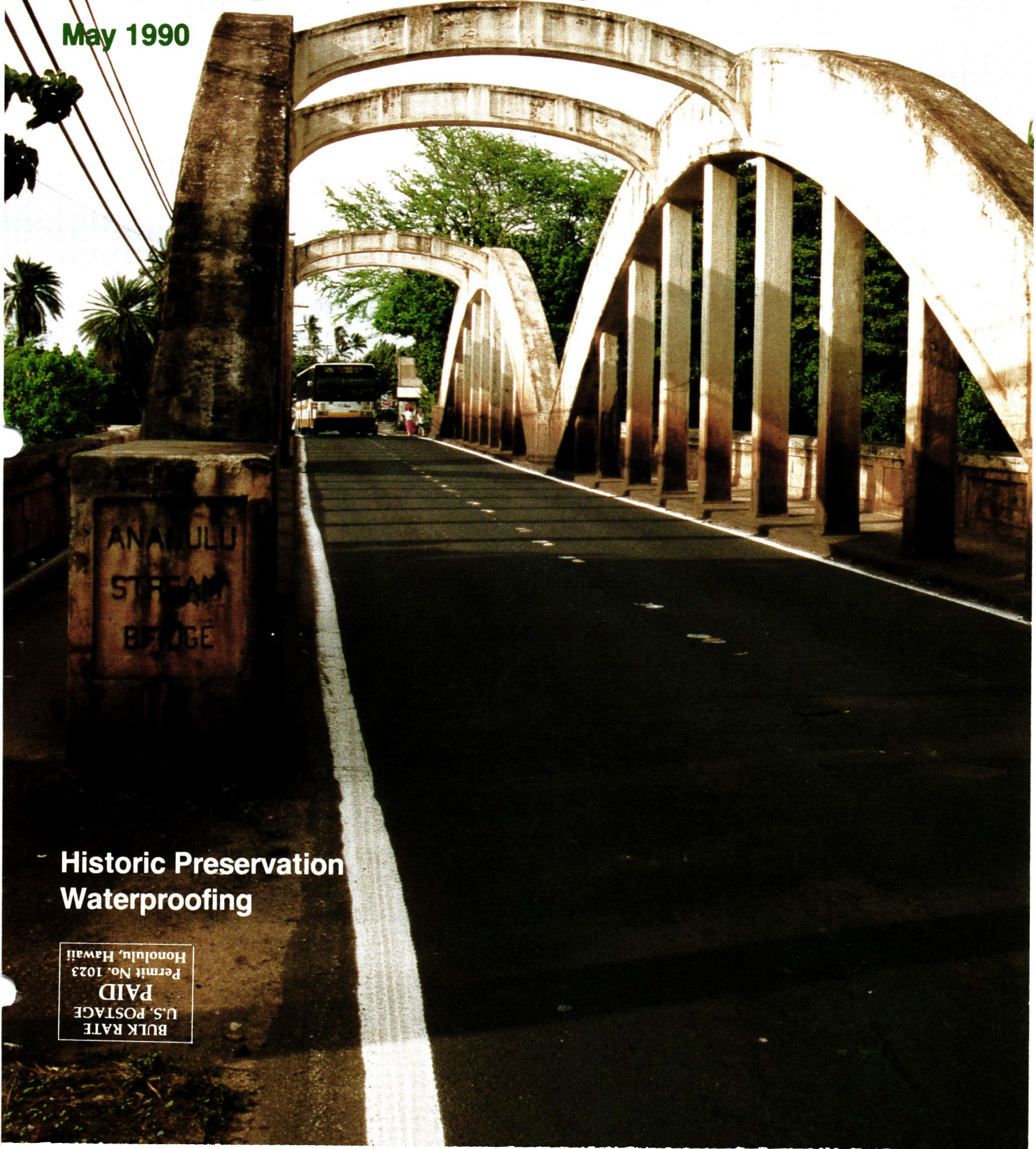


HAWAII ARCHITECT

May 1990



ANAHULU
STREAM
BRIDGE

Historic Preservation
Waterproofing

BULK RATE
U.S. POSTAGE
PAID
Permit No. 1023
Honolulu, Hawaii



When your critical path is truly critical...

Allied Builders' crews are the top field solution. Case in point: North Beach Leather, the splashy high-end clothiers, part of an avant international chain, now open at Ala Moana.

For architect Duane L. Cobeen, AIA, the project called for fast-track execution, precision installation of unique fashion-flavored materials (arriving from faraway ports) and sensitivity to mall management and patrons passing by.

For the California-based owner's representative, interiors specialist Steven R. Frank, the contractor demonstrated big picture intelligence, situational control, artisan pride and lightning speed—as rain threatened to break through the renovated mall's half-completed skyline.

"Allied went the extra yard to organize and accommodate—and help us open in a timely fashion," noted Frank. "They were in control, even under duress, at all times."

True to its trademark, Allied hit the deck running with plans in hand one day, computerized scheduling pau the next, and men on site right after that.

Cobeen's conclusion: "It was our first job together. I hope there will be many more."

Allied Builders project manager Bret Phillips,
North Beach Leather manager Steven Frank, architect Duane Cobeen



**Teamwork. Our motto.
Our method.**

1717 Akahi Street Honolulu, Hawaii 96819 Telephone (808) 847-3763

Contractor License BC-5068

Contents

President's Message

- 5 Maui Architects are Out in Front of the Problem-Solving Race**
Of the many challenges facing Maui practitioners, the biggest is dealing with the island's phenomenal growth.
by Hans Riecke, AIA
President, Maui Chapter/AIA

Historic Preservation

- 7 Looking Back Toward Haleiwa's Future**
Haleiwa has been accepted as Oahu's official Main Street Town by Main Street Hawaii, and historic preservation and economic restructuring of the town's Central Business District is under way.
by Beth Wotkyns
- 12 Is it the Final Act for the Liberty?**
As the May issue of *Hawaii Architect* is published, Hawaii's oldest theater may or may not still be standing.
by Nancy Bannick
- 16 Linekona School: Once Again a House of Learning**
On Feb. 4, the Honolulu Academy of Arts dedicated its new art center in the former Linekona School, adding another chapter to the building's colorful history.
by Peggy Stern

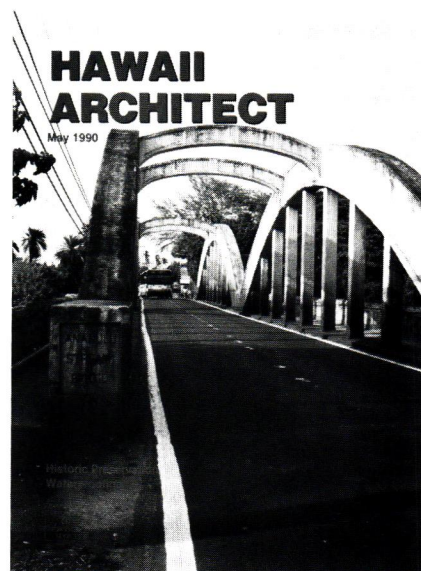
Waterproofing

- 23 Getting it Right the First Time**
There is only one chance to get waterproofing right before structural overlay is set, and often the simplest products are most effective.
by William H. Christensen
- 26 Water Infiltration Codes and Standards**
A variety of codes and standards give guidance in roofing, waterproofing and other critical construction procedures.
by Andrew Charles Yanoviak, AIA

Features

- 32 In Maunawili Valley, Tee Time Approaches for One of the World's Most Challenging Courses**
Completion of the Royal Hawaiian Country Club in Oahu's Maunawili Valley will mark one of golf course designer Perry O. Dye's most challenging assignments to date.
by Rick Carroll

37 News



Cover: The deteriorating Anahulu Stream Bridge is the vital link between Haleiwa, an official Main Street town, and the rest of Oahu's North Shore. Photo by Cynthia Becklund

pmp company ltd

Publishers

1034 Kilani Avenue, Suite 108
Wahiawa, Hawaii 96786
(808) 621-8200
FAX (808) 622-3025

PUBLISHER/EXECUTIVE EDITOR
Peggy Murchison

EDITOR
Aimee R. Holden

Assistant Editor
Nancy Nahas

PRODUCTION/ART DIRECTOR
Cynthia Becklund

Graphic Artist
Leonardo Henobio, Jr.
Production/Typography
Pam Sledge
Pam Timothy

SALES MANAGER
Miki Riker
Senior Account Executive
Mark Zanetti

Account Executive
Karl Uesato
Office Administrator/Sales Coordinator
Judy Lillard

BUSINESS MANAGER
Ted Kramer

Copyright© 1990 PMP Company, Ltd., 1034 Kilani Avenue, Suite 108, Wahiawa, Hawaii 96786. All rights reserved. Reproduction of the whole or any part of the contents of *Hawaii Architect* without written permission is prohibited. **Postmaster:** send change of addresses to *Hawaii Architect* (ISSN 0191-83111) at 1034 Kilani Ave., Ste. 108, Wahiawa, Hawaii 96786.



 **First Interstate** Bank

*When it comes to business banking
we've got the bells and whistles.*



THE HAWAII COUNCIL

1990 Hawaii State Council/AIA Officers

President, Dennis T. Toyomura, FAIA

Vice President/President-elect,
Arthur A. Kohara, AIA

Secretary/Treasurer,
Daniel G. Chun, AIA

Directors

Francis S. Haines, FAIA
Daniel G. Chun, AIA
Evan D. Cruthers, AIA
Nancy Peacock, AIA

Hawaii Island Director

Harrell McCarty, AIA

Maui Chapter Director

Ormond Kelley, AIA

Hawaii Architect Committee

Lee Davis, AIA
Charles A. Ehrhorn, AIA
Robert M. Fox, AIA
Jeffrey Nishi, AIA
Henry E. Reese, AIA
Alan Rowland, AIA
Patricia Shimazu, AIA

Honolulu Chapter/AIA

1128 Nuuanu Avenue
Honolulu, Hawaii 96817
(808) 545-4242

Executive Vice President/CEO

Shirley L. Cruthers

Executive Secretary

Beverly McKeague

Receptionist/Documents

Victoria A. Wong

Hawaii Architect is a monthly journal of the Hawaii Council/American Institute of Architects. Subscriptions are \$24 per year. Opinions expressed by authors do not necessarily reflect those of either the Hawaii State Council/AIA or the publisher. The appearance of advertisements or new products and service information does not constitute an endorsement of the items featured.

President's Message

Maui Architects are Out in Front Of the Problem-Solving Race

by Hans Riecke, AIA
President, Maui Chapter/AIA

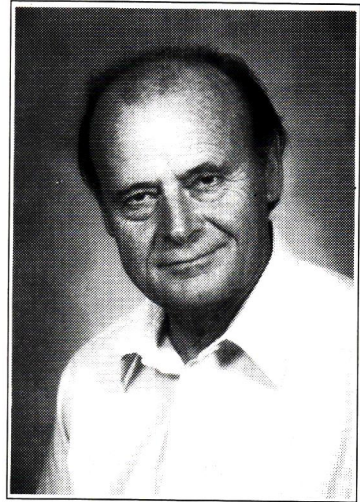
The new Maui Chapter/AIA is off and running — sometimes stumbling a bit, but never losing sight of its goals.

Of the many challenges facing the Maui practitioners, the biggest is dealing with the island's phenomenal growth and its consequences: high construction costs, labor shortages, permit delays and government actions to curb and manage growth.

It is in the latter arena that our new chapter has been and will be the most active. We will continue to respond to requests by elected or appointed officials to review and comment on proposed rules and ordinances. We will also take the initiative in some cases and make our own proposals.

I invite all Maui Chapter members to become more involved in this activity. I believe architects have a lot to contribute to their community because by training and inclination they are problem solvers.

The issues facing us range from drafting a new ordinance for



Hans Riecke, AIA

underground utilities to the mayor's proposal to require architects and engineers to certify that all code and ordinance requirements have been met, to finding solutions to the affordable housing crisis and many others.

I know you are all busy with your work, but we cannot afford to stand back and let others make the rules under which we do our work. HA

Writers, story ideas sought for HA

Hawaii Architect is seeking writers to contribute to the magazine. If you have ideas for articles, know of interesting topics, or need deadline or focus information, please contact Aimee Holden at 621-8200 or write: *Hawaii Architect*, 1034 Kilani Ave., Suite 108, Wahiawa, HI 96786.