

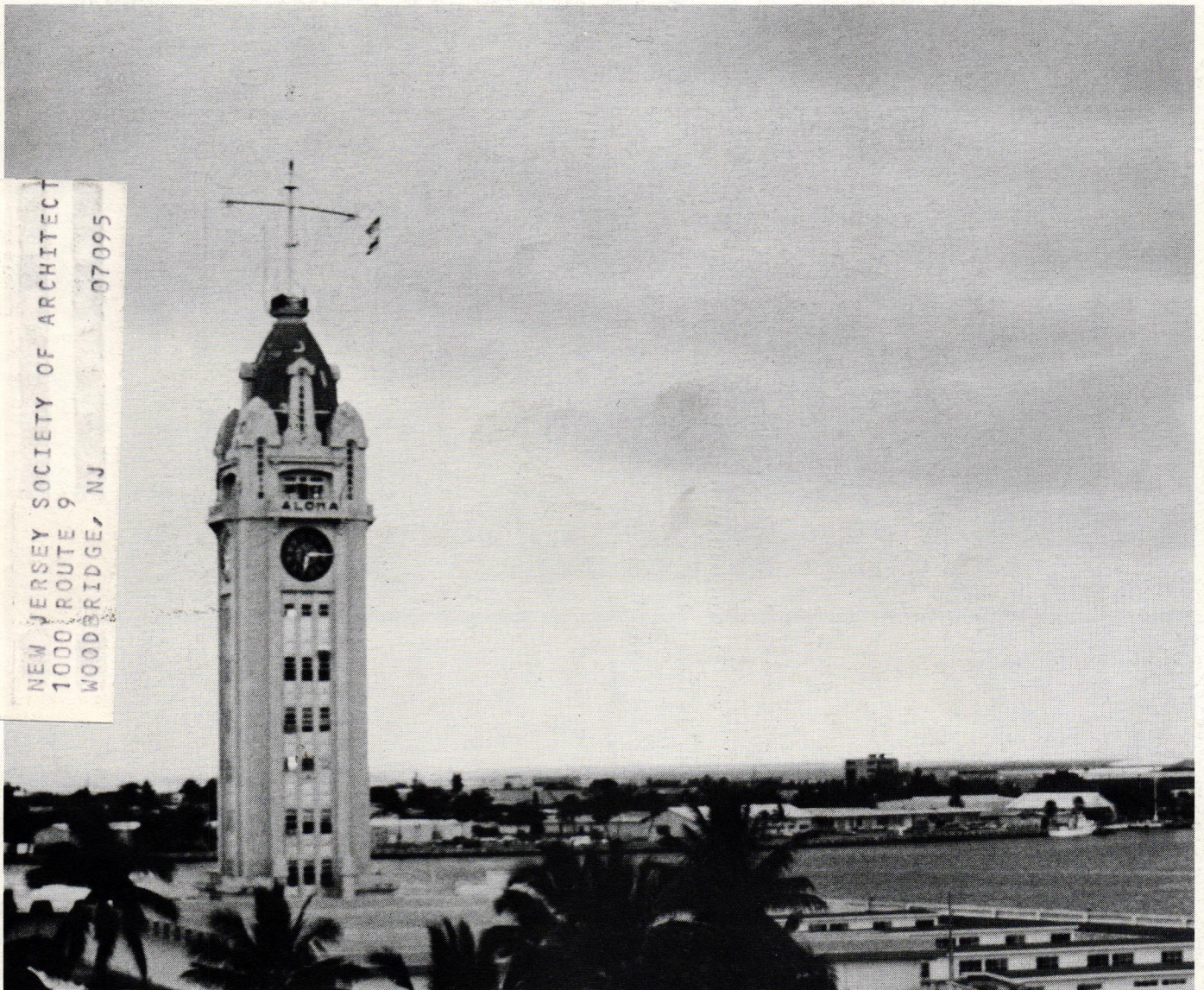
journal
of the
hawaii
society/
american
institute
of
architects

HA

HAWAII ARCHITECT

May, 1983

Aloha Tower



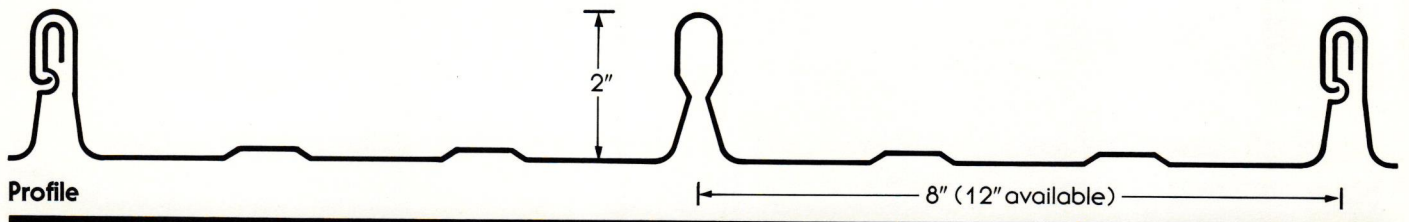
09265 2 6 HAA

NEW JERSEY SOCIETY OF ARCHITECT
1000 ROUTE 9
WOODBRIDGE, NJ 07095

INTRODUCING DIMONDEK[®] METAL ROOFING

Roll formed in Hawaii for immediate delivery

- Concealed anchors eliminate fasteners through panel
- Preformed seams lock together without special seaming tool
- Floating anchors allow for expansion and contraction
- Long lengths eliminate end laps in most cases
- Available in prepainted steel, aluminum, stainless steel and copper



EARLE M. JORGENSEN CO.

STEEL • CULVERT • FASTENERS • GALVANIZING • ROLL FORMING
2655 Waiwai Loop • Honolulu, Hawaii 96820 • (808) 836-1611
Neighbor Islands Call 1-800-352-3612



HAWAII ARCHITECT

Volume 12, No. 5

May, 1983

Hawaii Architect is a monthly journal of the Hawaii Society/American Institute of Architects. Subscriptions are \$10 per year. Opinions expressed by authors do not necessarily reflect those of either the Hawaii Society or the AIA. The appearance of advertisements, new product and service information does not constitute an endorsement of the items featured.

Hawaii Society/AIA
233 Merchant Street, Suite 200
Honolulu, Hawaii 96813-2977
(808) 538-7276

Executive Secretary, Beverly McKeague

HS/AIA Officers

President, Lewis Ingleson, AIA

Vice President/President-Elect
Christopher J. Smith, AIA

Secretary, A. Kimbal Thompson, AIA

Treasurer, Sydney C.L. Char, AIA

Directors

Charles A. Ehrhorn, AIA
Michael J. Leineweber, AIA
Glenn E. Mason, AIA
Patrick T. Onishi, AIA
Geoffrey G. Paterson, AIA

Associate Director, Nancy Peacock

Hawaii Architect Personnel

Editor, Karen Gates

Steering Committee

Charles A. Ehrhorn, AIA
Glenn E. Mason, AIA
Jeffrey Nishi, AIA
Alan Rowland, AIA
Patricia Shimazu, AIA
Edward Sullam, FAIA

ASLA Liaison, Thomas S. Witten

Legislative Commentator, Ali Sheybani

Photographers

Michael S. Chu, ASLA
Ann Yoklavich

Staff

Gary Marshall, AIA
Nancy Peacock

Published monthly by:

Crossroads Press, Inc.

863 Halekauwila Street
P.O. Box 833
Honolulu, Hawaii 96808

Phone (808) 521-0021

Stephen S. Lent, Publisher

William B. Roberts, Advertising Director

POSTMASTER: Send address changes to the Hawaii Architect, 233 Merchant Street, Suite 200, Honolulu, Hawaii 96813

HAWAII ARCHITECT (USPS063170)

second class

postage paid at Honolulu, Hawaii

Features

Aloha Tower—The Public Purpose in Redevelopment **8**
by Boris Dramov, Jim Adams, and Bonnie Fisher
ROMA Architects and Urban Designers

The Changing Complexion of Chinatown **14**
by Jeffrey Y. Nishi, AIA, Architects NKO Inc.
Photos by Robert Chinn Photography

The Neutron Gauge—A Useful Tool for Structural
Moisture Surveys **18**
by Philip J. Manly and Nick Rinaldi
Gamma Corporation

Departments

To the Editor **4**

Headlines **6**
Excellence in Architecture
by Lewis Ingleson
President, Hawaii Society/AIA

General Notes **12**
Living in History, Preservation Parade '83

New Members **22**
by Nancy Peacock

Cover **Aloha Tower, Photo by Ann Yoklavich**

Do you really need a full-time office?

HQ's **Complete Executive Office** Plan II is offices and conference rooms on an as needed basis with full support services available on a pay as you use basis:

- Receptionist and telephone answering.
- Secretarial, word processing and copying.
- Telex, fax and 800 number services.
- Video facilities.
- Group insurance and more.

HQ's CEO Plan II costs considerably less than a full-time office.

523-0966

HQ OFFICES & SERVICES

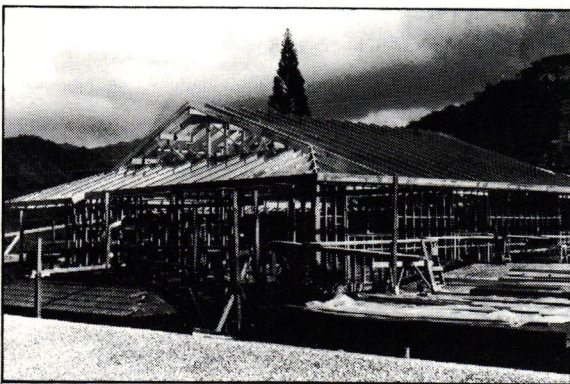
THE HEADQUARTERS COMPANIES

900 Fort Street Mall
Suite 1777 • Honolulu

The HQ Network—Changing the Way America Does Business

© 1982 HQ

Manufactured in Hawaii



- Trusses
- Load-bearing studs and joists
- Residential & Commercial
- Competitively priced
- Quick service
- Technical design assistance

CALL FOR FREE BROCHURE — NO OBLIGATION
845-9311

Ask for George White

STUDCO
INC.

Galvanized metal studs • Track • Trusses • Joists
Baker Way/Sand Island 845-9311

To the Editor

The choice of the headline "Why Can't Johnny Draw" for the article I wrote about my experience as a 300-level juror at the School of Architecture was most unfortunate. It contains a negative connotation which is not consistent with the spirit of the article. Rather the intent was to remind students that developing the ability to sketch and draw is vital to the proper presentation of projects—whether it be to jurors or clients. That ability should not be neglected in favor of model building or verbal skills. I didn't say that "Johnny Can't Draw." I did try to say that Johnny didn't seem to understand how important it is.

Edward Sullam
Edward Sullam, FAIA & Associates

CLASSIFIED NOTICES

Call 521-0021 to place a classified ad. \$3.50 per line + 4% tax, 4 line minimum, approximately 5 words per line. Payment must accompany order.

OFFICE SPACE!

Great business locations Downtown, Kakaako, So. King nr. Keeaumoku, Chinatown (historic renovations), Makiki! Rents from 50¢ to \$1.00 per sq. ft. net! Sizes from 500 to 12,500 sq. ft. For specifics call:

LYNN TILTON LTD.

523-8623

Full fee to brokers.