

journal
of the
hawaii
society/
american
institute
of
architects

HA

HAWAII ARCHITECT

January, 1983

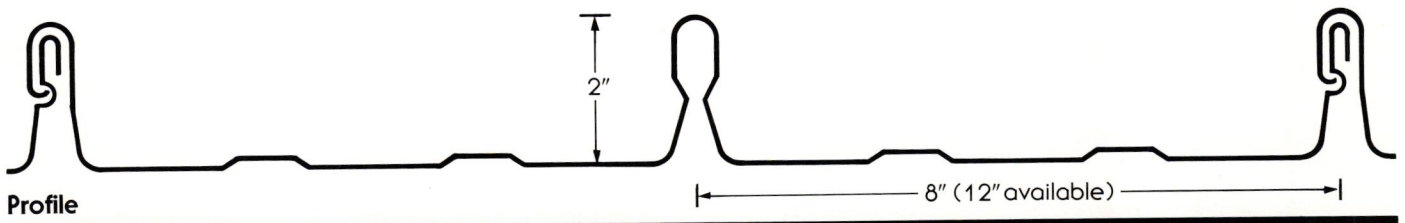
Inside: Hawaii Chapter, ASLA



INTRODUCING DIMONDEK[®] METAL ROOFING

Roll formed in Hawaii for immediate delivery

- Concealed anchors eliminate fasteners through panel
- Preformed seams lock together without special seaming tool
- Floating anchors allow for expansion and contraction
- Long lengths eliminate end laps in most cases
- Available in prepainted steel, aluminum, stainless steel and copper



EARLE M. JORGENSEN CO.

STEEL • CULVERT • FASTENERS • GALVANIZING • ROLL FORMING
2655 Waiwai Loop • Honolulu, Hawaii 96820 • (808) 836-1611
Neighbor Islands Call 1-800-352-3612



HAWAII ARCHITECT

Volume 12, No. 1

January, 1983

Hawaii Architect is a monthly journal of the Hawaii Society/American Institute of Architects. Subscriptions are \$10 per year. Opinions expressed by authors do not necessarily reflect those of either the Hawaii Society or the AIA. The appearance of advertisements, new product and service information does not constitute an endorsement of the items featured.

Hawaii Society/AIA
233 Merchant Street, Suite 200
Honolulu, Hawaii 96813-2977
(808) 538-7276

Executive Secretary, Beverly McKeague

HS/AIA Officers

President, Francis Oda, AIA

Vice President/President-Elect,
 Lewis Ingleson, AIA

Secretary, Rosalina Burian, AIA

Treasurer, Sydney C.L. Char, AIA

Directors

Michael J. Leineweber, AIA

Glenn E. Mason, AIA

Charles A. Ehrhorn, AIA

Dwight C. Lowrey, AIA

Associate Director, Ben Torigoe

Hawaii Architect Personnel

Editor, Karen Gates

Steering Committee

Charles A. Ehrhorn, AIA

Glenn E. Mason, AIA

Jeffrey Nishi, AIA

Alan Rowland, AIA

Patricia Shimazu, AIA

Edward Sullam, FAIA

ASLA Liaison, Thomas S. Witten

Graphic Consultant, Bonnie Louise Judd

Legislative Commentator, Ali Sheybani

Photographers

Michael S. Chu, ASLA

Ann Yoklavich

Staff

Nancy Peacock

Features

Forces of Change: Creating New Landscapes by Thomas S. Witten Phillips, Brandt, Reddick & Associates	6
Highlights of the 1982 Annual Meeting of the American Society of Landscape Architects by Edward A. Williams, FASLA, EDAW, Inc.	8
1982 Professional Awards Program Hawaii Chapter, American Society of Landscape Architects	10
Mauna Lani Resort, Belt, Collins & Associates	10
Royal Hawaiian Shopping Center Belt, Collins & Associates	12
Civic Center Parking Structure Walters, Kimura & Associates	14
Chain of Craters Road, Thomas Fake, ASLA	16
Legends of the Hawaiian Forest Robin Koma Lee	17
Wailea Elua, Walters, Kimura & Associates	19
Sacred Falls State Park Phillips, Brandt, Reddick & Associates	20
Hasegawa-Komuten Building Phillips, Brandt, Reddick & Associates	20
The Anchorage at Tweed Heads, Australia Belt, Collins & Associates	20
Oahu Urban Design Study (Phase A) Phillips, Brandt, Reddick & Associates	21
Honouliuli Regional Plan Donald Wolbrink, FASLA Claire Avis, ASLA	21
Puu Alii, Phases I and II, EDAW, inc.	21

Departments

Headlines	1983 Challenge by Lewis Ingleson President, Hawaii Society/AIA	4
Profile	Richard C. Tongg Tongg, Clarke & Mechler by Alan Clarke	22
Cover	Civic Center Parking Structure Photo by Augie Salbosa	

Published monthly by:

Crossroads Press, Inc.

863 Halekauwila Street

P.O. Box 833

Honolulu, Hawaii 96808

Phone (808) 521-0021

Stephen S. Lent, Publisher

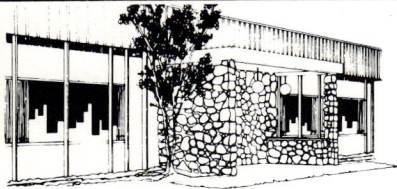
William B. Roberts, Advertising Director

POSTMASTER: Send address changes to
 the Hawaii Architect, 233 Merchant Street,
 Suite 200, Honolulu, Hawaii 96813

HAWAII ARCHITECT (USPS063170)

second class

postage paid at Honolulu, Hawaii



SOULE

BUILDINGS

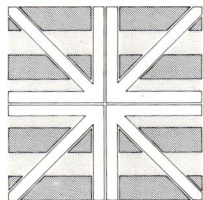
Economy and good looks in metal buildings

Pre-engineered metal buildings— industrial, commercial, recreational. Clear-span, post-free interiors. Surprisingly low cost.

For more information and free quotations call:

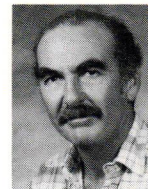


533-7421 401 Kamakee St.



Headlines

1983 Challenge



by Lewis Ingleson
President, Hawaii Society/AIA

The beginning of 1983 presents many challenges to architects. We are beset by the current recession with high interest rates, high unemployment, declining construction starts, and intense competition for fewer and fewer commissions. We have been unable to rally the required legislative support for key bills relating to our professional status. Moreover, we are confronted by more numerous and larger claims against us for alleged professional negligence by an increasingly litigious clientele.

We also share, with the rest of the society, the ills of a nation and state in transition. We are confronted by high crime rates, lack of affordable housing, environmental disasters, the threat of a nuclear holocaust, etc. ad nauseum. Each day's newspapers are filled with the symptoms of a seemingly sick society, and few of us are immune.

It would be folly to believe that we as individuals or the HS/AIA collectively can tackle all the challenges confronting us. However, I do believe that we can be a catalyst for change.

As architects, we are planners by nature. And as planners, we are also visionaries. Our society looks to its architects to give form to its aspirations, dreams, and hopes. On the other hand, as products of our society, we express through our buildings the weaknesses and foibles of our era.

Most of us are experiencing a distinct lack of activity in our offices. We have lots of time available and not much work. We can spend our spare time in despair and wishful thinking waiting for "things" to get better. Or we can

use our power to envision a better world, and our ability to implement that vision.

We can, and should, speak out on the issues that affect the world in which we live. We know what we want. We have the intelligence and ability to make it happen. We have but to speak, and society will listen.

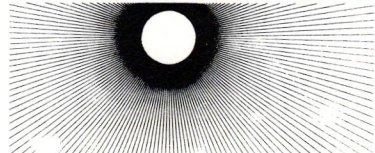
I believe the same is true of the HS/AIA. Therefore, it is one of my prime goals as your president to speak out on the vital issues confronting our profession and our citizenry. I aim to increase the community's awareness of architects, their work and their worth. All of us in the HS/AIA have a valuable message for our state. We may not yet be fully aware of the value of our talent and ability.

However, I hope that with your help we may together discover our strength and our vision, and offer them to the people of Hawaii. To do less is to abandon the cause of architecture.

In closing, I would like to congratulate Francis Oda, his officers, and executive and working committees for a job well done in 1982. It was an eventful year with numerous activities demanding attention. The most obvious, of course, was the national convention for which our Society, as host, can be rightfully proud. However, there were numerous other programs undertaken with equal effectiveness, including continuing education courses, annual architectural awards, the journalism award, increasing attendance at our monthly dinner meetings, and many others. All in all, it was a busy year and to Francis and crew, "Mahalo."

HA

SAVENERGY



Fact: Metal lath/steel stud curtainwalls can offer dramatic reductions in heating-cooling energy consumption and operating costs.

On an average day with temperatures in the mid-80s, the heat gain through one square foot of the lath/stud wall will be 1 Btu an hour. Heat gain through a conventional masonry wall would be about 4 Btus an hour. Through a double-plate glass wall—7 Btus. And through a precast concrete wall—10 Btus.

More facts: Installed costs for metal lath/steel stud curtainwalls are about 50 per cent less than comparable masonry or concrete installations.

Keeping Hawaii Plastered



Plaster Information — Don Morgarella
PACIFIC BUREAU for LATHING & PLASTERING
905 Umi St. — Rm. 303 Ph. 847-4321