

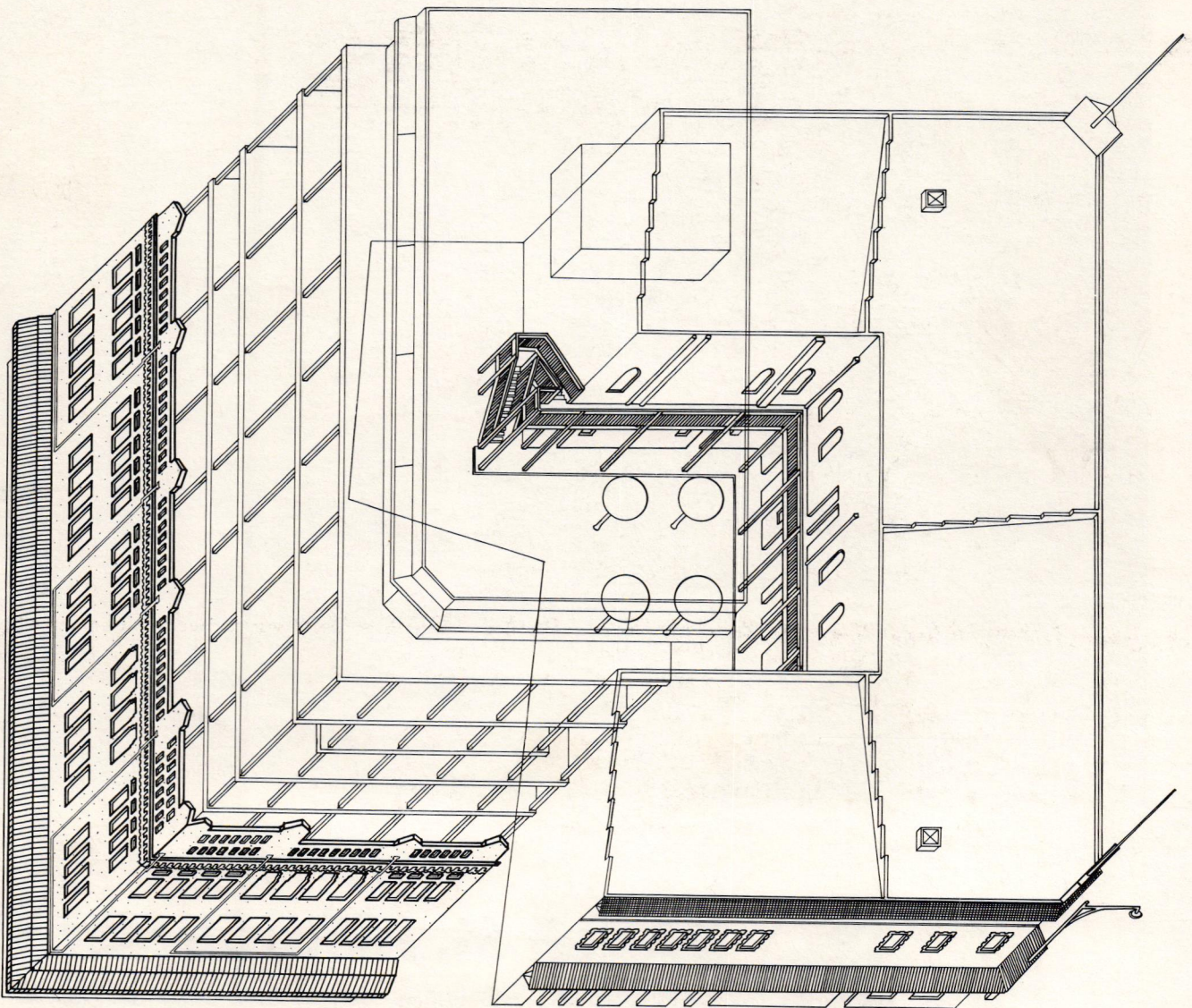
journal  
of the  
hawaii  
society/  
american  
institute  
of  
architects

HA

# HAWAII ARCHITECT

September, 1981

## Historic Preservation



M.SHIROMA 8/81

# JORGENSEN METAL ROOFING

- Custom rolled in Hawaii for immediate delivery
- Available in 8 colors and 4 profiles
- Installed easily without specialty trades
- Proven durability in Hawaii
- Competitively priced

For more information and specifications call 836-1611



## EARLE M. JORGENSEN CO.

STEEL • CULVERT • FASTENERS • GALVANIZING • ROLL FORMING  
2655 Waiwai Loop • Honolulu, Hawaii 96820 • (808) 836-1611

# HAWAII ARCHITECT

Volume 10, No. 9

SEPTEMBER, 1981

**Hawaii Architect** is a monthly journal of the Hawaii Society/American Institute of Architects. Subscriptions are \$10 per year. Opinions expressed are those of the editors and writers and do not necessarily reflect those of either the Hawaii Society or the AIA. All correspondence should be directed to:

All correspondence should be directed to:  
**Hawaii Society/AIA**  
233 Merchant Street, Suite 200  
Honolulu, Hawaii 96813

Beverly McKeague  
Executive Secretary  
Phone (808) 538-7276

**HS/AIA Officers:**  
**President**  
Donald D. Chapman, AIA

**Vice President/President-Elect**  
Francis Oda, AIA

**Secretary**  
Gordon Ogata, AIA

**Treasurer**  
Ted Garduque, AIA

**Directors**  
Tom Culbertson, AIA  
Rosalina Burian, AIA  
Charles A. Ehrhorn, AIA  
Dwight C. Lowrey, AIA

**Associate Director**  
Ann Thompson

**Hawaii Architect Personnel**  
**Co-Editors**  
Shannon McMonagle  
Glenn E. Mason, AIA

**Staff**  
Rob Hale, AIA  
Michael J. Leineweber, AIA  
Curtis Miyamura  
Mary Alice Sinton  
Mike Chu

**Art Director**  
Jan Olin Nakamura

Published monthly by:

**Crossroads Press, Inc.**  
863 Halekauwila Street  
P.O. Box 833  
Honolulu, Hawaii 96808  
Phone (808) 521-0021

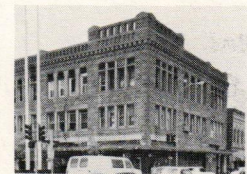
Stephen S. Lent, Publisher  
William B. Roberts, Advertising Director

POSTMASTER: Send address changes to the Hawaii Architect, 233 Merchant Street, Suite 200, Honolulu, Hawaii 96813

HAWAII ARCHITECT (USPS063170)  
controlled circulation  
postage paid at Honolulu, Hawaii

## Contents:

<b>Headlines:</b>	Summer Salad Days By Donald D. Chapman, AIA President, Hawaii Society/AIA	4
<b>Historical:</b>	Tax Incentives for Historic Properties By Richard Coones Touche Ross & Co.	6
<b>Historical:</b>	Economics of Building Re-Use: Creative Financing By Michael J. Leineweber, AIA	8
<b>Historical:</b>	Case Study: Restoration of the Model/Progress Block By Lisa Porter-Fox Fox Hawaii, Inc.	10
<b>Historical:</b>	Case Study: Restoration of the Mendonca Block By Shannon McMonagle	14
<b>Historical:</b>	Historic Site Preservation By Robin Koma Lee, ASLA Manager of Land Planning Alexander & Baldwin, Inc.	18
<b>New Members:</b>	Wilbert K. Hashimoto, James M. McKeague, John J. Clements, Gisela Patteson, M. Arthur Stilwell, Patrick W. Mori, Rebecca N.H. Pang, Michael K.F. Loke, Warren Hananoki, Warren W. Sunland	22
<b>Planning &amp; Zoning:</b>	Planning Conferences By Councilman George Akahane Chairman, Planning and Zoning Committee	24
<b>Cover:</b>	Axonometric Projection of Model/Progress Block and Mendonca Block By Michael Shiroma	



**COME  
TO THE  
SOURCE  
for  
QUALITY  
distributors of**

**GARMENT RACKS**

**SHOW CASES**

**HARDWARE**

**TEMPERED GLASS  
CUBE SYSTEMS**

**1x1 CHROME SQ.  
TUBE SYSTEMS**

**DISPLAY FIXTURES**

**HARDWARE**

**SAVE TIME & MONEY  
CALL US FIRST**

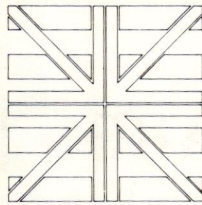
Representatives for Custom Fixtures  
Manufacturers



**STORE PLANNING**

**526-0623**

570 Auahi Street  
Honolulu, Hawaii 96813

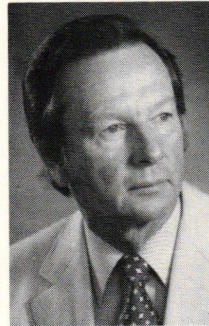


**Headlines**

## Summer Salad Days

by **DONALD D. CHAPMAN, AIA**  
President, Hawaii Society/AIA

With the lazy hazy days of Summer 1981 drawing to a close I find it a bit of a chore to keep this article from being a bore. Interest rates are high, construction is down, and "A Quest in Time"



**Chapman**

is still some distance into the future. Perhaps it is time to relax and be a little on the tossed, lighthearted, maybe even frivolous side. Why not.

We architects all pass through a period later fondly referred to as the salad days of our careers, so for your late summer fare here are a couple of old specifications that may be of interest.

First, for the younger designer types may I suggest lining a calabash with a layer of thin orange slices, sugar lightly, add a layer of sliced Maui onions seasoned with salt and pepper. Repeat the layers and pour over a vinaigrette or French dressing to taste. Place in the fridge and chill for an hour or so. (May be upgraded by addition of sliced mushrooms). Serve with a chilled California White.

For the reminiscing senior designer type try lightly rubbing the calabash with garlic then mash four hard-boiled egg yolks with two teaspoons of prepared mustard. Blend in ½ cup each of tarragon vinegar and olive oil. Lightly salt and pepper. Finely chop six white truffles and quarter six cooked artichoke bottoms. Mix carefully and top with ½ cup of green mayonnaise. The wine? A premium French Champagne of course.

Regarding "A Quest In Time." This is a request in time, I hope, to keep you from discarding models and sketches that may be displayed in several Hawaii '82 exhibits. Specifically, there will be a 'City in Miniature' exhibit of archi-

tectural models at the Ala Moana Center chaired by Bob Hartman. There is also a proposed exhibit on the Art of Architecture to be held at the Honolulu Academy of Arts. It is contemplated that design sketches, presentation boards, construction drawings, photographs, etc., of Island work that respects our environment will be of great interest to the public as well as to our visiting architects. This exhibit is to be sponsored jointly between the academy and HS/AIA with Tom Culbertson as our genial coordinator. So during your annual end of summer throw-out, please check with Bob or Tom before you chuck out.

Now in the words of George Hogan, the sage of the golf links, the tennis courts, and the drafting boards, "Get Back To Work"! HA

**DON'T  
MISS IT!**

**YOU ARE  
INVITED  
SEPT. 17, 18, 19...**

**THE HAWAII  
INDUSTRIAL/CONSTRUCTION  
SHOW**

Suite 408 • 119 Merchant St. • Honolulu, Hawaii 96813 • Ph. 523-7755  
TELEX 7238703 SHOW HR

**...FEATURING THIS YEAR  
HAWAII'S LARGEST ARRAY OF CONSTRUCTION/  
INDUSTRIAL AND BUSINESS PRODUCTS**

- BUILDING MATERIALS
- FINISH PRODUCTS
- ENERGY SYSTEMS
- COATINGS
- DATA PROCESSING
- ARCHITECTS SUPPLIES
- AND MUCH, MUCH MORE



**SPECIAL EVENT**

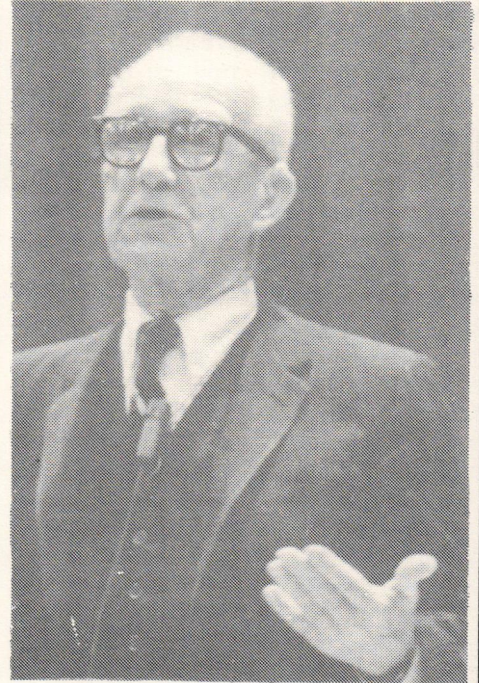
- HAWAII'S FIRST STATE WIDE INDUSTRIAL/  
CONSTRUCTION CONFERENCE SPONSORED BY  
THE GENERAL CONTRACTORS ASSOCIATION,  
BANK OF HAWAII AND TRADE PUBLISHING CO.  
CALL CAROL INAMINE FOR  
DETAILS AT 836-1681

SHOW HOURS:  
SEPT. 17 NOON TO 8:00 P.M.  
SEPT. 18 NOON TO 9:00 P.M.  
SEPT. 19 10:00 A.M. TO 5:00 P.M.

**FREE  
ADMISSION**

**SPECIAL  
ATTRACTION**

**1 P.M.  
SAT.  
SEPT. 19  
NBC CONCERT HALL**



**BUCKMINSTER  
FULLER**

- ★ Planet's Friendly Genius
- ★ Inventor
- ★ Author
- ★ Architect
- ★ Futurist

*A Rare Speaking  
Appearance*  
**TICKETS \$10**

at NBC Box Office and  
all HITS Outlets  
For information call 523-7755