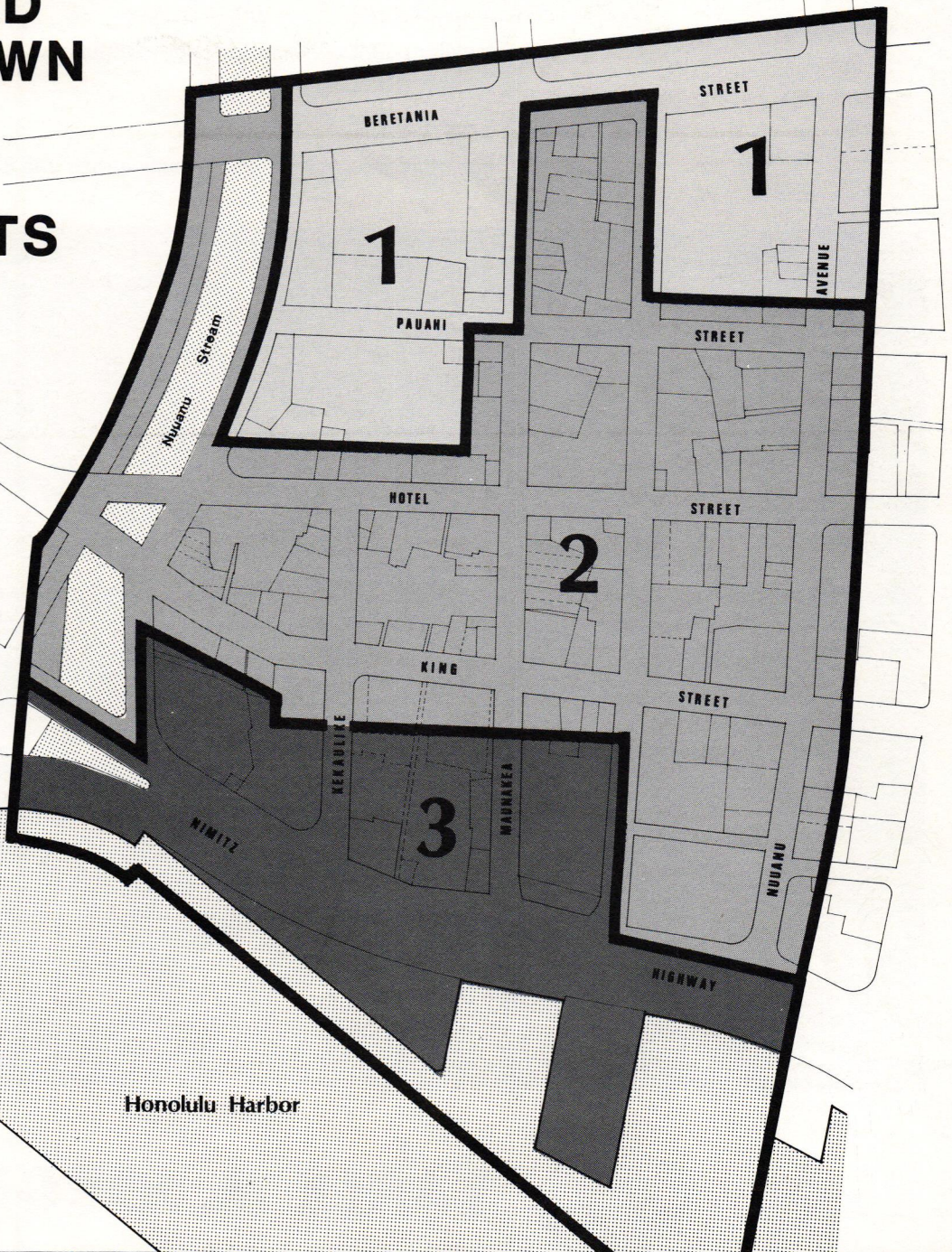


Historic Preservation

PROPOSED CHINATOWN SPECIAL DESIGN PRECINCTS 1-3



JORGENSEN METAL ROOFING

- Custom rolled in Hawaii for immediate delivery
- Available in 8 colors and 4 profiles
- Installed easily without specialty trades
- Proven durability in Hawaii
- Competitively priced

For more information and specifications call 836-1611



EARLE M. JORGENSEN CO.

STEEL • CULVERT • FASTENERS • GALVANIZING • ROLL FORMING
2655 Waiwai Loop • Honolulu, Hawaii 96820 • (808) 836-1611

HAWAII ARCHITECT

Volume 10, No. 8

August, 1981

Hawaii Architect is a monthly journal of the Hawaii Society/American Institute of Architects. Subscriptions are \$10 per year. Opinions expressed are those of the editors and writers and do not necessarily reflect those of either the Hawaii Society or the AIA. All correspondence should be directed to:

All correspondence should be directed to:
Hawaii Society/AIA
233 Merchant Street, Suite 200
Honolulu, Hawaii 96813

Beverly McKeague
Executive Secretary
Phone (808) 538-7276

HS/AIA Officers:

President
Donald D. Chapman, AIA

Vice President/President-Elect
Francis Oda, AIA

Secretary
Gordon Ogata, AIA

Treasurer
Ted Garduque, AIA

Directors
Tom Culbertson, AIA
Rosalina Burian, AIA
Charles A. Ehrhorn, AIA
Dwight C. Lowrey, AIA

Associate Director
Ann Thompson

Hawaii Architect Personnel
Co-Editors
Shannon McMonagle
Glenn E. Mason, AIA

Staff
Rob Hale, AIA
Michael J. Leineweber, AIA
Curtis Miyamura
Mary Alice Sinton
Mike Chu

Art Director
Jan Olin Nakamura

Published monthly by:

Crossroads Press, Inc.
863 Halekauwila Street
P.O. Box 833
Honolulu, Hawaii 96808
Phone (808) 521-0021

Stephen S. Lent, Publisher
William B. Roberts, Advertising Director

POSTMASTER: Send address changes to the Hawaii Architect, 233 Merchant Street, Suite 200, Honolulu, Hawaii 96813

HAWAII ARCHITECT (USPS063170)
controlled circulation
postage paid at Honolulu, Hawaii

Contents:

Headlines: Don't Forget the Convention! 4
By Donald D. Chapman, AIA
President, Hawaii Society/AIA

Historical: The Chinatown Revitalization Plan 6
By A. Lono Lyman

Historical: Urban Design Elements in Chinatown 10
By Spencer Leineweber, AIA

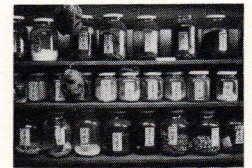


Photo Feature: Construction Vitality in the Old City 14

Laurels: HS/AIA 1981 Awards Program 16
A Makiki Heights House
By Tom Fanning, AIA

ASLA: The Iolani Palace Grounds 18
By David R. Black, ASLA

Kudos: Hego Fuchino 21
1981 Preservation Award

Historical: Archaeological Concerns and the Architect 23
By Frank Johnson

Historical: Budget Cuts and State Office 26
of Historic Preservation
By Glenn E. Mason, AIA

Planning & Zoning: Development Plans 28
By Councilman George Akahane
Chairman, Planning and Zoning Committee

Cover: Proposed Precinct Map of Chinatown
Special Design District