



JORGENSEN METAL ROOFING

- Custom rolled in Hawaii for immediate delivery
- Available in 8 colors and 4 profiles
- Installed easily without specialty trades
- Proven durability in Hawaii
- Competitively priced

For more information and specifications call 836-1611



EARLE M. JORGENSEN CO.

STEEL • CULVERT • FASTENERS • GALVANIZING • ROLL FORMING

2655 Waiwai Loop • Honolulu, Hawaii 96820 • (808) 836-1611

HAWAII ARCHITECT

Volume 10, No. 7

July, 1981

Hawaii Architect is a monthly journal of the Hawaii Society/American Institute of Architects. Subscriptions are 10 per year. Opinions expressed are those of the editors and writers and do not necessarily reflect those of either the Hawaii Society or the AIA. All correspondence should be directed to:

All correspondence should be directed to:
Hawaii Society/AIA
233 Merchant Street, Suite 200
Honolulu, Hawaii 96813

Beverly McKeague
Executive Secretary
Phone (808) 538-7276

HS/AIA Officers:
President
Donald D. Chapman, AIA

Vice President/President-Elect
Francis Oda, AIA

Secretary
Gordon Ogata, AIA

Treasurer
Ted Garduque, AIA

Directors
Tom Culbertson, AIA
Rosalina Burian, AIA
Charles A. Ehrhorn, AIA
Dwight C. Lowrey, AIA

Associate Director
Ann Thompson

Hawaii Architect Personnel
Co-Editors
Shannon McMonagle
Glenn E. Mason, AIA

Staff
Rob Hale, AIA
Michael J. Leineweber, AIA
Curtis Miyamura
Mary Alice Sinton
Mike Chu

Art Director
Jan Olin Nakamura

Published monthly by:

Crossroads Press, Inc.
863 Halekauwila Street
P.O. Box 833
Honolulu, Hawaii 96808
Phone (808) 521-0021

Stephen S. Lent, Publisher
William B. Roberts, Advertising Director

POSTMASTER: Send address changes to the Hawaii Architect, 233 Merchant Street, Suite 200, Honolulu, Hawaii 96813

HAWAII ARCHITECT (USPS063170)
controlled circulation
postage paid at Honolulu, Hawaii

Contents:

Headlines:	Hawaii '82 By Donald D. Chapman, AIA President, Hawaii Society/AIA	4
Index:	The Waianae Potential By A. Lono Lyman	6
Laurels:	HS/AIA 1981 Awards Program	12
Laurels:	They Got Theirs at the Awards Banquet	19
A/E Liabilities:	A/E Liabilities	20
New Members:	Richard S. McGerrow, Bryce Klug, Judith Jones Lebar, Joseph L. Coggan, Robert L. Jacobowitz, William J. Laffan, Sheila Hixenbaugh, Ronald J. Dean, Richard L. Katz, George T. Fujiwara, Ann Hind, Patricia L. Eidson, Walter H.T. Leong, Ronald K. Lau, Lisa Porter-Fox, Clemson Lam, Edward R. Haysom	22
Ballpoint:	Letter to the Editors By Edward Sullam, FAIA	25
Photo Feature:	Douglas Peebles Architectural Photographer	26
Headlines:	From: Ke Kaha Ki'i To: Hawaii Architect By Glenn E. Mason, AIA	28
Planning & Zoning:	Involving Citizens in Fiscal Planning By Councilman George Akahane Chairman, Planning and Zoning Committee	30
Cover:	Photo Montage of Past Covers By Glenn E. Mason, AIA	

**COME
TO THE
SOURCE
for
QUALITY
distributors of**

GARMENT RACKS

SHOW CASES

HARDWARE

**TEMPERED GLASS
CUBE SYSTEMS**

**1x1 CHROME SQ.
TUBE SYSTEMS**

DISPLAY FIXTURES

HARDWARE

**SAVE TIME & MONEY
CALL US FIRST**

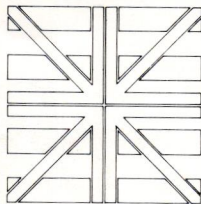
Representatives for Custom Fixtures
Manufacturers



STORE PLANNING

526-0623

570 Auahi Street
Honolulu, Hawaii 96813



Headlines

Hawaii '82

by **DONALD D. CHAPMAN, AIA**
President, Hawaii Society/AIA

Time marches on! The most successful "A Line on Design and Energy" in Minneapolis has passed the baton to "A Quest in Time," our time, HS/AIA and the 1982 National Convention in Hawaii just one short

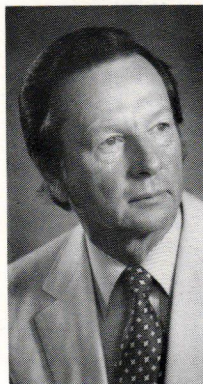
year away. Where, how, and what will be the demands? Rest assured the demands will be many, as National is predicting a record turnout of 7,000-plus.

How does HS/AIA stand? Like the Roman Army. Our generals under the leadership of Caesar Lipman, Mark Anthony Hara, Cleopatra Sakata and their command staff have been strategizing and organizing the logistics of the coming campaign for over one year. And it is OUR campaign, yours and mine, with a great deal of dollars at stake. We have a real opportunity to put the chapter in a sound financial position, if we all perform. If we don't all jump in, well . . .

When you receive your draft notice, remember HS/AIA is not a democratic society. You do not have a choice, as all conscientious objectors will be promptly fed to the mongooses. Seriously, it will take the dedicated efforts of the entire membership. Kokua.

The HS/AIA promotion at Minneapolis for Hawaii '82 was a tremendous success. A sizable contingent of members, wives, girlfriends and secretaries put in many long hours extending a warm aloha spirit to thousands at the convention and are entitled to the May Mahalo Award. However, to Bob Hartman and Ernie Hara go special awards.

Bob receives the coveted Maha-



Chapman

lo Award with Oak Leaf Clusters for his brilliantly conceived promotion booth, consisting of colorful Hawaiian fabric banners and travel posters. Eye-catching, inexpensive, easily transported, reusable and definitely Hawaiian. Also a mahalo to Bruce Hopper for turning Bob's design into the final product.

Now about Ernie. Ernie truly endeared himself to me by cockroaching (to cockroach means to get manuahi — for free, in the new "Plain Language") 300 dozen anthuriums and 12 cases of pineapple, which he then had delivered to my office with the note, "Don, hapai to Minneapolis as part of your personal baggage; do not refrigerate." Any of you know what 3,600 carefully packaged anthuriums and 12 cases of pineapple look like? It's one standard-size stationwagon completely filled, with your luggage tied on the roof outside!

That's not all. He also arranged for two appearances of Aloha Airlines musicians and dancers, cockroached and helped transport untold thousands of vanda orchids, leis, exotic flowers (from which Clare Hara made the main rostrum centerpiece), macadamia nuts, etc. For three days the flowers were given away freely, and were seen all over Minneapolis. They were spectacular, and combined with Hartman's booth design, made our selling of Alohaland a pleasure. Ernest Hara, from a grateful HS/AIA, a very special Mahalo Award with Distinguished Cockroach Clusters.

Speaking of awards, to those who won design awards this year, congratulations! Enjoy! To us others, no shame. Try next year.

Lastly, manini detail. In looking at the March and May issues of Hawaii Architect, I'm not sure which profile of Don Chapman I like best — the right side, or the wrong side, or which is which. Aloha. HA