

**Ke
Kaha
Ki'i**

SEPTEMBER, 1970

OFFICIAL PUBLICATION OF THE HAWAII CHAPTER, AMERICAN INSTITUTE OF ARCHITECTS



Sea, Sand & Sun / Hawaii Seven-O

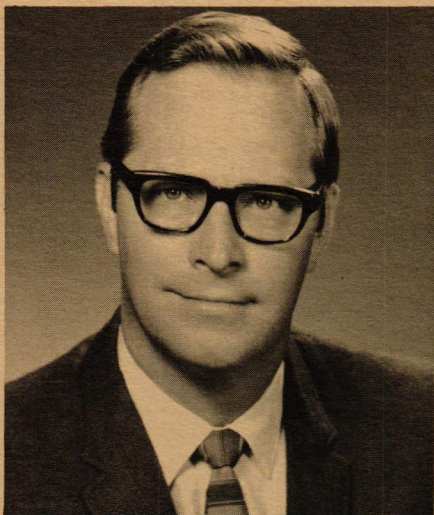
IF YOU CAN DREAM OF IT, CONCRETE CAN DO IT

Whatever you have in mind, from a new building to a work of art, concrete can do it. Because concrete can be shaped, poured, molded, carved, cut . . . or formed into any shape your imagination can create. Beautifully!

Imagination
Can Be
A Concrete
Thing



CCPI CEMENT AND CONCRETE PRODUCTS INDUSTRY OF HAWAII
Suite 400, Hawaiian Life Building, 1311 Kapiolani Boulevard, Honolulu 96814



WHAT'S HAPPENING

BY GERALD L. ALLISON, PRESIDENT
HAWAII CHAPTER, AMERICAN INSTITUTE OF ARCHITECTS

WHAT'S HAPPENING?

HAWAII SEVEN O!

THAT'S WHAT'S HAPPENING!

Speaking for the entire Chapter, the Hawaii architects extend their Aloha to their professional colleagues from the great Northwest. We have anticipated and prepared for your coming and it is our wish to make your stay with us as memorable as possible. Many of us living in Hawaii were former residents of the Northwest or received our education there and we are eager to share these Islands with you and show you why "Paradise" (Hawaii) is proud to be a part of "God's Country" (the Northwest). This September issue of Ke Kaha Ki'i is dedicated to you and, within its pages, you will find information intended to make your visit to Hawaii entertaining, educational, and perhaps even inspirational. If you desire any special help or information, just ask a Hawaii Chapter member (he is the one without the suntan!), and I am sure that you will be taken care of.

CHAPTER SUPPORTS HCDC

At the August 20 Chapter meeting, the membership expressed its financial support toward the AIA sponsored Hawaii Community Design Center by passing a special assessment of \$10.00 per corporate member and \$5.00 per associate and professional associate member. The total amount of approximately \$5,000 to be contributed by the Chapter this year assures the continued operation of the Design Center without additional outside funds until January 1971. It is expected by that time that the HCDC will have its non-profit status and a major fund raising campaign will then provide sufficient operating funds to continue this vital community service. It is anticipated that the Chapter will provide continued sponsorship and support in the 1971 budget. A motion was also

approved that Hawaii Chapter dues be waived for any Design Center Director serving on a volunteer, non-paid basis. For further background on the Hawaii Community Design Center and the projects it has now undertaken, read the article in this month's Ke Kaha Ki'i.

HAWAII'S HISTORICAL HERITAGE

The first of a new bi-weekly AIA series, "Hawaii's Historical Heritage" was printed in the Wednesday, September 2nd issue of the Honolulu Star Bulletin and is reprinted in this month's Ke Kaha Ki'i. The continuation of this series is a joint effort of Associate Member Robert Fox who prepares the sketches and some of the editorial comments, combined with Corporate Member Geoff Fairfax providing historical data and comment for the series. Bob Fox has been providing similar historical sketches for Ke Kaha Ki'i for some time now. Bob is a free-lance architectural renderer and can be contacted at 732-7565. (See sketch and article on page 8).

WHY? . . . WHY NOT?

The "Why? . . . Why Not?" series that has run in the Sunday newspapers since January will terminate at the change of Chapter officers in November. The Honolulu Advertiser would like to continue a meaningful AIA Series of some sort on a regular basis. If you have any suggestions or wish to contribute your journalistic efforts, please contact the AIA office or the P. R. Committee Chairman, Donald Goo.

EMPLOYMENT BULLETIN BOARD

The AIA office, in its renovations, is providing a Bulletin Board to help architectural offices and individuals solve their employment needs. If you are an employer looking for help, call the AIA office and Nannette will fill out a standard card listing the requirements. If you

are an individual seeking a job, drop by and fill out a similar card. Both will be posted on the board for a period of two weeks, and will be renewed, if desired. For full particulars, call Nannette DeRossette at 538-7276.

SIGN OF THE TIMES

Those who have been there know that the central square of Amsterdam is inhabited on a 24 hour basis by Hippies who eat, sleep and "do their thing" there. On an adjacent building face is a large sign reading "Make love, not litter!"

ATTENTION BOOKWORMS

The recently established Architectural Library for the University of Hawaii, a necessity for accreditation, is badly in need of books and magazine subscriptions. If you wish to donate new or used books on architecture, city planning, the environment, or any other related subject, or wish to provide the students with a magazine subscription of the various architectural journals, or if you would care to contribute funds for the purchase of these items, contact the AIA office or the Department of Architecture directly. Your assistance would be greatly appreciated by the students and the faculty.

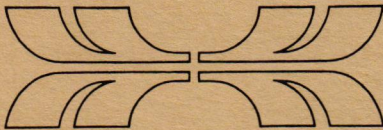
FORT DeRUSSY LAND

In answer to my inquiry, I have been assured by Hawaii's members of the National Senate and House, as well as by a Special Assistant to the President, that every effort will be made to maintain Fort DeRussy as permanent open space and that any transfer of this land will be to State or City use for that purpose. It would, of course, be well for each individual member to express his feelings to his Representatives on this and other environmental matters. Being an election year, now is the time to get commitments.

(Continued on page 4)

TALK TO AN
EXPERIENCED
PROFESSIONAL
IN
PRE-PLANNING OF
RESORT CONDOMINIUMS
MANAGEMENT

(No Obligation)



**HOLIDAY
MANAGEMENT
CORPORATION**

Suite 1305 / 2222 Kalakaua Avenue
Honolulu 96815 / Phone 922-2717

**Choose from FIVE
Widespan
Structural
Systems**

Ideal for Hawaii

Modern skyscrapers and Butler Widespan buildings have much in common. The structural system of each carries the load, including walls and roof.

Five Butler Widespan structural systems are available. Each is based upon the same engineering module. All may be combined to meet your architectural requirements.

Call Satoru Nakamura at
845-3291



2308 PAHOUNUI DRIVE
HONOLULU, HAWAII 96819

On Maui call Arisumi Bros. - 877-5014
On Kauai call Kauai Dev't Co. - 245-4122

Greetings from the Conference Chairman, Gordon Bradley, AIA

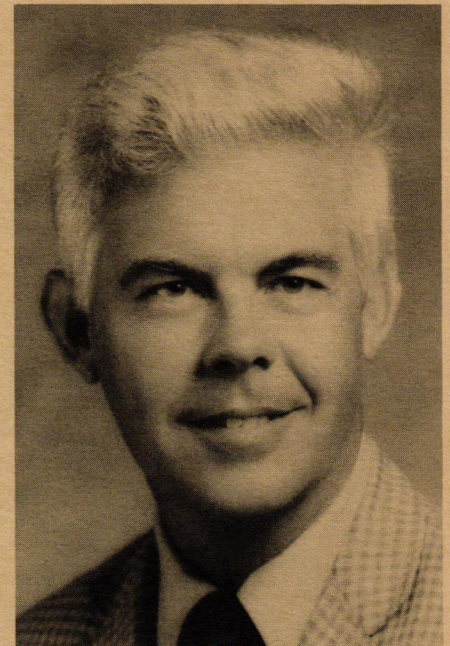
Remember Salishan - a great conference - ask anyone who was there. Hawaii Seven-O - what's that - a new kind of drink?

By now if you all don't know - Hawaii Seven-O is the latest in Northwest Regional Conferences - now being held in Alohaland, the Islands of the "Sea, Sand, & Sun," from which springs the theme of the Hawaii-hosted 19th Annual Northwest Regional Conference.

This year's Conference Committee sends its warmest greetings to all Northwesterners including our colleague North-Northwesterners in Alaska and not to be forgotten our Northwest-easterners from Montana. We are most happy to have you join us - in work and play. Do we or don't we? Now, see for yourselves! We sincerely hope you'll be pleasantly surprised when it's all pau. (Pau=Finished)

It has been our goal in the planning of this conference not to belabor our so few days with hour upon hour of meetings but instead give you a smack of our "way of life." To this end we have attempted to plan events which will be meaningful to we as individuals and as professionals while still leaving sufficient free time for our guests to enjoy our fair surroundings.

For those of you who wish to spend more than the four days of official con-



Gordon Bradley

ference time we have offered both pre and post conference activities on our Neighbor Islands. If possible during your visit try to partake in one or both of these offerings, because really, to just see our Island of Oahu isn't enough, as each of our Islands can give you a new and different feeling as to a way of life.

As your Conference Chairman I again extend the hands of welcome for all Hawaii chapter members. Aloha Nui-
loa!

For Architects' Wives Only

Somewhere between Picasso and Morrison-Knudson, we find a creature known as an architect. A combination of artist, engineer, plumber, electrician, P.R. and businessman, in whose pockets can be found a tape measure, a scale, and assorted felt pens. They are also dreamers and men of vision.

And, we, the wives of architects are the ones chosen to share these dreams. Of course, not all of our dreams come true. There's the unfinished patio, the new room as soon as the plans are drawn, and the enlarging of the dining room, as soon as he finds time. So my message to you, wives of architects, is to forget the patio, the new room and the dining room and help your architect husband to forget his problems and

enjoy the Sea, Sand, and Sun of beautiful Hawaii. May your visit to the Islands surpass all your expectations.

Mahalo and Aloha,

Kathy Chapman, President
Women's Architectural League.

WHAT'S HAPPENING (Continued from page 3)

AIA - DAGS

The Executive Committee is appointing a special task force to study equitable fees, responsibilities, supervision and liability on State projects. It is our hope that this study will result in a unified Chapter policy and action in this area.