

# Ke Kaha Ki'i

Monthly Publication  
of the  
American  
Institute of  
Architects



Hawaii Chapter  
1210 Ward Avenue  
Honolulu, Hawaii 96814

Mr. Alfred Preis, FAIA  
State Foundation on Culture  
and the Arts  
P. O. Box 757  
Honolulu, Hawaii 96803

Bulk Rate  
U.S. Postage  
PAID  
Honolulu, Hawaii  
Permit No. 1157

AP/ST

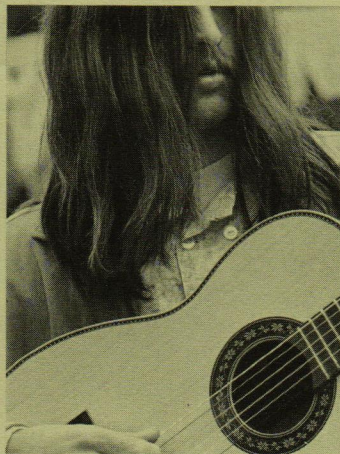
*Ke Kaha Ki'i—A person who draws pictures or petroglyphs*

## DID YOU NOTICE?

The telephone booth at the Diamond Head end of Kalakaua near the water fountain?

## OPEN LETTER TO THE MEMBERSHIP

This monthly publication belongs to you. Your comments on any portion of this newsletter will be welcomed. Address comments to Nannette at the Chapter office.



*This month's Editor.....*

now available — 1969 edition  
**Engineering, Planning Guides**

**Lamson Pneumatic Tube Systems  
Elevators by Dover  
Raised Floor Systems by Westinghouse  
Monorail, Hoists, Cranes by American Monorail**

SYSTEMS DIVISION— Design, Engineering & Installation

**Edward R. Bacon Company**

Affiliate of Alexander & Baldwin, Inc.

Phone 897-202

918 Ahua Street

APRIL, 1969

## CALENDAR

This calendar will be a monthly item. It will contain meeting notices, public hearings and special events. If you wish to contribute, address the comments to Calendar, c/o the Chapter office.

April meeting will be held at Chico's Pizza Parlor at the corner of St. Louis Drive and Wai'alae Avenue. Plans are being made to have the City's Leading Italian as guest speaker.

**APRIL 17 - May 5** Hawaii Painters and Sculptors League Annual Exhibition. Contemporary Arts Center. Daily except Sunday.

**May 14** Gwen Lux, winner of many sculpturing awards, will have a private preview of major new works at the Contemporary Arts Center. AIA members will be included in the guest list.

**May 15-23** Above Exhibit—open to the public.

## Don't Miss Any of the **Action!**

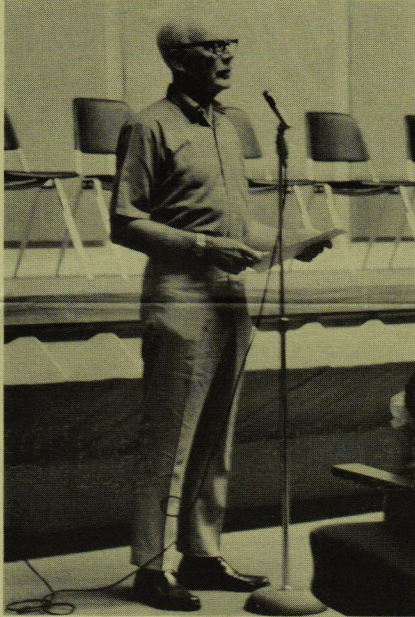
**MARCH MEETING REPORT**  
The March meeting began with a box lunch on the grounds of Iolani Palace for a group of 135 persons, which included Hawaii AIA members and families, the Architectural Secretaries Association, and the Women's Architectural League.

The group was then led on a tour of the new Capitol

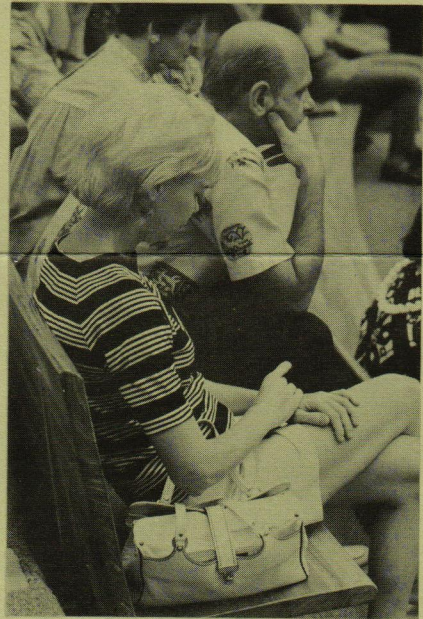
Building. Mr. Fred McWayne, Sergeant-at-Arms for the House of Representatives, personally conducted the tour and provided the group with a description of how the Capitol Building functions.

Mr. Cyril Lemmon, of Lemmon, Freeth, Haines and Jones, leading architect for the building, described the project

*(continued on page 10)*



# THE CAPITOL





# ZAP-IN



Photos by Steve Mori