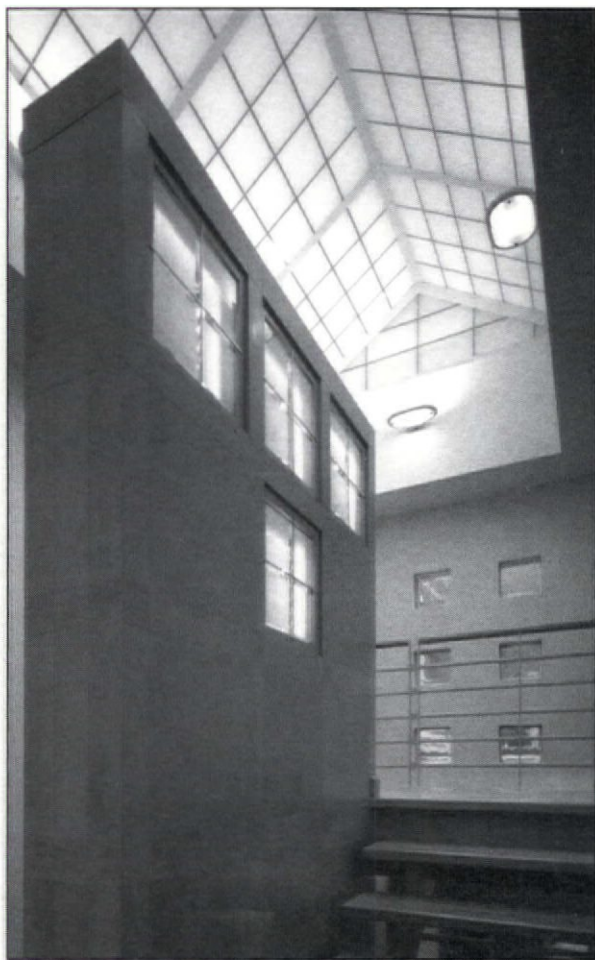


The 1995 Profile of Denver Architects

DO NOT REMOVE!!!!

Reference Copy ONLY!

WHEN QUALITY COMES FIRST...



P R E M I U M
Q U A L I T Y
C O M M E R C I A L &
R E S I D E N T I A L
A R C H I T E C T U R A L
W O O D W O R K
&
E X C E P T I O N A L
C O M M E R C I A L
W O O D O F F I C E
F U R N I T U R E

efi EUROPEAN
FINISH
INC.

2645 INDUSTRIAL LANE • BROOMFIELD, CO • 80020 303-469-6439

FOR REFERENCE ONLY
Property of AIA Colorado
(PLEASE DO NOT REMOVE)

The 1995 Profile of Denver Architectural Firms

TABLE OF CONTENTS

Introduction.....	3
About The Profile.....	4
1994 Design Award Winners.....	6
Architects/Professional Listings.....	8
Advertisers.....	10
Professional Services Listings.....	11
Firm Profile.....	14
Professional Services Profile.....	99
AIA Denver Membership.....	114



AIA Denver
1526 15th Street
Denver, CO 80202
303.446.2266

CREDITS

Cover: Ed LaCasse Photography

Editor: Elizabeth Boudreau

Printing: Ken's Reproductions, Inc.

We thank advertisers and professional listors whose participation in the Profile make possible this publication. Although AIA Denver does not endorse any product or service, we urge consideration of those offered here. AIA Denver welcomes questions and comments from Profile users. Your response assists in improving the effectiveness of this publication in meeting the needs of architects and the community. Thank you.



1995 BOARD OF DIRECTORS

Richard von Lührte, FAIA	President
Ned White, AIA	President-elect
David Tryba, AIA	First Vice-President
David Rhyne, AIA	Second Vice-President
Ron Mason, AIA	Secretary
Stephen Newman, AIA	Treasurer
Michael Jacoby, AIA	Treasurer-elect
William Tracy III, AIA	Past-President/Director
Juana Gomez, AIA	Director
Lisa Haddox, AIA	Director
Robert Hill, AIA	Director
Paul Jeselnick, AIA	Director
Robert Kronewitter, FAIA	Director
Steve Schonberger, AIA	Director
Gail Pelsue, Associate AIA	Associate Director
Elizabeth Boudreau	Executive Director

AIA DENVER, THE LOCAL DENVER component of the American Institute of Architects, is pleased to present this Profile of member firms in the Denver Metropolitan area.

In 1982, AIA Denver was among the first of the local components of the AIA to produce a local Profile in an easily accessible and attractive format. The local Profile idea has been widely adopted by other AIA components across the country. Although similar information is available from the National AIA, it is much less accessible because of the sheer bulk and cost of the National Profile document. However, for someone researching architectural firms on a national basis, that document is very useful. It is now available in an on-line electronic version through *AIAOnline*.

If you are seeking an architectural firm, this Profile may be the first step in your search process. Use it to make contact with several firms, and ask each firm to provide you with additional information relating to the specific project you are considering. You will find that both large and small firms will be pleased to provide such information. In addition, you will find many resources in the offices of AIA Denver which will assist you in the process of selecting an architect. Most are free. Please drop by and use them.

Finally, there are other resources besides the architects listed in this Profile. Contractors, engineers, and vendors provide quality services and products to the building industry. Please make use of the listings in the back of the Profile, as well as the ads throughout, to access these services and products. And when you do, please let them know that you found them in the AIA Denver Profile!

WHAT IS THE AIA?

The American Institute of Architects was founded in 1857 by a small group of architects to explore ways of improving their profession. Today, the American Institute of Architects is the pre-eminent professional society serving architects in the United States.

The Objects (from the Bylaws of the American Institute of Architects) shall be to organize and unite in fellowship the members of the architectural profession of the United States of America; to promote the aesthetic, scientific and practical efficiency of the profession; to advance the science and art of planning and building by advancing the standards of architectural education, training and practice; to coordinate the building industry and the profession of architecture to insure the advancement of the living standards of people through their improved environment; and to

make the profession of ever-increasing service to society.

WHAT IS THE DENVER CHAPTER AIA FIRM PROFILE?

The Profile is a roster of AIA member architectural firms. All firms listed employ registered and licensed professional architects who, after meeting stringent educational and practical requirements, subscribe to professional standards advanced by the American



Institute of Architects. Additional professional listings describe services available from a variety of individuals and firms in disciplines related to architecture. Profile data regarding architectural firms was provided by the firms via a survey soliciting information most frequently requested by these users:

*Potential clients seeking information about area firms

*Architectural, contracting, engineering, and other firms in the building industry pursuing

consultant services

*Manufacturers and suppliers to the building industry assessing prospects for marketing and service

*Newcomers to the area, and others with local employment goals

Profile users are invited to contact architects and other professionals listed in the Profile for clarification or additional information. Responsibility for the contents of the listing rests solely with the listed firm.

HOW TO USE THE PROFILE

Basic information about the firm, types of work offered, and personnel by number and type is listed in the Profile. Firms are also asked to provide examples of their work.

SELECTING AN ARCHITECT

The preparers of the Profile urge those contemplating a project which may involve hiring an architect to seek architectural

consultation early in the process.

A simple, brief phone call to an architect will tell you whether you can take advantage of complimentary consultation. Many architects are willing to meet with you initially without obligation.



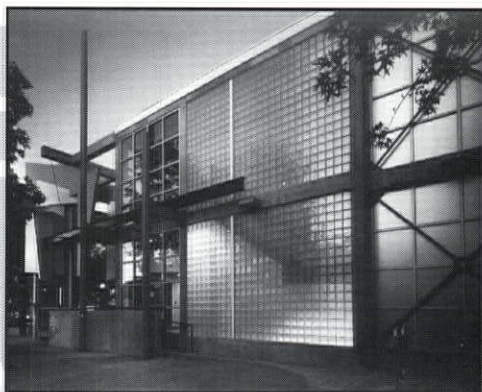
Selecting an architect is a personal decision requiring the client's thoughtfulness and care. The preparers of the Profile believe that the information provided here can be of assistance in

that decision by providing a perspective on the variety of architectural services available.

Perhaps most useful for your choice is consultation with a professional architect, or with two or three architects, to give you a sample of what you might expect from working with one of them, and to find a satisfactory match of your needs with what the architect can supply. You and your architect, working together, can turn your ideas and requirements into a built reality.

1994 Design Award Winners

H O N O R A W A R D S



▲ Michael Brendle Architects

Ross-Cherry Creek
Branch Library

◀ David Owen Tryba Architects

Stanley British
Primary School in Denver

▼ C.W. Fentress I.H. Bradburn
and Associates

Denver International
Airport Passenger
Terminal Complex



1994 Design Award Winners

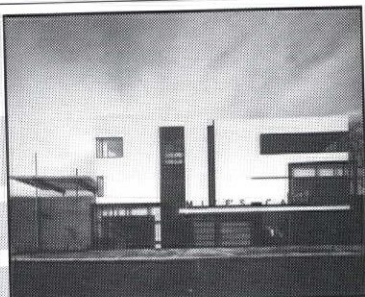
M E R I T A W A R D S



▲ C.W. Fentress / J.H. Bradburn and Associates

The University of Colorado Mathematics and Gemmill Engineering Library

Morter Architects ▶
private residence
in Avon, Colorado



▲ ArchitectureDenver, P.C.
2500 Pearl Street—
Mike's Camera Building

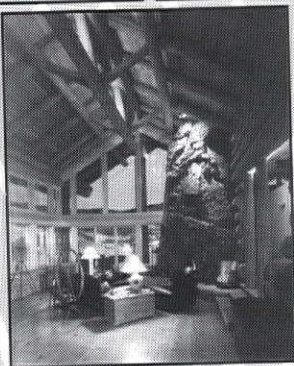
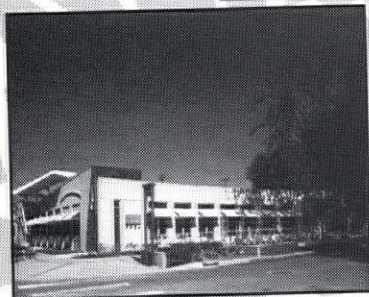
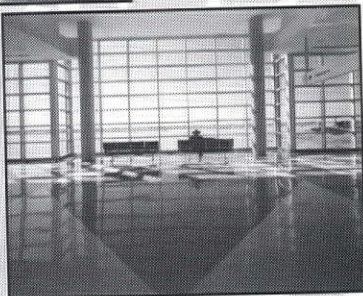


PHOTO NOT AVAILABLE
Arley Rinehart Associates
Architects in conjunction with
Form First Architecture
renovation of 150
Adams Street in Denver



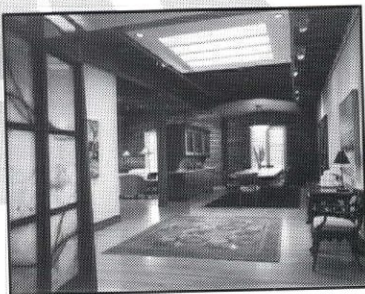
▲ Roth + Sheppard Architects
The Third Avenue Collection



▲ Gensler and Associates/Architects
Amarillo International Airport

Y O U N G A R C H I T E C T

B. Story Swett, AIA
The Design Collaborative



ARCHITECTS/PROFESSIONALS

ACR, Ltd.	14
AE West, Ltd.	14
Abo • Copeland Partnership	16
The Allred Architectural Group P.C.	17
Anderson Mason Dale, P.C.	17
Architectural Concepts	19
Architectural/Environmental Services, P.C.	19
Architecture 2000 P.C.	20
Michael Barber Architecture	20
Barker-Rinker-Seacat and Partners, Architects, P.C.	21
Sears Barrett Architects, Inc.	21
Barrett - Steele	22
Bennett Wagner & Grody Architects	23
Bertram & Associates	23
Boulder Associates, Architecture + Interior Design	24
Michael Brendle Architects, P.C.	25
David Budrow Architects, Inc.	26
Buscaj Andrews Design	26
Lewis E. Bussey, Architect	27
CHP Design Group, Inc.	28
CRSS Constructors International, Inc.	28
C S Architects, P.C.	29
Patrick Cashen Architect	29
Civitas Inc.	30
Construction Management & Technical Services	30
Cowperthwaite Architecture	31
Davis Partnership P.C. - Architects	33
The Design Collaborative	33
Design Partnership Inc.	34
Dilatush Architects	35
Donelson Architecture, AIA	35
Virginia Dubrucq, AIA	36
Dulaney Architecture	36
A.W. Dunn & Company	37
Durrant Architects Inc.	38
Energetic Enterprises, Inc.	39
Feld Design, Inc.	39
C.W. Fentress J.H. Bradburn and Associates, P.C.	41
Fisher Associates, P.C. Architects And Engineers	41
Fuller, Fuller & Associates	42
Gensler And Associates/Architects	43
David George-Nichols, AIA	43
Gerou & Associates Ltd.	44
Greenfield Architects	44
H+L Architecture Ltd. AIA	45
Hakimi Architects	45
Hansen Lind Meyer, Inc.	46
Hanson Enterprises - Architects	46

Syd Harrison Architects, AIA	47
Havekost + Lee Architects P.C.	48
Richard Henry-Architect	49
Harvey M. Hine, Architects, P.C.	49
Hoover Berg Desmond	50
Humphries Poli Architects, P.C.	50
Hurley, Johnson & Gagné Inc.	52
Hutton Ford Architects P.C.	52
Intergroup, Inc.	53
JEY Architects, P.C.	53
JH•P Architecture Interior Design Planning	55
KDC Architects, Engineers, P.C.	55
Walter E. Kaesler Architect	56
Kathka • Loptien, P.C.	56
Kephart Architects	57
Klipp Colussy Jenks Dubois Architects P.C.	57
Michael Knorr AIA & Associates, Inc.	59
Knudson Gloss Architects & Plannres	59
Andrew Kramer Photography	60
Keith Krebs Architect, AIA	60
Lantz-Boggio Architects, P.C.	61
Robert R. Larsen AIA	61
Roberta K. Law, AIA	62
Lawrence Architecture	63
Lee Architects/Interior Designers	63
MCB Architects, P.C.	64
M+O+A Architectural Partnership	64
Markovich Designs	65
Marx/Okubo & Associates	65
Harold Massop Associates Architects, P.C.	66
Mellin & Associates Architects, P.C.	68
Merrick & Company	68
Milan Architect, P.C.	69
Mitchell Plus Associates	69
Moyes Associates	70
Michael Murphy Architecture	70
Andrew Nielson Architect	72
Oliver and Hellgren Architects, PC	72
OOMS Design, Inc.	73
Peter Orleans, Architect	73
OZ Architecture	74
Pearson Design Group, Inc.	74
Perlmutter Architects	75
Pierce, Segerberg & Associates P.C., AIA	76
Pouw & Associates, Inc.	76
RCS Design/Planning/Consulting	77
RMA Architects and Planners	77
RNL Design	78
Ragland Design Group, Inc.	79
Reddy & Reddy, Architects P.C.	80 9

Reilly Johnson Architecture	80
Richfield Architecture & Design	81
Robert Root & Associates	81
Roth + Sheppard Architects	82
SEM Architects, Inc	83
Saiber Saiber, Inc.	83
R. Paul Santangelo, AIA Architect	84
Sholar Buchanan Associates,	85
Sink Combs Dethlefs, P.C.	85
Slater-Paull & Associates, Inc.	87
Ray D. Stevens, Architect	87
Ronald A. Straka, FAIA	88
Tomas Hart, AIA, T.H.E. Architecture Studio	89
TSP Five, Inc.	90
Tectonic Management Group, Inc.	90
David Owen Tryba Architects	91
United Architects, Ltd.	91
Urban Design Group, Inc.	92
Irving F. Waite, Architect P.C.	93
Brad Adams Walker Architecture, P.C.	93
Arthur Wise Architects AIA	94
Wiss, Janney, Elstner Associates, Inc.	95
Wong Strauch Architects, a P.C.	95
Z Plan	96
William Zmistowski Associates	96

PROFILE ADVERTISERS

ABS Consultants	24
Adolfson & Peterson, Inc.	66
American Institute of Architects	48
American Institute of Architects	86
The Ballard Group	22
Dan Berich, Inc.	32
William Caruso & Associates, Inc.	67
Centerre Construction	31
Colorado Hardscapes	34
Design Materials, Inc	79
European Finish	Inside Front Cover
Gambrell Engineering, Inc.	82
James R. Howell & Co., Inc.	92
International Marble & Granite of Colorado	58
Ken's Reproductions, Inc.	89
LaCasse Photography	51
Lerch Bates Companies	84
Ludvik Electric	27
Martin/Martin	88
S.A. Miro, Inc.	37

Monroe & Newell	47
Moy-Nassar Associates, Inc.	42
OfficeScapes	15
Palace Construction	94
Pallas Photo	62
Pella Products of Colorado, Inc.	16
Professional Underwriters Incorporated	71
Rocky Mountain Masonry Institute	18
Rocky Mountain Prestress	38
Roos Szynskie	75
Soundtrack	40
Sturgeon Electric	54
Tattered Cover	78
Van Gilder Insurance Corp.	25

PROFESSIONAL SERVICES

ACOUSTICAL CONSULTING	98
Robert F. Mahoney & Associates	98
ARCHITECTURAL PAVING	98
Colorado Hardscapes by Van Heukelem Concrete, Inc.	98
ARCHITECTURAL PRECAST CONCRETE	98
Denver Architectural Precast, Inc.	98
ARCHITECTURAL WOODWORK/OFFICE FURNITURE	98
European Finish, Inc.	98
ASBESTOS CONSULTING	99
Spence-Geiger Associates, Inc.	99
CIVIL ENGINEERING	99
Alpha Engineering Group, Inc.	99
CONSTRUCTION MANAGEMENT/GENERAL CONTRACTOR	99
Baldwin Construction, Inc.	99
Haselden Construction, Inc.	99
GE Johnson Construction Company	100
Gerald H. Phipps, Inc.	100
CONSULTING ENGINEERS	100
Beaudin Ganze Consulting Engineers, Inc.	100
Moyer-Flax Engineering Inc.	100
DESIGN-BUILD	101
Bryant Electric, Inc.	101

DRY WALL/FRAMING	101
Delta Dry Wall, Inc.	101
ECONOMIC/MARKET ANALYSIS	101
Hammer, Siler, George, Associates	101
ENVIRONMENTAL ENGINEERS	101
RLH Engineering, Inc.	101
Environmental Remediation	102
Dominion Services, Inc.	102
GENERAL CONTRACTOR	102
Boa Construction, Inc.	102
Breiner Construction Co., Inc.	102
Brown-Schrepferman & Company	102
Calcon Constructors, Inc.	103
Hensel Phelps Construction Co.	103
James R. Howell & Co., Inc.	103
Palace Construction Company, Inc.	103
Gerald H. Phipps, Inc.	103
Taylor Ball	104
Tandem Enterprises, Inc.	104
GEOTECHNICAL ENGINEERING	104
Geotechnical Services, Inc.	104
GEOTECHNICAL/ENVIRONMENTAL ENGINEERING	104
Kumar & Associates, Inc.	104
CTL/Thompson, Inc.	105
HARDWARE/WINDOWS	105
Interstate Hardware Co.	105
INSURANCE	105
PUI Agency of Colorado, Inc.	105
Van Gilder Insurance Corporation	105
INTERIOR DESIGN	106
Runyan/Unter	106
KITCHEN/BATH DESIGN	106
Kitchens at the Denver	106
LAND PLANNING	106
Plan West, Inc.	106
LANDSCAPE ARCHITECTURE	106

Civitas, Inc.	106
EDAW HRV	107
Guman & Associates, Ltd.	107
Land Mark Design, Inc.	107
LEGAL SERVICES	107
Creamer and Seaman P.C.	107
MASON SUBCONTRACTOR	107
Dan Berich, Inc.	107
MECHANICAL/ELECTRICAL ENGINEERING	107
Gordon, Gumeson and Associates, Inc.	108
HNTB Corporation	108
M*E Engineers, Inc.	108
The RMH Group, Inc.	108
STEEL ERECTION	108
Trujillo Steel Erectors, Inc.	108
STRUCTURAL/CIVIL ENGINEERS	109
S.A. Miro, Inc.	109
STRUCTURAL ENGINEERS	109
Jirsa-Hedrick & Associates, Inc.	109
KRM Consultants, Inc.	109
Nicol + Hofland Associates, Inc.	109
Redwine-Reizian, Inc.	110
WALL UPHOLSTERY	110
Textile Techniques, Inc.	110
WHOLESALE DISTRIBUTION	110
Larson Distributing Co., Inc.	110

ACR, LTD.

3840 South Jason Street
Highlands Ranch, CO 80110-3410
(303)781-6623
FAX: 781-1233

Year Established: 1976

Principals: Arthur C. Ranes, AIA

Firm Personnel By Discipline:

Administrative	1
Architectural	1
Technical	1

Types of Work:

Commercial	5%
Multiple Family Dwellings	10%
Residential	75%
Retail	5%
Other	5%

Examples of Projects: Gooding residence, Cherry Hills Village, CO

Work Done In Colorado: 100%

Clients Should Contact:

Aurthur C. Ranes

Manufacturers Should Contact:

Aurthur C. Ranes

AE WEST, LTD.

2450 South Peoria Street
Aurora, CO 80014
(303) 750-8181
FAX: 751-2581

Year Established: 1970

Principals: Norman E. Hodge, AIA

Firm Personnel By Discipline:

Administrative	1
Architectural	3
Technical	1
Other	2

Types of Work:

Commercial	50%
Other	50%

Examples Of Projects: Numerous Projects, State Buildings Programs, Denver, CO; Waste-water Facility/Administration, Lafayette, CO; Drake Visitor Center, Drake, CO; Prestige Imports, Lakewood, CO; Mile High Honda, Denver, CO; Jerry Roth Chevrolet, Lakewood, CO

Work Done In Colorado: 90%

Work Done Outside State: 10%

Clients Should Contact:

Norman E. Hodge, AIA or Steve Pavlisin

Manufacturers Should Contact:

Gary Nickerson



OfficeScapes

Business Furniture

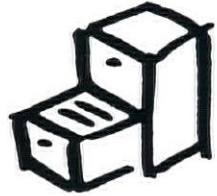
*Here for you to help your clients
work more productively*

Full Service Furniture Provider

- Inventory
- Move Management
- Installation
- Refurbishment



Steelcase and Steelcase Design
Partnership Companies



Many Other Manufacturers

Project Planning Support Services

- Typicals
- Layouts
- CAD Support



On-Site Ergonomics Lab



Dedicated Architecture/Design
Liaison on Staff

1221 Auraria Parkway
Denver, CO 80204
(303) 573-1221

118 West Colorado Avenue
Colorado Springs, CO 80903
(719) 471-0199

ABO • COPELAND PARTNERSHIP

1448 Pennsylvania Street
Denver, CO 80203
(303) 830-0575
FAX: 830-8930

207 Canyon Boulevard
Boulder, CO 80302
(303) 443-4335
FAX: 444-5826

Year Established: 1976

Principals: Ronald K. Abo, AIA
James D. Copeland

Jonn Priebe
Stephen K. Loos, AIA

Daniel Cervantes

Firm Personnel By Discipline:

Administrative 2
Architectural 8

Types of Work:

Commercial 20%
Institutional 40%
Multiple Family Dwellings 10%
Residential 10%
Schools 20%

Examples of Projects: Denver International Airport Airside Concourse Buildings, Denver, CO; Roxborough Elementary School, Douglas County, CO; Julesburg Welcome Center, Julesburg, CO; Allendale Elementary School Addition, Arvada, CO; Grant Humphries Mansion Interior Renovation, Denver, CO; Exeter Office Building, Boulder, CO; First National Bank in Boulder, Boulder, CO; Syntex Chemical Laboratories, Boulder, CO; National Renewable Energy Laboratories (NREL) Alternative Fuel User Facility, Golden, CO; NREL Outdoor Test Facility, Golden, CO

Work Done in Colorado: 100%

Clients Should Contact:

Ronald K. Abo, AIA - Denver,
James D. Copeland - Boulder

Manufacturers Should Contact:

Lynn Coit



WINDOWS
& DOORS

Pella Products of
Colorado, Inc.

4500 Grape Street
Denver, CO 80216
303/388-0884

Wats 800/227-6271
FAX 303/333-0847

THE ALLRED ARCHITECTURAL GROUP, P.C.

1875 Lawrence Street, Suite 300
Denver, CO 80202
(303) 292-1875
FAX: 293-8002

Year Established: 1974

Principals: James L. Allred, AIA Dan Rothschild Keith Johnson
Karen Berkey Irene Tarczynski

Firm Personnel By Discipline:

Administrative	4
Architectural	16
Interior Design	1

Types of Work:

Commercial	55%	Residential	5%
Hospitals	15%	School	10%
Institutional	10%		
Multiple Family Dwellings	5%		

Examples Of Projects: DIA Airside Concourses, Denver, CO; United Artists Theatres, Sacramento, CA; Burlington Northern Railroad, Lincoln, NE; Holtze Executive Village, Denver, CO; Jefferson County Schools, Littleton, CO; Denver Public Schools, Denver, CO; Air Force Academy Graduates Building, Colorado Springs, CO; Childrens Hospital projects, Denver, CO; Tuscany Cove Townhomes, Denver, CO; Greenwood Athletic Club, Englewood, CO

Work Done In Colorado: 75%

Work Done Outside State: 25%

Clients Should Contact:

Jim Allred, AIA

Manufacturers Should Contact:

Steve Rimnac

ANDERSON MASON DALE , P.C.

1615 Seventeenth Street
Denver, CO 80202
(303) 294-9448
FAX: 294-0762

Year Established: 1960

Principals: John D. Anderson, FAIA Curt F. Dale, AIA, CSI
Ronald L. Mason, AIA Paul S. Haack, AIA

Firm Personnel By Discipline:

Administrative	4
Architectural	15
Interior Design	1
Technical	1

Types of Work:

Commercial	10%	Retail	5%
Institutional	45%	Schools	35%
Residential	5%		

Examples Of Projects: Mount Rushmore Visitor Facilities, Rapid City, SD; Tropical Discovery/Denver Zoo, Denver, CO; Biomedical Research Facility, University of Colorado-Denver, Denver, CO; Adams County Justice Center, Brighton, CO; Breckenridge Events Facility, Breckenridge, CO; Lookout Mountain School, Golden, CO; Geology Building, Boulder, CO; Harrington Elementary School, Denver, CO; Great-West Life/Tower III, Denver, CO; Community College of Aurora, Aurora, CO

Work Done In Colorado: 75%

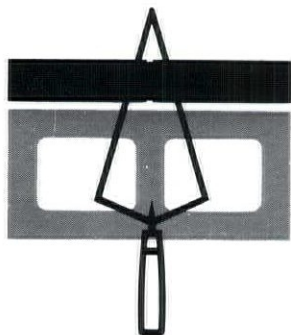
Work Done Outside State: 25%

Clients Should Contact:

John Anderson, FAIA Ron Mason, FAIA
Curt Dale, AIA , Paul Haack, AIA, Emily Haack

Manufacturers Should Contact:

Peggy Kinsey, David Cummins



ROCKY MOUNTAIN MASONRY INSTITUTE

Your Source for Technical Assistance with Masonry Products and Construction

- BIA and NCMA TEK Notes
- Seminars
- Supplier and Contractor referrals
- Up-to-Date Code Information

Consider the Advantages of Masonry

- Maintenance Free
- Cost Competitive
- Design Flexibility
- Fire Safety

ROCKY MOUNTAIN MASONRY INSTITUTE

1780 South Bellaire, Suite 602 • Denver, Colorado 80222
(303) 691-2141 • FAX (303) 691-0121

ARCHITECTURAL CONCEPTS

1700 Broadway, Suite 410
Denver, CO 80290
(303) 830-8002
FAX: 861-1621

Year Established: 1980

Principals: Kevin P. Mills, AIA

Firm Personnel By Discipline:

Administrative	2
Architectural	3
Interior Design	1
Technical	1

Types of Work:

Commercial	70%
Residential	5%
Retail	25%

Examples Of Projects: Glenfair Recreation Center, Glendale, AZ; Family Entertainment Center, Mount Pleasant, SC; Tiki Entertainment Center, Lancaster, OH; White Plains Recreation Center, White Plains, NY; Sports Bowl and Lounge, Indianapolis, IN; Arapahoe Recreation Center, Englewood, CO

Work Done In Colorado: 5%

Work Done Outside State: 80%

Work Done Internationally: 15%

Clients Should Contact:

Kevin P. Mills, AIA

Manufacturers Should Contact:

G. Kevin Sullivan, AIA

ARCHITECTURAL/ENVIRONMENTAL SERVICES, P.C.

1580 Lincoln Street, Suite 1130
Denver, CO 80203-1513
(303) 832-6576
FAX: 832-6079

Year Established: 1987

Principals: James M. Trombley, AIA

Firm Personnel By Discipline:

Administrative	1
Architectural	1
Technical	2

Types of Work:

Commercial	15%
Hospitals	5%
Institutional	25%
Retail	10%
Schools	45%

Examples Of Projects: Federal Reserve Bank, Denver, CO; Federal Reserve Bank, Oklahoma City, OK; University of Southern Colorado, Pueblo, CO; Colorado State Capitol, Denver, CO; Colorado Mental Health Institute, Denver, CO; University of Colorado Health Sciences Center, Denver, CO; State Services Building, Denver, CO; Wheat Ridge Regional Center, Wheat Ridge, CO; Bethlehem Lutheran Church, Lakewood, CO; Colorado Department of Institutions, Grand Junction, CO

Work Done In Colorado: 80%

Work Done Outside State: 20%

Clients Should Contact:

James M. Trombley, AIA

Manufacturers Should Contact:

James M. Trombley, AIA

ARCHITECTURE 2000 P.C.

5031 South Ulster, Suite 325
Denver, CO 80237
(303) 290-9930
FAX: 290-0274

Year Established: 1987

Principals: Kathy C. Lingo, AIA Leonard Lingo
 Miles Moorehouse

Firm Personnel By Discipline:	Types of Work:	Institutional	15%
Architectural 4	Commercial 70%	Multiple Family Dwellings	15%

Examples Of Projects: Mesa Verde Library and Museum, Mesa Verde National Park, CO; Denver International Airport Operations Buildings for Aircraft Fueling Systems, Denver, CO; Medical Research Labs, VA Medical Center, Denver, CO; Transamerica Administrative Office Facility, Englewood, CO; Denver Housing Authority, Dispersed Family Housing, Denver, CO; FDIC Administrative Office Facility, Denver, CO; Group Homes for the Developmentally Disabled, Littleton, CO; Chevron Real Estate, Englewood, CO; ARA Leisure Services/Mile High Stadium Concessions, Denver, CO; Chamizal National Memorial, El Paso, TX

Work Done In Colorado: 90% **Work Done Outside State:** 10%

Clients Should Contact:

Kathy Lingo

MICHAEL BARBER ARCHITECTURE

303 16th Street, Suite 300
Denver, CO 80202-5657
(303) 595-7070
FAX: 595-7080

Year Established: 1979

Principals: Michael Barber, AIA

Firm Personnel By Discipline:	Types of Work:	
Administrative 3	Commercial	40%
Architectural 11	Institutional	25%
Interior Design 3	Residential	5%
Technical 3	Schools	25%
	Other	5%

Examples Of Projects: Wastewater Management Headquarters, Denver, CO; U.S. Court of Appeals - 10th Circuit, Denver, CO; CSU College of Business, Fort Collins, CO; Western State College Student Union, Gunnison, CO; Guaranty National Headquarters, Englewood, CO; Hudson Gardens, Littleton, CO; Harrah's Black Hawk Casino, Black Hawk, CO; Ziff-Davis Publishing Company, Denver, CO; Keystone Conference Center, Keystone, CO; Shepard's/McGraw Hill, Colorado Springs, CO

Work Done In Colorado: 100%

Clients Should Contact:

Michael Barber, AIA

Manufacturers Should Contact:

Chuck Adkisson, AIA

BARKER-RINKER-SEACAT AND PARTNERS, ARCHITECTS, P.C.

2546 Fifteenth Street
Denver, CO 80211
(303) 455-1366
FAX: 455-7457

Year Established: 1975

Principals:	R. Russell Seacat	David Hammel, AIA	Dennis Morgan
	Ronald E. Rinker	Duane Crawmer, AIA	Philip Lawrence, AIA
	Roz Schneider	Ken, Berendt, AIA	Joan McCracken
	Bruce Flynn, AIA	Joe Ward	

Firm Personnel By Discipline:

Administrative	3
Architectural	12
Interior Design	1

Types of Work:

Multiple Family Dwellings	25%
Schools	25%
Other	50%

Examples Of Projects: Arvada Center for the Arts, Arvada, CO; Arvada City Hall, Arvada, CO; Koelbel Public Library, Arapahoe Library District, Littleton, CO; Virginia Village Library, Denver, CO; Golden Recreation Center, Golden CO; East Boulder Recreation Center, Boulder, CO; North Lincoln Park Homes, Denver, CO; Fort Collins Senior Center, Fort Collins, CO; Pleasant View Elementary School, Golden, CO; The American Mountaineering Center, Golden, CO

Work Done In Colorado: 90%

Work Done Outside State: 10%

Clients Should Contact:

Roz Schneider

Manufacturers Should Contact:

Joe Ward

SEARS BARRETT ARCHITECTS, INC.

1091 South Gaylord Street
Denver, CO 80209
(303) 871-9412
FAX: 871-0440

Year Established: 1982

Principals: Sears Barrett, AIA

Firm Personnel By Discipline:

Administrative	1
Architectural	5

Types of Work:

Institutional	10%
Residential	90%

Examples Of Projects: Rader Residence, Evergreen, CO; Soper Residence, Boulder, CO; Greengard Residence, Castle Rock, CO; Merage Residence, Denver, CO; Miller Residence, Keystone, CO

Work Done In Colorado: 100%

Clients Should Contact:

Sears Barrett, AIA

Manufacturers Should Contact:

Greg Enger

BARRETT - STEELE

3191 Broadway
Boulder, CO 80304
(303) 449-1141
FAX: 449-9320

Year Established: 1977

Principals: David Barrett, AIA
Gary Steele, AIA

Firm Personnel By Discipline:

Administrative	2
Architectural	7
Interior Design	1

Types of Work:

Commercial	5%
Multiple Family Dwellings	5%
Residential	40%
Retail	5%
Schools	40%
Other	5%

Examples of Projects: Eagle Rock School & Professional Development Center, Estes Park, CO; El Viento Windsurfing Retreat, Isla de Margarita, Venezuela; Estes Park Aquatic Center, Estes Park, CO; Covenant Presbyterian Church, Lafayette, CO; Palm Island Community & Clubhouse, Ft. Myers, FL; St. Ambrose Parish Hall, Boulder, CO; Mary Sandoe House for Elderly Care, Boulder, CO; St. Walburga Benedictine Abbey, Longmont, CO; Mountain Ridge Community, Boulder, CO; Greyrock Commons Cohousing Community, Fort Collins, CO

Work Done In Colorado: 85%

Work Done Outside State: 13%

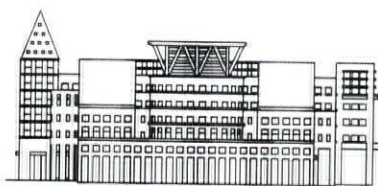
Work Done Internationally: 2%

Clients Should Contact:

David Barrett, AIA

Manufacturers Should Contact:

Sam Nishek



DENVER CENTRAL LIBRARY

KLIPP
COLUSSY
JENKS
DUBOIS
ARCHITECTS

MICHAEL
GRAVES
ARCHITECT



The Ballard Group
Mechanical Consulting Engineers

BENNETT WAGNER & GRODY ARCHITECTS

1123 Auraria Parkway, Suite 123
Denver, CO 80204
(303) 623-7323
FAX: 623-2386

Year Established: 1989

Principals: Martha L. Bennett, AIA
Donald R. Grody, AIA
Linda Moore Wagner, AIA

Firm Personnel By Discipline:

Administrative 1
Architectural 14

Types of Work:

Commercial 5%
Institutional 5%
Residential 5%
Retail 5%
Schools 80%

Examples Of Projects: Northwest College Science/Math Building, Powell, WY; Center for the Study of Earth from Space, University of Colorado-Boulder, Boulder, CO; Child Care Center-Auraria Higher Education Center, Denver, CO; Jefferson County Open School, Lakewood, CO; Brown/Centennial/Edison Elementary Schools, Denver, CO; Center for Astrophysics and Space Astronomy, University of Colorado-Boulder, Boulder, CO; Weber & Kyffin Elementary Schools, Jefferson County, CO; Sanbusco Market Center, Santa Fe, NM; Miscellaneous Projects, Denver Zoo, Denver, CO

Work Done In Colorado: 90%
Work Done Outside State: 10%

Clients Should Contact:
Martha L. Bennett, AIA

Manufacturers Should Contact:
Linda Wagner, AIA

BERTRAM & ASSOCIATES

PO Box 6223
Denver, CO 80206
(303) 871-9300
FAX: 722-4664

Year Established: 1978

Principals: Donald A. Bertram Esq, AIA

Firm Personnel By Discipline:
Other 1

Types of Work:
Other 100%

Examples of Projects: Licensed to practice law in CO, WY, Supreme Court of the United States, United States Tenth Circuit Court, District of Columbia; Jefferson County School District O/A Contract; Independent Contractor Legislation; QBS Colorado-A/E Procurement Legislation; AIA Documents - State Coordinator; AIA State Government Network; AIA/Colorado Government Affairs Committee

Work Done In Colorado: 70%
Work Done Outside State:: 30%

Clients Should Contact:
Donald A. Bertram Esq, AIA

BOULDER ASSOCIATES, ARCHITECTURE + INTERIOR DESIGN

4747 Table Mesa Drive, Suite 202
Boulder, CO 80303
(303) 499-7795
FAX: 499-7767

Year Established: 1983

Principals: Robert G. Owens, III, AIA Nicholas J. Rehnberg, AIA
 Craig D. Mulford, AIA Timothy C. Boers, AIA

Firm Personnel By Discipline:

Administrative	3
Architectural	12
Interior Design	1

Types of Work:

Hospitals	25%
Other	75%

Examples Of Projects: Outpatient Services Addition to Sierra Nevada Memorial Hospital, Grass Valley, CA; St. Christopher House at St. Joseph Hospital, Denver, CO; Lutheran Medical Office Building #4, Wheat Ridge, CO; Lutheran Medical Office Building #3, Arvada, CO; Scripps/Ximed Ambulatory Surgery Center, La Jolla, CA; Hooverwood Nursing Home, Indianapolis, IN; Chanate Oaks Medical Plaza, Santa Rosa, CA; VA Medical Center Nursing Home, Cheyenne, WY; Recovery Inn of Menlo Park, Menlo Park, CA; Primary Care and Diagnostic Imaging Center, Torrance Memorial Hospital, Torrance, CA

Work Done In Colorado: 20%

Work Done Outside State: 80%

Clients Should Contact:

Robert G. Owens, AIA

Manufacturers Should Contact:

Brian Olesz



1123 AURARIA PKWY., SUITE 400
DENVER, CO 80204
(303) 623-6200 FAX (303) 623-6200

10TH ANNIVERSARY

MICHAEL BRENDLE ARCHITECTS, P.C.

1743 Wazee Street, Suite 400
Denver, CO 80202
(303) 292-6967
FAX: 292-6976

Year Established: 1982

Principals: J. Michael Brendle, AIA James L. Bazzanella, AIA

Firm Personnel By Discipline:

Administrative	2
Architectural	5

Types of Work:

Institutional	60%
Schools	40%

Examples Of Projects: Ross Cherry Creek Library, Denver, CO; Harvard Gulch Recreation Center, Denver, CO; Abraham Lincoln High School Athletic Facility, Denver, CO; Ross University Hills Branch Library, Denver, CO; Eiber Elementary School Addition/Renovation, Lakewood, CO; Mile High Church of Religious Science Community Center, Lakewood, CO; Colorado Welcome Centers, Dinosaur/Burlington/Fruita, CO; Thomas M. Field Golf Course Clubhouse, Denver, CO; Colorado High School Activities Association Headquarters, Aurora, CO; Rockland Community Church Addition, Golden, CO

Work Done In Colorado: 100%

Clients Should Contact:

J. Michael Brendle, AIA or Charlie Brendle

Manufacturers Should Contact:

Thomas Groves, Associate AIA

Design Your Future



Van Gilder Insurance Corporation

~ experts in providing comprehensive
liability and loss prevention programs
for design professionals.

Van Gilder Insurance Corp.

700 Broadway, Suite 1000 Denver, CO 80203

For competitive rates and quality service contact Van Gilder Insurance Corporation

(303)837-8500 • (800)873-8500

DAVID BUDROW ARCHITECTS, INC.

1099 18th Street, Suite 1840
Denver, CO 80202
(303) 298-1770
FAX: 298-1970

Year Established: 1983

Principals: David Budrow, AIA

Firm Personnel By Discipline:

Architectural	4
Interior Design	1

Types of Work:

Commercial	51%
Multiple Family Dwellings	12%
Residential	25%
Retail	10%
Other	2%

BUSCAJ ANDREWS DESIGN

1747 Clarkson
Denver, CO 80218
(303) 861-0672
FAX: 861-0672

Year Established: 1992

Principals: Stanley R. Andrews, AIA Christine R. Buscay, ASID

Firm Personnel By Discipline:

Administrative	2
Architectural	2
Interior Design	2

Types of Work:

Commercial	15%
Hospitals	30%
Institutional	15%
Residential	5%
Schools	5%
Other	30%

Examples Of Projects: Rose Medical Center Interior Design, Denver, CO; Nexagen Laboratory Expansion, Boulder, CO; RMD Health Enterprises, Inc., Denver, CO; North Suburban Medical Center, Thornton, CO; Synergen Laboratories, Boulder, CO; Downtown Denver Child Care Consortium, Denver, CO; Clayton College, Denver, CO

Work Done In Colorado: 100%

Clients Should Contact:

Stan Andrews, AIA

Manufacturers Should Contact:

Stan Andrews, AIA

LEWIS E. BUSSEY, ARCHITECT

3400 East Bayaud, Suite 280
Denver, CO 80209
(303) 321-6036

Year Established: 1979

Firm Personnel By Discipline:

Architectural 1

Types of Work:

Multiple Family Dwelling	10%
Residential	50%
Retail	40%

Examples of Projects: Chesterfield Village, Springfield, MO; Gray Knolls, Springfield, MO

Work Done In Colorado: 80%

Work Done Outside State: 20%

Clients Should Contact:

Lewis Bussy, AIA

Manufacturers Should Contact:

Lewis Bussy, AIA

L U D V I K E L E C T R I C

Ludvik Electric Co.'s

ability to excel in

new technology is

demonstrated by

incomparable

performance on

high tech projects



2900 South Shoshone Englewood, CO 80110
(303) 781-9601 FAX (303) 781-6731

CHP DESIGN GROUP, INC.

200 Union Boulevard Suite 318
Lakewood, CO 80228-1831
(303) 987-1180
FAX: 987-1880

Year Established: 1972

Principals: Thomas C. Johnson, AIA

Firm Personnel By Discipline:

Architectural	1
Other	2

Types of Work:

Residential	100%
-------------	------

Examples of Projects: Miller Residence, Boulder, CO; Liptak Residence, Littleton, CO; Johnson Residence, Littleton, CO; Young Residence, Evergreen, CO; Led Residence, Evergreen, CO; Larson Residence, Cheyenne, WY; Berry Residence, Estes Park, CO

Work Done In Colorado: 90%

Work Done Outside State: 10%

Clients Should Contact:

Tom Johnson, AIA

Manufacturers Should Contact:

Tom Johnson, AIA

CRSS CONSTRUCTORS INTERNATIONAL, INC.

216 Sixteenth Street Mall, Suite 1700
Denver, CO 80202
(303) 820-5200
FAX: 820-2402

Year Established: 1971

Principals: Scott W. Cram, AIA
Steve Hultgren, AIA

Firm Personnel By Discipline:

Administrative	70
Architectural	247
Engineering	1109
Other	315

Types of Work:

Hospitals	10%
Schools	7%
Other	83%

Examples of Projects: Denver Public Schools Bond Program, Denver, CO; Rocky Mountain Mapping Center, Lakewood, CO; Federal Building/Post Office Renovation, Denver, CO; Program Management for Colorado Department of Corrections, Colorado Springs, CO; Boone County Government Center, Columbia, MO; Boone County Juvenile Justice Center, Columbia, MO; St. Louis Justice Center, Clayton, MO; Boulder Valley Schools Bond Program, Boulder, CO; King County Justice Center, Kent, WA; Seattle Public Schools-Pre-Bond Services, Seattle, WA

Work Done In Colorado: 19%

Work Done Outside State: 81%

Clients Should Contact:

Jerry Cowan

C S ARCHITECTS, P.C.

7555 East Hampden Avenue, Suite 525
Denver, CO 80231
(303) 743-0002
FAX: 743-0005

Year Established: 1992

Principals: Craig I. Cahen
William T. Smith, AIA

Firm Personnel By Discipline:

Administrative	1
Architectural	3

Types of Work:

Commercial	40%
Residential	5%
Retail	45%
Schools	5%
Other	5%

Examples of Projects: PACE/Sam's Membership Warehouse, Douglas County, CO; PACE/Sam's Membership Warehouse, Miami, FL; PACE Membership Warehouse, Bridgewater Township, NJ; PACE Membership Warehouse/National Account Architect; Linens' N Things, Belleview Shores Shopping Center, Lakewood, CO; Greenwood Community Church (Addition/Remodel) Englewood, CO; Red Robin Restaurant, Aurora, CO; Red Robin Restaurant, Fort Collins, CO; Red Robin Restaurant, Highlands Ranch, CO; Quizno's Classic Subs throughout Colorado/Regional Architects

Work Done In Colorado: 65%

Work Done Outside State: 35%

Clients Should Contact:

Principals

Manufacturers Should Contact:

William T. Smith, AIA

PATRICK CASHEN ARCHITECT

4155 East Jewell Avenue, Suite 1106
Denver, CO 80222
(303) 759-0650
FAX: 759-0852

Year Established: 1980

Principals: Patrick Cashen, AIA

Firm Personnel By Discipline:

Administrative	1/2
Architectural	1

Types of Work:

Commercial	10%
Residential	90%

Work Done In Colorado: 100%

Clients Should Contact:

Patrick Cashen, AIA

Manufacturers Should Contact:

Patrick Cashen, AIA

CIVITAS INC.

1422 Delgany Street, Suite 24
Denver, CO 80202
(303) 571-0053
FAX: 825-0438

Year Established: 1984

Principals: Mark Johnson, Assc. AIA Ann Mullins, ASLA
 Todd Johnson, ASLA

Firm Personnel By Discipline:

Administrative	3
Landscape Architect	13
Other	4

Types of Work:

Commercial	30%
Institutional	30%
Residential	10%
Retail	10%
Schools	20%

Examples of Projects: Denver International Airport, Denver, CO; Stapleton Redevelopment Plan, Denver, CO; Elitch Gardens Relocation, Denver, CO; MCI Headquarters, Colorado Springs, CO; Larimer Square Renovations, Denver, CO; Seventeenth Street Plaza, Denver, CO; Mac Light Rail Urban Design, Denver, CO; Speer/Sixth/Lincoln Park and Grade Separation, Denver, CO; Kochi Wellness Resort, Kochi, Japan; Great West Life Plaza/Garden, Denver, CO

Work Done In Colorado: 85%

Work Done Outside State: 15%

Work Done Internationally: 5%

Clients Should Contact:

Lori Vaclavik

Manufacturers Should Contact:

Chuck Ware

CONSTRUCTION MANAGEMENT & TECHNICAL SERVICES

1328 East 22nd Avenue
Denver, CO 80205
(303) 831-7905
FAX: 832-6722

Principals: Rexford D. Canady, Assoc. AIA

Firm Personnel By Discipline:

Architectural	1
Engineering	40
Technical	100
Other	20

Types of Work:

Commercial	60%
Hospitals	5%
Residential	10%
Schools	20%
Other	5%

Examples of Projects: Denver International Airport Inspections, Denver, CO

Work Done In Colorado: 60%

Work Done Outside State: 40%

Clients Should Contact:

Rexford D. Canady

COWPERTHWAITE ARCHITECTURE

1628 Fourteenth Street, Suite 1A
Denver, CO 80202
(303) 778-7783
FAX: 778-1449

Year Established: 1992

Principals: Arthur T. Cowperthwaite, Jr., AIA

Firm Personnel By Discipline:		Types of Work:	
Administrative	1	Commercial	10%
Architectural	2	Residential	60%
Interior Design	1	Multiple Family Dwellings	10%
Technical	1	Retail	10%
		Other	10%

Examples Of Projects: Ashby House Condominiums, Denver, CO; Spinal Consultants Office Finish, Aurora, CO; Volker Loft Unit 1A, Denver, CO; Greenview Arts Center, Chicago, IL; Jordan Residence, Morrison, CO; White Residence, Denver, CO; Kaesemeyer Residence, Silverthorne, CO; Bayless Cabin, Dolores, CO; Pascual Townhouse, Washington, D.C.; Kleiner Residence

Work Done In Colorado: 90%
Work Done Outside State: 10%

Clients Should Contact:
Arthur Cowperthwaite, AIA

Manufacturers Should Contact:
Arthur Cowperthwaite, AIA

Centerre Construction Inc.

***5445 DTC Parkway
Suite 745
Englewood, Colorado 80111
Tel. (303) 220-9400
Fax. (303) 220-9893***

Contact: Dave Hritz

Fast Track Construction

Tenant Improvements

Historic Renovations

Build-to-Suit

TRADITION!



DAN BERICH INC
MASON CONTRACTORS

1675 WEST YALE AVENUE,
ENGLEWOOD, CO 80110
(303) 922-8213

DAVIS PARTNERSHIP P.C. - ARCHITECTS

1775 Sherman Street, Suite 3100
Denver, CO 80203
(303) 861-8555
FAX: 861-3027

Year Established: 1967

Principals: Gary M. Adams, AIA Hugh W. Brown, AIA Brit Probst, AIA
Rodney S. Davis, AIA David M. Rhyne, AIA

Firm Personnel By Discipline:

Administrative	13
Architectural	32
Engineering	2
Interior Design	3
Landscape Architect	5
Technical	30

Types of Work:

Commercial	10%
Hospitals	45%
Institutional	10%
Retail	5%
Schools	20%
Other	10%

Examples Of Projects: Littleton Hospital/Porter, Littleton, CO; St. Anthony's Central Hospital, Denver, CO; Denver General Hospital, Denver, CO; P/SL Aurora Presbyterian, Aurora, CO; Synergen, Boulder, CO; Somatogen, Boulder, CO; Columbine Senior High School, Jefferson County, CO; CSM-Coolbaugh Hall, Golden, CO; Red Rocks Community College, Arvada, CO; New Elitch Gardens, Denver, CO

Work Done In Colorado: 90%

Work Done Outside State: 10%

Clients Should Contact:

Gary Adams, AIA

Manufacturers Should Contact:

Kevin Scott, AIA

THE DESIGN COLLABORATIVE

1424 P Larimer Street, Suite 200
Denver, CO 80202
(303) 825-6353
FAX: 825-3334

Year Established: 1991

Principals: B. Story Swett, AIA
Roberta Cation

Firm Personnel By Discipline:

Administrative	1
Architectural	3
Interior Design	1
Other	1

Types of Work:

Commercial	70%
Institutional	15%
Residential	15%

Examples of Projects: CQG, Inc. World Headquarters, Glenwood Springs, CO; Benton Loft, Denver, CO; CQG, Inc. Regional Marketing Offices, Chicago, IL, New York, NY, London, Paris; Concord Group, World Headquarters, Denver, CO

Work Done In Colorado: 70%

Work Done Outside State: 20%

Work Done Internationally: 10%

Clients Should Contact:

Story Swett, AIA

Manufacturers Should Contact:

Gedeon LaFarge, Assoc. AIA

DESIGN PARTNERSHIP INC.

950 Logan Street
Denver, CO 80203
(303) 839-5969
FAX: 839-5758

Year Established: 1986

Principals: Mark McPherson, AIA

Firm Personnel By Discipline:

Administrative	4
Architectural	5
Interior Design	4

Types of Work:

Commercial	50%
Hospitals	10%
Residential	30%
Retail	10%

Examples Of Projects: Piper Jaffray, Denver, Pueblo, Colorado Springs, CO and Sacramento, San Francisco, CA; Children's Hospital, Denver, CO; CH2M Hill, Denver, CO; United Artist, Denver, CO; Rose Medical Center, Denver, CO; Timet, Denver, CO; Invesco Funds Group, Denver, CO; Daniels & Associates, Denver, CO and New York, NY; Krecji Residence, Denver, CO; The Chocolate Foundry, Denver, CO

Work Done In Colorado: 85%

Work Done Outside State: 10%

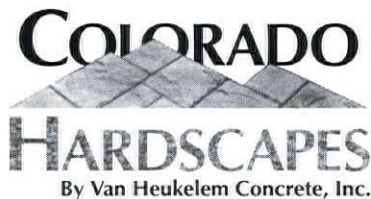
Work Done Internationally: 5%

Clients Should Contact:

Curt Bellom, Mark McPherson, AIA

Manufacturers Should Contact:

Jan Delaney



NEW NAME/NEW LOOK/SAME COMPANY

Most of you know us simply as **Van Heukelem Concrete** when we service your new or replacement flatwork.

Some know us as **Bomanite** in Colorado when we service your colored and imprinted paving.

Still others know us as **Custom Rock of Colorado** when we do your simulated rock work.

Colorado Hardscapes more accurately encompasses all the hard surfaces that we can offer you to complement your landscapes.

The company remains the same, with the same owner, personnel, innovation and quality workmanship that you have come to expect from us over the past 45 years.

Our office remains at:

Colorado Hardscapes
by Van Heukelem Concrete, Inc.
7803 E. Harvard Ave., Denver, CO 80231
Phone: (303) 750-8200

DILATUSH ARCHITECTS

3071 S. Krameria
Denver, CO 80222
(303) 759-2114
FAX: 759-2114

Year Established: 1979

Principals: William Dilatush, AIA

Firm Personnel By Discipline:

Administrative	1
Architectural	1
Technical	1

Types of Work:

Commercial	20%
Institutional	40%
Schools	40%

Examples of Projects: CSU Art Complex, Fort Collins, CO; CSU Student Recreation Building, Fort Collins, CO; CSU Chemistry Building, Fort Collins, CO

Work Done In Colorado: 100%

Clients Should Contact:

William Dilatush, AIA

Manufacturers Should Contact:

William Dilatush, AIA

DONELSON ARCHITECTURE, AIA

807 14th Street
Golden, CO 80401
(303) 278-9540

Year Established: 1983

Principals: Mark Donelson, AIA

Firm Personnel By Discipline:

Administrative	1/2
Architectural	1
Interior Design	1

Types of Work:

Commercial	5%
Multiple Family Dwellings	15%
Residential	75%
Retail	5%

Examples Of Projects: Jeffco Library Service Center, Wheat Ridge, CO; Campus Improvements Project-CSM, Golden, CO; Lab Remodel-CSM, Golden, CO; Everett Building Renovation, Golden, CO; S.F. Row Office Buildings, Golden, CO; Improvements Project-VAMC, Grand Junction, CO; Weigh Station, Monument, CO; Iams Pet Food Warehouse/Office, Golden, CO; Addition to Foss Drug, Golden, CO; Miscellaneous Custom/Spec Houses, Golden and Evergreen, CO

Work Done In Colorado: 100%

Clients Should Contact:

Mark Donelson, AIA

Manufacturers Should Contact:

Mark Donelson, AIA

VIRGINIA DUBRUCQ, AIA

336 South Washington Street
Denver, CO 80209
(303) 698-2200
FAX: 698-2200

Year Established: 1969

Principals: Virginia DuBrucq, AIA

Firm Personnel By Discipline:

Architectural	1
Interior Design	1

Types of Work:

Commercial	50%
Institutional	20%
Residential	20%
Other	10%

Examples Of Projects: Colorado School of Mines, Offices of the President, Golden, CO; Anderman/Smith Office Remodel, Denver, CO; Woodruff Residence, Denver, CO; Dudley Residence Remodel, Denver, CO; Aspen Institute Signage Program, Aspen, CO; Herman Miller, Inc., Product Development, Zeeland, MI

Work Done In Colorado: 90%

Work Done Outside State: 10%

Clients Should Contact:

Virginia DuBrucq, AIA

Manufacturers Should Contact:

Virginia DuBrucq, AIA

DULANEY ARCHITECTURE

5261 South Quebec Street, Suite 200
Englewood, CO 80111
(303) 770-0987
FAX: 770-0988

Year Established: 1986

Principals: W. Patrick Dulaney, AIA

Firm Personnel By Discipline:

Administrative	1
Architectural	2
Interior Design	1
Technical	1

Types of Work:

Commercial	20%
Residential	20%
Retail	10%
Schools	50%

Examples Of Projects: Laurel Elementary School, Fort Collins, CO; Lopez Elementary School Addition/Remodel, Fort Collins, CO; Johnson Elementary School Addition/Remodel, Fort Collins, CO; Brendan Jewelers/Southglen Mall, Littleton, CO; Cole Residence, Littleton, CO; Dulaney Residence, Greenwood Village, CO; Houlton Residence, Keystone, CO; McGraw Elementary School, Fort Collins, CO

Work Done In Colorado: 100%

Clients Should Contact:

W. Patrick Dulaney

Manufacturers Should Contact:

Daniel Dulaney

A.W. DUNN & COMPANY

P.O. 284; 4352 Nambe Road
Indian Hills, CO 80454
(303) 697-6008
FAX: 697-0787

Year Established: 1987

Principals: Ann W. Dunn, AIA

Firm Personnel By Discipline:

Architectural	1
Technical	1

Types of Work:

Commercial	35%
Retail	38%
Schools	27%

Examples Of Projects: Rockies Cafe, Denver, CO; Colorado Colors (DIA), Denver, CO;
Foster Elementary Addition and Remodel, Arvada, CO

Work Done In Colorado: 100%

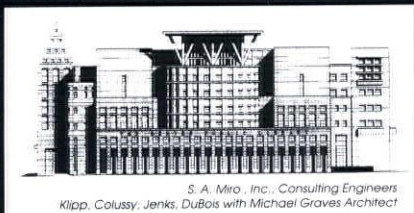
Clients Should Contact:

Ann W. Dunn, AIA

Manufacturers Should Contact:

Ann W. Dunn, AIA

MIRO



S. A. Miro, Inc.
Structural, Civil
Investigative, Transportation

4582 S. Ulster St. Pkwy. • Suite 1501
Denver, Co. 80237
(303) 741-3737 • FAX (303) 694-3134



DURRANT ARCHITECTS INC.

3773 Cherry Creek Drive North, Suite 240
Denver, CO 80209
(303) 377-2900
FAX: 377-0621

Year Established: 1959

Principals: Dennis L. Thompson, AIA Hellmut Mueller, AIA Tracy Nelson
David J. Wheeler II Dean M. Ibsen

Firm Personnel By Discipline:

Administrative	3
Architectural	13
Interior Design	1
Technical	10
Other	1

Types of Work:

Commercial	5%
Institutional	55%
Residential	5%
Retail	35%

Examples Of Projects: Police Operations Center, Colorado Springs, CO; Foley's Southglenn Mall, Arapahoe County, CO; Foley's Cherry Creek Mall, Denver, CO; Central Palace Casino, Central City, CO; Plant Science Laboratory/CSU, Fort Collins, CO; Plymouth Correctional Facility, Plymouth, MA; Wyatt Correctional Facility, Central Falls, RI; Robinson-May Arrowhead Towne Center, Glendale, AZ; Foley's Woodlands Mall, The Woodlands, TX; Police Operations Center, Rosenberg, TX

Work Done In Colorado: 40%

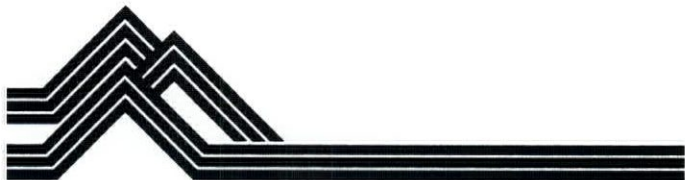
Work Done Outside State: 60%

Clients Should Contact:

Dennis L. Thompson, AIA

Manufacturers Should Contact:

K. Robert. Stegmuller



Rocky Mountain Prestress, Inc.

P.O. Box 21500, Denver, CO 80221
5801 Pecos Street, Denver, CO 80221
FAX 303/433-0451, Phone 303/480-1111

ENERGETIC ENTERPRISES, INC.

6470 South Quebec Street
Englewood, CO 80111-4628
(303) 740-8871
FAX: 740-8872

Year Established: 1982

Principals: Steven J. Sall Richard T. Sall, Associate, AIA, President
Sharon M. Sall, Vice President

Firm Personnel By Discipline:		Types of Work:	
Administrative	1	Multiple Family Dwellings	10%
Architectural	5	Residential	90%

Examples Of Projects: Cline Residence, Castle Pines, CO; Private Residence at the Reserve, Cherry Hills, CO; Wiens Residence, Douglas County, CO; Fry Residence, Sixth Avenue Estates, CO; Hall Residence, Niwot, CO; Raintree Homes, Hilltop Neighborhood, CO; Strahley Residence, Riva Chase, CO; Raintree Homes, Westminster, CO; Hier Residence, Castle Rock CO; Corner Stone Custom Homes, Niwot, CO

Work Done In Colorado: 98%

Work Done Outside State: 2%

Clients Should Contact:
Steve Sall

Manufacturers Should Contact:
Steve Sall

FELD DESIGN, INC.

4600 South Ulster Steet, Suite 350
Denver, CO 80237
(303) 721-8383
FAX: 721-9418

Year Established: 1992

Principals: Pam English, president
Happy Harrington, AIA

Firm Personnel By Discipline:		Types of Work:	
Architectural	8	Multiple Family Dwellings	60%
Interior Design	2	Residential	40%
Landscape Architect	2		

Examples of Projects: Boundry Bay II at the Breakers, Denver, CO; Bridgewater, Greenwood Village, CO; Pelican Point, Denver, CO

Work Done In Colorado: 100%

Clients Should Contact:
Pam English

Manufacturers Should Contact:
Happy Harrington, AIA

Custom Home Theaters



Complete home theater systems
•
Family room entertainment systems
•
Audio/video systems

Visit our showrooms:

Denver Metro
2553 S. Colorado Blvd.
1-mile South of I-25
or call Greg Tiffin:

759-8875

Colorado Springs
1230 N. Academy
2 blks. north of Citadel Mall
or call Mike Dzedzic:

570-2662

Soundtrack



Custom Home Entertainment DivisionSM

C.W. FENTRESS J.H. BRADBURN AND ASSOCIATES, P.C.

421 Broadway
Denver, CO 80203
(303) 722-5000
FAX: 722-5080

Year Established: 1980

Principals: Curtis W. Fentress, AIA
James H. Bradburn, AIA

Firm Personnel By Discipline:		Types of Work:	
Administrative	6	Commercial	15%
Architectural	35	Institutional	5%
Interior Design	9	Residential	5%
Technical	20	Other	75%

Examples Of Projects: Colorado Convention Center, Denver, CO; Clark County Government Center, Las Vegas, NV; Denver International Airport, Denver, CO; GSA Federal Building, Boulder, CO; Jefferson County Government Center, Jefferson County, CO; National Cowboy Hall of Fame, Jackson, WY; New Seoul Metropolitan Airport, Seoul, Korea; Natural Resources Agency Building, Olympia, WA; National Wildlife and Art Museum, Oklahoma City, OK; University of Colorado Engineering Building, Boulder, CO

Work Done In Colorado: 45%
Work Done Outside State: 30%
Work Done Internationally: 25%

Clients Should Contact:
Curtis W. Fentress, AIA

FISHER ASSOCIATES, P.C. ARCHITECTS AND ENGINEERS

5655 South Delaware
Littleton, CO 80120
(303) 795-1643
FAX: 795-9342

Year Established: 1992

Principals: David B. Fisher, AIA, PE

Firm Personnel By Discipline:		Types of Work:	
Administrative	1	Commercial	60%
Architectural	2	Multiple Family Dwellings	10%
Technical	2	Residential	10%
		Schools	20%

Examples Of Projects: Fairmount Elementary School Addition, Golden, CO; Littleton Fire Station #16, Littleton, CO; Columbine Mill Brewery, Littleton, CO; Textile Factory Federal Prison Industries, Littleton, CO; Masonry Perimeter Wall, Columbine Valley, CO; IDIQ Contract Rocky Mountain Arsenal, Commerce City, CO; Cellular One Remote Sites, Various locations throughout CO; Little's Creek Townhomes, Littleton, CO; Gallegos Residence Historic Renovation and Addition, Littleton, CO; Fabrizio Residence Renovation and Addition, Wakeeney, KS

Work Done In Colorado: 95%
Work Done Outside State: 5%

Clients Should Contact:
David B. Fisher, AIA

Manufacturers Should Contact:
Chris Fisher

FULLER, FULLER & ASSOCIATES

3320 East Second Avenue
Denver, CO 80206
(303) 333-3320
FAX: 399-5006

Year Established: 1917

Principals: Robert K. Fuller, AIA Kenneth R. Fuller, FAIA Emeritus

Firm Personnel By Discipline:

Administrative	1
Architectural	2
Technical	1

Types of Work:

Commercial	20%
Multiple Family Dwellings	20%
Residential	50%
Retail	10%

Examples Of Projects: Residence #6, Cherry Hills Drive, Cherry Hills Village, CO; Residence 2320 South Monroe, Denver, CO; Townhouse, 412 Milwaukee, Denver, CO; Residence 758 Potatoe Patch Drive, Vail, CO; Log Lodge, Whitefish, MT; Water Bottling Facility, Denver, CO; Mixed Use, 32nd and Lowell, Denver, CO; Mullen High School Fieldhouse, Denver, CO

Work Done In Colorado: 90% **Work Done Outside State:** 10%

Clients Should Contact:

Robert K. Fuller, AIA

Manufacturers Should Contact:

W. Gene Houghton



MNA, INC.
Moy-Nassar Associates, Inc.
Civil and Structural
Consulting Engineers
Since 1979

STRUCTURAL

- *Foley's Department Stores*
- *Country World Casino*
- *Denver Public Schools*
- *Falcon Homes*
- *Five Points Media Center*

CIVIL

- *Bus Operations Facility*
- *Golden Gate Casino*
- *Rebound Ranch*
- *Youth Detention Facility*

COMPUTER APPLICATIONS

- *United Airlines Support Facility*
- *City & County of Denver*
- *Denver International Airport*
- *National Park Service*

The firm philosophy is to provide for the client, superior work that remains within budget and is completed on schedule.

3955 E. Exposition Ave., Suite 312, Denver, CO 80209
(303) 733-3535 (303) 733-0512 Fax

GENSLER AND ASSOCIATES/ARCHITECTS

1616 Glenarm Place, Suite 200
Denver, CO 80202
(303) 595-8585
FAX: 825-6823

Year Established: Denver - 1973; Firm - 1965

Principals: Linda W. Nelson, AIA, Vice President
Christopher G. Nims, AIA, Vice President
Phillip C. McCurdy, AIA, Vice President
Robert W. Cox, Jr., AIA, Vice President

Firm Personnel By Discipline:		Types of Work:	
Administrative	7	Commercial	80%
Architectural	23	Institutional	20%
Interior Design	13		
Other	1		

Examples Of Projects: Jeppesen Corporate Headquarters, Englewood, CO; Boston Chicken Corporate Headquarters, Golden, CO; MCI Telecommunications Corp. Campus, Colorado Springs, CO; Tele-Communications, Inc., Englewood, CO; Detroit Metropolitan Airport, Detroit, MI; Midland International Airport, Midland, TX; Copper Mountain Resort, Copper Mountain, CO; United Methodist Church, Delta, CO; University of Colorado-Boulder, Boulder, CO; Denver Performing Arts Complex, Denver, CO

Work Done In Colorado: 80%
Work Done Outside State: 20%

Clients Should Contact: Linda W. Nelson, Vice President
Manufacturers Should Contact: Jessica Roberts

DAVID GEORGE-NICHOLS, AIA

7420 Apache Drive
Sedalia, CO 80135
(303) 688-3304

Year Established: 1978

Principals: David George-Nichols, AIA

Firm Personnel By Discipline:		Types of Work:	
Administrative	1	Commercial	30%
		Multiple Family Dwellings	20%
		Residential	50%

Examples of Projects: Hampton Residence, Roxborough Park, CO; Fagan Residence Addition, Conifer, CO; West Douglas County Fire Protection District, Sedalia, CO

Work Done In Colorado: 100%

Clients Should Contact: David George-Nichols
Manufacturers Should Contact: David George-Nichols

GEROU & ASSOCIATES LTD.

2942 Evergreen Parkway, Suite 404
Evergreen, CO 80439
(303) 674-4177
FAX: 674-4177

Year Established: 1986

Principals: Phillip H. Gerou, FAIA Cheri R. Gerou, ASID

Firm Personnel By Discipline:

Architectural	3
Interior Design	1

Types of Work:

Residential	80%
Retail	10%
Other	10%

Examples Of Projects:

Urban Family Retreat, Fraser, CO; Carter Residence, Snowmass, CO; Alta Moda, Denver, CO; Private Residence, Beaver Creek, CO; Wood Residence, Evergreen, CO; Peterson Residence, Grand Lake, CO; Moore Residence, Steamboat Springs, CO; Garel Residence, Cheyenne, WY; Children's Center, Evergreen, CO; Hiwan Swim and Racquet Facility, Evergreen, CO

Work Done In Colorado: 95%

Work Done Outside State: 5%

Clients Should Contact:

Phillip H. Gerou, FAIA

Manufacturers Should Contact:

Phillip H. Gerou, FAIA

GREENFIELD ARCHITECTS

3650 South Yosemite, Suite 402
Denver, CO 80237
(303) 770-1020
FAX: 770-0922

Year Established: 1985

Principals: James P. Greenfield, AIA

Firm Personnel By Discipline:

Administrative	1
Architectural	1
Interior Design	1
Technical	1

Types of Work:

Commercial	70%
Institutional	10%
Residential	5%
Retail	5%
Schools	5%
Other	5%

Examples of Projects: Alameda Junior High School Community Center, Lakewood, CO; Cathedral Plaza Expansion, Denver, CO; Immanuel Lutheran Church Redesign, Englewood, CO; Security Title Guaranty Co., Corporate Headquarters, Greenwood Village, CO; Security Title Guaranty Co. Branch Office, Colorado Springs, CO; Mostly Seafood Restaurant, Denver, CO; Fidelity Investments, Denver, CO; Plaza Tower at Denver Place, Tenant Planning, Denver, CO; One Denver Place, Tenant Planning, Denver, CO

Work Done In Colorado: 100%

Clients Should Contact:

James Greenfield, AIA

H+L ARCHITECTURE LTD. AIA

1621 18th Street, Suite 110
Denver, CO 80202
(303) 295-1792
FAX: 292-6437

Year Established: 1963

Principals: Dayl A. Larson, FAIA
J. Michael Jacoby, AIA
Richard E. Wolfe, AIA

George J. Haller, AIA
Jeffrey A. Ambrose, AIA

Rob Davidson, AIA
Patricia A. Young

Firm Personnel By Discipline:

Administrative	3
Architectural	26
Interior Design	2

Types of Work:

Commercial	5%
Hospitals	60%
Institutional	5%
Schools	30%

Examples Of Projects: Evergreen High School Addition, Evergreen, CO; Surgery Center, Penrose Community Hospital, Colorado Springs, CO; New High School, Douglas County School District, CO; Boulder Community Hospital, Medical Office Building and Parking Structure, Boulder, CO; Lutheran Medical Center Addition, Wheat Ridge, CO; Sterling Regional MedCenter Addition, Sterling, CO; Peterson Air Force Base Fire Station, Colorado Springs, CO; Poudre Valley Hospital Additions, Fort Collins, CO; Saint Joseph Hospital Addition/Remodels, Denver, CO; University Hospital Renovations, Denver, CO

Work Done In Colorado: 95%

Work Done Outside State: 5%

Clients Should Contact:
Any principal

Manufacturers Should Contact:
Jeff Ambrose, AIA

HAKIMI ARCHITECTS

215 South Krameria Street
Denver, CO 80224
(303) 388-8935
FAX: 388-8935

Year Established: 1993 Colorado
(1978 Illinois)

Principals: Dayla G.S. Hakimi, AIA

Firm Personnel By Discipline:

Architectural	1
---------------	---

Types of Work:

Commercial	5%
Multiple Family Dwellings	5%
Residential	70%
Schools	20%

Examples of Projects: Kopinsky Residence renovation, Denver, CO; Goldberg Residence renovation, Denver, CO; Hubert Humphrey Superdome, Minneapolis, MN; Hyatt Hotel, Schaumburg, IL; York College, Queens, NY; Strick Shoe Store renovation, Chicago, IL; Denver Parks Monuments and Fountains restoration, Denver CO; Pillsburg & First Bank of Minneapolis, MN

Work Done In Colorado: 50%

Work Done Outside State: 50%

Clients Should Contact:
Dayla G.S. Hakimi

Manufacturers Should Contact:
Dayla G.S. Hakimi

HANSEN LIND MEYER, INC.

400 South Colorado Boulevard Suite 870
Denver, CO 80222
(303) 322-1181
FAX: 322-7387

Year Established: 1985

Principals: Thomas S. Pearson, AIA

Firm Personnel By Discipline:		Types of Work:	
Administrative	3	Commercial	5%
Architectural	8	Hospitals	80%
Engineering	2	Institutional	10%
		Other	5%

Examples Of Projects: University Hospital, Denver, CO; Rose Medical Center, Denver, CO; Longmont United Hospital, Longmont, CO; Cassia Memorial Hospital, Burley, ID; Mercy West Health Center, Clive, IA; Dixie Regional Medical Center, St. George, UT; Ochsner Medical Institutions, New Orleans, LA; Skiff Medical Center, Newton, IA; Providence Memorial Hospital, El Paso, TX

Work Done In Colorado: 80%

Work Done Outside State: 20%

Clients Should Contact:
Thomas S. Pearson, AIA

Manufacturers Should Contact:
Gary Barness

HANSON ENTERPRISES - ARCHITECTS

3755 Longwood Avenue
Boulder, CO 80303
(303) 494-8034
FAX: 494-2707

Year Established: 1991

Principals: L. Victor Hanson, AIA

Firm Personnel By Discipline:		Types of Work:	
Administrative	1	Commercial	25%
Architectural	1	Hospitals	55%
		Schools	10%
		Other	10%

Examples Of Projects: Belle Bonfils Memorial Blood Center, Denver, CO; Boulder Medical Center, Boulder, CO; Lightning Eliminators and Consultants, Boulder, CO; Centennial Peaks Hospital, Louisville, CO; Sacred Heart of Mary Catholic Church, Boulder, CO

Work Done In Colorado: 100%

Clients Should Contact:
Victor Hanson, AIA

Manufacturers Should Contact:
Victor Hanson, AIA

SYD HARRISON ARCHITECT, AIA

1738 Wynkoop Street, Suite 203
Denver, CO 80202
(303) 295-1131

Year Established: 1977

Principals: Syd Harrison, AIA

Firm Personnel By Discipline:
Architectural 3

Types of Work:
Residential 100%

Examples of Projects: Custom residential renovations

Work Done In Colorado: 100%

Clients Should Contact:
Syd Harrison, AIA

Manufacturers Should Contact:
Syd Harrison, AIA



Monroe & Newell

Structural Engineers
Denver • Vail

1660 Seventeenth Street
Suite 350
Denver, Colorado 80202
(303) 623-4927
FAX (303) 623-6602

0048 E. Beaver Creek Blvd.
Suite 301
P. O. Box 1597
Avon, Colorado 81620
(303) 949-7768
FAX (303) 949-4054

HAVEKOST + LEE ARCHITECTS P.C.

1121 Grant Street
Denver, CO 80203
(303) 861-1121
FAX: 832-2840

Year Established: 1964

Principals: Daniel J. Havekost, FAIA Robert A. Lee, AIA

Firm Personnel By Discipline:		Types of Work:	
Administrative	1	Commercial	10%
Architectural	3	Multiple Family Dwellings	20%
Technical	1	Residential	10%
		Schools	20%
		Other	40%

Examples Of Projects: Deane Elementary School Renovation, Lakewood, CO; Walsh Manor Modernization, Denver, CO; Faith Community Church, Littleton, CO; Kennedy High School Remodel, Denver, CO; Fellowship Community Church, Arapahoe County, CO; Curtis School Arts and Humanities, Greenwood Village, CO; Encore Condominium Redevelopment, Denver, CO; Mission Hills Baptist Church, Greenwood Village, CO; Hope United Methodist Church, Greenwood Village, CO; National Cattleman's Association Headquarters, Greenwood Village, CO

Work Done In Colorado: 100%

Clients Should Contact:
Daniel Havekost, FAIA

Manufacturers Should Contact:
Robert Lee, AIA

**Information
access
has
never
been
easier!**



**To order your AIAOnline
software, call 800-864-7753.**



RICHARD HENRY-ARCHITECT

2345 Seventh Street
Denver, CO 80211
(303) 433-7566
FAX: upon request

Year Established: 1976

Principals: Richard E. Henry, AIA

Firm Personnel By Discipline:

Architectural 2

Types of Work:

Commercial	15%	Residential	55%
Institutional	5%	Retail	15%
Multiple Family Dwellings	10%		

Examples Of Projects: Wide variety of custom remodel and new construction projects throughout the state. Past projects include office interiors, tenant finish, retail and showroom design, multi-family residential, elderly housing, child-care facilities, condominium remodeling, ski lodge, mountain residences, and custom residential.

Work Done In Colorado: 100%

Clients Should Contact:

Richard E. Henry, AIA

Manufacturers Should Contact:

Richard E. Henry, AIA

HARVEY M. HINE, ARCHITECTS, P.C.

3217 Walnut Street
Boulder, CO 80020
(303) 444-8488
FAX: 444-2403

Year Established: 1989

Principals: Harvey Hine, AIA

Firm Personnel By Discipline:

Architectural 1

Types of Work:

Commercial	40%
Residential	40%
Retail	20%

Examples Of Projects: Fifteenth and Walnut Professional Building, Boulder, CO; Boulder Salad Company, Boulder, CO; Denver Salad Company, Denver, CO; Curton Residence, Lyons, CO; Salmagundi Restaurant, Denver, CO; Andrea's Fine Food & Spirits, Lyons, CO

Work Done In Colorado: 90%

Work Done Outside State: 10%

Clients Should Contact:

Harvey Hine, AIA

Manufacturers Should Contact:

Harvey Hine, AIA

HOOVER BERG DESMOND

1645 Grant Street
Denver, CO 80203
(303) 837-8811
FAX: 837-9007

Year Established: 1976

Principals: George Hoover, FAIA Karl Berg, FAIA
Gary Desmond, AIA

Firm Personnel By Discipline:		Types of Work:	
Administrative	4	Commercial	25%
Architectural	11	Institutional	25%
Interior Design	1	Schools	25%
Technical	7	Other	25%

Examples Of Projects: Environment and Natural Resources Building, University of Arizona, Tucson, AZ; Cummins Engine/Onan Corporation World Headquarters, Minneapolis, MN and Huntsville, AL; Red Rocks Community College Library/Classroom/Office Addition, Lakewood, CO; GSA U.S. Custom House Renovation and Restoration, Denver, CO; Safeco Insurance Company Corporate Headquarters, Lakewood, CO; U.S. Air Force Academy Planning Contract, Colorado Springs, CO; USDA Wild Animal Research Center, Fort Collins, CO; National Western Stock Show Events Center/ Equestrian Arena, Denver, CO; Aerospace and Mechanical Engineering Building, University of Arizona, Tucson, AZ

Work Done In Colorado: 75%
Work Done Outside State: 25%

Clients Should Contact: Gary Desmond, AIA, Ellen Johnson
Manufacturers Should Contact: Karl Berg, FAIA

HUMPHRIES POLI ARCHITECTS, P.C.

123 West 12th Avenue
Denver, CO
(303) 607-0040
FAX: 607-0040

Year Established: 1994

Principals: Dennis R. Humphries, AIA
Joseph J. Poli, AIA

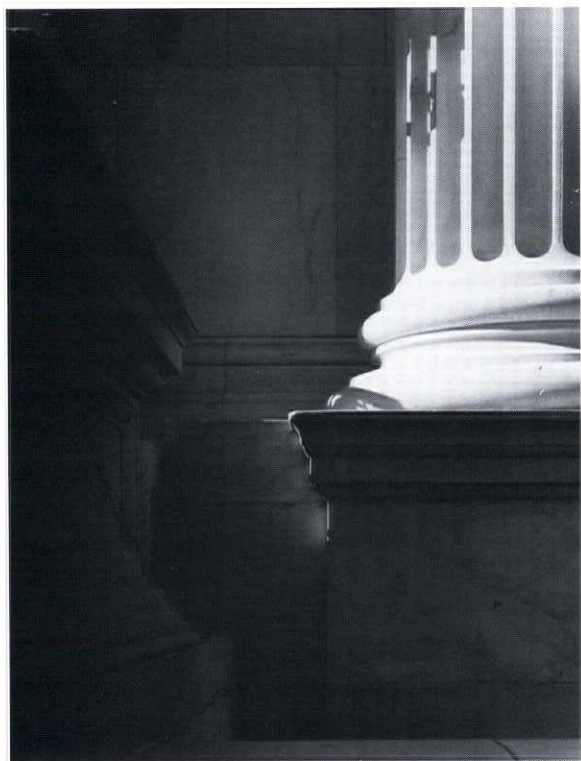
Firm Personnel By Discipline:		Types of Work:			
Administrative	1	Commercial	25%	Retail	25%
Architectural	5	Institutional	25%	Schools	10%
Interior Design	1	Residential	5%	Other	10%

Examples of Projects: Regional Transportation District, Denver, CO; Westminster City Center Marketplace, Westminster, CO; Denver Art Museum, Denver, CO; Civic Center Cultural Complex, Denver, CO; Jimmy's Bait Shop, Tempe, AZ; Department of Veterans Affairs Office Building, Lakewood, CO; Rocky Ford Community Building, Rocky Ford, CO; Greenbar Corporate Offices, Denver, CO; Orchard Place Renovation, Greenwood Village, CO; Lawrence Court Retail, Denver, CO

Work Done In Colorado: 90%
Work Done Outside State: 10%

Clients Should Contact: Dennis Humphries, AIA
Manufacturers Should Contact: Joseph Poli, AIA

ATTENTION · TO · DETAIL



LACASSE

PHOTOGRAPHY

- Architectural
- Industrial

•(303) 571-4331

HURLEY, JOHNSON & GAGNÉ, INC.

2150 West 29th Avenue, Suite 410
Denver, CO 80211
(303) 477-1995
FAX: 480-7510

Year Established: 1993

Principals: J. Thomas Hurley
Lee S. Gagné Julie L. Johnson

Firm Personnel By Discipline:		Types of Work:	
Architectural	2	Commercial	5%
Interior Design	1	Hospitals	90%
Technical	1	Residential	5%
Other	2		

Examples of Projects: Townhome Complex Addition, Cherry Creek, CO; Medical Office Building Renovation, Denver, CO; Investigative Study for Adaptive Reuse of Historic Landmark School; Adaptive Reuse and Historic Renovation, Boulder, CO; Residence, Cherry Hills, CO

Work Done In Colorado: 100%

Clients Should Contact: Lee S. Gagné, AIA
Manufacturers Should Contact: Julie L. Johnson

HUTTON FORD ARCHITECTS P.C.

5500 Greenwood Plaza Boulevard, Suite 116
Englewood, CO 80111-2105
(303) 773-2845
FAX: 773-2852

Year Established: 1990

Principals: Paul C. Hutton, AIA
Alan Ford

Firm Personnel By Discipline:		Types of Work:	
Administrative	1	Commercial	10%
Architectural	4	Institutional	15%
		Residential	10%
		Retail	5%
		Schools	55%
		Other	5%

Examples Of Projects: Slater Elementary, Lakewood, CO; Lyons Elementary, Lyons, CO; Dawson Library, Boulder County, CO; Kent Denver School Library, Denver, CO; El Pomar Theater, Denver, CO; Denver University Ricks Center for Gifted Children, Denver, CO; Dawson Middle School, Boulder County, CO; Ronald Reagan Library, Simi Valley, CA; Tycon Towers Office Building, Vienna, VA; Disney Swan Hotel, Lake Buena Vista, FL

Work Done In Colorado: 75%
Work Done Outside State: 25%

Clients Should Contact: Paul C. Hutton, AIA or Alan Ford
Manufacturers Should Contact: Paul C. Hutton, AIA or Alan Ford

INTERGROUP, INC.

2696 South Colorado Boulevard, Suite 304
Denver, CO 80222
(303) 758-8877
FAX: 758-8712

Year Established: 1974

Principals: Ned K. White, AIA
Mark S. Smyth, AIA

Ransom Leeds, AIA Gary G. Landin, AIA
Tom Wittenwyler, AIA

Firm Personnel By Discipline:

Administrative 2
Architectural 12

Types of Work:

Commercial 45%
Residential 5%
Retail 40%
Schools 10%

Examples Of Projects: Gerry Baby Products, Thornton, CO; Denver Broncos Headquarters, Englewood, CO; Miller Brands, Denver, CO; 105 Fillmore Office Building, Denver, CO; Jones Lightwave, Lincoln Center, Denver, CO; Arapahoe Community College, Castle Rock and Parker, CO; New Life Church, Colorado Springs, CO; Centennial Professional Center, Englewood, CO; Aspen Labs, Arapahoe County, CO; Children's World Learning Centers, various states throughout USA

Work Done In Colorado: 90%

Work Done Outside State: 10%

Clients Should Contact:
any principal

Manufacturers Should Contact:
Tom Wittenwyler, AIA

JEY ARCHITECTS, P.C.

1836 Blake Street, Suite 201
Denver, CO 80202
(303) 295-3361
FAX: 295-3361

Year Established: 1985

Principals: John Yonushewski, AIA

Firm Personnel By Discipline:

Architectural 1
Technical 1

Types of Work:

Institutional 10%
Multiple Family Dwellings 10%
Residential 80%

Examples Of Projects: Trinity Lutheran Church, Monument, CO; Spoor Renovation, Greenwood Village, CO; Robinson Renovation, Englewood, CO; Blincoe Renovation, Keystone, CO; Bailey Residence, Evergreen, CO; Willardsen Renovation, Denver, CO; Hogan Renovation, Denver, CO; Somerville Residence, Evergreen, CO; Clark Residence, Genesee, CO; Kelsall Residence, Keystone, CO

Work Done In Colorado: 90%

Work Done Outside State: 10%

Clients Should Contact:
John Yonushewski, AIA

Manufacturers Should Contact:
John Yonushewski, AIA



ESTABLISHED 1912

**SERVING METRO-DENVER
FOR OVER 80 YEARS**

**COLORADO'S FULL SERVICE
ELECTRICAL CONTRACTORS**

- **COMMERCIAL/INDUSTRIAL SERVICE**
- **ELECTRICAL CONSTRUCTION**
 - **OVERHEAD & UNDERGROUND
DISTRIBUTION**
 - **COMPLETE RESIDENTIAL
SERVICE**

**RADIO DISPATCHED
286-8000**

**COLORADO LIC
No. 3**

24 HOUR
EMERGENCY SERVICE

12150 E. 112 Ave
HENDERSON, CO 80640

JH•P ARCHITECTURE INTERIOR DESIGN PLANNING

1600 Stout Street, Suite 600
Denver, CO 80202
(303) 623-5858
FAX: 629-0559

Year Established: 1951

Principals: Noel Copeland, AIA Gerald Cowley, AIA
Dale F. Hopson, AIA

Firm Personnel By Discipline:
Administrative 2
Architectural 11

Types of Work:
Commercial 25%
Hospitals 10%
Institutional 25%
Residential 5%
Schools 35%

Examples Of Projects: Fillmore Place, Cherry Creek, CO; Applied Science and Engineering Building, Colorado Springs, CO; Medical Offices for Kaiser Permanente, Denver, CO; Market Street/Civic Center Stations, Denver, CO; Molecular and Radiological Biosciences Building, Fort Collins, CO; College of Pharmacy, UCHSC, Denver, CO; Standley Lake Library, Arvada, CO; Ryan/Van Arsdale Schools, Jefferson County, CO; Bryant Webster Elementary School, Denver, CO; Beach Court Elementary School, Denver, CO

Work Done In Colorado: 95% **Work Done Outside State:** 5%

Clients Should Contact: Dale F. Hopson, AIA **Manufacturers Should Contact:** Gerald D. Cowley, AIA

KDC ARCHITECTS, ENGINEERS, P.C.

3091 South Jamaica Court, Suite 200
Aurora, CO 80014-2639
(303) 750-6999
FAX: 750-0236

Year Established: 1978

Principals: Kenneth D. Camp, AIA, president

Firm Personnel By Discipline:
Administrative 3
Architectural 4
Engineering 2
Interior Design 2
Other 2

Types of Work:
Commercial 10%
Retail 10%
Other 80%

Examples of Projects: AT&T Network Control Center West, Denver, CO; PacTel Regional Operations Control Center, Tustin, CA; Kmart Stores, 13 states; Bell Atlantic Mobile Switch, Phoenix, AZ; LA Cellular Switch, Gardena, CA; Cellular One system expansion, Tulsa, OK; US West Cellular system expansion, AZ and CO; Cellular Telephone Network System, Bogota, Columbia; PacTel Cellular Cell Sites, Los Angeles, CA; Smart SMR Mobile Switching Center, Los Angeles, CA

Work Done In Colorado: 15% **Work Done Outside State:** 80%
Work Done Internationally: 5%

Clients Should Contact: Kenneth D. Camp, AIA **Manufacturers Should Contact:** Thomas R. Brunn

WALTER E. KAESLER ARCHITECT

23084 Pinecrest Road
Golden, CO 80401
(303) 526-0924
FAX: upon request

Year Established: 1983, 1990 in Colorado

Principals: Walter E. Kaesler, AIA

Firm Personnel By Discipline:		Types of Work:	
Architectural	1	Commercial	30%
		Residential	70%

Examples of Projects: Saltus Residence, Golden, CO; BHA Office Addition, Denver, CO; Kaesler Residence, Golden, CO; Complete Plumbing Warehouse, Englewood, CO; Berges Residence Addition, Golden, CO; Lindquist Residence Addition, Golden, CO; Stallknecht Residence Addition, Golden, CO; Comfort Inn Motel, Dallas, TX; Retail Grocery Store, Dallas, TX; Zales Jewelry Stores, various locations

Work Done In Colorado: 95%
Work Done Outside State: 5%

Clients Should Contact:
Walter Kaesler, AIA

Manufacturers Should Contact:
Walter Kaesler, AIA

KATHKA • LOPTIEN, P.C.

1580 Lincoln Street, Suite 1130
Denver, CO 80203
(303) 832-4467
FAX: 832-6079

Year Established: 1981

Principals: Tim Kathka, AIA Gary Loptien, ASID

Firm Personnel By Discipline:		Types of Work:	
Architectural	2	Commercial	5%
Interior Design	1	Residential	5%
Technical	1	Schools	20%
		Other	70%

Examples Of Projects: Peace with Christ Lutheran Church, Aurora, CO; Shepherd of the Hills Lutheran Church, Littleton, CO; Bethlehem Lutheran Church and School masterplan and addition, Lakewood, CO; St. Paul's Lutheran Church remodel, Amherst, CO; Christian Corps International remodel and addition, Aurora, CO; Young People's Learning Center, Fort Collins, CO; Institute of Cognitive Science, University of Colorado, Boulder, CO; University Hills Animal Hospital and Grooming Center, Denver, CO; McCullough Residence, Denver, CO

Work Done In Colorado: 95%
Work Done Outside State: 5%

Clients Should Contact:
Tim Kathka, AIA, Gary Loptien

Manufacturers Should Contact:
Gary Loptien

KEPHART ARCHITECTS

758 Sherman Street
Denver, CO 80203
(303) 832-4474
FAX: 832-4476

Year Established: 1974

Principals: Mike Kephart, AIA

Firm Personnel By Discipline:

Administrative	3
Architectural	10
Technical	1

Types of Work:

Multiple Family Dwellings	30%
Residential	5%
Other	65%

Examples Of Projects: Manor Knolls, Denver, CO; Tyndall Green, Aurora, CO; Willow Springs, Jefferson County, CO; Evans and Joesphine, Denver, CO; Viewpoint, North Olmstead, OK; Georgetown II, Batavia, IL; Villas at Homestead, Littleton, CO; Country Walk, Round Lake Beach, IL; Fox Acres, Fort Collins, CO; Firethorne, Charlotte, NC; Highland Hills, Littleton, CO; Spring Lake Farms, Lake-in-the-Hills, IL

Work Done In Colorado: 33%

Work Done Outside State: 62%

Work Done Internationally: 5%

Clients Should Contact:

Mike Kephart, AIA or Paul Campbell

Manufacturers Should Contact:

Doug Van Lerberghe or Steve Lane

KLIPP COLUSSY JENKS DUBOIS ARCHITECTS P.C.

1200 Seventeenth Street, Suite 1100
Denver, CO 80202
(303) 893-1990
FAX: 893-2204

Year Established: 1979

Principals: Brian R. Klipp, AIA
Larry D. Jenks, AIA

Alan E. Colussy, AIA
Cornelius R. (Kin) DuBois, AIA

Firm Personnel By Discipline:

Administrative	10
Architectural	40
Interior Design	1
Other	1

Types of Work:

Commercial	20%
Hospitals	20%
Institutional	10%
Residential	5%
Retail	10%
Schools	35%

Examples Of Projects: Denver Central Library, Denver, CO; University of Colorado Health Sciences Center Master Plan, Denver, CO; City of Loveland Town Planning, Loveland, CO; Thornton Middle School, Thornton, CO; Dakota Ridge High School, Littleton, CO; CU Integrated Teaching Laboratory, Boulder, CO; Cultural Complex of South West Colorado at Fort Lewis College, Durango, CO; Palmer Center, Colorado Springs, CO; PruCare Health Centers, Denver metro area, CO; Swedish Medical Center Emergency Department, Englewood, CO

Work Done In Colorado: 98%

Work Done Outside State: 2%

Clients Should Contact:

Brian Klipp, AIA, Allison H. Cooper

Manufacturers Should Contact:

Larry D. Jenks, AIA, Pegi Dougherty Culbreth



IMG

International Marble & Granite of Colorado

852 South Jason
Unit 8
Denver, Colorado 80223

Office (303) 722-2800

Fax (303) 722-1023
1-800-IMG-2511

DIRECT IMPORTERS

- Colorado's largest stocking full service stone supplier.
- Comprehensive **IN-STOCK** inventory – 100 different marbles, 25 granites, 8 slates, 9 travertines, sandstone and limestone.
- State of the art showroom with the largest display of natural stone in Denver for architect, designer, contractor and fabricator reference source and specification
- Wholesale only.
- Over 1100 in-stock slabs of marble and granite for on-site, hand selection, in 135 types.
- Model home programs.
- IMG materials are shown in over 90% of the floor covering shops, interior designer studios and architectural firms in Colorado and neighboring 4 states.

#1 Supplier of Marble, Granite, Slate, and Limestone
in 1992, 1993 and 1994 Parade of Homes.

MICHAEL KNORR AIA & ASSOCIATES, INC.

1590 South Acoma
Denver, CO 80223
(303) 744-1887
FAX: 744-1892

Year Established: 1975

Principals: Michael Knorr, AIA

Firm Personnel By Discipline:

Administrative	2
Architectural	3
Interior Design	1

Types of Work:

Multiple Family Dwellings	14%
Residential	80%
Other	6%

Examples Of Projects: Townhouses, Adams Street, Denver, CO; Custom Home, Hyde Park, Denver, CO; Pluss Residence, Cherry Hills, CO; Foley Townhouses Adams Street, Denver, CO; Kobey Duplex, St. Paul Street, Denver, CO; Schorr Residence, Las Vegas, NV; McCann Residence, Las Vegas, NV; Borgeldt Residence, Las Vegas, NV; Starbuck Residences, Castle Pines, CO; Z Group Townhomes, Ontario, Canada

Work Done In Colorado: 70%

Work Done Outside State: 28%

Work Done Internationally: 2%

Clients Should Contact:

Michael Knorr, AIA, or Bill McDonough

KNUDSON GLOSS ARCHITECTS & PLANNERS

4820 Riverbond Road
Boulder, CO 80301
(303) 442-5882
FAX: 442-5888

Year Established: 1977

Principals: D. John Knudson, AIA Jerry R. Gloss, AIA

Firm Personnel By Discipline:

Administrative	2
Architectural	13
Interior Design	1

Types of Work:

Commercial	10%
Multiple Family Dwellings	20%
Residential	65%
Retail	5%

Examples Of Projects: Tangerine Bay Club, Sarasota, FL; The Glen, Castle Pines, CO; The Genesee Company, Denver Metro Area, CO; Falcon Homes, Denver Metro Area, CO; D'Agistino Residence, Vail, CO; New View Duplex at Lionshead, Vail, CO; 26 Private Residences, Castle Pines, CO; 45 Private Residences, Genesee, CO; 15,000 sq. ft. Family Compound, Saratoga, WY; Hamilton Club Villas, Sarasota, FL

Work Done In Colorado: 70%

Work Done Outside State: 30%

Clients Should Contact:

D. John Knudson, AIA

Manufacturers Should Contact:

Graham Swett

ANDREW KRAMER PHOTOGRAPHY

3600 Buckeye Court
Boulder, CO 80304
(303) 449-2280
FAX: 449-7177

Year Established: 1978

Principals: Andrew Kramer, AIA

Firm Personnel By Discipline:

Administrative 2

Examples Of Projects: Photography of architecture, interior design, architectural models and architectural materials.

Work Done In Colorado: 70% **Work Done Outside State:** 30%

Clients Should Contact:

Andrew Kramer, AIA



KEITH KREBS ARCHITECT, AIA

1739 York Street
Denver, CO 80206-1212
(303) 388-3336

Year Established: 1986

Principals: Keith Krebs, AIA

Firm Personnel By Discipline:

Architectural 2

Types of Work:

Commercial	15%	Retail	10%
Multiple Family Dwellings	30%	Other	20%
Residential	25%		

Examples Of Projects: Crestmoor Vista Townhomes, Denver, CO; Ptarmigan Lodge Addition, Dillon, CO; Brookshire House Nursing Home, Denver, CO; McCrann Residence, Denver, CO; Morrow Residence Addition, Denver, CO; Shortstop for Kids Daycare, Denver, CO; Jeffco Senior's Resource Center, Wheat Ridge, CO

Work Done In Colorado: 100%

Clients Should Contact:

Keith Krebs, AIA

Manufacturers Should Contact:

Keith Krebs, AIA

LANTZ-BOGGIO ARCHITECTS, P.C.

5200 DTC Parkway, Suite 500
Englewood, CO 80111
(303) 773-0436
FAX: 773-8709

Year Established: 1981

Principals: Dennis Boggio, AIA
Gary Prager, AIA

Shekhar Bhushan
Greg Markling, CCS, CSI

Firm Personnel By Discipline:

Administrative	3
Architectural	18
Technical	2

Types of Work:

Commercial	5%
Hospitals	5%
Institutional	20%
Multiple Family Dwellings	20%
Schools	5%
Other	45%

Examples Of Projects: Colorado Lutheran Home Additions and Renovations, Arvada, CO; Kaiser Permanente Medical Offices, Longmont, CO; Maplewood Assisted Living, Minneapolis, MN; Scott's Liquid Gold Offices and Maintenance Facility, Denver, CO; Life Care Center of Aurora, Aurora, CO; DIA Maintenance Facility, Denver, CO; Denver Silvercrest Retirement Center, Denver, CO; East Morgan County Hospital Additions and Renovations, Brush, CO; King Soopers Warehouse, Denver, CO; Manor Care Nursing Center, Denver, CO

Work Done In Colorado: 75%

Work Done Outside State: 25%

Clients Should Contact:
Dennis Boggio, AIA

Manufacturers Should Contact:
Greg Markling

ROBERT R. LARSEN AIA

1415 Larimer Square, Suite 206
Denver, CO 80202
(303) 620-9911
FAX: 534-0342

Year Established: 1987

Principals: Robert R. Larsen, AIA

Firm Personnel By Discipline:

Architectural	1
---------------	---

Types of Work:

Commercial	10%
Hospitals	40%
Multiple Family Dwellings	5%
Residential	40%
Retail	5%

Examples Of Projects: McPherson Residence, Castle Pines, CO; Gooding Residence, Cherry Hills, CO; Swedish Medical Center, MS Rehabilitation Center, Englewood, CO; Swedish Medical Center CNI Research Laboratory, Englewood, CO; Swedish Medical Center, 5th Floor Pediatrics Remodel, Englewood, CO; Lakewood Country Club Remodel, Lakewood, CO; Dr. Sam Alexander Office Remodel, Denver, CO; Wilson-Lindsay Showroom, Denver, CO; Rochester Institute of Technology Cafeteria Remodel, Rochester, NY; Good Residence, Columbine Valley, CO

Work Done In Colorado: 98%

Work Done Outside State: 2%

Clients Should Contact:
Robert Larsen, AIA

Manufacturers Should Contact:
Robert Larsen, AIA

ROBERTA K. LAW, AIA

1946 Mt. Zion Drive
Golden, CO 80401
(303) 277-0887
FAX: 277-1515

Year Established: 1989

Principals: Roberta K. Law, AIA

Firm Personnel By Discipline:

Architectural 1

Types of Work:

Commercial 20%
Residential 80%

Examples Of Projects: Fire Station #3, Lakewood, CO; Fire Station #2, Lakewood, CO; Voorhees Residence Addition, Golden, CO; Binns Residence, Lakewood, CO; Partridge Circle Residence, Golden, CO; Carney Residence Additions, Golden, CO; Torres Residence Addition, Golden, CO; Reed Residence, Addition, Golden, CO

Work Done In Colorado: 100%

Clients Should Contact:

Roberta K. Law, AIA

Manufacturers Should Contact:

Roberta K. Law, AIA

PallasPhotoLabs

Denver • Milwaukee

A CUSTOM

▪ *Custom color/B&W prints*

PHOTO LAB

▪ *Color/B&W murals*

SPECIALIZING

▪ *Computer slides*

IN THE

▪ *Mac & PC imaging*

PHOTO

▪ *Canon 550 laser outputs*

PRESENTATION

from Mac & PC files

NEEDS OF

ARCHITECTS

700 Kalamath

AND INTERIOR

Denver, CO 80204

DESIGNERS

893-0101

1-800-875-7875

LAWRENCE ARCHITECTURE

7555 East Harvard Avenue, Suite 308
Denver, CO 80231
(303) 751-2630

Year Established: 1985

Principals: Rick L. Lawrence, AIA

Firm Personnel By Discipline:

Architectural 1

Types of Work:

Commercial	20%
Residential	60%
Retail	15%
Other	5%

Examples Of Projects: Rolling Hills Country Club Vehicle Maintenance Facility Renovation, Golden, CO; Cody Court Housing Development, Lakewood, CO; Loveland Bear Alignment, Loveland, CO; KG Men's Stores, various locations throughout the USA; Mayfield Residence, Routt County, CO; Doster Residence, Douglas County, CO; Krueger Showroom, Chicago, IL; Wolff Residence, Lakewood, CO; Lyons Residence, Greenwood Village, CO

Work Done In Colorado: 85%

Work Done Outside State: 15%

Clients Should Contact:

Rick L. Lawrence, AIA

Manufacturers Should Contact:

Rick L. Lawrence, AIA

LEE ARCHITECTS/INTERIOR DESIGNERS

2525 South Wadsworth Boulevard, Suite 21
Denver, CO 80227
(303) 989-4500
FAX: 989-4511

Year Established: 1971

Principals: C.W. Lee, AIA, President James Morgan, AIA, Vice President
Bob Wright, AIA

Firm Personnel By Discipline:

Administrative 3
Architectural 8
Interior Design 2
Other 1

Types of Work:

Commercial	73%
Residential	7%
Retail	15%
Schools	5%

Examples Of Projects: First United Bank of Parker, Denver, CO; IBM Employees Credit Union, Denver, CO; Salida Building and Loan, Salida, CO; YMCA Central, Denver, CO; Nativity of Our Lord Catholic Church, Denver, CO; Credit Union of Denver, Denver, CO; Woodmen Valley Chapel, Colorado Springs, CO; Riverton State Bank, Riverton, WY; Grace Community Church, Denver, CO; Calvary Bible Evangelical Free Church, Denver, CO

Work Done In Colorado: 90%

Work Done Outside State: 10%

Clients Should Contact:

C.W. Lee, AIA

Manufacturers Should Contact

Keith Zahler

MCB ARCHITECTS, P.C.

1780 South Bellaire Street, Suite 800
Denver, CO 80222
(303) 758-7858
FAX: 758-7984

Year Established: 1954

Principals: Ronald E. Crutchfield, AIA William L. Leverington, AIA

Firm Personnel By Discipline:		Types of Work:	
Administrative	3	Hospitals	8%
Architectural	12	Institutional	36%
Other	1	Schools	40%
		Other	16%

Examples Of Projects: College Center, Aims Community College, Greeley, CO; Glenwood Springs Middle School, Glenwood Springs, CO; Denver South High School Field House Addition, Denver, CO; Larimer County Jail, Fort Collins, CO; Fremont County Jail, Canon City, CO; Veterans Administration Medical Center Addition and Renovation, Denver, CO; Production Support Facility, Rocky Flats, Golden, CO; Red Rocks Community College, Lakewood, CO; Arapahoe Community College, Littleton, CO; AT&T Network Control Center West, Denver, CO

Work Done In Colorado: 85%

Work Done Outside State: 15%

Clients Should Contact:
Ronald E. Crutchfield, AIA

Manufacturers Should Contact:
Andrea Jones

M+O+A ARCHITECTURAL PARTNERSHIP

1660 17th Street, Suite 200
Denver, CO 80202
(303) 572-1911
FAX: 534-0221

Year Established: 1981

Principals: Robert L. Outland, AIA Kiyoshi Murata, AIA
Kenneth W. Harshman Kevin D. Sullivan

Firm Personnel By Discipline:		Types of Work:	
Administrative	4	Commercial	20%
Architectural	9	Institutional	10%
Interior Design	1	Multiple Family Dwellings	5%
Technical	2	Schools	35%
Other	1	Other	30%

Examples Of Projects: Broomfield Municipal Center, Broomfield, CO; Pomona High School, Arvada, CO; Summit Ridge Middle School, Littleton, CO; Libby Bortz Assisted Care Facility, Littleton, CO; Torian Plum Condominiums, Steamboat Springs, CO; Mount Vernon Country Club, Golden, CO; K N Energy Headquarters, Lakewood, CO; Hakushika Sake Brewery, Golden, CO; Evergreen Lake House, Evergreen, CO; The Breakers Residential Community, Denver, CO

Work Done In Colorado: 100%

Clients Should Contact:
Robert L. Outland, AIA

Manufacturers Should Contact:
David Fulk

MARKOVICH DESIGNS

7076 South Cook Way
Littleton, CO 80122
(303) 220-7131
FAX: 290-6701

Year Established: 1991

Principals: Richard C. Markovich, Associate AIA

Firm Personnel By Discipline:		Types of Work:	
Architectural	1	Commercial	20%
Interior Design	1	Residential	60%
		Retail	15%
		Other	5%

Examples of Projects: Kendrick Residence Addition/Remodel, Greenwood Village, CO; East Williams Residence, Castle Rock, CO; Stallings Residence, Littleton, CO; Lelli Residence, Cherry Hills, CO; Gupta Residence, Englewood, CO; Speros Residence, Marble, CO; Remodeling of 72 Seven-Eleven stores in CO; Lou/Tex Cat Fish Company Deli, Denver, CO; Waterbury Estates Master Plan, Englewood, CO; Brohl Residence, Denver, CO

Work Done In Colorado: 100%

Clients Should Contact:
Richard C. Markovich, AIA

MARX/OKUBO & ASSOCIATES

1641 Downing Street
Denver, CO 80218
Also Costa Mesa, CA.; Seattle, WA.; Houston, TX
(303) 861-0300
FAX: 861-8565

Year Established: 1982

Principals: Leo Marx, AIA
G.W. McMahou
Larry Okubo
Mark Haddix

Firm Personnel By Discipline:		Types of Work:	
Administrative	16	Commercial	40%
Architectural	12	Multiple Family Dwellings	30%
Engineering	2	Other	30%
Technical	2		

Examples of Projects: Bank One Center Rehabilitation, Houston, TX; GFS, Los Angeles, CA; Parliament Apartments, Denver, CO; Ford Dealerships, TX, CO, CA, and WA

Work Done In Colorado: 5%

Work Done Outside State: 95%

Clients Should Contact: Leo Marx
Manufacturers Should Contact: Joan Walker

HAROLD MASSOP ASSOCIATES ARCHITECTS, P.C.

3955 East Exposition Avenue, Suite 314
Denver, CO 80209
(303) 722-6611
FAX: 722-6643

Year Established: 1988

Principals: Harold V. Massop, AIA Robert L. Hill Jr., AIA

Firm Personnel By Discipline:

Administrative	2
Architectural	3
Interior Design	1
Technical	6

Types of Work:

Commercial	89%	Retail	2%
Institutional	5%	Schools	2%
Residential	2%		

Examples Of Projects: Denver International Airport United Cargo Handling Facilities, Denver, CO; Denver International Airport Automated Ground Transportation System, Stations and Maintenance Facilities, Denver, CO; Denver International Airport, Bus Operations Facilities, Denver, CO; Five Points Media Center, Denver, CO; RMES Communications Inc., Denver, CO; Community College of Denver at Phillips Trust Center, Denver, CO; Colorado Black Chamber of Commerce Offices, Aurora, CO; BetaWest Office Building, Inverness, CO; Trimble Tate Nulan Law Offices, Denver, CO; Nelson Residence, St. Andres, Jamaica, West Indies

Work Done In Colorado: 97%

Work Done Outside State: 2%

Work Done Internationally: 1%

Clients Should Contact:

Harold V. Massop, AIA

Manufacturers Should Contact:

Robert L. Hill Jr., AIA



**Adolfson &
Peterson, Inc.**

"Total Construction Services"

505 Nucla Way Unit D

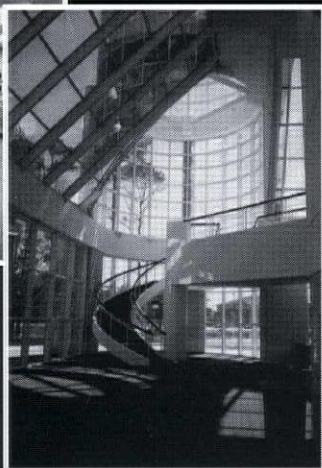
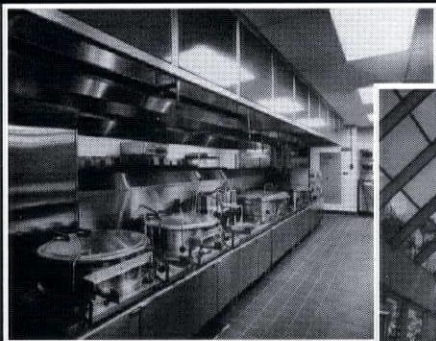
Aurora, Colorado 80011

(303) 363-7101

WC&A

WILLIAM CARUSO & ASSOCIATES, INC.

**Food/Beverage Facility Planners & Designers
To Projects Throughout the World**



Specializing in Food/Beverage Systems:

- Market, Economic and Financial Feasibility Analyses
- Master Planning
- Operational/Design Programming
- Full Scope Design
- Catering Contract Preparation and Negotiation
- Operational Consultation
- Solid Waste System Planning/Design
- Laundry System Planning/Design



Denver Corporate Office

9200 East Mineral Avenue, Suite 100
Englewood, Colorado 80112
303-649-1600
303-649-1660 Fax

Chicago Office

200 East Evergreen—Tower Center
Mt. Prospect, Illinois 60056
708-818-8494
708-818-8495 Fax

Affiliate Offices

Atlanta, Georgia
Buffalo, New York
Toronto, Canada

Professional Members:

William J. Caruso
Robert F. Schmid
Mark I. Newlin
Stephen K. Young



MELLIN & ASSOCIATES ARCHITECTS, P.C.

741 South Depew Street
Lakewood, CO 80226
(303) 937-9408

Year Established: 1982

Principals: James A. Mellin, AIA

Firm Personnel By Discipline:

Administrative	1
Architectural	2

Types of Work:

Commercial	35%	Residential	10%
Institutional	10%	Schools	35%
Multiple Family Dwellings	10%		

Examples Of Projects: Northeast Junior High Administrative Offices Remodel, Northglenn, CO; Eagle Bank (Rudd & Mellin Architects), Broomfield, CO; Alternative Education Center, Thornton, CO; Klub Kaos Night Club, Denver, CO; PSCO Payment Center, Denver, CO; Harvard Commons Townhomes, Thornton, CO; Metropolitan Dental Care Offices, Denver, CO; Orchard Road at Franklin Residence, Greenwood Village, CO; 1400 Glenarm Office Building Lobby Remodel, Denver, CO

Work Done In Colorado: 95%

Work Done Outside State: 5%

Clients Should Contact:

James A. Mellin, AIA

Manufacturers Should Contact:

James A. Mellin, AIA

MERRICK & COMPANY

2450 South Peoria Street
Aurora, CO 80014
(303) 751-0741
FAX: 751-2581

Year Established: 1955

Principals: Bradley Dodds, AIA
David Sprenkle, PE

Bruce Walker, PE
Duane Johnson, PE

Firm Personnel By Discipline:

Administrative	72
Architectural	23
Engineering	130
Interior Design	2
Landscape Architect	2
Technical	222
Other	19

Types of Work:

Commercial	10%
Institutional	15%
Retail	10%
Other	65%

Examples Of Projects: Patuxent National Wildlife Visitors Center, Laurel, MD; Fitzsimons NCO Dining Club, Aurora, CO; Office of Special Investigation, Buckley ANG, CO; Municipal Service Center, Broomfield CO; Transportation Training Facility, San Antonio, TX; Graebel Van Lines Headquarters Building, Aurora, CO; Stuttgart Laboratory, Stuttgart, AR; Roadway Services Hub Distribution Facility, Henderson, CO; Santa Fe Station Postal Facility, Denver, CO; Inter American Airforce Academy, San Antonio, TX

Work Done In Colorado: 65%

Work Done Internationally: 1%

Work Done Outside State: 34%

Clients Should Contact:

Bradley Dodds, AIA

Manufacturers Should Contact:

Steven Grueber

MILAN ARCHITECTS, P.C.

1775 Lee Lane
Lakewood, CO 80215
(303) 232-2256
FAX: 232-0695

Year Established: 1958

Principals: John F. Milan, AIA Emeritus John M. Milan, AIA

Firm Personnel By Discipline:

Administrative	3
Architectural	3
Interior Design	1
Landscape Architect	1
Technical	1

Types of Work:

Commercial	50%
Hospitals	5%
Multiple Family Dwellings	10%
Residential	5%
Retail	20%
Schools	10%

Examples of Projects: Heedmich Residence, Paradise Valley, AZ; Transamerica Offices, Golden, CO; Michael Handler Retail, Denver, CO; Our Lady of Fatima Church, Lakewood, CO; General American Life Offices, Golden, CO; AMAX Gold Offices, Golden, CO

Work Done In Colorado: 95%

Work Done Outside State: 5%

Clients Should Contact:

Mark Milan, AIA

Manufacturers Should Contact:

Mark Milan, AIA

MITCHELL PLUS ASSOCIATES

455 Sherman Street, Suite 150
Denver, CO 80203
(303) 722-9690
FAX: 722-0851

Year Established: 1991

Principals: M.J. Mitchell, AIA

Firm Personnel By Discipline:

Administrative	1
Architectural	5
Interior Design	2

Types of Work:

Commercial	75%
Retail	25%

Examples Of Projects: King Soopers Addition at Leetsdale/Monaco, Denver, CO; FirstBank of Denver, Denver, CO; FirstBank in King Soopers, Metro Area, CO; FirstBank of Loveland, Loveland, CO; FirstBank of Greeley, Greeley, CO; Peoples Bank, Monument, CO; Colorado State Bank Building, Denver, CO; Petroleum Building, Denver, CO; FirstBank of Louisville, Louisville, CO; FirstBank of Southglenn, Englewood, CO

Work Done In Colorado: 100%

Clients Should Contact:

M.J. Mitchell, AIA

Manufacturers Should Contact:

Tia Jenkins, AIA

MOYES ASSOCIATES

433 Park Point Drive, Suite 100
Golden, CO 80401
(303) 526-2500
FAX: 526-7303

Year Established: 1972

Principals: Duncan A. Moyes, AIA Eric E. Maule, AIA

Firm Personnel By Discipline:

Administrative 1
Architectural 6

Types of Work:

Commercial 10%
Hospitals 40%
Institutional 20%
Multiple Family Dwellings 5%
Residential 5%
Retail 5%
Schools 15%

Examples Of Projects: Life Safety Upgrade, Fitzsimons AMC, CO; NOAA Research Lab, Point Barrow, AK; NOAA Research Labs, Boulder, CO and nationwide; Lakewood High School Remodel, Lakewood, CO; Kinko's, Lakewood, CO; Multi Family Housing, Lakewood, CO; Single Family Homes, Rideway, CO; Office Building, Evergreen, CO; Medical Clinic/Office, Aurora, CO; Custom Mountain Homes, CO

Work Done In Colorado: 90%

Work Done Outside State: 10%

Clients Should Contact:

Duncan A. Moyes, AIA

Manufacturers Should Contact:

Eric Maule, AIA

MICHAEL MURPHY ARCHITECTURE

500 East Eighth Avenue, Suite 202
Denver, CO 80203
(303) 830-8068
FAX: 830-1317

Year Established: 1980

Principals: Michael B. Murphy, AIA

Firm Personnel By Discipline:

Administrative 1
Architectural 3
Interior Design 1

Types of Work:

Commercial 10%
Multiple Family Dwellings 5%
Residential 40%
Retail 40%
Other 5%

Examples Of Projects: Denver International Airport Retail, Denver, CO; Greystone Residence, Evergreen, CO; Colorado Resort, Granby, CO; Vintage Hotel, Winter Park, CO; Aspinal Wilson Conference Center, Gunnison, CO; 15 Pop-Top Residences, Washington Park, CO; High End Homes, Cherry Hills, CO; Marriott Hotel, Wilmington, DE; City Park Pavillion, Denver, CO; Arlington Square, Arvada, CO

Work Done In Colorado: 90%

Work Done Outside State: 10%

Clients Should Contact:

Michael Murphy

Manufacturers Should Contact:

Liz Murphy



***PUI IS ONE OF THE
LARGEST WRITERS
OF PROFESSIONAL
LIABILITY INSURANCE
IN THE COUNTRY***

***ALLOW US TO DELIVER THE RELIABLE
PROTECTION AND DEPENDABLE
SERVICE YOU REQUIRE***

**SPECIALIZED INSURANCE PLACEMENT
ARCHITECTS / ENGINEERS ERRORS AND OMISSIONS**

PUI Agency of Colorado Inc.
4949 S. Syracuse, Suite 342
Denver, CO 80237

Bus. (303) 843-0229

Offices also in Michigan, Ohio and Arizona.

CNA **AE** Agent
For All the Commitments You Make® CHOICE

ANDREW NIELSON ARCHTIECT

156 South Lafayette Street
Denver, CO 80209
(303) 744-0949
FAX: 744-0949

Year Established: 1993

Principals: Andrew G. Nielsen, AIA

Firm Personnel By Discipline:

Architectural	1
Engineering	1

Types of Work:

Commercial	20%
Institutional	10%
Multiple Family Dwellings	50%
Residential	20%

Examples of Projects: Three Townhomes, Denver, CO; Community Activity Center, Summit County, CO; Benedict Residence Remodel, Denver, CO; 4th and Josephine Master Plan, Denver, CO

Work Done In Colorado: 100%

Clients Should Contact:
Andy Nielsen, AIA

Manufacturers Should Contact:
Andy Nielsen, AIA

OLIVER AND HELLGREN ARCHITECTS, PC

2727 East Second Avenue
Denver, CO 80206
(303) 399-8974
FAX: 399-8977

Year Established: 1973

Principals: W.Kelly Oliver, AIA

John C. Hellgren, AIA

Firm Personnel By Discipline:

Administrative	1
Architectural	3
Technical	2

Types of Work:

Commercial	30%	Retail	10%
Hospitals	5%	Schools	5%
Institutional	10%	Other	25%
Residential	10%		
Multiple Family Dwellings	5%		

Examples Of Projects: Municipal Maintenance Facility, Greenwood Village, CO; HQ Office Renovation, Department of Wildlife, Denver, CO; Child Care/Pre-School, Denver/Jefferson County, CO; ADA Renovations-Mile Hi Cablevision, Denver, CO; University Athletic Club, Arapahoe County, CO; Hotel and Country Club, Spring Green, WI; VA Medical Center Renovations, Denver, CO; Time Inc., Office Building Renovations, Arapahoe County, CO; Renovations/Colorado Department of Transportation, CO; Sausage Packing Plant, Adams County, CO

Work Done In Colorado: 90%

Work Done Outside State: 10%

Clients Should Contact:
W. Kelly Oliver, AIA

Manufacturers Should Contact:
John C. Hellgren, AIA

OOMS DESIGN, INC.

1738 BLAKE STREET
Denver, CO 80202
(303) 295-9595
FAX: 295-9596

Year Established: 1986

Principals: Frank Ooms, AIA

Firm Personnel By Discipline:

Administrative	1
Architectural	2
Interior Design	1

Types of Work:

Commercial	50%
Residential	25%
Retail	25%

Examples Of Projects: Careertrack Corporate Headquarters office complex and warehouse (architecture and interiors); Max, (retail stores); Metropolis, (retail store); Garbarino (retail stores); Denver International Airport (retail design guidelines); Bergman Johnson (retail showroom); Icehouse offices, wall signage and main entry design; Geman Residence (retail store) & Perkins Ad Agency offices; Carson Residence; Salzman Residence; Lawrence Covatta (retail store)

Work Done In Colorado: 95%

Work Done Outside State: 5%

Clients Should Contact:

Frank Ooms

Manufacturers Should Contact:

Wendy Schaftenaar, Frank Ooms

PETER ORLEANS, ARCHITECT

228 Dexter Street
Denver, CO 80220
(303) 321-0548 *1726*
FAX: 321-1726

Year Established: 1977

Principals: Peter Orleans, AIA

Firm Personnel By Discipline:

Architectural	1
---------------	---

Types of Work:

Commercial	20%
Multiple Family Dwellings	10%
Residential	40%
Other	30%

Examples Of Projects: Farm Credit Services ADA, Survey and Compliance project, Fort Collins, CO; Carriage Green Condominiums, Denver, CO; Hamman Residence Addition, Denver, CO; Dickson Residence Addition, Denver, CO; Camelot II, 16 Units, HUD Moderate Rehabilitation, Greeley, CO; Denver Housing Authority Access Compliance Study, Denver, CO

Clients Should Contact:

Peter Orleans, AIA

Manufacturers Should Contact:

Peter Orleans, AIA

OZ ARCHITECTURE

1580 Lincoln Street, Suite 200
Denver, CO 80203
(303) 861-5704
FAX: 861-9230

2336 Pearl Street
Boulder, CO 80302
(303) 449-8900
FAX: 449-3886

Year Established: 1964, 1989 as OZ Architecture

Principals: Tom Obermeier, AIA Alan Zeigel, AIA Bob West, AIA
David Carson, AIA Jim Bershof, AIA

Firm Personnel By Discipline:

Administrative	6
Architectural	23
Interior Design	6
Other	10

Types of Work:

Commercial	20%	Residential	10%
Hospitals	5%	Retail	5%
Institutional	15%	Schools	20%
Multiple Family Dwellings	15%	Other	10%

Examples Of Projects: MCD Biology Building/CU-Boulder, Boulder, CO; Pediatrics Lab UCHSC, Denver, CO; YMCA Conference Center, Tabernash, CO; Parking Structure, Winter Park, CO; Prairie Learning Center, Des Moines, IA; 20th Street Recreation Center, Denver, CO; US Air Force Academy; Vanderburg/Sijan Dorms Remodeling and Fairchild Hall Remodeling, Colorado Springs, CO; North Creek Condominiums, Denver, CO; 2020 Skylofts Condominiums, Denver, CO; Moore Hardware/John Deere Buildings, Denver, CO

Work Done In Colorado: 78%
Work Done Internationally: 2%

Work Done Outside State: 20%

Clients Should Contact:

Tom Obermeier, Sharon Lavoie
Dave Carson

Manufacturers Should Contact:

Michael Noda, Jan Peck, Dave Carson,
Kirk Hale

PEARSON DESIGN GROUP, INC.

5310 Denver Technical Center Parkway, Suite I
Englewood, CO 80111
(303) 843-6350
FAX: 834-6349

Year Established: 1990

Principals: Brian Pearson, Associate Cindy Pearson

Firm Personnel By Discipline:

Administrative	1
Architectural	2

Types of Work:

Commercial	5%
Multiple Family Dwellings	5%
Residential	80%
Retail	5%
Other	5%

Examples Of Projects: Amherst, Westminster, CO; Concord, Thornton, CO; Holly Point, Thornton, CO; Fox Hill, Aurora, CO; Rock Creek, Superior, CO; Wright Farms, Thornton, CO; Morningside at Piney Creek, Aurora, CO; Melody Homes Mortgage Company, Westminster, CO; Skouira-Merritt Residence, Castle Rock, CO; Zoellner Residence, Conifer, CO

Work Done In Colorado: 98%
Work Done Outside State: 2%

Clients Should Contact:

Brian Pearson, AIA

Manufacturers Should Contact:

Lane Cutter

PERLMUTTER ARCHITECTS

14001 East Iliff Avenue, Suite 415
Aurora, CO 80014
(303) 755-4100
FAX: 745-8750

Year Established: 1985

Principals: Roy Perlmutter, AIA

Firm Personnel By Discipline:

Administrative	1
Architectural	3
Technical	3

Types of Work:

Commercial	5%
Retail	15%
Other	80%

Examples Of Projects: Telecommunications facilities in CO and WY

Work Done In Colorado: 85%

Work Done Outside State: 15%

Clients Should Contact:

Roy Perlmutter, AIA

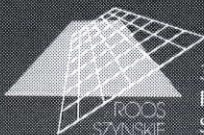
Manufacturers Should Contact:

Angie Williams

The Electrical And Lighting
Systems Are Not Only State Of
The Art, They Are A Statement
About Electrical Engineering
And Lighting As Art.

Call for spectacular
results.

Roos Szynskie
303 696-2602



3045 South
Parker Rd.
Suite 225
Aurora, CO
80014



PIERCE, SEGERBERG & ASSOCIATES P.C., AIA

One Tabor Center
1200 17th Street, Suite 515
Denver, CO 80202
(303) 623-3355
FAX: 623-2262

Year Established: 1989

Principals: Gordon R. Pierce, AIA
Kurt A. Segerberg, AIA

Firm Personnel By Discipline:

Administrative	3
Architectural	18

Types of Work:

Multiple Family Dwellings	25%
Residential	50%
Retail	5%
Other	20%

Examples of Projects: Sonnenalp Hotel, Vail, CO; Chateau Lodge, Condominiums and Residence, Beaver Creek, CO; St. James Place Condominiums, Beaver Creek, CO; Seven Lakes Lodge, Rio Blanco County, CO; Les Domaines De Vidauban, Vidauban, France; La Estancia, Cuernavaca, Mexico; Private Residence, Cherry Hills Village, CO; Westlands Ranch, Buford, CO; Lot 5 Residence, Vail, CO; Private Residence, Chicago, IL.

Work Done In Colorado: 80%

Work Done Outside State: 10%

Work Done Internationally: 10%

Clients Should Contact:

Gordon R. Pierce, AIA

Manufacturers Should Contact:

B.J. Davis

POUW & ASSOCIATES, INC.

1860 Blake Street, Suite 200
Denver, CO 80202
(303) 296-4343
FAX: 296-9172

Year Established: 1977

Principals: Stanley S. Pouw, AIA, ASLA Virginia Howe-Reseutek
Dennis F. Reseutek, AIA

Firm Personnel By Discipline:

Administrative	7
Architectural	19
Interior Design	2
Landscape Architect	1
Technical	1

Types of Work:

Commercial	30%	Retail	10%
Hospitals	5%	Schools	10%
Institutional	10%	Other	35%

Examples Of Projects: Denver International Airport, Landside Terminal Complex, Denver, CO; Hertz Regional Car Facilities, Denver International Airport, Denver, CO; United Airlines Hangar and Maintenance Facility, Denver International Airport, Denver, CO; United Airlines Ground Support Equipment Building, Denver International Airport, Denver, CO; Vail Valley Medical Center, Vail, CO; Federal Heights Municipal Facilities, Federal Heights, CO; Westland Towne Center, Lakewood, CO; General Services Administration Term Contract, Denver, CO; Dora Moore Elementary School, Denver, CO; Chemistry Laboratory, Front Range Community College, Westminster, CO

Work Done In Colorado: 100%

Clients Should Contact:
Stanley S. Pouw, AIA, ASLA

Manufacturers Should Contact:

Leroy Schickedanz, AIA

RCS DESIGN/PLANNING/CONSULTING

621 17th Street, Suite 1710
Denver, CO 80293
(303) 296-6760
FAX: 296-6805

Year Established: 1986

Principals: Robert Schmid, AIA

Firm Personnel By Discipline:

Architectural	2
Other	1

Types of Work:

Commercial	60%	Retail	10%
Residential	20%	Other	10%

Examples Of Projects: American Career Training Corporation, Pompano Beach, FL; Ivion Corporation - Phase 2, Broomfield, CO; Adolph Coors Company - Graphics, Golden, CO; Pleion Showroom - The Ice House, Denver, CO; Jefferson Economic Council - Photography, Golden, CO; Kettering Residence remodeling, Aberdeen, SD; Griffith Residence remodeling, Ft. Lauderdale, FL

Work Done In Colorado: 90%

Work Done Outside State: 10%

Clients Should Contact:

Robert Schmid

Manufacturers Should Contact:

Robert Schmid

RMA ARCHITECTS AND PLANNERS

1221 South Clarkson Street, Suite 413
Denver, CO 80210
(303) 871-8221
FAX: 871-0455

Year Established: 1981

Principals: R. William Messner, AIA

Firm Personnel By Discipline:

Administrative	1
Architectural	6
Interior Design	1
Landscape Architect	1
Technical	1

Types of Work:

Commercial	30%
Residential	20%
Retail	50%

Examples of Projects: SoundTrack, Denver, CO; Ultimate Electronics, Las Vegas, NV; Ultimate Electronics, Salt Lake City, UT; Retail strip centers, NV, UT, and CO; Industrial buildings to 300,000 sq. ft.; Residential Buildings \$500,000 to \$2,000,000 in CO, VT, CT; Retail Fixture Design, Restaurants, CO and UT; Schools, CO

Work Done In Colorado: 50%

Work Done Outside State: 50%

Clients Should Contact:

Doug Beall

Manufacturers Should Contact:

Doug Beall

RNL DESIGN

1225 17th Street, Suite 1700
Denver, CO 80202
(303) 295-1717
FAX: 292-0845

Year Established: 1966

Principals: Philip H. Goedert, AIA
John B. Rogers, FAIA

Stephen C. Newman, AIA
Richard L. von Lührte, FAIA

Firm Personnel By Discipline:

Administrative	17
Architectural	27
Engineering	3
Interior Design	9
Landscape Architect	1
Technical	11

Types of Work:

Commercial	58%
Hospitals	2%
Institutional	20%
Retail	1%
Schools	3%
Other	16%

Examples Of Projects: Cherry Hills Community Church, Highlands Ranch, CO; Kaiser Waterpark I and regional office buildings, Denver, CO; General Service Administration Historic Building, Denver, CO; Long Beach Fleet Services Facility, Long Beach, CA; Operational Support Facility, Falcon Air Force Base, Colorado Springs, CO; Crew Training Facility, Falcon Air Force Base, Colorado Springs, CO; Salt Lake City Master Plan, Salt Lake City, UT; Hyatt Regency Denver Lobby Renovation, Denver, CO; Robert Waxman Camera and Video Store, Denver, CO; Gart Sports Superstore, Aurora, CO

Work Done In Colorado: 80%
Work Done Outside State: 18%

Work Done Internationally: 2%

Clients Should Contact:
Linda Clark

Manufacturers Should Contact:
Wendy Weiskopf

Architectural Graphic Standards, Ninth Edition/CD-ROM

Architectural Graphic Standards is the one essential book in architectural design. Now **John Wiley & Sons** is introducing this classic reference in electronic format.

Tattered Cover

Cherry Creek 2955 East First Avenue, Denver, Colorado 80206 322-7727
LoDo 1628 16th Street, Denver Colorado 80202 436-1070
800-833-9327

RAGLAND DESIGN GROUP, INC.

1600 Stout Street, Suite 1770
Denver, CO 80202-3126
(303) 623-4750
FAX: 825-0642

Year Established: 1994

Principals: Delbert Ragland, AIA

Firm Personnel By Discipline:

Architectural	1
Technical	3

Types of Work:

Commercial	40%
Residential	10%
Schools	50%

Examples of Projects: Martin/Goss Residence, Westcliffe, CO; Shaffer Elementary HVAC Remodel, Littleton, CO; Pump house for well, Monument, CO; Burt Chevrolet Remodel, Englewood, CO

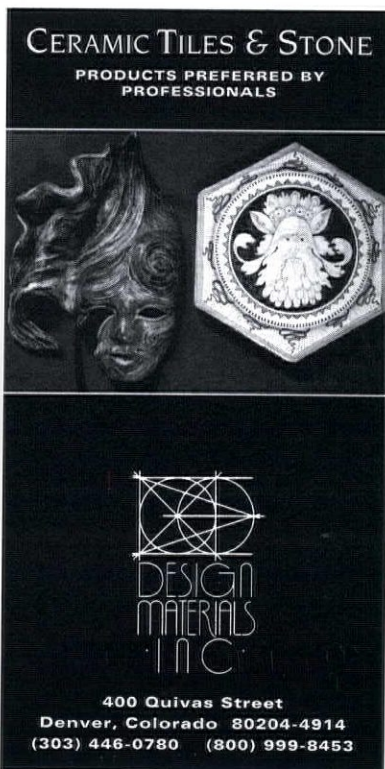
Work Done In Colorado: 100%

Clients Should Contact:

Delbert Ragland, AIA

Manufacturers Should Contact:

Delbert Ragland, AIA



CERAMIC TILES & STONE
PRODUCTS PREFERRED BY
PROFESSIONALS

DESIGN MATERIALS INC.

400 Quivas Street
Denver, Colorado 80204-4914
(303) 446-0780 (800) 999-8453

REDDY & REDDY, ARCHITECTS P.C.

1666 South University Boulevard
Denver, CO 80210
(303) 733-3717
FAX: 777-7494

Year Established: 1956

Principals: Paul R. Reddy, AIA Emeritus Jeffrey S. Reddy

Firm Personnel By Discipline:		Types of Work:	
Administrative	2	Commercial	60%
Architectural	7	Institutional	10%
Technical	3	Retail	10%
		Schools	20%

Examples Of Projects: Terminal Building Stapleton International Airport, Denver, CO; Concourse E, Stapleton International Airport, Denver, CO; Concourse A, Stapleton International Airport, Denver, CO; Design Standards, Denver International Airport, Denver, CO; United Airlines Training Center, Stapleton International Airport, Denver, CO; United Airlines Flight Kitchen, Stapleton International Airport, Denver, CO; Stapleton Plaza Hotel, Denver, CO; George Washington High School Renovation, Denver, CO; Windsor Gardens Community Center, Denver, CO; Las Vegas Boulevard Pedestrian Bridges, Las Vegas, NV

Work Done In Colorado: 90% **Work Done Outside State:** 10%

Clients Should Contact: **Manufacturers Should Contact:**
Jeffrey S. Reddy, AIA Jeff Pelaez

REILLY JOHNSON ARCHITECTURE

1981 Blake Street, Suite 400
Denver, CO 80202
(303) 293-9111
FAX: 293-9135

Year Established: 1981

Principals: Thomas P. Reilly, AIA Robert D. Johnson, AIA

Firm Personnel By Discipline:		Types of Work:	
Administrative	1	Commercial	35%
Architectural	6	Institutional	45%
Interior Design	1	Other	20%

Examples Of Projects: Rocky Mountain News E.W. Estlow Production Facility, Phases 1 and 2, Denver, CO; State of Colorado Department of Corrections, Limon Correctional Facility (design consultation to Clifford S. Nakata Associates), Limon, CO; Denver County Jail expansion and remodel, Denver, CO; KMGH TV 7 Newsroom and Technical Operations Center and Boardroom, Denver, CO; KUSA TV 9 Headquarters and Broadcast Facility, Denver, CO; Sky Chefs In-Flight Kitchen, Denver International Airport, Denver, CO; Public Service Company of Colorado Headquarters Office Building, Denver, CO; WestGas Corporate Headquarters, Denver, CO; State of Colorado Department of Corrections, Colorado Territorial Correctional Facility, Canon City, CO; University of Colorado Health Sciences Center, F Lot Parking Facility, Denver, CO; Micromedex Corporate Headquarters

Work Done In Colorado: 100%

Clients Should Contact: **Manufacturers Should Contact:**
Thomas P. Reilly, AIA, Robert D. Johnson, AIA Steven J. Radomski, Robert B. Brashears

RICHFIELD ARCHITECTURE & DESIGN

4600 South Ulster Street, Suite 1200
Denver, CO 80237
(303) 220-2000
FAX: 220-2380

Year Established: 1991

Principals: Michael D. Ward, AIA Fran A. Fannin, ASID
Wayne A. Johnson, AIA

Firm Personnel By Discipline:

Administrative	2
Architectural	5
Interior Design	5

Types of Work:

Commercial	100%
------------	------

Examples Of Projects: Regal Riverfront Hotel, St. Louis, MO; Radisson Hotel and Casino, Green Bay, WI; Marina Hotel and Conference Center, Jacksonville, FL; Regal McCormick Ranch, Scottsdale, AZ; Sheraton Lakeside, Orlando, FL; Hilton Gateway and Towers, Newark, NJ; Regal Alaskan Hotel, Anchorage, AK; Radisson Golf and Conference Center, Ypsilanti, MI; Pine Lake Trout Club, Chagrin Falls, OH; Regal Constellation Hotel and Convention Center, Toronto Ontario

Work Done In Colorado:	5%
Work Done Outside of State:	85%
Work Done Internationally:	10%

Clients Should Contact:
Mike Ward, AIA

Manufacturers Should Contact:
Susan Kucma

ROBERT ROOT & ASSOCIATES

1736 Krameria Street
Denver, CO 80220
(303) 399-7402
FAX: 399-4181

Year Established: 1991

Principals: Robert Root, FAIA

Firm Personnel By Discipline:

Administrative	1
Architectural	1

Types of Work:

Commercial	15%
Institutional	55%
Multiple Family Dwellings	15%
Residential	15%

Examples Of Projects: Coolbaugh Hall Chemistry Building, Colorado School of Mines, Golden, CO; RTD Mac Light Rail, South Extension, Denver, CO; Washington Park Bath House Renovation for Volunteers for Outdoor Colorado, Denver, CO; Boschen Residence, Evergreen, CO; Lehr-Welles Residence, Denver, CO

Work Done In Colorado:	100%
-------------------------------	------

Clients Should Contact:
Robert Root, FAIA

Manufacturers Should Contact:
Robert Root, FAIA

ROTH + SHEPPARD ARCHITECTS

1623 Blake Street, Suite 350
Denver, CO 80202
(303) 534-7007
FAX: 534-7722

Year Established: 1983

Principals: Jeffrey L. Sheppard, AIA
Herbert B. Roth, AIA

Firm Personnel By Discipline:

Administrative	1
Architectural	6
Interior Design	1
Technical	1

Types of Work:

Commercial	5%
Institutional	10%
Multiple Family Dwellings	5%
Residential	10%
Retail	20%
Schools	10%
Other	40%

Examples Of Projects: Cucina Colore Restaurant, Denver, CO; Rose Stein Elementary School, Lakewood, CO; Third Avenue and St. Paul Retail, Denver, CO; Perlmutter Residence, Cherry Hills, CO; Boulder Police Facility, Boulder, CO; Vail Police and Municipal Facility, Vail, CO; Golden Police and Municipal Facility, Golden, CO; Santa Ana Police and Holding Facility, Santa Ana, CA; Long Beach Police Program, Long Beach, CA; World Savings, Colorado Boulevard and Arapahoe, Denver, CO

Work Done In Colorado: 80% **Work Done Outside State:** 20%

Clients Should Contact:
Jeffrey L. Sheppard, AIA

Manufacturers Should Contact:
Steve King, AIA

Larry J. Gambrell, P.E.



**GAMBRELL
ENGINEERING, INC.**

7535 Hilltop Circle
Denver, CO 80221-3452
(303) 428-8808
(303) 428-3408 FAX
Consulting Electrical Engineers

SEM ARCHITECTS, INC.

7935 East Prentice Avenue, Suite 102
Englewood, CO 80111
(303) 220-8900
FAX: 220-0708

Year Established: 1978

Principals: Donald R. Slack
Gary W. Ellermann, AIA
Bruce T. McLennan, CSI, CCS

Firm Personnel By Discipline:

Administrative	3
Architectural	10
Interior Design	2

Types of Work:

Commercial	50%
Multiple Family Dwellings	5%
Retail	30%
Schools	5%
Other	10%

Examples Of Projects: Lucky Penny Hotel and Casino, Blackhawk, CO; Upland Warehouse, Aurora, CO; Best Buy Retail Store, Aurora, CO; Tabor Center Tenant Finish, Denver, CO; Snyder Oil, Hudson, CO; Cahners Publishing, Douglas County, CO; Bowles Crossing, Jefferson County, CO; Bear Valley, Denver, CO; Snap On Tools, Arvada, CO; Intel Com Group, Englewood, CO

Work Done In Colorado: 85%

Work Done Outside State: 15%

Clients Should Contact:

Gary W. Ellermann, AIA

Manufacturers Should Contact:

Bruce T. McLennan, CSI, CCS

SAIBER SAIBER, INC.

2422 East Third Avenue
Denver, CO 80206
(303) 388-3313
FAX: 388-3342

Year Established: 1980

Principals: Jonathan Saiber, AIA
Toni Saiber

Firm Personnel By Discipline:

Administrative	1
Architectural	3
Interior Design	1

Types of Work:

Commercial	30%
Institutional	5%
Multiple Family Dwellings	50%
Residential	15%

Examples Of Projects: Crestmoor Townhomes, Denver, CO; 421-427 Detroit, Denver, CO; The Georgetown Townhomes, Denver, CO; Perry + Company Cherry Creek Offices, Denver, CO; Salvation Army Family Services Center, Denver, CO; Eby Creek Residence, Eagle, CO; 426-432 Madison, Denver, CO; Echo Bay Mines, Republic Plaza, Denver, CO; Salt Creek Stables, Eagle, CO; 226 South Franklin, Denver, CO

Work Done In Colorado: 100%

Clients Should Contact:

Jonathan Saiber, AIA

Manufacturers Should Contact:

Kiley Vorreiter

R. PAUL SANTANGELO, AIA ARCHITECT

3801 Wright Court
Wheat Ridge, CO 80033
(303) 467-1320
FAX: 467-1320

Year Established: 1975

Principals: R. Paul Santangelo, AIA

Firm Personnel By Discipline:

Administrative	1
Architectural	1

Types of Work:

Commercial	50%
Multiple Family Dwellings	20%
Residential	10%
Retail	20%

Examples Of Projects: Retail Center, Denver, CO; Domino's Tenant, Denver, CO; Retail Center, Wheat Ridge, CO; Multi-Family Townhomes, Wheat Ridge, CO; Multi-Family Townhomes, Lakewood, CO; Custom Residential, Genesee, CO; Custom Residential, Riva Chase, CO; Custom Residential, Wheat Ridge, CO

Work Done In Colorado: 100%

Clients Should Contact:

Ralph Santangelo, AIA



Lerch Bates Companies

DESIGN & INSPECTION SERVICES

FOR:

- * Vertical Transportation
- * Materials Management
- * Materials Handling
- * Waste Management
- * Central Service

Lerch Bates Companies have provided services for over 10,000 projects including over 600 hospitals.

LB SERVICES PROVIDE:

Improved building utilization - Lower operating costs
Efficient building flow - Improved equipment reliability

8089 South Lincoln, Suite 205
Littleton, Co. 80122-2709

303 795-1445
FAX 303 730-7626

SHOLAR BUCHANAN ASSOCIATES

710 Kipling, Suite 202
Lakewood, CO 80401
(303) 237-5700
FAX: 237-5717

Year Established: 1985

Principals: Ronald Sholar, AIA
Brad Buchanan, AIA

Firm Personnel By Discipline:

Administrative	1
Architectural	8
Interior Design	1
Technical	4
Other	1

Types of Work:

Commercial	15%
Hospitals	5%
Multiple Family Dwellings	20%
Residential	20%
Other	40%

Examples Of Projects: First Federal Bank, Arvada, CO; First Federal Bank, Thornton, CO; Eaton Bank, Greeley, CO; The Bank, Conifer, CO; Goldenbanks, Westminster, CO; The Monroe Townhouses, Denver, CO; RGM Custom Homes, Golden, CO; Hensel Phelps Environmental Services, Westminster, CO; Secure Self Storage, Lakewood, CO; Arrowhead Townhouses, Arrowhead, CO

Work Done In Colorado: 100%

Clients Should Contact:

Ron Sholar, AIA

SINK COMBS DETHLEFS, P.C.

1900 Grant Street, Suite 1250
Denver, CO 80203
(303) 830-1200
FAX: 830-0645

Year Established: 1962

Principals: Richard L. Combs, AIA
Fred J. Coester, AIA

Donald R. Dethlefs, AIA
Andrew W. Barnard, AIA

Firm Personnel By Discipline:

Administrative	3
Architectural	17

Types of Work:

Commercial	10%
Residential	5%
Schools	10%
Other	75%

Examples Of Projects: Mullen High School Renovation, Denver, CO; University of Northern Colorado Recreation Center, Greeley, CO; Colorado State Fair Events Center, Pueblo, CO; San Jose Sports Arena, San Jose, CA; Fargodome Multipurpose Stadium, Fargo, ND; South Dakota State University Wellness Center, Brookings, SD; First Banks, Denver, CO; Dalward Center at the University of Colorado-Boulder, Boulder, CO; Custom Residences, Beaver Creek, CO

Work Done In Colorado: 85%

Work Done Outside State: 15%

Clients Should Contact:

Principals

Manufacturers Should Contact:

Fred Coester, AIA



IF YOU'RE PLANNING EVEN A SMALL RENOVATION ...



... PLAN ON SAVING MONEY WITH AN ARCHITECT.

Whether you're adding a bedroom or building a new home, it pays to call an architect.

It all starts with your first meeting.

By listening carefully to your specific wants and needs, an architect can help you make the most of your space, speed up your renovation, and smooth out the hassles from start to finish.

Architects know how to keep a watchful eye on your budget. And they can help you avoid costly, last-minute changes.

So if you're considering either renovating or building a new home, give us a call.

We can put you in touch with an AIA architect who'll interpret your needs.

And keep a ceiling on your budget.

IT PAYS TO CALL AN ARCHITECT.

AIA Denver

A Chapter of The American Institute of Architects

1526 15th St. Denver, Colorado 80202



THE AMERICAN
INSTITUTE
OF ARCHITECTS

SLATER-PAULL & ASSOCIATES, INC.

7800 East Union Avenue, Suite 500
Denver, CO 80237-2754
(303) 770-8778
FAX: 770-2853

Year Established: 1972 (Atlanta Office 1985)

Principals: James F. Paull, AIA Gerhard J. Petri, AIA Bruce A. Lott (Atlanta)
Clayton C. Cole, AIA James C. Pedler, AIA Rick Ricker (Atlanta)

Firm Personnel By Discipline:		Types of Work:	
Administrative	7	Commercial	40%
Architectural	36	Institutional	10%
Interior Design	2	Schools	30%
Technical	3	Other	20%
Other	2		

RAY D. STEVENS, ARCHITECT

828 South Alkire Street
Lakewood, CO 80228
(303) 988-9316

Year Established: 1959

Principals: Raymond D. Stevens, AIA, CSI

Types of Work:

Commercial	50%
Residential	50%

Examples Of Projects: Christ on The Mountain Office and Sanctuary, Lakewood, CO; Four theater complex, Clovis, NM; Six theater complex, Topeka, KS; Four theater complex, St. Joseph, MO; Four theater complex, Casper, WY; Six theater complex, Los Angeles, CA; Elevator for St. Bernadette Church, Lakewood, CO; Richard Locke Residence, Evergreen, CO; Residence, Summit County, CO; Benjamin Moore Paint Company remodel, Denver, CO

Work Done In Colorado: 50%

Work Done Outside State: 50%

Clients Should Contact:

Ray D. Stevens

Manufacturers Should Contact:

Ray D. Stevens

RONALD A. STRAKA, FAIA

1600 Wynkoop Street, Suite 200
Denver, CO 80202
(303) 446-8728
FAX: 623-3251

Year Established: 2.5 years / 13 years prior to position at the city

Principals: Ronald A. Straka, FAIA

Firm Personnel By Discipline:
Urban Design

Types of Work:
Master Planning
Urban Design
Feasibility Studies

Examples of Projects: Central Platte Valley Master Plan, Denver, CO; Civic Center Cultural Complex Master Plan, Denver, CO; Lakewood Civic Center Master Plan Studies, Lakewood, CO; Lakewood Industrial/Office Park Studies/Master Plan, Lakewood, CO; Salt Lake City Convention Center Master Plan, Salt Lake City, UT; Acoma Plaza/Denver Art Museum Urban Design Study, Denver, CO; HUD Vision/Reality Publication/New Consolidated Planning Act, Washington, D.C.; ISTEA: NAIA Demonstration Project/New Transportation Planning Act, Washington, D.C.

Work Done In Colorado: 75%

Work Done Outside State: 25%

Clients Should Contact:
Ronald A. Straka, FAIA

MARTIN/MARTIN

4251 Kipling Street
Wheat Ridge, CO
80033
(303) 431-6100

- ▶ structural
- ▶ civil
- ▶ survey
- ▶ GIS mapping

Creative practical engineering solutions

TOMAS HART, AIA, T.H.E. ARCHITECTURE STUDIO

2072 Glencoe Street
Denver, CO 80207-3833
(303) 394-1410
FAX: 394-3914

Year Established: 1991

Principals: Tomas A. Hart, AIA

Firm Personnel By Discipline:

Architectural 3

Types of Work:

Residential 100%

Examples Of Projects: Hinton Residence, Franktown, CO; Marshall Remodel, Parker, CO; Hart Remodel, Denver, CO; Wood Addition, Denver, CO; Pasternak Addition, Englewood, CO; Lowry Addition Denver, CO; Hutton Remodel, Englewood, CO; Carpenter Remodel, Denver, CO; Lovejoy Addition, Littleton, CO

Work Done In Colorado: 100%

Clients Should Contact:

Tomas Hart, AIA

Manufacturers Should Contact:

Tomas Hart, AIA

QUALITY

KEN'S REPRODUCTIONS LTD.

2220 CURTIS STREET • DENVER, COLORADO 80205

Bus: 303-297-9191

Fax: 303-297-8885

Canon Color Laser Copies	Photographic
Canon Color Fiery Output	Versatec Laser Plotting
Desktop Publishing	Large Document Copying
High Resolution	Spec. Book Copying
Imagesetting	Diazo
Offset Printing	

Established in 1963

*The QUALITY you expect
...The SERVICE you need*

TSP FIVE, INC.

8751 East Hampden Avenue, Building B-7
Denver, CO 80231
(303) 695-1997
FAX: 695-1938

Year Established: 1981 (The TSP Group, 1930)

Principals: Richard Nearman, AIA Robert Saas

Firm Personnel By Discipline:		Types of Work:	
Administrative	3	Commercial	5%
Architectural	6	Institutional	10%
Landscape Architecture	1	Multiple Family Dwellings	10%
		Schools	25%
		Other	50%

Examples Of Projects: Lone Tree Country Club, Littleton, CO; Regis College Life Directions Center, Denver, CO; Coors Wellness Center, Golden, CO; St. Peter Lutheran Church, Greenwood Village, CO; Wray Rehabilitation and Activities Center, Wray, CO; Shepherd of the Hills Presbyterian Church, Lakewood, CO; First Lutheran Church, Colorado Springs, CO; O'Connell Middle School, Lakewood, CO; Evergreen High School Feasibility Study, Evergreen, CO; Haight Apartments, Minneapolis, MN

Work Done In Colorado: 95% **Work Done Outside State:** 5%

Clients Should Contact: Richard Nearman, AIA **Manufacturers Should Contact:** Richard Nearman, AIA

TECTONIC MANAGEMENT GROUP, INC.

P.O. Box 6416
Denver, CO 80206
(303) 480-9262
FAX: 733-3726

Year Established: 1990

Principals: Mark A. Stormberg, AIA Richard O. Kuberski
Mark E. Potadle, AIA

Firm Personnel By Discipline:		Types of Work:	
Administrative	1	Commercial	90%
Architectural	2	Residential	10%
Technical	2		
Other	2		

Examples Of Projects: AMR Combs General Aviation Facility, Construction Manager, Denver International Airport, Denver, CO; American Airlines Admirals Club, Project Management, Denver International Airport, Denver, CO; Aircraft Deicing System, Project Management, Denver International Airport, Denver, CO; Littleton Texaco Auto Service Center, Design/Build, Littleton, CO; Mall of America, Knott's Camp Snoopy Theme Park, Project Management, Bloomington, MN; American Airlines, Project Management, Denver International Airport, Denver, CO

Work Done In Colorado: 90% **Work Done Outside State:** 10%

Clients Should Contact: Mark A. Stormberg, AIA **Manufacturers Should Contact:** Mark Potadle, AIA

DAVID OWEN TRYBA ARCHITECTS

1601 Arapahoe Street, Fourth Floor
Denver, CO 80202
(303) 629-9363
FAX: 595-3023

Year Established: 1988

Principals: David Owen Tryba

Firm Personnel By Discipline:

Administrative	1
Architectural	3
Technical	4

Types of Work:

Commercial	20%
Residential	25%
Retail	20%
Schools	15%
Other	20%

Examples Of Projects: Rocky Ridge Music Center Recital Hall, Estes Park, CO; Mercantile Square/Tattered Cover Bookstore, Denver, CO; KPSP/Mutual of Omaha Corporate Headquarters, Denver, CO; Birmingham Hills, Michigan Art Center; New St. Joseph Catholic Church, Grand Junction, CO; Sts. Peter and Paul Chapel, Wheat Ridge, CO; Eurobath and Tile Showroom and Lofts, Denver, CO; PS-1 Charter School, Denver, CO; Three Denver Public Schools Renovations and Additions; Four Historic Branch Libraries

Work Done In Colorado: 90%

Work Done Outside State: 10%

Clients Should Contact:

David Tryba, AIA

Manufacturers Should Contact:

William Moon, Associate AIA

UNITED ARCHITECTS, LTD

5555 Greenwood Plaza Boulevard
Englewood, CO 80111
(303) 843-2511
FAX: 843-2208

Year Established: 1970 (originally Sterns-Roger Architects)

Principals: Caswell Cooke, President Steve Van Winkle, AIA, Vice-president
Chuck Miller, Director

Firm Personnel By Discipline:

Administrative	4
Architectural	45
Interior Design	4
Technical	2

Types of Work:

Commercial	30%
Other	70%

URBAN DESIGN GROUP, INC.

1621 18th Street, Suite 200
Denver, CO 80202
(303) 292-3388
FAX: 292-3113

Year Established: Locally 1981, firm 1975

Principals: Peter H. Dominick, Jr., FAIA
Sandy McLeod, Associate AIA

Ronald D. Armstrong, AIA

Firm Personnel By Discipline:

Administrative	5
Architectural	13
Interior Design	2
Technical	13

Types of Work:

Commercial	30%	
Hospitals	3% Residential	20%
Institutional	7% Retail	25%
Multiple Family Dwellings	6% Schools	9%

Examples Of Projects: Disney Fort Wilderness Lodge Resort, Orlando, FL; Tivoli Student Union Building Renovation, Denver, CO; The Denver Dry Goods Building, Denver, CO; United Artists Theatres 12-Plex, Englewood, CO; Rivercenter, San Antonio, TX; Telluride Gondola Terminals, Telluride, CO; Philbrook Museum, Tulsa, OK; Sinclair Cabin, Montrose, CO; Telluride Employee Housing, Telluride, CO; Carlson Center, Minneapolis, MN

Work Done In Colorado: 45% **Work Done Outside State:** 45%

Work Done Internationally: 10%

Clients Should Contact:

Peter H. Dominick, Jr., FAIA, Ronald D. Armstrong, AIA
Sandy McLeod, Associate AIA

Manufacturers Should Contact:

Angel Riguero

For over 59 years James R. Howell & Company has been providing the construction community with total project and construction management preliminary design through movin.

Howell is one of Denver's most experienced and professional general contractors providing a diverse client base with an unparalleled ability to deal



Howell

with the most complex projects and demanding specifications. New design or tenant finish, Howell provides the highest standards of performance and

craftsmanship. No other Denver general contractor has earned such a distinguished reputation for performance, service, and quality.

JAMES R. HOWELL & CO., INC.
Construction Management Since 1935

550 Lipan Street, Denver, CO., 80204 (303) 825-6257

IRVING F. WAITE, ARCHITECT P.C.

11031 South Pikes Peak Drive
Parker, CO 80134-7389
(303) m841-5287
FAX: 841-5287

Year Established: 1986

Principals: Irving F. Waite, AIA Emeritus

Firm Personnel By Discipline:

Administrative	1
Architectural	1
Technical	1

Types of Work:

Commercial	20%
Residential	20%
Other	60%

Examples of Projects: B & R Plastics-Feasibility Study, Denver, CO; Anderson Die Casting-Warehouse, Denver, CO; Pinery Country Club, ADA Survey, Parker, CO; Lange Graphics Facility, Denver, CO; Bridgeside Professional Building, ADA Survey, Parker, CO; Central Products Company, Brighton, CO; Marquest Medical Products, Englewood, CO; Parker Funeral Home, Parker, CO; Van Waters and Rogers, Denver, CO; Southwick Residence, Breckenridge, CO

Work Done In Colorado: 100%

Clients Should Contact:

Irving F. Waite, AIA Emeritus

Manufacturers Should Contact:

Irving F. Waite, AIA Emeritus

BRAD ADAMS WALKER ARCHITECTURE, P.C.

235 Fillmore Street, Suite 260
Denver, CO 80206
(303) 388-9500
FAX: 388-2305

Year Established: 1992

Principals: Brad Adams Walker, AIA
Karen Smith

Firm Personnel By Discipline:

Administrative	2
Architectural	7
Interior Design	2

Types of Work:

Commercial	90%
Residential	10%

Examples Of Projects: Computer Control Facility, Chevron USA, San Francisco, CA; Computer Control Facilities, Shell Oil Co., San Francisco, CA; Computer Control Facilities, Phillips Petroleum, Borger, TX; Prudential Plaza Streetscape Improvements, Denver, CO; Nicholas Construction Headquarters Facility, Denver, CO; Advance Telecommunications, Inc., Denver, CO; R.W. Beck, Tenant Finish, Denver, CO

Work Done In Colorado: 20%

Work Done Outside State: 80%

Clients Should Contact:

Brad Adams Walker, AIA

Manufacturers Should Contact:

Karen Smith

ARTHUR WISE ARCHITECTS AIA

1077 Cherokee Street
Denver, CO 80204
(303) 573-9542
FAX: 623-8203

Year Established: 1973

Principals: Arthur Wise, AIA, president

Firm Personnel By Discipline:		Types of Work:	
Administrative	1	Commercial	20%
Architectural	2	Multiple Family Dwellings	30%
		Residential	20%
		Retail	30%

Examples Of Projects: Intercession Church, Thornton, CO; CES Veterinarian Clinic, Douglas County, CO; Heritage Village Townhomes, Golden, CO; Benson Residence, Breckenridge, CO; Barnes Residence, Greenwood Village, CO; Famous Video, Denver, CO; Oakshire Townhomes, Thornton, CO; St. Alban Church, Windsor, CO; Dietrich's Chocolate and Espresso, Denver, CO; Beauty Express, Colorado Springs, CO

Work Done In Colorado: 100%

Clients Should Contact:
Arthur Wise, AIA

Manufacturers Should Contact:
Arthur Wise, AIA



*Preconstruction Services

*New Commercial Construction

* Structural Repairs

* Historic Renovations

90 Galapago • Denver • Colorado • 80223 • (303) 777-7999

WISS, JANNEY, ELSTNER ASSOCIATES, INC.

4251 Kipling Street, Suite 310
Wheat Ridge, CO 80033-2898
(303) 422-5404
FAX: 423-9047

Year Established: 1956

Principals: Don T. Ryle, PE Bill Burger David A. Besel, AIA, PE

Firm Personnel By Discipline:

Administrative	1
Architectural	2
Engineering	4
Technical	2
Other	1

Types of Work:

Other	100%
-------	------

Examples of Projects: Mile High Stadium Repairs, Denver, CO; Denver General Hospital Parking Garage Repairs, Denver, CO; Roofing Replacement, Denver Public Schools, Denver, CO; Exterior Repair/Replacement, Home Federal Savings, Fort Collins, CO; Repair/Restoration, Keystone Resort, Keystone, CO; Condition Assessment Study, Regis University, Denver, CO

Work Done In Colorado: 80% **Work Done Outside State:** 20%

Clients Should Contact:

David A. Besel, AIA/PE

WONG STRAUCH ARCHITECTS, a P.C.

1940 Blake Street, Suite 200
Denver, CO 80202
(303) 293-9206
FAX: 293-8207

Year Established: 1989

Principals: Jam F. Wong, AIA Donald E. Strauch, AIA
Vicki C. Dettman

Firm Personnel By Discipline:

Administrative	4.5
Architectural	5
Interior Design	1
Technical	5

Types of Work:

Commercial	60%
Hospitals	10%
Institutional	12%
Multi-Family Residence	5%
Residential	1%
Retail	2%
Schools	10%

Examples Of Projects: Concourse B Tenant Improvements, Denver International Airport, Denver, CO; Cleo Wallace Center, Westminster and Colorado Springs, CO; Craig Fire Station, Craig, CO; National Car Rental and Budget Rent a Car Facilities, Denver International Airport, Denver, CO; Centrum Medical Office Building, Englewood, CO; Denver Public Works/Parks and Recreation, 5 Recreation Centers, National Park Service, Denver, CO; United Airlines Facilities Management, Denver International Airport, Denver, CO; Hutchinson and Dutch Creek Elementary Schools, Jefferson County, CO; Imperial Restaurant, Denver, CO

Work Done In Colorado: 100%

Clients Should Contact:

Jam Wong, AIA or Donald Strauch, AIA

Manufacturers Should Contact:

John Yancey, AIA

Z PLAN

1900 South Clarkson Street
Denver, CO 80210-4104
(303) 733-3200
FAX: 733-3200

Year Established: 1988

Principals: James Zavist, AIA

Firm Personnel By Discipline:

Architectural 1

Types of Work:

Commercial	80%
Residential	5%
Retail	15%

Examples Of Projects: Tenant Finish Work for RREEF, Starr; Realty Management Corporation, Corum Real Estate Group, Cytryn/Tischler, Western Centers, Computer Sites and Others

Work Done In Colorado: 100%

Clients Should Contact:

Jim Zavist, AIA

Manufacturers Should Contact:

Jim Zavist, AIA

WILLIAM ZMISTOWSKI ASSOCIATES

1909 Broadway
Boulder, CO 80302
(303) 449-4831
FAX: 449-1345

Year Established: 1978

Principals: V. William Zmistowski, Jr., AIA

Firm Personnel By Discipline:

Administrative	2
Architectural	7
Interior Design	1
Technical	5

Types of Work:

Commercial	90%
Multiple Family Dwelling	5%
Residential	5%

Examples of Work: CU President's Campus Residence, Boulder, CO; 5200 DTC Office Building, Denver, CO; East Sussex National Golf Resort, London, England; Desert Highlands Golf Clubhouse, Scottsdale, AZ; Sherwood Country Club Clubhouse, Thousand Oaks, CA; Castle Pines Country Club Clubhouse, Castle Rock, CO; Olympic Country Club Clubhouse, Tokyo, Japan; Maroon Creek Golf Cottages, Aspen, CO; Morrish Residence, Dallas, TX; Covered Bridge Golf Club, Sellersburg, IN

Work Done In Colorado 30%

Work Done Internationally 10%

Work Done Outside Colorado 60%

Clients Should Contact:

William Zmistowski, Jr., AIA

Manufacturers Should Contact:

Gracie Mount



1995
Professional
Services
Profile

Acoustical Consulting

Robert F. Mahoney & Associates

2333 Mapleton Avenue
Boulder, CO 80304
(303)443-2213
FAX: 443-6989

Creative, flexible, in-depth consultation from a fellow architect. Specializing in the acoustics of educational and conference facilities, churches, and spaces for the performing arts.

Contact: Bob Mahoney

Architectural Paving

Colorado Hardscapes by Van Heukelem Concrete, Inc.

7803 East Harvard Avenue
Denver, CO 80231
(303)750-8200
FAX:695-1474



Architectural concrete paving; exterior and interior. Bomanite imprinted concrete: Bomanite chemical staining, designs in concrete, Custom Rock, etc.

Contact: Jay Fangman

Architectural Precast Concrete

Denver Architectural Precast, Inc.

8200 East 96th Avenue
Henderson, CO 80640
(303)286-7339
FAX:286-7926

Full service manufacturer of architectural precast concrete building materials and site furnishings.

Contact: James J. Nagel, Randy J. Wolf, John R. Long

Architectural Woodwork/Office Furniture

European Finish, Inc.

2645 Industrial Lane
Broomfield, CO 80020
(303)469-6439
FAX:469-6123

Producer and installer of PREMIUM quality, high-end commercial and residential architectural woodwork. Special experience/expertise in mountain residential and lodge.

Contact: Jackie and Alfred Feulner - owners

Asbestos Consulting

Spence-Geiger Associates, Inc.

The Center at Evergreen
2922 Evergreen Parkway, Suite 311
Evergreen, CO 80439
(303)670-8882
FAX:670-9432

Spence-Geiger Associates, Inc. is an environmental consulting firm specializing in asbestos and lead abatement design and in indoor air quality. We have performed as part of the A/E team on over 3,000 projects.

Contact: Nan Spence, Jeff Geiger

Civil Engineering

Alpha Engineering Group, Inc.

650 South Cherry Street, Suite 320
Denver, CO 80222
(303)329-3308
FAX:329-9963

Civil, structural and transportation engineering for public and private clients. Specialties include buildings, bridges, site civil, highways. Fully computerized using Autocadd and Intergraph.

Contact: James J. Hamblin, P.E., Vice President

Construction Management/General Contractor

Baldwin Construction, Inc.

301 East Lincoln Avenue
Fort Collins, CO 80524
(303)482-7722
FAX:484-7428

Preconstruction/construction services including conceptual estimating, value engineering, construction management, general construction and design/build projects emphasizing educational, health care, commercial, industrial and institutional facilities.

Contact: Ed Baldwin, Clayton Schwerin, Fred Sauer

Haselden Construction, Inc.

2134 South Valentia Street
Denver, CO 80231
(303)751-1478
FAX:751-1627



Construction manager/general contractor serving the health care, hospitality, education, retail, industrial, and renovation marketplace. Preconstruction and construction services including cost consulting, conceptual estimating, value engineering and design build services.

Contact: Ed Haselden, Elmer Janz

GE Johnson Construction Company

P.O. Box 2139
Colorado Springs, CO 80901
(719)473-5321
FAX:473-5324



Preconstruction and construction services including conceptual estimating, construction management, general construction and design build services throughout Colorado and surrounding states. Expertise in high tech/biotech manufacturing, correctional, hospitality/resort, health care, renovation and interior finish projects.

Contact: Gil Johnson, Jim Johnson

Gerald H. Phipps, Inc.

1530 West 13th Avenue
Denver, CO 80204
(303)571-5377
FAX:629-7467

3100 North El Paso Street
Colorado Springs, CO 80907
(719)633-4673
FAX:471-3169

Providing complete preconstruction and construction phase services including conceptual estimating, value engineering, scheduling, competitive bidding, design/build/finance and full General Contractor services. Serving the medical, education, high tech, office, hospitality, industrial, renovation and tenant finish marketplace throughout Colorado.

Contact: Bruce Ferguson, Richard C. Freske, John A. Gibbs

Consulting Engineers

Beaudin Ganze Consulting Engineers, Inc.

P.O. Box 39
Vail, CO 81658
(303)949-6108
FAX: 949-6159

14142 Denver West Parkway, Suite 195
Golden, CO 80401
(303)278-3820
FAX:278-3843

The firm's two offices provide distinctive mechanical, electrical, environmental, and control engineering design services for medical, commercial, residential, institutional and resort projects throughout the Rocky Mountain Region.

Contact: Thomas C. Ganze, P.E.

Moyer-Flax Engineering Inc.

7510 West Mississippi Avenue, Suite 210
Lakewood, CO 80226
(303)742-9535
FAX:742-9560

Complete electrical consulting engineering services for design, surveys, analyses and feasibility studies for industrial, commercial, institutional, educational, and public buildings. Complete AUTOCAD system.

Contact: Dennis G. Moyer, President

Design-Build

Bryant Electric, Inc.

7020 South Tucson Way
Englewood, CO 80112
(303)799-8920
FAX:799-8916

Electrical budget, design, engineering, and installation of electrical construction projects, ie. commercial, industrial, institutional, retirement, and multi-family.

Contact: William J. Bryant

Dry Wall/Framing

Delta Dry Wall, Inc.

2605 West 7th Avenue
Denver, CO 80204
(303)534-4295
FAX:534-4672

The firm was incorporated in 1969 and is a service company specializing in steel stud framing, drywall, exterior insulation and finish systems, panelization, and insulation and demountable partitions.

Contact: Ross T. Plowman

Economic/Market Analysis

Hammer, Siler, George, Associates

1638 Pennsylvania Street
Denver, CO 80203
(303)860-9996
FAX:832-6513

Forty years experience on multidisciplinary teams providing market and economic analysis, including optimum use mix, pro forma feasibility analysis, fiscal impact and absorption projections.

Contact: J. Lee Sammons, Ron Dutton

Environmental Engineers

RLH Engineering, Inc.

1200 Carousel Drive, Suite 202
Windsor, CO 80550
(303)686-5695
FAX:686-5696

Provide site engineering for building projects. Services include building surveys, plans, specifications and on-site observation of asbestos abatement projects. Special expertise in schools and hospitals.

Contact: Richard L. Huwa, P.E., President

Environmental Remediation

Dominion Services, Inc.

6815 Grove Street
Denver, CO 80221
(303)429-5200
FAX:429-4625

Dominion Services specializes in asbestos abatement, underground and aboveground storage tank removals and installations, contaminated soils, lead-based paints and PCB's, heavy metals and other chemical wastes.

Contact: Edward "Chuck" Williams, G. Randolph Macdonald

General Contractor

Boa Construction, Inc.

P.O. Box 4345
Denver, CO 80204
(303)892-1973
FAX:893-0664



New homes and additions; Interiors and custom woodworking; Renovation and restoration; Light commercial and tenant finish; for 23 years Denver's remodeling specialist.

Contact: Timothy G. Pleune

Breiner Construction Co., Inc.

1400 Oneida Street
Denver, CO 80220
(303)322-1260
FAX:322-9453



Member: Associated General Contractors, Women Construction Owners and Executives, Hispanic Contractors of Colorado. Offering complete construction services, from remodeling through new construction, design build and per-engineered buildings.

Contact: Rosemary Breiner

Brown-Schrepferman & Company

2380 South Tejon Street
Englewood, CO 80110
(303)935-2475
FAX:934-1781

We have been in business since 1889. Commercial/industrial general contractor providing complete construction services, tenant finish to new construction and remodeling. 1.5 million to 4 million.

Contact: Robert C. Brown

Calcon Constructors, Inc.

2270 West Bates Avenue
Englewood, CO 80110
(303)762-1554
FAX: 762-1948



Based and founded in Denver since 1981. Member of the Associated General Contractors of Colorado. General construction, design/build and construction management services.

Contact: Cal Cox, Jim Bosshart, Joe Gallion

Hensel Phelps Construction Co.

420 Sixth Avenue
Greeley, CO 80632-0710
(303)352-6565
FAX: 352-9311

Preconstruction and construction services including design/build. Provide conceptual estimating, value engineering and construction management services in health care, high tech, correctional, manufacturing, retail, and hospitality projects.

Contact: Jerry L. Morgensen, President

James R. Howell & Co., Inc.

550 Lipan
Denver, CO 80204
(303)825-6257
FAX: 899-4786

Commercial/Industrial General Contractor since 1935. Provide free estimates and construction design services to the architectural and design communities. Projects to 20 million.

Contact: Jim Howell

Palace Construction Company, Inc.

Denver, CO 80223
(303)777-7999
FAX: 777-5256

Preconstruction and full construction services including conceptual estimating, engineering, and scheduling. Over 30 years experience in new commercial construction, historical renovations, insurance restoration, and structural repairs.

Contact: Lou Jahde, Bill Hoban, Rick Carter

Gerald H. Phipps, Inc.

1530 West 13th Avenue	3100 North El Paso Street
Denver, CO 80204	Colorado Springs, CO 80907
(303)571-5377	(719)633-4673
FAX: 629-7467	FAX: 471-3169

Providing complete preconstruction and construction phase services including conceptual estimating, value engineering, scheduling, competitive bidding, design/build/finance and full General Contractor services. Serving the medical, education, high tech, office, hospitality, industrial, renovation and tenant finish marketplace throughout Colorado.

Contact: Bruce Ferguson, Richard C. Freske, John A. Gibbs

Taylor Ball

5775 Flatiron Parkway, Suite 115
Boulder, CO 80301
(303)440-4220
FAX:440-4256

Dedicated team player. Providing complete preconstruction and construction assistance. Conceptual, value engineering, design/build and full general contractor services. Established in 1947 with operations in California, Florida, Iowa.

Contact: Fred Hampe, Brian Laartz

Tandem Enterprises, Inc.

12503 East Euclid Drive, Suite 60
Englewood, CO 80111
(303)792-3971
FAX:792-3972

General contractor specializing in design-build and general construction services for interior tenant improvements, light commercial, and custom residential projects throughout the front range.

Contact: Scott S. Gratrix

Geotechnical Engineering**Geotechnical Services, Inc.**

10500 East 54th Avenue, Suite J
Denver, CO 80239
(303)371-4601
FAX:371-4605

Geotechnical investigations, soil and rock mechanics, foundation engineering, laboratory and field quality control testing for soils, concrete, aggregates, asphalt and steel; environmental Phase I and II assessments, drilling services.

Contact: Thomas L. Buelt, Regional Manager

Geotechnical/Environmental Engineering**Kumar & Associates, Inc.**

925 West Kenyon Avenue, Unit 1
Englewood, CO 80110
(303)761-2337
FAX:761-2651

Offering professional and technical services in the areas of geotechnical and environmental engineering, geologic hazards, soils, and materials testing and construction observation.

Contact: Narender Kumar, Jeff Johnson

CTL/Thompson, Inc.

1971 West 12th Avenue
Denver, CO 80204
(303)825-0777
FAX:825-4252



Geotechnical engineering, environmental services, construction observation, construction materials testing; soils, concrete, asphalt, masonry, structural steel, fireproofing. Complete engineering and testing in the field and laboratory.

Contact: Art Greengard

Hardware/Windows**Interstate Hardware Co.**

7660 East Jewell Avenue
Denver, CO 80231
(303)755-4590
FAX: 755-0938

40 years of service in architectural and decorative hardware and windows. Specializing in high end residential and small contract jobs. 5500 sq.ft. showroom. Specifications written.

Contact: Dan Stringer and Matt Flynn

Insurance**PUI Agency of Colorado, Inc.**

4949 South Syracuse Street, Suite 342
Denver, CO 80237
(303)843-0229



Specializing in professional liability insurance for architects, engineers, and construction industry consultants.

Contact: Carol L. Reynolds, CIC, CPIW

Van Gilder Insurance Corporation

700 Broadway, Suite 1000
Denver, CO 80203
(303)837-8500
FAX:831-5295

Architects and engineers professional liability. Bonds and insurance for contractors.

Contact: Ed Hays

Interior Design

Runyan/Unter

899 Logan Street, Suite 210
Denver, CO 80203
(303)830-7764 or 830-1750
FAX:830-2034

Commercial interior design firm (WBE) providing programming, space planning, color/finish and furniture specifications, custom millwork, and signage. Specializing in airport, corporate and medical facilities.

Contact: Judy Unter

Kitchen/Bath Design

Kitchens at the Denver

639 Kalamath
Denver, CO 80112
(303)629-0119
FAX:629-1551

Member of a large family of Colorado's finest full service kitchen/bath dealerships. Design staff of eight offers expertise with all built-in cabinetry including in-home offices/theatres.

Contact: Katherine Reed-Maring, Manager

Land Planning

Plan West, Inc.

8000 East Prentice Avenue, Suite C-1
Englewood, CO 80111-2727
(303)741-1411
FAX:741-1492



Land/master planning, zoning/public processing, conflict resolution, site design, landscape architecture (registered), project coordination, CADD support, specializing in mixed use PUD, business parks and multi family.

Contact: Bill Howard

Landscape Architecture

Civitas, Inc.

1422 Delgany Street
Denver, CO 80202
(303)571-0053
FAX:825-0438

Landscape architecture, urban design and planning for diverse project types. Comprehensive landscape architecture services include CADD, construction documents, consultant management and field observation.

Contact: Ann Mullins, Principal-in-Charge

EDAW HRV

511 16th Street, Suite 510
Denver, CO 80202
(303)595-4522
FAX:595-4434

Landscape Architecture, Planning, Urban Design, Environmental Analysis, Site Engineering, Graphic Design

Contact: Russ Butler

Guman & Associates, Ltd.

110 South Weber, Suite 101
Colorado Springs, CO 80903
(719)633-9700
FAX:633-8429

Site planning, landscape and irrigation system design, environmental mitigation, construction management and design/build with emphasis on fast tracking. Commercial, municipal, and federal facilities.

Contact: Carla B. Anderson, William F. Guman

Land Mark Design, Inc.

1027 Pontiac Street
Denver, CO 80220
(303)355-0673
FAX:355-6879

Land Mark Design provides landscape design and site planning for public, commercial and residential sites. WBE Certified Denver and Colorado

Contact: Cathe Mitchell, Gail Barry

Legal Services**Creamer and Seaman P.C.**

7730 East Belleview Avenue, Suite 102
Englewood, CO 80217-2870
(303)771-2111
FAX:796-0899

A full service law firm with expertise in the representation of design professionals in business, liability, and personal matters.

Contact: Philip Cardi

Mason Subcontractor**Dan Berich, Inc.**

1675 West Yale, Suite D
Englewood, CO 80110
(303)922-8213
FAX:922-8224

Mason subcontractor for 33 years in the Denver Metro Area with a state certified safety program.

Contact: Todd Berich, Andy Cooper

Gordon, Gumeson and Associates, Inc.

7430 East Caley Avenue, Suite 240
Englewood, CO 80111
(303)779-1222
FAX:694-9144



Full range of mechanical and electrical planning, design and construction administration services to institutional, commercial, and industrial clients within Colorado and nationwide.

Contact: Charles Gumeson, Christine King

HNTB Corporation

3609 South Wadsworth Boulevard, Suite 200
Denver, CO 80237
(303)988-4682
FAX:988-4699

Provides complete HVAC, Plumbing, Fire alarm, lighting and related services to health care and educational facilities.

Contact: Steve Biagiotti, P.E.

M*E Engineers, Inc.

4251 Kipling Street, Suite 400
Wheat Ridge, CO 80033
(303)421-6655
FAX:421-0331

M*E Engineers provides complete mechanical and electrical engineering services including specialty lighting design and low voltage systems for health care, laboratory and sports facility projects.

Contact: Allen Tochihara, P.E. - Principal

The RMH Group, Inc.

12600 West Colfax Avenue, Suite A-400
Lakewood, CO 80215
(303)239-0909
FAX:235-0218



Project management, planning, design, and construction services for HVAC, utility/process piping, fire protection systems, primary/secondary/UPS/emergency power, instrumentation/controls, automation, lighting, telecommunications

Contact: Diane J. Strickler

Steel Erection

Trujillo Steel Erectors, Inc.

1800 South 120th Street
Lafayette, CO 80026
(303)665-0310
FAX:665-0327

In business since 1979. Site work and precast. Division 5 Metals. Members of ASA and AGC.

Contact: Ambrocio Trujillo, Tony Solano

Structural/Civil Engineers

S.A. Miro, Inc.

4582 South Ulster Street Parkway, Suite 1501
Denver, CO 80237
(303)741-3737
FAX:694-3134



Structural, civil, investigative engineering for a broad variety of private and government projects throughout Rocky Mountain states. Special experience in large commercial, industrial, retail complexes.

Contact: Sami A. Miro, P.E., President, Certified MBE

Structural Engineers

Jirsa-Hedrick & Associates, Inc.

899 Logan Street, Suite 410
Denver, CO 80203
(303)839-1963
FAX:839-1983



Comprehensive structural design and consulting services for architects, developers and contractors. Extensive experience in office buildings, retail centers, hotels, churches, schools, banks, parking structures, warehouses and manufacturing facilities.

Contact: Steven T. Jirsa, P.E., Ronald D. Hedrick, P.E.

KRM Consultants, Inc.

P.O.Box 4572
Vail, CO 81658
(303)949-9391
FAX:949-1577



Structural design, drawings and details for residential and commercial buildings. Field observations and reports. Analysis of existing buildings. Using autocad R12.

Contact: Kimberly R. McGhee, P.E.

Nicol + Hofland Associates, Inc.

4730 Walnut Street, Suite 210	1617 Wazee Street, Suite C
Boulder, CO 80301	Denver, CO 80202
(303)443-1677	(303)446-2558
FAX:449-2422	FAX:446-2568

Structural engineers offering comprehensive professional design services to architects, developers and others. Special experience/expertise in mountain residential, lodge, municipal and commercial projects to \$25 million.

Contact: Joseph C. Nicol, P.E., Paul B. Hofland, P.E.

Redwine-Reizian, Inc.

1743 Wazee Street, Suite 350
Denver, CO 80202
(303)292-5311
FAX:292-6722

Full service structural engineering firm serving commercial, institutional and residential sectors. Organizational style based on client focus, principal involvement and continuous improvement.

Contact: Bob Redwine, Greg Reizian

Wall Upholstery**Textile Techniques, Inc.**

434 Washington Street
Denver, CO 80203
(303)744-3801
FAX:733-4942

UNLIMITED FABRIC INSTALLATIONS FOR WALLS AND CEILINGS. Wall Upholstery, Fabric Wall Reliefs, Acoustic Wall Treatments.

Contact: P.J. Bergin

Wholesale Distribution**Larson Distributing Co., Inc.**

P.O. Box 16189
Denver, CO 80216-0189
(303)296-7253
FAX:296-8583



Wholesale distributor to retail and subcontract trades. Representing Armstrong Resilient Flooring, Formica, Surell and Avonite Solid Surfacing, Shawmark Carpets, Hartco Wood Flooring and more.

Contact: Diane Carpenter

AIA Members

Ronald K. Abo, AIA
Ann Holubec Adams, AIA
Gary M. Adams, AIA
Paul R. Adams, Associate AIA
Robin P. Adams, Associate AIA
Charles L. Adkisson, AIA
James L. Allred, AIA
Jeff A. Ambrose, AIA
David C. Anderson, AIA
Gerald C. Anderson, AIA
Nanon A. Anderson, AIA
Richard T. Anderson, AIA
John D. Anderson FAIA
Frederick M. Andreas, AIA
Deborah Andrews, AIA
Stanley R. Andrews, AIA
Dennis J. Armstrong, AIA
Ronald D. Armstrong, AIA
Dennis Law Ash, AIA
Lawrence Atkinson, AIA Emeritus
Deighton V. Babis, Associate AIA
Gary J. Badik, AIA
Craig T. Ballard, AIA
David K. Ballast, AIA
Michael R. Barber, AIA
Donald E. Barker, AIA
Andrew W. Barnard, AIA
Sears Barrett, AIA
Eric A. Bartczak, AIA
John E. Bassett, AIA
James L. Bazzanella, AIA
C. Douglas Beall, AIA
Brian Beaudette, Associate AIA
Enrique Bejarano, AIA
Kris Belter, Associate AIA
Martha L. Bennett, AIA
Donald F. Benson, AIA Emeritus
Karl A. Berg, FAIA
Paul T. Bergner, AIA
Stephen Berlin, AIA
James S. Bershof, AIA
David L. Berton, AIA
Donald A. Bertram Esq., AIA
Vija Berzins, Associate AIA
David A. Besel, AIA
Shekhar Bhushan, AIA
Gregory Billingham, AIA
Jane Blackstone, Associate AIA
Ira Blackwell, AIA
Timothy C. Boers, AIA
Dennis R. Boggio, AIA
Bruce D. Bollenbach, AIA
Kelly K. Bonner, Associate AIA
Roger B. Booker, AIA
Bruce A. Boomer, AIA
Janet Boone, Associate AIA
Ronald R. Booth, AIA
James Borman, AIA Emeritus
James H. Bradburn, AIA
John Braithwaite, Associate AIA
Laura Braithwaite Dianich, AIA
Arlo Braun, AIA
Michael Bray, AIA
Aubrey B. Brelsford, AIA Emeritus
Michael Brendle, AIA
Leon Brin, AIA Emeritus
Jack Brokaw, AIA
Stephen Brooks, AIA
Hugh W. Brown, AIA
Stanley E. Brown, AIA
Bertram A. Bruton, AIA
Bradley S. Buchanan, AIA
Melanie L. Budd, Associate AIA
David Budrow, AIA
Jeff W. Burnham, AIA
Richard B. Buss, AIA
Lewis E. Bussey, AIA
Norman Cable, AIA
Kenneth D. Camp, AIA
Paul R. Campbell, AIA
Rexford D. Canaday, Associate AIA
Glen Carels, AIA
Nancy Carlisle, Associate AIA
Martha S. Carlson, AIA
David Carpenter, AIA
Thomas L. Carr, AIA
Mark Carvalho, AIA
Anthony Casey, Associate AIA
Patrick Cashen, AIA
Michael J. Cassutt, AIA
Brian H. Chaffee, AIA
Dean B. Chambliss, FAIA
Michael Childers, AIA
G. Cabell Childress, FAIA
Fred J. Coester, AIA
Clayton C. Cole, AIA
Estella Cole, AIA
Maria E. Cole, Associate AIA
John Collins, AIA
Alan Colussy, AIA
Richard L. Combs, AIA
Jack C. Cook III, AIA
Noel J. Copeland, AIA
Charles J. Cordina, AIA
Oscar Covarrubias, International Associate
Gerald D. Cowley, AIA

Arthur T. Cowperthwaite Jr., AIA
 Curtis F. Cox, AIA
 Dennis L. Cox, Associate AIA
 Robert W. Cox, AIA
 Bruce Crabb, Associate AIA
 Scott W. Cram, AIA
 Stephen P. Crawford, AIA
 Duane W. Crawmer, AIA
 Rex. A. Crook, AIA
 Roger K. Crosby, AIA
 Richard Crowther, FAIA Emeritus
 Ronald E. Crutchfield, AIA
 David M. Culberson, AIA
 David E. Cummins, AIA
 R. Lane Cutter, Associate AIA
 Curt Dale, AIA
 Robert F. Dalton Jr., AIA
 Henry A. Daniel, AIA
 Beverly A. Darrow, Associate AIA
 Robert A. Davidson, AIA
 Brad J. Davis, AIA
 C. Clay Davis, AIA
 David G. Davis, AIA
 Rodney S. Davis, AIA
 Cynthia Day, Associate AIA
 Roger Day, Associate AIA
 Warren M. Dean, AIA
 Tyson Dearduff, Associate AIA
 David B. Decker, AIA
 Michael DeMichele, Associate AIA
 Craig A. Demmon, AIA
 Henry J. Denicola, AIA Emeritus
 Gary L. Desmond, AIA
 William Dilatush, AIA
 Nora Dimitrov, Associate AIA
 Bradley W. Dodds, AIA
 Peter H. Dominick Jr., FAIA
 Paul F. Dominov, Associate AIA
 Mark E. Donelson, AIA
 L. Kent Doss, AIA
 Charles Downing, AIA
 Cornelius R. DuBois, AIA
 Virginia R. DuBrucq, AIA
 Charles, R. Duff, AIA
 Patrick Dulaney, AIA
 Ann W. Dunn, AIA
 Michael Edson, AIA
 Peter F. Einsle, AIA
 Martin Eiss, AIA
 Christine M. Eitemiller, Associate AIA
 David M. Elisberg, AIA
 Gary W. Ellermann, AIA
 James P. Endelicato, AIA
 Kay Engel, Associate AIA
 Bradley G. Ensz, Associate AIA
 Victoria Eppler, Associate AIA
 Duane L. Erickson, AIA
 Peter Ewers, AIA
 Richard C. Farley, AIA
 Robert J. Fatovic, AIA
 William J. Fauri, AIA
 William Fedro, AIA Emeritus
 Curtis W. Fentress, AIA
 Lauren Ferris, Associate AIA
 Jeanne S. Fetterman, Associate AIA
 David B. Fisher, AIA
 Julia M. Fitzpatrick, Associate AIA
 Michael D. Fleming, AIA
 Bruce M. Flynn, AIA
 Dean A. Foreman, AIA
 Donald M. Forst, AIA
 Paul Foster, AIA
 Warren J. Foster, AIA
 Vince Fredericksen, AIA
 Kent L. Freed, AIA
 Larry Friedberg, AIA
 David H. Fritz, Associate AIA
 John C. Fuentes, AIA
 Kenneth Fuller, AIA Emeritus
 Robert K. Fuller, AIA
 Lee S. Gagné, AIA
 Francis H. Gallagher, AIA
 Alan G. Gass, AIA
 David R. Gebel, AIA
 Thomas S. Geiser, AIA
 Thomas Gentry, Associate AIA
 David George-Nichols, AIA
 Phillip H. Gerou, FAIA
 Tyler B. Gibbs, AIA
 Jerry R. Gloss, AIA
 Philip H. Goedert, AIA
 Juana Gomez, AIA
 James P. Greenfield, AIA
 Chris K. Greenwald, AIA
 Donald R. Grody, AIA
 Thomas Groves, Associate AIA
 Steven B. Grueber, AIA
 Thomas S. Guida, Associate AIA
 David L. Gundersen, AIA
 Paul S. Haack, AIA
 Lisa M. Haddox, AIA
 Joseph F. Haezebrouck, AIA
 Mark R. Hafen, AIA
 Dalya Hakimi, AIA
 George J. Haller, AIA
 Scott E. Halpin, AIA
 David S. Hammel, AIA
 Carl K. Hammergren, AIA Emeritus

Robert J. Hammervold, AIA
 L. Victor Hanson, AIA
 Kathryn Harhai, AIA
 Happy Harrington, AIA
 Karen L. Harris, Associate AIA
 Syd P. Harrison, AIA
 Tomas Hart, AIA
 James F. Hartman, AIA
 Marvin Hatami, FAIA
 Daniel J. Havekost, FAIA
 Keith E. Hayes, AIA
 Kristen Hedberg, AIA
 Fred W. Hegel, AIA
 Richard R. Heinemeyer, AIA
 John D. Heinly, AIA
 John C. Hellgren, AIA
 Jim N. Henderson, AIA
 Richard Henry, AIA
 Phillip L. Hensley, AIA
 R. Stephen Hentschel, Associate AIA
 Robert Hill, Jr., AIA
 Bryan T. Hinckley, Associate AIA
 Harvey M. Hine, AIA
 Kimble Hobbs, AIA
 Norman E. Hodge, AIA
 Kristine L. Hoehn, AIA
 Per Hogestad, Associate AIA
 Timothy D. Holcomb, Associate AIA
 Cheryl Honigsberg, AIA
 George Hoover, AIA
 Thomas E. Hoover, Associate AIA
 Dale R. Hopson, AIA
 Victor Hornbein, FAIA Emeritus
 Kevin Hoskins, Associate AIA
 Art Hoy III, AIA
 Mark I. Hughes, Associate AIA
 Dennis R. Humphries, AIA
 Michael Hunsinger, Associate AIA
 Lawrence Hunter, Associate AIA
 A. Sayre Hutchison, AIA
 Paul Hutton, AIA
 Leslie Imes, Associate AIA
 Jennifer L. Isbill, Associate AIA
 Bruce D. Ivins, AIA
 Robert Jacobsen, AIA
 J. Michael Jacoby, AIA
 Tia Jenkins, AIA
 Larry Jenks, AIA
 Emmy Jenson, AIA
 Paul Jeselnick, AIA
 Laurie L. Jessen, AIA
 James G. Johnson, AIA
 James H. Johnson, AIA Emeritus
 Lamar Johnson, AIA
 Mark W. Johnson, Associate AIA
 Robert Johnson, AIA
 Thomas C. Johnson, AIA
 Wayne Johnson, AIA
 Jamy Jones, Associate AIA
 Mark D. Jonnson, AIA
 Walter Kaesler, AIA
 Hans Kahn, AIA
 Kelly Karmel, AIA
 Tim Kathka, AIA
 Neil Katz, AIA
 Jeffrey A. Keast, AIA
 Andrew M. Kenney, AIA
 Michael Kephart, AIA
 William G. Kestelik, AIA
 Terry L. Kies, AIA
 Robert Kindig, AIA Emeritus
 Dennis King, AIA
 Steve Kline, Associate AIA
 Brian Klipp, AIA
 Carl Kloverstrom, AIA Emeritus
 Michael Knorr, AIA
 Richard Koehn, AIA
 Victor Kolouch, Associate AIA
 Andrew W. Kramer, AIA
 Keith Krebs, AIA
 J. Robert Kroeger II, AIA
 Robert Kronewitter, FAIA
 Jack Kruse, AIA Emeritus
 Scott A. Kuehn, AIA
 Deborah Laenen-McCarthy, Associate AIA
 Gedeon Lafarge, Associate AIA
 Gary G. Landin, AIA
 Jim B. Landin, AIA
 Victor Langhart, AIA
 Robert L. Lanham Jr., AIA
 Wendy Larkin-Burbage, Associate AIA
 Greg Larock, AIA
 Bruce Larson, AIA
 Dayl A. Larson, AIA
 Norman E. Larson, Associate AIA
 Hervey Lavoie, AIA
 Roberta K. Law, AIA
 Philip Lawrence, AIA
 Rick L. Lawrence, AIA
 David E. Leavenworth, AIA
 Claud W. Lee, AIA
 Robert Lee, AIA
 Ranson V. Leeds, AIA
 Owen C. Leslie, AIA
 William L. Leverington, AIA
 Joseph P. Levi, AIA
 Jeffrey Limerick, AIA
 Kathy Lingo, AIA

Jane Loefgren, AIA
 Richard Loveman, AIA
 John Lowe, AIA
 Deborah Lucking, AIA
 Charles Lugton, AIA Emeritus
 Don C. Lund, AIA
 Nancy Lyons, Associate AIA
 Paul L. Mack Jr. AIA
 Sandy MacLeod, Associate AIA
 Julie Maple, AIA
 Richard Markovich, AIA
 Don Marshall, AIA Emeritus
 William Martin, AIA
 Leo Marx, AIA
 Mary M. Mason, AIA
 Ron Mason, AIA
 Harold Massop, AIA
 Eric E. Maule, AIA
 T. Jeffrey McCaa, AIA
 Phillip C. McCurdy, AIA
 Nancy McGrew, AIA
 Tim McKay, AIA
 Thomas E. McKenzie, AIA
 Gregory H. McMenamin, AIA
 Kathryn McNally, AIA
 Mark McPherson, AIA
 Lawrence P. McSorley, AIA
 James A. Mellin, AIA
 R. William Messner, AIA
 J. Elizabeth Metz, AIA
 J. Mark Milan, AIA
 John F. Milan, AIA Emeritus
 Paul Miles, AIA
 James Millensifer, AIA
 Evan Miller, Associate AIA
 Kevin Mills, AIA
 M.J. Mitchell, AIA
 William M. Moon, Associate AIA
 Gary Moranville, AIA
 James C. Morgan, AIA
 Andrew Moss, AIA
 Shanaz Motallebi-Barhagi, Associate AIA
 Jennifer T. Moulton, AIA
 Jack Mousseau, AIA
 Duncan A. Moyes, AIA
 Hellmut Mueller, AIA
 Kiyoshi Murata, AIA
 Michael B. Murphy, AIA
 Renee Myers, AIA
 Jerome Nagel, AIA Emeritus
 Alan Nagle, AIA
 Richard Nearman, AIA
 David C. Necker, AIA
 David Nelson, AIA
 Linda W. Nelson, Associate AIA
 Rick New, AIA
 Stephen C. Newman, AIA
 Carl Newmark, AIA
 David Nichols, AIA Emeritus
 Andrew Nielsen, AIA
 Christopher G. Nims, AIA
 Chad Novak, Associate AIA
 Michael Noda, AIA
 Thomas Obermeier, AIA
 Daniel O'Brien, AIA
 Jerome E. Odell, AIA
 Charles D. Ogden, AIA Emeritus
 Stuart Ohlson, AIA
 Brian Olesz, AIA
 Kelly Oliver, AIA
 Jeffrey W. Olson, AIA
 Frank Ooms, AIA
 Peter Orleans, AIA
 Michael Ossian, AIA
 Robert L. Outland AIA
 J. W. Pahl, AIA Emeritus
 Joe M. Pahl, AIA
 Robert G. H. Pahl, AIA
 George Pales, AIA
 Glen Palmer, AIA
 Julio Palomino, AIA
 Peter Pappas, AIA
 James Parker, AIA
 William Parkhill, AIA
 Donald L. Patton, AIA
 James F. Paull, AIA
 Fred R. Pax, AIA
 Lynn Paxson, Associate AIA
 Barbara Payne, Associate AIA
 Brian Pearson, AIA
 Thomas S. Pearson, AIA
 James C. Pedler, AIA
 Charles C. Pell, AIA
 Gail Pelsue, Associate AIA
 Roy Perlmutter, AIA
 Gary M. Perrin, Associate AIA
 Gustav Peterson, AIA
 Gerhard Petri, AIA
 Jerry Pickens, AIA
 Paul S. Pierson, AIA
 W. Dale Pilkinton, Associate AIA
 Scott D. Pirnack, Associate AIA
 Joseph J. Poli, AIA
 Mark Potadle, AIA
 Dana Potter, AIA
 Cynthia Pougiales, AIA
 Stanley Pouw, AIA
 Gary Prager, AIA

Kim D. Prentice, AIA
 Donald Preszler, AIA Emeritus
 Brit Probst, AIA
 Mark Queripel, AIA
 Paul Rader, AIA Emeritus
 Steven Radomski, AIA
 Delbert Ragland, AIA
 Norman Rajotte, AIA
 Catherine D. Rands, Associate AIA
 Arthur C. Ranes, AIA
 Robert L. Rayborn, AIA
 Jeff S. Reddy, AIA
 Paul Reddy, AIA Emeritus
 John D. Reece, AIA
 Barbara Reese, AIA
 Thomas Reilly, AIA
 Dennis Reseutek, AIA
 David M. Rhyne, AIA
 Terrence L. Richards, AIA
 Lila Rioth, AIA
 Ann Ritberger, Associate AIA
 Howard Rivers, AIA
 Michael K. Roberts, AIA
 Kurt Robertson, AIA
 Marcus Robertson, AIA
 Mark Rodgers, Associate AIA
 Esteban T. Rodriguez, AIA
 Scott Rodwin, Associate AIA
 Larry Rogers, AIA
 John B. Rogers, FAIA
 Robert W. Root, FAIA
 Seth L. Rosenman, AIA
 Charles Roser, Jr., AIA
 Herb Roth, AIA
 Michael Roybal, AIA
 Ronald Roybal, AIA
 Axel Russell, AIA
 Beverly Rutherford, AIA
 Jack A. Rychecky, AIA
 Jonathon Saiber, AIA
 Richard T. Sall, Associate AIA
 Thomas Sanders, AIA
 R. Paul Santangelo, AIA
 Maxwell L. Saul, AIA
 Charles Scheuber, AIA
 Robert C. Schmid, AIA
 Jack Schmidt, AIA
 Steve Schonberger, AIA
 Stephen B. Schuyler, Associate AIA
 Kevin D. Scott, AIA
 A. Riddick Semple, AIA
 Jerry M. Seracuse, FAIA
 Jack Shanahan, Associate AIA
 Jeff Sheppard, AIA
 Barbara Shepler, AIA
 Ronald Sholar, AIA
 Michael Shomo, AIA
 Christopher Sibilia, AIA
 Stephen Silkworth, AIA
 Charles Sink, FAIA
 Michael Skidmore, Associate AIA
 Matthew G. Slater, AIA
 James C. Smith, Associate AIA
 James E. Smith, AIA
 William T. Smith, AIA
 Mark S. Smyth, AIA
 George Snode, AIA
 Andrew Snyder, AIA
 David R. Solomon, AIA
 Bill Speck, AIA
 Cheryl Spector, Associate AIA
 Aubrey Spent, AIA
 Milan Srnka, AIA Emeritus
 Timothy Stead, AIA
 Karl Stegmuller, AIA
 Dale H. Stephens, AIA
 Eugene Sternberg, AIA Emeritus
 Raymond D. Stevens, AIA
 Stephen Stock, AIA
 Mark Stormberg, AIA
 Ronald A. Straka, FAIA
 Donald E. Strauch, AIA
 Brian L. Strom, AIA
 Robert Strom, AIA
 Ira Studebaker, AIA
 Wilfred Sugai, AIA
 Gerald K. Sullivan, AIA
 Kevin Sullivan, AIA
 W. Patrick Sullivan, AIA
 Frank Swaans, AIA
 Patricia Swan, AIA Emeritus
 Steven G. Sweany, AIA
 B. Story Swett, AIA
 David F. Swoboda, AIA
 Emil Tanner, AIA
 C. Kirk Taylor, AIA
 Lynne C. Thom, AIA
 Daniel Thompson, AIA
 Dennis L. Thompson, AIA
 Ruth L. Timmons, Associate AIA
 Roger W. Tinney, AIA
 Edward Towbin, AIA
 William Tracy, AIA
 James M. Trombley, AIA
 David Tryba, AIA
 Marcus Tucker, AIA
 Raymond H. Tuell, AIA
 William Turner, AIA

Scott Turnipseed, AIA
 Stephen van Winkle, AIA
 Russell P. Veazey, AIA
 John Verschoor, AIA
 G. Kay Vetter, AIA Emeritus
 Donald Visani, AIA
 Jeffrey M. Von Breitenfeld, AIA
 Richard L. von Lührte, FAIA
 Linda Wagner, AIA
 Irving F. Waite, AIA Emeritus
 Elizabeth Waldorf, AIA
 Brad A. Walker, AIA
 James Walljasper, AIA Emeritus
 Susan E. Walsh, AIA
 Douglas Walter, AIA
 Mike Ward, AIA
 William Ward, AIA
 Linda E. Waterhouse, AIA
 Jay C. Watkins, AIA
 William D. Webb, AIA
 Kermit J. Wells, AIA
 Terry Wetzsteon, AIA
 Ned K. White, AIA
 Sam White, AIA
 Edward White Jr., AIA
 Jill Whitehead, Associate AIA
 Joseph E. Wicentowich, AIA
 James L. Wiley, AIA
 Diane Wilk Shirvani, AIA
 Ben Wilking, AIA
 Mark S. Williams, AIA
 J.D. Willis, AIA
 Adele Wilson, AIA
 Merrill Ann Wilson, AIA
 Michelle Wilson, AIA
 Michael O. Winters, AIA
 Norman E. Wirkler, FAIA
 Arthur Wise, AIA
 David Wise, AIA
 Michael D. Wisneski, AIA
 Thomas Wittenwyler, AIA
 Richard E. Wolfe, AIA
 Jam F. Wong, AIA
 F. Scott Woodard, AIA
 Lucinda Woodard, AIA
 Jeffrey Wright, AIA
 John Yancey, AIA
 John E. Yonushewski, AIA
 Kerl Yoo, AIA
 James F. Young, Associate AIA
 James L. Young, AIA
 James Zavist, AIA
 V. William Zmitowski, AIA

FRIENDS OF ARCHITECTURE

Marc Able
 Charles Albin
 Brad Allshouse
 Juan Alvarez
 Elaine Asarch
 Francis Atallah
 Mike Ballard
 Eve Barbaria
 Bud Barr
 Donna Barta
 Todd Bassett
 Jean Batchelder
 Kenneth Bennington
 P.J. Bergin
 Dan Berich
 Todd Berich
 Deborah Black
 Joe Boatman
 Jerry Bow
 Clint Bowman
 Wayne Boyce
 Sharon Breay
 Rosemary Breiner
 Bryan Brook
 Kathleen Brooker
 Lisa Brooks
 Gregg Brown
 Roya Brown
 Tom Buelt
 Michael Burstein
 Phil Cardi
 Tom Carroll
 Rick Carter
 William Caruso
 Mary Chandler
 James Chang
 Jacques Chartier
 Paul Clark
 Don Clem
 Sandra Clinger
 J. Gorsuch Collins
 Peter Conley
 Shelley Couch
 Calhoun Cox Jr.
 Dan Coxall
 Stephen Crum
 Dianne Dahmes
 Amy Damon
 Carol Davis
 Ginny Deherdt
 Bruce Dempsey
 Helen Devantery
 Jim Devantery
 Lynn Diaz-McLeese
 Paul Doak
 Mike Douglas
 George Duley
 Patricia Durbin
 John Eaton
 Sharon Elfenbein
 Brian English
 Alan Espenlaub
 William Ettenger
 Ruth Falkenberg
 Jay Fangman
 Mike Fishbach
 Marie Fitzpatrick
 Sudee Floyd
 Susan Floyd
 David French
 Ron Frickel
 Larry Gambrell
 Pat Gavin
 Beverly Gibson
 Penn Gildersleeve
 Juli Goodhue
 Richard Goodman
 Gordon Graham
 Chris Grealish
 Elizabeth Gregg
 Lorraine Gross
 Judy Gubner
 Charles Gumeson
 Robert Haack
 Amy Hamilton
 Fred Hampe
 Alan Hansen
 Jack Harrier
 Jim Harris
 Karen Heinkel
 John Helin
 Bruce Hellerstein
 Pat Hendrix
 Michael Henry
 John Hickenlooper
 Paul Hofland
 James Howell
 Steve Hritz
 Tracey Hubbell
 Beverly Hutter
 Kelly Hynes
 Lou Jahde
 Steven Jirsa
 Coleen Johnson
 Julie Johnson
 John Jozwick

Ron Keller
Mark Kelley
Julie Keppelmann
William Knapp
Teresa Kriebel
Marie Koecher
Narender Kumar
Velma Lane
Danial Larson
Rob Layton
Joanne Littman
John Long
Grant Lucas
Jim Lucas
Ron Lundquist
Bill Lunsford
Edmund Lynch
David Marsh
Gene Marsolek
Carol Mathers
Isabelle Matteson
Gerry McNally
Rosemary Menconi
Frank Micelli
Todd Miller
Sami Miro
Donald Monahan
Peter Monroe
Regina Morgan
Vic Moss
Wayne Muir
Charles Murphy
Judy Murray
Anne Myers
Edward Nagel
Jon Nelson
Stan Neujahr
Jeff Nielsen
Sandra Nienaber
Gary Orazio
Melora Palmer
Richard Pardys
John Park
Joel Parker
Daniel Paulien
Paul Pennock
Kent Peterson
James Pinkard
Tom Pirog
Beverly Poole
Andy Poremba
Thomas Ragonetti
Katherine Reed Maring
Greg Reizian

Edward Resavage
Carol Reynolds
Marty Richardson
Richard Riddell
Philip Riedesel
Joan Riggs
Don Rosier
Ray Roskopf
Fred Rotter
Joanne Salzman
Doug Sandridge
Bill Scherer
Brad Segal
Marilyn Shaw
Don Shepherd
Heather Shulman
Carla Sibia
Peggy Smith
Robert Smith
Tom Soell
Clair Steck
George Stimson
Larry Storms
James Stratis
Diane Strickler
Jeffrey Strom
Guy Tabor
Floyd Tanaka
Candice Taylor
Harold Tubbs
Marilee Utter
Kelly Vigil
Chuck Wadleigh
Ken Wallenta
Valerie Walsh
Elizabeth Watson
Keith Webb
Richard Weingardt
Wendy Weiskopf
James Whitfield
Willajeane Wilson
John Woodward III
Dena Wyatt
Rodger Young
Pam Zeldin

PROFESSIONAL AFFILIATES

Cori Brown
James Clemans
Alfred Feulner
Lisa Gallun
Frank Gandora
Thomas Haning

Ronald Hensen
Stephen Hess
Margie Hughes
Thomas Jump
Thomas Keeton
Richard Koblishcke
Earl Lee Jr.
Carl Limbach
Sean Masood
Roy Miller
Ted Nuncio
Eli Osatinski
Thomas Ricca
Kurt Smith
Amy Snow
Nanette Spence
David Wilkins
Wendall Williams

STUDENT AFFILIATES

Tareq Abu-Sukhelia
Kelle Ballard
Stephen Barsch
Patrick Berrend
Denver Borders
Michael Brohman
Hanh Bui
Lynda Denney
Eileen Derenowski
Suzanne Dupee
M. Prasetyo Effendi-Yasin
Kenneth Eime
Edwin Enck
John Fitzpatrick
Jeffrey Fleischer
J. Bradley Hajim
Sarah Hales
Amy Hause
Li Hsieh
Erick Irwin
Richard Jarecki
Kyong Kim
Chung Ching Lin
Matthew Lucero
John Montoya
Kimberly Myers
Sandy Nervig Machle
Guy Nichols
Peter Pfister Jr.
Peter Profant
Brent Restemayer
Eric Roy
Joan Riggs
Rene Victor Sabatini

Jean Ellen Stauss
Kevin Stockton
Sara Struckman
Christopher Stumm
Jennifer Toll
Kirk Watson
Amanda Woodward
Jody Yehle

**CORPORATE FRIENDS
OF ARCHITECTURE**

Accessible Design Associates

Acorn Hills

David L. Adams

Norm Almquist

B-Cad Inc.

Michael Benedict

Graydon Bevins

Tom Blackstone

John J. Blank

Roger Blank

J.J. Blank Engineering

Aaron Blutman

Maureen Blutman

Boa Construction

Janet Bocciarelli

Hazel Bolsover

Randall Brennan

Brick Inc.

Peter Brungardt

Edward Buteyn

Pete Campbell

Diane Carpenter

Darant Distributing Corp

Kirk Davis

Thomas Deniston

Melvin Donaldson

Neil Dunbar

Stuart Elliot

Doug Elward

Elward Construction Co.

Chris Ervin

W. Brent Ferren

Bill Field

Mike Fordyce

Ron Fossett

Kari Foster

Rodney Foster

Bud Gaines

G E Johnson

Norman Gebhart

Candace Gergen

Carl Gershenon

Ira Goldschmidt
Gordon, Gumeson & Assoc.

Charles Gumeson

N. Clayton Hart

Esther Hartman

Brian Healy

Ronald Hedrick

Kurt Helfter

J. Timothy Hickisch

Dana Houglund

Kent Jarnig

Steven Jirsa

Eric Johanson

Scott Jordan

Kahn and Company

Raymond Kassmeier

Les Kempers

Chuck Keyes

Bill Kimball

Kitchen Distributors

Larry Lafollette

Larsen Distributing Co

Jerry Lockamy

Edward Logsdon

Martin/Martin

McFall-Konkel & Kimball

John McGovern

Tammy McKnab

Pat Mershon

Michael Mitchell

Stuart Monical

Eric Mott

Roy Mucilli

Donna Neblett

Officescapes

Roger Olson

Don Palmer

Pella Products

James Perry

G.E. Phipps Company

Gerald Phipps

Piper Electric Company

Richard Polmear

Porter McLeod

Thomas Razo

Bill Richardson

Pete Sabeff

C. Nick Sauer

Saunders Construction

J.D. Shafer

Robert Sidwell

Brian Snow

Larry Snow

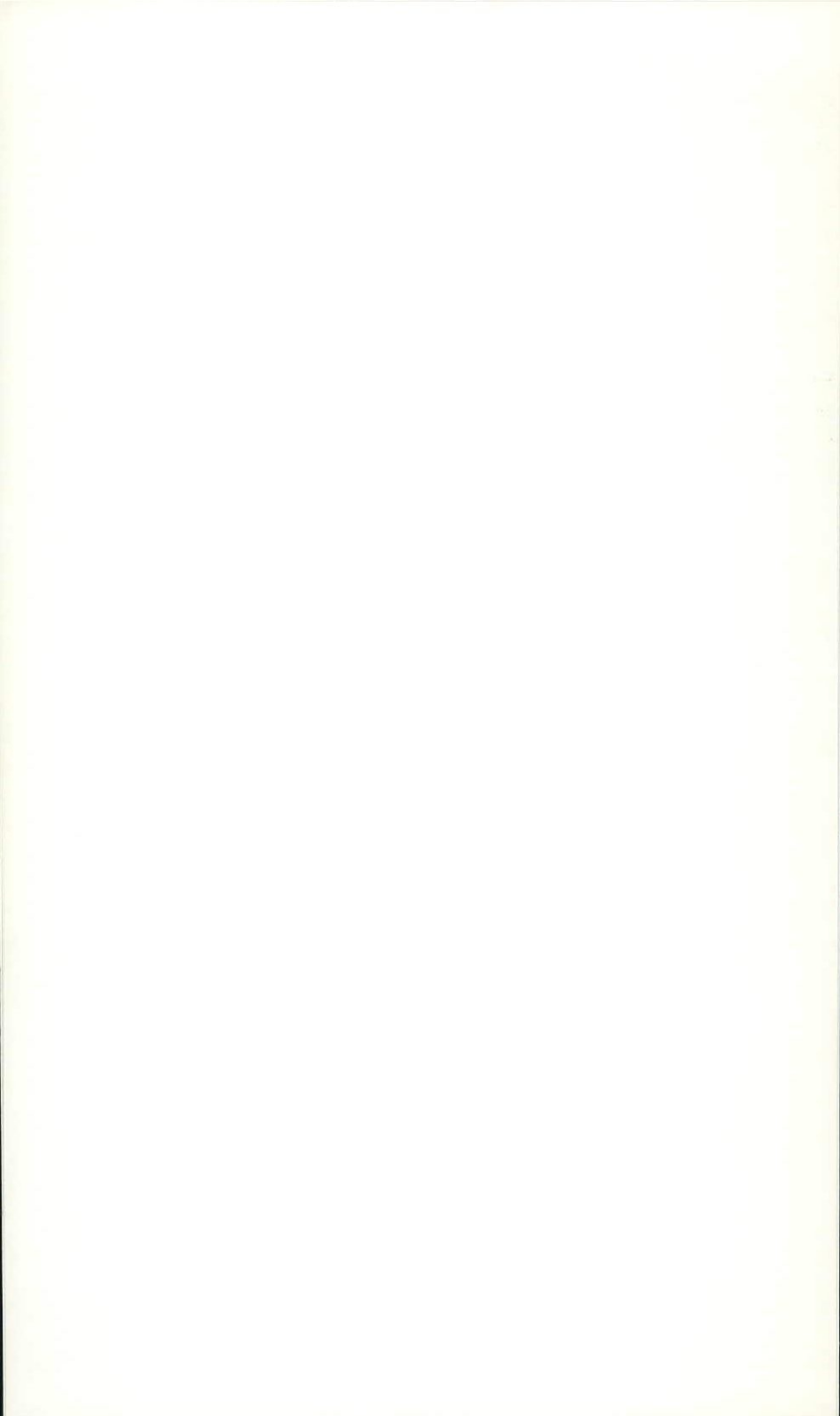
Snow Construction

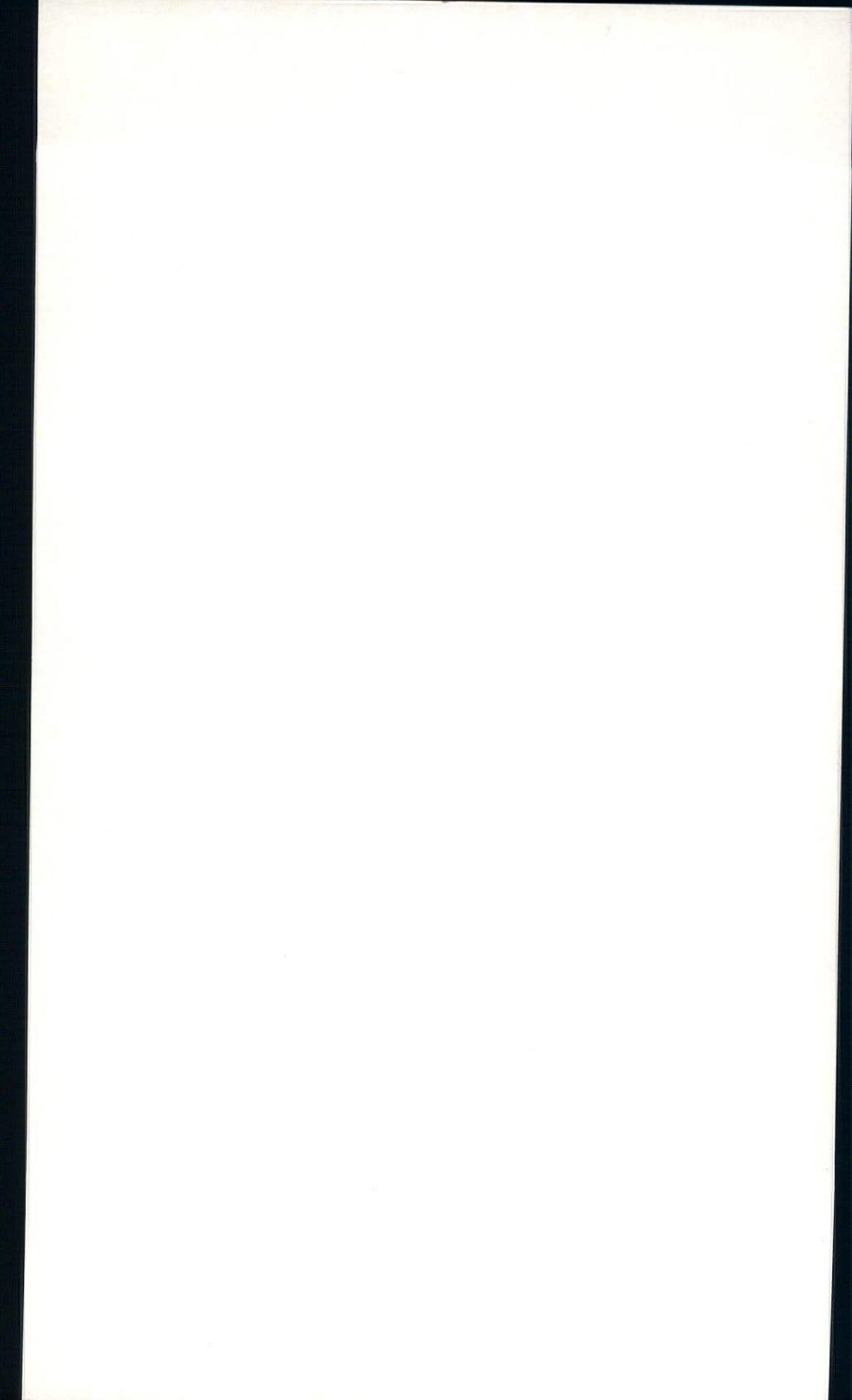
Anthony Solano
Annette Stelmack
Maggie Tandysh
Brandon Thompson
Roy Towns
Jane Trujillo
Umbrocio Trujillo
Trujillo Steel Erectors
Christine Urbanek
Deborah Welch

Acoustical Consulting	98
Robert F. Mahoney & Associates	98
Architectural Paving	98
Colorado Hardscapes by Van Heukelem Concrete, Inc.	98
Architectural Precast Concrete	98
Denver Architectural Precast, Inc.	98
Architectural Woodwork/Office Furniture	98
European Finish, Inc.	98
Asbestos Consulting	99
Spence-Geiger Associates, Inc.	99
Civil Engineering	99
Alpha Engineering Group, Inc.	99
Construction Management/General Contractor	99
Baldwin Construction, Inc.	99
Haselden Construction, Inc.	99
GE Johnson Construction Company	100
Gerald H. Phipps, Inc.	100
Consulting Engineers	100
Beaudin Ganze Consulting Engineers, Inc.	100
Moyer-Flax Engineering Inc.	100
Design-Build	101
Bryant Electric, Inc.	101
Dry Wall/Framing	101
Delta Dry Wall, Inc.	101
Economic/Market Anaylsis	101
Hammer, Siler, George, Associates	101
Environmental Engineers	101
RLH Engineering, Inc.	101
Environmental Remediation	102
Dominion Services, Inc.	102
General Contractor	102
Boa Construction, Inc.	102

Breiner Construction Co., Inc.	102
Brown-Schrepferman & Company	102
Calcon Constructors, Inc.	103
Hensel Phelps Construction Co.	103
James R. Howell & Co., Inc.	103
Palace Construction Company, Inc.	103
Gerald H. Phipps, Inc.	103
Taylor Ball	104
Tandem Enterprises, Inc.	104
Geotechnical Engineering	104
Geotechnical Services, Inc.	104
Geotechnical/Environmental Engineering	104
Kumar & Associates, Inc.	104
CTL/Thompson, Inc.	105
Hardware/Windows	105
Interstate Hardware Co.	105
Insurance	105
PUI Agency of Colorado, Inc.	105
Van Gilder Insurance Corporation	105
Interior Design	106
Runyan/Unter	106
Kitchen/Bath Design	106
Kitchens at the Denver	106
Land Planning	106
Plan West, Inc.	106
Landscape Architecture	106
Civitas, Inc.	106
EDAW HRV	107
Guman & Associates, Ltd.	107
Land Mark Design, Inc.	107
Legal Services	107
Creamer and Seaman P.C.	107
Mason Subcontractor	107
Dan Berich, Inc.	107
Mechanical/Electrical Engineering	107
Gordon, Gumeson and Associates, Inc.	107

HNTB Corporation	108
M*E Engineers, Inc.	108
The RMH Group, Inc.	108
Steel Erection	108
Trujillo Steel Erectors, Inc.	108
Structural/Civil Engineers	109
S.A. Miro, Inc.	109
Structural Engineers	109
Jirsa-Hedrick & Associates, Inc.	109
KRM Consultants, Inc.	109
Nicol + Hofland Associates, Inc.	109
Redwine-Reizian, Inc.	110
Wall Upholstery	110
Textile Techniques, Inc.	110
Wholesale Distribution	110
Larson Distributing Co., Inc.	110





FOR REFERENCE ONLY

Property of AIA Colorado

(PLEASE DO NOT REMOVE)