

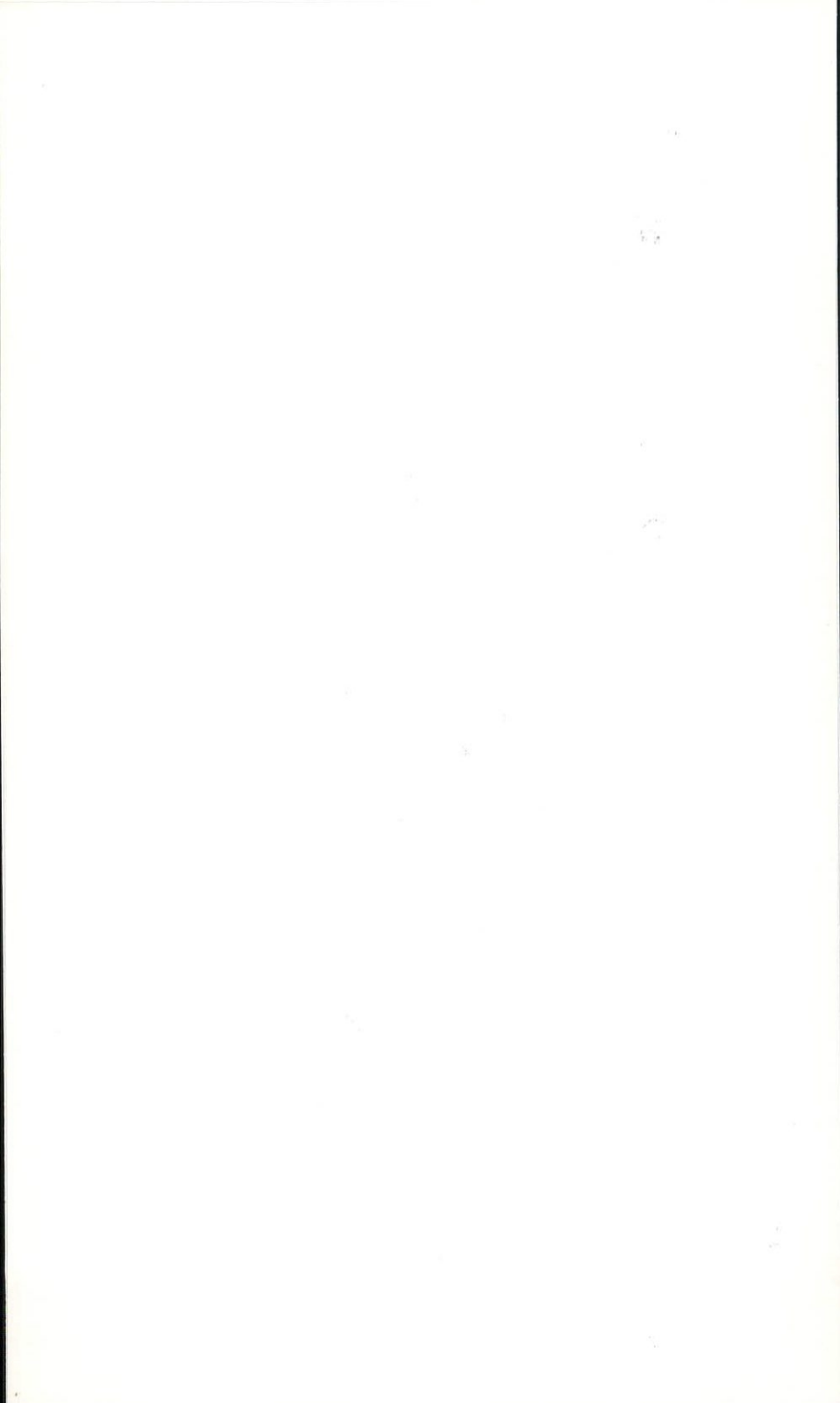
D E N V E R C H A P T E R
THE AMERICAN INSTITUTE OF ARCHITECTS



T h e 1 9 9 4

P R O F I L E

Of Denver Architects



T h e 1 9 9 4

PROFILE

Of Denver Architects

1994 BOARD OF DIRECTORS

William Tracy III, AIA, President
Richard von Lührte, FAIA, President-elect
Richard Farley, AIA, First Vice-President
Andrew Barnard, AIA, Second Vice-President
Ned White, AIA, Secretary
Peter Orleans, AIA, Treasurer
Stephen Newman, AIA, Treasurer-elect
Brian Klipp, AIA, Past President/Director
Steve Chucovich, AIA, Director
Charles Cordina, AIA, Director
James Hartman, AIA, Director
Robert Hill, AIA, Director
Robert Kronewitter, FAIA, Director
Steve Schonberger, AIA, Director
Michael DeMichele, Associate AIA, Director
Elizabeth M. Boudreau, Executive Director

WHAT IS THE DENVER CHAPTER AIA FIRM PROFILE?

The Profile is a roster of AIA member architectural firms. All firms listed employ professional architects, registered and licensed to practice after meeting stringent educational and practical requirements, who subscribe to professional standards advanced by the American Institute of Architects.

Additional professional listings describe services available from a variety of individuals and firms in disciplines related to architecture.

Profile data regarding architectural firms was provided by the firms via a survey soliciting information most frequently requested by these users:

- * Potential clients seeking information about area firms
- * Architectural, contracting, engineering, and other firms in the building industry pursuing consultant services
- * Manufacturers and suppliers to the building industry assessing prospects for marketing and service
- * Newcomers to the area, and others with local employment goals

Profile users are invited to contact architects and other professionals listed in the Profile for clarification or additional information. Responsibility for the contents of the listing rests solely with the listed firm.

HOW TO USE THE PROFILE

Basic information about the firm, types of work offered, and personnel by number and type is listed in the Profile. Firms are also asked to provide examples of their work.

SELECTING AN ARCHITECT

The preparers of the Profile urge those contemplating a project which may involve hiring an architect to seek architectural consultation early in the process. A simple, brief phone call to an architect will tell you whether you can take advantage of complimentary consultation. Many architects are willing to meet with you initially without obligation.

Selecting an architect is a personal decision requiring the client's thoughtfulness and care. The preparers of the Profile believe that the information provided here can be of assistance in that decision by providing a perspective on the variety of architectural services available.

Perhaps most useful for your choice is consultation with a professional architect, or with two or three architects, to give you a sample of what you might expect from working with one of them, and to find a satisfactory match of your needs with what the architect can supply. You and your architect, working together, can turn your ideas and requirements into a built reality.

Credits

Cover: Ed LaCasse Photography

Editor: Elizabeth Boudreau

Printing: Ken's Reproductions, Inc.

We thank advertisers and professional listings whose participation in the Profile make possible this publication. Although AIA Denver does not endorse any product or service, we urge consideration of those offered here.

AIA Denver welcomes questions and comments from Profile users. Your response assists in improving the effectiveness of this publication in meeting the needs of architects and the community. Thank you.



AIA Denver

1660 Wynkoop Street, Suite 120

Denver, Colorado 80202

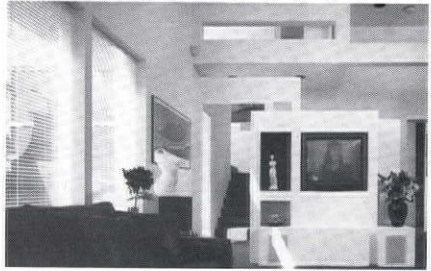
303-892-1188 FAX: 303-534-8503

1993 Design Award Winners

HONOR AWARDS

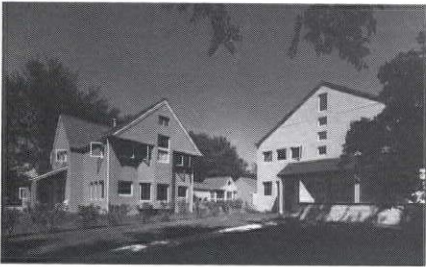


◀ Anderson Mason Dale, PC
Bristol Hall, Colorado Mountain College,
Alpine Campus,
Steamboat Springs, Colorado



Marvin Hatami ▶
Private Residence, Denver, Colorado

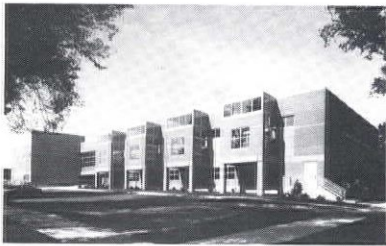
◀ Oz Architecture
Housing Project, 8th and Gilpin residences,
Denver, Colorado



MERIT AWARDS

Gensler & Associates Architects
Jefferson County Airport,
Jefferson County, Colorado ▼

RNL Design ▶
Longmont Municipal
Library,
Longmont,
Colorado



Davis Partnership
PC Architects
Amgen Inc. Biologi-
cal Research &
Development
Facility,
Boulder, Colorado ▼

PHOTO NOT AVAILABLE
Harry Teague Architects
Steuben Aspen Retail Interiors

1993 YOUNG ARCHITECT AWARD

◀ Frank
Raymond
Ooms
AIA

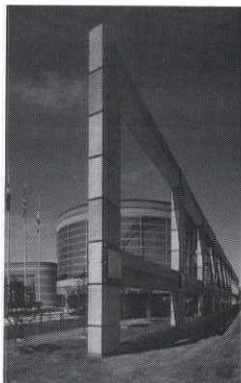


TABLE OF CONTENTS

ARCHITECTS/PROFESSIONALS

AE West, LTD	11
Abo Architects	11
Acquilano Leslie Incorporated	12
Allred Seracuse Lawler & Partners, P.C.	13
Anderson Mason Dale	13
Andreas Associates Architects & Planners	14
Andrews & Anderson, P.C.	14
Architectural Concepts	16
Architectural/Environmental Services, P.C.	16
Architecture 2000 P.C.	17
Architecture and Construction Resources, Ltd.	17
ArchitectureDenver	18
Michael Barber Architecture	18
Barker-Rinker-Seacat & Partners, Architects	19
Sears Barrett Architects, Inc.	19
Eric Bartzak Architects	20
Becker - Williams P.C.	20
Bennett Wagner & Grody Architects P.C.	21
Bertram & Associates	21
Boulder Associates, Architecture + Interior Design	22
Braun & Downing Architecture•Planning	22
Michael Brendle Architects, P.C.	23
Stanley E. Brown/Architect/AIA	23
Bertram A. Bruton and Associates	24
Buscaj Andrews Design	24
Richard Buss Design Partnership, P.C.	25
Lewis E. Bussey, Architect	25
CDFM Architectural	26
CRSS Constructors, Inc.	26
Cable Associates, Architects	27
Carr Daigle Architects PC	28
Patrick Cashen Architect	28
Cabell Childress Architects	29
Coover-Clark & Associates	30
Cowperthwaite Architecture	30
Cronenwett Architects	31
The Crosby Group, Inc.	31
D•A•F Architecture	32
DCB Construction Company, Inc.	32
DMC2 Architects	33
C. Clay Davis, Architect	33
Davis Partnership P.C. - Architects	35

Decker & Associates, Architects	35
The Design Collaborative	36
Design Partnership Incorporated, McPherson	36
Nora Dimitrov	37
Donelson Architecture	37
Virginia Dubrucq, AIA	38
Duff Associates Architecture	38
Dulaney Architecture	39
A.W. Dunn & Company	40
Durrant Flickinger Inc.	40
Energetic Enterprises, Inc.	41
Engelke Architects	41
C.W. Fentress J.H. Bradburn and Associates, P.C.	42
Fisher Associates, Architects And Engineers	42
Fisher, Reece & Johnson, Architects, P.C.	43
Form First Architecture	43
Fuller, Fuller & Associates	44
Gensler And Associates/Architects	45
Gerou & Associates LTD.	45
Ricardo Gonzales & Associates	46
Greiner, Incorporated	46
Haller & Larson Ltd., Architects	47
Hamilton Stephens Architects	47
Hansen Lind Meyer, Inc.	48
Hanson Enterprises Architects	49
Marvin Hatami Architect	49
Havekost + Lee Architects P.C.	50
Fred W. Hegel, AIA	50
Richard Henry Architect	51
Harvey M. Hine, Architects	51
Hoffman/Reed, Inc.	52
Hoover Berg Desmond	53
Hutton Architects P.C.	53
ntergroup, Inc.	54
EY Architects, P.C.	55
H•P Architecture	55
G Johnson Architects	56
Hans Kahn Associates, Inc., Architects	57
Kathka • Loptien, P.C.	57
Kenney Architects, P.C.	58
Kephart Architects	58
Klipp Colussy Jenks Dubois, Architects P.C.	59
Michael Knorr AIA & Associates, Inc.	60
Knudson Gloss Architects, P.C.	60
Andrew Kramer Photography	61
Keith Krebs Architect, AIA	61

Lanham Architecture	6
Lantz-Boggio Architects, P.C.	6
LaRock Associates, P.C.	6
Robert R. Larsen AIA	6
Roberta K. Law, AIA	6
Rick L. Lawrence Architectural Consultant	6
Lee Architects/Interior Designers	6
MCB Architects, P.C.	6
M.H. Architects & Planners	6
Harold Massop Associates Architects, P.C.	6
Thomas McKenzie Architect	6
Mellin & Associates Architects, P.C.	6
Merrick & Company	6
Elizabeth Metz Architect	7
Mitchell Plus Associates	7
Moyes Associates	7
Murata Outland Associates	7
Michael Murphy Architecture	7
Newmark Deircks Design Incorporated	7
Ohlson Lavoie Corporation	7
Oliver and Hellgren Architects P.C.	7
Ooms Design, Inc.	7
Peter Orleans, Architect	7
OZ Architecture	7
Pahl-Pahl-Pahl PC Architects/Planners	7
Pax-Tektōn	7
Pearson Design Group, Inc.	7
The Pellegren Corporation	7
Roy Perlmutter, Architect	7
Pouw & Associates, Inc.	7
RCS Design/Planning/Consulting	8
RNL Design	8
Reddy & Reddy, Architects P.C.	8
Reilly Johnson Architecture	8
Richfield Architecture & Design	8
Lila Rieth	8
Marcus Robertson & Associates	8
Robert Root & Associates Architects	8
Roth Sheppard Architects	8
The Roybal Corporation	8
SEM Architects Inc	8
Saiber Saiber	8
R. Paul Santangelo, AIA • Architect	8
Maxwell L. Saul & Associates	8
A. Riddick Semple, AIA	8
Sholar Buchanan Associates P.C.	8

Sink Combs Dethlefs, P.C.	88
Slater-Paull & Associates	89
Ray D. Stevens, Architect	89
Strange and Associates	90
Sunrise Designs	90
T.H.E. Architecture Studio	91
TRA, Ltd.	92
T*Rex Architex	92
TSP Five, Inc.	93
Tech-Sites Corporation	93
Tectonic Management Group, Inc.	94
David Owen Tryba Architects	94
Urban Design Group, Inc.	96
Brad Adams Walker Architecture, P.C.	96
Doug Walter Architects	97
Wetzsteon Design Associates	97
Merrill Ann Wilson, Architect	98
Arthur Wise Architects AIA, PC	99
David Lynn Wise AIA - Architect	99
Wong Strauch Architects, a P.C.	100
Z Plan	100
William Zmistowski Associates	101

ADVERTISERS

Seal Furniture & Systems, Inc.	12
Rocky Mountain Masonry Institute	15
Adolfson & Peterson, Inc.	17
Ken's Reproductions, Inc.	27
Tattered Cover	29
Sturgeon Electric	34
Pallas Photo Labs	39
Cain•T-Square	44
Van Gilder Insurance Corporation	48
Snow Construction Company	52
James R. Howell & Co.	54
S.A. Miro, Inc.	56
Monroe & Newell	59
A&D Draft-Aid, Inc.	64
LaCasse Photography	68
Professional Underwriters Incorporated	72
Pouw & Associates, Inc.	79
Saunders Construction, Inc.	87
Martin/Martin	91
AIA E.D.S.	95
The Knoll Group	101

PROFESSIONAL SERVICES

ASBESTOS ABATEMENT	103
American Abatement, Inc.	103
CEMENT/MORTAR PRODUCER	103
QUICKRETE- Colorado (Dri-Mix Concrete Co.)	103
CONSTRUCTION MANAGEMENT/GENERAL CONTRACTOR ...	103
Haselden Construction, Inc.	103
G E Johnson Construction Company	103
Gerald H. Phipps, Inc.	104
Saunders Construction Inc.	104
CONSULTING ENGINEERS	104
Beaudin Ganze Consulting Engineers, Inc.	104
McFall-Konkel & Kimball Consulting Engineers, Inc.	104
Riegel Associates, Inc.	105
DRY WALL/FRAMING	105
Delta Dry Wall Inc.	105
ELECTRICAL CONTRACTOR	105
Bryant Electric, Inc.	105
ECONOMIC/MARKET ANALYSIS	105
Hammer, Siler, George, Associates	105
FURNITURE MANUFACTURER	106
The Knoll Group	106
GENERAL CONTRACTOR	106
Adolfson & Peterson, Inc.	106
Brown-Schrepferman & Company	106
Calcon Constructors, Inc.	106
Gerald H. Phipps, Inc.	107
Saunders Construction Inc.	107
Tandem Enterprises, Inc.	107
Taylor Ball	107
GEOTECHNICAL ENGINEERING	108
CTL/Thompson, Inc.	108
GEOTECHNICAL/ENVIRONMENTAL	108
Huntingdon, Chen-Northern, Inc.	108
HARDWOOD FLOOR FINISHES	108
Bonakemi USA, Inc.	108

INSURANCE	108
PUI Agency of Colorado, Inc.	108
Van Gilder Insurance Corporation	109
INTERIOR DESIGN	109
Carol Mathers Interiors, Inc.	109
KITCHEN/BATH CABINETS	109
Wm. Ohs Showrooms, Inc.	109
LAND PLANNING	109
Plan West, Inc.	109
LANDSCAPE ARCHITECTURE	110
HNTB Corporation	110
LEGAL SERVICE	110
Grimshaw & Haring, P.C.	110
MASON CONTRACTOR	110
Conley-Built, Inc.	110
MASON SUBCONTRACTOR	110
Dan Berich Inc.	110
MECHANICAL/ELECTRICAL ENGINEERING	111
The RMH Group, Inc.	111
MECHANICAL ENGINEERING	111
The Ballard Group, Inc.	111
PARKING CONSULTANTS	111
Walker Parking Consultants/Engineers, Inc.	111
STRUCTURAL/CIVIL ENGINEERS	112
S.A. Miro, Inc.	112
STRUCTURAL CONSULTANTS	112
Bierbach Consulting Engineers	112
STRUCTURAL ENGINEERS	112
IVA, Incorporated	112
Nicol + Hofland Associates Inc.	112
WALL UPHOLSTERY	113
Textile Techniques, Inc.	113
WHOLESALE SHOWROOMS	113
Design Center at the Ice House	113

T h e 1 9 9 4

P R O F I L E

Of Denver Architects

**ARCHITECTURAL
FIRM PROFILE
LISTING**

D E N V E R C H A P T E R
THE AMERICAN INSTITUTE OF ARCHITECTS

AE WEST, LTD.

10800 East Bethany Drive, Suite 200
Aurora, CO 80014
(303) 750-8181
FAX: 368-1347

Year Established: 1962

Principals: Norman E. Hodge

Firm Personnel By Discipline:

Architectural 1

Types of Work:

Commercial 100%

Examples Of Projects: Prestige Imports, Lakewood, CO; Mile Hi Honda/Acura, Denver, CO; Wastewater Treatment Facility/Administration, Lafayette, CO; Jerry Roth Chevrolet, Lakewood, CO; Stapleton Clinic (remodel 3M Building), Denver, CO; North Fork Visitors' Center, Drake, CO; Westminster Fire Station #3, Westminster, CO; Castleberry Residence, Golden, CO; El Paso County Public Works Center, Colorado Springs, CO; Goodman Buick addition, Littleton, CO

Work Done In Colorado: 90%

Work Done Outside State: 10%

Clients Should Contact:

Norman E. Hodge

Manufacturers Should Contact:

Norman E. Hodge

ABO ARCHITECTS

1448 Pennsylvania
Denver, CO 80203
(303) 830-0575
FAX: 830-8930

Year Established: 1976

Principals: Ron Abo, AIA

Firm Personnel By Discipline:

Administrative 2

Architectural 4

Types of Work:

Commercial 20%

Retail 10%

Schools 25%

Other 45%

Examples of Projects: Denver International Airport airside concourses, Denver, CO; Roxborough Elementary School, Douglas County, CO; Wilcox Building, Castle Rock, CO; Grant Humphries Mansion interior restoration; Morrison Center - Denver Botanic Gardens, Denver, CO; Tropical Discovery, Denver Zoo, Denver, CO; Phoenix Center, Adams County, CO; Lamar Welcome Center, Lamar, CO; Brighton Senior Center, Brighton, CO; El Centro Su Teatro, Denver, CO

Work Done in Colorado: 100%

Clients Should Contact:

Ron Abo

Manufacturers Should Contact:

Lynn Coit

ACQUILANO LESLIE INCORPORATED

1600 Stout Street, Suite 300
Denver, CO 80202
(303) 893-5355

Year Established: 1990

Principals: Donna M. Aquilano

Owen C. Leslie, AIA

Firm Personnel By Discipline:

Administrative	1
Architectural	2
Interior Design	3

Types of Work:

Commercial	100%
------------	------

Examples Of Projects: University of Colorado renovation, Denver, CO; CIGNA (2 facilities) Denver, CO; Budget Rent-A-Car, Western Regional Offices, Denver, CO; Plus System Inc. Headquarters, Denver, CO; McKenna & Cuneo Law Firm, Denver, CO; Davis Graham & Stubbs Law Firm, Denver, CO; Ballard Spahr Andrews & Ingersoll Law Firm, Denver, CO; Public Service Company of Colorado.

Work Done In Colorado: 99%

Work Done Outside State: 1%

Clients Should Contact:

Donna Aquilano

Manufacturers Should Contact:

Kathryn Janak

context[™] by Steelcase[®] (M)



**Freestanding Office System for
Private Office and Open Plan,
a creative alternative to panel systems.**

 **OfficeScapes**
Business Furniture

since 1951
Formerly Seal Furniture & Systems, Inc.

1221 Auraria Parkway
Denver, CO 80204-1863
(303) 573-1221

105 East Vermijo Avenue
Suite 120
Colorado Springs, CO 80903
(719) 471-0199

ALLRED SERACUSE LAWLER & PARTNERS, P.C.

1875 Lawrence Street, Suite 300
Denver, CO 80202
(303) 292-1875
FAX: 293-8002

Year Established: 1974

Principals: James L. Allred John L. Lawler
 Karen Berkey

Firm Personnel By Discipline:		Types of Work:			
Administrative	4	Commercial	15%	Retail	10%
Architectural	9	Hospitals	50%	School	5%
Interior Design	2	Institutional	10%		
Other	4	Multiple Family Dwellings	10%		

Examples Of Projects: St. Anthony Hospital, Denver, CO; Provenant Senior Care Center, Denver, CO; Denver International Airport Retail Concessions, Denver, CO; Burlington Northern Railroad, Colorado, Wyoming, Nebraska; U.S. Postal Service, throughout Colorado; The Terrace at Denver Tech Center, Englewood, CO; Cherry North Townhomes, Denver, CO; Mercy Medical Center, Denver, CO; Children's Hospital, Denver, CO; Rose Medical Center, Denver, CO

Work Done In Colorado: 95%
Work Done Outside State: 5%

Clients Should Contact: Jim Allred
Manufacturers Should Contact: Keith Johnson, Vivian Sabel

ANDERSON MASON DALE

1615 Seventeenth Street
Denver, CO 80202
(303) 294-9448
FAX: 294-0762

Year Established: 1960

Principals: John D. Anderson, FAIA Curt F. Dale, AIA, CSI
 Ronald L. Mason, AIA

Firm Personnel By Discipline:		Types of Work:			
Administrative	4	Commercial	10%	Retail	5%
Architectural	15	Institutional	45%	Schools	35%
Interior Design	1	Multiple Family Dwellings	5%		

Examples Of Projects: Mt. Rushmore Visitor Facilities, Rapid City, SD; Tropical Discovery/ Denver Zoo, Denver, CO; Biomedical Research Center, University of Colorado, Denver, CO; Breckenridge Events Facility, Breckenridge, CO; Science Building, Salt Lake Community College, Salt Lake City, UT; Community College of Aurora, Aurora, CO; Colorado's Ocean Journey, Denver, CO; Dinosaur Discovery Center at Garden Park, Canon City, CO; Adams County Justice Center, Brighton, CO; Harrington Elementary School, Denver, CO

Work Done In Colorado: 70%
Work Done Outside State: 30%

Clients Should Contact: John Anderson, Ron Mason,
Curt Dale, Emily Haack
Manufacturers Should Contact: Peggy Kinsey

ANDREAS ASSOCIATES ARCHITECTS & PLANNERS

1553 Platte Street, Suite 206
Denver, CO 80202
(303) 433-0858
FAX: 433-6858

Year Established: 1990

Principals: Frederick Andreas, AIA

Firm Personnel By Discipline:		Types of Work:	
Administrative	1	Commercial	30%
Architectural	2	Residential	20%
Technical	1	Retail	25%
		Other	25%

Examples Of Projects: Western Avenue Baptist Church, Cambridge, MA; Millis Housing Development, Millis, MA; Underwater Phantaseas, Lakewood, CO; Jenks Residence, Boulder, CO; 20th Street Restaurant, Denver, CO; Octadome Temporary Housing, NEA Grant Washington, DC; commercial land planning, Union Street, Lakewood, CO; Colorado Aquarium Master Planning, Littleton, CO

Work Done In Colorado: 50%

Work Done Outside State: 50%

Clients Should Contact:

Frederick Andreas

ANDREWS & ANDERSON, P.C.

1120 Washington Avenue, Suite 200
Golden, CO 80401
(303) 278-4378
FAX: 278-0521

Year Established: 1990

Principals: Deborah Andrews, AIA David C. Anderson, AIA
Nanon Adair Anderson, AIA

Firm Personnel By Discipline:		Types of Work:	
Administrative	1	Commercial	15%
Architectural	3	Residential	15%
Technical	2	Retail	10%
		Schools	10%
		Other	50%

Examples Of Projects: Human Services Center Building Assessment/Recordation, Yankton, SD; Loveland, Coors Schultz Buildings renovation, Golden, CO; Town Hall - remodeling project, Union Bridge, MD; CSU remodeling project, Fort Collins, CO; Colorado School of Mines Master Planning Golden, CO; Denver International Airport, Stabilization/recordation of historic sites, Denver, CO; Facilities Construction Management Headquarters, Arvada, CO; Design Guidelines, Manitou Springs, CO

Work Done In Colorado: 75%

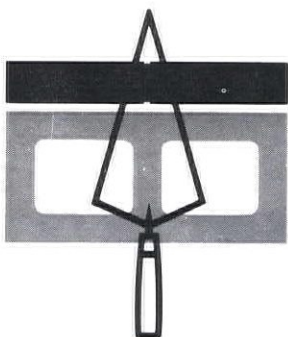
Work Done Outside State: 25%

Clients Should Contact:

Nanon Anderson

Manufacturers Should Contact:

David Anderson



ROCKY MOUNTAIN MASONRY INSTITUTE

**Your Source for Technical Assistance with
Masonry Products and Construction**

- BIA and NCMA TEK Notes
- Seminars
- Supplier and Contractor referrals
- Up-to-Date Code Information

Consider the Advantages of Masonry

- Maintenance Free
- Cost Competitive
- Design Flexibility
- Fire Safety

ROCKY MOUNTAIN MASONRY INSTITUTE

1780 South Bellaire, Suite 602 • Denver, Colorado 80222
(303) 691-2141 • FAX (303) 691-0121

ARCHITECTURAL CONCEPTS

1700 Broadway, Suite 410
Denver, CO 80290
(303) 830-8002
FAX: 861-1621

Year Established: 1980

Principals: Kevin P. Mills, AIA

Firm Personnel By Discipline:

Administrative	1
Architectural	3
Interior Design	1

Types of Work:

Other	100%
-------	------

Examples Of Projects: Arapahoe Bowling Center, Denver, CO; Glenfair Lanes, Phoenix, AZ; Cloverleaf Lanes, Fremot, CA; Lucky Lanes, San Pablo, CA; Sport Bowl, Indianapolis, IN; Cooper Sports Center, Anderson, IN; Taylor Lanes, Taylor, MI; Madison Bowl, Nashville, TN; Franklin Entertainment Complex, Franklin, NJ; Americana Lanes, Ozone Park, NY

Work Done In Colorado: 5%
Work Done Outside State: 95%

Clients Should Contact:
Kevin P. Mills

Manufacturers Should Contact:
Kevin P. Mills

ARCHITECTURAL/ENVIRONMENTAL SERVICES, P.C.

1580 Lincoln Street, Suite 1130
Denver, CO 80203
(303) 832-6576
FAX: 832-6079

Year Established: 1986

Principals: James M. Trombley, AIA

Firm Personnel By Discipline:

Administrative	1
Architectural	1
Other	1

Types of Work:

Commercial	30%
Institutional	30%
Retail	5%
Schools	30%
Other	5%

Examples Of Projects: State Capitol asbestos abatement consulting, Denver, CO; University of Southern Colorado asbestos investigation and abatement design, Pueblo, CO; University of Colorado Health Sciences Center environmental assessments, Denver, CO; Federal Reserve Bank building investigation and abatement design, Denver, CO; Federal Reserve Bank investigation and abatement design, Oklahoma City, OK; State Services building investigation and abatement design, Denver, CO; Commercial Building's building investigation and abatement design, Denver, CO; Dormitory renovation building investigation and abatement design, Denver, CO; Church AHERA investigation and management plan, Denver, CO

Work Done In Colorado: 80%
Work Done Outside State: 20%

Clients Should Contact:
James M. Trombley, AIA

Manufacturers Should Contact:
James M. Trombley, AIA

ARCHITECTURE 2000 P.C.

5031 South Ulster, Suite 325
Denver, CO 80237
(303) 298-1955
FAX: 298-1449

Year Established: 1987

Principals: Kathy C. Lingo, AIA Leonard Lingo
 Miles Moorehouse

Firm Personnel By Discipline: **Types of Work:**

Architectural	5%	Commercial	50%	Institutional	30%	Multiple Family Dwellings	20%
---------------	----	------------	-----	---------------	-----	---------------------------	-----

Examples Of Projects: Mesa Verde Library and Museum, Mesa Verde National Park, CO; Outdoor Performance Facility, Chamizal National Memorial, El Paso, TX; Transamerica administrative facility tenant finish, Englewood, CO; FDIC administrative facility tenant finish, Denver, CO; Denver Housing Authority dispersed family housing modernizations, Denver, CO; Chevron Real Estate tenant planning, Englewood, CO; Equitable Real Estate, tenant planning, Denver, CO; Aircraft fueling system facilities, Denver International Airport, Denver, CO; Aircraft de-icing system facilities, Denver International Airport, Denver, CO; VA Medical Center, research laboratories, Denver, CO;

Work Done In Colorado: 90% **Work Done Outside State:** 10%

Clients Should Contact:
Kathy Lingo

ARCHITECTURE AND CONSTRUCTION RESOURCES, LTD.

3570 East White Bay Drive
Highlands Ranch, CO 80126
(303) 791-4241
FAX: 791-7025

Year Established: 1984

Principals: Arthur C. Ranes, AIA

Firm Personnel By Discipline:

Administrative	1	Engineering	1	Types of Work:	
Architectural	2	Technical	2	Residential	100%

Examples Of Projects: Richard and Nancy Gooding, Englewood, CO; Brian Flynn, Franktown, CO

Work Done In Colorado: 100%



Adolfson & Peterson, Inc.

"Total Construction Services"

505 Nucla Way Unit D

Aurora, Colorado 80011

ARCHITECTURE DENVER

730 17th Street, Suite 420
Denver, CO 80202
(303) 893-1600
FAX: 893-5658

Year Established: 1986

Principals: Steven Chucovich, AIA Arpie C. Chucovich

Firm Personnel By Discipline:

Administrative	2
Architectural	8

Types of Work:

Commercial	40%
Residential	20%
Retail	10%
Schools	30%

Examples Of Projects: Mixed Use Building for Pearl Partnership, Boulder, CO; Brio - Equitable Building, Denver, CO; Howell Residence, Denver, CO; Park Hill Elementary School, Denver, CO; Knight Fundamental Academy, Denver, CO; Assumption Greek Orthodox Cathedral renovations/additions, Denver, CO; Mikes Camera, Boulder, CO; Crown Resources Corporate Headquarters, Denver, CO; Presidio Oil Corporate Headquarters, Denver, CO; Evergreen Residence, Evergreen, CO

Work Done In Colorado: 90%
Work Done Outside State: 10%

Clients Should Contact:
Steven Chucovich, AIA

Manufacturers Should Contact:
Chris Brown

MICHAEL BARBER ARCHITECTURE

1290 Broadway, Suite 600
Denver, CO 80203
(303) 837-0555
FAX: 837-0600

Year Established: 1979

Principals: Michael Barber, AIA

Firm Personnel By Discipline:

Administrative	4
Architectural	11
Interior Design	3
Other	4

Types of Work:

Commercial	25%
Institutional	25%
Residential	5%
Retail	10%
Schools	25%
Other	10%

Examples Of Projects: Ziff-Davis Publishing Co. Headquarters, Denver, CO; Western State College - Student Union, Gunnison, CO; Colorado State University College of Business, Fort Collins, CO; Hudson Foundation, Littleton, CO; Guaranty National Insurance Company Headquarters, Englewood, CO; Wastewater Management Headquarters, Denver, CO; United States Court of Appeals - Tenth District, Denver, CO; Horseshoe Casino, Black Hawk, CO; Scanticon Hotel improvements, Englewood, CO; Ziff Interiors, Los Angeles/La Jolla, CA

Work Done In Colorado: 95%
Work Done Outside State: 5%

Clients Should Contact:
Michael Barber

Manufacturers Should Contact:
Chip Melick

BARKER-RINKER-SEACAT & PARTNERS, ARCHITECTS

2546 Fifteenth Street
Denver, CO 80211
(303) 455-1366
FAX: 455-7457

Year Established: 1975

Principals: R. Russel Seacat
Ronald E. Rinker
Roz Schneider
Bruce Flynn

Firm Personnel By Discipline:

Administrative	4
Architectural	14
Engineering	1
Interior Design	1

Types of Work:

Institutional	50%
Multiple Family Dwellings	10%
Schools	15%
Other	25%

Examples Of Projects: Arvada Center for the Arts, Arvada, CO; Arvada City Hall, Arvada, CO; Easter Boulder Recreation Center, Boulder, CO; Breckenridge Recreation Center, Breckenridge, CO; Koelbel Public Library, Littleton, CO; Virginia Village Library, Denver, CO; Canton Recreation Center, Canton, MI; West High School addition, Denver, CO; Denver Visitors Center, Denver, CO; P.S.S. Housing, Boulder, Denver, CO

Work Done In Colorado: 90%

Work Done Outside State: 10%

Clients Should Contact:

Roz Schneider

Manufacturers Should Contact:

Joe Ward

SEARS BARRETT ARCHITECTS, INC.

1091 South Gaylord Street
Denver, CO 80209
(303) 871-9412
FAX: 871-9417

Year Established: 1982

Principals: Sears Barrett, AIA

Firm Personnel By Discipline:

Administrative	1
Architectural	5

Types of Work:

Residential	100%
-------------	------

Examples Of Projects: Rader Residence, Evergreen, CO; Cohen Residence, Keystone, CO; Drinkwine Residence, Castle Rock, CO; Galansky Residence, Denver, CO; Bryant Residence, Cherry Hills, CO; Soper Residence, Boulder, CO; Herman Residence, Ohai, CA

Work Done In Colorado: 95%

Work Done Outside State: 5%

Clients Should Contact:

Sears Barrett

Manufacturers Should Contact:

Greg Enger

ERIC BARTCZAK ARCHITECTS

1425 Market Street, Suite 200
Denver, CO 80202
(303) 623-2302
FAX: 623-2854

Year Established: 1990

Principals: Eric Bartczak

Firm Personnel By Discipline:

Architectural 3

Types of Work:

Institutional	10%
Residential	20%
Schools	70%

Examples Of Projects: Garson Park Public Facilities, Glendale, CO; Fort Garland Museum re-roofing/restoration, Fort Garland, CO; Dean Residence renovation/addition, Lakewood, CO; Barrett/Carson/Hallett/Park Hill Elementary renovations, Denver, CO; Cole Middle School renovation, Denver, CO; Knight Academy/McMeen Elementary renovations, Denver, CO; Twin Lakes Visitors Center, Twin Lakes, CO; Cook/Hacking Log Residence, Breckenridge, CO; Centennial Elementary School classroom connector/offices, Broomfield, CO; Warehouse facility modifications, Northglenn, CO

Work Done In Colorado: 100%

Clients Should Contact:

Eric Bartczak

Manufacturers Should Contact:

Eric Bartczak

BECKER - WILLIAMS P.C.

10290 South Progress Way, Suite 201
Parker, CO 80134
(303) 841-2521
FAX: 841-6410

Year Established: 1984

Principals: Christopher F. Williams, AIA
Thorndike Williams, Jr.

Tonie Becker, ASID

Firm Personnel By Discipline:

Administrative	2
Architectural	4
Interior Design	2

Types of Work:

Commercial	25%
Residential	60%
Retail	15%

Examples Of Projects: TCI, Corporate Offices, Denver, CO; Liberty Media Corporate Offices, Denver, CO; Streich, Lang Corporate Offices, Phoenix, AZ; Tanner Store, Castle Rock, CO; Malone Residence, Parker, CO; Sweitzer Residence, Parker, CO; Deming Residence, Oyster Bay, NY; Fisch Residence, NJ; Cottage Farm, Beaufort, SC; Malone Residence, Booth Bay, MA

Work Done In Colorado: 50%

Work Done Outside State: 50%

Clients Should Contact:

Chris Williams

Manufacturers Should Contact:

Chris Williams

BENNETT WAGNER & GRODY ARCHITECTS P.C.

1123 Auraria Parkway, Suite 123
Denver, CO 80204
(303) 623-7323
FAX: 623-2386

Year Established: 1989

Principals: Martha L. Bennett, AIA Linda Moore Wagner, AIA
Donald R. Grody, AIA

Firm Personnel By Discipline:

Administrative	1
Architectural	4
Technical	4

Types of Work:

Commercial	5%
Institutional	25%
Residential	15%
Schools	55%

Examples Of Projects: Kyffin Elementary School, Golden, CO; Weber Elementary School, Arvada, CO; University of Colorado - Ekeley Building, Boulder, CO; Auraria Higher Education Center, Child Care Center, Denver, CO; Denver Public Schools, Denver, CO; Sweetwater County Historical Museum, Green River, WY; Denver Zoological Foundation, Denver, CO; Burke Residence, Genesee, CO; Hayward Residence, Perry Park, CO; Sanbusco Market Center, Santa Fe, NM

Work Done In Colorado: 80%

Work Done Outside State: 20%

Clients Should Contact:

Martha L. Bennett

Manufacturers Should Contact:

Donald R. Grody

BERTRAM & ASSOCIATES

PO Box 6223
Denver, CO 80206
(303) 871-9300
FAX: 722-4664

Year Established: 1978

Principals: Donald A. Bertram Esq, AIA

Firm Personnel By Discipline:

Other	1
-------	---

Types of Work:

Other	100%
-------	------

Work Done In Colorado: 60%

Work Done Outside State: 40%

Clients Should Contact:

Donald A. Bertram Esq, AIA

BOULDER ASSOCIATES, ARCHITECTURE + INTERIOR DESIGN

4747 Table Mesa Drive, Suite 202
Boulder, CO 80303
(303) 499-7795
FAX: 499-7767

Year Established: 1983

Principals: Robert G. Owens, III, AIA Nicholas J. Rehnberg, AIA
Craig D. Mulford, AIA Timothy C. Boers, AIA

Firm Personnel By Discipline:

Administrative	3
Architectural	12
Interior Design	1

Types of Work:

Hospitals	25%
Other	75%

Examples Of Projects: Outpatient Services addition to Sierra Nevada Memorial Hospital, Grass Valley, CA; St. Christopher House at St. Joseph Hospital, Denver, CO; Lutheran Medical Office Building 4, Wheat Ridge, CO; Lutheran Medical Office Building 3, Arvada, CO; Scripps Ximed Ambulatory Surgery Center, La Jolla, CA; Hooverwood Nursing Home, Indianapolis, IN; Chanate Oaks Medical Plaza, Santa Rosa, CA; VA Medical Center Nursing Home, Cheyenne, WY; Recovery Inn of Menlo Park, Menlo Park, CA; Primary Care and Diagnostic Imaging Center at Torrance Memorial Hospital, Torrance, CA

Work Done In Colorado: 20%

Work Done Outside State: 80%

Clients Should Contact:

Robert G. Owens

Manufacturers Should Contact:

Brian Olesz

BRAUN & DOWNING ARCHITECTURE•PLANNING

825 East Speer Boulevard, Suite 310
Denver, CO 80218
(303) 733-0701
FAX: 733-0790

Year Established: 1989

Principals: Charles Downing, AIA Arlo Braun

Firm Personnel By Discipline:

Administrative	1
Architectural	5

Types of Work:

Multiple Family Dwellings	50%
Residential	50%

Examples Of Projects: Jesuit Residence, , Denver, CO; Vistas at Castle Rock, Castle Rock, CO; Monarch Ridge, Henderson, NV; Harbor Point at Desert Shores, Las Vegas, NV; Windsong at Hidden Canyon, North Las Vegas, NV; Tournament Drive at Castle Pines Village, Douglas County, CO; McCormick Residence, Denver, CO; Mesa Hills, Cedar City, UT; Country Club Village, Northville, MI; Desert Creek, Las Vegas, NV

Work Done In Colorado: 50%

Work Done Outside State: 50%

Clients Should Contact:

Arlo Braun or Charles Downing

Manufacturers Should Contact:

Charles Downing

MICHAEL BRENDLE ARCHITECTS, P.C.

1743 Wazee Street, Suite 400
Denver, CO 80202
(303) 292-6769
FAX: 292-6976

Year Established: 1982

Principals: J. Michael Brendle, AIA James L. Bazzanella, AIA

Firm Personnel By Discipline:		Types of Work:	
Administrative	1	Institutional	60%
Architectural	5	Schools	40%

Examples Of Projects: Ross University Hills Library, Denver, CO; Ross Cherry Creek Library, Denver, CO; Harvard Gulch Recreation Center, Denver, CO; Abraham Lincoln High School Athletic Facility, Denver, CO; Rockland Community Church addition, Golden, CO; Colorado Welcome Centers, Dinosaur/Burlington/Fruita, CO; Colorado High School Activities Association Headquarters, Aurora, CO; Aurora History Museum, Aurora, CO; Montclair Recreation Center, Denver, CO; Renovation of Arkansas/Vassar/Clyde Miller Elementary Schools, Aurora, CO

Work Done In Colorado: 100%

Clients Should Contact:
J. Michael Brendle, AIA

Manufacturers Should Contact:
Thomas Groves

STANLEY E. BROWN/ARCHITECT/AIA

2755 South Locust Street, Suite 103
Denver, CO 80222
(303) 757-7323
FAX: 691-9292

Year Established: 1967

Principals: Stanley E. Brown

Firm Personnel By Discipline:		Types of Work:	
Architectural	1	Residential	100%

Examples Of Projects: Residence, Cherry Hills Village, CO; Snyder Residence, Denver, CO; Salove Residence, Westminster, CO; Hellon Residence, Cherry Hills Village, CO;

Work Done In Colorado: 100%

Clients Should Contact:
Stanley E. Brown

Manufacturers Should Contact:
Stanley E. Brown

BERTRAM A. BRUTON AND ASSOCIATES

2001 York Street
Denver, CO 80205
(303) 388-4314
FAX: 388-8506

Year Established: 1961

Principals: Bertram A. Bruton, AIA

Firm Personnel By Discipline:

Administrative	3
Architectural	6
Technical	2

Types of Work:

Commercial	45%
Institutional	10%
Multiple Family Dwellings	10%
Retail	5%
Schools	30%

Examples Of Projects: Manual High School, Denver, CO; Air Cargo Building, Denver International Airport, Denver, CO; Rossonian Hotel, Denver, CO; Bank One-NE, Denver, CO; Fire Station #10, Denver, CO; Sakura Square Apartments, Denver, CO; Kappa Tower, Denver, CO; Urban League of Denver, Denver, CO; Scott Methodist Church, Denver, CO; Sport Section - SIA, Denver, CO

Work Done In Colorado: 95%
Work Done Outside State: 5%

Clients Should Contact:

Bertram A. Bruton

Manufacturers Should Contact:

Jeffrey Keast

BUSCAJ ANDREWS DESIGN

1747 Clarkson
Denver, CO 80201
(303) 861-0672
FAX: 861-0672

Year Established: 1992

Principals: Stanley R. Andrews, AIA Christine R. Buscaj, ASID

Firm Personnel By Discipline:

Administrative	2
Architectural	1
Interior Design	1

Types of Work:

Commercial	15%
Hospitals	25%
Institutional	25%
Residential	10%
Other	25%

Examples Of Projects: Synergen Laboratories, Boulder, CO; Rose Medical Center interior renovations, Denver, CO; Downtown Denver Child Care Consortium, Denver, CO; Clayton College Adaptive Reuse of Historic Architecture, Denver, CO; Buscaj Andrews Design Adaptive Reuse of Historic Architecture, Denver, CO; Christ Church United Methodist, Denver, CO; medical office tenant finish, Denver, CO

Work Done In Colorado: 100%

Clients Should Contact:

Stan Andrews

Manufacturers Should Contact:

Stan Andrews

RICHARD BUSS DESIGN PARTNERSHIP, P.C.

650 South Cherry Street, Suite 620
Denver, CO 80222
(303) 321-7677
FAX: 321-8455

Year Established: 1991 (1975 as Mitchell Buss Assoc., Inc.)

Principals: Richard B. Buss

Firm Personnel By Discipline:		Types of Work:	
Administrative	2	Commercial	75%
Architectural	3	Hospitals	5%
Interior Design	2	Institutional	5%
		Retail	5%
		Schools	5%
		Other	5%

Examples Of Projects: Fitzsimons Federal Credit Union, Aurora, CO; Jeffco Schools Credit Union, Lakewood, CO; CoBank, Englewood, CO; Gamma Phi Beta International Headquarters, Englewood, CO; Coast To Coast Resorts, Englewood, CO; Country Club at Castle Pines, Castle Rock, CO; Plum Creek Golf and Country Club, Castle Rock, CO; Public Service Company of Colorado, Denver, CO; Regis University, Denver, CO; Good Shepherd Lutheran Church, Boulder, CO

Work Done In Colorado: 100%

Clients Should Contact:
Richard Buss

Manufacturers Should Contact:
Marv Clausen

LEWIS E. BUSSEY, ARCHITECT

3400 East Bayaud, Suite 280
Denver, CO 80209
(303) 321-6036

Year Established: 1979

Types of Work:	
Commercial	10%
Multiple Family Dwelling	10%
Residential	70%
Retail	10%

Work Done In Colorado: 80%

Work Done Outside State: 20%

CDFM ARCHITECTURAL

3400 East Bayaud Avenue, Suite 280
Denver, CO 80209
(303) 355-2302
FAX: As Requested

Year Established: 1981

Principals: Richard R. Heinemeyer, AIA

Firm Personnel By Discipline:

Architectural 2

Types of Work:

Commercial	40%
Hospitals	10%
Residential	40%
Retail	10%

Examples Of Projects: Beth Israel Building remodel, Denver, CO; McCourt Residence Golden, CO; Price Residence and Greenhouse, Dove Creek, CO

Work Done In Colorado: 100%

Clients Should Contact:

Richard Heinemeyer

Manufacturers Should Contact:

Richard Heinemeyer

CRSS CONSTRUCTORS, INC.

216 Sixteenth Street, Suite 1700
Denver, CO 80202
(303) 820-5200
FAX: 820-4815

Year Established: 1971

Principals: Scott W. Cram, AIA
Jerry Cowan

Steve Hultgren, AIA
Pat Tarnow

Firm Personnel By Discipline:

Administrative 10
Other 30

Types of Work:

Institutional	50%
Schools	50%

Examples Of Projects: Denver Public Schools Bond Program, Denver, CO; Concourse "E" Stapleton International Airport, Denver, CO; U.S. Post Office/Federal Tax Court, Denver, CO; Cherry Creek High School, Denver, CO; National Institute of Standards and Technology Boulder, CO; Northwestern Memorial Hospital, Chicago, IL; Denver Reception and Diagnostic Center, Denver, CO; Arapahoe County Justice Center, Denver, CO; Merrill Lynch World Financial Center, New York, NY; U.S. Courthouse and Federal Building, Los Angeles, CA

Work Done In Colorado: 20%

Work Done Outside State: 80%

Work Done Internationally: 3%

Clients Should Contact:

Jerry Cowan

CABLE ASSOCIATES, ARCHITECTS

2077 Emerson Street
Denver, CO 80205
(303) 830-0530

Year Established: 1980

Principals: Norman V. Cable, AIA

Firm Personnel By Discipline:

Interior Design	2
Technical	1
Other	1

Types of Work:

Commercial	20%
Multiple Family Dwellings	10%
Residential	60%
Retail	10%

Examples Of Projects: St. Cajetan Center/Auraria, Denver, CO; Barbara and Company, Denver, CO; Kline Residence, Parker, CO; Golting Residence, Cherry Hills, CO; McHugh Residence, Evergreen, CO; Royal Bay Yacht Club, Pankor Laut, Malaysia; Hotel for Singapore Airlines, Singapore, Singapore; Woodlands Information Center, Woodlands, TX

Work Done In Colorado: 80%

Work Done Outside State: 10%

Work Done Internationally: 10%

Clients Should Contact:

Norman V. Cable

Manufacturers Should Contact:

Norman V. Cable

KEN'S REPRODUCTIONS LTD.

2220 CURTIS STREET • DENVER, COLORADO 80205

Bus: 303 - 297 - 9191

Fax: 303 - 297 - 8885

- Laser Plotting
- Canon Color Copies
- Blueprinting
- Spec Book Copying
- Offset Printing
- Computer Graphics
- Photographic
- Free pick up and delivery

Established in 1963

*The QUALITY you expect
...The SERVICE you need*

QUALITY

CARR DAIGLE ARCHITECTS PC

165 Madison Street
Denver, CO 80206
(303) 399-9898
FAX: 399-9837

Year Established: 1977

Principals: Thomas L. Carr, AIA Brian L. Daigle

Firm Personnel By Discipline:

Administrative 1
Architectural 4

Types of Work:

Commercial 15%
Multiple Family Dwellings 15%
Residential 40%
Retail 20%
Other 10%

Examples Of Projects: Custom residences, mountains, Metro Colorado; MAME Award Winning residences, Colorado; Medical/dental office and buildings; Residential additions and remodeling; Multi-family residential; Furniture stores, Western U.S.; Historic renovation

Work Done In Colorado: 90%

Work Done Outside State: 10%

Clients Should Contact:

Thomas L. Carr, AIA

Manufacturers Should Contact:

Thomas L. Carr, AIA

PATRICK CASHEN ARCHITECT

4155 East Jewell Avenue, Suite 1106
Denver, CO 80222
(303) 759-0650
FAX: 759-0852

Year Established: 1980

Principals: Patrick Cashen, AIA

Firm Personnel By Discipline:

Administrative 1/2
Architectural 1

Types of Work:

Residential 75%
Schools 25%

Work Done In Colorado: 100%

Clients Should Contact:

Patrick Cashen

Manufacturers Should Contact:

Patrick Cashen

CABELL CHILDRESS ARCHITECTS

1433 Market Street
Denver, CO 80202
(303) 629-1595
FAX: 629-1599

Principals: Cabell Childress, FAIA

Firm Personnel By Discipline:

Administrative	1
Architectural	4
Technical	1.5

Types of Work:

Institutional	90%
Other	10%

Examples Of Projects: Eagle County Building, Eagle, CO; CU Dance Building, Boulder, CO; CU Theater Building, Boulder, CO; Roxsbrough State Park Visitor Center, Douglas County, CO; Colorado School for Deaf and Blind, Colorado Springs, CO; Good Shepard Episcopal Church, Englewood, CO; Corporate Interiors, Denver, CO; Inverness Office Building, Englewood, CO; Evergreen Library, Evergreen, CO; Grand River Ranch, Kremmling, CO

Work Done In Colorado: 100%

Clients Should Contact:

Cab Childress



Sources Of Inspiration

Tattered Cover

2955 East First Avenue
Denver, Colorado 80206
322-7727 or 1-800-833-9327

COOVER-CLARK & ASSOCIATES, ARCHITECTS/PLANNERS/LANDSCAPE ARCHITECTS

2382 South Carr Court
Denver, CO 80227
(303) 969-8664
FAX: 969-8781

Year Established: 1987

Principals: Carol Coover-Clark, AIA

Firm Personnel By Discipline:

Administrative	1
Architectural	6
Landscape Architect	1
Other	1

Types of Work:

Commercial	30%
Hospitals	5%
Institutional	20%
Multiple Family Dwellings	5%
Retail	20%
Schools	20%

Examples Of Projects: Alamo Rent-a-Car, Denver, CO; Denver Housing Authority, ADA Compliance, Denver, CO; Auntie Anne's Pretzels, Colorado, Texas, Oklahoma; McDonald's Colorado, Utah; JC Penny's, Westminster, CO; Dollar Rent a Car, Denver, CO; Denver Central Library Landscape, Denver, CO; Public Schools, Denver, CO; Johnston County Courthouse Tishomingo, OK; Headstart Daycare, Denver, CO;

Work Done In Colorado:: 60%

Work Done Outside State: 40%

Clients Should Contact:

Carol Coover-Clark

Manufacturers Should Contact:

Kelly Bonner

COWPERTHWAITTE ARCHITECTURE

1628 Fourteenth Street, Suite 1A
Denver, CO 80202
(303) 778-7783
FAX: 778-7783

Year Established: 1992

Principals: Arthur T. Cowperthwaite, Jr., AIA

Firm Personnel By Discipline:

Administrative	1
Architectural	1
Interior Design	1
Technical	1

Types of Work:

Commercial	15%
Residential	60%
Retail	15%
Other	10%

Examples Of Projects: Kaesemeyer Residence, Silverthorne, CO; Bayless Cabin, Dolores, CO; Berger Residence, Denver, CO; Pascual Residence, Washington, D.C.; Volker Loft 1A, Denver, CO; Perallit Residence, Denver, CO; Kleiner Residence, Denver, CO; Greenview Arts Center, Chicago, IL

Work Done In Colorado: 90%

Work Done Outside State: 10%

Clients Should Contact:

Arthur Cowperthwaite

Manufacturers Should Contact:

Arthur Cowperthwaite

CRONENWETT ARCHITECTS

1888 Sherman Street, #210
Denver, CO 80203
(303) 860-8111
FAX: 860- 8118

Year Established: 1985

Principals: Joal Cronenwett Laura Cronenwett

Firm Personnel By Discipline:		Types of Work:	
Architectural	3	Commercial	35%
Interior Design	1	Institutional	5%
		Residential	40%
		Retail	20%

Examples Of Projects: Denver Art Museum, Denver, CO; Denver Athletic Club 1985 addition, Denver, CO; Pinehurst Country Club remodeling, Denver, CO; Madison Townhome Development, Cherry Creek, Denver, CO; Westminster Presbyterian Church addition, Westminster, CO; Auer's Retail Store, Denver, CO; Halverson Residence, Steamboat Springs, CO; Rogers Residence, Virgin Gorda, British Virgin Islands

Work Done In Colorado: 100%

Clients Should Contact: Laura or Joal Cronenwett
Manufacturers Should Contact: Laura or Joal Cronenwett

THE CROSBY GROUP, INC.

7400 East Orchard Road, Suite 170
Englewood, CO 80111
(303) 796-7477
FAX: 796-7916

Year Established: 1982

Principals: Roger K. Crosby, AIA

Firm Personnel By Discipline:		Types of Work:	
Administrative	3	Commercial	90%
Architectural	4	Schools	5%
Technical	2	Other	5%

Examples Of Projects: Hughes Communications DirecTv Broadcast Center, Douglas County, CO; Jones Intercable ME/U Uplink Facility, Douglas County, CO; All Souls Catholic Church, Denver, CO; Solarium Building tenant finish, Englewood, CO; Tri-County Federal Savings, Torrington, WY; Holiday Inns Worldwide Data Center, Atlanta, GA; Montgomery Ward Satellite Hub, Chicago, IL; UNOCAL Satellite Hub, Brea, CA; Pennsylvania Emergency Management Authority Satellite Hub, Harrisburg, PA; Colorado School of Mines, Golden, CO

Work Done In Colorado: 60%
Work Done Outside State: 40%

Clients Should Contact: Roger K. Crosby
Manufacturers Should Contact: Eric D. Highsmith

D•A•F ARCHITECTURE

5925 South Datura Court
Littleton, CO 80120
(303) 795-7042

Year Established: 1992

Principals: Dean A. Foreman, AIA

Firm Personnel By Discipline:

Administrative	1
Architectural	1
Interior Design	1
Landscape Architect	1
Technical	1

Types of Work:

Hospitals	75%
Multiple Family Dwellings	10%
Residential	5%

Examples Of Projects: Toxicology Lab - University Hospital, Denver, CO; Radiology Department - Rose Medical Center, Denver, CO; Swedish Hospital Medical Office Building, Englewood, CO; Duplex at 451 Fillmore, Denver, CO; Central Sterile Supply - University Hospital, Denver, CO; Porter Hospital Cancer Care Center, Denver, CO; Lake Residence, Denver, CO; Skiff Medical Center - hospital renovation, Newton, IA; Radiology Department remodel, Ochsner Hospital, New Orleans, LA

Work Done In Colorado: 90%

Work Done Outside State: 10%

Clients Should Contact:

Dean Foreman

Manufacturers Should Contact:

Dean Foreman

DCB CONSTRUCTION COMPANY, INC.

909 East 62nd Avenue
Denver, CO 80216
(303) 287-5525
FAX: 287-3697

Year Established: 1964

Principals: John R. Barna, Jr.
Earl Raymond

Chris K. Greenwald, AIA
Dennis Payne

Firm Personnel By Discipline:

Administrative	4
Architectural	3
Technical	3
Other	24

Types of Work:

Commercial	60%
Institutional	20%
Retail	20%

Examples Of Projects: Louisville Recreation Center, Louisville, CO; Mile Hi Cablevision, Denver, CO; Culligan Water Softner, Littleton, CO; Dreyer's Ice Cream distribution, Lakewood, CO; Kettelsen Campers of Colorado, Wheat Ridge, CO; Checker Auto Parts, Denver and various locations; Exabyte Manufacturing, Boulder, CO; BFI Hazardous Waste Facility, Last Chance, CO; Johnson Storage and Moving, Longmont, CO; Willamette Cardboard Manufacturing, Golden, CO

Work Done In Colorado: 95%

Work Done Outside State: 5%

Clients Should Contact:

Richard Bowler

Manufacturers Should Contact:

Tom Benson

DMC2 ARCHITECTS

7450 East Progress Place, Suite 3
Englewood, CO 80111
(303) 771-7800
FAX: 773-6843

Year Established: 1986

Principals: David M. Culberson, AIA Michael J. Cassutt, AIA

Firm Personnel By Discipline:

Administrative	1
Architectural	3
Interior Design	1

Types of Work:

Commercial	55%
Residential	5%
Other	40%

Examples Of Projects: Aurora Medical Center III, Aurora, CO; One Norwest Center tenant finish, Denver, CO; Prentice Point tenant finish, Denver, CO; Denver Corporate Center II tenant finish, Denver, CO; Continental Insurance Building tenant finish, Denver, CO; The Commons tenant finish, Englewood, CO; 84 Inverness Circle East tenant finish, Englewood, CO; Taco Bell's, Denver, Englewood, Littleton, Thornton, Brighton, Boulder, CO; Hot N' Now's, Denver, Englewood, Littleton, Thornton, Brighton, Boulder, CO; Various private residences, Greenwood Village, Littleton, Boulder, CO

Work Done In Colorado: 98%

Work Done Outside State: 2%

Clients Should Contact:

David Culberson, AIA

Manufacturers Should Contact:

Michael Cassutt, AIA

C. CLAY DAVIS, ARCHITECT

8775 East Orchard Road, #805
Englewood, CO 80111
(303) 770-6666
FAX: 773-9900

Year Established: 1954

Principals: C. Clay Davis

Firm Personnel By Discipline:

Architectural	1
Interior Design	1

Types of Work:

Commercial	50%
Multiple Family Dwellings	20%
Residential	10%
Retail	20%

Examples Of Projects: Grant and Kepner Middle Schools; Vail Racquet Club; Marquet Medical Products; Englewood Executive Center; apartments, condos, housing projects, churches, warehouses; 4500 custom residences

Work Done In Colorado: 95%

Work Done Outside State: 5%

Clients Should Contact:

C. Clay Davis

Manufacturers Should Contact:

C. Clay Davis



ESTABLISHED 1912

**SERVING METRO-DENVER
FOR OVER 76 YEARS**

**COLORADO'S FULL SERVICE
ELECTRICAL CONTRACTORS**

- **COMMERCIAL/INDUSTRIAL SERVICE**
- **ELECTRICAL CONSTRUCTION**
- **OVERHEAD & UNDERGROUND
DISTRIBUTION**
- **COMPLETE RESIDENTIAL
SERVICE**

**RADIO DISPATCHED
286-8000**

**COLORADO LIC
No. 3**

24 HOUR
EMERGENCY SERVICE

12150 E. 112 Ave
HENDERSON, CO 80640

DAVIS PARTNERSHIP P.C. - ARCHITECTS

1775 Sherman Street, Suite 3100
Denver, CO 80203
(303) 861-8555
FAX: 861-3027

Year Established: 1967

Principals: Gary M. Adams, AIA Hugh W. Brown, AIA
Rodney S. Davis, AIA David M. Rhyne, AIA

Firm Personnel By Discipline:		Types of Work:	
Administrative	12	Commercial	10%
Architectural	28	Hospitals	40%
Engineering	2	Institutional	20%
Interior Design	6	Schools	15%
Landscape Architect	3	Other	15%
Technical	32		

Examples Of Projects: Littleton Hospital/Porter, Littleton, CO; St. Anthony's Central Hospital, Denver, CO; Denver General Hospital, Denver, CO; P/SL Aurora Presbyterian, Aurora, CO; Synergen, Boulder, CO; Somatogen, Boulder, CO; Columbine Senior High School, Jefferson County, CO; CSM - Coolbaugh Hall, Golden, CO; Red Rocks Community College, Arvada, CO; New Elitch Gardens, Denver, CO

Work Done In Colorado: 90%
Work Done Outside State: 10%

Clients Should Contact: Gary Adams
Manufacturers Should Contact: Kevin Scott

DECKER & ASSOCIATES, ARCHITECTS

1600 Broadway, Suite 1950
Denver, CO 80202
(303) 894-8442
FAX: 837-0408

Year Established: 1974

Principals: David Decker, AIA

Firm Personnel By Discipline:		Types of Work:	
Administrative	2	Commercial	25%
Architectural	2	Institutional	50%
		Residential	25%

Examples Of Projects: Gillette -Campbell County Airport Terminal, Gillette, WY; Riverton Airport Terminal, Riverton, WY; Steamboat Springs Airport Business Center Master Plan, Steamboat Springs, CO; Brown Residence, Denver, CO; Ringsby Residence, Denver, CO; TCI of Colorado Corporate Headquarters, (United Cable of Colorado), Englewood CO; World Savings, Aurora, CO, (two branches); Office/warehouse ERED Buildings in Inverness (2) at Corporate Center in Golden, CO

Work Done In Colorado: 80%
Work Done Outside State: 20%

Clients Should Contact: David Decker, AIA
Manufacturers Should Contact: David Decker, AIA

THE DESIGN COLLABORATIVE

1424 P Larimer Street, Suite 200
Denver, CO 80202
(303) 825-6353
FAX: 825-3334

Year Established: 1991

Principals: B. Story Swett, AIA

Firm Personnel By Discipline:

Administrative	1
Architectural	3
Interior Design	1

Examples of Projects: CQG World Headquarters, Glenwood Springs, CO; Benton Loft Denver, CO; CQG Regional Marketing Office, New York, NY; CQG Regional Marketing Office London, England; CQG Regional Marketing Office, Chicago, IL; Concord Group World Headquarters, Denver, CO; Rattlesnake Club, Denver, CO

Work Done In Colorado: 70%

Work Done Outside State: 20%

Work Done Internationally: 10%

DESIGN PARTNERSHIP INCORPORATED, MCPHERSON

950 Logan Street
Denver, CO 80203
(303) 839-5969
FAX: 839-5758

Year Established: 1986

Principals: Mark McPherson, AIA

Firm Personnel By Discipline:

Administrative	2
Architectural	3
Interior Design	3
Other	2

Types of Work:

Commercial	55%
Hospitals	15%
Residential	20%
Retail	10%

Examples Of Projects: United Artists Theaters World Headquarters, Englewood, CO; Pipe Jaffray Financial Services, Tech Center Office, Englewood, CO; Porter Medical Center Plaza Denver, CO; Invesco Funds Group, Englewood, CO; Public Service of Colorado Gas Measurements and Control NRC Records Center; Brio Coffee House, Congress Park, CO; Woolley Residence, Congress Park, CO; Wilkins Residence, Congress Park, CO

Work Done In Colorado: 100%

NORA DIMITROV

50 South Steele Street, Suite 470
Denver, CO 80209
(303) 388-4129
FAX: 321-7089

Year Established: 1972

Principals: Nora Dimitrov, Associate, AIA

Firm Personnel By Discipline:

Administrative	1
Architectural	1
Interior Design	2

Types of Work:

Commercial	80%
Institutional	5%
Residential	5%
Retail	5%
Other	5%

Examples Of Projects: Douglas County Public Libraries, CO; AT&T Data Center; Cherry Creek Inn; Norwest Bank Building; Pueblo, CO

Work Done In Colorado: 98%

Work Done Outside State: 2%

Clients Should Contact:

Nora Dimitrov

Manufacturers Should Contact:

Nora Dimitrov

DONELSON ARCHITECTURE

807 14th Street
Golden, CO 80401
(303) 278-9540
FAX: 277-1515

Year Established: 1983

Principals: Mark Donelson, AIA

Firm Personnel By Discipline:

Administrative	1/2
Architectural	1
Technical	1/2

Types of Work:

Commercial	5%
Institutional	5%
Residential	90%

Examples Of Projects: Jeffco Library Service Center, Wheat Ridge, CO; Campus improvement projects - Colorado School of Mines, Golden, CO; Lab remodel - Colorado School of Mines, Golden, CO; S.F. Row Office Buildings, Golden, CO; Improvement projects - VAMC, Grand Junction, CO; Weigh Station, Monument, CO; Iams Pet Food Warehouse/Office, Golden, CO; Addition to Foss Drug, Golden, CO; Miscellaneous custom/spec houses, Golden/Evergreen, CO

Work Done In Colorado: 100%

Clients Should Contact:

Mark Donelson, AIA

Manufacturers Should Contact:

Mark Donelson, AIA

VIRGINIA DUBRUCQ, AIA

336 South Washington Street
Denver, CO 80209
(303) 698-2200

Year Established: 1969

Principals: Virginia DuBrucq, AIA

Firm Personnel By Discipline:

Architectural	1
Interior Design	1

Types of Work:

Commercial	50%
Institutional	20%
Residential	20%
Other	10%

Examples Of Projects: Colorado School of Mines Campus Color Palette, Golden, CO; D.C. Dudley and Associates office interiors, Denver, CO; Blue Mountain Bison Ranch Residence Lyons, CO; Anderman/Smith Operating Company Russian exploration offices, Denver, CO; Herman Miller, Inc. work station research, Zeeland MI

Work Done In Colorado: 80%

Work Done Outside State: 20%

Clients Should Contact:

Virginia DuBrucq, AIA

Manufacturers Should Contact:

Virginia DuBrucq, AIA

DUFF ASSOCIATES ARCHITECTURE

8000 Bradburn Boulevard
Westminster, CO 80030
(303) 429-6616
FAX: 429-6616

Year Established: 1986

Principals: Charles R. Duff, AIA

Firm Personnel By Discipline:

Administrative	1
Architectural	1

Types of Work:

Commercial	20%
Institutional	15%
Multiple Family Dwellings	15%
Residential	20%
Schools	15%
Other	15%

Examples Of Projects: Community Senior Center, Westminster, CO; ADA Audit District 50 Adams County, CO; Borg Residence remodel, Westminster, CO; ADCO renovations, Brighton CO; Hyland Hills Recreation Buildings, Federal Heights, CO; Wishbone Restaurant, Westminster, CO; US Home/Westcliff Land Planning; Printing Plant remodel; Zimmerman Residence Denver, CO; Miscellaneous government processing

Work Done In Colorado: 100%

Clients Should Contact:

Charles R. Duff

Manufacturers Should Contact:

Charles R. Duff

DULANEY ARCHITECTURE

5261 South Quebec Street, Suite 200
Englewood, CO 80111
(303) 770-0987
FAX: 770-0988

Year Established: 1963 as Bourn and Dulaney

Principals: W. Patrick Dulaney

Firm Personnel By Discipline:

Administrative	1
Architectural	2
Interior Design	1
Technical	1

Types of Work:

Commercial	20%
Institutional	10%
Residential	20%
Schools	50%

Examples Of Projects: Seven prototypical elementary schools for Poudre School District R-1, Fort Collins, CO; Cole Residence, Littleton, CO; Houlton Residence, Keystone, CO; Dulaney Residence, Greenwood Village, CO; Packaging Corporation of America entry addition, Denver, CO; Brendan Jewelers, Southglenn Mall, Denver, CO

Work Done In Colorado: 100%

Clients Should Contact:

W. Patrick Dulaney

Manufacturers Should Contact:

Daniel Dulaney

PallasPhotoLabs

Denver • Milwaukee

- A CUSTOM** *▪ Custom color/B&W prints*
- PHOTO LAB** *▪ Color/B&W murals*
- SPECIALIZING** *▪ Computer slides*
- IN THE** *▪ Mac & PC imaging*
- PHOTO** *▪ Canon 550 laser outputs*
- PRESENTATION** *from Mac & PC files*
- NEEDS OF**
- ARCHITECTS** *700 Kalamath*
- AND INTERIOR** *Denver, CO 80204*
- DESIGNERS** *893-0101*
- 1-800-875-7875*

A.W. DUNN & COMPANY

1780 South Bellaire Street, Suite 800
Denver, CO 80222
(303) 756-5259
FAX: 758-7984

Year Established: 1987

Principals: Ann W. Dunn, AIA

Firm Personnel By Discipline:

Administrative	1
Architectural	2
Technical	1

Types of Work:

Commercial	35%
Retail	15%
Schools	40%
Other	10%

Examples Of Projects: Emily Griffith Opportunity School, Denver, CO; Rockies Deli and Bakery, Denver, CO; Rockies Cafe, Denver, CO; Pace Membership Warehouse headquarters, Englewood, CO

Work Done In Colorado: 100%

Clients Should Contact:

Ann W. Dunn

Manufacturers Should Contact:

Ann W. Dunn

DURRANT FLICKINGER INC.

3773 Cherry Creek North Drive, Suite 240
Denver, CO 80209
(303) 377-2900
FAX: 377-0621

Year Established: 1959

Principals: Dennis L. Thompson
David J. Wheeler II

Hellmut Mueller
Dean M. Ibsen

Firm Personnel By Discipline:

Administrative	5
Architectural	20
Interior Design	1
Technical	1

Types of Work:

Commercial	10%
Hospitals	1%
Institutional	40%
Multiple Family Dwellings	2%
Residential	1%
Retail	40%
Schools	5%
Other	1%

Examples Of Projects: Bureau of Prisons/Immigration and Naturalization Facility, Elroy AZ
Poice Operations Center, Colorado Springs, CO; Robinson's May Arrowhead Mall Department Store, Glendale, AZ; Foley's Woodalnd Mall Department Store, Woodlands TX; US Marshalls I.S.F., Plymouth, MA; US Marshalls I.S.F., Central Falls, RI; Foleys Citad Department Store Expansion, Colorado Springs, CO; Foleys Cherry Creek Department Store, Denver, CO; Shepherd of the Springs Luthern Church Expansion, Colorado Springs, CO
Southwest Plaza, Littleton, CO

Work Done In Colorado: 30%

Work Done Outside State: 70%

Clients Should Contact:

Dennis L. Thompson, AIA

Manufacturers Should Contact:

K. Robert. Stegmuller

ENERGETIC ENTERPRISES, INC.

6470 South Quebec Street
Englewood, CO 80111-4628
(303) 740-8871
FAX: 740-8872

Year Established: 1982

Principals: Steven J. Sall, Owner Richard T. Sall, Associate, AIA, President-Design
Sharon M. Sall, Vice President

Firm Personnel By Discipline:		Types of Work:	
Administrative	1	Residential	100%
Architectural	4		

Examples Of Projects: Cline Residence, Castle Pines, CO; Custom Residence (private), Castle Pines Village, CO; Custom Residence (private), The Reserve - Cherry Hills, CO; Swim Residence, Cherry Hill Farms, CO; Possehl Residence, Cherry Hill Farms, CO; Brown Residence, The Ridge at Hiwan, Evergreen, CO; Gebhart Residence, Boulder, CO; Larson Residence, The Ranch Subdivision, Westminster, CO; Straehley Residence, Riva Chase, CO; Hull Residence, Somerset Estates, Niwot, CO

Work Done In Colorado: 98%

Work Done Outside State: 2%

Clients Should Contact:
Steve or Rick Sall

Manufacturers Should Contact:
Rick Sall

ENGELKE ARCHITECTS

6950 East Belleview, Suite 202
Englewood, CO 80111
(303) 741-5511
FAX: 290-9741

Year Established: 1970

Principals: Robert R. Engelke

Firm Personnel By Discipline:		Types of Work:	
Administrative	1	Commercial	40%
Architectural	2	Hospitals	20%
Interior Design	1	Multiple Family Dwellings	10%
Technical	1	Residential	20%
		Retail	10%

Examples Of Projects: Tamarac Square Shopping Center, Denver, CO; Loveland Commerce Center, Loveland, CO; La Mariposa Health Center, Denver, CO; Denver General Outpatient Facilities, Denver, CO; Beacon Hill Townhomes, Arapahoe County, CO; Bank of Denver, Denver, CO; Jicarilla Headquarters, Dulce, NM; Cottonwoods Townhomes, Denver, CO; Mercy Medical Center, CO; Westin Hotel remodel, Denver, CO

Work Done In Colorado: 90%

Work Done Outside State: 10%

Clients Should Contact:
Robert R. Engelke

Manufacturers Should Contact:
Robert R. Engelke

C.W. FENTRESS J.H. BRADBURN AND ASSOCIATES, P.C.

421 Broadway
Denver, CO 80203
(303) 722-5000
FAX: 722-5080

Year Established: 1980

Principals: Curtis Worth Fentress, AIA Chris Carvell, AIA
 James Henry Bradburn, AIA

Firm Personnel By Discipline:		Types of Work:	
Administrative	13	Commercial	10%
Architectural	25	Institutional	5%
Interior Design	9	Residential	5%
Technical	20	Other	85%

Examples Of Projects: Colorado Convention Center, Denver, CO; Clark County Government Center, Las Vegas, NV; Denver International Airport, Denver, CO; GSA Federal Building, Boulder, CO; Jefferson County Government Center, Jefferson County, CO; National Cowboy Hall of Fame Museum, Jackson, WY; New Seoul Metropolitan Airport, Seoul, Korea; Natural Resources Agency Building, Olympia, WA; National Wildlife and Art Museum, Oklahoma City, OK; University of Colorado Engineering Building, Boulder, CO

Work Done In Colorado: 50%
Work Done Outside State: 40%
Work Done Internationally: 10%

Clients Should Contact:
Curtis W. Fentress

FISHER ASSOCIATES, ARCHITECTS AND ENGINEERS

5655 South Delaware
Littleton, CO 80120
(303) 795-1643
FAX: 795-9342

Year Established: 1992

Principals: David B. Fisher, AIA

Firm Personnel By Discipline:		Types of Work:	
Administrative	1	Commercial	40%
Architectural	2	Institutional	30%
Engineering	1	Residential	10%
Technical	1	Other	20%

Examples Of Projects: Fire Station #16, Littleton, CO; LUMC Day Care remodel, Littleton, CO; USPS Havana Street Station, Aurora, CO; Arapahoe Community College Parking Lot Expansion and Campus Walkway, Littleton, CO; Santa Fe Driving Range Club House, Littleton, CO; Cellular One Cell Sites, various Colorado locations; Wullschlegler Residence, Douglas County CO; Scaaf/Holcomb Residence, Gilpin County, CO; Forensic Architecture and Expert Testimony, CO; Littleton Tenant Finishes, Littleton, CO

Work Done In Colorado: 100%

Clients Should Contact:
David B. Fisher

Manufacturers Should Contact:
Chris Fisher

FISHER, REECE & JOHNSON, ARCHITECTS, P.C.

1500 South Pearl Street
Denver, CO 80210
(303) 777-0407
FAX: 777-3826

Year Established: 1967

Principals: John D. Reece, AIA
A. Aubrey Spenst, AIA
G. Fred Peterson, AIA
Barbara N. Reese, AIA

Firm Personnel By Discipline:		Types of Work:	
Administrative	2	Commercial	20%
Architectural	7	Hospitals	80%
Interior Design	1		

Examples Of Projects: Aspen Valley Hospital, Aspen, CO; Copper Mountain Community Center, Copper Mountain, CO; Estes Park Medical Center, Estes Park, CO; Hewlett-Packard Company, Colorado Springs, CO; Kaiser Permanente, Denver, CO; Kaiser Permanente, Lakewood, CO; Kaiser Permanente, Westminster, CO; P/SL Centennial Healthcare, Englewood, CO; Vail Valley Medical Center, Vail, CO

Work Done In Colorado: 95%
Work Done Outside State: 5%

Clients Should Contact: John D. Reece, AIA
Manufacturers Should Contact: G. Fred Peterson, AIA

FORM FIRST ARCHITECTURE

225 Kimball Avenue
Golden, CO 80401
(303) 279-8053
FAX: 279-8042

Year Established: 1991

Principals: Daniel H. O'Brien AIA

Firm Personnel By Discipline:		Types of Work:	
Administrative	1	Commercial	30%
Architectural	1	Institutional	10%
		Residential	10%
		Retail	30%
		Schools	20%

Examples Of Projects: Edwardo's Restaurant, Westminster, CO; Red Rocks Community College - renovations to the main campus - conference facilities, theater, classrooms and faculty offices, Lakewood, CO; Quizno's - Cherry Creek, Denver, CO; AAA Office Building renovation, Littleton, CO; Malcomson-Broussard Residence, Park City, UT

Work Done In Colorado: 90%
Work Done Outside State: 10%

Clients Should Contact: Daniel O'Brien
Manufacturers Should Contact: Daniel O'Brien

FULLER, FULLER & ASSOCIATES

3320 East Second Avenue

Denver, CO 80206

(303) 333-3320

FAX: 399-5006

Year Established: 1917

Principals: Robert K. Fuller, AIA

Kenneth R. Fuller, FAIA

Firm Personnel By Discipline:

Administrative 1

Architectural 2

Technical 1

Types of Work:

Commercial 20%

Multiple Family Dwellings 20%

Residential 50%

Retail 10%

Examples Of Projects: Residence, #6 Cherry Hills Drive, Cherry Hills Village, CO; Residence 2320 South Monroe, Denver, CO; Townhouse, 412 Milwaukee, Denver, CO; Residence 758 Potatoe Patch Drive, Vail, CO; Log Lodge, Whitefish, MT; Water Bottling Facility, Denver, CO; Mixed use, 32nd and Lowell, Denver, CO; Mullen High School Fieldhouse, Denver, CO

Work Done In Colorado: 90%

Work Done Outside State: 10%

Clients Should Contact:

Robert K. Fuller

Manufacturers Should Contact:

W. Gene Houghton



Cain • T-Square

CTS *Repro/graphics*

*"Offering The Latest And Most Complete
Reprographic Services in Colorado"*

Downtown 832-2468 1824 Lincoln St.	Lower Downtown 572-7905 1625 Blake St.	South Office 771-1922 8775 E. Orchard	West Office 233-6141 12550 W. Colfax
Technical Services 572-7905			

GENSLER AND ASSOCIATES/ARCHITECTS

1616 Glenarm Place, Suite 200
Denver, CO 80202
(303) 595-8585
FAX: 825-6823

Year Established: Denver - 1973; Firm - 1965

Principals: Linda W. Nelson, Associate AIA, Vice President and Managing Principal
Christopher G. Nims, AIA, Vice President Phillip C. McCurdy, Vice President
Robert W. Cox, Jr., Vice President

Firm Personnel By Discipline:		Types of Work:	
Administrative	6	Commercial	80%
Architectural	15	Institutional	10%
Interior Design	14	Retail	5%
Other	1	Schools	5%

Examples Of Projects: MCI Telecommunications Corporation, Colorado Springs, CO; Jeppeson Sanderson, Englewood, CO; Lockheed Information Technology Company, Adams County, CO; Jefferson County Airport, Golden, CO; Amarillo International Airport, Amarillo, TX; McGraw Hill, Englewood, CO; University of Colorado, Boulder, CO; Tele-Communications, Inc., Denver, CO; National Demographics and Lifestyles, Denver, CO; Metropolitan Life Pension Association, Denver, CO

Work Done In Colorado: 60%
Work Done Outside State: 40%

Clients Should Contact:
Linda W. Nelson, Vice President & Managing Principal

Manufacturers Should Contact:
Jessica Roberts

GEROU & ASSOCIATES LTD.

2942 Evergreen Parkway, Suite 404
Evergreen, CO 80439
(303) 674-4177
FAX: 674-4177

Year Established: 1986

Principals: Phillip H. Gerou, FAIA Cheri R. Gerou, ASID

Firm Personnel By Discipline:		Types of Work:	
Architectural	2	Commercial	15%
Interior Design	1	Residential	75%
Technical	1	Other	15%

Examples Of Projects: Peterson Residence, Grand Lake, CO; Moore Residence, Steamboat Springs, CO; Carter Residence, Snowmass, CO; Wood Residence, Evergreen, CO; Alta Moda/Cara Mia, Denver, CO; Urban Retreat, Fraser, CO; Private Residence, Beaver Creek, CO; Cobb Residence, Evergreen, CO; Thompson Residence, Evergreen, CO; Charles Residence, Cherry Hills Village, CO

Work Done In Colorado: 100%

Clients Should Contact:
Phillip H. Gerou, FAIA

Manufacturers Should Contact:
Phillip H. Gerou, FAIA

RICARDO GONZALES & ASSOCIATES

10368 Crestone Mountain Road
Littleton, CO 80127
(303) 971-0753
FAX: 971-0753

Year Established: 1982

Principals: Ricardo Gonzales, Associate AIA

Firm Personnel By Discipline:

Administrative	1
Technical	1
Other	1

Types of Work:

Other	100%
-------	------

Work Done In Colorado: 80%

Work Done Outside State: 15%

Work Done Internationally: 5%

Clients Should Contact:

Rick Gonzales

Manufacturers Should Contact:

Rick Gonzales

GREINER, INCORPORATED

Stapleton International Airport, Main Terminal Building, 4th Floor
Denver, CO 80207
(303) 270-1900
FAX: 270-1960

Year Established: 1908

Principals: Mrs. Luci Woodard, AIA
Mr. Richard Havry, PE

Mr. Norm Wittveen, PE

Firm Personnel By Discipline:

Administrative	6
Architectural	8
Engineering	35
Technical	12

Types of Work:

Institutional	15%
Retail	5%
Other	80%

Examples Of Projects: Denver International Airport, Denver, CO; Chap Lap Kok Airport, Hong Kong, United Kingdom; Orlando International Airport, Orlando, FL; Tampa International Airport, Tampa FL; St. Thomas Airport, St. Thomas, Virgin Islands; Baltimore International Airport, Baltimore, MD

Work Done In Colorado: 15%

Work Done Outside State: 65%

Work Done Internationally: 20%

Clients Should Contact:

Mr. Norm Wittveen PE

Manufacturers Should Contact:

Mr. Norm Wittveen PE

HALLER & LARSON LTD., ARCHITECTS

1725 Blake Street
Denver, CO 80202
(303) 295-1792
FAX: 292-6437

Year Established: 1962

Principals: Dayl A. Larson, FAIA George J. Haller, AIA
 J. Michael Jacoby, AIA Richard E. Wolfe, AIA

Firm Personnel By Discipline:		Types of Work:	
Administrative	3	Commercial	10%
Architectural	28	Hospitals	70%
Interior Design	2	Schools	20%
Technical	2		

Examples Of Projects: Penrose Community Hospital Surgery Center, Colorado Springs, CO; Poudre Valley Hospital Support Services, Fort Collins, CO; St. Joseph Hospital Ambulatory Care, Denver, CO; ANR Combs Executive Terminal (DIA), Denver, CO; Boulder Community Hospital, Medical Office Building, Boulder, CO; Lutheran Medical Center, Emergency Addition, Wheat Ridge, CO; Prairie Middle School Media Center addition, Englewood, CO

Work Done In Colorado: 98%
Work Done Outside State: 2%

Clients Should Contact: any principal **Manufacturers Should Contact:** Chuck Ogden

HAMILTON STEPHENS ARCHITECTS

6874 South Prince Way
Littleton, CO 80120
(303) 798-6708
FAX: 347-1235

Year Established: 1988

Principals: Dale H. Stephens, AIA

Firm Personnel By Discipline:		Types of Work:	
Administrative	1	Commercial	50%
Architectural	1	Institutional	40%
		Residential	10%

Examples Of Projects: Bennetts Bar-B-Que, Denver, CO, Bennetts Bar-B-Que, Colorado Springs, CO; Sheridan Shopette, Sheridan, CO; Sterne Park Pavilions, Littleton, CO; South Suburban Park Facility, Englewood, CO; Rocky Mountain Nissan addition, Thornton, CO; Sheridan Ball Fields, Sheridan, CO; Residence, Westminster, CO; Residence, Denver, CO; Residence, Cherry Hills, CO

Work Done In Colorado: 100%

Clients Should Contact: Dale Stephens **Manufacturers Should Contact:** Dale Stephens

HANSEN LIND MEYER, INC.

400 South Colorado Boulevard Suite 870
Denver, CO 80222
(303) 322-1181
FAX: 322-7387

Year Established: 1985

Principals: Thomas S. Pearson, AIA

Firm Personnel By Discipline:

Administrative	2
Architectural	8
Engineering	1
Other	1

Types of Work:

Commercial	5%
Hospitals	60%
Institutional	30%
Other	5%

Examples Of Projects: University Hospital, Denver, CO; Rose Medical Center, Denver, CO; Mercy West Health Center, Clive, IA; Cassia Memorial Hospital, Burley, ID; Dixie Regional Medical Center, St. George, UT; Ochsner Medical Institute, New Orleans, LA; Skiff Medical Center, Newton, IA; Providence Memorial Hospital, El Paso, TX

Work Done In Colorado: 30%

Work Done Outside State: 70%

Clients Should Contact:

Thomas S. Pearson, AIA

Manufacturers Should Contact:

Marvin Falconburg

Design Your Future

Van Gilder Insurance Corporation
- experts in providing comprehensive liability and loss prevention programs for design professionals.

700 Broadway, Suite 1035



For competitive rates and quality service contact
Van Gilder Insurance Corporation

303/837-8500.

Denver, Colorado 80203

Van Gilder Insurance Corp.

HANSON ENTERPRISES ARCHITECTS

3755 Longwood Avenue
Boulder, CO 80303
(303) 494-8034
FAX: 494-2707

Year Established: 1991

Principals: L. Victor Hanson, AIA

Firm Personnel By Discipline:

Architectural 1

Types of Work:

Hospitals	50%
Schools	40%
Other	10%

Examples Of Projects: Kaiser Permanente, Denver, CO; Belle Bonfils Memorial Blood Center, Denver, CO; Boulder Valley School District, Boulder, CO; Regis University, Denver, CO

Work Done In Colorado: 100%

Clients Should Contact:

Victor Hanson

Manufacturers Should Contact:

Victor Hanson

MARVIN HATAMI ARCHITECT

142 Dexter Street
Denver, CO 80220
(303) 322-1555
FAX: 321-2557

Year Established: 1965

Principals: Marvin Hatami, FAIA

Firm Personnel By Discipline:

Architectural 1
Interior Design 1

Types of Work:

Commercial	10%
Multiple Family Dwellings	30%
Residential	40%
Retail	20%
Other	10%

Examples Of Projects: Glenarm Place multi-family housing, Denver, CO; Pacific Place Public Housing, Denver, CO; Franklin Court preservation and renovation residential project, Denver, CO; Baum Residence, Frisco, CO; Cormier Residence, Denver, CO; Fisk Planetarium, University of Colorado, Boulder, CO; St. Francis Center, AHEC, Denver, CO; Surplus Plumbing showroom and sale, Denver, CO; Law offices, Denver, CO; Skyline Urban Design and Development Study, Denver, CO

Work Done In Colorado: 100%

Clients Should Contact:

Marvin Hatami, FAIA

Manufacturers Should Contact:

Marvin Hatami, FAIA

HAVEKOST + LEE ARCHITECTS P.C.

1121 Grant Street
Denver, CO 80203
(303) 861-1121
FAX: 832-2840

Year Established: 1964

Principals: Daniel J. Havekost, FAIA Robert A. Lee, AIA

Firm Personnel By Discipline:

Administrative	1
Architectural	3
Technical	1

Types of Work:

Commercial	10%
Institutional	30%
Multiple Family Dwellings	30%
Residential	10%
Schools	20%

Examples Of Projects: Faith Community Church, Jefferson County, CO; Kennedy High School renovation, Denver, CO; Curtis School Arts and Humanities Center, Greenwood Village, CO; Smoky Hill United Methodist Church, Aurora, CO; Encore Condominium redevelopment, Denver, CO; Fellowship Community Church, Arapahoe County, CO; Hope United Methodist Church, Greenwood Village, CO; National Cattlemen's Association Headquarters, Greenwood Village, CO; Mission Hills Baptist Church, Greenwood Village, CO; Historic Paramount Theatre Office Building, Denver, CO;

Work Done In Colorado: 100%

Clients Should Contact:
Daniel Havekost

Manufacturers Should Contact:
Robert Lee

FRED W. HEGEL, AIA

2020 South Oneida Street, Suite 212
Denver, CO 80224
(303) 753-9251

Year Established: 1982

Principals: Fred W. Hegel

Types of Work:

Commercial	40%
Residential	20%
Schools	25%
Other	15%

Work Done In Colorado: 100%

Clients Should Contact:
Fred Hegel

Manufacturers Should Contact:
Fred Hegel

RICHARD HENRY ARCHITECT

2345 Seventh Street
Denver, CO 80211
(303) 433-7566
FAX: upon request

Year Established: 1976

Principals: Richard E. Henry, AIA

Firm Personnel By Discipline:

Architectural 2

Types of Work:

Commercial	15%	Residential	65%
Institutional	5%	Retail	15%

Examples Of Projects: Wide variety of custom remodel and new construction projects throughout the state. Past projects include office interiors, tenant finish, retail and showroom design, multi-family residential, elderly housing, child-care facilities, condominium remodeling, ski lodge, mountain residences, and custom residential.

Work Done In Colorado: 100%

Clients Should Contact:

Richard E. Henry

Manufacturers Should Contact:

Richard E. Henry

HARVEY M. HINE, ARCHITECTS

2336 Pearl Street
Boulder, CO 80302
(303) 444-8488
FAX: 444-2403

Year Established: 1989

Principals: Harvey Hine, AIA

Types of Work:

Commercial	60%
Residential	40%

Examples Of Projects: Fifteenth and Walnut Professional Building, Boulder, CO; 36,000 square foot signature office building; Denver Sand Company; six 5,300 square foot restaurants; Curton Residence; Caldwell Residence remodel; Weber Residence remodel.

Work Done In Colorado: 100%

Clients Should Contact:

Harvey Hine

Manufacturers Should Contact:

Harvey Hine

HOFFMAN/REED, INC.

1900 Wazee Street, Suite 102
Denver, CO 80202
(303) 296-8806
FAX: 296-9005

Year Established: 1978

Principals: Timothy J. Reed, AIA

Firm Personnel By Discipline:

Administrative	1
Architectural	6

Types of Work:

Commercial	15%	Multiple Family Dwellings	15%
Hospitals	40%	Schools	10%
Institutional	20%		

Examples Of Projects: Valley View Hospital, Glenwood Springs, CO; Longmont United Hospital, Longmont, CO; Hover Village, Longmont, CO; Nederland Junior/Senior High School Nederland, CO; Mercy Medical Center, Denver, CO; The Arabian Horse Center, Denver, CO; Royal Oaks Manor, Los Angeles, CA; McAuley Place, Mobile, AL

Work Done In Colorado: 65%

Work Done Outside State: 35%

Clients Should Contact:

Timothy Reed

Manufacturers Should Contact:

Dennis Mateski

SNOW CONSTRUCTION CO.

A COLORADO TRADITION SINCE 1890

COMPUTER/COMMUNICATION FACILITIES
COMMERCIAL/INDUSTRIAL
HISTORIC RENOVATION
MEDICAL
CHURCHES
TENANT FINISH

CONTACT: Jack Mincher
(303) 572-3711 FAX 572-3934



HOOVER BERG DESMOND

1645 Grant Street
Denver, CO 80203
(303) 837-8811
FAX: 837-9007

Year Established: 1976

Principals: George Hoover, FAIA Karl Berg, FAIA
Gary Desmond, AIA

Firm Personnel By Discipline:		Types of Work:	
Administrative	3	Commercial	20%
Architectural	12	Institutional	25%
Interior Design	1	Schools	25%
		Other	30%

Examples Of Projects: Environmental and Natural Resources Building, University of Arizona, Tucson, AZ; Safeco Insurance Company Corporate Headquarters, Lakewood, CO; Parker United Methodist Church, Parker, CO; Storage Technology Corporation Executive Marketing and Demonstration Center, Louisville, CO; Colorado Bar Association Headquarters Building and Offices, Denver, CO; Denver Public Schools, Horace Mann and Morey Middle Schools addition and renovation, Denver, CO; U.S. Department of Agriculture National Wild Animal Research Center, Fort Collins, CO; National Western Stock Show Multi-Purpose/Equestrian Center Arena, Denver, CO; Space Technology Center, University of Colorado at Boulder Research Park, Boulder, CO; Aerospace and Mechanical Engineering Building, University of Arizona, Tucson, AZ

Work Done In Colorado: 75%
Work Done Outside State: 25%

Clients Should Contact: Gary Desmond, Ellen Johnson
Manufacturers Should Contact: Karl Berg

HUTTON ARCHITECTS P.C.

5500 Greenwood Plaza Boulevard, Suite 116
Englewood, CO 80111
(303) 773-2845

Year Established: 1990

Principals: Paul C. Hutton

Firm Personnel By Discipline:		Types of Work:	
Administrative	1	Commercial	15%
Architectural	4	Residential	10%
		Schools	75%

Examples Of Projects: Ricks Center for Gifted Children, Denver, CO; El Pomar Theater, Englewood, CO; Dawson Middle School, Lafayette, CO; Dawson School Library, Lafayette, CO; Lobben International Hair Studio, Vail, CO; Lyons Junior/Senior High School, Lyons, CO; Lyons Elementary School, Lyons, CO; Peterson Residence renovation, Greenwood Village, CO; City and County handicapped access, Denver, CO; Woodside Plaza Office Building, Englewood, CO

Work Done In Colorado: 100%

Clients Should Contact: Paul C. Hutton
Manufacturers Should Contact: Paul C. Hutton

INTERGROUP, INC.

2696 South Colorado Boulevard, Suite 304
Denver, CO 80222
(303) 758-8877
FAX: 758-8712

Year Established: 1974

Principals: Ned K. White, AIA
Mark S. Smyth

Ranson Leeds
Tom Whittenwyler

Firm Personnel By Discipline:

Administrative	2
Architectural	11

Types of Work:

Commercial	30%	Retail	25%
Residential	5%	Other	40%

Examples Of Projects: Gerry Baby Products, Thornton, CO; Miller Brands, Denver, CO; Denver Broncos Headquarters, Englewood, CO; 105 Fillmore/Office Building, Denver, CO; Children's World Learning Centers, Tulsa, OK; Denver Regional Council of Government Offices, Denver, CO; Community College of Denver, TEC West/Denver, CO; Orchards Shopping Center, Arapahoe County, CO; Viewpoint Office Building, Littleton, CO; New Life Church, Colorado Springs, CO;

Work Done In Colorado: 90%

Work Done Outside State: 10%

Clients Should Contact:
any principal

Manufacturers Should Contact:
Randy Leeds

For over 58 years James R. Howell & Company has been providing the construction community with total project and construction management from design through start-up and turnover. Howell is one of Denver's most experienced and professional general contractors providing a diverse client base with an



Howell

unparalleled ability to deal with the most complex projects and demanding specifications. New design or tenant finish Howell provides the highest standards of performance and craftsmanship. No other Denver general contractor has earned such a distinguished reputation for performance, service, quality.

JAMES R. HOWELL & CO., INC.
Construction Management Since 1935

550 Lipan Street, Denver, CO., 80204 (303) 825-6257

JEY ARCHITECTS, P.C.

1836 Blake Street, Suite 201
Denver, CO 80202
(303) 295-3361
FAX: 295-3361

Year Established: 1985

Principals: John Yonushewski, AIA

Firm Personnel By Discipline:

Administrative	1
Architectural	1

Types of Work:

Institutional	10%
Multiple Family Dwellings	20%
Residential	70%

Examples Of Projects: Trinity Lutheran Church, Monument, CO; Somerville Residence, Evergreen, CO; Bailey Residence, Evergreen, CO; Clark Residence, Genesee, CO; Sherlock Residence, Keystone, CO; Kelsall Residence, Keystone, CO; VanBenthynsen renovation, Denver, CO; Willardsen renovation, Denver, CO; Altman renovation, Breckenridge, CO; Waterford Planned Residential Development, Stafford TWP., NJ

Work Done In Colorado: 90%

Work Done Outside State: 10%

Clients Should Contact:

John Yonushewski

Manufacturers Should Contact:

John Yonushewski

JH•P ARCHITECTURE

1600 Stout Street, Suite 600
Denver, CO 80202
(303) 623-5858
FAX: 629-0559

Year Established: 1951

Principals: Noel Copeland, AIA
Dale R. Hopson, AIA

Gerald Cowley, AIA
Barton W. Smith, AIA

Firm Personnel By Discipline:

Administrative	2
Architectural	11

Types of Work:

Commercial	20%
Hospitals	5%
Institutional	30%
Residential	20%
Schools	30%

Examples Of Projects: Fillmore Place, Cherry Creek, CO; Applied Science and Engineering Building, Colorado Springs, CO; Medical Offices for Kaiser Permanente, Denver, CO; Market Street /Civic Center Stations, Denver, CO; Molecular and Radiological Biosciences Building, Fort Collins, CO; College of Pharmacy, UCHSC, Denver, CO; Standley Lake Library, Arvada, CO; Ryan/Van Arsdale Schools, Jefferson County, CO; Bryant Webster Elementary School, Denver, CO; Beach Court Elementary School, Denver, CO

Work Done In Colorado: 95%

Work Done Outside State: 5%

Clients Should Contact:

Noel Copeland, AIA

Manufacturers Should Contact:

Gerald D. Cowley, AIA

JG JOHNSON ARCHITECTS

5230 West Rowland Avenue
Littleton, CO 80123
(303) 973-6383
FAX: 978-0375

Year Established: 1981

Principals: James Gilbert Johnson, AIA

Firm Personnel By Discipline:

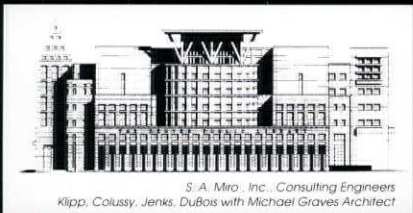
Administrative	1
Architectural	2

Types of Work:

Commercial	20%
Institutional	20%
Multiple Family Dwellings	20%
Residential	40%

Examples Of Projects: Boulder Reservoir Buildings, Boulder, CO; 453 Detroit Duplex, Denver, CO; National Audio Video Transcripts, Denver, CO; Breckenridge Sports Pavilion, Breckenridge, CO; Garfield Townhouses, Denver, CO; Koin Residence, Denver, CO; Fahlsing Residence, Denver, CO

MIRO



S. A. Miro, Inc.
Structural, Civil
Investigative, Transportation

4582 S. Ulster St. Pkwy. • Suite 1501
Denver, Co. 80237
(303) 741-3737 • FAX (303) 694-3134



HANS KAHN ASSOCIATES, INC., ARCHITECTS

2140 South Ivanhoe Street, Suite 206
Denver, CO 80222
(303) 759-9311
FAX: 759-9886

Year Established: 1975

Principals: Hans Kahn

Firm Personnel By Discipline:

Administrative	1
Architectural	4
Interior Design	1
Technical	1
Other	1

Types of Work:

Commercial	10%
Institutional	10%
Multi-Family Dwellings	5%
Residential	5%
Retail	10%
Schools	60%

Examples Of Projects: Haxtun High School, Haxtun, CO; Yuma Middle School, Yuma, CO; Fallis Elementary School, Denver, CO; East Bank Shopping Center, Aurora, CO; Riverview Elementary School, Thornton, CO; Rocky Mountain Elementary School, Federal Heights, CO; Belmar Shopping Center, Lakewood, CO; Spangler Elementary School, Longmont, CO; Sedalia Elementary School, Sedalia, CO; Coronado Hills Elementary School, Thornton, CO

Work Done In Colorado: 95%

Work Done Outside State: 5%

Clients Should Contact:

Hans Kahn

Manufacturers Should Contact:

Stephen Ward

KATHKA • LOPTIEN, P.C.

1580 Lincoln Street, Suite 1130
Denver, CO 80203
(303) 832-4467
FAX: 832-6079

Year Established: 1981

Principals: Tim Kathka, AIA

Gary Loptien, ASID

Firm Personnel By Discipline:

Administrative	.5
Architectural	2
Interior Design	1
Technical	1

Types of Work:

Commercial	5%
Residential	5%
Schools	20%
Other	70%

Examples Of Projects: Peace with Christ Lutheran Church, Aurora, CO; Shepherd of the Hills Lutheran Church masterplan, Littleton, CO; Bethlehem Lutheran Church and School masterplan, Lakewood, CO; Bethlehem Lutheran Church and School addition, Lakewood, CO; St. Paul's Lutheran Church remodel, Amherst, CO; Young Peoples Learning Center, Fort Collins, CO; Institute of Cognitive Science, University of Colorado, Boulder, CO; University Hills Animal Hospital and Grooming Center, Denver, CO; McCullough Residence, Denver, CO; Kalush Residence, Littleton, CO

Work Done In Colorado: 95%

Work Done Outside State: 5%

Clients Should Contact:

Tim Kathka, Gary Loptien

Manufacturers Should Contact:

Gary Loptien

KENNEY ARCHITECTS, P.C.

7950 East Prentice Avenue, Suite 202
Englewood, CO 80111
(303) 694-2445
FAX: 290-8115

Year Established: 1983

Principals: Andrew M. Kenney, AIA

Firm Personnel By Discipline:

Administrative	1.5
Architectural	4
Interior Design	2

Types of Work:

Commercial	65%
Institutional	5%
Multiple Family Dwellings	5%
Residential	20%
Retail	5%

Examples Of Projects: Corporate Headquarters Great-West Life, Denver, CO; U.S. Data Operations Facility, Great-West Life, Denver, CO; Westlake Village - 500 unit mixed-use residential development, Longmont, CO; Century Banks, multi-facility renovation and design throughout Colorado; Benefit Payment Offices, Great-West Life, United States and Europe; Dairy Queen Restaurants, multiple locations, Denver-metro area, CO; Custom Residences, Denver-metro Area, CO; North Jeffco Park and Recreation District Facilities, Arvada, CO; Central Presbyterian Church, Denver, CO

Work Done In Colorado: 95%

Work Done Outside State: 4%

Work Done Internationally: 1%

Clients Should Contact:

Andrew M. Kenney

Manufacturers Should Contact:

W. Vern Burke

KEPHART ARCHITECTS

758 Sherman Street
Denver, CO 80203
(303) 832-4474
FAX: 832-4476

Year Established: 1974

Principals: Mike Kephart, AIA

Firm Personnel By Discipline:

Administrative	2
Architectural	10

Types of Work:

Multiple Family Dwellings	30%
Residential	65%
Other	5%

Examples Of Projects: Viewpoint, North Olmstead, OK; Georgetown II, Batavia, IL; Villas at Homestead, Littleton, CO; Country Walk, Round Lake Beach, IL; Fox Acres, Fort Collins, CO; Firethorne, Charlotte, NC; Highland Hills, Littleton, CO; Spring Lake Farms, Lake-in-the-Hills, IL; Bansal Residence, Cincinnati, OH; Hyde Park Jewelers at Cherry Creek Mall, Denver, CO

Work Done In Colorado: 38%

Work Done Outside State: 62%

Clients Should Contact:

Mike Kephart or Paul Campbell

Manufacturers Should Contact:

Paul Campbell or Doug Van Lerberghe

KLIPP COLUSSY JENKS DUBOIS, ARCHITECTS P.C.

1200 Seventeenth Street, Suite 1100

Denver, CO 80202

(303) 893-1990

FAX: 893-2204

Year Established: 1979

Principals: Brian R. Klipp, AIA
Larry D. Jenks, AIA

Alan E. Colussy, AIA
Cornelius R. (Kin) DuBois, AIA

Firm Personnel By Discipline:

Administrative	9
Architectural	29
Interior Design	2

Types of Work:

Commercial	20%
Hospitals	30%
Institutional	15%
Multi-Family Dwellings	5%
Schools	20%
Other	15%

Examples Of Projects: Denver Central Library, Denver, CO; Thornton Middle School #7, Thornton, CO; Kaiser Permanente Franklin Medical Center, Denver, CO; Swedish Medical Center Patient Focused Care, Englewood, CO; Palmer Center mixed-use complex, Colorado Springs, CO; Buenaventura Mall, San Buenaventura, CA; Jefferson County High School, Littleton, CO;; University of Colorado Health Sciences Center masterplan, Denver, CO; American Red Cross Headquarters, Denver, CO; Penn Center Office Building, Denver, CO

Work Done In Colorado: 85%

Work Done Outside State: 15%

Clients Should Contact:

Brian Klipp, Alan Colussy

Manufacturers Should Contact:

Larry Jenks, Pegi Dougherty Culbreth



Monroe & Newell

Structural Engineers

Denver
(303) 623-4927

Avon
(303) 949-7768

MICHAEL KNORR AIA & ASSOCIATES, INC.

1590 South Acoma
Denver, CO
(303) 744-1887
FAX: 744-1892

Year Established: 1981

Principals: Michael Knorr, AIA

William. McDonough

Firm Personnel By Discipline:

Administrative 2
Architectural 3

Types of Work:

Commercial 3%
Multiple Family Dwellings 3%
Residential 85%
Other 7%

Examples Of Projects: Custom Home, 4th & St. Paul, Denver, CO; Goolesby-Ericson remodel, Cherry Creek, Denver, CO; Streal Residence, Hyde Park, Denver, CO; Arapakis Residence, 4th & St. Paul, Denver, CO; Bella Vista, Boulder City, NV; Fischbein Residence at Summerlin, Las Vegas, NV; Rolling Hills Estate Leherer's Property, Denver, CO; Northdale Walk, London, Ontario, Canada

Work Done In Colorado: 58%

Work Done Outside State: 40%

Work Done Internationally: 2%

Clients Should Contact:

Michael Knorr

KNUDSON GLOSS ARCHITECTS, P.C.

4820 Riverbond Road, Suite A
Boulder, CO 80301
(303) 442-5882
FAX: 442-5888

Year Established: 1977

Principals: D. John Knudson, AIA

Jerry R. Gloss, AIA

Firm Personnel By Discipline:

Architectural 14
Technical 2

Types of Work:

Commercial 5%
Multiple Family Dwellings 10%
Residential 80%
Other 5%

Examples Of Projects: Tangerine Bay Club (90 unit condo), Sarasota, FL; Westwood Ranch (nine model homes) Arvada, CO; The Glen (24 custom homes), Castle Pines, CO; Highgate on the Park (10 townhomes), Denver, CO; Lillis Residence, Castle Pines, CO; Orofino (10 homes), Castle Pines, CO

Work Done In Colorado: 75%

Work Done Outside State: 25%

Clients Should Contact:

D. John Knudson

Manufacturers Should Contact:

Graham Swett

ANDREW KRAMER PHOTOGRAPHY

3600 Buckeye Court
Boulder, CO 80304
(303) 449-2280
FAX: 449-7177

Year Established: 1978

Principals: Andrew Kramer, AIA

Firm Personnel By Discipline:

Administrative 2

Examples Of Projects: Photography of architecture, interior design, architectural models and architectural materials.

Work Done In Colorado: 70%

Work Done Outside State: 30%

Clients Should Contact:

Andrew Kramer, AIA

KEITH KREBS ARCHITECT, AIA

1739 York Street
Denver, CO 80206
(303) 388-3336
FAX: 388-6869

Year Established: 1986

Principals: Keith Krebs, AIA

Firm Personnel By Discipline:

Architectural 1
Technical 1

Types of Work:

Commercial	15%
Multiple Family Dwellings	20%
Residential	55%
Other	10%

Examples Of Projects: South Lincoln Homes remodeling - Denver Housing Authority, Denver, CO; Crestmoor Vista Townhomes, Denver, CO; Green Mountain Recreation Center remodeling, Lakewood, CO; Brookshire House remodeling - Nursing Home, Denver, CO; Batenburg Residence addition, Denver, CO; Morrow Residence addition, Denver, CO;

Work Done In Colorado: 100%

Clients Should Contact:

Keith Krebs

Manufacturers Should Contact:

Keith Krebs

LANHAM ARCHITECTURE

10 Emerson Street, Suite 401
Denver, CO 80218
(303) 777-7470

Year Established: 1992

Principals: Robert Lanham

Firm Personnel By Discipline:

Architectural 1

Types of Work:

Residential 100%

Examples Of Projects: Griffiths Residence, Englewood, CO; Swanson remodel, Lakewood CO; Lot 14 Castle Pines, Douglas County, CO

Work Done In Colorado: 90%

Work Done Outside State: 10%

Clients Should Contact:

Bob Lanham

Manufacturers Should Contact:

Bob Lanham

LANTZ-BOGGIO ARCHITECTS, P.C.

5200 DTC Parkway, Suite 500
Englewood, CO 80111
(303) 773-0436
FAX: 773-8709

Year Established: 1981

Principals: Dennis Boggio, AIA

Firm Personnel By Discipline:

Administrative 4
Architectural 10
Technical 7
Other 2

Types of Work:

Commercial 20%
Hospitals 5%
Institutional 20%
Multiple Family Dwellings 20%
Schools 5%
Other 20%

Examples Of Projects: Denver International Airport - maintenance facility, Denver, CO; Colorado Lutheran Care Center, Brush, CO; Salvation Army Senior Housing, Colorado Springs, CO; Presbyterian Church, Stockton, CO; VOA-Maplewood Assisted Living Care Center, Maplewood, CO; Kaiser Medical Office Building, Longmont, CO; Arapahoe Park Race Track, Arapahoe County, CO; U.S. Air Force Academy military family housing, Colorado Springs, CO; AT&T TV Studio, Englewood, CO; Mediplex Office Building, Thornton, CO

Work Done In Colorado: 80%

Work Done Outside State: 20%

Clients Should Contact:

Dennis Boggio

Manufacturers Should Contact:

Gary Prager

LAROCK ASSOCIATES, P.C.

1415 Larimer Square, Suite 306
Denver, CO 80202
(303) 534-2200
FAX: 534--0342

Year Established: 1976

Principals: Gregory J. LaRock

Firm Personnel By Discipline:

Architectural	1
Technical	2

Types of Work:

Commercial	35%
Hospitals	10%
Multiple Family Dwellings	15%
Residential	25%
Retail	15%

Examples Of Projects: Cherry Creek Crossing Townhomes, Denver, CO; Garfield Luxury Duplex, Denver, CO; Miller Residence in Perry Park, Douglas County, CO; Emerson Court, Denver, CO; Arapahoe Estates Residence, Littleton, CO; The Greens at Copper Creek, Copper Mountain, CO; Pasko Residence, Jefferson County, CO; Swanger Residence, Jefferson County, CO; Ascot Centre Retail, Jefferson County, CO; Niagra Office Building, Denver, CO

Work Done In Colorado: 95%

Work Done Outside State: 5%

Clients Should Contact:

Gregory J. LaRock

Manufacturers Should Contact:

Gregory J. LaRock

ROBERT R. LARSEN AIA

1415 Larimer Square, Suite 206
Denver, CO 80202
(303) 620-9911
FAX: 534-0342

Year Established: 1987

Principals: Robert R. Larsen, AIA

Firm Personnel By Discipline:

Architectural	1
---------------	---

Types of Work:

Commercial	10%
Hospitals	30%
Residential	50%
Retail	10%

Examples Of Projects: Richard Gooding Residence, Cherry Hills, CO; McPherson Residence, Castle Pines, CO; Spalding M.S. Rehabilitation Center, Englewood, CO; C.N.I. Research Laboratory, Englewood, CO; Swedish Medical Center NTU Gym remodel, Englewood, CO; Dr. Sam Alexander Office remodel, Denver, CO; Lakewood Country Club remodel, Lakewood, CO; Roney Residence remodel, Denver, CO; Good Residence remodel, Columbine Valley, CO; Kepner Residence remodel, Bowmar, CO;

Work Done In Colorado: 97.5%

Work Done Outside State: 2.5%

Clients Should Contact:

Robert Larsen, AIA

Manufacturers Should Contact:

Robert Larsen, AIA

ROBERTA K. LAW, AIA

807 14th Street
Golden, CO 80401
(303) 277-0887
FAX: 277-1515

Year Established: 1989

Principals: Roberta K. Law, AIA

Firm Personnel By Discipline:

Architectural 1

Types of Work:

Commercial	33%
Multiple Family Dwellings	33%
Residential	34%

Examples Of Projects: Fire Station # 3, Lakewood, CO; Fire Station #2, Lakewood, CO

Work Done In Colorado: 100%

Clients Should Contact:

Roberta K. Law

Manufacturers Should Contact:

Roberta K. Law



A&D DRAFT-AID, INC.

THE REPROGRAPHICS PROFESSIONALS

QUALITY - SERVICE - PRICE

UNIQUE COMBINATION THAT MAKES US #1

- | | |
|-------------------|----------------------|
| • Copying | • Duplicating |
| • Camera Work | • Blueprinting |
| • Dry Mounting | • CADD Plotting |
| • Offset Printing | • Large Xerographics |

Lower Downtown - 1428 15th St. (at Blake)
Phone 573-5757 • Fax 573-8714

Main Office - 225 Mariposa St.
Phone 623-5757 • Fax 623-9004

- **NEW LOCATION - JANUARY 1994** -
SOUTHEAST/CHERRY CREEK AREA

• PICK UP AND DELIVERY •

RICK L. LAWRENCE ARCHITECTURAL CONSULTANT

7580 East Harvard Avenue, Suite 108

Denver, CO 80231

(303) 751-2630

Year Established: 1985

Principals: Rick L. Lawrence, AIA

Firm Personnel By Discipline:

Architectural 1

Types of Work:

Commercial 35%

Residential 50%

Retail 15%

Examples Of Projects: Rolling Hills Country Club vehicle maintenance facility renovation, Golden, CO; Cody Court Housing Development, Lakewood, CO; Loveland Bear Alinement (auto shop), Loveland, CO; Lyons Residence basement finish, Greenwood Village, CO; KG Men's Stores (tenant finish), various locations throughout U.S.; Krueger Showroom (tenant finish), Chicago, IL; Custom (spec) Residence, Quail Subdivision, Adams County, CO; Doster Residence, Douglas County, CO

Work Done In Colorado: 85%

Work Done Outside State: 15%

LEE ARCHITECTS/INTERIOR DESIGNERS

2525 South Wadsworth Boulevard, Suite 21

Denver, CO 80227

(303) 989-4500

FAX: 989-4511

Year Established: 1971

Principals: C.W. Lee, AIA, President James Morgan, Vice President

Firm Personnel By Discipline:

Administrative 2

Architectural 5

Interior Design 2

Technical 1

Other 2

Types of Work:

Commercial 17%

Institutional 10%

Residential 3%

Retail 10%

Other 60%

Examples Of Projects: Bear Valley Baptist Church, Lakewood, CO; Rocky Mountain Christian Church, Niwot, CO; Colorado Credit Union League, Denver, CO; Banc One - University Hills, Denver, CO; State Hospital Employees Credit Union, Pueblo, CO; Silver State Schools Credit Union, Las Vegas, NV; Denver Consistory, Denver, CO; Coors Employee Credit Union, Golden, CO

Work Done In Colorado: 90%

Work Done Outside State: 10%

Clients Should Contact:

C.W. Lee

MCB ARCHITECTS, P.C.

1780 South Bellaire Street, Suite 800
Denver, CO 80222
(303) 758-7858
FAX: 758-7984

Year Established: 1954 as sole proprietorship

Principals: Ronald E. Crutchfield, AIA William L. Leverington, AIA

Firm Personnel By Discipline:

Administrative	2
Architectural	14

Types of Work:

Commercial	5%
Hospitals	10%
Institutional	20%
Multiple Family Dwellings	5%
Retail	5%
Schools	40%
Other	15%

Examples Of Projects: Larimer County Detention Center, Fort. Collins, CO; Veterans Administration Medical Center, Denver, CO; College Center, Aims Community College, Greeley, CO; Field House addition, Denver Public Schools, Denver, CO; AT&T Regional Network Operations Center, Denver, CO; Glenwood Springs Middle School, Glenwood Springs, CO; Gymnasium and Performing Arts Center, Mancos Public Schools, CO; Northeast Elementary School remodeling, Douglas County, CO; Forensic Psychiatry, Maximum Security Unit, Colorado State Hospital, Pueblo, CO; Red Rocks Community College, Lakewood, CO

M.H. ARCHITECTS & PLANNERS

8480 East Orchard Road, Suite 2025
Englewood, CO 80111
(303) 770-6933
FAX: 770-1046

Year Established: 1985

Principals: Michelle M. Wilson

Firm Personnel By Discipline:

Administrative	1
Architectural	4
Engineering	1
Interior Design	1
Landscape Architect	1
Technical	1
Other	1

Types of Work:

Commercial	40%
Residential	5%
Retail	35%
Other	20%

Examples Of Projects: First Data Corporation, (formerly American Express) Millennium Building, Englewood, CO; RAC Transport, Commerce City, CO; Consolidated Freightway Aurora, CO; Aurora Wal-Mart City Center and south location, Aurora, CO; Park City Wal-Mart Park City, UT; Mountain River Plaza Retail Center, Rexburg, ID; Cherrelyn Horsecar addition City of Englewood, CO; 200 Fillmore Building remodel, Denver, CO; Palmetto Grille Restaurant, Denver, CO; Rathert International Golf Design, Denver, CO

Work Done In Colorado: 80%

Work Done Outside State: 20%

Clients Should Contact:

Kathleen McAllister, Michelle Wilson

Manufacturers Should Contact:

Joyce Donaldson, Michelle Wilson

HAROLD MASSOP ASSOCIATES ARCHITECTS, P.C.

3955 East Exposition Avenue, Suite 314
Denver, CO 80209
(303) 722-6611
FAX: 722-6643

Year Established: 1988

Principals: Harold V. Massop, AIA Robert L. Hill Jr., AIA

Firm Personnel By Discipline:

Administrative	2
Architectural	5
Technical	1

Types of Work:

Commercial	89%	Retail	2%
Institutional	5%	Schools	2%
Residential	2%		

Examples Of Projects: Denver International Airport - United Airlines Cargo Handling Facilities, Denver, CO; Denver International Airport - automated ground transportation system stations and maintenance facilities, Denver, CO; Denver International Airport - bus operations facilities, CO; Five Points Media Center, Denver, CO; RMES Communications, Inc., Denver, CO; Community College of Denver at Phillips Trust Center, Denver, CO; Colorado Black Chamber of Commerce Offices, Aurora, CO; BetaWest Office Building (JV), Inverness, CO; Trimble Tate Nulan Law Offices, Denver, CO; Nelson Residence, St. Andrews Jamaica, West Indies

Work Done In Colorado: 97%

Work Done Outside State: 2%

Work Done Internationally: 1%

Clients Should Contact:

Harold V. Massop, AIA

Manufacturers Should Contact:

Robert L. Hill Jr., AIA

THOMAS MCKENZIE ARCHITECT

1739 York Street
Denver, CO 80206
(303) 388-4601

Year Established: 1976

Principals: Thomas McKenzie

Firm Personnel By Discipline:

Administrative	1
Architectural	1
Technical	2

Types of Work:

Commercial	35%
Institutional	10%
Multiple Family Dwellings	10%
Residential	10%
Retail	25%
Other	10%

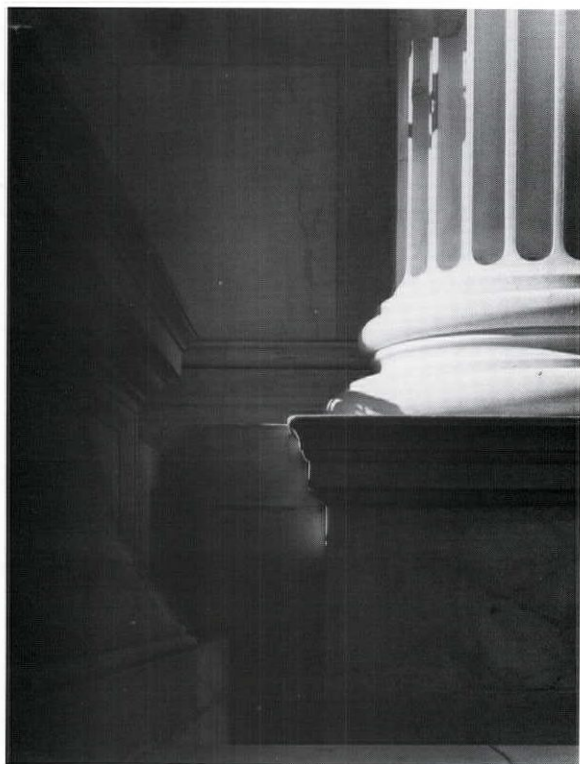
Examples Of Projects: Tara Woods Recreation Building, Denver, CO; Denver Zoo Maintenance Complex renovation, Denver, CO; Denver Zoo Primate Panorama, Denver, CO; Tandy Corporation, Denver, CO; Cherry Knolls Shopping Center, Littleton, CO; Colorel Corporation, Douglas County, CO; Bent Residence, Silverthorne, CO; NCR, Aurora, CO; Schroder Residence-, Denver, CO

Work Done In Colorado: 100%

Clients Should Contact:

Tom McKenzie

ATTENTION · TO · DETAIL



LACASSE

PHOTOGRAPHY

- Architectural
- Industrial

•(303) 571-4331

MELLIN & ASSOCIATES ARCHITECTS, P.C.

741 South Depew Street
Lakewood, CO 80226
(303) 937-9408

Year Established: 1982

Principals: James A. Mellin, AIA

Firm Personnel By Discipline:

Administrative	1
Architectural	2

Types of Work:

Commercial	35%	Residential	10%
Institutional	10%	Schools	35%
Multiple Family Dwellings	10%		

Examples Of Projects: Alternate Education Center at Thornton High School, Thornton, CO; Klub Kaos Night Club, Denver, CO; Central Bank of Belize, Belize, Central America; Mobile classroom improvements for Adams 12 Schools, CO; PSCO Payment Center, Denver, CO; Harvard Commons Townhomes, Thornton, CO; Metropolitan Dental Care remodel, Denver, CO; Orchard Road residence, Greenwood Village, CO; 1400 Glenarm Office Building remodel, Denver, CO

Work Done In Colorado: 75%

Work Done Internationally: 25%

Clients Should Contact:

James A. Mellin, AIA

Manufacturers Should Contact:

James A. Mellin, AIA

MERRICK & COMPANY

10855 East Bethany Drive
P.O. Box 22026
Denver, CO 80222
(303) 751-0741
FAX: 751-2581

Year Established: 1955

Principals: Bradley Dodds, AIA

David Sprenkle

Firm Personnel By Discipline:

Administrative	44
Architectural	18
Engineering	99
Interior Design	2
Landscape Architect	1
Technical	76
Other	23

Types of Work:

Commercial	20%
Institutional	15%
Retail	5%
Other	60%

Examples Of Projects: National Seed Storage Laboratory, Fort Collins, CO; National Wildlife Visitor Center, Laurel, MD; Stuttgart Fish Farming Experimental Lab, Stuttgart, AK; Northeast Anadromous Fish Research Lab, Turners Falls, MA; Airport Mail Facility, Denver International, Denver, CO; Highlands Ranch Postal Facility, Denver, CO; D.C. Booth Historic Fish Hatchery, Spearfish, SD; Adams Camp Lodge Snow, Mountain Ranch, Winter Park, CO; Commercial Testing and Engineering Laboratory, Denver, CO; Columbia National Fisheries Contaminant Lab, Columbia, MO

Work Done In Colorado: 50%

Work Done Outside State: 45%

Work Done Internationally: 5%

Clients Should Contact:

Steven Sweany, AIA

Manufacturers Should Contact:

Bradley Dodds, AIA

ELIZABETH METZ ARCHITECT

1221 South Odgen
Denver, CO 80210
(303) 777-1729
FAX: 733-8211

Year Established: 1993

Principals: Elizabeth Metz, AIA

Firm Personnel By Discipline:

Administrative	1
Architectural	2

Types of Work:

Multiple Family Dwellings	40%
Residential	50%
Schools	10%

Examples Of Projects: Cooper Building, Denver, CO; Tivoli Student Union, Denver, CO; Knox-Kelly Residence, , Denver, CO; Kortz Jewelers, Denver, CO

Work Done In Colorado: 100%

Clients Should Contact:

Elizabeth Metz

Manufacturers Should Contact:

Elizabeth Metz

MITCHELL PLUS ASSOCIATES

455 Sherman Street, Suite 150
Denver, CO 80203
(303) 722-9690
FAX: 722-0851

Year Established: 1991

Principals: M.J. Mitchell, AIA

Firm Personnel By Discipline:

Architectural	2
Interior Design	2

Types of Work:

Commercial	90%
Residential	2%
Other	8%

Examples Of Projects: FirstBank of Westland, Lakewood, CO; FirstBank of Breckenridge Breckenridge, CO; FirstBanks in King Soopers, Denver metro, CO; Petroleum Building tenan development, Denver, CO; FirstBank Republic Plaza, Denver, CO; Digital Equipment Corporation, Colorado Springs, CO; Gorsuch Kirgis et al (law firm), Denver, CO; Trinity Place (tenan development), Denver, CO; FirstBank South Boulder, Boulder, CO

Work Done In Colorado: 99%

Work Done Outside State: 1%

Clients Should Contact:

Mick Mitchell

Manufacturers Should Contact:

Bruce Bollenbach



***PUI IS ONE OF THE
LARGEST WRITERS
OF PROFESSIONAL
LIABILITY INSURANCE
IN THE COUNTRY***

***ALLOW US TO DELIVER THE RELIABLE
PROTECTION AND DEPENDABLE
SERVICE YOU REQUIRE***

**SPECIALIZED INSURANCE PLACEMENT
ARCHITECTS / ENGINEERS ERRORS AND OMISSIONS
CAROLYN S. KEIL, CIC**

PUI Agency of Colorado Inc.
90 Madison, Suite 300
Denver, CO 80206

Bus. (303) 388-1511

Offices also in Michigan, Ohio, Arizona, and Texas.

CNA **AE** Agent
For All the Commitments You Make® CHOICE

MICHAEL MURPHY ARCHITECTURE

500 East Eighth Avenue, Suite 202
Denver, CO 80203
(303) 830-8068

Year Established: 1986

Principals: Michael B. Murphy

Firm Personnel By Discipline:

Administrative	1
Architectural	1
Interior Design	1
Technical	1
Other	1

Types of Work:

Commercial	10%
Multiple Family Dwellings	10%
Residential	40%
Retail	40%

Examples Of Projects: Greystone Estate residence, Evergreen, CO; Club Homes Community, Louisville, CO; Denver International Airport tenant spaces, Denver, CO; Colorado Ranch and Resort, Granby, CO; Marriott Hotel, Wilmington, DE; Colorado Coalition for the Homeless, Denver, CO; Numerous residence additions, Denver, CO; Numerous mall retail spaces, Boulder, Aurora, Greeley, CO; Old Town Plaza mixed-use, Arvada, CO; Guaranty Bank Housing, Denver, CO

Work Done In Colorado: 80%

Work Done Outside State: 20%

Clients Should Contact:

Michael Murphy

Manufacturers Should Contact:

Liz Murphy

NEWMARK DIERCKS DESIGN INCORPORATED

7935 East Prentice Avenue, Suite 103
Greenwood Village, CO 80111
(303) 740-7409
FAX: 740-7240

Year Established: 1991

Principals: Carl Newmark, AIA
Ken MacGregor

Gloria Diercks

Firm Personnel By Discipline:

Administrative	2
Architectural	3
Interior Design	5

Types of Work:

Other	100%
-------	------

Examples Of Projects: Hyatt Regency New Orleans, New Orleans, LA; Marriott Denver City Center, Denver, CO; Sheraton Colony Square, Atlanta, GA; Sofitel Chicago, Chicago, IL; Red Lion Hotel, Boise, ID; Sheraton Steamboat, Steamboat Springs, CO; Holiday Inn Crowne Plaza, Seattle, WA; Hilton Gaithersburg, Gaithersburg, MD; Guest Quarters Suite Hotel, Houston, TX; Don Ce Sar Beach Resort, St. Petersburg Beach, FL

Work Done In Colorado: 10%

Work Done Outside State: 90%

Clients Should Contact:

Carl Newmark, AIA

Manufacturers Should Contact:

Gloria Diercks

OHLSON LAVOIE CORPORATION, ARCHITECTURE AND PLANNING

1860 Blake Street, Suite 300
Denver, CO
(303) 294-9244
FAX: 294-9440

Year Established: 1981

Principals: Stuart A. Ohlson, AIA Hervey R. Lavoie, AIA
Dana R. Potter, AIA William Fauri

Firm Personnel By Discipline:

Administrative	3
Architectural	14
Interior Design	4
Technical	2

Types of Work:

Commercial	65%	Retail	5%
Multiple Family Dwellings	10%	Schools	5%
Residential	10%	Other	5%

Examples Of Projects: Jewish Community Center remodel, Denver, CO; Chateau Pyrenees Restaurant remodel, Denver, CO; Writer II Office Building, Denver, CO; Country Club Towers Luxury Apartments, Denver, CO; Park Place Assisted Living Community, Denver, CO; Lake Forest (Illinois) Health and Fitness Institute, Lake Forest, IL; Rochester Athletic Club, Rochester, MN; Shiroyama Athletic Club, Tokyo, Japan; 330 Grande Sapporo Hotel, Sapporo, Japan; 330 Grande Kurashiki Hotel, Kurashiki, Japan

Work Done In Colorado: 10%
Work Done Outside State: 60%
Work Done Internationally: 30%

Clients Should Contact:
William J. Fauri, Principal

Manufacturers Should Contact:
Charles Musgrave

OLIVER AND HELLGREN ARCHITECTS P.C.

2727 East Second Avenue
Denver, CO 80206
(303) 399-8974
FAX: 399-8977

Year Established: 1973

Principals: W. Kelly Oliver, AIA John C. Hellgren, AIA

Firm Personnel By Discipline:

Administrative	1
Architectural	3
Technical	2

Types of Work:

Commercial	30%	Retail	10%
Hospitals	5%	Schools	5%
Institutional	10%	Other	25%
Residential	10%		

Examples Of Projects: Municipal Maintenance Base, Greenwood Village, CO; Headquarters Office renovation, Colorado Department of Wildlife, Denver, CO; University Athletic Club, Arapahoe County, CO; Tachibana Japanese Restaurant, Lexington, KY; St. John's Catholic Church, Spring Green, WI; Mallinckrodt Medical Laboratory, Denver, CO; Mile-Hi Cablevision - ADA Compliance, Denver, CO; Fitzsimmons Army Medical Center renovations, Aurora, CO; Hotel and Country Club, Spring Green, WI; Time, Inc., Office Building/Inverness, Arapahoe County, CO

Work Done In Colorado: 90% **Work Done Outside State:** 10%

Clients Should Contact:
W. Kelly Oliver, AIA

Manufacturers Should Contact:
John C. Hellgren, AIA

OOMS DESIGN, INC.

1738 Blake Street
Denver, CO 80202
(303) 295-9595
FAX: 295-9596

Year Established: 1987

Principals: Frank Ooms, AIA

Firm Personnel By Discipline:

Administrative	1
Architectural	2
Interior Design	1

Types of Work:

Commercial	50%
Residential	25%
Retail	25%

Examples Of Projects: Careertrack Corporate Headquarters office complex and warehouse, architecture and interiors; Max, (retail stores); Metropolis, (retail store); Garbarini, (retail stores); Denver International Airport (retail design guidelines); Bergman Johnson (Icehouse showroom); Icehouse offices, wall signage and main entry design; German Residence, Cherry Hills, CO; Thomas & Perkins Ad Agency offices; Carson Residence; Salzman Residence;

Work Done In Colorado: 95%

Work Done Outside State: 5%

Clients Should Contact:

Frank Ooms

Manufacturers Should Contact:

Wendy Schaffenaar, Frank Ooms

PETER ORLEANS, ARCHITECT

228 Dexter Street
Denver, CO 80220
(303) 321-0548

Year Established: 1977

Principals: Peter Orleans, AIA

Firm Personnel By Discipline:

Architectural	1
---------------	---

Types of Work:

Commercial	10%
Institutional	10%
Residential	50%
Other	30%

Examples Of Projects: Camelot II - 16 units HUD moderate rehabilitation, Greeley, CO; Colorado State Hospital Access Compliance Study, Pueblo, CO; Denver Housing Authority Access Compliance Study, Denver, CO; Adams County School District 14 Access modifications, Commerce City, CO; Dacono City Library Access modifications, Dacono, CO; Carriage Green Condominiums at North Washington Park, Denver, CO; Peoples Clinic Primary Care Health Facility (with Ron Abo, Architect), Boulder, CO; Abramovitz - Lay Residence renovation/addition, Denver, CO; Miami Jewish Home and Hospital Alzheimer's Care Facility, Miami, FL; Quigg Newton/Columbine roof renovation project (with Wong-Strauch Architects), Denver, CO

Work Done In Colorado: 90%

Work Done Outside State: 10%

Clients Should Contact:

Peter Orleans

Manufacturers Should Contact:

Peter Orleans

OZ ARCHITECTURE

1580 Lincoln Street, Suite 200
Denver, CO 80203
(303) 861-5704
FAX: 861-9230

1215 Spruce Street
Boulder, CO 80302
(303) 449-8900
FAX: 449-3886

Year Established: 1964, 1984 as Oz Architecture

Principals: Tom Obermeier
David Carson

Alan Zeigel
Jim Bershof

Firm Personnel By Discipline:

Administrative	8
Architectural	20
Interior Design	5
Other	11

Types of Work:

Commercial	20%	Residential	10%
Hospitals	5%	Retail	5%
Institutional	15%	Schools	20%
Multiple Family Dwellings	15%	Other	10%

Examples Of Projects: Great Kills Environmental Education, New York, NY; Green Mountain High School, Lakewood, CO; Walnut Creek Prairie Learning Center, Prairie City, IA; Bailey Corporate Headquarters, Golden, CO; Cable Labs, Boulder, CO; YMCA of the Rockies 100 room lodge/conference, Estes Park/Tabernash, CO; MCD Biology Building/CU, Boulder, CO; Grand Canyon National Park Service Employee Housing, Grand Canyon, AZ; Alfalfa's Distribution Center, Boulder, CO; Broadway/College Pedestrian Underpass, Boulder, CO

Work Done In Colorado: 80%
Work Done Internationally: 2%

Work Done Outside State: 20%

Clients Should Contact:

Tom Obermeier, Sharon Lavoie
Dave Carson

Manufacturers Should Contact:

Michael Noda, Jan Peck, Dave Carson,
Kirk Hale

PAHL-PAHL-PAHL PC ARCHITECTS/PLANNERS

1900 Grant Street, Suite 1200
Denver, CO 80203
(303) 861-7147
FAX: 861-7227

Year Established: 1958

Principals: Joseph M. Pahl, AIA, President/Treasurer
Robert G.H. Pahl, AIA, Vice President/Secretary

Firm Personnel By Discipline:

Administrative	3	Interior Design	1
Architectural	6	Technical	3

Types of Work:

Commercial	10%	Schools	20%
Institutional	30%	Other	40%

Examples Of Projects: Joint Army/Air National Guard Complex, Buckley ANG Base, Aurora, CO; Metropolitan Wastewater Reclamation District Administration Building, Denver, CO; Armory Facilities, at Fort Carson and Durango, CO; Federal Building/U.S. Custom House Historic Building Preservation Plan, Denver, CO; Americans With Disabilities Act building modifications for Bent County, Colorado Courthouse; Hazardous Materials Training Facility at Front Range Community College, Westminster, CO; Colorado State Capitol renovations, Denver, CO; Buckley Air National Guard Base Fire Station, Buckley ANG Base, Aurora, CO; E-470 Toll Plaza and Administration Building, Arapahoe County, CO; Budget Rent-A-Car Building renovation, Denver, CO;

Work Done In Colorado: 90%

Work Done Outside State: 10%

Clients Should Contact:

Joseph M. Pahl, AIA or Robert G.H. Pahl, AIA

Manufacturers Should Contact:

Barbara Darden

PAX-TEKTÖN

1738 Wynkoop, Suite 3
Denver, CO 80202-1000
(303) 296-1054
FAX: 296-1109

Year Established: 1991

Principals: Beverly Gunning Pax Frederick R. Pax AIA

Firm Personnel By Discipline:

Administrative	1
Architectural	2
Landscape Architect	1

Types of Work:

Commercial	33%
Residential	33%
Retail	34%

Examples Of Projects: Denver International Airport CADD production and translations, Denver, CO; Kmart at Marketplace CADD production, Denver, CO; MicroStation (CADD) training

Work Done In Colorado: 90%

Work Done Outside State: 10%

Clients Should Contact:

Beverly Gunning Pax, Fred Pax

PEARSON DESIGN GROUP, INC.

5310 Denver Technical Center Parkway, Suite I
Englewood, CO 80111
(303) 843-6350
FAX: 834-6349

Year Established: 1990

Principals: Brian Pearson, Associate Cindy Pearson

Firm Personnel By Discipline:

Administrative	1
Architectural	2

Types of Work:

Multiple Family Dwellings	10%
Residential	85%
Other	5%

Examples Of Projects: Denver Series by Melody Homes, Westminster, CO; Colorado Series by Melody Homes, Westminster, CO; Pioneer Series by Park Homes, Englewood, CO; Estate Series by Colorado Homes, Englewood, CO; The 600 and 700 Series by David Weekley Homes, Englewood, CO; Project Build, Englewood, CO; Richmond Homes, Denver, CO; Village Homes, Denver, CO; Three Model Homes by Aspen Construction, Cheyenne, WY; Four Model Homes by Dexter Writer Homes, Denver, CO

Work Done In Colorado: 95%

Work Done Outside State: 5%

Clients Should Contact:

Brian Pearson

Manufacturers Should Contact:

Lane Cutter

THE PELLEGREN CORPORATION ARCHITECTS AND ENGINEERS

4582 South Ulster Street
Denver, CO 80237
(303) 770-7812
FAX: 770-7819

Year Established: 1975

Principals: John Pellegren, AIA David Ehrhardt, AIA

Firm Personnel By Discipline:

Administrative	1
Architectural	2
Interior Design	1
Technical	2
Other	1

Types of Work:

Commercial	5%
Residential	5%
Other	90%

Examples Of Projects: The Sun, San Bernardino, CA; The Free Lance-Star, Fredricksburg, VA; The Denver Post, Denver, CO; The Times-Call, Longmont, CO; The Daily Record, Canon City, CO; The State, Columbia, SC; Concord-Monitor, Concord, NH; Press-Journal, Vero Beach, FL; The Sun News, Myrtle Beach, SC; Advocate-Messenger, Danville, KY

Work Done In Colorado: 9%

Work Done Outside State: 91%

Clients Should Contact:

John Pellegren

Manufacturers Should Contact:

David Ehrhardt

ROY PERLMUTTER, ARCHITECT

1582 South Parker Road, Suite 307
Denver, CO 80231
(303) 755-0696
FAX: 755-5549

Year Established: 1985

Principals: Roy Perlmutter, AIA

Firm Personnel By Discipline:

Architectural	2
---------------	---

Types of Work:

Commercial	85%
Hospitals	5%
Institutional	10%

Examples Of Projects: ADA Barrier Survey, Temple Events Center, Denver, CO; ADA Barrier Survey, Golden City Hall, CO; ADA Barrier Survey, Southwest Plaza Mall, CO; ADA Compliance Survey - Aurora Presbyterian Hospital, Aurora, CO; Upgrade hospital entrances, Denver CO; ADA Feasibility Study - Lowry Golf Clubhouse, Aurora, CO; Sixty cellular phone sites, CO WY; Highline and Del Mar Park restroom buildings, Aurora, CO; ADA staff training - Colorado Department of Social Services; 2nd/3rd floor renovation, Colorado State Judicial Building Denver, CO

Work Done In Colorado: 85%

Work Done Outside State: 15%

Clients Should Contact:

Roy Perlmutter, AIA

Manufacturers Should Contact:

Dan Vasquez

POUW & ASSOCIATES, INC.

1860 Blake Street, Suite 200

Denver, CO 80202

(303) 296-4343

FAX: 296-9172

Year Established: 1977

Principals: Stanley S. Pouw, AIA, ASLA

Dennis F. Reseutek, AIA

Joseph J. Poli, AIA

Dennis R. Humphries, AIA

Firm Personnel By Discipline:

Administrative	7
Architectural	37
Interior Design	2
Landscape Architect	3
Technical	1

Types of Work:

Commercial	20%	Retail	20%
Hospitals	10%	Schools	5%
Institutional	40%		
Multiple Family Dwellings	5%		

Examples Of Projects: Denver International Airport Office Building, Denver, CO; Denver International Airport Landside Terminal, Denver, CO; Denver International Airport Parking/Curbsides/Bridges, Denver, CO; Westland Centre, Lakewood, CO; Synergen Laboratories, Boulder, CO; American Health Properties, San Diego, CA; Denver Union Terminal renovation, Denver, CO; Dora More Elementary School renovation, Denver, CO; United Airlines Hangars, Denver, CO; Denison Memorial Library, UCHSC, Denver, CO

Work Done In Colorado: 95%

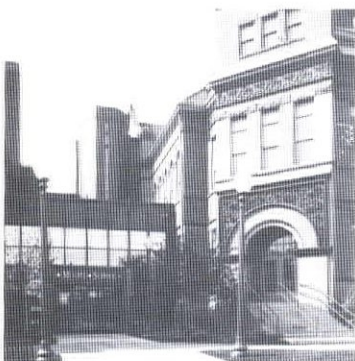
Work Done Outside State: 5%

Clients Should Contact:

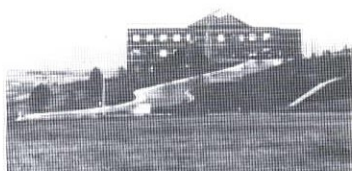
Stanley S. Pouw, AIA, ASLA

Manufacturers Should Contact:

Thomas A. Sanders, AIA



**Commitment to Excellence
of the Built Environment
for the Past 15 Years**



RCS DESIGN/PLANNING/CONSULTING

621 17th Street, Suite 1710
Denver, CO 80293
(303) 296-6760
FAX: 296-6805

Year Established: 1986

Principals: Robert Schmid, AIA

Firm Personnel By Discipline:

Architectural	2
Other	1

Types of Work:

Commercial	60%	Retail	10%
Residential	20%	Other	10%

Examples Of Projects: American Career Training Corporation, Pompano Beach, FL; Ivion Corporation - Phase 2, Broomfield, CO; Adolph Coors Company - Graphics, Golden, CO; Pleion Showroom - The Ice House, Denver, CO; Jefferson Economic Council - Photography, Golden, CO; Kettering Residence remodeling, Aberdeen, SD; Griffith Residence remodeling, Ft. Lauderdale, FL

Work Done In Colorado: 90%

Work Done Outside State: 10%

Clients Should Contact:

Robert Schmid

Manufacturers Should Contact:

Robert Schmid

RNL DESIGN

1225 17th Street, Suite 1700
Denver, CO 80202
(303) 295-1717
FAX: 292-0845

Year Established: 1966

Principals: Philip H. Goedert, AIA
John B. Rogers, FAIA

Stephen C. Newman, AIA
Richard L. von Lührte, FAIA

Firm Personnel By Discipline:

Administrative	16
Architectural	35
Engineering	3
Interior Design	11
Landscape Architect	2
Technical	18

Types of Work:

Commercial	26%
Hospitals	10%
Institutional	55%
Retail	2%
Schools	5%
Other	2%

Examples Of Projects: Longmont Civic Center expansion, Longmont, CO; US WEST Communications, Generic Contract, 1993, Denver, CO; Colorado School of Mines Alderson Hall renovation, Golden, CO; Colorado Special Needs Unit (Secure Psychiatric Hospital) Pueblo, CO; Fitzsimons Army Medical Center Replacement Facility, Aurora, CO; Sixth Army U.S. Headquarters, Fort Carson, CO; Southern Gables Church, Lakewood, CO; MCI relocation, Denver, CO; Central City Design Guidelines, Central City, CO; Robert Waxman Camera and Video Superstore, Denver, CO

Work Done In Colorado: 84%

Work Done Outside State: 15%

Work Done Internationally: 1%

Clients Should Contact:

Richard L. von Lührte

Manufacturers Should Contact:

Nancy Hughes-Allen

REDDY & REDDY, ARCHITECTS P.C.

1666 South University Boulevard
Denver, CO 80210
(303) 733-3717
FAX: 777-7494

Year Established: 1956

Principals: Paul R. Reddy, AIA Emeritus Jeffrey S. Reddy

Firm Personnel By Discipline:		Types of Work:	
Administrative	2	Commercial	90%
Architectural	9	Other	10%
Other	2		

Examples Of Projects: Concourse "E", Stapleton International Airport, Denver, CO; Community Center, Windsor Gardens, Denver, CO; United Flight Training Center, Denver, CO; Las Vegas Pedestrian Bridges, Las Vegas, NV; Stapleton Plaza Hotel and Office Building, Denver, CO; Air Cargo Building, McCarran Field, Las Vegas, NV; Maintenance Building, McCarran Field, Las Vegas, NV; Terminal and concourses - Stapleton, Denver, CO; Terminal design and design standards, Denver International Airport, Denver, CO; Tenant finish, Concourse "A", Denver International Airport, Denver, CO

Work Done In Colorado: 90% **Work Done Outside State:** 10%

Clients Should Contact: **Manufacturers Should Contact:**
Jeffrey S. Reddy, President Jeffrey S. Reddy, President

REILLY JOHNSON ARCHITECTURE

1981 Blake Street, Suite 400
Denver, CO 80202
(303) 293-9111
FAX: 293-9135

Year Established: 1981

Principals: Thomas P. Reilly, AIA Robert D. Johnson, AIA

Firm Personnel By Discipline:		Types of Work:	
Administrative	1	Commercial	45%
Architectural	6	Institutional	45%
Interior Design	1	Other	10%

Examples Of Projects: Rocky Mountain News E.W. Estlow Production Facility, Phases 1 and 2 (programming, architecture, interiors), Denver, CO; State of Colorado Department of Corrections, Limon Correctional Facility (design consultation to Clifford S. Nakata Associates), Limon, CO; Denver County Jail expansion and remodel (programming, architecture, interiors), Denver, CO; KMGH TV7 Newsroom and Technical Operations Center, and Boardroom (programming, interiors, furnishings), Denver, CO; KUSA TV9 Headquarters and Broadcast Facility (programming, interiors, furnishings), Denver, CO; Sky Chefs In-Flight Kitchen (programming, architecture, interiors), Denver International Airport, Denver, CO; Public Service Company of Colorado Headquarters Office Building (Code + ADA survey, programming, interiors, space planning), Denver, CO; WestGas Corporate Headquarters (programming, interiors, furnishings), Denver, CO; State of Colorado, Department of Corrections, Colorado Territorial Correctional Facility (Life Safety Upgrades), Canon City, CO; University of Colorado Health Sciences Center, F Lot Parking Facility (conceptual design, cost model), Denver, CO

Work Done In Colorado: 100%

Clients Should Contact: **Manufacturers Should Contact:**
Thomas P. Reilly, Robert D. Johnson Steven J. Radomski, Robert. B. Brashears

RICHFIELD ARCHITECTURE & DESIGN

4600 South Ulster Street, Suite 1200
Denver, CO 80237
(303) 220-2000
FAX: 220-2120

Year Established: 1991

Principals: Michael D. Ward, AIA Fran Fannin, ASID
Wayne A. Johnson, AIA

Firm Personnel By Discipline:

Administrative	1
Architectural	5
Interior Design	5

Types of Work:

Commercial	100%
------------	------

Examples Of Projects: Regal Riverfront Hotel, St. Louis, MO; Radisson Fort George Resort, Belize City, Belize, Central America; Regal Constellation Hotel, Toronto, Canada; Oneida Radisson and Casino, Green Bay, WI; Marina Hotel and Conference Center, Jacksonville, FL; Regal Maxwell House, Nashville, TN; Buffalo Airport Sheraton, Buffalo, NY; Lakeside Sheraton, Orlando, FL

Work Done In Colorado: 5%

Work Done Outside of State: 80%

Work Done Internationally: 15%

Clients Should Contact:

Mike Ward

Manufacturers Should Contact:

Linda Temple

LILA RIOTH

340 South Washington Street
Denver, CO 80209
(303) 778-8763

Year Established: 1988

Principals: Lila Rieth, AIA

Firm Personnel By Discipline:

Architectural	1
---------------	---

Types of Work:

Residential	100%
-------------	------

Examples Of Projects: Residential, Los Angeles, CA, and In Colorado:

Work Done In Colorado: 30%

Work Done Outside State:: 70%

Clients Should Contact:

Lila Rieth

Manufacturers Should Contact:

Lila Rieth

MARCUS ROBERTSON & ASSOCIATES

2323 West 30th Avenue, Suite 101
Denver, CO 80211
(303) 455-4436
FAX: 455-4436

Year Established: 1981

Principals: Marcus Robertson

Firm Personnel By Discipline:

Administrative	1
Architectural	3

Types of Work:

Commercial	10%
Residential	20%
Schools	65%
Other	5%

Examples Of Projects: Valdez Elementary School addition, Denver, CO; Omnibank at Aurora, Aurora, CO; Omnibank at Aurora, Aurora, CO; University Center, University of Northern Colorado, Greeley, CO; Valverde Elementary School remodel, Denver, CO; Rahilly Residence, Parker, CO

Work Done In Colorado: 100%

Clients Should Contact:

Marcus Robertson

Manufacturers Should Contact:

Marcus Robertson, Ed Maurer

ROBERT ROOT & ASSOCIATES ARCHITECTS

1736 Krameria Street
Denver, CO 80220
(303) 399-7402
FAX: 399-4181

Year Established: 1991

Principals: Robert Root, AIA

Firm Personnel By Discipline:

Architectural	1
---------------	---

Types of Work:

Commercial	20%
Institutional	30%
Residential	30%

Examples Of Projects: Coolbaugh Hall Chemistry Building, Colorado School of Mines, Golden, CO; RTD MAC Light Rail South Extension, Denver, CO; Lehr-Welles Residence, Denver, CO

Work Done In Colorado: 100%

Clients Should Contact:

Robert Root

Manufacturers Should Contact:

Robert Root

ROTH SHEPPARD ARCHITECTS

2185 Broadway
Denver, CO 80205
(303) 296-8850
FAX: 298-0720

Year Established: 1983

Principals: Jeffrey L. Sheppard Herbert B. Roth

Firm Personnel By Discipline:

Administrative	1
Architectural	9
Interior Design	1

Types of Work:

Commercial	10%
Residential	10%
Retail	10%
Schools	5%
Other	65%

Examples Of Projects: Santa Ana Police Department Administration and Holding Facility Santa Ana, CA; Vail Municipal Center, Vail, CO; Boulder Public Safety Facility, Boulder, CO; Springdale Municipal Facility, Springdale, AR; Eugene Field Library, Denver, CO; S-2 Restaurant, Cherry Creek, CO; Third Avenue Retail Collection, Cherry Creek, CO; Printemps, Denver, CO; Perlmutter Residence, Cherry Hills, CO; Cinema Savers 4-Plex, Evergreen, CO

Work Done In Colorado: 70%

Work Done Outside State: 30%

Clients Should Contact:
Jeff Sheppard or Herbert Roth

Manufacturers Should Contact:
Steve King

THE ROYBAL CORPORATION

875 Delaware Street
Denver, CO 80204
(303) 534-5626
FAX: 534-6020

Year Established: 1981

Principals: Ronald L. Roybal, AIA Michael W. Roybal, AIA

Firm Personnel By Discipline:

Administrative	9
Architectural	8
Interior Design	2
Technical	8
Other	21

Types of Work:

Commercial	30%
Hospitals	5%
Multiple Family Dwellings	5%
Retail	10%
Schools	25%
Other	25%

Examples Of Projects: Jefferson County Elementary Schools, Lakewood, CO; Richard T. Castro Elementary School, Denver, CO; Rocky Mountain Arsenal Exhibits, Commerce City, CO; McDonalds - Steamboat location, Steamboat, CO; U.S. Fish and Wildlife Wichita Environmental Education Center, Wichita, KS; Quiznos Restaurant, Denver International Airport, Denver, CO; Airport Rescue and Firefighting Stations, Denver International Airport, Denver, CO; McDonalds Corporate Office Building, Albuquerque, NM; General Services Administration CQM project Building 25, Lakewood, CO; Terminal Building Floor Graphics Implementation, Denver International Airport, Denver, CO

Work Done In Colorado: 60%
Work Done Internationally: 5%

Work Done Outside State: 35%

Clients Should Contact:
Maria Velez

Manufacturers Should Contact:
Dennis King, AIA

SEM ARCHITECTS INC

7935 East Prentice Avenue, Suite 102
Englewood, CO 80111
(303) 220-8900
FAX: 220-0708

Year Established: 1978

Principals: Donald R. Slack
Gary W. Ellermann, AIA
Bruce T. McLennan, CSI, CCS

Firm Personnel By Discipline:

Administrative	3
Architectural	8
Interior Design	2

Types of Work:

Commercial	50%
Multiple Family Dwellings	5%
Retail	30%
Schools	5%
Other	10%

Examples Of Projects: Lucky Penny Hotel and Casino, Blackhawk, CO; Cahner's, Douglas County, CO; Tabor Center tenant finish, Denver, CO; Target Distribution Center Warehouse, Pueblo, CO; Arapahoe Marketplace, Englewood, CO; Association of Operating Room Nurses, Denver, CO; Information Handling Services, Douglas County, CO; Red Robin, Englewood, CO; Arvada Marketplace and Urban Renewal, Arvada, CO; PACE Warehouse, National

Work Done In Colorado: 85%

Work Done Outside State: 15%

Clients Should Contact:
Gary W. Ellermann, AIA

Manufacturers Should Contact:
Bruce T. McLennan, CSI, CCS

SAIBER SAIBER

2422 East Third Avenue
Denver, CO 80206
(303) 388-3313
FAX: 388-3342

Year Established: 1980

Principals: Jonathan Saiber, AIA

Firm Personnel By Discipline:

Administrative	2
Architectural	4
Interior Design	1

Types of Work:

Commercial	30%
Multiple Family Dwellings	30%
Residential	25%
Retail	15%

Examples Of Projects: Crestmoor Townhomes, Denver, CO; Gerrity Oil and Gas, Denver, CO; The Georgetown Townhomes, Denver, CO; Perry + Company, Cherry Creek Offices, Denver, CO; Salvation Army Family Services Center, Denver, CO; Eby Creek Residence, Eagle Creek, CO; Project Madison Townhomes, Denver, CO; Echo Bay Mines, Denver, CO; 1900 East Stanford Avenue, Cherry Hills Village, CO; 226 South Franklin Street, Denver, CO

Work Done In Colorado: 100%

Clients Should Contact:
Jonathan Saiber, AIA

Manufacturers Should Contact:
Kiley Vorreiter/Stacy Cousey

R. PAUL SANTANGELO, AIA • ARCHITECT

3801 Wright Court
Wheat Ridge, CO 80033
(303) 467-1320
FAX: 467-1320

Year Established: 1975

Principals: R. Paul Santangelo, AIA

Firm Personnel By Discipline:

Administrative	1
Architectural	1

Types of Work:

Commercial	25%
Multiple Family Dwellings	25%
Residential	25%
Retail	25%

Examples Of Projects: 10 - residence, Denver area; 2 multi-family, Denver area; 1 commercial, Denver area

Work Done In Colorado: 100%

Clients Should Contact:
R. Paul Santangelo, AIA

Manufacturers Should Contact:
R. Paul Santangelo, AIA

MAXWELL L. SAUL & ASSOCIATES

15352 East Milan Drive
Aurora, CO 80013
(303) 693-0924
FAX: 680-4244

Year Established: 1956

Principals: Maxwell L. Saul, AIA

Firm Personnel By Discipline:

Administrative	1
Architectural	1

Types of Work:

Commercial	30%
Institutional	20%
Multiple Family Dwellings	40%
Schools	10%

Examples Of Projects: Ball Corporation Office Center, Westminster, CO; Northglenn High School, Northglenn, CO; Thornton High School, Thornton, CO; KWGN Channel 2 Television Studio, Englewood, CO; Halcyon House Apartments, Denver, CO; Simon Center Elderly Apartments, Englewood, CO; Skyline Park Apartments, Denver, CO; Cairo America College, Cairo, Egypt; Sports and Cultural Center, American Community School, Amman, Jordan; Monfort Elementary School, Greeley, CO

Work Done In Colorado: 96%

Work Done Outside State: 2%

Work Done Internationally: 2%

Clients Should Contact:
Max Saul

Manufacturers Should Contact:
Max Saul

A. RIDDICK SEMPLE, AIA

2385 Ash Street
Denver, CO 80207
(303) 220-9403
FAX: 220-9404

Year Established: 1992

Principals: A. Riddick Semple, AIA

Firm Personnel By Discipline:

Administrative	.5
Architectural	.5
Interior Design	1
Technical	1
Other	.5

Types of Work:

Commercial	70%
Institutional	10%
Residential	15%
Retail	5%

Examples Of Projects: First Trust Corporation, Denver, CO; Penwest Foods Company, Englewood, CO; Fryor, Carney and Johnson, P.C., Englewood, CO; University of Denver, College of Law, Denver, CO; Wheeler Residence, Castle Rock, CO; Alexander Residence, Buena Vista, CO; Phelps, Dunbar, New Orleans, LA; M Bank, Austin, TX; Cowles and Thompson, Dallas, TX; Hyatt Regency Denver, Denver, CO

Work Done In Colorado: 75%

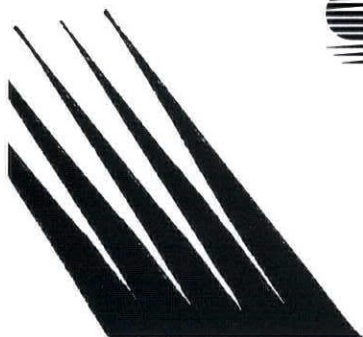
Work Done Outside State: 25%

Clients Should Contact:

A. Riddick Semple, AIA

Manufacturers Should Contact:

A. Riddick Semple, AIA



SAUNDERS

Saunders Construction Inc.
6950 S. Jordan Road
P.O. Box 3908
Englewood, Colorado 80155
303/699-9000

SHOLAR BUCHANAN ASSOCIATES P.C.

200 Union Boulevard, Suite 440
Lakewood, CO 80228
(303) 980-5700
FAX: 986-1197

Year Established: 1985

Principals: Ronald Sholar, AIA Brad Buchanan

Firm Personnel By Discipline:
Architectural 10

Types of Work:
Hospitals 15%
Residential 35%
Other 50%

Examples Of Projects: First Federal Bank, Greenwood Village, CO; Golden Bank, Westminster, CO; Kaiser Permanente, Denver, CO; 5th and St. Paul Townhouses, Cherry Creek, CO; 454 Cook Townhouses, Cherry Creek, CO; 4th and Jackson Townhouses, Cherry Creek, CO; Rose Medical Center tenant finish, Denver, CO; 1724 Prima Lane, house, Evergreen, CO; First Federal Bank, Smoky Hill, CO; First Federal Bank, Thorton, CO

Work Done In Colorado: 100%

Clients Should Contact:
Ron Sholar

SINK COMBS DETHLEFS, P.C.

1900 Grant Street, Suite 1250
Denver, CO 80203
(303) 830-1200
FAX: 830-0645

Year Established: 1962

Principals: Richard Combs, AIA Donald Dethlefs, AIA
Fred J. Coester, AIA Andrew W. Barnard, AIA

Firm Personnel By Discipline:
Administrative 3
Architectural 19
Interior Design 1
Other 1

Types of Work:
Commercial 5%
Institutional 10%
Residential 5%
Schools 10%
Other 70%

Examples Of Projects: Colorado State Fair Coliseum, Pueblo, CO; San Jose Arena, San Jose, CA; Colorado Springs Multipurpose Arena, Colorado Springs, CO; Fargodome Football Stadium and Multi-purpose Arena, Fargo, ND; CU Dal Ward Athletic Facility of the University of Colorado, Boulder, CO; University of Iowa Recreation Center addition, Iowa City, IA; South Dakota State University Athletics Facility/Ground Planning Study, Brookings, SD; University of Northern Colorado Football Stadium, Greeley, CO; Palace Arena at Auburn Hills, MI; McNichols Sports Arena and renovations/additions, Denver, CO

Work Done In Colorado: 50%
Work Done Outside State: 50%

Clients Should Contact:
Principals

Manufacturers Should Contact:
Fred Coester

SLATER-PAULL & ASSOCIATES

7800 East Union Avenue, Suite 500
Denver, CO 80237
(303) 770-8778
FAX: 770-2853

Year Established: 1972 (Atlanta Office 1985)

Principals: James F. Paull, AIA Gerhard J. Petri, AIA
 Clayton C. Cole, AIA Matt Slater, AIA

Firm Personnel By Discipline:	DEN	ATL	Types of Work:	
Administrative	4	3	Commercial	30%
Architectural	9	3	Institutional	10%
Interior Design	1		Schools	35%
Technical	15	8	Other	25%

Examples Of Projects: Stevens Elementary School replacement, Lakewood, CO; Wheat Ridge Middle School replacement, Lakewood, CO; Historic Garden Place Academy renovation, Denver, CO; Historic City and County of Building renovation, Denver, CO; New Communications Company facility, CO; U. S. Air Force Academy Mitchell Hall renovation, U.S. Air Force Academy, Colorado Springs, CO; St. Vincent de Paul Catholic Church and School; First Plymouth congregational Church remodel, Englewood, CO; Rising Star Baptist Church new facility; Charles Hickey Junior School Detention Facility, Baltimore, MD

Work Done In Colorado: 65%

Work Done Outside State: 35%

Clients Should Contact:
Jim Paull, (Denver); Clayton Cole, (Atlanta)

Manufacturers Should Contact:
Gary Petri, (Denver)

RAY D. STEVENS, ARCHITECT

828 South Alkire Street
Lakewood, CO 80228
(303) 988-9316 or 789-4451

Year Established: 1959

Principals: Raymond D. Stevens, AIA, CSI

Types of Work:

Commercial	50%
Residential	50%

Examples Of Projects: Christ on The Mountain Office and Sanctuary, Lakewood, CO; Four theater complex, Clovis, NM; Six theater complex, Topeka, KA; Four theater complex, St. Joseph, MO; Four theater complex, Casper, WY; Six theater complex, Los Angeles, CA; Elevator for St. Bernadette Church, Lakewood, CO; Richard Locke Residence, Evergreen, CO; Residence, Summit County, CO; Benjamin Moore Paint Company remodel, Denver, CO

Work Done In Colorado: 50%

Work Done Outside State: 50%

Clients Should Contact:
Ray D. Stevens

Manufacturers Should Contact:
Ray D. Stevens

STRANGE AND ASSOCIATES

10395 West Colfax Avenue, Suite 200
Lakewood, CO 80215
(303) 237-1001
FAX: 237-1001

Year Established: 1966

Principals: Robert C. Strange, AIA

Firm Personnel By Discipline:

Administrative	1
Architectural	3

Types of Work:

Commercial	10%
Retail	5%
Schools	75%
Other	10%

Examples Of Projects: Shelton Elementary School, Golden, CO; Camping World Building, Wheat Ridge, CO; Perfect Circle Piston Plant, Pueblo, CO; Northmor Elementary School additions, Northglenn, CO; Applewood Baptist Church Education Building, Wheat Ridge, CO; Jackson Ice Cream Plant, Denver, CO; Spicer Clutch Manufacturing Plant, Colorado Springs, CO; Z Transportation Maintenance Buildings, Evergreen and Jefferson County, CO; Holy Shepherd Lutheran Church Fellowship Hall, Lakewood, CO; Wheat Ridge Middle School addition, Wheat Ridge, CO

Work Done In Colorado: 100%

Clients Should Contact:

Chet Lockwood

Manufacturers Should Contact:

R. C. Strange

SUNRISE DESIGNS

986 Croke Drive
Thornton, CO 80221
(303) 657-0177

Year Established: 1981

Principals: Jerry Pickens, AIA

Firm Personnel By Discipline:

Architectural	1
---------------	---

Types of Work:

Residential	25%
Other	75%

Examples Of Projects: Life Fellowship, Westminster, CO; Ilegna De Dios, Honduras

Work Done In Colorado: 85%

Work Done Outside State: 10%

Work Done Internationally: 5%

Clients Should Contact:

Jerry Pickens

Manufacturers Should Contact:

Jerry Pickens

T.H.E. ARCHITECTURE STUDIO

2072 Glencoe Street
Denver, CO 80207
(303) 394-1410
FAX: 394-3914

Year Established: 1991

Principals: Tomas A. Hart, AIA

Firm Personnel By Discipline:
Architectural 3

Types of Work:
Residential 100%

Examples Of Projects: Hinton Residence, Franktown, CO; Hutton remodel, Englewood, CO; Marshall remodel, Parker, CO; Lowry addition, Denver, CO; Wood addition, Denver, CO;

Work Done In Colorado: 100%

Clients Should Contact:
Tomas Hart

Manufacturers Should Contact:
Tomas Hart

MARTIN/MARTIN CONSULTING ENGINEERS

Providing our clients with excellence and innovation in structural and civil engineering design services for:

- ◆ Longspan & Special Structures
- ◆ Criminal Justice Facilities
- ◆ Airport & Transit Terminals
- ◆ Educational Facilities
- ◆ Commercial/Retail Buildings
- ◆ Health Care Facilities
- ◆ Office Buildings
- ◆ Public Facilities
- ◆ Hotels/Residential
- ◆ Sports/Recreation Facilities
- ◆ Computer Research Facilities
- ◆ Projects Requiring 254/255's
- ◆ Investigations/Evaluations
- ◆ Public Works

This firm also provides field surveys, construction observation, and automated mapping/facilities management (AM/FM) services.

Sixteen affiliated offices from the midwest to the Pacific.

4251 KIPLING

WHEAT RIDGE, CO 80033

431-6100

TRA, LTD.

1875 Lawrence Street, Suite 610
Denver, CO 80202
(303) 295-7777
FAX: 298-7885

Year Established: 1988 (Denver)

Principals: Victor D. Langhart, AIA

Firm Personnel By Discipline:

Administrative	1
Architectural	7
Interior Design	2
Technical	2

Types of Work:

Commercial	50%
Retail	50%

Examples Of Projects: Southern Pacific Lines Facilities master plan, Denver, CO, San Francisco, CA, Houston, TX; Denver International Airport Concourses, Denver, CO; Steamboat Springs Airport Terminal, Steamboat Springs, CO; Continental Airlines President's Club Denver International Airport, Denver, CO; The Paradies Shops, Denver International Airport, Denver, CO

Work Done In Colorado: 100%

Clients Should Contact:

Victor D. Langhart, AIA

Manufacturers Should Contact:

Jack Cook, Helen Brown, John Anderson

T*REX ARCHITEX

235 Fillmore Street, Suite 260
Denver, CO 80206
(303) 388-2918
FAX: 388-5838

Year Established: 1986

Principals: Rex Crook

Firm Personnel By Discipline:

Architectural	2
---------------	---

Types of Work:

Commercial	10%
Multiple Family Dwellings	2%
Residential	15%
Retail	5%
Other	68%

Examples Of Projects: South Fellowship Church, Littleton, CO; US WEST NewVector, Metro CO; 379 South York Street residence, Denver, CO; 1231 South Clayton Street residence, Denver, CO; 500 Milwaukee Street residence, Denver, CO

Work Done In Colorado: 98%

Work Done Outside State: 2%

Clients Should Contact:

Rex Crook

Manufacturers Should Contact:

Rex Crook

TSP FIVE, INC.

8751 East Hampden Avenue, Building B-7
Denver, CO 80231
(303) 695-1997
FAX: 695-1938

Year Established: 1981 (The TSP Group, 1930)

Principals: Richard Nearman, President Robert Saas, Vice president

Firm Personnel By Discipline:

Administrative	2.5
Architectural	9.5

Types of Work:

Commercial	10%
Hospitals	5%
Institutional	25%
Multiple Family Dwellings	10%
Retail	5%
Schools	25%
Other	25%

Examples Of Projects: O'Connell Middle School, Jefferson County Schools, Lakewood, CO; Adolph Coors Brewing Company Wellness Center, Golden, CO; Shepherd of the Hills Presbyterian Church addition, Lakewood, CO; Lord of the Mountains Lutheran Church addition, Dillon, CO; Holy Cross Catholic Church renovation, Thornton, CO; The New Life Direction Center Building, Regis College, Denver, CO; Wray Rehabilitation and Activities Center, Wray, CO; Lone Tree Country Club, Douglas County, CO; Colorado Department of Parks and Outdoor Recreation Arkansas River Headquarters Building, Salida, CO; New Hospital Study, Mile City, MT

Work Done In Colorado: 80%

Work Done Outside State: 20%

Clients Should Contact:

Richard Nearman or Robert Saas

Manufacturers Should Contact:

Richard Nearman or Robert Saas

TECH-SITES CORPORATION

13275 East Fremont Place, Suite 207
Englewood, CO 80112
(303) 799-6405
FAX: 799-6424

Year Established: 1992

Principals: Wilfred M. Sugai, AIA

Firm Personnel By Discipline:

Administrative	3
Architectural	1
Engineering	1
Technical	8
Other	12

Types of Work:

Commercial	95%
Hospitals	5%

Examples Of Projects: VA Denver Telephone site preparation, Denver, CO; Fort Micro Electronics, Colorado Springs, CO; Light Fantastic, Denver, CO

Work Done In Colorado: 100%

Clients Should Contact:

Wilfred M. Sugai

Manufacturers Should Contact:

Wilfred M. Sugai

TECTONIC MANAGEMENT GROUP, INC.

P.O. Box 6416
Denver, CO 80206
(303) 480-9262
FAX: 733-3726

Year Established: 1990

Principals: Mark A. Stormberg, AIA Richard O. Kuberski
Mark E. Potadle

Firm Personnel By Discipline:

Administrative	2
Architectural	3
Other	1

Types of Work:

Commercial	75%
Institutional	10%
Residential	5%
Retail	10%

Examples Of Projects: AMR Combs General Aviation Facility, construction management Denver International Airport, Denver, CO; Littleton Texaco Auto Service Center, design/build Littleton, CO; Knott's Berry Farm Camp Snoopy Theme Park, Mall of America, owners representative, Bloomington, MN

Work Done In Colorado: 80%
Work Done Outside State: 20%

Clients Should Contact:
Mark A. Stormberg

Manufacturers Should Contact:
Mark Potadle

DAVID OWEN TRYBA ARCHITECTS

1601 Arapahoe Street, Fourth Floor
Denver, CO 80202
(303) 629-9363
FAX: 595-3023

Year Established: 1988

Principals: David Owen Tryba

Firm Personnel By Discipline:

Administrative	1
Architectural	5
Technical	4

Types of Work:

Commercial	25%
Institutional	20%
Residential	20%
Retail	15%
Other	20%

Examples Of Projects: Mercantile Square, Denver, CO; Four historic branch libraries Denver, CO; Six private residential homes, Denver, CO; St. Joseph Catholic Church, Grand Junction, CO; Stanley British Primary, Denver, CO; Regis High School, Aurora, CO; Three Denver Public Schools renovations and additions, Denver, CO; Birmingham Bloomfield Art Center, Birmingham, MI; Aurora Reservoir Facility, Aurora, CO; Eurobath and Tile Showroom and Lofts, Denver, CO

Work Done In Colorado: 90%
Work Done Outside State: 10%

Clients Should Contact:
David Tryba

Manufacturers Should Contact:
William Moon

Here's The Warehouse For All The AIA Documents Your Firm Needs.



We've stored all of the AIA Documents on electronic disks so you can have them in your office all of the time . . . anytime for a year. There's no need ever again for you to run out of documents. Simply slip a disk into your PC, add the information or modify the document, and print it. It's that easy. No more storage problems, no more inventory problems. A virtually unlimited supply of AIA Documents all year long. When the annual license expires, you renew it. It's that simple. Just \$325 a year for AIA members; \$425 for non-members. For additional details and to order your unlimited supply of AIA electronic documents, call us today.

AIA EDS

AIA Denver
1660 Wynkoop, Suite 120, Denver, CO 80202

We also carry printed (hard copy) Documents.

URBAN DESIGN GROUP, INC.

1440 Blake Street, Suite 300
Denver, CO 80202
(303) 623-3800
FAX: 623-3729

Year Established: 1975

Principals: Peter H. Dominick, Jr., AIA
Sandy McLeod

Ron Armstrong, AIA

Firm Personnel By Discipline:

Administrative	8
Architectural	21
Interior Design	4
Landscape Architect	1
Technical	2
Other	3

Types of Work:

Commercial	40%
Hospitals	3%
Institutional	10%
Multiple Family Dwellings	10%
Residential	5%
Retail	25%
Schools	7%

Examples Of Projects: Disney Wilderness Lodge Resort, Orlando, FL; Tivoli Union Building Renovation, Denver, CO; The Denver Building, Denver, CO; United Artists Theatres 12-plex Englewood, CO; Rivercenter, San Antonio, TX; Telluride Gondola Terminal, Telluride, CO; Philbrook Museum, Tulsa, OK; Sinclair Cabin, Montrose, CO; Telluride Employee Housing Telluride, CO; Carlson Center, Minneapolis, MN

Work Done In Colorado: 50%

Work Done Outside State: 50%

Clients Should Contact:

Ron Armstrong, Peter H. Dominick, Jr. or
Sandy McLeod

Manufacturers Should Contact:

Tracy Buffum

BRAD ADAMS WALKER ARCHITECTURE, P.C.

235 Fillmore Street, Suite 260
Denver, CO 80206
(303) 388-9500
FAX: 388-2305

Year Established: 1992

Principals: Brad Adams Walker

Firm Personnel By Discipline:

Administrative	2
Architectural	7
Interior Design	1

Types of Work:

Commercial	90%
Residential	10%

Examples Of Projects: Chevron USA Computer Control Facility, San Francisco, CA; Prudential Plaza streetscape improvements, Denver, CO; Nichols Construction Headquarters facility, Denver, CO; Total Petroleum Computer Control Facilities, Alma, MI; Ardmore, OK

Work Done In Colorado: 20%

Work Done Outside State: 80%

Clients Should Contact:

Brad Adams Walker

Manufacturers Should Contact:

Karen Smith

DOUG WALTER ARCHITECTS

280 Columbine Street, Suite 205
Denver, CO 80206
(303) 320-6916

Year Established: 1979

Principals: Doug Walter, AIA

Firm Personnel By Discipline:

Administrative	1
Architectural	6
Technical	1

Types of Work:

Residential	100%
-------------	------

Examples Of Projects: NEW HOMES: 401 Forest Street, 120 South Clermont Street, 1805 East Cedar Avenue, 581 South Downing; REMODELS: 123 Dahlia Street, 137 Dahlia Street, 45 Elm Street, 5656 East Sixth Avenue, 15 Ivy Lane, 5800 East 3rd Avenue, 120 Kearney Street, 890 South Josephine Street, 219 Gaylord Street, 111 East Tufts Avenue, 2 University Lane, 5429 South Krameria Street

Work Done In Colorado: 95%

Work Done Outside State: 5%

Clients Should Contact:

Doug Walter, AIA

Manufacturers Should Contact:

Stan Gould, AIA

WETZSTEON DESIGN ASSOCIATES

7692 South Monaco Circle East
Englewood, CO 80112
(303) 220-8011
FAX: 220-8011

Year Established: 1987

Principals: Terry Wetzsteon, AIA

Firm Personnel By Discipline:

Architectural	1
Interior Design	1

Types of Work:

Multiple Family Dwellings	10%
Residential	50%
Other	40%

Examples Of Projects: Breckenridge Brewery, Denver, CO; Victoria Square P.U.D., Aspen, CO; Sax Residence, Aspen, CO;

Work Done In Colorado: 80%

Work Done Outside State: 20%

Clients Should Contact:

Terry Wetzsteon

MERRILL ANN WILSON, ARCHITECT

32351 Horseshoe Drive
Evergreen, CO 80439
(303) 674-1377
FAX: 670-9190

Year Established: 1984

Principals: Merrill Ann Wilson, AIA

Firm Personnel By Discipline:

Architectural 1

Types of Work:

Commercial	35%
Institutional	50%
Schools	15%

Examples Of Projects: Molly Brown House, Denver, CO; Bent's Fort, La Junta, CO; 20th Street Recreation Center, Denver, CO; Grant Humphries Mansion, Denver, CO; Governor's Mansion, Denver, CO; Masonic Building, Denver, CO; Union Station, Denver, CO; 1st Avenue/Speer Boulevard, Denver, CO; Larimer Square, Denver, CO

Work Done In Colorado: 100%

Clients Should Contact:

Merrill Ann Wilson

Manufacturers Should Contact:

Merrill Ann Wilson

ARTHUR WISE ARCHITECTS AIA, PC

1077 Cherokee Street
Denver, CO 80204
(303) 573-9542
FAX: 623-8203

Year Established: 1973

Principals: Arthur Wise III

Firm Personnel By Discipline:

Administrative	1
Architectural	2
Landscape Architect	1

Types of Work:

Commercial	10%
Multiple Family Dwellings	20%
Residential	30%
Retail	30%
Other	10%

Examples Of Projects: Famous Video and Music, Denver, CO; Dietrich's Chocolate and Espresso, Denver, CO; Clayton Arbor Retail Shops, Denver, CO; Beauty Express, Beauty Supply Store, Denver, CO, Sebring, FL, Atlanta, GA, Houston, TX; Country Cafe, Wheatridge, CO; Davis and Shaw Furniture, Denver, CO; Eaglebend Apartments, Avon, CO; Co-op Service Station and Tire Service, Colby, KS; Benson Residence, Breckenridge, CO; Barnes Residence, Denver, CO

Work Done In Colorado: 80%

Work Done Outside State: 20%

Clients Should Contact:

Arthur Wise

Manufacturers Should Contact:

Arthur Wise

DAVID LYNN WISE AIA - ARCHITECT

1543 Champa Street, Suite 220
Denver, CO 80202
(303) 592-1003
FAX: 592-1162

Year Established: 1991

Principals: David Lynn Wise, AIA

Firm Personnel By Discipline:

Architectural	1
---------------	---

Types of Work:

Commercial	5%
Multiple Family Dwellings	20%
Residential	70%
Other	5%

Examples Of Projects: 120 South Marion Street residence, Denver, CO; 1916 Fairfax residence, Denver, CO; 1434 South Logan Street residence, Denver, CO; Historical analysis - 16th Street Mall in LoDo, Denver, CO; Neustater Lofts parking, Denver, CO; Tramway Tower Apartments, Denver, CO; Brauley Building Lofts, Denver, CO; Sustainable Architecture House, Fairplay, CO

Work Done In Colorado: 100%

Clients Should Contact:

David Lynn Wise, AIA

Manufacturers Should Contact:

David Lynn Wise, AIA

WONG STRAUCH ARCHITECTS, a P.C.

1940 Blake Street, Suite 200
Denver, CO 80202
(303) 293-9206
FAX: 293-9208

Year Established: 1989

Principals: Jam F. Wong, AIA Donald E. Strauch, AIA

Firm Personnel By Discipline:

Administrative	6
Architectural	10
Interior Design	1
Technical	9

Types of Work:

Commercial	70%
Institutional	12%
Multi-Family Residence	5%
Residential	1%
Retail	2%
Schools	10%

Examples Of Projects: United Airlines tenant improvements, Concourse B, Denver International Airport, Denver, CO; Cleo Wallace Center, Westminster, Colorado Springs, CO; Craig Fire Station, Craig, CO; National Car Rental and Budget Rent a Car facilities at Denver International Airport, Denver, CO; United Airlines Medical and Training Facilities, Denver International Airport, Denver, CO; Denver Public Works/Parks and Recreation, Recreation Centers, Denver, CO; Aurora Municipal Centers space planning, Aurora, CO; National Park Service, Denver, CO; Denver Housing Authority, Denver, CO; United Airlines Facilities Management, Denver International Airport, Denver, CO

Work Done In Colorado: 100%

Clients Should Contact:
Jam Wong or Donald Strauch

Manufacturers Should Contact:
John Yancey

Z PLAN

1900 South Clarkson Street
Denver, CO 80210
(303) 733-3200
FAX: 733-3200

Year Established: 1988

Principals: James Zavist, AIA

Firm Personnel By Discipline:

Architectural	1
---------------	---

Types of Work:

Commercial	60%
Residential	10%
Retail	30%

Examples Of Projects: Tenant planning work at 410 17th Street; Lake Arbor Center, Quebec Highlands Center, and Foothills Center; For Coffee Cache, Washington Park Community Center, Prince Street Bingo, and Rack-Em Cue Club; A Carriage House renovation and expansion; and two residential expansion projects; all in the Denver metropolitan area

Work Done In Colorado: 100%

Clients Should Contact:
Jim Zavist

Manufacturers Should Contact:
Jim Zavist

WILLIAM ZMISTOWSKI ASSOCIATES

1909 Broadway
Boulder, CO 80302
(303) 449-4831
FAX: 449-1345

Year Established: 1978

Principals: V. William Zmistowski, Jr., AIA

Firm Personnel By Discipline:

Administrative	2
Architectural	7
Interior Design	1
Other	1

Types of Work:

Commercial	50%	Retail	5%
Institutional	10%	Other	15%
Residential	10%		

Examples of Work: East Sussex National Hotel, Uckfield, East Sussex, UK; Desert Highlands Golf Club, Scottsdale, AZ; Sherwood Country Club, Los Angeles, CA; University of Colorado President's House, Boulder, CO; Honnen Office Building, Denver Tech Center, CO; Country Club at Castle Pines, Castle Rock, CO; Morrish Residence, Dallas, TX; Cliffhouse Restaurant, Palm Springs, CA; Indianwood Golf and Country Club, Detroit, MI; Olympic Country Club, Tokyo, Japan

Work Done In Colorado 20%
Work Done Internationally 10%

Work Done Outside Colorado 70%

Clients Should Contact:

Bill Zmistowski, Jr., AIA

Manufacturers Should Contact:

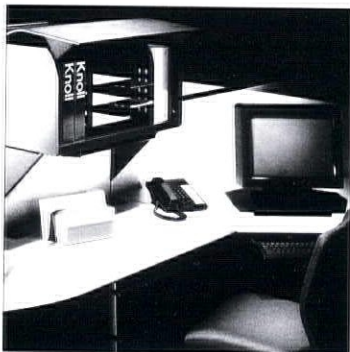
Grace Mount

Presenting adjustable solutions for the intelligent workspace

Well-designed, easily adjustable furnishings with ergonomic options can make workers more comfortable and more productive. The Bulldog Chair[®], Interaction[™] Table, and Reuter Overhead Storage reflect Knoll's responsiveness to ergonomic guidelines set by ANSI, OSHA and the Americans With Disabilities Act as well as relevant international standards, including DIN.

Reuter Overhead Storage, conceived to work with Morrison Network[™], features a pneumatic door that opens fully with one touch of a finger. Computer monitors fit neatly underneath.

For all the news, please call 303 573-1056
The Knoll Group 1660 Wynkoop Street, Suite 100, Denver, Colorado 80202



© 1993 The Knoll Group

Knoll

Delivering intelligent workspaces worldwide.™

T h e 1 9 9 4

P R O F I L E

Of Denver Architects

**LISTING
OF OTHER
PROFESSIONAL
SERVICES**

D E N V E R C H A P T E R
THE AMERICAN INSTITUTE OF ARCHITECTS

AMERICAN ABATEMENT, INC.

5835 West 6th Avenue, Suite 4A
Lakewood, CO 80214
(303) 237-3204
FAX: 237-8330

American Abatement is a full service asbestos abatement company with excellent staff and over 600 jobs completed. Commercial and residential work, bonded, insured and dependable.

Contact: Jim Clark/Greg Anderson

Cement/Mortar Producer

QUICKRETE- COLORADO (DRI-MIX CONCRETE CO.)

6200 Bryant Street
Denver, CO 80221
(303) 429-2111
FAX: 428-9265

Manufacturer of construction products, packaged portland/lime cement and SPEC/MIX - specification bulk mortar and silo System. Custom colors available.

Contact: Frank J. Owens

Construction Management/General Contractor

HASELDEN CONSTRUCTION, INC.

2134 South Valentia Street
Denver, CO 80231
(303) 751-1478
FAX: 751-1627

Preconstruction and construction services including design phase cost consulting, conceptual estimating, value engineering, construction management, general construction, and design/build services. Serving the healthcare, educational, hospitality, retail, high tech, industrial, and renovation marketplace.

Contact: E. J. Haselden, President

G E JOHNSON CONSTRUCTION COMPANY

P.O. Box 2139
Colorado Springs, CO 80901
(719) 473-5321
FAX: 473-5324

Preconstruction and construction services including conceptual estimating, construction management, general construction, and design build services throughout Colorado. Expertise in high tech/biotech manufacturing, correctional, hospitality/resort, healthcare, renovation, and interior finish projects.

Contact: Gil Johnson, Jim Johnson, and Angie Kinnaird

GERALD H. PHIPPS, INC.

1530 West 13th Avenue
Denver, CO 80204
(303) 571-5377
FAX: 629-7467

3100 North El Paso Street
Colorado Springs, CO 80907
(719) 633-4673
FAX: 471-3169

Providing complete preconstruction and construction phase services including conceptual estimating, value engineering, scheduling, competitive bidding, design/build/finance, and full General Contractor Services. Serving the medical, educational, high tech, office, hospitality, industrial, renovation and tenant finish marketplace throughout Colorado.

Contact: Bruce Ferguson, Richard C. Freske, John A. Gibbs

SAUNDERS CONSTRUCTION INC.

P.O. Box 3908
6950 South Jordan Road
Englewood, CO 80155
(303) 699-9000
FAX: 680-7448

Design/build, CM/GC services with preconstruction staff. Our project managers, project administrators, field engineers, and superintendents have expertise in hospital, high tech, industrial, office, retail, recreational and educational projects throughout Colorado.

Contact: Tom Blackstone and Judy Sealock

Consulting Engineers

BEAUDIN GANZE CONSULTING ENGINEERS, INC.

P.O. Box 39
Vail, CO 81658
(303) 949-6108
FAX: 949-6159

Mechanical and electrical engineering services based out of two Colorado offices. Focus is on hospital, commercial, institutional and exclusive residential projects and close client contact.

Contact: Thomas C. Ganze, P.E.

MCFALL-KONKEL & KIMBALL CONSULTING ENGINEERS, INC.

2160 South Clermont Street
Denver, CO 80222
(303) 753-1260
FAX: 753-1312

Provide mechanical/electrical/energy/environmental engineering services for public and private sector projects. Use CADVANCE and AUTOCAD. Serving Denver, Colorado and locations throughout North America.

Contact: Robert E. Sidwell, Vice-president

RIEGEL ASSOCIATES, INC

5310 DTC Parkway, Suite E
Englewood, CO 80111
(303) 796-7272
FAX: 796-9416

Mechanical, electrical and life safety building systems/analysis; conceptual design, performance standards, design/build, value engineering, quality assurance/peer review, troubleshooting, system commissioning, forensic investigations.

Contact: Don Reigel, P.E.

Dry Wall/Framing

DELTA DRY WALL INC.

2605 West 7th Avenue
Denver, CO 80204
(303) 534-4295
FAX: 534-4672

The firm was incorporated in 1969 and is a service company specializing in steel stud framing, drywall, exterior insulation and finish systems, panelization, and insulation and demountable partitions.

Contact: Ross T. Plowman or Brent A. Funk

Electrical Contractor

BRYANT ELECTRIC, INC.

7020 South Tucson Way
Englewood, CO 80112
(303) 799-8920
FAX: 799-8916

Design/build electrical construction for fast track commercial, industrial, governmental, institutional, health care, shopping center and historic building renovation projects. Complete electrical engineering and CAD design capabilities.

Contact: William J. Bryant

Economic/Market Analysis

HAMMER, SILER, GEORGE, ASSOCIATES

1638 Pennsylvania Street
Denver, CO 80203
(303) 860-9996
FAX: 832-6513

Forty years experience on multidisciplinary teams providing market and economic analysis, including optimum use mix, pro forma feasibility analysis, fiscal impact and absorption projections.

Contact: J. Lee Sammons, Ron Dutto

THE KNOLL GROUP

1660 Wynkoop Street, Suite 100
Denver, CO 80202
(303) 573-1056
FAX: 893-2951

Full-service manufacturer of open plan office systems, casegoods, files, seating, studio classics, accessories and textiles.

Contact: Susan McKee

ADOLFSON & PETERSON, INC.

505 Nucla Way, Unit D
Aurora, CO 80011
(303) 363-7101
FAX: 363-9251

"Total Construction Services" for all types of commercial construction. Forty-eight years of experience, providing preconstruction and construction services for educational, office, church, industrial, manufacturing and health care facilities.

Contact: Tom Pirog

BROWN-SCHREPFERMAN & COMPANY

2380 South Tejon Street
Englewood, CO 80110
(303) 935-2475
FAX: 934-1781

We have been in business since 1889. Commercial/industrial general contractor providing complete construction services, tenant finish to new construction and remodeling, 1.5 million to 4 million.

Contact: Robert C. Brown

CALCON CONSTRUCTORS, INC.

2270 West Bates Avenue
Englewood, CO 80110
(303) 762-1554
FAX: 762-1948

Based and founded in Denver since 1981. Member of the Associated General Contractors of Colorado. Merit shop, commercial general contractor, offering general construction, design/build and construction management services.

Contact: Cal Cox, Jim Bosshart, and Joe Gallion

GERALD H. PHIPPS, INC.

1530 West 13th Avenue
Denver, CO 80204
(303) 571-5377
FAX: 629-7467

3100 North El Paso Street
Colorado Springs, CO 80907
(719) 633-4673
FAX: 471-3169

Providing complete preconstruction and construction phase services including conceptual estimating, value engineering, scheduling, competitive bidding, design/build/finance, and full General Contractor Services. Serving the medical, educational, high tech, office, hospitality, industrial, renovation and tenant finish marketplace throughout Colorado.

Contact: Bruce Ferguson, Richard C. Freske, John A. Gibbs

SAUNDERS CONSTRUCTION INC.

P.O. Box 3908
Englewood, CO 80155
(303) 699-9000
FAX: 680-7448

Saunders is a 20 year old, award winning, Colorado owned CM/GC with experience in all types of commercial construction emphasizing preconstruction services.

Contact: Tom Blackstone

TANDEM ENTERPRISES, INC

12503 East Euclid Drive, Suite 60
Englewood, CO 80111
(303) 792-3971
FAX: 792-3972

A general construction corporation specializing in design-build and general construction services for interiors and light commercial projects throughout the Front Range and western United States.

Contact: Scott S. Gratrix

TAYLOR BALL

5775 Flatiron Parkway, Suite 115
Boulder, CO 80301
(303) 440-4220
FAX: 440-4256

Top 25 Front Range contractor since 1981. New construction-remodel-renovation-C.M. Established in 1947 with operations in Iowa, Colorado, California. Top 175 nationally ranked G.C. Dedicated team player.

Contact: Fred Hampe

Geotechnical Engineering

CTL/THOMPSON, INC.

1971 West 12th Avenue
Denver, CO 80204
(303) 825-0777
FAX: 825-4252

Geotechnical engineering, environmental services, construction observation, construction materials testing; soils, concrete, asphalt, masonry, structural steel, fireproofing. Complete engineering and testing in the field and laboratory.

Contact: Art Greengard

Geotechnical/Environmental

HUNTINGDON, CHEN-NORTHERN, INC.

96 South Zuni Street
Denver, CO 80223
(303) 744-7105
FAX: 744-0210

Full service geotechnical engineering; environmental site assessments; asbestos surveys and management plans; remedial engineering; construction material testing and observation. Seventeen offices throughout the western U.S.

Contact: Tom Ramsey, Dave Adams

Hardwood Floor Finishes

BONAKEMI USA, INC.

14805 East Moncrieff Place
Aurora, CO 80011
(303) 371-1411
FAX: 371-6958

Bonakemi offers "All You Need" in waterborne floor finishing and maintenance products to bring out the natural beauty of any hardwood floor.

Contact: Gary Markle

Insurance

PUI AGENCY OF COLORADO, INC.

90 Madison, Suite 300
Denver, CO 80206
(303) 388-1511
FAX: 355-7873

Specializing in professional liability insurance for architects, engineers, and construction industry consultants.

Contact: Carolyn Keil, CIC

VAN GILDER INSURANCE CORPORATION

700 Broadway, Suite 1000
Denver, CO 80203
(303) 837-8500
FAX: 831-5295

Architects and engineers professional liability, bonds and insurance for contractors.

Contact: Karl Parker, Ed Hays

Interior Design

CAROL MATHERS INTERIORS, INC.

121 Summit Boulevard
Englewood, CO 80110
(303) 781-5378
FAX: 781-5378

Full service commercial/residential interior design firm; complete predesign and design phase services; coordination of owner-supplied data; programming; space-planning; materials specification; installation; materials research.

Contact: Carol Mathers, President

Kitchen/Bath Cabinetry

WM. OHS SHOWROOMS, INC.

2900 East 6th Avenue
Denver, CO 80206
(303) 321-3232
FAX: 321-8299

Dramatically styled and carefully engineered Kitchen and Bath furniture from America and Europe, displayed in Denver's Premier Showroom. Professional design assistance available.

Contact: Mary Lynn Rockwell CKD, Sharon Overstake, Kelly Peterson

Land Planning

PLAN WEST, INC.

2755 South Locust Street, Suite 117
Denver, CO 80222
(303) 758-1411
FAX: 758-4856

Land/master planning, zoning/public processing, conflict resolution, site design, landscape architecture (registered), project coordination, CADD support, specializing in mixed use PUD, business parks and multi-family.

Contact: Bill Howard

HNTB CORPORATION

3609 South Wadsworth Boulevard, Suite 220
Denver, CO 80235
(303) 988-4682
FAX: 988-4699

Master planning, design and engineering for parks, trails, bikeways and streetscapes. Urban design, design guidelines/regulations and redevelopment expertise for public and private utilities.

Contact: Ellen Crain-Jordan

Legal Service

GRIMSHAW & HARRING, P.C.

1700 Lincoln Street, Suite 3800
Denver, CO 80203
(303) 839-3800
FAX: 839-3838

Advocates for design professionals providing services regarding contracts, claim avoidance and defense, professional license issues, insurance, employee relations, fee disputes, and general business advice.

Contact: Edward J. Blieszner

Mason Contractor

CONLEY-BUILT, INC.

970 Simms Street
Golden, CO 80401
(303) 235-0358
FAX: 235-0366

In business since 1977, masonry construction services include design recommendations, quality construction and compliance with aggressive scheduling. WBE certified, state certified safety program.

Contact: Susan Conley, Peter Conley

Mason Subcontractor

DAN BERICH INC.

1675 West Yale, Suite D
Englewood, CO 80110
(303) 922-8213
FAX: 922-8224

Mason subcontractor for 33 years in the Denver Metro Area with a state certified safety program.

Mechanical/Electrical Engineering

THE RMH GROUP, INC.

12600 West Colfax Avenue, Suite A-400
Lakewood, CO 80215
(303) 239-0909
FAX: 235-0218

Project management, planning, design, and construction services for HVAC, utility/process piping, fire protection systems, primary/secondary/UPS/emergency power, instrumentation/controls, automation, lighting, telecommunications.

Contact: Diane J. Strickler

Mechanical Engineering

THE BALLARD GROUP, INC.

2525 South Wadsworth Boulevard, Suite 200
Lakewood, CO 80227
(303) 988-4514
FAX: 988-4517

Mechanical engineering services including HVAC, plumbing and fire protection design for commercial, medical, educational, recreation facilities and public buildings. Extensive CAD capabilities.

Contact: Michael R. Ballard

Parking Consultants

WALKER PARKING CONSULTANTS/ENGINEERS, INC.

2530 South Parker Road, Suite 635
Aurora, CO 80014
(303) 337-2634
FAX: 751-4610

National specialists in functional and structural design of parking structures. Parking consulting for commercial, institutional, and public projects. Feasibility studies, economic analyses, and restoration engineering.

Contact: Larry W. Hofmockel, P.E., Principal

Structural/Civil Engineers

S.A. MIRO, INC.

4582 South Ulster Street Parkway, Suite 1501
Denver, CO 80237
(303) 741-3737
FAX: 694-3134

Structural, civil and investigative consulting engineering for a broad variety of commercial and government projects, serving clients in both public and private sectors.

Contact: Sami A. Miro, P.E., President, Certified MBE

Structural Consultants

BIERBACH CONSULTING ENGINEERS

5707 West 6th Avenue
Denver, CO 80214
(303) 233-5838
FAX: 233-0516

Framing and feasibility studies, field observations and reports, construction consultation, preliminary drawings, design and analysis, computer modeling, on-site supervision, working drawings, cost analysis, investigations, specifications and CAD drafting.

Contact: Steven E. Bierbach

Structural Engineers

JVA, INCORPORATED

1319 Spruce Street
Boulder, CO 80302
(303) 444-1951
FAX: 444-1957

Structural design/investigation of buildings-public and private. Active principals. Experienced staff of twelve. Capable of wide variety of projects. Use AUTOCAD. Service since 1956.

Contact: Robert B. Hunnes, David M. Houdeshell, Thomas. S. Soell

NICOL + HOFBLAND ASSOCIATES INC.

4730 Walnut Street, Suite 210	1617 Wazee Street, Suite C
Boulder, CO 80301	Denver, CO 80202
(303) 443-1677	(303) 446-2558
FAX: 449-2422	FAX: 446-2568

Structural engineers offering comprehensive professional design services to architects, developers and others. Special experience/expertise in mountain residential, lodge, municipal and commercial projects to \$25 million.

Contact: Joseph C. Nicol, P.E., Paul B. Hofland, P.E.

TEXTILE TECHNIQUES, INC.

434 Washington Street
Denver, CO 80203
(303) 744-3801
FAX: 733-4942

UNLIMITED FABRIC INSTALLATIONS FOR WALLS AND CEILINGS. Wall Upholstery, Fabric Wall Reliefs, Acoustic Wall Treatments.

Contact: P.J. Bergin

Wholesale Showrooms

DESIGN CENTER AT THE ICE HOUSE

1801 Wynkoop Street
Denver, CO 80202
(303) 298-9191
FAX: 295-7428

More than 40 commercial and residential showrooms representing more than 1000 manufacturers of fabrics, wallcoverings, lighting, furniture, accessories, carpeting, tile, furniture systems and seating.

Contact: WillaJean Wilson, Executive Director



