

November 2025

ARCHITYPE

THE DIGITAL MAGAZINE OF AIA CONNECTICUT

2025 AIA Design AWARDS



**AIA Connecticut
Announces
Individual
Awards**

**AIA Guides
for Equitable
Practice
Strengthen
EDI Initiatives**

**Latest
Materials
Pledge by
the Numbers
Report**

**New Haven is
a 'Trending'
Destination
For 2026**

2026 BUILDING PERFORMANCE AND CODES SEASON PASS

Saves you approximately 30% versus purchasing programs individually!

- 10+ HSW Continuing Education credits over course of year
- Includes Building Performance & Regulations and Codes virtual programs
- Also includes a Building Performance & Regulations or Codes In-Person event at a discount



\$495^{.00}

We've rolled back the price to 2024 rates!

CLICK
HERE!

or use the QR Code



**SIGN UP BY
DECEMBER
23, 2025**

TABLE OF CONTENTS

FEATURES

- 5** FROM THE EXECUTIVE DIRECTOR
- 7** PRESIDENT'S COLUMN
- 8** 2025 Design Awards
- 23** Dominique Moore, AIA, the 2025 President's Awardee
- 24** AIA Connecticut Honors Exemplary Contributions to the Built Environment with 2025 Public Service Awards
- 26** 2025 Volunteers of the Year Awards
- 28** Ashley Anderson
AIA Connecticut's 2025 Allied Member of the Year
- 30** Leveraging the AIA Guides for Equitable Practice to Strengthen EDI Initiatives
- 31** The 2025 J.E.D.I. Award Recipients
- 32** Collaboration with AIA Connecticut for Upcoming Seasons on CBS
- 34** AIA Releases Latest Materials Pledge by the Numbers Report
- 35** AIA Strategic Council October Highlights and Looking Ahead to 2026
- 36** CAF: Building the Future of Architecture in Connecticut
- 38** New Haven is a 'Trending' Destination For 2026, According to Travel Agency Skyscanner
- 39** Amenta Emma Architects Expands Boston Office Amid Growing New England Portfolio
- 40** Patriquin Architects Celebrating 15 Years of Growth, Leadership, and Design Excellence
- 42** NATIONAL NEWS
AIA Housing Summit Seeks Solutions to the U.S. Housing Crisis
AIA Announces \$4 Million Matching Grant to the Architects Foundation to Renew and Preserve the Octagon
- 45** OUT AND ABOUT
Women in Architecture Coffee Meetups Unite Members Across Connecticut
Industry Professionals Gathered for Energy Code Deep Dive
Annual Fellows Dinner
- 49** Calendar

PUBLISHED BY AIA CONNECTICUT

EDITOR

Gina Calabro, Hon. AIA CT

ART DIRECTOR

Anthony Calabro

CONTRIBUTORS

Gina Calabro, Hon. AIA CT
Marc Guerrier Andre, AIA, NCARB
Nancy Clayton, AIA
Jayden Nguyen
Katherine Flynn

OFFICE

The District
470 James Street, Suite 111
New Haven, CT, 06513

MAILING ADDRESS

The District
470 James Street, 007
New Haven, CT, 06513

communications@aiact.org

ON THE COVER:

A House for Grandmothers

Photography by Nicholas Venezia

© Architype. No part of this publication may be reproduced, stored in a retrieval system or transmitted in any form or by any means, photocopying, electronic, mechanical or otherwise without the prior written permission of the copyright owners.

While precautions have been taken to ensure the accuracy of its contents and information given to readers, neither the editor, publisher, or its agents may arise therefrom. All rights reserved.

WWW.AIACT.ORG

ARCHITYPE is a publication of the American Institute of Architects Connecticut.

ARCHITYPE

THE DIGITAL MAGAZINE OF AIA CONNECTICUT



You are the Power Behind Our Profession

The driving force behind AIA Connecticut is YOU — our members.

Everything we do is built to help you thrive in your professional journey. Staying informed, connected, and engaged isn't just beneficial — it's essential to shaping the future of architecture.

YOUR MEMBERSHIP MAKES A DIFFERENCE

Your voice, your perspective, your passion fuel our advocacy, energize our programs, and guide the evolution of architecture across Connecticut.

Our AIA Connecticut team is committed to supporting you. We're here to answer your questions, elevate your work, and stand by you as a partner in shaping what comes next.

**Stay Connected. Stay Inspired.
Stay Involved.**



FROM THE EXECUTIVE DIRECTOR

2025 BOARD OF DIRECTORS



As we reflect on the accomplishments of this past year, I continue to be inspired by the dedication, leadership, and design excellence that define AIA Connecticut. Our community has celebrated a season of meaningful achievements—from statewide gatherings and educational programs to prestigious honors recognizing our members’ outstanding contributions.

Across the state, our members and firms continued to receive significant recognition. The 2025 Design Awardees represent the highest level of architectural achievement

in Connecticut this year. We will proudly honor Dominique Moore, AIA, with the 2025 President’s Award and recognize individuals advancing our built environment through the 2025 Public Service Awards. We celebrate our 2025 Volunteers of the Year, whose dedicated service strengthens our mission daily, and congratulate Ashley Anderson, named 2025 Allied Member of the Year.

Our commitment to equity and inclusion remains central to our work. This year’s J.E.D.I. Award Recipients and our continued efforts leveraging the AIA Guides for Equitable Practice demonstrate the profession’s growing leadership in advancing equitable, inclusive, and justice-centered design practices.

Education and professional development also remained front and center. Our October program, “From Compliance to Performance: A Deeper Dive into the Energy Code,” was a sold-out event that equipped architects, engineers, and building professionals with essential guidance on Connecticut’s upcoming energy code changes and strategies for achieving higher-performance design.

Looking ahead, we are thrilled to announce our upcoming collaboration with America ByDesign, which will spotlight AIA Connecticut member projects on a national and international stage on television and streaming services. This partnership celebrates the design talent found across our state and reinforces our role in shaping and promoting the future of the built environment.

As we close this month with the celebration of Thanksgiving, I extend my heartfelt appreciation to every member, volunteer, partner, and colleague who contributes to the vibrant and forward-looking community that is AIA Connecticut. Together, we are building a more sustainable, equitable, and inspired future for architecture and I am honored to be a part of it.

Happy Thanksgiving,

Gina Calabro, Hon. AIACT, NOMA

PRESIDENT

Marc Andre, AIA
Marc G. Andre Architects, LLC

PRESIDENT-ELECT

F. Michael Ayles, FAIA
Antinozzi Associates, PC

TREASURER

Amy Samuelson, AIA, LEED AP
BL Companies

SECRETARY

Julia Su Jack, AIA, NCARB,
NOMA, PMP
City of Hartford

PAST PRESIDENT

Susan Wyeth, AIA, NOMA
Centerbrook Architect & Planners

DIRECTORS AT LARGE

Brian Baril, AIA
A/Z Corporation

Dov Feinmesser, AIA
Newman Architects

Nyicia George, Associate AIA
City of Hartford

Leen Hariri, Associate AIA, NOMA
Patriquin Architects

Thomas Haskell, AIA, LEED AP
University of Connecticut

Daniel Horowitz, AIA
University of Hartford

Jennifer Huestis, AIA NOMA
Huestis Tucker Architects, LLC

Julia Su. Jack, AIA, NOMA
City of Hartford

Jeremy Jamilkowski, AIA
Amenta Emma Architects

David O'Connor, AIA
Centerbrook Architect & Planners

Thaddeus M. Stewart, AIA NOMA
Integrated Design & Construction, LLC

Gina Calabro, Hon. AIACT, NOMA
Executive Director/CEO

A hand with a white manicure points to a specific area on a set of architectural blueprints. The blueprints show room layouts with dimensions and door swings. Three colored callout boxes are overlaid on the image: a teal box at the top left, an orange box in the middle left, and a red box in the middle right. Each box contains a Sherwin-Williams paint color name and number. The background is a blurred image of a person's head and shoulder, suggesting a professional consultation.

**SHERWIN
WILLIAMS®**

SW 6760
Rivulet

SW 6677
Goldenrod

SW 6620
Rejuvenate

**Spec & color
expertise.**

At your service.

Learn more at [s-w.com/fullspectrumpossibilities](https://www.sherwin-williams.com/fullspectrumpossibilities)

PRESIDENT'S COLUMN



I hope this message finds you well. The strength of AIA Connecticut comes from its people, architects who lead by example, advocate for our communities, and support one another. Serving as your president this year has given me the privilege of witnessing firsthand how engagement turns membership into meaningful impact.

Membership in the American Institute of Architects has offered me opportunities to grow as a leader, both within AIA Connecticut and beyond my professional circle. In this role, I have often been called upon to weigh in on issues affecting our members individually and collectively. Throughout my tenure, I have been guided by a simple principle: leadership is defined not by visibility, but by service.



While I have never hesitated to raise challenging topics, such as stagnation within our profession. I have also found great value in empowering others to lead. True leadership means listening, sharing responsibility, and creating opportunities for others to contribute. This approach has allowed new voices to emerge within AIA Connecticut, ensuring our decisions reflect the diversity and depth of our membership.

Before joining the AIA Connecticut Board, I served on commissions and committees in my hometown, from advocating for seniors to overseeing the expansion of a local high school. As a multidisciplinary practitioner involved in real estate development, I rely on diverse teams to bring projects to fruition. My architectural training has taught me to think creatively, step outside my comfort zone, and collaborate across disciplines, even when interests do not perfectly align. These experiences have shaped my approach to leadership: with openness, empathy, and a firm belief in the power of teamwork.

I have been a proud AIA member for more than twenty-five years, yet I must admit I did not fully appreciate the value of membership until our Executive Director, Gina Calabro, encouraged me to get involved, first with NOMAct, and later at the board level. Like many members, I had paid my dues each year without realizing how much more the organization could offer. After joining the board, I discovered many colleagues shared the same experience: interested in contributing but waiting for an invitation. My response has always been the same: we cannot have a strong and effective organization if no one is willing to serve, and we cannot sustain our community without engaged members.

The true value of AIA Connecticut lies in connection and collective advocacy. Through this organization, we strengthen our profession, influence public policy, mentor the next generation, and shape the future of our built environment. Membership is not simply a credential; it is a commitment to our shared purpose as architects and community leaders.

Serving in leadership has been transformative. It has made me a stronger advocate, a more effective collaborator, and, perhaps surprisingly, a more outgoing person. I have found confidence and community in spaces that once felt unfamiliar.

Thank you for the opportunity to serve as your president this year. I am excited for the work ahead and look forward to continuing to support AIA Connecticut in the months to come. I encourage all members to remain engaged, your participation strengthens our profession, our communities, and our shared mission.

With sincere appreciation,

A handwritten signature in black ink, appearing to read "Marc Guerrier Andre".

Marc Guerrier Andre, AIA, NCARB
2025 President - AIA Connecticut

2025 AIA Design AWARDS

The AIA Connecticut Design Awards celebrate the outstanding achievements of Connecticut-based architecture firms, honoring exemplary work across both built and unbuilt projects at home and around the world. This year, out of 111 submissions, 24 projects were selected for recognition—each demonstrating exceptional creativity, environmental stewardship, technical expertise, and forward-thinking design. Together, these award-winning works highlight the breadth of talent and innovation that define Connecticut’s architectural community.

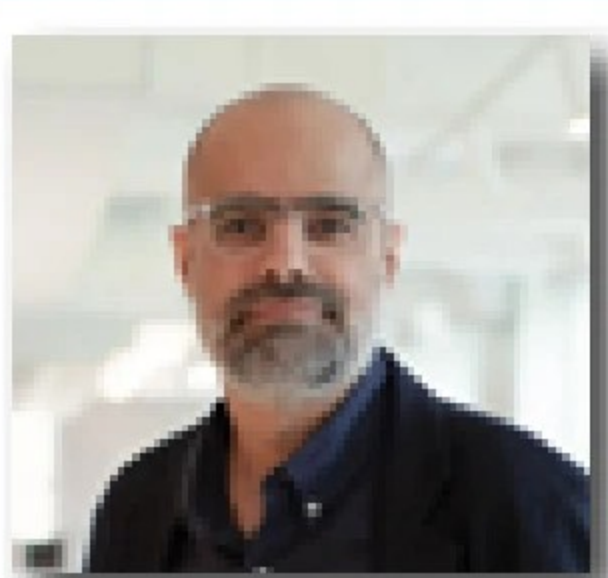
The 2025 jury—Forth Bagley, AIA (Kohn Pedersen Fox Associates PC, New York, NY); Andy Davey (Simpson & Brown, Edinburgh, UK); Antonia Devine, AIA (Tishman Speyer and Yale School of Architecture lecturer, New York, NY); Colin Flavin, AIA (Flavin Architects,

Boston, MA); and Stephen White, AIA (Roger Williams University, Dean, Architecture School, Providence, RI) brought diverse expertise and rigorous evaluation to the review process. Their thoughtful deliberation ensured that each selected project represents the highest standards of architectural excellence, craft, and impact.

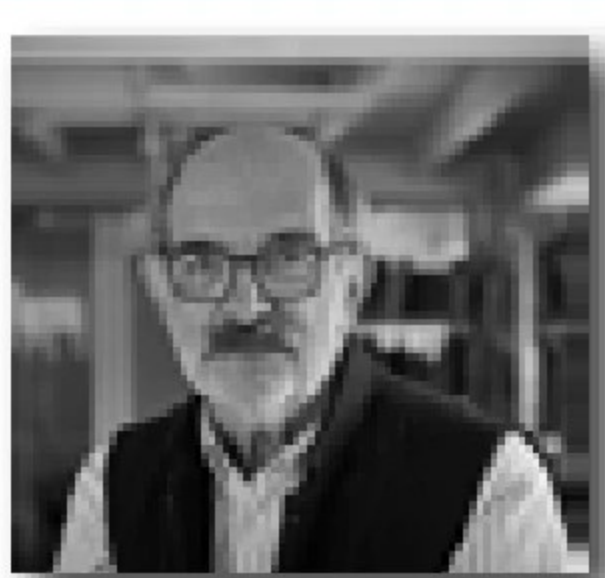
As we prepare to honor this year’s award recipients, we also recognize the dedication, vision, and collaboration that shape our built environment and advance the profession. These projects not only elevate communities but reflect the evolving role of architecture in addressing contemporary challenges.

We look forward to celebrating these remarkable achievements on December 11th at the Bristol Events Center in Bristol, CT.

2025 Jurors



*Forth Bagley, AIA
Kohn Pedersen Fox
Associates PC
New York, NY*



*Andy Davey
Simpson & Brown
Edinburgh, UK*



*Antonia Devine, AIA
Tishman Speyer
and Yale School of
Architecture lecturer
New York, NY*



*Colin Flavin, AIA
Flavin Architects
Boston, MA*



*Stephen White, AIA
Roger Williams
University
Dean, Architecture
School
Providence, RI*



Photo: ©Nicholas Venezia

EXCELLENCE

*Residential Design
Small Firm Design*

A House for Grandmothers

**Atelier Cho
Thompson**

When a forested lot became available next to a family home in Litchfield County, Connecticut, it offered the opportunity to create a guest pavilion for visiting grandmothers. Designed to engage deeply with the surrounding landscape, the building is oriented toward a small pond, with bedrooms and living spaces positioned to capture views of the forest. Service areas, including storage, kitchen, and a powder room, are tucked to the rear and clad in subdued black wood to minimize their presence.

The pavilion's relationship with the forest evolves throughout the day. In the morning, the glass façade reflects its verdant surroundings, blending the building seamlessly into the trees, while the dark rear façade remains unobtrusive. At night, the glass frontage glows like a lantern, creating a warm, inviting space for family and friends to gather, balancing privacy, connection, and the natural beauty of the site.



Photo: ©Meg Matyia

EXCELLENCE

*Planning:
Community, Campus,
Town and Urban*

Chestnut Street Redevelopment

Beinfield Architecture

The South Norwalk TOD Master Plan transforms five acres adjacent to the South Norwalk Train Station into a dense, mixed-use, transit-oriented community. The plan balances residential, commercial, and transit needs, with 472 new apartments, 10% of which are affordable, and ground-floor retail serving commuters and daily needs. By replacing blighted buildings and restoring historic structures, the project reinforces SoNo as a walkable, inclusive neighborhood that celebrates its rich history.

Phase 1 included the award-winning adaptive reuse of the historic Shirt Factory, featuring ground-floor commercial space and 16 residential units, alongside The Platform, a new five-story mixed-use building with 106 apartments and retail at the gateway to the train station. Phase 2, SoNo Central, adds 150 residential units and retail in restored buildings, incorporating corten steel façades that reference Norwalk's manufacturing heritage. The final phase will deliver an intermodal transit facility and 200 additional residential units with transit-oriented retail, completing a vibrant, connected, and historically mindful urban district.



EXCELLENCE
*Historic Preservation
& Adaptive Re-Use*

**Farmington Canal
Heritage Trail, Phase
4, Below Grade
Segment**

**Dean Sakamoto
Architects LLC**

This historic preservation and adaptive reuse project reconnect New Haven to its waterfront while enhancing links between Yale University and downtown. It highlights the 200-year history of the Farmington Canal, later repurposed as a railroad, through a new public space designed for alternative transportation and urban engagement. The complex site passes under streets, a housing complex, and a parking garage, ultimately rising to a busy intersection, and incorporates elements built by African American entrepreneur William Lanson. This marks the second adaptive reuse of the site, which is listed on the National Register of Historic Places.

The design strategy focused on exposing, reinforcing, and celebrating existing features such as canal stone walls, bridge supports, and concrete structures, complemented by new materials including painted steel, local stone, and concrete. Interpretive elements include illuminated historical timeline panels, full-scale canal boat and rail track outlines, and lighting that transforms the tunnel segment into both a safe and evocative historical experience. The project creates a public space that merges preservation, education, and urban vitality while making the site's layered history visible and accessible.



Photo: ©Rafael Gamo

EXCELLENCE

*Commercial, Institutional,
Educational, Multi-Family
Residential Design (Small:
under 25,000sf)*

Pruzan Arts Center at Wesleyan University

Peterson Rich Office / Newman Architects

This project transforms Wesleyan University's works on paper collection by relocating it from the isolated Arts Campus to a central site between two historic McKim, Mead & White buildings. Serving as a new gateway to the university's main library, the gallery creates a vital link between academic disciplines and establishes a prominent home for the visual arts at the heart of campus. The design strengthens interdisciplinary connection while giving this important collection a clear and celebrated identity

The new gallery functions as both a connective and protective structure, uniting people and places while safeguarding delicate artworks. It balances openness and control, linking adjacent buildings and circulation paths while maintaining the precise environmental conditions required for preservation. Through this integration of architecture, art, and community, the project reinforces the role of the arts as a unifying and accessible part of campus life.



Photo: ©Eric Laignel Photography

EXCELLENCE

*Commercial, Institutional,
Educational, or Multi-
Family Residential Design
(Large: over 25,000sf)*

T3 RiNo

Pickard Chilton

T3 RiNo is a six-story mass timber office building in Denver's River North neighborhood that sets a new standard for sustainable, community-centered workplace design. Drawing inspiration from the area's historic brick and timber architecture, the project combines low-carbon construction with modern industrial elegance. Certified LEED-CS Gold, WELL Silver, and WiredScore Platinum, its carbon-negative structure incorporates 188,000 cubic feet of timber, sequestering more than 4,000 metric tons of CO₂ and significantly reducing emissions through efficient manufacturing and construction practices.

Designed around the human experience, T3 RiNo offers natural light, expansive mountain and skyline views, and terraces on every floor for outdoor collaboration. Biophilic materials, local artwork, and wellness-focused amenities such as a fitness center and bicycle facilities foster health and connection. With excellent walkability, transit access, and integration into the surrounding retail and dining scene, the building strengthens both workplace culture and neighborhood vitality. T3 RiNo exemplifies how thoughtful architecture can unite sustainability, well-being, and urban resilience.



Photo: ©Pickard Chilton

EXCELLENCE
Unbuilt Design

The Joinery
Pickard Chilton

The Joinery is Silicon Valley’s first commercially available mass timber building, showcasing the strength and sustainability of low-carbon construction. Its design features interlocking volumes and accentuated bays reminiscent of the end grain of a wood beam, creating spaces for gathering, reflection, and connection with nature. Flexible, biophilic interiors support both collaboration and focused work, establishing a workplace that prioritizes productivity, well-being, and human-centered design.

Targeting LEED-NC Gold and WELL Certification, the Joinery includes 16-foot-high spaces, operable windows, rooftop work areas, and light-filled stairwells that encourage movement and access to fresh air. Centrally located in downtown Sunnyvale near Caltrain, the building integrates with the historic Murphy Avenue neighborhood, promotes sustainable commuting, and frames a welcoming, environmentally conscious gateway to the city.

MERIT

Historic Preservation &
Adaptive Re-Use

*East Hartford Senior
Center*

**Christopher Williams
Architects**



Photo: ©Christopher Gardner

The transformation of the former Blessed Sacrament Church in East Hartford reimagines a 1970s place of worship into a vibrant, modern senior center, setting a new standard for adaptive reuse in Connecticut. Designed to meet the evolving needs of the senior community, the project revitalizes the building with accessibility, flexibility, and safety at its core. New exterior cladding, windows, roofing, and skylights, along with a thoughtful interior reconfiguration, create a welcoming environment that supports social, educational, and recreational activities.

MERIT

Residential Design

Kent House

**Brent Buck
Architects**



Photo: ©Christopher Sturman

The 6,250 square foot home is intended as a gathering place for a multi-generational family. The site, set against the backdrop of a mountain, fronts a state park and provides long views across a meandering brook. The multi-building design is inspired by local precedents—the arrangement of farmstead buildings, the formality of bank barns, and the regional materials consistent with the New England setting.

Dark gabled forms clad in black timber and roofed in metal recede into the landscape, while large, glazed openings frame the panoramic vistas from the interior. A pool was sited in the landscape to encourage views to the adjacent hilltops.

MERIT

Residential Design

Meadow Pavilion

**Joeb Moore +
Partners, Architects,
L.L.C.**



Photo: ©David Sundberg/Esto & Eric Petschek

The Meadow Pavilion, located on a residential estate northeast of New York City, serves as a garden, guesthouse, and gathering space that engages deeply with its surrounding meadow. Positioned at the edge of the property, the pavilion is revealed gradually through movement and descent, harmonizing with the shifting grasses, light, and seasonal changes. Cast-in-place concrete walls form terraced gardens that echo the land's contours, while pathways and embedded structures create a journey of attunement, connecting visitors to the natural rhythms of the site.

MERIT

Commercial, Institutional,
Educational, or Multi-
Family Residential Design
(Large: over 25,000sf)

*Southern Connecticut
State University School of
Business*

**Sasaki/Oak Park
Architects**

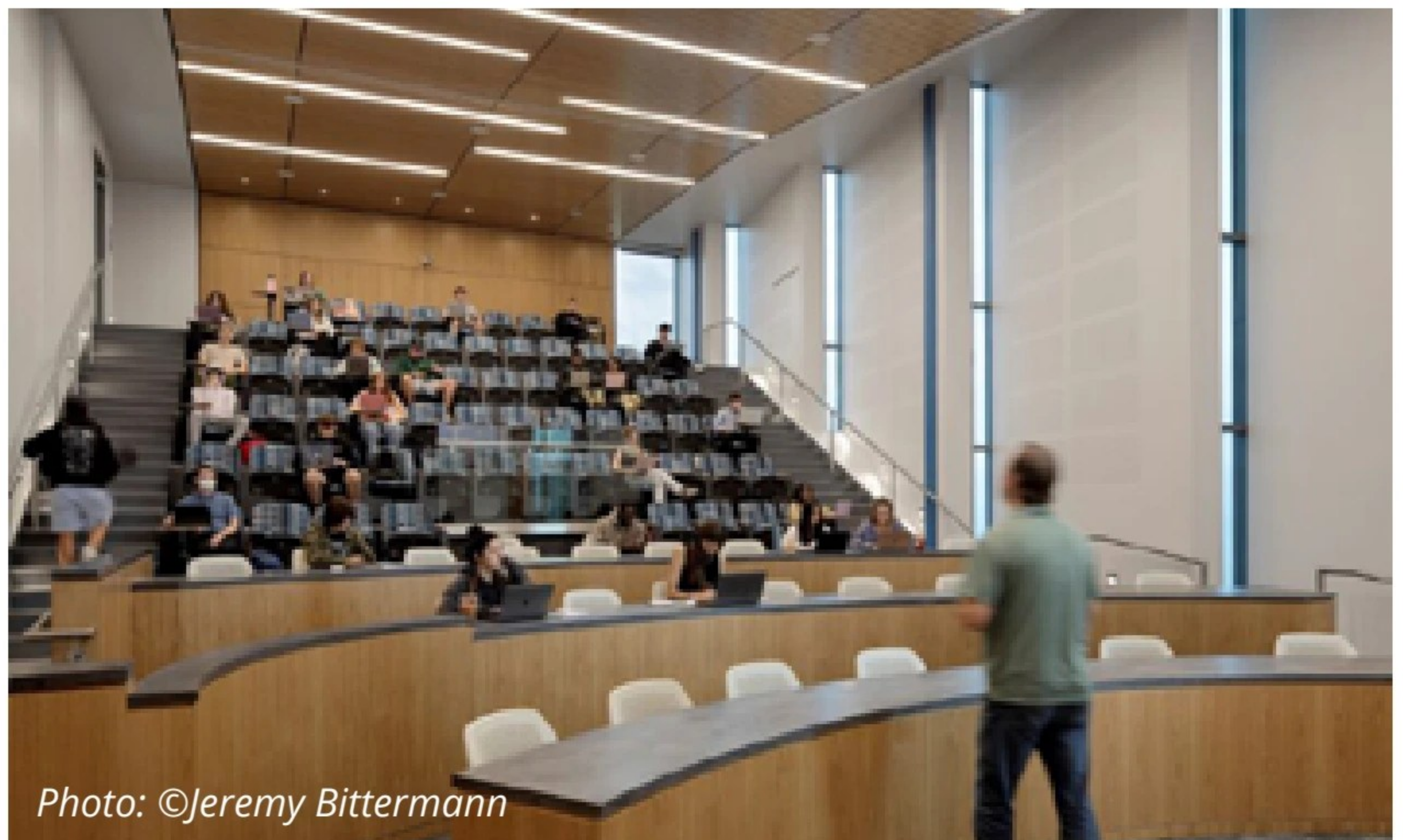


Photo: ©Jeremy Bittermann

The 60,000-square-foot School of Business at Southern Connecticut State University serves as a new academic and community hub, strategically positioned between the university's academic and residential areas. As the State's first Net Zero Energy building, it embodies environmental responsibility and the school's core values of Conscious Capitalism, Social Justice, and Sustainability. Flexible classrooms, a Bloomberg trading lab, and a market research suite support experiential learning, while open study zones, glass-enclosed team rooms, and daylit faculty suites foster collaboration and connection.

MERIT

Commercial, Institutional,
Educational, or Multi-
Family Residential Design
(Large: over 25,000sf)

The Eight **Pickard Chilton**



Photo: ©Erik Stackpole Undéhn, David Sundberg/Esto

The Eight is a defining new landmark in Bellevue, Washington, encompassing nearly 800,000 square feet and symbolizing the city's ongoing urban transformation. Inspired by the Pacific Northwest's natural landscapes and industrial heritage, its design evokes the textures and tones of forests, mountains, and local manufacturing. The project reconnects the urban fabric through a welcoming public realm that links transit, the commercial core, and surrounding neighborhoods, transforming a once steep sidewalk into an inviting plaza with native landscaping, seating, and local retail.

MERIT

Commercial, Institutional,
Educational, or Multi-
Family Residential Design
(Large: over 25,000sf)

The Grove Residence Hall **Amenta Emma Architects**



Photo: ©Robert Benson Photography

The Grove at Quinnipiac University's Mt. Carmel campus is a 111,000-square-foot, LEED Gold residence hall that redefines the first year living experience. Located within the Pine Grove and adjacent to the student union, it establishes a vibrant residential community centered around a new green courtyard. Designed to house 418 students, The Grove blends single and double rooms with 15 communal lounges, promoting both individual growth and social connection. Its layout encourages easy navigation and interaction, with shared kitchens, lounges, and laundry spaces on each floor, as well as faculty apartments and resident assistant suites that support mentorship and learning.

MERIT

Commercial, Institutional,
Educational, Multi-Family
Residential Design (Small:
under 25,000sf)

*The Lizzie and Jonathan
Tisch Center for
Innovation and Active
Citizenship*

Sasaki



Photo: ©Jeremy Bittermann

The Center for Innovation and Active Citizenship at The Frederick Gunn School is a 24,000-square-foot facility dedicated to interdisciplinary learning, civic engagement, and environmental stewardship. Located on the school's historic New England campus in Washington, Connecticut, it replaces an outdated science building while maintaining harmony with the surrounding landscape. Developed through close collaboration with faculty and students, the Center is organized into three pavilions that support academic, collaborative, and civic functions, providing flexible spaces that adapt to evolving teaching and learning needs.

MERIT

Architecture: The
Encompassing Art

*Yale Center for British
Art - Welcome Desk &
Museum Shop*

**Knight Architecture
LLC**



Photo: ©Richard Capsole

The Yale Center for British Art, designed by Louis I. Kahn, holds the largest collection of British art outside the United Kingdom and serves as a vital cultural and educational hub. As part of a broader initiative to expand its educational spaces, the Center enlisted the firm to relocate its museum shop from a nearby street back into the building's Entrance Court, a striking multi-story atrium that originally housed the shop when the museum opened in 1977. The redesign also replaced an outdated and unwelcoming reception desk with a custom circular design that improves accessibility and enhances the visitor experience.

MERIT

Historic Preservation &
Adaptive Re-Use

*YNHH Saint Raphael
Campus, Heart &
Vascular Center & Cardiac
Rehabilitation Program*

**Joseph Sepot
Architects**



Photo: ©Jake Snyder | Red Skies Photography LLC

The Heart & Vascular Center at YNHH is an urban adaptive reuse project that transformed the neglected Plymouth Congregational church into an advanced healthcare facility at the intersection of Sherman Ave and Chapel Street. Located in the Dwight Street Historic District off the public transit stop, the Center provides advanced treatments and services to all patients at an accessible central location. The existing structure, which is listed on the National Register of Historic places, is within walking distance to a variety of housing types and residences.

MERIT

Historic Preservation &
Adaptive Re-Use

37 Hillhouse Avenue
**Christopher Williams
Architects**



Photo: ©Robert Benson Photography

37 Hillhouse Avenue, historically known as the Graves Gilman House, is an Italianate villa built in 1866 and part of the Hillhouse Avenue Historic District. Originally converted for academic use in 1957, the building had become outdated, prompting a full renovation and the addition of a 6,500-square-foot contemporary extension, bringing the total area to 17,750 square feet. The project preserves the historic character while accommodating modern program needs, following National Park Service guidelines to create an addition that is contemporary yet compatible in scale and respectful of its historic setting. Significant site features, including Yale's largest tulip tree and 29 additional trees, were protected throughout construction.

MERIT
Unbuilt Design

Bushnell South
Amenta Emma
Architects



Photo: ©Amenta Emma Architects

The Bushnell South Development in Hartford transforms underutilized land at the edge of the city's historic park into a vibrant, 300,000-square-foot mixed-use neighborhood. Combining high-rise, mid-rise, and townhouse typologies, the master plan centers on diverse housing options while integrating promenades, pocket parks, and retail frontages that connect the district to the Bushnell Theater, Capitol Avenue, and surrounding community. Ground-level design fosters engagement and vitality through civic gathering spaces, pathways, and flexible public areas that host events and encourage a sense of belonging.

**Apparently, we have this unrelenting
obsession with perfection.**



ROCKMAN
WINDOWS & DOORS

Westchester | Connecticut | The Hamptons

We believe every window and door project, from a timely repair or breathtaking upgrade to an extensive new construction or complicated historical replication, requires getting every detail precisely right. Partner with skilled professionals that have unparalleled industry knowledge about every nuance of a product, its performance, beauty, and lasting value.

Every Rockman door and window solution is a built-to-order masterpiece of modern technology and exquisite design, crafted to an even far more exacting standard. Behind all the beauty, you'll find ultra-thorough proofing and skilled review of every order before it's released into production. Architects, builders, and homeowners can expect that degree of commitment with our dedicated support and expert guidance every step of the way, guaranteed.

We're especially obsessed with excellence and accountability from project concept through completion. Discover the best windows and doors, suited to match your home's design and budget.

Proud Allied
Members of:

AIA Connecticut
VIP Circle
PLATINUM

AIA WESTCHESTER HUDSON VALLEY
AIA Peconic

914-909-9430

www.RockmanWindowsAndDoors.com



Showroom
Virtual Tour

CITATION

Landscaping

Meadow Pavilion

**Joeb Moore +
Partners, Architects,
L.L.C.**

The Meadow Pavilion, located on a residential estate northeast of New York City, serves as a garden, guesthouse, and gathering space that engages deeply with its surrounding meadow. Positioned at the edge of the property, the pavilion is revealed gradually through movement and descent, harmonizing with the shifting grasses, light, and seasonal changes. Cast-in-place concrete walls form terraced gardens that echo the land's contours, while pathways and embedded structures create a journey of attunement, connecting visitors to the natural rhythms of the site.



Photo: ©David Sundberg/Esto & Eric Petschek

CITATION

Creative Use of Humble
Materials

*Piazza at The Basilica of
Saint John the Evangelist*
**Centerbrook
Architects and
Planners**

The Piazza at the Basilica of Saint John the Evangelist transforms a former vacant lot in downtown Stamford into a welcoming public space that strengthens the church's connection to the city. Inspired by the great civic piazzas of Italy, it provides a flexible setting for worship, celebration, and community life while harmonizing with the Basilica's historic Gothic architecture. Framed by the church and rectory, the piazza combines weathering steel, locally sourced granite, and a rose-covered trellis to create a contemporary yet reverent atmosphere of beauty and reflection.



Photo: ©Jeff Goldberg/Esto

CITATION

Architecture: The
Encompassing Art
Pergola Design

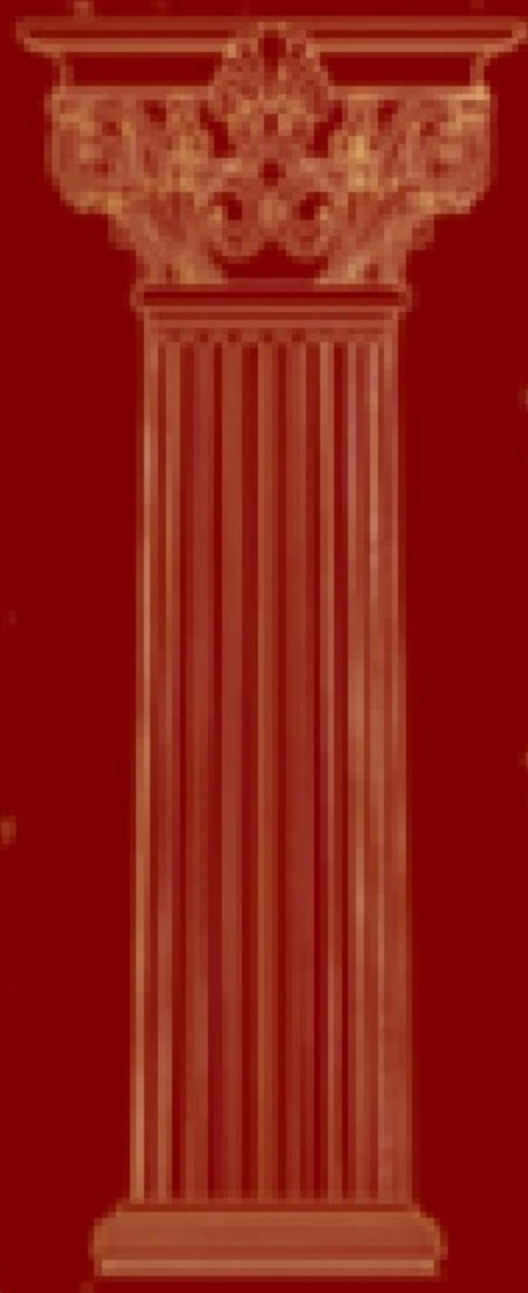
*YNHH Saint Raphael
Campus, Heart &
Vascular Center &
Cardiac Rehabilitation
Program*

North Studio

StoreStage is a pair of wood storage cabinets that frame an outdoor community space while serving multiple functions. Originally conceived to protect lumber from New England's varied climate and improve safe material handling, the project evolved into a versatile venue for performances, workshops, and outdoor classes. Located in a courtyard beside the University's woodshop, StoreStage provides a much-needed gathering area for the Center for the Arts, a complex originally designed by Roche Dinkeloo without a central hub. The two storage units, one for lumber and one for sheet goods, define a stage that uses the CFA's wall as a natural backdrop.



Photo: ©Elijah Huges



2025 AWARDS GALA

THURSDAY

DEC 11 2025

An Evening of Excellence, Celebration, and Inspiration

The AIA Connecticut Awards Gala is the most anticipated event of the year, bringing together professionals and visionaries to honor outstanding achievements and designs.



Individuals and firms will be recognized for the following awards:

Alice Washburn
Design Awards
Emerging Professionals
President's Award
Women in Architecture

Allied Member of the Year
Drawing Awards
JEDI Awards
Public Service
Volunteers of the Year

Connecticut Treasures
Elizabeth Mills Brown
25 & 50-year Milestones
Sustainable Architecture
Project of the Year

5:00pm - 9:00pm
Bristol Event Center
112 Century Dr, Bristol, CT

Secure Your Tickets
Before December 3rd!

CLICK HERE TO
PURCHASE



Connecticut

Dominique Moore, AIA, the 2025 President's Awardee



Member volunteers are—and will always remain—AIA Connecticut's greatest asset. Their leadership, generosity, and unwavering commitment fuel our programs, shape our initiatives, and strengthen our impact across the state. Established in 2018, the President's Award honors an AIA Connecticut architect member who exemplifies these values through exceptional participation, dedicated service, and meaningful advocacy for AIA Connecticut's mission and vision.

More than a recognition, the President's Award celebrates those who consistently go above and beyond — offering their time, expertise, and passion to elevate the profession and support their peers. Recipients embody the spirit of collaboration and advancement that defines our organization, helping to foster a vibrant architectural community and ensuring that AIA Connecticut remains a trusted voice for design excellence.

Chosen by the 2025 AIA CT President, Marc Andre, AIA, we proudly recognize Dominique Moore, AIA, Co-Founder, President, and Executive Director of My Architecture Workshops, Inc.

Dominique embodies the essence of the President's Award through her unwavering leadership, her

commitment to justice and inclusion, and her dedication to shaping a more equitable future for the architectural profession. Her work crosses the boundaries of organizational service, mentorship, community building, and education—leaving a measurable impact throughout Connecticut and well beyond.

Dominique's professional leadership is both broad and meaningful. She has contributed her voice and expertise as Associate Director on the AIA Connecticut Board (2020) and as Regional Associate Director for AIA New England. Her influence within the profession continues through her engagement on the AIA CT J.E.D.I. Committee, her service on the University of Hartford Architecture Program's Advisory Board, and her active involvement with NOMA Connecticut. In recognition of her contributions to NOMAct, she was honored with the José Hernandez President's Award in 2022.

At the heart of Dominique's work is her passion for expanding access to architecture and design. As the leader of My Architecture Workshops, Inc., a Stamford-based

nonprofit that introduces K-12 students—particularly those historically underrepresented in the field—to the world of architecture, she is transforming how young people discover and engage with design. Through hands-on learning, design/build experiences, and enriching summer programs, Dominique is helping young people discover their creativity, confidence, and potential career pathways.

Her mission goes beyond teaching design—it is about opening doors, elevating voices, and the opportunity to shape the built environment. By championing mentorship and equitable access, Dominique advances the core values of AIA Connecticut and strengthens the future of the profession.

We are honored to recognize Dominique Moore with the 2025 President's Award. Her leadership, vision, and commitment exemplify the profound difference one architect can make in the lives of others and in the profession at large.

AIA Connecticut Honors Excellence in the Built Environment with 2025 Public Service Awards

For many years, AIA Connecticut has proudly recognized individuals and organizations whose exceptional service has strengthened the Connecticut architectural community. These honors acknowledge efforts that elevate the profession, enrich public life, and expand education around the built environment.

Eligible recipients span a broad spectrum—architects, civic leaders, educators, authors, community groups, and public advocates—reflecting the diverse network of people who contribute to the health and vitality of Connecticut’s cities and towns. Past honorees have included municipal and state officials, preservationists, designers, and organizations whose work has made a meaningful and lasting impact.



This year, we honor three well-deserving individuals whose vision, leadership, and dedication exemplify the profound impact that public service and community advocacy can have on our built environment.

Together, these three honorees reflect the spirit of service, collaboration, and vision that strengthens Connecticut’s communities and advances the mission of AIA Connecticut.

Susan Godshall

Nominated by Duo Dickinson, FAIA



The 2025 Honor Recipient, Susan Godshall (posthumous), is recognized for her extraordinary contributions to historic preservation and civic life in New Haven. A steadfast champion of the city’s architectural heritage,

Susan devoted her career to celebrating and safeguarding New Haven’s cultural legacy.

Susan retired as Senior Vice President of the Greater New Haven Chamber of Commerce, where she guided regional economic development, government relations, and initiatives that strengthened the city’s business and civic communities. Her distinguished career also included leadership roles at the Community Foundation for Greater New Haven and Yale University, where she helped forge stronger partnerships between the university and the city. Earlier in her career, she served as Deputy Corporation Counsel for the City of New Haven.

With degrees from Oberlin College, Yale Law School, and the Yale School of Architecture, Susan brought extraordinary expertise to her preservation work. Her long involvement with the New Haven Preservation Trust (NHPT)—including roles as Board Member, Treasurer, and Awards Committee Co-Chair—helped elevate historic stewardship across the region. Most recently, she led the successful nomination of New Haven’s Long Wharf Pier to the National Register of Historic Places, honoring the legacy of African American engineer and builder William Lanson. Her passing leaves a significant void, but her visionary contributions endure.

Exemplary Contributions to 2025 Public Service Awards

Caroline Tanbee Smith

Nominated by Laura Pirie, AIA and Amy Albandoz Jimenez.

Caroline Tanbee Smith, is recognized for her impactful work at the intersection of civic engagement, design, and community development. Her leadership in the I-91 Neighborhood Reconnection Initiative exemplifies her ability to transform underutilized infrastructure into welcoming public space. Caroline has also championed citywide improvements—from the Mill River Trail extension to the Grand Avenue Special Services District and the Lawrence Street Plaza pilot—while helping secure more than \$2 million in public space enhancements. As co-founder of Collab, she has supported hundreds of local entrepreneurs, further strengthening New Haven's economic and cultural ecosystem.



Doug Hausladen

Nominated by Christopher Bockstael, AIA, Karin Patriquin, AIA and Paolo Campos, AIA

Doug Hausladen, Executive Director of the New Haven Parking Authority is honored for his leadership in advancing sustainable and equitable mobility. With more than two decades of experience, Doug has driven transformative transportation initiatives, including the renovation of Union Station, expansion of EV charging infrastructure, relaunch of the Ride New Haven e-bike share program, and introduction of Via NHV micro transit service. His work ensures New Haven continues to grow as an accessible, well-connected, and vibrant city.



2025 Volunteers of the Year Award

Andrew Gorzkowski, AIA, LEED GA

Senior Associate, Pickard Chilton

Andrew Gorzkowski is a highly respected architect with extensive experience designing and coordinating all phases of complex architectural projects. His portfolio includes large-

scale mixed-use, corporate, and commercial developments across the United States and internationally.

As co-chair of the AIA Connecticut Committee on the Environment (COTE), Andrew has been instrumental in developing high-quality educational programming that deepens architects' understanding of sustainable design, energy performance, and environmental responsibility. His leadership has significantly enhanced the reach and impact of the committee's initiatives.

Andrew is also completing his two-year term as Connecticut's AIA

Young Architect Representative—a role that serves as a vital link between local and state chapters and the national

Young Architects Forum (YAF). In this capacity, he has represented emerging professionals at both the state and national levels, communicated critical information and updates, and amplified the voices and needs of early-career architects.

His professional accomplishments include receiving the 2019 Pickard Chilton Traveling Fellowship and the 2019 AIA Connecticut Emerging Professional Award. A past member of the AIA Connecticut Board of Directors, Andrew continues to demonstrate a strong commitment to mentorship, sustainability, and advancing the future of the profession.



AIA Connecticut proudly recognizes the dedication and service of the volunteers who help advance our mission through committee participation, program support, and professional leadership. Their efforts strengthen our community, enrich our programming, and elevate the impact of our organization statewide. Each year, AIA Connecticut honors individuals whose commitment stands out among the many

who generously give their time. Their names are added to the *Volunteer of the Year* plaque, prominently displayed in our office, as a lasting acknowledgment of their contributions.

For 2025, AIA Connecticut is pleased to honor two outstanding members: **Andrew Gorzkowski, AIA, LEED GA**, and **Marissa Mead, AIA, NOMA, LEED AP**.

Marissa Mead, AIA, NOMA, LEED AP

Principal and Director of Art Integration, Svigals + Partners, an FCA Company

Marissa Mead brings a unique blend of creativity, craftsmanship, and vision to her work as Principal and Director of Art Integration at Svigals + Partners. A graduate of the University of Notre Dame with a degree in architecture, her passion for sculpting, furniture design, and making with her hands originally sparked her path into the profession. A self-described maker and puzzle-solver, Marissa is driven by a belief in the power of beautiful, meaningful places—a belief that aligns seamlessly with Svigals + Partners' commitment to integrating art and architecture. Her work embodies the firm's mission to infuse projects with creativity, meaning, and delight.

Marissa has been a vital member of the Women in Architecture Committee since its relaunch in 2018. During the COVID-19 pandemic, she developed an innovative K-12 educational video series that provided

teachers with accessible design content at a time of unprecedented need. Remarkably, these videos continue to be downloaded by educators across the country today—an enduring testament to her talent and generosity.

In October, Marissa was elected to the AIA Connecticut Board of Directors. Her three-year term will begin in January 2026, marking the next chapter of her leadership within the organization.

AIA Connecticut extends its deepest appreciation to Andrew Gorzkowski and Marissa Mead for their exceptional volunteer service. Their leadership, creativity, and dedication

exemplify the best of our community and help ensure that AIA Connecticut remains a vibrant, supportive, and forward-thinking organization.



Ashley Anderson AIA Connecticut's 2025 Allied Member of the Year

Launched in 2018, the Allied Member of the Year Award recognizes non-architect members whose commitment, expertise, and active engagement have significantly contributed to advancing the architecture profession in Connecticut. Allied Members play an essential role in strengthening the connection between industry partners and the design community, and this award honors those whose dedication elevates the mission and work of AIA Connecticut.

AIA Connecticut proudly recognizes Ashley Anderson, Architectural Project Manager at Marvin Windows and Doors, as the 2025 Allied Member of the Year. Based in Hartford, Connecticut, Ashley has built a distinguished career grounded in collaboration, technical knowledge, and a deep commitment to supporting architects, builders, and design professionals across the region.

Since joining Marvin in 2019—first through A.W. Hastings & Co., a leading distributor of the Marvin family of brands—Ashley has demonstrated exceptional leadership and a strong service ethic. Following Marvin's acquisition of A.W. Hastings, she transitioned into the role of Territory Manager for Greater Hartford, where she worked to strengthen dealer relationships, enhance product support, and expand market capacity for future growth. Her ability to connect with design and construction partners, paired with her knowledge of building products and performance standards, quickly distinguished her as a trusted resource within the industry.

In 2021, Ashley advanced into her current role as Architectural Project Manager, where she supports residential and

commercial architectural teams across Connecticut, Rhode Island, and Western Massachusetts. She specializes in the specification of Marvin window and door systems—ensuring that architects have the technical guidance, product expertise, and collaborative support needed to bring their design visions to life. Ashley's work exemplifies the Marvin philosophy: imagining and creating better ways of living through thoughtful, high-quality design solutions.

Beyond her professional responsibilities, Ashley has been an active and engaged participant in the AIA Connecticut community. Her consistent presence at programs, committee meetings, and industry events reflects her dedication to strengthening relationships across the design ecosystem.

Ashley's contributions embody the purpose of the Allied Member of the Year Award—celebrating those who, while not

architects themselves, meaningfully advance the profession through partnership, advocacy, and leadership. Her commitment to excellence, her collaborative spirit, and her deep respect for the work of architects make her an invaluable member of the AIA Connecticut community.

AIA Connecticut congratulates Ashley Anderson on this well-deserved honor and thanks her

for her ongoing dedication to elevating the profession.



**Allied
Member**
of the Year Award



TRUSTILE®

A MARVIN® BRAND



WSC Woodbury
Supply Company, Inc.



MARVIN® 

Make space for
dreams come true.

Making your client's dreams a reality is a complex process with many moving parts. A partner who understands this can be invaluable. At Marvin, we take considered care to deliver inspired design, high-quality windows and doors, and life-bettering innovations. It's all to help you make space for distinction, expression, and everything that matters most to you and your clients.

marvin.com/architectural-resources



Leveraging the AIA Guides for Equitable Practice to Strengthen EDI Initiatives

By Gina Calabro, Hon. AIACT

Equity, Diversity, and Inclusion (EDI) efforts in architecture are expanding as firms recognize the need to create workplaces that support the success and well-being of all practitioners. Among the most robust resources available for this work are AIA's Guides for Equitable Practice, a series of evidence-based chapters offering research, frameworks, and actionable tools to advance equity in the profession. The Guides help firms translate values into practice by outlining practical strategies related to firm culture, career progression, interpersonal behavior, and organizational systems.

A distinguishing feature of the Guides is their intentional use of storytelling to deepen understanding and foster empathy. Each chapter concludes with a "Consider" section that highlights first-person experiences gathered from nearly 100 individuals across the architecture field. These stories speak candidly to challenges, inequities, and moments of transformation, grounding the Guides' recommendations in the lived realities of practitioners. For EDI programming—particularly initiatives centered on dialogue, reflection, or culture-building—these authentic narratives offer powerful entry points for

meaningful conversation and engagement.

Story-based learning is especially effective in helping teams connect with complex issues on a human level. By integrating the Guides' stories into workshops, training sessions, or staff meetings, facilitators can create space for deeper discussion and help participants visualize how systemic issues manifest within their own organizations. The Guides not only provide knowledge but also model an equitable approach to learning: one that centers diverse voices and encourages inclusive participation.

Building on this foundation, AIA has expanded its support for EDI implementation with the release of the Equitable Practice Activation Kit—a resource specifically designed to help firms turn awareness into action. The Activation Kit provides ready-to-use tools that make it easier for firms to incorporate equity work into daily practice and professional development.

What's inside the Activation Kit:

- Slide decks and facilitation guides for each chapter of the Guides
- Flexible resources adaptable for team meetings, onboarding, workshops, or training sessions

Developed by the AIA Equity, Diversity, and Inclusion Strategies team, the Activation Kit was

created in collaboration with the Guides' original authors—Renee Cheng, FAIA, Dean of the Herberger Institute for Design and the Arts and Senior Vice Provost at Arizona State University, and Nancy Alexander, Principal of Lumenance Consulting LLC. Their continued involvement ensures that the Kit remains aligned with the Guides' research-driven foundation while offering practical, accessible tools for implementation.

Together, the Guides and Activation Kit form a comprehensive framework for firms committed to cultivating equitable workplaces. The Guides provide a deep, research-based understanding of the issues at play, while the Activation Kit offers structured pathways for action. When used in tandem, these resources support firms in building cultures where equity is integrated into everyday practice—not as an abstract goal, but as a living, collaborative commitment that strengthens the profession as a whole.

For access to the guides, click [here](#). If you would like the activation kit, please email [AIACT Communications at communications@aiaact.org](mailto:communications@aiaact.org)

The 2025 J.E.D.I. Award Recipients

AIA Connecticut proudly recognizes firms that are taking meaningful, measurable steps to strengthen justice, equity, diversity, and inclusion within the architectural profession. The J.E.D.I. Challenge, created to inspire progress across Connecticut’s design community, invites member firms to commit to cultivating workplaces that welcome, represent, and support individuals from a broad range of backgrounds, identities, and lived experiences.

Participation in the J.E.D.I. Challenge is voluntary and open to firms of all sizes and locations throughout Connecticut. The program acknowledges that every firm—whether large or small—has the capacity to advance equity and create cultures where emerging and established professionals can thrive. The Challenge provides a clear, practical roadmap to help firms pursue both short- and long-term goals aimed at reducing barriers, fostering belonging, and supporting career pathways that reflect the future of the profession.

Each October, AIA Connecticut distributes a detailed survey that assesses how effectively each firm has integrated these practices into its structure, policies,

and day-to-day operations. Firms whose aggregated results surpass the baseline are honored for their dedication and progress.

The J.E.D.I. Awards recognize firms that are not only setting goals but also taking tangible action—enhancing workplace culture, expanding opportunities for professional growth, broadening leadership representation, fostering mentorship, and strengthening pathways for future architects. These efforts demonstrate what is possible when firms commit to meaningful, sustained change and strive to create environments where all professionals feel valued and empowered.

AIA Connecticut is proud to congratulate the following 2025 J.E.D.I. Award recipients, recognized for their commitment to building a more inclusive and equitable profession. AIA Connecticut also applauds these firms for their leadership and commitment. Their work is helping shape a stronger, more innovative, and more welcoming architectural community—one that reflects the values and future of the profession.

1 – 10 EMPLOYEES



11 – 30 EMPLOYEES



31 – 50 EMPLOYEES

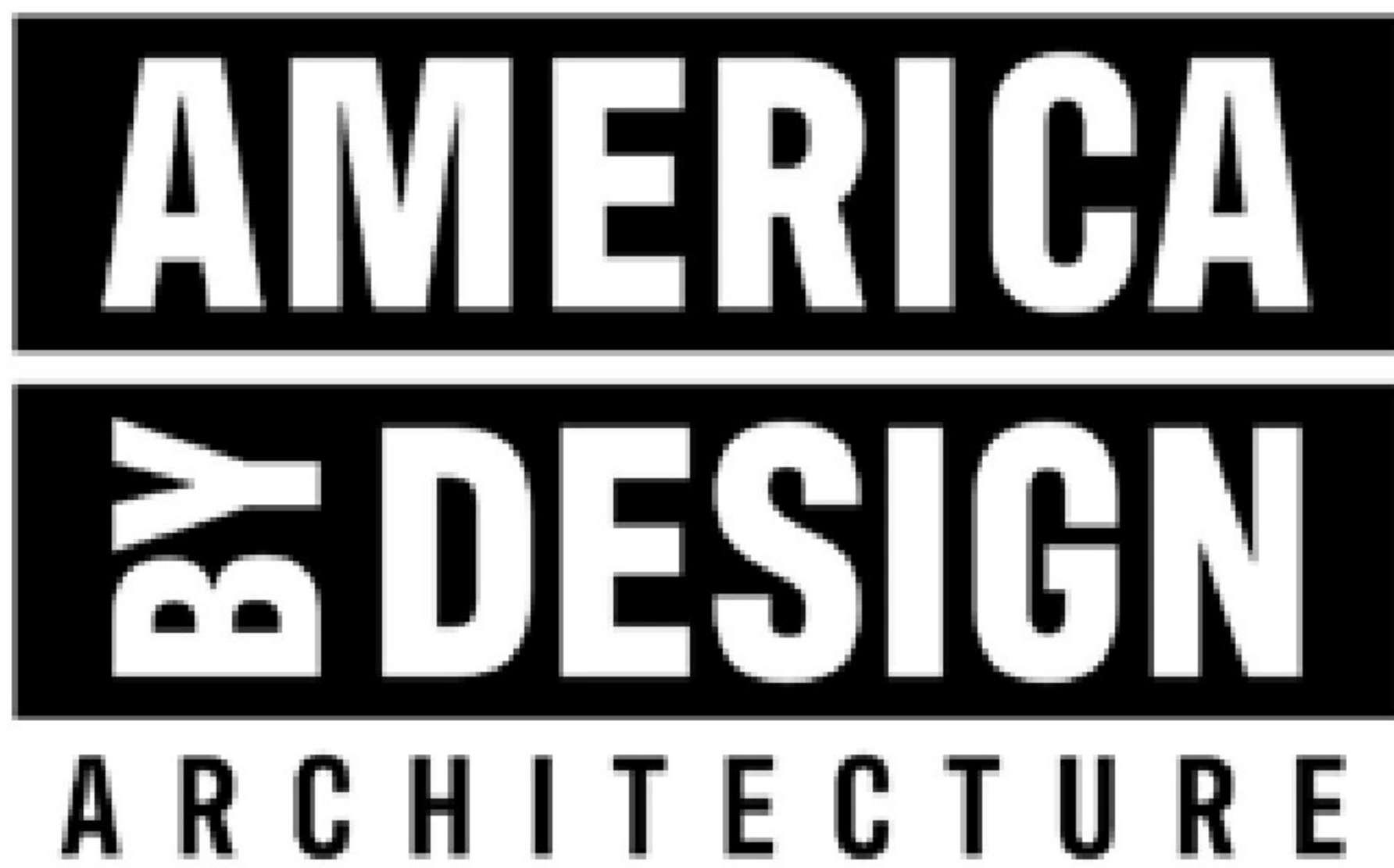


51 – 99 EMPLOYEES



100+ EMPLOYEES





® Collaboration with AIA Connecticut for Upcoming Seasons on CBS

AIA Connecticut is excited to announce a new collaboration with America ByDesign, the nationally broadcast television series that highlights standout achievements in architecture, design, technology, and innovation. The show's producers recently reached out to Executive Director Gina Calabro with an invitation to feature the exceptional work of AIA Connecticut member firms in the upcoming 2025–2026 seasons. This opportunity provides a powerful platform to showcase award-winning Connecticut design—whether built within the state or beyond its borders—to a nationwide and international audience.

AIA Connecticut members will receive 10 dedicated feature story slots across the next two seasons of America ByDesign. These stories will highlight selected projects through professional storytelling, interviews, and high-quality video production.

To meet production timelines, AIA Connecticut must identify 15–20 potential projects to present to the producers for consideration. Of the 10 final features allocated to AIA Connecticut:

- Five stories must be secured from November 2025 to February 2026.
- The remaining five will be filmed between February 1st and April 30, 2026.

Selected AIA Connecticut projects will enjoy extensive visibility and promotional support. Benefits of this partnership include:

- Prominent placement of the AIA Connecticut logo alongside the America ByDesign brand in all associated promotions.
- AIA Connecticut branding featured in the opening titles of the televised programs.
- On-screen, animated acknowledgment for each AIA Connecticut project featured in the series.
- Two managed EDM partnership communications to the program's subscriber database.
- Priority placement for all AIA Connecticut stories on the ByDesignTV YouTube channel for at least 48 months.
- A digital marketing package for each featured project, including short-form highlight videos.
- Prime-time first-run broadcasts on CBS News Streaming.
- Domestic syndication to top CBS and partner markets across the United States.
- A pre-broadcast “soft launch” to the AIA National audience via AIA.org.
- International syndication of America ByDesign episodes as they air globally.

Produced as a magazine-style, half-hour program, America ByDesign celebrates remarkable architecture—projects that integrate sustainability, culture, learning, collaboration, and thoughtful design.

AIA maintains exclusive early access to each episode, reflecting the shared belief that “design belongs to everyone” and that the work of architects should be accessible, inspiring, and widely seen.

AIA Connecticut encourages members interested in having their work considered for this exceptional opportunity to contact Gina Calabro at gcalabro@aiact.org for more information.



SAFETY | PROFESSIONALISM | INTEGRITY | QUALITY | DEDICATION



GENERAL CONTRACTORS | CONSTRUCTION MANAGERS | DESIGN-BUILDERS

203.235.1770

LAROSABG.COM



 800-390-1000

 architecturalservices@ringsend.com

 RingsEnd.com

The Architectural Services Team at Ring's End provides the A + D community with service, support, and expertise in a wide range of products and practices. All services are complimentary and include in-office and onsite support. Contact us for your next project!



AIA RELEASES LATEST MATERIALS PLEDGE BY THE NUMBERS REPORT

Tracking Industry Progress Toward Healthier, More Sustainable Materials

The latest release of the AIA Materials Pledge by the Numbers report provides a comprehensive look at how firms across the country are advancing the selection of healthier, low-impact materials. With participation from 121 signatory firms, this year's findings highlight measurable momentum toward improved material transparency and responsible specification—key components of designing for human and planetary well-being.

Materials play a transformative role in the built environment, affecting everything from occupant health to global climate impacts. The AIA Materials Pledge centers on five interconnected impact categories: human health, social health and equity, climate health, ecosystem health, and the circular economy. The new RY24 report aggregates firm-, project-, and product-level data to show how architects are applying these commitments in practice, offering the industry's clearest picture yet of progress toward healthier material choices.

The report draws on metrics from 419 projects, representing 3.5 million gross square feet, providing insights into how design teams are integrating material strategies across a range of building types and scales. This depth of information allows firms to benchmark their progress, compare strategies, and better understand where opportunities lie for improvement.



Several key findings stand out:

- 121 firms submitted data in 2024, underscoring growing momentum and shared commitment across the profession.
- 67% of participating firms now have a formal Sustainability Action Plan that includes material selection strategies—an encouraging sign that healthy material considerations are becoming embedded in firm culture and operations.
- Projects reported metrics and strategies across all 22 product categories tracked by the pledge, demonstrating broad engagement across flooring, insulation, finishes, structure, and more.
- Product-level reporting continues to evolve, offering clearer visibility into how material choices can directly improve outcomes across the five impact areas.

The report not only showcases progress but also highlights pathways for future improvement. Many firms are increasing their internal knowledge through education, forming cross-disciplinary material health teams, or establishing more rigorous vetting and tracking protocols. Others are strengthening relationships with manufacturers to push for greater transparency and innovation.

As the industry works toward a healthier and more equitable built environment, the Materials Pledge by the Numbers report serves as both a benchmark and an inspiration. It provides architects and firm leaders with data-driven insight into what's working, where gaps remain, and how collective action can accelerate meaningful change in material health.

Professionals are encouraged to [download the full report](#) and the [executive summary](#) to explore detailed findings and strategies.



AIA Strategic Council October Highlights and Looking Ahead to 2026

The AIA Strategic Council closed out October with significant momentum as members participated in the AIA Leadership Exchange Calls, offering both a comprehensive recap of 2025 activities and an early preview of initiatives planned for 2026. The presentation materials shared during these calls are included with this month's report for easy reference.

A key milestone this fall is the upcoming release of the 2025 Year in Review Journal, expected in mid-November. This publication highlights the Council's collective work over the past year, featuring project updates, accomplishments, and the final executive summaries from each of the Council's seven study groups. The report represents months of collaboration and synthesis, and we extend our sincere appreciation to the Communications team for their thoughtful work in bringing the journal to life.

October also marked the onboarding of 22 new Councilors who will serve during the 2026–2028 term. The virtual orientation session provided an introductory look at the Council's structure, mission, and expectations, setting the stage for the group's preliminary study group meetings beginning in November. This new cohort brings fresh insights and energy that will help shape the Council's direction in the years ahead.

The Strategic Council also takes a moment this month to express deep gratitude to the 2025 Bethune Fellows. Over the past three to four years, this cohort has made significant contributions to the Council's evolution, advancing conversations and developing work that will influence the organization long into the future. As these leaders step into new roles—whether within AIA's Knowledge Communities, Components, or other organizations across the profession—we look forward to seeing how their expertise continues to elevate the field.

Looking ahead, the next Council report will be issued in January 2026 and will outline the refined focus areas for the upcoming year. The Council's 2026 studies will be organized under five broad themes: Regenerative Nation, Housing, Practice, Value, and Neuroarchitecture. These areas will be further developed through generative discussions with the AIA Board and Council during Governance Week in December, with the goal of establishing clear priorities that respond to the needs and opportunities facing the built environment.

As always, the Council welcomes feedback, ideas, and commentary as we continue shaping the work that lies ahead. Please contact our AIA Connecticut Strategic Councilor, Paolo Campos at paolo@patriquinarchitects.com.



CONNECTICUT ARCHITECTURE FOUNDATION

By Nancy Clayton, AIA

The Connecticut Architecture Foundation (CAF) has a mission to raise and award funds to advance architectural education and professional growth across the state. Since its founding in 1978 as the philanthropic arm of what is now AIA Connecticut, the organization has invested nearly five decades in building the profession's future.

The Foundation's board includes architects from firms across Connecticut, current and past AIA-CT board members and presidents, plus professionals from the public sector and allied fields.

The CAF funds architectural education from elementary school, through college and graduate school, to professional licensure.

"The students we support today will become the architects, collaborators, and colleagues we work alongside tomorrow," says CAF President Nancy Clayton, AIA. "By investing in them, we're investing in the future of our firms, our communities, and our profession."

In 2025, the Foundation supported AIA Connecticut's K-12 Architecture Week program at the New Haven Public Library and Eli Whitney Museum and Workshop, plus "My Architect Workshop," a summer camp for K-8 students in Stamford, now in its fourth year. CAF also annually awards William Mack prizes at the Connecticut Science Fair for middle school and high school projects on sustainability and the built environment.

The Foundation has a long connection to the Architecture

Building the Future of Architecture in Connecticut

Resource Center (ARC). CAF established ARC in 1991 as its K-12 educational component. After ARC's programs grew successful enough to become an independent nonprofit in 2005, CAF has continued providing grants, including this year's funding for a grades 3-5 program.

For emerging professionals navigating licensure, CAF has funded Black Spectacles ARE prep subscriptions through AIA-CT for the past five years. This year, CAF has supported a new initiative by NOMA CT to help cover exam costs.

The Foundation also funds public engagement projects. For two years, CAF has supported a WPKN podcast "Our Buildings, Our Selves" led by architect Duo Dickinson, FAIA that features interviews with scholars and practitioners. Past CAF grants have funded short films and student conference presentations.

Since 1986, CAF has awarded over \$700,000 in scholarships to architecture students with Connecticut ties. Many recipients attend Connecticut's two architecture schools: the University of Hartford and Yale. Others have studied at more than 25 institutions nationwide. Recent scholarship awardees



include students from UMass Amherst, Temple, Northeastern, Roger Williams, NYC College of Technology, Wentworth Institute of Technology, and SUNY Alfred State College.

CAF also provides annual support for University of Hartford's three architecture scholarships in honor of Tai Soo Kim, FAIA; Frederick J. Mahaffey, FAIA; and David LaBau, FAIA.

Individual donations, corporate sponsorships, and endowed funds make these grants and scholarships possible. This year's annual Distinguished Leadership Award event at the University of Hartford honored Tai Soo Kim, FAIA for his design work and his support for students and raised a record-breaking amount to support the CAF's mission.

Three named funds have been established in recent years at CAF, honoring Alan Dehar, FAIA; Jane and Kevin Roche, FAIA and the firm Hoffmann Architects + Engineers. Long-standing funds in memory of Charles DuBose, FAIA, and Suzanne Sheng, AIA continue to support students.

Nancy Clayton, AIA is the 2025 CAF Board President

BECOME AN ANNUAL SPONSOR



CONNECTICUT ARCHITECTURE FOUNDATION

2026 Benefits	Champion	Gold	Silver
Recognition in CAF Annual Impact Report	Limited (\$6,000.00)	Unlimited (\$4,500.00)	Unlimited (\$3,000.00)
Recognition on CAF Website Tagline & logo displayed at bottom of CAF home page	⊙	⊙	⊙
Recognition in all CAF Mailings	⊙	⊙	⊙
Tickets to CAF Leadership Award Lecture/Reception/Dinner Silver • 2 Tickets Gold • 4 Tickets Champion • 8 Tickets (1 Table)	⊙	⊙	⊙
Recognition at CAF Leadership Award Lecture/Reception/Dinner	⊙	⊙	⊙
Banner display at CAF Leadership Award Lecture/Reception/Dinner	⊙	⊙	
Sponsor remarks at CAF Leadership Award Lecture/Reception/Dinner	⊙		
Link to Sponsor Website on CAF Website Bottom of CAF home page	⊙	⊙	⊙
One Page article in AIA CT Architype (1 Issue)	⊙		
Seat on CAF Committee of Choice: Scholarships, Events, Communications	⊙		
Larger Logo on Website	⊙		
cafct.org or ctarchfoundation@gmail.com			

THANK YOU TO OUR INAUGURAL ANNUAL SPONSORS

OUR 2025 CHAMPION



OUR 2025 GOLD SPONSORS



OUR 2025 SILVER SPONSORS



NEIL HAUCK ARCHITECTS





New Haven is a ‘Trending’ Destination For 2026, According to Travel Agency Skyscanner

By Jayden Nguyen

New Haven is one of the «best places to visit in 2026,” according to a new list released by U.K.-based travel agency Skyscanner.

The Elm City was named to its list of trending destinations for travelers next year, landing at No. 8 on the list above Bilbao, Spain, and Mykonos, Greece.

“Acclaimed for its pizza and cultural scene, New Haven offers museums, architecture and diverse cuisine, plus a surge in visitors this fall as «Gilmore Girls» fans celebrate the show’s 25th anniversary in nearby Stars Hollow-inspired Connecticut,» Skyscanner said about New Haven on its list.


To curate its list, Skyscanner’s travel experts used data to determine which destinations saw increases in flight searches between Jan. 1 and June 30 for travel throughout 2025 compared to the same time period in 2024. Its travel experts then selected the top 10 locations based on “travel suitability.”

New Haven saw a 39 percent increase in flight searches in 2025 compared to 2024, according to Skyscanner.

Limon, Costa Rica, was the No. 1 trending destination for 2026. The only other U.S. location besides New Haven to make Skyscanner’s list was Vail, Colorado.

Skyscanner’s experts determined through its list that U.S. travelers were looking for “smaller, lesser-known destinations that fly further under the radar, but offer something fresh beyond the big-name spots,” according to its website.

Jayden Nguyen is a Trending Reporter for CT Insider. She has been with Hearst Connecticut Media Group since 2024. Originally from Louisiana, Jayden graduated from Louisiana State University (LSU) in 2023 with a degree in mass communication and a minor in French.



AMENTA|EMMA
ARCHITECTS

Ament Emma Architects Expands Boston Office Amid Growing New England Portfolio

Ament Emma Architects has announced a significant expansion of its Boston presence, marking a new chapter of growth driven by a rising volume of work across New England. The firm has relocated its Boston team to a larger space at 285 Summer Street, positioning the office to better support an expanding staff and a broadening array of project types.

According to firm president Michael Tyre, Boston has become a key catalyst in Ament Emma's evolution. He emphasized that the region's clients have played a major role in shaping the firm's approach to purposeful, forward-thinking design. The new office, he noted, will help ensure the firm can continue meeting the needs of both long-standing and new partners while maintaining its commitment to design excellence.

Although Ament Emma has operated in Boston for more than ten years, the new studio

offers enhanced capacity for collaboration and technical resources. This added space arrives at a moment of sustained momentum under the leadership of Principal Eric Weyant, who has guided the Boston team through a period of increased project activity. His group is leading efforts to address pressing housing challenges while also advancing work in academic and workplace environments.

Across the region, the Boston office is now engaged in several multifamily housing developments totaling more than 1,000 new units. At the same time, the team continues to strengthen the firm's footprint in higher education, with active projects at MIT, Boston University, and Dartmouth. In the workplace sector, designers are developing

projects throughout Boston, Cambridge, and MetroWest, responding to the evolving needs of organizations across industries.

Weyant noted that the region is experiencing a strong demand for community-focused design, particularly around housing and neighborhood development. He emphasized that the expanded office will enhance the team's ability to support projects that strengthen local communities, while also enabling deeper involvement in academic and workplace commissions.

The Boston expansion coincides with a period of strategic hiring at Ament Emma. Over the past year, the firm has welcomed both emerging professionals and seasoned designers to help meet project demand and support continued growth.

AMENTA | EMMA

PATRIQUIN
ARCHITECTS



Patriquin Architects Celebrating 15 Years of Growth, Leadership, and Design Excellence

As the firm marks its 15th anniversary, it reflects on a decade and a half of growth, design achievement, and the valued clients and collaborators who have shaped its journey. This fall, a season often associated with renewal, brings new ideas, evolving perspectives, and important milestones that highlight the firm's continued evolution.

The firm proudly announces several significant professional advancements. Molly Straut has been promoted to Senior Design Associate, recognizing her growing leadership and contributions to the practice. Newly licensed architect Aurora Perreault has been elevated to Associate, a testament to her design talent and emerging voice in the profession. Additionally, Uzayr Agha has been honored with the prestigious Bass Fellowship from the Yale School of Architecture.

Design excellence also continues to be recognized externally. The firm received the CREW CT Blue Ribbon Award for Sustainable Design for the Slate Upper School project, as well as the

2025 Sustainable Award of Excellence from AIA Connecticut. The project's design centers on the natural characteristics of the site, creating an immersive campus that complements the Slate Lower School. The 2025 jury commended Slate Upper for its "strong material choices" and "impressive EUI of 22," underscoring the project's commitment to environmental stewardship.

Leadership within the profession remains an important part of the firm's identity. Paolo Campos is now serving his second year as Connecticut's representative to the AIA Strategic Council, a national think tank focused on research and foresight. As Co-Chair of the AIA of the Future Workgroup, Campos helped lead a presentation to the Strategic Council and AIA National Board on September 13. The session concluded with strategic considerations for 2030, including membership growth, climate action, and strengthening the profession's role in addressing societal and environmental challenges.

The firm is also proud to support Aurora Perreault at this year's CACX conference, where she presented "Learn to Give a Sh!t - Perspectives on Contemporary Space Segregation." Her talk examined the history of segregation and explored contemporary issues related to gender, identity expression, and inclusive design—particularly in shared spaces such as restrooms and signage. Additionally, Max Ballardo, and Perreault, were elected to the 2026 AIA Connecticut Board.

Continuing the firm's commitment to education, Josh Lavalley, Associate AIA, has begun teaching a BIM Modeling course at the University of New Haven's Interior Design program. The course introduces third-year students to Revit, offering foundational experience in both 2D and 3D building information modeling essential for residential and commercial work.

Together, these achievements reflect a year of meaningful progress and reaffirm the firm's dedication to design excellence, professional leadership, and a more inclusive and sustainable built environment.



BA, BAA & BABA COMPLIANT PRODUCTS

For over 30 years, QTL has been designing and manufacturing architectural lighting in the United States. From federal infrastructure to local transit, projects across the country rely on QTL's USA-made lighting solutions to meet BAA, BABA, or BA requirements. With integrated manufacturing in Connecticut and California, we maintain full control over materials, processes, and output – ensuring our products meet the highest standards while supporting American jobs and infrastructure.



LEARN MORE



Design - Build Commercial Construction General Contractor

Serving CT &
Southwestern RI
Since 1968

- New Construction
- Renovation
- Interior Fit-Out
- Building Renewal
- Repair & Maintenance
- Sustainable Building



Custom Engineered Metal Building Subcontractor

Offering the Northeast
Supply & Erect Services
Since 1995

- Sports Facilities & Arenas
- Educational Institutions
- Warehouse Distribution
- Manufacturing & Industrial
- Commercial & Business
- Aircraft Hangars



PAT MUNGER CONSTRUCTION COMPANY, INC.
203.483.3645 • mungerconstruction.com



INDUSTRIAL BUILDING SYSTEMS LLC
203.924.0761 • ibsct.com



AIA HOUSING SUMMIT SEEKS SOLUTIONS TO THE U.S. HOUSING CRISIS

AIA CONVENED INDUSTRY LEADERS TO ADDRESS ONE OF THE NATION'S MOST CHALLENGING PROBLEMS.

BY KATHERINE FLYNN

This year, the median age of a first-time homebuyer in the United States reached a historic high, at 38 years old. For all homebuyers, the median age was even higher: 56.

These statistics reflect just one symptom of a housing market that isn't working for most Americans. A decade of underbuilding following the Great Recession (causing a shortfall of roughly 4.7 million homes, although some estimates put the number even higher) forms the foundation of the problem—but exacerbating factors, including high mortgage rates and soaring rents, are creating an increasingly untenable situation.

“The time is now to move on all these things,” said Congressman Mike Quigley of Illinois’ 5th Congressional District in an address to a housing summit convened by AIA leadership in Washington, D.C., on Tuesday, Oct. 21. “The threats are great, but for those who are in homeless situations, people who are looking to move out, [and] first-time buyers, [they] recognize that the American dream is just outside their grasp.”

In 2017, AIA’s board of directors ratified a member-led resolution, adopted at the Annual Business Meeting, declaring access to housing as a human right. In the time since, AIA’s Housing & Community Development Knowledge Community has worked to advocate for equity in housing. In 2020, the AIA Strategic Council Study Group on Affordable and Equitable Housing issued a report identifying that the demand for affordable, equitable, and climate-resilient housing is rising at a faster rate than the design and construction industry can currently meet.

Last week, AIA’s 2025 Housing Summit convened a meeting of industry stakeholders to identify solutions.

“Like many of you, I believe housing is one of the most critical issues facing our profession

and our communities,” said AIA 2025 President Evelyn Lee, FAIA, NOMA, during a morning session comprising AIA leadership, members, and staff.

Defining the problem

Throughout the United States, demand for housing is outstripping supply, but additional barriers to housing affordability are plentiful, including zoning and land use restrictions for new construction, permitting delays, and a shortage of federal funding. A 120-city joint survey released earlier this year by AIA and the U.S. Conference of Mayors found that the cost of housing is a major burden on households, with 42% of households spending more than 30% of their income on rent, mortgage payments, and other housing costs.

While increasing the available housing stock in the U.S. would help alleviate the problem, total housing production remains constrained due in part to outdated and lengthy permitting processes.

“Our housing system is stuck,” said Matthew Murphy of NYU’s Furman Center in his keynote address to the summit. “When architects enter this conversation that’s been kind of niche, frankly ... I think there’s a lot of power there and a lot of synergy.”

At the local level, Murphy said, cities including Portland, Ore., and Minneapolis have implemented upzoning, legalized gentle density, and changed regulations around infill housing. States such as California, Arizona, and Connecticut now require cities to plan for, and demonstrate capacity for, production of housing at all income levels.

Murphy had ideas on the roles that architects can play in making changes on the policy level, including speaking to development issues with unique credibility and creating feasible housing models based on community needs and market realities.

“The affordability crunch is no



longer a coastal issue, which we all know,” Murphy said. “Every community is having this conversation.”

Challenges at the federal level

With budget cuts impacting the Department of Housing and Urban Development and many other federal agencies, multiple attendees of the Housing Summit acknowledged the anxiety and uncertainty around the current federal funding landscape for housing.

“There is no money—that’s the real truth to the situation we are in,” said Dave Gatton, director of the Council of Metro Economies & the New American City at the U.S. Conference of Mayors. He pointed out that the last time the federal government put forth a housing policy with sufficient money behind it was during the Carter administration. “There has been a four-decade-long underfunding of the nation’s housing programs,” he said.

Congressman Quigley also addressed the issue of federal funding in his remarks, stating, “We’re not going to get a lot of help from the federal government in the next couple of years.”

While the U.S.’s Low Income Housing Tax Credit (LIHTC) was

expanded under 2025’s One Big Beautiful Bill Act, calling for a permanent 12% credit allocation increase starting in 2026, more financial and regulatory incentives are necessary to encourage the private sector to build more housing, both market-rate and affordable.

“Any supply is good for reducing rents overall,” said Peter Bell, president and CEO of the National Housing & Rehabilitation Association.

A compounding factor on the supply side is the federal government’s restrictive immigration policy, which is adding to an already-significant labor shortage for construction. According to AIA’s Chief Economist, the construction labor force consists of 12 million workers nationally, of which three million are foreign born. One in every eight construction workers are undocumented.

Next steps

One of AIA’s current priorities is support for the bipartisan ROAD to Housing Bill, which recently passed the Senate as part of the National Defense Authorization Act (NDAA). If passed, this legislation would create new, flexible grants to help communities increase

housing supply and strengthen infrastructure, among other benefits.

“It’s the most comprehensive federal housing legislation we’ve seen in decades,” said Alexander Cochran, AIA’s chief government affairs officer. “We in the housing community know what we need to do. We need to build more housing now, correctly and quickly. ROAD moves that goal forward. I believe if the housing community joins together, we can get it passed in Congress, and the benefits will spread across all who work, build, and rely on safe, affordable and sustainable housing.”

Gatton, of the U.S. Conference of Mayors, emphasized the importance of the summit because of the need for AEC industry and housing stakeholders to work together to meet the current moment.

“We have to take advantage of this [moment], and I think it can only be done in a coalition,” said Gatton, noting that housing production for the country has not been a national issue until now. “I think it’s important ... to come together to take advantage of this very rare political moment that we’re in, unfortunately, because we’re in a housing crisis.”

Katherine Flynn is director, digital content at AIA.



National News

AIA ANNOUNCES \$4 MILLION MATCHING GRANT TO THE ARCHITECTS FOUNDATION TO RENEW AND PRESERVE THE OCTAGON

Architects Foundation



The American Institute of Architects (AIA) announced a \$4 million matching grant to benefit the Architects Foundation. This transformative gift underscores AIA's dedication to safeguarding architectural heritage through the comprehensive rehabilitation of The Octagon, the 225-year-old National Historic Landmark anchoring the AIA Global Campus for Architecture & Design in Washington, D.C.

AIA's commitment builds on a \$749,723 semiquincentennial grant from the National Park Service, creating a powerful foundation for The Octagon's comprehensive renewal. Together, these investments will leverage additional philanthropic support to complete essential upgrades that ensure The Octagon's continued service as a museum and center for design, preservation, and sustainability. The matching opportunity applies to all contributions to the Architects Foundation until it is met.

"This project connects our nation's architectural heritage to its future," said Evelyn Lee, FAIA, 2025 AIA President. "Renewing The Octagon reinforces our commitment to design that endures, both in structure and in spirit."

"AIA has called The Octagon home for more than a century," said Stephen Ayers, FAIA, Interim CEO of AIA. "Our investment ensures

this building, where presidents once lived and treaties were signed, will continue to inspire future generations."

A Landmark of American History Built in 1799 by Dr. William Thornton, the first Architect of the U.S. Capitol, The Octagon served as a refuge for President James Madison and First Lady Dolley Madison after the burning of the White House in 1814, where the President signed the Treaty of Ghent ending the War of 1812.

AIA purchased The Octagon in 1902, launching one of the nation's first major preservation efforts. Designated a National Historic Landmark in 1960 and opened as a museum in 1970; it remains one of only three presidential residences still standing today, alongside the White House and Blair House.

Renewal and Vision

The project will comprehensively rehabilitate The Octagon while upgrading systems to meet modern standards for accessibility, safety, and energy efficiency, reducing energy use by more than 50 percent.

When complete, The Octagon will reopen as a reimagined national museum for architecture and design. Together with the renewed AIA Headquarters, it will anchor the new AIA Global Campus for Architecture & Design, which will officially open to the public

in January 2026. The campus will include a welcome center, exhibitions, a design shop, and café, helping visitors explore how architecture shapes our lives. The project also aims to make the Octagon the oldest LEED-certified building in the United States.

Partnership and Preservation The renewal will be guided by the Architects Foundation in collaboration with AIA leadership, the National Trust for Historic Preservation, the U.S. Commission of Fine Arts, and other partners. Work will follow the Secretary of the Interior's Standards for the Treatment of Historic Properties to ensure authenticity and resilience.

"This matching grant reflects our commitment to make The Octagon a model of sustainable preservation," said Dan Kirby, FAIA, Chair, Architects Foundation Board of Directors. "Our work proves that preservation and progress can coexist. We're investing in The Octagon's long-term future while respectfully caring for this historic treasure."

To learn more about contributing to The Octagon renewal or other Architects Foundation programs, visit <https://architectsfoundation.org> or contact Executive Director, Jennifer Calvert Hall at jennifer@architectsfoundation.org.

Out & About

WOMEN IN ARCHITECTURE COFFEE MEETUPS UNITE MEMBERS ACROSS CONNECTICUT

OCTOBER 24, 2025

The Women in Architecture (WIA) Knowledge Community continued its commitment to connection and conversation by hosting the final series of Coffee Meetups across Connecticut. Gatherings were held in Glastonbury, New Haven, Norwalk, and Old Saybrook, drawing attendees from a range of architecture and allied design fields. Open to individuals of all

genders, these informal meetups provide a relaxed platform for professional networking, shared learning, and community building.

The Norwalk Coffee Meetup, held at The Norwalk Art Space, was a particular highlight. Attendees included Amanda Martocchio,

Melissa Fitter, Erin Shairzay, Joseph Strickland, Cheree Goone, and others who joined for lively discussion in a bright and welcoming setting. The venue—praised for its cheerful atmosphere, community-focused mission, and on-site café—offered an inspiring backdrop for conversation. Participants appreciated the opportunity to support a local arts organization; more about the space can be found at www.thenorwalkartspace.org.

Across all four meetup locations, the WIA Coffee series continues to serve as a meaningful space for members to exchange ideas, celebrate professional milestones, and strengthen networks statewide. With interest and participation growing, the WIA Knowledge Community looks forward to expanding these gatherings in the coming year, fostering an even more robust and supportive environment for Connecticut's design professionals.



Out & About

INDUSTRY PROFESSIONALS GATHERED FOR ENERGY CODE DEEP DIVE

OCTOBER 30, 2025



On Thursday, October 30, industry professionals from across the state convened at the Courtyard by Marriott in Orange, Connecticut, for “From Compliance to Performance: A Deeper Dive into the Energy Code.” The half-day program offered an in-depth exploration of Connecticut’s forthcoming energy code updates, providing attendees—from architects and engineers to code officials and builders—with practical, detailed guidance on both residential and commercial requirements.

Participants heard directly from state code experts, gaining insights designed to help project teams move beyond basic code compliance toward higher performance and energy efficiency. The program addressed the rapidly evolving regulatory landscape, equipping attendees with the tools needed to adapt their design, permitting, and construction practices.

Throughout the program, presenters examined several key topics, including:

- Upcoming changes to Connecticut’s energy code, along with administrative updates and implementation timelines.
- Major updates in the 2024 residential energy code, including application of tools such as REScheck for compliance.

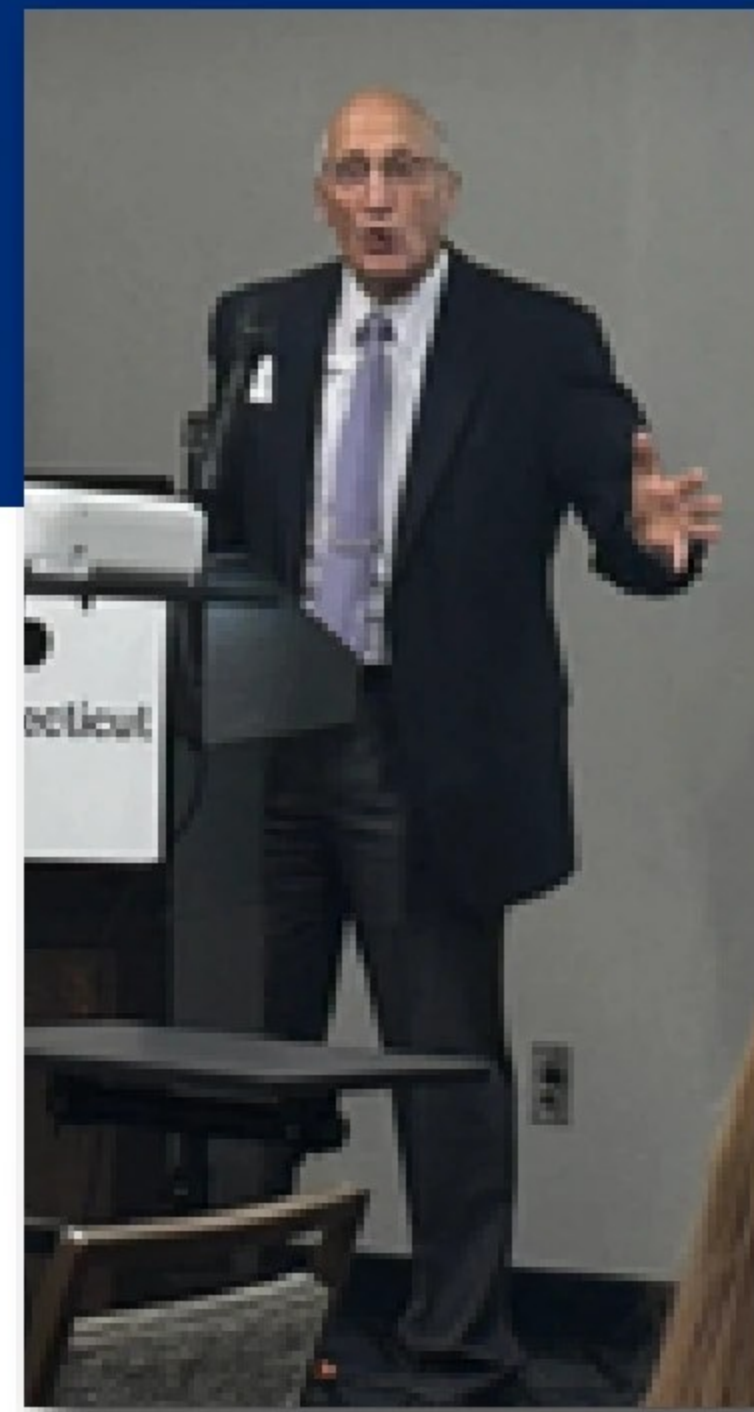
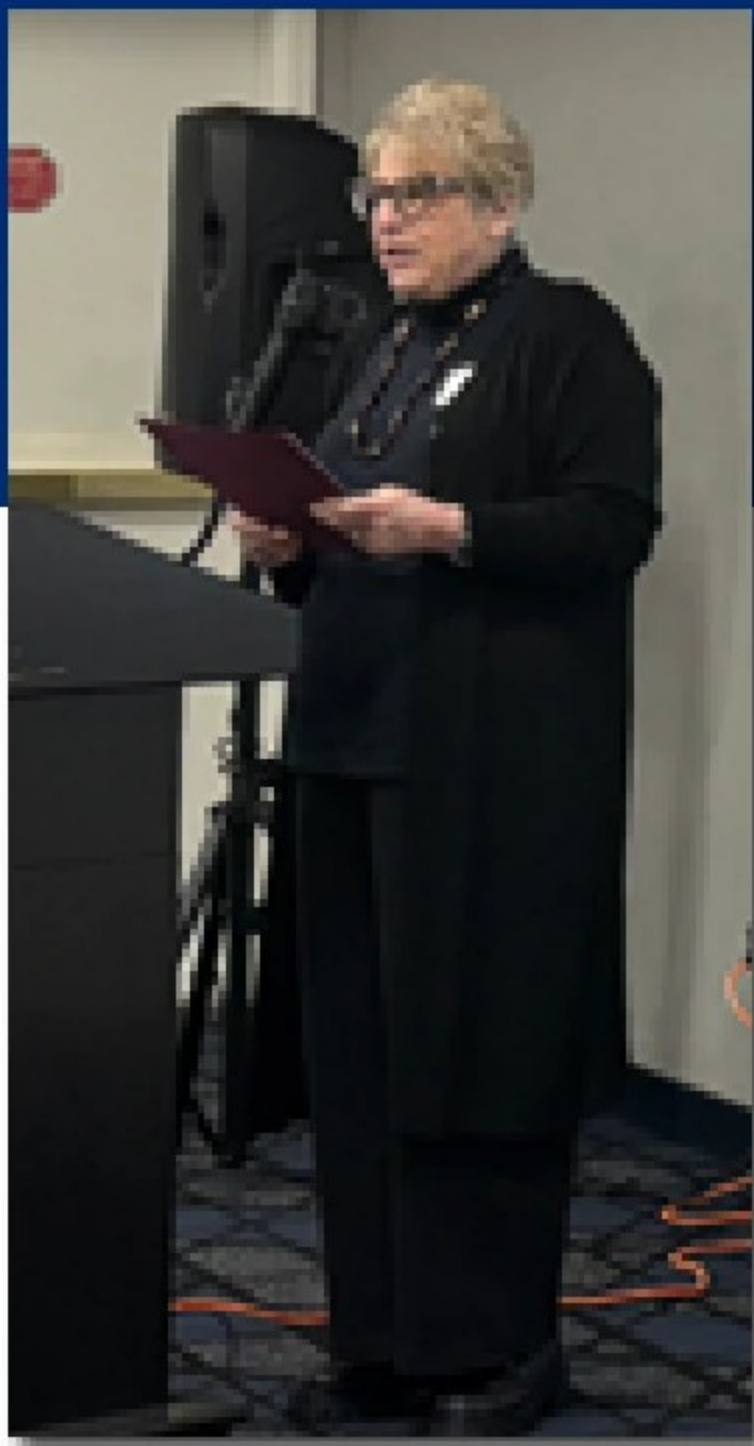
- Best practices for incorporating Passive House standards and residential energy modeling into early design and permitting.
- Significant residential and commercial code revisions, spanning documentation, air leakage testing, and HVAC and lighting control requirements.
- Approaches for meeting energy-related obligations in commercial buildings, including renewable energy strategies and load management systems.

The speaker lineup featured state and industry leaders:

- Omarys Vasquez, AIA, NOMA, Connecticut State Building Inspector
- Peter Zvingilas, Assistant Director of Regulatory Compliance, Office of the State Building Inspector
- Fred Wajcs, PE, Energy Code Consultant

The event provided attendees with knowledge, clarity, and resources essential for navigating Connecticut’s next generation of energy codes. By emphasizing both compliance and performance, the program helped professionals prepare for a future where high-efficiency design and construction practices will play an increasingly central role.





Out & About

ANNUAL FELLOWS DINNER

NOVEMBER 11TH



The Annual AIA Connecticut Fellows Dinner, held on November 11th at Hotel Marcel, brought together an engaged audience of Fellows and guests from AIA CT and CTASLA for an evening of conversation, reflection, and celebration of architectural excellence.

The featured speaker for the evening was Christopher Hawthorne—an architecture critic, educator, filmmaker, and senior critic at the Yale School of Architecture. Hawthorne offered thoughtful insights drawn from his multifaceted career, which spans journalism, academia, and public service. His remarks highlighted the evolving responsibilities of designers in addressing contemporary urban challenges, as well as the importance of storytelling in understanding the cultural and civic dimensions of architecture.

Hawthorne shared reflections from his tenure as the first Chief Design Officer for the City of Los Angeles,

a role he held from 2018 to 2022. During this period, he provided design oversight for major building and infrastructure projects across the city and launched initiatives focused on housing, architecture, urban design, civic memory, and public art. He also touched on his earlier work as architecture critic for the Los Angeles Times, where from 2004 to 2018 he shaped public discourse around the city's changing landscape and architectural identity.

Attendees left inspired by the depth of his experience and the clarity of his vision for design's role in shaping equitable, resilient, and culturally rich communities. The dinner reaffirmed the vitality of AIA CT's Fellowship community and its commitment to advancing meaningful conversations within the field of architecture.



NOV

27

28 Thanksgiving - AIA Connecticut Office Closed



DEC

3

Equity, Diversity, & Inclusion Knowledge Community Meeting

4

Making Sense of the IEBC: Code Strategies for Existing Building Work

8

Committee on the Environment (COTE) Meeting

9

Small Firms Exchange (SFx) Meeting

10

AIA Connecticut Board of Directors Meeting

11

2025 Awards Gala

12

Women in Architecture (WIA) Meeting: Inspirational Story with Guest Speaker Claire Weisz, FAIA

25

The AIA Connecticut Office will be closed from December 25th to January 2nd



AIA CONNECTICUT CALENDAR

Series:	Scales	No.
Item Number:		
Product Name:		



AIA SAFETY ASSESSMENT PROGRAM: SAP Training

Get certified to assess buildings for safety after a disaster.

One of the best ways architects, engineers, or certified building inspectors can support communities after a disaster is serving as building evaluators through the Safety Assessment Program (SAP) Training Program.

This training is the standard of certification, providing leadership, advocacy, and training to architects who are interested in volunteering their professional skills in times of crisis.

Upon completion of this course, participants will be able to consistently and safely assess structures for habitability and will receive a nationally recognized CAL OES registration ID card from the state of California.

FEBRUARY 4 & 5, 2026*

4th: 1pm – 5pm
5th: 9am – 12pm
**must attend both days*

- ✓ **Virtual**
- ✓ **6.5 HSW Credits**
- ✓ **Certification valid for 5 years**
- ✓ **Get recertified**
- ✓ **Receive a CAL OES registration ID card**

REGISTER TODAY! >