

May 2025

ARCHITYPE

THE DIGITAL MAGAZINE OF AIA CONNECTICUT

alice 2025 **WASHBURN** AWARDS

**Women In Architecture
Award Recipients**

Shifting Federal Priorities

K-12 Architecture Week

Strategic Council Update



SW 6760
Rivulet

**SHERWIN
WILLIAMS®**

SW 6677
Goldenrod

SW 6620
Rejvante

**Spec & color
expertise.**

At your service.

Learn more at [s-w.com/fullspectrumpossibilities](https://www.sherwin-williams.com/fullspectrumpossibilities)

TABLE OF CONTENTS

PUBLISHED BY AIA CONNECTICUT

FEATURES

- 5** FROM THE EXECUTIVE DIRECTOR
- 7** PRESIDENT'S COLUMN
- 8** 2025 Alice Washburn Awards
- 12** 2025 Women in Architecture Award Recipients: Leading with Vision and Impact
- 14** Trump Administration Climate Policy Rollbacks Threaten Occupant Health
- 18** Shifting Federal Priorities Create New Landscape for Architecture, Engineering and Construction Firms
- 20** K-12 Architecture Week Inspires the Next Generation of Designers
- 23** Strategic Council Update
- 24** CAF Celebrates the 2025 Leadership Recipient and University of Hartford Scholarship Awardees
- 26** UHart Architecture Students Advance Sustainable Design Dialogue in Germany
- 28** Downtown Evening Soup Kitchen's (DESK) Drop-in & Resource Center Renovation Complete
- 30** Sue Wyeth AIA, Receives the UHART Tau Sigma Delta Silver Medal Award
- 31** BL Companies Receives Grand Award from ACEC CT for Harbor Brook Project
- 32** Hoffmann Elevates Key Staff to Senior Leadership
- 33** Amenta Emma Announces New Workplace Studio Leader
- 34** NATIONAL NEWS
Is Your Firm Hiring? Three Things to Consider
- 36** CREW CT Celebrates 30 Years of Excellence at Blue Ribbon Awards Gala
- 38** OUT & ABOUT
Emerging Professionals (EP) Community Lunch Meetup
- 39** Calendar

EDITOR

Gina Calabro, Hon. AIA CT

ART DIRECTOR

Anthony Calabro

CONTRIBUTORS

Gina Calabro, Hon. AIA CT
Marc Guerrier Andre, AIA, NCARB
Daniel Piselli
Derek Kohl
Sue Wyeth, AIA
Amelia Sponauer
Katherine Flynn
Paolo Campos, AIA

OFFICE

The District
470 James Street, Suite 111
New Haven, CT, 06513

MAILING ADDRESS

The District
470 James Street, 007
New Haven, CT, 06513

communications@aiaact.org

© Architype. No part of this publication may be reproduced, stored in a retrieval system or transmitted in any form or by any means, photocopying, electronic, mechanical or otherwise without the prior written permission of the copyright owners.

While precautions have been taken to ensure the accuracy of its contents and information given to readers, neither the editor, publisher, or its agents may arise therefrom. All rights reserved.

WWW.AIACT.ORG

ARCHITYPE is a publication of the American Institute of Architects Connecticut.

ARCHITYPE

THE DIGITAL MAGAZINE OF AIA CONNECTICUT

ANNUAL



Connecticut

CORNHOLE TOURNAMENT

Whether you're a seasoned cornhole competitor or just in it for the fun, the afternoon offers the perfect mix of friendly competition and professional connection in a relaxed, scenic setting.

Enjoy a delicious lunch, a spirited reception, and an awards ceremony to crown our champions.

**It's more than just a game
—it's a celebration of
community, camaraderie,
and a great excuse to get
outside and have fun.**



JUNE 25

11:30AM-5:00PM

**POWDER RIDGE MOUNTAIN PARK & RESORT
MIDDLEFIELD, CT**

FROM THE EXECUTIVE DIRECTOR



Dear Members and Friends,

Last month was rich with recognition across our architectural community, and I'm pleased to share a few standout moments that reflect the depth of our creativity, commitment to mentorship, and passion for shaping the built environment.

The 2025 Alice Washburn Awards, which honor excellence in traditional residential design, were presented to projects that beautifully balance timeless architectural language with modern-day needs. These award-winning projects reflect a deep understanding of the enduring value of

craftsmanship in residential architecture.

We also had the privilege of recognizing Elizabeth DiSalvo, AIA, and Julia McFadden, AIA, as this year's recipients of the Women in Architecture Awards. Their visionary leadership and dedication to inclusive, community-driven design continue to inspire and open doors for future generations of women in the profession.

It was a personal honor to serve as a judge for the 30th Annual CREW CT Blue Ribbon Awards Gala. This milestone event celebrated the commercial real estate projects that are reshaping our state through innovation, collaboration, and design excellence. It was a powerful reminder of the impact that cross-disciplinary partnerships have in elevating the built environment.

Our commitment to nurturing future architects was evident in our K-12 Architecture Week programs. Eli Whitney Museum and the New Haven Free Public Library hosted our interactive program engaging students aged 8-12 to a hands-on workshops exploring sustainable architecture and solar housing. These initiatives are vital in inspiring young minds and fostering a passion for design.

Capping off the month's celebrations, we honored Tai Soo Kim, FAIA, at the Connecticut Architecture Foundation Distinguished Leadership Award Gala. With over 50 years of impactful work, Tai Soo's contributions to architecture and his dedication to mentoring emerging professionals have left an indelible mark on our community.

As we celebrate these remarkable individuals and initiatives, let us carry forward the spirit of excellence, inclusion, and collaboration that defines our architectural community.

Best Always,

A handwritten signature in black ink, appearing to read "Gina Calabro".

Gina Calabro, Hon. AIACT NOMA
Executive Director/CEO



VOLUNTEER OPPORTUNITIES

NATIONAL LEVEL

Explore AIA volunteer opportunities—a great way to support the work and shape the future of the architecture profession, develop and grow leadership skills, and help advance AIA's mission. AIA offers a number of ways to get involved at the national level. Whether you have limited bandwidth or can make a multiyear commitment—the 2026 National volunteer application process is now underway.

[Deadline to apply is June 16th](#)

LOCAL LEVEL

AIA Connecticut offers strong leadership and governance at the state level, guiding the organization's mission and initiatives. For those interested in meaningful committee involvement, building in-person connections, and participating in local events, joining a local committee is an excellent way to volunteer and engage with the architectural community.

Contact AIA CT — **communications@aiact.org**

PRESIDENT'S COLUMN



To Our Valued Members,

We are living through a time of rapid change. Many of our members are still adjusting to shifting policies, evolving priorities, and growing economic uncertainty. For those whose work involves the federal government or relies on public funding, recent developments raise urgent questions about the future of our profession. Some welcome deregulation as a way to spur development. Others worry we may be losing sight of our responsibility to protect the environment.



In such moments, it helps to reflect on individuals who remind us of what values-driven lives, and values-driven architecture can accomplish.

In March, we lost Ricardo Scofidio, a pioneering architect and educator. Born in 1935 in New York City to Black parents, he studied at Cooper Union and earned a degree in architecture from Columbia in 1960. In 1979, he co-founded a practice with Elizabeth Diller. I met him once as a student at City College, and for many of us, especially Black students, he was a rare and inspiring figure. Their firm won the MacArthur "genius grant" in 1999 and in 2003 his firm won a competition that later led the transformation of an abandoned elevated railway into Manhattan's iconic High Line. Completed in stages beginning in 2009, the park stands as a powerful example of how adaptive reuse can breathe new life into cities and connect communities.

This Easter, we also marked the passing of Pope Francis, Jorge Bergoglio, an Argentinian of Italian heritage and the first modern day pope from outside Europe. Ordained a priest in 1969 and elected pope in 2013, he became a global voice for the poor, for environmental stewardship, and for justice. His humble gesture of washing the feet of parishioners, including women, during Holy Week reflected a deep commitment to compassion and equity, values that resonate with our mission as architects committed to human dignity and service.

A few weeks ago, the Connecticut Architecture Foundation honored Tai Soo Kim at their annual fundraising gala. A native of Korea, Tai Soo came to the U.S. in 1961, studied at Yale, and founded his practice in 1970. He played a key role in establishing an architecture program at the University of Hartford, the second in Connecticut, to offer a professional degree. His legacy lives in buildings across the state, including my daughter's middle school in Fairfield. Known for its copper-clad facade and simple entry that shelters a single tree, the school is both a polling place and a beloved landmark in our community. Tai' Soo's journey is one of perseverance and a deep belief in simple architectural ideas' ability to facilitate learning while providing long term value to his clients.

We can also draw inspiration from Francis Kéré, the first Black architect to win the Pritzker Prize. Raised in a small village in Burkina Faso without running water or electricity, he studied in Germany and, while still a student, designed and built a school in his hometown using local materials. His work shows how design rooted in community can be both powerful and transformative.

These individuals remind us that architecture is not just about buildings, it's about people, purpose, and possibility. As the world changes, let's remain grounded in dignity, sustainability, and inclusion, and continue to build with humility, courage, and hope

Marc Guerrier Andre, AIA, NCARB
2025 President - AIA Connecticut

2025 BOARD OF DIRECTORS

PRESIDENT

Marc Andre, AIA
Marc G. Andre Architects, LLC

PRESIDENT-ELECT

F. Michael Ayles, FAIA
Antinozzi Associates, PC

TREASURER

Amy Samuelson, AIA, LEED AP
BL Companies

SECRETARY

Julia Su Jack, AIA, NCARB,
NOMA, PMP
City of Hartford

PAST PRESIDENT

Susan Wyeth, AIA, NOMA
Centerbrook Architect & Planners

DIRECTORS AT LARGE

Brian Baril, AIA
A/Z Corporation

Dov Feinmesser, AIA
Newman Architects

Nyicia George, Associate AIA
City of Hartford

Leen Hariri, Associate AIA, NOMA
Patriquin Architects

Thomas Haskell, AIA, LEED AP
University of Connecticut

Daniel Horowitz, AIA
University of Hartford

Jennifer Huestis, AIA NOMA
Huestis Tucker Architects, LLC

Julia Su. Jack, AIA, NOMA
City of Hartford

Jeremy Jamilkowski, AIA
Amenta Emma Architects

David O'Connor, AIA
Centerbrook Architect & Planners

Thaddeus M. Stewart, AIA NOMA
Integrated Design & Construction, LLC

Gina Calabro, Hon. AIACT, NOMA
Executive Director/CEO

alice 2025 WASHBURN AWARDS

Celebrating Excellence 2025 Alice Washburn Awards

Each year, the Alice Washburn Awards honor the very best in traditional residential design, celebrating the timeless artistry and modern relevance of Connecticut's architectural heritage. Named after Alice Washburn, a pioneering self-taught designer and builder of the 1920s, the awards recognize projects that thoughtfully reinterpret traditional styles to meet the needs of contemporary living.

Washburn's legacy—defined by her skillful integration of form, function, and historic context—inspires these awards, which are

EXCELLENCE Accessory Buildings

7 Pond Chalet

Rolfs Elert Office

The Pond Chalet, originally constructed in the 1920s as part of the historic Hiram Halle estate, began as a whimsical landscape folly and has since been reimagined as a serene retreat. This 718-square-foot stone and half-timber structure, with its distinctive undulating shingled roof and eclectic mix of finishes, is nestled among mature trees and dramatic ledge outcroppings at the edge of a pond. The renovation transformed the building into a tranquil space for rejuvenation and escape, organized around its original stone fireplace and featuring a dining area, spa-like bath, and sauna. A new cedar hot tub, set into an expansive deck that carefully weaves around existing rock formations, strengthens the building's connection to its surroundings. The jury praised the project for



Photo: Michael Biondo

its graceful balance of preservation and renewal, noting how original details were sensitively retained and refreshed, while new elements were introduced with subtlety and harmony to enhance the quiet elegance of the site.

Jury comments: This is a beautiful project that strikes a thoughtful balance between preservation and renewal. Many of the original details have been carefully retained, maintaining their charm while feeling fresh and updated. The new elements are clearly present, but they're



introduced with subtlety and harmony—they complement rather than compete. The site work is particularly well done, enhancing the overall sense of place with quiet elegance.

in Traditional Home Design: wardees

presented by AIA Connecticut to celebrate homes that embody her spirit of innovation and stylistic rigor.

This year's jury, composed of distinguished architects from Vermont, brings a deep appreciation for thoughtful design and regional nuance:

Together, the 2025 jurors evaluated submissions that reflect a strong sense of place, craftsmanship, and architectural continuity, all while addressing 21st-century needs in compelling ways.



Andrew Garthwaite, AIA – Haynes & Garthwaite, Norwich, VT



Pi Smith, AIA – Smith & Vansant, White River Junction, VT



Greg Thomas, AIA – Groundline Architecture Studio, St Johnsbury, VT

EXCELLENCE
Additions &
Renovations



Photo: Stefan Radtke

Four Winds

Rolfs Elert Office

Perched on a secluded hilltop near Long Island Sound, Four Winds is a refined stone and wood country home that underwent an extensive reconstruction to modernize and expand its historic core. Originally designed by Calvin Kiesling and built in 1931 by renowned architect Frazier Foreman Peters, the residence now artfully blends old and new in a unified, elegant, and sometimes unexpected way. The renovation honors the

craftsmanship and distinctive details of the original design while introducing a fresh chapter to the home's legacy.

Jury comments: *The interior of the home was especially enjoyable, with several well-considered elements that added to its overall appeal.*



MERIT Accessory Buildings

French Provincial **Saniee Architects LLC**

Nearly a century after its original construction, this landmark home underwent a meticulous restoration aimed at preparing it for the next 100 years. The exterior was treated with the precision of a historic preservation project, drawing from best practices in both the U.S. and the U.K. to ensure the highest standards were met. In contrast, the interior—largely stripped of its original character—required a more transformative approach. Unused attic spaces were reimagined into livable volumes,



Photo: David Sundburg/ESTO

multiple smaller rooms were combined to create more open, functional spaces, and a new family wing was seamlessly connected to the backyard, extending the home's living environment. The jury praised the result as a gracefully

updated residence that respects the original character while feeling entirely natural in its expanded form, describing the project as beautifully executed and a pleasure to experience.

MERIT New Construction

General's Residence **Duo Dickinson** **Architect**

The General's Residence, designed by Duo Dickinson Architect and completed in 2022, is located in the heart of Madison, Connecticut, where two sites fronting Route 1 were merged. A poorly constructed ranch house was removed to make way for the faithful reconstruction of an iconic but deteriorating 19th-

century home, with its exterior meticulously replicated on three public-facing sides. The project preserved the original 1890 stone landscape walls, mature trees, and the easterly open space overlooking downtown, all while meeting strict septic regulations. Carefully integrated into the existing neighborhood fabric, the design maintains the historic meadow and honors the original siting of the residence. The jury praised the project as a compelling example of how increased residential density



Photo: Duo Dickinson

can be gracefully incorporated into a town center, enhancing its urban character and making downtown living more accessible.

Commendation

Island Cottage **Vicente-Burin** **Architects**

Situated on just over half an acre on a New England island, this coastal residence is nestled within a small beachside community and offers

sweeping views of the Atlantic Ocean. The design centers on three interconnected pods, strategically positioned to capture expansive water views while forming a sheltered courtyard that protects against strong ocean winds. Each pod serves a distinct function, allowing for privacy and flexibility when different family members are in residence. The jury noted the project's subtle and unpretentious sense of place, praising its balanced proportions, inviting scale, and the way it effortlessly captures the



Photo: Wendy Mills

charm and character of coastal Massachusetts without ever feeling overstated.

DESIGNING

THE FIRM THE FUTURE

2025 Leadership Summit



FRIDAY, JUNE 13
8:30AM – 3:00PM
HOTEL MARCEL, NEW HAVEN, CT

At this dynamic summit, experience how architects are transforming the business of architecture. Through candid discussions, practical insights, and an interactive session, explore the full arc of practice –from startup to legacy. Connect with visionary leaders shaping sustainable, values-driven practices and reimagining the profession's future. It's a day of inspiration, meaningful connection, and fresh perspectives.

What to Expect:

- Hear from trailblazers
- Gain diverse perspectives
- Navigate transitions with confidence
- Develop essential leadership skills
- Connect and collaborate

**AGENDA, SPONSORSHIP
& REGISTRATION INFO >**

Hosted by:



Connecticut
Women in Architecture

2025 Women in Architecture Award Recipients

AIA Connecticut is proud to announce the recipients of the 2025 Women in Architecture Awards, honoring exceptional women who are shaping the future of the built environment through design excellence, professional leadership, and a commitment to equity and sustainability. These awards celebrate not only architectural talent but also the vital roles women play in creating more inclusive, resilient, and inspiring spaces for communities across Connecticut and beyond.

The 2025 honorees exemplify what it means to lead with purpose. Through their innovative projects, community advocacy, and mentorship, each recipient reflects the evolving landscape of architecture—a profession enriched by diverse perspectives and driven by a shared goal of improving lives through design.

Jury members Mandy Freeland, AIA, of Mandy Freeland Architect in Bakersfield, CA,

Jessica O'Donnell, AIA, of Urban Practice in Camden, NJ, and Elizabeth Whittaker, AIA of Merge Architects in Boston, MA, praised this year's submissions for their clarity of vision, depth of impact, and the ways in which each architect is pushing the boundaries of practice while staying grounded in social and environmental responsibility.

From transformative public spaces to thoughtfully detailed residential work, the projects recognized this year stand as a testament to the power of design led by empathy, intelligence, and integrity. These women are not only advancing architectural discourse—they are building a legacy of leadership for future generations.

2025 Awardees:



Elizabeth DiSalvo, AIA *Trillium Architects Co-operative, Inc.*

Elizabeth DiSalvo is the founder and CEO of Trillium Architects Cooperative, Inc., a 12-person employee-owned firm specializing in highly sustainable, energy-efficient residential design. A leader in the Northeast's green building movement for over two decades, her work focuses on Net Zero homes, Passive House design, and LEED-certified residences across Fairfield and Westchester Counties.

She also founded SEED Homes and NetZ GenZ Homes, offering affordable Net Zero modular housing solutions. With degrees from Rensselaer Polytechnic

Institute and Columbia University, Elizabeth's diverse experience includes work in Los Angeles, New York, Colorado, and at Centerbrook Architects in Connecticut.

A passionate community advocate and co-chair of AIA CT's Small Firms Exchange, she champions equity and collaboration, structuring Trillium as a cooperative to share ownership and opportunity among employees.

Recipients: Leading with Vision and Impact



Julia McFadden, AIA *Principal, QA+M Architecture*

Julia McFadden is a Principal at QA+M Architecture, where she co-leads the firm's education studio and has spent nearly two decades shaping innovative learning environments from early childhood centers to universities. A pivotal moment in her career was leading the design of the new Sandy Hook School, an experience that deepened her commitment to creating spaces that foster academic excellence, emotional well-being, and physical safety through strategies like biophilic design and Crime Prevention Through Environmental Design (CPTED).

Julia is a national and international speaker, most recently presenting at EdCrunch in Almaty, Kazakhstan, and is

recognized for her expertise in holistic, sustainable, and trauma-informed school design. Known for her collaborative leadership, she fosters inclusive engagement with clients, consultants, and communities, consistently building consensus around bold, visionary goals. Her early commitment to equity in the profession—evident in organizing a national symposium on gender and diversity while in graduate school—continues to inform her work.

Julia's passion for integrating wellness, sustainability, and human-centered design has made her a trusted advocate for thoughtful, resilient, and inspiring educational environments.



Through their innovative projects, community advocacy, and mentorship, each recipient reflects the evolving landscape of architecture—a profession enriched by diverse perspectives and driven by a shared goal of improving lives through design.



By Daniel Piselli

While the Trump administration rolls back environmental, efficiency, and other climate

policies, many forces continue to push the architecture, engineering, and construction industry toward sustainable building practices.

These forces range from practical to financial to ethical and are not so easily dismissed. Fundamentally, health, efficiency, resilience, and responsible choices are good for people and long-term business. Progress continues despite temporary headwinds. With federal abdication on climate issues, the extent of that progress depends on building owners, financiers, designers, contractors, manufacturers, and others in the field to do their part.

Perhaps the most powerful of these forces is occupant health, which, in addition to being a moral imperative, impacts the financial bottom line of both businesses and households. People prefer to live in homes and work in offices that are healthy, feel comfortable, and are connected to nature through daylight, views, and operable windows. They are dismayed when they learn that buildings cause them harm, leading to health conditions and medical bills. Building occupants are becoming increasingly aware that building materials, enclosure details, and mechanical systems can lead to asthma, cancer, infertility, and a number of other conditions. LEED buildings are healthier for employees to work in, but healthier choices are often disregarded in favor of marginally less expensive, more convenient, but harmful options. All involved in the design, construction, and maintenance of buildings should prioritize health. For example, architects can sign on to the AIA Materials Pledge, raise their awareness of options, avoid the most harmful materials, and propose healthier baselines. Manufacturers can disclose health impacts through transparency documents such as Health Product Declarations and optimize materials to do no harm.

Trump Adminis Rollbacks Thre

Architects and manufacturers have



Construction Climate Policy Threaten Occupant Health

Have a moral imperative to build without doing harm.



Financially, sustainable buildings are worth more and can cost less to run than standard buildings. Multiple studies have shown that LEED-certified office buildings outperform their counterparts. While there are upfront consulting, certification, and construction costs associated with LEED and other sustainability frameworks, costs are generally outweighed by added value. One study determined the average additional construction cost of LEED buildings to be 2 percent, while the returns were exponential: asset value by 18 percent, rental income by 12 percent, occupancy by up to 16 percent and productivity by 5 percent. A recent study of Passive House buildings in New York and Massachusetts found that while additional construction costs averaged 3.5 percent, energy costs were reduced by up to 50 percent. Improved durability and extended replacement timeframes represent additional long-term cost benefits. Architects can communicate these financial benefits to building owners, developers can prioritize long-term value, and contractors can focus on key construction performance factors like airtightness and continuous insulation.

Many companies will continue pursuing ESG policies despite federal pressure and recent abandonment of a proposed SEC climate risk disclosure rule. Employers face pressure from employees, investors, and stakeholders to maintain healthy workplaces and uphold sustainability commitments. From one direction, these activities are necessary for recruitment and retention of talent. From the other, major investors in U.S. commercial real estate, such as Norges Bank, require companies they invest in to comply with ESG requirements. These expectations include climate risk disclosures, greenhouse gas reporting, and concrete plans to reach net-zero emissions by 2050. Empowered employees and enlightened investment firms can continue to hold companies accountable for climate action.

Natural disasters are driving

resilient and adaptive design to protect investments and mitigate dramatic insurance rate increases. As the climate crisis increases risk from flooding, wildfires, hurricanes, extreme heat, and similar catastrophes, people and businesses must assess their situation and plan ahead. Some “climate migrants” are already leaving disaster-prone areas. Those who stay can turn to a variety of analyses, nature-based solutions, resilience guidelines, and protective building practices. Design professionals should educate clients about related risks and solutions, which are not yet required in many jurisdictions.

Building codes are set at the state and local levels, beyond federal control. Leading codes such as California’s CALGreen, and local legislation such as NYC’s Local Law 97 will continue to set new standards and raise the bar nationally. Stakeholders and volunteers can advocate for progress through a variety of committees and organizations. For architects with an interest in local policy, the AIA Committee on the Environment (COTE) Network Guide to Local + State Groups is a great resource. For example, I participate in the AIANY COTE as a co-chair of the Policy subcommittee and look forward to engaging in an upcoming update to the NYC Energy Code.

Finally, with renewable energy cheaper and easier to build than ever, there is bipartisan support for clean energy incentives. Many Republican lawmakers want to preserve IRA funding that benefits their states. And, in an ironic twist, an unintended consequence of a recent executive order relaxing permit requirements for energy projects may enable many renewable energy projects and help speed up the clean energy transition. House Minority Leader Hakeem Jeffries recently said of the surge in federal action, “We’re not going to swing at every pitch.” Energy policy is certainly a pitch worth swinging at—call your senator!

“
With federal abdication on climate issues, the extent of that progress depends on building owners, financiers, designers, contractors, manufacturers, and others in the field to do their part.
”



©2024 Marvin Lumber and Cedar Co., LLC.

Make space for
dreams come true.

Making your client's dreams a reality is a complex process with many moving parts. A partner who understands this can be invaluable. At Marvin, we take considered care to deliver inspired design, high-quality windows and doors, and life-bettering innovations. It's all to help you make space for distinction, expression, and everything that matters most to you and your clients.

marvin.com/architectural-resources



Commercial Construction Metal Building Experts

- New Construction
- Renovation
- Interior Fit-Out
- Building Renewal
- Repair & Maintenance
- Sustainable Building

PAT MUNGER CONSTRUCTION COMPANY, INC.
203.483.3645 • mungerconstruction.com

Shifting Federal Priorities Create New Landscape for Architecture, Engineering and Construction Firms

By Derek Kohl

The landscape for design and construction is ever-changing. Two big factors driving that change are the economy and federal government.

In 2024, for instance, firms were navigating a market reshaped by the Infrastructure Investment and Jobs Act, while also contending with inflation and supply chain challenges.

Now, in 2025, a new mix of headwinds and tailwinds is emerging, and industry players must adapt to stay ahead.

These shifts play out across the industry. Federal funding priorities influence public infrastructure and energy projects, while rising labor and material costs affect everything from retail rollouts to residential development.

Evolving regulations – whether tied to environmental standards or workforce requirements – add another layer of complexity.

At times like these, agility isn't just an asset; it's a requirement for staying competitive.

Shifting federal priorities

On the policy front, the ground is already shifting. We're still in the early days of the second Trump administration, but its rapid pace offers clear signals about where things are headed, particularly when it comes to infrastructure

funding and regulatory focus.

One of the most immediate changes is a potential rollback in discretionary grants that have historically supported projects with environmental or social impact goals, including those that provide accessibility and enhancement improvements.

Infrastructure projects like programmatic road and bridge improvements will likely continue, but others tied to climate resilience or "green" initiatives may slow or stall as the administration shifts the government's funding focus and strategies.

When it comes to regulation, the emphasis appears to be on speeding things up. Efforts to streamline permitting could reduce lengthy regulatory review, reducing some environmental permitting work while opening up opportunities in construction and development.

For the architecture and engineering industry, owners and builders, that could mean more shovel-ready projects on the horizon.

That doesn't mean public dollars and regulation will disappear. We may see states taking a larger role in funding public projects and setting environmental standards for the public and private sector.

That is likely to take some time.



Tariffs impact

The economic outlook is a little murkier. Prolonged high interest rates continue to squeeze project budgets that are already stretched thin from years of inflation.

We have seen owners hit pause or walk away entirely over the last couple of years, as the cost of capital climbed higher than many had anticipated.

And that pattern is likely to persist through 2025 at a minimum.

Adding more uncertainty are the range of tariffs introduced by the Trump administration, along with retaliatory measures from global trading partners. These new trade dynamics have created whiplash conditions for companies relying on imported materials and equipment.



With costs fluctuating and timelines disrupted, a single high-ticket item sourced from overseas can suddenly become the reason a project stalls or dies altogether.

In the long term, there may be some upside. The push to onshore manufacturing and reduce supply chain vulnerabilities could ultimately create more resilience for the U.S., and create additional opportunities for the architecture, engineering and construction industries.

But, in the short term, the concern and pain is real.

Staying engaged and agile

So, how do firms not only weather uncertainty, but position themselves to thrive in it?

It starts from within. During

economic and policy shifts, a highly engaged company culture becomes a strategic advantage.

Senior leaders at architecture, engineering and construction firms should be gathering employees on a consistent basis to share the latest insights on both the state of the business and the broader market.

These meetings are where leaders can share what they should be monitoring. Everyone at the company should know what is in the pipeline and what is in hand to help stay ahead of potential challenges, while identifying new opportunities.

Senior leaders also need to practice active listening – with employees, partners and clients. These are your eyes on the ground and can sometimes surface concerns and opportunities earlier than data.

Finally, for firms offering integrated and multidiscipline services, this is the moment to double down on cross-training. A nimble workforce where engineers can step into surveying roles, or environmental staff can do both compliance and natural resource work, creates built-in flexibility.

That kind of agility not only keeps work moving, it provides learning experiences for employees and positions the firm to seize new opportunities, regardless of market turns.

Derek Kohl is vice president of operations at BL Companies, an integrated architecture, engineering, environmental and land surveying firm headquartered in Meriden.

This article first appeared in the Hartford Business Journal.

K-12 Architecture Week Inspires the Next Generation of Designers

By Gina Calabro, Hon. AIACT

AIA Connecticut, the Architecture Resource Center, and the Connecticut Architecture Foundation proudly hosted this year's K-12 Architecture Week, an engaging and interactive initiative designed to spark curiosity and introduce young learners to the world of architecture, design, and sustainability.

This year's program featured two hands-on workshops tailored for children ages 8-12, focusing on the fundamentals of sustainable design through the construction of solar-powered model houses. The events took place on April 14th at the Eli Whitney Museum & Workshop and April 16th at the New Haven Free Public Library, where eager participants explored how architecture can positively impact both communities and the environment.

Thanks to the generous support of a \$1,500 grant from AIA National and an additional \$750 grant from the Connecticut Architecture Foundation, both events were offered free to the public. Combined with individual donations and the dedication of volunteers, these contributions helped make the two afternoons unforgettable experiences filled with creativity, learning, and engagement.

The program was further enriched by dynamic presentations from industry professionals who shared their passion and expertise with the young participants. At the Eli Whitney Museum, Andrew Swartzell, AIA, LEED AP, from Pickard Chilton Architects, inspired a group of 30 students with an engaging discussion on the broad world of architecture and its potential to create positive environmental change. The museum generously provided the space and helped promote the event, welcoming a diverse group of curious young minds.

At the New Haven Free Public Library, Paolo Campos, AIA, NOMA, spoke about the importance of sustainable design, encouraging both children and their families to think critically about how architects play a key role in shaping a greener, more resilient future.

At both locations, students participated in the hands-on activity of building solar-powered model homes—a project that sparked imaginations and encouraged exploration of sustainable design concepts.

Volunteers played an essential role in bringing these programs to life. Amy Albandoz of Pirie Associates, along with Max Ernesto Ballardo, AIA, and Molly Straut, Assoc. AIA, LEED

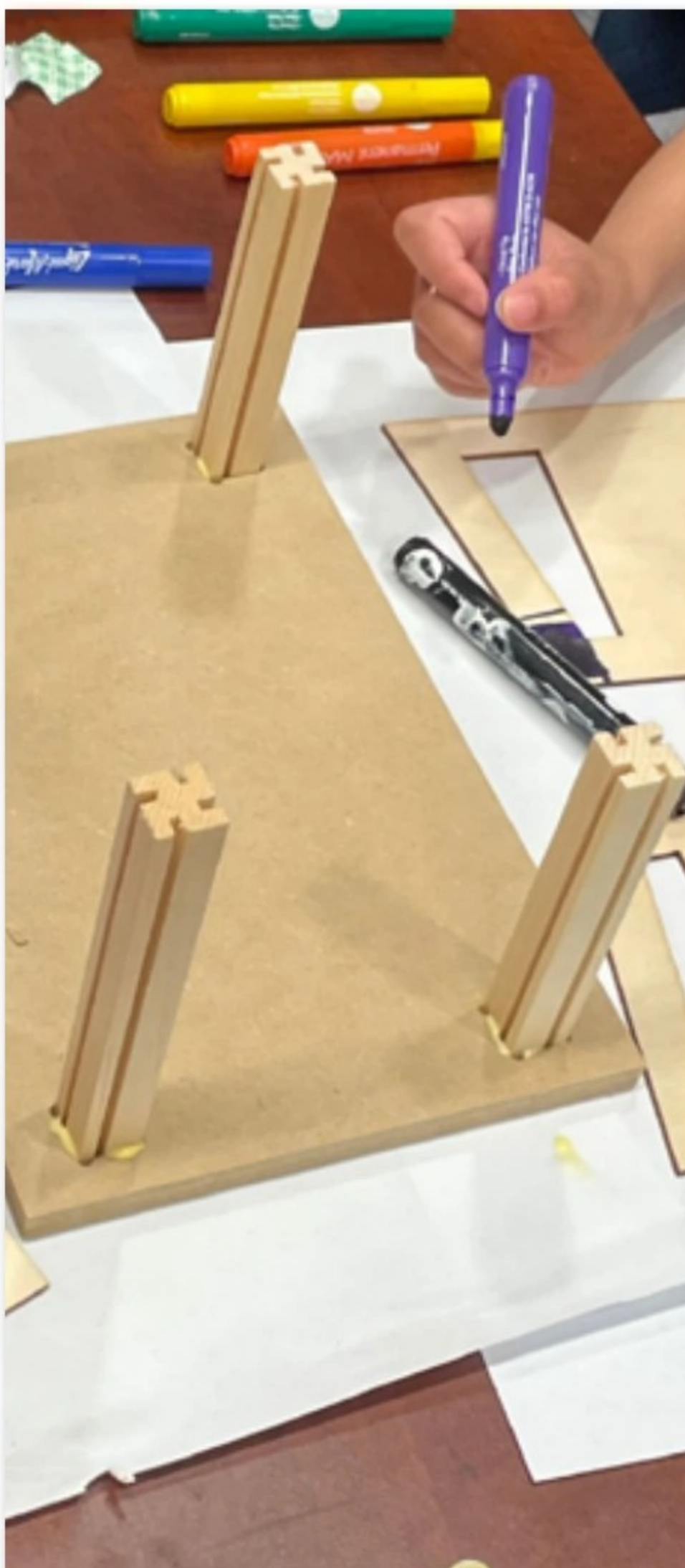




Green Associate, of Patriquin Architects, worked closely with the children, offering guidance, support, and inspiration. Their dedication created a welcoming and encouraging environment where students felt empowered to explore, ask questions, and imagine themselves as future designers and changemakers.

AIA Connecticut extends heartfelt thanks to all who made K-12 Architecture Week a success—from grant sponsors and venue partners to presenters and volunteers. This initiative highlights the power of collaboration in nurturing the next generation of architects, innovators, and community leaders.

We look forward to building on this momentum and continuing to provide opportunities for young people to explore the transformative world of architecture.





Strategic Council Update

As the Institute embarks on a new strategic plan, President Evelyn Lee, FAIA, has assembled a Strategic Planning Committee to guide this work in collaboration with consulting experts and staff partners. I am pleased to announce I will be a member of this Committee- a dedicated group of volunteer leaders charged with guiding the development of AIA's next strategic direction. Representing a range of perspectives from across our community, we are leading a thoughtful and inclusive process to help shape our future priorities. Together, we will:

- **Clarify the challenges and opportunities facing our organization and profession**
- **Engage with stakeholder input, interpreting what we hear with discernment and care**
- **Frame strategic priorities that are both visionary and executable**

Working in partnership with an external consultant, the committee will gather and interpret input from members and stakeholders, explore key challenges and opportunities, and recommend strategic focus areas that reflect our values, mission, and vision.

AIA staff are supporting this process by coordinating logistics and communications, ensuring the committee and consultant have the tools and information they need to be successful. While staff are not involved in decision-making, they play a vital role in enabling a smooth and well-supported planning process.

Together, this collaboration ensures that the voices of our members and partners are heard—and that our next strategic plan is built to inspire, focus, and lead.

We will kick off the process later this month and look forward to sharing regular updates and ways for you to shape this important work.



The members of the 2025 Strategic Planning Committee are listed below:

- Korey White, AIA, Co-chair - Illinois
- Mike Waldinger, Hon. AIA, Co-chair - Colorado
- Josh Flowers, FAIA - Tennessee
- Abigail Brown, FAIA - DC
- Paolo Campos, AIA - Connecticut
- Li Ren, AIA - Dubai
- Sarah Woynicz, AIA - Texas
- Saakshi Terway, Assoc. AIA - DC
- Bill Bates, FAIA - Pennsylvania
- Rachel Minnery, FAIA - Washington
- Nate Hudson, AIA - Nevada
- Melvaleen McLemore, AIA, NOMA - Texas

I look forward to representing our state in this process. My door is always open to hear from you.

Best,

Paolo Campos, AIA, NOMA
Strategic Council Representative
2024-2026

CAF Celebrates the Recipient and University Scholarship Award

By Sue Wyeth, AIA

The Connecticut Architecture Foundation celebrated Tai Soo Kim, FAIA with the Distinguished Leadership Award reception and dinner on April 29th at the University of Hartford's Harry Jack Gray Center, fittingly, a building designed by him. It was a great evening, kicked off with a wonderful lecture by Tai Soo of his architectural works, spanning his career, both in the United States and in Korea.

This annual event is the CAF's major fund-raiser, providing the resources to advance education and professional growth in the field of architecture in Connecticut. This year the foundation has raised over \$50,000 for scholarships and grants and is proud to say that over \$700,000 has been awarded for scholarships to date, at an ever-increasing number of schools of architecture. The Foundation will be awarding scholarships to nine qualified students of architecture who are connected to Connecticut.

Through the Foundation's William Mack, AIA Awards, students at the Connecticut Science Fair are recognized for outstanding projects, typically in the areas of Sustainability and Building Performance. This year's recipients are a team from Platt Technical High School, who proposed transforming a former golf course in Woodbridge into a Green Academy, and a team from John Winthrop Junior High School, who investigated the stability of various structural shapes during a simulated seismic event.



Grant funding includes support for the Architecture Resource Center (ARC), originally founded in 1991 as part of the Connecticut Architecture Foundation. ARC became an independent nonprofit in 2005. Following the passing of its founder, Anna Sanko, the organization has entered a new chapter of leadership, with Gina Calabro serving as Executive Director and Tanya Cutolo, a CAF Board Member, playing an active role in its governance.

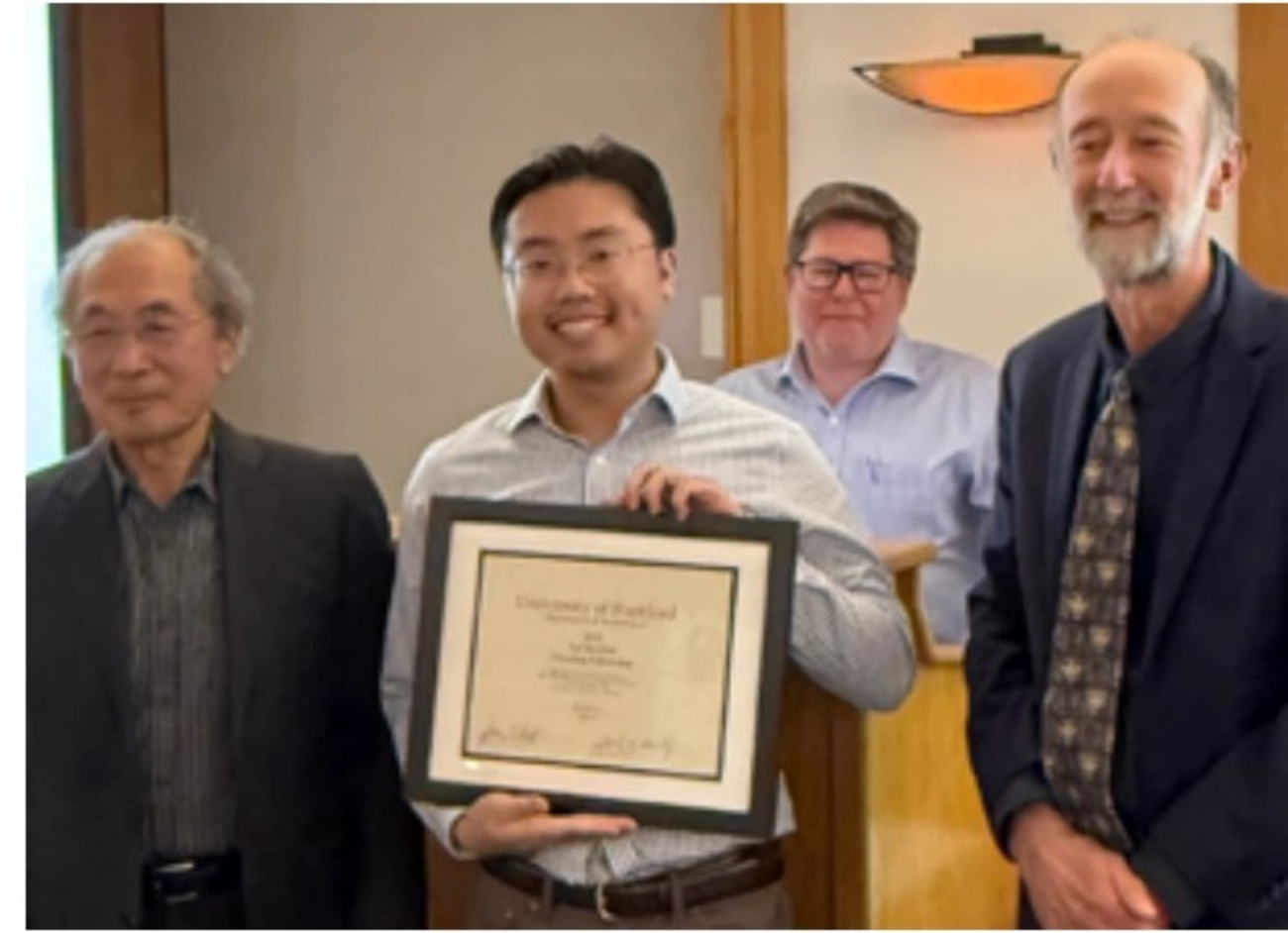
As a longtime supporter of the University of Hartford, CAF provides scholarship funds to supplement UHART's endowed scholarships for Students of Architecture. The following awardees of scholarships, medals, awards and fellowship were announced and presented.

The David N. LaBau Memorial Architecture Endowed Scholarship

Given to honor the memory of David N. LaBau, this scholarship is awarded to a student studying architecture at the graduate level. David N. LaBau, FAIA was a founding Principal of the SLAM Collaborative and a driving force behind developing a Master of Architecture program at the University of Hartford.

- Alena Doll
- Lauren Matias
- Christina Patmanidis

The 2025 Leadership University of Hartford Awards



The Frederick J. Mahaffey Memorial Endowed Architecture Scholarship

Given to honor the memory of Frederick J. Mahaffey, a former professor of Architecture at the University of Hartford, this scholarship awards one or more students studying architecture at the graduate level.

- Alvana Abedini
- Johnathan Lyn
- Haindhavi Paruchuri

The Tai Soo Kim Master Class Scholarship Fund

Given to promote and enhance the education of graduate students in the University of Hartford's Master of Architecture Program.

- Uarda Elmasllari
- Kimberly Fraleigh
- Sierra Nicholais
- Aziel Rivera
- Serhat Saman

The Alpha Rho Chi Medal

This medal is given to a graduating student who has shown an ability for leadership, performed willing service for their school or department, and demonstrates promise of real professional merit through their attitude and personality.

- Kayleigh Luke

The AIA Medal for Academic Excellence

The AIA Medal for Academic Excellence is conferred to the top architecture graduate whose imagination and design thinking will influence the future of the built environment.

- Timothy Wang

Architecture is Free Foundation Student-Choice Thesis Award

This award is student chosen. The Architecture Is Free Foundation holds that education in general should be free, or at least affordable and easily accessible to all, representing a cross-section of people that live in the world, not just the unencumbered elite few.

- Peter Catapano

Tai Soo Kim Traveling Fellowship

The Tai Soo Kim Traveling Fellowship, made possible through the generosity of architect Tai Soo Kim, FAIA, supports the travel of a graduating Master of Architecture student (or student team) each year to further their independent study of architecture.

- David Tran

Walter Harrison Thesis Award

In honor of University President Emeritus Walter Harrison, this Award is bestowed upon the Master of Architecture student with the most outstanding Thesis Project. Projects must be timely in nature, thoroughly thought out, comprehensively developed, graphically stunning, and effectively presented.

- Timothy Wang



UHart Architecture Students Advance Sustainable Design Dialogue in Germany

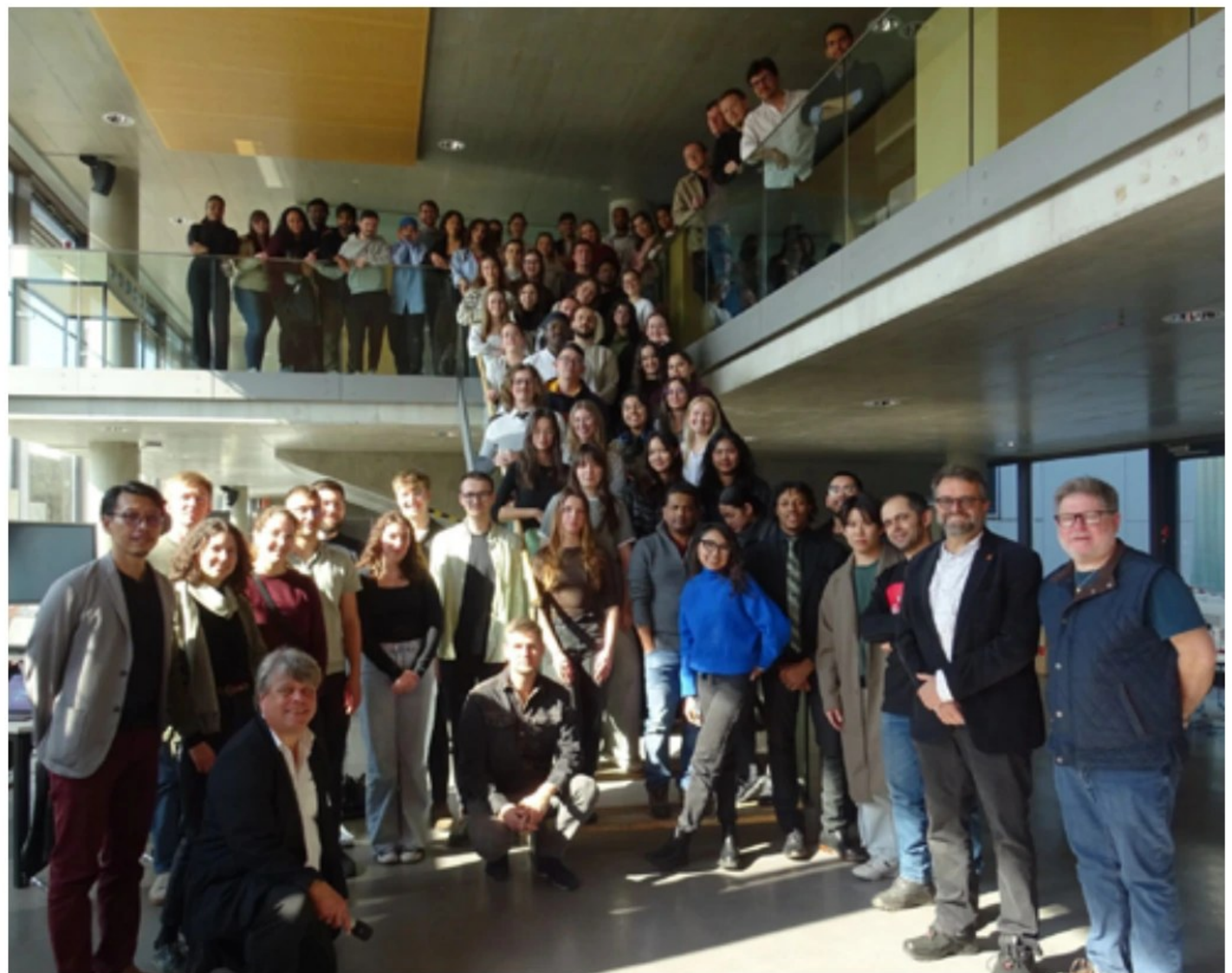
By Amelia Sponauer

For architecture students at the University of Hartford, education extends far beyond the studio. Study abroad is a core component of the program—offering immersive, place-based experiences that broaden students' perspectives, deepen their understanding of global design traditions, and expose them to the cultural, material, and environmental contexts that shape the built environment.

One such opportunity recently brought a group of graduate and undergraduate students to Wismar, Germany, where they participated in an intensive international workshop focused on sustainable design and upcycling strategies within the circular economy. Far from a traditional spring break, this ten-day program placed students at the heart of a rigorous design studio on Germany's Baltic coast.

The initiative included two weekends in Berlin and a weeklong workshop at Hochschule Wismar University of Applied Sciences, a long-standing academic partner of UHart. The collaboration reflects the University's deep commitment to embedding global design thinking into architectural education. Dan Horowitz, Program Director of the Master of Architecture program, currently advises a Wismar thesis student who previously studied in his Integrated Design studio at UHart. Horowitz also delivered a keynote lecture during the workshop on the intersection of artificial intelligence and design education, drawing on his work with the nonprofit Architecture Is Free Foundation.

The workshop, titled Resourcing Architecture Design Aesthetics through Upcycling, challenged participants to consider how



discarded materials could inspire new aesthetic languages and construction methodologies. Students from five countries—Germany, the U.S., Sweden, Thailand, and Slovakia—collaborated on speculative proposals that blended environmental responsibility with design innovation.

“Working with peers from radically different contexts to develop architecture from cast-off materials was both humbling and catalytic,” said John Tinelli '25, a senior in UHart's Architectural Design + Technology program. “It redefined what sustainability can look like and how we can build identity through constraint.”

In Berlin, the group explored the city's rich architectural and political history, visiting sites including Museum Island, the Berlin Cathedral, the Holocaust Memorial, and Checkpoint Charlie. For students working on a master plan project for

a two-block site adjacent to the Berlin Zoo, walking the actual streets brought fresh clarity and relevance to their studio proposals—bridging the speculative and the real.

This global initiative is emblematic of UHart Architecture's evolving mission: to prepare students to confront pressing ecological and social challenges, collaborate across cultural and disciplinary boundaries, and design with intelligence, integrity, and purpose.

Amelia Sponauer M'25 is the Marketing Communication Manager for the College of Engineering, Technology, and Architecture, Office of Marketing and Communication at the University of Hartford

**UNIVERSITY
OF HARTFORD**

ARCHITECTURE



The
Di Salvo
Engineering
Group
Structural Engineers



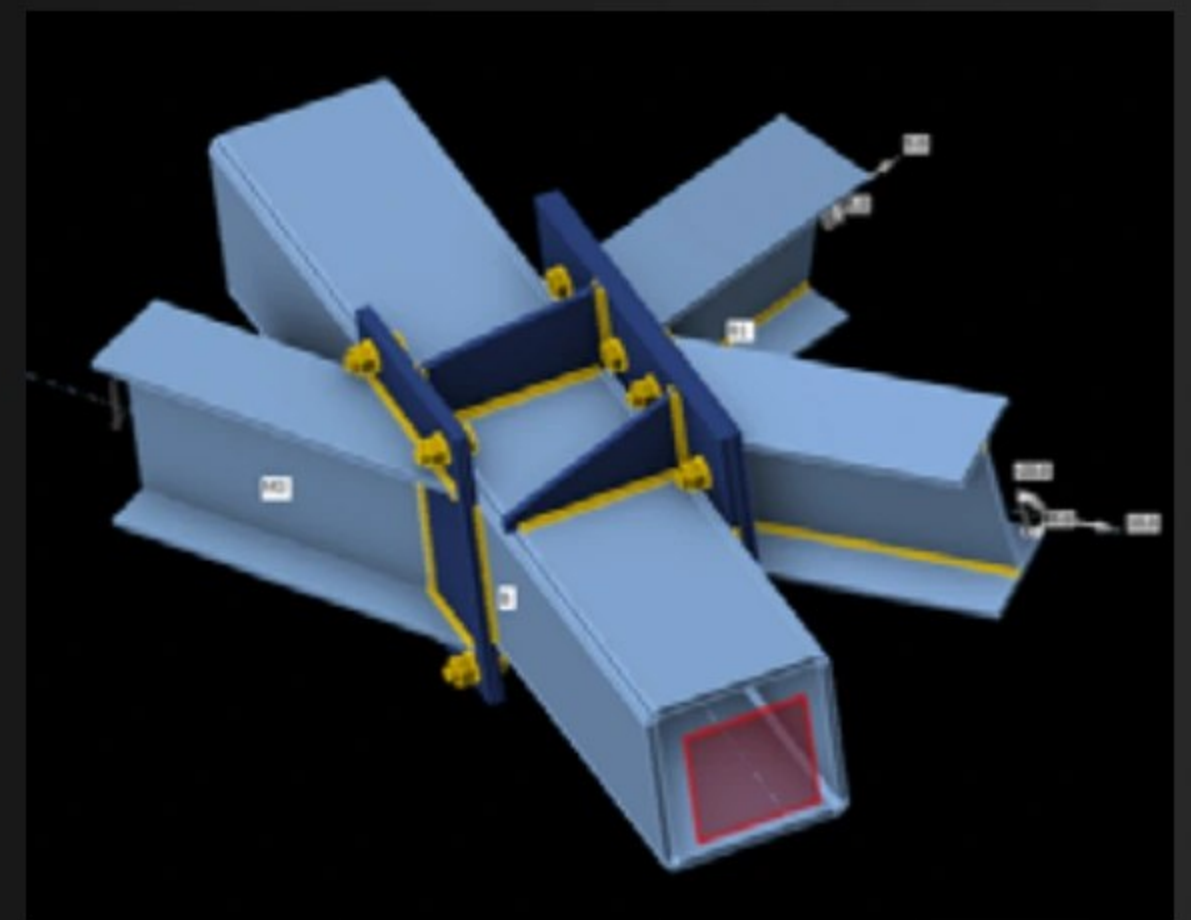
Photo by Jeff Totaro

THE DI SALVO ENGINEERING GROUP...

has been providing comprehensive structural engineering services to CT/AIA architects for over 50 years.

Our commitment to technical excellence and exceptional service is made possible by the dedicated staff of engineers and designers who routinely provide creative solutions to the challenges presented.

Give us a call and let us know how we can help you structure your next building project.



CONTACT US



(203) 490-4140



www.tdeg.com



Connecticut Office:

**93 Lake Ave, Suite 201
Danbury, CT 06810**



Colorado Office:

**405 S. Wilcox St, Suite 210
Castle Rock, CO 80104**



DOWNTOWN EVENING SOUP KITCHEN'S (DESK) DROP-IN & RESOURCE CENTER RENOVATION COMPLETE

Svigals + Partners, an FCA company, has completed the renovations for Downtown Evening Soup Kitchen's (DESK) Drop-in & Resource Center at 266 State Street. Consolidating three facilities into one, the redesigned building is now open, offering unhoused individuals a comprehensive range of critical services in a welcoming, trauma-informed environment.

Most notably, this facility is the first of its kind to integrate professional medical and clinical psychiatric services directly into its program—breaking down significant barriers to healthcare for a population where trust in treatment is often a major obstacle. The addition of in-house medical staff marks an extraordinary leap forward in addressing both immediate and long-term needs. The revitalized facility has already demonstrated an outstanding impact on its New Haven community and was honored with the Irmgard and Morris Wessel Unsung Heroes Award in February 2025.

The renovation is the culmination of a process that began in

2019, when Svigals + Partners facilitated a series of interviews, focus groups, and a half-day workshop with individuals with lived experience, service providers, volunteers, community stakeholders, law enforcement, and City officials. This collaboration informed the vision for New Haven's first low-barrier Downtown Drop-in & Resource Center (DRC), advancing DESK's mission to create a welcoming and supportive space.

The 266 State Capital Project is a \$3.875 million effort, funded by a combination of public and private sources, including federal HUD Community Project Funding, state and city contributions with support from Congresswoman Rosa DeLauro, institutional funders such as Yale New Haven Health Systems and Cornell Scott Hill Health Center, and private donors. The new facility features a modern, energy-efficient commercial kitchen, additional office space for program staff, a full medical clinic staffed by Cornell Scott

Hill Health Center's Homeless Healthcare Department, and expanded consultation and meeting spaces for partner organizations.

"This is a program that breaks down walls—both literally and figuratively," said Steve Werlin, DESK's Executive Director. "With this new space, we're strengthening connections and providing a place where trust can be built, leading to meaningful support services for those who need them most."

Svigals + Partners, an FCA company recognized for its trauma-informed approach in projects such as New Haven's Ronald McDonald House and the Sandy Hook School redesign, worked closely with DESK to ensure the facility promotes dignity, accessibility, safety, and comfort. PAC Group oversaw construction, bringing its expertise in healthcare and clinical facility projects.

SVIGALS + PARTNERS | an **FCA** company



800-390-1000

architecturalservices@ringsend.com

RingsEnd.com

The Architectural Services Team at Ring's End provides the A + D community with service, support, and expertise in a wide range of products and practices. All services are complimentary and include in-office and onsite support. Contact us for your next project!



SAFETY | PROFESSIONALISM | INTEGRITY | QUALITY | DEDICATION



GENERAL CONTRACTORS | CONSTRUCTION MANAGERS | DESIGN-BUILDERS

203.235.1770

LAROSABG.COM

Sue Wyeth AIA, Receives the UHART Tau Sigma Delta Silver Medal Award

The University of Hartford's Tau Sigma Delta Gamma Nu Chapter recently convened for its annual meeting—a hallmark event that celebrates the spirit of academic and professional excellence.

The Gamma Nu Chapter represents the highest level of academic accomplishment at the University of Hartford's architecture program. Students who qualify for membership in Tau Sigma Delta are among the top 10% of their class, maintaining a GPA of 3.6 or higher. This distinction reflects not only academic excellence but a commitment to the rigorous standards of architectural education.

Tau Sigma Delta is the only national honor society recognized in the fields of architecture, landscape architecture, and the allied arts. As such, membership is a prestigious accomplishment—on par with the most respected honor societies in other disciplines. Students who meet the society's criteria do so through individual merit, and the faculty, along with the Grand Chapter, bestows upon them the honor of wearing the Tau Sigma Delta key. This emblem is more than a symbol; it is a testament to the scholarly and professional promise of each inductee.

A key highlight of the annual meeting is the presentation of the Tau Sigma Delta Silver Medal, awarded each year by the Gamma Nu Chapter to a professional whose work exemplifies excellence in design and leadership in the fields of architecture, landscape architecture, or the allied arts.

This year, the chapter proudly honored Sue Wyeth, AIA, NOMA, of Centerbrook Architects & Planners, with the Silver Medal Award. A graduate of the Rhode Island School of Design, Ms. Wyeth has been a leading figure in the architectural community for over four decades. Her distinguished career at Centerbrook, including ten years as senior director, has been marked by an unwavering commitment to design innovation, mentorship, and service to the profession.

Her impressive portfolio has garnered numerous national and regional accolades, and her work has been widely published. Most recently, she served as the 2024 President of the Connecticut Chapter of the American Institute of Architects (AIA CT), further underscoring her impact on both practice and pedagogy.



Previous awardees include:

- 2014 Tai Soo Kim, FAIA
- 2015 Craig Saunders, AIA
- 2016 Tyler Smith, FAIA
- 2017 James McManus, FAIA
- 2018 Terri Hahn
- 2019 James E. LaPosta, Jr., FAIA
- 2020 Robert Orr, FAIA
- 2021 Kermit D. Thompson, FAIA
- 2022 Angela Cahill, AIA
- 2023 Anthony J. Amenta, AIA
- 2024 James Lawler, FAIA



BL Companies Receives Grand Award from ACEC CT for Harbor Brook Project

BL Companies has been honored with the 2025 Grand Award by the Connecticut chapter of the American Council of Engineering Companies (ACEC) for its work on the Harbor Brook Channel Improvements Project in Meriden, Connecticut. This prestigious recognition celebrates engineering excellence and acknowledges the project's outstanding contributions to flood mitigation, environmental sustainability and community revitalization.

The Harbor Brook project was designed to address chronic flooding along a 1-mile stretch of the brook, reducing the floodplain footprint, protecting vulnerable neighborhoods, and enhancing public access to natural space through the integration of a new multi-use trail.

"This recognition highlights the critical role engineering plays in building stronger, safer and more resilient communities," said Derek Kohl, Vice President of Operations at BL Companies. "We are proud to collaborate with the City of Meriden and our project partners to deliver a solution that not only resolved a long-standing public safety issue but also restored natural habitat, improved quality of life and created new recreational opportunities." The Harbor Brook Channel Improvements Project combined flood mitigation infrastructure with environmental restoration and community accessibility enhancements. The project involved widening and deepening the channel, constructing new floodplain storage areas, replacing aging infrastructure and introducing a 3,500-foot multi-

use trail. These efforts addressed flood risk, improved emergency response capabilities and created new public access to the brook.

Construction was completed ahead of schedule and under budget, the result of close collaboration between BL Companies, the City of Meriden, Richards Corporation and Seifert Associates, LLC.

BL Companies received the Grand Award, as well as a Connecticut Engineering Excellence Award, during a ceremony at the Aqua Turf Club in Plantsville, Connecticut, on January 28, 2025.



Hoffmann Elevates Key Staff to Senior Leadership



Juan A. Kuriyama, AIA



Lawrence E. Keenan, AIA, PE



Daniel L. Bishop, AIA



Robert A. Marsoli, Jr., PE

Hoffmann Architects + Engineers announces the promotions of Juan Kuriyama, Larry Keenan, Dan Bishop, and Rob Marsoli, Jr., expanding their leadership responsibilities as senior managers.

Juan Kuriyama, AIA to lead Hoffmann's New York City office

Juan A. Kuriyama, AIA has been promoted to from Vice President to Senior Vice President and Director, Architecture, and assumes responsibility for the operation and management of Hoffmann's New York City office. The office was previously under the direction of Craig A. Hargrove, AIA and, with Hargrove's recent appointment as President, Technical Services at

Hoffmann, Kuriyama is well positioned to succeed him in the role of New York office manager. One of the owners of the firm, Kuriyama has been with Hoffmann since 1998.

Larry Keenan, AIA, PE to oversee Quality Assurance / Quality Control

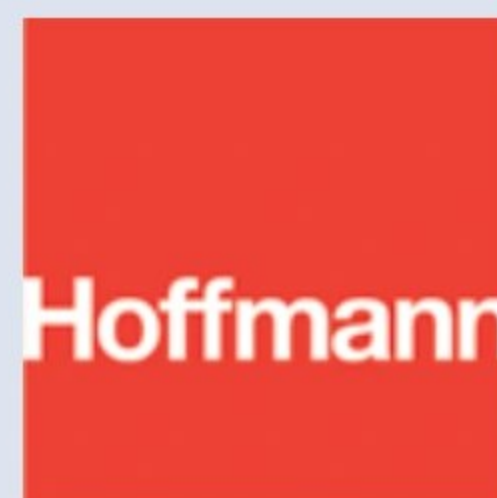
Lawrence E. Keenan, AIA, PE earns a promotion from Senior Vice President and Director, Architecture and Engineering to Senior Vice President and Director, Technical Services. In this role, he directs the firm's Quality Assurance / Quality Control program, overseeing the architectural and engineering deliverables produced across all three of Hoffmann's offices. Both a licensed professional engineer and a registered architect, Keenan is uniquely positioned to evaluate the technical accuracy, code compliance, constructability, and performance of the design solutions developed by the firm's design professionals. Keenan succeeds Russell M. Sanders, AIA in this position, as Sanders has announced his planned retirement in August 2025.

Dan Bishop, AIA named Vice President and Director

Daniel L. Bishop, AIA gains the corporate title of Vice President, in addition to a promotion from Senior Architect to Director, Architecture. Since 2021, Bishop has overseen the firm's Washington DC office, managing a team of design professionals to see that projects are delivered on time, within budget, and to rigorous technical standards. As Vice President and Director, he assumes greater responsibility for the growth and success of the firm, providing mentorship to junior staff, collaborating with peers in other offices, guiding business development initiatives, and contributing to executive decisions about Hoffmann's trajectory.

Rob Marsoli, Jr., PE to lead Hoffmann's engineering team

Robert A. Marsoli, Jr., PE has been tapped to head Hoffmann's team of engineers, with a promotion from Senior Engineer to Director, Engineering and Corporate Vice President. Marsoli will direct engineers across all Hoffmann offices to bring consistency, accuracy, and technical ingenuity to structural rehabilitation projects firm-wide. As a senior leader and one of the owners of the firm, Marsoli supervises junior staff to see that Hoffmann's exacting standards for project documents and construction administration drive every project. He also provides guidance to emerging professionals at Hoffmann in building their experience, knowledge, and credentials as they prepare to manage projects independently. Marsoli has been with Hoffmann since 2007.



Amenta Emma Announces New Workplace Studio Leader

Amenta Emma Architects is pleased to announce that Debra Seay, AIA, WELL AP, has been appointed as the firm's new Workplace Studio Leader. Debra succeeds Tom Quarticelli, AIA, who has retired after 38 years of distinguished service to the firm.

"Debra's promotion to lead our Workplace studio is a natural and well-deserved evolution of her career focus," said Amenta Emma president, Michael Tyre. "Her deep experience in workplace and commercial interiors projects has been central to Amenta Emma's success in this market. Known for her commitment to client advocacy and delivering inspired design solutions, we couldn't be more excited to see Debra excel in her new role."

When she joined the firm in 2016, Debra brought with her more than 14 years of experience on large-scale, complex projects and an exceptional level of innovation and leadership. A year into her tenure she earned a WELL accreditation and has since applied thoughtful and creative design approaches that use biophilia, natural light, and natural materials to enhance the user experience.

More recently, under Debra's leadership, Amenta Emma's



Hartford and Boston offices achieved the prestigious WELL Equity Rating, making them among the first architecture offices in New England to receive this distinction. The rating recognizes organizations that create inclusive workplaces prioritizing health, well-being, and equitable practices.

In her new role, Debra will lead the Workplace Studio's strategic direction and continue to advance the firm's commitment

to creating innovative, healthy, and sustainable workplace environments that inspire and engage.

Debra says, "Leading our Workplace Studio is an incredible opportunity to expand our impact on how people experience their work environment. We're not just designing spaces - we're creating healthy, inclusive environments that inspire collaboration and support well-being."

AMENTA | EMMA



IS YOUR FIRM HIRING? THREE THINGS TO CONSIDER

BY KATHERINE FLYNN



In 2018, I reported a story for ARCHITECT magazine (AIA's then-media partner) on how firms think about culture fit when hiring for new roles. At the time, what I heard from the firms I spoke with was that culture fit and a willingness to share ideas were more important qualities in a new hire than technical skills alone. Technical skills can be taught—soft skills, such as good communication and strong leadership, are more innate.

With the onslaught of societal and cultural changes that have happened in the time since, including the rise of remote work, it seemed like a good time to revisit the topic. As I dove in, however, I started questioning the premise. If good talent is hard to come by, is culture fit now more of a luxury than it was seven years ago? Amid the current economic uncertainty being felt across industries, as reported in this month's ABI, are firms even thinking about hiring at all?

To clarify what firms are thinking about in relation to staffing today, I chatted with Hugh Hochner, a principal at architecture and engineering management consulting firm the Coxe Group. Hochner, a nearly fifty-year veteran of the industry, has helped firms weather multiple eras of ups and downs.

Of the firms his company works with, Hochner says, "About a third are in a hiring mode, a third are in a downsizing mode, and a third are stable."

There's still a shortage in the "middle."

"During the pandemic—not necessarily because of the pandemic, but during that era—quite a few firms were elevating project leaders to partner status, and they were critical as project leaders to justify becoming partners," says Hochner. However, the shortage of experienced



project managers in “the middle”—due to a variety of factors, with anecdotal evidence supporting the long-term impacts of the 2008 recession—means that a growing number of architects have the title of “partner,” but are still actively working in project management roles. While partners may still be involved in the nitty-gritty details of daily project work, it’s important not to sideline long-term goals and the bigger picture.

Optimize “project process training” whenever possible.

“[It’s like] hiring people for a baseball team—amongst the people you’d hire would be the utility infielders, people who do a lot of different things and do them well,” Hochner says.

Because of the shortage in the middle, he explains, Coxe Group is helping more firms look at project process—how they do what they do day-to-day.

With the prevalence of BIM, which encourages holistic thinking rather than linear thinking, “it makes every bit of sense to have a philosophy of practice that doesn’t isolate design from production and construction administration,” he says. “It makes more sense to integrate them.”

He also emphasizes that no matter how much education and training a prospective hire has received, there’s no substitute for hands-on experience. “The most effective learning doesn’t happen in workshops; it doesn’t happen in classrooms. It happens on the job,” he says. “When I say we’re doing ‘project process training,’ we’re setting firms up to make sure that they can do most of their training on the job.”

Have a strategic plan, and hire with transition planning in mind.

According to Hochner, many firms that he works with are prioritizing longer-term strategic thinking, which particularly ties into soft skills like leadership. A few of the questions that firms should be considering: who is going to be able to best connect with future clients? Who is going to lead the firm in important aspects of practice, like design?

“It’s impossible to do really good transition planning without tying into strategic planning,” he says. “Whether you’re calling it ‘strategic planning’ or not, you need to tie it into where the firm is going. You need to make sure the firm is in a position to create that strategy.”

Katherine Flynn is Director, Digital Content at AIA.

CREW CT Celebrates 30 Years of Excellence at Blue Ribbon Awards Gala



CREWCT

CREW CT (Commercial Real Estate Women) is the industry's leading business networking organization, dedicated to advancing women in commercial real estate through business development, leadership opportunities, and meaningful connection.

The chapter recently marked a major milestone with its 30th Annual Blue Ribbon Awards Gala, held on April 23, 2025, at The Bushnell in Hartford. The event drew members, partners, and guests from across the region to celebrate the state's most impactful commercial real estate projects and the visionary teams behind them.

The Blue-Ribbon Award, the evening's highest honor—was presented to Centerbrook Architects + Planners for their exceptional work on the Yale Peabody Museum.

The awards also recognized outstanding achievements by AIA CT members and firms:

- 101 College Street — Fuss & O'Neill
- Anthem at Square — 10 PES Structural Engineers
- Connecticut Residence and Dining Hall — Newman Architects
- Friends Center for Children - CINE4 Flint Street — Patriquin Architects
- Fuss & O'Neill Headquarters — Tecton Architects
- Parker-Hannifin Plating Room Addition — Petra Construction Corporation
- Sacred Heart University, Pioneer Village — The S/L/A/M Collaborative
- Shoreline Grove — Newman Architects
- Slate Upper School — Patriquin Architects
- Springside Middletown — Fuss & O'Neill
- The Archive Apartments — Kenneth Boroson Architects, LLC



- Trinity Health of New England, Enfield Campus, Ambulatory Care Center — The S/L/A/M Collaborative
- Windham High School, Renovate-as-New — Friar Architecture Inc.

These projects showcased a wide range of contributions, from adaptive reuse and sustainability to educational and community-focused development.

Special thanks go to this year's esteemed panel of judges: Gina Calabro, Executive Director and CEO of AIA CT; David Wharmby, Director of the Center for Real Estate at UConn; and Courtney Hendricson, Director of Corporate & Foundation Relations at Southern Connecticut State University.

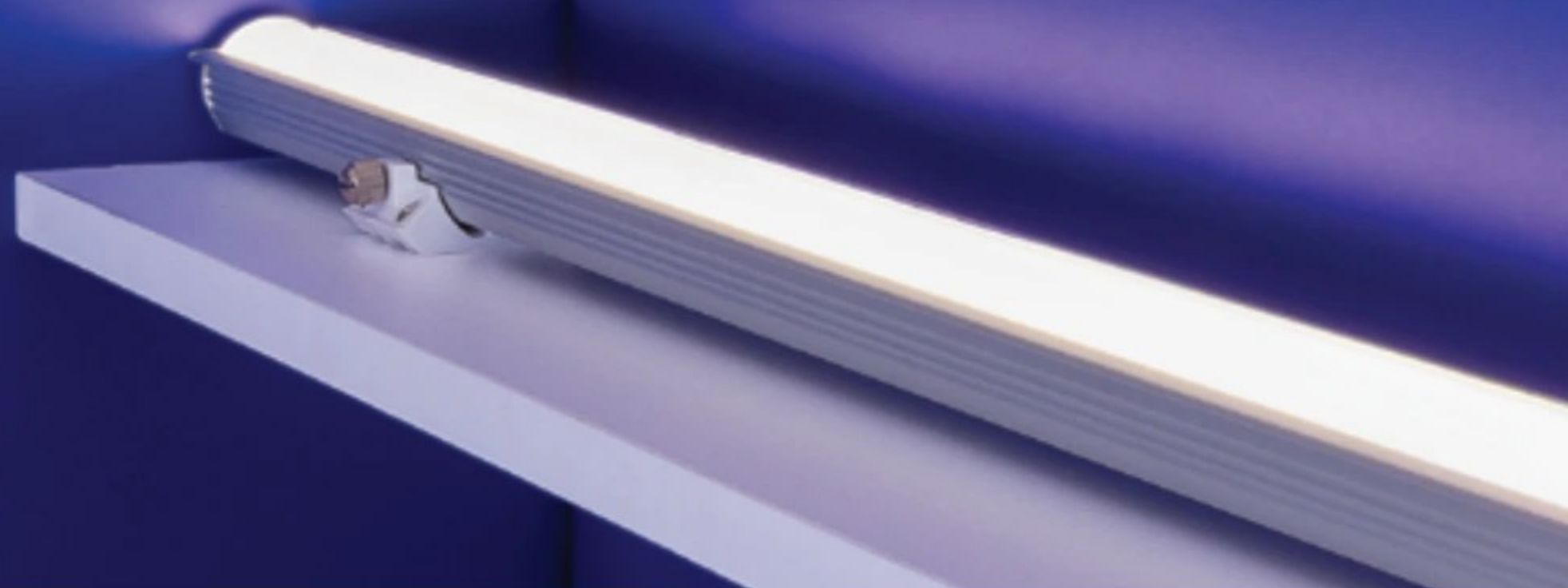
QUOVA



PERFORMANCE

POWERFUL LIGHTING FOR FLAWLESS COVES

QUOVA PERFORMANCE boasts up to 900 lm/ft of output and 450 cd peak intensity at CRI 98, making it best in class. Its proprietary, asymmetric optic focuses light with high peak intensity, ensuring uniform illumination across ceilings, even from shallow coves.



Apparently, we have this unrelenting obsession with perfection.



ROCKMAN WINDOWS & DOORS

Westchester | Connecticut | The Hamptons

We believe every window and door project, from a timely repair or breathtaking upgrade to an extensive new construction or complicated historical replication, requires getting every detail precisely right. Partner with skilled professionals that have unparalleled industry knowledge about every nuance of a product, its performance, beauty, and lasting value.

Every Rockman door and window solution is a built-to-order masterpiece of modern technology and exquisite design, crafted to an even far more exacting standard. Behind all the beauty, you'll find ultra-thorough proofing and skilled review of every order before it's released into production. Architects, builders, and homeowners can expect that degree of commitment with our dedicated support and expert guidance every step of the way, guaranteed.

We're especially obsessed with excellence and accountability from project concept through completion. Discover the best windows and doors, suited to match your home's design and budget.

Proud Allied Members of:
VIP Circle
PLATINUM

AIA Connecticut

AIA WESTCHESTER HUDSON VALLEY

AIA Peconic

914-909-9430

www.RockmanWindowsAndDoors.com



Showroom
Virtual Tour

EMERGING PROFESSIONALS (EP) COMMUNITY LUNCH MEETUP

APRIL 17TH

The Emerging Professionals (EP) Knowledge Community hosted its April Lunch Meetup at the Trumbull Kitchen in Hartford, providing a relaxed setting to connect and discuss upcoming committee initiatives. Leen Hariri, Assoc. AIA, Nyicia George, Assoc.

AIA, and Joy Ortiz, AIA, gathered for the event, with Joy Ortiz of Amenta Emma winning the gift card giveaway. We hope to see even more emerging professionals join us at future meetups to share ideas, build connections, and get involved!



TRŪSTILE
A MARVIN BRAND

WSC Woodbury
Supply Company, Inc.

MAY

20

Retro-Commissioning 101 - It's Better for Your Building!

21

Government Affairs Committee Meeting

Securing the Future: Succession, Merger Planning, and Ownership Transition Planning for Your Firm

22

Committee on Design

23

Drawing Awards Submission Deadline

26

Memorial Day - AIA Connecticut Office Closed

30

Sustainable Architecture Awards-Submission Deadline

JUN

5

Building Performance & Regulations (BP&R) Meeting

9

Design Awards Registration Opens

Committee on the Environment (COTE) Meeting

10

Small Firms Exchange (SFx) Meeting

Exterior Walls, Fire Walls, Fire Barriers, and Fire Partitions

11

Equity, Diversity, & Inclusion Knowledge Community Meeting

12

AIA Connecticut Board of Directors Meeting

13

Elizabeth Mills Brown Awards Registration Deadline

2025 WIA Leadership Summit

18

Professional Practice Knowledge Community Meeting

19

Juneteenth - AIA Connecticut Office Closed

AIA CONNECTICUT CALENDAR

Series:	Scales	No.
Item Number:		
Product Name:		



SAVE THE DATE

CACX'25

**Mohegan Sun
September 26th**

Registration Opening Soon!