

AMERICAN INSTITUTE
OF
ARCHITECTS

DEC 27 1973

LIBRARY

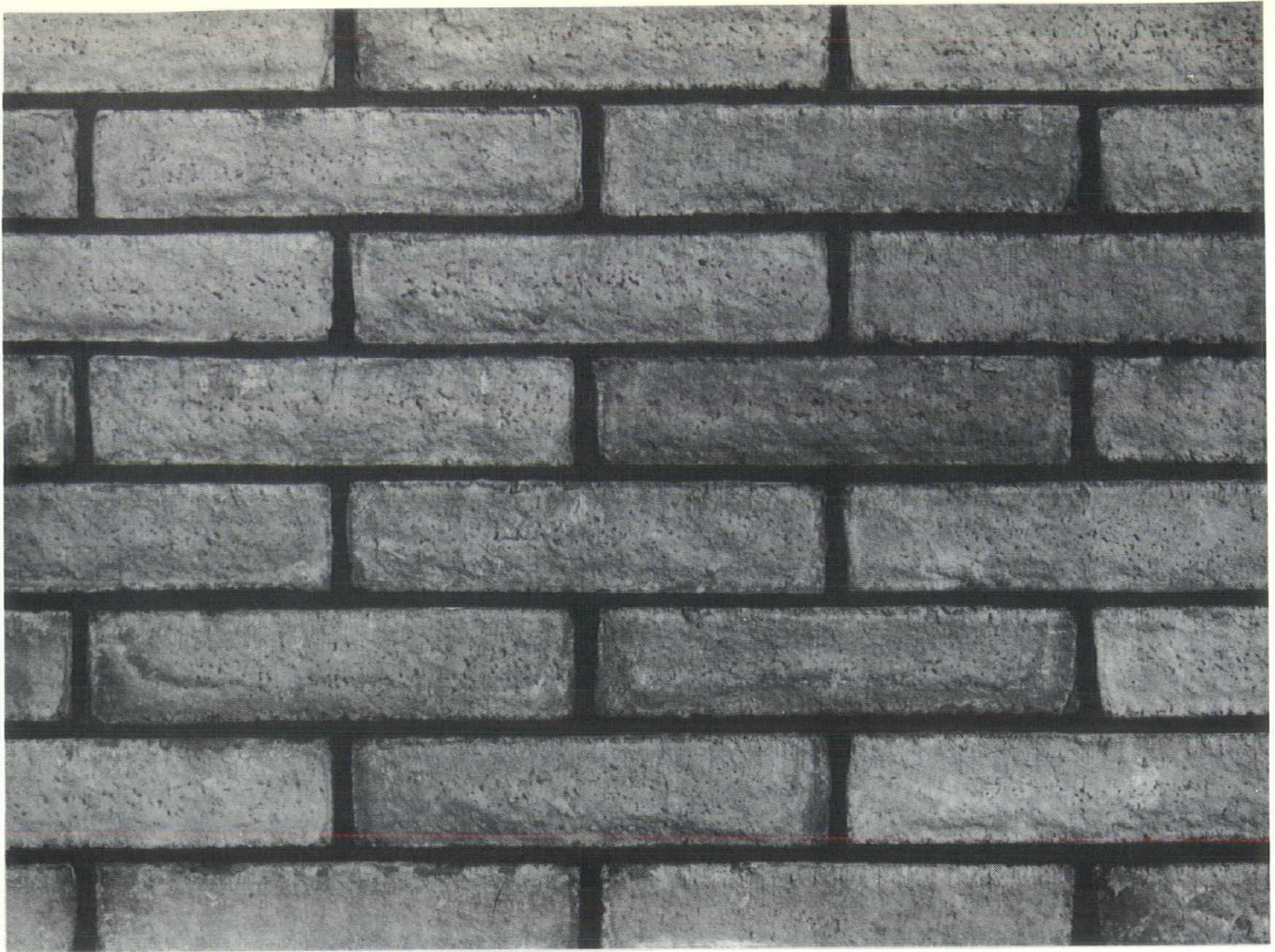
Roster Issue



CONNECTICUT ARCHITECT

FIVE DOLLARS

NOVEMBER-DECEMBER 1973



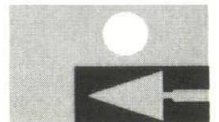
Roman Roughs

Replete with character, rich and rustic in texture, it lends itself to innumerable pattern possibilities for interior and exterior walls. Compliment your good taste with quality Concrete Masonry Units that are naturally Durable, Fire-safe and practically Maintenance Free. Autocalved (preshrunk) Plasticrete Roman Roughs are available in several different colors, in nominal 4", 8" and 12" thicknesses, with face dimensions of 4" x 16", Solid and Cored units. Other sizes and colors made on special order.

Send for FREE detailed literature.

plasticrete corporation

1883 Dixwell Avenue, Hamden, Connecticut 06514 • Tel: 288-1641



CONNECTICUT ARCHITECT

We're at the bottom of a lot of "topping offs."

There's good reason the best laid plans of architects, builders and homeowners get off to faster starts when Connecticut Savings Bank gets into the picture.

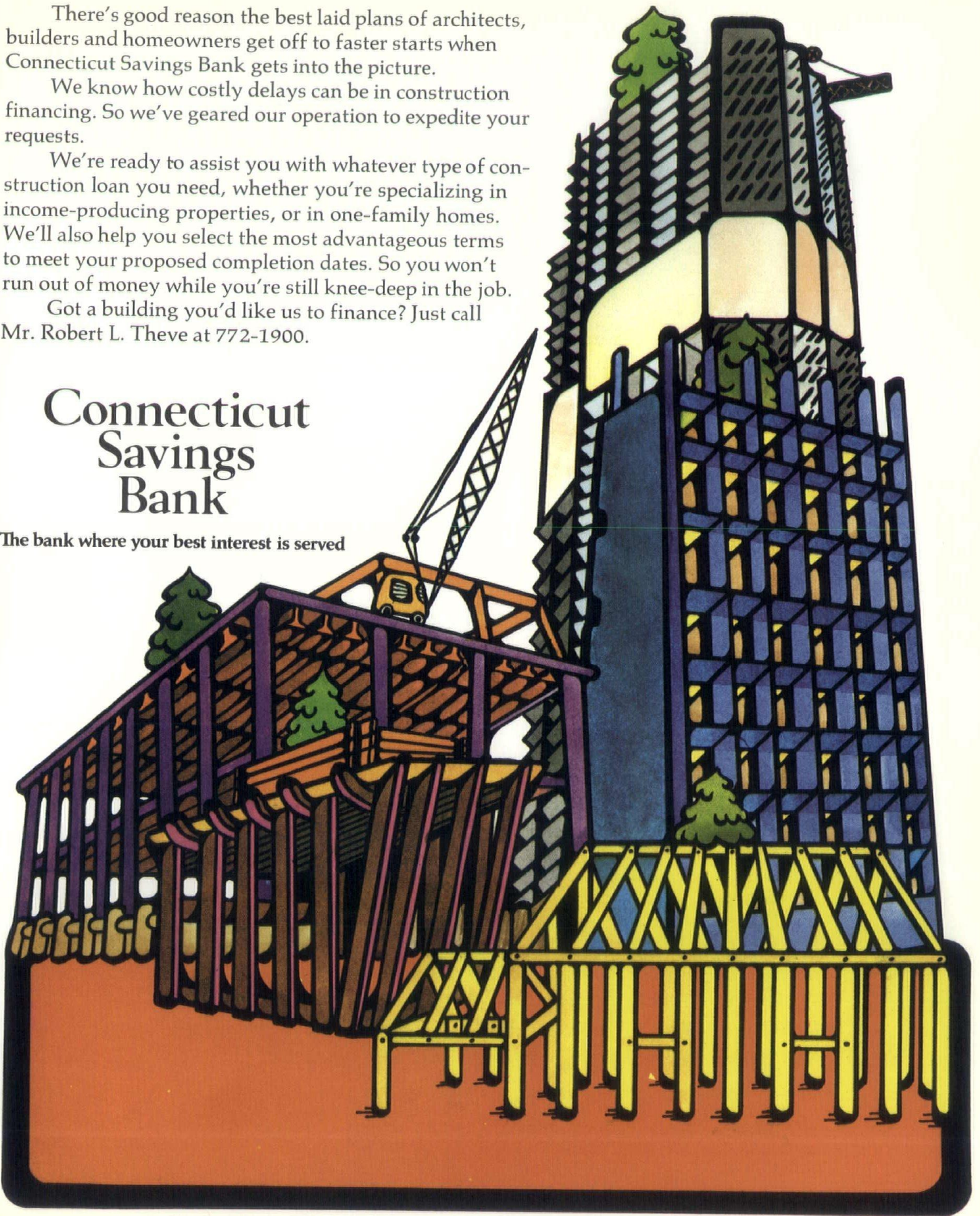
We know how costly delays can be in construction financing. So we've geared our operation to expedite your requests.

We're ready to assist you with whatever type of construction loan you need, whether you're specializing in income-producing properties, or in one-family homes. We'll also help you select the most advantageous terms to meet your proposed completion dates. So you won't run out of money while you're still knee-deep in the job.

Got a building you'd like us to finance? Just call Mr. Robert L. Theve at 772-1900.

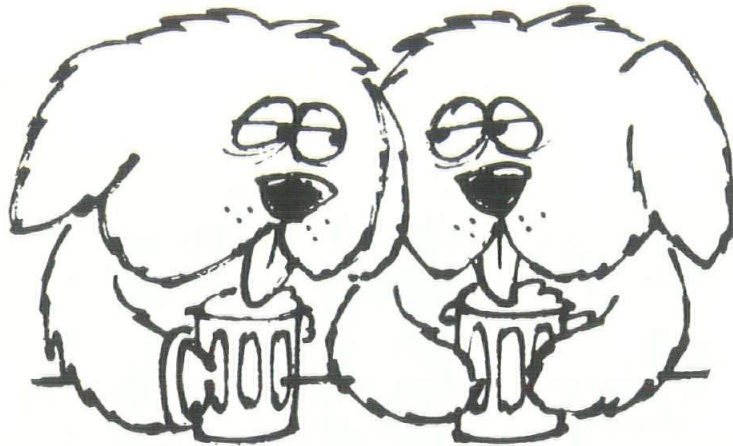
Connecticut Savings Bank

The bank where your best interest is served



I get my
construction loans
at First New
Haven National.

Doggone
good
bank.



ONE CHURCH STREET / NEW HAVEN / CONNECTICUT

Communications in Connecticut

TEL-RAD REPRESENTS THESE MANUFACTURERS:

WEBSTER-ELECTRIC

ALTEC LANSING

3M MUSIC

SOUNDCRIBER

PROVIDING SYSTEMS FOR: Hospital Nurse Call Signal • 24 Hour Police and Fire
Business, Industrial and Automatic Dial Telephone • Telephone Monitor
School Programming Church, Auditorium and Stadium Recorders •
and Communication • Sound Reinforcement •

• INTRUSION ALARM SYSTEMS

Write or call Tel-Rad today
for full information.

TEL-RAD INC.
EST. 1946

GETS YOU WHAT YOU NEED, WHEN YOU WANT IT!

Sales, installation and service throughout Connecticut.



TEL-RAD, INCORPORATED, 592 New Park Avenue, Hartford, Conn. 06110, Phone 236-2388

The Connecticut Fencemen

Providing assistance for:

Perimeter Protection and Gate Controls
Parking Assistance and Grounds Protection
Municipal, Recreation and Security Control



NORTH HAVEN
*The Frankson
Fence Co.*
451 State St.
Tel. 288-2588

WATERBURY
*Perfection
Fence Co., Inc.*
1327 Meriden Rd.
Tel. 756-8991

WESTPORT
*Westport
Fence Co., Inc.*
1545 East State St.
Tel. 227-5282

Publisher's Uneasy Chair

Two news stories in recent weeks emerged from the chaotic deluge of verbiage about national and international disasters. Neither has anything to do with the mid-east or the Washington bandwagon. The first was good news. Connecticut's Commissioner of Transportation Joseph B. Burns announced that nothing was going to happen to the Wilbur Cross-Merritt Parkway system to "improve" it, except some work to make safer access points. The second was an historic landmark versus progress story. Louis', the reputed birthplace of the hamburger is right smack in the way of New Haven's proposed \$12 million health center. This small restaurant, which has been serving outstanding hamburgers since 1906, occupies a thirty-by-thirty-foot space. Should it be moved brick-by-brick to a new location? Should it be incorporated in the new center? Or, should it just be plowed under by a bulldozer carrying a progress flag?

This, presumably, will be the final in a series of Publisher's Uneasy Chair columns which first appeared in the November-December 1969 issue. The next issue of *Connecticut Architect* is even now being prepared by a new publisher. We've enjoyed our nine year stint and wish the Connecticut Society of Architects many more years of constructive publishing sponsorship. We part the best of friends as we retire from editorial architecture, with the hope that more people in Connecticut know a little more about the architect's role than before our first issue appeared at the start of 1965.

About this issue of *Connecticut Architect*: A profile of a major architectural firm, Charles DuBose Associates, is reported as our main feature story; an in-process project in Portland by EDG looks into "why's" of design; Bob Mutrux asks what's so great about architecture; and there is a roster of CSA members. These items are supported, as usual, by pertinent news stories. □

CONNECTICUT ARCHITECT

BOX U • GUILFORD • CONNECTICUT • 06437

VOLUME 9, NUMBER 6

NOVEMBER-DECEMBER 1973



Connecticut Architect is published every other month for The Connecticut Society of Architects, a chapter of The American Institute of Architects, and is the official publication of the Society.

OFFICERS

President

WALTER F. GREENE, JR., AIA

Vice President

DAVID N. LA BAU, AIA

Secretary

DONALD J. BAERMAN, AIA

Treasurer

RICHARD E. SCHOENHARDT,
AIA

Executive Director

PETER H. BORGEMEISTER

EDITORIAL BOARD

Chairman

RALPH T. ROWLAND, AIA

DAVID BASCH, AIA

LANDIS GORES, FAIA

ROBERT H. MUTRUX, AIA

RAYMOND J. WISNIEWSKI, AIA

PUBLISHER

Produced for The Connecticut Society of Architects, AIA, by Connecticut Publications, Inc., Box U, Guilford, Connecticut 06437. Rufus K. Allerton, Jr., Publisher, Fredric D. Barrett, Business Manager, Donald F. Bradley, Advertising Director.

Printed by The Bond Press, Inc., Hartford, Connecticut.

Controlled circulation postage paid at Hartford, Connecticut.

All rights reserved. No part of this publication may be reproduced without permission in writing from the publisher, except brief quotations in a review.

FRONT COVER: The Hartford architectural firm of DuBose Associates has had a significant impact on the capital city as shown in the profile which starts on page 6. This impression in contrasts on the cover is the concept of Michael Buckley.



TABLE OF CONTENTS

DuBose Associates Profile	6
What's So Great About Architecture? (Robert H. Mutrux, AIA)	12
Design for Therapy (Environmental Design Group, Architects)	13
Hartford's Dinosaur	15
Connecticut Society of Architects Roster	16
Connecticut Society of Architects	20
Mather Honored	23
Professional Services	26
Index to Advertisers	26

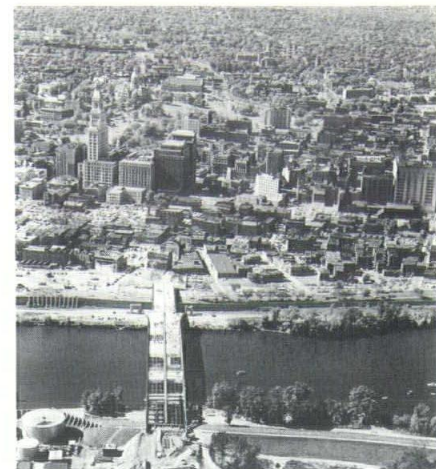
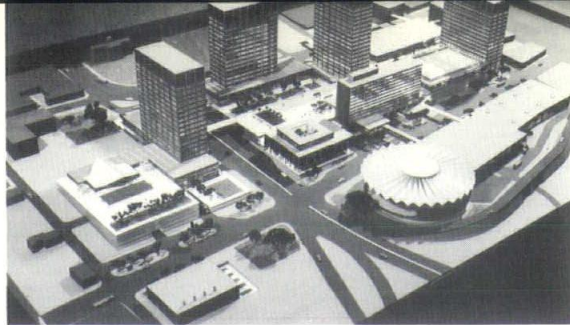
PHOTO AND ART CREDITS: Front cover and page 6 left, page 7-8, Joseph W. Molitor; page 7 top, Arman G. Hatsian; page 7 right, *Hartford Times*; page 9 center, Heilpern; page 10 top left, Michael Buckley; page 11 left and top left, Stephen F. Rosenthal; page 12, Joe Mayo, Second New Haven Bank; page 15 right, Geoffrey W. Tupper; page 24, Bachrach.

Circulation of **Connecticut Architect** includes all resident Connecticut architects; libraries; landscape architects; and selected consulting engineers, contractors, builders, and church, hospital, school, federal, state, and local officials; and others concerned with architecture in Connecticut. Appearance of products, services, names, and pictures in advertising or editorial content does not constitute endorsement by The Connecticut Society of Architects, AIA.

One Dollar a Copy

Six Dollars a Year

**DU BOSE ASSOCIATES
PROFILE: IMPACT ON
HARTFORD'S EVOLVING
URBAN IMAGE**



Pre-redevelopment downtown Hartford (above) contrasted with DuBose model (upper left) of an original master plan study for Constitution Plaza. LEFT: Completed mid-town complex of office and commercial structures clustered around interlinked pedestrian plazas.

Downtown Hartford has undergone a dramatic transformation in the past decade. Several major projects in construction, and others under consideration, will generate further structure for an evolving urban image: a unique mid-town system of interlinked buildings supported by a web of pedestrian networks.

DuBose Associates, a Hartford-based architectural and planning firm, was founded by Charles DuBose, FAIA, just over a decade ago. It has made a substantial impact on Hartford's downtown development in that period. This brief chronicle of the firm's continuous involvement includes some projects realized in construction and a critical commentary by the firm on Hartford's potential as an exciting, cohesive urban setting.

**EARLY DOWNTOWN
DEVELOPMENT:
CONSTITUTION PLAZA**

The DuBose firm was formed to begin master planning and feasibility

studies for Hartford's Market Street Redevelopment area. The original development plan proposed a cluster of uses and activities including three major office structures, extensive commercial and entertainment facilities, a television studio and corporate offices, a major hotel and, finally, a Civic Center and Coliseum. All of these structures were to be grouped around high capacity parking garages topped by landscaped pedestrian plazas.

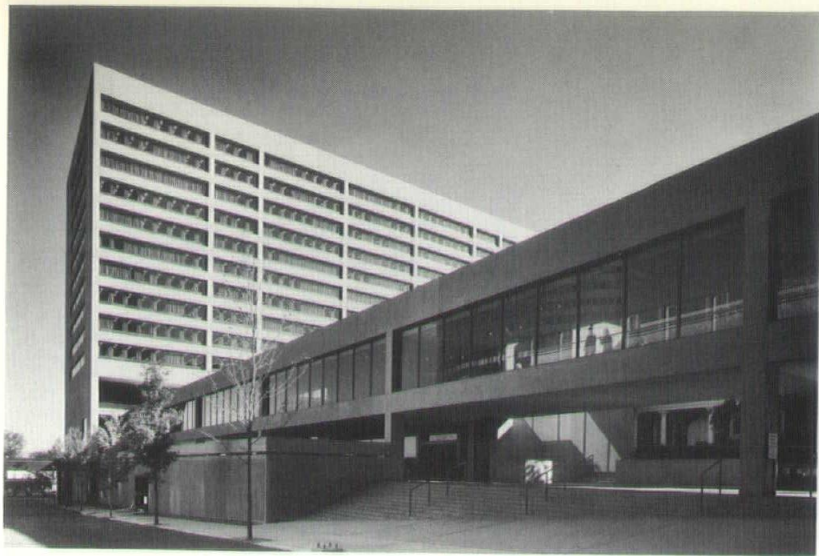
Many elements of the original plan, including the concept of an elevated pedestrian access deck, were realized in the completed project. Many commercial and entertainment activities proposed originally had to be eliminated, with the result that the activity level of the Plaza has yet to reach its potential. Interestingly, the Plaza hosts two major urban events: the Christmas Festival of Light and the summertime Plaza Arts Festival. These celebrations bring throngs of people to the very cen-

ter of the Hartford region, graphically demonstrating at least twice a year the "accommodation potential" of the original Plaza concept.

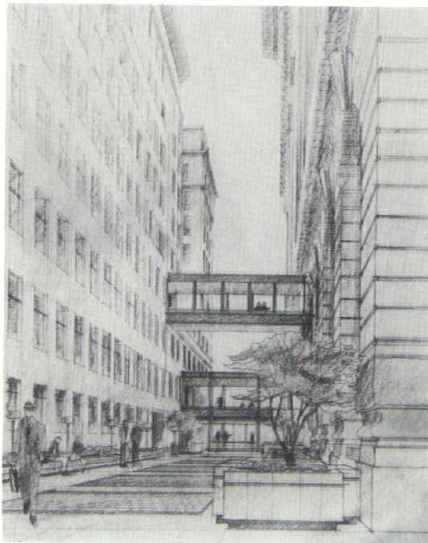
As the eastern anchor for a mid-town urban system, Constitution Plaza may one day support a constant pedestrian promenade with requisite activities and services. Currently this twelve-acre center-city complex contains over one million square feet of office and commercial space and provides structured parking for 1,850 automobiles.

**THE PLAZA EXTENDED:
TRAVELERS INSURANCE
HOME OFFICE EXPANSION**

The recently completed Travelers home office expansion has continued the pedestrian platform south from Constitution Plaza to a new landscaped plaza and an enclosed, elevated link with the Travelers Tower. Charles DuBose was associate architect with RTKL Inc., of Baltimore for the new office building. The DuBose office was involved continuously from early



Travelers Insurance home office expansion extends the pedestrian plaza system beyond Constitution Plaza and Phoenix Mutual Life Insurance Company. Enclosed pedestrian bridge spans Prospect Street to connect new facility with Travelers Tower. The Grove Street Mall interconnects structures within the Tower Square complex.



conceptual design begun in 1967, and was independently responsible for the Grove Street Mall which contains both a connection at grade and an elevated pedestrian bridge which spans the landscaped court. The large volume of space required in the new home office structure was enclosed in a simple, planar container — a true “background” building for the spikey gymnastics of the Travelers Tower, the original corporate landmark.

The new Travelers office building

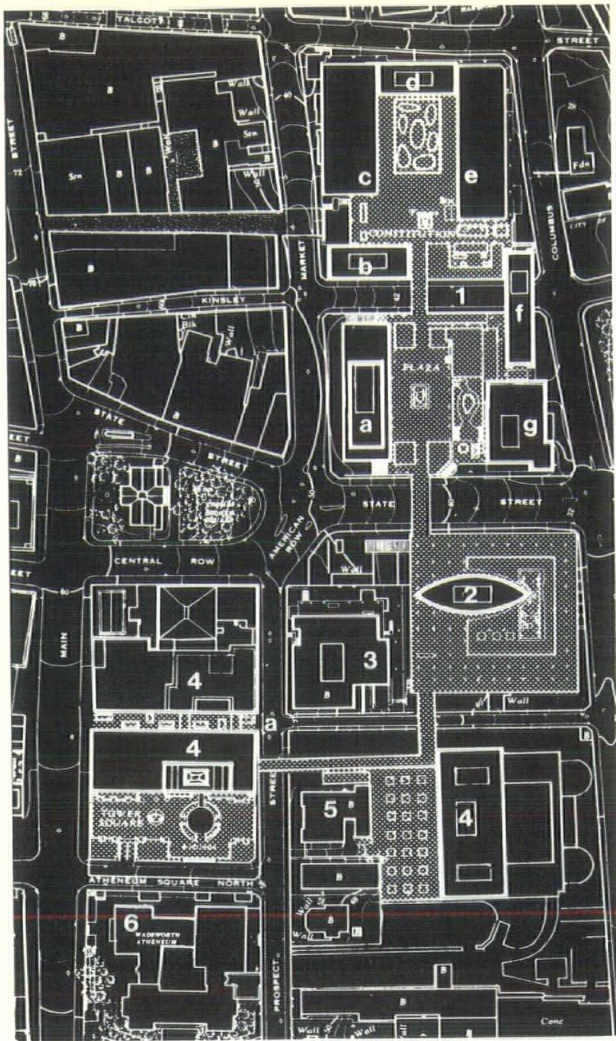
completed in 1972 contains 400,000 square feet of office space with central employees’ service facilities, a 1400-car garage, and its own landscaped plaza deck. The entire structure, including plaza and garage, has been pre-designed for linear expansion to the south.

HARTFORD’S MID-TOWN PEDESTRIAN SYSTEM

Architects and planners found something lacking in the American urban scene of the 50’s and decided

it was architectural texture. We know now that added visual interest was only part of the urban problem, yet it remains the most visible solution. The missing ingredient is diversity — the complexifying set of interrelated commercial, cultural and recreational activities that can be supported only by the concentrated demand of an urban population.

Hartford’s mid-town pedestrian system offers a skeletal framework, a potential infrastructure for a con-



LEFT: Plan of Hartford mid-town pedestrian system shows (1) Constitution Plaza, (a) Connecticut Bank & Trust Company, (b) Hartford National Bank and Trust Company, (c) Society for Savings and retail shops, (d) Greater Hartford Chamber of Commerce, (e) retail shops, (f) Hotel Sonesta, (g) Broadcast House, (2) Phoenix Mutual Life Insurance Company. (3) Hartford Steam Boiler Insurance Company. (4) Travelers Insurance Company; (a) Grove Street Pedestrian Mall. (5) The Hartford Club. (6) Wadsworth Athenaeum. The site plan defines building complexes served by traffic-free network. BELOW: Skyline view from Founders Plaza illustrates linear extent of the pedestrian platform through central Hartford.

tinuous, active and diverse collection of activities.

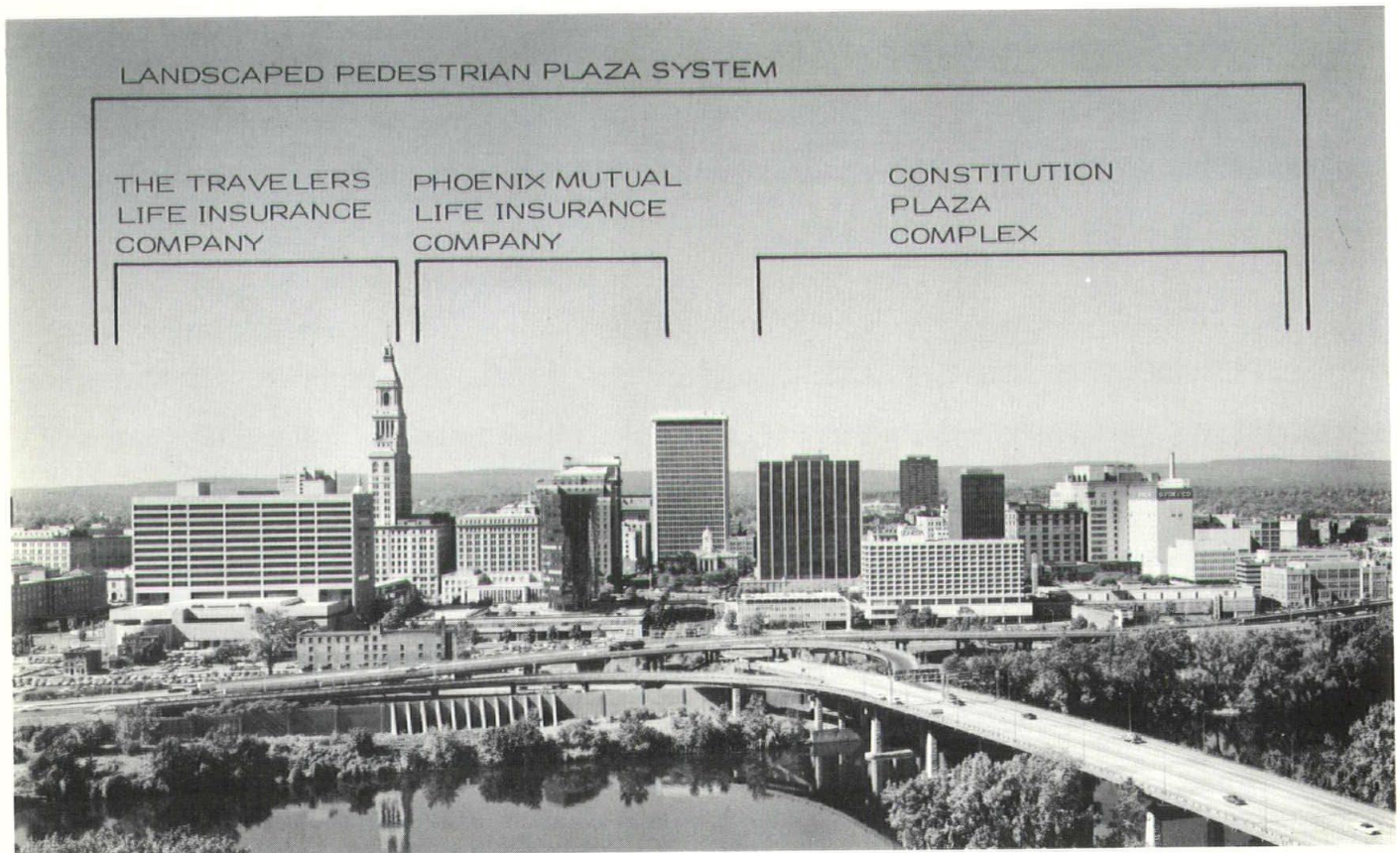
The network currently includes seven acres of landscaped plazas constructed atop multi-level parking garages which accommodate 4,200 automobiles.

These elevated pedestrian malls now extend over five city blocks, permitting car-free access to fifteen separate structures totaling more than three million square feet of executive offices, corporate facilities and commercial space.

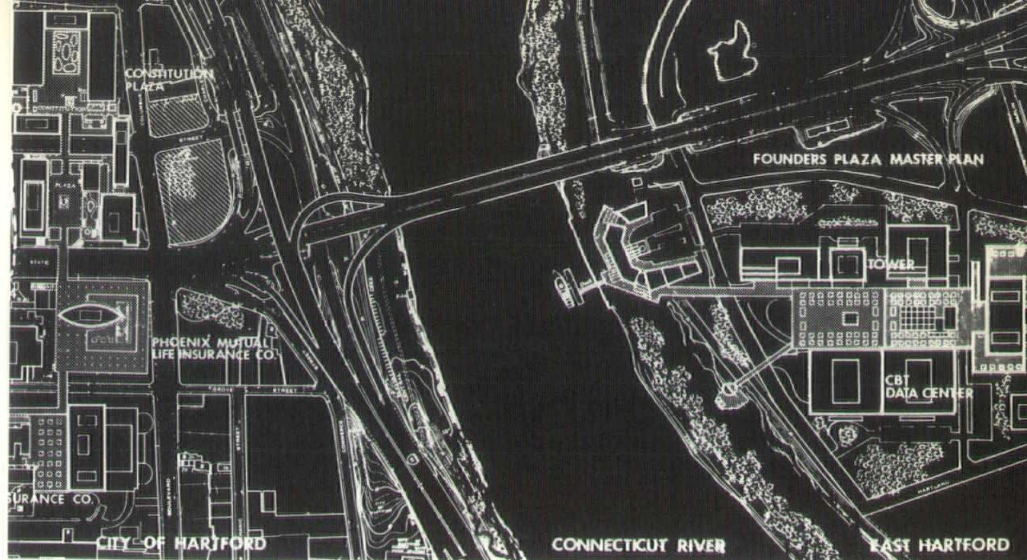
Hartford's mid-town platform already exceeds in extent the bridges of Atlanta's Peachtree Center, and the malls of Place Ville Marie in Montreal. If the activity within the pedestrian system can be intensified, maintained and extended, Hartford will possess a remarkable urban circulation device.

**HARTFORD'S LEFT BANK:
FOUNDERS PLAZA
COMPLEX**

DuBose Associates' master plan for Phoenix Mutual's Founders Plaza proposes a cluster of structures adjacent to the Connecticut River. The complex will contain a



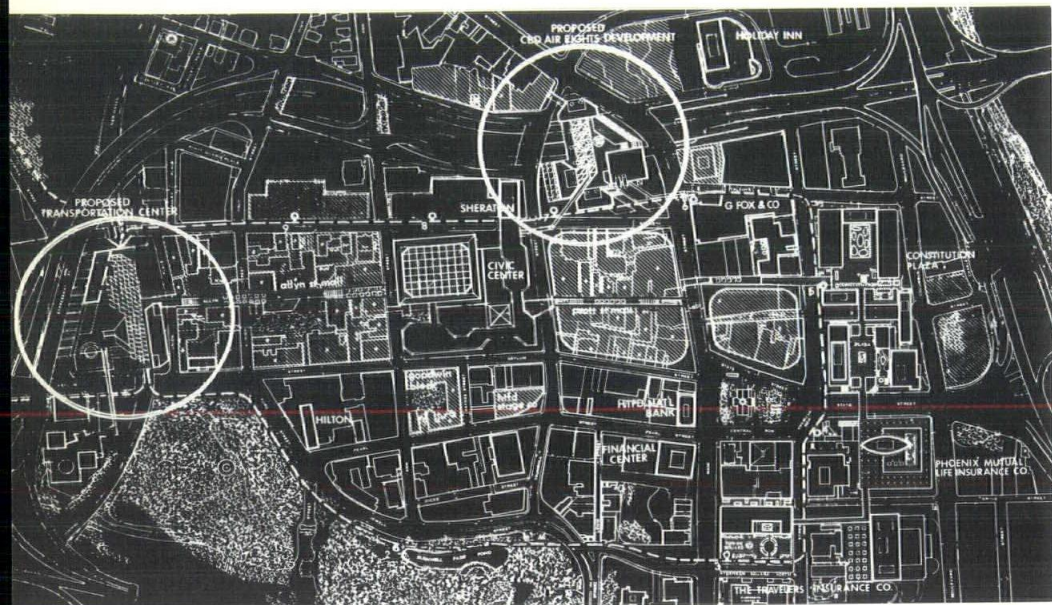
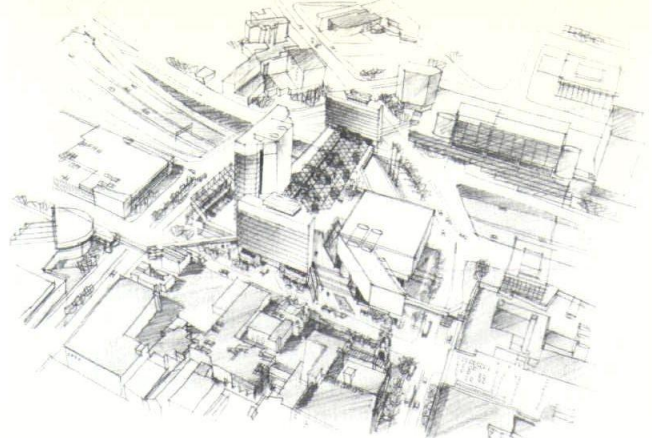
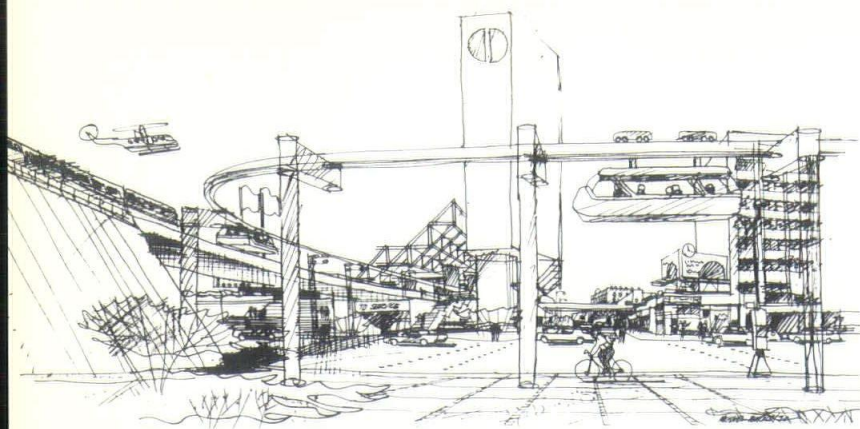
Master plan for Founders Plaza proposes interlinked office, commercial, and entertainment facilities on the "left bank" of the Connecticut River. BELOW: Completed first phase with office tower, garage, and landscaped plaza. BOTTOM: Connecticut Bank & Trust Company Computer Center.



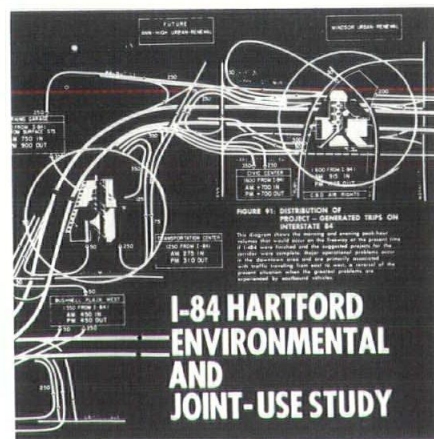
full spectrum of activities and uses, from a river-front restaurant and entertainment group with boat landing, to office and commercial space linked with Plaza-topped parking structures. The project master plan recently has been published by the Japanese magazine *Architecture & Urbanism* in its issue titled "New Directions in Urban America."

The first increment of the master plan completed in 1972 includes an eighteen-story, 260,000 square foot office tower, a 350-car parking structure, and a 240,000 square foot computer center for the Connecticut Bank & Trust Company. Soil conditions in the area require pilings for major structures, and the Connecticut River's earthen flood dikes block the dramatic Hartford skyline at grade. Therefore, the concept of a structured garage with landscaped platform deck serves to elevate the major use levels for an overview of both river and skyline profile.

The development of Founders Plaza as a concentrated activity center—located prominently on the river, interlinked within itself, and hopefully to adjacent parcels with river-fronting residential complexes—would create a strong "city edge" on both banks of the Connecticut River.



DuBose Associates 1970 urban design study plan for Interstate 84 Hartford corridor identifies major joint-use development options. ABOVE: Sketches show two principal "activity centers," the CBD air-rights proposal and a transportation center at Union Place with an integrated mini-rail loop serving both downtown and the Asylum Hill insurance district.



INTERSTATE 84: HARTFORD CORRIDOR MID-CITY DEVELOPMENT

DuBose Associates developed the 1970 "I-84 Environmental and Joint-Use Study" with Wilbur Smith & Associates of New Haven. The urban design options emphasized potential "activity centers" within the highway corridor, established excess land parcels for joint-use, and identified feasible air-rights opportunity zones.

Seven primary development sectors were outlined in the report. Two of these proposals have received subsequent attention: the Central Business District Air-Rights scheme was incorporated into a downtown proposal submitted by a Canadian developer; the Transportation Center, garage and mini-rail loop serving both the CBD and the large insurance companies on

Asylum Hill was in part contained in a Connecticut mass-transit firm's proposal to build and maintain such an elevated movement system.

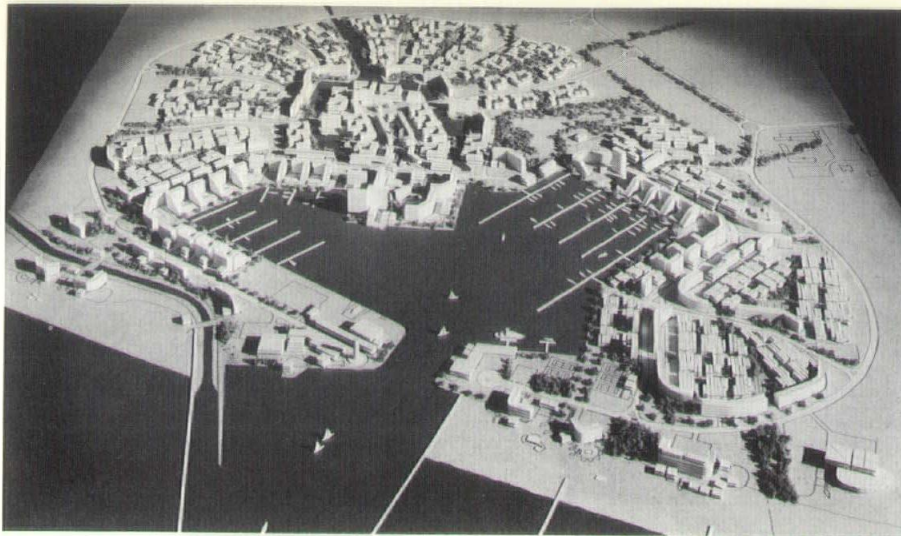
DuBose Associates' urban design proposals for I-84 downtown developments shared a common concept: integrate the movement system with activities centers. These interlocked developments would permit a traffic-free pedestrian network extending from Constitution Plaza to Union Station. The links include a Talcott Street promenade to G. Fox; pedestrian bridges over Main Street; the CBD air-rights project with shopping arcade spanning I-84, the Pratt Street Shopping Mall to the new Civic Center; a pedestrian mall on Allyn Street, recently explored in depth by the Knox Foundation as part of its one million dollar offer to the city for a matching renovation program; and,

finally, an elevated mini-rail loop serving downtown and Asylum Hill from the transportation center.

A phased sequence of diverse uses and activities, including new residential construction, would then extend throughout mid-town Hartford. This concentrated pedestrian-activity system would offer a uniquely exciting urban experience unequalled in any New England city.

INTERLINKED ACTIVITY NETWORKS: VILAMOURA RESORT COMMUNITY

DuBose Associates developed further the concept of interlinked activity and movement systems in



Vilamoura Resort Community development proposal, Algarve Coast, Portugal, shows master plan of 18,000 population community. Circulation diagram superimposed on plan conveys the deliberate complexity in the pedestrian experience. LEFT: Model photo of first phase increment looking to the sea over the man-made marina harbor.

a 1972 master plan proposal for Vilamoura, a new resort community in Portugal. Fronting the sea on the Algarve Coast, the 18,000 population, 256-acre city plan proposes a necklace of "activity nodes"—concentrated public services and facilities—strung around a marina promenade, and linked to perimeter residential clusters by a deliberately intricate pedestrian network. The first phase increment of some 50,000 square meters would guarantee an active, complete and cohesive architectural environment focusing development around the first of these "activity nodes." This decidedly incrementalist approach to urban design—that of completeness at each stage—represents an ad-hoc, layered solution to the generic problem of multi-phase development where services are tied to demand, and pre-planning usually determines demand requirements over time.

A FUTURE VIEW: THE URBAN QUILT

Jane Jacobs claims that large-scale redevelopment destroys urban diversity; in a series of poignant recollections in a Hartford newspaper some years ago, a resident of the Market Street area grieved for his former home and bemoaned the loss of an active, street-oriented environment; the Hartford Stage Company threatens to leave downtown for a suburban location; the terrific outflow of cinema theaters continues; preservation of the vestigial remnants of downtown residential areas, such as the remarkable Goodwin block on Haynes Street, becomes increasingly difficult; the city's ability to entice new apartment construction or convert existing loft space to residential use becomes practically impossible under present circumstances.

Hartford appears to need an

"urban shearsman" to recut the proven bits and pieces of city design, to link familiar elements in the city, to convert and modify present uses to others until the result is an innovative whole, and patch them together in an urban quilt. A shearsman, not a weaver, is needed because a truly diverse urban fabric cannot be woven of whole cloth.

Either architects and planners abandon the center city and work determinedly to improve the suburbs, or our urban images and policies must be recast. It is no coincidence that the establishment of urban design curricula within major schools of architecture has proven a most difficult and enduring task. As Norton Long maintains, our "un-walled city" must *earn* a loyalty it cannot require, or else urban centers become poor farms held tenuously in check by their suburban keepers.

Please turn to page 24

What's So Great About Architecture?

Robert H. Mutrux, AIA

What is the quality the art of building possesses that has made man literally surround himself with it? Why is it that we spend so much time, energy, and anguish trying to attach one structural material to another in a special way? Why is it that we're building today at the rate of \$100 billions annually (that's enough lettuce to cover the entire 100-mile Connecticut Turnpike with \$200 bills), and show no sign of letting up?

Why is it that, when you make the grand tour, the postcards you send to the folks back home almost invariably represent a building of some sort? And conversely, why is it that when one country wages war on another, the first thing it attacks is its enemy's buildings?

It couldn't be the fact that architecture provides shelter; the caves provided that. There must be something about architecture that responds to a primitive and universal need in its creator, its builder, the down-trodden peasant, the weary taxpayer, and the passing tourist as well.

The answer may not be at all profound. Architecture is probably the most satisfying of all the creative arts because it is without doubt the most flattering.

Architecture, more than any of the other arts, makes man feel good because it makes him look good. It is man's picture of himself viewed at a safe and enchanting distance. Painting, sculpture and literature, on the other hand, tend more and more to portray "the truth" by showing not only the wrinkles and the excess fat but the innate weakness and inadequacy as well, leaving man naked and defenseless against ridicule, contempt, or even castigation.

Architecture has a way of skimming over these unredeeming char-

acteristics, and the world is full of excellent samples. The Capitol, the Supreme Court Building, and the White House are clear and forthright expressions of our most cherished and exalted virtues. They represent strength, steadfastness of purpose, loyalty, honesty, fairness, and integrity, all chiseled deep in stone and concrete. But where are the human frailties, from the petty lies to the high crimes and misdemeanors, that make us all embarrassingly human? You will find them, to be sure, in quickly-forgotten news releases, in histories buried in libraries, in miles of perishable microfilm, but nowhere in the mass nor in the detail of our enduring governmental monuments. Even the "honest arrogance" that Frank Lloyd Wright stoutly defended is not in evidence.

Man decided early that he wasn't going to have his sins and his foibles advertised on every street corner. And so he invented architecture.

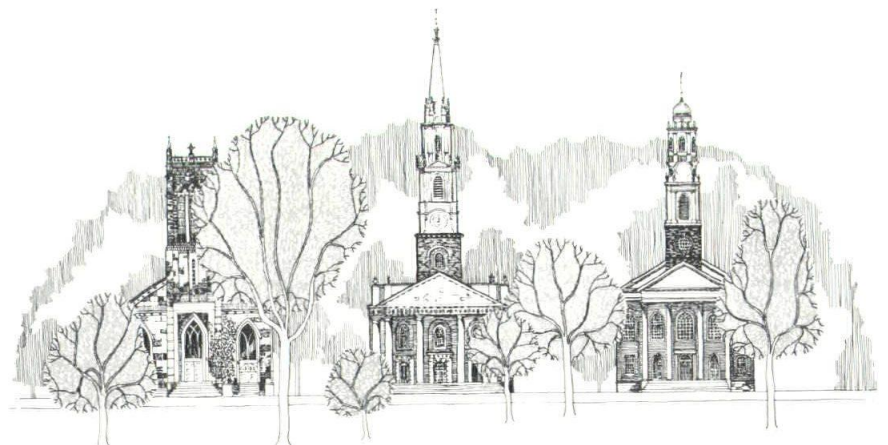
The glorious conceptions of the middle ages, for all the religious zeal that helped in their creation, do not in any way reflect the rampant ignorance, the superstition, the corruption in both nobility and clergy that culminated in the Reformation nor the dirt and disease

that paved the way for the Black Plague.

Pride, yes. The pride of the Bishop whose delusions of grandeur were measured by the height of his spires in comparison to his neighbor's. The pride of the peasants, too, who despite the back-breaking labor and the high mortality, revelled equally in pride in the God they worshipped and who, by their own high standards, merited such an edifice. They sensed, long before it was completed, that its sheer magnificence in concept and in realization reflected directly back on them.

The same peasants didn't object to the architecture that was built just prior to the French Revolution. In fact, they loved it and still do, and if you don't believe it, watch the countless busloads of them who visit the chateaux on and off season. They only resented the living conditions and the total absence of fringe benefits. On the other hand, they did destroy the Bastille, because that made everybody look terrible. The same may be said of the grandsons of the moujik and the serf who come in droves and in droshkies and wait in interminable lines just to see the Kremlin and the Hermitage.

Please turn to page 22



DESIGN FOR THERAPY

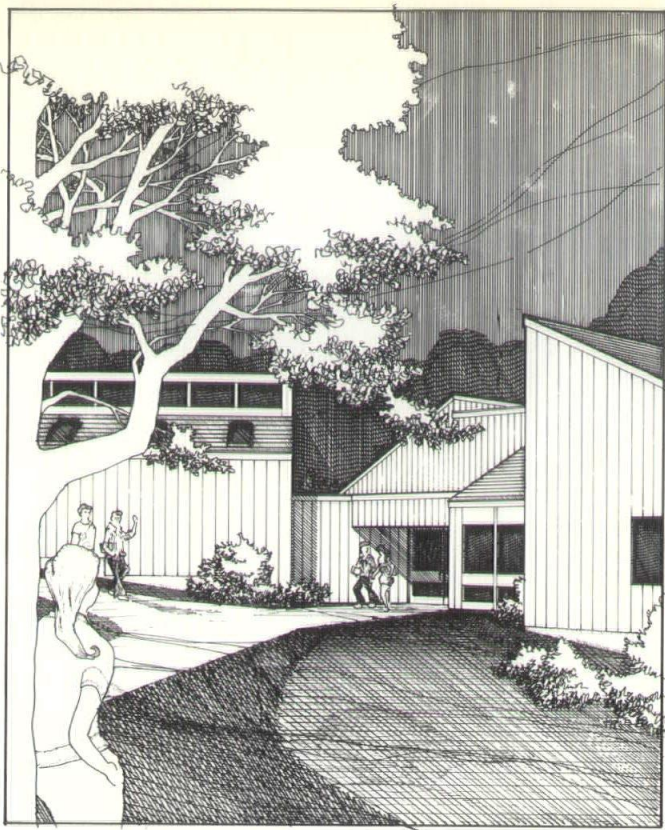
Elmcrest Psychiatric Institute

Portland, Connecticut

ENVIRONMENTAL DESIGN GROUP

ARCHITECTS

J. H. HOGAN, INC., General Contractor



Outside courtyard area.

In the design for an expansion of the Elmcrest Psychiatric Institute of Portland, Environmental Design Group (EDG), New Haven architects, created a setting which reflects the attitudes of the therapeutic community.

Elmcrest is a comprehensive mental health facility based on the concept of providing an environment in which the patient, through intensive interaction and communication with other patients and staff members, can work to understand himself better and face problems more confidently.

The \$1.2 million project, scheduled for completion in 1974, had its groundbreaking in September. It will double Elmcrest's in-patient capacity from fifty to one hundred beds and includes a new day-hospital for outpatients.

The architecture for the new Elmcrest evolves directly from a design process in which EDG and the interior designers became resource members of a design group consisting of the Institute's clinical director, administrator, clinical head of each sub-unit in the exist-

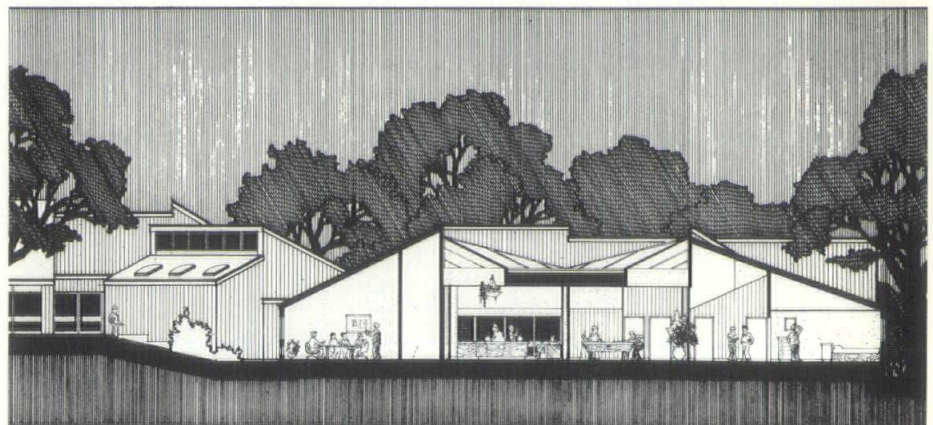
ing facility, director of nursing, and a project director.

In four marathon sessions, this group defined the overall objectives of the Elmcrest therapeutic community, explored the processes used in pursuing these objectives, and developed a physical program for implementation. This included a site plan, diagrammatic plan of all required structures, a square foot and cost analysis, and an architectural style. EDG was then delegated responsibility for developing architectural continuity within the limits of the program and budget.

Plans were designed to coincide with definitive objectives of the community — to promote maximum interaction between patient and patient, and patient and staff, by use of open and interlocking spaces and elimination of physical barriers between patient spaces and staff spaces. The community was also to be dynamic without being overpowering, be diverse yet not confusing, offer choices without loss of control or personal security, and relate to the rest of the Elmcrest campus.

A hierarchy of territories was

Cross section of Elmcrest adolescent unit.



perceived from the various patient groupings. Bed, closet, bureau, and desk became the personal space of the patient. The two-bed room is the territory of two roommates who, with the occupants of three other two-bed rooms, form an eight-person group which has its territory defined by space change. Three eight-person groups form a unit served by its own psychiatrist, social worker, nurses and aides. When the new facility is complete, the total community will consist of four such units.

Central to the architecture and community activity is a sky-lighted forum space for each unit. This area is extremely flexible, conducive to ambulatory activities, and at all times visible from each of the private two-bed rooms. Group and sub-group territories are the spaces in which relief from

community activity can be found. Total isolation is possible only in the toilet rooms and the two high-security rooms in each unit.

The nurses' station is a major social gathering point where patient, family, staff, and visitors can interact rather than feel intimidated by the traditional barrier approach to this post. For privacy and record keeping, the nurses have a writing desk and a conference room designed to discourage gathering.

The accessibility of cooking facilities offers opportunity for the development of skills and social activity associated with the preparation of food and eating.

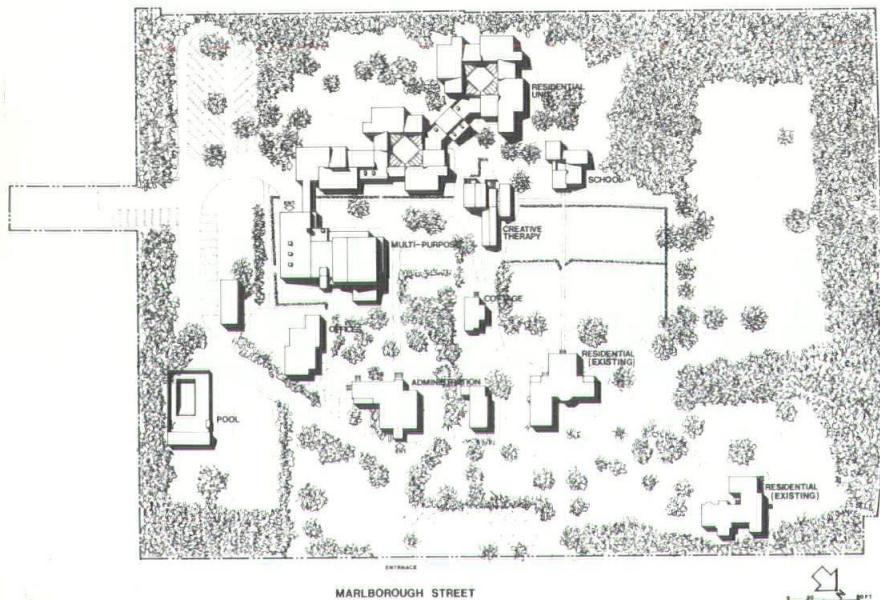
Need for a space in which a patient could act out aggressions safely and with minimal disturbance to the rest of the community resulted in a punch room which is

specifically designed to handle such behavior. Heavily sound-proofed and structurally over-designed, it will tolerate extreme violence.

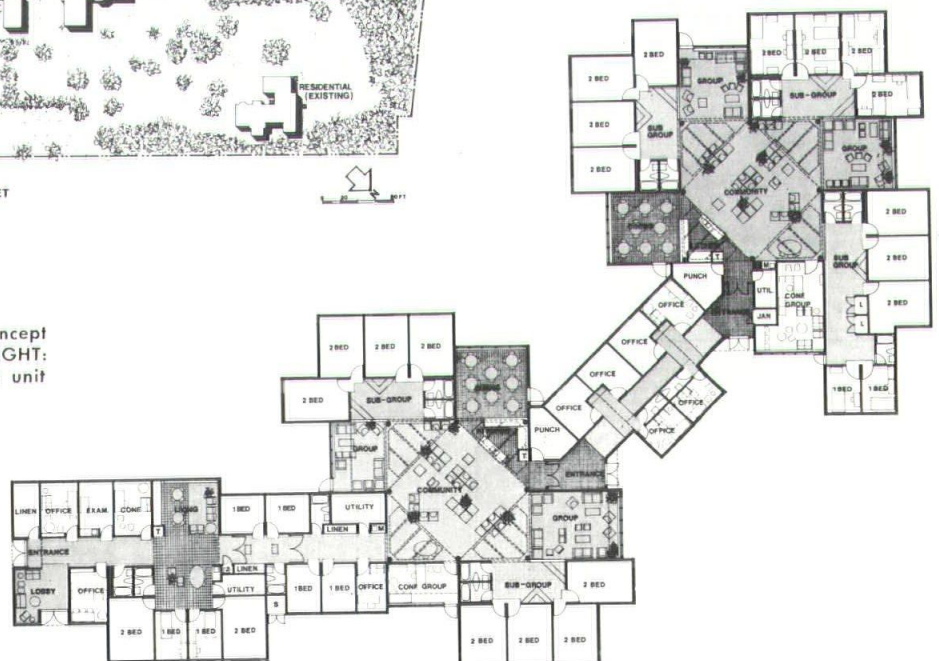
In the short-term treatment program, contact with the realities of the outside world was described as an essential part of the design plan. To that end, a multi-purpose room equipped with a stage and half-court basketball facilities has been included in the design. It can be used for performances, lectures, movies, and conferences, as well as a dining area in daily life.

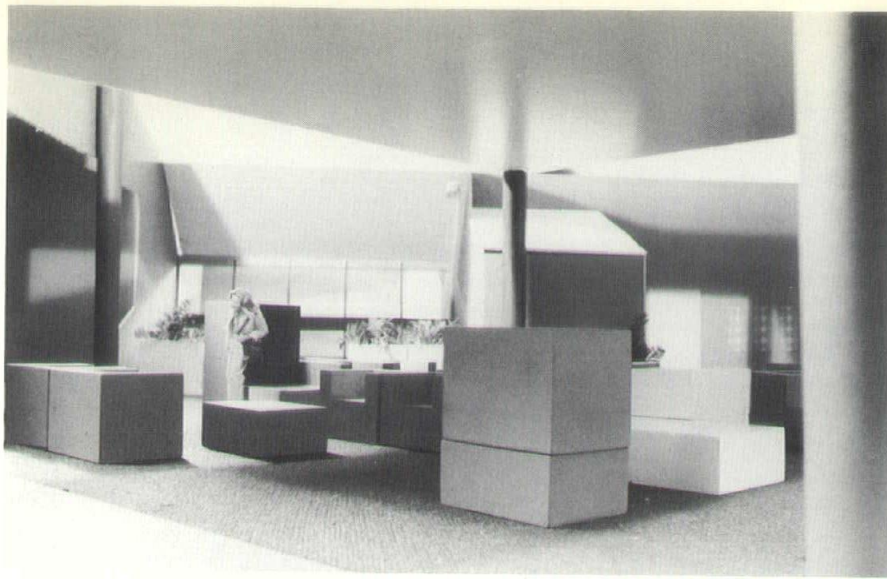
Isolation of each unit from the whole is minimized by emphasizing the connections between inside and outside, developing a "campus" plan which focuses on the grounds, and centrally located meeting places. From the inside, there will be a constant awareness of light, weather and season. As a member of the community goes from this unit to the creative therapy center, he is made aware of the entity and of the constant activity of the community. The paths are organized to be connections between nodes for social interaction and for new encounters as well as the physical links between functions.

The successful solution to this complex problem can be attributed to a great extent to the fact that the design group approach effec-

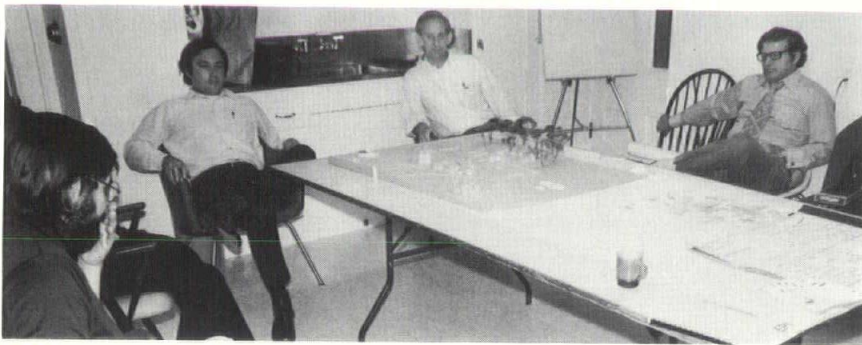


ABOVE: Site plan shows campus concept of inter-related building dispersal. RIGHT: Floor plan of new fifty-bed inpatient unit for Elmcrest.





ABOVE: Photo of interior model shows scale, interest, and function. BELOW: Architect's view of early planning session.



J. L. Foote

Jonathan L. Foote, partner in ENVIRONMENTAL DESIGN GROUP and project architect for Elmcrest, is a graduate of Yale, attended Rhode Island School of Design, and earned his master's degree in architecture at Yale. Other principals are Augustus G. Kellogg, who served as a USN engineering officer between his graduation from Yale as a bachelor of arts and receiving his master's degree in architecture from Yale; and Barun Kumar Basu who is an architectural honor graduate of Sir. J. J. College of Architecture, University of Bombay. The firm was subject of a *Connecticut Architect* profile (March-April 1972).

Hartford's Dinosaur

For the second time in less than a hundred years, an American city received a major sculpture from France. On October 10, sculptor Alexander Calder attended dedication ceremonies of his brilliant red Stegosaurus which dominates the tree-lined plaza of Burr Mall in Hartford.

The other dedication, October 28, 1886, was when President Grover Cleveland accepted the Statue of Liberty in New York. A work of the French sculptor, Frederic Auguste Bartholdi, the Statue of Liberty has great significance, not only for all Americans, but for all who know this symbol of freedom which stands watch in New York's harbor.

While the Hartford sculpture may never attain the symbolic stature of Liberty, it will certainly be remembered as significant to present and future residents and visitors to Connecticut's capital city.



Hartford's Stegosaurus

This latest gift to span the Atlantic was commissioned by the Burr McManus Fund which was established by Ella Burr McManus in 1906. Its goal was to create an appropriate memorial to her father, Alfred Burr, founder of the *Hartford Times*. Burr Mall is a gift to

the people of Hartford by the Fund.

Alexander Calder, a resident of Roxbury since 1933, divides his time between this Connecticut community and his studio in France. A son and grandson of sculptors, he is a graduate of Stevens Institute of Technology and, among his many artistic accomplishments, he is responsible for adding the word "mobile" to the language. Now he has added the word "stabile" which is exemplified by the Stegosaurus.

Stegosaurus was a dinosaur which lived in Wyoming and Colorado some 150 million years ago. Mr. Calder's Stegosaurus is a 40-ton structure of heavy steel plate. It is painted bright "Calder" red, is fifty feet high, and stands on five legs, the front two of which straddle the eastern-most end of Burr Mall fountain. The span between the forelegs is thirty-seven feet. □

THE CONNECTICUT SOCIETY OF ARCHITECTS, AIA

FELLOWS (FAIA)

BLANCHARD, CARL R., JR.
BUTTERFIELD, RICHARD D.
DuBOSE, CHARLES
GORES, LANDIS
GRANBERY, E. CARLETON
HOWLAND, RICHARD L.
HUNTINGTON, JOHN W.
JONES, HUGH MCK., JR.
KIMBALL, RICHARD A.
MATHER, AUSTIN
MILLER, HENRY F.
McNULTY, CARRELL S., JR.
MOORE, CHARLES W.
NOYES, ELIOT
PHELAN, J. GERALD
ROTIVAL, MAURICE E. H.
SHARPE, RICHARD
SHERWOOD, THORNE
STECKER, RUSSELL L.
STEIN, JOSEPH

HONORARY ASSOCIATES

CUNNINGHAM, CHARLES
89 South St., Williamstown, Ma. 01267
DANES, GIBSON A., Dean
School of the Visual Arts
State University of New York
Purchase, N. Y. 10577
LAVIERI, CARMINE R., Attorney
Howd, Lavieri & Finch, Attorneys
65 Elm St., Winsted, Ct. 06098
LEE, RICHARD C.
Former Mayor of New Haven
255 McKinley Ave., New Haven, Ct. 06515
SPIEGEL, HERMAN D. J., Dean
7066 Chapel St., New Haven, Ct. 06510

CORPORATE MEMBERS EMERITI

ANDERSON, FRED C.
28 Hedgehog Rd., Trumbull, Ct. 06611
BAILEY, JOSEPH W.
34 E. Putnam Ave., Greenwich, Ct. 06830
BARNUM, PHELPS
Lake Ave., Greenwich, Ct. 06830
BARRATT, ROSWELL F.
776 Pequot Rd., Southport, Ct. 06490
BREED, F. NELSON
P. O. Box 433, Wilton, Ct. 06897
BROWN, WALTER DEAN
Box 222, Lakeville, Ct. 06039
CLAY, ALBERT G.
9 Francis Lane, Niantic, Ct. 06357
COGGINS, H. LAWRENCE
Cat Rock Rd., P. O. 662, Greenwich, Ct. 06830
COLES, THOMAS GREER
Hamburg Rd., Route 156, Lyme, Ct. 08371
CRABTREE, WALTER P., JR.
195 Fern St., West Hartford, Ct. 06119
DIXON, FREDERICK J.
FAY, FREDERICK T.
9 Seaview Ave., Branford, Ct. 06405
FAY, JULIAN A.
825 Bayshore Dr., Apt. #806,
Pensacola, Fla. 32507
FENNER, WARD W.
FUREY, WALTER R.
308 Enfield St., Enfield, Ct. 06082
GILKISON, ARTHUR H.
R.D. #2, Box 157A, Stonington, Ct. 06378
GOLDEN, MAURICE H.
1224 Farmington Ave., West Hartford, Ct. 06107
GOODWIN, HENRY S.
4 Ciderbrook Rd., Avon, Ct. 06001
GREEN, WARREN B.
36 Sharp Hill Rd., Wilton, Ct. 06897
HALASZ, ANDRE
6732 E. Granada Rd., Scottsdale, Ariz. 85257
HAWLEY, ALTON J.
15 Candlewood Rd., Trumbull, Ct. 06611
HAYDEN, HAROLD A.
135 Middle St., P. O. Box 1576, Bristol, Ct. 06010
HEDLANDER, R. LINCOLN
45 East Putnam Ave., Greenwich, Ct. 06830
HEINE, KEITH SELLERS
83 Sunny Reach Dr., West Hartford, Ct. 06118

JACKSON, WILLIAM HENRY
LEVY, LEON R.
Tradewinds, Sanibel Island, Fla. 33957
LINDSAY, HARRY G.
84 Oakview Circle, Bridgeport, Ct. 06604
LUDORF, HENRY F.
MILLIGAN, CARINA E. (Mrs.)
Little Sunset, New Canaan, Ct. 06840
MOORE, MAXWELL
Mountain Spring Rd., Farmington, Ct. 06032
OLSON, PAUL H., SR.
9 Meadowbrook Rd., Granby, Ct. 06035
PALMER, BENJAMIN H.
16 Franklin St., Norwich, Ct. 06360
PHELAN, J. GERALD, FAIA
299 Washington Ave., Bridgeport, Ct. 06604
POLLITT, EVAN
61 Vista Drive, Easton, Ct. 06425
PRENTICE, NORRIS F.
35 Chestnut Hill Terr., Glastonbury, Ct. 06033
PRENTICE, T. MERRILL
Todd Hill Rd., Cornwall, Ct. 06753
REINHARDT, ALFRED
Vernon Professional Bldg.,
Route 30, Vernon, Ct. 06086
ROSE, ROBERT W.
61 Nottingham Terr., Waterbury, Ct. 06714
ROSENBERG, LOUIS C.
555 Country Club Rd., Lake Oswego, Ore. 97034
SCHILLING, WALTER H.
18 Trumbull St., New Haven, Ct. 06511
SUNDERLAND, PHILIP N.
81 West St., Danbury, Ct. 06810
TARPLEY, DONALD G.
127 Harrison Ave., New Canaan, Ct. 06840
VAN LOON, HENRY B.
West Rd., Dorset, Vt. 05251
VECE, TOBY
9 Roger Williams Rd., Bridgeport, Ct. 06610
WEIR, JOSEPH G.
6 West Putnam Ave., Greenwich, Ct. 06830
WILKINS, WILLARD
279 Mountain Rd., West Hartford, Ct. 06109
WILSON, AB. L.
P. O. Box 41, Easton, Ct. 06425
ZIROLLI, ORESTE C. S.
2625 Park Ave., Bridgeport, Ct. 06604

CSA LIFE MEMBERS

ABRAMOWITZ, CHARLES H.
52 Goffe Terrace, New Haven, Ct. 06511
BALDWIN, HARRISON E.
High Acres Rd., Ansonia, Ct. 06401
BRUFFE, JAMES H.
11 Livingston Rd., East Hartford, Ct. 06108
CAMPBELL, WALTER J.
CANNICCI, HARRY S.
113 First Ave., West Haven, Ct. 06513
DELLA VALLE, JOSEPH
221 Ridgemed Rd., Baltimore, Md. 21210
PETRILLO, JOSEPH A.
36 Greenwood St., New Haven, Ct. 06511
PODOLOFF, DAVID
32 High St., New Haven, Ct. 06510
PROVOOST, WILLIAM J.
37 Benjamin St., Old Greenwich, Ct. 06870

CORPORATE MEMBERS

ABEL, PETER (549-0778)
100 Constitution Plaza, Hartford, Ct. 06103
AHLSTROM, CHARLES (562-1000)
153 Wooster St., New Haven, Ct. 06511
ALDEN, ARTHUR H., III (347-9125)
141 Nooks Hill Rd., Cromwell, Ct. 06416
ALEXANDER, LOUIS T. (754-4771)
77 Bank St., Waterbury, Ct. 06702
ALLEN, KENNETH E. (589-1717)
683 Farmington Ave., Bristol, Ct. 06010
AMES, T. GREGORY (756-8944)
72 Centerbrook Rd., Hamden, Ct. 06518
AMORE, VINCENT C. (933-7049)
63 Elm St., West Haven, Ct. 06516
ANTINOZZI, DANIEL P. (377-1300)
3303 Main St., Stratford, Ct. 06497
ARNEILL, BRUCE PORTER (772-0600)
216 Crown St., New Haven, Ct. 06510
ARSENEAULT, FLAVIAN F. (335-9333)
114 State St., Bridgeport, Ct. 06603

ASHLEY, WARREN H. (233-8291)
740 N. Main St., West Hartford, Ct. 06117
AUBIN, ROLAND M. (289-3409)
800 Pleasant Valley Rd., South Windsor, Ct. 06074
AUSTIN, C. MERRILL (678-0031)
Box 469, Avon Park North, Avon, Ct. 06001
AUSTIN, DAVID E. (255-4031)
212 Center St., Southport, Ct. 06490

BABBITT, THEODORE F. (787-2231)
299 Chapel St., New Haven, Ct. 06513
BABBITT, THOMAS C. (567-8306)
Norfolk Rd., Litchfield, Ct. 06759
BACHTELL, EDWARD KEIFFER II (236-5841)
357 Main St., Wethersfield, Ct. 06109
BAERMAN, DONALD J. (777-2316)
88 Buell St., North Haven, Ct. 06518
BALDESSARI, MENDEL L. (223-3533)
94 Underhill Lane, New Britain, Ct. 06053
BARKER, DAVID C. (525-8963)
50 State St., Hartford, Ct. 06103
BARTLETT, RICHARD W. (242-7230)
3 Prospect St., Bloomfield, Ct. 06002
BASU, BARUN KUMAR (787-7194)
Environmental Design Group
19 Howe St., New Haven, Ct. 06511
BAXTER, EDWARD STUART (932-4292)
99 Phipps Dr., West Haven, Ct. 06516
BAYEK, C. FRANK (529-2158)
17 Center St., Wethersfield, Ct. 06109
BELLINGRATH, CHARLES T. (521-4600)
80 S. Main St., West Hartford, Ct. 06107
BENDETSON, JAN (521-1749)
9 Greenacres Ave., West Hartford, Ct. 06107
BERGMANN, RICHARD R. (966-9505)
112 Main St., New Canaan, Ct. 06840
BIEBESHEIMER, FREDERICK CARL, III (434-8083)
Interdesign
Lyme St., Old Lyme, Ct. 06371
BIRD, RICHARD A. (633-0273)
100 Sycamore St., Glastonbury, Ct. 06033
BISHARAT, VICTOR H. (325-1393)
733 Summer St., Stamford, Ct. 06902
BLAGDEN, JOSEPH W. (869-4101)
14 Owenoke Way, Riverside, Ct. 06878
BLANCHARD, CARL R., JR. (FAIA-1970) (777-5551)
74 Forbes Ave., P.O. Box 1630,
New Haven, Ct. 06506
BLUM, WILLIAM H., JR. (853-3311)
64 Wall St., Norwalk, Ct. 06850
BOGDANOV, BOLESLAVS (566-6560)
12-N Regency Towers, 30 Woodland St.,
Hartford, Ct. 06105
BORTHWICK, WILLIAM H. (566-4500, X5811)
State of Conn., P.W.D.
165 Capitol Ave., Rm. 468, Hartford, Ct. 06115
BOWMAN, FIELDING L. (869-0241)
Box 74, Cos Cob, Ct. 06807
BOYSON, ROBERT C. (233-0024)
10 N. Main St., West Hartford, Ct. 06107
BOZZI, THOMAS I. (366-7605)
161 Lenox Rd., Fairfield, Ct. 06430
BRAUN, CARL C. (869-1097)
Zaccheus Mead Lane, Greenwich, Ct. 06830
BREEN, EDWARD JOSEPH (525-1161)
Laurel Lane, Columbia, Ct. 06237
BROTHERTON, F. PHILIP (914-949-5560)
190 E. Post Rd., White Plains, N.Y. 10601
BROWN, RAYMOND L., JR. (482-0905)
Wildcat Hill Rd., Harwinton, Ct. 06790
BUCHANAN, GEORGE E. (488-6384)
730 Main St., Branford, Ct. 06405
BUCKLEY, MICHAEL PAUL (249-9387)
49 Woodland St., Hartford, Ct. 06105
BURNS, THOMAS K. (249-9387)
30 Berkeley Lane, East Hartford, Ct. 06118
BUSHKA, EDWARD B. (243-8500)
53 Adams Rd., Bloomfield, Ct. 06002
BUTTERFIELD, RICHARD D. (FAIA-1961) (677-1318)
The Exchange, Farmington Ave.,
Farmington, Ct. 06032

CANNON, WINTHROP P. (772-0600)
34 Laurel Rd., Guilford, Ct. 06437
CARLIN, EARL P. (777-7323)
32 Elm St., New Haven, Ct. 06510
CARLSON, VAL (735-2677)
159 Center St., Shelton, Ct. 06484
CARPENTER, ROGER D. (227-6213)
13 Split Level Rd., Ridgefield, Ct. 06877

CARTER, ROBERT I. (767-8924)
47 Main St., Essex, Ct. 06426
CHAPMAN, FRANK C. (865-5624)
31 Batter Terrace, New Haven, Ct. 06515
CHERRY, EDWARD E. (281-1300)
60 Connolly Parkway, Hamden, Ct. 06514
CHESANEK, LOUIS F. (869-6676)
436 Stanwich Rd., Greenwich, Ct. 06830
CHRIST-JANER, VICTOR (966-3551)
10 Forest St., New Canaan, Ct. 06840
CHUNG, DO HYUN (966-3551)
248 North Wilton Rd., New Canaan, Ct. 06840
CIMINO, DOMINIC C. (522-3117)
520 Asylum St., Hartford, Ct. 06103
CIRESI, ANTHONY D. (366-5441)
Redding Ridge, Redding, Ct. 06876
CLARK, FREDERICK E., JR. (549-5004)
Bushnell Plaza - Park Level
One Gold St., Hartford, Ct. 06103
COCHRAN, WALTER H. (777-2316)
29 Whitney Ave., New Haven, Ct. 06510
COFFIN, DAVID DeLONG (438-0978)
4 Nod Rd., Ridgefield, Ct. 06877
COFFIN, JOHN GARDNER (762-5344)
3 Pond Rd., Wilton, Ct. 06897
COHAN, MILTON (233-7938)
110 Brewster Rd., West Hartford, Ct. 06117
COHEN, ANDREW S. (755-2139)
38 Grove St., Waterbury, Ct. 06710
COLASONO, DONALD J. (661-1155)
37 Stag Lane, Greenwich, Ct. 06830
COLAVECCHIO, LOUIS J. (242-5557)
800 Cottage Grove Rd., Bloomfield, Ct. 06002
COLLINS, JAMES DeVILLE (772-0550)
488 Chapel St., New Haven, Ct. 06511
CONAWAY, HARVEY P. (288-2976)
26 Lansdowne Ave., Hamden, Ct. 06517
CONKLIN, GEORGE W. (787-3827)
17 Broadway, New Haven, Ct. 06511
COOK, ARTHUR H. (246-5488)
799 Main St., Hartford, Ct. 06103
COOKE, CASWELL (787-0909)
554 Chapel St., New Haven, Ct. 06511
COWLING, RICHARD LLOYD (677-1318)
The Butterfield Partnership
The Exchange, Farmington Ave.,
Farmington, Ct. 06032
COX, EDMUND VAN DYKE (633-9409)
124 Hebron Ave., Glastonbury, Ct. 06033
CRABB, JAMES DAVID (212-673-0690)
213 Lorraine Ave., Upper Montclair, N.J. 07043
CRABTREE, WALTER P., III (233-6729)
195 Fern St., West Hartford, Ct. 06119
CRAM, WILLIAM B. (938-2115)
Rt. #1, Cross Highway, Redding, Ct. 06896
CREGO, DAVID G. (259-5313)
720 Old Post Rd., Fairfield, Ct. 06430

DALTON-MORRIS, PETER A. J. (567-0234)
Beecher Lane, Litchfield, Ct. 06759
DAMICO, JOHN (754-6846)
175 Pine St., Waterbury, Ct. 06710
DAMUCK, WALTER E. (265-2801)
120 Colonial Blvd., West Haven, Ct. 06516
DANOS, HARRY J. (246-8537)
1 Gold St., Hartford, Ct. 06103
DARBEE, HENRY (249-5837)
1170 Prospect Ave., Hartford, Ct. 06105
DE COSSY, EDWIN W. (787-2231)
299 Chapel St., New Haven, Ct. 06513
DEHAR, ALLAN J. (488-6383)
730 Main St., Branford, Ct. 06405
DELAMARRE, JACQUES L. (333-4242)
76 Samp Mortar Drive, Fairfield, Ct. 06430
DE SALVO, ARTHUR E., JR. (966-9561)
Group #6
50 Washington St., South Norwalk, Ct. 06854
DE SILVER, CARL HARRISON (966-9662)
36 Grove St., New Canaan, Ct. 06840
DE STEFANO, DONALD A. (628-0985)
1121 Waterbury Rd., Cheshire, Ct. 06410
DEXTER, GEORGE H. (777-3671)
346 East River Rd., Guilford, Ct. 06437
DI CORCIA, PHILIP J. (646-3225)
P. O. Box 927, 390 (R) W. Middle Turnpike,
Manchester, Ct. 06040
DINKELDO, JOHN G. (777-7251)
20 Davis St., Hamden, Ct. 06517
DOHM, DONALD K. (521-4600)
44 Seminary Rd., Simsbury, Ct. 06070
D'OLIVEIRA, ARTHUR P. (753-0571)
183 Delaware Ave., Waterbury, Ct. 06708
DONEGAN, MICHAEL LEO (366-5441)
215 Laurel St., Stratford, Ct. 06497
DONOHOE, RICHARD P. (354-2500)
Leach Hollow Rd., Sherman, Ct. 06784
DRAGAT, ANDREW SACK (233-0013)
c/o Henry Schadler Associates
16 Brace Rd., West Hartford, Ct. 06107
DRAKOS, LOUIS J. (522-4127)
9 Lewis St., Hartford, Ct. 06103
DROUIN, RAYMOND LUCIEN (245-4745)
86 Neck Rd., Madison, Ct. 06443

DRURY, RALPH (865-6423)
130 Cold Spring St., New Haven, Ct. 06511
DU BOSE, CHARLES (FAIA-1964) (249-9387)
49 Woodland St., Hartford, Ct. 06105
DUDA, RAYMOND GEORGE (466-5185)
2791 Park Ave., Bridgeport, Ct. 06604
DU PONT, LAURENT T. (966-3551)
134 Main St., New Canaan, Ct. 06840
Dwyer, WILLIAM R. (754-6181)
111 Euclid Ave., Waterbury, Ct. 06710
DZIKI, FRANCIS RAYMOND (677-1607)
RR #3, Day St., Danielson, Ct. 06239

EATON, LYNEDON S. (762-8371)
235 Danbury Rd., Wilton, Ct. 06897
EDWARDS, JARED I. (525-1195)
750 Main St., Hartford, Ct. 06103
ELSBERRY, PAUL VINCENT, JR. (787-1953)
53 Morse St., Hamden, Ct. 06517
EVANS, JAMES A. (327-2571)
733 Summer St., Stamford, Ct. 06901
EVELETH, DAVID D. (677-1607)
35 Professional Park, Farmington, Ct. 06032

FAIRCHILD, HENRY E. (246-5413)
40 Drake Hill Rd., Simsbury, Ct. 06070
FAIRCHILD, PETER WILLIAM (246-5413)
Cedar Ridge Rd., East Granby, Ct. 06035
FALCONER, DAVID BRUCE (655-4441)
859 Post Rd., Darien, Ct. 06820
FARRELL, JAMES K. (232-4821)
928 Farmington Ave., West Hartford, Ct. 06107
FELKER, THEODORE E. (972-0411)
14 Devon Rd., Darien, Ct. 06820
FESTA, GENE J. (777-7251)
20 Davis St., Hamden, Ct. 06511
FISCHER, NORBERT C. (729-2235)
14 Scott St., Naugatuck, Ct. 06770
FISHER, ARMAND S. (757-1905)
332 Academy Rd., Cheshire, Ct. 06410
FLORES-JENKINS, HANNIBAL (521-6870)
86 Buena Vista Rd., West Hartford, Ct. 06107
FODOR, JOHN J., JR. (853-4567)
64 Wall St., Norwalk, Ct. 06850
FOOTE, JONATHAN LIPE (787-7194)
19 Howe St., New Haven, Ct. 06511
FOSTER, DAVID G. (233-0013)
c/o H. Schadler Assoc's.
16 Brace Rd., West Hartford, Ct. 06107
FOSTER, RICHARD (869-5051)
398 Greenwich Ave., Greenwich, Ct. 06830
FOX, FRANK W. (527-3163)
71 Burr St., West Hartford, Ct. 06107
FRANKLIN, EDWARD V. (212-683-5700)
Kiff, Voss, Franklin, York & Sawyer
230 Park Ave., N.Y., N.Y. 10017
FRANZONI, AUGUSTUS J. (272-3020)
9 South Main St., Cheshire, Ct. 06410
FRAZIER, LAWRENCE R. (289-9391)
50 Founders Plaza, Rm. 303,
East Hartford, Ct. 06108
FRINDER, F. WM. (771-3694)
5 Farnam Hill, Bethel, Ct. 06801
FROST, ALEC C. (678-1245)
Hill Rd., Harwinton, Ct. 06790
FROST, STUART P. (869-5758)
248 Greenwich Ave., Greenwich, Ct. 06830
FUCITO, LOUIS R. (754-6181)
37 Hillside Ave., Waterbury, Ct. 06710
FUREY, ROBERT T. (745-2443)
32 Brook Rd., Enfield, Ct. 06082

GALL, NORMAN R. (489-3241)
118 Migeon Ave., Torrington, Ct. 06790
GALLIHER, ROGER E. (658-7617)
The Courtyard #10, Simsbury, Ct. 06070
GANTNER, ROBERT H. (456-0456)
756 Main St., Willimantic, Ct. 06226
GARDNER, ERNEST L., JR. (633-8341)
73 Woodrow St., West Hartford, Ct. 06107
GARRICK, JOSEPH E. (261-3586)
5499 Main St., Trumbull, Ct. 06611
GAYDOS, JOHN H. (853-3311)
64 Wall St., Norwalk, Ct. 06850
GELLERT, FRED (374-3553)
3720 Main St., Bridgeport, Ct. 06606
GIBSON, MURRAY O. (521-4600)
80 South Main St., West Hartford, Ct. 06107
GIRARDI, MICHAEL J. (255-3163)
1700 Post Rd., Fairfield, Ct. 06430
GLASS, EDGAR T. (677-1527)
Reservoir Rd., Farmington, Ct. 06032
GORES, LANDIS (FAIA 1973) (966-3089)
Cross Ridge Rd., New Canaan, Ct. 06840
GRANBERY, E. CARLETON, JR. (FAIA 1972)
(865-3132)
123 York St., New Haven, Ct. 06511
GREENE, WALTER F., JR. (677-2801)
Spring Lane, Farmington, Ct. 06032
GREENLEE, WM. W. (327-2571)
45 Great Hill Rd., Ridgefield, Ct. 06877
GREENWALD, AUDREY (Mrs.) (227-1567)
544 Riverside Ave., Westport, Ct. 06880

GREGG, GLENN H. (776-1000)
219 Bishop St., New Haven, Ct. 06511
GREIST, DONALD F. (226-6672)
44 Spicer Rd., Westport, Ct. 06880
GREY, WM. A. (938-2202)
Rt. 2 West Redding, Ct. 06896
GRIMES, JOHN CARLTON (366-5441)
18 Buttonball Rd., Sandy Hook, Ct. 06482
GRISWOLD, GORDON B. (366-5441)
4561 Main St., Stratford, Ct. 06497
GUSTAVSON, ARNOLD R. (366-5431)
855 Main St., Bridgeport, Ct. 06604

HAKEWESSELL, CARL F., JR. (525-1161)
799 Main St., Hartford, Ct. 06103
HAMBLIN, JESSE J., SR. (335-0245)
1188 Main St., Bridgeport, Ct. 06603
HAMMERBERG, DONALD O., JR. (677-1691)
772 Farmington Ave., Farmington, Ct. 06032
HANDY, JOHN W. (378-4290)
2268 Main St., Stratford, Ct. 06497
HARASYMIAK, IRENEUS (243-9771)
168 Grande Rd., East Hartford, Ct. 06118
HARPER, ROBERT L. (767-0101)
Oak Drive, Centerbrook, Ct. 06409
HERMANN, WM. F., JR. (536-7244)
50 Edgcomb St., Mystic, Ct. 06355
HILDEBRAND, CHARLES E., JR. (677-1607)
35 Professional Park, Farmington, Ct. 06032
HOLLOWAY, DAVID G. (442-4120)
816 Hartford Rd., Waterford, Ct. 06385
HOLM, GEORGE C. (366-5431)
855 Main St., Bridgeport, Ct. 06604
HORWITZ, EARL HAROLD (242-0725)
44 Jerome Ave., Bloomfield, Ct. 06002
HOUK, JOHN FRANKLIN (762-9282)
196 Danbury Rd., Wilton, Ct. 06897
HOWARD, MILTON L. (525-3444)
99 Pratt St., #205-6, Hartford, Ct. 06103
HOWLAND, RICHARD L. (FAIA 1970) (566-3094)
25 Foxcroft Rd., West Hartford, Ct. 06119
HUGHLETT, DONALD C. (521-6770)
316 Cumberland Rd., West Hartford, Ct. 06119
HUME, THOMAS (325-1303)
66 Broad St., Stamford, Ct. 06901
HUNT, RAYMOND (525-3531)
41 Dayton Rd., South Glastonbury, Ct. 06073
HUNTINGTON, JOHN W. (FAIA 1971) (249-5837)
41 Lewis St., Hartford, Ct. 06103

ISENBERG, MARION E. (Mrs.) (247-1630)
179 Allyn St., Hartford, Ct. 06103
IVERSON, JOHN EDWARD (972-0411)
233 Rockhouse Rd., Easton, Ct. 06612

JACKSON, NANCY MORRISON (Mrs.) (677-2163)
1 D. Talcott Glen Rd., Farmington, Ct. 06032
JACOB, CHARLES H., JR. (762-5781)
20 Indian Hill Rd., Wilton, Ct. 06897
JANAS, Z. EDMUND (249-9387)
Belden Rd., Burlington, Ct. 06085
JEPSON, DAVID GEORGE (246-5488)
799 Main St., Hartford, Ct. 06103
JETER, S. EDWARD (246-5488)
799 Main St., Hartford, Ct. 06103
JETER, SHERWOOD F., JR. (246-5488)
799 Main St., Hartford, Ct. 06103
JEVNE, HENRY M., JR. (323-9640)
Revonah Woods, Stamford, Ct. 06905
JOHNSON, EDWARD C. (787-4131)
19 Howe St., New Haven, Ct. 06511
JOHNSON, SPENCER M. (327-4141)
553 Scofieldtown Rd., Stamford, Ct. 06903
JOHNSON, S. ROY (442-1647)
33 Heritage Rd., East Lyme, Ct. 06333
JOHNSON, THOMAS E. (247-3562)
17 Woodland St., Hartford, Ct. 06105
JONCUS, STEPHEN J. (536-7244)
14 Holmes St., Mystic, Ct. 06355
JONES, HUGH MC K., JR. (FAIA 1967) (453-5216)
P.O. Box 361, 71 Whitfield St.,
Guilford, Ct. 06437
JUNG, YIU-SING (YU SING) (617-267-6700)
21 Benvenue St., Wellesley, Mass. 02181

KAEMMERLEN, ROBERT B. (233-1286)
1007 Farmington Ave., West Hartford, Ct. 06107
KAESTLE, JOHN ANTON (229-0361)
30 Bank St., New Britain, Ct. 06051
KAFFKA, WARREN E. (438-8507)
123 High Ridge Ave., Ridgefield, Ct. 06877
KAGAN, GERALD M. (624-4171)
118 Dwight St., New Haven, Ct. 06511
KALITA, ATHENA Z. (Mrs.) (413-732-1079)
79 Pondview Drive, Springfield, Mass. 01118
KANE, JOSEPH E. (232-4821)
928 Farmington Ave., West Hartford, Ct. 06107
KASS, MORTON (366-5431)
855 Main St., Bridgeport, Ct. 06604
KEATING, ROBERT P. (263-2480)
Lighthouse Rd., Woodbury, Ct. 06798
KELLEY, RAYMOND J. (966-0691)
P.O. Box 185, New Canaan, Ct. 06840

KELLOGG, AUGUSTUS G. (787-7194)
19 Howe St., New Haven, Ct. 06511
KENYON, BEN H., JR. (525-1161)
799 Main St., Hartford, Ct. 06103
KIMBALL, RICHARD A. (FAIA 1968) (453-9670)
Main St., Salisbury, Ct. 06068
KINCAID, HOLLIS W. (633-0273)
100 Sycamore St., Glastonbury, Ct. 06033
KING, CHARLES A. (525-3431)
266 Pearl St., Hartford, Ct. 06103
KING, PERCY JOE (887-5640)
114-116 Thayer Bldg., Norwich, Ct. 06360
KISTLER, DANIEL D. (966-9307)
29 Myanos Rd., New Canaan, Ct. 06840
KITTA, ELIZABETH BOGGS (Mrs.) (212 - 751-1540)
17 Stony Brook Rd., Norwalk, Ct. 06851
KNIFFIN, EDGAR ALDRICH, JR. (972-0411)
129 Gerdes Rd., New Canaan, Ct. 06840
KNOX, MALCOLM R. (242-1775)
7 Prospect St., Bloomfield, Ct. 06002
KOSINSKI, PETER R. (562-8082)
77 Willow St., New Haven Ct. 06511
KRASKO, DONALD GERARD (853-7138)
307 Flax Hill Rd., S. Norwalk, Ct. 06854

LA BAU, DAVID N. (521-6770)
1224 Farmington Ave., West Hartford, Ct. 06107
LA CAVA, FRANK A. (743-0425)
215 Main St., Danbury, Ct. 06810
LANGE, ALFRED H. (366-5431)
855 Main St., Bridgeport, Ct. 06604
LAWRENCE, ALINE H. (Miss) (865-6151)
61 Valley Rd., Hamden, Ct. 06514
LAWRENCE, ARNOLD (643-2161)
571 Porter St., Box 369, Manchester, Ct. 06040
LEBLANC, RAYMOND (561-0108)
54 Red Top Drive, West Hartford, Ct. 06110
LECHNER, GEORGE J. (366-5431)
855 Main St., Bridgeport, Ct. 06604
LEE, JOHN BLACK (966-9662)
Chichester Rd., New Canaan, Ct. 06840
LEE, MONTE S. (445-2027)
359 Long Hill Rd., Groton, Ct. 06340
LEMONIDES, GEORGE (212 - 364-7711)
715 Rugby Rd., Brooklyn, N. Y. 11230
LICCIARDI, CHIDO S. (748-6669)
22 High Rise Rd., Danbury, Ct. 06810
LIEBIG, OTTO E., JR. (442-1647)
816 Hartford Rd., Waterford, Ct. 06385
LIENHARD, ROBERT H. (525-1161)
50 Golf St., Maple Hill, Newington, Ct. 06111
LINCOLN, JOHN W. (535-1904)
Box 11, Stonington, Ct. 06378
LINCOLN, MERRILL H. (561-0148)
19 High Farms Rd., West Hartford, Ct. 06107
LINDGREN, EARL R. (729-3783)
301 Hillside Ave., Naugatuck, Ct. 06770
LINDSAY, ALEXANDER S. (442-1647)
816 Hartford Rd., Waterford, Ct. 06385
LODES, JOHN B. (914 - 273-8561)
8 Sunset Drive, Armonk, N.Y. 10504
LONDON, F. MARSDEN, JR. (227-1716)
121 East State St., Westport, Ct. 06880
LOPORCARO, LAWRENCE L. (762-0044)
P.O. Box 105, Wilton, Ct. 06897
LOYE, EDWIN M. (272-3928)
167 Jill Lane, Cheshire, Ct. 06410
LUNT, JERRY WARREN (342-0588)
95 Church St., Wethersfield, Ct. 06109
LUTIAN, MICHAEL J. (366-5441)
408 Rockwell Ave., Stratford, Ct. 06497
LYON, VIRGINIA S. (Mrs.) (434-5593)
The Little Mill, RFD #2, Old Lyme, Ct. 06371
LYONS, JESSE MICHAEL (777-6471)
1696 Orchard Hill Rd., Cheshire, Ct. 06410
LYONS, THOMAS J. (366-5431)
855 Main St., Bridgeport, Ct. 06604

MANKEY, RICHARD G. (647-1439)
769 Main St., Manchester, Ct. 06040
MARTIN, STUART TIMOTHY (972-0411)
59 Grove St., New Canaan, Ct. 06840
MASCIARELLI, ANTHONY D. (323-1156)
31 Bradley Place, Stamford, Ct. 06905
MATHER, AUSTIN W. (FAIA 1959) (366-5431)
855 Main St., Bridgeport, Ct. 06604
MATTHEWS, JOHN A. (562-9861)
19 University Place, New Haven, Ct. 06511
MAZZALUPO, VINCENT F. (758-9217)
Stoneybrook Rd., Middlebury, Ct. 06752
MC GUERTY, JOHN LEONARD (436-3400)
394 Central Ave., New Haven, Ct. 06515
MC HUGH, WM. J. (677-1607)
35 Professional Park, Farmington, Ct. 06032
MC LEOD, DONALD B. (348-9293)
316 Courtland Ave., Stamford, Ct. 06906
MC NULTY, CARRELL S., JR. (FAIA 1972) (227-5387)
30 Blueberry Hill Rd., Weston, Ct. 06880
MC SHEFFERY, CHARLES J., JR. (566-6630)
29 Marshall Rd., Rocky Hill, Ct. 06067

MEAGHER, JAMES L., JR.
118 State Ave., Rogers, Ct. 06263
MEYERS, LAUREN, JR. (776-4427)
Wingate Rd., Guilford, Ct. 06437
MICHAELS, LAWRENCE A. (227-0568)
248 North Ave., Westport, Ct. 06880
MILLER, HENRY F. (FAIA 1972) (777-2316)
29 Whitney Ave., New Haven, Ct. 06510
MILLS, WILLIS N., JR. (972-0411)
59 Grove St., New Canaan, Ct. 06840
MINATTI, LOUIS J. (375-3358)
335 Wildwood Dr., Stratford, Ct. 06497
MINER, S. NORTON (435-9273)
Top of the Hill, Lakeville, Ct. 06039
MITARACHI, PAUL J. (562-7319)
168 York St., New Haven, Ct. 06510
MITCHELL, CLIFFORD, JR. (525-3444)
105 West Euclid St., Hartford, Ct. 06112
MITCHELL, JAMES A. (348-1600)
1100 Bedford St., Stamford, Ct. 06905
MOECKEL, HENRY T. (729-5281)
305 Church St., Naugatuck, Ct. 06770
MOGENSEN, ARNOLD C. (233-7630)
7 South Main St., West Hartford, Ct. 06107
MONTAINE, RICHARD E. (914 - 428-2296)
92 Woodmere Rd., Stamford, Ct. 06905
MOORE, CHARLES W. (FAIA 1970) (764-0101)
Main St., Centerbrook, Ct. 06426
MOORE, LAWRENCE (239-5671)
100 Broadway, North Haven, Ct. 06473
MORGAN, JOHN M. (741-2121)
111 Phoenix Ave., Enfield, Ct. 06082
MOWBRAY, HENRY S. (434-9249)
Sill Lane, Old Lyme, Ct. 06371
MULLER, THEODOR (226-0791)
155 East State St., Westport, Ct. 06880
MUTRUX, ROBERT H. (366-5441)
299 Washington Ave., Bridgeport, Ct. 06604

NAPPIER, CONNIE, JR. (522-0153)
999 Asylum Ave., Hartford, Ct. 06105
NEWMAN, HERBERT S. (772-1990)
300 York St., New Haven, Ct. 06511
NEYLAND, SINGLETON J. (246-5678)
16 Bridge Path Rd., Stamford, Ct. 06902
NICHOLS, ARTHUR R. (754-4771)
77 Bank St., Waterbury, Ct. 06702
NORTON, T. FREDERICK (325-1303)
24 1/2 Noank Rd., West Mystic, Ct. 06388
NOYES, ELIOT F. (FAIA 1961) (966-9561)
96 Main St., New Canaan, Ct. 06840
NOYES, HERBERT, JR. (777-2316)
29 Whitney Ave., New Haven, Ct. 06510
NYLEN, SAMUEL E. (212 421-0300)
7 Buena Vista Drive, Westport, Ct. 06880

OGDEN, PETER K. (869-2923)
2 Lafayette Court, Greenwich, Ct. 06830
OLSON, PHYLLIS, V. (Mrs.) (525-3431)
25 Garden St., Wethersfield, Ct. 06109
OSTEYEE, ROBERT W. (333-5044)
964 Iranistan Ave., Bridgeport, Ct. 06604

PACELLE, JOHN M., JR. (628-0985)
628 Spring St., Southington, Ct. 06489
PALMER, T. J. (342-0588)
P.O. Box 201, Cobalt, Ct. 06414
PALMIERI, A. J. (372-4559)
3851 Main St., Bridgeport, Ct. 06606
PAINCHAUD, KELTON C. (549-4300)
21 Driscoll Rd., Branford, Ct. 06405
PASSANESI, SEBASTIAN J. (346-1809)
164 Court St., Middletown, Ct. 06457
PATTERSON, HOWARD A., JR. (655-9913)
23 Oak Crest, Darien, Ct. 06820
PAVIA, ANTHONY M., SR. (322-8661)
1260 Hope St., Stamford, Ct. 06907
PEDERSEN, WM. F. (776-0973)
95 Apple Tree Lane, New Canaan, Ct. 06840
PELIZZA, CHARLES A. (777-3671)
335 Demarest Drive, Orange, Ct. 06477
PEPIN, EDWARD L. (243-1471)
37 Jerome Ave., Bloomfield, Ct. 06002
PERRY, HOWARD H. (525-1195)
20 Westledge Rd., West Simsbury, Ct. 06092
PERSE, JOHN W., JR. (865-3381)
258 Church St., New Haven, Ct. 06510
PETERS, KENNETH (329-0409)
178 Four Brooks Rd., Stamford, Ct. 06903
PETROFSKY, PETER, SR. (261-4576)
28 Hedgehog Rd., Trumbull, Ct. 06611
PIERZ, JOSEPH F. (527-2601)
115 Garden St., Wethersfield, Ct. 06109
PLATNER, WARREN (777-6471)
18 Mitchel Drive, New Haven, Ct. 06511
POKRAS, DAVID M. (734-0559)
P.O. 205, 350 East Main St., Ansonia, Ct. 06401
POLAK, DAVID (777-3428)
111 Park St., New Haven, Ct. 06511
POLIZZOTTI, MARIO A. (966-9505)
66 White Oak Shade Rd.,
New Canaan, Ct. 06840

PORTER, GEORGE EDWARD (Rev.)
2370 North Ave., Bridgeport, Ct. 06604
POZZI, PAUL EMIL (777-7323)
965 Forest Rd., New Haven, Ct. 06515
PRIEMER, HANS-HELMUT E. (236-5841)
34 Lakeside Dr., Granby, Ct. 06035
PULITANO, PASQUALE M. (324-5781)
6 Shady Lane, Greenwich, Ct. 06830

QUEEN, STANLEY O. (777-3428)
Hawley Rd., Oxford, Ct. 06483
QUINN, RICHARD W. (242-9701)
37 Jerome Ave., Bloomfield, Ct. 06002

RALLIS, WILLIAM H. (246-5413)
133 Washington St., Hartford, Ct. 06106
RAYMOND, NORMAN L. (324-3762)
207 Atlantic St., Stamford, Ct. 06901
REED, WALTER H. (566-6560)
550 Main St., Hartford, Ct. 06070
REINHART, RICHARD (677-2801)
5 Norton Lane, Farmington, Ct. 06032
REPPENHAGEN, CHARLES W. (354-2500)
Edmonds Rd., Sherman, Ct. 06784
RIDDLE, WM. L. (547-1970)
470 Asylum St., Hartford, Ct. 06103
RIDOUT, FRANK J., JR. (233-1286)
1007 Farmington Ave., West Hartford, Ct. 06107
RIFKIN, STEVEN (756-8944)
45 Savings St., P.O. Box 5051,
Waterbury, Ct. 06702
RILEY, JOHN L. (521-4600)
80 South Main St., West Hartford, Ct. 06107
ROBERTS, HENRY BRYCE (677-1318)
The Exchange, Farmington Ave.,
Farmington, Ct. 06032
ROCHE, E. KEVIN (777-7251)
20 David St., Hamden, Ct. 06517
ROCHE, FRANCIS M. (442-4120)
816 Hartford Rd., Waterford, Ct. 06385
ROGUS, ROBERT C. (377-1300)
Dahlia Lane, RFD #1, West Redding, Ct. 06896
RONALDES, ROBERT H. (677-2801)
Drakos & Greene Architects
Spring Lane, Farmington, Ct. 06032
ROOT, DONALD Y. (525-1161)
799 Main St., Room 1760, Hartford, Ct. 06103
ROSETTI, ANDREW C. (583-9279)
300 Main St., Bristol, Ct. 06010
ROTH, HAROLD (787-1166)
99 Ives Place, New Haven, Ct. 06511
ROWAN, JAN C. (866-1300)
246 Rowayton Ave., Rowayton, Ct. 06853
ROWLAND, RALPH T. (366-5441)
201 North Rolling Acres Rd.,
Cheshire, Ct. 06410
RUDERMAN, NORMAN (246-5488)
121 Lawler Rd., West Hartford, Ct. 06117
RUSSELL, DAN LYMAN (525-4291)
60 Washington St., Suite 902, Hartford, Ct. 06106
RUSSELL, JAMES F. (521-4600)
80 South Main St., West Hartford, Ct. 06107
RUTHERFORD, IRVING W. (527-3163)
84 Wadsworth St., Hartford, Ct. 06106

SAAD, EDWARD (272-0600)
608 So. Brookfield Rd., Cheshire, Ct. 06410
SAHMEL, PER VIGGO (327-2571)
733 Summer St., Stamford, Ct. 06901
SALERNO, JOSEPH (227-1567)
544 Riverside Ave., Westport, Ct. 06880
SAPACK, ROBERT A. (756-8944)
Savings Tower, 45 Savings St.,
P.O. Box 5051, Waterbury, Ct. 06702
SCHADLER, HENRY C. (233-0013)
16 Brace Rd., West Hartford, Ct. 06107
SCHECTER, JACK H. (334-0189)
1188 Main St., Bridgeport, Ct. 06603
SCHNEIDER, OTTO (549-4300)
15 Hughes Lane, Windsor Locks, Ct. 06096
SCHOENHARDT, RICHARD E. (658-7617)
Gallihier & Schoenhardt
The Courtyard - No. 10, Simsbury, Ct. 06070
SCOFIELD, EDWARD K. (792-5920)
111 Bridge St., Stamford, Ct. 06905
SCOTT, DAVID W. (438-0901)
Poplar Rd., Ridgefield, Ct. 06877
SETARO, J. ARTHUR (748-6748)
5 Valerie Lane, Danbury, Ct. 06810
SHARPE, RICHARD (FAIA 1970) (889-7314)
30 Connecticut Ave., Norwich, Ct. 06360
SHERWOOD, THORNE (FAIA 1959) (567-8075)
West Morris Rd., Morris, Ct. 06763
SHOLLER, T. HOWARD (268-7209)
P.O. Box 4, Easton, Ct. 06425
SHOPE, RICHARD ALLEN (658-9102)
327 Hopmeadow St., Weatogue, Ct. 06089
SIGSWAY, CHARLES S. (846-1950)
James St., Norwalk, Ct. 06850
SINCLAIR, JOHN K. (677-2801)
Spring Lane, Farmington, Ct. 06032

SIRINE, DONALD F. (838-0601)
80 Great Hill Rd., Ridgefield, Ct. 06877
SISK, SIDNEY M. (232-4112)
2446 Albany Ave., West Hartford, Ct. 06117
SITTERS, GERARD J. (754-6181)
119 Store Ave., Apt. 2-1, Waterbury, Ct. 06705
SLOVAK, JOSEPH, JR. (366-5441)
57 Blueberry Lane, Shelton, Ct. 06484
SMALL, ROGER (795-0070)
380 Boston Post Rd., Orange, Ct. 06477
SMALLEN, HUGH J., JR. (966-3757)
160 Chichester Rd., New Canaan, Ct. 06840
SMITH, ANDREW B. (249-1609)
c/o David Woodard Architect
One Gold St., Hartford, Ct. 06103
SMITH, CYRIL E., JR. (484-2594)
Mountain View Terrace, Northford, Ct. 06472

SMITH, MARGARET HOYT (Mrs.) (866-0869)
30 Highland Ave., Rowayton, Ct. 06853
SNYDER, GARY NEIL (226-0791)
44 Wauneta Rd., Trumbull, Ct. 06611
SOUTHEY, DAVID L. (202-363-0735)
2801 Quebec Street, N.W.,
Washington, D.C. 20008
STADLER, ALLAN E. (453-3422)
82 Russet Drive, Guilford, Ct. 06437
STANDISH, WELLES A., II (233-1286)
168 Wood Pond Rd., West Hartford, Ct. 06107
STECKER, RUSSELL L. (FAIA-1971) (242-5557)
800 Cottage Grove Rd., Bloomfield, Ct. 06002
STEIN, JOSEPH (FAIA-1969) (756-8944)
45 Savings St., P.O. Box 5051,
Waterbury, Ct. 06702
STEINMETZ, ROBERT C. (972-0411)
188 Sturges Ridge Rd., Wilton, Ct. 06897
STOCK, PHILLIP (521-6500)
162 Selden Hill Dr. West Hartford, Ct. 06107
SULLIVAN, HOWARD J. (777-3428)
260 Fort Hale Rd., New Haven, Ct. 06512
SUNDERLAND, WILLIAM W. (748-4366)
81 West St., Danbury, Ct. 06810
SWANBERG, ERNEST E. (366-5431)
Lyons . Mather . Lechner, 855 Main St.,
Bridgeport, Ct. 06604
SWANSON, CARL SIEGFRIED (413-733-5106)
49 Thaddeus St., Chicopee Falls, Ma. 01020
SWITZER, GILBERT (562-9861)
514 Boston Post Road, Madison, Ct. 06443

TALCOTT, CHARLES H. (869-1037)
45 East Putnam Ave., Greenwich, Ct. 06830
TASILLO, DANIEL J. (525-2964)
111 Westerly Terrace, Hartford, Ct. 06105
TAYLOR, SHELBY R. (633-8341)
P. O. Box 328, Hartford, Ct. 06101
THOMAS, GEORGE E. (288-3221)
1712 Whitney Ave., Hamden, Ct. 06517
THOMPSON, KERMIT DUNCAN (239-5671)
285 Greene St., New Haven, Ct. 06511
THORNTON, ROY JOHN (521-6770)
1224 Farmington Ave., West Hartford, Ct. 06107
TICHY, LESTER C. (869-3293)
170 Mason St., Greenwich, Ct. 06830
TILLINGHAST, STUART (777-5551)
Old Hickory Lane, Branford, Ct. 06405
TILNEY, BRADFORD S. (777-4457)
75 Whitney Ave., New Haven, Ct. 06510
TRAVERS, DAVID B. V. (878-1923)
117 Broad St., Milford, Ct. 06460

URBINATI, JOHN F. (754-6181)
56 East Brown St., West Haven, Ct. 06516

VALENTINO, GEORGE JOSEPH (423-1831)
70 Bulkeley Ave. North, Westport, Ct. 06880
VALUS, WILLIAM S., JR. (226-9553)
41 Riverside Ave., Westport, Ct. 06880
VENTURINI, ALFRED O. (212-EM1-7711)
MacGregor Drive, Mahopac, N.Y. 10541
VERELLEY, ROBERT B. (366-5431)
855 Main St., Bridgeport, Ct. 06604
VIGNEAU, DONALD J. (289-9391)
50 Founders Plaza, Rm. 303,
East Hartford, Ct. 06108
VON BROCK, A. RAYMOND (972-0411)
59 Grove St., New Canaan, Ct. 06840
VON DOHLEN, ROBERT J. (521-4600)
80 South Main St., West Hartford, Ct. 06107

WALDEN, JAMES C. (531-7480)
100 Putnam Green, P. O. Box 903,
Greenwich, Ct. 06830
WALLACE, EDWARD G. (655-3204)
5 Overbrook Lane, Darien, Ct. 06820
WATSON, DONALD (453-6388)
Box 401, Guilford, Ct. 06437
WEY, RICHARD S. (354-1835)
Hemlock Point Drive, RR #2,
P. O. Box 267A, Sherman, Ct. 06784
WHITAKER, STEPHEN CHARLES (756-8944)
27 Litchfield Rd., Watertown, Ct. 06795
WHITCOMB, ROGER PITT (792-5920)
213 Main St., Danbury, Ct. 06810

WHITE, HARVEY M. (236-0723)
928 Farmington Ave., West Hartford, Ct. 06107
WHITE, HERBERT P. (865-6151)
12 Whiting Farm Rd., Branford, Ct. 06405
WILSON, ROBERT L. (327-7806)
733 Summer St., Stamford, Ct. 06901
WINDER, FRANK D. (787-2231)
299 Chapel St., New Haven, Ct. 06513
WISNIEWSKI, RAYMOND J. (677-2801)
Spring Lane, Farmington, Ct. 06032
WOODARD, DAVID E. (249-1609)
Bushnell Plaza-Park Level, One Gold St.,
Hartford, Ct. 06103
WOOLLEY, EVEN B. (874-5579)
Red Root Lane, Box 577, Milford, Ct. 06460
WRIGHT, LEE (972-0411)
277 Noroton Ave., Darien, Ct. 06820

YOST, ZANE (384-2201)
144 Island Brook Ave., Bridgeport, Ct. 06606
YOUNG, CARLTON SCOVILL (366-5441)
353 Davis Rd., Fairfield, Ct. 06430

ZAleta, DONALD JOSEPH (366-5431)
6 Pond Ridge Rd., Danbury, Ct. 06810

UNASSIGNED MEMBERS

LEFFERTS, GILLET, JR. (687-8124)
177 Leroy Ave., Darien, Ct. 06820

PROFESSIONAL ASSOCIATES OF THIS CHAPTER

BARTOS, FRANK JOSEPH
143-55 41st Ave., Flushing, N.Y. 11355
BASSERMAN, V. PETER (432-4822)
68 Woodlawn St., Hamden, Ct. 06517
BOEGE, HERBERT F. (232-4821)
9 Haviland Rd., Bloomfield, Ct. 06002
BROWN, ROBERT KEITH (677-1607)
Trailsend Drive, Canton, Ct. 06019

CADMAN, JOHN E. (643-2161)
Valley Falls Rd., Vernon, Ct. 06066
CANNING, WILLIAM JOHN (536-2945)
221 Tyler Ave., Groton, Ct. 06340
CLARK, FRANK J. (335-9333)
114 State St., Bridgeport, Ct. 06604
CREADICK, RICHARD G.
15146 Mulholland Dr., Los Angeles, Calif. 90024

DEMBROW, LEON W. (566-6250)
Loomis Rd., Suffield, Ct. 06078

FIELDS, FRANKLIN B. (246-5488)
51 Walbridge Rd., West Hartford, Ct. 06119
FOYE, WILLIAM DEAN (677-1318)
1 Miles Ave., Middletown, Ct. 06457

GAULT, ROBERT TAYLOR (227-0568)
15 Soundview Dr., Westport, Ct. 06880

HAMER, MARVIN R. (933-5736)
46 Court St., West Haven, Ct. 06516
HANDLER, PHILIP STEPHAN (236-5841)
46 Miami Rd., West Hartford, Ct. 06117
HARTUNG, RODERIC MICHAEL (434-0250)
15 Boggy Hole Rd., Old Lyme, Ct. 06371
HOLBECK, MARY HANES (Miss)
1921 Kalorama Rd., N.W.,
Washington, D.C. 20009
HOWARD, LEONARD EDWIN (887-9294)
Reutemann Rd., North Stonington, Ct. 06359
HUNT, HENRY G. (453-4650)
360 Old Sachem's Head Rd., Guilford, Ct. 06437

KARVE, PAKMAKAR VASUDEO (889-7314)
30 Connecticut Ave., Norwich, Ct. 06360
KINGSBURY, WILLIAM W. (377-1300)
1061 Wells Place, Stratford, Ct. 06497
KOLLIGIAN, HAIG C. (777-5551)
Bethany Wood, Bethany, Ct. 06525
KRAFJACK, JACK MICHAEL (232-4821)
100 Meadow Lark Rd., Vernon, Ct. 06086
KRISSENGER, RICHARD S. (521-6770)
68 Walden St., West Hartford, Ct. 06107

LIBSON, MAURICE E.
58 Whitney Ave., New Haven, Ct. 06511
LIEBREICH, ROBERT F. (212-982-8810)
10 East 76th St., New York, N.Y. 10021

MC MANUS, JAMES MICHAEL (521-6770)
29 Taylor St., Windsor, Ct. 06095
MURPHY, JAMES J. (521-4794)
578 Park Rd., West Hartford, Ct. 06107

NASTRI, ANDREW LOUIS (288-2976)
566 Townsend Ave., New Haven, Ct. 06512

OHLY, NICHOLAS D. (777-7251)
8 Academy St., New Haven, Ct. 06511

PARENTE, MICHAEL A. (374-9201)
29 Hemlock Trail, Trumbull, Ct. 06611
PETCHLER, WILLIAM J., JR. (777-3196)
85 Willow St., New Haven, Ct. 06511

RAFFONE, WILLIAM P., JR. (372-4591)
Commerce Park, 4695 Main St.,
Bridgeport, Ct. 06606
ROBIE, JOHN R. (762-3964)
143 Linden Tree Rd., Wilton, Ct. 06897

SAPIENZA, WM. J. (777-5551)
808 Savin Ave., West Haven, Ct. 06516
SHELTON, GEORGE ANDREW (777-7251)
79 Locust St., Milford, Ct. 06460
SLOCUM, CHARLES D. (787-2231)
30 Roslyn Drive, Cheshire, Ct. 06410
SORICH, JOHN (566-6560)
23 Red Stone Drive, Simsbury, Ct. 06089
STOUTENBERG, THEODORE JOHN (229-0361)
30 Bank St., New Britain, Ct. 06051

VOGT, FREDERICK NILSEN (277-2316)
19 Union St., Guilford, Ct. 06437

WALLACK, JOHN STEPHEN (521-4600)
30 Center St., Wethersfield, Ct. 06109
WEINSTOCK, MILTON S. (914-428-2296)
54 Big Oak Rd., Stamford, Ct. 06903
WILES, GEORGE ALONZO (372-4559)
11 Laurie Rd., Trumbull, Ct. 06611

AIA ASSOCIATE MEMBERS

LEBATIQUE, DOMINGO C. (525-3444)
20 Dwight Rd., West Hartford, Ct. 06110
LEWONSKI, JOHN EDWARD (756-8944)
45 Savings St., P.O. Box 5051,
Waterbury, Ct. 06702

ASSOCIATES OF CSA

ARGIROS, PETER W. (549-0778)
Lot #6, Kellogg Rd., Marlborough, Ct. 06424

BAILEY, PAUL BOYD (787-0909)
554 Chapel St., New Haven, Ct. 06511
BASCH, DAVID (566-3041)
65 Mohegan Dr., West Hartford, Ct. 06107
BECKWITH, HARRY L. (232-4821)
121 High St., Manchester, Ct. 06040
BERGERON, KEN (525-1161)
G-12 Bradley Circle, Enfield, Ct. 06082
BEVERIDGE, JOHN PENMAN, JR. (563-1820)
Walkley Hill Rd., Haddam, Ct. 06438
BIRDSALL, GRACE MARY (Mrs.) (242-5557)
P. O. Box 294, Southington, Ct. 06489
BOUTIN, LEO ANTHONY (289-3409)
RFD #3, 43 Overbrook Dr., Vernon, Ct. 06086
BROPHY, JERRY P. (767-0191)
Achenbach Realty Companies, Essex, Ct. 06426

CAMPBELL, ED W. (914-428-2296)
162 Sawyer Rd., Fairfield, Ct. 06430
COOK, ROY EDWARD
32 North Rd., East Granby, Ct. 06026
COUTURE, CARL EDWARD (772-0609)
441 Lincoln Ave., Bridgeport, Ct. 06606

DONALDSON, DAVID KING, JR. (562-2183)
48 Livingston St., New Haven, Ct. 06511

ELLIOTT, THOMAS LEE (777-5551)
RFD #1, Box 166, Westbrook, Ct. 06498
ELOVITZ, JEFFREY LEONARD (384-2214)
c/o William P. Raffone Jr., Architect
904 Madison Ave., Bridgeport, Ct. 06606

FINDLAY, HERBERT JAMES ALEXANDER (229-0361)
24, B1 Lake Shore Dr., Farmington, Ct. 06032

GILLEY, ROY (881-3900)
19519 Trailshire Rd., Gaithersburg, Md. 20760
GRANBERY, DIANA A. (Mrs.) (865-3132)
111 Old Quarry Rd., Guilford, Ct. 06437
GUNNELS, CHARLES E., JR. (243-1471)
5 Plymouth Rd., West Hartford, Ct. 06119
GUSTAFSON, RAYMOND E. (678-0031)
The Austin Associates, Inc.
P. O. Box No. 469, Avon, Ct. 06001

HAMBLIN, JESSE JAMES, JR. (874-0304)
39 Shell St., Milford, Ct. 06460
HAMER, J. JOHN (865-6151)
9 Wildwood Dr., Branford, Ct. 06405

HEWEY, ROBIN W. (527-3163)
193 Walnut St., East Hartford, Ct. 06108
HNATH, DEMETRIUS M.
490 Avery St., South Windsor, Ct. 06074
HOFFMAN, JOHN J. (777-2500)
835 Mix Ave., Hamden, Ct. 06510
HOWES, HOWARD RICHARD (853-4567)
50 Catherine St., Stratford, Ct. 06497
HURD, ROBERT B. (633-2070)
7 Rheel St., Rockville, Ct. 06066

JANET, ANDRE SOSTHENE, JR. (243-1471)
68 Tunxis Ave., Bloomfield, Ct. 06002

KAHN, SHAHARYAR (327-7806)
67 B Mencil Circle, Bridgeport, Ct. 06610
KEANE, ROBERT J., JR. (366-5441)
299 Washington Ave., Bridgeport, Ct. 06604
KLEEMAN, JOAN S. (Mrs.) (393-3037)
Bethmour Rd., Bethany, Ct. 06525

LAMSON, ALAN F. (289-9391)
613 Bush Hill Rd., Manchester, Ct. 06040
LAWRENCE, RICHARD STEVEN (643-2161)
22 Duncan Rd., Manchester, Ct. 06040
LINARD, DIMITRI (212-288-4721)
40 East 72nd St., New York, N.Y. 10021

MARGOLIS, ESTELLE T. (Mrs.) (227-8139)
72 Myrtle Ave., Westport, Ct. 06880
MATTEO, RICHARD LEE (777-7251)
3708 Whitney Ave., Mount Carmel, Ct. 06518
MILLER, ROBERT LEONARD, JR. (264-4069)
111 Park St., Apt. 14P, New Haven, Ct. 06511

PANICCIA, MARIO DOMENIC (372-4591)
325 Jewett Ave., Bridgeport, Ct. 06606
PAVIA, MICHAEL P. (366-5441)
76 Southport Woods Drive, Southport, Ct. 06490
PERRY, ALLEN WADE (787-0909)
c/o Caswell Cooke Architect
554 Chapel St., New Haven, Ct. 06511
PHELAN, JOHN G. (366-5441)
299 Washington Ave., Bridgeport, Ct. 06604
POZHARSKY, VLADIMIR J. (377-1300)
590 Whitney Ave., New Haven, Ct. 06511

RICH, LOUIS B.
20 Highcrest Acres Rd., Wethersfield, Ct. 06109
ROSE, PHILIP AUGUSTUS
1231 Boulevard, New Haven, Ct. 06519

SACCO, ALFRED (758-1911)
Hillview Drive West, R.F.D. #4
New Fairfield, Ct. 06810
SHORT, HERBERT M. (562-2183)
16 Derby Ave., New Haven, Ct. 06511
STEFANI, JEROME ALLEN (562-9861)
315 Whitney Ave., New Haven, Ct. 06511
STERLING, JOHN DAVID
Porter Hill Rd., Middlebury, Ct. 06762
SWIBOLD, RICHARD E. (525-3431)
Cherry Brook Rd., North Canton, Ct. 06059

TAISARSKY, EDWARD LEON (525-1161)
6 Erickson Drive, Collinsville, Ct. 06022
TANASI, GENE LOUIS (249-0095)
152 Bond St., Hartford, Ct. 06114
TERNI, ROGER ALEXANDER (377-1300)
82 Laurel St., Waterbury, Ct. 06702
TOMAIUOLO, ALFRED ANTHONY (787-0909)
312 Benham Ave., Bridgeport, Ct. 06604

VITOLS, WILLIAM (757-9647)
Pleasant Acres, Danbury, Ct. 06810

WEINER, EDWARD TERRY
2400 N.E. 25th Place, Apt. 4,
Ft. Lauderdale, Fla. 33305
WHITESIDE, RICHARD HARTMAN (366-5441)
Fletcher Thompson Assoc's.
299 Washington Ave., Bridgeport, Ct. 06604
WOJICK, FREDERICK E. (774-8511)
Box 117, North Grosvenor, Ct. 06255
WOODFORD, FRED WILLIS, JR. (366-5441)
56 Orchard St., Stratford, Ct. 06497

ZALENSKI, RICHARD
2100 Stanley St., Apt. 208
New Britain, Ct. 06053
ZAVARELLA, MARIO (688-3675)
Windsor Town Hall, 275 Broad St.
Windsor, Ct. 06095

PROFESSIONAL AFFILIATES

BYE, ARTHUR EDWIN, JR. (869-0381)
(Landscape Architect)
Box 94, Cos Cob, Ct. 06807
CAVALIERE, ALFONSO M. (777-3671)
(Structural Engineer)
150 Huntington Rd., New Haven, Ct. 06512
DALEY, CHARLES EGBERT (744-0331)
(Lumberman)
P.O. Box 127, 11 Osborne St.,
Danbury, Ct. 06810
DEE, RICHARD KENNETH (678-0670)
(Landscape Architect)
Brownstone Court, Avon, Ct. 06001
FOEHL, JOHN M., P.E. (322-7630)
108 Elmwood Dr., Cheshire, Ct. 06410
GOICO, JOSE M. (525-4269)
(Civil Engineer)
999 Asylum Ave., Hartford, Ct. 06105
JOHNSON, DEAN ADAMS (678-0670)
(Landscape Architect)
Brownstone Court, Avon, Ct. 06001
LENGEL, ARTHUR H. (388-3164)
(Architectural Woodwork Institute)
450 Main St., Old Saybrook, Ct. 06475
NEVERLIN, KENNETH F. (658-0456)
(Landscape Architect)
c/o Allen W. Hixon, Jr., & Associates
736 Hopmeadow St., Simsbury, Ct. 06070
SHEMITZ, SYLVAN R. (934-8441)
(Lighting Designer & Consultant)
145 Orange Ave., West Haven, Ct. 06516

SNYDER, H. EVAN (249-7634)
Communicon Publications, Inc.
One Gold St., Hartford, Ct. 06073
VINICK, BERNARD SIDNEY (525-4293)
(Interior Designer)
55 High St., Hartford, Ct. 06103
WILSON, FRANCES E. (Mrs.) (AID) (972-0411)
59 Grove St., New Canaan, Ct. 06840

STUDENT ASSOCIATES

BARTHOLOMAY, JAMES PETER
117 Snipsic Lane Rd., Ellington, Ct. 06029
BEGLEY, HUGH GEORGE
Thayer Rd., Higganum, Ct. 06441
BURRIS JAMES EDWARD
198 Edgewood Ave., New Haven, Ct. 06511
DE ROSA, KENNETH R.
46 Springside Ave., New Haven, Ct. 06515
DOUCETTE, JOHN
44 Westbrook St., Hartford, Ct. 06107
DUNCAN, ARTHUR FRANK
78 Lake Place, New Haven, Ct. 06511
EKLOF, ERIC SWAN
227 South St., Auburn, Ma. 01501
GETER, HENRY W.
E. S. Harkness Memorial Hall,
New Haven, Ct. 06520
JANTY, STEPHEN CARL
444 Avery St., So. Windsor, Ct. 06905
KASPAREK, EDWARD RAYMOND
39 Brook Lane, West Haven, Ct. 06516
KULESZA, ERNEST
235 Lake Plymouth Rd., Plymouth, Ct. 06782
LANDRY, BRUCE EDWARD
62 Pleasant St., Manchester, Ct. 06040
LIGAS, RONALD WILLIAM
209 Dana Lane, South Meriden, Ct. 06450
MUCIK, PAUL MICHAEL
20 Marshall Rd., Meriden, Ct. 06450
OSKANDY, JOSEPH MICHAEL
57 Conlon St., Bristol, Ct. 06010
PARRISH, MAURICE DRUE
409 Prospect St., Room 29 - Brainard,
New Haven, Ct. 06510
PAVONE, RALPH BINCENT
24 Hughes St., East Haven, Ct. 06512
PIETRYCHA, EDWARD PAUL
363 Campfield Ave., Hartford, Ct. 06114
PISANI, ANTHONY JOHN
119 Franklin St., Meriden, Ct. 06450
REICHERT, GEORGE JOHN
1575 Iranistan Ave., Bridgeport, Ct. 06604
ROZIE, LEE MAURICE
108 Sisson, East Hartford, Ct. 06108
THOMPSON, HUGH LLOYD
409 Prospect St., P.O. Box 161,
New Haven, Ct. 06510
TODARO, ROCCO JOSEPH
14 Cummings Ave., Wethersfield, Ct. 06109
ZARASKI, BEVERLY ELSIE
309 Forbes St., East Hartford, Ct. 06118

The Connecticut Society of Architects

The Connecticut Society of Architects, Inc., is a chapter of the American Institute of Architects, the 24,000-member national professional society. The CSA headquarters is located at 152 Temple Street in New Haven. Names of the officers of the Society appear on the masthead of each issue of *Connecticut Architect*.

The professional code of ethics of architects is an assurance of technical competence, design skill, and professional integrity for those who employ and commission architects.

Necrology

Three members of the Connecticut Society of Architects died during the past year. They are Ward W. Fenner, AIA, corporate member; Rand B. Jones, professional associate; and Walter A. Walsh, Jr., associate. □

Connecticut is particularly fortunate in the quality and diversity of architectural talent among its practitioners. Connecticut, too, is the home of one of the best known architectural institutions in the nation, the Yale School of Art and Architecture.

The roster of the Connecticut Society of Architects, which appears in this issue of *Connecticut Architect*, is published for the convenience of the magazine's readers. Copies of this once-a-year roster issue are available at the CSA office for \$5 each. □

NOW! Keep any building interior up to...

15° COOLER with KOOLSHADE SOLAR HEAT and GLARE CONTROL

Sun-exposed window areas, even with interior shading devices, admit as much as 90% of the sun's hot rays and are primarily responsible for excessive heat gain, uncomfortable room temperatures.

CLEAR OUTWARD VISIBILITY: KoolShade is like a transparent veil, almost invisible from the inside, permits up to 84% clear outward visibility.

REDUCES GLARE: KoolShade also provides unmatched glare-shading efficiency—admits comfortable, diffused daylight.

FOR ANY BUILDING: Office, Hospital, School, Church, Apartment, Home—wherever solar heat and glare are a problem.

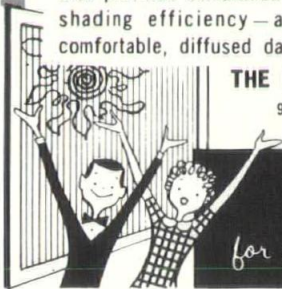
AUTHORIZED CONTRACTOR: We are thoroughly trained and equipped to make any type of installation. Call for more information, free estimate.

THE HARTFORD WIRE WORKS COMPANY

90 ALLYN STREET, HARTFORD, CONNECTICUT 06101

(203) 522-0296

for any window under the Sun!



SPECIFY

Jennite J-16®

**BLACKTOP SEALER
FOR PARKING AREAS AND DRIVEWAYS**

latexite

**COLOR-FAST ACRYLIC RESIN COLORED SEALERS
FOR PLAY AREAS**

For low-budget jobs where pavement is not subject to oil and fuel drippings, specify low-cost **COLOR-SEAL**

FREE Parking Lot Templates save you time in preparing plans. Call or write for yours today.

**COPELAND
COMPANY, INC.**
WILLOW STREET
CHESHIRE, CONNECTICUT
Telephone
272-3221

DESIGNING A HOSPITAL?



The increase in costs, training and admissions coupled with shortages of doctors, nurses and technicians have caused hospital administrators to look to sophisticated communications systems as one answer to their problems. Tomorrow's hospital will require a wide spectrum of communications facilities including voice, data and video systems. Underfloor ducts, conduit and riser systems, switchboards and apparatus closets must be planned early. Expensive rearrangements and unsightly exposed wiring can be avoided later on.

Coordinated communications preplanning is essential. Our building industry consultant can help you plan for the communications needs of a modern hospital or any other building where sophisticated communications systems are required. He knows communications. And he has experience working with people who build. Call the building industry consultant when your plans are still on the drawing board. You add him to your team without cost or obligation. Dial 1-800-922-2953, toll free from anywhere in Connecticut.

Southern New England Telephone

What's So Great
Continued from page 12

It is true there were certain minor misunderstandings at the bargaining table in each case and that some of those representing management even lost their heads. But today, in a permanent gesture of noblesse oblige, they share their grandeur and their illusions — all expressed in mirrored halls, polished floors, gardens, and fountains — with the open-mouthed populace at two francs per person, and everyone goes away happy.

There's a place for "the truth, the whole truth, nothing but the truth," but not in the architect's bag. Even the first Architect didn't create the Universe in order to be ashamed of it.

When the archeologists search the rubble for the clue to our identity, they will find dozens of great commercial centers, hundreds of insurance buildings, and thousands of corporate headquarters. And they will find ways to prove that they were all paid for, rivet by rivet, by a happy and uncomplaining

populace.

Nothing in the architecture will describe the labor disputes, the tax inequities, the international intrigue, the monopolistic shenanigans that lie underneath the veneer of granite, glass, and stainless steel. They may even find the remains of a fine apartment hotel known as "The Watergate" and deduce, by the grace of its lines, the rhythm and symmetry of its proportions, and its utter sincerity of purpose, that we were all rather nice, honest people.

And . . . unless, by some unhappy chance, they unearth the Rosetta Stone in the form of "The Tapes," they will honor us with our own self-serving epitaph, "This is what they believed in, to the best of their recollection, at that point in time." □

The Francis M. Jackson Associates

Providing a "PROFESSIONAL" insurance service
for the "PROFESSIONAL" Architect & Engineer.

Administrator of CISA's group insurance plan.

For your complete insurance and bond needs,
call or write to:

Bob Camilleri

The Francis M. Jackson Associates
185 Silas Deane Highway
Wethersfield, Connecticut 06109
(203) 563-9381

Joins Firm



Clifford Mitchell

Clifford Mitchell, Jr., Hartford architect and artist, has been named as associate of Milton Lewis Howard Associates/Architects, Hartford.

Mr. Mitchell is a past president of the Connecticut Chapter of the National Society of Interior Designers and of the Connecticut Watercolor Society. □

The George C. Field Company

General Contractors *Founded 1897*

Essex Madison East Lyme
Connecticut

Fine residential construction

Mather Honored

Austin W. Mather, FAIA, has been awarded the Alumni Medal, the highest award given by Pratt Institute's Alumni Society. The presentation was made in Brooklyn on October 13.

Mr. Mather was cited for "accomplishments in architecture and architectural education." A 1926 graduate of Pratt's School of Architecture, he is a partner in the architectural firm of Lyons-Mather-Lechner, Bridgeport.

Mr. Mather, who also studied at the Beaux Arts Institute of Design, served as a member of the Pratt faculty where he established city planning as part of the curriculum and taught its first course. Similarly he initiated the architectural drawing and appreciation course at University of Bridgeport. This course is for students studying to be architectural draftsmen. He has served as guest lecturer and critic in the School of Architecture of the Massachusetts Institute of Technology.

Long active in Connecticut's

architectural affairs, Mr. Mather served as president of the Connecticut Society of Architects, 1947-48. Since 1934, he has been a consultant for the Fairfield County Planning Association and has served as president of the Connecticut Federation of Planning and Zoning Agencies and chairman of the Norwalk Planning Commission. □

Arneill Award

The Park-Danforth Home in Portland, Maine, designed by the Office of Bruce Porter Arneill, Architects, New Haven (*Connecticut Architect*, March-April 1973), has been chosen as a recipient of a "Burlington House Institutional Award" for 1974.

Special citations for institutional and residential projects will be announced on January 6, 1974, at the opening of the International Home Furnishings Market at Merchandise Mart in Chicago. Park-Danforth will be one of nine such projects honored.

The annual Burlington House

Awards are concerned with interior design. A special "institutions" category was inaugurated a few years ago, and according to Raymond E. Kassar, executive vice president of Burlington Industries, Inc., "has evoked a great deal of public interest."

"The use of good interior design in buildings serving the public is an amelioration of our environment and serves as an inspiration to other planners and builders," he said.

Mr. Arneill's Park-Danforth housing for the elderly project earlier received the Maine State Award, presented by Maine's Governor Kenneth M. Curtis and the Arts Council of Maine. □

Conversion Table

An English to metric unit conversion table and standards for wood interior door jambs and frames is in the new WP/Series Moulding Patterns catalog of Western Wood Moulding and Millwork Producers, Box 25278, Portland, Oregon 97225. □

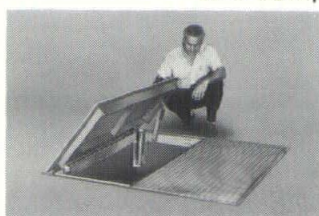
If our salesmen could carry samples, You'd always specify BILCO.

When all you have to go by are the pictures on the catalog pages, one brand of horizontal doors looks pretty much like another. But if our sales representatives could carry samples you would immediately recognize the advantages of Bilco Doors.



ROOF SCUTTLES

Standard sizes for personnel access; special sizes in single and double leaf types for equipment access.



FLOOR and PIT DOORS

Four standard types in a variety of sizes for every interior and exterior requirement. Special sizes on order.



FIRE VENTS

The finest in fire protection equipment. Eight standard sizes with UL and FM labels. Special sizes to order.

Bilco®

DOORS FOR
SPECIAL SERVICES

The BILCO Company, Dept. CA-113, New Haven, Connecticut 06505



Solar Energy

Testifying recently before the congressional subcommittee on energy of the committee on science and astronautics, Fred S. Dubin, PE, president of Dubin-Mindell-Bloome Associates, West Hartford, said that the time is right to encourage the utilization of solar energy for heating and cooling of office buildings.

"Solar energy for heating and cooling is non-polluting, and its use could result in reducing air pollution by more than two billion pounds of pollutants per year," Mr. Dubin said as he urged continued research be accelerated and supported by congressional action. □



**Keep America Clean.
Keep America Beautiful.**

LARGE VARIETY
OF
ARCHITECTURAL
CLAY PAVERS

Clay Products
INCORPORATED

203-527-8851

GRA Director



C. A. King

Charles A. King has been elected a director-at-large of the Guild for Religious Architecture, an affiliate of the American Institute of Architects. The GRA is composed of architects, religious leaders, artists, and craftsmen. For thirty years, it has worked to establish standards of excellence in design and function of buildings constructed for religious purposes. The organization is "committed to the belief that worship, fellowship, education, and community spaces in religious structures should offer esthetic satisfaction as well as functional purpose." □

Mr. King also served as president of the American Society for Religious Architecture from 1970 to 1973. □

Craftsmen Show

The show and sale of the Society of Connecticut Craftsmen will continue at the group's Avon Gallery through January 3. The gallery is in the Farmington Valley Creative Arts Center, Avon Park North. Hours are ten to three on Tuesdays through Saturdays and one to four on Sundays. The Gallery is closed Mondays. □

DuBose Profile

Continued from page 11

Hartford offers an unparalleled occasion for the merged efforts of corporate, commercial and public interests. A concentrated demand for services in downtown Hartford, coupled with an increased resident population and a continuously changing downtown movement system, can create and support market diversity. There exists a unique opportunity for a flexible, contingent response to the urban experience. □



DU BOSE ASSOCIATES
ARCHITECTURE AND PLANNING

DU BOSE ASSOCIATES is a Hartford-based professional firm of architects and planners organized under a system of integrated planning and design teams.

CHARLES DU BOSE, FAIA, is executive director with overall responsibility for the firm's professional performance; EDMUND JANAS, AIA, senior associate and project manager, has responsibility for office management and construction administration; THOMAS K. BURNS, AIA, senior associate and project manager, directs space planning operations and redevelopment consultation; MICHAEL BUCKLEY, AIA, Associate AIP, associate and project manager, is responsible for planning and design control and client development; JERRY W. LUNT, AIA, associate and project manager, is responsible for design development and architectural production. DU BOSE ASSOCIATES has a normal staff complement of twenty-five people including ten graduate architects and three senior technical staff members in production, materials specifications, and construction cost analysis. Other projects by the office include the Hartford National Bank Computer Center, manufacturing and office facilities for Pratt & Whitney Aircraft, and office buildings for IBM and Kodak. Current industrial projects include the new Preferential Mail Center for Hartford and a records center for Aetna Life and Casualty Company.

Address Changes

When you change your address, advise *Connecticut Architect* promptly to ensure receiving all copies of the magazine. Please give your former address *and* new address, including zip code. Send this information to: Circulation Department, CONNECTICUT ARCHITECT, Box U, Guilford, Connecticut 06437.

You'll enjoy banking
with the bank that helps
you get things done.

COMMUNITY bANKING COMPANY

"FULL SERVICE BANKING"

North Branford, Guilford,
Madison, Durham, Foxon

Member F.D.I.C.

Political Contributions

A nine-month study of political contributions by architects has resulted in a recommendation from The American Institute of Architects that the award of government design contracts be removed from the political process.

The AIA recommended that an open selection board be established to review designers' qualifications and award contracts for work.

At its fall directors' meeting in Vermont, the AIA also adopted a stiffer ethical standard regarding political contributions by its members.

The AIA recommends that, on the state level, the governor choose candidates for a selection board from lists of qualified persons submitted by professional organizations with an interest in state work. Candidates would be subject to confirmation by the state legislature.

AIA President S. Scott Ferebee, Jr., FAIA, said that the AIA proposal "would help free the selection process from potential undue political influence; would open it to public scrutiny; and would maintain the advantages of the current negotiated selection and compensation procedures, which emphasize picking the best qualified design firm for a specific project."

At the AIA board meeting, members reaffirmed the right of architects to take part in politics. However, the revised standard stipulates that "the architect shall not contribute, or promise to contribute either directly or indirectly, any gift or other consideration for present, past, or future award of professional work." □

OSHA Classes

Martin Summit, of Summit & Summit Inc., Waterbury based general contractors, completed the instructor's course for construction at the Occupational Safety and Health Institute in Chicago.

Mr. Summit will conduct classes for those interested in obtaining government certification from OSHA. He may be contacted at 70 Edwin Avenue, Waterbury. □

The Editor

Connecticut Architect

I am writing in regard to Bob Mutrux's article, "A Plea for an Endangered Species." Mutrux writes with tongue-in-cheek, and the article is humorous and witty. But he deals with a matter that is of more than passing concern, or at least should be, to architects, planners, urbanologists, redevelopers and, most specially, politicians. Mutrux speaks of the dwindling poor, an endangered species whose numbers are now reduced, he claims, from 25.2 million to 24 million, (by what authentic reckoning?), and who "seem destined to join the bison, the whopping crane," etc. All very funny unless you should happen to be one of those 24 or 25 million whose ghetto existence is not and never has been of their own choosing. The question is: Is Mutrux's thesis credible or is it merely a belladonna poultice applied to make us all feel better?

Housing is the architect's domain. I grant you it may be more rewarding to plan the \$100,000 luxury house than a stack of minimum units for those of lower income. Yet the needs are still very much there, and the responsibility that the professional owes society is not so easily thrust into the background. The care and housing of the disadvantaged remains an arduous and pressing problem of our time. It is hard to believe that architects, as well as their professional societies, are unable to face up to the problem or to address themselves purposefully to the solving of conditions that would be deemed a disgrace in far less affluent countries than our own. In my opinion, what we as architects should be doing and have so far failed to do, is to busy ourselves in the legislative halls where decisions regarding housing and related matters affecting the entire collective prosperity of the country are made.

In another vein, Bob Mutrux proposes in "A Voice From the Future" (August issue), that certain buildings might well be designed with a built-in program to self-destruct. The notion I find both novel and appealing, so long as the choice of which buildings are to be disposed of and when is not left entirely in the hands of fellow architects. Even architects can be fallible.

To Mutrux, the Board, and Publishers of Connecticut Architect, A Happy New Year. □

George W. Conklin, AIA
Urban Design Associates

2 inc nemo
nema 2inc
2inc nemo
nema 2inc
2inc nemo
nema 2inc
2inc nemo
nema 2inc

**SERVING THE ARCHITECT
WITH THE FINEST IN
LIGHTING EQUIPMENT**

**Westinghouse
Lam
Kliegl
Dual-Lite**

**ANDY RESNISKY
GEORGE LAWLESS
DON ARMOUR**

**222 PARK ROAD
WEST HARTFORD, CONN.
(203) 236-5941**

JOSEPH MERRITT & COMPANY

COMPLETE REPROGRAPHICS

Blueprints, Photocopies, Microfilming
Engineering Supplies, Offset Printing



MAIN OFFICE
650 Franklin Avenue

DOWNTOWN BRANCH
186 Pearl Street

PROFESSIONAL SERVICES

HUBBARD, LAWLESS & OSBORNE ASSOCIATES, INC.

110 Whitney Avenue
New Haven, Connecticut 06510

Mechanical & Electrical Engineers

THE ASSOCIATED SHEET METAL, ROOFING AND INSULATING CONTRACTORS

NORTHERN DISTRICT OF CONNECTICUT

19 LAUREL AVENUE — WINDSOR, CONNECTICUT — TELEPHONE 688-9651

American Sheet Metal Works
280 Brookside Ave., Waterbury
C. G. Bostwick Co.
41 Francis Ave., Hartford
Bristol Sheet Metal Works
7 Carlton St., Wallingford
Capitol Ventilating Co.
195 Maxim Road, Hartford
G. R. Cummings Co.
198-210 State St., Meriden
Dansky's Roofing & Sheet Metal Works
22 Raymond Road, West Hartford
Joseph H. Day Company
16 Honey St., Milford
H. R. Hillery Co.
Box 186, Groton

Industrial Sheet Metal Works
140 Boston Post Road, Orange
Limbach Company
9 Goodman Place, Bloomfield
Liner-Atwill Co.
729 N. Mountain Rd., Newington
Morin Erection Co.
683 Middle Turnpike, Bristol
Northeastern Ventilating Co.
271 John Downey Dr., New Britain
Ernest Peterson, Inc.
1830 Broad St., Hartford
Portland Roofing Co.
Lake St., Portland

Potter & Carrier, Inc.
84 Wellington St., Hartford
R. & S. Contractors, Inc.
410 S. Main St., Waterbury
Shaw Metal Fabricators
Box 131, Branford
Shelton Roofing Co.
101 Water St., Derby
Southern N.E. Roofing Co.
Box 1772, Hartford
Systems Testing & Balancing Co.
32 Harmony Rd., Granby
Tarco, Inc.
618 Capitol Ave., Hartford

BURTON & VAN HOUTEN ENGINEERS, INC.

Structural, Mechanical, Electrical, and Civil Engineering

10 North Main Street
West Hartford, Conn. 06107

FRAIOLI - BLUM - YESSELMAN OF NEW ENGLAND

A Professional Corporation

STRUCTURAL ENGINEERING CONSULTANTS

999 Asylum Ave., Hartford, Ct. 06105
Philip Wesler, P.E. Jose M. Goico, P.E.

OFFICE
EXIT
ELEVATOR
WALL & DOOR SIGNS
EVERY TYPE
FOR SCHOOLS, CHURCHES, HOSPITALS, OFFICES, FACTORIES, BANKS, PUBLIC BUILDINGS
FREE 72 PAGE CATALOG
SETON NAME PLATE CORP.
New Haven, Conn., 06505 • (203) 772-2520

DUBIN-MINDELL-BLOOME ASSOCIATES, P.C. Consulting Engineers

MECHANICAL-ELECTRICAL-SITE UTILITIES
ENGINEERING MASTER PLANNING

312 Park Road
West Hartford, Conn. 06107
42 West 39th St.
New York, N.Y. 10018

STORCH ENGINEERS

Soils Consultants
Site Engineers
Sanitary - Water - Hydraulics

161 Main Street
Wethersfield, Conn. 06109

ONDERDONK - LATHROP ASSOCIATES, INC. Consulting Engineers

Structural & Civil Buildings, Structures, Foundations, Site Work

100 Sycamore Street
Glastonbury, Conn. 06033
633-0251

KESSLER EQUIPMENT SALES

Automotive and Petroleum Equipment
Carbon Monoxide Systems
Welding Exhaust Systems
Automotive Lifts
Lubrication Systems
Air Compressors

CALL — Hartford (203) 236-0833

INDEX TO ADVERTISERS

ACMAT Corporation	Back Cover
Associated Sheet Metal, Roofing & Insulating Contractors	26
Bilco Company	23
Clay Products, Incorporated	24
Connecticut Savings Bank	3
Copeland Company	21
Community Banking Company	24
Development Research Services	26
George C. Field Company	22
First New Haven National Bank	4
Frankson Fence Company	4
Hartford Wire Works Company	21
Francis M. Jackson Associates	22
Joseph Merritt & Company	25
NEMA 2 Incorporated	25
Plasticrete Corporation	2
Seton Name Plate Corporation	26
Southern New England Telephone Company	21
Tel-Rad, Incorporated	4
Wyatt, Incorporated	27

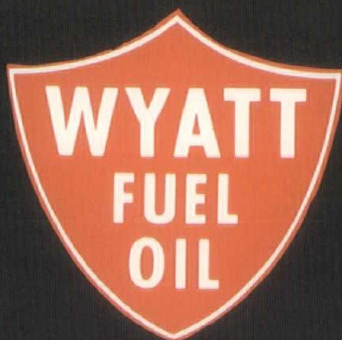
development RESEARCH SERVICES
ECONOMIC feasibility studies
MARKET RESEARCH
PROJECT PROGRAMMING development CONSULTING

118 Dwight Street, New Haven, Connecticut 06511

phone 776-5100

Will Your
Clients Have
The Energy?

They will, if you specify oil
for their heat and power re-
quirements. Oil is the only
prudent fuel choice for the
energy-tight period that we
are just entering.



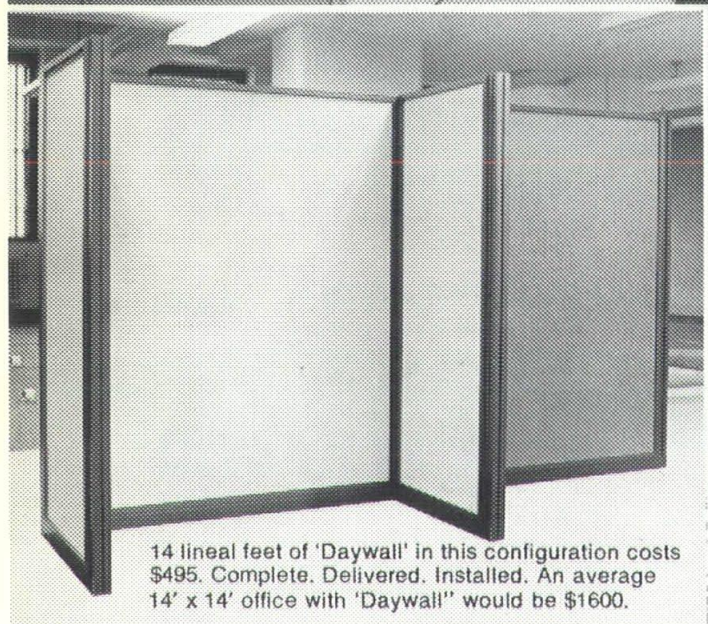
We cordially invite you to
use our free consultation
service to help assure the
most suitable installations
for your projects.

900 Chapel Street, New Haven, Conn. 06510 Telephone: 203-787-2175

NEW ENGLAND'S MOST EXPERIENCED FUEL SUPPLIER



This office could be rearranged in minutes.



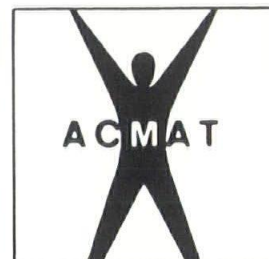
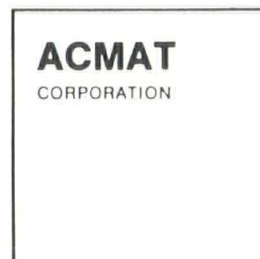
14 lineal feet of 'Daywall' in this configuration costs \$495. Complete. Delivered. Installed. An average 14' x 14' office with 'Daywall' would be \$1600.

With no tools. No special help. No new capital expense.

It could be, *if* the privacy panels and landscape screening are provided by all-new ACMAT *Daywall*. With *Daywall*, you get instant modular work station and office arrangement and rearrangement. The post and panel construction gives you great floor plan flexibility—panels can be run straight or at angles of 90, 45 and 135 degrees. The panels, which are 72" high, are available in 60" and 30" widths. *Daywall* panels, framed in bronze aluminum, come in a variety of decorator colors with either vinyl or wall carpeting finish.

To get complete details on how *Daywall* can fit into your new or remodeled office plans, call ACMAT

collect. ACMAT is the largest interior contracting organization in the United States. We got that way by developing new products like *Daywall*—products that give you more office for less. Which we think is a very good office arrangement.



CEILINGS, WALLS,
FLOORS, FIREPROOFING,
CARPETING, LIGHTING
TARCO DIVISION
HEATING, VENTILATING,
AIR CONDITIONING,
REFRIGERATION, PLUMBING,
POLLUTION CONTROL