

CONNECTICUT ARCHITECT

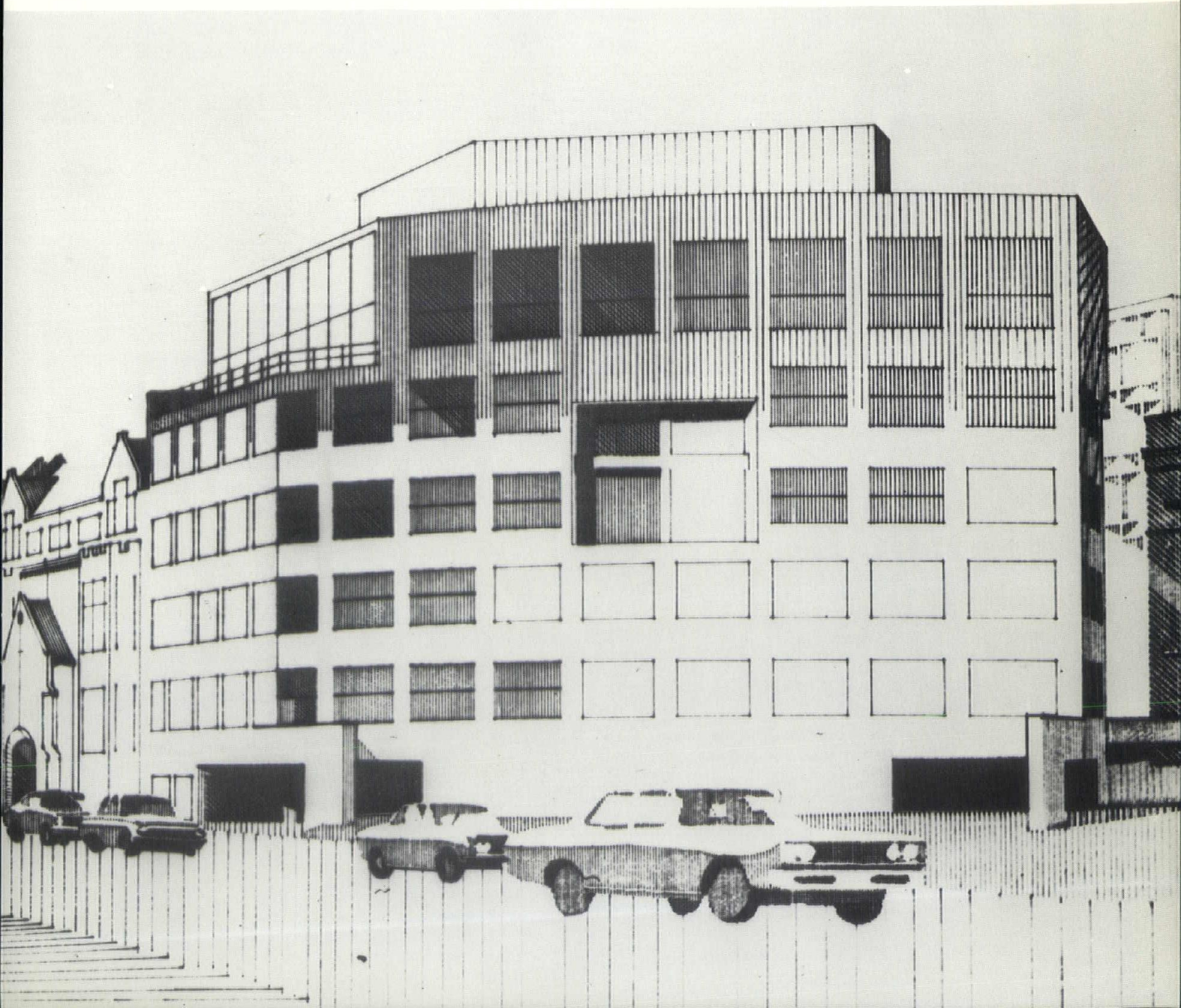
SEVENTY-FIVE CENTS

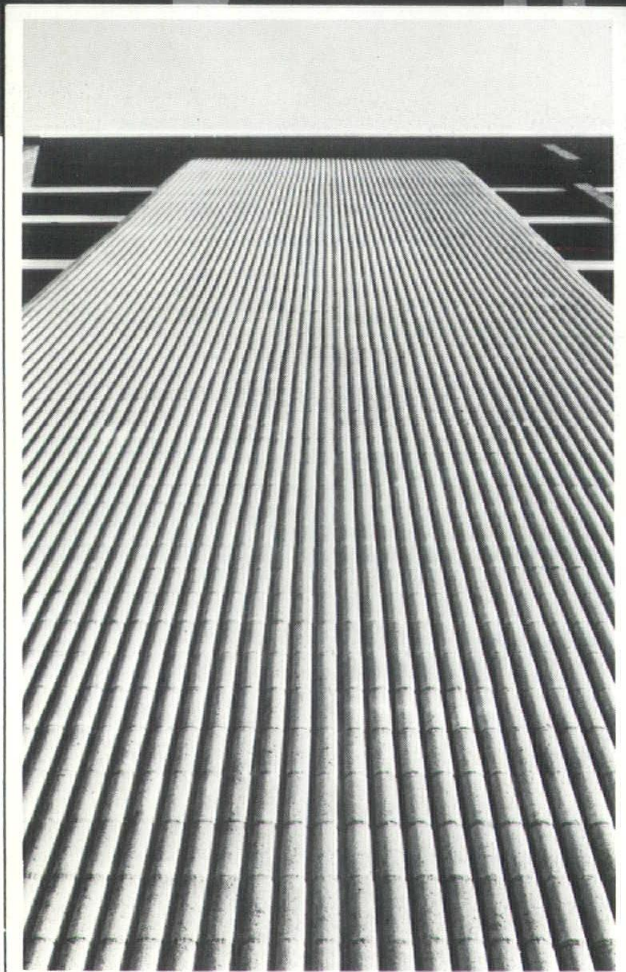
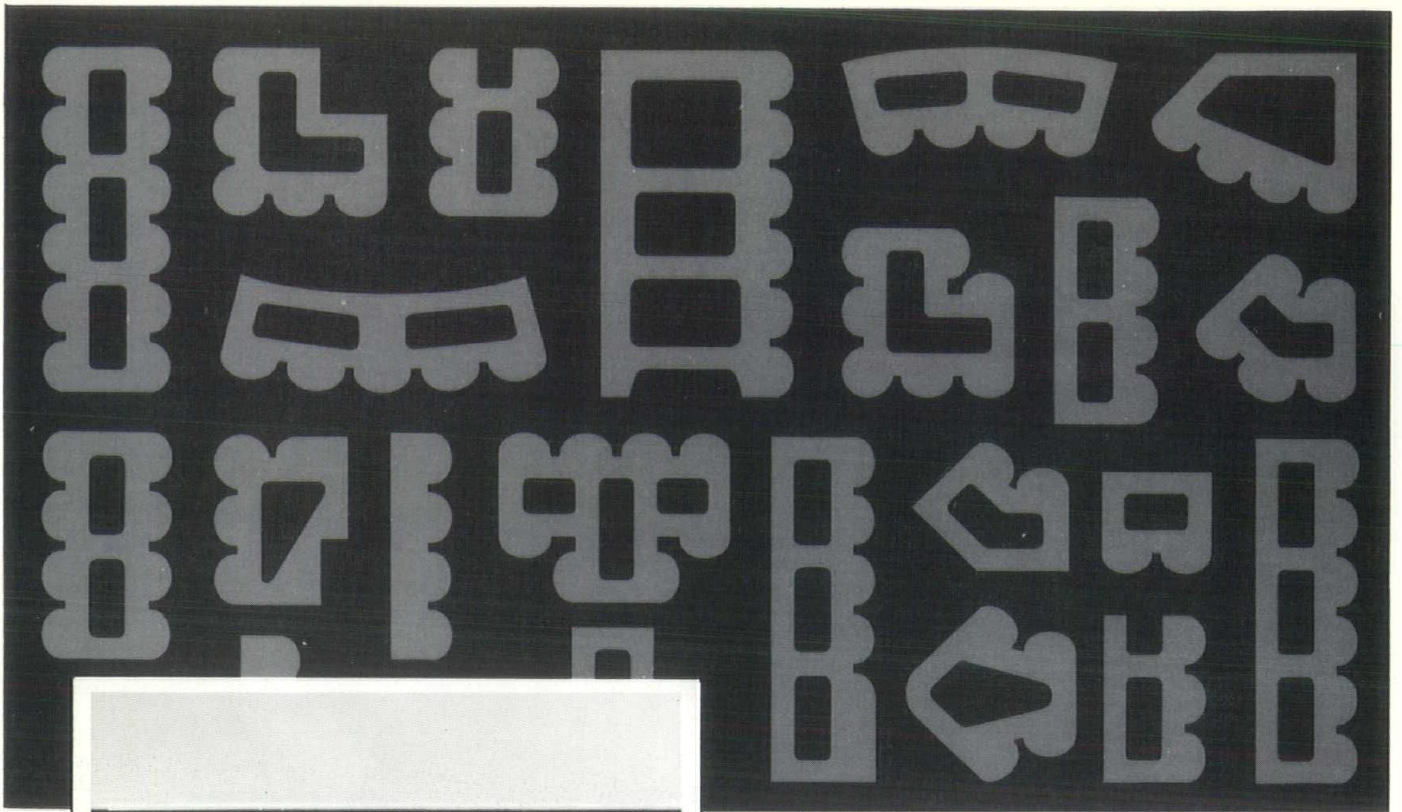
JULY-AUGUST 1970

AMERICAN INSTITUTE
OF
ARCHITECTS

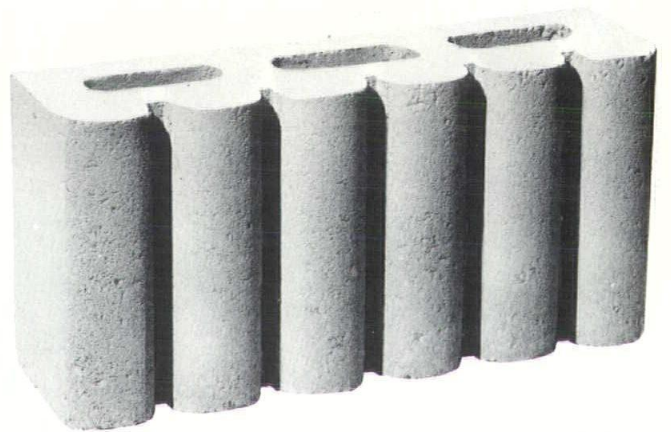
AUG 18 1970

LIBRARY





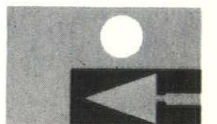
HOUSING FOR THE ELDERLY, Revere, Massachusetts
 Sponsor: City of Revere
 Architects: Bedar & Alpers, Boston, Mass.
 General Contractor: Barkan Construction Co., Boston, Mass.
 Mason Contractor: Pizzotti Brothers Masonry, Saugus, Mass.



One Profile with many faces...

Few building materials present themselves in such a crisp, diversified and contemporary manner as Plasticrete's Profile Fluted, Autoclaved, Concrete Masonry Units, Series PFL-1. Textural elegance, modular simplicity, sophisticated wall designs all go together as the architect's limitless imagination and creativeness directs. Special shapes, other than those shown, are available on order.

plasticrete corporation



1883 DIXWELL AVENUE, HAMDEN, CONNECTICUT 06514 • TELEPHONE 288-1641

BISON Wall Frame

By **BLAKESLEE**

A System for Housing
from 2 to 30 Stories





There are some homes one of our Improvement Loans won't help

When a client is interested in a major improvement of his home or property, he should be advised that the First New Haven National Bank is a major source of such loans.

Twenty conveniently-located offices in south central Connecticut make us easy to find — and easy to do business with.

**When it comes to
Improvement Loans
you can't
improve on**

THE

**FIRST
NEW HAVEN
NATIONAL BANK**

MEMBER: FEDERAL RESERVE SYSTEM • FEDERAL DEPOSIT INSURANCE CORPORATION

Main Office: One Church Street, New Haven
Other Offices in: New Haven (7), Hamden, East Haven,
West Haven, Allingtown, Milford (2), Devon, Branford (2),
Orange, Guilford, Derby, and Wallingford

The Publisher's

Uneasy Chair

With a factory, a store, an office building, and a home — and another commentary by Bob Mutrux — this issue has a diversity of interest. Schools were omitted because the next issue of *Connecticut Architect* will present a number of the state's school buildings to show some of the results being accomplished with tax dollars.

With so many talented architects in Connecticut — and so much that is excellent in architecture — the building tide is still bountifully flecked with atrocious structures. The expedencies of time and space are never so great as to preclude consultation with an architect — and a landscape architect — to achieve splendid and desirable results where otherwise there could be ordinary workaday visual pollution.

Architect professionals design a building for people to use, to live in, to work in, to learn in, or to worship in. A building — aside from storage silos — is to be used, enjoyed — and to provide some degree of esthetic pleasure to the ordinary person. And even a well-designed silo *can* have esthetic compatibility with the environment, by the way.

In this time of awakening to ravages of pollution and waste of natural resources, the architect is in a key position to restore order. This cannot be accomplished at conventions, or meetings, or by writing papers and letters to the editor (although these have their place). It can be accomplished (a) by architects approaching each commission by relating the structure to the environment as well as the function, and (b) by owners following the professional counsel of architects in the design and siting of their buildings.

Watching New Haven's new arena rise slowly to the east of the Knights of Columbus' new headquarters building and promising to form a bridge to the Community Services building makes one wonder about the final effect. Will it be one of interesting and attractive composition? Or will the structures compete? □

CONNECTICUT ARCHITECT

BOX U • GUILFORD • CONNECTICUT • 06437

VOLUME 6, NUMBER 4

JULY-AUGUST 1970



Connecticut Architect is published every other month for The Connecticut Society of Architects, a chapter of The American Institute of Architects, and is the official publication of the Society.

OFFICERS

President
JOSEPH STEIN, FAIA
Vice President
HARVEY M. WHITE, AIA
Secretary
ROBERT H. MUTRUX, AIA
Treasurer
WALTER F. GREENE, JR., AIA
Executive Director
PETER H. BORGEMEISTER

EDITORIAL BOARD

Chairman
RALPH T. ROWLAND, AIA
LANDES CORES, AIA
ROBERT H. MUTRUX, AIA
WILLIAM H. RALLIS, AIA

PUBLISHER

Produced for The Connecticut Society of Architects, AIA, by Connecticut Publications, Inc., Box U, Guilford, Connecticut 06437, Rufus K. Allerton, Jr., Publisher; Fredric D. Barrett, Business Manager; Gerald G. Hotchkiss, Advertising Director.

Printed by The Bond Press, Inc., Hartford, Connecticut.

Controlled circulation postage paid at Hartford, Connecticut.

All rights reserved. No part of this publication may be reproduced without permission in writing from the publisher, except brief quotations in a review.

FRONT COVER: Proposed Yale Mathematics Building designed by Philadelphia architectural firm of Venturi and Rauch (see page 22). Building will be on Hillhouse Avenue, New Haven, next to Leet Oliver Memorial Hall (left).



TABLE OF CONTENTS

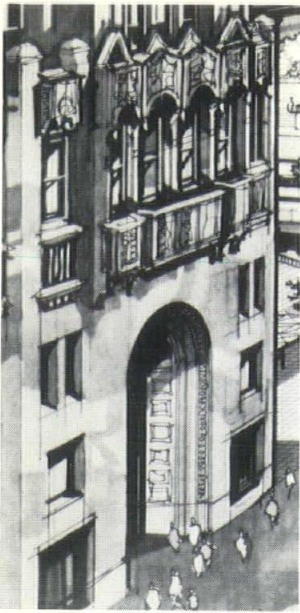
Mot à Mot (<i>Robert H. Mutrux, AIA</i>)	6
Office and Store (<i>Weinreich and Masciarelli, Architects</i>)	7
Builder's Prototype (<i>John Damico, Architect</i>)	10
Factory in the Round (<i>Wendell E. Rossman, Architect</i>)	12
Playplace (<i>Yale Students</i>)	15
Beersheba: Award for Community Architecture	16
Yale Competition	22
High School Students Hear Architect	23
CBC Officers	26
Awards Program	28
Wisdom Hath Not Bulided A House	29
Professional Services	30
Index to Advertisers	30

PHOTO CREDITS: Page 7, top right page 8 and page 9, Bill Rothschild; bottom page 8, David Thomas; pages 10-11, James Brett; page 13, Dave Nadig; pages 16 and 20, Ran Erde.

Circulation of Connecticut Architect includes all resident Connecticut architects; libraries; landscape architects; and selected consulting engineers, contractors, builders, and church, hospital, school, federal, state, and local officials; and others concerned with architecture in Connecticut. Appearance of products, services, names, and pictures in advertising or editorial content does not constitute endorsement by The Connecticut Society of Architects, AIA.

Seventy-five Cents a Copy

Four Dollars and Fifty Cents a Year



Mot à Mot

Robert H. Mutrux, AIA

We've come a long way from the time when we furnished the top of our more important buildings with a wide band called a "frieze" and on which we inscribed, in classic lettering, a phrase or two which seemed appropriate to the structure and to the time.

"Only the just man enjoys peace of mind" and "Where law ends, tyranny begins" were the thoughts for the day when the Criminal Courts Building was erected; their application to Central Park at night in our times, however, is remote at best. "Neither snow nor rain nor heat nor gloom of night stays these couriers from the swift completion of their appointed rounds" taking up the entire Post Office block, and all of your breath as well, was probably a rather reassuring notion in the days of the nickel cigar; the era of the five-cent post card is bound to view these lofty sentiments with a touch of cynicism. And the irrelevant device on the Daily News Building, "God must have loved the poor, he made so many of them," though it may once have served to brighten the peripatetic lunch hour, has overtones nowadays which are downright depressing.

Oddly enough, we haven't actually progressed very far. Today we get the plain, unadorned building, and its "message," if it exists

at all, is buried deep inside the design. You either get it or you don't, just as you get John Cage's music and Richard Lippold's sculpture and Mark Tobey's paintings. There is a message, to be sure, in the world Trade Center and the Verazzano Bridge and the Lever Building, but you have to work hard to find it.

Somehow, in spite of all the dialogue about contemporary forms of expression and the involvement at a distant intellectual level which is supposed to result, one cannot escape a twinge of nostalgia for the good old days with their harmless traditions, like the libretto in plain English or even Latin.

It occurs to me that nothing would be lost and a lot gained, if we were to revive the time-honored custom of providing our buildings with inscriptions the way we used to. After all, it's not different from reading Joyce with a key or even peeking at the title of a painting. In addition, we are triply rewarded; the building is ennobled, the author of the inscription is immortalized. (Who would ever have heard of Emma Lazarus if her fragment, "Give me your tired, your poor, your huddled masses . . ." had not been carved into the base of the Statue of Liberty?) And third, we are flattered by the depth of our own erudition and, of course, our wit.

There are more than enough quotations to go around. The Bible, Shakespeare, and Bartlett's are positively glutted with resounding words waiting for the proper setting. We can easily afford to pass up Robert Burns' shopworn quip

about mice and men (though I've often wondered why mice received higher billing than architects). For openers, I submit that "Of making many books there is no end" would greatly enhance the entrance gates to Aqueduct or the Yonkers Raceway. Somewhere on the Seagram or the CBS Building, "For now we see through a glass darkly, but then face to face" would be food for sober thought and a gracious plug for solar bronze glazing as well. "I don't know anything about art, but I know what I like" would serve beautifully to irrigate the marble wastes of that museum on Columbus Circle. And there are endless possibilities for "All hope abandon, ye who enter here," from the offices of the Internal Revenue Service to the canopy at Ohrbach's. These random selections, however, do not begin to tap the rich reservoir of possibilities of what can be done for contemporary architecture.

Because of its stark simplicity, we don't begin to give proper attention to all that prime space that's going to waste. Take the new Madison Square Garden. When you've seen one of its hundred-and-fifty-foot facets, you've seen them all. But suppose we inscribed one of them with, say, a selection from Coleridge; it would help to pass the time pleasantly while standing in line and reveal some surprisingly prophetic passages.

"In Xanadu did Kublai Khan a stately pleasure-dome decree where Alph, the sacred river ran through caverns measureless to man down to a sunless sea. . . ." It rolls easily

Please turn to page 18

OFFICE AND STORE

Putnam Office Building

Greenwich, Connecticut

Bonro Construction, General Contractor

Turn of River Hardware

Stamford, Connecticut

Better Homes, General Contractor



Recessed windows protect glass areas.

WEINREICH and MASCIARELLI, ARCHITECTS

The Putnam Office Building on West Putnam Avenue, Greenwich is a 24,000 square foot structure designed for a site 110 feet wide by 71 feet deep, with on-site parking for tenants.

Architects Howard Weinreich and Anthony Masciarelli solved the space problem by raising the building to provide parking on the ground level and office space on the three levels above. Additional parking space at the rear of the building can be reached by vehicle access through the ground-level parking area.

The owner desired a prestigious and distinctive office building which would attract tenants and be attractive to tenants' customers, clients, and business associates. Window fenestration only in the front and rear of the building allowed full utilization of the limited-width site. The architects avoided an ordinary curtain wall approach by using a pattern of eight-by-eight-foot masonry openings re-

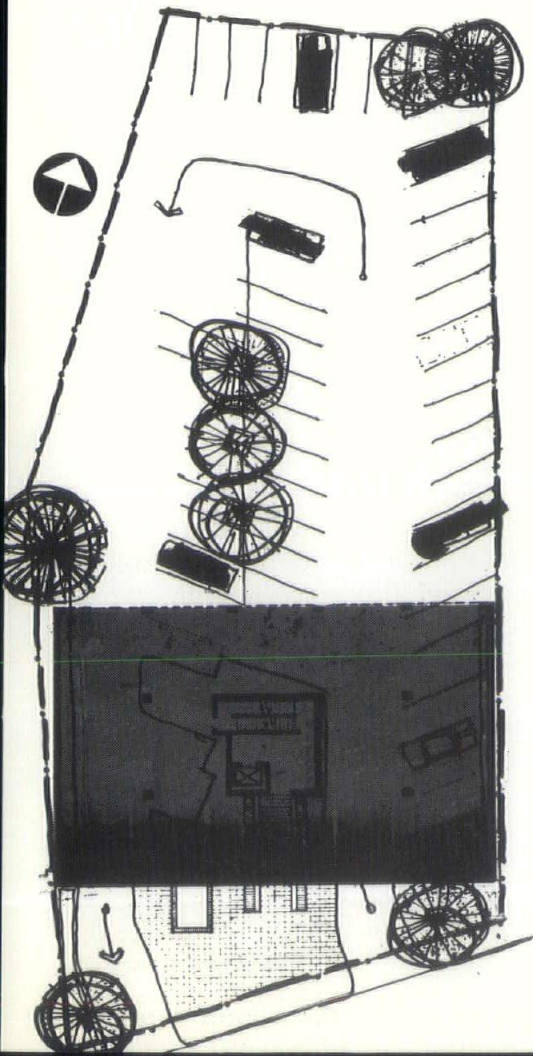
cessed to a depth of two feet and having slanted brick sills. The angle of the specially made brick readily sheds water and snow as well as expressing the individuality of the building. A further benefit of the deeply recessed windows is the protection of glass areas and lessening of the air-conditioning load.

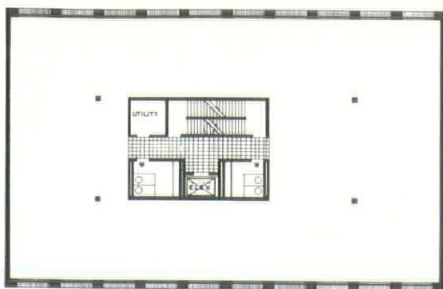
Structurally, the building is steel frame with exterior masonry walls. Steel sectional window frames contain bronze window glass. The tawny brick on the exterior walls was chosen to be compatible with the materials on existing buildings in the area.

A pedestrian entrance from the street is paved with brick and bordered with trees and shrubs.

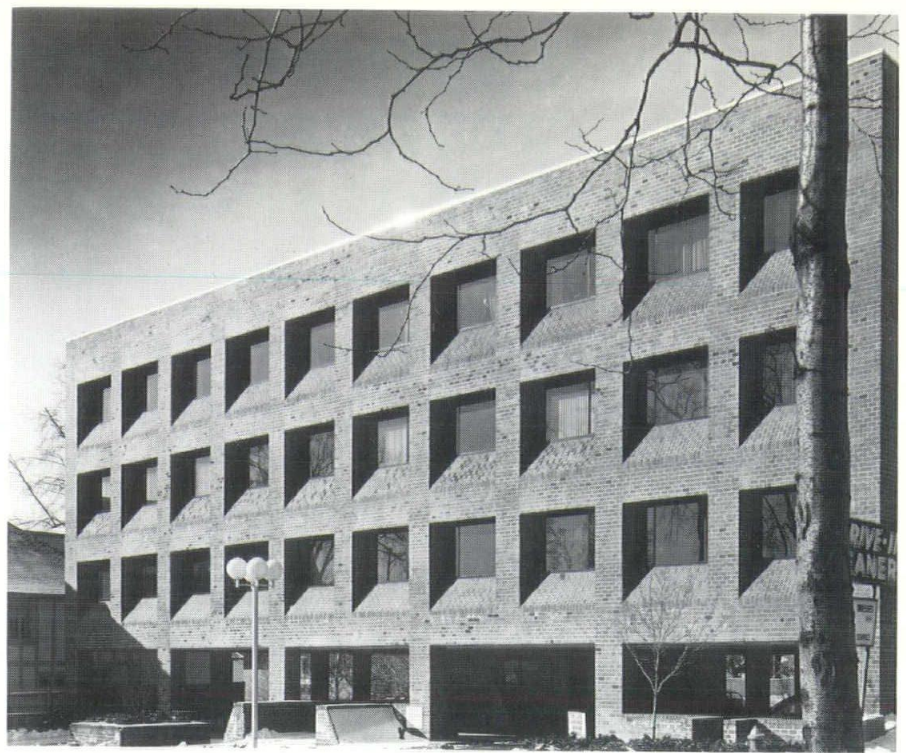
The Putnam Office Building, which was approved by the Design Review Board of Greenwich, was fully rented before completion.

A second recent project of Weinreich and Masciarelli, Archi-





Floor plan.



Putnam Office Building makes good use of space.

Steel frame stair invites customers upstairs.



ects, is the Turn of the River Hardware Store, High Ridge Road, Stamford. This is one of the largest hardware stores in the region, with twelve thousand square feet of retail sales space, parking for thirty-seven cars, and a two - thousand - square - foot attached warehouse on the three-quarter-acre site.

Since interior space has the greatest pay-back potential to the owner, the architects designed the two-story building to extend to property line limits and to be windowless on three sides. This provided maximum wall space in the sales area, and storage consistent with the demands of present-day hardware merchandising.

Daylight makes a dramatic entrance through a skylight located directly over an open-riser, steel-frame stairway leading from the first floor to the second. Windows of polished plate glass face west at the front of the store. They are protected from strong sunlight in the

afternoon by the second floor cantilever which lessens the air-conditioning load and also provides protected parking for several cars.

The structure combines load-bearing exterior concrete walls with a steel framing system. The front of the building is faced with a duranodic aluminum batten system.

The interior has a terrazo floor on the first level, where garden equipment and hardware displays predominate. The second floor, which is devoted mainly to house-

wares and home accessories, is softly carpeted.

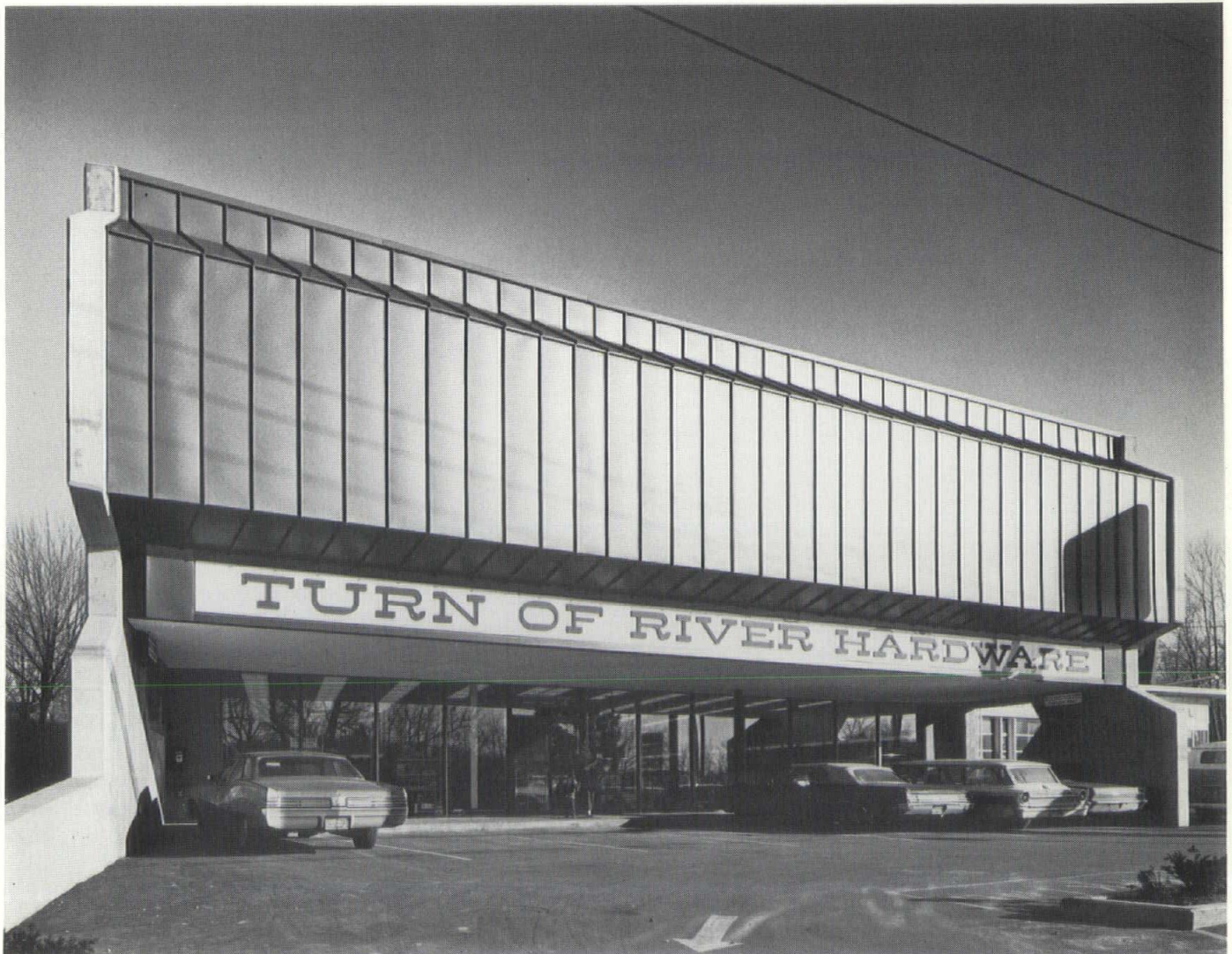
Having moved just one block from its former location and smaller quarters, the new Turn of the River Hardware Store has retained the personal quality of the owner-managed store. A sign with letters two feet high declares the name of the store, and the building itself has clear, strong lines and makes its own bold statement.

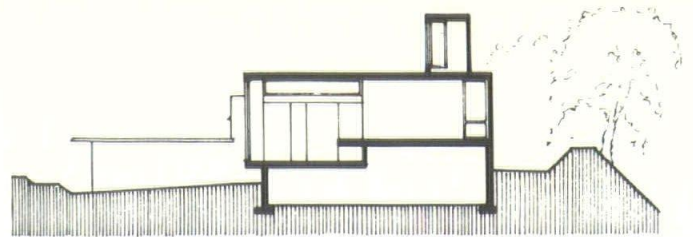
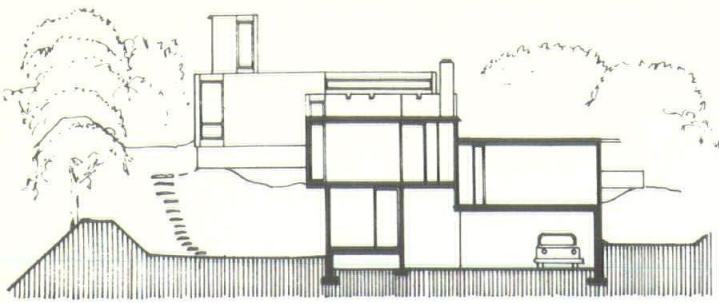
In both buildings, structural engineering was done by Paul Pan-

tano, and mechanical engineering by Tizian Associates. □

HOWARD WEINREICH is an architecture graduate of North Carolina State College and continued graduate work at Yale School of Architecture. Following design work with Morris Lapidus in New York, he joined Sherwood, Mills & Smith, Architects (now SMS Partnership) in 1952, and formed his own firm in 1958. Ten years later he was joined by ANTHONY MASCIARELLI to form the present firm. Mr. Masciarelli is an architecture graduate of the University of Cincinnati and was associated with several firms of architects before joining forces with Mr. Weinreich. The firm conducts a general practice ranging from Vermont ski clubs to commercial structures to private residences.

The structure commands attention.





BUILDER'S PROTOTYPE

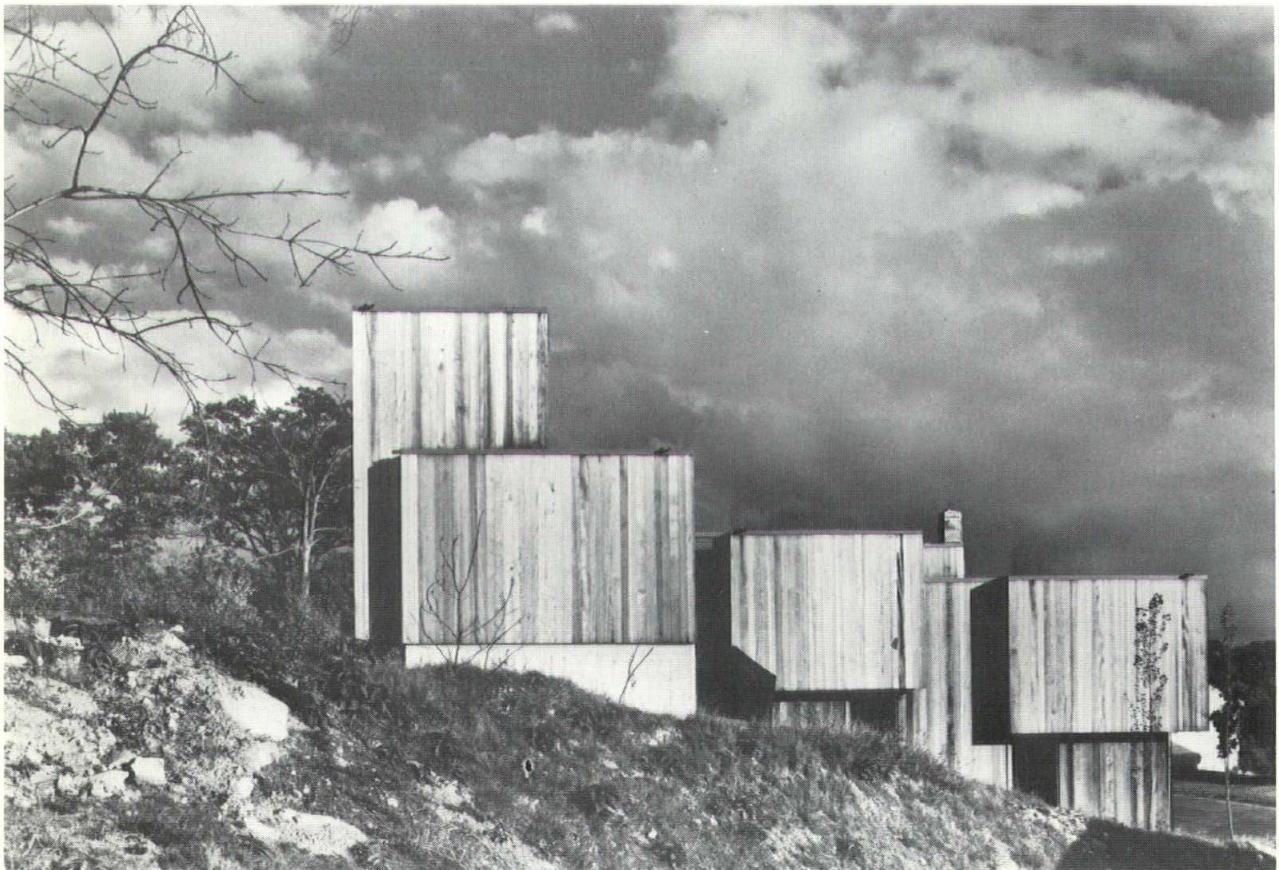
Robert Zappone Residence

Waterbury, Connecticut

JOHN DAMICO, ARCHITECT

Robert Zappone, General Contractor

The house steps with its site.



This unusual home for a young couple with two children is on a relatively small plot in suburban Waterbury. The site is rocky, sloping, and covered with low brush.

The owner, a real estate developer, was interested in a "prefab" approach with the possibility that the result might serve as a prototype for future projects. However, for purposes of cost comparisons, he wished to limit materials and construction methods to standard items both familiar to local labor and available on the local market.

These conditions delineated many aspects of Architect John Damico's design solution. The rocky, sloping site pointed to a multi-level approach. The budget and materials limitations suggested prefabrication of rooms which could be erected on the site with a minimum of labor. And pitched roofs were ruled out since they would require excessive on-site labor.

The resulting plan reveals a seven-level structure which "steps"

up the slope. Rooms radiate from a central core which houses mechanical and utility facilities, further identifying each space from the exterior in a visible manner.

Wood framing, plywood sheathing, gypsum board walls, and hardwood flooring are the major construction materials, in order to stay within budget plans. The floor-level increments are all the same, using standard uncut 7'-10" studing. Windows of standard manufacture were combined to give floor-to-ceiling natural lighting where desired. Additional budget gains were achieved by "shopping" for electrical and hardware fixtures.

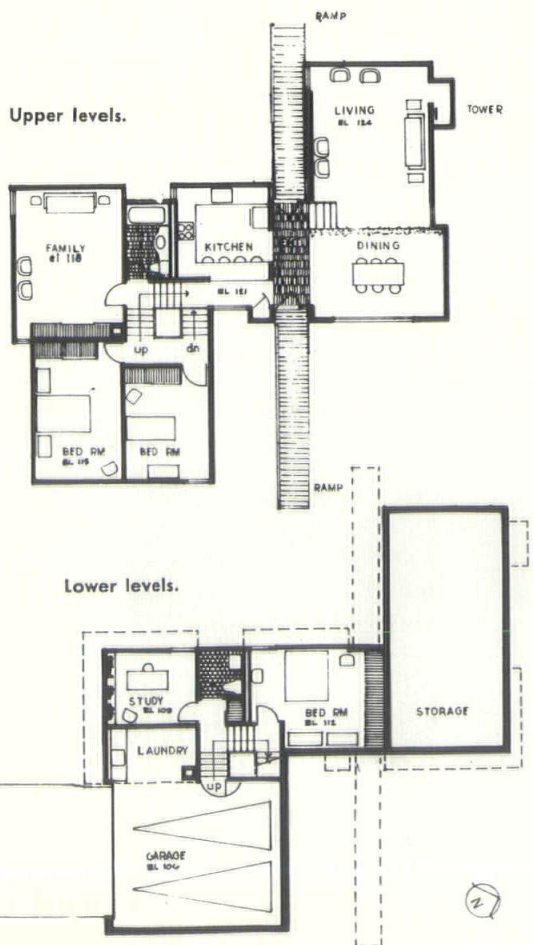
The house is oriented to the exceptional easterly view, rather than as a "street definer" in the neighborhood style. A tower structure provides a panorama outlook, and the majority of the glazing is related to the view. Where the house backs up to its neighbor, on the west, the wall exposures are solid,

and earth berms are used to provide additional privacy. The southerly exposures also have considerable glass to catch the light as the sun moves across the sky.

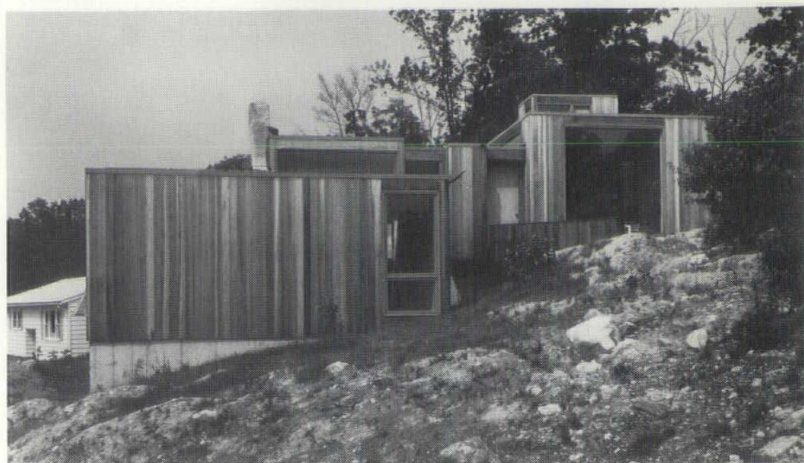
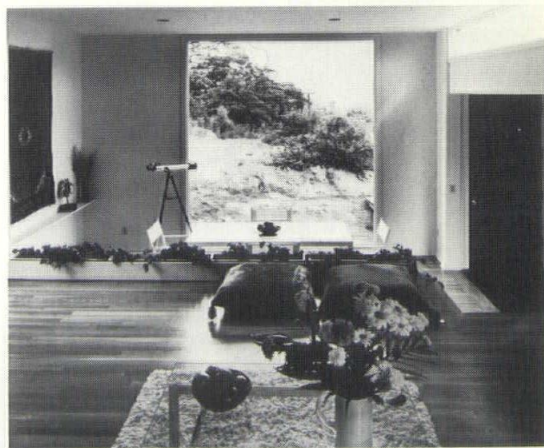
The lower levels, in addition to the two-car garage, consist of study, bedroom with bath, laundry room, and a large storage room. Two more bedrooms with a bath and the family room flank the central kitchen on one side of the upper levels. On the other side are the dining room and the living room. The two entryways at this level are marked by ramps of decked construction.

The owner served as his own contractor for this 1600 square-foot residence. □

JOHN DAMICO graduated from Carnegie Institute of Technology with a degree in architecture and earned his master of architecture degree at Yale University. Following service in the offices of Paul Rudolph and Edward Barnes, he established his own practice in Waterbury. Mr. Damico has also served as visiting lecturer in fine arts at Quinnipiac College.



RIGHT: Excellent use is made of view.
BELOW: The house flows from the rough terrain.



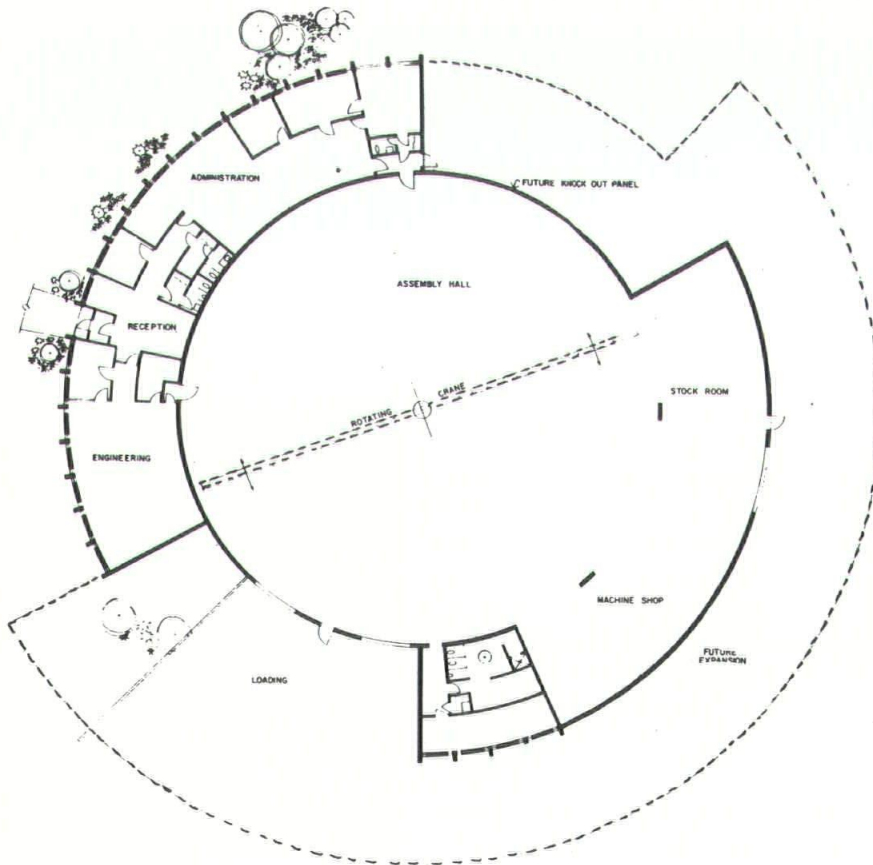
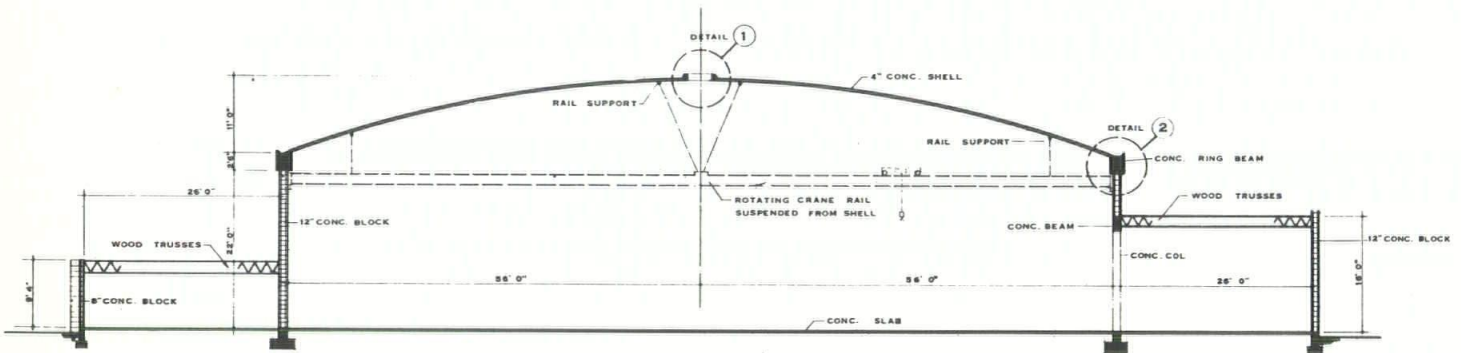
FACTORY IN THE ROUND

Macton Machinery Company

Danbury, Connecticut

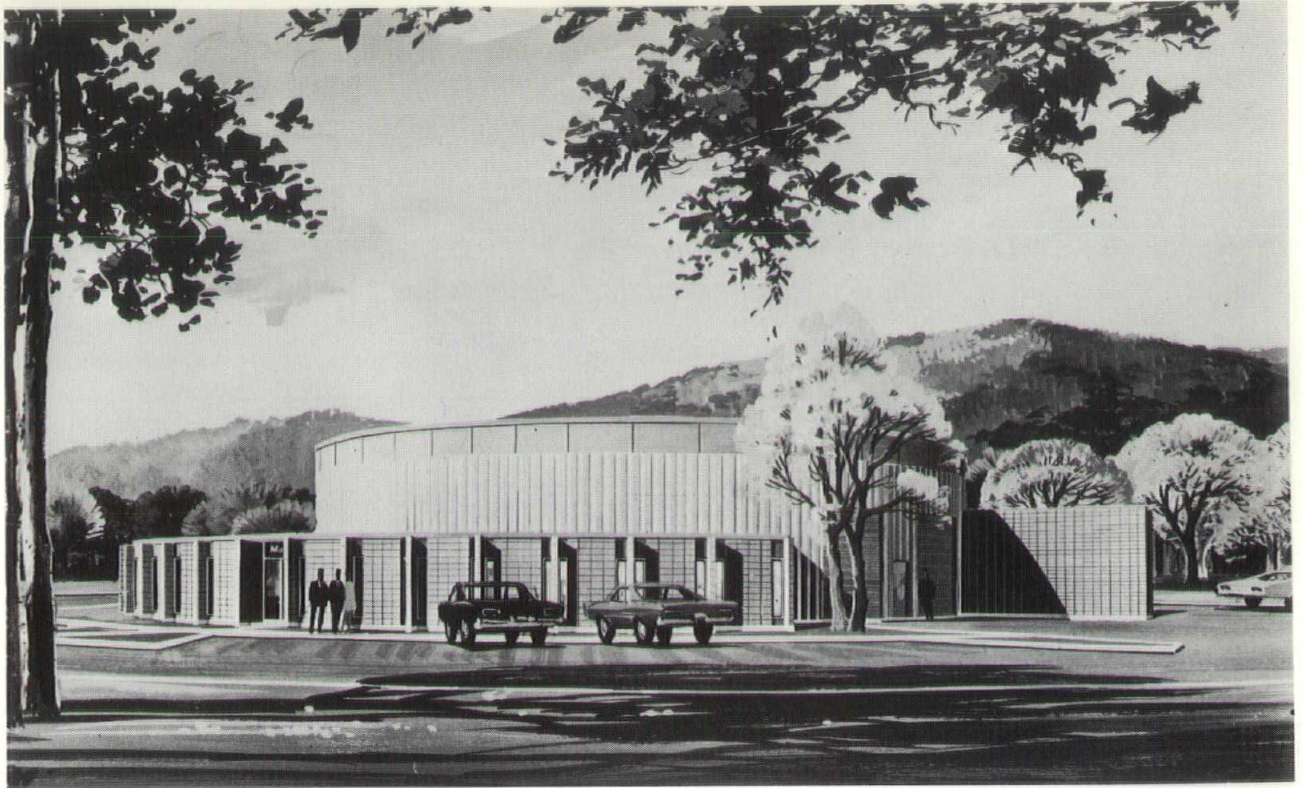
WENDELL E. ROSSMAN, ARCHITECT

Morganti, Inc., General Contractor



In his design notes, Architect Wendell E. Rossman of Phoenix, Arizona, stated: "I suppose it can be said almost with certainty that Mr. Carr (John F. Carr, president of Macton Machinery Company) has constructed the only manufacturing plant in history for the sole purpose of building turntables. When he outlined his requirements to me, I could truthfully say that there was no precedent from which I might have drawn prior knowledge and experience."

Dr. Rossman went on to say that the requirements for a turntable manufacturing plant would seem to be simple enough. There was to be a central assembly area to permit as large as possible a turntable to be preassembled prior to shipping. More or less distributed around this assembly area, there were to be various shops and store rooms on one side, with engineering, administration, and sales on the other.



"Like all buildings, the whole complex had to be expandable to a multiple of its initial capacity. The deciding step in the solution of the problem was to build a circular assembly hall. It was obvious that, in contrast to other manufacturing functions, Mr. Carr did not need square feet as much as he needed diameter. Thus the circular shape permitted nearly one-hundred-percent use of the actual square foot area. In the final design, turntables of 112 feet in diameter can be pre-assembled," Dr. Rossman said.

With the decision of a circular assembly hall, the other requirements — shops and administration — fell into place. It was obvious that these functions must be grouped organically around the circle.

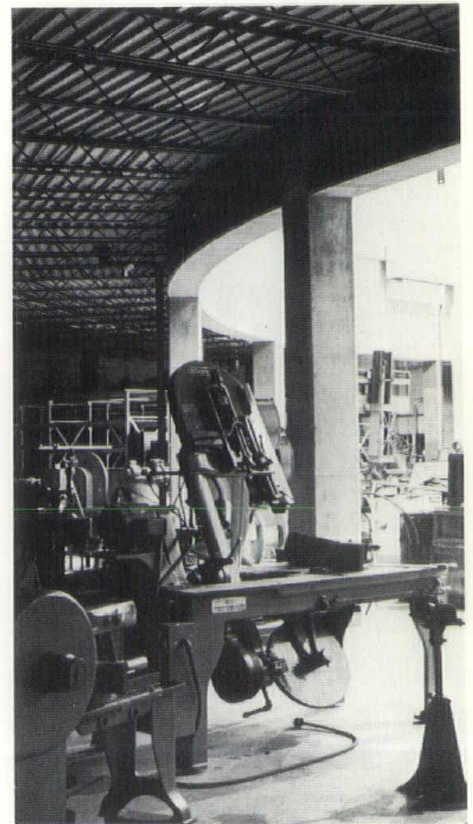
Initially the full circle was not consumed, with almost forty percent free for circumferential expansion. Also, the circumferential wings permit the addition of a second

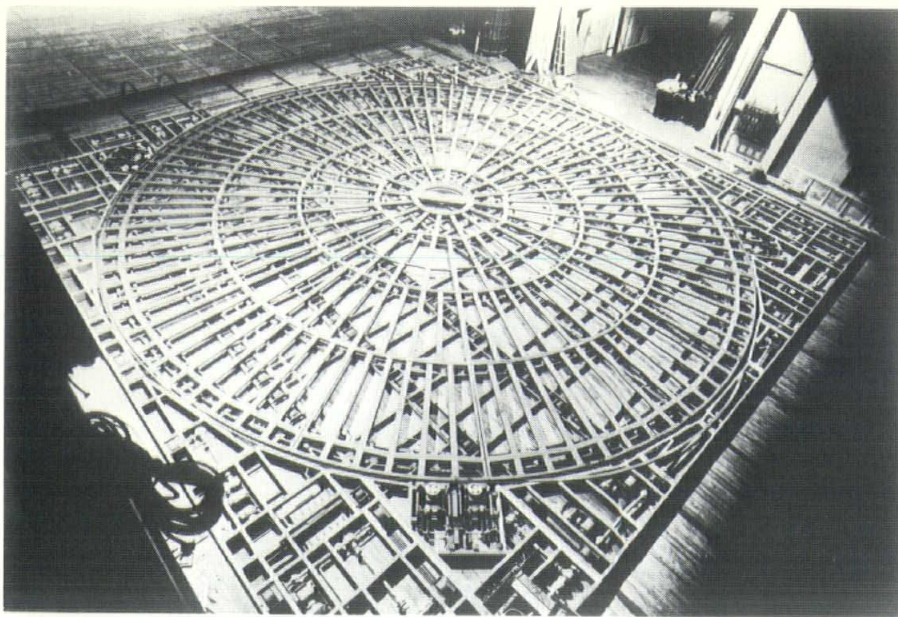
floor. For ease of internal relocation of partitions, only exterior walls are load bearing. In this manner, the architect felt he had simple roof construction, and one wall sections could be developed. The technical solution of a spherical concrete shell was used to roof the circular space of the assembly area.

"As construction has proven, these basic concepts achieved an extremely functional arrangement at the lowest possible construction cost. In the overall planning, future expansion of assembly and manufacturing areas foresees the construction of a second and much larger circular assembly hall with suitably interacting circumferential port wings. In the first assembly area, a large opening is provided for on the runway side. This serves the possibility of air freighting components directly from the plant," according to the architect.

The plant is located at the Danbury airport because the owner

Section of shop area.





Steel framework of new turntable for Metropolitan Opera has 57-foot rotating section, set in 60-foot square which travels from backstage to footlights.

was spending about the equivalent of four weeks a year driving to and from the airport from the company's previous plant location. Much of the customer contact and engineering for the firm's turntable business must be done on location, so the owner spends many airborne hours piloting his twin-engine Beechcraft.

Structural engineering consultant John K. Parsons reviewed the design scheme of a concrete dome with a horizontal diameter of 112 feet and a rise of eleven feet. The spring line of the shell is almost twenty-five feet above the floor. The structure had to support a 15,000 pound crane load from the dome roof which dictated a shell thickness of four inches. It also had to provide for a forty-foot future opening.

The tension ring for part of its length is continuously supported on a masonry wall and for the remainder of its length acts as a tension ring and a beam spanning between columns. The ring beam with a portion of the dome shell acts as an L-shaped beam. Since the ring beam was poured earlier and had a higher compressive strength at the time of the post-tensioning, a reduced effective

flange length had to be used. The thrust line of the dome shell is eccentric with the center of gravity of the L-shaped ring beam, so the post-tensioning tendons had to be adjusted to keep the stress due to eccentricity within allowable limits.

Torsional stress, according to Mr. Parsons, due to curved beam action where the tension ring spans columns, is small except for the future forty-foot opening, where it is high. Reinforcing steel with an ultimate strength of 60,000 pounds per square inch was used for bending and torsional stress, while post-tensioning strand with an ultimate strength of 270,000 psi was used to resist the direct tension in the ring.

A layer of Visqueen was placed on top of the masonry wall and concrete beam with a two-by-two-by-three-inch block of styrofoam at the base of all reinforcing steel that extended into the ring beam. The purpose of this was to allow the

ring beam to shrink so that the required compressive force could be introduced into the ring beam.

The thickness of the shell was increased at the junction with the ring and reinforcing steel was increased in this area. Reinforcing bars rather than welded wire fabric were used because they can be kept in position more easily while concrete is poured. Insulrock was used as form board and remained in place as an insulation material.

The crane rail is designed so the crane can operate at any point in the building. When the crane is in the center the load is distributed through the eight supports to the shell which results in small bending stress in the dome. When the crane is at the outer edge, a higher concentrated load occurs, but the bending stresses are not excessive.

When the concrete strength of the dome reached 3000 psi, the ring beam was stressed, and then all the shoring was removed.

The 18,000 square foot plant with its 164-foot diameter represents an investment of approximately \$375,000.

Owner John F. Carr not only is satisfied with his circular plant concept, but also feels that round plants have applications in many other industries. "Certainly in itself one of the most novel manufacturing facilities built in recent years, our new plant's uniqueness is further enhanced by its location right at the airport," he said. □



Owner's aircraft stands close to building.



Playplace

Yale architecture students used concrete, tires, tubing, and rope nets to design and construct a new "play machine" to be used as a jungle-gym for small children.

The multi-colored fortlike structure was assembled at the New Haven Regional Center for the Mentally Retarded, operated by the State of Connecticut on Wintergreen Avenue in New Haven. The play machine was the class project of first-year students in architecture in the Yale School of Art and Architecture.

The school requires its first-year students to undertake a practical design and construction project so they can get a first-hand feel for building processes. Some members of last year's class had built a fore-runner play machine at New Haven's Camp Cedarcrest. Constant use last summer necessitated repairs and a new rope net.

"This year's structure was built for permanence," according to Bill Mack, a successful lawyer-turned-

architecture-student, who was straw boss of the Regional Center job. "We were able to get a professional welder to donate his time so that the tricky welding of the three-inch pipe sections that make up the 'tower' would be sure to last and to ensure safety."

The playplace consists of a three-foot high wall enclosing an irregular polygon of play space, which is penetrated at intervals by pipe sections. The north and south ends are flanked by a tower — with a net below for climbing and safety — and a slide. Trips down the slide are enlivened by passage through a massive chunk of striped pipe.

"The layout is challenging and demands that a child enter actively into the spirit of the place. The only way to get in is by scaling the wall, climbing the ladder to the tower, or by burrowing on hands and knees through the pipes. And once inside the fort, you can climb the net to the tower or shinny up the pipes," Bill Mack said.

The hillside that cradles the play-

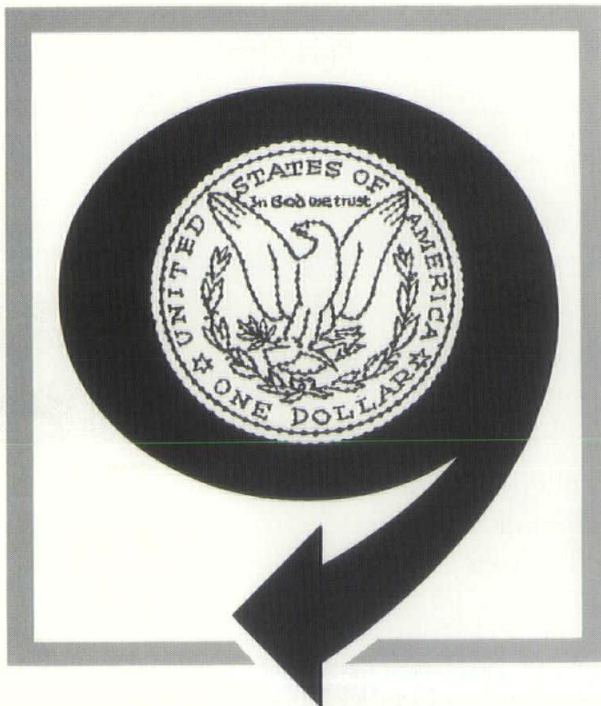
place is festooned with multi-colored automobile tires for climbing and jumping.

In addition to Bill Mack, Yale students Clinton Sheerr, Deborah Lee, Heather Cass, Greg Montes, Bob Hoffman, and David Burnor were prime movers in the project.

New Haven area firms which provided materials included Plasti-concrete, Cosgrove Construction, C. W. Blakeslee, DeMatteo, and Buckingham-Routh which contributed concrete block, pipe, and services.

Joseph J. Colombatto, who directs the Center for the State Department of Health, said: "It is a beautiful project, both in terms of human input and the finished product. It was a real thrill to see the Yale kids mixing cement — including the girls in the class, too — and the kind of cooperation and volunteerism that it evoked in the suppliers . . . like the man who drove over with a crane after work, on his own time. It's the kind of project that brings out the best in a lot of people." □

DESIGNING A BANK?



Fast, accurate transfer of information is vital to the modern bank. Voice, video, and data systems speed the flow of information within the bank and with customers hundreds of miles away.

Because of the need for sophisticated communications, hardware preplanning is essential. Whether you're building a bank, brokerage house or any other building where communications systems are concentrated, you'll find our BUILDING INDUSTRY CONSULTANT ready to assist you. He knows communications. And he knows how to work with people who build.

Call on the BUILDING INDUSTRY CONSULTANT while your plans are still on the drawing board. You add him to your team without cost or obligation. Just dial 1-800-922-2953, toll free from anywhere in Connecticut.



Southern New England Telephone

Beersheba: Award for Community Architecture

The Biblical city of Beersheba in Israel, where a completely-planned "new town" is being built in the ancient desert settlement, has been given the second R. S. Reynolds Memorial Award for Community Architecture.

The architects and planners of Beersheba receive the international award, which confers \$25,000 and an original sculpture in aluminum, "for the design of a community in which architectural planning

and design have made a most significant contribution." The American Institute of Architects announced. The AIA administers the program sponsored by Reynolds Metals Company.

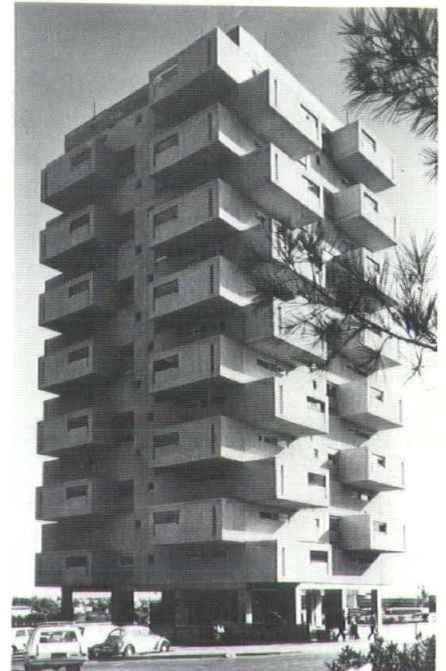
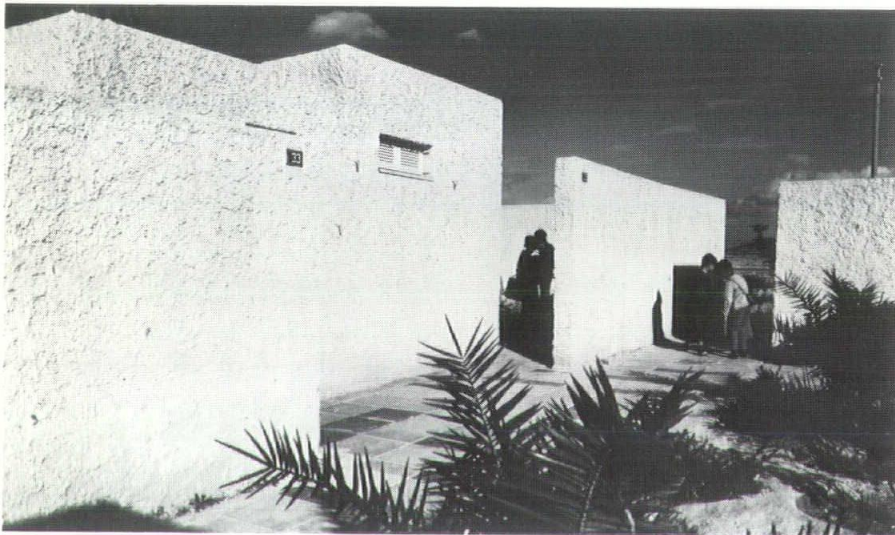
The award was presented at the AIA annual convention in Boston on June 25. The \$25,000 will be used for study grants in urban design under the administration of Technion, Israel's technical university.

In selecting Beersheba the Institute jury paid tribute to the entire new towns program of Israel.

"Beersheba was selected as an outstanding symbol of the Israeli new urbanization program, since it is the oldest and largest of a series of some 25 new, reconstructed, and substantially enlarged towns started little more than 20 years ago," the jury report stated. "The very existence and growth of

Please turn to page 19

BELOW: Patio houses are one type of residential facility designed for the needs of the environment. RIGHT: Apartment tower has projecting room units cantilevered from central core.



The George C. Field Company

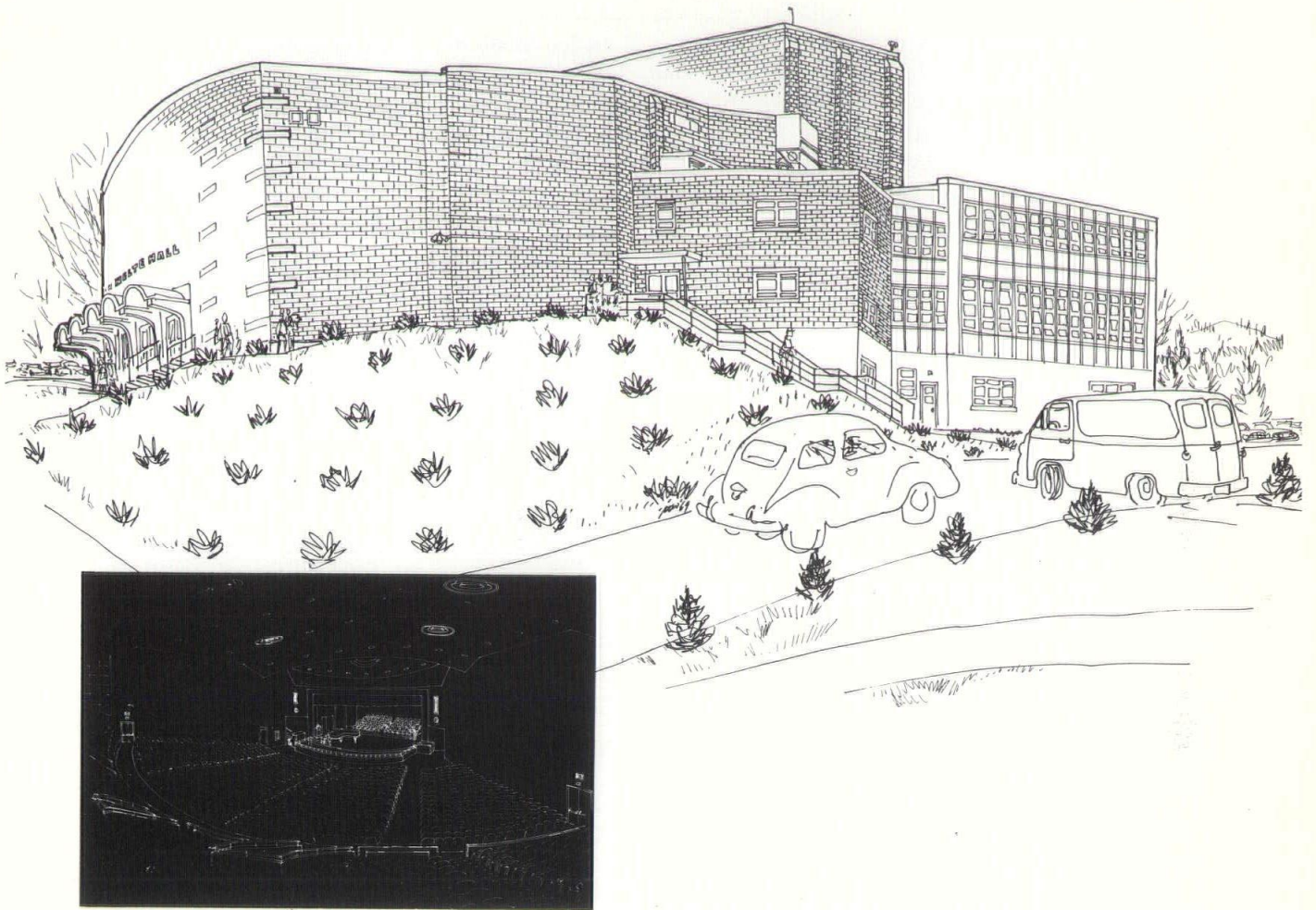
General Contractors *Founded 1897*

Madison, Connecticut

Specializing in fine residential
construction for architects

245-2020

Herbert D. Welte Hall, including new auditorium,
at Central Connecticut State College, New Britain.
Paving, Angelo Tomasso, Inc.
Concrete, Sherman-Tomasso Concrete, Inc.
Architects: Olson & Miller



From a series of original sketches by John Wedda, commissioned by Angelo Tomasso, Inc. and Sherman-Tomasso Concrete, Inc.

This outstanding example of contemporary Connecticut architecture makes substantial, effective use of Angelo Tomasso, Inc. paving materials and Sherman-Tomasso Concrete, Inc. central mix concrete. Architects know they can depend on the strength, durability and attractiveness of these versatile products for a wide variety of construction purposes.

Angelo Tomasso, Inc. Sherman-Tomasso Concrete, Inc.

New Britain, Connecticut 06050 223-3651

Mot

Continued from page 6

off the tongue, but that's not all, by any means. Assume, for the moment, that "Xanadu" is actually a cryptogram for the Garden's new address. "X" represents the "crossing" of "ana" or "anna," a Hindu coin worth roughly 1/34th of a new French franc, and "du" or "do", which is the eighth note of the musical scale, and there you have the corner of 34th Street and 8th Avenue. In the same way "Kublai

Khan" can, with a lively imagination, be translated into "Madison Square Corporation;" from then on the verse becomes startlingly literal. No one will deny that the new arena is indeed a "stately pleasure-dome," even if its structural engineers chose to invert it. And it is transparent even to the amateur cryptologist that "Alph" is really the Greek "Alpha" or, better still, the Hebrew "Aleph", referring to the A-line on the subway to Bay-side. "So twice five miles of fertile ground with walls and towers girdled round: and there were gardens . . ."

This is about as literal as one can get without insulting the intellect. Certainly the walls are there, and the (stair) towers girdling them. And what sounds at first like poetic license (or faulty geometry) is actually a reasonable outline of the purlieu required for parking on an average night.

"A savage place! And from this chasm with ceaseless turmoil seeth-

ing, as if this earth in fast thick pants were breathing, a mighty fountain momentarily was forced."

This is what is commonly referred to in the trade as "a real beauty." If it doesn't accurately describe a flood of so-called humanity pouring out from a hockey game, someone has missed the point, but it certainly wasn't Samuel Taylor.

It is no news to the average reader that there is a *mot juste* for every occasion. But there is also a fitting phrase for every building type, as well as for all the phases of this complex industry. Consider the following, gleaned from the chapter on gamblers in Erasmus' "The Praise Of Folly." *"The more a man is deluded, the happier he is. Very like to these is the class of men who suffer from an incurable itch to be abuilding. They transform round structures into square ones, and presently square ones into round ones."* Perhaps we are laboring a point to remind ourselves that the aforesaid Garden, which was once square, is now indeed round. The sixteenth-century quotation applies equally well to several far nobler building types. The Metropolitan Museum and its contemporary counterpart, the Museum of Modern Art, if not square, are certainly rigidly rectangular. Then, in chronological sequence, the Guggenheim, which is notably round, is followed by the Huntington Hartford and the Whitney, both of which revert to the ninety-degree angle — a perfect embodiment of Erasmus' formula. And one has only to follow the strong trend toward "Churches-in-the-round" to find the pattern again clearly represented.

The moving finger of architecture is writing all the time, and having writ, leaves a mark which only the wrecking ball can obliterate, so it may as well be bold and legible. We haven't yet translated the famous handwriting on the wall, *"Mene, mene, tekel, upharsin,"* and more's the pity. But if *"Après moi, je ne sais quoi"* were emblazoned over the gates of the

A COMPLETE PHOTOGRAPHIC SERVICE FOR ARCHITECTS AND BUILDERS

- on location photography, exteriors and interiors
- large color murals at little cost
- black and white enlargements up to 20 feet
- color slides and transparencies

JACK STOCK STUDIOS

Derby, Conn.

734-6296

GUARD RAIL
Galvanized Steel or Rustic Wood

INSIDE PARTITIONS
Window Guards
Safety Enclosures

INDUSTRIAL CHAIN LINK

GORHAM FENCES

**NORTH HAVEN
THE FRANKSON
FENCE CO.**

451 STATE ST
TEL 288-2588

**WATERBURY
PERFECTION
FENCE CO., INC.**

1327 MERIDEN RD
TEL 755-6172

**WESTPORT
WESTPORT
FENCE CO., INC.**

1545 EAST STATE ST
TEL 227-5282

French Embassy, everyone would know exactly what we meant. Wouldn't "Verweile doch, du bist so schon," reminiscent of Faust's Margherita, have been a pleasant goodbye for the old Met in its last days? And if some advertising concern doesn't inscribe "In medias rat res" over its doors, our successors are being denied a good belly-laugh.

A wholesale revival of the time-honored custom of providing our buildings with inscriptions will throw an exciting light on the road "vers une nouvelle architecture" and perhaps make people look at it again. It is well known, for example, that architecture has no humor whatsoever. No one has yet been made to laugh by a building except, in rare instances, one architect by the design of a competitor. Nor to cry either. Worst of all, architecture has no sex, and in these free and easy times, this is a blatant crime of omission. A ship, as everyone knows, is a woman. "She moves, she moves, she seems to feel the thrill of life along her keel . . ." is only one of the innumerable tributes to a ship's gender. Shakespeare wrote a sonnet to Cleopatra's barge and she wasn't even in it. But no one, to my knowledge, has written a line to a building, outside of "Home Sweet Home," although the George Washington Bridge made it when a symphonic poem was written for its dedication.

The building does not exist which does not have something to say, however bland its message, however still and small its voice. Oliver Wendell Holmes, who once said "A page of history is worth a volume of logic," would be the first to admit the corollary, "A building is worth a volume of history." Some buildings do, to paraphrase Churchill, "have a lot to be modest about," but the most self-effacing deserves to eternalize itself, somehow, in words everyone can understand. A touch of terza rima, a couplet in the lingua franca, even a single non-committal word will

do. Louis XVI, the least eloquent of kings, made the Hall of Famous Quotations when he wrote in his diary on the morning of the fall of the Bastille, "Aujourd'hui, rien."

It is time for architecture, the coolest of all media, to come unstuck. Demosthenes, so they say, used pebbles to cure an impediment of speech. We have sticks, stones, steel, concrete, glass, plastics, the lot. The world is waiting for a Svengali, a Cyrano to put them together to bring out the true timbre of our innermost sentiments.

It may result, among other things, in a resurrection of a little architectural honesty. This step alone would vastly improve our posture, posterity-wise. I could suggest a long list of buildings which would not suffer in the least, and whose designers would gain immeasurably in stature, if they were crowned with that famous apologia from "The Informer," so poignantly voiced by Gypo Nolan, "I didn't know what I was doin'!" □

Address Changes

When you change your address, advise *Connecticut Architect* promptly to ensure receiving all copies of the magazine. Please give your former address and new address, including zip code. Send this information to: Circulation Department, CONNECTICUT ARCHITECT, Box U, Guilford, Connecticut 06437.

Beersheba

Continued from page 16

the country depends in large measure on the placement and the social and economic success of its orchestration of new towns."

Beersheba lies on a plateau at the entrance to the Negev Desert, about 100 miles south of Tel Aviv. The Bible records that Abraham lived in Beersheba, and it was from there he took his son Isaac to the sacrificial rock, Moriah. The scriptures also tell of Jacob's leaving Beersheba to seek a bride and of his returning there as an old man to offer sacrifice at the altar of his father, Isaac.

Beersheba now is the administrative, commercial, and social center of the Negev District, which comprises almost 40 per cent of the country's land area. Today it has about 70,000 residents. A population of 250,000 is projected by the year 2000.

The jury praised the designers of Beersheba for its "dynamically evolving" plan which is successfully overcoming the admitted shortcomings in earlier planning.

An initial master plan for Beersheba, begun about 1950, was based on the concept of an English garden city, with low population density, winding streets, one-story homes with large garden plots, and extensive open spaces. This plan soon was recognized as unsuitable for a dessert community, and new plans were developed in the mid-Sixties.

The new master plan seeks to integrate the older housing areas

THE ASSOCIATED SHEET METAL, ROOFING AND INSULATING CONTRACTORS

NORTHERN DISTRICT OF CONNECTICUT

19 LAUREL AVENUE

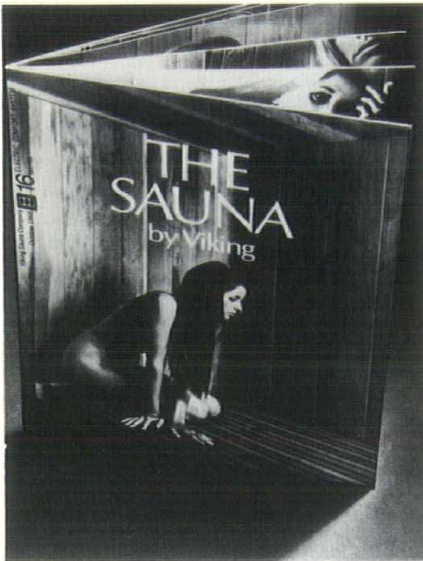
WINDSOR, CONNECTICUT

TELEPHONE 688-9651

Acme Roofing & Sheet Metal Co.
52 John St., East Hartford
American Sheet Metal Works
280 Brookside Ave., Waterbury
C. G. Bostwick Co.
41 Francis Ave., Hartford
Bristol Sheet Metal Works
7 Carlton St., Wallingford
Capitol Ventilating Co.
195 Maxim Road, Hartford
G. R. Cummings Co.
198-210 State St., Meriden
Dansky's Roofing & Sheet Metal Works
22 Raymond Road, West Hartford

Eagle Sheet Metal Works
110 Reed Ave., West Hartford
H. R. Hillery Co.
Box 186, Groton
Industrial Sheet Metal Works
140 Boston Post Road, Orange
Limbach Company
9 Goodman Place, Bloomfield
Liner-Atwill Co.
729 N. Mountain Rd., Newington
Ernest Peterson, Inc.
1830 Broad St., Hartford
Portland Roofing Co.
Lake St., Portland
Potter & Carrier, Inc.
84 Wellington St., Hartford

R. & S. Contractors, Inc.
410 S. Main St., Waterbury
Reliable Roofing & Sheet Metal Co.
2965 Berlin Turnpike, Newington
Shelton Roofing Co.
50 E. Main St., Ansonia
Sound Reduction Corp.
Bidwell Rd., Box 158, S. Windsor
Southern N.E. Roofing Co.
Box 1772, Hartford
Sterling Blower Corp.
Box 415, Hartford
Tarco, Inc.
618 Capitol Ave., Hartford



Send for this free best-seller

It's a new booklet that describes the complete line of Viking Saunas—the best-selling ones in the world.

Including a new kind that's practical even for apartments—the Solo Sauna. It's just 39½" x 36". Takes fifteen minutes to install. And turns an average bedroom into something special.

Then, for real swank, there are larger pre-built saunas. And custom saunas, which we'll be glad to help you design.

Of course, the book doesn't tell how easy it is to sell a home or rent a luxury apartment with a sauna these days.

And it doesn't tell how much you can charge for them, once they're installed. You can figure that out, once you've seen them in "The Sauna" by Viking. For your free copy, complete with diagrams, just send us the coupon.

Sold and Distributed in Connecticut exclusively by

Viking & Sauna.

of CONNECTICUT

564 Boston Post Road
Orange, Conn. 06477

Name _____

Address _____

City _____

State/Zip _____

and a thriving commercial-entertainment district with a now-developing Town Center and new high-density residential sections. All planning and architectural design have been carried out under the direction of Israel's Ministry of Housing, but private architects have designed many of the individual buildings. All construction has been handled by private firms, although ownership is vested in the government.

A key element of the present plan is the new Town Center building whose design came from a national competition among Israeli architects. This recently-completed megastructure has an open-air gallery in the middle, with shops on either side at street level. The second story contains stores and offices, and apartments are provided on the upper levels. The building is of linear design, and thus can be extended down its axis through the community as new facilities are required.

Housing in the new areas is of several types. The first high-rise apartment building, with projecting room units cantilevered from a central core, already is in use. The jury termed it a "dynamic pioneering effort." There are "pyramid houses" with multiple units in a lower density arrangement. "Patio houses" with small individual garden spaces, are of still lower density.

In all types of housing the jury said, "the architecture encompasses and is the site."

The old commercial and enter-

tainment section, developed before World War I, is being gradually reconstructed in coordination with the new Town Center. Efforts are being made to retain the typical oriental character of this section, and the jury noted that the newly-built Central Market there "gives some indication of how successfully that can be done."


"The jury believes Beersheba to be of international significance in the evaluation of town planning," the report said. "It represents the full spectrum for community evolution. It is, in the totality of development of new and old, an outstanding symbol of a national urbanization policy."

"The courage and resolve of the planners and the government to undertake a systematic evaluation of the shortcomings of the earlier plan and construction, which served as a learning experience, and to propose the elimination of existing structures or their reconstruction to integrate them into the goals of the new master plan, is admirable. The present total visual impression of Beersheba is less important than the evidence of its new dynamic solution, evidenced by the excellence of its newly-designed structures."

The jury consisted of Daniel Schwartzman, FAIA, of New York, chairman; George T. Rockrise, FAIA, of San Francisco, a vice president of AIA; and Jules Gregory, FAIA, of Lambertville, N.J. They visited Beersheba and other Israeli new towns. □

Town Center, a megastructure of linear design suitable for expansion, is a key architectural feature of Beersheba.





**We Are In a
NEW WORLD OF
CLIMATE DESIGN**

Phone us to tell you
at your convenience what
oil can do for your clients



NEW ENGLAND'S FOREMOST
INDEPENDENT FUEL COMPANY

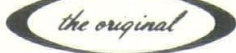
900 Chapel Street, New Haven, Conn. 06510
Phone: 787-2175

INSIST ON THE GENUINE

T H E



Since



1921

ELECTRIC OPERATORS
AND RADIO CONTROLS

OVERHEAD DOOR COMPANY, INC.

391 BOSTON POST ROAD ORANGE, CONN.

49 years of DOORability

Housing Change

John M. Camp, Jr., president of the American Wood Council and general manager of the building products division of Union Camp Corporation, in addressing the 1970 national meeting of the Forest Products Research Society, said: "The single family home as we have known it in recent years, tracts of houses laid out side by side in seemingly endless rows through our suburban countryside, is breathing its last." □

Design a school. Hospital. Office building. Motel. And Carrier's compact, reheat room terminal can fit into places others can't. Beautifully. With a single duct system. Pinpoint temperature and humidity control. Ideal ventilation. All year.

Cold days, and this terminal actually washes a curtain of warm air up and across the window. And with twice the cfm of ordinary outlets

(but quietly). So it beats the drafts before they get moving.

Warm days, and it can blanket a sun-drenched window with cool air. Always reaching the right comfort level. Room by room.

Off-hours, turn off the central fans—and this terminal even works as a gravity convector. Spares discomfort and electric bills.

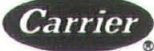
Steam. Hot water. Electric, UL approved. We have five models for each. Call



The Connecticut Air Conditioning Co.,
Orange, Conn. 06477
Wholesale Distributor

**Cover
your windows
with a curtain
of air.**

**Get the best
degree of comfort
in any room.**



Yale Competition

Venturi and Rauch, Philadelphia architects, topped 468 entries in winning the competition for design of the Yale Mathematics Building.

The team of Robert Venturi and John Rauch also includes W. G. Clark, James Greifendorf, Steven Izenour, Arthur Jones, and Douglas Southworth. The competition for the \$3 million, 55,000 square foot structure was opened in November 1969. The building is to be on Hillhouse Avenue, New Haven, adjoining Leet Oliver Memorial Hall, built in 1908, and spanning a sunken railroad right of way. The rear of the building faces the courtyard of the Becton Laboratory for Engineering and Applied Science, designed by Marcel Breuer and completed last winter.

The jury included Charles E. Rickart, Percy F. Smith professor of mathematics and director of graduate studies in the Yale department; Vincent J. Scully, Colonel John Trumbull professor of the history of art at Yale and architectural critic; Edward W. Y. Dunn, director of building and grounds planning for Yale; Kevin Roche, AIA; Romaldo Giurgola, AIA; and John Christiansen. Professional advisor for the project is Charles W. Moore, FAIA, dean of the faculties in design and planning of the Yale School of Art and Architecture. □

AIA Director

Hugh McKinley Jones, Jr., FAIA, Guilford architect, was elected a director of The American Institute of Architects representing the New England states at the AIA's recent convention in Boston. □

Visit our

**ARCHITECTS'
SAMPLE ROOM**

Just off Routes 91 and 5 on
Old Depot Hill Road, Ware-
house Point.

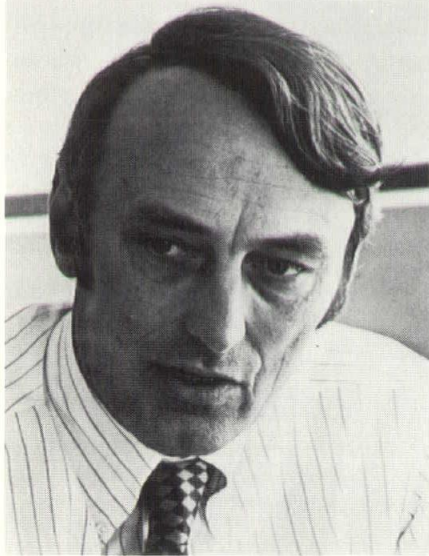
"BRICK CENTER"

Clay Products
INCORPORATED

HTFD. 527-8851

High School Students Hear Architect

Believing that one must start with the young people if the world is to be changed, Thomas A. Norton of Norton and Hume, Architects Incorporated in Stamford, has embarked on a program of speaking to elementary and high school students about environmental planning.



Thomas A. Norton

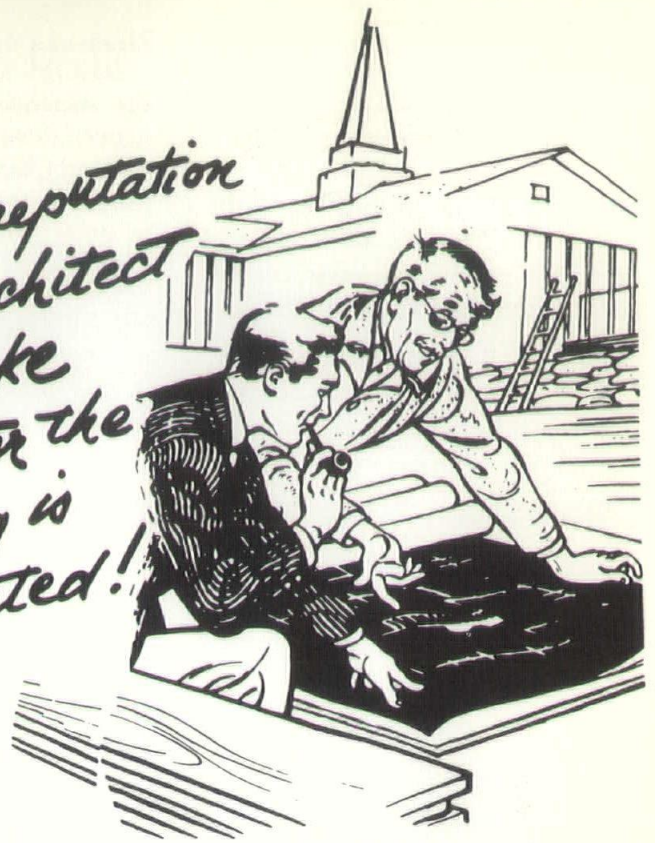
In a recent talk before some 30 architectural drafting students at Stamford High School, Mr. Norton said, "We live in a time when the quality and shape of our environment is a matter of survival. Our population is growing; our spaces and our physical resources are shrinking. This does and will affect our lives dramatically.

"... The architect must exert more influence in the sound and sensible planning of our physical environment. That is why I suggest to you that architecture is an exciting and challenging field to enter.

"We must have more architectural planners and designers who ... can exert a positive influence on the shape of our man-made environment."

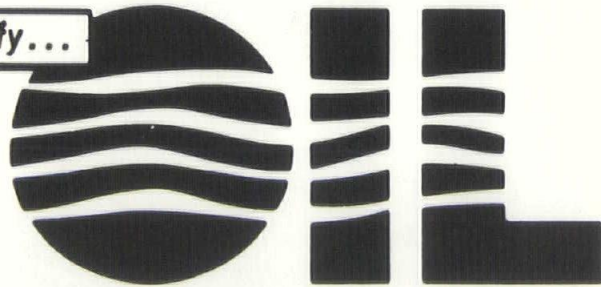
Mr. Norton has plans to reach as many student and community groups as possible to communicate this message. "We feel it is part of a concerned architect's responsibility," he said. "We look for other architects around the country to join in efforts like this." □

*Your reputation
as an architect
is at stake
long after the
building is
dedicated!*



DON'T GAMBLE WITH TOTAL COSTS OR RELIABILITY...

Specify...



HEATING • HOT WATER • AIR CONDITIONING
and TOTAL ENERGY

THE PROVEN FUEL
FOR
8 OUT OF 10 BUILDINGS

OIL FUEL INSTITUTE OF CONNECTICUT

119 ANN STREET • HARTFORD, CONNECTICUT

New Post

Martin D. Gehner has been appointed head of the Department of Architecture, Iowa State University. A former resident of Storrs, Mr. Gehner has been active in the Connecticut Society of Architects as its commissioner on education and in developing and introducing architecture-oriented studies in Connecticut secondary schools and colleges. □

Elected Director

Kenneth E. Froeberg of Orange has been elected a director of the George B. H. Macomber Company. He is in charge of the Boston-based contractor's New Haven Office. □

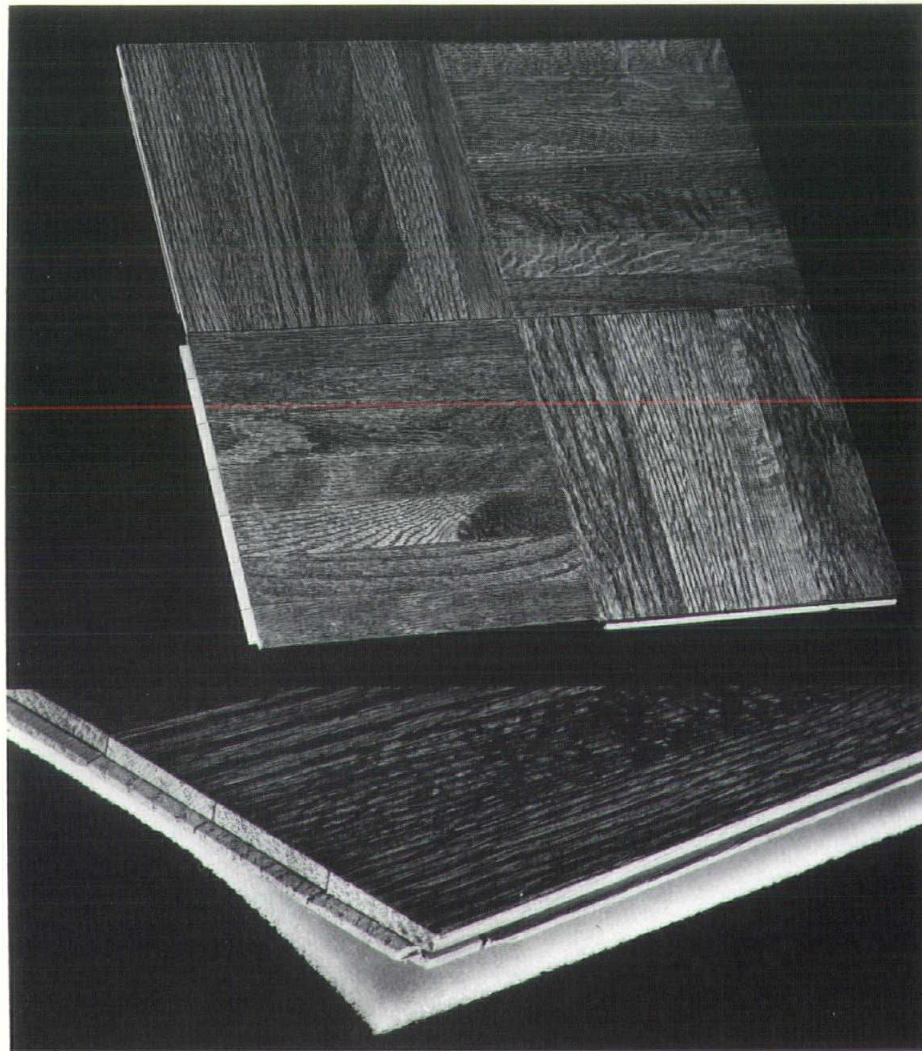
Eighty Exhibitors

Eighty firms plan exhibits at the first Industrialized Building Exposition to be held in Louisville, November 3-6, at the Kentucky Fair and Exposition Center. □

Research Meeting

The seventh annual Architects-Researchers Conference, co-sponsored by the Department of Architecture at the University of Cincinnati and the American Institute of Architects, will be held at Stouffer's Cincinnati Inn, November 1-3.

Papers will be presented on such subjects as design of court rooms, industrialized housing, urban transportation, and computer applications. Information and registration materials are available from John M. Petersson, AIA, Department of Architecture, University of Cincinnati, Cincinnati, Ohio 45221. □



New Foam-Cushioned Parquet for Sound Control

7/16" x 12" x 12" Solid Hardwood parquet panels. 1/8" thick closed cell foam laminated as shown in lower photograph. Moisture cured urethane finish. Use handy coupon for details.



TIBBALS FLOORING COMPANY
Oneida, Tennessee

TIBBALS FLOORING COMPANY
Eastern Sales Office
P. O. Box 127
Danbury, Connecticut 06810

PLEASE SEND LITERATURE

Name
Address
City State Zip

SIGNS OF ALL KINDS

For Offices, Schools, Hospitals, Etc.
TO ARCHITECTS' SPECIFICATIONS

Write or phone
your Connecticut Manufacturer

SETON NAME PLATE CORPORATION
592 Boulevard, New Haven 06519
Phone: 772-2520

NOISE CONTROL ON-SITE TESTING TO ASTM STANDARDS

Party Walls
Floor/Ceilings
Doors

WHEREVER ACOUSTIC
PRIVACY IS A MUST



HAROLD R. MULL
& ASSOCIATES
Consultants in Acoustics
Wilton, Conn.
762-8393

INDUSTRIAL & COMMERCIAL

Real Estate Specialists



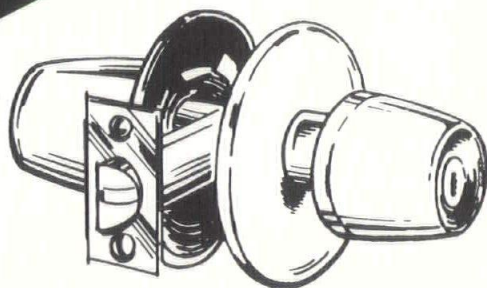
Serving all the
Greater New Haven
area

PHONE 777-5481

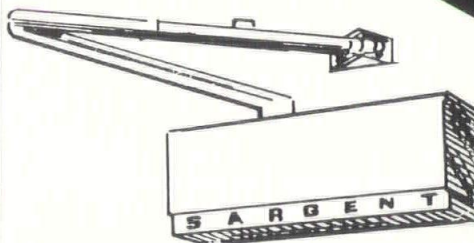
"THE HOUSE OF NAME BRANDS"



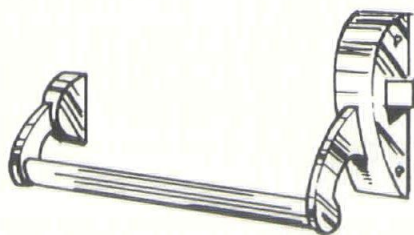
HINGES



LOCK SETS



DOOR CLOSERS



PANIC DEVICES

Builders Hardware Inc.

593 New Park Avenue
West Hartford, Connecticut 06110
Phone 236-1255

Architectural Hardware Co.

2490 Whitney Avenue
Hamden, Connecticut 06518
Phone 288-3326

**SARGENT LOCKS AND HARDWARE • STANLEY BUILDERS HARDWARE
STEEL DOORS AND FRAMES • TOILET ROOM ACCESSORIES**

Roncari
INDUSTRIAL PARK
 RT. 20 EAST GRANBY

**INDUSTRIAL
 SITES
 AVAILABLE**

**ABUTTING BRADLEY
 INTERNATIONAL
 AIRPORT**

**2 Acre, 5 Acre
 and
 10 Acre Parcels**

**FOR SALE, LEASE
 OR WILL BUILD TO SUIT**

on Town Paved Roads with
 Sanitary Sewers, Fire Lines,
 Hydrants, City Gas Lines
 and City Street Lights

For Further Information Call
RONCARI INDUSTRIES
 East Granby 653-2524
 Hartford 527-1825
 or Your Own Broker

Contract Conditions

The American Institute of Architects and the Associated General Contractors of America have published a revised "general conditions of contract for construction" and a new "instructions for bidders."

The "general conditions" document (AIA Document A201) is the twelfth edition of a guide first published in 1911. It covers such subjects as work execution, payment, methods for change orders, handling disputes, protection of persons and property, insurance, subcontracting, correction of work, and termination of contract.

The "instructions" publications (AIA Document A701) outlines bidding procedures, qualifications for bidders, performance bonds, and other matters.

The two publications may be ordered from AIA Documents Division, 1735 New York Avenue NW, Washington, D.C. 20006. Cost is eighty-five cents. □

CBC Officers

Clifton J. Cotter of M. J. Daly & Sons, Inc., Waterbury, has been re-elected president of the Connecticut Building Congress.

Other officers elected at CBC's annual meeting on June 18, are Leo D. Rose of Dubin-Mindell-Bloome Associates, West Hartford, first vice president; John E. Plantinga of Meyer, Strong and Jones, New York City, second vice president; Anthony J. Calini of Pfisterer, Tor and Associates, New Haven, secretary; and Matthew L. Blakely, Dwight Building Company, Hamden, treasurer.

Elected to the board of directors for three-year terms are Peter Flagg, C. N. Flagg & Co., Meriden; Ralph Mausolf, Cybernetics, Inc., Cheshire; and Russell G. Williams, The Reynolds Electric Co., Wallingford.

Continuing on the board are Robert E. Baker, Conco Industries, Inc., West Haven; Augustus G. Kellogg, Environmental Design Group, New Haven; Roscoe D. Smith, W. J. Megin, Inc., Naugatuck; Robert W. Kallinich, J. H. Hogan, Inc., New Haven; Frank J. White, Jr., The Associated General Contractors of Connecticut, Inc., Woodbridge; and Edwin Moss, Edwin Moss & Son, Inc., Bridgeport.

Immediate past president is Roy C. Ferguson, of Frid, Ferguson, Mahaffey & Perry, Architects, Hartford. □

Bridgeport Architects

David G. Crego has been elected president of the Bridgeport Association of Architects. Other officers are Robert W. Osteyee, vice president; William J. Kimball, secretary; and Augustine J. Palmieri, treasurer. □

Course Announced

A course on noise and vibration measurement and control will be held September 13-19 at the Red Jacket Beach Inn, Cape Cod. Details are available from Dr. Walter L. Koltun, Program for Advanced Study, Bolt, Beranek and Newman Inc., 50 Moulton Street, Cambridge, Massachusetts 02138. □

Communications in Connecticut

TEL-RAD REPRESENTS THESE MANUFACTURERS:
 WEBSTER-ELECTRIC ALTEC LANSING 3M MUSIC SOUNDSCRIBER

PROVIDING SYSTEMS FOR: Hospital Nurse Call Signal • 24 Hour Police and Fire Telephone Monitor
 Business, Industrial and Automatic Dial Telephone • Recorders •
 School Programming Church, Auditorium and Stadium Sound Reinforcement •
 and Communication •

Write or call Tel-Rad today for full information.

TEL-RAD INC.

Est. 1946

Sales, installation and service throughout Connecticut.



TEL-RAD, INCORPORATED, 592 New Park Avenue, Hartford, Conn. 06110, Phone 236-2388

**ONE OF NEW
 ENGLAND'S LARGEST
 INDEPENDENT INSURANCE
 AGENCIES**

Direct agency connections with America's top blue chip insurance companies. Call us for a complete free insurance evaluation. Insurance programs and plans provided without charge.

THOMPSON & PECK, Inc.
 321 Whitney Ave., New Haven, Ct. 06511
 Phone 787-6781
 Founded 1928

*** DON'T FORGET
1,000 varieties of Face Brick**

**GEORGE N. TOLMAN, JR.
ARCHITECTURAL BRICK CO.**

SHOW ROOM AND OFFICE

**417 Washington Avenue
North Haven, Connecticut 06473
Phone — New Haven 239-1529
Hartford Office 688-3735**



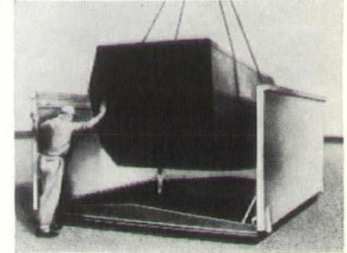
Up



down



under



thru

Easy does it with a BILCO Door

When you're about to provide the best in access through a horizontal surface — think BILCO — leader in design and quality of special purpose doors.

There's a BILCO Door for every need — for convenient personnel access through roofs, floors, ceilings — for access to pumps, valves, meters. All are ruggedly built for long service. All operate with the ease and safety for which BILCO Doors have earned a universal reputation.

And when you need an extra-large special size in any type, specify BILCO for a product designed and built to insure your client's lasting satisfaction.

Where in the world do you go
for the best in horizontal access doors?



The BILCO Company, Dept. 000, New Haven, Conn. 06505

SPECIFY



**BLACKTOP SEALER
FOR PARKING AREAS AND DRIVEWAYS**

latexite

**COLOR-FAST ACRYLIC RESIN COLORED SEALERS
FOR PLAY AREAS**

For low-budget jobs where pavement is not subject to oil and fuel drippings, specify low-cost
COLOR-SEAL

FREE Parking Lot Templates save you time in preparing plans. Call or write for yours today.



**COPELAND
COMPANY, INC.**

WILLOW STREET
CHESHIRE, CONNECTICUT

Telephone
272-3221

Plasticrete Active

Plasticrete Corporation in recent weeks has acquired the Lexington Sand and Gravel Company of Lexington, Massachusetts, entered a large new geographic area with the first shipment of specialized concrete units for a new store in Appleton, Wisconsin, and entered the housing development field following award of a \$1.16 million contract to Urban Developer, Inc. which is a majority-owned subsidiary, and another award of a \$1.4 million contract for dormitory construction to a recently-formed subsidiary, Unitec of New England, Inc.

Philip Paoella, Plasticrete's president, recently reported sales of \$18.8 million for the year ended March 31, 1970, up twelve percent over the previous year. Earnings increased sixteen percent to \$416,848, and the firm has a \$10.5 million backlog. □

- CORBIN
Finish Hardware
- HUF COR
Folding Partitions
- STEELCRAFT
Hollow Metal Doors and Frames

BIDWELL
HARDWARE CO.

HARTFORD, CONN.

527-6443

Awards Program

The 1970 honor awards program of the New England Region of the American Institute of Architects is open to architects' projects completed since January 1, 1965.

Entries must be for projects in the New England area which have not previously received a regional or national award from the American Institute of Architects. Awards will not be made by category with the single exception of private houses "which will be judged separately as a specialized building type."

Entry slips and a registration fee of \$10 for each entry must be received in New Haven by Thursday, July 23. Entries must be received by Thursday, August 27. Both entry slips and entries are to be sent to Howard A. Patterson, Jr., Regional Honor Awards Chairman, The Connecticut Society of Architects, 152 Temple Street, New Haven, Connecticut 06510.

Awards will be presented at the AIA New England Regional Meeting, October 21, at The Laurels Hotel, Sackett Lake, Monticello, New York. □

Architectural Scholarship

Elliott Flynn of New Haven, who will start his college studies at Hampton this fall, was one of twenty youths who will head for architectural careers with the aid of a \$1 million national scholarship program sponsored by the American Institute of Architects and the Ford Foundation. □

Readers Write . . .

June 9, 1970

I am writing this letter in order to share with you, your advertisers, and your readers the activities of the Architects' Planning Team, located in this quiet area called Waterbury.

Our team is made up of men who were at one time competing architects but who have now decided that, by joining forces, a much higher-quality service can be accomplished by using the special capabilities of each architect involved.

Our offices are located in what was a vintage restaurant in the once elegant Elton Hotel on the central Green of the City. We chose this spot because of its familiarity to the residents of the City and because of its central location. We wanted the public to feel that they too may take an interest in the internal workings of the architectural planning process. We try to plan our conferences during lunch hours and serve sandwich lunches to all who come. This works exceptionally well because of the nature of the client, who, in fact, is donating his time to serve on the various boards and building committees.

We are also making a point to include in all of our meetings all of our consultants so that everyone is, in fact, allowed to represent his specialty and does not have to "bull" his way through, so to speak.

So far things are working out quite well and prove to be exciting, not only for us, but also for this city of Waterbury.

ARCHITECTS' PLANNING TEAM
30 West Main Street, On The Green
Waterbury, Connecticut 06702

Caswell Cooke, A.I.A.

Louis R. Fucito, A.I.A.

Joseph Stein, F.A.I.A.

John F. Urbinati, A.I.A.

Robert A. Sapack, A.I.A.

T. Gregory Ames, Jr., A.I.A.

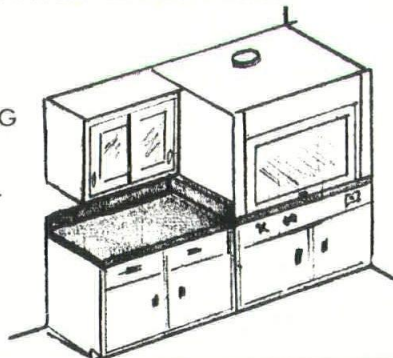
Dante Fucito

New Office

Warren E. Kaffka, AIA, has formed a new office under his name for the practice of architecture and interior design. Mr. Kaffka has been associated with the Eliot Noyes office in New Canaan for the past fifteen years. The new office is in Ridgefield. □

LABORATORY FURNITURE HOSPITAL CASEWORK

- ENGINEERING
- MANUFACTURING
- INSTALLATION
- WOOD & STEEL
- COMPONENTS STOCKED



CONCO INDUSTRIES, INC.
31 Water Street
P. O. Box 150
West Haven, Conn. 06516

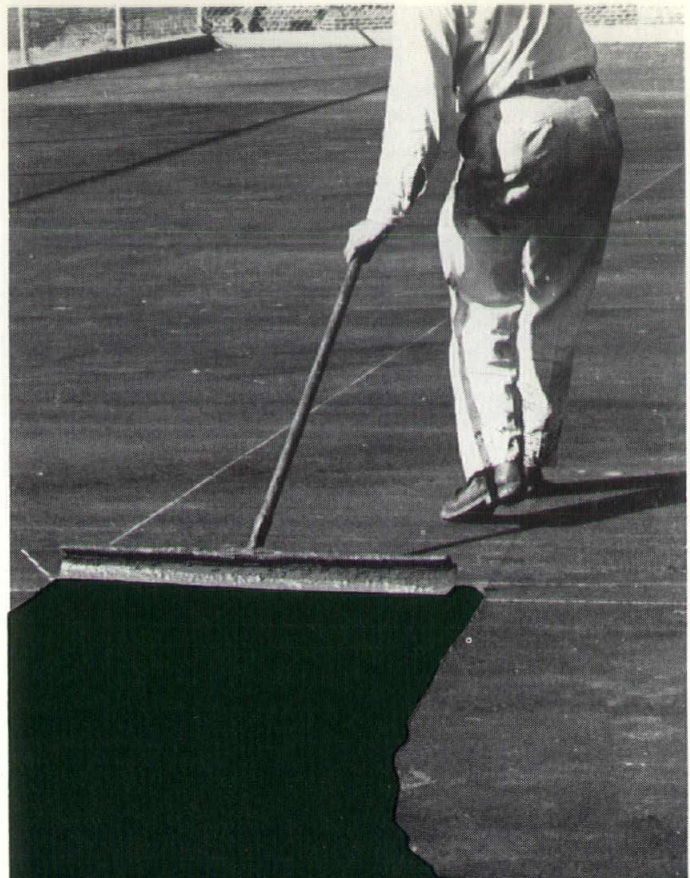
Wisdom Hath Not Buildded A House

To build or not to build, that is the question;
Whether it's smarter, after all, to live
With rent, and clauses in outrageous leases,
Or to take leave of this whole mess of problems
And by owning your own thing, end them?
To build, to rent no more,
And by this step to hope to end
The headaches and the thousand daily shocks
That go with renting; it's a combination
Devoutly to be wished. To build, to sleep,
To sleep in your own pad, perchance to dream,
Ay, there's the catch,
For in that sleep of debt, what nightmares come
Before we've shuffled off the mortgage bond
Will make us stop and think. Now there's the problem
That we should live so long and work so hard
For who today can pay, even on time,
The legal fees, the contractor's low bid,
And stand the pangs of FHA delays,
The insolence of workmen, and the spurn
That builders make of our requests for changes.
And all the time you know
That you could be your own contractor,
And in a one-man office, do as well,
(With a bare bodkin just for cutting costs)
If you but had the time.
But who'd assail the local building code
To grunt and sweat the current interest rate
Just to add something real to your estate
When you could buy a cottage in Vermont,
That undiscovered country from whose bourne
No commuter returns, and for excellent reasons.
Decision 'twixt the two puzzles the will
And makes us rather bear the bills we have
Than contract others we know naught of.
Thus money doth make cowards of us all,
And the great scheme we had, in full color,
Is sicklied o'er with a thick coat of doubt,
And enterprises of great pith and moment,
With this regard, wind up high on the shelf,
And lose the label "active" . . . and never get built.
Oh well. Fair Ophelia!
At three hourly dollars, fringe benefits,
Fifty words a minute, and atrocious spelling
Up from thy teen-age orisons, and take a letter!

ROBERT H. MUTRUX, AIA

**Give to the college
of your choice.**

Published as a public service in cooperation
with The Advertising Council and the
Council for Financial Aid to Education.



PLEXIPAVE

COLOR FINISH SYSTEM FOR ASPHALT SURFACES

Plexipave is the uniquely tough, smooth, color-surface in depth that integrates with any asphalt paving. Available in 8 handsome colors, Plexipave creates a surface barrier to protect asphalt against the destructiveness of harsh sun and severe weather. When you pave with asphalt, include the beauty and protection of the Plexipave Color Finish System. It's ideal for . . .

**tennis courts
playgrounds
outdoor basketball courts
park and golf course pathways
highway median strips
private drives
parking lots
zoological and botanical gardens**

For more details on the performance, easy application, economy and uses of the Plexipave Color Finish System, send for our free brochure now, or call John Wood "COLLECT" at (617) 547-5300.



CALIFORNIA PRODUCTS CORP.

169 WAVERLY STREET CAMBRIDGE, MASS. 02139 /617: 547-5300

**PROFESSIONAL
SERVICES**

CAHN ENGINEERS, Inc.

Consulting Engineers
Site Planners

New Haven
772-2000

New Britain
225-2000

**SCHUPACK ASSOCIATES
and COMPANY**

Consulting Structural Engineers

2701 Summer Street
Stamford, Connecticut
(203) 325-3578

**MORTON S. FINE
&
ASSOCIATES**

- engineers
- surveyors
- landscape architects



BLOOMFIELD, CONN.

EARL R. SMITH, INC.

Bridgeport, Connecticut 06608

Phone 336-2109

INTRODUCES

COMPRO CORP.

PVC* Steel Reinforced
Windows and Doors

Call for Information

*Poly Vinyl Chloride

Long Wharf Theatre

Long Wharf Theatre's sixth season will open October 23. It will present three premieres; classic favorites by Shaw, Goldsmith, and Thornton Wilder; and a recent off-Broadway success. Brochures and information may be obtained by writing to Long Wharf Theatre, 222 Sargent Drive, New Haven 06511. □

Portsea Rowhouses

Community Housing, Inc. recently opened eight rehabilitated "deluxe townhouses" in the heart of New Haven's Hill district. The Portsea Street Rowhouses, Portsea and Dewitt Streets, are restored "flopouses."

Redesigned interiors and modern appliances are combined to meet the needs of low-income families. The four-bedroom units have dining rooms, living rooms, and two baths, plus expansion basements. Floor space in each unit totals 1850 square feet.

The three-story brick structures will be sold to families displaced by urban renewal activity or over-income for admission to public housing. Unit price has been set at \$21,000 with low-interest, 30-year mortgages guaranteed by FHA under Section 235(j) of the 1968 Housing Act. □

New Department

Golden, Thornton, LaBau, Inc., Architects, West Hartford, have formed a department of interior design to be headed by Clifford Mitchell, architect and vice president of GTL, president of the Connecticut Chapter of National Society of Interior Designers, and president of the Connecticut Watercolor Society. Mr. Mitchell will be assisted by Lucien F. Boulais, NSID, as the department's chief interior designer. Mr. Boulais is a graduate of the New York School of Interior Design. □

Honor Award

New York's Whitney Museum of Art was among the fourteen winners of 1970 national AIA honor awards. The architect was Marcel Breuer & Hamilton Smith, New York, and consulting architect was Michael H. Irving of New Canaan. □

Scholarship Judge

Albert Shoemaker of Fletcher-Thompson, Inc., Bridgeport architect and engineering firm, served as a judge in the annual architectural scholarship awards program of the Portland Cement Association. □

Word From Abroad

A reader of *Connecticut Architect* sent a recent issue of the magazine to an acquaintance in Oban, Argyll, Scotland. A reply from Leslie Grahame MacDougall, an architect of note, included this reference: "I am particularly interested in the article 'Landmark Preserved' (CA March-April 1970) as its preservation is so important and we are in the midst of 'European Conservation' year, with special emphasis on the Georgian part of Edinburgh."

Mr. MacDougall in 1938-39 was architect for the Caledonian Insurance office in Edinburgh. □

**ARCHITECT II
City of Hartford**

Opportunity for professional. Responsibility involves reviewing plans and specifications for conformance to applicable codes, statutes, and regulations. Degree and license as a Registered Architect required.

Salary range: \$13,624-\$16,224. Outstanding city-paid benefits. Appointment may be made above the minimum.

Comprehensive resume should be addressed to:

Personnel Department
City of Hartford
550 Main Street
Hartford, Connecticut 06103

INDEX TO ADVERTISERS

Architectural Brick Company	27
Architectural Hardware Company ...	25
Associated Sheet Metal, Roofing & Insulating Contractors	19
Bidwell Hardware Company	28
Bilco Company	27
C. W. Blakeslee & Sons, Inc.	3
Builders Hardware, Inc.	25
California Products Corporation ...	29
Clay Products, Inc.	22
Conco Industries, Inc.	28
Connecticut Air Conditioning Com- pany	22
Connecticut Publications, Inc.	30
Copeland Company, Inc.	27
Electric Companies of Connecticut Back Cover	
George C. Field Company	16
First New Haven National Bank ...	4
Frankson Fence Company	18
Gas Utilities of Connecticut	31
Harold R. Mull and Associates	24
Oil Fuel Institute of Connecticut ..	23
Overhead Door Company, Inc.	22
H. Pearce Company	24
Plasticrete Corporation	2
Roncari Industries, Inc.	26
Seton Name Plate Corporation	24
Sherman-Tomasso Concrete, Inc. ...	17
Earl B. Smith, Inc.	30
Southern New England Telephone Company	15
Jack Stock Studios	18
Tel-Rad Incorporated	26
Thompson & Peck, Inc.	26
Tibbals Flooring Company	24
Angelo Tomasso, Inc.	17
Viking Sauna of Connecticut	20
Wyatt, Inc.	21

Contemporary on the outside...

downright futuristic on the inside...

Architects: The Partnership of Lyons-Mather-Lechner.



The Southern Connecticut Gas Company's headquarters building in Bridgeport features a total gas energy system which is completely independent of any outside source of electric energy!

Total gas energy means GAS and only GAS supplies *all* the energy. In this new 32,000 square foot sales and executive office center, four GAS internal combustion engines generate and supply all the electricity for the entire structure. While the engines drive a generator to produce electricity, exhaust heat from the engines is recovered to heat and cool the building and provide domestic hot water — a real bonus when it comes to operating costs.

Installations like this provide proof that total gas energy systems are likely to be the mass energy

packages of the future. Nationwide, there are already over four hundred such installations in shopping centers, motels, schools, post offices, apartment and office buildings, factories, hospitals and universities.

We don't have to tell you natural gas is more dependable because it's piped safe and sound from underground. We probably don't even have to tell you that natural gas is a non-pollutant, clean burning fuel. But what you may not know is that a total gas energy system is a *very real practicality today*. We'll be happy to give you more information.

Architects often need specific information about electric company rates or policies.

The Answer Man has it.



There may be times when you'll want specific information about electric company rates or policies. Or there may be occasions when it would be to your advantage to draw on our memory bank . . . the accumulated experience of long-time specialists in electrical applications.

That's the time to have a session with the Answer Man — your electric company representative. Electrical applications are his business. (And, as you know, they can contribute substantially to making the buildings you design more attractive, more functional, and more economical to build and operate.) If he doesn't have the information you need, he'll get it for you . . . fast.

To take advantage of this personal service, talk with the Answer man. Call your local electric company office.



THE ELECTRIC COMPANIES OF CONNECTICUT

UNITED ILLUMINATING

THE CONNECTICUT LIGHT AND POWER CO.

THE HARTFORD ELECTRIC LIGHT CO.