

CONNECTICUT ARCHITECT

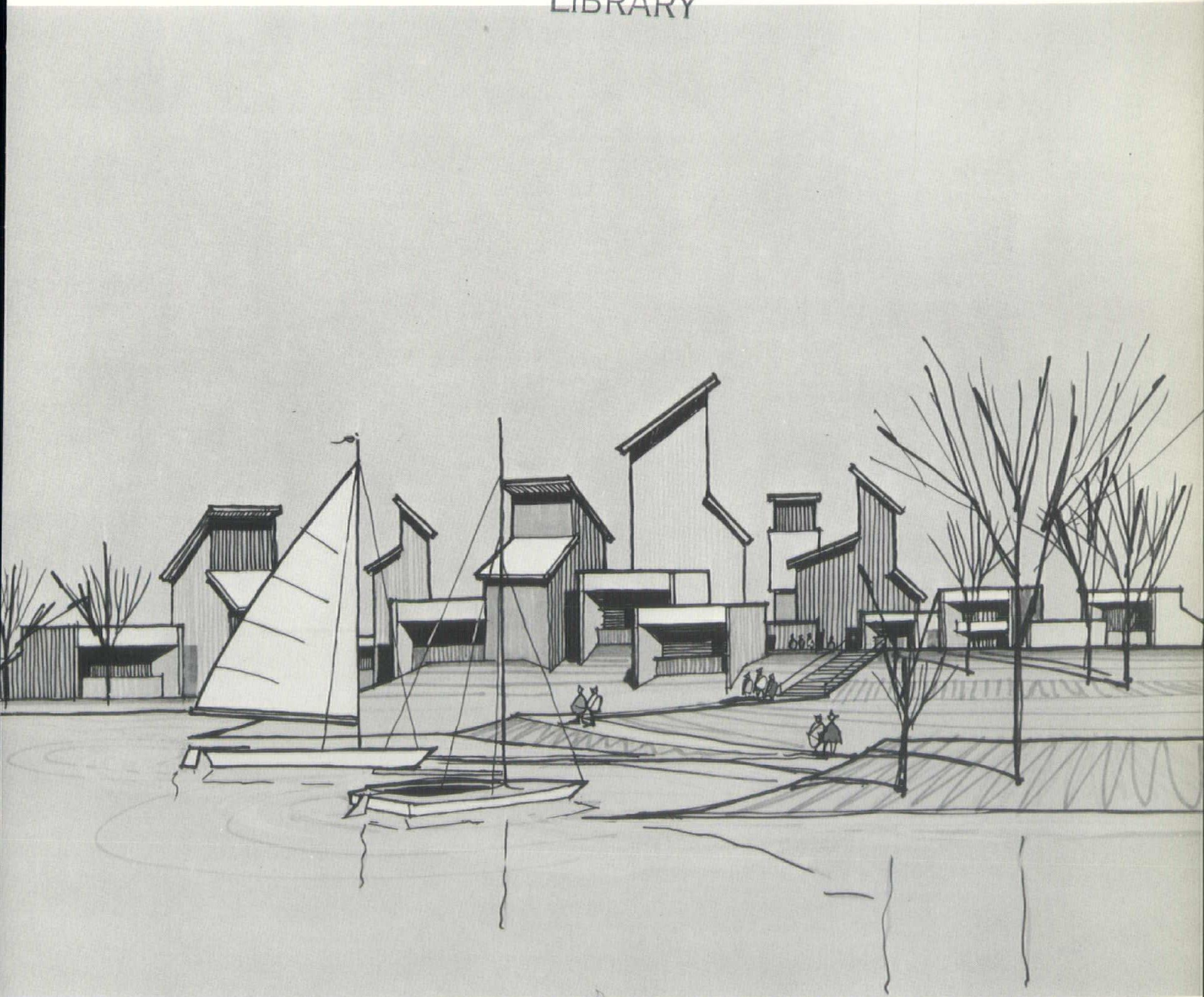
SEVENTY-FIVE CENTS

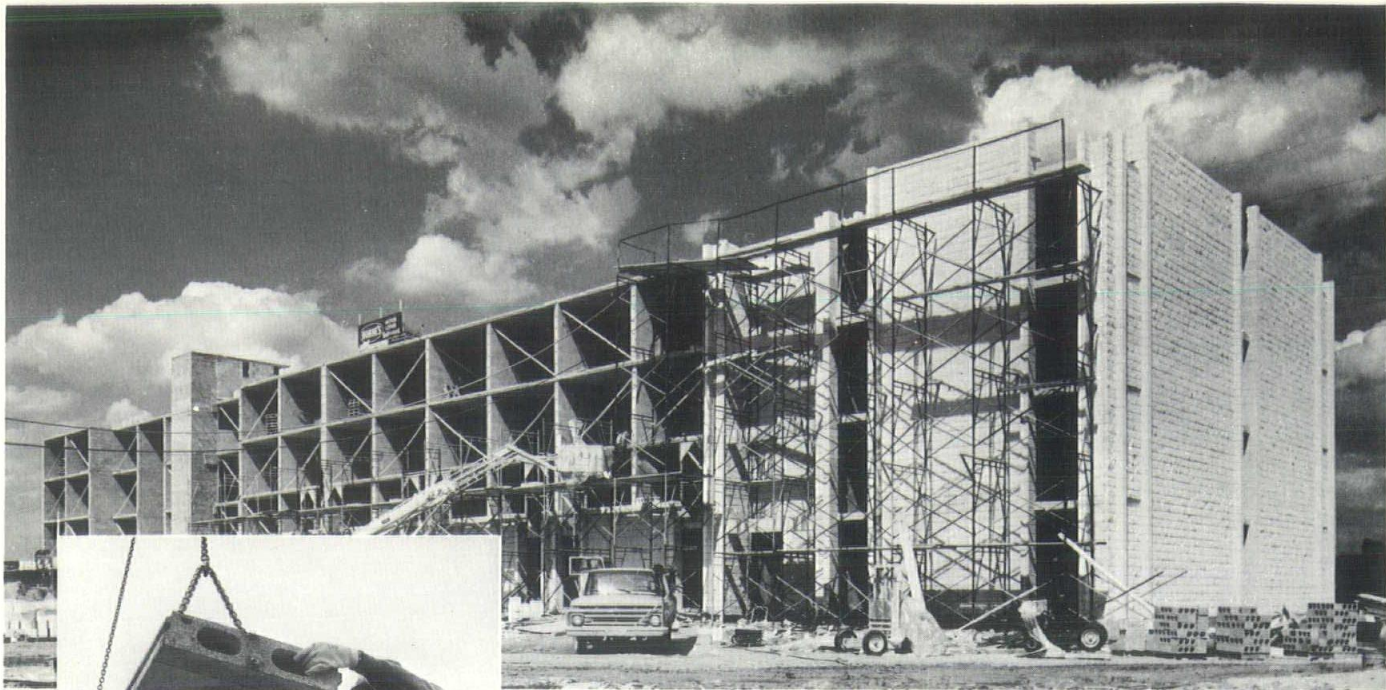
JULY-AUGUST 1969

AMERICAN INSTITUTE
OF
ARCHITECTS

AUG 14 1969

LIBRARY





HORNE'S MOTOR LODGE — RESTAURANT, WETHERSFIELD, CONNECTICUT
 OWNER: GERALD S. BERSON
 ARCHITECTS: FRAZIER AND VIGNEAU, A.I.A., MANCHESTER, CONN.
 GENERAL CONTRACTOR: G-S CONSTRUCTION CO., WETHERSFIELD, CONN.
 MASONRY CONTRACTOR: F & D INCORPORATED, EAST HARTFORD, CONN.

A New Design and Construction Concept...

for a structural building system . . . now used by Architects and Engineers . . . is available from Plasticrete.

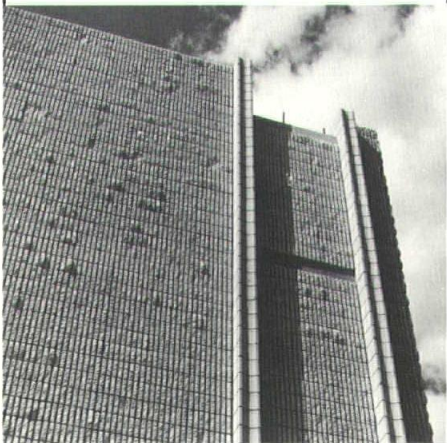
Using exclusively Plasticrete Products of Precast Concrete and Unit Masonry for bearing walls, floors, ceilings and exterior finish, the Designer finds the product range he needs for apartments, dormitories, motels, public housing, convalescent homes . . . both low rise and high rise design and construction.

CALL: Larry Albertini or Lothar Riba at 203-288-1641 to help you develop these benefits:

- **LOWEST BUILDING COST**
- **SPEED OF ERECTION CREDIT**
- **CONTINUITY OF CONSTRUCTION**
- **COLD WEATHER CONSTRUCTION CAPABILITY**
- **LOW SOUND TRANSMISSION — VERTICALLY AND HORIZONTALLY**
- **EXCELLENT FIRE RATINGS**
- **WIDE SELECTION OF MASONRY UNITS, COLORS, TEXTURES AND SIZES.**

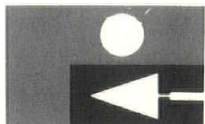
PLASTICRETE PRODUCTS INCLUDED:

- 8-INCH TRANSVERSE BEARING WALLS, 12 1/2 FT. CENTER TO CENTER, BUILT WITH PRECISION GROUND, TONGUE AND GROOVE CONCRETE MASONRY UNITS USING THREADLINE® BRAND ADHESIVE MORTAR.
- NEW CELDEX® PRESTRESSED FLOOR AND ROOF SYSTEM
- PRECAST CONCRETE LINTELS AND BEAMS
- SPLIT RIBBED PROFILE UNIT MASONRY EXTERIOR

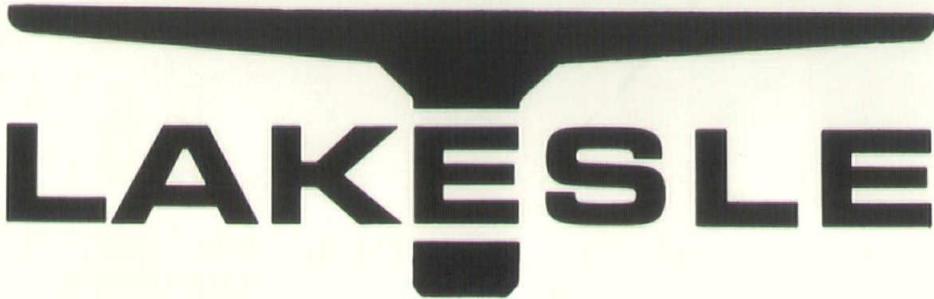


plasticrete corporation

1883 DIXWELL AVENUE, HAMDEN, CONNECTICUT 06514 • TELEPHONE 288-1641



CONNECTICUT ARCHITECT



BLAKESLEE

PRESTRESSED CONCRETE

PLANNED PROGRESS

POSITIVE PERFORMANCE



When it comes to financing, see the man from the FIRST



For mortgage loans.
 Construction loans.
 Municipal loans.
 Loans for schools, public buildings, private residences.
 Tax anticipation loans.
 All types, all amounts.
 See the man from the First when you need financing in a hurry.

THE
FIRST
 NEW HAVEN
NATIONAL BANK

Serving Connecticut since 1792
 Assets over \$280 million.

COMING EVENTS

July, August and September
 Museum of American Art, New Britain: The American Scene, from the permanent collection.

August 12
 Middletown: CSA-AIA President's Outing. Twilight cruise on the Connecticut River. Reservations required.

To August 17
 Yale Art Gallery, New Haven: Selections from the Collection Société Anonyme.

To September 7
 Yale Art Gallery, New Haven: The Graphic Art of Picasso.

To September 7
 Yale Art Gallery, New Haven: French Prints of the Nineteenth Century by Corot, Millet, Manet, Bredin, and Toulouse-Lautrec.

August 3 - 25
 Craft Center, Brookfield: Art exhibit "Index of American Design."

August 9 and 10
 Mystic: Outdoor Art Festival.

August 16 - September 7
 Art Gallery, Essex: Regional Jury Show.

August 23
 Connecticut College, New London: Outdoor Flea Market, sponsored by Lyman Allyn Museum.

August 23 - September 13
 Art Association, Washington Depot: Craft Show and Art Exhibit.

August 28 - September 1
 Wethersfield Country Club, Wethersfield: Greater Hartford Golf Tournament.

September 6
 Mystic Seaport, Mystic: Second annual invitational schooner race.

September 7 - 10
 Arena, New Haven: Fall Antiques Show.

September 18 - 20
 Congregational Church, North Greenwich: Antique Show.

September 21
 Horsemen's Grounds, East Hampton: Connecticut Quarter Horse Show.

November 15 - 16
 Willimantic: Eastern Connecticut Arts and Crafts Festival.

March 16 - 18, 1970
 Convention Hall, Atlantic City: International College and University Conference and Exposition.



CONNECTICUT ARCHITECT

BOX 346 · GUILFORD · CONNECTICUT · 06437

VOLUME 5, NUMBER 4

JULY-AUGUST 1969

Connecticut Architect is published every other month under the direction of the Connecticut Society of Architects, a chapter of the American Institute of Architects, and is the official publication of the Society.

OFFICERS

- President
CARRELL S. McNULTY, JR.
- Vice President
JOSEPH STEIN
- Secretary
HARVEY M. WHITE
- Treasurer
NORMAN L. RAYMOND
- Executive Director
CHARLES P. RANDALL

EDITORIAL BOARD

- Chairman
RALPH T. ROWLAND
GEORGE W. CONKLIN
LANDIS GORES
ROBERT H. MUTRUX
WILLIAM H. RALLIS

PUBLISHER

Produced for the Connecticut Society of Architects by Connecticut Publications, Inc., Box U, Guilford, Connecticut. Rufus K. Allerton, Jr., Publisher; Fredric D. Barrett, Business Manager; Gerald G. Hotchkiss, Advertising Director. Printed by The Bond Press, Inc., Hartford, Connecticut.

Controlled circulation postage paid at Hartford, Connecticut.

All rights reserved. No part of this publication may be reproduced without permission in writing, except for brief quotations in a review. For information, write the publisher.

FRONT COVER: An impression of a community designed to combine commercial-industrial facilities and residences into a harmonious environment eliminating suburban sprawl.



TABLE OF CONTENTS

Anatomy Of An Architect (<i>Robert H. Mutrux, AIA</i>)	6
The Client & The Architect (<i>Robert C. Osborn</i>)	7
Educational Center (<i>Russell, Gibson & vonDohlen, Architects</i>)	9
Activity Center (<i>Damuck and Babbitt, Architects</i>)	12
Religious Center (<i>Jeter & Cook, Architects</i>)	14
Campus Center (<i>J. G. Phelan & Associates, Architects</i>)	16
Consultation Service	19
Stein Named Fellow	19
Connecticut Home Award	23
CBC Awards	26
Bridgeport Architects	28
Address Changes	30
Professional Services	32
AIA Public Service Bureau	34
Index of Advertisers	34

PHOTO CREDITS: Front cover, Star Manufacturing Company; pages 7-8, Robert Osborn; pages 9-11 and 14-15, Charles N. Pratt; pages 16-17, Robert Perron; page 23, Ezra Stoller; page 27, Anthony Reveaux.

Circulation of **Connecticut Architect** includes resident Connecticut architects, public libraries, and selected consulting engineers, contractors, builders, and church, hospital, school and federal, state and local officials. Appearance of products, services, names, and pictures in advertising or editorial matter does not constitute endorsement by the Connecticut Society of Architects.

Seventy-five Cents a Copy

Four Dollars and Fifty Cents a Year

ANATOMY OF AN ARCHITECT

Robert H. Mutrux, AIA

"An architect should be ingenious,
and apt in the acquisition of
knowledge;

He should be a good writer,
a skillful draftsman,
versed in geometry and optics,
expert at figures,
acquainted with history,
informed on the principles of
natural and moral philosophy.
Somewhat of a musician,
not ignorant of the sciences both
of law and physic,
nor of the motions, laws, and
relations to each other of the
heavenly bodies.

An architect, therefore, is suffi-
ciently educated, whose general
knowledge enables him to give his
opinion on any branch when re-
quired to do so.

An architect . . . should be theo-
retical as well as practical,
able not only to prove the prop-
riety of his design,
but equally so to carry it to
execution.

He should be above meanness in
his dealings,
and avoid arrogance;

He should be just, compliant, and
faithful to his employer;

He should not be occupied with
the thoughts of filling his
coffers

nor with the desire of grasping
everything in the shape of
gain;

But by the gravity of his manners,
and a good character,

Should be careful to preserve his
dignity."

So wrote one Marcus Vitruvius
Pollio, in the first Century A.D.,
for all the world and for all future
building committees to read.

A formidable specification, to
say the least.

It is a standard so high that it
may explain why the Creator him-
self is referred to, not as attorney,
nor as a surgeon, nor even as a
minister or priest, but as "Archit-
ect of the Universe."

My own reaction is that if you
should by chance meet someone

who measures up fully, engage him
on the spot. If you do not have a
whole new city or at least a uni-
versity for him to design, retain
him nevertheless, because he could
as well qualify for mayor, chief
ombudsman, governor, or a high-
level ambassador.

Many of our great men were
gifted with capabilities which led
them well beyond their major fields
of endeavor.

Leonardo da Vinci played the
lute, among other things, and
Michelangelo wrote a mean quat-
rain. The Abbot Suger, who de-
signed Mont St. Michel, was pri-
marily a bishop, and our third
president, Thomas Jefferson, is
well-known for his architectural ac-
complishments. Wright and Le
Corbusier were both prolific writ-
ers, and Thomas Hardy was origi-
nally an architect.

Vitruvius, in his second chapter,
provides the classic example of an
individual whose all-round assets,
resting somewhere between "an
architect should be ingenious," and
"he should be careful to preserve
his dignity," went far beyond the
call of duty.

"Dinocrates the architect, rely-
ing on the powers of his skill and
ingenuity, whilst Alexander was in
the midst of his conquests, set out
from Macedonia to the army, de-
sirous of gaining the commenda-
tion of his sovereign. That his in-
troduction to the royal presence
might be facilitated, he obtained
letters from his countrymen and
relations to men of the first rank
and nobility about the king's per-
son; by whom being kindly re-
ceived, he besought them to take
the earliest opportunity of accom-
plishing his wish. They promised
fairly, but were slow in perform-
ing; waiting, as they alleged, for a
proper occasion. Thinking, how-
ever, they deferred this without
just grounds, he took his own
course for the object he had in
view. He was, I should state, a

man of tall stature, pleasing coun-
tenance, and altogether of digni-
fied appearance. *'Trusting to the
gifts with which nature had thus
endowed him, he put off his ordi-
nary clothing, and having anointed
himself with oil, crowned his head
with a wreath of poplar, slung a
lion's skin across his left shoulder,
and carrying a large club in his
right hand,'* he sallied forth to the
royal tribunal, at a period when
the king was dispensing justice.
The novelty of his appearance ex-
cited the attention of the people;
and Alexander soon discovering,
with astonishment, the object of
their curiosity, ordered the crowd
to make way for him, and de-
manded to know who he was."

In short, he got the job: "Alex-
ander . . . ordered Dinocrates to
build a city whose name should
be Alexandria. Dinocrates obtained
this honor through his comely ap-
pearance and dignified deport-
ment."

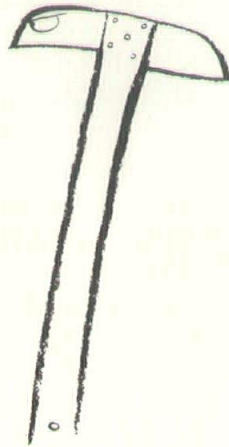
Vitruvius does not go into de-
tail about "the gifts with which
nature had endowed Dinocrates."
But having read a thing or two
about Alexander and having stud-
ied Greek vases as much as the
next voyeur, I have a fairly graphic
image of this historic confronta-
tion.

I can't help wondering how this
approach would go with the typi-
cal laymen's building committee,
or a church group. Would our
public relations counselors ap-
prove? Is there an appropriate
modern equivalent of a lion's skin
(with two vents?), a wreath of
poplar (a Beatles hairdo?) and a
large club?

I should submit unhesitatingly
that if today's architect showed
this much ingenuity, his effort
should be recorded for posterity
whether he gets the job or not.

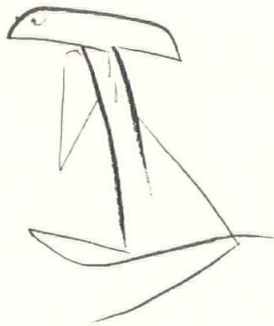
Actually, with hard times coming
up, an 8½% prime interest rate, and
the wall all covered with hand-
writing, it's well worth a try. □

The Client & the Architect

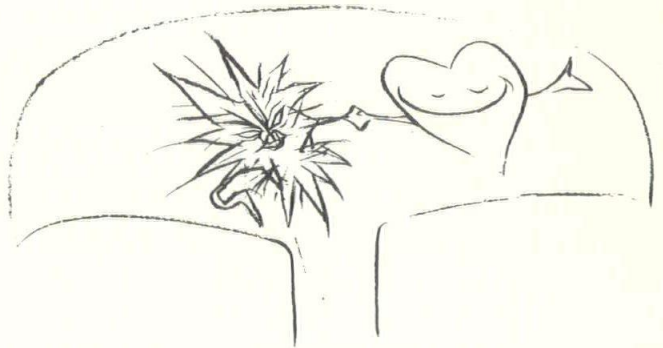


Osborn

First meeting



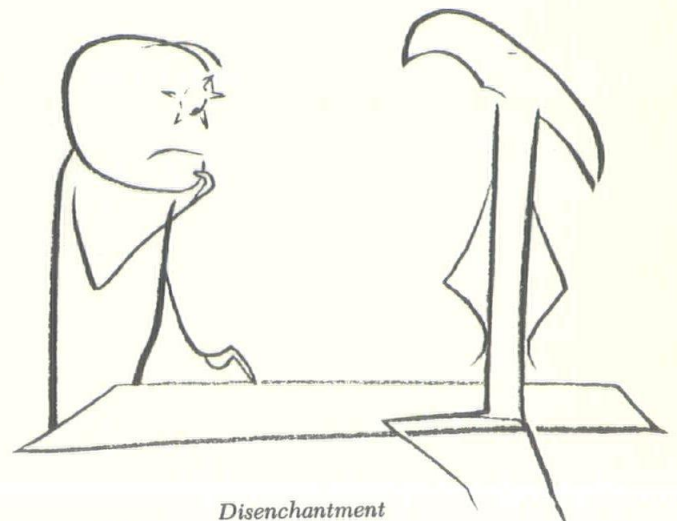
Exposition



Creation of the idea



Honeymoon



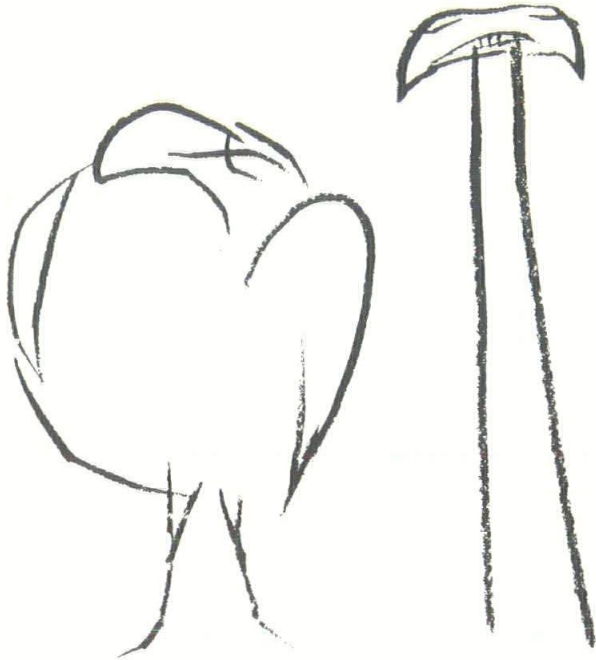
Disenchantment



Deterioration



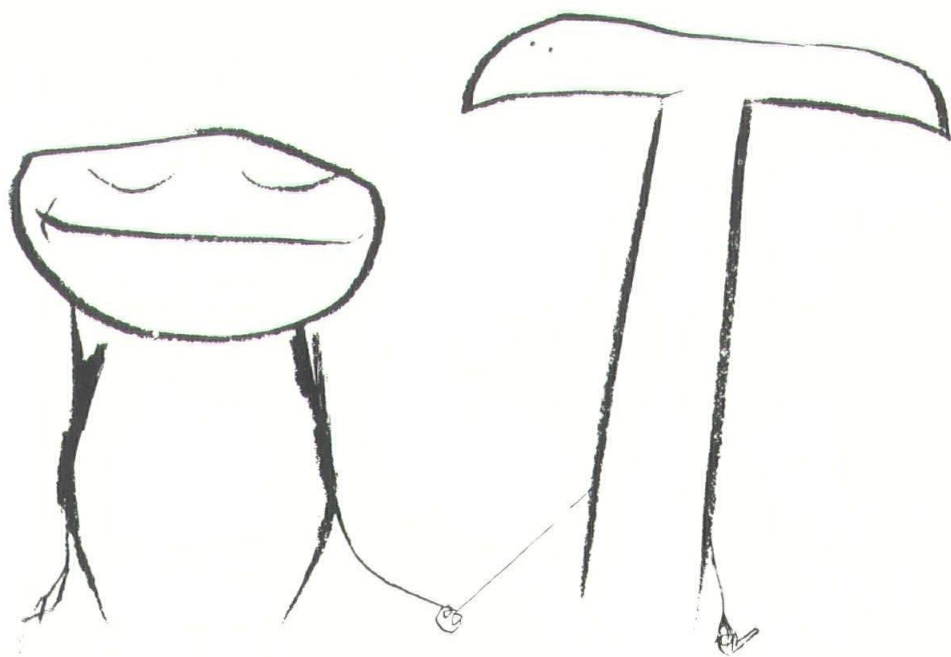
Horrid snarl



Freeze



Thaw



Tenuous reconciliation

Cartoons by Robert Osborn

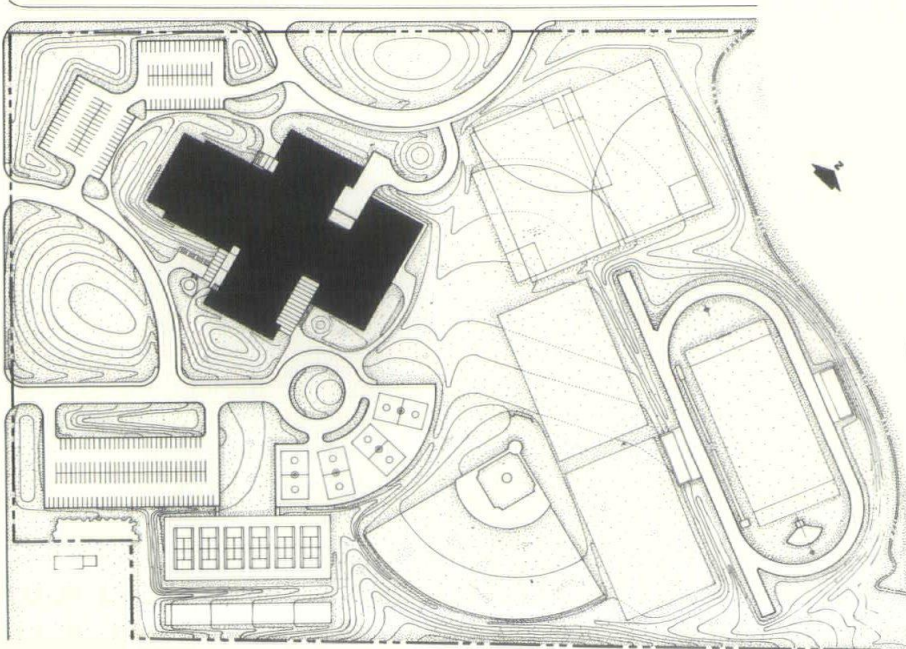


EDUCATIONAL CENTER

Enrico Fermi High School, Enfield, Connecticut

RUSSELL, GIBSON & VON DOHLEN, ARCHITECTS

Fontaine Brothers, General Contractors



The new Enrico Fermi High School in Enfield, Connecticut, is already an award winner, although only one-third complete at this writing. The project was one of those selected for meritorious recognition at the recent Connecticut Building Congress exposition.

The town's educational philosophy sets forth certain basic concepts for the guidance of the building committee and the architects:

1. *Comprehensiveness* in its program and facilities;
2. *Emphasis on the individual student*;
3. *Flexibility* for both present and future teaching programs; and
4. *Community use* for educational and recreational needs.

The comprehensive educational specifications required that a broad choice of experience be available to students, ranging from rigorous college-level advanced courses to basic courses designed to develop

marketable skills for the high school graduate.

Despite this seeming diversity of program, the common denominator of the educational specifications is the commitment to and emphasis

on the individual student. This is to be accomplished by physical subdivision of the school into smaller units. The result is that each of the 1800 students will be closely associated with a relatively small group of peers, teachers, specialists, and administrators.

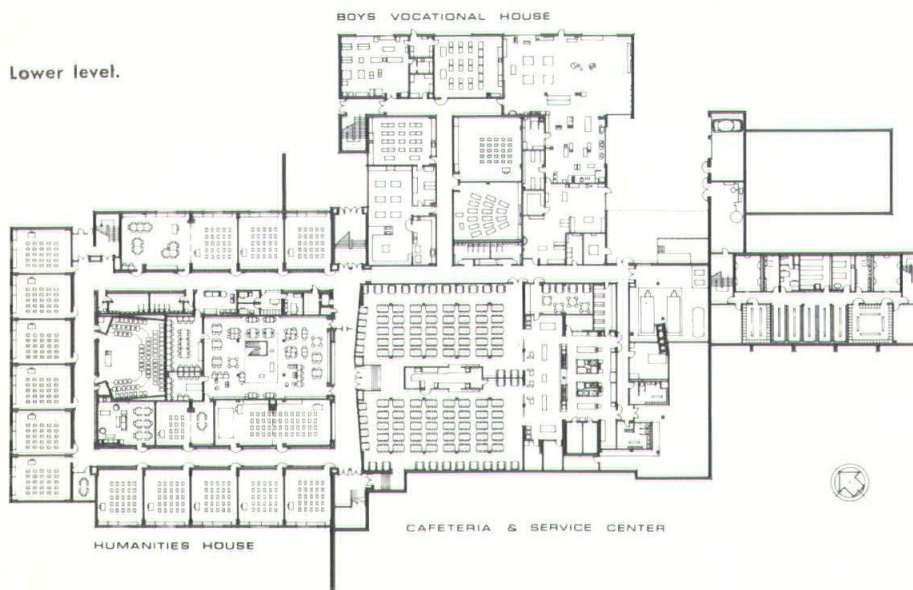
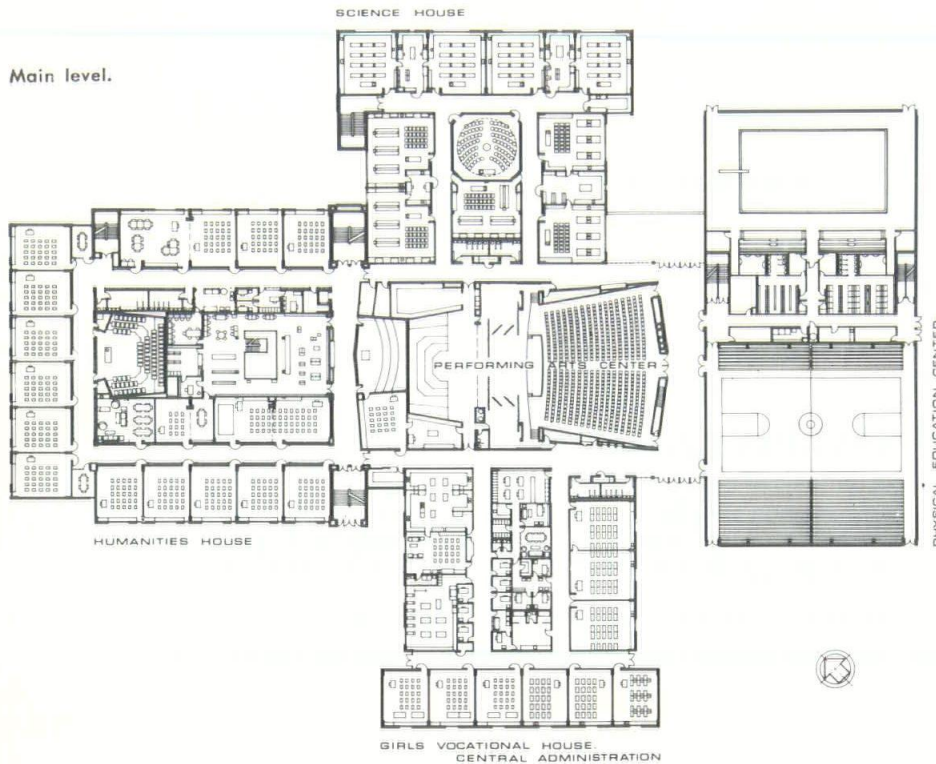
The fast changing educational spectrum itself brings a need for flexibility, convertibility, and multiple use of all instructional spaces. Thus, built-in flexibility can to a degree prevent quick obsolescence resulting from changes in scheduling and variety in teaching methods.

Finally, the program called for planning that would accommodate educational and recreational community use. This need is created by the rapid growth of the town's population and a higher educational level of the families moving in.

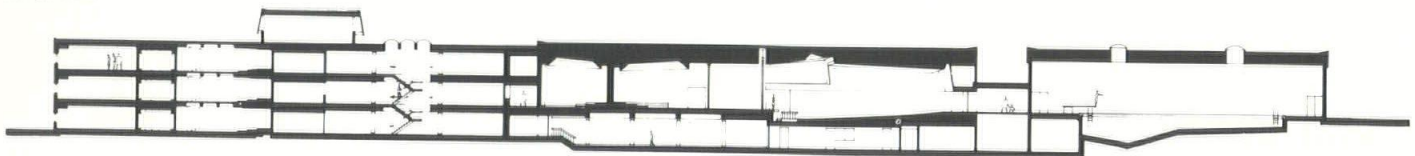
The architects, Russell, Gibson & von Dohlen, translated these educational specifications into space definitions which are compatible with the basic philosophy. The resulting concept is an organization of educational "houses" which uniquely solves the complex requirements of the program. The scheme developed by the architects, in conjunction with the educational administrators and the building committee, groups instructional spaces according to subject matter.

According to the school administration, a student spends about 65 percent of his time in "humanities." The school, therefore, is subdivided into three smaller schools called "houses." Once assigned, a student is associated for the three years with one humanities house. Each house has its own student body; its own faculty, administration, and specialists; its own student government, intramural teams, and other activities.

Each humanities house then



Longitudinal section.



serves its students and only its students: academically in humanities; administratively in scheduling, discipline, and guidance; politically in self-government; and socially in clubs, organizations, and closer ties to fewer people.

The remainder of the school is organized into special houses or centers which draw from the entire student population and serve as a neutral ground for the exchange of ideas, experiences, and associations developed independently in each humanities house.

Three of these special houses — science, boys' vocational arts, and girls' vocational arts — are grouped in relation to the performing arts, dining, and physical education centers in such a way that each unit is self-contained and there is no through traffic in a house.

The three-level resources center is an integral part of the academic area and is directly accessible to the three humanities houses on their separate levels. Its location close to major entrances also positions it well for community use. Student parking and bus areas are adjacent to student entrances, while public parking is related to the principal community use spaces — auditorium, gymnasium, and natatorium.

The sloping site provided an op-

portunity to separate the public, the students, and the building services. All community use functions as well as major academic and administrative facilities are on the main level, and service and service-oriented facilities are located on the lower level.

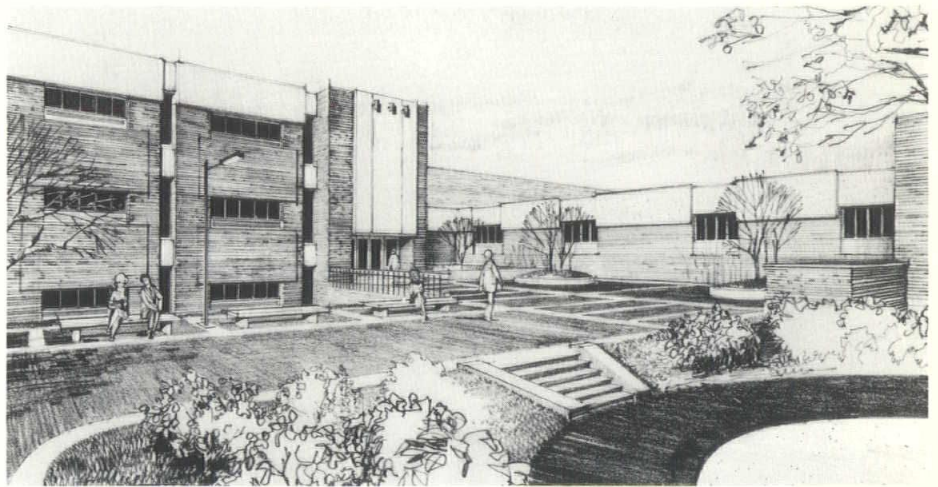
The complex is framed with steel on concrete foundations. Classrooms are heated with unit ventilators, and all core areas are heated and cooled with forced air.

Exterior finishes are brick, concrete, and tinted glass in pre-finished steel frames. Interior finishes include carpet, vinyl asbestos tile, and bluestone flooring. Walls are brick, spray-glazed block, vinyl wall covering, wood battens, and ground face block. Acoustical ceilings are used throughout where noise control is necessary.

Enfield's new Enrico Fermi High School is budgeted at \$4,860,000, for a total area of 213,000 square feet. The contract was awarded, in October, 1968, and completion is planned for September, 1970.

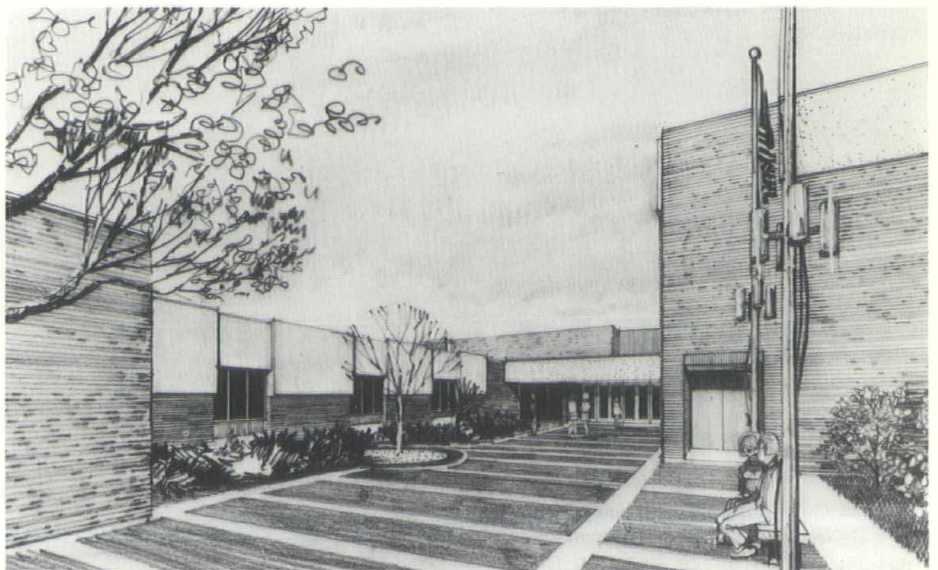
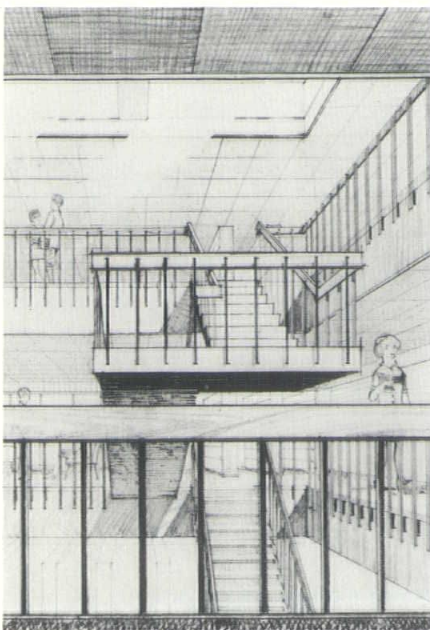
Murray O. Gibson was partner-in-charge on this project, with Charles T. Bellingrath as project architect. Kahn and Bayer, Manchester, served as structural engineering consultant, while Donovan Associates, West Hartford, handled the mechanical engineering. □

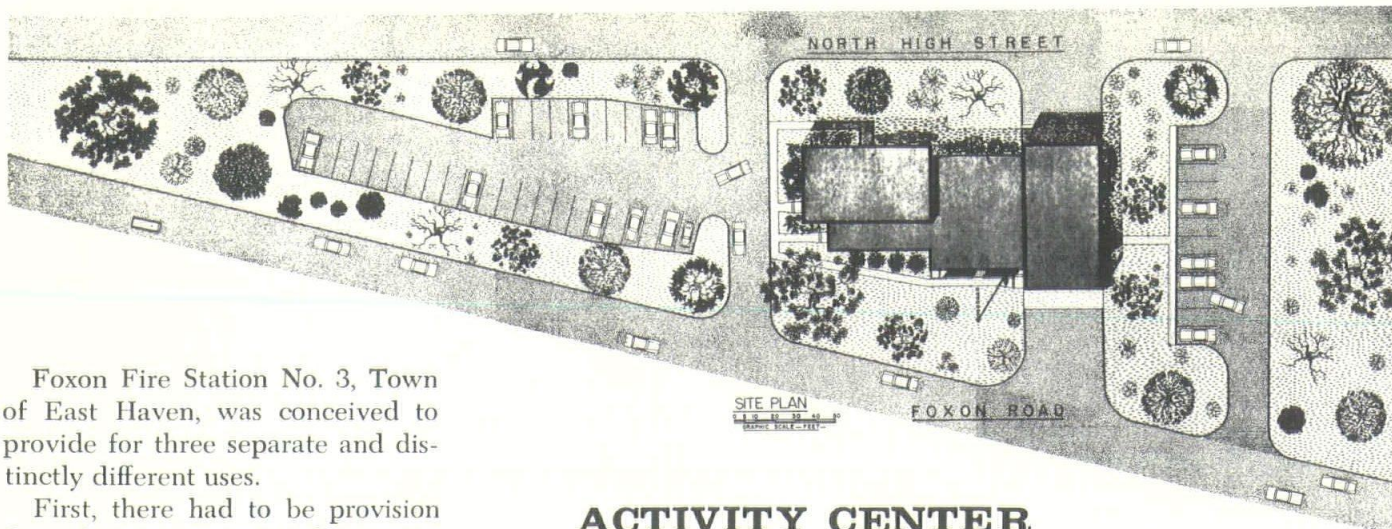
The firm of Russell, Gibson & von Dohlen in West Hartford was formed in 1954. The three partners, James F. Russell, Murray O. Gibson, and Robert J. von Dohlen, received their degrees in architecture at Cornell University, as did John L. Riley, an associate in the firm. Richard W. Quinn and Charles T. Bellingrath, also associates, are graduates of Notre Dame and Princeton, respectively.



Each entrance has courtyard approach.

Resources center is accessible at three levels.





Foxon Fire Station No. 3, Town of East Haven, was conceived to provide for three separate and distinctly different uses.

First, there had to be provision for a four-bay complete fire station with a squad room; recreation room; volunteers' meeting room; kitchen; hose washing, drying, and repair space; and other related spaces. A Civil Defense area with OCD shielding was required, too. Total area allocated for these functions amounted to 7230 square feet.

Second, the plan called for a public hall with independent kitchen facilities with capacity for feeding two hundred persons, and normally related coat checking, toilet, and storage facilities. Area for these functions required another 2652 square feet.

Third, was a police substation with interrogation space and two

ACTIVITY CENTER

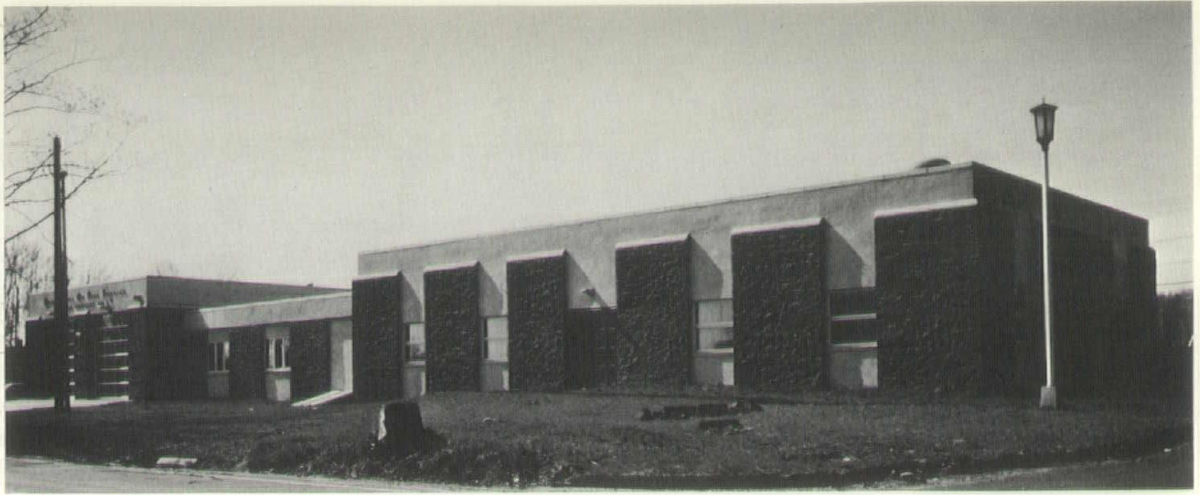
Foxon Fire Station, East Haven, Connecticut

DAMUCK AND BABBITT, ARCHITECTS

L. F. Pace & Sons, Inc., General Contractor

Masonry screen separates building elements.





Colored concrete panels break wall expanse.

cells. This added 1230 square feet. In addition, the plan had to provide for future expansion of the fire station.

The site, plus the existing wood-frame structure housing a fire station and public hall which had to be retained for total use until the new facilities became available, complicated the planning. The site is a narrow triangle of land with an average width of 113 feet, located between two heavily traveled arterial highways serving three different areas of the town. Further, there is a five-foot elevation differential between the two highways.

The different uses were organized into individual elements of the total structure and grouped to

maintain visual separation of these masses articulated by varying roof heights. Damuck and Babbitt defined their solution in terms of relating the separate and total masses, orientation, and colors of the structure to the elementary school on the contiguous western parcel, the church across the road, and the rural, wooded setting. It was also decided to establish the elevation of the apparatus room midway between the elevations of the two roads to provide equal access for fire equipment in either direction.

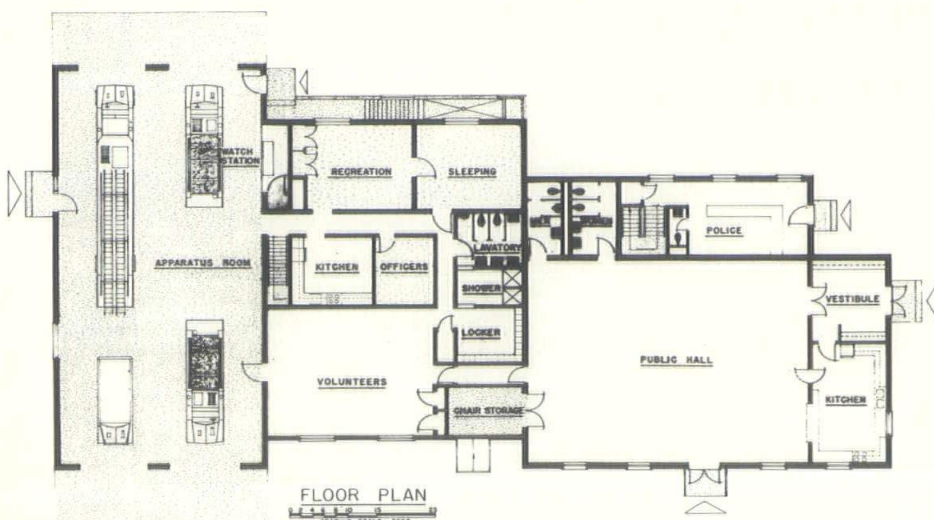
The building has poured concrete foundations, masonry unit bearing walls, finished inside and veneered with brownstone colored, split-faced vibrated concrete ma-

sonry. Suspended slabs over basement areas and the roof system consist of prestressed concrete planks. Since construction was done during the winter months, the prestressed, prefabricated concrete plank allowed a totally dry installation of materials that would not be subject to damage by moisture. Water-shedding roof pitches were achieved by the use of lightweight aggregate bituminous concrete fill. A factor in this, too, was the radioactive shielding capability of concrete.

In areas where space proportion directed high ceilings, the natural textured painted surface of concrete plank was used, and it provides the necessary acoustical dampening and absorption. Where smaller spaces visually required lower ceilings, articulated spline-mounted mineral acoustical tile was used.

Those areas where the masonry unit walls would be subject to heavy personal contact and resulting soil have glazed cement finish. Paint is used elsewhere. Sculptured and scored blocks were used to provide visual interest in texture.

Leisure and heavy occupancy areas are carpeted to provide a sense of cordiality and comfort. Other use areas are tiled in vinyl asbestos. Equipment, storage, maintenance, and similar spaces not subject to heavy soil are finished in hardened concrete. The



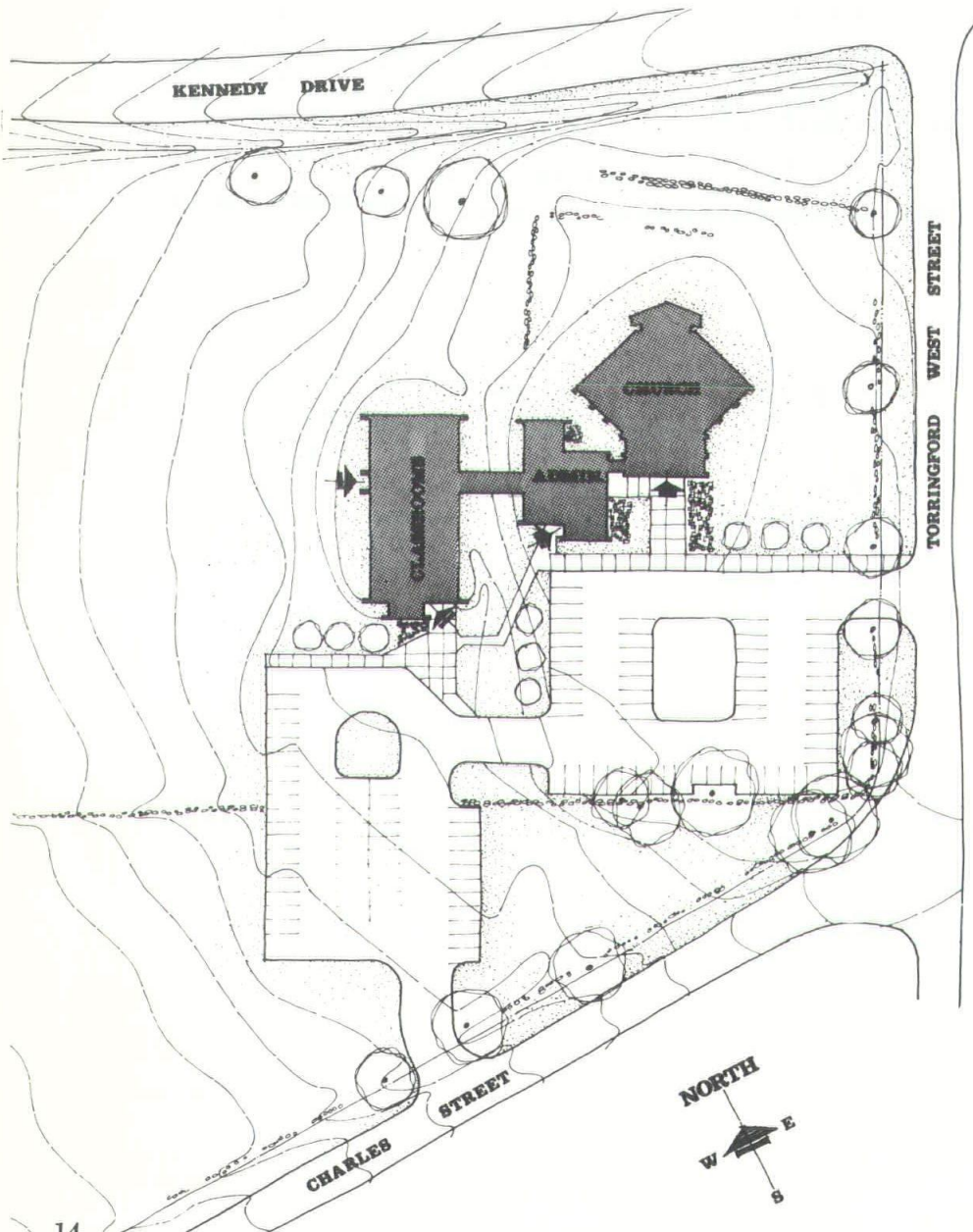
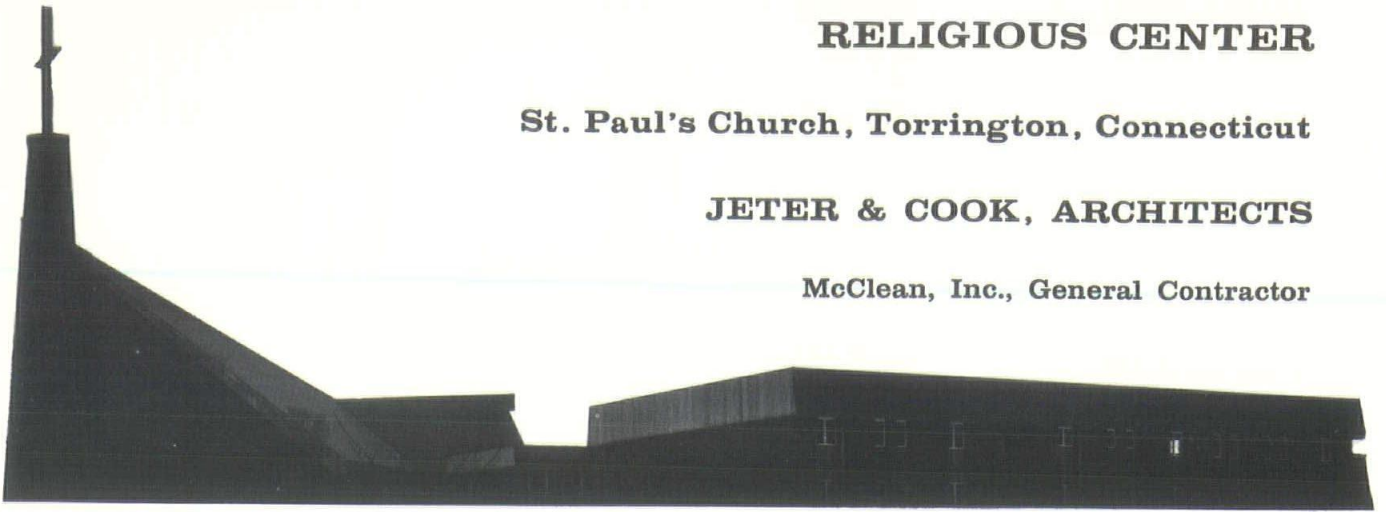
Please turn to page 32

RELIGIOUS CENTER

St. Paul's Church, Torrington, Connecticut

JETER & COOK, ARCHITECTS

McClean, Inc., General Contractor



Worship space for 475 people with intimate relationship to the pulpit and altar was the basic concept in the design of St. Paul's Evangelical Lutheran Church in Torrington. Jeter and Cook, Architects, of Hartford further defined the design problem as providing this space in a manner which expresses the desire for people to worship together, but without resorting to a circular plan.

Administrative, social, and educational spaces are very much a part of the plan and are carefully integrated in the total concept which had to be sited on a sloping fourteen-acre tract high on a hill overlooking the city of Torrington to the west.

It was decided to use a square plan form with the orientation on the diagonal to provide a compact space for the congregation. A narthex and choir loft were added at one corner, and a tower became the element of focus from within the building and from the exterior as well. This tower is located at the other corner.

The roof form accents the major focus of the tower, the minor focus of the entrance, and provides one volume to define the unity of the worship service in the sanctuary.

Other activities of the church, while closely knit in the complex, are separated from the worship area to form two connected buildings that take full advantage of the open sloping site. The result is that the administration function, which is astride the connector between the church and the classrooms, exercises central control. The social hall on the second level over the classrooms has a view of the city below.

The church is built with concrete foundations, slab on grade, steel and laminated beam roof framing, and brick veneer over wood wall framing. The administrative and classroom buildings are wood frame with laminated beams and brick veneer. Exposed brick is used in the interior with appropriate areas finished with gypsum board and painted. Carpeting and acoustical tile are used extensively for sound dampening and simple maintenance, as well as for a sense of warmth. The chancel furnishings are oak and slate, and the entire complex is electrically heated.

Asbestos shingles are used on the roof areas, and exposed ex-



Highlighted lower wall is focus of interior.

terior wood is cedar. The windows are double glazed in plastic coated wood frames. The crowning cross, set in a dramatic representation of a bell tower, is weathering steel.

Working with Jeter and Cook were Onderdonk, Lathrop & Coel of Glastonbury, who did the structural engineering; and Burton & Van Houten of West Hartford, who did the mechanical and electrical engineering. Landscaping was designed by Maine & Tillapaugh of West Hartford. □

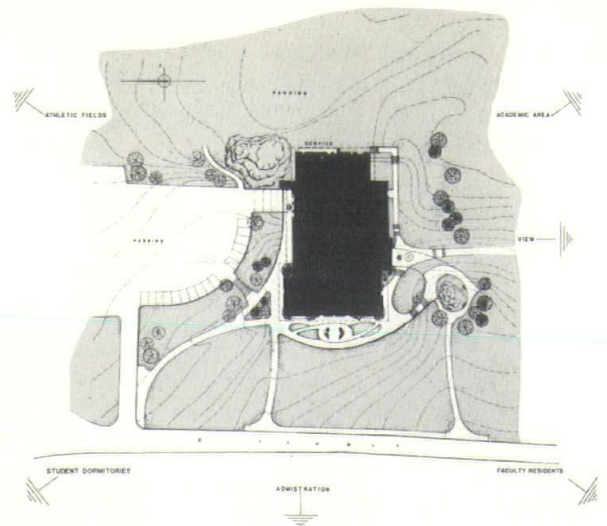
JETER & COOK began as a one-man office before World War II, with Sherwood F. Jeter, Jr. Arthur H. Cook joined him in 1948 and became a partner in 1956. Today the office has 25 people, with two partners and five associate partners. Mr. Jeter, a BFA graduate of Yale, is a member of the National Council of Architectural Registration Boards, Hartford Society of Architects, Governor's Committee on Public Buildings, and AIA. Mr. Cook, a graduate in architecture of M.I.T., is a member of the National Council of Architectural Registration Boards, Hartford Society of Architects, M.I.T. Educational Council, City of Hartford Board of Building Review, and AIA. The associates are Francis D. Newell, Butler W. Andrus, Norman Ruderman, S. Edward Jeter, and David E. Woodward.

Administrative unit bridges church proper and social-educational building.



CAMPUS CENTER

Fairfield University
Fairfield, Connecticut



J. G. PHELAN & ASSOCIATES, ARCHITECTS

E & F Construction Company, General Contractor

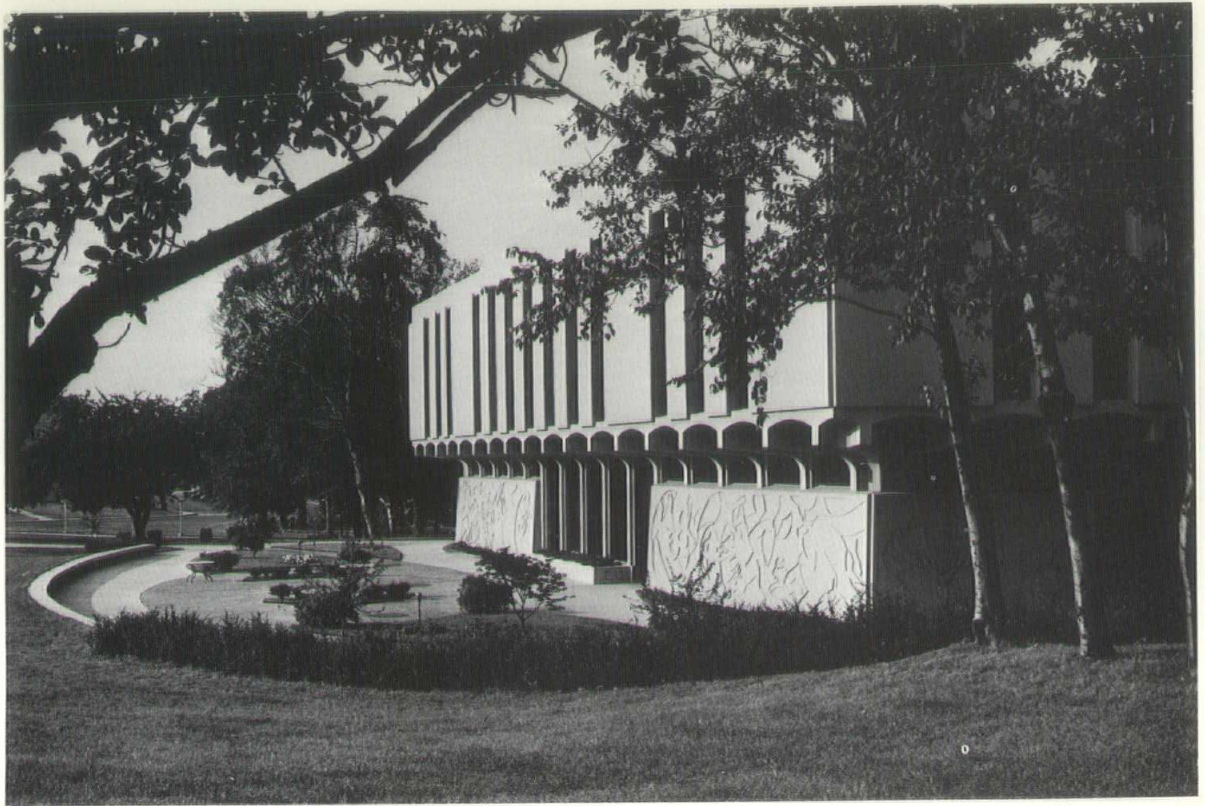
Secluded corner can serve as social center or exhibit gallery.



The Campus Center of Fairfield University was conceived to provide an architectural symbol worthy of the latest phase in the development of one of New England's most promising centers of higher education. This program requirement indicated the desirability of equally striking elevations from all sides because of the structure's central campus location.

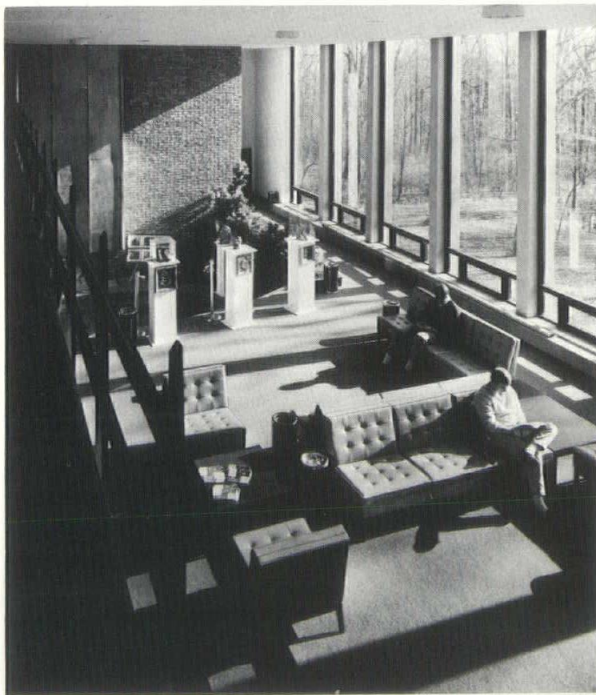
The Campus Center was designed to accommodate the major extra-curricular interests of students and staff. It includes space for formal dining and for snacks, and facilities for art exhibits, music, conferences, campus publications, games, mail distribution, bookstore, and barber shop. In addition, it allows for those activities in which the interests of the university reflect those of the surrounding community.

At any given moment, while members of the faculty approach the building from their residences to the southwest, students may

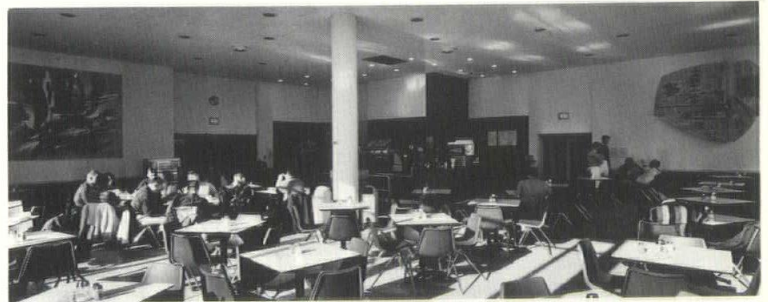


Expansive lounge is bright and airy.

Abstract sculpture of poured-in-place concrete depicts university life.



Colorful snack bar is center for free moments.



Main entrance leads to activity areas at varying levels.



gather from the library, gymnasium, academic center, and their own dormitories. Meanwhile, an art exhibit may be in progress prior to an outdoor reception to be held in the west patio. At the same time, deliveries may be made to the mail room, bookstore, kitchen, and boiler room and still allow for casual visitors' parking.

In approaching the design solution, a difference of elevation of ninety feet and a central location on the campus as an element of the master plan pointed clearly to having entrances to activities and services at many different levels. The multi-level concept expresses an esthetic integration of structure to site, a cohesion of architectural masses that distinguishes it from other academic facilities on the campus, and a plan that allows a maximum of free and interrelated movement from one activity to another.

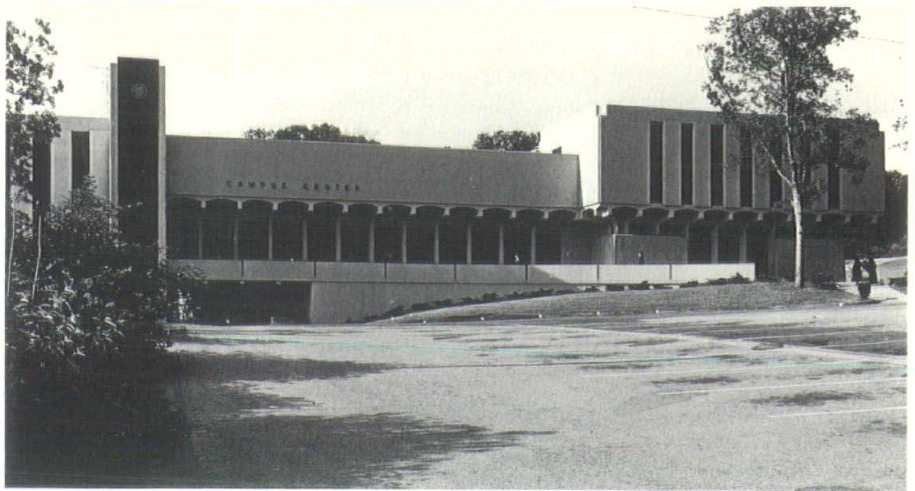
With mechanical equipment located in the sub-basement, the basement area is used to house such service facilities as bookstore, mail room, and barber shop. In addition, there is a student meeting room and a recreation-game room.

The large recreation room, faced on two sides by outdoor patios, is on the ground floor. A stage is integrated into this multipurpose area and is flanked by music rooms. The lobby, snack bar, and lounge are other public areas on this level.

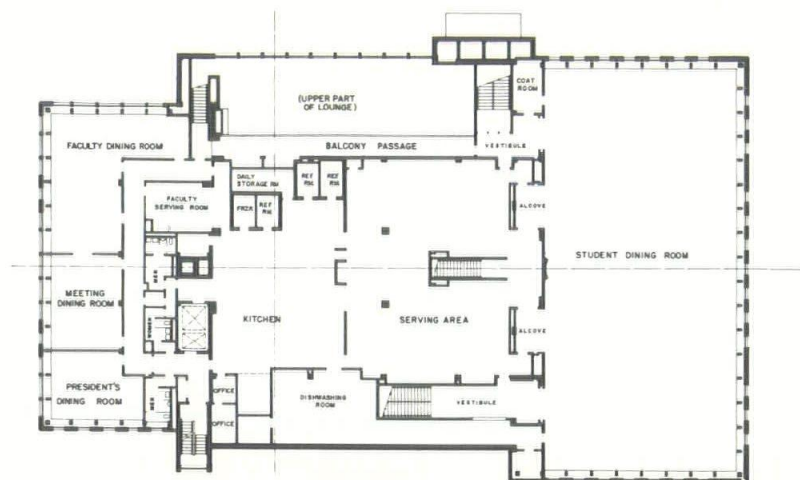
The student dining room is the dominant feature of the main floor plan, which also includes separate dining rooms for the faculty and the president's office, and a combined smaller meeting and dining room.

Exposed reinforced concrete is used throughout the structure, except in the roof which is framed with long-span steel joists and corrugated concrete roof deck. The concrete was poured in place, pre-cast on the site, and some post tensioned. A major feature of the exterior is the poured-in-place abstract concrete sculpture depicting various phases of university life.

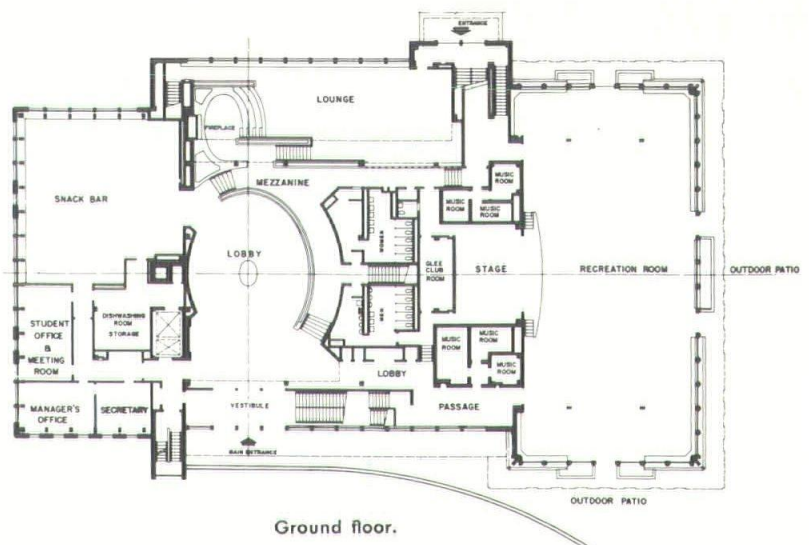
The university, as its master plan develops, becomes an increasingly significant part of the community in which it is located. Not only does it perform its special educational functions efficiently and attractively, but it provides an environment conducive to stronger interrelationships between the university's and the community's people. □



Approaches to ground floor from parking area.



Main floor.



Ground floor.

ROBERT HENRI MUTRUX, AIA, a senior associate of Fletcher-Thompson, Inc., was project architect for the Campus Center. A native of St. Louis, Missouri, Mr. Mutrux received his architectural education at the University of Lausanne, Switzerland, Washington University in St. Louis, the Fontainebleau School and the Ecole de Fresque de la ville de Paris. He has worked in the offices of Trueblood E. Graf, Julius Gregory, Voorhees Walker Foley &

Smith, Norman Bel Geddes, Walter Dorwin Teague, The Corning Glass Works, and William Provoost. He is a director of Fletcher-Thompson, Inc. and has specialized in the design of university buildings, schools, homes for the elderly, and seminaries throughout New England. He is a director of the Connecticut Society of Architects, member of the editorial board of *Connecticut Architect*, and editor of *Environment* magazine.

Consultation Service Available

State Civil Defense Director William L. Schatzman has announced that the University of Connecticut now has a new, free design consultation service, provided under a federal grant and called the Direct Mail Shelter Development System.

The system is described as "an automated procedure to encourage architects and owners of projected buildings to plan for and develop more fallout shelter protection in their projects while these are still in the design stage."

Director of the Professional Advisory Services Center which operates the system at U-Conn is Frank D. DeFalco, a professor of civil engineering at Worcester Polytechnic Institute. Professor Jack Stevens, head of the Civil Engineering Department at U-Conn, is contract administrator for the University.

DMSDS is a four-step program, according to Captain Schatzman. Using commercially-available reports of new construction projects, the Department of Defense, Office of Civil Defense, sends a letter to the building owner advising him of the need for expanding the fallout shelter system in the nation and explaining how the Shelter System helps architects to design such protection into their projects at minimal cost.

At the same time, a letter and questionnaire are sent to the architect, urging him to consider incorporating fallout protection in the new building and advising him of the existence of the Advisory Service at the University of Connecticut which will provide free consultation on fallout shelter design techniques. The questionnaire indicates the architect's willingness to include radiation shielding and his interest in having the University service contact him to this purpose; it also describes the project status at the time.

The second step is an effort by State or local Civil Defense to make personal contact with the building owner, where possible, to

inform him of the necessity for additional public fallout shelter space in the community. In the third step, the owner consults with his architect, and the University assigns a Shelter Analysis Advisor, a professional trained in the techniques of fallout shelter analysis and design.

In the fourth step, the University Professional Advisory Services Center files reports with the Office of Civil Defense from the shelter analyst on the "slanting" or shielding techniques he has advised the architect to apply to the owner's project. Subsequent periodic project status reports are also filed with the Office of Civil Defense so that the state CD office can be kept abreast of newly-constructed buildings in Connecticut communities which will include additional fallout protection for the local population.

Commenting on the usefulness of the DMSDS program, Captain Schatzman said, "Since the program began as a pilot project in seven states in 1967, much good shelter space has been provided. Connecticut is one of 43 states in which DMSDS is now being used.

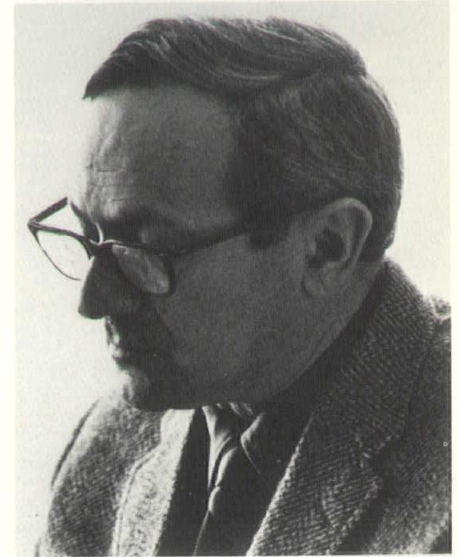
"With the continual expansion and urban renewal efforts going on in our cities and towns, and with the addition of this valuable service to owners of new buildings, the time should come when we can truthfully say that there is enough fallout protection for all of Connecticut's three million citizens. I might also point out that DMSDS is a natural complement to the community shelter planning effort now going on in a number of our planning regions and towns . . . our number one priority for the Fiscal Year 1970 which began July 1."

The DMSDS Contract with the University of Connecticut began on June 1, 1969, and will extend for one year.

Interested architects and engineers may get in touch with Professor DeFalco, Civil Engineering Department, University of Connecticut, Storrs, Connecticut 06268. □

Stein Named Fellow

Joseph Stein, Waterbury architect, has been elected to the College of Fellows of the American Institute of Architects and was formally invested with this honor at the Institute's recent convention in Chicago. Other than its single annual gold medal, Fellowship is the highest honor AIA can bestow on its members.



Mr. Stein, a native of Waterbury, received his bachelor's degree from Dartmouth College and bachelor's in architecture from the Harvard School of Design. He is vice president of the Connecticut Society of Architects, AIA, and serves on the AIA national insurance committee.

A principal in the firm of Joseph Stein and Associates, his work includes a broad spectrum of building types. His major projects are the Silas Bronson Library, Northwood Apartments, The Waterbury Club, The American Savings and Loan Association, The Gilmartin and Regan Schools, Science Classroom Building for Saint Margaret's School, and the Faculty Club at the University of Connecticut at Storrs.

His awards include the AIA and ALA National Award and Connecticut Building Congress Merit Award in 1964 for the Silas Bronson Library in Waterbury; the 1965 Connecticut Building Congress Merit Award for The Waterbury Club; and *Institutions* award for interior design in 1965. □

CSA Outing

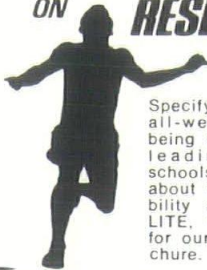
The 1969 president's outing of the Connecticut Society of Architects, AIA, will be a twilight cruise on the Connecticut River on Tuesday, August 12. Sailing of the *Dolly Madison* river boat is scheduled for six p.m. from Middletown. □

Sharpe Honored



Richard Sharpe, AIA, Norwich architect, at right, chats with group of Mexican architects.

MEET THE RECORD-BREAKER ON **RESLITE**



Specify the same resilient, all-weather track now being used at almost 300 leading colleges & schools. To learn more about the economy, durability and uses of RESLITE, write to Dept. RP2 for our FREE 4-page brochure.

CALIFORNIA PRODUCTS CORPORATION

169 Waverly St./Cambridge, Mass. 02139
TEL: (617) 547-5300

Richard Sharpe, AIA, Norwich architect and past president of The Connecticut Society of Architects—AIA, has been made an honorary member of the Society of Mexican Architects.

Mr. Sharpe, who is chairman of the committee of international re-

lations for the American Institute of Architects and United States representative to the board of directors of the Pan American Federation of Architects, received a diploma and medal at the Fifth Mexican Congress of Architects in Mexico City, May 20-24. Presentation was made by Joaquin Alvarez Ordonez, president of the Mexican Society.

During the conference, which was devoted to urban problems, honorary memberships in the Society of Mexican Architects were presented to representatives from Brazil, Argentina, Peru, Ecuador, Colombia, Venezuela, Panama, Guatemala, and the United States. George E. Kassabaum, FAIA, then president of AIA, was also made an honorary member of the Mexican society. □

Communications in Connecticut

TEL-RAD REPRESENTS THESE MANUFACTURERS:

WEBSTER-ELECTRIC ALTEC LANSING ITT KELLOGG SOUNDSCRIBER

PROVIDING SYSTEMS FOR:

Hospital Nurse Call Signal •	24 Hour Police and Fire
Business, Industrial and	Automatic Dial Telephone •
School Programming	Church, Auditorium and Stadium
and Communication •	Sound Reinforcement •
	Telephone Monitor
	Recorders •

Write or call Tel-Rad today
for full information.

TEL-RAD INC.

Est. 1946

Sales, installation and service throughout Connecticut.



TEL-RAD, INCORPORATED, 592 New Park Avenue, Hartford, Conn., 06110, Phone 236-2388

The George C. Field Company

General Contractors *Founded 1897*

Madison, Connecticut

Specializing in fine residential
construction for architects

245-2020



Antinozzi Associates, Architect
 Hill & Harrigan, Engineer
 Harlaco, Inc., General Contractor

Thank You Gentlemen, for specifying **Carrier**®. You have helped us make a very exciting move.

A move, just this month, into our own 24,000 square foot office and warehouse building on Connair Road in Orange. We've increased our office space, we've doubled our warehouse facilities, we've computerized our inventory, ordering and billing procedures and we've made our literature library and literature distribution process more efficient. And, we're especially proud of our new 100 capacity meeting room where we can efficiently continue to conduct sales and training seminars for our dealer organization and other members of the building trades.

From our new headquarters we look forward to the challenges of the seventies and to your continued confidence in the products we sell and the services we perform.



The Connecticut Air Conditioning Company

Five Connair Road, Orange, Conn. 06477 / Phone 795-6011 (One half mile South of Conn. Tpke. Exits 41)
 Hartford Area Office: 510 Cottage Grove Road, Bloomfield 06002 / Phone 243-0361

Wholesale Distributors in Connecticut & Western Massachusetts for: • Carrier air conditioning products • Kold-Wave water-cooled, portable air conditioners • Tuttle electric heaters • Honeywell controls • Marley cooling towers • Central-Temp thru-the-wall air conditioners

Land Development

"Brand new cities should be completely preplanned and developed in sparsely settled areas of the country to divert a large share of the exploding population away from the crowded, slum-ridden older cities, giving them time to heal themselves and rebuild for the 21st century," according to Joseph Tinman, chairman of the Committee for National Land Development Policy, a non-profit association of developers, builders, educators, and sociologists. □

Visit our

ARCHITECTS' SAMPLE ROOM

Just off Routes 91 and 5 on
Old Depot Hill Road, Ware-
house Point.

"BRICK CENTER"

Clay Products
INCORPORATED

HTFD. 527-8851

- CORBIN
Finish Hardware
- HUFOR
Folding Partitions
- STEELCRAFT
Hollow Metal Doors and
Frames

BIDWELL
HARDWARE CO.

HARTFORD, CONN.

527-6443

Use of Bonds

The State of Connecticut under Connecticut Public Act Number 437, passed by the legislature in 1965, will permit contractors doing state work to substitute municipal bonds for retained monies "of any political subdivision in the state," or bonds of the state or United States Treasury bonds, notes, or bills for retained monies. By performing this substitution, the contractor can earn approximately five percent tax free (10% taxable equivalent), on funds which currently provide no return to the firm. This potential return could contribute significantly to earnings, the Gibraltar Securities Company of Newark reports. It should be emphasized that this applies only to State of Connecticut work and the public act is not applicable to work for individual municipalities.

Roscoe D. Smith of W. J. Megin, Inc., Naugatuck, chairman of Industry Practices Committee of the Connecticut Building Congress which includes many architects, feels that this use of municipal, state and federal bonds for retained monies on state work can be significant to engineers and architects practicing in Connecticut. He also points out that it would seem possible that this type of retained funds could be made applicable to private work. However, it is advisable that this be thoroughly checked out from all aspects by individuals who might want to pursue this method, according to Mr. Smith. □

Trends

The Washington watch to determine Nixon Administration stands and policies on housing, Model Cities, New Towns, real estate taxes, and urban transit continues. Bureaucrats say they don't know yet the future of Kennedy-Johnson policies or what Nixon substitutes will be. HUD Secretary George Romney said the Johnson's Administration goal of six million units for low and middle-income families in the next 10 years is "unrealistic." Later the former auto man altered his tune somewhat and said he wants housing pushed by attracting the giants of American industry. Nixon budget includes \$675 million for Model Cities and no money for new cities to enter program plus \$1 billion for urban renewal, \$100 million for rent supplements.

Meanwhile, construction costs continue to climb faster than general price increases.

Associated General Contractors president Carl M. Halvorsen warns of "runaway inflation." Average wage increase of 13.4 per cent was noted in 50 settlements so far this year, he said.

AGC backs use of unskilled workers for some construction jobs, arbitration of wage disputes in government jobs.

AIA Board of Directors at April meeting endorsed bill by Florida Sen. Edward J. Gurney (R. Fla.) which would prohibit product boycotts by unions. Introduction of new materials is vital to stabilizing house prices, says AIA.

HUD Undersecretary Floyd Hyde, former Fresno mayor, tells Georgia Tech students and architect Garland Reynolds, AIA — in Washington area for a look at Reston and Columbia — he supports Model Cities.

But Nixon economists warn cost could run to \$27 billion just for first 150 cities that got planning money. Only nine cities so far have received money to start building. □

THE ASSOCIATED SHEET METAL, ROOFING AND INSULATING CONTRACTORS NORTHERN DISTRICT OF CONNECTICUT

19 LAUREL AVENUE

WINDBOR, CONNECTICUT

TELEPHONE 688-9651

Acme Roofing & Sheet Metal Co.
52 John St., East Hartford

Aetna-Samson Corporation
100 Constitution Plaza, Hartford

Allied Air Conditioning Co.
410 S. Main St., Waterbury

American Sheet Metal Works
280 Brookside Ave., Waterbury

Automatic Refrigerating Co.
618 Capital Ave., Hartford

C. G. Bostwick Co.
41 Francis Ave., Hartford

Bristol Sheet Metal Works
7 Carlton St., Wallingford

Capital Ventilating Co.
195 Maxim Road, Hartford

G. R. Cummings Co.
198-210 State St., Meriden

Dansky's Roofing & Sheet Metal Works
22 Raymond Road, West Hartford

Eagle Sheet Metal Works
110 Reed Ave., West Hartford

H. R. Hillery Co.
Box 186, Groton

Industrial Sheet Metal Works
140 Boston Post Road, Orange

Liner-Atwill Co.
729 N. Mountain Rd., Newington

Ernest Peterson, Inc.
1830 Broad St., Hartford

Portland Roofing Co.
Lake St., Portland

Phillips Air Devices, Inc.
17 Flower St., Hartford

Potter & Carrier, Inc.
84 Wellington St., Hartford

Reliable Roofing & Sheet Metal Co.
2965 Berlin Turnpike, Newington

Shelton Roofing Co.
50 E. Main St., Ansonia

Sound Reduction Corp.
Bidwell Rd., Box 158, S. Windsor

Southern N.E. Roofing Co.
Box 1772, Hartford

Sterling Blower Corp.
Box 415, Hartford



Connecticut Home Wins National Award

A home for a family of four on a wooded site near Darien, designed by Richard Meier, AIA, of New York, received a 1969 Honor Award at the first joint American Institute of Architects and Royal Architectural Institute of Canada convention at Chicago in June. The award is the nation's highest professional recognition for architectural excellence, one of 16 given this year from more than 450 designs submitted.

The house is owned by Mr. and Mrs. Fred Smith and is located on the shore of Long Island Sound with a view of the water in three directions. In selecting this residence for an award, the AIA jury stated: "This apparently simple piece of domestic geometry subtly plays off the rocks and uses its naturalistic setting as a foil for hard, unwavering line. The house itself is varied within an overall, unifying pattern. Its clean consistency extends from outside to inside and the uncurtained glass frames views from within and without." □

SPECIFY


BLACKTOP SEALER
 FOR PARKING AREAS AND DRIVEWAYS

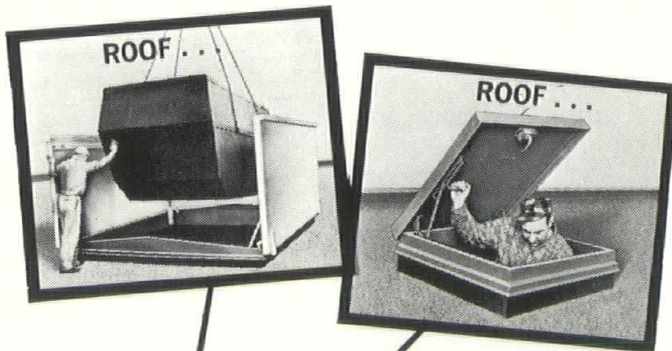
●
latexite

COLOR-FAST ACRYLIC RESIN COLORED SEALERS
 FOR PLAY AREAS

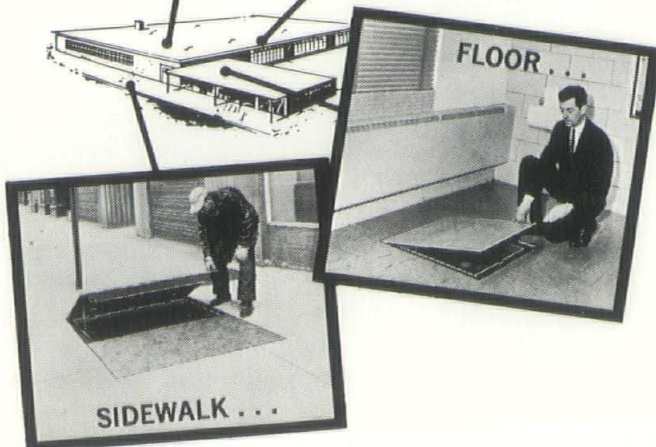
●
 For low-budget jobs where pavement is not subject to oil and fuel drippings, specify low-cost
COLOR-SEAL

FREE Parking Lot Templates save you time in preparing plans. Call or write for yours today.

 **COPELAND**
COMPANY, INC.
 WILLOW STREET Telephone
 CHESHIRE, CONNECTICUT 272-3221



all-around access:



... Wherever workmen must go, there is a Bilco door to provide easy access. Choose from a wide range of standard units ... or select special doors shaped and sized to your precise needs.

Ease of installation, permanent weather-sealing, and rugged construction are all part of the Bilco quality tradition. Exclusive design features include built-in spring operators for effortless lifting of even heavy plate doors. Bilco all-metal doors give you freedom of design, too — they fit and blend with any structure.

Specify Bilco doors ... design with Bilco doors in mind ... with confidence in Bilco lifetime quality.

See our catalog in Sweets
 Architectural & Engineering Files or send for it.

Bilco®

HORIZONTAL SPRING-ASSISTED DOORS

The Bilco Co., Dept. CA, New Haven Conn. 06505.
 Please send me your new catalog on special service doors.

NAME _____
 FIRM _____
 STREET _____
 CITY _____ STATE _____ ZIP _____

Man's Living Space

Protection of the ecology and a decent habitat for man continues to grow as bipartisan, multi-interest issue.

Conservative Daughters of The American Revolution strongly endorsed laws to obtain clean air and water, warned Americans are "endangering the balance of nature" in heedless urban growth. DAR resolution came at national convention in Washington, D.C., in April.

New Interior Secretary Walter J. Hickel when asked about Democrats on his Advisory Board said, "I don't care if they're asking for just blue sky; I'm ready to go after the money for them."

Nathaniel A. Owings, FAIA, and on the Hickel Advisory Board, said, "Politics don't matter when you're talking about environment, what we'll see and breathe for years to come." AIA Committee on Urban Design suggests new national policy on urbanization to halt haphazard growth. □

Dwelling Code

National public hearings on a proposed one and two family dwelling code, jointly sponsored by the American Insurance Association, Building Officials Conference of America, and International Conference of Building Officials, will be held in Kansas City, Missouri starting July 28.

Draft copies of the proposed code, which will include plumbing, electrical and mechanical sections in addition to building regulations, are available at \$3 each from Publications Section, ICBO, 50 South Los Robles, Pasadena, California 91101. □

State Development

Lewis R. Doering, recently named chief of the business and industrial development division, Connecticut Development Commission, will be responsible for state industrial development, technical assistance to Connecticut business and industry, international trade, marine commerce, and vacation travel. □

Sculpture Program

A sculpture program called Mill 21 offers a service to architects, institutions, communities and individuals seeking solutions to sculptural problems. It will search internationally for the right sculptor for each situation and implement his concept with technical equipment and experience for mutually satisfactory results.

Sponsored by the Vermont Marble Company, the program will serve sculptors who have commissions by providing an industrial facility to explore new ideas and dimensions in stone. Skilled workers, special tools, heavy equipment and technical information will be provided.

Paul Achenbach, coordinator and participant in the recent Vermont International Sculptors Symposium, is coordinator of the Mill 21 program which he visualizes as an idea rather than a place. "Recognizing that each sculpture and each sculptural location is an unique challenge with its own economic, technical and conceptual solution, the structure of this program will be flexible and open. It will seek ideas which will lead to new methods, new uses and new forms . . . to accent and give meaning to the spaces in which we live," he said. □

ICS Architecture Catalog

A forty-page catalog describing twenty-eight architecture and building trades courses is available from International Correspondence Schools, Scranton, Pennsylvania 18515. □

The SMS Partnership/Architects
777 Summer St., Stamford, Conn.

We Have Positions of Responsibility
Open for Qualified Architects

Please Call: 325-4141

Reflecto-Shield®
The ORIGINAL Window Film
bounces back solar heat
& glare

• Reduces cooling and heating costs . . . eliminates fading • Transparent or Translucent • Can be laminated to Thermopane and heat-absorbing glass without danger of glass breakage • LouverDrape Vertical Blinds & FolDoor & PanelFold Doors, too.

Call 777-3648
for estimates

The S. BARRY JENNINGS Co.

136 Chapel Street, New Haven / Established 1923 / Phone 777-3648

INSIST ON THE GENUINE

THE

OVERHEAD DOOR
1921

Since

the original

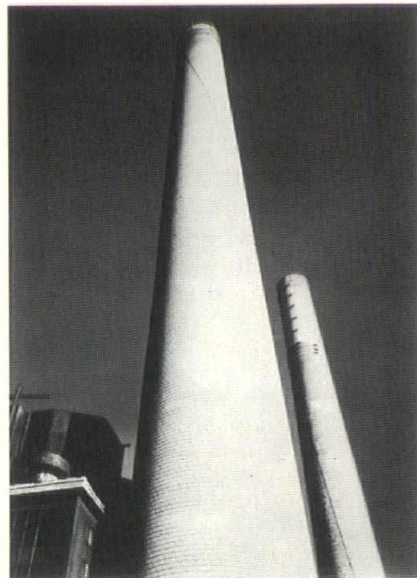
1921

ELECTRIC OPERATORS
AND RADIO CONTROLS

OVERHEAD DOOR COMPANY, INC.
391 BOSTON POST ROAD ORANGE, CONN.

48 years of DOORability

What's Gas Energy doing to make Connecticut industry nice to be near?



This industrial chimney is in full-time operation. Where's the smoke? There isn't any because it's using clean-burning Gas Energy.

Gas Energy is helping to get rid of plant waste before it becomes a community air pollution problem. By using economical Gas for waste incineration and heat processing, more and more plants are contributing to clean air in their communities.

But Gas incineration is more than good public relations, it's good business. Because Gas cuts operating costs for processing and waste disposal. And high temperature incineration is effective because Gas burns clean. Another big plus with gas is that it burns without odor.

Modern Gas incineration can dispose of liquid, gaseous, and solid wastes. And heat from incineration can be recovered for industrial processing. Or for plant climate control.

The problem of air pollution is receiving public and legislative attention. So industry must solve its diverse and complex problems of gaseous, liquid, and solid waste disposal. And research in the Gas Industry is playing an important role in solving these problems.

But is this really so surprising? After all Gas is almost pure energy.

Franchised Dealers



Residential - Industrial

**GLEN TERRACE
NURSERIES, INC.**

Hamden, Conn. 06517



Tel. 288-3511



**OUR QUALITY CONTROL
ENGINEERS ARE EXPERTS
IN PRECISION MIXING**

- Ready Mix Concrete
- In-Place Concrete
- and Equipment for Pumping, Too.

**BITUMINOUS CONCRETE
TRAP ROCK QUARRY
SAND & PROCESSED GRAVEL**



RONCARI INDUSTRIES, INC.

1776 SO. MAIN ST., EAST GRANBY
TEL. HARTFORD 527-1825

Design Awards Program

Distinguished community and junior college facilities which respond to the needs of the educational program and goals of the college are the subject of a new design awards program.

Sponsored by the American Association of Junior Colleges' Office of Facilities Development, The American Institute of Architects, the U.S. Office of Education's Office of Construction Service, and the Educational Facilities Laboratories, Inc., the program will cover four categories: 1) comprehensive campus master plan; 2) new facilities; 3) facilities catalytic of community improvement, and 4) converted or remodeled facilities.

All entries must be submitted by registered architects and will be limited to projects of two-year institutions of higher education. Projects submitted must have been occupied by September 30, 1969, but not prior to September 30, 1959.

Awards will be given in two categories: Honor Award and Award of Merit. Certificates will be presented to the winning architect and the institution's president at the A.A.J.C. convention in Honolulu, March 1-6, 1970.

Entry applications are due September 2, 1969, submissions of projects are due November 3, and the jury will meet Nov. 10-11. The registration fee is \$20 per project.

Further details and regulations are available from Mrs. Marie Murray, Manager, AIA Awards Programs, The American Institute of Architects, 1735 New York Ave., N.W., Washington, D.C. 20006. □

CBC Awards

Awards for excellence in architectural design were made to five Connecticut architectural firms by the Connecticut Building Congress at its sixth construction industry symposium at the Hotel America, Hartford, this spring.

The citations were awarded to Russell, Gibson & von Dohlen, West Hartford, for the Enrico Fermi High School (see page); Stecker and Colavecchio, Hartford, for the Naubuck Elementary School; Hirsch, Kaestle, Boos, New Britain, for the police headquarters and circuit court building (*Connecticut Architect, March-April 1969*); and Environmental Design Group and Gilbert Switzer & Associates, both of New Haven, for their joint design of the Bache House at Gunnery School.

Judges for the competition were Columbia University's professor of architectural design, Alexander Kouzmanoff, and professor of civil engineering, Granville Sewell. Walter E. Damuck of Damuck and Babbit, Architects, New Haven, was chairman of professional display for the exposition. □

AIA Headquarters Designer

The Architects' Collaborative, Cambridge, Massachusetts, has been selected to design the new national headquarters of the American Institute of Architects in Washington, D.C.

"The firm was chosen on the basis of the outstanding buildings they have designed, their sensitivity to the difficult architectural problems of designing a new building that closely relates to the historic Octagon House, the services they have performed for other clients, and their capabilities for handling this project," according to George E. Kassabaum, FAIA, past president of AIA.

Willis N. Mills, FAIA, of The SMS Partnership, Stamford, was a member of the selection committee which chose the architects for the new AIA headquarters building. The committee was headed by Max Urbahn, FAIA, New York. □

**ONE OF NEW
ENGLAND'S LARGEST
INDEPENDENT INSURANCE
AGENCIES**

Direct agency connections with America's top blue chip insurance companies. Call us for a complete free insurance evaluation. Insurance programs and plans provided without charge.

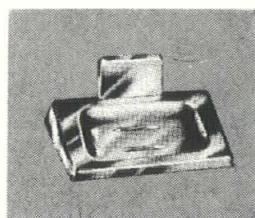
THOMPSON & PECK, Inc.
149 Court St., New Haven, Conn.
Phone 787-6781
Founded 1928



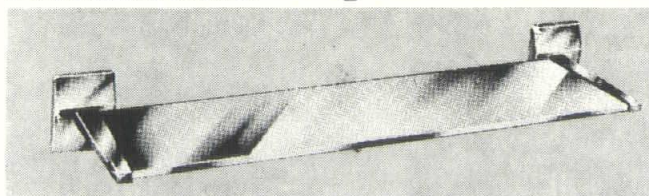
Wooster Square Playground

A popular gathering place for children under the age of twelve is the new Wooster Memorial Playground in Wooster Square, New Haven. Designed by landscape architect Daniel Kiley, the new playground features contemporary, imaginative equipment, including a spray pool and a variety of climbing apparatus. Nearby sitting areas provide mothers with a vantage point for supervision of their youngsters.

The \$75,000 playground on Wooster Street at the end of Warren Street was constructed by the Giordano Construction Company. □



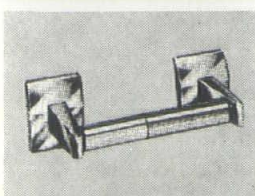
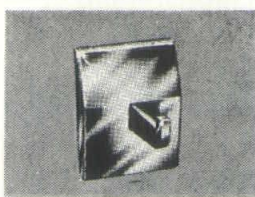
Stainless Steel Accessories by Parker



ANOTHER 1st BY PARKER

Two complete lines are available with either rectangular or round flanges. Manufactured completely of type 302 bright lustre or satin finish stainless steel (including concealed fastening device).

Write for brochure on complete information and specifications!



The CHARLES PARKER CO.
51 HANOVER ST. MERIDEN, CONN.

CALIFORNIA all-latex paint system passes two tough tests:



The architect's
eye.



And the
contractor's
arithmetic.

California All Latex Paint System wins the architect's approval. With appealing colors and smooth, even textures to enhance his design. With practical, durable finishing for any surface or material, indoors or in the weather. Cost-conscious contractors prefer California All Latex Paint System, too . . . because it means faster, better results. Fewer complications. Lower labor costs. And fast, dependable service from your local dealer or Cambridge, Mass!

California All Latex is the contemporary approach to architectural finishing . . . a complete family of fine, dependable high-quality all-latex paints that include:

- ALLWALL® Interior All Purpose Flat Vinyl Paint
- ALLSHEEN 100% Latex Eggshell Enamel
- RAY-O-GLOS® Interior Latex Semi Gloss Enamel
- ALLFLOR Epoxy Acrylic All Purpose Floor Enamel
- CALIFORNIA House Paint
- CALIFORNIA House Paint Primer
- CALIFORNIA Trim Paint
- PLEXICOLOR Exterior Acrylic for Masonry
- RUST-PLEX 100% Acrylic Latex Metal Paint
- Plus other Special Finishes

Specify California All Latex Paint System for your next project! For the new California 540 Architect's Color Selector Book with Ultra-Deep Tones and Pastels, call collect or write your California Products District Manager:

Jack Tormay
123 Miriam Road
New Britain, Ct.
(203) 224-2379

NEW ENGLAND MANUFACTURERS OF DECORATIVE AND PROTECTIVE FINISHES FOR OVER 40 YEARS
CALIFORNIA PRODUCTS CORPORATION
169 WAVERLY STREET CAMBRIDGE, MASS. 02139 TEL: 617 547-5300

Architectural Programming

A collection of programming techniques for the use of architects "Emerging Techniques - 2 - Architectural Programming," a continuing study by the American Institute of Architects' committee on research for architecture, has just been published. Copies of the book may be ordered from the Documents Division, AIA, 1735 New York Avenue, N.W., Washington, D.C. 20006. The cost is \$5 for non-members of AIA, and \$2 for members. □

INSIST ON . . .



**OPERABLE WALLS
AND
FOLDING PARTITIONS**

●
Soundmaster

Acousti-Seal

Coil-Wal

Woodmaster

Splendoor

●
Commercial Distributor

WILLCO SALES & SERVICE

580 State Street Extension

P.O. Box 23

Fairfield, Connecticut

Tel. Hlfd. 528-1580

Fairfield 366-3895

Church Award

The Church of the Resurrection, Wallingford (*Connecticut Architect* November-December 1968) designed by Russell, Gibson, & von Dohlen, West Hartford architects, has been selected as one of the 12 best church designs out of 95 exhibited at the 30th National Conference of Religious Architecture.

The interfaith and interdenominational conference, held in St. Louis, was sponsored by the Guild for Religious Architecture, affiliate of the American Institute of Architects, in cooperation with national religious and professional organizations. The design competition was limited to religious structures erected over the past five years.



A feature of the exterior of the church is the use of sheet copper for both roofing and fascia. The metal was chosen because of its "durability and esthetic appearance and the fact that it complemented the brick and glass exterior of the building," according to the architects. Anaconda American Brass Company supplied the copper through Sondik of Connecticut.

General contractor was Anderson Fair Oaks, Inc., Hartford. Structural and mechanical engineers were Burton & Van Houten, West Hartford. □

Bridgeport Architects

William J. Kimball was elected president of the Bridgeport Association of Architects on June 19. Other officers are Flavian F. Arseneault, vice president; and David C. Crego, secretary-treasurer.

Mr. Kimball studied architecture at Pratt Institute and Catholic University, graduating in 1949. He began his practice in Bridgeport in 1965. He is a member of the Connecticut Society of Architects, AIA, and the national institute. He is a council member of the Boy Scout troop at St. Augustine's Church and is a water safety instructor with the Bridgeport Chapter of the American Red Cross.

Mr. Arseneault studied architecture at Pratt Institute and began work with the late Charles Wellington Walker in 1928. Following Mr. Walker's death, Mr. Arseneault became the principal of Walker Associates, Architects. He is a member of the Connecticut Society of Architects, AIA, and its national organization, and of the American Legion.

Mr. Crego was graduated from Yale University in 1951 and from the Yale School of Architecture in 1954. He has been in private practice in Fairfield since 1962. A member of the AIA and the Connecticut Society of Architects, he is president of the Fairfield Chamber of Commerce and a member of the Bridgeport Chamber of Commerce, Yale Club of Eastern Fairfield County, and the Fairfield Improvement Committee.

The Bridgeport Association of Architects is open to all registered architects who work or live in the greater Bridgeport area. □

Window Specifications Film

The Architectural Aluminum Manufacturers Association's new slide film, "Specifying What You Need and Getting What You Specify," is a nineteen-minute presentation for architects and specifications writers. For information write Film Department AAMA, One East Wacker Drive, Chicago, Illinois 60601. □

CENTURY REPRODUCTION CORPORATION

Leaders in Reprography

introduces

PRECISION MACRO-PHOTOGRAPHY

New CAMERA-ENLARGER produces ENLARGEMENTS TO SCALE

either line or continuous tone on FILM: Max. size 48 x 82 inches

PAPER: Max. size 52 x 82 inches

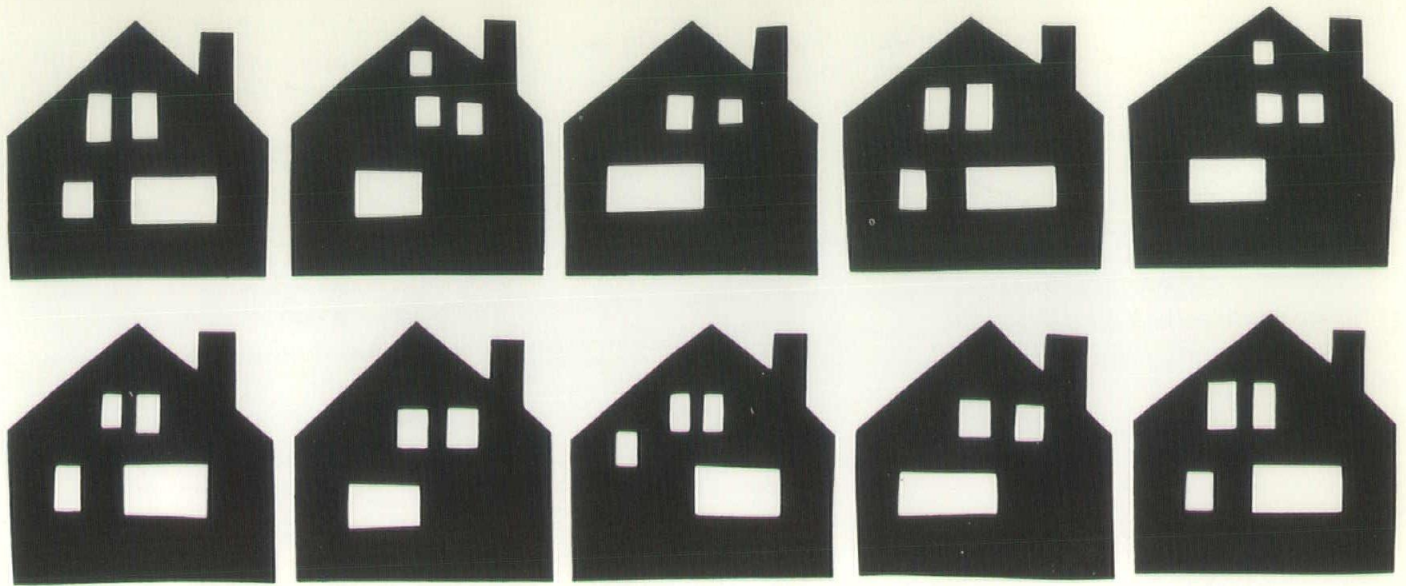
ENLARGEMENTS up to 20 times. REDUCTIONS down to 5% linear

Our MASTER REPROGRAPHERS will make SCALED REPRODUCIBLE MAPS, PLOT PLANS, ELEVATIONS, PERSPECTIVES, etc. (within the above limits) from your tracings, surveys, C.G.S. charts, etc. thereby eliminating costly re-drafting and checking.

624-9989

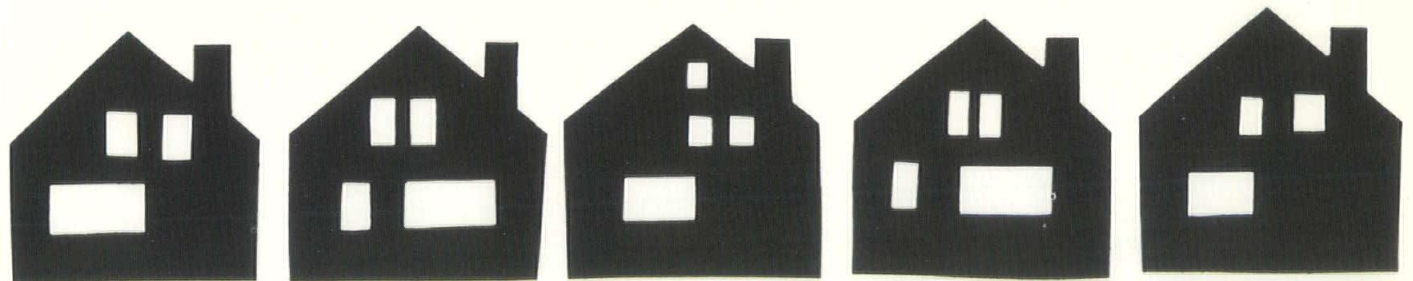
93 Audubon Street, New Haven

777-1356

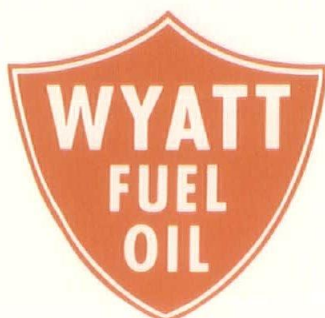


In Nearly Every Case

OIL HEAT IS BEST FOR YOUR CLIENTS



We Will Be Glad to Provide
Comparative Data for Any
Of Your Projects



**NEW ENGLAND'S LARGEST
INDEPENDENT FUEL COMPANY**

CONNECTICUT
Call 787-2175

MASSACHUSETTS
Call 732-6207

Address Changes

When you change your address, advise *Connecticut Architect* promptly to ensure receiving all copies of the magazine. Please give your former address and new address, including zip code. Send this information to: Circulation Department, CONNECTICUT ARCHITECT, Box U, Guilford, Connecticut 06437.

INDUSTRIAL & COMMERCIAL

Real Estate Specialists

H. Pearce
COMPANY

Serving all the
Greater New Haven
area

PHONE 777-5481

Operation Breakthrough

Points of the "Operation Breakthrough" program of the United States Department of Housing and Urban Development which are of special interest to architects are: (1) HUD will select five teams capable of developing new designed, high volume, rapid delivery housing systems of improved environmental quality at reasonable costs; (2) HUD will assist and encourage development of testing procedures and identification of appropriate standards to provide a basis for evaluation of the necessary innovation and implementation of the materials and procedures; (3) after HUD's evaluation, design and development contracts will be awarded to those submitting the best and most promising solutions and design concepts; and (4) the contract for prototype design and development will contain an option clause permitting HUD to review, revise and, if necessary, eliminate those systems found inadequate. □

Phelan Honored

J. Gerald Phelan, AIA, president of Fletcher-Thompson, Inc. and J. Gerald Phelan & Associates, Bridgeport, received an honorary doctorate from Fairfield University at its nineteenth commencement on June 8. According to the Connecticut Society of Architects - AIA, it is believed he is the first member of the Society to be so honored.

"Through its honorary degrees, Fairfield University wishes to honor men and women who, in their own lives, have made significant contributions to the life of the community and the growth of education," said The Very Reverend William C. McInnes, S.J., University president.

Mr. Phelan designed many buildings on the Fairfield campus, including the award-winning Campus Center which was cited by *College and University Business* magazine. He is a graduate of Pratt Institute's School of Architecture and long active in civic and community affairs. He was honored in 1966 when he completed fifty years as an architect (reported in the May-June 1966 *Connecticut Architect*). □

ARCADIA SLIDING DOORS

arcadia

ARCHITECTURAL METAL SYSTEMS OF NEW ENGLAND, INC.

New Haven Area
Edward Aubin
774-4021

or call 617-268-8800 Collect

Hartford Area
Donald Thrasher
623-1213

FREDERICK E. PATON

COMPLETE PHOTOGRAPHY SERVICE FOR THE
ARCHITECT—DESIGNER—PLANNER—BUILDER

LORDS HIGHWAY • WESTON, CONN. 06880 • (203) 227-4806

Edwin Moss
and Son, inc.

COMMERCIAL & INDUSTRIAL

CONTRACTORS • BUILDERS

CALL BRIDGEPORT
334-4177



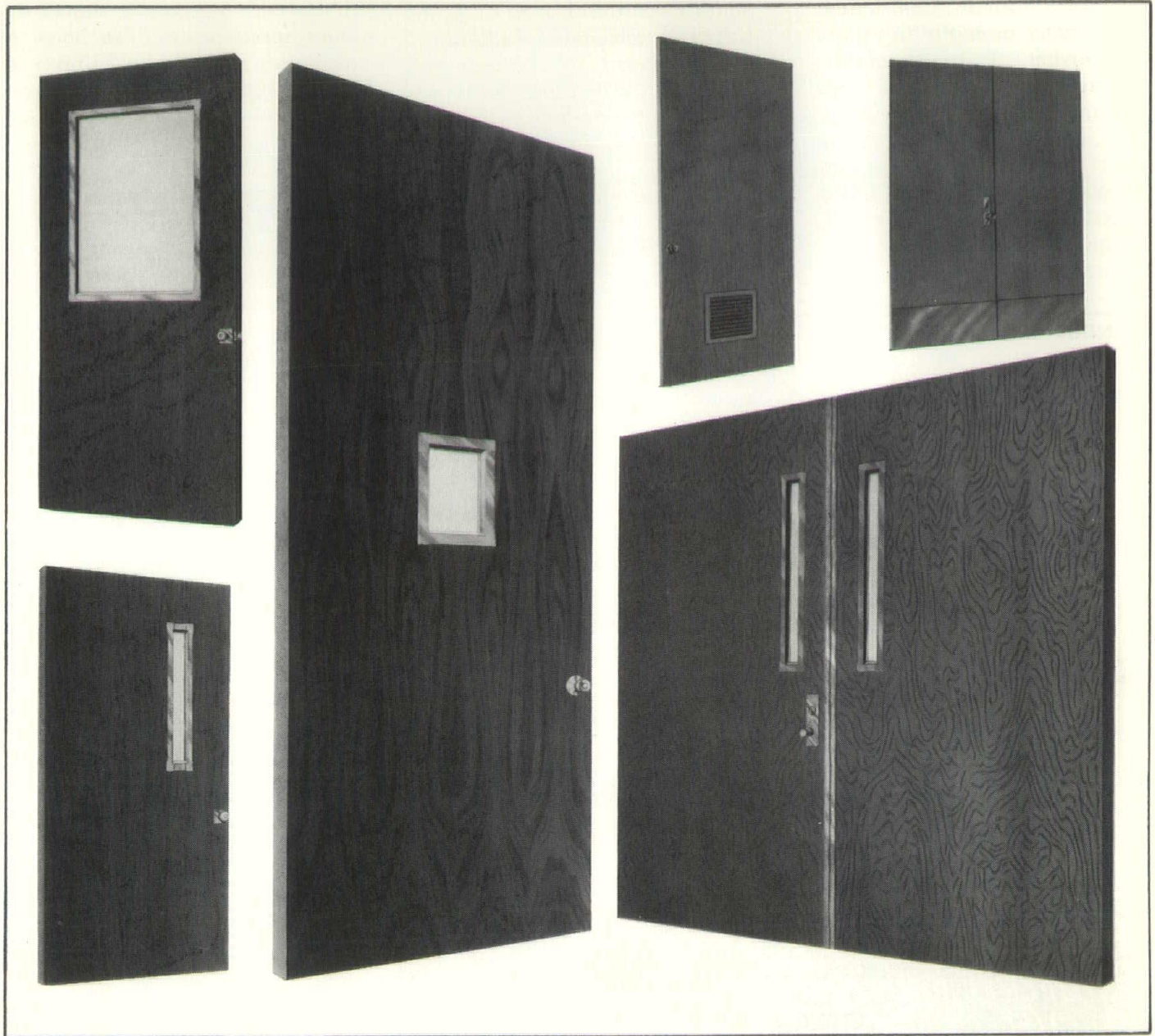
555 GRANT ST. • BRIDGEPORT

Wesleyan University - Science Center

Associates

Twelve associates have been named by Fletcher-Thompson, Inc., Bridgeport-based architectural and engineering firm. The new associates advanced in the firm's professional staff are Everett C. Bradley, Albert F. Broska, Clarence DiBlasi, Heinz H. Janssen, Chido S. Licciardi, Michael J. Lutian, Irwin H. Meth, Alvin J. Northrop, Ralph T. Rowland, Ayres C. Seaman, Joseph J. Slovak, and Alfred L. Szymanski.

Fletcher-Thompson, Inc. has nineteen registered architects and the same number of registered engineers on its staff. Other officers and senior associates include J. Gerald Phelan, president; John G. Phelan, PE, executive vice president; A. D. Ciresi, A. J. Hawley, F. D. George, and R. H. Mutrux, all AIA; J. E. Claffey and A. M. Shoemaker, both RA; P. A. Keane, treasurer; and M. P. Pavia. □



When it comes to wood fire doors, there's really only one place to go. Weyerhaeuser.[®]

We make wood fire doors you just can't find anywhere else in the world.

Doors with vision panels as large as 33" in one direction, and with a 1-1/2 hour rating.

Or 10-foot-tall doors with 1 or 1-1/2 hour ratings. Or 8' wood doors with a 3/4-hour rating.

And the biggest pair of doors in the business — big enough to fit an 8' x 8' opening, and rated at 1-1/2 hours.


If there are other tight requirements, see us. We have the most versatile line

of permanently identified flush doors in the industry: including x-ray shielding doors. Sound retardant doors.

Even bulletproof doors.

They're all available through a network of Architectural Specialty Dealers who can tell you about custom finishing, custom machining, and a full line of matching Weyerhaeuser hardwood products including fire-retardant-treated wood paneling.

Use the coupon to get in touch. We'll be glad to send you technical data.



To: Weyerhaeuser Company
P.O. Box 629, Newark, N.J. 07101
Send me details on:

Weyerhaeuser doors.
 Weyerhaeuser wood paneling.

Name _____
Firm _____
Address _____
City _____ State _____ Zip _____

SIGNS OF ALL KINDS

For Offices, Schools, Hospitals, Etc.
TO ARCHITECTS' SPECIFICATIONS

Write or phone
your Connecticut Manufacturer

SETON NAME PLATE CORPORATION
592 Boulevard, New Haven 06519
Phone: 772-2520

CNC

CLAUDE NEON OF CONN.

INC.

signs

ILLUMINATED
PLASTIC
NEON

letters

STAINLESS STEEL
ALUMINUM-BRONZE
PORCELAIN ENAMEL

specialties

FLAG POLES
CROSSES
AREA LIGHTING

125 FRONT STREET
Bridgeport, Conn. 06606
335-2177

PROFESSIONAL SERVICES

CAHN ENGINEERS, Inc.

Consulting Engineers
Site Planners

New Haven
772-2000

New Britain
225-2000

CSA Honor Awards

The 1969 honor awards program of the Connecticut Society of Architects, AIA, had June 23 as its closing date for registration. All entries must be received for judging at the Society's Hamden headquarters not later than September 26. □

A COMPLETE PHOTOGRAPHIC SERVICE FOR ARCHITECTS AND BUILDERS

- on location photography, exteriors and interiors
- large color murals at little cost
- black and white enlargements up to 20 feet
- color slides and transparencies

JACK STOCK STUDIOS

Derby, Conn. 734-6296

COMMUNITY BANKING COMPANY

Member Federal Deposit Insurance Corporation

FREE PERSONAL CHECKING ACCOUNTS

Boston Post Road Route 139 161 Main Street
Guilford - North Branford - Durham

453-5208 488-8341 349-3464
PERSONALIZED COMMUNITY BANKING



OFFICE FURNITURE

The most complete collection of fine wood office furniture.
Modern, contemporary and traditional styling.

280 Park Road
West Hartford
232-8825

900 Chapel Street
New Haven
562-8622

Foxon

Continued from page 13

apparatus room and kindred spaces subject to petroleum drippings, mud, and water are finished in a high-gloss epoxy enamel.

Equipment doors on both sides of the fire department structure are full glazed to provide natural light from the north and from the tree-shaded exposure to the south. On the west where no shade is available and the bright afternoon sun had to be diffused to avoid a harsh play of light brilliance, fiberglass sandwich panels stretched over aluminum I-beam frames provide the required ambient luminescence. This is the wall where future expansion will take place.

A gas operated stand-by generator was provided to preclude communications interruption in the event of power failure and to satisfy the needs of Civil Defense. Gas was selected over petroleum fluids for the generator operation because of the capability for uninterrupted supply and to obviate the special safeguards required for petroleum storage.

Construction of the 11,112 square foot structure was accomplished at a unit cost of \$20.02. Working with Damuck and Babbitt, Architects, were Norman Tanguay & Associates, mechanical engineers; and Daniel S. Gaidosz, electrical engineer. The building was completed September 16, 1968, and the project cost was \$2301 less than the architect's estimate. □

The partnership office of Damuck and Babbitt was formed in 1967. Prior to then, the principals, Walter E. Damuck and Harvey T. Babbitt, had had extensive experience in private practice and with other firms, and both are active in civic and professional organizations including the Connecticut Society of Architects - AIA, the Construction Specifications Institute, and the Connecticut Building Congress.

We must remake our cities

SEND FOR

"The Turning Point"

WRITE: URBAN AMERICA, INC., BOX 6087,
WASHINGTON, D.C. 20005

advertising contributed for the public good



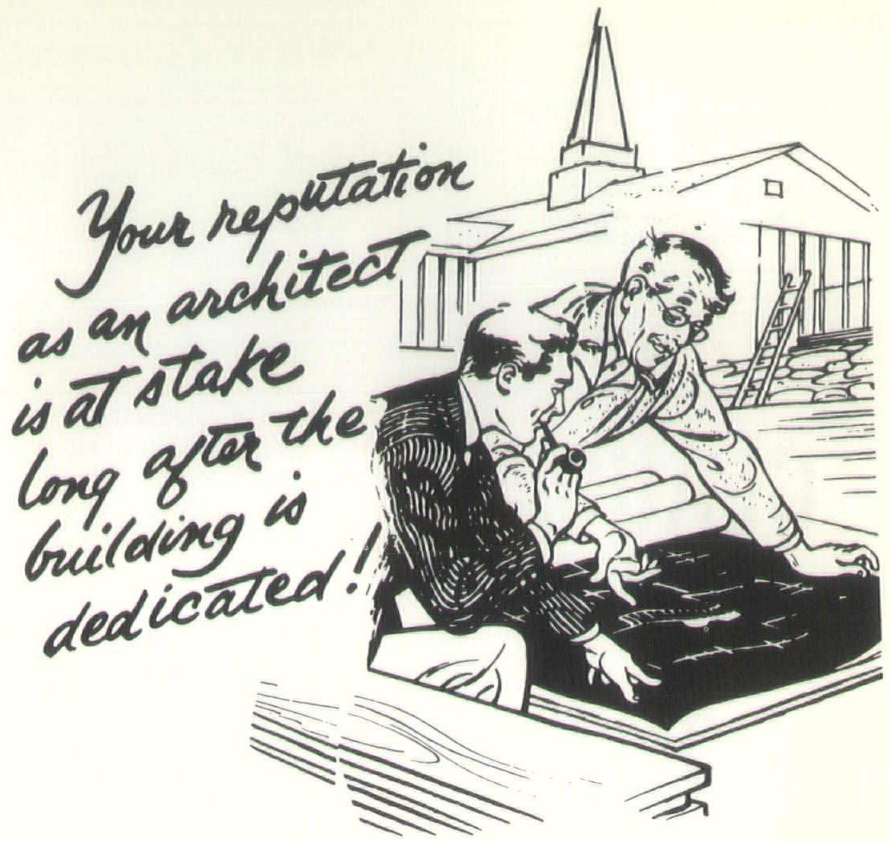
CBC Officers

Roy C. Ferguson, partner in the architectural firm of Frid, Ferguson, Mahaffey & Perry, Hartford, was elected president of the Connecticut Building Congress at its annual meeting Thursday, June 19, at Restland Farm, Northford.

Other officers elected include Clifton J. Cotter of M. J. Daly and Sons, Inc., Waterbury, first vice president; Leo D. Rose of Fred S. Dubin Associates, West Hartford, second vice president; Anthony J. Calini of Pfisterer, Tor and Associates, New Haven, secretary; and Matthew L. Blakely of the Dwight Building Company, Hamden, treasurer. Immediate past president is Frederick W. Farnsworth, Eastern Elevator Co., Inc., New Haven.

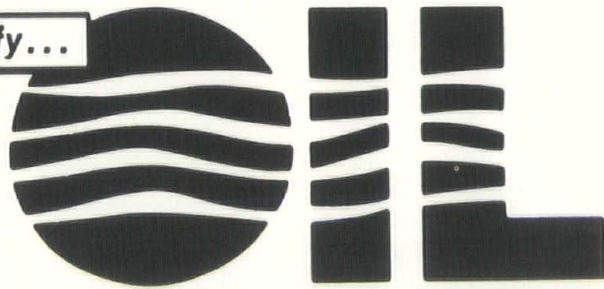
Elected to the board of directors for three year terms were Robert E. Baker, Conco Industries, Inc., West Haven; Augustus G. Kellogg, Environmental Design Group, New Haven; and Roscoe D. Smith, W. J. Megin, Inc., Naugatuck.

Continuing to serve on the board of directors are Robert W. Kallinich, Tomlinson-Hawley-Patterson, Inc., Trumbull; Frank J. White, Jr., Associated General Contractors of Connecticut, Inc., Woodbridge; Edwin Moss, Edwin Moss & Son, Inc., Bridgeport, all two years; Thomas W. Lane, Shelton Roofing Company, Inc., Ansonia; Louis Tagliatela, The Franklin Construction Company, Hamden; John E. Plantinga, Meyer, Strong and Jones, New York City, all one year. □



DON'T GAMBLE WITH TOTAL COSTS OR RELIABILITY...

Specify...



**HEATING • HOT WATER • AIR CONDITIONING
and TOTAL ENERGY**

KAPETAN, INCORPORATED

General Contractors

Throughout

Connecticut

378 Boston Post Road

Orange, Connecticut 06477

Telephone (203) 795-6041

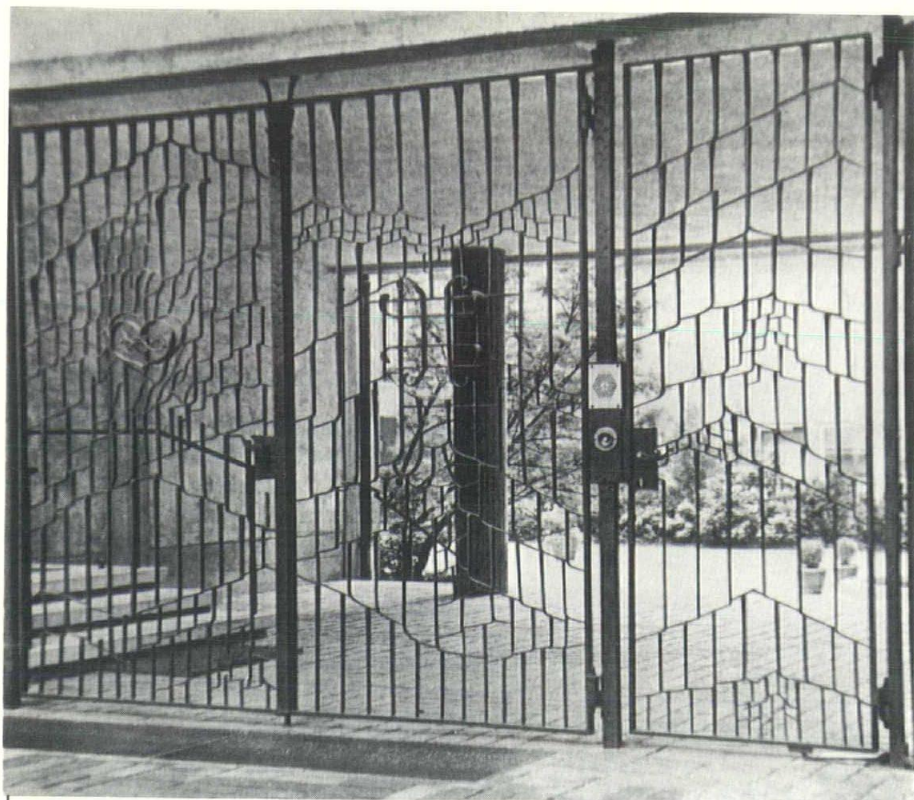
THE PROVEN FUEL

FOR

8 OUT OF 10 BUILDINGS

OIL FUEL INSTITUTE OF CONNECTICUT

119 ANN STREET • HARTFORD, CONNECTICUT



we design and fabricate

in traditional, contemporary
and religious motifs.

ARTISTIC IRONWORKS

GUENTER H. KOCZORSKI — ARTIST
558 CONNECTICUT AVE / NORWALK / CONN 06854 / PHONE 203-838-9200

Executive Director, The Connecticut Society of Architects, AIA
Box 4335, Hamden, Connecticut 06514

We are interested in using the CSA Public Service Bureau
to provide
(service)

for a meeting of
(name of group)

to be held
(date) (time) (place)

Signed
(name) (title)

Address
Phone No. Date

Conventioneers

Among the Connecticut architects attending the AIA National Convention in Chicago in June were Carrell S. McNulty, Joseph Stein, Harvey M. White, Norman L. Raymond, Ralph T. Rowland, F. Philip Brotherton, Harvey T. Babbitt, William H. Rallis, Victor D. Lewis, Jr., Robert L. Wilson, Carl R. Blanchard, Charles DuBose, FAIA, Hugh McK. Jones, FAIA, Michael H. Trower, Richard Sharpe, and Charles P. Randall. □

REACH DECISION MAKERS

CONNECTICUT ARCHITECT

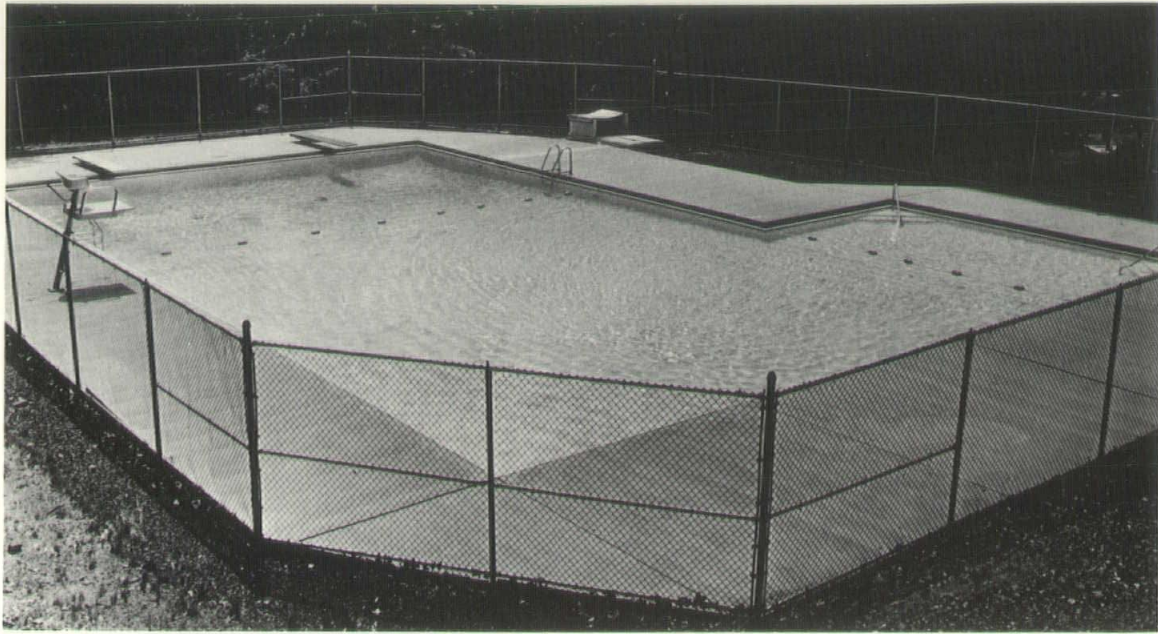
GERALD G. HOTCHKISS
Advertising Director

BOX U

GUILFORD, CONN. 06437
(203) 453-5318

Artistic Ironworks	34
Architectural Metal Systems of New England, Inc.	30
Associated Sheet Metal, Roofing & Insulating Contractors	22
Bidwell Hardware Company	22
Bilco Company	23
C. W. Blakeslee & Sons, Inc.	3
California Products Corporation 20,	27
Century Reproduction Corporation..	28
Claude Neon of Connecticut, Inc.	32
Clay Products Incorporated	22
Community Banking Company	32
Connecticut Air Conditioning Com- pany	21
Connecticut Architect	34
Connecticut Publications, Inc.	34
Copeland Company, Inc.	23
Domore Office Furniture of Connec- ticut, Inc.	32
Electric Companies of Connecticut	Back Cover
George C. Field Company	20
First New Haven National Bank.....	4
Gas Utilities of Connecticut	25
Glen Terrace Nurseries, Inc.	26
S. Barry Jennings Company	24
Kapetan, Incorporated	33
Edwin Moss & Son, Inc.	30
Oil Fuel Institute of Connecticut	33
Overhead Door Company, Inc.	24
Charles Parker Company	27
Frederick E. Paton	30
H. Pearce Company	30
Plasticrete Corporation	2
Roncari Industries, Inc.	26
Scott-Paddock Pools, Inc.	35
Seton Name Plate Corporation	32
Jack Stock Studios	32
Tel-Rad Incorporated	20
Thompson & Peck, Inc.	26
Weyerhaeuser Company	31
Willco Sales & Service, Inc.	28
Wyatt, Inc.	29

ANOTHER "IFRS" POOL



CAMP FARNAM, DURHAM, CONNECTICUT

The Farnam Neighborhood House of New Haven chose the "IFRS" pool for their camp in Durham, Connecticut. The "L" shaped pool provides standard racing lanes and allows a shallow area for beginners, thereby getting maximum use of entire pool. It measures 45' x 75'1", with a 15' x 25' shallow area.

here are the nine reasons why:

1. All buried perimeter pool piping is completely eliminated. No pipe access tunnels required.
2. Controlled pressure directional jet inlets every 3 feet around the pool provide superior filtered water distribution and deep water bottom supply.
3. "Jet Clean" perimeter gutter provides more efficient surface skimming.
4. Integral skimming weir provides 24-hour surface skimming.
5. Jet cleaned constant flow gutter.
6. Stainless steel construction provides ultimate in long-run economy.
7. Oversized combination roll-out recessed type gutter. The advantages of both designs; the drawbacks of neither.
8. Wave-break gutter design.
9. Deck level accessibility for all connections.

PLUS

- Non-skid safety curb and gutter lip
- Life line and racing line anchors
- Gutter waste channel to filter
- Filter Water Supply Tube

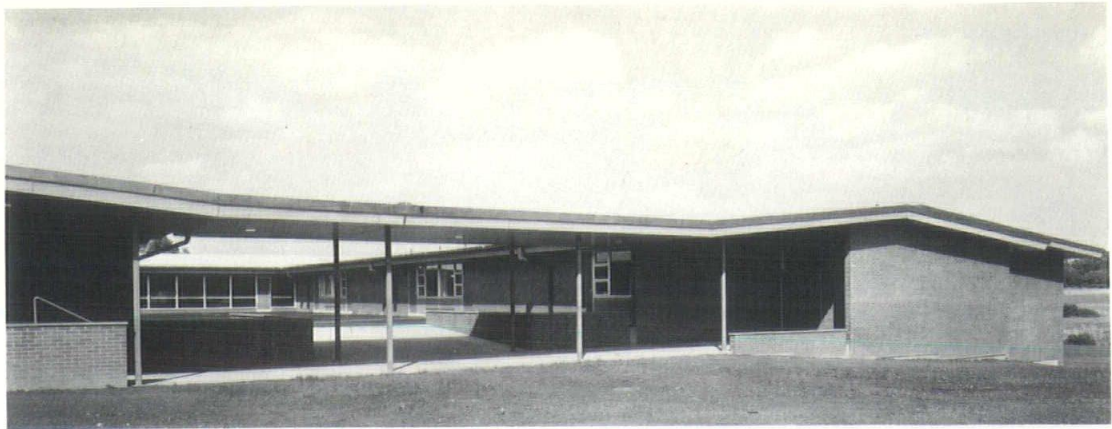
For a free 16 page detailed brochure, performance reports and a partial list of over 150 installations, call or write:

Since 1937

"The preferred builder of Quality"

Scott-Paddock Pools

Woodbury, Conn. • 263-2108
Hartford, Conn. • 527-4500



*Myrtle Stevens School addition,
Rocky Hill
Architect: Louis Drakos Associates*

The new 25,000-square-foot addition to Myrtle Stevens School houses 12 classrooms, a kindergarten, a library, a testing room, 6 lavatories, a janitor's room, and a large all-purpose room used as both auditorium and cafeteria.

With these varying environmental and convenience demands, plus the possibility of year-round use of the building, it was obvious at the design stage that heating

and air circulation had to be flexible . . . and that modern planned lighting was a must. Also to be considered were cooking needs and hot water use. The architect's design had to allow for an extremely flexible environment plus low owning and operating costs . . . without limiting his freedom of design. When all the facts were in, the new school addition went all-electric.

**All-electric construction provides
maximum flexibility plus freedom of
design. Ask us for details.**

THE ELECTRIC COMPANIES OF CONNECTICUT

UNITED ILLUMINATING

THE CONNECTICUT LIGHT AND POWER CO.

THE HARTFORD ELECTRIC LIGHT CO.