

CONNECTICUT ARCHITECT

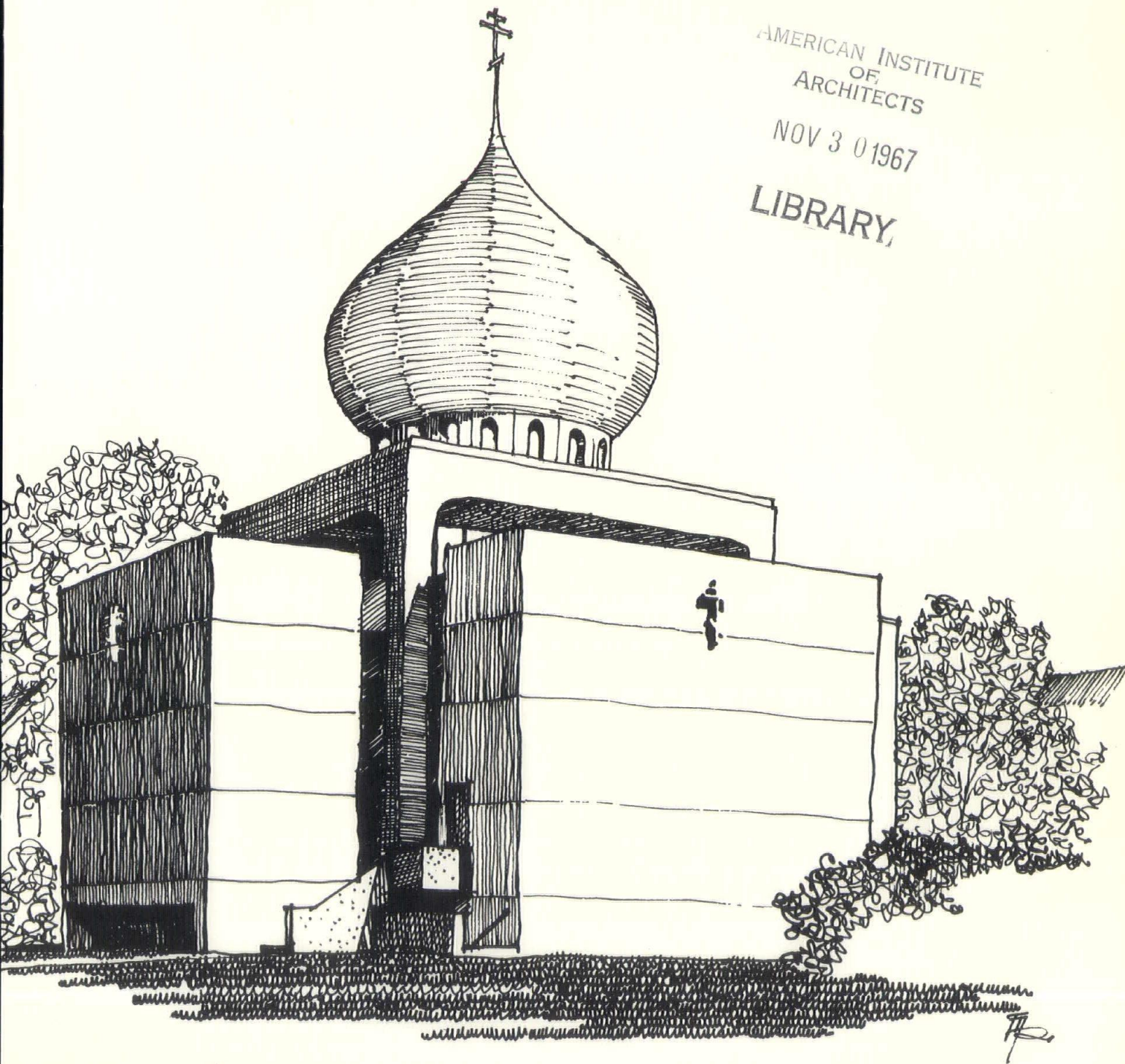
SEVENTY-FIVE CENTS

NOVEMBER-DECEMBER 1967

AMERICAN INSTITUTE
OF
ARCHITECTS

NOV 3 0 1967

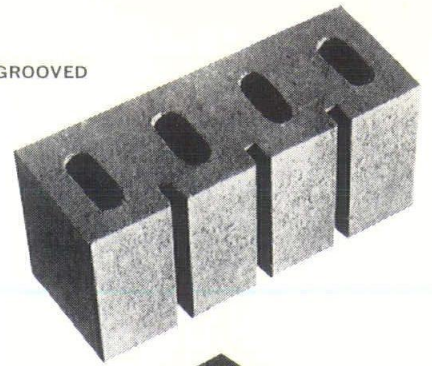
LIBRARY



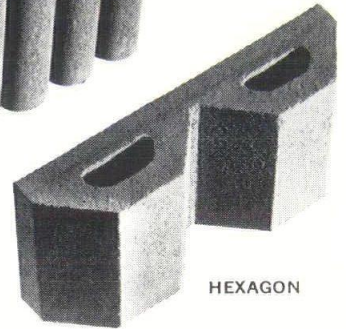
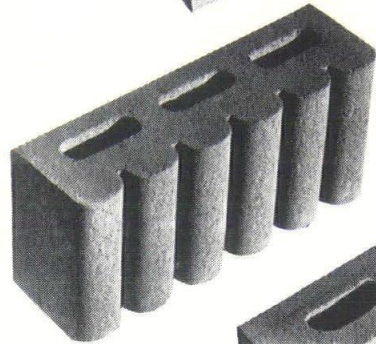


Architect: Paul Rudolph
 General Contractor: Giordano Construction Co., Branford, Conn.

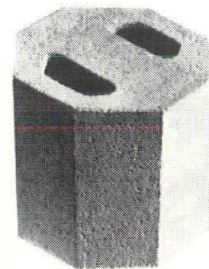
GROOVED



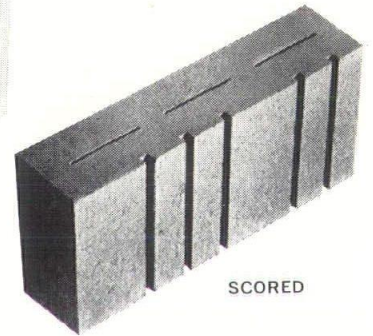
FLUTED



HEXAGON



OCTAGON
 CORNER



SCORED

Creativity...with a dramatic flair

These Profile Masonry Units by Plasticrete are the result of our continuing efforts to make concrete masonry more pleasing and versatile. We believe they present a challenge to one's imagination and ingenuity.

Another big plus benefit — you can rely on built-in product stability from autoclaved (preshrunk) Profile Units when you specify Plasticrete.

What you create, we can produce.

PLASTICRETE CORPORATION

1883 DIXWELL AVENUE, HAMDEN, CONNECTICUT 06514 • TELEPHONE 288-1641





top
to
bottom

THIS IS A SPAN-DECK ROOM

Warm in the winter —
Cool in the summer —
Quiet year round —
Apartments constructed of Span-Deck bring an independence to its tenants not possible in any other type of structure. Exposed surfaces are easily painted or decorated with floors covered directly with carpeting.

For more information on the techniques and economies of building with prestressed concrete Span-Deck — write today.

BLAKESLEE
SPAN-DECK

BLAKESLEE PRESTRESS, BOX 1809, NEW HAVEN, CT. 06507, (203) 389-9571
NEW YORK OFFICE: 103 PARK AVE., ROOM 816 • (212) 889-7190
A DIVISION OF C. W. BLAKESLEE & SONS, INC.

- Have a field engineering representative get in touch with me
- Send me your SPAN-DECK brochure

NAME _____
 ORGANIZATION _____ POSITION _____
 STREET _____
 CITY _____ STATE _____
 PHONE _____

When it comes to financing, see the man from the FIRST



For mortgage loans.
 Construction loans.
 Municipal loans.
 Loans for schools, public buildings, private residences.
 Tax anticipation loans.
 All types, all amounts.
 See the man from the First when you need financing in a hurry.

THE
FIRST
 NEW HAVEN
 NATIONAL BANK

Now with
 18 offices

Serving Connecticut since 1792
 Assets over \$210 million.

COMING EVENTS

November 28
 Park Plaza Hotel, New Haven:
 CSA-AIA Annual Meeting

December 1
 La Salle Hotel, Chicago: National seminar for architects and engineers, "Facing The Union Problem."

December 1 - 17
 Wadsworth Atheneum, Hartford:
 Connecticut furniture exhibition.

To December 3
 Museum of American Art, New Britain: Retrospective exhibition by Claire Leighton and drawings and pastels by John Melecsinsky.

To December 3
 Yale University Art Gallery, New Haven: Paintings, sculpture, and drawings from the Fogg Art Museum of Harvard University.

December 4
 Old Art Gallery, Yale University, New Haven: Public Lecture Series - Charles Moore: Architecture, the making of metaphors.

December 9 - 30
 Museum of American Art, New Britain: Serigraph prints by Sister Mary Corita and photographs by Jerrems C. Hart.

December 13
 Museum of American Art, New Britain: Silkscreen demonstration by Sister Mary Corita.

December 18
 Hotel America, Hartford: CSA-AIA Dinner meeting. Program by the Committee on Design.



J. Gerald Phelan (right), president of Fletcher-Thompson, Inc., Bridgeport architects and engineers, receives a citation from Rev. William C. McInnes, S.J., president of Fairfield University. Presentation was made October 18 at the university's first annual progress dinner. The award was made for Mr. Phelan's "many contributions to education and particularly to Fairfield." In citing Mr. Phelan, Father McInnes said "he has demonstrated a deep interest in Jesuit education at Fairfield, and his dedication to the university and its programs symbolizes the efforts of those who have worked and will work with Fairfield for its continued progress."

CONNECTICUT ARCHITECT

BOX 346 · GUILFORD · CONNECTICUT · 06437



Connecticut Architect is published every other month under the direction of the Connecticut Society of Architects, a chapter of the American Institute of Architects, and is the official publication of the Society.

OFFICERS

President
RICHARD S. SHARPE
Vice President
CHARLES DuBOSE
Secretary
CARRELL S. McNULTY, JR.
Treasurer
NORMAN L. RAYMOND
Executive Director
HUGH McK. JONES, JR.

EDITORIAL BOARD

Chairman
RALPH T. ROWLAND
Vice Chairman
HARVEY M. WHITE
CYRIL K. SMITH, JR.
DONALD J. VIGNEAU

PUBLISHER

Produced for the Connecticut Society of Architects by Connecticut Publications, Inc., Box 346, Guilford, Connecticut. Rufus K. Allerton, Jr., Publisher; Fredric D. Barrett, Business Manager; Gerald G. Hotchkiss, Advertising Director. Printed by The Bond Press, Inc., Hartford, Connecticut.

Controlled circulation postage paid at Hartford, Connecticut.

All rights reserved. No part of this publication may be reproduced without permission in writing, except for brief quotations in a review. For information, write the publisher.

VOLUME 3, NUMBER 6

NOVEMBER-DECEMBER 1967

FRONT COVER: Holy Transfiguration Russian Orthodox Church in the Westville Section of New Haven contemporizes and preserves tradition through the skilful design of the Office of Carl Blanchard, Jr.



TABLE OF CONTENTS

1967 Honor Awards	6
Douglas MacLise Residence	10
Russian Orthodox Church	15
Economy Forecast	18
Ribicoff Speaks	22
Yale Degree Changes	24
Index of Advertisers	26

PHOTO CREDITS: Page 7, Ezra Stoller Associates; Page 8, (top and center) David Hirsch, (bottom) Malcolm Smith; Page 9, (top and right center) Ernest Silva; Pages 12-13, William Maris; Pages 14-16, Charles N. Pratt.

Circulation of **Connecticut Architect** includes resident Connecticut architects, public libraries, and selected consulting engineers, contractors, builders, and church, hospital, school and federal, state and local officials. Appearance of products, services, names, and pictures in advertising or editorial matter does not constitute endorsement by the Connecticut Society of Architects.

Seventy-five Cents a Copy

Four Dollars and Fifty Cents a Year



HONOR AWARDS PROGRAM • 1967
THE CONNECTICUT SOCIETY OF
ARCHITECTS • A CHAPTER OF THE
AMERICAN INSTITUTE OF ARCHITECTS

Three Connecticut firms share top eminence in the 1967 Honor Awards Program of The Connecticut Society of Architects, AIA. Five buildings were selected from thirty-eight entrants by the jury consisting of Ulrich Franzen, AIA, and George Nemeny, AIA, of New York, New York; and Professor Vincent Scully of Yale University.

The Honor Awards, which have identical status, were designated for:

Carlin, Pozzi and Associates, Architects, New Haven, for scattered site, low rental public housing in New Haven; and for a residence in Stonington (*Connecticut Architect*, March-April 1967).

Sherwood, Mills and Smith, Architects, Stamford, for South Kent School Science Building, South Kent; and for Tokeneke Beach Club, Darien.

Hugh Smallen and Associates, Architects, New Canaan, for a residence in New Canaan.

The awards are to be presented at the annual meeting of CSA-AIA at the Park Plaza Hotel, New Haven, on Tuesday evening, November 28. The award-winning designs are to be displayed there, also.

The Society's Honor Awards Program "seeks to single out and honor distinguished architectural design." The jury, in accordance with the program's provisions, was instructed to select one or more buildings meriting honor awards for distinguished accomplishments in architecture.

Carlin, Pozzi and Associates' scattered site low rental public housing is sponsored by the New Haven Housing Authority. Its sociological goal is to minimize large public housing ghettos in

favor of small units in established neighborhoods. The design goal is to provide a new complex complementary in scale, form, and texture with the surrounding housing.

The firm's second award winner, a residence in Stonington, provides elevated living space on a site originally covered by a dense mass of scrub brush and cedar trees. The architects reasoned that the most logical and economical way to achieve this objective was to elevate the usual basement activities to ground level, thus forming a base upon which to support the living spaces.

The Sherwood, Mills and Smith design for a science building at South Kent School fulfills the owners' desire for a simple, functional solution compatible with the residential character of the school and arranged to fit the sloping site. The grade permits access at two levels,

and the design concept is generated by a laboratory shape which logically divides the room into recitation and laboratory space by using flat ceilings and low windows in the recitation area. The laboratory areas of each space have high sloping ceilings with high side light.

The addition to the Tokeneke Club, also designed by Sherwood, Mills and Smith, was to improve dining, snackbar, and bar facilities. An alternating rhythm of large

and small spaces in the service block suggests the wide-narrow bay system. Circulation into the main dining-lounge is through narrow bays. Sliding glass doors "stack" in narrow bays leaving wide bays completely open to cantilevered deck. Sunshades occur in wide bays for sun control, and high windows occur in wide bays to the north for cross ventilation.

Hugh Smallen and Associates' award-winning residence presented "a verdant site which in part nur-

tured an indigenous expression in wood, fieldstone, and glass. The natural contours of the land, combined with a desire for separated living areas, suggested a three dimensional rhomboid. The interior environment offers a variety of spatial relationships which combine austerity and joie de vivre."

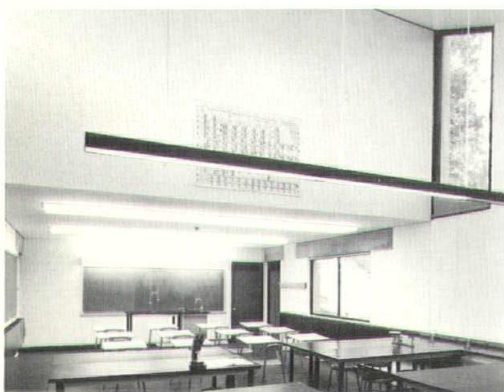
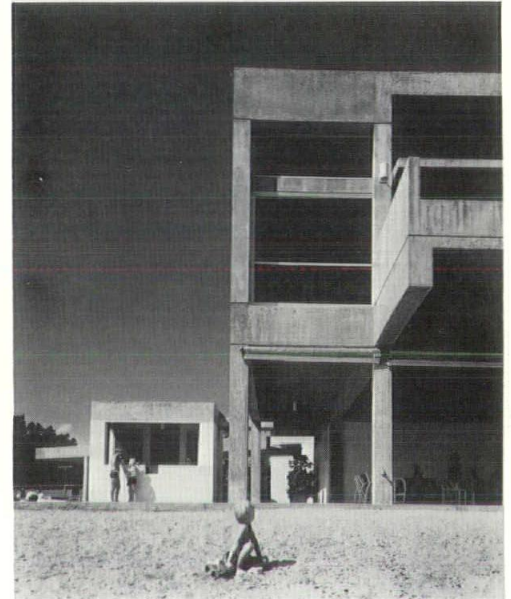
The Honor Awards Committee includes Robert C. Rogus, chairman; Thomas C. Babbitt, Edmund Van Dyke Cox, Richard G. Mankey and Charles S. Sigsway. □



"It is a cool revival of Bauhaus style," was the jury comment concerning the New Canaan residence designed by Hugh Smallen and Associates. The crisp livable house has five bedrooms and two baths on two levels, and its central level also contains the principal living areas. Its 2500 square feet are arranged for optimum comfort and convenience.



Sherwood, Mills and Smith's Tokeneke Club design was cited by the jury as: "Decent plan and structure. Perhaps a bit rigid but solid and convincing." Materials were selected for visual and physical strength, durability, and low maintenance.

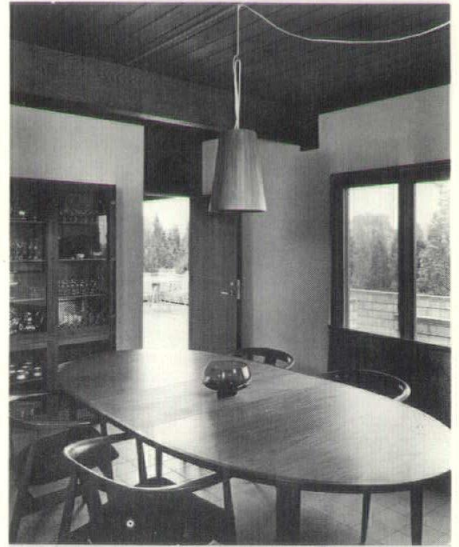
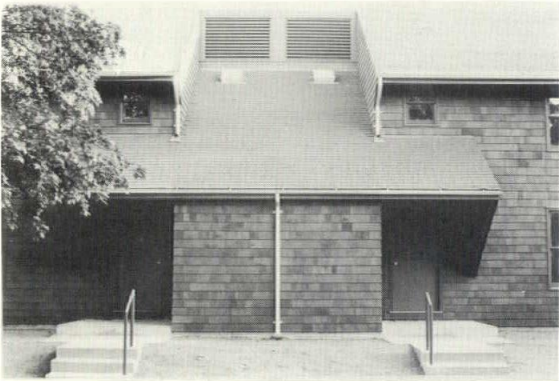


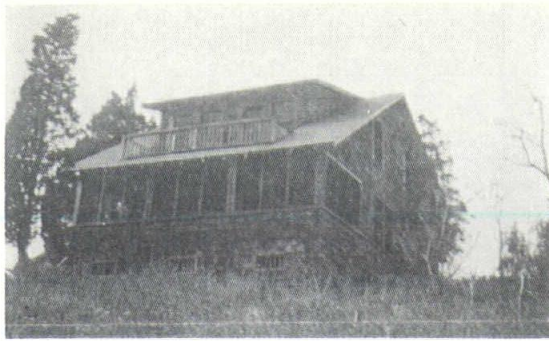
Wittenberg Science and Mathematics Center, South Kent School, another award-winning design by Sherwood, Mills and Smith, is, according to the jury, "a modestly scaled approach, successfully carried out." Simplicity and compatability are achieved by direct use of simple materials and direct expression of the desired shape of laboratory spaces.





Carlin, Pozzi & Associates' residence design received this jury comment: "It produces the complexity of thoughtfulness." It is skillfully zoned and ideally sited. Of the firm's low rent housing for The Housing Authority of The City of New Haven (center left and bottom), the jury stated: "A good example of anti-cataclysmic redevelopment. Appropriate to the pre-existing street and to the fabric of life which it houses. The jury welcomes New Haven's first foray into low income public housing under redevelopment, and is pleased that it clearly respects the neighborhood and its people. Indeed, it is largely for that reason that the result shows infinitely more architectural quality than the high-cost middle class apartments which have so often been encouraged in the past.





RENOVATION AND RETROFIT

**Residence of Douglas MacLise
Guilford, Connecticut**

OFFICE OF BRUCE ARNEILL, ARCHITECT

Erwin Griffiths, General Contractor

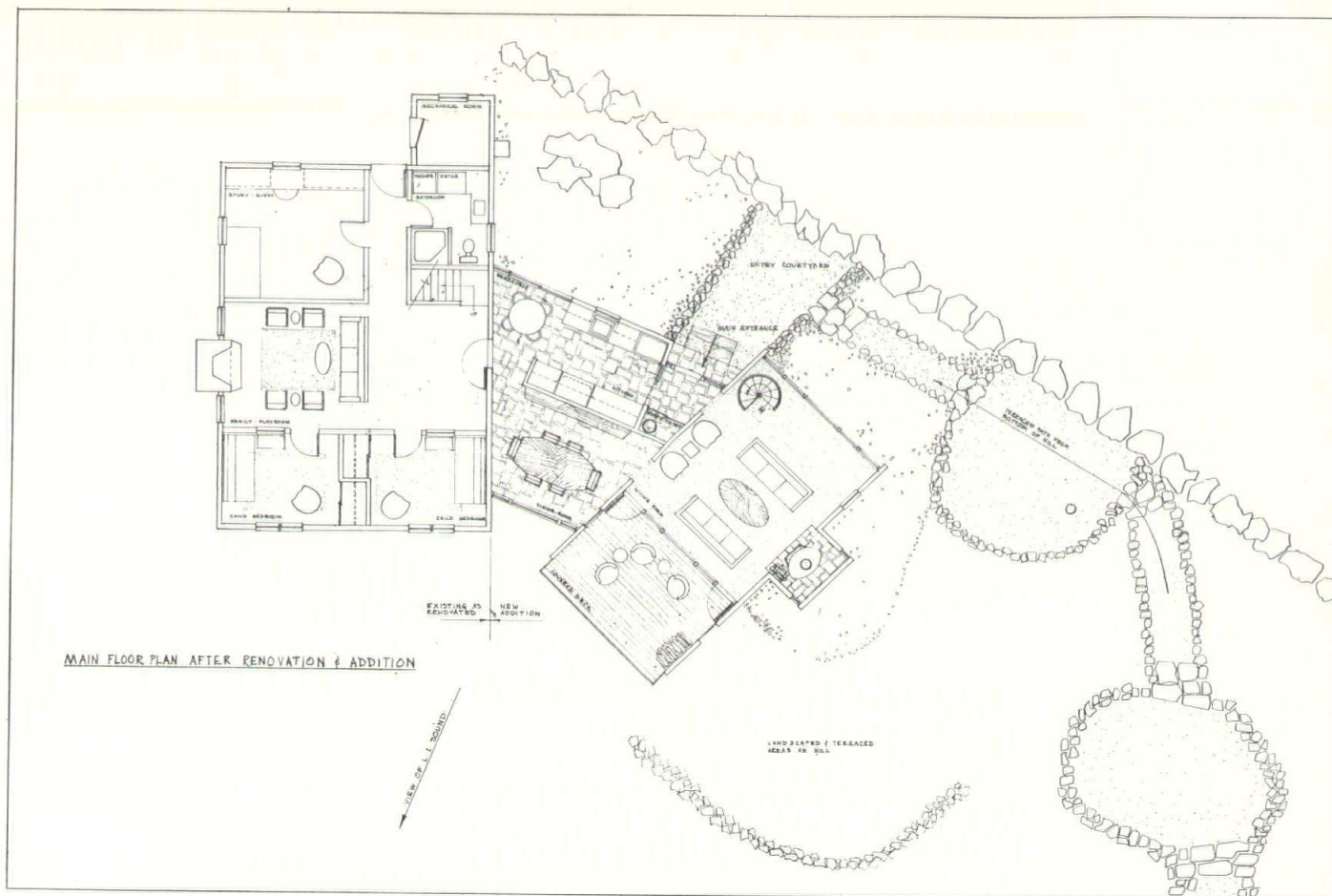
The Office of Bruce Porter Arneill A.I.A. has a broad range of "specialization" which ranges from hospital complexes to residential renovation and addition. While this latter talent often produces more satisfaction than other types of rewards for an architect, Mr. Arneill feels that only the broadest spectrum of architecture challenges and sharpens one's creative talents.

Mr. and Mrs. Douglas MacLise owned a site and house whose single greatest asset was its southern frontage on Long Island Sound in Guilford. On the minus side, there was a questionable access road which they finally gained rights to use, and a badly built summer cottage on a narrow, very steep piece of land.

The owners first insulated the

cottage so they could use it all year, but it was limited in size and function. Its hillside location, difficult to approach, necessitated construction of a drive which included a hairpin curve to bring cars up to the level of the house. The area by the house was mainly for service and family car parking, and it was hoped that a walkway could be worked out in the future so guests could park below and not mind wandering up a pleasant path to a future entrance.

The first renovation of the house was done by the MacLises. While this was an improvement, it could not solve the problem of a long narrow living room with a fireplace at one end which, despite its three windows opening to a porch, was dark and captured little of the delightful water view. It had a



dining area off the living room and an awkwardly shaped kitchen equipped with both washer and dryer. A small mechanical room by the back door housed the furnace and water heater.

The architect noted that all of the area was "quite dim and dreary considering the fact of a magnificent site overlooking the waters of Long Island Sound and the Thimble Islands. The functions were very awkward because one had to walk through one room to get to others, and at the same time, the breakup in the living room was such that one could not really focus all the furniture about a well-rounded seating area adjacent to the fireplace."

The second floor contained three poorly-proportioned bedrooms with closets jutting into them and a

bathroom that left much to be desired.

However, the house served its basic purpose at the time and was within the scope of their starting investment. Then, in 1965, the owners budgeted \$15,000 to overhaul the house, add space for their growing family, and take maximum advantage of the site.

Architect Bruce Arneill visualized the house and addition as a single entity. With the existing house, he came up with a solution of rearranging the entire functional concept of the structure and the way it is entered from the hill. This involved turning the existing house into a sleeping wing. One wall would be removed in the upper level to make way for a large master bedroom. The remaining bedroom would become a

study-guest room, and the existing bathroom would be used for this master suite.

The front porch on the lower level would be converted into two bedrooms for the children and would give them a panoramic view of the Sound. The existing living room would become a playroom, and the existing dining room would become a general purpose area for sewing, study, or guests. The existing kitchen, with its washer and dryer, would be converted into a large bathroom. The entire lower level would then become a complete children's suite.

From this point, it was decided to build two functional units off the existing house, angled to take full advantage of the view. A living room pavilion, built at 45 degrees off the house, provides for



Glass walled living room looks out on Long Island Sound.

future expansion in its basement space and is now used as an office for Mr. MacLise's landscaping business.

Between the new pavilion and the house is a flat-roofed connector which contains a dining room with a southern exposure and the kitchen, entry, and breakfast room on the north overlooking a courtyard.

The low budget dictated the most advantageous possible use of space while finding the most economical construction to use on the

steep site of solid bed rock. The floor of the connector wing actually contours over the flat part of the existing bed rock. Where the rock drops off sharply, the two-story pavilion wing begins.

Money was saved by eliminating corridors and utilizing passages through defined areas, and by having the rooms work functionally around the kitchen. There was little problem of cross passage through various rooms.

The owners wanted a large fireplace, but their budget would not

permit one of masonry or brick. Instead, by projecting a joist out from the vaulted pavilion and creating a "box" to hold a metal fireplace as well as wood and other equipment, the feeling of a large fireplace was created. This helped to make a more interesting interior and exterior elevation on the house with the use of a metal flue.

For the oil-fired hot air furnace, a metal asbestos-type round flue was projected upward through a coat closet near the entry where it took little space and helped to hold costs in line. The whole furnace system was developed for the old and new portions of the residence so it would be as modern as the addition, and this, too, was done within the budget.

A courtyard northside was created next to the property line where there is an attractive rock outcrop and ledge. The area was leveled and graveled and finished off with a stone wall visible from the breakfast room and kitchen. A few feet from this, another courtyard was developed to serve as an entry. Then working down from the north side of the house around the east is a series of graveled and stoned courtyards with large steps made of railroad ties. This casual walk up the side of the hill with "thank you ma'ams" to stop and rest is landscaped to enhance its leisure atmosphere.

Working with Mr. Arneill were Erwin Griffiths, contractor; McColl-Wade, Inc., mechanical; Charles Griffiths, plumbing; and Joan Reynolds, interior. Douglas MacLise did his own landscaping. □

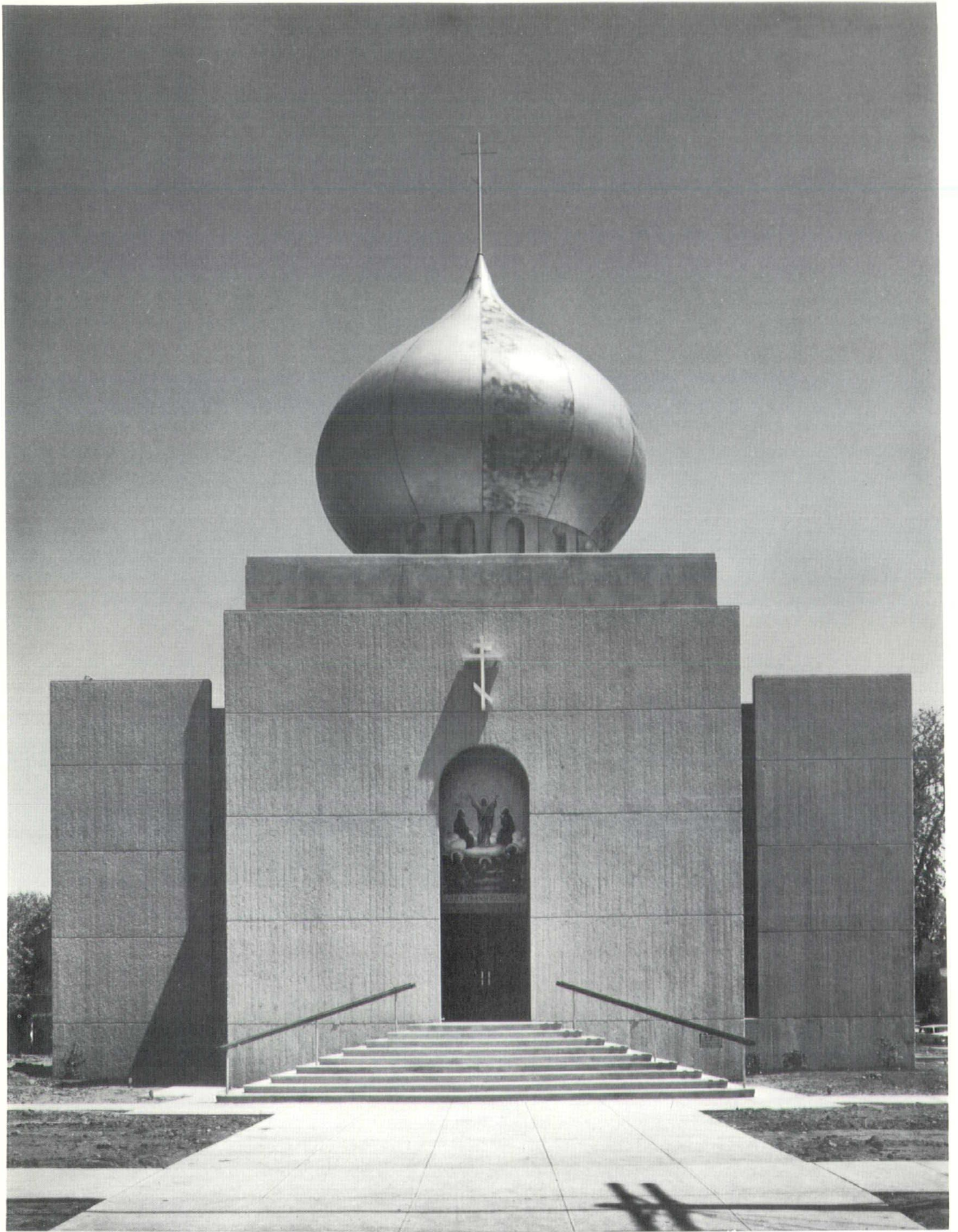
BRUCE PORTER ARNEILL earned three degrees at Yale: Bachelor of Arts and Bachelor and Master of Architecture. He did research and advanced study at Mexico City College and at L'Ecole des Beaux Arts in Paris. He received the Magnus T. Hopper Fellowship for his award-winning health center design project. His work ranges from hospitals to homes and has been published frequently. In addition to his AIA membership, he is Chairman of the Urban Renewal Committee of the Greater New Haven Chamber of Commerce, and a member of AIA Program Committee and Guilford Handcrafts Committee.



Recessed fireplace provides living room focal center.

New wing is homologous extension of original house.





CHURCH IN A GARDEN

**Holy Transfiguration Russian Orthodox Church
New Haven, Connecticut**

OFFICE OF CARL R. BLANCHARD, JR., ARCHITECT

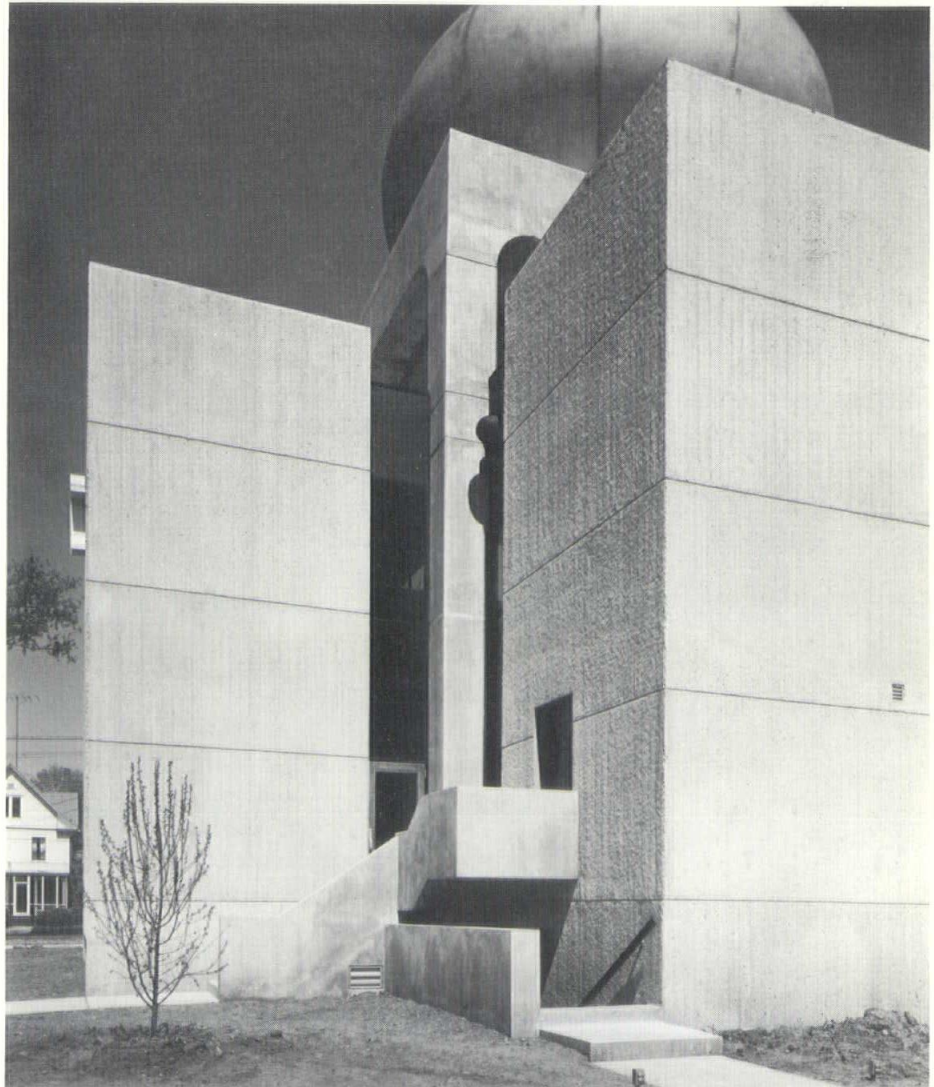
W. J. Megin, Inc., General Contractor

It was 976 years ago that the first Russian Orthodox Church was built in Kiev. Forty-one years later, in 1017, the Cathedral of St. Sophia was erected. It was an impressive and majestic building with five apses and crowned by thirteen cupolas. Over the years, rich traditions have evolved which are important in the design of today's Russian Orthodox Churches.

The Office of Carl R. Blanchard, Jr., Architects, has researched thoroughly many religions as expressed through the evolution of their houses of worship. Traditional elements which are important and relevant have been retained but are clothed in a contemporary framework in the striking Russian Orthodox Church the Blanchard office designed.

For many years, Russian Orthodox worshippers in New Haven met in a small wood frame building on Dixwell Avenue. When they learned that the building was within a renewal area of the city, it was decided to build on property owned by the congregation in New Haven's Westville section. This is a quiet residential neighborhood which contains some fine one-family homes.

Traditional elements are housed in austere shell.





Nave furnishings retain historic integrity.

The requirements were uncomplicated. There was need for a worship space to accommodate approximately two hundred persons at one time. Some would be seated, and some would stand, as is the custom. In addition, a meeting room and related facilities were needed.

The architect was to plan for future elements which included a rectory and bell tower.

The solution is bold and direct — an amalgam of yesterday and today, without compromise to either. The onion dome, the cruciform, the locations of crosses, altar and other furniture were all honored as important factors. Then, an austere concrete shell was designed to house them.

This thirty foot concrete container, which is the church itself,

is the chrysalis from which four massive columns rise to support the dome in classic fashion. Light filters down by way of a clerestory to the worship area which is a vertical space some sixty feet in height.

From a balcony over the entrance vestibule, the a cappella choir provides the only music during the services. Because a great many candles are used during worship, the nave is kept darkened, and the windows in the lower portion of the church are provided with grey glass.

Wood trim, doors, pews and furnishings are done in natural oak. The floor is carpeted.

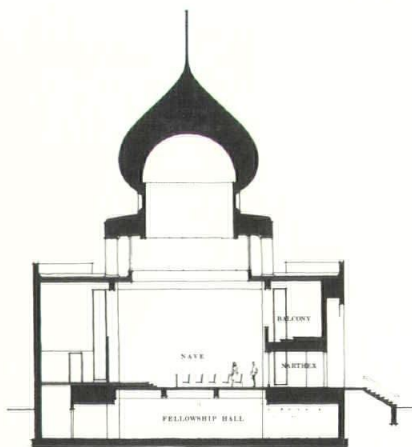
The dome is of special interest because it was constructed of twelve large segments of fiberglass. These were cast by Rudkin-Wiley Corporation. Much investigation was involved in this element due to its size, shape and height above the ground. Fiberglass was used because of its weight, workability and low cost. The gold color was cast integrally with each section.

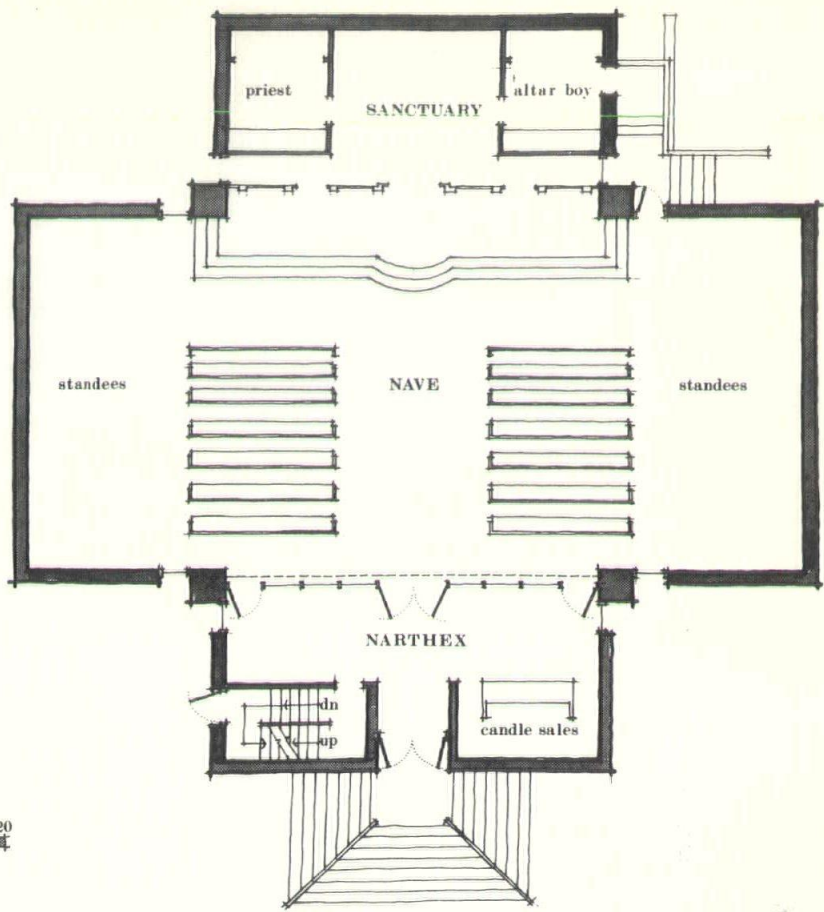
Heating is done electrically by baseboard radiation augmented with fan units. Both recessed and exposed lighting are used.

A six-foot-high wall encloses a garden, and in the center of the garden is the church. During some of the services, particularly at Easter, the garden becomes a worship and meditation space. In the master plan, the wall that encloses the garden becomes a wall of the rectory.

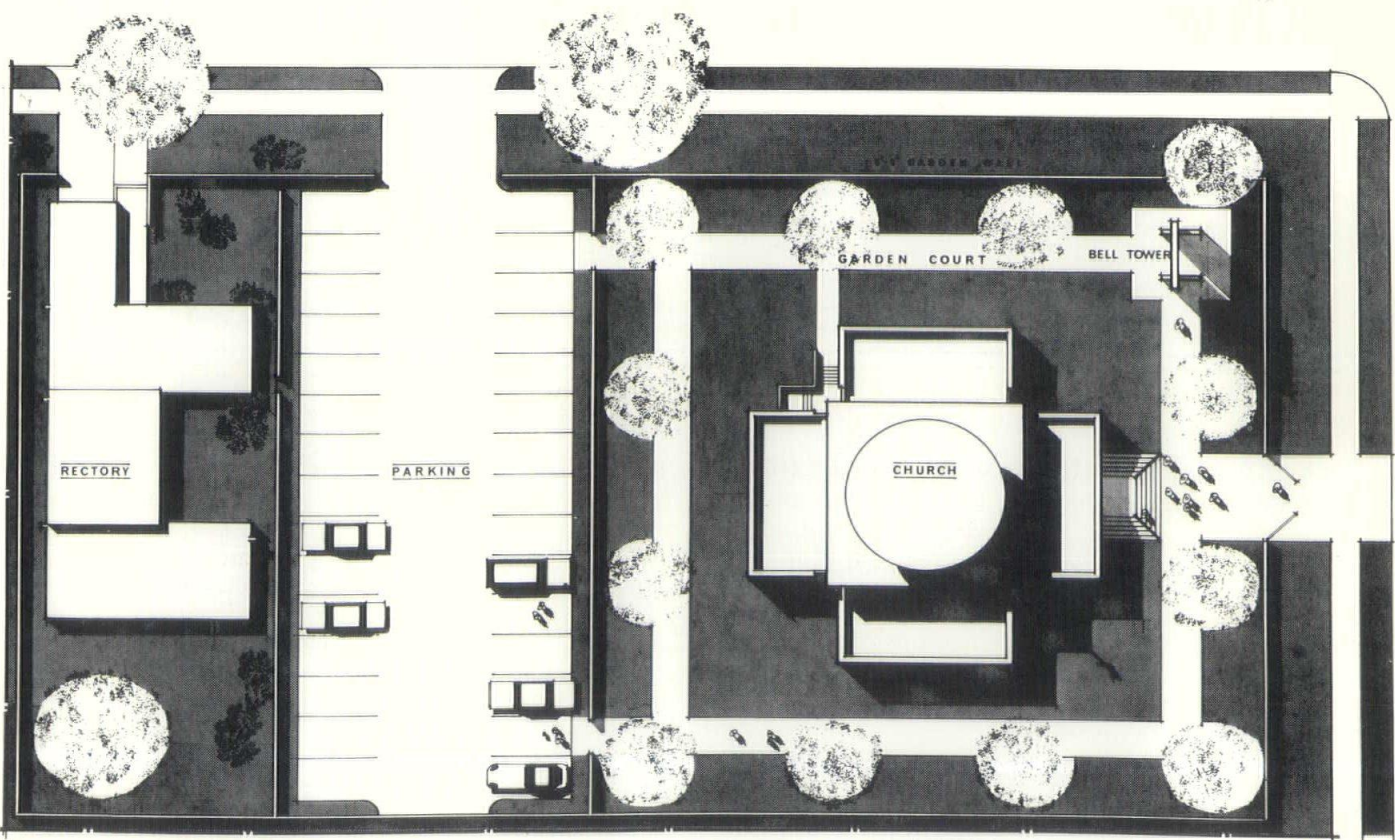
Mechanical engineering for the church was done by Hubbard, Lawless & Osborne, and structural engineering was done by H. A. Pfisterer & Associates. □

OFFICE OF CARL R. BLANCHARD, JR., ARCHITECT, includes Stuart Tillinghast, and Frank H. Roberts was associated with the Office during the planning and construction of the church. Mr. Blanchard is a past president of Connecticut Chapter, AIA, and played an important role in its merger and formation of the Connecticut Society of Architects, AIA. He is active in the Guild for Religious Architecture, Congregational Home of the Aging, Church Council of Center Church in New Haven, as well as many civic organizations. The office is at 111 Whitney Avenue, New Haven.





MAIN FLOOR PLAN
 0 10 20



Economy Forecast

Retail trade, construction, governmental and other service employment in Connecticut by the year 2000 will outpace needs in manufacturing fields, the Connecticut Interregional Planning Program (CIPP) reports.

The number of jobs in service industries will grow at a faster rate than the state's total projected increase in employment by the end of the century, according to CIPP, and will outstrip by far gains expected for manufacturing industries. Employment in resource industries such as agriculture will decline over the same period.

The forecasts are included in "The Economy," the second of six planning reports prepared by CIPP on the future of the economy,

transportation, urban development, recreation and natural resources in the State.

In addition to employment prospects, the 90-page volume discusses the outlook and problems to be faced by the total spectrum of Connecticut's economy. Various indices of economic growth are analyzed, current trends and problems identified and suggestions offered for dealing with them.

Although the overall growth of service employment will be substantial, increases for specific occupations will vary greatly. In fact, CIPP points out, selected manufacturing occupations will grow faster than some service industries. Other manufacturing jobs will decline.

It is anticipated that employment

in the manufacture of machinery, electrical equipment and precision instruments will be up sharply. Moderate to slow growth is foreseen for the rubber and plastics industry, fabricated metals and ordnance. Declines are expected in textile-related fields.

Among service industries, employment in construction and retail and wholesale trade is expected to double as the population increases. Federal, state and local government employment, including teachers and hospital workers, is projected as rising sharply as the demand increases for these services. Business and financial services will increase at a slower rate than the population because of the increasing use of computers.

Recommendations to meet anticipated employment needs of the future, with emphasis on expanding educational facilities, are contained in the report along with discussion of the need for industrial expansion and research, the availability of industrial sites, fuel, water and power requirements and other factors. □

More DOLLAR EQUITY

through a First Federal

HOME *Enjoyment* LOAN

An *investment*, not an expenditure! That's the way most people have come to look at a First Federal HOME ENJOYMENT LOAN . . . whether it be for home *improvements* or for home *purchase*.

FIRST FEDERAL SAVINGS

MAIN OFFICE 80 ELM STREET/OFFICES IN HAMDEN
BRANFORD • MILFORD • FAIRFIELD • BRIDGEPORT

DECORATIVE WIRE

WIRE PARTITIONS

WIRE MESH

EXPANDED and
PERFORATED METALS

The JOHN P SMITH *Co.*

174 Cedar St. Branford, Conn.
Tel. 488-7225

REINFORCED AIR CORPORATION

presents

The hottest cool news in acoustic insulation today — ISOFOAM.

Looks like shaving cream when it foams out of the tank. Foams directly into wall cavities. Seals up every heat-leaking, sound-leaking crack and crevice. And then . . .

- ISOFOAM sets in 50 seconds cold!
- No settling. No expansion.
- Light in weight.
- Won't accept moisture. Won't support combustion.
- Absolutely non-toxic. But insects and rats hate it.
- Smothers sound.

ISOFOAM—newest high performance thermal-acoustic insulation for either new or old buildings. Both exterior and interior walls. Competitively priced for use in houses, high-rise apartments and office buildings, motels, schools—*anywhere* you need top efficiency insulation. Isoschaum®

Now available through:

AMERICAN INSULATING AND ELECTRIC HEATING CORPORATION

P. O. Box 213, Mystic, Connecticut 06335

Telephone (203) 536-6193

Blakeslee Cited

C. W. Blakeslee & Sons, Inc. has been awarded the first Connecticut "Certificate of Conformance for Concrete Production Facilities" by the National Ready-Mixed Concrete Association. The award for its New Haven and Hamden concrete plants was issued following an examination of Blakeslee's equipment, materials, and processes by engineers of the national trade association. □

ARB Officers

State of Connecticut Architectural Registration Board members who were reelected officers for the current term are Maurice H. Golden, West Hartford, President; Howard J. Sullivan, New Haven, Vice President; and Andrew S. Cohen, Waterbury, Secretary. J. Gerald Phelan, Bridgeport, and Harold H. Davis, New Haven, were reelected to the Board. □

Communications in Connecticut

DUKANE
Industrial and Institutional
Sound Paging and
Background Music Systems;
Hospital Nurse Call Signal Systems;
"Flexifone" Business Intercom Systems

WEBSTER-ELECTRIC
"Tele-talk" Business Intercom Systems

ITT KELLOGG
Automatic Dial
Telephone Systems,
Telephone Equipment and
Apparatus

ALTEC-LANSING
Church, Auditorium,
Stadium, Sound
Reinforcement
Systems.

TEL-RAD INC.

Est. 1946

Sales, installation and service throughout Connecticut.

TEL-RAD INCORPORATED, 592 New Park Ave., Hartford 10, Conn., Phone 236-2388



CNC

CLAUDE NEON OF CONN.

INC.

signs | ILLUMINATED
PLASTIC
NEON

letters | STAINLESS STEEL
ALUMINUM-BRONZE
PORCELAIN ENAMEL

specialties | FLAG POLES
CROSSES
AREA LIGHTING

125 FRONT STREET
Bridgeport, Conn. 06606
335-2177

ROOF . . .

ROOF . . .

all-around access:

FLOOR . . .

SIDEWALK . . .

. . . Wherever workmen must go, there is a Bilco door to provide easy access. Choose from a wide range of standard units . . . or select special doors shaped and sized to your precise needs.

Ease of installation, permanent weather-sealing, and rugged construction are all part of the Bilco quality tradition. Exclusive design features include built-in spring operators for effortless lifting of even heavy plate doors. Bilco all-metal doors give you freedom of design, too — they fit and blend with any structure.

Specify Bilco doors . . . design with Bilco doors in mind . . . with confidence in Bilco lifetime quality.

See our catalog in Sweets
Architectural & Engineering Files or send for it.

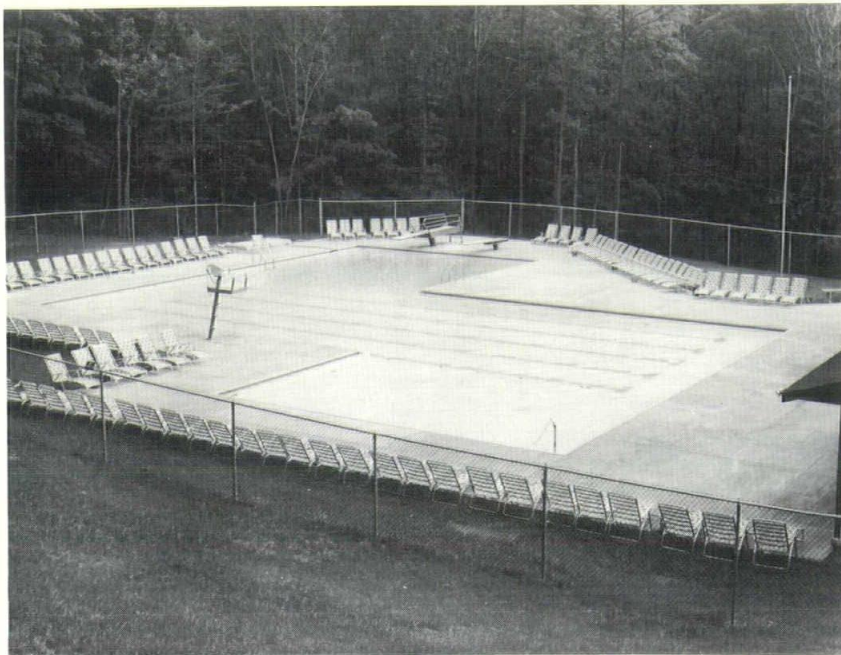
Bilco®

HORIZONTAL SPRING-ASSISTED DOORS

The Bilco Co., Dept. CA, New Haven Conn. 06505.
Please send me your new catalog on special service doors.

NAME _____
FIRM _____
STREET _____
CITY _____ STATE _____ ZIP _____

Scott Pools has Built . . .



Northern Branch of New Haven YMCA (second pool)

another revolutionary "IFRS" (Pipeless Pool) with all these unique advantages

- All buried perimeter pool piping is completely eliminated. No pipe access tunnels required.
- Controlled pressure directional jet inlets every 3 feet around the pool provide superior filtered water distribution and deep water bottom supply.
- "Jet Clean" perimeter gutter provides more efficient surface skimming.
- Integral skimming weir provides 24-hour surface skimming.
- Jet cleaned constant flow gutter.
- Stainless steel construction or anodically-protected galvanized steel provide ultimate in long-run economy.
- Oversized combination roll-out recessed type gutter. The advantages of both designs; the drawbacks of neither.
- Wave-break gutter design.
- Deck level accessibility for all connections.

PLUS

- Non-skid safety curb and gutter lip
- Life line and racing line anchors
- Gutter waste channel to filter
- Filter water supply tube
- Continuous protective sacrificial anode
- Heavy hot-dipped galvanized steel

For a brochure describing details and variations plus a list of IFRS installations . . . write or call the PREFERRED Builder of Quality

Since 1937

Scott-Paddock Pools

Woodbury, Conn. • 263-2108
Hartford, Conn. • 527-4500

PCI Certification

The Prestressed Concrete Institute has awarded one of twenty-five "Plant Certification" seals to C. W. Blakeslee & Sons, Inc. This action followed an inspection of the company's plants, materials, yards, and production processes by Ross Bryan Associates of Nashville, Kentucky, an independent engineering firm retained by the Institute.

Blakeslee Prestress was developed in 1958 as one of the first American producers of prestressed concrete which had earned acceptance in Europe. The company is one of the country's largest producers with over four hundred employees in its Prestressed Concrete Division in New Haven and Hamden.

Blakeslee has supplied its prestressed products for such structures as the Bridgeport Parking Garage; New Rochelle, New York, Parking Garage; I-87, Route 9, and Route 25 Highway Bridges; New York State College, Farmingdale; Greenwich Academy, Greenwich; Howard Johnson Motor Lodges; and the company's new headquarters now under construction in the Long Wharf Redevelopment area of New Haven. □

New Associates

Charles DuBose, F.A.I.A., Architect, has announced that Z. Edmund Janas, A.I.A., and Thomas K. Burns, A.I.A., have been named associates in the firm, which recently moved its offices to 49 Woodland Street, Hartford. □

A Complete Photographic Service For The Architect

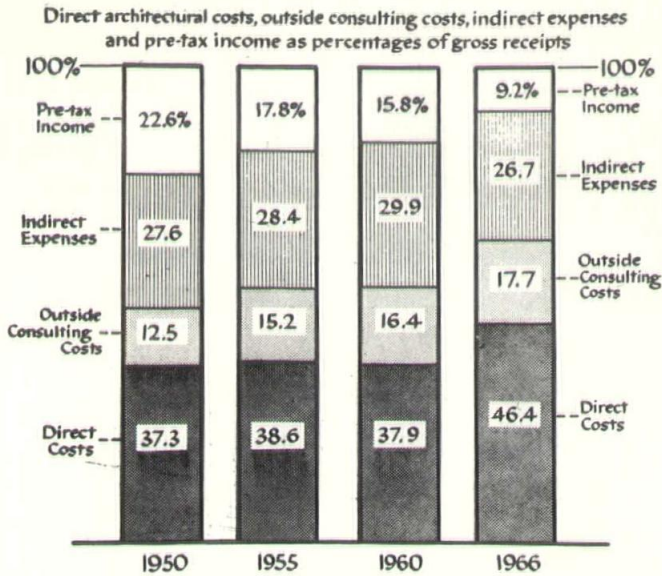
- On Location, exterior and interior photographs
- Photo murals, black and white or color
- Color reproductions of your renderings — copying of original, 16 x 20 color print, exhibition mounted, all for \$45.00

JACK STOCK STUDIOS

306 MAIN STREET
Derby, Conn. 734-6296

**COST AND INCOME TRENDS IN ARCHITECTURAL PRACTICE
FOR THE YEARS 1950, 1955, 1960 & 1966**

(Data from Financial Statements)



Case and Company, a management consultant firm conducting a study of the cost of architectural services, reports that (1) the cost of such services has gone up sharply, (2) the profits of architectural firms have dropped sharply, and (3) clients of architectural firms are demanding "much more complicated and sophisticated service."

SPECIFY



**BLACKTOP SEALER
FOR PARKING AREAS AND DRIVEWAYS**

latexite

**COLOR-FAST ACRYLIC RESIN COLORED SEALERS
FOR PLAY AREAS**

For low-budget jobs where pavement is not subject to oil and fuel drippings, specify low-cost **COLOR-SEAL**

FREE Parking Lot Templates save you time in preparing plans. Call or write for yours today.

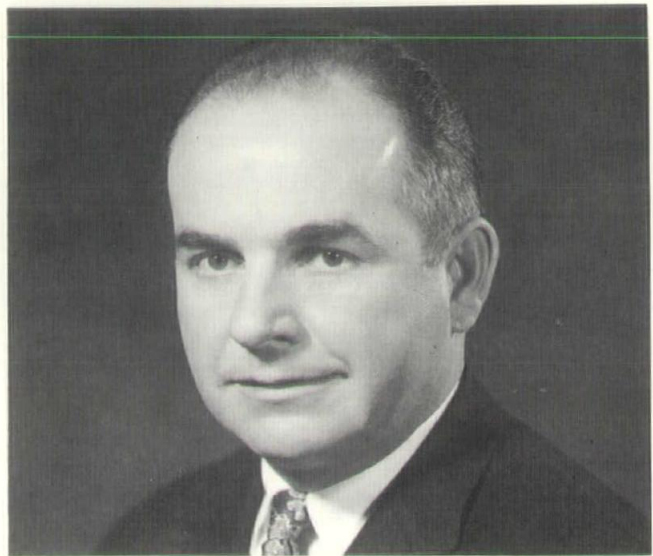


**COPELAND
COMPANY, INC.**

WILLOW STREET
CHESHIRE, CONNECTICUT

Telephone
272-3221

YOUR MAN...



Mr. Jack Tormay New Britain, Connecticut (203) BA 4-2379

TAKE ADVANTAGE OF HIM!

... JACK TORMAY, our District Manager for California Products of Cambridge, Mass., likes to be taken advantage of — it makes him feel he's doing his job better. And, he's available to assist you with any questions you may have when it comes to specifying and using the right product for the job.

One of the ways that Jack can best assist you is by providing you with a copy of California Products new ARCHITECTS' SPECIFICATION GUIDE. It contains comprehensive data and specifications for INTERIOR AND EXTERIOR PAINTS, BUILDING PRODUCTS, SPECIAL FINISHES, AND SPECIAL FINISHES for ASPHALT. Each Product Data Sheet lists the description, surface uses, application, drying time, coverage and limitations for the product . . . plus accurate specifications.

The AIA Uniform System is used for identification in this Guide and all data sheets are registered and on file with the Institute.

To get your copy of this handy GUIDE, clip the coupon below and send it to Jack — or better still, call him collect — he'll personally bring you a copy.

For your copy of the ARCHITECTS' SPECIFICATION GUIDE fill out and return this coupon to



Mr. Jack Tormay
Connecticut District Manager
California Products Corporation
123 Mariam Road
New Britain, Connecticut
Telephone: (203) BA 4-2379

Name _____

Firm _____

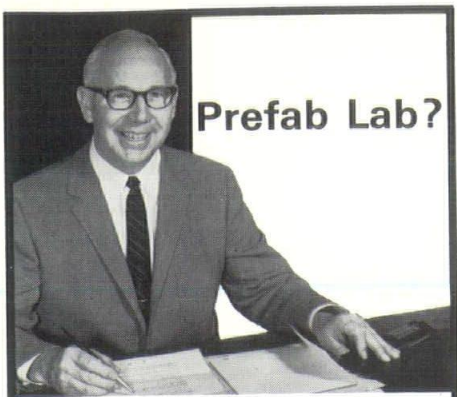
Address _____

City _____ State _____ Zip _____



CALIFORNIA PRODUCTS CORPORATION

169 WAVERLY STREET, CAMBRIDGE, MASS. 02139 / (617) 547-5300



Prefab Lab?

Whenever your design requirement includes industrial, educational, or institutional science laboratories, count on us for a complete service—the only service of its kind in Connecticut. We provide “wholly responsible” lab drawings, lab furniture, lab instruments, lab equipment, that fit your design and schedule—hand in glove. You can forget the lab problem when you call on us—known for prompt reliability for 20 years.

Daniel J. Pikosky
President
GENERAL
SCIENTIFIC EQUIPMENT COMPANY, INC.
Box 5277, Hamden, Conn. 06514

Ribicoff Speaks

Senator Abraham A. Ribicoff delivered a strong challenge to architects and planners at the Hartford Club, September 18, at a joint meeting of the Connecticut Society of Architects, AIA, and the Connecticut Section of the American Institute of Planners. The Connecticut Senator said there must be much greater involvement by professional people before the enormous job to be done in our cities can meet with success.

Senator Ribicoff urged architects and planners to create housing which allows people to retain their individual identities. “An environment must be created which lets a person retain his dignity and sense of belonging to the community. Cities must be built around the people who live in them,” he said.

The Senator discussed legislation he has sponsored jointly with Senator Charles H. Percy of Illinois which proposes that two per cent of the federal domestic budget

be set aside now and used for basic city needs.

“We cannot afford to concentrate only sixty cities in a ‘model cities’ program, while neglecting the planning for all cities which is so vitally needed to combat expanding civil unrest in urban areas across the land,” he said.

The Senator made a point of the responsibility of professionals to cause changes in regulations, attitudes, and official positions which harass and delay the process of rebuilding cities.

Branding the entire building industry as “the most backward industry in the United States,” he went on to declare that the responsibility for conversion to modernity belongs to architects and planners who can contribute the knowledge and experience necessary to bring about needed reformation.

Senator Ribicoff offered to help as strongly and effectively as his position permits in the implementation of essential changes. “The keys still are held by individual members of these professions and by their professional societies, for great strides forward will be taken only as experts step forward and speak out on the problems,” he said. □



Clark University Commons

T A C, Architects

Custom made solid hardwood tables, benches and seating for library, lounge, dining room, classroom and dormitory made to your exact specifications.

For further information write or call:

THOMPSON MANUFACTURING COMPANY

Lancaster, New Hampshire 03584
(603) 788-2011

Quality Products Since 1858

SIGNS OF ALL KINDS

For Offices, Schools, Hospitals, Etc.
TO ARCHITECTS' SPECIFICATIONS

Write or phone
your Connecticut Manufacturer

SETON NAME PLATE CORPORATION
592 Boulevard, New Haven 06519
Phone: 772-2520

JAMES CHARLES OFFICE FURNITURE AND EQUIPMENT CO.

319 YORK STREET
Cor. Saw Mill Rd.
WEST HAVEN,
CONN.
934-2432

- DESKS: Wood and Steel
- CHAIRS
- FILING CABINETS
- TABLES
- STEEL SHELVING
- INDUSTRIAL EQUIPMENT
- LOCKERS
- BLUE PRINT CABINETS
- DRAFTING TABLES

All types of used and new office furniture and equipment.

Library Competition

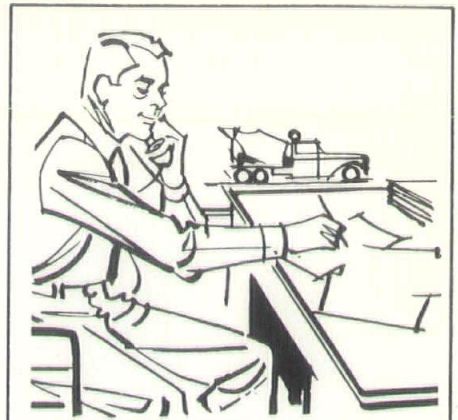
The American Institute of Architects, in cooperation with The American Library Association and The National Book Committee, has announced the opening of nominations for the 1968 library building awards program for excellence in the architectural design and planning of libraries.

Entries may be submitted by registered architects practicing in the United States for libraries which have been erected here or abroad, and completed after January 1, 1963. The program is open to academic, school and public libraries library buildings. Entry forms must be completed by December 14, 1967, and submissions in brochure form received at The Octagon by January 22, 1968.

CIPP Preview

A preview of problems and issues facing Connecticut residents over the next three decades is contained in the first of six planning reports released by the Connecticut Interregional Planning Program (CIPP).

The 42-page book, "Goals for Connecticut," sets the stage for a discussion of the findings of a 30-month planning phase conducted by CIPP. It suggests long-range goals and objectives and introduces alternative development concepts for the economy, transportation, urban development, recreation and natural resources, leaving to the five remaining volumes more detailed treatment of these areas.



**OUR QUALITY CONTROL
ENGINEERS ARE EXPERTS
IN PRECISION MIXING**

- Ready Mix Concrete
- In-Place Concrete
- and Equipment for Pumping, Too.

**BITUMINOUS CONCRETE
TRAP ROCK QUARRY
SAND & PROCESSED GRAVEL**

R

RONCARI INDUSTRIES, INC.

1776 SO. MAIN ST., EAST GRANBY
TEL. HARTFORD 527-1825

Anderson Fairbanks Incorporated



GENERAL CONTRACTORS

P.O. BOX 2068 - HARTFORD, CONNECTICUT 06101

Area Code 203 525-3151 or 3141

Choose **Carrier** for air conditioning

...even for an entire town.

For the first time in history, a whole community is being air conditioned from a single, central plant. Carrier equipment is cooling all of the homes, apartments and shops of Lake Anne Village in Reston, Virginia. Advances like this explain why more people put their confidence in Carrier than in any other make.

You can trust your local Carrier Dealer's experience, ability and integrity.

Carrier Distributor



THE CONNECTICUT AIR CONDITIONING COMPANY
West Haven, Connecticut • 934-5291

**FOLLOW THE LEADER
FOR FLEXIBILITY**

modernfold



**SIDE COILING
WOOD**

Coil-Wal



VINYL ACCORDION

Modernfold / Soundmaster



**VINYL CLAD
STEEL**

Audio-Wall



FLAT SURFACE

Acousti-Seal



WOOD

Woodmaster

Distributed by

WILLCO SALES & SERVICE

580 State Street Extension

P.O. Box 23

Fairfield, Connecticut

Tel. Hdfd. 528-1580

Fairfield 366-3895

Yale Degree Changes

Rewards for the study of architecture at Yale take on a new facade this year, as the traditional degree for professional study will be upgraded, and a program leading to a new, advanced degree will be offered for the first time.

Charles W. Moore, chairman of the Department of Architecture which began at Yale in 1908, announced that the basic, three-

and-a-half year architecture course will now lead to a Master of Architecture (M.Arch.) degree, instead of to the former Bachelor of Architecture ranking. Further, the current one-year Master's program of advanced study will be dropped from the Yale curriculum, to be replaced by a two-year course of study for a degree to be called the Master of Environmental Design (M.E.D.)

Professor Moore commented that the Master of Architecture degree "reflects the new breadth of professional education required in architecture, in addition to being a more realistic end of a three-and-a-half year graduate program. In the Master of Environmental Design program students will do advanced graduate work in areas of their individual interest — the new degree focuses on architecture in relation to the other arts, to the sciences and applied sciences, and on problems of urban planning and design."

Visit our

ARCHITECTS' SAMPLE ROOM

Just off Routes 91 and 5 on
Old Depot Hill Road, Ware-
house Point.

"BRICK CENTER"

Clay Products
INCORPORATED

HTFD. 527-8851

D. I. CHAPMAN, Inc.
**PAINTING and
DECORATING**

**STRUCTURAL
WATERPROOFING
AND RESTORATION**

560 Orchard St., New Haven

PHONE State 7-1211

A COMPLETE TECHNICAL SERVICE FOR ARCHITECTS

- Preliminary and Definitive Construction Cost Estimates
- Value Engineering And Comparative Economic Studies
- Project Planning (CPM/PERT) Scheduling And Forecasting
- Construction Claims Evaluation And Arbitration

Marvin Gates, P.E.

Construction Estimating, Inc.

158 Newington Road
West Hartford, Connecticut 06110

PAGE FENCE

- Aluminized Steel
- Vinyl-Clad (colors)
- Guard Rails
- Rustic Wood
- Post & Chain

Distributed & Erected by

SCHOOL EQUIPT.

GUARDCO

Request Specification File
for all products

- Bleachers
- Scoreboards
- Backstops & Goals
- Playground Equipmt.
- Tennis Courts

Steel Folding Gates & Roll-up Doors

77 STATE STREET, NORTH HAVEN 239-2554

To qualify for admission to the M. Arch. program students must have already received a B.S. or B.A. degree, and those desiring the new M.E.D. must have a Bachelor's degree in architecture for admission.

Professor Moore said that the new degrees are a result of "a marked shift which has occurred over the last few years in the Department of Architecture. Students and faculty have now become involved to an unprecedented extent with the problems of society—the social issues and human use of the environment as a whole rather than the shape of the objects within it."

"To an increasing extent design solutions are expected to come at least partly from interaction with the user, rather than from the imposition of an architect's formal preconceptions."

Last spring the first-year Yale architecture class completed the design and did the actual construction of a community center for the small town of New Zion, Kentucky,

after extensive consultation with the local people (*Connecticut Architect, July-August 1967*). Portions of the second and third year classes have been concerned with urban renewal and planning and with the construction of novel prototypes for low-cost housing. Several third-year students also won the Design Citation of "Progressive Architecture" magazine for a teenage club they designed for the poverty program in New Haven. □

- CORBIN
Finish Hardware
- HUFOR
Folding Partitions
- STEELCRAFT
Hollow Metal Doors and Frames

BIDWELL
HARDWARE CO.

HARTFORD, CONN.
527-6443

**Would you sell
your house today**

**for the
Fire Insurance
on it?**

If your answer is "No!", you're probably under-insured and are risking thousands in loss if you have a fire.

Property values have increased.

Replacement and repair costs have gone up.

At Thompson & Peck, our expert counselors can analyze your coverage and help you to bring your home insurance program in line with today's needs.

THOMPSON & PECK

149 Court Street • Telephone 787-6781

New Haven, Connecticut 06510

Not just another luxury hi-rise . . .

REGENCY TOWERS IS ALL-GAS!

Architect-engineers Walter J. Douglas Associates and builders Harry Gampel and Frank Beckerman chose GAS for their luxury REGENCY TOWER apartments in Hartford. GAS does all the big jobs best. GAS heats in winter, cools in summer. GAS cooks. GAS supplies hot water. GAS dries the laundry. GAS incinerates garbage. GAS was the choice not just because it's more dependable and efficient, which it is, but because it affords lower operating costs.

Let your professional gas specialist—at your local gas company—fill you in on all the facts and work with you from start to finish. You'll get a design that's years ahead in concept and fits your cost structure.




GREENWICH GAS COMPANY • HARTFORD GAS COMPANY • NEW BRITAIN GAS COMPANY • SOUTHERN CONNECTICUT GAS COMPANY
Bridgeport and New Haven

Yale Dean

Howard Sayre Weaver has been appointed acting dean of the Yale School of Art and Architecture. The deanship of the school became vacant July 1 with the resignation of Gibson A. Danes who left to become dean of visual arts at Westchester College of the State University of New York. Mr. Weaver, who is associate secretary of Yale University and assistant to the president for external relations, will continue with those duties. □

INSIST ON THE GENUINE

THE



Since 1921

ELECTRIC OPERATORS
AND RADIO CONTROLS

OVERHEAD DOOR COMPANY, INC.
391 BOSTON POST ROAD ORANGE, CONN.
45 years of DOORability

Cohen Elected

Andrew S. Cohen, Waterbury architect, was elected secretary-treasurer of the New England Council of Architectural Registration Boards at its annual convention in Portland, Maine, October 6. He succeeds William Linde of Vermont who was elected chairman of the Council.

Mr. Cohen, who is a past president of the Connecticut Society of Architects, was the first chairman of *Connecticut Architect's* editorial board. In practice since 1953, he is a principal of the firm of Cohen & D'Oliveiro, Architects. □

New Association

Albert Kennerly has resigned as an associate partner of Skidmore, Owings & Merrill to become managing partner of Fordyce Hamby & Kennerly with offices in New York and Washington. Mr. Kennerly is a registered architect in Connecticut. □

School Booklet

A 70-page booklet of award winning designs in the \$2 million architectural competition for the modernization of a New York City junior high school has just been published. The book is titled "The Intermediate School," and single copies are available from The Great Cities Research Council, 5400 North St. Louis Avenue, Chicago, Illinois 60625. □

INDEX OF ADVERTISERS

Anderson Fair Oaks Incorporated....	23
Bidwell Hardware Company	25
Bilco Company	19
C. W. Blakeslee & Sons, Inc.	3
California Products Corporation ..	21
D. I. Chapman, Inc.	24
James Charles Office Furniture & Equipment Co.	22
Claude Neon of Connecticut, Inc.	19
Clay Products Incorporated	24
Connecticut Air Conditioning Company	23
Construction Estimating, Inc.	24
Copeland Company, Inc.	21
Domore Office Furniture of Connecticut, Inc.	26
Dwight Building Company	26
Edgcomb-Milford Inc.	27
Electric Companies of Connecticut	Back Cover
First Federal Savings & Loan Association	18
First New Haven National Bank..	4
Frankson Fence Company	26
Gas Companies of Connecticut	25
General Scientific Equipment Company, Inc.	22
Guardco, Inc.	24
Oil Fuel Institute of Connecticut	27
Overhead Door Company, Inc. ..	26
Charles Parker Company	27
Plasticrete Corporation	2
Reinforced Air Corporation	18
Roncari Industries, Inc.	23
Scott-Paddock Pools, Inc.	20
Seton Name Plate Corporation	22
John P. Smith Company	18
Jack Stock Studios	20
Tel-Rad Incorporated	19
Thompson & Peck, Inc.	25
Thompson Manufacturing Company	22
Willco Sales & Service, Inc.	24



OFFICE FURNITURE

The most complete collection of fine wood office furniture.
Modern, contemporary and traditional styling.

Connecticut distributors for Peerless Steel Office Equipment.

280 Park Road
West Hartford
232-8825

900 Chapel Street
New Haven
562-8622



Gorham

FENCES

QUALITY SEAL MEMBERS

Wood
Steel
Wire

THE FRANKSON
FENCE CO.
451 STATE ST.
TEL. 288-2588
NORTH HAVEN

PERFECTION
FENCE CO., INC.
1327 MERIDEN RD.
TEL. 755-6172
WATERBURY

WESTPORT
FENCE CO., INC.
1545 EAST STATE ST.
TEL. 227-5282
WESTPORT

DWIGHT BUILDING COMPANY

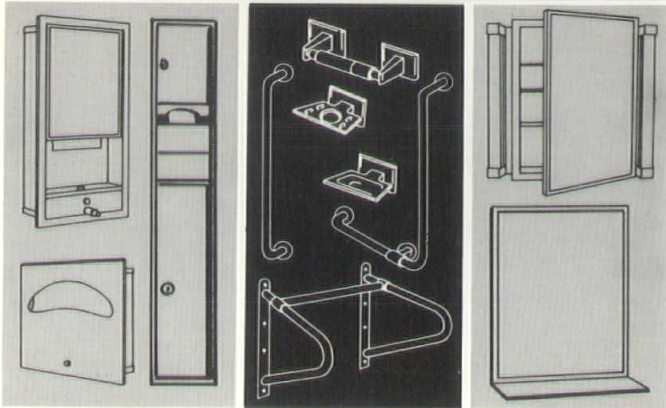
General Contractors

Since 1917

109 Sanford St. Hamden, Conn.

288-7753

SPECIFY WITH CONFIDENCE...CHOOSE FROM THE COMPLETE PARKER LINE!



WASHROOM EQUIPMENT

GRAB BARS ACCESSORIES

CABINETS MIRRORS

BY PARKER

The most complete line of quality lavatory and bathroom cabinets, mirrors, accessories and washroom equipment manufactured by a single company! Craftsmanship and functional beauty are built into every product . . . specials are easily obtainable upon request! Write for complete 32 page catalog or technical data sheets to:

The CHARLES PARKER CO.
50 HANOVER STREET, MERIDEN, CONN. Dept. "A"

ARCHITECTURAL SHAPES EXTRUSIONS • COPINGS • ACCESSORIES • ANGLES

CHANNELS • GRAVEL STOPS

BEAMS • PLATES

STEEL & ALUMINUM STRUCTURALS

SHEETS • TUBING

• BARS PIPE •

For fast delivery from our extensive warehouse stocks; for prompt quotations or help with your metals problems, just call us . . .

EDGCOMB + MILFORD

MILFORD, CONN. 06461 • ALUMINUM, BRASS, CARBON & STAINLESS STEEL
In Connecticut, call: Milford 874-1631, Darien 655-1471, Danbury 748-9208, Hartford 527-3291, Waterbury 754-2144, or ask Operator for Enterprise 6060.
In Poughkeepsie, N.Y., call Enterprise 6060; in Mass., call Enterprise 3972.

YOUR REPUTATION AS AN ARCHITECT IS AT STAKE LONG AFTER THE BUILDING IS DEDICATED...

When you plan for



you're not gambling with total costs or reliability!

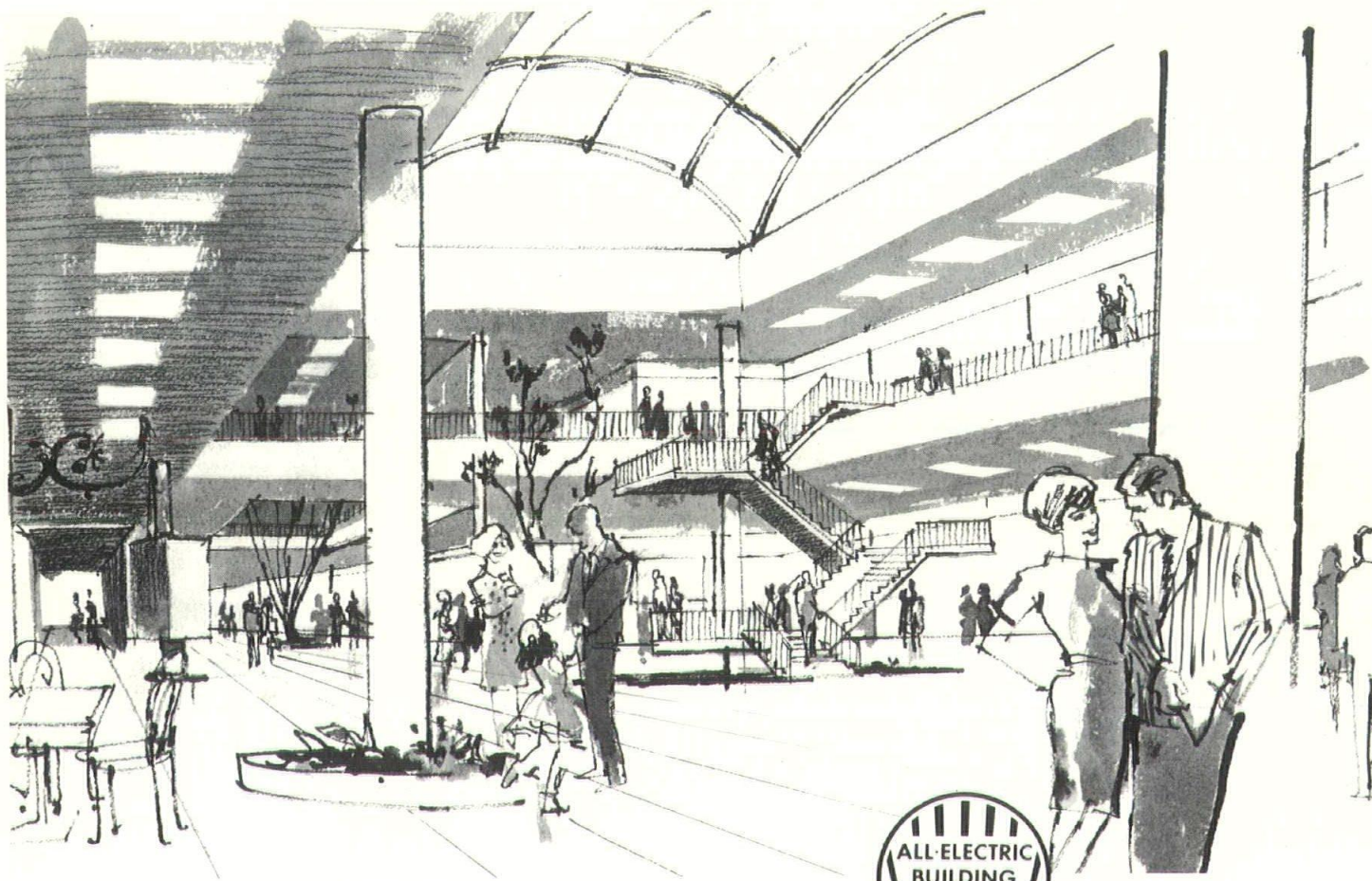
OIL DELIVERS WHAT IS EXPECTED AND NEEDED!

IT'S BEEN THE PROVEN FUEL FOR 8 OUT OF 10 CONNECTICUT BUILDINGS

OIL FUEL INSTITUTE OF CONNECTICUT • P.O. BOX 344 • HARTFORD, CONNECTICUT

ELECTRICITY

will heat and cool
530,000 square feet in
Lafayette Plaza, Bridgeport.



Architects and Engineers: Fletcher-Thompson, Inc.
Consulting Architect: Lathrop Douglass
Consulting Engineer: S. W. Barbanel Assoc.
Developer: Hammerson Fusco & Amatruda Corp.



Lafayette Plaza, major downtown redevelopment project in Bridgeport, includes a department store, bank, and office building. A two-level heated and air conditioned shopping mall (interior illustrated above) contains approximately 300,000 square feet of space.

Lafayette Plaza is the state's largest all-electric building. It is the fourth major project in which the same developer has specified all-electric design.

In large or small building assignments, all-electric building design has proven advantages and benefits. Ask your electric company for facts about all-electric design for your present or future projects.

The Electric Companies of Connecticut

United Illuminating • The Hartford Electric Light Co. • The Connecticut Light & Power Co.