

# Architect Colorado

A publication of The American Institute of Architects Colorado Component

**Focus on Residential  
Architecture**

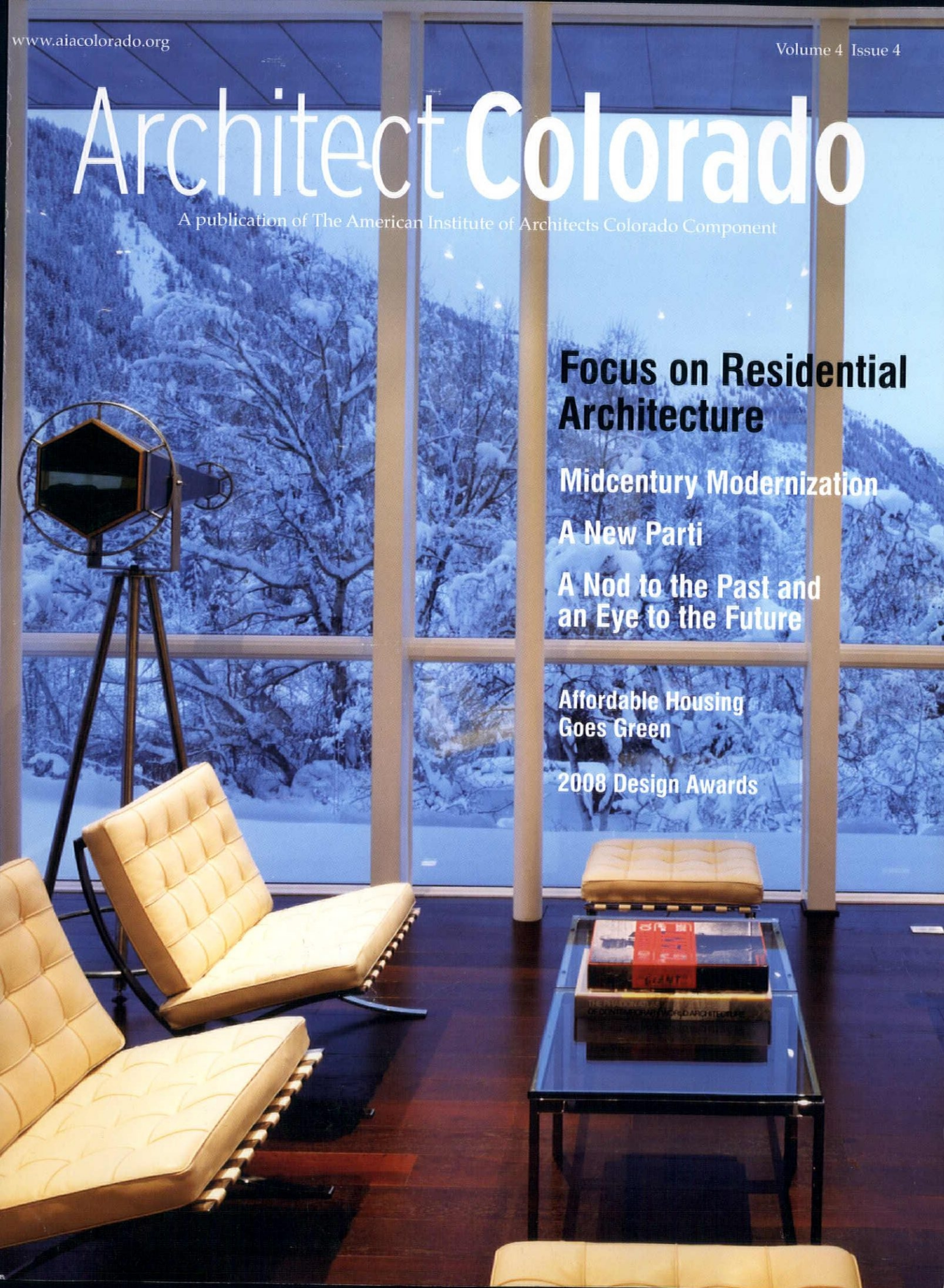
**Midcentury Modernization**

**A New Parti**

**A Nod to the Past and  
an Eye to the Future**

**Affordable Housing  
Goes Green**

**2008 Design Awards**







# Ideas built.

Government

Hospitality

Corporate/Office

Mission Critical/High-Tech

Parking

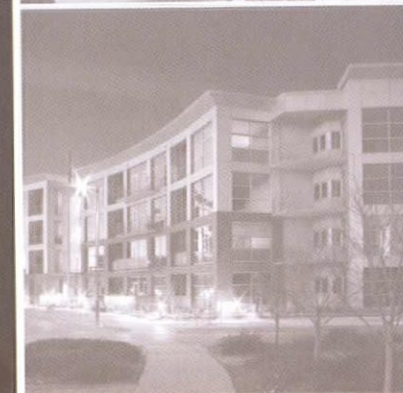
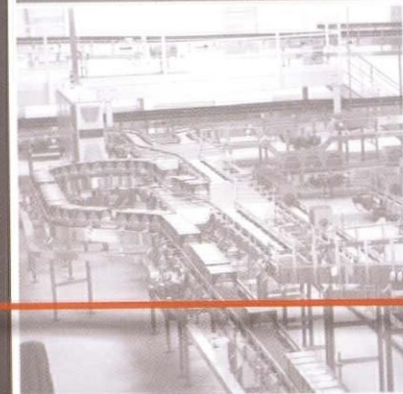
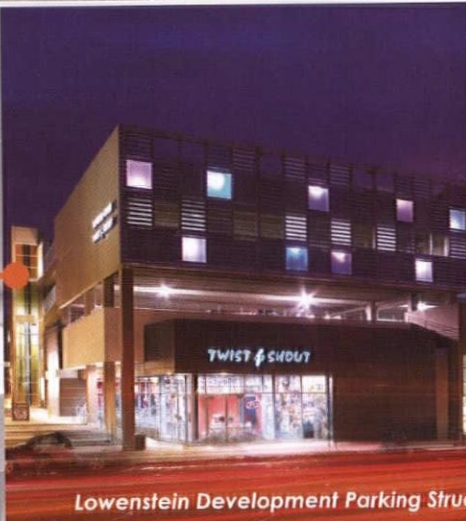
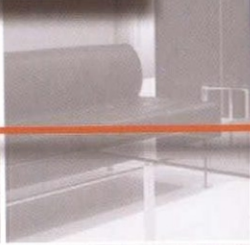
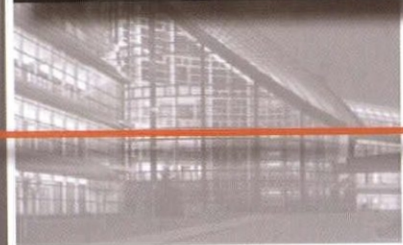
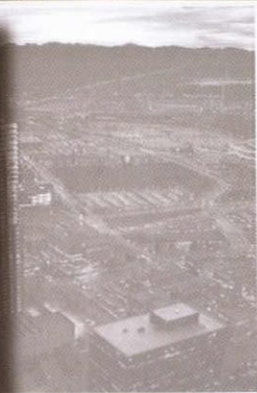
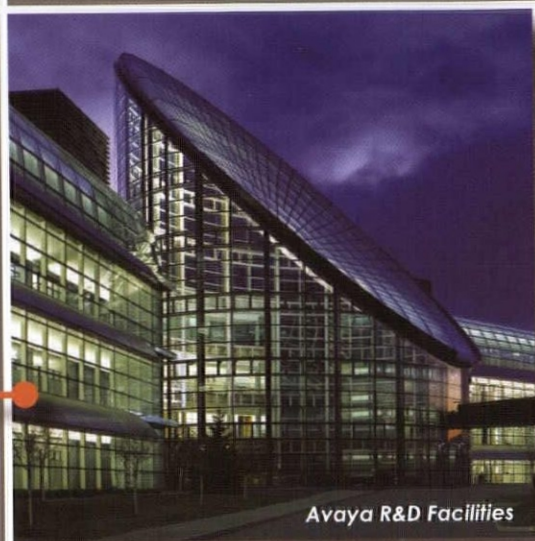
Mountain Resort

Higher Education

Tenant Improvement

Residential

Industrial

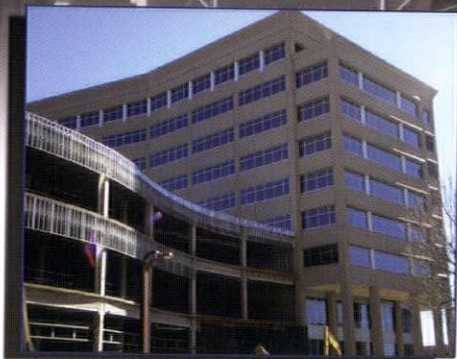
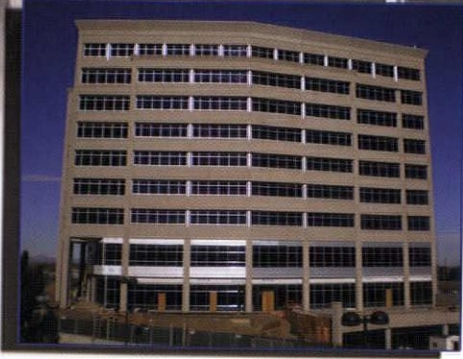


Building in Colorado since 1942





# Village Center Station



Owner - Shea Properties  
Architect - Davis Partnership  
Engineer - S.A. Miro  
Contractor - The Weitz Company

167,575 SF Precast Office Tower  
262,375 SF Precast Parking Garage

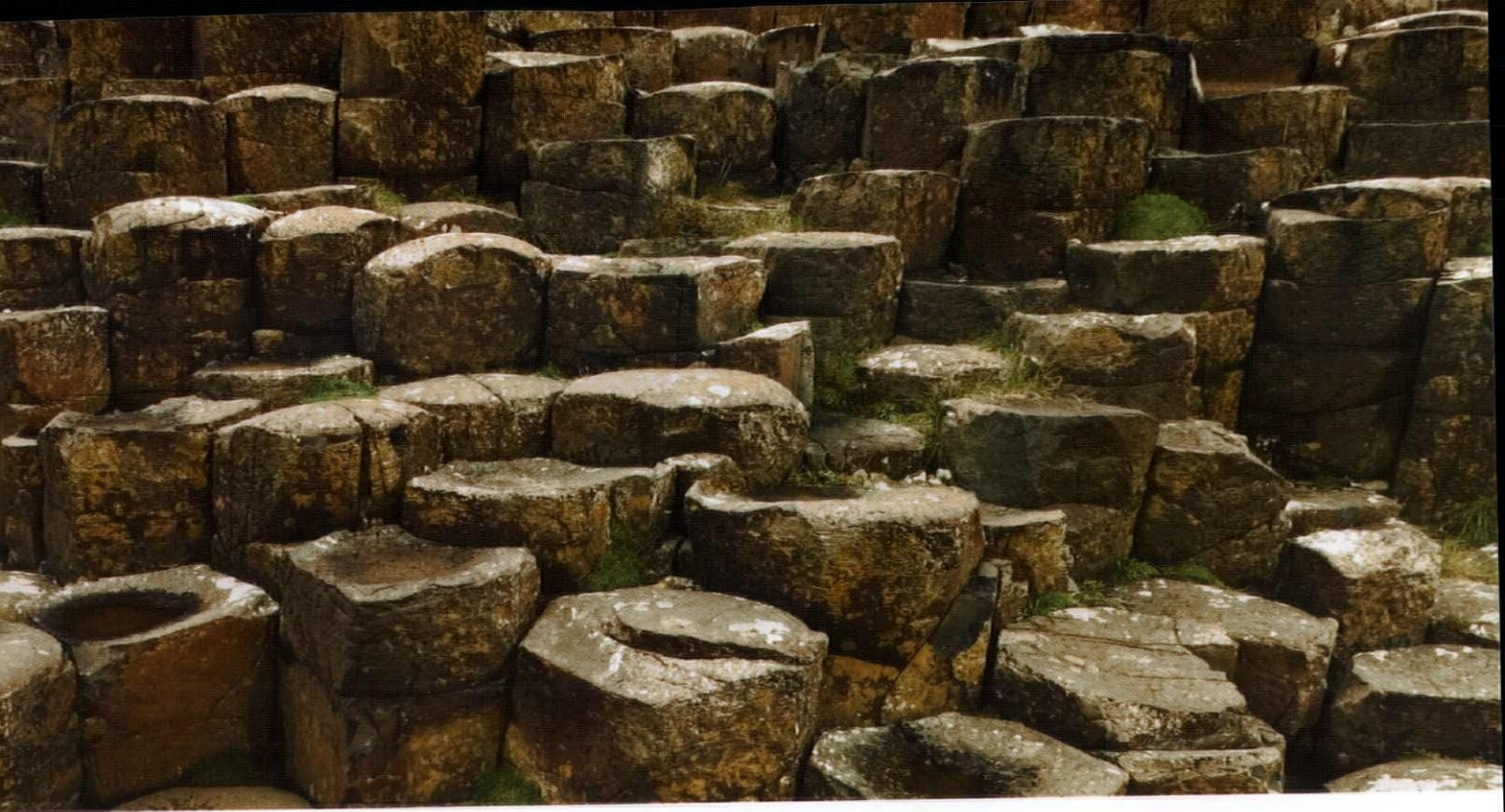
Two piece architectural columns, deep spandrel profiles and a large cornice overhang made this a challenging precast project. 2,260 pieces of precast were erected in less than 6 months.

Architectural & Structural Precast concrete provided by Rocky Mountain Prestress

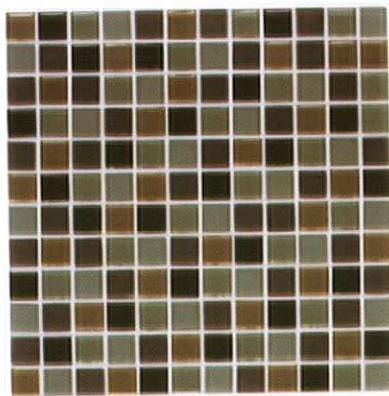


ROCKY MOUNTAIN PRESTRESS





*Giant's Causeway in Northern Ireland from one of nearly 40,000 basalt columns.*



*Skylights Beige-Green Mélange glass from Arizona Tile.*

## BRINGING YOU THE MOST EXTRAORDINARY SURFACES ON EARTH.

Experience a vast selection of porcelain, glass, ceramics and natural stone that will truly elevate any design. At Arizona Tile, there's a world of surfaces waiting to be explored. Through our exclusive relationships with select quarries and suppliers, you will discover stunning surfaces you won't find anywhere else on Earth.

*For all showroom locations and a look at our complete collection, visit [www.arizonatile.com](http://www.arizonatile.com).*

 **ARIZONA TILE**

---

DENVER 10100 East 45th Avenue, Denver, CO 80238, 303-574-2990 | Located on the southwest corner of 45th Avenue and Geneva



# Architect Colorado

## CONTENTS VOL. 4 ISSUE 4

### Features

- 16 Midcentury Modernization
- 24 A New Parti
- 28 A Nod to the Past and an Eye to the Future
- 34 Affordable Housing Goes Green
- 40 Reaching Back
- 46 2008 Design & Honor Awards

Frank Oms Photography - Frank Oms, Hughes Body Residence, Architect Roth + Sheppard Architects



RNL, Union Park - Parcel F, RNL, Denver office



### Departments

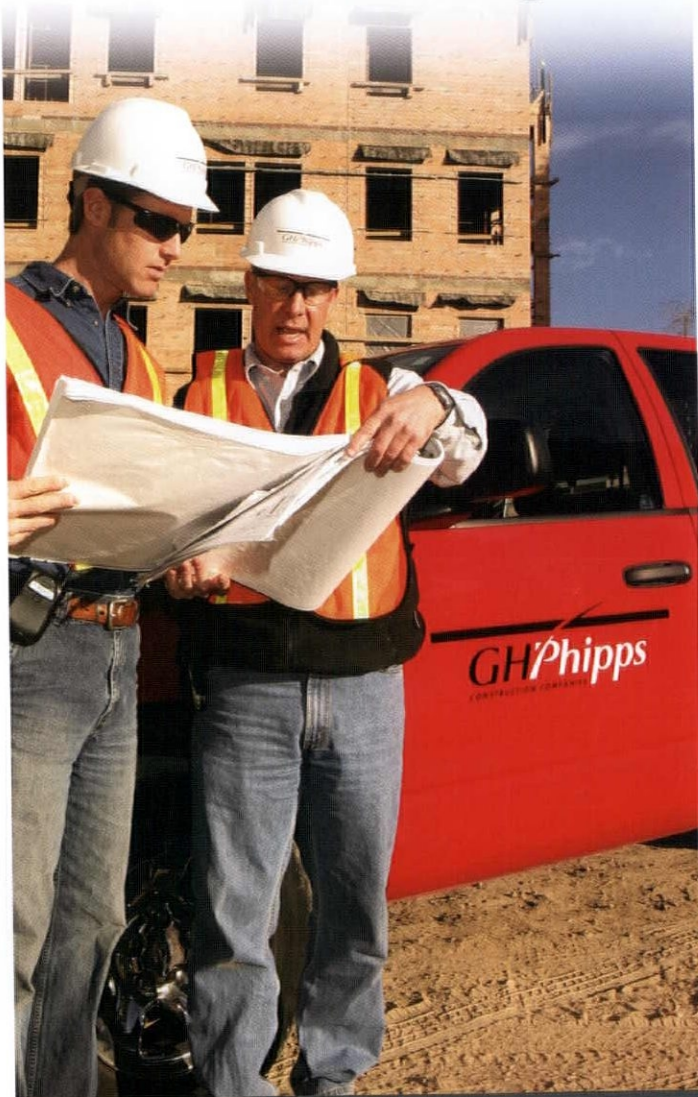
- 9 Letter From the Presidents
- 12 Member News
- 58 On The Boards
- 61 Looking Ahead
- 64 Index to Advertisers



INSPIRE LEAD DELIVER

**GH Phipps**  
CONSTRUCTION COMPANIES

GENUINE PEOPLE  
*Genuine Progress*



[www.GHPhipps.com](http://www.GHPhipps.com)

GH Phipps Construction Companies  
5995 Greenwood Plaza Blvd., Suite 100  
Greenwood Village, CO 80111  
Tel: 303.571.5377

496 Nevada Mesa View  
Colorado Springs, CO 80907  
Tel: 719.633.4673

5285 McWhinney Blvd.  
Suite 100  
Loveland, CO 80538  
Tel: 970.776.5500

**AIA Colorado**  
1515 Arapahoe St.  
Ste. 1-110  
Denver, CO 80202  
T 303.446.2266  
F 303.446.0066  
[www.aiacolorado.org](http://www.aiacolorado.org)

**Editorial Staff**

Managing Editor  
Heidi Gordon  
Copy Editor  
Mary Lou Jay  
Art Director  
James Colgan  
Publisher  
Dawson Publications, Inc.  
Timonium, MD

**Staff**

Executive Director  
Sonia Riggs, ext. 117  
[sonia@aiacolorado.org](mailto:sonia@aiacolorado.org)  
Director of Local Chapters  
Heidi Gordon, ext. 115  
[heidi@aiacolorado.org](mailto:heidi@aiacolorado.org)  
Director of Membership & Development  
Greg Bell, ext. 113  
[greg@aiacolorado.org](mailto:greg@aiacolorado.org)  
Programs Director  
Robin Hickey, ext. 111  
[robin@aiacolorado.org](mailto:robin@aiacolorado.org)  
Programs Coordinator  
Molly Osadjan, ext. 116  
[molly@aiacolorado.org](mailto:molly@aiacolorado.org)  
Continuing Education Coordinator  
Jenna Cather, ext. 112  
[jenna@aiacolorado.org](mailto:jenna@aiacolorado.org)  
Administrative Assistant/  
Membership Coordinator  
Emily Ewing, ext. 110  
[emily@aiacolorado.org](mailto:emily@aiacolorado.org)  
Part-time Administrative  
Assistant/Bookkeeper  
Carmen Jaeger, ext. 114  
[office@aiacolorado.org](mailto:office@aiacolorado.org)

**2009 Board of Directors**

President  
Stuart Coppedge, AIA  
President-Elect  
Mary Morissette, AIA  
Past-President  
Chris Stumm, AIA  
Treasurer  
Steve Schonberger, AIA  
Treasurer-Elect  
Ernest Joyner, AIA  
Secretary  
Rhonda Boger-Linder, AIA  
Director, AIA Denver  
Steven Carr, AIA  
Director, AIA Colorado North  
Whitney A. Churchill, AIA  
Director, AIA Colorado South  
RJ Steer, AIA  
Director, AIA Colorado West  
Cyd Pougiales, AIA  
Associate Director  
Heather Ludwig, Assoc. AIA  
Associate Director-Elect  
Angela Tirri Van Do, Assoc. AIA  
Professional Affiliate Director  
Bill Newell, PA, PE.  
Public Director  
Larry Friedberg, AIA  
University Director  
Hans Morgenthaler  
Student Director  
Kristen Stroh, SA  
Government Affairs Director  
Mike Wisneski, AIA

SDA Liaison  
Sue Zen, SDA/C  
Ex-Officio  
Sonia Riggs

**AIA Colorado**, the voice of the profession of architecture, inspires and supports its members as leaders to improve and sustain the quality of the built environment. We promote the value of the profession and provide resources and education for members.

**Advertising**

Contact Dawson Publications  
800.322.3448.

**Subscriptions**

\$30 for one year. Contact  
AIA Colorado at 800.628.5598.

The opinions expressed in this publication or the representations made by advertisers, including copyrights and warranties, are not those of the editorial staff or the board of directors of AIA Colorado or Dawson Publications, Inc. Copyright: 2009 by AIA Colorado.

All rights reserved. Reproduction in whole or in part without written permission is strictly prohibited.

*Architect Colorado* is produced on paper that has recycled content and printed with green inks that do not contain solvents and are VOC free. Alcohol substitutes and acid-free paper are used. Our printer has eliminated the use of film and film processing and uses waste recovery programs and EPA-licensed handlers.

**Corporate Sponsors**

Platinum  
Monroe & Newell Engineers Inc.  
initial.AEC  
Gold  
BCER Engineering Inc.  
JVA Incorporated  
Ken's Reproductions, L.L.L.P.  
Silver  
Calcon Constructors Inc.  
Fransen Pittman General Contractors  
GE Johnson Construction Company  
Haselden Construction, LLC  
INDOX Services  
Rocky Mountain Prestress  
Saunders Construction  
Bronze  
CAD-1 Inc.  
Cator, Ruma & Associates Co.  
The Gallegos Corporation  
Martin Martin Inc.  
MKK Consulting Engineers  
Mortenson Construction  
Pinkard Construction Co.  
Powers Products  
Thompson Engineering  
Turner Construction Company

**Correction Notice**

In the Fall 2008 issue of *Architect Colorado*, the article titled "Inscribed, Grounded, and Floating: Two Architects Set an Ambitious Course" incorrectly stated that the House on 32nd Street is the first LEED-certified prefabricated house in the United States. Instead the article should have stated "the project currently is undergoing LEED certification and planned as one of the first LEED certified modulars in the country."





## This is where it all begins

When you're ready to start the search for the perfect appliance collection, our showroom offers a firsthand look at the latest technology and style from Viking and other legendary brands. You'll have all the time in the world to ask questions in a comfortable, unhurried environment. You can call for an appointment or just visit our showroom. Either way, this is where it all begins.



Salt Lake City Showroom  
2233 South 300 East,  
Salt Lake City, UT 84115  
(801) 466-0569

Denver Showroom  
1400 W. Third Ave,  
Denver, CO 80223  
(303) 893-1423

[www.KimballDistributing.com](http://www.KimballDistributing.com)





## Building with the Best and the Brightest

At JE Dunn Group, construction is not merely about bricks and mortar it is about a desire to build partnerships of excellence.



303.753.8988  
719.471.0217  
www.jedunn.com



© 2008 JE Dunn Construction Group, Inc.



**On the Cover:** Scholl Residence  
Studio B Architects  
Aspen, Colo.  
Photography by Aspen Architectural Photographers

The primary mission of *Architect Colorado* is to inform AIA Colorado members about architectural news, trends and developments occurring throughout the state and about work being done in our region and beyond by our members. The publication also serves as an outreach tool to educate the community about the value of architectural excellence and the contributions of AIA Colorado architects.



A Component of The American Institute of Architects



Experience

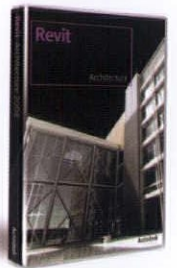
Revit Architecture

now

## Architectural software that works the way you do.

Revit® Architecture 2008 works the way you think, letting you create naturally and design freely. Mirroring the real world, it treats information in terms of the entire building, rather than separate floors, sections, or elevations. And because it's purpose-built for

building information modeling (BIM), any changes you make, anywhere, are automatically updated throughout your project. The result: your design and documentation stay coordinated, consistent, and complete.



For a complete schedule of Revit Architecture events and training, visit our website at [www.cad-1.com](http://www.cad-1.com).

**Autodesk®**  
Authorized Value Added Reseller

CAD-1, Inc.  
12130 Pennsylvania St., #101  
Thornton, CO 80241  
[www.cad-1.com](http://www.cad-1.com)  
P: 303-427-2231 F: 303-428-9720



Autodesk and Revit are registered trademarks of Autodesk, Inc., in the USA and/or other countries. All other brand names, product names, or trademarks belong to their respective holders. Autodesk reserves the right to alter product offerings and specifications at any time without notice, and is not responsible for typographical or graphical errors that may appear in this document. © 2007 Autodesk, Inc. All rights reserved.



# A good building benefits its inhabitants. A great building benefits those who may never set foot in it.

Green. It's the fashionable color these days. Yet to us, environmental sensitivity isn't about being fashionable. It's about being socially and economically prudent. From building reclamation to product life-cycle analysis, we've been at the forefront of constructing facilities that benefit people today, as well as tomorrow. Learn more by calling Derek Cunz at 303.295.2511, or visit [mortenson.com](http://mortenson.com).



Building what's next.<sup>SM</sup>







During trying times and downturns in the economy, it becomes increasingly tempting to both try to place blame and to look to programs, stimulus packages, bailouts, industry trends, etcetera for answers for our profession. True leadership does not place blame or look to others for solutions. While learning from its past, true leadership confidently looks forward with vision and acts with purpose. If we simply sit back and wait for good things to happen or wait for others, we will miss perhaps the biggest opportunity of the difficult times: to recognize and return to the enduring values of our profession to strengthen our businesses and our position as leaders in our communities.

By respecting those things that over time have proven themselves to be permanent, such as the value of hard work, practical creativity and integrity, we can assure ourselves and our profession the highest levels of relevance and moral capital. We think we all believe that architecture can play a large role in issues such as the sustaining our natural environment and the best parts of our culture. So with skeptical minds, we should separate "greenwashing" from what we know already to be part of common sense building practices. Furthermore, do we provide greater value to society (as well as our profession) by having conversations within the profession about the value of the latest "starchitect" creation or even levels of building certification, or by speaking to the timeless value of handsome and efficient design and craftsmanship with all those outside of our profession in a language easily understood?

If we want to truly lead, it seems to us that our focus should be not on another rating system or even our own cherished design awards, but long-lasting solutions to complex problems. It seems so much more effective to return to the timeless value of common sense design, which, while acknowledging and incorporating appropriate new technologies, remains rooted in what works and what we do well. This foundation will allow us to emerge from the economic crisis not only with a solid and relevant profession, but as leaders.

In 2009, AIA Colorado will step forward and focus on determining what is most important and of value to our membership. We will be reaching out to members in some new innovative ways, and we encourage you to participate to the fullest extent you are able so that we may be of the greatest service to you. Our commitment is to be at the forefront of our profession in providing you with information and resources to help you to navigate through the new State of Colorado continuing education requirements and through the current economic climate.

Sincerely,

A handwritten signature in black ink, appearing to read "C. Stumm".

Chris Stumm, AIA  
AIA Colorado 2008 President

A handwritten signature in black ink, appearing to read "Stuart Coppedge".

Stuart Coppedge, AIA  
AIA Colorado 2009 President



# The Leader in Opening Glass Walls



Aspen Residence, Aspen Colorado  
Architect: Windham Partners



For a showroom appointment, contact:  
Matt E. Tudor  
303-715-0240 x228, mtudor@archsale.com

Open the door to exhilaration  
Enjoy the best of both worlds: a room with a view that  
opens to the outdoors yet gives you the peace of mind  
only a weather-resistant NanaWall provides.



800.873.5673

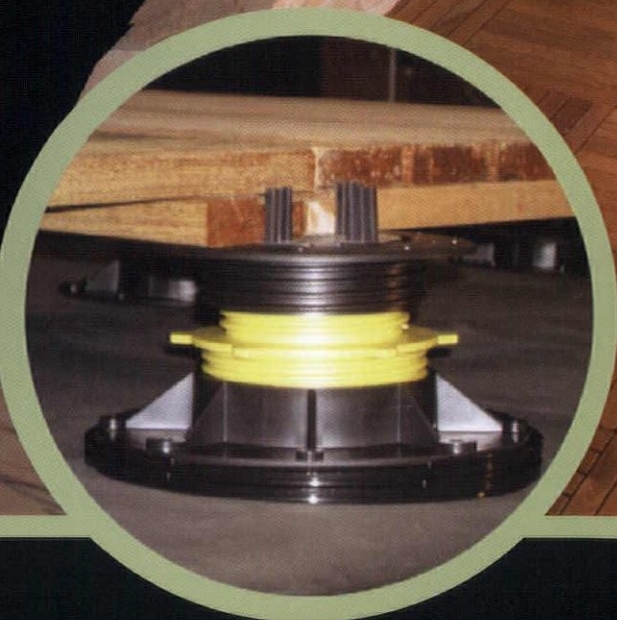
[nanawall.com](http://nanawall.com)

**NanaWall**<sup>®</sup>  
Grand Transformations



TRUSTED NAME. PROVEN PERFORMANCE.  
**SPECIFY BISON.**

**BISON Deck Supports and  
BISON Ipê Wood Tiles**



BISON Ipê Deck Tiles on BISON Level.it Pedestals

**BISON Ipê Wood Tiles**

Express yourself with the warmth of wood. The Bison deck tile system is beautiful, easily installed and ideal for commercial roof decks.



800-333-4234  
[www.BisonDeckSupports.com](http://www.BisonDeckSupports.com)



The Arizona Historical Society, Arizona's oldest historical agency, selected **Fentress Architects** as the designer of its new Arizona History Museum. The design process is anticipated to take one year and ground breaking is planned for 2009. Construction cost is estimated at \$50 million.

**RNL** has been selected to provide interior architecture design services for

Xcel Energy's new 340,000-square-foot regional headquarters to be located in the new 1800 Larimer Street office tower. The space will be designed to meet Leadership in Energy and Environmental Design for Commercial Interiors (LEED-CI) at the platinum level as designated by the U.S. Green Building Council (USGBC), the highest rating given by USGBC. The new regional headquarters will consolidate

Xcel Energy employees from three separate existing locations in the Denver metro area into 1800 Larimer Street, which also is pre-certified by USGBC to meet LEED platinum level for core and shell buildings (LEED-CS).

**SLATERPAULL Architects** announced completion of the \$45-million University Center for the Arts (UCA) at Colorado State University (CSU) in Fort Collins, Colo. Completed in three phases over several years, the University Center for the Arts houses the programs of music, theatre and dance and encompasses five performance venues: the Griffin Concert Hall, the University Theatre and Studio Theatre in the Bohemian Theatre Complex, the University Dance Theatre and the Organ Recital Hall and two museums: the University Museum and the Avenir Museum of Design and Merchandising.

**Source Four Inc.**, a regional provider of distinctive commercial furnishings, celebrated its 25th anniversary with a chocolate tasting hosted by Chef Keegan Gerhard, owner of Denver's newest dessert bar, D Bar, and host of the weekly TV show, Food Network Challenge. The event was attended by some 275 guests, including members of the local architectural and design community as well as executives from Source Four's suppliers from Norway, Germany, Italy, China and the United States.

AIA Western Mountain Region (WMR) announced **Humphries Poli Architects P.C.** (HPA) as the 2008 Firm of the Year. The award recognizes the continuing collaboration among individuals in a firm who have: produced distinguished architecture for more than 10 years; made significant contributions to the institute, the profession



Richard Douglas



Eric LaCasse



and their community; and who have transcended their local boundaries in making these contributions. HPA presented a diverse body of work to the award selection committee that represents the firm's 14-year history, spanning public safety, libraries and community centers as well as work for private sector clients in mixed-use environments, multi-family residential and commercial office buildings.



**Cheri R. Gerou, AIA**, was elected to the Colorado House of Representatives and represents House District 25.

Gerou has been active in the community volunteering for children's programs and professional organizations. She is a past president of AIA Colorado and AIA Denver as well as a past chair of the Constructors and Designers Alliance (CDA). In 2006, Gerou was appointed by Gov. Bill Owens to the State Licensing Board of Architects, Professional Engineers and Professional Land Surveyors.

**Roth Sheppard Architects** completed Osteria, a new bar in Boulder, Colo. Osteria is an addition to Carelli's Ristorante Italiano and features an outdoor patio, which includes a fire pit and soft seating. The bar incorporates circular forms, state-of-the-art LED lighting, plush booth seating and natural materials such as steel, concrete, wood, slate, glass and copper.



Ben Temper



Ben Temper



bulthaup



If you are passionate about the aesthetics of functional objects and the sensuality of high-quality materials, if you want to design your kitchen and living space to reflect your lifestyle, then you need partners who think the same way, are experts in their field and have the requisite skills – in other words, internationally recognized specialists in kitchen architecture. You'll find these partners wherever you see the name bulthaup. [www.bulthaup.com](http://www.bulthaup.com)

bulthaup Denver – Kitchen Distributors, Inc. | 1038 Bannock Street, Denver, CO 80204, Tel 1 303 777 5409





Sierra Pacific Windows  
*Discover the value...*

PROJECT  
ST JULIEN HOTEL, BOULDER, CO

CONTRACTOR  
GE JOHNSON CONSTRUCTION

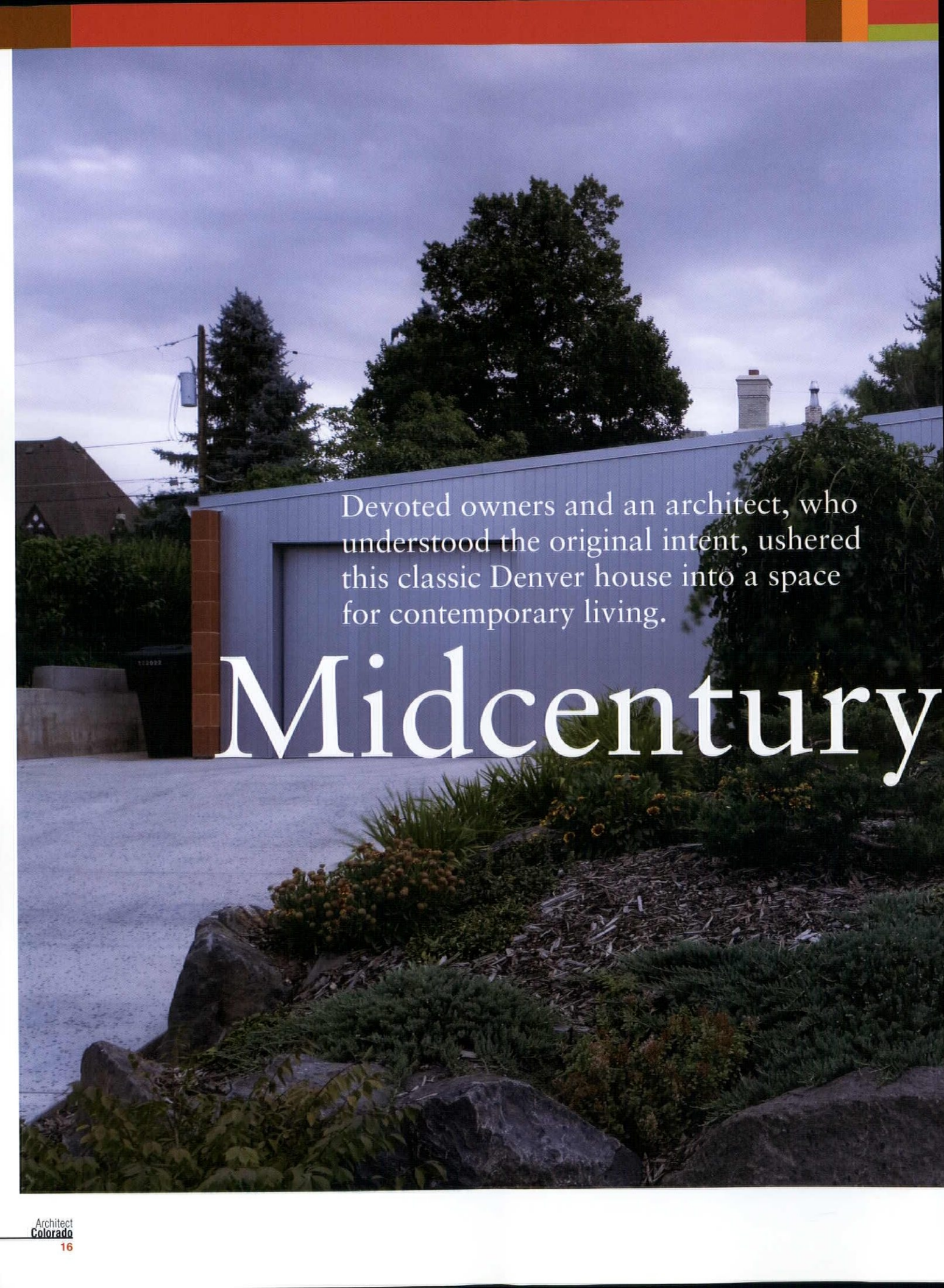
ARCHITECT  
4240 ARCHITECTURE, INC.



proudly serving colorado's finest builders  
(800) 824-7744 | [www.sierrapacificwindows.com](http://www.sierrapacificwindows.com)







Devoted owners and an architect, who understood the original intent, ushered this classic Denver house into a space for contemporary living.

# Midcentury



# Modernization

By Brianne Sanchez

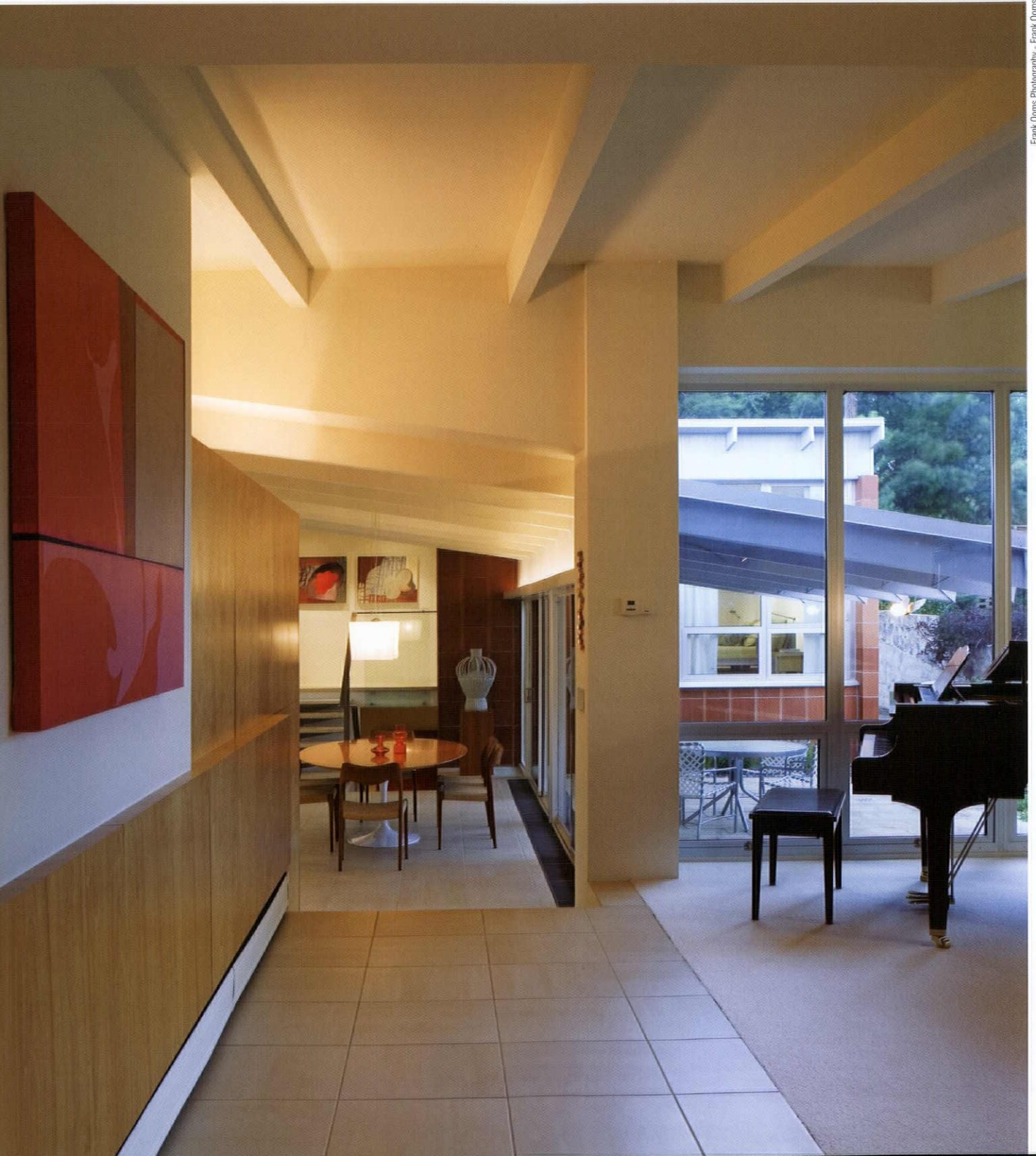
How does a house with a foundation the size of a tennis court capture the attention of everyone from trick-or-treaters to the editors of *Dwell* magazine? For owners Karen Brody and Mike Hughes, the answer was in finding an architect who could execute their vision and update a classic design. Devotees of midcentury architecture, the couple wanted a home that reminded them of the Kauffman Desert House in Palm Springs, Calif., but that fit the Denver landscape. What they found was the light-filled former residence of sculptor Jean Neufeld.



“The sheer architecture of it looked so interesting,” Brody said. Sloping rooflines and a California contemporary post-and-beam construction drew them to the home. “When you walk in, this house opens into expansive space.” The home had been virtually untouched since the 1960s, complete with grass-cloth wallpapering. “We didn’t want to pay for someone else’s bad renovation,” she explained.

With plenty of updates in mind, the owners sought out Jeffrey Sheppard, AIA, of Roth+Sheppard Architects. Sheppard had remodeled another

Below: Painting the beams a fresh white and changing the materials of the entry way gave it a warmer and more polished feel.





midcentury house in the neighborhood. They wanted to consult him and get his impression of the structure before they invested in the property. “We wanted to see if he thought the house was worth saving,” Hughes said.

Sheppard saw potential. To him, it exemplified the elements that attract him to 1950s-era houses. “From a stylistic standpoint, they don’t get into this false idea of what a house should be,” Sheppard said. “They take an honest approach to structure, function and scale. You actually feel better inside the house because of the scale.”

The renovation was about bringing a midcentury design into a floor plan that made sense for a modern couple. It wasn’t a full restoration, but a modernization that sought balance between paying homage to an era of design and creating a space that was livable and took advantage of updated materials.

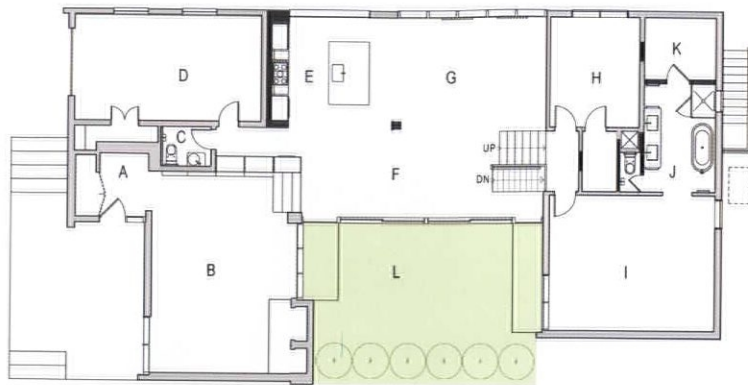
“We really just sat down and talked with Jeff about how we thought we’d use the house,” Hughes said. It wasn’t a solely conceptual project. The owners actually moved into the home—crumbling walls and all—for a full year to experience the layout and discover how it would fit their lifestyle.

What they determined was a need for more open space to allow them to entertain, showcase their art collection and host house guests. “For better ventilation, they opened up the interior,” Sheppard said. “Back in the late 1950s, people were still building houses more as a series of rooms.” The owners also wanted to increase square footage without compromising the scale of the house. (They were not greedy for thousands of extra square feet. During the remodel, Hughes and Brody lived for 11 months in a 400-square-foot apartment.)

Maintaining that 1950s feel of proportion was critical for the success of the project. The house is situated on a half lot, in a space that originally served as a tennis court for its northern neighbor, so expanding the footprint of the home would have ruined the scale. Staying small was important to the owners and appreciated by neighbors, even though supersized homes are a trend in the area. “So much good design is being thrown away,” Hughes said. “In our neighborhood, people are building really showy houses. They don’t seem to fit in the city, state, country they’re in.”

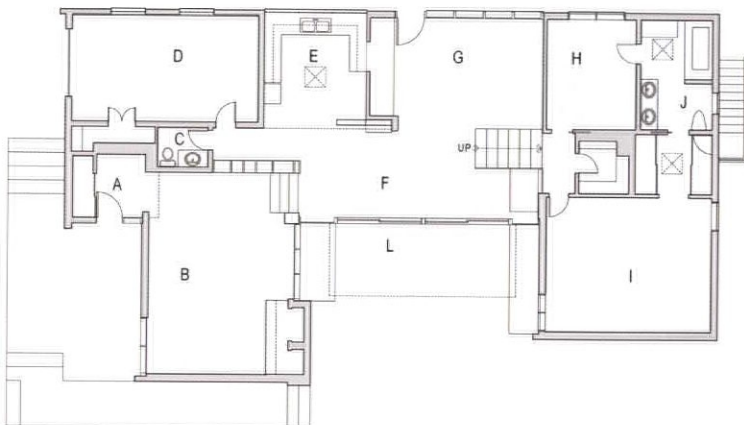
Building up was not an option. It would have meant blocking the sunlight and diminishing the sense of sanctuary that help define the house. Sheppard knew the original architect’s natural lighting philosophy firsthand.

“The original architect [Richard Crowther, AIA] is probably one of the pioneers of passive solar architecture in the Denver area,” Sheppard said. It was Sheppard’s own area of expertise in school during the late 1970s, and he actually interviewed once with Crowther for a job. In the end, the



after main floor plan

- |                 |                        |
|-----------------|------------------------|
| A - Entry       | G - Family Room        |
| B - Living Room | H - Study/ 2nd Bedroom |
| C - 1/2 Bath    | I - Master Bedroom     |
| D - Garage      | J - Master Bathroom    |
| E - Kitchen     | K - Master Closet      |
| F - Dining      | L - Courtyard          |



before main floor plan



Roth+Sheppard Architects





Frank Connes Photography - Frank Connes

**Above:** The home's design philosophy embraces passive solar, as the light-filled living room shows.

Hughes-Brody residence gained square footage by connecting the main level to the basement. Prior to the remodel, the basement was only accessible through an exterior door. In researching the home, Hughes and Brody unearthed Crowther's designs, in which he connected the main and basement levels with an internal staircase.

Sheppard took inspiration from Crowther's design, but presented them with several updated options.

"We found the sketch and then we treated the stair as a floating sculptural element as well as a structural element," Sheppard said. The basement was the second phase of a two-part project. To make the lower level a multifunctional space, he added a Murphy bed in a space originally designed to house a closet. The sliding barn-door panels create enough privacy and flexibility for a guest as well as options for the owners when company is not present.

The first phase of the project was the upstairs. The most substantial change involved removing a wall between the kitchen and living rooms. They left a column to demarcate the transition between kitchen and living areas. "We exposed it, holding the roof structure and adding definition and visual separation," Sheppard said. This floor plan encouraged a more natu-



ral flow for the couple to host dinner parties and created an interior design that served as an improved, gallery-like backdrop for their art collection.

To take advantage of every square foot of the small space, they utilized built-in elements that were a feature of the original home. Used more like walls than furniture, the built-ins do not overwhelm rooms, but instead create hidden storage and visual interest. A wall unit that divides the living room from the hallway, originally used as a bookcase and housing for stereo equipment and speakers, is now blind storage and space for appliances and a built-in pantry, complete with an espresso maker.

Settled into their home, the owners are confident that keeping a classic design was the right decision. ■



Frank Dooms Photography - Frank Dooms

#### HUGHES BRODY RESIDENCE

**Architect** Roth+Sheppard Architects - Jeff Sheppard, AIA

**Location** Denver

**Construction Cost** Withheld at owners' request.

**Scope** Interior and exterior renovation and restoration. The clay-tile exterior was restored and original details uncovered as part of the overall project, as well as the renovation and insertion of new materials and finishes.

Both processes respect the original architect's intent as well as the homeowners' contemporary lifestyle and aesthetic. The overall project was divided into two main phases: the main-living areas and the basement.

**Purpose** A modernization that would tailor a well-designed midcentury home to the present owners' lifestyle.

**Completion** The main living space was completed in 2006. Basement was completed summer 2008.

**Owners** Mike Hughes and Karen Brody

**Contractor** Collins Kiessig Construction

**Engineer** N/A

#### Other Notable Projects by Roth+Sheppard Architects

- Vesta Dipping Grill, Denver
- Cucina Colore Restaurant, Denver
- VIA Restaurant, Denver
- DC 10 Night Club, Denver
- Skye Boutique, Denver
- Carelli's, Boulder, Colo.



Roth+Sheppard Architects





# CTL THOMPSON

GEOTECHNICAL ENGINEERING  
CONSTRUCTION OBSERVATION  
ENVIRONMENTAL SERVICES  
MATERIALS TESTING  
STRUCTURAL SERVICES  
PAVEMENT ENGINEERING



Denver: (303) 825-0777  
Colorado Springs: (719) 528-8300  
Fort Collins: (970) 206-9455  
Glenwood Springs: (970) 945-2809  
Pueblo: (719) 595-1287  
[www.ctlf.com](http://www.ctlf.com)

COMPETENT

CAPABLE

ACCOUNTABLE



**ARCHITECTURAL WOODWORKERS**

[www.newworldmill.com](http://www.newworldmill.com)

303-791-9003

Castle Rock, Colorado







## If it was only this simple.

Your vision requires solutions that go beyond the surface. At Schirmer Engineering we go beyond the expected, to fully understand your goals and work toward developing Fire Protection, Life Safety and Security solutions that can help you realize that vision.

From Safety standards to code-compliance, Schirmer has the knowledge and experience to avoid potential pitfalls, and the creativity to provide innovative recommendations to help your designs come to fruition. To learn more, visit [www.schirmereng.com](http://www.schirmereng.com) or call us at (303) 283-0236.

**SCHIRMER  
ENGINEERING**  
an Aon Global company

Fire Protection ■ Code Consulting ■ Risk Assessment ■ Process Safety ■ Security Consulting



# A New Parti

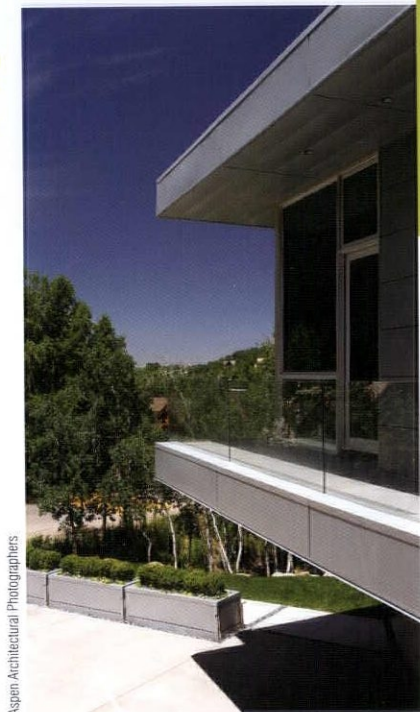
By Kelly Roberson

**In the midst of the mountains, an art collecting couple creates a homage to architecture and art.**

Aspen Architectural Photographers

Above: The Scholl residence was designed as two long rectangles, with a concrete base and zinc second floor. The details are rigorous in their lack of fussiness.

Below: Surrounding the house are other homes, built in the 1960s and 1970s, and views of the Aspen landscape.



Aspen Architectural Photographers

There are decisions every architect must make—about spatial relationships, material details, siting, for example. But those decisions become imbued with much more weight when there exist few examples of a certain building typology.

Such was the case with the Scholl residence, designed by Studio B Architects. “Generally, when you walk up to a house, you know it’s a house, and when you walk up to a museum you know it’s a museum,” says Noah Czech, project designer and manager with Studio B. “The parti here was to create a new typology that was not quite residence and not quite museum. That was the overlying principle with everything about this house.”

That’s because its owners, Dennis and Debra Scholl, circle the globe as widely regarded contemporary art collectors; their collection fills a large warehouse in Miami and a previous Aspen, Colo., residence as well. They are no ordinary clients; the duo renovated 20 buildings in South Beach’s Art Deco District and have a depth of knowledge about historical and contemporary architecture. “I’ve always been enamored with the Case Study



House; it's the quintessential residential moment," says Dennis Scholl. "What we learned from the art deco restorations we did was that when you build something, you do it as an homage—don't simply copy the period. We wanted to design a house as a homage to Case Study Houses."

Thus began an incredibly collaborative process between architect and client, one that would insert a distinctly nontraditional home into a transitional neighborhood minutes from downtown Aspen. "Around it are these old houses from the 1960s and 1970s," says Scott Lindenau, AIA, design principal with Studio B. "It's a really steep site with drainage pathways."

Those pathways led to a big depression that formed a natural datum in the landscape for the house, leading to its composition as a long rectangle with a back exterior staircase that leads from a sculpture garden to a rooftop garden. "We placed the house to accent the site," says Czech. "When you pull up, it's obvious that it's a two-story building, but in the back, because of the slope, it really only seems like a one-story building. The front of the house is all about the impact, the view, the richness of everything that's Aspen. The back of the house is intimate, about entertaining, nature, landscape. The site created that; the architecture didn't have to force anything and accents what was already there."

Throughout the design, Scholl was adamant that the house—which he calls "a museum with a bedroom"—be stripped down to its essence to



Aspen Architectural Photographers

**Above:** The back of the home is intended to be an intimate, private space, with stairs that lead to a rooftop deck.

**Below:** While the art is definitely focal point, the expansive windows provide stunning views of the Colorado countryside.



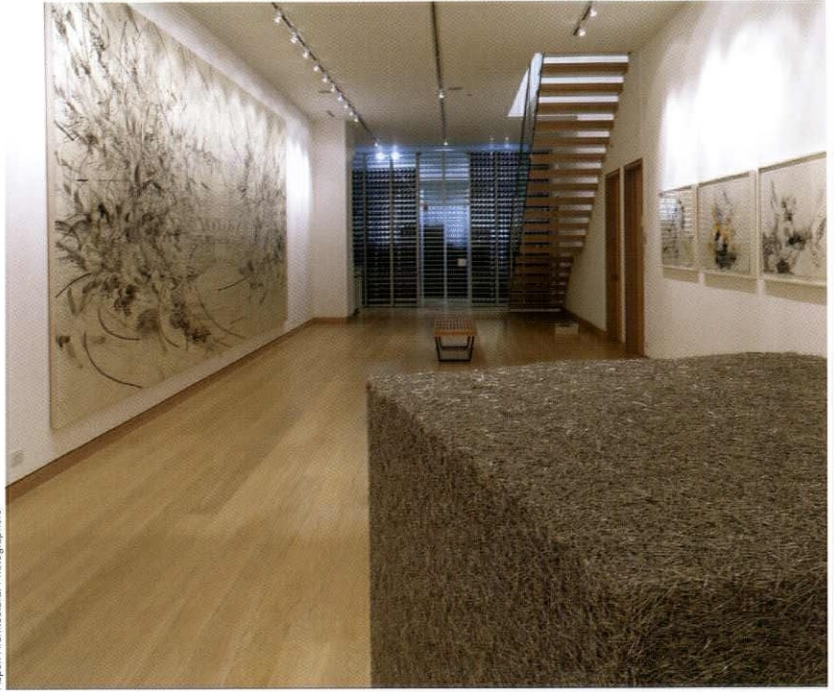
Aspen Architectural Photographers





**Left:** In addition to artwork, the Scholls also are in the winemaking business; part of the subgrade floor serves as storage for 3,000 bottles of their label.

**Right:** Centerpiece to the Scholl residence is the subgrade gallery space, with height and width that are nearly identical.



serve as a frame for the artwork. “I’m very enamored with the Mies philosophy ‘less is more,’” Scholl says.

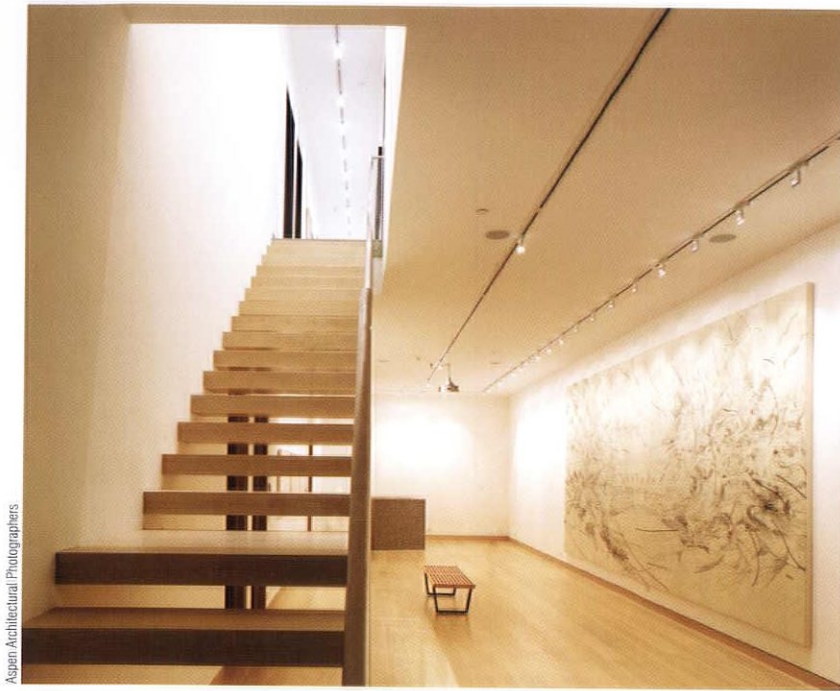
To that end, the exterior is composed with two materials—poured concrete for the first-floor base or plinth, zinc for the second-floor platform. The materials are imposing, machined-looking, almost monolithic, but in a way that is captivating, particularly as the zinc absorbs and reflects the changing daily and seasonal light. “There’s a subtlety to the zinc that picks up the richness of early morning light, or in the fall, which gives it almost a blue-yellow hue,” says Czech. “It changes personality at different times of the year.”

Once inside, what becomes obvious is that the house is actually three floors—not two. That 1,800-square-foot sub-grade floor is where the Scholls’ current passions—their art and winemaking—came most into play. “One of the things that the house does really well is that it has beautiful volumes to it,” says Scholl. “Anyone can point a house toward a view. Anyone can hang art on the wall. When people use sub-grade space, they tend to make it ghetto-like. We paid a lot of attention to making it beautiful and a focal point of the house as opposed to making it just someplace to go.”

To do that, Czech created a space that is almost as tall as it is wide, with stairs cantilevered off a wall. There are soaring ceilings and proportions that turn the traditional idea of a basement on its head, with museum-worthy wall space for the art as well as storage for up to 3,000 bottles of the wine the Scholls make, Betts & Scholl. “There’s nothing really touching the floor, and it feels very light,” Czech says. “And the art makes everything spectacular. There’s a simplicity to it. We didn’t over-design in order to get the design done.”

The rest of the interior spaces—bedrooms, offices, living spaces—fit the typology of a house but as with the sub-grade floor function as a backdrop to the art. “It really is a hybrid; if you came to the house you’d think it was comfortable to live in, but there would be no question that the art dominates the design,” says Scholl. “It is a house that is as flexible as it can be when it comes to contemporary art.”





Aspen Architectural Photographers

Each floor has its own flooring material, and the walls and floors separate with a recessed aluminum reveal that frames the walls and thus the art. The minimalist interior—glass railings, drywall, marble, gray European cabinetry—provides a link through the three floors. “Everything looks integrated. When you do fewer materials, the rule of thumb with the details is that they seem to become more important,” Czech says. “The architecture is better because of the art, and the art can be seen more clearly because of the architecture.”



Aspen Architectural Photographers

**Left:** A double-height entry opens the front of the home, and the glass railing nearly disappears.

**Right:** Furniture and details were designed to recede in order to allow the artwork to shine.

**Below:** Grey cabinetry from Europe provides a neutral, unassuming backdrop throughout the home, even in the kitchen.



Aspen Architectural Photographers

For Scholl, the house broke new ground in several ways. “It shows that you don’t need a 15-acre plot to build a modern house,” Scholl says. “You can do one in an urban environment surrounded by a lot of other non-modern houses; you don’t fit in but coexist. It’s the same thing with the art.

“If you come into the house, I’m only looking for one of two responses. I’m thrilled if you love it, I’m thrilled if you hate it. If you come in and go, ‘Hmm,’ I’ve totally failed. I’m trying to evoke a response.” ■

#### SCHOLL RESIDENCE

**Architect** Studio B Architects  
 Scott Lindenau, AIA, design principal  
 Noah Czech, project architect

**Location** Aspen, Colo.

**Construction Cost** Not available

**Scope** 6,000-square-foot residence

**Completion** December 2007

**Owners** Dennis and Debra Scholl

**Contractor** JD Black Construction,

Bruce Trujillo project superintendent

**Engineer** Pattillo Associates Structural Engineers

#### Other notable projects by Studio B Architects

- New Aspen Middle School, Aspen, Colo.
- NOVE houses, Aspen, Colo.
- AABC Fire Station, Aspen, Colo.
- Jussila Vineyard, Paso Robles, Calif.
- Lord Residence, Aspen, Calif.



# A Nod to the Past and an Eye to the Future

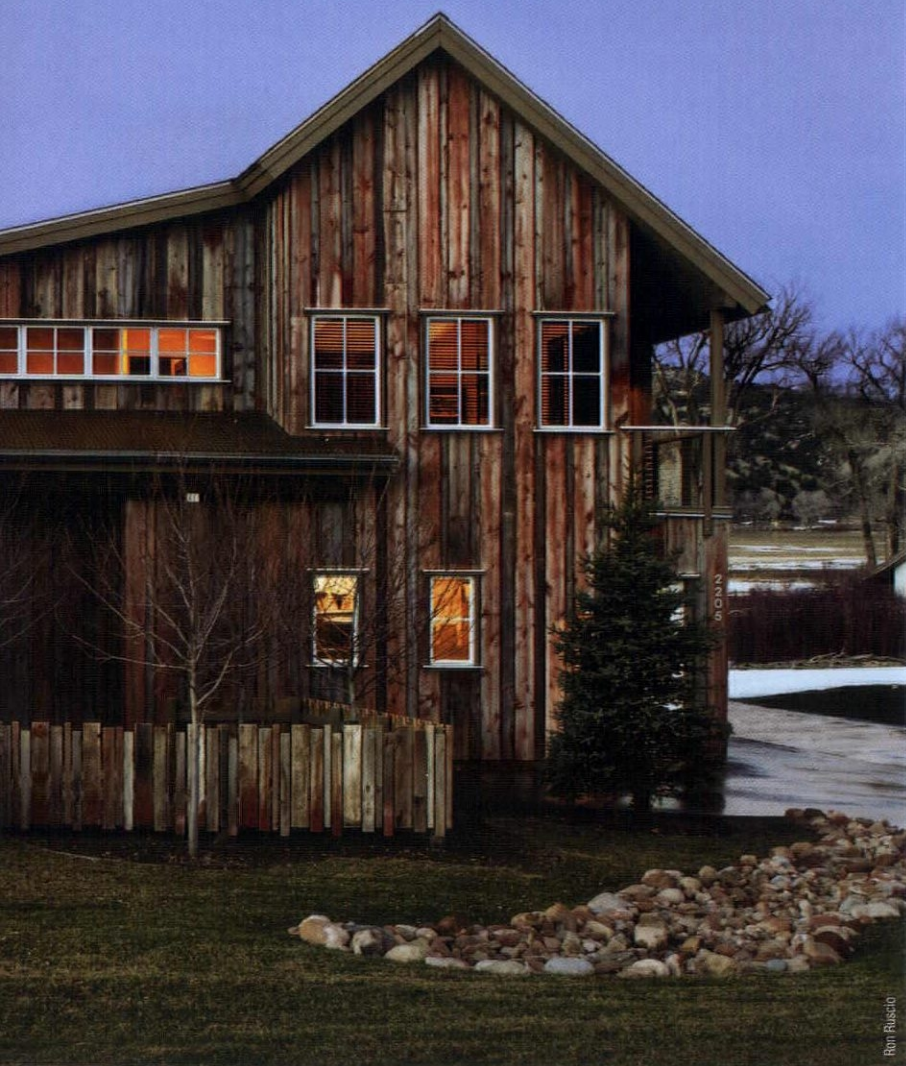
Using history as a  
guide, a new house  
rises in the Colorado  
landscape.

*By Kelly Roberson*

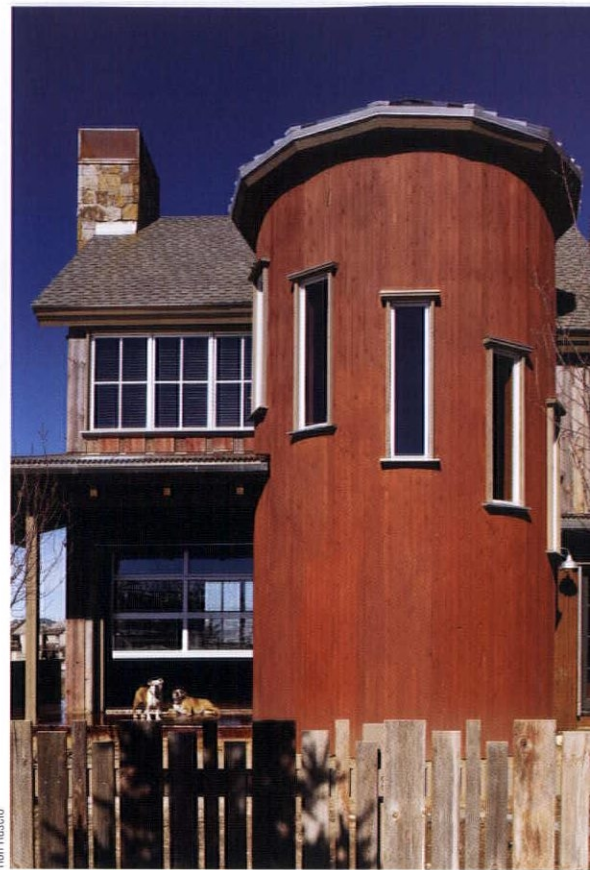




Many buildings give a nod and a wink to iconic forms of architecture—in plan, in siting, in material choices. For a new home in Eagle Ranch, Colo., Morter Architects and homeowner and contractor Brandon Peterson looked to the state’s agrarian past for inspiration. In form, visual textures and details, the house recalls elements of the rural landscape that were once commonplace.



Above: Siding and color choices on the exterior recall rural agrarian buildings.



Ron Ruscio



Ron Ruscio

Top and below: The silo was a “must-have” for the owner; it contains a circular steel stair that leads from the main living space to the master suite.



“We took the agrarian forms and injected a sense of humor into them. It creates these really interesting outdoor living spaces, but they are comforting and recognizable at the same time.”

*Jim Morter, FAIA*

### Beginnings

There was little to the lot when Peterson bought it. Sited along a creek in what was once a farming community, Peterson’s homestead is in a rapidly developing valley across from a golf course. There was an old rundown barn down the road, and it captured Peterson’s imagination. “I thought it would be cool to have a house with that sort of theme and feel to it,” he says.

So he began collaborating with Morter Architects to create a midsize house. Peterson wanted it to be open, without a chopped-up feeling that including numerous rooms would have created. What he lacked in concrete description he made up for with imagination. “It’s hard to describe what you want and for someone else to understand it,” Peterson says. “What Morter Architects came up with was exactly what I had in mind.”

Peterson’s personality also made the job that much easier for the architects. “There’s really a sense of play and fun about Brandon. He was so excited about the house and wanted to do something really cool,” says Pavan Krueger, project manager with Morter Architects. “It had to be affordable and the materials modest, but we really wanted to blur the boundaries between indoors and outdoors so he could live outside as much as possible.”

### A new purpose for old forms

To do that, the design team developed a plan that includes a juxtaposition of three forms—farmhouse, barn and silo—woven together with similar materials. No single form dominates the other, but their outlines do suggest the interior function within.

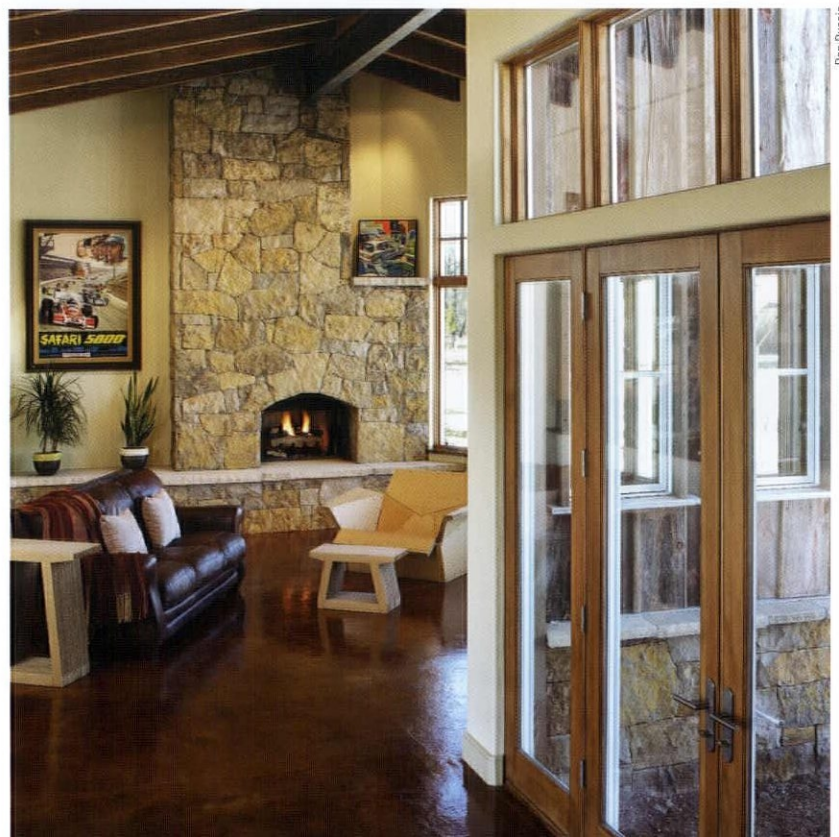
For example, the barn section houses a large garage on the first floor and two bedrooms with a living space on the second floor. The farmhouse includes primary living space for Peterson, with a kitchen, living and master bedroom spaces, while the silo houses a handcrafted metal circular stair (the stair that leads from

Left: Large doors and shielding overhangs define outdoor spaces, which are sited and covered to shield from inclement weather.

Right: Daylighting was maximized with large windows that flood each room with natural sunlight. Material choices were modest and welcoming.



Ron Ruscio



Ron Ruscio



the first to second floor in that section). There are few interior walls; the most distinct separations are between the additional bedrooms above the garage.

On the exterior, the forms are exaggerated in terms of scale, to capitalize on the playfulness exhibited by Peterson. "We took the agrarian forms and injected a sense of humor into them," says Jim Morter, FAIA, principal and owner of Morter Architects. "It creates these really interesting outdoor living spaces, but they are comforting and recognizable at the same time."

### A space that lives well

Before any work could be done, the architects needed to get the design approved by the neighborhood. This required one of three prescriptive design styles, none of which specifically allowed for the rustic barn of Peterson's imagination. Instead of abandoning their inspiration, the design team asked for flexibility, while acquiescing to certain guidelines, including a garage entrance in the back. "They went down the road with us a little bit in terms of interpreting those guidelines," says Morter. "They gave us some flexibility, which allowed us to try some things."

The final design is 3,500 square feet with a 1,000-square-foot garage. Windows on all four sides take in the view and squarely establish that interior-exterior connection. A glass garage door opens the sitting room onto an outdoor patio and fire pit for an informal entertaining area. In addition, the design strives to play up passive solar gains while sheltering outdoor spaces from the wind, even in winter. It is the light that Peterson found the most surprising part of the home. "I really wanted the house to be well lit during the day, so that I didn't need any lights," he says. "There is sun in every room for most of the day. It's really interesting how you can't always plan for how these things will work out. You just stumble upon them. The amount of the light and the way these rooms feel makes every space warm and inviting."

The house feels lived in and livable, and Peterson is able to shut off the guest bedrooms from the rest of the house when they are not in use. The main section of the home is essentially one great big room, with Peterson spending most of his time in the kitchen/living area. There are virtually no hallways or circulation spaces; instead, one room flows into the other. "Its modesty is really admirable, in a time when people tend to feel that bigger is better," says Krueger. "If you pay attention to how you create outdoor spaces, a small house can feel larger by flowing inside to outside."

Most of the material choices were modest, including the exterior, with siding that picks up surrounding landscape colors—reclaimed barn-wood siding in washed-out grays and reds, stone in undulating rust and earth-colored tones, and rusted steel siding. "It really harkens back to the old buildings you used to see, with metal roofs," Krueger says. "There's some great color variation that pays homage to the area."

In the end, the project was so successful because of the joy the client found in both process and construction. "A lot of people think working with architects is hard," Krueger says. "But he had so much fun with it and really enjoyed the process. He was open to new ideas about how the home could go together and was involved from the beginning. He was always looking for fresh ideas as opposed to something that was safe and stale." ■

### PETERSON RESIDENCE

**Architect** Morter Architects, Vail, Colo.

**Location** Eagle, Colo.

**Construction Cost** \$900,000 (plus land)

**Scope** A new home for a single family

**Purpose** The home was designed around the idea of flexibility and to maximize indoor-outdoor relationships. Reclaimed barn materials and simple gable and shed forms give the residence an eclectic mix of barn and industrial references.

**Completion** January 2006

**Owner** Brandon Peterson

**Contractor** Boles Construction and Brandon Peterson

**Engineer** Wilkens Engineering, LLC

### Other notable projects by Morter Architects

- Wyoming Valley Ranch, Jackson Hole, Wyo.
- Shaker Barn, Los Angeles, Calif.
- Gerald R. Ford Amphitheater (original design and renovations), Vail, Colo.



From Rustico

**Above:** Very few walls separate rooms, particularly in the main living spaces, where the owner spends most of his time.



**SPARK**

**focus** on the modern fire

www.sparkfires.com p 866.938.3846 modern fires

**Our clients say it best.**

"More of our clients may actually require BIM for all projects, and we will be way ahead of them on that count. Avatech helped to provide us with the roadmap to manage our successful implementation of Autodesk Revit and BIM. As our partner in this process, Avatech was instrumental in helping us understand and make the changes that were necessary to our success."


—Jon W. Covington, Architect  
Covington Hendrix Anderson Architects

"We've been working with Avatech for years; I consider them a true and trusted partner. They understand all aspects of our business and how technology can work for us. Since they work with many other good architectural and engineering firms, they help us benchmark best practices. We rely on them to keep us abreast of trends and help us maintain design technology excellence."

—Ken Fisher, CAD Manager  
Shive-Hattery

"We realize that making the successful move to BIM requires a depth and breadth of changes in our organization—the type of transition that involves a corresponding level of commitment throughout the organization. Having a partner like Avatech to help us understand and overcome the challenges is crucial."

—Gary Keep, CEO  
SHW Group

 **Avatech Solutions. Altogether Smarter BIM.**

**We are where you are:** 800.706.1000 [www.avatech.com](http://www.avatech.com)

<b>Autodesk</b> Authorized Value Added Reseller	<b>Baltimore</b>	<b>Cedar Rapids</b>	<b>Charlotte</b>	<b>Chicago</b>	<b>Cleveland</b>	<b>Dallas</b>	<b>Denver</b>	<b>Des Moines</b>	<b>Detroit</b>
	<b>Greensboro</b>	<b>Houston</b>	<b>Indianapolis</b>	<b>Omaha</b>	<b>Raleigh</b>	<b>Richmond</b>	<b>St. Paul</b>	<b>Tampa</b>	<b>Virginia Beach</b>

Oh, and six mobile labs and our unique online virtual classrooms.





The residential and commercial leader in Colorado for closed-cell **Spray Polyurethane Foam Insulation.**

Members of:  
the Home Builders Association; Built Green;  
the American Subcontractors Association

Holder of Qualified Applicator status for  
Comfort Foam & Sprayite products (BASF)

Phone (303) 761-9057 | Fax (303) 783-9157 | [www.metroinsulation.com](http://www.metroinsulation.com) | [info@metroinsulation.com](mailto:info@metroinsulation.com)

*eBlueprint* can **NOW** PLACE ANY  
LARGE FORMAT MACHINE INTO YOUR  
*office* OR *job trailer*

*eliminate* the wait for  
minimal drawings —  
DOWNLOAD AND PRINT FROM  
THE INTERNET

*never* MISS A MEETING  
WAITING FOR PRINTS —  
*print your own files as  
soon as they are completed*

PRINTING  
AT YOUR  
*fingertips*

*Yes You Can.*  
**Introducing FM Programs.**

**Metro Denver Office**  
10733 E. Bethany Dr. Aurora, CO 80014  
P: (303) 696-6363

**Downtown Office**  
1408 Wazee St. Ste. 100 Denver, CO 80202  
P: (720) 974-7444

**Headquarters**  
3666 Carnegie Ave. Cleveland, OH 44115  
P: (216) 281-1234

Visit us online at [www.eblueprint.com](http://www.eblueprint.com)

**eBlueprint** A division of **ARC**  
*...plan on it*



# Affordable Housing Goes Green

**Design of Central Park Apartments Cut Residents' Energy Costs** *By Mary Lou Jay*

Ben Tempel Photography



Architect  
Colorado



Left: The units were raised out of the ground far enough to allow light into the bottom apartments (which open on the back of the building) while keeping the steps to the upper unit at a manageable number.

Right: Residents of the ground-floor apartments gain entrance through doors that open off the commons area. Residents of the upper floor have balconies from which they can enjoy views of the mountains and the Denver skyline.

Ben Temper Photography



The Central Park Apartments @ Stapleton (Denver) presented multiple challenges for the architectural firm of Eckalizzi Design. The husband and wife team of Stephen Eckert, AIA, and Jade Polizzi, Assoc. AIA, had to design units affordable for renters whose incomes are 50 percent of the average median income. They had to meet Stapleton's strict community design guidelines and try to alleviate neighboring homeowners' concerns about the project. Finally, at the request of their client, the Northeast Denver Housing Center (NDHC), the architects developed a design green enough to achieve some level of LEED certification.

Working closely with a team that included the owner and developer, contractors and consultants, Eckalizzi Design created a two-building, 18-unit apartment complex. Despite a per-square-foot cost almost half of market rate projects at Stapleton, the project shows that good design is possible and beauty and functionality are achievable in very low-income projects.

Central Park Apartments became the first multi-housing project in the state of Colorado to earn the Leadership in Energy and Environmental Design (LEED) gold. It was the first project to be certified by Enterprise Community Partners in Colorado and won the state's first Governor's Excellence in Renewable Energy award for its solar power application.

#### Design standards raise the bar

The Central Park Apartments are located on a three-quarter-acre triangular property at the corner of Central Park Boulevard and Wabash Street. It is one of several affordable housing sites set aside by Stapleton's developer, Forest Park, per its agreement with the city of Denver. The lot serves as transition zone between commercial and industrial and residential areas.

The apartments' exteriors feature stucco and coffee bean brick that blend with the neighborhood. "Stapleton had a number of design guidelines that raised the bar higher in terms of finishes. That was actually great, because we could use nicer materials than we might otherwise have had on another affordable housing project," Eckert says.





Ben Temper Photography

**Above:** The pocket park at the tip of the triangular lot will provide a welcome green, shaded area as more development takes place along the street.

**Below:** Solar photovoltaic panels provide the power for up to 55 percent of residents' electrical needs.

**Bottom:** The coffee bean brick on the exterior was produced by a Denver-area brickmaker, helping the project win LEED points for using local materials.



Ben Temper Photography



Ben Temper Photography

There are five three-bedroom, two-bathroom units and 13 two-bedroom, one-bathroom apartments. Interiors in all apartments, while small, are designed to feel spacious while being efficient. "We tried to create an open floor plan, with the kitchens for the most part looking into combined living/dining areas," says Eckert. Residents enjoy views of Denver and the mountain ranges from their porches or balconies.

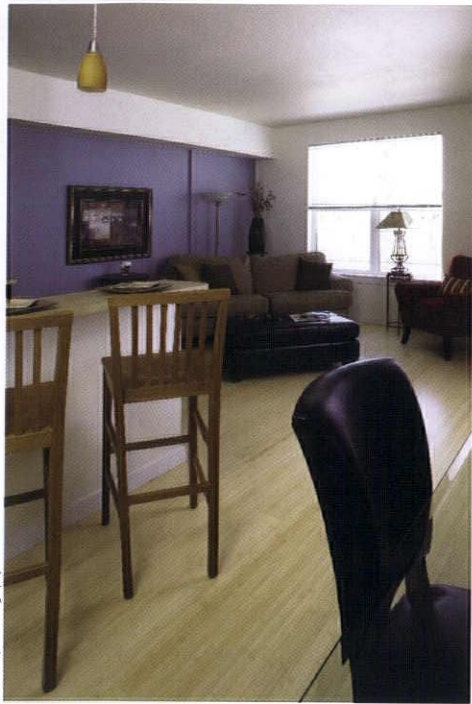
The V-shape of the buildings provides space for an inner green, with parking located in the alley. "We didn't want to have a parking lot in the middle of the project; the inner green gave a community feel between the buildings," Eckert says. The architects also placed a pocket park at the end of the V. "Eventually the entire street will be built up, so as the trees mature this will be a nice break."

The \$4.1 billion project, completed in November 2007, went through four redesigns, in part because of the concerns of nearby homeowners. Many said they had been told that the area would be a park, and others complained that the alley parking lot took away their children's play area. "Ironically, in the end we went back to the first design," says Eckert.

**Pre-planning required**

With affordability and environmental friendliness as project goals, the owner and architect began pre-planning in 2002. "We've done a number of projects with NDHC, and one of the best ways we've found to achieve affordability is to assemble the contractor team early on, at least in an advisory role," says Eckert. The contractor can get a working budget number from the initial set of schematic designs. "Then, we will try to rein in costs, value engineering the project with the team of the developer, architect and builder at the table," says Eckert.





Ben Temper Photography



Ben Temper Photography



Ben Temper Photography

In the foundation level of these apartments, for example, framed partition walls replaced the usual concrete partition walls. “On a more typical project, you might look for more big ticket items that you can value engineer, but here you have to look at everything. We saved \$10,000 or \$15,000 here, \$12,000 there,” Eckert adds.

“The other side of this is that with affordable housing and rentals in general, we have to use more durable products, so many things we need to do are actually more expensive than typical construction. For instances, the porches are made of steel with steel railing and columns and the balconies in the back also have steel. Typically you could get away with wood, but it won’t last as long. So, that’s an upgrade over a more traditional building, but it saves on maintenance down the road.”

On the green building side, “if you bring your disciplines in early enough and spend the time to evaluate and re-evaluate, it really pays off in the end,” says Getabecha “Gete” Mekonnen, NDHC’s executive director, who wanted to “push the envelope” on the project.

“We sat down in a design charrette meeting talking about the performance goals that they had,” says Paul Kriescher of Lightly Treading, the firm that made energy-efficiency recommendations and monitored construction. After looking at the requirements for various LEED levels, “we started with a focus on energy efficiency, and we started throwing out suggestions of what that might take.” Kriescher’s firm computer modeled the apartment’s original design with blown cellulose insulation and found it would not deliver the required efficiency. The group decided instead to use a new open-cell foam insulation product with an insulation value of R-22 for the walls and R-46 for the roofs. Use of this foam insulation reduced residents’ heating and cooling costs by at least 20 percent.

The most visible green feature on the project is the bank of solar photovoltaic cells on the rooftops, which produce up to 55 percent of the electric-

**Left:** The open floor plan creates a light and spacious feeling for the apartments despite their small size.

**Center:** All appliances are Energy Star rated to minimize energy usage for residents. The open cell-foam insulation installed in the walls and attic has helped reduce energy costs by as much as 20 percent.

**Right:** Windows and doors are located to let in as much natural lighting as possible. Artificial lighting is energy efficient and uses CFLs.

**Below:** When space is at a premium, features like built-in bookshelves provide attractive and valuable storage and display space.



Ben Temper Photography



## CENTRAL PARK APARTMENTS

### @ STAPLETON

**Architect** Eckalizzi Design, Boulder  
(Stephen Eckert, AIA, and Jade Polizzi, Assoc. AIA)

**Location** Stapleton Neighborhood

**Cost** \$4.1 million

**Scope** Two buildings housing 18 units, including five three-bedroom, three-bathroom apartments and 13 two-bedroom, one-bathroom apartments, serving 50 percent or below AMI.

**Purpose** Central Park Apartments @ Stapleton is a new rental development in Denver. It is designed to provide affordable units for households making less than 30-50 percent of the area median income while also incorporating principles of sustainable design and green building practices. The project is located in the Stapleton neighborhood, a nationally recognized urban infill planned community known for exemplifying good environmental stewardship.

**Completion** November 2007

**Owner** Northeast Denver Housing Center

**General Contractor** Partnership between Turner Construction, Denver, and Empire Construction Services, Denver

**Specialty Contractor** Solsource Solar Panels, Denver

**Structural Engineers** Kirk and Young Structural Engineers, Denver

**Energy Consultant** Lightly Treading Energy Analysis, Denver

#### Other projects of note by Eckalizzi Design

- Whittier Affordable Housing Project, Whittier Neighborhood, Denver

- Weisman Residence, Boulder, Colo.

ity needed by the apartments' residents. To ensure that residents take advantage of all of these energy savings, NDHC representatives make quarterly visits to ensure that they understand how to use their apartments' appliances and features properly.

Other green features include Energy Star-rated appliances, sustainable floor coverings, low- and no-VOC paint and adhesives, and energy-efficient lighting. The site itself is part of the Stapleton urban infill project, and is located convenient to public transit, shopping and some major area employers.

The higher costs associated with incorporating green features were offset by grants from a variety of sources, including Energy Outreach Colorado, the Governor's Energy Office and Xcel Energy.

### Guidelines for Affordable Housing

Designing affordable, green housing requires a different approach than more traditional projects. "First, make sure that your site allows you to do it," advises Mekonnen. "In our earlier phases of the project, we thought we had a good design, but it didn't pass muster. Local codes are not always as flexible as you'd like them to be.

"An architect has to be able to balance his or her vision with goal of the project and be thoroughly knowledgeable about local code conditions," he adds.

Consider who will be living in the home. "There's an attention to the end user that's a little bit different. We try to think of the quality of life that the end user will have and do things that will make their life better," says Eckert.

It is important to bring in members of the team early so they can have input into important design decisions. "In affordable housing, every inch becomes a premium, so it's a real juggling act to make everything fit in," Eckert adds.

When choosing the project's green components, Kriescher recommends that the team start by optimizing passive and active solar opportunities. "The next thing is to focus on the envelope of the house, because that's where you get the best bang for the buck. Look at constructing highly insulated, highly airtight buildings," he says. This may mean installing less efficient mechanical equipment, but it's easier to replace a furnace than it is to add insulation at a later date. Even if the construction budget doesn't stretch to solar panels, owners should consider having units pre-wired so they'll be easier to hook up down the road, according to Kriescher.

Explore alternatives for funding the project. "The resources are the challenging piece, so map out the sources of funds early on," Mekonnen says. With the growing demand for green projects, however, the sources that NDHC has tapped into in the past may not be available for everyone in the future. "We need the financial resources to provide the funding. Affordable housing is difficult enough to produce without adding another burden to it," he adds.

Look for experienced partners. "Like everything else in our profession, affordable housing is becoming more specialized," Eckert says. It's also an area that will be changing rapidly. "Europeans have been doing really exciting affordable housing for years, and we've been behind the times, but we're ready now. All the pieces are in place. It will be exciting to see what happens." ■



# I AM RESPONSIBLE

FOR CREATING A VISION, MEETING MY CLIENT'S NEEDS AND DESIGNING A SUSTAINABLE, ENERGY-EFFICIENT BUILDING.



© 2008 XCEL ENERGY INC.

Design your new facility or major renovation with energy efficiency built right in. Energy Design Assistance from Xcel Energy offers free energy modeling, financial incentives to improve the cost effectiveness of energy-efficient opportunities, and field verification to ensure strategies are installed per the design intent. Not only is this assistance free to architects and engineers, we also often pay for their time. Find out how you can save money and energy by calling our Business Solutions Center today at **1-800-481-4700** or visit [ResponsibleByNature.com](http://ResponsibleByNature.com).

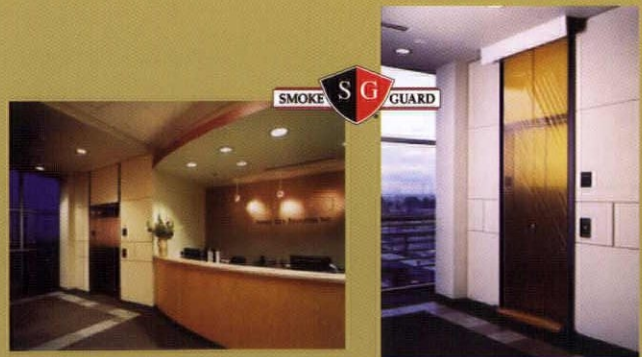


## SPACE MANAGEMENT Fire & Smoke

so · lu · tion –

Innovative area of separation solutions to meet life safety requirements.

- Uncompromising aesthetics
- Maximize usable floor space
- Maintain open egress pathways
- 3-hour, fire-rated systems available with egress



[powersproducts.com](http://powersproducts.com)

303.791.1010 / Colo

307.632.5521 / Wyo

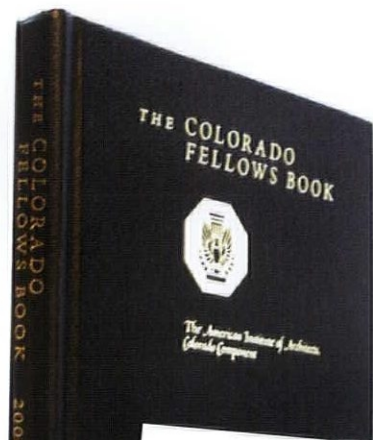
[solutions@powersproducts.com](mailto:solutions@powersproducts.com)



# Reaching Back

## Fellows offer insight through new book

By Chryss Cada



**P**hil Gerou, FAIA, does not think a memorial service should be the first time architects learn the story behind a distinguished colleague's career path.

"Too often we simply mourn the loss of a lifetime of experience, a career of excellence, a life well spent," said Gerou. "At a funeral, it's too late to ask them about the successes and struggles, the beginning of their careers and what drove them to build the practices they have."

Gerou's desire to capture the insight of the state's most seasoned architects was realized in June 2008 with the publication of *The Colorado Fellows Book*, a collection of essays by Fellows of The American Institute of Architects, Colorado Component.

"I think it's important for architects to get down their experiences on paper so that young people just entering the field can draw from their experience," he said. "If you wanted to have a conversation with an architect who has been around Colorado for 40 years, now you can pick up the book and do just that."

AIA Fellowship recognizes an exemplary career with a broad impact on the profession—in design, preservation, planning, practice management, service through AIA or other organizations, service to society or humanity, or a combination of these efforts. Their impact usually extends well beyond local boundaries to regional or national influence. Each year less than one-tenth of 1 percent of AIA architect members are elevated to the AIA College of Fellows. There are 48 AIA Fellows in Colorado.

"When I first sent out the request for contributions, I thought I'd get responses from 10 or 12—15 at the most," Gerou said. "Instead I wound up with 36. Obviously this is the type of forum people have been waiting for."

The book's publication is the realization of a dream Gerou has held onto for more than two decades.

"I made a proposal to AIA for the book in the 1980s, and while there was interest, there just wasn't the funding," he said.

Although he had to put the idea on the back burner, Gerou kept it alive by discussing it with people he thought would share his interest in seeing such a book published. At a professional conference two years ago, he found that interest in McGraw-Hill Editor Mark Shaw.

"I talked to him about it one evening, and he said it was a good idea," Gerou said. "Then he approached me the next day and said he had thought about it and it was a 'fabulous idea,' and that he would donate his time to edit the book."

a combination of these efforts. Their impact usually extends well beyond local boundaries to regional or national influence.

Each year less than one-tenth of one percent of the AIA's membership are elected (to) the College of Fellows. In Colorado the AIA College of Fellows is represented by fewer than 50 architects. In this book, most of that group has volunteered to share their personal perspectives and experience on a wide spectrum of subject matter. Although some of these Fellows have been recognized for their achievements at the end of their careers, most still are practicing architects.

This publication offers insights into the values, dreams, inspirations and motivations behind their achievements. No two stories are the same. In fact, as you will see, the range of interests, motivations and styles is somewhat extraordinary.

Too often, we simply mourn the loss of a lifetime of experience, a career of excellence, a life well spent. We regret not asking the important questions or creating a public venue for them: What drove you to succeed? What was the dominant force (or values or personal belief) that

### INTRODUCTION

Philip H. Gerou, FAIA  
MAY 2007

**A**S ODYSSEUS WAS PREPARING to leave for Troy, he appointed a custodian for his household. For years this guardian was a faithful friend, teacher and surrogate father to Odysseus' son, Telemachus. This mythical figure was named Mentor.

Professional growth depends upon a quality education and comprehensive experience. Exceptional development requires something more — a mentor, or ideally, a number of mentors — because no one individual can define your particular path. Each of us can identify mentors in our own lives: parents, teachers, friends, colleagues. Professionally, we look to those who have gone before us, creating model practices and achieving personal distinction. In the architectural community (and more specifically within the American Institute of Architects), these individuals sometimes are distinguished by election to the AIA College of Fellows.

AIA Fellowship recognizes an exemplary career with a broad impact on the profession — in design, preservation, planning, practice management, service through the AIA or other organizations, service to society or humanity — or

7  
The Colorado Fellows Book



Shaw's involvement was the push the project needed to get started. Gerou received a \$5,000 grant from The Architectural Education Foundation, AIA Colorado, for seed money for the project. It was decided that all proceeds from the sale of the book would be donated to the College of Fellows Scholarship Fund, which is managed under the auspices of The Architectural Education Foundation, AIA Colorado. The next step was to send out a letter to the state's Fellows requesting submissions.

"I gave them very broad parameters to write about whatever they wanted to," Gerou said.

In fact, the only set parameter was that the essay be between 500 and 2,000 words. To help the writers get started, Gerou sent a list of questions; including:

What values or influences did you have in your career?

What advice would you give young architects?

Where do you find inspiration?

Is there spiritual guidance in your work?

What do you want others to know that no one has ever asked you?

"I told them they may not want to address any of these questions but that they were things to consider," Gerou said. "I told them that the basic idea was they had reached a certain level of success in the profession, and we would like to get in writing what led them to where they are."

Gerou heard back from many architects who questioned their own writing abilities.

"I remember in particular Fred Hynek, FAIA, contacting me and saying he didn't know how to write, but that he had been keeping a list for 30 years of the things he had learned," Gerou said. "Well of course that list was exactly the kind of thing we were looking for."

The list of Hynek's phrases, some borrowed and some his own, include: "I worked with one person whose idea of an intense marketing program was to sit closer to the telephone, in case it rang." and "Architecture is not a job; it is a way of life."

### Phillip H. Gerou, FAIA

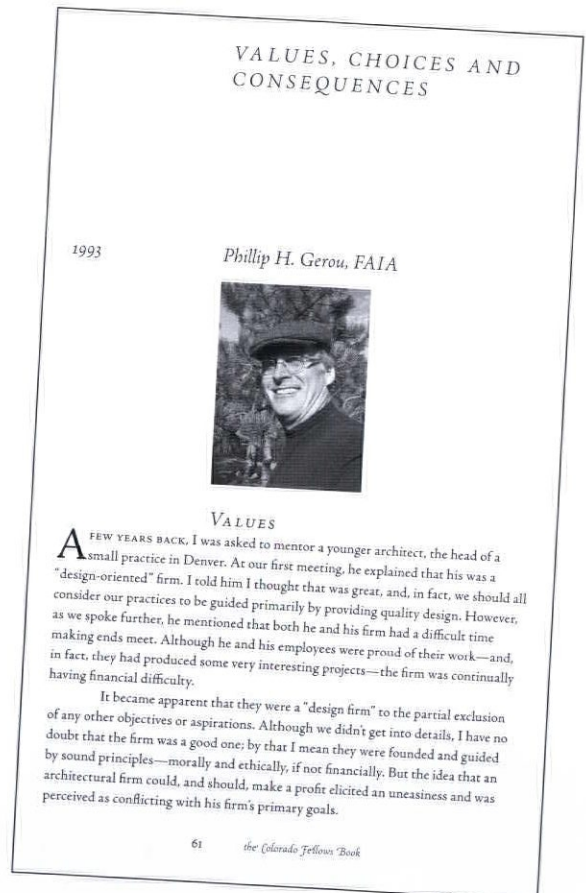
When it came time to write his own essay, Gerou decided that rather than focus on his own life story, he would focus on the topic that has defined his career: ethics.

"I think it's important as architects to take a step back from our work and look at what should be guiding us," he said.

While chairing the AIA National Ethics Council, Gerou presented programs on professional ethics at AIA National Conventions and AIA National Grassroots Conferences and to a number of universities and AIA components.

"AIA of course has a code of ethics to enforce, but there are also areas that are more gray where you have decisions to make," he said. "Professional ethics tread a thin line. Sometimes you have to look at what that thin line is based on to see if you stepped over it."

In his essay, Gerou writes about using "core values" to navigate the moral choices, competing loyalties and ethical dilemmas that architects face every day. He includes freewill in that list of core values.





## IMBALANCE

1995

Elizabeth Wright Ingraham, FAIA



**T**ODAY, WE ARE FACING a major paradigm shift on the world front due to lagging legacy systems (a need to balance analog and digital), the speed and breadth of a communication network and economic globalization. It is too early to fully understand the massive adjustments that will be needed. The monetary policy problems that plagued Franklin Delano

Roosevelt still exist today as our country struggles with the widening gap between poor and affluent. The absence of long-range planning in the economic system makes needed change too little and too late. Today, the fundamental idea that citizens in our democracy know enough is being tested. While education and structure as a key to this democratic charge is in place, albeit maneuvered by political expediencies, cronyism and patronage, everyone is still on "the take." Certainly, Alexis de Tocqueville and Karl Marx, to mention only two philosophers, understood the constraints but did little to offer possible alternatives. Perhaps it is the lack of alternatives that has led to a kind of historic amnesia of our population. It is insufficient to accept the ideological argument that universal history is over and democ-

Elizabeth Wright Ingraham, FAIA

"When you start talking about freewill you get into the area of theology," he said. "That gets into questions of why we're here and why we're allowed to make certain decisions in life."

Gerou ends his essay saying, "May we all choose well."

### Elizabeth Wright Ingraham, FAIA

The only thing foreseeable about Ingraham's career is that as the granddaughter of Frank Lloyd Wright, she became an architect—everything else is anything but predictable.

In her early 80s, Ingraham has spent decades as an architect pioneering new ground for women, drawing awareness to politics and encouraging her colleagues to think outside the "cookie-cutter" style promulgated by housing developers.

"Architects need to start thinking outside of what is thrown at them," she said. "Their sense of architecture needs to be their own."

Currently she's taking on the issue of visibility for architects.

"I've done several buildings in the middle of subdivisions, and people don't even know they're there," she said. "It's something of a shock the way they are surrounded by these humongous houses that are so often completely lacking in design."

Ingraham would like to see an architectural showcase created in Colorado to get the state's architects out of the shadows.

"Architects by practice don't advertise, so we have no real way of getting our work noticed," she said. "Architecture is art, and it should be displayed as such."

Ingraham would like to see a gallery space—free and open to the public—created to increase appreciation of the profession.

"It's time that there is a place for the public to come see what architects do, before architecture loses its identity to the mass production of buildings," she said.

### Gary L. Desmond, FAIA

When Desmond thought about what to write in his contribution to *The Colorado Fellows Book*, what came to him was the "passion you have to have to become an architect."

That passion and commitment was tested early in Desmond's career.

While attending the University of Michigan College of Architecture and Design, he and several fraternity brothers formed a rock group, The Ravens. The group was discovered during his fourth year at school (of the five required in architecture). The group was offered a contract by Motown Records and the chance to tour with the Motown Review, which included acts such as The Supremes, Stevie Wonder, The Temptations and others. Desmond passed on the opportunity rather than drop out of school.

"I always tell young people to follow their passion and for me that meant some tough decisions," he said. "Music was a huge passion for me, but architecture was number one."

Upon graduation Desmond had another decision to make when his senior design professor and mentor, Gunnar Birkerts, offered him a position at

## STAYING ON THE PATH

"Learn as if you were going to live forever.  
Live as if you were going to die tomorrow."  
- Mahatma Gandhi

1995

Gary L. Desmond, FAIA



### CHILDHOOD

**I**N 1943 I WAS BORN in Detroit during WWII in the middle of a race riot. My mother, a coal miner's daughter, and family were immigrants from Italy. I knew I wanted to be an architect about age 11. I loved to draw, build models and imagine what the world could be. My curiosities led me in that direction throughout my high school years, admittedly not knowing exactly what it was like to be an architect.

### STUDENT

**A**S I LEARNED MORE about architecture in high school through summer jobs and doing theoretical design work on my own, my passion grew. As a grade-average high school student, I wanted to attend the University of Michigan College of Architecture and Design. It was certainly among the best schools at the time. There was a strong influence from several adjunct professors from the nearby office of Eero Saarinen and other "graduates" of his firm. I was initially denied because of high

Gary L. Desmond, FAIA



his firm. Although he could pursue more lucrative positions within the field, this decision was an easy one for Desmond.

"I was fortunate to be asked, and there was no question that I should take advantage of the opportunity to work under a world-class architect," he said. "I would tell a young architect that mentoring and knowing the culture of a firm is far more important than a higher pay level."

### Michael J. Holtz, FAIA

*The Colorado Fellows Book* is another opportunity for Holtz to get the word out to his fellow architects about his passion: the impact of their work on the environment.

"Approximately 40 percent of carbon emissions are the result of buildings," Holtz said. "I tell every architect I speak with that the next building they design should be the most energy-efficient project they've done in their life. We're at a tipping point with the environment, and carbon emissions and architects must be part of the solution."

Holtz views architecture as part of an ecosystem, where all natural and man-made elements are interrelated and interdependent.

"I'm a strong proponent of good design—design that meets human needs and local conditions with the local ecology," he said. "Sustainability means honoring and recognizing the place in which you are building."

Environmental awareness is a message Holtz has heralded his whole career.

"I was surprised when I got out of school that most architects didn't have a clue about energy and environmentally responsive design," he said. "Energy issues were relegated to engineers."

While at the AIA Research Corporation in Washington, D.C., in the early 1970s, Holtz helped create a conceptual framework for architects to design within and that addressed energy efficiency, renewable energy sources and environmental impacts. The mission to conduct research to improve the planet and to link this research to architectural practice has been at the center of his professional life since that time.

### John D. Anderson, FAIA

Energy has also been at the center of Anderson's career.

"One of the things I thought I could bring to this book was my role as one of the forerunners of what is going on now with alternative energy," Anderson said. "In the early 1970s, it was an incredibly exciting time in architecture, as we realized that instead of just designing buildings, we could make a major contribution to society and the world at large."

Anderson was a part of building a new 300,000-square-foot facility for Front Range Community College (FRCC) that was solar powered. At the time, in 1973, it was the world's largest solar-heated facility. It initially used between 25 and 35 percent less energy than had it been conventionally designed. His firm went on to design solar facilities for Aurora School District, Colorado School of Mines and Western Wyoming College.

"We were met with rather ragged acceptance to the idea of solar when we brought it up in the 1970s," he said. "With the exception of some real

## MAKING PEOPLE HAPPY

2004

Michael Joseph Holtz, FAIA



**I**N MY FIFTH AND LAST year of architecture school, I had a course titled "Philosophy of Architecture." It was a survey course where we engaged in an exploration and discussion of the architectural theories and philosophies of many of the great historical and present-day architects. We had to read and discern what were the factors and elements that motivated these individuals to create the architectural responses they developed for a specific client within a specific architectural program at a specific site at a specific point in time.

My classmates and I had engaged in many of these discussions and debates with our instructors in our architectural design studios, so we knew the general discourse on the subject and the main protagonists of the day. However, what I remember most about this course—"Philosophy of Architecture"—was the final exam question: What is your philosophy of architecture?

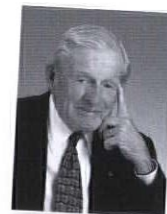
Since it was the last quarter of my last year in architecture school, this was perhaps a fitting question or perhaps a really naïve question. Had we had the time or experience to formulate a "philosophy of architecture"? Surely, we had views on

137 the Colorado Fellows Book

## A RAGGEDLY REWARDING CAREER

1980

John D. Anderson, FAIA



### THE SHAPERS

**I**N TERMS OF CRITICAL FORCES that shaped my career, certainly Hugh Stubbins' recommendations were high on the list. Colorado has responded wonderfully to our hopes and needs. Flodie and I both sense that there's no better place to bring up two boys. They apparently feel the same way, for they are both back in Colorado with their families.

A second important shaping factor has been the two firms I worked for after arriving in Denver in 1952. The first two years were with John Monroe. Jack could never remember my name (*he always call me "Young Man!"*), but from him and his key people I learned how to put together a solid set of contract documents.

Then for the next 6-1/2 years I was with Wheeler and Lewis. Selby Wheeler and Carol Lewis had started their practice in 1951. The work was almost exclusively K-12 schools all over Colorado and Wyoming. I designed many schools and came to believe that school design is probably some of the most meaningful work an architect could do. When I began my own practice, schools were my most natural

27 the Colorado Fellows Book



“I think it’s important for architects to get down their experiences on paper so that young people just entering the field can draw from their experience.”

*Phil Gerou, FAIA*

heroes we worked with, like FRCC and Aurora Schools, many clients didn’t believe in the seriousness of the situation at the time.”

Now, of course, acceptance of alternative energy is accepted and even demanded.

“In the 1970s, we were bringing it (the creation of alternative energy sources) up,” Anderson said. “Now clients often beat us to the punch.”


It took about three months for *The Colorado Fellows Book* essays to be collected and about 10 months for them to be edited. Douglas Ekstrand of Ekstrand Creative donated his services to format the text, design template and layout of the book. Then, in June 2008, a semi truck pulled into Gerou’s driveway and dropped off 3,000 copies of the Book.

“This is an important book today and will be for years,” Gerou said. “The advice contained in these essays has an infinite shelf life.”


That said, he does not rule out another book.

“We already have four or five new Fellows since we put the book together, so there will be new material, but we don’t have any plans for another book at this time,” Gerou said. “We’ll sell this book, raise some funds and see where we’re at. If we do decide to do another book, we’ll know the process.” ■

To order a copy of *The Colorado Fellows Book*, visit [www.aiacolorado.org](http://www.aiacolorado.org) (click Resources, then Contract Documents, then Miscellaneous) or call the AIA Colorado office at 303.446.2266. The price is \$24 (AIA members) and \$30 (non-members of AIA), plus tax and shipping and handling fees.




CONSULTING ENGINEERS



STRUCTURAL · CIVIL · ENVIRONMENTAL

Innovative Excellence  
through Engineering


[www.jvajva.com](http://www.jvajva.com)




1319 Spruce Street  
Boulder, CO 80302  
303.444.1951

LEED Accredited Professionals

Boulder | Fort Collins | Winter Park | Bozeman



 JEAN SEBBEN ASSOCIATES  
COMMERCIAL INTERIOR DESIGN

HEALTHCARE · CORPORATE · EDUCATION  
HOSPITALITY · GOVERNMENT

(719) 635-7133

P.O. BOX 6310, COLORADO SPRINGS, CO 80934

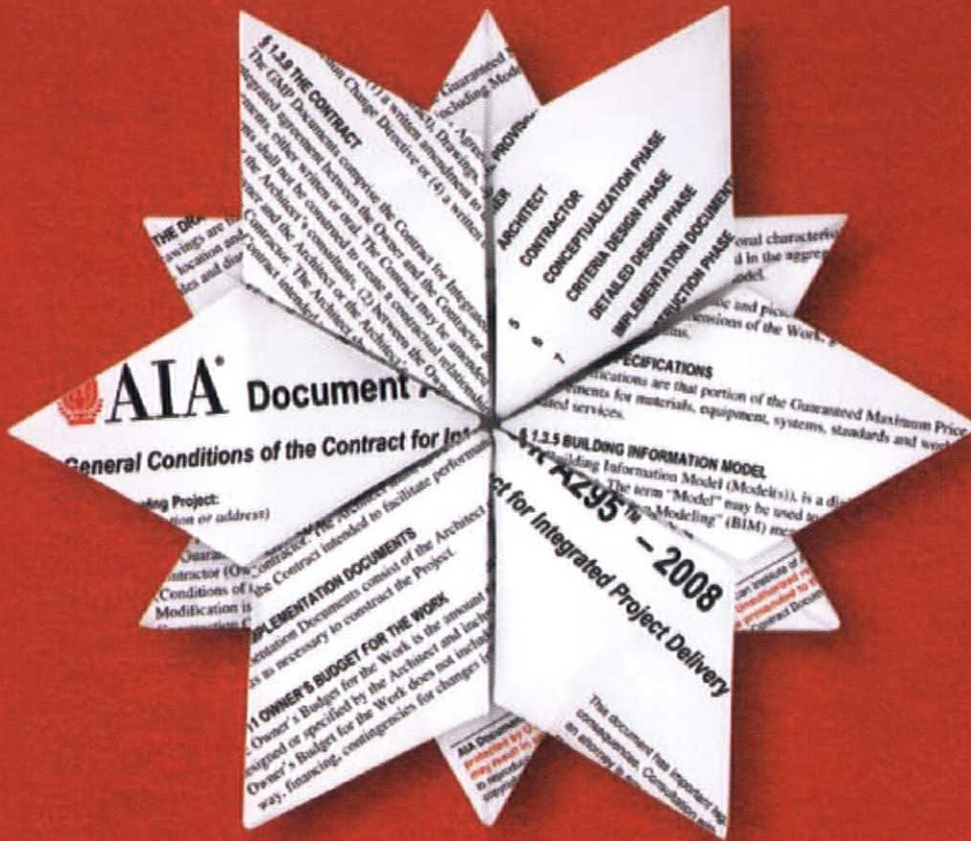
[www.jeansebbenassociates.com](http://www.jeansebbenassociates.com)  
[jsinteriors@qwestoffice.net](mailto:jsinteriors@qwestoffice.net)



~New~



THE AMERICAN  
INSTITUTE  
OF ARCHITECTS



## ~Integrated~

Since 1888, the AIA has been leading the industry with the most widely accepted construction and design contracts. In 2008, there's a new standard – Integrated Project Delivery (IPD). IPD encourages intense collaboration among contractors, owners, architects, and engineers – right from a project's inception. Maximize efficiency and build on the strengths of your construction and design team using the AIA's new IPD Agreements.

To learn more, visit [www.aiacontractdocuments.org](http://www.aiacontractdocuments.org) to download your free copy of *Integrated Project Delivery: A Guide*, and to purchase the IPD Agreements today.

**AIA Contract Documents**<sup>®</sup>  
A NEW INDUSTRY STANDARD.

The American Institute of Architects  
1735 New York Avenue NW  
Washington, D.C. 20006-5292



# 2008 Design and Honor Awards

Every year, AIA Colorado and its four local chapters (AIA Denver, AIA Colorado North, AIA Colorado South, AIA Colorado West) hold design awards competitions, recognizing works of architecture that were directed and substantially executed by design professionals and/or firms that are members of their respective AIA chapters.

In addition to the design awards, AIA Colorado and some of its chapters also conduct an honor awards program. Honor awards recognize people or projects that have had a positive impact on their community or have made a significant contribution to the profession.

Presidents of AIA Colorado and each chapter also reserve the right to bestow President's Awards to individuals or groups based on significant contributions.

Visit [www.aiacolorado.org](http://www.aiacolorado.org) throughout 2009 for additional information about each of these award-winning projects.

For more information about AIA Colorado or local chapter design awards, please contact the AIA Colorado office at 303.446.2266.



A Component of The American Institute of Architects

The following award recipients were recognized during a ceremony on Sept. 27 in Vail, Colo. The awards were presented by Jury Chair Gregory Papay, FAIA, of Lake | Flato Architects (San Antonio).

## HONOR DESIGN AWARDS: BUILT ARCHITECTURE

### Harry Teague Architects (Basalt, Colo.)

*Basalt River Lofts (Basalt, Colo.)*

### in situ DESIGN (Denver)

*Merchants Row Brownstones (Denver)*

## MERIT DESIGN AWARD: BUILT ARCHITECTURE

### Anderson Mason Dale Architects (Denver)

*Academic Office 1, Anschutz Medical Campus (Aurora, Colo.)*

### Fentress Architects (Denver)

*Sacramento City Hall (Sacramento, Calif.)*

### Studio B Architects (Aspen, Colo.)

*Scholl 2 (Aspen)*

## Basalt River Lofts

Basalt, CO

DESIGN AWARD Honor

CATEGORY Built Architecture

ARCHITECT Harry Teague Architects

OWNER/DEVELOPER Basalt River Lofts, Inc.

STRUCTURAL ENGINEER KL & A Inc.

GENERAL CONTRACTOR Crystal Springs Builders

PHOTOGRAPHER Wayne Thom



## MERIT DESIGN AWARD: INTERIORS

### Blythe Group + co. (Grand Junction, Colo.) and

### Roth + Sheppard Architects (Denver)

*Colorado Bureau of Investigation – Western Slope Facility (Grand Junction)*

## MERIT DESIGN AWARD: SUSTAINABILITY

### Barrett Studio Architects (Boulder, Colo.)

*Wee Ski Chalet (Colorado)*

## CITATION DESIGN AWARDS: BUILT ARCHITECTURE

### Michael Folwell Architecture (Boulder)

*Crescent Drive House Addition (Boulder)*

### Anderson Mason Dale Architects (Denver)

*Education 2 North and South Anschutz Medical Campus (Aurora)*

### Studio B Architects (Aspen)

*North 40 Station (Aspen)*

### Simple Brown Design PC (Denver)

*RedLine (Denver)*

### Roth + Sheppard Architects (Denver)

*Scandinavian Designs (Rocklin, Calif.)*

## CITATION DESIGN AWARD: INTERIORS

### Lubowicki Architecture + Design Inc. (Denver)

*Klug Studio (Denver)*

## CITATION DESIGN AWARD: SUSTAINABILITY

### Studio B Architects (Aspen) and Hutton Ford Architecture Studio (Denver)

*Aspen Middle School (Aspen)*

## CITATION DESIGN AWARD: UNBUILT ARCHITECTURE

### Studio H:T (Boulder)

*Shipping Container Residence (Nederland, Colo.)*

### Michael Folwell Architecture (Boulder)

*Tweedsmuir Lodge Spa Building (Bella Coola, British Columbia, Canada)*

## HONOR AWARD: ARCHITECT OF THE YEAR – This award recognizes a

licensed architect who has contributed to the profession and set an example in design, service and leadership to AIA Colorado over a period of at least 10 years.

### Richard von Lührte, FAIA, President of RNL (Denver)

PRESIDENT'S AWARDS – presented to individuals or companies that have made extraordinary contributions in supporting the mission of AIA Colorado and selected by AIA Colorado 2008 President Chris Stumm, AIA

### Phil Gerou, FAIA

### Monroe & Newell Engineers Inc.





**Merchants Row Brownstones**  
Denver, CO

DESIGN AWARD Honor  
CATEGORY Built Architecture  
ARCHITECT in situ DESIGN  
OWNER/DEVELOPER Curtis Park Investors Group  
STRUCTURAL ENGINEER Studio NYL  
ELECTRICAL ENGINEER Clayden and Associates  
MECHANICAL ENGINEER Integrated Mechanical Systems  
GENERAL CONTRACTOR Spectrum General Constructors  
PHOTOGRAPHER Frank Ooms



**Academic Office 1 Anschutz Medical Campus**  
Aurora, CO

DESIGN AWARD Merit  
CATEGORY Built Architecture  
ARCHITECT Anderson Mason Dale Architects  
OWNER/DEVELOPER University of Colorado Denver  
STRUCTURAL ENGINEER REI Structural  
ELECTRICAL ENGINEER The RMH Group  
MECHANICAL ENGINEER The RMH Group  
GENERAL CONTRACTOR The Weitz Company  
PHOTOGRAPHER Frank Ooms; Ron Mason



**Sacramento City Hall**  
Sacramento, CO

DESIGN AWARD Merit  
CATEGORY Built Architecture  
ARCHITECT Fentress Architects  
OWNER/DEVELOPER City of Sacramento / David S. Taylor Interests  
STRUCTURAL ENGINEER Buehler & Buehler  
ELECTRICAL ENGINEER ECOM Engineering; Rex Moore  
MECHANICAL ENGINEER Capital Engineering Consultants; Airco  
GENERAL CONTRACTOR Hensel Phelps Construction Company  
PHOTOGRAPHER Ed Asmus; Nick Merrick © Hedrich Blessing



**Scholl 2**  
Aspen, CO

DESIGN AWARD Merit  
CATEGORY Built Architecture  
ARCHITECT Studio B Architects  
OWNER/DEVELOPER Dennis Scholl  
STRUCTURAL ENGINEER PattiIto Associates  
ELECTRICAL ENGINEER Sun West Electric  
GENERAL CONTRACTOR JD Block Construction  
PHOTOGRAPHER Aspen Architectural Photography



**Colorado Bureau of Investigation - Western Slope Facility**  
Grand Junction, CO

DESIGN AWARD Merit  
CATEGORY Interiors  
ARCHITECT Blythe Group + co.; Roth + Sheppard Architects  
OWNER/DEVELOPER Grand Junction, Colorado, State Leasing Authority, Inc.  
STRUCTURAL ENGINEER Lindauer - Dunn, Inc.  
ELECTRICAL ENGINEER Bighorn Consulting Engineers, Inc.  
MECHANICAL ENGINEER Bighorn Consulting Engineers, Inc.  
GENERAL CONTRACTOR FCI Constructors  
PHOTOGRAPHER Steve Maylone



## Wee Ski Chalet

Colorado

DESIGN AWARD Merit  
CATEGORY Sustainability  
ARCHITECT Barrett Studio Architects  
STRUCTURAL ENGINEER Mozer Renn Structural Services  
GENERAL CONTRACTOR Ecolutures Building, Inc.  
PHOTOGRAPHER David Barrett; Michael Shoppen



## Crescent Drive House Addition

Boulder, CO

DESIGN AWARD Citation  
CATEGORY Built Architecture  
ARCHITECT Michael Folwell Architecture  
OWNER/DEVELOPER Michael + Gail Folwell  
STRUCTURAL ENGINEER Studio NYL  
GENERAL CONTRACTOR Thomas Stanko Construction  
PHOTOGRAPHER Ron Pollard Photography



## Education 2 North and South Anschutz Medical Campus

Aurora, CO

DESIGN AWARD Citation  
CATEGORY Built Architecture  
ARCHITECT Anderson Mason Dale Architects  
OWNER/DEVELOPER University of Colorado Denver  
STRUCTURAL ENGINEER Martin/Martin, Inc.  
ELECTRICAL ENGINEER Shaffer Baucom Engineering & Consulting  
MECHANICAL ENGINEER Shaffer Baucom Engineering & Consulting  
GENERAL CONTRACTOR Haselden Construction, Inc.  
Barton Malow Company  
PHOTOGRAPHER Frank Ooms, Ron Mason



## North 40 Station

Aspen, CO

DESIGN AWARD Citation  
CATEGORY Built Architecture  
ARCHITECT Studio B Architects  
OWNER/DEVELOPER Aspen Fire Protection District  
STRUCTURAL ENGINEER KL & A Inc.  
ELECTRICAL ENGINEER MKK Consulting Services  
MECHANICAL ENGINEER MKK Consulting Services  
GENERAL CONTRACTOR Fenion Construction, Inc.  
PHOTOGRAPHER Aspen Architectural Photography



## RedLine

Denver, CO

DESIGN AWARD Citation  
CATEGORY Built Architecture  
ARCHITECT Semple Brown Design, PC  
OWNER/DEVELOPER Consolidated Investment Group  
STRUCTURAL ENGINEER McGlamery Structural Group  
ELECTRICAL ENGINEER Apco Electric, Inc.  
MECHANICAL ENGINEER Rogers & Sons, Inc.  
GENERAL CONTRACTOR Spectrum General Contractors  
PHOTOGRAPHER Ron Pollard







**Scandinavian Designs**  
Rocklin, CA

DESIGN AWARD Citation  
CATEGORY Built Architecture  
ARCHITECT Roth + Sheppard Architects, Kyle Yardley, AIA  
OWNER/DEVELOPER Interline  
STRUCTURAL ENGINEER Martin/Martin  
ELECTRICAL ENGINEER Glumac International, Inc.  
MECHANICAL ENGINEER Glumac International, Inc.  
GENERAL CONTRACTOR Skanska Building USA, Inc.  
PHOTOGRAPHER Frank Ooms



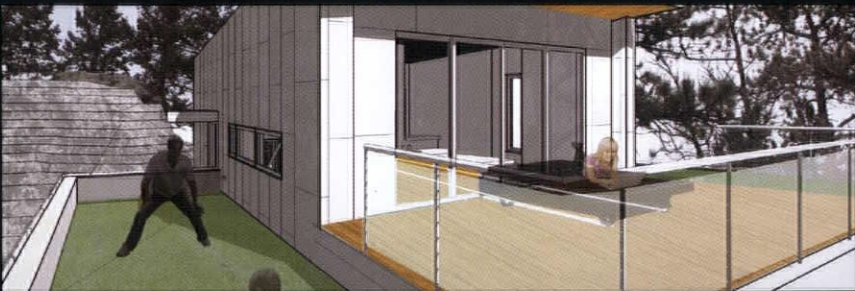
**Klug Studio**  
Denver, CO

DESIGN AWARD Citation  
CATEGORY Interiors  
ARCHITECT Lubowicki Architecture + Design, Inc.  
OWNER/DEVELOPER Jeff Padrick  
STRUCTURAL ENGINEER RNF Consultants  
GENERAL CONTRACTOR Owner  
PHOTOGRAPHER Klug Studio, Inc.



**Aspen Middle School**  
Aspen, CO

DESIGN AWARD Citation  
CATEGORY Sustainability  
ARCHITECT Studio B Architects  
Hutton Ford Architecture Studio  
OWNER/DEVELOPER Aspen School District  
STRUCTURAL ENGINEER Red Wine Engineers  
ELECTRICAL ENGINEER Beaudin Ganze Consulting Eng.  
MECHANICAL ENGINEER Beaudin Ganze Consulting Eng.  
GENERAL CONTRACTOR GE Johnson Construction Co.  
PHOTOGRAPHER Aspen Architectural Photography



**Shipping Container Residence**  
Nederland, CO

DESIGN AWARD Citation  
CATEGORY Unbuilt Architecture  
ARCHITECT Studio H:T  
OWNER/DEVELOPER Andrew McMullin  
STRUCTURAL ENGINEER Gebau Engineering  
GENERAL CONTRACTOR Andrew McMullin / Tiburon Builders  
PHOTOGRAPHER Studio H:T



**Tweedsmuir Lodge Spa Building**  
Bella Coola, BC, Canada

DESIGN AWARD Citation  
CATEGORY UnBuilt Architecture  
ARCHITECT Michael Folwell Architecture  
OWNER/DEVELOPER Kurt Hall  
PHOTOGRAPHER Michael Folwell Architecture



The following award recipients were recognized during a ceremony on Sept. 5 in Denver. The awards were presented by Jury Chair Manuel Cadrecha, AIA, of Perkins + Will (Atlanta).

**HONOR DESIGN AWARDS: BUILT ARCHITECTURE**

**Studio Daniel Libeskind (New York) with Davis Partnership Architects (Denver)**  
*Museum Residences (Denver)*

**Alan Eban Brown Architects (Eldorado Springs, Colo.), David Baker & Partners (San Francisco), Will Bruder & Partners (Phoenix) and Harry Teague Architects (Basalt, Colo.)**  
*TAXI Phase 2 (Denver)*

**MERIT DESIGN AWARDS: BUILT ARCHITECTURE**

**Simple Brown Design, P.C. (Denver)**  
*Kent Student Center for the Arts (Englewood, Colo.)*

**Davis Partnership Architects (Denver), and Adjaye Associates (New York)**  
*Museum of Contemporary Art (Denver)*

**Simple Brown Design, P.C. (Denver)**  
*RedLine (Denver)*

**Faleide Architecture Studio (Denver)**  
*Residence at 480 Poplar St. (Denver)*

**CITATION DESIGN AWARD: BUILT ARCHITECTURE**

**Roth + Sheppard Architects (Denver)**  
*Scandinavian Designs (Rocklin, Calif.)*

**CITATION DESIGN AWARD: UNBUILT ARCHITECTURE**

**Anderson Mason Dale Architects (Denver)**  
*Colegio Americano de Puebla (Puebla, Mexico)*

**HONOR AWARD: LIFETIME ACHIEVEMENT AWARD** – *This award recognizes an architect that has made significant contributions to AIA, the profession and the citizens of Denver.*  
**Robert W. Root, FAIA, of Root Rosenman Architects (Denver)**

**HONOR AWARD: YOUNG ARCHITECT OF THE YEAR** – *Recognizes significant contributions made during the early stages of an architect’s career that exemplify outstanding built or non-built work of any scale as well as projects, initiatives and brilliant beginnings that warrant attention from the profession or the public.*  
**Gerardo M. Salinas, AIA, of Anderson Mason Dale Architects (Denver)**

**HONOR AWARD: 25-YEAR AWARD** – *This award recognizes the enduring quality of architectural design and that has withstood the “test of time” and still functions in its original capacity.*  
**Sculptured (Deaton) House (Genesee, Colo.): by Charles Deaton**

**HONOR AWARD: PHIL MILSTEIN AWARD FOR CONTRIBUTIONS BY A NON-ARCHITECT** – *This award recognizes outstanding accomplishments by a non-architect in Colorado who demonstrated exemplary achievements in contributing to the quality of the built environment.*  
**Flodie Anderson (Denver)**  
**Jeannie L. Ritter (Denver)**

**HONOR AWARD: JAMES SUDLER, AIA, AWARD FOR CONTRIBUTION TO AIA DENVER** – *Recognizes an outstanding contribution to the chapter and achievements of people who have, by their professionalism, dedication, leadership, ability and commitment, improved the quality of services offered by AIA Denver.*  
**Studio NYL Structural Engineers (Boulder, Colo.)**

**PRESIDENT’S AWARD** – presented to an individual who has made extraordinary contributions in supporting the mission of AIA Denver or local architecture and selected by AIA Denver 2008 President Richard Combs, AIA  
**Pomelia “Pomie” Bowers, SDA**

**Museum Residences**  
Denver, CO

DESIGN AWARD Honor  
CATEGORY Built Architecture  
ARCHITECT Studio Daniel Libeskind with Davis Partnership Architects  
OWNER/DEVELOPER Mile High Development  
STRUCTURAL ENGINEER Jirsa Hedrick & Associates  
ELECTRICAL ENGINEER Ludvik Electric  
MECHANICAL ENGINEER DMCE Engineering  
GENERAL CONTRACTOR Milender White Construction Company  
PHOTOGRAPHER Ron Pollard



**TAXI Phase 2**  
Denver, CO

DESIGN AWARD Honor  
CATEGORY Built Architecture  
ARCHITECT Alan Eban Brown Architects, David Baker & Partners, Will Bruder & Partners and Harry Teague Architects  
OWNER/DEVELOPER Zeppelin Development  
STRUCTURAL ENGINEER KL & A Engineers  
ELECTRICAL ENGINEER Innovative Electrical Systems (IES)  
MECHANICAL ENGINEER HADJI & Assoc  
GENERAL CONTRACTOR M.A. Mortenson Company  
PHOTOGRAPHER Timothy Hursley, Alan Peters





**Kent Student Center for the Arts**  
Englewood, CO

DESIGN AWARD Merit  
CATEGORY Built Architecture  
ARCHITECT Semple Brown Design, PC.  
OWNER/DEVELOPER Kent Denver School  
STRUCTURAL ENGINEER Studio NYL  
ELECTRICAL ENGINEER M - E Engineers  
MECHANICAL ENGINEER M - E Engineers  
GENERAL CONTRACTOR CMC Group  
PHOTOGRAPHER Ron Pollard

**Museum of Contemporary Art - Denver**  
Denver, CO

DESIGN AWARD Merit  
CATEGORY Built Architecture  
ARCHITECT Davis Partnership Architects; Adjaye Associates  
OWNER/DEVELOPER Museum of Contemporary Art - Denver  
STRUCTURAL ENGINEER Martin/Martin  
ELECTRICAL ENGINEER M - E Engineers  
MECHANICAL ENGINEER M - E Engineers  
GENERAL CONTRACTOR M.A. Mortenson Company  
PHOTOGRAPHER Nic Lehoux

**RedLine**  
Denver, CO

DESIGN AWARD Merit  
CATEGORY Built Architecture  
ARCHITECT Semple Brown Design, PC.  
OWNER/DEVELOPER Consolidated Investment Group  
STRUCTURAL ENGINEER McGlamery Structural Group  
ELECTRICAL ENGINEER Apco Electric, Inc.  
MECHANICAL ENGINEER Rogers & Sons, Inc.  
GENERAL CONTRACTOR Spectrum General Contractors  
PHOTOGRAPHER Ron Pollard

**Residence at 480 Poplar St.**  
Denver, CO

DESIGN AWARD Merit  
CATEGORY Built Architecture  
ARCHITECT Faleide Architecture Studio  
OWNER/DEVELOPER Mode, LLC  
STRUCTURAL ENGINEER Studio NYL  
GENERAL CONTRACTOR Trivitt Construction  
PHOTOGRAPHER Tecto Graph

**Scandinavian Designs**  
Rocklin, CA

DESIGN AWARD Citation  
CATEGORY Built Architecture  
ARCHITECT Roth+Sheppard Architects, Kyle Yardley, AIA  
OWNER/DEVELOPER Interline  
STRUCTURAL ENGINEER Martin/Martin  
ELECTRICAL ENGINEER Glumac International, Inc.  
MECHANICAL ENGINEER Glumac International, Inc.  
GENERAL CONTRACTOR Skanska Building USA, Inc.  
PHOTOGRAPHER Frank Ooms

**Colegio Americano de Puebla**  
Puebla, Mexico

DESIGN AWARD Citation  
CATEGORY Unbuilt Architecture  
ARCHITECT Anderson Mason Dale Architects, Associate Architect  
Idea Asociados de Mexico  
OWNER/DEVELOPER Colegio Americano de Puebla





The following award recipients were recognized during a ceremony on Oct. 17 in Estes Park, Colo. The awards were presented by Jury Chair Will Bruder, AIA, of Will Bruder + Partners (Phoenix).

## HONOR DESIGN AWARD: RESIDENTIAL-LARGE

**Michael Folwell Architecture (Boulder, Colo.)**

*Crescent Drive House Addition (Boulder, Colo.)*

## MERIT DESIGN AWARD: SUSTAINABILITY

**Studio H:T (Boulder, Colo.)**

*32nd Street Modular (Denver)*

## MERIT DESIGN AWARD: URBAN DESIGN PLANNING

**Terra Verde Architects (Boulder, Colo.)**

*The Bungalows at Mapleton (Boulder, Colo.)*

## CITATION DESIGN AWARD: COMMERCIAL

**OZ Architecture (Boulder, Colo.)**

*1155 Canyon (Boulder, Colo.)*

## CITATION DESIGN AWARD: UNBUILT

**Arch 11 Inc. (Boulder, Colo.)**

*House on Discovery Bay (Port Townsend, Wash.)*

## SPECIAL RECOGNITION: INNOVATIVE PRACTICES

**Studio H:T (Boulder, Colo.)**

*Denver Recycling Filter (Denver)*

**HONOR AWARD: ASSOCIATE OF THE YEAR** – *This award recognizes an unlicensed architectural intern or associate member of AIA Colorado North whose contribution to the profession of architecture in AIA Colorado North has been outstanding.*

**Heather Ludwig, Assoc. AIA (Fort Collins, Colo.)**

**HONOR AWARD: MENTOR OF THE YEAR** – *This award recognizes a firm or licensed architect for exceptional efforts to promote the professional growth and development of an emerging design professional, or group of emerging professionals, who is/are in the process of acquiring a license.*  
**Allen Harlow (Boulder, Colo.)**

## HONOR AWARD: COMMUNITY SERVICE BY AN ARCHITECT

*This award recognizes a licensed architect member of the AIA Colorado North region for exemplary contribution of service to the community.*

**Len Segel, AIA (Boulder, Colo.)**

## HONOR AWARD: CONTRIBUTION TO THE ENVIRONMENT

*BY A NON-ARCHITECT* – *This award recognizes outstanding accomplishments by a non-architect in the AIA Colorado North region who has demonstrated exemplary achievements in contributing to the quality of the built environment.*

**City of Boulder, Office of Environmental Affairs**

**HONOR AWARD: 25-YEAR AWARD** – *This award recognizes a project completed in the AIA Colorado North area 25 to 35 years ago and that has withstood the test of time and still functions in its original capacity.*

**Old Town Square of Fort Collins**

**PRESIDENT'S AWARDS** – *presented to individuals who have made extraordinary contributions in supporting the mission of the chapter and selected by AIA Colorado North 2008 President Charles Fielder, AIA*

**Greg McMenamain, AIA**

**Whitney Churchill, AIA**

**Christa Plaza, AIA**

### Crescent Drive House Addition

Boulder, CO

DESIGN AWARD Honor

CATEGORY Residential - Large

ARCHITECT Michael Folwell Architecture

OWNER/DEVELOPER Michael + Gail Folwell

STRUCTURAL ENGINEER Studio NYL

GENERAL CONTRACTOR Thomas Stanko Construction

PHOTOGRAPHER Ron Pollard Photography



### 32nd Street Modular

Denver, CO

DESIGN AWARD Merit

CATEGORY Sustainability

ARCHITECT Studio H : T / Brad Tomecek, AIA

OWNER/DEVELOPER Brad Tomecek, AIA / Studio H:T

STRUCTURAL ENGINEER Bar Vista

ELECTRICAL ENGINEER Bar Vista

MECHANICAL ENGINEER Bar Vista

GENERAL CONTRACTOR ECO • Infill

PHOTOGRAPHER Brad Tomecek, AIA,

Justin Ewing







**The Bungalows at Mapleton**  
Boulder, CO

DESIGN AWARD Merit  
CATEGORY Urban Design Planning  
ARCHITECT Terra Verde Architects  
OWNER/DEVELOPER Del Mar Interests - Michael Boyers  
STRUCTURAL ENGINEER Gebau Inc.  
GENERAL CONTRACTOR Pilkington-Herman Construction  
PHOTOGRAPHER Michael Shopenn, Andrew Browing



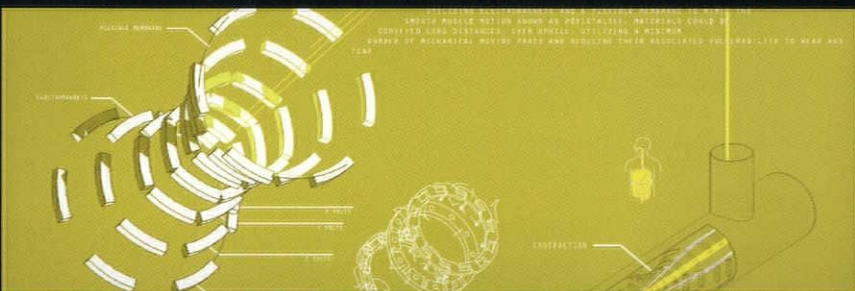
**1155 Canyon**  
Boulder, CO

DESIGN AWARD Citation  
CATEGORY Commercial  
ARCHITECT OZ Architecture  
OWNER/DEVELOPER 1155 Limited Liability Company  
STRUCTURAL ENGINEER JVA Incorporated  
ELECTRICAL ENGINEER Architectural Engineering Design Group, Inc.  
MECHANICAL ENGINEER Design Mechanical, Inc.  
GENERAL CONTRACTOR Wyatt Construction  
PHOTOGRAPHER Edward Dressel



**House on Discovery Bay**  
Port Townsend, WA

DESIGN AWARD Citation  
CATEGORY Unbuilt  
ARCHITECT Arch 11 Inc.  
OWNER/DEVELOPER Barry McClane  
STRUCTURAL ENGINEER Steven B. Brown  
GENERAL CONTRACTOR Kenyon Construction  
PHOTOGRAPHER Arch 11 Inc.



**Denver Recycling Filter**  
Denver, CO

DESIGN AWARD Special Idea/Innovative Thinking Award  
CATEGORY Sustainability  
ARCHITECT Studio H : T  
PHOTOGRAPHER Studio H:T



The following award recipients were recognized during a ceremony on Dec. 5 in Colorado Springs, Colo. The awards were presented by Jury Chair Prescott Muir, FAIA, of Prescott Muir Architects (Salt Lake City).

**MERIT DESIGN AWARDS**

**DLR Group (Denver)**

*Denver Newspaper Agency (Denver)*

**Hisa Ota Architect (Mosca, Colo.)**

*Off-Grid Residence and Home Office (Mosca, Colo.)*

**CITATION DESIGN AWARD**

**DLR Group (Denver)**

*Xcel Energy Steam Plant Screenwall (Denver)*

**PRESIDENT'S AWARDS** – *in recognition of outstanding service to the chapter and selected by AIA Colorado South 2008 President Douglas Abernethy, AIA*

- RJ Steer, AIA**
- Kristi Williams, Assoc. AIA**
- Clay Benson, PA**
- Gabriel Caunt, AIA**

**Denver Newspaper Agency**  
Denver, CO

DESIGN AWARD Merit  
CATEGORY Built Architecture  
ARCHITECT DLR Group  
OWNER/DEVELOPER Denver Newspaper Agency/Mosher Sullivan  
STRUCTURAL ENGINEER Jirsa Hendrick & Assoc.  
ELECTRICAL ENGINEER Ludvik Electric  
MECHANICAL ENGINEER R.K. Mechanical  
GENERAL CONTRACTOR Hensel Phelps Construction  
PHOTOGRAPHER Ed LaCasse



**Off-Grid Residence and Home Office**  
Mosca, CO

DESIGN AWARD Merit  
CATEGORY Residential Architecture  
ARCHITECT Hisa Ota Architect  
OWNER/DEVELOPER Hisayoshi Ota  
ELECTRICAL ENGINEER Eco Electric Inc.  
MECHANICAL ENGINEER Aspen Solar  
GENERAL CONTRACTOR Vaniwaarden Builders Inc.  
PHOTOGRAPHER Bill Ellzey, Hisa Ota, AIA



**Xcel Energy Steam Plant Screenwall**  
Denver, CO

DESIGN AWARD Citation  
CATEGORY Unbuilt Architecture  
ARCHITECT DLR Group  
OWNER/DEVELOPER Xcel Energy/Resolute Investments  
PHOTOGRAPHER DLR Group





The following award recipients were recognized during a ceremony on May 9 in Glenwood Springs, Colo. The awards were presented by Jury Chair David Miller, FAIA, of the Miller | Hull Partnership (Seattle).

**HONOR DESIGN AWARD: COMMERCIAL/ INSTITUTIONAL DESIGN**

**Willis Pember Architects, Inc. (Aspen, Colo.)**

*Red Brick Center for the Arts (Aspen, Colo.)*

**HONOR DESIGN AWARD: RESIDENTIAL (\$1 – \$3 MILLION) DESIGN**

**Studio B Architects (Aspen, Colo.)**

*Scholl House (Aspen, Colo.)*

**MERIT DESIGN AWARD: HISTORIC/REMODEL DESIGN**

**Willis Pember Architects, Inc. (Aspen, Colo.)**

*Live-Work (Basalt, Colo.)*

**MERIT DESIGN AWARD: RESIDENTIAL (\$1 – \$3 MILLION) DESIGN**

**Harry Teague Architects (Basalt, Colo.)**

*Norton Residence (Crested Butte, Colo.)*

**CITATION DESIGN AWARD:**

**COMMERCIAL/INSTITUTIONAL DESIGN**

**Black Shack Architects, LLC (Glenn Rappaport, AIA)**

*Crown Mt. Park Concessions Building (El Jebel, Colo.)*

**CITATION DESIGN AWARD: SUSTAINABLE DESIGN**

**Studio B Architects (Aspen, Colo.)**

*Hope Through Education Campus (Livingstone, Zambia, Africa)*

**CITATION DESIGN AWARD: UNBUILT DESIGN**

**Willis Pember Architects, Inc. (Aspen, Colo.)**

*Horizon House (Aspen, Colo.)*



**Red Brick Center for the Arts**  
Aspen, CO

DESIGN AWARD Honor  
CATEGORY Commercial/Institutional  
ARCHITECT Willis Pember Architects, Inc.  
OWNER/DEVELOPER City of Aspen  
STRUCTURAL ENGINEER KL + A of Colorado  
GENERAL CONTRACTOR Gateway Construction  
PHOTOGRAPHER David Marlow



**Scholl House**  
Aspen, CO

DESIGN AWARD Honor  
CATEGORY Residential \$1-3 m  
ARCHITECT Studio B Architects  
OWNER/DEVELOPER Dennis + Debra Scholl  
STRUCTURAL ENGINEER Patillo Engineers  
GENERAL CONTRACTOR JD Black  
PHOTOGRAPHER Aspen Architectural Photographers



**Live-Work**  
Basalt, CO

DESIGN AWARD Merit  
CATEGORY Historic Preservation/Remodel  
ARCHITECT Willis Pember Architects, Inc.  
OWNER/DEVELOPER Paul Cathers  
STRUCTURAL ENGINEER KL + A of Colorado  
MECHANICAL ENGINEER R.E.G. Inc  
GENERAL CONTRACTOR Janckila Construction  
PHOTOGRAPHER Willis Pember



### Norton Residence

Crested Butte, CO

DESIGN AWARD Merit

CATEGORY Residential \$1-3 m

ARCHITECT Harry Teague Architects

OWNER/DEVELOPER John + Robin Norton

STRUCTURAL ENGINEER KL + A of Colorado

GENERAL CONTRACTOR Pike Construction, Inc.

PHOTOGRAPHER Paul Gallaher; Jim Petrie



### Crown Mt. Park Concessions

El Jebel, CO

DESIGN AWARD Citation

CATEGORY Commercial/Institutional

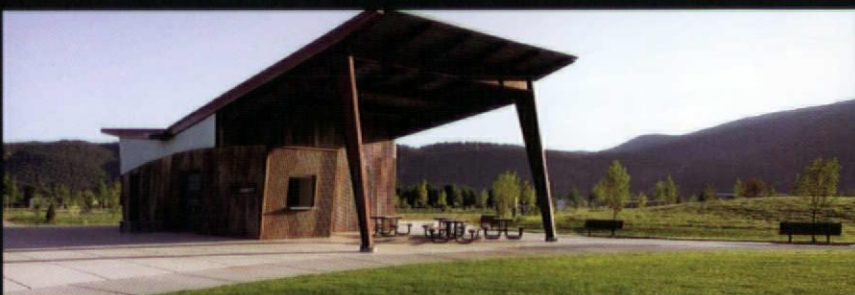
ARCHITECT Black Shack Architects LLC

OWNER/DEVELOPER Crown Mt. Parks & Rec. District

STRUCTURAL ENGINEER KL + A of Colorado

GENERAL CONTRACTOR Mueller Const. Inc.

PHOTOGRAPHER Wayne Thom



### Hope Through Education Campus

Livingstone, Zambia, Africa

DESIGN AWARD Citation

CATEGORY Sustainable Design

ARCHITECT Studio B Architects

OWNER/DEVELOPER Ebenezer Tavst

GENERAL CONTRACTOR Michael Musgrave



### Horizon House

Carbondale, CO

DESIGN AWARD Citation

CATEGORY Unbuilt

ARCHITECT Willis Pember Architects, Inc.

OWNER/DEVELOPER JD Sturgill / Sylvia Wendrow

STRUCTURAL ENGINEER KL + A of Colorado

MECHANICAL ENGINEER AEC Inc.

PHOTOGRAPHER Willis Pember





# “Architects In Action”



WE ASKED A SIMPLE QUESTION. “WHY ARE YOU A MEMBER?” THERE ARE 83,000 POSSIBLE ANSWERS. HERE ARE TWO.

*Being an Architect in-Action means you bring better solutions to your design projects.*

*You work to create healthy and sustainable buildings and communities.*

*It means you are a member of the American Institute of Architects.*

*As a member, you have access to knowledge and resources, a supportive network of colleagues, and a reputation built on 150 years of service to the design profession.*



“One of the big advantages of being a member of the AIA is the access to not only peers and networking, but also a huge repository of information based on all of the members and their experiences...It is the entire Institute whose information you have access to. There is almost always a way that you can go to that repository to figure out the solution to whatever your issue is.”

**Virgil Green, AIA — Member Since 1978**



“I believe that my membership with (the) AIA has enhanced my design skills and my design capabilities immensely; through my interaction with other leading professionals around the country, I've been able to understand best practices that they've applied to their projects. This helps me apply better design practice on the projects that I undertake.”

**Timothy Hawk, AIA — Member Since 1992**

Become the next Architect in Action. Become a member of the AIA.

[www.aia.org/join\\_today](http://www.aia.org/join_today)



THE AMERICAN INSTITUTE  
OF ARCHITECTS



# OntheBoards

By Mary Lou Jay

**Union Park – Parcel F**  
RNL, Denver office  
Tania S. Salgado, AIA,  
project architect

**Location** Las Vegas, Nev.

**Owner** Newland Communities, San Diego

**Scope of Work** 452,094-square-foot mixed-use residential: 191 units, six live/work, nine town homes, retail and covered parking

**Cost** \$65 million

**Start** January 2008

**Completion** Spring 2011

Block F will be the first residential/mixed-use project built within the 61-acre Union Park site. The project offers an opportunity for both public and private interaction, creating a dynamic interaction between people, place and activity. The building architecture is bold—the epitome of quality urban living.

Block F provides for a new urban lifestyle that brings nature into the city. An organic amenity deck in the heart of the block includes a pool and spa, inspired by spring water in a canyon. Fire pits, cabanas and private terraces create a sense of community. The project's rectilinear, organized and sleek skin relates to the surrounding street grid and city. Wedges of light, openings between the walls of the mid-rise and high-rise living, bring light and wind into the heart, providing visual connection from street to core to nature.

The project strives to be a leader in an engaged sustainable lifestyle experience. Key goals include reduction of energy and water use, use of rapidly renewable or recycled materials and design elements supporting these goals, such as sun shading, operable windows for natural ventilation, a green amenity deck and gray water reuse.





## Residence at 860 Magnolia Street

Faleide Architecture Studio  
Patrick Lee, AIA, project architect

**Location** Denver

**Owner** MODE LLC, Denver

**Scope** Single-family residence of 2,351 square feet, plus 1,344-square-foot finished courtyard basement

**Cost** \$500,000

**Start/completion** To be determined (designed August 2007)

The design of this residence allows it to simultaneously be built and maintained with the economy of a traditional suburban home and live with the open, light-filled generosity of a modern home. Using a basic box form, which affords the greatest volume relative to surface area, the structure can be built and run with maximum economy. The generous way it lives is achieved by sculpting the space inside and outside the box, allowing the house to live bigger than the actual structure that needs to be maintained, heated, cooled, etc. The result is a house that feels less like a collection of rooms and more like open, articulated modern space.

The use of the traditional box shape allows the house to conform to the pattern of suburban home building required in many Denver neighborhoods. The design also reflects the fact that more families want a home that allows flexibility in how they inhabit it. Thus, the house can accommodate multiple generations and blended families.

The architects have chosen earth-friendly materials to minimize cost as well as environmental impact. The siding consists of recycled snow fences and assembled stone leftovers.



Faleide Architecture Studio

## Northwest Campus Student Housing Infill

### Phase I, II & III

Carvell Page Southerland Page,  
Denver

Chris A. Carvell, AIA, project architect

**Location** Colorado State University, Pueblo

**Client/Owner** Allen & O'Hara / Education Realty Trust, Colorado State University – Pueblo

**Scope of Work** Micro Master Plan Residence Hall expansion with 750 new beds, common areas and dining hall delivered in three-phases

**Size** 255,000 square feet and future dining hall

**Cost** Phase I \$16 million; Phase I, II & III \$48 million

**Project start** February 2008

**Completion** Phase I: August 2009, Phase II & III: Fall 2010 & 2011

Based on a precinct micro master plan for the north campus area developed by Christopher Carvell Architects, this project is a three-phase residential community development. It includes 750 beds, approximately 20,000-square-foot common area (classrooms, lounges, game / recreation, cyber cafe, shell retail, vending and smart laundry areas), a future dining hall, surface parking and recreational fields. Each phase will deliver incrementally 250 beds for the fall semesters of 2009, 2010 and 2011.

The design creates a cohesive neighborhood by routing pedestrian paths through the building's common areas and from the student union to the south. A green and landscaped open space will serve as the entryway and unifying quadrangle for residents and guests.

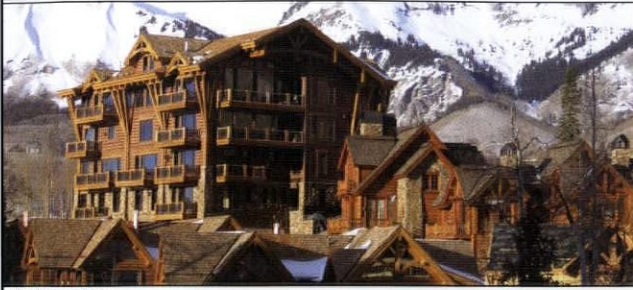
The residential areas will offer a mix of unit types, including two-bedroom and four-occupant suites, two-bedroom and two-occupant suites and single bed/RA and ADA suite. Each suite has a dedicated bay for desk space to study, walk-in/alcove or enclosed storage closet and a compartmentalized bathroom. All come equipped with data connections and cable TV.



Carvell Page Southerland Page



## Urban to Resort. Structural Engineering.



See Forever Lodge  
O'Bryan Paternship



Twenty Ninth Street Mall  
COMM Arts and SEM Architects



**Monroe & Newell**  
Engineers, Inc.  
Structural Engineers  
Vail • Denver • Frisco

<p><b>Denver</b> 1701 Wynkoop Street Suite 200 Denver, CO 80202 (303) 623-4927 denver@monroe-newell.com</p>	<p><b>Vail</b> 70 Benchmark Road Suite 204/PO Box 1597 Avon, CO 81620 (970) 949-7768 avon@monroe-newell.com</p>	<p><b>Frisco</b> 619 Main Street Suite 7/PO Box 295 Frisco, CO 80443 (970) 668-3776 frisco@monroe-newell.com</p>
---	---	--

[www.monroe-newell.com](http://www.monroe-newell.com)

# MERCURY

LDO<sup>®</sup> REPROGRAPHICS

Recycled Bond Paper  
Now Available

- Large/Small Format Reproduction, Color & B/W
- Graphics
- E-Commerce, Bid-Caster, SubHub
- Planwell On-Line Document Management
- Facilities Management

#### Colorado Locations

ENGLEWOOD  
9632 E. Arapahoe Rd.  
Tel: (303) 790-7169

LODO  
1660 Wynkoop St., Ste. 130  
Tel: (303) 785-2520

BOULDER  
2575 Pearl St., Suite C  
Tel: (303) 539-1350

DENVER  
860 Bryan St.  
Tel: (303) 893-8701

COLORADO SPRINGS  
315 E. Pikes Peak  
Tel: (719) 633-5564

FORT COLLINS  
422 S. Link Ln.  
Tel: (970) 484-1201

Plus 4 Locations in Nevada  
& 270 Locations Nationwide

email: [info@mercury-ldo.com](mailto:info@mercury-ldo.com)  
[www.mercury-ldo.com](http://www.mercury-ldo.com)



## THE POWER OF DIVERSITY: PRACTICE IN A COMPLEX WORLD

Register online at [www.aiaconvention.com](http://www.aiaconvention.com)

The profession of architecture is in the midst of incredible change. As our world becomes more complex and diverse, so too does our work.

From the clients we serve to the buildings we design. From those who practice architecture to how the work is accomplished.

Come to the AIA 2009 National Convention and Design Exposition and see the power of diversity for yourself. Take away knowledge from within the profession to support excellence in design, a commitment to environmental well-being, and the advancement of new technology, materials, and methods.

Register by March 16 and save!

convention 2009  
APRIL 30-MAY 2 SAN FRANCISCO



# Looking Ahead

## AIA Colorado 2009 Architecture Month

The AIA Colorado 2009 Architecture Month is scheduled for April. In addition to hosting a series of lectures and programs, Architecture Week activities include the AIA Colorado Young Architects' Awards Gala, the Box City children's event in Denver and Colorado Springs, the AIA Denver Outside the Box exhibit and the City and County of Denver's *Doors Open Denver* tours.

Check [www.coloradoarchitecturemonth.org](http://www.coloradoarchitecturemonth.org) for more information.

## Colorado Firms Receives AIA Western Mountain Region Honors

Humphries Poli Architects PC and Anderson Mason Dale Architects PC were recognized on Oct. 25 at the AIA WMR Awards in Santa Fe, NM, while receiving the following awards:

*Architectural Firm of the Year* (Honor Award)—

**Humphries Poli Architects** (Denver): This award recognizes the collaboration of individuals in a firm who have produced distinguished architecture over a period of at least 10 years; who have made significant contribution to the institute, the profession and their community; and who have transcended local boundaries in making these contributions.

*Unbuilt Category Merit Award* (Design Award)—Architect: **Anderson Mason Dale Architects** (Denver) and Associate Architect: Idea Asociados de Mexico for Colegio Americano de Puebla: Given to projects that display excellent design qualities.

## Save the Date for the AIA Colorado 2009 Design Conference

Mark your calendars! The AIA Colorado and AIA Western Mountain Region 2009 Design Conference will take place Oct. 15-27 at the Keystone Conference Center. The conference will celebrate the 50<sup>th</sup> anniversary of AIA WMR.

## Government Affairs

The legislative sessions began again in January. The AIA Colorado 2009 Government Affairs Committee is chaired by Mike Wisneski, AIA. He and the rest of the committee will continue to advocate for architects and architecture. AIA Colorado expects to see several bills introduced again this year regarding sustainable building design. Visit the Government Affairs page on [www.aiacolorado.org](http://www.aiacolorado.org) for updated information.





# Rocky Mountain Masonry Institute

24/7 Technical info at [www.rmmi.org](http://www.rmmi.org)

Email and Phone Technical Advice 9-5 M-F 303-893-3838 or [dianet@rmmi.org](mailto:dianet@rmmi.org)

blog full of ideas <http://rockymountainmasonry.blogspot.com/>

Plan reviews & Job site visits

Assistance with LEED planning and documentation: [tech@rmmi.org](mailto:tech@rmmi.org)

**Free Architecture Lunch n Learns :**  
2nd Tuesday,  
686 Mariposa St, Denver  
11:30 a.m. - 1 p.m.

**Free Lunch n Learns for Engineers too**  
1st Wednesday  
686 Mariposa St,  
11:30 a.m. - 1 p.m

- April 1 Designing Beams and Lintels
- April 8 Changes to LEED from 2008 to 2009
- May 6 Anchors for Connecting to Existing Construction
- May 13 Repairing Historic Buildings
- June 3 Calculating Masonry Deflections
- June 10 Masonry Cleaning
- July 1 Masonry Design Software for Engineers
- July 8 Masonry Design Software for Architects
- Aug. 5 Managing Your Construction Project
- Aug. 12 Workmanship Issues for Masonry Construction

See [www.rmmi.org](http://www.rmmi.org) for the full list

**STICK Lunches at your office:**

### Load Bearing Masonry

We sometimes forget to take advantage of reinforced masonry's incredible resistance for load-bearing construction. With the cost of steel sky-rocketing over the last two years, we can save money by turning to load bearing masonry in our projects. We will talk about planning your load bearing masonry project, study some monumental load bearing masonry projects, and review the general design process. Finally, we will give you up-to-date cost information about various wall systems and will help you select the right wall for your project.

## Feeling overwhelmed with your Document Management & Distribution?

Don't Surrender to just any Online Planroom... choose the one that documents **everything** from concept to completion.

### Document Fulfillment System

- > Online Plan Room
- > Invitation to Bid
- > Always Know Who's Current
- > Better project communication
- > Quicker Access to Documents
- > Online Take Offs
- > Better Estimates
- > Reduce Mistakes
- > Total Document Solutions for Your Project Management System

Ken's Reproductions and ReproMAX DFS



Ken's Reproductions has been servicing the Metro Denver Area for 45 years. We offer both online and traditional reprographic services.

**KEN'S REPRODUCTIONS, LLLP**

Downtown • 2220 Curtis Street • Denver, CO 80205 • Phone: 303.297.9191  
South-DTC • 7304 S. Alton Way 3H • Englewood, CO 80112 • Phone: 720.493.9904  
[www.kensrepro.com](http://www.kensrepro.com)

Ideas for parking. SOLUTIONS FOR PEOPLE®



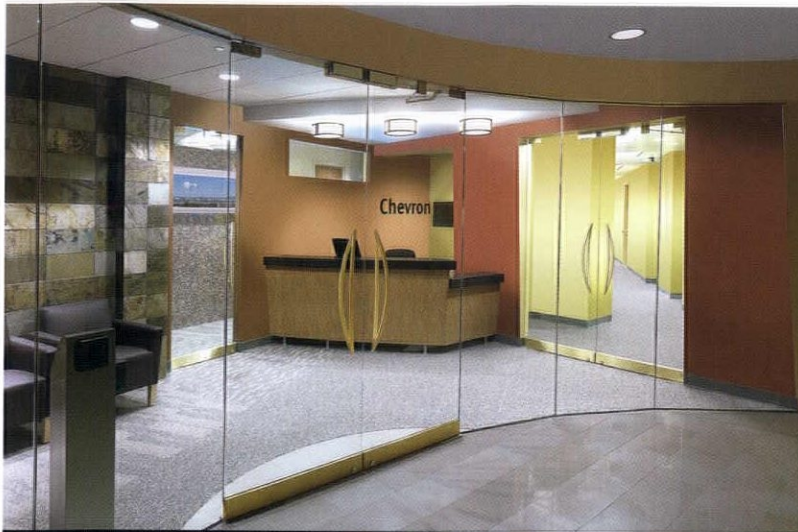
Parking Structure Planning & Design  
Studies & Operations Consulting  
Restoration Engineering

Contact Rob McConnell, P.E.  
303-894-8800, [rmcconnell@carlwalker.com](mailto:rmcconnell@carlwalker.com)

**Carl Walker**  
Parking Planning Engineering Restoration

Celebrating our 25th year! [www.carlwalker.com](http://www.carlwalker.com)





**SHAW**  
CONSTRUCTION  
www.shawconstruction.net

Quality Built  
Tenant Interiors

Specializing In:

- Commercial
- Mixed-Use
- Hospitality
- Multi-Residential
- Aviation
- Special Purpose

BUILDING SATISFACTION THROUGH PERFORMANCE

Denver: 303-825-4740

Grand Junction: 970-242-9236



*Everdure Caltite Waterproof Concrete System*

**No membranes or coatings required**

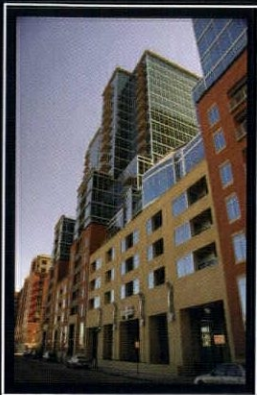
- Basements
- Tunnels
- Walls
- Roofs
- Exposed Decks
- Plaza locations

**Reduce construction time and cost**

Contact: Ken L. Dzioba, CSI, CDT

**206-764-3119**

Email: [kdzioba@calportland.com](mailto:kdzioba@calportland.com) [www.calportland.com](http://www.calportland.com)



Teaming with architects to successfully complete  
Denver's premier projects

Over 24 years of experience providing Geotechnical Engineering and Construction Materials Testing to Commercial, Industrial and Governmental Clients in the Rocky Mountain Region

- Geotechnical Engineering
- Construction Materials Testing and Engineering
- Certified Laboratory Services
- Static and Dynamic Pile Testing
- Pavement Engineering and Design
- Steel Inspection and Weld Testing
- Environmental Assessment
- Instrumentation and Seismic Studies
- Retaining and Shoring Design
- Building Inspection
- Additional Extended Project Services Available

**GROUND**  
ENGINEERING CONSULTANTS

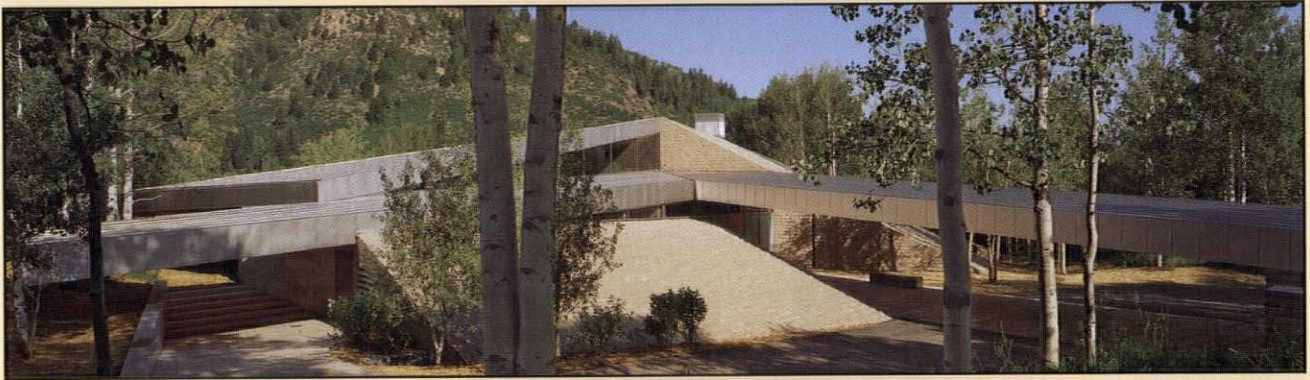
303-289-1989

5 offices to serve you: Commerce City • Englewood • Granby • Gypsum • Loveland  
Visit our website at [www.groundeng.com](http://www.groundeng.com)

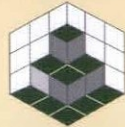


**Categorical Index to Advertisers**

<b>Appliance Distributor</b>	Carl Walker Inc. . . . .	.62	JE Dunn Construction Company . . . . .	.6
Kimball Distributing . . . . .	JVA Consulting Engineers . . . . .	.44	Mortenson Construction . . . . .	.8
<b>Appliances</b>	<b>Code Consultants</b>		Swinerton Builders . . . . .	IFC
Bulthaup Kitchen Distributors . . . . .	Schirmer Engineering Corp. . . . .	.23	<b>Construction Materials Testing</b>	
Kimball Distributing . . . . .	<b>Commercial - Construction</b>		Ground Engineering Consultants, Inc. . . . .	.63
<b>Architectural Concrete</b>	Shaw Construction . . . . .	.63	<b>Consulting Engineers</b>	
Stresscon . . . . .	<b>Commercial Interior Design</b>		Schirmer Engineering Corp. . . . .	.23
<b>Architectural Millwork</b>	Jean Sebben Associates, LLC . . . . .	.44	<b>Countertops</b>	
New World Millworks . . . . .	<b>Computer Software - Construction/Design</b>		Bulthaup Kitchen Distributors . . . . .	.14
<b>Architectural Wall Panel Systems</b>	Avatech Solutions . . . . .	.32	<b>Curtain Walls &amp; Storefronts</b>	
Powers Products . . . . .	<b>Computer Training/Construction</b>		Architectural Sales of Colorado . . . . .	.10
<b>Autodesk</b>	Avatech Solutions . . . . .	.32	NanaWall Systems, Inc. . . . .	.10
CAD-1, Inc. . . . .	<b>Concrete</b>		<b>Daylighting Design Assistance</b>	
<b>CAD</b>	Stresscon . . . . .	OBC	The Weidt Group . . . . .	.64
CAD-1, Inc. . . . .	<b>Construction - Hospitality</b>		<b>Decks</b>	
<b>CADD</b>	Shaw Construction . . . . .	.63	Bison Deck Supports . . . . .	.11
Avatech Solutions . . . . .	<b>Construction Management</b>		<b>Design/Build</b>	
<b>Civil Engineers</b>	Gerald H. Phipps, Inc. . . . .	.4	Gerald H. Phipps, Inc. . . . .	.4
Ascent Group Inc. . . . .	Haselden Construction, LLC . . . . .	.66		



Creative Engineering  
 Respect for Architecture  
 Client-Centered Service



**KL&A, Inc.**  
 Structural Engineers and Builders  
 Denver, Golden, Loveland, Basalt, CO and Falmouth, MA  
 www.klaa.com 303-384-9910



THE WEIDT GROUP®

30


YEARS

Assisting architects, engineers, building owners, utilities, and product manufacturers in making buildings better environmental citizens.


TWGI.COM
DENVER
BERKELEY
MONTPELIER
MINNEAPOLIS




Haselden Construction, LLC	.66	<b>Parking Consultants</b>	
JE Dunn Construction Company	.6	Carl Walker Inc.	.62
Mortenson Construction	.8	Parking Consultants LLC	.66
Swinerton Builders	.IFC	<b>Parking Functional Design</b>	
<b>Door &amp; Door Partitions</b>		Parking Consultants LLC	.66
Architectural Sales of Colorado	.10	<b>Parking Structural Design</b>	
NanaWall Systems, Inc.	.10	Parking Consultants LLC	.66
<b>Education - Masonry</b>		<b>Paving Engineering &amp; Design</b>	
Rocky Mountain Masonry Institute	.62	Ground Engineering Consultants, Inc.	.63
<b>Energy</b>		<b>Plaza Decks</b>	
XCEL Energy	.39	Bison Deck Supports	.11
<b>Energy Design Assistance</b>		<b>Precast</b>	
The Weidt Group	.64	Rocky Mountain Prestress	.1
<b>Engineers</b>		<b>Renewable Energy</b>	
Ascent Group Inc.	.65	XCEL Energy	.39
JVA Consulting Engineers	.44	<b>Reprographics</b>	
<b>Environmental Services</b>		eBlueprint	.33
CTL Thompson	.22	Ken's Reproductions, LLP	.62
<b>Fire Protection Engineers</b>		Mercury LDO	.60
Schirmer Engineering Corp.	.23	<b>Roof Decks</b>	
<b>Fireplaces</b>		Bison Deck Supports	.11
Spark Modern Fires	.32	<b>Security Consultants</b>	
<b>Fixtures</b>		Schirmer Engineering Corp.	.23
Bulthaup Kitchen Distributors	.14	<b>Slab</b>	
<b>Foam Insulation</b>		Arizona Tile Company	.2
Metro Skyline Insulation	.33	<b>Software</b>	
<b>General Contractors</b>		initial.AEC	.67
Gerald H. Phipps, Inc.	.4	<b>Specialty Smoke &amp; Fire Systems</b>	
Haselden Construction, LLC	.66	Powers Products	.39
JE Dunn Construction Company	.6	<b>Spray Polyurethane</b>	
Mortenson Construction	.8	Metro Skyline Insulation	.33
Swinerton Builders	.IFC	<b>Stone</b>	
<b>Geotechnical Engineering</b>		Arizona Tile Company	.2
CTL Thompson	.22	CAPCO Tile and Stone	.IBC
Ground Engineering Consultants, Inc.	.63	<b>Structural Engineers</b>	
<b>Information Technology</b>		Ascent Group Inc.	.65
initial.AEC	.67	Carl Walker Inc.	.62
<b>Interior Design</b>		JVA Consulting Engineers	.44
Jean Sebben Associates, LLC	.44	KL&A, Inc.	.64
<b>Interior/Exterior Paints</b>		Monroe & Newell Engineers, Inc.	.60
Kwal Paint	.68	<b>Structural Precast Concrete</b>	
<b>Kitchen Appliances &amp; Equipment</b>		Stresscon	.OBC
Kimball Distributing	.5	<b>Tile</b>	
<b>LEED ConsultingÆ</b>		Arizona Tile Company	.2
The Weidt Group	.64	CAPCO Tile and Stone	.IBC
<b>Masonry - Education</b>		<b>Translucent Sky &amp; Wall Systems</b>	
Rocky Mountain Masonry Institute	.62	Powers Products	.39
<b>Materials Testing</b>		<b>Wallcovering</b>	
CTL Thompson	.22	Kwal Paint	.68
<b>Millwork</b>		<b>Waterproof Concrete</b>	
New World Millworks	.22	Glacier Northwest, Inc.	.63
<b>Operable Glasswalls</b>		<b>Windows</b>	
Architectural Sales of Colorado	.10	Sierra Pacific Windows	.15
NanaWall Systems, Inc.	.10	<b>Woodwork</b>	
<b>Operable Partition Systems</b>		New World Millworks	.22
Powers Products	.39		
<b>Paints &amp; Coatings</b>			
Kwal Paint	.68		




**ASCENT**  
group  
CIVIL & STRUCTURAL ENGINEERING



Municipal



Residential



Commercial

**The Magic Behind Your Masterpiece**

Exceptional engineering for architects, builders and developers requiring personalized service, architectural integrity and design for cost efficiency.

Educational | Commercial | Industrial  
Municipal | Residential

**303.499.3022**  
[www.ascentgrp.com](http://www.ascentgrp.com)



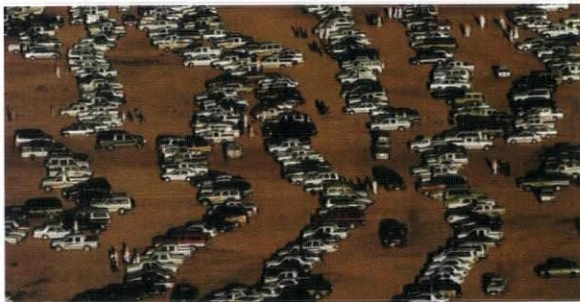
Advertising in trade and professional association publications is one of the most effective ways to sell your products and/or services!

# Architect Colorado

“RESERVE YOUR AD SPACE TODAY.”

**Please Contact:**  
**Dawson Publications, Inc.**  
2236 Greenspring Drive, Timonium, MD 21093  
800-322-3448 • Fax: 410-560-5601  
info@dawsonpublications.com

## We Can Help Solve Your Parking Problems.



Parking Consultants LLC offers a wide array of parking consulting and parking structure design services. Our golden rule philosophy is to deliver practical, cost-effective design solutions that satisfy all of our clients' objectives in a timely and professional manner.

Contact Paul D. Mack, P.E., FPCI at pmack@parkingconsultantsllc.com



3400 E Bayaud Ave, Suite 300  
Denver, CO 80209  
P 303-355-1069, F 303-333-9501  
M 720-560-0449  
www.parkingconsultantsllc.com

## Relationships



University of Colorado Hospital  
Anschutz Inpatient Pavilion  
Aurora, CO



Heart of the Rockies  
Medical Center  
Salida, CO

University of Colorado  
Hospital  
Leprino Office Building  
Aurora, CO

University of Colorado  
Health Sciences  
Education Facility II  
Aurora, CO

Make This Possible.



6950 South Potomac Street, Centennial, Colorado 80112 303-751-1478 Fax: 303-751-1627



**Alphabetical Index to Advertisers**

Architectural Sales of Colorado . . . [www.archsale.com](http://www.archsale.com) . . . . .10

Arizona Tile Company . . . . . [www.arizonatile.com](http://www.arizonatile.com) . . . . . 2

Ascent Group Inc. . . . . [www.ascentgrp.com](http://www.ascentgrp.com) . . . . .65

Avatech Solutions . . . . . [www.avat.com](http://www.avat.com) . . . . .32

Bison Deck Supports . . . . . [www.bisondecksupports.com](http://www.bisondecksupports.com) . .11

Bulthaup Kitchen Distributors . . . [www.kitchendistributors.com](http://www.kitchendistributors.com) . .14

CAD-1, Inc. . . . . [www.cad-1.com](http://www.cad-1.com) . . . . .7

CAPCO Tile and Stone . . . . . [www.capcotile.com](http://www.capcotile.com) . . . . .IBC

Carl Walker Inc. . . . . [www.carlwalker.com](http://www.carlwalker.com) . . . . .62

CTL Thompson . . . . . [www.ctlt.com](http://www.ctlt.com) . . . . .22

eBlueprint . . . . . [www.eblueprint.com](http://www.eblueprint.com) . . . . .33

Gerald H. Phipps, Inc. . . . . [www.ghphipps.com](http://www.ghphipps.com) . . . . .4

Glacier Northwest, Inc. . . . . [www.calportland.com](http://www.calportland.com) . . . . .63

Ground Engineering  
Consultants, Inc. . . . . [www.groundeng.com](http://www.groundeng.com) . . . . .63

Haselden Construction, LLC . . . . [www.haselden.com](http://www.haselden.com) . . . . .66

initial.AEC . . . . . [www.initialAEC.com](http://www.initialAEC.com) . . . . .67

JE Dunn Construction Company . [www.jedunn.com](http://www.jedunn.com) . . . . .6

Jean Sebben Associates, LLC . . . [www.jeansebbenassociates.com](http://www.jeansebbenassociates.com)44

JVA Consulting Engineers . . . . . [www.jvajva.com](http://www.jvajva.com) . . . . .44

Ken's Reproductions, LLP . . . . . [www.kensrepro.com](http://www.kensrepro.com) . . . . .62

Kimball Distributing . . . . . [www.kimballdistributing.com](http://www.kimballdistributing.com) . . .5

KL&A, Inc. . . . . [www.klaa.com](http://www.klaa.com) . . . . .64

Kwal Paint . . . . . [www.kwalpaint.com](http://www.kwalpaint.com) . . . . .68

Mercury LDO . . . . . [www.mercury-ldo.com](http://www.mercury-ldo.com) . . . . .60

Metro Skyline Insulation . . . . . [www.metroinsulation.com](http://www.metroinsulation.com) . . . .33

Monroe & Newell Engineers, Inc. [www.monroe-newell.com](http://www.monroe-newell.com) . . . . .60

Mortenson Construction . . . . . [www.mortenson.com](http://www.mortenson.com) . . . . .8

NanaWall Systems, Inc. . . . . [www.nanawall.com](http://www.nanawall.com) . . . . .10

New World Millworks . . . . . [www.newworldmillworks.com](http://www.newworldmillworks.com) .22

Parking Consultants LLC . . . . . [www.parkingconsultantsllc.com](http://www.parkingconsultantsllc.com) 66

Powers Products . . . . . [www.powersproducts.com](http://www.powersproducts.com) . . .39

Rocky Mountain Masonry  
Institute . . . . . [www.rmmi.org](http://www.rmmi.org) . . . . .62

Rocky Mountain Prestress . . . . . [www.RMPprestress.com](http://www.RMPprestress.com) . . . . .1

Schirmer Engineering Corp. . . . . [www.schirmereng.com](http://www.schirmereng.com) . . . . .23

Shaw Construction . . . . . [www.shawconstruction.net](http://www.shawconstruction.net) . . .63

Sierra Pacific Windows . . . . . [www.sierrapacificwindows.com](http://www.sierrapacificwindows.com) .15

Spark Modern Fires . . . . . [www.sparkfires.com](http://www.sparkfires.com) . . . . .32

Stresscon . . . . . [www.stresscon.com](http://www.stresscon.com) . . . . .OBC

Swinerton Builders . . . . . [www.swinerton.com](http://www.swinerton.com) . . . . .IFC

The Weidt Group . . . . . [www.twgi.com](http://www.twgi.com) . . . . .64

XCEL Energy . . . . . [www.xcelenergy.com](http://www.xcelenergy.com) . . . . .39

# initial.AEC

YOUR PREMIER SOFTWARE AND IT CONSULTANTS  
A Division of initial.IT, Inc.

- AutoCAD Revit Architecture Suite
  - Revit Architecture
- AutoCAD Architecture
- AutoCAD Revit MEP Suite
  - AutoCAD MEP
  - AutoCAD
  - AutoCAD LT
- AutoCAD Raster Design

**303.893.4350**

2460 West 26th Ave, Suite 217C, Denver, CO 80211

**[www.initialAEC.com](http://www.initialAEC.com)**

**Autodesk®**  
Authorized Reseller





# Kwal Paint®

*Our Passion. Your Results.*

Vision, innovation, cutting-edge technology and unyielding quality, this is what it takes to be an industry leader; this is what it means to be **Comex Group**. By harnessing the strength of market leading regional paint brands, Comex Group exceeds the competition by providing paint and coating solutions for professional application. With more than **3,300 distribution centers** supported by **12 production facilities**, **Comex Group** provides outstanding service in the United States, Canada, Mexico and Central America.

**Kwal Paint is poised for even greater growth through the power of the Comex Group.**

Complete line Residential,  
Commercial and Industrial Coatings.

MPI approved products.  
Listed in AIA Masterspec.

Low VOC and environmentally  
friendly products.

Proprietary Color System,  
that is second to none.

**Burt Buckman, CSI, ASID**  
Central Region Commercial Business  
Development/Architectural Services  
**303-915-2709**  
bbuckman@kwalpaint.com  
www.kwalpaint.com  
www.thecomexgroup.com

**Comex Group**





FUCINA BRONZO  
by Tagina, Italia

## Gentlemen prefer bronze.

It's catching eyes of men *and* women at our showrooms. This latest revelation from Italy combines the sensory glow of elegantly brushed metal with the sensible qualities of European ceramic. Fashionable, sleek and exquisitely manicured, *Fucina* from Tagina is guaranteed to turn heads.

**1.800.727.2272**

DENVER · BOULDER · COLORADO SPRINGS · FORT COLLINS · CARBONDALE/ASPEN · GRAND JUNCTION ·  
AVON/VAIL · SILVERTHORNE · LAS VEGAS · INTERIOR SOLUTIONS AT THE COLLECTION/DENVER DESIGN DISTRICT  
CUSTOM HANDPAINTED TILE FROM THE STUDIO AT CAPCO



Tile & Stone  
[capcotile.com](http://capcotile.com)

For the best results, CAPCO recommends the use of professional design and installation.



**PRECAST CONCRETE - ADVANCED TECHNOLOGY FOR TIMELESS ARCHITECTURE**



## **Sonnenalp**

**Owner: Sonnenalp Hotel**

**Architect: Pierce, Segerbergar, Spaeh Architects**

**Contractor: Weitz Cohen**



# **STRESSCON**

**ARCHITECTURAL AND STRUCTURAL PRECAST CONCRETE**

*An EnCon Co.*

3210 ASTROZON BLVD.

COLORADO SPRINGS, CO 80910

TEL: 719-390-5041

FAX: 719-390-5564

METRO: 303-623-1323

WWW.STRESSCON.COM

EMAIL: SALES@STRESSCON.COM