

Architect Colorado

WINTER 2005
www.aiacolorado.org

McGraw Hill
CONSTRUCTION



AIA

Colorado

A Component of The American Institute of Architects

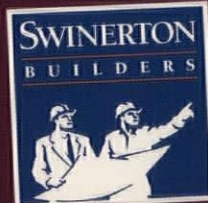
2005 AWARDS ISSUE
DENVER ARCHITECTURAL FOUNDATION

Turning Your Vision into Reality Since 1942



Merrill Lynch (above)
Architect: Gulash Design

Fairmont Hotel (left)
Architect: James & Merritt Reid
(original)
Julia Morgan (Restoration)



SWINERTON BUILDERS
6890 West 52nd Avenue
Arvada, CO 80002

www.swinerton.com
www.swinertongreen.com

303.423.9242 phone
303.423.0632 fax

Architect Colorado

WINTER 2005
Volume 1, Number 4



2005 Honor and Design Awards

15 > AIA Colorado Awards

23 > AIA Denver Awards

34 > AIA Colorado North Awards

40 > AIA Colorado South Awards

42 > AIA Colorado West Awards

Departments

50 > The Business of Architecture
Denver Architectural Foundation

52 > On the Boards
OZ Architecture
Hutton Ford Architects & Studio B Architects

54 > AIA Colorado News
Looking Ahead
Colorado Team Wins Second Solar Decathlon

58 > Denouement
John Yonushewski, AIA

EMC
ENGINEERS, INC.

**Making buildings work.
Better.**

**Leaders in Energy Conservation, Renovation,
and Commissioning since 1976**

*Providing sustainable
buildings by
optimizing energy
performance, automating
building systems,
commissioning for total
building efficiency.*

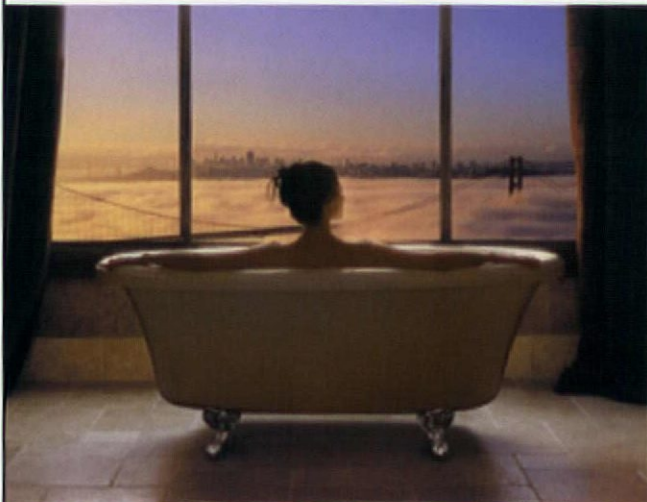


Denver, Colorado 303-974-1200 Fax 303-974-1239
Atlanta, Georgia 678-254-1200 Fax 678-254-1239
Los Angeles, California 818-325-3154 Fax 818-325-3137
Raleigh, N. Carolina 919-424-4455 Fax 919-424-4401
www.emcengineers.com

AQUATIC

WHIRLPOOLS

Experience the depth of Aquatic's value.



Action
Whirlpools™
KITCHENS & BATHS

29 N. Kalamath Street • Denver, CO 80223
800.364.2005 • 303.534.8827 • www.actionwhirlpools.com

DESIGNER PRODUCTS WITH A DOWN-TO-EARTH ATTITUDE

Architect Colorado

EDITOR

Jennifer Seward

SENIOR MANAGING EDITOR

Mark Shaw

PUBLISHER

Al Slattery

DESIGN

Douglas Ekstrand

AIA EDITORIAL LIAISON

Leslie Acosta

ADVERTISING SALES

Phillip Kummer, phillip_kummer@mcgraw-hill.com

Joe Tuttle, joe_tuttle@mcgraw-hill.com

Michael Branigan, michael_branigan@mcgraw-hill.com

PRODUCTION MANAGER

Mike Reeder

ARCHITECT COLORADO Winter 2005, Vol 1, No 4
Published quarterly by the McGraw-Hill Companies, Inc.

POSTMASTER send address changes to the McGraw-Hill Companies, Architect Colorado,
Attn: Circulation Manager, 1114 West 7th Ave., Suite 100, Denver, CO 80204.

PHOTOCOPY PERMISSIONS where necessary, permission is granted by copyright owner for those registered with Copyright Clearance Center (CCC), 222 Rosewood Drive, Danvers, MA 01923, www.copyright.com to photocopy any article herein for personal or internal reference use only for the flat fee of \$2.00 per copy for each article. Send payment to CCC. Copyright © 2005 The McGraw-Hill Companies, Inc.

The information contained within has been obtained by the McGraw-Hill Companies, Inc. from sources believed to be reliable. However, because of the possibility of human or mechanical error, the McGraw-Hill Companies, Inc. does not guarantee the accuracy or completeness of any information and is not responsible for any errors or omissions or for the results obtained from use of such information. The editor reserves the right to censor, revise, edit, reject, or cancel any material not meeting the standards of Architect Colorado.

PRODUCED BY

McGraw-Hill Construction
1114 West 7th Ave., Suite 100
Denver, CO 80204-4432
Phone 303 584 6725
Fax 303 756 4465

AIA Colorado
1515 Arapahoe St., Suite 1-110
Denver, CO 80202
Phone 303 446 2266
www.aiacolorado.org

McGraw Hill
CONSTRUCTION



AIA Colorado

THE AMERICAN INSTITUTE OF ARCHITECTS is the voice of the architectural profession dedicated to: serving its members, advancing their value and improving the quality of the built environment. Through a culture of innovation, The American Institute of Architects empowers its members and inspires the creation of a better-built environment.

LETTERS TO THE EDITOR Architect Colorado will gladly accept all signed, dated letters to the editor. We reserve the right to edit for style and any potentially libelous content. Letters should be submitted at least a week before the published deadlines of the magazine and contain a maximum of 250 words. Send them to the attention of the editor at the email or address below.

PROJECT AND NON-PROJECT STORY IDEAS AND SUBMISSIONS

Architect Colorado welcomes your story and project submissions. Just send a note describing your project, trend or issue story idea in 250 words or less on a CD. Include any photos (jpeg or tiff format) that may be appropriate and enclose a hard copy of your submission summary. You may also request a more detailed copy of our submission guidelines and story publication policy, or visit the AIA Colorado Web site at www.aiacolorado.org to view this information.

HOW TO REACH US Send all letters, submissions and inquires to: Jennifer Seward, Editor, Architect Colorado, 2661 Valentia St. Denver, CO 80238, or send email to jenseward@earthlink.net

ARCHITECT COLORADO EDITORIAL CALENDAR

- > **SPRING 2006 ISSUE DEADLINES**
Expanding the Role of the Architect
Editorial: Jan. 13 - Advertising: Jan. 20
- > **SUMMER ISSUE DEADLINES**
Background Architecture
Editorial: April 14 - Advertising: April 21
- > **FALL ISSUE DEADLINES**
Editorial: July 14 - Advertising: July 21
- > **WINTER ISSUE DEADLINES**
2006 Awards Issue
Editorial: Sept. 29 - Advertising: Oct. 6

BOCA RATON . BOSTON . CHICAGO . NEW YORK . PALM BEACH . PHOENIX . SAN DIEGO . SAN FRANCISCO . TORONTO

ANY DOOR | ANY COLOR | ANY STYLE

ANYTHING.

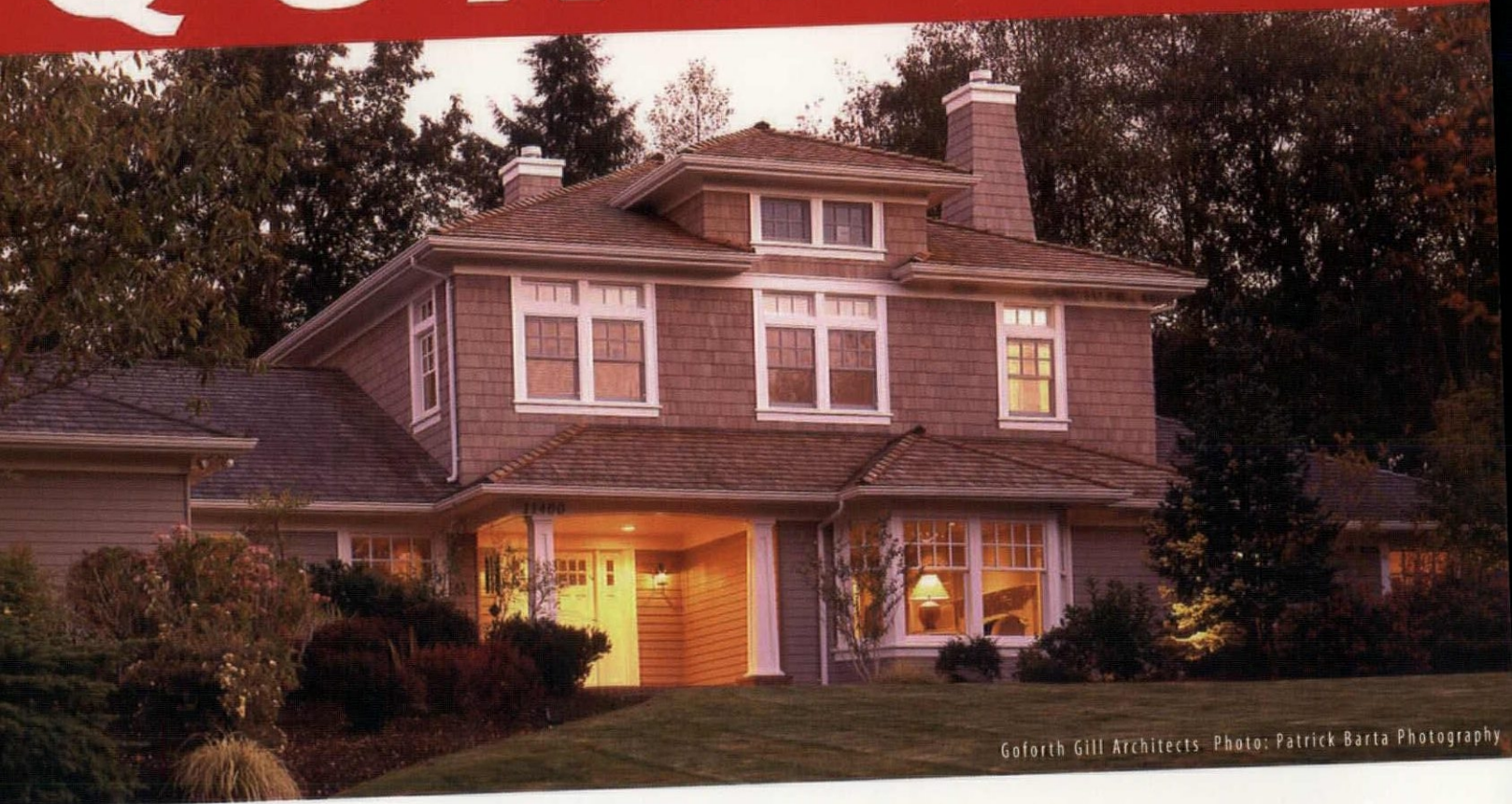
irpinia
KITCHENS

RECOGNIZED SINCE 1960



DENVER SHOWROOM | 250 STEELE STREET | CHERRY CREEK NORTH | WWW.IRPINIA.COM | 720.941.7006

QUANTUM



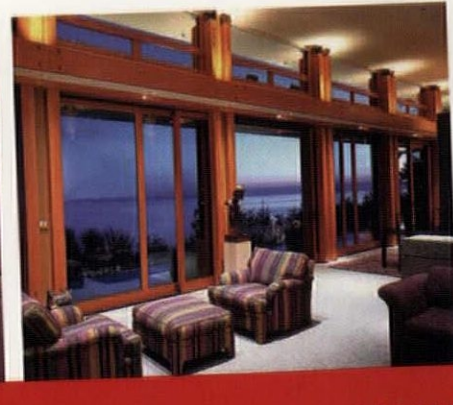
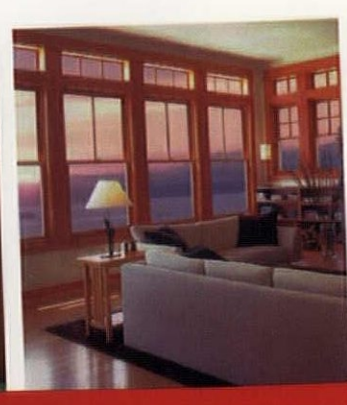
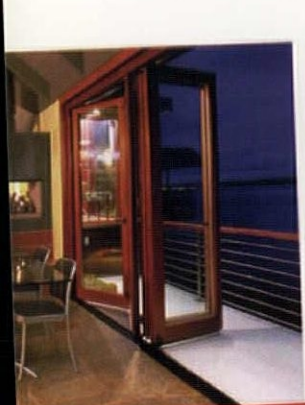
Goforth Gill Architects Photo: Patrick Barta Photography

As a leading manufacturer of premier, custom wood windows and doors, architects and builders have come to rely on Quantum to deliver incomparable value. Each window and door is built to your exacting specifications and backed by our 15/5/3 warranty—one of the longest and strongest in the industry. Give us a call to see how well Quantum will fit your next project.

Specified by leading architects since 1982.



1-800-287-6650
qsales@quantumwindows.com
www.quantumwindows.com



WINDOWS HINGED DOORS SLIDE/FOLD DOORS LIFT/SLIDE DOORS ALL CUSTOM ALL WOOD

CELEBRATING AN OUTSTANDING FIRST YEAR



FRED FUHRWEISTER, TIME FRAME

What a year! In February, AIA Colorado premiered the first issue of *Architect Colorado*,

our new quarterly design magazine highlighting the talent, leadership and work of Colorado's architects. The reaction has been overwhelmingly positive, and the journey has been an exciting one.

The publication's bold new layout has introduced readers in each issue to a handful of distinctively designed projects that are making an impact on our communities, the environment and the future of design.

Meanwhile, our editorial staff has delved into a myriad of hot topics ranging from what owners want from architects, to design professionals of the future and ideas for taming sprawl.

In this fourth and final issue of our inaugural year, *Architect Colorado* celebrates AIA's award-winning projects of 2005. Colorado's AIA architects have much to be proud of, with some of the most innovative and sustainable projects in the nation. This issue shines a bright light on those and many other AIA member accomplishments.

We look forward to hearing from you in 2006 as *Architect Colorado* continues to raise the bar of architectural excellence and promote greater dialogue among professionals in the state's architectural community. We invite your project submissions, "on-the-boards" announcements and feedback on issues that impact your profession. You can find our submission guidelines on page 4 of this issue or at aiacolorado.org under the resources link.

Thank you for your support during the first year of *Architect Colorado*.

A handwritten signature in black ink that reads "Jennifer Seward". The signature is fluid and cursive.

Jennifer Seward
Editor

SEND LETTERS TO Jennifer Seward
Editor, *Architect Colorado*,
2661 Valentia St. Denver, CO 80238
or email jenseward@earthlink.net

CORRECTIONS In the fall issue of *Architect Colorado*, the Creative Commuting feature story about the Northwest Parkway Toll Plaza project was written by Kimberly MacArthur Graham. Her byline was inadvertently omitted.

In the fall issue of *Architect Colorado*, a photo of the Mount Saint Vincent Children's Home in the Work of Heart story was mistakenly replaced with an image of the Blue Cube residence (page 47).

In the fall issue of *Architect Colorado*, Civitas should have been identified as the landscape architect for Phase One of the UCHSC Research Complex project. Civitas is a landscape architecture, urban design and planning firm that does not offer civil engineering services.

You can already tell exactly what kind of house it's going to be.





The right windows and doors help bring your plans to life beautifully. Specify Marvin, and you're assured of complete design flexibility and better-performing windows and doors with superior aesthetics. That includes furniture-grade interiors, consistent sight lines and the tightest tolerances possible — along with countless design options, from cladding profiles to hardware choices. Call 1-800-236-9690 or visit marvin.com

MARVIN 
Windows and Doors

 **BODDINGTON
LUMBER CO.**
boddingtonlumberco.com



D. L. ADAMS ASSOCIATES, INC.

Consultants in Acoustics and Performing Arts Technologies



- ◆ Audio-Visual Presentation Systems ◆
- ◆ Building Acoustics ◆
- ◆ Mechanical Noise & Vibration Control ◆
- ◆ Performance Lighting & Control Systems ◆
- ◆ Sound Isolation ◆
- ◆ Stage Rigging & Masking Systems ◆
- ◆ Theatre Planning ◆

303.455.1900 Fax: 303.455.9187
1701 Boulder Street, Denver, Colorado 80211

www.dlaa.com

Providing Consulting and Design Services for more than 25 years!



CTLITHOMPSON

**A LEADER IN
GEOTECHNICAL,
MATERIALS &
ENVIRONMENTAL
ENGINEERING
& TESTING**



Denver

303-825-0777

Colorado Springs

719-528-8300

Glenwood Springs

970-945-2809

Ft. Collins

970-206-9455

Pueblo

719-595-1287

www.ctlt.com



Fiona Stone Travertine

Since 1977, Arizona Tile featuring the Santa Fe Collection, has refined the art of natural stone in tile and slabs, as well as medallions, ceramic tile and other creations and applications. Offering lavish selections of rich granites, distinctive travertines, timeless marbles and classic limestones quarried from around the world, and all crafted as works of art.

Visit us in our Denver Showroom or online



ARIZONA TILE

FEATURING THE SANTA FE COLLECTION

Denver, CO
12655 E. 42nd Ave., Ste 50
Denver, CO 80239
Phone: 303.574.2990

www.arizonatile.com

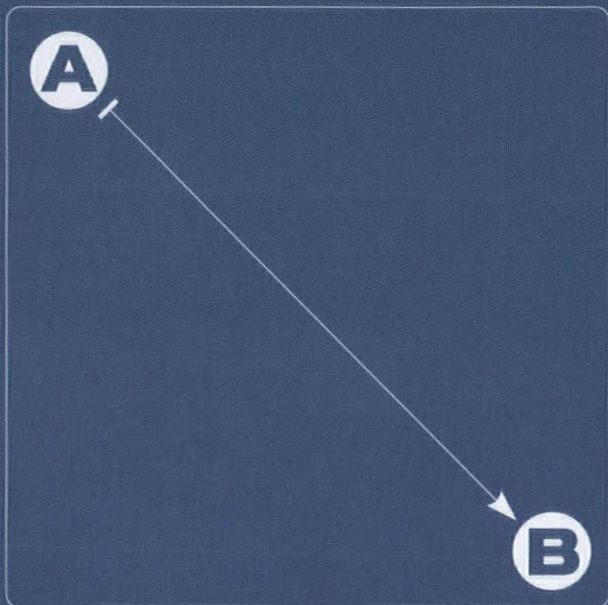
ARIZONA CALIFORNIA COLORADO NEW MEXICO NEVADA TEXAS UTAH

efficiency*

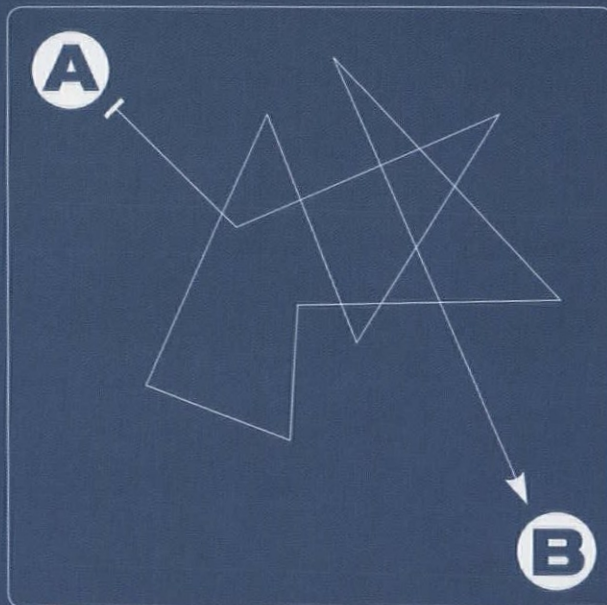
Efficiency \Ef*fi"ciencie\, Ef*fi"cienc*cy\, n.
The production of the desired effects or results
with minimum waste of time, effort, or skill.

*[synonym: eBlueprint]

Reprographic Management & Distribution Diagram



The eBlueprint Abadan Way



The Other Way

eBlueprint Abadan is defining efficiency within the document services industry. Specializing in the reproduction of construction documents, they use an integrated on-line system to deliver cost and time savings to your business.

Services

- Printing of CAD drawings, specs, and other documents
- Web enabled uploading of orders and database of all drawings
- 24/7 on-line order tracking
- Local and overnight delivery with quick turn-around times
- eBidTools for managing bid invitations

To be more efficient call us today t 303.696.6363

eBlueprint[®]
A B A D A N
...plan on it

Nothing Lasts Like An Acme Brick. We Guarantee It.



Latex paint:
5-year limited guarantee

Composition shingles:
20-year limited guarantee

Double-pane insulated windows:
20-year manufacturer's warranty

Oak panel door:
1-year manufacturer's warranty

made from fine earth clays, blended for color, and hard-fired in computercontrolled kilns at temperatures that can exceed 2,000 degrees. The result is a brick that will outlast your mortgage. In fact, we guarantee it – for 100 years.



Since 1891, we've shown that Acme Brick is the best thing to have around your house and your family.



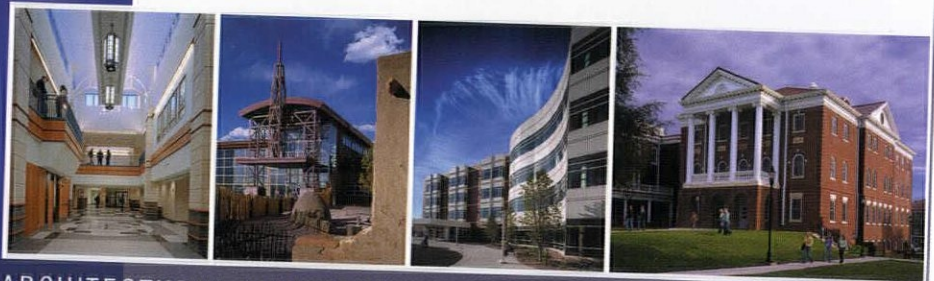
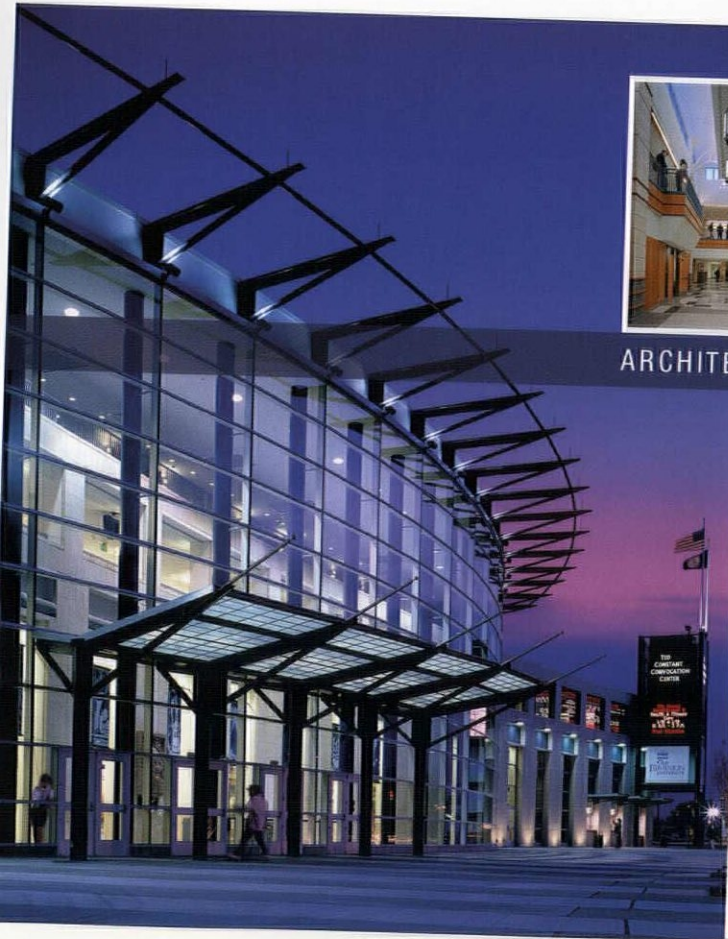
When you buy a new home, you want it to last a lifetime. But when windows break, the roof springs a leak, and the paint peels, it is nice to know that one product, Acme Brick, will last a lifetime. Each Acme Brick is

So, for lasting beauty that comes with a 100-year, fully transferable limited guarantee, choose Acme Brick.



Because, if you don't see the Acme name, you won't get Acme quality. Or the guarantee.

401 Prairie Hawk Drive • Castle Rock, CO 80104 • (303) 688-6951 • brick.com



ARCHITECTURAL ENVIRONMENTS & PEOPLE • RESORT • 360° VR

MAYLONE.com

Photography

www.maylone.com
p: 970.389.6326
e: steve@maylone.com

The Kitchen.

(circa 1935)



The Kitchen.

(2005)



KIMBALL

Kitchens that live and breathe

At Kimball, we offer some of the most incredible appliance collections in the world. Kitchens that you cook in, play in... *live in!*

From Viking's contemporary Designer Series kitchens to Miele's state-of-the-art laundry centers, we customize the right combination to fit your specific needs and discriminating taste. Visit one of our showrooms to see the latest in living kitchens, or visit our virtual showroom at www.kimballinc.com

1400 West 3rd Avenue
Denver, CO 80223
303.893.1423

2233 South 300 East
Salt Lake City, UT 84115
801.466.0569

Serving Colorado, Idaho, Utah, Wyoming, and Montana





A Component of The American Institute of Architects

HONOR AWARDS

ARCHITECT OF THE YEAR

- > Dennis Humphries, AIA, Humphries Poli Architects PC

FIRM OF THE YEAR

- > Semple Brown Design PC

25-YEAR AWARD

- > Denver Art Museum - Ponti Building

CONTRIBUTION TO THE BUILT ENVIRONMENT BY A NON-ARCHITECT

- > Mary Voelz Chandler, Art Critic, *Rocky Mountain News*

DESIGN AWARDS

MERIT

- > Jack Kerouac Lofts, JG Johnson Architects PC
- > Our Lady of Loreto Catholic Parish, David Owen Tryba Architects

CITATION

- > Aspen Recycling Center, CCY Architects
- > Designscapes, Semple Brown Design PC
- > Prospect Lofts, AR7 Hoover Desmond Architects
- > Rethinking the Big Box: Scandinavian Designs Furniture Store, Roth+Sheppard Architects
- > Skye, Roth+Sheppard Architects
- > The Molkery at Montclair Park, SLATERPAULL Architects
- > The Tube, Anderson Mason Dale Architects PC

AIA COLORADO HONOR AWARDS JURY

JURY CHAIR John D. Anderson, FAIA
Anderson Mason Dale Architects PC

John Anderson is the founding principal of Anderson Mason Dale Architects, a 50-person Denver firm with a regional public sector practice in architecture and planning. Anderson served as the 2001 AIA national president. He was also a delegate to the World Energy Congress in New Delhi in 1983 and has been a guest lecturer at universities around the world. Anderson has appeared in many states and in the United Kingdom, Canada, South Africa, Finland and India as a lecturer and panelist on energy-conscious architecture.

JURORS

Christopher G. Nims, FAIA, David Owen Tryba Architects
Phil H. Gerou, FAIA, Gerou & Associates Ltd.

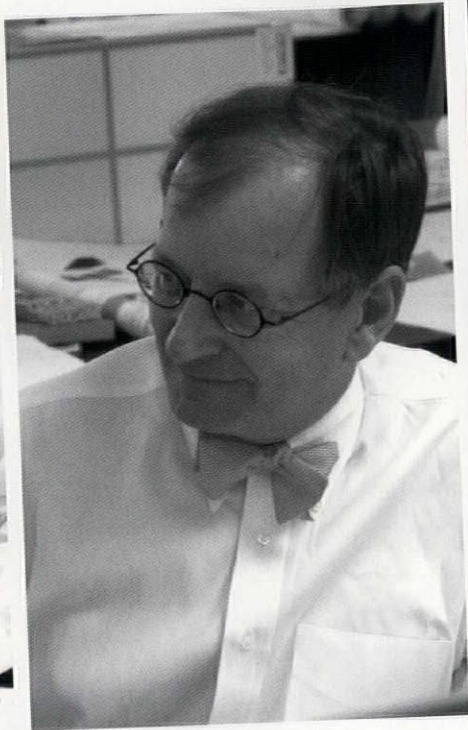
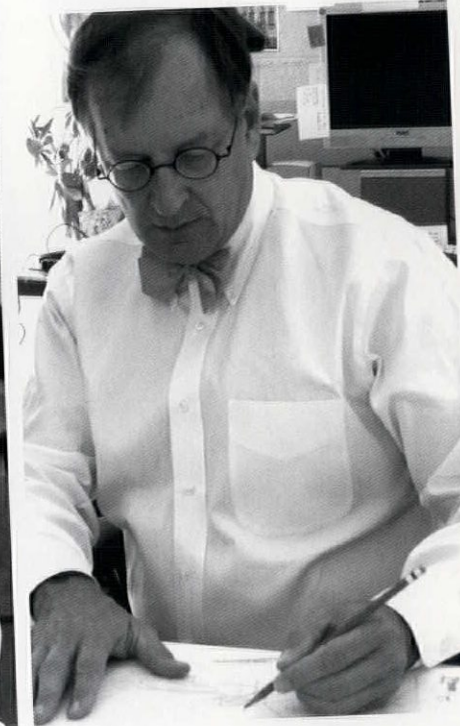
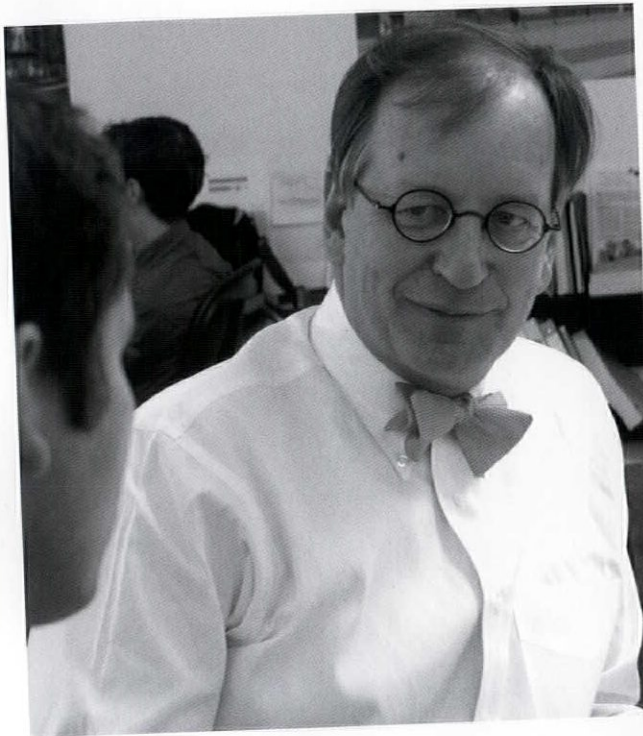
AIA COLORADO DESIGN AWARDS JURY

JURY CHAIR Steve Badanes, Assoc. AIA
Jersey Devil Design-Build
Professor, University of Washington

Steve Badanes' commissions have included private homes, schools, public structures and the winning entry, "The Fremont Troll," in the Hall of Giants 1990 Competition in Seattle. Badanes is a founder of Jersey Devil, an architectural firm perpetuating the tradition of medieval craftsmen. The firm is comprised of skilled craftsmen, architects, inventors and artists "committed to the interdependence of building and design." Jersey Devil architects/builders live onsite during the construction of their designs, which are known for energy efficiency and innovative use of materials.

JURORS

Annie Han, Assoc. AIA, Lead Pencil Studio, Seattle
Dan Mihalyo, Lead Pencil Studio
Prentis Hale, SHED
Thomas Schaer, SHED



“Dennis Humphries’ role within the profession and in Denver has been a blueprint of social consciousness and professional activism.”

— Juror Comment

Dennis Humphries, AIA, has been a leading role model in the Colorado architectural community for more than two decades, serving on numerous committees, boards and commissions, and effectively working to give architects and architecture a higher profile along the Front Range.

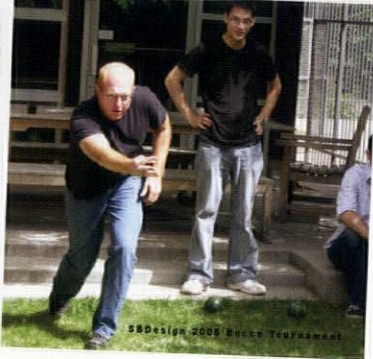
Humphries has helped introduce architecture into the curriculum at Denver public schools and played a critical role in numerous design issues important to Denver’s communities. Humphries Poli Architects, the city of Denver and the architectural profession have all benefited from his contributions.

Humphries exemplifies unique skills in motivating teams of architects, owners and contractors to exceed expectations on any given commission. He understands that in the architectural profession exemplary products are not possible without an exemplary process.

Humphries has been a visible and active member of the local component of the AIA. As a result of his vision, the AIA Colorado office was relocated into a storefront location in downtown Denver. Humphries also helped to combine the offices of the Colorado and Denver chapters into a single entity and was instrumental in initiating office visits to encourage membership. He launched a task force to formalize the Fellows nomination process; established the Denver Architectural Foundation; initiated the first annual Architecture Week and conceived the James M. Sudler honor award for outstanding leadership.

Shortly after co-founding Humphries Poli Architects, Humphries became involved in the creation of a new livable community—an urban village within blocks of the heart of Denver that would build on the resources of the three premiere cultural institutions of western U.S. history—the Denver Public Library, Denver Art Museum and the Colorado Historical Society.

More recently, Humphries served on the mayor’s task force for evaluating the proposed 1,500-bed Denver Justice Center and led the members of the Golden Triangle neighborhood association in evaluating the merits of a jail in their area. ♦



"Semple Brown Design exhibits a superior blend of creativity, experience and management skills that enables the firm to provide its clients with superior designs that exceed project goals in form, function, budget and schedule."

- Christopher O'Hara and Julian J.B. Lineham,
NYLStructural Engineers

SOME OF THE AWARD-WINNING PROJECTS BY SEMPLER BROWN DESIGN

- > 100 Dexter Residence
- > Arnold Loft
- > Glenarm Tower
- > Racine's
- > Denver School of the Arts
- > Stapleton Neighborhood Park
- > Adegas Restaurant & Wine Bar
- > Archstone-Smith
- > Barnhart Loft
- > MAX
- > Kenneth King Academic & Performing Arts Center
- > EDAW Regional Office
- > The Zone
- > REI

Semple Brown's commitment to quality design is evidenced in artful, innovative and responsive design that enhances the built environment."

- Juror Comment

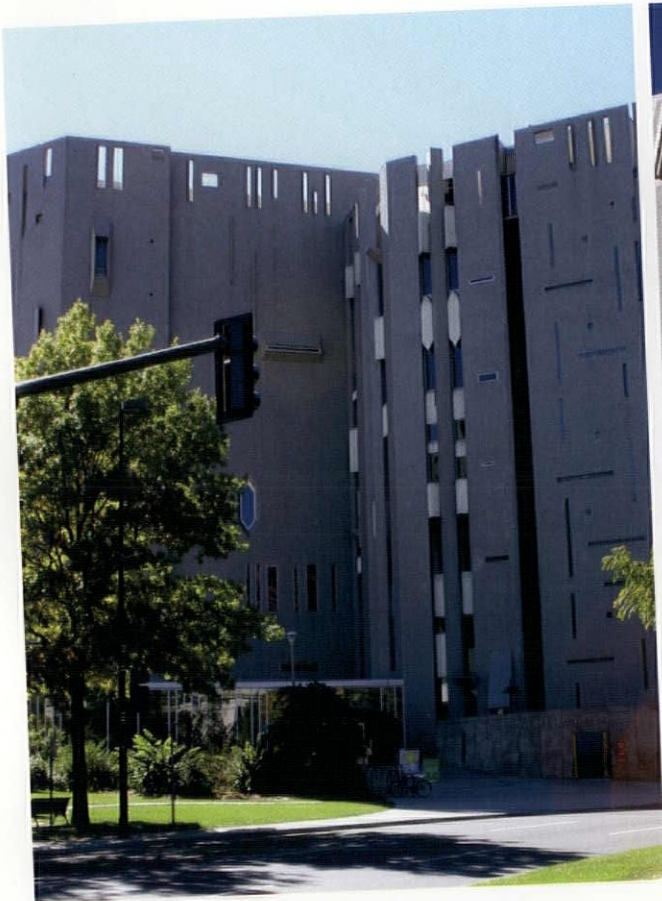
Denver-based architectural and interior design

firm Semple Brown Design has been providing architectural design services for 23 years. The firm approaches each project with a sense of challenge and adventure, resulting in artful, innovative and responsive design that enhances the built environment.

The Semple Brown Design team seeks out clients who share a conviction that quality design improves their way of life. Instead of concentrating on particular kinds of projects, Semple Brown focuses on clients who share that sensibility. This has led to the varied body of work, including new and renovated spaces such as restaurants, residences, offices, cultural and performing arts facilities, schools, churches, pavilions, retail shops, casinos, parking garages and mixed-use projects.

Semple Brown Design involves its clients from the start through a collaborative process where they become part of the design team. The process is structured to help clients act as effective leaders of their projects so that the results will meet the clients' unique vision and goals.

Since its inception, Semple Brown Design's contributions to Colorado's architectural environment have been varied. The firm's work has been recognized with more than 50 design awards.



The institution now known as the Denver Art Museum began humbly in 1893 as The Artists' Club. In 1956, James Sudler was appointed museum architect on the recommendation of his predecessor Burnham Hoyt, the first museum architect. The director and board of trustees felt that it was in the best interests of the institution to operate with a museum architect to ensure continuity on remodeling and expansion projects. A development program was initiated in 1964 to raise funds for an ambitious new building. In 1971 the museum finally achieved a goal that had eluded it for more than 75 years – the construction of a building that brought together all its treasures and activities under a single roof.

“A design that was controversial at the time, the museum has established a cadre of notable structures.”

- Juror Comment

The museum wanted to use the building program as an opportunity to promote itself locally and nationally. Architect Gio Ponti of Milan, Italy was appointed as design consultant to collaborate with Sudler on this once-in-a-lifetime project. Ponti was eager to give Denver an art museum unlike any other in the United States, with a “particular and characteristic exterior that had no precedent.” He was delighted when people compared the building to a fortress. “Art is a treasure, and these thin but jealous walls defend it,” he said.

In the 34 years the Ponti Building has been open, it has continued to serve the needs of its visitors. The functions of its special exhibition spaces, educational areas, restaurant space and the museum shop have evolved, leading to some renovations, but the building has easily accommodated these minor modifications and the integrity of its original design remains. ♦

CONTRIBUTION TO THE BUILT ENVIRONMENT BY A NON-ARCHITECT
 MARY VOELZ CHANDLER, ART CRITIC, ROCKY MOUNTAIN NEWS



"Study a city's architecture and you learn about its people. About its growth and progress, its challenges and travails, foibles and dreams."

- Mary Voelz Chandler

For more than 18 years, Mary Voelz Chandler has made an enormous contribution to maintaining, preserving, developing and promoting Colorado's built environment through her job as a reporter for the *Rocky Mountain News* and her book *Guide to Denver Architecture*.

As evidenced by the more than 200 articles she has written on Colorado architecture, Chandler has covered everything from the groundbreakings of new buildings to the politics and preservation of architecture.

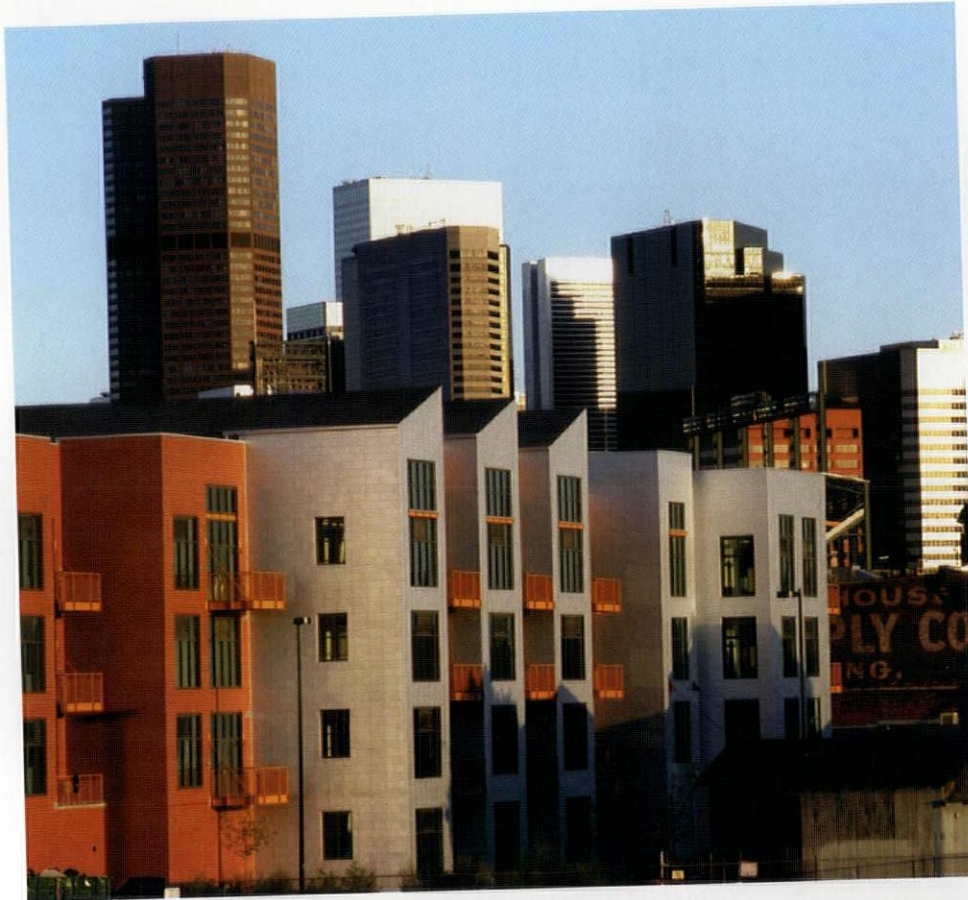
At least once a month, Chandler reports on important events in the building community. Some of her most recent articles have included the grand opening of Florence Square in Aurora and Quigg Newton Auditorium — two very different yet equally important projects.

Through her writing, Chandler has helped to disprove the stereotype that Denver is primarily a sports town not interested in great architecture. Almost single-handedly, she has made the vocabulary of architecture more accessible to the general public in Colorado.

In 2002 Chandler's goal was to research 400 buildings in and around Denver, put her comments into book form and publish it before the AIA conference. The resulting publication, *Guide to Denver Architecture*, is an indispensable reference tool and earned Chandler a Best of Denver Award.

"Mary's insights give architecture a public awareness in a way that invites interest and sometimes controversy."

- Juror Comment



JACK KEROUAC LOFTS

CATEGORY Built Architecture
OWNER/DEVELOPER Urban Neighborhoods
ARCHITECT JG Johnson Architects PC
STRUCTURAL ENGINEER Redwine Engineers Inc.
ELECTRICAL ENGINEER Laura Weilert Engineering Inc.
MECHANICAL ENGINEER Concord West
GENERAL CONTRACTOR The Weitz Co.
PHOTO Brendan Harrington

In the 1950s, writer Jack Kerouac spent time in the "bottoms" of Denver's Central Platte Valley, just north of where Coors Field is today. The exuberance and freedom that characterized the literature, art and music of the beat generation and the rediscovered downtown lifestyle is expressed today in the architecture of the Jack Kerouac Lofts.

Simple masonry buildings with both flat and sloped roofs, ancillary railroad structures in galvanized metal and a "boxcar" vocabulary form the design. The modern expression of this vernacular uses high ceilings and large windows to afford significant natural light and views to each of 60 lofts ranging from 650 sq ft to nearly 1,800 sq ft.

"If 20 percent of Denver developers were to adopt the sensibilities inherent in this design, the world would be a better place."

- Juror Comment

"Flexible, affordable housing on an industrial urban site provides a Denver alternative to sprawl and reactivates the city edge."

- Juror Comment



OUR LADY OF LORETO CATHOLIC PARISH

CATEGORY Interiors
OWNER/DEVELOPER Archdiocese of Denver
ARCHITECT David Owen Tryba Architects
STRUCTURAL ENGINEER The McGlamery Structural Group
ELECTRICAL ENGINEER Corey Electrical Engineering
MECHANICAL ENGINEER Integrated Mechanical Systems
GENERAL CONTRACTOR JHL Constructors Inc.
PHOTO Frank Ooms

Phase One of an overall campus master plan consists of a 300-year structure for a new parish in a community with commanding views of the Front Range and architecture designed to reflect the timeless values of Catholicism. The result is a place of respect and quiet worship where life's daily chaos is replaced by humble servitude and reverence.

The parish architecture features a central nave and two side transepts turned at 45-degree angles, concluding in an octagonal masonry dome rising 75 ft above the sanctuary floor.

On the interior, dramatic columns function to structurally support the roof and symbolically represent the trees of the forest from the First Book of Chronicles.

"Incredible craftsmanship, detailing and engineering daring makes a memorable, spiritual interior."

- Juror Comment

"Grand!"

- Juror Comment



ASPEN RECYCLING CENTER

CATEGORY Unbuilt Architecture
OWNER/DEVELOPER City of Aspen
ARCHITECT CCY Architects
RENDERING CCY Architects Graphics

The city of Aspen needed a new structure to house its recycling operation. Inspired by the single, low, long, quiet industrial/agricultural building resting in the landscape, this new structure is a long, earthen wall, its planted roof an extension of the park below.

Reclaimed wood, rammed earth, recycled concrete aggregate, a planted roof with native grasses and photovoltaics are in sync with the structure's intended use.



DESIGNSCAPES

CATEGORY Built Architecture
OWNER/DEVELOPER Designscapes Colorado
ARCHITECT Semple Brown Design PC
STRUCTURAL ENGINEER Martin/Martin Inc.
ELECTRICAL ENGINEER Belfay Engineering
MECHANICAL ENGINEER Belfay Engineering
GENERAL CONTRACTOR Findlay Criss & Co.
PHOTO Ron Pollard

The office building for this young, growing landscape construction company has an elegance and richness that belie its tight budget. Inside and out, the design reflects the broad needs of the client, with industrial qualities that respect the realities of construction-worker traffic, as well as other gestures reflecting the rich characteristics of the natural landscape and artistry of the design process.



PROSPECT LOFTS

CATEGORY Built Architecture
OWNER/DEVELOPER Design Prospects LLC
ARCHITECT AR7 Hoover Desmond Architects
STRUCTURAL ENGINEER Glenn Frank Engineering
ELECTRICAL ENGINEER BF Hammond Electrical Design
MECHANICAL ENGINEER Design/Build
GENERAL CONTRACTOR Coast to Coast Development
PHOTO Richard Epstein

Located just south of Longmont, Prospect is known for its unique designs, bright colors and idiosyncratic details, as well as its walkability and strong community. The Prospect Lofts building was designed to complement and contrast the aesthetic sensibilities of Prospect. A seriousness of purpose on the street with an ordered façade and restrained material palette is contrasted with a playful and colorful carport with a series of dancing roofs.



RETHINKING THE BIG BOX: SCANDINAVIAN DESIGNS FURNITURE STORE

CATEGORY Unbuilt Architecture
OWNER/DEVELOPER Interline
ARCHITECT Roth+Sheppard Architects

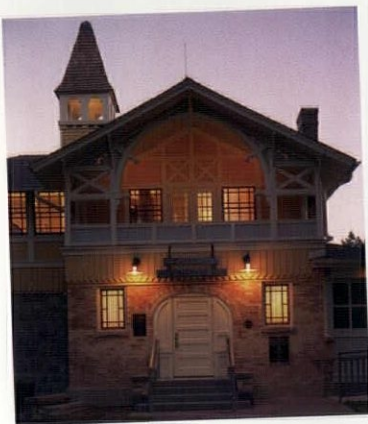
Scandinavian Designs is a retail furniture store providing contemporary furnishings derived from the philosophies of traditional Scandinavian design — a deep connection to nature, use of natural materials and an aesthetic derived from function. By taking a holistic design approach, these ideals and the image of the store are meshed to re-imagine the traditional big box as a more contextually and environmentally responsive building.



SKYE

CATEGORY Interiors
OWNER/DEVELOPER Skye Forrest - Ross
ARCHITECT Roth+Sheppard Architects
STRUCTURAL ENGINEER Kirkham Michael, Tom Schott
ELECTRICAL ENGINEER Gehring & Associates Architectural Engineers LLC
MECHANICAL ENGINEER Gehring & Associates Architectural Engineers LLC
GENERAL CONTRACTOR Sholders Co. Inc.
PHOTOS Frank Ooms

This clothing boutique is designed to celebrate the emotional metamorphosis of change. Focusing on the act of undressing and dressing, the interior is defined by carefully composing a series of translucent re-clothing chambers within the space. These cylindrical chambers redefine the space while signaling the emotional significance of shedding and re-clothing. Various levels of translucency expose the act as either intimately personal or expressively celebratory.



THE MOLKERY AT MONTCLAIR PARK

CATEGORY Historic Preservation
OWNER/DEVELOPER City and County of Denver - Parks and Recreation
ARCHITECT SLATERPAULL Architects
STRUCTURAL ENGINEER The Sheflin Group
ELECTRICAL ENGINEER BCER Engineering Inc.
MECHANICAL ENGINEER BCER Engineering Inc.
GENERAL CONTRACTOR JA Walker Co.
PHOTOS David Patterson

Boarded up and abandoned, the Molkery was a vandalism magnet. Originally built as a dairy, restaurant and hotel, this historic Montclair landmark once promoted healthy living while serving as one of the first tuberculosis sanitariums in Colorado until 1893. The charm of the decorative ornamental porch railings and cupola present in the 1908 renovation were selected as the period of restoration, returning the Molkery to its former glory.



THE TUBE

CATEGORY Built Architecture
OWNER/DEVELOPER Ron Mason
ARCHITECT Anderson Mason Dale Architects, PC
STRUCTURAL ENGINEER Martin/Martin Inc.
GENERAL CONTRACTOR Kiel Moe
PHOTO Ron Mason

The Tube is a small weekend house for two people perched over a remote bank of the Arkansas River at an elevation of 8,800 ft. The Tube resides among a settlement of buildings all designed by the architect to maximize encounters with the river or the surrounding meadows. Each building, including the Tube, is designed as a simple elemental form using a palette of wood siding or corrugated steel.



AIA Denver

A Chapter of The American Institute of Architects

HONOR AWARDS

ARCHITECT OF THE YEAR

> Gary L. Desmond, FAIA, AR7 Hoover Desmond Architects

FIRM OF THE YEAR

> Humphries Poli Architects PC

25-YEAR AWARD

> Denver Art Museum - Ponti Building

CONTRIBUTION TO THE BUILT ENVIRONMENT BY A NON-ARCHITECT

> Carolyn Etter

JAMES S. SUDLER AWARD FOR CONTRIBUTION TO THE DENVER CHAPTER

> AIA Denver Urban Design Committee

DESIGN AWARDS

HONOR

> Rethinking the Big Box: Scandinavian Designs Furniture Store, Roth+Sheppard Architects
> Robert Hoag Rawlings Public Library, Anderson Mason Dale Architects PC

MERIT

> The Barbara Davis Center for Childhood Diabetes, Anderson Mason Dale Architects PC
> Cataract Ranch, Semple Brown Design
> Englewood Cultural Arts Center, Arley Rinehart, AIA; Kerl Yoo, AIA; Richard Henry, AIA; and Mark Raeburn, AIA
> Rincon Building, AR7 Hoover Desmond Architects

CITATION

> Denver School of Science and Technology, klipp
> Prospect Lofts, AR7 Hoover Desmond Architects
> The Tube, Anderson Mason Dale Architects PC

AIA DENVER HONOR AWARDS JURY

JURY CHAIR Karl Berg, FAIA
Karl Berg Architect

Karl Berg has dedicated his career to design excellence. He has been recognized with countless professional awards and honors and believes that clear communication and effective management combine to produce excellence in architectural design. A tireless and tenacious problem solver, he has been a major force in architectural innovation and recognized many times by the American Institute of Architects and other professional organizations for his outstanding contributions to the profession.

JURORS

Michael Hicks, AIA, PCL Construction Services Inc.
Marilee Utter, Citiventure Associates
Maria Cole, AIA, Davis Partnership Architects
Michael Brendle, FAIA, RNL Design PC

AIA DENVER DESIGN AWARDS JURY

JURY CHAIR Carol Ross Barney, FAIA
Ross Barney+Jankowski

Carol Ross Barney is founder and principal of Ross Barney+Jankowski and the recipient of the 2005 Thomas Jefferson Award for Public Architecture, which recognizes excellence in architectural achievement. Her work has earned numerous honors, including four Honor Awards from the American Institute of Architects. Ross Barney's drawings have been widely collected and exhibited by the Art Institute of Chicago, the Chicago Historical Society, the Museum of Contemporary Art Chicago and the National Building Museum.

JURORS

Martha Thorne, Pritzker Architecture
David Woodhouse, FAIA, David Woodhouse Architects



“Gary has consistently provided outstanding service and leadership to the architectural profession, architectural education, the building industry and the public in general during his long professional career.”

— Juror Comment

Gary Desmond, FAIA, has dedicated his professional life to successful firm leadership, project design leadership and collaborative project processes. Desmond has volunteered countless hours of his time to the Downtown Denver Partnership. As co-chair of the Central Platte Valley Development Council, Desmond worked to ensure that the CPV developed into a logical expansion of downtown Denver. In this role, Desmond also guided the 35-member council through a complicated process of developing a master plan for Denver’s Union Station, ensuring that the partnership was able to make a significant impact on how this development is planned and implemented. As an AIA Denver board member for more than 10 years, Desmond led the effort to establish a fair and professional process for nominating worthy AIA members to the College of Fellows. This process has become the standard for Colorado component chapters.

As chair of the AIA Denver Practice Management Committee, Desmond led the process of creating a collegial forum for AIA members to help one another in their practice approaches and tactics. He also played an integral role in the creation of the AIA Denver Office Policy Manual, which has become the policy manual basis for firms throughout Colorado and across the nation. This manual was sold for a profit of more than \$75,000, greatly assisting the Denver Chapter during difficult financial times.

For the past five years, Desmond has taught a practice seminar for the Graduate School at the University of Colorado College of Architecture and Planning. He also conducts periodic workshops in various K-12 schools and technical schools to help students learn about the profession and their potential for a career in architecture.

While Desmond has focused his talents on the management of his firm, he is a fine designer in his own right and a keen judge of design excellence. In 1992 he founded the Orchids and Onions design awards program for the Denver Architectural Foundation, bringing with it the most publicity of any design awards program in Denver’s history. The program continues to this day, offering the public a chance to express opinions on good design and missed architectural opportunities in the Denver metro area. ♦



"Humphries Poli Architects and its founders, Dennis Humphries and Joe Poli, have set an enviable example of high-quality design, professional leadership, practice and community involvement for those of us who practice architecture."

- Juror Comment

Denver's Humphries Poli Architects was founded with a commitment

to create livable communities through buildings that ennoble their place, inspire participants, sustain resources and bring joy to users.

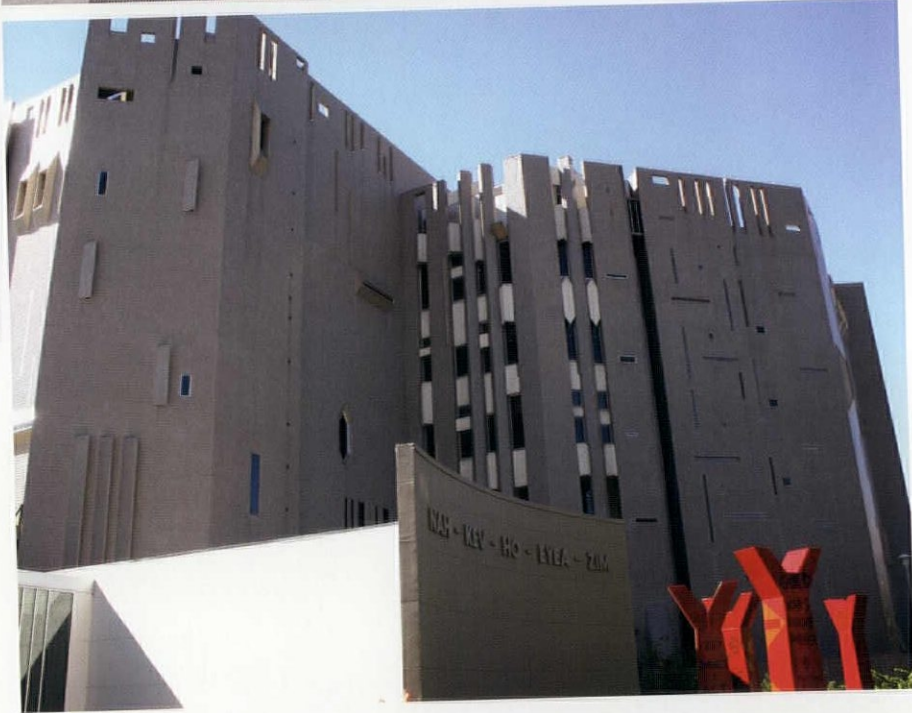
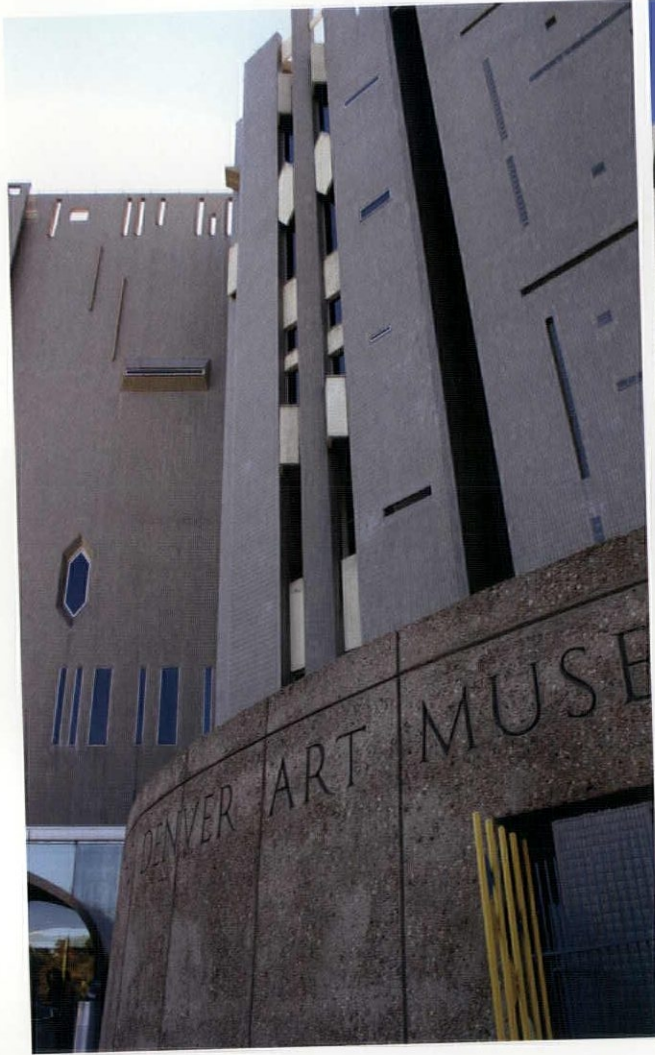
The firm's partners — Dennis Humphries, AIA, and Joe Poli, AIA — have collaborated for more than 30 years, dating back to their association as fraternity brothers at Alpha Rho Chi at the University of Illinois in the early 1970s.

Humphries Poli's work has been recognized as some of the most creative in the region. The firm's projects have been honored by various publications, the American Institute of Architects, allied professional organizations and local municipalities. The firm subscribes to the notion that the practice of architecture is a public process. The Humphries Poli design studios have always been maintained in a storefront location to encourage public exchange.

Humphries Poli Architects has been consistently involved in leading the profession and the community. The principals are committed to the pursuit of expanding the public's awareness of the profession and believe that, as practicing architects, they have a fundamental and critical role in shaping and leading their communities. The firm's location in the Golden Triangle neighborhood reflects this fundamental quest and opportunity.

SOME OF THE AWARD-WINNING PROJECTS BY HUMPHRIES POLI ARCHITECTS

- > Dora Moore School
- > Dolores Public Library
- > P.S. Miller Library
- > Westminster Public Safety
- > Grand Cherokee Lofts
- > Century Lofts
- > + gallery



“This contemporary building has had a lasting influence upon the Denver community and has withstood the test of time.”

– Juror Comment

“Unusual and provocative in design and plan, exceptional in its functional clarity, the lively new Denver Art Museum building by James Sudler Associates of Denver and Gio Ponti of Milan, Italy, breaks with tradition in both museology and architectural expression to provide a 79-year-old institution – the only major museum in the mountain region – with the first real means of displaying its extensive collections of art and artifacts.”

– *Architectural Record*, 1972

CAROLYN ETTER



“Carolyn has dedicated her life to the preservation of the historic fabric of Denver parks and neighborhoods.”

– Juror Comment

Carolyn Etter has served as a consultant to numerous organizations dedicated to the preservation of the historic fabric of Denver’s parks and neighborhoods. She has advised nonprofit organizations with respect to long-range planning, marketing, meeting management and project initiation. She served, with her husband, as manager of Denver’s Department of Parks and Recreation during Mayor Federico Pena’s second term.

Etter was a member of the Denver Comprehensive Plan and Blueprint Denver Committees. Most recently, she chaired a citywide committee established by the Denver Department of Community Planning and Development to recommend changes to the zoning code that would help preserve the character of Denver’s residential neighborhoods.

Etter has worked with the staff of the Western History Genealogy Department/Denver Public Library, presenting workshops to introduce architects and designers to the library’s extensive resources for research on historic buildings, residences and neighborhoods. She has also been instrumental in the protection and restoration of the Chamberlain Observatory, in the development and implementation of the landscape plans for the 9th Street Historic Park on the Auraria Campus and in the initial garden restoration at the Molly Brown House. Etter has lectured and written widely on the preservation of natural and built environments in Denver and throughout Colorado.

In collaboration with Don Etter, she published *Forgotten Dreamer: Reinhard Schuetze: Denver’s Landscape Architect; Colorado and the American Renaissance, a Denver Art Museum Catalog*; and *The Denver Zoo: A Centennial History*. ◆

“In heightening citizens’ awareness of their historic environment, Carolyn Etter engendered in them support for the preservation of their communities and encouraged many to research their neighborhoods and parks. Throughout her efforts, she displayed a passion for the historical record, a keen understanding of the human landscape, a joy of discovery and, in the words of a poet, ‘a grace of sense.’”

– James X. Kroll, Manager, Western History/Genealogy Department, Denver Public Library



ABOVE The AIA Urban Design Committee sponsors the Annual Box City event during Architecture Week.

The Urban Design Committee of the American Institute of Architects, Denver Chapter is the established contact with public and private groups of individuals as a resource to address issues of regional and urban design throughout the Denver metro area.

AIA DENVER URBAN DESIGN COMMITTEE

- > Lisa Daniel, AIA
- > David Daniel, AIA, David Owen Tryba Architects
- > Alan Gass, FAIA, AGGA Architecture & Urban Design
- > Joe Colistra, AIA, in situ DESIGN
- > Niccolo Casewit, AIA, Environmental Productions
- > Terry Willis, AIA, 4240 Architecture Inc.
- > Jeff Bartosik, 4240 Architecture Inc.
- > Jin Soo Park, Assoc. AIA, David Owen Tryba Architects

“This award is given to the Urban Design Committee for its many years of outstanding service as the public voice of the chapter on matters of design and planning in the metropolitan area.”

- Juror Comment

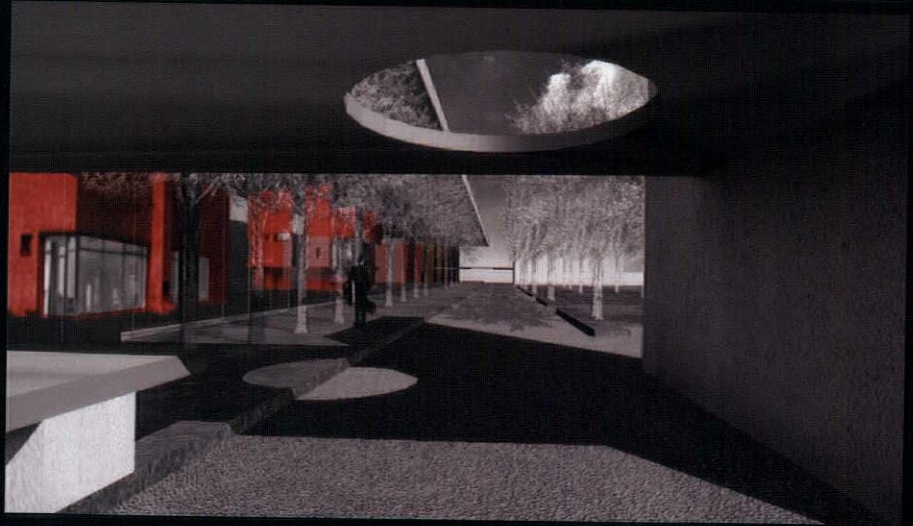
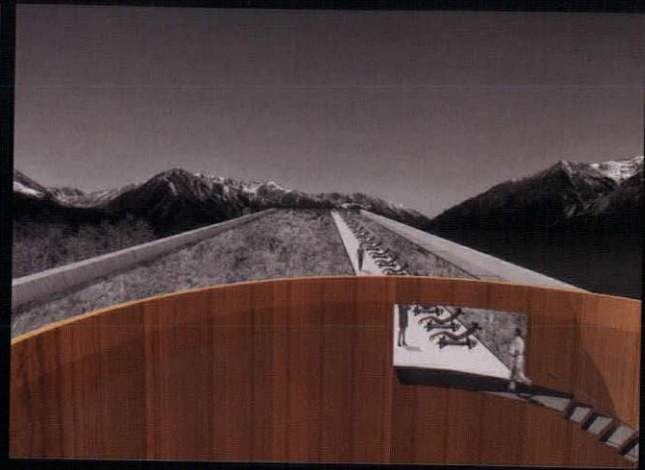
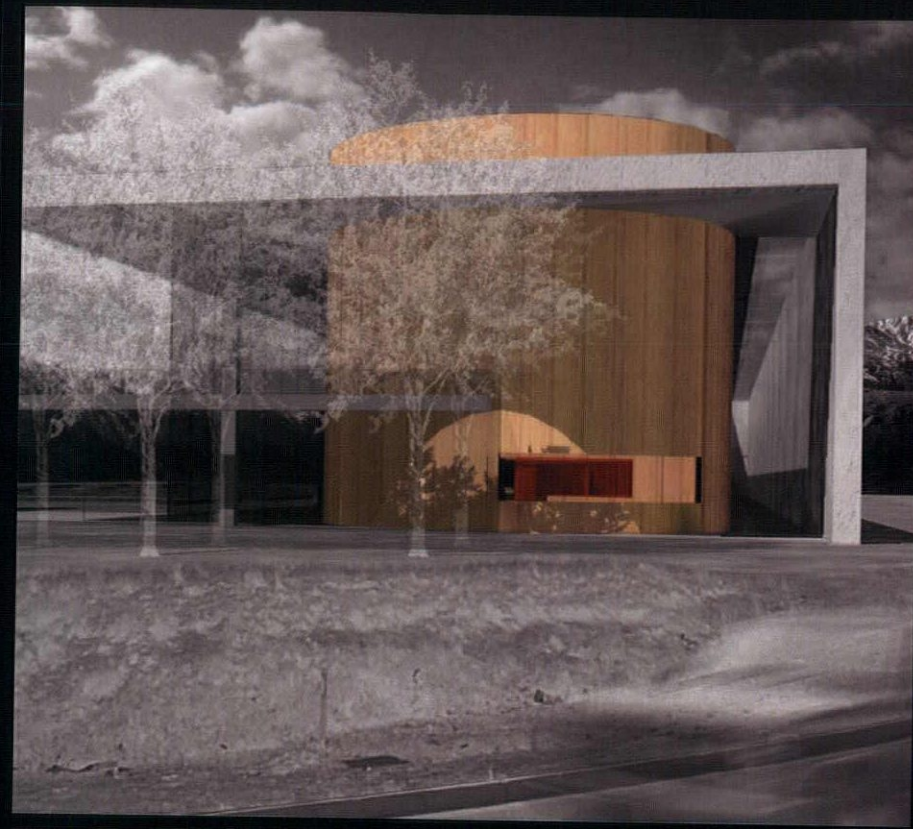
The UDC holds approximately two charettes per year in the metro area. During the past year, charettes were held in Denver and Castle Rock to focus on the West Colfax corridor.

The UDC has resurrected AIA's On the Boards program, bringing local architects together in an informal setting to discuss current projects in the design phase. At these programs, two to three designers present projects that address issues of bettering the built environment through urban design, planning and architecture.

The UDC continues to act in an advisory role to the Mayor's Commission to End Homelessness. The committee presented its ideas for a Surplus Land Initiative to support very low-income housing at the request of Councilwoman Jeanne Robb. The UDC continues to push for the AIA to have meaningful input on this important issue and on the writing of the commission's 10-year Plan to End Homelessness.

The UDC has recognized the need to be at the forefront of FasTracks planning and design guidelines for evaluating transit-oriented developments around Denver.

The UDC established a connectivity to the University of Colorado College of Architecture and Planning, participating in the search for a new dean in 2003 and 2004. It has also played an integral role in the college's Colorado Tomorrow vision committee, researching smart growth and possibilities for regional partnerships. In addition, the UDC sponsors the annual Box City event during Architecture Week, providing fun opportunities for elementary school children to learn about urban planning and architectural design.



“Convincing ... a new type of retail environment that is much needed.”

- Juror Comment

CATEGORY Unbuilt Architecture
OWNER/DEVELOPER Interline
ARCHITECT Roth+Sheppard Architects

Scandinavian Designs is a retail furniture store providing contemporary furnishings derived from the principal philosophies of traditional Scandinavian design — a deep connection to nature, natural materials and an aesthetic derived from function.

The traditional retail big box building is usually surrounded by an endless sea of parking without any relationship or response to the environment, its context or the products displayed within. By taking a holistic design approach, the Scandinavian Design's ideals and the image of the store are meshed to re-imagine the traditional big box as a more contextually and environmental responsive building type.

“Blends idealism and commerce.”

- Juror Comment

The footprint has been elongated and subdivided into a retail and warehouse component to create an appropriately scaled courtyard defined by a linear-access drive, parking, landscaped entry plaza and ecologically sensitive landscaping.



“Elegantly detailed, beautiful materials.”

– Juror Comment

“The building creates a public gateway that is unforgettable. Terrific move for a public space.”

CATEGORY Built Architecture
OWNER/DEVELOPER Pueblo City/County Library District
ARCHITECT Anderson Mason Dale Architects PC and Antoine Predock Architects
STRUCTURAL ENGINEER KL&A of Colorado
ELECTRICAL ENGINEER Gordon Gumeson & Associates
MECHANICAL ENGINEER The Ballard Group
GENERAL CONTRACTOR H.W. Houston Construction Co.
PHOTOS Timothy Hursley

Located in southern Colorado on the Arkansas River and at the base of the Wet Mountains, the city of Pueblo is considered an important cultural and geographical crossroads of the Southwest. The Robert Hoag Rawlings Public Library is an abstraction of and careful response to this natural and cultural landscape.

The building is designed to be a landmark spanning across Mesa Junction, with materials such as bronze, warm-toned concrete and glass in a dramatic sculptural form. Rising five stories, the library is situated above downtown Pueblo, oriented for views over the Arkansas Valley and the historic downtown to the east, as well as distant mountains such as Pikes Peak to the north, the Wet Mountains to the west and the Greenhorn and Spanish peaks to the south.

The building systems provide for comfortable, well-lit spaces. A flexible technological infrastructure allows the library to keep pace with changing needs. Each floor features a civic lobby with a grand staircase, glass elevator tower and glass atrium.

The main level entry includes an entry courtyard functioning as a community porch and coffee shop/café. This floor also houses book check-in/check-out and the children’s library, which defines the north edge of the entry courtyard, with a glazed wall that greets visitors with books and children’s activities while passing through the courtyard to the main entry.

The second level contains the library’s main collections. This large, open floor branches out from a central hub. The third level accommodates the library’s special collections as well as the administrative offices, which have been expanded and organized by function. The fourth level houses a meeting room and gallery space with expansive views to the north



THE BARBARA DAVIS CENTER FOR CHILDHOOD DIABETES

CATEGORY Built Architecture
OWNER/DEVELOPER University of Colorado Health Sciences Center
ARCHITECT Anderson Mason Dale Architects PC
STRUCTURAL ENGINEER Martin/Martin Inc.
ELECTRICAL ENGINEER BCER Engineering Inc.
MECHANICAL ENGINEER BCER Engineering Inc.
GENERAL CONTRACTOR J.E. Dunn Construction
PHOTOS Frank Ooms

The Barbara Davis Center for Childhood Diabetes is an outpatient clinic and research facility for children, adults and families with Type I diabetes.

The building's design recognizes the importance of public space within the building compared to the order of the campus. A generous story gallery welcomes patients and researchers. Building massing and facades recognize the fundamental program elements of clinical space on the lower two levels, research labs on the upper two and collaborative office suits on each end. The public facade of the center consists of the warmth of the patient gallery, the relationship of the new center to the historic army hospital, and the iconic playfulness of a children's playroom.

"Large project, but humane. Good dialogue with existing buildings."

- Juror Comment



CATARACT RANCH

CATEGORY Built Architecture
OWNER/DEVELOPER Russel L. Brown Jr. and Sarah Semple Brown
ARCHITECT Semple Brown Design PC
STRUCTURAL ENGINEER Monroe & Newell Engineers Inc
GENERAL CONTRACTOR Folkers Inc.
PHOTO Ron Pollard

The design of this single-family residence located on 36 acres within the former Cataract Creek Ranch responds directly to its surrounding natural environment and to the 360-degree views of aspens, meadows and mountains.

The exterior design is comprised of a palette of materials and colors that respond to agricultural buildings indigenous to the area and to the aspens and sage, including deeply grooved corrugated metal panels, lead-coated copper and straight-grain Douglas fir soffits.

The interior, divided into public and private sections, is almost completely clad in a horizontal tongue-and-groove wood, providing texture and warmth throughout.

"Good integration with an understanding of the site."

- Juror Comment



ENGLEWOOD CULTURAL ARTS CENTER

CATEGORY Unbuilt Architecture

OWNER/DEVELOPER Englewood Cultural Arts Center

ARCHITECTS Arley Rinehart, AIA; Kerl Yoo, AIA;
Richard Henry, AIA; and Mark Raeburn, AIA

PHOTO Richard Henry

The Englewood Cultural Arts Center had to be highly visible and easily accessible. The intersection of the Santa Fe transportation corridor and Highway 285 provides maximum metro-wide exposure and makes the arts center convenient for arrival by both automobile and mass transit. In this location, the ECAC will be a "billboard for the arts." This exposure will augment the aggressive promotion of the arts necessary to sustain an art center's fiscal success.

The proposed design articulates the different functions and disciplines within the center into several clear forms, and encourages diversity and interconnection of the disciplines through the use of stairs, ramps, escalators and other gathering spaces. The design also integrates artful expression and sustainability into all components and structures.

"A contrast of glass see-in/see-out space with opaque masses filled with function."

- Juror Comment



RINCON BUILDING

CATEGORY Built Architecture

OWNER/DEVELOPER Spindrift Ventures

ARCHITECT AR7 Hoover Desmond Architects

STRUCTURAL ENGINEER J.X. Giltner & Associates

ELECTRICAL ENGINEER B.F. Hammond Electrical Design

MECHANICAL ENGINEER Western States Engineering

GENERAL CONTRACTOR Shifrin Construction and Design

PHOTO Thorney Lieberman

The Colorado prairie environment can be a beautifully harsh place. An existing concrete double tee building sat on this site, waiting to be re-appropriated, sheltered and transformed.

The existing light industrial building had many redeeming characteristics, notably from its structure. The double tees that form the walls, floors and roof provided a very stable base from which to work and allowed for large, open spaces and tall ceilings on the interior.

Myriad changes have created a building inspired by its location yet cognizant of its past life. Opened to the outside, yet sheltered from the elements, the project has been reintroduced to its surroundings.

"Direct solution; clever and effective."

- Juror Comment



DENVER SCHOOL OF SCIENCE AND TECHNOLOGY

CATEGORY Built Architecture
OWNER/DEVELOPER Denver School of Science and Technology
ARCHITECT klipp
STRUCTURAL ENGINEER JVA Inc.
ELECTRICAL ENGINEER Swanson Rink
MECHANICAL ENGINEER Swanson Rink
GENERAL CONTRACTOR M.A. Mortenson Co.
PHOTOS James H. Berchert

The Denver School of Science and Technology has its origins in a Challenge Grant from the Bill and Melinda Gates Foundation and an initiative by Colorado Gov. Bill Owens. This is the first of four "demonstration" schools intended to serve as a model for future Colorado public schools. With a limited budget, the challenge was to create an inexpensive building that was unique and dynamic yet functional. Standard building systems and materials were utilized in non-conventional ways.



PROSPECT LOFTS

CATEGORY Built Architecture
OWNER/DEVELOPER Design Prospects LLC
ARCHITECT AR7 Hoover Desmond Architects
STRUCTURAL ENGINEER Glenn Frank Engineering
ELECTRICAL ENGINEER BF Hammond Electrical Design
MECHANICAL ENGINEER Design/Build
GENERAL CONTRACTOR Coast to Coast Development
PHOTOS Richard Epstein, Brian Dave and Don Wendeski

Located just south of Longmont, Prospect is known for its unique designs, bright colors and idiosyncratic details, as well as its walkability and strong sense of community. The Prospect Lofts building was designed to complement and contrast the aesthetic sensibilities of Prospect. A seriousness of purpose on the street with an ordered façade and restrained material palette are contrasted with a playful and colorful carport with a series of dancing roofs.



THE TUBE

CATEGORY Built Architecture
OWNER/DEVELOPER Ron Mason
ARCHITECT Anderson Mason Dale Architects PC
STRUCTURAL ENGINEER Martin/Martin Inc.
GENERAL CONTRACTOR Kiel Moe
PHOTO Ron Mason

The Tube is a small weekend house for two people, perched over a remote bank of the Arkansas River at an elevation of 8,800 ft. The Tube resides among a settlement of buildings all designed by the architect to maximize encounters with the river or surrounding meadows. Each building, including the Tube, is designed as a simple elemental form using a palette of wood siding or corrugated steel.



AIA Colorado North

A Chapter of The American Institute of Architects

DESIGN AWARDS

HONOR

- > Fossil Creek Park Pavilion, RB+B Architects Inc.
- > Fossil Ridge High School, RB+B Architects Inc.

MERIT

- > BOHO live + work, Hobbs: A Design Co.
- > Pearl Street Office, Boulder Associates
- > Skyline Center for Health, Vaught Frye Architects

CITATION

- > Blair-Caldwell African American Research Library, OZ Architecture
- > Nuzum Building, Dwayne Nuzum, and Hobbs: A Design Co.
- > Patryas Building, Hobbs: A Design Co.

AIA NORTH DESIGN AWARDS JURY

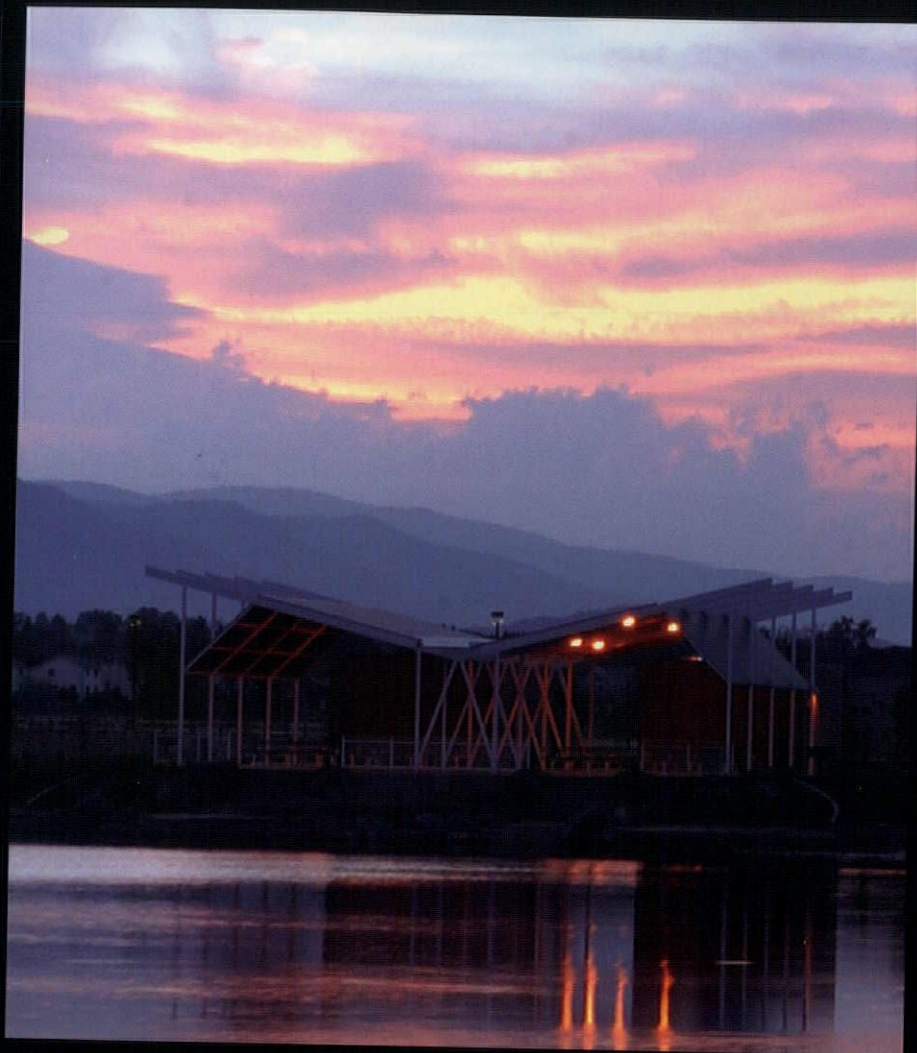
JURY CHAIR John Carney, AIA
Carney Architecture PC

John Carney's varied career highlights include the design of one of Denver's tallest towers, a number of historic renovations and loft projects in Denver's Lower Downtown, a large hotel for Disney Development and renovation of the historic Denver Dry Goods Building. Carney is active in the Jackson Hole, Wyo. community where, as a county commissioner, he actively promoted sound planning and sustainable values, culminating in a resolution on global warming.

JURORS

Stephen Dynia, AIA, Stephen Dynia Architects PC
Eric Logan, AIA, Carney Architects PC

FOSSIL CREEK PARK PAVILION



"Pure structural expression of the pavilion with its bone metaphor was very powerful."

- Juror Comment

CATEGORY Small Commercial
OWNER/DEVELOPER City of Fort Collins
ARCHITECT RB+B Architects Inc.
STRUCTURAL ENGINEER JVA Engineering Inc.
ELECTRICAL ENGINEER ESC Engineering
MECHANICAL ENGINEER Abrahamson Engineering Inc.
GENERAL CONTRACTOR Clark Construction
PHOTO Greg Carlson

The 99-acre Fossil Creek Park site is an assemblage of winding creek, lakes, wetlands and undulating landforms rising to create a gentle hill at the center. From the top of the hill, one sees the entire site, parts of the city and magnificent views of the foothills. The design goal was simple: to preserve and accentuate the beauty of the site while integrating various program needs of a community park.

Lake Pavilion is one of several structures in the park. It provides 2,600 sq ft of sheltered space and incorporates separate restrooms for men and women.

The design encourages visitors to experience landscape through the eyes of architecture. The restrooms and pavilion are organized to emphasize a central architectural window through which one views the water and landscape beyond. A continuous opening is created at the roof of the pavilion, where a slice of vertical sky is revealed. This opening at the roof brings light to the space while defining two distinct sheltered spaces within a single structure.

The central focus of the park design is the origin of life. This proved to be an indigenous idea; mammoth bones were discovered at the site during construction and interpreted in the design of the pavilion by exposing its "bones."

Structural members of the pavilion are slender, repetitive and painted white, indirectly resembling skeletons. This analogy shaped the appearance of the pavilion as an object, but the purpose of the pavilion still remains to be a composition of space from where one experiences the beauty of water and the park beyond.

AIA COLORADO NORTH

DESIGN AWARD >

HONOR

FOSSIL RIDGE HIGH SCHOOL



CATEGORY Large Commercial
OWNER/DEVELOPER Poudre School District
ARCHITECT RB+B Architects Inc.
STRUCTURAL ENGINEER JVA Engineering Inc.
ELECTRICAL ENGINEER CEI Inc.
MECHANICAL ENGINEER MKK Consulting Engineering Inc.
GENERAL CONTRACTOR Haselden Construction
PHOTO Patterson Photography

Fossil Ridge High School is designed to free the educational mold of departmentalization and "egg-crate" architecture. The 1,800-student high school is really three learning communities of 600 students each. Each learning community has a separate administration and counseling center. Classrooms open to independent student work areas. The 600-student learning community model offers a much closer interaction between students and administration.

The school's design evolved with the learning communities and other core curriculums grouped in a two-story solution encompassing the north half of the building, and the media center in the central hub location. All three learning communities are on an east-west axis to allow north and south classroom exposures to optimize daylighting.

The school is also a high performance building -- meeting and exceeding the school district's sustainable guidelines -- and a model energy performer. The design of building and site is a clear statement of the district's commitment to environmentally responsible design.

The integrated design process required the exploration of numerous sustainable approaches in the design of the school. Controlled daylighting was carefully introduced throughout major learning areas so that the use of electric lights is largely unnecessary. With lights off or dimmed low, unwanted heat gain is significantly reduced, thus downsizing the mechanical cooling and equipment load. Numerous heating and cooling strategies were modeled in the design process. Ice storage for cooling (making ice at night during off-peak hours for cooling during the day) provided the most cost-effective cooling. Several heat recovery systems were also incorporated.

"The architects integrated the sustainable design approach throughout all aspects of the design, from site plan to daylighting to detailing of the building envelope. A great achievement to get LEED silver."

- Juror Comment

BOHO LIVE+WORK

CATEGORY Small Commercial
OWNER/DEVELOPER Confidence LLC
ARCHITECT HOBBS: A Design Co.
STRUCTURAL ENGINEER Pendergrast and Associates
ELECTRICAL ENGINEER Ackerman Engineering
MECHANICAL ENGINEER Lepore Engineering
GENERAL CONTRACTOR Chaparral Construction
PHOTO Kimble Hobbs, Nancy Miller-Hobbs

In a revolutionary concept, loft-like housing with authentic materials applied with care is offered at an affordable price. Located in Longmont's Prospect New Town, each unit responds to its unique location, balancing natural light and mountain views. Sleek interiors are lined with wood detailing and floors open out to private decks featuring translucent railings.

Design decisions for the project are driven by the use of everyday builder supply items and off-the-shelf hardware. Acceptance of the design limitations of the "usual" with careful design allows for cost restraint. The result is warm, modern and democratically crafted for the individual pursuit of happiness.

"Really exciting, fresh take on an urban mixed-use new loft."

- Juror Comment

PEARL STREET OFFICE

CATEGORY Interiors
OWNER/DEVELOPER Boulder Associates Inc.
ARCHITECT Boulder Associates Inc.
ELECTRICAL ENGINEER The Boulder Engineering Co.
MECHANICAL ENGINEER The Boulder Engineering Co.
GENERAL CONTRACTOR Faurot Construction
PHOTOS Ed LaCasse

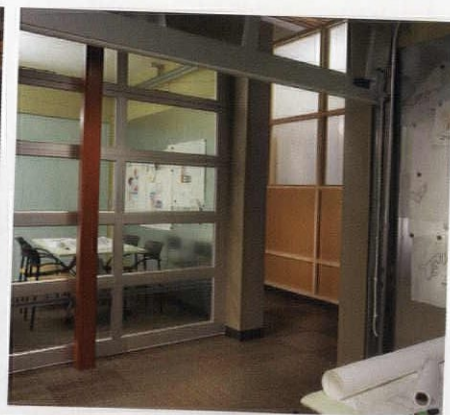
When Boulder Associates moved its offices to the Pearl Street Mall in downtown Boulder, the primary goal was to create a healthy work environment exemplifying the principles of sustainable design that the firm strives to implement in all of its projects.

The office is located in three interconnected buildings that include the former location of the dance hall/nightclub known over the years as Citizen's Hall and The Good Earth, where icons like Glenn Miller and Billy Joel played.

Because of the building's historic landmark status, there was nearly 100 years' worth of legacy materials and design issues to consider during the renovation process. The result is a unique combination of old and new—an office that blends functional efficiency with a high degree of visual interest.

"This entire project demonstrated a careful balance between exuberance and quiet professionalism - a good statement for an architectural firm."

- Juror Comment





SKYLINE CENTER FOR HEALTH

CATEGORY Large Commercial
OWNER/DEVELOPER Loveland Medical Enterprises/Everitt Companies
ARCHITECT Vaught Frye Architects
STRUCTURAL ENGINEER JVA Consulting Engineers
ELECTRICAL ENGINEER RJ McNutt
MECHANICAL ENGINEER AE Associates
GENERAL CONTRACTOR Drahotka Inc.
PHOTO Ed LaCasse

The 80,000-sq ft Skyline Center for Health includes an ambulatory surgery center, endoscopy center, medical imaging center, magnetic resonance imaging center, urgent care, a pediatric clinic, dental clinic and physician offices.

The new identity created for the newly formed medical group expresses the artful yet high-tech care provided within. The architecture is designed to relate specifically to the greater natural context of Colorado's front range through materials, colors and site placement. The building's geometry and juxtaposition of materials serves to create a contrast, which enhances the reading of each element against the other.

"A complex program has been subdued and gracefully housed in a dramatic and striking building."

- Juror Comment



Photo-Rendering

Existing



ARCHITECTURAL RENDERINGS
VISUAL

- 3D Perspectives
- Animations
- Photo-Renderings

Design by Humphries Poli Architects, P.C.

www.visualrenderings.com

7525 South Jasmine Court, Centennial, Colorado 80112
 T. 303-378-4130 E. info@visualrenderings.com



BLAIR-CALDWELL AFRICAN AMERICAN RESEARCH LIBRARY

CATEGORY Large Commercial
OWNER/DEVELOPER The Denver Public Library
ARCHITECT OZ Architecture
STRUCTURAL ENGINEER S.A. Miro Inc.
ELECTRICAL ENGINEER Roos Szymskie Inc.
MECHANICAL ENGINEER Gordon, Gumeson and Associates Inc.
GENERAL CONTRACTOR Turner/J. A. Walker JV
PHOTO Ron Pollard Photography

The newest and largest branch in the Denver Public Library system is located in Denver's Five Points/Welton Street Historic District and serves as a library, research facility, community meeting center and museum related to African Americans in the Mountain West. Inspired by Brunelleschi's magnificent Pazzi Chapel in Florence, the basic concept is a brick envelope with a large, centered brick arch on each major façade flanked by balanced punched openings.



NUZUM BUILDING

CATEGORY Small Commercial
OWNER/DEVELOPER Dwayne Nuzum
ARCHITECT Dwayne Nuzum and Hobbs: A Design Co.
STRUCTURAL ENGINEER Pendergrast and Associates
ELECTRICAL ENGINEER design-build
MECHANICAL ENGINEER design-build
GENERAL CONTRACTOR Ron Patryas
PHOTO Nancy Miller-Hobbs and Kimble Hobbs

The Nuzum Building is a modern take on the western storefront. The barn/shed has a wrapper of multi-colored brick evoking the owner/artist's iconographic paintings of storefront buildings. The owner's art gallery is to occupy the first floor with a rental apartment above. Typical commercial window displays for these types of buildings have been reinterpreted at the corner with a projecting glass display bay for art works.



PATRYAS BUILDING

CATEGORY Small Commercial
OWNER/DEVELOPER Ron and Denise Patryas
ARCHITECT: HOBBS A Design Co.
STRUCTURAL ENGINEER Pendergrast and Associates
ELECTRICAL ENGINEER design-build
MECHANICAL ENGINEER design-build
GENERAL CONTRACTOR Ron Patryas
PHOTO Nancy Miller-Hobbs and Kimble Hobbs

This mixed-used building - a veritable study of contrasts - offers space for a corner grocery store, together with access to an enclosed garden. The design carefully shapes the two upper level residential units to take advantage of the mountain vistas and light. Board-on-batten siding contrasts with the brick skin of the upper levels, as does the open storefront with a covered colonnade for shoppers. The studio office above the garage is a strong sculptural element that dramatically defines one of the upper-level decks.



AIA Colorado South

A Chapter of The American Institute of Architects

DESIGN AWARDS

CITATION

- > Irving Elementary School, H+L Architecture
- > *The Colorado Springs Independent*, Michael H. Collins Architects and Jean Sebben Associates LLC
- > The Learning Commons at Tutt Library, LKA Partners Inc.

RECOGNITION

- > Cheyenne Mountain Residence, Clifford Taylor Architects PC

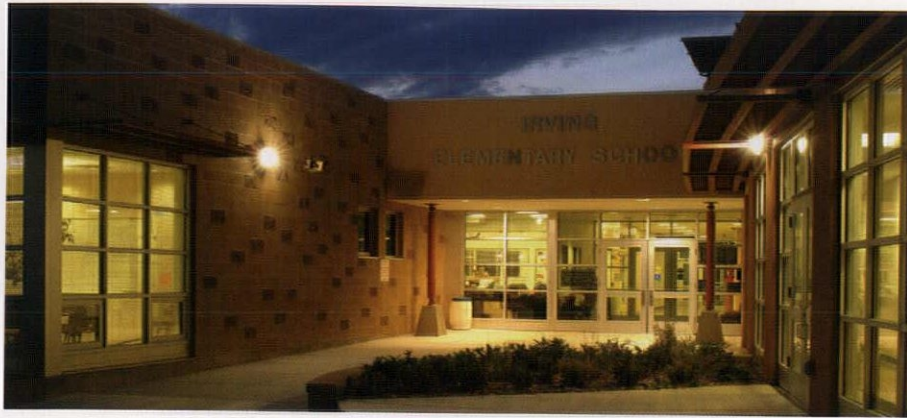
AIA SOUTH DESIGN AWARDS JURY

JURY CHAIR Jim Childress, FAIA
Centerbrook Architects

Jim Childress' work includes numerous projects at Cold Spring Harbor Laboratory in New York. Additionally, he has been the architect for the Heckscher Museum of Art in Huntington, N.Y.; the expansion of the Trudeau Institute, a national center for immunology research in Saranac Lake, N.Y.; the Library for the University of Colorado Health Sciences Center in Denver; the National Outdoor Leadership School Headquarters in Lander, Wyo.; the School of Law at the University of Colorado in Boulder; and the Fairfield Historical Society Museum in Connecticut. He has also designed more than 25 single-family houses. In 1994 he was selected by *Interior* magazine as one of the decade's "40 National Architects under 40."

JUROR

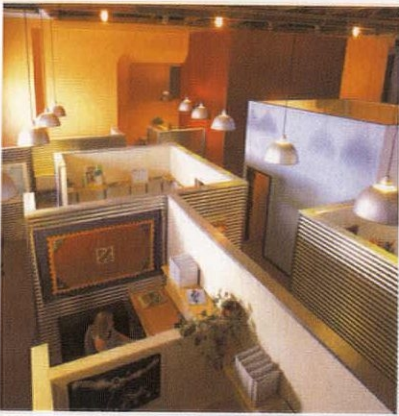
Ralph Jackson, FAIA, Shepley Bulfinch Abbot, Boston



IRVING ELEMENTARY SCHOOL

CATEGORY Large Built Architecture
OWNER/DEVELOPER Pueblo School District 60
ARCHITECT H+L Architecture
STRUCTURAL ENGINEER Structural Consultants Inc.
ELECTRICAL ENGINEER Gordon Gumeson & Associates
MECHANICAL ENGINEER Gordon Gumeson & Associates
GENERAL CONTRACTOR Bassett Construction
PHOTO Jeff Scroggins

Irving Elementary School is a new three-track elementary school for grades K-5. The facility replaced the old Irving Elementary School located on a six-acre site adjacent to a public park. The park was upgraded as a joint use facility for play activities. The new facility incorporates a geo-exchange heating and cooling system and will save the school district substantial operating costs while providing maximum comfort for the occupants.



THE COLORADO SPRINGS INDEPENDENT

CATEGORY Interior Architecture
OWNER/DEVELOPER John Weiss
ARCHITECTS Michael H. Collins Architects and
 Jean Sebben Associates LLC
STRUCTURAL ENGINEER G.M. Nagel
ELECTRICAL ENGINEER Jordan Electric
MECHANICAL ENGINEER Sol Chavez & Associates
GENERAL CONTRACTOR Murphy Constructors of Colorado Springs
PHOTO Paul J. Brokering

Built in 1912 as the United Brethren Church and converted to The Smokebrush Theatre in the 1990s, the home of *The Colorado Springs Independent* featured a voluminous sanctuary with choir loft, exposed ceiling structure and altar, stepped seating, catwalks, theatre lighting, proscenium and stage.

Theatre seating was removed, open space office stations were constructed on the original sanctuary floor and materials were selected for visual, sound bounce and acoustical qualities in the former sanctuary.

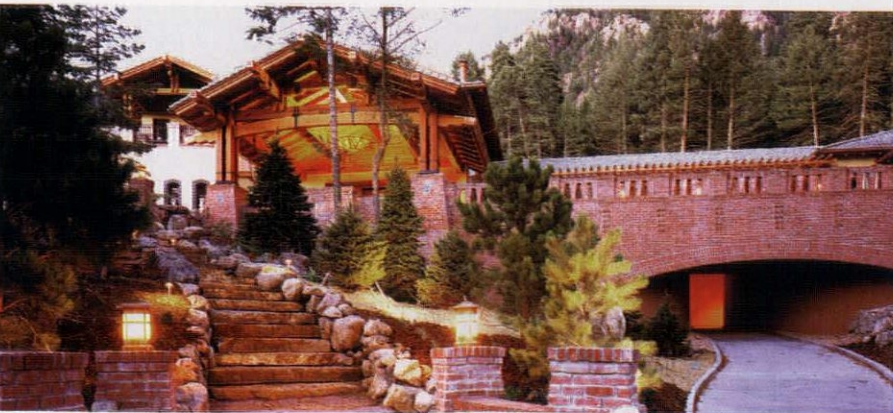


THE LEARNING COMMONS AT TUTT LIBRARY

CATEGORY Interior Architecture
OWNER/DEVELOPER Colorado College
ARCHITECT LKA Partners Inc.
STRUCTURAL ENGINEER MGA Inc.
ELECTRICAL ENGINEER Farris Engineering
MECHANICAL ENGINEER Schendt Engineering
GENERAL CONTRACTOR GE Johnson Construction Co.
PHOTO Fred Fuhrmeister

The Learning Commons is an integrated space that provides support for critical thinking and collaborative learning across the curriculum on the Colorado College campus.

New common spaces and amenities include a variety of flexible and comfortable student learning spaces, such as a multi-use classroom, a central map room, a "living room" commons and a multi-media preparation lab. The formerly lifeless library stack area was redefined using casework, shapes and color.



RECOGNITION > CHEYENNE MOUNTAIN RESIDENCE

CATEGORY Built Architecture - Residential
OWNER/DEVELOPER Confidential
ARCHITECT Clifford Taylor Architects PC
STRUCTURAL ENGINEER HCDA Engineering Inc.
ELECTRICAL ENGINEER MCM Engineering
MECHANICAL ENGINEER Sol Chavez & Associates
GENERAL CONTRACTOR Weitz Norris
PHOTO David Harris

Located above the Broadmoor Hotel in Colorado Springs, this residence is drawn along contours on a steeply sloped site on Cheyenne Mountain. In its longitudinal section, the home bridges a deep ravine, the vestiges of which form an open car court under the home with flanking underground garages. The home is a blend of the owner's desires, combining a masculine, mountain lodge in the Arts and Crafts style with a romantic Mediterranean style reminiscent of early homes in the Broadmoor community.



Colorado West

A Chapter of The American Institute of Architects

DESIGN AWARDS

HONOR

> Snowmass Golf Clubhouse, CCY Architects

MERIT

> Burlingame Sustainable Community, Charles Cunniffe Architects

> Jussila Residence, Studio B Architects

> Next Gen Homes, Novy Architects

> Waterstone Residence, RKD Architects Inc.

AIA WEST DESIGN AWARDS JURY

JURY CHAIR John Carney, AIA
Carney Architecture PC

John Carney's varied career highlights include the design of one of Denver's tallest towers, a number of historic renovations and loft projects in Denver's Lower Downtown, a large hotel for Disney Development and renovation of the historic Denver Dry Goods Building. Carney is active in the Jackson Hole, Wyo. community where, as a county commissioner, he actively promoted sound planning and sustainable values, culminating in a resolution on global warming.

JUROR

Richard Fernau, FAIA, Fernau & Hartman Architects PC

Jane Roth, Susan Maxman & Partners

Susan Maxman, FAIA, Susan Maxman & Partners

Stephen Dynia, AIA, Stephen Dynia Architects PC

SNOWMASS GOLF CLUBHOUSE



CATEGORY Sustainable Design
OWNER/DEVELOPER Aspen Skiing Co.
ARCHITECT CCY Architects
STRUCTURAL ENGINEER Monroe & Newell Engineers
ELECTRICAL ENGINEER MKK Consulting Engineers
MECHANICAL ENGINEER MKK Consulting Engineers
GENERAL CONTRACTOR RA Nelson & Associates
PHOTO Pat Sudmeier

The Snowmass Golf Clubhouse was designed to create a community facility reflective of its original ranch heritage and be a good example of energy efficiency. The building is reminiscent of early barn structures in the valley.

This project is Leadership in Energy and Environmental Design (LEED) certified at the silver level. To date, there are only seven LEED-certified buildings in Colorado, and only four certified at a level of silver or higher. There are only 167 LEED-certified buildings in the United States.

The clubhouse is oriented along an east-west axis with occupied space that includes the bar, dining area, golf pro shop and an office located on the south side for solar gain, natural light and mountain views. Back-of-house spaces located on the north side include the kitchen, restrooms and locker rooms.

Fifty percent of the lumber used was certified as sustainably harvested; the toilets are low-water use, dual flush and exceed code requirements by 30 percent; showerheads are low flow; and the small amount of carpet used was made from recycled materials and is itself recyclable.

The R-55 roof and walls are insulated above code requirements. Sustainable, harvested eucalyptus wood and non-formaldehyde materials were installed throughout the building, which is estimated to be 60 percent more energy efficient than conventional structures.

Local materials were also used wherever possible. Indoor air quality is protected through the use of low-VOC paints, sealants and glues. All wood, metal, glass, paper and cardboard construction waste was recycled or ground up and used as mulch on site. The golf course uses native grasses to reduce water demands, and the local creek was rehabilitated.

“Green right from the start, through planning ... all the way through execution.”

- Juror Comment

“Visually conservative, which formally relates to indigenous architecture, but fresh and modern.”

- Juror Comment

BURLINGAME SUSTAINABLE COMMUNITY

CATEGORY Sustainable Design
OWNER/DEVELOPER City of Aspen
ARCHITECT Charles Cunniffe Architects
STRUCTURAL ENGINEER Loris and Associates
ELECTRICAL ENGINEER Beaudin Gauze Consulting Engineers Inc.
MECHANICAL ENGINEER Beaudin Gauze Consulting Engineers Inc.
GENERAL CONTRACTOR Fenton Construction

The master plan for the Burlingame Sustainable Community is a synergistic, sustainable integration of affordable housing, recreation, open space and transit opportunities. An unusually large percentage of the housing is directly adjacent to village greens and natural open spaces.

The goals of the plan include creating a village, optimizing open space relationships, creating connectivity, celebrating the setting, constructing sustainable homes and providing affordable well-built homes.

"The complexity and scope of the project is notable... a major undertaking."

- Juror Comment



JUSSILA RESIDENCE

CATEGORY Unbuilt Architecture
OWNER/DEVELOPER Kevin and Paula Jussila
ARCHITECT Studio B Architects
STRUCTURAL ENGINEER Taylor and Syfan Engineers
MECHANICAL ENGINEER San Luis Mechanical
GENERAL CONTRACTOR US Builders

The 80-acre site lies equidistant between Los Angeles and San Francisco near Paso Robles in the emerging wine region of central California. The program consists of a main house, guest-house, winemaking facility, tasting cave and a cooking school. The project is expected to require three to four years of planning and construction.

The 4,500-sq-ft main residence is divided into five elements — a garage, public functions, guest area, private/bedroom wing, and the sauna and gardens. This scheme for the compound offers light and shadow, direct access to exterior features, individual component views and privacy from each of the other components.

"Rural modernism handled well."

- Juror Comment



NEXT GEN HOMES

CATEGORY Affordable Housing
OWNER/DEVELOPER Blue Creek Ranch & Fenton Development LLC
ARCHITECT Novy Architects
STRUCTURAL ENGINEER Maggart & Associates and Building Science Corporation
MECHANICAL ENGINEER Mark Sevier
GENERAL CONTRACTOR Fenton Construction
PHOTO Steven A. Novy

The Next Gen Homes at Blue Creek Ranch are two prototype homes that will be replicated and refined within the Mountain West. Next Gen is a public domain project so all of the designs, data and lessons learned will be available to the general public and shared with affordable housing developers throughout the region. For the next few years, the homes will act as a laboratory of how the materials and systems work best together. This information can be used to design any kind of new home, high end or affordable.

The designs meet a regional need for simple-to-construct, energy-efficient, aesthetically pleasing, marketable, durable, low-maintenance, comfortable and healthy homes that are inexpensive to operate. They are comfortable for an average family and have ample storage and great curb appeal.

"Defines an important direction we should all be taking."

- Juror Comment

WATERSTONE RESIDENCE

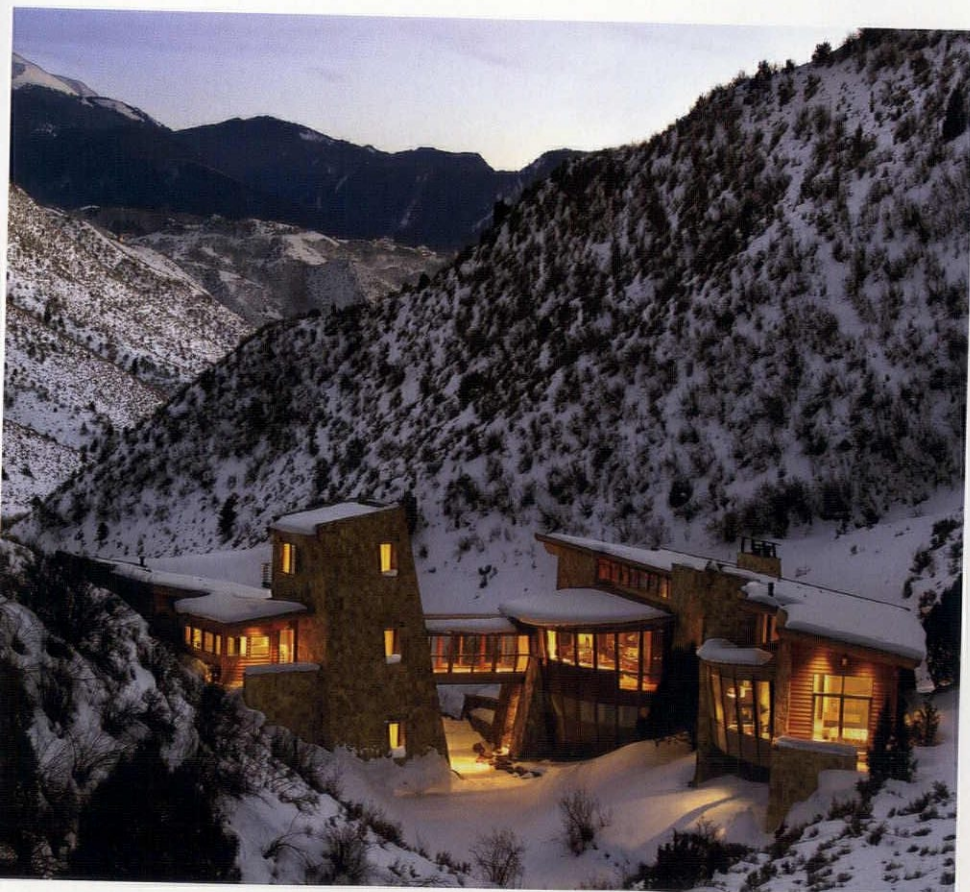
CATEGORY Residential Architecture
OWNER/DEVELOPER Confidential
ARCHITECT RKD Architects Inc
STRUCTURAL ENGINEER Monroe & Newell Engineers Inc
GENERAL CONTRACTOR RKD Inc
PHOTO Ron Ruscio

The primary objective in the Waterstone design was to connect its owners to the environment and to the architecture. The design grew from the site. Three living pods nestle into the side of a canyon, with interconnecting glass bridges that span the streams and ponds below.

A palette of stone, glass, patinaed copper and weathered steel respond sculpturally to the dramatic site while withstanding the extreme conditions of a high desert environment. Contemporary slopes and curves are combined with more traditional materials to give the home warmth. More daring, battered, curved and overhanging architectural forms evoke the geology of the site. The extensive use of stone enhances the natural setting and grounds the home to its site with permanence.

"Both rich and simple. Very strong on a sculptural level."

- Juror Comment





100 Years of Building Success

Ellie Caulkins Opera House Semple Brown Design, P.C.



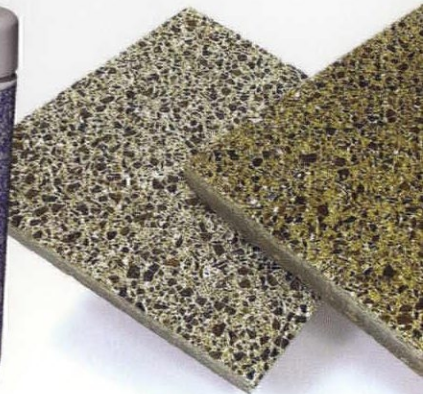
PCL Construction Services, Inc.

Watch us build at www.pcl.com



CONSTRUCTION LEADERS

Wausau Tile & Recreation Plus, LTD. Present Precast Concrete with Recycled Glass



Whether concrete pavers or terrazzo tile, Site amenities or custom precast, your projects can now be designed with "Green Status", both inside and outside with the vast array of recycled glass products manufactured by Wausau Tile.

- Environmentally friendly using 100% recycled glass.
- Long lasting durability.
- Flexibility of design and function.
- A variety of standard & custom colors.
- Manufactured in the USA.
- Service provided by an experienced staff of professionals.

WAUSAU TILE

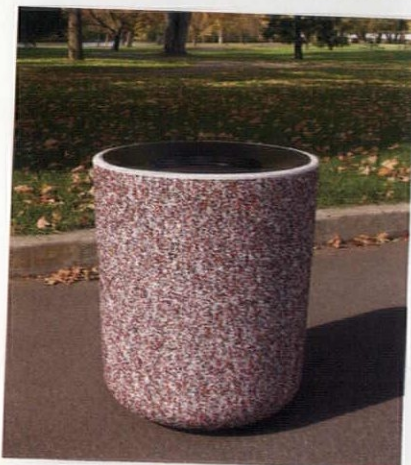
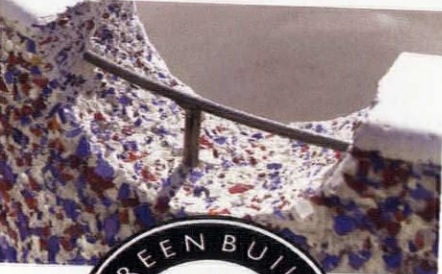
P.O. Box 1520 - Wausau, WI - 54402-1520
(800)-388-8728 - Fax (715)-359-7456
www.wausautile.com

Recreation Plus, Ltd.



(303)-278-1455 / (888)-278-1455
Fax (303)-278-1606
www.recreationplus.com
letsplay@recreationplus.com

Passport AIA/CEU Certified



Every Aspect of Life Brings Risk



BUSINESS INSURANCE PERSONAL INSURANCE EMPLOYEE BENEFITS RISK SERVICES

Consider Us Your Safe Place

Van Gilder understands risk
is part of your business

It is our job to define risk
and create solutions
that keep you on your
path to success

Consider us your
resource for success

 **VAN GILDER**
INSURANCE CORPORATION
...An Assurex Global Partner
Protecting Your Future Since 1905

303-837-8500 • Toll Free 800-873-8500

700 Broadway, 10th Floor • Denver, Colorado 80203-3400

www.vgic.com

Direction

Making sure you get the proper financial advice starts with taking an in-depth look at where you are today and where you want to be tomorrow. Helping you reach your financial goals means guiding you in the right direction...with no short cuts. So we don't risk getting you lost along the way.

Chris Hassett, ChFC
Financial Adviser

Eagle Strategies Corp., A Registered Investment Adviser
6850 West 52nd Avenue, Suite 200
Arvada, Colorado 80002
303.403.5680

**Eagle
Strategies
Corp.**

A REGISTERED INVESTMENT ADVISER

Carl Walker
Parking
Planning Engineering Restoration

DIFFERENT BY DESIGN



Clayton Lane Parking Facility
Cherry Creek North District, Denver, CO

Atlanta
Charlotte
Chicago
Dallas
Denver
Indianapolis
Kalamazoo
Philadelphia
Phoenix
Tampa

- ◆ Parking Structure Planning & Design
- ◆ Studies & Operations Consulting
- ◆ Restoration & Renovation Engineering

Contact: Paul Mack
Business Development Director
(303) 894-8800

WWW.CARLWALKER.COM

GROWING OLD ISN'T EASY...

BUT AFTER 220 YEARS RIDER HUNT
STILL KNOWS HOW TO MAINTAIN THE
PERFECT FIGURE.

CONSTRUCTION COST ESTIMATING
BUDGET CONTROL
CHANGE ORDER ANALYSIS
OWNER REPRESENTATION

EST. 1785



Rider Hunt Levett & Bailey

Construction Consultants and Quantity Surveyors

DENVER, CO | 720.904.1480
www.riderhunt.com

PRECAST REACHES NEW HEIGHT



Front Range Air Traffic Control Tower (ATCT)

- *With a finished height over 200' the Front Range ATCT in Watkins, CO is the tallest General Aviation Tower on the North American Continent.*
- *The all precast structure is made up of 175 total pieces and contained over 900 cubic yards of concrete. There are 100 exterior pieces each containing 30 NMB splice sleeve connections. This equated to 150 connections per lift needing to line up.*
- *3D modeling and precision formwork were keys to the success in eliminating reinforcing interferences for production and obtaining product fit in the field.*

*Designer/Construction
Manager: URS Corporation
General Contractor:
Hensel Phelps Construction*



Rocky Mountain Prestress
PCI Certified

5801 Pecos Denver, Colorado 80221
303/480-1111 FAX 303/433-0451
www.rmpprestress.com
sales@rmpprestress.com



COMMERCIAL
DIVISION

PELLA COMMERCIAL DIVISION WOULD LIKE TO OFFER
ARCHITECTS SOME FOOD FOR THOUGHT. AND LUNCH.



Pella Windows and Doors, Inc.

14175 E. 42nd Ave. • Denver, CO 80239

303-371-3750

fax: 303-371-4268

www.pella.com

Pella Commercial is making it easier than ever for architects to receive the continuing education they need to maintain their AIA membership, CSI certification and/or architectural license. As an AIA/CES Registered Provider Charter Member since 1995, Pella Commercial is committed to developing quality learning activities in accordance with AIA/CES and Health/Safety/Welfare (HSW) criteria.

Programs will be presented by Pella Commercial representatives and cover a broad range of fenestration topics. Pella's programs are typically one hour in length, so architects receive one Learning Unit (LU) and one hour of HSW.

Pella Commercial helps make getting the training you need as easy as possible – you can even do it over lunch. Contact us today to set up your educational box-lunch program. And feed more than just your mind.



> THE BUSINESS OF ARCHITECTURE

SPREADING THE WORD

THE DENVER ARCHITECTURAL FOUNDATION WANTS PEOPLE TO KNOW AND APPRECIATE GOOD DESIGN

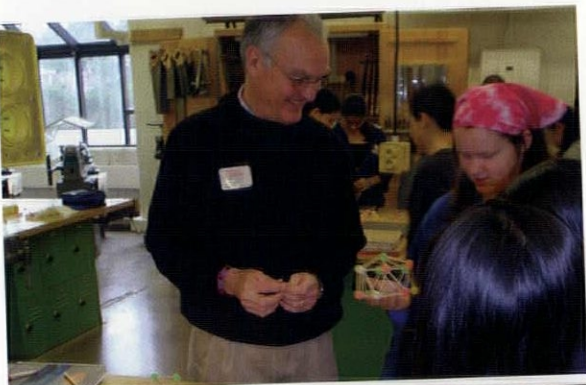
The focus of the Denver Architectural Foundation can be summarized in three words: architecture for everyone.

Since it was founded in 1990, the organization's members have worked to help the public understand the impact of architecture on the quality of life in their communities.

"The foundation sparks interest and encourages community involvement," said DAF Executive Director Heidi Hild.

"In contrast to other organizations, the DAF is not a specialty organization such as Historic Denver or the AIA," said Frank Traylor, DAF board president. "It emphasizes quality in both old and new structures and attempts to educate and inform the public, especially school children."

Ted Halsey, AIA, board vice president, added: "We're unique in that we choose to be a voice in the public realm and try to bring all that's good about the architecture profession and the construction industry to the people."



SPEAKERS & PROGRAMS

The foundation has spread awareness of and appreciation for architecture through several popular programs geared toward the public. They include hard hat tours of significant construction projects led by the architects who designed them and lectures and presentations by well-known industry figures.

Past speakers for DAF programs have included Ed Feiner, FAIA, chief architect for the General Services Administration; Blair Kamin, architectural critic for the



Pick an Ace...
WIN with SEH!

229 licensed engineers
31 architects and landscape architects
34 environmental scientists
18 planners and community development specialists
750 professionals dedicated to **superior service**

**For all your professional consulting needs
contact SEH today!**

800.325.2055 | www.sehinc.com

[ARCHITECTS | ENGINEERS | PLANNERS | SCIENTISTS]



WHO'S WHO AT THE DENVER ARCHITECTURAL FOUNDATION

STAFF

Heidi Hild, executive director
Tim Thomas, CAL program manager

BOARD OF DIRECTORS

Frank Traylor, president
Ted Halsey, AIA, vice president
Donald Bain, Esq., secretary
William Tracy, AIA, treasurer
Jack Crawford
Curt Fentress, AIA
Mark Gelernter, Associate AIA
L. Tyrone Holt, Esq.
Dennis Humphries, AIA
Wendy Kohn
Diana Murphy
Thomas Noel
James Paull, AIA
John Ratner
Sonia Riggs
John Rogers, FAIA
J. Mark Taylor

Chicago Tribune; *New Urbanist* and author Peter Calthorpe, AIA; and *The New Yorker's* Pulitzer Prize-winning architectural critic Paul Goldberger.

In 2004, the foundation co-sponsored, along with the University of Colorado at Denver College of Architecture and Planning, a presentation by rising international architecture star David Adjaye, who designed the new 25,000-sq-ft Museum of Contemporary Art/Denver, set to open in 2006 at 15th and Delgany – the Ghanaian-British architect's first building in the United States and his first museum worldwide.

Currently, DAF and AIA Denver are co-sponsoring "Talking Architecture/Justice Center Unveiled," a series of discussions that will take place over three evenings with the nine firms in the running to design the two main components of the Denver Justice Center, a \$378 million project approved by voters last May.

"Architectural foundations, through their educational efforts, elevate the public's understanding of and appreciation for good design," said DAF board member Bill Tracy, AIA. "In the long run, this leads the public to demand better design and elevates the quality of our built environment."

THE CAL PROJECT

The program that sets DAF apart from other industry groups is the Cleworth Architectural Legacy Project, an architecture-in-education program now entering its sixth year. More than 700 school children participated last spring.

Initiated in 2000 by teacher Tim Thomas — and named for the late Charles "Cal" Cleworth, a prominent former DAF board member — the CAL Project, as it's best known, pairs architects from some of the city's top firms with classes at about two dozen Denver Public Schools campuses and one private school. The curriculum is practical, hands on and creative, but also challenging, with each class developing its own architectural project.

Why architecture? Because the application of the design process encompasses many dimensions of learning, including problem solving, creativity, research skills and direct experience.

"It is the perfect medium for understanding math, history, civics and engineering," Halsey said.


Thomas said the interaction between the students and design professionals is the key to the program's success.

"There's that direct involvement with schoolchildren that's so rare, and ongoing," he said. "I love the generosity and magnanimity from the design professionals. Because of the age differences between them, the students they're working with aren't likely to be their clients. So they're doing this because they have a passion and love [that] they want to share."

While the CAL Project helps kids "rethink their vision of who they are and what they can accomplish," Thomas said, its goal isn't to convince them to become architects when they grow up.

"This is not an effort to create a junior cadre of architects," he said. "It's simply to help students become more aware of the world around them." ♦

OPPOSITE TOP Chuck Keyes of Martin-Martin chats with Henry Middle School students as they construct domes made from gumdrops and toothpicks.
OPPOSITE CENTER Gensler's Carla Pokrywka with Barnum Elementary students working on drinking straw construction.
OPPOSITE BOTTOM Cynthia Kemper (center) and other DAF guests during a hard hat tour last May of the Hyatt Regency Denver at Colorado Convention Center.



HADJI AND ASSOCIATES
CONSULTING ENGINEERS

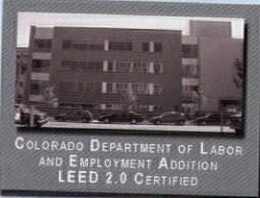
1825 LAWRENCE STREET, SUITE 200, DENVER, CO 80202
PHONE 303 293-3800 FACSIMILE 303 293-3884
HADJI@HADJIENGR.COM WWW.HADJIENGR.COM

Services


- ♦ DESIGN
- ♦ CONSULTING
- ♦ OWNER REPRESENTATION
- ♦ CONSTRUCTION ADMINISTRATION

Expertise

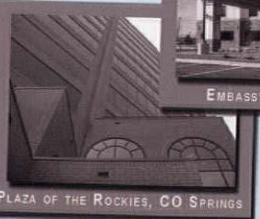
- ♦ HVAC
- ♦ LIGHTING
- ♦ PLUMBING
- ♦ POWER SYSTEMS
- ♦ FIRE PROTECTION
- ♦ SPECIAL SYSTEMS
- ♦ FIRE ALARM
- ♦ LIFE SAFETY



COLORADO DEPARTMENT OF LABOR AND EMPLOYMENT ADDITION
LEED 2.0 CERTIFIED



EMBASSY SUITES AT DIA





PLAZA OF THE ROCKIES, CO SPRINGS

ACEC
MEMBER

Consulting Mechanical & Electrical Engineers
Since 1966

Certified Small Business Enterprise (SBE)
by the Division of Small Business Opportunity
of Denver, CO

> ON THE BOARDS

FIRE STATION NO. 26

OZ ARCHITECTURE

LOCATION Stapleton
OWNER City of Denver
SIZE 15,000 sq. ft.
COST \$4.2 million
START Sept. 2005
COMPLETION Spring 2006



The city's first new fire station to be built in 20 years is located in the Stapleton neighborhood at the corner of Trenton Street and Martin Luther King, Jr. Boulevard. With its traditional red brick architecture, arches and a 75-ft. tower, the firehouse was designed to create a civic presence and a neighborhood landmark.

The building incorporates state-of-the-art, energy-saving technology and the two-acre site is encircled by a running track, a first for a Denver firehouse.

The new station will house 32 firefighters working in three shifts. Its presence will ensure a four-minute response time within the Stapleton neighborhood, which has grown enough to need the new station. Unusual for an urban setting, the station's pull-through design also enhances pedestrian safety while decreasing response time.

The 75-ft tower, about twice the height of a traditional firehouse tower, will be used for rappelling exercises and other firefighter training. <>

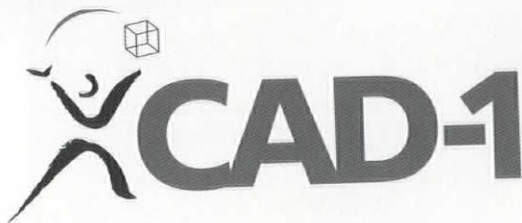
ON THE BOARDS SUBMISSIONS

For projects that are unbuilt and/or under construction, please submit the following, preferably on a CD:

- > Project description (limit: 250 words)
- > 1 rendering or elevation (JPG 5 x 7 in size; 300 dpi resolution)
- > Photo or rendering credit (individual and/or firm name)
- > Project Location
- > Owner
- > Project Scope (size, in sq ft)
- > Project Cost (if not confidential)
- > Start Date (design & construction)
- > Anticipated Completion Date

SEND SUBMISSIONS TO
Editorial Department, *Architect*
Colorado, 2661 Valentia Street,
Denver, CO 80238

WE CREATE CAD SOLUTIONS



autodesk
premier training center

12130 N. Pennsylvania
Denver, CO 80241

discreet*

Architectural ■ Civil ■ Multimedia ■ 3D

■ AutoCAD software sales, support and service

■ AutoCAD consulting and customization

■ Autodesk Premier Training Center

■ Authorized 3D Studio MAX & VIZ Reseller

303-427-2231 ■ www.cad-1.com for schedule

ASPEN MIDDLE SCHOOL

HUTTON FORD ARCHITECTS PC AND
STUDIO B ARCHITECTS

LOCATION Aspen
OWNER Aspen School District
SIZE 103,000 sq ft
COST \$22 million
START Design - Summer 2005; Construction - Spring 2006
COMPLETION Summer 2007

On November 1, 2005, Aspen voters approved a \$33 million bond issue for major improvements at the Aspen District's main K-12 campus adjacent to Maroon Creek Road. Hutton Ford Architects, in association with Studio B Architects of Aspen, has been working on facility programming, existing facility analysis, conceptual design and a public relations campaign since early 2005 — guided by an asset committee composed of administrators, teachers, parents and community members.

The project consists of a classroom expansion to the existing elementary school, improvements to the school district theater, a replacement middle school with playground and site alterations to improve pedestrian and traffic flow. The additions, improvements and new building alterations will reflect the community's core values of academic excellence, appreciation for the arts, outdoor education and environmentalism.

Key sustainable strategies for the new middle school are daylighting, high-efficiency electric lighting, multistory form and high-performance glazing. Other sustainable features of note include reflective roofing, waterless urinals, low-maintenance concrete floors and linoleum.



The design team is working with the Community Office of Resource Efficiency, Rebuild Colorado and the Holy Cross Utility Co. to explore creative funding for the project and may utilize the LEED system to assess sustainability.

Exterior materials for the building will be brick to blend with other campus structures, plus concrete block and zinc siding. Interior materials will be durable and inviting and will promote good indoor air quality.



KEN'S...YOUR FULL SERVICE REPROGRAPHIC SHOP SERVING METRO DENVER FOR 42 YEARS...

*Providing ALL your reprographic needs,
and a proud Host of Océ Plan Center, Member CNS Plan Room,
Member US Reprographic Network...printing your plans from coast to coast.*



KEN'S REPRODUCTIONS, LLLP

Ken's Océ Plan Center is your solution for:

- Publishing • Viewing • Ordering • Archiving
- 24/7 Security and Accessibility
- Call Ken's for your 30 day FREE Trial.



KEN'S DOWNTOWN
2220 Curtis Street • Denver, CO 80205
303.297.9191 Fax 303.297.8885

KEN'S SOUTH
7304 S. Alton Way • Unit 3-H • Centennial, CO 80112
720.493.9904 Fax 720.493.9917

Visit us on the web: www.kensrepro.com

> LOOKING AHEAD

AIA COLORADO GOVERNMENT AFFAIRS COMMITTEE AT WORK

The AIA Colorado Government Affairs Committee has been intently focused on successfully navigating the Sunset Review process for the architect-licensing statute. Legislation for the bill is likely to be introduced in the House Business Affairs and Labor Committee near the end of January, and the entire process of hearings and consideration in both House and Senate could be completed in the first quarter of the year.

The GAC will be monitoring other legislative proposals as they arise and making recommendations to the AIA Colorado Board of Directors when it is important to take a position.

Other 2006 GAC activities include taking an active role with the AIA National State Government Network, helping with February's Legislative Day on the Hill, communicating to AIA members the significance of community and government involvement and continuing to build on the relationships with legislators and allied organizations that members have worked so hard on this year. 2006 is also an election year.

AIA COLORADO LEGISLATIVE DAY

Join AIA Colorado for Legislative Day on the Hill in February. This annual Day at the Capitol allows members to meet Senate and House leadership and learn about key legislative issues affecting the design and construction industry. More details will follow when they are available.

NATIONAL GRASSROOTS LEADERSHIP AND LEGISLATIVE CONFERENCE

The AIA National Grassroots Leadership and Legislative Conference in Washington, D.C. will take place February 8 - 12. This conference offers the opportunity for advocacy through meetings with senators, leadership skills development, networking, continuing education and knowledge sharing among members and groups within the AIA family.

ARCHITECTURE WEEK

AIA Colorado Architecture Week is April 21 - 28. In addition to hosting a series of lectures and programs, AIA's Architecture Week activities will include the AIA Colorado Young Architects' Awards Gala, the AIA Denver Urban Design Committee Box City Exhibit, AIA Denver's Outside the Box Exhibit and the City and County of Denver's second annual Doors Open Denver.

2006 DESIGN CONFERENCE

Mark your calendars for the 2006 AIA Colorado Design Conference and Communications Symposium November 2-4 at The Vail Cascade Resort and Spa.

For more information about upcoming events and a complete list of all AIA activities, visit the calendar link at www.aiacolorado.org.

AIA COLORADO 2006 BOARD OF DIRECTORS

PRESIDENT

Cheri Gerou, AIA, Gerou & Associates

PRESIDENT-ELECT

Kin DuBois, AIA, Klipp

PAST PRESIDENT

John Yonushewski, AIA, Buchanan Yonushewski Group

TREASURER

Christopher Stumm, AIA, OZ Architecture

TREASURER-ELECT

Stuart Coppedge, AIA, RTA

SECRETARY

Mary Morissette, AIA, Bennett Wagner & Grody Architects

DIRECTOR (DENVER)

Brit Probst, AIA, Davis Partnership Architects

DIRECTOR (NORTH)

Miguel Burbano de Lara, AIA, The Neenan Company

DIRECTOR (SOUTH)

Roger Sauerhagen, AIA, CSNA Architects

DIRECTOR (WEST)

David Argano, AIA, eutenics West Architecture

ASSOCIATE DIRECTOR

Deborah Faris, Assoc. AIA, Fentress Bradburn Architects

ASSOCIATE DIRECTOR-ELECT

Niloufar Vakili, Assoc. AIA, David Owen Tryba Architects

PROFESSIONAL AFFILIATE DIRECTOR

Al Slattery, PA, McGraw-Hill Construction

UNIVERSITY DIRECTOR

Mark Gelernter, Assoc. AIA, University of Colorado at Denver

STUDENT DIRECTOR

Sergey Chudin, SA, AIAS, University of Colorado at Denver

GOVERNMENT AFFAIRS DIRECTOR

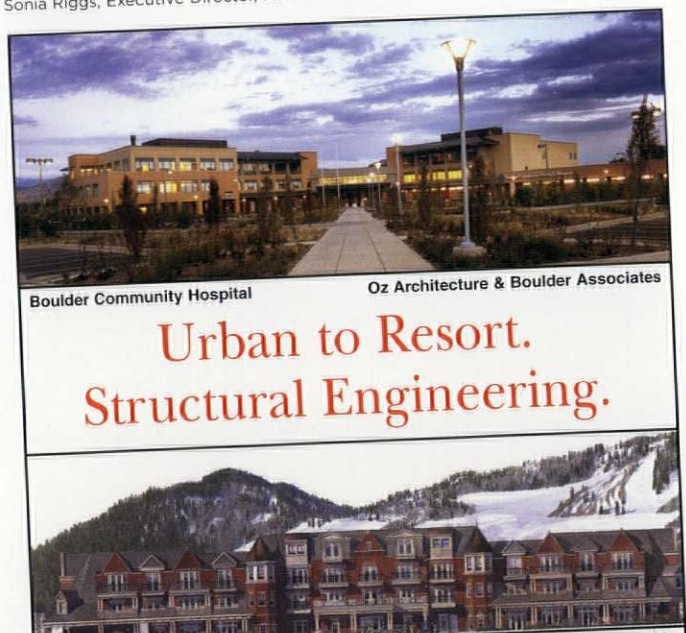
Michael Wisneski, AIA, M+O+A Architectural Partnership

SDA LIAISON

Debra Ellis, SDA/C, Barker Rinker Seacat Architecture

EX-OFFICIO

Sonia Riggs, Executive Director, AIA Colorado




Boulder Community Hospital Oz Architecture & Boulder Associates

Urban to Resort. Structural Engineering.

Grand Aspen Lodge O'Bryan Partnership

www.monroe-newell.com



MONROE & NEWELL
Engineers, Inc.
Structural Engineers
Vail • Denver • Frisco

DENVER
1701 Wynkoop St., Suite 200, Denver, CO 80202
(303) 623-4927 • denver@monroe-newell.com

VAIL
70 Benchmark Rd., Ste 204/PO Box 1597- Avon, CO 81620
(970) 949-7768 • avon@monroe-newell.com

FRISCO
619 Main Street, Suite #7/PO Box 295 • Frisco, CO 80443
(970) 668-3776 • frisco@monroe-newell.com

BY BETSY METZGER
UNIVERSITY OF COLORADO
COLLEGE OF ARCHITECTURE
AND PLANNING

PHOTO BY STEFANO PALTERA/
SOLAR DECATHLON



RIGHT U.S. Under Secretary of Energy David Garman congratulates the University of Colorado on the team's first-place finish in front of its energy-efficient, solar-powered house at the Solar Decathlon on the National Mall in Washington D.C.

COLORADO TEAM WINS SECOND SOLAR DECATHLON

A team of 30 students from the University of Colorado's College of Architecture and Planning and the College of Engineering and Applied Science recently defended its championship title, bringing home another first place award in Solar Decathlon 2005.

The second international Solar Decathlon pitted 18 collegiate teams from the United States, Puerto Rico, Canada and Spain in a competition to design, build and operate the most attractive and energy-efficient solar-powered home, while educating the public about alternative-energy technologies. The teams transported their solar houses to the National Mall in Washington DC, where they formed a solar village open to the public for 10 days in October. More than 100,000 people visited the CU home.

Students competed in 10 categories ranging from architecture, livability and comfort to how well the homes provide energy for space heating and cooling, hot water, lighting and appliances. Each house also had to produce enough extra power for an electric car.

The CU home, the BioS(h)IP, was designed based on the team's mission to "integrate natural materials and innovative technologies in an environmentally conscious, publicly accessible, modular, solar home design." The resulting residence is a low-to-no petroleum, single-chassis solar mobile home incorporating a patent-pending structural insulated panel system,

called the BioSIP, which was invented by the CU team specifically for their Solar Decathlon entry.

Professors Julee Herdt of architecture and Michael Brandemuehl of engineering served as faculty advisers during this two-year effort. The home has been sold to Prospect New Town in Longmont, where it will be the first solar mobile residence in the village.

The CU home is one that you can truly sink your teeth into, with materials that read like a health-food menu and include agricultural products and by-products such as soy, corn, coconut, wheat, canola oil, citrus oils, sugar and even chocolate. A nutritionist helped to develop a meal served to competition judges using ingredients that correlate with the building materials.


Like a ship that fills its sails with renewable wind energy for travel, the BioS(h)IP filled its tank with renewable biodiesel fuel from waste oils and plants during its trips between Boulder and Washington DC.

The primary sponsor of the Solar Decathlon is the U.S. Department of Energy's Office of Energy Efficiency and Renewable Energy in partnership with its National Renewable Energy Laboratory, the American Institute of Architects, the National Association of Homebuilders, BP Solar, the DIY Network and Sprint Nextel.



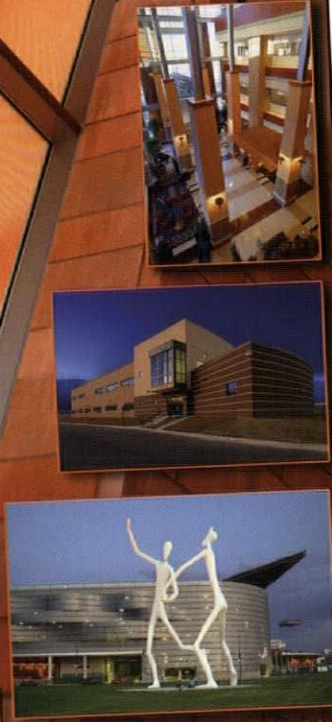
FINAL STANDINGS

- > University of Colorado, Denver and Boulder
- > Cornell University
- > California Polytechnic State University
- > Virginia Polytechnic Institute and State University
- > New York Institute of Technology
- > University of Texas at Austin
- > University of Missouri-Rolla and Rolla Technical Institute
- > University of Maryland
- > Universidad Politécnica de Madrid
- > Pittsburgh Synergy (Carnegie Mellon, University of Pittsburgh, Art Institute of Pittsburgh)
- > Universidad de Puerto Rico
- > Crowder College
- > Florida International University
- > Canada (Concordia University and Université de Montréal)
- > Washington State University
- > Rhode Island School of Design
- > University of Michigan
- > University of Massachusetts
- > Dartmouth



PHOTOGRAPHY

Providing Award - Winning Photography since 1993

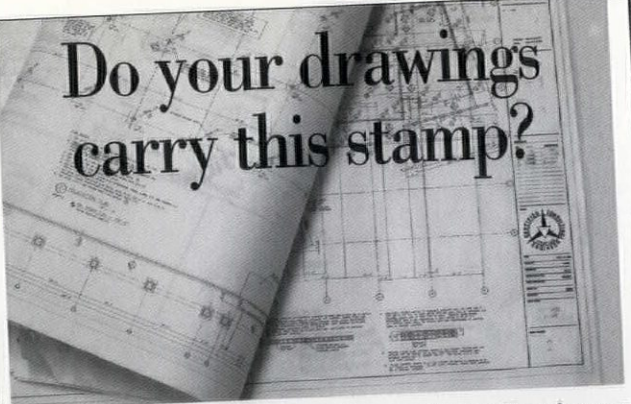


303/543-4451

www.timeframeimages.com
fred@timeframeimages.com

©2004 Fred J. Fuhrmeister

Do your drawings carry this stamp?




The seal of a Certified Consulting Engineer.

The knowledge and experience of Certified Consulting Engineers ventures well beyond applying well-crafted skills to engineer significant and responsible design.

Knowledge and experience translates into staff development, client education and overall project value.

Certified Consulting Engineers strengthen the qualifications of their firms. They are constantly keeping abreast of industry trends, searching for more efficient ways to get the project done. As they learn and contribute, they become invaluable guides in the project development process.

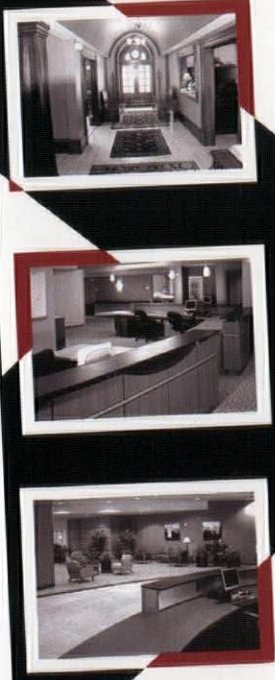

And that results in the highest caliber of engineering performance possible.



A Step Beyond.

Certified Consulting Engineers of Colorado
899 Logan Street, Suite 109 Denver, Colorado 80203
303.832.2200
email: www.acec-co.org/ceec


AIA Affiliate Professional Member Since 1988

JEAN SEBBEN ASSOCIATES, LLC
COMMERCIAL INTERIOR DESIGN

Interior Design
Space Organization
Specification

104 S. Weber St. #100
Colorado Springs, CO
80903
p 719-635-7133



POWERS

BUILDING SOLUTIONS...NOT JUST PRODUCTS

FURNISH INSTALL SERVICE

KALWALL®
TRANSLUCENT SKYLIGHTS & WALL SYSTEMS


SMOKEGUARD®
ELEVATOR LOBBY SMOKE CONTAINMENT SYSTEM

MODERNFOLD®
OPERABLE PARTITIONS

DRY-JOINT FAÇACE SYSTEMS
ALPHATON, SWISSPEARL, METAL PANELS

COMMERCIAL DOORS, FRAMES, & HARDWARE
DIVISION 10 SPECIALTIES

MODERNFOLD ALPHATON KALWALL



THE FINEST ARCHITECTURAL BUILDING PRODUCTS, EXPERT DESIGN ASSISTANCE, AND HIGHLY SKILLED INSTALLATION CREWS. CALL FOR A TURN-KEY SOLUTION.

T 303.791.1010 • F 303.791.1011
WWW.POWERSPRODUCTS.COM



HAVE LUNCH ON US!

Kwal Paint would like to offer architects a better way to stay current on the latest developments in paint and coatings, while earning AIA learning credits.

Kwal Paint's box lunch program provides an informative presentation that lasts approximately one hour, earning each participant one HSW Learning Unit (LU).

To schedule a box lunch at your office, please contact John Frey at (303) 517-8254.

www.kwalpaint.com

info@kwalpaint.com



BROADWAY
PLAZA
LOFTS



INTEGRITY. INNOVATION. INSIGHT.

CALCON
CONSTRUCTORS



Calcon Constructors | 2270 West Bates Avenue | Englewood, CO 80110 | 303 762 1554 ph | 303 762 1948 fax | www.calconci.com

A COMMITMENT TO CHANGE

> BY JOHN YONUSHEWSKI, AIA
2005 AIA COLORADO PRESIDENT

Change is defined as the process or result of making or becoming different. This past year, AIA Colorado has been all about change. Not change for the sake of being different, but change in terms of evolving.

This is a process by which we are able to embrace external changes and be comfortable seeking new opportunities for our membership, vision for our leaders and strong direction for AIA Colorado and its staff. Upon looking back on our accomplishments this year, the changes came slowly but very deliberately with respect to how we communicate, advocate, educate, practice and promote architectural excellence throughout the state.

The changes in communication were the most apparent in the reformatting of the AIA Colorado Web site and the introduction of *Architect Colorado*, our quarterly design magazine. Other changes included our new branding effort, the e-newsletter, Denver's Channel 8 television programming and the annual report poster distributed to all members.

Public awareness of Architecture Week has never been higher; a variety of public exhibits and programs culminated in the first-ever Doors Open Denver, with more than 30,000 participants. These programs, along with incredible media coverage, help to raise the public awareness of architecture to promote AIA architects as leaders in the built environment. This communication evolution earned AIA Colorado an AIA National Component Excellence Award.

Our legislative advocacy is directly impacted by our heightened communication. With a higher profile, AIA locally, statewide and nationally has



FRED FUHRWEISER, TIME FRAME

been able to make a difference in promoting legislation and reform benefiting AIA architects. This has led to increasing our relationships with local and state representatives as well as taking positions on issues that are not just about architecture, but also affect the greater good of our communities.

This dialogue of change has also affected how we continue to practice architecture, stimulating conversations and programs to re-evaluate our roles and leadership potential as architects in the 21st century. These events have also directly benefited how we prepare and educate our young architects for the future. The AIA and the College of Architecture and Planning at CU have never been more committed to promoting curriculum, mentoring and internships that excel in producing tomorrow's architectural leaders.

As you can clearly see, change is healthy and highly contagious. The result is an effective board, a motivated staff and strong financial health for the organization.

The challenge I propose to our members and to future boards is to continue the conversation of change and the process of evolution, and never to be content to rest on our past successes. We must always strive to extend the AIA's reach, to constantly improve the quality of our students, our architects and our communities.

Thanks to all of AIA Colorado's participating members and staff for your support and friendship this past year. Your hard work and commitment to change has made all the difference. ♦

CAPCO SHOWROOMS

DENVER

BOULDER

COLORADO SPRINGS

FORT COLLINS

RIDGWAY/TELLURIDE

AVON/VAIL

BASALT/ASPEN

GRAND JUNCTION

SILVERTHORNE

LAS VEGAS

INTERIOR SOLUTIONS

AT THE COLLECTION/
ADJACENT TO THE

DENVER DESIGN CENTER



Tile & Stone

For the best results,
CAPCO recommends the use of

Eye-catching tile that redefines "Wall to Wall".

Stop. Look. Look again. It's a dynamic vision for your home that defies expectations. With this Italian wall tile from CAPCO, you'll fashion a spellbinding environment that will bedazzle you today, and grow in appreciation for years to come. Just one look, and you'll see what we mean.

1-800-727-2272

www.capcotile.com

M A G I S T R A
by REX Ceramiche Artistiche, Italy

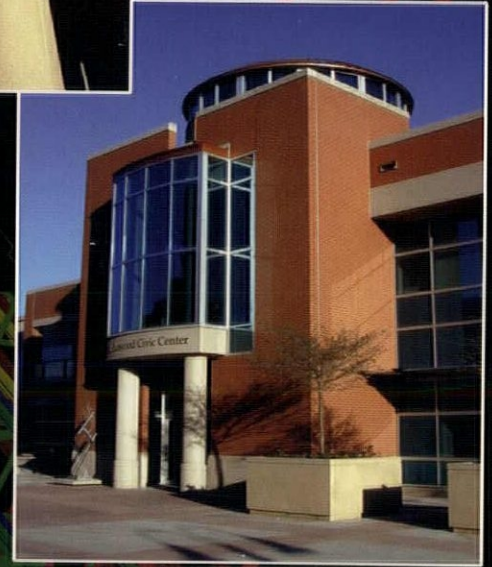
PRECAST CONCRETE - THE CLEAR CHOICE



Peak View Office Building



Strawberry Park



Lakewood Civic Center



Memorial Hospital Parking

STRESSCON

ARCHITECTURAL AND STRUCTURAL PRECAST CONCRETE

An EnCon Co.

3210 ASTROZON BLVD.

COLORADO SPRINGS, CO 80910

TEL: 719-390-5041

FAX: 719-390-5564

METRO: 303-623-1323

WWW.STRESSCON.COM

EMAIL: SALES@STRESSCON.COM