

# Architect Colorado

SUMMER 2005  
[www.aiacolorado.org](http://www.aiacolorado.org)



DESIGN PROFESSIONALS OF THE FUTURE

THE INSPIRATION OF DWAYNE NUZUM

TAXI: A COLLABORATIVE RISK

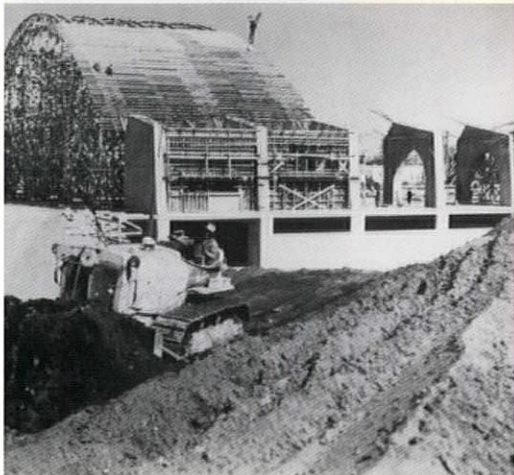
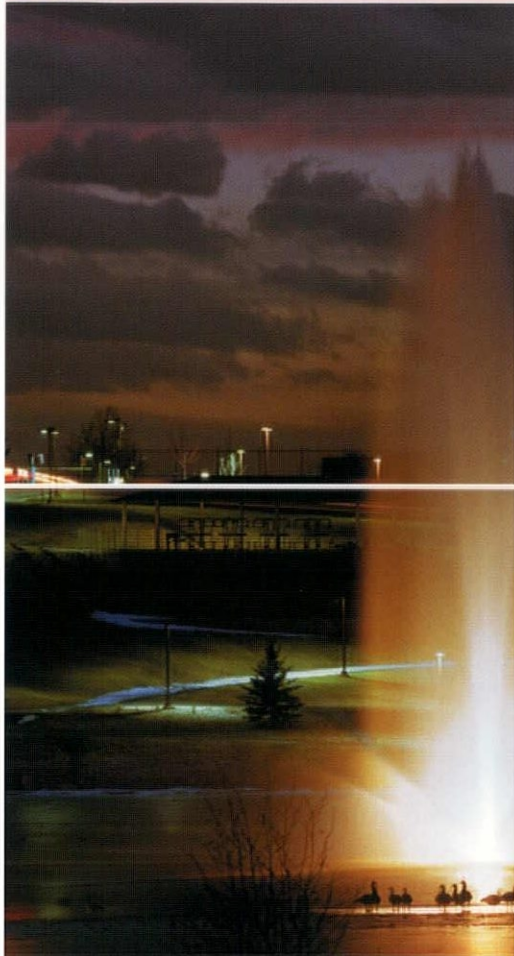
McGraw\_Hill  
CONSTRUCTION



Colorado

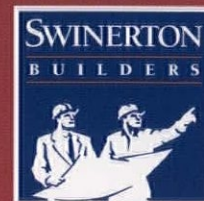


# Turning Your Vision into Reality Since 1942



Thorton Justice Center (above)  
Architect: Brinkley Sargent Architects

Denver Coliseum (left)  
Architect: Lorimer and Rose with  
Denver Architect Roland A. Linder



**SWINERTON BUILDERS**  
6890 West 52nd Avenue  
Arvada, CO 80002

[www.swinerton.com](http://www.swinerton.com)  
[www.swinertongreen.com](http://www.swinertongreen.com)

303.423.9242 phone  
303.423.0632 fax

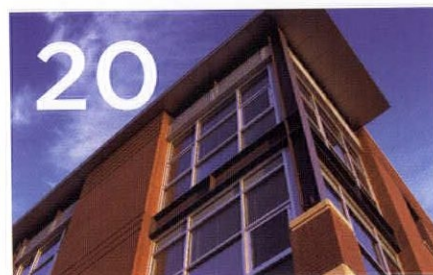


# Architect Colorado

SUMMER 2005  
Volume 1, Number 2



12 > **On the Right Track**  
Elati light rail maintenance facility transitions easily into neighborhood



16 > **Prairie Agrarian**  
Civic grandeur and modest scale meet in Tallyn's Reach municipal campus



20 > **Organically Urban**  
Stapleton Town Center takes on new identity for burgeoning community

24 > **Embracing Constraints**  
In-Situ marries form and function to provide a seamless transition to the site



28 > **School With a View**  
Fox Meadow Middle School merges with environment to elevate learning

## Departments

34 > **The Business of Architecture**  
Design Professionals of the Future

42 > **Colorado Architects**  
The Inspiration of Dwayne Nuzum, AIA

46 > **On the Boards**  
TAXI: A Collaborative Risk

52 > **A 60-Year Tradition**  
Architectural Education Foundation supports Colorado's design community

56 > **AIA Colorado News**  
Looking Ahead  
New Fellows Announced  
Architecture Week

62 > **Denouement**  
John Yonushewski, AIA, on Taking Risks

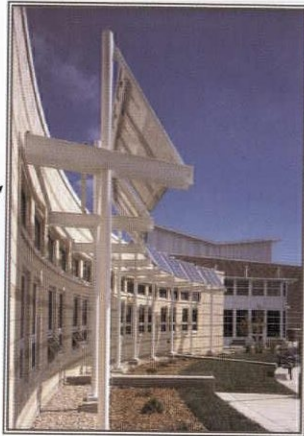


**EMC**  
ENGINEERS, INC.

**Making buildings work.  
Better.**

**Leaders in Energy Conservation, Renovation,  
and Commissioning since 1976**

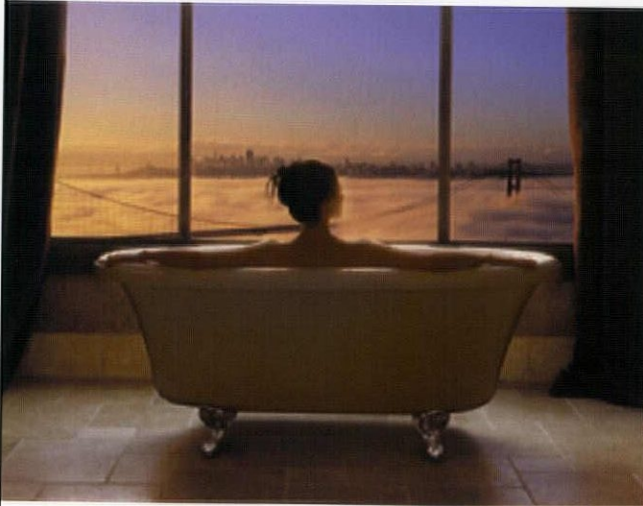
*Providing sustainable  
buildings by  
optimizing energy  
performance, automating  
building systems,  
commissioning for total  
building efficiency.*



**Denver, Colorado** 303-974-1200 Fax 303-974-1239  
**Atlanta, Georgia** 678-254-1200 Fax 678-254-1239  
**Los Angeles, California** 818-325-3154 Fax 818-325-3137  
**Raleigh, N. Carolina** 919-424-4455 Fax 919-424-4401  
[www.emcengineers.com](http://www.emcengineers.com)

**AQUATIC**  
WHIRLPOOLS

Experience the depth of Aquatic's value.



**Action**  
Whirlpools™  
KITCHENS & BATHS

29 N. Kalamath Street • Denver, CO 80223  
800.364.2005 • 303.534.8827 • [www.actionwhirlpools.com](http://www.actionwhirlpools.com)

DESIGNER PRODUCTS WITH A DOWN-TO-EARTH ATTITUDE

# Architect Colorado

**EDITOR**  
Jennifer Seward

**SENIOR MANAGING EDITOR**  
Mark Shaw

**PUBLISHER**  
Al Slattery

**DESIGN**  
EKSTRAHAND Design, Douglas Ekstrand

**AIA EDITORIAL LIAISON**  
Leslie Acosta

**ADVERTISING SALES**  
Phillip Kummer, [phillip\\_kummer@mcgraw-hill.com](mailto:phillip_kummer@mcgraw-hill.com)  
Joe Tuttle, [joe\\_tuttle@mcgraw-hill.com](mailto:joe_tuttle@mcgraw-hill.com)  
Michael Branigan, [michael\\_branigan@mcgraw-hill.com](mailto:michael_branigan@mcgraw-hill.com)  
Lauren Gott, [lauren\\_gott@mcgraw-hill.com](mailto:lauren_gott@mcgraw-hill.com)

**PRODUCTION MANAGER**  
Mike Reeder

**ARCHITECT COLORADO** Summer 2005, Vol 1, No 2  
is published quarterly by the McGraw-Hill Companies, Inc.

**POSTMASTER** send address changes to the McGraw-Hill Companies  
Architect Colorado, Attn: Circulation Manager, 1114 West 7th Ave., Suite 100,  
Denver, CO 80204.

**PHOTOCOPY PERMISSIONS** where necessary, permission is granted by copyright  
owner for those registered with Copyright Clearance Center (CCC), 222 Rosewood  
Drive, Danvers, MA 01923, [www.copyright.com](http://www.copyright.com) to photocopy any article herein for  
personal or internal reference use only for the flat fee of \$2.00 per copy for each  
article. Send payment to CCC. Copyright © 2005 The McGraw-Hill Companies, Inc.

The information contained within has been obtained by the McGraw-Hill Companies,  
Inc. from sources believed to be reliable. However, because of the possibility of  
human or mechanical error, the McGraw-Hill Companies, Inc. does not guarantee the  
accuracy or completeness of any information and is not responsible for any errors or  
omissions or for the results obtained from use of such information. The editor  
reserves the right to censor, revise, edit, reject, or cancel any material not meeting  
the standards of Architect Colorado.

**PRODUCED BY**  
McGraw-Hill Construction  
1114 West 7th Ave., Suite 100  
Denver, CO 80204-4432  
Phone 303 584 6725  
Fax 303 756 4465

AIA Colorado  
1515 Arapahoe St., Suite 1-110  
Denver, CO 80202  
Phone 303 446 2266  
[www.aiacolorado.org](http://www.aiacolorado.org)

**McGraw Hill**  
CONSTRUCTION



**AIA** Colorado

A Component of The American Institute of Architects

**THE AMERICAN INSTITUTE OF ARCHITECTS** is the voice of the architectural  
profession dedicated to: serving its members, advancing their value and improv-  
ing the quality of the built environment. Through a culture of innovation, The  
American Institute of Architects empowers its members and inspires the  
creation of a better-built environment.

**LETTERS TO THE EDITOR** Architect Colorado will gladly accept all signed,  
dated letters to the editor. We reserve the right to edit for style and any  
potentially libelous content. Letters should be submitted at least a week  
before the published deadlines of the magazine and contain a maximum of  
250 words. Send them to the attention of the editor at the email or  
address below.

**PROJECT AND NON-PROJECT STORY IDEAS AND SUBMISSIONS**  
Architect Colorado welcomes your story and project submissions. Just send  
a note describing your project, trend or issue story idea in 250 words or less  
on a CD. Include any photos (jpeg or tiff format) that may be appropriate  
and enclose a hard copy of your submission summary. You may also request  
a more detailed copy of our submission guidelines and story publication  
policy, or visit the AIA Colorado Web site at [www.aiacolorado.org](http://www.aiacolorado.org) to view  
this information.

**HOW TO REACH US** Send all letters, submissions and inquires to: Jennifer  
Seward, Editor, Architect Colorado, 2661 Valentia St. Denver, CO 80238, or  
send email to [jenseward@earthlink.net](mailto:jenseward@earthlink.net)

#### ARCHITECT COLORADO 2005 EDITORIAL CALENDAR

- > **FALL ISSUE DEADLINES**  
Community Leadership/Influence on Built Environment  
Editorial: June 24 - Advertising: June 24
- > **WINTER ISSUE DEADLINES**  
2005 Design Awards  
Editorial: Sept. 23 - Advertising: Sept. 30



BOCA RATON . BOSTON . CHICAGO . NEW YORK . PALM BEACH . PHOENIX . SAN DIEGO . SAN FRANCISCO . TORONTO

ANY DOOR | ANY COLOR | ANY STYLE

ANYTHING.

**irpinia**  
KITCHENS



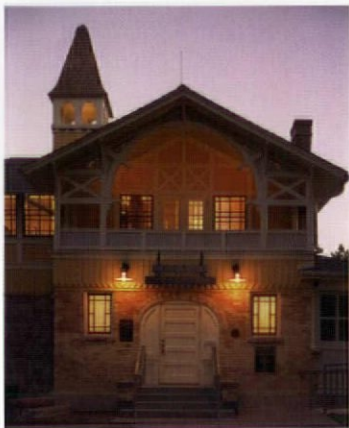
DENVER SHOWROOM | 250 STEELE STREET | CHERRY CREEK NORTH | WWW.IRPINIA.COM | 720.941.7006



## > LETTERS

DEAR MS. SEWARD, MR. SHAW, MR. SLATTERY AND ALL CONTRIBUTING WRITERS AND PHOTOGRAPHERS:

Congratulations on a beautiful new magazine. To my delight a building in my Council District 5 was featured. May I add to your list of credits for the sensitive remodeling of the Molkery in Historic Montclair the names of Robert Alson, DCM Supervisor; Tracy Higuera, Project Manager; and Barry Smith, Project Inspector for the Department of Public Works, DCM.



DAVID PATTERSON

Mark Upshaw, AIA, project director from Denver Parks and Recreation was quoted in your article. The neighbors, who love the renewed building, began to believe that Mr. Upshaw's commitment to the project might be prolonging the work. They are absolutely thrilled to have this building alive during the day with the Parks' Hands on Denver staff there and to have the building available to the community for meetings and even weddings. You have added stature to a building proud of its recent Historic Denver award, as noted.

To make sure I continue to receive your magazine I have already contacted your subscription staff to unravel the address confusion between myself and Councilwoman Peggy Lehmann. I don't want to miss an issue.

— Councilwoman Marcia Johnson  
Council District 5, Denver

**SEND LETTERS TO** Jennifer Seward, Editor, Architect Colorado, 2661 Valencia St. Denver, CO 80238, or send email to [jenseward@earthlink.net](mailto:jenseward@earthlink.net) (please send a postal address in your message).

**CORRECTION** In the spring issue of Architect Colorado, George Brelig, AIA, RB&B Architects, was identified as one of Bill Muchow's former employees. Although he worked in a leadership role on several projects Muchow designed, Brelig was actually an employee of Haller & Larson, which shared an office with Muchow and joint-ventured on a number of projects.



FRED FUHRMEISTER, TIME FRAME

## POISED FOR CHANGE

Can you imagine a world where buildings are legally required to produce as much energy as they consume? How about a "green community" where clean travel is enforced and priority is given to electric and fuel-efficient cars?

Futurist Chris Luebke, director of global foresight and innovation for London-based ARUP — the largest engineering firm in the world, with 10,000 projects currently in progress — tells us that these Jetsons-like predictions are becoming less futuristic fantasy and closer to reality every day. Speaking to a group of Denver architects recently at the Future of Design lecture and as one of the main seminar speakers in last fall's AIA Colorado Design Conference in Colorado Springs, Luebke challenged architects to nourish their profession. As architects, he says, "We must help society to make the necessary changes" to continue evolving.

Whether it's through educating the public via various interactive and engaging vehicles during Architecture Week, or turning an every-day building such as a middle school, town center or light rail facility into a structure prepared to address the needs of our next generation, AIA architects are creating positive change in our built environment here in Colorado, every day.

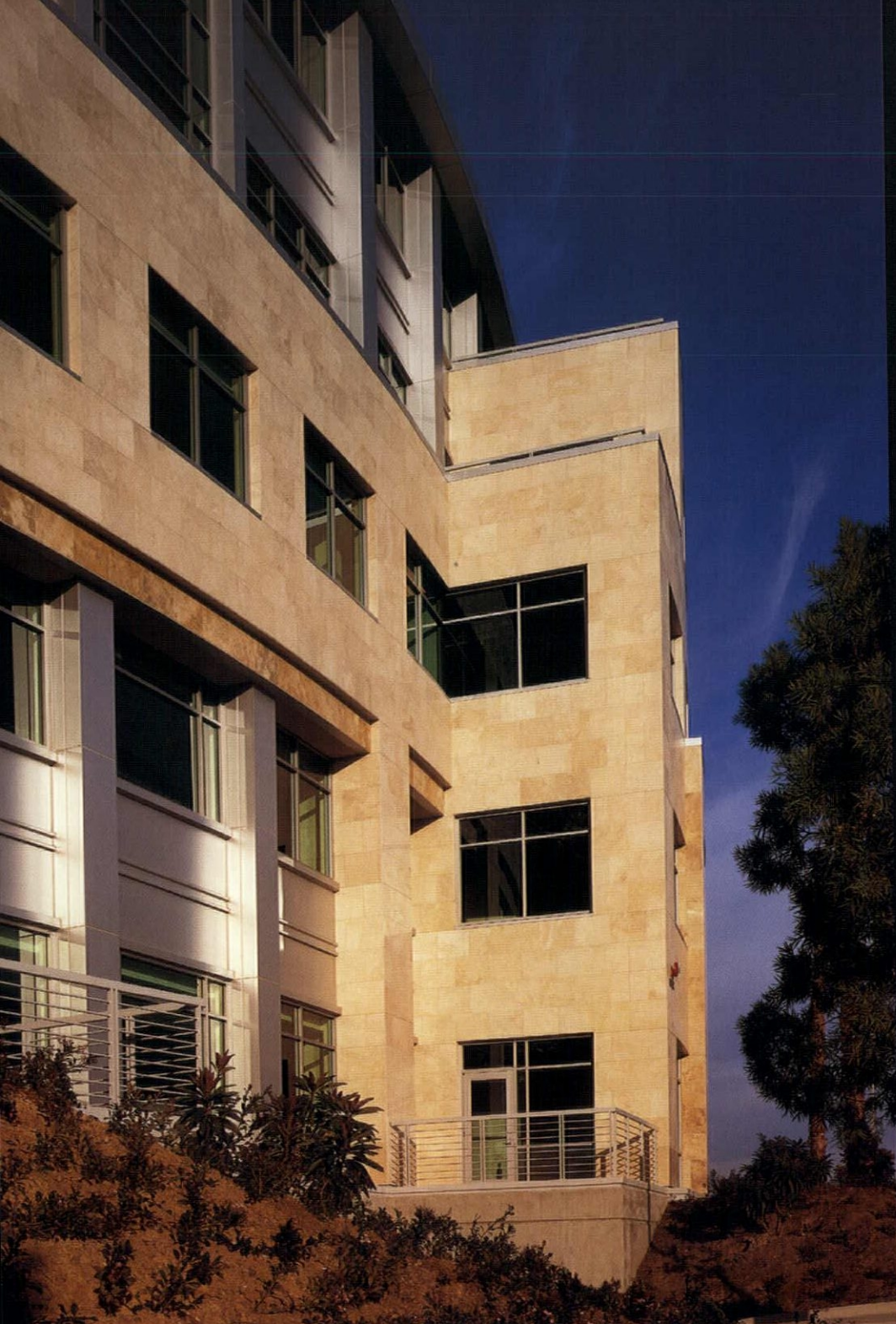
In this issue, we've asked a dozen of your AIA contemporaries to weigh in on their concept of the architect's evolving role in the built environment. Where do you think your profession is heading? Is the future oversold and under-imagined, as Luebke claims it to be? And if so, what should architects be doing about it?

And that green community mentioned earlier? It's already a reality. The Beddington Zero Energy Development—BedZED—is a full eco-community, with 100 homes and as many offices. The site in South London is billed as the most sustainable community in the world. Efficiency measures reduce energy use and renewable energy is generated onsite.

Luebke will tell you that there is no such thing as risk-free innovation. It doesn't exist. So as the architectural community continues to imagine, dream and plan for our future — poised to make changes before the needs actually arise — we'll all be watching, learning and waiting for the next great inspiration to come our way.

  
Jennifer Seward  
Editor





Pictured: Fiona and Imperial Gold Travertine

Do you send your clients to select from the industry favorite - Santa Fe Collection from Arizona Tile?

We stock over 200 varieties of natural stone slabs and tile in granite, travertine, limestone, marble, slate and onyx.

Our ceramic and porcelain tiles are custom manufactured to our specifications.

With 20 locations in 7 Western states, we are committed to showcasing the design/ build community.

Supplying the design/building professionals ...ask for the Santa Fe Collection from Arizona Tile.

AZ Glendale  
Phoenix  
Prescott  
Scottsdale  
Tempe  
Tolleson  
Tucson

CA Anaheim  
Oakland  
Miramar  
Palm Desert  
Sacramento  
San Diego  
San Marcos  
Temecula

CO Denver

NM Albuquerque

NV Las Vegas

TX Dallas

UT Salt Lake City



**ARIZONA TILE**  
FEATURING THE SANTA FE COLLECTION

[www.arizonatile.com](http://www.arizonatile.com)



# Wausau Tile & Recreation Plus, LTD.

Present

## Precast Concrete with Recycled Glass



Whether concrete pavers or terrazzo tile, Site amenities or custom precast, your projects can now be designed with "Green Status", both inside and outside with the vast array of recycled glass products manufactured by Wausau Tile.

- Environmentally friendly using 100% recycled glass.
- Long lasting durability.
- Flexibility of design and function.
- A variety of standard & custom colors.
- Manufactured in the USA.
- Service provided by an experienced staff of professionals.

### **WAUSAU TILE**

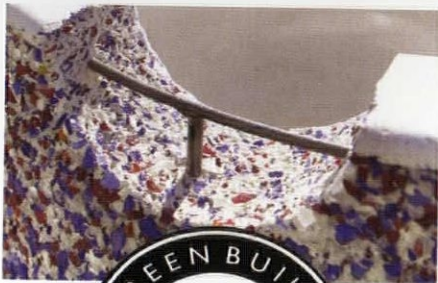
P.O. Box 1520 - Wausau, WI - 54402-1520  
(800)-388-8728 - Fax (715)-359-7456  
[www.wausautile.com](http://www.wausautile.com)

### *Recreation Plus, Ltd.*



(303)-278-1455 / (888)-278-1455  
Fax (303)-278-1606  
[www.recreationplus.com](http://www.recreationplus.com)  
[letsplay@recreationplus.com](mailto:letsplay@recreationplus.com)

**Passport AIA/CEU Certified**





# Nothing Lasts Like An Acme Brick. We Guarantee It.

Latex paint:  
5-year limited guarantee

Composition shingles:  
20-year limited guarantee



Double-pane insulated windows:  
20-year manufacturer's warranty

Oak panel door:  
1-year manufacturer's warranty

made from fine earth clays, blended for color, and hard-fired in computercontrolled kilns at temperatures that can exceed 2,000 degrees. The result is a brick that will outlast your mortgage. In fact, we guarantee it – for 100 years.



Since 1891, we've shown that Acme Brick is the best thing to have around your house and your family.

So, for lasting beauty that comes with a 100-year, fully transferable limited guarantee, choose Acme Brick.



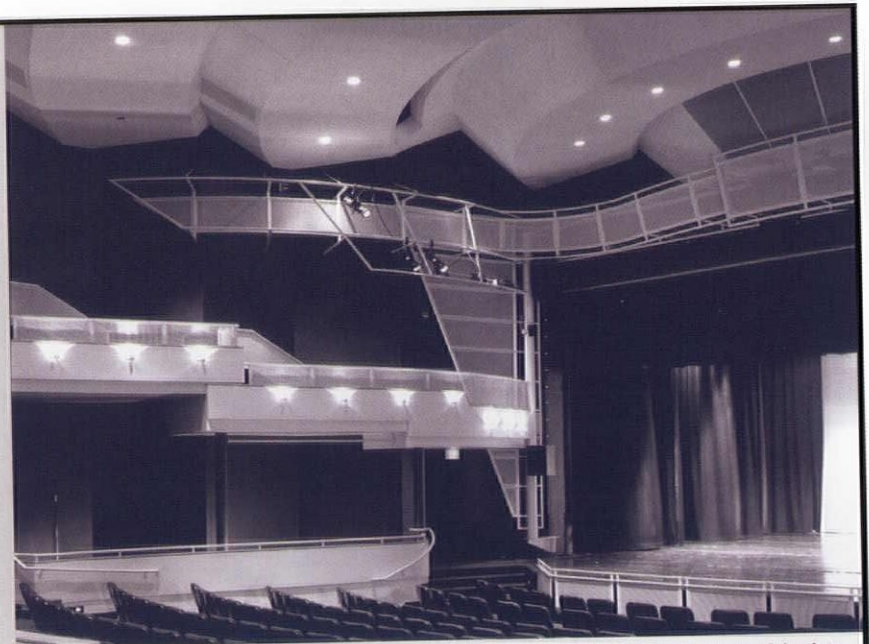
When you buy a new home, you want it to last a lifetime. But when windows break, the roof springs a leak, and the paint peels, it is nice to know that one product, Acme Brick, will last a lifetime. Each Acme Brick is

Because, if you don't see the Acme name, you won't get Acme quality. Or the guarantee.

401 Prairie Hawk Drive • Castle Rock, CO 80104 • (303) 688-6951 • brick.com

## Providing Consulting and Design Services for more than 25 years!

- ◆ Building Acoustics
- ◆ Sound Isolation
- ◆ Mechanical Noise & Vibration Control
- ◆ Theatre Planning
- ◆ Audio-Visual Presentation Systems
- ◆ Performance Lighting & Control Systems
- ◆ Stage Rigging & Masking Systems



Main Theatre at the Denver School of the Arts

Visit our web site  
[www.dlaa.com](http://www.dlaa.com)



**D. L. Adams Associates, Inc.**

Consultants in Acoustics and Performing Arts Technologies

303.455.1900 Fax: 303.455.9187  
1701 Boulder Street  
Denver, Colorado 80211

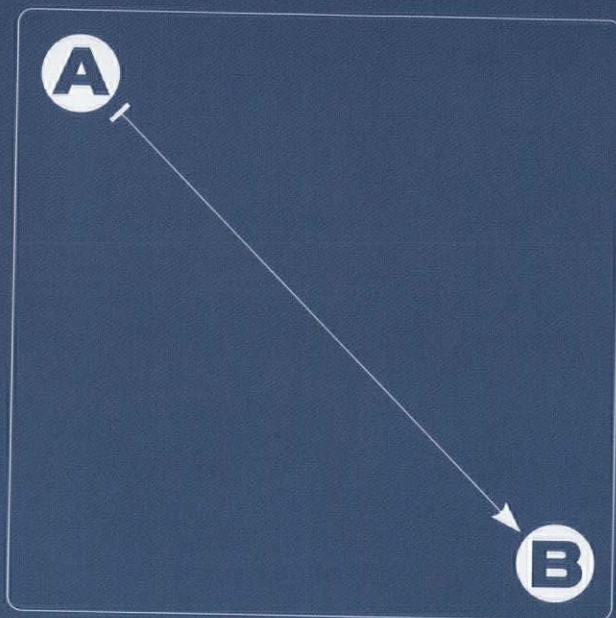


# efficiency\*

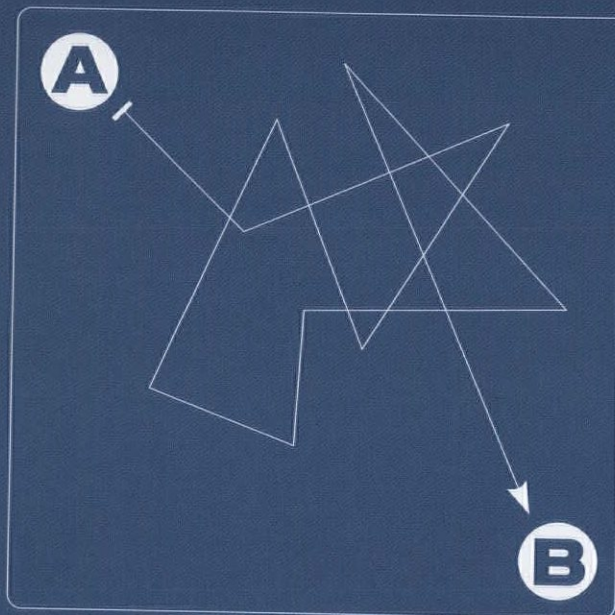
Efficiency \Ef\*fi"ciency\, Ef\*fi"ciency, n.  
The production of the desired effects or results  
with minimum waste of time, effort, or skill.

\*[synonym: eBlueprint]

## Reprographic Management & Distribution Diagram



The eBlueprint Abadan Way



The Other Way

eBlueprint Abadan is defining efficiency within the document services industry. Specializing in the reproduction of construction documents, they use an integrated on-line system to deliver cost and time savings to your business.

## Services

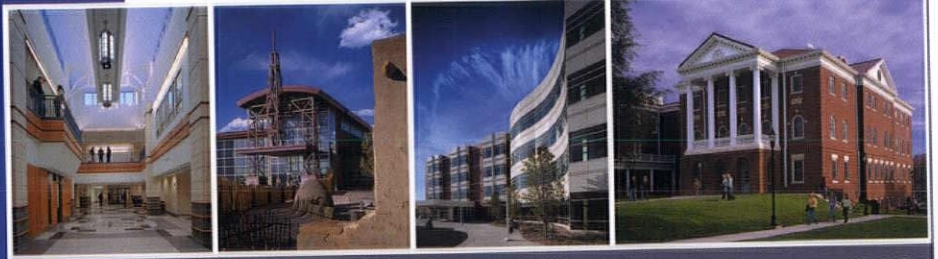
- Printing of CAD drawings, specs, and other documents
- Web enabled uploading of orders and database of all drawings
- 24/7 on-line order tracking
- Local and overnight delivery with quick turn-around times
- eBidTools for managing bid invitations

To be more efficient call us today t 303.696.6363

**eBlueprint**<sup>®</sup>  
A B A D A N

...plan on it





ARCHITECTURAL ENVIRONMENTS & PEOPLE • RESORT • 360° VR

# MAYLONE.com

Photography

[www.maylone.com](http://www.maylone.com)

p: 970.389.6326

e: [steve@maylone.com](mailto:steve@maylone.com)

# KWAL PAINT®

Complete line of residential, commercial and industrial coatings, including low VOC and environmentally friendly products.

Contact John Frey for product information and/or color tools at (303) 517-8254.

[www.kwalpaint.com](http://www.kwalpaint.com)

[info@kwalpaint.com](mailto:info@kwalpaint.com)





> PAGE 12

> PHOTOS BY ED LACASSE

ELATI LIGHT RAIL MAINTENANCE FACILITY

# ON THE RIGHT

TRANSITIONS EASILY INTO NEIGHBORHOOD







THE RECENTLY COMPLETED ELATI RTD LIGHT RAIL MAINTENANCE FACILITY SETS A NEW DESIGN STANDARD for maintenance buildings and provides a glimpse of future FasTracks projects.

Located at Yale Avenue and Elati Street, at the boundaries of Englewood and Denver, the 125,000-sq-ft facility services RTD's expanding fleet of light rail trains. Distinguished by its graceful, arcing roofline, the Elati facility provides a human scale facing the residential neighborhood and a rugged industrial façade in the rail yard.

"It's a facility designed with workers in mind," said RNL Principal-in-Charge Dick Shiffer, AIA. "It has a lot of natural light for the mechanics, and it's a wonderful piece of architecture that recognizes that this is a people facility."

#### SEAMLESS INTEGRATION

Because it borders residential neighborhoods on the east, the Elati site challenged the team to create a design that would remain sensitive to its community location and still meet specific maintenance and operations needs.

"Each area of the building was designed with consideration for how people experience that particular space, from the layout to the materials used," said RNL Project Manager Jon Holler. It also needed to ensure that the administrative and maintenance staffs would feel connected within one facility.

# TRACK



# “This is one of the best-looking facilities of its kind in the nation.”

— Jerry Nery  
T-REX LRT Engineering Manager

To meet tight budgets, the facility underwent a significant value-engineering effort throughout the design phase that directly impacted the selection of building material systems. While the exterior metal panel in the maintenance bays was originally designed as a precast concrete panel system, the move to more cost-effective metal panels indirectly led to the inclusion of clerestory windows.

“The metal panel system enabled the clerestory to be sculpted into a dual curve, creating a gesture more appropriate to the length and scale of the arcing roof,” explained Project Designer Ron Izzo.

Incorporating brick and stone masonry at the base of the metal panel created functional durability and integrated the use of materials from the administration areas. This allowed for a continuous wrap at the

pedestrian level. The structural framework supporting the vaulted roof and the exterior skin was also integrated into the support of working platforms and other systems, defining the function of the building.

The advantages of alternative materials and integration of the structural system set a foundation for cost-effective solutions without sacrificing design opportunities. This approach played a significant role in the way the rest of the building systems were integrated into the design.

## MOVING AIR

The roof presented several challenges and opportunities. The design team took advantage of space within the roof volume by bringing major mechanical equipment inside the building. Housing this





equipment indoors added minimal upfront costs, yet provides ongoing savings by reducing operations and maintenance costs.

RNL incorporated a well across the curved roof to meet code requirements, providing a natural location for smoke and heating vents. This solution also allowed roof panels to expand and contract across the length of the roof.

It is a challenge to provide heat and ventilation in any large space since air stratifies in large rooms. To prevent this, the project team installed several giant fans with 12-ft blades, recycling warm air down to the operational floor during winter and reducing cooling loads during summer.

T-REX Facilities Engineer Steve Logan has received positive feedback from technicians who say they have noticed airflow improvement in the pits as a result of this feature.

**A NEIGHBORHOOD ASSET**

The need for efficient lighting also influenced Elati's design. Natural light streams into the maintenance area through the clerestory windows flanking the sides and center aisle, and a concrete hardener with a minimum 60 percent light reflective surface helps reflect overhead light to the underside of vehicle carriages.

The design team opted for white primer on the steel and left the overhead doors as unfinished galvanized steel. In addition to saving money, this approach also provides a clean, cohesive color scheme and brightens up the maintenance area.

"The mechanics are the ultimate end-users of this facility and are impressed with the lighting, along with the openness of the pit areas," said T-REX LRT Engineering Manager Jerry Nery. "This is also one of the best-looking facilities of its kind in the nation."

The east side of the building required a more human scale, and the barrel-vaulted roof provides an inviting and distinctive entryway defining the public side of the building.

"We looked at several [facilities] while we were planning this one, including the big one in Salt Lake, and it's like night and day. Ours is much better. The façade looks more like a new recreation center or a school than a maintenance building," said Nery.

Bob Simpson, community development director for the City of Englewood, said the design provides a "good transition to the neighborhood."

The overall result is a highly efficient facility that speaks to architectural aesthetics and the pride of the people working in the facility and living in the surrounding neighborhood.

"It's now part of us," Simpson said. "It's a valuable and attractive asset for the neighborhood and we're pleased to have it in the community." ◆



**PREVIOUS ABOVE** An exterior photo of the Elati facility at dusk. **PREVIOUS BELOW LEFT** Light rail vehicles enter the vehicle wash in the maintenance area. **PREVIOUS BELOW CENTER** An interior shot of the maintenance area. The large fans can be seen spinning above. **PREVIOUS BELOW RIGHT** Another interior shot. Clerestory windows are visible above. **OPPOSITE** The interior reception area. Neighborhood houses are visible across the street. **ABOVE** Symbols of track and turntables are evident in the interior design of the breakroom.

**ELATI LIGHT RAIL MAINTENANCE FACILITY**

**LOCATION** Yale and Elati, Denver  
**COST** \$40 million, including equipment  
**SCOPE** 125,000 sq ft  
**PURPOSE** Support facility for maintenance of RTD's expanding light rail fleet  
**COMPLETION** Fall 2004

**OWNER** Regional Transportation District  
**DESIGN TEAM**  
Maintenance Design Group - Project Manager, Planner  
RNL Design - Architectural and Interior Design  
Carter Burgess - Mechanical, electrical, plumbing, structural engineering  
Milestone Engineering - Civil engineering  
Land Mark Design - Landscape architecture  
Booz Allen Hamilton - Track, power & control oversight  
Hanscomb Faithful & Gould - Cost estimating  
Kumar & Associates - Geotechnical investigation  
RoofTech Consultants Inc. - Roofing consultant  
**GENERAL CONTRACTOR** M.A. Mortenson

**OTHER NOTABLE PROJECTS BY RNL DESIGN**

- > Florence Square, Aurora
- > Burj Dubai Master Plan, Dubai, United Arab Emirates
- > Qwest Flagship Retail Store, Denver
- > Clayton Lane Mixed-Use Parking Facility, Denver
- > Northern Arizona University School of Communications, Flagstaff



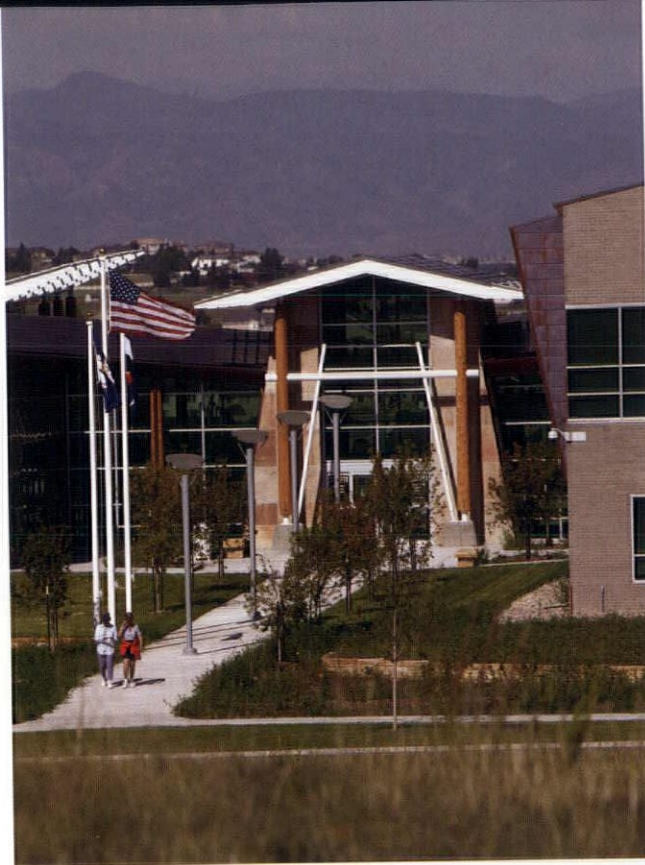
> PAGE 16  
> BY SUSANNA DONATO  
> PHOTOS BY RON POLLARD



# Prairie Agrarian

Civic grandeur and modest scale  
meet in Tallyn's Reach  
municipal campus





## IN THE GROWING COMMUNITY OF TALLYN'S REACH, LOCATED ALONG THE E-470 CORRIDOR IN SOUTHEASTERN AURORA,

the new Municipal Services Campus connects residents to the area's farming roots through an innovative design.

As the new home for the Aurora Public Library, Aurora Fire Department Station No. 13, Aurora Police Department and the city's 911 dispatch center, the Tallyn's Reach Municipal Services Campus is a hub of activity.

"The central question was how to take an 80,000-sq-ft complex and drop it into a residential neighborhood so that the building is not overwhelming in terms of scale, and yet maintains a civic quality," said lead designer Michael Brendle, FAIA, of BrendleAPV.

Initially, the city of Aurora approached Denver-based BrendleAPV with certain specifications, including a "prairie agrarian" theme. The first question was just exactly what that would be.

"We were challenged to understand and define what prairie agrarian meant and create a timeless design," Brendle said. "As a result, the building is very modern, yet it is of its place. We made no attempt to reject the environment or the surroundings."

Brendle designed the complex as a series of pavilions, distinguished by varying materials and sloped, gabled and butterfly roofs. Exterior patterns of circular and rectangular shapes work together – even standard book-return slots fit seamlessly into the design.

"This technique is consistent with what farmers did years ago," Brendle said. "They would build a barn and add a lean-to here, then a shed roof. Eventually, the entire piece grew in a morphic manner."

**OPPOSITE** The complex reads as a whole, broken into a series of smaller pavilions, through forms and shapes that keep the center from overwhelming its community surroundings.

**ABOVE** The scale of the main entrance as seen from afar appears as a small, inviting pavilion, but on approach, the scale changes to a civic entry.





#### FUNCTIONAL AESTHETIC

Completed in August 2004, the building's public entry centers on a vestibule that opens west and east. Details include Italian light fixtures of aluminum and glass, combining the playful and the sophisticated in an elegant form that subtly harkens back to the homemade aesthetic of homesteaders.

"From a distance, the entrances are approachable, but inside, the lobby gives a sense of spaciousness and civic grandeur," Brendle said.

Exterior pine columns appear to support the roof's white steel canopies. The pine actually sheaths structural steel columns whose footprints are visible at the ground. Other natural materials, including the entryway composed of elemental limestone, define varied pavilions. Copper cladding already has begun to achieve a rich, earth-hued patina that complements the natural surroundings, including stands of Ponderosa pine.

Those details are of utmost importance, said Brendle. "We couldn't pull off this idea without having each individual piece reinforce the other."

The landscaping includes native vegetation and ties in with planned greenbelts. Several of the building's pavilions blend inside and outside spaces, from patios giving exterior access to a glassed conference room that extends into the entry plaza. Sunshades cast patterned shadows, and careful design draws natural light into the center of the building.

As the building flows north, it grows into the landscape, seemingly resting in a hill that minimizes its rise to two stories. At the west, Fire Station No. 13 includes truck and equipment storage and living quarters for firefighters. To the east, the police station hosts 911 dispatch behind aerie-like windows on the second floor.

#### OTHER NOTABLE PROJECTS BY BRENDLEAPV

- > Martin Luther King, Jr. Library & Municipal Services Center, Aurora
- > The Blue Cube Residence, Cherry Hills Village
- > Aurora Sports Park, Aurora
- > Schlessman Family Branch Library, Denver
- > Ross Cherry Creek Library, Denver

"The police structure looks inviting, coupled with the security measures that today's environment requires."

— Chief Terry Jones  
Aurora Police Department





**OPPOSITE** Structural metal detail adds a shadow play of light on the copper-clad shapes. **ABOVE RIGHT** The transparency of the entry vestibule provides a layered view, revealing the complexity of the architecture.

“The dispatch center is state-of-the-art, even in the design, which includes natural and passive lighting on the building’s north side,” said Chief Terry Jones of the Aurora Police Department. “The entire layout is extremely functional. The police structure looks inviting, coupled with the security measures that today’s environment requires.”

#### PRACTICAL DETAILS

The Tallyn’s Reach branch library centers on a glass spine, elongated to provide western views toward the mountains, explained Brendle. The building’s western entry, which now leads to a traffic circle anchored by a vertical sandstone and glass sculpture, will eventually anchor a planned retail “Main Street” for Tallyn’s Reach.

A low passage for small visitors opens into the children’s library, where a real hot-air balloon brightens the story area. A comfortable reading room includes high ceilings, tall windows and a stone fireplace that appears round, but actually is a half-circle – a structure that can only be built with today’s steel technology, rather than traditional masonry. The resulting fireplace, said Brendle, is thoroughly “of today,” but reinforces the building’s prairie agrarian style.

“The library doesn’t need much signage, because the layout is intuitive,” said Pam Szot, library projects coordinator for the city of Aurora. “Customers navigate it well.”

That attention to practical details distinguishes BrendleAPV’s design philosophy, down to the shallow ledges at the checkout counters that allow a small child to make eye contact with a librarian, or give visitors a spot to set their laptop bag while their hands are full.

The library is intentionally full of light. “When you drive by at night, you get a sense that there’s a lot going on inside,” said Brendle. “All of the details back up the idea that this building has been thoughtfully placed into this neighborhood, yet it doesn’t come off as a dominant place... it has a very close-up scale so that it fits easily into its surroundings.”

#### TALLYN’S REACH MUNICIPAL SERVICES CAMPUS

**LOCATION** Aurora  
**CONSTRUCTION COST** \$15.5 million  
**SCOPE** 80,000 sq ft  
**PURPOSE** To provide municipal services, including a library, fire department, police department and 911 dispatch center to the developing Tallyn’s Reach neighborhood  
**COMPLETION** Aug. 2004

**OWNER** City of Aurora  
**ARCHITECT** BrendleAPV  
**DEVELOPER** Carma Construction Inc.  
**MECHANICAL/ELECTRICAL ENGINEER** BCER Engineering  
**STRUCTURAL ENGINEER** Monroe & Newell Engineers  
**CIVIL ENGINEER** Icon Engineering  
**LANDSCAPE ARCHITECT** Wenk Associates  
**ACOUSTICAL DESIGN** David L. Adams Associates  
**GENERAL CONTRACTOR** Adolfson & Peterson Construction



# ORGANICALLY



> PAGE 20

> BY ISABELLE MATTESON

> PHOTOS BY FRANK OOMS



# URBAN

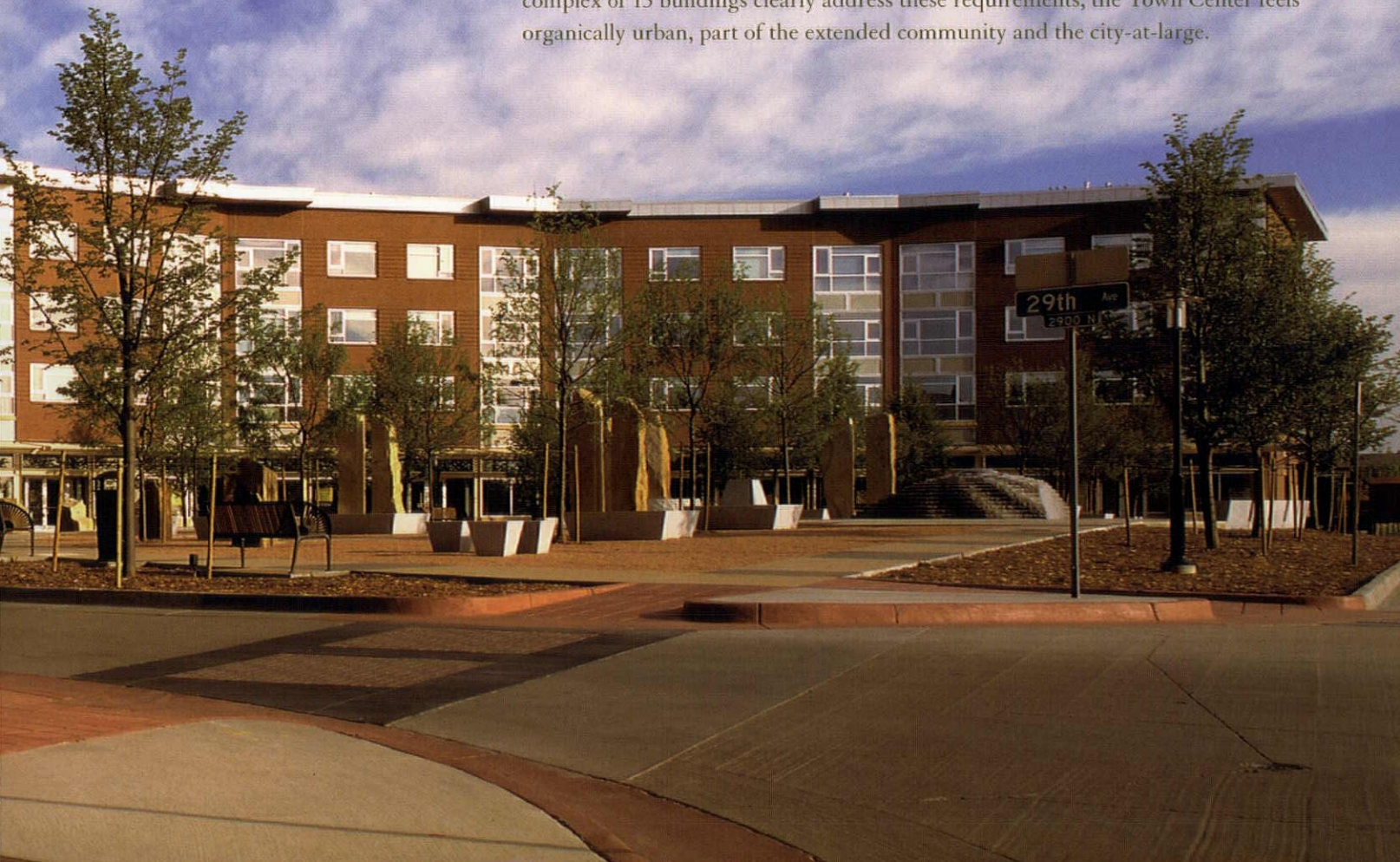
## STAPLETON TOWN CENTER TAKES ON NEW IDENTITY FOR BURGEONING COMMUNITY

Master planned as a new urbanist community by Calthorpe & Associates for Forest City, the 4,700-acre former Stapleton Airport in Denver is quickly filling up with homes, schools, parks, green trails, streets and boulevards.

The success of this new community can be attributed in part to the vision and determination of Forest City, the master developer, who turned Stapleton into a national model for its socio-economic diversity, sustainable urban sensibility and focus on green spaces. One of the area's most successful neighborhoods is the Town Center on Quebec Street and East 29th Avenue.

"Stapleton's Town Center was planned to sit on the edge of the redevelopment site to achieve several objectives," said Jim Chrisman, vice president of development for Forest City. "First, we wanted it to serve the under-served community around the site, which in turn provided a built-in shopper base while the project was in its infancy. We also wanted to enrich the development with the local and economic diversity this kind of project may not otherwise enjoy."

While the architectural program and urban design ideas that underlie this mixed-use complex of 13 buildings clearly address these requirements, the Town Center feels organically urban, part of the extended community and the city-at-large.





## A NOD TO HISTORY

The Town Center responds to Calthorpe's Beaux Arts master plan by forming a street wall with a contemporary and dynamic vocabulary – a refreshing departure from most current new urbanist models. East 29th Avenue is entered from Quebec Street between two gateway buildings that allow glimpses of the larger structures behind as the street progresses toward the Town Green.

“We wanted to make these two buildings interesting to draw people in but not imposing to the neighborhood across Quebec,” said Peter H. Dominick Jr., FAIA, principal of 4240 Architecture, the Denver-based firm that designed the Town Center.

The architecture of the Town Center expresses an aesthetic of both formality and vigor, providing a backdrop to the Town Center's lively Main Street. Single-story retail storefronts give way to residences and small offices above. Terraces for cafes and restaurants spill over onto the large sidewalks.

The buildings' masonry and steel “bones” provide an ordered framework for lively retail signage, awnings and decorations that reinforce street life. The soaring forms and aluminum cladding of the buildings is a subtle nod to the site's aeronautical history. While exhibiting a consistency of materials, each building brings an individuality and independent expression of the common material palette. The result is an urban, lively and youthful atmosphere.

## COMMUNITY COMES TO LIFE

Three blocks long, East 29th Avenue is intersected by small streets and pedestrian walkways that lead to parking, neighborhood banks and a grocery store anchoring the site. The streetfront buildings screen from view the parking lots behind them, with both sides of the buildings designed with the same attention to detail. Also, the architects convinced the grocer to build a “box with interest,” one that fits visually with the Town Center's architectural details and materials.

Strolling along East 29th Avenue away from Quebec, the street opens to the civic-minded Town Green, the heart of the new community, with its amphitheater lawn and sculptural, crescent-shaped park. Four-story apartment buildings along the park house one- and two-bedroom apartments, facing the Town Green and the rest of the community in sweeping plains-meets-city views. While the park hosts public events and the commercial amenities draw the extended neighborhood into the Town Center, this residential program adds to the community's social diversity.

Since the Town Center's focus is on pedestrian access, the street was narrowed to enhance daily social interaction. The office spaces in the buildings along East 29th reinforce daytime activity and provide an employment base.







**PREVIOUS** The Crescent Flats apartments enclose the west end of the Town Green. **ABOVE** Appropriate massing and integration of mixed-use buildings with public gathering spaces help to create a pedestrian-oriented community with an urban spirit. **OPPOSITE LEFT** Gateway buildings with soaring rooflines hint at the site's former aeronautical uses. **OPPOSITE RIGHT** A neo-industrial materials palette combined with fine brick detailing and large expanses of glass lend the Town Center a dynamic contemporary feel in a traditional framework.

#### EAST 29TH AVENUE TOWN CENTER AT STAPLETON

**LOCATION** Denver  
**CONSTRUCTION COST** \$22.8 million  
**SCOPE** 207,200 sq ft  
**PURPOSE** To create a vibrant and contemporary commercial zone that attracts a diverse population while making a contextual connection between existing and new neighborhoods.  
**COMPLETION** Feb. 2004

**OWNER** Forest City Stapleton Inc.  
**ARCHITECT** 4240 Architecture Inc.  
**CIVIL & STRUCTURAL ENGINEER** S.A. Miro Inc.  
**ELECTRICAL ENGINEER** RG Engineering Consultants Inc.  
**MECHANICAL ENGINEER** J.J. Blank Engineering Co.  
**ACOUSTICAL** Jim Barath  
**CODE/LIFE SAFETY** Rolf Jensen & Associates Inc.  
**GRAPHICS** Communication Arts Inc.  
**LANDSCAPE** Nuszer Kopatz  
**LIGHTING** M-E Engineers Inc.  
**GENERAL CONTRACTORS** Blackinton & Decker Inc./Saunders Construction Inc., JV  
**MASONRY** A.P. Eberlein Co. Inc., V&B Masonry, C. Morgen Masonry  
**GLASS & GLAZING** Metropolitan Glass  
**DRYWALL** Four Star Drywall  
**PLUMBING** MAI Mechanical, Marquez Mechanical  
**HVAC** Skidmore Inc., Steele Brothers Heating Inc.  
**ELECTRICAL** Lakewood Electric

#### OTHER NOTABLE PROJECTS BY 4240 ARCHITECTURE

- > St. Julien Hotel & Spa, Boulder
- > Horizon Pass Lodge at Bachelor Gulch, Avon
- > Snow Cloud at Bachelor Gulch, Avon
- > Riverfront Park at Central Platte Valley, Denver
- > 900 West Pearl, Boulder

#### GOING GREEN

Following the green mandate of the entire community, the Town Center includes extensive sustainable measures – less parking through shared spaces; storm water drainage through grass swales on site; a construction waste recycling program; formaldehyde-free cabinetry, millwork and paints; 40 percent recycled content in concrete mix; 100 percent recycled steel; tuned glazing on windows; operable windows in office buildings; high-emissivity and reflectivity of the roofing; and sunshade roof extensions.

“One of the major challenges of the project,” said Terry Willis, AIA, 4240’s project manager, “is that our team commenced work without a definitive program and no physical context. As a result, we developed a flexible design that expressed a residential town house over a storefront entry but could adapt to an office window wall.”

The no-context situation turned into an asset. The team was able to create a new aesthetic for this community that makes the Town Center a vibrant and contemporary commercial zone to attract a diverse population. The Town Center grew its own identity from a blank slate.





# EMBRACING CONSTRAINTS

IN-SITU MARRIES FORM AND  
FUNCTION TO PROVIDE A  
SEAMLESS TRANSITION  
TO THE SITE

> PAGE 24

> BY AIMEE MILLER

> PHOTOS BY O'HARA PHOTOGRAPHY



## CHALLENGING CIRCUMSTANCES OFTEN PRODUCE EXTRAORDINARY RESULTS.

This is certainly true for the In-Situ corporate headquarters in Fort Collins, designed to meet a tight timeline and strict budget.

In-Situ, from the Latin word meaning “in-place,” is a 28-year-old company in the business of developing, marketing and manufacturing products to monitor water quality in the natural environment. The company’s relocation from Laramie, combined with its continual growth, drove the design of this new 30,000-sq-ft corporate campus on the banks of the Poudre River.

### PROVEN PARTNERSHIP

In-Situ President and CEO Bob Blythe selected Fort Collins-based Vaught Frye Architects to deliver his vision.

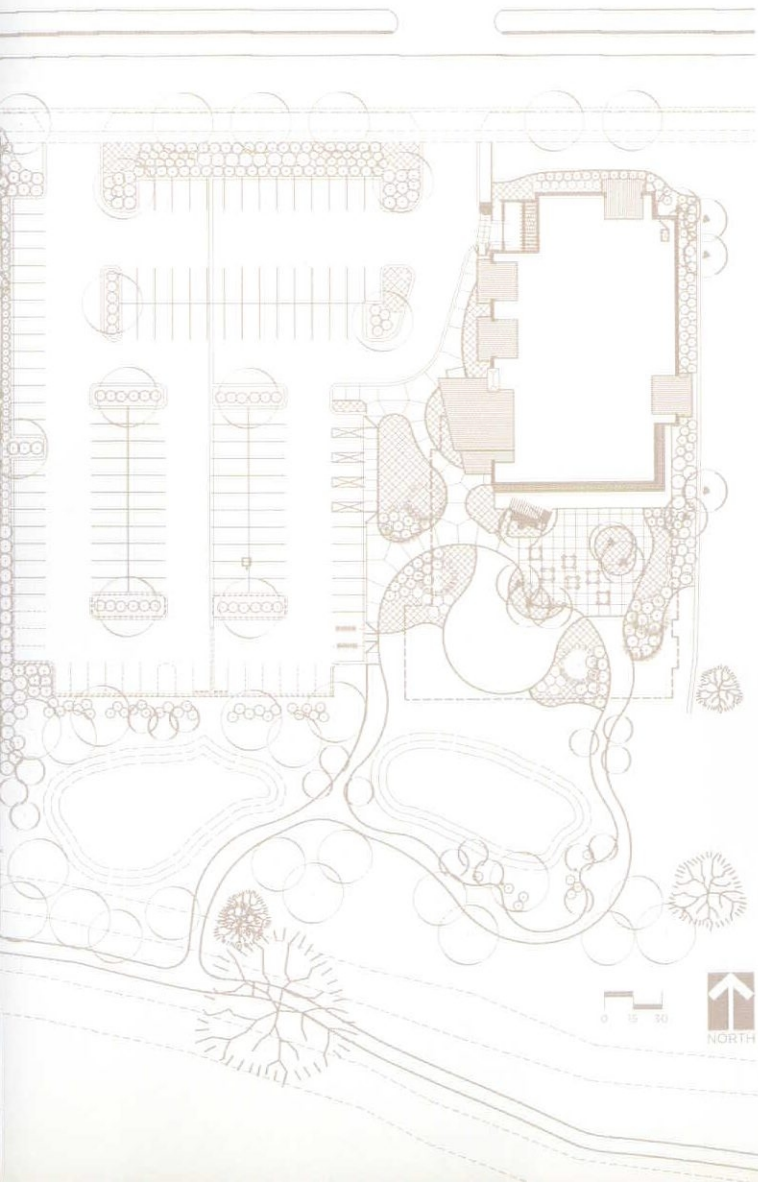
“We worked side by side with Dohn Construction,” said Mark Gausepohl, AIA, project architect with Vaught Frye, who said that a true partnership emerged on the project. “Our meetings were very productive because everyone was collaborating around the same goals. The contractor knew I was being sensitive to the budget, so in turn, they were sensitive to the design and how that design was achieving the owner’s goals.”

The team adhered to a firm schedule for fall occupancy to accommodate the employees enrolling their children in the Fort Collins school system. Several study models were created early in the design process as a tool for the design team and to assist the client in visualizing the project. The architects also used 3D modeling software to create the construction documents.

“This was an incredibly fast project,” explained Gausepohl, noting that the work took just over a year from the start of design to construction completion. “I was often sketching details in the field while the construction team was building it right alongside me, even spray-painting instructions on the ground for the team to follow as questions arose along the way.”

### FORM & FUNCTION

To accommodate the owner’s wishes to provide a “best-in-class” experience for customers visiting the facility, and in an effort to provide a stimulating environment for employees, the architect designed a series of pitched roofs that sharply cascade from the top of the building. These dramatic architectural elements also serve several practical purposes – bringing light into the building through clerestory windows, providing a contrast in the building’s overall form and masking the mechanical equipment.







## “I WAS OFTEN SKETCHING DETAILS IN THE FIELD WHILE THE CONSTRUCTION

— Mark Gausepohl, AIA, Vaught Frye Architects

Creating an atmosphere with abundant natural light was paramount to the design. Precast concrete, load-bearing exterior walls and structural insulated panels were employed to deliver economies in both cost and speed of construction while allowing for maximum light.

“Due to the environmental nature of our business, we wanted to not only ensure that our new campus met our more obvious needs of space, but more importantly, portrayed to our customers, our employees and the community that In-Situ is proud to be a steward of the environment,” said Blythe. “We intentionally located our facility on the banks of the Poudre River to provide a place for our customers to learn to deploy our products in the field.”

Landscaped paths designed by VFRipley Associates provide a seamless transition to the river, just 100 ft south of the site, where clients can use the company’s products to test water quality for themselves.

The building’s interior architecture boasts a wide main staircase that serves as a critical path leading from the lobby to the main conference and training area on the second floor. The placement of the

landing within the staircase lends itself to uninterrupted views of the river.

### DESIGN SIGNIFICANCE

The use of contrast was a major design theme, evident in the juxtaposition between the general mass of the building, framed in a rectangular shape, and the pitched-roof elements, further enhanced by the deep green coloring and rough-sawn glu-lams.

“The neutral gray segments of the building act as a backdrop, casting the richer and more salient elements into the foreground,” Gausepohl said.

“The material selection was very important to the project,” added Doug Dohn, co-owner of Dohn Construction. “The feeling of being on the river, views of the mountains, natural daylighting and the use of materials like wood and stone to emphasize the company’s mission were all essential.”

In keeping with the environmental emphasis, the design purposefully excluded any exotic or endangered woods while the selection of glu-lams allowed for a more sustainable use of wood than a heavy timber structural system.



## IN-SITU INC. HEADQUARTERS

**LOCATION** Fort Collins  
**CONSTRUCTION COST** \$3.1 million  
**SCOPE** 30,000 sq ft  
**PURPOSE** To provide a "best-in-class" facility for an environmental company relocating to Fort Collins. The program includes production space, training facility and research-and-development labs.  
**COMPLETION** Sept. 2004

**OWNER** In-Situ Inc.  
**ARCHITECT** Vaught Frye Architects PC  
**CONTRACTOR** Dohn Construction Inc.  
**LANDSCAPE/PLANNING** VFRipley Associates Inc.  
**STRUCTURAL ENGINEER** Weeks & Associates Inc.  
**MECHANICAL & ELECTRICAL ENGINEER** The CE Group  
**CIVIL ENGINEER** Northstar Design  
**INTERIOR DESIGN** ABD Designs  
**FRAMING/CARPENTRY** Pat Phillips Carpentry  
**WINDOWS & STOREFRONT** Commercial Glass Inc.  
**LANDSCAPING** Mill Brothers  
**WATER FEATURE** Waterwise  
**ROOFING** Front Range Roofing  
**ELECTRICAL** Cleaver Electric  
**MECHANICAL** Air Comfort

## OTHER NOTABLE PROJECTS BY VAUGHT FRYE ARCHITECTS

- > Skyline Center for Health, Loveland
- > First National Bank Exterior Renovation, Fort Collins
- > American Eagle Distributing, Loveland
- > Northern Hotel Historic Renovation, Fort Collins
- > Collindale Golf Club House, Fort Collins

Midway through design it became evident that meeting the original budget would not be an issue. At that point, In-Situ decided to add additional amenities such as balconies on the west side, enabling formerly enclosed spaces to become exterior areas where employees can step out for a breath of fresh air and take in the beauty of the site.

"The building exemplifies my belief that a constrained budget is no excuse for poor design," said Gausepohl. "While architects cannot work miracles, imagination, ingenuity and skill can create significant value and meaning in a project."

After a careful design process and swift construction schedule, the In-Situ building – now home to 75 employees – epitomizes the organization's commitment to the natural environment and provides a workspace that emphasizes creativity and informal collaboration. ◆

**PREVIOUS** Wood beams stained to contrast the dark green roofs deliver both structure and ornamentation.  
**OPPOSITE** The angled roof planes and exposed wood structure create an immediate identity for the building.  
**BELOW LEFT** The main lobby is occupied by a large water feature and striking hanging staircase.  
**BELOW RIGHT** Materials from the exterior are used to create an informal meeting area on the second floor adjacent to the main stair.

TEAM WAS BUILDING IT RIGHT ALONGSIDE ME."





# SCHOOL WITH A VIEW



> PAGE 28

> BY CYNTHIA KEMPER, PA

> PHOTOS BY DAVID HARRIS, HARRIS PHOTOGRAPHIC SERVICES  
AND CLIFFORD CURTIS, AIA, CSNA ARCHITECTS



# FOX MEADOW MIDDLE SCHOOL MERGES WITH ENVIRONMENT TO ELEVATE LEARNING

Imagine living next to a serenely beautiful 28-acre expanse of wild Colorado open space textured with rolling hills and ancient scrub oak as far as one can see. Picture worn dirt foot-paths where neighbors walk their dogs at sunrise and trails that crisscross the terrain of fox and coyote, mingling nature and civilization.

Now envision neighborhood reaction to the announcement that this remarkable place – cherished for its rolling hillsides and lush vegetation – would soon be marred by construction of a new middle school.

As the largest signature project of the 2001 \$60 million bond issue for Colorado Springs's Harrison School District No. 2, the Fox Meadow Middle School was programmed to serve 750 students while offering a variety of community spaces for independent use.

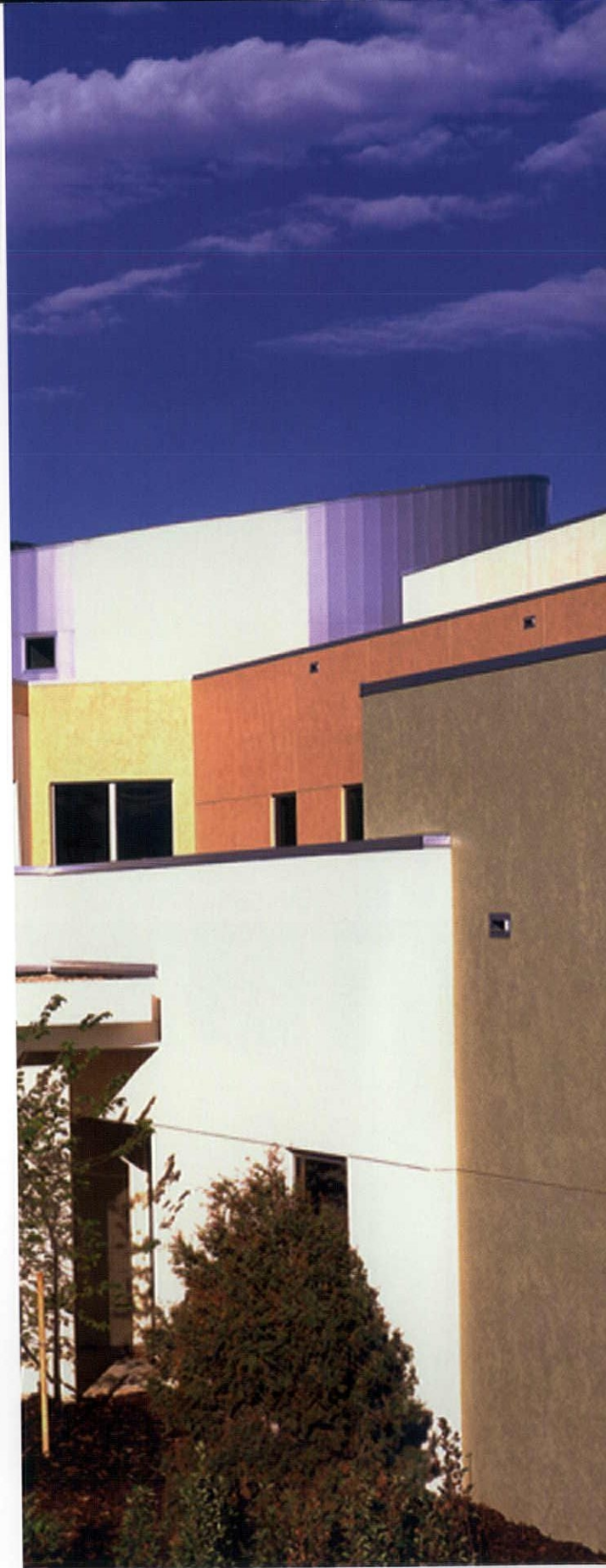
## PRESERVING THE PEACE

Fortunately, Art Martini, chair of the district's architect selection committee, understood why residents were concerned about the long-term impact of this imposing addition and how a school structure and traffic would affect their beloved “neighborhood park” known for its majestic views of the Front Range.

He also knew that finding the right design firm would be critical to the project's success. The firm ultimately chosen would not only be expected to provide creative solutions on time and within budget, but also to engage and collaborate with multiple groups of passionately invested constituents throughout the complex process.

“It's a very beautiful, unique site. While it's a large property, we were concerned about the land adjacent to the neighborhood, as residents were envisioning a park,” said Martini, currently director of the district's bond management. “Although it was zoned for housing, we wanted to be good citizens and take their concerns into account.”

It was during the interview with Roger Sauerhagen, AIA, and Gregory Friesen, AIA – principals of







CSNA Architects in Colorado Springs – that the committee knew they had a match.

“We knew CSNA wanted to do great things; that we could plan on a spectacular result,” said Martini. “Roger and Gregory had a keen respect for the site and a heightened sensitivity to the customer and community. We just knew they could do it.”

#### SCHOOL WITHIN A PARK

From the beginning, the CSNA design team felt the driving concept of this project was to create a “school within a park.” But before designing the 128,348-sq-ft facility, they first had to develop and program the educational specifications since the district hadn't built a new middle school in over two decades.

“They took the community's input to heart, met patiently with a design advisory group of teachers, neighboring community members and the entire staff multiple times, and integrated everyone's requests beautifully,” said Martini.

“CSNA's design development process was creative and uniquely interactive,” he added. “Like diplomatic boy scouts, they were ‘kind, obedient and reverent.’ And because they gave us great latitude we have a community showcase today.”

In keeping with residents' concerns, only 17 acres were developed, resulting in a minimal impact on vegetation and topography. Today, three striking, wedge-shaped linear forms are strategically placed at the top of existing ridges, and a central gathering space, or rotunda – as a connecting point for the wings – is positioned where the earth's natural creases intersect. By design, all classrooms feature stunning views of the surrounding Colorado landscape and mountain terrain.

#### MEETING THE CHALLENGE

The angular building, bus drop-off, transportation, emergency access, athletic fields and equipment storage were also designed in direct response to existing site conditions. Unique exterior spaces adjacent to the main building include a play area, outdoor art space and separate drop-off for special needs students.

“Project constraints and challenges were myriad and multi-layered,” said Friesen. “In addition to a topographically challenging site and neighborhood adjacency concerns, we faced a wide range of circulation, assembly and functional issues. The overarching needs and desires of nearby residents also factored into our design process.”



“There are so many areas of focus within the confines of this site and structure,” added Sauerhagen. “But as architects, we thrive on that kind of challenge. Because each of our projects is interpreted through a stylistically different signature, no two projects are alike. Fox Meadow Middle School is no exception.”

“The staff and neighbors were overwhelmed with the facility – they just love it,” Martini said. “The school is bright, airy, colorful and laid out with good traffic flow patterns. And the overall design, functionality and views were beyond our expectations – the envy of most restaurants in town.

“Most of all,” he said, “CSNA offered a 100-percent solution for only one fee, making the process much easier for us. Roger and Gregory put a lot of effort into everything. They spent an inordinate amount of time testing colors, materials and designs, and exuded great excitement about maximizing the site itself. But the greatest surprise was when they came in nearly \$1 million under budget, ultimately rescuing a number of my other projects.”



**PREVIOUS** The school's exterior architectural elements – precast wings and stucco connectors – are artfully merged by the metallic rotunda as it reaches for the Colorado sky. **OPPOSITE ABOVE** The school's curvilinear teachers' lounge and contrasting colors provide a counterpoint to the diagonal, wedge-shaped forms of classroom wings, classroom service modules and the special needs student entry. **OPPOSITE BELOW** Juxtaposed interior and exterior views of the rotunda reveal Fox Meadow Middle School's purposeful study in contrasts and merging of angles, curves, colors and materials into a subtly evocative whole. **ABOVE** A soaring, light-filled reading-niche smoothly joins the circular library with a rectilinear gym and fitness center at the shared public entry. **BELOW** Fox Meadow's open, airy, light-filled rotunda is the school's primary gathering place and social hub for students and staff. The building's wings and main entrance radiate out from this two-story rotunda at the heart of the school, providing a stimulating meeting space and circulation experience. Framed views and special vistas make this space expansive yet inviting and warm.

**FOX MEADOW MIDDLE SCHOOL**

**LOCATION** Colorado Springs  
**CONSTRUCTION COST** \$13,044,532  
**SCOPE** 128,348 sq ft  
**PURPOSE** Middle school with capacity for 750 students built on expansive Colorado open space  
**COMPLETION** Aug. 2004

**OWNER** Harrison School District No. 2  
**ARCHITECT** CSNA Architects  
**CIVIL ENGINEER** Kiowa Engineering  
**LANDSCAPE ARCHITECT** Wenk Associates  
**STRUCTURAL ENGINEER** Samberson and Associates  
**MECHANICAL/ELECTRICAL ENGINEER** The RMH Group  
**GENERAL CONTRACTOR** Gerald H. Phipps Inc.  
**PRECAST** Stresscon Corp.  
**MECHANICAL** RK Mechanical Inc.  
**ELECTRICAL** Dynalectric Co.

**OTHER NOTABLE PROJECTS BY CSNA ARCHITECTS**

- > Alpine Village Housing, University of Colorado at Colorado Springs
- > Broadmoor Events Center, The Broadmoor Hotel, Colorado Springs
- > El Paso County Jail Expansion, Colorado Springs
- > Integrated Learning Center, Manitou School District 14, Manitou Springs
- > Science and Technology Addition, Academy School District 20, Colorado Springs





A VERTICAL PIVOT GATE™

Estate Gate™

Introduces...

City Gate™

SECURITY • COMFORT • CONVENIENCE



A Solar Powered or 120 Volt Battery Operated Gate that Maintains Your Privacy.

*Mazza Designs, Inc.*

9737 W. Nova Ave., Littleton, CO 80127

"Vertical Picket Gate" Pivots Up to a Slender Vertical column.

Toll Free 877-948-5169 • 303-949-5169 • [www.estate-gate.com](http://www.estate-gate.com)



COMMERCIAL  
DIVISION

PELLA COMMERCIAL DIVISION WOULD LIKE TO OFFER ARCHITECTS SOME FOOD FOR THOUGHT. AND LUNCH.



Pella Windows and Doors, Inc.

14175 E. 42nd Ave. • Denver, CO 80239

303-371-3750

fax: 303-371-4268

[www.pella.com](http://www.pella.com)

Pella Commercial is making it easier than ever for architects to receive the continuing education they need to maintain their AIA membership, CSI certification and/or architectural license. As an AIA/CES Registered Provider Charter Member since 1995, Pella Commercial is committed to developing quality learning activities in accordance with AIA/CES and Health/Safety/Welfare (HSW) criteria.

Programs will be presented by Pella Commercial representatives and cover a broad range of fenestration topics. Pella's programs are typically one hour in length, so architects receive one Learning Unit (LU) and one hour of HSW.

Pella Commercial helps make getting the training you need as easy as possible – you can even do it over lunch. Contact us today to set up your educational box-lunch program. And feed more than just your mind.





Existing

Photo-Rendering



# VISUAL

ARCHITECTURAL RENDERINGS

3D Perspectives

Animations

Photo-Renderings

Design by Humphries Poli Architects, P.C.

[www.visualrenderings.com](http://www.visualrenderings.com)

7525 South Jasmine Court, Centennial, Colorado 80112  
T. 303-378-4130 E. [info@visualrenderings.com](mailto:info@visualrenderings.com)

CHALLENGE NO. 1

## INTEGRITY VS VINYL

Leave your mark in a better way than a ding, scratch or scrape. Integrity® windows and doors are built with Ultrex®—a pultruded fiberglass 8x stronger than vinyl. Our patented finishing process makes them virtually indestructible and rich pine interiors elevate the look of any home. All that means superior performance with no callbacks to scrape away profits. **Built to perform**



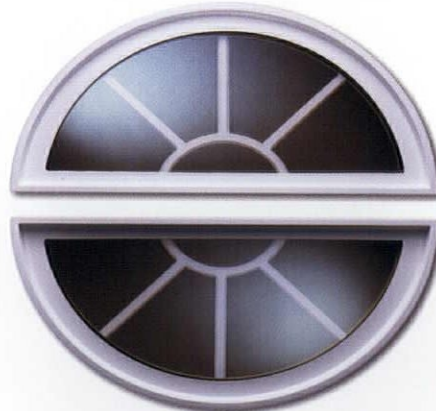
### VINYL:

- FLEXES  FADES  SCRATCHES  LOOKS BAD



### INTEGRITY:

- DOESN'T



**Beyers Window and Door, Inc.**  
7310 S. Alton Way, Suite H  
Centennial, CO  
(303) 220-5990  
[www.beyerswindows.com](http://www.beyerswindows.com)

**Harbert Lumber**  
240 North Avenue  
Grand Junction, CO  
(970) 243-3273  
[www.harbertlumber.com](http://www.harbertlumber.com)

**Marvin Design Gallery by Boddington Lumber Co.**  
4220 Mark Dabbling Boulevard  
Colorado Springs, CO  
(719) 528-7147  
[www.boddingtonlumberco.com](http://www.boddingtonlumberco.com)

**Mile High Windows & Doors**  
680 Atchison Way #200  
Castle Rock, CO  
(303) 325-0007  
[www.milehighwindows.com](http://www.milehighwindows.com)

**Tom's Windows & Doors LLC**  
1939 E Kentucky Avenue  
Denver, CO  
(303) 733-7476  
[www.tomswindows.com](http://www.tomswindows.com)

**BMC West**  
2100 East Prospect Road  
Fort Collins, CO  
(970) 482-1510  
[www.bmcwest.com](http://www.bmcwest.com)

**Jordan's Building Center**  
5000 Ward Road  
Wheat Ridge, CO  
(303) 421-1484  
[www.jordanslumber.com](http://www.jordanslumber.com)

**Mawson Lumber Co.**  
115 Lincoln Avenue  
Fort Collins, CO  
(970) 482-8082

**The Window Center**  
6200 N. Washington #10  
Denver, CO  
(303) 289-7977  
[www.thewindowcenter.net](http://www.thewindowcenter.net)



©2005 Marvin Windows and Doors. All rights reserved. ®Registered trademark of Marvin Windows and Doors.



## DESIGN PROFESSIONALS OF THE FUTURE

FUTURIST CHRIS LUEBKEMAN ENCOURAGES ARCHITECTS TO STOP, LOOK AND THINK ABOUT THE FUTURE OF THE PROFESSION

*Engineer and futurist Chris Luebke­man of London's ARUP travels the world talking about trends in construction and challenging designers to reinvent themselves as industry leaders. He was a guest speaker at last fall's AIA Colorado Design Conference and returned to Colorado in February to reprise his message about the evolution of design.*

**ARCHITECT COLORADO >** How has the role of the architect changed in the overall construction process?

**CHRIS LUEBKEMAN >** It is diminishing, partly due to internal systemic factors. Among those, the way procurement of the built environment is evolving, and we may soon be sidelined. Contractually, the design profession has moved to protect itself from a lot of the responsibility of delivering a finished product, and the clients are logically gravitating toward those who will take that responsibility – whomever will assume the risk, whether it's the contractor or whomever.

Then there are external factors – resource depletion, an aging population, increasing connectivity. There are few [design] professionals who, in my opinion, have the broad range of sensitivities to deal with these social implications. That's why our window of opportunity for positive change is closing.

**ARCHITECT COLORADO >** So what can the profession do to fix that?

**CHRIS LUEBKEMAN >** We need to step up to the plate and present viable visions and solutions that address the major issues. As architects, we can do that if we are conscious enough. We are going to be confronting major issues that will have major consequences on us. I think it's fantastic that AIA is taking the lead in encouraging the leadership role architects must take as a professional community.

But first we have to understand what leadership is. There are many types of leadership styles. It's not just for the high and mighty; leadership must start with yourself and then you must decide how you want to lead your life positively. Leadership and political influence are often seen as being the same thing. But you can lead on a project, a job site, in your own community – on all sorts of levels.

We need to make a conscious commitment – a recommitment – toward playing a more positive leadership role.

**ARCHITECT COLORADO >** Is the architectural community poised for that or do they need to make big changes in the way they do business?

**CHRIS LUEBKEMAN >** Yes, we're poised at a cusp, very close to a tipping point, at the beginning of a major change, especially when we look at 3D design and BIM [building information models] – when these move into common practice – and they're coming fast, we'll all have to change our thinking.



ABOVE Chris Luebke­man in China



“The design industry is being killed by the need for ‘risk-free’ innovation. It is becoming more about managing risk than creating good buildings.”

- Chris Luebke, ARUP

**ARCHITECT COLORADO >** What has to happen within the design community for that change in thinking to manifest itself?

**CHRIS LUEBKEMAN >** We have to stop ‘bumping,’ think about what we’re doing, why we’re doing it and where we’re going. We get into familiar routines, and we need to stop and think about whether what we’re doing is what we need to be doing. And we must look around, be more world-aware. These new projects will require new types of materials and methods. At the end of the day, we’re creating the world for our clients.

**ARCHITECT COLORADO >** You’ve talked about architects in the roles of blacksmiths and baumeisters. What will the architect of the future become? How would you fill in the blank?

**CHRIS LUEBKEMAN >** This depends on many things, and their relevance to contemporary society. There are many, many paths, so filling in that blank will have more than one answer. If you asked ten people, you’d get ten different ideals. But architects are trained to be synthesizers, confronting various constraints and creating solutions. We are the ones that have to be thinking about these issues so that when things start to happen, we can say we have some good ideas. ◆



**35**  
introducing  
seven  
new  
products  
designed  
by  
frog

landscapeforms®

Vivian Kovacs, Denver Sales Office  
888.741.6739 | 303.799.0028 | 303.799.0029 fax  
viviank@landscapeforms.com



# THE EIGHT NEWEST KITCHEN DESIGN TRENDS

## A SEMINAR COVERING >>

- Current trends as illustrated by some of the most innovative and creative architects, interior designers and kitchen designers in the country.
- Cutting Edge information on equipment, materials and details, some gleaned from the recent Kitchen and Bath Industry Show.
- What is helping to market the kitchen designs of today, whether you're designing a new home or remodeling an existing structure.
- Updates in Residential Architecture



## WHEN >>

**Thursday, September 8, 2005**

5:30 -6:15 pm >> Refreshments/Wine/Beer

6:15 - 7:15 >> Program

## RSVP >>

**Contact >>** Judith Brunko, AIA

Casey & Godden Architects, 303-455-4437

*Limited Seating, RSVP by Tuesday, September 6*

## HOSTED BY >>

AIA Denver Housing Committee

## ALSO HOSTED BY >>

### **Roth Distributing**

The Roth Concept Center, 17801 E. 40th Ave., Aurora, Co 80011

Directions >> I-70 to Airport Blvd. Go Airport Blvd North to 40th Ave., turn Right. First building on the left.

*The corporate home for Roth Distributing, is displaying in their 7,000 sq. ft. Showroom, 17 full-size vignettes and a Culinary Center with stadium seating and state-of-the art audio and video equipment. Attendees will receive the latest in Sub-Zero Design Contest Winners in the Great American Kitchen Book as a bonus!*

## SPONSORED BY >>

**myhouse**  
in the mountain states



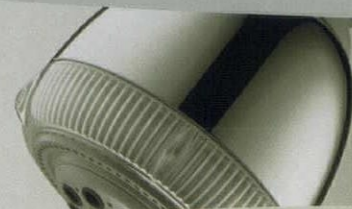
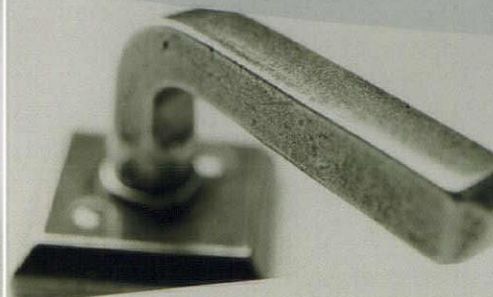
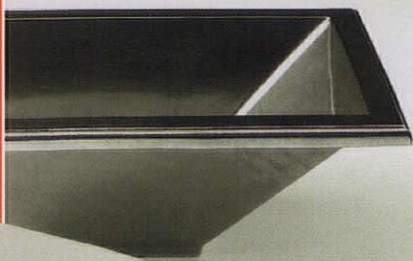
**ROTH CONCEPT CENTER**  
DISTINCTIVE APPLIANCES



**Colorado**

A Component of The American Institute of Architects





## Partnering For Your Success

Dedicated team. Premier selection. Designers' choice for the best in architectural and builder's hardware, kitchen & bath.

815 South Jason Street  
Denver, Colorado 80223

P: 720.570.4488  
F: 720.570.4489  
1: 877.998.4888

[www.hutterwholesale.com](http://www.hutterwholesale.com)



## Angling for something different?

Tulikivi makes the most efficient, cleanest-burning fireplaces in the world. Our secret is our soapstone, perfected over billions of years deep within the hills of Finland. No matter how you cut it—fireplace, sink, countertop, tile or flooring—soapstone creates an environment of natural warmth, health and beauty. Extremely durable with unrivaled heat-retention properties, soapstone adds a lifetime of value to any home. For more info, visit [www.warmstone.com](http://www.warmstone.com) or call Ron Pihl at 406-333-4383.

Fireplaces • Bakeovens • Sinks • Countertops • Tiles • Flooring



Cornerstone Masonry—406.333.4383. Visit our showroom at Crazy Mountain Cabinetry, 114 N. B Street, Livingston, Montana 59047

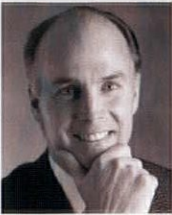


# > THE BUSINESS OF ARCHITECTURE

*Futurist Chris Luebke offers different possibilities for the architect of the future:  
Blacksmith – an outdated master craftsman whose skills are no longer important in contemporary society,  
Baumeister – a master of the entire art and science of the built environment.  
Architect Colorado asked several AIA architects to share their ideas of what the architect of the future will be.*

**DESIGN PROFESSIONALS OF THE FUTURE WILL BE MORE IDEA ORIENTED AND GOOD PROBLEM SOLVERS.** Technology is neutralizing the importance of the architect as traditionally defined. As technology becomes less expensive and more pervasive, non-architects will utilize it to implement architecture. The pace of change in whole, accelerating at an ever-increasing rate, creates

pressure for creative problem-solving. Social issues, the deterioration of the environment and the merging of professional roles create opportunities for leadership. The 'idea,' i.e., one's ability to think in 3D and solve complex problems, will be an increasingly valuable commodity in coming decades – selling what is scarce.



**Brian Klipp, FAIA**  
Principal  
Klipp

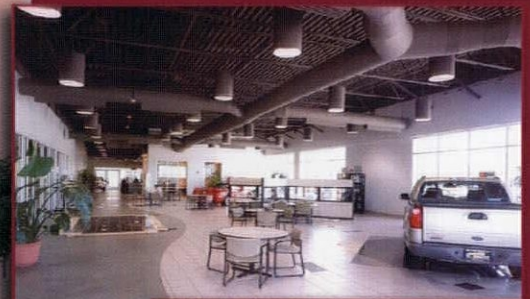
**ARCHITECTS OF THE FUTURE WILL BE STRONGER LEADERS IN THE A/E/C INDUSTRY.** We are becoming more specialized, less generalists. Our involvement in continuing education is better than ever. Our abilities and understanding of our potential in the political realm have strengthened greatly. We are

improving our impact on the economics, technology and politics of good design in our communities. Finally, we are endeavoring to explore new and exciting ways of delivering the 'ahh factor,' a well-designed project that enlivens the spirit.



**Cheri Gerou, AIA**  
2005 AIA Colorado President-Elect  
Principal  
Gerou & Associates Ltd.

quality. dedication. integrity. expertise.



**CALCON**  
CONSTRUCTORS

2270 West Bates Avenue • Englewood, CO 80110  
303.762.1554 ph • 303.762.1948 fax  
www.calconci.com

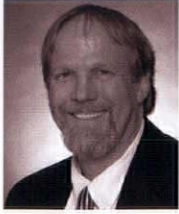
Clockwise: Stevinson Imports, Stevinson Toyota (exterior/interior), Medved/Brutyn Autoplex (interior)





**THE PROMINENT ARCHITECT LEADERS OF THE FUTURE WILL BE RESPECTED BUSINESS TEAM COLLABORATORS.** The charge of these professionals will be to skillfully and credibly assemble financial, construction, design and engineering teams. They must be able to effectively address technology, time and increasingly sophisticated owner and business interests and create well-planned and financially strong opportunities for exciting,

bold and creative architecture. Design will matter, and well-designed projects will be more economically viable than their alternatives. The collaborator architect will be a necessary evolution as AIA architects work to effectively deliver value to our clients.



**Chris Green, AIA**  
Past-President, AIA Colorado  
Principal  
Ago Studios Inc.

**ARCHITECTS OF THE FUTURE MUST RETURN TO THE ROLE OF CREATIVE PROVOCATEUR.** It is not enough to be creative in a manner that serves to support an ailing system. Historians often observe that asking the right question is more important than producing the right answer. The right

answer to a trivial question remains trivial while the posing of the right question can be the guide to real discovery - to meaningful creativity. That is where architecture should reside. The architect of the future won't be afraid to get a little gritty.



**David Barrett, AIA**  
2002 AIA Colorado Architect of the Year  
Principal  
Barrett Studio Architects

**DESIGN PROFESSIONALS OF THE FUTURE WILL NEED TO BE FACILITATORS OF THE ENTIRE DESIGN AND CONSTRUCTION PROCESS.** Architects will need to respond to the changing direction and demographics of the design and construction industry and should take a leadership role in facilitating this process. They will need the ability to adapt to changes in traditional architectural practice, including more outsourcing of services that were traditionally provided in-house, more specialization of project types and more demand for architect-led design-build project delivery systems.



**David Lingle, AIA**  
Principal  
Aller-Lingle Architects PC

**AS AMERICAN SOCIETY CONTINUES TO DISCOVER OPPORTUNITIES TO ENHANCE OUR QUALITY OF LIFE THROUGH THOUGHTFUL DESIGN OF THE PUBLIC REALM AND CAREFULLY PLANNED DENSITY, INFORMED AND TALENTED ARCHITECTS WILL BE AS BUSY AS EVER.** Civic leaders, citizens and consumers are becoming increasingly more sophisticated. We are demanding higher levels of design from the products we purchase at Target, for instance, to the homes we live in, our office environments, medical facilities, parks, open space and resort experiences. The

social and civic level of design embodied in recent new sports and cultural structures, and in the public spaces connecting all areas of life, suggest an ever-increasing reliance on the profession of architecture. It's a great time to be a young architect.



**David O. Tryba, FAIA**  
Principal  
David Owen Tryba Architects

# Direction

Making sure you get the proper financial advice starts with taking an in-depth look at where you are today and where you want to be tomorrow. Helping you reach your financial goals means guiding you in the right direction...with no short cuts. So we don't risk getting you lost along the way.

**Chris Hassett, ChFC**  
Financial Adviser  
Eagle Strategies Corp., A Registered Investment Adviser  
6850 West 52<sup>nd</sup> Avenue, Suite 200  
Arvada, Colorado 80002  
303.403.5680

**Eagle  
Strategies  
Corp.**

A REGISTERED INVESTMENT ADVISER

## Every Aspect of Life Brings Risk



BUSINESS INSURANCE PERSONAL INSURANCE EMPLOYEE BENEFITS RISK SERVICES

### Consider Us Your Safe Place

Van Gilder understands risk  
is part of your business

It is our job to define risk  
and create solutions  
that keep you on your  
path to success

Consider us your  
resource for success

**VAN GILDER**  
INSURANCE CORPORATION  
...An Assurex Global Partner

*Protecting Your Future Since 1905*

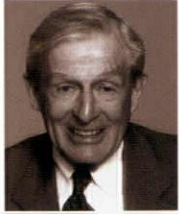
303-837-8500 • Toll Free 800-873-8500

700 Broadway, 10th Floor • Denver, Colorado 80203-3400

www.vgic.com



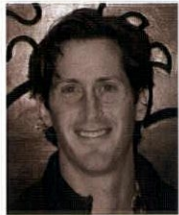
**SUCCESSFUL ARCHITECTS OF THE FUTURE WILL BE MORE BROADLY BASED, SAVVY AND EFFECTIVE ABOUT ALL ASPECTS OF THE DESIGN AND CONSTRUCTION PROCESS AND WILL CLEARLY BE THE LEADERS OF THAT PROCESS.** They will embrace more responsibility and risk and be able to provide an inclusive array of services from the earliest vision through design, construction, commissioning, occupancy and beyond. The architect who provides today's limited/traditional services only will ultimately, and possibly soon, be left in the dust or will be limited to an ever-narrower practice.



Why is this the case? Today's pressures to accept a diversity of roles, including community service, are already enormous and will only increase. We must prepare for that inevitable and exciting future rather than bog down in a dead past.

**John D. Anderson, FAIA**  
Senior Vice President  
Anderson Mason Dale Architects

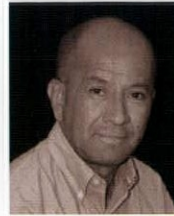
**ARCHITECTS WILL CONTINUE TO BE ESSENTIAL TO THE DESIGN AND CONSTRUCTION OF COMMERCIAL PROJECTS.** However, unless we change the way we deliver residential design services, I think we may be almost completely pushed out of that aspect of the field over the next 20 years. It's time for us to reclaim the leadership role in neighborhood planning and home design - 10,000 identical beige boxes does not make a livable community. I believe there is a need for us to fill.



However, unless we change the way we deliver residential design services, I think we may be almost completely pushed out of that aspect of the field over the next 20 years. It's time for us to reclaim the leadership role in neighborhood planning and home design - 10,000 identical beige boxes does not make a livable community. I believe there is a need for us to fill.

**Scott Rodwin, AIA, LEED AP**  
2005 President, AIA Colorado North  
Principal  
Rodwin Architecture

**DESIGN PROFESSIONALS OF THE FUTURE WILL BE INTEGRATORS OF MULTIPLE DISCIPLINES - EVEN BEYOND THE MASTER BUILDER.** Technological innovations such as digital processes and the effective use of 4D and 5D modeling as complements of traditional 3D modeling will enable master architects to truly model the projects in a 'digital laboratory.' The benefits to customers and the community of this analysis tool will be significant since they will permit full evaluation of functionality, aesthetics and economic considerations before actual construction.



**Miguel Burbano de Lara, AIA**  
2005 President-Elect, AIA Colorado North  
Vice President Healthcare Operations  
Principal Architect  
The Neenan Co.


**UNFORTUNATELY, MOST DESIGN PROFESSIONALS WILL CHOOSE TO GET OUT OF THE BUSINESS OF MAKING GOOD ARCHITECTURE.** A few will continue in the traditional master builder role - and will therefore still be in a position to do good design by making wonderful architecture. A few will become leaders in shaping the urban terrain - an important development, but one that will take their talents away from designing good buildings.

The vast majority of architects, however, will become 'team players.' In other



words, in a world in which buildings are commodities rather than embodiments of our community vision, architects will join teams of 'commodity managers.' They will be problem-solvers who make pretty spaces, but their buildings will be unlikely to endure the test of time. They will be reduced to being space-arrangers and 'aesthetic-ticians.'


**Ron Faleide, AIA**  
President  
Faleide Architects PC



**Carl Walker**  
Planning Engineering Restoration

DIFFERENT BY DESIGN

Atlanta  
Charlotte  
Chicago  
Dallas  
Denver  
Indianapolis  
Kalamazoo  
Philadelphia  
Phoenix  
Tampa






Clayton Lane Parking Facility  
Cherry Creek North District, Denver, CO


◆ Parking Structure Planning & Design  
◆ Studies & Operations Consulting  
◆ Restoration & Renovation Engineering

Contact: Paul Mack  
Business Development Director  
(303) 894-8800

WWW.CARLWALKER.COM

AIA  
Affiliate Member  
Since 1982



**JEAN SEBBEN ASSOCIATES, LLC**  
COMMERCIAL INTERIOR DESIGN

Interior Design  
Space Organization  
Specification

104 South Weber St. #100  
Colorado Springs, CO  
80903  
719 635 7133



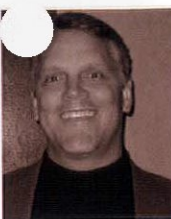
**ARCHITECTS OF THE FUTURE WILL BE THE LEADERS OF THE BUILDING PROCESS.** The most important aspect of a building is ultimately the quality of the design. In addition to today's traditional roles, architects will also need to be well versed in a broader range of issues and knowledge such as financing, sustainability, cost control and digital modeling, just to name a few. Architects must have, however, the ability to collaborate and communicate with a team of multiple experts in their own fields from concept to delivery of the project.



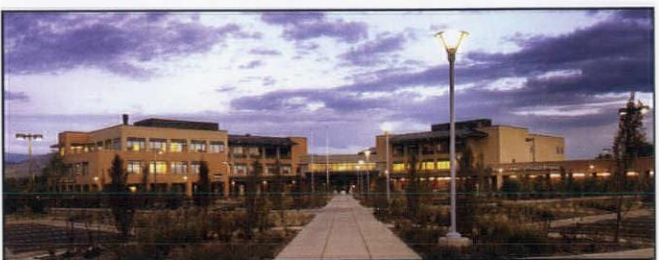
**Roger D. Sauerhagen, AIA**  
 2005 President-Elect, AIA Colorado South  
 CSNA Architects

**ARCHITECTS OF THE FUTURE WILL EITHER LEAD OR BE LEFT OUT.** If we allow it, the architect's role will slowly be reduced to ensuring life safety compliance for building permit purposes. We must see our buildings in a broad aesthetic, economic and social context. Just as each detail we develop adds or subtracts from the quality of a building, each building adds or subtracts from the beauty and vitality of its surrounding community.

To avoid marginalization, architects must provide leadership by taking advantage of rapidly emerging technologies and the expertise various parties bring to a project while retaining an old-fashioned, one-on-one client service ethic. It's not just about teaming but about the architect stepping forward, eager to collaborate, but also willing to exercise responsible control of a project.



**Stuart L. Coppedge, AIA, LEED AP**  
 2005 President, AIA Colorado South  
 Associate Principal  
 RTA Architects



**Boulder Community Hospital** Oz Architecture & Boulder Associates

**Urban to Resort.  
 Structural Engineering.**



**Grand Aspen Lodge — In Progress** O'Bryan Partnership

[www.monroe-newell.com](http://www.monroe-newell.com)



**Monroe & Newell**  
 Engineers, Inc.  
 Structural Engineers  
 Vail • Denver • Dillon

- DENVER**  
 1701 Wynkoop St., Suite 200, Denver, CO 80202  
 (303) 623-4927 • denver@monroe-newell.com
- VAIL**  
 70 Benchmark Rd., Suite 204, Avon, CO 81620  
 (970) 949-7768 • avon@monroe-newell.com
- DILLON**  
 765 W. Anemone Tr., Suite 202, Dillon, CO 80435  
 (970) 513-1600 • dillon@monroe-newell.com

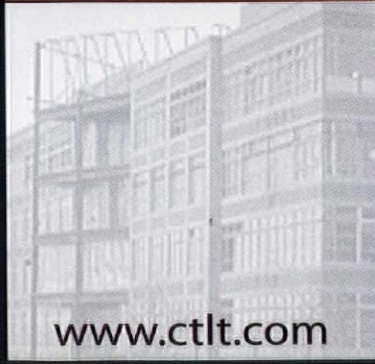


# CTL THOMPSON

**A LEADER IN  
 GEOTECHNICAL,  
 MATERIALS &  
 ENVIRONMENTAL  
 ENGINEERING  
 & TESTING**

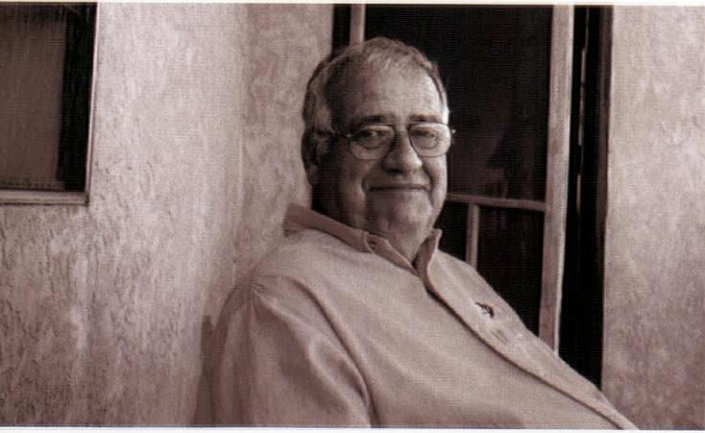


- Denver**  
 303-825-0777
- Colorado Springs**  
 719-528-8300
- Glenwood Springs**  
 970-945-2809
- Ft. Collins**  
 970-206-9455
- Pueblo**  
 719-595-1287



[www.ctlt.com](http://www.ctlt.com)





## THE INSPIRATION OF DWAYNE NUZUM (1936-2005)

COLORADO'S ARCHITECTURAL COMMUNITY REMEMBERS  
A DYNAMIC MENTOR, LEADER AND FRIEND

> BY JENNIFER SEWARD

### The American poet Henry Wadsworth Longfellow

once wrote: "Lives of great men all remind us, we can make our lives sublime, and, departing, leave behind us, footprints on the sands of time."

If Longfellow were alive today, he would likely consider the footprints of Dwayne Nuzum, AIA, to be of considerable size. Nuzum, a retired professor at the University of Colorado at Denver, died suddenly in January a few weeks after having knee surgery.

A talented academic, architect and artist, Nuzum accomplished more in his career, both personally and professionally, than most people could hope to achieve in several lifetimes. While Nuzum was a familiar face and key leader in both the faculty and administration on all three of the University of Colorado campuses for nearly 40 years, his influence reached into the greater community, touching a myriad of people and projects.

#### THE FACE BEHIND THE COLLEGE

Attempting to summarize Nuzum's many roles, his close friend, colleague and business partner John Prosser, AIA also a professor at the University of Colorado, recalled him as "an academic, professional, editor, developer, banker, writer, trouble shooter, collaborator, sports enthusiast, mentor, friend, husband, father, and granddad," adding that "he exemplified service, reason, honor, and stability, and most of all, smiles."

If this description seems superfluous, it just begins to scratch the surface of all that was Nuzum's life work. "He was, more than any single person, the one who shaped the college as we know it today," said Mark Gelernter, Associated AIA, dean of the College of Architecture and Planning at the University of Colorado at Denver and Health Sciences Center.

Credited with creating the Graduate School of Architecture at UCD, Nuzum turned the college's formerly five-year bachelor's program into a four-plus-two year combination pre-professional undergraduate and professional master's degree program.

He used the program as a learning laboratory for graduate design and education, developing the concept of putting students to work on real community projects.

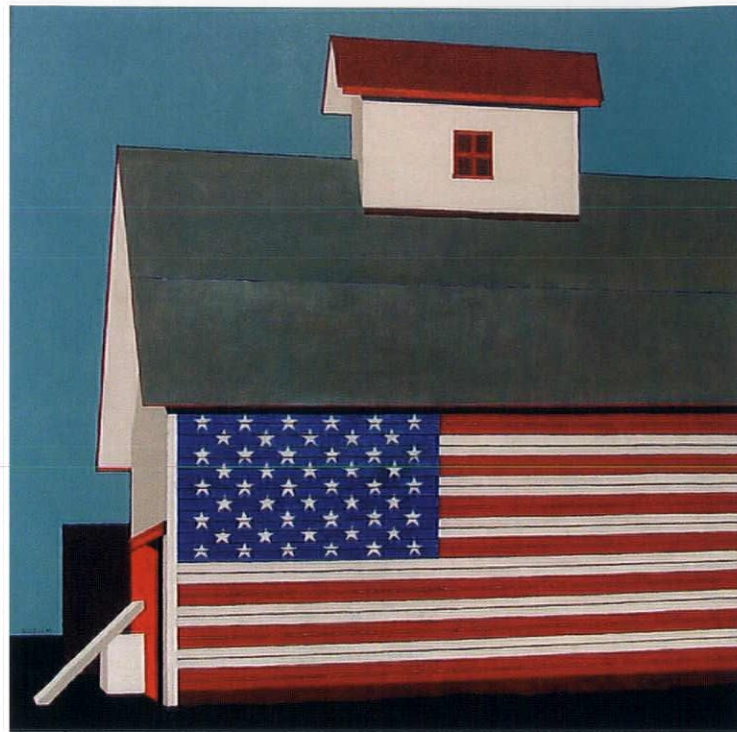
"At lunch a week before his very successful knee replacement – just two weeks before he died – we discussed his coming retirement plans and mutually agreed how lucky we two had been to be a part of the golden years of collegiate education," said Prosser. "And to have participated throughout the evolution of our school from a single undergraduate program at Boulder to a program with six degrees, including a Ph.D. Truly, Dwayne was the key person in this transformation."

Nuzum was also involved in setting up the Colorado Center for Community Development in



“Dwayne Nuzum, more than any single person, shaped the college as we know it today.”

– Mark Gelernter, Associate AIA



the 1970s, helped create CU's master's degree program for urban design, and served as acting chancellor at UCD before becoming chancellor at the University of Colorado at Colorado Springs from 1986-1992. Nuzum was also the head of the Colorado Commission on Higher Education under former Gov. Roy Romer.

During his career, Nuzum designed homes and apartment buildings in Boulder. He also played a key role in formalizing the Fitzsimons Master Plan in 1999 and provided oversight design review for the Colorado Convention Center expansion.

#### ARCHITECTURE & ART

Chris Nims, FAIA, is a principal with Denver's David Owen Tryba Architects and the director of mentor and internship programs at CU's College of Architecture and Planning. Nims is also a former student of Nuzum's who later went to work for him at the Boulder design firm of Nuzum Prosser Vetter. Nims said he first met Nuzum – the man he would come to call his mentor – when he was an undergraduate in one of Nuzum's planning courses. The young Prof. Nuzum had just returned from Holland, where he had attended Delft Technical University on a Fulbright scholarship and became the first American to receive a degree in town planning.

“Dwayne had a profound understanding of the dynamics of planning,” Nims said. “He'd start out his class with the discussion of water as a planning tool ... spending time educating us on water rights and water laws.” Then Nuzum would point out that Denver was founded where the Plains Indians first settled, around water, at the confluence of Cherry Creek and the South Platte River.

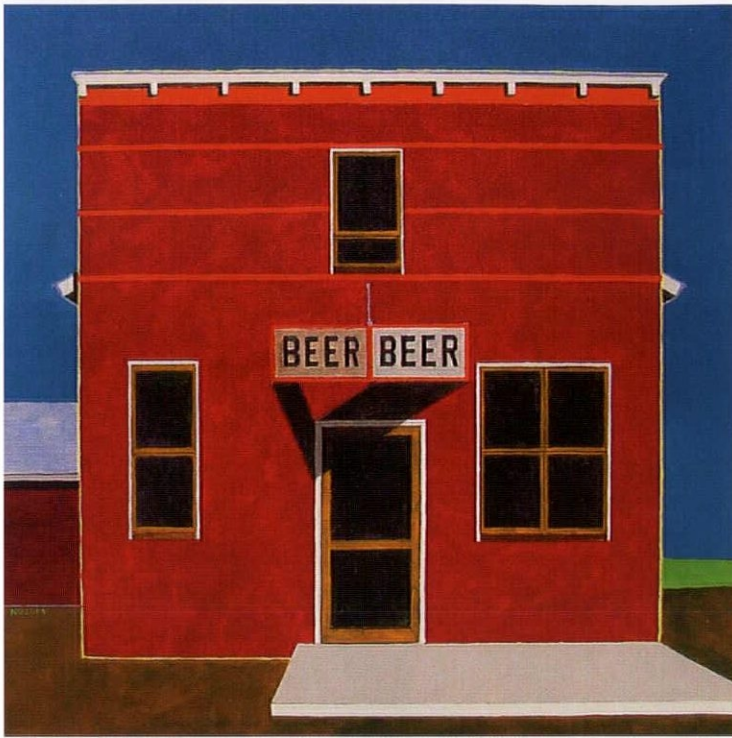
Nuzum's passion for architecture and the Old West parlayed nicely into his own art. Many of Nuzum's paintings were about the endangered architecture of the West. He wandered the state to find simple churches, ordinary homes and old commercial buildings that were falling down and then captured them as bright, iconic structures on his canvases.

“Usually, when you'd see a Dwayne Nuzum [painting], it would be a building in Sawatch, Colorado, with a wooden front. The building itself may have been dilapidated beyond redemption, but Dwayne would show it in its best form,” said Stephen Savageau, a close friend for more than 30 years. He also owns the Savageau Art Gallery in Denver, where Nuzum exhibited many of his paintings.

“Dwayne had a terrific art collection and a very keen eye,” Savageau said.

When he died, Nuzum was stepping down as chair of CU's Urban and Regional Planning Department. He had also just started a long-overdue sabbatical in





“If you didn’t have a good time with Dwayne Nuzum, the fault was yours, not his.”

– Doug Looney

mid-December, during which he planned to write a history of the College of Architecture and Planning.

Nuzum was looking forward to the opening of a studio, gallery and apartment building he had designed as a place to focus on his painting. As it turned out, this structure – the Prospect Building – was the last completed building of his architectural career.

“Throughout his comprehensive teaching, creative, research and service careers, Dwayne was always beginning new endeavors,” Prosser said.

#### A FRESH PERSPECTIVE

Nuzum was also a big sports fan, especially basketball. Childhood friend Doug Looney, a former senior writer at Sports Illustrated, shared Nuzum’s love for basketball and took in many CU games with him. The “Boulder boys” grew up at a time when the town’s population was “just 10,000 or less, when everyone knew everyone,” Looney said, and most of the high school boys mowed lawns for the Nuzum family’s landscaping business.

“When you saw Dwayne coming, he was the kind of guy who made you smile,” Looney said. “If you didn’t have a good time with Dwayne Nuzum, the fault was yours, not his.”

“Whenever you ran into him in the hallway, he’d always give you a ‘Wassup!’” said Nims, imitating Nuzum’s lively bellow, and joking that it closely resembled the mating sound of a bull elk.

“It’s hard to think of Dwayne without a cigar, without the sports, and without his (often) irreverent laughter,” said Looney. “One of my greatest memories is of seeing Dwayne running down the court smoking a cigar ... that just about says it all.”

“Dwayne was a delight to be around all of the time,” added Nims. “He was energetic and enthusiastic, constantly positive. The thing that was fascinating to me about Dwayne was that he was politically savvy, but he didn’t take himself too seriously. He could find humor in some of the political situations we create for ourselves.”

“Dwayne was exceptionally brilliant at understanding people and their motivations, and really knew how to get them to work together to get things done,” noted Gelernter.

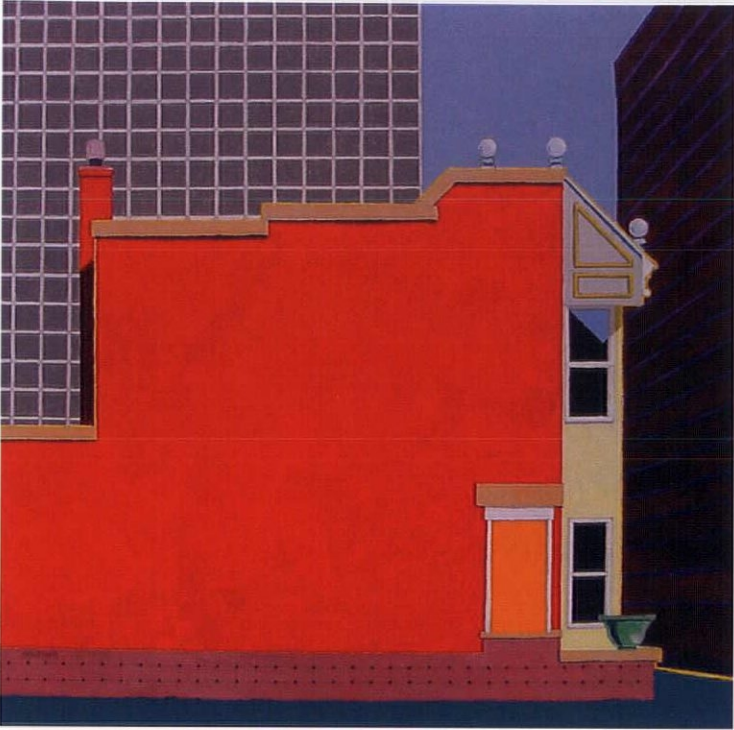
This innate people-skill was one reason that Nuzum’s role on a project or committee was often crucial to its success.

“Dwayne still had a lot left to do,” said Nims. “He had a lot of contributions to make; he just



“Dwayne loved life & lived it to its fullest.”

- John Prosser, AIA



wasn't through yet. He was taken too early. But when you look back on the contributions he made, they were phenomenal.”

Nims keeps a picture of his mentor on his desk as a reminder of Nuzum's many accomplishments. He said it inspires him about what can be done in one person's lifetime.

“Dwayne didn't live as long as we would have wanted, but likely he never wanted as long as he lived,” said Prosser. “He loved life and lived it to its fullest. If there is indeed an afterlife, surely Dwayne is once again hitting three-pointers and slam dunks as he always did – on and off the basketball court.”



## Dwayne Nuzum A Lifetime of Achievement

- > Director, Urban Design Program, University of Colorado
- > Chair, Urban and Regional Planning Department, University of Colorado
- > Dean of the College of Architecture and Planning, University of Colorado
- > Acting Chancellor, University of Colorado at Denver
- > Chancellor, University of Colorado at Colorado Springs
- > University of Colorado Governmental / Legislative Relations Director
- > Executive Director, Colorado Commission on Higher Education
- > Boulder Planning Board
- > Boulder City Council (acting mayor)
- > University Design Review Board
- > President, Association of Collegiate Schools of Architecture
- > President, Association of Public College and University Presidents, Colorado
- > Board member, Colorado Historical Foundation
- > Board member, Colorado Center for Community Development

PREVIOUS LEFT Dwayne Clifton Nuzum

Many of Nuzum's paintings were about the endangered architecture of the West. He wandered the state to find simple churches, ordinary homes and old commercial buildings that were falling down and then captured them as bright, iconic structures on his canvases. Shown here are three of Nuzum's paintings.

PREVIOUS RIGHT American Barn Illinois  
OPPOSITE Beer Beer  
ABOVE ESQ Downtown Denver





## A QUILTING BEE

TAXI: CATALYTIC. CREATIVE.  
FLEXIBLE. SECURE. VIABLE.  
SUSTAINABLE. FLEXIBLE.  
SECURE. VIABLE. FLEXIBLE.  
CATALYTIC. CREATIVE. TAXI:

## A COLLABORATIVE RISK

> BY CYNTHIA KEMPER, PA

In the arena of project development, creativity and daring are often the exception to the rule.

But Denver has always been at the cusp of the frontier—a city where visionary leaders honor the tension between western tradition and daring innovation. Out of this unique milieu comes yet another edgy urban project envisioned by one of Denver's renaissance men.

Mickey Zeppelin, founder of Denver-based Zeppelin Development Inc., is the developer leading a diverse and talented team in creating a new phase of TAXI, a cutting-edge mixed-use development on the city's industrial north side.

### THE MANY PHASES OF TAXI

In 2000, motivated by a desire to create a "catalyst for change," Zeppelin purchased the former Yellow Cab taxi garages located on the west bank of the South Platte River at 34th and Ringsby Court. He named the abandoned space "TAXI" and renovated it to house a diverse collection of businesses. The TAXI building remains 100% leased, employing about 100 people, with a mix of tenants that includes small incubator start-ups to medium-sized marketing firms, studios and boutique offices.

The renovated space retains much of its original, industrial-chic character with high-bay doors, sprawling corridors and multiple access points.

Now, Zeppelin wants to take TAXI a step further by creating an initial 134,000-sq-ft addition to house 29 top-floor residences above two floors of business and commercial space. He envisions extensive art and public spaces, including cafes, wine bars and courtyards. Future phases could substantially increase the residential totals to as many as 250 units, an ambitious plan for a mostly undiscovered industrial area 10 minutes from downtown.

"I saw a rare opportunity to do something that would set a new pace for what could happen in Denver—to be at the heart of a new kind of community," Zeppelin said. "I envisioned a place that exudes pleasure, stimulation and pride; a community where people are living, working and playing together creatively with a sense of freedom and excitement. I wanted people to feel special, in a special place."

Zeppelin was so drawn to the eclectic TAXI space that he moved his own offices there in July 2001, even though the building's zany motor-pool aesthetics and



post-industrial landscape might be considered too far out of the mainstream for most developers.

But Zeppelin is not like most other developers. Known for turning lofty musings into meticulous site plans and inspired urban spaces, he has invested a lifetime of heart—and a great deal of his own hard-earned capital—into creating a better city.

Since emerging in the mid-'80s as a vocal leader during the redevelopment heyday of Denver's LoDo, Zeppelin has proven his ability to energize other people's talents around his dynamic vision. At TAXI, that vision includes a risky development process that redefines architectural collaboration.

#### EDGY DEVELOPER + MADCAP FORMULA = ARCHITECTURAL QUILTING BEE

Zeppelin's dream of creating a new kind of community at TAXI also required a more creative design process. Rather than simply hiring one architect to serve as his representative and spearhead the project, Zeppelin assembled a team to design it in distinct but complementary pieces, layered and stitched together by an evolving master plan—like an architectural quilt.

He started by turning to an old friend and Zeppelin Development's main architect, Alan Brown, AIA, who oversaw the redesign of the original TAXI building. Brown, known for his work on the Stapleton redevelopment master plan, is a principal of Eldorado Springs-based Alan Eban Brown Architects.

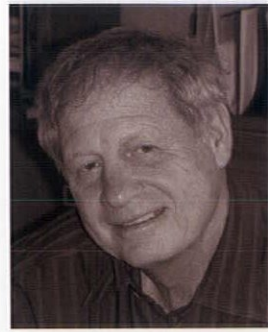
As the final tenant moved into the original TAXI building in March 2004, Brown completed the initial "gothic-style" site plan for future phases, spreading 12 buildings across the nine-acre site. In the meantime, the city was creating a new plan for the neighborhood—River North—through an expansive rezoning approved in January 2005.

Zeppelin had been quietly touting the project to several other architects since early that year. Then, in a daring move, he decided to expand the TAXI team to include three additional architects, men widely recognized for their creative yet economical designs.

In April 2004, those three—Will Bruder, AIA, founding partner of Phoenix-based Will Bruder Architects Ltd.; David Baker, FAIA, founding partner of San Francisco-based David Baker + Partners; and Harry Teague, AIA, founding partner of Aspen-based Harry Teague Architects—joined the team around the TAXI conference table for the first charrette.

The question on everyone's mind was: "Why four architects?"

Zeppelin's answer: "I took this route partially because I'm a little bit insane, but I'm also very curious. Like a mad chemist, I try to mix different combinations together to see if I can come up with something new—it was a bit of an adventure, to say the least."



"Everything was new—[we are working with] a new area, a new approach to collaboration, a new concept

of site plan and building and a new work model with 3-D modeling, bringing in the contractor early."

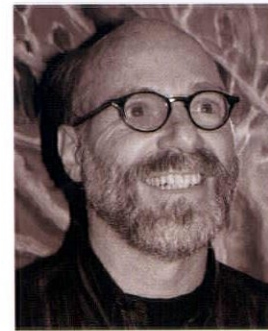
- Mickey Zeppelin, Zeppelin Development



"The technology and 3-D tools we're using are one of the key components of the project. When you have

architects in four geographical regions, even using a Web site can make communications challenging."

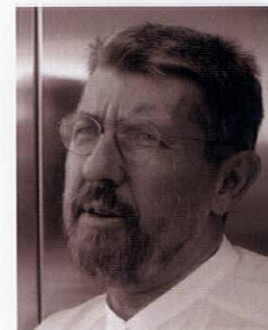
- Todd Hager, AIA, M.A. Mortenson



"Complexity, debate, natural differences, calculated risks and a fragile consensus are conditions that are here to stay. Successful professional collaborations will achieve clarity in communication,

greater working efficiencies, and will enhance community in their specific design solutions."

- Alan Brown, AIA, Alan Eban Brown Architects



"This is very 'retro' with the costing of value-engineering and construction getting more and more

complex—the old paradigm isn't working anymore."

- Will Bruder, AIA, Will Bruder Architects Ltd.



## > ON THE BOARDS

### CREATING THE CIRCLE

During the early stages of the process, Baker, Teague, Bruder and Brown brought their individual backgrounds and voices into the room. But over time, a truly collaborative resonance emerged—quietly heralding its presence in unexpected moments.

“They are all very ‘real,’ with an ability to apply their ingenuity and creativity in ways that capture the essence of place,” Zeppelin said. “Their [past] projects offered a sense of empowerment, but with feeling—not merely architecture. And they use a variety of materials in very creative ways.”

The first three charrettes, in April, August and October of 2004, lasted two days each. They got to know each another, defined their shared versus individual contributions and established the architectural vision, process and schedule. Then they began a collaboration about site planning and schematic design.

The one thing they all had in common was Zeppelin's dream.

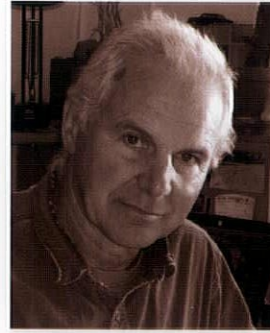
He wanted to bring the fresh eclecticism of the original TAXI to the project's later phases, which will encompass a new brand of mixed-use design. The “railroad car-like” forms of the next buildings parallel the existing TAXI in a “bar scheme,” with room between them for landscaping and surface parking. The first and second floors will house commercial and retail uses, with residences on the third floor.

The new units will be thematically tied to the site by the towering presence of the original TAXI communications antenna, whose guy wires will be “notched” into the space of the new building.

“We're letting the environment influence the building,” Bruder said. Exactly who's designing what pieces, and other elements—such as unit sizes, shapes and materials—are still being determined, but the project is moving forward more quickly now that the team's dynamics have been worked out.

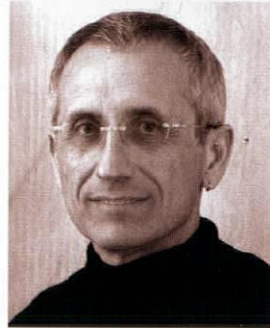
### A BIG REACH

Looking back at those early meetings, Bruder said, “As a group, we're at a ‘hinge-point’ in the development of the New West. We all want to create an



“It's like an authentic jazz venue. Where collaboration exists, you're on an adventure together—you bond with your peers over the process while still retaining each architect's individuality.”

– Harry Teague, AIA, Harry Teague Architects

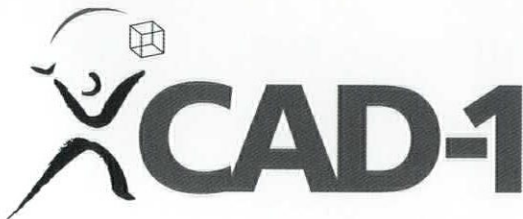


“There is this Ayn Rand ‘Fountainhead’ thing in the architectural world—but everything we do is really about collaboration. It's merely a matter of how much you suppress your collaborators.”

– David Baker, AIA, David Baker + Partners

**OPPOSITE** Catalytic Architects (left to right) Eric Hendricks, Harry Teague Architects; Patrick Leeds, Harry Teague Architects; Ben Nesbeitt, Will Bruder Architects; Will Bruder, Will Bruder Architects; Mickey Zeppelin, Zeppelin Development; Brandi Henderson, David Baker + Partners; Alan Brown, Alan Eban Brown Architects; David Baker, David Baker + Partners; Harry Teague, Harry Teague Architects; and Bob Yeager, Zeppelin Development

## WE CREATE CAD SOLUTIONS



Architectural ■ Civil ■ Multimedia ■ 3D

■ AutoCAD software sales, support and service

■ AutoCAD consulting and customization

■ Autodesk Premier Training Center

■ Authorized 3D Studio MAX & VIZ Reseller

autodesk  
premier training center

12130 N. Pennsylvania  
Denver, CO 80241

discreet\*

303-427-2231 ■ [www.cad-1.com](http://www.cad-1.com) for schedule



architecture that celebrates both people and place—to create community, take the ordinary and make it extraordinary.”

Teague admits to experiencing an architect’s inherent fear of the collaborative peer process, where iconic elements can easily disappear.

“TAXI is a rare event. So why are we normally so afraid of this?” he asked. “Because we’re afraid of losing our individuality. But what I’ve discovered is that I learn something different every time we come together.”

Bruder agreed: “Nothing is easy with TAXI. Everything is a big reach ... a big exercise. We have a bunch of ‘quilters’ sitting here at the table. And like with quilting, we take random parts and put them together so no one knows which part is whose.”

“By nature, we think we’re exclusive to the ideas; that our work is our reputation. But Mickey had to help us get beyond this,” Baker said. “Architecture is not a single moment. A city is created over time, by many different people. So we continue to ask where does individuality fit into a quilt?”

**CONTRACTOR AS MASTER QUILTER**

Despite the array of architectural talent assembled to design TAXI’s next phase, the architect-of-record works for the project’s general contractor, M.A. Mortenson. Todd Hager, AIA, was brought on board partly because of his familiarity with the 3-D technologies that Mortenson used to build Frank Gehry’s Walt Disney Concert Hall in Los Angeles and is currently using on Daniel Libeskind’s new Frederick C. Hamilton Building at the Denver Art Museum.

“Zeppelin was interested in our technological ability to reduce risk by clarifying the end-product three-dimensionally,” Hager said. “Our role—to ensure that the established budget reflects what’s in the plans—helps the design team identify a bigger, better scope of work while leveraging their expertise toward a better end-product.”

Initially, Brown was expected to be the architect-of-record. But the group wanted to aggressively streamline the process and eliminate overlap. Hager’s



**WHY MICKEY ZEPPELIN CHOSE EACH OF THE TAXI ARCHITECTS**

**WILL BRUDER, AIA: THE ARTIST**

“Will’s projects are very sculptural. He has been trained as an artist and has a fabulous aesthetic edge. He’s incredibly creative, and really pushed the boundaries at the library in Phoenix. It’s a wonderful people place. He takes current reality and turns it into something new.”

**HARRY TEAGUE, AIA: THE CONTEXTUALIST**

“Harry always captures the essence of the environment around him, and especially the feeling of the West. He’s a contextual architect who has an ability to create places for people that are both environmentally sensitive and beautifully crafted.”

**DAVID BAKER, FAIA: THE ENVIRONMENTAL PRAGMATIST**

“David is a real pragmatist. He understands economy and has the ability to create beautifully crafted housing in an economic way. He’s proven to be a real asset and an important addition to the team.”

**ALAN BROWN, AIA: THE TRANSLATOR**

“Alan has been such a wonderful architect who has helped pull everything together. We’ve worked together for a long time and he really understands this area. He’s sensitive to each architect and how best to capture the essence of each individual’s contribution.”

**TODD HAGER, AIA: THE SYNTHESIZER**

“Todd understands where the other architects are going. He’s the perfect ‘keeper of the model’—a master at translating drawings into reality.”

**KEN’S...YOUR FULL SERVICE REPROGRAPHIC SHOP  
SERVING METRO DENVER FOR 42 YEARS...**

*Providing ALL your reprographic needs,  
and a proud Host of Océ Plan Center, Member CNS Plan Room,  
Member US Reprographic Network...printing your plans from coast to coast.*



**Ken’s Océ Plan Center is your solution for:**

- Publishing • Viewing • Ordering • Archiving
- 24/7 Security and Accessibility
- Call Ken’s for your 30 day FREE Trial.



**KEN'S DOWNTOWN**  
2220 Curtis Street • Denver, CO 80205  
303.297.9191 Fax 303.297.8885

**KEN'S SOUTH**  
7304 S. Alton Way • Unit 3-H • Centennial, CO 80112  
720.493.9904 Fax 720.493.9917

Visit us on the web: [www.kensrepro.com](http://www.kensrepro.com)

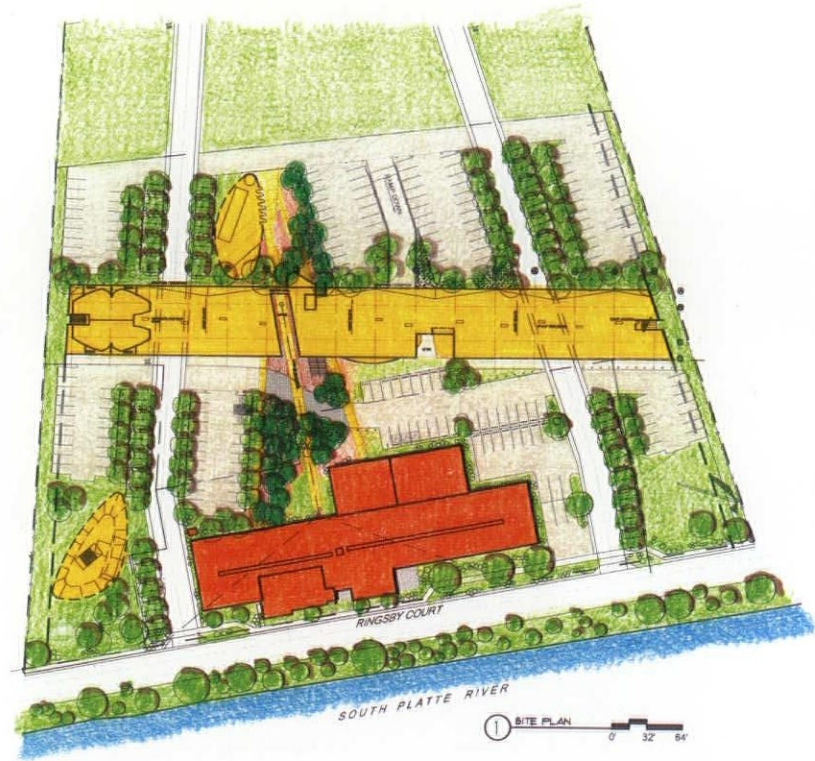


background with conflict-resolution “hub” technologies was seen as a major asset, so he was tapped to serve as the architect-of-record.

“The concept of master builder-architect was our model. We wanted to lower risk while [reviving] this historical ideal with its extra level of detail and care,” Hager said. “The technology helps us remove the issues and conflicts, [so the architects can] focus on the finer details of design and the final product.”

“As an architect, Todd understands where the architects are going,” Zeppelin said. “He’s the perfect ‘keeper of the model’—a master at translating drawings into reality. It’s an aggressive project, so everyone saw the opportunity and embraced the idea.”

Speaking more philosophically about the project, Bruder said: “We need to move back into a space where we as architects are collaborators with the contractors and suppliers rather than adversaries. This project got better because we all stepped up to a place where we could each attack this as creatively and professionally as humanly possible.”



## TAXI Future. . . Phase 2

3455 Ringsby Court, Denver, Colorado...a mixed use project by Zeppelin Development Inc.

COLLABORATIVE DESIGN:  
BY  
DAVID BRAKER ARCHITECTS  
ALAN ESKAN SHENK, AIA  
WILL BRUDER ARCHITECTS  
HARRY TEAGUE ARCHITECTS

### TAXI: DEVELOPMENT

	EXISTING	PROPOSED	FUTURE	TOTAL
Gross project area	74,012	134,007	184,316	392,335
Number of dwelling units	None	29	219	248
Gross floor area total	27,285	103,708	261,007	392,000
Gross residential floor area	None	37,479	132,167*	169,646*
Gross commercial floor area	27,285	66,229	128,840*	222,354*
Maximum height of structures in Stories	1	3	15	NA
Total Land Area	74,012	134,007	184,316	392,335
Land area covered by Structures	37%	22%	53%**	39%**
Land area covered by Parking	34%	44%	18%**	30%**
Land area covered by Landscaping	16%	22%	20%**	20%**
Land area covered by Private Driveway	13%	11%	9%	11%
Total parking spaces provided	77	183	653	913

\* The mix of residential and commercial area in Future Development may be adjusted based on future market conditions.

\*\* The Land area covered by Structures, Parking and, Landscaping in Future Development may be adjusted based on changing conditions.

### ON THE BOARDS SUBMISSIONS

For projects that are unbuilt and/or under construction, please submit the following:

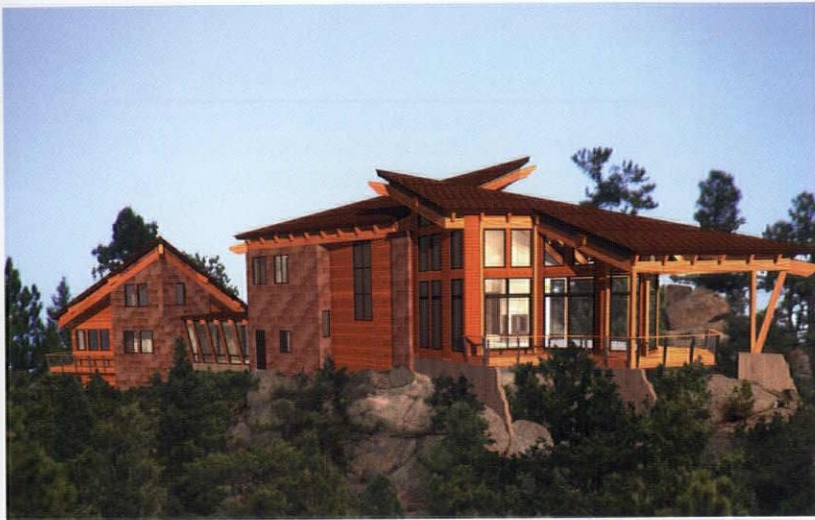
- > Project description (limit: 250 words)
- > 1 rendering or elevation (JPG or TIF, at least 5 x 7 in size; 300+ dpi resolution)
- > Photo or rendering credit (individual photographer and/or firm name)
- > Project Location
- > Owner
- > Scope (size, in sq ft)
- > Cost (if not confidential)
- > Start Date (design & construction)
- > Anticipated Completion Date
- > Send all submissions to  
Editorial Dept.  
Architect Colorado  
2661 Valeria St.  
Denver, CO 80238



## CONIFER RESIDENCE

RKD ARCHITECTS INC.

**LOCATION** Conifer  
**OWNER** Undisclosed (private residence)  
**SCOPE** 3,500 sq ft  
**COST** TBD  
**START** Summer 2005  
**COMPLETION** Summer 2006



This tear-down/re-build project begins with an existing structure that is both disappointing and uninspiring. The existing foundation will be saved due to budget constraints and an entirely new and dramatic structure will be built upon an outcropping of rocks with incredible views.

The three interlocking pavilions with kite-like roof features provide organization and structure atop the solid rock formations and take advantage of the site's panoramic views. The design progresses from the natural rock base to concrete slab floors to free form, faceted window walls and a protective, organizing roof structure.

Consideration of the area's severe weather and the site's exposure to the elements led to the creation of spaces varying from dramatic to serene. The great room's south-facing glass walls create outdoor-like space inside and lend to an exposed and "hanging on top of the world" experience. Other spaces in the home are more sheltered and provide a more Zen-like and relaxed atmosphere.

Materials include broken-board form cement concrete walls that appear to grow out of boulders, metal siding, timber and glass. ◆

## FORT COLLINS POLICE SERVICES FACILITY

HUMPHRIES POLI ARCHITECTS PC

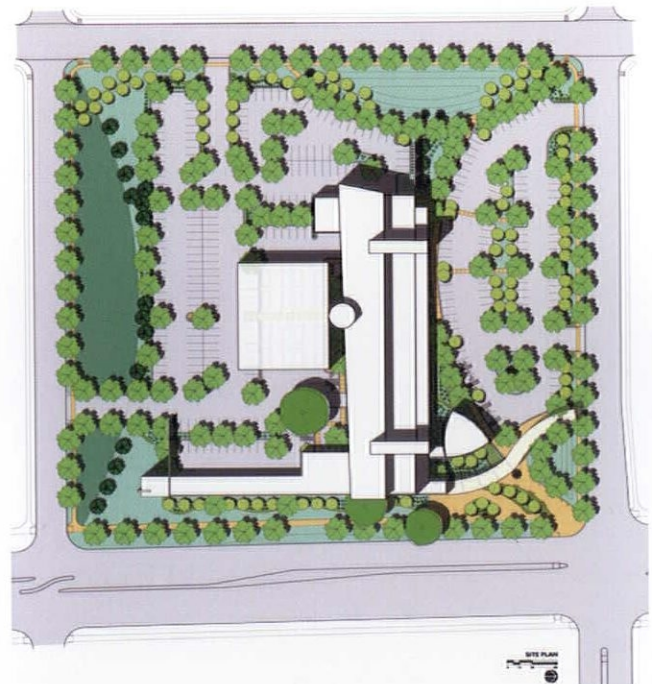
**LOCATION** Fort Collins  
**OWNER** City of Fort Collins  
**SCOPE** 93,000 sq ft  
**COST** \$20 million  
**START** Feb. 2005  
**COMPLETION** April 2007

The new Fort Collins Police Services Facility will house the Fort Collins Police Department and include administration, patrol, information services, investigative services, community room and training room and common areas.

This state-of-the-art police building will also project a positive image to the community, conveying a sense of permanence and community pride. The intent of the building will be to bring life to the city of Fort Collins' vision of a timeless, flexible and contextually and environmentally sensitive civic structure.

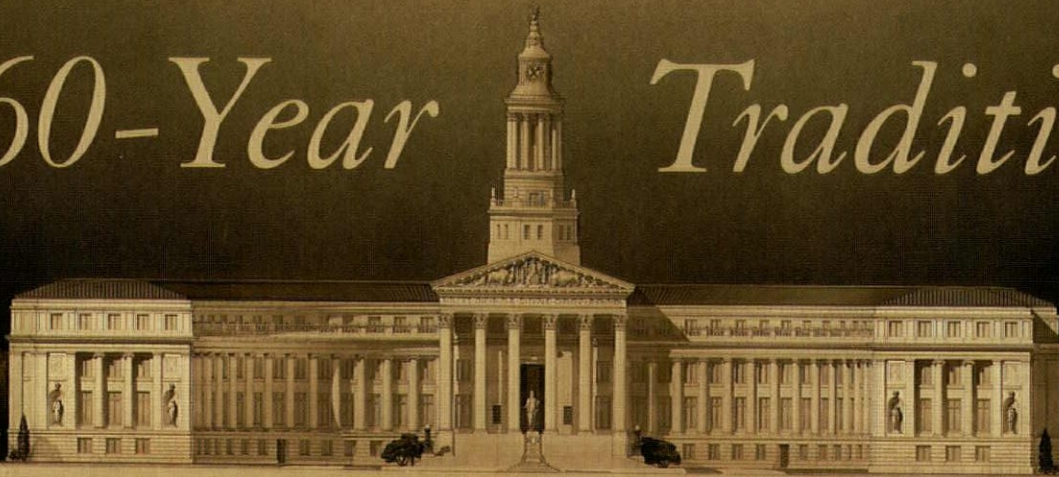
Located on a 10-acre site, the facility will include three stories and a special room for community meetings or events, enough parking for approximately 330 vehicles, and achieve at minimum a silver LEED certification.

Aesthetically, the building will fit well into its site and environment, and embody the values of the city of Fort Collins. Its inspiration has come from landforms of the area, natural materials from the region, the unique history of the city, the colors and textures of the environment and the quality of light and the sky. ◆





# A 60-Year Tradition



## ARCHITECTURAL EDUCATION FOUNDATION SUPPORTS COLORADO'S DESIGN COMMUNITY

> BY KIM JACKSON

### The Architectural Education Foundation, AIA Colorado (AEF)

will present \$46,600 in the form of 23 awards, grants and scholarships throughout 2005. Thirteen of these scholarships — \$27,600 in all — were presented at this year's Young Architects Awards Gala on April 15. Since the first scholarship was awarded 44 years ago, the foundation has given nearly \$800,000 to architectural students and professional architects in Colorado.

Marvin Sparn, FAIA, now semi-retired, said the entire Colorado design industry has benefited greatly from the foundation. "The basic premise of the AEF is that education does not really end with your graduation from the university," he said. "It's an ongoing process. The grants recognize there is an ongoing need for scholarships, for learning more about practices. The fund is really a combination of educating upcoming architects, as well as continuing education for the practitioner."

#### UNUSUAL BEGINNINGS

Oddly enough, the foundation was started as the result of a lawsuit. In the early 1920s, the City and County of Denver was ready to start on its new City and County Building. To win the bid — and compete against a larger faction — five Denver architects banded together to form Allied Architects,

an alliance large enough to handle the project. It was a good strategy because the group won the bid and began work on the project.

Design was complete and construction had just begun when the Great Depression hit in 1929. Soon after, the city was faced with financial difficulties and sued the Allied Architects under a statute that didn't allow architects to bid as a group — the city claimed there had to be a lead architect on the project. However, the city had already awarded the contract, and the new City and County Building was eventually completed in 1932. After winning the lawsuit in 1933 and paying their lawyers, the alliance was left with \$3,500 for the outstanding fees owed them.

A year later, the men — Robert K. Fuller, FAIA; William E. Fisher, FAIA; George H. Williamson, FAIA; William Bowman, AIA and Fred Montjoy, AIA — pooled their individual portions of the fees to create a trust fund, known today as the Architectural Education Foundation.

They knew it would take some time before the fund would grow enough so that scholarships and grants could be awarded from it, so Fuller invested it during the Depression years and World War II. In 1944, the AEF became linked with

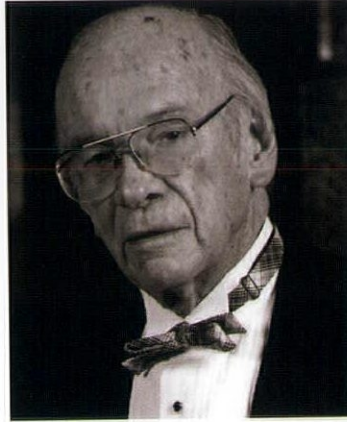


“The AEF grants recognize the ongoing need for scholarships, for learning more about practices.”

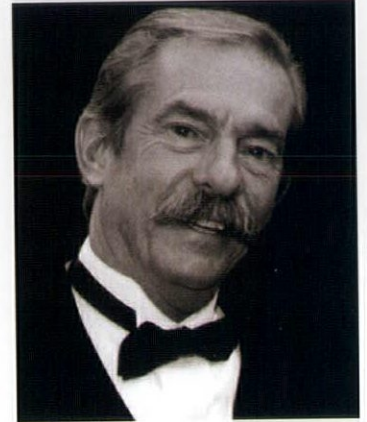
— Marvin Sparn, FAIA



Robert K. Fuller, FAIA



Kenneth R. Fuller, FAIA



Robert K. Fuller II, AIA

**OPPOSITE** Five Denver architects joined forces to form Allied Architects, an alliance large enough to design the City and County Building in the early 1920s. The proceeds from this project were used to create the Architectural Education Foundation, an AIA scholarship program that will present students with \$46,600 in awards, grants and scholarship in 2005. **ABOVE** Three generations of the Fuller family have managed the funds of the Architectural Education Foundation since its creation in 1933.

AIA Colorado and Fuller was named as its first permanent trustee.

Through smart investments and careful management – often attributed to Fuller’s son, Kenneth R. Fuller, FAIA – the AEF fund gained enough in interest and dividends to award its first \$600 scholarship in 1961.

Robert K. Fuller II, AIA, principal with Fuller Fuller & Associates, is the third generation of Fuller architects to manage AEF funds.

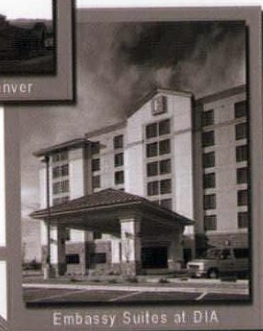
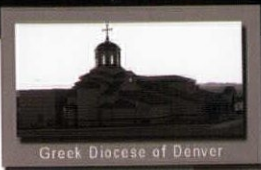
“After that first [scholarship] award of \$600,” he said, “the foundation continued to grow and donations were made to supplement it from the families of architects who passed away.”

The 501(C)3 endowment now yields enough each year to cover all of its scholarships and grants, and allow for growth and inflation.

“We exclusively support the design community in Colorado,” Fuller said. “One part of the mission statement is that everything we do [must] contribute



**HADJI AND ASSOCIATES, INC.**  
MECHANICAL AND ELECTRICAL  
CONSULTING ENGINEERS  
SINCE 1966



**S** DESIGN/BUILD  
**P** HVAC SYSTEMS  
**E** POWER SYSTEMS  
**C** SPECIAL SYSTEMS  
**I** LIGHTING SYSTEMS  
**A** PLUMBING SYSTEMS  
**L**  
**T**  
**Y**

**S** LIFE SAFETY SYSTEMS  
**E** FIRE ALARM SYSTEMS  
**R** OWNER REPRESENTATION  
**V** FIRE PROTECTION SYSTEMS  
**I**  
**C**  
**E** CONSTRUCTION ADMINISTRATION  
**S**

1825 LAWRENCE STREET, SUITE 200, DENVER, CO 80202  
PHONE 303 293-3800 FAX 303 293-3884  
HADJI@HADJIENGR.COM  
WWW.HADJIENGR.COM



to the architectural knowledge base of Colorado. The contributions by architects, their firms, friends and families are an important part of the continued success and growth of the foundation.”

#### A BOOST FOR CU-BOULDER

DeVon Carlson, FAIA, dean emeritus of the College of Architecture and Planning at the University of Colorado at Boulder, met Robert Fuller Sr. “as a very junior, junior member of the Colorado Component of the AIA.”

Carlson started the architecture program in Boulder in the late 1950s. “We were still part of the engineering program then,” he said, “and we decided it would be a good idea to have a group of practitioners to serve as an advisory board. Our chief adviser to the architectural degree program was Robert Sr.

“The foundation certainly helped us a great deal in getting the school established because of the source of scholarship money and [his] advice,” Carlson said. “It helped us in getting accreditation because members of the profession were there to help support students.”

Allen Harlow is an assistant chair of the UCB program and a 15-year chair of the department’s undergraduate scholarship committee. While he knows many of the nearly 1,000 undergraduate architectural students on campus, he said, “the number of students who apply is rather finite. They have to gather quite a bit of information and provide a statement of intent for the scholarship.”

#### AWARDS FOR PROFESSIONALS

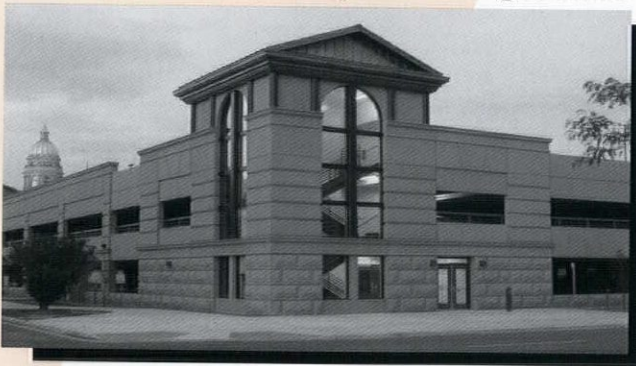
Several scholarships are also directed toward either faculty or professional candidates or applicants. The foundation is “tied to the overall process of perpetuating the profession and the quality of the profession,” Harlow said. “I believe it’s just as important as the concept of mentoring and mentorship.”

As a practicing architect, Sparn was presented with a \$2,500 Fisher traveling award in 1995. His research stemmed from questions about wood-burning fireplace restrictions in the Colorado mountains.

Sparn had noticed that a lot of coal and wood were burned in fireplaces in Germany and Switzerland. He used the AEF scholarship to study whether there

## CITY & STATE AGREE ON PRECAST

*Wyoming State Parking Structure*



*Owner: State of Wyoming  
Architect: Tobin & Associates, P.C.  
Engineer: Parsons Brinckerhoff Quade and Douglas, Inc.  
General Contractor: Cambria Corporation*

*Cheyenne City Parking Structure*



*Owner: City of Cheyenne  
Architect: Douglas L. Coates  
Engineer: Robert D. Clary, P.E., P.C.  
General Contractor: Reiman Corp.*

- *Precast stone textures and integral cast thin brick allow the precast panels to match the historic architecture of the surrounding buildings.*
- *Precast K-Frames in lieu of shear walls provide an open and safe environment for city employees and parking customers.*

  
**Rocky Mountain Prestress**  
PCI Certified

5801 Pecos Denver, Colorado 80221  
303/480-1111 FAX 303/433-0451  
www.rmpprestress.com  
sales@rmpprestress.com



were pollution problems or legal restrictions on coal and wood burning in the two countries.

"It was a very interesting experience," Sparr said. "The scholarships are an incentive for people to learn more about what they're doing."

It's also a marvelous way to give back to a highly rewarding profession. John Rogers, FAIA, principal emeritus at RNL Design, said that giving to the foundation is "a good thing, and architects ought to support that kind of thing. There's always a need for scholarships and research and there's not much funding for architects."

RNL started a policy several years ago that when an occasion such as a funeral calls for flowers to be sent, the firm now donates money to the AEF instead.

"Bob's father Ken would write a nice letter to the recipient, saying we'd made a donation in their family member's name," Rogers said. "I think a number of firms now do that." ◀

#### How you can help the AEF

Bob Fuller, the third generation of Fullers to manage the AEF, suggests that, "Instead of contributing flowers or gifts when you lose a member of your design team or your family, make a donation to the Architectural Education Foundation."

CONTRIBUTIONS CAN BE SENT TO  
Architectural Education Foundation  
3320 E. 2nd Ave., Denver, CO 80206  
303-333-3320  
e-mail: fullerarch@mho.net

#### AEF 2005 Scholarship Recipients

##### ACADEMIC SCHOLARSHIPS - UNDERGRADUATE

- > Crystal Olin, Canon City - Anniversary Scholarship, a \$1,500 award for third- or fourth-year studies in the College of Architecture and Planning at the University of Colorado at Boulder.
- > Kevin Brodtkorb, Centennial - AIA Colorado North Chapter Scholarship, a \$1,000 award for study to an AIAS member, based upon merit, need and contribution to the College of Architecture and Planning.
- > Andria Baleztena, Grand Junction - C. Gordon Sweet Scholarship, a \$1,500 award for first- or second-year study at the College of Architecture and Planning.
- > James Beech, Boulder - Gary G. Landin Scholarship \$1,500 award for fourth-year study at the College of Architecture and Planning based upon merit, scholarship and need.

##### ACADEMIC SCHOLARSHIPS - GRADUATE

- > Luis E. Fraguada, Boulder - Kenneth R. Fuller Scholarship, a \$2,000 award to a fourth-year student entering the masters of architecture program at the University of Colorado at Denver.
- > Geneva Kowalski, Lakewood - DeVon M. Carlson Scholarship, a \$2,500 award to an exceptional fourth-year student with hand-drawing skills from Colorado entering the masters of architecture program at CU-Denver.>
- > Sarah Cross, Denver - Robert K. Fuller Scholarship, a \$2,000 award for graduate study in architecture at the College of Architecture and Planning at CU-Denver.
- > Christopher Christian, Detroit - William C. Muchow Scholarship, a \$2,100 award for graduate study in architecture at the College of Architecture and Planning at CU-Denver.
- > Matthew Shea, Denver - Temple Hoyne Buell Scholarship, a \$2,500 award for graduate study in architecture at the College of Architecture and Planning at CU-Denver.

##### TRAVELING SCHOLARSHIPS

- > Claire Shepherd Lanier, Golden - James M. Hunter Scholarship, a \$2,000 award for travel and study in the Americas. Lanier will travel and conduct graduate research into Charles Z. Clauder, the architect responsible for the unique character of CU's Boulder campus.
- > Prof. Peter Schneider, Denver - Fisher Traveling Scholarship Award I, a \$2,700 award for travel and study abroad. Schneider will research the theoretical work of Douglas Darden, a young Colorado architect whose work was gaining international acceptance at the time of his death.
- > Selma Catovic, Denver - Fisher Traveling Scholarship Award II, a \$2,300 award for travel and study abroad. Catovic will conduct architectural documentation and study the wartime reconstruction required for the future rebuilding of post-war Sarajevo, Bosnia.
- > Sergey Chudin, Denver - Rodney S. Davis Scholarship, a \$4,000 award for travel and study to an individual selected by Davis Partnership, given every other year. Chudin will travel to Russia to research and document Russian wooden architecture.

## Building is a Tradition . . .



The Academy,  
Boulder

School of Mines Student  
Housing, Golden



McKee Cancer  
Center, Loveland



Rangeview Office  
Building, Loveland



23 Years Experience

90% Repeat and Referral Clients

Strong relationships in subcontracting  
community

Award Winning Firm -- 7 ACE Awards  
from AGC, AIA, ACI, + many more

Member of U.S. Green Building Council  
AND 12 Staff Members LEED  
Accredited

Construction Management, Design Build  
EXPERTISE with Significant Projects  
Based throughout Colorado and into  
Wyoming

Large Enough, Small Enough -  
Personal Service, Focused, Confident



2725 Rocky Mountain Ave., Suite 100  
Loveland, CO 80537  
970.663.9700

Denver 303.813.0035 \* WY 307.433.1095  
www.allianceconstruction.com

GROWING OLD ISN'T EASY...

BUT AFTER 220 YEARS RIDER HUNT  
STILL KNOWS HOW TO MAINTAIN THE  
PERFECT FIGURE.

CONSTRUCTION COST ESTIMATING  
BUDGET CONTROL  
CHANGE ORDER ANALYSIS  
OWNER REPRESENTATION

EST. 1785



Rider Hunt Levett & Bailey

Construction Consultants and Quantity Surveyors

DENVER, CO | 720.904.1480  
www.riderhunt.com



## > LOOKING AHEAD

### AIA COLORADO OFFERS MEMBERS A VARIETY OF EDUCATIONAL AND NETWORKING OPPORTUNITIES

**ON THE WEB** For a complete listing of all of the upcoming events, programs, workshops, conferences, round tables and more, visit [www.aiacolorado.org](http://www.aiacolorado.org) and click on the calendar link. AIA Colorado's newly designed Web site offers a user-friendly calendar format encompassing all of the chapter and state component events and is searchable by chapter, day or month.

**CHALLENGE AND BALANCE: DESIGNING HEALTHY WESTERN COMMUNITIES** AIA Colorado West invites you to attend "Challenge and Balance: Designing Healthy Western Communities." The conference will be held at the Two Rivers Convention Center in Grand Junction, June 10-11, where attendees will explore the relationship between community involvement and decision-making and the architecture that results. Good architecture is the result of good planning, and AIA architects' involvement in the planning process is critical in creating well-designed, quality and livable communities.

The 2005 design award winners will be announced during the Annual Awards Gala at the conclusion of the conference on June 11.

**TEE TIME** AIA Denver's 13th Annual Golf Tournament will be held August 15 at the Hiwan Golf Club in Evergreen. This year's event features a shotgun start and the opportunity to win \$10,000 for hitting a hole in one. Lunch will be served before the tournament.

The AIA Colorado North Annual Golf Tournament will be held August 5 at the Lake Valley Golf Club in Longmont. Golf hole

contests include longest putt closest to hole, longest drive, shortest drive and closest to water hazard. Dinner will be served and prizes awarded following the tournament.

**WESTERN MOUNTAIN REGIONAL CONFERENCE** Save the date for the Western Mountain Region Conference held August 25-27 at the Arizona Biltmore Resort and Spa. This year's theme, "White Gentleman's Club - What's Missing?" will focus on diversity in the architectural community.

**PICNIC PLANNING** Check the AIA Web site for future information about the AIA Denver Annual Picnic and Membership Meeting to be held in July for members and their families.

**MAXIMIZE YOUR MEMBERSHIP BENEFITS** AIA Colorado recently mailed members a firm profile verification form for the 2005-2006 Firm Profile and Membership Directory. Qualified firms (those with at least one principal who is an AIA member) will need to return the completed form by the deadline date listed on the form in order to have the firm's complete information included. Individual member listings will automatically be included in the directory. To ensure yours is correct, please take the time to update your contact information now by logging into the Members Only section at [www.aia.org](http://www.aia.org). ♦

For more information about upcoming AIA events, visit the calendar link at [www.aiacolorado.org](http://www.aiacolorado.org)

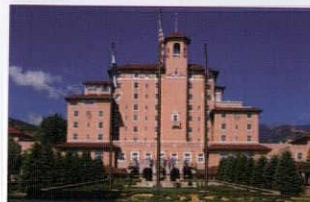
This year's theme **2020 VISION** will explore the future of the architectural profession and AIA Architects as visionaries and leaders in our Colorado communities.

- ▲ STEVE BADANES, JERSEY DEVIL founder of Jersey Devil, an architectural firm perpetuating the tradition of medieval craftsmen who live on-site during the construction of their designs.
- ▲ JAMES CRAMER, HON AIA, HON IIDA author of several hundred articles and books, including the critically acclaimed Design + Enterprise, Seeking a New Reality in Architecture and is an educator, futurist and business advisor.

Meet Congressmen, Presidents and even the Devil himself at the 2005 AIA Colorado **DESIGN CONFERENCE** October 27-29 at The Broadmoor Hotel and Conference Center! For more information visit, [www.aiacolorado.org](http://www.aiacolorado.org)

- SPEAKERS** ▲ ROBIN ELLERTHORPE, FAIA author of "Understanding Client Relationships" and Director of Facilities Consulting at OWP&P Consultants has mastered the art of understanding client relations and the opportunities that exist for architects to develop firm strategies in this area.
- JOHN FREGONESE, PRINCIPAL, FREGONESE CALTHORPE ASSOCIATES planner for 25 years where he has earned the reputation of being able to create both an energizing vision for communities and workable solutions to urban problems.

# 2005 AIA Colorado DESIGN CONFERENCE & Communications Symposium October 27-29



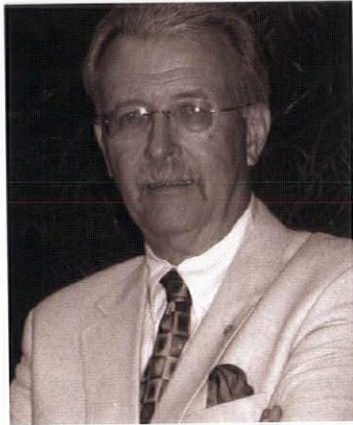
THE  
**BROADMOOR**  
COLORADO SPRINGS

 **AIA** Colorado  
A Component of The American Institute of Architects

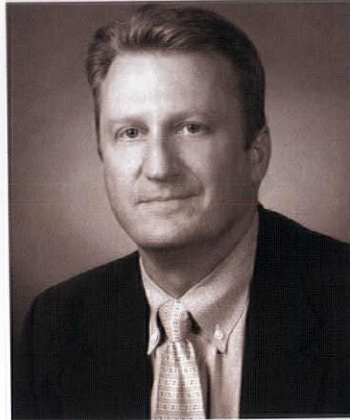


## &gt; NEW FELLOWS ANNOUNCED

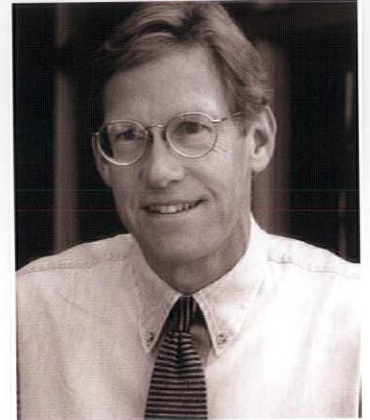
## THREE AIA DENVER MEMBERS RECEIVE HIGHEST HONOR



Donald A. Bertram, FAIA



Bradley S. Buchanan, FAIA



James P. Leggitt, FAIA

Fellowship is one of the highest honors the American Institute of Architects can bestow upon a member. AIA's fellowship program was developed to elevate architects who have made a significant contribution to architecture and society and who have achieved a standard of excellence in the profession. Election to fellowship not only recognizes the achievements of architects as individuals, but also acknowledges their significant contribution to architecture and society on a national level.

The AIA Fellows Jury recently elevated 66 members to its prestigious College of Fellows, including AIA Denver's Donald A. Bertram, FAIA, Bertram and Associates; Bradley S. Buchanan, FAIA, Buchanan Yonushewski Group; and James P. Leggitt, FAIA, RNL Design.

These recently elevated fellows were inducted on May 20 at the AIA 2005 National Convention and Design Exposition in Las Vegas.

Through his voluntary commitment to the profession of architecture, Bertram has united architecture, law and political insight. His unique talents and determined guidance have led the AIA and the profession in the establishment and refinement of laws and contracts locally, regionally and nationally.

By integrating architecture with construction, Buchanan has created and demonstrated expanded roles for architects and, through his advocacy and education efforts, inspired others to become master builders.

For the past three decades, Leggitt has practiced architecture with two primary goals: to improve the practice of hand drawing and to share his discoveries with others in the profession. He has achieved those goals by developing new hybrid drawing techniques that integrate digital technology with traditional drawing processes, saving time and money. He published his findings in a book and has successfully promoted his "you can draw" message to national and international audiences.

Fewer than five percent of AIA members are elected for fellowship nationally. Only 72 Colorado fellows have been elected since 1886, including seven in the past two years. Fewer than 100 fellows are elected annually nationwide.

**FUTURE FELLOWS NOMINATIONS ENCOURAGED** The elevation to fellowship is conferred on architects with at least 10 years of AIA membership who have made significant contributions in one or more areas related to their profession. There are many deserving candidates in Colorado who need to be identified and encouraged to pursue the two-step process of nomination and election.

Each chapter completes its nomination process by late spring. Once nominated, the AIA Colorado Fellows Task Force conducts a series of work sessions beginning in June to educate and assist the nominees with their submittal preparations. Please help identify and encourage potential candidates by forwarding names of outstanding AIA members to your local chapter for consideration. ◆



## > PROMOTING ARCHITECTURE

### AIA'S ARCHITECTURE WEEK HIGHLIGHTS THE PROFESSION THROUGH A SERIES OF EDUCATIONAL AND INTERACTIVE EVENTS

This year's Architecture Week, April 15-22, featured a variety of educational and entertaining activities to promote the profession of architecture and educate the public about the community's architectural history. Various events served to highlight the impact AIA architects have on their communities, as well as the diversity and skill of the profession. The week-long affair included community-based projects, student design competitions, exhibits, forums, receptions, lectures and tours of local sites.

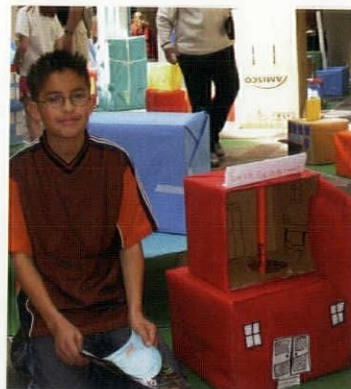
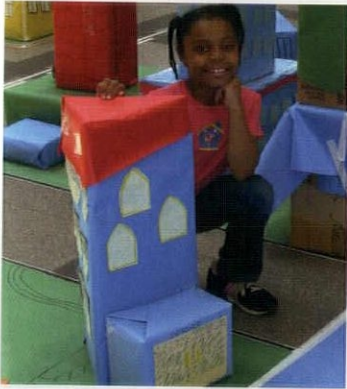
The Sixth Annual Young Architects Awards Gala & Beaux Arts Ball kicked off Architecture Week by honoring Colorado's passionate young architects, students and interns (see list of winners on page 61).

The Outside the Box Exhibit at The Wells Fargo Atrium - one of the Doors Open Denver tour sites - showcased the work of the AIA 2004 design award-winning firms. This exhibit educated the public about what AIA member architects can offer both within Colorado and "outside the box" of our state's


borders. The MAD Cocktail Reception, the fifth in a series of mixers designed to bring our creative community closer together, was held during the exhibition.

AIA's Fifteenth Annual Box City took place at the Wellington Webb Municipal Office Building Atrium, another of the Doors Open Denver tour sites. This unique children's event promotes an understanding of historic preservation and urban design by combining art and architecture, creative thinking, city planning, design, construction, fun and learning into one comprehensive educational experience. More than 100 children and their families participated in building a miniature cardboard city.

The Residential Architecture Exhibit hosted at the AIA Colorado office - another of the Doors Open Denver tour sites - showcased models, display boards and photographs of unique residential architecture designed by AIA Colorado architects. ◆



LEFT More than 100 children and their families helped build a miniature cardboard city at AIA's Fifteenth Annual Box City event during Architecture Week.



honesty  
dynamic culture  
RESPECT  
integrity

**At PCL, we  
aspire to be the  
most respected  
builder,  
renowned for:**



- excellence
- leadership
- unsurpassed value

2000 South Colorado Blvd  
Tower 2, Suite 2-500, Denver, CO 80222  
Ph: (303) 365-6500 Fx: (303) 365-6590

Watch us build at [www.pcl.com](http://www.pcl.com)

AIA Colorado  
2005 GOLD LEVEL SPONSOR

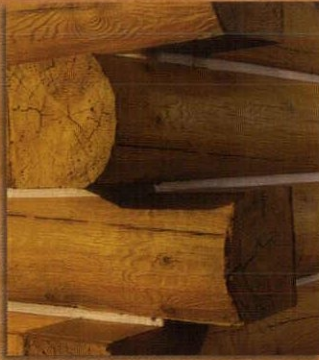
Boettcher Pavilion & Bridge Connection



The Robert & Judi Newman Center  
for the Performing Arts, University of Denver



# If you can envision it, we can build it.



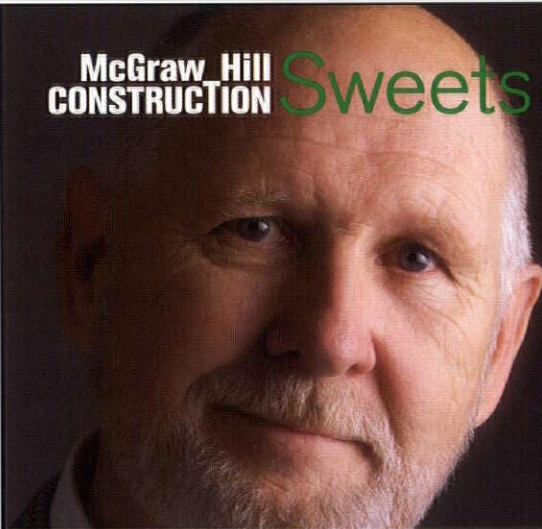
Our groundbreaking building system is revolutionizing the log home construction industry. Cultured Logs are structural logs. They combine strength, beauty, fire resistance, energy efficiencies, and cost savings. Virtually maintenance free the biggest challenge for your clients is deciding how to spend all their free time!



**CULTURED LOG SYSTEMS**  
SUSTAINABLE STRUCTURAL SOLUTIONS

Please visit our display home in Missoula, MT.  
For more information, please call 1-877-257-5647  
or visit us at [www.CulturedLogs.com](http://www.CulturedLogs.com)

**McGraw Hill CONSTRUCTION** Sweets 



## Sweets works for me.

**I found products I didn't even know existed.**

Sweets. Your connection to the most comprehensive source of building product information. Any format. Any time. Anywhere. **Put Sweets to work for you.**

Click: [www.sweets.construction.com](http://www.sweets.construction.com) Call: 1-800-442-2258

McGraw Hill CONSTRUCTION  
Dodge Sweets  
Architectural Record  
ENR  
Regional Publications

Find us online at [www.construction.com](http://www.construction.com)

MRCP45U

connecting people\_projects\_products

The McGraw-Hill Companies



# myhouse

in the mountain states



“Our dream started with *myhouse*.”

Every other month MyHouse brings you success stories of building and renovation in the mountain states. Every issue highlights beautiful homes, striking architecture and decorating trends.

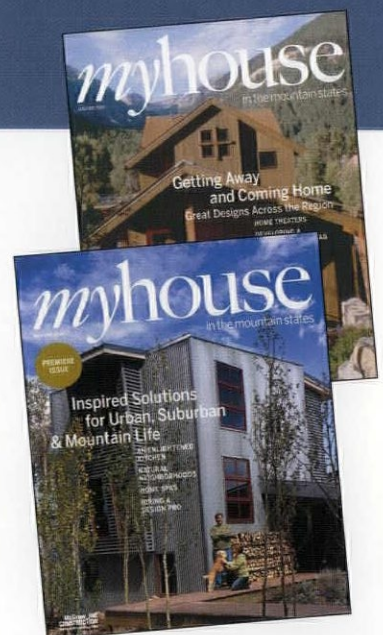
Features include:

- Solutions
- Ways of Living
- Out the Door
- Products
- Here and Now
- Sources
- Building Blocks
- Letters from the Editor and My Word.

MyHouse offers financial advice for project development, an endless resource of products and the latest technologies.

Don't start a project without it!

**Try a free trial subscription by visiting our web site at [www.myhouse.com](http://www.myhouse.com) or calling 1-866-874-4560.**



connecting people\_projects\_products

**McGraw Hill**  
**CONSTRUCTION**  
Dodge  
Sweets  
Architectural Record  
ENR  
Regional Publications

Find us online at [www.construction.com](http://www.construction.com)

KCN54ENR

The McGraw-Hill Companies



## > WINNERS OF THE 2005 YOUNG ARCHITECTS AWARDS

### STUDENT PORTFOLIO

WINNER Michael Piche, Studio b Architects  
HONORABLE MENTION Yi-Chien Chu, UCD

### GRAPHIC-VISUAL COMMUNICATION

WINNER Peter Burr, Assoc. AIA

### CRAFTSMANSHIP - ARTISTIC & ARCHITECTURAL

WINNER J Bell, UCD  
HONORABLE MENTION Adam Wright, SA, UCD; Paul Norquist, SA, UCD; and Alan Scheer, SA, UCD

### ARCHITECTURAL PROJECT

WINNER Katy Collins, SA, UCD & Niloufar Vakili, SA, UCD  
HONORABLE MENTION Nicholas Brown, Roth Sheppard Architects

### MENTORSHIP

WINNER Thom Walsh, AIA, Fentress Bradburn Architects Ltd.

### INSTRUCTOR OF THE YEAR

WINNER Joe Colistra, AIA, insitu DESIGN

### INTERN OF THE YEAR

WINNER Brian Holland, Semples Brown Design

### YOUNG ARCHITECT OF THE YEAR

WINNER Collin Kemberlin, AIA, David Owen Tryba Architects

*Serving the Colorado Architectural Community for 25 Years!*



*The Children's Hospital at Fitzsimons Campus*



*Denver Convention Center Hotel*



S. A. MIRO, INC.  
Consulting Engineers

DENVER  
4582 S Ulster St Pkwy #1501  
Denver, CO 80237  
303-741-3737

FORT COLLINS  
3500 JFK Pkwy #310  
Fort Collins, CO 80525  
970-266-1900

SUMMIT COUNTY  
P.O. Box 4423  
610 Main Street #11  
Frisco, CO 80443  
970-668-0747

AIA Colorado  
2005 GOLD LEVEL SPONSOR



# AIA Colorado Firm Profile & Directory

## 2005/2006 Firm Verification Form

## Firm Members

Don't miss your opportunity to receive your free 2005/2006 firm listing!

Firm Verification Forms are Due to McGraw Hill Construction Publications by **JUNE 3, 2005.**

**QUESTIONS** contact the AIA Colorado office  
303.446.2266

INDIVIDUALS ARE AUTOMATICALLY LISTED IN THE FIRM PROFILE & MEMBERSHIP DIRECTORY - FORMS ONLY NEED TO BE COMPLETED BY MEMBER FIRMS.  
FOR A BLANK COPY OF THE FORM, VISIT [WWW.AIACOLORADO.ORG](http://WWW.AIACOLORADO.ORG)

 **AIA Colorado**  
A Component of The American Institute of Architects



## > DENOUEMENT

# A RISK WORTH TAKING HELPING THE ARCHITECT OF TOMORROW MAKE THE MOST OF TECHNOLOGY TODAY

> JOHN YONUSHEWSKI, AIA  
2005 AIA COLORADO PRESIDENT

Life is inherently risky, and it has been said that there is only one big risk we should avoid at all costs, and that is the risk of doing nothing at all.

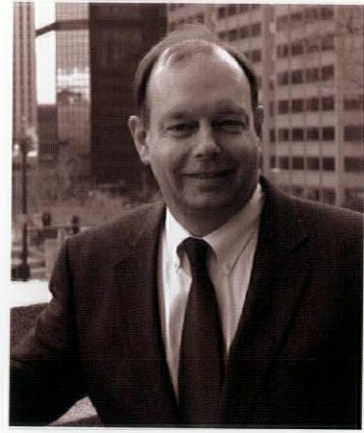
Architects have gained a reputation for being risk adverse, and over the years, we have predictably played the part. On the other hand, technology and our owners have changed dramatically in the last 20 years, with the latter constantly pushing us to use the tools now available to envision their dreams and manage their risks.

Yet with all the new tools that technology has offered, little has changed in the way architects deliver their services. Sure, we can create brilliant 3D graphics, but the process by which we deliver our service – i.e. schematic design, design development, construction documents, etc. and the scope of that service – has largely remained unchanged. If we as a profession continue down this stagnant path, the owners, contractors, consultants and tradespeople will most assuredly pass us by and leave us struggling for our own relevance.

"Visualizing the problems of the future is risky business but also a great opportunity."

### ENHANCING DESIGN

Architects' future success will depend on how the advancements in technology can be integrated into the design process by managing financial risks for the owner, the scope and coordination risk for the contractor, and maximizing building performance for the end-user – all the while maintaining design integrity and quality. The architects of the future will need to live in the virtual building world – not just as a means to illustrate their designs but also to enhance each phase of the design process.



FRED FUHRMEISTER, TIME FRAME

Imagine if at schematic design we provided detailed cost, performance and systems modeling of multiple schemes to help owners decide which direction to proceed. Imagine during design development collaborating with the contractors, tradespeople and material suppliers to provide detailed scheduling and cost data that would link to the various models for material selection and detailing. And imagine during the construction documents phase providing construction simulation in a virtual building world from initial excavation to final landscaping, with all components designed to link back to original cost and performance modeling.

The architect, through this enhanced process of technology, collaboration and building information systems, can deliver to the project team great value in cost management, systems coordination, energy usage and building performance – all the while managing risk for the owner, creating value for the construction team and enhancing the design.

### EMBRACING CHANGE

Visualizing the problems of the future in an effort to elevate the quality of tomorrow's communities is risky business but also a great opportunity. Architects have the talent and the ability to realize our undeveloped potential and be used as a valued resource not just for excellence in design but also for how we creatively manage our clients' risk and challenge their perception of the built environment.

The technology already exists to provide an expanded level of service, and our clients, now more than ever, need our help in navigating the complex world of design, entitlements, sustainability and construction. All that is needed is architects' ability to embrace change and envision their future as innovative leaders in the creation of the built environment.





CAPCO SHOWROOMS

DENVER

BOULDER

COLORADO SPRINGS

FORT COLLINS

RIDGWAY/TELLURIDE

AVON/VAIL

BASALT/ASPEN

GRAND JUNCTION

SILVERTHORNE

LAS VEGAS

INTERIOR SOLUTIONS

AT THE COLLECTION/  
ADJACENT TO THE

DENVER DESIGN CENTER



Tile & Stone

For the best results,  
CAPCO recommends the use of  
professional design and installation.

## Modern tile colored with an eon of inspiration.

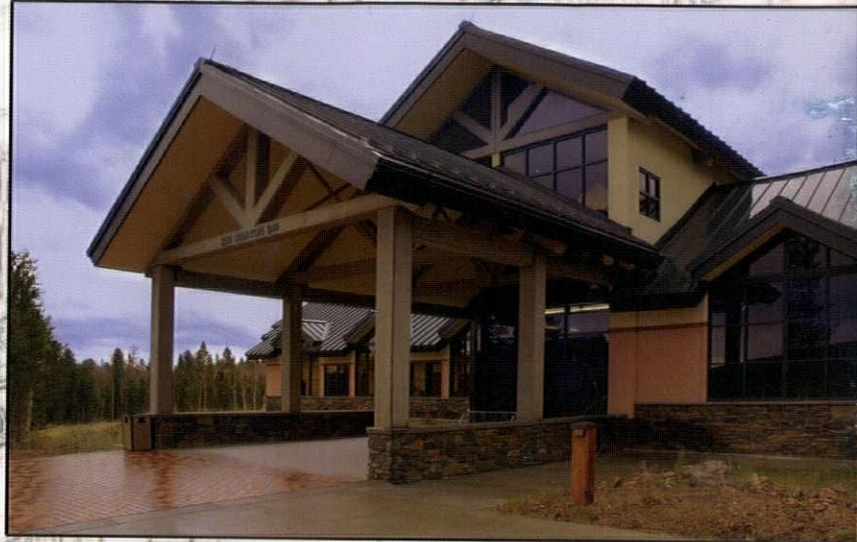
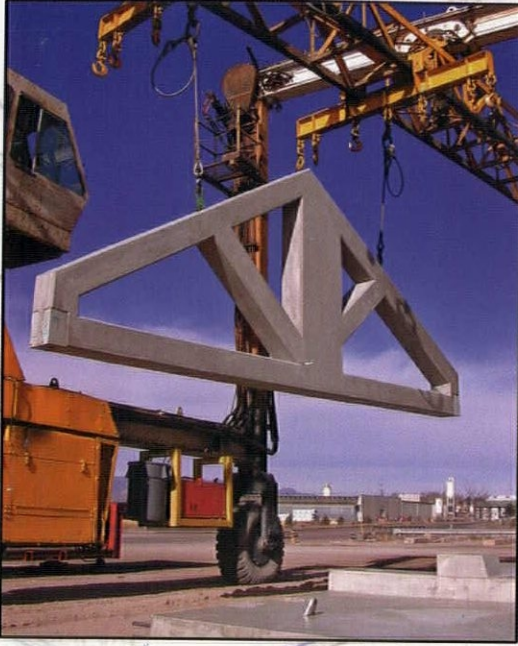
Rich textures and hues that redefine your lifestyle and inspire your home's expression. Explore the warmth and color that will expand your home's potential at any of CAPCO's eleven showrooms — and the one on your desktop at [capcotile.com](http://capcotile.com).

1-800-727-2272  
[www.capcotile.com](http://www.capcotile.com)

A FRESCO  
by Tagina Ceramiche d'Arte, Italy



# PRECAST CONCRETE • A CLEAR VIEW TO YOUR DESIGN



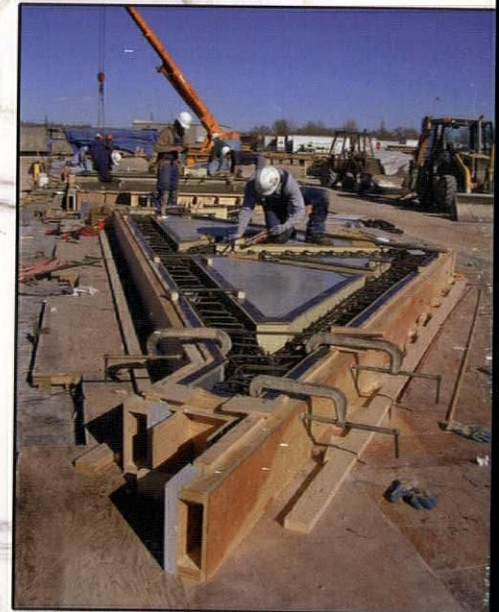
## Gilpin County Community Center

*Owner: Gilpin County Parks and Recreation*

*Architect: Sopris Architecture*

*Structural Engineer: Glenwood Structural And Civil, Inc.*

*Contractor: Newstrom-Davis Construction Company*



# STRESSCON

ARCHITECTURAL AND STRUCTURAL PRECAST CONCRETE

An EnCon Co.

3210 ASTROZON BLVD.

TEL: 719/390-5041

FAX: 719/390-5564

METRO: 303/623-1323

WWW.STRESSCON.COM

EMAIL: SALES@STRESSCON.COM