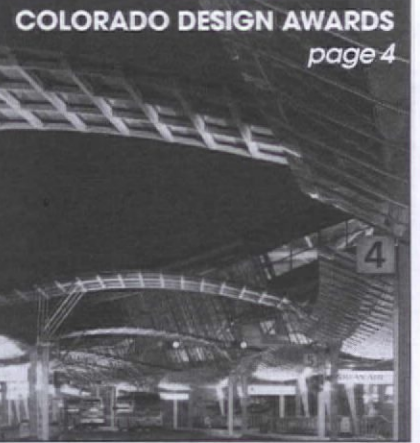


# AIA

COLORADO ARCHITECT

E  
P  
I  
S  
O  
D  
E

<b>Denver Apogee</b> .....	8
<b>Lines &amp; Columns</b> .....	9
<b>North Chapter</b> .....	10
<b>109th Meridian</b> .....	11
AIA members will Re-engage in 2003. ....	Cover
Exit 2002 .....	1
2002 Chapter President Recap .....	2
Government Affairs .....	3
<b>COLORADO DESIGN AWARDS</b> .....	4
<b>Denver Chapter Design Awards</b> .....	12
<b>South Chapter Design Awards</b> .....	15
<b>North Chapter Design Awards</b> .....	17
<b>West Chapter Design Awards</b> .....	20
New Members .....	23



WINTER 2003 \$ 5

## EXIT 2002

by Elizabeth Wright-Ingraham, FAIA



Elizabeth Wright-Ingraham, FAIA  
Colorado 2002 President

**F**or AIA Colorado, 2002 was a tough year. Coming to terms with the downturn in the economy we reduced our staff to five, modified services and concentrated on revenue building. Thanks to Joe Jackson, Assoc. AIA, our former Executive Vice President and his dedicated staff who worked overtime to keep the engine moving, we began to see some light at the end of the tunnel in December, 2002.

The successful and well attended Design Conference under the imaginative leadership of Joe Poli, AIA and Randy Johnson, AIA, hosted outstanding out-of-state speakers and showcased 20 Colorado architectural firms to reinforce the fact that Colorado has high design excellence. Joe Poli's Bermuda Triangle of speakers from Toronto (Bruce Kuwabara), Los Angeles (Eric Owen Moss, FAIA), and San Antonio (Ted Flato, FAIA) with Colorado (Dr. Nicholas Vanderborgh) at the epicenter made the complexities of the chaos theory come alive. Coupled with the Design Conference was a successful and popular all-day Communications Symposium conceived and run by AIA Colorado's Communications Director, Sherri Hughes-Smith.

Last Spring, an intellectually challenging one-day conference known as the Knowledge Summit was held in Denver. Co-chairs, James Bradburn, FAIA, Bill Tracy, AIA and Ned White, AIA, pursued the new knowledge with diligence. They brought distinguished engineer William LeMessurier from Boston to talk about "Tall Buildings" and Professor Kent Larson from the MIT Media Laboratory to address ideas on homes of the future. The conference again show-

cased Colorado architectural firms and their work. The Young Architects Awards Gala in its second year created an imaginative production to honor architectural students and rising young architects at the end of the Knowledge Summit event.

The 2002 state agenda included a long list of AIA activities and work. The President and President-Elect served on the UCD Advisory Board, the Design & Construction Coalition, the Colorado Education Foundation and a broad array of committees including Government Affairs, Communications and Strategic Planning. An outstanding group of architects, associate architects and professional affiliates gave volunteer time to committees, which served not only AIA members but also all registered architects and the public in a variety of ways. I want to take this opportunity to thank them for their considerable efforts on behalf of AIA Colorado. And finally, each of our four chapters produced a year of active, successful programs for their members.

At the year's end, however, those important large issues facing architects and architecture in the future remain. AIA membership not only dropped in Colorado to 43% of all registered architects but nationwide to 41%. It is a heavy load to provide the legal expertise for construction and architectural practice documents, provide an active lobbying service on behalf of our profession at the local, state and national level, and individual services which promote health, safety and welfare, with programs which target new knowledge with less than 50% of all registered architects participating. In an informal survey of other professional organizations I found that only ten

percent of the nation's physicians belong to the American Medical Association, one of the strongest organizations in Congress. The leading question of who funds the AMA lobbying efforts was answered – the insurance companies! The critical nature of equitable health care demands new solutions. Lawyers, upon licensure, automatically become members of the Bar Association as they go through a court procedure rather than a regulatory procedure. The accepted place of lawyers in our society may be one of the benefits of a 100% professional member organization.

Our national president, Gordon Chong, FAIA, initiated a "national conversation" in 2002 that was of special interest. The response showed that architects would be drivers, not passengers, in the 21st century; that we need to expand our turf rather than defend our turf. National AIA responded by reorganizing into three groups, knowledge, communications and relationships. Embracing change is becoming a theme for the future. It is not an easy task as we confront those inhibitors to change like competitive issues, codified institutions which leave us with codes, ordinances, covenants and a host of mandates, educational systems which need an infusion of money and talent to push forward, and, that built-in inertia which arrives on the heels of "if it ain't broke, don't fix it" thinking.

In the final analysis it is important to remember that The American Institute of Architects is the only collective voice for architects and architecture that we have in the country. It is incumbent on us to find a "place at the table." **AIA**



## 2003 AIA Colorado Board of Directors

President

**William B. Tracy, AIA**

President-Elect

**Chris Green, AIA**

Treasurer

**John Yonushewski, AIA**

Treasurer-Elect

**Cheri Gerou, AIA**

Secretary

**Morey Bean, AIA**

Past President

**Elizabeth Wright Ingraham, FAIA**

Directors

**Ben Wilking, AIA Denver****Bob Herzog, AIA North****John Hoelscher, AIA South****Patrick Heise, AIA West**

Associate Director

**Jason Pettigrew, Assoc. AIA**

Professional Affiliate

**Isabelle Matteson, PA**

Public Director

**Al Slattery**

University Director

**Patricia O'Leary, AIA**

Student Director

**Dan Craig, AIAS**

AIA Colorado

One Park Central,

1515 Arapahoe St., Suite 1-110

Denver, Colorado 80202

303.446.2266

www.aiacolorado.org

## 2003 COMMUNICATIONS ADVISORY BOARD

## Mission Statement and Tasks

The Communications Advisory Board (CAB) has been formed to serve the members of AIA Colorado, insuring them an informative, comprehensive and timely newsletter as well as a progressive web site. Members of this board will function as an accessible source of information and as a tool for architectural professionals, supporting personal and professional development. The members that sit on the CAB will answer and report to the AIA Colorado Board.

## CAB Members:

**Charles Campbell, AIA/South Chapter****James Buckner, AIAC/West Chapter****James Ramsey, AIAC/South Chapter****Charlotte Grojean, AIAC/North Chapter****William B. Tracy, FAIA/Chair****Stephen Loos, AIAC/North Chapter****Isabelle Matteson, PA****Jason Pettigrew, Assoc. AIA****Mark Shaw, Dodge Publications****Michael Hicks, AIA/Denver Chapter****Sherri Hughes-Smith, AIA Colorado Communications Director**

## Published by

Meyer Direct Inc.

1701 Wynkoop St., Suite 239

Union Station, Denver, CO 80202

phone: 303.620.9578 • fax: 303.620.9764

www.MeyerDirect.com

**Gates Scott, Publisher**

Meyer Direct is Denver's premier full service direct response advertising agency. Our focus is on relationship marketing to help acquire new customers, develop customer activation, retention and loyalty programs while increasing profitability. "We create customers for life."

## 2002 Chapter President Recap

## AIA Colorado Denver

## Cheri Gerou, AIA

Perhaps it is a sign of age, but this year went too quickly! I very much appreciate the opportunity of serving as your chapter president and the time spent with the members of AIA Denver. Our chapter membership is made of an incredible number of gifted, talented, and able professionals. Witnessing the bodies of work and passion for architecture is truly inspiring! It has been said that architects represent the best of what a profession can be... it's true!

The photo-montage on these pages show a glimpse of the year... it's just a glimpse. What is not shown is the hundreds of hours of meetings, planning and preparations for our programs and events. On behalf of our membership, I extend my thanks and respect to our volunteers. Top of that list is our board of directors, they are a thoughtful, intelligent group of individuals that gave their time and talent for the good of us all. I must mention that the firm directory mistakenly omitted a member of our board... Tyler Gibbs filled a one-year vacancy with consideration and insight that was greatly appreciated.

*Thank you to everyone!*

## AIA Colorado West

## Christopher J. Green, AIA

In January, the West Chapter Board cast a vision for the year. The board prioritized ideas and focused on the goal of developing an AIA sponsored Growth Management Task Force. The intent will establish the value of AIA Architects by working directly with West Slope communities to promote good planning and design in coalition with other design and planning professionals. This is not a vision that will happen overnight. It is a strong idea that will take the efforts of several years of consistent focus and effort to make a difference.

This year we made a financial commitment to provide travel expenses for the leadership of the chapter to attend key chapter board meetings and the annual planning meeting in Denver. Resources were also allocated to provide travel expenses for chapter leaders to travel to our members through out our expansive chapter. This year we met with member and non-member architects in Telluride, Durango, Steamboat and Grand Junction.

Our area coordinators developed educational programs in green design,

waterproofing, cabinetry, and copper detailing. We had social events in Grand Junction, Telluride, Vail, Durango and Steamboat Springs. We awarded Mark Larson – our Durango area State Representative – an AIA legislative award.

This has been a good year. I consider it an honor to have served as President of the AIA Colorado West Chapter. As we complete another year of strong activity in the West Chapter, we continue to seek and encourage AIA Member Architects and Associate members to be involved in all levels of the chapter's activities.

## AIA Colorado South

## Rhonda Boger-Linder, AIA

As an eventful year draws to a close, I reflect upon the successful programs, hard hat tours, open houses, Past President's luncheon, Associate functions, and active committees that are involved in the AIA Colorado South Chapter.

The AIA Colorado South 2002 Design Awards were presented on the 10th of December at The Cliffhouse in Manitou Springs, Colorado. A jury of five architects, comprised by AIA Wyoming Members, was led by jury chair, Randy Byers, AIA. **AIA**

## Who's watching your back-end?



This is the question Meyer Direct, Denver's leading direct response marketing firm wants to ask *you* about *your* business.

Hold Meyer Direct accountable for all your marketing needs!

Check us out at [www.meyerdirect.com](http://www.meyerdirect.com)

**MeyerDirect Inc.**  
MARKETING • ADVERTISING • PUBLIC RELATIONS • MARKETING

1701 WYNKOOP STREET, SUITE 239 • UNION STATION • DENVER, COLORADO 80202  
303.620.9578 • fax 303.620.9764 • [www.meyerdirect.com](http://www.meyerdirect.com)

*Creating Customers for Life*

## Our goal is to Partner with Design Professionals to Create Success.

Colorado's Premier Construction Management and General Contracting Company...since 1982.



**Alliance**  
CONSTRUCTION SOLUTIONS

2725 Rocky Mountain Ave., Suite 100  
Loveland, CO 80538

970/663-9700

[www.allianceconstruction.com](http://www.allianceconstruction.com)



g o v e r n m e n t a f f a i r s

## AIA Colorado Government Affairs 2002 Year In Review

by Mike Wisneski, AIA

The past year was one of organization and change for the Government Affairs Committee. The GAC adopted a mission statement this year, formally describing its purpose. Additionally, the Legislative Subcommittee has adopted a mission statement, as well as policies and procedures. These tasks were accomplished to better pass the torch to future generations of Committee Members, and as a reminder of what we are to do as a committee. A new position, Vice-Chairperson, was created in order to relieve the workload of the Chairperson, and provide continuity of leadership. The inaugural Vice-Chairperson selected was Mike Wisneski, AIA, to serve with outgoing Chairperson, Mary Follenweider, AIA. Alas, it was a short term, because Ms. Follenweider relocated in September to San Jose, California, to be with her family and work with the City of San Jose as a staff architect.

David Lingle, AIA, has been nominated and selected as the next Vice-Chairperson for the remainder of this year and all of the next. Mr. Lingle is also the new Legislative Subcommittee Chairperson, filling the position for Mr. Wisneski. The Legislative Subcommittee meets regularly during the legislative session and monitors the bills presented at the State Capitol.

Finally, after long, hard hours of effort by Ms. Follenweider, the Government Affairs Committee Chairperson may become a member of the AIA Colorado Board of Directors by virtue of a change in the AIA Colorado By-laws. Unfortunately, at the time of this writing, we do not know the result of the December Board meeting. Her diligence and persistence in raising the awareness of the role of Government Affairs, regardless of the outcome of the By-law revision, is greatly appreciated by the Membership.

This coming year will be a productive and successful one, based on the foundation of hard work and relationship building already in place by our past

leadership and current members. We encourage new, smiling faces to join us on the first Friday of every month, 1:30 PM, at the AIA Colorado offices. **AIA**

### DAVID L. ADAMS ASSOCIATES, INC. Consultants in Acoustics and Performing Arts Technologies



**Building Acoustics • Audio-Visual Presentation Systems  
Video Conferencing • Sound Systems • Theatre Planning  
Stage Rigging, Lighting and Drapery Systems  
Mechanical System Noise and Vibration Control**

1701 BOULDER STREET • DENVER, COLORADO 80211  
Phone: 303.455.1900 • Fax: 303.455.9187 • E-mail: denver@dlaa.com

Expert engineering.  
Exceptional answers.  
Pella's Commercial Division delivers.



400 Third Residences — Denver, CO



Broadmoor Hotel — Colorado Springs, CO

Pella's Commercial Division is dedicated to providing product and design solutions that meet the diverse challenges of commercial architects and contractors.

In fact, Pella was the only window company cited in *Architectural Record* magazine's Readers' Choice Awards as "the manufacturer most helpful in solving site-specific, design or technical problems."

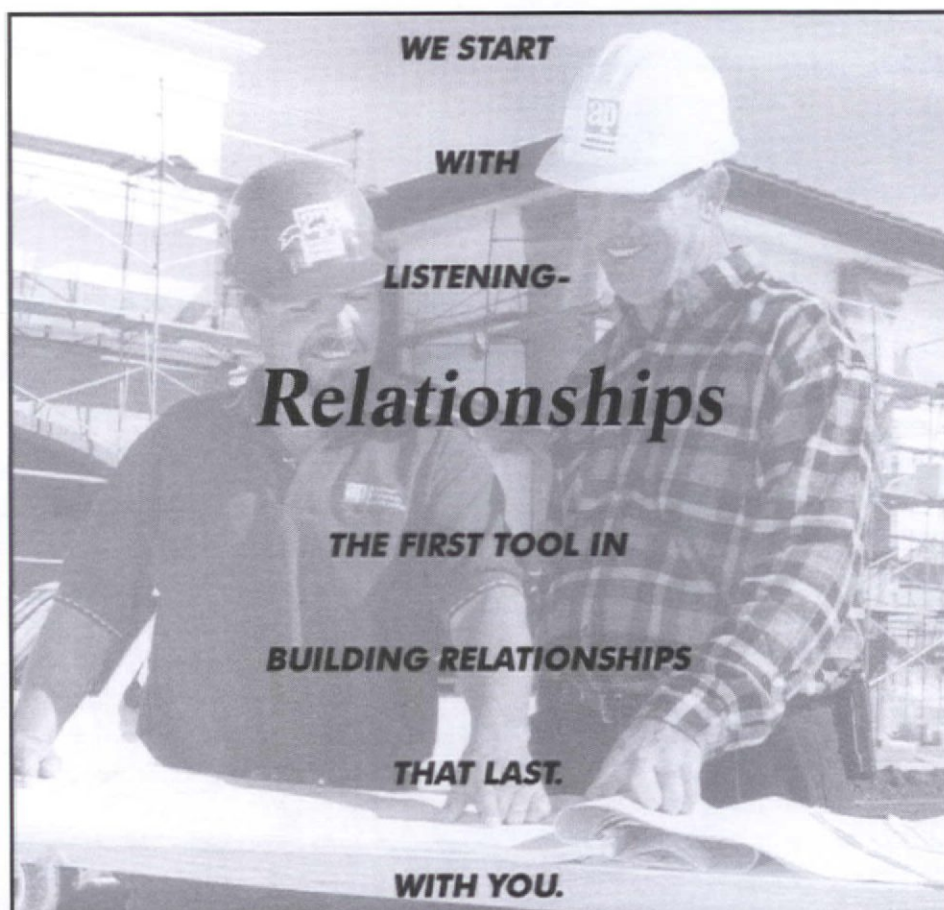
From initial design consultation and site analysis to custom product design and on-site installation, count on the Pella Commercial Division.

**PELLA® WINDOWS & DOORS, INC.**

14175 East 42nd Avenue, Suite 1 • Denver, CO • 303-371-3750



© 2001 Pella Corporation



**ap** Adolfsen & Peterson Construction

303.363.7101

**a-p.com**



## AIA Colorado Announces State Architecture Awards Recipients

**R**ecognizing architecture and design excellence throughout the state of Colorado, The American Institute of Architects (AIA) today announced the recipients of its 2002 design awards. The awards were announced at the annual 2002 AIA Colorado Design Conference and Awards Gala in Vail, Colorado.

This year's jury chair, Bruce Kuwabara of Kuwabara Payne McKenna Blumberg Architects of Ontario, Canada, assembled a group of distinguished architects to judge more than 130 submitted projects in the categories of Built Architecture, Unbuilt Architecture, Interiors and Planning.

### Colorado Chapter Design Awards

#### Honor Awards (Highest Achievement)

**Project: Hallam Street Residence  
(Built Architecture)**

**Architects: Harry Teague, AIA (principal)  
Patrick Leads (project manager)  
Matt Scholl, for Hallam Street Residence.**



#### Project Description:

The 3,000 square foot addition to this carefully restored mining era Victorian retreats back and to the side, allowing the original house to stand alone on the street. Cornice lines, proportions and materials transfer the scale naturally across to the contemporary volumes enclosing the master bedroom suite. This new element is connected to the main house by a "transparent" gallery. Exterior floor, wall and ceiling materials carry through the interior with minor interruptions, and necessary doors and screens hide in discrete pockets within the stone walls. All contribute to the spatial transparency. Massive stone walls provide a suitable background for the display of an ever-changing collection of contemporary art, while adding to the illusion of invisible walls.

#### Jury Comments:

"The site plan creates two outdoor courtyards linked through the main living room. The interlocking of old and new is very sophisticated, reinforced by strong material selection including long slabs of stone flooring, massive stone walls, and zinc cladding."

**Project: University of Colorado,  
Colorado Springs, University Center  
Expansion (Built Architecture)**

**Architects: H & L Architecture,  
Shepley, Bulfinch Richardson & Abbott  
for the University of Colorado,  
Colorado Springs, University Center  
Expansion.**



#### Project Description:

The University Center Expansion project was designed to create a new social center for students, faculty and staff on a growing Colorado Springs campus within the University of Colorado system. It replaced a disjointed, multi-level facility that was housed in two buildings with no defining relationships or a common entry. The primary goal of this student funded University Center was to create an expanded facility that not only provided additional square footage for specific programs and activities, but also created a flowing connection between existing spaces from an identifiable entry point.

To accomplish this goal, a literal glass link, was designed to connect the three buildings together. The transparent structure with continuous parapet glazing and daylighting throughout blurs the boundaries of indoor and outdoor space. Pyramidal skylights mark the primary pedestrian circulation connection. The link, addition is anchored by a glazed tower structure to the south, marking a landmark entry point for students while defining a two-story entry and lobby space.

#### Jury Comments:

"This project creates a very successful link connecting different buildings and different levels on the campus. The contrast of the lightness of the new glazing with the existing masonry buildings gives the new interventions a unique identity."

**Project: Stone & Glass House  
(Built Architecture)**

**Architects: Alexander Gorlin, AIA**



#### Project Description:

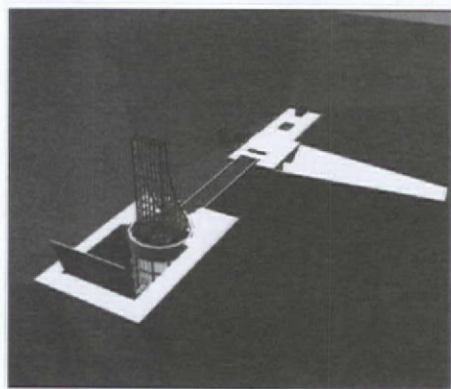
This house is conceived both as an abstraction of the landscape on which it is situated and as a reinhabited ruin; a ruin built in reverse. Located on a steep, heavily wooded site in the Rocky Mountains, the house is organized along two axes, forming a pinwheel plan inserted into the site between two ravines. Stonewalls extending into the landscape form the image of a ruin found in the inhabited wilds, and are reinhabited with the program of the house. These vertical surfaces echo the nature of the site, while mediating between the exterior and interior spaces of the house.

#### Jury Comments:

"Within a bold cruciform plan, the design breaks down and integrates a large residential program on its site into a well-orchestrated composition of solids and voids."

**Project: UN Security Council / Titan  
Missile Silo (Unbuilt Architecture)**

**Architects: Mark Harris, AIA**



#### Project Description:

Located in the remote location of a desert military installation, the rehabilitation of the Titan II missile silo is to maintain its role of being a deterrent to the possible catastrophe that a nuclear confrontation would bring if undertaken at

any scale. However, in times like these it is diplomacy that seems to be the greatest weapon in our arsenal. The isolated location of the new United Nations Security Council Chambers provides the necessary neutrality for diplomatic actions to succeed.

#### Jury Comments:

"This probing, visionary project offers a prototype for the conversion of abandoned Titan missile silos to accommodate the UN Security Council. The re-inhabitation of a former missile silo is both a powerful and highly symbolic act. The project is extremely strong at a conceptual level and coherent at every scale."

**Project: The Bloedorn Center for  
Community and Economic  
Development - The Farmer's Bank  
(Interiors)**

**Architects: Bennett Wagner & Grody  
Architects, P.C.**



#### Project Description:

At the time of its construction the bank was a cornerstone of the agricultural business community in Fort Morgan and the surrounding Northeastern Colorado. Groves employed the classical proportions of the Greek Temple archetype and incorporated elegantly carved limestone entablatures and pilasters to evoke financial stability, visionary development, and community stewardship.

#### Jury Comments:

"The original building is a modern design, thoroughly appreciated and loved by the community it served. The new functions include offices for the Chamber of Commerce, and a range of agricultural programs. The attention to the details of the historic building and the adaptation of spaces for new users is very impressive. The tradition of community values and stewardship is highly commendable."

### Merit Awards

(Outstanding Achievement)

**Project: Sabre Data Center  
(Built Architecture)**

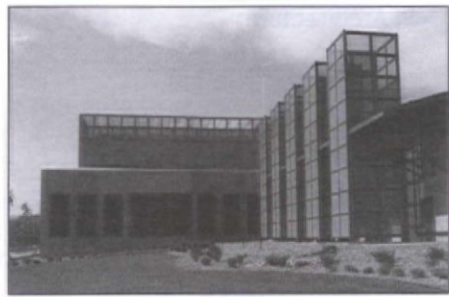
**Architects: Gensler**

#### Project Description:

The 225,000 sf Sabre Data Center includes two computer modules totaling 134,000 sf, 13,000 sf of office space, and a 78,000 sf central plant. The raised computer floor area is designed for 100 watts per square foot, while the overall facility is designed to withstand the effects of a Category F5 tornado.



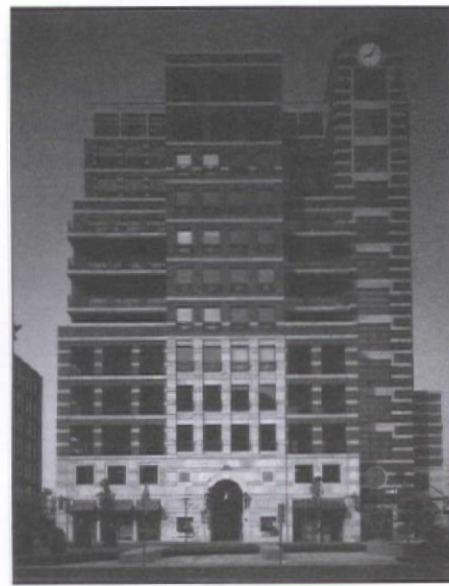
## DESIGN AWARDS



spaces with connections to the interior spaces. Every response is thoughtful, providing a sense of openness while maintaining the privacy of the occupant. Frank Lloyd Wright's residential ideas are reinterpreted in a fresh contemporary manner."

**Project: Riverfront Park  
(Built Architecture)**

**Architects: Urban Design Group**



**Project Description:**

Former Denver Mayor Federico Peña's inauguration message set the original challenge for Riverfront Park more than a decade ago. Now sited in the historic Central Platte Valley, in a former 400-acre rail yard where Denver's earliest roots can be traced, the Riverfront Tower address many urban responsibilities. The Riverfront Tower creates a precedent for the redevelopment of the new Central Platte Valley as it fronts Commons City Park and as it becomes part of Denver's Urban Core. The Tower creates an economically and culturally diverse neighborhood, through varying the living unit sizes and levels of finish. They range from Denver City Qualified "Market Rate" to high-energy urban lofts, to fully finished and finely detailed Flats and Penthouses. On the exterior, the finishes are detailed and vary by building to convey the occupants' lifestyle ranges, from an urban "after-hours energy" to the security of a Central Park-type residence with concierge services.

**Jury Comments:**

"This ensemble of buildings supports a big vision. The civic gesture is the park and its connections to the urban fabric and the river. The massing, articulation, and material selection of the buildings is coordinated and legible. The project brings to fruition a long-term vision and commitment to the city building."

**Project: Gerald R. Ford  
Amphitheater/Vilar Pavilion  
(Built Architecture)**

**Architects: Morter Architects,  
James R. Morter, FAIA  
James K. Buckner, AIA**

**Project Description:**

The new, larger sweeping roof planes are



the highlight of the project, increasing the pavilion volume and providing 30% more weather coverage with improved acoustics. Round steel tube trusses were used to "lighten" the appearance of the new roof in contrast to the square tube steel structure it replaced. The pavilion now fully engages the lawn seating into the venue. With a clear span of 118 feet, seven concrete pier columns replace the existing 12 truss columns to support the new pavilion and stage roof, thereby eliminating columns within the seating area. In addition, the roof structure itself carries storm drainage directly underground to the Gore Creek, thus eliminating the old gutter and downspout surface drainage. Softer, indirect lighting highlights the new redwood roof deck and exposed structure creating a warm glow over the audience in the evenings.

**Jury Comments:**

"By breaking the large roof into sections at different levels, they have developed a way to bring in natural light and achieve a sculptural effect of floating planes. At the same time, the exposed wood decking imbues the space with visual warmth. The framing of views of the landscape and sky is entirely harmonious. Nature becomes the backdrop for performances."

**Project: Netcher Barn  
(Built Architecture)**

**Architects: Metropolitan Design**



**Project Description:**

The project consists of the dismantling, relocation, and reassembly of an 1873 hand-hewn barn located in Ohio, and converting it into a high-technology office space for a film production company in Palmer Lake, Colorado. The design techniques used reflect the values and sensibilities of the original owner. The details and materials are sophisticated and rational, yet uncomplicated. The basement, a standard foundation system on which the barn was placed, houses a modern office space for an international non-profit organization. The details and finishes for this space reflect a

progression of the details above; sophisticated and rational, yet uncomplicated.

**Jury Comments:**

"The architects have retained the qualities of the barn and found ways to inhabit it with new uses and life. Great care was taken in the relocation, reconstruction and conversion of the original barn. The structural integrity has been preserved. The design is straight-forward, robust and unsentimental while reflecting a love of the original barn."

**Project: 15th & Pearl Parking Structure  
(Built Architecture)**

**Architects: RNL Design Shears +  
Leese Architects, LLC**



**Jury Comments:**

"This urbane project is an exemplary act of city building. The garage is integrated with retail shops and offices, making it a mixed-use development. The project is contextual yet contemporary with thoughtful, well-scaled canopies, piers, and handsome brick detailing."

**Project: Incheon International Airport  
Passenger Terminal Complex  
(Built Architecture)**

**Architects: Fentress Bradburn  
Architects, Ltd**

**Architect of Record: Korean Architects  
Collaborative International**



**Jury Comments:**

"What is refreshing about this project is how the architects have taken the functional diagram of airport circulation and interchanges and managed to express the essence of Korean culture, avoiding the generic blandness of so many airports that function well but lack a sense of place and identity."

(Continued on page 6)



(Continued from page 5)

## Colorado Design Awards

**Project: Century Lofts  
(Built Architecture)**

**Architects: Humphries Poli Architects, P.C.**



### Project Description:

The excitement inherent in the roots of modernism is the building's underlying architectural message. It seems very appropriate that the elements of light, color, and the freedom from structural constraints are combined in a building attempting to realize a less restrictive lifestyle rooted in the richness of the urban fabric. Based on the model of urban courtyard buildings, this L-shaped, 30-unit building is organized around an open-air circulation and commons courtyard, both practical notions in Denver's moderate, dry climate. Individual dwellings benefit from this thin

footprint, placing the most public uses nearest the street and views, yet maintaining ventilation and quiet uses towards the court space.

### Jury Comments:

"This is a very skillfully handled L-shaped, 30-unit mid-rise residential building organized around a courtyard. The project vigorously reinforces the neighborhood by adding density, and contemporary architectural form. The contrast of the urban street faces of the building and the filigree of walkways and stairs at the rear is very rich."

**Citation Award**  
(Excellence in Achievement)

**Project: Wagner Park Edge  
(Built Architecture)**

**Architects: Willis Pember Architects, Inc.  
Suzannah Reid, AIA Ajax Design  
Graphics**

### Project Description:

Wagner Park Edge is a built competition entry sited along the contiguous edge of a pedestrian mall and an urban park in downtown Aspen. Construction includes a clock tower, exhibition pavilion and ceremonial plaza. The project seeks to address several urban design goals while celebrating the notion of 'green theatre' in which construction and exhibition are interchangeable. The exhibition pavilion accommodates a graphic timeline of local history, touch screen monitors, a

photovoltaic glass roof and public restrooms. The siting and articulation of these elements seek to increase the transparency between the mall and park, inscribe a 'gateway' function across the edge and mediate views of Aspen Mountain through varied glass effects.

### Jury Comments:

"This is a small pavilion that reads big and has large ambitions. Sitting at the edge of a park, the pavilion is very public in



space. The design incorporates a number of "green" initiatives including photovoltaic panes. The project animates and adds energy to an outdoor plaza, transforming the edge condition into an interactive seam."

**Project: The Nature Conservancy  
Headquarters  
(Built Architecture)**

**Architects: OZ Architecture**



### Jury Comments:

"This is a unique institutional building that has been integrated into a mixed-use block in an historic district. The massing strategy of setting the third floor back from the lower masonry base and treating the upper level as a conceptual pavilion creates a beneficial massing that respects the scale of the surrounding neighborhood." **AIA**



## MNA, Inc

### Structural, Civil & Land Surveying Services

4521 E. Virginia Avenue, Suite 200 ■  
Denver, Colorado 80246 ■  
Phone: 303 377-6601 ■  
Fax: 303 377-6656 ■

■ Web site: [www.mnaengineering.com](http://www.mnaengineering.com)



PROFESSIONAL  
UNDERWRITERS  
PUI Agency of Colorado, Inc.

Allow Us To Deliver The Reliable Protection And  
Dependable Service You Require

Specialized Insurance Placement  
Architects/Engineers Errors and Omissions

PUI AGENCY OF COLORADO, INC.  
8480 E. Orchard Rd. Suite 4250  
Greenwood Village, Colorado 80111  
303-843-0229

Reflecting its Heritage

Reflecting its Heritage



**BROADMOOR LAKESIDE**

Modern Precast Concrete Inside -  
Same Classic Style Outside

OWNER: The Broadmoor Hotel ARCHITECT: CSNA Architects  
STRUCTURAL ENGINEER: Anderson & Hastings Consulting Engineers  
CONTRACTOR: M.A. Mortenson Construction

**STRESSCON**  
ARCHITECTURAL AND STRUCTURAL PRECAST CONCRETE

3210 Astrozon Boulevard PO Box 15129 Colorado Springs, Colorado 80935  
Tel: 719/390-5041 Denver Line: 303/623-1323 Fax: 719/390-5564  
email: [sales@stresscon.com](mailto:sales@stresscon.com) Web site: [www.stresscon.com](http://www.stresscon.com)

**It all starts with a good foundation.**



**READY-MIX CONCRETE • SAND & GRAVEL**

**303.666.6657**



## Education Update

by Stephen George, AIA

**S**tephen George, Member of AIA Denver and Senior Associate at BurkettDesign, has founded a nonprofit 501(c)3 organization called CONNECT. CONNECT'S mission is to expand children's perspective of the World and their environment. With architect Ted Schultz, AIA member and principal at Agency for Architecture, and Suzi Juarez of Jefferson County Schools on the Board of Directors, CONNECT is committed to developing StudioK12, web-based educational resources for grades K through 12 that focus on architecture.

StudioK12 will incorporate Virtual Architectural Field Trips and Architectural Correspondent Expeditions exploring the profession of architecture, architecturally significant cities around the world, work of master architects, and specific building types ranging from Skyscrapers to Museums. Each Field Trip and Expedition will incorporate a "Teacher's Briefcase", developed by architects and educators, that provides teachers with the necessary lesson plans, quizzes and tests for easy integration of the programs within the Math, Science, History, Social Studies, Geography, English and Visual Arts Curriculum.

Virtual Architectural Field Trips will be



designed to enable teachers to lead a variety of lessons, developed to satisfy current educational standards and objectives, within their own classrooms. Architectural Correspondent Expeditions will bring Architects to classrooms to build a personal connection with students prior to embarking on an interactive journey that will involve daily explorations of significant buildings, cities, and cultures around the world. Students around Colorado and the Country will follow Correspondent Expeditions through digital video, correspondent journal entries, web casts, and additional resources found on CONNECT'S Expedition web sites.

Currently, CONNECT is working on the development of StudioK12-Colorado Projects: The Denver Art Museum Expansion, the first of such Correspondent Expedition programs under the umbrella of StudioK12. The Denver Art Museum Expansion Program

will be a 4-part, multimedia, program that documents the process of design and construction of the dynamic Denver Art Museum Expansion. Not only will it introduce children to the Profession of Architecture, but also to the various people and organizations, such as government officials, engineers, and contractors, that make such a project a reality. The program will be led by teams of Correspondents, made up of architects from around the State. Correspondents will visit classrooms to introduce children to the program and to establish a personal connection with students that will be maintained throughout the entire program. Each part of the series will include video documentation, links to online resources, live web casts, multidisciplinary educational curriculum within the Teacher's Briefcase, and interaction with the Architectural Correspondents via the Internet.

CONNECT believes StudioK12, and programs such as The Denver Art Museum Expansion, can be a solid educational resource that can effectively make evident the significance of lessons taught in the classroom, while broadening perspectives of our youth.

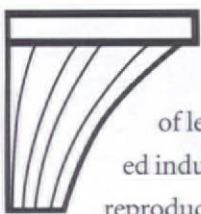
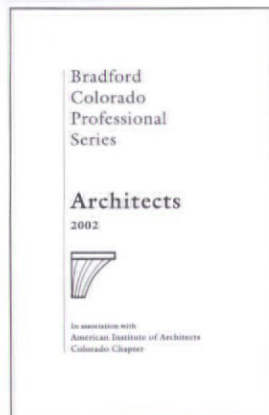
Founded in October of 2001, CONNECT is just getting off the ground and is looking for the support of AIA members locally, and nationally. Email CONNECT today to receive information about membership to our organization and to learn more about how you can contribute to a positive, multidisciplinary, educational resource that not only enhances K through 12 education, but also elevates the understanding and appreciation of architecture. **AIA**

**CONNECT is a 501(c)3 organization. Your generous contribution is tax deductible. Send inquiries to Stephen George, at StudioK12@yahoo.com.**

Critical information  
from one professional to another

## Architects

Bradford Colorado  
Professional Series



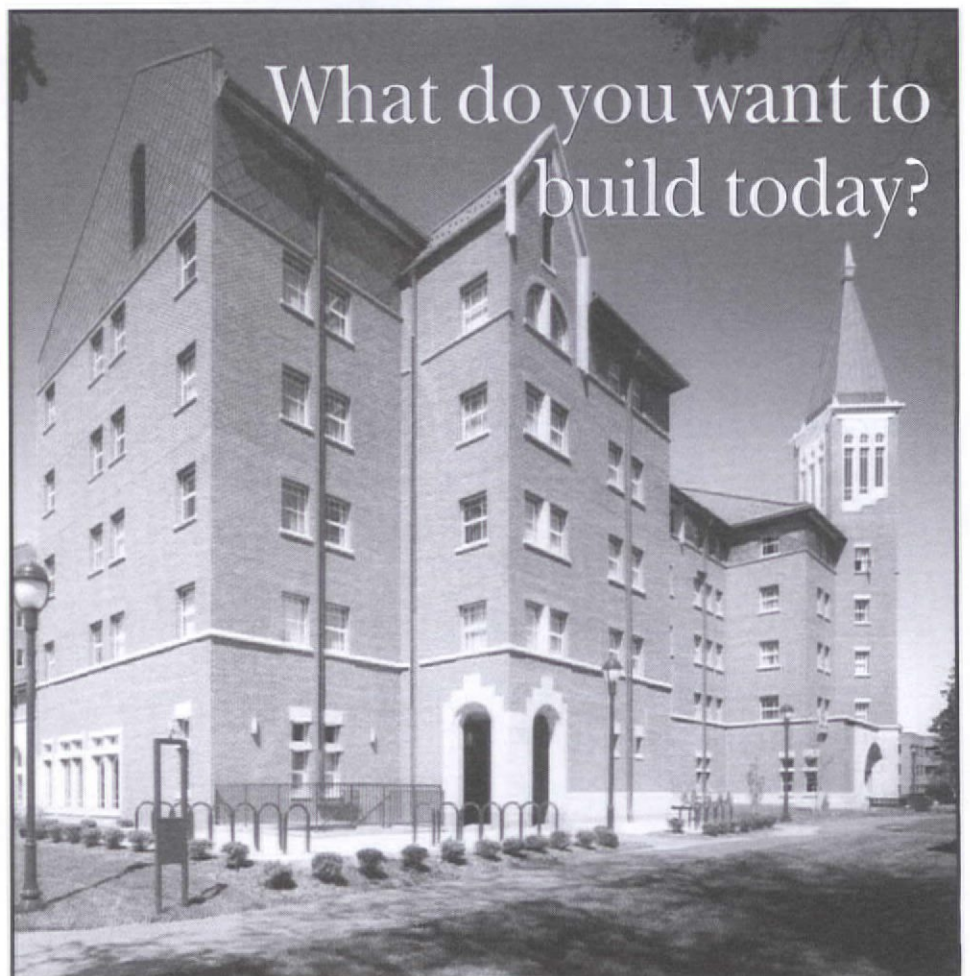
*Architects* is the first book in Bradford Publishing's new series of legal books for Colorado professionals who practice in regulated industries. Along with extensive statutory and regulatory materials reproduced in the appendices, this book includes a lengthy synopsis of legal issues affecting the practice of architecture. Written in plain English, the synopsis covers such issues as qualifications and licensing; the functioning and authority of the state Board of Examiners of Architects; ethics and professionalism; disciplinary proceedings; design and construction standards; stamping and retention of architectural documents; private and government contracting; professional liability; and mechanic's liens.

To order, call AIA Colorado at (800)628-5598 or contact Bradford Publishing, 1743 Wazee Street, Denver, CO 80202, phone (303)292-2590 or fax (303)298-5014. Or visit Bradford Publishing online at [www.bradfordpublishing.com](http://www.bradfordpublishing.com).



BRADFORD PUBLISHING Co.

What do you want to  
build today?



[www.monroe-newell.com](http://www.monroe-newell.com)



Monroe & Newell  
Engineers, Inc.  
Structural Engineers  
Vail • Denver • Dillon

### DENVER

1701 Wynkoop St., Suite 200, Denver, CO 80202  
(303) 623-4927 • [denver@monroe-newell.com](mailto:denver@monroe-newell.com)

### VAIL

70 Benchmark Rd., Suite 204, Avon, CO 81620  
(970) 949-7768 • [avon@monroe-newell.com](mailto:avon@monroe-newell.com)

### DILLON

765 W. Anemone Tr., Suite 202, Dillon, CO 80435  
(970) 513-1600 • [dillon@monroe-newell.com](mailto:dillon@monroe-newell.com)





AIA Denver Chapter

## 2002 AIA Denver Board of Directors

President  
**Ben Wilking, AIA**

President-Elect  
**Michael Hicks, AIA**

Vice President  
**Mary Morissette, AIA**

Vice President-Elect  
**Joe Poli, AIA**

Secretary  
**Kevin Hoskins, AIA**

Treasurer  
**Suzette Emerson, AIA**

Treasurer-Elect  
**Chris Stumm, AIA**

Past President  
**Cheri Gerou, AIA**

Directors  
**Joe Colistra, AIA**  
**Lisa Daniel, AIA**  
**Paul Haack, AIA**  
**Carla McConnell, AIA**  
**Andrew Moss, AIA**  
**Gail Pelsue, AIA**  
**Jack Swanzy, AIA**

Associate Director  
**Fred Lai, Assoc. AIA**

SDA Director  
**Pat Potts, SDA/C**

Professional Affiliate Director  
**Sandy Blaha, PA**

Public Director  
**Susan Barnes-Gelf**

Student Representative  
**Jennifer Schaefer**

Director of Local Chapters  
**Sonia Riggs**

## Denver Chapter 2003 Vision

by Ben Wilking, AIA

**M**y platform first advertised in the ballot for the 2002 Board remains unchanged. In fact, I've become more and more secure with it the more I understand the opportunities that we as architects have in 2003. In summary, seeking out qualities we as architects need to be strong and confident voices in the work place, creating opportunities and alliances that are mutually beneficial for the profession,

and seeking ways to recognize and mentor students in schools of architecture as well as young architects within the work place, are all important in order for our future success.

The progress we've made during 2002 is incredible. Under Cheri's leadership we are reaching out to the general public and the local city council, the popularity of member forums continues to rise, the variety of programs we offer is well received, and the interest we give

the built environment will continue. In addition, the inclusiveness of allied professions, improved communications with the Denver membership, understanding what we need as architects to be leaders in our profession and our communities, becoming more involved in government affairs, moving ahead with a state-wide design magazine, and valuing architectural education and interns graduating with professional degrees, are all important in 2003. **AIA**



AIA Colorado 2002 President Elizabeth Wright Ingraham, FAIA shares words with Rocky Mountain News reporter, Mary Chandler at the Media Luncheon which was held in August.



AIA Colorado members with reporters from the Rocky Mountain News, The Denver Business Journal and Colorado Real Estate Journal.



AIA Colorado West chapter president Chris Green AIA provides thoughts to Rita McCoy, of UPN Channel 20.



# Lines & Columns

AIA Colorado  
South Chapter

## 2002 AIA South Board of Directors

President  
**John Hoelscher, AIA**

President-Elect  
**Jim Ramsey, AIA**

Secretary  
**Charlie Campbell, AIA**

Treasurer  
**Dan McCully, AIA**

Past President  
**Rhonda Boger-Linder, AIA**

Directors  
**Richard Cherry, AIA**  
**Stuart Coppedge, AIA**  
**Dempsey Currie, AIA**  
**Margaret Gilbert, AIA**  
**Mark Tremmel, AIA**  
**Larry Whittaker, AIA**

Associate Director  
**Daniel Berens, Assoc. AIA**

Public Directors  
**Buck Rienking**  
**Ron Bevans**

Director of Local Chapters  
**Sherri Hughes-Smith**



## South Chapter 2003 Vision

by John C. Hoelscher, AIA

**A**s the incoming president for 2003 (AIA Colorado South Chapter) I have given a great deal of thought as to what I would like to accomplish this coming year. As the president elect, I had the opportunity to participate in the AIA Colorado Strategic Planning process. This was an exciting opportunity to see and hear the issues that were important to the other component chapters. There was a great diversity of issues but also a common thread that appeared to effect all parts of the State. The most often mentioned goals at the State level were to somehow more fully engage our membership in "Government Affairs", and to improve the Financial Stability of our organizations. As I tried to focus my thoughts on next year it seemed very appropriate for the 2003 Colorado South Chapter to focus on these two issues. Many of our membership may not be

aware of the efforts that are already under way in this area. We have several board members active in the ACCA, this is an organization of allied professionals and city officials that effect Planning, zoning, and building code issues in Colorado Springs. This is a very important committee and more of our membership need to be aware of how this group can effect their lives as Architects. The ACCA is just one example, other areas of possible member involvement that I would like to push this year is the Colorado Community Design Network. This is an exciting opportunity for our membership to become active in learning how the planning process works and to interact with others in our community that are effected by planning and growth issues. In addition I believe that as an organization we need to become more active at the local level, focusing on Planning Commission,

City Council, and other organizations that directly effect our practices on a daily basis. If we can make inroads with these groups, then the AIA will have an important voice locally on such issues as placement of the new proposed County Court House in downtown Colorado Springs.

The second area of focus is on improving the financial health of our organization. The easiest and most direct path to achieve this goal is to increase membership. This will be a tremendous challenge in a difficult economic climate. We must as an organization provide meaningful benefits and programs. It is only through this process that we can hope to increase our membership. Better Communication of current programs is important as well as developing new programs that the Architectural community deemed important will be another focus for this year.

The 2003 Board and myself are looking forward to a great year and hope that we will be able to engage the entire South Chapter at greater levels than ever before. **AIA**

**Attend the Design and Construction Industry's PREMIER EVENT!**

AIA 2003 National Convention and Expo  
San Diego Convention Center  
May 8-10, 2003

# Design Matters!

poetry proof

THE AMERICAN INSTITUTE OF ARCHITECTS

**CONVENTION**  
AIA  
EXPO 2003  
SAN DIEGO

Earn valuable learning units—Fulfill AIA membership and mandatory state licensure continuing education requirements, including HSW  
Choose from more than 200 continuing education opportunities—Workshops, seminars, and tours  
Discover cutting-edge products and services from more than 600 companies  
Visit San Diego—a beautiful waterfront city with a rich cultural history, art galleries, museums, and miles of sandy beaches

Visit [www.aia.org](http://www.aia.org)—Register online and get up-to-date convention information





AIA Colorado North Chapter

## North Chapter 2003 Vision

by Bob Herzog, AIA

### 2002 AIA North Board of Directors

President  
**Bob Herzog, AIA**

President-Elect  
**Charlotte Grojean, AIA**

Secretary  
**Mark Hafen, AIA**

Treasurer  
**Tom Kalert, AIA**

Treasurer-Elect  
**Brad Massey, AIA**

Past President  
**Ken Field, AIA**

Directors  
**Joe Ashcraft, Assoc. AIA**  
**Thomas Beck, AIA - Director**  
**Fred Cooper, AIA - Director**  
**K. Merl Haworth, AIA - Director**  
**Katharine Leigh, Assoc. AIA**  
**Angela Tirri, Assoc. AIA**

Associate Director  
**Stephanie Ridgway, Assoc. AIA**

University of Colorado Rep  
**Alan Harlow**

AIA Student Rep  
**Cinder Trout, SA**

Director of Local Chapters  
**Sherri Hughes-Smith**

**A**s I sat down to prepare my vision for the coming year, I contemplated how I arrived at this position. My Architectural career began in this state 23 years ago when I took a job drafting plans for custom solar homes for a small design-build firm in Green Mountain Falls. From that meager beginning, I moved to California in 1985 and continued to work in the profession and attended school part time to eventually earn my degree. I received my California Architect's license in 1995, and my Colorado license in 1998. I met my wife (a California girl) here in Colorado Springs, which is the primary reason I relocated for a temporary (16 year) stint in California. My wife and I had always intended to return to Colorado for our retirement. As it turned out, fortune smiled upon us, and we were able to move back to Colorado in 2001, well ahead of my retirement years. I was subsequently asked to consider running for the AIA CNC President Elect for the

2002 term, which I accepted, and hence am now your President. With that as a background, let me share my vision for the upcoming year.

As Architects, we have the ability to turn a dream into reality. We take our clients desires and put those concepts on paper. From these documents, a building is created as a monument to our abilities to turn thought into an edifice that hopefully will endure the test of time. It is my personal belief that we must balance our abilities with a sense of responsibility. Not only should we be responsive to our clients, we must be aware of the impact any structure we design has on our built environment, and is a reflection of the profession as a whole. Architecture has, and will continue to be, a noble profession if we keep these ideals in mind. We need also to be aware that as members of the AIA, we have the ability, and I believe the responsibility, to be involved with all aspects of things that

affect the built environment. I believe firmly that AIA should also stand for "Architects In Action", in addition to the "American Institute of Architects". In my opinion, the old adage holds true, "if you're not part of the solution, you're part of the problem". Without the AIA members being involved with local, state and national issues that have direct impact on our profession, we will have to live with whatever is handed down to us. I would encourage everyone to volunteer at some level in your own community. We can, and should be, advocates for our profession.

In closing, I want to extend my best wishes and hopes for all of the firms in the North Chapter of the AIA for a healthy and prosperous new year. I know that many of the member firms have suffered significantly from the economic slow-downs suffered after 9/11. However, it is my firm belief that this year will be better for us all as firms and as individuals. **AIA**



AIA Colorado North Past Presidents join current President, Ken Field, AIA for a photo opportunity.





## West Chapter 2003 Vision

by Patrick E. Heise, AIA

### 2002 AIA West Board of Directors

President  
**Patrick Heise, AIA**

President-Elect  
**Jim Buckner, AIA**

Secretary  
**Carolyn Hunter, AIA**

Treasurer  
**Patrick Stuckey, AIA**

Past President  
**Chris Green, AIA**

Directors:  
**Ed Chamberlin, AIA**  
**Ann Darby, AIA**  
**Mark Maurer, AIA**

Coordinators:  
**Carolyn Hunter, AIA**  
(Durango)

**Marina Florian, AIA**  
(Glenwood Springs)

**Bob Ralston, AIA**  
(Steamboat Springs)

**Robbie Dickson, AIA**  
(Summit County)

**Jim Buckner, AIA**  
(Vail)

Director of Local Chapters  
**Sherri Hughes-Smith**



I view the year 2003 as an opportunity to build on momentum toward firmly establishing the AIA West Slope Growth Management Task Force initiated in 2002. I hope to inspire the West Chapter to use this committee as an opportunity to foster Design Excellence, Professional Collaboration, and an Attitude that design is very important to West Slope Development. Thereby, creating a better living environment on the West Slope for today and for the future.

Specific issues which I encourage the Growth Management Task Force to address may include :

**A) Growth:** The increase in population coupled with the implementation of infill vs urban sprawl and the consumption of land.

**B) City/Town Planning:** Determine what

distinct aspects of growth West Slope communities have in common. Identify what growth issues have already been addressed and successfully resolved by other West Slope cities or towns. Share these findings with developing communities in public meetings and through participation in the city/town and county planning processes.

**C) Water:** Determination of which laws should govern water rights, stream flows, restrictions, and regulations.

**D) Energy Consumption:** Proposed Performance Goals which will confidently promote sustainable building rather than continued waste of non-renewable resources.

**E) Transportation:** Integrated planning at the local level.

**F) Pollution:** Creation of less air, soil, and water contamination.

The conceivable goal for the Growth Management Task Force is to analyze, evaluate, and condense this information into a reliable and inventive knowledge base which can provide other West Slope AIA architects with what they need to know in order to better serve their clients. These guidelines will hopefully establish responsible growth policies which will contain sprawl without eliminating productive and beneficial growth. Transformation of current growth patterns into creative neighborhood planning and enhancement of a stronger sense of community while living within our environmental constraints is the desired objective. **AIA**



AIA Colorado West Double Citation award recipient Scott Lindenau, AIA with his staff of Studio B



AIA Colorado West chapter president, Chris Green, AIA with "Antoine Predock, FAIA"; guest presenter John Anderson, FAIA and president-elect Patrick Heise.



AIA Colorado staff Nicole Encinias poses as fellow staff member Loni Bernhard works diligently to post winning recipient boards at the 2002 AIA Colorado West Design Awards Gala.



## Denver Chapter 2002 Design Awards Recipients

The Denver chapter of The American Institute of Architects (AIA) announced the architecture excellence award recipients of its 2002 Design Awards at the Denver Art Museum on October 4, 2002.

Each year, local chapter members submit projects and compete for Honor, Merit and Citation awards. Architecture Magazine's former editor-in-chief and this year's jury chairperson, Reed Kroloff, along with Marion Weiss, principal of Weiss/Manfredi Architects and Gregg Pasquarelli, principal of Sharpless Holden Pasquarelli, both of New York, New York, judged more than seventy-five submitted projects in categories that included Built, Unbuilt and Civic Projects.

### Honor Awards (Highest Achievement)

**Project: River Tower and Studio  
(Built Architecture)**

**Architects: Anderson Mason Dale Architects**

#### Project Description:

The buildings recall a village composition similar to the early gold mining settlements of the area. The tower and studio are companion elements which celebrate the joy of study and work as an around the open center shaft of the undivided experience. A stairway winds tower leading to a platform under the tower room where final access is provided by a ladder and hatch. Built-in seating and storage allows conversion to nighttime sleeping and the opportunity to sleep with the stars. Coyotes howl



when the tower glows as a lantern in the night sky. The studio includes a raised work area at each end of its nave like space, a metaphor to step up to one's work with total focus and devotion.

**Project: Aurora Sports Park  
(Built/Interiors)**

**Architects: Brendle APV**



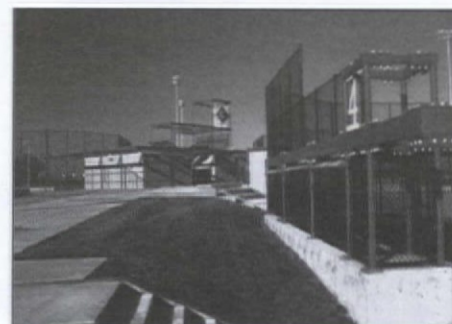
#### Project Description:

While working on the concept for this project, Brendle APV began playing with the idea that the architecture should be derived directly from children's toys. Since kids would be major users of the park, the architecture could embrace the idea of fun and color. The original design models were constructed of "K'nex", modular connectible building systems, and presented as "toy architecture". The translation from toys to buildings became critical in order to maintain the character of the toy model. A grid of 10' modules was created utilizing tube steel elements. The connections were emphasized by plates, top and bottom, held together by large bolts and oversized polished acorn nuts. This grid framework surrounds simple boxes of polished concrete block.

### Merit Awards (Outstanding Achievement)

**Project: Denver Millennium Bridge  
(Built/Urban Design)**

**Architects: ArchitectureDenver**



#### Project Description:

The structure is an asymmetrical mast and cable stayed span. It is placed over an existing railroad easement envelope 25 feet above street level and within an existing street right of way. The composition of the mast, deck and the structural cable system create a visual and spatial foil. The structure is of a singular dynamic quality and has become an urban landmark providing focus and identity to this new extension of the 16th Street pedestrian mall.

(Continued on next page)

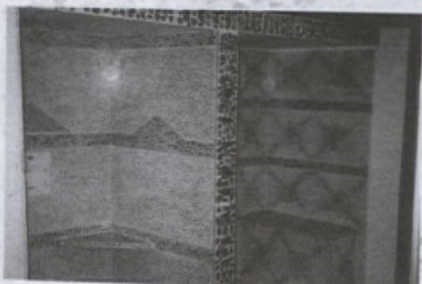
## Terrazzo Manufactured Products



Custom made wall panels, vanity tops with sinks, to your size color, and texture specifications.



Custom made floor tiles to your size color and texture specifications.



Custom made shower panels, bases and surrounds to your size, color and texture specifications.

YOUR ONLY LIMITATION IS YOUR OWN IMAGINATION

A wide variety of colors and patterns available

One of a kind bath, kitchens and bookshelves

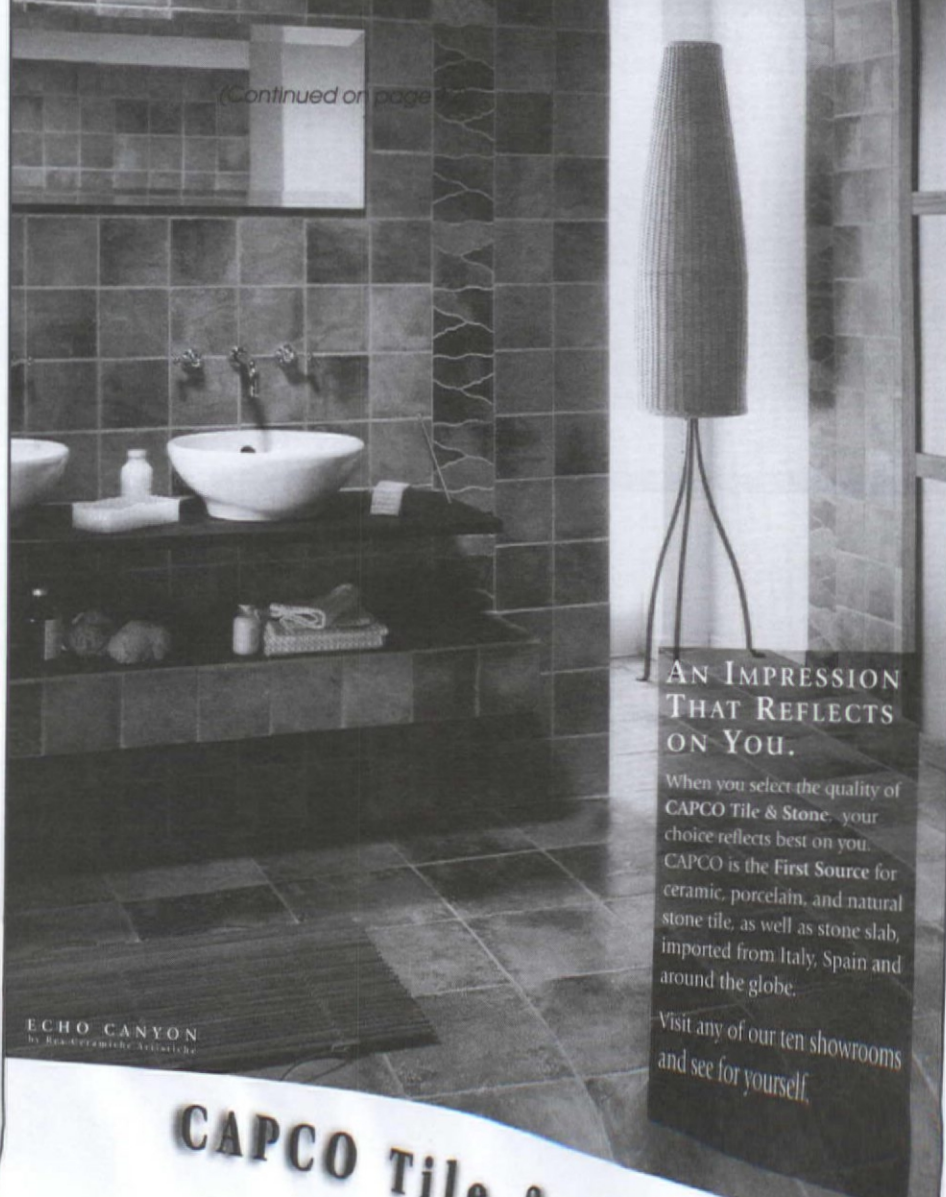
- Shower bases custom or standard
- Window sills and surrounds
- Wall panels
- Vanity tops with or without sinks
- Counter tops without sinks
- Fire place hearths and mantels
- Free standing stove hearth & mantles
- Handcrafted floor tiles
- Bartops, desktops, and table tops

MILE HI TERRAZZO

Showroom: 801 E. E 54th Ave., Denver CO 80216  
phone: 303.293.9019 • fax: 303.293.9019 • e-mail: MileHiTerrazzo@aol.com  
Web site: <http://hometown.aol.com/milchiterrazzo/myhomepage/business.html>

PAGE 12

## CAPCO Tile & Stone



(Continued on page)

AN IMPRESSION THAT REFLECTS ON YOU.

When you select the quality of CAPCO Tile & Stone, your choice reflects best on you. CAPCO is the First Source for ceramic, porcelain, and natural stone tile, as well as stone slab, imported from Italy, Spain and around the globe.

Visit any of our ten showrooms and see for yourself.

CAPCO Tile & Stone  
1-800-727-2272

SHOWROOMS IN DENVER • BASALT • AVON • BOULDER • COLORADO SPRINGS • FORT COLLINS  
SILVERTHORNE • LAS VEGAS  
INTERIOR SOLUTIONS AT THE COLLECTIONS/DENVER DESIGN CENTER

[www.capcotile.com](http://www.capcotile.com)



## Denver Chapter 2002 Design Awards Recipients

The Denver chapter of The American Institute of Architects (AIA) announced the architecture excellence award recipients of its 2002 Design Awards at the Denver Art Museum on October 4, 2002.

Each year, local chapter members submit projects and compete for Honor, Merit and Citation awards. Architecture Magazine's former editor-in-chief and this year's jury chairperson, Reed Kroloff, along with Marion Weiss, principal of Weiss/Manfredi Architects and Gregg Pasquarelli, principal of Sharpless Holden Pasquarelli, both of New York, New York, judged more than seventy-five submitted projects in categories that included Built, Unbuilt and Civic Projects.

### Honor Awards (Highest Achievement)

#### Project: River Tower and Studio (Built Architecture)

Architects: Anderson Mason Dale Architects

#### Project Description:

The buildings recall a village composition similar to the early gold mining settlements of the area. The tower and studio are companion elements which celebrate the joy of study and work as an around the open center shaft of the undivided experience. A stairway winds tower leading to a platform under the tower room where final access is provided by a ladder and hatch. Built-in seating and storage allows conversion to nighttime sleeping and the opportunity to sleep with the stars. Coyotes howl



when the tower glows as a lantern in the night sky. The studio includes a raised work area at each end of its nave like space, a metaphor to step up to one's work with total focus and devotion.

#### Project: Aurora Sports Park (Built/Interiors)

Architects: Brendle APV



#### Project Description:

While working on the concept for this project, Brendle APV began playing with the idea that the architecture should be derived directly from children's toys. Since kids would be major users of the park, the architecture could embrace the idea of fun and color. The original design models were constructed of "K'nex", modular connectible building systems, and presented as "toy architecture". The translation from toys to buildings became critical in order to maintain the character of the toy model. A grid of 10' modules was created utilizing tube steel elements. The connections were emphasized by plates, top and bottom, held together by large bolts and oversized polished acorn nuts. This grid framework surrounds simple boxes of polished concrete block.

### Merit Awards (Outstanding Achievement)

#### Project: Denver Millennium Bridge (Built/Urban Design)

Architects: ArchitectureDenver



#### Project Description:

The structure is an asymmetrical mast and cable stayed span. It is placed over an existing railroad easement envelope 25 feet above street level and within an existing street right of way. The composition of the mast, deck and the structural cable system create a visual and spatial foil. The structure is of a singular dynamic quality and has become an urban landmark providing focus and identity to this new extension of the 16th Street pedestrian mall.

(Continued on next page)

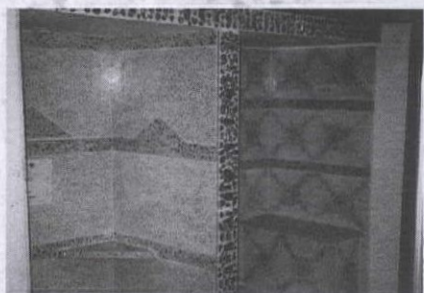
## Terrazzo Manufactured Products



Custom made wall panels, vanity tops with sinks, to your size color, and texture specifications.



Custom made floor tiles to your size color and texture specifications.



Custom made shower panels, bases and surrounds to your size, color and texture specifications.

YOUR ONLY  
LIMITATION IS  
YOUR OWN  
IMAGINATION

A wide variety of colors  
and patterns available

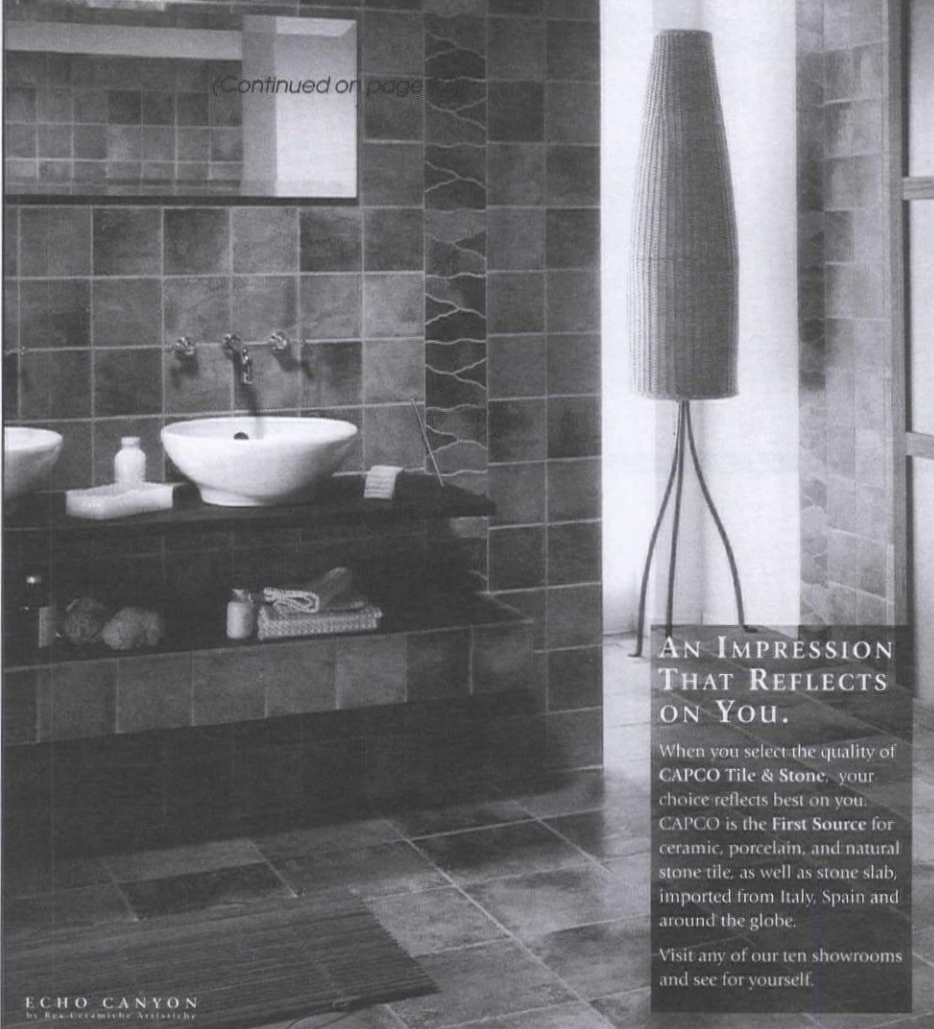
One of a kind bath, kitchens  
and bookshelves

- Shower bases custom or standard
- Window sills and surrounds
- Wall panels
- Vanity tops with or without sinks
- Counter tops without sinks
- Fire place hearths and mantels
- Free standing stove hearth & mantles
- Handcrafted floor tiles
- Bartops, desktops, and table tops

MILE HI TERRAZZO

Showroom: 801 E. E 54th Ave., Denver CO 80216  
phone: 303.293.9019 • fax: 303.293.9019 • e-mail: MileHiTerrazzo@aol.com  
Web site: <http://hometown.aol.com/milehiterrazzo/myhomepage/business.html>

## CAPCO Tile & Stone



(Continued on page 13)

AN IMPRESSION  
THAT REFLECTS  
ON YOU.

When you select the quality of CAPCO Tile & Stone, your choice reflects best on you. CAPCO is the First Source for ceramic, porcelain, and natural stone tile, as well as stone slab, imported from Italy, Spain and around the globe.

Visit any of our ten showrooms and see for yourself.

CAPCO Tile & Stone

1-800-727-2272

SHOWROOMS IN DENVER • BOULDER • COLORADO SPRINGS • FORT COLLINS  
BASALT • AVON • GRAND JUNCTION • SILVERTHORNE • LAS VEGAS  
INTERIOR SOLUTIONS AT THE COLLECTIONS/DENVER DESIGN CENTER

[www.capcotile.com](http://www.capcotile.com)





**2002 AIA West Board of Directors**

President  
**Patrick Heise, AIA**

President-Elect  
**Jim Buckner, AIA**

Secretary  
**Carolyn Hunter, AIA**

Treasurer  
**Patrick Stuckey, AIA**

Past President  
**Chris Green, AIA**

Directors:  
**Ed Chamberlin, AIA**  
**Ann Darby, AIA**  
**Mark Maurer, AIA**

Coordinators:  
**Carolyn Hunter, AIA**  
(Durango)

**Marina Florian, AIA**  
(Glenwood Springs)

**Bob Ralston, AIA**  
(Steamboat Springs)

**Robbie Dickson, AIA**  
(Summit County)

**Jim Buckner, AIA**  
(Vail)

Director of Local Chapters  
**Sherri Hughes-Smith**



view the year 2003 as an opportunity to build on momentum toward firmly establishing the AIA West Slope Growth Management Task Force initiated in 2002. I hope to inspire the West Chapter to use this committee as an opportunity to foster Design Excellence, Professional Collaboration, and an Attitude that design is very important to West Slope Development. Thereby, creating a better living environment on the West Slope for today and for the future.

Specific issues which I encourage the Growth Management Task Force to address may include :

- A) Growth:** The increase in population coupled with the implementation of infill vs urban sprawl and the consumption of land.
- B) City/Town Planning:** Determine what

distinct aspects of growth West Slope communities have in common. Identify what growth issues have already been addressed and successfully resolved by other West Slope cities or towns. Share these findings with developing communities in public meetings and through participation in the city/town and county planning processes.

- C) Water:** Determination of which laws should govern water rights, stream flows, restrictions, and regulations.
- D) Energy Consumption:** Proposed Performance Goals which will confidently promote sustainable building rather than continued waste of non-renewable resources.
- E) Transportation:** Integrated planning at the local level.

**F) Pollution:** Creation of less air, soil, and water contamination.

The conceivable goal for the Growth Management Task Force is to analyze, evaluate, and condense this information into a reliable and inventive knowledge base which can provide other West Slope AIA architects with what they need to know in order to better serve their clients. These guidelines will hopefully establish responsible growth policies which will contain sprawl without eliminating productive and beneficial growth. Transformation of current growth patterns into creative neighborhood planning and enhancement of a stronger sense of community while living within our environmental constraints is the desired objective. **AIA**

## West Chapter 2003 Vision

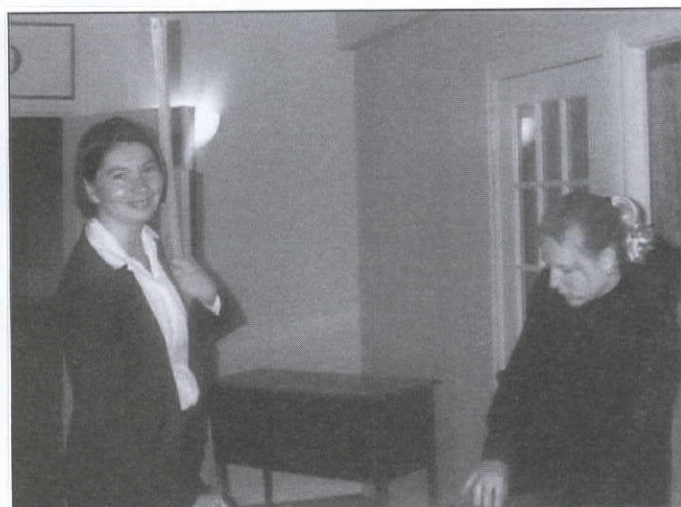
by Patrick E. Heise, AIA



AIA Colorado West Double Citation award recipient Scott Lindenau, AIA with his staff of Studio B



AIA Colorado West chapter president, Chris Green, AIA with "Antoine Predock, FAIA"; guest presenter John Anderson, FAIA and president-elect Patrick Heise.



AIA Colorado staff Nicole Encinias poses as fellow staff member Loni Bernhard works diligently to post winning recipient boards at the 2002 AIA Colorado West Design Awards Gala.



(Continued from page 8)

## Denver Chapter Design Awards

### Project Description:

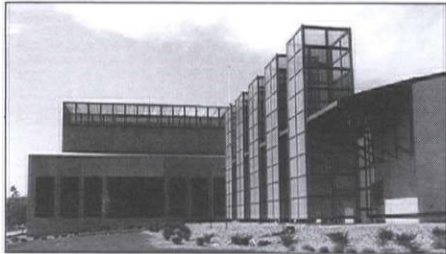
Light, layering, and polished materials became the key elements in redefining this Boulder boutique. MAX has an unparalleled reputation for presenting the latest in fashion, yet the existing space was small and indistinctive. The goal was to design a space that projects the store's refinement & sophistication.

Located within an historic pedestrian district of Boulder, this corner site has a high pedestrian and vehicle traffic. An essential element for the success of the design was to create a strong street presence. By adding a new window and removing walls, the space was completely reconfigured to improve the store's visibility and spatial openness. The new entry to the store draws people in from the street. It aligns with a soffit above that recalls the platform of a fashion show runway. This strategy, combined with the overall sleekness, conveys that latest fashions and a sophisticated experience are here.

### Awards of Special Recognition

#### Project: Sabre Data Center (Built Architecture)

Architects: Gensler



#### Project Description:

The 225,000 sf Sabre Data Center

includes two computer modules totaling 134,000 sf, 13,000 sf of office space, and a 78,000 sf central plant. The raised computer floor area is designed for 100 watts per square foot, while the overall facility is designed to withstand the effects of a Category F5 tornado.

The many steps taken in designing the structural layout of the building to protect the data center from the area's characteristically high winds. The precast concrete shell and steel columns support a 16-inch thick concrete roof while the walls of the computer modules are bermed to the roof-line.

#### Project: Discovery Learning Center (Built Architecture)

Architects: Klipp Colussy Jenks DuBois Architects, P.C.



#### Project Description:

The Discovery Learning Center is the second act of an architectural drama that has unfolded at the east side of the Engineering Complex at the University of Colorado at Boulder. The first step was the 1998 Integrated Teaching and Learning Laboratory (ITLL), a two story addition the bridged back to the Engineering Center and explored, with its exterior detailing, the further extension of the unique vocabulary of the main facility. The Discovery Learning Center (DLC) takes this a step further and completes several gestures initiated in the earlier building.

## AIA Colorado 2002 - A year in photos



Ben Wilking, AIA and Bob Herzog, AIA listen as former AIA Colorado's Executive Director Joe Jackson, Assoc. AIA speaks at Media Luncheon hosted by AIA Colorado.

### A few of the Winners!



Nicholas Vanderborgh speaks at the 2002 AIA Colorado Design Conference.



AIA Colorado 2002 Design Conference keynote speaker and jury chair, Bruce Kuwabara.



Colorado7 - President Elizabeth Wright Ingraham, FAIA accepts the state's President's Award from President-elect, Bill Tracy.



AIA

## HOW CAN YOU TELL QUALITY WHEN YOU SEE IT?

You'll know quality when you see it at Alpha, where we have a passion for stone.



Kent Schweiss, Manager

14501 E. Moncrieff Place, Aurora  
Phone 303-373-4911  
Toll Free 1-866-770-2211

IN CALIFORNIA: SAN LEANDRO, SANTA CLARA, AND SACRAMENTO

www.alphagranite.com

**ALPHA**  
GRANITE & MARBLE



(Continued from previous page)

**Project: Scottish Rite Masonic Center  
(Built Architecture)**

**Architects: Studio Completiva, Inc.**



**Project Description:**

The owner required an addition to a historic landmark structure built in 1923. The addition was designated for office space and specific rooms for freemason activities as well as space for lease. Project challenges included integration of Capitol Overlay Zoning District requirements, approval from Landmark Commission and coordination with an adjacent, large apartment complex being developed simultaneously by a different owner. Additional challenges came from providing horizontal connection/circulation and vertical egress with the existing building that houses a large auditorium and stage with multiple intermediary service levels.

**Project: Capitol Heights Apartments  
(Built Architecture)**

**Architects: Studio Completiva, Inc.**



**Project Description:**

The owner wanted to revitalize an area near the capitol which consisted of the juxtaposition of several neoclassical structures of historic value with run-down retail and rental housing units nearby. A large surface parking lot amid the quadrangle served as the site. A mixed-use, high density development was envisioned to activate the area and bring an enhanced pedestrian interaction to the stature of the existing neoclassical buildings in the area.

A number of special zoning restrictions and overlays had to be addressed due to the preservation requirements of the historic landmark status for several struc-

tures in the area. Another challenge was cost. Our design investigations lead us to novel solutions utilizing inexpensive materials by breaking down the structure through massing manipulation and color. Surfaces were carefully modulated to expose structure, create scale and richness.

**Project: Barnhart Loft  
(Built Interiors)**

**Architects: Semple Brown Design, P.C.**



**Project Description:**

The architectural/interior design team's goal was to design a 'chic' industrial space for the client's home in the city.

Living room area was raised to create both a more intimate sitting area and improve the sitting view to downtown. Materials in this space include a leather floor inset with padded carpet, recycled wood counter tops, and custom steel shelving.

Custom designed steel bookcases span across the length of the space. The

hopper functioning cabinet doors are designed with hydraulic shocks to assist in easy opening and closing. This guest area is primarily used as a conference area and converts to a guest bedroom when the Murphy bed is dropped and the woven door is closed. Axis connecting the office silo to the master bedroom shows the play of materials within the space; woven closet doors and screen walls, backlit to create a warm textural glow, clear maple rolling and hinged doors act as articulated wall panels-concealing laundry, guest bath, and guestroom. All walls within this space stop short of the ceiling to reinforce the overall shape of the silo and to expand the feeling of the space.

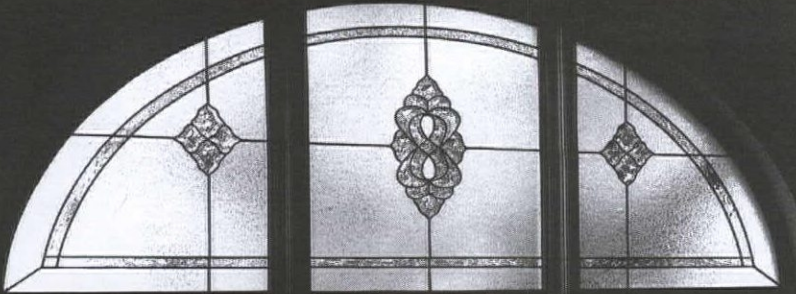
**Citation Awards  
(Excellence in Achievement)**

**Project: MAX  
(Built Architecture)**

**Architects: Semple Brown Design, P.C.**



(Continued on page 14)




**Black and white  
just can't  
do these justice.**

No matter what your design reason, be it for privacy, light and heat control, or simply as a beautiful design statement for your client's homes, stained and leaded glass applications offer an elegant way to meet your client's needs.

For examples in color,  
call Martin Faith at  
**303.766.3811**

**SCOTTISH STAINED GLASS**

**Do your drawings carry  
this stamp?**




**The seal of a Certified Consulting Engineer.**

The knowledge and experience of Certified Consulting Engineers ventures well beyond applying well-crafted skills to engineer significant and responsible design.

Knowledge and experience translates into staff development, client education and overall project value.

Certified Consulting Engineers strengthen the qualifications of their firms. They are constantly keeping abreast of industry trends, searching for more efficient ways to get the project done. As they learn and contribute, they become invaluable guides in the project development process.

And that results in the highest caliber of engineering performance possible



**A Step Beyond.**

Certified Consulting Engineers of Colorado  
899 Logan Street, Suite 109 Denver, Colorado 80203  
303.832.2200  
email: [www.acec-co.org/ccce](http://www.acec-co.org/ccce)



## South Chapter 2002 Design Awards Recipients

The AIA Colorado South 2002 Design Awards were presented on the 10th of December at The Cliffhouse in Manitou Springs, Colorado. A jury of five architects, comprised by AIA Wyoming Members, was led by jury chair, Randy Byers, AIA. The awards are:

### Merit Awards (Outstanding Achievement)

**Project: Lester L. Williams Fire Department Complex  
(Built Architecture)**

**Architects: HB & A**



#### Project Description:

The new Fire Department Complex stands as a proud expression of responsible civic architecture for the City of Colorado Springs. As one of the first Public Safety SCIP projects, the Complex underwent extensive community involvement throughout the planning and design phases. The myriad functions fostered under the umbrella of the Colorado Springs Fire Department all exist to provide the highest quality of service to the citizens of Colorado Springs.

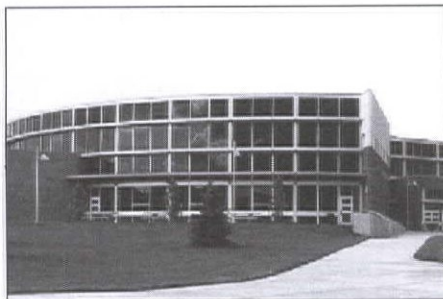
Constructed of durable materials, the successful design meets functional requirements, welcomes the community into the public portions of the building, and provides for future expansion of the

departments. The museum portion of the building honors the Department's past in a culturally significant way – making the priceless collection of artifacts and apparatus accessible to the community.

In the short period of occupancy since completion, the building has already achieved significant reputation as a public asset within the City.

**Project: Ralston Valley High School  
(Built Architecture)**

**Architects: KA Partners, Inc.**



#### Project Description:

Located on 54 acres of rolling terrain, the new state-of-the-art high school represents the quality and foresight the Jefferson County School District promotes in its educational philosophy. The large scale and mass of the two story high school was carefully integrated into the site so that it does not dominate views from the major roadways that access the area. Placed within an existing development, surrounded by residential one acre sites, this school facility is an important focal point as a regional hub for education, social and recreational purposes.

The building was carefully designed for impressive views of the Front Range Mountains while capturing panoramic views of the foothills rolling into the city. The abundant use of windows throughout the building utilizes large expanses of glass for priority public spaces. The position of punched windows in classrooms and offices to integrate the natural setting and views. The building includes the business tower located in Downtown Denver.

The 1,250-student high school is expandable to 1,500 students with a future classroom addition, was designed to accommodate students in smaller, personal settings. This twenty-fourth high school for Jefferson County is a wonderful combination of community and education facilities, exemplifying clarity of circulation, socialization opportunities, and orientation to unique environment amenities, while demonstrating the importance of a twenty-first century education complex.

### Citation Awards (Excellence in Achievement)

**Project: Broadmoor South Golf Club  
(Built Architecture)**

**Architects: DLR Group / The TAG Studio**



existing base design and perimeter

SPRINGS  
2003  
AIA I

enjoy- Front

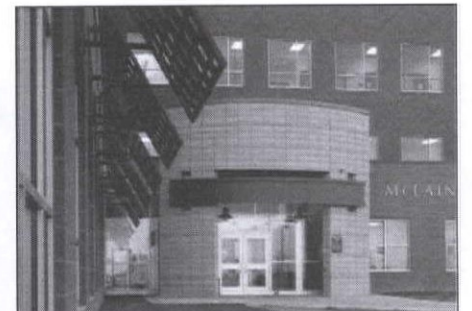
is located outside the dining room along the northern desk and is a natural gathering spot for guests of all ages.

The Dining Room Addition has created a transparent connection to the exterior, and has brought the 'outside in'. It is a pleasure to enjoy a five-course meal while overlooking a serene stream and watching the wildlife frolic on the golf course.

This successful addition to the Clubhouse truly augments the services provided by the five-star resort.

**Project: Life Long Learning Center  
(including McLain Community High School and Warren Tech)  
(Built Architecture)**

**Architects: LKA Partners, Inc.**



(Continued on page 16)

# KEN'S...YOUR ONE STOP

## REPROGRAPHIC SHOP IS CELEBRATING

### It's 40th Year Serving the Metro Denver Architectural Community

**We excel in all of the following categories:**

- Duplicating Architectural Drawings
- Plotting Architectural Drawings
- Duplicating Specification Books
- Plotting Oversize Color Drawings
- Duplicating Small & Large Format Color
- Distribution of Sets & FedEx Shipping
- Member of Construction News Services
- Member of U.S. Reprographics Network

## KEN'S REPRODUCTIONS LTD.

**KEN'S DOWNTOWN**  
2220 Curtis Street • Denver, CO 80205  
303.297.9191 Fax 303.297.8885

**KEN'S SOUTH**  
7304 S. Alton Way #3H • Englewood, CO 80112  
720.493.9904 Fax 720.493.9917

Visit us on the web: [www.kensrepro.com](http://www.kensrepro.com)

### PRODUCERS' COUNCIL

Let Our Experts Assist You  
on Your Next Project

---

**'STICK'**  
Continuing Education Lunches  
Scholarships Available for  
Advanced Education

---

**Proud Sponsors of:**  
American Institute of Architects  
Young Architects Scholarship  
Colorado Springs Scholarship  
Wyoming Scholarship

---

Kelli Davis 303.773.9054  
Ed Nagel 303.825.2211  
Charlie Davis 303.733.2476

---

**PRODUCERS' COUNCIL**  
Colorado Chapter

**EDUCATING DESIGN**  
PROFESSIONALS SINCE 1935  
[www.producerscouncil.org](http://www.producerscouncil.org)



(Continued from page 15)

## South Chapter Design Awards

### Project Description:

In 1998, after years of scattered buildings, with no forethought to the future, the bringing together of individual facilities into a campus was desired and the Life Long Learning Center was born. The facilities and programs for the Center involve not only Jefferson County School District, but also, partnerships with Red Rocks Community College, The City of Lakewood, the Jefferson Foundation and private sector businesses. This unique 210-acre campus has successfully established a strong campus framework, which is useable, memorable, and flexible for the future.

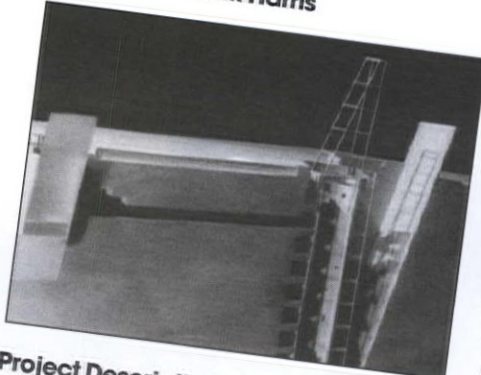
Located across the pedestrian Alley from Warren Tech, McLain Community High School is a three level high school, which steps up the sloping site. The new community high school houses three distinct programs. The Warren Tech Center comprises five buildings, which were at best - dated and uninspiring. Despite obvious visual and functional shortcomings, the programs offered were successful, so improvements were overdue that would finally reflect what was happening within. The new look for Warren Tech has quite simply transformed the facility, re-

defined its direction, and made the students proud to say they attend Warren Tech.

The Life Long Learning Center has been defined and is truly unified - embracing a passion for learning sought by students from pre-school to adulthood.

### Project: Remote UN Security Council Chambers (Un-Built Architecture)

Architects: Mark Harris



### Project Description:

Located in the remote location of a desert military installation, the rehabilitation of the Titan II missile silo is to maintain its role of being a deterrent to the possible catastrophe that a nuclear confrontation would bring if undertaken at any scale. However, in times like these it is diplomacy that seems to be the greatest weapon in our arsenal. The isolated location of the new United Nations Security Council Chambers provides the necessary neutrality for diplomatic actions to succeed.

Through it's aggressive yet poetically made point that architecture can convey meaning and modify behavior. This creative and innovative adaptive re-use project embraces what was once destructive into a beacon of hope in a dark sea of fear, or as a voice of reason in a time of great madness.

## South Chapter Photos



President-elect John Hoelscher, AIA with Randy Byers, AIA & AIAC and South Chapter President, Rhonda Boger-Linder, AIA



AIA Colorado South members enjoy festivities at the 2002 Design Awards Gala at the Cliffhouse in Manitou Springs.



Greg Friese, AIA and Morey Bean, AIA



Stuart Coppedge, AIA with Melissa Brensing, Assoc. AIA



President Rhonda Boger-Linder with guest speaker and jury chair Rander Byers, AIA and board member, Dempsey Currie, AIA.

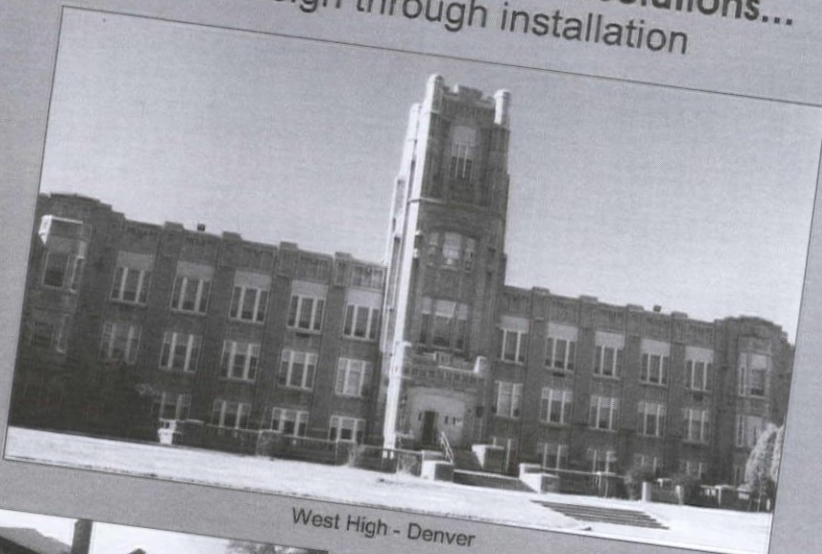


AIA

## The Winners



## Creative Window & Door Solutions... design through installation



West High - Denver



Lowell School - Colorado Springs



Northern Hotel - Fort Collins

## Denver - Northern Colorado - Steamboat

Showrooms by appointment:

Denver: 1604 East 17th Avenue  
303.830.2611

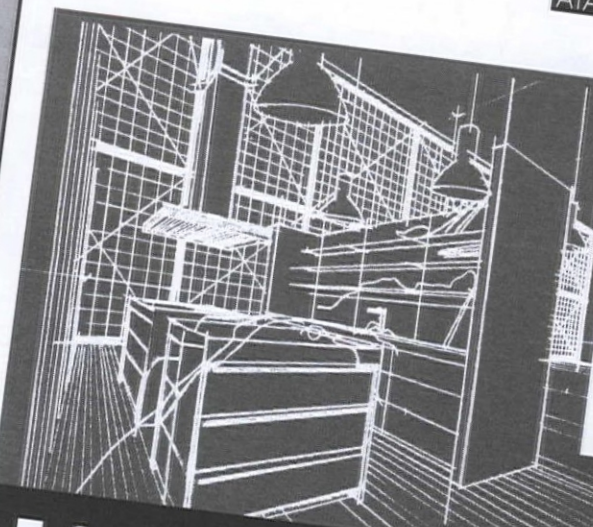
Loveland: 525 West 66th Street  
970.667.9580

Steamboat: 2185 Riverside Plaza  
970.875.0400

1-800-775-7887



COLORADO  
SASH & DOOR, INC.



This is how we  
create spaces  
for living.

bulthaup



Kitchen Distributors  
601 S. Broadway Suite A-1  
Denver, CO 80209  
Phone 303-777-5409  
800-688-0665 outside metro  
Fax 303-777-5412



## North Chapter 2002 Design Awards Recipients

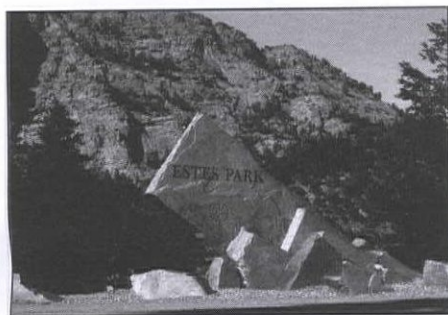
**T**he AIA Colorado North chapter covers nine counties in Northeastern Colorado and includes Boulder, Greeley, Fort Collins, Loveland and Longmont.

Fifty submitted projects from AIA Colorado North chapter members were judged in categories in **Unbuilt Projects, Small Projects (construction costs less than \$300,000), Residential Architecture, Historic Renovation, and Commercial/Institutional.** Renowned architect, **Robert F. Gatje, FAIA**, participated as this year's jury chairperson. Other jury participants were **Tician Papachristou, FAIA**, of Massachusetts and **Bruce S Fowle, FAIA**, New York.

### Small Projects Honor Awards (Highest Achievement)

**Project: Town of Estes Park Gateway  
(Built Architecture)**

**Architects: Roger M. Thorp, AIA**



#### Project Description:

The design was developed to mimic a natural stone outcrop that would give the appearance of being thrust up from the ground, leaving a single monolith to be simply etched with the name of the community. Sandstone from local quarries was the chosen material to complement the natural coloration of the Granite/sandstone Mountains in the area.

#### Jury Comments:

"Its simplicity of conception, the dedication of its execution – all conspired to reinforce the honorable result. We admired the sensitive incised lettering and logo and its careful placement against the awesome backdrop of the mountainous park. More sculpture than architecture, it still looked great."

### Historic Renovation Merit Awards

(Outstanding Achievement)

**Project: C&S Freight Depot Downtown  
Transit Center, Ft Collins  
(Built Architecture)**

**Architects: Roger M. Thorp, AIA**



#### Project Description:

The downtown Transit Centre is a historic rehabilitation and adaptive reuse of the 1906 C & S Railroad Freight Depot into a new downtown multi-modal transit center for the City of Fort Collins. Users include the local Transport bus service and other regional carriers, taxi and airport shuttle services and office space for the city of Fort Collins' SMARTtrips program. The restored Transit Center will anchor one end of the proposed Mason Street Corridor, a multi-modal transportation corridor running 5.5 miles through the urban core of Fort Collins.

#### Jury Comments:

"The meticulous restoration of the exterior of this old Freight is praised and the echo of its suspended canopy in the new bus shelters is recognized. The resultant shell is an evocative monument. Altogether a fine addition to downtown Ft Collins and no doubt admired by the travelers that will put it to good use."

### Residential Architecture Merit Awards

(Outstanding Achievement)

**Project: Hell's Canyon Cottage,  
Larimer County (Built Architecture)**

**Architects: Rodwin Architecture**



#### Project Description:

This 1200 s.f. cottage sits on a small knoll surrounded 309 pristine acres just outside of Estes Park in Larimer County. The valley is the site of a turn-of-the-century cattle summer pasture. The cottage was created as a mountain retreat for two families, and sleeps up to 14 people. This earthy gem has many unique architectural aspects: a cozy bounce (a Mexican/southwestern feature referring to a cave-like nook) filled with pillows; a treehouse-like sleeping and play loft overlooking the great room; an octagonal gazebo with spectacular 270 degree views of the private valley; a poetic eyebrow window and entry gable; a beautiful and unique bathroom with a Cedar-lined two-person shower and a polished river-rock floor, with a layout that can accommodate three separate parties simultaneously; a traditional wood-burning Rumsford fireplace, surrounded by pink local sandstone; wood dwelled heavy-timber roof framing; copper gutters with chain link downspouts; artistic,

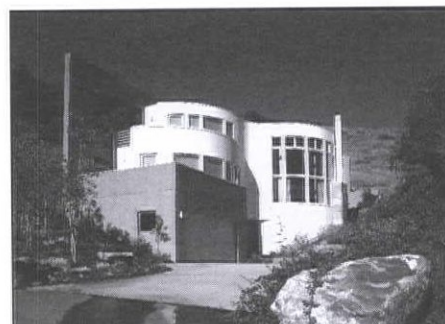
rustic woodwork and custom cabinetry throughout; a road gate welded by a neighbor from antique farm machinery; and a romantic, wood-fired, outdoor Cedar hot tub.

#### Jury Comments:

"This is a fine house, enhanced by the serious dedication to "green" principles. Its stuccoed straw-bale walls are appropriately detailed."

**Project: Jessor/Menken Residence,  
Boulder (Built Architecture)**

**Architects: Harvey M. Hine Architects, P.C.**



#### Project Description:

The design is a composition of four floor levels, each with walk out access to an adjacent terrace. The curved walls were created to comply with solar access restrictions and to take full advantage of the breathtaking views. The thick southern wall acts as a boundary for the free-flowing interior space. The strong southern light is filtered through numerous small punctured windows in this wall creating a mosaic of light, subtly changing throughout the day and year.

A straight run stair is located directly adjacent to the southern bounding wall, creating a pause between the exterior and the interior. This primary stairway connects all of the public spaces in the house, while secondary stairs connect and separate the private spaces from the public. A roof top terrace and garden is accessed by an exterior stairway from the west terrace, and offers a 360 degree panoramic view of the Front Range and the City of Boulder.

#### Jury Comments:

"We treasure this one uncompromising submission in a truly contemporary idiom. Its use of crisp, contrasting materials and careful fenestration enhance a plan that is most responsive to the dramatic site. The curvilinear lines of its principal spaces are a fine foil to the elegant geometry of the rest of the composition."

**Project: Hannah Evans Residence  
(Built Architecture)**

**Architects: OZ Architecture**

#### Project Description:

This residence, located in an established neighborhood in east Denver, was designed for a single professional



woman and completed in 2002. The architectural brief for the project offered interesting opportunities and challenges.

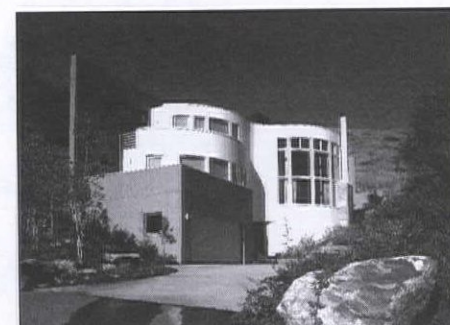
The owner wanted a modern design that fit architecturally into its 1950s ranch house style neighborhood. She had been living on the site in a split level ranch that had become obsolete, as is the case with many of the original houses in the neighborhood, which are located on large lots and are being rapidly replaced with larger homes. Generally, these new larger homes are designed to imitate historical styles such as English Tudor, French Country, Spanish Colonial, etc. Our client agreed with us that her new house should be reflective of the present era rather than a previous one and the house should take its design cues from the original and more straightforward ranch style homes. We thought of Wright's Prairie House and their floating roofs as a starting point for our design.

#### Jury Comments:

"The frank acknowledgment of Wright's influence makes it possible to admire this house and what it has succeeded in doing as a modern addition to a conservative neighborhood. The ground floor plan is exceptionally well worked out in giving privacy to residents on a busy street. References to Japan are obvious and welcome."

**Project: Western Ranch, Boulder County  
(Built Architecture)**

**Architects: Mark S. Queripel, AIA, Terra Verde Architects, LLC**



#### Project Description:

Deep roof overhangs and wrap-around porches protect the home from the western sun and southern exposure while providing plenty of indoor-outdoor connectivity. The low roof profile provided many opportunities to customize the upper floor bedrooms so that each child's room had unique features such as window

(Continued on page 18)



(Continued from page 17)

## North Chapter Design Awards

seats, built-ins or skylights. Two staircases, formal and informal, connect the two levels. The approach to the front entrance sweeps gracefully in a semi-circle and a heavily landscaped burn protects the home from the street and adjoining neighbors. The landscape was carefully planned to create privacy for the homeowners as well as protect view corridors for nearby properties.

### Jury Comments:

"This is a very big, solid house that uses a familiar vernacular with conviction and consistency. It is beautiful and certainly a comfortable home for its lucky owners."

### Commercial/Institutional Honor Awards (Highest Achievement)

#### Project: Caretaker's Cottage at Saguaro Forest - Arizona (Built Architecture)

Architects: Downing, Thorpe & James, Inc.

#### Project Description:

The design concept for this community entry began by responding to the land



and the traditions of the desert region. As residents and visitors move from the desert flat lands into the foothills of the Saguaro Forest they feel as if they have happened upon an old homestead. A rustic caretaker's cottage acts as the entry to this resort community and provides a personalized experience for all who pass through its gates.

While creating a distinctive sense of entry, the experience is somewhat understated. The idea of place, history, and a storyline is reflected through many design elements. Stone pavers along the road transition to building materials, distressed wood enhances the building's rustic appearance, and rusted iron gates enforce the sense of history.

#### Jury Comments:

"We were completely captivated by this theatrical tour-de-force, despite the architect's claim to "understatement". Beautiful adobe-like detailing, Gaudiesque stone and metalwork, combined with a fine wood vocabulary result in a storybook structure. A great job."

### Merit Awards (Outstanding Achievement)

#### Project: Zach (Prototype 2000) Elementary School (Built Architecture)

Architects: RB + Architects, Inc.

#### Project Description:

The plan of the Prototype Elementary 2000 incorporates a diagonal corridor, which divides the school into "passive areas" and "active areas". The classrooms face the quiet or passive part of the site. The Gymnasium and Flax Room/Cafeteria face the playground



and ball fields or active part of the site. Classrooms are grouped in threes and stacked, meeting the programmatic requirement of grouping classrooms by age or (by working vertically), three schools within a school of grades 1 through 6. This concept plan allowed maximum daylight in most all classrooms as well as teacher work spaces, and placed all classrooms in close proximity to the Media Center, Gym and

Cafeteria. Zach was recently awarded one of the 6 national design award citations given by AASA/AIA/CEFPI.

#### Jury Comments:

"This handsome school must be a joy to its students and we admire its thoughtful plan and decorative, if derivative facades."

#### Project: Main Street Station, Breckenridge (Built Architecture)

Architects: K. David Carson and Andy White, OZ Architecture, Cottle Graybeal and Yaw



#### Project Description:

The complete complex ties together a diverse set of requirements into a solution that is a joy to walk through and discover its richness. The diverse uses are complimentary. The plazas and site connections satisfy the needs of the ski resort and town circulation. The very large building

(Continued on next page)

A PLACE TO PARK  
 A CREATIVELY CONSTRUCTED GARAGE UTILIZING SPACE AND DESIGN

**Carl Walker**  
Parking  
Planning Engineering Restoration

- ▶▶ **PARKING PLANNING SERVICES**
  - Studies • Operations Assessment & Design
  - Structured Parking Feasibility
- ▶▶ **PARKING DESIGN**
  - Structural Design • Functional Layout
- ▶▶ **RESTORATION SERVICES**
  - Condition Appraisals • Structural Design
  - Construction Administration

CONTACT ▶▶ Jay Stevens • jstevens@carlwalker.com • 303.894.8800

carlwalker.com

MARVIN WINDOWS AND DOORS
COMMERCIAL CAPABILITIES

### Preconstruction Services

- Design Consultation
- Field Inspection for Budget Development
- Mock Ups

### Construction Services

- Installation
- Warranty Service
- Local Contacts for reliable communication and speedy response to concerns.

### We Specialize In

- Historic Restoration
- Loft Conversions
- Professional Buildings

*Call for assistance from experienced professionals.*

— DENVER —

**Jon Lounsbury, 303-427-9333**

— COLORADO SPRINGS —

**Tim Boddington, 719-528-6000**

— GRAND JUNCTION —

**Larry Wilkening, 970-245-4507**

**MARVIN**  
WINDOWS & DOORS

A Division of  
**BODDINGTON LUMBER CO.**  
Colorado Distributors of Marvin Windows and Doors for over 40 Years.



(Continued from previous page)

masses are broken down into smaller elements that fit comfortably into the scale of the downtown. The open spaces and retail fronts enliven the pedestrian experience. The architectural detailing acknowledges the rich environment of the town in which this project exists.

**Jury Comments:**

"This is primarily an example of excellent town planning. The relationship of underground parking to street level commerce and overhead residential sounds just about right. In this case, after careful examination we think the project succeeds on the basis of its search for authentic local color and detailing and the strength of its plan."

**Project: Xilinx Colorado Corporate Campus, Longmont (Built Architecture)**

**Architects: Downing, Thorpe & James, Inc.**

**Project Description:**

In the high technology world, creative advantages are what make the difference between success and failure. The Client, a leading designer of programmable logic chips for the computer industry, recognized the positive impact that new facilities could have on their products and company employees. The Client's



charge to the architecture design team was to create an innovative corporate research and development office campus in Colorado. The first completed phase is comprised of a 127,000 square-foot office building and a 6,500 square-foot conference center. Future phases include an additional 635,000 square feet of office, conference, dining, and recreation uses spread among eight buildings.

**Jury Comments:**

"The single-client office development looks deceptively simple in plan and incredibly complex in elevation. The exercise has been cleverly carried out and there is a final sense of cohesion and place that probably makes it one of the best of its type."

**North Chapter Photos**



AIA Colorado North 2002 Board of Directors from left to right: Ken Field, AIA; Merl Hawthorn, AIA; Bob Herzog, AIA; Stephanie Ridgeway, Assoc. AIA; Fred Cooper, AIA; TW Beck, AIA; Tom Kalert, AIA; Ashley Pitts, Assoc. AIA; Thurl Freeman, Assoc. AIA; Caitlin Barnes, Assoc. AIA; Mark Queripel, AIA and Harvey Hines, AIA



Roger Thorp, AIA accepts Honor award from 2002 AIA Colorado North President Ken Field, AIA and Awards Chair, Harvey Hines, AIA.



Communication Arts Richard Foy and Oz Architecture's David Carson, AIA share a moment together.

**Subscribe Today!**  
*The Colorado Architect*  
 Get your news from the industry's leading resource.  
**CALL TODAY!**  
**303.446.2266**  
[www.aiacolorado.org](http://www.aiacolorado.org)

**MARK YOUR CALENDARS**

*Architecture Week*  
 By Andrea Nicholl, Assoc. AIA

Architecture Week 2003, scheduled for April 5 - 11, will draw the attention of the public, the media and more to architecture and design. Many fun events are planned, including:

Box City, an urban design event for children and families, organized by the Design Build Committee.

- **Public Lectures.**
- **CANstruction - co-sponsored by SDA and BOMA.**
- **Public open houses at the Architecture Laboratory and well-known design firms.**
- **Hard Hat tours.**
- **The Incredible Edible Chair, an IIDA event.**
- **The Young Architect's Awards Gala.**
- **The Beaux Arts Ball, an AIAS (Student Chapter) annual event.**

The community of design and construction is coming together in a week full of architecture. Mark your calendars. Something exciting is happening every day during ARCHweek. More details about each event is coming soon...

**PRECAST DELIVERS THE STARZ**

*Starz Encore Corporate Headquarters*



Owner: Starz Encore General Contractor: The Wertz Company  
 Architect: Barber Architecture Engineer: S.A. Miro

- The all precast building required only a year to build for over 300,000 square feet.
- The building utilizes entablatures at the front and back entries. These unique freestanding precast features use post tension bars to fasten stacked column and beam pieces thus eliminating all exposed connections.
- Clay models were used to develop the rubber molds for the stone pieces. Concrete retarding chemical and a unique concrete mix create a texture that looks like granite.
- Precast "soaps" are used to cover the panel joints so the running bond pattern continues seamlessly across the building face.

**Rocky Mountain Prestress**  
 PCI Certified  
 5801 Pecos Denver, Colorado 80221  
 303/480-1111 FAX 303/433-0451  
[www.impprestress.com](http://www.impprestress.com)



## West Chapter 2002 Design Awards Recipients

**A**IA Colorado West is the largest geographical area, covering twenty-two counties in Western Colorado and includes the communities of Aspen, Breckenridge, Vail Grand Junction Durango and Steamboat Springs.

Each year, local chapter members submit projects and compete for Honor, Merit and Citation awards. More than forty submitted projects were judged in categories that included Commercial/Institutional, Residential Economy of Means, Residential over \$1 million Construction, Details Interior and Exterior and Open. Renowned architect, Antoine Predock, FAIA, participated as this year's guest juror and the 2001 AIA National President, John Anderson, FAIA, was the evening's guest speaker and awards presenter.

### Commercial/Institutional Honor Awards (Highest Achievement)

#### Project: Wagner Park Edge (Built Architecture)

Architects: Willis Pember Architects, Inc., Suzannah Reid, AIA



#### Project Description:

Wagner Park Edge is a built competition entry sited along the contiguous edge of a pedestrian mall and an urban park in downtown Aspen. Construction includes a clock tower, exhibition pavilion and ceremonial plaza. The project seeks to address several urban design goals while celebrating the notion of 'green theatre' in which construction and exhibition are interchangeable. The exhibition pavilion accommodates a graphic timeline of

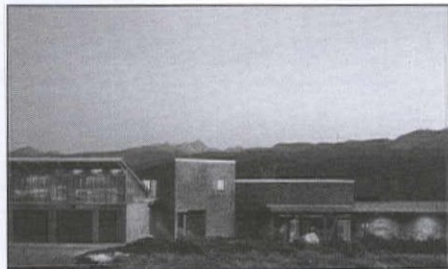
local history, touch screen monitors, a photovoltaic glass roof and public restrooms. The siting and articulation of these elements seek to increase the transparency between the mall and park, inscribe a 'gateway' function across the edge and mediate views of Aspen Mountain through varied glass effects.

**Jury Comments:** "The mall provides an active pedestrian experience while balancing an effective level of transparency and porosity along the parks edge."

### Residential Economy of Means Honor Awards (Highest Achievement)

#### Project: Blue Moon Ranch (Built Architecture)

Architects: Willis Pember Architects, Inc.,



#### Project Description:

Blue Moon Ranch Located on a remote mountain desert plateau, this single family residence overlooks the Roaring Fork Valley and embraces panoramic views of the Rocky Mountains. The home is situated on four discrete site platforms and descends harmonically with the contours, (elevations +0'-0", -2'-0", -3'-6" and -4'-6").

The massing, restricted to four elemental 'boxes' with overhangs, responds to the motion inherent in the site - a two sided overlook. The harmonic progression of site platforms is reiterated in a similar progression of diminishing roof pitches, (3/12, 2/12, 1/12 and .5/12), as the 'boxes' descend into the meadow. These architectural relationships are analogous to certain acoustic phenomenon, i.e. the Doppler Effect, and resonated with the project's location, conception and execution.

#### Jury Comments:

"Skillfully sited. The gradually descending plan fragments oriented to the panoramic views is skillfully executed and is a quiet, elegant solution to its remote site."

### Merit Awards

(Outstanding Achievement)

#### Project: The Hydro Mill - Two Mile Ranch (Unbuilt Architecture)

Architects: Anderson Architecture P.C.



#### Project Description:

The Hydro-Mill is the keystone of projects for the vision of green development at Two Mile Ranch. Derived from the imagery of a historic grist mill, the Hydro-Mill is a resurrection of water power where creek flows are harnessed to generate clean power; using the grid as a battery in cooperation with the local utility company. Woody Creek, which bisects the two mile stretch of property, has a seasonal flow rate that ranges from 5-800 CFS (cubic feet per second), with the capacity to produce between 45-280Kw/h of power. Educational viewing platforms overlook the two cross flow turbines, central data and communications and a surface water treatment system. As with all the outbuildings at Two Mile Ranch, green building materials and techniques are employed to reduce impacts to the environment and for the benefit of the user.

#### Jury Comments:

"Green development. This is a very thoughtful, responsible project contributing clean sustainable electricity to the development."

(Continued on page 18)

**TEAM...**

team (tēm)n. 1. A group organized to work together. 2. To harness together to form a team. 3. A group on one side of a match.

...PLAYER?

**LAND ARCHITECTS**  
perspective | balance  
2681 W. Alamo Ave., Littleton, Colorado 80120  
303.734.1777 ♦ www.landarchitects.net

TEAMING  
WITH  
ARCHITECTURAL  
FIRMS FOR  
OVER  
25 YEARS.



JEAN SEBEN ASSOCIATES, LLC  
COMMERCIAL INTERIOR DESIGN

HEALTHCARE

CORPORATE

EDUCATION

HOSPITALITY

GOVERNMENT

P.O. BOX 6310  
COLORADO SPRINGS, CO 80934  
P (719) 635 7133

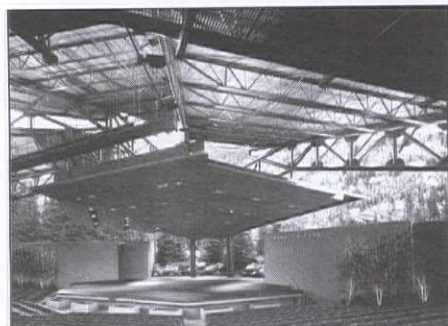


**Commercial/Institutional  
Citation Awards**

(Excellence in Achievement)

**Project: Gerald R. Ford Amphitheater/  
Vilar Pavilion (Built Architecture)**

**Architects: James A. Morter, FAIA,  
James K. Buckner, AIA, Morter Architects**



**Project Description:**

Morter Architects, (who was also the architect for the original structure) was charged with creating a new, larger roof system to better protect the audience and the performers while also increasing the number of protected seats, without sacrificing the unique mountain ambience and open-air feeling of the original design. Equally important was the need to further advance the amphitheater to be a state-of-the-art venue.

The new, larger sweeping roof planes are the highlight of the project, increasing the pavilion volume and providing 30% more weather coverage with improved acoustics. Round steel tube trusses were used to "lighten" the appearance of the new roof in contrast to the square tube steel structure it replaced. The pavilion now fully engages the lawn seating into the venue. With a clear span of 118 feet, seven concrete pier columns replace the existing 12 truss columns to support the new pavilion and stage roof, thereby eliminating columns within the seating area. In addition, the

roof structure itself carries storm drainage directly underground to the Gore Creek, thus eliminating the old gutter and downspout surface drainage. Softer, indirect lighting highlights the new redwood roof deck and exposed structure creating a warm glow over the audience in the evenings.

**Jury Comments:**

"Building design. The amphitheater projects a glowing celebratory quality. The new fragmented roof planes reinforce the facilities informal site and traditions. The heavier exterior reading of amphitheater's fanning roof planes does not fully translate to the light, buoyant interior."

**Residential (over \$1 million)  
Citation Awards**

(Excellence in Achievement)

**Project: Lot 921 Telluride, Colorado  
(Built Architecture)**

**Architects: Bercovitz Design, Architects,  
Ronald J. Bercovitz, AIA**



**Project Description:**

The design of this house, built high in the Rocky Mountains, draws from traditional mining structures built in the region. The shape of the building, the materials, and the use of timbers in a mine structure arrangement is reminiscent of a mining tippie. On the interior, rusted steel and timbers are used for the stairs reminiscent of a mining shaft. Corrugated steel is used between the trusses in the living

room. Also note the traditional steel connectors on the exterior. These details combined created a mining style home that fits perfectly into the local history of the region. It is a second home for the owners wishing to live in a fun, creative home when visiting this region.

**Jury Comments:**

"Building design. Innovative residence referencing its vernacular context. Drawing on the mining vernacular of the region the residence's materiality is true to its past and is thoroughly carried throughout the house. The interior stair ascending to the skylight is a poetic gesture to sky; we would like to have seen more development akin to this sensitive piece."

**Residential (over \$1 million)  
Citation Awards**

(Excellence in Achievement)

**Project: Del Balso Residence  
(Conundrum House)  
(Built Architecture)**

**Architects: Studio B Architects, Scott  
Lindenau, AIA, Principal, Derek Skalko,  
Noah Czech, Elish Warlop**



**Jury Comments:**

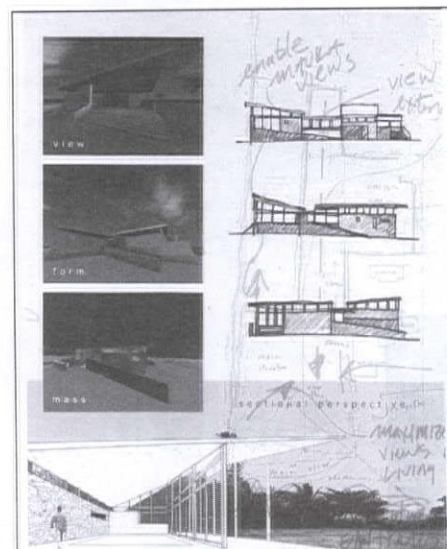
"Site. The residence is carefully sited in relationship to what seems to be a challenging site. The carefully orchestrated plan orients the living spaces to capture surrounding views."

**Open Category  
Citation Awards**

(Excellence in Achievement)

**Project: House on Molokai, Island of  
Molokai, Hawaii  
(Un-built Architecture)**

**Architects: Studio B Architects, Scott  
Lindenau, AIA, Principal, Derek Skalko,  
Noah Czech, Elish Warlop**



**Jury Comments:**

"Design. This is an elegant residence that thoughtfully responds to its environment. The clear delineation between roof, clerestory and wall is sensitively executed."

**WestChapter Photos**

**2002 Design Award Gala**



Carolyn Hunter, AIA and Colorado West chapter President, Chris Green, AIA share insights with fellow AIA Colorado West members.

(Continued on page 22)

**You design buildings  
that exceed client  
expectations.**

**We do the same thing  
with computer  
networks.**

A well-designed network can improve the efficiency and security of your office.

- Document collaboration
- Internet and e-mail access from every machine
- Group calendaring
- Data encryption and firewalls

Contact us for more information about ways we can serve your IT needs.

**303-908-6104**

www.GrahamGoldenTech.com  
info@GrahamGoldenTech.com



The Design Consortium  
according to Bruce Howard

"As usual, you've done a great job.

We really appreciate your willingness to work through all the issues and changes in completing our project. The Design Consortium makes it so easy. You provide suggestions and expertise when we need it, yet never forget that we are the client and are willing to do whatever it takes to satisfy our needs.

That, in my mind, is a recognizable difference with your firm."

Bruce Howard  
Manager of Marketing and Public Relations  
Metropolitan Council  
St. Paul, Minnesota

The Design Consortium  
2400 North Broadway #4  
Denver, Colorado 80205

303 293 8065  
303 293 8064 (Fax)  
designconsortiumllc.com

Contact Julie Allawas  
Extension 202  
jallawas@  
designconsortiumllc.com

Melding the art and  
science of marketing.





(Continued from page 21)

## West Chapter Design Awards



AIA Colorado West members share a laugh with chapter president Chris Green, AIA.



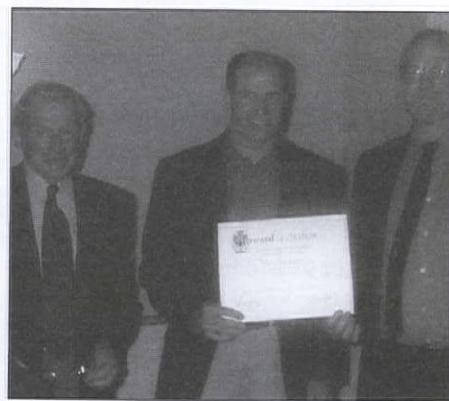
A full house of attendees at the 2002 AIA Colorado West Awards Gala.



Ronald Berkovitz, AIA 23 is honored by receiving Citation award for Lot 921



Willis Pember Architects walks away from the 2002 AIA/West Design Awards with two Honor awards: with Suzannah Reid, AIA for Wagner Park Edge project and for the Blue Moon Ranch.



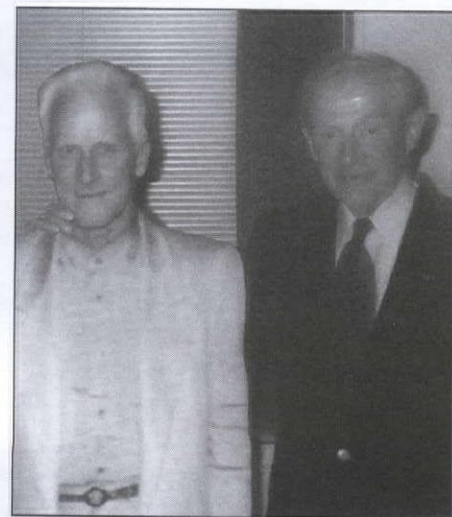
Jim Buckner, AIA of Morter Architects, accepts Citation award for the Gerald R. Ford Amphitheater/ Vilar Pavilion.



Scott Lindenau, AIA of Studio B receives Citation awards for House on Molokai and the Balso Residence.



Eric Anderson, AIA of Anderson Architecture accepts Merit award for The Hydro Mill- Two Mile Ranch.



2002 AIA Colorado West Design Awards speaker, John Anderson, FAIA, shares a moment with "Antoine Predock, FAIA".

**AIA COLORADO ARCHITECT**

**Subscribe Today!**

*The Colorado Architect*

Get your news from the industry's leading resource.

**CALL TODAY!**  
**303.446.2266**

[www.aiacolorado.org](http://www.aiacolorado.org)

B O M A N I T E ®

CUSTOM CONCRETE

REPLACEMENT

PREMIUM FLOORS

CONCRETE SCIENCE ®

CUSTOM ROCK

CUSTOM WALLS



### You'll be Floored by This Concrete

Would a custom floor be the unique touch you're looking for? Colorado Hardscapes offers several premium flooring options to set your work apart from the rest.

8085 EAST HARVARD AVENUE  
DENVER, CO 80231  
303.750.8200

[www.coloradohardscapes.com](http://www.coloradohardscapes.com)



Visit our NEW Concrete Design Center

**COLORADO**  
**HARDSCAPES**

**CONCRETE SCIENCE** A Div. of Colorado Hardscapes  
Services of Colorado

*From the obvious to the outrageous, we have concrete solutions!*



## New Members

### DENVER

Sergey Chudin, SA  
University of Colorado, Denver

Ronald J. Smith, SA  
Arapahoe Community College

Todd Quinlan, PA  
Louis Poulsen Lighting

Michael Bock, PA  
DoppleBock Woodworking

Cedra Ginsburg, AIA  
Jacobs Facilities

Alexa L. Taylor, AIA  
Fentress Bradburn Architects, Ltd.

Kelly R. Leger, PA  
Mountain Living

Richard L. Hoffman, AIA  
Archcentric

Todd A. Cooper, Assoc. AIA

### SOUTH

Dr. Trajn Boughan, Assoc. AIA

R. James Aberle, AIA  
RTA Inc.

### NORTH

Melvin Birkey, AIA  
Melvin Birkey - Architect

Jennifer R. Nusz, Assoc. AIA  
PEH Architects

Kent L. Norwood, AIA  
RB+B Architects, Inc.

Dustin Littrell, Assoc. AIA  
Boulder Associates Architects, PC

Specify

# PRISTINE ECOSPEC

Professional Environmental Coating Systems -  
These environmentally conscious products feature very low VOCs and minimal odor and will provide you with a customer friendly paint maintenance program.



**Benjamin Moore & Co.**  
**PROFESSIONAL COATINGS**

Hospitals • Care Facilities • Workplaces  
Retail Spaces • Restaurants • Schools • Factories



Learn more about Professional Coatings  
at our website:  
[www.benjaminmoorepaints.com](http://www.benjaminmoorepaints.com)

For more information call Kristen Leu at  
**1.800.642.5678 Ext. 2216**



**POWERS**  
ARCHITECTURAL  
PRODUCTS



CRÉME DE LA CRÉME CHILDCARE  
LONE TREE, COLORADO  
Kabwall - 70 ft. x 40 ft. hipped self-supporting  
translucent skylight

EXCLUSIVE REPRESENTATIVE FOR:

**KALWALL**  
TRANSLUCENT SKYLIGHTS AND WALL SYSTEMS

**SMOKEGUARD**  
ELEVATOR LOBBY SMOKE CONTAINMENT SYSTEM

**MODERNFOLD**  
OPERABLE PARTITIONS

**HUSSEY**  
SPECTATOR SEATING

**MODEVA**  
DECORATIVE STONE

THE FINEST ARCHITECTURAL BUILDING PRODUCTS,  
EXPERT DESIGN ASSISTANCE, AND HIGHLY SKILLED  
INSTALLATION CREWS. CALL FOR DESIGN, DETAIL,  
SPECIFICATION, OR BUDGET ASSISTANCE.

**BUILDING SOLUTIONS...NOT JUST PRODUCTS.**

12425 MEAD WAY - LITTLETON, CO 80125 - 303.791.1010 - FAX 303.791.1011  
[WWW.POWERSPRODUCTS.COM](http://WWW.POWERSPRODUCTS.COM)

**DOES IT SEEM LIKE  
SOMETIMES  
YOU'RE OUTSIDE...**

**LOOKING IN?**



Oscar Meyer, CEO  
(Canine Executive Officer)

**Wondering how you can garner  
a larger market share?**

Meyer Direct has worked with clients like Wells Fargo Bank, EchoStar, Monroe & Newell, National PetCare Centers, Qwest Communications International, and many other companies that make direct response a priority. Time and time again, Meyer Direct has proved that direct response marketing is less expensive and produces the best results because it's highly targeted. Our expertise of direct response marketing, response generating creative and strategic targeting will leave you wondering why you didn't think of this before.

**MeyerDirect Inc.**  
MARKETING • ADVERTISING • PUBLIC RELATIONS • eMARKETING

1701 WYNKOOP STREET, SUITE 239 • UNION STATION • DENVER, COLORADO 80202  
303.620.9578 • fax 303.620.9764 • [www.meyerdirect.com](http://www.meyerdirect.com)

**"CREATING CUSTOMERS FOR LIFE"**

For more information, log on to our Web site at [www.meyerdirect.com](http://www.meyerdirect.com) or call us at 303.620.9578



## January 2003 thru March 2003

January	February	March
<p>9th AIA Colorado Denver Board of Directors Meeting</p> <p>9th AIA Colorado South Board of Directors Meeting</p> <p>10th AIA Colorado West Board of Directors Meeting</p> <p>16th AIA Denver Mayoral Forum</p> <p>16th AIA Colorado North Board of Directors Meeting</p> <p>17th AIA Colorado Communications Advisory Board Meeting</p> <p>17th AIA Colorado Board of Directors Meeting</p> <p>18th AIA Colorado Board of Directors Retreat</p> <p>22nd AIA Denver/Architectural Laboratory 2003 Spring Lecture Series - Tom Noel</p> <p>23rd AIA Denver Executive Committee Meeting</p>	<p>6th AIA Colorado Denver Board of Directors Meeting</p> <p>7th AIA Colorado Government Affairs Meeting</p> <p>13th AIA Colorado South Board of Directors Meeting</p> <p>14th AIA Colorado West Board of Directors Meeting</p> <p>20th AIA Colorado North Board of Directors Meeting</p> <p>20th AIA Colorado Legislative Day</p> <p>21st AIA Colorado Communications Advisory Board Meeting</p> <p>21st AIA Colorado Board of Directors Meeting</p> <p>24nd AIA Denver/Architectural Laboratory 2003 Spring Lecture Series - Rob Wellington, Quigley Architects</p> <p>27th AIA Denver Executive Committee Meeting</p>	<p>7th AIA Colorado Government Affairs Meeting</p> <p>10th AIA Denver/Architectural Laboratory 2003 Spring Lecture Series - Michele Saege</p> <p>13th AIA Colorado South Board of Directors Meeting</p> <p>13th AIA Colorado Denver Board of Directors Meeting</p> <p>14th AIA Colorado West Board of Directors Meeting</p> <p>20th AIA Colorado North Board of Directors Meeting</p> <p>21st AIA Colorado Communications Advisory Board Meeting</p>

For more information on any of these events, call AIA Colorado at 800.628.5598 or visit our Web site at: [www.aiacolorado.org](http://www.aiacolorado.org), unless otherwise noted.

**AIA** COLORADO ARCHITECT

ONE PARK CENTRAL, 1515 ARAPAHOE ST., SUITE 1-110, DENVER, COLORADO 80202

W I N T E R 2 0 0 3



The friendly faces of AIA Colorado. (Not pictured: Sonia Riggs)

PRSR1 STD  
U.S. Postage  
PAID  
Denver, CO  
Permit No. 3473

A PUBLICATION OF AIA COLORADO

# AIA

COLORADO ARCHITECT

Denver Apogee ..... 8

Lines & Columns ..... 9

North Chapter ..... 10

109th Meridian ..... 11

AIA members will Re-engage in 2003. .... Cover

Exit 2002 ..... 1

2002 Chapter President Recop ..... 2

Government Affairs ..... 3

**COLORADO DESIGN AWARDS** ..... 4

Denver Chapter Design Awards ..... 12

South Chapter Design Awards ..... 15

North Chapter Design Awards ..... 17

West Chapter Design Awards ..... 20

New Members ..... 23

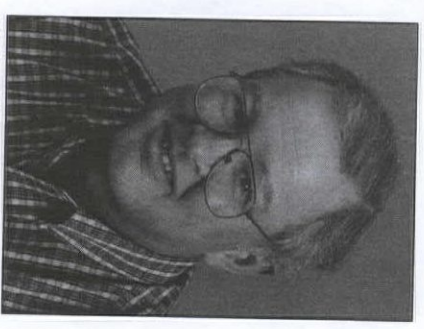
**COLORADO DESIGN AWARDS**

Page 4

W I N T E R 2 0 0 3 \$ 5

## AIA Members will Re-Engage in 2003

by William B Tracy, AIA Colorado 2003 President



William B Tracy,  
AIA Colorado 2003 President

The engraving on the wall outside the entrance of the new City & County of Denver office building says "What is a City but its People"? The same can be said of any great organization, whether it is a city, a community, a business, a church or the American Institute of Architects. What is the AIA but its members? Those of us on the AIA Colorado Board, who are responsible for leading our profession, keep it foremost in our minds that our focus is to work for the success of our individual members. The AIA Colorado office and staff are a means to leverage our efforts toward this end. They provide us with indispensable support, but they are not our prime focus.

Conversely, The AIA Board and office cannot do all the work. They cannot be effective without the active engagement of all AIA members in the issues and opportunities that our profession and our communities face. It is for this reason that the primary strategic initiative of AIA Colorado in 2003 is member engagement with our government, our industry and our communities. We will celebrate the work of the many architects who are already involved in their communities, sitting on boards, involved in industry groups, and working with local and state governments to make our communities better places to live and our profession a better one in which to practice. If you are not engaged now, I hope you will make plans to do so in 2003. The AIA, through all of its members speaking together, will become a strong voice in Colorado for livable communities, a sustainable environment, and excellence in design for our buildings. **AIA**