



AIA COLORADO  
AIA COLORADO NORTH  
AIA COLORADO SOUTH  
AIA COLORADO WEST  
AIA DENVER

JULY 2000

## URBAN TOPOGRAPHY

—Steve Chucovich, AIA, ArchitectureDenver, PC

### [ contents ]

North Chapter PAGE 7

109th Meridian PAGE 8

Denver Apogee PAGE 9

Lines & Columns PAGE 10

President's Message PAGE 2

Workshop on regional design PAGE 3

Firm Profile: Anderson Mason Dale Architects PAGE 3

Continuing Education PAGE 4

What a party! PAGE 4

2001 Convention... Highlight Colorado PAGE 6

Spotlight on the Web PAGE 6

AIA Denver Special Award nominations PAGE 11

DFA prepares for 2001 Convention PAGE 13

Call for entries PAGE 14

GAC wraps up Legislative Session PAGE 15

ASID announces awards PAGE 15

It's hard to think about topography and Colorado and not construct a mental image of our mountains. Continue this thought, and contrast becomes evident between the relief of the mountains and rolling prairies. However, at this time, our urban topography is influenced more by man than by nature. This is no more evident than in the open spaces of the Central Platte Valley.

There is little tradition in Denver of exploring the urban landscape in any archeological sense as one might in Barcelona, Vienna, or Beirut. In Denver, the "archeology," if the term can be applied, is sometimes detached from its context and is found in plat books, microfilm, or computer databases.

This graphic and written documentation overlays the abandoned landscape in the form of streets, utilities, lot lines, structures, covenants, and railroad easements. Existing or as a memory, all of these elements have had an impact on the urban site, describing a complex and compelling dimension of abstract and physical elements that exist. This material, with all of its contradictions and constraints overlaid onto the physical site, became the primary departure point for our design of the connections along 16th Street.

In 1997, ArchitectureDenver was engaged to develop a master plan for the continuation of the 16th Street Mall through the proposed Central Platte Valley redevelopment. The ultimate goal was to re-establish the historic connection between the west Denver neighborhoods and downtown. The connection was previously made with several long viaducts placed high over the valley, ignoring the landscape below. As the valley redevelopment plans became defined and the viaducts removed, the focus for any new connection was at grade, incorporating the new Commons Park and adjacent streets.

To complete the connection, three obstacles had to be overcome. These included the South Platte River, Interstate 25, and the Consolidated Main Line (CML), the common freight rail link through the area.

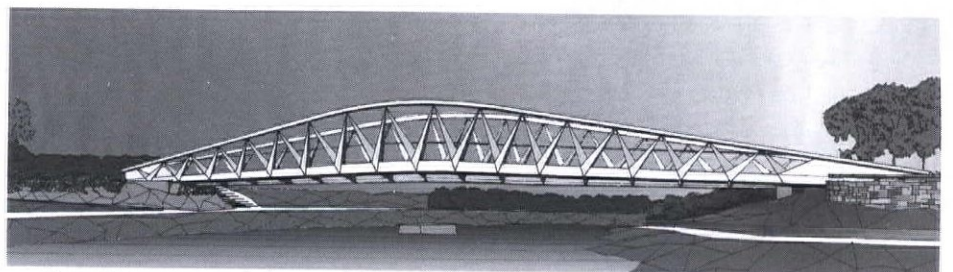
### CML Millennium Bridge

The CML Millennium Bridge has a span of 125 feet and a deck height from grade of 30 feet. A true urban folly, a 190-foot-tall, cable-stayed mast will support the 80-foot-wide deck over the tracks with

32 front cables and five large backstays. The creation of a dynamic space formed by the asymmetrical cable configuration and the experience of moving up and over the deck, the creation of its own unique topography, will be unique to any structure in the region. In addition to staircases, elevators will provide alternative access to all people. At night, these structures will be intensely lit, taking on the quality of lanterns.

### Platte River Crossing

The Platte Crossing bridge has a span of 210 feet and consists of a pair of splayed Vierendeel trusses, 32 feet high at the center, running parallel to the span and attached to a tubular "spine" below the wood deck. The deck arches up at the



Platte River Crossing

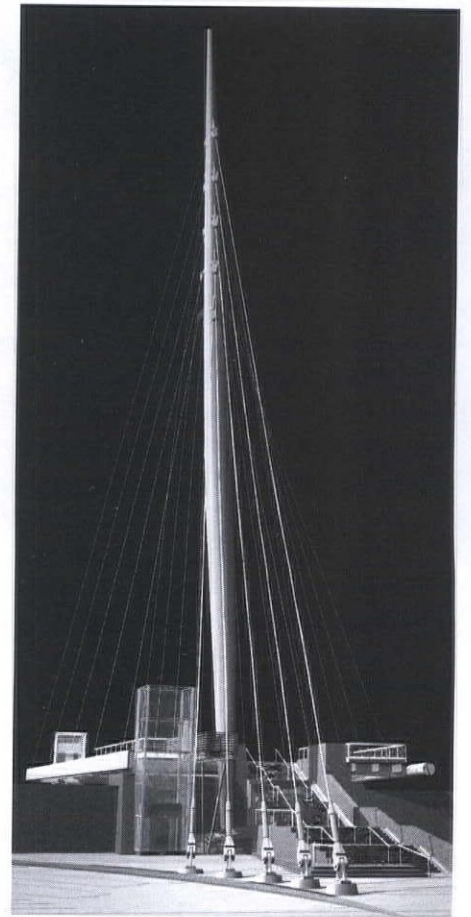
center, offering a perspective of the river, the park, and the other crossings. A variation of grade at each riverbank and the integration of the massive abutments from the old viaduct created unique challenges. This bridge is the most pastoral of the three, taking on the sculptural qualities found in Oriental garden structures.

### Interstate 25 Crossing

The most visible, but the last to be built, the I-25 bridge will span approximately 250 feet with 55-foot-tall, twin-arched trusses suspending the deck below. The deck and the trusses are symmetrical about one axis and asymmetrical about the other. Much like the Platte bridge, the approaches are not equal in elevation and will require unique abutment and bearing design.

As architects, the dialog that we undertake today is focused mostly on buildings with structures and systems that interrelate with each other. Inherent in these buildings are spaces between. We use terms like "poche" and "interstitial" to describe these places that are the result of formal or functional dialog.

A bridge, compared to the design of a building, is another matter. Done well, it is a true balance of structure, form,



CML Millennium Bridge

program, and economy; there are no extra parts, no decorative elements, no "poche." Everything works in balance. The bridge is a crossing from one place to another physically and mentally—and for our firm, a crossing into another process with unique challenges. It is an urban object, and especially in the city, will become a landmark and a focus.

The aesthetic that evolved in these structures is rooted in the dialogue of engineering and architecture; an authenticity both within the process and the final design. It is important that authenticity be communicated by civic structures of this scale. This authenticity manifests itself in an original quality that anchors an element or form within its specific time and place, as well as in the process of "making." This idea does not reject historical precedent; neither does it only embrace modern design ideals. It balances our need to move forward in time—both technologically and culturally—with the search for structures, textures, and patterns that speak to our human need for going beyond the base or utilitarian to achieve delight in design and, therefore, the evolution to the applied art of architecture.

To us, this is the challenge.



**2000 Board of Directors**

- President: .....Stephen Loos, AIA
- President Elect: .....John Williams, AIA
- Treasurer: .....Jim Morter, AIA
- Treasurer Elect: .....Martha Bennett, AIA
- Secretary: .....Rebecca Spears, AIA
- Past President: .....Ned White, AIA
- Director: .....Herb Roth, AIA
- Director: .....Randy Giseburt, AIA
- Director: .....Suzannah Reid, AIA
- Director: .....Duane Boyle, AIA
- Associate Director: .....Jesse Adkins, Assoc. AIA
- University Director: .....Dean Patricia O'Leary, AIA
- Public Director: .....vacant
- Prof. Affil. Dir.: .....Isabelle Matteson, PA
- Student Dir.: .....Jason Pettigrew, AIAS
- Executive VP/CEO: .....Joseph Jackson, Assoc. AIA

Colorado Architect is the monthly publication of AIA Colorado, AIA Colorado South, AIA Denver, AIA Colorado North and AIA Colorado West, and is provided as a benefit to members. Submit your article by mail, fax or e-mail (info@aiacolorado.org). Deadline for all material is the first day of each month previous to publication. Space allows. Articles are edited and published as space permits. Suggestions, comments and encouragement are welcomed. Expressed opinions and statements in this publication do not necessarily represent the opinions of the AIA Colorado Board of Directors or its membership.

**AIA Colorado**  
 One Park Central  
 1515 Arapahoe Street, Suite 110  
 Denver, CO 80202  
 Phone: 303.446.2266  
 Fax: 303.446.0066

**Editorial Board**

- Rick Dominick, AIA, West Chapter
  - Joseph Jackson, Assoc. AIA, AIA Colorado
  - Kim Jackson, PA, The Newsletter Group
  - Jim Leggitt, AIA, Denver Chapter
  - Carolyn Livingston, AIA Colorado
  - Steve Loos, AIA, State Chapter
  - Eileen March, Assoc. AIA, The Research Studio
  - Mark Quéripel, AIA, North Chapter
  - Mark Shaw, Colorado Construction; The Daily Journal
  - Vacant, South Chapter
- Published by The Newsletter Group

# A COLORADO KIND OF ARCHITECTURE

This month's theme, designing with geography, reminded me of an interesting conversation I got involved in with a gentleman from Fort Collins at the AIA Colorado Design Conference out at Stapleton a couple of years ago. This guy was a bit exasperated about the fact that Colorado didn't have anything like a recognizable architectural style. He was concerned that Colorado architects had not developed an architectural identity for our state, similar to that enjoyed by New Mexico with its southwestern style. The fact that this brand of architecture was the result of a long heritage of response to local building materials, labor talent, and environmental parameters didn't seem to count for much in the search for this "style."

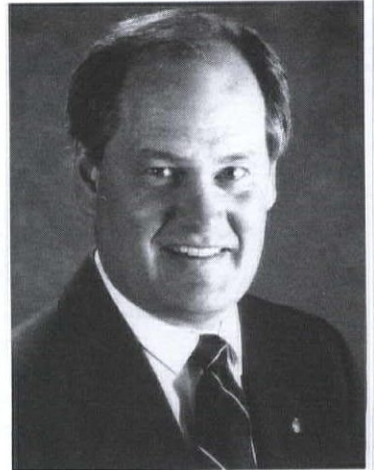
This exchange still resonates with me because the response I tried to make seems particularly relevant during this period of prosperity, when we are defining so much of our architectural legacy to the future. The point I tried to make (and failed) is that, by necessity, Colorado's architecture must be responsive to a very broad range of environmental influences.

This state is both blessed and cursed with very impressive geographical extremes—alpine wilderness, high desert, prairie grassland, true southwestern desert, and lowland sand hills, to name a few. Each of these environmental contexts exert its own special brand of demands on architecture—demands that must be accommodated if serious difficulties are to be avoided. Blazing sun, extreme temperature swings, expansive soil, an incredible freeze/thaw cycle, relentless wind, killer ice jams; they all have serious consequences for the uninitiated. What is appropriate in Cortez won't cut it in Sterling. What works in

Grand Junction isn't right in Denver. You get my point...

These exceptional contrasts will continue to frustrate every attempt at a unified "Colorado" style. What is so exciting to me, however, is that real Colorado architecture is defined and enriched by these demanding design parameters. I have always believed that our Colorado "style" should be the result of the architectural community's creative response to this unique place on the planet—an architecture of place of the purest kind where our built environment is shaped in direct response to locale and context. The results may be harder to recognize than the "Santa Fe style," but they will be no less effective in creating a sense of architectural "correctness." I firmly believe that this type of design will speak directly to that intuitive sense we all have of what "feels right."

I had the opportunity to attend the West Chapter's recent 10x10 presentation in Vail. I was very impressed by how well our high-country associates have found their "voice" in this extreme design context. To me, most of the projects had that strong sense of "fit" so often lacking elsewhere. What is also very impressive is that they have accomplished this feat without importing so many of their significant design ideas from elsewhere. Granted, this is an exceptional context with rich architectural potential, but the quality and character of the design is so far beyond the oddly uncomfortable products of the '60s, '70s, and '80s. Indeed, the only problem I foresee is the danger of becoming so articulate with this architectural "language" that it becomes an end unto itself and strangles further exploration and development of the underlying ideas.



—Stephen Loos, AIA President, AIA Colorado

Now, I know that none of these ideas is particularly new or ground-breaking. What is unfortunate, however, is how rare this kind of context-driven, environmentally/geographically responsive architecture is in Colorado. Give this idea some thought the next time you are asked to create that Georgian/half-timber/Tyrolean vernacular/southwestern/Cape Cod cottage facade for that new townhouse project in Douglas County. Don't let them tell you that this is the only thing that will sell. People are recognizing the right Colorado "fit" up in the mountains and are paying for it as never before.

Before I forget, look for the launch of the new AIA Colorado Web site around the end of the month. Carolyn Livingston and the AIA Colorado staff have been hard at work creating something very special for our net address. I had the opportunity to preview what is being developed by our Web site designer, Michael Kroll of Phorium, and can tell you that it is going to have the right "fit." The Web site is going to feel architectural, with plenty of evidence of style, wit, and creativity. Log on soon and check it out!

*the rocky mountain region's  
MicroStation experts!*

- MicroStation Sales**
- MicroStation Training**  
A MicroStation Institute Center  
AIA CEU's Earned  
PowerLunch Seminars and Custom Courses
- MicroStation Technical Support**  
A Bentley SELECT Provider  
Home of Bentley's 1998 Technical  
Support Representative of the Year
- MicroStation Consulting Services**

**Think  
TriForma**

**Think what you could  
create with architectural  
EEM software that thinks  
like you do.**

[www.paxtekton.com](http://www.paxtekton.com)

**Phone 303.296.1054**

**JEAN SEBEN ASSOCIATES**  
 COMMERCIAL INTERIOR DESIGN  
 A UNIQUE PERSPECTIVE ON PEOPLE & SPACES

IN  
 MEDICAL · OFFICE COMPLEX  
 EDUCATION · HOSPITALITY

SERVICES  
 CONCEPTS · COLOR/TEXTURE  
 SPACE PLAN · SPECIFYING  
 AUTOCAD · CONSULTING  
 FINISH MATERIALS  
 FURNITURE

TEAMING WITH  
 ARCHITECTURAL FIRMS  
 WITH AN INTERIOR EMPHASIS  
 FOR 15 YEARS

P.O. BOX 6388  
 COLORADO SPRINGS, CO 80934  
 (719) 635-7133 · FAX (719) 635-7191



# WORKSHOP ON REGIONAL DESIGN

Are you interested in regional design? Regionalism is an idea whose time is long overdue in the Rocky Mountain area. The more our world becomes uniformly the same, the more many people in Colorado seek places that are uniquely expressive of our climate, geography, and culture.

We want to meet with practitioners around the state who are seeking

regional expressions in their own work. We intend to run a free workshop in each local AIA chapter, which will provide a forum for practitioners to discuss with one another the special regional qualities in their area. We will ask participants to bring in visual examples—either of their own work or of others—of historical and contemporary buildings, landscapes, and town layouts that capture regional qualities.

We intend to present this collected work to the AIA National Convention in Denver in May 2001.

The workshops will be conducted over the next six months, and schedules of specific places and times will be announced in a later edition of this publication. We want to schedule these to suit the people who are most interested in attending, so please let us know if you

want to participate. You can contact us at: Virginia DuBrucq, AIA  
ginndu@aol.com

Mark Gelernter, University of Colorado at Denver  
Mark.Gelernter@cudenver.edu

*These workshops are made possible in part by a grant from the AIA Colorado Educational Fund.*



Virginia DuBrucq, AIA, and Dr. Mark Gelernter, AIA, receiving the James H. Hunter Scholarship, from presenter Jim Leggett, AIA, at the Young Architects Awards Gala. This Educational Fund Scholarship is helping to make possible the Regional Design Workshops.

## AIA Denver firm profile:

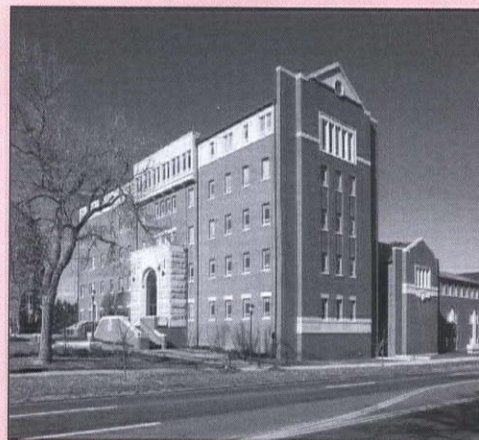
### ANDERSON MASON DALE ARCHITECTS

Anderson Mason Dale Architects is dedicated to the belief that public architecture must reflect the highest cultural standards of society. A building should heighten and shape an individual's sense of place and values. It must also be sensitive to the environment and minimize the depletion of natural resources.

We and our clients are honored with these responsibilities and together, we create places that will evolve and endure as meaningful contributions to our communities. We ask our people to embrace these ideals, and our buildings are shaped by this guiding ethic.

Anderson Mason Dale Architects was founded in 1960 and continues today with a staff of 65. Our projects are diverse and include Colorado's Ocean Journey, the Daniels College of Business at Denver University, the Benson Earth Sciences Laboratory at the University of Colorado, the Visitor's Center at Mount

Rushmore National Memorial, Denver's new Federal Courthouse, and a variety of single- and multi-family housing projects.



Daniels College of Business  
University of Denver  
Denver, Colorado

By focusing on projects that challenge and enable our staff to develop professionally, Anderson Mason Dale Architects has become a regional expert in the design of facilities for education, justice, visitor centers, multi-family housing, senior living, and laboratories.

Contact: Ron Mason, FAIA,  
303.294.9448.

## Structural Engineers Serving All Of Colorado

Denver  
1701 Wynkoop Street  
Suite 200  
Denver, CO 80202  
(303)-623-4927  
Fax (303)-623-6602

Vail  
70 Benchmark Rd.  
Suite 204  
P.O. Box 1597  
Avon, CO 81620  
(970)-949-7768  
Fax (970)-949-4054

We wish to thank our clients and friends for their support!



Monroe & Newell  
Engineers, Inc.

## Do you need to integrate changing technology into your architectural designs?

Call the people who designed NASA's "Classroom of the Future."



C. Daniel Miller, CEO  
303.221.5622  
cdmiller@cvlan.com  
http://www.cvlan.com

**CVLAN**  
Technology Consultants





## CONTINUING EDUCATION

### Design Build Roundtable Discussion

July 20  
Small Contractors doing Design/Build—In addition to some of the well-known commercial projects utilizing Design/Build, many smaller projects use this project delivery method. Plan to attend this roundtable discussion that will focus on projects with a total budget below \$200,000. Types of projects include general contractors, subcontractors, and tradepeople for residential, tenant finish, and remodel work. The involvement of consultants typically under the architect's umbrella will also be discussed.

The roundtable will take place at the Denver Design Center, 595 S. Broadway, with a light breakfast served at 7:00 a.m. Cost: \$12 members/\$20 non-members. RSVP to the AIA Office at 303.446.2266.

### Kwal-Howells Tour

July 26  
Recently named as a AIA Continuing Education registered provider, Kwal-Howells will be conducting a Paint Plant Tour and specification lesson on July 26th. The event will take place from 1:00 p.m. – 2:30 p.m. at 3900 Joliet Street and qualifies for 1.5 learning units. Call Joel Parker at Kwal-Howells to reserve your

spot! 303.307.2189.

### AIA Western International Summit 2000

*Exploring the Spirit in Architecture*  
September 21, 22, 23, 2000

Our world is a cacophony of action and reaction. We run from task to task solving myriad problems, while maneuvering through the minefield of client expectations and business management. But where in this chaos is the art in architecture? Where is the spiritual essence of our profession? How can we ensure—in the middle of this maelstrom—that we don't lose our *raison d'être*?

This September in Sun Valley, Idaho, "Exploring the Spirit in Architecture" will examine those elusive factors that

elevate our profession. Three relaxing days of presentations and panel discussions will inspire you to explore the spiritual potential in your own work.

If chasing your tail has become your life, this conference will be the pause that reminds you what the chase is all about.



(www.aiasummit2000.com)

### CES Reporting deadline:

September 2000

You have until September to report 1998 and AIA Continuing Education System (AIA/CES) hours. Requirements for architect members is 18 contact hours each year, 8 of which must be in health, safety, and welfare education (HSW), effective January 1, 2000. This will retroactively affect 1998 and 1999 records, as well.

### Art Show Open House

July 20

Klipp Colussy Jenks DuBois Architects is pleased to invite the architectural community and allied professions to its annual Art Show. The show features works of art created by employees of the firm and their immediate families. Food and refreshments will be served 5 p.m. to 7 p.m. at KCJD Architects, 1512 Larimer Street (Writer Square Office Tower), Bridge Level, Denver. Call 303.893.1990 for more information.

## WHAT A PARTY!

—Andrea Nicholl, Associate AIA

Over 200 people knew PS1 Charter School was the place to be on April 27th. The First Young Architects' Awards Gala was a hit. From the unique space, informal reception, to the awards presentation, everyone seemed to enjoy the evening.

I am sure you know how hard the Committee worked. However, the Gala wouldn't have been as successful if it weren't for all the students, interns, architects and colleagues who attended.

Thank you for being there. Your presence made a difference.

If you have any comments about this year's gala or suggestions for next year's gala, please email them to [anicholl@ar7.com](mailto:anicholl@ar7.com).

Once again, thank you for your support of the Young Architects, Interns, and Students. We hope to see you at the Gala next year.



The attendees at the Young Architects' Awards Gala at PS1.

### MODERN ARTICULATION

Mountain View



Developer: Legacy Partners Commercial  
General Contractor: Saunders Construction, Inc.  
Architect: Oz Architecture  
Design Architect: Hylton Design  
Engineer: S.A. Miro, Inc.

- Bold features on columns and spandrels provide modern articulation that tie all four buildings of the campus together.
- By varying the two colors used for the precast, from building to building, a sense of contrast and interest is developed.
- The rapid lease rate is testament to the quality of the buildings.



Rocky Mountain Prestress  
PCI Certified  
5801 Pecos Denver, Colorado 80221  
303/480-1111 FAX 303/433-0451



# AN ARCHITECT'S LIABILITY FOR ERRORS AND OMISSIONS BY ENGINEERING CONSULTANTS

—Philip B. Cardi, Esq. and William D. Esbenshade, Esq.  
Jackson & Kelly PLLC, Denver, Colorado

**T**his article addresses an architect's liability to the owner for negligent errors by engineers hired by the architect. The AIA's owner/architect agreement provides that "[t]he architect's design services shall include normal structural, mechanical and electrical engineering services." (AIA Document B141-1997, Art. 2.4.1.) The AIA form does not exempt the architect from liability for errors by engineering consultants the architect retains to provide "design services."

Colorado courts have held that when a general contractor agrees to perform a specific task, he may not, by hiring an independent contractor to perform the task, escape liability for breach of contract damages resulting from the negligence of the independent contractor. If an architect agrees to provide "design services" that include "structural, mechanical, and electrical engineering services," then the architect can not avoid liability for errors in those services by hiring an engineering consultant operating as an independent contractor.

To avoid liability for work by consulting engineers, an architect may try to

modify the AIA form contract by adding a contract addendum which makes it clear that

- ◆ The architect is retaining independent subcontractors to provide structural, mechanical, and electrical engineering services.
- ◆ The architect will incorporate engineering recommendations from these consultants into drawings and specifications; but the architect has no control over—or responsibility for—engineering recommendations made or engineering work done. The architect is not responsible for ensuring that engineering designs and recommendations are safe, accurate, valid, comply with building codes, or are otherwise adequate.
- ◆ The architect is not responsible for acts or omissions of the consulting engineers, whether negligent or otherwise. Colorado courts have upheld "exculpatory" language precluding negligence liability, as long as the exculpatory language is clear and there is no obvious disparity in contract bargaining power.

To encourage owners to agree to contract changes, architects should ensure that

hired consultants have adequate professional liability insurance. Article 12.8.1 of the AIA's architect/consultant form contract, AIA Document C141-1997, allows an architect to require engineering consultants to provide proof of insurance coverage for negligent work. Architects should obtain proof of insurance—regardless of contractual arrangements with the owner. Insurance should cover both the job period and a reasonable time period following job completion.

The architect should also try to ensure that exculpatory language is included in the architect/consultant contract. AIA Document C141-1997, Article 2.3, states that a consultant is an independent contractor "responsible for methods and means used in performing the consultant's services under this Agreement, and is not an employee, agent, or partner of the architect."

Finally, the architect should deal with consultants in a manner consistent with their independent contractor status. An independent contractor is defined as one who performs services for another according to his own methods and manner, free from direction and control by the employer in all matters relating to performance of the work. As a general rule, a person hiring an independent contractor to perform work is not liable for the independent contractor's negligent acts.

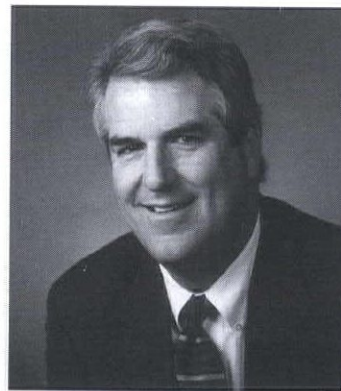
Consistent with this definition, architects should avoid exercising control over the consulting engineer's work method. If the architect exercises too much control

over work method, the engineer may lose his independent contractor status and be deemed an agent of the architect, despite exculpatory language in the owner/architect and architect/consultant contracts. In this situation, the architect could be held vicariously liable for the consultant's work.

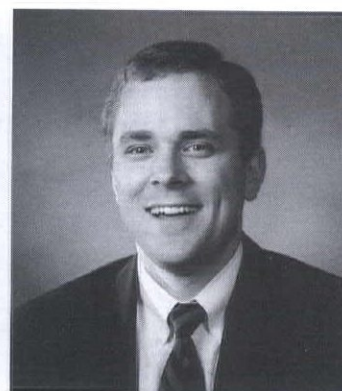
Under Colorado law, an architect may exercise control over the end result, rather than the work method, without jeopardizing the consultant's independent contractor status. Independent contractors may be subject to control sufficient to ensure that the end result contracted for is reached.

To the extent an architect considers modifying a standard AIA contract form, he should first consult with an attorney. Modifications to one provision of a form contract may be inconsistent with other contract provisions.

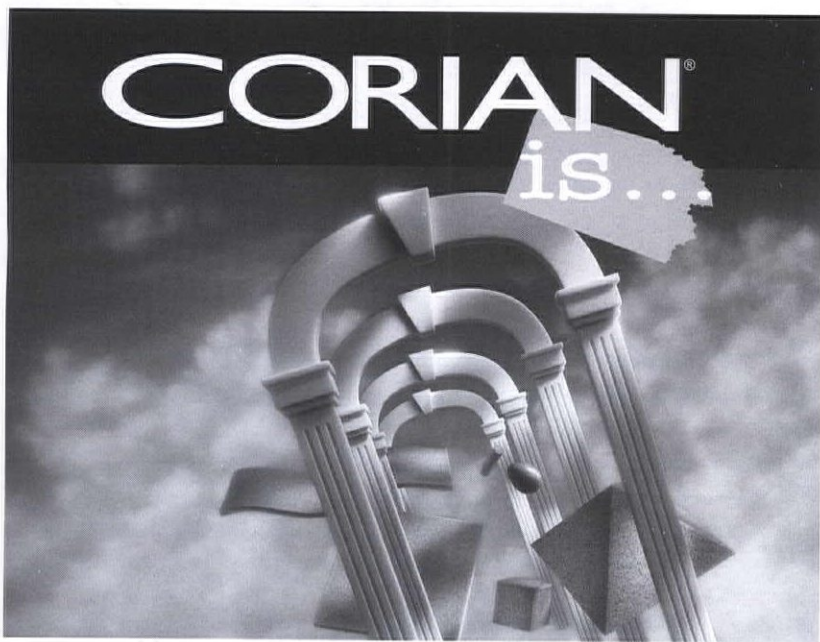
*Phil Cardi and Bill Esbenshade are attorneys with Jackson & Kelly PLLC, in Denver. Their practice focuses on construction litigation, with special emphasis on the representation of architects and other design professionals. Mr. Cardi is author of the "Construction Litigation" chapter of the Colorado Methods of Practice series published by West Publishing. He has presented numerous seminars on issues relating to construction law.*



Philip B. Cardi, Esq.



William D. Esbenshade, Esq.



## A great material for...

### Partitions

Wall cladding

### Work surfaces

Windowsills & door frames

### Vanities/Surrounds

Furniture

### Columns

Lighting

### LONG-TERM VALUE

DURABLE

### INVITING TO THE TOUCH

COMPATIBLE

### EASY TO CLEAN

VERSATILE

### THERMOFORMABLE

TRANSLUCENT

### Explore the possibilities...

For more information, current samples, or to arrange for a presentation, please call Todd Bassett with MPI at 303-761-1472, ext 342.

CORIAN®



## In the Information Age it takes more than CAD Management to survive.

### How do you stay ahead?..

- STRATEGIC PLANNING
- AEC TECHNOLOGY MANAGEMENT
- WEB & ASP DEVELOPMENT
- INTRANET & EXTRANET DESIGN
- NETWORK & INTERNET SECURITY
- REMOTE / GLOBAL ACCESS
- TELECOMMUTING
- DISASTER PREVENTION
- AEC COMPUTER SYSTEMS
- ON-SITE SUPPORT
- OUTSOURCING



Denver · Boulder

www.thegeckogroup.com  
info@thegeckogroup.com  
Voice 303.415.2052  
Toll Free 800.413.4552

We've been Colorado's premier AEC Technology Consultants since 1994.



# 2001 CONVENTION...A GREAT WAY TO HIGHLIGHT ALL OF COLORADO!

—Sonia Q. Riggs  
2001 Convention Manager

In 2001, thousands of architects worldwide will descend on Denver for the AIA National Convention. That doesn't mean that Denver is all that the architects will see. The 2001 Convention Committee has formed a subcommittee, dedicated to planning all of the convention tours for next year—many of which will be eligible for continuing education credit (LUs).

This Tour subcommittee is planning tours from Colorado Springs to Boulder and beyond. The tours will highlight architecturally significant sites all over our great state. Planned Colorado tours include historic Georgetown, the National Center for Atmospheric Research (NCAR), the Air Force Academy and the US Olympic Complex, Red Rocks, and Rocky Mountain National Park, to name a few.

Of course, there will also be tours highlighting Denver sites, such as the Central

Platte Valley, LoDo Lofts, Lowry, The Denver Tech Center, Pepsi Center, Bronco Stadium, and Coors Field. The subcommittee is diligently planning these tours in time for the September 1st deadline for inclusion in the Official Convention Guide.

The subcommittee estimates that it will need approximately 100 volunteers to help run the tours next year. Tour guides who are familiar with the architectural significance/history of the toured areas are especially needed. If you or anyone you know is interested in participating in the 2001 National Convention Tour Program—or any other aspect of the convention—please call or e-mail me.

Sonia Riggs is the 2001 Convention Manager for AIA Colorado. You may reach her at the AIA Office, 1515 Arapahoe St. #1-110, Denver, CO 80202, 303.446.2266, [sonia@aiacolorado.org](mailto:sonia@aiacolorado.org)

## Spotlight on the Web

A new Web site has been launched through a partnership of the Boulder Energy Conservation Center (BECC) and the Governor's Office of Energy Management and Conservation (OEMC). This Web site brings a wide variety of energy-related topics together for easy reference and provides hundreds of links for quick access to more in-depth information.

ColoradoENERGY.org provides architects, designers and builders with some of the information that you need to design and build homes and buildings that are energy and resource efficient. On the site are links to information that can help you determine the best approach to take for improving the energy efficiency of your project, the resource efficiency of your project or how to incorporate renewable energy into your project.

Some of the topics covered include:

- ◆ **Energy Efficiency Information—The Ideal Home**  
This short pamphlet describes the keys to designing and building a home that is comfortable, durable, efficient and of high quality. It includes a checklist and a sample "ideal wall" section to help you get started in the right direction.
- ◆ **Renewable Energy Information—Colorado Renewable Energy Resource Guide**  
The Colorado Renewable Energy Resource Guide is a renewable energy information guide for builders, architects, and engineers. The guide contains background information and a directory of where to find renewable energy information and products in Colorado.
- ◆ **EREC Renewable Energy Fact Sheets**  
The Energy Efficiency and Renewable Energy Clearinghouse (EREC) has produced a number of fact sheets over the years as it relates to renewable energy and they are posted in both HTML and PDF format on the EREN Web site. Topics include Active Solar: Solar Water Heating; Geothermal Energy...Power from the Depths; Photovoltaics: Basic Design Principles and Components; Wind: Small Wind Energy Systems for the Homeowner.
- ◆ **Codes**  
Colorado does not have an updated statewide energy code. Colorado communities are free to adopt their own energy codes. This section will help you determine what energy code applies to your jurisdiction.

Visit [www.coloradoenergy.org/tips/builders](http://www.coloradoenergy.org/tips/builders) today and bookmark it for future reference.

Have the **tools** you need  
when you need them. Order your  
AIA documents **today**.  
Don't run **out**.

Local Distributor:

AIA Colorado  
800-628-5598

## JUST ADD COLOR!



Double-Notched

Double-Notched represents the first affordable staggered roof tile. Featuring our unique double-notched design for ease of application and a full 1 1/2" stagger for that dramatic shadow line on steep roofs. Double-Notched is available in any of our Slate or Shake colors!

**WESTILE**

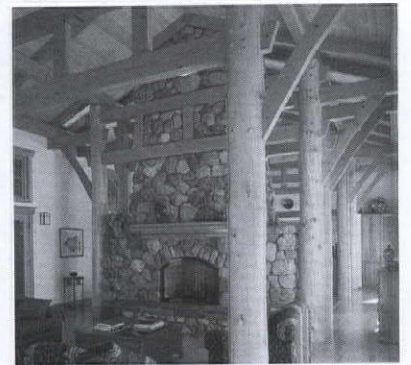
A local manufacturer since 1981

8311 W. Carder Court, Littleton, CO 80125  
303-791-1700 Fax 303-791-9906  
1-800-433-8453 [www.westfile.com](http://www.westfile.com)

An Oldcastle™ Company



## An Architect's Timber Framing Partner.



The Cascade Joinery team is ready to be your Heavy Timber Experts.

We provide architects with a collaborative support system for their design as well as structural analysis. For your next Timber Framing project phone us at 360.527.0119 or Email [info@cascadejoinery.com](mailto:info@cascadejoinery.com).

THE  
CASCADE  
JOINERY

1401 Sixth Street • Bellingham, WA 98225

Visit our website at [www.cascadejoinery.com](http://www.cascadejoinery.com)





AIA Colorado North Chapter

## EnvironDesign4: Choices

—James R. Plagmann, AIA, Terra Verde International, LLC

### 2000 AIA Colorado North Chapter Board of Directors

President: .....Randal J. Giseburt, AIA  
 President Elect:.....Mark Quéripel, AIA  
 Treasurer: .....K. David Carson, AIA  
 Treasurer Elect: .....Mike Spearnak, AIA  
 Secretary:.....Ken Field, AIA  
 Past President:.....Rebecca Spears, AIA  
 Director: .....Michael Holtz, AIA  
 Director: .....Linda Kiisk, AIA  
 Director: .....Susan Kreul-Froseth, AIA  
 Director: .....Barbara Rogg Maloy, AIA  
 Associate Dir.:.....Katie Barnes, Assoc. AIA  
 University Rep:.....Randy Ott  
 Executive Director  
 Local Chapters:.....Susan Buchanan, CMP

From May 18th to 20th, more than 600 architects, designers, teachers, builders, manufacturer's representatives, and representatives from various governmental, non-governmental and non-profit organizations converged on the Westin Westminster for EnvironDesign4, a conference, "For the way environments need to be in the 21st Century—as told by the visionaries who are making them happen."

This is no exaggeration. Sustainability has moved from a sideline issue in the '90s to an absolute priority today. I'll not reiterate the list of reasons why we must become more conscious of our design choices. Instead, I'll let the fact that many of the largest multinational corporations have embraced sustainability speak for itself. Companies such as Nike, Herman Miller, SC Johnson, Steelcase, and even Ford Motor have developed projects that are not only sensitive to the local, regional, and global environment, but also to the environments they create for their occupants.

These efforts are not just for the public relations value of being able to say they are building green. These organizations are realizing that sustainable design is yielding the kind of green that stockholders appreciate. And the list is growing as more companies and the Federal Government are making sustainability a requirement of the designers and products they use. Documented lower operating costs and higher employee productivity are proving that, when done correctly, sustainable design can be a win-win situation for the environment and the economy.

Produced by *Interiors and Sources* magazine, and co-hosted by the U.S. Green Building Council, this interesting and informative conference included four keynote speakers; 25 workshops on topics such as building green on a budget, sustainability analysis tools, case studies of buildings and communities, marketing sustainable design services, and feng shui; tours of the National Renewable Energy Laboratories; McStain's Meadowview development in Longmont; Denver's REI flagship store; Architect Jim Logan's residential projects; and 25 booths representing manufacturers who incorporate sustainability in their products.

The conference began Thursday evening with Architect Sarah Susanka's presentation, "A Not So Big House for a Not So Big Planet." Her book, *The Not So Big House*, suggests that homes should reflect the way we live today, and that smaller, well-designed houses that focus on quality over quantity is a better use of resources. The book has struck a chord, selling over half a million copies, an extraordinary number for a book on architecture. To find out more, visit <http://www.notsobighouse.com>.

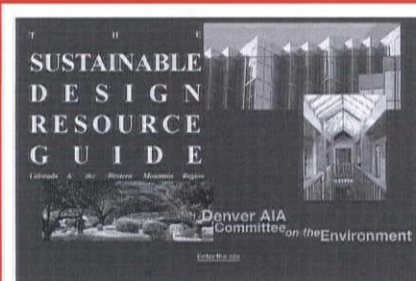
Architect William McDonough opened Friday with his address, "Leading the Design of the Next Industrial Revolution", a rather large vision, but one that he is vigorously pursuing. For the last decade, McDonough has been at the forefront of, as he prefers, "Sustaining Design." Time recently recognized his efforts in the Earth Day Issue, honoring him as one of the "Heroes of the Planet." He spoke eloquently on the philosophy, biology, and history of sustainability, and introduced his "Sustainable Indicators Toolkit," intended as a means to measure quality of life and success of designs from a sustainable perspective. More information on McDonough's many endeavors can be found at <http://www.mcdonough.com>.

Saturday's keynote was another of *Time's* "Heroes of the Planet," Colorado's own L. Hunter Lovins, co-founder of the Rocky Mountain Institute, and co-author of the book *Natural Capitalism: Creating the Next Industrial Revolution*. (This idea of the next industrial revolution is popular!) *Natural Capitalism* is a proposed business model for the future, addressing the fact that, where in the past we had abundant natural resources and scarce labor, we now face the opposite conditions. And, as with McDonough's ideas, these are not just high-minded theories of what might work. These are practices being implemented by major companies and even entire industries that will revolutionize the way we live. More information on "Natural Capitalism" and the Rocky Mountain Institute can be found at <http://www.rmi.org>.

Saturday's closing address was by David Barram, administrator of the General Services Administration (GSA), about the creation of "Planet GSA," an initiative to incorporate sustainable practices in all areas of our government. Since the GSA is the largest single purchaser of goods and services in the nation, it is

clear that sustainability is not just a passing trend. For more information on EnvironDesign, please visit <http://www.environdesign.com>.

James R. Plagmann, AIA, is a project architect at Terra Verde International, LLC and a member of the Colorado AIA Committee on the Environment. He can be reached at 303.530.3232.



### ENVIRONMENTALLY RESPONSIBLE DESIGN

One of the most difficult aspects of environmentally responsible design is to find the most suitable materials and available products that help sustain the earth and human health. Until now, it has been difficult to find sources for suitable materials and products from local or regional sources.

A multi-disciplinary group of building professionals created the *Sustainable Design Resource Guide*, a convenient resource that fills needs not covered by other guides. It is now updated on the internet at [www.aiacolorado.org/SDRG/index.html](http://www.aiacolorado.org/SDRG/index.html).

### NEW MEMBERS

Barbara S. Fineberg, Assoc. AIA  
 Hartronft Fauri Architects, P.C.  
 Sara A. Jensen, Assoc. AIA  
 Hartronft-Fauri Architects  
 Brian J. Schweitzer, Assoc. AIA  
 Hartronft-Fauri Architects





## 2000 AIA Colorado West Chapter Board of Directors

President: .....Suzannah Reid, AIA  
 President Elect: .....Rick Dominick, AIA  
 Treasurer: .....Marina Florian, Assoc. AIA  
 Secretary: .....Michael Oney, AIA  
 Past  
 President: .....Wendell "Skip" Doty III, AIA  
 Director: .....Heidi Hoffmann, AIA  
 Durango Director: .....Carolyn Hunter, AIA  
 Grand Junction  
 Director: .....Frank Wagner, AIA  
 Vail Valley Director: .....Chris Green, AIA  
 Grand Junction  
 Coordinator: .....Marc Maurer, AIA  
 Middle Roaring Fork  
 Valley Coordinator: .....Mary Holley, AIA  
 Pagosa Springs  
 Coordinator: .....Julia Donahue, AIA  
 Steamboat  
 Coordinator: .....Bob Ralston, AIA  
 Upper Roaring Fork  
 Valley Coordinator: .....Rally Dupps, AIA  
 Executive Director  
 Local Chapters: .....Susan Buchanan, CMP

# Zehren & Associates: Specialists in resort community design

**F**ounded in 1983 and with offices in Vail, Colorado and Santa Barbara, California, Zehren & Associates employs 26 people, including two full-time planners and seven registered architects. Providing a full range of services bridging master planning, architecture and interior design, Zehren specializes in undertaking projects with unusual operational needs or special environmental locations for mountain, coastal, and other resort communities.

By incorporating special knowledge of mountain sites, the alpine environment, special needs of the resort hospitality industry, and economic realities of four-season mountain resort communities, Zehren provided the overall master plan, authored the architectural design regulations, and designed many significant buildings at Beaver Creek, Colorado. The firm has similar relationships with the communities of Vail, Telluride, and Mount Crested Butte in Colorado and with Schweitzer and West Rock in Idaho, Solitude, Utah; Mount Hood Meadows in Oregon; and Peek 'N Peak in New York.

In addition to mountain resort communities, Zehren & Associates has designed for golf and coastal resort communities such as Cordillera in Edwards, Colorado; Patriot's Point in South Carolina; and Ennisbrook in Santa Barbara, California.

### Two Elk Restaurant

One special project of the firm's is Two Elk Restaurant, which is located on a spectacular spot at the top of Vail Mountain. At 11,240 feet, the site commands long-range views of the Gore Range, Mount of the Holy Cross, and China Bowl. With nearly 30,000 square feet, the restaurant is designed to be a self-supported scramble-style cafeteria with seating for 900 people. The design addresses many climactic considerations: energy use, microclimatic control, building orientation, and environmental conditions. It won the 1991 EVHBA Award for Best Interior Design and the 1992 *Snow Country* magazine Award for Honorable Mention for the Day Lodge category.

The design intent behind Two Elk recreates a classic western mountain lodge. Logs and heavy timber beams contribute to a rustic building exterior. Inside, expansive windows

next to the seating areas let guests enjoy the views, while being reminded of the Ute Indian heritage.

An environmental extremist group burned the original Two Elk in 1998. Determined that such an iconic symbol of Vail not be lost, Vail Associates engaged Zehren & Associates to help rebuild Two Elk; the task was accomplished in only nine months and on Christmas Eve 1999. The new design is true to the original character and architecture, while it includes an employee apartment and expanded seating capacity.

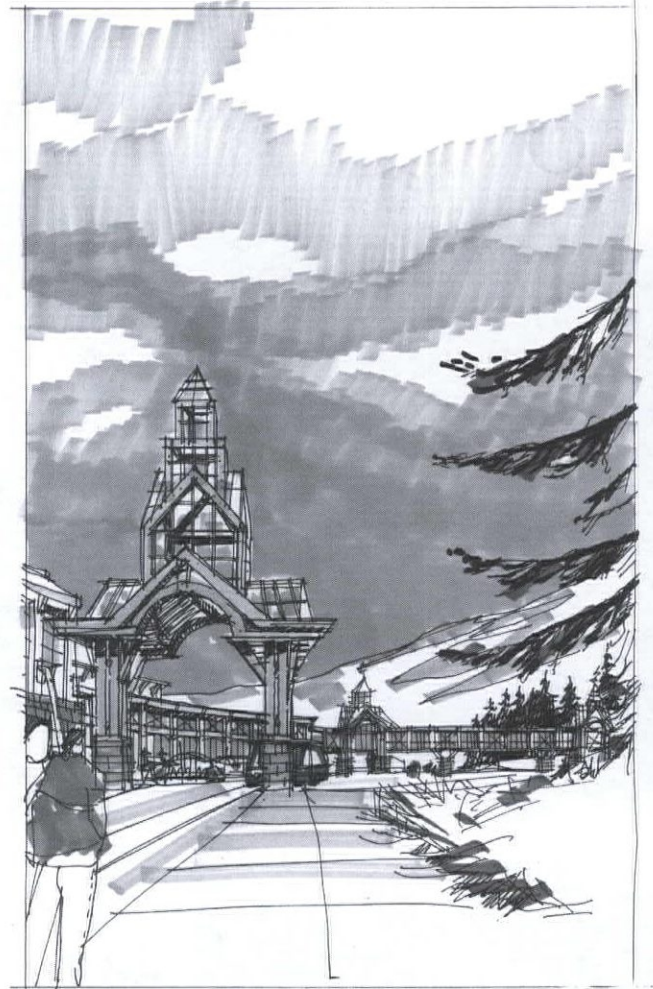
### Vail Town Center

Another issue that touches on the issues of the environment, site, and mountain architecture is the Vail Town Center, a proposed cultural, educational, and recreational complex that will be located in the center of the Vail community. It also embodies a civic component. While the program is still being studied, the Vail Town Center will be a public-private joint venture, intended to revitalize and rejuvenate Vail. The design is being carried out by an affiliation between Zehren & Associates, EDAA, and HGA.

The design intent behind the Vail Town Center is to refine the master planning concepts for a variety of civic facilities for the town and to provide it with a

large public gathering space, much like the great plazas and gathering places in Europe.

Along with public input sessions and independent market analysis, the design group devised program elements that include a conference and learning center, retail shops, galleries, restaurants, a performing arts space, two sheets of ice, a family recreation and entertainment center, employee housing, and additional parking. The goal is to blend private and public facilities around a central town plaza with vitality of uses, dynamic architecture, and direct engagement with the special natural environment of Vail.



## NEW MEMBERS

Michael A. Painter, Assoc. AIA  
 Jamers David Whitfield, Assoc. AIA  
 Mark R. Yoo, Assoc. AIA



# AIA Denver Apogee

AIA Denver Chapter



## Oglala National Grasslands, Nebraska Hudson – Meng Bonebed Visitor/ Research Center

—Paul Haack, AIA  
Anderson Mason Dale Architects

### 2000 AIA Denver Chapter Board of Directors

- President: .....Herb Roth, AIA
- President Elect: .....Jim Leggitt, AIA
- Vice President: .....Rick Petersen, AIA
- Secretary: .....Ben Wilking, AIA
- Treasurer: .....Michael Murphy, AIA
- Treasurer-Elect: .....Cheri Gerou, AIA
- Past President: .....Jim Paull, AIA
- Director: .....Eric Bartczak, AIA
- Director: .....Sylvia Deye, AIA
- Director: .....Paul Hutton, AIA
- Director: .....Carla McConnell, AIA
- Director: .....Bill Moon, AIA
- Director: .....David Pfeiffer, AIA
- Director: .....Joe Poli, AIA
- Associate Director: .....Chris Murdy, Assoc. AIA
- SDA Director: .....Debra Massop, SDA/C
- Public Director: .....vacant
- Prof. Affiliate Rep: .....Bart Deitrick
- Student Rep: .....Gina Wilson, AIAS
- Executive Director Local Chapters: .....Susan Buchanan, CMP

**T**he Hudson-Meng Research Center is located in the Oglala Grasslands—a gently sloping landscape located 30 miles outside of Chadron, Nebraska. The site contains the largest bison bonebed of its age in the western hemisphere, harboring the remains of an extinct 10,000-year-old Plains Bison species. The remains of more than 600 bison, together with stone tools and projectiles, have raised many questions among archaeologists and other researchers. As a result, the site has been the focus of a major research effort and has become a key component of the US Forest Service interpretive program.

Research on the site is conducted during the summer and early autumn months. Before construction of the new facility, researchers would carefully excavate and re-bury the fossil bed each year. In June, beginning with heavy equipment, the first layers of the site were removed. After several feet had been stockpiled, the researchers would begin the painstaking process of using hand tools and finer implements to uncover the actual bone bed. In the fall, the bonebed was carefully buried and secured until the following spring when the process was repeated. The design team was asked to design a permanent



Photo credit: Thorney Letgeman

facility that would eliminate this labor-intensive procedure and provide a place for visitors to view this remarkable site.

A relatively small area was required to provide the resources for several years of summer research; subsequent archeological sites would be serviced by mobile facilities, such as tents or temporary shelters.

#### Minimizes disruption

The new 7,000-square-foot structure was sited to minimize disruption to the bonebed area and to take advantage of

an existing pond that is close to a planned visitor parking area. The cottonwoods and other vegetation associated with the pond and drainage ravine established a natural “place” within the rolling hills. The trees and contours screen the parking from the facility. Visitors leave their cars and move toward the pond along the edge of the trees, which terminate on a narrow land bridge. The bridge serves as a natural threshold and marks the arrival to the visitor center and working compound.

[ See HUDSON-MENG on page 11 ]

### NEW MEMBERS

- Fred S. Alexander, III, AIA  
Carter & Burgess, Inc.
- Stephen A. Blackburn, AIA
- Patrick T. Bohler, Assoc. AIA  
JG Johnson Architects P.C.
- Paoju Chen, Assoc. AIA  
Studio Completiva
- Michael E. Doyle, AIA  
CommArts
- Thomas K. Emerson, Assoc. AIA  
Intergroup, Inc.
- Patrick Espy, Assoc. AIA  
Roth + Sheppard Architects
- Catherine Feek, Assoc. AIA  
OZ Architecture
- Kirstin Fennell, SA
- Richard C. Freske, PA  
Colorado Jaynes Construction
- Charles Benjamin Fulton, Assoc. AIA  
David Owen Tryba Architects
- James David Gold, Assoc. AIA  
American Tower Corp.
- Martin Gregg, PA  
ArtHouse Design
- Kevin W. Harkins, Assoc. AIA  
Marx/Okubo Associates, LTD
- Kimberly J. Harvey, AIA  
CLC Associates, Inc.
- Michael F. Mroz, AIA  
The Staubach Co.
- Matt Plahuta, PA  
Matt Plahuta Construction Services
- John C. Scales, AIA  
Galloway, Romero & Associates
- N. Beth Frye Strickland, Assoc. AIA
- Michelle Gill Wagner, Assoc. AIA  
OZ Architecture
- Christine C. Winans, Assoc. AIA  
HLM Design
- C. Cameron Wolfe, Assoc. AIA  
OZ Architecture
- Jody Yehle, Assoc. AIA  
Urban Design Group

## Members in the news

**H**+L Architecture announces the promotion of **Chad Novak, AIA**, and **Tana Crane, AIA**, to associates. Chad specializes in educational facilities and Tana focuses on large-scale medical projects. Most recently joining H+L is **Gil Hack, Associate AIA**, assisting in the firm's Health Care segment.



Chad Novak, AIA



Tana Crane, AIA

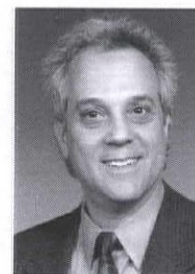


Gil Hack, Associate, AIA

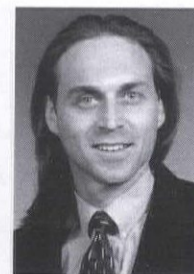
Sami A. Miro, founder of S.A. Miro, Inc., was recently appointed as vice chair of the Denver International Airport Business Partnership, an organization charged with attracting and retaining a business presence within the DIA district. Miro will move to the chair position in 2001.

RNL Design welcomes **Bryan Aumiller, AIA**, in transportation; **Troy Schneider, Associate AIA**, in commercial architecture; and **Jesse Adkins, Associate AIA**, in institutional architecture. RNL also received an excellence in interiors award from the American Society of Interior Designers. (see related story on page 15.)

OZ Architecture in Denver has added to its staff **Steve Gottesman, AIA**, as a project manager; **Matt Piper, AIA**, as a project manager; **Kenneth Cilia, Associate AIA**, as an intern architect; and **Teresa Westhoven, Associate AIA**, as an intern architect.



Steve Gottesman, AIA



Matt Piper, AIA



# Lines & Columns

AIA Colorado South Chapter

## Landscape taking shape in Colorado Springs

—Ron Bevens ASLA, Colorado Springs Planning Group

### 2000 AIA Colorado South Chapter Board of Directors

- President: .....Duane Boyle, AIA
- President Elect: .....vacant
- Secretary: .....Pat Ziuchkovski, AIA
- Treasurer: .....Michael Cook, AIA
- Past President: .....Marvin Maples, AIA
- Director: .....Richard Cherry, AIA
- Director: .....George L. Cruz, AIA
- Director: .....Dempsey V. Currie, AIA
- Director: .....Rhonda Boger-Linder, AIA
- Director: .....Doug Canright, AIA
- Associate Director: .....Carol Sundstrom, Assoc. AIA
- Public Director: .....Lynn Ellen Braley, ASID
- Public Director: .....Quinn Peitz, AICP
- Executive Director
- Local Chapters: .....Susan Buchanan, CMP

The state of the Colorado Springs landscape is beginning to realize the effects of the revised Landscape Code, in place now since November 1998. The City of Colorado Springs Landscape Code and Policy Manual requires compliance of all new construction and major additions, except single- and two-family residential. More than 220 plans have been reviewed under the auspices of the revised code, which has been recognized through awards for its approach to obtaining a landscape within the context of the regional character, that “sense of place.”

The City of Colorado Springs implemented a major overhaul to its landscape code by creating and adopting the *Landscape Code and Policy Manual and the Signature Landscape Design Manual*. As a departure from the previous version of the code, the new code takes a more comprehensive approach to the provision of landscaping in the built environment. A partnership between the

Colorado Springs City Planning Group and the Colorado Springs Utilities-Water Resources Department, new policies provide for a more qualitative approach to design, along with the existing quantitative look at the landscape. Key components of the code and resulting landscapes are water conservation, sustainability, and the regional landscape character.

The code includes the typical quantitative approach of many landscape codes by providing for specific quantities and areas devoted to landscape based on the particular development and location. Where this code goes farther is in the implementation of policies that are specific to water conservation, sustainability, and the regional landscape.

To address water conservation, limitations were placed on the amount of high-water turfgrass (bluegrass, etc.) and associated slopes to minimize runoff potential. Irrigation plans are now

part of the review process, verifying that the irrigation design is consistent with plant materials, slope, aspect, etc.

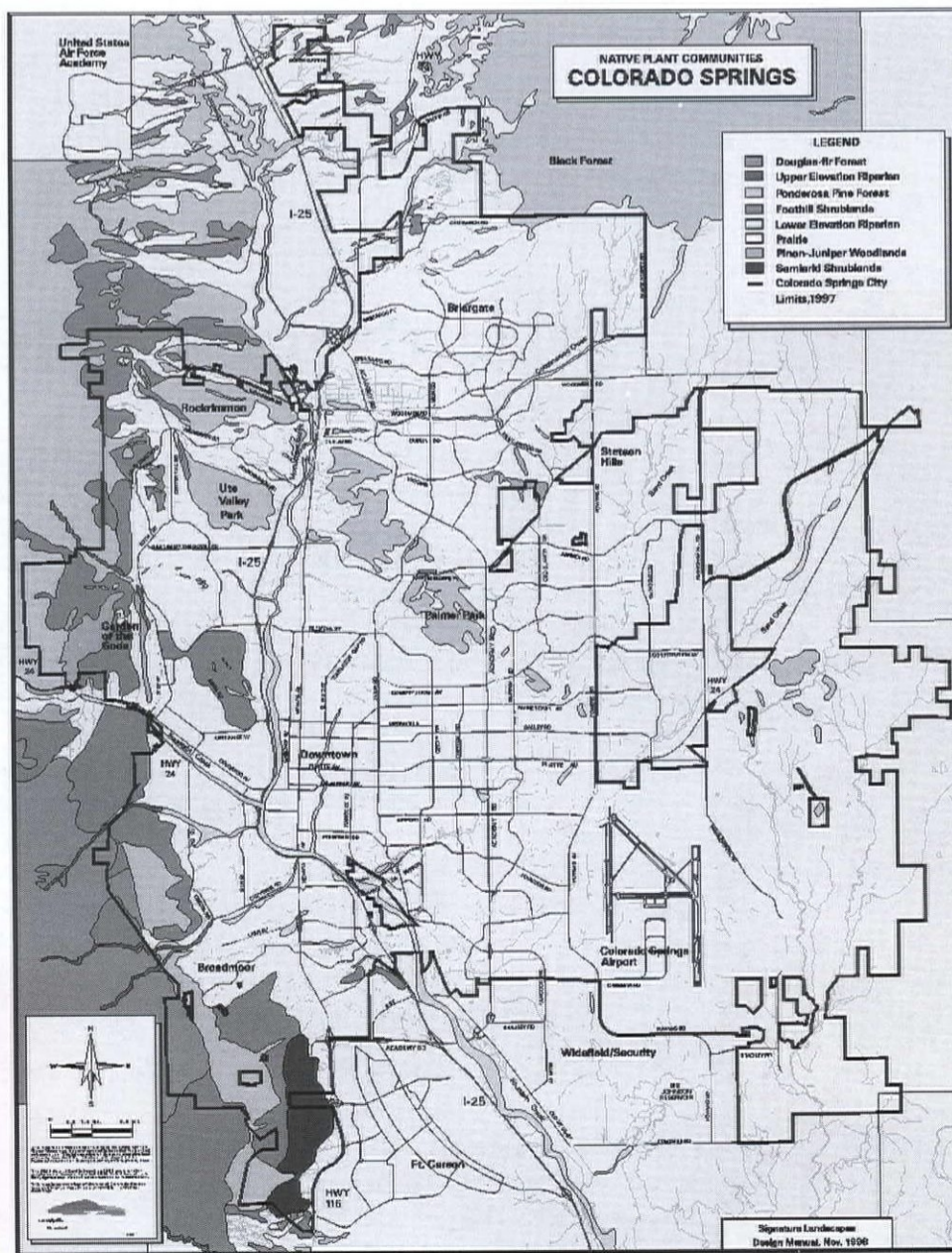
Landscape plans submitted for City review are to be accompanied by a soil analysis, with the appropriate amendments to be incorporated into the soil. This is an effort to work toward a sustainable landscape. With an understanding of the soil, the plant materials can correspond to the specific soil types and organic matter incorporated, often reducing the long-term fertilizer requirements, creating a soil structure that has a greater water holding capacity and is well-suited to the proposed landscape.

It was important when developing the code that the regional character of Colorado Springs and the Front Range be reflected in the built landscapes. To address this issue, the term “Signature Landscapes” was coined to reflect the naturally occurring landscape patterns within the region. Specific plant communities were identified with associated climate zones from the high foothills to the low plains, from which the developed landscape character reflects.

Overall, the code requires appropriate horticultural practices, site preparation, efficient irrigation systems, preservation of natural areas, configuration and grading of landscape areas that can be efficiently irrigated, enforceable installation standards, and long-term maintenance. The Landscape Code and Policy Manual and associated Signature Landscape Design Manual provide the tools to achieve quality landscapes throughout the city that are compatible with—and representative—of the regional character.

With City development running the gamut from the neighborhood strip center to “signature” architecture, the landscape is one area that offers the opportunity to create the fabric that ties the community together. As much as anything, the natural landscape of Pikes Peak, the Garden of the Gods, and the Rampart Range has become synonymous with Colorado Springs. As the City continues to grow and develop, it will be the treatment of the built “natural” environment that leaves an additional lasting impression.

Ron Bevens is City Landscape Architect with Colorado Springs Planning Group and the current President Elect of the Colorado Chapter of ASLA. 719.385.5375



### NEW MEMBERS

- William Burroughs, AIA  
Hagen Cameron Architecture
- Carl D. Reinhardt, AIA  
Carter Burgess
- Susan TenBrink, Assoc. AIA  
Richard Cherry & Associates P.C.



# AIA DENVER SPECIAL AWARD NOMINATIONS

A time to recognize those who have contributed to AIA and the profession

AIA Denver is accepting nominations for the five special awards it may present at the Denver Design Awards Gala on September 29, 2000. Please take the time to review each category and nominate those persons who have affected you, your firm, and the architectural profession. You can get the full descriptions of award purpose, eligibility and nominating process by calling the AIA Office at 303.446.2266. Deadline for award nominations is Tuesday, August 15, 2000.

Here are brief descriptions of award categories:

◆ **Award of Distinction**—recognizes achievements of public service architects and architects in private corporations who manage or produce quality building design or urban design within their organizations or agencies.

◆ **James S. Sudler Award for Contribution to the Denver Chapter**—Recognizes an outstanding contribution to the AIA Denver chapter for dedication, leadership, ability,

and commitment that improved the quality of services offered by AIA Denver.

◆ **Young Architect's Award**—Recognizes significant contributions made during the early stages of an architect's career that exemplify outstanding built or unbuilt work of any scale, as well as projects, initiatives, and brilliant beginnings that warrant attention of the profession or the public.

◆ **Planning and Research Award**—Recognizes design, urban design, planning, and research for the future. This award is given for vision and creativity.

◆ **Phil Milstein Award for Community Service**—Recognizes outstanding accomplishments by a non-architect or organization in the Denver metro area for contributing to the quality of the built environment or contributions to a better understanding and interpretation of architecture, planning, urban design, and landscape architecture.

Thank you for your nominations in recognizing all those who make our lives better!

[HUDSON-MENG, from page 9]

The plan of the building is a simple eight-bay rectangle. Two bays of the facility make up the service component of the diagram that supports the main research volume. The first bay is designed as a "porch," which serves

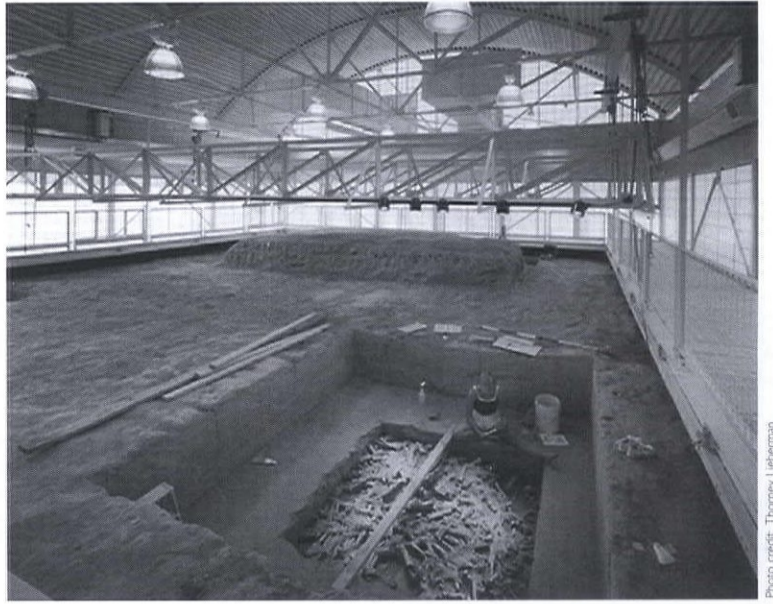


Photo credit: Thorney Lieberman

as a refuge for workers and visitors from the harsh sun and heat during the summer months. The service component consists of a multipurpose room, office, workroom, prep room, and storage room.

The main feature of the plan is the large research floor, which is characterized by the bonebed area. Every effort was made to minimize disruption of the bonebed, while maximizing access to as much of the research floor as possible.

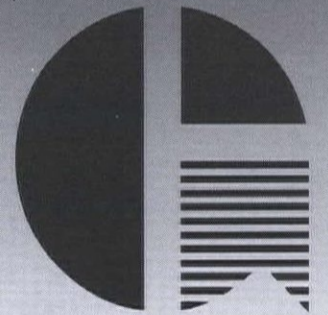
Foundations for the building were carefully designed to limit interface with the bonebed. Where necessary, subsurface areas were carefully cataloged and cleared. Access to the bonebed is provided by catwalks (suspended from the truss system) around the periphery and a large mobile bridge that traverses the bonebed floor.

The building design evolved from the desire to build upon rural Nebraska building typologies and to express in very simple ways the sustainable building technologies utilized in the facility. Like the plan, the form of the building is simple. The shape is determined by the large bowstring trusses that span the bonebed floor. The arc of the roof structure hovers over the exterior wall panels—both of which are sheathed in galvanized corrugated steel. Together, they provide a subtle connection to the surrounding architecture and a figural complement to the gentle rolling landscape. Natural daylight is provided into the research facility through transparent

panels located on the south and north sides of the building. During the winter months, these walls are protected by coiling doors that roll down in front of the wall surface. Ventilation is provided by adjustable louvers located on opposite ends of the main vault. Large metal cisterns collect rainwater from the roof that is then utilized by researchers in cleaning various bone specimens.

**Guy's Floor Service has made excellence our standard for more than 50 years. For the best in commercial carpet, tile, wood and resilient floors.**

**(303) 371-8900**



**GUY'S FLOOR SERVICE INC.**

STAPLETON BUSINESS CENTER  
10275 East 47th Avenue  
Denver, Colorado 80239  
Phone (303) 371-8900  
Fax (303) 375-8790

**GIVE YOUR NEXT PROJECT SO MANY CURVES YOU'LL BE FORCED TO POST A WARNING SIGN.**

Concrete Playground Exhibit - Arvada Center

**YOU'LL BE FORCED TO POST A WARNING SIGN.**

Custom concrete - any way you want it!

**COLORADO HARDSCAPES**  
Denver, Colorado

From the obvious to the outrageous, we have a concrete solution for your next project.

303-750-8200 • 1-800-447-1888 • www.coloradohardscapes.com

**WOODS** **W SITE** **Play Scapes**

The new TimberForm Site Catalog from Columbia Cascade Company for

**2000 IS HERE!**

For your personal copy please call:

Michael O. Woods  
PO Box 6 ~ Elizabeth, CO 80107 ~ P: 303-688-2132 ~ F: 303-646-4288



# KNOLLENBERG RESIDENCE—HOME IN ROCKSCAPE

—David Barrett, AIA, Barrett Studio Architects

As architects, we are presented with both the responsibility and the privilege of bringing habitation to places of beauty and fragility. The Knollenberg site is both. Construction of the home, juxtaposed with the spectacular landscape, was an undertaking not for the faint at heart. Precariously perched granite boulders seem to anticipate a roll down the mountain into neighbors 600 feet below. Thankfully, we had an owner with the vision to realize this site required an atypical approach to construction—and the commitment to see it through.

To preserve the qualities that had attracted them to this rocky precipice required a marriage of science and art. It was this balance that became the soul of the architecture. As the design unfolded, it was clear that this was an opportunity to experience rock, sky, and distant vistas. It would be both sanctuary and an atmospheric observatory. As home for a couple—a scientist and a fiber artist—it was to blend architecture and engineering, masculine and feminine, earth and sky.

## Concepts/Systems

The site, located in the foothills of the Rocky Mountains, is a spectacular geological event. Just as a lizard suns itself on a rock, the house was envisioned as an organism resting on the granite pile, opening itself to sun and views. All mechanical systems are contained in the underbelly, in lieu of excavation that would have disturbed the delicate ecology of this place. The elevated steel structure rests on piers anchored into bedrock. This approach allows for a delicate addition into the natural vocabulary of the site. The result is an elevated structure intertwined with rocks, trees, and sky.

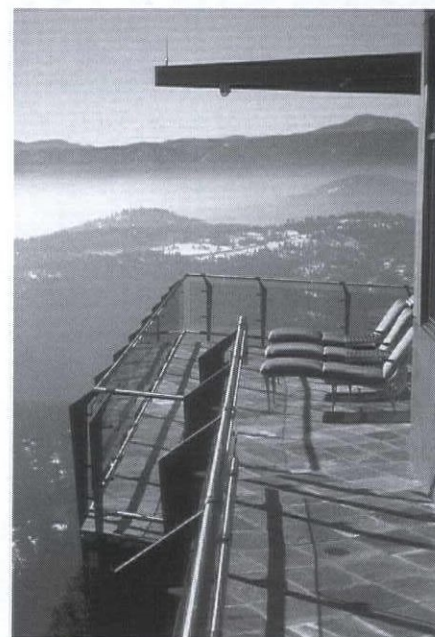
## Construction

Our initial intent was to minimize site disruption by touching down lightly on the site—the “lunar lander” approach. We planned to concentrate loads on a minimum number of piers, doweled into the stable bedrock, and use a steel space frame to span in two directions off the piers. The space frame, based on a 60° triangle, became the fractal cell from which the house geometry grew. Systems such as waste, plumbing, and heating were contained below in the thick floor cavity.

Over the course of the process, the space frame was found to be elegant but too expensive. The constructed system, designed by Mike Gorman of Neujahr Gorman, Structural Engineers, used conventional steel with cantilevers up to 24 feet. The geometry and the overall systems approach remained the same, though the inspiration for the geometry, the space frame, was no longer present. Construction was limited to manual labor on the site with the steel craned in and concrete pumped by boom, minimizing impact on the rockscape. The result is a finely woven tapestry of rocks, trees and architecture.

## Architecture

The architecture mimics the colliding forms of this rock pile—nature’s chaos. The uplifted roof forms bring a balance of light and ventilation into the home. Spatial definition is reinforced



View from cantilevered deck gives a sense of suspension.

volumetrically in lieu of walls that define “room.” The house is open and flowing, organized around a spine gallery that takes you out to this very special perch. The feeling on the eastern side of the house is one of soaring. The western spaces, in contrast, wrap around the outcropping, stepping down to a grounded natural rock garden.

The exterior skin, in chameleon-like fashion, is derived from the lichen-mottled rocks. Glass-like troweled stucco, steel roofing, steel and glass rails, and slate terraces complete the exterior palette.

This is truly a home as lens. From this exciting location, one is able to observe and experience the dynamic fluctuations in the Colorado climate. This lens reveals not only weather and atmosphere, but also a sacred rock world that asks us to pay attention and take care.

Owner: Robert and Barbara Knollenberg

Architect: Barrett Studio Architects (formerly Barrett Steele)  
David Barrett, Principal in charge of Design  
Tom Scrimgeour, Project Architect

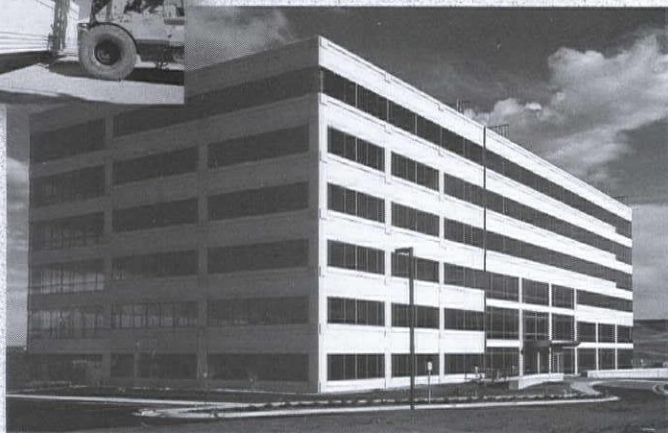
Structural Engineer: Neujahr Gorman

Builder: Tom Stanko Construction



The house weaves its way through rocks and trees to provide distant vistas.

## Precast Concrete Panels to Accommodate Any Imagination!



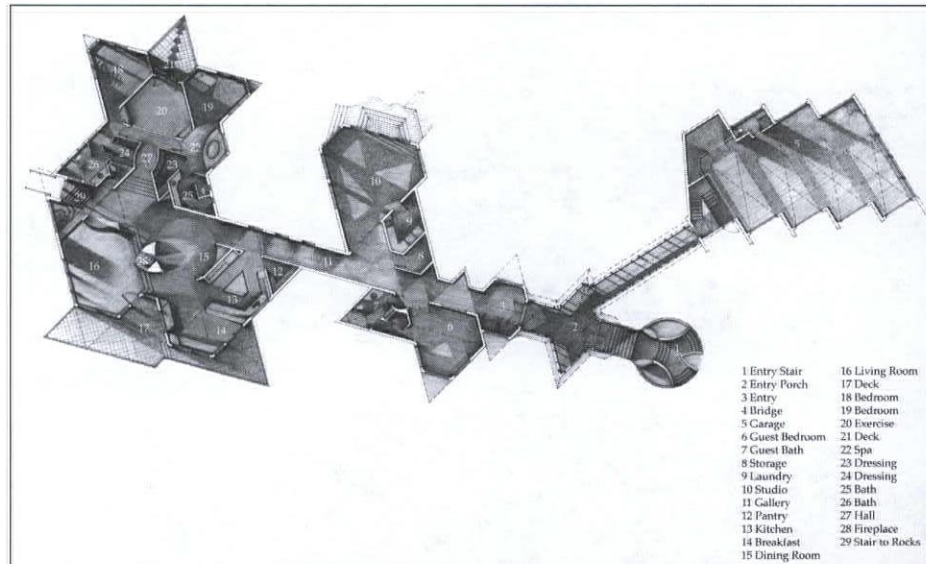
Parkridge I Corporate Office Building at I-25 and Lincoln Blvd.  
Architect: Gensler Contractor: Swinerton & Walberg  
Owner: Patrinely Group, Inc.

### Panel Projects Completed

- Office Buildings
- Parking Garages
- Governmental Buildings
- Universities/Libraries

## Denver Architectural Precast, Inc. (DAP)

Call or E-mail us for more information at:  
(303)286-7339 Fax: (303)286-7926  
web site: [www.denverprecast.com](http://www.denverprecast.com)  
e-mail: [daprecast@aol.com](mailto:daprecast@aol.com)  
8200 E. 96th Ave., Henderson, CO 80640  
(15 minutes north of downtown Denver)



Plan organized around central spine.

- |                 |                   |
|-----------------|-------------------|
| 1 Entry Stair   | 16 Living Room    |
| 2 Entry Porch   | 17 Deck           |
| 3 Entry         | 18 Bedroom        |
| 4 Bridge        | 19 Bedroom        |
| 5 Garage        | 20 Exercise       |
| 6 Guest Bedroom | 21 Deck           |
| 7 Guest Bath    | 22 Spa            |
| 8 Storage       | 23 Dressing       |
| 9 Laundry       | 24 Dressing       |
| 10 Studio       | 25 Bath           |
| 11 Gallery      | 26 Bath           |
| 12 Pantry       | 27 Hall           |
| 13 Kitchen      | 28 Fireplace      |
| 14 Breakfast    | 29 Stair to Rocks |
| 15 Dining Room  |                   |



# DFA PREPARES FOR 2001 CONVENTION

—John B Rogers, FAIA  
President DFA

From now through the 2001 AIA Convention in Denver next May, the Denver Foundation for Architecture is planning a number of activities. The following are some of the projects that have been proposed.

- ◆ Co-sponsor (with the Golden Triangle Association and AIA Denver) a design competition for a pedestrian bridge from the Golden Triangle to the Sunken Gardens across from Speer Boulevard.
- ◆ Initiate a joint program with DPS to assist schools in using art and architecture in their curriculum.
- ◆ Conduct a feasibility study for creating architectural archives. There are currently archives in the Colorado Historical Museum, some with the Denver Public Library, and others with AIA Colorado.
- ◆ Sponsor a public survey to honor Colorado's 20 best buildings built in the 20th century to help create public awareness of how outstanding architecture in Colorado has contributed to our quality of life.
- ◆ Coordinate and sponsor architectural tours for the 2001 AIA National Convention in Denver.

- ◆ Continue to sponsor our annual "Art by Architects" exhibit. This spring's exhibit received 58 entries; 29 were selected and hung in the AIA Colorado gallery.
- ◆ Continue the summer walking tour series. This summer, the Foundation is conducting the tours listed here. In addition, new tours are being organized and planned for the 2001 National Convention for May 17 to 20, 2001.
- ◆ Increase the Foundation's membership and its funding. The Foundation is preparing for a membership and funding drive to be conducted this fall.
- ◆ Complete the Denver Architectural Guide Book. This Foundation effort is well along, and will be completed this year. Assistance will be needed for distribution and sales activities.
- ◆ Plan and sponsor a public fall architectural lecture. Both the date and



**DENVER FOUNDATION  
FOR ARCHITECTURE**

subject are open to suggestions and a combination event or co-sponsors are welcome.

We invite and solicit comments, participation, and involvement in the Foundation to execute the Foundation's mission to the public. If you are interested in participating in one or more of these projects, please contact the Foundation.

### Upcoming DFA tours

- LoDo: July 8 and 29;  
August 5 & 26;  
September 9 & 30
- Civic Center: July 15
- Geology of Downtown Denver: July 22
- Central Business District: August 12
- People and Steeples: August 19
- Golden Triangle: September 16
- Auraria Campus: September 23

Denver Foundation for Architecture  
P.O. Box 481882  
Denver, CO 80248  
303/779-9193  
E-mail: denverfdnarch@aol.com

### In passing

Longtime friend of AIA Colorado, Clarence Arthur (Cal) Briggs died May 27, 2000 at the age of 87. He was Professor Emeritus of Architecture at the University of Colorado until his retirement in 1977. The research he did on Italian Renaissance architecture in Tuscany influenced the policies governing further campus development in Boulder.

His articles on architecture were published in Japan, England and the United States. His interests included collecting art, ice skating, and tennis and he was active on the Committee for the Conference on World Affairs.



**Alliance**  
CONSTRUCTION SOLUTIONS  
*Your Partner in Construction Services*

Colorado's **PREMIER**  
construction management  
and general contracting  
company...since 1982.

301 East Lincoln Avenue  
Fort Collins, CO 80524  
www.allianceconstruction.com

**970/482-7722**



### **WHAT A CONCEPT!**

Created for **YOUR** convenience -  
To make it easier for you to work with us  
and because we **WANT** your business!

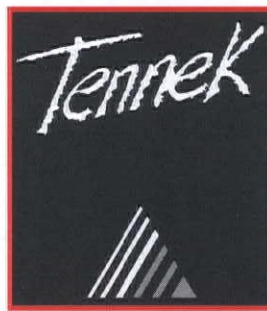
Technical support is always available  
to answer any question you might have.

Visit our website and you will agree....

### **WHAT A CONCEPT!**

Tennek is your specialist in safety surfacing...  
from playground surfacing, multi-purpose gym or school  
flooring, fitness and athletic or any specialty flooring.

Visit **www.tennek.com** and get all the answers.



**TENNEK SPORTS SURFACES, INC.**  
1-800-845-6724 • 1-303-838-0922  
E-mail: sales@tennek.com



## Call for entries INSTITUTE HONOR AWARDS FOR INTERIOR ARCHITECTURE

**T**he Institute Honor Awards for Interior Architecture acknowledge the excellence of building interiors created by architects who are licensed in the United States. The intent of this awards program is to draw attention to the broad diversity of completed interior architecture. Entries may be large or small in scope and may involve renovation, adaptive use, or new construction. Submissions in the areas of residential, institutional, commercial, corporate, retail, hospitality, and miscellaneous are equally welcome. All entries are judged on merit, regardless of scale or budget.

Entry forms must be completed, submitted with the entry fee, and postmarked no later than August 18, 2000. All submission binders must be sent to the AIA Honors and Awards Department; 1735 New York Avenue NW; Washington, DC, 20006-5292; Attention: Institute Honor Awards for Interior Architecture, and postmarked no later than September 15, 2000.

To request a call for entries or for more information, contact the AIA Honors and Awards Department, 202.626.7586 or rlee@aia.org.

### Watch for Web site

AIA Colorado will launch its new Web site this month. A Web site task force has been hard at work to determine the focus of the new site and the overall graphic identity.

The concept of the site is to show the creative thinking process that happens in architecture. Included in the site will be conceptual sketches, call-outs, and drawing symbols—all meant to remind us of the thinking, creativity, and unexpected fun that goes into architecture and design.

Look for it soon!

## Call for entries INSTITUTE HONOR AWARDS FOR ARCHITECTURE

**E**very year since 1949, the AIA has celebrated outstanding architecture through its Institute Honor Awards program.

Each entry in the Institute Honor Awards program is judged for the success with which the project has met its individual requirements. Entries are weighed individually—not in competition with one another.

Projects must be submitted in one of the following two categories: design resolution, which demonstrates exemplary skill and sensitivity in resolution of formal, functional, and technical requirements; or design advancement, which advances the contemporary understanding of design by proposing new approaches to the development of architectural form.

In addition to design achievements, projects may be exemplary in the following subcategories:

- ◆ Societal advancement, which demonstrates a commitment to social progress
- ◆ Technical advancement, which explores new technologies and

their architectural applications

- ◆ Environmental advancement, which demonstrates a commitment to sustainable design and/or conservation of resources
- ◆ Preservation/restoration, which demonstrates skill, sensitivity, and thoughtfulness in preservation, restoration, or alternative use of existing buildings, regardless of their original architectural intentions.

Entry forms must be completed, submitted with the entry fee, and postmarked no later than August 4, 2000. All submission binders must be sent to the AIA Honors and Awards Department; 1735 New York Avenue NW; Washington, DC, 20006-5292; Attention: Institute Honor Awards for Architecture. Entries must be postmarked no later than September 1, 2000.

To request the call for entries or for more information, contact the AIA Honors and Awards Department, 202.626.7586 or rlee@aia.org.

### THE STATE OF THE ART IN CERAMIC TILE AND STONE



## Tile and Stone

FOR OVER TWENTY YEARS, CAPCO HAS IMPORTED SUPERIOR CERAMIC TILE FROM THE FINEST MANUFACTURERS OF ITALY AND AROUND THE WORLD INCLUDING TAGINA, REX, GRANITIFIANDRE, IMOLAGRES, IMOLA, LAUFEN, SICHENIA, CITY, LATCO, SUMMITVILLE, AND MORE.

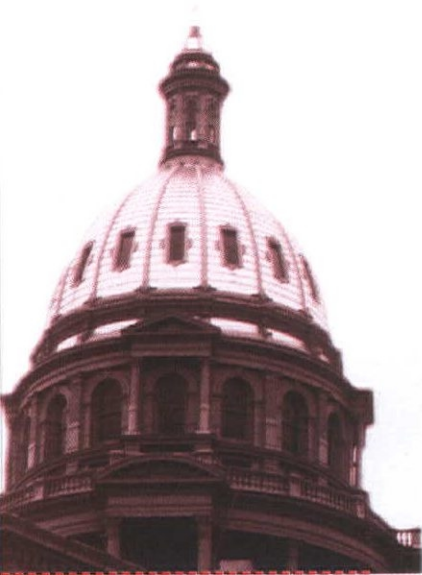
NOW CAPCO IS COLORADO'S SOURCE FOR NATURAL STONE. CAPCO STOCKS AND DISTRIBUTES A WIDE ARRAY OF GRANITE, MARBLE, LIMESTONE, AND SLATE IN BOTH TILES AND SLABS. MAKE CAPCO THE ONE-STOP SOLUTION TO YOUR TILE AND STONE NEEDS.

CAPCO PROVIDES ARCHITECTS AND DESIGNERS WITH A SINGLE SOURCE FOR PRODUCT INFORMATION AND INDUSTRY SPECIFICATIONS IN EACH OF OUR LOCATIONS.

**1-800-727-2272**  
[www.capcotile.com](http://www.capcotile.com)

DENVER • BOULDER • COLORADO SPRINGS • FORT COLLINS  
BASALT • AVON • GRAND JUNCTION • SILVERTHORNE • LAS VEGAS, NEVADA





## 14 Growth bills introduced to House, 6 to Senate GAC MONITORED 41 HOUSE, 20 SENATE BILLS

introduced in the House and 6 in the Senate. Of these, only four passed to the Governor for his signature.

There were several bills introduced to alleviate the transportation problems of Colorado, such as defining RTD revenues and appropriating money for highway infrastructure. We also reviewed bills relating to the improvement of the state capitol and the customary capital improvement bills to fund public construction projects.

Your Legislative Affairs subcommittee monitored these bills very closely, as well as others that affected the business of architecture, the environment, and planning. The total number of bills monitored were 41 House bills and 20 Senate bills. Unlike in the past, we did not need to testify before any committees this year to present our position on issues relevant to our profession.

Just because the Legislative session is over doesn't mean you can't be involved. Contact your state representative and senator, especially regarding issues pertinent to the profession of architecture. You can still visit the state Legislature Web site at: [http://www.state.co.us/gov\\_dir/stateleg.html](http://www.state.co.us/gov_dir/stateleg.html) At this site, you can see the progress of past bills, find information on your state legislature, and be connected to your government at work.

**Don't know who your elected officials are?** Click on the "Who are my elected officials?" link, enter your ZIP+4 code and you'll have their names! Simple, fast, and easy! This may be the best time to meet your legislators. Invite one to coffee or host an open house. Your involvement in the process is what keeps it alive!

Your Government Affairs Committee and the Legislative subcommittee were very busy with the new legislation of the past session. This year's bills were exciting, mostly because of the renewed interest in controlling growth and resolving our transportation woes. The members of the 2000 Legislative subcommittee were: **Aileen Koenigsberg, AIA**; **Jered Minter, Assoc. AIA**; **Mike Wisneski, AIA**; and **Jim Zavist, AIA**. Our Executive Vice President, **Joe Jackson, Associate AIA**, led the way and our resourceful lobbyist, **Berry Johnson, Hon. AIA/C** provided invaluable information and history of the bills we selected for monitoring. Thank you to you all!

The 2nd Regular Session of the 62nd General Assembly of the State Legislature convened January 5, 2000 and the session closed after 120 days on May 3, 2000. The Legislative subcommittee met weekly at the beginning of the session to monitor the bills proposed by the Senate and House that affect our profession.

We expected and saw from the legislature a variety of bills pertaining to Land Use and Planning, under the umbrella of "Smart Growth." At the conclusion, there were 14 growth bills

## THE ENVELOPE PLEASE!

The second annual Interior Design Awards (the IDAs) sponsored by the Colorado Chapter ASID, were presented at a grand ceremony held May 9 at the Atrium of the Denver Design Center. The awards were presented to interior designers whose projects displayed excellence in design. More than 70 submissions in the categories of Residential and Commercial Design were judged. Numerous AIA members were included in the winners. In Residential interiors, **Doug Walter, AIA**, of Doug Walter Architects received two awards.

In Residential/Commercial Interiors, **Chris Nims, AIA**, of Gensler; **James Johnson, AIA**, of JG Johnson Architects; and **Doris Sung** received awards. And in Commercial Architecture, **David Tryba, AIA**, **David Owen Tryba Architects**; **Janette Ray, ASID**, of **Davis Partnership Architects**; **James Johnson, AIA**, of **JG Johnson Architects**; **Chuck Albright, AIA**, **RNL Design**; **Ron Sholar, AIA**, **Sholar Group**; and **OZ Architecture** all received awards.

### CLASSIFIED

**Fountainhead Communications** in Boulder, Colorado. Award-winning marketing, publicity, and editorial consulting for Front Range architects. Many satisfied clients. 303.939.9844 or [fountain@indra.com](mailto:fountain@indra.com)

### Do you know a candidate running for the legislature?

The Government Affairs Committee is asking AIA members who know candidates running for election to the Colorado House of Representatives or the Colorado Senate to contact Joe

Jackson at the AIA Office, 800.628.5598. AIA Colorado will compile the information to help us strengthen our legislative relationships in the future.

### AIA Logo Usage

Many firms use the AIA logo (the Eagle and Column) on their stationery and brochures. AIA National has provided the following rules that apply to its use.

- ◆ Individual architect members and their firms may use the logo if each living person in the firm's name is a current AIA member.
- ◆ The logo may not be used by a firm if a firm name includes the terms "Incorporated," "P.A.," "Company," "and Associates" or a similar term, or if the firm name is a trade name such as "Architecture & Design," in which personal names are not used.

When using the Institute's name or initials "AIA," there are further guidelines that must be used. They are:

- ◆ "AIA" may be used after an individual member's name in the name of a firm, for example, "John Jones, AIA Architect."
- ◆ "AIA" may not be used following a firm name that includes terms such as "Incorporated," "P.A.," "Company," "and Associates" that are not the names of individual members.

Please be aware of these rules and use them appropriately in your firm. If you have any questions, call either the AIA Colorado office or AIA National. Both will be happy to assist in answering any questions you may have.



## Featuring the Océ 9800 with Repro Desk Delivering High Volume Plotting Copying & Scanning Service

**Repro Desk Software:** Installed at your office, you do all the job preparation & with a click of the mouse - send the job to Ken's

**Total File Compatibility:** With most .PLT Files

**Scan to file:** Allows you to build hybrid plot jobs comprised of CAD plot files and scanned originals

**Fastest Scanning Speed:** 12 D size per minute  
Many More **Money Saving** Features

- ✓ **Comprehensive Reprographic Services**
- ✓ **Color CAD Plotting**
- ✓ **Spec Set Copying**
- ✓ **Diazo up to 42" Wide**
- ✓ **Free Pick-up & Delivery**
- ✓ **Oversized Color Scans**
- ✓ **Oversized Color Copies**



**297-9191**

**KEN'S REPRODUCTIONS LTD.**

2220 CURTIS STREET • DENVER, COLORADO 80205  
E-MAIL: [SALES@KENSREPRO.COM](mailto:SALES@KENSREPRO.COM) NET: [HTTP://WWW.KENSREPRO.COM](http://WWW.KENSREPRO.COM)



# JULY EVENTS

Monday	Tuesday	Wednesday	Thursday	Friday	Saturday
	<p>For more information on any of these events, call AIA Colorado at 800.628.5598, unless otherwise noted.</p>	<p>5 12 p.m. Cte. On the Environment, AIA Office</p> <p>◆ 12p.m. 2001 Convention Mtg., RNL Design</p>	<p>6 4 p.m. Denver Chapter Board of Directors, AIA Office</p>	<p>7</p>	<p>8 10 a.m. DFA Tour LoDo</p>
<p>10 12 p.m. Denver Foundation for Architecture, AIA Office</p> <p>◆ AIA Denver Design Award entry deadline</p>	<p>11</p>	<p>12 7 a.m. South Chapter Board of Directors</p>	<p>13</p>	<p>14 Noon-2p.m. Government Affairs Cte., AIA Office</p>	<p>15 10 a.m. DFA Tour Civic Center</p>
<p>17</p>	<p>18 7:30 a.m. Housing Cte., AIA Office</p> <p>◆ 3 p.m. North Chapter Board of Directors</p>	<p>19</p>	<p>20 7:15 a.m. Design Build Roundtable, Design Center</p>	<p>21 11 a.m. Editorial Board</p> <p>◆ 12:30 p.m. Finance Cte.</p> <p>◆ 2 p.m. AIA Colorado Board of Directors</p>	<p>22 10 a.m. DFA Tour Downtown Geology</p>
<p>24</p>	<p>25</p>	<p>26</p>	<p>27 7:30 a.m. Historic Preservation Cte.</p>	<p>28 7:30 a.m. Denver Golf Tournament—Fox Hollow</p> <p>◆ AIA Colorado Design Award entry due</p> <p>29 10 a.m. DFA Tour LoDo</p>	

## GALLERY EXHIBITS

June 15 - July 15

UCD/Barbara Ambach "Interactive Architecture"

Colorado Architect  
One Park Central  
1515 Arapahoe St.  
Suite 110  
Denver, CO 80202

## AUGUST HIGHLIGHTS

18 GAC Retreat, 12 noon - 4p.m.  
AIA North Chapter Golf Tournament

# Colorado

# ARCHITECT

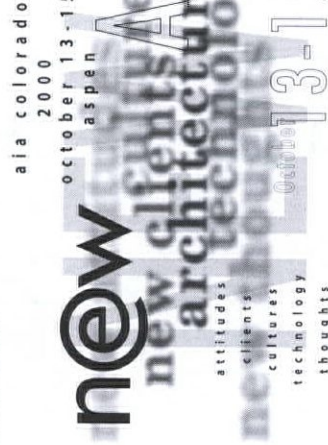
A PUBLICATION OF AIA COLORADO

JULY 2000

\$5.00

## IT'S OFFICIAL!!

The 2000 AIA Colorado Design Conference will take place October 13-15 in Aspen and Snowmass. This year we return to the popular Aspen Institute with its pristine setting and relaxing atmosphere. Mark your calendar now, and plan to join us as we focus on new Architecture.



Urban topography

PAGE 1

Architects' liability for E & O by engineering consultants

PAGE 5

Resort community design

PAGE 8

Hudson-Meng Bonebed Visitor Research Center

PAGE 9

Landscape taking shape in Colorado Springs

PAGE 10

Knollenberg Residence—Home in Rockscap

PAGE 12

The conference will explore the new thoughts, new attitudes, new clients, new technologies and new cultures that will define a new Architecture for the millennium. We have been very fortunate in securing a major player in our industry as one of our conference leaders—Jim Cramer, president of the Greenway Group and editor of *DesignIntelligence*. He has agreed to be a keynote speaker and to participate in the entire conference to offer his insights and ideas.

We are also very fortunate to secure a prestigious design awards jury from the Boston area that will be chaired by **David Manfredi, AIA**, of Elkus / Manfredi Architects Ltd. Joining him will be Warren Schwartz, AIA; Fred Koetter, and **Peter Kuttner, FAIA**. Call for Entries registrations for the 2000 Design Awards are due July 28, with submittal binders due August 31.

AIA Colorado president **Steve Loos, AIA**, said, "This is going to be a conference that will be energizing and thought-provoking while you are there and one that will tickle your imagination continually as you head back to work. We are working to create a conference that will change the way you look at things forever!"

In concert with our theme of new Architecture, AIA Colorado is directing Awards and Conference participants to its Web site for registration and all general information. Please view the site at [aiacolorado.org](http://aiacolorado.org) to learn more about this exciting event.