



AIA COLORADO
AIA COLORADO NORTH
AIA COLORADO SOUTH
AIA COLORADO WEST
AIA DENVER

AUGUST 1997

FORT LEWIS COLLEGE BUILDS

—Critique by Suzannah Reid, AIA

[contents]

President's Message PAGE 2

Lines & Columns PAGE 5

Denver Apogee PAGE 7

North Chapter PAGE 11

109th Meridian PAGE 13

National Park Service Architect Upholds Sustainability PAGE 3

Continuing Education PAGE 4

AIA Denver Sponsorship Tribute PAGE 7

Fort Lewis College (FLC) is situated on a mesa overlooking the City of Durango, and the La Plata Mountain Range. A majority of the original campus buildings were built between 1965 and 1975 on the southwest side of the mesa, and as with many educational facilities built in this era, the buildings are low, modest, and somewhat military looking. The campus was essentially modeled, as most colleges are, on the historical 'agricultural town,' with the various functions grouped together and distributed around common, usually green, open spaces. In this case the campus consisted of one and two story buildings arranged around two large grass areas with the original commons building in between. As the campus grew it expanded to the east with a group of buildings around another large open area. Today the campus is still organized around these large open spaces with parking on the perimeter along the aptly named Rim Drive.

A master plan for facilities, developed in the late 80's focused on the usual



The Fine Arts Building by Anderson Mason Dale of Denver with R. M. Bell & Associates, Durango.

considerations of infrastructure, signage, ADA, and landscaping. It also defined the use of materials and massing for new construction. When, through a couple of legislative initiatives, money became available to the State College system for capital improvements, FLC found itself in a strong position to apply for funding for a major building campaign.

FLC identified the critical areas in need of improved facilities and focused the planning process on providing adequate facilities for the faculty and in

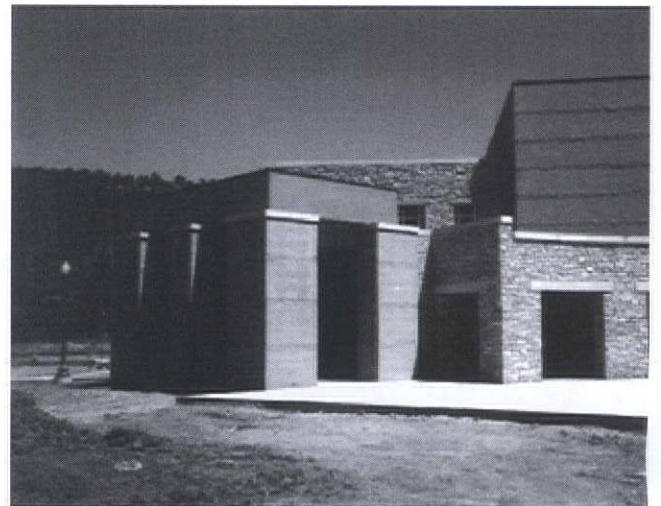
turn allowing the current programs to reach their full potential. Once architects were selected, this approach assured that programming and design were done with the user groups and from a strong base of knowledge and experience. Anderson Mason Dale, of Denver, was awarded the Fine Arts Building and a science classroom expansion project, while the firm of Klipp Colussy Jenks DuBois Architects, also of Denver, was awarded the new Concert Hall and the future Center of Southwest Studies.

The new buildings are situated to the northeast of the original campus and connected by a wide concrete walkway to the adjacent existing fine arts buildings. The new Fine Arts Building is nearing completion and will be fully occupied by fall. Its daylighted student

and faculty studios are generally two story spaces with lofts. The U-shaped plan, open to the walkway and a recurring type on campus, encloses a courtyard which will allow for outdoor display of work. The exterior materials and detailing of the building are modest, but the repetition of the light monitors along the two legs, reminiscent of the ranching buildings of the area, give the building a strong character and presence in the campus skyline.

The new Concert Hall, which recently opened, is the first in a series of three buildings, including a new Southwest Studies Building and a Theater Building. The three will be linked by a circular arcade which will terminate the long curved walkway from the campus proper. These three buildings will also be used by the community

and this courtyard, with an entrance from the parking beyond, will serve as an area of overlap between the public and the campus uses.



New Concept Hall by Denver firm Klipp Colussy Jenks DuBois Architects.

Though the building now stands alone with one fragment of the circular arcade in place, one can get the sense of how the sequence will be completed in the future. This building also has a modest exterior expression. Its interior space being primarily a large rectangular volume, leaves little programmatic articulation for the exterior. However, when the arcade is complete, the primary focus of the building will be through the arcade and into the center courtyard. The majority of the Concert Hall volume will be subservient to the mix of functions and activities taking place behind the arcade.

As successful as the individual buildings may be, they are at the periphery of the campus, and it is yet unclear how the new construction within the campus will transform the whole. For example, the language of U-shaped buildings opening on to larger green areas, creates the potential for a hierarchy of exterior spaces. Though repeated and, in fact, terminated at the new buildings, this pattern is not used to its full potential. Existing plantings, pathways, and entries do not currently reinforce the hierarchy and therefore leave the feeling of a somewhat incoherent whole. A potentially positive outcome

[See FORT LEWIS on page 15]

1997 BOARD OF DIRECTORS

President.....Steven Walsh, AIA
 President-ElectRon Abo, AIA
 Secretary.....Kelly Karmel, AIA
 Treasurer.....Bill Tracy, AIA
 Treasurer-ElectDean Ibsen, AIA
 Past President.....Dennis Humphries, AIA
 DirectorGregory Friesen, AIA
 DirectorPeter Orleans, AIA
 DirectorMark Quéripel, AIA
 DirectorShira Geller, AIA
 Assoc. DirectorRick Dominick, Assoc. AIA
 Executive VPJoseph M. Jackson, Assoc. AIA
 Ex-Officio.....Dean Patricia O'Leary, AIA
Dean Albright, AIAS

The Colorado Architect is the monthly publication of AIA Colorado, AIA Colorado South, AIA Denver, AIA Colorado North and AIA Colorado West, and is provided as a service to members. Submit your article by mail, fax or e-mail (aiadenco@aol.com). Deadline for all newsletter material is the 1st day of each month previous to publication. Submissions are edited and published as space allows. Letters to the editor, suggestions, comments and encouragement are welcome. Expressed opinions and statements in this newsletter do not necessarily represent the opinions of the AIA Colorado Board of Directors or its membership.

EDITORIAL BOARD

Duane Boyle, AIA, South Chapter
 Joseph M. Jackson, Assoc. AIA
 Kim Jackson, The Newsletter Group
 Michael Jacoby, AIA, Denver Chapter
 Stephen Loos, AIA, North Chapter
 Isabelle Matteson, PA, Marketing Consultant
 Kris Oppermann, Colorado Real Estate Journal
 Suzannah Reid, AIA, West Chapter
 daphne r. scott-monroe, Assoc. AIA
 Jonathan Stern, Colorado Real Estate Journal
 Steven Walsh, AIA

PublisherAIA Colorado
 Newsletter by ...The Newsletter Group

COLORADO ARCHITECT EDITORIAL CALENDAR SEPTEMBER THROUGH DECEMBER 1997

September The Business of Architecture
 October Women in Architecture
 November Client Responses
 December Living Treasures

Letters, articles and comments are always welcome. The deadline is the first day of the month preceding the month of publication (June 1 for July newsletter). Submit your information by mail, fax or e-mail: AIA Colorado, 1526 15th Street, Denver, CO 80202, 303.446.0066 (fax), aiadenco@aol.com (e-mail). Web site: www.aiacolorado.org

PRESIDENT'S MESSAGE

—Steven Walsh, AIA

Just as an ecosystem's species diversity is a sign of good health, professional diversity is crucial to the long-term viability of architecture. Opportunities outside general architectural practice are common as industry, government, education, and the public have come to value architects for their problem-solving and team management skills. In fact, these institutions are actively seeking and recruiting from our ranks.

The AIA has expanded its vision to acknowledge and promote that all architects, no matter their practice, are integral and essential components of a diverse profession.

Consider the tired argument that competitive pressure is increasing because we are graduating too many architects

from our schools. I believe the opposite is true. We need to increase the number of graduates tenfold, as we build the conduits they can use to find their niche as generalists or as specialists in new venues. If you don't agree, ask

client needs, and our increasing awareness and sophistication in the



"Common among those prospering, is a willingness to change with the times—confident in their expertise as providers of process, not product."

yourself how lawyers have become the decision makers influencing our entire society from politics to commerce. They understand that by placing like minds in strategic places, their mission can be readily accomplished. Shouldn't architects be making policy? After all, who understands the built environment more comprehensively? Only when respected architects become the decision makers, will architectural service providers be working with and appealing to an informed clientele—one that understands the value of our services and is willing to pay for that value.

What I observe at our conferences, and hear when talking with architects in Colorado and around the country, is that opportunity abounds. It's evident by our use of burgeoning technology, new markets arising in response to

ways we contract for our services. These concepts are keeping architects in business; given our robust economy, some are flourishing. Common among those prospering, is a willingness to change with the times—confident in their expertise as providers of process, not product. They embrace new knowledge with an eagerness to place themselves in new settings.

Career diversity should be a concern for each of us. Even if you have a steady job or a reliable flow of projects, your future depends on it. The AIA's mandatory continuing education provides excellent opportunities to embark on a diverse career. It's a chance to look at a practice area you never considered, but found interesting. It is a chance to discover new tools. Your career diversity is yet another way to rediscover the spirit of being an architect.

YOUR AIA STAFF...

AIA Colorado is pleased to introduce Andrea Nicholl as the newest addition to staff. Having joined us in February of this year as our Administrative Assistant, Andrea handles the contract documents sales, job board, resume book, referral database and general public relations on a daily basis. Through the month, she helps develop the monthly newsletter, graphic design projects and other AIA programs and events. She pulled July's Colorado Architect together, she coordinated the 1997 Educational Fund Scholarship Awards Program and helped with the FAIA lecture series by AIA Denver. As general organizer of the Design Conference Committee, Andrea will focus on the AIA Colorado Design Expo '97.



Andrea's passion for architecture came from growing up in San Francisco's surroundings. She received her Bachelor of Environmental Design in Architecture degree at the University of Colorado at Boulder. Her architecture background is extremely handy and appreciated by everyone in the office. Andrea is one of our new associate members this month, and she intends to further her career in architecture by receiving a masters degree in architecture in the near future. According to AIA Colorado Executive Vice President Joe Jackson, "Andrea's creativity, energy and enthusiasm are a welcome addition to the office. Her educational background, her personality and demeanor, and her sense of humor help balance our team." As for now, she is absorbing as much information about architects as she can and, of course, networking!



Ken's Reproductions Ltd.
 2220 CURTIS STREET • DENVER, COLORADO 80205

We have plotted our Open House events!

Oce®-Repro Demonstrations
 Unequaled high volume plotting, copying, and scanning. Daily demonstrations on this truly unique process. Come and witness what Repro Desk can do for your organization.

Oversize Color Demonstrations
 Watch how your marketing materials can be transformed into poster size displays!

Food & Beverage
 Don't worry about missing lunch, we've got munchies!

Plan to Attend!
 Tuesday, August 19, 1997
 Wednesday, August 20, 1997
 Thursday, August 21, 1997
 (11:30 AM to 4:00 PM daily)

Contact us for details
 phone: 297-9191
 fax: 297-8885
<http://www.kensrepro.com>
 e mail: sales@kensrepro.com

SUSTAINABILITY IS KEY FOR NATIONAL PARK SERVICE ARCHITECT

Lisa Haddox, AIA and about 500 fellow architects are part of a quest that began August 25, 1916. On this date, the nation became officially committed to the preservation of our cultural, historical, and natural resources for the enjoyment of future generations. The "Organic Act," signed by President Woodrow Wilson, created the National Park Service (NPS).

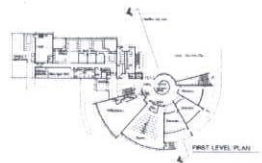
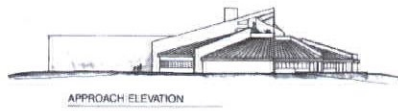
As an NPS architect, Lisa Haddox is involved with the planning, design, construction, and preservation of our nation's most treasured places. "It is very rewarding to work on projects that the public can enjoy. At the National Park Service, I can help enhance people's experience and memories of visiting a park, seashore or monument," said Haddox.

Like other NPS architects, she is generally working on several projects simultaneously that are at different phases of completion, and are located throughout the country. Haddox said she travels every six weeks or so for project meetings and construction site inspections.



Sustainable design is key to preserving the Grand Canyon's beauty.

One of her previous projects is the Environmental Education Center at Gateway National Recreation Area in New York City. OZ Architecture was a consultant on the education center and has worked with NPS on several other projects.



Gateway National Recreation Area, Environmental Education Center schematic designs, Haddox created with OZ Architecture.

Gateway NRA and Golden Gate State Park in San Francisco were the first urban recreation areas in the country. Gateway NRA encompasses more than 26,000 acres, including wildlife sanctuaries, recreational and athletic facilities, miles of sandy beaches, old military installations, airfields, a lighthouse, historic structures, and adjacent waters around New York Harbor.

"There are regional differences in Park Service architecture," said Haddox. "In the east there's more use of brick and cut stone, and in the west, there's 'Park-itecture' and more subtle structures built with rough stone and logs."

Sustainability, according to Haddox, is a foremost design concern for the NPS.

"We try to minimize impact on a site and fit a structure into the surroundings and specify 'green' materials, such as recycled and natural materials. We also try to use a lot of local materials and craftsmanship."

At Grand Canyon National Park, Haddox is working on the schematic design for an orientation center. "The goal is to keep the architecture from competing with the surroundings. I am working closely with landscape architects and exhibit designers. With the Park Service, I have the opportunity to get together early with others working on a project, since we share the same employer, which isn't always the case with private firms."

Before she joined the NPS in 1991, Haddox worked primarily on commercial projects at both DMJM and CCSB (now merged with C.W. Fentress, J.H. Bradburn & Associates). She spent two years with Kephart Associates, a firm specializing in multi-family and single family houses. When the housing market declined, Haddox joined Davis Partnership, a large architectural firm focusing on health care and institutional work. Haddox managed projects for Rose Medical Center, and the National Jewish Center for Immunology and Respiratory Therapy.

Haddox is currently on AIA Denver's

Board of Directors and heads the Public Architect's Roundtable. Her involvement with the AIA has included serving on the Denver Chapter Board of Directors in 1988-90; Chairman, Local Government Affairs Committee 1988-89 and Associates Network Committee 1983-84. Chapter Master, Tau Sigma Delta Honor Fraternity, Tulane University, 1980-81.



Lisa Haddox, AIA

LETTERS POLICY

The Colorado Architect welcomes all letters. Letters must be signed with name, street address and daytime phone number. The opinions expressed do not necessarily represent the opinions of the AIA Colorado Board of Directors or its membership.



GUY'S FLOOR SERVICE INC.

2050 West 9th Avenue
Denver, Colorado 80204-3846
(303) 623-4191
Fax (303) 623-4820

Since 1942



COLORADO HARDSCAPES
By Van Heuleken Concrete, Inc.

303 | 750 | 8200


Custom Concrete
Your Ideas, Nature's Products, Our Expertise

"Quality Makes a Lasting Impression...with Custom Concrete finishes that offer durability and low maintenance as well as a wide variety of textures, colors and designs."

Structural Engineers Serving All Of Colorado

Denver
1660 Seventeenth Street
Suite 101
Denver, CO 80202
(303)-623-4927
Fax (303)-623-6602

Vail
70 Benchmark Rd.
Suite 204
P.O. Box 1597
Avon, CO 81620
(970)-949-7768
Fax (970)-949-4054



Monroe & Newell
Engineers, Inc.

CONTINUING EDUCATION OPPORTUNITIES

Producers' Council Stick Program

The 1997 Stick Program, sponsored by the Producers' Council, is available for architectural firms to sign up for a free lunch while learning about technical product information and design assistance. Call Charlie Davis at 303.733.2476 to get an application.

Breakfast Roundtable Discussion Series: Redefining the Profession

"Defining Your Ambitions"
August 21
7:30-8:30 AM
Last of a five-part series sponsored by the Denver Design Build Committee. Free. Two Learning Units. Register in advance. Call AIA office at 303.446.2266.

Design Communications Committee meetings

"Drawing Shortcuts slide show"
brown bag workshop
August 21
noon at the AIA offices

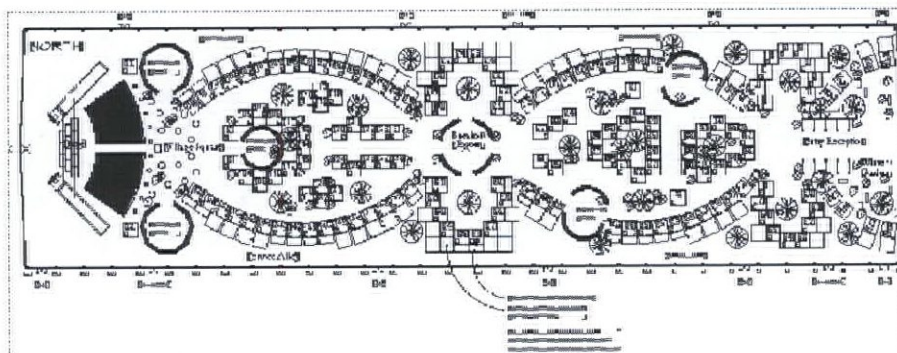
"Basics of Desktop Publishing"
brown bag workshop
September 18
noon at the AIA offices

"Making Great Presentations Using Powerpoint"
brown bag workshop
October 16
noon at the AIA offices

CLE International, Business Succession Planning presents an important new conference on Business Succession Planning Strategies to be held on August 21 & 22, 1997 at the Hyatt Regency in Denver. Our expert faculty will show you how to select appropriate compensation plans, how to analyze the complex legal, tax and accounting issues, and how to obtain the correct type and amount of insurance. This Conference is essential for business owners and those professionals who advise them. For more information, please call 303.377.6600.

Do you need continuing education learning units? Come to the AIA offices and check out some of our educational videos for credit. Call Andrea at 303.446.2266 for more information and a list of videos available.

EXPO '97 DESIGN CONFERENCE



Floor plan courtesy of CAD Designs

TENTATIVE SCHEDULE OF EVENTS

Friday, October 17

Welcome
Context ...
• Growth & The Colorado Front Range by *National Geographic*
Paideia
• Question: Is Compassion compatible with the concepts of the Western Frontier?
Lunch/Exhibits
Reconnection
• Summaries from Paideia breakouts
Scandinavian Compassion
• Jens Arnfred
Towards an Ethic of Compassion
• Matthew Fox
Roundtable Wrap-up
AIA Colorado Design Awards Presentation

Saturday, October 18

Welcome
Presentation
• Michael Rotundi
Design Charette (open to the public)
Compassionate Technology
• Photovoltaics & Architecture
—John Thorton
• The Presidio
—Bob Lopenski
• Compassion & Engineering
—Ove Arup & Partners

• The Development of Stapleton —Stapleton Development Corporation
Major Roundtable Paideia
• Speakers, facilitators, moderators
AIA Colorado Annual Awards Gala and USO Party

Sunday, October 19

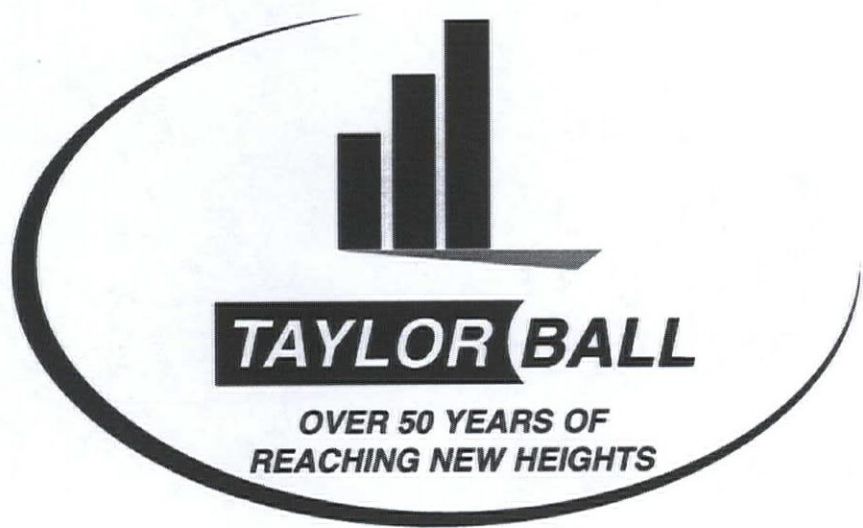
Welcome
AIA Colorado Annual Business Meeting

INVITED SPEAKERS

Michael Long & Jim Richardson, Journalists, *National Geographic Magazine*
Jens Arnfred, Architect, *Vandkunsten, Denmark*
Matthew Fox, Priest, *California*
Michael Rotundi, Architect, *Los Angeles*
Honorable Chuck Berry, Speaker of the House, *State of Colorado*
John Thorton, NREL Energy
Bob Lopenski, National Park Service, *The Presidio*
Ove Arup & Partners, *Engineering Services*
Stapleton Development Corporation
Honorable Wellington Webb, Mayor, *City of Denver*

[See CONFERENCE on page 15]

BUILDING ON SUCCESS



GENERAL CONTRACTORS CONSTRUCTION MANAGERS

5775 Flatiron Parkway, Suite 115
Boulder, Colorado 80301
(303) 440-4220
(303) 440-4256 - Fax

BOULDER • CEDAR RAPIDS • DES MOINES
KANSAS CITY • SAN DIEGO

TimberForm® Palomar



2644-6



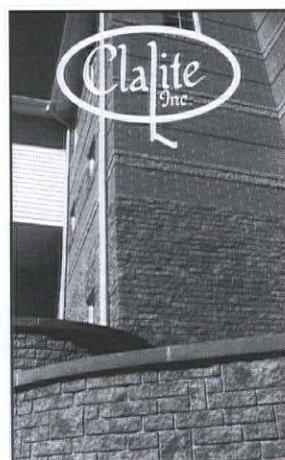
2651

Represented by: Mike Woods
303/688-2132 Fax 303/646-4288
P.O. Box 6, Elizabeth, CO 80107-0060
TimberForm and Palomar are trademarks of Columbia Cascade Company.

Ask for the 100-page specifier's catalog

Call Toll Free 1-888/688-2132

Woods Site & Playscapes



COLORADO'S PREMIER MASONRY UNIT SUPPLIER



GEOCAST™
Enduring Beauty in Stone Design

ALL TYPES CMU • INTERSTATE BRICK®
NOVABRIK® • DESIGNER STONE®
ALLAN BLOCK® RETAINING WALLS
MASONRY ACCESSORIES

303.292.2345 FAX 303.292.2380
800.289.2562

5050 Race Street Denver, Colorado 80216

Photo: Colorado Children's Home, Tenneyson Center for Children, Fentress/Bradburn, Architects



Lines & Columns

August 1997

AIA Colorado South Chapter 1997 Board of Directors

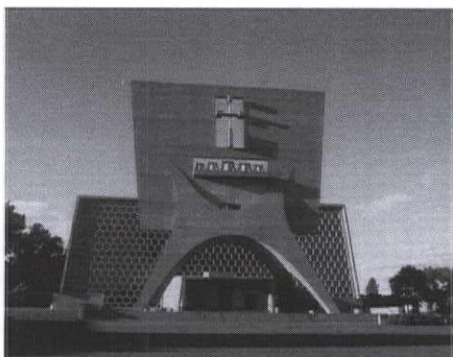
President.....Gregory M. Friesen, AIA
VP-Elect.....Duane Boyle, AIA
Treasurer.....Douglas E. Hahn, AIA
Secretary.....Michael A. Cook, AIA
Director.....Michael Collins, AIA
Director.....John Goodloe, AIA
Director.....Richard Gordon, AIA
Director.....Valerie Stengel, AIA
Director.....Belinda M. Zink, AIA
Assoc. Director...Jason Whitlock,
Assoc. AIA
Past President.....Clifford Taylor, AIA

CSNA ARCHITECTS WORK WITH MARCEL BREUER

*"For it becometh the master to speak
and to teach;
but it befits the disciple to be silent and
to listen."
- Rule of St. Benedict, Ch. 6 Of Silence*

Written during the early 6th Century, the Rule of St. Benedict is a humbling maxim for architects who restore the work of masters. CSNA Architects hearkens Marcel Breuer, a Bauhaus architect, as the firm restores, and creates an addition to, the Science Center at St. John's University.

St. John's University, 90 miles northwest of Minneapolis, selected Colorado Springs-based CSNA Architects from a roster of 15 firms provided by the National Science Foundation.



Breuer's Abbey Church

The Science Center is part of the largest collection of Breuer buildings in the world. The structure was originally completed in 1966. It is enclosed by the original abbey church to the west; Alcuin Library (known for its elegant tree-shaped columns) to the north; and to the south, Breuer's Abbey Church, recognized as the only religious structure designed by a Bauhaus figure.

Working closely with the Abbey Design Committee, CSNA gained extraordinary insights from Brother Frank Kasmarcik, a renowned liturgical furnishings designer and graphic artist. Kasmarcik was part of the selection committee when St. John's sought its master plan in the early 1960's. Prospective candidates included Richard Neutra, and Walter Gropius, who recommended Marcel Breuer to the committee "because he is younger and would be with you longer." In

gratitude for Kasmarcik's advice during Abbey Church's design, Breuer provided him with a design for his residence, as a gift.

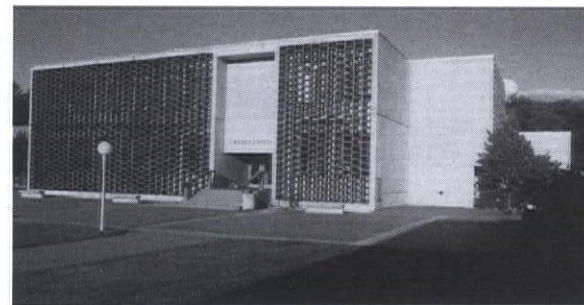
CSNA's design approach was "to listen, and remain silent, to discover what the architecture reveals." Hundreds of photographs were taken of Breuer buildings on campus. Working drawings were studied, for both built and unbuilt Breuer projects at St. John's. The Breuer Archive at the Syracuse University

Library in New York was consulted, which included study of the working drawings for Breuer's Whitney Museum in New York.

According to CSNA, preconceptions of how buildings are assembled and detailed were eliminated—what matters is how Breuer executed a building. Poured concrete was used with site-cast pieces from site-built formwork. This technique, according to CSNA, demonstrates the classic design move of grouping all similar uses in a box, and pulling out what doesn't belong.

The box was articulated in site-cast concrete with flue-tile screens. What didn't belong—an auditorium—was pulled out and sheathed in granite. In the design of the addition, CSNA used precast concrete wall panels in similar sizes and proportions to the Science

Center. The panels were then articulated with reveals identical to those which reappear throughout Breuer's documents and buildings.

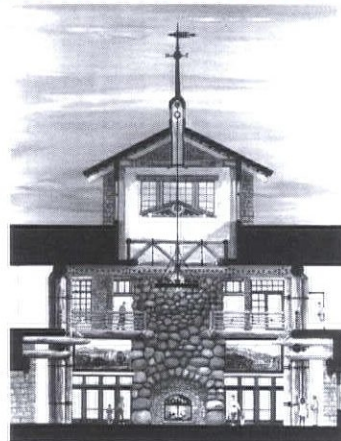


St. John's University, Science Center

Breuer was a master of the reveal and CSNA adhered the two-story entry cube, sheathed in granite. The truncated copper dome relates to the copper roof of the St. John's University student center, executed by CSNA's local associate, Rafferty Rafferty Tollefson of St. Paul, Minnesota. Immediate context—Breuer. Campus context—copper sky terminus. Materials of extreme durability—poured concrete, precast concrete, granite, copper—are appropriate for extreme Minnesota weather, and for the timeless milieu of a monastic order that has thrived since the 6th century.

St. John's Science Center; 42,000 GSF, \$5.6 million CSNA Architects, in association with Rafferty Rafferty Tollefson; Bid Date: June 12, 1997; Completion Date: August 7, 1998.

A VIEW FROM THE TOP: THE NEW PIKE'S PEAK SUMMIT



The Summit House by Clifford Taylor, Architects featuring the "American Rustic" look

July 4th marked the kick-off of the campaign for America's Mountain - Pikes Peak. More than 600,000 visitors reach the top of the Peak yearly. Visitors are greeted there by the current Summit House, held in place by 40 industrial jacks.

A multiyear, \$40 million fundraising effort is underway to not only build a new summit house, but also make necessary erosion, drainage and road

[See VIEW on page 6]

[VIEW from page 5]

improvements to the Pikes Peak Highway. Funds will also support interpretive and educational opportunities for visitors.

Clifford Taylor, Architects, AIA, was chosen by the City of Colorado Springs to lead the design team. After careful study of thousands of slides, and site visits to several of the national parks and lodges, the City chose to follow the "American Rustic" or "National Parks" style. This style, according to City officials, most appropriately reflects the history and grandeur of the entire Pikes Peak Corridor.

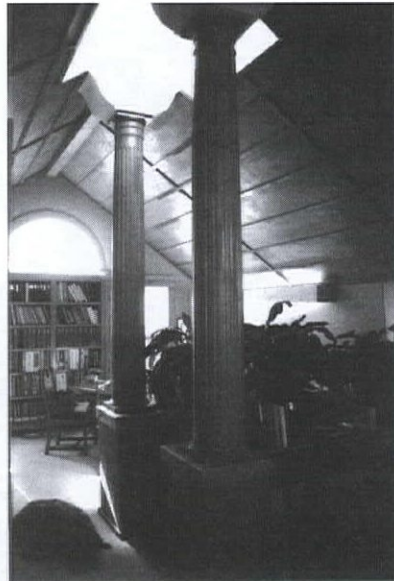
Stephen Mather, first director of the National Parks Service, together with Gilbert Stanley Underwood, et al., were the originators of this rustic style. The Forest Service also adopted this "traditional design vocabulary."

The new Summit House site offers a myriad of design and engineering challenges. A passive cooling structural design (suggested by studies at the University of Minnesota) is planned to stabilize and protect the fragile permafrost environment at the summit. The project is also being designed to maximize prefabrication opportunities and minimize work at the top, where altitude and oxygen become factors in worker safety and productivity. Weather permitting, the City hopes to have the new Summit House open for the 2000 season.

SOLE PROPRIETOR NOT REALLY GOING SOLO

Many architects dream of having their own firm; for J. Mark Nelson, being a sole proprietor does not mean being completely on his own. His wife Gloria, manages the small office, from book-keeping to final checks on plans.

Together, they buck several truisms about architectural practice in Colorado Springs: "You can't survive doing houses," "You need to hire a bunch of people to do the work for you," "Pencils, maylines and electric erasers are obsolete," "You can't work out of your house."



The J. Mark Nelson, Architect office/carriage house.

J. Mark Nelson, Architect has been featured in two architectural magazines. The firm has also garnered design awards such as an Award of Merit "generously given by the chapter for a relocated and recycled carriage house," which also happens to be



This English-style home won the Colorado Home First Place Award.

Nelson's office. AIA Colorado honored Nelson in 1995 with the Housing Colorado First Place Award for an English-style house in the Old North End of Colorado Springs.

"Fun and interesting projects continue to find us," said Nelson. "Like two education centers for the City of Colorado Springs—historic Rockledge Ranch and Sondermann Environmental Program Center, which is earth-sheltered and sustainable-designed." The firm has handled many diverse projects, including Historic Preservation guidelines and a city-adopted Master Plan. "Sometimes we get to create just for the fun of it—like building a park and pavilion for our neighborhood school out of a patch of asphalt, or moving an old log cabin up to a lake in the mountains."

"I guess I'm thankful for the challenges, like being able to test the truisms, and I hope we can continue to give it a go, with the help of our junior staff: Cassie, Nick, and the office dog, Ginger. Now if I could just hire a bunch of people to do the work for me..."

JEAN SEBBEN ASSOCIATES
COMMERCIAL INTERIOR DESIGN

A UNIQUE PERSPECTIVE ON PEOPLE & SPACES

interior design
specifying
space planning
p.o. box 6388
co springs, co
80934
(719) 635-7133
fax (719) 635-7191

ART
HARDWARE

4001 Holly St. #17
Denver, CO 80216
303-355-8543
1-800-355-4229

**HP HEWLETT*
PACKARD
Authorized Reseller**

List Pricing Shown Call for Special Pricing!!

<p>HP DesignJet 750C Plus Color Inkjet Printer</p> <p>Fast, unattended color printing for networked workgroups</p> <p>U.S. list price: •C4709A (36 inch)—\$6,995 •C4708A (24 inch)—\$5,995</p> <p>Print Quality •Superior line quality •Near-photo-quality imaging •Color: 300 dpi (for images) 600-dpi-addressable (for lines) •Black: 600 dpi</p> <p>Performance •Final-quality 2-by-3-foot line drawings in about 4 minutes</p> <p>Highlights •8-MB RAM (maximum 72 MB) •Queuing, nesting, roll-feed and automatic cutter for unattended printing •Automatic cartridge alignment •AutoCAD and Microsoft Windows drivers included •Optional Adobe PostScript Level 2 •HP ZoomSmart scaling technology for large-format output from virtually any Windows application •Optional HP JetDirect network interface cards</p> <p>Warranty 1-year warranty with free onsite service Extended 3-year warranty: \$996 Yearly service contract: \$552</p>	<p>HP DesignJet 700 Monochrome Inkjet Printer</p> <p>Fast, unattended black printing for networked workgroups</p> <p>U.S. list price: •C4706A (36 inch)—\$5,495 •C4705A (24 inch)—\$4,495</p> <p>Print Quality •Superior line quality •True 600 dpi</p> <p>Performance •Final-quality 2-by-3-foot line drawings in about 4 minutes</p> <p>Highlights •4-MB RAM (maximum 68 MB) •Queuing, nesting, roll-feed and automatic cutter for unattended printing •Automatic cartridge alignment •AutoCAD and Microsoft Windows drivers included •Optional Adobe PostScript Level 2 •HP ZoomSmart scaling technology for large-format output from virtually any Windows application •Optional JetDirect network interfaces</p> <p>Warranty 1-year warranty with free onsite service Extended 3-year warranty: \$600 Yearly service contract: \$396</p>	<p>HP DesignJet 350C and 330 Inkjet Printers</p> <p>Affordable printing for individuals and small workgroups</p> <p>U.S. list price: •C4700A (36 inch)—\$3,495* •C4699A (24 inch)—\$2,695* •C4702A (36 inch)—\$2,995* •C4701A (24 inch)—\$2,195*</p> <p>Print Quality •Excellent line quality •Near-photo-quality imaging •Color: 300 dpi •Black: 600-dpi-addressable</p> <p>Performance •Final-quality 2-by-3-foot line drawings in about 6 minutes •Final-quality 2-by-3-foot black line drawings in about 5 minutes</p> <p>Highlights •Optional roll-feed and stand with manual cutter •Optional color upgrade kit for black only models •4-MB RAM (maximum 36 MB) •AutoCAD and Microsoft Windows drivers included •HP ZoomSmart scaling technology for large-format output from virtually any Windows application •Optional HP JetDirect EX network interface boxes</p> <p>Warranty 1-year warranty with free onsite service Extended 3-year warranty: \$600 Yearly service contract: \$336</p>
--	--	--

**Mention This Ad and Receive an Additional 2% Off
Our Already Low Pricing***

Call for Discounts on All Your Supplies!!

***new plotter orders only, expires 10/31/97**

The Natural Choice

International Marble & Granite has the largest selection of natural stone products available in Denver, with over 3,000 slabs in stock, 145+ colors of marble, granite, slate and limestone, and sizes ranging from 4" x 4" to 24" x 24".

**More options.
More creative solutions.
More than a great choice - it's the natural choice.**

IMG

**International
Marble & Granite
of Colorado**

(303) 722-2800 • fax (303) 722-1023 • 1-800-464-2511
852 South Jason • Unit 8 • Denver, Colorado 80223

For more information, call Kent Schweiss - V.P. of Sales & Marketing

HOME BUILDERS
ASSOCIATION
OF COLORADO

IIDA
International Interior Design Association



what they do:

support our ability to deliver continuing education programs to our members and promote the profession to our various publics

- FAIA Lecture Series
- Breakfast Seminar Series
- General Membership Meetings
- Architectural Registration Examination Seminars
- Annual Design Competition
- Colorado's Best in Residential Architecture Competition
- Leadership Development Programs

.....in appreciation of our corporate sponsors

Silver Gold

- Calcon Constructors, Inc.
- Gerald H. Phipps, Inc.
- Monroe & Newell Engineers, Inc.
- Altempee Glass, Ltd.
- Haselden Construction, Inc.
- IKON Office Solutions
- Norwest Bank, N.A. Colorado
- Rocky Mountain Prestress, Inc.
- Swinerton & Walberg Co.
- Vinyl Laminators, Inc.

calcon constructors, inc.

AIA Denver sponsor Calcon Constructors, Inc. recently completed Resource Management Systems as a turn-key freestanding building for a private owner.



Calcon prides itself on its ability to build unique structures.

Calcon and Klipp Colussy Jenks DuBois Architects have also started construction on another freestanding building for a private owner in Castle Rock, Meadows Crossing.

haselden construction, inc.

Haselden Construction boasts a 60 percent repeat-client base. According to the firm, this is because they deliver what they promise. Haselden's executive staff maintains a "hands-on" management approach. This is



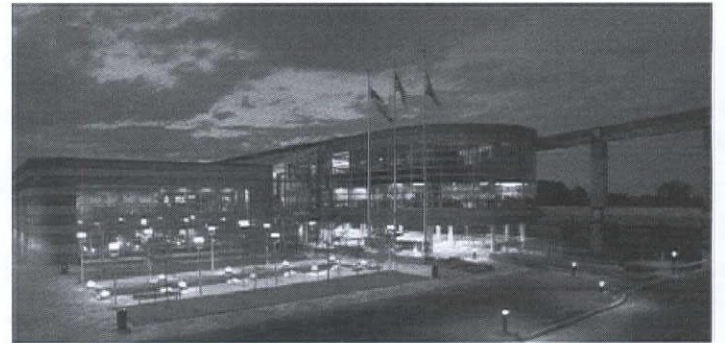
one of the many elements ensuring that each owner receives exceptional service. Established nearly 25 years

ago, the firm specializes in educational, healthcare, casino, hospitality, retail, multi-unit, office, and warehouse projects. Haselden's annual revenue totals \$100 million.

Haselden's dedication to owner satisfaction has enabled it to become Colorado's 5th largest and the nation's 304th largest general contractor. In addition, Haselden managed and built Colorado's third largest 1996 construction project by an in-state firm - Roaring Fork School District's \$37 million Capital Improvement Program.

monroe & newell engineers, inc.

Monroe & Newell Engineers, Inc., a full service structural engineering consulting firm, has offices in Avon and Denver, Colorado. The firm was founded in 1991 by Mr. William Newell, P. E. and Mr. Peter Monroe, P. E. with the consolidation of Design Structures, Inc. and Monroe Engineering Consultants, Inc. In six years, Monroe & Newell Engineers, Inc. has become one of Colorado's largest structural engineering firms.



and adaptive reuse, casinos, parking structures, recreation centers, apartments, ski area facilities including gondola terminals, and mountain top restaurants, affordable housing and bridges.

The firm provides structural engineering services on projects ranging from single family residences to mixed-use mega-projects. Project types include mountain resort lodges, office buildings, golf course clubhouses, office warehouses, historical renovations

Structural systems designed include wood, steel joists and beams, composite steel, reinforced and post-tensioned cast-in-place concrete, precast concrete, and masonry. Projects are located throughout Colorado, the United States and foreign countries.

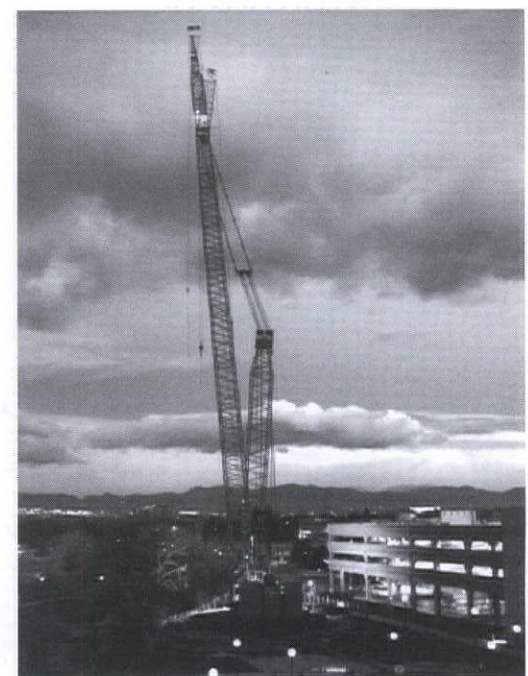
gerald h. phipps, inc.

Last September, Gerald H. Phipps, Inc. was awarded the contract for the expansion of the Cherry Creek Mall. Plans include increasing lease space, adding parking to the west deck, and building a larger Lord & Taylor store.

In October 1996, a Manitowoc 4600 Series IV Ringer Crane was reserved for the project. This crane was deemed the most effective method for the erection of the sixth level located at the west parking structure. The crane, one of the largest ever erected in Colorado (according to the supplier, Lampson International) is situated on the south side of the mall, adjacent to the creek. It reportedly weighs as much as 150 elephants and is being used to hoist the 21 ton precast concrete beams up five stories above ground and into place on top of the parking garage. The main boom extends 360 feet with a 120 foot jib and a 40 jib extension. It utilizes over one million pounds of counter-weight and required more than 9,500 feet of

wire for hoisting, with 2,000 feet of electrical wire just to keep the beacons running. All lifting work is being done at night to minimize the impact on mall customers.

Parts were assembled literally from coast to coast to erect this crane - from Washington state to Derry, New Hampshire, Houston, Texas, and Charleston, North Carolina. One rail car and 80 semi-truck loads of materials were collected to erect this 530-foot long form and 1 million pounds of counter weight. A 175 ton track and a 155 ton conventional crane, both substantial

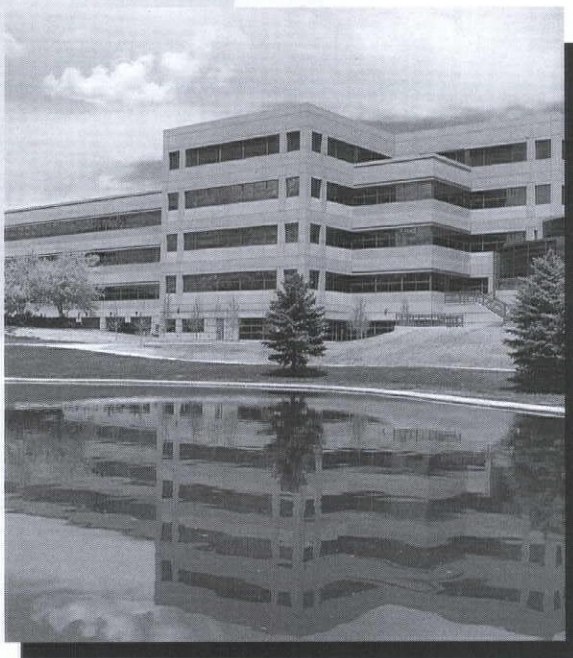


cranes on their own, were utilized for two weeks to complete assembly of the ringer crane.

The entire project will require many phases to complete. The parking deck and new Lord & Taylor store are scheduled for completion by November 1997.

A REFLECTION OF GOOD TASTE

Tri-State Corporate Headquarters



Architect: Michael Barber Architecture

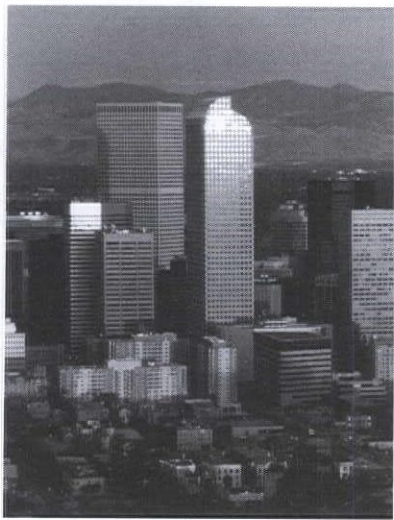
- Rocky Mountain Prestress' early interaction with design team helped maximize the economies of precast.
- 160,000 sq. ft. total precast structure utilizes architectural load bearing spandrels with two finishes.



Rocky Mountain Prestress, Inc.
5801 Pecos Denver, Colorado 80221
303/480-1111 FAX 303/433-0451

norwest bank, N.A. colorado

AIA Denver sponsor, Norwest possesses a community banking philosophy. "We are committed to the long-term success of every community in which we do business. We provide direct financial contributions, volunteer hours, in-kind services and event sponsorships with



the goal of improving the communities where we live and work.

Colorado customers benefit from the overall strength of Norwest, which is

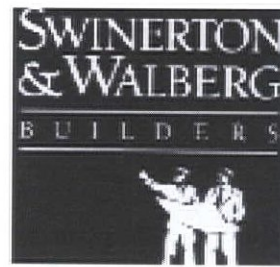
the 11th largest financial services company in the nation. The combination of local community involvement and local decision-making, and the resources of a \$83.6 billion company allows Norwest to provide the best banking services to their customers. "Our bankers offer creative solutions and customized pro-

grams to help you achieve your goals, and are dedicated to delivering our wide range of products conveniently and personally."

swinerton & walberg, co.

AIA Denver sponsor, Swinerton & Walberg performs best when their experienced construction personnel have early involvement in a project.

The firm believes in forming a team with the architect, consultants and owner to deliver the best possible project—within the owner's budget and schedule. Our proactive participation in estimating, scheduling and other preconstruction services



makes the entire construction process easier and more beneficial for everyone involved.

Swinerton & Walberg has been providing construction services in Colorado since 1942. These services include general construction, construction management, design/build, preconstruction, value engineering, estimating and scheduling. Our strengths lie in the areas of office building construction, education and high tech facilities, hotels and assisted living centers.

vinyl laminators, inc.

Vinyl Laminators has manufactured custom demountable wall systems for many of Colorado's leading buildings and facilities, since 1975.

Demountable wall construction is "the wall of choice" for many building owners and architects. Vinyl-wrapped walls last three to five times longer than paint and can save 40 to 60 percent over standard drywall construction. What's more, new demountable wall technology has leveled the initial

cost and aesthetics to that of standard drywall systems. Vinyl Laminators strongly believes with cost, the speed at which the wall can be constructed, environmental concerns and the changing business world, demountable construction will give the flexibility to meet today's tenant requirements. Vinyl Laminators is dedicated to helping the Colorado building climate continue on a strong and healthy pace.

rocky mountain prestress, inc.

Rocky Mountain Prestress is one of the world's largest producers of architectural and structural precast products. The architects of Colorado are unique to any other area having this hometown capability. Our beautiful Rocky Mountains provide us with an unlimited supply and diversity of aggregates and sand.

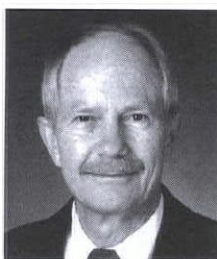
Rocky Mountain Prestress appreci-



ates the continued support of the AIA Colorado Architects.

MEMBER NEWS

Pahl-Pahl-Pahl recently hired four people in response to their growing project base: **Roger A. Maxwell**, architect; **Nadine Low**, intern



Roger A.



Nadine Low

management and construction documentation for the Army. Low will provide Construction Documentation for the Greeley

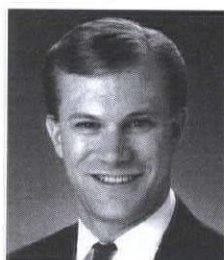


Katia Thomas

Air National Guard's Vehicle Maintenance Facility. Thomas is assisting with Construction Documentation for the Denver Amory. Brazee will assist with

the firm's hospitality projects.

Tim Papich was named Vice President of Preconstruction Services for **Howell Construction**. **Papich**



Mark Brazee

joined Howell Construction in 1986. He will direct the estimating and cost control functions, and will continue to serve as safety coordinator and network administrator.

Ronald Roybal, AIA and **Michael Roybal, AIA** of the **Roybal Corporation** were honored by the Denver Metro Chamber of Commerce. The firm, founded in 1981, was selected as the 1997 Minority-Owned Business of the Year.

The **Society of Design Administration** announced that **Karen Roman** of **Intergroup, Inc.**; **Sue Zen** of **S.A. Miro, Inc.**; and **Debra Massop** of **Barker Rinker Seacat & Partners Architects** achieved the Certified Design Administrator designation.

IMPORTERS OF TOP QUALITY CERAMIC TILES



We Stand On Our Quality.

For over twenty years, CAPCO has presented the state of the art from around the world with a heavy emphasis on ceramic lines from the finest manufacturers in Italy: Tagina, Rex, Kronos, Imolagres, Imola, Sichenia, City, Cedir, and more.

CAPCO offers the broadest selection in Colorado of glazed, and porcelain tiles, decorative tiles, and in-house custom hand painting.

CAPCO provides easy access to the trade with warehouses and showrooms in seven Colorado locations.

1-800-727-2272

Denver ■ Colorado Springs ■ Boulder ■ Fort Collins
Avon ■ Basalt ■ Grand Junction ■ Las Vegas, Nevada

CHAPTER NEWS

1997-1998 BOARD NOMINATIONS

In September, the membership of AIA Denver will vote on nominations for chapter officers for 1997-1998.

We believe it is important to get a good cross section of our membership to achieve representation of the many facets of our profession -- and towards that end, we are encouraging any AIA member to express your interest in one of the following positions: *President-elect, Vice President, Secretary, Treasurer-elect, or Director.* Please call **daphne r. scott-monroe, Assoc. AIA** at **303.446.2266** if you have any questions about the positions and to express your interest. Nominations are due by August 8, 1997.

- **Step up to the plate!**
- **Be counted!**
- **Express your opinions!**

Our membership is growing and we all need to get better acquainted. I am committed to a year that concentrates on our membership by: 1) encouraging architectural dialogues, 2) public exposure to issues of planning and architectural importance to Denver and Colorado, and 3) educational and social activities.



Let's have fun!

Mike Jacoby, AIA
1997 President-elect, AIA Denver

DENVER PRESIDENT'S MESSAGE

I am writing this letter having just returned from a trip to Europe and a brief stay in Washington where I participated in the Universal Accessibility Conference jointly sponsored by AIA and the Access Board. I used public transit facilities in Barcelona, Paris and Washington, and stayed in the kind of urban neighborhoods that James Howard Kunstler writes about in *The Geography of Nowhere*. In reading Kunstler's book, I noted that architects who promote the "new urbanism" seek to reproduce these urban neighborhoods in America as an antidote to our current exaggerated dependence on the automobile.

Upon returning to Denver, I found editorial debates in our newspapers about the value of the RTD "Guide the Ride" initiative scheduled for a vote in November -- a discussion that is just beginning to heat up! If "Guide the Ride" is funded by the voters in November, RTD plans to build a commuter rail line from Golden, through downtown Denver, to DIA along with light rail lines to serve the west, southwest and south-east corridors. Our legislature has led the way by authorizing this referendum. Now in planning and building for the future we can choose to commit to light and commuter rail solutions or to increased highway investment. Highways will exacerbate our problems of air pollution, traffic congestion and suburban sprawl. As a profession, we should take a stand on this issue.

Last fall when I proposed a Chapter initiative to the AIA Denver Board, I sought a vehicle through which AIA Denver members could make a contribution to civic design--public transportation was the farthest thing from my mind. An opportunity for

such civic involvement has now presented itself. AIA Denver has been approached by TransitWest -- a group of citizens advocating for light rail along the west corridor. They have invited us to contribute to the dialog about public transit, and to influence the design of RTD stations -- facilities that will affect the fabric of neighborhoods along the west corridor, the old Associated Railroad line between downtown Denver and the Cold Spring Park-n-Ride facility.

AIA Denver has committed to doing this by co-sponsoring, with

TransitWest, a two-day Denver Design Assistance Team (DDAT) just before the election. RTD has agreed to join in the effort and Lakewood planning and transportation officials are on board. The purpose of this community-based event is to engage with the public in developing design standards for public transit stations. These standards should influence station design throughout the proposed system. If you're interested in participating in the DDAT, please call me at 321.1726.

- Peter Orleans, AIA
1997 President

CONSTRUCTIVE ideas in design

United Services Automobile Association

<p>OWNER: USAA (UNITED SERVICES AUTOMOBILE ASSOCIATION) COLORADO SPRINGS, CO</p>	<p>ARCHITECT: ERNEST HANCHEY, HKS INC. DALLAS, TX</p>	<p>STRUCTURAL ENGINEER: CAMPBELL & ASSOCIATES CONSULTING ENGINEERS INC. DALLAS, TX</p>	<p>GENERAL CONTRACTOR: AUSTIN COMMERCIAL/PINKARD CONSTRUCTION JOINT VENTURE DALLAS, TX/DENVER, CO</p>
---	--	---	--

STRESSCON
ARCHITECTURAL AND STRUCTURAL PRECAST CONCRETE
www.stresscon.com

Proudly supplying architectural and structural precast concrete products to Colorado for over 25 years.

Colorado Springs Office
3210 Astrozon Boulevard
Colorado Springs, CO 80910
719-390-5041
Fax 719-390-5564

Denver Line
623-1323
Denver Sales Office
303-777-0977
Fax 303-771-1270

ON THE BOARDS

Abo•Copeland Architecture, Inc. of Denver and Boulder is proud to have been selected as the architectural design team member for the Curtis Park HOPE VI community revitalization project. The team includes representatives of the Curtis Park community, the Denver Housing Authority, the Denver City Planning Department, the Integral Group. L.L.C. (developers of the first successful HOPE VI project in Atlanta), Urban-Collage, THK Associates, Inc., among others. When the project is funded by HUD, this team and others will continue working to bring significant urban design improvements and housing opportunities to this important in-town neighborhood.



- AutoCAD sales, service and training
- CAD hardware & software
- Authorized Softdesk Dealer
- Authorized Arch T Dealer
- Networks
- AEC Medallion



Three National Awards as a Top 10 AutoCAD Dealer for
Customer Service and Support

Building a Future

The Design Technology for the Built Environment program at University College emphasizes interdisciplinary teamwork, communication, technology, and skills needed for professional success in the fields of:

- | | |
|-----------------|------------------------|
| Architecture | Planning |
| Engineering | Landscape Architecture |
| Interior Design | Facilities Management |

Two certificates are available:

- Design for a Sustainable Environment
- Technology of Building Design

These certificate programs are flexible, allowing students to pursue diverse individual and professional goals, and take between 12-18 months for completion.

Fall registration begins August 4.
Fall quarter begins September 8.

- Building Process
- Introduction to Design for a Sustainable Environment
- Regulatory Issues for Design Professionals

All of our classes meet nights and you can register by phone or in person.

For more information, please call (303) 871-3155, ext. 549.



UNIVERSITY COLLEGE
University of Denver

© 1997 University College, University of Denver. All rights reserved.



AIA



1997 AIA COLORADO NORTH CHAPTER BOARD OF DIRECTORS

- PresidentMark Quéripel, AIA
- President-Elect..Stephen Loos, AIA
- Past President....Marvin J. Sparn, FAIA
- Secretary.....Rebecca Spears, AIA
- TreasurerJ. Erik Hartronft, AIA
- Treas.-Elect.....Randy Giseburt, AIA
- Director.....K. David Carson, AIA
- Director.....Ron Goodman, AIA
Emeritus
- Director.....John Sohl, AIA
- Director.....Jim Cox, AIA
- Assoc. Dir.....Shawn Gaither, Assoc. AIA

WHICH HAT DO YOU WEAR?

—Mark Quéripel, AIA

During my formative years, I experienced and enjoyed many different jobs. I was an auto mechanic, art dealer, house painter, framer, display designer, grounds keeper, scout leader and caddy—all while dreaming of becoming an architect. Through grade school, high school and college, I wanted to be an architect.

My parents, both interior designers, had several architect friends and our family life orbited around design. Despite this, my ideas about architecture were pretty simplistic. Architects design beautiful buildings. Not until several years after graduate school did I understand the diversity of careers open to architects.

When my partnership split in 1984, I was somewhat disillusioned and dissatisfied with architecture. I wanted more. I wanted more control and better projects. A friend at Opus, who was a successful developer, offered some advice. He said unless one could understand the business of another, no control could be exerted. Given his own success, I asked him specifically how he thought I could improve myself.

My friend referred me to Coldwell Banker Commercial Real Estate. They would train me to “sell.” Sell? I wanted to understand development and how

corporations decided upon the firms they hired. Was this what I wanted?



Mark Quéripel, AIA

In 1985, I landed a job at Coldwell Banker. They sent me to their training school. They sent me to IBM sales training courses and financial analysis classes. I pored over market data, demographics, corporate profiles, etc. We rookies made 50 cold calls a day and recorded each one. We toured facilities and learned facility analysis. We learned how to write sales contracts, lease agreements and options.

At the time, I believed my architect friends thought I had sold out. This was not the case at all. In fact, I soon became a resource for several architectural firms. Basically, I had access to information. I had broadened my value. The light bulb went on. Now

I understood information was only half the formula, the other half was communication.

The next few years I observed interactions between corporations and their architects. Successful architects understood their clients' business and business needs, and were able to effectively communicate that understanding. I also became aware of how many architects had followed diverse career paths. Some were in-house architects, others were facility directors. Many of the architects we worked with were space planners, while others were interior designers, system furniture representatives and structural engineers.

As a co-owner of a design and build firm, I recognize the education and training we received as architects is incredible. My perspective of architecture has broadened as has my passion for design. Analytical problem solving and future vision are invaluable in all businesses. Architects become teachers, CEOs, attorneys, developers, land planners, facility planners, furniture designers, set designers, rock stars and ranchers. Architects have the capacity to pursue any career path they choose if they are willing to assimilate new information and communicate well their value. Architecture as a profession is not shrinking; it is coming of age.

NEW MEMBERS

- Amy Britton, Assoc. AIA
Britton Design Collaborative, LLC
- Harry Hunt, Assoc. AIA
Barret Steele Architects
- Edward Taisarsky, Assoc. AIA
High-Point Rendel

MEMBERSHIP NCAR TOUR

—Stephen Loos, AIA

Some 17 North Chapter members and guests took advantage of an opportunity to tour the National Center for Atmospheric Research building on the evening of June 17th and earned a few continuing education credits as well. The tour, conducted by Acting Staff Architect, Michael George took us “off the beaten tour path” to many areas not frequently visited by the public—the laboratories, the office areas, and the “back of the house” service and mechanical areas. It was an excellent tour and the North Chapter extends a warm thank you to Michael George for arranging and leading it. We all came away with a more thorough understanding of the building, its history, and its idiosyncrasies.

The tour was especially timely because NCAR is in the midst of an effort to secure Federal funding to take care of years of “deferred maintenance,” which has really taken its toll on the building. Completed in 1966 for \$5.5 million, the 193,000 square foot (\$28.50/s.f.) building has been internally modified countless times with a continuing need to update its facilities to meet new technologies and mission demands.

In many respects, the I.M. Pei design has not proven to be especially “user friendly”—low floor-to-floor heights, inadequate office and lab spaces, little room or flexibility in routing services and wiring, inadequate HVAC, etc. Externally, the bush-hammered concrete and limestone aggregate readily

absorb moisture with attendant freeze/thaw spalling and cracking. In short, the building needs \$17 million worth of work just to bring it to a point where regular future maintenance can have an impact.

There should be no doubt that the building deserves every penny it can pry loose from the Feds. Much has been made of the distinctive design with its Mesa Verde cliff dwelling influences. Whether you agree with Pei's assertion that the building seeks to join with the natural setting rather than competing with it or with those who see it as an inevitable manmade affront to the beauty of the Flatirons,

[See NCAR on page 12]

FURNITURE BY AN ARCHITECT

—Ron Goodman, AIA Emeritus

More than 30 years ago, I received my degree from Pratt Institute. Three years ago, I moved to Colorado and, with my partner Fritz vonValtier, started R. G. Valtier, Inc., a high-end custom wood shop employing four people. We bid work for architects and are now installing two custom kitchens—one in Boulder for Cooney & Morie Associates AIA, another in Breckenridge for a custom builder.

How, you may ask, does an architect evolve into a cabinetmaker? While attending Pratt, I worked at an upscale cabinet company, producing shop drawings. Through that job, I met the manager of the Knoll Planning unit and was soon working for Florence Knoll. One of my more interesting projects was the design of a folding table for Mrs. Knoll's personal airplane.

In the 1960's, I became a senior designer for Skidmore Owings and Merrill in New York. We developed an open, three-sided cubicle, incorporating a desk, files, shelving and storage. The unit consisted of modular, flexible components and was one of the first "open office" projects. Beekman Downtown Hospital, Oswego State University and numerous office buildings kept me busy.

In 1970, I began my first practice and eventually formed Adler Goodman Kalish, Architects/Engineers, a small firm with a government and corporate practice. By the mid-1980's I had built several homes for my family. I usually designed and built all of the furniture and built-ins.

The AIA Colorado Gallery space recently featured a large redwood bench we produced. We installed and built an intricate oak screen for a Longmont bank; and last year, we completed a large solid walnut desk from old boards kept in our client's garage for 15 years. R.G. Valtier is also producing a colorful line of children's furniture.



White lacquer bookshelves and storage for Boulder residence.

I am also one of several owners/writers of a new monthly newspaper in Niwot, *The Left Hand Valley Courier*, and I serve on the AIA Colorado North Chapter Board.

[NCAR, from page 11]

most agree that the building is an architectural icon, a unique world-class building that was largely responsible for putting Colorado on the architectural map when it was completed. The building complex and its incomparable setting on Table Mountain are Colorado treasures that deserve our best efforts to preserve and protect them. As the building is now 27 years old, it should be high on our state list for the 25-year award.

PARTNERS OF THE COLORADO NORTH CHAPTER

The Colorado North Chapter welcomes some new Partners and extends its thanks to its past Partners, many of whom have signed up for another year.

Corinthian

- * Pro Door & Windows, Inc.
123 North College Avenue
Ft. Collins 80524
(970) 482-7887
- * Vinyl Laminators, Inc.
1355 South Huron Street
Denver 80223
(303) 733-2476
(increased participation level from Doric for 1997)
- JVA, Inc.
1319 Spruce Street
Boulder 80302
(303) 444-1951
- Saunders Construction, Inc.
P.O.Box 3908
Englewood 80155
(303) 699-9000

Ionic

- * Boulder/Denver Couriers
1200 Pearl Street, #40
Boulder 80302
(303) 938-6887
- * Boddington Lumber/Marvin Windows
150 West 60th Place
Denver 80216
(303) 427-9333
- * Creative Concrete Designs
9753 Carr Circle
Westminster 80021
(970) 423-0578

- * CTL Thompson, Inc.
1971 West 12th Avenue
Denver 80204
(303) 825-0777
- Scale Builders, Architectural Model Building Service
511 Mattheus
Ft. Collins 80524
(970) 224-5653
- TW Hartmann, Inc.
748 Whalers Way, Suite 204
Ft. Collins 80525
(970) 229-0031

Doric

- * Bertram & Associates
P.O.Box 6223
Denver 80206
(303) 871-9300
- * McGuckin Hardware
2525 Arapahoe Avenue
Boulder 80302
(303) 443-1822
- * Terracon Construction Western, Inc.
301 North Howes Street
Fort Collins 80521
(970) 484-0359
- * Mr. Mathias Thurmer
2129-F 13th Street
Boulder 80302
(303) 447-0956
- * Western Allied Systems
P.O.Box 16382
Denver 80216
(303) 289-4601
- * 1996 Partners renewing for 1997
- * New Partners added this year

ArapahoeSignArts

- Materials Specialists
- Carved & Blasted
- Directories
- Monuments
- Dimensional
- Silkscreen
- ADA

303.762.1915 fax 303.761.6914
2823 South Broadway, Englewood CO 80110
Members AIA, SEG, AIGA

1997

AlpenGlass

Technology

Update...

- R-5 to R-8 Insulation
- 99.5% UV Blockage
- Super-Cool, Low-Reflectivity Clear Glass
- Monumental Picture Windows - to 6' x 12'
- Condensation Freedom - to 35°F below zero
- "Tuned" Morning Solar Gain - Afternoon Solar Rejection
- Full European AlpenView Window Line - Boulder Factory
- 16-Year History of Expert Architectural Assistance
- 15-day delivery (vs. months from competitors)
- Commercial / Residential / Institutional

(800) 882-4466 or (303) 530-1150

ALPEN
ALPENGLASS/HEAT MIRROR
5400 Spine Road • Boulder, CO 80301
Fax (303) 530-1753/(800) 321-1753

BLUEPRINT, IMAGE & DESIGN, INC.
A WOMAN OWNED SMALL BUSINESS

August and September '97

• **Monthly Special** •

Bluelines - Stapled & Bound @ \$.08 per square ft.

24 x 36 \$\$.48 per sheet
30 x 42 \$\$.72 per sheet
36 x 48 \$\$.96 per sheet

• **Weekly Specials** •

Week 1	Color Copies (off Glass)	8' x 11 11 x 17	1-Sided \$\$.80 ea. 1-Sided \$1.60 ea.
Week 2	Color Posters laminated & mounted (from digital files) (48 hrs. turn around time)	24 x 36 30 x 42 36 x 48	\$60 ea. \$80 ea. \$110 ea.
Week 3	Large Document Scan to Bond \$\$.20 per SF	24 x 36 30 x 42 36 x 48	\$1.20ea. \$1.80ea. \$2.40ea.
Week 4	Plotting from .DWG file (Bond or Vellum) \$1.15 per SF	24 x 36 30 x 42 36 x 48	\$6.90ea. \$10.35ea. \$13.80ea.

High Speed Xerox Copies

8' x 11 on 20# white bond
(Excludes litigation copying)

1-Sided \$.03ea.
2-Sided \$.05ea.

Minimum Order - Will Call \$10.00 / Pick up & Delivery \$15.00
Call for Special Pricing on High Volume Jobs or Project Pricing
1130 W. Virginia Ave. Denver, CO. 80223
(303)•744•2900 FAX (303)•744•2610 E-mail BID@IX.NETCOM.COM

AIA Colorado West Chapter 1997 Officers

Executive Officers

- PresidentShira Geller, AIA
970.925.5444
- President-Elect...Suzannah Reid, AIA
970.920.9225
- TreasurerSkip Doty, AIA
970.945.8306

Area Coordinators

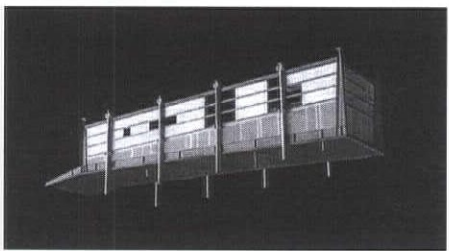
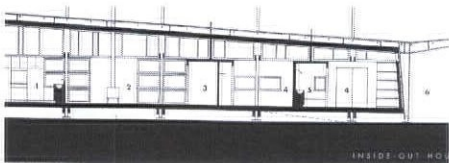
- Steamboat Springs..Bill Rangitsch, AIA
970.879.0819
- MontrosePatrik Davis, AIA
970.249.5404
- DurangoDean Brookie, AIA
970.247.1336
- Grand Junction ..Gary Vanderwood, AIA
970.242.0845
- AspenSteven Buettow, AIA
970.925.5968
- TellurideCraig Melvin, AIA
970.728.5251
- VailAndrew Abraham, AIA
970.476.5105

We are still looking for people to be involved. If you have any interest, call Shira Geller, AIA at 970.925.5444.

PROFILES OF AIA COLORADO WEST CHAPTER 1996 AWARD WINNERS

Following is the first of a four-part series of firm profiles. Each award winner from our 1996 awards program, held earlier this spring, will have the opportunity to talk about the winning project and the firm's work and philosophy. The first two firms profiled here were awarded Citation Awards by the Jury, chaired by Les Wallach, FAIA, of Tucson, Arizona.

Willis Pember Architects, Inc. was awarded a Citation Award for the Inside-Out House, an unbuilt, 1,000 square foot housing prototype. Assembled from a "kit of parts" and capable of being mass produced, it employs prefabricated construction components that could be shipped to the site and assembled in a short time. The jury found this project to be unique in its approach and "off the shelf" nature.



Inside-Out House, by Willis Pember Architects, Inc.

What was the motivation behind creating the Inside-Out House prototype?

This project was a response to a client's difficulty in building a home for themselves. Due to circumstances beyond their control, they were forced to spend construction funds extricating themselves from legal problems surrounding the project. In the end, they felt they could only afford a manufactured home. The presumption was that architects are not a "good deal" and are a poor choice from a consumer's point of view, in a market with a variety of pre-built or kit-built options to choose from.

I took this as a challenge. I think architects need to address the possibility of broadening their role by understanding the economic disincentives toward their involvement and the possibility of mass production as a way to provide

the value of their work to the average consumer. This is essentially the dream of modernism at its inception.

Who do you see as the 'client' and in what context might the house reside?

As mass production implies, the "client" would be anyone interested in purchasing one, ideally many, units. The question of context is interesting and has two sides. Recently, the planning profession has "gotten religion" and consistently looks at manufactured home sites as negative examples of "community." The dogma is a little hard to take.

Locally, these places are where the struggle for community is won or lost given the skewed nature of resort area economics. The Inside-Out House consciously addresses a specific set of local circumstances. At the same time this project is a generic enclosure and revisits the notion of universal space. To that extent, the context is open-ended and the product infinitely responsive to a variety of uses; a weekend house, an office, a small gallery, etc. Additionally, I think of its construction as a paradigm for the way most buildings are built in this country today—a steel frame with layers of finishes attached.

Anything else we should know about construction, materials, or philosophy?

Yes, the conception of the project derives from an interest in ephemeral constructions found in the landscape and normally passed over as sources of formal "inspiration"—fences, piles of hay, landscape elements evocative of place, but not buildings per se. The making of this project tries to synthesize these experiences in specific ways. For example, there is a explicit dialog

between the two expressed structural systems. The first consists of wooden posts and is suggestive of the balloon frame and traditional "western" construction techniques. The second is the steel frame and is the main ingredient in our current vernacular landscape.

This thinking typifies the way our office attempts to assign meaning and value to essential architectural elements—geometry, enclosure, structure—in an effort to manipulate the language of its making into a coherent and relevant dialogue.

How does the creation of this project inform other client-driven projects you are currently working on?

Quite directly actually, the client's participation becomes another voice in the dialogue. They are usually quite receptive to architectural ideas that directly address the circumstances of their lives. Some clients have "Raum Plan" personalities, others are "Free Plan" types—all respect the power of architecture to transform their lives in positive and meaningful ways. I tend to reject the idea that client desires and meaningful architecture are somehow mutually exclusive. On the contrary, they support each other and are quite inseparable.

Willis Pember Architects, Inc. is an office committed to the practical application and investigation of theoretical positions. Our work currently involves an even mix of urban and non-urban residential projects. Willis Pember, AIA apprenticed with Robert Venturi in the 80's and has been practicing in Colorado for the last five years.

[See PROFILES on page 14]

NEW MEMBERS

- Martin Ellrick, PA
El Rey Stucco Company, Inc.
- Michael Oney, AIA
Fawhaus, Inc.
- Kevin Milan, Assoc. AIA
Milan Architects

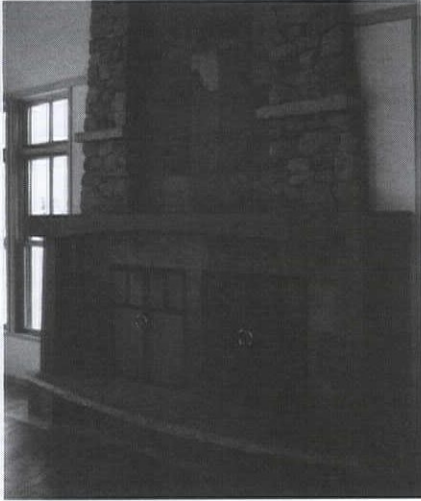
TRANSPORTATION CONFERENCE

The American Society of Landscape Architects, Colorado Chapter is hosting the "Kinetic Community/Transportation Conference 1997" to address Colorado's transportation explosion. The event is scheduled Friday, September 19, 1997 at The Pines in Genessee Events Center. International designer Paddy Tillet, FAIA of Zimmer Gunsul Frasca, Portland, will give the dinner address. Other featured speakers include Colorado transportation policy facilitator Jim Charleir, who will address new technology; Chris Duerksen of the Chicago/Denver firm of Clarion Associates, who will discuss Metro Vision 2020; and Dan Mariott of the National Trust for Historic Places, Washington, D.C. with John Whiteman of New England/Boulder firm Whiteman & Taylor, will address "Gateways and Byways."

For more information, contact Mark Tabor, ALSA Colorado chapter vice president of programs, 303.969.2493.

[PROFILES, from page 1]

Hagman Architects, LTD, of Basalt, Colorado was awarded a Citation Award for the **Weil Residence**, a 3,500 square foot single-family residence in



Weil Residence Interior Detail

home reflective of the area, not too rustic, but inviting, complemented the eclectic character formed by the unique, yet casual marriage between the two models. The only real aesthetic directive was: Not Modern!

Were there any obstacles to the process?

The site was very fragile and steep. It was one of the original Wood Run sites, circa 1966, and had not been planned for ease of access for vehicles. It required several studies, site plans, and options to get it right. The client's requirements for outdoor areas presented the particular challenge of how to make viable exterior space carved out of the steep slope. Topped off with significant budget constraints (\$175/square foot), the project demanded careful study and consideration throughout.



Entry of Weil Residence by Hagman Architects, LTD

Snowmass, Colorado. Located on a steep north facing site within a grove of mature aspen trees, the program called for a strong connection to the site and the views; an open and grand living area that serves both social and intimate gatherings; and intimate outdoor spaces. The Jury particularly appreciated the level of detail in the structure, both interior and exterior, in this project.

How did the client find you or vice versa?

This client was referred to us through another client, who had enjoyed working with us and was happy with their home.

What was the approach to the design of the Weil Residence?

The concept was influenced by the uniquely American Cottage and Bungalow styles of the mid-20th century. These types of homes blended together, fulfilled the goals set forth by the client and ourselves for this project. They are both typically self sustaining structures of moderate size with simple, clean materials and colors. Our approach responded to a number of factors, including a modest budget and a steep site. The client's desire for a

Other things we should know about the process or project?

It was a constantly enjoyable process and the clients were great people to work with, we became friends.

A sensitive approach to clients' desires, design tailored to the site, creative use of materials, innovative detailing, and over 25 years of experience, makes Hagman Architects, LTD an award winning firm. Providing the highest level of full service, our firm specializes in custom residential, commercial, multi-family, and resort accommodations.

OTHER ROADSIDE ATTRACTIONS: BOUNDARIES

—Skip Doty, AIA

Ever since the Gulf War, our society has talked about drawing lines in the sand. In reality, we have been drawing imaginary lines in the dirt for centuries. I always found it amazing when I lived in Alaska and had to drive across the Canadian Border that this country had clear cut a 30-foot wide swath for over 1,000 miles to mark the border. Closer to home, there have been lines drawn in the sand or cut in stone as happens between the states of Colorado and Utah.

Just as there are boundaries between states, there are boundaries in the professional world. Because architecture is such a multi-faceted profession, we often find ourselves wearing many different hats during a job. As our award winners have demonstrated, we often have to cross the boundary of expectations to bring the project to fruition. I would like to ask you as architects: What are your boundaries, and what are you doing about them?



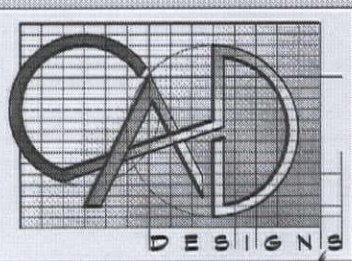
Victorian Stairs

& Woodworking, Inc.

“PEOPLE ARE STARTING TO STAIR”

Stairs • Mantels • Moulding

Dave Preston • (970) 984-2641
P.O. Box 976 • New Castle, CO 81647



CAD FOR THE PROFESSIONAL

Graphisoft® Authorized Reseller & Trainer

ArchiCAD® 5.0

for Architects in the Information Age

We specialize in ArchiCAD sales, training, and support. Call for more information on seminars and the services CADD designs provides.

CADD designs
Your ArchiCAD® Source


CADD designs • 650 Loveland St. • Golden, CO 80401
(303) 384-9336 • Email: KWichmann1@aol.com

■ ■ ■ ■
 Vail
 Aspen
 Denver
 Ridgway
 Boulder
 Telluride
 Crested Butte
 Breckenridge
 Steamboat Springs

thurston
KITCHEN ■ BATH

Everyone understands the importance of a first impression. At THURSTON KITCHEN & BATH, we know how to make it last.

DENVER SHOWROOM • 303/399-4564
BOULDER SHOWROOM • 303/449-4001



Celebrating Twenty Years of Lasting Impressions

[CONFERENCE, from page 4]



AIA COLORADO AWARDS GALA AND USO PARTY!

On Saturday night, in addition to bestowing AIA Colorado's most prestigious awards—Architect of the Year, Firm of the Year, Contribution to the Built Environment, and 25-Year Award—we will be celebrating in Big Band style with a live band, musical review and dance floor, complete with army-USO theme decorations! Don't miss out on this spectacular event. We expect more than 400 people, so this is sure to be the party of the year!

UNIQUE EXHIBITOR EVENT

This year, instead of booths, we are selling "lots," which the exhibitors will actually build. Come prepared to learn about all the new and exciting materials, product lines and technologies available to the profession!

SLATE OF CANDIDATES ANNOUNCED

AIA Colorado is pleased to announce its slate of candidates for 1998 offices:

- President-elect:
- Mark Quéripel, AIA; North Chapter
 - Ned White, AIA; Denver Chapter
- Treasurer-elect:
- Jim Cox, AIA; North Chapter
 - Saundra Spaeh, AIA; West Chapter
- Secretary:
- Ron Goodman, AIA; North Chapter
 - Lisa Haddox, AIA; Denver Chapter
- Assoc. Director:
- Linda Purcell, Assoc. AIA; Denver Chapter
 - Sara Meskin, Assoc. AIA; Denver Chapter

The President-elect and Treasurer-elect are two-year terms, with the second year serving as the President or Treasurer; the Secretary and Associate Director each serve one-year terms. Watch for your ballot to arrive in mid-August.

AIA Colorado Bylaws require a 15-day period whereby nominating petitions (signed by not less than five eligible voting members) may be returned to AIA Colorado placing in nomination one or more candidates other than those listed above. For information on filing a nomination petition, please contact Ron Abo, AIA, AIA Colorado President-elect at (303) 830-0575.

[FORT LEWIS, from page 1]

of the economics of construction, will drive the addition of buildings of more than two stories, reinforcing the "interior" open spaces of the campus and contributing to a visual hierarchy and variety of experiences among and within the buildings.

Another aspect of this issue, is the entry to the campus. Currently, entry takes place wherever the parking intersects the open space, providing no logical way to enter into the internal pattern of the campus. The new circular courtyard at the Concert Hall will ultimately serve as an entry, but most like-

ly only for that group of buildings, since it is, for the most part, the public destination.

As is so often the case, economics and facilities management drive the design of the buildings themselves and the campus as a whole. While these are important considerations, the essential elements of design are sometimes left to fend for themselves and achieve success only by chance. Individual building architects are able to identify issues and provide localized solutions for those larger scale concerns, however, those solutions must be allowed to inform the whole. Many times design can successfully take place on this

"subconscious" level. Some of the right solutions will come out of the process of maintenance, upgrade, and construction. But it may be important to have a spokesperson (an architect, for example) for those concerns as part of the planning process. Not necessarily someone who will overlay a new logic on the whole, but someone who can find those subtle elements of architecture that will tie the whole together and clarify the underlying structure.

Fort Lewis College has the basis of a good campus plan, the challenge now will be to discover how to make the small moves that allow it to reach its full potential both architecturally and academically.

The author thanks Mr. Al Mages, Jr., P.E. Director, Physical Plant Services, Fort Lewis College, and Dr. Robert Dolphin, Vice President for Business & Finance, Fort Lewis College and former Durango Mayor, for their hospitality and contributions to this article.

CLASSIFIEDS

FOR LEASE. NEAR PORTER HOSPITAL, 1,100 square feet executive office with storage room and kitchenette. Ideal for small firm. Call 303.744.3457 for more information.

Introducing Enlightened Spaces...
...A Comprehensive Educational Program on Daylighting Principles

The Program

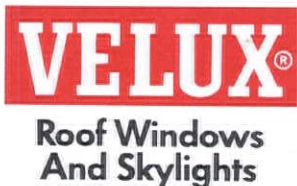
Enlightened Spaces is a comprehensive educational program on daylighting principles in residential design. Its purpose is to communicate how daylighting can enhance a home's design and its occupant's well-being. Topics include: harnessing daylighting through site orientation, interior shading and ventilation; designing with natural light, including energy compliance issues and unique skylight application; daylighting material changes with focuses on glazing, suncreening and installation.

Educational Credits

The program is developed in conjunction with AIA Continuing Education Program Guidelines and provides up to 9 learning units, including credits in Health, Safety and Welfare.

Program Participation

VELUX-AMERICA INC. Sales Representatives are expanding their ongoing "Box Lunch" program and are available to arrange in-firm sessions. We will also work within AIA chapter meeting formats. To have your VELUX Sales Representative, Marty Goss, contact you concerning *Enlightened Spaces*, fax the coupon below to 864-941-4870, or call us at 1-800-88-VELUX and ask for Marty. We promise an enlightening experience.



Please contact me to arrange an *Enlightened Spaces* Program. AIA

Name _____

Firm _____

Address _____

City/State/Zip Code _____

Phone _____ Fax _____

VELUX-AMERICA INC. Toll-Free Phone: 800-88-VELUX Fax: 864-941-4870

JUST CHOOSE MASONRY

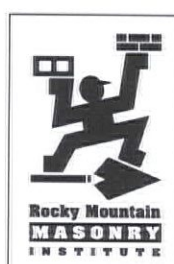
We'll help you do the rest.

Are you ...

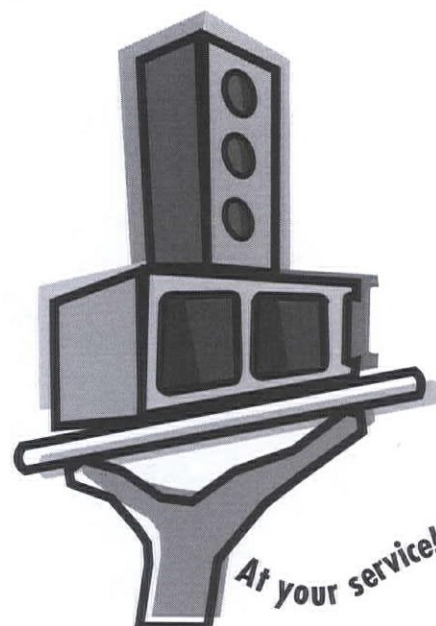
- Looking for a qualified masonry contractor?**
- Wondering how to detail an unusual condition?**
- Searching for the most appropriate products for your wall?**
- Trying to resolve a difference of opinion on the job site?**

Look no further. The Rocky Mountain Masonry Institute is here to help ... before, during and after construction of your project. Our members and staff are committed to making masonry your most trouble-free design choice.

For more information on our technical publications and seminars, free engineering and architectural consulting services, and supplier & contractor referrals, just call RMMI at 303.691.2141. And we'll do the rest.



1780 S.
Bellaire
Suite 402
Denver, CO
80222
303.691.2141



Masonry Contractor and Apprenticeship Training • Design Seminars • Extensive Library
Technical Information & Assistance • Steve Dach Architectural Excellence Awards Program • Publications

CALENDAR EVENTS

AUGUST

- 1 North Chapter "Summerfest" Golf Tournament and Banquet
- 5 AIA Colorado Design Conference meeting, 5:30 PM at AIA offices
- 7 Committee on the Environment, noon, AIA offices
- 7 Denver Board of Directors, 5:30 PM, AIA offices
- 8 AIA Denver Golf Tournament. Call AIA offices for more info. at 303.446.2266
- 15 Colorado Finance Committee, noon-2 PM, AIA offices
- 15 Colorado Board of Directors 2-5 PM, AIA offices
- 21 Denver Design Build Committee, Redefining the Profession Breakfast Roundtable Discussion Series, "Defining Your Ambitions," 7:30 - 8:30 AM, AIA offices
- 21 Design Communication Committee meeting, "Drawing Shortcuts slide show," brown bag workshop at noon, AIA offices
- 21-23 Western Mountain Regional AIA Conference in Sundance, Utah
- 28 Historic Preservation Committee, 7:30 AM, AIA offices

SEPTEMBER

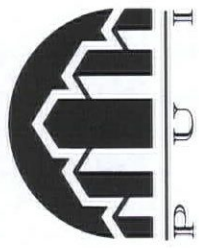
- 4 Committee on the Environment, noon, AIA offices
- 4 Denver Board of Directors, 5:30 PM, AIA offices
- 5 Gallery Opening presented by Denver Chapter, 5:30 PM, AIA offices
- 8 General Denver Chapter Member Meeting - call AIA Denver at 303.446.2266 for more information
- 18 Denver Executive Committee meeting, 5:30 PM, AIA offices
- 19 Colorado Finance Committee, noon-2 PM, AIA offices
- 19 Colorado Board of Directors 2-5 PM, AIA offices
- 25 Historic Preservation Committee, 7:30 AM, AIA offices
- 27 AIA Denver Annual Awards Gala at Auraria Campus North Classroom Building. For more information, call 303.446.2266



VINYL LAMINATORS, INC.
FIXED WALLS - LIKE RIGID IDEAS - ARE OBSOLETE

Custom Manufacturer of Commercial Demountable Partitions

Charlie Davis 303-733-2476



Allow Us To Deliver The Reliable Protection And Dependable Service You Require

Specialized Insurance Placement Architects / Engineers Errors and Omissions

PUI AGENCY OF COLORADO, INC.

4949 South Syracuse St. Suite 300
Denver, COLORADO 80237
303-843-0229

PROFESSIONAL UNDERWRITERS

PUI Agency of Colorado, Inc.

OCTOBER

- 17-19 1997 AIA Colorado Annual Design Conference, Stapleton in Denver, Colorado

NOVEMBER

- 7 North Chapter Annual Meeting, Banquet, Design Awards Presentation, and introduction of new Board officers

Colorado

ARCHITECT

A PUBLICATION OF AIA COLORADO

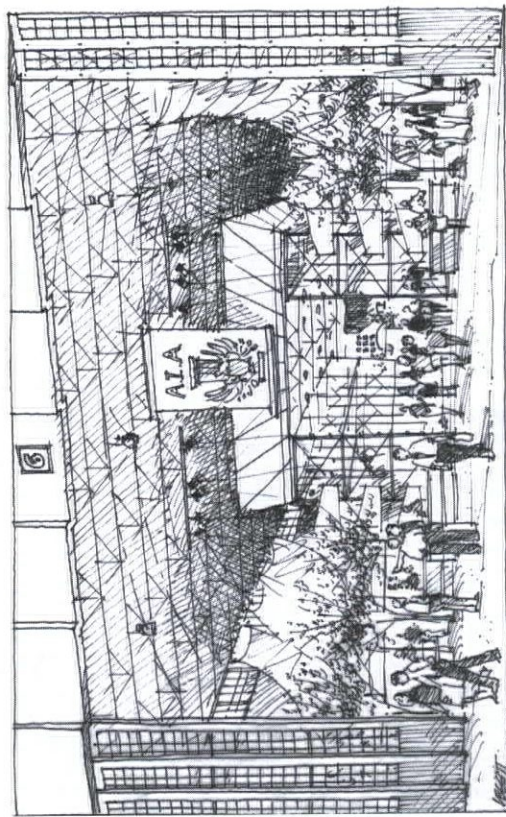
AUGUST 1997

\$5.00

CAREER DIVERSITY ISSUE

AIA COLORADO DESIGN EXPO '97

Compassion is the theme of this year's AIA Colorado conference: compassion for ourselves; compassion for our profession; and compassion for our planet and environment. Taking place in a Stapleton hangar—the length of two football fields, Expo '97 will be different from any other conference. Plan to join us October 17-19. More details on page 4.



Rendering by Jim Leggitt, AIA

[inside]

Fort Lewis College
Earns Degree of Respect

PAGE 1



Career Diversity
Strengthens Architecture

PAGE 2



Design Conference
Details

PAGE 4



Marcel Breuer Leads
CSNA Architects

PAGE 5



Colorado Architect
1526 15th Street
Denver, CO 80202

SUBSCRIBE TO THE COLORADO ARCHITECT

The Colorado Architect is provided to members as a member service; subscriptions are available to non-members for \$60 per year. Mail or fax the form to AIA Colorado at 1526 15th Street, Denver, CO, 80202, 303.446.2266. Fax 303.446.0066.

NAME	STATE	ZIP
COMPANY	PAY	
ADDRESS		
CITY		
PHONE		
METHOD OF PAYMENT:	<input type="checkbox"/> MC	<input type="checkbox"/> VISA
<input type="checkbox"/> CHECK	NUMBER	EXP. DATE
SIGNATURE (REQUIRED)		