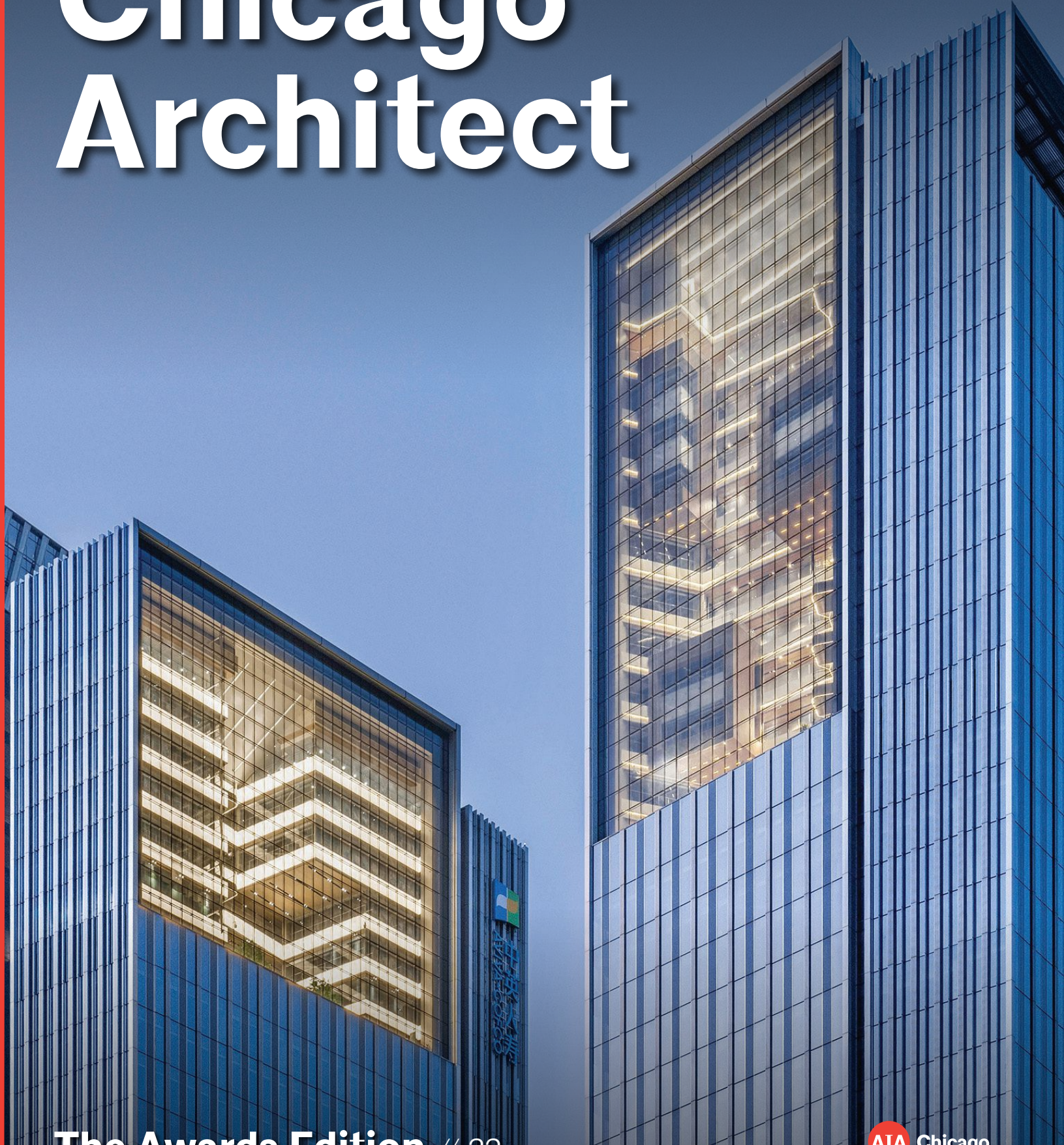


# Chicago Architect



The Awards Edition // 23

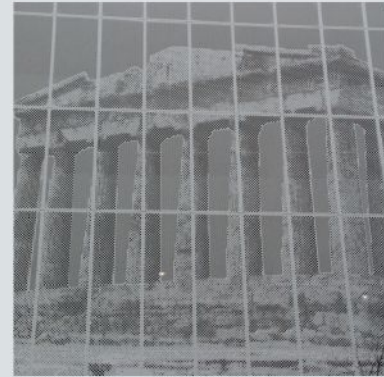
# GRAPHICPERF<sup>TM</sup>



**ARCHITECTURAL  
IMPACT**



**STORYTELLING  
CANVASES**



**DESIGN  
FREEDOM**

**LEARN MORE**





  
**accurate**  
PERFORATING

Transform artwork,  
photos, logos, & patterns  
into striking perforated  
metal panels that finish  
your architectural story.



 800.621.0273  
 sales@accurateperforating.com

 accurateperforating.com  
 3636 S. Kedzie Ave Chicago, IL 60632

EXPERIENCE  
NATURE'S PALETTE  
REIMAGINED.

EQUITONE [inspires] WOOD

Tap into an endless potential of creative options with our nature-inspired range of facade materials. Evoking the textures and tones of the natural world, these expressive surfaces introduce an organic palette to the urban landscape—enhancing architectural character while fostering connection to the environment.



Discover the full range of EQUITONE [inspires] our hi-strength (high-density) cement rainscreen panel with a digitally printed surface at [www.equitone.com/en-us/](http://www.equitone.com/en-us/).

 **EQUITONE**  
by etex

# Soreno™

SLEEK. MODERN. SOPHISTICATED



## CREATE MODERN MASTERPIECES

Create stunning, contemporary designs with Soreno slabs from Unilock. Their refined stone structure enhances the natural character in every unit, while the flamed-like texture—crafted with fine-grained, natural stone grit—offers a smooth, elegant surface with a surefooted grip. Factory sealed with EasyClean™, these slabs also resist stains, ensuring long-lasting protection and beauty.

Designed for versatility, Soreno's clean lines and subtle colors create seamless transitions between indoor and outdoor spaces. Its large format size makes Soreno an ideal slab for pedestals and rooftop amenity areas, offering both style and functionality.



Connect with a Territory Manager for  
Samples, Information & CEU Seminars.

Project: Private Residence // Designer: Mulder Outdoor // Product: Soreno in Toscana Beige

**UNILOCK®**  
TRANSFORMING HARDSCAPES

# Chicago Architect

## Editor in Chief

Jen Masengarb, Assoc. AIA  
editor@aiachicago.org

## Managing Editor

Dillon Goodson, Affil. AIA Chicago  
editor@aiachicago.org

## Editors

David Chase, Assoc. AIA  
communications@aiachicago.org

Drew Clark

drewc@innovativepublishing.com

## Designer

Catherine Meany

## Advertising Sales

Innovative Publishing  
advertise@innovativepublishing.com  
844.423.7272



*Chicago Architect*, an outreach tool of AIA Chicago, is published four times a year as an authoritative resource for architects, the larger design community, and the public about architecture and related issues of interest to Chicago architects. The magazine communicates industry trends, the value of high-quality design, and the role of AIA Chicago and its members in the world of architecture.



- 📘 facebook.com/aiachicago
- 📧 @aiachicago
- 📺 x.com/aiachicago
- 📺 youtube.com/@aiachicago1869
- 📄 linkedin.com/company/aia-chicago

Dear AIA Chicago Members and Colleagues,

Each fall, we enter a spirited and inspiring awards season, and this year is no exception. While many other organizations host awards programs, AIA Chicago's Design Excellence Awards stand apart by celebrating work that is not only beautiful but also profoundly impactful. Small and large, these projects are transforming communities, enriching neighborhoods, and reshaping the many ways we live and interact with one another.

This issue of *Chicago Architect* showcases the very best of this year's impactful projects. Alongside the Design Excellence Awards, we feature the 2025 recipients of the Roberta Feldman Architecture for Social Justice Award. These honorees were recognized at Designight, AIA Chicago's annual awards celebration, alongside recipients of the Decarbonization Awards, Lerch Bates People's Choice Award, Lifetime Achievement Award, and Dubin Family Young Architect Award, which will be featured in future issues. The Chicago office of Gensler, recipient of the Firm Award highlighted in the previous issue of *Chicago Architect*, was also honored at the event, held in September at the Harris Theater for Music and Dance.

Throughout the awards process, we gather feedback from our jury members to better understand what stood out to them and shaped their final decisions. This year, our esteemed jurors identified five key themes that emerged across the submissions:

- 1. Impactful transformation:** Projects that demonstrated significant impact and innovation, whether by rethinking typologies, creating dynamic spaces, or embracing experimental programming, were a highlight of this awards class
- 2. Exceptional detailing:** Jurors consistently praised meticulous attention to detail, refined material palettes, and elegant execution
- 3. Deep contextual responsiveness:** Designs that responded thoughtfully to their surroundings and cultural context stood out for their relevance and sensitivity
- 4. Enhanced user experience:** Many projects were recognized for their inclusive and collaborative environments as well as their ability to provide meaningful public amenities
- 5. Clarity of vision:** Submissions that showcased a clear design process, a well-articulated conceptual framework, and a sophisticated balance of elements were especially favored



Jason Golub, AIA  
2025 AIA Chicago President

As professionals in the architectural community, we face constant challenges that enable us to utilize our problem-solving abilities daily. The winners in each of our categories demonstrate the ability to solve complex problems while integrating these five key themes.

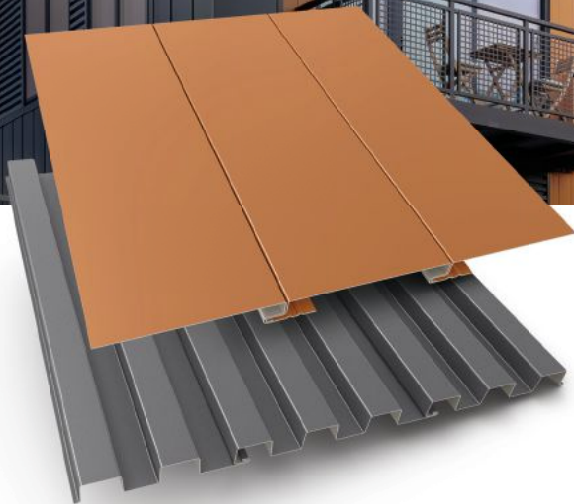
At the same time, we recognize that not every project can win an award and not every award-worthy project was submitted. Therefore, we ask that you continue to be engaged, attend our events throughout the year, share what you are doing in your offices, and help continue to bolster Chicago's proud architectural legacy and future.

We are incredibly fortunate to live and practice in a city that serves as a global center of architectural history and innovation. As we celebrate these achievements, let us continue to push boundaries, elevate our craft, and inspire one another through design that truly makes a difference.

Jason Golub, AIA  
2025 AIA Chicago President  
president@aiachicago.org

# Versatile Metal Cladding

Photo: alanblakely.com



## Metal panel mix for an industrial chic look

“We wanted to give the building architecture a refined industrial feel,” said Renato Gilberti, AIA, BKV Group. PAC-CLAD Flush, Reveal, and Box Rib 1 panel systems in four finishes were chosen to create this vision.



View the  
case study  
and video



PAC-CLAD.COM | 800 PAC CLAD

# Contents



## The Awards Edition: Design Excellence Awards and Unbuilt Award // 23

California College of the Arts Campus Expansion by Studio Gang.  
JASON O'REAR

- 10 // Chapter Report
- 12 // Foundation Report
- 15 // AIA Illinois Update
- 16 // People + Projects
- 64 // Behind the Screens:  
Neşe Altıntaş, Assoc. AIA



Roberta Feldman Architecture for  
Social Justice Awards



▲ **ON THE COVER**  
COFCO Qianhai Innovation Center,  
Goettsch Partners.  
CREATAR

► **OUR PREVIOUS ISSUE**  
is available to view digitally at  
[AIAChicago.org/ChicagoArchitect](http://AIAChicago.org/ChicagoArchitect)

## 2025 AIA CHICAGO DIRECTORY

**CHICAGO ARCHITECT**  
**EDITOR IN CHIEF**  
Jen Masengarb,  
Assoc. AIA

**MANAGING EDITOR**  
Dillon Goodson,  
Affil. AIA Chicago

**EDITORS**  
David Chase, Assoc. AIA  
Drew Clark

**DESIGNER**  
Catherine Meany

**AIA CHICAGO 2025**  
**BOARD OF DIRECTORS**  
**PRESIDENT**  
Jason Golub, AIA

**FIRST VICE PRESIDENT/  
PRESIDENT-ELECT**  
Kelly Moynihan, AIA

**PAST PRESIDENT**  
Lynda Dossey, AIA

**VICE PRESIDENT,  
ADVOCACY**  
Natalie Hicks, AIA

**VICE PRESIDENT,  
EDUCATION**  
Chey Taylor, AIA

**VICE PRESIDENT,  
FINANCE**  
Calli Verkamp, AIA

**VICE PRESIDENT,  
HONOR AND AWARDS**  
Peter Wojtowicz, AIA

**VICE PRESIDENT,  
MEMBERSHIP**  
Richie Hands, AIA

**VICE PRESIDENT,  
SPONSORSHIP**  
Susan Brain, AIA

**DIRECTOR**  
Sara Beardsley, FAIA  
Lori Day, AIA  
Fred Grier, AIA  
Jessie LaFree,  
AIA, NCARB  
Candace Small, AIA  
Neil Sondgeroth, AIA  
Ashlen Williams,  
AIA, NOMA

**ASSOCIATE DIRECTOR**  
Noor Ain, Assoc. AIA  
Eve Fineman, Assoc. AIA

**AFFILIATE DIRECTOR**  
Albert Mena, PE, SE,  
Affil. AIA Chicago  
Eric Singer, Affil.  
AIA Chicago

**STUDENT DIRECTOR**  
Anna Karel, IIT  
Smita Pandey, UIC  
Galila Sima, SAIC

**AIA CHICAGO**  
**FOUNDATION 2025**  
**BOARD OF TRUSTEES**  
**PRESIDENT**  
Danielle J. Tillman,  
AIA, NOMA

**VICE PRESIDENT**  
PK. "Trish"  
VanderBeke, AIA

**SECRETARY**  
Gracia Maria Shiffrin, FAIA  
co-chair

**INTERIM TREASURER**  
Dawn Schuette,  
FAIA, NOMA

**PAST PRESIDENT**  
Christopher E.  
Chwedyk, AIA

**TRUSTEE**  
Susan Conger-Austin, AIA  
Elliott E. Dudnik, FAIA

Ryan Gann, AIA, NOMA  
Palmyra Geraki, AIA  
Melissa Gibson, AIA  
Helen J. Kessler, FAIA  
Kerl LaJeune,  
Assoc. AIA, NOMA  
Julia Mosqueda,  
Assoc. AIA  
Justin Rossman, AIA  
Lynette Stuhlmacher,  
Assoc. AIA

**PUBLIC TRUSTEE**  
Roberta M. Feldman,  
Ph.D., Assoc. AIA

**EX-OFFICIO,  
AIA CHICAGO FIRST**  
**VICE PRESIDENT,  
PRESIDENT-ELECT**  
Kelly Moynihan, AIA

**EX-OFFICIO,  
AIA CHICAGO**  
**FOUNDATION**  
**EXECUTIVE DIRECTOR**  
Jen Masengarb,  
Assoc. AIA

**2025 KNOWLEDGE**  
**COMMUNITIES**  
**BUILDING ENCLOSURE**  
**COUNCIL**  
Brian Rouse, AIA, chair  
Jessica Saravia, AIA,  
co-chair

**COTE + 2030**  
**COMMITMENT**  
Daniel Jaconetti, AIA,  
2030 co-chair  
Kelly Moynihan, AIA,  
co-chair  
David Swain, AIA, co-chair

**CUSTOM RESIDENTIAL**  
**ARCHITECTS**  
**NETWORK (CRAN)**  
Tim Hawkins, AIA,  
co-chair  
Nate Lielas, AIA,  
co-chair

**DESIGN**  
Ann Erskine, AIA, co-chair  
David Lillie, AIA, co-chair  
Angelica Paleczny, AIA,  
co-chair

**DESIGN FOR AGING**  
Drew Roskos, AIA,  
co-chair  
Heidi Wang, AIA, co-chair

**EDUCATION**  
Katherine Kalant, AIA,  
NCARB, co-chair  
Cory Kamholz,  
AIA, co-chair  
Alli Mallory, AIA,  
NCARB, co-chair  
Tianye Zhou, AIA,  
co-chair

**HEALTHCARE**  
Adrienne Erbesti,  
AIA, co-chair  
Cam Twohey, AIA,  
co-chair  
Sudhiksha Srinivasan,  
Assoc. AIA,  
program chair  
Ida Wrocklage, Assoc.  
AIA, program chair

**HISTORIC RESOURCES**  
Bill Ipema, S.E., P.E., Affil.  
AIA Chicago, co-chair  
Greg Maxwell, AIA,  
co-chair  
Andrea Sforza, AIA,  
co-chair

**HOUSING AND**  
**COMMUNITY**  
**DEVELOPMENT**  
David Kennedy, AIA,  
co-chair  
Cristian Yugsi, Assoc. AIA,  
co-chair

**INTERIOR**  
**ARCHITECTURE**  
Genie Bae, Assoc. AIA,  
co-chair  
Dane Rausch, AIA,  
co-chair

**PRACTICE**  
**MANAGEMENT**  
Sheri Andrews,  
AIA, co-chair  
Scott Steffes, AIA,  
co-chair

**TECHNICAL ISSUES**  
David Hillsamer, AIA,  
co-chair  
Cassandra Yeam, AIA,  
co-chair

**TECHNOLOGY IN**  
**ARCHITECTURAL**  
**PRACTICE (TAP)**  
Teodor Duhnev, co-chair  
Sonja Flint, AIA, co-chair  
Ted Hogan, Assoc. AIA,  
co-chair  
Kevin Kosciulek, Assoc.  
AIA, co-chair  
Katy Liang, AIA, co-chair

**2025 AFFINITY**  
**GROUPS**  
**COMMUNITY**  
**ENGAGEMENT**  
**AND ARCHITECTS**  
**IN SCHOOLS**  
Priya Iyer, AIA, NCARB  
Wade Splinter, AIA

**EDI COMMITTEE**  
Riya Desai, Assoc. AIA,  
co-chair  
Katie Hart, AIA, co-chair

**LGBTQIA+ ALLIANCE**  
Kerry Frank, AIA, co-chair  
Alex Tsaparis, AIA,  
co-chair

**SMALL FIRM**  
**EXCHANGE (SFX)**  
Matthew Clapper,  
AIA, co-chair  
Chyanne Husar,  
AIA, co-chair

**YOUNG ARCHITECTS**  
**FORUM (YAF)**  
Prerana Kamat,  
Assoc. AIA, co-chair  
Lena Schapen, AIA,  
co-chair

**WORKING GROUPS**  
**DEPARTMENT OF**  
**BUILDINGS**  
Ken DeMuth, AIA,  
co-chair  
Jean Dufrense, AIA,  
RAIC, NCARB, co-chair  
Holly Gerberding, FAIA,  
co-chair

**CHAPTER STAFF**  
**EXECUTIVE DIRECTOR**  
Jen Masengarb,  
Assoc. AIA

**SENIOR DIRECTOR OF**  
**MEMBER RESOURCES**  
**AND ADVOCACY**  
Joan Pomaranc, Hon.  
AIA Chicago

**DIRECTOR OF**  
**OUTREACH**  
Allison Garwood  
Freeland

**DIRECTOR OF**  
**DEVELOPMENT, SALES,**  
**AND MEMBERSHIP**  
Kirstin Osgood

**DIRECTOR OF**  
**OPERATIONS**  
David Chase, Assoc. AIA

**MANAGER OF**  
**VOLUNTEERS**  
**AND AWARDS**  
Madison Young

**MANAGER OF**  
**MEMBERSHIP**  
Marclena Shaeffer

**SPONSORSHIP AND**  
**DONOR RELATIONS**  
**ASSISTANT**  
Evans Debeza, AIA

**FINANCIAL MANAGER/  
BOOKKEEPER**  
Naghmah Sabah

**MANAGING EDITOR/  
AWARDS ADVISOR**  
Dillon Goodson,  
Affil. AIA Chicago

A STEP ABOVE

 **Schuler Shook**  
LIGHTING DESIGN / THEATRE PLANNING / AUDIO VIDEO DESIGN

# You Owe it to Yourself.

Dream.  
Design.  
Create...  
in a  
Massive  
Sandbox.

Remember when you built big sand castles that touched the sky? Remember the vision, the dreams, the creations? Don't let that be extinguished. At Jansen, we bring the perfection of steel facades and fenestration, plus unique sizes and shapes, to make those dreams become real. Backed by over 100 years of technical expertise, you're invited to stir your emotions once again. Jansen – The human touch to steel and a catalyst for creativity.

**JANSEN**  
America



KAI BROWN PHOTOGRAPHY



EVENING CUE



# DESIGN 2025 NIGHT **A Night to Remember**

Designight 2025 was a great success celebrating the best of Chicago architecture with unparalleled energy!

We are absolutely thrilled by the overwhelming turnout. More than 1,200 members and friends of the Chicago architecture community filled Harris Theater for Music and Dance for the Awards Ceremony, generating an incredible atmosphere of excitement and passion.

The celebration continued on the Harris Theater rooftop as more than 500 attendees joined the after-party, keeping the vibrant energy going late into the night. The attendance figures not only exceeded our expectations but also underscored the dynamism and strength of our local design scene.

To all who attended and brought their passion, creativity, and energy — thank you for making the night so extraordinary and memorable.

Finally, we extend our gratitude to our host committee. This event truly could not have happened without you: **Charles Smith, FAIA**, chair; **Susan Brain, AIA**; **Joseph Caprile, FAIA**; **Lori Day, AIA**; **Sara Fetterolf, AIA**; **Todd Hensley, Affil. AIA Chicago**; **Eric Singer, Affil. AIA Chicago**; **Neil Sondgeroth, AIA**; and **James Young, AIA**.

# Chicago Welcomes Three New Fellows in 2025

The AIA College of Fellows is composed of three percent of the Institute’s members who have demonstrated a high level of success in the industry as judged by a national jury of their peers. Each Fellow has exhibited their achievements under one of six “Objects,” or categories of the profession that include design, practice management, leading the institute, public service, alternative career, or education.

Fellowship recognizes an individual’s professional achievements in innovative design, technical achievement, sociocultural advancement, volunteer work, or educating the next generation of architects/leaders. Individual Fellows serve our members through volunteering, mentoring, and supporting local component initiatives.

The College of Fellows supports broader national initiatives including a Component Grant, which assists local components to develop programs that enhance the development of emerging professionals, and the Latrobe Prize, a biennial \$100,000 two-year program for research that leads to significant advances in the architecture profession. Locally, AIA Chicago Fellows volunteer as mentors in the nationally recognized Bridge program.

AIA Chicago is very proactive in seeking highly qualified candidates for Fellowship, and we consistently see a significant number of our own elevated annually. AIA Chicago’s Fellowship Committee recruits and guides potential candidates on the path toward Fellowship. We conduct reviews of potential submissions, offer suggestions for improvement, and provide direct one-on-one mentoring to candidates. We also conduct seminars during the year on Demystifying Fellowship and a Storytelling/ Writing Workshop.

This year’s class of three from Illinois are all recognized in practice management, and they represent more than three percent of all Fellows elevated in the nation this year.

We wish to thank the committee for their support and to bestow well-deserved congratulations to the three newest members of the College of Fellows! Congratulations to Stephen Cavanaugh, FAIA; Susan Heinking, FAIA; and JinHwa Paradowicz, FAIA. Well done!



Catherine Baker, FAIA, and Tom Hoepf, FAIA  
Co-Chairs, AIA Chicago College of Fellows



**Stephen Cavanaugh, FAIA**

DLR Group  
Object Two: Practice  
(Technical Advancement)

*Forging a path toward carbon neutrality, Stephen pioneered the use of mass timber for large-scale structures. His innovation, technical leadership, and advocacy advance architecture by reducing the environmental impact of building construction.*



**Susan Heinking, FAIA**

Pepper Construction  
Object Two: Practice  
(Technical Advancement)

*As both an architect and contractor, Susan leverages her dual roles to overcome challenges and forge new pathways and partnerships, creating sustainable architecture that enriches lives, benefits the planet, and shapes vibrant futures.*



**JinHwa Paradowicz, FAIA**

Perkins Eastman  
Object Two: Practice  
(Technical Advancement)

*A passionate advocate and architect focused on dignity, equity, and social impact, JinHwa leads transformative design to create healthy environments for underrepresented communities, pioneers intergenerational design, and empowers the next generation of diverse architectural professionals. CA*



## Objects of Fellowship Nomination

**Object One:**

Design, Urban Design, or Preservation  
*To promote the aesthetic, scientific, and practical efficiency of the profession.*

**Object Two:**

Practice Management or Practice Technical Advancement  
*To advance the science and art of planning and building by advancing the standards of practice.*

**Object Three:**

Led the Institute or a Related Organization  
*To coordinate the building industry and the profession of architecture.*

**Object Four:**

Public Service, Government, Industry, or Organization  
*To ensure the advancement of the living standards of people through their improved environment.*

**Object Five:**

Alternative Career, Volunteer Work with Organizations Not Directly Connected with the Built Environment or Service to Society  
*To make the profession of ever-increasing service to society.*

**Object Six:**

Education, Research, Literature  
*To advance the science and art of planning and building by advancing the standards of architectural education and training.*

# Announcing the 2025 Chicago Award in Architecture Student Award Honorees

The AIA Chicago Foundation, which invests in Chicago’s next generation of architectural change-makers by awarding scholarships, grants, and recognition, is pleased to announce the winners of the Chicago Award in Architecture Student Awards. This prestigious competition recognizes exceptional student projects from local architecture schools.

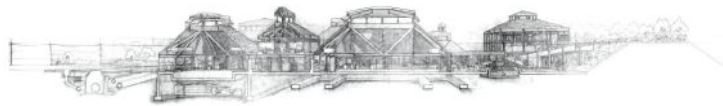
## CATEGORY 1: First- and Second-Year Architecture Students



### 1st Place

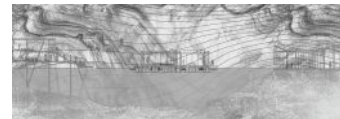
Entropy: Baukunst Hall  
John P. McCullough IV  
Prof. Alexander Shelly, AIA  
Illinois Institute of Technology

## CATEGORY 2: Third, Fourth-, and Fifth-Year Architecture Students



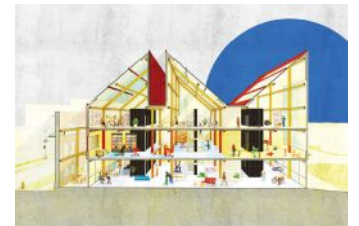
### 1st Place

Reimagine Engelwood  
Stephen Cruz and Swun Tun  
Prof. Kindon Mills and Andy Tinucci, AIA  
Illinois Institute of Technology



### Honorable Mention

Lofoten Aquaculture Progression  
Ashley Barrios, Yu Cheng “Roy”  
Chou, and Qiushi Chen  
Prof. Lukasz Kowalczyk  
School of the Art Institute of Chicago



### Honorable Mention

The Village  
Casey Kowalsky  
Prof. Camille Yu, AIA  
Illinois Institute of Technology

## CATEGORY 3: NAAB Accredited Master Students



### 1st Place

Creatures and Mountains  
Molly Rice and Abigail Mudd  
Prof. Lukasz Kowalczyk  
School of the Art Institute of Chicago



### Honorable Mention

Becoming-Lodge  
Alex Serbanescu  
Prof. Francesco Marullo  
University of Illinois Chicago

# AIA Chicago Foundation Announces 2025 Diversity Scholarship Recipients

The AIA Chicago Foundation Diversity Scholarship is an opportunity to attract and retain diverse, talented young professionals in Chicago. It recognizes the value of new and unique voices in the profession. Up to two \$10,000 scholarships will be awarded each year. Each \$10,000 scholarship will be awarded over two years, \$5,000 per year, per recipient.



**Aliya Perez**  
Graduate Student  
First-year student in 2025  
University of Illinois Chicago  
Mentor: **Maya Charpure, AIA**

*"Receiving this scholarship allows me to continue pursuing my architectural education and lifelong mission of improving underrepresented communities on the South Side of Chicago. I hope to inspire others from similar backgrounds to follow this path, ensuring that those who are often overlooked are not only seen but truly valued and heard."*



**Ny Phan**  
Undergraduate Student  
Fourth-year student in 2025  
Illinois Institute of Technology  
Mentor: **Jean Dufresne, AIA**

*"Receiving this scholarship is an incredible honor. It means so much more than financial support. It's a recognition of my hard work and our collective commitment to excellence and diversity. It motivates me to continue striving for personal, academic, and communal growth." CA*

► Make an impact. Donate to the Diversity Scholarship at [AIAChicago.org/Donate](https://AIAChicago.org/Donate).

**POWERING CHICAGO**

# WE POWER WHAT MATTERS.

FIND YOUR QUALIFIED POWERING CHICAGO ELECTRICAL CONTRACTOR TODAY.

- ⚡ MISSION CRITICAL
- ⚡ INDUSTRIAL
- ⚡ MANUFACTURING
- ⚡ COMMERCIAL REAL ESTATE
- ⚡ LIFE SAFETY SYSTEMS
- ⚡ BUILDING AUTOMATION
- ⚡ SERVICE & MAINTENANCE
- ⚡ ...AND MORE

**FIND YOUR CONTRACTOR TODAY**  
[POWERINGCHICAGO.COM](https://POWERINGCHICAGO.COM)  
[@POWERINGCHICAGO](https://twitter.com/POWERINGCHICAGO)



  
**FOLLOW US**   
 @GOLDBERGGENERALCONTRACTING



# Eliminating the Rolling Clock: A Two-Year Journey to Architectural Licensure Reform

After a dedicated two-year effort across legislative and regulatory channels, we're proud to announce that a crucial reform for Illinois' emerging architects is now fully enacted: the elimination of the **ARE Rolling Clock**. This change will significantly benefit professionals pursuing licensure statewide.

## From National Policy to State Law

The journey began on May 1, 2023, when the National Council of Architectural Registration Boards (NCARB) officially ended the national policy that gave candidates only five years to complete all divisions of the Architect Registration Examination (ARE). While this was excellent news, the timing meant we couldn't introduce a corresponding bill during that year's session of the Illinois General Assembly.

We swiftly prioritized this vital initiative for our 2024 legislative agenda. The bill successfully passed both chambers and was signed into law on July 1, 2024.

## The Final Regulatory Hurdle

The legislative signature was not the final step. To ensure proper implementation, the critical changes to the **Architecture Practice Act** had to be codified into enforceable rules. This final hurdle was cleared by the Joint Committee on Administrative Rules (JCAR). On July 23, 2025, JCAR reviewed and approved the new rules, which are essential for the Department of Financial and Professional Regulation (IDFPR) to properly implement and interpret the revised statute.

This landmark change is the culmination of two years of dedicated effort involving extensive hearings, discussions, and collaboration with numerous agencies, nonprofits, and our valued members. The Legislature laid the essential framework, and JCAR developed the actionable, enforceable policies.

Though significant reform takes time, adherence to a rigorous process ensures that critical laws — like the Architecture Practice Act — and the practice of architecture itself remain both strong and equitable for all future licensees. **CA**



**Eric Klinner, CAE**  
AIA Illinois Executive Vice President

**SCHWEISS**

# DOORS

**YOU THINK IT, WE BUILD IT!**

**HYDRAULIC** - OR - **BIFOLD**  
**ONE-PIECE DOORS**      **STRAP LIFT DOORS**

**507-426-8273**

**"BUILDING BETTER DOORS"**

**SCHWEISSDOORS.COM**



**Pam Lamaster-Millett, AIA**, was named a recipient of an Outstanding Alumni Award from Estopinal College of Architecture and Planning, Ball State University.



**George Guarino III, Assoc. AIA**, has been named president of **MAPS**, Chicago's top permitting and architectural compliance firm.



The AIA Academy of Architecture for Health is pleased to announce that **Roderic Walton, FAIA, NCARB, NOMA, LSSYB**, a principal at **Moody Nolan Architects**, is the 2027 president-elect. With more than 30 years of advocacy experience, he brings a wealth of expertise to the role. Roderic looks forward to contributing to the Academy's mission.



ANDREW RUGGE / COPYRIGHT PERKINS EASTMAN

Designed by **Perkins Eastman**, the Forrestral Elementary School held a topping out ceremony at Naval Station Great Lakes in North Chicago, Illinois, in March 2025. Designed to foster a sense of community and to support student well-being, the light-filled elementary school prioritizes literacy, wellness, and sustainability to deliver a premier learning environment.



PERKINS EASTMAN

The Marquette Veterans Home, designed by the Chicago studio of **Perkins Eastman**, broke ground in Marquette, Michigan, in May 2025. Envisioned as a center for excellence in veterans' care and based on the VA's Small House Model Design Guide, the new 157,000-square-foot community will set a high standard of wellness for its residents and staff.

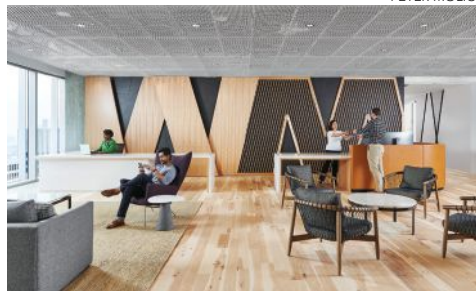


JOHN DAVID PITTMAN

The Harvard Graduate School of Design is pleased to announce that **Jeanne Gang, FAIA** (MArch '93), has been named the Kajima professor in practice of architecture as of July 1, 2025. Established at the school in 1989 by the Kajima Corporation, the endowed professorship supports a faculty member to advance instruction and scholarship in architecture.



JAMES STEINKAMP PHOTOGRAPHY



PETER MOLICK

The Chicago studio of **Perkins&Will** recently won two AIA National Awards: an Architecture Award for Damen Green Line Station and an Interior Architecture Award for WM Headquarters.



BRUCE T MARTIN PHOTOGRAPHY

**Partners by Design** recently completed Husch Blackwell's Boston office, a modern legal workplace that draws inspiration from the city's historic harbor, weaving in soft curves, natural materials, and open layouts to create a space that's both forward thinking and deeply connected to its surroundings.

ALL IMAGES ARE COURTESY OF THE FIRM, UNLESS OTHERWISE NOTED. LEED AP STATUS IS INDICATED ONLY IF REPORTED BY THE FIRM.

GILLIAN FRY



**Richie Hands, AIA, NCARB, LEED AP BD+C, NOMA**, recently joined the Chicago office of **Gensler** as a project architect in its Lifestyle studio, bringing nearly 15 years of professional experience and industry engagement. He currently serves on the AIA Chicago board of directors as VP of membership and secretary and holds leadership positions with ACE Chicago and NOMA.



SKENDER

**Perkins&Will** has recently completed Fifth City Commons in partnership with Preservation of Affordable Housing (POAH) and architect of record **NIA** to provide sustainably designed affordable rental housing. The new three-story residential project features 43 mixed-income apartments and 4,500 square feet of commercial space. One of the first and largest Passive House projects in the Midwest, 100 percent of its power and stormwater is processed on-site, contributing to a net-zero carbon and net-zero energy project.

KATHARIN MRAZ



**HOK** is pleased to announce that **Dipayan Ghosh, AIA, LEED GA; Anthony Khairallah, AIA, LEED GA; Tommy Nam, AIA, LEED AP BD+C, WELL AP; and Bella Wu, AIA, LEED AP BD+C**, have recently become licensed architects.

VIA CHICAGO



**Via Chicago** has started construction on Bambuda Casco Antiguo — a 43-key boutique hotel in the lively colonial quarter of Panama City, Panamá. Once complete, the project will include an extensive restoration and renovation of three interconnected landmark properties with new infill construction on an adjoining lot topped by a stunning pool terrace and rooftop bar.



**Partners by Design** recently completed three distinct spec suites at 1 South Wacker, including one anchored by a rare three-story atrium, each crafted with a unique identity to captivate and attract a diverse range of tenants.



**Carlos Rodríguez, AIA, NCARB**, has been promoted to associate at **Huntsman Architectural Group**, which he joined in 2018.



Please Share Your News by Completing the Form at [AIAChicago.org/PeopleandProjects](https://www.aiachicago.org/PeopleandProjects)

By submitting content to *Chicago Architect*, you consent to publication and affirm you have permission to distribute any photos. Deadline to submit for the next issue is Friday, January 30, 2026.

ANGIE MCMONIGAL



The **HKS** Chicago office and its design partners celebrated the completion of the Ann & Robert H. Lurie Children’s Hospital of Chicago – Outpatient Center in Schaumburg. The community-based, three-story, 75,000-square-foot building provides a wide array of specialized pediatric services including an Ambulatory Infusion Center.



**Tom Lee Studio** is pleased to announce that construction is underway on Demeter Millwork’s new 53,000-square-foot headquarters in Woodridge, Illinois, with Helios Construction. Designed for near net-zero energy performance, the facility is set to open in 2026.

KATHARIN MRAZ



**HOK** is pleased to announce that **Scott Lawson, AIA, LEED GA, NCARB**, has been promoted to associate and is starting a new position as project architect.

ROSS FLOYD



**Partners by Design** recently completed three spec suites at the Aon Center, each designed to attract a diverse range of tenants.

ANDREW COLLINGS PHOTOGRAPHY



**Carl Sergio, AIA**, was recently elected to a 2026-2028 at-large role for AIA National’s Strategic Council, a think tank that advances the profession by informing the AIA National board of directors.

LEGAT ARCHITECTS



The Ohio Department of Natural Resources celebrated completion of the Mohican State Park Visitor Center designed by **Legat**. The 5,200-square-foot facility features exhibit space with interactive public art, a merch area, staff support spaces, and a commons area with a fireplace.

RENDERING COURTESY LEGAT ARCHITECTS



Construction of a new, **Legat**-designed YMCCA kicked off in LeClaire, Iowa, this summer.

RENDERING COURTESY LEGAT ARCHITECTS



Design is underway for the Mosque Foundation’s new community center in Bridgeview, Illinois. The 50,000-square-foot facility designed by **Legat** creates a beacon of unity for the Chicagoland Muslim community.

ALL IMAGES ARE COURTESY OF THE FIRM, UNLESS OTHERWISE NOTED. LEED AP® STATUS IS INDICATED ONLY IF REPORTED BY THE FIRM.

FILIPPO BOLOGNESE



The Silvio J. Mollo Federal Building, designed by **Krueck Sexton Partners**, was awarded a 2025 AIA National Justice Facilities Review Award (Unbuilt). The project was designed to be the most sustainable GSA building in Region 2, targeting LEED Platinum and Zero Carbon Certification.

© CREATAR



Global architecture firm **Goettsch Partners (GP)** announced the completion of the Four Seasons Hotel Hangzhou at Hangzhou Center, a landmark project that redefines the intersection of luxury, landscape, and modern urban hospitality in the historic Chinese capital city of Hangzhou.

HARTSHORNE PLUNKARD ARCHITECTURE / NEUTRAL



**Hartshorne Plunkard Architecture** celebrated the groundbreaking of The Edison, a mixed-use residential tower in Milwaukee, Wisconsin. At 31 stories, the building developed by Neutral is on track to be the tallest mass timber building in the world. The project is pursuing both PHIUS and Living Building Challenge Core certifications.



**Tyler Gaeth, AIA**, was recently promoted to associate principal, and **Jon McNeely, AIA**, has been promoted to principal | technical director at **Booth Hansen, Ltd.**

NURTURE ARCHITECTS



**Nurture Architects** is pleased to announce two sustainability milestones: the PHIUS Design Certification of their residential Conservation Habitat project on the shores of Lake Michigan, aiming for the Living Future Living Building Challenge, and PHIUS Zero certifications focused on resilience, conservation, and regenerative design. Nurture is also pleased to announce that every employee of the organization holds at least one or more sustainability credentials, covering variants of LEED professionals, Certified Passive House Consultants (CPHC), WELL Accredited Professionals, Fitwel Ambassadors, and Living Future Accreditations.

RYAN BARAYUGA PHOTOGRAPHY, COURTESY OF THE NATIONAL PUBLIC HOUSING MUSEUM



**Ryan Gann, AIA, NOMA**, completed a public artwork at the National Public Housing Museum with artists Amanda Williams and Olalekan Jeyifous. Inspired by paint chips and wallpaper fragments left behind in the Jane Addams Homes, “Resilient Hues” transform the Museum’s entrance into a powerful threshold of memory and resistance. It’s a bold tribute to the joy, creativity, and resilience of public housing residents.

# HANOVER<sup>®</sup>

Architectural Products

MASTER DISTRIBUTOR FOR **OPTIMUM**



Arabescato  
Corchia

## DESIGN WITHOUT LIMITS.

ACHIEVE SEAMLESS, COORDINATED DESIGNS ACROSS MULTIPLE SURFACES  
WITH XL PREMIUM PORCELAIN SLABS

[WWW.HANOVERPAVERS.COM](http://WWW.HANOVERPAVERS.COM)

# VISIT OUR SHOWROOM



*CONTACT US  
TODAY*

Lake Bluff, IL 60044  
(847) 615-1003  
[MarvinbyEvanstonLumber.com](http://MarvinbyEvanstonLumber.com)

**MARVIN**<sup>®</sup>  
DESIGN GALLERY  
by Evanston Lumber



**SIERRA  
PACIFIC**  
WINDOWS

A DIVISION OF  **SIERRA  
PACIFIC  
INDUSTRIES**



Jeremy Bitterman Photography

ELEVATING AESTHETICS,  
ONE VIEW AT A TIME.



View more amazing  
projects from Sierra  
Pacific Windows

## Chicago Design Center

2445 E Higgins Rd. | Elk Grove Village | 847-262-5907

[www.SierraPacificWindows.com](http://www.SierraPacificWindows.com) | 800-824-7744

# DESIGN EXCELLENCE AWARDS

AIA Chicago's Design Excellence Awards honor the outstanding work of AIA Chicago members and their firms, reinforce the value of great architecture, and highlight members' contributions to designing equitable and sustainable places and spaces. These awards are given based on project square footage. The categories include Architecture: Extra Small, Small, Medium, Large, and Extra Large, as well as Interior Architecture: Small, Medium, and Large.

The Unbuilt Award recognizes projects that, though not yet realized, thoughtfully engage with social, cultural, environmental, and technological opportunities and challenges. Returning for the first time since 2018, this award highlights the profound value of the creative process, fostering dialogue and idea generation within the design community while celebrating innovation, intention, and conceptual rigor. Eligible projects were those creatively conceived between 2020 and 2025.

For both Design Excellence and Unbuilt awards, the highest possible honor, the Honor Award, recognizes projects that exemplify excellence in architectural design on all levels and embrace the highest standards to which AIA members aspire. Except in extraordinary circumstances, one Honor Award is given for each of the project categories and must be selected by a unanimous vote from the jury.

Granted to projects that display a high standard of architectural quality and design, the Citation of Merit is given to a project deemed unanimously or by consensus of jury members. The number of Citations of Merit is given at the discretion of the jury.

## JURY

### INTERIOR ARCHITECTURE SMALL, MEDIUM, LARGE



**Brent Linden, AIA**  
Allied Works  
Portland, Oregon



**Nina Cooke John, AIA, NOMA**  
Studio Cooke John  
Architecture + Design  
New York, New York



**Cally Niess, AIA**  
INVISION  
Architecture  
Des Moines, Iowa



**Rebecca Rudolph, AIA**  
Design, Bitches  
Los Angeles, California



**JURY CHAIR**  
**Francisco Javier Rodríguez-Suárez, FAIA**  
Director, School of  
Architecture, Clayton  
T. Miers Professor  
in Architecture  
University of Illinois  
Urbana-Champaign

### ARCHITECTURE EXTRA SMALL, MEDIUM



**Everald Colas, AIA, NOMA, LEED AP**  
STORYN Studio  
for Architecture  
St. Petersburg,  
Florida



**Andrew Parks, Assoc. AIA**  
archimania  
Memphis, Tennessee



**Margo Peterson-Aspholm, AIA, CPHC**  
Prentiss+Balance+  
Wickline Architects  
Winthrop, Washington



**Michael Guthrie, FAIA, LEED AP**  
INFORM Studio  
Detroit, Michigan

### ARCHITECTURE SMALL, LARGE, EXTRA LARGE, AND UNBUILT



**Jose Alvarez, FAIA, LEED AP**  
EskewDumezRipple  
New Orleans, Louisiana



**Arthur Chang, AIA**  
NADAAA Inc.  
Boston, Massachusetts



**Damian Hines, AIA**  
HINESAD  
Houston, Texas



**Julie Hui-Guang Kaufman, AIA, LEED AP BD+C**  
BIG  
New York, New York



**Patricia Rhee, FAIA, DBIA**  
Ehrlich Yanai Rhee  
Chaney Architects  
Los Angeles, California

TOM HARRIS



**WHEELER KEARNS ARCHITECTS**  
**SAWYER RETREAT**  
**SAWYER, MICHIGAN**

Perched along a steep lakeside bluff, Sawyer Retreat is a new vacation house integrated into the Michigan sand dune landscape. The home asserts privacy from the street with a low single-story, black charred wood exterior. A pedestrian bridge spans the sloping ground to reach the front door, reinforcing the client's desire for a light touch and respect for the site, strategically positioned around existing trees. Conceptually, two slightly skewed wooden boxes float over a concrete base rooted into the hillside — built up rather than out. At the entry point, a glass “slice” through the home connects sky, lake, and light, framing an ever-changing panorama that defines the retreat’s sense of place.

TOM HARRIS



TOM HARRIS



**GENERAL CONTRACTOR:** Scott Christopher Homes | **COLLABORATORS:** Enspect Inc. and Kathryn Murphy Interiors | **ARCHITECT TEAM MEMBERS:** Larry Kearns, FAIA; Michael Kendall, AIA; and Erica Ulin, AIA

JAMES STEINKAMP



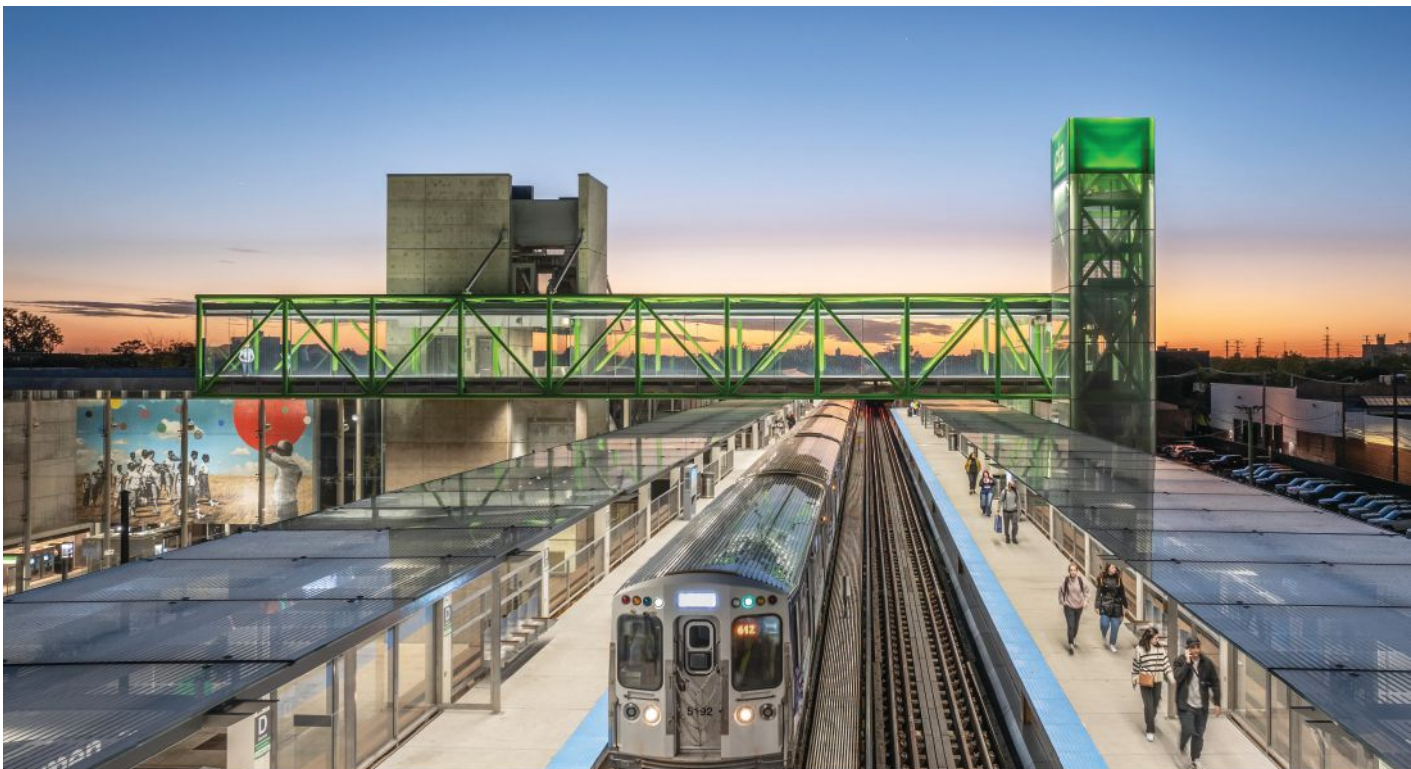
PERKINS&WILL

## DAMEN GREEN LINE STATION CHICAGO, ILLINOIS

Following years of community advocacy, the Damen Green Line Station marks the return of service to Chicago's Near West Side, where several stations closed in 1948, cutting off economically disadvantaged residents from vital transit access. The new hub provides open space for the neighborhood, accommodates surge crowds during events at the nearby United Center, and features a mural celebrating local identity alongside integrated bike and bus connections. Its clear, transparent design helps visitors navigate the station safely while offering striking views of the city's skyline from the bridge. The station's opening is already serving as a catalyst for community reinvestment and revitalization.

JAMES STEINKAMP





**CLIENT:** Chicago Department of Transportation | **GENERAL CONTRACTOR:** F.H. Paschen | **COLLABORATORS:** Simpson Gumpertz & Heger and Milhouse Inc. | **ARCHITECT TEAM MEMBERS:** Ralph Johnson, FAIA; Bryan Schabel, AIA; Mark Walsh, FAIA; Carl D'Silva, FAIA; David Rader, AIA; Justin Wortmann, AIA; Andrew Sommerville, AIA; Matthew Kuhl; Jennifer Heiney; Douglas Smith; Connor Fischer, AIA; Annie Lee; Matt Terdich; Timm Schoenborn; Nathan Geller; and Manos Proussaloglou

ANNABELL REN



**CONVERGE ARCHITECTURE**  
**1516 W CARROLL**  
**CHICAGO, ILLINOIS**

1516 W Carroll is an adaptive reuse project that expands a 1920s high-bay warehouse and attached office building to make way for a new ecosystem of businesses. Guided by the honest expression of a restrained material palette, different eras of construction are celebrated. Intentional overlaps of function and a desire to see and interact with raw materials create a cohesive building despite its varied programs. The project includes a ground-floor restaurant, coffee bar, retail store, design studio, and apothecary workshop; a second-story food innovation film studio and test kitchen, private dining space, office space, and event space; and a third-floor rooftop farm and greenhouses.

RENDERING BY CONVERGE ARCHITECTURE





**CLIENT:** Tracy Boychuk | **GENERAL CONTRACTOR:** LG Development | **COLLABORATORS:** Goodfriend Magruder Structure; BTR Engineers; LG Construction; Warren Aftahi; Meg McMorrow Design; and Tracy Boychuk | **ARCHITECT TEAM MEMBERS:** Lynsey Sorrell, AIA; Steven Karvelius; and Elliott Riggen

JASON O'REAR



STUDIO GANG

# CALIFORNIA COLLEGE OF THE ARTS CAMPUS EXPANSION

SAN FRANCISCO, CALIFORNIA

The California College of the Arts Campus Expansion creates a vibrant indoor-outdoor environment that fosters connections among diverse people, ideas, and creative practices. Conceived as a creative ecosystem where 34 art and design disciplines converge in one location, the expansion adds new art-making facilities, learning spaces, and green spaces. The concrete ground level houses indoor-outdoor workshops for intensive art-making and fabrication, designed for visibility, accessibility, and interdisciplinary exchange. Above, two mass timber pavilions — among California's first exposed mass timber structures — contain classrooms, art studios, and exhibition galleries, offering informal spaces for learning, working, and gathering.

JASON O'REAR





**CLIENT:** California College of the Arts | **GENERAL CONTRACTOR:** Hathaway Dinwiddie Construction Company | **CONTRIBUTING ARCHITECT:** TEF Design (Associate Architect) | **COLLABORATORS:** Dovetail Construction Project Management; Atelier Ten; Arup; Meyers+; Surface Design Inc.; Lotus Water; PritchardPeck; Public Design; Coffman Engineers; Thornton Tomasetti; and Urban Design Consulting Engineers | **ARCHITECT TEAM MEMBERS:** Ellen Anderson; Vincent Calabro; Kimberly Daul; William Emmick, AIA; Jason Flores; Jeanne Gang, FAIA; Dimitra Gelagoti; Claire Halpin; Alan Huang; Christina Kull; Taylor Metcalf; Andrea Rovetta; Mauricio Sanchez, AIA; Mark Schendel, FAIA; Aurelien Tsemo, AIA; Clifford Vickrey, AIA; Olesya Vodenicharska; and Steve Wiesenthal



GOETTSCH PARTNERS

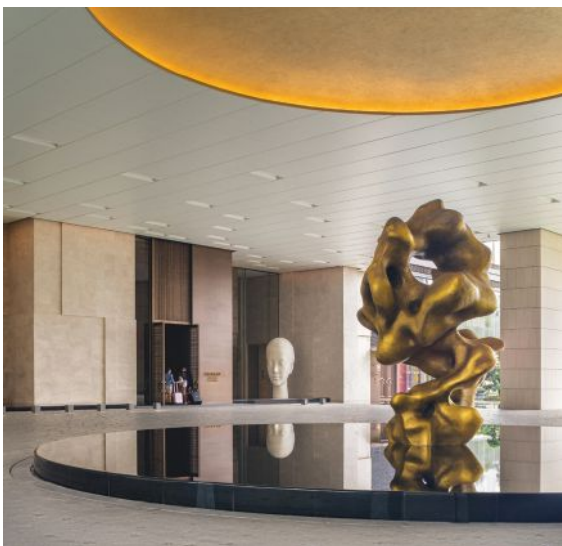
## CONRAD SHENZHEN

SHENZHEN, CHINA

The new Conrad Shenzhen is a 300-key luxury hotel designed for both business and leisure. It features cascading amenity floors and landscaped roof gardens atop a raised podium, all oriented to capture views of the adjacent green belt and Qianhai Bay. As Hilton Worldwide's first luxury property in this gateway city of southern China, the hotel integrates architecture, art, and landscape. The triangular site and strict setback requirements inspired a distinctive design that maximizes views, optimizes program placement and outdoor amenities, and celebrates local building materials, art, and culture.



ACF



ACF



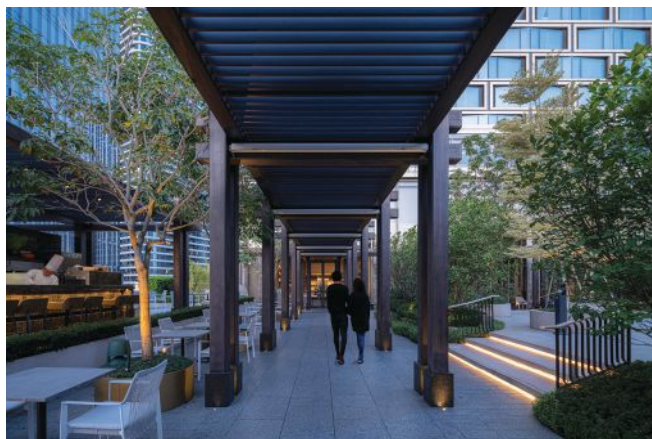
ARCH-EXIST



ARCH-EXIST



ARCH-EXIST



**CLIENT:** Horoy Group | **GENERAL CONTRACTOR:** Huashi Group | **ARCHITECT OF RECORD:** Architectural Design and Research Institute of Guangdong Province (GDI) | **COLLABORATORS:** Yabu Pushelberg and WSP | **ARCHITECT TEAM MEMBERS:** James Zheng, AIA; Travis Soberg, AIA; Joachim Schuessler; Daniel Lipetzky, AIA; and Hai Wang, AIA

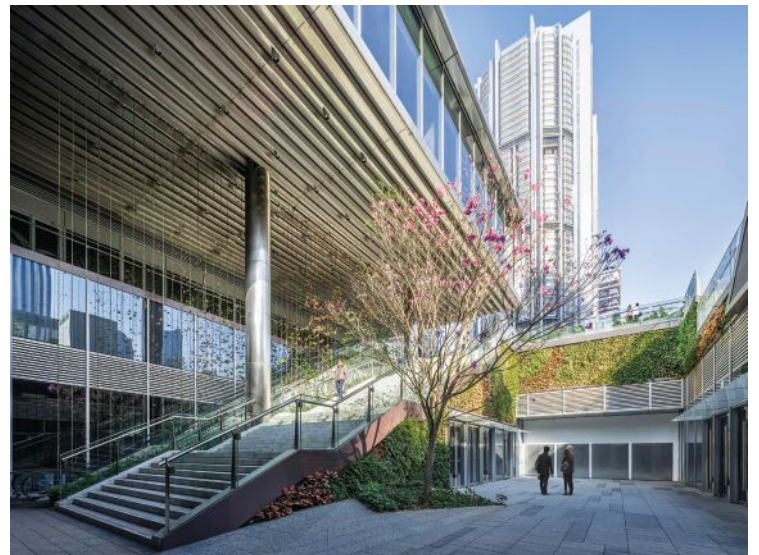
CREATAR



**GOETTSCH PARTNERS**  
**COFCO QIANHAI**  
**INNOVATION CENTER**  
**SHENZHEN, CHINA**

Located in Shenzhen's Qianhai district, COFCO Qianhai Innovation Center serves as a headquarters and multi-tenant office complex featuring two towers, each designed as slender vertical forms with three stepped-back bars that reveal internal atria and sky terraces. The towers' façades feature angled curtain walls, which maximize views and daylight. At their summits, interconnected sky villages promote collaboration and foster community. Ground-level pedestrian zones, elevated bridges, and an extensive underground retail network integrate the site with adjacent areas, reinforcing public access and connectivity. The design celebrates nature, transparency, and community while establishing a strong identity within Shenzhen's urban fabric.

CREATAR



CREATAR



COURTESY COFCO



CREATAR



CREATAR



**CLIENT:** Grandjoy Holdings Group Co. Ltd. | **GENERAL CONTRACTOR:** China Construction Fifth Engineering Division Corp. Ltd. | **ARCHITECT OF RECORD:** Huasen Architecture and Engineering Design Consulting Co. | **COLLABORATORS:** PT Architecture Design and WSP | **ARCHITECT TEAM MEMBERS:** James Zheng, AIA; Travis Soberg, AIA; Claire Yin Chen; Xiaohai Li; Michael Wagenbach; Xiao Ma; and Yang Liuqingqing

VON WEISE ASSOCIATES

**BARLOW RESIDENCE**

CHICAGO, ILLINOIS

Barlow Residence creates a seamless flow from inside to outside, allowing for both visual and physical access to the outdoors and nature. Architecturally, the older portion of the home was renovated to maintain the traditional character of the neighborhood while the new addition — built on the back and perpendicular to the original house — is more open and transparent, fostering a stronger connection with the landscape. Planters and green roofs integrate into the circulation to ensure visual access to nature, natural light, and cross-ventilation. The glass-enclosed staircase exemplifies this approach, turning movement through the home into an immersive experience of the outdoors.



HALL+MERRICK+MCCAUGHERTY

**CLIENT:** Dan and Annie Barlow | **GENERAL CONTRACTOR:** Fraser Construction Inc. | **COLLABORATORS:** Goodfriend Magruder Structure; T Clifton Design, Ltd.; and DDG Engineers | **ARCHITECT TEAM MEMBER:** Charles von Weise, AIA

SMITHGROUP

**BOYNE GATLINBURG SKYLIFT LOWER BUILDING**

GATLINBURG, TENNESSEE

Gatlinburg draws tourists with its natural beauty and kitschy charm, often leaning into Disney-like or romanticized Appalachian architecture. In contrast, Boyne offers a unique experience: a scenic chair lift ride culminating at North America's longest pedestrian suspension bridge. The new 5,000-square-foot, two-story base building serves as the gateway, housing offices, retail, and ticketing facilities. Architecturally, it mirrors the bridge's bold structure and geometric clarity, clad in metal trellage over board-formed concrete, with a glowing tower that anchors the site and draws visitors in from the parkway.



JAMES EWING

**CLIENT:** Boyne Resorts | **GENERAL CONTRACTOR:** Merit Construction | **ARCHITECT TEAM MEMBERS:** Bill Ash, AIA; Steven Barrett; Brian Bilski; Alvin Gu; Laura Holman; Steve Lodge, AIA; Andrew Nelson; Jason Smith, AIA; Alivia Stalnaker, AIA; Zilong Tan; and Hongen Zhou

SEEK DESIGN + ARCHITECTURE

# DUTCHMOOR VALLEY GUESTHOUSE

LA PORTE, INDIANA

Dutchmoor Valley Guesthouse sits on a 30-acre farmstead in rural Indiana, nestled among trees and wildflowers. When unoccupied by guests, it serves as a wellness and entertainment retreat for the property owners. The design comprises three gabled volumes — a bedroom wing, a fitness wing, and a multipurpose wing — each strategically oriented to frame views and connect with the surrounding landscape and farmstead. Together, they create a retreat that is deeply rooted in place, opening fully to the rhythms of the land.

ANGIE MCMONIGAL



**CLIENT:** John Hass and Mary Frances Budig | **GENERAL CONTRACTOR:** Integrus Construction | **COLLABORATORS:** M2 Engineering; HTP Engineering Group; and site design group, Ltd. | **ARCHITECT TEAM MEMBERS:** Jason Nuttelman, AIA; Jose Carlos Garcia; and Kai Liu

LATENT

# HEART OF THE CITY | DISCOVERY WALK

ROCHESTER, MINNESOTA

Situated at the center of a global medical city, Heart of the City reimagined an aging public plaza and linked it to Discovery Walk — a new, four-block multiuse linear park. Designed through an intersectional lens of mobility, public health, and cultural inclusion, Latent collaborated with a local landscape architect to create distinctive pavilions, movable seating, and curated art elements along the corridor. It offers a moving response to the question: *How can a city's public spaces be designed for wellness?*

DEAN RIGGOTT PHOTOGRAPHY



**CLIENT:** Destination Medical Center | **GENERAL CONTRACTOR:** Knutson Construction | **CONTRIBUTING ARCHITECT:** Coen + Partners | **COLLABORATORS:** Kimley Horn; Landscape Forms; EZ Fab; and Fowler + Hammer | **ARCHITECT TEAM MEMBERS:** Nicolas Anderson, AIA; Maria Carrizo, Assoc. AIA; Samantha Choudhury; Katherine Darnstadt, AIA; Terrence Hector, AIA; Tyler Stoeckel; and Francesca Xavier

# CITATION OF MERIT

DESIGN EXCELLENCE | ARCHITECTURE EXTRA SMALL

KWONG VON GLINOW

## RICE UNIVERSITY MD ANDERSON HALL RENOVATION HOUSTON, TEXAS

The renovation of Rice University School of Architecture at MD Anderson Hall introduces three new spaces to the school: a welcome center, a student and community forum, and a faculty and staff lounge. All three back-filled spaces are located along the school's central axis, in the addition designed in 1981 by James Stirling and Michael Wilford. The design approach for the renovation of these spaces reveals and celebrates the building's history by acknowledging and enhancing the specific context of the original intervention.

MIKAEL OLSSON



**CLIENT:** Rice University | **GENERAL CONTRACTOR:** Tellepsen | **ARCHITECT OF RECORD:** Sharp Architecture Inc. | **COLLABORATORS:** National Structural Engineering; Threshold Acoustics; Dirtt; Kawneer; and T&D Engineers LLC | **ARCHITECT TEAM MEMBERS:** Alison Von Glinow, AIA; Lap Chi Kwong; Nathan Geller, AIA; Oana Giuglea; Jonah Laduca; Benjamin Luebke; Jiachen Wang; and Tianjiao Wang, Assoc. AIA

## Brighton Park Neighborhood Council

We're honored to provide structural engineering for this new headquarters and community center—an inspiring project bringing lasting impact to an underserved community.



8623 W Bryn Mawr Avenue, Suite 509  
Chicago, IL 60631  
312.739.3701

baseengr.com | info@baseengr.com





Disarm the  
everyday hazards.  
Even steel-toe boots.



Kingspan's OPTIM-R E is the industry's only encapsulated panel, built to disarm everyday jobsite hazards while maintaining a high R-value. See how OPTIM-R E sets a new standard for vacuum insulated panels by scanning the QR code.

GFT

## 147TH STREET/SIBLEY BOULEVARD METRA STATION

### HARVEY, ILLINOIS

The 147th Street/Sibley Boulevard Station transforms a constrained piece of infrastructure into a civic space beneath an active rail viaduct in Harvey, Illinois. While technical requirements dictated much of the design, opportunities for architectural expression emerged in two key elements: a folded ceiling and a rhythm of sculptural columns. Together, they create the station's public face, bringing movement, light, and human scale to the arrival experience. What began as a necessary infrastructure upgrade has become something more — a dignified, legible, and deliberately designed space that repositions transit as a visible and valued part of community life.



COURTESY GFT

**CLIENT:** Metra Commuter Rail | **GENERAL CONTRACTOR:** IHC Construction Companies LLC | **COLLABORATORS:** TYLin International Group and HTP Engineering Group | **ARCHITECT TEAM MEMBERS:** Steve Hotz; Ryan Johnson; Susan Johnson; Michael Lucansky, AIA; Norbert Schlotter, AIA; Mark Stromberg, AIA; Susan Thayer, AIA; and Nicole Torres

RANGE DESIGN &amp; ARCHITECTURE

## NOTHING DESIGN CO. HEADQUARTERS

CHICAGO, ILLINOIS

Nothing Design Co. Headquarters is the expansion of an existing structure into a combined furniture design studio and showroom. The project unifies and expresses a variety of spatial qualities, creating spaces to make and display furniture, addressing daylighting and energy performance for a prominent south-facing façade, and drawing inspiration from Chicago's historical pattern of common brick structures with face-brick fronts. The result is a workplace and public-facing venue that reflects the company's craft while engaging the architectural character of its neighborhood.



JAMES JOHN JETEL

**CLIENT:** Nothing Design Co. | **GENERAL CONTRACTOR:** Formed Space | **COLLABORATORS:** Louis Shell Structures Inc.; Interstate Brick; Bricks Inc.; and Edifel Designs | **ARCHITECT TEAM MEMBERS:** Casimir Kujawa, AIA, and Mason Pritchett, AIA

**LBBA ARCHITECTS AND MOODY NOLAN**  
**BRONZEVILLE ETOD:**  
**43 GREEN PHASE 1 & 2**  
**CHICAGO, ILLINOIS**

TOM HARRIS



As the first equitable transit-oriented development on Chicago’s South Side, 43 Green is a multiphase housing project anchored by the 43rd Street Green Line station. Located in Bronzeville — a historic heart of the city’s Black community — the development is the result of collaboration among numerous community design partners. It comprises two mixed-use buildings, each with more than 50 percent affordable units, delivering high-quality, amenity-rich housing alongside commercial space. This public-private investment is revitalizing the 43rd Street corridor, drawing teachers, tradespeople, and young professionals while honoring the neighborhood’s legacy and providing much-needed affordable housing.

**CLIENT:** The Habitat Company and P3 Markets | **GENERAL CONTRACTOR:** BOWA Construction and McHugh Construction | **ARCHITECT OF RECORD:** LBBA Architects | **CONTRIBUTING ARCHITECT:** Beehyve (Interior Architect) | **COLLABORATORS:** Element Energy Consulting; Space Continuum; Dukane Precast; Nayyar & Nayyar International; dbHMS; McKay Landscape Architects; Engage Civil; JMF Interior Design; Shen Milsom & Wilke; and LightHive | **ARCHITECT TEAM MEMBERS:** Jeff Bone, FAIA; Yanitza Brongerz-Marrero, FAIA, NOMA; Matthew Brown, AIA; Ronel Constantin, Assoc. AIA; Ochuko Ewaraye, AIA, NOMA; Trish Girdwood, AIA; Miguel Gonzalez; Renauld D. Mitchell, FAIA, NOMA; Julia Mosqueda, Assoc. AIA; Jessica Parmenter, AIA; Matt Snoap, AIA; Jennifer Stanovich, AIA; and Terran Wilson, AIA

**PERKINS&WILL**  
**ELEMENT LABS, UNIVERSITY**  
**RESEARCH PARK**  
**MADISON, WISCONSIN**

MARK HERBOTH



Element Labs is a flexible, multi-tenant lab and office building in Madison’s University Research Park. Designed to foster innovation and community engagement, it features a publicly accessible ground floor with a restaurant, lounge-style workspaces, and an event venue that welcomes tenants and visitors alike. Above, four levels of state-of-the-art lab space support a range of scientific disciplines, while three levels of structured parking are tucked discreetly below. By challenging the traditional, isolated office park model, the design creates an open, dynamic environment that reflects the ambitions of its scientific tenants and strengthens connections within the broader research community.

**CLIENT:** University Research Park – UW Madison | **GENERAL CONTRACTOR:** J.H. Findorff & Son Inc. | **COLLABORATORS:** Graef; Kawneer; 9Wood; Vetter Stone; and AEI | Affiliated Engineers Inc. | **ARCHITECT TEAM MEMBERS:** Max Adams, AIA; Vanessa Eickhoff; James Giebelhausen, AIA; Amina Helstern; Adana Johns, AIA; Jerry Johnson, AIA; Andrew Kroll, AIA; Bridget Lesniak, AIA; David Rader, AIA; and John Slack

**PERKINS&WILL**

## HELEN EDWARDS ENGINEERING RESEARCH CENTER

**BATAVIA, ILLINOIS**

Fermilab, the premier particle physics laboratory in the United States, sought to bring together researchers and engineers previously dispersed across its 6,800-acre campus into a single facility: the Helen Edwards Engineering Research Center (HEERC). Designed to foster collaboration, improve operational efficiency, and support cutting-edge particle physics research — including the Deep Underground Neutrino Experiment — the HEERC sits northeast of the iconic Wilson Hall, connecting directly to its ground floor and L1 atrium. Its configuration, scale, and proportions were carefully considered to respond sensitively and artfully to the presence of Wilson Hall.



JAMES STEINKAMP

**CLIENT:** Fermilab | **GENERAL CONTRACTOR:** Mortenson | **COLLABORATOR:** ARUP | **ARCHITECT TEAM MEMBERS:** Gabriel Abbott; Rashad Baniabbasi, AIA; Katie Coffey, AIA; Joe Connell; Ryan Chester, AIA; Vanessa Eickhoff; Matthew Ficket, AIA; Alli Gerardot; Adana Johns, AIA; Ralph Johnson, FAIA; Lara Leskaj; Tom Mozina, AIA; Thang Nguyen; Nick Perry, AIA; Rocco Tunzi, AIA; Nathan Uibel, AIA; Mark Walsh, FAIA; Rick Young, AIA; and Jeff Zynda

**CANNONDESIGN**

## WESTERN MICHIGAN UNIVERSITY — STUDENT CENTER AND DINING FACILITY

**KALAMAZOO, MICHIGAN**

The new student center at Western Michigan University is designed as an inclusive, welcoming hub for campus life. Located on lands historically occupied by the Ojibwe, Odawa, and Bodewadmi nations, it serves as a student-centered gathering place that fosters belonging and community. The three-level facility offers a range of spaces — including gathering and lounge areas, a dining hall, campus bookstore, on-campus brewpub, welcome center, and retail shops — along with a grand ballroom, conferencing rooms, a game room, and numerous collaboration zones. Its vibrant, flexible environment encourages connection, community, and collaboration for all students.



CHRISTOPHER BARRETT PHOTOGRAPHY

**CLIENT:** Western Michigan University | **GENERAL CONTRACTOR:** Walbridge | **CONTRIBUTING ARCHITECT:** Hobbs + Black | **COLLABORATORS:** Peter Basso and Associates; Skyfold; Clover Architectural Products; and Bubble Deck | **ARCHITECT TEAM MEMBERS:** Thomas Hanley, AIA; Darren Poon, AIA; Roland Lemke, AIA; Brett Lawrence; Billy Raleigh; Jacob Simanowitz, AIA; Charles Smith, FAIA; Carrie Parker, AIA; and Emily Weiser, Assoc. AIA

**CANNONDESIGN**

# JOHNS HOPKINS UNIVERSITY APPLIED PHYSICS LABORATORY — BUILDING 201

**LAUREL, MARYLAND**

Guided by the client’s forward-thinking ethos, the design of the Johns Hopkins University Applied Physics Laboratory – Building 201 incorporates unexpected moments throughout the highly technical laboratory from soaring atriums to floating staircases. This state-of-the-art facility provides scientists with advanced tools, equipment, and laboratories that push the boundaries of research and development. Whether unraveling the mysteries of the universe, pioneering new materials, or addressing complex national security challenges, Building 201 equips researchers with the resources to explore new frontiers.

CHRISTOPHER BARRETT PHOTOGRAPHY



**CLIENT:** Johns Hopkins University Applied Physics Laboratory | **GENERAL CONTRACTOR:** Turner Construction | **COLLABORATORS:** TURF Design; Oldcastle Building Enclosure; and ISEC Interior Architectural Millwork | **ARCHITECT TEAM MEMBERS:** Tomas Cantu-Martinez; Angela Gonzalez; Tom Hanley, AIA; Michael Kmak, AIA; Chris Lambert; Brett Lawrence; Roland Lemke, AIA; Jack Mevorah, AIA; Carrie Parker, AIA; Darren Poon, AIA; Billy Raleigh; Michael Patrick Sullivan; and Emily Weiser, Assoc. AIA

**OPTIMA INC.**

# VERDANA

**WILMETTE, ILLINOIS**

Verdana is a seven-story, 100-unit apartment building in Wilmette on Chicago’s suburban North Shore. Standing on a corner site and clad entirely in glass with a partially exposed concrete frame, the building makes a striking first impression. The sawtooth façade plays with light and shadow, while terraces edged with irrigated plantings add a touch of green. At street level, retail space will soon welcome a café. From the lobby and lounge, residents look out onto a courtyard lushly landscaped with native plants. With bus stops steps away and a commuter train station directly across the street, Verdana offers not only distinctive architecture but also a seamless connection to the region.

BILL TIMMERMAN



**CLIENT:** Optima Inc. | **GENERAL CONTRACTOR:** Optima Inc. | **CONTRIBUTING ARCHITECT:** David Hovey Jr., AIA | **COLLABORATORS:** TGRWA; Mansard; and Cosentini Associates | **ARCHITECT TEAM MEMBERS:** David Hovey Jr., AIA, and David Hovey Sr., FAIA

# CITATION OF MERIT

DESIGN EXCELLENCE | ARCHITECTURE LARGE

LAMAR JOHNSON COLLABORATIVE

## EMBRY

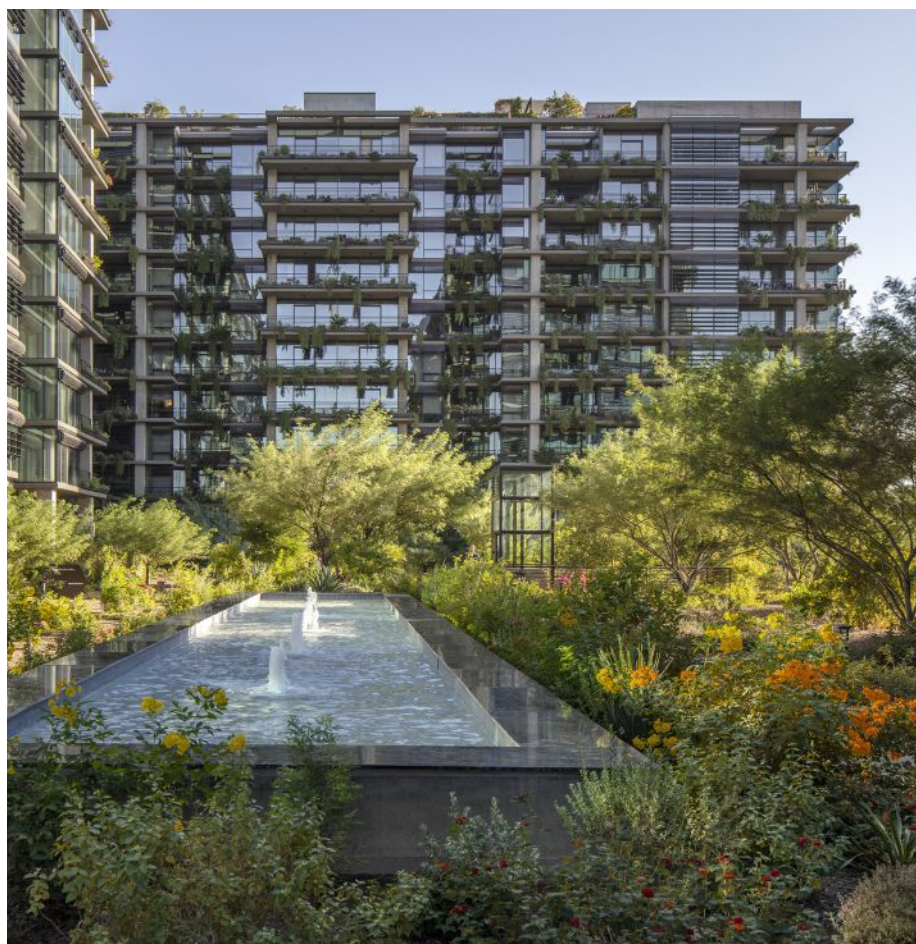
CHICAGO, ILLINOIS

Embry is a modern classic in the heart of Chicago's West Loop — a 16-story, 58-unit condominium tower that reflects the power of collaborative vision and discovery-driven design. Developed through a close partnership with the client and an integrated team, the building was conceived from the inside out, with unit layouts shaping its massing, proportions, and overall experience. Its façade, rich in texture and bronze tones, shifts with the changing light and surrounding context, giving the building a dynamic presence on the skyline. From intricate detailing to its citywide profile, Embry stands as a timeless urban landmark rooted in place, material richness, and human-scaled design.

LAMAR JOHNSON COLLABORATIVE



**CLIENT:** Sulo Development | **GENERAL CONTRACTOR:** McHugh Construction | **COLLABORATORS:** DeSimone Consulting Engineers; Kara Mann Design; and Salas O'Brien | **ARCHITECT TEAM MEMBERS:** Alan Barker, AIA; Ben Buehrl, AIA; Dayuma Cruz; Jameson Skaife; and Mike Staats, AIA



## optima<sup>®</sup>

Optima is a design-driven real estate development firm that has spent over four decades redefining modern living through renowned luxury communities in both urban and suburban settings. By overseeing every detail; from development and design to construction, sales, marketing, and management; Optima is free to push boundaries, refine efficiencies, and shape environments.

With more than 40 developments across Arizona and Illinois and over 100 national awards, each project reflects the belief that architecture should be felt as much as seen. Through space, light, and materiality, Optima creates vibrant, connected communities rooted in modernist traditions and continually evolving to transform the way people experience home.

**OPTIMA.INC**

Managed by Optima Real Estate, Inc.



GOETTSCH PARTNERS

# 320 SOUTH CANAL

CHICAGO, ILLINOIS

Immediately south of the 1925 Union Station headhouse, the 2.2-acre, full-block site sits in the West Loop with excellent access to transit and major expressways. The 51-story tower totals 1.74 million square feet and includes a conference center, fitness center, restaurant, grab-and-go market, branch bank, and a cocktail lounge in an adjacent structure, along with parking for 324 vehicles (including EVs) and 114 bicycles. Roughly 1.5 acres are dedicated to The Green at 320 — a public park that ranks among Chicago’s largest privately owned public parks. Together, the tower and The Green at 320 knit Union Station to the West Loop, pairing an amenity-rich workplace with a generous new public realm.



**CLIENT:** Riverside Investment & Development and Convexity Properties | **GENERAL CONTRACTOR:** Clark Construction | **COLLABORATORS:** Magnusson Klemencic Associates and Environmental Systems Design | **ARCHITECT TEAM MEMBERS:** James Goettsch, FAIA; Joseph Dolinar, AIA; Joachim Schuessler; Richard Barrett, AIA; Nick Popoutsis; and Larry Weldon

# Build for Your Future

Become a **Phius Professional**



- ✓ Unlock new business opportunities
- ✓ Become a leader in your field
- ✓ Master high-performance design & construction

 **phius** | [www.phius.org/trainings](http://www.phius.org/trainings)

REID ROLLS, REID ROLLS PHOTOGRAPHY



**NORMAN KELLEY WITH SPENCER MCNEIL**  
**BUCK MASON OAKBROOK**  
**OAK BROOK, ILLINOIS**

REID ROLLS, REID ROLLS PHOTOGRAPHY

The Buck Mason “Shop in Shop” is located in the historic Oakbrook Center, where a rectangular pavilion has been inserted into an irregularly shaped 1,000-square-foot retail space. Confronted with the generic context of a typical American mall, the design draws inspiration from Jean Prouvé’s 1940s demountable military shelters — structures later repurposed as post-war refugee housing and now often seen in exhibition settings. Fitting rooms and seating are placed between the existing shell and a modular shelter clad in reclaimed wood with glass block infill, a material that made its U.S. debut at the 1893 World’s Columbian Exposition in Chicago and here reemerges as both a tactile and historical focal point.





**CLIENT:** Buck Mason | **GENERAL CONTRACTOR:** Ostrander Construction | **ARCHITECT OF RECORD:** Spencer G McNeil LLC | **COLLABORATORS:** Calor; Anthology Woods; Chestnut Woodworking; and Goodfriend Magruder Structure | **ARCHITECT TEAM MEMBERS:** Thomas Kelley; Spencer McNeil, AIA; Carrie Norman, AIA; and Evan Ortiz

TOM HARRIS



WHEELER KEARNS ARCHITECTS + WORKING GROUP 1

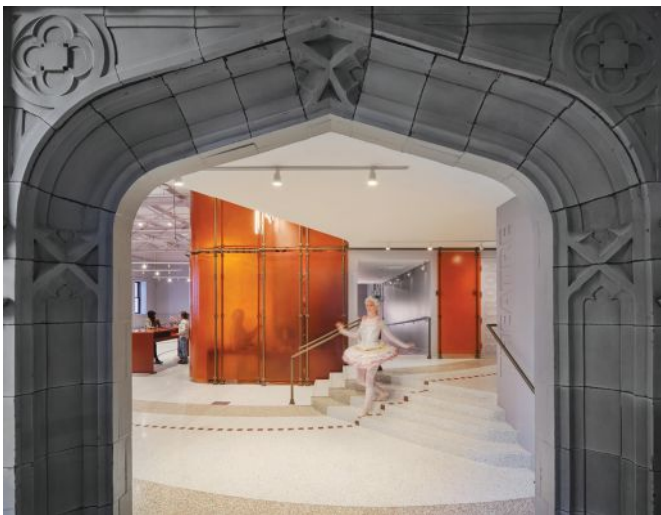
## LOOKINGGLASS THEATRE LOBBY

CHICAGO, ILLINOIS

Tucked inside the historic Chicago Avenue Pumping Station, Lookingglass Theatre's renovated public space connects the mainstage to the city with a new street-front entrance, vibrant lobby, café, bar, and flexible areas for rehearsal, development, and outreach. A terrazzo floor, inscribed with a celestial map, guides visitors past historic utilities and new amenities, leading them up a ceremonial stair and accessible ramp to the mainstage. At the lobby's core, a glowing hand-cast fiberglass hub — part scrim, part lantern — draws visitors in and encourages movement through and around the box office, coat check, and universal restrooms it contains, establishing a bold, unifying architectural language that embodies the theatre's experimental spirit.

TOM HARRIS





**CLIENT:** Lookingglass Theatre Company | **GENERAL CONTRACTOR:** Norcon | **ARCHITECT OF RECORD:** Wheeler Kearns Architects | **CONTRIBUTING ARCHITECT:** Working Group 1 | **COLLABORATOR:** TYLin | **ARCHITECT TEAM MEMBERS:** Larry Kearns, FAIA, LEED AP; Melissa Neel; Calli Verkamp, AIA, LEED AP; and Fabiola Yep, AIA

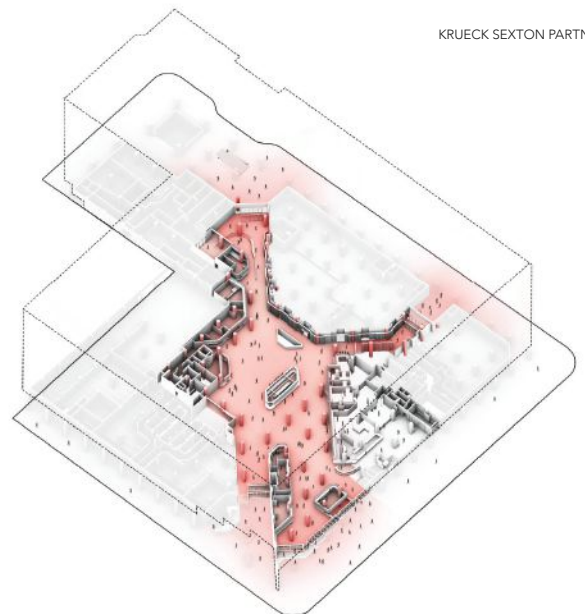
ANTON GRASSL



**KRUECK SEXTON PARTNERS**  
**THE SQUARE AT**  
**INTERNATIONAL SQUARE**  
**WASHINGTON, D.C.**

KRUECK SEXTON PARTNERS

Anchored by a D.C. Metro stop at the corner of International Square, The Square extends a new food market from the urban streetscape into the building. Along 19th Street, large awning-style glazed overhead doors open the ground-floor façade to the neighborhood, creating a porous edge and clear sightlines into a 12-story atrium — a cultural hub animated by food vendors and event space. This openness prompted a rethinking of the mechanical strategy, leading to an automated natural ventilation system that harnesses D.C.'s temperate climate to cut energy use, reduce environmental impact, and keep visitors comfortable in every season.

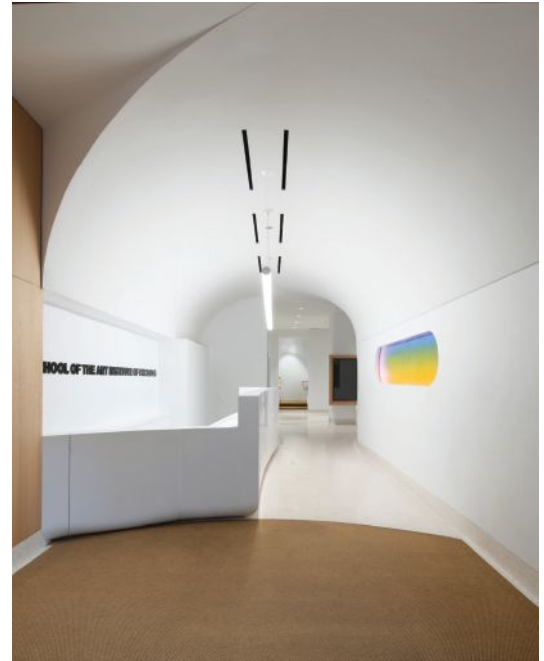




**CLIENT:** Tishman Speyer | **GENERAL CONTRACTOR:** DAVIS Construction | **COLLABORATORS:** GHT; JRS Associates; Transsolar KlimaEngineering; George Sexton Associates; Omni Ecosystems; Wiles Mensch; Tadjer Cohen Edelson Associates; Arup; and CS Consulting | **ARCHITECT TEAM MEMBERS:** Yugene Cha, AIA; Mariusz Klemens, AIA; Roland Knowlden; Boram Oh; Xiang Qiang, AIA; Stephen Shatswell, AIA; Juan M. Villafañe, AIA; and Leif Widholm, AIA

**KWONG VON GLINOW****162 N. STATE STREET  
RESIDENCE HALL  
LOBBY RENOVATION****CHICAGO, ILLINOIS**

For an art school in the heart of downtown Chicago, the 162 N. State Street Residence Hall lobby introduces a new geometrical language, creating a continuous vaulted space that welcomes students to their first living experience away from home. Security and wayfinding are prioritized by repositioning the security desk to the front of the lobby, giving officers a clear line of sight to safeguard students and monitor activity. The desk's geometry — formed by three intersecting curves — defines the lobby's programmatic zones: an accessible entrance counter, a check-in area, and the elevator lobby, transforming a functional element into the central organizing feature of the space.



MIKAEL OLSSON

**CLIENT:** School of the Art Institute of Chicago | **GENERAL CONTRACTOR:** Helios Construction Services | **COLLABORATORS:** Goodfriend Magruder Structure; Threshold Acoustics; Luftwerk; Demeter Millwork; Blake Engineering; and MAPS | **ARCHITECT TEAM MEMBERS:** Alison Von Glinow, AIA; Lap Chi Kwong; Bridgette Anne Galve; Nathan Geller, AIA; Oana Giuglea; Benjamin Luebke; Nicholas Papas; Hai Truong; and Tianjiao Wang, Assoc. AIA

**JEN PARK, AIA, OF IIT COLLEGE OF ARCHITECTURE  
AND PARKFOWLER PLUS WITH STUDENTS OF  
IIT COLLEGE OF ARCHITECTURE****CHANGE IN PLOT****CHICAGO, ILLINOIS**

Change in Plot explores critical shifts in architectural narratives by transforming Crown Hall's modernist legacy through parametric manipulation and unconventional materiality. The installation challenges normative spatial understanding by extruding Mies' universal grid into complex forms that are squeezed, twisted, and expanded — operations emblematic of creative architectural thinking. Sisal rope, hand-dyed with natural materials, creates an interactive landscape that references pre-industrial craft traditions. This conceptual intervention illustrates how contemporary architectural education adapts, reacts, and transforms established design principles, creating new spatial experiences that bridge modernist foundations with forward-thinking ideas that shape our future built environments.



FIONN HUI

**CLIENT:** IIT College of Architecture | **GENERAL CONTRACTOR:** Fabricated and installed by design team | **ARCHITECT TEAM MEMBERS:** Mercy Godfrey; Parker Morii-Sciolla; Jim Christie; Tindra Fundin; Kaustubh Mhatre; Cylas Hall, Assoc. AIA; Kara Connolly; Nicole Dushi; Lena Zayed; and Milton Molina (IIT CoA Design and Installation Team); Brad Fowler, AIA; and Reilly Kenney (ParkFowler Plus Design Contributors)

**NORMAN KELLEY WITH SPENCER MCNEIL**  
**ARCHITECTURE AND**  
**DESIGN GALLERY**  
**CHICAGO, ILLINOIS**

The renovation of the architecture and design gallery at the Art Institute of Chicago's Modern Wing is inspired by an electrical floor box left by the building's original architect, Renzo Piano. From this mundane origin, a system of modular columns is designed to screw into the floor and anchor floating partition walls. The new gallery is experienced as a series of adjoining rooms that pinwheel about a central corridor-like space, never touching an extant wall. The result is a flexible gallery with countless permutations. As the collection of works change, so too might the columns through their removal or addition. While a single column bears only the reference to the original electrical floor box, the collection of columns signals how curation is a practice in constant flux.

KENDALL MCCAUGHERTY, HALL+MERRICK+MCCAUGHERTY



**CLIENT:** Art Institute of Chicago | **GENERAL CONTRACTOR:** Ism Furniture | **COLLABORATOR:** Goodfriend Magruder Structure | **ARCHITECT TEAM MEMBERS:** Thomas Kelley; Spencer McNeil, AIA; Carrie Norman, AIA; and Liam Hoy, Assoc. AIA

**CANNONDESIGN**  
**NORTHWESTERN MEDICINE,**  
**FACULTY OFFICE CENTER**  
**CHICAGO, ILLINOIS**

Confronting a challenge faced by every academic medical center — balancing physicians' long-held expectations for private offices with the realities of limited space — Northwestern Medicine's Faculty Office Center introduces a new, hospitality-inspired model for the workplace. The design replaces traditional one-size-fits-all offices with a variety of shared, flexible environments that support both focused work and informal connection. Drawing on biophilic forms, organic patterning, and carefully tuned lighting, the space fosters comfort, well-being, and a sense of belonging. The result is an immersive, elevated environment that reimagines how physicians work, collaborate, and recharge.

CHRISTOPHER BARRETT PHOTOGRAPHY



**GENERAL CONTRACTOR:** Bulley & Andrews | **CLIENT:** Northwestern Medicine | **PROJECT COLLABORATORS:** Stantec Consulting; Arktura; Alur Walls; and American Designs, an SCI Company | **ARCHITECT TEAM MEMBERS:** Samantha Dobrusin, AIA; Mark Hirons, FAIA; Meg Navin; Paul Ng; Bradley Pausha, AIA; and Chris Lambert

PERKINS&amp;WILL

## CONFIDENTIAL LAW FIRM

### SALT LAKE CITY, UTAH

For a prominent law firm in Salt Lake City, the design takes a hospitality-driven, sophisticated approach centered on connection and gathering. Drawing from the firm's culture, values, and the natural beauty of its mountain surroundings, the workplace supports best-in-class client service with a range of inviting spaces for meetings, celebrations, and events. The office strikes a balance between professionalism and hospitality, delivering a seamless, high-touch experience throughout the workplace.

STEVE HALL, HALL + MERRICK + MCCAUGHERTY



**GENERAL CONTRACTOR:** Interior Construction Specialists | **COLLABORATORS:** IMEG; Imperial Woodworking; Xibitz; Corporate Concepts; and VBFA Consulting Engineers | **ARCHITECT TEAM MEMBERS:** Alyssa Carata; Jennifer Carzoli; Mikaya Clyde; Joe Connell; Jeremy Helfert, AIA; Lara Leskaj; Quan Pham; Elizabeth Schertler; Rocco Tunzi, AIA; Ken Wilson; and Matthew Zelensek, AIA

PERKINS&amp;WILL

## HEITMAN

### CHICAGO, ILLINOIS

Perched on the 40th and 41st floors above the Chicago River, Heitman's headquarters embodies the firm's stature while creating a workplace that draws people together. A soaring double-height arrival reveals sweeping skyline views, offering an immediate sense of inspiration and belonging. A sculptural stair weaves the two levels into a seamless flow, encouraging connection across teams. At the heart, a lively café becomes the center of community — where colleagues gather and the energy of the workplace comes alive. More than an office, the design invites people back, elevating daily experience and strengthening Heitman's culture of collaboration.

STEVE HALL, HALL + MERRICK + MCCAUGHERTY

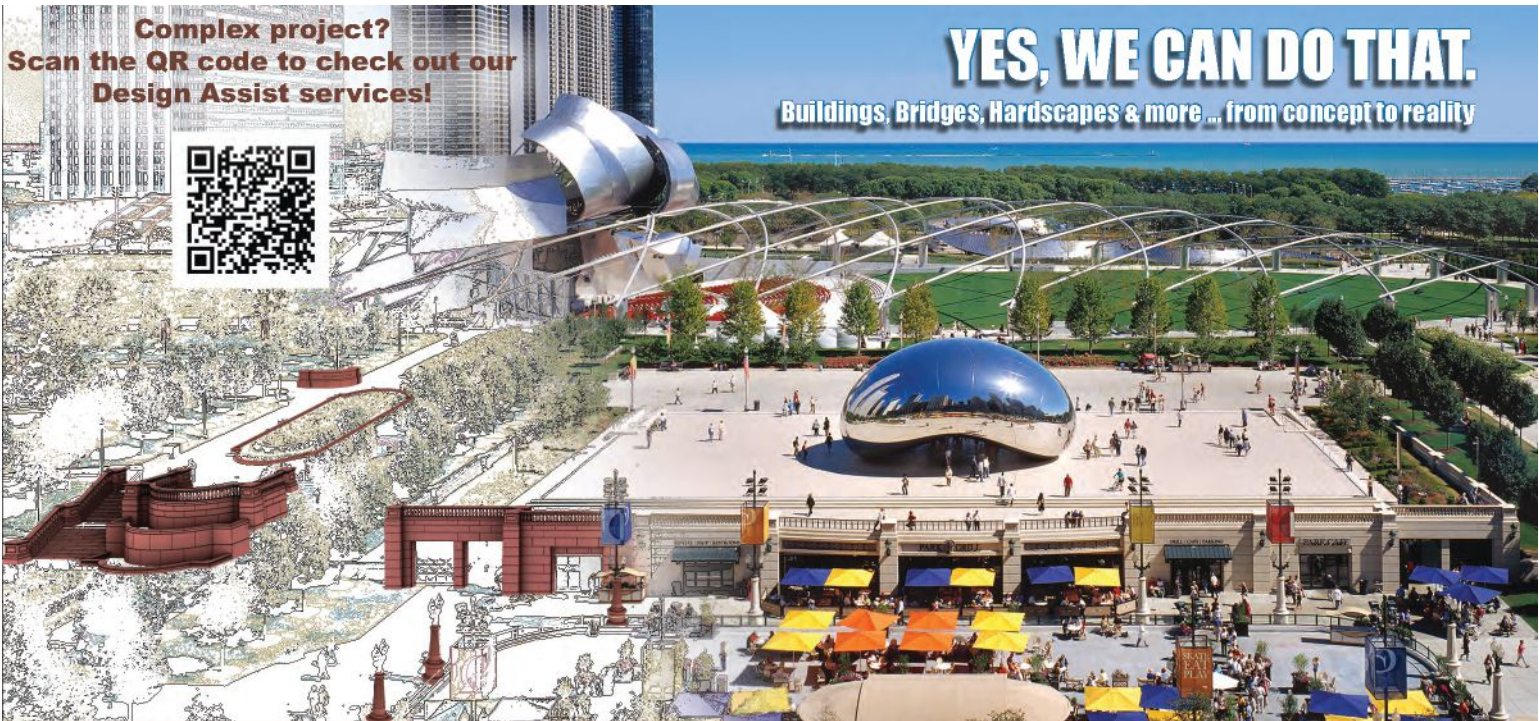


**CLIENT:** Heitman | **GENERAL CONTRACTOR:** Clune Construction | **COLLABORATORS:** Thornton Tomasetti; Alur Store Fronts; Imperial Woodworking Company; Terrazzo and Marble Supply; and Cosentini Associates | **ARCHITECT TEAM MEMBERS:** Joe Connell; Karmen Kahrs; Mayur Patel, AIA; Kara Phillips; Courtney Ruhl; Rocco Tunzi, AIA; and Tim Wolfe

Complex project?  
Scan the QR code to check out our  
Design Assist services!



**YES, WE CAN DO THAT.**  
Buildings, Bridges, Hardscapes & more ... from concept to reality



**ARCHITECTURAL CAST STONE**

*Maximize your Design Possibilities*

[www.acscaststone.com](http://www.acscaststone.com)

PRECAST CONCRETE UHPC GFRC CAST STONE

[sales@acscaststone.com](mailto:sales@acscaststone.com)

630.377.4800

West Chicago, Illinois

ACS Management Group LLC

**IN PURSUIT OF  
YOUR  
PERFECT PROJECT**

Careers

**CLUNE**  
CONSTRUCTION

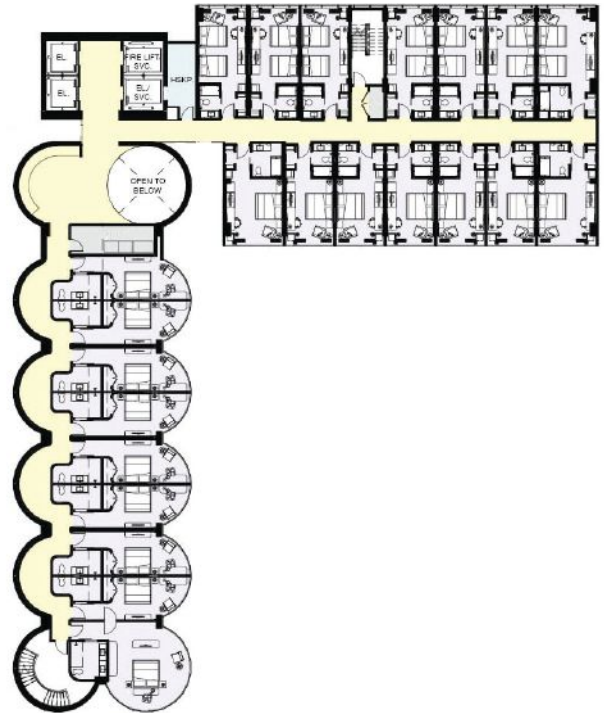


EPSTEIN

## SILO HOTEL

CHICAGO, ILLINOIS

The Silo Hotel project began with a deep respect for the industrial heritage of Chicago's Fulton Market and a vision to preserve the soul of a 150,000-square-foot grain-silo complex while adapting it for a modern hotel program. The design team viewed the site as an archaeological relic layered with history and meaning, and their goal was to metaphorically excavate it, revealing its inner workings to the public. By preserving the iconic concrete silos and exposing their once-hidden mechanical systems — conveyor belts, funnels, and inspection paths — they aimed to create a space that honors the past while engaging the present. The design integrates modular hotel units within the preserved silo drums, enhancing efficiency and sustainability, while a sunken public plaza transforms industrial remnants into a place for gathering, reflection, and education.



**ARCHITECT TEAM MEMBERS:** Randy Buescher, AIA; Patrick Carata, AIA; Ed Curley; Marcin Rysniak; and Tom Suarez

# CITATION OF MERIT

UNBUILT

GENSLER

## NATIONAL UNIVERSITY HOSPITAL SINGAPORE

SINGAPORE

“Hospital Impossible” reimagines National University Hospital (NUH) Singapore under extreme urban constraints. How do you build a 3,000,000-square-foot replacement hospital on a landlocked campus without interrupting care? You elevate above it. NUH’s master plan stacks a state-of-the-art academic medical center directly over existing facilities, allowing uninterrupted operations while new inpatient, diagnostic, and research environments take shape. Once patients and staff move into the new hospital, the obsolete structures are removed and the ground plane is restored as nearly 10 acres of lush, wellness-oriented parkland. In a city of exceptional density, the project refuses false choices: it delivers both 21st-century care spaces and generous public open space. The result inverts the campus from roughly 90 percent coverage to almost 90 percent green, returning land to the community while improving health outcomes. NUH becomes a bridge — spanning diagnosis to cure, research to treatment, hospital to city — an urban asset that heals people and place.

RENDERING BY GENSLER



**COLLABORATORS:** WSP and Arup | **ARCHITECT TEAM MEMBERS:** Randy Guillot, FAIA, LEED AP; Michael Schur, AIA, LEED AP; David Calkins, FAIA, LEED AP; Kelly Westwood, AIA, NOMA; Sean McGuire, AIA; and Steven Wilson, AIA



### Ex-Cell Kaiser's New Pizza Box Recycler



Contact us!

(847) 451-0451

[www.ex-cell.com](http://www.ex-cell.com)



# ROBERTA FELDMAN ARCHITECTURE FOR SOCIAL JUSTICE AWARDS

The Roberta Feldman Architecture for Social Justice Award, administered by the AIA Chicago Foundation, was established in 2020 to honor excellence in built projects and design programs guided by the conviction that access to high-quality architecture is not a privilege but a human right. Architecture for Social Justice is defined by the following objectives:

1. To engage a broader cross-section of society, especially those not typically able to access architectural services
2. To create innovative design solutions that address complex social and economic inequities that impact these communities

This yearly award celebrates the commitment of designers who work on behalf of the public good while receiving no or below market rate compensation.\*

\*Market rate compensation is based on conventional fee structures.



## About Roberta Feldman, Ph.D.

Roberta Feldman, Ph.D., is professor emerita at the University of Illinois at Chicago, School of Architecture. As an architectural activist, researcher, and educator, she is committed to democratic design. Feldman's work is grounded in the conviction that high-quality design is a meaningful and necessary component of an equitable and sustainable society. Her expertise in such work has been recognized nationally and internationally.

# JURY



## JURY CHAIR

**Chris Chwedyk, AIA**  
The Code Group  
AIA Chicago Foundation Past President



**Ryan Gann, AIA, NOMA**  
Freelance Consultant  
AIA Chicago  
Foundation Trustee



**Helen Kessler, FAIA**  
UpFront Regenerative  
Design Inc.  
AIA Chicago  
Foundation Trustee



**Joseph Altshuler, Assoc. AIA**  
Could Be Design  
2024 Roberta Feldman  
Architecture for Social Justice  
Honor Award Recipient



**Patricia Saldaña Natke, FAIA**  
Urban Works, Ltd.

ELLIOTT RIGGEN



**CONVERGE ARCHITECTURE**  
**AFRICAN HERITAGE HUT**  
**CHICAGO, ILLINOIS**

ANNABELL REN

The African Heritage Hut reclaims a disinvested public space in North Lawndale with dignity and purpose. Co-created with local residents, the open gathering space serves as a visible symbol of African heritage and a welcoming hub for everyday life. The design is inspired by a traditional African hut featuring a skylight to connect with nature and the sky and a hearth to serve as a gathering place and resting area. The hut's plan is based on the Adinkrahene symbol, which consists of three concentric circles that symbolize charisma, leadership, and greatness. Today, the space is actively used by the local community for various events, offering a shaded resting area for gardeners and a venue for gatherings and celebrations. This structure has become a vital part of the community, fostering connections and honoring cultural heritage.



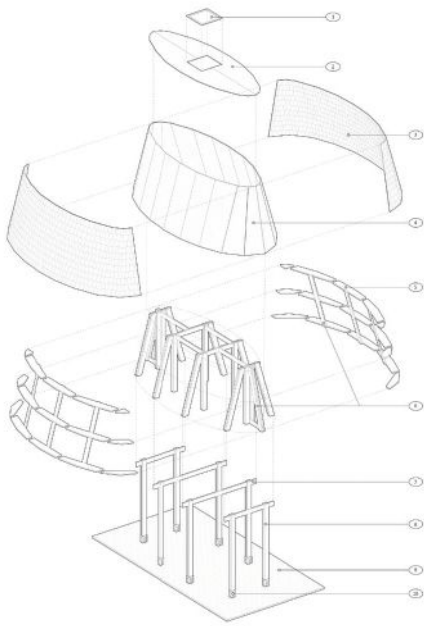
ANNABELL REN



JACHEN WANG



RENDERING BY CONVERGE ARCHITECTURE



- AFRICAN HERITAGE HUT CONSTRUCTION COMPONENTS
1. ACRYLIC SKYLIGHT
  2. 4X4 PIPPOLO
  3. CORNER BRACE CLADDING
  4. 2X4 PLYWOOD SHEATHING
  5. 1/2" OSB SHEATHING
  6. 2X8 FRAMING
  7. 2X8 BEAM
  8. 2X6 COLUMN
  9. EXTERIOR FINISH
  10. SHAPTON METEOR POST BASE

ANNABELL REN



**CLIENT:** North Lawndale Historical and Cultural Society | **GENERAL CONTRACTOR:** Human Scale | **COLLABORATOR:** TYLin | **ARCHITECT TEAM MEMBERS:** Annabell Ren; Elliott Riggan; and Moriah Adam

# CITATION OF MERIT

ROBERTA FELDMAN ARCHITECTURE  
FOR SOCIAL JUSTICE AWARD

BALLOGG PHOTOGRAPHY



DAAM

## LYTE LOUNGE

CHICAGO, ILLINOIS

The LYTE Lounge is an adaptive reuse project transforming a long-vacant nursery school and parish center into a vibrant community hub for at-risk youth on Chicago's South Side. The design strategically reallocates resources and leverages the existing structure to deliver low-barrier access to personal storage and critical care spaces while establishing discreet, secure circulation throughout. A refreshed façade and new landscaping announce the building's renewal to the neighborhood, inviting youth into a calm, dignified environment. By building on what was already there, the project channels limited funds to the highest-impact spaces and creates a safe, welcoming place for young people experiencing homelessness to rest, connect, and receive support.

**CLIENT:** LYTE Collective | **GENERAL CONTRACTOR:** The BOWA Group |  
**COLLABORATORS:** blakeMEP; Geolam; Armstrong Floors; and  
Rockey Structures | **ARCHITECT TEAM MEMBERS:** Elyse Agnello, AIA;  
Alex Shelly, AIA; and Ryan Treacy

Proud to be  
part of a DAAM  
good design



©2025 balloggphoto.com

**Congratulations to DAAM, LLC  
on winning the Roberta Feldman  
Architecture for Social Justice Award.**

Geolam's Vertigo 5010 cladding, chosen for this project, delivers the warmth and natural grain of wood without the maintenance. Easy to install and lightweight, it's the smart, sustainable choice for award-winning exteriors.

**Geolam**<sup>®</sup>

Architectural Eco-Technology

usa.geolam.com

# SOLAR DOESNT HAVE TO BE THE DESIGN COMPROMISE

Architects who care about aesthetics partner with Windfree Solar. Because great design deserves great solar integration.

Let's design something remarkable.  
312-588-6953 | www.windfree.us



# SUSTAINABLE SIDING. IN EXPERTFINISH® COLOR.

Specify LP® SmartSide® ExpertFinish® Trim & Siding.  
It's carbon negative, exceptionally efficient, and highly durable.



NEW ExpertFinish®  
Naturals Collection  
Now Available!



To learn more, visit [LPCorp.com/ExpertFinish](http://LPCorp.com/ExpertFinish)

© 2025 Louisiana-Pacific Corporation. All rights reserved. All trademarks are owned by Louisiana-Pacific Corporation.



## Architectural Specification Support

### Division

- 08 41 26 All Glass Entrances
- 08 42 29 Automatic Entrances
- 08 42 33 Revolving Doors
- 08 71 00 Door Hardware
- 08 71 13 Automatic Swing Door Operators
- 08 71 53 Security Door Hardware

Door hardware sets & consulting,  
substitutions & submittal review,  
and RFI responses

**Grant Heppes, CDT**  
Architectural Services Representative  
(312) 350-2602  
[grant.heppes@dormakaba.com](mailto:grant.heppes@dormakaba.com)

### Division 10

- 10 22 19 Demountable Glass Partitions



importers of fine cork flooring & wall coverings

[www.amcork.com](http://www.amcork.com) 1-888-955-CORK (2675)



# BEHIND THE SCREENS

**NAME**

Neşe Altıntaş

**AFFILIATIONS/  
CREDENTIALS**Assoc. AIA,  
NOMA, CWA**TITLE**

Architectural Designer

**COMPANY**Wold Architects  
and Engineers**DEGREE(S)**The Illinois Institute of  
Technology (IIT)  
Bachelor of  
Architecture, Minor  
in Psychology**AIA CHICAGO  
INVOLVEMENT**Co-Chair, AIA  
Chicago Young  
Architects Forum  
AIA Chicago  
Delegate, AIA Illinois  
Early Professionals  
(EP) Network**What advice would you give to a younger version of yourself?**

Here is what I would tell myself: Your resistance to people and systems that try to hold you back from pursuing all your callings is one of your greatest assets. Protecting your curiosity will always allow you to flourish.

I know people are telling you that you can't be involved in 13 different things at the same time. That it's not sustainable. That you should commit to one or two things you're good at and focus on making the best out of them. And despite all that, I know you're living through your values. I respect that.

Keep wondering, learning, experimenting. Keep saving your ideas and thoughts. Just keep doing all the "a little too much" things you're doing.

You won't be disappointed.

**How has your Turkish background influenced your approach to architecture, particularly in terms of community, public space, and design?**

High-context cultures such as Türkiye are complex and implicit. Communication carries layered meanings, nonverbal cues, and expectations derived from shared knowledge and values. The mind becomes attentive to subtleties, gestures, and shifts in energy by/through others, which tangles individual experiences together and shapes a collective memory.

Low-context cultures such as the United States are direct and explicit. Communication is task-oriented, stripped of emotional cues, focused on clarity and efficiency. The individualistic mindset prioritizes self-defined values over collective customs and ancestral expectations. It celebrates setting boundaries for personal space — both in abstract (mind) and physical (built environment) forms — often separating individual experience from the collective.

The ethos of these two constructs sets the framework of our perception: concepts, definitions, and terminology development.

Having my primary perception framework formed in a high-context culture, then growing into my architect mind within the ethos of a low-context culture, has expanded my meaning-making trajectory.

**How has your experience studying and living in both Türkiye and Chicago shaped your understanding of different built environments and how people interact with them?**

Many of my epiphany moments related to my life in Türkiye happened when I was in Chicago. You never know (at least right away) which external forces of the built environment and social landscape stimulate your brain and unlock a mind-knot. Once this mental weaving between environments across space and time catches a rhythm, your definition of home(s) changes. Once your definitions start changing, your perception framework shifts. So, I visualize the subject (people) and space (environment) interaction in a cycles model.

**What has been the most valuable resource to you in your career? (This can be a mentor, scholarship, organization, initiative, program, tool, etc.)**

My student mentality — no doubt.

**What has been a large challenge or obstacle as an architectural professional and how are you working to/how have you overcome it?**

Maintaining the contrast: artist brain versus architect mind.

One of my biggest challenges has been producing through my artist brain and architect mind at the same time.

My artistic process has developed very organically as it became my brain's way of reflecting, learning, unlearning,

"Behind the Screens" is a series developed by AIA Chicago's Editorial Advisory Committee to highlight the members of the chapter. Throughout the year, this series will showcase Fellows, Architects, Associates, and Affiliate members. If you'd like to nominate someone, please write to [editor@aiachicago.org](mailto:editor@aiachicago.org).

grounding, and reclaiming my story. Empowering, healing, and restorative. I use the word “brain” intentionally because it wasn’t a mindfully curated process to follow.

In contrast, my architect mind grew through a teaching framework created and facilitated by others under the umbrella of an institutional education.

It is shaped by boundaries and clear objectives where a successful project requires commitment to execute and share a coherent vision. That level of planning and clarity is necessary in architecture, and that’s why it’s a “mind” extension for me curated and refined.

At times, these two ways of thinking and producing truly exhaust me. It feels like pressing the gas pedal while in park. My artist brain stimulates untamed production of ideas and limitless variations, while my architect mind insists on strategic planning and order.

The question is whether my artist brain and architect mind can coexist in a ratio that feels right and healthy — my very personal chaos and order theory.

**You were recently awarded the 2025 AIA Future Forward Grant. How did the idea for the “Beyond the Classroom” initiative first emerge, and what led you to focus on K-12 educational architecture?**

Transitioning from academia to practice wasn’t easy. What had been feeding my creative cravings in school (and what I found missing in practice) was the act of expanding on the bigger picture in architectural storytelling. Cultivating design thinking through intellectually stimulating questions and an interdisciplinary approach has been my fuel. Working



EVENING CUE

on K-12 education projects right as I entered the profession made me question so many systems and processes in place. So, a year into practice, I started this “Braindump” document — a running list of all the questions I had about the overlap of psychology, neuroscience, and architecture, especially in the context of learning (built-in) environments. It became a personal synthesis of what I was observing in projects at work and in industry organizations. As Braindump kept evolving into Beyond the Classroom, I came across the AIA Future Forward Grant on YAF’s social media. That was one of those moments when I said, “This is meant for me.” It felt like an invitation to bring Beyond the Classroom to life.

**Looking ahead, what is the ultimate goal for the “Beyond the Classroom” initiative? How do you see this work evolving after the grant period concludes?**

I want to take Beyond the Classroom beyond the research.

I acknowledge that, given the disconnect between research and practice, unless policy requires it, the budget-driven culture of the AEC industry and the capitalism ethos will not accept incorporating these interdisciplinary procedures into current business and project management models.

That’s why I continue to learn more about trauma-informed (and responsive) design, neuro-architecture, and the science of learning; I’ve been reverse-engineering how to obtain the most applicable, impactful, and adaptable toolkit framework. Something that will carry into the future, such as a systems-creating framework methodology.

**What is the most effective step you’ve taken in your work toward a more equitable built environment?**

Thanks to the I-NOMA Project Pipeline Summer Camp & Teen Design Build Program, ACE Mentor Program, LBBA Labs, and many other STEAM Education Initiatives led by industry organizations, I have discovered something I truly love and am good at; that’s a blessing. Building trusting relationships [and] offering purposeful guidance, significant opportunities, and meaningful connections to those high-fliers is the most fulfilling part of my work. I am committed to making young people feel seen, heard, valued, and respected so that they understand the vitality of empathy through lived experience.

**What is one actionable way that young designers can positively impact climate change in their firms?**

I love the “actionable way” nuance there! It helps acknowledge that many early career professionals — especially in architecture — don’t have the negotiating power in making design decisions. So, defining the scope of “actionable” and shifting our energy [toward] things we can control instead of the ones we can’t (just yet) is the power move.

Speaking of power — if your firm is still leaving all the office lights on at night, that’s probably a good place to start from.

**What is your favorite quote about architecture?**

“The street is a room by agreement.” — Louis Kahn 



Chicago Architect is published four times a year by Innovative Publishing. Innovative Publishing specializes in association communications and messaging.






Photocopy permissions where necessary, permission is granted by copyright holder for those registered with Copyright Clearance Center (CCC), 222 Rosewood Drive, Danvers, MA 01923, www.copyright.com to photocopy any article herein for personal or internal reference use only for the flat fee of \$2.00 per copy for each article. Send payment to CCC. Copyright 2025 AIA Chicago.

The information contained within has been obtained by AIA Chicago and Innovative Publishing from sources believed to be reliable. However, because of the possibility of human or mechanical error, AIA Chicago and Innovative Publishing do not guarantee the accuracy or completeness of any information and are not responsible for any errors or omissions or for the results obtained from use of such information. The editor reserves the right to censor, revise, edit, reject, or cancel any material not meeting the standards of Chicago Architect. The information and opinions published in Chicago Architect represent the views of the authors and not those of the publisher or AIA Chicago, unless otherwise stated. The acceptance of advertising does not reflect endorsement of products or services by this publication, AIA Chicago, or Innovative Publishing.

**LETTERS TO THE EDITOR:** Chicago Architect gladly accepts all signed, dated letters to the editor. We reserve the right to edit for style and any potentially libelous content. Letters should be no longer than 250 words. Submit letters to editor@aiachicago.org.

**STORY IDEAS AND SUBMISSIONS:** Chicago Architect welcomes your story ideas and your written article submissions, whether about your projects or about business trends and issues. Email us at editor@aiachicago.org.

Chicago Architect is printed with zero-VOC ink on 10 percent post-consumer waste stock.

-  facebook.com/aiachicago
-  youtube.com/@aiachicago1869
-  @aiachicago
-  linkedin.com/company/aia-chicago
-  x.com/aiachicago



*The World's Most Accurate Load Calc*

**Residential HVAC Load Calculations**

**Residential Mechanical Plans**


**Energy Code Compliance Calculations**


**1dtrueloads.com**



For over 30 years, Ostrander Construction has delivered excellence as a Commercial General Contractor specializing in interior office work. Our proven success in this niche market has fueled expansion into new construction markets including medical office, retail, industrial facilities, libraries, and schools.

With deep expertise and a highly coordinated approach, we adapt to evolving project dynamics, drive productivity, and deliver results. At Ostrander, project success is the goal—because earning client trust is the ultimate outcome.

 Contact us today at (630) 971-2211

 Email: info@ostrander.biz

 Visit: <http://www.ostranderconstruction.biz>



35 East Wacker Drive, Suite 250  
Chicago, IL 60601

# Thank you to our 2025 **1869Circle** Partners

The **1869Circle**, named after the year AIA Chicago was founded, is a program of unprecedented recognition for partners who contribute annually to AIA Chicago and the AIA Chicago Foundation at the highest level.



To learn more about this program or to see if you qualify, please scan the QR code or visit [AIACHicago.org/1869Circle](https://AIACHicago.org/1869Circle).

