

# Chicago Architect

+ 'Disrupters' Exhibition Honors  
50 Years of Nonprofit CWA // 54



## Recognizing Design Excellence in 2024: Part I

Design Excellence Awards // 17

Divine Detail Awards // 50

The Madison at Racine, Chicago, IL  
Size & Color: Roof Pavers 24" x 24", Charcoal, Tudor<sup>®</sup> Finish

THE SOLUTION FOR ALL YOUR  
ROOFING NEEDS

## HANOVER<sup>®</sup> ROOF & PLAZA PAVERS

Hanover<sup>®</sup> Roof & Plaza Pavers provide environmental benefits while creating aesthetically appealing rooftops and plaza gardens. A wide range of paver styles, pedestal systems and high wind solutions are available. And with a library of over 3,800 granite-like colors to choose from, paving possibilities are endless.



GUARDIAN<sup>®</sup>  
PAVER SYSTEM



ELEVATOR<sup>®</sup> PEDESTAL  
SYSTEM

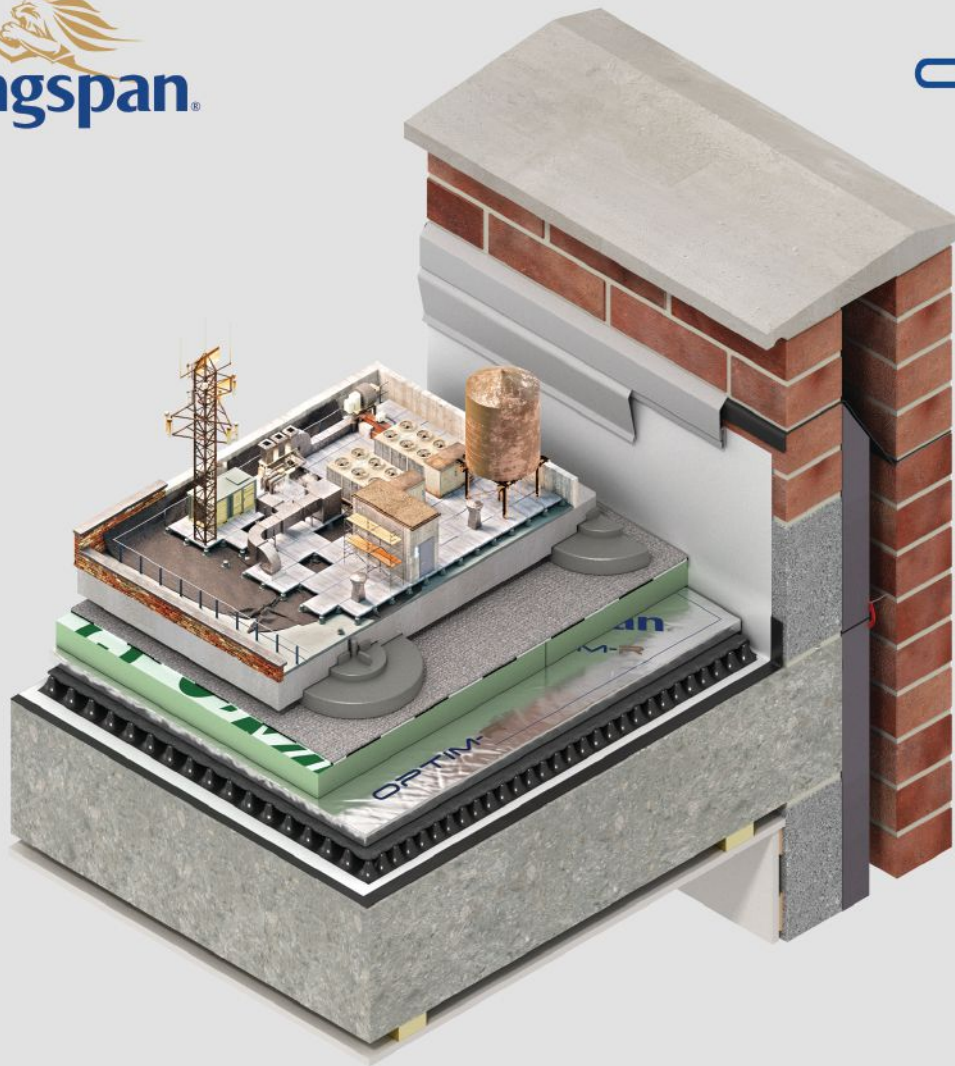


GRIDLOC<sup>®</sup>  
SYSTEM





OPTIM-R



# Up to 5x greater thermal efficiency

Get higher efficiency with less material thickness for your re-roofing projects. Ultra-thin VIP Kingspan® OPTIM-R® rigid insulation performs at an R-value of R28 and R57 (1" & 2").

Learn more at [lessmeansmore.kingspaninsulation.us](https://lessmeansmore.kingspaninsulation.us)  
or contact our local sales team at (312) 877-3695



**Tide Academy**

Menlo Park, CA  
LPA Design Studios

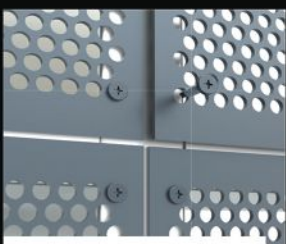


New from Dri-Design:

# PERFORATED SCREEN SYSTEMS

Our new pan-style perforated screen panels come in larger-than-traditional module sizes – 48" x 126" and 126" x 48" – and are available in painted or anodized aluminum. They provide strength and rigidity without the weight and they're less expensive than traditional panels. Plus, we offer a fully engineered integrated-system package upon request, making an already great idea even better.

Learn more at [Dri-design.com/product/PSS](https://dri-design.com/product/PSS)



FF-Face Fastened



SF-Side Fastened



TF-Through Fastened



A Kingspan Group Company

[dri-design.com](https://dri-design.com) | 616-355-2970

# Chicago Architect

## Editor in Chief

Jen Masengarb, Assoc. AIA  
editor@aiachicago.org

## Managing Editor

Dillon Goodson, Affil. AIA Chicago  
editor@aiachicago.org

## Editor

David Chase, Assoc. AIA  
communications@aiachicago.org

Drew Clark

drewc@innovativepublishing.com

## Designer

Catherine Meany  
catherine@innovativepublishing.com

## Advertising Sales

Innovative Publishing  
advertise@innovativepublishing.com  
844.423.7272



*Chicago Architect*, an outreach tool of AIA Chicago, is published four times a year as an authoritative resource for architects, the larger design community, and the public about architecture and related issues of interest to Chicago architects. The magazine communicates industry trends, the value of high-quality design, and the role of AIA Chicago and its members in the world of architecture.

facebook.com/aiachicago  
@aiachicago  
x.com/aiachicago  
youtube.com/@aiachicago1869  
linkedin.com/company/aia-chicago

## Pausing to Celebrate the Finish Line

Dear AIA Chicago Members and Friends,

Walk into most architecture firms and one of the first things to greet you is often a wall of awards. At first glance, architects conferring other architects with awards might seem self-indulgent. But only another architect can fully understand the herculean efforts over many years needed to bring a well-designed structure to life — one that will impact the daily lives of people and communities for generations to come.

This autumn issue of *Chicago Architect* highlights our Design Excellence Awards. Along with the Firm Award to Moody Nolan, the Decarbonization Award, the Roberta Feldman Architecture for Social Justice Award, the Lerch Bates People's Choice Awards, and the Lifetime Achievement recipient Linda Searl, FAIA (highlighted in either previous issues or issues to come), we conferred all these awards at Designight 2024.

Three independent juries comprising AIA members from across the United States and United Kingdom evaluated more than 200 projects anonymously over hours of discussion, review, and debate. Each architectural jury is certainly unique, and they bring with them their own collective values, expertise, experiences, and perspectives on the built environment. These contributions are reflected in each of the 28 projects contained within the pages of this issue.

AIA Chicago's staff observed three key themes during this year's deliberations, which are summarized below:

1. Small firms won big. Of the award winners, 60% are from firms of 10 or fewer staff. Regardless of firm size, design excellence clearly knows no bounds.
2. Storytelling matters. Rather than just a collection of descriptive text and images, jurors noted that many of the winning projects went deeper by telling a story of how and why the design problem was solved, using images to support that narrative.
3. Put the client first. Jurors noted how many of the honorees this year put the client's needs over architectural ego. Projects that were thoughtful — and centered around people and place — resonated with jurors.

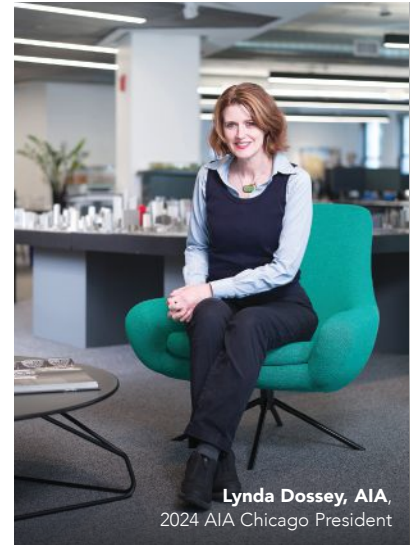
At the heart of AIA Chicago's Architecture Awards is the recognition of creativity in problem-solving and design strategies. These exemplary projects now transcend into new case studies and paradigms we can learn from.

It's also important to recognize the value that awards have in helping firms recruit future clients and colleagues. Beyond showcasing a firm's expertise and culture, awards validate to future clients, collaborators, and team members that when it comes to achieving design excellence, small decisions can make a big difference.

Too frequently as architectural teams, we don't pause and reflect on our completed accomplishments. Every day the calendar is filled with new meetings and tasks as we move onto the next project. Awards offer teams a chance to pause, celebrate, and reflect on shared accomplishments, while also acknowledging finish lines with a proper moment of closure. Not only does this build morale among the team, but it also can build confidence in staff to continue learning, growing, and advancing their careers.

While we know that every completed architectural project is worth celebrating, we hope you'll find inspiration in the award-winning submissions found in the pages that follow.

Lynda Dossey, AIA  
2024 AIA Chicago President  
president@aiachicago.org



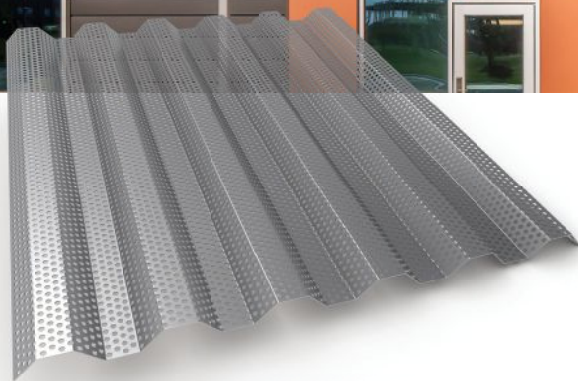
Lynda Dossey, AIA,  
2024 AIA Chicago President

P.S. Watch for the next issue to come in the new year highlighting the Lerch Bates People's Choice Awards, Decarbonization Award, and Roberta Feldman Architecture for Social Justice Award winners.

# Dramatic Entrance



Photo: alanblakely.com



## Perforated metal layer spotlights entryway

“Perforated 7.2 metal panels surrounding the entrance emphasizes the building’s height and adds a bit of visual drama.”

-Matt Cortez, president/CEO, TESSERE



View the  
case study  
and video



PAC-CLAD.COM | 800 PAC CLAD

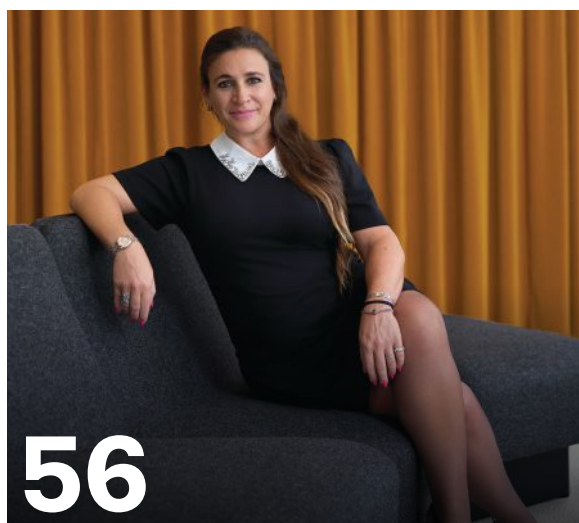
# Contents



## Design Excellence and Divine Detail Awards // 17

Dunelands by dSPACE Studio. TY COLE

- 10 // Chapter Report
- 10 // Foundation Report
- 11 // AIA Illinois Update
- 12 // People + Projects
- 54 // Chicago Architecture Center's 'Disrupters' Exhibition Honors 50 Years of Nonprofit Chicago Women in Architecture (CWA)



# 56

Behind the Screens: Maria José Tasada, AIA, NCARB, LEED Green Associate



### ▲ ON THE COVER

*Dunelands by dSPACE Studio is the winner of the Divine Detail Honor Award, a longtime favorite award program that returned in 2024.*

TY COLE

### ► OUR PREVIOUS ISSUE

is available to view digitally at [AIAChicago.org/ChicagoArchitect](http://AIAChicago.org/ChicagoArchitect)

# 2024 AIA CHICAGO DIRECTORY

## CHICAGO ARCHITECT

### EDITOR IN CHIEF

Jen Masengarb, Assoc. AIA

### MANAGING EDITOR

Dillon Goodson, Affil. AIA Chicago

### EDITORS

David Chase, Assoc. AIA  
Drew Clark

### DESIGNER

Catherine Meaney

## AIA CHICAGO 2024

### BOARD OF DIRECTORS

#### PRESIDENT

Lynda Dossey, AIA

#### FIRST VICE PRESIDENT/ PRESIDENT-ELECT

Jason Golub, AIA

#### PAST PRESIDENT

Mindy Viamontes, AIA

#### VICE PRESIDENT, ADVOCACY

Natalie Hicks, AIA

#### VICE PRESIDENT, EDUCATION

Chey Taylor, AIA

#### VICE PRESIDENT, FINANCE

Calli Verkamp, AIA

#### VICE PRESIDENT, HONOR AND AWARDS

Peter Wojtowicz, AIA

#### VICE PRESIDENT, MEMBERSHIP

Kelly Moynihan, AIA

#### VICE PRESIDENT, SPONSORSHIP

Julie Hacker, FAIA

### DIRECTOR

Sara Beardsley, FAIA  
Susan Brain, AIA  
Lori Day, AIA  
Richie Hands, AIA, NOMA  
Jessie LaFree, AIA, NCARB  
Josh Mings, AIA  
Ashlen Williams, AIA, NOMA

### ASSOCIATE DIRECTOR

Noor Ain, Assoc. AIA  
Eve Fineman, Assoc. AIA

### AFFILIATE DIRECTOR

Albert Mena, PE, SE,  
Affil. AIA Chicago  
Eric Singer, Affil. AIA Chicago

### STUDENT DIRECTOR

Amelia Fager, AIAS, SAIC  
Tom Godinez, AIAS, UIC  
Caleb Kwok, AIAS, IIT

## AIA CHICAGO FOUNDATION

### 2024 BOARD OF TRUSTEES

#### PRESIDENT

Christopher E. Chwedyk, AIA

#### VICE PRESIDENT

Danielle J. Tillman, AIA, NOMA

#### SECRETARY

Gracia Maria Shiffrin, FAIA

#### TREASURER

Walter D. Street III, AIA, NOMA

#### PAST PRESIDENT

Chris-Annmarie Spencer, AIA, NOMA

#### TRUSTEE

Susan Conger-Austin, AIA  
Elliott E. Dudnik, FAIA  
Palmyra Geraki, AIA  
Kerl LaJeune, Assoc. AIA, NOMA  
Julia Mosqueda, Assoc. AIA  
Gina (JinHwa) Paradowicz, AIA  
Lynette Stuhlmacher, Assoc. AIA  
P.K. "Trish" VanderBeke, AIA

#### PUBLIC TRUSTEE

Roberta M. Feldman, PhD  
Mary K. Woolever

### EX-OFFICIO, AIA CHICAGO

#### EXECUTIVE DIRECTOR

Jen Masengarb, Assoc. AIA

### EX-OFFICIO, AIA CHICAGO

#### FIRST VICE PRESIDENT, PRESIDENT-ELECT

Jason Golub, AIA

## 2024 KNOWLEDGE COMMUNITIES

### ARCHITECTURE FOR JUSTICE

Ryan Rohlf, AIA, co-chair

### BUILDING ENCLOSURE COUNCIL

Brian Rouse, AIA, co-chair  
Jessica Saravia, AIA, co-chair

### COTE + 2030 COMMITMENT

Daniel Jaconetti, AIA, 2030 co-chair  
Kelly Moynihan, AIA, co-chair  
David Swain, AIA, co-chair

### CUSTOM RESIDENTIAL ARCHITECTS NETWORK (CRAN)

Nate Lielasus, AIA, co-chair  
Mike Shively, AIA, co-chair

### DESIGN

Ann Erskine, AIA, events  
David Lillie, AIA, events  
Angelica Paleczny, AIA, events

### DESIGN FOR AGING

Drew Roskos, AIA, co-chair  
Heidi Wang, AIA, co-chair

### EDUCATION

Kysa Heinitz, AIA, co-chair  
Cory Kamholz, AIA, co-chair

### HEALTHCARE

Cam Twohey, AIA, co-chair  
Adrienne Erbesti, AIA, secretary

### HISTORIC RESOURCES

Greg Maxwell, AIA, co-chair  
Andrea Sforza, AIA, co-chair

### HOUSING AND COMMUNITY DEVELOPMENT

David Kennedy, AIA, co-chair  
Josh Mings, AIA, co-chair  
Cristian Yugsi, Assoc. AIA, co-chair

### INTERIOR ARCHITECTURE

Charlie Cunov, AIA  
Susan Brain, AIA, PMP, chair

### PRACTICE MANAGEMENT

Sheri Andrews, AIA, co-chair  
Scott Steffes, AIA, co-chair

## TECHNICAL ISSUES

David Babnigg, AIA, co-chair  
Lee Fink, AIA, co-chair  
David Hillsamer, AIA, co-chair  
Calli Verkamp, AIA, co-chair  
Cassandra Yearm, AIA, co-chair

## TECHNOLOGY IN ARCHITECTURAL PRACTICE (TAP)

Sonja Flint, AIA, LEED AP, co-chair  
Kevin Kosciulek, co-chair  
Katy Liang, AIA, co-chair  
Mark Schmieding, FAIA, co-chair  
Darya Stefanovic, AIA, co-chair  
Anthony Viola, AIA, co-chair

## 2024 AFFINITY GROUPS COMMUNITY ENGAGEMENT AND ARCHITECTS IN SCHOOLS

Priya Iyer, AIA, NCARB  
Wade Splinter, AIA

### EDI COMMITTEE

Riya Desai, Assoc. AIA, co-chair  
Katie Hart, Assoc. AIA, co-chair

### LGBTQIA+ ALLIANCE

Kerry Frank, AIA, co-chair  
Hao Phung, Assoc. AIA, co-chair  
Alex Tsaparis, AIA, co-chair

### SMALL FIRM EXCHANGE (SFX)

Matthew Clapper, AIA, co-chair  
Chyanne Husar, AIA, co-chair

### YOUNG ARCHITECTS FORUM (YAF)

Raquel Guzman Geara, AIA, co-chair  
Prerana Kamat, Assoc. AIA, co-chair  
Lena Reiff, AIA, co-chair

## 2024 EDITORIAL ADVISORY COMMITTEE

Spencer Blaney, AIA  
Nicole Ellis Semple, AIA  
Eve Fineman, Assoc. AIA  
Daniel Gillen, AIA  
Helen Kessler, FAIA  
Reed Kroloff, Assoc. AIA  
Maria Laguarda-Mallo, PhD, Assoc. AIA  
Max Laphorne  
Thomas Leslie, FAIA  
Deon Lucas, AIA  
Sarah Polster  
Walter Street III, AIA  
John Syvertsen, FAIA

## CHAPTER STAFF

### EXECUTIVE DIRECTOR

Jen Masengarb, Assoc. AIA

### SENIOR DIRECTOR OF MEMBER RESOURCES AND ADVOCACY

Joan Pomaranc, Hon. AIA Chicago

### DIRECTOR OF OUTREACH

Allison Garwood Freedland

### DIRECTOR OF DEVELOPMENT AND SALES

Kirstin Osgood

### MANAGER OF EDUCATION AND AWARDS

Anne Ross, M.Ed.

### SPONSORSHIP AND DONOR RELATIONS ASSISTANT

Evans Debeza, AIA

### SENIOR MANAGER OF COMMUNICATIONS

David Chase, Assoc. AIA

### SENIOR COORDINATOR OF PROGRAMS AND EVENTS

Madison Young

### MEMBERSHIP MANAGER

Marcilena Shaeffer

### FINANCIAL MANAGER/ BOOKKEEPER

Naghm Sabah

### MANAGING EDITOR/ AWARDS ADVISOR

Dillon Goodson, Affil. AIA Chicago

## CONTRIBUTORS



KIRSTEN MICCOLI

**Eve Fineman** is a curator, designer, and educator. As director of exhibitions at the Chicago Architecture Center, she oversees the planning and design of public exhibitions. She has won numerous awards and has exhibited and been published widely.



# Artchitecture

**Jansen steel systems make any building a masterpiece.**

Across the world, architects use the creativity of Jansen's steel systems to bring awe-inspiring designs to life. Born in Switzerland, and now available in the U.S., Jansen systems help fulfill the promise of architecture as art. Explore your architectural creativity. Make your project a masterpiece. [Jansen.com/Creativity](https://www.jansen.com/Creativity)

**JANSEN**  
America



# AIA Chicago Partners with Northwestern University's Center for Talent Development

This summer, AIA Chicago partnered with Northwestern University's Center for Talent Development summer programs for a three-week intensive architecture studio for high school students, led by recent University of Wisconsin Milwaukee School of Architecture and Urban Planning (UWM SARUP) graduate Danya Almoghrabi and architecture professor at Harold Washington College Ivan Tejada. The group of 11 local and out-of-town teens spent the first week learning about Chicago and architecture through walking tours, visits to architecture firms, and guest speakers. In the final two weeks, the students went to work in teams of two to design a multifunctional pavilion for a community center in the Bronzeville neighborhood that serves as a café and community gathering space during the day and transforms into a sculptural space at night. The students presented their designs to their peers and four guest reviewers. **CA**



**“The most valuable takeaway I have from this course is the importance of cultural relevancy when designing a space that is for public and community use.”**

– STUDENT PARTICIPANT

## AIA CHICAGO FOUNDATION REPORT

# What Defines an ‘Architectural Changemaker’?

### Strategic Planning Updates

In February of this year, the AIA Chicago Foundation launched its first multiyear strategic plan (2024-2027). With strong new vision and mission statements to serve as the guideposts for the next three years, the board of trustees has embarked on dozens of new goals and strategic initiatives.

The Foundation's Past President Chris-Annmarie Spencer, AIA, serves as the strategic planning chair and also heads up the Scholarships, Awards, and Grants Committee. The group is currently evaluating the existing criteria of all the Foundation's awards and developing a new definition

### AIA Chicago Foundation Vision

A city where the architecture profession is diverse, equitable, and inclusive.

### AIA Chicago Foundation Mission

Investing in Chicago's next generation of architectural changemakers by awarding scholarships, grants, and recognition.

► Learn more at [AIACHicago.org/Foundation](https://AIACHicago.org/Foundation).

of architectural “changemakers” — working toward the goal of greater impact by increasing both the number of applicants and honorees.

“The Foundation's commitment to supporting the next generation is evident in programs like the Diversity Scholarship, the Dubin Family Young Architect Award, the Roberta Feldman Architecture for Social Justice Award, and our student awards,” Spencer explained. “The work of creating a diverse, equitable, and inclusive profession will be led by architectural changemakers who promote excellence in design, advance social justice issues, lead in technical innovation, or invigorate the profession. We are excited to continue the Foundation's growth and impact by focusing on these areas.”

Many of the Foundation's 2024 honorees will be recognized at the Building Together Awards and Holiday Open House, held at the Chicago Architecture Center on the evening of December 4, 2024. All are welcome. **CA**




Eric Klinner, CAE, executive vice president of AIA Illinois, pictured with former Illinois congressman and author Adam Kinzinger.

## Leveraging Your Network


While I like to think of networking as more of a social/personal side of my daily life, I am often reminded of the importance it plays in my professional life. Building and maintaining relationships with like-minded people or within common industries can sometimes take time to yield results but is well worth the investment. This active collaboration at conferences and events can bring about new job opportunities and new partnerships and can lead to better personal relationships.

I recently contacted one of my association colleagues with whom I collaborated for nearly a decade. From our years of interaction, I felt more comfortable asking how could I get added to their VIP list for a Q&A session with a former congressman who was keynoting one of the largest association gatherings of the year. Was it a reach? Yes. Was I ready for the rejection? Yes. Instead, I received an immediate response. Michelle remembered me from our time serving as staff and board members, respectively, for an association more than five years ago. Within half an hour, I was added to the VIP list, and the following week I would be on my way to a meet-and-greet with former Illinois congressman and author Adam Kinzinger. This is just one example of how I've used networking to meet others, advocate for our members, and increase the visibility of AIA Illinois. I feel networking is an important way to help with knowledge sharing, professional support, and personal growth.

I would encourage everyone to take advantage of as many networking opportunities with AIA as you can. They can come in many different forms: the AIA Illinois Annual Conference, awards events, Knowledge Community and affinity events, Third Thursdays, or even just meeting a couple of colleagues for coffee to talk about the latest trends or mentoring those who are newer in the profession. Networking is an essential tool for career advancement and personal development at any stage of your career. Invest time and effort now to build meaningful connections so you can continue to discover new opportunities and resources that will help you succeed in your professional journey. 



**Eric Klinner, CAE**  
Executive Vice President, AIA Illinois



**SCHWEISS**

# DOORS

**YOU THINK IT, WE BUILD IT!**

**HYDRAULIC** - OR - **BIFOLD**  
**ONE-PIECE DOORS**      **STRAP LIFT DOORS**

**507-426-8273**

**"BUILDING BETTER DOORS"**

**SCHWEISSDOORS.COM**



**Please Send Your News To:**

editor@aiachicago.org

By submitting content to *Chicago Architect*, you consent to publication and affirm you have permission to distribute any photos. Deadline to submit for the next issue is Thursday, January 2, 2025.

ERIC LAIGNEL



**Goettsch Partners** (design architect) and **Gensler** (hospitality-driven interior design) completed Coppia, a 226-foot-tall high rise completed by Power Construction. This 19-floor, 298-unit building totals 315,000 square feet with more than 24,000 square feet of amenity space.



**Farr Associates Architecture & Urban Design** is proud to announce **Mercedes E. Miley, AIA, CPHC, NCARB**, and **Len Sciarra, AIA, ASHRAE, LEED Fellow, CPHC**, have joined the ownership team as President and Vice President, respectively. Together with Founder **Doug Farr, FAIA, FCNU**, they will focus on strategic partnerships to advance the firm's mission of prototyping the future and bringing cutting-edge, affordable, sustainable design to all.



**Legat Architects' Kelsey Jordan, AIA**, has become one of only 11 Accredited Learning Environments Planners (ALEP) in Illinois. The certification, issued by the Association for Learning Environments (A4LE), identifies architects who demonstrate the core competencies essential to the practice of planning and designing educational environments.



**Gensler**, working alongside a team of key real estate leaders, has proposed a reinvention for Chicago's Michigan Avenue, which has been in a state of transition since the pandemic.



**Eckenhoff Saunders** has been selected as the designer of the new Endeavor Health facility located at the Glenbrook Hospital campus. The development comprises 165,000 square feet of new construction, including eight cath labs, four EP labs, four open-heart operating rooms, two hybrid operating rooms, preparation/recovery bays, staff and clinical support, and a large lobby area with a tall glass enclosure.

ALL IMAGES ARE COURTESY OF THE FIRM, UNLESS OTHERWISE NOTED. LEED AP STATUS IS INDICATED ONLY IF REPORTED BY THE FIRM.



**Pappageorge Haymes Partners (PH)** is pleased to announce the promotions of **Christopher Chiu, AIA**, to associate, and **Michael Henning, AIA**, to senior associate. Additionally, PH is proud to mark the milestones of **Timothy Kent, AIA**, celebrating an extraordinary 30-year tenure at PH, and **Kenneth DeMuth, AIA**, who marks an impressive 40 years with PH.



**HOK** is pleased to announce two new leadership roles: **Vladislav Torskiy, Intl. Assoc. AIA, MHA, AORN, LEAN Healthcare CP**, as a principal and regional leader of health care, and **Chelsea Zdawczyk, PE, Assoc. AIA**, as principal and senior project engineer.



LBBA is delighted to announce two promotions: **Ashley Wendela, AIA**, has been promoted to senior associate, and **Kate Lengacher Cichon, AIA**, has been promoted to associate. LBBA is excited to welcome them to its leadership team, where their dedication and fresh perspectives will further LBBA's future growth and commitment to sustainable, affordable community development.



**SCB**, an architecture, planning, and interior and urban design firm founded in Chicago in 1931, has moved into a new Chicago headquarters at 330 North Wabash AMA Plaza. Notably, the office is tracking LEED Gold and places Chicago-based employees on one unified floor.



Congratulations to **Valerio Dewalt Train (VDT)** as it celebrates its 30th anniversary! For three decades, VDT has based its practice on the simple idea that whatever the question, good design is the answer. Founding partners pictured in 1994 from L to R: **Joe Valerio, FAIA**; **Mark Dewalt, AIA**; and **Jack Train, FAIA**.



**Ryan Lakes, AIA**, has joined the Chicago health care studio of **Gresham Smith** as a senior designer. He brings nearly 20 years of experience designing, coordinating, and managing high-rise health care and mixed-use multifamily projects.



Designed by **Krueck Sexton Partners**, The Square at International Square is a new food market anchored by a D.C. Metro stop. The 19th Street ground-floor façade incorporates mega-scale, awning-style glazed, overhead doors opening the building to the neighborhood with a corresponding plan that allows cross-views to the 12-story atrium, a cultural hub lined by food vendors and event space.



**Goettsch Partners** is designing what is scheduled to be the tallest building in Nashville, Tennessee. Called "Paramount," the building is located at 1010 Church Street downtown and will stand at 60 stories and 750 feet tall upon completion, surpassing the 617-foot-tall AT&T Building, the city's current tallest.



**RADA Architects** has promoted **Aram Garbooshian, AIA, LEED AP**, to managing principal, and **Carter Haas, AIA, NCARB**, to associate principal, who is in the lead of the firm's health care and institution projects.



Designed by **Legat Architects**, Denison University's new 1110 North Pearl building in Granville, Ohio, unites three departments and celebrates an adjacent forest preserve. Legat Architects provided interior design and furniture selection for the 21,000-square-foot facility.



**HMPG** announced the completion of 732 West Randolph, a new nine-story concrete loft addition to Randolph Office Center, an existing six-story timber loft office building in Chicago's Fulton Market Historic District. The project received first place prize in *Retrofit Magazine's* Metamorphosis Awards.



**Please Send Your News To:**

editor@aiachicago.org

By submitting content to *Chicago Architect*, you consent to publication and affirm you have permission to distribute any photos. Deadline to submit for the next issue is Thursday, January 2, 2025.



**Julie Hacker, FAIA**, principal of **Stuart Cohen Julie Hacker Architects LLC**, served as a juror in AIA San Antonio's Residential Design Awards.



**MJ Evans, AIA, NCARB**, has joined **MAPStudio** as firm architect. As firm architect, she will lead the AOR and Design Architect processes for residential and commercial projects in Illinois in partnership with MAPS permitting and code consulting services.



**Corey S. Zussman, AIA, NCARB, ALA**, has joined **AECOM-Hunt Construction** as QA/QC vice president.

RENDERING BY TOMORROW AB © RELATED MIDWEST



Rising at the confluence of Lake Michigan and the Chicago River, 400 Lake Shore Drive, designed by **Skidmore, Owings & Merrill**, will reshape the skyline with two towers reaching nearly 900 feet, articulated with terraces that cascade down the eastern façades. Tapering in both plan and section, the towers frame a view of the lake while angling back toward the cityscape.



**HOK**, in partnership with **Potter Lawson**, celebrated the groundbreaking of the University of Wisconsin-Eau Claire's new Science and Health Sciences building. The facility breaks down traditional siloed departmental arrangements and includes exhibit spaces that transform the building into a valuable resource for the community.

PATSY MCENROE



**Lamar Johnson Collaborative (LJC)**, a full-service architecture firm headquartered in Chicago, revealed interior renderings of The LaSalle Residences, an office-to-residential adaptive reuse project at 208 South LaSalle Street in Chicago's Loop.



**Lamar Johnson Collaborative (LJC)** has announced a transformative vision for Michigan Avenue's "Magnificent Mile" retail corridor in downtown Chicago. Known as MM2050, the LJC plan was commissioned by the Magnificent Mile Association to explore innovative solutions for addressing vacancies spurred by the pandemic and ensure that Michigan Avenue remains a top destination and economic driver for Chicago.

MIKE SCHWARTZ



**SPACE Architects + Planners** recently completed "The Pepper House." The 8,300-square-foot home sits on a double lot in Lincoln Park. This home allows the clients to age in place, complete with a gym/physical therapy room adjacent to a guest room and bathroom for a future caretaker.



**JGMA** is proud to be the league champions of Chicago Sport and Social Club's North Avenue Coed Chicago Architecture Beach Volleyball! For JGMA, being part of this league is not about winning, but coming together as a community outside the office.

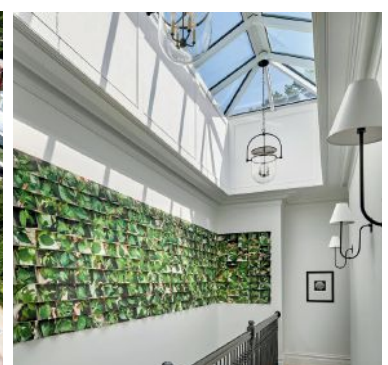
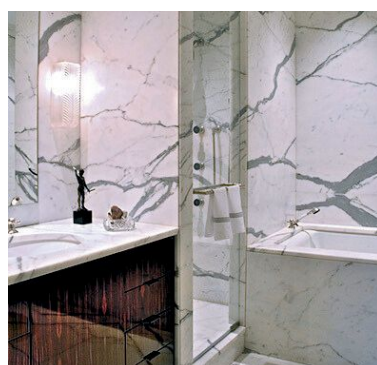
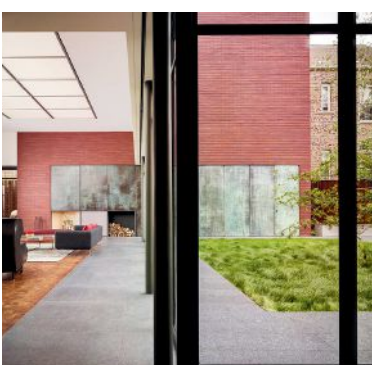
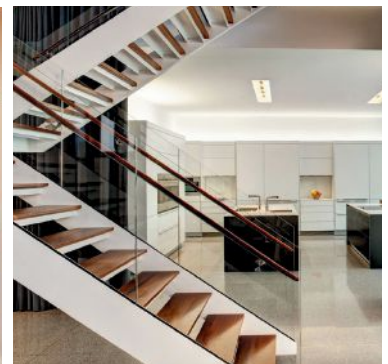


Bauer Latoza Studio is now **Arda Design**. Nationally recognized for its expertise and passionate approach to preserving, restoring, and renovating buildings, the Arda portfolio includes a diverse collection of design, planning, and renovation projects.

ALL IMAGES ARE COURTESY OF THE FIRM, UNLESS OTHERWISE NOTED. LEED AP STATUS IS INDICATED ONLY IF REPORTED BY THE FIRM.



  
 FOLLOW US   
 @GOLDBERGGENERALCONTRACTING





PROJECT: Bourbonnais Village Green, Bourbonnais, IL | DESIGN: The Lockhart Group | PRODUCT: Umbrino, Il Campo, & SeRes

# Your Creation. Our Teamwork.

---

Our team of Unilock hardscaping experts are ready to support your next unit paving project from start to finish. Combine our technical expertise with a vast array of Unilock colors, shapes and textures, to bring your unique vision to life.



Connect with a Territory Manager for Samples, Information & CEU Seminars.



# Design Excellence Awards

AIA Chicago's Design Excellence Awards honor the outstanding work of AIA Chicago members and their firms, reinforce the value of great architecture, and highlight members' contributions to designing equitable and sustainable places and spaces. These awards are given based on project square footage: Architecture: Extra Small, Small, Medium, Large, and Extra Large, and Interior Architecture: Small, Medium, and Large categories.

Returning this year for the first time since 2021, the Divine Detail Award recognizes instances where architectural theory is translated into artistic expression, emphasizing the interplay between design and craftsmanship. Submissions showcase how details enhance the design concept through craftsmanship, technology, or material choices.

For both Design Excellence and Divine Detail awards, the highest possible honor, the Honor Award, recognizes projects that exemplify excellence in architectural design on all levels and embrace the highest standards to which AIA members aspire. Except in extraordinary circumstances, one Honor Award is given for each of the project categories and must be selected by a unanimous vote from the jury.

Granted to projects that display a high standard of architectural quality and design, the Citation of Merit is a project deemed unanimously or by consensus of jury members. The number of Citations of Merit is given at the discretion of the jury.

## THE JURORS

### Architecture Extra Small and Small; Interior Architecture Small and Medium; and Divine Detail



**Barbara Bestor, FAIA**  
Bestor Architecture  
Los Angeles,  
California



**Hansy Better Barazza, AIA, LEED AP, NOMA**  
Studio Luz  
Architects Ltd.  
Boston, Massachusetts



**Brandon Bibby, AIA, NOMA**  
National Trust for  
Historic Preservation  
Cambridge,  
Massachusetts



**Lee Ann Roth Gamble, AIA**  
Gamble +  
Gamble Architects  
Atlanta, Georgia



**Brien Graham, AIA, NOMA, NCARB**  
KAI  
Dallas, Texas



**Brandon Welling**  
Morphosis  
Culver City, California

### Architecture Medium, Large, and Extra Large; Interior Architecture Large



**Daniel Baumann, Assoc. AIA**  
Henning Larsen  
New York, New York



**Khalid Kahn, Assoc. AIA**  
Neumann Monson  
Architects  
Des Moines, Iowa



**Jeffrey Kenoff, FAIA**  
Kohn Pedersen Fox  
New York, New York



**Amanda Levete, RIBA, Hon. AIA**  
Amanda Levete  
London,  
United Kingdom



**Monica Rodriguez, AIA**  
House &  
Robertson Architects  
Culver City, California



**Katherine Williams, AIA, NOMA**  
Georgetown  
University  
Falls Church, Virginia

MIKE SCHWARTZ



Woodhouse Tinucci Architects  
**Wicker Park Cottage**  
 Chicago, Illinois

**GENERAL CONTRACTOR:** WoodTin Build

**LANDSCAPE ARCHITECT:** Larry Asimow Landscaping

**COLLABORATORS:** *Structural Engineer:* Goodfriend Magruder Structure;  
*MEP Engineer:* dbHMS

**ARCHITECTURE TEAM MEMBERS:** Andy Tinucci, AIA; Brian Foote, AIA;  
 Mohammad Kassem; and Chris Cordell

Wicker Park Cottage transformed a 19th-century worker’s cottage and coach house into a single-family home in the heart of Chicago’s Wicker Park neighborhood. Its age and location required special consideration of its historic street presence, while its unique masonry and timber structure led to a distinctive design solution. This renovation weaves together the compact and subdivided floor plates, creating open and interconnected living spaces with ample natural light and exterior connections. New exterior “rooms” are composed between the reworked massings on the site, maximizing the potential of the compact urban lot. The unique design stems from the original goals of the project: preserving while updating and experiencing through connection.

MIKE SCHWARTZ



MIKE SCHWARTZ



“The final result of the project is beautifully composed and makes great use of glazing. It gives the coach house the appearance that it’s floating above the ground plane.”

— JUROR

MIKE SCHWARTZ





The Miller Hull Partnership and Osterhaus McCarthy

## 15 Elizabeth

Chicago, Illinois

**CLIENT:** Ranquist Development Group, Jodi Development, and Campbell Coyle

**GENERAL CONTRACTOR:** BASEBLD LLC

**LANDSCAPE ARCHITECT:** Groundwork Design LLC

**COLLABORATORS:** *Structural Engineer:* SP Engineers Ltd.; *MEP Engineer:* Diligent Design Group; *Interior Designer:* Jennings Creative Studio and Vladimir Radutny Architects

**ARCHITECTURE TEAM MEMBERS:** Brian Court, FAIA, and Scott Osterhaus

Located on a quiet street in Chicago's West Loop neighborhood, 15 Elizabeth embodies an efficient and economical approach to urban infill. The project features five two- to three-bedroom units and two penthouses, each designed to connect inhabitants to the surrounding landscape while ensuring privacy and repose. Positioned alongside an alley, the building maximizes access to daylight and views on one side. Inspired by the neighborhood's industrial vernacular, the façade utilizes steel and glass, with shifting corrugated metal planes optimizing natural light and transparency. Floor-to-ceiling glass living spaces accompanied by private solid panels and outdoor terraces integrate the interiors with the urban environment, demonstrating that dense urban housing can be efficient, connected, and aesthetically pleasing.





“15 Elizabeth is a well-organized and spatially coherent project on a compact site.”

— JUROR

Studio Gang

# Kresge College Expansion at the University of California, Santa Cruz

Santa Cruz, California

**CLIENT:** University of California, Santa Cruz

**GENERAL CONTRACTOR:** Swinerton Builders

**CONTRIBUTING ARCHITECT:** TEF Design  
(Associate Architect)

**LANDSCAPE ARCHITECT:** Joni L. Janecki & Associates and  
Office of Cheryl Barton

**COLLABORATORS:** *Structural Engineer:* Magnusson Klemencic Associates and MME Civil + Structural Engineering; *MEP/FP Engineer:* Introba Group; *Civil Engineer:* Sherwood Design Engineers; *Interior Designer:* Studio Gang; *Lighting Design:* Horton Lees Brogden Lighting Design; *Wayfinding and Graphics:* Cheng+Snyder; *Project Manager:* Bogard Construction; *Other Collaborators:* Atelier Ten (Sustainability Consultant); Salter (Acoustical Consultant); Jensen Hughes (Accessibility Consultant); Holmes Fire (Code Consultant); Elevator Consulting Associates (Elevator Consultant); Simpson Gumpertz & Heger (Envelope Consultant); Ricca Design Studios (Foodservice Consultant – Residential Buildings); Directional Logic (Quantity Surveyor); TEECOM (Technology Consultant); The Shalleck Collaborative (Theater Consultant – Kresge College Academic Center)

**ARCHITECTURE TEAM MEMBERS:** *Studio Gang:* Jeanne Gang, FAIA; Steve Wiesenthal, FAIA; Claire Halpin; Molly Kinsella; Ashley Hinton; David Swain, AIA; Rolf Temesvari; Corbin Keech, AIA; Elizabeth Nadai, Adriana Arteaga; Chase Jordan; Kristina Eldrenkamp; Nicholas Cecchi; Olesya Vodenicharska; Dimitra Gelagoti, AIA; Alexandra Bair; Michael Nham; Jordan Hicks, AIA; Emily Licht; AJ Rosales, AIA; Weiju Lai, AIA; William Emmick, AIA; Mark Schendel, FAIA; and Margaret Cavenagh, AIA; *TEF Design:* Andrew Wolfram, AIA; Maryam Rostami, AIA; Laura Allen, AIA; Gretchen Korsmo, AIA; Paul Pasquariello; Ivana Pilipovic; Benny Lin; Brayden Templeton; O.J. Monegas, AIA; Samantha Rose; Greta Gardner; and Alexandra Chen

The Kresge College Expansion reinforces and enhances the existing heritage campus designed by Moore Lyndon Turnbull Whitaker (MLTW). The addition of four new buildings — three residential halls and an academic center — reinvigorates the campus. The project aims to connect with the surrounding forest and the campus core, achieving this with a sensitive approach to scale and building placement, respecting the majesty of the redwoods, and providing an accessible ravine bridge to the greater UC Santa Cruz campus. The expansion builds upon Kresge’s founding theme of participatory democracy, engaging students and the community extensively in the design process. This collaborative effort has resulted in designs that enhance the original campus by increasing density, connectivity, and vitality.

JASON O'REAR



JASON O'REAR





JASON O'REAR



“The big windows really bring the outside in. What a great way to be immersed in the college experience – and the forest.”

— JUROR



Farr Associates

## Lawson House Redevelopment

Chicago, Illinois

**CLIENT:** Holsten Real Estate Development Corporation and Holsten Human Capital Development

**GENERAL CONTRACTOR:** Walsh Construction

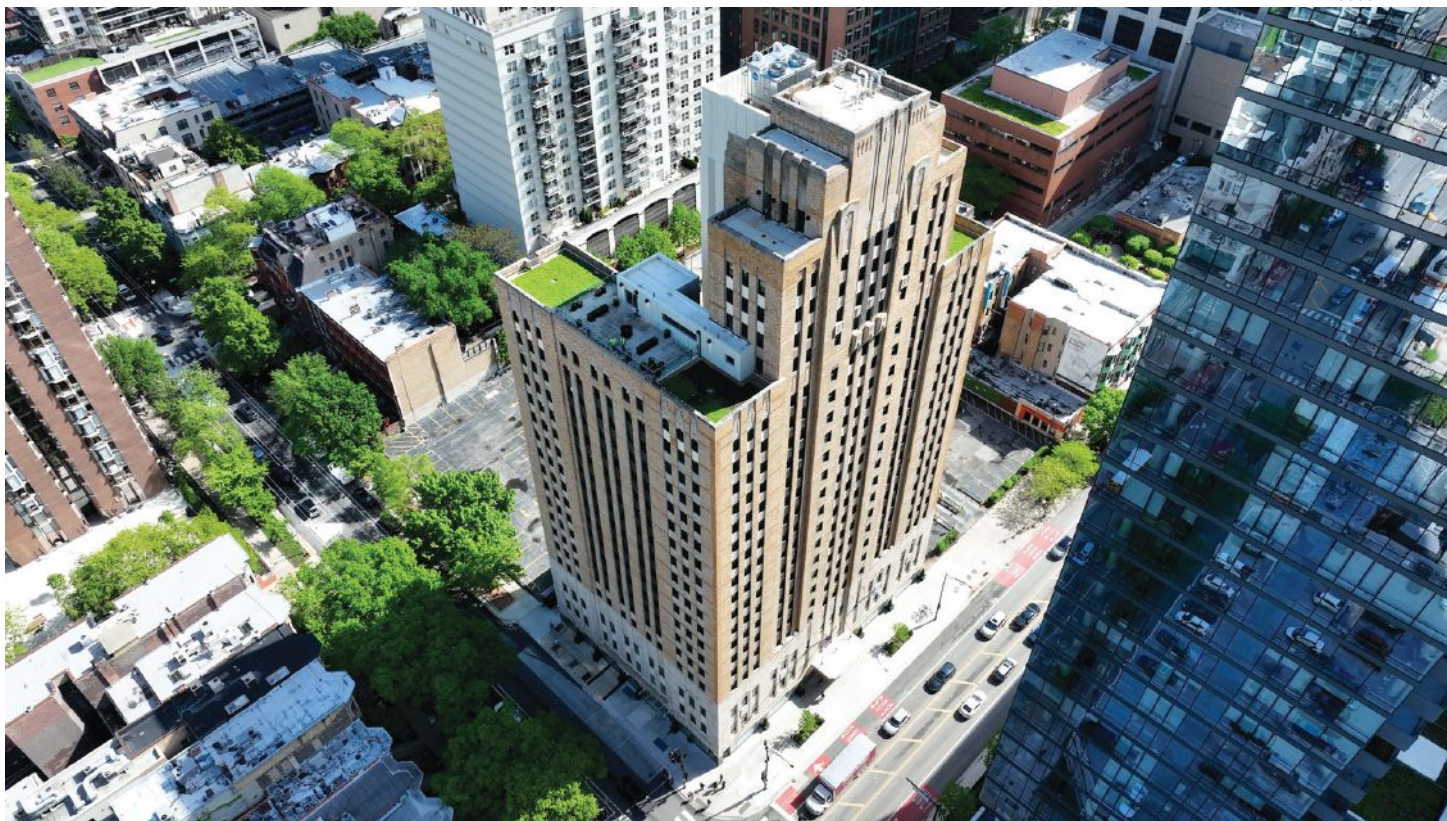
**LANDSCAPE ARCHITECT:** site design group, Ltd.

**OTHER ARCHITECT:** Klein & Hoffman (Façade and Building Forensics)

**COLLABORATORS:** *Structural Engineer:* C.E. Anderson & Associates; *MEP Engineer:* dbHMS; *Civil Engineer:* Terra Engineering Ltd.; *Other Engineers:* Primera (Commissioning Agent); Jenkins & Huntington Inc. (Elevator Consultant); Lighting Design: Chicago Lightworks; Historic Preservation Consultant: Ryan LLC; Other Collaborators: ArchiTect (Architectural Specifications); Shen Milsom & Wilke (Acoustics Consultant); Jensen Hughes (Code Consultant); Slipstream (Grant Compliance)

**ARCHITECTURE TEAM MEMBERS:** Doug Farr, FAIA; Mercedes Miley, AIA; and Matt McGrane, AIA

The redevelopment of Lawson House, Chicago's historic YMCA, brings dignified low-income housing to one of the city's wealthiest neighborhoods. Built in 1931 as the tallest structure in Chicago, the building became a "city in a block" with 583 sleeping rooms, two gymnasiums, an indoor pool, a cafeteria, a barbershop, and many period-themed amenities. The 28-month transformative rehabilitation, completed in April 2024, now provides 409 single-room occupancy (SRO) units, constituting approximately one-third of the city's new SRO units. The project marks the first complete renovation of the units since the building's opening nearly 100 years ago.



WALSH CONSTRUCTION



“This project speaks to our time and the issues that should be important to us. I am especially impressed with the scale of the renovation undertaken here.”

— JUROR



Perkins&Will

## Westview High School and YMCA

Omaha, Nebraska

**CLIENT:** Omaha Public Schools

**GENERAL CONTRACTOR:** Sampson Construction

**ARCHITECT OF RECORD:** BCDM Architects

**COLLABORATORS:** *Structural Engineer:* Performance Engineering; *MEP Engineer:* Alvine Engineering; *Civil Engineer:* Lamp Rynearson; *Other Engineers:* Counsilman Hunsaker (Pool Engineer)

**ARCHITECTURE TEAM MEMBERS:** Aimee Eckmann, FAIA; Jerry Johnson, AIA; Steven Turckes, FAIA; and Max Adams, AIA

Situated in northwest Omaha, Westview High School takes inspiration from the surrounding rolling prairie to create a cohesive building that blends seamlessly into the landscape. The simple brick and zinc exterior palette draws from Omaha's past while offering a contemporary, honest, and durable design. Unique in Omaha, Westview partnered with the local YMCA to create a joint-use facility for the entire community. Students attend school in state-of-the-art learning environments, while community members enjoy a large fitness center. Thoughtful planning allows for shared after-hours use, making the facility greater than the sum of its parts.

JAMES STEINKAMP



JAMES STEINKAMP





JAMES STEINKAMP



“This project took a pretty restrained palette and made impressive use of it.”

— JUROR



HOK

## Wayne County Justice Center

Detroit, Michigan

**CLIENT:** Wayne County and Bedrock Development

**GENERAL CONTRACTOR:** Barton Malow Builders

**LANDSCAPE ARCHITECT:** Giffels Webster

**COLLABORATORS:** *Structural Engineer:* HOK; *MEP Engineer:* HOK; *Civil Engineer:* Giffels Webster; *Interior Designer:* HOK; *Lighting Design:* HOK; *Graphic/Environmental Design:* HOK; *Other Collaborators:* Jensen Hughes (Code Consultant); SM&W (Acoustics Consultant)

**ARCHITECTURE TEAM MEMBERS:** Nadya Alshaweesh, AIA; Scott Anderson, AIA; Yongbeom Ji; Michela Bettin, Assoc. AIA; Tyler Boyett, AIA; Triana Carter; Gregory Cook; Melanny Fernandez; Tony Garoppolo, AIA; Mark Gerardot; Fred Goebel, AIA; Jeff Goodale, AIA; Dan Hartmann, AIA; Larry Hlavacek, AIA; Tony Holub, AIA; Mark Ip, AIA; David Ivey; Anna Kendrick; Alyssa Killian; Sue Kim, IIDA; Vesselin Kovatchev, AIA; Nathan Lentz, AIA; Valeria Lopez, Assoc. AIA; Paul Maute, AIA; Jourdon Miller; Lou Oswald, AIA; Ryan Rohlfs, AIA; Peter Ruggiero, AIA; Bob Schwartz, FAIA; Eric Schwartzbach, AIA; Ali Siddique; and Kristen Zilch-Markos, AIA

The Wayne County Justice Center is designed to create a cohesive campus and consolidate facilities once spread throughout Detroit. The architects envisioned a modern, civic design that embodies transparency and dignity. The varied façades break down the scale of the campus into unique yet related “siblings,” and the continuous plinth represents a stable foundation of fairness. The scalloped precast panels, paired with the thoughtful use of a curtain wall, create a dynamic experience that elevates the building material and type and references the openness of the courts. The project meets its functional expectations while challenging preconceptions and celebrating justice as a key aspect of society.

ANGIE MCMONIGAL PHOTOGRAPHY



“The use of diagrams to tell the story is very effective.”

— JUROR

ANGIE MCMONIGAL PHOTOGRAPHY



dSPACE Studio

## Silver Lake Residence

Saugatuck, Michigan

**GENERAL CONTRACTOR:** Zahn Builders

**COLLABORATORS:** *Structural Engineer:* Goodfriend Magruder Structure; *Interior Designer:* KBS Interiors

**ARCHITECTURE TEAM MEMBERS:** Robert McFadden; Kevin Toukoumidis, AIA; and Brandon McKenzie

This home in picturesque Saugatuck, Michigan, offers an art-filled refuge away from hectic city life. Originally from Rio, the clients sought to incorporate Brazilian elements into a design that blends seamlessly with the lakeside location. The project brief included open plan living, a plunge pool, and guest spaces, with all rooms accessible to the outdoors. In this serene setting overlooking a rustic lake, the structure becomes a sculptural object — a contemplative space providing the clients with a layered architectural experience to interact with nature and their art collection.



TY COLE

Wight & Company

## The Picnic Glade at Chicago Botanic Garden

Glencoe, Illinois

**CLIENT:** The Chicago Horticultural Society

**GENERAL CONTRACTOR:** Trellis Group LLC

**LANDSCAPE ARCHITECT:** Raycroft/Meyer Landscape Architecture

**COLLABORATORS:** *Structural Engineer:* Forefront Structural Engineers Inc.; *MEP Engineer:* The Engineering Studio Inc.; *Civil Engineer:* Gewalt Hamilton Associates Inc.; *Lighting Design:* Gwen Grossman Lighting Design; *Project Manager:* S Projects LLC

**ARCHITECTURE TEAM MEMBERS:** Scott Steffes, AIA; Stephen J. Dillon; E.J. Fernandez; and Divya Jain, AIA

Modeled after a glade in the adjacent forest preserve, this new gathering area at the Chicago Botanic Garden offers a free, family-friendly space with magnificent views of a world-class Japanese garden. The pavilions were thoughtfully positioned and designed to be minimally invasive, enhancing, rather than detracting, from the carefully curated, postcard-like views integral to Japanese garden design. The Picnic Glade provides bicycle parking, restroom facilities, and shaded areas, serving as a welcoming entry point for those arriving by bike or foot from the neighboring forest preserve and trails.



© CHRISTOPHER BARRETT PHOTOGRAPHY



# Silver Lake Residence

CITATION OF MERIT • DSPACE STUDIO • KEVIN TOUKOUMIDIS DUNELANDS • DIVINE DETAIL AWARD • DSPACE STUDIO • KEVIN TOUKOUMIDIS

This home is an understated retreat that offers an architectural experience in which to interact with the environment. The structure is embedded into a hill sloping toward Silver Lake and partially obscured by a green roof. The dynamic interior unfolds as you descend the main stair. Varied ceiling heights, abstract angles and multiple points of light create a space that is constantly changing as you progress through the home.



1.616.738.9246  
ZAHNBUILDERS.COM

Architecture for Public Benefit and Trent Fredrickson Architecture

# Then A Memorial

Chicago, Illinois

**CLIENT:** Lawndale Christian Community Church and Mishkan Chicago

**GENERAL CONTRACTOR:** Architecture for Public Benefit and Trent Fredrickson Architecture

**COLLABORATORS:** *Structural Engineer:* Goodfriend Magruder Structure; *Other Collaborators:* Chicago Sukkah Design Festival (Organizer); Could Be Design and Lawndale Popup Spot (Host); Jason Pion and Jayhawk Reese (Fabrication Support); Adam Fogel, Brian Griffin, and Norvell Tolbert (Photography)

**ARCHITECTURE TEAM MEMBERS:** Chana Haouzi, AIA, and Trent Fredrickson

Then A Memorial emerged from a collaboration between two interfaith communities centered around the creation of a sukkah — a structure constructed for the Jewish festival of Sukkot. Originally part of the Chicago Sukkah Design Festival, the structure was designed to transform into a memorial honoring 41 young people from Chicago’s North Lawndale lost to violence. The sukkah reinterprets traditional elements, providing a space for inclusive programming, including shared worship, interfaith dinners, and individual reflection. Openings in the walls hold community stories and memories. Its adaptable design ensures it remains a valuable community asset, reflecting the ongoing relationship between the congregations and celebrating life’s varied seasons.

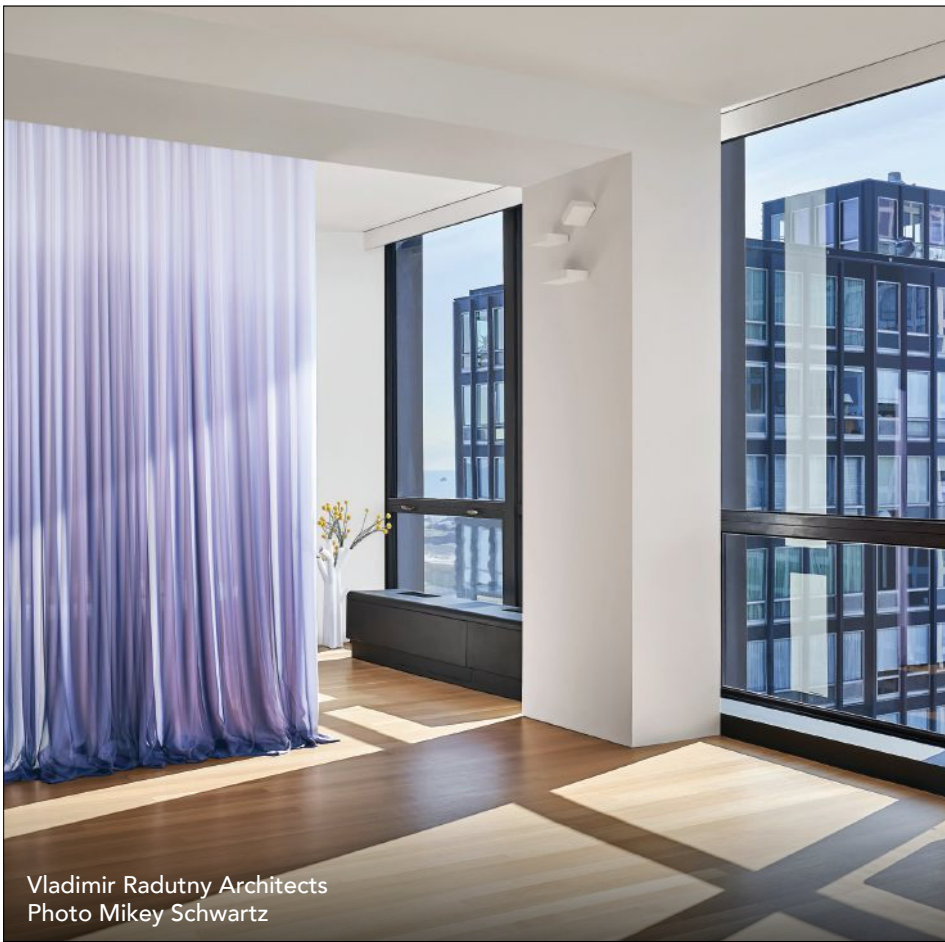
NORVELL TOLBERT



- ✓ Unmatched resilience
- ✓ Luxurious interior environment
- ✓ Climate specific & cost optimized

That's the  
**Phius Difference**

[www.phius.org](http://www.phius.org)



Vladimir Radutny Architects  
Photo Mikey Schwartz



it's Oksana

"It's Oksana" Chicago based full service drapery design studio and home textile workroom with 25 years experience.

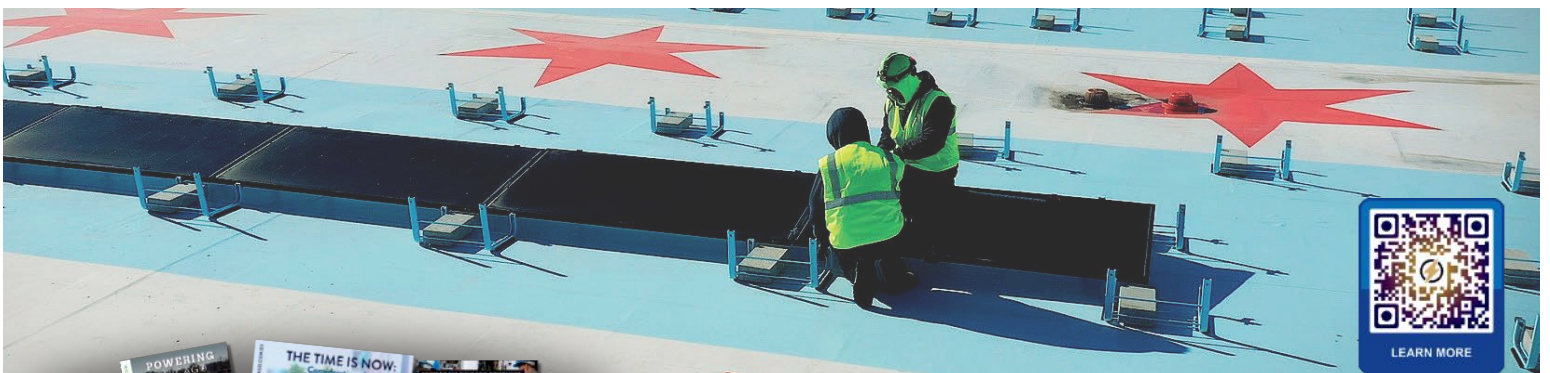


[www.itsoksanadraperly.com](http://www.itsoksanadraperly.com)

# POWERING CHICAGO

IBEW 134/NECA

**BETTER** CONSTRUCTION. **BETTER** CAREERS. **BETTER** COMMUNITIES.



Find Helpful Resources for your Journey to Clean Energy from the Qualified Experts @ [WWW.POWERINGCHICAGO.COM](http://WWW.POWERINGCHICAGO.COM)

Vladimir Radutny Architects

# 530 West Dickens

Chicago, Illinois

**CLIENT:** Ranquist Development Group and New Era Development Group

**GENERAL CONTRACTOR:** G. Corp.

**COLLABORATORS:** *Structural Engineer:* Louis Shell Structures Inc.;  
*MEP Engineer:* One World Consulting

**ARCHITECTURE TEAM MEMBERS:** Vladimir Radutny, AIA; Ryan Sarros;  
and Fanny Hothan

530 West Dickens is a four-unit multifamily building that enhances the architectural dialogue within its neighborhood. Located on a picturesque, tree-lined street between two noteworthy properties, the building respects its historic context yet intends to leave a lasting impression through juxtaposition of a refined masonry aesthetic. The design is organized as a series of overlapping, Tetris-like dwellings. Sleeping rooms are at the front, in the building's narrowest part, while living spaces are at the back where the lot widens considerably. This arrangement harmoniously blends form and function and efficiently distributes the required building area, adheres to zoning height constraints, and maximizes daylight within an atypical site.



MIKE SCHWARTZ



**MAXIMIZE PERFORMANCE. OPTIMIZE COST. MINIMIZE RISK.**  
Trusted technical consultants for total building performance.

- Vertical Transportation
- Building Science
- Building Logistics
- Facade Access
- Forensics
- Enclosures & Structures

Learn more about our integrated team delivery and comprehensive technical specialties at [LerchBates.com](http://LerchBates.com).





READY, SET, GLOW!

 **Schuler Shook**  
LIGHTING DESIGN / THEATRE PLANNING / AUDIO VIDEO DESIGN

## Introducing **PERM-A-BARRIER® ULTRA™**



A versatile, commercial weather barrier and flashing solution for high temperature application.

- Excellent adhesion to a variety of sealants
- Available in multiple widths for easy application
- Compatible with a wide range of substrates and adjacent materials
- High-temperature stability (up to 300° F)
- Use as a high-temperature transition membrane under metal coping
- Suitable behind metal cladding
- NAFF 285 compliant with various wall assemblies



Scan QR code  
for more information

© Copyright 2024 GCP Applied Technologies Inc. All rights reserved.



Latent

## Boys and Girls Clubs of Chicago Rusu-McCartin Club

Chicago, Illinois

**CLIENT:** Boys and Girls Clubs of Chicago**GENERAL CONTRACTOR:** BEAR Construction**LANDSCAPE ARCHITECT:** Omni Ecosystems

**COLLABORATORS:** *Structural Engineer:* Rockey Structures; *MEP Engineer:* CCJM Engineers; *Civil Engineer:* Engage Civil; *Geotechnical Engineer:* Geo Services; *Other Engineers:* NPCE Technology Solutions (Technology Engineer); *Interior Designer:* Latent; *Lighting Design:* KSA Lighting & Controls; *Graphic/Environmental Design:* MAUDE Group; *Other Collaborators:* MAP Strategies (Code Consultant)

**ARCHITECTURE TEAM MEMBERS:** Katherine Darnstadt, AIA; Nicolas Anderson, AIA; Louisa Zheng; and Tyler Stoeckel

The Rusu-McCartin Club is Chicago's first new construction Boys and Girls Club in 50 years, anchoring Austin's Joint Public Safety West Side Campus. This project engages local youth with a broad range of programs promoting leadership development, academic success, and healthy lifestyles. The building activates Chicago Avenue with large expanses of glass, showcasing various creative programs across three stepped floors. Above the gymnasium, an outdoor deck and growing meadow feature flexible classroom spaces. The exterior rainscreen, composed of a varied pattern of metallic-coated steel profiles, creates an ever-changing display of light and shadows throughout the day, creating views that are never quite the same.



© TOM HARRIS

John Ronan Architects

## Chicago Park District Headquarters

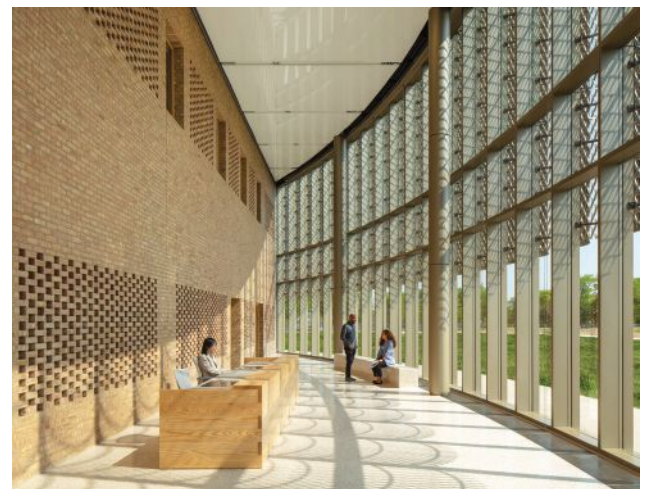
Chicago, Illinois

**CLIENT:** Chicago Park District**GENERAL CONTRACTOR:** FH Paschen and ALL Construction Group**LANDSCAPE ARCHITECT:** site design group, ltd.

**COLLABORATORS:** *Structural Engineer:* Thornton Tomasetti; *MEP Engineer:* dbHMS; *Civil Engineer:* Terra Engineering Ltd; *Geotechnical Engineer:* GSG; *Interior Designer:* John Ronan Architects; *Lighting Design:* Charter Sills; *Graphic/Environmental Design:* John Ronan Architects; *Other Collaborators:* Shen Milsom & Wilke (Acoustics, AV/IT, and Security Consultant); APMonarch (Community Engagement Liaison)

**ARCHITECTURE TEAM MEMBERS:** John Ronan, FAIA; Marcin Szefer; John Kerner, AIA; Eric Cheng; Maranda Gerga; Sam Park; Phil Syvertsen; Andrew Akins; Courtney Arabea; Dominika Opolska; Yuxin Ma; Danielle Beaulieu, AIA; and Xipeng Wu

The Chicago Park District Headquarters is an 80,000-square-foot building that includes office space for Park District staff and an 18,000-square-foot fieldhouse with a gymnasium, fitness center, and club rooms, all situated within a 17-acre park on a former brownfield site. The building is carefully integrated into the park to provide a dignified presence and to organize the surrounding park space. This two-story, circular structure serves as an iconic shape befitting an important civic institution. It was designed to make Park District staff feel as though they are working in a park and put them in close contact with the public they serve.



JAMES FLORIO

HBRA Architects

# Cordia Harrington Center for Excellence at the University of Arkansas

Fayetteville, Arkansas

**CLIENT:** University of Arkansas, Fayetteville

**GENERAL CONTRACTOR:** VCC LLC

**ARCHITECT OF RECORD:** CORE Architects

**LANDSCAPE ARCHITECT:** OLIN

**COLLABORATORS:** *Structural Engineer:* Bernhard; *MEP Engineer:* Bernhard; *Civil Engineer:* DCI; *Interior Designer:* CORE Architects

**ARCHITECTURE TEAM MEMBERS:** *HBRA Architects:* Aric Lasher, FAIA; Dennis Rupert, FAIA; William Mahalko; and Jeff Policky; *CORE Architects:* Michael Baldwin, AIA; Bob Kelly; Gil Newnum, AIA; Katie Baldwin; Caity Malloy, AIA; and Walter Stephens

In the heart of the historic campus, the new Cordia Harrington Center for Excellence is set into a sloping site, connecting to the ground at two levels. This 71,000-square-foot, four-story building welcomes visitors from the quad into a skylit lobby and from the outdoor terrace into a student gathering space. Its design respects the campus's architectural heritage and includes tutoring and mentoring spaces, multi-use lounges, classrooms, conference rooms, faculty offices, and a notable foodservice component that engages the campus community. The spaces are designed to foster interaction between students and faculty while providing flexibility for future growth and programmatic evolution.

© TIM HURSLEY



Ross Barney Architects

# Railyard Park

Rogers, Arkansas

**CLIENT:** City of Rogers, Arkansas

**GENERAL CONTRACTOR:** Nabholz Construction

**CONTRIBUTING ARCHITECT:** AFHJ Architects (Associate Architect)

**LANDSCAPE ARCHITECT:** Ross Barney Architects

**COLLABORATORS:** *Structural Engineer:* Goodfriend Magruder Structure; *MEP Engineer:* HP Engineering; *Civil Engineer:* CEI Engineering Associates; *Other Engineers:* Crowne Group (AV Consultant); *Lighting Design:* Schuler Shook; *Graphic/Environmental Design:* SPAN

**ARCHITECTURE TEAM MEMBERS:** *Ross Barney Architects:* Carol Ross Barney, FAIA, HASLA; Ryan Giblin, AIA, LEED AP BD+C; Misa Inoue, PLA, ASLA; Shinya Uehara; Ryan Gann, AIA; Youngjae Lee; and Yifan Liang; *AFHJ Architects:* Laleh Amirmoez

Railyard Park is a multiblock urban design development in Rogers, Arkansas, set within a fast-growing region of the Ozarks. The project aims to spur economic development, foster placemaking, and enhance connectivity with the surrounding neighborhoods and northwest Arkansas. Unlike many railroad-era towns, Rogers lacked a town square. The site, once occupied by parking lots and abandoned buildings along an active rail line, has been transformed into a cohesive space that recenters downtown activity. Railyard Park strengthens public life, celebrates local cultures, and promotes sustainability in a socially equitable public space.

KATE JOYCE STUDIOS



Jahn

## One Freedom Plaza

Washington, D.C.

**CLIENT:** Quadrangle Development Corporation

**GENERAL CONTRACTOR:** Hensel Phelps

**COLLABORATORS:** *Structural Engineer:* Fernandez & Associates; *Lighting Design:* Reed Burkett Lighting Design; *Other Collaborators:* Atelier Ten (Energy/Comfort/LEED Consultant)

**ARCHITECTURE TEAM MEMBERS:** Helmut Jahn, FAIA; Philip Castillo, FAIA; Lynda Dossey, AIA; and Peter Hayes

Located in Washington, D.C., One Freedom Plaza stands out — not for breaking new ground but for building upon best practices in 21st-century building technology. Its simple yet refined aesthetic conceals a complex array of high-performance systems, including operable windows and intelligent controls that maximize efficiency and comfort for office workers, while flooding interior spaces with natural light. The exquisitely detailed lobby, a dramatic space highlighted by a dynamic sculpture, presents a transparent front door to the adjacent Freedom Plaza, enhancing the building's connection to its vibrant surroundings.



RAINER VIETELBÖCK

Studio Gang

## Richard Gilder Center for Science, Education, and Innovation at the American Museum of Natural History

New York, New York

**CLIENT:** American Museum of Natural History

**GENERAL CONTRACTOR:** AECOM Tishman

**ARCHITECT OF RECORD:** Davis Brody Bond a Page company (Executive Architect)

**LANDSCAPE ARCHITECT:** Reed Hilderbrand

**COLLABORATORS:** *Structural Engineer:* Arup; *MEP/FP/Façade Engineer:* Buro Happold; *Civil Engineer:* Langan; *Interior Designer:* Studio Gang; *Lighting Design:* Renfro Design Group; *Signage Design:* Pentagram; *Other Collaborators:* Arup (Acoustical and Audiovisual Consultant); Ralph Appelbaum Associates (Exhibition Designer); Atelier Ten (Sustainability Consultant); Tamschick Media + Space with Boris Micka Associates (Theater Design); Zubatkin Owner Representative LLC (Owner Representative)

**ARCHITECTURE TEAM MEMBERS:** *Studio Gang:* Jeanne Gang, FAIA; Weston Walker, AIA; Ana Flor Ortiz, AIA; Anu Leinonen; Anika Schwarzwald; Margaret Cavenagh, AIA; Maciej Kaczynski; Andrew McGee; Arthur Terry; Spencer Hayden; Kathleen Stranix; Stanley Schultz; John Castro; Jay Hoffman; Weiju Lai, AIA; Bethany Mahre; Dimitra Gelagoti, AIA; Claire Cahan; Chris vant Hoff; Mark Schendel, FAIA; Peter Zuroweste, AIA; Schuyler Smith; Franco Bolanos; William Lambeth; Elif Erez; Magda Wala; Gabrielle Poirier; Natalya Egon; Juan De La Mora; and Paige Adams; *Davis Brody Bond a Page company:* Carl Krebs, FAIA; Mark Wagner, AIA; Carl Brown; Jeffrey Lee; and Conrad Gartz, AIA

The Richard Gilder Center for Science, Education, and Innovation is a major addition to the American Museum of Natural History. Designed to amplify the intellectual impact of the museum and encourage exploration, it provides new exhibition, education, collections, and research spaces and brings essential functions into public view for the first time. This gives visitors new insight into the full breadth of the museum's diverse collections and active scientific research. The Gilder Center also establishes a new museum entrance and creates dozens of new links between existing buildings, improving visitor flow and overall functionality.



IWAN BAAN




## Chicago Botanic Garden

Thank you for connecting people with nature.  
We are grateful for your partnership!

Chicago Botanic Garden, The Glade, AIA Chicago Design Excellence Citation of Merit Award



Complex project?  
Scan the QR code to check out our  
design assist services!



# YES, WE CAN DO THAT.

Buildings, Bridges, Hardscapes & more ... from concept to reality

An architectural rendering of a park plaza. In the center is a large, highly reflective, spherical sculpture. The plaza is paved and surrounded by trees, walkways, and modern buildings. In the background, there are skyscrapers and a body of water under a blue sky.


## ARCHITECTURAL CAST STONE

*Maximize your Design Possibilities*

[www.acscaststone.com](http://www.acscaststone.com)

**CAST STONE PRECAST CONCRETE UHPC CAST GRFC**

[sales@acscaststone.com](mailto:sales@acscaststone.com)  
630.377.4800  
West Chicago, Illinois  
ACS Management Group LLC





PALMYRA PLLC

## Not All White Walls

San Francisco, California

**CLIENT:** California College of the Arts

**COLLABORATORS:** *Curatorial Team:* Sita Kuratomi Bhaumik (Humanities and Sciences); Donald Fortescue (Design); Glen Helfand (Fine Arts); and Palmyra Geraki (Architecture and Interior Design); *Exhibition and Public Programs Team:* Jaime Austin (Director of Exhibitions and Public Programs); Josh Stulen (Manager, Exhibitions and Public Programs); and Bryndis Hafthorsdottir (Program Coordinator); *Installation Team:* Manuel Angeja; Jamee Crusan; Brandon Walls Olsen; Malaya Tuyay; Emily Livingston Stout; Frankie Garcia; River Black; Vincent Miranda; Justin Clark; John Roy; Juan Pablo Rahal Soto; Fiona Ball; Margot Becker; and Jacob Ji

**ARCHITECTURE TEAM MEMBERS:** Palmyra Geraki, AIA, NCARB, LEED AP BD+C

Commissioned by California College of the Arts, the exhibition design “Not All White Walls” showcased a range of work from various creative disciplines, all while maintaining a cohesive atmosphere within its unique setting: a former Greyhound bus maintenance garage. As the site of several gatherings, the space had to accommodate anywhere from a few dozen visitors to thousands of people, all without looking empty in the absence of a crowd. The design featured four immersive, colorful rooms that punctuated the expansive space, effectively managing the grand scale of the architecture and aiding in wayfinding. These rooms also served as thresholds between the central nave and a series of interconnected smaller spaces, creating a fluid, intimate, and integrated viewing experience.

PALMYRA GERAKI



“This project is well presented and showcases a consistent design solution on a restrained budget.”  
— JUROR

PALMYRA GERAKI





Vladimir Radutny Architects

## Unit 8408

Chicago, Illinois

**GENERAL CONTRACTOR:** Harder Brothers Inc.

**COLLABORATORS:** *MEP Engineer:* One World Consulting

**ARCHITECTURE TEAM MEMBERS:** Ryan Sarros and Vladimir Radutny, AIA

The apartments within the John Hancock Center are rarely showcased. With Unit 8408, the architects looked to flip the script on the iconic Chicago building, modernizing an existing apartment and enhancing a living experience nearly 1,000 feet above ground. Here, a continuous aperture over the length of the unit enables a dynamic connection to the city and the sky. All room partitions were detached from the exterior and oriented outward. The primary bedroom, cocooned behind a curved wall, strategically expands views from deeper sections of the apartment. The kitchen was completely relocated and seamlessly integrates shared plumbing stacks, establishing a direct visual dialogue with living spaces and the skyline. Finally, the building's recognizable diagonal steel structure was revealed through the application of current fireproofing technology, stitching a timeless and tactile element within the design.



ADRIEN WILLIAMS



“Unit 8408 is beautifully integrated, showcasing a smart balance of the existing structure and a well-conceived intervention.”

— JUROR

ADRIEN WILLIAMS



ADRIEN WILLIAMS





Kwong Von Glinow

## School of the Art Institute of Chicago Flaxman Library Renovation

Chicago, Illinois

**CLIENT:** School of the Art Institute of Chicago

**GENERAL CONTRACTOR:** Mortenson

**COLLABORATORS:** *Structural Engineer:* Goodfriend Magruder Structure; *MEP Engineer:* Advance Consulting Group International; *Other Engineers:* Threshold Acoustics (Acoustic Engineer); MAPS Strategies (Permit Expeditor); *Other Collaborators:* Mikael Olsson and Junfu Cui (Photographers)

**ARCHITECTURE TEAM MEMBERS:** Alison Von Glinow, AIA; Lap Chi Kwong; Nathan Geller, AIA; Tianjiao Wang, Assoc. AIA; Oana Giuglea; Jiachen Wang; Jonah Laduca; and Steven Huang

The School of the Art Institute of Chicago's Flaxman Library renovation project adopts an "open book" approach, connecting two previously separate floors to create a unified space that showcases the library's collections and the work of librarians. Located in the historic 1902 Sharp Building, the project removed sections of clay tile arch in the library's floorplate to create a narrow 100-foot-long atrium between the fifth and sixth floors, enhancing natural light and visibility between the two levels of the library. This space, deemed *Corridor +*, offers circulation space, semi-private student nooks, and views into library storage and work areas. The renovation creates community space and study areas, while improving storage efficiency and maintaining a strong connection to the building's historic architecture, significantly enriching the academic experience for students.

MIKAEL OLSSON



MIKAEL OLSSON



MIKAEL OLSSON



MIKAEL OLSSON



“This project is well thought out, with a rigorous organization and consistent design approach that prioritizes the users and subject.”

— JUROR



GARRETT ROWLAND

Perkins&Will

## Confidential Project

San Francisco, California

**GENERAL CONTRACTOR:** Skyline Construction

**COLLABORATORS:** *MEP Engineer:* ESD, now Stantec; *Interior Designer:* Perkins&Will; *Lighting Design:* Lighthive; *Project Manager:* Dovetail; *Other Collaborators:* Thomas Interiors (Furniture Dealer); Design Workshops (Millworker); Waveguide (AV Consultant)

**ARCHITECTURE TEAM MEMBERS:** Fred Schmidt; Sarah Busch; Lara Leskaj; Ryan Monteague; Rocco Tunzi, AIA; Andrew Wright; and Brooke Holley

The renovation of one of two primary client-facing offices aimed to create an elegant and sophisticated space in a highly visible public location, reflecting the client's brand. Emphasizing wellness, comfort, and seamless technology integration, the office offers options for focused work, small team gatherings, and ample conference facilities to encourage a return to the office. One challenge was to create an airy, energetic space in an older building with low ceilings. Inspired by residential design, varying ceiling heights now create an open feel, with a darker elevator lobby transitioning to lighter finishes. The cohesive design connects public and private spaces with views of the San Francisco Bay, warm oak millwork, and natural elements, unifying the space and connecting people with nature.



GARRETT ROWLAND



“The design responds well to the brief, and the use of wood is quite nice.”

— JUROR

GARRETT ROWLAND



34-TEN

# Deep Red Wine Merchant

Chicago, Illinois

**CLIENT:** Deep Red Wine Merchant

**GENERAL CONTRACTOR:** Formed Space

**ARCHITECTURE TEAM MEMBERS:** Joshua Hutchison, AIA, and Jarrett Jespersen

Located in Chicago's Avondale neighborhood, this 700-square-foot, come-as-you-are wine bar and bottle shop creates intrigue from the street. Inside, the retail build-out fulfills its owner's dream of making wine approachable and accessible to everyone, including those who might feel intimidated by wine culture. With a design that feels timeless, Deep Red Wine Merchant offers an intimate space where patrons can enjoy a glass of wine at a window seat, grab a bottle to go, or settle in to learn more about wine. The name of the shop — and its postmodern design — was heavily influenced by Dario Argento's 1975 horror classic *Deep Red*, reflecting the close collaboration between client and architect that made the project possible.



JAMES JOHN JETEL



Product information provided by Dow.com

**BREATHTAKING VIEWS SHOULD BE SEEN. FULLY SEEN.**



## DOWSIL™ 375 Construction & Glass Embedding

FOR EFFICIENCY, AESTHETICS AND DURABILITY

Introducing the new pourable, self-leveling, two-component polyurethane from Dow. DOWSIL™ 375 Construction & Glass Embedding was developed to securely mount and support flat and curved monolithic or laminated glass panels.

Contact your Beacon Waterproofing Sales Representative to set up a Lunch & Learn on DOWSIL products.

**(630) 860-7878**

Authorized Distributor



**BEACON**  
Waterproofing Products

Formerly Sealant Engineering Construction Supply, Inc.

1645 Greenleaf Ave | Elk Grove Village, IL



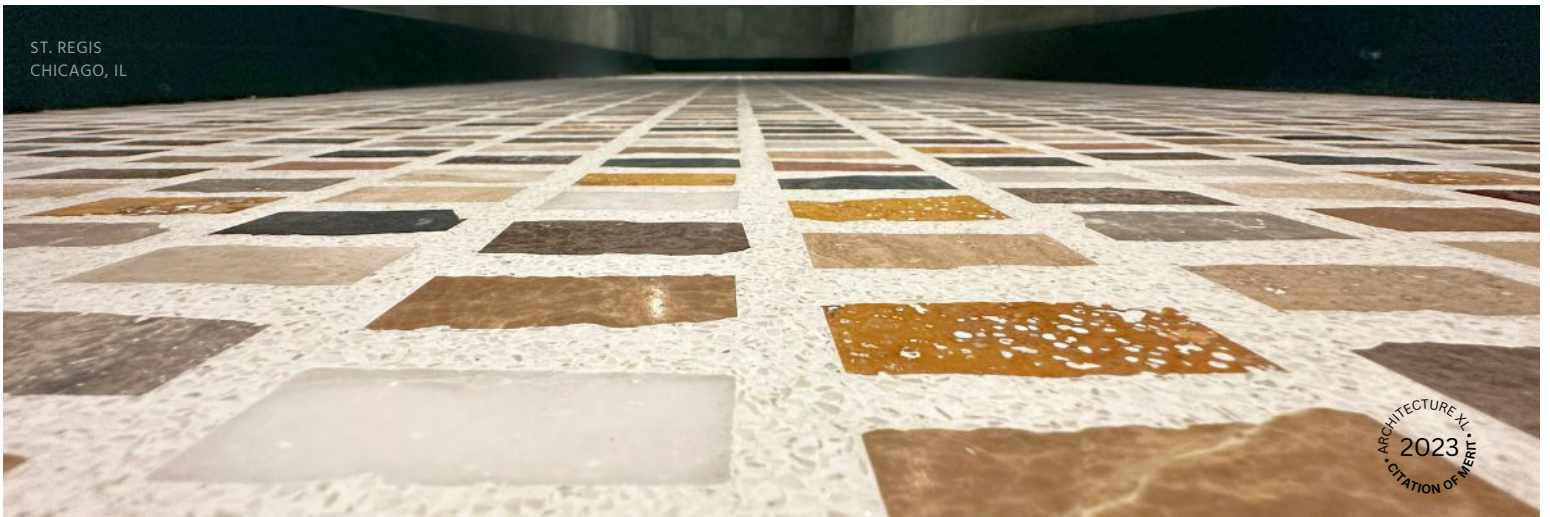
**Glass Skylights that go above and beyond...**  
 Contact our skylight experts today: 833-759-3667 | [info@glassskylights.com](mailto:info@glassskylights.com)



[www.glassskylights.com](http://www.glassskylights.com)

Visit our website for case studies, shop drawings, and inspiration or to book an AIA CES Approved Lunch & Learn

**GLAZING  
VISION**




## Terrazzo Unleashed: Where durability meets design

Since 1974, Menconi delivers superior installations of terrazzo, resinous epoxy, and polished concrete flooring systems with proven expertise for commercial, industrial, and high-end residential clients.



TERRAZZO | RESINOUS | CONCRETE

**MENCONI** | BENSENVILLE | 630 238 8275 | [FINEARTFORFLOORS.COM](http://FINEARTFORFLOORS.COM) | FIND US ON  **Material Bank**



dSPACE Studio

## Dunelands

Laketown, Michigan

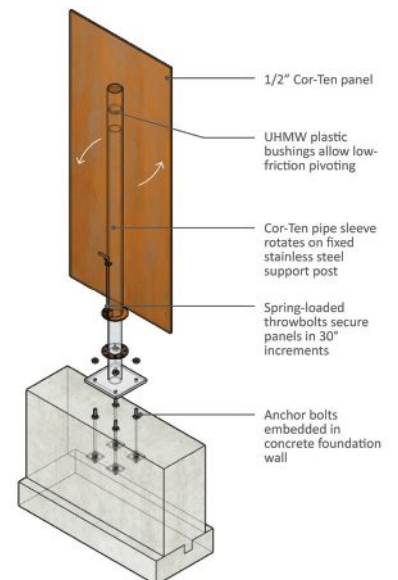
**GENERAL CONTRACTOR:** Zahn Builders

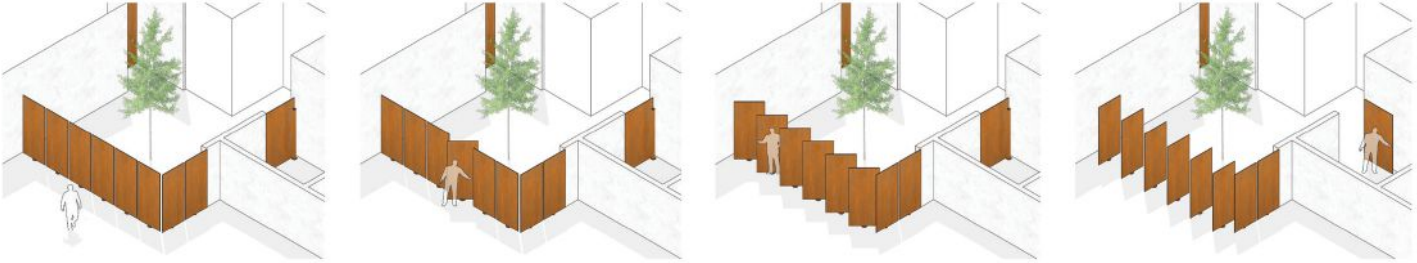
**COLLABORATORS:** *Structural Engineer:* Goodfriend Magruder Structure

**ARCHITECTURE TEAM MEMBERS:** Kevin Toukoumidis, AIA, and Jordan Snittjer

Built on a ridge overlooking Lake Michigan and surrounded by rolling, tree-covered dunes, Dunelands appears to emerge from the landscape. The project brief called for an artful house that respects the land and promotes wellness and outdoor living. Its rugged beauty and opportunities for four-season adventure attracted the owners to the property, but it also presented challenges, including rising lake levels, wildfire risk, and gale-force winds common in this extreme microclimate. The site necessitated a durable shelter that could responsibly integrate with the environment. The result is an innovative design that blurs the line between architecture and art.

RENDERING BY DSPACE STUDIO





TY COLE



TY COLE



Canopy / architecture + design

## Enlace Headquarters

Chicago, Illinois

**CLIENT:** Enlace Chicago

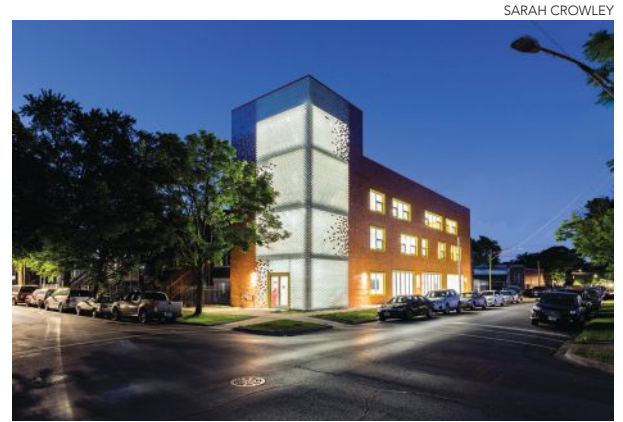
**GENERAL CONTRACTOR:** Blackwood Group

**LANDSCAPE ARCHITECT:** McKay Landscape Architects

**COLLABORATORS:** *Structural Engineer:* CE Anderson;  
*MEP Engineer:* dbHMS Engineering; *Civil Engineer:* EVA Design  
and Engineering

**ARCHITECTURE TEAM MEMBERS:** Jaime Torres, AIA;  
Andreea Micu, AIA; Burke Greenwood; and Hannah Hortick

Enlace, a nonprofit organization supporting Chicago's Little Village community, needed a new centralized facility that balanced safety, flexibility, and cultural expression. Architects responded by designing a two-phase, four-story building with a rooftop community garden, starting with a 6,000-square-foot structure that opened in 2021 and expanding as funds allowed. Despite financial constraints, the design used familiar materials like brick, glass block, and steel, reflecting the neighborhood's past, present, and future. The innovative masonry creates a lantern effect at night, symbolizing community unity. Open floor plans and operable storefront windows enhance connectivity and adaptability, turning the building into a neighborhood icon and a beacon of community spirit.



SARAH CROWLEY



SARAH CROWLEY

Jahn/

## Pritzker Military Archives Center

Somers, Wisconsin

**CLIENT:** Archives & Armory of PMML WI LLC

**GENERAL CONTRACTOR:** Pepper|Riley Construction

**LANDSCAPE ARCHITECT:** O2 Design

**COLLABORATORS:** *Structural Engineer:* WSP; *MEP Engineer:* Cosentini;  
*Civil Engineer:* Terra Engineering Ltd.; *Lighting Design:* Reed Burkett  
Lighting Design; *Project Manager:* Daccord; *Other Collaborators:* Threshold  
Acoustics (Acoustics Consultant); Cyclone Energy Group (Energy/Comfort  
Consultant)

**ARCHITECTURE TEAM MEMBERS:** Helmut Jahn, FAIA; Philip Castillo,  
FAIA; Tobias Dold; Graham Bowman; Lucie Rigaldies, Assoc. AIA; and John  
Ruffolo, AIA

The Pritzker Military Archives Center was designed to house the growing collections of the Pritzker Military Museum and Library. The center features a curated landscape and expansive gallery, allowing military scholars and the public to explore the contributions of citizen soldiers to military history. Inspired by military equipment, the design combines toughness with refined details, using exposed fasteners and a high-performance enclosure to regulate temperature, humidity, and UV radiation. The facility includes archival storage for books, uniforms, firearms, and artifacts, with stringent climate controls. The addition of exhibition and ceremonial spaces, along with a landscape design echoing military imagery, creates a space that honors and preserves military history in a flexible, adaptive environment.



TOM ROSSITER



TOM ROSSITER



## Landscape Series

- 34-gallon capacity
- Laser cut graphics
- Secured dome tops
- In-ground mounting kit included
- Dimensions:  
18" dia X 44" H



[www.ex-cell.com](http://www.ex-cell.com)

**Congratulations to the Pritzker Military Archives Center with Jahn on receiving the Divine Detail Award. GSI is proud to be a part of your success.**



# When Women Gather

Chicago Architecture Center's 'Disrupters' Exhibition Honors 50 Years of Nonprofit Chicago Women in Architecture (CWA)

by **Eve Fineman, Assoc. AIA**  
Director of Exhibitions, Chicago Architecture Center; Board of Directors, AIA Chicago

In 1974, a group of female architects gathered in a colleague's office, connected by a common experience of serious workplace challenges. They sat on tables and on the floor and talked about how to start organizing.

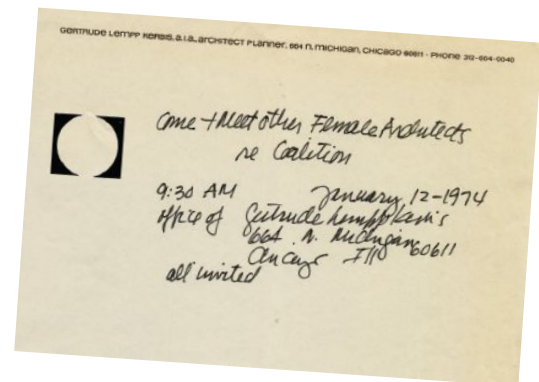
That colleague was **Gertrude Lempp Kerbis, FAIA**, who after more than a decade of producing award-winning projects with large architecture firms, opened her own practice in 1967 in response to discriminatory practices. While this decision eliminated some frustrations, another set of issues quickly arose. In a context where female architects were rarely hired or promoted, Kerbis struggled to obtain the clients and projects she desired and deserved. Fueled by a need to connect with others experiencing similar issues, she "sent out a little note" to all the women architects she knew — an invitation to come to her small office on Michigan Avenue. More than 20 women turned out for this first meeting of Chicago Women in Architecture (CWA).

This first gathering of talented and motivated women in the 1970s formed the foundation of a robust advocacy organization that is still going strong today. They also led their own firms, took on leadership roles within a growing CWA, started the CWA Foundation, and were bold trailblazers and leaders at AIA.

In 2008, 34 years after she organized the first CWA gathering, Kerbis received AIA Chicago's Lifetime Achievement Award — the first woman to receive the honor. As she acknowledged in the tribute video that year, "I just hope that I pushed the ball a little farther."

In honor of its 50th anniversary, Chicago Architecture Center is proud to partner with CWA to present "Disrupters," a new exhibition that recognizes the challenges women continue to face in the field while celebrating the significant gains they have made. CWA has sustained and grown over the years, outlasting many similar groups throughout the country. This is due in part to the group's willingness to push boundaries while fostering a supportive community and advocating for women in the profession. This exhibition celebrates the work and impact of CWA leaders and members over the years through imagery, photographs, oral histories, and built projects around the world. **CA**

► "Disrupters" is now on display at the Chicago Architecture Center, 111 E. Wacker Dr., Chicago, IL 60601. Learn more and purchase tickets to the exhibition at [Architecture.org](https://www.architecture.org).



ABOVE: An invitation to the first meeting of Chicago Women in Architecture, penned by Gertrude Lempp Kerbis in 1974.



# A Composite Skyline

Building designs are commonly attributed to a single architect – often a man – despite the fact that entire teams of architects work to see a project through to completion. Within the imagined skyline at the bottom of this page, you will find buildings large and small from Chicago and around the world where one or more Chicago women played a leading role. These are just some of their many contributions:



DEERFIELD HIGH SCHOOL PTO

**Deerfield High School**  
Deerfield, Illinois, 1959  
Po Hu Shao, AIA  
Loebl, Schlossman and Bennett



DARRIS LEE HARRIS/BKL ARCHITECTURE LLC

**GEMS World Academy**  
Chicago, Illinois, 2014  
Danielle Tillman, AIA, NOMA  
bKL Architecture



GERTRUDE LEMPP KERBIS ARCHIVE, RYERSON AND BURNHAM ARCHIVES, THE ART INSTITUTE OF CHICAGO

**The Rotunda Building at O'Hare International Airport**  
Chicago, Illinois, 1963  
Gertude Lempp Kerbis, FAIA  
C.F. Murphy Associates



KENDALL MCCAUGHERTY, HALL+MERRICK/ROSS BARNEY ARCHITECTS

**McDonald's Global Flagship Chicago**  
Chicago, Illinois, 2018  
Carol Ross Barney, FAIA  
Ross Barney Architects



MARSHALL GEROMETTA/CTBUH

**Newberry Plaza**  
Chicago, Illinois, 1974  
Margaret Zirkel Young, AIA  
Ezra Gordon – Jack M. Levin and Associates



PERKINS EASTMAN

**Maravilla at the Domain**  
Austin, Texas, 2019  
JinHwa Paradowicz, AIA  
Perkins Eastman



HEDRICH BLESSING / WEESE LANGLEY WEESE ARCHITECTS

**Gallery House for an Artist**  
Empire, Michigan, 2008  
Cynthia Weese, FAIA  
Weese Langley Weese Architects



PERKINS&WILL

**Fermilab Integrated Engineering Research Center**  
Batavia, Illinois, 2022  
Adana Johns, AIA  
Perkins&Will



# BEHIND THE SCREENS

**Maria José Tasada**

**AFFILIATIONS/  
CREDENTIALS**

AIA, NCARB, LEED  
Green Associate

**TITLE**

Technical Director at  
Gensler; President  
of Arquitectos Inc.;  
and Vice President  
of Chicago Women  
in Architecture

**COMPANY**

Gensler

**DEGREE(S)**

Master of  
Architecture,  
UIC; Bachelor  
of Architecture,  
Universidad Abierta  
Interamericana

**AIA CHICAGO  
INVOLVEMENT**

2023 AIA  
Jury Development  
Task Force,  
AIA Chicago Guess-  
A-Sketch Task Force



**What gets you out of bed in the morning?**

The thrill of shaping the built environment gets me out of bed in the morning.

Every day presents new opportunities to learn and grow alongside Gensler's talented team, which fuels my enthusiasm. I thrive on collaboration and am inspired by the collective energy of varied perspectives and working together to find design solutions.

Architecture allows me to combine my skills with my desire to help others. I'm passionate about becoming a role model for aspiring architects and feel immense satisfaction when my peers and mentees succeed. Growing up with the support of a strong community, I'm committed to giving back. This led me to collaborate with nonprofits, including Arquitectos Inc. and Chicago Women in Architecture (CWA).

**What has been the most valuable resource to you in your career? (This can be a mentor, scholarship, organization, initiative, program, tool, etc.)**

After graduating from college in 2007, I embarked on a life-changing six-month internship at José María Saez Vaquero's office in Quito, Ecuador. Immersing myself in a different culture and collaborating with a skilled architect broadened my understanding of international architectural standards.

Upon returning to Argentina in 2008, I joined Diego Arraigada's studio. His mentorship was invaluable. Inspired by his stories about his master's degree at UCLA, I decided to follow a similar path and enrolled at the University of Illinois at Chicago. Along with my previous experiences abroad, my travels have provided me with a comprehensive global outlook. This combination of international

experience and strong mentorship has been instrumental in my professional growth, providing me with a solid foundation for my career in design.

I've been in Chicago since 2012, working on a variety of projects from small-scale urban interventions to large mixed-use projects with an emphasis on retail, office, and hospitality uses. Some recent highlights of my career at Gensler include 360 North Green, a new tower in Fulton Market focused on professional services tenants, and 1229 West Concord, a hospitality-infused laboratory workplace building in Lincoln Yards.

**What is the most effective step you've taken in your work or your firm toward a more equitable profession?**

I continue to work [toward] fostering a strong sense of community and support within the architecture industry through my involvement with two DEI-focused architecture organizations.

As the vice president of CWA and president of Arquitectos, I've dedicated my efforts to creating platforms where underrepresented architects can connect, collaborate, and thrive.

CWA and Arquitectos were founded on the principle of providing a supportive network for architects facing systemic barriers. By expanding our membership and offering a range of resources, we've empowered countless individuals to overcome challenges and achieve their professional goals. Our organizations have become catalysts for change, advocating for equity, diversity, and inclusion within the industry.

**What is one actionable way that young designers can positively impact climate change in their firms?**

One of the most impactful ways young designers can combat climate change within their firms is to champion embodied carbon reduction. By focusing on material selection and construction methods, we can significantly decrease the environmental impact of our buildings. This involves researching and specifying low-carbon materials, exploring opportunities for reuse and recycling, and advocating for design choices that minimize resource consumption.


**What is your favorite quote about architecture?**

"People ignore design that ignores people." — Frank Lloyd Wright

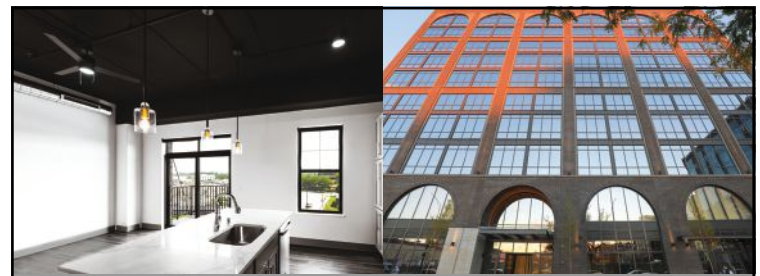
By centering design on the needs of people, architects can create spaces that enhance quality of life, foster community, and promote equity for all. Wright's quote is a powerful reminder that architecture is not merely about aesthetics but also about creating environments that serve the human experience.

**Why should architects and designers — at any stage in their career — get involved with Chicago Women in Architecture and Arquitectos?**

Architects and designers at every career stage should get involved with nonprofit organizations to advocate for equity, diversity, and inclusion within the industry.

I am currently part of the executive boards of CWA and Arquitectos. Involvement can start small with event attendance and grow to offer invaluable opportunities for networking, mentorship, and professional development. By joining, individuals can connect with like-minded professionals, gain access to resources, and positively impact the industry. 

"Behind the Screens" is a new series developed by AIA Chicago's Editorial Advisory Committee to highlight the members of the chapter. Throughout the year, this series will showcase Fellows, Architects, Associates, and Affiliate members. If you'd like to nominate someone, please write to [editor@aiachicago.org](mailto:editor@aiachicago.org).



## PROUD PARTNER IN PROVIDING ARCHITECTURAL AND STRUCTURAL PRECAST SOLUTIONS.

**MID-STATES CONCRETE INDUSTRIES**  
500 South Park Avenue,  
South Beloit, IL 61080  
800.236.1072  
[msprecast.com](http://msprecast.com)

**INTERNATIONAL CONCRETE PRODUCTS**  
N104 W13561 Donges Bay Road,  
Germantown, WI 53022  
262.242.7840  
[internationalconcrete.com](http://internationalconcrete.com)



**MID-STATES**  
CONCRETE INDUSTRIES



**INTERNATIONAL**  
CONCRETE PRODUCTS



# AMCORK

**AMERICAN  
CORK PRODUCTS  
COMPANY**



importers of fine cork flooring & wall coverings

[www.amcork.com](http://www.amcork.com) 1-888-955-CORK (2675)



Contact us today!  
 (312) 588-6953  
 (630) 440-4332  
 jack@windfree.us  
 or go to:  
 www.windfree.us

**WINDFREE SOLAR**

**CALL FOR A  
 FREE EVALUATION  
 TODAY!**



## Architectural Specification Support

### Division

- 08 41 26 All Glass Entrances
- 08 42 29 Automatic Entrances
- 08 42 33 Revolving Doors
- 08 71 00 Door Hardware
- 08 71 13 Automatic Swing Door Operators
- 08 71 53 Security Door Hardware

Door hardware sets & consulting, substitutions & submittal review, and RFI responses

**Grant Heppes, CDT**  
 Architectural Services Representative  
 (312) 350-2602  
 grant.heppes@dormakaba.com

### Division 10

- 10 22 19 Demountable Glass Partitions



# Taft /

## The Modern Law Firm.

Our Real Estate team assists clients with:

- Planned Developments.
- Map Amendments.
- Special Use and Variation Approvals.
- Economic Incentives.

[Taftlaw.com](http://Taftlaw.com)



Chicago Architect is published four times a year by Innovative Publishing. Innovative Publishing specializes in association communications and messaging.

Photocopy permissions where necessary, permission is granted by copyright holder for those registered with Copyright Clearance Center (CCC), 222 Rosewood Drive, Danvers, MA 01923, www.copyright.com to photocopy any article herein for personal or internal reference use only for the flat fee of \$2.00 per copy for each article. Send payment to CCC. Copyright 2024 AIA Chicago.

The information contained within has been obtained by AIA Chicago and Innovative Publishing from sources believed to be reliable. However, because of the possibility of human or mechanical error, AIA Chicago and Innovative Publishing do not guarantee the accuracy or completeness of any information and are not responsible for any errors or omissions or for the results obtained from use of such information. The editor reserves the right to censor, revise, edit, reject, or cancel any material not meeting the standards of Chicago Architect. The information and opinions published in Chicago Architect represent the views of the authors and not those of the publisher or AIA Chicago, unless otherwise stated. The acceptance of advertising does not reflect endorsement of products or services by this publication, AIA Chicago, or Innovative Publishing.

**LETTERS TO THE EDITOR:** Chicago Architect gladly accepts all signed, dated letters to the editor. We reserve the right to edit for style and any potentially libelous content. Letters should be no longer than 250 words. Submit letters to editor@aiachicago.org.

**STORY IDEAS AND SUBMISSIONS:** Chicago Architect welcomes your story ideas and your written article submissions, whether about your projects or about business trends and issues. Email us at editor@aiachicago.org.

Chicago Architect is printed with zero-VOC ink on 10 percent post-consumer waste stock.

- [facebook.com/aiachicago](https://facebook.com/aiachicago)
- [youtube.com/@aiachicago1869](https://youtube.com/@aiachicago1869)
- [@aiachicago](https://instagram.com/aiachicago)
- [linkedin.com/company/aia-chicago](https://linkedin.com/company/aia-chicago)
- [x.com/aiachicago](https://x.com/aiachicago)

**AcousticsFirst.com**<sup>®</sup>

Specializing in Custom Panels & Unique Sound Diffusers.™

**Sonora<sup>®</sup> Wave Clouds**

Toll-Free Number:  
**888-765-2900**



## Do You Need Steel Window Specialists?

Since 2005, we're Chicago's reliable source for thermally-broken and interior custom steel doors & windows.

Featuring Italian-made award-winning designs from



**Travis Justis**  
General Manager/Midwest  
AIA@frenchsteel.com  
www.frenchsteel.com



35 East Wacker Drive, Suite 250  
Chicago, IL 60601

Builder: Black Dog Homes | Architect: Windmill Design Studio | Photography: Spacecrafting



NATURAL BEAUTY, MODERN STYLE. WINDOWS THAT INSPIRE.

We are excited to welcome Catherine Langan as your Chicagoland Architectural Consultant!

Catherine M. Langan, CDT – (630) 453-1589 | [clangan@spi-ind.com](mailto:clangan@spi-ind.com)



View more amazing projects from Sierra Pacific Windows!



[www.SierraPacificWindows.com](http://www.SierraPacificWindows.com) | 800-824-7744 | A Division of

