

Chicago Architect

2023 Awards Edition

Design Excellence Awards // 21

Lerch Bates People's Choice Awards // 47

Decarbonization Award // 53

Roberta Feldman Architecture for Social Justice Award // 57

Also inside:

**Interview with Kimberly Dowdell, AIA, NOMAC,
2024 AIA President // 18**

PROJECT White Plains
Library,
White Plains, NY

DESIGN IQ Landscape
Architects

PRODUCT City Park
Paver™ in Series™ finish



Your **CREATION**

Our **TEAMWORK**

Our team of Commercial Design Consultants are ready to support your next unit paving project from start to finish.

Combine our technical expertise with a vast array of Unilock colors, shapes and textures, to bring your unique vision to life.

Contact for samples, product information and Lunch & Learns.

UNILOCK.COM | 1-800-UNILOCK

UNILOCK®



Commit to more informed decisions.

Better design starts with knowing what's available. Explore all the latest options for HVAC design, efficiency and sustainability at the most comprehensive event for HVAC equipment and technology.

A more sustainable future starts now.



JANUARY 22-24 / 2024

2050 Net Zero
2030 AIA Commitment
2024 AHR Expo

Register for free at ahrexpo.com

LPI Most Innovative Design Awards



Credit: WINNER/New Build
Bonded Lightning Protection Systems, Ltd./Feyen Zylstra

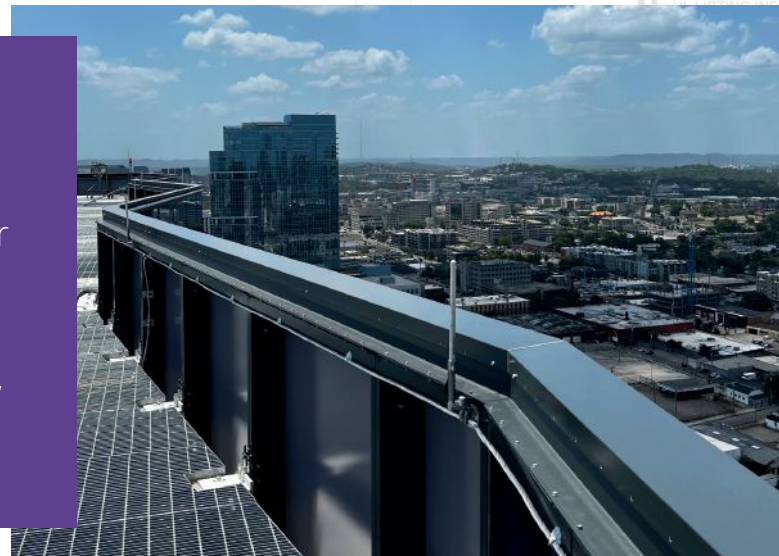


**LIGHTNING
PROTECTION
INSTITUTE**

Collaborating with Architects
and Engineers
since 1955

Architects and Engineers
play an integral role with
lightning protection systems.

The proper design of a system enables proper
function and protection. Through
collaboration of assessment and design,
architects can contribute to the overall safety,
functionality, and sustainability of the
structures they create.



ON @ CURTAINWALL



Credit: WINNER/Renovation / Larson Lightning Protection/ BBEC

The **LPI Innovative Design Awards** recognize a
person/firm that demonstrated early coordination with
an LPI professional to design an innovative solution to
improve the aesthetics of the lightning protection
system on a noteworthy structure.



Check out these Award Winners
& details about their collaborative
projects at: lightning.org/news

Questions? Need a Specification?
lpi@lightning.org or 800.488.6864

Chicago Architect

Editor in Chief

Jen Masengarb, Assoc. AIA
editor@aiachicago.org

Managing Editor

Dillon Goodson, Affil. AIA Chicago
editor@aiachicago.org

Editor

David Cordaro, Assoc. AIA
communications@aiachicago.org

Drew Clark

drewc@innovativepublishing.com

Designer

Catherine Meany
catherine@innovativepublishing.com

Advertising Sales

Innovative Publishing
advertise@innovativepublishing.com
844.423.7272



Chicago Architect, the primary outreach tool of AIA Chicago, is published four times a year as an authoritative resource for architects, the larger design community, and the public about architecture and related issues of interest to Chicago architects. The magazine communicates industry trends, the value of high-quality design, and the role of AIA Chicago and its members in the world of architecture.

- facebook.com/aiachicago
- @aiachicago
- twitter.com/aiachicago
- vimeo.com/aiachicago
- linkedin.com/company/aia-chicago

Dear Members and Friends,

Even as we welcome the new year, I'm not quite ready to say farewell to 2023. With so many honors and awards for AIA Chicago members this year, I'd like to take a moment to wrap up my year as chapter president with a quick review. It's a fitting introduction for this issue, which highlights our awards presented at Designight on September 28 in the Harris Theater.

At the annual event, we honored 32 projects for Design Excellence Awards, Decarbonization Awards, and the Roberta Feldman Architecture for Social Justice Award. In addition, we presented nine Lerch Bates People's Choice Awards, chosen by 2,000 Chicagoans and presented in partnership with the Chicago Architecture Center. More than 1,100 people attended Designight, with nearly 500 people celebrating at the after-party on a beautiful evening under a tent on the Harris Theater rooftop.

The highlight of my year as president was presenting **Cynthia Weese, FAIA**, with the 2023 AIA Chicago Lifetime Achievement Award. Cynthia is a true pioneer and vanguard for the profession an unwavering advocate for women in the profession who continues to inspire younger generations.

Recipients of the Dubin Family Young Architect Award, presented to **Breah Page, AIA**, and the Firm Award, presented to **KOO**, were publicly honored for the first time at Designight. We also recognized **Carol Ross Barney, FAIA**, recipient of the AIA Gold Medal, and heard from **Kimberly Dowdell, AIA, NOMAC**, who will serve as the 100th president of AIA in 2024.

2023 saw many exciting new initiatives, programs, and outreach — all while we continued our core mission of advocating for the profession, sharing knowledge among members, and partnering with communities.

The EDI Committee's innovative anti-racism pledge wrapped up its beta test with 13 firms meeting throughout the year in small cohorts to discuss and address long-standing biases, share resources for identifying racial and gender pay gaps, and outline actionable steps in addressing inequality.

Our new Third Thursday program series highlighted the work of our members. A new full-day CRAN (Custom Residential Architecture Network) Symposium in May provided a day of professional development. In July, Guess-a-Sketch brought together 200 people for some friendly competition and support for the AIA Chicago Foundation's Diversity Scholarship. Transform — our skill-building course for the business of architecture — relaunched in 2023, along with a new role for the Chapter in the Wing mentorship program connecting local architecture students with emerging professionals.

December marked the end of our 2021-2023 strategic plan, where your member voice shaped six big organizational goals and helped us execute dozens of key objectives. As we look ahead to developing the next strategic plan to take us through 2026, we encourage you to be involved in that process. Watch for a member survey and a call for volunteers and feedback as we kick things off in the new year.

Incoming President **Lynda Dossey, AIA**, will lead the Chapter in 2024. I remain inspired by all the ways in which you — our members — are passionate, engaged, and committed to the work of designing equitable and sustainable places and spaces. It's been an honor to serve you this year.

Mindy Viamontes, AIA
2023 AIA Chicago President
president@aiachicago.org



Mindy Viamontes, AIA, 2023 AIA Chicago President

Light-Catching Mosaic



Photo: alanblakely.com

Photo: oceanphoto.com



Shadows and highlights move across metal tiles

As the multi-faceted Precision Series metal tiles catch the sunlight, the three colors used are transformed into many shades, adding richness to the palette of grays – Musket Gray, Slate Gray and Granite. Stone White 7.2 panels create a contrasting feature wall for the interior courtyard.



View the case study and video



PAC-CLAD.COM | 800 PAC CLAD

Contents

More in '24: In Conversation with Kimberly Dowdell, AIA, NOMAC // 18



IMAGE BY STEPHANIE JENSEN PHOTOGRAPHY

Features



21

Design Excellence Awards



47

Lerch Bates People's Choice Awards



53

Decarbonization Awards



57

Roberta Feldman Architecture for Social Justice Awards

Departments

- 11 // Chapter Report
- 12 // AIA Chicago Foundation Report
- 13 // Legislative Update
- 14 // People + Projects

OUR PREVIOUS ISSUE

is available to view digitally at www.aiachicago.org

ON THE COVER

*Tribune Tower Conversion, designed by 2023 Design Excellence Award and Lerch Bates People's Choice Award winner Solomon Cordwell Buenz (SCB)
Image by Dave Burk*

DOORS



HYDRAULIC – OR – BIFOLD
 ONE-PIECE DOORS STRAP LIFT DOORS

507-426-8273



“BUILDING BETTER DOORS”

SCHWEISSDOORS.COM

2023 AIA CHICAGO DIRECTORY

CHICAGO ARCHITECT

EDITOR IN CHIEF
 Jen Masengarb, Assoc. AIA

MANAGING EDITOR

Dillon Goodson,
 Affil. AIA Chicago

EDITOR

David Cordaro, Assoc. AIA

Drew Clark

DESIGNER

Catherine Meany

AIA CHICAGO 2023 BOARD OF DIRECTORS

PRESIDENT
 Mindy Viamontes, AIA

PRESIDENT-ELECT

Lynda Dossey, AIA

PAST PRESIDENT

Drew Deering, AIA

VICE PRESIDENT, ADVOCACY

Natalie Hicks, AIA

VICE PRESIDENT, EDUCATION

Chey Taylor, AIA

VICE PRESIDENT, FINANCE

Tim Tracey, AIA

VICE PRESIDENT, HONOR AND AWARDS

Peter Wojtowicz, AIA

VICE PRESIDENT, MEMBERSHIP

Jason Golub, AIA

VICE PRESIDENT, SPONSORSHIP

Julie Hacker, FAIA

DIRECTOR

Susan Brain, AIA
 Lori Day, AIA
 Josh Mings, AIA
 Kelly Moynihan, AIA
 Enrique Suarez, AIA
 Calli Verkamp, AIA
 Ashlen Williams, AIA, NOMA

ASSOCIATE DIRECTOR

Eve Fineman, Assoc. AIA
 Richie Hands, AIA

AFFILIATE DIRECTOR

Bob Magruder, Affil. AIA Chicago
 Eric Singer, Affil. AIA Chicago

STUDENT DIRECTOR

Fima Ivanov, AIAS, UIC
 Zahid Shari, AIAS, SAIC
 Emily Yeow, AIAS, IIT

AIA CHICAGO FOUNDATION 2023 BOARD OF TRUSTEES

PRESIDENT
 Chris-Annmari Spencer,
 AIA, NOMA

VICE PRESIDENT

Christopher E. Chwedyk, AIA

SECRETARY

Gracia Maria Shiffrin, FAIA

TREASURER

Danielle J. Tillman, AIA, NOMA

PAST PRESIDENT

Fred L. Brandstrader, AIA

TRUSTEE

Elliott E. Dudnik, FAIA
 Palmyra Geraki, AIA
 Kerl LaJeune, Assoc. AIA, NOMA
 Julia Mosqueda, Assoc. AIA
 Gina (JinHwa) Paradowicz, AIA
 Walter D. Street III, AIA, NOMA
 P.K. “Trish” VanderBeke, AIA

PUBLIC TRUSTEE

Roberta M. Feldman
 Mary K. Woolever

EX-OFFICIO, AIA CHICAGO EXECUTIVE DIRECTOR

Jen Masengarb, Assoc. AIA

EX-OFFICIO, AIA CHICAGO FIRST VICE PRESIDENT, PRESIDENT-ELECT

Lynda Dossey, AIA

2023 KNOWLEDGE COMMUNITIES

ARCHITECTURE FOR JUSTICE

Eric Davis, AIA, co-chair
 Matt Guarnery, AIA, co-chair
 Fred Moyer, AIA, co-chair
 Ryan Rohlf, AIA, co-chair

BUILDING ENCLOSURE COUNCIL

Matt Filippini, AIA, chair
 Brian Rouse, chair-elect
 Rebecca Booth, past chair
 Alexis Brackney, AIA, treasurer
 Eric Overby, secretary

COTE + 2030 COMMITMENT

Daniel Jaconetti, AIA,
 2030 co-chair
 Kelly Moynihan, AIA, co-chair
 David Swain, AIA, co-chair

CUSTOM RESIDENTIAL ARCHITECTS NETWORK (CRAN)

Nate Lielasus, AIA, co-chair
 Mike Shively, AIA, co-chair

DESIGN

Lori Day, AIA, co-chair
 Josh Mings, AIA, co-chair
 Ann Erskine, AIA, events
 David Lillie, AIA, events
 Angelica Paleczny, AIA, events

DESIGN FOR AGING

Drew Roskos, AIA, co-chair
 Heidi Wang, AIA, co-chair

EDUCATION

Jonathan Fair, AIA, co-chair
 Kysa Heinitz, AIA, co-chair
 Cory Kamholz, AIA, co-chair

HEALTHCARE

Cam Twohey, AIA, co-chair
 Luis Vazquez Rivera,
 Assoc. AIA, co-chair
 Denise Haberkorn, Affil.
 AIA Chicago, treasurer
 Adrienne Erbesti, AIA, secretary

HISTORIC RESOURCES

Greg Maxwell, AIA, co-chair
 Andrea Sforza, AIA, co-chair

INTERIOR ARCHITECTURE

Susan Brain, AIA, PMP, co-chair
 Charles Cunov, AIA, co-chair
 John Hopkins, co-chair

PRACTICE MANAGEMENT

Ben Johnson, AIA, co-chair
 Iana Kolev, AIA, co-chair
 Sam Luckino, AIA, co-chair

SMALL FIRM EXCHANGE (SFX)

Matthew Clapper, AIA, co-chair
 Chyanne Husar, AIA, co-chair
 Frank Michalski, AIA,

TECHNICAL ISSUES

David Babnigg, AIA, co-chair
 Lee Fink, AIA, co-chair
 David Hillsamer, AIA, co-chair
 Calli Verkamp, AIA, co-chair
 Cassandra Yeam, AIA, co-chair

TECHNOLOGY IN ARCHITECTURAL PRACTICE (TAP)

David Ivey, co-chair
 Katy Liang, AIA, co-chair
 Hiram Rodriguez, co-chair
 Mark Schmieding, FAIA, co-chair
 Darya Stefanovic, AIA, co-chair
 Anthony Viola, AIA, co-chair

2023 AFFINITY GROUPS COMMUNITY ENGAGEMENT

Ian Miley, AIA, co-chair
 David Sikorski, AIA, co-chair

EDI COMMITTEE

Riya Desai, Assoc. AIA, co-chair
 Katie Hart, Assoc. AIA, co-chair

LGBTQIA+ ALLIANCE

Kerry Frank, AIA, co-chair
 Hao Phung, Assoc. AIA, co-chair

YOUNG ARCHITECTS FORUM (YAF)

Raquel Guzman Geara,
 AIA, co-chair
 Lena Reiff, Assoc. AIA, co-chair

CHAPTER STAFF EXECUTIVE DIRECTOR

Jen Masengarb, Assoc. AIA

SENIOR DIRECTOR OF ADVOCACY AND SPECIAL PROJECTS

Joan Pomaranc,
 Hon. AIA Chicago

DIRECTOR OF OUTREACH

Allison Garwood Freedland

DIRECTOR OF MEMBERSHIP AND DATA ANALYTICS

Steve Riforgiato

DIRECTOR OF DEVELOPMENT AND SALES

Kirstin Osgood

DIRECTOR OF EDUCATION AND AWARDS

Ashley Spell

COMMUNICATIONS MANAGER

David Cordaro, Assoc. AIA

PROGRAMS AND EVENTS COORDINATOR

Madison Young

DEVELOPMENT COORDINATOR

Amanda Engel

FINANCIAL MANAGER/BOOKKEEPER

Naghm Sabah

Chicago Architect is printed with zero-VOC ink on 10 percent post-consumer waste stock.



A WINDOW. A WALL. A MIRACLE OF ENGINEERING.

Upgrade to Sierra Pacific. There are more expensive windows. But none more impressive.

Chicago Design Center - 2445 E Higgins Rd. | Elk Grove Village | 847-262-5907



www.SierraPacificWindows.com | P.O. Box 8489, Red Bluff, CA 96080 | 800-824-7744 | A Division of



Scan the QR code to see more amazing projects from Sierra Pacific Windows

Tide Academy

Menlo Park, CA
LPA Design Studios

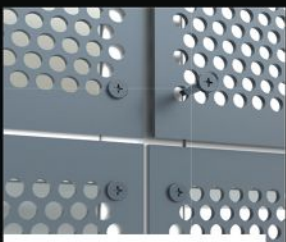


New from Dri-Design:

PERFORATED SCREEN SYSTEMS

Our new pan-style perforated screen panels come in larger-than-traditional module sizes – 48" x 126" and 126" x 48" – and are available in painted or anodized aluminum. They provide strength and rigidity without the weight and they're less expensive than traditional panels. Plus, we offer a fully engineered integrated-system package upon request, making an already great idea even better.

Learn more at [Dri-design.com/product/PSS](https://dri-design.com/product/PSS)



FF-Face Fastened



SF-Side Fastened



TF-Through Fastened



A Kingspan Group Company
dri-design.com | 616-355-2970



At top left: Dinner spread at the after-party. **At top right:** **Breah Page, AIA**, receiving the Dubin Family Young Architect Award, conferred by the AIA Chicago Foundation Board of Trustees. **At middle, left:** **Brad McCauley, PLA, ASLA, CDT; Mark Schwamel, FAIA; and Jason Golub, AIA**. **At bottom left:** AIA Chicago Executive Director **Jen Masengarb, Assoc. AIA**; AIA President-Elect **Kimberly Dowdell, AIA**, and AIA Chicago President **Mindy Viamontes, AIA**. **At middle, right:** **Carol Ross Barney, FAIA**, speaking on her 2023 AIA Gold Medal award. **At middle, bottom:** **Cynthia Weese, FAIA**, 2023 AIA Chicago Lifetime Achievement Award recipient. **At bottom right:** Attendees mingle at the after-party.

Designight 2023, Chicago's Premier Architectural Awards Celebration

Celebrating projects and teams of all sizes, Chicago's architectural community gathered on September 28 for the biggest event of the year — Designight 2023. Held at the Harris Theater for Music and Dance and Harris Theater Rooftop Terrace in Millennium Park, the evening was a celebration of the best in architecture and design with more than 1,000 guests in attendance.

The highlights of the evening included the presentation of the Design Excellence Awards, Decarbonization Award, Lerch Bates People's Choice Awards, Lifetime Achievement Award, Firm Award, as well as the Dubin Family Young Architect Award and the Roberta Feldman Architecture for Social Justice Award, both administered by the AIA Chicago Foundation.

Awards were distributed in a formal awards ceremony while the individuals and project teams were celebrated at a rooftop party afterward. **CA**

➔ [View the full album of photos from Designight at www.aiachicago.org/designight2023-photos.](http://www.aiachicago.org/designight2023-photos)



At top: Prospective students attend the student-led panel. **At bottom left:** AIA Chicago volunteers assist prospective students. **At bottom right:** A student meets with a representative from SCAD.

AIA Chicago Foundation Hosts Chicago Architecture + Design College + Career Day

This past September, more than 200 high school and college students joined their guardians, teachers, and counselors for the annual Chicago Architecture + Design College + Career Day. This free event — an initiative of the AIA Chicago Foundation — enables students to learn more about careers in architecture, construction management, interior design, landscape architecture, and urban planning.

Hosted at Harold Washington Community College, the day began with a student-led panel titled “What You Need to Know to Get Started in Architecture School: A Student Perspective” followed by a question-and-answer session. Attendees then browsed the booths of more than 40 colleges and universities from around the United States that provided information and answered questions on their degree programs. **CA**

➔ To learn more about the Chicago Architecture + Design College + Career Day, visit www.aiachicago.org/foundation.

Eliminating the Rolling Clock




As we eagerly anticipate the upcoming legislative session in spring of 2024, I am thrilled to provide you with a comprehensive update on our efforts to eliminate the “Rolling Clock” — a restrictive time frame limiting Architect Registration Examination® (ARE®) test takers to five years for exam completion. The “Rolling Clock” has been recognized as an unnecessary barrier, deterring qualified individuals from participating in the profession due to its restrictive and arbitrary nature. Our proposed change would replace this with a more reasonable score validity policy.

Since the National Council of Architectural Registration Boards (NCARB) announced the retirement of the “Rolling Clock” effective May 1, 2023, AIA Illinois has been working diligently in collaboration with NCARB, national and local AIA chapters, the Illinois Department of Financial and Professional Regulation, and various members across the state. Our collective objective is to formulate the optimal solution for individuals in Illinois taking the ARE® and pursuing licensure. Unfortunately, Illinois was one of only two jurisdictions in the country to have the “Rolling Clock” written in statute, complicating our ability to swiftly effect change.

After months of concerted effort and collaboration with stakeholders, we have successfully drafted the necessary language and secured sponsors, thanks to the unwavering dedication of our lobbying team and a group of committed members who have played a pivotal role in driving this essential change forward.

If you share our passion for making a difference and wish to be involved in this transformation or other legislative initiatives, we invite you to reach out to me at the AIA Illinois office or via email at eklinner@aiaill.org. For more information on legislative topics and upcoming events, visit www.aiaill.org and follow AIA Illinois online.

Together, we can reshape the landscape and enhance the professional journey for aspiring architects in Illinois. 

Eric Klinner, CAE

AIA Illinois Executive Vice President



In late September, AIA Illinois announced **Eric Klinner, CAE**, was selected as the state chapter’s new executive vice president. Klinner has served the chapter as its managing director since 2006 in addition to his role as executive director of the AIA Prairie chapter.



Please Send Your News To:

editor@aiachicago.org

By submitting content to *Chicago Architect*, you consent to publication and affirm you have permission to distribute any photos. Deadline to submit for the next issue is Friday, January 12, 2024.



LBBA is pleased to announce that **Clayton Knapp, AIA, NCARB**, has been promoted to project architect and **Mitchell Hawkins, Assoc. AIA**, has been promoted to project designer. These two designers support LBBA's passion for creating sustainable and affordable community-based developments.



Olivia Lewis, a first-year Master of Architecture student, has been named this year's recipient of the **Hartshorne and Plunkard Fellowship** at the University of Illinois Chicago's School of Architecture. The fellowship seeks to increase the number of architecture degrees awarded to students from traditionally underrepresented populations and, in turn, diversify the architectural profession.



Simple+Rappe Architects is celebrating the completion and success of Smoque Steak Chicago. The 7,000-square-foot modern steakhouse in Chicago's Avondale neighborhood has recently been recognized by *Crain's Chicago Business*, *TimeOut Chicago*, and *Chicago Magazine*. S+R provided architectural and interior design, as well as operations and branding collaboration.

IMAGE CREDIT: DAVE BURK © SOM



For the Chicago Architecture Biennial opening, **Skidmore, Owings & Merrill** showcased an algae-based concrete alternative at The Mews in Fulton Market. Developed in partnership with Prometheus Materials, Bio-Block™ Spiral offers a model for carbon-neutral construction.

IMAGE CREDIT: MICHAEL LIPMAN PHOTOGRAPHY



EAA (Earles Architects + Associates) recently completed a new spec suite at 227 West Monroe. The design features a warm color palette and tailored textures.

ALL IMAGES ARE COURTESY OF THE FIRM, UNLESS OTHERWISE NOTED. LEED AP STATUS IS INDICATED ONLY IF REPORTED BY THE FIRM.



Designed by **Johnson and Lee Architects**, Imani Village Senior Residences at 9633 South Cottage Grove Avenue is a short distance from the 95th Metra Electric stop and across the street from Chicago State University.



Driven by their expanding size and capacity, **JGMA** announced they are expanding to Milwaukee. This move marks a pivotal step in their continued journey of growth, architectural excellence, and equity for neighborhoods and communities across the Milwaukee area.



Palmyra Geraki, AIA, joined the **University of Wisconsin-Milwaukee** as a tenure-track assistant professor in architecture. She also serves on the AIA Chicago Foundation Board of Trustees.



Jeff Saad, AIA, LEED AP, joins **Barker Barrios Architects**, a multidisciplinary architectural and design firm, as Midwest regional director of healthcare.

IMAGE CREDIT: LESLIE SCHWARTZ



Semple+Rappe Architects has completed a \$5.25 million restoration of the Revere Park Fieldhouse and adjacent Neighborhood Boys & Girls Club for the Chicago Park District. The work included interior and exterior restoration and an addition that provides a new park-facing public entrance with a stair and elevator serving all four levels.

IMAGE CREDIT: KAI BROWN PHOTOGRAPHY



Farr Associates is leading the extensive design and green renovation of Lawson House, the Midwest's largest single-room occupancy housing site. Originally opened in 1931, the building was a "city in a block" and provided amenities to residents as part of their rent. The rehabilitated building aims to do the same with on-site social services, community spaces, and community-focused retail.



Charles Smith, FAIA, has been named office practice leader for **CannonDesign** in Chicago, the firm's largest office.



Jaime Torres Carmona, AIA, founder and principal at Canopy, served as chair of the AIA Oregon Design Awards jury for 2023.



Please Send Your News To:

editor@aiachicago.org

By submitting content to *Chicago Architect*, you consent to publication and affirm you have permission to distribute any photos. Deadline to submit for the next issue is Friday, January 12, 2024.



Hirsch MPG LLC (HMPG) is pleased to announce the promotions of **Sarah Sutor, AIA**, and **Chris Hainer, AIA, NCARB**, to the position of senior associate. Sarah has a B.S. in architecture from the University of Nebraska and a MArch from the Illinois Institute of Technology and has been with HMPG since 2013. Chris holds a BS in architecture from the University of Michigan and a MArch from the University of Illinois Urbana-Champaign and has been with HMPG since 2018. As senior associates, they will lead project teams from design through construction on a wide array of projects and continue providing exceptional contributions to the firm.



The **Chicago Women in Architecture Foundation (CWAF)** recently celebrated the graduation of its inaugural Ladders to Leadership Program, a six-month intensive educational series for up-and-coming female leaders in the architecture industry. Participating AIA Chicago Members: **Sheri Andrews, AIA**, Valerio Dewalt Train; **Sara Beardsley, FAIA, SCB**; **Yuki Gottschaldt, AIA**, STG Design; **Laurie Hoffman, AIA**, Buffalo Grove Park District; **Chauncey Kingsbury, AIA, HED**; **Maggie Krieger, AIA**, FGM Architects; **Dallas Martin, AIA**, CannonDesign; **Monika Miller, AIA**, SmithGroup; **JinHwa Paradowicz, AIA**, Perkins Eastman; **Elizabeth Schneider, AIA**, Goettsch Partners; **Jane Sloss, AIA**, WJW Architects; **Anne Strane, AIA**, Holabird & Root; **Chey Taylor, AIA**, SMNG Architects; **Erica Ulin, AIA**, The Collaborative Inc.; and **Catherine Van Leer, AIA**, HED.



UChicago Medicine has celebrated the groundbreaking of Chicago's first free-standing cancer center at 5654 South Drexel Avenue. Designed by **CannonDesign**, the 575,000-square-foot facility will provide patients and the community access to the newest diagnostic innovations and leading-edge therapies.



Gensler is supporting **Nia Architects** and **site design group Ltd.** to create the Black Ensemble Theater's Free to Be Village in Chicago's Uptown community, the first-of-its-kind, culturally diverse, artist-centric live/work village featuring a media technology center, centered around performance art and education and affordable housing for the creative class.

ALL IMAGES ARE COURTESY OF THE FIRM, UNLESS OTHERWISE NOTED. LEED AP STATUS IS INDICATED ONLY IF REPORTED BY THE FIRM.

why settle for ordinary when you can experience excellence
eggersmann since 1908



300 W Hubbard St, 4th Fl | Chicago, IL 60654 | 312.222.8700

eggersmannusa.com

new york | dania beach | houston | dallas | chicago | los angeles | toronto | pittsburgh | scottsdale | sand city | maui | honolulu | los cabos

More in '24

In Conversation with Kimberly Dowdell, AIA, NOMAC

IMAGE CREDITS: STEPHANIE JENSEN PHOTOGRAPHY



Jen Masengarb, Assoc. AIA, executive director, recently sat down for a conversation with **Kimberly Dowdell, AIA, NOMAC**, AIA's 2024 president. In their discussion, Dowdell shared her vision for the organization and described how intentionality and balance will be key to AIA's future success.

This interview was edited for length and clarity. An expanded version is available at www.aiachicago.org/morein24.

Jen Masengarb (JM): All right, let's talk about 2024. What are those priorities for your new term as president?

Kimberly Dowdell (KD): Well, I'd like to frame them within the context of my slogan for [2024]. That slogan is "More in '24." More money. More members. More mission.

More money: Architects create a tremendous amount of value for our

clients, for our communities, for our society. But across the board, we're not compensated in alignment with the value we create. That causes us to struggle with attracting and retaining strong talent. Young people are savvy when it comes to making career choices, and our starting salaries are just not as competitive as we need them to be. We must be intentional

about articulating the value of what we create and find ways to bring that into our firms and practices so we can compensate people on par with their value. More money is really focused on the intentionality around prosperity. Prosperity is often thought about in the financial sense, which is a big part of it, but it also touches on happiness, work-life balance, and more. So, just

helping architects overall feel that they can prosper in this profession over the long term.

More members: Very simply, the AIA has around 96,000 members today. I will be AIA's 100th president, which I'm very excited about it, and I would like for us to reach 100,000 members during my presidency. If we can do more, that's even better!

More mission: With more money and members, we can also more effectively achieve our mission, which is really focused around climate action and equity.

JM: Let's talk about the National Board. What issues are currently on the docket, or looking ahead to 2024, what kinds of big things is the national Board focused on?

KD: We're really focused on our strategic plan, the priorities that we've been talking about for the last few years: climate action and equity. Finding ways to ensure that those two things are threaded through everything we do is really important. We are also thinking about how to best sustain the AIA for the future. And then as a board, our responsibility is to stay laser-focused on climate action and equity and also address the question: How do we promote the practice of architecture to really raise the public profile of the architect so that we can have a greater impact in our local community and on the global scale?

JM: You are doing a lot of traveling around the country. What are you hearing from other chapters and architects beyond Chicago?

KD: I've been previewing the "More in '24" concept, and I think there's a lot of support for it. Just the notion of helping architects articulate their value and promote that is resonating. It's been encouraging to get that feedback. In general, people want to know what AIA is doing — not just in the country but around the world. There's been a large focus on international growth and finding ways to bring in members from literally every corner of the globe. Many conversations have been around what we're doing with climate action and [diversity, equity, and inclusion].

Another theme that I'd like to weave into what I do is helping to inspire people, or reinspire them. It takes a lot of inspiration to want to become an architect and certainly

“Representation matters. People seeing themselves reflected in leadership empowers them to do things that maybe they didn't think were possible before. As the first Black woman to be elected, I think it resonates with certain people who had not historically seen themselves represented.”

— KIMBERLY DOWDELL, AIA, NOMAC, 2024 AIA PRESIDENT

to navigate all of the training and experience and testing that it takes to become an architect. But for those who maybe have lost that inspiration, how do we reinvigorate that? How do we inspire people to go back into their work with joy?

JM: Agreed. I see that here at the local level all the time too in terms of how the 9-to-5 or 9-to-9 or whatever it is, is difficult. And how do we provide a space where we can celebrate with each other, we can find joy in the work, we can support each other? [Where] we can also talk about the hard things that are not going well in the profession that we can find some solutions. And that community that you talked about.

KD: And I think also expanding the community. It's no secret that we as a profession are not the most diverse group out there. I mean, there are only 122,000 licensed architects. There are more attorneys than that in the state of California. So, we're a small but mighty group. But it would be great to find ways to expand the pool of architects, particularly the number of women and people of color. As you know, I was the president of NOMA (the National Organization of Minority Architects) for a few years recently. In that context, I got to know the numbers intimately. African American architects have comprised just 2 percent of our profession for

the 50-plus years we've been keeping track. We're seeing the number of women and the percentage of women increase, which is great. But there's still a lot more work to do. A lot of our focus has been about empowering women and people of color and people from marginalized groups to step into leadership in their AIA chapter or through a committee or knowledge community. One of the cool things about being an architect is having the ability to see and create a better future, and the more people who are empowered to do that, the better outcomes we'll see across the board.

JM: I'm so glad you did step into that leadership role.

KD: Thank you! Shortly after I was elected, I received a letter from a second-year architecture student at an HBCU (historically Black college/university), a young woman. I don't remember all the words in the letter, but the one sentence that stood out that I don't think I'll ever forget is, "Because you were elected, I feel like my dreams are possible." And that really drove it home — why it was important that I step forward and do this. Representation matters. People seeing themselves reflected in leadership empowers them to do things that maybe they didn't think were possible before. As the first Black woman to be elected, I think it resonates with certain people who had not historically

seen themselves represented. I think a lot of Black women, a lot of women of all backgrounds — and even men — are like, "It's really cool that you're able to represent this portion of the profession that has not typically been seen." I'm also the first of the millennial generation. So, [for] people who are sort of on the fence about whether or not it's time to step up and serve, they can hopefully see themselves in my coming into this position at a somewhat untraditional age.

JM: We also have a couple other firsts. We've got three women AIA National presidents in a row. That has not happened before. Two women of color presidents, back to back, with Evelyn Lee coming in in 2025, also a historic first. It was really, really great to see the three of you together up on stage.

KD: Boston was a lot of fun. We had over 900 people, yes, mostly women. We had some men there too, so I want to acknowledge everyone who showed up and expressed their support.

JM: So, let's talk about the Women's Leadership Summit. What were your experiences in Boston this year? What's there to build on? What are you looking forward to [in 2024]?

KD: More — more in '24. It's good to know there is demand. We certainly will make sure that the venue in Chicago is appropriate for a larger crowd. But more inspiration, I think, is a big part of what I gathered from Boston. Seeing people latch onto, and just be really captivated by, the women on the stage. Seeing how motivated people have become just based on the conversations that are being had and, you know, helping to empower not only themselves but one another was a really magical aspect of the Women's Leadership Summit.

JM: I did a firm visit at a local small firm, and the firm owner attended in Boston. I asked her what her thoughts were and what she took away. She's a regular attendee of the national

Q&A

conference, so she's seen all the different kinds of variations of gathering large numbers of architects together. And she said it was interesting to be at a conference and not talk about buildings per se, but the making of buildings, the practice of architecture, what it means to be an architect from a distinct lens, obviously, as the Women's Leadership Summit. But she found that just very refreshing. It wasn't about architecture, it was about "architecting" and the practice of creating architecture and what that means. I think there's something to build on there.

KD: One of the most fascinating things about being a woman in architecture, particularly in AIA leadership, and having many other women in similar roles, whether it be the CEO or president, current president, president-elect — that whole kind of succession — is we have to text each other [about] what we're planning to wear so that we don't wear the same thing, which is something that I don't think men have typically done. It's just an interesting new thing. So, Lakisha [Ann Woods, AIA EVP/chief executive officer], Emily [Grandstaff-Rice, AIA president], and I, last year we started a group text. We're like, alright, so which dresses are you wearing when or which outfits, or colors, or whatever.

JM: I'm going to go back to NOMA. You mentioned your learnings from that. Now, you will be in ... a unique position that you will have led these two large member-based organizations. What do you see as collaboration, cooperation with NOMA and AIA in the years to come? We're doing more collaborations locally here, which is very exciting. We share a lot of members. The organizations are both valuable in their mission, but what do you see at the national level in terms of cooperation and collaboration?

KD: It's not about just NOMA and AIA. I think it's about that entire ecosystem and finding ways to solve some of the diversity matters with



everyone around the table. It's about being intentional in working together and breaking down the silos to create a forum for all of the different organizations to bring their strengths and resources together to create a more diverse profession.

JM: I think that phrase "be intentional" is really key. Regardless of the partnership, but especially with groups like NOMA, Arquitectos, etc., how do we be intentional? That's something that's really important that we all need to work on.

I'm going to wrap up with two more questions here. You've lived in several cities across the U.S. and practiced architecture in different corners of the country. What's different about Chicago, or is there anything different about Chicago in this architectural community here?

KD: So, I've lived in seven different cities — six in the U.S. — with Chicago being the most recent. Chicago takes architecture very seriously. That's not to say the other cities don't, but it's different here. I happen to be on the Board for the Chicago Architecture Biennial, which is super unique to Chicago, to have

a biennial. Just walking around the city, you can tell that there's been intentionality around how everything is planned.

JM: What are you most excited about in 2024, just in general?

KD: I'm excited about having conversations around what architects can do to improve society. I'm personally interested in improving health outcomes and health equity. Here in Chicago, there's a 30-year life expectancy gap between the North Side and the South Side. Bringing greater attention to not just that issue but also to what specifically architects can do to help contribute to our duty, which is to protect the health, safety, and welfare of the public. So, [we're] looking at elevating those conversations and helping to empower architects to find ways to contribute to solving some of their communities' biggest issues.

JM: Anything else you want to add that we didn't talk about?

KD: I did have this initiative that I wanted to promote for every city in the U.S. to have a chief architect, which used to be a thing but then it

went away decades ago. I'd like for us to look at ways to even maybe connect that role with the health equity or health disparity conversation.

I'd like to find a way to create a template for chapters to write, "Dear Mayor XYZ, we would love for you to consider ..." And then here are some resources. So, that's something that's kind of not necessarily ready for public consumption yet, but it's something I think would be great to focus on.

Another thing is really improving the procurement process for design services. In my prior role as marketing principal in the Chicago studio of HOK, I saw firsthand that there are a lot of inefficiencies that cost architecture firms too much time, energy, and resources. In my new firmwide role, I'm having many more conversations about how the marketing efforts are impacting our business. This issue translates to firms of all sizes across the country. So, maybe just establishing and publishing some best practices around procurement for architectural services could help us make some positive changes.

JM: I think that could be really important, especially to a state chapter, to really lean into.

KD: Those things are kind of bubbling to the top. But overall, "More in '24." More money, more members, more mission. And intentionality, inspiration, and, actually borrowing from our CEO EVP Lakisha [Ann Woods], balance. Because there's a lot to do. But we have to balance that with our resources, both in people/bandwidth and financial resources, and just know we can't do everything all at once.

JM: Thanks for all that you're doing now. Thanks for all that you're going to do [in 2024]. Not only for your vision and leadership of the profession, but for all the travel and the speaking, listening to members, and asking the hard questions. Thank you.

KD: Thank you. I appreciate the conversation. **CA**

AIA Chicago's Design Excellence Awards honor the outstanding work of AIA Chicago members and their firms, reinforce the value of great architecture, and highlight members' contributions in designing equitable and sustainable places and spaces. These awards are given based on project square footage: Architecture: XL, L, M, S, and XS, and Interior Architecture: L, M, and S categories.

The highest possible honor, the Honor Award, recognizes projects that exemplify excellence in architectural design on all levels and embrace the highest standards to which AIA members aspire. One Honor Award is given for each of the project categories and must be selected by a unanimous vote from the jury.

Granted to projects that display a high standard of architectural quality and design, the Citation of Merit is a project deemed unanimously or by consensus of jury members. The number of Citation of Merit awards is given at the discretion of the jury.

Jurors

Architecture XS and S + Interior Architecture S and M

Julie Eizenberg, FAIA, KoningEizenberg, Santa Monica, California

Natasha Espada, AIA, Studio Enee, Needham, Massachusetts

Rod Kruse, FAIA, BNIM, Des Moines, Iowa

Tom Kundig, FAIA, Olson Kundig, Seattle, Washington

Jean Rehkamp Larson, AIA, Rehkamp Larson Architects, Minneapolis, Minnesota

Molly Blakley, AIA*, DLR Group, Denver, Colorado

Architecture M, L, and XL + Interior Architecture L

Nicole Becker, AIA, ZGF, Portland, Oregon

Kai-Uwe Bergmann, FAIA, BIG, New York, New York

Audrey O'Hagan, AIA, Audrey O'Hagan, Cambridge, Massachusetts

Thomas Phifer, FAIA, Thomas Phifer and Partners, New York, New York

Rob Whitehead, FAIA, College of Design at Iowa State University, Ames, Iowa

Ashley Craig, AIA*, Skidmore, Owings & Merrill, Los Angeles, California

2023 Jury Chair (non-voting role)

Eleanor Esser Gorski, AIA, CEO and President, Chicago Architecture Center

** Indicates Jury Alternate. These individuals serve as non-voting members of the jury, except in cases of a tie or to fill the role of an absent or recused juror.*

DESIGN EXCELLENCE AWARDS



IMAGE CREDIT: TIMOTHY HURSLEY

IMAGE CREDIT: TIMOTHY HURSLEY



Location: San Antonio, Texas

Client: Susan English

General Contractor: Long House Builders

Structural Engineer: GE Reaves

Landscape Architect: Hillworks

Susan's House

Mary English and Xavier Vendrell Architects

Situated in Lavaca, San Antonio's oldest existing neighborhood, Susan's House seamlessly blends with the local context, offering an interior filled with spatial surprises. Drawing the outdoors in, a series of southeast-oriented courtyards brightens the home, ensuring interiors and exteriors share similar scale, proportions, and materials.

Lavaca is on the National Register of Historic Places, which required architects to follow historic design guidelines and have the design approved by the community's design review board. As a result, the home features a specific roof profile and window proportions. Despite the neighborhood's traditional, narrow plots that typically separate the interior from the exterior, this residence innovatively spans deep into the lot, incorporating two porches: one street-facing and a central, screened multipurpose space. The screened porch is at the center of the house and the center of activity of the family, used flexibly as dining and living space or as a sleeping room with a nice breeze. The screened porch and the courtyards modify the microclimate and enhance the airflow at the heart of the house.

With its spare material palette of concrete floors, white walls, a metal roof, and aluminum windows, the house embodies a minimalist aesthetic. The focal point is the pair of solid wood entry doors, signifying the transition between the exterior and interior spaces. Located just a short bike ride or walk from downtown, this house not only respects the historic context of Lavaca but also surprises with its intimate connection to nature and its dynamic, flexible spaces within its compact, less-than-2,000-square-foot layout.

IMAGE CREDIT: CHANA HAOUIZ



Location: Boston, Massachusetts
Client: Boston Public Library and Mayor's Office of New Urban Mechanics
General Contractor: YouthBuild Boston
Community Engagement Facilitator: Design4Equity

A Library Free to All

Architecture for Public Benefit

In the summer of 2022, the Boston's Mayor's Office of New Urban Mechanics and the Boston Public Library aimed to improve access and visibility to library resources in nine underserved communities. In response to the impacts of the pandemic, which left many individuals without access to the library's essential services, organizers sought to bring the library, its services, and its spaces beyond the institution's traditional boundaries to connect with the public in new ways.

A Library Free to All is an outgrowth of this effort. The project includes a flexible kit of parts: canopies for shade, light, mist, and a series of modular and playful furniture pieces that serve various functions from outdoor performance to informal gathering space. Made from standard, affordable, and readymade components, the project introduces a series of memorable designs responsive to its community and context.

Through an innovative and collaborative community engagement model, architects at Architecture for Public Benefit identified the vision, identity, and function of each intervention. They partnered with YouthBuild Boston, an organization that engages underserved young people, for the fabrication and assembly of the project.

Medill House

UrbanLab

Located in a Chicago neighborhood, this meticulously designed residence serves a family of four. A blend of grass and concrete terraces animates the partially submerged lowest level, ensuring a continuous dialogue with the surrounding garden landscape. The first floor, set back from the encompassing levels and embraced by tall, operable glass sliding doors, hosts expansive communal living spaces, unfolding across its entire width, while an artistically carved upper floor unveils a private courtyard, amplifying the privacy and outdoor connection of the main bedroom.

Though bound by a 17-foot width between finished wall surfaces, every nuanced space seeks to thwart the feeling of living in a tunnel. The design employs an elegant mixture of sculpted surfaces and encased operable windows, illuminating and energizing the life within. Balancing public and private spaces, architects employed a discerning massing strategy to make the functional distinctions of the home legible. The residence combines aesthetic interest with sustainability, encapsulating features like a water-harvesting system and water-efficient mechanical systems, ensuring a dwelling that is as ecologically mindful as it is architecturally splendid.

IMAGE CREDIT: BOB COSCARELLI



Location: Chicago, Illinois
Client: Kevin and Deree Kobets
General Contractor: Eighty-Eight Design and Construction
Structural Engineer: Sound Structures Inc.
MEP Engineer: BESS Engineering

Tree House

dSPACE Studio

Rising above the Indiana Dunes National Lakeshore, this residence draws inspiration from the landscape and local architectural history to create a tranquil retreat. The structure is situated atop a steeply sloped dune, employing columnar massing to shrink its footprint and minimize its environmental impact. The vertically stacked program strengthens the connection to the forest by evoking a feeling of living in a tree house.

Attracted to the rugged terrain, the client desired a dwelling celebrating nature with modern details. Working with a modest budget and the steeply wooded site, architects crafted a design that met spatial needs. Strategic voids in the structure facilitate exterior balconies, frame natural views, and foster a human-scale touch. From the top floor, residents enjoy expansive views of the treetops, Lake Michigan, and the Chicago skyline in the distance.

Modern construction techniques enabled a sustainable design approach, which includes a compact septic system and erosion-preventing driveway solutions. Rooms are strategically placed for optimal sunlight and sustainable elements, such as passive solar design and native plantings, are integrated throughout.

IMAGE CREDIT: TONY SOLURI PHOTOGRAPHY



Location: Beverly Shores, Indiana

General Contractor: Caron Custom Homes

Civil Engineer: Great Lakes Engineering

Structural Engineer: Goodfriend Magruder Structure

Surveyor: Duneland Group Engineering and Surveying

POWERING CHICAGO
IBEW 134/NECA

PRESENTS

THE POWER OF BETTER

NEW

EDUCATION, BEST PRACTICES, FREE RESOURCES AND MORE TO HELP YOUR TRANSITION TO NET ZERO

SUBSCRIBE

LinkedIn Newsletter

The POWER of BETTER Video Series

Tools & Resources @ poweringchicago.com

Find your Renewable Energy Expert

"Chicagoland's Qualified Electrical and Renewable Energy Contractors"



Find a Qualified Contractor @poweringchicago.com



FIND YOUR QUALIFIED ELECTRICAL CONTRACTOR



POWERINGCHICAGO.COM



@POWERINGCHICAGO





IMAGE CREDIT: TOM HARRIS

Ford Calumet Environmental Center

Valerio Dewalt Train

The Ford Calumet Environmental Center (FCEC) at Big Marsh Park has meticulously reinvigorated a landscape once devastated by 20th-century industrial waste, breathing life and community back into it. Elegantly positioned amid a vital continental bird migration route, the FCEC not only provides a serene refuge for birdwatchers but also acts as a setting for competitive cyclists and a communal nucleus for the adjacent neighborhoods of Pullman, South Deering, Riverdale, and Hegewisch.

Mirroring the robust and storied industrial past while casting a vision toward a sustainable future, the FCEC, a LEED Silver-certified structure, integrates an 89 percent recycled COR-TEN steel enclosure with a mass timber structure. The use of steel harkens back to the site's industrial roots, while the innovative woodwork symbolizes a reclaimed and environmentally conscious future. The FCEC also introduces Chicago's first blackwater treatment wetland. This ambitious move — born out of a pragmatic response to budget and logistical constraints — supports environmental and economic sustainability, curating a solution that not only preserves the project's viability but also underscores a commitment to pioneering sustainable practices.

The center does not merely stand as an architectural accomplishment but also as a testament to bird safety, achieving a remarkably low LEED bird safety rating of 4 on a scale of 100. Moreover, the FCEC embeds itself in the fabric of the community, weaving local narratives and environmental consciousness. By spotlighting the activism and stories of local "champions" through its permanent exhibit, and with a nod to the region's rich history and ecology, the center coalesces memories of the past with visions for the future.

The project came to fruition thanks to a \$3.7 million donation from the Ford Motor Company. An embodiment of collaborative and integrated design, the FCEC reflects the synchronized efforts of architecture, interiors, and experiential media studios, supported by various consultants. This coalition has meticulously crafted not just a building but a living, breathing epicenter for environmental stewardship, community, and history.



IMAGE CREDIT: TOM HARRIS

Location: Chicago, Illinois

Client: Chicago Park District

Civil Engineer: Primera Engineers

Structural Engineer:
Matrix Engineering

MEP Engineer: dbHMS

Landscape Architect:
Jacobs Ryan Associates

Green Infrastructure: Biohabitats

Environmental Design: Tetra Tech

Exhibit Fabricator: Xibitz
Grand Rapids Michigan

Signage Fabricator: Spring Moon

Exhibition Furniture: ReWork

Experiential Design Studio:
Media-Objectives

Broadway Youth Center

Wheeler Kearns Architects

The new facility for Howard Brown Health’s Broadway Youth Center (BYC) in Chicago provides a liberated, dignified space for Chicago’s LGBTQIA+ youth, offering expansive social and medical services in a five-story structure.

Moving from a small, single-story storefront, the new building not only quadruples the program’s physical footprint but also echoes the cherished values and identities of Howard Brown and the communities it ardently serves. A distinctive façade, created with a patchwork of varied masonry panels, envelops the building like a quilt, intertwining BYC’s unique identity with Chicago’s architectural essence. Inside, welcoming environments celebrate and affirm each individual’s unique journey, while also providing an oasis of joy, love, and acceptance, facilitated through colorful, art-adorned spaces and multifunctional amenities.

Upholding a commitment to address health disparities and promote well-being, especially among LGBTQIA+ teens experiencing homelessness, the facility emphasizes inclusiveness, trauma-informed principles, and vibrant, healing spaces, all while ensuring energy efficiency and acoustic isolation through high-performance construction elements. Ideally located and visibly accessible, it communicates its mission and values through large, mission-projecting windows to passing train commuters, serving as an unwavering pillar of community support, affirmation, and empowerment.

IMAGE CREDIT: KENDALL MCCAUGHERTY (HALL + MERRICK + MCCAUGHERTY PHOTOGRAPHERS)



Location: Chicago, Illinois

Client: Howard Brown Health

General Contractor: Bulley & Andrews

Architect of Record: Wheeler Kearns Architects

Structural Engineer: Forefront Engineers

MEP Engineer: dbHMS

Other Engineer: TERRA Engineering

Landscape Architect: site design group ltd.

Acoustics Consultant: Kirkegaard

Healthcare Consultant: Anderson Mikos Architects

Kitchen Consultant: Edge Associates

Owner's Rep: RLE Partners

IMAGE CREDIT: STEVE HALL



Location: Lakeside, Michigan

General Contractor: Bulley & Andrews

Architect of Record: Wheeler Kearns Architects

Structural Engineer: Enspect Engineering

MEP Engineer: BESS Engineering

Landscape Architect: Hoerr Schaudt

Interior Design: Alessandra Branca

Lighting Design: Lux Populi

Meadow Lane Retreat

Wheeler Kearns Architects

Nestled on a two-acre wooded bluff overlooking Lake Michigan, Meadow Lane Retreat is a serene weekend escape designed to maximize the well-being of its occupants and create a sanctuary away from the bustle of city life.

Artfully configured into three separate structures, this retreat not only prioritizes natural light and sublime views through floor-to-ceiling glass and intentional placement but also curates a delicate balance between indoor and outdoor spaces, enabling a profound connection with the encompassing natural elements. Native materials, such as a limestone wall that weaves through the main house and black locust cladding destined to gracefully weather over time, delicately blur the boundaries between the built and natural environments.

The project adheres to the AIA’s Framework for Design Excellence and universal design principles, ensuring an inclusive, accessible home that supports both physical and emotional comfort through strategic natural light utilization and breathtaking lake and woodland views. It also exhibits a respectful environmental footprint, enhancing the site’s natural hydrology and supporting local ecology via innovative stormwater management and bee-supporting green roofs.

The Hub at Prairie Shores

Gensler

The Hub at Prairie Shores emerges as a radiant symbol of community and inclusivity, reinventing city living for the diverse residents of the iconic Prairie Shores towers in Chicago's Bronzeville neighborhood. Originally a model of post-war urban development, this vibrant housing development now invites an eclectic mix of residents to enjoy a "third place" that intertwines work, wellness, and leisure in the middle of a community historically lacking such amenities.

The Hub is crafted through genuine collaboration with residents, businesses, and community entities, exuding a sense of elevated familiarity and belonging. Thoughtful design, which underscores accessibility, acoustics, and natural light, meets generous amenities, including tranquil outdoor spaces, state-of-the-art wellness facilities, and food options. The architecture, inspired by historical sandy lakefront dunes, employs gentle curves and light-optimizing shapes that also pay homage to local environmental considerations through the use of bird-safe glass.

Not merely a building but a beacon of community, connectivity, and future possibilities, the new building creates a welcoming new front door to the vibrant residential community and a model of what's to come for the evolving community.

KENDALL MCCAUGHERTY (HALL + MERRICK + MCCAUGHERTY PHOTOGRAPHERS)



Location: Chicago, Illinois

Client: Farpoint Development and Golub & Company

General Contractor: Leopardo Companies

Structural Engineer: Nayyar and Nayyar

MEP Engineer: Environmental Systems Design (ESD)

Landscape Architect: site design group ltd.

Interior Design: Loren Stanton

Lighting Design: Erin Flaum



YOUR DESIGN. YOUR VISION. IN FULL VIEW.

Modern design. Seamless engineering. The ultra-modern, all-aluminum VUE Collection makes sure nothing stands in the way of your home or your view. Visit weathershield.com to learn more.

WEATHER SHIELD.
WINDOWS & DOORS



IMAGE CREDIT: JAMES JOHN JETEL PHOTOGRAPHY

Wicker Park Courtyard House

34-TEN

In the Wicker Park Historic District, this unique “rambler in the sky” provides a haven of tranquility and luminosity set against the clamor of urban life. Occupying the second story of an 1880s building on Milwaukee Avenue — once a neglected office space turned squatter dwelling — this revitalized residence rises above architectural challenges to become a spacious, 2,700-square-foot light-infused home.

Constrained by zoning requirements and a lack of spacing between buildings, which precluded conventional window installations, the innovative design introduces two strategic interior courtyards, ensuring compliance with the Chicago Building Code’s natural light and ventilation stipulations. The primary courtyard, surrounded by the kitchen and dining room, not only bathes interior spaces with abundant natural light but also serves as a secluded outdoor respite along the vibrant retail and entertainment corridor of Milwaukee Avenue. Meanwhile, an intimate secondary courtyard interlinks two children’s bedrooms, providing playful connectivity while enhancing luminosity and airflow.

Exceeding mere adherence to building code requisites, these judiciously positioned courtyards transform functional elements into luxurious spatial experiences. Particularly, the primary courtyard, while extending sightlines to the skies above, also creates an acoustically buffered alcove. Furthermore, a guest bedroom, gracefully adjoining this primary courtyard, extends a comfortable, private domain for visitors.

This project symbolizes a deliberate and creative confluence of past and present, transforming a once-shuttered commercial space into a resplendent family residence, rich in historical resonance yet thoroughly attuned to contemporary urban living.



IMAGE CREDIT: JAMES JOHN JETEL PHOTOGRAPHY



Location: Chicago, Illinois

General Contractor: Integro Builders

Contributing Architect: Kuklinski + Rappe

Structural Engineer: NLP Concepts

Lincoln Park Condo Remodel

New Office

Navigating the crossroads of historical preservation and contemporary functionality, the Chicago Historical Condo Renovation project emerges as a paradigm, illuminating possibilities for rejuvenating Chicago's two- and four-flat buildings. Amid the loss of more than 4,800 such structures since 2013, the project meticulously revitalizes a 120-year-old unit in Lincoln Park as a sign of more to come, ensuring its consonance with modern living while safeguarding its authentic historical detailing.

Confronting ubiquitous challenges like outdated amenities and insufficient space, the renovation infuses life into every corner by innovatively blending "new" and "old" wood. Here, dark-toned maple and lighter red oak converge, forging a harmony encapsulated in various built-ins and functional features like storage units, bookshelves, and day beds. As such, the design represents an exploration and playfulness with a mix of media.

The project extends beyond mere aesthetic appeal, manifesting as a tacit dialogue between past and present. Through a deliberate and playful integration of materials and adaptive reuse, it embraces a sustainable future, aspiring to ignite a widespread commitment to preserving Chicago's architectural legacy while accommodating the pragmatic needs of contemporary urban dwellers.

IMAGE CREDIT: ANNABELL REN



Location: Chicago, Illinois

Client: Annabell Ren,
Steven Karvelius

General Contractor:
Steven Karvelius

IMAGE CREDIT: MIKE SCHWARTZ



Soldier Field House

Collective Office

Embarking on a transformative journey, architects at Collective Office reimagined a four-story townhome situated at the base of a Chicago high-rise, initially constructed eight years prior using robust concrete. Their mission, rooted in their client's desires for a noise-reduced, personally stylized space, involved meticulous renovations beginning with a complete reengineering of the existing mechanical system. This necessitated a thorough interior gutting and rebuilding.

In the reimagined space, an innovative millwork concept, minimal yet consistent, not only enhances spatial functionality and aesthetics in key areas, such as the primary bathroom and kitchen, but ingeniously conceals unavoidable elements like electrical and mechanical systems. An unexpectedly discovered concrete shear wall, running through three stories, becomes a serendipitous focal point, maintained and polished to showcase its unique aesthetic. Strategic modifications to the original kitchen and stair design, including introducing a glass balustrade and an island to foster smooth transitions and usability, further underscore a commitment to marrying form and function.

The result seamlessly merges state-of-the-art technology and design throughout the home, ensuring every inch is thoughtfully utilized and appreciated.



Location: Chicago, Illinois

General Contractor: Artistic Construction

Other Engineer: Brian Rayski


UKIYO

[u-key-yo] · Japanese

(n.) living in the moment,
detached from the bothers of life.
“The floating world”

A new collection designed by Claudia Afshar.
Two structured patterns available in five colors
that transform the identity of cladding.

Find inspiration at [cosentino.com](https://www.cosentino.com)

 **DEKTON**®

Cosentino City Chicago
217 W Illinois St, Chicago,
IL 60654,
312.210.8779


[cosentino.com](https://www.cosentino.com) |  @cosentinocitychicago



IMAGE CREDIT: IWAN BAAN

Arkansas Museum of Fine Arts

Studio Gang, Design Architect and Architect of Record; Polk Stanley Wilcox, Associate Architect

The Arkansas Museum of Fine Arts (AMFA) in Little Rock blossoms anew, creating space for people, art, and nature in a reimagined design that intertwines cultural vibrancy with community spirit.

Seeking to breathe new life into the beloved institution, the redesigned AMFA rejuvenates existing buildings while threading them together with a connective space, described by designers at Studio Gang as an architectural “stem.” This stem not only unifies and reorganizes the museum’s multifaceted functions and programs but also blooms into distinctive entrances and social spaces that harmoniously intertwine with the refreshed landscape and the city beyond, including adjacent MacArthur Park.

Seeking an ethos of renewal, the design maintains a keen eye on sustainability and historical reverence, revitalizing structures dating back to 1937 and mitigating the project’s embodied carbon through the strategic reuse of existing additions. This inclusive approach opened new architectural avenues, including the “Cultural Living Room,” a community space with a transparent façade and uplifted form. Up above, the new addition reveals a ceiling composed of 6,000 suspended plywood slats, invoking a dynamic motion that guides visitors through their journey. It sits beneath a folded-plate, cast-in-place concrete roof, which not only elevates visual interest but also amplifies structural integrity. Innovatively, the roof’s pleats guide rainwater into adjacent rain gardens, contributing to the



IMAGE CREDIT: IWAN BAAN

site’s ecological sustainability, with the project pursuing LEED Silver certification.

Prioritizing visitor experience, AMFA unearths fresh possibilities for engagement, socialization, and education through its redesign. Additional renovations amplify art stewardship and education via enhanced art classrooms, improved art storage, a simplified art handling route, and enhancements to the Children’s Theatre. The organic, curving form of the new addition stands as an elegant testament to AMFA’s commitment to nurturing existing structures while unfolding new possibilities, contributing a sustainable, unified, and vibrant cultural destination in Little Rock.

Location: Little Rock, Arkansas

Client: Arkansas Museum of Fine Arts

General Contractor: Nabholz Construction, Pepper Construction, and Doyne Construction Co.

Civil Engineer: McClelland Consulting Engineers

Structural Engineer: Thornton Tomasetti

MEP Engineer: dbHMS

Landscape Architect: SCAPE

Lighting Design: Licht Kunst Licht

Acoustics, Theater, and AV Consultant: Arup

Cost Estimator: Venue

Chicago Joint Public Safety Training Center

AECOM

Chicago's Joint Public Safety Training Center (JPSTC), located in the historically underinvested neighborhood of West Humboldt Park, symbolizes a vision for greater collaboration between Chicago's public safety entities and the communities they serve. Faced with initial skepticism, architects engaged residents in a co-design process, embedding transparency and relationship-building into the building's DNA from the start.

Inspired by the Chicago Police Department's distinctive checkerboard hat band, the façade integrates a modern abstraction of the Sillitoe tartan, inviting community scrutiny and curiosity by allowing sightlines to internal activities. This intentional transparency extends metaphorically, reflecting the project's ethos of mutual trust and openness with the neighborhood. Through numerous cost-saving, environmentally conscious design choices, like utilizing acoustic insulation on exposed structures and revealing concrete slabs instead of hard flooring, the design-build team not only delivered the project under budget — returning \$4 million for essential purchases — but also ensured that the building reflected a conscientious balance between expense, responsibility, and user experience.



IMAGE CREDIT: RAFAEL GAMO



Location: Chicago, Illinois
Client: City of Chicago
General Contractor: Public Safety Community Builders
Architect of Record: AECOM

Contributing Architect: Architrave
Structural Engineer: AECOM
MEP Engineer: AECOM
Landscape Architect: Jacobs Ryan Associates



IMAGE CREDIT: ANGIE MCMONIGAL

Joliet Inpatient Treatment Center

HOK and HDR

The Joliet Inpatient Treatment Center (JITC) blends a correctional facility with a comprehensive health care establishment, focusing on the mental well-being of incarcerated individuals. Tailored to address the rising numbers of incarcerated individuals with serious mental illness nationally, JITC is molded on principles of human dignity and rehabilitation, utilizing innovative design to stimulate therapeutic and calming environments.

Natural light permeates through the inventive use of skylights, light monitors, and light wells, not only reducing energy consumption but also crafting a distinctive and psychologically uplifting space. Prioritizing rehabilitation, mental health offices are embedded within living units for immediate care and counseling from more than 400 dedicated professionals. External and internal communal and respite areas facilitate both inmate and staff interaction and wellness, while innovative, ligature-resistant cells and treatment rooms prioritize safety without compromising therapeutic design.

The JITC, adhering to and surpassing correctional and public health standards while ensuring full ADA compliance, manifests a commitment to inclusivity and progressive treatment, exemplifying an enhanced approach to corrections and mental health by intertwining design excellence with an empathetic approach to incarceration and mental health care. The center not only focuses on minimizing recidivism but also potently symbolizes a pioneering stride toward creating a more equitable and inclusive future beyond its walls.



Location: Joliet, Illinois
Client: Capital Development Board of the State of Illinois
General Contractor: River City Construction LLC
Civil Engineer: Globetrotters
Structural Engineer: RME
MEP Engineer: BRIC Partnership LLC

Electrical Engineer: XNet
Acoustics, IT/Data Consultant: Shen Milsom & Wilke
Foodservice/Laundry Consultant: Camacho
Cost Estimating: Wight & Company
Criminal Justice Consulting: Pulitzer/Bogard & Associates LLC

University of Illinois at Urbana-Champaign Campus Instructional Facility

Skidmore, Owings & Merrill

Located on the campus of the University of Illinois at Urbana-Champaign, the Campus Instructional Facility (CIF) unites advanced engineering education and sustainable design, sculpting an interactive and evolutionary learning environment.

Aiming for LEED Platinum, CIF unveils its structural artistry through exposed steel and load-bearing brick, while innovatively embedding ground source heat exchange and radiant ceiling panels, underscoring a commitment to carbon reduction. Championing adaptability, this terra cotta-bricked and high-performance glass facility integrates long-span spaces with flexible partitions, anchoring a versatile central hall and fostering a dynamic mix of classrooms that can mold to changing educational landscapes.

Beyond creating architectural interest, CIF becomes an educational tool itself, its exposed features like structural braces with integrated systems becoming a practical curriculum for students. The school's community was integral to shaping classroom typologies and operational mechanics while also emphasizing optimal sustainability, thereby establishing CIF not only as a state-of-the-art learning venue but also as an ever-adapting educational tool.



IMAGE CREDIT: (C) SOM | DAVE BURK



Location: Urbana, Illinois

Client: University of Illinois at Urbana-Champaign

Developer: Campbell Coyle and Vermilion Development

General Contractor: Pepper Construction Company

Architect of Record: Skidmore, Owings & Merrill

Structural Engineer: Skidmore, Owings & Merrill

MEP Engineer: dbHMS

Landscape Architect: site design group ltd.

Environmental Graphics: Studio J9

IMAGE CREDIT: (C) NICK MCGINN



Western Kentucky University Commons at Helm Library

Gensler in collaboration with Lockett & Farley

The Western Kentucky University Commons at Helm Library redefines traditional library spaces, expertly balancing intellectual and social areas while honoring its roots as the university's original gymnasium.

Embracing adaptive reuse and sustainability, the renovation transforms the space into a versatile hub for today's students, merging academic, social, and dining spaces under one roof. A strategic atrium shift creates two distinct two-story areas, providing sound, smell, and mechanical control while avoiding the need for an elaborate smoke evacuation system. The design respects the historic context, exposing the original gymnasium volume and establishing connections with the campus through a glass curtainwall façade and accessible pathways across varied topography. The revitalized space connects all levels visually, ensuring plentiful daylight via restored skylights and encouraging free movement among vibrant food halls and quiet study areas.

The innovative project seamlessly blends the past and present, fostering an engaging, multidimensional student experience. It not only serves as an academic nucleus, showcasing learning support at its heart, but also as a catalyst for improved learning outcomes, symbolizing a connected and inclusive learning network for the entire WKU community.



Location: Bowling Green, Kentucky

Client: Western Kentucky University

General Contractor: A&K Construction

Structural Engineer: Lockett & Farley

MEP Engineer: Lockett & Farley

Interior Design: Gensler



IMAGE CREDIT: DANIEL LEE

Blue Bottle Coffee Wolf Point

Bohlin Cywinski Jackson, Design Architect; DxU, Architect of Record

Located in River North, Blue Bottle Coffee's café at Wolf Point is a spacious yet intimate social hub within a new residential tower. Overlooking the confluence of the Chicago River's three branches, the 3,600-square-foot café — the brand's largest in the country — balances its expansive scale with the cozy atmospheres the brand is renowned for. Full-height, 17-foot green channel glass partitions, which stand out for their green hue and transformative sandblasted finish, segment the interior into a focal coffee-making bay and three light-filled customer lounges, ensuring an open yet distinctly partitioned space that allows light to gracefully permeate throughout.

Recognizing the potential to offer a vibrant amenity centrally located within the neighborhood's growing residential developments, Blue Bottle Coffee approached the larger space with innovative design solutions to preserve the brand's signature intimate aesthetic. Custom millwork pieces facilitate comfortable, secluded seating and display nooks and serve as flexible venues for social gatherings, avoiding a permanent commitment to fixed program elements and maintaining the café's inviting openness. One lounge transforms into a private venue for coffee tastings and instructional sessions, cleverly concealing a full coffee and espresso bar within bifold pocketing millwork panels. Another hosts revolving exhibitions or converts into a point-of-sale station via a custom credenza, continually refreshing the space and its offerings. The inaugural exhibition spotlighted ceramics from the Hyde Park Art Center, underscoring a commitment to supporting local entities and artists.

Guided by a dedication to serenity and social interaction, and showcasing the meticulous art of coffee making, the design employs an honest, elegant material palette unique to this location. A symbiotic blend of European beech millwork and back-painted glass, faced upon the service counter, imparts a warmth and specific character against the green glass, forging a space that is as elegant and distinctive as it is welcoming and integrative into the neighborhood's social and physical landscape.

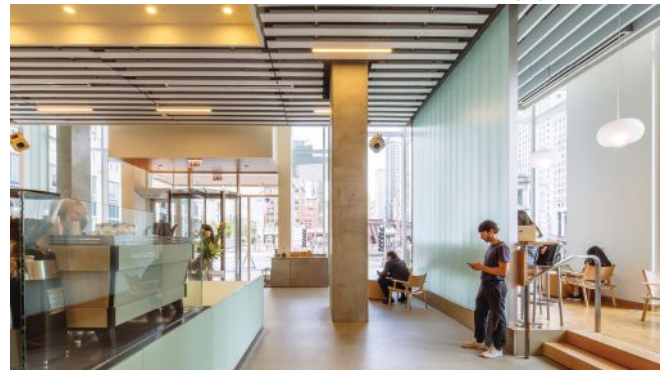


IMAGE CREDIT: DANIEL LEE



Location: Chicago, Illinois

Client: Blue Bottle Coffee

General Contractor: 41 North Contractors

Structural Engineer: Silman

MEP Engineer: AMA Group

AIC Ryan Learning Center Renovation

Wheeler Kearns Architects

The revitalized Ryan Learning Center (RLC) at the Art Institute of Chicago emerges as a 14,000-square-foot embodiment of art, learning, and community. Through a meticulously orchestrated renovation, the RLC transforms into a welcoming and accessible hub, christening the David Vitale Art Exchange as a dynamic space where visitors, spanning all ages and roles, immerse themselves in creative and educational pursuits.

Strategic design interventions, including the formation of the Art Exchange, dissolve previous spatial ambiguities and navigate guests from mere corridors to vibrant, engaging rooms where exploration is instinctive. Diverse zones — delineated by masterfully designed millwork and enhanced color and acoustic palettes— facilitate varying activities, from playful engagement and relaxed reading to participative creativity.

Ensuring increased usability and inclusivity, adaptations for improved accessibility, like modified restrooms and sensory-sensitive design elements, have been carefully integrated. A “Design for Discovery” framework, validated through phased evaluations and audience feedback, directed design decisions, resolving issues of entry confusion and space clarity while aligning with the principles of the AIA’s Design for Equitable Communities. Every element, from concept and millwork to finishes and furniture, converges to foster a barrier-free, inclusive environment, elevating the RLC as a nurturing space where art and community coalesce seamlessly.

IMAGE CREDIT: KENDALL MCCAUGHERTY (HALL + MERRICK + MCCAUGHERTY PHOTOGRAPHERS)



Location: Chicago, Illinois

Client: Art Institute of Chicago

General Contractor: Pepper Construction

Architect of Record: Wheeler Kearns Architects

Graphic Identity Concept: Studio Blue

Graphic Identity and Environmental Graphic Design: Art Institute of Chicago Experience Design

METRO COLLECTION

Three standard lid openings to choose from

Hammered Charcoal & Platinum powder-coat finish

Cool silver decals pre-applied to each unit



service@ex-cell.com | (847) 451-0451



Tribune Tower Conversion

Solomon Cordwell Buenz (SCB)

Transforming Tribune Tower — a cherished Chicago landmark since 1925 — into luxury residences while maintaining the building's historic essence presented a challenging design journey. Initially erected adjacent to a *Chicago Tribune* printing plant, followed by subsequent expansions with the radio and television buildings in 1935 and 1950, the site evolved over the decades before its conversion into 162 luxury condominiums.

Undertaking exhaustive investigations of existing structures and systems, the design team leaned heavily into original construction documents. They began by creating a digital model to coordinate preservation and transformation efforts across the 34-story tower and its neo-Gothic neighbors. Their work was made even more challenging by the extensive floor plates of the tower and its surrounding buildings, which resulted in the creation of 55 unique floor plans. Simultaneously, adherence to the site's Chicago landmark designation necessitated close collaboration with city and state officials, ensuring each alteration was historically congruent and met approval from the Chicago Department of Planning and Development. The team, allied with a historic preservation architecture firm, fortified their commitment to respecting and elevating the site's historic value through each design and construction phase.

Astute design decisions, such as a reduced and redesigned tower core and the addition of four modern glass floors above the TV building, served both aesthetic and functional purposes. A carved-out courtyard within the low-rise complex not only enriched resident amenities but also channeled natural light into adjoining units. Pioneer Court, an adjacent public plaza, was reimagined as a vibrant public space. Along with the meticulously restored tower lobby, it offers educational and leisure value to the broader Chicago community.

Other innovations included substituting an obsolete boiler flue with a new elevator, employing river water for mechanical cooling, and preserving artifacts like the "Stones of the World" and the iconic *Chicago Tribune* sign. By weaving modern functionality into one of Chicago's famous landmarks, architects effectively showcased a seamless union of past and present.

IMAGE CREDIT: DAVE BURK



IMAGE CREDIT: DAVE BURK



Location: Chicago, Illinois

Developer: Golub & Company and CIM Group

General Contractor: Walsh Group

Contributing Architect: Vinci Hamp Architects

Structural Engineer: TGWRA

MEP Engineer: Elara Engineering

Facade Restoration Engineer: Klein & Hoffman

Landscape Architect: site design group ltd. and OLIN

Exterior Enclosure Consultant: WJE

Interior Design: The Gettys Group Companies

Lighting Design (Exterior): Schuler Shook

Vertical Transportation Consultant: Jenkins & Huntington

IMAGE CREDIT: (C) SOM | DAVE BURK



800 Fulton Market

Skidmore, Owings & Merrill

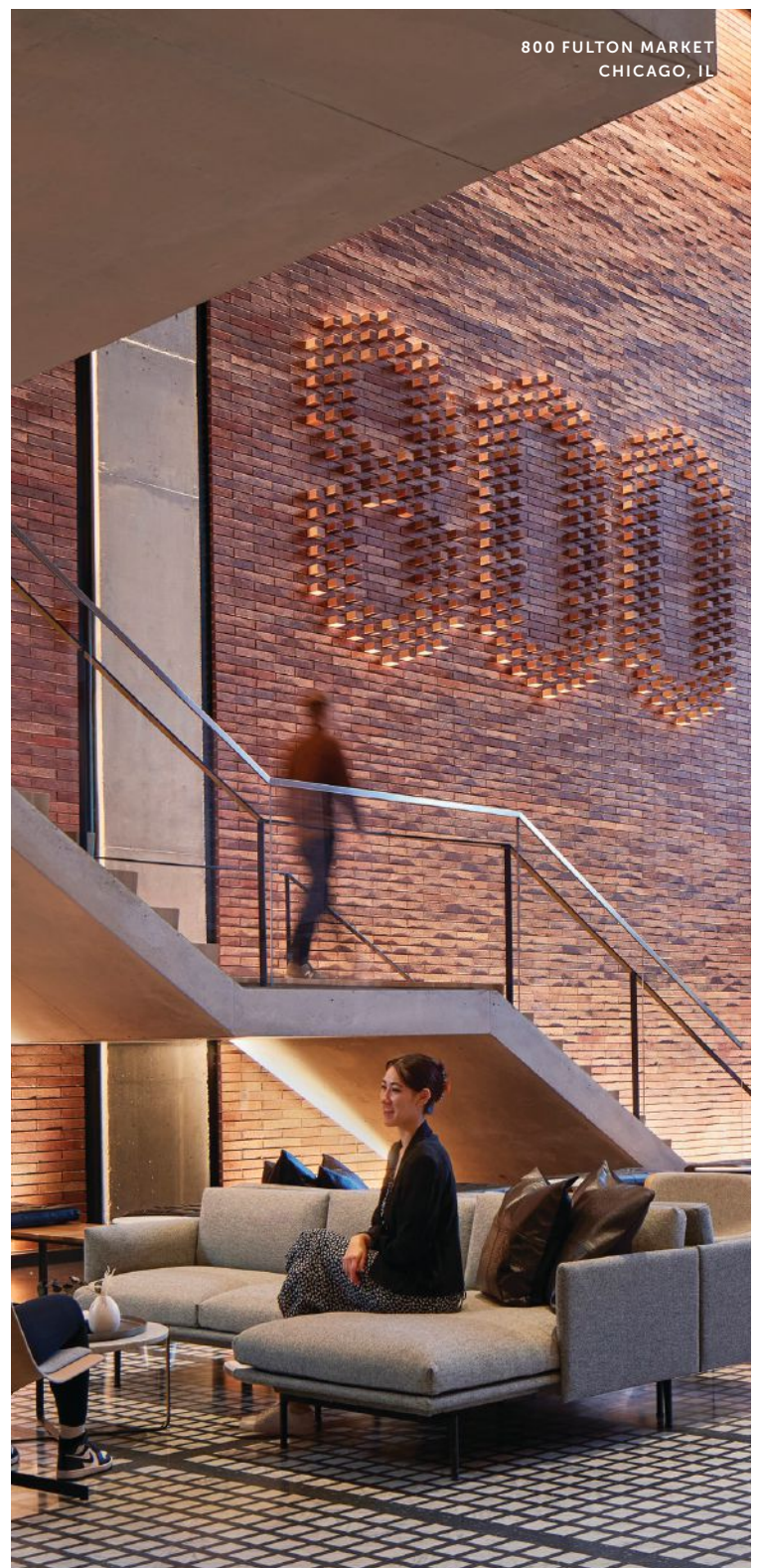
Embraced by Chicago's burgeoning Fulton Market neighborhood, 800 Fulton Market emerges as a testament to innovative, community-integrated, and environmentally forward design. At 19 stories tall, the building gracefully mingles with the city's historic and commercial structures, courtesy of thoughtfully proportioned setbacks and terraces. Externally adorned with climate-resilient steel X-braces and complemented by an offset daylight core, the design incorporates spacious, flexible workspaces, appealing to contemporary creative tenants.

Navigating through challenges of aligning commercial aspirations with the neighborhood's charm, the team engaged in dialogues about height, street activity, and overall mass, ensuring alignment with the community's evolving needs. The structural design, while attentive to Chicago's climatic demands, ensures floor plan versatility, from expansive lower floors to boutique upper-level spaces. The blend of brick, glass, and dark metal nods to the industrial spirit of the surroundings, while amenities like extensive bike parking and accessible retail spaces underscore a commitment to urban responsiveness and street-level vitality.

Distinguished not only by its LEED Platinum and WELL Gold certifications but also by its pursuit of operational net-zero via carbon offsets, 800 Fulton Market serves as a symbol of sustainable, health-conscious, and technologically integrated workplace design. The building harmoniously blends the vibrant brick tones and dark steel of the exterior with interiors accentuated by the work of local artists and artisans.



- Location:** Chicago, Illinois
- Client:** Thor Equities
- General Contractor:** Lendlease
- Architect of Record:** Skidmore, Owings & Merrill
- Structural Engineer:** Skidmore, Owings & Merrill
- MEP Engineer:** dbHMS
- Other Engineer:** TERRA Engineering
- Landscape Architect:** Omni Ecosystems
- Interior Design:** Skidmore, Owings & Merrill



WE LOBBY FOR GREAT LIGHTING



LIGHTING DESIGN / THEATRE PLANNING / AUDIO VIDEO DESIGN



USG Ensemble® Acoustical
Drywall Ceiling



O'HARE INTERNATIONAL AIRPORT, TERMINAL 5

HARMONIZE SOUND AND STYLE.

The USG Ensemble® Acoustical Drywall Ceiling brings together superior sound performance and seamless design in high-end spaces.



Scan the QR code or visit usg.com/ensemble to learn more about how the USG Ensemble® system stands out from a traditional drywall solution.

Chicago O’Hare International Airport Terminal 5 Extension

Muller2 and HOK

The extension of Terminal 5 at O’Hare International Airport offers a light-drenched, wing-shaped welcoming point for visitors to Chicago. Prioritizing an open, uplifting environment, the project delivers expansive views of aircraft and the city while also acting as an intuitive guide through the terminal by minimizing sensory overload. Inspired by urban plazas, the grand central space mingles lounges, gates, and retail, reflecting the pulsating energy of city life within its vaulted, naturally illuminated areas.

In lieu of a linear extension, the design ingeniously adopts a boomerang shape, optimizing airfield space and introducing enhanced amenities, including a community area that embodies a town square. Seamless transition from the existing terminal to the new, resilient, and adaptable design ensures a 25 percent capacity increase, while also accommodating evolving aircraft and terminal usage needs. With more than 300,000 square feet of space added, the extension proficiently serves international and domestic flights and flexibly hosts various retailers, public art, and activities. It simultaneously echoes an art museum’s serenity yet bustles with liveliness when activated by passengers.

Material selection focused on local availability and durability, while meticulous lighting design — incorporating a mix of natural and artificial sources — ensures architectural intent is maintained. This allows the space to serve not just as a passage, but as an experiential journey, embedded with the spirit of Chicago and the joy of travel.

IMAGE CREDIT: NIC LEHOUX PHOTOGRAPHY



Location: Chicago, Illinois

Client: Chicago Department of Aviation

General Contractor: Austin Power Partners Joint Venture

Civil Engineer: TYLin

Structural Engineer: Garza Karhoff Engineering

MEP Engineer: Milhouse

Baggage Handling Engineer: BNP Associates Inc.

Landscape Architect: Daniel Weinbach & Partners Ltd.

Exterior Façade Consultant: Simpson Gumpertz & Heger (SGH)

Lighting Design: Schuler Shook

Information Technology: HOK

Vertical Transportation Consultant: Lerch Bates

Cost Estimating: Faithful+Gould



COCO ARCHITECTURAL
GRILLES • METALCRAFT

HISTORIC RENOVATIONS
Restoring
Restoring Historic Renovations with a combination of old world craftsmanship and state of the art manufacturing processes

631.482.9449 ♦ COCOMETALCRAFT.COM

AMCORK AMERICAN CORK PRODUCTS COMPANY

importers of fine cork flooring & wall coverings

www.amcork.com 1-888-955-CORK (2675)



IMAGE CREDIT: JEFF GOLDBERG/ESTO

LaGuardia Airport Terminal B

HOK

LaGuardia Airport's Terminal B has undergone a comprehensive transformation, ushering in an ambitious new era of mobility, travel, and public celebration. This audacious redesign gives equal prominence to both arrivals and departures, while the transparent design radiates a civic pride fitting for a city famed for its remarkable architecture.

From the outset, the main goal was to transform the terminal while remaining fully operational and minimizing inconvenience to the customers or communities surrounding LaGuardia's uniquely small geographic footprint. While initial designs leaned toward a conventional approach, the client adopted an innovative proposal of two island concourses connected by pedestrian bridges, which permitted the new structure to be built over the existing terminal. Impressively, at the height of this construction, only one out of 35 gates were closed at any given time. This strategic repositioning reclaimed 40 acres for aircraft operations, brought it closer to the Grand Central Parkway, and expedited the construction timeline by two years.

The headhouse, earlier overshadowed by a parking structure, now stands proudly as the terminal's front door. Its façade solidifies the airport's stature while drawing a visual line to the Manhattan skyline. Inside, the terminal resonates with New York's essence, characterized by vast spaces, 60-foot ceilings, and panoramic windows, immersing passengers in the city's vibrancy. The iconic pedestrian bridges, stretching 450 feet and standing 65 feet tall, elegantly link the main terminal to the island concourses. These bridges mirror the urban design of New York City — a city interlinked by bridges and islands.

Terminal B also boasts best practices in sustainability. It's the first airport project in the world to achieve the LEED v4 Gold certification, offering daylight optimization, a solar thermal system, efficient taxi lanes, and elevated protection for vital systems. Beyond infrastructure, the terminal's redesign provided broad community benefits, allocating contracts worth more than \$910 million to women- and minority-owned enterprises and creating numerous local jobs.

IMAGE CREDIT: FIRM RENDERING



Location: Queens, New York

Client: LaGuardia Gateway Partners

General Contractor: Skanska-Walsh

Architect of Record: HOK

Contributing Architect: Foit-Albert Associates, M.Castedo Architects,

Nandinee Phookan Architects, RCGA Architects, The Switzer Group

Civil Engineer: WSP

Structural Engineer: HOK and Thornton Tomasetti

MEP Engineer: WSP

Fire Protection/Alarm Consultant: Arora Engineers

PIGMENTO

COLOUR AS THE ESSENCE OF MATTER

Inspired by hand-trowelled cementitious resin, Ergon Pigmento is a technically impeccable porcelain project that spans 9 colours, 5 sizes in the 9.5mm Large Format Tile version and a 120x278cm x 6.5mm Gauged Porcelain Panel.

It is completed with an exquisite Cardboard texture as show here and also with 4 porcelain wall-paper designs such as Carioca, Eden, Pop Art and Peonia.



 **ERGON**
engineered stone

info@emilamerica.com
tel. 703-481-1150
emilgroup.com/ergon

O'Hare International Airport, Multi Modal Terminal

Ross Barney Architects, Design Architect; TranSystems, Architect of Record, Transportation Engineer

IMAGE CREDIT: KENDALL MCCAUGHERTY (HALL+MERRICK+MCCAUGHERTY PHOTOGRAPHY)



Location: Chicago, Illinois
Client: Chicago Department of Aviation
General Contractor: Austin Power Partners

The Multi-Modal Terminal at O'Hare International Airport unifies ground transportation, offering a streamlined gateway to Chicago. Linked to the airline terminals via an extended airport transit system, it encompasses airline, transit, rail, bus, shuttle, car rental, and public parking. Additionally, it connects to northern Illinois and Wisconsin via a regional train, with prospective high-speed rail access.

Emphasizing sustainability, the terminal follows the Airport Sustainability Manual by the Chicago Department of Aviation, underlining Chicago's green construction dedication. Its design embodies several sustainable building strategies, utilizing materials like precast concrete panels with recycled aggregates and low-e glazing. Features like light-filled spaces and courtyards, aided by day-light simulation modeling, enhance user well-being and cut energy use by 26.6 percent. Such efforts equate to the environmental impact of a 1,000-acre pine forest.

The terminal expands travel opportunities throughout the Chicago region and reduces 1.3 million vehicles annually from central terminal roads. The 3 million-square-foot structure offers consolidated car rentals, quick fueling/wash facilities, and parking for 2,600 vehicles. Aesthetically, courtyards filled with trees enhance natural light and aid wayfinding. Earning LEED Silver certification, it sets a precedent for the Department of Aviation's upcoming ventures.

One Chicago

Hartshorne Plunkard Architecture and Goettsch Partners

One Chicago is a monumental 2.2 million-square-foot development, transforming a full city block into a dynamic live, work, and play destination. Comprising two towering residential structures and a shared podium, the 77-story main tower proudly stands as Chicago's tallest all-residential building, boasting a design of vertical, rectilinear masses. Formerly a parking area, One Chicago now enhances the urban landscape with mixed-use functionalities and a fresh urban park.

Occupying a prized location in River North, the development was envisioned as a hub of diverse programming, blending seamlessly within its urban surroundings while offering distinct identities for its various components. With 812 residential units, ample office and retail space, and world-class amenities like a flagship Whole Foods Market and Life Time fitness center, it represents urban infill at its best. Unique construction techniques allowed for dense, efficient space utilization, while internal traffic solutions maintain street fluidity.

Anchoring the site is the main tower, juxtaposed beautifully with a park, and another 49-story tower. Their design, marked by vertical bars, terraces, and setbacks, ensures an elegant presence in Chicago's skyline, revitalizing an underutilized space and spurring growth in River North.

IMAGE CREDIT: DRONE MEDIA



Location:
Chicago, Illinois

Client: JDL
Development

General Contractor:
Power Construction

Structural Engineer:
Magnusson Klemencic
Associates

MEP Engineer:
Salas O'Brien

Other Engineer:
SPACECO Inc.
and Jenkins &
Huntington Inc.

Landscape Architect:
site design group ltd.

Interior Design:
Darcy Bonner

The St. Regis Chicago

Studio Gang, Design Architect; bKL Architecture, Architect of Record; Gensler, Hotel Architect; HBA, Interior Architect

The St. Regis Chicago, now the city's third-tallest structure, is a beacon of innovative architecture that harmoniously integrates with the public realm. Offering unparalleled accessibility to the Chicago River, the condominium and hotel complex promotes social vibrancy with top-tier amenities that converge at its upper levels.

Located at the edge of the Lakeshore East community, the development underscores the client's vision of a bustling residential hub, close to Chicago's cultural, dining, and entertainment attractions. The building offers residents and hotel patrons alike unparalleled views of the city and Lake Michigan, coupled with five-star amenities that include a sky terrace, a top-notch fitness center, a golf lounge, and more.

The tower's mesmerizing design, seen as interconnected volumes of varying heights, champions urban connectivity and optimizes



IMAGE CREDIT: NICK ULIVIERI



daylight access for its occupants. Its distinctive frustum-based structure enhances views, daylight, and ventilation. Furthermore,

the building's exterior boasts a gradient of high-performance glass optimized for solar efficiency, embodying both aesthetic and environmental brilliance.

Location: Chicago, Illinois

Client: Magellan Development Group

General Contractor: McHugh Construction

Civil Engineer: Mackie Consultants

Structural Engineer: Magnusson Klemencic Associates

MEP Engineer: dbHMS

Bridge Engineer: CBBEL

Geotechnical Engineer: Ground Engineer Consultants Inc.

Wind Engineer: RWDI

Landscape Architect: OLIN

Façade Consultant: Curtainwall Design Consulting and Lee Herzog Consulting

Hotel Public Space Interior Design: KTGy and Simeone Deary Design Group

Hotel Lighting Consultant: CD+M, Reveal Design Group

Hotel Kitchen Consultant: Cini-Little

Hotel Restaurant Space Interior Design: David Collins Studio and Rockwell Group

Residential Interior Design: HBA

Residential Penthouse Interior Design: Suzanne Lovell

Residential Lighting Design: Hugh Lighting Design

Acoustics Consultant: Shiner Acoustics

Swimming Pool Consultant: WWT Group and Innovative Aquatic Design

Traffic Consultant: Kimley-Horn

Vertical Transportation Consultant: Fortune Shepler Saling



BRICK



STONE



HARDSCAPE

BRICKWORKS[®] SUPPLY CENTER

At Brickworks Supply Center we offer a wide selection of high-quality masonry and hardscape products for both commercial and residential projects. Whether you're an architect, contractor, or homeowner, we have everything you need to complete your project on time and on budget. Contact us today to learn more!

- Face Brick
- Thin Brick
- Structural Brick
- Glazed Brick
- Klaycoat[®] Brick
- Special Shapes
- Metal Cladding
- Builder Stone
- Natural Stone
- Out Cropping
- Stone Veneer
- Clay Pavers
- Concrete Pavers
- Porcelain Pavers
- Wood Fire Pits
- Fireplaces
- Masonry Tools
- Accessories and more...

Chicagoland Locations

Chicago • Bridgeview • Des Plaines • Schaumburg • Naperville
New Lenox • Chesterton

We have over 25 Brickworks Supply Center locations to service your next project!
www.BrickworksSupply.com • info@brickworkssupply.com

*Product brands and selection may vary per location.





IMAGE CREDIT: (C) SOM | DAVE BURK

SOM Chicago Studio Renovation

Skidmore, Owings & Merrill

After more than 30 years in Daniel Burnham's iconic Railway Exchange Building, Skidmore, Owings & Merrill decided it was time to rethink its space. Overlooking the building's luminous terra cotta-clad lightwell, the revamped office embodies a workshop-style atmosphere and fosters enhanced connectivity, flexibility, and comfort, drawing inspiration from the finest design ateliers.

In anticipating the demands of a post-pandemic work environment, the designers crafted a versatile space championing interdisciplinary synergy. A unique "display ribbon" navigates both floors to put the creative process and team collaboration on display, embracing digital and analog approaches. The reception showcases multipurpose seating configurations, doubling as meeting and workspace zones. Meanwhile, features like a mobile partition in the town hall and glass pivoting doors offer dynamic space management. As a perk for its employees, an expanded pantry, fitted with a custom terrazzo island, serves as a versatile hub of activity, reflecting scenic views of Lake Michigan and Millennium Park.

The design ensures privacy without sacrificing the open ambiance. Glass-enclosed meeting zones, phone rooms, and a connecting stairway between the ninth and 10th floors maintain an open, luminous environment. Minimizing barriers enables sunlight diffusion and encourages interdisciplinary collaboration. Aesthetically, arrival zones employ warmer, darker tones, while main work areas are bright. Yet, warm-toned millwork is consistent throughout, offering cohesion.

The design was informed by neurodiversity and workplace well-being studies, coupled with high-performance design principles. These principles aim to bolster focus, maximize energy efficiency, and facilitate individual and collaborative tasks, manifesting the firm's innovative design approach. Ample daylight, panoramic views, smart lighting, and a tailored thermal control system affirm a commitment to employee well-being, with the workspace pursuing WELL Platinum and LEED Gold certifications.

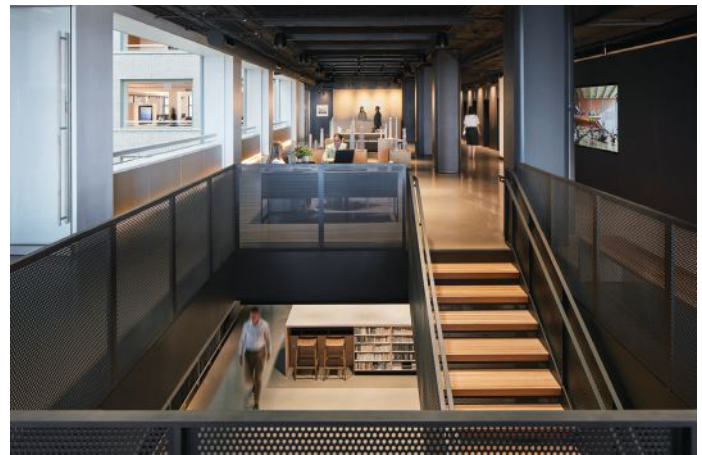


IMAGE CREDIT: (C) SOM | DAVE BURK



Location:
Chicago, Illinois

Client: Skidmore, Owings & Merrill

General Contractor:
Power Construction Company

Interior Design:
Skidmore, Owings & Merrill

Lighting Design:
Schuler Shook

Acoustics Engineer:
Shiner Acoustics

Millwork/Furniture Consultant: Navillus Woodworks

Structural Engineer:
Skidmore, Owings & Merrill

MEP Engineer:
Skidmore, Owings & Merrill

345 North Morgan

Eckenhoff Saunders with Sterling Bay Design Studio

345 North Morgan anchors Chicago's booming Fulton Market District, boasting 230,000 square feet of Class A office space. With its expansive 23,000 square-foot office floors, 13-foot ceilings, and private outdoor terraces on each level, it merges functionality with luxury.

The building's highlight is its arched windows on the 10th floor, showering spaces with sunlight. Premium amenities range from heated parking to a fitness center, a top-floor conservatory, and a sprawling outdoor deck. Drawing inspiration from the location's industrial past and the grandeur of classic railway stations, the design juxtaposes raw building elements with luxury finishes, embodying a contemporary take on old-world charm. Tenants are greeted by a grand two-story barrel arch in the lobby, setting the tone for the interiors. Meanwhile, the 11th floor offers an amenity-rich space with a sunlight-bathed conservatory, a well-equipped bar, and a serene conference area, encapsulating the developer's vision of modern elegance.

Designers faced many challenges during the construction of the building, including window system changes and material availability issues. They met these needs with innovation, air-shipping items from overseas to compensate for lost time and conducting masonry modeling to streamline the construction of the building's main entry arch.

IMAGE CREDIT: KENDALL MCCAUGHERTY (HALL + MERRICK + MCCAUGHERTY PHOTOGRAPHERS)



Location: Chicago, Illinois

Client: Sterling Bay

General Contractor: Skender

Civil Engineer: TERRA Engineering

Structural Engineer: WSP

MEP Engineer: Salas O'Brien

Landscape Architect: Omni Ecosystems

Lighting Design: AKLD Lighting Design

Acoustics Consultant: Shen Milsom & Wilke



SKIDMORE, OWINGS & MERRILL
CHICAGO, IL

Terrazzo Unleashed: Where function meets elegance

Since 1974, Menconi delivers superior installations of terrazzo, resinous epoxy, and polished concrete flooring systems with proven expertise for commercial, industrial, and high-end residential clients.



TERRAZZO | RESINOUS | CONCRETE

MENCONI | BENSENVILLE | 630 238 8275 | FINEARTFORFLOORS.COM | FIND US ON 



IMAGE CREDIT: STEVE HALL



Location: Chicago, Illinois
General Contractor: Clune Construction
MEP Engineer: Environmental Systems Design Inc.
Acoustics Consultant: Waveguide
Furniture Consultant: Thomas Interiors

Confidential Client

Perkins&Will

A global private equity firm embarked on an ambitious project to design its new office on Wacker Drive — a full-floor space representing just one of the firm's five locations. The aim was to not only foster a spirit of collaboration but also to clearly reflect their brand values. They envisioned spaces conducive to focused tasks, team collaborations, and hosting meetings among colleagues and clients alike.

The design challenges were multifaceted. There was a need to craft five offices in different cities, each exuding a unique identity while resonating with an overarching architectural theme. The layout of their Chicago office demanded clear demarcation between public- and client-facing areas and private workspaces, ensuring that every zone was illuminated by natural daylight, especially spaces along the river. A warm, timeless design language, underscored by high-quality materials, became a key requirement, ensuring the space was welcoming and seamless throughout.

The result is a testament to the design team's ability to overcome these challenges. It beautifully blends private offices, huddle rooms, and open communal spaces. A strategically placed central axis unifies the entire design, linking panoramic vistas from Lake Michigan to the Chicago River. The thoughtful use of warm materials across spaces evokes comfort and elegance. A versatile café transitions from an IT support hub by day to a chic cocktail bar by night. Furthermore, the design prioritizes employee well-being, offering amenities like a wellness room, a dedicated IT concierge, and provisions for healthy dining.

University of Cincinnati College of Law

Perkins&Will, Design Architect; BHDP Architecture, Architect of Record

The renovation and expansion of the University of Cincinnati's College of Law aimed to achieve state-of-the-art instructional and study areas. Encompassing classrooms, study zones, clinics, lecture halls, faculty offices, and a cutting-edge law library — all organized around a refurbished light well — the facility enhances the student experience and aligns with future-forward teaching methodologies.

The old structure had inherent challenges: It lacked modern teaching space configurations and felt disconnected from the adjacent campus green. To address this, designers prioritized technology-rich, flexible spaces conducive to both individual and collaborative research, turning the once inwardly focused 1970s-era academic building into a cohesive, modern building. Central to this design was a grand two-story atrium, adorned with a social stair linking the atrium's main level to a terrace. Acting as a focal hub, this space, with its vivid furniture and study tables, encourages student-faculty interaction and community engagement. Symbolizing justice's transparency and fairness, the design prioritizes open, clear façades.

By seamlessly merging old and new, the facility echoes the law school's progressive vision, equipping students for interdisciplinary studies and showcasing the evolving nature of legal education.

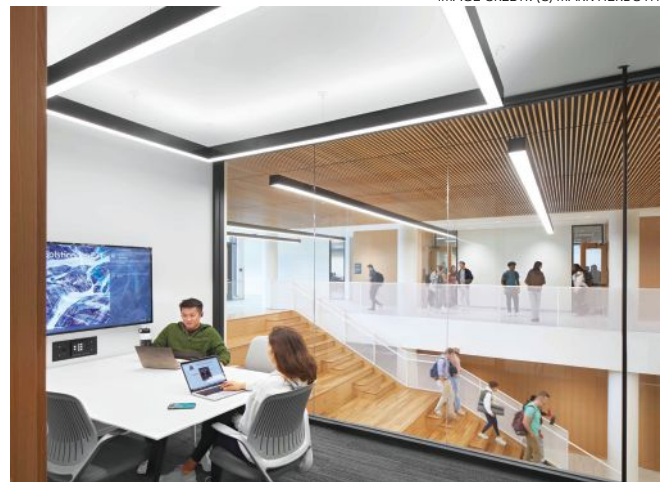
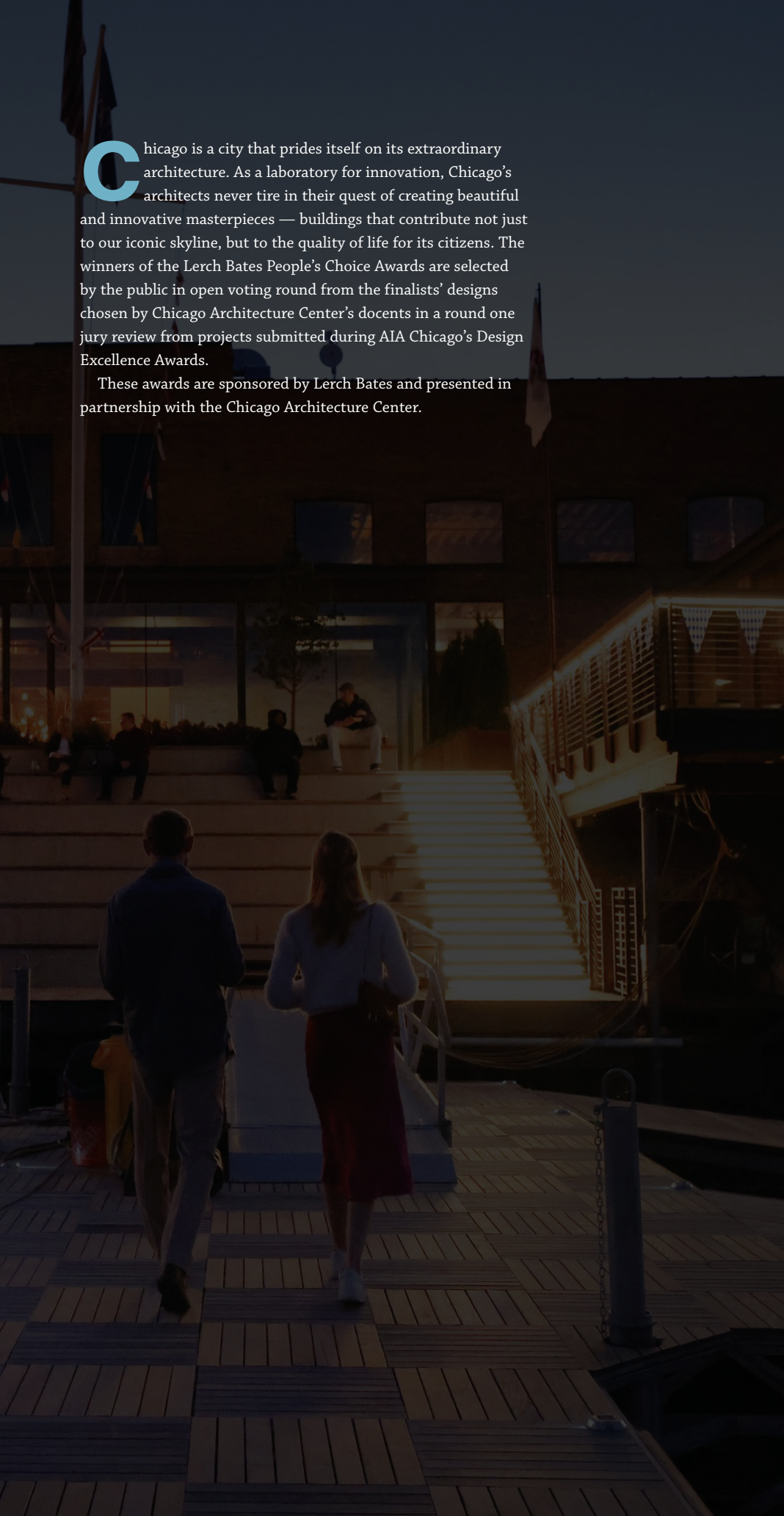


IMAGE CREDIT: (C) MARK HERBOTH



Location: Cincinnati, Ohio
Client: University of Cincinnati
General Contractor: Skanska
Structural Engineer: The Kleingers Group
MEP Engineer: CTMA Inc.
Other Engineer: THP Limited



Chicago is a city that prides itself on its extraordinary architecture. As a laboratory for innovation, Chicago's architects never tire in their quest of creating beautiful and innovative masterpieces — buildings that contribute not just to our iconic skyline, but to the quality of life for its citizens. The winners of the Lerch Bates People's Choice Awards are selected by the public in open voting round from the finalists' designs chosen by Chicago Architecture Center's docents in a round one jury review from projects submitted during AIA Chicago's Design Excellence Awards.

These awards are sponsored by Lerch Bates and presented in partnership with the Chicago Architecture Center.

LERCH BATES PEOPLE'S CHOICE AWARDS

CIVIC

Navy Pier Flyover

Muller2

In response to decades of car-dominated urban design, the Navy Pier Flyover reclaims Chicago's lakefront for pedestrians and cyclists. This sculptural, elevated trail not only bridges a perilous divide in the existing Lakefront Trail but redefines how people experience Chicago's waterfront, offering safe, accessible, and fun passage through a high-trafficked part of the city. By integrating architectural ingenuity and engineering expertise, the design negotiates complex urban obstacles, using a malleable tube-shaped spine, ensuring ADA compliance, and respecting local landmarks. Meanwhile, strategically placed lighting enhances safety and aesthetic appeal. Significantly, the Flyover embodies a multifaceted design philosophy: fostering equitable communities through inclusive access, endorsing environmental responsibility by prioritizing human-powered transit, and promoting public health and economic prudence by reducing reliance on car travel.



IMAGE CREDIT: BILL ZBAREN

Location: Chicago, Illinois

Client: Chicago Department of Transportation

General Contractor: Paschen (Phase I); Granite (Phase II)

Structural Engineer: HNTB

Lighting Design: Schuler Shook

COMMUNITY AND CULTURAL

Steppenwolf Theatre Campus Expansion

Adrian Smith + Gordon Gill Architecture

Steppenwolf Theatre's innovative 50,000-square-foot expansion reimagines the theater, fostering intimate actor-audience dynamics with a unique 400-seat space. This multifunctional hub emphasizes inclusivity and engagement, featuring adaptable staging, extensive accessibility measures, and The Loft, a dedicated youth arts center. Floor-to-ceiling windows invite transparency and neighborhood integration, while the interior's strategic design avoids repurposing cultural motifs for decorative purposes. The expansion's distinctiveness is further captured in its rising theater volume, sophisticated material use, and contextual sensitivity to urban surroundings. Together, these elements help the building achieve a turning point in the design of buildings that house Chicago's vibrant arts scene.



IMAGE CREDIT: JAMES STEINKAMP

Location: Chicago, Illinois

Client: Steppenwolf Theatre Company

General Contractor: Norcon Inc.

Civil Engineer: SPACECO Inc.

Structural Engineer: Thornton Tomasetti

MEP Engineer: ESD

Lighting Design: Morlights

Fire and Life Safety Consultant: Jensen Hughes

Signage and Wayfinding Consultant: Studio Blue

Theatre Consultant: Charcoalblue

Cost Estimating: Venue Consulting

IMAGE CREDIT: (C) SOM | DAVE BURK



EDUCATION

University of Illinois at Urbana-Champaign Campus Instructional Facility

Skidmore, Owings & Merrill

The University of Illinois Urbana-Champaign's Campus Instructional Facility (CIF) becomes an exemplary tool for learning, integrating advanced engineering and sustainable design within its very structure. Targeting LEED Platinum certification, the facility incorporates an exposed steel frame and ground source heat exchange, making the building itself a comprehensive learning tool. Developed through a highly collaborative public-private partnership, the CIF's design and rapid two-year completion were informed by direct student and faculty involvement, ensuring its multifunctional spaces support a diverse range of programs and learning styles. Beyond its role as an academic hub, the CIF, with its terra cotta-brick façade, complements the existing campus environment, inviting in the broader student community with social spaces, a central circulation hall, and an approach deeply committed to environmental responsibility and UIUC's carbon neutrality goals.

Location: Urbana, Illinois
Client: University of Illinois at Urbana-Champaign
Developer: Campbell Coyle and Vermilion Development
General Contractor: Pepper Construction Company
Architect of Record: Skidmore, Owings & Merrill

Structural Engineer: Skidmore, Owings & Merrill
MEP Engineer: dbHMS
Landscape Architect: site design group ltd.
Environmental Graphics: Studio J9

HOSPITALITY AND RETAIL

Rockwell on the River

Rosen Architecture

Rockwell on the River breathes new life into a century-old tannery in Avondale. Set on the Chicago River, the project has become a dynamic space for craft industries, offices, private events, and artist studios. Key to the complex's revitalization was the strategic demolition of select structures, creating central courtyards for natural light and efficient circulation, enhanced by a unique second-story bridge connection. Architects preserved and accentuated the site's historical elements with custom steel-framed installations, while closely adhering to zoning laws along a spacious riverfront plaza. This area becomes a focal point, featuring granite pavers and wooden decks over the river, all meticulously designed to respect the local ecosystem. The incorporation of helical piers for support minimizes ecological disruption, underscoring the project's commitment to environmental sensitivity and community enrichment.

IMAGE CREDIT: KATRINA WITTKAMP



Location: Chicago, Illinois
Client: Prairie Management and Development
General Contractor: Phoenix Community Builders
Other Contractor: Munib Ceric
Contributing Architect: AltusWorks
Civil Engineer: Merit Corp
Structural Engineer: Clark T. Baurer Structural Engineering and Highland Engineering

MULTIFAMILY RESIDENTIAL

Tribune Tower Conversion

Solomon Cordwell Buenz (SCB)

The conversion of Chicago's historic Tribune Tower into 162 luxury condos balances meticulous design sensitivity and rigorous historic preservation.

Navigating complex challenges, from utilizing original blueprints for digital modeling to creating 55 distinct floor plans to accommodate century-old structures, the project weaves modern amenities into the neo-Gothic tower and four additional buildings that are part of the site. Architects worked under stringent landmark regulations, which required careful collaboration with the City of Chicago in order to ensure historical integrity. Strategic design moves, like a reconfigured tower core and contemporary glass floor additions, balanced modernity with heritage. Innovations, such as a new elevator replacing an old flue and using river water for cooling, highlight environmental considerations. The revitalized Pioneer Court and the tower's lobby, along with preserved artifacts, blend Chicago's rich history and contemporary luxury living.



IMAGE CREDIT: DAVE BURK

Location: Chicago, Illinois

Developer: Golub & Company and CIM Group

General Contractor: Walsh Group

Contributing Architect: Vinci Hamp Architects

Structural Engineer: TGWRA

MEP Engineer: Elara Engineering

Façade Restoration Engineer: Klein & Hoffman

Landscape Architect: site design group ltd. and OLIN

Exterior Enclosure Consultant: WJE

Interior Design: The Gettys Group Companies

Lighting Design (Exterior): Schuler Shook

Vertical Transportation Consultant: Jenkins & Huntington

OFFICE

Walgreens Old Post Office

Stantec Architecture

Constructed in 1921, Chicago's Old Post Office remained unused for decades until its transformation into a technology hub for Walgreens began in 2018. Stantec's design, inspired by an urban landscape, strategically segments the massive space into interactive neighborhoods located around communal spaces that act like city centers. These spaces foster community, surrounded by zones promoting collaboration and innovation, all while preserving the building's historical essence.

Emphasizing Walgreens' vision for creating a "workplace for tomorrow," the layout supports flexibility, integrating modern technology in a reimagined environment. Unique materials and art installations echo Chicago's character, enhancing the original architecture. This revamp not only champions adaptability and wellness through its open concept and natural light optimization but also celebrates the building's enduring legacy.



IMAGE CREDIT: CHRISTOPHER BARRETT

Location: Chicago, Illinois

Client: Walgreens

General Contractor: Skender

MEP Engineer: Stantec

IMAGE CREDIT: © STEVE HALL

SINGLE FAMILY RESIDENTIAL
- NEW CONSTRUCTION

Solar House

Booth Hansen

This innovative, nearly net-zero residence stands on a unique triangular site in an established Chicago neighborhood, constructed over the remnants of a former home's foundation. Designed as an all-electric, two-story structure, the house features three primary volumes distinguishing public and private spaces, each oriented toward lush, intimate garden views while ensuring privacy on the exposed corner site. The central section features a double-height, sunlight-infused space, thanks to generous floor-to-ceiling windows, flanked by areas dedicated to rest and study. Externally, a brick façade harmonizes with the surrounding context. Strategic architectural planning, informed by extensive solar studies, affords each living space direct garden access. These green pockets, shielded by the preserved masonry street wall, offer residents varying natural views and lighting, enriching their urban living experience.

Location: Chicago, Illinois

General Contractor:
MC Construction Group

Structural Engineer: SP Engineering

MEP Engineer: DDG Engineers

Landscape Architect: Mariani

Interior Design: Deanna Berman

Audio Visual Consultant:
Hooked Up Installs

Energy Modeler: dBHMS

SINGLE FAMILY RESIDENTIAL -
NEW CONSTRUCTION

Lakeside Midcentury

Robbins Architecture

This renovation of a classic midcentury home in Southwest Michigan respects midcentury design principles yet feels modern and fresh, not weighed down by the past. The renovation maintains the house's understated geometric form, enhancing its less than 2,500-square-foot interior to accentuate the breathtaking lake views on its expansive site. Redefining spaces like the kitchen, where concealed appliances create a seamless transition to living areas, architects refreshed the home's aesthetic. Sustainable upgrades include LED lighting, solar shades, and an efficient zonal HVAC system, improving comfort without compromising style. Key interventions, such as the subtle introduction of a soft pink hue traced from the original Chicago-brick fireplace to quartzite-wrapped bathrooms, honor the past while writing a new chapter in the home's architectural story.

IMAGE CREDIT: ROGER DAVIES



Location: Southwest Michigan

General Contractor: Insignia Homes

Structural Engineer: Goodfriend Magruder Structure

Interior Design: Robbins Architecture

Lighting Design: AKLD Lighting Design

TALL BUILDING

The St. Regis Chicago

Studio Gang, Design Architect; bKL Architecture, Architect of Record; Gensler, Hotel Architect; HBA, Interior Architect

The St. Regis Chicago, now the city's third-tallest building, features unprecedented urban connectivity, uniting the Lakeshore East community with the city through enhanced access to the Chicago River. Housing condominiums and a five-star hotel, the building offers residents and guests unparalleled 360-degree city and lake views, plus amenities like an outdoor pool and state-of-the-art fitness center. Its design features three dynamic volumes, utilizing an innovative "frustum" geometry to maximize daylight, creating eight unique corners per floor. The tower's skin showcases a high-performance glass gradient, echoing Lake Michigan's tones, and underlining the building's sustainable ethos. The project not only redefines Chicago's skyline but also celebrates the synergy of community, architecture, and the environment.



IMAGE CREDIT: TOM HARRIS

Location: Chicago, Illinois

Client: Magellan Development Group

General Contractor: McHugh Construction

Civil Engineer: Mackie Consultants

Structural Engineer: Magnusson Klemencic Associates

MEP Engineer: dbHMS

Bridge Engineer: CBBEL

Geotechnical Engineer: Ground Engineer Consultants Inc.

Wind Engineer: RWDI

Landscape Architect: OLIN

Façade Consultant: Curtainwall Design Consulting and Lee Herzog Consulting

Hotel Public Space Interior Design: KTGy and Simeone Deary Design Group

Hotel Lighting Consultant: CD+M, Reveal Design Group

Hotel Kitchen Consultant: Cini-Little

Hotel Restaurant Space Interior Design: David Collins Studio and Rockwell Group

Residential Interior Design: HBA

Residential Penthouse Interior Design: Suzanne Lovell

Residential Lighting Design: Hugh Lighting Design

Acoustics Consultant: Shiner Acoustics

Swimming Pool Consultant: WT Group and Innovative Aquatic Design

Traffic Consultant: Kimley-Horn

Vertical Transportation Consultant: Fortune Shepler Saling

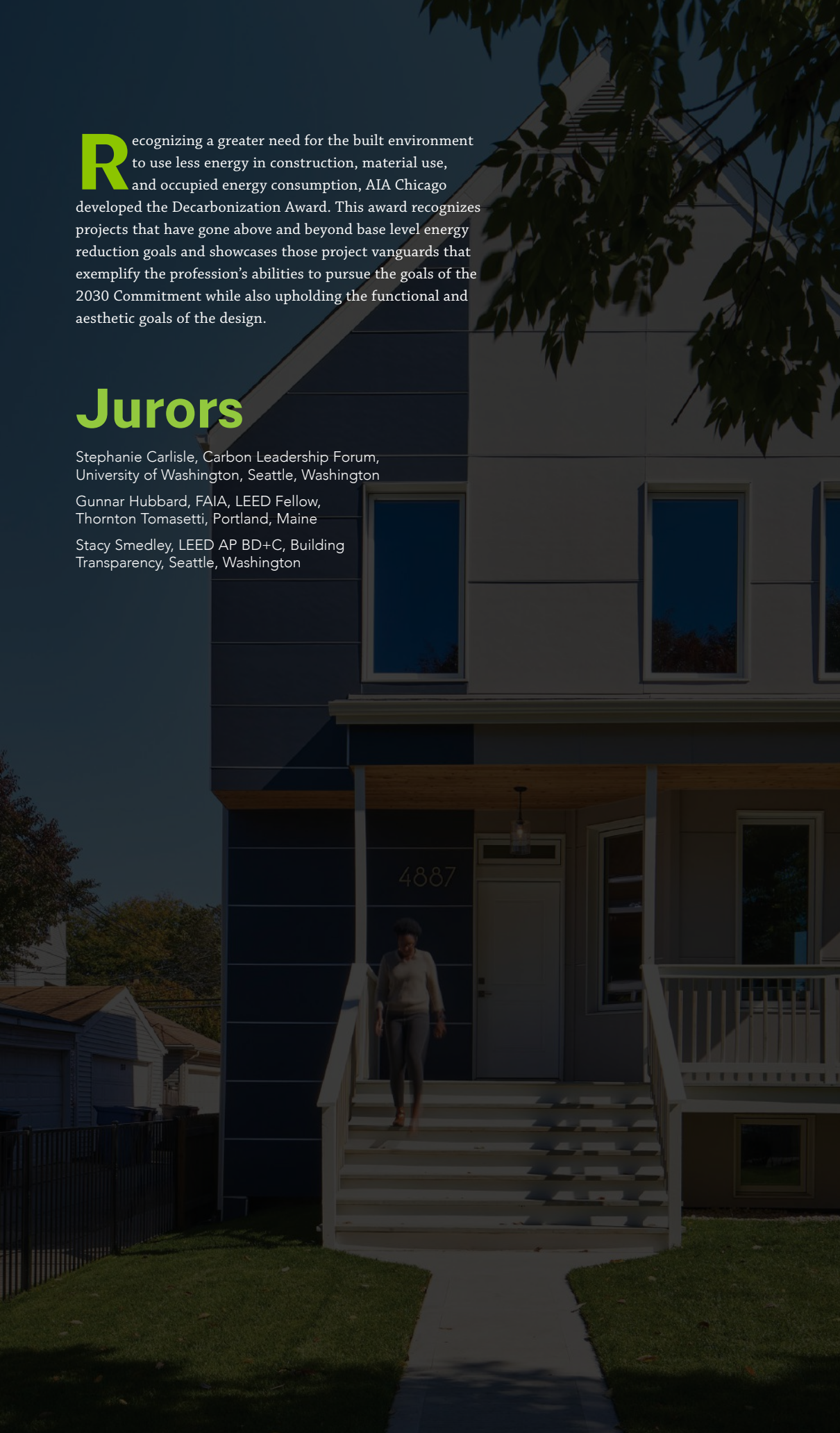


Do Your Windows Speak French?

Since 2005, Chicago's proven source for interior, exterior and now impact-rated custom steel doors & windows. *Oh, and thermally broken wine rooms.*



Steve Edgcomb
 General Manager
 Chicago & Midwest
 BonJour@frenchsteel.com
 www.frenchsteel.com



Recognizing a greater need for the built environment to use less energy in construction, material use, and occupied energy consumption, AIA Chicago developed the Decarbonization Award. This award recognizes projects that have gone above and beyond base level energy reduction goals and showcases those project vanguards that exemplify the profession's abilities to pursue the goals of the 2030 Commitment while also upholding the functional and aesthetic goals of the design.

Jurors

Stephanie Carlisle, Carbon Leadership Forum,
University of Washington, Seattle, Washington

Gunnar Hubbard, FAIA, LEED Fellow,
Thornton Tomasetti, Portland, Maine

Stacy Smedley, LEED AP BD+C, Building
Transparency, Seattle, Washington

DECARBONIZATION AWARDS

Yannell PHIUS+ Residence

HPZS

The Yannell PHIUS+ House stands as a groundbreaking achievement in sustainable renovation in the Midwest. Hailed as the first certified single-family Passive House Institute US (PHIUS 2018+) renovation in a 14-state region, the home not only defies traditional decarbonization challenges but also serves as a successful model for future projects.

The design team was presented with existing building and urban site constraints prohibiting optimal passive design performance and strategies, challenges that many existing buildings often face. This prompted innovative approaches to passive design and insulation strategies. Adding an additional layer of complexity, the project team deliberately partnered with a general contractor inexperienced in Passive House construction to promote knowledge sharing and help accelerate the Passive House movement.

The result is a testament to innovation, sustainability, and the power of collaboration. Featuring an airtight envelope; advanced insulation; energy-efficient HVAC systems; and comprehensive certifications like PHIUS 2018+, the Department of Energy's Zero Energy Ready Home (ZERH), and the Environmental Protection Agency's Energy Star and Indoor airPLUS certifications, the home sets new standards in energy efficiency and indoor air quality. The project also played a pivotal role in reshaping the urban landscape by preserving historical residential forms while infusing them with modern elements. Overcoming zoning challenges added another layer of complexity, highlighting the need for evolving regulations to align with PHIUS standards.

Beyond its own success, the Yannell PHIUS+ House aimed to serve as a template for similar residential buildings across Chicago, demanding a meticulous analysis of cost implications and innovative marketing strategies. From the project's inception in 2017, architects at HPZS and their client sought to attract attention and educate the public through extensive press coverage, project videos, and a dedicated website about the home, conveying the vital message that sustainable development is not only necessary but also entirely feasible.



IMAGE CREDIT: COPYRIGHT © 2020 CHRISTOPHER BARRETT PHOTOGRAPHY



IMAGE CREDIT: COPYRIGHT © 2020 CHRISTOPHER BARRETT PHOTOGRAPHY



Location: Chicago, Illinois

Client: Yannell Foundation for Sustainable Development

General Contractor: MK Construction & Builders Inc.

Structural Engineer: Goodfriend Magruder Structure

MEP Engineer: DataBasedPlus

University of Illinois at Urbana-Champaign Campus Instructional Facility

Skidmore, Owings & Merrill

The Campus Instructional Facility (CIF) at the University of Illinois at Urbana-Champaign represents best practices in performance and carbon reduction. Its exposed building systems, paired with graphic portraits of notable alumni, represent achievements for students to aspire to surpass.

The project's sustainability is deeply rooted in collaboration with students and faculty, which resulted in the development of highly efficient mechanical, electrical, and plumbing systems, and a conscious effort to reduce materials in the lower-level auditorium. The University's Student Sustainability Committee recognized this dedication by awarding an additional \$300,000 in funding, allowing for the replacement of fossil fuel systems with environmentally friendly heat pumps.

Notable achievements of the CIF project include its pursuit of LEED Platinum and LEED Zero Energy Certification; its exceptional performance, surpassing benchmarks such as 51.5 percent above ASHRAE standards and 73 percent above Commercial Building Energy Consumption Survey standards; and the provision of direct outdoor views to 87 percent of occupied spaces. Innovative features like dynamic glazing in windows, integrated radiant heating and cooling systems, and a ground source heat exchange, designed to reduce energy consumption by 65 percent, further exemplify its commitment to sustainability and performance.

IMAGE CREDIT: (C) SOM | DAVE BURK



Location: Urbana, Illinois

Client: University of Illinois at Urbana-Champaign

Developer: Campbell Coyle and Vermilion Development

General Contractor: Pepper Construction Company

Architect of Record: Skidmore, Owings & Merrill

Structural Engineer: Skidmore, Owings & Merrill

MEP Engineer: dbHMS

Landscape Architect: site design group ltd.

Environmental Graphics: Studio J9

- ✓ Unmatched resilience
- ✓ Luxurious interior environment
- ✓ Climate specific & cost optimized

That's the
Phius Difference

www.phius.org

Sonora® Panels




AcousticsFirst.com
Specializing in Custom Acoustic Panels & Sound Diffusers.™

The **Aeolian**®
Sound Diffuser


Toll-Free Number:
888-765-2900

The
Franklin Dining Chair
as featured on *The Bear*, Season 2



available from Navillus Woodworks
@navillus_woodworks navilluswoodworks.com

ARUP



Art Preserve
Sheboygan, WI

© Durston Saylor, courtesy John Michael Kohler Arts Center

Dedicated to sustainable development, Arup is a global collective of designers, consultants and experts. We work across disciplines and draw on diverse voices to find more digitally integrated, sustainable, and resilient outcomes.

Connect with us
www.arup.com | chicago@arup.com | +1 312 849 5610

CONGRATULATIONS
TO THE 2023 AIA CHICAGO DESIGN
NOMINEES & AWARD WINNERS!



© Connie Zhou | Design by Genster

MCGUIRE ENGINEERS INC.
MECHANICAL • ELECTRICAL • PLUMBING • CONSULTING SERVICES
CELEBRATING 37 YEARS IN BUSINESS!

300 S. Riverside Plaza, Suite 350
Chicago, Illinois 60606
(312) 876.9240 | www.mecinc.com



The Roberta Feldman Architecture for Social Justice Award, administered by the AIA Chicago Foundation, was established in 2020 to honor excellence in single built projects and single design programs guided by the conviction that access to high-quality architecture is not a privilege, it is a human right. Architecture for Social Justice is defined by the following objectives: first, to engage a broader cross-section of society, especially those not typically able to access architectural services, and, second, to create innovative design solutions that address complex social and economic inequities that impact these communities. This yearly award celebrates the commitment of designers who work on behalf of the public good while receiving no or below market rate compensation.*

A monetary award of \$2,500 will be given by the AIA Chicago Foundation for built projects and/or design programs that exemplify socially just design practices and impact. Nonmonetary honorable mentions may also be awarded. There is no cost to enter.

**Market rate compensation is based on conventional fee structures.*

Jurors

Elliott Dudnik, FAIA, Elliott Dudnik + Associates, Evanston, Illinois

Pete Landon, FAIA, LBBA, Chicago, Illinois

Negin Moayer, BNMO Design, Chicago, Illinois

Katie Swenson, AIA, Mass Design Group, Boston, Massachusetts

2023 Jury Chair

Danielle Tillman, AIA, NOMA, bKL Architecture, Chicago, Illinois

ROBERTA FELDMAN ARCHITECTURE FOR SOCIAL JUSTICE AWARD



IMAGE CREDIT: RANDY CRANDON

A Library Free to All

Architecture for Public Benefit

A Library Free to All set out to enhance access and visibility to vital public library services across nine underserved communities in Boston. Undertaken by Architecture for Public Benefit, the visionary project represents a creative and collaborative approach to community engagement that has shaped the vision, character, and functionality of each library intervention.

Kickstarting this endeavor in the summer of 2022, the Boston Mayor's Office of New Urban Mechanics and the Boston Public Library secured a grant aimed at addressing the challenges brought forth by the pandemic, which left many individuals reliant on essential library services without proper access. Recognizing the potential for this project to extend the library's reach beyond its conventional boundaries, Architecture for Public Benefit implemented an innovative community engagement model. Beginning with interactive community workshops conducted in partnership with Design4Equity, this approach spotlighted the unique needs and identities of each branch and its community. This effort was bolstered by meticulous site surveys, insightful librarian interviews, and a thorough assessment of existing equipment inventories, all tailored to the specific conditions of each site.

In response to the research findings and community input, architects devised a flexible and modular kit of parts, enabling public assembly and adaptation to serve various functions — from outdoor performances to casual gathering spaces. This kit of parts included a range of furniture pieces, easy to fabricate from standard lumber and constructed from weather-resistant, recycled materials. Additionally, the project introduced canopies designed to provide shade, light, and cooling mist, offering year-round utility with minimal maintenance requirements. These canopies creatively reimaged the use of readily available components, ensuring affordability, replicability, and responsiveness to each community's unique context.

The project's fabrication and assembly phase became a valuable opportunity for partnership with YouthBuild Boston, an organization dedicated to empowering underserved young individuals through vocational training and education. The collaboration empowered young participants to contribute tangibly to their built environment while gaining invaluable design and construction skills.



IMAGE CREDIT: CHANA HAOUIZ



Location: Boston, Massachusetts

Client: Boston Public Library and Mayor's Office of New Urban Mechanics

General Contractor: YouthBuild Boston

Community Engagement Facilitator: Design4Equity

INDEX OF ADVERTISERS

Acoustics First56	www.acousticsfirst.com
AHR Expo3	www.ahrexpo.com
AmCork39	www.amcork.com
Arup56	www.arup.com
Brickworks Supply Center43	www.brickworkssupply.com
Coco Architectural Grilles & Metalcraft39	www.cocometalcraft.com
Cosentino City Chicago30	www.cosentino.com/usa/professional/cosentino-city/chicago
Dri-Design10	www.dri-design.com
Eggersmann USA Chicago17	www.eggersmannusa.com/chicago-german-kitchen-showroom
Emil America41	www.emilamerica.com
Ex-Cell LLC35	www.ex-cell.com
Lightning Protection Institute4	www.lightning.org
McGuire Engineers Inc.56	www.mepcinc.com
Menconi45	www.fineartforfloors.com
Navillus WoodWorks56	www.navilluswoodworks.com
Passive House Institute US55	www.phius.org
Petersen Aluminum Corporation6	www.pac-clad.com
Powering Chicago24	www.poweringchicago.com
Schuler Shook37	www.schulershook.com
Schweiss Doors8	www.schweissdoors.com
Sierra Pacific Windows9	www.sierrapacificwindows.com
The French Steel Company LLC52	www.frenchsteel.com
Unilock Chicago2	www.unilock.com
USG Corporation38	www.usg.com
Weather Shield Windows & Doors27	www.weathershield.com



Chicago Architect is published four times a year by Innovative Publishing. Innovative Publishing specializes in association communications and messaging.

Photocopy permissions where necessary, permission is granted by copyright holder for those registered with Copyright Clearance Center (CCC), 222 Rosewood Drive, Danvers, MA 01923, www.copyright.com to photocopy any article herein for personal or internal reference use only for the flat fee of \$2.00 per copy for each article. Send payment to CCC. Copyright 2023 AIA Chicago.

The information contained within has been obtained by AIA Chicago and Innovative Publishing from sources believed to be reliable. However, because of the possibility of human or mechanical error, AIA Chicago and Innovative Publishing do not guarantee the accuracy or completeness of any information and are not responsible for any errors or omissions or for the results obtained from use of such information. The editor reserves the right to censor, revise, edit, reject, or cancel any material not meeting the standards of *Chicago Architect*. The information and opinions published in *Chicago Architect* represent the views of the authors and not those of the publisher or AIA Chicago, unless otherwise stated. The acceptance of advertising does not reflect endorsement of products or services by this publication, AIA Chicago, or Innovative Publishing.

LETTERS TO THE EDITOR: *Chicago Architect* gladly accepts all signed, dated letters to the editor. We reserve the right to edit for style and any potentially libelous content. Letters should be no longer than 250 words. Submit letters to editor@aiachicago.org.

STORY IDEAS AND SUBMISSIONS: *Chicago Architect* welcomes your story ideas and your written article submissions, whether about your projects or about business trends and issues. Email us at editor@aiachicago.org.

<ul style="list-style-type: none"> facebook.com/aiachicago @aiachicago x.com/aiachicago 	<ul style="list-style-type: none"> vimeo.com/aiachicago linkedin.com/company/aia-chicago
--	--





35 East Wacker Drive, Suite 250
Chicago, IL 60601

Thank you to our 2023 **1869**Circle Partners

The **1869Circle**, named after the year AIA Chicago was founded, is a program of unprecedented recognition for partners who contribute annually to AIA Chicago and the AIA Chicago Foundation at the highest level.



To learn more about this program or to see if you qualify, please scan the QR code or visit AIACHicago.org/1869Circle.

