

CHICAGO ARCHITECT

2022 AWARDS EDITION

Design Excellence Awards

**Lerch Bates
People's Choice Awards**

Decarbonization Awards

**Roberta Feldman Architecture
for Social Justice Awards**

Lifetime Achievement Award





Lerch Bates

BUILDING INSIGHT

**MAXIMIZE PERFORMANCE.
OPTIMIZE COST.
MINIMIZE RISK.**

**Trusted technical consultants for the
entire lifecycle of a building.**

Learn more at LerchBates.com

**Vertical
Transportation**

Logistics

**Enclosures &
Structures**

**Facade Access
Services**

**Property Loss &
Expert Witness**

One partner for all your building needs.

1.877.427.6470

why settle for ordinary when you can experience excellence
eggersmann since 1908



eggersmann
Kitchens | Home Living

300 W Hubbard St, 4th Fl | Chicago, IL 60654 | 312.222.8700

eggersmannusa.com

new york | dania beach | houston | dallas | chicago | los angeles | toronto | pittsburgh | scottsdale | sand city | maui | honolulu | los cabos



Credit: Mr. Lightning



LPI
LIGHTNING
PROTECTION
INSTITUTE

Collaborating with Architects
and Engineers
since 1955

LPI Most Innovative Design Awards

The LPI Innovative Design Awards recognize a person/firm that demonstrated early coordination with an LPI professional to design an innovative solution to improve the aesthetics of the lightning protection system on a noteworthy structure.



Credit: Pixabay



Credit: Bonded Lightning Protection Systems, Ltd.

**Have you worked
with an LPI Member
on a project in 2022?**

Ask them how to nominate your
project for the 2023 awards.

Architects and Engineers play an integral part with
lightning protection systems.

Check out the Award winners & details of these
projects at:

lightning.org/news

Questions? Need a Specification?
lpi@lightning.org or 800.488.6864

CHICAGO ARCHITECT

EDITOR IN CHIEF

Jen Masengarb
editor@aiachicago.org

INTERIM EDITOR

Dillon Goodson
editor@aiachicago.org

EDITOR

Liz Herrera Lauer
liz@innovativepublishing.com

DESIGNER

Catherine Meany

ADVERTISING SALES

Innovative Publishing
advertise@innovativepublishing.com
844.423.7272



Dear Members and Friends,

As we wrap up 2022 with this awards issue, I'm reflecting on all we have accomplished together. It's been an honor to serve as AIA Chicago president in this year filled with significant milestones, exciting growth, and meaningful progress toward our 2021-2023 Strategic Planning Goals. From hosting the AIA Conference on Architecture in June, to rolling out our new awards program, to unveiling our new vision for Designight, it has been a pleasure engaging my fellow Chicago architects and showcasing their projects.

The new format for Designight this year, with its focused outreach to all Chicagoans, reflected members' desire for greater inclusivity and a broader focus on public advocacy. With the move to Millennium Park's Jay Pritzker Pavilion for a free ceremony, our entire AIA Chicago membership — in addition to clients, consultants, collaborators, friends, and family — could celebrate together for the first time. More than 2,500 people gathered on a beautiful September evening. Thank you for making it such a success.

In this issue, we celebrate Ralph Johnson, FAIA, for receiving the 2022 Lifetime Achievement Award. Presenting the award to Ralph during Designight was one of the most memorable moments for me this year. In the accompanying article, you'll hear from other AIA Chicago members — his peers, colleagues, and mentees — who have been shaped by Ralph's approach and process.

The Design Excellence Awards take center stage in this issue as we celebrate the achievements of AIA Chicago members. With XS to XL projects recognized for the first time in the same ceremony, we had a chance to celebrate firms of all sizes together. Congratulations to the eight Honor Award winners and the 17 Citation of Merit winners this year.

The new Decarbonization Award this year celebrated projects that have demonstrated an extremely high level of commitment to sustainability

and the reduction of carbon within our built environment. This category required that firms report detailed metrics on both construction and energy use. Farr Associates, with collaborating architect Woodhouse Tinucci, transformed the mid-century Keller Center at the Harris School of Public Policy at the University of Chicago, earning them the Honor Award in this category.

In this issue, we also commend the winners of the second annual Roberta Feldman Architecture for Social Justice Award, administered by the AIA Chicago Foundation. Sounding Boards Garden at Harmony by Eastlake Studio received the highest honor. Created together with residents of the North Lawndale community, the project was inspired by the Black Lives Matter uprising in the summer of 2020 and brought together artists and business owners.

The winners of the inaugural Lerch Bates People's Choice Awards are also featured in this issue. Presented in partnership with the Chicago Architecture Center, more than 1,500 people chose the final winners in eight typologies ranging from single-family residential to tall buildings, hospitality, and retail to community and cultural.

As I reflect back on 2022 and also prepare to pass the baton to incoming President Mindy Viamontes, AIA, I am confident that the leadership of this incredible organization will remain focused on our chapter's vision of fostering a culture of design excellence for equitable and sustainable places and spaces. You and your work live out these values each day, and I remain inspired by what is to come.

Best wishes for a new year filled with meaningful design challenges and creative collaborations.

Drew Deering, AIA, LEED AP
2022 AIA Chicago President



Chicago Architect, the primary outreach tool of AIA Chicago, is published four times a year as an authoritative resource for architects, the larger design community, and the public about architecture and related issues of interest to Chicago architects. The magazine communicates industry trends, the value of high-quality design, and the role of AIA Chicago and its members in the world of architecture.



- 📘 facebook.com/aiachicago
- 📧 @aiachicago
- 🐦 twitter.com/aiachicago
- 📺 vimeo.com/aiachicago
- 🌐 linkedin.com/company/aia-chicago

Playful Patterning



Photo: hortonphotoinc.com

The patterning of the Precision Series Tile hues from cream upward to mottled grays, with splashes of sea/sky blue creates a mosaic, described by the architect as inspired by rippling water and natural elements. Explore PAC-CLAD's palette and expand your creative process.

Children's Museum + Theatre of Maine, Portland, ME Installing contractor: Industrial Roofing and Siding
Architect: Bruner/Cott Architects Distributor: North Bridge Building Products GC: Zachau Construction

Precision Series TS Tile

Metal Roof and Wall System

Cityscape, Berkshire Blue,
Stone White, Granite



View the
case study
and video



Contents



20

RALPH JOHNSON, FAIA, RECEIVES THE 2022 AIA CHICAGO LIFETIME ACHIEVEMENT AWARD AT DESIGNIGHT. IMAGE CREDIT: MATT MANSUETO PHOTOGRAPHY, INC.

FEATURES

- 20 // HUMBLE GIANT**
Ralph Johnson, FAIA, Receives the 2022 AIA Chicago Lifetime Achievement Award
- 23 // DESIGN EXCELLENCE AWARDS**
- 46 // LERCH BATES PEOPLE'S CHOICE AWARDS**
- 52 // DECARBONIZATION AWARDS**
- 55 // ROBERTA FELDMAN ARCHITECTURE FOR SOCIAL JUSTICE AWARDS**

DEPARTMENTS

- 12 // CHAPTER REPORT**
- 14 // FOUNDATION REPORT**
- 16 // PEOPLE + PROJECTS**

ON THE COVER

Sounding Boards Garden by Eastlake Studio. Photo by Kendall McCaugherty, Hall + Merrick + McCaugherty Photographers.



OUR PREVIOUS ISSUE is available to view digitally at www.aiachicago.org



Union Carpenters & Contractors

The Mid-America Carpenters Regional Council represents over 52,000 working men and women across 324 counties in Illinois, Missouri, Kansas and Eastern Iowa. Our highly skilled carpenters touch every aspect of a construction project from foundation to finish and set the benchmark for performance, safety and productivity.

#WeBuildStrong



Gary Perinar
Executive Secretary-Treasurer
12 E. Erie Street
Chicago, IL 60611
312-787-3076

www.carpentersunion.org
[@midamcarpenters](https://twitter.com/midamcarpenters)

Professional Flooring Installers Association



We are the leading group of third-party warranty flooring contractors supporting today's busy construction market with single-source accountability.

Our Premier members serve the Chicagoland commercial flooring market with highly trained **INSTALL Certified** flooring installers.

To learn more contact us:
630-325-4132



www.pfia.org



SCHWEISS

DOORS



**YOU THINK IT,
WE BUILD IT!**

HYDRAULIC - OR - BIFOLD
ONE-PIECE DOORS STRAP LIFT DOORS

507-426-8273



"BUILDING BETTER DOORS"

SCHWEISSDOORS.COM

2022 AIA CHICAGO DIRECTORY

CHICAGO ARCHITECT

Dillon Goodson, interim editor
Liz Herrera Lauer, editor
Catherine Meany, designer

AIA CHICAGO 2022 BOARD OF DIRECTORS PRESIDENT

Drew Deering, AIA

FIRST VICE PRESIDENT/ PRESIDENT-ELECT

Mindy Viamontes, AIA

PAST PRESIDENT

Jessica Figenholtz, AIA

VICE PRESIDENT, ADVOCACY

Arathi Gowda, AIA

VICE PRESIDENT, DEVELOPMENT

Julie Hacker, FAIA

VICE PRESIDENT, EDUCATION

Chey Taylor, AIA

VICE PRESIDENT, FINANCE

Tim Tracey, AIA

VICE PRESIDENT, HONORS AND AWARDS

Lynda Dossey, AIA

VICE PRESIDENT, MEMBERSHIP

Jason Golub, AIA

DIRECTOR

Natalie Hicks, AIA

Kelly Moynihan, AIA

Josh Mings, AIA

Enrique Suarez, AIA

Calli Verkamp, AIA

Ashlen Williams, AIA

Peter Wojtowicz, AIA

ASSOCIATE DIRECTOR

Richie Hands, Assoc. AIA

Justin Banda, Assoc. AIA

STUDENT DIRECTOR

Vacant

AIA ILLINOIS DELEGATE

Molly Rademacher, AIA

Terran Wilson, AIA

Wei Yu, AIA

AFFILIATE DIRECTOR

Chris Carpenter, Affiliate AIA

Bob Magruder, SE, PE

Affiliate AIA

2022 KNOWLEDGE COMMUNITIES

ARCHITECTURE FOR JUSTICE

Eric Davis, AIA, chair

Fred Moyer, AIA, co-chair

BUILDING ENCLOSURE COUNCIL CHICAGO

Matt Filippini, AIA, chair

Patrick Keeney, AIA, chair-elect

Rebecca Booth, past chairperson

Eric Overby, treasurer

Bryan Rouse, secretary

COTE/2030 COMMITMENT GROUP

Daniel Jaconetti AIA, LEED AP, 2030 co-chair

Saranya Gunasingh,

Intl. Assoc. AIA, co-chair

David Swain, AIA, co-chair

Kelly Moynihan, AIA, co-chair

CUSTOM RESIDENTIAL ARCHITECTS NETWORK (CRAN)

Stuart Cohen, FAIA, co-chair

Mike Shively, AIA, co-chair

DESIGN

Greg Klosowski, AIA, co-chair

Josh Mings, AIA, co-chair

Lori Day, AIA, co-chair

DESIGN FOR AGING

Heidi Wang, AIA, chair

EDUCATION

Jonathan Fair, AIA, co-chair

Kysa Heinitz, AIA, co-chair

Peter Schlossman, AIA, co-chair

HEALTHCARE ARCHITECTURE

Cam Twohey, AIA, chair

Luis Vazquez-Rivera,

Assoc. AIA, co-chair

Denise Haberkorn, AIA, treasurer

HISTORIC RESOURCES

Jonathan Solomon, AIA, co-chair

Andrea Sforza, AIA, co-chair

INTERIOR ARCHITECTURE

Susan Brain, AIA, PMP, co-chair

Charles Cunov, AIA, co-chair

PRACTICE MANAGEMENT

Ben Johnson, AIA, chair

Iana Kolev, AIA, co-chair

Sam Luckino, AIA, co-chair

SMALL FIRM EXCHANGE (SFX)

Frank Michalski, AIA, chair

TECHNICAL ISSUES

Lee Fink, AIA, chair

David Babnigg, AIA, co-chair

Calli Verkamp, AIA, co-chair

2022 AFFINITY GROUPS

LGBTQIA+ ALLIANCE

Hao Phung, AIA,

co-chair

Lucas Goldbach, AIA, co-chair

YOUNG ARCHITECTS FORUM

Raquel Guzman Geara,

AIA, chair

Lena Reiff, AIA, co-chair

EQUITY, DIVERSITY, INCLUSION (EDI) COMMITTEE

Natalie Hicks, AIA, co-chair

David Mulder, AIA, co-chair

COMMUNITY ENGAGEMENT

Erin Sanchez, AIA, co-chair

David Sikorski, AIA, co-chair

CHAPTER STAFF

EXECUTIVE DIRECTOR

Jen Masengarb, Assoc. AIA

SENIOR DIRECTOR OF ADVOCACY AND SPECIAL PROJECTS

Joan Pomaranc

DIRECTOR OF OUTREACH

Allison Garwood Freedland

DIRECTOR OF MEMBERSHIP AND DATA ANALYTICS

Steve Riforgiato

DIRECTOR OF EDUCATION AND AWARDS

Ashley Spell

PROGRAM AND EVENTS COORDINATOR

Madison Young

DIRECTOR OF DEVELOPMENT AND SALES

Kirstin Osgood

COMMUNICATIONS MANAGER

David Cordaro, Assoc. AIA

FINANCIAL MANAGER/ BOOKKEEPER

Naghmah Sabah



Subscription to Chicago Architect is included with AIA Chicago membership.

Non-members may subscribe by signing up at: www.aiachicago.org

Additional copies of Chicago Architect are available for \$7.50 per issue and can be obtained by contacting the AIA Chicago office at 312.670.7770. If you are interested in purchasing a large number of issues, contact AIA Chicago and ask about group sales.

The American Institute of Architects is the voice of the architectural profession and the resource for its members in service to society.

Chicago Architect is printed with zero-VOC ink on 10 percent post-consumer waste stock.



GOLDBERG GENERAL CONTRACTING, INC.

Photo: Christopher Barrett Photography



Architect: Brininstool + Lynch, Ltd.




IN MEMORY OF BRAD LYNCH
1958 - 2022

WWW.GGCINC.NET

Designight Reinvented

To embrace and recognize projects, teams, and budgets of all scales, AIA Chicago restructured its signature awards celebration, Designight. This new format combined the former Small Projects Awards and Design Excellence Awards into one awards program, keeping the Design Excellence Awards name.

For the first time in AIA Chicago history, this format allowed for all members to be together, in the same space, at the same time, without any cost barrier for entry. This also provided the opportunity to promote architecture to the public by allowing not only members, but friends, family and architecture aficionados to take part in the celebration.

Held at the largest stage in the city, over 2,500 people gathered at the Jay Pritzker Pavilion in Millennium Park to celebrate the global achievements of Chicago's architects. 

View the photos in *Chicago Architect's* digital edition at aiachicago.org.

PHOTO BY MATT MANSUETO PHOTOGRAPHY, INC.

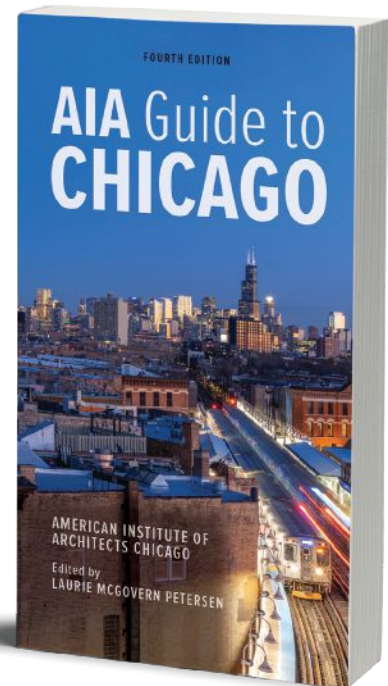


The new Fourth Edition of the acclaimed guidebook.

30% OFF with promo code **"S22UIP"** when purchased through the University of Illinois Press.



Offer valid until June 30, 2023. Not available at any other bookseller.



Architect: Bruce Butler / By Design
Builder: Justin Fletcher Homes



MODERN LIVES COMFORTABLY WITH CHARM.
Upgrade to Sierra Pacific. There are more expensive windows. But none more impressive.

Chicago Design Center - 2445 E Higgins Rd. | Elk Grove Village | 847-262-5907

www.SierraPacificWindows.com | P.O. Box 8489, Red Bluff, CA 96080 | 800-824-7744 | A Division of  SIERRA PACIFIC INDUSTRIES



Scan the QR code to see more amazing projects from Sierra Pacific Windows

Architects in Schools Returns, Introducing Middle Schoolers to the Profession

The AIA Chicago Foundation is celebrating another year of Architects in Schools, which introduces middle school students to the field of architecture. The program began the fall semester at Cameron Elementary School in Humboldt Park and Whittier Dual Language Academy in Pilsen.

Architects in Schools places architecture professionals in Chicago classrooms to explore and investigate the broader theme of architecture as a changemaker. Volunteers engage the students in critically analyzing their neighborhoods for opportunities to create positive change and utilizing architecture as a means for implementing solutions. The initiative is managed through AIA Chicago's Community Engagement Affinity Group.

Other participating schools have included Chavez Multicultural Academic Academy (Back of the Yards), George M. Pullman Elementary (Pullman), Gunsaulus Scholastic Academy (Brighton Park) and Sidney Sawyer Elementary School (Gage Park). For more information, visit aiachicago.org.




The AIA Chicago Foundation Hosts Chicago Architecture + Design College Day

This September, nearly 200 high school and college students joined their parents, teachers, and counselors for Chicago Architecture + Design College Day. This free event — an initiative of the AIA Chicago Foundation — enables students to learn more about careers in architecture, construction management, interior design, landscape architecture, and urban planning.

Hosted at Harold Washington Community College, the day began with a student-led panel: What You Need to Know to Get Started in Architecture School. Following a lively discussion, which included

Q&A with college students enrolled in local architecture programs, attendees then browsed the booths of approximately 50 colleges from around the United States that provided information and answered questions on their degree programs.

The program was organized as part of the Consortium for Design and Construction Careers, a group of individuals, colleges, and allied associations that are joined together to assist individuals interested in the profession of architecture and related fields. For more information, visit chicagocareerday.org. 



A personalized payment solution built with your clients in mind



At ClientPay, we make accepting payments simple, so you can focus on what matters most to your business: your clients.

Our user-friendly payment solution allows building and design professionals like you to securely accept credit, debit, and eCheck payments anytime, from anywhere—in the office, online, or even at a project site.

- ✓ Make it easy for your clients to pay you 24/7
- ✓ Enjoy faster, more reliable payments
- ✓ Experience customer support from real people every time you call



clientpay.com/aia-chicago
866-280-2424



Please Send Your News To:

editor@aiachicago.org

By submitting content to *Chicago Architect*, you consent to publication and affirm you have permission to distribute any photos.

IMAGE CREDIT: KATE JOYCE STUDIOS



Perkins Eastman promoted **David Larson, AIA**, to associate principal, and **Ramu Ramachandran, AIA**, to principal.



For its design of the Railyard Park in Rogers, Arkansas, **Ross Barney Architects** was awarded *Fast Company's* 2022 Innovation by Design award in the Urban Design Category.



Carol Ross Barney, FAIA, HASLA, was honored as the Design Leader in *Architectural Record's* Women in Architecture Awards.

IMAGE CREDIT: TARA WHITE



Canopy / architecture + design has promoted four AIA Chicago members: **Armando Tobias, AIA** to principal; **Andreea Micu, AIA**, to senior associate; **Josh Mings, AIA**, to senior associate; and **Catherine Varnas, AIA, LEED GA**, to senior associate.

ALL IMAGES ARE COURTESY OF THE FIRM, UNLESS OTHERWISE NOTED. LEED AP STATUS IS INDICATED ONLY IF REPORTED BY THE FIRM.

IMAGE CREDIT: JASON KEEN



Moody Nolan announced the completion of the Friend Family Health Center, a multi-use medical facility spanning three blocks in Woodlawn on Chicago’s South Side. Moody Nolan renovated the space that was once a beauty supply store.



Nate Koschmann, AIA, has joined **SmithGroup** as the firm’s Higher Education Studio leader.



Jaime Torres Carmona, AIA, LEED AP BD+C, principal and founder of **Canopy / architecture + design**, has been appointed to serve on National Advisory Jury for the 2023 AIA Gold Medal and Firm of the Year Awards.



Orlando, Florida-based **Baker Barrios Architects** announced the opening of its Chicago office located on Wacker Drive. This is the fourth office for the firm, joining practice sites in Orlando, Tampa, and Nashville. **Brad Lutz, Assoc. AIA**, has been hired to oversee the new office as managing principal and multifamily/residential practice leader.



Lucien Lagrange, AIA, will join **Lamar Johnson Collaborative** as a principal and will act in the role of senior design consultant. Additionally, **My-Nga Lam, AIA**, **Victor Krasnopolsky, AIA**, and **Alfredo Marr, AIA**, will also join as principals. With the addition of this new team, Lamar Johnson Collaborative will have a staff of over 250 and offices in Chicago, St. Louis, Los Angeles, Phoenix, Kansas City and Atlanta.



Nia Architects and **Ross Barney Architects** broke ground on Auburn Gresham Apartments, a two-building, 58-unit, mixed-use complex that represents the first of more than 10 construction projects to move forward through the City’s INVEST South/West initiative.



Please Send Your News To:
editor@aiachicago.org

By submitting content to *Chicago Architect*, you consent to publication and affirm you have permission to distribute any photos.



Inho Rhee, AIA, has been promoted to principal at **Skidmore, Owings & Merrill**.



Jason Pugh, AIA, was promoted to global director of Diversity, Equity & Inclusion, design manager, and principal at **Gensler**.



Grant C. Uhler, FAIA, was promoted to global director of large projects and principal at **Gensler**.

Catherine Baker, FAIA, has been named as the chair of the 2023 AIA Housing Awards alongside a distinguished group of national jurors. The jury will be reviewing housing projects of all types and sizes across the country under the AIA Framework for Design Excellence.



VDTA has promoted **Andrew Paul, AIA**; **Jake Emery, AIA**; and **Matt Gilbert, AIA**, to associates.



Goettsch Partners announced the completion of **Guangxi China Resources Tower**, a new 1,322-foot-tall skyscraper in Nanning, Guangxi, China, that is also the city's tallest building.



Legat Architects has named **Adam Quigley, AIA**, director of its Chicago studio and **Rob Wroble, AIA**, director of its Oak Brook location.



DAAM was featured as "Next Progressives" in *Architect Magazine*. The firm is led by **Elyse Agnello, AIA**, and **Alex Shelly, AIA**.

PROJECT White Plains
Library,
White Plains, NY

DESIGN IQ Landscape
Architects

PRODUCT City Park
Paver™ in Series™ finish



Your **CREATION**

Our **TEAMWORK**

Our team of Commercial Design Consultants are ready to support your next unit paving project from start to finish.

Combine our technical expertise with a vast array of Unilock colors, shapes and textures, to bring your unique vision to life.

Contact for samples, product information and Lunch & Learns.

UNILOCK.COM | 1-800-UNILOCK

UNILOCK 
PAVING IT FORWARD YEARS



Humble Giant

Ralph Johnson, FAIA, Receives the 2022 AIA Chicago Lifetime Achievement Award

BY DILLON GOODSON

If you were a frenzied commuter or unsuspecting tourist walking down Michigan Avenue during rush hour on the evening of September 12, you probably would have found yourself asking: who's Ralph?

The answer would have been marching right beside you.

Flanked by roughly 100 of his Perkins&Will colleagues, family members, and friends — all sporting Ralph-branded swag and with a brass band in tow — architect Ralph Johnson, FAIA, made his way in ceremonious style from the firm's offices in the Wrigley Building to Millennium Park.

Perkins&Will's parade reflected the deep admiration and esteem in which Johnson's colleagues hold him. During Designight at the Jay Pritzker Pavilion, Johnson received the 2022 AIA Chicago Lifetime Achievement Award.

AIA Chicago's Board of Directors confers its highest award annually to an architect who has had a significant impact on the profession of architecture. Previous recipients of the award include, among others: Phillip C. Johnson, FAIA; Stanley Tigerman, FAIA; Helmut Jahn, FAIA; Natalie DeBlois, FAIA; and Gertrude Lempp Kerbis, FAIA. For the first time, this year's awards process began with an open nomi-

nation followed by multiple rounds of anonymous voting and discussion prior to making a selection.

By all accounts, Johnson wasn't destined to become an architect. The son of a TV repairman and a stay-at-home mom, he was the first in his family to go to college. Growing up on one of the last few blocks of the Southwest Side before you reach the suburbs, he lived closer to the Indiana border than he did to the modern buildings that began dotting the Chicago skyline around the time he was born.

Yet, today, Johnson has become one of the foremost flagbearers of a new Modernism — and a link to an era of architects remembered

as much for their buildings as their personalities.

But not Johnson. Writing in a 1995 article in the *Chicago Tribune*, architecture critic Blair Kamin explained how Johnson broke the mold. "Without fanfare or a towering ego — perhaps because he lacks a towering ego — Ralph Johnson is softening the hard edges of modernism, shaping schools and civic centers and skyscrapers that at once belong to their surroundings and bring something fresh to them."

Johnson's passion for architecture can be traced to a single building down the street from his childhood home: Frank Lloyd Wright's

R.W. Evans House at 99th Street and Longwood Drive. Fascinated by the home's design and inspired by the rich architecture of the city, he decided to enter the profession.

Reportedly, it took just one year for the young Johnson to complete a three-year mechanical drawing class at Morgan Park High School. Upon his graduation, he attended the University of Illinois Urbana-Champaign, where he was in the same class as fellow Chicago architect Carol Ross Barney, FAIA, HASLA, the 2017 recipient of AIA Chicago's Lifetime Achievement Award.

Ross Barney remembers meeting Johnson for the first time when they were both 17 years old. "We knew from the moment that we met him that he was going to be a game-changer," she recently recalled. "Fifty years ago, Ralph was the leader of our class — and he's stayed in that position."

With his Bachelor of Architecture degree in hand, he spent a year working in the practice of Stanley Tigerman, FAIA, before moving away once more to achieve his Master of Architecture — this time, from Harvard University. In 1976, he returned to Chicago for good, joining the office of Perkins&Will, where he has served as the firm's global design director ever since.

Johnson's portfolio includes some of Chicago's most recognizable buildings, from the Peggy Notebaert Nature Museum and the Rush University Campus Transformation Project — which includes the prominent hospital tower along the Eisenhower Expressway — to William Jones College Preparatory High School and Terminal 5 at O'Hare International Airport. Outside Chicago, he has made his mark in cities like Cleveland, Washington, D.C., and Shanghai.

By one measure, Johnson's projects have received upward of 150



RALPH JOHNSON, FAIA, (CENTER) WITH AIA CHICAGO PRESIDENT-ELECT MINDY VIAMONTES, AIA, NCARB, (LEFT) AND PRESIDENT DREW DEERING, AIA (RIGHT).



RALPH JOHNSON, FAIA. PHOTO BY FRANCISCO LÓPEZ DE ARENOSA



RALPH JOHNSON, FAIA, WITH HIS DAUGHTER CLAIRE JOHNSON (LEFT) AND WIFE KATHY JOHNSON (RIGHT).

awards. That includes 10 national awards and more than 80 regional awards from the AIA. But while many architects would be happy to hang their hats on achievements like these, Johnson continues pressing forward, helping to shape the careers of other architects who draw influence from his 50 years of experience in the profession.

Casey Jones, director of the Design Leadership Council at Perkins&Will, has known Johnson for nearly half of this time. "As a colleague, he is amazingly insightful," Jones said of working with Johnson. "We have a culture of design review here at Perkins&Will where we invite people who aren't on the project team to come and review the projects, and Ralph is

easily the most requested because he just brings such thoughtful insight to everything."

Ross Barney estimated the number of architects Johnson has influenced over his career to be in the thousands.

Marching through the Loop last September, the Ralph fan club was on full display. Even Chicagoans who aren't familiar with Ralph — the person — would know his buildings, which are affectionately referred to by his fellow architects as "Ralph buildings."

"He's one of those architects who has transcended his last name," explained Reed Kroloff, dean and the Rowe Family College of Architecture Endowed Chair at the Illinois Institute of

Technology. "And there are a lot of architects in the profession who never get to that."

For those who know him best, this humble kid from the Southwest Side has never been motivated by fame or notoriety. Instead, they say, his success can be measured by the impression his works leave behind on everyday Chicagoans.

"The conversation really advances each and every time someone goes by and says, 'that's interesting,'" said Kroloff. "And I think that Ralph, more than many architects — especially because of the variety of buildings he's done, and especially because of where they all are — has had that effect more than almost any other architect in the city." CA



NORCON
Inc.
312.715.9200 www.norconinc.com



YES, WE CAN DO THAT.
Buildings, Bridges, Hardscapes & more ... from concept to reality



ARCHITECTURAL CAST STONE

Maximize your Design Possibilities

www.acscaststone.com

CAST STONE PRECAST CONCRETE CAST GFRC

sales@acscaststone.com

630.377.4800

West Chicago, Illinois

ACS Management Group LLC

IMAGE CREDIT: MICHAEL YOUNG

JURORS

Architecture XS and S + Interior Architecture S and M

Annie Chu, FAIA, Chu-Gooding, Los Angeles, California
Jack DeBartolo 3, FAIA, debartolo architects, Phoenix, Arizona
Nicole Hollant-Denis, AIA, NOMA, Aaris Design Architects, New York, New York
Carolyn Kiernat, AIA, Page and Turnbull, San Francisco, California
Mark Sanderson, AIA, Digsau, Philadelphia, Pennsylvania
Joan M. Soranno, FAIA, HGA, Minneapolis, Minnesota

Architecture M, L, and XL + Interior Architecture L

Deborah Berke, FAIA, Deborah Berke Partners, New York, New York
Merrill Elam, AIA, Mack Scogin Merrill Elam Architects, Atlanta, Georgia
Damaris Hollingsworth, AIA, Design by Melo, St Louis Park, Minnesota
Michael Marshall, FAIA, NOMA, Michael Marshall Design, Washington, D.C.
Lawrence Speck, FAIA, Page Architects, Austin, Texas
Mehrdad Yazdani, Assoc. AIA, Yazdani Studio at Cannon Design, Los Angeles, California

DESIGN EXCELLENCE AWARDS

AIA Chicago's Design Excellence Awards honor the outstanding work of AIA Chicago members and their firms, reinforce the value of great architecture and highlight members' contributions in designing equitable and sustainable places and spaces. In alignment with the chapter's strategic goals of equity and inclusivity, AIA Chicago restructured the Design Excellence Awards

program in 2022 to accommodate the depth and breadth of the strong work being produced across AIA Chicago membership. The restructured Design Excellence Awards recognize projects of all scales, from Architecture XS to XL to Interior Architecture S to L, encompassing what in previous years were standalone Small Project Awards.

“ In merging together the Small Project Awards with the Designight Awards, we were able to create a singular ceremony that celebrated all award-winning members together. This effort also coordinated with the idea of a free Designight that allowed all of AIA membership as well as colleagues, clients, family and friends to attend.”

– Lynda Dossey, AIA, Vice President, Honors and Awards

“The Gillson Park Beach House was a profoundly well-executed project that reflects sophistication and great deliberation on the part of the design team to care for and foster such a rich experience.”

– Juror



IMAGE CREDIT: MIKE SCHWARTZ

Gillson Park Beach House

Woodhouse Tinucci Architects

Location: Wilmette, Illinois

Client: Wilmette Park District

General Contractor: WB Olson, Inc.

Civil Engineer: Gewalt Hamilton Associates, Inc.

Structural Engineer: C.E. Anderson & Associates, P.C.

MEP Engineer: Morton Gestalt Engineering

Landscape Architect: Confluence (formerly Wolff Landscape Architecture)

Nestled between 60 acres of prime parkland and the Lake Michigan shoreline, Wilmette’s Gillson Park Beach House offers both park and beach amenities within a singular site.

The project began with a failed referendum — a public that was dissatisfied with the park district’s original proposal for the site, leaving them to manage a 50-year-old failing beach house. Responding to calls for transparency in the design process, Woodhouse Tinucci Architects were brought on board, hosting 22 public meetings over nine months before a new vision for the project emerged.

This transparent process informed the design of a transparent building. Using the site and existing dunes as inspiration, architects extended its perceived ridgeline parallel to the swimming beach and let the beach house meander like a dune along the shoreline. With this intervention, the beach house becomes a mediator between the park and the beach, its form gently rising up from a classic dune fence.



IMAGE CREDIT: MIKE SCHWARTZ

The driving concept leverages the fundamental belief that beaches are more important than buildings. After all, architects figured, it is the lake and its beach that draw patrons to this place; and human comfort, if appropriately addressed, allows greater appreciation of this natural sanctuary. The resulting structure treats architecture as an accessory to a landscape — a refuge within a refuge — to offer shade, rest or relief.

Most of all, it fulfills the community’s desire for amenities without a building — and security without a wall.

“The Granor Farm Greenhouse is a spectacular example of utilitarian beauty, taking a pre-engineered greenhouse and transforming it into a beautiful laboratory of food growing and preparation — a place that we all want to visit and experience from the inside.”

— Juror



IMAGE CREDIT: TOM HARRIS, TOM HARRIS ARCHITECTURAL PHOTOGRAPHY

Granor Greenhouse

Wheeler Kearns Architects

Location: Three Oaks, Michigan

Client: Granor Farm

Structural Engineer: C.E. Anderson & Associates, P.C.

MEP Engineers: Mansfield Engineering and Building Engineering Systems

Landscape Architect: McKay Landscape Architects

Lighting Design: Lux Populi

Established in 2006, Granor Farm, the first certified organic vegetable farm in Southwest Michigan, has expanded its site and offerings to its local community. The newly constructed Granor Greenhouse achieves the farm’s goals of creating an inventively programmed and conditioned space for food education, production, and citizenry under one roof. With agrarian economy and utility in mind, the prefabricated 7,336-square-foot glass structure immerses farm staff, chefs, Farm Camp youths, visitors and farm-to-table diners into a working vegetable farm while delightfully engaging all of their five senses.

The greenhouse was designed to fit into the existing farm and local typologies. Galvanized steel, mill-finished aluminum, and access doors painted “Farmall” red visually tie it to the other buildings on the farm. Harvesting the sun with its broadside facing south, the building utilizes the Dutch Venlo greenhouse kit-of-parts system and organizes its diverse program into three zones with associated glazing strategies. The central zone — designed for maximum program flexibility with a kitchen that supports daily food and bakery production — uses clear glass to provide unencumbered views out to the fields and sky above. In the eastern and western zones, which include



IMAGE CREDIT: STEVE HALL, HALL + MERRICK + MCCAUGHERTY PHOTOGRAPHERS

an herb garden and space for production, translucent glass provides the most diffuse, ideal growing environment.

Innovations in heating, cooling, and lighting enabled the project to fold these multiple uses into one seamless structure. The greenhouse enclosure is equipped with automated, operable vents that naturally modulate the inside air temperature during temperate days. During winter, radiant hydronic piping within the concrete floor introduces heat close to occupants while a variable refrigerant flow (VRF) system adds additional heat from above. Overhead, the abundant daylight is tempered by operable horizontal shades, and with the wood volumes punctuated with round “roof” openings, every space is lit by day by natural light. At night, a grassy berm shields vehicular headlights from shining into the grounds, while softly downlit trees around the perimeter draw the eye through the glass out into the surrounding context.

O’Hare International Airport Emergency Generator Station

Epstein with Andrew Metter, FAIA

Location: Chicago, Illinois

Client: Department of Aviation, City of Chicago

General Contractor: Broadview Electric

MEP Engineer: CCJM Engineers

Architectural Support: Petrea Collaborative

Scheduling and Estimating: Jones Moore Construction

Located adjacent to an iconic C.F. Murphy Associates heating and refrigeration plant, the O’Hare International Airport Emergency Generator Station has been designed as a work of architecture that is both respectful of the past, as well as a harbinger of the future. Comprising two buildings elevated on a raised garden plinth, the structures become a focal point for travelers exiting the airport by Terminal 3 — an evocative form for a building that serves a utilitarian purpose.



IMAGE CREDIT: MARK BALLOGG, BALLOGG PHOTOGRAPHY

The building housing the hibernating generators is sheathed in a taut black anodized aluminum skin — an aesthetic homage to, and extrusion of, the architecture of the original plant building to the south. The second building, clad in channel glass, houses the electrical switchgear and is in a constant energized state. Together, the two buildings provide a practical solution — fire separation and equipment access — and result in a harmonious balance of light and dark, transparent and opaque, smooth and textured. The resulting architecture becomes an expression of the two energy states: potential and kinetic.

Riverview Pedestrian Bridge and Bike Path

Epstein with Andrew Metter, FAIA

Location: Chicago, Illinois

Client: Chicago Department of Transportation

Associate Architect: UrbanLab

General Contractor: Illinois Constructors Corporation

Landscape Architect: Hoerr Schaudt Landscape Architects

Lighting Design: Singh & Associates

Riverview Pedestrian Bridge and Bike Path was conceived as the “connector piece” that would serve as the final link in a multi-mile bike trail system along the north branch of the Chicago River. The solution takes the form of an elevated cyclist highway, locating the trail completely in the river, saving the existing vegetation and avoiding de-stabilizing the bank. The result is a clean, constructible, economical structure that leaves the green riverbanks intact.

The structure is designed as an extrusion, utilizing the same cross-section for both the bridge portion of the trail and the path itself.



IMAGE CREDIT: MARK BALLOGG, BALLOGG PHOTOGRAPHY

Constructed of maintenance-free COR-TEN steel, the structure and material choice were designed to relate to the bridge’s natural surroundings, blending in during summer and fall and contrasting in winter and spring. Utilizing a functionally sculptural form, the bridge provides joggers and cyclists with breathtaking views of the woods and river. In the evening, the integral lighting provides a continuous luminous path, creating a ribbon of light weaving through the forest.

Rising Sun**David Hovey Sr., FAIA****Location:** Scottsdale, Arizona**Client:** Optima DCHGlobal, Inc.**General Contractor:** Optima DCHGlobal, Inc.

In the middle of Arizona's Sonoran Desert, Rising Sun is one in a series of prototypical structures for a planned rollout of entirely factory-made modular housing. Composed of five steel modules ranging from 18 feet by 72 feet to 18 feet by 36 feet, the structures form a compound with a home made up of two staggered modules connected at the long sides, a garage, a gallery and a studio. The five units are grouped to envelop a private inner courtyard.

The challenging desert site is located in a flood plain. To mitigate flooding, each module rests on just four concrete piers, set at least 12 inches above the high water mark so that floodwaters can flow unobstructed through the property. Responding to the intense desert sunlight, a system of sun shades mounted above the windows shelter the interiors, while punched horizontal members mounted on the exterior provide both shading and privacy to select areas.



IMAGE CREDIT: BILL TIMMERMAN

The project took only five days to fabricate in the controlled factory conditions and was lifted into place by crane in two hours — saving time and cutting costs.

SOS Children's Villages**JGMA****Location:** Chicago, Illinois**Client:** SOS Children's Villages Illinois**General Contractor:** Lendlease**Civil Engineer:** Knight Partners LLC**Structural Engineer:** TGRWA LLC**MEP Engineer:** Cosentini Associates**Landscape Architect:** site design group, Ltd.

The design for the new SOS Children's Villages exemplifies a unification of SOS's child-fostering mission with the surrounding family "villages" of the Roosevelt Square community. The prominent corner site along the active Blue Island Avenue, just south and west of Chicago's downtown area, welcomes engagement with adjacent residential neighborhoods while presenting a positive and compelling outward image to the public. Slated to be the first new cross-laminated timber (CLT) structure built in Chicago, the design is a physical manifestation of the forward-thinking nature of the SOS Children's Villages organization.

Serving dual purposes, the building provides an opportunity for foster children and their families to gather and becomes a community center for all of



IMAGE CREDIT: TOM ROSS

Chicago. Its design prioritizes the safety and wellness of its occupants while stewarding a new kind of sustainable development in Chicago. The use of CLT greatly reduces the building's carbon footprint over the use of concrete and steel. Meanwhile, the entire roof is covered in photovoltaic panels, which generate an estimated 58 percent of the facility's power needs.



IMAGE CREDIT: CHRISTOPHER BARRETT, CHRISTOPHER BARRETT PHOTOGRAPHY

BARDAVID

Brininstool + Lynch

Location: Chicago, Illinois

Client: The University of Chicago

Architect of Record: Diller Scofidio + Renfro for the David Rubenstein Forum

General Contractor: Norcon

MEP Engineer: Primera Engineers, Ltd.

Kitchen Equipment: Cini-Little

Lighting: Polymath Design

On the campus of the University of Chicago, architects at Brininstool + Lynch envisioned a place of reprieve. Known as BARDAVID, the bar and restaurant pairs Mediterranean cuisine with a design that is sophisticated yet approachable, elevating the dining scene in Hyde Park and becoming a focal point on the ground level of the new David Rubenstein Forum.

The space for the restaurant was a tight fit in every direction. Viewing this narrowness as an opportunity for creativity, architects organized their plan into three sections: a bar and standing room at the front, casual seating in the middle and intimate and private seating at back. Each section is supplemented with custom-designed furniture pieces, like a long linear banquette, to allow for the grouping of tables for larger parties and round banquettes with taller backs to allow for more intimate conversations. These custom furniture pieces also allowed for flexibility in arrangement or relocation for private events.

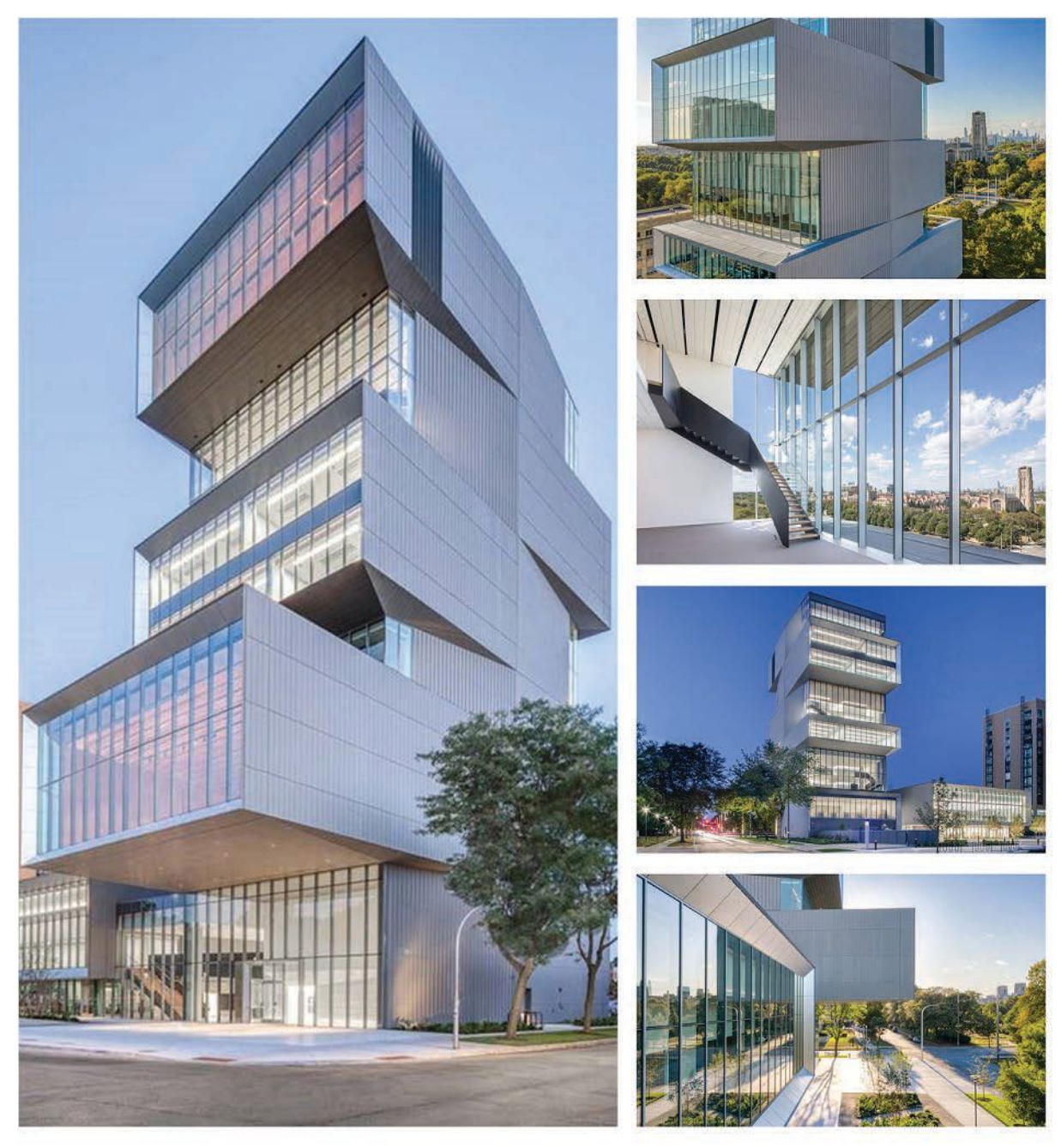


IMAGE CREDIT: CHRISTOPHER BARRETT, CHRISTOPHER BARRETT PHOTOGRAPHY

Overhead, a parametrically designed cloud of lights animates the main seating area. By deftly weaving each pendant between the walnut wood slat ceiling to conceal any attachment points, the cloud seems to hover independently over the diners. The glow of the cloud not only casts an even and warm glow in the interior, but the sparkle of lights can be seen from the outside, attracting onlookers walking along the Midway Plaisance and lingering in the main plaza.

While only a small portion of the larger Forum, BARDAVID integrates into the overall function and performance of the building and amplifies the social outreach to the community within and outside the university. The Forum was designed as an event space that allows for all sizes and types of gatherings, while the restaurant facilitates more intimate conversations that will naturally spill out of the building's year-round events.

**Congratulations to our partners at
Diller Scofidio + Renfro on receiving the
AIA Chicago Design Excellence Award on the
David Rubenstein Forum Project.**



Glass Solutions is proud to be a part of your success.



Dayglow

Range Design & Architecture

Location: Chicago, Illinois

Client: Tohm Ifergan

General Contractor: Crosstown Design Build

Engineer: DDG Engineers

Concrete: Kerr Concrete

Steel Fabricator: Stolatis Fab

Millworker: Creative Woods Inc.

Dayglow is the first venture outside of LA for the award-winning retail coffee and tea company. Working closely with the client, architects at Range Design & Architecture developed a design reflective of the brand's aesthetic values, creating a notable destination along Chicago's 606.

The space is defined by its striking use of color and light, with a monolithic, concrete bar serving as the primary organizing element of the interior. The bar is positioned asymmetrically to the front entry, allowing customers to comfortably circulate in front of the bar and offering a view to a slatted wall



IMAGE CREDIT: JAMES JOHN JETEL PHOTOGRAPHY

beyond. Overhead, a custom pendant echoes perforations of large sliding glass doors and precisely illuminates the countertop surface.

The palette within the space makes use of a single color along the surrounding walls and a continuous cove around the perimeter, enveloping the space in a warm, ambient glow. The resulting atmosphere is light and airy, contrasting with the weight of the concrete floor and monolithic bar.



Chicagoland Millworkers

Get the most Professional Qualified Woodwork Fabricator for your Upcoming Project.

From Graceful Staircases to Exquisite Cabinetry
Chicagoland Millworkers will meet your Construction needs.

www.chicagolandmillworkers.com

Take your design to reality with pride!





IMAGE CREDIT: BRETT BEYER, COURTESY OF DS+R

“I was particularly impressed by the way this building addressed neighborhoods to the south of the site. It has a very nice entry north towards the rest of the University of Chicago campus but, unlike most of the buildings on that edge of the campus, it also acknowledges the community on the other side.”

– Juror

David Rubenstein Forum

Diller Scofidio + Renfro

Location: Chicago, Illinois

Client: The University of Chicago

Associate Architect: Brininstool + Lynch

General Contractor: Turner Construction

Civil Engineer: Terra Engineering

Structural Engineer: LERA Consulting Structural Engineers

MEP/FP/Code/Life Safety/Energy Consultant: Primera Engineers, Ltd.

Landscape Architect: site design group, ltd.

Facade Consultant: Thornton Tomasetti

Lighting Consultant: Tillotson Design Associates

Vertical Transportation Consultant: Syska Hennessy

Food Consultant: Cini-Little

LEED Consultant: HJKessler Associates

Specifications Consultant: Construction Specifications, Inc.

Cost Estimator: Dharam Consulting

Waterproofing: Simpson Gumpertz & Heger

The David Rubenstein Forum at the University of Chicago is a space of discourse and intellectual exchange aimed at fostering the outward engagement of visiting scholars, researchers and dignitaries from around the world. Located on Chicago’s Midway Plaisance across from Rockefeller Chapel, the Forum stands out as an unconventional take on the traditional convention center.

Responding to the University’s need for a singular forum to host meetings and conferences, architects addressed multiple communities with building components that are stacked, rotated and oriented not only toward downtown Chicago, but also toward the Woodlawn neighborhood. This sense of community continues on the inside of



IMAGE CREDIT: BRETT BEYER, COURTESY OF DS+R

the building as well; rather than funneling into large hallways after meetings, guests move from the convening space into multi-story social areas. These spaces are stitched together by stairs to encourage people to move up and down throughout the day without the use of elevators in order to meet up with their colleagues.

Promoting the university’s dedication to sustainability, the building introduces more green space to the Midway Plaisance and draws the natural environment into interior spaces. It incorporates state-of-the-art energy conservation technologies including bird-safe glazing, natural and LED lighting systems, radiant conditioning and rainwater harvesting. In order to re-establish a connection to the natural environment and maximize daylight, convening spaces provide views of the outdoors via floor-to-ceiling glass, as well as access to adjacent green roofs, connecting guests to the surrounding campus and community.

The 801

DESIGNBRIDGE, Ltd

Location: Oak Park, Illinois

Client: The Community Builders

General Contractor: Joseph J. Duffy Company

Civil Engineer: 2IM Group, LLC

Structural Engineer: Virgilio and Associates

Traffic Engineer: Sam Schwartz

MEP/FP Engineer: Quest Design Group

Landscape Architect: site design group, ltd.

Interior Designer: Vara Design

In the backyard of Oak Park's architectural masterpieces, the 801 addresses a shortage of affordable housing in the community through an expression of modern design. Consisting of 37 affordable apartments, it provides high-quality housing to residents earning up to approximately \$17 per hour, plus five units for individuals with disabilities, two ground-floor live/work units and a 900-square-foot commercial retail space.

The building's design responds to the neighborhood context, beginning with the detailing of the building's skin. Long format bricks in a variegated combination of earth tones, in addition to the use of "V" joints for the horizontal mortar, emphasize horizontality and echo the craftsmanship found in many of Frank



IMAGE CREDIT: TOM HARRIS PHOTOGRAPHY

Lloyd Wright's notable buildings. This high-quality masonry work is complemented with bronze metal highlights and simple detailing to further emphasize connections to nature.

The site's walkable access to the CTA Blue Line presented the opportunity for a mixed-use, transit-oriented development that could contribute to economic activity with the integration of active ground floor uses. The resulting building establishes a new gateway, forming a transition between the commercial corridor to the south and the residential fabric to the north.



IMAGE CREDIT: MARIA MONTEAGUDO

KLEO Art Residences

JGMA

Location: Chicago, Illinois

Client: K.L.E.O. Community Family Life Center

General Contractor: Joseph J. Duffy Company

Civil Engineer: David Mason & Associates

Structural Engineer: Forefront Structural Engineers

MEP/FP Engineer: Consentini Associates

Landscape Architect: site design group, ltd.

Located in Chicago's Washington Park neighborhood, KLEO Art Residences challenges norms in affordable housing by making natural light and quality of living the overriding priorities. Intended to serve local artists in the community and become a catalyst for development on the Southside of Chicago, the building embodies the mission of its occupant, which beckons Chicagoans to "keep loving each other."

Polycarbonate panels represent most of the exterior envelope — a first of its kind in Chicago construction. This provides optimal daylighting for its artists and residents on the inside, while in the evening hours, the building becomes a glowing beacon within the community. Responding to inadequate places for artists to distribute their work, the ground level contains retail spaces where artists can showcase, exhibit and sell their work. Throughout, the building makes use of natural materials that maximize the longevity of the space while providing a raw aspect to the interior.

By The Hand Club - Moving Everest

Present Future Architects

Location: Chicago, Illinois

Client: By The Hand Club For Kids

General Contractor: Novak Construction Company

Civil Engineer: Atwell LLC

Structural Engineer: Forefront Structural Engineers

Mechanical Engineer: Salas O'Brien

Acoustics: Threshold Acoustics

Specification Writer: ArchiTech Consulting, Inc.

By The Hand Club — Moving Everest is a partnership between Moving Everest Charter School and By The Hand Club For Kids to serve 810 kindergarten through eighth-grade students in Chicago’s Austin neighborhood. This school-plus-after-school model provides a rigorous education during the school day and holistic services in the after-school hours, including technology-assisted and blended learning that personalizes the learning experience for each child.

Unique features of the building include a metal rainscreen cladding system that incorporates the partnership’s bold and vibrant brand colors. Cantilevered second- and third-floor STEM classrooms create space for an exterior rubberized play surface, facilitating an interior layout that encourages efficient movement for the blended learning rotational model. Throughout, generous windows allow natural light to penetrate into classrooms, letting all the energy, joy, and achievement happening on the inside of the building weave its way through the façade.

The school-plus-after-school program has become a transformative fixture in the community and was even dubbed “The Miracle on Laramie.”

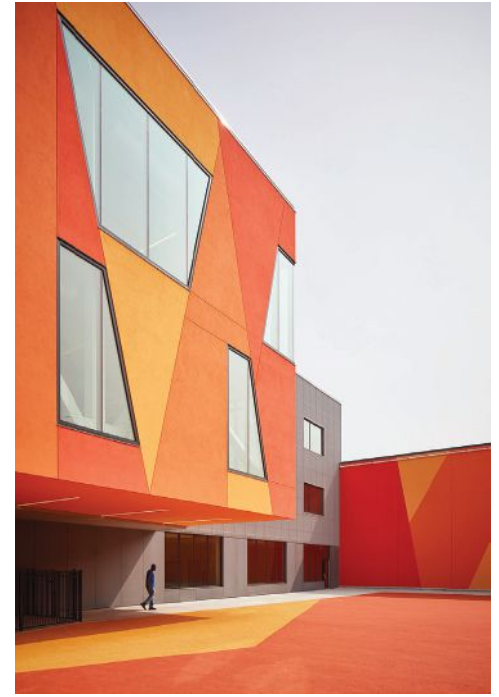


IMAGE CREDIT: TOM HARRIS PHOTOGRAPHY

POWERING CHICAGO

IBEW 134/NECA

BETTER CONSTRUCTION.
BETTER CAREERS.
BETTER COMMUNITIES.

CHICAGOLAND'S LEADING ELECTRICAL RESOURCE

Powering Chicago is an electrical industry labor management partnership between IBEW Local 134 and the Electrical Contractors’ Association (ECA) of Chicago and Cook County that invests in consistently better construction, better careers and better communities. Powering Chicago is your Industry resource for electrical construction. Our members include leading experts in construction safety, innovation, emerging technology, and energy solutions. Visit our growing resource center of free online publications and expert electrical contractors at poweringchicago.com.



100+ INDUSTRY AWARDS
BETTER CONSTRUCTION



APPRENTICE AMBASSADOR
BETTER CAREERS



100+ CHARITABLE EVENTS
BETTER COMMUNITIES



The Time is Now: Considerations
for EV Charging Infrastructure

EXPERT PUBLICATIONS
YOUR RESOURCE

POWERINGCHICAGO.COM



@POWERINGCHICAGO



Robert Crown Community Center

Woodhouse Tinucci Architects

Location: Evanston, Illinois

Client: City of Evanston

Collaborating Architect: MJMA Architecture and Design

General Contractor: Bulley & Andrews

Civil Engineer: Terra Engineering

Structural Engineer: Stearn-Joglekar

Mechanical and Refrigeration Engineer: Smith+Anderson

Acoustics/AV Engineer: Arup

Engineer of Record: CCJM

Lighting Design: AKLD Lighting Design

Landscape Architect: Environmental Consulting Technology

The Robert Crown Community Center offers a complex hybrid of recreational and educational programming to the surrounding community, mediating Crown Park's connection to Evanston's neighborhoods and existing community infrastructure. The building — a community center with a public library, preschool, community rooms, gymnasium and two ice rinks — hugs the park's west boundary, buffering it from busy Dodge Avenue and forming a richly landscaped parkland.



IMAGE CREDIT: TOM HARRIS PHOTOGRAPHY

A transparent design process engaged community members in more than 20 public meetings. The resulting structure stays true to the feedback shared with its architects, opening itself up to the site and marrying the inside with the outside. To allow for more space on the tight site, the gymnasium is lofted above the entry, creating an exterior public shelter with views into the gym as a foreshadowing of the activities within. Once inside, visitors have views of the essential rooms from the center, connecting them to the community of use throughout the space.

Proud lighting and controls partner of Chicago's talented architects and designers. **Congrats to all the AIA Award recipients!**



How is our approach to association communications better?

it's polished

Our team of perfectionists makes you look good with custom publications you'll be proud to show members and partners.



844.423.7272 | advertise@innovativepublishing.com
www.innovativepublishing.com



IMAGE CREDIT: MIKE SCHWARTZ

999 Residence**Vladimir Radutny Architects****Location:** Chicago, Illinois**Client:** Undisclosed**General Contractor:** Instyle Construction**MEP Engineer:** Zoetic Building Consultants

Located in one of the oldest multifamily buildings in Chicago, 999 Residence explores juxtaposition, introducing a new material and spatial dialogue within the perceptive weight of a historic structure.

Erected in 1912, the building was originally built with three distinct units per floor, each uniquely shaped because of its location along the bend of Lake Shore Drive. In contrast to today's lifestyle, the apartments were designed in a time of compartmentalized living, with servants and social formalities in place, resulting in a divided interior with little connection to the outside.

Seeking to live in a brighter and more open space, clients tasked Vladimir Radutny Architects with combining two apartments into a single 6,200-square-foot dwelling. The geometry and scale of the historic building's footprint presented opportunities to articulate new walls, ceilings, and material transitions in unexpected ways. White oak cabinetry meanders throughout the apartment, gracefully interacting with the columns, ceilings and floors. Thin steel frames with obscured glass transmit light from both the east and the west into a central circulation that connects sleeping and living, creating a blank canvas for the display of an ongoing collection of personal objects and art.

Each of these elements is organized around original columns that were liberated during the demolition process. At the heart of the new floorplan, where two primary living zones intersect, the kitchen choreographs open spaces and views. This is the only place within the apartment where one can experience the mood of Lake Michigan from north to south as well as views of the city to the west.

Sensibly stitching the past with a lighter design logic, 999 Residence becomes a comfortable home, adding a new chapter to an ongoing story.



IMAGE CREDIT: MIKE SCHWARTZ

The Grand Army of the Republic Rooms at the Chicago Cultural Center

Harboe Architects

Location: Chicago, Illinois

Client: City of Chicago

General Contractor: Berglund Construction

Structural Engineer: TGRWA

Mechanical Engineer: Architectural Consulting Engineers

Architectural Conservation: Building Conservation Associates

Art Glass Consultant: Julie L. Sloan LLC

Lighting Design: Schuler Shook

Located in the north wing of the Chicago Cultural Center, the Grand Army of the Republic Rooms have been meticulously restored thanks to an anonymous donation of \$15 million.

Harboe Architects spent a full year of preparation alongside the design and construction team to unearth the original design of Shepley, Rutan & Coolidge. As many as five layers of paint and glazes obscured original wall finishes, which required the work of a dozen conservators working over a six-month period to restore. The team also recreated elaborate multi-armed bronze light fixtures that were removed decades earlier using detailed historic photographs and modern 3D printing technology.

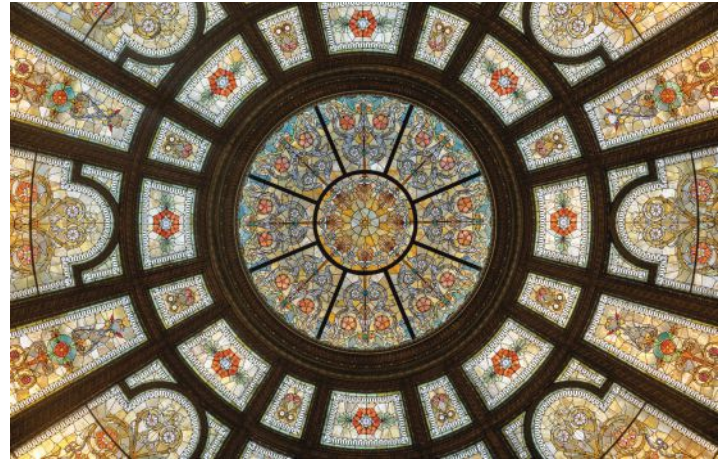


IMAGE CREDIT: TOM ROSSITER

Overhead, the restoration of the 40-foot diameter art glass dome, originally executed by Healy & Millet, entailed cleaning 145 separate panels containing 62,000 individual pieces of glass. The original skylight over the dome had been covered with concrete panels and a copper roof in the 1930s. These were removed and a modern glass skylight system was installed over the original steel frame, allowing for natural light to shine through once again.

SHANNON BOOL 1:1

Mocp
Museum of Contemporary Photography

Columbia
COLLEGE CHICAGO



FREE
Open
7 days a week

NOVEMBER 10—APRIL 2, 2023

Museum of Contemporary Photography, Columbia College Chicago
600 S. Michigan Ave., Chicago, IL 60605 **mocp.org**



AMCORK

**AMERICAN
CORK PRODUCTS
COMPANY**



importers of fine cork flooring & wall coverings

www.amcork.com 1-888-955-CORK (2675)

The Place at Fifth + Broadway**Pappageorge Haymes Partners****Location:** Nashville, Tennessee**Client:** Brookfield Properties**General Contractor:** Skanska**Architect of Record:** Gresham Smith**MEP Engineer:** Alvine Engineering**Landscape Architect:** Hoerr Schaudt**Master Planning & Retail Architect:** Gensler
(Los Angeles)**Interior Design:** Jules Wilson Design Studio

In Nashville, Tennessee, The Place at Fifth + Broadway sets a new standard for midsized American cities. Comprising a 34-story residential building positioned atop adjacent retail, restaurants, and entertainment, the development blends respectfully into the historical urban context of Lower Broadway at its base. Above, its tower's modern, gray glass volume stands out as a recognizable feature in the city's skyline.

To accomplish this delicate balance, architects drew inspiration from around them. Alleys tucked away from main streets that provide intimate retail and dining experiences are a unique part of Nashville's streetscape. This theme becomes an important part of The Place at Fifth + Broadway, where an L-shaped commercial alley was designed to feel compact and crowded, creating a feeling of intimacy that drives human interaction. Inside the residential building, various private and semi-private rooms are organized along a central circulation path, recreating the scene outside.

In designing the building's exterior, architects leaned on materials found throughout downtown Nashville. A loft-like brick base podium embraces the historical aesthetics found on Broadway and conveys a sense of permanence and age. Meanwhile, the tower is a dazzling contrast that lightly rests atop its base, designed to stand out in the city's skyline. Tying the two masses together is a repeating grid pattern that rises from the structural grid of the podium. The apartment tower's gray glass volume is overlaid by a black aluminum grid designed to anchor the tower to its base and accentuate the building's form, making it both legible and distinct from the surrounding structures.

Nashville's deep-rooted culture of music and entertainment is also mirrored in the collection of unique amenity spaces at The Place at Fifth + Broadway. The building boasts a wide array of aesthetics and materials in recording rooms, screening rooms, business centers, a gym, a yoga studio, and several other indoor and outdoor entertainment spaces. Community lounges and balconies at every third level of the tower are positioned on the east side of the building, allowing residents to visually engage with the entertainment from the mall below.

“This is exactly the kind of development that mid-sized American cities like Nashville need more of. It gives people an opportunity to live a much more sustainable lifestyle in a higher-density, mixed-use environment that is not so car-dependent. The architects did a great job of weaving this new density into the existing urban fabric of downtown Nashville in a way that makes it a real city-building project.”

— Juror

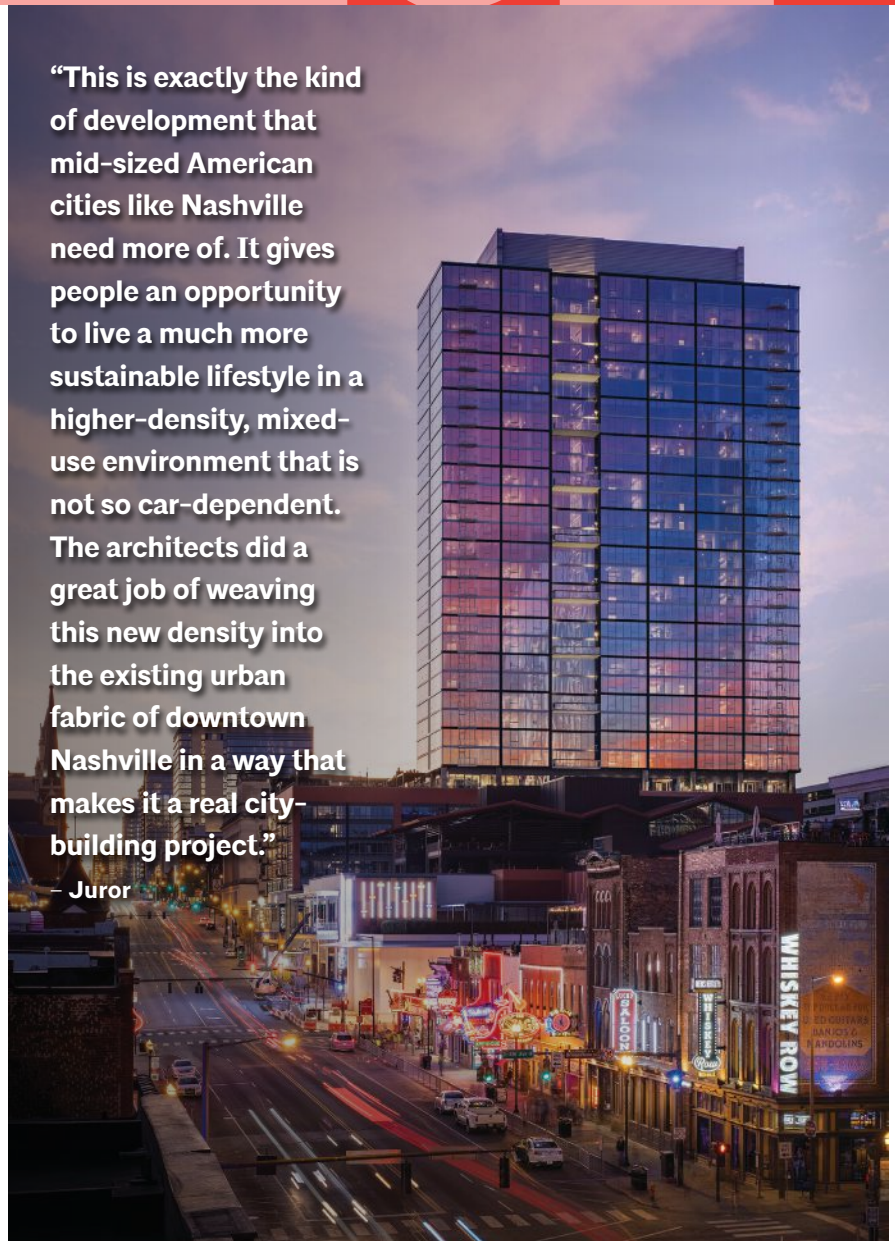


IMAGE CREDIT: ZACK BENSON PHOTOGRAPHY

IMAGE CREDIT: PAPPAGEORGE HAYMES PARTNERS



MIT SoMa Site 3 Lab Building

Perkins&Will

Location: Cambridge, Massachusetts

Client: MITIMCo. (MIT Investment Management Company)

General Contractor: Turner Construction

Structural Engineer: McNamara Salvia, Inc.

MEP Engineer: AHA Consulting Engineers, Inc.

Parking Consultant: Desman, Inc.

Acoustics, Technology, and Vibration Consultant: Acentech, Inc.

Sustainable Design Consulting: The Green Engineer, Inc.

Land Surveyor: Feldman Land Surveyors

Landscape Planning: Hargreaves Jones

Code Engineering: Jensen Hughes

Lighting Design: Lam Partners, Inc.

ICT Services: Nephin Technology, Inc.

Civil Engineer: Nitsch Engineering

Experiential Design: Roll Barresi & Associates

Wind/Wake Engineering: Rowan Williams

Davies Irwin



IMAGE CREDIT: JAMES STEINKAMP PHOTOGRAPHY

When they were tasked by the Massachusetts Institute of Technology (MIT) to design a flexible home for tenants in the corporate or laboratory sectors, architects at Perkins&Will prioritized the preservation of an existing building as part of a new addition with a dramatic presence.

A five-story mass sits below a larger upper mass rotated ninety degrees, creating dynamic cantilevers to the north and south that can be experienced from the exterior open space under development to the south. The upper volume is placed at the eastern end of the base, providing a gateway between green spaces and a large sixth-floor terrace relating to the open space below. Next door, the historic 238 Main Street building was restored on the exterior and renovated on the interior, providing relevant leasable spaces as well as a refreshed entry leading to a 95-foot-tall atrium linking the addition and the existing building.

The building's design reinforces the scale and character of its neighborhood, maintaining the pedestrian scale of Kendall Square while creating 450,000 square feet of space.

Simpson Querrey Biomedical Research Center

Perkins&Will

Location: Chicago, Illinois

Client: Northwestern University

General Contractor: Power Construction Company, LLC

Civil Engineer: TERRA Engineering

Structural Engineer: Thornton Tomasetti

MEP Engineer: Affiliated Engineers, Inc.

Environmental Façade Analysis, LEED

Administration, and Lighting Design: Atelier Ten

Façade Consultant: BuroHappold

Preconstruction Consultant: Barton Malow

Cost Consultant: CCS

Geotechnical Consultant: GEI Consultants

Commissioning Agents: Grumman/ Butkus Associates

Façade Commissioning Agent: Intertek and Architectural Testing, Inc.

Lab Planning: Jacobs Consultancy

Elevator Consultant: Jenkins & Huntingdon

Security and Code Consultant: Jensen Hughes

Laboratory Furniture: Lab Crafters

Material and Waste Management and Façade Access: Lerch Bates

Fire Protection: Primera Engineering

Audio-visual and Acoustical Consultant: Shen Milsom & Wilke

Landscape Architect: Terry Guen

Design Associates

Preconstruction Consultant: Walsh Construction

Northwestern University's Simpson Querrey Biomedical Research Center (SQBRC) provides labs and laboratory support for 550-plus principal investigators and 3,300 graduate students, enabling scientists to conduct more groundbreaking research into cures for the world's deadliest diseases.

Sited at the center of the medical school downtown, the building design creates an iconic shape in Chicago's skyline, providing a contemporary reference to the signature towers on Northwestern's Gothic-style campus while honoring the significance of the research activities that take place within. The curving profile of the tower plan serves to preserve the daylight and views while stepping the massing back from Superior Street to avoid a "canyon effect" between the buildings. Below, ground-level connectivity on all four street frontages culminates in an activated lobby and winter garden, which have become the new heart of the campus.

Architects prioritized sustainability in the building's design. The curving north façade and the east façade deploy a system of integrated external vertical fins to control solar heat gain, while the south façade utilizes the double skin technologies of operable vents and automated shading to ensure occupant comfort for the faculty and graduate students seated along the perimeter. Recently awarded LEED Gold certification, the building systems and enclosure design balance a focused reduction of energy use while ensuring occupant comfort.

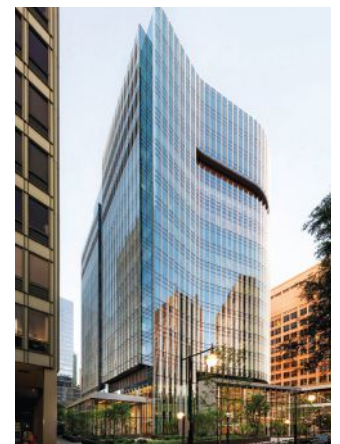


IMAGE CREDIT: JAMES STEINKAMP PHOTOGRAPHY

CHOOSE THE NO-BRAINER MEMBRANE ROOF.



Vs

UNPROTECTED

MEMBRANE ROOF / 16 YEAR AVERAGE LIFESPAN
AND IT WILL ALWAYS BE
JUST A ROOF

HYDROTECH PROTECTED

MEMBRANE ROOF / 40+ YEAR LIFESPAN AND COUNTING
WITH THE OPTION TO GROW
A LUSH GARDEN ROOF



SEE WHY HYDROTECH ROOFS
LAST INDEFINITELY



CHOOSE HYDROTECH.

It's a no-brainer. Only one membrane roof lasts indefinitely with virtually no required maintenance – The Hydrotech Protected Membrane Roof.

hydrotechusa.com/no-brainer



IMAGE CREDIT: GARRETT ROWLAND

Willis Tower Relocation

Gensler

Location: Chicago, Illinois

Client: EQ Office

General Contractors: Turner Construction Co. and Clayco Corp.

Civil Engineer: V3 Companies

Structural Engineer: Thornton Tomasetti

MEP Engineer: Environmental Systems Design (ESD)

Exterior Facade Co-Designer: SkB Architects

Landscape Design: OLIN

Lighting Consultant: Kugler Ning Lighting

Parking Consultant: Walker Parking

Fire/Life Safety Consultant: Wiss, Janney, Elstner Associates

Acoustic Consultant: IMEG Corp.



IMAGE CREDIT: GARRETT ROWLAND

How can a building originally conceived during an era of single-use architecture and urban flight evolve to meet our 21st-century needs? This was the question driving Gensler's repositioning of the Willis Tower, which builds on a massive mixed-use redevelopment of the site that began in 2015.

In its approach, the design team sought to enhance the tower's original glass and metal aesthetic while offering a more textural and tactile experience. What was once a fortress of red granite at the base has been transformed into a welcoming and transparent podium, filled with a varied and extensive retail and food and beverage experience. What was once a sea of wind-swept hardscapes was transformed into lushly landscaped roof parks. From the outside, the design fulfills its promise of reenvisioning the iconic tower "from street to sky."

Willis Tower's interior experience celebrates the tower above while also introducing materials and details reminiscent of notable Chicago neighborhoods and

historic architecture. At the entry on Wacker Drive, the user ascends via a grand staircase between columns, an intentional design element evoking the entry to an archaeological site. Three hundred thousand square feet of public space includes new dining, entertainment and retail, a nod to the classic Sears Catalog that was also attuned to the ever-changing nature of commercial spaces. In a centrally located food hall, offerings include full-service dining with Chicago's emerging culinary talent, experiential art exhibits and high-end convenience shopping. Looking upward, guests encounter incredible views of the tower through an undulating 75 feet by 85 feet skylight.

The project is not only architecturally stunning — it's sustainable as well, achieving LEED Platinum status by increasing efficiency and reducing waste. Willis Tower may have been built in a different era than today, but its next iteration consists of a modern mixture of uses with active streetscapes — welcoming to all.

Shure Incorporated: Lobby and Cafeteria Renovation**Perkins&Will****Location:** Niles, Illinois**Client:** Shure Incorporated**General Contractor:** Clune**Structural Engineer:** Structural Engineer**MEP Engineer:** Syska Hennessy Group**Food Service Consultant:** Clevenger Group**Audio Visual Consultant:** Waveguide, LLC**Acoustical Consultant:** Arup**Project Manager:** Cushman & Wakefield**Lighting Consultant:** Lighthive**Furniture Dealer:** Interior Investments

IMAGE CREDIT: STEVE HALL © HALL MERRICK PHOTOGRAPHERS

Responding to their client's vision, Perkins&Will's Lobby and Cafeteria Renovation at Shure Incorporated uses a strong brand presence and lighting to create drama within a modern architectural envelope. The project was conceived from the input of Shure's Associates who desired a warm, inviting, functional and human-centric environment.

Upon entering the space, bold signage brings clarity to place, utilizing the Shure logo and color palette for identity. Throughout the design, accents of black and green are layered into elements to create a cohesive story. The glulam pavilion, the heart of the project, is scaled and in harmony with the volume

of the full-height glass atrium. The warmth of wood, variety of comfortable furniture and biophilia create a warm and inviting atmosphere that emanates outward from the pavilion, flowing into a separate café space that makes use of the same materials.

Like the assembly of Shure's products, the space is beautiful, functional, and well-crafted. And in offering their seal of approval, the company's associates — many of them musical artists — have taken to showcasing their talents through spontaneous performances just beyond the lobby's walls in an adjacent outdoor space.

Financial Services Firm**Perkins&Will****Location:** Chicago, Illinois**Client:** Undisclosed**General Contractor:** Clune**MEP Engineer:** Cosentini Associates**Audio Visual Consultant:** Allen Visual**Millwork:** Parenti & Raffaelli, LTD**Furniture Dealer:** Thomas Interiors

IMAGE CREDIT: STEVE HALL © HALL MERRICK PHOTOGRAPHERS

When a private investment firm focused on middle-market companies approached Perkins&Will, they asked architects to design a welcoming atmosphere for their clients that celebrates their history and culture. The resulting space retains a traditional perimeter office layout, turning walls into a gallery-like backdrop for the display of the firm's extensive art collection.

To balance the client's desire for openness with the private nature of their business, architects proposed using floor-to-ceiling clear glass. This, coupled with the strategic placement of full-height solid walls for artwork, allows for maximum transparency and connectedness throughout the space, including outstanding views of downtown Chicago, Lake Michigan and Millennium

Park. Architects also placed a strong focus on ergonomics and wellness, with each office and workstation including sitting/standing desks and amenity spaces facilitating room for relaxation and meditation.

From the reception area to the innermost offices, architects created an understated and enduring space complemented by minimalist details and soft materiality that create the effect of working within a museum.

Facility

Carlo Parente Architecture Inc.

Location: Chicago, Illinois

Client: Nick Cave & Bob Faust

General Contractor: Development Solutions, Inc.

Structural Engineer: Louis Shell

Millwork Fabrication and Installation: Zak Rose

Located inside a 1920s brick building in Chicago's Irving Park neighborhood, Facility is a hub for living, working, making and connecting for artists Nick Cave and Bob Faust. The storefront — which once housed a mason's shop — has been transformed into a workspace, library, and gallery space that can host art installations, performances and public events. Upstairs, two residences provide space for living in close proximity to the artists' studios.

Architects worked hand-in-hand with the artists to envision the space, reclaiming as much of the building's history as they could. Masonry walls and structural components were kept and exposed along with remnants and fragments of the original plastered walls, which hold traces of old walls and stairs. The artists embraced these vestiges — even an abandoned hornets' nest that was found while constructing the greenhouse stayed in place at their request, now revealed by an opening in the ceiling.

Throughout the space, design details emphasize what's new, contrasting modern and salvaged materials. The result is a design that's refreshingly funky yet surprisingly economical.



IMAGE CREDIT: MICHELLE LITVIN

The **Aeolian**[®]
Sound Diffuser

AcousticsFirst.com[®]
The first name in state-of-the-art sound control.™

Toll-Free Number:
888-765-2900

Photo: BIG3 STUDIOS - St. Petersburg, FL



“Though the dramatic pencil tower proportions and the extraordinary technological means to accomplish them impress you most at first glance, what is really remarkable is how gracefully this tower integrates into the existing fabric and scales itself down to gracefully meet the street.”

– Juror

IMAGE CREDIT: MICHAEL YOUNG

Central Park Tower

Adrian Smith + Gordon Gill Architecture
Location: New York, New York
Client: Extell Development Company
Associate Architect: Adamson Associates Architects
General Contractor: Lendlease

Structural Engineer: WSP
MEP/FP Engineer: AKF Engineers
Wind Engineer: RWDI
Landscape Architect: HMWhite
Interior Design: Rottet Studio
Façade Consultant: AJLP / Surface Design Group

Geotechnical Consultant: Langan
IT, AV, Security Consultant: The Clariant Group
Lighting Consultant: Cline Bettridge Bernstein Lighting Design Inc.
Aquatic Experience Consultant: Integrated Aquatics Engineering



IMAGE CREDIT: PAUL CLEMENCE

Overlooking Central Park, one of New York City's newest residential towers is also the world's tallest. Measuring 472 meters — or approximately 1,500 feet — tall, Central Park Tower is a beacon of glass and steel that shines brightly in the Manhattan skyline.

Designed by Adrian Smith + Gordon Gill Architecture, the building is characterized by its pencil-thin profile, which allows the tower to occupy a relatively small footprint, maximizing density and providing an efficient use of infrastructure. Its height is further emphasized by strong vertical ribs, or super-mullions, that define the body of the building and hold sunlight. Their scale and form were studied for the right balance of interior views, while the texture helps mitigate wind and create the perception of depth due to their reflections in the glass.

Down below, a cantilever ascends 290 feet above grade, slipping into the body of the tower on its east façade. This eccentricity demanded structural load shifts, as well as design solutions that would address the context. Architects and their partners on the project conducted numerous studies to understand the impact of the cantilever from the street, ensuring that building materials would diffuse light, reduce reflectivity and meet the strict requirements for an art school next door.

Despite its impressive presence on the outside, architects designed the building from the inside out. The unit experiences, quality of spaces, and views drove the form to create comfortable residential spaces. Discussions on plans were down to the half inch, meticulous with respect to comfort, safety, experience and quality. Not only in plan, but also in section, the units were developed for ease of operability, creating expansive views of the city and allowing panoramic experiences while maintaining privacy.

Optima Kierland Center

David Hovey Sr., FAIA

Location: Scottsdale, Arizona

Client: David Hovey & Associates Architect, Inc.

General Contractor: Optima Construction, Inc.

Interior Designer: Optima, Inc.

Located in Scottsdale, Arizona, Optima Kierland Center takes on all the qualities of an oasis in the middle of a desert. Billing itself as a “sustainable residential development for urban families,” the four-structure complex prioritizes access to healthy activities and opportunities for building community.

The project is designed precisely for the harsh climate in which it was built. Floor-to-ceiling glass is protected from direct sunlight by outdoor terraces and by perforated sunscreens and louvers. From overhead, a veil of indigenous plantings falls gently over the concrete structures, contrasting with an earthy color palette that registers as light grey and dark plum. Adding to a common language that exists between the individual buildings, the plantings are nurtured by a computer-controlled watering system that helps lower the ambient temperature.



IMAGE CREDIT: BILL TIMMERMAN

The development’s signature feature is its combination of private terraces and 70 percent open space at grade. Together, these spaces create a strong indoor-outdoor relationship, allowing residents to catch glimpses of distant mountains.

Shanghai Financial Exchange Plaza

Jahn/ and FGP Atelier

Location: Shanghai, China

Client: Shanghai Stock Exchange, China Financial Futures Exchange, China Securities Depository and Clearing Corporation Ltd.

General Contractor: Institute of Shanghai Architectural Design & Research Co., Ltd.

Architect of Record: Institute of Shanghai Architectural Design & Research Co., Ltd.

Structural Engineer: Werner Sobek AG

MEP Engineer: WSP and Flack + Kurtz

Landscape Architect: Rainer Schmidt Landscape Architects

Façade Consultants: Werner Sobek AG and ALT Cladding, Inc.

Lighting Consultant: L-Plan Lighting Design

Exterior Art Lighting Consultant: BOA Light Studio

Shanghai Financial Exchange Plaza addresses three corporations’ individual needs through a complex of buildings that allow each to retain its own identity while becoming part of the whole.

The project, a partnership between Jahn and FGP Atelier, utilizes projecting mullions to create an elegant verticality — the dominant feature of each building. At the ground level and up above, a central plaza and pedestrian bridge work together to unify the three towers while facilitating opportunities for building users to interact. Meanwhile, split cores divide the buildings into two slabs with column-free office spaces, allowing spacious through-building lobbies and mid-level atriums while creating an openness that visually connects the three towers.



IMAGE CREDIT: QINGYAN ZHU

Architects, collaborating with engineers and outside consultants, developed integrated design solutions to achieve excellent environmental performances and LEED Gold certification. High-performance low-E window coatings, automated blinds and state-of-the-art mechanical systems allow the office’s air conditioning and heating loads to be considerably reduced. Atop the building’s roofs and pedestrian bridge, rooftop gardens with planting and water collection systems recover storm water and considerably reduce water runoffs on the extensive site.



ROBBINSARCHITECTURE

robbins-architecture.com | Phone 847 446 8001 | Instagram: [@robbinsarchitecture](https://www.instagram.com/robbinsarchitecture)

“As architects, we pour a lot of passion into the creation of our projects, solving complex problems and creating beautiful spaces. Chicagoans are great enthusiasts and advocates for architecture. This inaugural People’s Choice Award will allow Chicago architects and Chicagoans to unite in their excitement for architecture.”

– Drew Deering, AIA, AIA Chicago President

“The Chicago Architecture Center (CAC) is proud to be working on this new initiative with AIA Chicago. Chicagoans know their architecture, and the People’s Choice Award is sure to be a special honor for the winning projects. We encourage everyone to get involved and vote and exercise their informed opinions on our world class architecture.”

– Juanna Blackwell, CAC COO and Interim CEO

LERCH BATES PEOPLE’S CHOICE AWARDS

Chicago is a city that prides itself on its extraordinary architecture. As a laboratory for innovation, Chicago’s architects never tire in their quest of creating beautiful and innovative masterpieces; buildings that contribute not just to our iconic skyline but to the quality of life for its citizens.

This year, AIA Chicago created the new Lerch Bates People’s Choice Awards to allow the public to engage with award-winning architecture

and select their favorite projects. Finalists’ designs were chosen by Chicago Architecture Center’s docents in a round one jury review from over 125 projects submitted during AIA Chicago’s Design Excellence Awards, with the final selections being chosen by the public.

There were eight categories: Civic, Community and Cultural, Education, Hospitality and Retail, Multifamily Residential, Office, Single Family Residential, and Tall Building.

CTA Bryn Mawr Temporary Elevated Station**EXP****Location:** Chicago, Illinois**Client:** Chicago Transit Authority**General Contractor:** Walsh-Fluor Design-Build

The CTA Bryn Mawr Temporary Station, designed by EXP, is a small part of the CTA's Red/Purple Modernization project encompassing the reconstruction of tracks, structures and stationhouses on Chicago's North Side. It provides uninterrupted transit access for Edgewater neighborhood residents over the multi-year construction duration.

Given the vehicular speed and scale of adjacent buildings off a busy four-lane commercial strip, the primary challenge was creating visibility and presence for the diminutive structure. The Tetris-like shape is elementary, playful and dramatized by bold red color signifying the Red Line. The tower reaches to create a beacon-like presence along the busy Broadway corridor.



IMAGE CREDIT: JAMES STEINKAMP PHOTOGRAPHY

Community & Cultural



IMAGE CREDIT: TOM ROSSITER

Mindworks: The Science of Thinking**Krueck Sexton Partners in Collaboration with Pentagram****Location:** Chicago, Illinois**Client:** The University of Chicago Booth School of Business, Center for Decision Research**Contributing Architect:** Nia Architects**General Contractor:** Executive Construction Inc.**Exhibition Design:** Pentagram**Specifications:** ArchiTech Specs**Lighting Design:** AKLD Lighting Design**Acoustical Consultant:** Threshold Acoustic, LLC

Mindworks is the new, public facing education and outreach hub for the University of Chicago Booth School of Business' Center for Decision Research.

The new space, which was formerly occupied by the Chicago Architecture Foundation (Center), is both an exhibition venue and a behavioral science lab for public engagement. It's positioned in a former retail space on Michigan Avenue, specifically for its high accessibility to a diverse group of research subjects.

The storefront leverages its premier location within the historic Railway Exchange Building by positioning key exhibition elements toward passersby on both the Michigan Avenue and atrium-facing sides of the space.

Education

David Rubenstein Forum

Diller Scofidio + Renfro

Location: Chicago, Illinois

Client: The University of Chicago

Associate Architect: Brininstool + Lynch

General Contractor: Turner Construction

Civil Engineer: Terra Engineering

Structural Engineer: LERA Consulting Structural Engineers

MEP/FP/Code/Life Safety/Energy Consultant: Primera Engineers, Ltd.

Landscape Architect: site design group, ltd.

Facade Consultant: Thornton Tomasetti

Lighting Consultant: Tillotson Design Associates

Vertical Transportation Consultant: Syska Hennessy

Food Consultant: Cini-Little

LEED Consultant: HJKessler Associates

Specifications Consultant: Construction Specifications, Inc.

Cost Estimator: Dharam Consulting

Waterproofing: Simpson Gumpertz & Heger

The David Rubenstein Forum at the University of Chicago is a space of discourse and intellectual exchange aimed at fostering the engagement of visiting scholars, researchers and dignitaries from around the world. Located on Chicago's Midway Plaisance across from Rockefeller Chapel, the Forum stands out as an unconventional take on the traditional convention center.



IMAGE CREDIT: BRETT BEYER, COURTESY OF DS+R

Responding to the University's need for a singular forum to host meetings and conferences, architects addressed multiple communities with building components that are stacked, rotated and oriented not only toward downtown Chicago, but also toward the Woodlawn neighborhood.

The building introduces incorporates state-of-the-art energy conservation technologies including bird-safe glazing, natural and LED lighting systems, radiant conditioning and rainwater harvesting, as well as access to adjacent green roofs, connecting guests to the surrounding campus and community.

Hospitality & Retail

Haymarket Books

34-TEN

Location: Chicago, Illinois

Client: Haymarket Books

General Contractor: O'Hara Construction, Inc.

Structural Engineer: Goodfriend Magruder Structure LLC

MEP Engineer: Calor Design Group, Ltd.

Interior Designer: Amelia Canham Eaton

A once elegant 1917 mansion in Chicago's Buena Park neighborhood needed thoughtful attention to begin its next life as the new home office of a Chicago book publisher. Despite a mountain of deferred maintenance, many significant historical details survived, and the design team at 34-TEN worked tirelessly to preserve them while making sure the building can effectively serve the surrounding community.

ADA compliance, new mechanical systems and significant structural alterations have been added to make way for a vibrant gathering space filled with natural light, an intimate library, practical workspaces and a four-stop elevator — all within local landmark status restrictions.



IMAGE CREDIT: JAMES JOHN JETEL PHOTOGRAPHY

Multifamily Residential

1100 West Polk

Hanna Architects

Location: Chicago, Illinois

Client: Perino Properties

General Contractor: Top MD Construction, Inc.

Located in the Little Italy neighborhood in Chicago, this five-unit infill residential building is now part of the bustling, vibrant community in which it resides. The historic Italian neighborhood is always filled with passersby, thanks to the adjacent University of Illinois at Chicago.

Massive terraces on level one, a roof deck and other decks invite inhabitants outside, where the tree-lined neighborhood and Chicago skyline are easy on the eyes. Reclaimed Chicago common brick is used to infill between the steel structure and large windows, while the project is a modern take on a classic Chicago infill project, surrounded by historical buildings.



IMAGE CREDIT: HANNA ARCHITECTS



Civil Engineering | Traffic & Parking
Landscape Architecture



Illinois | Indiana | Wisconsin

COCO
ARCHITECTURAL
GRILLES • METALCRAFT

HISTORIC RENOVATIONS
Restoring
Restoring Historic Renovations with a combination of old world craftsmanship and state of the art manufacturing processes

631.482.9449 ♦ COCOMETALCRAFT.COM

Single Family Residential

Midwest Sanctuary

Robbins Architecture

Location: Deerfield, Illinois

Client: Undisclosed

General Contractor: Legacy Custom Homes

Structural Engineer: Goodfriend Magruder Structure LLC

Landscape Architect: Mariani Landscape

Interior Designer: Janet McCann

Lighting Designer: Architecture & Light

Tucked within a suburb of Chicago, this summer residence is a celebration of art and craft. The client, who escapes the harsh midwestern winters and returns each year to the brief but magical joy of a Midwest summer, enjoys how nature is folded into both the front and back courtyards to capture the outdoor beauty from all angles. Soaring glass window walls create a delicate separation between inside and out, embracing and welcoming nature.

For this house, Robbins Architecture developed a language of metal, glass and stone artisanship that brings an immediate sense of belonging and connectivity in this Midwestern summer retreat.



IMAGE CREDIT: ROGER DAVIES

Tall Building



IMAGE CREDIT: NICK ULIVIERI PHOTOGRAPHY

Bank of America Tower

Goettsch Partners

Location: Chicago, Illinois

Client: The Howard Hughes Corporation/Riverside Investment & Development

General Contractor: Clark Construction

Structural Engineer: Thornton Thomasetti

MEP Engineer: Environmental Systems Design (ESD)

Landscape Architect: Confluence (formerly Wolff Landscape Architecture)

Lighting Designer: One Lux Studio

Vertical Transportation Consultant: Jenkins & Huntington

This state-of-the-art Class A office tower totals 56 stories and 1,770,000 square feet. Interior space planning is enhanced by the five-foot setbacks along the river, providing the equivalent of 14 corner offices on each floor. The setbacks create a distinctive form that accentuates the building's verticality and avoids the pure box-like appearance of typical office towers.

The design addresses the challenges with an unusual, stepped center core, which allows for a 45-foot lease span on each side. To avoid an angled perimeter, the west wall has a series of 30-foot-wide, five-foot setbacks, accommodating an orthogonal, five-foot planning module throughout the building.

Office



IMAGE CREDIT: © SOM DAVE BURK

800 Fulton Market

Skidmore, Owings & Merrill

Location: Chicago, Illinois

Client: Thor Equities

General Contractor: Lendlease

Engineer: Terra Engineering, Ltd

MEP Engineer: dbHMS Chicago

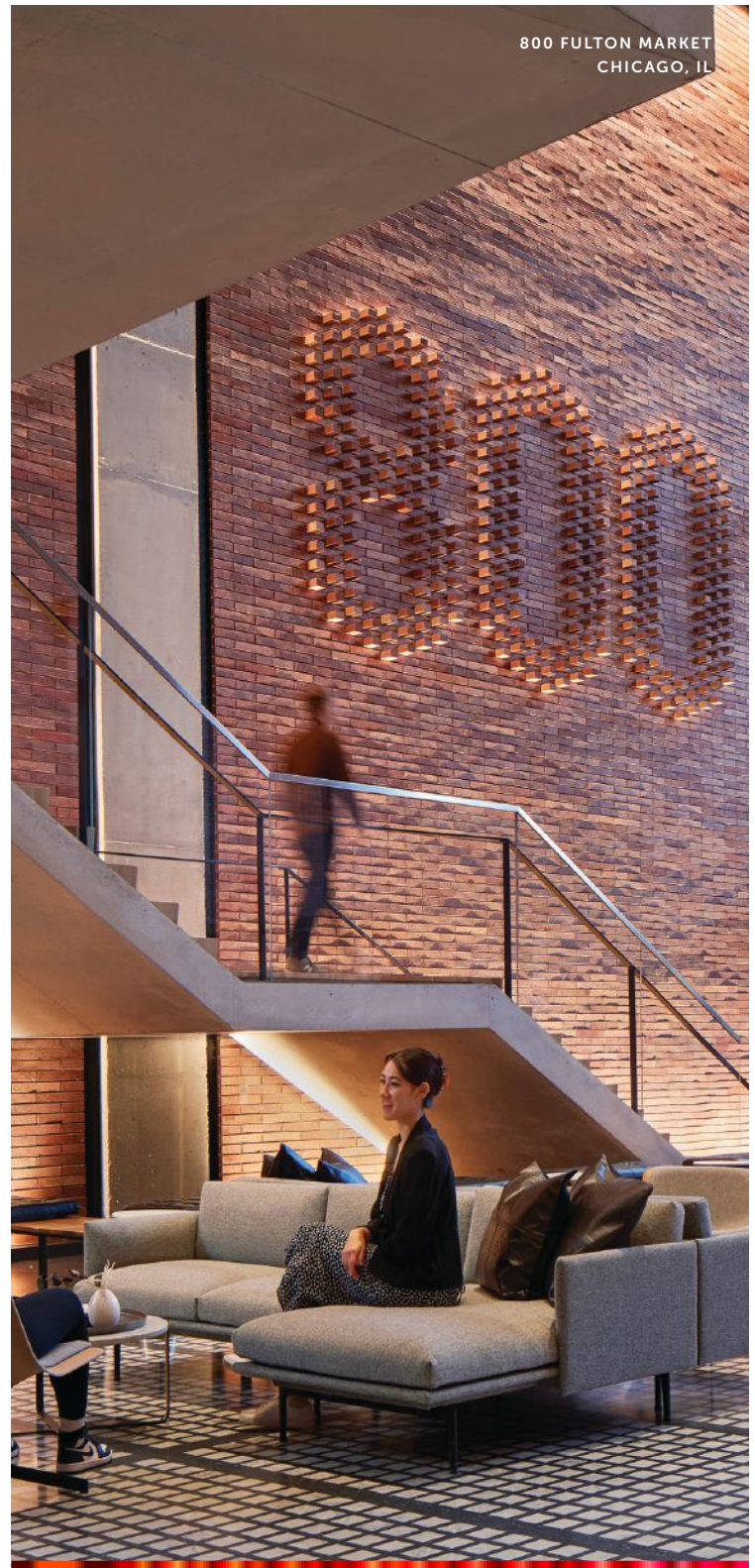
Landscape Architect: Omni Ecosystems

Vertical Transportation Consultant: VDA

Contractor: Curtain Wall Design and Consulting, Inc.

Lighting Consultant: Schuler Shook

800 Fulton Market, designed by Skidmore, Owings & Merrill, is a mixed-use office building that marks the gateway to one of Chicago's most dynamic neighborhoods. With a series of setbacks and landscaped terraces, the 19-story design is carefully proportioned to relate to the rhythm and scale of the Fulton Market District's historic low-rise streetscape, while connecting to the higher-density commercial district to the north. Integrated structural, architectural and interior design optimize building systems and allow for maximum tenant comfort and wellness.



800 FULTON MARKET
CHICAGO, IL

WE LOBBY FOR GREAT LIGHTING

Schuler Shook
LIGHTING DESIGN / THEATRE PLANNING / AUDIO VIDEO DESIGN

IMAGE CREDIT: TOM ROSSITER

JURORS

Kjell Anderson, FAIA, LMN Architects, Seattle, Washington
Emilie Hagen, Assoc. AIA, LEED Fellow, Atelier 10, San Francisco, California
Erin McConahey, P.E., FASHRAE, Arup, Los Angeles, California

DECARBONIZATION AWARDS

New in 2022, AIA Chicago's Decarbonization Award honored projects that have demonstrated an extremely high level of commitment toward the goal of designing carbon-neutral buildings. Developed by a group of AIA Chicago members and juried by a team of national experts, the Decarbonization Award required submitting firms to report detailed analyses of the building's life cycle and lifespan. Along with metrics on embodied carbon in the structure and materials, firms also

reported carbon emissions and predicted versus actual energy operational use.

In addition to the Decarbonization Award, all 83 firms who submitted for this year's Design Excellence Awards were signatories to AIA's 2030 Commitment toward the goal of designing carbon-neutral buildings by 2030. Firms were also required to submit data for at least one building to AIA's Design Data Exchange (DDx), allowing firms to compare project performance.

Honor Award



IMAGE CREDIT: TOM ROSSITER

The Keller Center

Farr Associates

Location: Chicago, Illinois

Client: The Harris School of Public Policy, University of Chicago

Collaborating Architect: Woodhouse Tinucci Architects

General Contractor: Mortenson Construction

Structural Engineer: Stearn-Joglekar

MEFP Engineer: dbHMS

Landscape Architect: site design group, ltd.

The renowned Harris School of Public Policy has found its first permanent home in the Keller Center — a dramatic adaptive reuse that reimagines a mid-century masterpiece designed by architect Edward Durrell Stone in 1963.

The thoughtful transformation of the building preserves and celebrates Stone's signature design to create an encompassing experience. New accessible passages erode the uninviting and monumental original plinth leading to glass insertions respectfully nested in the limestone pilasters. The new entries signal a transparent, welcoming view into to the practice of public policy education and development.

Prominently located on the Midway Plaisance on the University of Chicago's South Campus, the building design is filled with policy-inspired design firsts. The Keller Center is the most sustainable building on the University of Chicago Campus, the most sustainable Top-5 policy school, and one of the most sustainable buildings in all of higher education.

To use 46 percent less energy than permitted by code, the project employs a full menu of energy efficiency strategies including daylighting strategies and skylights with integrated shading systems, LED lights, and radiant heating and cooling. On day one, 11 percent of the total building's energy was provided by grant-funded photovoltaic panels, a system planned to expand to provide nearly 24 percent of building energy needs as funding becomes available. The addition of a green roof paired with a 15,000-gallon rainwater cistern mitigates the stormwater on the Keller Center site. Rainwater captured on the roof is stored in the cistern to be used to flush toilets and landscape irrigation. This has

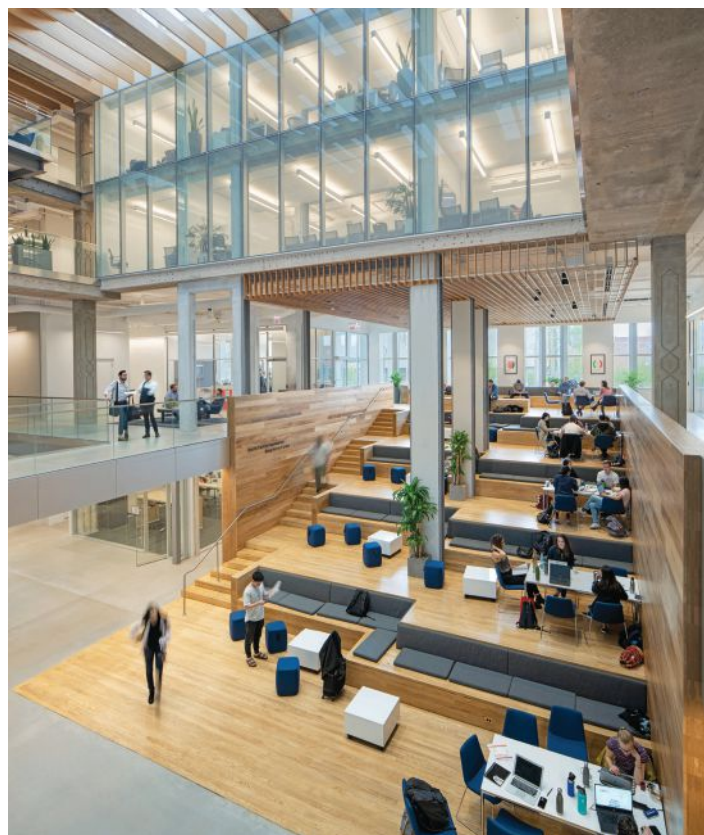


IMAGE CREDIT: TOM ROSSITER

the dual benefit of reducing burdens on the City of Chicago's combined sewer system while saving 525,208 gallons of fresh water per year. In addition, a new rain garden for cistern overflow paired with native plantings throughout the site contributed to the water conservation plan.

Other sustainable features and project highlights include Red List-compliant products and finishes, salvaged materials and bird-friendly glass.

Citation of Merit

**McDonald's Global Flagship
@ Walt Disney World Resort**

Ross Barney Architects

Location: Lake Buena Vista, Florida

Client: McDonald's Corporation

General Contractor: Southland Construction

Architect and Engineer of Record: CPH

Structural Engineer: Goodfriend Magruder Structure

Engineer: WSP

Lighting Consultant: Schuler Shook

The McDonald's Global Flagship @ Walt Disney World Resort aims to become the world's first Net Zero Energy quick service restaurant and, in doing so, represents McDonald's commitment to building a better future.

Under a shed clad in solar panels, the restaurant is a sustainable and healthy response to the Florida climate. Taking advantage of the humid subtropical climate, the building is naturally ventilated approximately 65 percent of the year. Jalousie windows, operated by outdoor humidity and temperature sensors, close automatically when air conditioning is required. An outdoor porch features wood louvered walls and fans to create an extension of the indoor dining room.

As an energy intensive building typology and arguably an enabler of automobile culture, the McDonald's Global Flagship explores its role as a sustainable steward and learning lab for scalable technology, revolutionizing an industry to be more thoughtful, strategic, and impactful.



IMAGE CREDIT: KATE JOYCE STUDIOS



Do Your Windows Speak French?

Since 2005, Chicago's proven source for interior, exterior and now impact-rated custom steel doors & windows.
Oh, and thermally-broken wine rooms.



Holly H. Scardino
Director of Sales
info@frenchsteel.com
www.frenchsteel.com

IMAGE CREDIT: MARCEL PAGE

JURORS

Chair: Grant Uhlir, FAIA

Paola Aguirre

Catherine Baker, FAIA

Kerl LaJeune, Assoc. AIA

John Syvertsen, FAIA

ROBERTA FELDMAN ARCHITECTURE FOR SOCIAL JUSTICE AWARDS

The Roberta Feldman Architecture for Social Justice Award was established in 2020 to honor excellence in single-built projects and single-design programs guided by the conviction that access to high-quality architecture is not a privilege, it is a human right. Architecture for Social Justice is defined by the following objectives: first, to engage a broader cross-section of society, especially those

not typically able to access architectural services, and, second, to create innovative design solutions that address complex social and economic inequities that impact these communities.

This yearly award celebrates the commitment of designers who work on behalf of the public good while receiving no or below-market-rate compensation, based on conventional fee structures.

“Roberta Feldman’s leadership and her creation of this noteworthy award program, the Roberta Feldman Architecture for Social Justice Award, honors the commitment of designers who work on behalf of the public good. Roberta’s passion to provide ‘design excellence for all’ is on full display throughout the many remarkable entries that were equally thoughtful, intentional and engaging. Bravo!”

– Grant Uhlir, FAIA, Chair

Honor Award



IMAGE CREDIT: KENDALL MCCAUGHERTY, HALL + MERRICK + MCCAUGHERTY PHOTOGRAPHERS

Sounding Boards Garden at Harmony

Eastlake Studio

Location: Chicago, Illinois

Client: Harmony Community Church

General Contractor: Redmond

Artists: All Sounding Boards artists are listed at soundingboards.org

When painted plywood murals protecting the city’s buildings came down following civil unrest in 2020, non-profit leaders began searching for a way to honor their original intent as public art. Founded by members of Eastlake Studio, arts organization Sounding Boards toured the North Lawndale neighborhood with Pastor James Brooks of Harmony Community Church and found the perfect location: a vacant lot near the church.

Designed and constructed in collaboration with general contractor Redmond, Sounding Boards Garden now serves as a platform for conversations, music, performing arts and as a space for quiet contemplation. The plywood murals were used in part as structural materials to create the semi-enclosed garden space adjacent to Harmony Community Church. A stage area, clad with mural slats and protected by larger painted panels, allows the church and the community to host outdoor events. Engraved bricks in remembrance of lost community members line the garden and provide neighbors with a place to mourn and reflect.

The garden has been used for events throughout the winter and spring, including a planting party where community children helped plant the flower boxes for summer.



IMAGE CREDIT: KENDALL MCCAUGHERTY, HALL + MERRICK + MCCAUGHERTY PHOTOGRAPHERS

The recent addition of lighting and electricity will help further activate the stage for larger events throughout the year.

From concept to completion, Sounding Boards Garden came to life in only four months. Historicizing the Black Lives Matter movement’s ongoing importance, the project serves as a vibrant reminder of the ongoing struggle for equality — while creating a safe outdoor space for residents to gather, reflect and heal.

Citation of Merit

POPCourts!

Lamar Johnson Collaborative

Location: Chicago, Illinois

Client: Westside Health Authority

Government Agency: Chicago Department of Planning and Development

General Contractor: Butler Frelix Construction LLC.

Artists: Paint the City, Mural Artists

Funders: Local Initiatives Support Corporation, United Way of Metro Chicago

POPCourts! is a 7,000-square-foot community plaza in Chicago's Austin neighborhood. Born out of the pandemic and civil unrest and launched as part of Mayor Lightfoot's INVEST South/West initiative, it provides a community anchor and safe space where residents can enjoy the outdoors.

The project consists of three distinct zones — or “Courts” — each serving a variety of community functions. A basketball court doubles as a community plaza, a gravel drive hosts food trucks and farmers markets and a shaded lawn provides casual seating. Artwork brings the project together, figuratively and literally, with a pop-art theme, while flexible programming allows activities to “pop” up and transform over time.



IMAGE CREDIT: LJC, ANEZKA GOCOVA

Prior to being reimagined, the empty lot now occupied by POPCourts! was a dumping ground for abandoned cars and an epicenter for crime along Chicago Avenue. On the day of the Ribbon Cutting, residents poured onto the site even before the official program started — a hopeful sign that paves the way for a bright future for this long-overlooked intersection.

The Harbour

OKW Architects

Location: Illinois

Client: The Harbour

General Contractor: Kinzie Builders

Community Group/Organization: Designs For Dignity

Located in suburban Illinois, The Harbour is a non-profit shelter for young women experiencing homelessness. The project by architects at OKW replaces an aging shelter with a beautiful new space that uses the idea of openness as its central organizing principle.

The original shelter was a two-story farmhouse built in the early 1900s and purchased by the shelter in the early 1980s. After a successful fundraising campaign with help from Designs For Dignity, the new building is a single-family home with an institutional backbone. Tucked away from the main road, the house opens to a bright, airy and inviting common area that serves as the nexus for two wings of bedrooms and offices. In the rear, a patio and yard create space for residents to enjoy the outdoors.

With the construction of the new shelter, The Harbour has been able to reclaim its mission of offering safety and security in every aspect of



IMAGE CREDIT: MARCEL PAGE

the physical structure. In a space designed to foster connections, access, belonging, and community, residents are now living in an environment that welcomes, heals and restores their sense of worthiness.

Chicago Architect is published four times a year by Innovative Publishing. Innovative Publishing specializes in association communications and messaging.

Photocopy permissions where necessary, permission is granted by copyright holder for those registered with Copyright Clearance Center (CCC), 222 Rosewood Drive, Danvers, MA 01923, www.copyright.com to photocopy any article herein for personal or internal reference use only for the flat fee of \$2.00 per copy for each article. Send payment to CCC. Copyright 2022 AIA Chicago.

The information contained within has been obtained by AIA Chicago and Innovative Publishing from sources believed to be reliable. However, because of the possibility of human or mechanical error, AIA Chicago and Innovative Publishing do not guarantee the accuracy or completeness of any information and are not responsible for any errors or omissions or for the results obtained from use of such information. The editor reserves the right to censor, revise, edit, reject, or cancel any material not meeting the standards of *Chicago Architect*. The information and opinions published in *Chicago Architect* represent the views of the authors and not those of the publisher or AIA Chicago, unless otherwise stated. The acceptance of advertising does not reflect endorsement of products or services by this publication, AIA Chicago, or Innovative Publishing.

LETTERS TO THE EDITOR: *Chicago Architect* gladly accepts all signed, dated letters to the editor. We reserve the right to edit for style and any potentially libelous content. Letters should be no longer than 250 words. Submit letters to editor@aiachicago.org.

STORY IDEAS AND SUBMISSIONS: *Chicago Architect* welcomes your story ideas and your written article submissions, whether about your projects or about business trends and issues. Email us at editor@aiachicago.org.

 facebook.com/aiachicago	 vimeo.com/aiachicago
 @aiachicago	 linkedin.com/company/aia-chicago
 twitter.com/aiachicago	

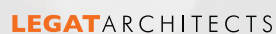
INDEX OF ADVERTISERS

Acoustics First	42
www.acousticsfirst.com	
AmCork	36
www.amcork.com	
Architectural Cast Stone	22
www.acscaststone.com	
Chicagoland Millworkers	30
www.chicagolandmillworkers.com	
Client Pay	15
www.clientpay.com	
Coco Architectural	49
www.cocometalcraft.com	
Eggersmann USA Chicago	3
www.eggersmannusa.com	
Endicott Clay Products	60
www.endicott.com	
Eriksson Engineering Associates, Ltd.	49
www.eea-ltd.com	
Force Partners	34
www.forcechicago.com	
The French Steel Company	54
www.frenchsteel.com	
Glass Solutions Inc.	29
www.gsichicago.com	
Goldberg General Contracting, Inc.	11
www.ggcinc.net	
Hydrotech	39
www.hydrotechusa.com/no-brainer	

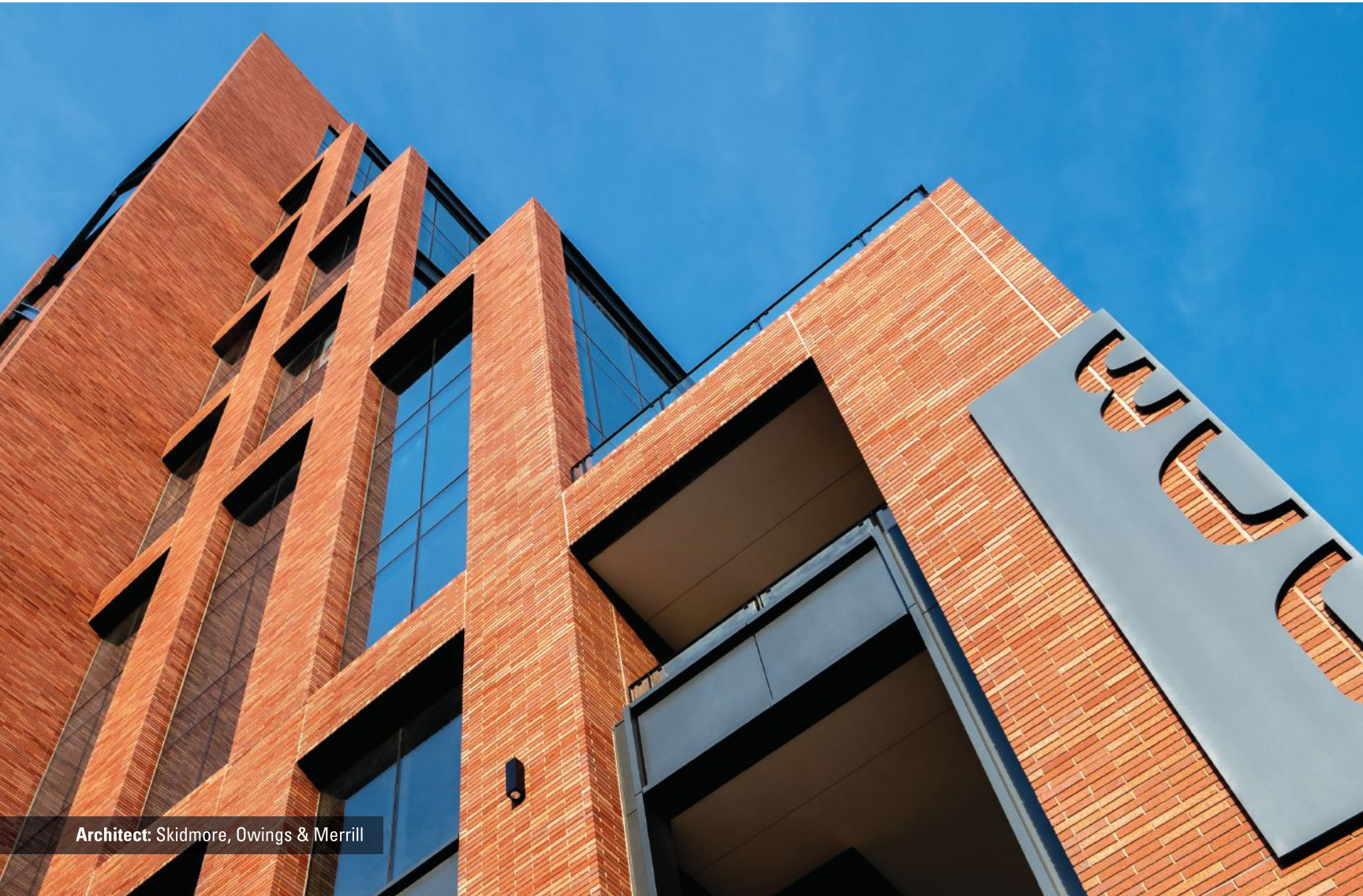
Lerch Bates, Inc.	2
www.lerchbates.com	
Lightning Protection Institute	4
www.lightning.org	
Mid-America Carpenters Regional Council	8
www.carpentersunion.org	
Museum of Contemporary Photography	36
www.mocp.org	
Norcon	22
www.norconinc.com	
Pac-Clad	6
www.pac-clad.com	
Powering Chicago	33
www.poweringchicago.com	
Professional Flooring Installers Association	9
www.pfia.org	
Robbins Architecture	45
www.robbins-architecture.com	
Sierra Pacific Windows	13
www.sierrapacificwindows.com	
Schuler Shook	51
www.schulershook.com	
Schweiss Doors	10
www.schweissdoors.com	
Unilock	19
www.unilock.com	

Thank you to our 2022 **1869Circle** Partners

The **1869Circle**, named after the year AIA Chicago was founded, is a program of unprecedented recognition for partners who contribute annually to AIA Chicago and the AIA Chicago Foundation at the highest level.



**800 FULTON – FULTON MARKET DISTRICT
CHICAGO, IL**



Architect: Skidmore, Owings & Merrill

DESIGN THE NEXT CHICAGO MASTERPIECE

To stand out in a field of great Chicago architecture, you need the best material to help you achieve your unique vision. Endicott has been giving Chicago architects the tools to build legacies for generations. Contact us to learn more.

FACE BRICK | THIN BRICK | CLAY PAVERS



Distributed by
BRICKS INCORPORATED

Endicott
CLAY PRODUCTS

endicott.com