

CHICAGO ARCHITECT

FutureCare // 31

THEATER AS PUBLIC
CATHARSIS // 16



REIMAGINING THE ROOF

Our team has been trusted for over 40 years to provide technical expertise and project support in the exploration of segmented paving product options.

Our full line of architectural roof deck pavers and slabs, offering the same great finishes as on-grade applications, will deliver high impact and maximum function for your roof deck and amenity space design.

PROJECT: Loews Hotel Roof Deck. Chicago, IL
DESIGN: Wolff Landscape Architecture
PRODUCT: Umbriano™

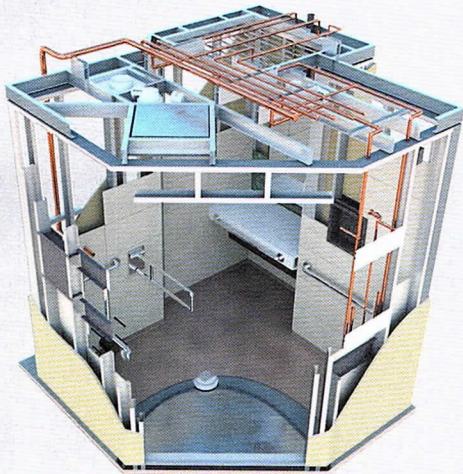
Contact your Unilock Representative for samples, product information and to arrange a Lunch & Learn for your team.

UNILOCK
DESIGNED TO CONNECT

UNILOCK.COM 1-800-UNILOCK



MODULAR SOLUTIONS



With over 80 years of experience in the construction industry, today we're leading the way in modular construction. Through our off-site prefabrication and modular construction shops, Hill generates time-saving solutions to many complex challenges. Our modular solutions not only accelerate construction schedules but also ensure high quality, minimize waste and maximize safety.

Contact: Jim Hill, President 847.451.5000



View our
modular process.

hillgrp.com



BUILDING EXCELLENCE ... *through Experience and Innovation*

SOME DOORS ARE JUST AN OPENING

Ours Define the Home

Marvin Scenic Doors give you the power to deliver remarkable results. Our products perform with unmatched energy efficiency whatever the size, and our exclusive hardware pairs seamlessly with modern aesthetics. Combined with Marvin windows, each build has unrivaled harmony, so that every grand entrance leaves its mark.

**FIND INSPIRATION AT YOUR LOCAL,
INDEPENDENT MARVIN DEALER TODAY.**

MARVIN DESIGN GALLERY
by **Evanston Lumber**
930 North Shore Dr.
Lake Bluff, IL
847-615-1003
MarvinByEvanstonLumber.com

Mahe Lumber
301 W Irving Park Rd.
Wood Dale, IL
630-766-8440
MaheLumber.com

Midwest Window & Door
41 N. Lively Blvd.
Elk Grove Village, IL
847-979-8230
MidwestWindowAndDoor.com

Midwest Window & Supply
800 Hicks Dr.
Elburn, IL
630-365-5772
MidwestWindow.com

Re-Visions Window & Door Replacement
451 W. Fullerton Ave.
Elmhurst, IL
630-617-5970
ReVisionsWindow.com

Searls Windows and Doors, Inc.
Plainfield, IL
Chicago, IL
815-436-3196
SearlsWindows.com

Woodland Windows & Doors
25 W 355 Lake St.
Roselle, IL
630-529-3667
WoodlandWindows.com

Alexander Lumber Co.
Cortland, IL - 815-756-4824
Joliet, IL - 815-725-0030
Woodstock, IL - 815-356-8600
AlexLbr.com

Ashland Millwork, Inc.
5 Messner Dr.
Wheeling, IL
847-465-8101
AshlandMillwork.com

Auburn Corp.
10490 W. 164th Place
Orland Park, IL
877-978-2606 | 708-349-7676 x16
AuburnCorp.com

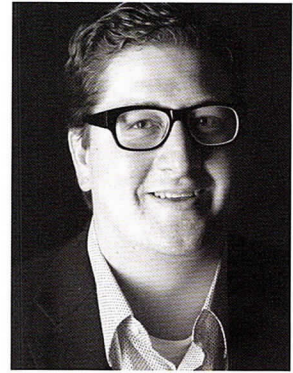
Creative Millwork
3700 Illinois Ave.
St. Charles, IL
630-762-0002
CreativeMillworkLLC.com

Door & Window Super Store
Downers Grove - 630-969-7454
Orland Park - 708-349-0405
DoorWindowSuperStore.com

Evanston Lumber Company
1001 Sherman Ave.
Evanston, IL
847-864-7700
EvanstonLumber.com

Lee Lumber
Chicago, IL - 773-509-6700
Highland Park, IL - 847-681-0300
Chicago, IL - 773-927-8282
LeeLumber.com

MARVIN
Windows and Doors
Built around you.



AGENTS OF CHANGE

PUBLICATION DIRECTOR
Nicholas Esposito
esposito@aiachicago.org

EDITORS
Nicholas Rao
rao@aiachicago.org

Deanna Strange
deanna@innovativepublishing.com

DESIGNER
Matt Wood

ADVERTISING SALES
Innovative Publishing
advertise@innovativepublishing.com
44.423.7272

In a world facing unprecedented challenges, architects have the skills to drive positive change through the power of design. We are optimists, strategic thinkers and complex problem-solvers. There has never been a greater time for architects to demonstrate our value and leadership by applying our skills to strengthen our communities.

It is our fundamental obligation as professionals to protect the health, safety and welfare of all people and to design a better future. Implicit in that ethical mandate is resilient design. The Rockefeller Foundation 100 Resilient Cities project, which includes Chicago, defines "Urban resilience is the capacity of individuals, communities, institutions, businesses, and systems within a city to survive, adapt, and grow no matter what kinds of chronic stresses and acute shocks they experience." This includes physical, social and environmental issues. AIA Chicago and our Committee on the Environment (COTE) are further defining how architects can lead this important conversation. We are developing new programming, which includes a partnership with USGBC-Illinois for the Chicago Thrives! Resilience Symposium that will take place on April 20.

In these pages, we highlight health care design innovations by Chicago architects with a focus on the psychology of healing, collaborative treatment models and advanced technology to enhance wellness and patient comfort. We celebrate the skillful restoration

of Union Station by Goettsch Partners, the rebirth of an important historic civic infrastructure asset, to accommodate the needs of modern commuters and travelers. We also hear from Michael Pfeffer, AIA, vice president of architecture at Related Midwest and a 2016 *Crain's Chicago* 40 Under 40 honoree, sharing his story and challenging us all to get involved through service and community engagement.

Architects are highly engaged, now more than ever, speaking up for our principles and values. On March 28, AIA Chicago and AIA Illinois will host Prairie Grassroots, our annual advocacy day at the State Capitol in Springfield. We will meet with our elected representatives to discuss issues critical to our communities and the design and construction industry. A complementary bus is available for attendees from Chicago to Springfield.

We are all advocates. Please join me in Springfield for this opportunity for our individual and collective voices to be heard.

AIA Chicago is a member-driven professional organization. As always, we welcome your feedback at membervoices@aiachicago.org.

Matthew Dumich, FAIA



Chicago Architect, the primary outreach journal of AIA Chicago, is published six times a year as an authoritative resource for architects, the larger design community and the public about architecture and related issues of interest to Chicago architects. The magazine communicates industry trends, the value of high-quality design and the role of AIA Chicago and its members in the world of architecture.

facebook.com/chicagoaia
aiachicago.tumblr.com
twitter.com/aiachicago
vimeo.com/aiachicago

ELECTRO-SCIFI – AN ARRHYTHMIA LAB WITH HEART



Openness, transparency and visual connection are paramount to a medical staff's ability to work as a team.

Advances in the field of cardiac electrophysiology have led to an increasing demand for fully integrated labs inside hospitals to provide a complete array of diagnostic technological platforms within a single operating suite that serves in- and out-patient needs. RADA Architects led the transformation of an outdated, decommissioned procedure room and adjacent rooms at Bernard Mitchell Hospital on the University of Chicago Medicine campus into a state-of-the-art Arrhythmia Technology Suite (ATS), equipped with three mapping systems, robotic magnetic navigation technology and a glass-enclosed viewing room.

ATS Medical Director Dr. Roderick Tung envisioned a space that looked the part of the "lab of the future," housing not only today's latest electrophysiological technology but also providing an inspiring atmosphere in which to conduct the clinical research that defines and refines the tools of tomorrow.

This presented a unique challenge to the architect, largely because the futuristic labs imagined in science fiction movies often frame sinister intentions, while the purpose of the ATS Lab is to preserve health and save lives. As a result, the design provides no cloning stations or suspended animation pods, but it does feature

the recognizable use of glass and light to simulate daylight, elicit hope, and illuminate and inspire dreams of the future. Visual enhancements include glowing 3form lightboxes and horizontal-reveal LED light fixtures, which create dynamic wall accents. Floor-to-ceiling, leaded-glass observation windows allow

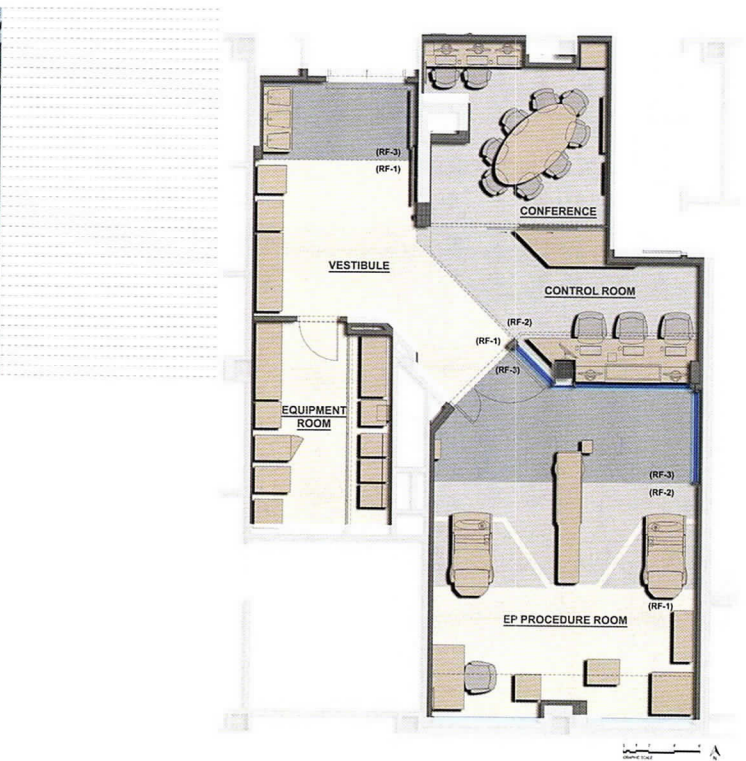
transparency and visual connection throughout the suite, and high-end finishes capture the spirit of the doctor's cinematic vision.

Venturing into the Unknown

If the architect had been asked to complete a feasibility study to determine the most difficult location to build an arrhythmia lab



Control Room – more like a spaceship dashboard



That study would likely have identified the space that became the Arrhythmia Technology Suite. The original 1980 building plans reveal that a corridor, waiting room, dressing room and toilet rooms once occupied the first-floor space of the future lab. Directly above, the second-floor mechanical room contains large main ducts that feed large wings of the hospital. These existing ducts run directly above the arrhythmia lab procedure room, filling to capacity the above-ceiling space that was needed to run new ducts, conduits and structure.

This space had been converted to a catheter lab and, later, to an electrophysiology lab when Philips X-Ray imaging equipment and two large Stereotaxis ablation magnets were added, but availability of as-built drawings for these two

remodels was limited. The walls, floor and ceiling of the procedure room were surrounded by six layers of silicon sheet-metal shielding, providing protection from the powerful magnets and also obscuring all views to above-ceiling conditions. How the ducts above the space had been re-configured was a mystery that RADA Architects, engineering consultant dbHMS, and contractor Berglund Construction would not solve until demolition was complete.

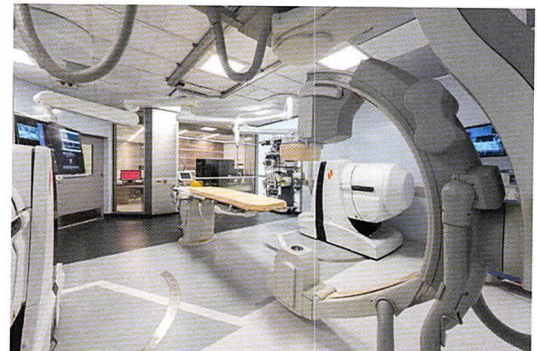
Moving Ahead

An aggressive project schedule required RADA and dbHMS to design the space within a two-month period. The magnetic ceiling in the procedure room could not be removed until the project was bid and demolition had commenced, which meant designers worked effectively blindfolded.

HVAC and structural systems were completely re-designed once ceilings were removed, and above-ceiling space proved tighter than expected. The newly discovered conditions required extensive coordination between the architect, engineer and contractor to provide structural support for new ceiling mounted equipment, route new supply ducts to laminar flow diffusers and thread conduits through the densely packed interstitial space.

The Arrhythmia Lab suite includes a new control room with a full-height, leaded-glass observation window overlooking the procedure room, which received new seamless, hygienic PVC wall covering to cover lead-lined gypsum board and magnetic shielding. The suite also includes a new conference room for collaboration and training of medical staff with a direct view through a frameless glass wall to the control room and the procedure room

beyond. The new medical equipment and technologies combine with LED lighting, generous use of glass, and eye-catching finishes to create a high-functioning and high-design medical suite. "One of the most important accomplishments is the balance between the futuristic glass, steel and LED aesthetic with integration of warm wood paneling and soothing light accents that make the space truly unique for a hospital setting," Dr. Tung said. CA



Calming and neutral colors — but not institutional white — for a relaxed mind and body



Collaborative work setting with a peek into procedure space

A CIVIC GATEWAY TO THE CITY: UNION STATION RENOVATION

BY AUDREY F. HENDERSON

The *Untouchables* stairs were restored with marble from the same Italian quarry that sourced the original stairs. The detail (inset) shows the subtle squaring of the stair edges as well as the elegant extension of the banister.



PHOTO BY JON MILLER, HEDRICH BLESSING



PHOTO BY JON MILLER, HEDRICH BLESSING

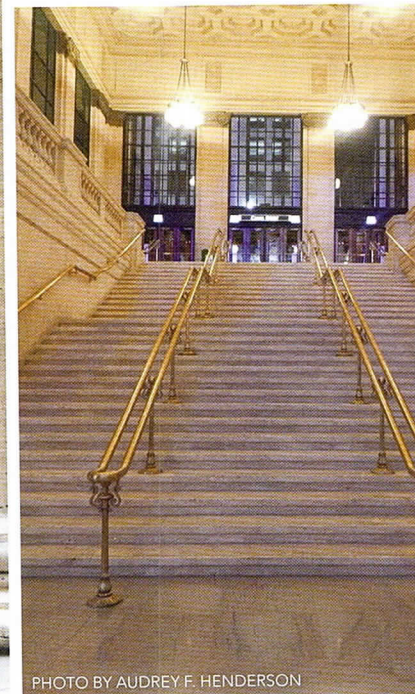


PHOTO BY AUDREY F. HENDERSON

Located in Chicago's rapidly growing West Loop, Union Station functions as a terminus for local Metra commuters and a way station for long-distance Amtrak travelers. A Chicago landmark since 2002, Union Station has been undergoing a much-needed facelift since 2010 under the direction of its owner, Amtrak. Restoration is being guided by facilities management firm CBRE, with architectural design by Goettsch Partners.

"We were honored to be a part of the project to restore Union Station as a city landmark and a civic gateway to the city," said Len Koroski, FAIA, LEED AP, and a principal with Goettsch Partners.

Long-unused headhouse spaces are being reclaimed while the overburdened concourse and track platforms are being freed up. The entire facility is being retrofitted for 21st century passengers, tourists and local residents. The next phase for restoration involves repairing the soaring skylight above the Great Hall.)

"This project for Chicago is on the same scale as the Statue of Liberty or the Capital Dome building restoration," said Paul Sanders, senior facilities manager, Chicago Union Station at Amtrak.

The Burlington Room, reconfigured from the former Women's lounge and restored to a level reminiscent of its original glamour, features meticulously restored murals and a dramatic offered ceiling. Nonetheless, this elegant event space also includes retrofitted smart lighting system. The antique fixtures were

discovered in crates stored in the basement, Koroski said.

The Burlington Room's grand re-opening was held in November 2016. During the event, Landmarks Illinois presented Amtrak with the 2016 Real Estate and Building Industries Council Award.

"The time felt right for us to give Amtrak a signal that their work was recognized and to encourage them to continue," said Bonnie McDonald, Landmarks Illinois president and CEO.

Earlier restoration efforts focused on staircases leading into the Great Hall from Canal Street. The southern staircase had served as a backdrop for the 1987 feature film *The Untouchables*. To the casual observer, both staircases retained their original grandeur.

"You can still find people taking pictures of those Great Hall steps, those 'Untouchables' steps," Koroski said.

Nonetheless, closer inspection revealed that decades of footfalls had taken their toll. In some places, the travertine on individual steps had worn down to half the original 3-inch thickness.



The former Women's Lounge required extensive restoration to nearly every element. The murals had been damaged by both age and humidity. Three of the four murals were restored, while the fourth was recreated by an intricate process of matching digital photograph squares and strips. The alcoves on the far wall formerly served as phone booths.

Restoration required balancing sometimes conflicting landmark demands and ADA requirements. Specifically, each staircase was required to retain its "floating" illusion, originally achieved largely by rounded "bull nose" finishes on each step, an aesthetic feature which represented a tripping hazard that would not pass ADA muster, Sanders said.

The ingenious solution required both artistry and complex mathematics. Tripping was minimized by subtly altering each bull nose to a square edge. Calculations were made to replicate original pattern and placement frequency of handrail posts, while adding two posts per banister and extending it from the bottom step to the landing. The finished result is hardly distinguishable from the original design.

"This project required a level of detail and finish that most

construction firms don't deal with today," Sanders said.

By contrast, the bi-level Metropolitan Lounge, relocated from the concourse to the headhouse, is fitted out with sleek furnishings and clean lines. Emphasizing premium passenger comfort, the Metropolitan Lounge boasts 21st century amenities, including Wi-Fi throughout and abundant charging stations for laptops and mobile devices. A feature restored within the lounge and geared toward weary cross-country travelers had been absent from Union Station for the past four decades: showers.

The starkly modern update of the Metropolitan Lounge detracts nothing from Union Station's landmark status, McDonald said.

"We are not encouraging people to preserve buildings in amber. Buildings are living, breathing structures," McDonald said. **CA**



Relocating the Metropolitan Lounge to the main head house doubled its capacity from 180 to 360. Modeled after premium airport lounges, it features separate spaces for business travelers, families with kids as well as areas designed for quiet relaxation.

THEATER AS PUBLIC CATHARSIS: THE CEDAR RAPIDS VETERANS MEMORIAL BUILDING

BY PAUL ALT, AIA



Since the siege of Homer's Troy (approximately 1250 B.C.), the Greek city-states have been at war with the powers of the Mediterranean, the Eastern world and each other for nearly 13 centuries. Because of the constant state of war, the impact on individuals, families and society were profound. Almost every able-bodied male served in the military, and widespread post-traumatic stress disorder affected the warriors and their families. Poetry, philosophy and theater became "cultural tools for the healing" of the mind, body and spirit. In 700 B.C., Greek theater created the genre of tragedy, which was written, performed and viewed by active warriors and veterans, and

served as a tool of public catharsis. The tragic plays of Aeschylus, Sophocles, and Euripides are performed today for our society's veterans and warriors. A veteran can connect to the protagonist, who experienced combat trauma and adverse effects of the "afterwar." The first step in healing is the recognition of an affliction.

The transformation of the Cedar Rapids Veterans Memorial Building, a multi-use veteran/community center (completed in 2014 after the catastrophic flood of 2008) included the restoration of the 10,000-square-foot auditorium with fly space and theater changing rooms. The auditorium hosts plays and rituals devoted to

veteran healing in addition to performances of music, athletic events and leadership conferences. In the recent primaries, both Republicans and Democrats hosted their primary pep rallies at

the building. The building is also very popular with the community. Wedding receptions occupy the restored auditorium, ballroom and the new multi-purpose space three of four weekends every month.

The 8,000-square-foot multi-purpose room (formerly the armory) also hosts smaller theater and performance venues. Natural light penetrates the space from the adjacent mezzanine level. A Veterans Lounge was initially located on the eastern mezzanine, but it has since become a church. On the western edge, there is a series of conference rooms/multipurpose rooms. These rooms have several functions ranging from: behavioral health, veteran peer-mentoring, veteran writers' workshops and cognitive therapy. The image shows a veteran writers' workshop by the University of Iowa's Writers Workshops with a group of combat veterans. Artifacts, such as helmets from World War I to the present conflicts, were placed in niches





Armory: before



Armory: after



Auditorium: before



Auditorium: after

Adjacent to writing stations. These artifacts were from the Veterans Art Museum located on the ground floor. These were placed to remind the veterans there were others who went before them — they were not alone.

At the American College of Healthcare Architects Summit in Chicago last summer, there was a call for health care services integrating into the surrounding

communities. Professor David Allison, FAIA, FACHA, the director of graduate studies in architecture and health at Clemson University, spoke of this need:

"Hospitals have an implied or moral, if not explicit, mission to not only restore health but to promote health for those impacted by them. They also have a significant civic and economic and environmental impact on the

communities where they are located. They should therefore be places that support the physical, mental, social and environmental health of the individuals who use them, the communities where they are located, and globally through their environmental footprint. They should be places that positively contribute to the life of the larger community, provide positive places for healthful

activities and serve as role models for the healthful design of spaces, buildings, and healthy community planning and design."

Given our national mental health crisis due to inner-city violence and addiction, additional cultural healing tools need to be implemented to address mental health issues by providing a 21st century tool for public catharsis and individual well-being. **CA**



CRAN/PELLA LECTURE SERIES

Pella Crafted Luxury continues its 2017 lecture series in its Merchandise Mart showroom on Thursday, June 8, with Sheila Kennedy, FAIA (Kennedy & Violich Architecture, Ltd., Boston). AIA Chicago and the AIA/Chicago Area CRAN are co-sponsors of this series, which began on March 3 with a lecture by John Simpson, RIBA (John Simpson Architects, London) and continues with **Thomas Kligerman (Ike Kligerman Barkley, New York City and San Francisco)** on September 7, and **Tod Williams, FAIA, and Billie Tsien, AIA, (Tod Williams Billie Tsien Architects, New York City)** on November 16.

All events begin with a reception at 5:30 p.m., followed by the lecture at 6 p.m. and take place at: **Pella Crafted Luxury Showroom, Merchandise Mart Suite 100.**

AIA CHICAGO MADE FEATURES RANGE DESIGN

The AIA Chicago Made series features objects designed by architects in Chicago. In its third iteration, AIA Chicago Made presents a new seating series by RANGE Design.

Lightframe Stool emerged out of the architectural and interior design of the Hopewell Brewing Company Brewery and Taproom. Composed of two interlocking steel tubes and a thin wood seat, the design reflects the qualities of the space: modern, light and airy.

Stillwood Chair was commissioned as part of the interior renovation of a '70s-era modern home in Jackson Hole, Wyoming. Both chair and interior were designed to complement the elemental expression of the original architecture.

The display will be on view in AIA Chicago's reception area until April 1, 2017.



NATIONAL REBUILDING DAY

April 29, 2017

Robbins, Illinois

The work of architects affects such a wide range of Chicagoans, and AIA Chicago is again partnering with Rebuilding Together Metro Chicago for a day to make a difference in the life of a Chicago area family selected to receive home repair assistance from our volunteers.

Rebuilding Together is a leading national nonprofit in safe and healthy housing with more than 40 years of experience. Through volunteer events, the organization improves Chicagoland's low income homes and communities.

Join us on April 29, 2017, in Robbins, Illinois (just south of Oak Lawn). Visit aiachicago.org for more details and to sign up.



AIA Chicago volunteers, with homeowners, on Rebuilding Day.

2017 DESIGN EXCELLENCE AWARDS



Submissions for the 2017 **Design Excellence Awards** open on March 31, 2017, and will remain open through May 31, 2017. Stay tuned for details, and **SAVE THE DATE** for **DESIGNIGHT 2017**: October 13, 2017 at Navy Pier's Grand Ballroom.

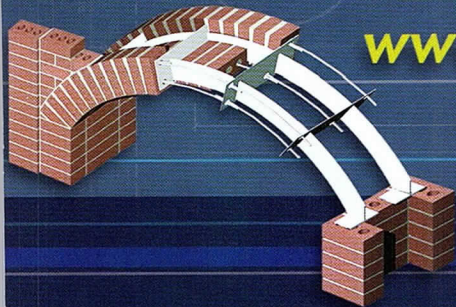
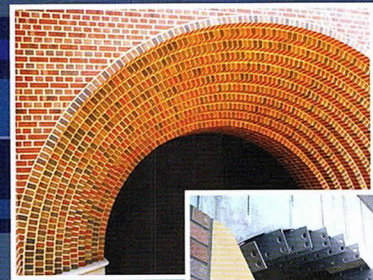
NOTHING

Comes Between The Architect's Vision

And The End Result...

CONCEALED LINTEL SYSTEMS FROM HOHMANN & BARNARD

are custom designed and engineered to fit even the most intricate and complex architectural requirements. Designs can incorporate various courses, spans, and offsets as well as multiple sizes and colors of brick. H&B provides all necessary drawings, calculations, and components; **allowing for virtually limitless architectural creativity!**



www.h-b.com/lintelca2

1-800-645-0616



HOHMANN & BARNARD, INC.

A LARGE PARTY FOR SMALL PROJECTS RETURNS!



The annual LARGE PARTY attracts more than 600 architects, clients, contractors and members of the public to celebrate small firms.

AIA Chicago asks members and friends to save the date for the seventh annual LARGE PARTY for Small Projects, celebrating our Small Projects Awards:

Thursday, May 4, 2017
Architectural Artifacts
4325 North Ravenswood Avenue
5:30-8 p.m.

This FREE event features a short program honoring the competition winners, beer by Revolution Brewing, wine and light bites. You can also peruse the Small Projects Exhibition, featuring all 2017 Small Projects Awards submissions.



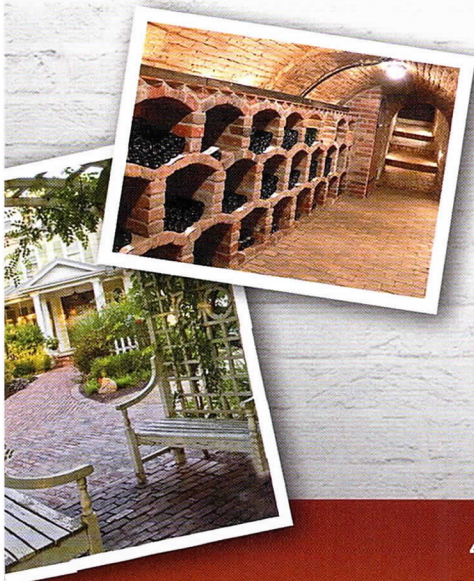
DESIGN WITH THOUGHT



When your clients inquire about reclaimed materials and use words like sustainability, natural elements and “green” let them know that your firm is able to provide the products they desire.

Stockyards Brick specializes in reclaimed architectural elements from the heart of the industrial and manufacturing districts of Chicago. We turn old growth timber into beautiful ceiling and wall exposed beams, flooring, mantels, and custom furniture; old brick and pavers into patios, fireplaces, kitchen and bar tiled flooring, back splashes, driveways, and decks.

The USGBC’s Leadership in Energy and Environmental Design (LEED) rating system is nationally accepted benchmark for green building. Stockyards Brick is proud to support the United States Green Building Council by providing a wide selection of products that comply with LEED guidelines and contribute to LEED certification.



STOCKYARDS BRICK



4150 S. Packers Ave., Chicago, IL 60609
872.444.5440 | www.stockyardsbrick.com



YOUNG ARCHITECTS CAN MAKE A DIFFERENCE THANK YOU, CRAIN'S, FOR NOTICING

BY MICHAEL PFEFFER, AIA

I worked in a large firm for 15 years, straight from college, raw and uninitiated. I dutifully built countless models, laid out bathrooms, parking stalls, and did whatever I was told. I survived a recession ... finding out later I had been on a list to be let go, but someone with more experience than I saw something in me to stand up and take me off that list, for which I am grateful.



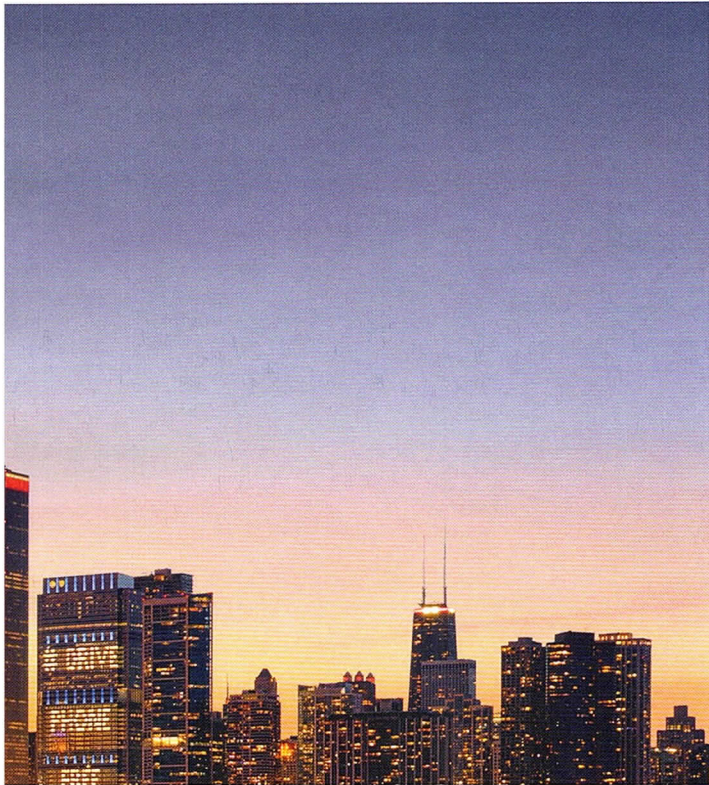
Architecture is a wonderful profession imbued with a social conscience. In Chicago, surrounded by historical champions of architecture, responsibility passes from generation to generation, each carrying the burden of responsibility to live up to or surpass its predecessor. What a task, what an honor.

Architecture is also a tough profession, with an arduous path to credibility. As a comparison, conventional wisdom holds that performance peaks for marathon runners in their early 30s; in architecture, that number is closer to 50!

At some point, I decided I wasn't making the impact I had envisioned for myself, so I set out to alter conventional wisdom. I did this by acting as a social conscience in the workplace. I noticed I was so focused on

designing sustainable buildings and healthy cities with my colleagues that I was missing an opportunity as an architect to contribute to my own city. So I found like-minded people, and we got to work. We got involved with great organizations like Rebuilding Together, Habitat for Humanity, the ACE Mentorship program and AIA Chicago. People started to engage, and we gave back. Soon people started to appreciate things outside of the world of pen and paper, and whether we knew it at the time or not, we were becoming better architects, better people and more rounded. It was really cool.

Last month, I was recognized by *Crain's Chicago* 40 Under 40, and I'd like to say "thank you" for recognizing the architectural profession in its annual installment. It's important that publications, which are not 100 percent



WINTRUST BANK
CHICAGO, IL



focused on architecture, continue to recognize the efforts of the architectural community. This recognition also stands as inspiration to all the other young architects that you don't need to be 50 (or older!) to be recognized.

I'd encourage all young architects to get engaged in your communities. We have essential skills that Chicago needs.

I was very lucky along the way; SOM gave me more opportunities than I could have imagined. I saw the world, was introduced to different cultures and made many friends around the world. I was dedicated, proud, stubborn and lucky (did I say lucky twice?).

I am excited for our future.

The architectural profession is in your hands.

Get involved. [CA](#)

**LIGHTING THAT EARNS
YOUR INTEREST**

THEATRE PLANNERS / LIGHTING DESIGNERS
Schuler Shook



PLEASE SEND YOUR NEWS TO:
info@aiachicago.org

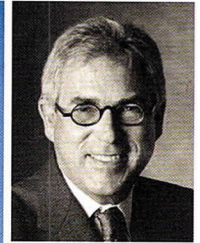
SWALLOW

ACOUSTICS, NOISE & VIBRATION CONTROL
Thornton Tomasetti

Thornton Tomasetti acquired Swallow Acoustic Consultants Limited, a consulting engineering firm specializing in acoustics, vibration and noise control. The firm is based in Mississauga, Ontario.



HED recently served as the design architect on the Elizabeth Catlett Residence Hall, a new residence hall at the University of Iowa campus. The hall opens this fall.



Richard Keating, FAIA, is partnering with HED to provide design services to its practice.



SmithGroupJJR recently completed the redesign of its new offices located on the ninth floor of the Jeweler's Building in downtown Chicago. The new space uses open floorplan and desking arrangements, allowing the firm to grow by 40 percent without adding additional square footage.

ALL IMAGES ARE COURTESY OF THE FIRM, UNLESS OTHERWISE NOTED. LEED AP STATUS IS INDICATED ONLY IF REPORTED BY THE FIRM.



Mark Schmieding, AIA, joined bKL Architecture as a director. Other new promotions include **Paul Hagle, AIA**, to the position of director; **Angela Spadoni, AIA**, **Grace Ames, AIA**, **Leah Raab, AIA**, and **Andrian Avram, AIA**, to the position of associate director; **Christopher Smith, Isaac Persley, AIA**, **Jonathan Meyer, AIA**, **Matt Noap, AIA**, **Ruxandra Antea, AIA**, and **Sonja Janeva, AIA**, to the position of associate.



Perkins Eastman, working as architect of record and interior designer, has created a new headquarters for the American Board of Psychiatry & Neurology, Inc. The L-shaped, 41,000-square-foot building will feature slender wings that form a private outdoor courtyard. The project broke ground in October 2016.



PK is providing architecture and design services, as well as interior and site design and program verification, to the Nashville/Davidson Metro Criminal Justice Center. This new building replaces an old, obsolete intake center and will provide new opportunities for rehabilitation and restorative justice. **Moody Nolan** is associate architect.

PEOPLE + PROJECTS



PLEASE SEND YOUR NEWS TO:
info@aiachicago.org



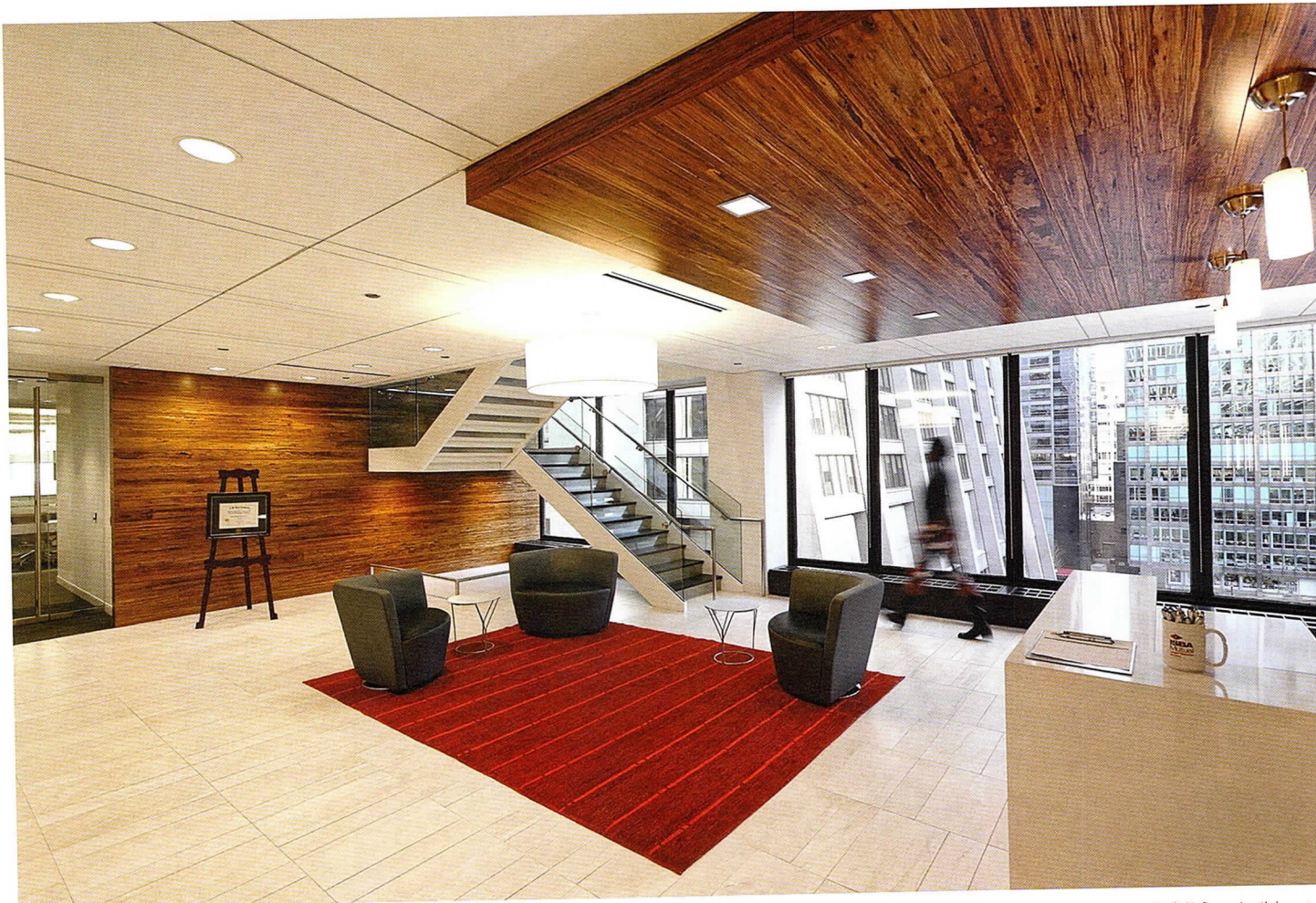
Jeremy Green, AIA, joined **GREC Architects** as a senior project architect to lead one of the firm's major projects. **Janeen Harrell, AIA**, has also joined **GREC Architects** as a senior project architect.



Manish H. Shah, AIA, has been hired as the executive director of the Chicago/Midwest office of **KTGY Architecture + Planning**. Shah will work in the firm's national health care design practice.



Andy Totten, AIA was recently named vice president at **McHugh Construction**.



Christopher Nigro, AIA, LEED AP B+C, is now principal at **Griskelis Young Harrell**. Recent projects include the Illinois State Bar Association Mutual's full-floor build-out at 20 South Clark.



Design Insight, Inc. has recently completed the expansion of a private Tudor cottage in Arlington Heights, adding 500 square feet and remodeling 500 square feet of existing space.



Andrew Roskos, AIA, has been promoted to associate at **HED**. Roskos leads design and technical systems for large, complex projects for the Chicago office.



Mark Palmer, AIA, LEED AP, received the DuPont Emerging Leader Scholarship, selected by the Design Futures Council and sponsored by DuPont Building Innovations. The Design Futures Council aims to identify leaders who will increasingly have a larger impact on the sustainable design community. Palmer is an associate VP of health care in **CallisonRTKL's** D.C. office.



Francia Flores recently joined **KTGY Architecture + Planning's** Chicago office as a job captain.



Douglas Pfeiffer, AIA, LEED AP, has been elevated to principal and business manager of **Dewberry's** Illinois operations in the Elgin, Illinois office.



PLEASE SEND YOUR NEWS TO:
info@aichicago.org



Level Incorporated (formerly Wilkinson Design Corporation) is currently designing a 13,000-square-foot apartment building at 4540 North Ravenswood. The design team is pursuing a zoning change to increase the number of units from five to nine and include ground-floor live-work units.



Michael Thompson, AIA, LEED AP, and **Francesco Mozzati, LEED AP,** have been promoted to associate principals at **Solomon Cordwell Buenz**.



Jennifer White, AIA, joined **HUSArchitecture** as project manager.



HKS Chicago has added several senior staff. In the firm's health sector, **Terence Houk, AIA,** is now vice president; and **Janhvi Jakkal, AIA,** is associate. Additionally, **Karl Gustafson, AIA;** **Jorge Barrero, Assoc. AIA;** and **Julie Hutchison, Assoc. AIA,** were named vice presidents and will focus on corporate, residential, hospitality and education clients. **Leah Ray, Assoc. AIA,** is now vice president and director of content development.

ALL IMAGES ARE COURTESY OF THE FIRM, UNLESS OTHERWISE NOTED. LEED AP STATUS IS INDICATED ONLY IF REPORTED BY THE FIRM.



Cordogan Clark & Associates' John C. Dunham STEM Partnership School at Aurora University project has been awarded a LEED Platinum certification by the U.S. Green Building Council, recognizing the energy-efficient and high-performing design of the building.




DJ Architects completed the 20,000-square-foot shared office space for a co-working group, Amata, at 161 North Clark Street. The space uses integrated technology to help established and up-and-coming legal firms succeed.

MANUFACTURER
– OF –
ARCHITECTURAL
METAL

HENDRICK

cladding | corrugated panels
entrance grilles | stair components
sunshades | tree grating
trench grating | ventilation grilles



Hendrick
Architectural
Products

www.hendrickarchproducts.com
1-877-840-0881

Shirley Ryan AbilityLab

Gensler Chicago

The new Shirley Ryan AbilityLab at the Rehabilitation Institute of Chicago (RIC) melds 21st-century design with new ideas of health care teamwork and healing. For decades, the RIC has been the top hospital for rehabilitation care, leading in technology, research and practice for those with traumatic brain injuries, spinal cord injuries, stroke patients and more. Their new facility was designed by Gensler (a collaborative project with HDR and Clive Wilkinson) — and has been a project created for and through collaboration.

While working among the medical community at RIC during their extensive research and visioning sessions, the Gensler team heard from doctors who emphasized the importance of teamwork in patient recovery rates: they were finding that patients who interfaced with clinicians, researchers, therapists and family simultaneously had higher recovery rates.

Michael Hanley, AIA, LEED AP BD+C, regional health and wellness practice leader, who worked on the project, said, “A patient’s health

improves dramatically in these circumstances. It was our focus and priority to bring these different groups together physically and spatially in a collaborative and supportive manner.” Grant Uhler, AIA, Gensler principal in charge, described how the team translated this into design: “We co-created two-story ‘centers of excellence,’ which were essentially mixing chambers, a new paradigm, where patients, clinicians, therapists,

researchers and family members interact and support in improving the patient’s ability.” The project was a collaborative effort with HDR, which moved its team into the Gensler office during the design phases, essentially recreating the intended collaborative environment at the AbilityLab.

“One can envision clinicians in white lab coats, researchers in Birkenstocks, and therapists with their exercise balls. We brought

them together into this working lab forward-looking space to support and encourage a shared, common goal — to encourage a team dynamic with a keen focus on the patient,” Uhler said. These centers for excellence are segmented for brain, pediatrics, hands and limbs, among others, which allow patients to interact with all modes of treatment and research in their particular injury area.

Further, the building’s design itself emphasized how an RIC patient might interact with the space. “Our team used the principal of ‘frictionless design’ to explore how the environment can best support treatment,” said Hanley. “In the final design, there are very few doors or sharp angles, but curvaceous open spaces that flow and facilitate the ease of movement.”

“One important outcome of universal design is intuitive wayfinding,” Uhler added, who described that brain trauma patients often experience intense contrasts between light and dark. “It meant we had to create legible, easily-understandable spaces using subtle lighting and textural changes.”





Christ Hospital Spine and Joint Center

Skidmore, Owings & Merrill, LLP

The challenge in designing a patient-focused, state-of-the-art medical facility is in the details. That challenge was front and center when designing the Christ Hospital Spine and Joint Center in Cincinnati.

The 381,000-square-foot, seven-story facility opened in September 2015 as a model of spine and joint care and part of Christ Hospital's plan to integrate and open up their main campus. Brian Lee, FAIA, LEED AP, design partner at Skidmore, Owings & Merrill, served as the lead designer on the project, which

includes 90 inpatient rooms and 12 surgical suites.

The facility proves that attention to detail and small touches — like artwork in the bathroom — can make an efficient medical facility feel like a residential space, he said. "We wanted much more of a friendlier, more human touch to the facility," Lee said, "Yet it doesn't feel

like it is the wrong kind of environment. It still feels like it's a powerful institute that provides the strongest care you can get."

In order to make sure all the details came together just right, SOM worked with patients, medical professionals and hospital staff to design a facility that not only assisted patients in their recovery



PHOTO BY JEFFREY TOTARO



PHOTO BY JEFFREY TOTARO

place deep within the hospital, which was not easily accessible,” Faurot said. “We wanted to make the patient path of travel from parking, to elevator, to waiting room, to pre- and post-op, to out-the-door faster and more efficient.”

The design includes three floors of physician’s offices, three floors of parking and three floors of ambulatory care, including a 23,000-square-foot comprehensive cancer center, Faurot said. Developed in close collaboration with former CEO of Presence Saint Joseph Hospital, Roberta Ruskin-Hawke, the interior’s waiting and recovery rooms incorporate natural materials, translucent screens and prairie décor. Patients awaiting treatment in the ground-floor cancer center can touch dried and preserved bamboo poles. Those in the sixth-floor orthopedic

rehabilitation and fitness center can peer through south-facing windows at a rooftop garden planted with prairie grass. Upper-floor waiting rooms offer expansive views of Lake Michigan.

Faurot said the \$92 million project, which began in 2009 shortly before passage of the Affordable Care Act, comes at a time when outpatient surgery centers have become a rapidly growing sector of hospital health care known for shorter patient stays and fewer overhead costs. “This springs from both the need for affordable care and a health care model that is moving away from inpatient care to outpatient care because it is cheaper and patients recover better at home. A knee replacement that would have lasted a week decades ago can be done in a day or two,” Faurot said. **CA**

— Jeff Link

INDEX OF ADVERTISERS

Artistry in Architectural Grilles37 www.aagrilles.com	Petersen Aluminum Corp.8 www.pac-clad.com
CPI Daylighting7 www.cpidaylighting.com	Schuler Shook23 www.schulershook.com
Hendrick Architectural Products29 www.hendrickarchproducts.com	Schweiss Doors6 www.schweissdoors.com
Hohmann & Barnard, Inc.19 www.h-b.com	Simpson Gumpertz & Heger37 www.sgh.com
JEC GroupIBC www.jecomposites.com	Stockyards Brick21 www.stockyardsbrick.com
Leopardo CompaniesBC www.leopardo.com	The Hill Group3 www.hillgrp.com
LG Construction10 www.lgconstructiongroup.com	Unilock ChicagoIFC www.unilock.com
Marvin Windows and Doors4 www.marvin.com	
Pella Crafted Luxury11 www.pellacraftedluxury.com	

AAGM Artistry in Architectural Grilles by Advanced Architectural Grilleworks

Custom manufacturers of fine architectural grilles and metalwork



Bar Grilles • Perforated Grilles
Decorative Metal Panels
HVAC Grilles • Architectural Screens

sales@aagrilles.com • www.aagrilles.com • 516-488-0628

We are Proud Affiliate Members of AIA Chicago,
New York, Long Island, and AIA California Council



Chicago Architect is published six times a year by Innovative Publishing.

Photocopy permissions where necessary, permission is granted by copyright holder for those registered with Copyright Clearance Center (CCC), 222 Rosewood Drive, Danvers, MA 01923, www.copyright.com to photocopy any article herein for personal or internal reference use only for the flat fee of \$2.00 per copy for each article. Send payment to CCC. Copyright 2017 AIA Chicago.

All information contained within has been obtained by AIA Chicago and Innovative Publishing from sources believed to be reliable. However, because of the possibility of human or mechanical error, AIA Chicago and Innovative Publishing do not guarantee the accuracy or completeness of any information and are not responsible for any errors or omissions or for any results obtained from use of such information. The editor reserves the right to censor, revise, edit, reject or cancel any material not meeting the standards of Chicago Architect. The information and opinions published in Chicago Architect represent the views of the authors and not those of the publisher or AIA Chicago, unless otherwise stated. The acceptance of advertising does not reflect endorsement of products or services by this publication, AIA Chicago or Innovative Publishing.

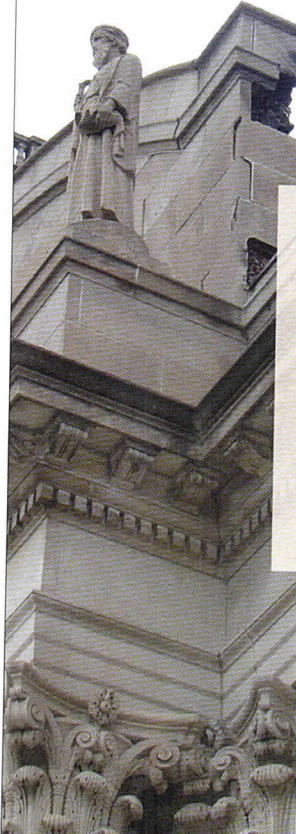
LETTERS TO THE EDITOR: Chicago Architect gladly accepts all signed, dated letters to the editor. We reserve the right to edit for style and any potentially libelous content. Letters should be no longer than 250 words. Submit letters to CA@aichicago.org.

STORY IDEAS AND SUBMISSIONS: Chicago Architect welcomes your story ideas and your written article submissions, whether about your projects or about business trends and issues. Email us at CA@aichicago.org.

facebook.com/chicagoaia twitter.com/aichicago
aichicago.tumblr.com vimeo.com/aichicago

SIMPSON GUMPERTZ & HEGER

Engineering of Structures
and Building Enclosures



Simpson Gumpertz & Heger Inc. is a national engineering firm that designs, investigates, and rehabilitates structures, building enclosures, and materials.

135 South LaSalle St.
Suite 3050
Chicago, IL 60603
312.754.7500

Left: Shrine of Christ the King Church, Chicago, IL

Boston
Chicago
Houston
Los Angeles
New York
San Francisco
Southern California
Washington, DC

www.sgh.com

CARTER MANNY AND THE WORD (1918-2017)



PHOTO: ARTHUR SIEGEL

CARTER H. MANNY, JR. (RIGHT) WITH R. BUCKMINSTER FULLER (LEFT), 1965, GRAHAM FOUNDATION FOR ADVANCED STUDIES IN THE FINE ARTS, CHICAGO.

Among the pleasantest memories I have of Carter Manny, FAIA, are the occasional phone calls I made to him after his move to California.

The news of his death that came in February brought back memories of the time I first met him. I was the art

critic of the *Chicago Daily News*, and I wanted to learn something about the kindred art of architecture. A good place to start was the Madlener House on Burton Place that was the quarters of the Graham Foundation. Carter Manny was the Foundation's director. I made an appointment and quickly learned that I had made a good choice. Manny had studied architecture at Harvard and later worked in the office of Frank Lloyd Wright before his time at the Studio of Ludwig Mies van der Rohe. Manny graduated from the Illinois Institute of Technology in 1948.

At the time I met him, one of the issues at the Foundation pertained to its library. Its trustees were debating over the fate of the books there. One trustee wanted to sell them; another wanted to keep them. The books were finally sold to the Canadian Centre for Architecture. Manny, himself, wanted to keep them in Chicago because he knew how important (and valuable) they were.

Listening to him talking to the trustees and conversing with me, I realized how much he knew about the literature of architecture and visual arts. He was knowledgeable about words as well as buildings.

Anyone interested in following Manny's career would do well to consult the oral history of architecture owned by the Art Institute of Chicago. An interview included in that program was one that I did with Manny that covered his whole career. This interview reminds me again of how much he contributed to the culture of Chicago. **CA**

— Franz Schulze

Franz Schulze is the Hollender Professor of Art Emeritus at Lake Forest College and a renowned writer on Chicago's architectural history. His many books include Philip Johnson: Life and Work and, Mies van der Rohe: A Critical Biography, Expanded Edition. His interviews with Carter Manny can be found online at the Art Institute of Chicago's Ryerson & Burnham Collections, www.artic.edu.

A memorial celebrating the life of Carter Manny will take place at 2 p.m. on Saturday, May 20, at Crown Hall, IIT. If you'd like to attend, please rsvp to info@aiachicago.org.

THE FUTURE OF Composites in Construction

BY **JEC**
GROUP

McCormick Place Lakeside Center

Three Full Days of Business, Content and Networking, gathering leaders and decision makers from the Composites, Construction and Civil engineering industries.

Chicago, IL, USA
June 20-21-22 - 2017

Find out more about the program of the event and register on:
www.the-future-of-composites-in-construction.events

Co-located with: **techtex**
NORTH AMERICA

In partnership with:

NetComposites
NOW

CompIC

SPF
SOCIETY OF
PLASTICS ENGINEERS

AIA
Chicago

Sponsored by: **BASF**

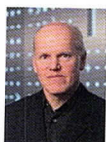
Dixie
Chemical

MVP
MAGNUM VENUS PRODUCTS

SAERTEX

STÄUBLI

tfp



Keynote speaker

MARK GOULTHORPE

Professor and Architect
MIT Department of Architecture.

MIT Massachusetts
Institute of
Technology

JEC KNOWLEDGE & NETWORKING
GROUP DEVELOPING THE COMPOSITES INDUSTRY WORLDWIDE
JECcomposites.com



Leopardo

People are drawn to Leopardo by our distinctiveness — both who we are and what we do.

People see joining our team as their dream job: a place to achieve their personal and professional goals. Industry partners prefer to work with us because we truly value collaboration and team work.

Clients seek us out as their trusted partner, saying we deliver fewer problems, greater value and better decision making. Leopardo. Passionately pursuing construction excellence.

