



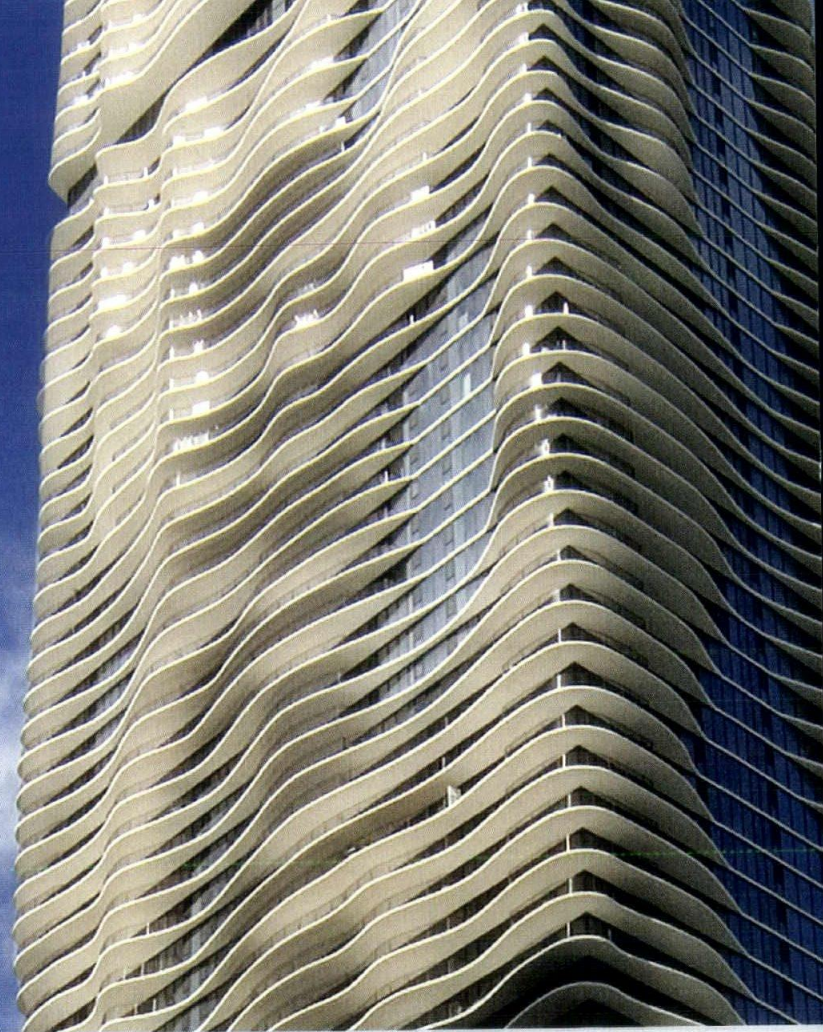




COMMERCIAL  
SOLUTIONS

TWO  
INDUSTRY  
LEADERS.

ONE LOCAL  
SOURCE.



ALUMINUM



FIBERGLASS



VINYL



WOOD

WINDOWS • BALCONY DOORS • STOREFRONTS • ENTRANCES • CURTAIN WALLS  
SUN CONTROL • IMPACT, BLAST AND BALLISTIC OPTIONS • THERMAL PERFORMANCE

Articulate your vision with four materials, virtually endless styles and options, and a wide range of price points with Pella EFCO Commercial Solutions. Pella and EFCO – two of the strongest fenestration brands in the industry – are working together to better support you in realizing your design intentions.

Contact your local team: 630-257-1465 | [PellaEFCOSolutions.com](http://PellaEFCOSolutions.com)



© 2014 Pella Corporation



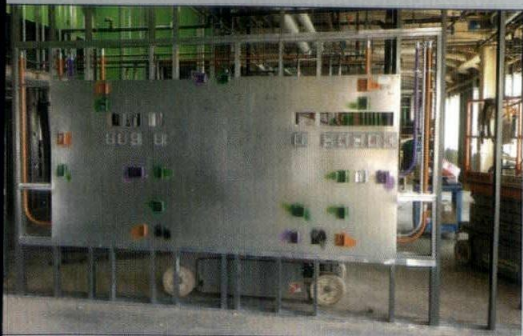
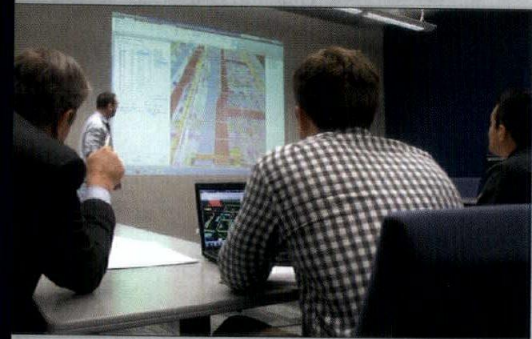


# THE HILL GROUP

## Reinventing an Industry

The Hill Group is helping to reinvent the building process by leading the way in Collaboration, Integrated Project Delivery, Building Information Modeling, Pre-Fabrication, Modular Construction, Commissioning, and Building Energy Efficiency.

- Construction*
- Energy Efficiency/Sustainability*
- Service & Building Maintenance*
- Commissioning/Test & Balance/LEED Consulting*
- Building Operations/Stationary Engineers*
- Engineering Services*
- Facilities Solutions*
- Architectural Systems*



THE HILL CAMPUS

Our 26-acre, state-of-the-art campus includes:

- (A) 32,000 SF Corporate office space
- (B) 104,000 SF Prefabrication shop
- (C) 80,000 SF Modular construction space
- (D) 21,000 SF Hill Collaboration Center
- (E) Tools, logistics, high bay and crane area

*"I personally invite you to tour our campus and witness the future of an industry today."*

Brian Teyema, Vice President  
847.451.5000  
hillgrp.com



Scan to watch Autodesk® video featuring The Hill Group.



New Heights. Reached.



Renowned for its unparalleled level of commitment and care, Ronald McDonald House Charities needs a contractor just as dedicated. For its first high-rise location, the charity relied upon the building acumen of Bulley & Andrews, whose involvement took project delivery to the next level. Fifteen levels to be exact.

**BULLEY &  
ANDREWS**

General Contractors Since 1891

1755 West Armitage Avenue • Chicago, Illinois 60622 • 773.235.2433 • [bulley.com](http://bulley.com)

[balloggphoto.com](http://balloggphoto.com)



# CHICAGO ARCHITECT

*Chicago Architect*, the primary outreach tool of AIA Chicago, is published six times a year as an authoritative resource for architects, the larger design community and the public about architecture and related issues of interest to Chicago architects. The magazine communicates industry trends, the value of high-quality design and the role of AIA Chicago and its members in the world of architecture.

## Publication Director

Zurich Esposito  
zesposito@aichicago.org

## Publisher

Tony Mancini  
tmancini@sgcmail.com

## Associate Publisher

John Rogier  
jrogier@sgcmail.com

## Editor

Ben Schulman  
bschulman@aichicago.org

## Managing Editor

Raissa Rocha

## Consulting Editor

Rob Cassidy  
*Building Design+Construction*  
magazine

## Designer

Kelsey Craig

## Advertising Sales

Jeff Elliott  
jelliott@sgcmail.com  
616.846.4633

Maggie Zmija  
mzmija@sgcmail.com  
847.954.7935

## Advertising Coordinator

Lucia Currans  
lcurrans@sgcmail.com  
847.391.1005

**AIA  
CHICAGO**

**SCRANTON  
GILLETTE  
COMMUNICATIONS  
SGC HORIZON**

## Contributors

Pamela Dittmer McKuen  
Lynne Fort  
Adilla Menayang  
Laurie Petersen  
Dennis Rodkin  
Mary Ellen Shoup  
Lisa Skolnik  
Jeff Zagoudis

## Vice President, Custom Media SGC/SGC Horizon

Diane Vojcanin  
dvojcanin@sgcmail.com

## Custom Media Manager

Melissa Sersland

# PRESIDENT'S LETTER

There is a fascinating map on display as part of the Chicago Architecture Foundation's "City of Big Data" exhibit, which graphically displays the age of Chicago's building stock. An online version allows you to sort buildings into four groups: pre-1899, 1900-1949, 1950-1999 and post-2000. As you step through the various eras, it becomes clear that most of the city is "old"; according to some estimates, most Chicago buildings are about 85 years old. It is hard to underestimate how our daily experience continues to be shaped by architects who practiced long ago.

As architects, we understand the long-term impact our work can have. Most of us are keenly aware the decisions that are made during a few short months of design will be leveraged – potentially – over decades of use. Our placement of windows can frame views that inspire; the exterior envelopes and structural grids we choose can define long-term space and energy efficiency; and the circulation paths we establish can choreograph the spatial experience of people for generations to come. In short, what we do has an impact that ripples through time and can extend far beyond our own lives.

The fortunate among our profession have had their work survive for centuries (a select few, for millennia). With a renewed emphasis on the values of sustainability and resilience (traditional practices lost in our throw-away era), architects practicing today can hope their work will positively influence the lives of people who won't be born for decades.

We have little control over which buildings will survive into the deep future, but in a sense, we do nominate the ones we think should last. Through AIA Chicago's Design Excellence and Small Project Awards programs, the profession recognizes the work which best reflects its values at this point in time.

Our awards programs take the broad range of new work and distill it into its essence. And judging by past experience, they do a pretty good job. Each month, the 'Back' section of *Architect* magazine features past Progressive Architecture Awards winners. It is fascinating to see what projects our predecessors a half century ago thought best represented architectural excellence. It is also quite amazing to see the familiar names of the jurors, some of whom were at the top of their game, others who were only beginning to make names for themselves.

As we celebrate the winners of the 59th annual Design Excellence Awards, let's reflect upon what message we are communicating to the future. Viewed across a distance of decades, and in the absence of our ability to speak for them, what will our buildings say about our culture, values and priorities? What do they say about us?

Scott A. Rappe, AIA

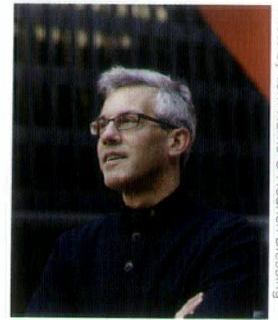


Photo by Tom Harris © Hedrich Blessing

*Chicago Architect* is published six times a year by the Custom Media Division at Scranton Gillette Communications/SGC Horizon LLC.

Photocopy permissions where necessary, permission is granted by copyright holder for those registered with Copyright Clearance Center (CCC), 222 Rosewood Drive, Danvers, MA 01923, www.copyright.com to photocopy any article herein for personal or internal reference use only for the flat fee of \$2.00 per copy for each article. Send payment to CCC. Copyright 2014 AIA Chicago.

The information contained within has been obtained by AIA Chicago and Scranton Gillette Communications/SGC Horizon LLC from sources believed to be reliable. However, because of the possibility of human or mechanical error, AIA Chicago and Scranton Gillette Communications/SGC Horizon LLC do not guarantee the accuracy or completeness of any information and is not responsible for any errors or omissions or for the results obtained from use of such information. The editor reserves the right to censor, revise, edit, reject or cancel any material not meeting the standards of *Chicago Architect*. The information and opinions published in *Chicago Architect* represent the views of the authors and not those of the publication or AIA Chicago, unless otherwise stated. The acceptance of advertising does not reflect endorsement of products or services by this publication, AIA Chicago or Scranton Gillette Communications/SGC Horizon LLC.

Letters to the Editor: *Chicago Architect* gladly accepts all signed, dated letters to the editor. We reserve the right to edit for style and any potentially libelous content. Letters should be no longer than 250 words. Submit letters to CA@aichicago.org.

Story Ideas and Submissions: *Chicago Architect* welcomes your story ideas and your written article submissions, whether about your projects or about business trends and issues. E-mail us at CA@aichicago.org.



Moving Walls

800-746-8273

# DOORS

- SHOPPING CENTERS
- OFFICE BUILDINGS
- RESTAURANTS
- AVIATION



## HYDRAULIC "One-Piece" DOOR

OR

## BIFOLD STRAP-LIFT and auto-latch

- FASTER
- SAFER
- QUIETER
- PROVEN

Say YES... to Strap-Lift Doors

Say NO to Cable Lift

**SCHWEISSDOORS.com**

One-Piece

### CHICAGO ARCHITECT ADVISORY COMMITTEE

Thomas Braham, AIA  
Peter Exley, FAIA  
Peter Schlossman, AIA  
Linda Searl, FAIA  
Brett Taylor, AIA  
PK. VanderBeke, AIA  
Cynthia Weese, FAIA  
Thomas Zurowski, AIA

### AIA CHICAGO 2014 BOARD OF DIRECTORS

**President**  
Scott A. Rappe, AIA  
**First Vice President/  
President Elect**  
Tony LoBello, AIA  
**Vice President  
Government Affairs**  
Tom Jacobs, AIA  
**Vice President  
Sponsorship**  
David Eckmann, AIA  
**Vice President  
Honors & Awards**  
Michael Wilkinson, AIA  
**Secretary**  
Matt Dumich, AIA  
**Treasurer**  
Dawn Schuette, FAIA  
**Past President**  
Peter Exley, FAIA  
**Directors**  
Katherine Darnstadt, AIA  
Dina Griffin, AIA  
Tristan d'Estree Sterk, AIA  
Nootan Bharani, AIA  
Craig Brandt, AIA  
Robert Forest, FAIA  
Catherine Baker, AIA  
**Associate Directors**  
Erin Lavin Cabonargi,  
Assoc. AIA  
Michelle Lynn Rademacher,  
Assoc. AIA  
**Professional Affiliate  
Directors**  
Fred Berglund, Affiliate AIA  
Gregg Garmisa  
**Student Director**  
William Baine Rydin Ma,  
AIAS  
**AIA Illinois Delegates**  
Rik Master, AIA  
Ellen Dickson, AIA  
Steve Kismohr, AIA  
Eric Davis, AIA  
Janeen Harrell, AIA  
Mark Schwamel, AIA

### AIA Illinois Delegate Alternates

Steve Blye, AIA  
Julianne Scherer, AIA

### 2014 COMMITTEE CHAIRS

#### Community Interface Committee

Chey Hsiao, AIA  
co-chair  
Andrew Roskos, AIA  
co-chair

#### 2014 KNOWLEDGE COMMUNITIES

##### Design

Gregory Klosowski, AIA,  
co-chair  
Katherine LaCourt, Assoc.  
AIA, co-chair

##### Design for Aging

Steven Montgomery, AIA,  
chair

Heidi Dahle, AIA, co-chair

##### Education

Burcin Moehring, AIA,  
chair

William Bradford, AIA,  
co-chair

##### Environment

Susan Heinking, AIA,  
co-chair

Darren Hoppa, AIA, co-chair  
José Rodriguez, Intl. Assoc.  
AIA, 2030 Working Group

##### Healthcare Architecture

Candace Small, AIA, EDAC,  
co-chair

Matthew Miller, AIA, ACHA,  
co-chair

##### Historic Resources

Tim Scovic, AIA, co-chair  
Carolyn Andrews, Assoc.  
AIA, co-chair

##### Interfaith Forum on

**Religion, Art and  
Architecture**

Mark Kasprzyk, AIA,  
co-chair

Douglas Lasch, AIA,  
co-chair

##### Practice Management

Ben Johnson, AIA,  
interim chair

##### Regional & Urban Planning

Susan Hickey, AIA,  
chair

Steve Wilson, AIA, co-chair

##### Residential Design

Nate Lielasus, AIA, chair

### Small Practitioners Group

Terri Johnson, AIA, chair  
Craig Cermak, AIA, co-chair

### Technical Issues

Peter Stutz, AIA, co-chair  
Nick Niedospial, AIA,  
co-chair

### ADDITIONAL KNOWLEDGE COMMUNITIES

#### Interior Architecture

#### Young Architects Forum

Scott Schumaker, Assoc.  
AIA, chair  
Laura Crane, Assoc. AIA,  
co-chair  
Andres Lopez Franco,  
Assoc. AIA, co-chair

### CHAPTER STAFF

#### Executive Vice President

Zurich Esposito

#### Program Director

Joan Pomaranc

#### Program Manager

Allison Garwood Freedland

#### Communications Director

Ben Schulman

#### Financial Manager

Kathy Jessen

#### Membership Manager

Steve Riforgiato

#### Events Manager

Kelsey Kirkley

#### Office Manager

Nina Dew

*Subscription to Chicago Architect is included with AIA Chicago membership. Non-members may subscribe by signing up at: [www.aiachicago.org](http://www.aiachicago.org)*

*Additional copies of Chicago Architect are available for \$7.50 per issue and can be obtained by contacting the AIA Chicago office at 312-670-7770. If you are interested in purchasing a large number of issues, contact AIA Chicago and ask about group sales.*

*The American Institute of Architects is the voice of the architectural profession and the resource for its members in service to society.*



AIA Chicago is proud to print *Chicago Architect* entirely on FSC®-certified paper. The strict standards of the Forest Stewardship Council™ (FSC®) ensure that the paper stock includes wood fiber from well-managed forests as well as recycled fiber and/ or fiber from company-controlled sources.





Mary Bartelme Park & Playground, Chicago, IL

## STYLE FLOWS THROUGH

When your vision calls for a permeable paver, there's no better option than Unilock®.

More than twenty years ago, Unilock introduced the first permeable paver to North America and since then we've steadily increased the number of sizes, shapes, colors and architectural finishes available.

Today, our EnduraColor™ Plus technology delivers superior surface durability that can be customized to bring your project vision to life with the natural look of granite, marble, limestone or even sandstone.

**ENDURACOLOR™**  
PLUS

Unilock permeable pavers are self-aligning, structural pavers with joint spacing that complies with the Americans with Disabilities Act and will stay true for years to come. Plus, Unilock permeable pavers can help contribute toward achieving your LEED certification goals.

With national distribution and unrivaled product selection, only Unilock truly lets your style flow through.

**UNILOCK®**  
DESIGNED TO CONNECT.



# RED-HOT GREEN DESIGN



## CASE STUDY



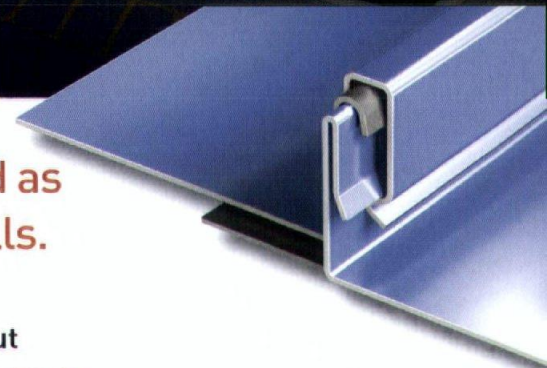
Nashville Fire Department, Joelton Fire Station 30, Joelton, TN  
Architect: Thomas, Miller and Partners, PLLC  
Roofing Contractor: Donelson Roofing Co., Inc.  
Profile: Snap-Clad 16" aluminum panels finished in .032 Champagne

A "green" Tennessee fire station is constructed as part of a larger plan for replacing aging fire halls.

Snap-Clad metal panels make a Nashville-area fire station stand out architecturally as it becomes a model of energy efficiency and endurance.

- Silver LEED Certification pending
- Energy-efficient, one-story structure
- Modern building designed and constructed to last more than 50 years
- 16" O.C. aluminum Snap-Clad panels
- 20-year non-prorated finish warranty
- Stiffener beads available
- Corrective leveled
- Labor-saving one-piece design
- Max length of 64' - Check with local factory for longer lengths
- Most of our 38 colors meet LEED, ENERGY STAR and cool roof certification requirements

Download our new PAC App to enter our smartphone giveaway!



**PAC-CLAD**  
Petersen Aluminum

WWW.PAC-CLAD.COM | IL: 1 800 PAC C  
MD: 1 800 344 1400 | TX: 1 800 441 8661  
GA: 1 800 272 4482 | MN: 1 877 571 2025

[PACGREENINFO.COM](http://PACGREENINFO.COM)  
YOUR GREEN METAL RESOURCE

[twitter](#)  
[facebook](#)



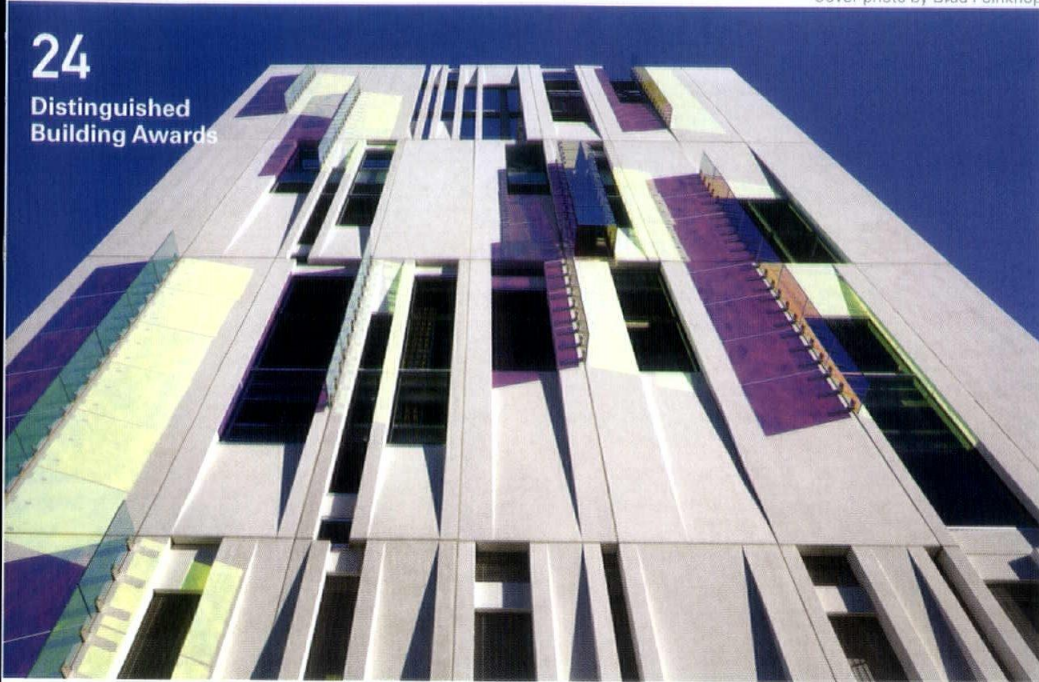
# TABLE OF CONTENTS

CHICAGOARCHITECT nov | dec 2014

Cover photo by Brad Feinknopf

24

Distinguished Building Awards



ON THE COVER: 2014 Distinguished Building Citation of Merit award recipient, OSU South Campus Chiller.

Photo by Steinkamp Photography

10

People + Projects



18

Lifetime Achievement Award

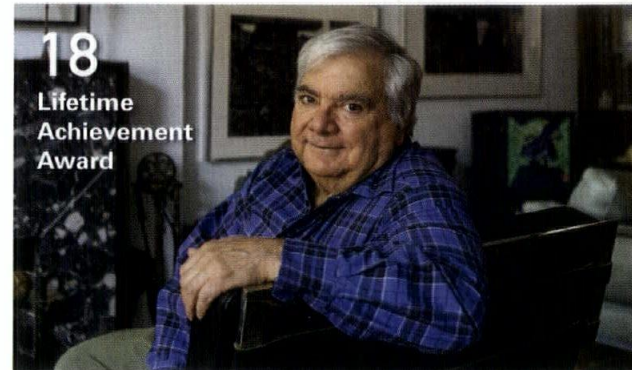


Photo by William Zbaren

34

Interior Architecture Awards

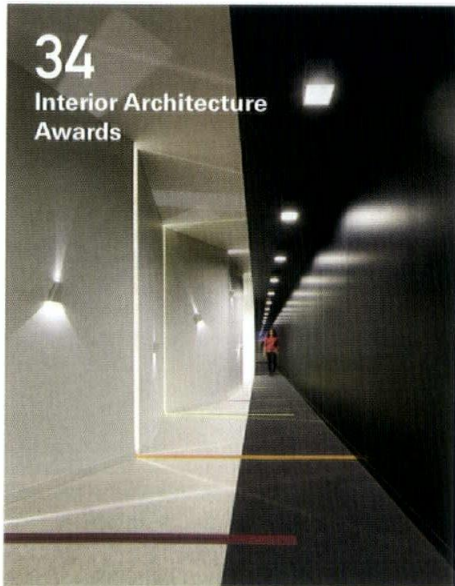


Photo by Steve Hall Hedrich Blessing

40

Divine Detail Awards

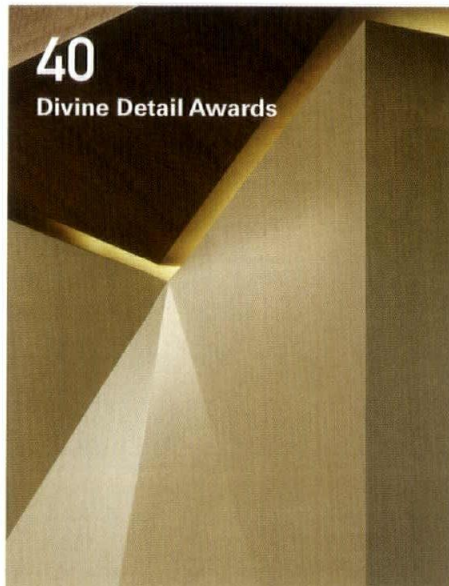


Photo by Mariusz Mizera Photography

44

Unbuilt Design Awards

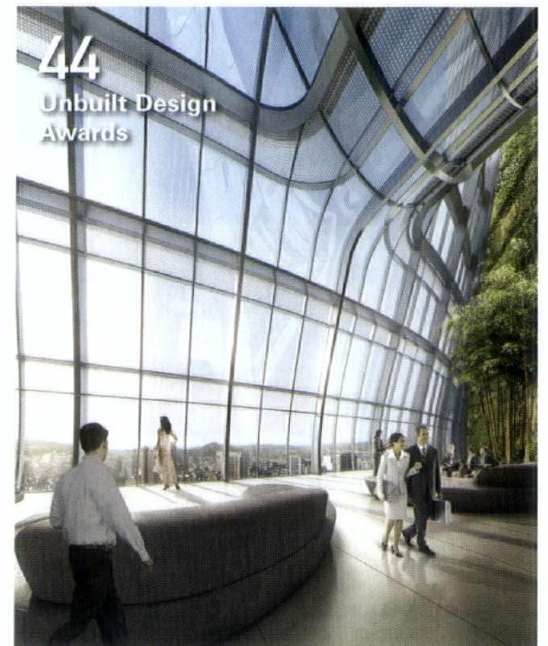


Image ©SOM

VIEW 2014 DESIGN EXCELLENCE AWARD WINNERS AND ALL OTHER SUBMISSIONS AT [AIACHICAGO.ORG](http://AIACHICAGO.ORG)



# PEOPLE + PROJECTS



**AltusWorks designed** the steel and glass canopies at the entrance of the recently rehabilitated Harrison Red Line as part of a larger overhaul of the CTA station.

## Booth Hansen promoted

Trina Sandschafer, LEED AP, to associate principal. She joined the firm in 2006.



## Bauer Latoza Studio was named a finalist

in the Midscale/Economy Hotel category at the 2014 *Hospitality Design Awards* for its renovation of the Hyatt Regency Chicago. The firm served as architect of record for the \$30 million project, which transformed the hotel's atrium, lobby, registration desk and dining areas. Additional recognition for the Hyatt renovation includes the 2014 Friends of Downtown Award and 2014 IES Illumination Award of Merit.



Jay Longo

## Forum Studio has appointed

Jay Longo, AIA, as president and Jennifer Park, AIA, as principal. They previously co-founded the former Longo Park Design Workshop.

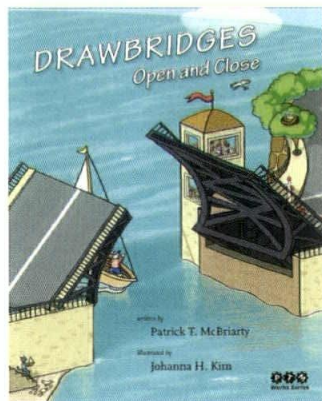


Jennifer Park



## William Jenkinson, Intl. Assoc. AIA, RIBA,

has joined HOK's aviation & transportation practice as vice president and regional practice leader in Chicago. Jenkinson joins HOK from Gensler, where he was director of aviation & transportation.



## The PTM Werks Series from author Patrick McBriarty has debuted

with the publication of the book *Drawbridges Open and Close*. McBriarty created the series to explain how machines work, and to answer the "why" questions kids ask. He was inspired to share stories with children after completing his photographic book *Chicago River Bridges*, published by the University of Illinois Press in October 2013.



## Charles Cook, AIA, of Cook Architectural Design Studio designed

the new 2,200-square-foot Lalique boutique in The Shops at Crystals located in Las Vegas. Cook worked with the Lalique design team to create a lavish art deco-influenced aesthetic that showcases the boutique's crystal product line.



# TRANSFORM THE WORLD

DESIGN WITH

VECTORWORKS 2015

Find your inspiration, discover, and experiment  
with the software that enables great design.

[www.vectorworks2015.net](http://www.vectorworks2015.net)





Susan Suhar



Tracey Pieczonka



Asha Patil



Chris Nikkel



Kent Rehmer



Dave Schlecht

**Susan Suhar, IIDA, RID, LEED AP, has been named**

senior associate at Eckenhoff Saunders Architects. She is also the current director of interiors.

The following were also named associates at the firm:

- > Asha Patil
- > Kent Rehmer, AIA
- > Tracey Pieczonka, LEED AP
- > Chris Nikkel
- > Dave Schlecht, LEED AP



**Jennifer McKenzie, AIA,**

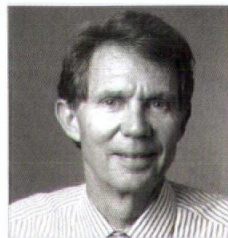
a past winner of the AIA Chicago Dubin Farley Young Architect Award, was selected to attend the Design Futures Leadership Summit this past September in Deer Valley, Utah, as one of six recipients of the DuPont Emerging Leadership Scholarship. McKenzie is an architect at Gensler.



**Goettsch Partners was hired**

by developer China Resources Land Limited to design a project located in Neighborhood 2 of Shenhen's Qianhai district. The project covers 6.18 hectares and includes five commercial towers totaling 450,000 square meters, the firm's largest project to date in China.

The overall development totals 503,000 square meters and includes three office towers, a five-star hotel tower, an apartment tower, shopping mall and retail stores. GP is designing all of the towers, as well as the hotel and apartment podiums and their affiliated program spaces. The project is a collaboration with U.K.-based design firm Benoy, who developed the master plan and is designing the shopping mall and retail areas.



**Jeff Case, AIA, is retiring**

from Holabird & Root after a 38-year tenure with the firm. His notable portfolio includes work on projects such as Concordia University's Christopher Center, Chicago Public Library Peer Reviews for City Libraries, PAWS Chicago Adoption and Humane Center, and numerous Chicago Public Schools.

**April Marie Hughes, AIA,**

NCARB, LEED AP BD+C,

joined HPZS as a managing principal. Hughes was previously director of studio operations at Farr Associates.



**Jeffrey T. Huck, AIA, REFP, joined** ARCON as director of design.

**Cordogan Clark & Associates has completed**

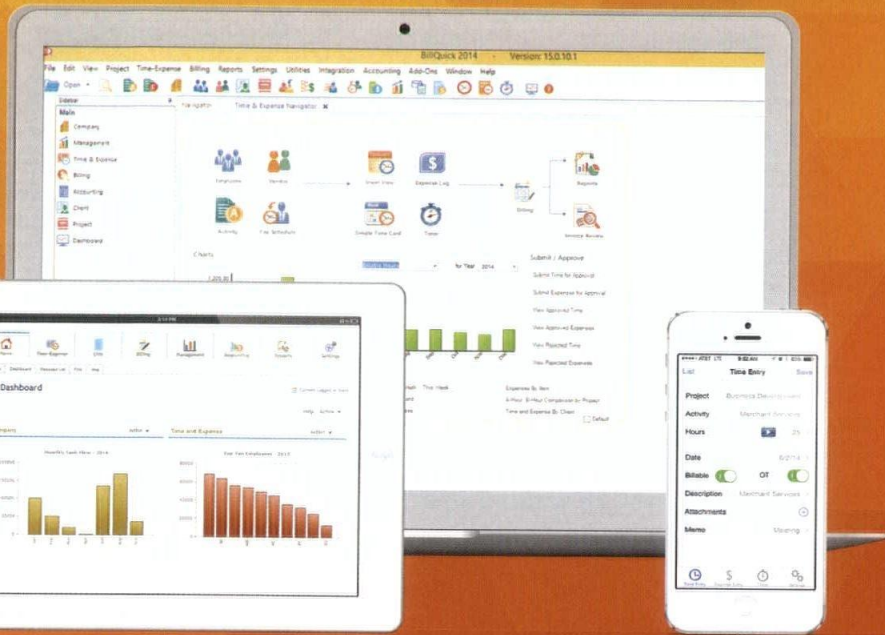
Myers Place, an affordable housing project in suburban Mount Prospect. The \$13.2 million, four-story mixed-use development features an array of sustainability features, such as a vertical ground-source geothermal heat pump system and drought-tolerant landscaping.





# BillQuick

Integrated Project Management and Time Tracking Software



- Intuitive Time & Expense Tracking
- Powerful Project Management
- Seamless QuickBooks Integration
- Simplified Billing & Accounting
- Access Anytime, Anywhere
- Clear Reporting

Time & Expense, Project Management, Accounting, Reporting and More for Architects.



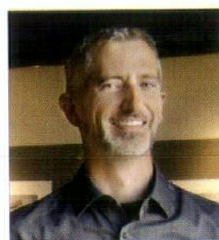


**IIT College of Architecture's Frank Flury reported**

progress on the second library he and a team of students are building in Ghana for local communities. Last year's library, built in the Twifo Hemang district, was featured in the March/April 2014 issue of *Chicago Architect*.

**Worn Jerabek Architects announced**

the promotions of Todd Wiltse, AIA, LEED AP, to principal and Heidi Dahle, AIA, LEED AP, EDAC, to associate principal. The firm also welcomed newcomer Jane Sloss, AIA, LEED AP BD+C.



Todd Wiltse



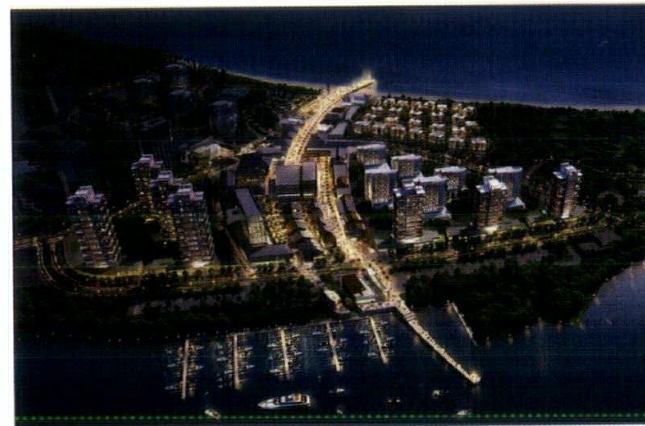
Heidi Dahle



Jane Sloss

**The Chicago office of RTKL Associates won**

an international competition for a mixed-use district on Hainan Island, the largest island in China's southernmost province. RTKL's entry in the competition connects the South China Sea with the Laoye Sea to the north by way of a pedestrian thoroughfare that encompasses retail, restaurants, community services, and entertainment and cultural venues.



**Tim Moran, AIA, has joined**

the Jones Lang LaSalle Project & Development Services Group as a project manager. He comes to JLL after 6+ years with the Chicago office of Gensler.



**Candace Small, AIA,** LEED AP BD+C, of VOA Associates received Black Belt Lean Six Sigma certification for healthcare from Purdue Healthcare Advisors. Six Sigma doctrine codifies professional techniques and tools for process improvement, and is used across many different industries.



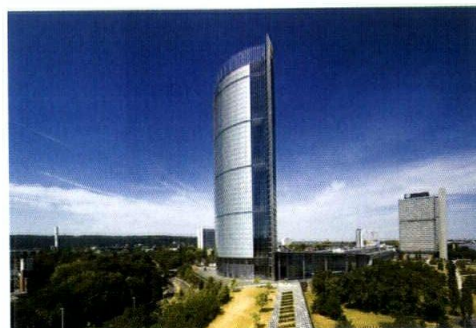
**Morgante-Wilson Architects**

is in the final stages of LEED certification for an adaptive reuse single-family home in Wicker Park. The project, completed in fall 2012, included the transformation of a 1½-story building that once housed a popular neighborhood bar into a modern multilevel 5,500-square-foot home.

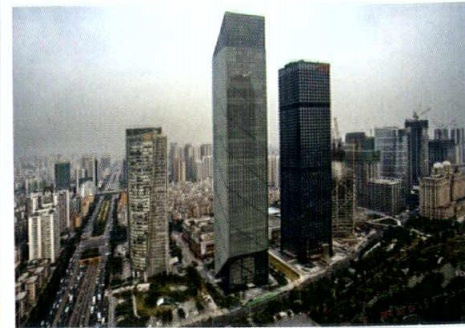
**The JAHN-designed Post Tower, a 163-meter-tall office tower in Bonn, Germany, has received**

the 10 Year Award from the Council on Tall Buildings and Urban Habitat. The 10 Year Award recognizes proven value and performance in a tall building over a period of 10 years since its completion.

In other news of the firm, the Leatop Plaza was certified LEED Gold. It is the first LEED Gold building in Guangzhou, China, and JAHN's first in Asia.



Post Tower



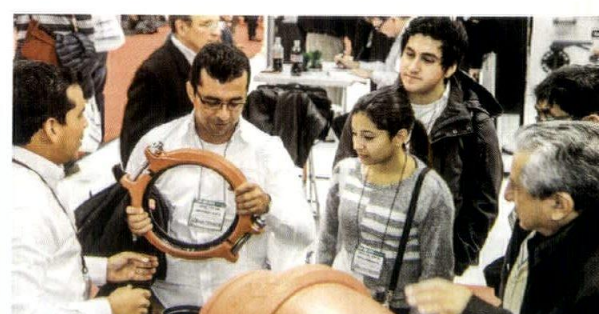
Leatop Plaza



WELCOME TO THE WORLD'S LARGEST

# HVACR

MARKETPLACE





**Perkins+Will announced Elizabeth Rack, AIA, LEED AP, has joined**

the firm as principal on the healthcare team in Chicago. She brings with her more than 25 years of experience.

P+W also announced the following personnel changes:

- > Michael Reinhart, AIA, LEED AP ID+C, was promoted to principal.
- > Aimee Eckmann, AIA, LEED AP BD+C, Michael McPhail, AIA, LEED AP BD+C, and Kristin Rosebrough, AIA, LEED AP BD+C, were promoted to associate principals.



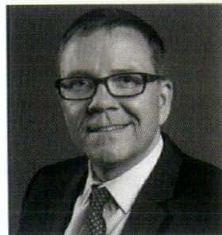
Elizabeth Rack



Michael Reinhart



Aimee Eckmann



Michael McPhail



Kristin Rosebrough



**Scott Delano, AIA, IIDA, NCARB, LEED AP,**

joined IA Interior Architects as a design director in the Chicago office. Previously, he was vice president and design director at VOA.



**SOM's Philip Enquist,**

**David Woodhouse, FAIA, and Andy Tinucci, AIA,** have

**Solomon Cordwell Buenz promoted Strachan Forgan, RIBA, LEED AP,**

to principal. Forgan joined the firm in 2012.

In other firm news, SCB's renovation of Manzanita Hall on the campus of Arizona State University, originally designed by Cartmell and Rossmann in 1967, won an Excellence in Architecture Award in Restoration or Preservation from the Society for College and University Planning.



Strachan Forgan



Manzanita Hall, Arizona State University

**The Society of Architectural Historians' annual gala**

will be held Nov. 8, with former *Chicago Architect* editor Dennis Rodkin serving as emcee. Five awards will be presented to individuals who initiated early preservation work in Chicago: Ben Weese, FAIA; Tim Samuelson; Robert Furhoff; Wilbert Hasbrouck, FAIA, and Marilyn Hasbrouck; and Toni Preckwinkle.







**HANDCRAFTED  
IN AMERICA**

Ultimate Sliding French Door (1Z rated), Pine Interior,  
Ashley Norton Satin Nickel handle sets,  
Ultimate Casement Awning (1Z rated), Pine Interior,  
Custom windows created by Marvin Signature Services

Builder: Michael K. Walker & Associates Inc.  
Architect: Sweet Sparkman Architects

SUPERIOR CRAFTSMANSHIP TURNS BLUEPRINTS INTO  
**BEAUTIFUL SPACES.**

*At Marvin, we can make your creative vision a reality through attention to detail, four generations of experience, and a commitment to quality and service. From concept to installation, we work as your partner to create a window as unique as your imagination. Experience the Marvin difference at [MARVIN.COM](http://MARVIN.COM)*

**MARVIN**   
Windows and Doors

Built around you.®

*To explore creative solutions for your next project, contact your local, independent Marvin dealer today.*

**MARVIN DESIGN GALLERY  
by Estates Windows, LTD.**

930 North Shore Dr.  
Lake Bluff, IL 60044  
847-615-1003  
[MarvinByEstates.com](http://MarvinByEstates.com)

**Alexander Lumber Co.**

Joliet, IL - 815-725-0030  
Twin Lakes, WI - 262-877-2181  
[AlexLbr.com](http://AlexLbr.com)

**Ashland Millwork, Inc.**

5 Messner Dr.  
Wheeling, IL 60090  
847-465-8101  
[AshlandMillwork.com](http://AshlandMillwork.com)

**Auburn Corp.**

10490 W 164th Place  
Orland Park, IL 60467  
708-349-7676 | 877-978-2607  
[AuburnCorp.com](http://AuburnCorp.com)

**Blue Ribbon Millwork**

Woodstock - 815-338-8900  
Algonquin - 847-658-9998  
[BlueRibbonMillwork.com](http://BlueRibbonMillwork.com)

**Creative Millwork**

3700 Illinois Ave.  
St. Charles, IL 60174  
630-762-0002  
[CreativeMillworkLLC.com](http://CreativeMillworkLLC.com)

**Door & Window Super Store**

Downers Grove - 630-969-7454  
Orland Park - 708-349-0405  
Sycamore - 815-899-3667  
[DoorWindowSuperStore.com](http://DoorWindowSuperStore.com)

**Evanston Lumber Company**

1001 Sherman Ave.  
Evanston, IL 60202  
847-864-7700  
[EvanstonLumber.com](http://EvanstonLumber.com)

**Lee Lumber & Building Materials**

Chicago North - 773-509-6700  
Chicago South - 773-927-8282  
Merrillville, IN - 219-736-2055  
[LeeLumber.com](http://LeeLumber.com)

**Lee Lumber's Spaces and Views**

Highland Park - 847-681-0300  
[SpacesAndViews.com](http://SpacesAndViews.com)

**Maher Lumber**

301 W Irving Park Rd.  
Wood Dale, IL 60191  
630-766-8440  
[MaherLumber.com](http://MaherLumber.com)

**Midwest Window and Door**

1001 Aucutt Rd.  
Montgomery, IL 60538  
630-966-1071  
[MidwestWindowAndDoor.net](http://MidwestWindowAndDoor.net)

**Midwest Window & Supply**

800 Hicks Dr.  
Elburn, IL 60119  
630-365-5772  
[MidwestWindow.com](http://MidwestWindow.com)

**Searls Windows and Doors, Inc.**

16261 S Frontage Rd.  
Plainfield, IL 60544  
815-436-3196  
[SearlsWindows.com](http://SearlsWindows.com)

**Woodland Windows & Doors**

25 W 355 Lake St.  
Roselle, IL 60172  
866-838-3667  
[WoodlandWindows.com](http://WoodlandWindows.com)





# A LEGACY PRESERVED

JOHN VINCI, FAIA, 2014 AIA CHICAGO LIFETIME ACHIEVEMENT AWARD WINNER

By Robert Sharoff | Photos by William Zbaren

“IF ANYONE TELLS YOU THAT IT IS IMPOSSIBLE WITHIN A LIFETIME TO DEVELOP AND PERFECT A COMPLETE INDIVIDUALITY OF EXPRESSION... TELL HIM THAT YOU KNOW BETTER AND THAT YOU WILL PROVE IT BY YOUR LIVES.” — LOUIS SULLIVAN

In 2011, the architect John Vinci, FAIA, was named a “Legendary Landmark” at Landmark Illinois’s annual fall gala for his numerous campaigns over the last half century to save and preserve some of the city’s most iconic structures.

I was there, but I don’t remember much about it, except that it was held at the exclusive Casino Club and included speeches by various tuxedoed worthies.

What I do remember is that at the end of the evening, after bidding several friends goodnight on the sidewalk outside the club,

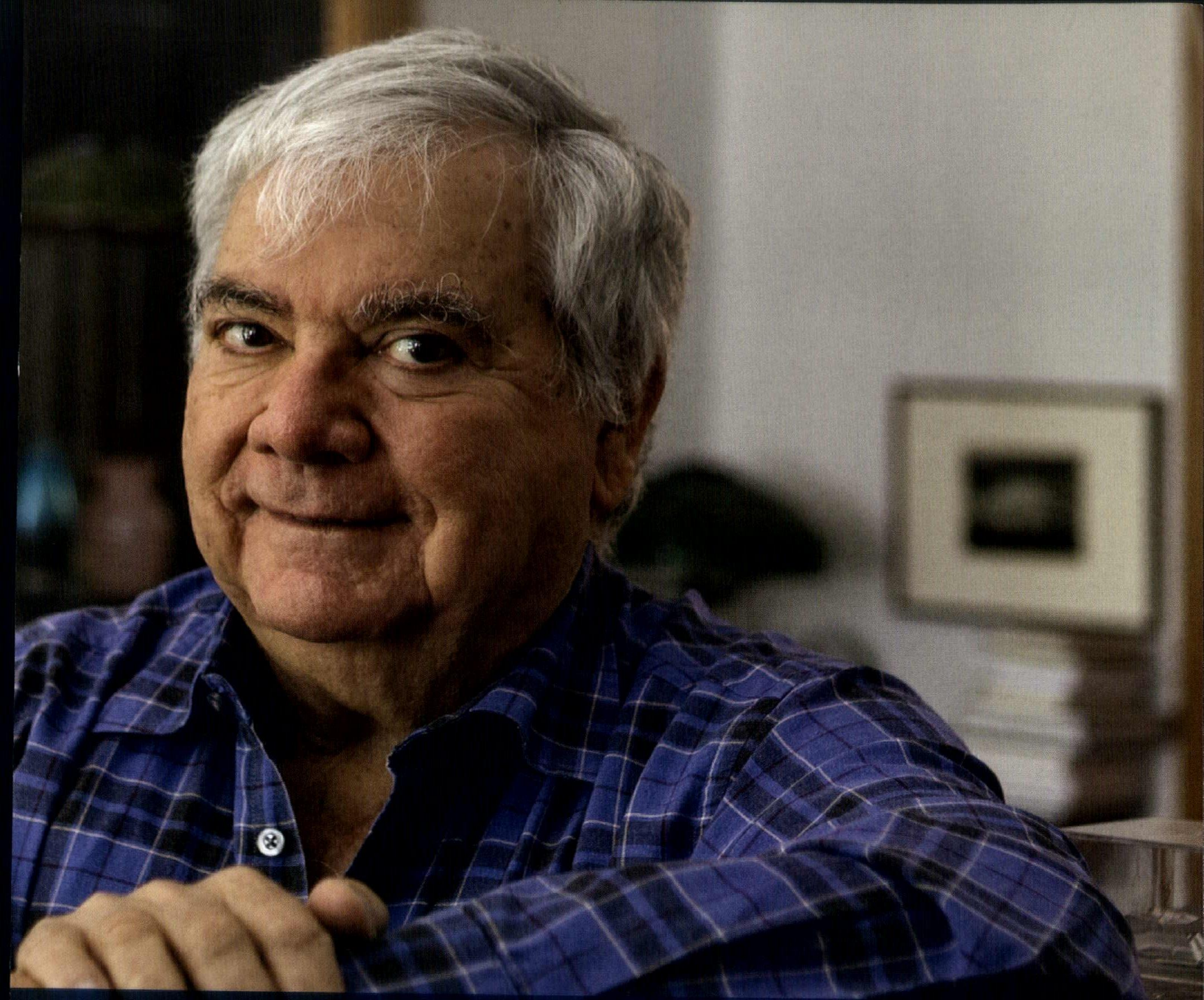
Vinci walked up the block to Michigan Avenue and caught the #151 bus back to the brick two-flat he has occupied for the last forty years on the city’s North Side.

I’ve never seen the award since, even though I’m sure that it’s somewhere in that vast compost heap of books and papers and mail he calls his office.

The point is that for Vinci, preservation has never been about awards or official recognition. “I did it because I thought it needed to be done,” he said.

Among the many buildings Vinci has either campaigned to save or has actively restored are landmarks such as Henry Hobson Richardson’s Glessner House, Frank Lloyd Wright’s Robie House, Burnham & Root’s Monadnock Building and Mies van der Rohe’s Farnsworth House, as well as two of Adler & Sullivan’s most





prominent remaining structures, the Auditorium Building and the Carson Pirie Scott Building.

And then there are the two lost Adler & Sullivan buildings, the Garrick Theater and the Chicago Stock Exchange. Both structures were ultimately wrecked—the former in 1961 and the latter in 1971—after lengthy battles in which Vinci was an active participant.

The buildings and the battles, however, have had amazingly long afterlives. Today, they are regarded as the turning points that changed the way Chicago views its architectural heritage.

“John has been a consistent voice of reason and integrity throughout challenging times,” said Tim Samuelson, who began his career working for Vinci in the 1970s and today is the city of

preservation and civic issues John has taken stands on over the years that seemed impossibly radical at the time but which today are accepted wisdom.”

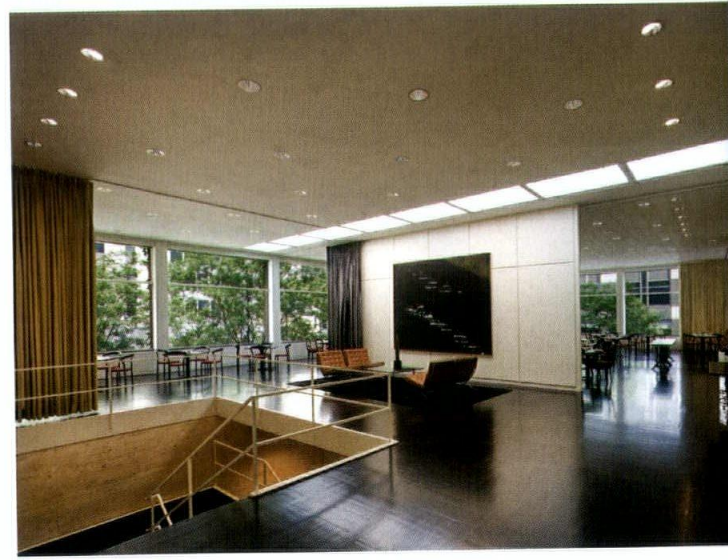
During those years, Vinci also pioneered many of the tools and techniques that have become accepted practices in the field of historic preservation.

An example is the reconstruction he undertook of the Chicago Stock Exchange’s trading room at the Art Institute of Chicago in the late 1970s. Using architectural fragments, vintage photos and archival research as his guides, he resurrected a space that had not existed in its original state for more than half a century. The finished room—half restoration, half conceptual art project—remains his most audacious commission





1





4



5



1. Vinci's Davis House received AIA Chicago's Distinguished Building Award in 2002.
2. The 2010 Crab Tree Farms Guesthouse was inspired by a nearby assemblage of historic barns designed by 19th century architect S.S. Beman.
3. In addition to gallery space and an expansive dining room, the Arts Club of Chicago includes a staircase designed by Mies van der Rohe.
- 4-5. One of Vinci's most admired restoration projects is his recreation of the Trading Room of Adler & Sullivan's Chicago Stock Exchange Building at the Art Institute of Chicago.

Arts Club of Chicago, the National Italian American Sports Hall of Fame and numerous residential commissions. In 2002, the strikingly modern house he designed for developer Alison Davis received an AIA Chicago Distinguished Building Award.

In his original commissions, Vinci, a 1960 graduate of the Illinois Institute of Technology, remains resolutely Miesian in his outlook.

"I was a true convert to IIT and still am," he told a reporter—me—several years ago. "I haven't discarded one of the beliefs I learned there."

Vinci's residential commissions reveal him to be a master of understatement. The details are discreet. There is usually a smashing staircase or fireplace. Custom-designed furniture is not unusual. The materials and craftsmanship are inevitably superb.

One is reminded of Mies's dictum that, "We don't think about the form when we start. We think about the right way to use the materials. Then we accept the result."

"It's authentic American architecture, born in Chicago, which is not a bad place to have your architecture come from," said Philip Hamp, FAIA, Vinci's partner.

It is no exaggeration to say Vinci's work has raised the bar for residential design in Chicago.

Meanwhile, the firm Vinci created with Hamp in the mid-1980s—Vinci | Hamp Associates—continues to garner acclaim. In 2008, the firm's restoration of the Illinois State Capitol Building in Springfield received an AIA National Honor Award for Interior Architecture.

"You can't argue with John's body of work," said Zurich Esposito, executive vice president of AIA Chicago. "Whether it's restoring another master's building or creating his own masterful commissions, the attention to quality is always there."

Vinci is also a prolific author, lecturer and architectural scholar. His most impressive project is the completion of his friend Richard Nickel's unfinished manuscript, *The Complete Architecture of Adler & Sullivan*.

Nickel, an architectural photographer and pioneering preservationist, began the book in the 1950s. After his death in 1971—he was killed when a floor collapsed on him while he was salvaging ornaments in the Chicago Stock Exchange building—the project languished as several writers and historians failed to complete the text.

Finally, in the mid-2000s, Vinci finished the book with the help of an associate, architect Ward Miller. Lavishly illustrated with Nickel's photographs, it was published in 2010. The book, which received national attention, is unlikely to be surpassed either in the exhaustiveness of its research or in the depth of its understanding of the hugely influential firm.

Vinci's career stands as a monument to citizenship. A lifelong Chicagoan, he views the city in personal terms. The fact that Chicago today is regarded as a bastion of historic architecture is to some degree the result of his lifelong activism, not only for the cause of historic preservation but also for a wide range of cultural initiatives aimed at making the city both more attractive and more livable. **CA**



AIA CHICAGO

# 2014 DESIGN EXCELLENCE AWARDS

PROJECTS ARE ELIGIBLE IF THEY WERE COMPLETED BETWEEN MAY 1, 2009, AND MAY 1, 2014. PROJECTS MUST BE DESIGNED BY CHICAGO-AREA ARCHITECTS OR BE LOCATED IN THE CHICAGO AREA.

## DISTINGUISHED BUILDING AWARDS

AIA Chicago established the Distinguished Building Award in 1955 to recognize significant achievements in the planning, design and execution of recent building projects.

### JURORS

**ROBERT MILLER, AIA**  
UNIVERSITY OF ARIZONA  
SCHOOL OF ARCHITECTURE

**ADÈLE NAUDÉ SANTOS, FAIA, ARCUK**  
MIT SCHOOL OF ARCHITECTURE  
AND PLANNING

**JONATHAN SEGAL, FAIA**  
JONATHAN SEGAL ARCHITECT

## INTERIOR ARCHITECTURE AWARDS

The Interior Architecture Award began in 1984 to promote interior architecture as a unique profession by recognizing outstanding interior design projects. When considering projects for this award, we define "interior architecture" as the space within a building envelope, including lighting design, furnishings and finishes.

### JURORS

**ROBIN ELSMLIE OSLER, AIA**  
ELMSLIE OSLER ARCHITECTS

**JULIE SNOW, FAIA**  
SNOW KREILICH ARCHITECTS

**TREY TRAHAN, FAIA**  
TRAHAN ARCHITECTS

## DIVINE DETAIL AWARDS

The Divine Detail Award was established in 1991 to recognize an instance in which the expression of architectural theory becomes an artistic medium, defining the relationship between architecture and craft. The detail should illustrate or illuminate the governing design concept of the building in which the detail is found, through material, design components or technology.

### JURORS

**ROCCO CASTELLANO, AIA**  
NAGLE HARTRAY ARCHITECTURE

**JOHN MORRIS, AIA**  
MORRIS ARCHITECTS PLANNERS

**ANNE T. SULLIVAN, FAIA**  
SCHOOL OF THE ART INSTITUTE  
OF CHICAGO

## UNBUILT DESIGN AWARDS

Established in 1991, the Unbuilt Design Award recognizes achievement in architectural design for commissioned projects that will not be built. Evaluation is based on the significance of the concept and the quality of the design.

### JURORS

**DIRK DENISON, FAIA**  
DIRK DENISON ARCHITECTS

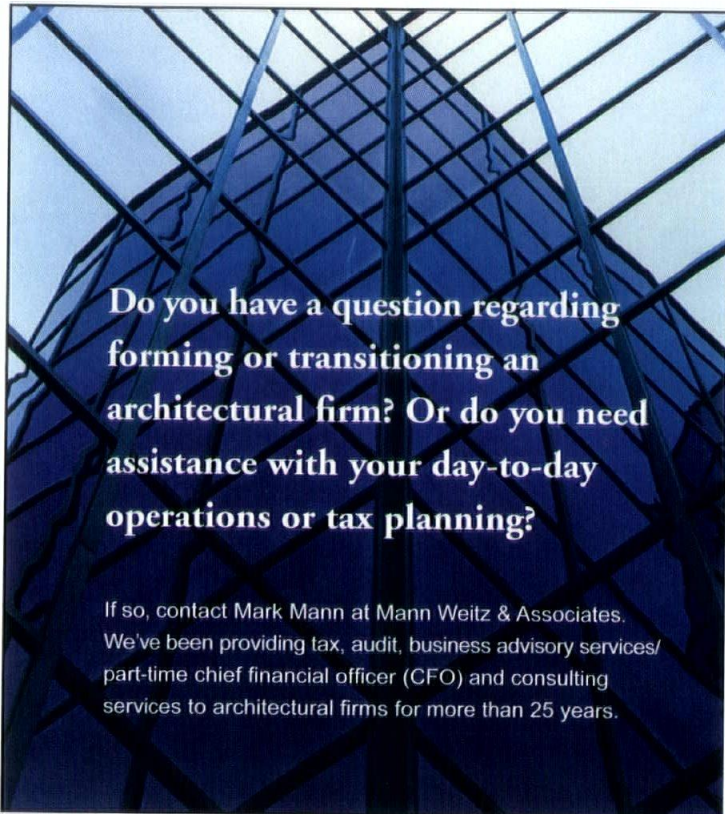
**SUSAN KING, FAIA**  
HARLEY ELLIS DEVEREAUX

**GRANT UHLIR, AIA**  
GENSLER



VIEW 2014 DESIGN EXCELLENCE AWARD WINNERS AND ALL OTHER SUBMISSIONS AT [AIACHICAGO.ORG](http://AIACHICAGO.ORG)





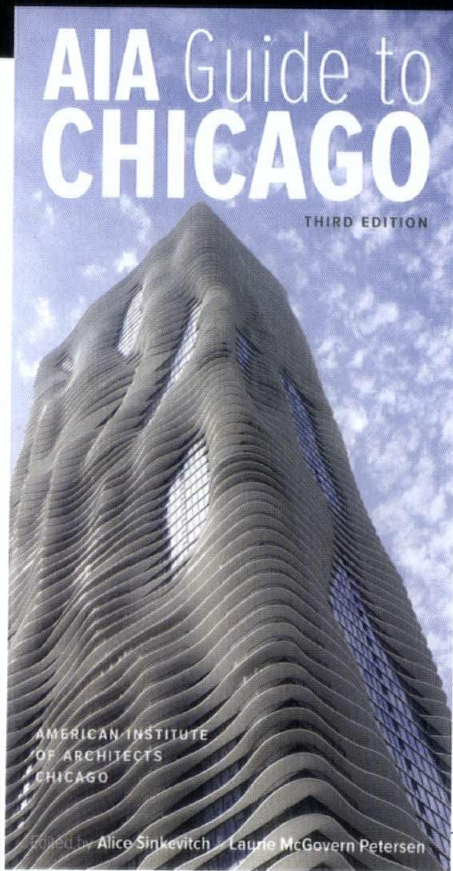
**Do you have a question regarding forming or transitioning an architectural firm? Or do you need assistance with your day-to-day operations or tax planning?**

If so, contact Mark Mann at Mann Weitz & Associates. We've been providing tax, audit, business advisory services/ part-time chief financial officer (CFO) and consulting services to architectural firms for more than 25 years.

**MW&A**

Expert Advice | Strategic Solutions | Personalized Attention

**MANN, WEITZ & ASSOCIATES L.L.C.**  
 CERTIFIED PUBLIC ACCOUNTANTS AND CONSULTANTS  
 111 Deer Lake Road, Suite 125, Deerfield, IL 60015-9578  
 Main:847.267.3400 Fax:847.267.3401 Web:mannweitz.com



**THE PREMIER GUIDEBOOK TO CHICAGO ARCHITECTURE, NOW IN ITS THIRD EDITION**

# AIA Guide to CHICAGO

THIRD EDITION

**American Institute of Architects Chicago**

**Edited by Alice Sinkevitch and Laurie McGovern Petersen**

**Preface by Geoffrey Baer; Introduction by Perry Duis**

The third edition of the *AIA Guide to Chicago* brings readers up to date on ten years of dynamic changes with new entries on showcases like the Aqua building, Trump Tower, and Millennium Park, as well as on smaller projects.

Praise for an earlier edition of the *AIA Guide to Chicago*:

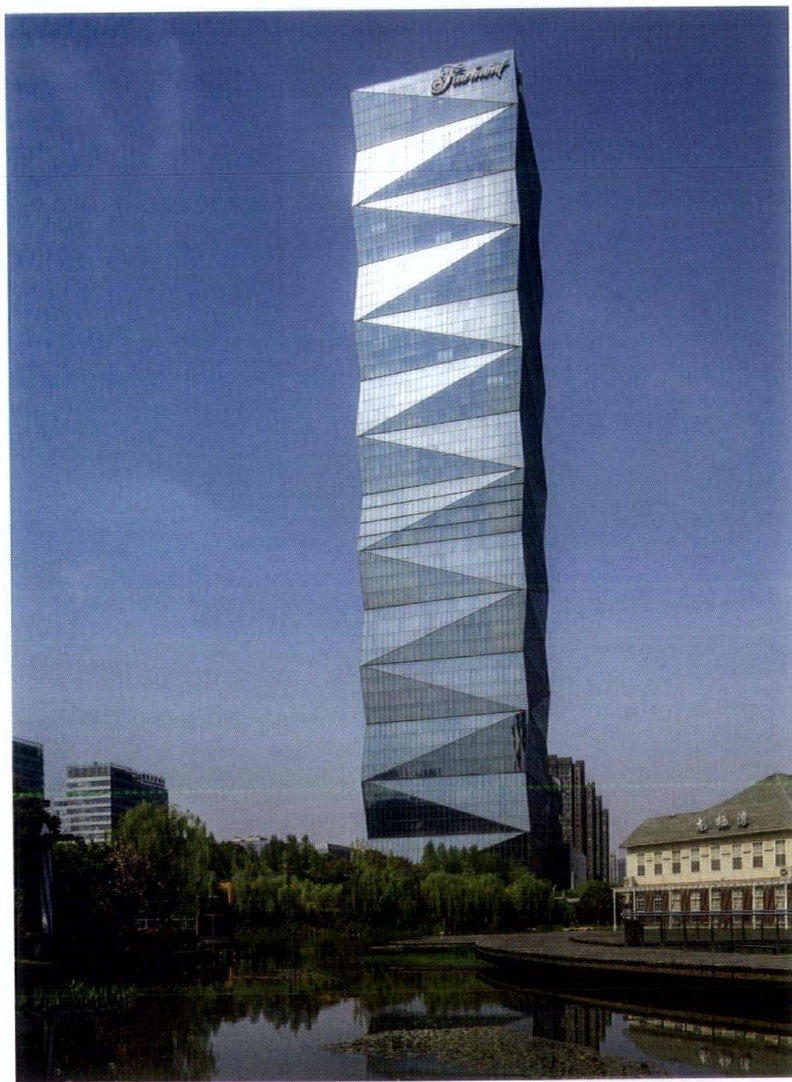
"A many-voiced celebration of the rich flavors of Chicago architecture, the delights on the side streets as well as the landmarks that make the history books."—*Chicago Sun-Times*

INCLUDES 458 PHOTOGRAPHS AND 34 MAPS. AVAILABLE IN PAPERBACK AND E-BOOK.

**UNIVERSITY OF ILLINOIS PRESS**

[www.press.uillinois.edu](http://www.press.uillinois.edu)





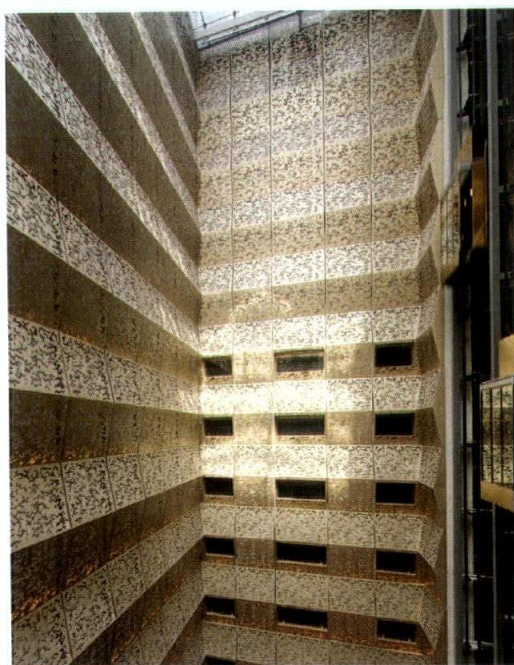
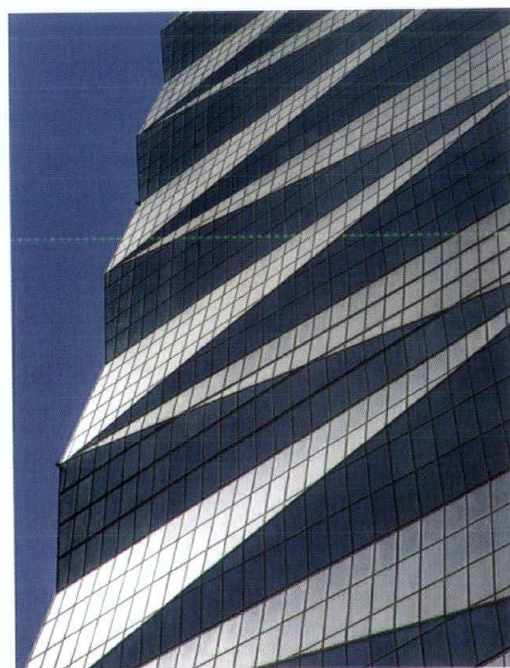
HONOR AWARD  
JINAO TOWER

LOCATION: NANJING, CHINA

ARCHITECT: SKIDMORE, OWINGS & MERRILL

ASSOCIATE ARCHITECT: NANJING ARCHITECTURE DESIGN & RESEARCH INSTITUTE

CLIENT: JIANGSU GOLDENLAND REAL ESTATE DEVELOPMENT (GROUP) CO. LTD.



Photos ©Tim Griffith

Jinao Tower integrates architectural, structural and mechanical systems to redefine the modern high-rise. Anchoring Nanjing's Hexi District, an emerging commercial and civic hub, the building mixes a small retail component with residences and a hotel. Diagonal braces wrap the tower from top to base to define the external envelope. Coupled with an internal glass façade, the form creates a functional cavity that helps to ventilate the tower and respond to the extreme heat of Nanjing. "The externally ventilated cavity wall provides a lot of benefits," a juror noted. The cavity wall also works to improve HVAC performance, increase daylighting and augment better acoustics in interior spaces. Glass balconies, placed periodically within the cavity, provide an additional asset to a number of the accommodations. A 27-story atrium is defined by a system of translucent and opaque screens, invigorating the space around it. "This one is really handsome," a juror said.

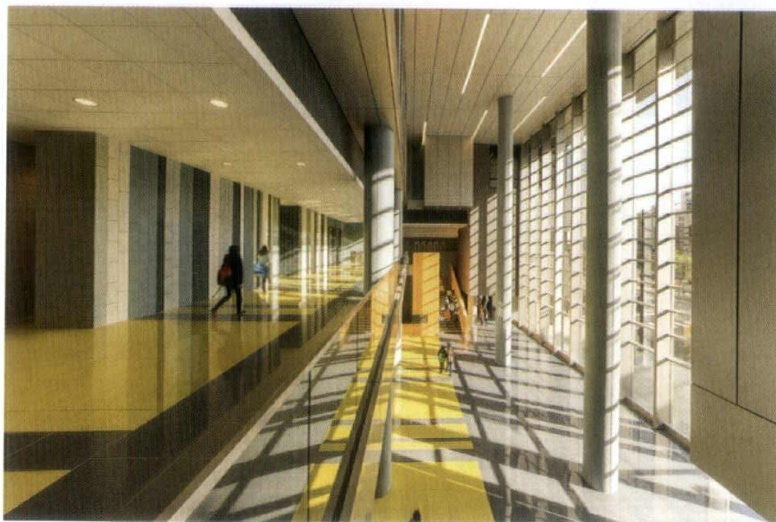


HONOR AWARD  
WILLIAM JONES COLLEGE PREPARATORY  
HIGH SCHOOL

LOCATION: CHICAGO  
ARCHITECT: PERKINS+WILL  
ASSOCIATE ARCHITECT: THE ARCHITECTS ENTERPRISE LTD.  
CLIENT: PUBLIC BUILDING COMMISSION OF CHICAGO / CHICAGO PUBLIC SCHOOLS  
CONTRACTOR: WALSH CONSTRUCTION  
CONSULTANTS: PRIMERA ENGINEERS, HALVORSON & PARTNERS, TERRA  
ENGINEERING, SITE DESIGN GROUP, TALASKE



A new paradigm for urban schools, this public high school located in Chicago's South Loop engages the city as its campus. "It's a large building that's been broken down in a graceful manner," a juror observed. The school disperses its functions vertically over seven floors, as opposed to the more traditional horizontal floor plan. A multistory lobby acts as a central gathering space, with administrative offices and an auditorium easily accessible from the area. Classrooms are located on the fourth and fifth level, in proximity to the shared spaces above and below. The top floor smartly situates the pool and gymnasium to eliminate the need for structural transfers above their long spans, and they flank an exterior garden terrace offering dramatic views of the surrounding cityscape. "A very clever, wonderfully thought-out building," a juror said.

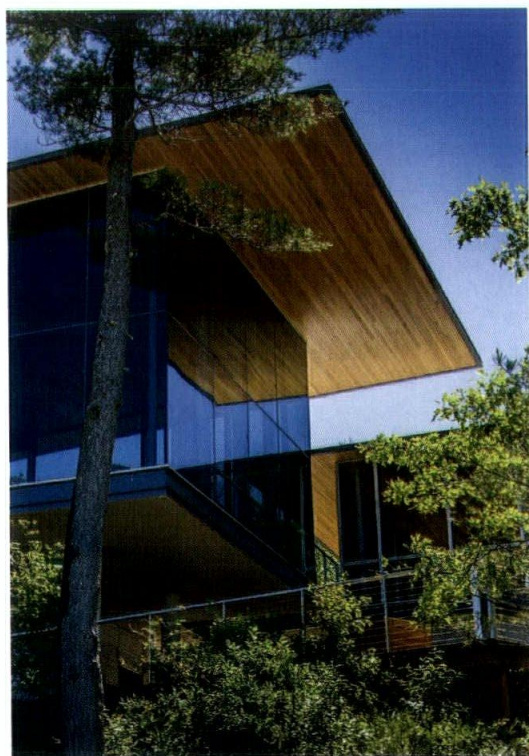
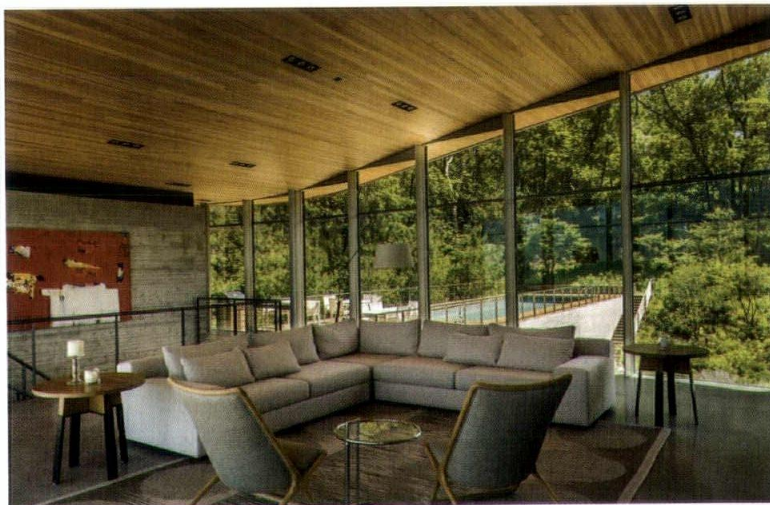
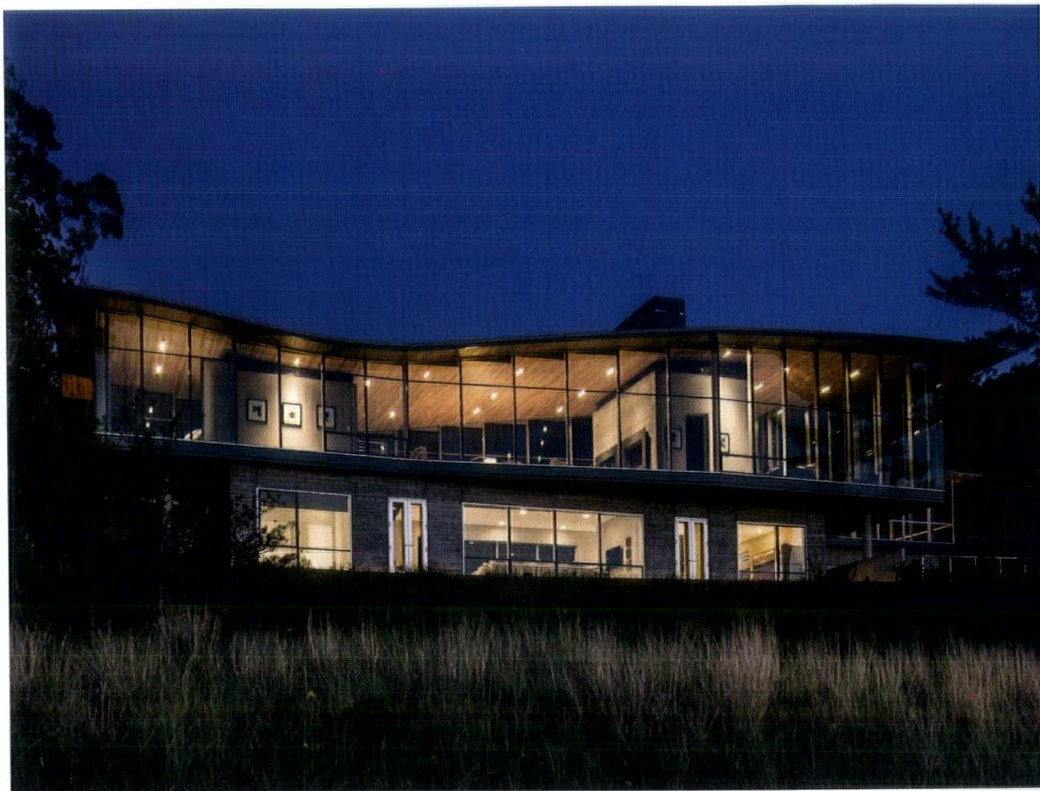


Photos © James Steinkamp, Steinkamp Photography



HONOR AWARD  
BEVERLY SHORES RESIDENCE

LOCATION: BEVERLY SHORES, IND.  
ARCHITECT: BOOTH HANSEN  
CLIENT: NORMAN GLASSBERG  
CONTRACTOR: RIIS BORG  
CONSULTANTS: HOERR SCHAUDT, BUILDING  
ENGINEERING SERVICES LLC,  
SOWLAT ENGINEERS PC



Photos by Bruce Van Inwegen

This two-story home nestled between the sand dunes of Lake Michigan to the north and a steep wooded terrain to the south “exposes all the fantastic potentials of the site,” a juror said. The home responds to the topography of the sand dunes and employs a minimal footprint to leave most of the parcel undisturbed as dune grass and woodlands. Its concrete base recedes into the rising woods while the glassed-in living room and master suite soar above as a raised aerie offering wraparound views of the dramatic landscape. The aerie’s connection to the outdoors is further enhanced by a high, undulating roofline with point-supported glass and deep, hemlock-lined overhangs. Subtle interventions deepen the connection to the outdoors, such as a shift in the floor plan that creates access points to a screened porch and pool terrace on opposite ends of the living room. “It all works together in a very organic way,” a juror said.



HONOR AWARD  
MORGAN STREET LIVE + WORK

LOCATION: CHICAGO

ARCHITECT: URBANLAB

CLIENT: N/A

CONTRACTOR: HI TECH BUILDERS

CONSULTANTS: SOUND STRUCTURES, O DESIGN CONSULTING AND RESEARCH, CHANDRA  
GOLDSMITH LANDSCAPE ARCHITECT, BUILDING ENGINEERING SERVICES



Morgan Street Live + Work is an evenly split 3,000-square-foot mixed-use live/work building composed of two distinct “bars.” On the ground floor, the office “bar” is faced with a perforated Corten rain screen that allows for shaded daylight and privacy while carving out a distinct space away from the street. Raw aluminum panels wrap the remainder of most façades, folding around the corners of the building without additional detailing. Zoning disallowed the residence on the ground floor, forcing the architects to employ a creative solution to the client’s desire to have an immediate connection to the backyard green space. The architects repurposed debris and excavated soil from the demolished material of the grocery store that formerly stood on the site, and “mounded” the backyard to meet the protruding second-floor residential “bar” of the home. The result gave the residence a direct connection to the ground. “This is a real strategy,” a juror stated. “One of the things that stands this apart from others is the craft with which it was designed.”



Photos by Matthew Messner



## HONOR AWARD

## ORCHARD WILLOW RESIDENCE

LOCATION: CHICAGO

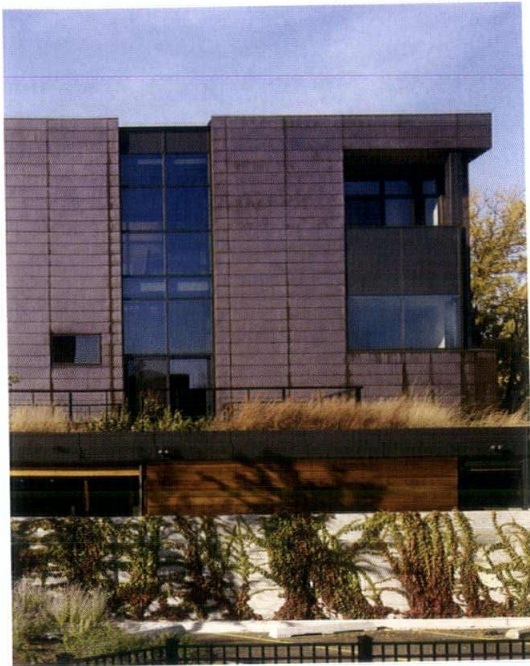
ARCHITECT: WHEELER KEARNS ARCHITECTS

CLIENT: N/A

CONTRACTOR: NORCON INC.

CONSULTANTS: MCKAY LANDSCAPE

ARCHITECTURE, ENSPECT ENGINEERING



"A house absolutely worthy of an honor," a juror stated upon seeing this single-family Chicago residence. The client wished for a home that balanced an abundance of natural light and access to the outdoors with an equal desire for privacy, especially as the house abuts a schoolyard. The architects responded by devising a board-formed concrete wall poured just above eye-level that encircles the entire property. With the textural wall acting as a buffer from prying eyes, the first floor is enclosed completely in glass, forming a synthesis between inside and outside, and highlighting the detailing of the wooden-framed interior living space. Large sliding doors and a continuous stone floor connect the interior and exterior as a single room. A narrow, copper-clad volume, which contains two floors of private bedrooms complete with recessed balconies, floats on a clerestory band of windows, further flooding the interior with light. "Without a doubt, this would be a lovely place to live," a juror said.



Photos by Steve Hall, Hedrich Blessing



Photos © Adrian Smith + Gordon Gill Architecture/Photography by Namgoong Sun

This new office headquarters, located prominently in Seoul at 50 stories tall and 170,000 square meters in size, touts a customized exterior wall designed specifically for the client. The building's skin is formed in a folded pattern that fits in with the predominantly orthogonal architecture of the surrounding district, and collects energy through photovoltaic panels strategically placed to also provide natural light. "This project has a very interesting façade," noted one juror. "You have a façade with solar panels that both creates energy and shades the interiors."



**CITATION OF MERIT**  
**FK1 TOWER**

**LOCATION: SEOUL, SOUTH KOREA**  
**ARCHITECT: ADRIAN SMITH + GORDON GILL ARCHITECTURE**  
**ASSOCIATE ARCHITECT: CHANG-JO ARCHITECTS**  
**CLIENT: FEDERATION OF KOREAN INDUSTRIES**  
**CONTRACTOR: HYUNDAI ENGINEERING & CONSTRUCTION CO. LTD.**  
**CONSULTANTS: ENVIRONMENTAL SYSTEMS DESIGN, THORNTON TOMASETTI**

**CITATION OF MERIT**  
**NEW FAITH BAPTIST CHURCH**  
**INTERNATIONAL WORSHIP CENTER**

**LOCATION: MATTESON**  
**ARCHITECT: HARDING PARTNERS**  
**CLIENT: NEW FAITH BAPTIST CHURCH INTERNATIONAL**  
**CONTRACTOR: POWER & SONS CONSTRUCTION CO. INC.**



This contemporary religious facility houses a growing African-American congregation at the southern tip of Cook County. The new center incorporates several daylighting features throughout while preserving the theatrical (i.e., lighting and projection) quality of the large sanctuary at its center. The jurors were impressed by the quality of the building, calling it "a job neatly done." A suspended sunshade that screens the curved façade changes its profile according to the sun, while skylights scatter light throughout the foyer and sanctuary. Wood accent panels and rich purple fabrics in the sanctuary add to the church's warmth.



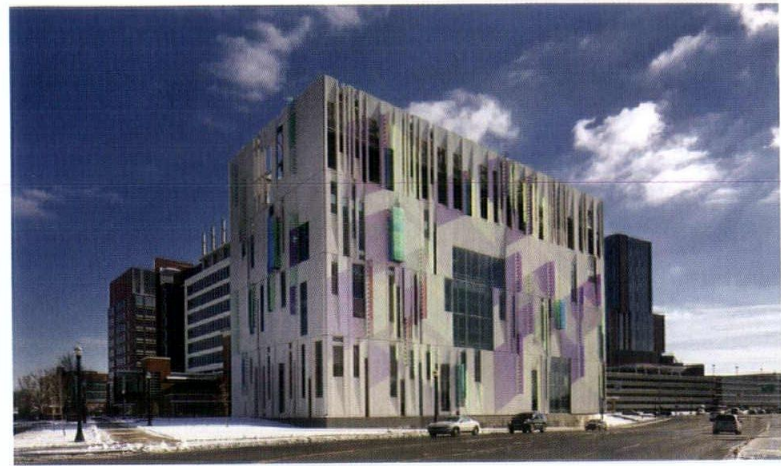
Photos © Christopher Barrett Photographer



Tasked with providing 30,000 tons of chilled water production and distribution to the university's medical district, this facility is identified by its unique dichroic glass fins and boxes that change color according to the movement of the sun and location of the observer. "It's quite clever," enthused one juror. The color-changing shadows are cast onto modular precast concrete panels that make up the building envelope, and glazed openings are specifically located to allow views of the chiller equipment, identifying the function of the facility.



Photos by Brad Feinknopf



**CITATION OF MERIT**  
**OSU SOUTH CAMPUS CHILLER**

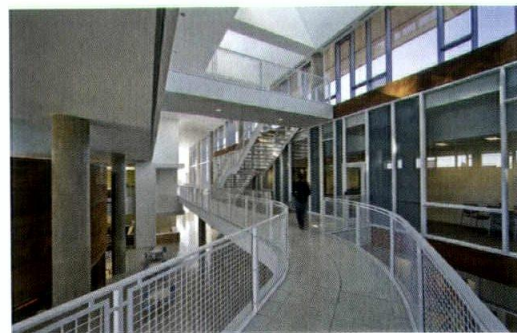
**LOCATION:** COLUMBUS, OHIO  
**ARCHITECT:** ROSS BARNEY ARCHITECTS  
**ASSOCIATE ARCHITECT:** CHAMPLIN ARCHITECTURE  
**CLIENT:** THE OHIO STATE UNIVERSITY  
**CONTRACTOR:** WHITING TURNER  
**CONSULTANTS:** RMF ENGINEERING, SHELLY METZ BAUMANN HAWK, GARRY STEFFY LIGHTING DESIGN



**CITATION OF MERIT**  
**UNIVERSITY OF MINNESOTA-DULUTH**  
**LABOVITZ SCHOOL OF BUSINESS & ECONOMICS**

**LOCATION:** DULUTH, MINN.  
**ARCHITECT:** PERKINS+WILL  
**ASSOCIATE ARCHITECT:** STANIUS JOHNSON ARCHITECTS  
**CLIENT:** UNIVERSITY OF MINNESOTA-DULUTH  
**CONTRACTOR:** OSCAR J. BOLDT CONSTRUCTION  
**CONSULTANTS:** GAUSMAN & MOORE, MEYER BORGMAN AND JOHNSON, OSLUND AND ASSOCIATES, SHORT ELLIOTT HENDRICKSON, ELECTRONIC INTERIORS

The University of Minnesota-Duluth campus is noted for an internally connected central spine that lets students come and go with ease from different departmental buildings, even during the harsh winters. The new building for the Labovitz School of Business & Economics, also connected to this internal spine, adds a bright and inviting point of entry for students. A curving concrete bar tops the two-story base and extends over an entry drive, which impressed the panel, prompting a juror to call it "an interesting feature." A rooftop observatory terrace rounds out this LEED Gold project, offering students views to Lake Superior and the surrounding wetlands.



Photos © James Steinkamp, Steinkamp Photography



CITATION OF MERIT  
WMS BOATHOUSE AT CLARK PARK

LOCATION: CHICAGO  
ARCHITECT: STUDIO GANG ARCHITECTS  
CLIENT: CHICAGO PARK DISTRICT  
CONTRACTOR: SCHAEFGES BROTHERS  
CONSULTANTS: MATRIX ENGINEERING CORP., SPACECO INC., AECOM, DBHMS  
DESIGN BUILD ENGINEERING, TERRY GUEN DESIGN ASSOCIATES, M CANNON  
ROOFING, WENDELL BUILDERS



Photos by Steve Hall Hedrich Blessing



Slate and zinc cladding accentuate this Chicago Park District boathouse that sits along the Chicago River at Clark Park. All spanning elements are linear, but alternating truss geometries in the roof's form give the building a warped appearance. Clerestories are used to reduce energy use throughout the structure, letting the sun warm floor slabs in the winter and ventilating interiors during the summer. The field house portion houses programming and courses, and a second-floor room doubles as event space. "It's a really charming building," remarked one juror.



SPECIAL RECOGNITION  
WRIGLEY BUILDING

LOCATION: CHICAGO  
ARCHITECT: GOETTSCHE PARTNERS  
CLIENT: BDT CAPITAL PARTNERS/ZELLER REALTY GROUP  
CONTRACTOR: POWER CONSTRUCTION COMPANY  
CONSULTANTS: ENVIRONMENTAL SYSTEMS DESIGN, KLEIN AND HOFFMAN, BUILDING TECHNOLOGY CONSULTANTS, WISS, JANNEY, ELSTNER ASSOCIATES, GOBY LLC, DONNELLY & ASSOCIATES, MACROSTIE  
HISTORIC ADVISORS

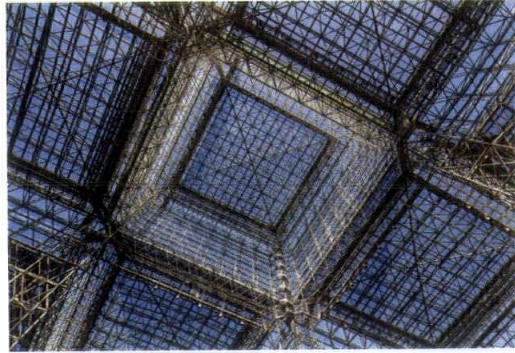
The renovation of one of the city's most recognized and historic buildings did not go unnoticed with the jurors, who called any task of this nature an accomplishment. The removal of the glazed screen wall between the two towers at ground level (which were originally included in anticipation of an upper-level street that would run between the towers), as well as the removal of connecting walkways dating back to the 1950s, allows the space between the towers to fully develop into an open plaza for pedestrians. Restorations of the interiors were also completed, with more than 2,000 new windows added and all public corridors renovated.



Photos by Jon Miller © Hedrich Blessing



Photo by Chris Cooper



The space frame for this convention center may be the largest in the world, but many elements of original architect I.M. Pei's vision were lacking until a design team overhauled the structure in 2013, a successful feat according to the jurors. With its technologies completely upgraded and modernized, the Javits Center in Manhattan offers convention-goers a brighter and more contemporary experience than before.

**SPECIAL RECOGNITION**

**JACOB K. JAVITS CONVENTION CENTER  
RENOVATION**

**LOCATION: NEW YORK CITY**

**ARCHITECT: FXFOWLE | EPSTEIN (JOINT VENTURE)**

**CLIENT: EMPIRE STATE DEVELOPMENT CORP.**

**CONTRACTORS: TISHMAN CONSTRUCTION, AN AECOM COMPANY**

**CONSULTANT: WEIDLINGER ASSOCIATES, WSP GROUP, LANGAN ENGINEERING,  
KEN SMITH LANDSCAPE ARCHITECT**



Photo by Esto Photographics Inc



The owner of the property possessed the house for nearly 40 years before he decided it was time to fix the roof, which was caving in, and the slab, which was slowly sinking. A chance to reinvigorate a classic American ranch house, the project called for a design that was durable and responsive to the environment. The team sought to reveal, rather than conceal, the structure's construction. Simplicity was also key; a juror noted that "by painting everything white, they make the language of the house abstract."

**SPECIAL RECOGNITION**  
**HARBERT COTTAGE**

**LOCATION: HARBERT, MICH.**

**ARCHITECT: SEARL LAMASTER HOWE ARCHITECTS**

**CLIENT: N/A**

**CONTRACTOR: ESTKOWSKI CONSTRUCTION**



Photos by Tony Soluri Photography



# 4040

# 4040 UNDER

## The rising superstars of the AEC industry

### Call for Nominations



**BD+C** is looking for 40 young professionals who represent "the next generation of leadership in the AEC industry."

If you have anything to do with the built environment, you could be a nominee.

Open to professionals anywhere in the world. You can even nominate yourself.

Nominees must be age 39 or under as of January 1, 2015.



**NOMINEES CAN BE FROM ANY BRANCH OF THE DESIGN AND CONSTRUCTION INDUSTRY, SUCH AS:**

- Business Development
- Construction
- Design
- Education
- Engineering
- Environment
- Finance/Management
- Government
- Marketing
- Membership Association
- Product Manufacturing
- Property Ownership
- Real Estate
- Urban Planning

Look for the entry form on our website,  
[www.BDCnetwork.com](http://www.BDCnetwork.com), in November.

**Questions? Contact: David Barista**  
[dbarista@sgcmail.com](mailto:dbarista@sgcmail.com), 847.954.7929

**BUILDING DESIGN  
+ CONSTRUCTION**



HONOR AWARD  
 AMERICAN SOCIETY FOR CLINICAL  
 PATHOLOGY EXPANSION

LOCATION: CHICAGO  
 ARCHITECT: EPSTEIN

CLIENT: AMERICAN SOCIETY FOR CLINICAL  
 PATHOLOGY

CONTRACTOR: EDISON CONSTRUCTION COMPANY  
 CONSULTANT: ENVIRONMENTAL SYSTEMS DESIGN



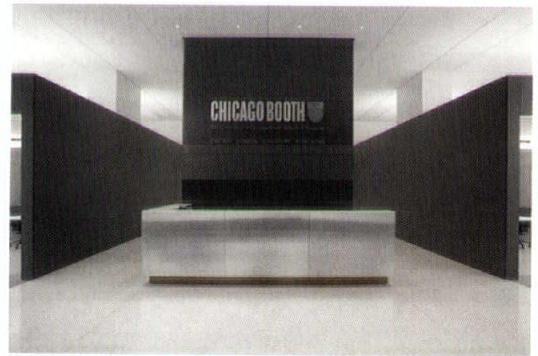
Photos by Steve Hall Hedrich Blessing

The design for this office expansion for the American Society for Clinical Pathology revolves around the concept of a sheet of paper 'folding' around its contents—or, in this instance, the office staff and visitors. Taking geometric and color cues from one of the organization's publications, the space features an angled corridor wall intersected by strips that create a unique entry for staff and visitors. "The stark black, dark gray and white palette really brings the light element into play for a low budget," remarked one juror. Another called the execution "beautiful," pointing out the fracturing of light throughout the office. Low-height workstations and storage lockers support organization, while spaces such as the open conference room and lounge area encourage collaboration. "It's all slightly askew, which I think works to the project's advantage," summarized a juror.



**HONOR AWARD**  
**CHICAGO BOOTH 455**

**LOCATION: CHICAGO**  
**ARCHITECT: WOODHOUSE TINUCCI ARCHITECTS**  
**(FORMERLY DAVID WOODHOUSE ARCHITECTS)**  
**CLIENT: UNIVERSITY OF CHICAGO**  
**CONTRACTOR: MORTENSON CONSTRUCTION**  
**CONSULTANTS: CCJM ENGINEERS, LUX POPULI,**  
**MATRIX ENGINEERING, ROLF JENSEN &**  
**ASSOCIATES**



When a renowned graduate school of business calls for certain attributes (lucid, rational, productive, transparent) in its programs, it means its buildings too. Chicago Booth's new 15,000-square-foot student facility on the ground floor of NBC Tower—right across the street from the school's existing downtown space, Gleacher Center—boasts a lofty, clear-cut appearance. "When somebody uses the words 'lucid,' 'rational' and 'productive,' and then you see a design that actually supports that, it's remarkable," a juror said. With the floor plan organized into three parallel layers, students have the choice of taking their studies to glass-enclosed conference rooms, 16 glazed seminar rooms and two tiered classrooms, among other spaces. "There's a clarity in the plan that is very refreshing," noted another juror. "There's a scale of organization here that is very clear."



Photos by Mike Schwartz





HONOR AWARD  
KIDS SCIENCE LABS

LOCATION: CHICAGO  
DESIGN ARCHITECT: WOODHOUSE TINUCCI  
ARCHITECTS (FORMERLY DAVID WOODHOUSE  
ARCHITECTS)  
ARCHITECT OF RECORD: FARR ASSOCIATES  
CLIENT: KIDS SCIENCE LABS  
CONTRACTOR: FRIEDLER CONSTRUCTION  
CONSULTANT: CCJM ENGINEERS



Children are naturally curious, and the Kids Science Labs seeks to stimulate that curiosity with its 7,900-square-foot hands-on learning center in the South Loop. The facility provides space for both independent discovery and interactive learning, encouraging kids to wonder how their world works and why. "There are slight differences that define each classroom, that help children organize where they're going in very subtle ways," a juror observed. Another remarked that the center uses "no primary colors. It doesn't pander to kids." One area, the wood-lined Accelerator Space, even gives kids the opportunity to experiment with homemade catapults and rockets. A blackboard interlocking puzzle wall also offers questions for thought ("How do holograms work?"; "What is a lightsaber and can I have one?"), creating a learning environment for children and parents alike.



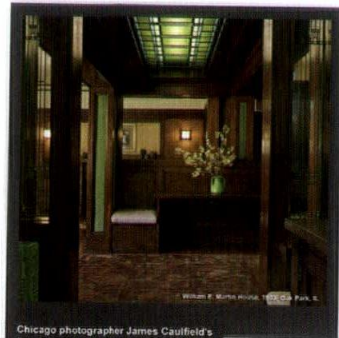
Photos by Mike Schwartz



# CHICAGO ARCHITECT

Reach the AIA Community with digital opportunities from *Chicago Architect*

Chicago says "architecture." That's why world-class architects and design professionals work in Chicago to create beautiful spaces here and around the world. With *Chicago Architect*, reach the community that makes architectural history.



Chicago photographer James Caulfield's Frank Lloyd Wright images on display at...

Chicago photographer James Caulfield's Frank Lloyd Wright images on display at...  
Many of the photos from the books and others can be seen by visiting [www.aia.org](#). Additional information about the exhibit and...  
If you plan to be at the Spring Green or Madison areas before...



## E-MAIL TRANSMISSIONS

Use e-mail transmissions\* to 4,700+ AIA Chicago members and affiliates to drive traffic to your website, promote your social media efforts and provide feedback about who took action on your message.

### BillQuick

#### How Small Firms Can Make Big Money

What separates the great but struggling designers from the great but successful designers isn't luck. It's you're as good an architect as you think, you'll be successful, and it won't be because of your design skills. [Read More](#)



#### 2 Fatal Flaws of Architecture Firms



After visiting over 200 architecture firms, I was aghast that so many of them were committing these costly sins of mismanagement and miscommunication, without even realizing it. I can help even one more firm from shutting its doors. [Read More](#)

#### 3 Surprising Business Mistakes You Make All the Time



Some habits always seem to be present in places where workers are better, motivated and unhappy. Here's our special 3-part advice to help you solve common workplace mistakes. [Read More](#)

## OPPORTUNITIES

- Increase brand recognition
- Generate leads
- Drive Web traffic
- Launch a new technology or service
- Break a company announcement
- Invite people to visit your trade show booth
- Promote webcasts

## SPECIFICATIONS

- One-time use, full list only, no selects
- Material must be provided for review
- AIA Chicago and SGC/SCG Horizon reserve the right to refuse material deemed inappropriate for any reason

\* E-mails must conform to standard e-mail practices



## CHICAGO ARCHITECT DIGITAL EDITION

Maximize visibility to a targeted audience of AIA members with an interactive ad in the *Chicago Architect* digital edition.

## HALF-PAGE AD ON PRESENTATION PAGE

Get more eyes on your marketing with this half-page opportunity. Your ad is prominently displayed opposite the front cover below a video message from the AIA Chicago president.

## CONTACT

Maggie Zmija  
Integrated Media Consultant  
847.954.7935  
mzmija@sgcmail.com



AIA CHICAGO

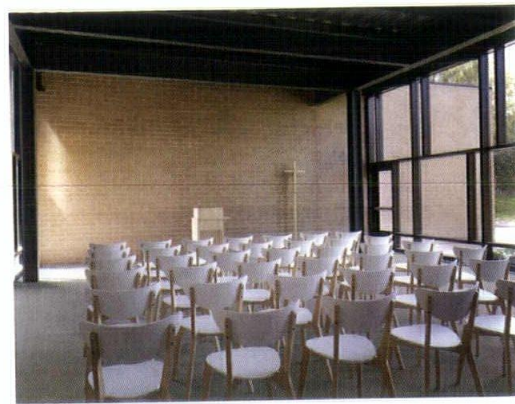


CITATION OF MERIT  
CHAPEL AND OFFICE WING

LOCATION: LISLE  
ARCHITECT: HARDING PARTNERS  
CLIENT: DUPAGE A.M.E. CHURCH  
CONTRACTOR: MORETON CONSTRUCTION COMPANY



Photos by Christopher Barrett Photographer



This expansion of an African Methodist Episcopal church sought to welcome the congregation with an openness and transparency that pleased the jury. "It's contemplative and quiet, and creates this almost courtyard feeling," noted one juror. Public spaces include a new childcare center and bookstore; the chapel's worship space is envisioned as an ideal setting for intimate weddings and funerals. Its sustainability features were also a plus to the jurors, with strategies such as the rainscreen system, high efficiency air handling units and advanced digital controls garnering praise. "They're trying to connect the church to the neighborhood. What they were doing in terms of sustainability is amazing," said a juror.

SPECIAL RECOGNITION  
PEARSON APARTMENT

LOCATION: CHICAGO  
ARCHITECT: SEARL LAMASTER HOWE ARCHITECTS  
CLIENT: N/A  
CONTRACTOR: MOD CONSTRUCTION



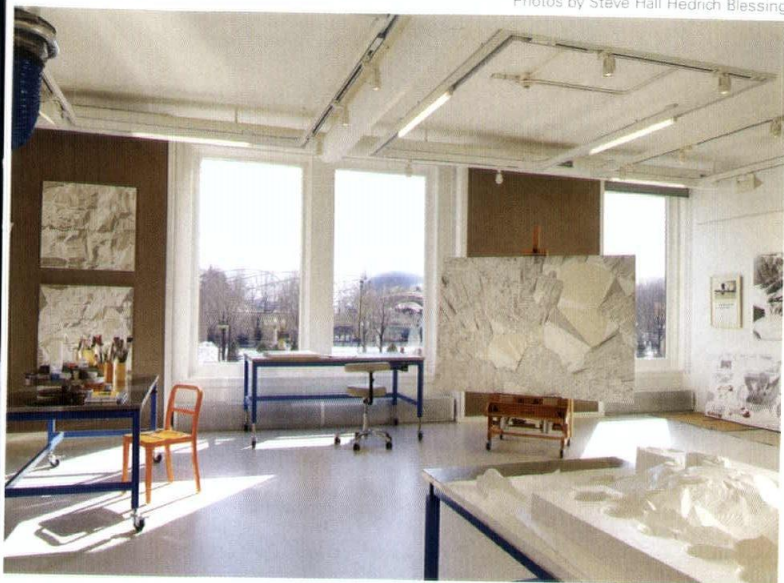
This project began as a renovation of a high-rise condo like any other, but it was the little things that mattered for the jurors. The designer added little flair and instead emphasized the gaps and voids as well as subtle lighting to create detail. "There were little but meaningful interventions," a juror said.



Photos by Tony Soluri Photography



Photos by Steve Hall Hedrich Blessing

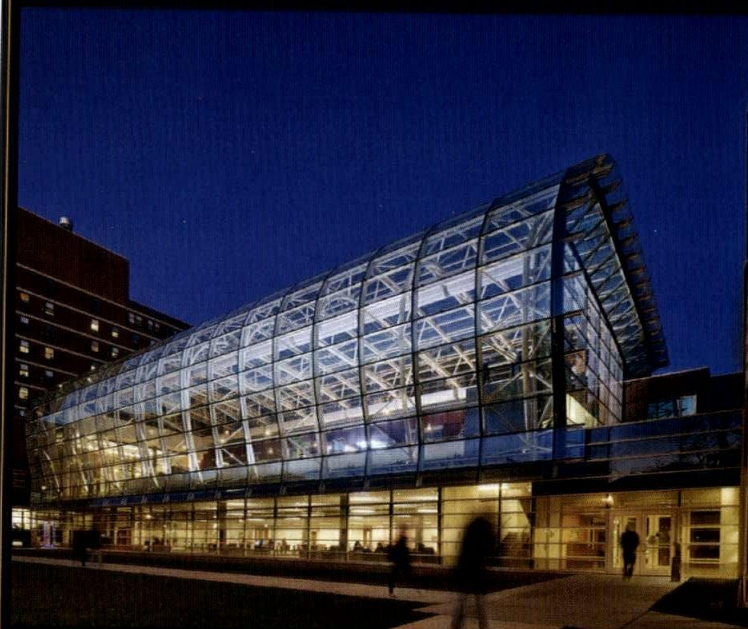


**SPECIAL RECOGNITION**  
**PAHC STUDIO**

**LOCATION: CHICAGO**  
**ARCHITECT: STUDIO GANG ARCHITECTS**  
**ARCHITECT OF RECORD: CD GROUP**  
**CLIENT: PAHC STUDIO**  
**CONTRACTOR: WUJCIK CONSTRUCTION GROUP**  
**CONSULTANTS: DBHMS DESIGN BUILD**  
**ENGINEERING, FILAMENT 33, PROJECT**  
**MANAGEMENT ADVISORS**

Situated in a 1920s commercial building, this art studio makes use of specialized systems to easily adjust and reconfigure exhibits at any time while isolating hazardous art materials, an effort the jury noticed. "The strength of the project was in the science that was undertaken to create a healthy environment for artistic production. "It's not a simple thing to do," remarked a juror. The mechanics of the studio include exhaust hoods, a continuous flow extraction system and movable extraction arms.

# GREEN-LIGHTED



Loyola University Institute of Environmental Sustainability - Chicago

LIGHTING DESIGNERS  
**Schuler Shook** 

**Chicago**  
**Minneapolis**  
**Dallas**

[schulershook.com](http://schulershook.com)



HONOR AWARD

CONGREGATION SOLEL READING TABLE

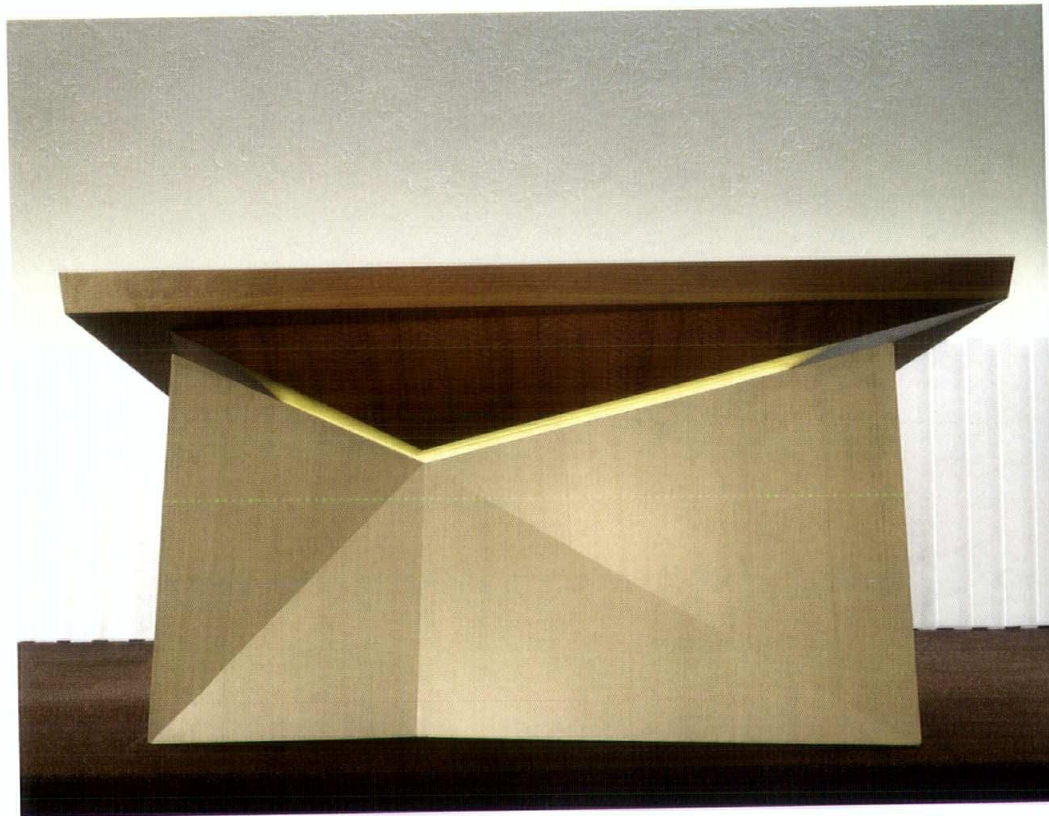
LOCATION: HIGHLAND PARK

ARCHITECT: ECKENHOFF SAUNDERS ARCHITECTS

CLIENT: CONGREGATION SOLEL

CONTRACTOR: EXECUTIVE CONSTRUCTION

CONSULTANT: INTER OCEAN CABINET

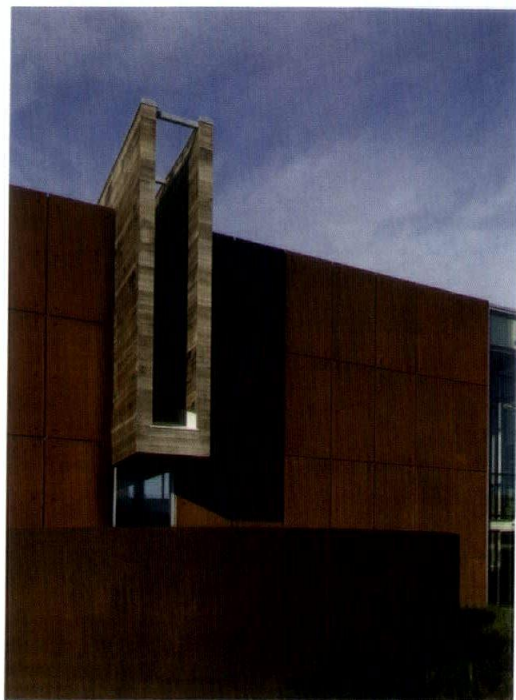


The Torah reading table at Congregation Solel in suburban Highland Park was designed in an abstract, angular form to represent the Jewish faith's multifaceted traditions. Jurors noted the table's poetic function of interpreting and communicating the varied stories and scripture of Judaism was translated into physical terms. Fashioned out of sapele wood, the tabletop suspends and cradles a band of light. The rift sawn ash with a translucent white finish complements the white Bimah wall, a backdrop to the entire space. When viewed from various vantage points within the remodeled sanctuary, the table's form fluctuates and folds like paper, offering each congregant a distinct perspective of the Torah using design themes of light and the natural world. "It really does appear to float," one juror said. "It's like folded paper. It's complex and it's simple."

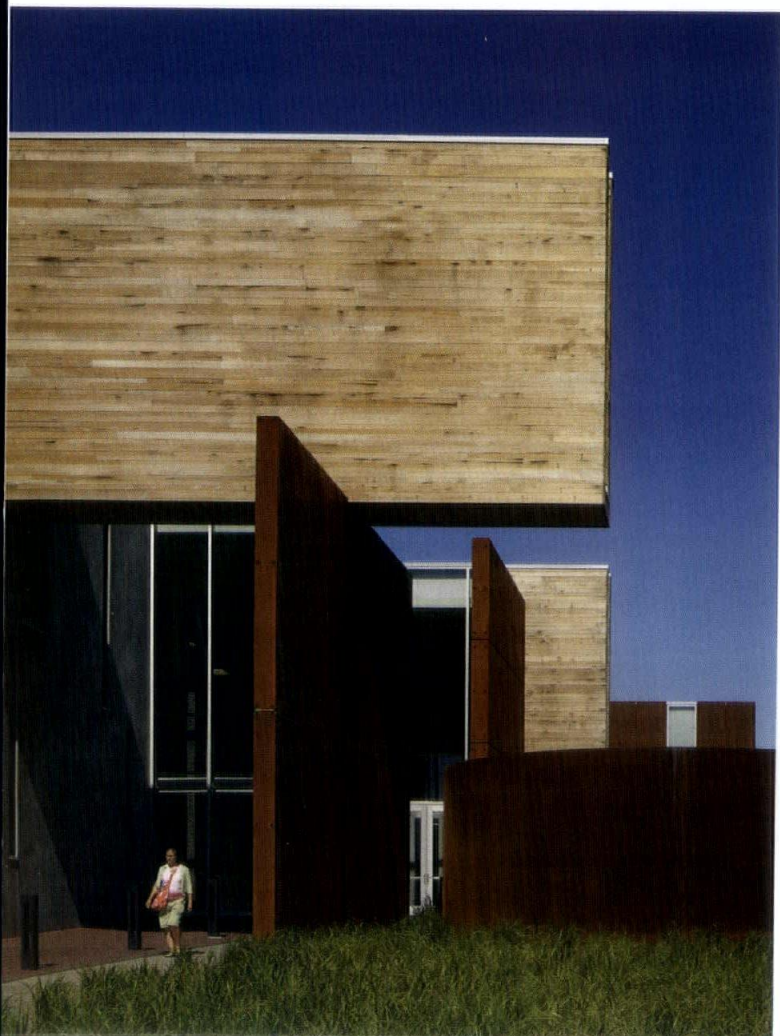
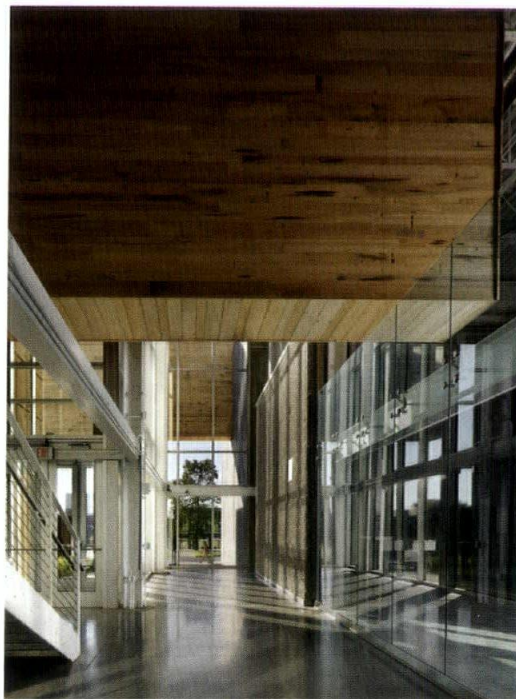


Photos by Mariusz Mizera Photography



**HONOR AWARD**

UNIVERSITY OF MINNESOTA-DULUTH, PICKLE BARREL SCUPPERS

**LOCATION: DULUTH, MINN.****ARCHITECT: ROSS BARNEY ARCHITECTS****ASSOCIATE ARCHITECT: TKDA (FORMERLY STANIUS JOHNSON)****CLIENT: UNIVERSITY OF MINNESOTA-DULUTH****CONTRACTOR: STAHL CONSTRUCTION COMPANY****CONSULTANT: OSLUND AND ASSOCIATES**

The exterior of University of Minnesota-Duluth's James I. Swenson Civil Engineering building is rich with materials: rusting steel, precast and poured-in-place concrete, and reclaimed wood. "What do engineers need to learn and what forces do they need to control?" was the question the architects asked themselves when devising the concept of the building's look. The reclaimed wooden, oversized scuppers that jut out of the sleek steel and concrete façade prevent rainwater from overflowing the sewer and causing environmental damage to local streams. Instead, the water pours into giant steel tubs that corrode constructively before one's eyes, providing a constant reminder to pupils of how materials change and interact with the environment, prompting one juror to comment that "the building as a pedagogical tool is amazingly successful." The selection of materials that visually age as the seasons change also impressed the jury. "[The building] manifests seasonal changes and interacts with its environment very directly. It's exemplary of how building materials age over time," a juror commented.

Photos by Kate Joyce Studios

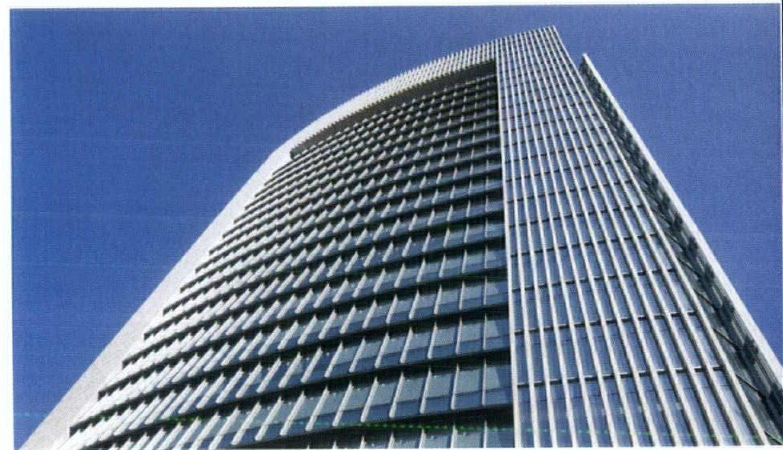




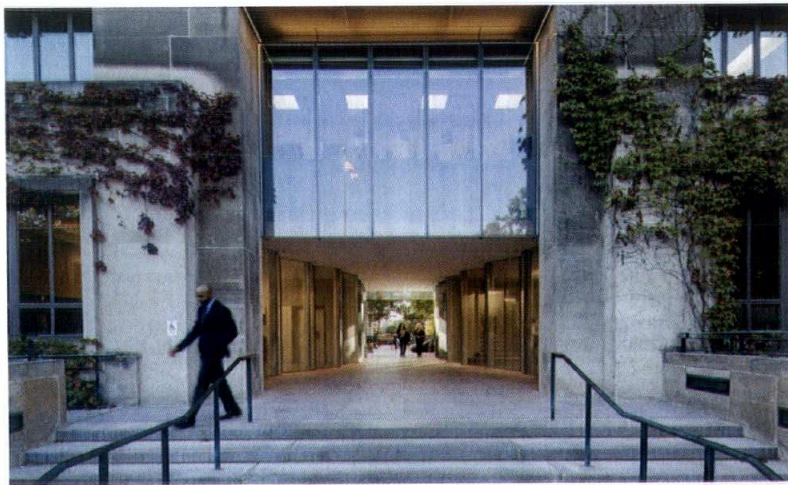
CITATION OF MERIT  
SOOCHOW SECURITIES HEADQUARTERS

LOCATION: SUZHOU, CHINA  
 ARCHITECT: GOETTSCH PARTNERS  
 ASSOCIATE ARCHITECT: SUZHOU INDUSTRIAL PARK DESIGN & RESEARCH INSTITUTE CO. LTD.  
 CLIENT: SOOCHOW SECURITIES CO. LTD.  
 CONTRACTOR: JIANGSU NANTONG NO. 2 CONSTRUCTION ENGINEERING (GROUP) CO. LTD.  
 CONSULTANTS: ACLA, ONELUX STUDIO LLC

The Soochow Securities Headquarters, built on the western edge of Jinji Lake in Suzhou Industrial Park, was designed as a modern gateway to the city center. The building's enclosure of stone and glass curtain wall incorporates a shingled façade to provide passive shading during the summer months. To maintain a clean and uniform exterior enclosure, the operable window units were hidden and integrated into the shingled façade, so occupants could open them without affecting the exterior aesthetic. "It's quite an exciting concept," one juror said.



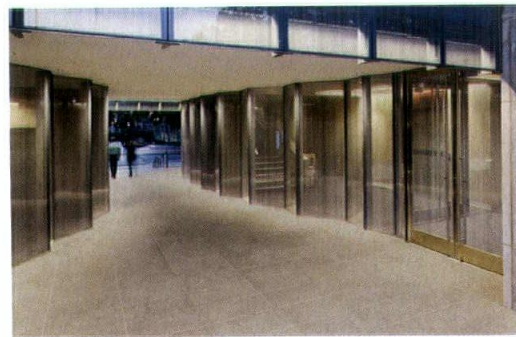
Photos by Shen Zhonghai



CITATION OF MERIT  
UNIVERSITY OF CHICAGO ADMINISTRATION  
BUILDING PORTAL

LOCATION: CHICAGO  
 ARCHITECT: KRUECK + SEXTON ARCHITECTS  
 ASSOCIATE ARCHITECT: GENSLER  
 CLIENT: UNIVERSITY OF CHICAGO  
 CONTRACTOR: MORTENSON CONSTRUCTION

The Edward H. Levi Administration Building is prominently placed at the axis terminus of the University of Chicago quadrangle, but for many years the building has been a barrier that limits free movement through the campus along 58th Street. The solution was to open up the building by creating a portal. An asymmetrical, faceted façade of transparent, translucent and opaque glass brings a new texture to the existing Art Deco building. The new design allows articulation of the seamless portal wall, creating a natural link through campus. "It's an elegant expression of connectivity that's very important for wayfinding," a juror noted.



Photos by Tom Rossiter

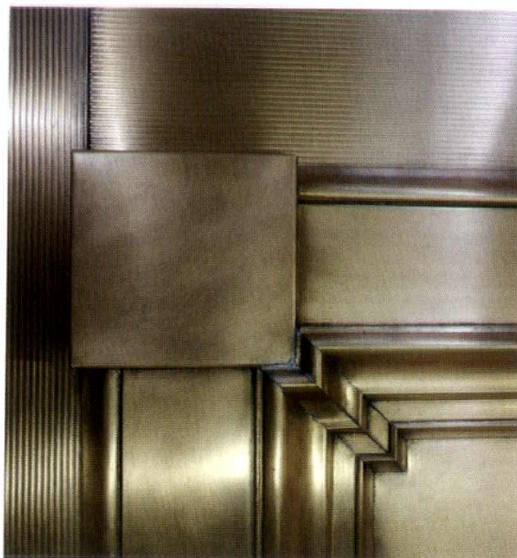




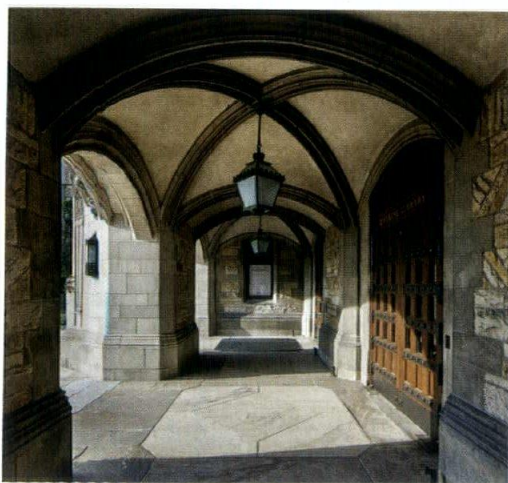
**SPECIAL RECOGNITION**  
ILLINOIS STATE CAPITOL EXTERIOR DOORS

**LOCATION:** SPRINGFIELD, ILL.  
**ARCHITECT:** VINCI | HAMP ARCHITECTS  
**CLIENT:** ILLINOIS CAPITAL DEVELOPMENT BOARD  
**CONTRACTOR:** CORE CONSTRUCTION  
**CONSULTANT:** IMPERIAL WOODWORKING COMPANY

The capitol's new exterior doors that replaced a 1970s aluminum set are copper-clad mahogany, a 19th century method that makes the doors less vulnerable to the elements. The method wasn't just chosen for its durability, but for its aesthetics as well. "It reclaims what was there, all working from just a historic photograph," said one juror.

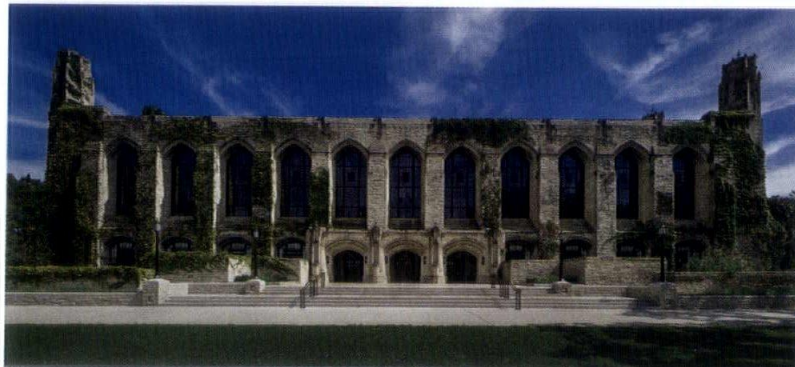


Photos by Tom Rossiter and Bill Zbaren



**SPECIAL RECOGNITION**  
CHARLES DEERING LIBRARY WEST ENTRY

**LOCATION:** EVANSTON  
**ARCHITECT:** HBRA ARCHITECTS  
**CLIENT:** NORTHWESTERN UNIVERSITY  
**CONTRACTOR:** W.B. OLSON  
**CONSULTANTS:** WMA CONSULTING ENGINEERS, RUBINOS & MESIA ENGINEERS, ANNE KUSTNER LIGHTING DESIGN, CCS INTERNATIONAL, ARCHITECH CONSULTING, HH ANGUS, QUARRA STONE COMPANY, SMALL CORP., BARSANTI WOODWORK CORP.



Photos by Ballogg Photography

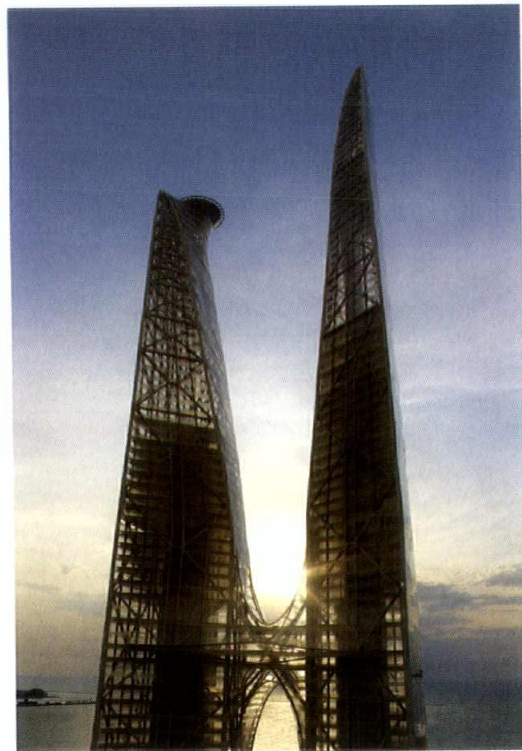
When the Northwestern University Library was completed in 1970, it closed off the entrance to the attached 1930s Deering Library, minimizing the impact of the entrance as a ceremonial portal to knowledge. Today, an accessible entry route is enhanced with updated landscaping and restoration of historic lighting that approach the building. "It creates a plaza rather than a stoop," said a juror. Another juror noted the use of bronze lamp standards and sandstone, saying the materials are "integral to the historicity of the façade."



HONOR  
LIANSHENG FINANCIAL CENTER

LOCATION: TAIYUAN, CHINA  
ARCHITECT: SKIDMORE, OWINGS & MERRILL  
CLIENT: LIANSHENG GROUP

"An iconic tower," one juror exclaimed upon seeing this 668-meter-tall skyscraper. The structure is composed of two connected, tapered towers, achieving its height by dividing the building's lease span into 2,000-square-meter floor plates. The move allows the building to rest upon a minimal base while increasing the total amount of leasable space in each tower. Structural linkages are strategically located along the height of the towers to reinforce the stability of the joined system and to offer vertical transportation transfer points in public sky lobbies. An effect of such is to afford the visitor spectacular views of the city below. "The siting is appropriate for a tall building. I think it is one that I really would like to see built," another juror added.

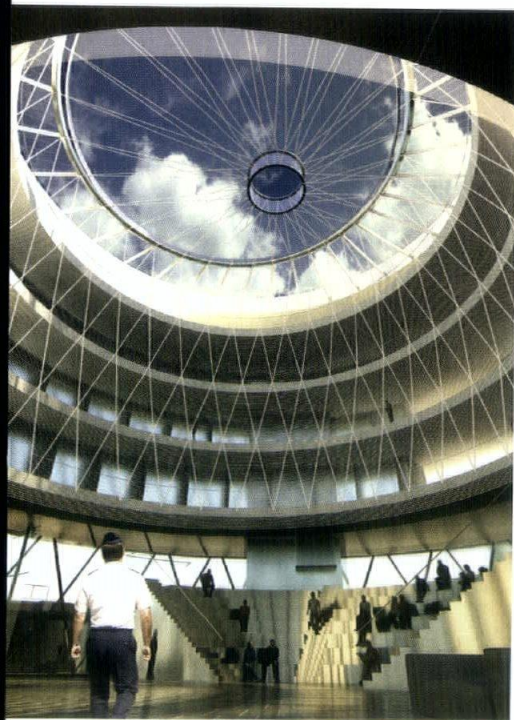
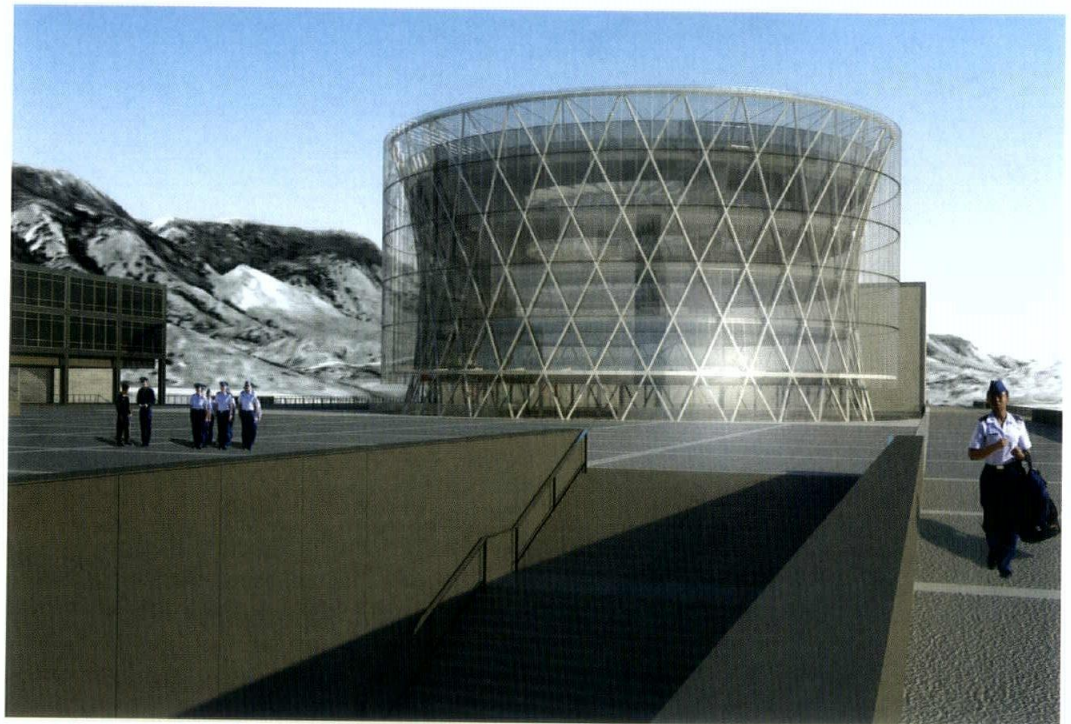
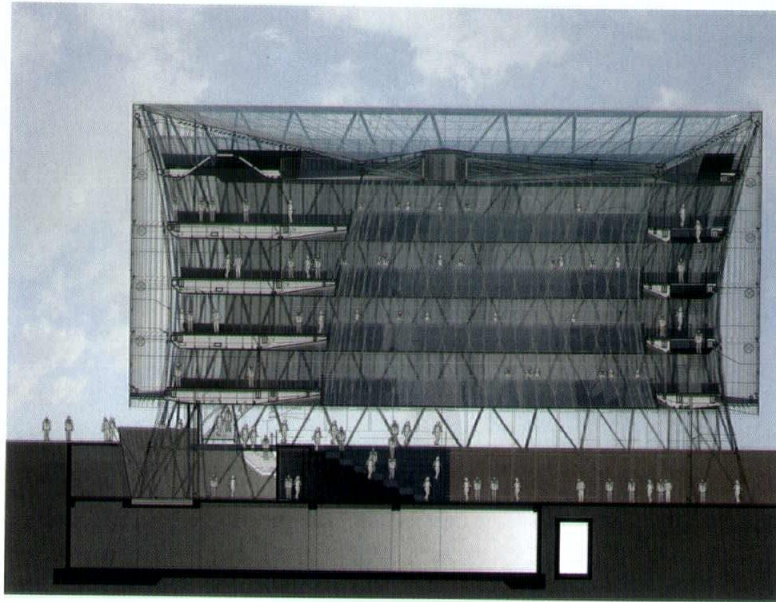


Images ©SOM



HONOR  
 U.S. AIR FORCE ACADEMY CENTER  
 FOR CHARACTER & LEADERSHIP  
 DEVELOPMENT

LOCATION: COLORADO SPRING, COLO.  
 ARCHITECT: SKIDMORE, OWINGS & MERRILL  
 CLIENT: UNITED STATES AIR FORCE



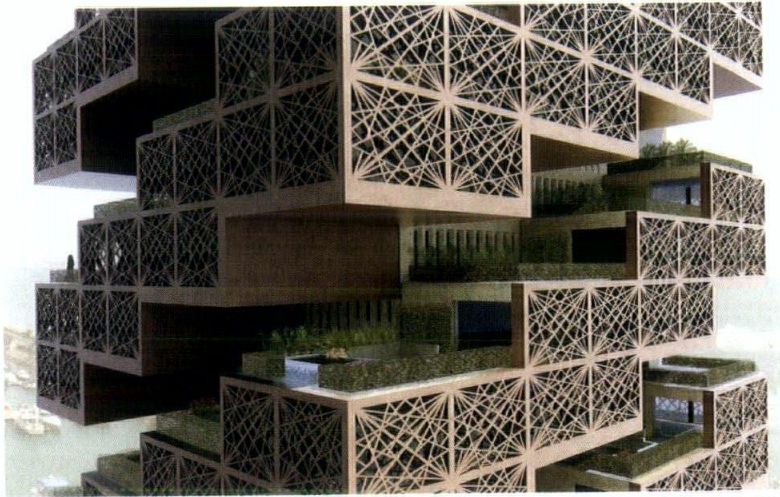
Images ©SOM

The building's striking circular geometry creates a toroid set in an inspirational, mountainous setting. The structural steel basket encloses the maximum space while using minimal materials. Two layers of glass—a cylindrical outer single-glazed shell and inner double-glazed enclosure—are used to form a ventilated air chamber, enhancing the building's sustainable measures. A dramatic tension rod skylight system floods the interior with light and creates a symbolic connection between the interior and sky, subtly referencing the work of those who occupy the space. "The building fulfills every intention of the space; it's very appropriate," a juror said.

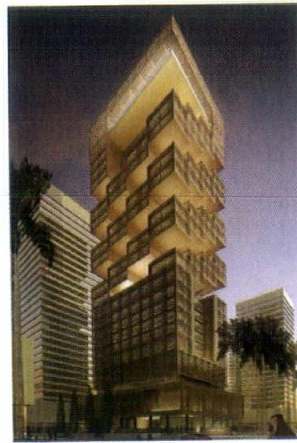


CITATION OF MERIT  
NOZUL LUSAIL MARINA

LOCATION: DOHA, QATAR  
ARCHITECT: SKIDMORE, OWINGS & MERRILL  
CLIENT: NOZUL REAL ESTATE

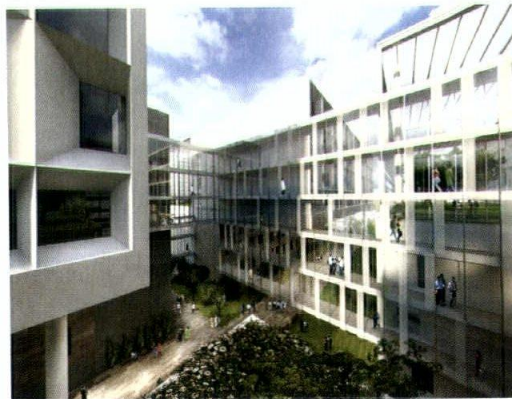


Images ©SOM

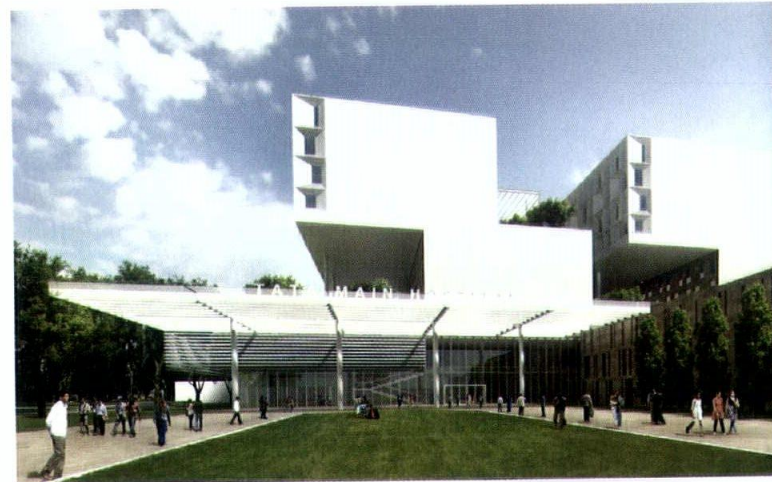


Designed to stand directly adjacent to the Persian Gulf, the 23-story hotel tower's recessed balconies are carved into the length of the entire structure, allowing the upper floors to shade the terraces that offer spectacular views. The intricate exterior design of the façade also provides shading that helps reduce the building's energy consumption for cooling by an estimated 17 to 90 percent, with an average reduction estimated at 63 percent. The atrium incorporates additional energy-saving turns, as it acts as a natural ventilation device by exhausting hot air out and away from the building. "The entire design plan is very specific to its location but has features that could be, on a different scale, utilized in other places," said a juror.

The Tata Main Hospital was designed with a series of large, elevated gardens that would not only shade the hospital from the intense climate but also create "green lungs" in a largely industrial city. "The metaphor works," one juror noted. "It's not a hermetically sealed box, it's open for patients to engage with the outdoor space." The hospital was designed as an integrated health campus that embodies clinical best practices to serve the employees of Tata Steel, their families and the people of Jamshedpur. "Progressive plan; great to see this as a catalyst [for healthcare design]," a juror added.



Images courtesy CannonDesign



CITATION OF MERIT  
TATA MAIN HOSPITAL

LOCATION: JAMSHEDPUR, JHARKHAND, INDIA  
ARCHITECT: CANNONDESIGN  
CLIENT: TATA GROUP



CITATION OF MERIT  
URBAN FILTER OFFICE BUILDING

LOCATION: GENEVA, SWITZERLAND  
ARCHITECT: JOHN RONAN ARCHITECTS  
CLIENT: SOCIÉTÉ PRIVÉE DE GÉRANCE  
CONSULTANT: THORNTON TOMASETTI – BUILDING SKIN PRACTICE



The office building was designed for a triangular urban site, a structure wrapped in a shingled glass curtain wall sitting on a stone base that rolls across the adjacent ground plane, integrating itself with the urban context. "We all liked the skin," said one juror, addressing the fact that from one angle, the glass façade mirrored the stainless panels and the building appears opaque, but from another angle, the façade mirrors the ever-changing sky. "Office buildings don't get this much attention in terms of design," another juror said.



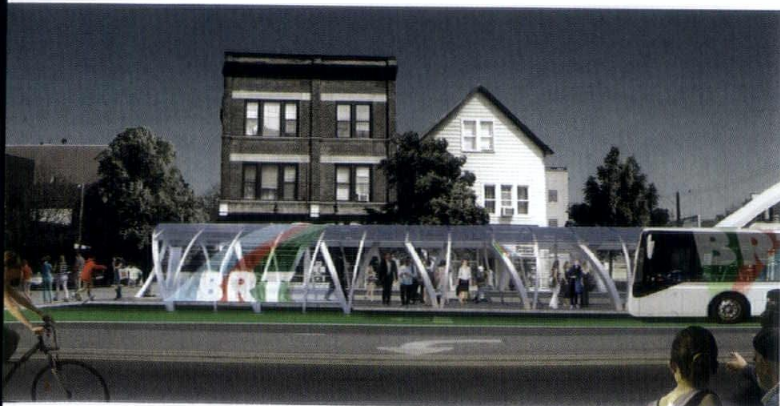
Images by John Ronan Architects

SPECIAL RECOGNITION  
BRT: HALO

LOCATION: CHICAGO  
ARCHITECT: RTKL ASSOCIATES  
CLIENT: CHICAGO TRANSIT AUTHORITY  
CONSULTANTS: HALVORSON + PARTNERS,  
WILLOUGHBY ENGINEERING



HALO is a prototype station for Chicago's proposed Bus Rapid Transit system. The proposal treats three separate sites as part of an effort to improve transit modes in the city using existing corridors while rejuvenating neighborhoods at the pedestrian scale. Each station is composed of simple, integrated forms that will involve energy production and rainwater harvesting at the commuter level. "An interesting solution... [bringing] sustainable technology to the ridership so they can interact with that as they wait for the bus," a juror noted.



Images courtesy RTKL Associates





SPECIAL RECOGNITION

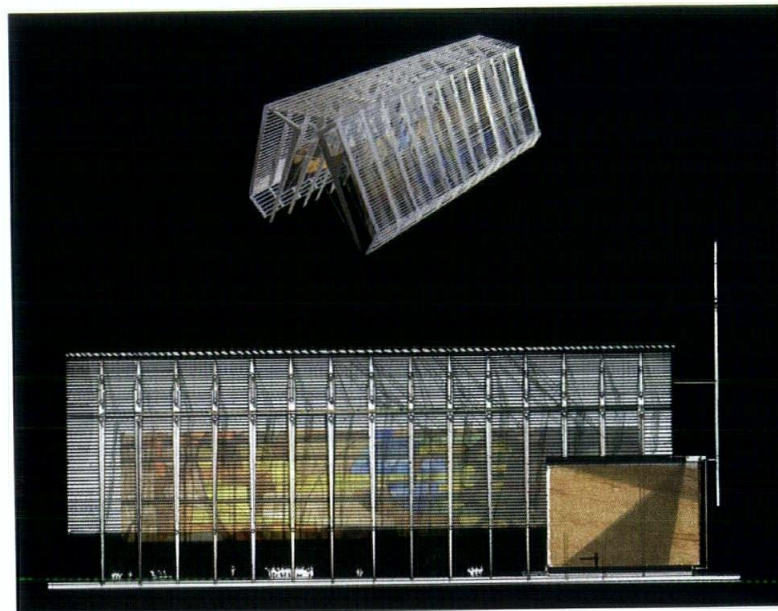
HAITI CATHEDRAL

LOCATION: PORT-AU-PRINCE, HAITI

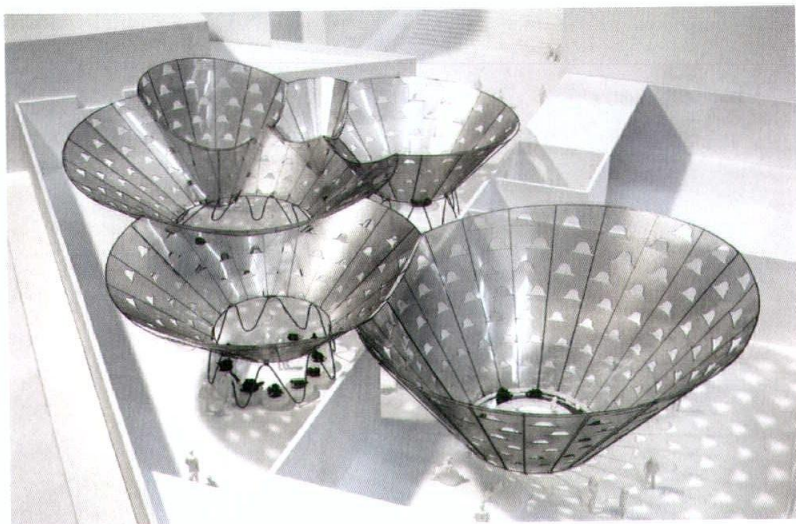
ARCHITECT: EPSTEIN | METTER STUDIO

CLIENT: ARCHDIOCESE OF HAITI

Designs for the Notre Dame de l'Assomption referenced the tradition of a cathedral as a symbolic place for resurrection, refuge and rejuvenation. A series of layered enclosures serve different functions—the outermost enclosure protects the church from environmental elements, and the innermost layer provides physical support while defining the interior space through repetition, modulation and iconic form. “The layering of the skins has the potential to be an ever-changing space and a really nice experience to be in,” said one juror.



Images by Epstein | Metter Studio



The structures are designed to collect more than 300,000 gallons of water per year from MoMA PS1's public courtyard. The Virtual Water project collects, cleans, conserves and uses thousands of gallons of this rainwater for different purposes, such as a waterfall fishpond, a reflecting pool or an active mist sprinkler, acting as a model of sustainable practices and repurposing. “I like when architecture engages in the educational,” one juror noted. “It has purpose to communicate natural systems and engage in a way that’s informative.”

SPECIAL RECOGNITION

VIRTUAL WATER

LOCATION: QUEENS, N.Y.

ARCHITECT: URBANLAB

ASSOCIATE ARCHITECT: ENDRESTUDIO

CLIENT: MOMA PS1

CONSULTANT: METHOD DESIGN



Images by UrbanLab



## INDEX OF ADVERTISERS

AIA Guide to Chicago	23	Leopardo Companies, Inc.	C4	Schweiss Doors	6
BD+C 40 under 40	33	Mann Weitz & Associates, LLC	23	The Hill Group	3
BQE Software, Inc.	13	Marvin Windows & Doors	17	Unilock Chicago	7
Bulley & Andrews, LLC	4	Nemetschek Vectorworks, Inc.	11		
Chicagoland Roofing Council	C3	Pella Corp.	C2		
International Exposition Company - AHR Expo	15	Petersen Aluminum Corporation	8		
		Schuler Shook	39		



# CHICAGO ARCHITECT

## The City's Resource for Architectural News

*Chicago Architect*, the official publication of AIA Chicago, is the authoritative resource for Chicago architects, the larger design community and the public about architecture and related topics.

Your ad message in *Chicago Architect* reaches more than 3,400 members, including architects, contractors, design consultants, engineers, interior designers and other design/build professionals.

Reach out to this architectural community. **Reserve your ad space today and ask about available premium positioning!**

*AIA Chicago's Board of Directors appreciates your advertising commitment in Chicago Architect and welcomes Scranton Gillette Communications/SGC Horizon as their new publishing and media partner.*

**AIA  
CHICAGO**

 **SCRANTON  
GILLETTE  
COMMUNICATIONS**  
SGC HORIZON

**FOR MORE INFORMATION  
OR TO RESERVE YOUR AD  
SPACE CONTACT:**

Maggie Zmija  
Integrated Media Consultant  
847.954.7935  
mzmija@sgcmail.com





## CONGRATULATIONS

to John Vinci, FAIA,  
on his Lifetime  
Achievement Award  
and to all the winners  
of the 2014 Design  
Excellence Awards.

THANK YOU TO ALL THE SPONSORS OF THE  
59TH ANNUAL DESIGN EXCELLENCE AWARDS.

### PLATINUM SPONSORS:

Adrian Smith + Gordon Gill Architecture  
Black Spectacles  
Goettsch Partners  
Lightswitch Architectural  
Magnusson Klemencic Associates  
Petersen Aluminum Corporation  
Perkins + Will  
Scranton Gillette Communications  
Skidmore Owings & Merrill

### GOLD SPONSORS:

Booth Hansen  
JAHN  
Newsweb Corporation

View all the winners online at

.....  
[aiachicago.org](http://aiachicago.org)  
.....

**AIA CHICAGO**





# Energy Efficiency Starts at the Top

Creating an energy efficient building takes more than a lot of insulation on the roof. From the bottom up, there is an art and a science to creating a Building Envelope that is an air and water tight system.

The Building Envelope is key to successfully meeting the New 2012 International/Illinois Energy Code, International Green Construction Code and Chicago's Energy Benchmarking Ordinance requirements.

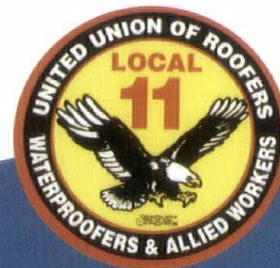
Chicagoland Roofing Council Contractors work with building owners and managers and roofing designers to ensure that every roof they install is reasonably priced and provides energy saving options that keep buildings dry and up to, or beyond, minimum Energy Code Requirements. Chicagoland Roofing Council Contractors

stay on top of the issues that affect cost and performance of the complete rooftop as a system.

They guide you through the selection process for the best energy efficient, most competitive and long lasting roof possible.

Chicagoland Roofing Council Contractors – One Call, Single Source Responsibility, for everything on top of the roof and a building envelope system that works too.

**Call 708.449.5266 or visit  
[www.chicagoroofing.org](http://www.chicagoroofing.org)  
to find the best Roofing  
Professionals.**



[www.chicagoroofing.org](http://www.chicagoroofing.org)





[www.leopardo.com](http://www.leopardo.com)

*CONSTRUCTION   DESIGN - BUILD   DEVELOPMENT*

Interiors • Healthcare • Retail • Municipal • Recreation • Office • Industrial • Higher Education  
• K-12 Education • Hospitality • Residential • Community • Aviation • Federal