

CHICAGO ARCHITECT

1 SETTING THE STANDARDS

2013 AIA CHICAGO DESIGN
EXCELLENCE AWARDS

ALSO INSIDE:
STANLEY TIGERMAN,
MISCHIEVOUS MENTOR 16

*****AUTO**MIXED ADC 630 N630
SCK 3
PRSR1 STD
AIA
MICHELLE BOXLEY
1735 NEW YORK AVE NW
WASHINGTON DC 20006-5209
Permit No. 5
Pontiac, IL
Paid
US Postage

AIA Chicago
www.aiachicago.org nov | dec 2013



“The Holcim Awards appeal to students, to professionals, to everybody who has an interest in sustainable construction and design. All can stand together and talk as equals in the arena.”

Reed Kroloff, Director, Cranbrook Academy of Art, USA.

4th International Holcim Awards for sustainable construction projects. Prize money totals USD 2 million.

**OPEN NOW
FOR ENTRIES**
www.holcimawards.org



Renowned technical universities lead the independent juries in five regions of the world. They evaluate projects at an advanced stage of design against the “target issues” for sustainable construction and allocate additional prizes for visionary ideas of young professionals and students. Find out more about the competitions at www.holcimawards.org

The Holcim Awards is an initiative of the Swiss based Holcim Foundation for Sustainable Construction. It is supported by Holcim and its Group companies and affiliates in around 70 countries, including the United States. Holcim Ltd is one of the world’s leading suppliers of cement and aggregates.

 **Holcimawards**
for sustainable construction

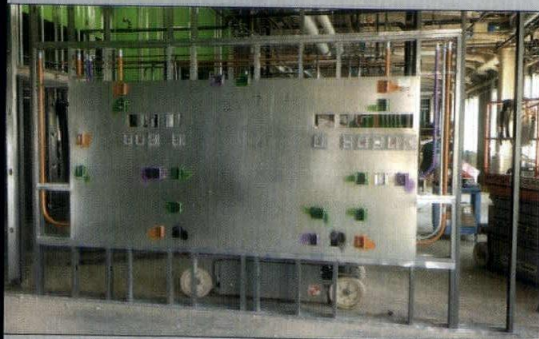


THE HILL GROUP

Reinventing an Industry

The Hill Group is helping to reinvent the building process by leading the way in Collaboration, Integrated Project Delivery, Building Information Modeling, Pre-Fabrication, Modular Construction, Commissioning, and Building Energy Efficiency.

- Construction*
- Energy Efficiency/Sustainability*
- Service & Building Maintenance*
- Commissioning/Test & Balance/LEED Consulting*
- Building Operations/Stationary Engineers*
- Engineering Services*
- Facilities Solutions*
- Architectural Systems*



Our 26-acre, state-of-the-art campus includes:

- (A) 32,000 SF Corporate office space
- (B) 104,000 SF Prefabrication shop
- (C) 80,000 SF Modular construction space
- (D) 21,000 SF Hill Collaboration Center
- (E) Tools, logistics, high bay and crane area

"I personally invite you to tour our campus and witness the future of an industry today."

Bob Krier, President
847.451.5000
hillgrp.com



Scan to watch Autodesk® video featuring The Hill Group.

BUILDING EXCELLENCE ... through Experience and Innovation



Free Design and Engineering Support for Wood Buildings

TECHNICAL SUPPORT – Free one-on-one project support from experts in wood design—email help@woodworks.org

ONLINE TRAINING – Webinars, design examples, case studies

WEB-BASED TOOLS – CAD/REVIT details, calculators, span tables, product and design guides

EDUCATIONAL EVENTS – Wood Solutions Fairs, workshops, in-house presentations



WoodWorks

Wood costs less and delivers more

WoodWorks is an initiative of the Wood Products Council

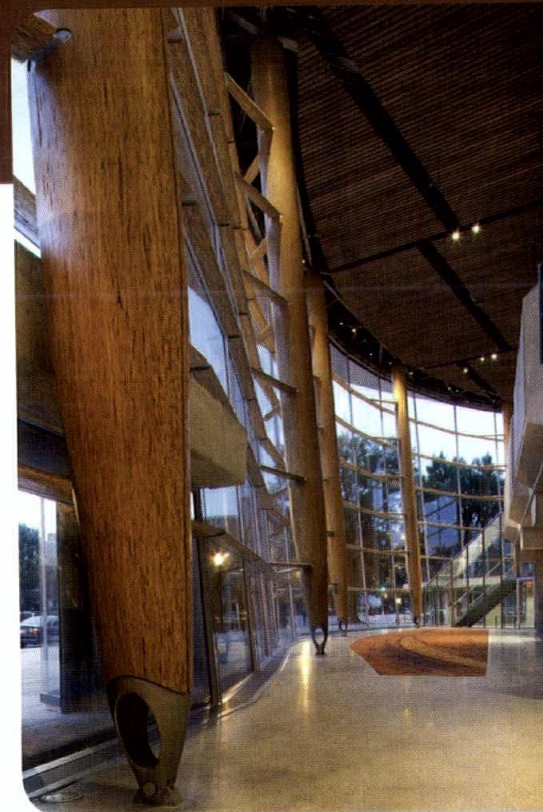


Photo: Mercer Court, University of Washington, Ankrum Moisan Architects, courtesy WG Clark Construction
Arena Stage at the Mead Center for American Theater, Nic Lehoux, courtesy of Bing Thom Architects

CHICAGO ARCHITECT

Chicago Architect, the primary outreach tool of AIA Chicago, is published six times a year as an authoritative resource for architects, the larger design community and the public about architecture and related issues of interest to Chicago architects. The magazine communicates industry trends, the value of high-quality design and the role of AIA Chicago and its members in the world of architecture.

Publication Director

Zurich Esposito
esposito@aiachicago.org

Publisher

Tony Mancini
tmancini@sgcmail.com

Editor

Dennis Rodkin
dennis@rodkin.com

Senior Editor

Ben Schulman
bschulman@aiachicago.org

Managing Editor

Raissa Rocha

Consulting Editor

Rob Cassidy
Building Design+Construction
magazine

Designer

Kelsey Craig

Advertising Sales

Pete Pirocanac
ppirocanac@sgcmail.com
847.954.7935

Advertising Coordinator

Lucia Currans
lcurrans@sgcmail.com
847.391.1005

AIA Chicago



Contributors

Lee Bey
Cindy Coleman
Abby Kleckler
Amy McIntosh
Pamela Dittmer McKuen
Laurie Petersen
Lisa Skolnik
Jeff Zagoudis

Vice President, Custom Media SGC/SGC Horizon

Diane Vojcanin
dvojcanin@sgcmail.com

Custom Media Manager

Melissa Sersland

Chicago Architect is published six times a year by the Custom Media Group at Scranton Gillette Communications/SGC Horizon LLC.

Photocopy permissions where necessary, permission is granted by copyright holder for those registered with Copyright Clearance Center (CCC), 222 Rosewood Drive, Danvers, MA 01923. www.copyright.com to photocopy any article herein for personal or internal reference use only for the flat fee of \$2.00 per copy for each article. Send payment to CCC. Copyright 2013 AIA Chicago.

The information contained within has been obtained by AIA Chicago and Scranton Gillette Communications/SGC Horizon LLC from sources believed to be reliable. However, because of the possibility of human or mechanical error, AIA Chicago and Scranton Gillette Communications/SGC Horizon LLC do not guarantee the accuracy or completeness of any information and is not responsible for any errors or omissions or for the results obtained from use of such information. The editor reserves the right to censor, revise, edit, reject or cancel any material not meeting the standards of *Chicago Architect*. The information and opinions published in *Chicago Architect* represent the views of the authors and not those of the publication or AIA Chicago, unless otherwise stated. The acceptance of advertising does not reflect endorsement of products or services by this publication, AIA Chicago or Scranton Gillette Communications/SGC Horizon LLC.

Letters to the Editor: *Chicago Architect* gladly accepts all signed, dated letters to the editor. We reserve the right to edit for style and any potentially libelous content. Letters should be no longer than 250 words. Submit letters to CA@aiachicago.org.

Story Ideas and Submissions: *Chicago Architect* welcomes your story ideas and your written article submissions, whether about your projects or about business trends and issues. E-mail us at CA@aiachicago.org.

PRESIDENT'S LETTER

Wish I could be like Stanley T.

In the near 60 years of AIA Chicago's Design Excellence Awards, this one is special.

The 35 honorees illustrated in this issue of *Chicago Architect* traverse the globe, transcending every building typology and scale. It is an amazing and impressive snapshot of our collective coolness.

This year we ice the cake by recognizing Stanley Tigerman, FAIA, with our AIA Chicago Lifetime Achievement Award.

Continuing the tradition of sharing my musical obsessions—and with apologies to Ray Davies, The Kinks and other British invaders—how about we spend this month singing about Stanley T?

(To the tune of The Kinks' "David Watts")

Fa-fa-fa-fa-fa-fa-fa-fa-AIA

Fa-fa-fa-fa-fa-fa-fa-fa-AIA

I am a dull and simple lad
Cannot tell Walter from Bruce G
And I have never met Philip J
And I wish I could have all that he has got
I wish I could sketch like Stanley T

Fa-fa-fa-fa-fa-fa-fa-fa-AIA

Fa-fa-fa-fa-fa-fa-fa-fa-AIA

And when I lie on my keyboard
at night
I dream I could draw like Stanley T
Lead the school team to victory
And take my ARE and pass the lot

(Wish I could be)
Wish I could be like Stanley T
(Wish I could be)
Wish I could write like Stanley T

Fa-fa-fa-fa-fa-fa-fa-fa-AIA

Fa-fa-fa-fa-fa-fa-fa-fa-AIA

He is the head boy at the school
He is the captain of the team
He is so great and says as he please
And I wish all his ideas belonged to me

I wish I could be like Stanley T

Fa-fa-fa-fa-fa-fa-fa-fa-FAIA

Fa-fa-fa-fa-fa-fa-fa-fa-FAIA

And all the firms in the neighborhood
Try to have fun like Stanley T
They try their best but can't succeed
For he is of pure and noble breed

Wish I could be like

Wish I could be like

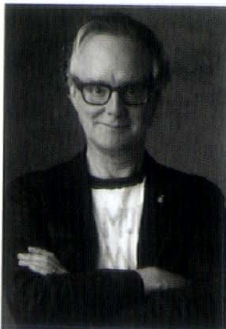
Wish I could be like

Fa-fa-fa-fa-fa-fa-fa-fa-AIA

Fa-fa-fa-fa-fa-fa-fa-fa-AIA

Congratulations, Stanley. You keep us at the epicenter. Your example rocks. Thank you.

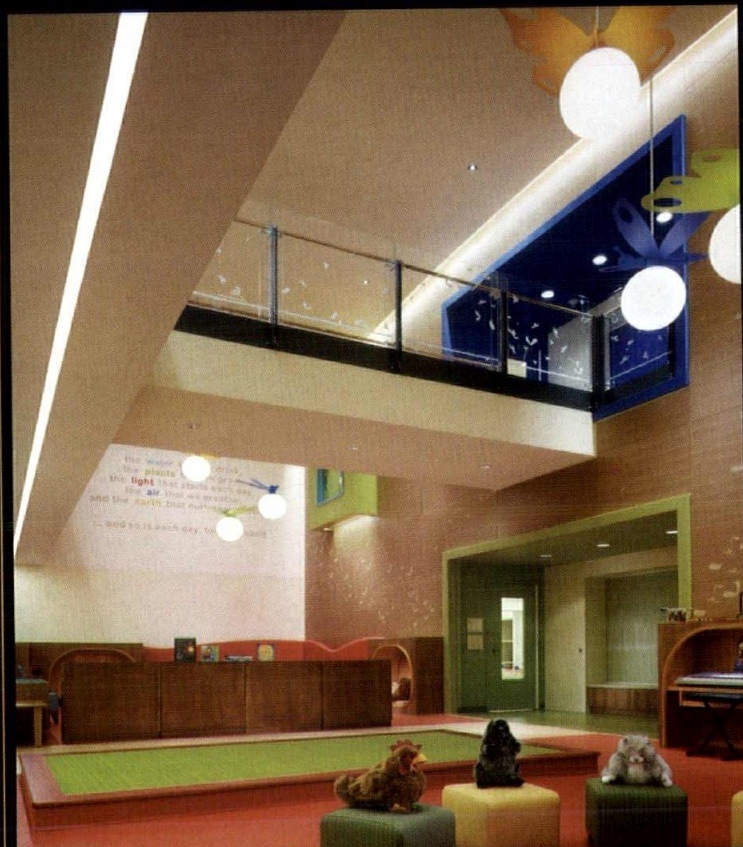
And to every member of AIA Chicago, to my board colleagues, to Zurich and the incredible professionals in the AIA Chicago office, to Sharon: THANK YOU. What an incredible gift you have afforded me to be president of AIA Chicago. You rock, and roll.



Peter Exley,
FAIA

Photo by Marc Heuser 2012

LIGHT PLAY



Northwestern Memorial Hospital Early Childhood Education Center - Chicago

LIGHTING DESIGNERS
Schuler Shook



Chicago
Minneapolis
Dallas

schulershook.com

CHICAGO ARCHITECT ADVISORY COMMITTEE

Thomas Braham, AIA
Peter Exley, FAIA
Peter Schlossman, AIA
Linda Searl, FAIA
Brett Taylor, AIA
P.K. VanderBeke, AIA
Cynthia Weese, FAIA
Thomas Zurowski, AIA

AIA CHICAGO 2013 BOARD OF DIRECTORS

President
Peter Exley, FAIA

**First Vice President/
President-Elect**
Scott Rappe, AIA

**Vice President
Government Affairs**
Tom Jacobs, AIA

**Vice President
Honors & Awards**
Michael Wilkinson, AIA

**Vice President
Sponsorship**
Tony LoBello, AIA

Secretary
Matt Dumich, AIA

Treasurer
Dawn Schuette, AIA

Past President
Rand Ekman, AIA

Directors
Katherine Darnstadt, AIA
Dina Griffin, AIA
Tristan d'Estrée Sterk, AIA
Mike Damore, AIA
David Eckmann, AIA
Robert Forest, AIA
Catherine Baker, AIA

Associate Directors
Erin Lavin Cabonargi,
Assoc. AIA
Michelle Rademacher,
Assoc. AIA

**Professional Affiliate
Directors**
Gregg Garmisa
Gary Leopardo

Student Director
Kristen Moreau, AIAS

AIA Illinois Delegates
Rik Master, AIA
Juan Moreno, AIA
David Bradley, AIA
Eric Davis, AIA
Janeen Harrell, AIA
Mark Schwamel, AIA

2013 COMMITTEE CHAIRS

**Community Interface
Committee**
Nootan Bharani, AIA,
co-chair
Andrew Roskos, AIA,
co-chair

2013 KNOWLEDGE COMMUNITIES

Design
Rocco Castellano, AIA,
chair
Anthony Viola, Assoc. AIA,
co-chair

Design for Aging
Steven Montgomery, AIA,
chair
Heidi Dahle, AIA, co-chair

Education
Burcin Moehring, AIA, chair
William Bradford, AIA,
co-chair

Environment
Jose Rodriguez, Intl. Assoc.
AIA, chair
Vuk Vujovic, Assoc. AIA,
co-chair

Healthcare
David Nienhueser, AIA
Matthew Miller, AIA

Historic Resources
Tim Scovic, Assoc. AIA,
chair

**Interfaith Forum on
Religion, Art and
Architecture**
Mark Kasprzyk, AIA,
co-chair

Interior Architecture
David Carr, AIA,
co-chair

**Regional & Urban
Planning**
Peter Kindel, AIA, chair
Susan Hickey, AIA, co-chair
Steve Wilson, AIA, co-chair

Residential Design
William Bickford, AIA,
chair
Nate Lielasus, AIA, co-chair

Small Practitioners Group
Terri Johnson, AIA, chair
Craig Cermak, AIA, co-chair

Technical Issues
John Price, AIA, chair

Young Architects Forum
Adina Balasu, Assoc. AIA,
chair
Despina Zouridis, co-chair

CHAPTER STAFF

**Executive Vice
President**
Zurich Esposito

Program Director
Joan Pomaranc

Program Manager
Allison Garwood Freedland

Communications Director
Ben Schulman

Financial Manager
Kathy Jessen

Membership Manager
Steve Riforgiato

Program Assistant
Kelsey Kirkley

*Subscription to Chicago
Architect is included with AIA
Chicago membership. Non-
members may subscribe by signing
up at: www.aiachicago.org*

*Additional copies of Chicago
Architect are available for \$7.50
per issue and can be obtained
by contacting the AIA Chicago
office at 312-670-7770. If you
are interested in purchasing a
large number of issues, contact
AIA Chicago and ask about
group sales.*

*The American Institute of
Architects is the voice of the
architectural profession and the
resource for its members in service
to society.*



AIA Chicago is proud to print *Chicago Architect* entirely on FSC®-certified paper. The strict standards of the Forest Stewardship Council™ (FSC®) ensure that the paper stock includes wood fiber from well-managed forests as well as recycled fiber and/or fiber from company-controlled sources.



Dear Editors:

The **September/October 2013** issue was so full of thought-provoking stories that I felt

compelled to respond to two articles:

Re: "Save Our School Buildings – Design community must help re-use empty CPS structures," by Jonathan Fine:

This year the people of Chicago sustained one of the greatest blows to any urban community nationwide: the closing of 50 neighborhood schools. Even before the dust has settled, Jonathan Fine has recategorized the schools as "empty structures," stripped of human content and social context. In doing so, Fine encourages us to ignore our responsibility to the schools and the Chicagoans they serve.

Each Chicago neighborhood is a living organism composed of interdependent parts: fire stations, libraries, roads, police stations, parks, churches, homes, shops and schools, threaded together with public transit and shipping lines, waterways and interstate roads. Shutting down a school in a neighborhood is tantamount to pulling an organ from a human body. It can be a mortal blow to the system it serves.

Architects, engineers, planners and zoning

professionals created this organism. Seen from an airplane, our intentions are clear: Chicago is for people. The land is blanketed with housing. Parks, schools and steeples create a rhythm of wayfinding markers, acting as foci for each community area. Elementary schools, especially the historic early 20th-century structures described in the article, are intentionally sited to promote a lifestyle scaled to walking, playing and communal activity. These public schools are accessible to everyone, a symbol for a democratic ideal, made manifest by our profession.

One hundred years later, before we rush to repurpose our community assets, we need to ask if the "neighborhood school" remains a shared Chicago value and an essential part of a healthy community. There are other uses for these "empty structures," but I would argue that in most cases, their best use is still "school."

In many Chicago communities, school "underutilization" is a symptom of graver social and economic problems. By killing off schools we risk losing whole neighborhoods. Rather than position Chicago architects as CPS's ambulance chasers, I would like to imagine us as a profession of critical thinkers, capable of analyzing the failures in a system we created. Shouldn't we be raising our voices on behalf of our neighborhoods and

applying our design skills to save them? In the process, we might save the neighborhood school.

Re: "Root Where You're Planted"

As I read the article on The Plant by Dennis Rodkin, I was surprised that you did not mention Rashmi Ramaswamy and Mike Newman of SHED Studio, who have worked with John Edell and the city's building department to make this project possible. Their collaboration is essential to implementing the innovations at The Plant and has smoothed the path for other architects and developers planning similar projects in the future.

> **Helen Slade, AIA**

Correction: An item in the People + Projects column of the **September/October 2013** issue omitted some important information. Here is the full item as it should have run:

tvdesign completed a \$110 million, three-part project that expanded and renovated the Hyatt Regency McCormick Place. The project includes a new guest room tower, as well as renovations to the existing guest rooms, health club, conference rooms, service areas and public spaces. The design-build team was led by Clark Construction, Bulley & Andrews and Goettsch Partners, and includes AndersonMiller and Primera Engineers, among others. **We regret this error.**



CONSTRUCTION MANAGERS & GENERAL CONTRACTORS SINCE 1922.



250 S. NORTHWEST HIGHWAY ~ PARK RIDGE, IL 60068

P 847-698-4900 ~ F 847-692-9320

www.ragnarbenenson.com

Divine Fabrication



Scottish Rite Cathedral Association, Chicago, IL

Architect: tvsdesign, Chicago, IL Roofing Contractor: Anthony Roofing Tecta America, Aurora, IL

Material: Tite-Loc Plus finished in PAC-CLAD® Granite.

Tite-Loc Plus Standing Seam Metal Panels take Association's gothic arch from vision to reality.

Building design reflects symbolism of Freemasonry and the Scottish Rite, melding historic origins and modern design via Petersen Tite-Loc Plus Panels.

- Metal adapts to arched and curved roof shapes
- Mechanically seamed in the field to a 90 degree lock
- 24 gauge, 21' panels curve to 18'2" radius
- 16" wide panels seam by hand
- 2' deep gutter system integrates at base of panels
- Exposed fastener, flush, and composite wall panels, as well as column covers, are all available
- Available in PAC-CLAD® Kynar 500® finish in 38 standard colors on steel and aluminum
- Most colors meet LEED®, ENERGY STAR® and cool roof certification requirements



WWW.PAC-CLAD.COM | IL: 1 800 PAC CLAD

MD: 1 800 344 1400 | TX: 1 800 441 8661

GA: 1 800 272 4482 | MN: 1 877 571 2025



TABLE OF CONTENTS

CHICAGOARCHITECT nov | dec 2013

Cover photo by David Matheson Photography



Photo by Kate Joyce Studios

44
SustainABILITY
Leadership
Awards

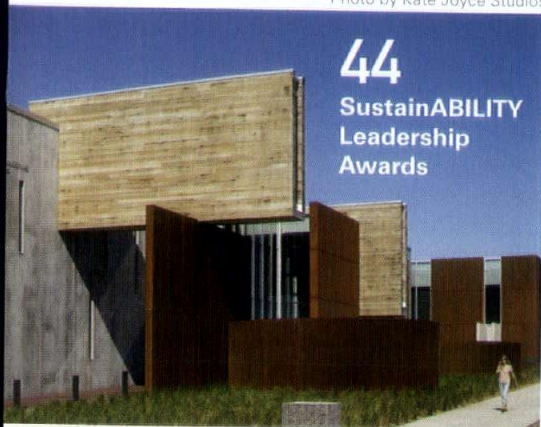


Photo by Lee Bey



16
Lifetime
Achievement
Award



50
In Memoriam

Photo by Jill Paider



31
Interior Design
Awards

Photo by Gensler



38
Divine Detail
Awards

Photo by Fentress Photography



10
People + Projects

Image courtesy of Studio Gang Architects



A Wheeler Kearns project, the Inspiration Kitchens in Garfield Park,

received the 2013 Rudy Bruner Award for Urban Excellence Gold Medal from the Bruner Foundation and the Richard H. Driehaus Foundation. Inspiration Kitchens is a skills training outreach program from the Inspiration Corp., which provides social services to Chicagoans experiencing homelessness and/or poverty.



Peter Ruggiero, AIA, HOK senior vice president and design board member,

was named design principal for the firm's Chicago offices. Ruggiero will relocate from Houston but continue to serve as design principal for the Florida and Texas offices.

Ruggiero's 30 years in architecture includes a previous stop in Chicago, where he was a design partner at Skidmore, Owings & Merrill from 1985 to 2011.

Among his previous notable projects are Chevron's Houston campus; the Austin Planetarium; 7 World Trade Center in New York City; and the University of North Carolina Genome Science Laboratory Building.

Studio Gang Architects was honored

at a White House luncheon hosted by Michelle Obama in September with other recipients of the Smithsonian Cooper-Hewitt National Design Awards.

Principals Jeanne Gang, FAIA, and Mark Schendel, AIA, and the other awardees, architects Michael Sorkin and James Wine and a host of other designers from across many disciplines, were honored at a ceremony in New York in October.



Harley Ellis Devereaux completed

the architecture and design of the new 52,000-square-foot international headquarters for ShopperTrak on the 41st floor of the Willis Tower. The project was targeted for a LEED Silver designation.

ShopperTrak is a global leader in people counting and store performance analysis. The retail technology company collects and analyzes anonymous foot traffic, queue times and shopper demographics to identify revenue opportunities. ShopperTrak services are deployed in more than 60,000 locations in 90 countries and territories.



David Mann



Joseph King

Booth Hansen announced a series of promotions:

- > David Mann, AIA, was promoted to principal/director.
- > Joseph King, AIA, was promoted to principal.



SmithGroupJJR and Studio Gang Architects were among the winners of the Environmental Design Research Association's 2013 Great Places Awards for their work with the Chicago Park District on the Northerly Island Framework Plan. The EDRA Great Places Awards recognizes exemplary projects in architecture, planning, landscape architecture and urban design.

The project is a complete redevelopment of the 91-acre, manmade island to help beautify the Chicago lakefront. Under the plan, the island will be divided into four major zones with a range of ecological environments. The north side will feature an amphitheater, harbor walk and events pavilion; the south side will house a variety of native landscapes including prairie, woodland, marsh and savanna, in addition to a reef-protected lagoon.

Kristine Fallon Associates celebrates

its 20th anniversary in 2013. Recent major projects for the firm have included implementation of the e-Builder project collaboration and management system for the Illinois Tollway, and analysis of processes and technology for the CTA's engineering division.



GreenAssociates welcomed

Matthew J. Toepper, AIA, as a project architect. His 13 years of architecture experience in Western and Midwestern markets include primary and higher education, commercial, healthcare, entertainment and residential projects.

VOA unveiled designs on the new outpatient center

for La Rabida Hospital. Architectural highlights of the building include expansive views of Lake Michigan, a rain screen that offers shade, a "front porch" area for the play area/healing garden and a bright blue roof.



Tom Harrison, AIA, SE, PE, LEED AP, joined

Holabird & Root as its new chief structural engineer. Harrison was previously senior structural engineer with Arup.

Burns + Beyerl Architects is celebrating

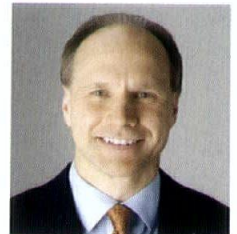
its 20th anniversary in 2013. The firm commemorated the milestone with the launch of a new website showcasing the 600 projects they've completed in the last 20 years, including residential and hospitality interior and exterior renovations.



Scott Delano



Molly Ellingsen



Rebel Roberts

VOA Associates welcomed

Scott Delano, AIA, LEED AP BD+C, NCARB, and Molly Ellingsen to its team. Delano joins the firm as vice president, design director of its Workplace division, focusing on corporate interiors clients in the private and public sectors; he was previously a senior designer at Nelson.

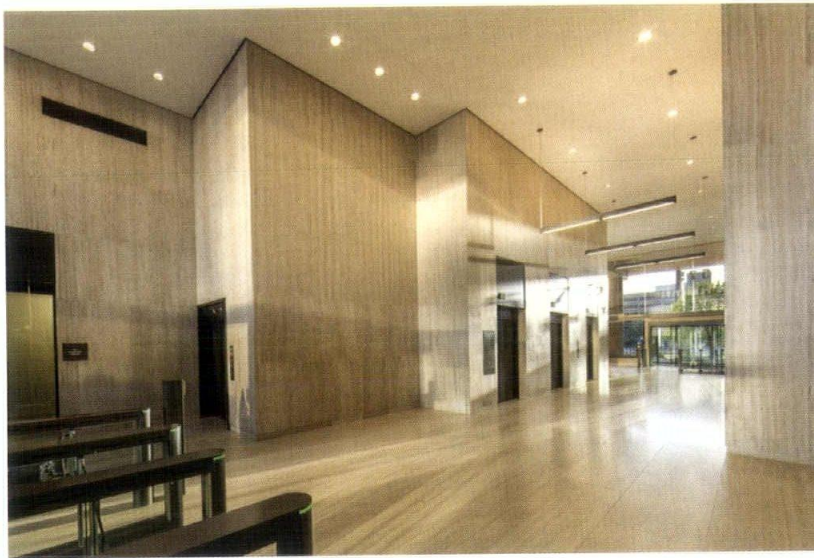
Molly Ellingsen is the new vice president, business development manager for the VOA Workplace team. She was previously an account manager at Interior Investments.

In other firm news, VOA President and COO Rebel Roberts, AIA, was named a fellow with the American College of Healthcare Architects.



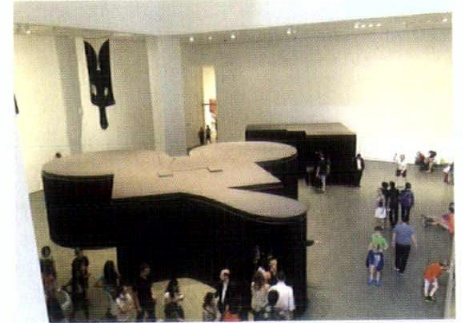
Solomon Cordwell Buenz designed the new

Loyola Institute for Environmental Sustainability, which opened in September. The facility is the largest geothermal-powered complex in Chicago, with 90 geothermal wells providing more than 700 tons of cooling energy. Other highlights include a 3,100-square-foot ecodome greenhouse, clean energy lab, other state-of-the-art laboratory spaces and a 130,000-square-foot residence hall.



exp was honored

with an Interior Architecture award from AIA Indiana for its recently completed LEED Gold modernization of the Minton-Capehart Federal Building in Indianapolis.

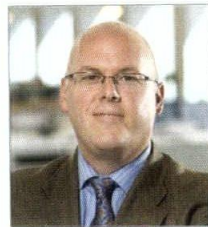


A pair of exhibition structures created by Stuart Cohen, FAIA, of

Cohen and Hacker were put on display at the Museum of Modern Art in New York City this summer. The exhibition, originally created by Cohen in 1977 for the Museum of Contemporary Art in Chicago, displays the dime store objects and souvenirs that inspired the work of artist Claus Oldenburg.

The exhibit has appeared at four other museums over the years, including the Whitney Museum in New York and the Museum Ludwig in Cologne, Germany.

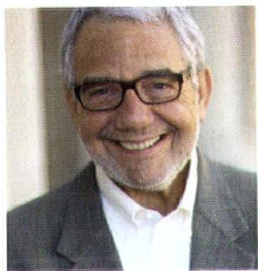
DLR Group added Jason Lembke, AIA, LEED AP, and Jake Davis, AIA, LEED AP, to the design staff. Lembke will lead the K-12 education practice; Davis, a public safety expert, was brought in to head the justice and civic practices.



Jason Lembke



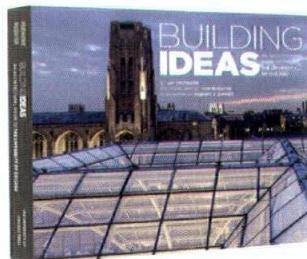
Jake Davis



Schuler Shook co-founder Robert Shook, FIALD, LC, attained fellow status with the International Association of Lighting Designers.

The University of Chicago Press released

Building Ideas: An Architectural Guide to the University of Chicago by Jay Pridmore, with photos by Tom Rossiter, FAIA. The 160-page book includes photographs from the university's 120-year history, along with guest commentaries from prominent architects.



Northlight Architects was honored with a 2013 Evanston Preservation and Design Award for Sensitive Alteration/Rehabilitation from the Evanston Preservation Commission for its restoration of an Evanston landmark home. Located on the lakefront, the Gothic style house was renovated and fully restored.

SandRidge Energy Headquarters
Oklahoma City, OK

HOERR SCHAUDT

LANDSCAPE ARCHITECTS

A consortium led by SOM was chosen to assess the feasibility of creating three Kuwait Economic Zones (KEZs) in the Middle Eastern nation. Commissioned by the Kuwait Foreign Investment Bureau, the goal of the KEZs is to expand opportunities for local and regional investment. The 12-month feasibility study will examine the strategic, physical, legal and operational framework needed to make these plans a reality.

Goettsch Partners won two design competitions in China,

hosted by the Greenland Group, one of the country's largest real estate developers. Both winning projects are mixed-use, multi-building developments.

The Chancheng Greenland Center in Foshan is a 430,000-square-meter development, with planned elements including a six-tower residential complex, four office towers, a street retail environment with two- and three-story shops, and a shopping mall.

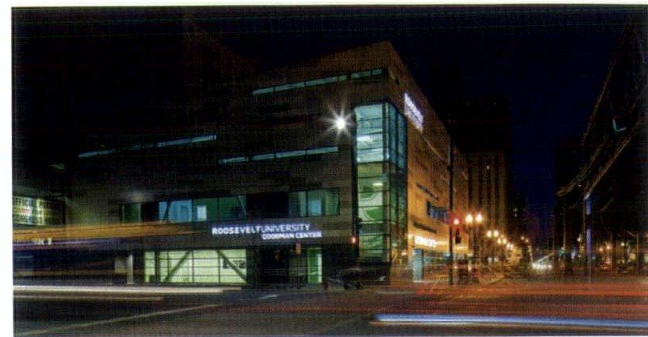
The second project, in Suzhou, will cover 234,000 square meters over two parcels. The first parcel will include a 50-story office tower, a 24-story hotel and 10,000 square meters of connecting retail. The other parcel will hold three apartment towers—two at 40 stories and one at 50 stories.



Chancheng Greenland Center

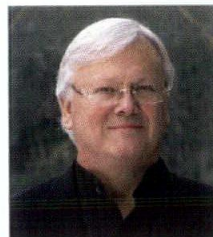


Suzhou Greenland Mixed-Use Project



Solomon Cordwell Buenz completed

work on the new Lillian and Larry Goodman Center at Roosevelt University, the Loop's first dedicated collegiate athletic facility. Officially open in July, the 27,834-square-foot field house includes a second-floor gymnasium, locker rooms, coach and staff offices, meeting rooms, an athletic training area and strength and conditioning center. The LEED-certified building sports a 3,500-square-foot green roof completed with native plants.



Adrian Smith



Gordon Gill



Judith Payne McBrien



Blair Kamin

Photos by Christine Orsogood, Chicago Tribune



Zoe Ryan



Alison Fisher

The Society of Architectural Historians will honor seven members

of the Chicago architecture community at its annual Awards Gala on Nov. 9. Honorees include:

- > Adrian Smith, FAIA, and Gordon Gill, FAIA, of Adrian Smith + Gordon Gill Architecture;
- > Judith Payne McBrien, director of Archimedia Workshop;
- > Blair Kamin, architecture critic for the Chicago Tribune; and
- > The Department of Architecture and Design at the Art Institute of Chicago. Zoe Ryan, Alison Fisher and Karen Kice will accept the award on behalf of the department.



Karen Kice

Visit your local Marvin dealer today for more information and to discuss solutions for your next project.

MARVIN DESIGN GALLERY

by Estates Windows, LTD.

930 North Shore Dr.
Lake Bluff
847-615-1003
MarvinByEstates.com

Alexander Lumber Co.

100 Barney Dr.
Joliet
815-725-0030
AlexLbr.com

Ashland Millwork, Inc.

5 Messner Dr.
Wheeling
847-465-8101
AshlandMillwork.com

Auburn Corp.

10490 W 164th Place
Orland Park
708-349-7676
AuburnCorp.com

Blue Ribbon Millwork

Woodstock
815-338-8900
Algonquin
847-658-9998
BlueRibbonMillwork.com

Creative Millwork

3700 Illinois Ave.
St. Charles
630-762-0002
CreativeMillworkLLC.com

Door & Window Super Store

Downers Grove
630-969-7454
Orland Park
708-349-0405
Sycamore
815-899-3667
DoorWindowSuperStore.com

Evanston Lumber Company

1001 Sherman Ave.
Evanston
847-864-7700
EvanstonLumber.com

Lee Lumber & Building Materials

Chicago North
773-509-6700
Chicago South
773-927-8282
Merrillville, IN
219-736-2055
LeeLumber.com

Lee Lumber's Spaces and Views

Highland Park
847-681-0300
SpacesAndViews.com

Maher Lumber

301 W Irving Park Rd.
Wood Dale
630-766-8440
MaherLumberCo.com

Midwest Window and Door

1001 Aucutt Rd.
Montgomery
630-966-1071
MidwestWindowAndDoor.net

Midwest Window & Supply

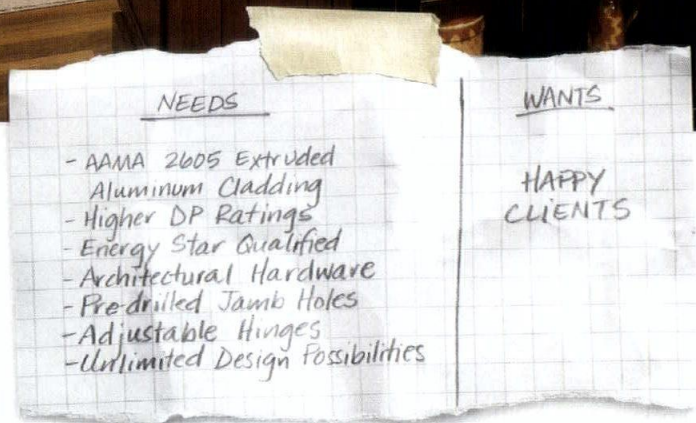
800 Hicks Dr.
Elburn
630-365-5772
MidwestWindow.com

Searls Windows and Doors, Inc.

16261 S Frontage Rd.
Plainfield
815-436-3196
SearlsWindows.com

Woodland Windows & Doors

25 W 355 Lake St.
Roselle
866-838-3667
WoodlandWindows.com



Whether it's remodeling or replacement, there's no better partner for exceeding your clients' needs. Marvin® has the broadest range of products combined with the most energy efficient options available, all backed by four generations of innovation, craftsmanship and support from local retailers. And with Marvin's selection of interactive tools, including our Product Designer, Product Finder, and new Marvin App for iPad®, you and your clients will have what you need to plan and organize projects from start to finish. See all our interactive tools at pros.myMarvin.com/Tools



MARVIN
Windows and Doors

Built around you.®



TIGERMAN THE ARCHITECT,
ARTIST AND ACTIVIST, AS APPRAISED
BY HIS OWN PARTNER

By Margaret McCurry

Stanley Tigerman,

2013

AIA Chicago

Lifetime

Achievement

Award Winner

OVER THE 30-PLUS YEARS I HAVE WATCHED STANLEY INTERACT WITH YOUNG ARCHITECTS, MY IMAGINATION HAS OFTEN CONJURED UP A VISION OF THE PIED PIPER.

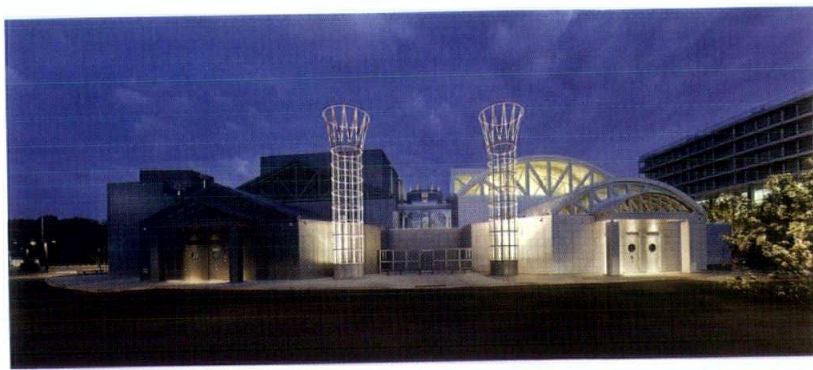
This “hero” of a 13th-century German folk legend has been reinterpreted throughout the subsequent eight centuries. Of the many conflicting versions, I prefer the image of a charming and colorful (i.e. pied) figure piping a lilting tune as laughing children skip merrily along behind him.

This version would seem to be borne out by the number of Stanley’s mentees who have sent very moving congratulatory notes. I intercepted one from a former student of long ago, Tom Rajkovich, that reads in part: “Your dedication to obligating the city’s architects to be not just ‘makers/builders,’ but articulate, thinking, deliberate ‘makers/builders’ has been a gift to Chicago. While others were content with appearance, you elevated the discourse to include ideas. And as the captain of the ship, you took us all along with you. I was (and remain) a beneficiary of your generosity, along with hundreds of my colleagues across the country. I would never have taught without your encouragement and trust. I would never have done theoretical projects on classicism, nor thrown barbed rhetoric at more senior architects at Chicago Architectural Club meetings, without your (fiery and caring) example.”

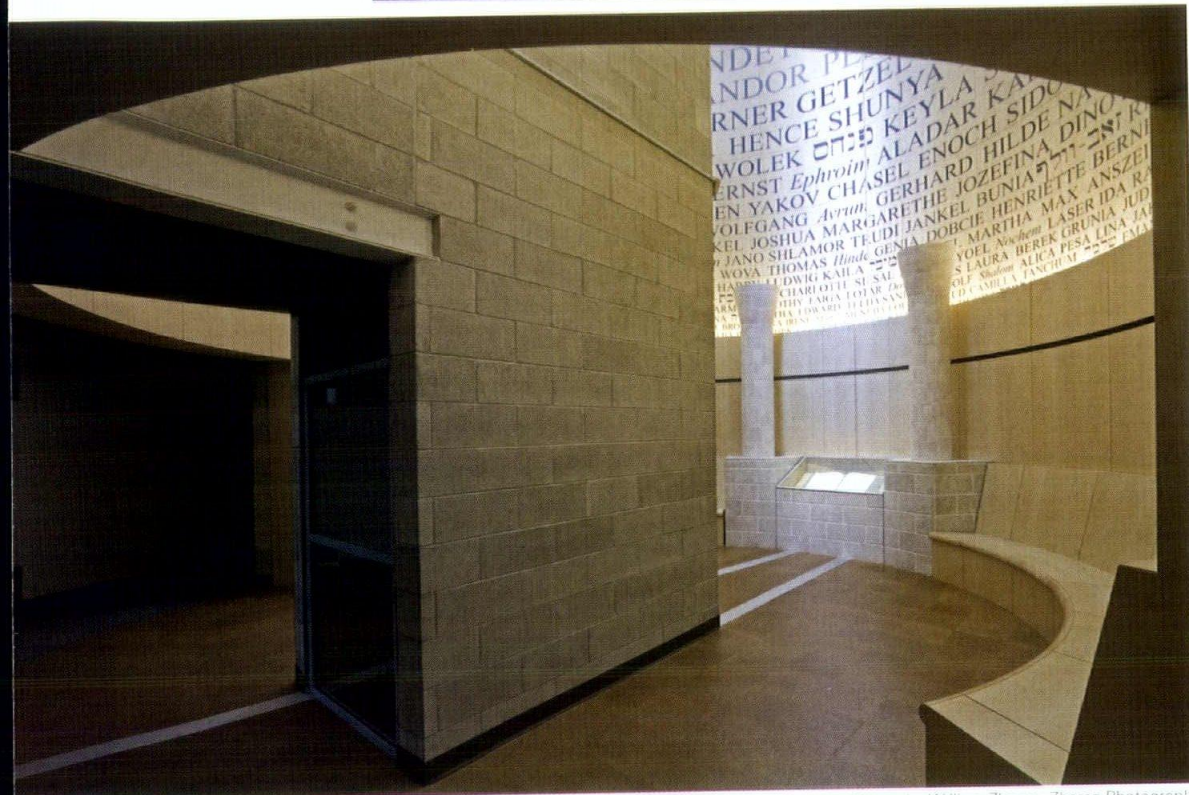
Tom’s recollections remind me that in the late 1970s, with others, Stanley resurrected the Chicago Architectural Club, which was founded in the late 19th century as the Chicago Architectural Sketch Club. For years he sponsored lively debates among members and orchestrated design crits, blithely handing out “winners” and “losers” certificates at will. And then, as is his wont, he stepped aside to let the younger members take the reins.

More recently he did the same with Archeworks, the alternative design school he co-founded with Eva Maddox. The pair envisioned Archeworks as a hothouse for nurturing design in the context of social cause. For 15 years, he and Eva tirelessly donated their time and talent to support the school, and then once again he retired to allow a younger generation to pick up the reins.

Winner of the AIA/ACSA Topaz Medallion for his lifelong commitment to teaching, he often mischievously announces that he has taught or lectured at every architectural school in the country except MIT, which flunked him out at the end of his freshman year, and IIT, where he criticized the Miesian



Among Tigerman's recent works are the Illinois Holocaust Museum and Education Center in Skokie (top two photos), the Pacific Garden Mission in the South Loop (lower left), and the relocation of the Seminary Co-Op Bookstore in Hyde Park (lower right).



Photos by William Zbaren, Zbaren Photography



Photo by Steve Hall, Hedrich Blessing Photographers

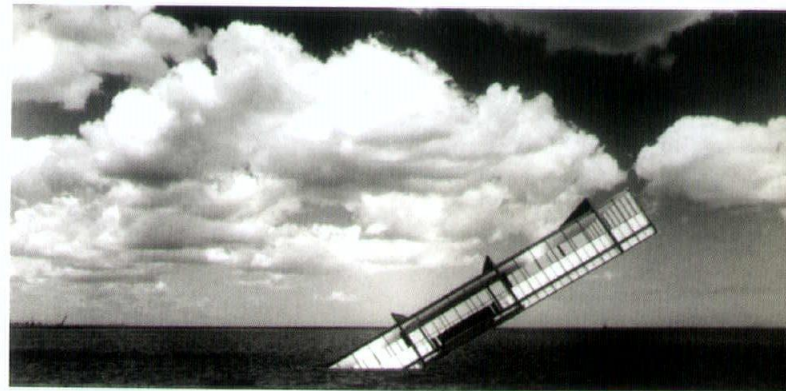


Photo by Steve Hall, Hedrich Blessing Photographers

Tigerman has often been “the architectural voice and conscience of Chicago,” including his memorably comical take on Crown Hall.



Photo by Lee Bey



Original image by Stanley Tigerman

acolytes for mindlessly staying in the shadow of the Master. Ergo, although Mies was his paradigm, Stanley’s most notorious photo collage in the collection of the Art Institute of Chicago is the image of a canted Crown Hall sinking into Lake Michigan. His other educational role model has been Paul Rudolph, who as chairman of Yale’s Architecture School—and with some voiced misgivings—allowed Stanley to matriculate with no undergraduate degree. Earning two degrees in two years, Stanley graduated with the Alpha Rho Chi medal.

In gratitude, Stanley has sent his archives to the school, which honored him with a retrospective exhibition in 2011 in Rudolph Hall. Thirty years earlier, the university awarded him its first Alumni Arts Award along with friends Charlie Gwathmey and Norman Foster.

In the 50 years since graduation Stanley has authored 10 books, lectured 1,000 times, been published four times that number and won more than 150 design awards. My Energizer Bunny has still found time to be the architectural voice and conscience of Chicago. As such, in the 1970s he was a founding member of the “Chicago Seven,” which was formed to rebel against the exclusionary establishment. He also co-authored with Stuart Cohen the exhibition and book *Chicago Architects* to remind the community at large of the many diverse architects who pre- and post-dated the ascendancy of Mies Van der Rohe and other sycophant firms.

In the 1980s, Paul Gapp, then the architectural critic of the Chicago Tribune, wrote an insightful commentary on Stanley that remains ever true in this turbulent 21st century: “Tigerman fits his hometown well, for this has always been a snug urban berth for impudent, arrogant and wittily flip men and women—so long as they had talent. It has also been a magnificent place to practice architecture for the last 100 years, and Tigerman views that characteristic of Chicago as undiminished. Here is an architect

who takes his profession and his city seriously.”

In serious moments, Stanley has fought to save historic buildings, criticized bad architecture, condemned public inertia and worked with community activists to achieve affordable housing. From his design of Woodlawn Gardens in the 1960s to his recent Pacific Garden Mission, the largest homeless shelter in the country—and certified LEED Silver—his belief that all levels of society are entitled to design excellence is his credo. He embraces those institutional projects that allow him to make a difference in the lives of the poor and underprivileged.

Yet another side of this Janus figure is his deep interest in philosophical thought and dialectical reasoning. He often reminds us that St. Thomas Aquinas was the author of one of the few books that Mies brought with him when he closed the Bauhaus. It sat in a prominent location on a shelf behind his desk. Concurrent with Stanley’s own study of philosophy and ethics is that of Kaballah and biblical interpretation. As members of the Visiting Committee of The Divinity School at the University of Chicago, we cherished a visit by the membership to Stanley’s Holocaust Museum & Education Center in Skokie, which was awarded LEED Gold just this year.

Because of his strong commitment to professional ethics, Stanley remains a role model to many for moral judgment and behavior. That is not to say that he has ever suffered fools wisely or well, but that his bully pulpit has always been in support of the Art of Architecture lest it be diminished by the profession of architecture. If ever I have known an architect who has done it “my way,” it is my partner, Stanley Tigerman. **CA**

Margaret McCurry, FAIA, FIIDA, ASID, ALA, is a principal of Tigerman McCurry Architects.

O'Brien Metal, Inc. and HBRA Architects collaborated to create bronze castings and authentic forgings for The Charles Deering Library inspired by legendary blacksmith Samuel Yellin's historic work in the 1930's.

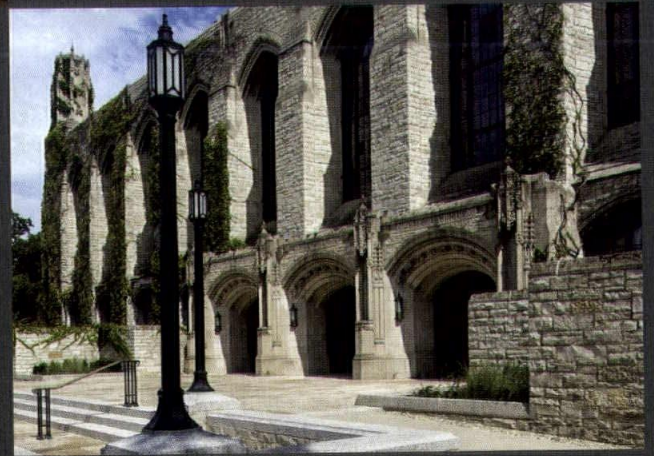
HBRA
ARCHITECTS



 **O'BRIEN**
METAL



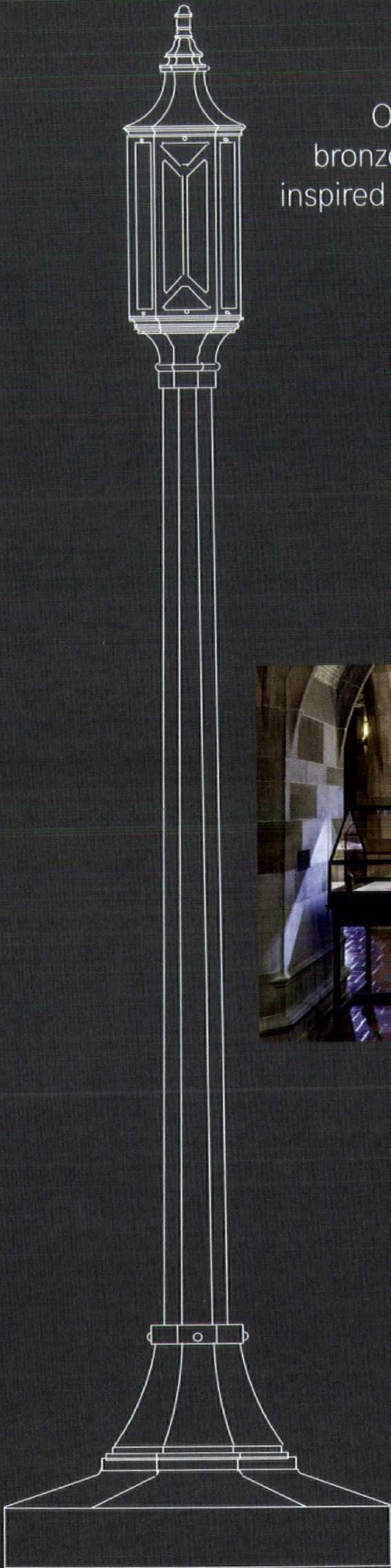
NORTHWESTERN
UNIVERSITY



obrienmetal.com

chicago | new york

tel. 888.973.4442



DISTINGUISHED BUILDING AWARDS

PAGE 22

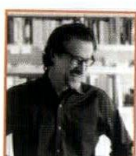
JUDGES



ANDREW HERDEG, AIA
Lake Flato
Architects



ANDREA LEERS, FAIA
Leers Weinzapfel
Associates
Architects



BRUCE LINDSEY, AIA
College of
Architecture/Graduate
School of Architecture
& Urban Design,
Washington University
in St. Louis

INTERIOR AWARDS

PAGE 31

JUDGES



RICHARD STOKES, AIA
Stokes
Architecture



**CLIVE WILKINSON,
FAIA, RIBA**
Clive Wilkinson
Architects



GWYNN ZIVIC, AIA
Mackey
Mitchell
Architects

DIVINE DETAIL AWARDS

PAGE 38

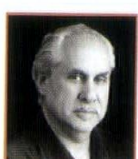
JUDGES



**JACKIE KOO, AIA, IIDA,
LEED AP**
Koo and
Associates



PETER LANDON, FAIA
Landon Bone
Baker Architects



ANDREW METTER, FAIA
Epstein

SustainABILITY LEADERSHIP AWARDS

PAGE 44

JUDGES



**ROB PAULUS, AIA
LEED AP**
Rob Paulus
Architects



BRYAN SHILES, AIA
WRNS Studio



**RAMONA WESTBROOK,
AIA LEED AP**
Brook
Architecture

VIEW 2013 DESIGN EXCELLENCE AWARD WINNERS AND ALL OTHER SUBMISSIONS AT AIACHICAGO.ORG



ARCHITECT: JAHN
CLIENT: Frankonia Eurobau AG
CONTRACTOR: AUREA
Projektmanagement GmbH
CONSULTANTS: Werner Sobek, Transsolar
Energietechnik GmbH, Brandi IGH
Ingenieure GmbH, L-Plan Lichtplanung,
Horstmann + Berger

A faith in elegance and simplicity drove the design of this 230-foot building that rises above the old Rhine harbor in Düsseldorf. The glass tower's strong visual identity is accentuated through its semicircular façade accompanied by a slab edge. The envelope is composed of overlapping glass sheets that form a shingled surface, and behind the building's striking aesthetic is a design approach that aims to integrate the structural and mechanical systems. Energy consumption is reduced by a series of clever interventions, such as integrated cooling supplied by groundwater in the concrete mass of the exposed slabs. "Incredible," exclaimed one juror, marveling at "how integrating systems allows the interior space to open freely." "Beautifully detailed, and spectacularly articulated," another juror said.

HONOR AWARD

**Wilmette Public Works
Facility Expansion
Wilmette, Illinois**

DESIGN ARCHITECT: Epstein | Metter Studio
 ARCHITECT: Legat Architects (AOR)
 CLIENT: Village of Wilmette
 CONTRACTOR: Pacific Construction
 CONSULTANTS: n/a

The Village of Wilmette's new public works building contains six private offices, an open work space and a conference room and reception area in its 5,000 square feet. The building fits into a complex site already occupied by a number of existing buildings, from a 1950s-era bowstring truss garage to a mid-1990s addition. Designed as a freestanding "linear bar," the building delicately responds to its neighbors. It runs parallel to the bowstring truss garage, yet maintains a connection through an outdoor court 18 feet wide or via a glass-enclosed vestibule. Natural light floods the interior through high clerestory windows on the southern façade and full-length glass window walls to the north. And its white metal-paneled façade is a contemporary Miesian nod. "This design encourages public buildings to be built well. It elevates public service," a juror said.

Photo by Mark Ballogg of Ballogg Photography

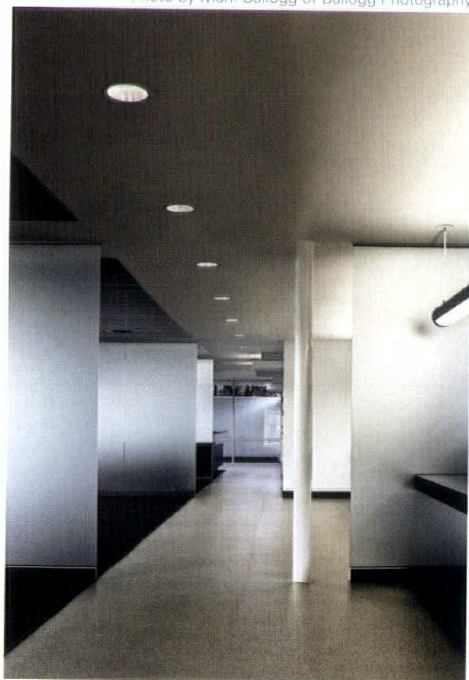


Photo by Mark Ballogg of Ballogg Photography



Photo by Jim Steinkamp of Steinkamp Photography

Photo by James Steinkamp, Steinkamp Photography

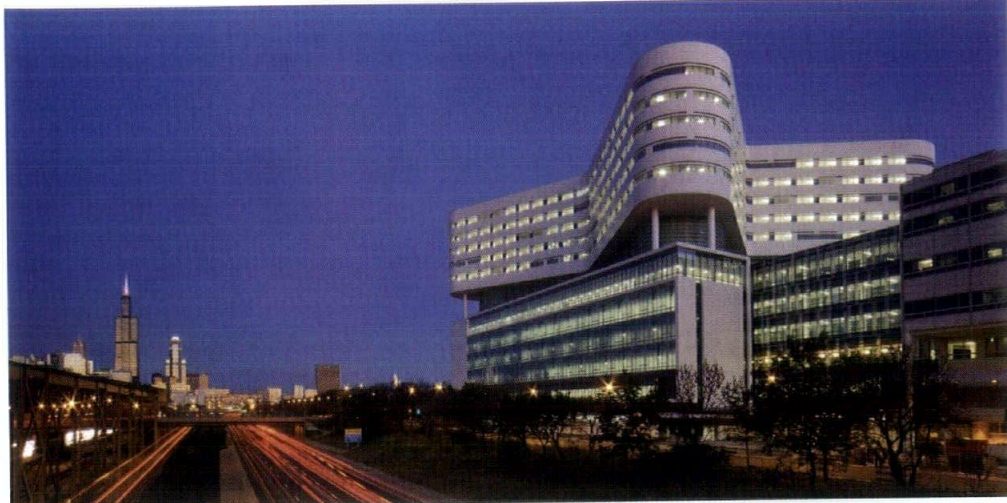


Photo by Steve Hall, Hedrich Blessing



Photo by Steve Hall, Hedrich Blessing

HONOR AWARD

Rush University Medical Center New Hospital Tower Chicago

ARCHITECT: Perkins+Will

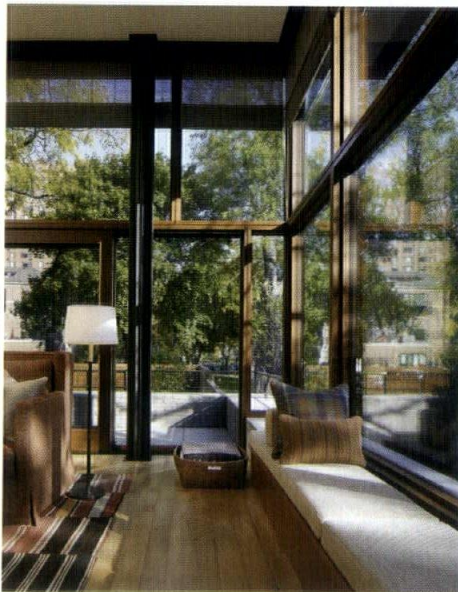
CLIENT: Rush University Medical Center

CONTRACTOR: Power/Jacobs Joint Venture

CONSULTANTS: Environmental Systems Design Inc., Thornton Tomasetti, TERRA Engineering, Geoff Roehl, Hitchcock Design Group, Walsh Consulting, IBC Engineering Services Inc.

"This building is in the spirited form of Goldberg. It looks like Chicago," one juror said. One of the largest LEED Gold-NC certified hospitals in the world, the Rush University Medical Center New Hospital Tower is a dramatic presence rising above the adjacent highway. The tower makes use of rectilinear and curvilinear geometries to create pleasant rooms for patients and, just as importantly, maximizes space efficiently for caregivers. Each elevation of the base responds to the street in its own manner and signals a different internal function. The north elevation houses diagnostic elements of the hospital, while the southern façade contains elements with public access, such as waiting areas. Holistic treatments, such as a landscaped healing garden on the roof of the lobby, are found throughout the entire program. A juror described it as "an innovation which engages urban space."

Photos by Steve Hall, Hedrich Blessing Photography



HONOR AWARD

**Lake Shore Drive
Residence
Chicago**

ARCHITECT: Wheeler Kearns Architects
CLIENT: Private
CONTRACTOR: Sylvester Construction Services Inc
CONSULTANTS: C.E. Anderson & Associates, IBC
Engineering, Stone Arch Consulting Ltd.

The composition of this luxury Lake Shore Drive home addresses the owner's desire for sustainable features and expansive park and lake views, while maintaining a sense of privacy from neighboring high-rises. A plinth mass anchors the house; sculptural volume houses private spaces. The home's 1½ stories provide sweeping views that bring the outside in. "The home breaks out of the Chicago box," a juror said, "and the architects are using geometry in a playful way." Domestic limestone is used consistently throughout the exterior, although in subtly different ways to accentuate the masses. The load-bearing application of the plinth is emphasized by the carved limestone, while the sculptural volume has a smoother finish to its exterior skin. The home exceeds Chicago's Green Homes 3-star rating and employs a number of strategies intended to reduce its carbon footprint, including the use of an innovative rain-screen support system developed to minimize thermal bridge in the building envelope. "The home responds to the site intelligently," a juror said.

CITATION OF MERIT

Free University Hotel
and Conference Center
Berlin, Germany

ARCHITECT: JAHN

ASSOCIATE ARCHITECT: Designer's House

CLIENT: Kommunalprojekt GmbH

CONTRACTOR: Kirchner GmbH

CONSULTANTS: Rainer Schmidt

Landschaftsarchitekten, Reichmann + Partner,
K+S Haustechnik Planungsgesellschaft mbH



The sleek and streamlined geometry of the building cements its relationship to the adjacent university structures and residences. The form is separated into two separate structures: one serving the hotel, the other the conference center. Connecting the two is a continuous roof that spans over the building's courtyard as a trellis-supported pergola. The green-glass façade reflects the evergreen ground cover surrounding the facility, fostering a sense of seamless integration between the building and open space. "This reconceives the typology of the hotel/conference center building into something much more," a juror said.

Photo by Ballogg Photography, Scott McDonald



CITATION OF MERIT

Fountainsdale Public
Library District
Bolingbrook, Illinois

ARCHITECT: Nagle Hartray Architecture

CLIENT: Fountainsdale Public Library District

CONTRACTOR: Power Construction

CONSULTANTS: KJWW Engineering
Consultants, GRAEF, Architecture is Fun Inc.,
Sieben Energy Associates,

Shiner+Associates, Wolff Landscape

Architecture Inc., Charter Sills & Associates
Inc., ArchiTech Consulting Inc.

The Fountainsdale Public Library in suburban Bolingbrook incorporates a design that updates the definition of "library" for the 21st century. Located between the village's municipal campus and a residential area, the library becomes a bridge for the community between the public and private spheres. The architects utilized a warm, neutral palette of natural materials throughout the building. A façade that highlights custom-patterned glass simulates forest shadows in response to the community's desire for a "library in the park." The interior is designed to be an active third place focused not only on consuming content—the function of libraries of the past—but also on carving out spaces to create content, as modern libraries must do. The building achieved LEED Gold certification because of its use of recycled rubber flooring and green roof, as well as other sustainable measures. "A fully thought-out prescription," a juror said.

CITATION OF MERIT

Cedar Ridge High School
Round Rock, Texas



Photo by Charles Davis Smith Photography

ARCHITECT: Perkins+Will
ASSOCIATE ARCHITECT: KA Hickman Architects and Interior Designers
CLIENT: Cedar Ridge High School
CONTRACTOR: American Constructors, Inc. (ACI)
CONSULTANTS: ESA Engineering; LA Fuess Partners;
Baker-Aicklen; Larson, Burns and Smith; Elert & Associates;
Dickensheets Design Associates

Cedar Ridge High School is a 375,000-square-foot facility in Round Rock, Texas. The plan is organized around four academies: Arts/Humanities; Science, Technology, Engineering and Math; Hospitality/Public Service; and a ninth-grade transition academy. Although each academy maintains a degree of autonomy with its own courtyard, library, teacher planning area and special education rooms, the campus is linked together by shared spaces that include a black box theater, cafeteria, music center, common library, gymnasium and administrative offices. The school achieved LEED Silver certification through the use of locally quarried stone, native plantings and naturally day-lit interiors. Uniform details appear throughout the entire program. Floor-to-ceiling glass walls are found in all the libraries on campus. To maximize north-south exposure, all the academies have an east-west orientation. Flyover roofs provide shade, a carefully considered detail when factoring in the hot local climate. "A big program scaled well into its site," a juror said. "The command of the school is masterful," another juror added.

Moving Walls

800-746-8273

DOORS

- OFFICE BUILDINGS
- RESTAURANTS
- SHOPPING CENTERS
- AVIATION

HYDRAULIC

"One-Piece" DOOR

OR

BIFOLD

STRAP LIFT and auto latch

Opening New Doors
Every Day!

SCHWEISSDOORS.com

One-Piece

Latch Straps

CITATION OF MERIT

11 West Quincy Court
Chicago

ARCHITECT: 4240 Architecture
CLIENT: General Services Administration
CONTRACTOR: Mortenson Construction
CONSULTANTS: Harboe Architects,
Stephen Campbell, Campbell & Associates,
KJWW Engineering, Carnow Conibear,
Terra Engineering

After the General Services Administration took possession of the property in 2005, the federal government began a process of renovating the building's design, materials and internal systems. The project called for a complete modernization, and the architects responded by designing two new glass façades on the north and west elevations and an entirely new curtain wall on the east façade to add light to the existing building. The unified appearance of the exterior immediately freshens the expression of the building and the surrounding urban space. A former loading dock was transformed into a grand entryway, enlivening the user experience. The design "transforms something from the heavy and dark era of office planning to something that is light and airy and adds the illusion of additional space," a juror said.

Photo by Christopher Barrett

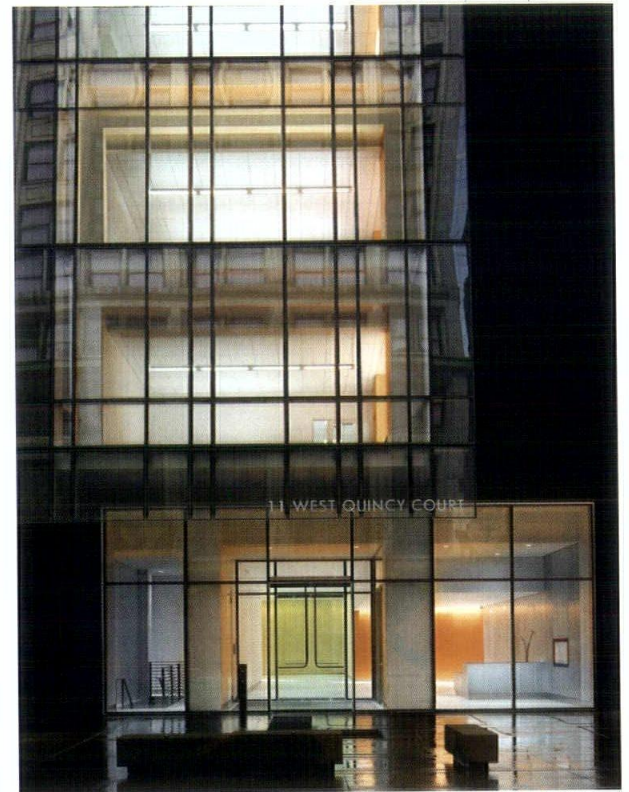
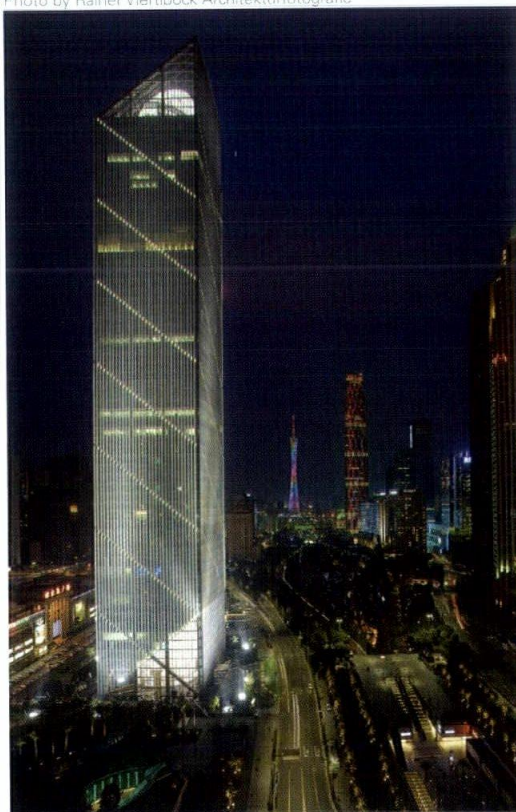


Photo by Rainer Viertböck, Architekturfotografie



CITATION OF MERIT

Leatop Plaza
Guangzhou, China

ARCHITECT: JAHN
ASSOCIATE ARCHITECT: Architectural Design
& Research Institute
CLIENT: Guangdong Leatop Real Estate
CONTRACTOR: China Construction Eighth
Engineering Corp., Ltd.
CONSULTANTS: Magnusson Klemencic
Associates, J Roger Preston Limited, ALT
Cladding & Design, Brandston Partnership,
Inc., GMS Consultants Pty, Ltd., Rainer
Schmidt Landschaftsarchitekten

Leatop Plaza is a crisp and bold skyscraper whose clean composition is crowned by a sharply sloped rooftop. "The simplicity of the tower accentuates the angularity of the top," a juror said. The building's twin-shell façade is made of transparent glass layers. Its saw-tooth curtain wall emphasizes the verticality of the structure but also serves a practical function—its overhanging fritted glass shingles are employed for sun-shading. Diagonal braces on all four faces of the tower provide a tube-like primary bracing structure, which mitigates the need for a central concrete core. The building therefore has more interior space for tenants to utilize and a lighter presence than most buildings in its class. "The design is simple and elegant throughout, especially about its core," a juror said.

**DISTINGUISHED
BUILDING AWARDS**

AWARD OF MERIT

**West Commons Apartments
Chicago**

ARCHITECT: Landon Bone Baker Architects
DEVELOPER: Heartland Housing, Inc., First Baptist
Evangelical Church

CONTRACTOR: Linn-Mathes Inc.

CONSULTANTS: dbHMS, McKay Landscape
Architects, McGuire Iglesias & Associates,
Ergonomics and Human Care Services, Home To Roost,
Interior Measures, GFGR Inc., GreenWorks Studio

West Commons Apartments, which includes 89 below-market
rental housing units and an additional 17 units of transitional housing
for formerly incarcerated residents, is a rehabilitation of an Art
Deco building that had fallen into disrepair. The restoration program
restored the polychromatic terra cotta panels of the façade, preserved
the original brickwork in the ground-floor communal space and returned the
colorful terrazzo floors in the lobby to their original luster. The
original floor plans were reconfigured to reduce the number of units,
increasing the space per resident. A number of green technologies were
incorporated to offset the building's footprint, including geothermal
heating and cooling, a solar-thermal domestic hot water system and a
green roof. The building, managed by the non-profit organization
Heartland Housing, also houses a teaching kitchen (where residents can
learn about nutrition and food preparation), a public café and an on-site
farm. "The restoration fully integrates with the city's past and its
future, and the farm adds to its future," a juror said. "The repair of the
building alone was great. The layer of programs and commercial space
makes this more than a space. It's a place," another juror said.



Photo by Wayne Cable

Historic Park Inn

"Last Remaining Frank Lloyd Wright designed and
built hotel in the world"

- 27 guest rooms
- 8000 sq. ft. of meeting space,
including a 2400 sq. ft. ballroom
- FREE Wi-Fi
- Exercise room
- Wine room
- Billiards Room

- 1910 Lounge
- Open 5:00pm, Monday-/aturday
- Billiards Room
- 1910 Grillé
- Open 5:30pm, Tuesday-/aturday
- 641.422.0015



Historic Park Inn

800.659.2220

historicparkinn.com

7 West State Street

Mason City, Iowa 50401

Listed in the National Registry of Historic Places



STONECREEK
HOSPITALITY

**DISTINGUISHED
BUILDING AWARDS**

Photo by Steve Hall, Hedrich

CITATION OF MERIT

**South Shore
International College
Preparatory High School
Chicago**

ARCHITECT: John Ronan Architects
ASSOCIATE ARCHITECT: DeStefano + Partners
CLIENT: Public Building Commission of Chicago
CONTRACTOR: The George Sollitt
Construction Company
CONSULTANTS: Brown & Momen Inc., Rubinos
and Mesia Engineers Inc., Environmental
Systems Design, Prism Engineering, Terry
Guen Design Associates, Bill Conner
Associates LLC, Innovative Aquatic Design LLC



Making full use of its compact urban site, this South Side public high school is organized into thematic bars—body (athletics), mind (classrooms) and spirit (arts). Flexible spaces are found throughout the building, such as the gymnasium which converts to a 1,200-seat auditorium. The building's thick masonry wall, dark on one side and light on the other, differentiates the building's mass while also serving as a thermal mass to offset the heating and cooling requirements. The LEED Silver school is "well-organized and very clear" in its articulation, a juror said. "It's an intelligent way to program a public building," another juror added.

CITATION OF MERIT

**Carmel Residence
Carmel by the Sea,
California**

ARCHITECT: Dirk Denison Architects
CLIENT: Private
CONTRACTOR: Thomas George
Construction
CONSULTANTS: endrestudio,
Building Engineering Systems

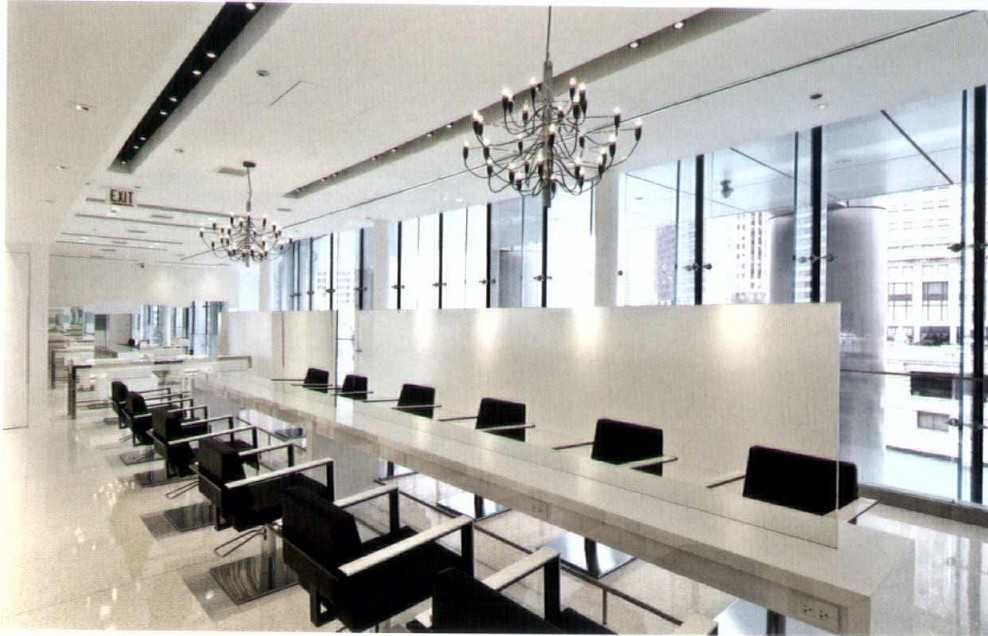
This home, situated on a dense site facing the Carmel Bay and Pacific Ocean, stands out for its beautiful interplay between interior and exterior. Conceived as a central room composed of a courtyard, living room and bedroom, the home features folding doors and walls that open from the living room and bedroom to the courtyard, blending the outdoor and indoor spaces. A mahogany and steel screen made up of vertical slats forms the outer border of the courtyard, creating a clever frame that both encloses the home for privacy and allows light and air to pour in from the screen. The home is protected from strong ocean winds by a glass roof that extends out over the courtyard, designed to maintain clear views upward and provide the homeowners opportunities to soak in the Japanese Ofuro bath installed beneath the glass. "A complete design [that] takes into account the site perfectly," a juror said.



Photo by David Matheson PH

AIA Chicago established the Interior Architecture Award in 1984 to promote interior architecture as a unique profession by recognizing outstanding interior design projects. When considering projects for this award, we define "interior architecture" as the space within a building envelope, including lighting design, furnishings and finishes. Projects are eligible if they were completed between May 1, 2008, and May 1, 2013. Projects must be designed by Chicago-area architects or be located in the Chicago area.

Photos by Jeremy Nye, DMAC Architecture



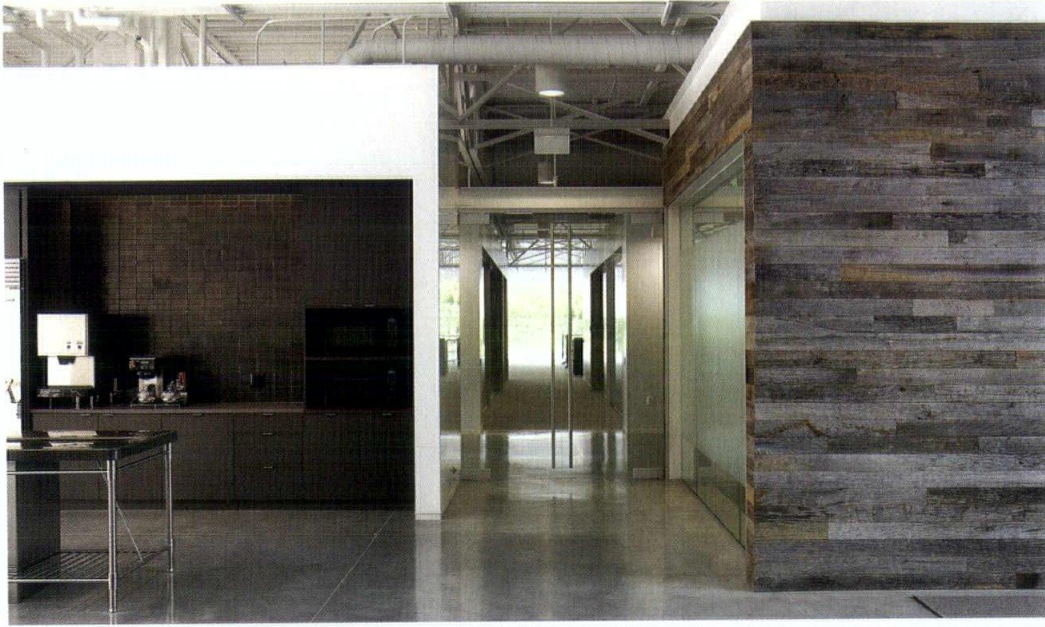
HONOR AWARD

**Anthony Cristiano Salon
Chicago**

ARCHITECT: DMAC Architecture
CLIENT: Anthony Cristiano
CONTRACTOR: Helios Design/Build

It had better be glamorous, situated as it is on a mezzanine level of the Trump International Hotel & Tower with a stellar view of the Chicago River and the city. The design of the 3,400-square-foot salon rises to the challenge, its bold white volumes framing the view and acting as backdrop for the stylish clientele and the stylists who tend to them. "It has all the glamour you'd want there," a juror said. Frameless mirrors that echo the curtain wall and create an "infinity" view romanced the jurors, as did the sophisticated handling of much chrome and polish and the wood that complements them. One juror pronounced it "the only way you could use that space, the only way it could look." One twist in the minimalist palette, the color division of couches, struck the judges as particularly well done. White leather couches are in areas for clients who are getting haircuts, and black couches are where they get their hair colored. "Spilled hair color won't show up on black, but would ruin white," one said. "Every choice fits the program."

Photos courtesy of Gensler



ARCHITECT: Gensler
CLIENT: Kohler
CONTRACTOR: CG Schmidt

"This is one of the most successful workspaces I've seen," a juror said of the 80,000-square-foot home to several creative departments of a Wisconsin manufacturing company. "It has a great sense of materials," incorporating everything from white porcelain—which salutes a key component of the firm's products—to the thousands of Post-It notes that make up a whimsical wallcovering. A perforated wall inside mimics the "beacon," the building's weathered steel crown. High ceilings and adroitly chosen lighting contribute to the air of openness that permeates the project, down to the benching furniture arrangement that helps prevent the silo effect among workers. With three walls of glass opening to the surrounding prairie landscape, the interior demanded relative simplicity, and jurors felt that's what was delivered. "The design language is very clear and never too much," one said.



HONOR AWARD

Kohler Communications
Kohler, Wisconsin

CITATION OF MERIT

Bertrand Goldberg: Architecture of Invention
Chicago



Photo by Steve Hall, Hedrich Blessing

ARCHITECT: John Ronan Architects
CLIENT: The Art Institute of Chicago
CONTRACTOR: The Art Institute of Chicago
CONSULTANTS: Goodfriend Magruder

The design of the exhibition referenced Bertrand Goldberg's work with its geometry. His early work was shown in a rectilinear space that suggested the orthodox modernism of that part of his career, but later projects were housed in a space with angled walls and radiused corners that reflected his fascination with curves. "It's very effective to have the plan of the exhibit resonate with [Goldberg's] work," a juror said. Mirrors lined the thick doorways between spaces. The material was an homage to the era because as it captured reflections of objects in other spaces, it suggested connections between Goldberg's projects. "It looks fantastic," one juror enthused.

For an 18,000-square-foot space that houses the technology department of a financial services firm, the design team used materials to delineate different functions. Private offices and conference rooms are enclosed in translucent and transparent glass; an undulating wall of recycled fiberboard 150 feet long is the backstop for a linear run of collaborative workstations; and from anywhere on the floor, wayfinding is made easier by the way the building core—wrapped in backlit acrylic sheets—glows blue. "These are all simple moves," a juror said. "From where you are, you'll see either the blue or the undulating wall or the plank ceiling. They're not trying to get too much into the view." The elegance of the solution was made even more appealing by the apparent budget restraint. "It's very economical in its means, but there's very deliberate reasoning behind every move," a juror said.

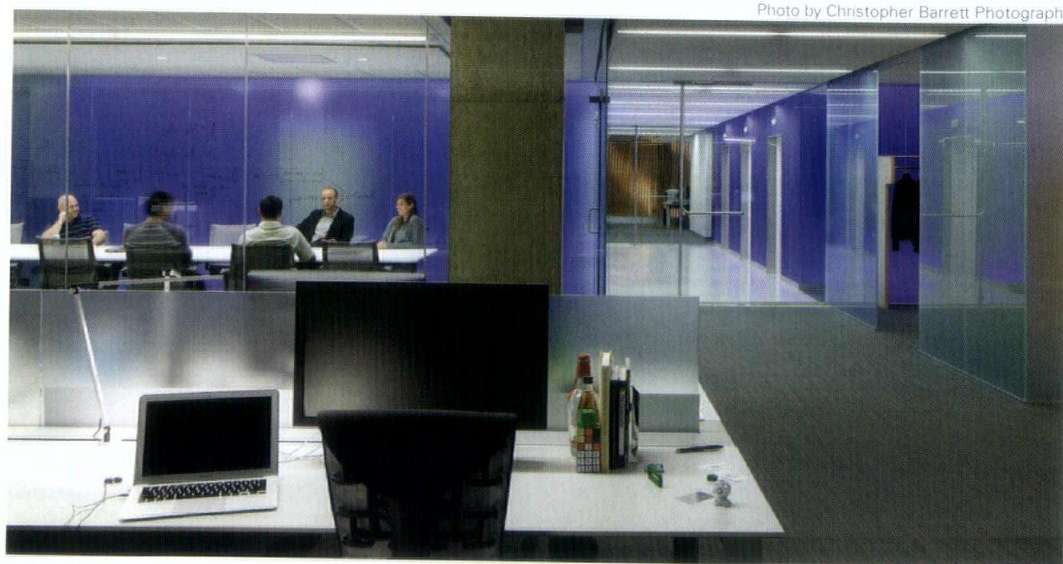


Photo by Christopher Barrett Photography

CITATION OF MERIT

Enova
Chicago

ARCHITECT: Brininstool + Lynch
CLIENT: Enova
CONTRACTOR: Bear Construction
CONSULTANTS: McGuire Engineers, Arup, Tietz-Baccon

CITATION OF MERIT

Genevieve and Wayne Gratz Center Chicago

ARCHITECT: Gensler

CLIENT: Fourth Presbyterian Church of Chicago

CONTRACTOR: Turner Construction

CONSULTANT: US Equities

A restrained, distinctly modern addition to a highly ornamented Gothic landmark, the Gratz Center attempts to complement its forebear at every turn, never to mimic or, worse, outshine it. Containing 23 classrooms, a chapel that can seat 350 and assorted other social and office spaces, the building is a far more active space than the contemplative sanctuary next door. But jurors felt it had the appropriate mix of spirit and muscle. "It's a very successful space, with clear circulation and different functions," one juror said, "and it does it all with grace." The jurors were especially fond of the chapel, with its wall of unpatinated copper and a labyrinth inlaid in the floor. "It's really quite wonderful," one said.



Photo by Richard Barnes

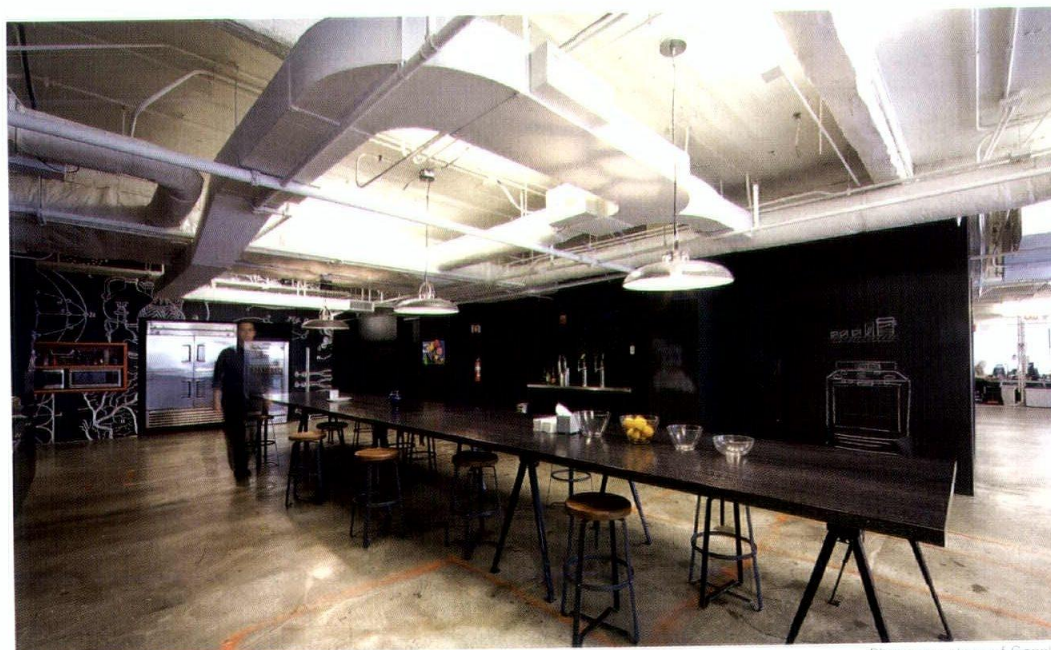
CITATION OF MERIT

Manifest Digital Chicago

ARCHITECT: Gensler

CLIENT: Manifest Digital

CONTRACTOR: Leopardo Companies



Photos courtesy of Gensler

The fun and adventuresome nature of the client firm is made manifest in the design for this office space, where nearly every wall is a writable surface. That's so that people with bright ideas can write them down instantly, no matter where in the office the brainstorm has happened. "There's clearly a synchronization of the client's brand and the design for the space," a juror said. There's a playfulness in the pairing of the hard vintage look of preserved concrete floors and ceilings with the frills of floral-print carpeting. But it's not too crazy: the carpet is gray and white. "It doesn't hit you in the face," a juror noted. Daylighting adds life, and an open benched layout with no fully enclosed offices facilitate a collaborative attitude among employees.

SPECIAL RECOGNITION

Trading Firm
Chicago

ARCHITECT: Perkins+Will
CLIENT: Name withheld
CONTRACTOR: Executive Construction Inc.
CONSULTANTS: WMA Consulting Engineers, Schuler Shook



Photo by Michelle Litvin Photography

The 30,000-square-foot trading floor designed for a privately owned financial company is a composition of tree-shaped GRG wood columns terminating into large elliptical "skylight" elements. "It reminds me of [Frank Lloyd Wright's] Johnson Wax Building in Racine," one juror remarked. The heart of a 75,000-square-foot, single-floor facility for the client, the trading floor stood out as "exceptional," according to one judge. The trio agreed that the client deserved applause as well: "It's not often that a client would support something like a tree motif for a trading floor," one noted.

ARCHITEMPS, INC.®

ARCHITEMPS, INC. – Chicago's premier Architectural & Interior Design staffing specialists.
Serving greater metropolitan Chicago for over 20 years.

Quality staffing, service and solutions:

- Design/Production Drafters
- Facility Planners
- CAD Architects/Interior Designers
- Project Managers

Our billing includes all employer liability:

- Payroll Administration
- Employee Benefits
- Government Compliance
- State & Federal Tax Remittance
- Workers' Compensation Coverage

ARCHITEMPS, INC.®
1050 North State Street
Chicago, IL 60610-7829

Tel: 312.649.0912
Fax: 312.649.1667
info@architemps.com
www.architemps.com

Architectural, interior design and facility planning personnel on a per-project basis. Customized programs to suit your staffing needs. Call today for information on our services or employment opportunities.

SPECIAL RECOGNITION

The Leroy Neiman Student Center Chicago

Clearly smitten with the glassy staircase that connects two levels of a 40,000-square-foot space for students, one juror described it as “a very modern, tight insertion into an old building. It draws you upstairs.” It’s a dramatic centerpiece to the student center, named for an illustrious alumnus of the school and created within the shell of a historical Holabird & Roche building. Judges appreciated the integration of the staircase and the lobby that surrounds it, and swooned about “the way it reads from the outside at night, when the channel glass is glowing.”

ARCHITECT: Valerio Dewalt Train Associates
CLIENT: School of the Art Institute of Chicago
CONTRACTOR: Turner Special Projects
CONSULTANTS: Environmental Systems Design, Matrix Engineers, S20



Photo by Barbara Karant, Karant + Associates

SPECIAL RECOGNITION

Shaw Technology and Learning Center Chicago

ARCHITECT: Farr Associates
CLIENT: Foundation for Homan Square
CONTRACTOR: Pepper Construction
CONSULTANTS: C.E. Anderson & Associates P.C.

When renovating the 1905 Sears Roebuck Power House as a facility to house a charter school, the architects sought to preserve original machinery as artifacts of an earlier era’s energy-producing equipment. The aim was to let them stand in contrast to modern machinery that students would be studying. “Contrasting the old technologies with the technology of today is a very innovative thing to do in a school setting,” said a juror. “It’s got a story that’s communicated and can really talk to students.” The jurors singled the project out in recognition of its unique reuse strategy.



Photo by Russell Phillips Photography

Professional Training Yields EXPERT PLASTERERS



Conventional and Veneer Plaster



Stucco and Exterior Insulated Finish Systems

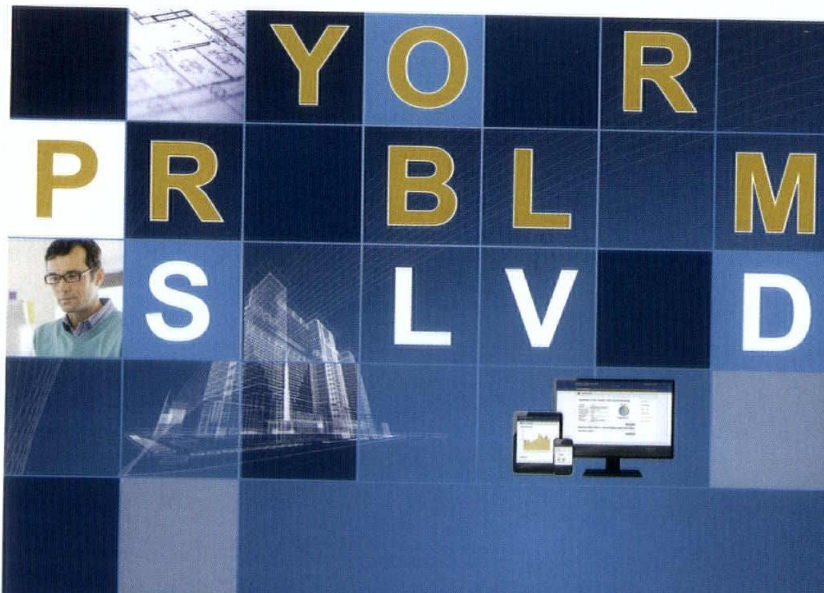


Ornamental Plaster

Call us for information about today's plastering systems and the best people to apply them.



Chicago Plastering Institute
5611 West 120th Street
Alsip, IL 60803
(708) 371-3100



120 Room Datasheets
5 Project Stakeholders
2 "current models"

IMAGINiT Clarity Workshare Your Problem. Solved.

Using IMAGINiT Clarity Workshare with Autodesk® Revit®, you can provide valuable information to key project stakeholders, even those who don't know Revit. Your team can also save time and headaches by automating the generation of deliverables, tasks like printing PDFs, DWFs, exporting to IFC or backing up your projects.

Share the design, automate the work. All while you keep designing.

See a free demonstration or request more information at imagineit.com/clarityws or call us at 800-356-9050

IMAGINiT
TECHNOLOGIES
A RAND Worldwide Company

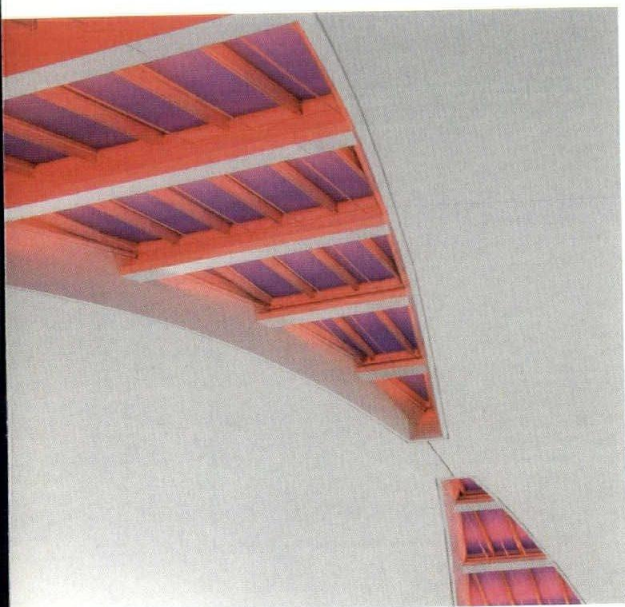
AUTODESK
Gold Partner
Architecture, Engineering & Construction
Engineering, Natural Resources & Infrastructure
Manufacturing
Education Specialized
Government Specialized
Consulting Specialized
Product Support Specialized

SOLUTIONS BEYOND SOFTWARE

CONSULTING | PROFESSIONAL SERVICES | TRAINING | SUPPORT | SOFTWARE

AIA Chicago established the Divine Detail Award in 1991 to recognize an instance in which the expression of architectural theory becomes an artistic medium, defining the relationship between architecture and craft. The detail should illustrate or illuminate the governing design concept of the building in which the detail is found, through material, design components or technology. Projects are eligible if they were completed between May 1, 2008, and May 1, 2013. Projects must be designed by Chicago-area architects or be located in Chicago.

Photos by Fentress Photography



The skylight-vaulted ceiling of the Minoru Yamasaki-designed main terminal at Lambert International Airport in St. Louis had lost its original, light-filled luster. The terminal was a mid-century modern icon in disrepair due to deferred maintenance and a spray-on acoustical finish that worked against the original smooth plaster surface of the ceiling. Acrylic lay-in ceilings flush with the vault surface had concealed the original skylights. The treatment aimed to restore the elegance of the original finish while enhancing the dramatic interplay between the four ceiling vaults and skylights. "They did their research, and made some creative decisions about how to enhance the place," a juror said. Enhancements went beyond merely adhering to and restoring Yamasaki's original intent, as fluorescent lighting inside the skylights was replaced with LED to reduce energy and maintenance costs and provide a range of lighting options, from white light to programmable color for special events. "They didn't just restore it, they made it better," a juror said.

HONOR AWARD

Main Terminal Vault Renovation, Lambert-St. Louis International Airport St. Louis, Missouri

ARCHITECT: exp
CLIENT: City of St. Louis Airport Authority
CONTRACTOR: C. Rallo Contracting Co.
CONSULTANT: Randy Burkett Lighting Design

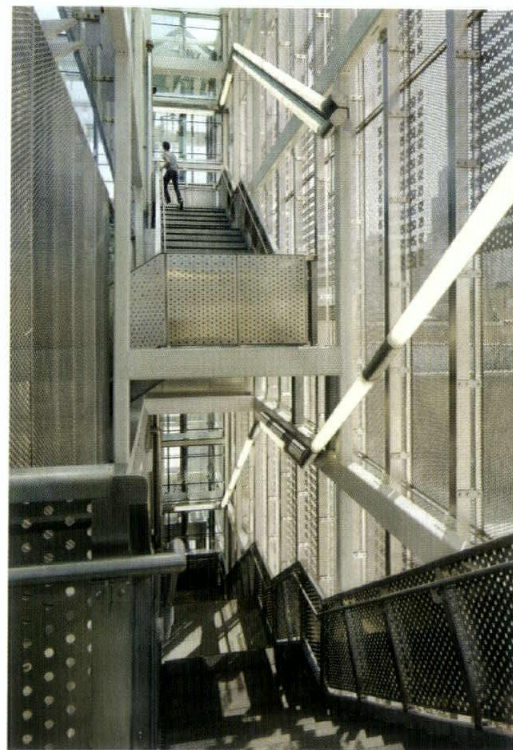




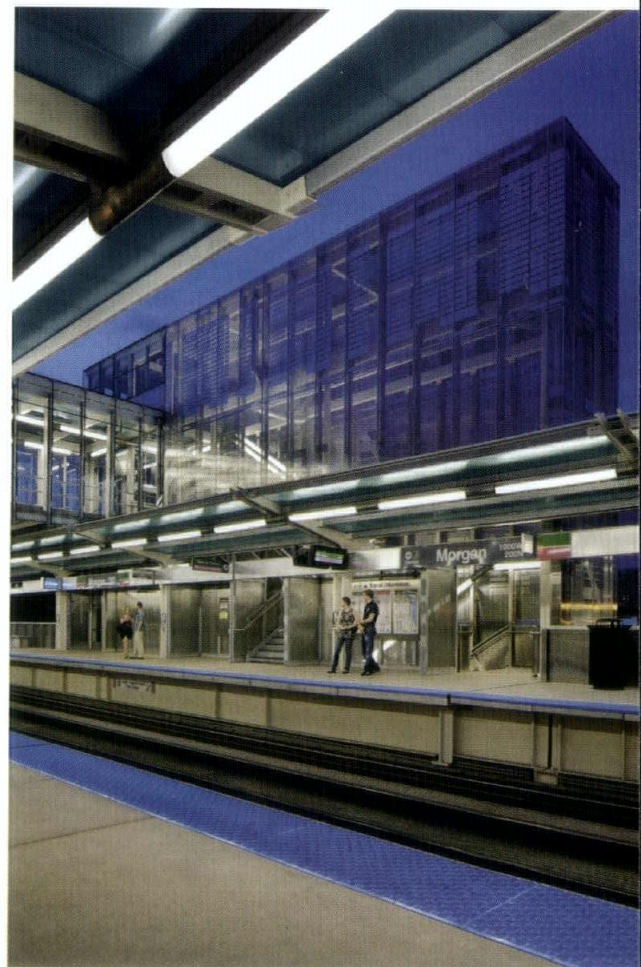
HONOR AWARD

CTA Morgan Station
Chicago

ARCHITECT: Ross Barney Architects
CLIENT: Chicago Department of Transportation
CONTRACTOR: F.H. Paschen, S.N. Nielsen
CONSULTANTS: TranSystems, Chicago Department of Transportation



The designs for the CTA Morgan Station in the Fulton Market District bridge the neighborhood's past as an industrial/ food-processing hotbed and its emerging status as a multi-faceted, hip and lively retail and residential corridor. The architects pay homage to the surrounding structures by cladding the project in perforated stainless steel. Added benefits to the use of steel are the material's durability in battling against Chicago's harsh weather and its malleability to express modern design details that reflect the ethos of the emerging neighborhood. Steel is used as both a protective element and an aesthetic material to, in the words of the architects, "convey the iconic and quintessentially Chicagoan shadow patterns of the overhead elevated tracks." "The perforated panel is a powerful detail that's effective and has multiple functions," a juror said. "It's a good solution that shows design and building type matter, and urban infrastructure is part of the civic realm," another juror added.



Photos by Kate Joyce Studios

CITATION OF MERIT

Shaw Technology
and Learning Center
Chicago

ARCHITECT: Farr Associates
CLIENT: Foundation for Homan Square
CONTRACTOR: Pepper Construction
CONSULTANTS: C.E. Anderson &
Associates P.C.

The Shaw Technology and Learning Center, a sustainable high school on the city's West Side, is an adaptive reuse of the old Sears Roebuck Power House structure. The architects were presented with the unique problem of designing a reuse of the steel trellis structure that was formerly a conduit for the delivery of coal into the main building. The design solution also had to address regulatory requirements of maintaining three accessible façades for all school buildings. "The structure needed a new function, but the design used spoke in a compatible vocabulary," a juror said of the repurposing of the trellis into a walkway that provides emergency access as well as solar shading to all classrooms. The walkway meets the school's modern needs while paying attention to the historic function and design of the trellis and the building. "An impressive reuse of the frame with a level of detail," a juror said.



Photos by Russell Phillips Photography

Photos by Steve Hall, Hedrich Blessing Photography



CITATION OF MERIT

Exelon Gym Daylight, Acoustical Coffers
Chicago

ARCHITECT: Wheeler Kearns Architects
CLIENT: Noble Network of Charter Schools
CONTRACTOR: Bulley & Andrews

The Exelon Gymnasium serves the student body of the Rowe Clark Math & Science Academy, as well as neighborhood organizations in Chicago's West Humboldt Park neighborhood. Responding to the modest budget for the construction of the gym, the architects employed a tactful approach when detailing a ceiling that would allow natural light while being mindful of energy costs. The design utilizes 24 light reflective coffers, each crowned by a 4-by-4-foot-high skylight that "elevates the type of space it is," a juror said. While bringing daylight into the gym, the coffers also work to absorb noise and conceal the gym's mechanical systems. The design of the ceiling works together with other attributes of the building—such as a green roof, heat recovery ventilation system and light/occupancy sensors—to construct a new idea of what a gym can be. "The ceiling is a measure of how good detail can be multifunctional," a juror said. "Usually a gym doesn't offer the opportunity to solve daylight and acoustical issues at the same time."

CITATION OF MERIT

Carmel Residence Courtyard Screen
Carmel By The Sea, California

ARCHITECT: Dirk Denison Architects

CLIENT: Confidential

CONTRACTOR: Thomas George Contractors

CONSULTANTS: endrestudio, Building Engineering Systems

"Functional, elegant and beautifully detailed," is how one juror described the courtyard screen for the Carmel Residence project. Folding walls and doors from the living room and bedroom extend the interior spaces outward, creating a large, enclosed courtyard. The mahogany and steel screen is made up of vertical slats that form the outer border of the courtyard, providing an outdoor space that allows light and air to pour in from the screen, into the courtyard and through the interior spaces. At the same time the screen opens the home to the outdoor space—viewed perpendicularly, the screen is porous—a sense of privacy is secured, as the screen reads opaque when viewed at an angle. "It's one thing from the street, but [it] becomes transparent for the people who live there," a juror said. "[The screen] uses modern materials to perform a traditional effect," said another.



Photos by David Matheson Photography

2013 DESIGNIGHT
58TH ANNUAL design EXCELLENCE awards

Congratulations to Stanley Tigerman, FAIA, on the 2013 AIA Chicago Lifetime Achievement Award, and to all the winners of the 58th Annual Design Excellence Awards.

AIA Chicago sends a special thank you to everyone who participated in this year's event, including these Platinum and Gold Sponsors:

- Adrian Smith + Gordon Gill Architecture
- Benjamin Moore & Co.
- Gensler
- JAHN
- Lightswitch
- Perkins + Will
- Petersen Aluminum Corp.
- Scranton Gillette Communications
- Skidmore, Owings & Merrill LLP
- Rick Valicenti and John Pobjewski of Thirst

AIA Chicago
aiachicago.org

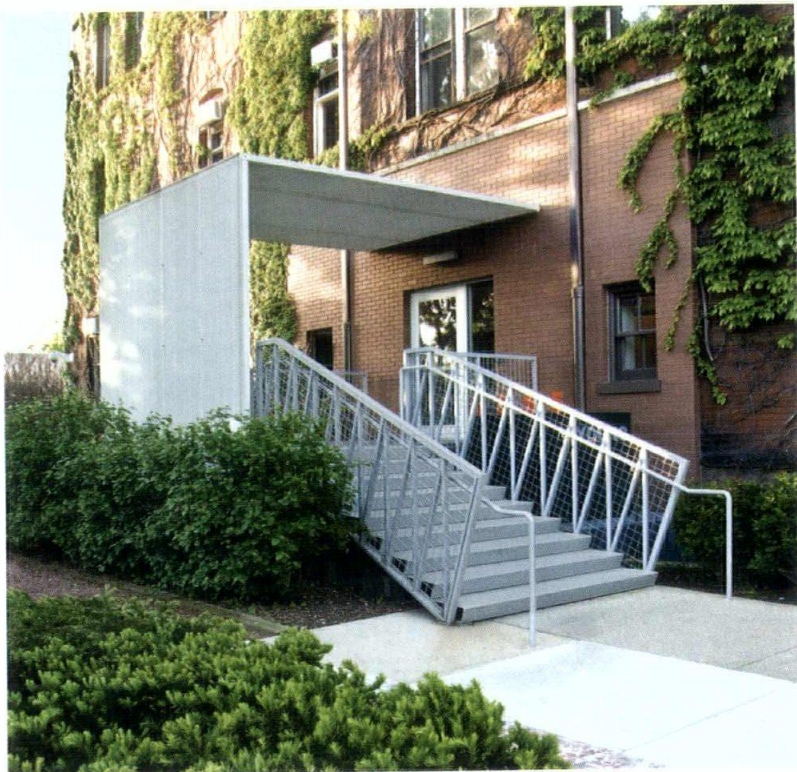


Photo by Andy Tinucci, David Woodhouse Architects

CITATION OF MERIT

Young Memorial Building Entry Canopy, The University of Chicago Chicago

ARCHITECT: David Woodhouse Architects
CLIENT: The University of Chicago
CONTRACTOR: Norcon Construction

This project revamps the entranceway to the University of Chicago Young Memorial Building. The canopy was designed to be a welcoming presence, replacing what was formerly a barren and abrupt steel-door entrance that provided no protection from the street or sense of place. The design incorporates 1 1/4-by-2 1/2-by-1 1/2-inch steel-grated bars to create a simple yet evocative entranceway that treats the building in "a context-sensitive way," a juror said. Contrasting the dark façade of the Young Memorial Building, the canopy is outfitted in luminous white paint that calls attention to its presence. "A simple, economical solution that responds to the problem in a sophisticated way," added a juror.

SPECIAL RECOGNITION

Bond Chapel Reneker Organ Installation, The University Of Chicago Chicago

ARCHITECT: David Woodhouse Architects
CLIENT: The University of Chicago
CONTRACTOR: Scale Construction
CONSULTANTS: Matrix Engineering, Anne Kustner Lighting Design,
Carl Giegold, Threshold Acoustics, Jeff Weiler & Associates

The Reneker Memorial Organ, a baroque-style instrument originally built in 1983, was moved from the Chicago Theological Seminary to the University of Chicago's Bond Chapel. In its new home, the organ hovers over the chapel's seating area, set against a panel of stained-glass windows foregrounding the ornate beauty of the piece. One juror called this "a considered approach—a subtle intervention without destroying what was there." "A sensitive integration of a giant piece into an intimate chapel setting," another added.



Photo by Christopher Barrett Photography



GE MONOGRAM | DESIGN CENTER

CHICAGO

Come see the latest in luxury appliances.
 Merchandise Mart LuxeHome, Suite 124 | monogram.com

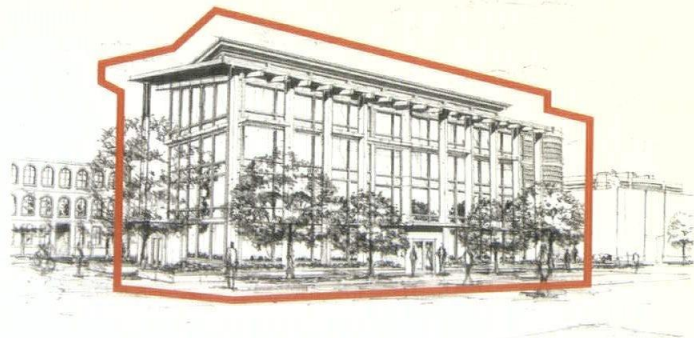
Protect Your Projects – One Contract at a Time.

AIA Documents-on-Demand®

The Contracts You Need – Whenever You Need Them

Draft your contracts with the insight and experience of the industry's brightest legal minds – in a quick, compact format. AIA Documents-on-Demand enables PC and MAC users to select individual documents from the AIA's most popular contracts and fill them out electronically with an easy-to-use, web-based service. Enjoy the peace of mind that comes with using the most widely accepted and time-tested documents in the industry.

AIA Contract Documents® | aia.org/contractdocs
 THE INDUSTRY STANDARD.



- **Choose from over 70 of AIA's most popular forms and contracts**
 Easy-to-use, web-based tool is accessible any time, from anywhere.
- **Purchase only the documents you need**
 Ideal for firms with limited budgets and smaller projects.
- **Compatible with both Mac & PC platforms**
 Save time with reliable, easy-to-complete electronic documents*.
- **Focus more on the project, less on the contract**
 Widely accepted and balanced fairly for all parties involved – get off to a smart start with AIA Documents-on-Demand.

For more information visit documentsondemand.aia.org.

*While a customer can complete the document electronically, there is limited editing capability, and the document is meant to be shared in hard copy.

AIA Chicago's SustainABILITY Leadership Award honors built and unbuilt work that demonstrates how community building and deep reductions in energy use are essential to good design in the 21st century. The designs should take a holistic approach, creating healthy, aesthetically pleasing environments for users, addressing issues of architectural and natural context and fostering resource efficiency in both energy- and non-energy-related areas. Projects or designs are eligible if they were completed between May 1, 2008, and May 1, 2013. Projects must be designed by Chicago-area architects or be located in Chicago.

Photos by Ballogg Photography

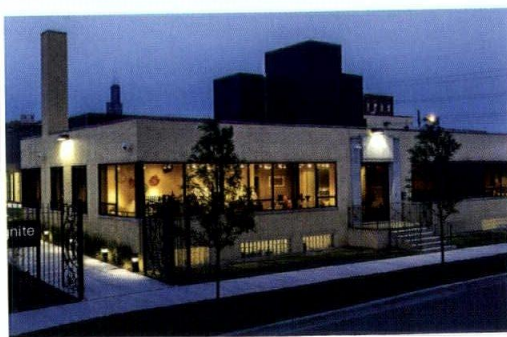


HONOR AWARD

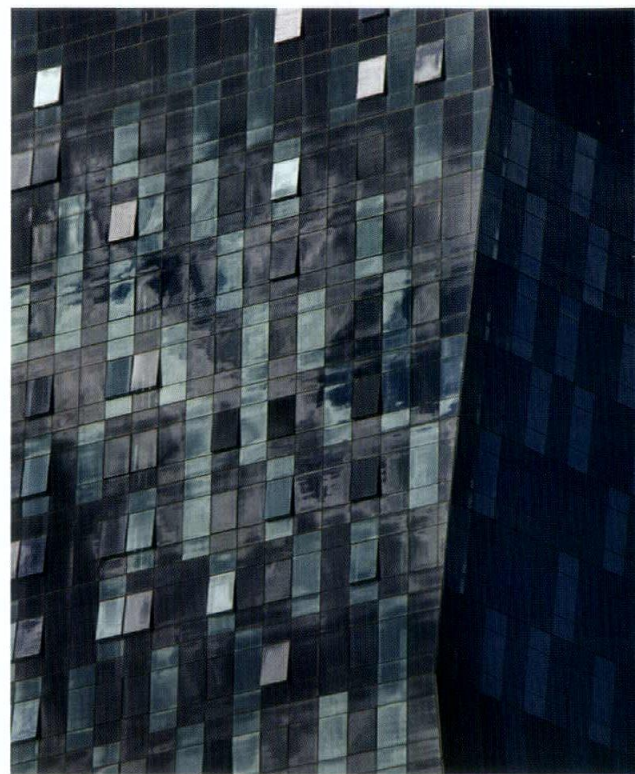
Ignite Glass Studios
Chicago

ARCHITECT: Epstein | Metter Studio
CLIENT: Ignite Glass Studios
CONTRACTOR: Graycor

While repurposing industrial space in the West Loop into a glass-blowers' cooperative and exhibition space, the architects didn't blow their chance to incorporate sustainable methods and materials. They shaped the new facility by demolishing the old selectively and building the new minimally. They sited the event space next door to the "hot shop," so the excess heat thrown off by the glass-blowers' equipment can help heat parties. A garden replaced a parking lot. Along with numerous touches that immediately reduce resource consumption, the project has built-in infrastructure for future improvements—sufficient roof support and electrical systems are in place to accommodate solar panels, and a continuous hood on the hot shop will facilitate creating a heat-recovery system. "They've created stair steps with the intent of coming back in and doing more," a judge said. "That says, 'We're really reaching and striving to get farther.'"



Photos by Tom Rossiter

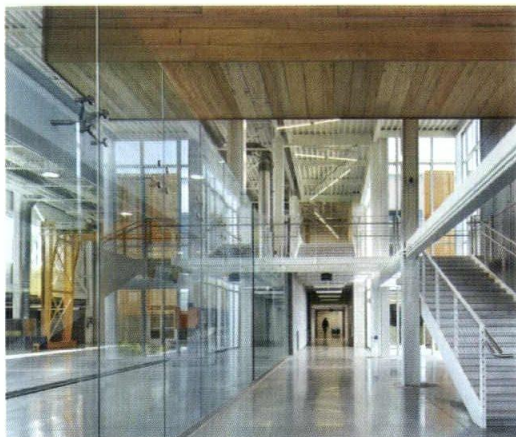


HONOR AWARD

Roosevelt University
Wabash Building
Chicago

ARCHITECT: VOA Associates
CLIENT: Roosevelt University
CONTRACTOR: Power Construction

"If density is sustainability, this building creates one heck of a sustainable campus," a juror said of the 32-story multiple-use building at Roosevelt University. Containing dormitory space, labs, classrooms, the student union and other functions, this single building serves the purposes of what could have been five separate buildings—and all on a footprint of just 17,300 square feet. But it's not only stacking that makes the project sustainable and brought it LEED Gold certification—natural ventilation, latent-heat recovery, rainwater harvesting and other strategic choices contribute as well. The tower uses 28 percent less energy and 35 percent less water than comparably-sized buildings and gets 72 percent of its energy from renewable resources. All of that together with its good looks makes it, in one judge's estimation, "a killer Chicago high-rise."



ARCHITECT: Ross Barney Architects
CLIENT: University of Minnesota Duluth
ASSOCIATE ARCHITECT: TKDA (formerly Stanius Johnson)
CONTRACTOR: Stahl Construction
CONSULTANTS: Oslund & Associates

This university building is not only a setting for teaching civil engineers about sustainable methods—it is a demonstration of many of those methods. Students can both experience viscerally and study the effects of such strategic choices as the facility's siting and massing, underfloor air distribution, its use of naturally derived materials such as taconite rock and corten steel and the stormwater management arrangement that includes a gigantic scupper treated as a sculptural extension of the building. "They've really explored the most dramatic pieces they can move [sustainability] forward with," a juror said. The details are like seeds that will plant themselves in students' heads and blossom when those students use them in their own projects down the line. "In that sense, the building is very giving," a juror said. Jurors noted it even gives to students just passing by. "That whacked-out scupper is going to make water management very memorable to them."

HONOR AWARD

James I. Swenson Civil
Engineering Building
Duluth, Minnesota

CITATION OF MERIT

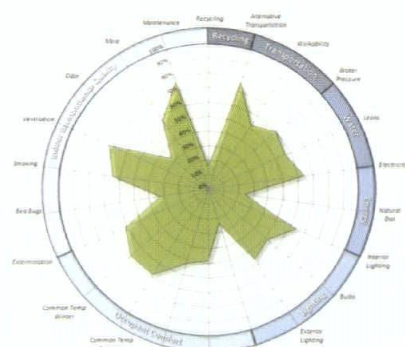
King Abdullah University
of Science and
Technology
Thuwal, Saudi Arabia

ARCHITECT: HOK
CLIENT: Aramco Services Company
CONTRACTOR: Saudi Oger Ltd.
CONSULTANTS: R.G. Vanderweil Engineers;
Affiliated Engineers Inc.; LJA Engineering; Solar
Design Associates; Code Consultants Inc; RWDI;
Abbie Gregg Inc.; Agritechnove Inc; Front Inc.;
Walter P. Moore; Shen Milson & Wilke, Inc.; Vita
Tech Engineering; Colin Gordon and Assoc.;
Flores Valles; Kroll; Pivotal Lighting Design



Photo by JB Picoulet

Though built on a very large scale, this project is rooted in cultural typologies such as the Arabic souk and the Bedouin tent, both of which are traditional, effective responses to the challenges of the prevailing climate. The design process relied on passive, climate-based solutions. Buildings are sited to shade themselves, window-to-wall ratios are kept below 30 percent, a monumental roof system hangs overhead to provide additional shading and solar towers induce natural ventilation. The design also relied on energy recovery, chilled beams, occupancy-sensing light controls and an array of other touches. "They went with a lot of different moves instead of one huge, blunt gesture," a juror noted. "They used materials and passive strategies smartly. It could have been this spaceship from Mars, but they embraced the materiality of the desert."



SPECIAL RECOGNITION

Chicago Housing Authority
Sustainable Housing Assessment
Chicago

PRIME: HOK
CLIENT: Chicago Housing Authority
CONSULTANTS: Environmental
Systems Design Inc.; TAG Properties
Inc.; Siemens Industry Inc.

"This was an extensive, diligent effort," a juror said of the project, which entailed collecting data from 580 buildings on 62 properties around the city as a way to measure the extant greenness and potential improvements throughout the far-flung system. The assessment team collected data on energy use, waste management, water cycles, accessibility of daylight and public transportation, and the use and management of green materials and green cleaning materials. The resulting manual on green operations and management is a key part of a plan to cut energy use by 12 percent across the CHA's portfolio. Jurors singled out the program for special recognition of its comprehensive approach. "It's laudable that they've done this so thoroughly," one said.

ARCHITECT: Gensler
CLIENT: Ministry of Healthy, Singapore
CONSULTANT: Buro Happold

The hospital's medical program intends to use the latest medical technology in a setting that reflects the rhythms of the human body and the natural relationships of family, community and the environment. Following that lead, the design team conceived of the hospital as a rainforest: it harnesses the sun, rain, soil and air to sustain life. Responding to Singapore's warm, humid climate, they created a building skin that is 80 percent naturally ventilated and occupant-controlled. It draws in the prevailing winds and daylight, not to mention local sounds and smells. Because of these and numerous other features, jurors felt the project merited special recognition as a sustainable healing environment.

SPECIAL RECOGNITION

Community Hospital at Yishun
Yishun, Singapore



Photo courtesy of Gensler

Photo courtesy of UrbanLab



SPECIAL RECOGNITION

Virtual Water
Long Island City, New York

ARCHITECT: UrbanLab
CLIENT: MoMA, PS1
CONSULTANTS: endrestudio, Method Design

Rainwater is the subject, the problem and the material at this installation in the courtyard at the Museum of Modern Art's PS1 exhibition space. In the past, more than 300,000 gallons of summertime rainwater fell on the site and were discarded into the storm sewer system. The designers captured, cleansed and displayed that hidden resource in what one juror described as "a piece of art that has a real program, illustrating a condition in our lives that needs to be paid attention to." Natural processes clean the water, and solar-powered pumps transport it between and over conical canopies to create different tableaux: a cool, misty area; a shallow pond; a reflecting pool. The jurors awarded special recognition for "this powerful teaching piece."

INDEX OF ADVERTISERS

AIA Contract Documents	43	Hoerr Schaudt Landscape Architects	13	Ragnar Benson Construction LLC	7
AIA Designight	41	Holcim (US) Inc.	C2	BD+C University	49
Architemps Inc.	35	IMAGINiT Technologies	37	Schuler Shook	6
Chicago Plastering Institute	37	Leopardo Companies Inc.	C4	Schweiss Doors	27
Chicagoland Roofing Council	C3	Marvin Windows & Doors	15	The Hill Group	3
GE Monogram	43	O'Brien Metal	20	Wood Products Council	4
Historic Park Inn	29	Petersen Aluminum Corp.	8		

BD+C university

BD+C university offers architects, engineers, contractors and building owners/developers who specialize in the commercial, industrial, and institutional markets a convenient education platform. The site offers access to a variety of educational components such as:

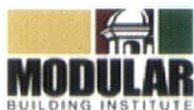
- + Courses
- + Webinars
- + White Papers
- + Videos

campuses



SAFTI FIRST FIRE RATED GLASS AND FRAMING CAMPUS

Learn the latest information on the correct and code approved use of fire rated glass and framing systems through educational and up-to-date articles, case studies, webinars and other interactive resources from SAFTI FIRST, a leading USA manufacturer of fire rated glass and framing systems and a preferred choice of architects and specifiers for 30 years.



MBI MODULAR CONSTRUCTION CAMPUS

MBI is the international non-profit trade association serving modular construction and they offer White Papers, Case Studies, Industry Annual Reports, published articles and coursework including:

- + Durability, Adaptability & Building Service Life Planning as Applied to Modular Construction
- + Combining Offsite & Site Construction
- + Does the Offsite Construction Process Equal Green?



BASF SUSTAINABLE CONSTRUCTION ACADEMY CAMPUS

In addition to whitepapers, brochures and case studies, BASF offers a range of one- and two-hour courses to help you complete professional development hours:

- + Improving the Performance of Existing Commercial Buildings: The Chemistry of Sustainable Retrofits
- + Windows for the Future: Insulated Glass Units
- + High-Performance Green Buildings: New Materials and Methods



NATALIE de BLOIS, FAIA

TRAILBLAZING FEMALE
ARCHITECT'S DESIGN WORK
WAS WORLDWIDE



Photo by Jeff Pender

Natalie de Blois, FAIA, 2010 AIA Chicago Lifetime Achievement Award winner, passed away in Chicago this July at the age of 92.

A pioneering female presence in the male-centric architecture world of the mid-20th century, Ms. de Blois is known for her work as an associate partner at SOM, leaving her mark on New York icons such as Midtown's Lever House and Chicago's Equitable Building.

An architecture graduate of Columbia University (1944) and longtime Hyde Park resident, Ms. de Blois was presented with the AIA Chicago Lifetime Achievement Award in 2010.

Below are excerpts of the *Chicago Architect* article by Pamela Dittmer McKuen that accompanied presentation of the award:

De Blois' work stands throughout the United States, Europe and points beyond, but Chicago happily claims her as its own.

If it forgets, there's a gentle nudge from Margaret McCurry, FAIA, of Tigerman McCurry Architects Ltd., who worked with de Blois at SOM from 1966 until de Blois left

in 1975. "Whenever I take the Chicago Architecture Foundation boat tour of the Chicago River, and the docent—who is usually female—proudly points out as we pass the Aqua Tower that Jeanne Gang's building is the only one by a woman architect in the city," McCurry says, "I grab the mic and remind the group that Natalie de Blois' Equitable Building predates Jeanne's by at least 45 years. Hopefully, by now, the record has been set aright."

As a small child, de Blois longed to be an architect. She was born in Paterson, N.J., in 1921 into a long family line of engineers, and earned her architecture degree from Columbia University in 1944. After a brief stint with Ketchum, Gina and Sharp in New York City (she was fired for resisting the advances of a colleague), she joined "Skidmore," as she still calls the firm. She was there for three decades—17 years in New York, mentored by Gordon Bunshaft, and 13 years in Chicago, where she worked for Bruce Graham and was promoted to associate partner in 1964. She also married, had her four sons and divorced. Her body of work as a senior designer includes corporate headquarters for Pepsi-Cola, Connecticut General Life Insurance, Lever Brothers and Union Carbide; the Public Library and

Museum for the Performing Arts at Lincoln Center; a Hilton Hotel in Istanbul, Turkey; U.S. government buildings throughout Germany; public housing towers in Fort Lee, N.J.; the Terrace Plaza Hotel in Cincinnati; the Arthur Andersen training center in Elgin; and the Equitable Building at Michigan Avenue and the Chicago River.

The women's movement took hold early in the decade and de Blois, a founding member of Chicago Women in Architecture, emerged a leader. She also served on the AIA Women in Architecture Task Force in Washington, D.C. She later moved to Houston, where she spent four years at 3D/International—which at that time was called Neuhaus and Taylor—and built a hotel in Riyadh, Saudi Arabia. Then she entered the next phase of her career: a 13-year tenure as professor of architecture at the University of Texas in Austin.

By 2003, de Blois had wrapped up all family and career responsibilities and was free to settle wherever she wished. But where? City life beckoned. She weighed Paris and New York but chose to return to Chicago, where she had friends and family. **CA**

AIA Chicago extends condolences to the family and friends of Natalie de Blois, FAIA.



Join the Green Revolution

When the building needs to meet the New 2012 International Energy Conservation Code, 2012 International green Construction Code requirements, or get LEED Points, the Roof and Building Envelope is a key element to success.

And, it needs to be done right the first time. From the bottom up, below grade walls and underslab floor protection, above grade plaza and parking deck waterproofing, air/vapor barriers, roof membrane with garden, reflective, ballasted and photovoltaic coverings, the Chicagoland Roofing Council Contractors and Local 11 workforce understand the science and art of the Building Envelope as an air and water tight system.

Whether it's liquid or spray applied, and self-adhered sheet membranes, our Chicagoland Roofing Council professional contractors have decades of experience.

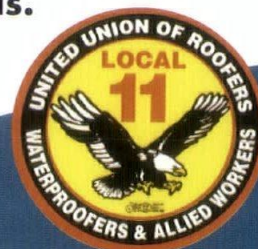
They are approved and certified for installation of these above grade air/vapor barrier and waterproofing membranes to meet new 2012 International Energy Conservation Code Requirements.

The Chicagoland Joint Apprenticeship Training Center has a full membrane building envelope curriculum for a well trained and efficient workforce.

We have many contractors who can provide single source building envelope protection from the bottom up.

Chicagoland Roofing Council contractors – One Call, Single Source Responsibility, for a roof and building envelope system that works..

Call 708.449.5266 or visit www.chicagoroofing.org to find Chicagoland's Roofing Professionals.



www.chicagoroofing.org



www.leopardo.com

CONSTRUCTION DESIGN - BUILD DEVELOPMENT

Interiors • Healthcare • Retail • Municipal • Recreation • Office • Industrial • Higher Education
• K-12 Education • Hospitality • Residential • Community • Aviation • Federal