



premiere issue

Getting to the Root of
John Holabird

Centers of Attention

2007 Design Excellence Award Winners

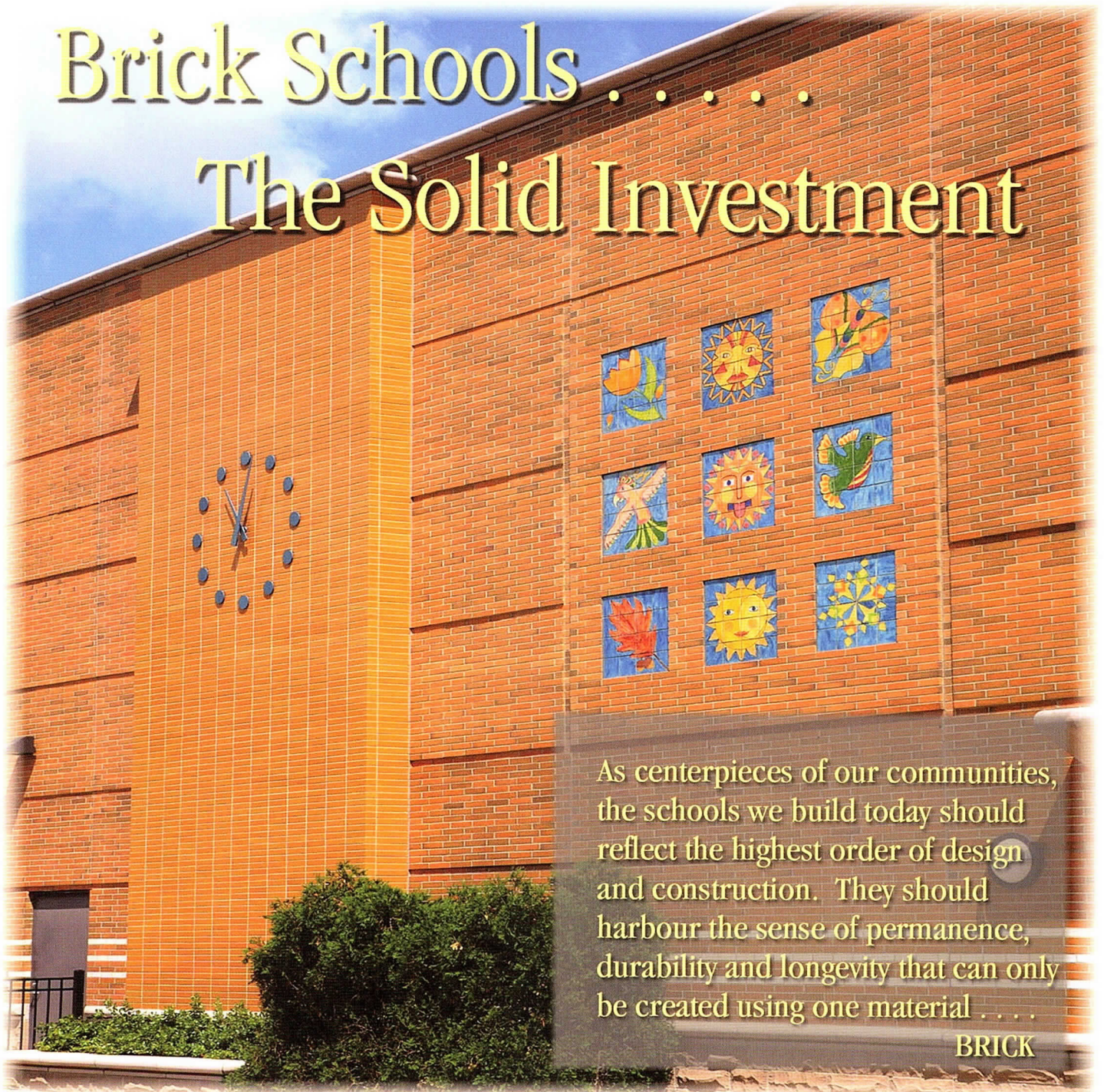
CHICAGOANS' BEST WORK, HERE AND AWAY

Gary Comer Center:
triple award winner

ALSO: PIER REVIEW, WALTER NETSCH & MATERIALS THAT MATTER

Brick Schools

The Solid Investment



As centerpieces of our communities, the schools we build today should reflect the highest order of design and construction. They should harbour the sense of permanence, durability and longevity that can only be created using one material

BRICK

Columbia Explorers Academy - 2004 Best of Brick Winner, Excellence in Masonry 2004

Architect : Gonzalez Hasbrouck

Mason Contractor : Pignato Masonry

Owner: Chicago Public Schools



Brick Distributors of Illinois Members

Acme Brick & Supply
Acutts Inc.
Brann Clay Products
Chicago Block & Brick Co.
Chicago Brick & Stone

(847) 662-8245
(630) 897-7922
(708) 385-3075
(708) 458-8130
(630) 257-8665

Clay Products Inc.
Illinois Brick Co.
Northern Illinois Brick & Supply
Prairie Central
Rauch Clay Sales Corp.

(815) 675-6646
(708) 344-1000
(847) 468-0091
(217) 235-5454
(773) 254-0775

PROJECT SUCCESS...

It starts and ends with

DETAILS

Over seventy years of experience and more than 10,000 construction projects clearly confirm one core belief at Hill Mechanical Group: managing project details is a key to project success. That's why we're Illinois' largest HVAC contractor and also the reason we commit ourselves to every aspect of a project — from initial preconstruction planning thru final commissioning.

Managing all the details ... in every step of our process ... that's how we build success!



HILL MECHANICAL GROUP



11045 Gage Ave.
Franklin Park, IL

Bob Krier, President
847.451.5000

www.hillmech.com



WATER RE | DISCOVERED



 **PRODUITS
NEPTUNE**



hydrology

435 N. LASALLE ST. CHICAGO, IL 60610
hydrologychicago.com 312.832.9000

CHICAGO ARCHITECT

Chicago Architect, the primary outreach tool of AIA Chicago, is published six times a year as an authoritative resource for architects, the larger design community and the public about architecture and related issues of interest to Chicago architects. The magazine communicates industry trends, the value of high-quality design and the role of AIA Chicago and its members in the world of architecture.

Publication Director

Zurich Esposito
esposito@aiachicago.org

Publisher

Al Slattery
al_slattery@mcgraw-hill.com

Editor

Dennis Rodkin
rodkin@aiachicago.org

Senior Editor

Lara Brown
brownl@aiachicago.org

Contributors

Lee Bey
Cindy Coleman
Edward Keegan, AIA
Laurie Petersen
Lisa Skolnik

Design

Good Studio
Jay Hartwell, McGraw-Hill

Advertising Sales

Dean Smith
dean_smith@mcgraw-hill.com
Bruce Weissman
bruce_weissman@mcgraw-hill.com

AIAChicago

**McGraw_Hill
CONSTRUCTION**

Chicago Architect November/December Vol. 1, No. 1
Published six times a year by the McGraw-Hill
Companies, Inc.

Postmaster: send address changes to the McGraw-Hill
Companies, Chicago Architect, Attn: Circulation Manager,
130 E. Randolph St., Suite 1400, Chicago, IL 60601.

Letters to the Editor: Chicago Architect gladly accepts all
signed, dated letters to the editor. We reserve the right to
edit for style and any potentially libelous content. Letters
should be no longer than 250 words. Submit letters to
CA@aiachicago.org.

Story Ideas and Submissions: Chicago Architect welcomes
your story ideas and your written article submissions,
whether about your projects or about business trends and
issues. Email us at CA@aiachicago.org.

Photocopy Permissions: where necessary, permission is
granted by copyright owner for those registered with
Copyright Clearance Center (CCC), 222 Rosewood Drive,
Danvers, MA 01923, www.copyright.com to photocopy any
article herein for personal or internal reference use only for
the flat fee of \$2.00 per copy for each article. Send payment
to CCC. Copyright © 2007 The McGraw-Hill Companies, Inc.

The information contained within has been obtained by the
McGraw-Hill Companies, Inc. from sources believed to be
reliable. However, because of the possibility of human or
mechanical error, the McGraw-Hill Companies, Inc. does not
guarantee the accuracy or completeness of any information
and is not responsible for any errors or omissions or for the
results obtained from use of such information. The editor
reserves the right to censor, revise, edit, reject, or cancel any
material not meeting the standards of Chicago Architect.
The information and opinions published in Chicago
Architect represent the views of the authors and not those
of the publication or AIA Chicago, unless otherwise stated.
The acceptance of advertising does not reflect endorsement
of products or services by this publication or AIA Chicago.



Dream. Kitchen.

BRIZO®

Jason Wu dress inspired by Brizo | brizo.com

Online specification
and design tools
at the click of a mouse.



Spec the possibilities.

USG Design Studio™ A powerful new online resource to help you quickly, easily and accurately design, specify and find just the right products and systems for your interiors.

Spec the possibilities at www.usgdesignstudio.com, or contact your USG representative for a guided tour.



Design Studio
an Architectural Solutions Center

Chicago Architect Advisory Committee

Thomas Braham, AIA
Peter Exley, FAIA
Jeff Missad, Assoc. AIA
Peter Schlossman, AIA
Linda Searl, FAIA
Brett Taylor, AIA
P.K. VanderBeke, AIA
Cynthia Weese, FAIA

AIA CHICAGO 2007 BOARD OF DIRECTORS

President
Laura Fisher, FAIA
**First Vice President/
President-Elect**
Richard (Rik) Master, AIA
Vice Presidents
Fred Brandstrader, AIA
David Brininstool, AIA
Grant Uhlir, AIA
Secretary
P.K. VanderBeke, AIA
Treasurer
Christopher Chwedyk, AIA
Past President
Peter Schlossman, AIA

Directors
Mark Hiron, AIA
Donna Robertson, FAIA
Dawn Schuette, AIA
Walter D. Street III, AIA
Brett Taylor, AIA
RaMona Westbrook, AIA
Amy Yurko-Nelson, AIA

Associate Directors
Jeffrey Missad,
Associate AIA
Mark Schwamel,
Associate AIA

**Professional Affiliate
Director**

Jeffrey Loyall
AIA Regional Directors
Jonathan L. Fischel, AIA
Walter Hainsfurther, AIA

AIA Illinois Delegates
Mary Brush, AIA
Dina Griffin-Poynton, AIA
Gaines B. Hall, FAIA
Susan King, AIA
Eben Smith, AIA
David Bradley, AIA
(alternate)
Robert Vagnieres, Jr.,
AIA (alternate)

2007 COMMITTEE CHAIRS Working with an Architect

DonnaLee Floeter, AIA
Constantine Vastlios, AIA

2007 KNOWLEDGE COMMUNITIES

Design
Craig Brandt, AIA
chair
Maura Crisham, AIA
co-chair
Julianne Scherer, Assoc. AIA
co-chair

Design/Build
Christopher Martersteck, AIA
chair

Environment
Steven Kismohr, AIA
chair

Healthcare
Robert Vagnieres, Jr., AIA
co-chair
Vuk Vujovic, Assoc. AIA
co-chair

Historic Resources
Charles Sejud, AIA
chair
Clark Christensen, Assoc. AIA
co-chair

Housing
Steven Montgomery, AIA
chair
David Wytmar, AIA
co-chair

Interior Architecture
Carol LaMar, AIA
co-chair
Mark Hiron, AIA
co-chair

**Regional & Urban
Planning**
Richard Wilson,
Assoc. AIA, chair
Federico Vidargas, AIA
co-chair

Practice Management
Michael Webber,
chair
Technical Issues
Ronald Reed, AIA
chair

Young Architects Forum
Cesar Vitale, AIA
co-chair
Lynette Stuhlmacher,
Assoc. AIA, co-chair

Young Architects Forum
Marc Teer, AIA
chair
Matthew Dumich, AIA
co-chair

AIA Chicago Chapter Staff

**Executive Vice
President**
Zurich Esposito
Program Director
Joan Pomaranc
**Membership Director/
Assistant to the EVP**
Phil Rahill
**Communications
Manager**
Lara Brown
Financial Manager
Crystal Gagler
Program Associate
Megan Bell
**Public Information
Receptionist**
Linda Freeman

*Subscription to Chicago
Architect is included with
AIA Chicago membership.
Non-members may subscribe
by signing up at www.aiachicago.org*

*Additional copies of Chicago
Architect are available for
\$7.50 per issue and can
be obtained by contacting
the AIA Chicago office at
312-670-7770. If you are
interested in purchasing
a large number of issues,
contact AIA Chicago and
ask about group sales.*

*The American Institute of
Architects is the voice of
the architectural profession
dedicated to: serving its
members, advancing their
value and improving the
quality of the built
environment. Through a
culture of innovation, The
American Institute of
Architects empowers its
members and inspires the
creation of a better-built
environment.*



**North America's
Leading Geotechnical
Construction Contractor**

Grouting

- Compaction Grouting
- Chemical Grouting
- Cement Grouting
- Jet Grouting
- Fracture Grouting
- Urethane Grouting

Ground Improvement

- Vibro Replacement
- Vibro Piers
- Vibro Compaction
- Vibro Concrete Columns
- Dynamic Compaction
- Wet and Dry Soil Mixing
- Injection Systems for Expansive Soils

Earth Retention

- Ground Anchors
- Helical Anchors
- Shoring
- Sheet Piling
- Soil Nailing
- Slope Stabilization

Structural Support

- Micropiles
- Macropiles
- Jacked Piers
- Driven Piles
- Helical Piles

Additional Services

- Ground Water Barriers

Design-Construct Services

YOU NEVER SEE OUR BEST WORK...

But you have confidence in knowing we've been here:

- ◆ Art Institute of Chicago, New North Wing
- ◆ Trump Tower
- ◆ The Chicago Spire
- ◆ 155 N Wacker Drive
- ◆ The Elysian
- ◆ Block 37
- ◆ 10 East Delaware
- ◆ 303 West Ohio
- ◆ The Lexington
- ◆ Millennium Park Pedestrian Bridge
- ◆ Soldier Field
- ◆ The Emerald
- ◆ Park View West

**HAYWARD
BAKER**
Geotechnical Construction



Midwest Region Office

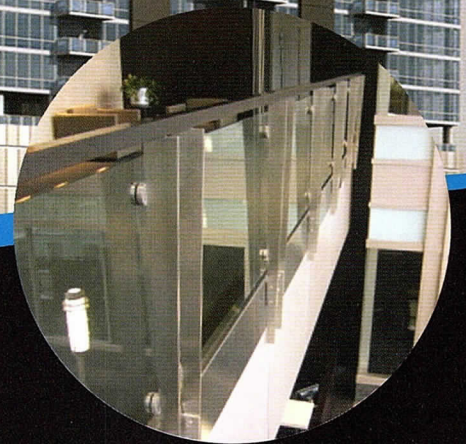
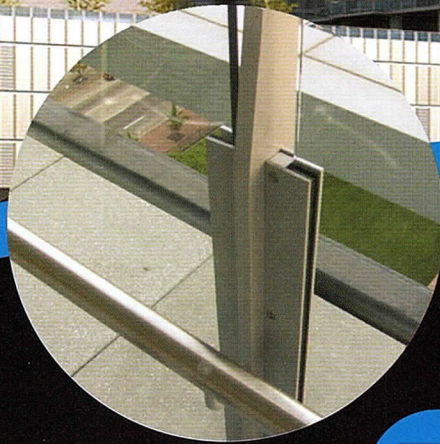
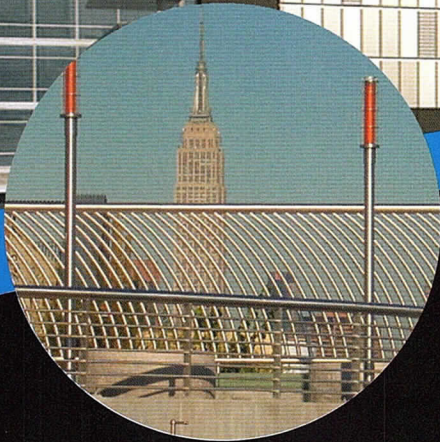
630-339-4300

St. Louis 314-802-2920

Minneapolis 952-851-5500

For a complete listing of offices, please visit:
www.HaywardBaker.com

MONDO CONDO



When you're looking for a traffic-stopping design element, consider a sleek stainless steel and glass railing system like we're creating for the Lexington Park Condominiums at 2138 S. Indiana in downtown Chicago. This will be a condo with incredible urban appeal provided exclusively by Tuttle Railing Systems. We innovate, fabricate, deliver and install the most contemporary rail systems in the world. Please contact us for details and product literature.



TUTTLE
RAILING SYSTEMS
A Division of Tuttle Aluminum & Bronze, Inc.

120 Shadowlawn Drive
Fishers, Indiana 46038
317.842.2420
800.328.4496
317.845.1328 Fax
www.tuttlerailings.com/chicagoarch

STADIUMS • MALLS • SPORTS • MEDICAL • EDUCATIONAL • SPEEDWAYS • PARKING • INDUSTRIAL • WASTE FACILITIES

Tofc



President's letter

Welcome to the first issue of Chicago Architect!

This is the beginning of what we hope will be a long conversation among Chicago's architects and others in the design and construction communities—about the latest in good design, about the changing practice of architecture, and about the role Chicagoans continue to play in designing the world's buildings.

Published by a partnership of AIA Chicago and McGraw-Hill six times a year, Chicago Architect aims to help shape the discussion of architecture and to help you shape the way you practice architecture.

Our first issue is something of a hybrid, coming as it does in the season of our Design Excellence Awards. There are so many outstanding awardees, and so much to say about them, that we had to set aside some of what you will see in regular issues of the magazine.

In this inaugural issue, the Façade section in the front of the magazine includes news of the chapter and the city's design community, a handy calendar that singles out key events in design (both AIA-sponsored and not), and People + Projects, replete with news of architects' promotions and developments. Behind the awards coverage is the first installment of our Interior Solutions column and a lively interview between AIA Chicago's executive vice president, Zurich Esposito, and the estimable Walter Netsch, FAIA, last year's Lifetime Achievement honoree.

Much more will come along beginning in the January/February 2008 issue: a column on technology, articles on the practice of architecture, and a few fun bits that draw on Chicago's great architectural legacy. We hope there will also be letters to the editor from you, stories written by you, and word on your latest projects. (Send any and all information to CA@aiachicago.org.)

Chicago Architect won't be our only means of communication; members will also continue to receive the chapter's electronic news briefs and up-to-the-minute program information.

Everyone involved with the magazine will be eager to hear what you think. Enjoy.

Laura Fisher, FAIA | President | AIA Chicago

Façade

10 **Pier Pressure** AIA members help dream up future of Navy Pier

12 **Sustained Attention** Columbia College focuses MFA program on sustainable methods

15 **Master Planner**

16 **People + Projects**



Feature

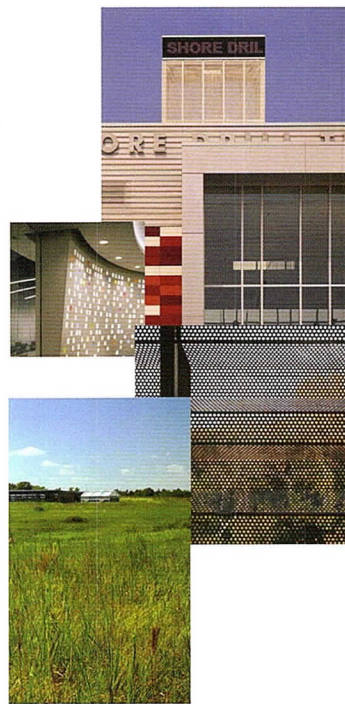
23 **Design Excellence Awards 2007**

25 **Distinguished Building**

35 **Sustainable**

43 **Divine Detail**

47 **Interiors**



54 **Lifetime Achievement**
John Holabird, FAIA

74 **index+**
sponsors

ON THE COVER: Dynamic and quickly becoming iconic, the Gary Comer Center wins three awards
Photo by Hedrich Blessing

63 **Interior Solutions** There's a material difference in design that reduces waste

76 **A-Z** Walter Netsch talks to Zurich Esposito about age and architects



Nobody Knows Permits Like Burnham

When it comes to building permit submittals Burnham has the experience, resources and project management expertise to set your project up for success.

Count on Burnham for:

- Pre-submittal Guidance
- Zoning Processing
- Submittal Management
- Ancillary Submittals
- Field Verification Inspection



"My experience on Trump Tower and 10 E. Delaware taught me that building permit submittals really come down to meticulous information management. I think our clients appreciate having project managers who are a little obsessive about details."

Dana Lewandowski
Project Manager
Burnham Nationwide

>> 800.407.7990

>> 312.407.7990

www.BurnhamOnline.com

SIMPLY

GETTING IT DONE >> > >



NATIONWIDE

ca·tas·tro·pho·bia

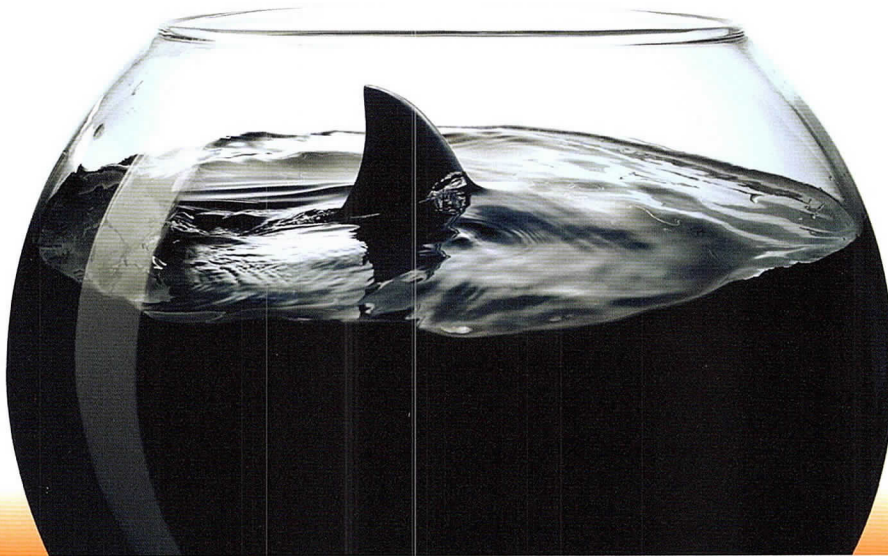
(kuh-tas-truh-foh-bia) *n.* fear of inadequate insurance coverage leading to catastrophic claims

Do you suffer from Catastrophobia?

Insurance is supposed to protect your firm from catastrophic claims. But all insurance is not equal, and understanding the differences is difficult.

Let PCIA perform a coverage analysis for you to identify any gaps in your existing coverage. No obligation.

Just peace of mind.



Professional Concepts Insurance Agency (PCIA) is a professional insurance advisor, specializing in customized risk management services and insurance products for architects and engineers. PCIA delivers tools to reduce your exposure to loss and reduce insurance costs.

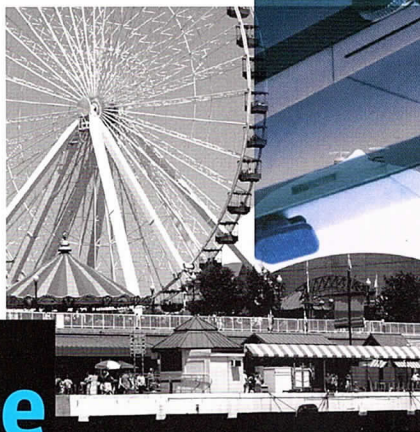
- Professional Liability
- Employee Benefits
- Business Insurance
- Personal Lines

PCIA is proud to announce its alliance with Debra Gervase.



Illinois | Michigan | 1.800.969.4041 | www.PCIAonline.com

AIA MEMBERS HELP DREAM UP FUTURE OF NAVY PIER



Nothing, she emphasizes, has been nailed down yet; to date, the process has been all about developing a shared image of the venue's potential. Two of the architects who participated pronounced the program exciting and invaluable to the future of recreation in Chicago.

"When Navy Pier was rebuilt, it was turned into a generic pier that just isn't of Chicago, it's of Boston and Baltimore and wherever there are piers," says Carol Ross

Barney, FAIA, of Ross Barney Architects. "What's there is mostly tacky stuff. It's not cool. It's mostly a parking garage. **This is a chance to look at the bigger picture of what Navy Pier could be and to fit it into the larger plans for the whole downtown lakefront.**"

Urban Lab's Martin Felsen, AIA, concurs, adding that the program is timely: "As one looks ahead toward the residential density that's going to be in that neighborhood in the next 30 years," he says, "people are going to really want more public space, and Navy Pier is a pretty good place to find it."

Felsen would like to see the present amenities on the pier gradually fade away, and to see parkland evolve in its place. "It could be a hub for all sorts of environmental activities relating to the lake and its relationship to the city," he suggests.

Both Ross Barney and Felsen bemoan the commercial nature of Navy Pier's present incarnation, though they acknowledge that's not likely to disappear entirely—or soon.

Nevertheless, they savored the chance to conjure up new ideas for a place that looms large in the civic imagination. Ross Barney notes that "whatever you provide on the pier, people will appreciate it. They're drawn there by the water." But the aim of the discussions among AIA Chicago members and other groups, she hopes, will be, "We can make it the best it can be: something well-received and memorable." It's not that now. →DENNIS RODKIN

You'd think 3,000 feet of pier topped by picturesque brick and limestone structures jutting into Lake Michigan would be a thrilling destination for Chicagoans and their visitors, but Navy Pier has mostly been an uninspired and uninspiring place since its mid-1990s redo.

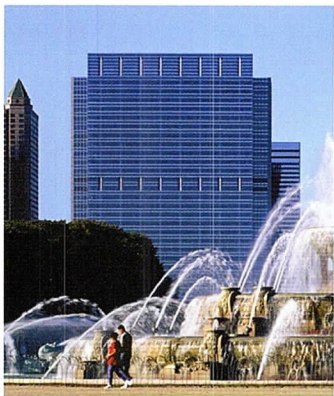
There's a lot of foot traffic and a lukewarm affection for the place, but the pier consistently disappoints people who want to love it. And since early 2006, when the city of Chicago announced a plan for revisions that would, essentially, have made the place even more like a shopping mall, that unrequited love has been more tangible.

This summer, the authorities linked to Navy Pier began an open-ended review of what Chicagoans want from the pier, and a panel of select AIA Chicago members was tapped to bring some great ideas to the discussion.

"We decided to take a step back and bring a bigger pool of stakeholders' opinions together," says Maribel Hopgood, a spokesperson for the Metropolitan Pier and Exposition Authority, the agency that controls the pier and McCormick Place. MPEA and Mayor Daley's office brought in consultants A.T. Kearney and the Civic Consulting Alliance to shape the discussion. Hopgood says the aim is to get a broad survey of input from many parts of the city; the hospitality industry, parks advocates and community groups were also asked to hold discussions.

Architects in particular were brought aboard because "they can help envision what we can do within the beautiful structures that are on the pier," Hopgood says. Among those who joined the sessions were Helmut Jahn, FAIA, George Pappageorge, FAIA, Ralph Johnson, FAIA, and Ross Wimer, AIA. In all, 21 Chicago architects participated in the July discussions about the pier. Some or all will be asked to join a series of larger sessions with members of other professions and community organizations down the line, Hopgood says.

“It was turned into a generic pier that just isn't of Chicago, it's of Boston and Baltimore and wherever there are piers.”

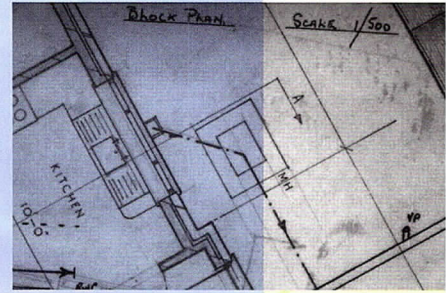
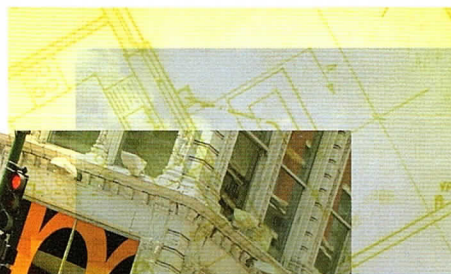


We welcome the premiere issue of
CHICAGO ARCHITECT



gp
goettschpartners
gpchicago.com





Sustained Attention

COLUMBIA COLLEGE FOCUSES

MFA PROGRAM ON

SUSTAINABLE METHODS

The start of a new school year brought with it the start of an entirely new approach to design education in Columbia College's MFA programs. As of September, the South Loop school's graduate-level programs in architectural studies and interior architecture will integrate the exploration of sustainable methods and materials into all coursework, effectively giving every student a specialized degree in low-resource design.

Letting sustainability permeate the curriculum is key to grooming a crop of young designers who can build and design projects that are less resource-intensive, says Sabina Ott, who chairs Columbia's department of art and design. **"When one philosophy colors your education, you'll look at every project in that way—for instance, if you were taught in a modernist institution, you would approach projects from a modernist standpoint,"** she says. Students who spend three years studying design through a lens of sustainability will similarly turn out to use that as a starting point of all their work, not an add-on, Ott says.

Rather than introduce individual courses on sustainable methods and materials, Columbia's program makes those an elementary piece of every project students study or create. "You don't go from Sustainability 101 to Sustainability 102," says Joclyn Oats, director of the two design MFA programs at Columbia. "This is an elemental datum that runs through everything. If we are talking about making a two-hour rated wall, we'll talk about using sustainable materials to do it."

The idea is not at all to follow fashionable thought, Oats says, but to acknowledge that designing with an eye toward reduced resource consumption is "the underpinning of our professions in the 21st Century." She says adjunct faculty in the program have long come to the campus talking about federal, state and local mandates that require the use of sustainable method and materials, indicating that everyone in design professions ultimately will be compelled to comply. Because of that,

"we have to educate future designers on their role as environmental custodians or they're not going to be valued in their professions," Oats says.

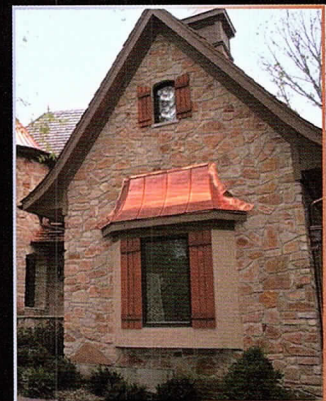
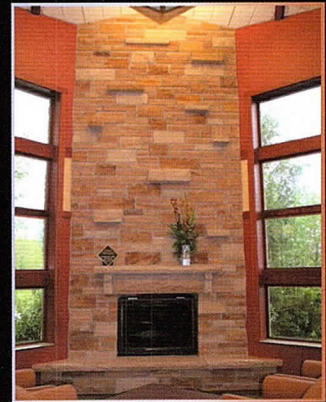
Claren Pappo sees that day coming. An aspiring interior designer with an undergraduate degree in business, she enrolled in Columbia's redesigned MFA program this fall in part because she believes sustainability "is a huge movement in architecture that will be even more prevalent by the time I graduate." The program's focus on sustainability, she predicts, "is going to make it much easier for me to adapt into the business circumstances I'll be in."

The change, which entailed about five years of planning, dovetails with Columbia's college-wide effort to be a green leader; earlier this year, the college signed a two-year agreement to get about 30 percent of its annual energy need fulfilled with wind power. But because Columbia's facilities aren't all that green themselves, the administrators of the program are setting up linkages with leading-edge locations in Chicago, so students can study surrounded by the sort of thing they might later design. Some classes are held at the Chicago Center for Green Technology, and at press time, there was a plan to teach others at the innovative Access Living building.

Re-working the programs' focus has entailed re-doing every class syllabus, and pretty much everything else about the program. But Ott says the goal is for this change to breed more change: **"We want to make a generation of innovators who are producing designs that are embedded with the notion of sustainability."** Will there come a time when curriculum is unremarkable because the whole profession has gone that way? "If everybody's doing it," she says, "that's good, isn't it?"

→DENNIS RODKIN

“ We have to educate future designers on their role as environmental custodians or they're not going to be valued in their professions. ”



Krukowski STONE CO., INC.

YOUR SOURCE FOR NATURAL STONE SINCE 1978
architectural • landscape • commercial • residential

3781 County Road C • Mosinee, WI 54455

800-628-0314

715-693-6300

fax: 715-693-7223

krukowskistone.com

You'll Discover We're **SOLID** As A **ROCK**.



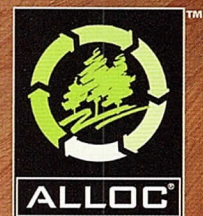
SAVE A TREE CREATE A LEGACY

WITH ALLOC LAMINATE FLOORING

Alloc laminate flooring creates a warm environment inside your home without compromising the environment outside. We use sawdust and wood scrapings that would otherwise be discarded to craft our superior-performance flooring. We manufacture responsibly by diverting 100% of our waste from landfills and utilizing it as energy. Our authentic wood looks are achieved through eco-friendly printing processes, and 100% of our aluminum and packaging comes from recycled materials.

A BEAUTIFUL HOME ENVIRONMENT SHOULD NEVER COME AT THE EXPENSE OF OUR OUTDOOR ENVIRONMENT.

**CHOOSING ALLOC
IS CHOOSING YOUR
ENVIRONMENT.**



Visit us now at www.alloc.com - Toll free 1-877-DO-ALLOC

november

			1	2	3			
4	5	6	7	8	9	10		
11	12	13	14	15	16	17		
18	19	20	21	22	23	24		
25	26	27	28	29	30			

1 → 3

AIA Illinois Annual Conference. This year's theme: "150 Years: Building on History." The Honor Awards program is Thurs., Nov. 1, in St. Charles, followed by conference sessions and tours in Elgin on Fri., Nov. 2, and Sat., Nov. 3. Details at www.aiaill.org and (217) 522-2309.

2 Alfred Alschuler, prolific architect of Loop buildings, synagogues and other structures, born 1876 in Chicago.

6 → 9

U.S. Green Building Council's Greenbuild International Expo

7-9 Green Building Council's Greenbuild International Expo, at McCormick Place, focuses on the theme "Accelerating Green Communities." Tours, speakers, vendors—all green.

Details at www.greenbuildexpo.org and (800) 795-1747.

8 Greenbuild's education program concerning Chicago's bid for the 2016 Olympics, 3 to 6 pm at AIA Chicago.

8 Reception hosted by AIA's national Committee on the Environment, 7:30-10 pm at AIA Chicago.

8 → 10

"Curtains Up! Restoring Historic Theaters and Revitalizing Communities" conference at the Pfister Hotel in Milwaukee. Details at www.wisconsinhistory.org/hp/workshop and (312) 939-5547.

13

Young Architects Forum Happy Hour, with Young Members Forum of Structural Engineers Association of Illinois. Everyone welcome; AIA membership is not required. 5:30-8pm at Rock Bottom Brewery, 1 W. Grand Ave. Details at www.aiachicago.org

15

Climate Change and Chicago's Infrastructure, a panel discussion by city of Chicago departmental leaders, who detail what impact climate change initiatives will have on the city's future infrastructure. 6 pm. Co-sponsored by the city and Chicago Architecture Foundation. Details at www.architecture.org.

december

				1				
2	3	4	5	6	7	8		
9	10	11	12	13	14	15		
16	17	18	19	20	21	22		
23	24	25	26	27	28	29		
30	31							

4

Young Architects Forum Happy Hour, 5:30-8 pm, at Rock Bottom Brewery, 1 W. Grand Ave. Details at www.aiachicago.org.

6

AIA Chicago Annual Meeting, at the University Club, 76 E. Monroe. Details at www.aiachicago.org and (312) 670-7770.

13

Tile One On at the Young Architects Forum Holiday Party, with International Masonry Institute. Make your own tiles in plaster molds, some of them Louis Sullivan designs. 6 pm, Hard Rock Café, 63 W. Ontario St. Details at www.aiachicago.org.



13

Board of AIA in New York officially recognizes Chicago Chapter in 1869.

16

Zachary Taylor Davis, architect of both Wrigley Field and the old Comiskey Park, dies in Chicago in 1946.



25

George W. Maher, architect of Chicago and North Shore Prairie-style homes, born in Mill Creek, WV, in 1864.

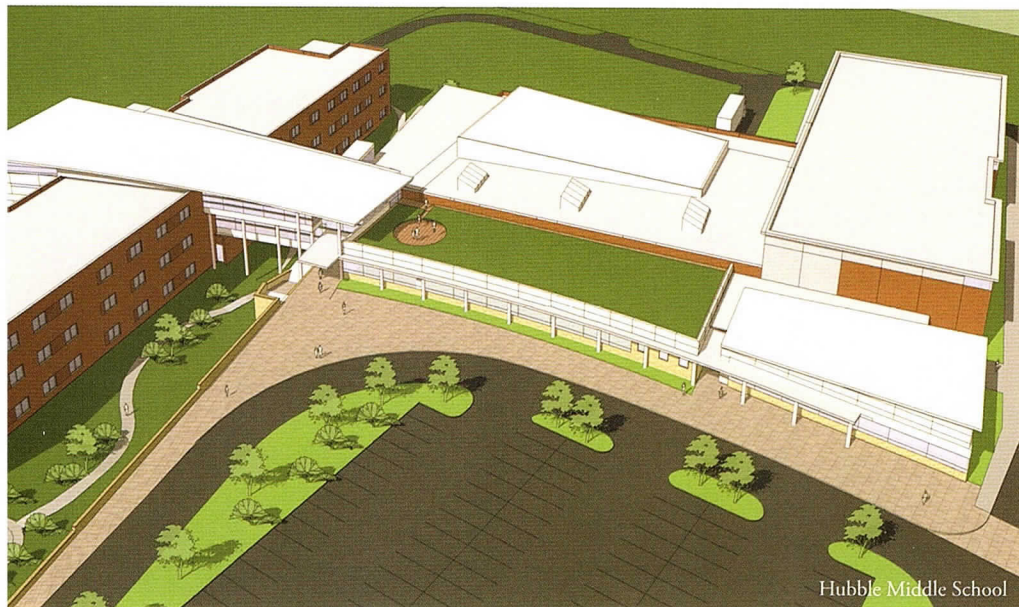
ONGOING

Through Jan. 5, 2008: Intersections: Views Across Chicago, an exhibit of large-format photos of the architecture and humanity found on the city's street corners, shot for a streetcar company and overlooked for years in the CTA's archives. At Chicago Architecture Foundation. Details at www.architecture.org.

For details on events, go to websites noted or to www.aiachicago.org

Master Planner highlights some of the most appealing activities on the two-month calendar. Many more events, programs and details are at www.aiachicago.org. Know a useful or memorable date? Send information for Master Planner to CA@aiachicago.org.





Hubble Middle School

A middle-school, an ambulatory care facility and a mixed retail-condo-health club are among the projects steaming ahead for Legat Architects.

Wheaton Warrenville Unit School District 200's board has approved the firm's concept plan and design for the 187,000-square-foot Hubble Middle School that features "extended classrooms" that accommodate large-group learning activities. Centegra Health System broke ground for its 65,000-square-foot ambulatory care structure in Huntley, and also tapped Legat to design an addition for a cancer center at the Northern Illinois Medical Center in McHenry.

Now finished is the Eleven 20 Club in Oak Park. That mixed-use project has 44 condos, a two-story

health club and retail space in its 189,000 square feet. Part of the job entailed renovation and restoration of an 1898 structure, the Drechsler Building.

Legat is also now the campus architect for Rosalind Franklin University of Medicine and Science in North Chicago, and is designing and project managing a 50,000-square-foot headquarters in Bloomingdale for the world's oldest and largest fraternal order of masons, Scottish Rite.

Vuk Vujovic, Assoc. AIA, Legat's director of sustainable design, participated in a panel discussion on the topic "What's Real About 'Green?'" at the 2007 Mid-Year Update and Forecast event sponsored by the Real Estate Investment Association and the DePaul University Real Estate Center.

Murphy/Jahn announced the appointment of Nicolas Anderson to associate principal architect.



Dawn R. Schuette, AIA, is now a full partner at Threshold Acoustics with Scott Pfeiffer and Carl. P. Giegold, AIA.

While at Kirkegaard Associates, Schuette, who is a director of AIA Chicago, led the acoustic design efforts for the newly completed Holland Center for the Performing Arts in Omaha, Cobb Energy Performing Arts Centre in Atlanta, and other notable projects.

Threshold is at work on the Glasgow Royal Concert Hall, Kentucky Center for the Arts, Muntu Dance Theatre of Chicago, and a competition-winning design for the Ford Calumet Environmental Center in Chicago.



With a passel of work going on out west, Solomon Cordwell Buenz has opened a San Francisco office to support those projects. SCB has

major projects going in Las Vegas, San Diego, Seattle and Phoenix, not to mention a dense pack of work in northern California. There, the firm has its prominent 55-story One Rincon Hill and two major mixed-use developments in San Jose, Three Sixty Residences and City Front Square.

The San Francisco opening entailed moving eight architects from Chicago and an announced plan to have 25 employees there. Work on the second tower at Rincon Hill tower was expected to begin by the end of 2007.



Eleven 20 Club

All images provided by the firms.

For enhancing the visual appearance and overall community sense of Valparaiso, Indiana, the St. Paul Education Center designed by DLR Group earned a Community Improvement Award in July from the city of Valparaiso and its Chamber of Commerce.

The structure was one of seven honorees thanked for having a positive influence on the surrounding community. In this case, it was not only the building's looks but its signaling of a "commitment for Valparaiso's future," according to a chamber of commerce official at the presentation.

The 60,000-square-foot addition to an existing church accommodates more than 300 students in kindergarten to 8th grade, and can handle three times that in the future. It was the first of a five-phase master plan program that in the future is to include new or expanded facilities for worship, seniors, rectory and other uses.

Two sizable Illinois healthcare structures broke ground on the same day, making July 12 a highlight on the calendar for OWP/P, the firm that designed both the patient care addition at Northwest Community Hospital in Arlington Heights and a mammoth expansion of OSF St. Francis Medical Center in Peoria that includes a new Children's Hospital of Illinois.

At Northwest, patient health comes first, of course, but environmental health is also an element of plans for its new 225,000-square-foot patient care structure, under construction now. The structure, a major component of the hospital's Renaissance Project that includes renovating 107,000 square feet of existing space, will go for LEED Silver Certification and is registered as a Green Guide for Health Care project.

The building's abundant glass and balconies on all floors are efforts to maximize natural light and a connection to the outdoors. The idea "is to create a healthcare environment that communicates the importance of nature and community to the healing process," says Jocelyn Stroupe,

principal and director of healthcare interiors at OWP/P.

In Peoria, OSF St. Francis's Milestone Project is a \$250 million program that encompasses 440,000 square feet of new or modernized space, the work of OWP/P and Atlanta-based Stanley Beaman and Sears. It includes a 200,000-square-foot children's hospital. The focus on improved safety and rest are manifest in the structure's use of noise-reducing materials and design, for enhanced rest and better healing; and a hand-washing sink at the doorway of every patient room, to help reduce the spread of infection. It's all slated to open in 2010.



Northwest Community Hospital



Mayor Richard M. Daley appointed Gracia Maria Shiffrin, AIA, to the influential and historic Chicago Plan Commission. Shiffrin, who was the mayor's deputy chief of staff from 2004 to 2006, is now in charge of development and construction at Catholic Charities Housing Development Corp., where she has recently overseen the completion of several projects serving seniors and homeless veterans.

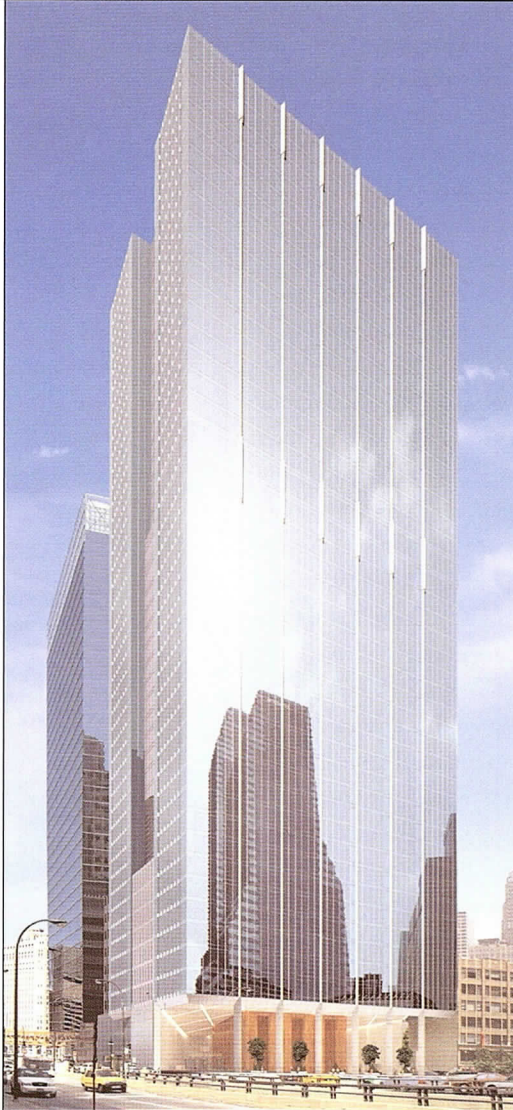


RTKL Chicago has completed designs for two projects, Paseo Morelia and The Harborage Club. Construction is underway on the first, a regional lifestyle center in Morelia, Mexico, that includes retail, a hotel, a family entertainment center, cinemas and a chapel. It is slated to be completed in 2009. RTKL's other project, The Harborage Club, is a dry-stack marina with a rooftop yacht club in Ft. Lauderdale, Florida.



Paseo Morelia

It's all about partnerships.



At Permasteelisa, we understand the importance of building strong partnerships. Our design-build approach incorporates a solid teamwork strategy with expert design engineers, trusted suppliers, skilled manufacturing technicians and proficient project management personnel. It is this collaboration that assures the complete satisfaction of our most important partner—our client.

PERMASTEELISA CS

2060 Centre Pointe Boulevard, Suite 10
Mendota Heights, Minnesota 55120
P 651 905 1515 **F** 651 905 1653

www.permasteelisa-cs.com

Permasteelisa CS is a proud partner and supplier of the curtain wall for 155 North Wacker - Chicago.



International
Masonry
Institute
1-800-IMI-0988
www.imiweb.org

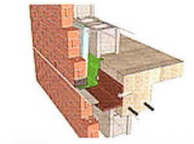
MASONRY DETAILING SERIES OFFERS NEW DESIGN TOOLS

The new web-based Masonry Detailing Series from the International Masonry Institute gives architects easy-to-use, practical solutions for their masonry projects. The interactive, multimedia format includes drawings, images, narratives, animated details and more. To view the series, visit www.masonrydetails.org.

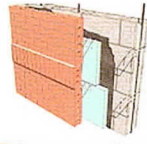
IMI also offers custom project-specific advice, through its regional Technical Service offices, which can be reached at 1-800-IMI-0988, or www.imiweb.org.

IMI offers free technical assistance to the design and construction communities, professional education for masonry contractors, and skilled training for craftworkers. IMI is a strategic alliance between the International Union of Bricklayers and Allied Craftworkers (BAC) and their signatory contractors to promote quality masonry construction.

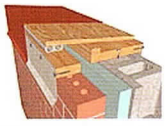
Images of the Masonry Detailing Series website are available in PDF and JPG format. Specific details and supporting materials can be downloaded at www.masonrydetails.org or email sconwell@imiweb.org.



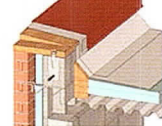
(NEW) 01.502: Floor detail: shelf angle w/ lipped brick



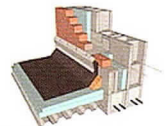
(NEW) 01.601: Architectural effect: projected soldier course



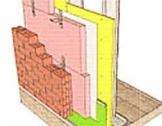
(NEW) 01.701: Roof detail: metal coping at parapet



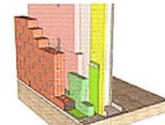
(NEW) 01.703: Roof detail: low parapet



(NEW) 01.704: Roof detail: low roof - high wall



(NEW) 02.101: Foundation detail w/ termination bar



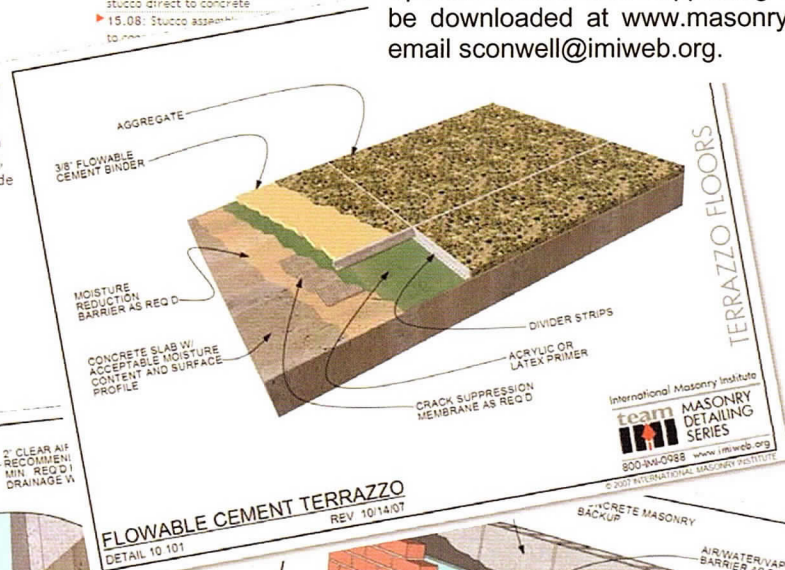
(NEW) 02.102: Foundation detail w/ termination bar & cavity insert



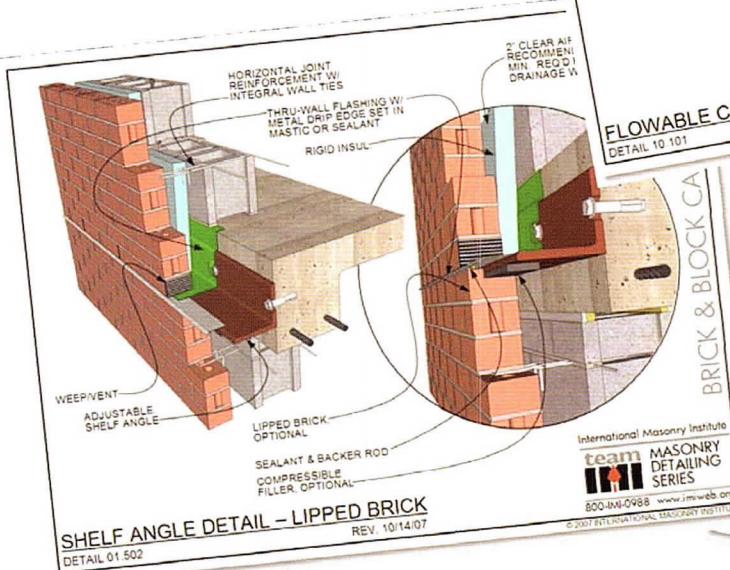
(NEW) 02.103: Foundation detail w/ termination bar, cavity insert & below grade

- top**
- ▶ 09.06: Floor Tile - Thinsit on Concrete or Cured Mortar Bed
 - ▶ 09.07: Floor Tile - Thinsit on concrete
 - ▶ 09.08: Floor Tile over CBU and Cork on Concrete
 - ▶ 09.09: Wall Tile - One coat method, wet area
 - ▶ 09.10: Wall Tile - One coat method, non-wet area
 - ▶ 09.11: Wall Tile - Cement Mortar
 - ▶ 09.12: Wall Tile - Thinsit or mastic on CBU over steel studs
 - ▶ 09.13: Floor Tile over CBU on Concrete
 - ▶ 09.14: Wall Tile - Thinsit on Concrete Masonry
 - ▶ 09.15: Wall and Floor Tile - Thinsit, corner condition
 - ▶ 10.02: Flowable cement terrazzo
 - ▶ 11.10: Allowable variations in mortar joint thickness
 - ▶ 12.01: Control joint
 - ▶ 12.04: Movement joint in brick & block cavity wall
 - ▶ 13.01: Window sill at cavity wall
 - ▶ 15.02: Stucco assembly: sheathed construction, wood framing
 - ▶ 15.03: Stucco assembly: sheathed construction, steel framing
 - ▶ 15.04: Stucco assembly: direct applied to concrete masonry
 - ▶ 15.05: Stucco assembly: attached to concrete masonry
 - ▶ 15.06: Stucco assembly: skim coat direct applied to concrete
 - ▶ 15.07: Stucco assembly: two-coat stucco direct to concrete
 - ▶ 15.08: Stucco assembly: to masonry

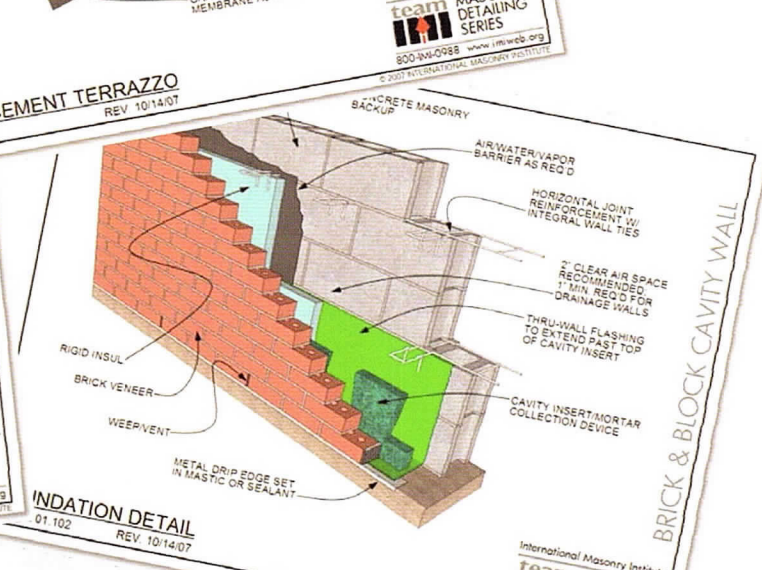
Partial screen shot of index page, www.masonrydetails.org



FLOWABLE CEMENT TERRAZZO
DETAIL 10.101
REV. 10/14/07



SHELF ANGLE DETAIL - LIPPED BRICK
DETAIL 01.502
REV. 10/14/07



INFLATION DETAIL
01.102
REV. 10/14/07

Congratulations
to all AIA Design Award nominees.



experience
honor inspire
distinguish

'Our business is built around client satisfaction and a passion for quality and service. This foundation has guided us to become one of America's leading providers of contract furniture and adaptable design.'

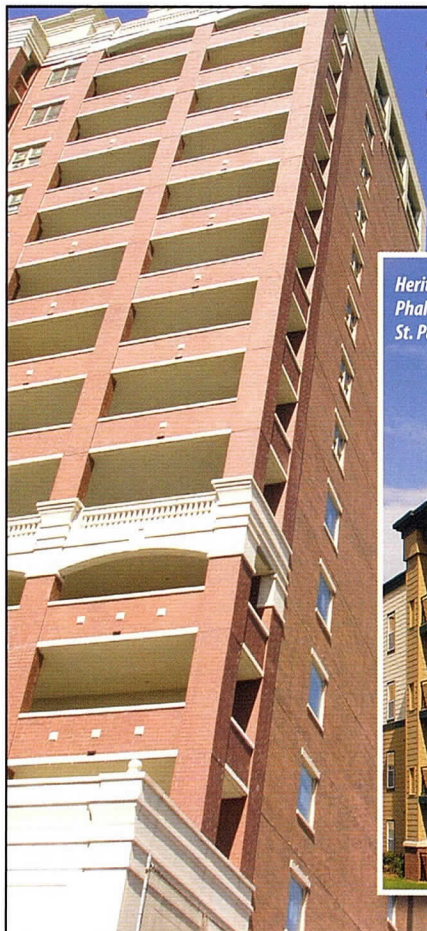
We maintain our service edge through a relentless dedication to continuous improvement, a steadfast determination to anticipate client needs and a will to be the best that we can be'.

Kayhan Hellriegel

kayhan
●●● international
a preferred Haworth Dealer

Kayhan International, Ltd.
1475 East Woodfield Road, Suite 104
Schaumburg, IL 60173
847-843-5060
www.kayhan.com

Derek Jayson Rusch
derek.jayson.rusch@kayhan.com



*Heritage Collection™ Designer Concrete Brick
Property developed by Sedgwick Properties
Development Corporation
Chicago, Illinois*



*Heritage Collection™ Designer Concrete Brick
Phalen Senior Housing Lofts
St. Paul, Minn.*

Building Communities

Meet lofty goals

with Heritage Collection™ Designer Concrete Brick

Concrete masonry is the ultimate building and decorating material. Discriminating architects and builders select it for structures that require distinction and long-lasting strength.

- Thin Veneers
- Concrete Brick
- Clay Brick
- Tumbled & Sculpted Masonry
- Decorative Concrete Masonry
- Oversize Concrete Units
- Burnished and Glazed Block
- Natural and Manufactured Stone Veneers
- Sound Absorbing Units
- Landscaping Products



Proud to be American based & American made

Chicago:

2217 South Loomis Street • (312) 421-8432

1430 North Elston Ave. • (773) 489-2423

www.countymaterials.com

Engineers for ideas

MAGNUSSON
KLEMENCIC
ASSOCIATES
Structural + Civil Engineers



www.mka.com

111 South Wacker Drive, Suite 3390 Chicago, Illinois 60606-4398 T: 312 683 1200 F: 312 683 1203
1301 Fifth Avenue, Suite 3200 Seattle, Washington 98101-2699 T: 206 292 1200 F: 206 292 1201

FAITHFUL
GOULD
CONSTRUCTIVE EXPERTISE

America's Leading
Cost Estimator

Cost Management
Program Management
Project Management
Construction Management
Value Management
Risk Management
Audit Solutions
Project Controls
Performance Monitoring



FGOULD.COM

Jim Farrell, *Business Development Manager*

jim.farrell@fgould.com

222 South Riverside Plaza
Suite 2240

Chicago, IL 60606

312.655.8510

FGOULD.COM

PAC-CLAD
Petersen Aluminum



NEW! AIA/CES ON METAL ROOFING

Sea Turtle Village & Cinemas
Bluffton, SC
Distributor: JGA Southern Roof Center/Beacon Sales
Architect: KRA Architecture Inc.
Roofing Contractor: Southern Roof & Wood Care
Profile: Snap-Clad
Color: Forest Green

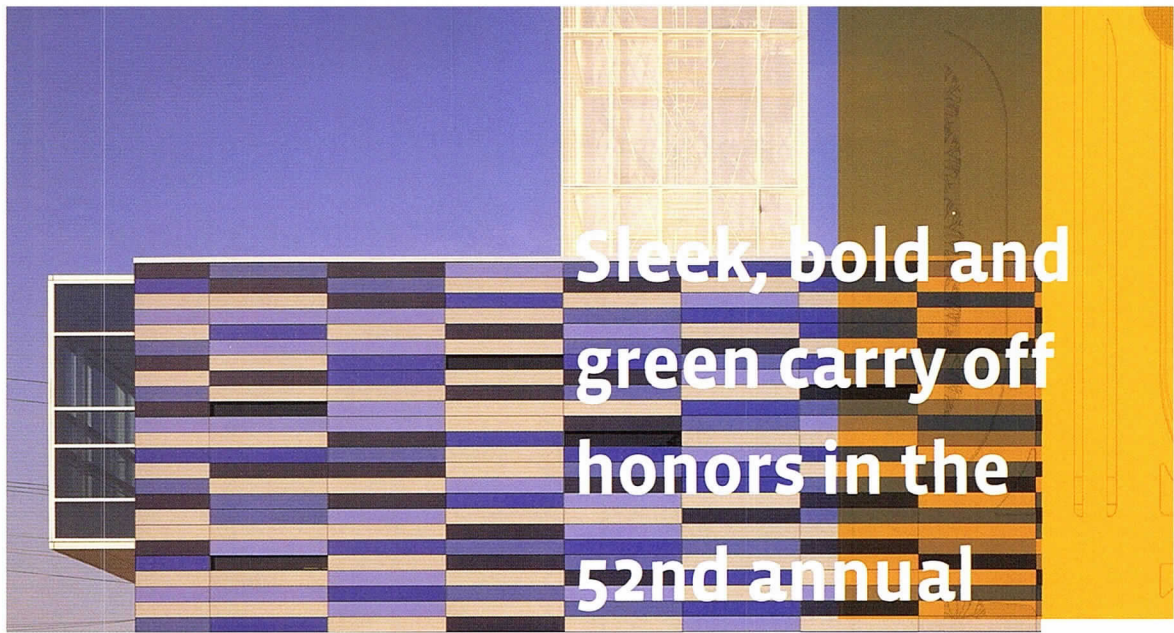
*E*arn one AIA/CES Learning Unit plus one hour of health safety welfare credit by reading our new article on metal roofing solutions. The new article discusses the complexities of metal roof systems, substrates and finishes.

Visit www.pac-clad.com and click on AIA/CES to access the program.

Petersen Aluminum

1005 Tonne Road • Elk Grove Village, IL 60007
1-800-PAC-CLAD or 1-847-228-7150
Fax: 1-800-722-7150 or 1-847-956-7968
<http://www.pac-clad.com>

Other Plant Locations:
Annapolis Junction, MD: 1-800-344-1400
Tyler, TX: 1-800-441-8661
Kennesaw, GA: 1-800-272-4482
Fridley, MN: 1-877-571-2025

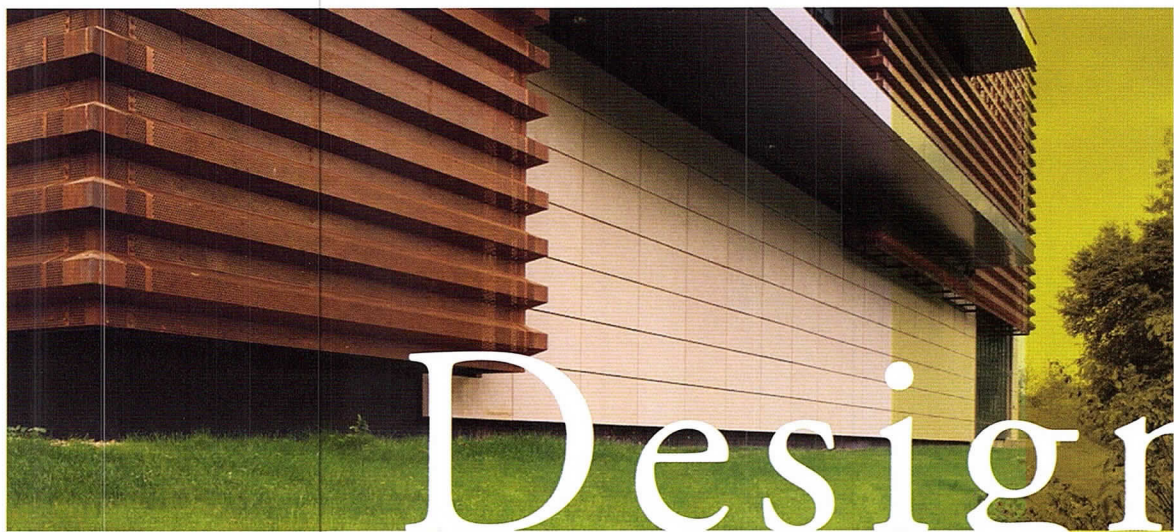


Sleek, bold and green carry off honors in the 52nd annual



Design Excellence Awards

Prized



Design



Modernism is rampant and overt

Bold volumes, sleek materials, and the mainstreaming of green features mark the winners in each category of AIA Chicago's 2007 Design Excellence Awards program. Some 46 award-winners represent the best current work of Chicago architects produced here and elsewhere.

Unusual and contorted geometries, a stalwart formula in recent years, seem to be on the wane. Instead, the Honor Awards among this year's Distinguished Building Awards went to: a multi-hued community center topped by an LED tower; a renovated warehouse celebrating the arts through an ever-changing video wall stretched across its façade; a large office structure that projects its modernity while conserving energy through a sophisticated, double layered skin of glass and stainless steel; and a tautly minimalist frame-and-box international border station.

Each of these overtly modern projects comes from an author well known to the Chicago architectural community—John Ronan, Doug Garofalo, Helmut Jahn, and Tom Beeby, respectively. None is a stranger to the Distinguished Building Awards (DBA), but it's significant that the two forty-somethings, Ronan and Garofalo, are being acknowledged for their first ventures into civic structures—perhaps a signal that their

Continued on page 24

by Edward Keegan, AIA

Chicagoans work in a frankly eclectic way that is a healthy aspect of today's architectural culture.



D

distinguished building

previously noted talents are now ready to play on bigger stages.

The Interior Architecture Awards jury found more formal variety among its top prizes (see p. 47), honoring Valerio Dewalt Train's *au courant* curving Garmin Store, mac D+A's hard edged Touch Salon, and Vinci/Hamp's historically significant renovation of the Illinois State Capitol House and Senate Chambers.

Ronan's Gary Comer Youth Center scored a triple play, collecting a Divine Detail Honor Award (see p. 43) and a Sustainability Honor Award (see p. 35) along with its Distinguished Building prize. Just over a year old, this bright beacon of hope in a difficult South Side neighborhood has garnered national attention for its lively design and its program of community opportunity.

DeStefano+Partners' State Emergency Operations Center took the other Divine Detail Honor Award. It's encouraging that a super-secure, post-9/11 building centered on a Dr. Strangelove-like control room can be transformed into a compelling work of architecture through distinctive detailing.

Four Honor Awards top the Sustainable Design category, with Valerio Dewalt Train's Kresge Foundation Headquarters adding a third plaudit to its DBA and Interior Architecture accolades from last year. An environmental research education center by Holabird & Root, a house by Farr Associates, and LCM Architects' Universal Design and Platinum LEED facility for Access Living round out these honorees.

Is there something that unifies

the winners, separates them from other nominees? Following the DBA deliberations, two jurors, New Yorkers Ronnette Riley, FAIA, of Ronnette Riley Architect and Richard Olcott, FAIA, of Polshek Partnership Architects, discerned a nascent regionalism. Olcott described it as "good clean modernism with a lot of local and contextual clues. It's an interesting thing and it's quite prevalent." But Sain, the lone Midwesterner, dissented. "I didn't see a Chicago vernacular," said Sain, who practices with Rockhill and Associates in LeCompton, Kansas.

I agree with Sain. Each winner is a worthy design, but any indication of a collective direction seems manufactured rather than real. The buildings they lauded represent just one slice of the broad range of current work by Chicago's architects. Anything with overtly traditional forms—gabled roofs being the most obvious element—drew disdain and, sometimes, derision from the DBA jury. Brick itself seemed a trouble spot—regardless of expression—although one bold brick townhouse by Studio Dwell did rate a citation.

Given Mayor Daley's interest in sustainable design and his oft-stated challenge for Chicago architects to lead the charge, it's not surprising that many entries included green features. But the jurors were appropriately skeptical, separating true green from faux. "There was a lot of conversation about green that looked like conventional building," Olcott noted. Riley was even more succinct. Something as fundamental

as building orientation was often left unclear. "If you're going to talk green, you better show a north arrow," to indicate where the sun hits the structure, she said. "There was a lot of green-washing" among the nominees. The jurors were confident the projects they honored were honest green.

It's no secret that Chicago's architects are building around the world—it's been happening since the days of Burnham and Wright—but this year's awards suggest that our designers might be better off spending more time at O'Hare than in their offices. To wit: while only five of the 121 submitted projects for the DBA were located on foreign soil (fewer than in recent years), four of those five are going home with some level of acclaim. It's clear from this tally that Chicago architects' efforts abroad are particularly well executed, but it raises fundamental questions about why local patronage isn't producing similar results. That's an issue that merits more serious discussion among Chicago's architects and their local clients.

Here or abroad, the buildings chosen for this year's awards are exemplars of what we are building today, regardless of locale. The ability of today's Chicago architects to work in a frankly eclectic way—different forms, materials, and expressions for disparate clients and programs—is a healthy, albeit often overlooked aspect of contemporary architectural culture. This year's award winners are the tip of a rather large iceberg whose full form will be known in due time.



S

sustainable



dd

divine detail



i

interiors

Our works abroad are particularly well executed; why aren't local patrons producing similar exemplars?

Distinguished Building



architect
John Ronan
Architects

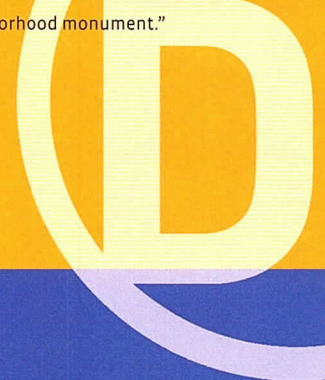
client
Comer Science
and Education
Foundation

contractor
W.E. O'Neil
Construction Co.

consultants
Arup (Structural)
CCJM Engineers
(MEP)

Gary Comer Youth Center | Chicago

An exuberant newcomer to Lands' End founder Gary Comer's childhood neighborhood, this affable building has space for youth education and recreation programs, as well as the South Shore Drill Team performance group. Jurors liked the way the building turned its "solid skin to the street side, and then opened up inside," thanks in part to numerous skylights that puncture an 8,400-square-foot roof garden. They called the building's colorful cladding "a beautiful element." While the entire set of panels animates the building, individual panels can be replaced after vandalism or other damage, without leaving a visible repair scar. The LED tower atop the Center's 80-foot tower "makes it a neighborhood monument."



Port of Entry | Raymond, Montana

embraces the huge sky above; it's an elegant representation of the landscape out there," one juror said of this airy border-crossing station in northeastern Montana. They were romanced by the "combination of forms under a large roof—they have a beautiful relationship. The solid form has external support, and the translucent form for daily use made slightly smaller." The barren, windswept landscape and the busyness of the commercial trucks and farm equipment that pass through this station posed a formidable challenge, but the result is something purely beautiful."



Craig Brandt, Hammond Beebey Rupert Ainge



architect
Hammond Beebey
Rupert Ainge

client
U.S. General
Services
Administration

contractor
Joanne Johnson
Contracting LLC/
Rolac Construction

consultants
Thomas, Dean & Hoskins, Inc.
(Structural); DuSABLE, Inc. (Civil); CTA
Architects Engineers (MEP)

Distinguished Building



architect
Muphy/Jahn

client
Mannheimer
Holding AG
contractor
Hochtief
Construction AG

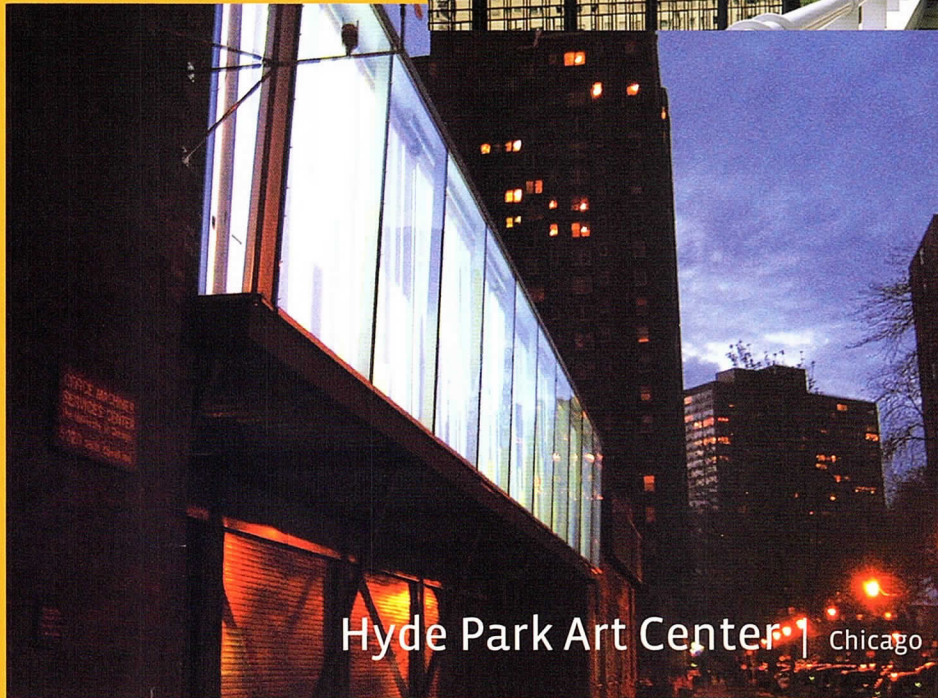
consultants
Werner Sobek Ingenieure GmbH (Structural); Transsolar
Energieietechnik GmbH, and Brandi Consult GmbH (Mechanical);
Peter Walker & Partners, and Wolfgang Roth (Landscape); L-Plan
Lichtplanung (Lighting); AIK Expeditions Lumiere (Lighting); Jappsen
+ Stangier GmbH (Elevator and Window Washing); Horstmann + Berger
(Building Physics)

Mannheimer 2 Corporate Headquarters | Mannheim, Germany

This addition to a corporate headquarters from 1990 relies on sophisticated technology and abundant transparency to juxtapose itself with its older sibling. “It’s trying to push sustainability to a new level,” one juror said of the building’s many technological solutions. They include taking in outside air at each floor and distributing it horizontally—eliminating the need for gigantic air handlers and vertical shafts—and a twin-shell façade to reduce energy consumption. Technology aside, “it’s filled with light and detail,” and handsomely expresses its materials.



Roland Fralbe Fotografie



Hyde Park Art Center | Chicago

Garofalo Architects

The budget was small, the mission large. The architects’ solution was to create spaces that seem larger than their actual physical selves. That’s especially true of the glass and steel tube that floats above the sidewalk piazza outside the main gallery; here is where artists install work in many media for viewing from both outside and in. “The idea of the ever-changing element of the façade is outstanding,” a juror said, “an idea to keep what appears to be a very limited budget from getting in the way of making beauty.” The transparency continues inside, where disappearing doors encourage flow among spaces while honoring fire-separation needs, and interior windows double as vitrines for small exhibitions.



architect
Garofalo Architects

client
Hyde Park Art
Center

contractor
Crown
Construction
and Development

consultants
Thornton Tomasetti Engineers; Building
Engineering Systems; Chandra Goldsmith
(Landscape Architecture)

CITATION
OF MERIT 

architect
Goettsch Partners

associate architect
SIAL s.r.o.
client
GE Capital Golub
Europe LLC

contractor
Metrostav

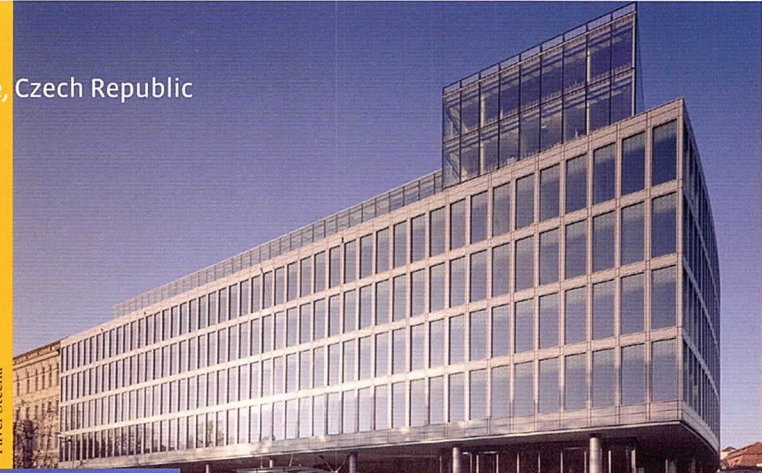
consultants
Building Services
Group (MEP)

Charles Square Center | Prague, Czech Republic

In a city center where new building sites are rare, the developer wanted to create an American-style office building that combines office, retail and below-grade parking—but with careful attention paid to Prague's historical architecture. The massing, fenestration and other components could bow to the neighbors on revered Charles Square, but the building would also have the technology and flexible space an office building demands. Jurors appreciated the interior court, reminiscent of those in many European cities.



Pavel Srecha



Pappageorge/Haymes

CITATION
OF MERIT 

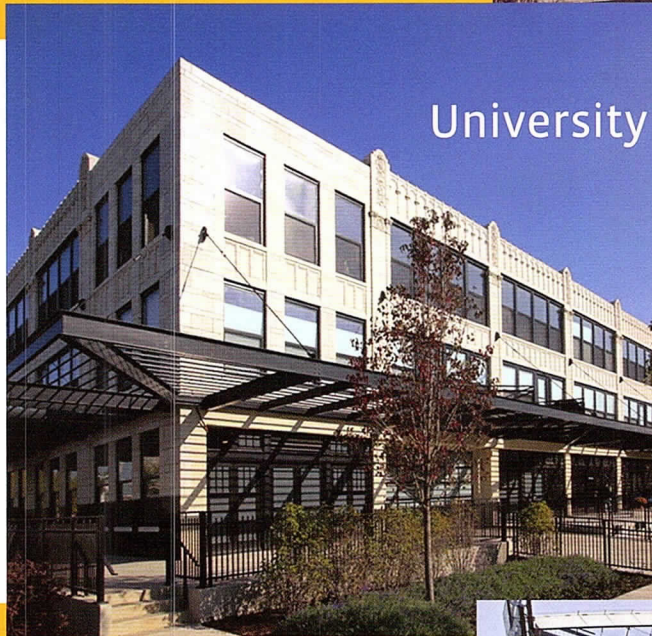
architect
Pappageorge/Haymes, Ltd.
client
The Enterprise Companies
contractor
The RJ Group
consultant
Samartano & Co.; Wiss, Janney, Elstner Associates, Inc.; David E. Rosenblatt, P.E.; Eriksson Engineering Associates, Ltd.; Charter Sills; Cosentini Associates, Daniel Weinbach & Partners, Ltd.

University Commons | Chicago

Turning six old produce warehouses with ornate terra cotta fronts into a 929-unit residential complex was a complex task, indeed. It entailed preserving the old facades, threading all new MEP systems through the structures, and creating light-filled residential spaces in what were once dim wholesale produce markets. A fourth-floor addition steps back modestly from the three-story original, while new triangular balconies echo the canopies that once hung in their place.



Rainer Viertlboeck



Merck Serono Headquarters and Research Center | Geneva, Switzerland

Not a single building but a city block where the architect knitted together new and historical structures as well as open spaces both covered and not, this project impressed jurors with its fluid traffic plan through the 'Main Street' and other connective areas. They delighted at the magical and changing boundaries for the public realm" created by the expansive glass roof with intricate work and a screen of crystalline glass blocks. One juror said, "you want to go walk this."



associate architect
Burekhardt + Partner AG
client
Merck Serono

architect
Murphy/Jahn

contractor
Steiner Total
Services Contractor

consultants
Werner Sobek Ingenieure (Special Structures and Façade Consultant); Transsolar (Energy Concept); Engineering Group Sécheron



CITATION
OF MERIT 

Distinguished Building

CITATION
OF MERIT



architect
Searl and Associates
Architects PC
client
withheld

contractor
S.R. McGuire
Builders, Inc., Tip Top Builders
consultants
James Differding (Landscape Architecture);
Shallan Hazelwood (Interior Design)

1748 N. Winchester | Chicago

Tall and slender on a slim urban lot, the house alternates austere private faces, on the two sides bounded by alleys, with more inviting faces on its other sides. A courtyard in the middle of the building lets sunlight pour into the interior, a relief from the dimness that characterizes some urban homes. The house is a tightly composed interplay of materials and spaces and a graciously fluid floor plan.



Marty Peters

Jeff Millies, Hedrich Blessing

Willow Residence | Chicago



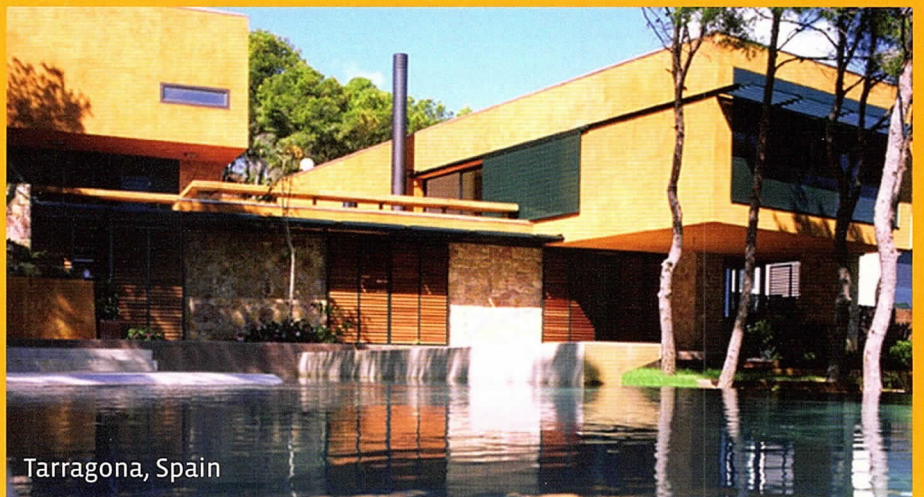
This project bowled a strike with jurors—appropriate, considering the home's earlier life as a bowling alley. Adding two levels to the one original created a dramatic home whose materials nod to the house's origins but contemporize it as well. Maple and pine alley flooring salvaged from the house becomes, on the first floor, a ceiling spine that reaches into two exterior courtyards, and on the second floor it is flooring for an arrow-straight hallway reminiscent of a bowling alley.



On a highly topographical site, this house melds indoor and outdoor spaces, with some rooms having no ceiling, others having a ceiling and floor but no walls, and some nothing but a floor. And of course some fully contained rooms. The house's open Mediterranean character seduced jurors, who felt it nicely embraced its natural setting with transparencies and criss-crossing views that extend the house.



Abello House | Tarragona, Spain



Monica Rosello and Jordi Guillaumet

CITATION
OF MERIT



architect
Xavier Vendrell, AIA,
Claudi Aguilo

client
Lluís Abello and
France Buyle

contractor
Construccions
Domenech

consultants
Eulalia Aran (Surveyor); Lluís Moya,
Xavier Aguilo (Structural); Joan Gonzalez-
Gou (Mechanical)

CITATION
OF MERIT



architect
John Ronan
Architects

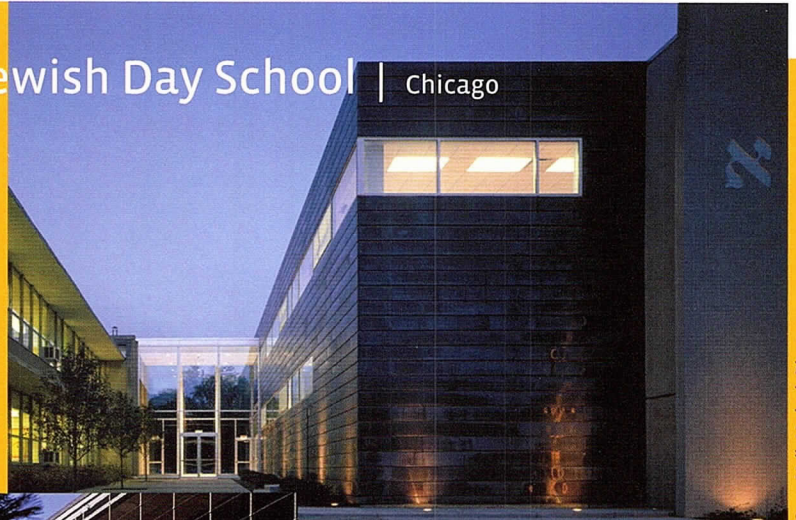
client
Akiba-Schechter
Jewish Day School

contractor
Meyne Company
(Phase 1); Levine
Construction
(Phase 2)

consultants
Robert L. Miller &
Associates
(Structural); CCJM
Engineers (MEP)

Akiba-Schechter Jewish Day School | Chicago

Nearly tripling the size of an established school, this addition had to be done relatively quickly, around the academic calendar, and inexpensively. Those constraints dictated the use of industrial materials such as precast concrete panels, but they were finished with an exposed limestone aggregate to link the new wing to the old. Jurors praised the building's ability to elevate common materials via a restrained design that emphasizes light and space.



Steve Hall, Hedrich Blessing

Doug Snower Photography

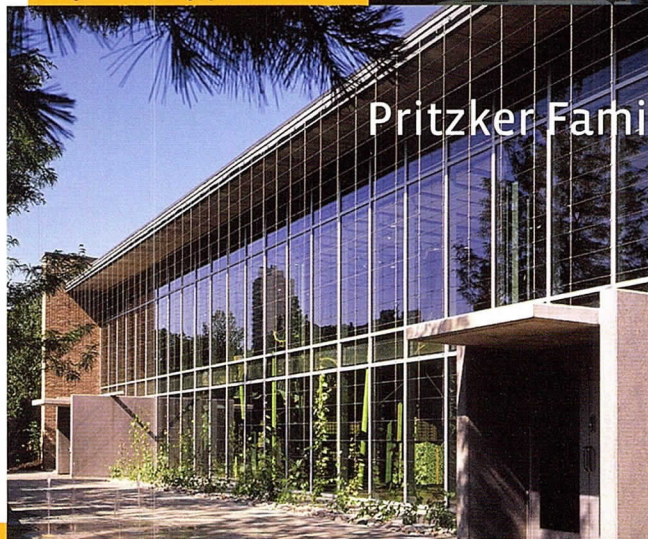
CITATION
OF MERIT



design architect
EHDD/Architecture
interior architect
architectureisfun, Inc.
climber design
Luckey & Company
client
Lincoln Park Zoo
contractor
Pepper Construction
consultants
Red Box Studio (Specialty
Fabrication); Alejandro
Romero; Klein &
Hoffman Structural
Engineers

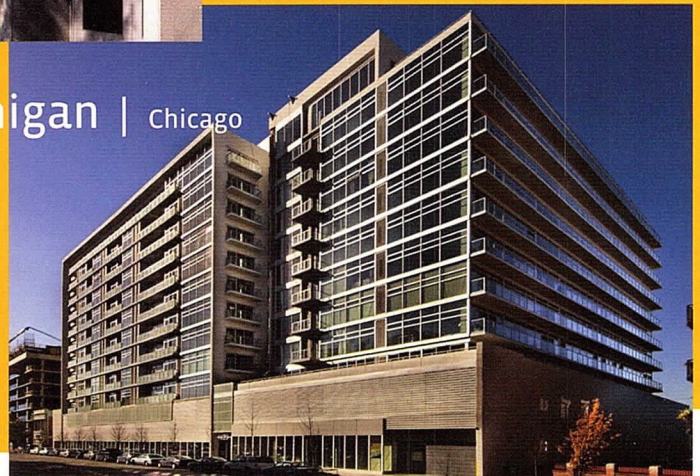
Pritzker Family Children's Zoo | Chicago

An indoor landscape of discovery and magic, the Children's Zoo is an artful wonderland where plywood leaves climb to the sky, tipped columns suggest angled tree trunks, and children huddle in wire mesh nests looking down into terrariums and an aviary. Light, shadow, touch and sound overlap one another as they would in a genuine natural setting, though here it is all orchestrated in order to encourage children to explore.



1620 South Michigan | Chicago

Serenely organized and rectilinear to the nth degree, this condominium structure is nevertheless a dynamic object, its balconies projecting like ribs and its two towers (originally envisioned as separate buildings) seemingly sliding past one another. Jurors lingered over the organizational details of the structure, as if examining an Escher drawing in all its complexity. The two masses stand perpendicular to one another, giving one stellar views north to the Loop and the other pride of place along one of the South Loop's main thoroughfares.



Darris Lee Harris, Padgett and Co.

CITATION
OF MERIT



architect
Brininstool + Lynch

client
CMK Development
Corp.

contractor
Bovis Lend Lease

consultants
Infracon/IG Consulting; C.E.
Anderson & Associates; WCW Engineers,
Inc.; Environmental Group, Inc.

Distinguished Building

CITATION
OF MERIT



architect
Murphy/Jahn
associate architect
**Smith and Smith
Architects**

client
**Mercy Housing
Lakefront**
contractor
Linn-Mathes

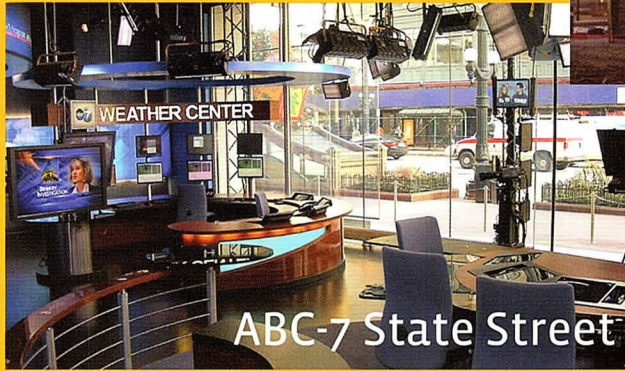
consultants
**Graef Anhalt Schloemer and Associates
(Structural); Environmental Systems Design
(Energy and Concept); The Renschler Co.
(LEED Commissioning)**

Margot and Harold Schiff Residences | Chicago

Passersby taken with the building's sophisticated and minimal shape are sometimes stunned to learn such an arresting new form in an upscale neighborhood houses formerly homeless and displaced Cabrini-Green residents. The other surprise in this ultra-sleek building is its environmental forwardness, including the horizontal wind turbines that animate the top of the building. "This project is taking its mission and its sustainability all the way," one juror said.

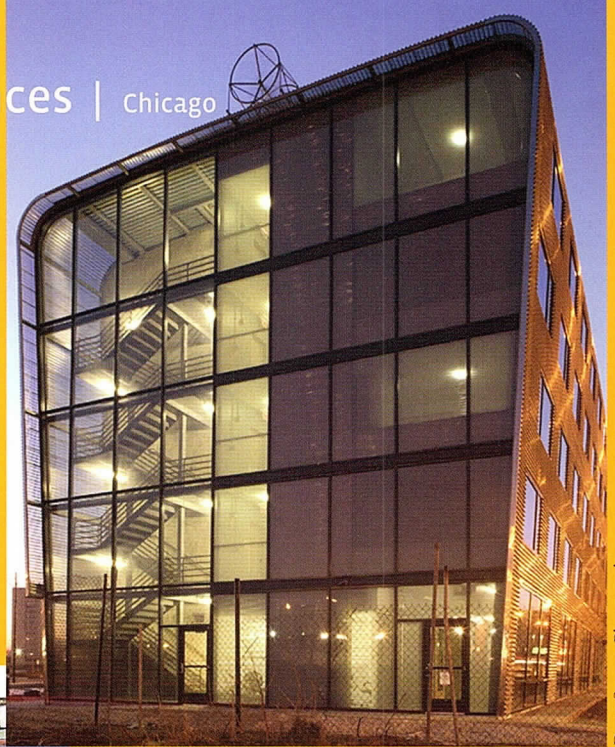


Puncturing the columned lower façade of a 1917 commercial building on State Street is a modern broadcast studio separated from the busy public sidewalk only by a wall of glass. The point-support glass system appears to float free of the building's structure, heightening the feeling that TV news personalities are sharing the space with the citizenry. The LED sculpture, 42 feet high, enhances the buzzing, contemporary attitude of the scene.



ABC-7 State Street Studio, WLS-TV | Chicago

James Steinkamp Photography



Doug Snower Photography

SPECIAL
RECOGNITION



architect
Legat Architects
client
ABC-& State Street

contractor
**Turner Special
Projects**

consultants
**Environmental Systems Design, Inc. (MEP);
Thornton Tomasetti Engineers (Structural);
Shen Milsom & Wilke (Technology)**

2007 Design Excellence Awards Jurors
A dozen jurors, working in teams of three for each category in this year's Design Excellence Awards, sifted through mountains of entries to select the most eminent buildings of the year, as presented in these pages. AIA Chicago is grateful for their effort. This year's jurors were:

Distinguished Building Awards:

Richard Olcott
FAIA
Polshak Partnership
Architects
New York, NY

Ronnette Riley
FAIA
Ronnette Riley
Architect
New York, NY

David Sain
Rockhill +
Associates
Lecompton, KS

Jurors

TOO OFTEN, THE ONLY THING BIM PROCESSES MAKE SUSTAINABLE, ARE HEADACHES.

We all want to create a cleaner and healthier environment through Sustainability.

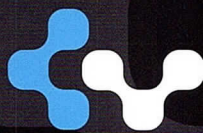
But implementing BIM processes can be time-consuming and well...difficult.

At CADworks, we help companies of all sizes become more efficient at designing, engineering, communicating, collaborating and, ultimately, competing. Whether you use the Revit® products, Navisworks®, or other interoperability tools, we'll get you BIM capable.

Visit SimplyBIM.com to see the many ways we can make easy a reality.

cadworks

We take the hard out of the software.



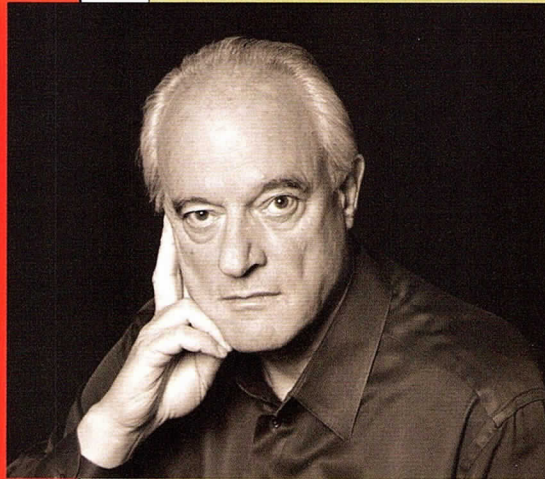
888.596.5325 | simplyBIM.com

Autodesk
Authorized Developer

AU Autodesk
University
2007

Microsoft
Small Business
Specialist

Chicago Building Congress Salutes Dirk Lohan With The 2007 Award Of Honor



Dirk Lohan's creative vision has played a large role in shaping Chicago as we know it today. A few of the visible examples of his accomplishments include his work on the Soldier Field & North Burnham Park renovation, the Cityfront Center Master Plan, and the Museum Campus Master Plan for the Field Museum and Oceanarium. His ardent enthusiasm for intelligent building design has inspired a generation to view architecture as more than just art . . . as "built environments" having a positive impact on the lives and work of all people.

Awards and recognition have followed Dirk's career achievements locally and nationally. We congratulate him now on receiving the prestigious Chicago Building Congress Award of Honor, celebrating his lifetime of notable achievement!

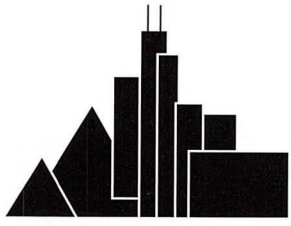


CHICAGO
BUILDING CONGRESS

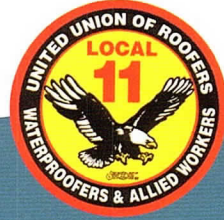
Chicago Building Congress

35530 Mignin Drive ■ Warrenville, IL 60555

Phone: 630/393-1313 ■ FAX: 630/393-1393



Chicagoland Roofing Council



www.chicagoroofing.org

Chicago's Green Roofers

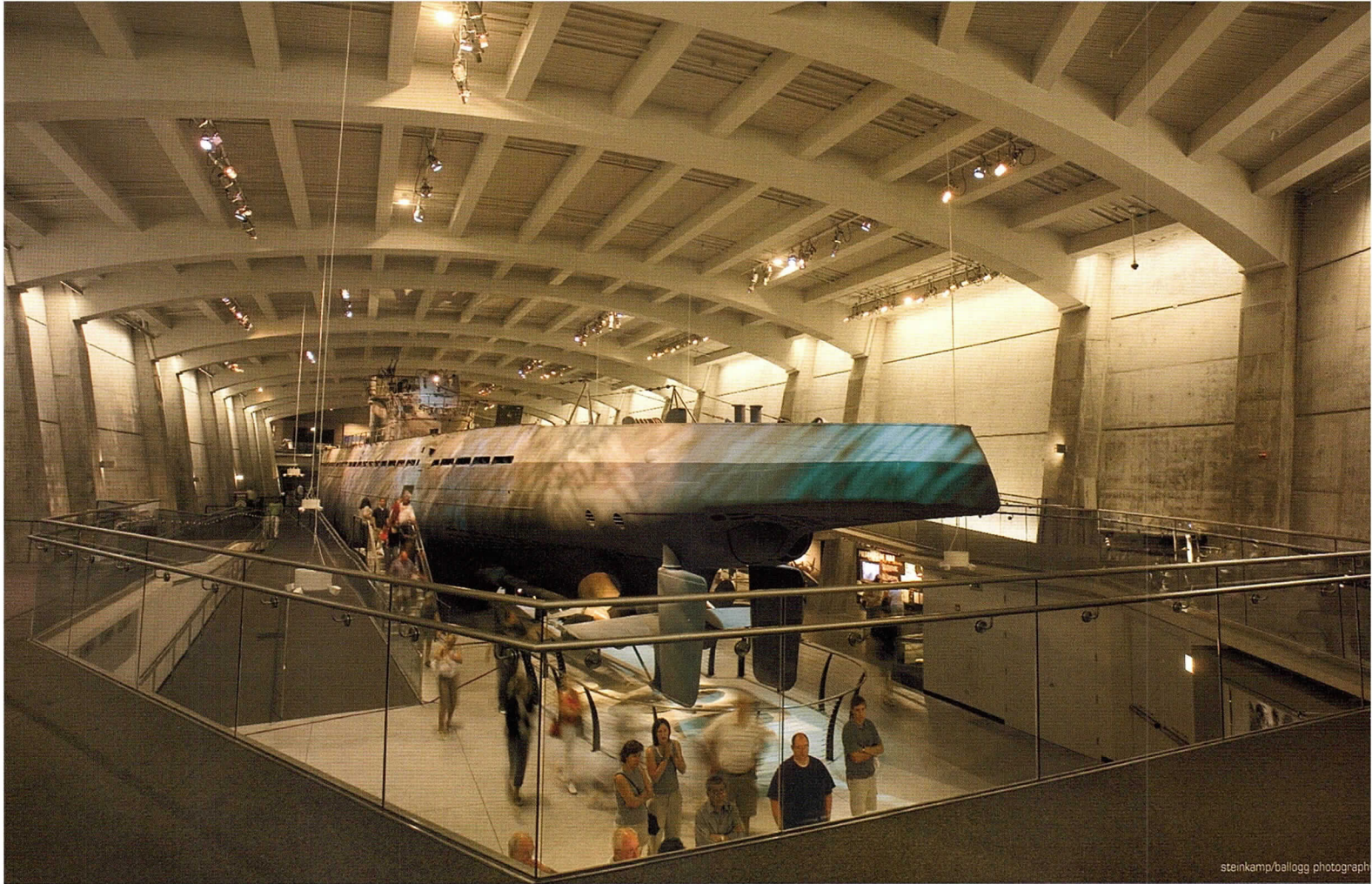


Chicagoland
Roofing
Council

Should your business go Green?

It's a business decision, yet an environmental decision. Consider the impact of city ordinances, building codes, tax benefits and energy costs. Chicagoland Roofing Council and Local 11 Roofers Union want to be part of your Green Roofing Project. Let our Green Roofing Professionals guide you through your installation of environmentally friendly roofing. Professional, Licensed, Bonded, Insured, Trained Contractors can help you with all your roofing decisions.

**For a list of Green Roofing Professionals,
call 877.671.ROOF**



steinkamp/ballogg photograph

CONGRATULATIONS TO THE U505 SUBMARINE CONSERVATION AND RELOCATION TEAM

From elaborate underground exhibits to internationally acclaimed towers, Halvorson and Partners provides the service you need to get your project from concept to reality.



HALVORSON AND PARTNERS
STRUCTURAL ENGINEERS

ENGINEERING YOUR NEEDS

600 WEST CHICAGO AVENUE SUITE 650

CHICAGO, ILLINOIS 60610

T +1 312 274 2400 F +1 312 274 2401

W HALVORSONANDPARTNERS.COM



architect
LCM Architects

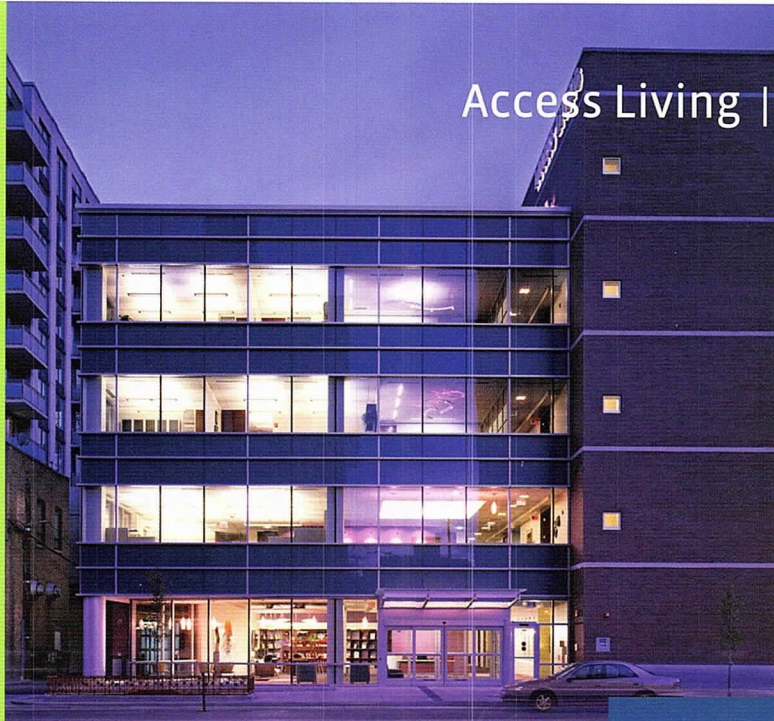
client
Access Living

contractor
Michuda
Construction

consultants
Illinois Facilities Fund, Cotter Consulting (Owner's Rep);
Thornton Tomasetti Engineers (Structural); 20/10 Engineering
Group (MEP/FP); Sieben Energy Associates (LEED)

Access Living | Chicago

Jurors professed their fondness for this forward-looking headquarters for a group that advocates for people with disabilities. "The thought that went into this was incredible," jurors said. "They went above and beyond, incorporating universal and green design." The intersection of the two is the building's distinctive strength—for example, lighting incorporates daylight harvesting to reduce energy use, but it can be adjusted to meet the needs of people with visual impairments.



Alys Beach Courtyard House A-5 | Alys Beach, FL

For a house in a walkable master-planned community in Florida's Panhandle, the architect used several techniques to maximize the structures' energy efficiency, ultimately attaining energy use that is 71 percent below code. Green features like the shaded arcade, central courtyard, geothermal heating and cooling, insulated concrete walls and even a shaded outdoor kitchen combine to give the home a languid comfort that enhances enjoyment of the setting. Jurors dubbed it "great design."



architect
Farr Associates

client
EBSCO Industries

contractor
Wave Construction
consultant
Spire Solar



architect
Valerio Dewalt
Train Associates

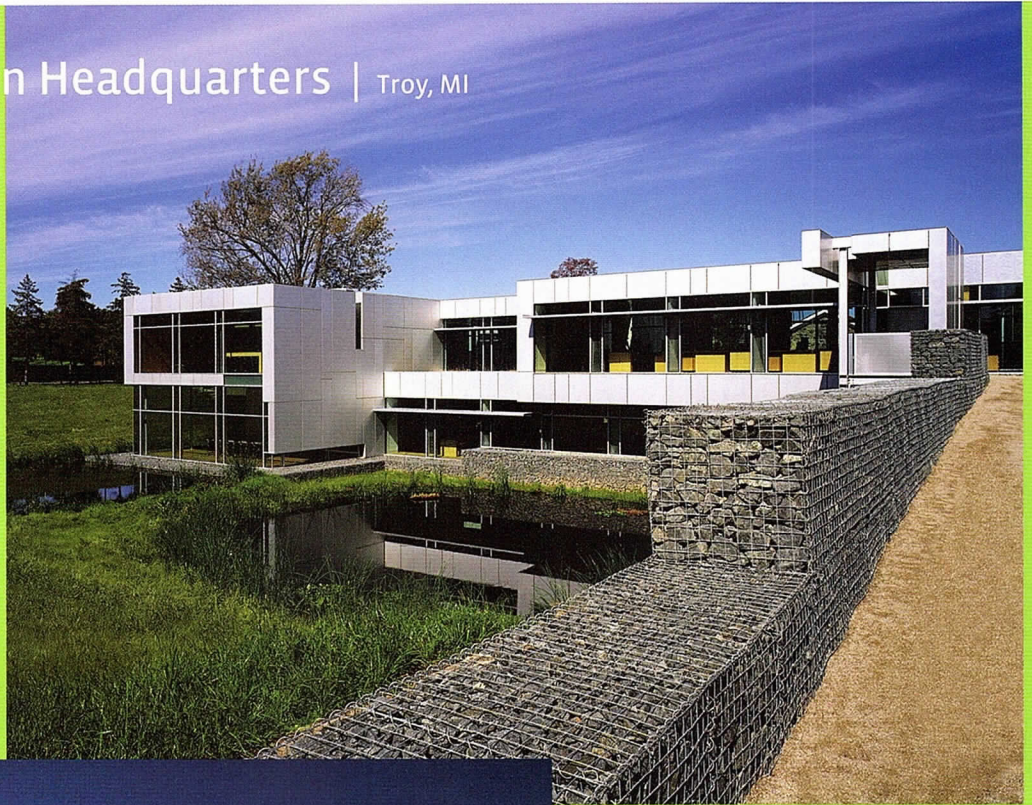
associate architect
Farr Associates
client
The Kresge
Foundation

contractor
JM Olson
Corporation

consultants
Robert Darvas Associates; OVE Arup &
Partners; Progressive AE; Conservation
Design Forum

Kresge Foundation Headquarters | Troy, MI

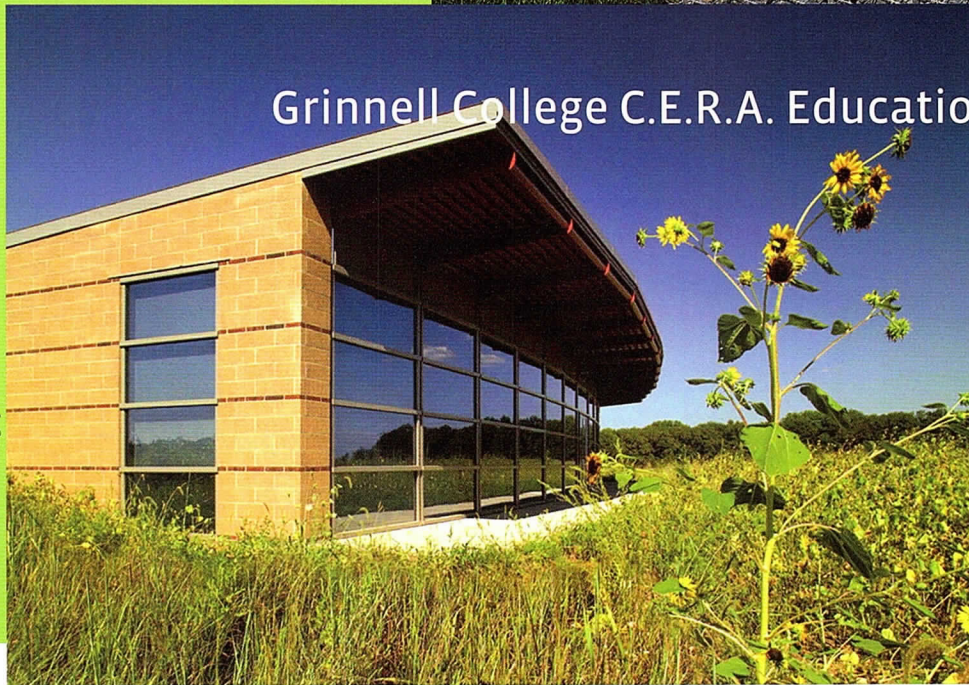
Although it uses 38 strategies to collect 52 LEED points, “they still made a great design,” jurors said. “It’s a beautiful building.” Embedded into the landscape, the building has retaining walls of gabion baskets filled with assorted old paving and foundation rubble from the site, but masquerading as crushed Michigan blue granite. And the 400 geothermal wells are concealed beneath the parking lot. Together, these and other details dramatically reduce the building’s environmental impact, but at no cost to its visual impact.



Barbara Karant, Karant + Associates

Grinnell College C.E.R.A. Education Center | Kellogg, IA

In its nature preserve, called the Conard Environmental Research Area, Grinnell College needed a facility for scientific and artistic study of the ecosystem. But as the parcel is in a rural area, it had to be nearly self-sufficient in resource use. The building sits low and faces south, to maximize sun and minimize cold and wind exposure. “The siting is good,” jurors said of the building with its north face buried partly in earth for insulation. Geothermal heat and a water-collecting roof that feeds greenhouses and toilets contributed to the project’s high marks.



Dale Van Donselar, Dale Photographics



architect
Holabird & Root

client
Grinnell College

contractor
Neumann Brothers

CITATION
OF MERIT



architect
Skidmore, Owings
& Merrill

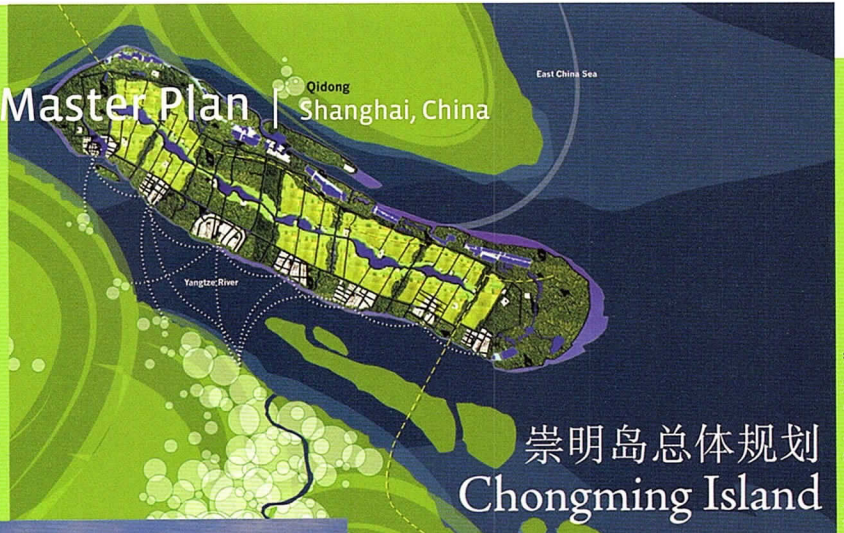
associate architect
W. Cecil Steward,
FAIA; Jocelyn Castle
Institute for
Sustainable
Communities.

client
Shanghai Urban
Planning Admini-
stration Bureau

consultants
Openlands Project; Chicago Green City
Market; Conservation Design Forum;
Wetlands Initiative; Sustain

Chongming Island Master Plan | Shanghai, China

"This is the way they should be designing" for China's ongoing, explosive growth, a juror said of the master plan for a 750-square-mile island in the Yangtze River—twice the size of the city of Chicago. The aim is to create space for 800,000 new inhabitants while preserving farmland and wilderness and installing public transportation system. The plan encompasses protected ecosystems, greenways and organic cropland into an urbanizing landscape.



James Steinkamp, Steinkamp Photography

崇明岛总体规划
Chongming Island

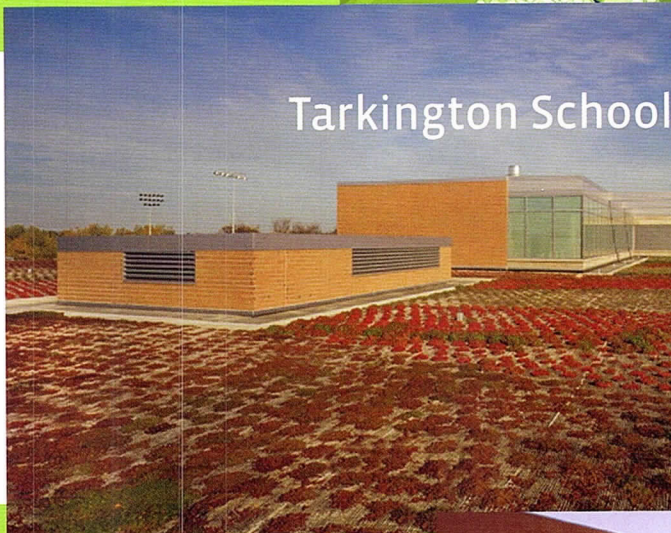
Skidmore, Owings & Merrill

CITATION
OF MERIT



architect
OWP/P
architect of record
Warman Olsen
Warman
client
Chicago Public Schools
contractor
George Sollitt
Construction

Tarkington School of Excellence | Chicago

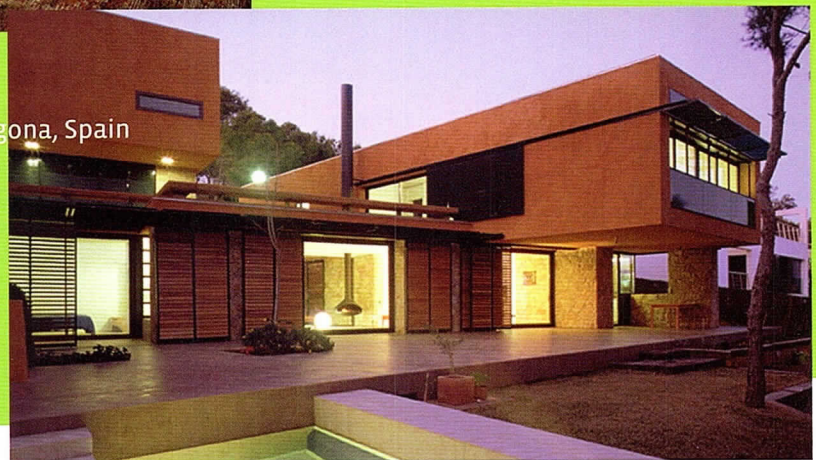


The first Chicago public school built to LEED guidelines, Tarkington School of Excellence has a vegetated roof and reflective roofing, its stormwater runoff is directed to the nearby Marquette Park lagoon via bio-swales, and it uses daylight harvesting strategies. But it also uses a no-tech strategy for saving resources: the building and athletic facilities also serve Chicago Park District users, eliminating the need for duplicative buildings. As a juror noted, "less structures equals less resources."



Abello House | Tarragona, Spain

Jurors commented on the many systems this house uses to lessen its impact on resources. Water that hits the roof is collected for landscape irrigation, mobile louvers allow for sun blocking without shutting off natural ventilation, insulation and other devices eliminate all but the most extreme need for air conditioning, and solar panels and geothermal energy provide hot water and heat. Together with its sumptuous aesthetics, those features make for "great design," jurors agreed.



CITATION
OF MERIT



architect
Xavier Vendrell, AIA,
Claudi Aguilo

client
Lluís Abello and
France Buyle

contractor
Construcciones
Domenech

consultants
Eulalia Aran (Surveyor); Lluís Moya,
Xavier Aguilo (Structural);
Joan Gonzalez-Gou (Mechanical)



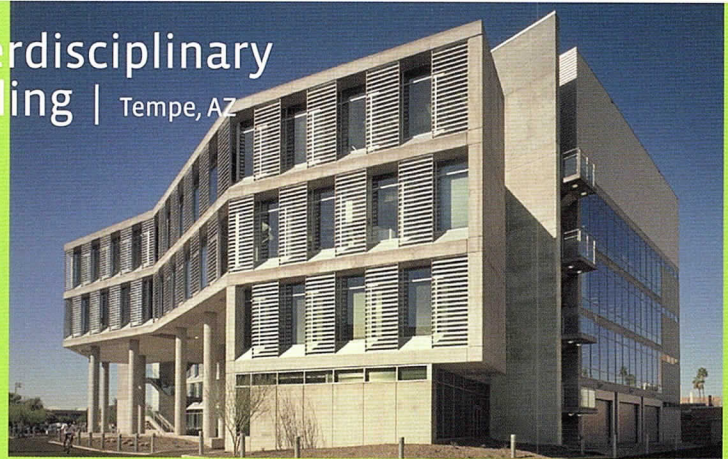
architect
Perkins+Will
associate architect
Dick & Fritsche
Design Group

client
Arizona State
University
contractor
Gilbane Building Co.

consultants
GPR Planners Collaborative (Laboratory Planning);
Battle McCarthy (Sustainability); Fore Solutions (LEED Consultant);
KPF Consulting Engineers (Structural); Bard, Rau + Athanas (MEP
Engineering)

Arizona State University Interdisciplinary Science and Technology Building | Tempe, AZ

Each of the four faces of this university building has an entirely different look from the others, in response to their varying interactions with the powerful desert sun. North is flush, south heavily shaded, west solid against the blistering afternoon heat, and east prepared for morning's variable sun intensity with a checkerboard of calibrated sunscreens. "Intriguing," jurors said of that judicious planning and other sustainable choices.



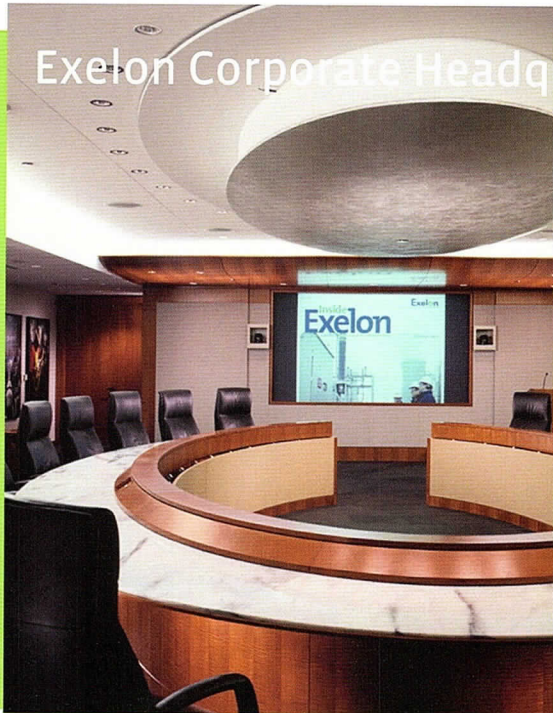
James Steinkamp, Steinkamp Photography



architect
Interior Space
International
client
Exelon Corp.

contractor
Turner Construction Special Projects
Division
consultants
Environmental Systems Design

Exelon Corporate Headquarters | Chicago



Encompassing ten floors of a new corporate headquarters, the Exelon project has many sustainable features, among them controllable task lighting for every employee, low-water plumbing fixtures, low- or no-VOC materials throughout, and recycled materials (including furniture from the old office space, where possible). The final layout gives nearly all employees natural light.

Steve Hall, Friedrich Blessing

Like the Schiff Residences, another recent Mercy Lakefront Housing development, this project had sustainability as a high priority, but did not have a high budget to match. The architect used oversized exposed roof trusses to support photovoltaic panels, their jaunty angles enhancing the already lively profile of the building. The result is what one juror described as a "playful, welcoming space" that at the same time demands less in resource costs.



Wentworth Commons Apartments | Chicago

Anthony May



architect
Harley Ellis
Devereaux

client
Mercy Housing
Lakefront
contractor
Linn-Mathes

consultants
KJWW Engineering Consultants;
Site Design Group; Matrix Engineering;
Sieben Energy Associates

SPECIAL
RECOGNITION

architect
Skidmore, Owings
& Merrill

associate architect
Stull and Lee
client
Manulife Financial

contractor
Clark/Suffolk Construction
consultants
McNamara/Salvia (Structural); R.G. Vanderweil Engineers (MEP);
Sasaki Associates (Interior Design, Landscape Architecture)

601 Congress Street | Boston, MA

Jurors appreciated the double-skin façade of this LEED-certified project on a brownfield site. Air flow through eight-inch cavity between inner and outer shells increases the wall's thermal resistance, and adjustable shades within that same gap can be set to keep solar radiation out.



Peter Vanderwarker

Alan Shortall Photography Ltd.

Christy Webber Landscapes Headquarters | Chicago



The industrial park goes eco, in the city's first response to Mayor Daley's stated hope for an eco-industrial compound. The landscape company's facility has two 'bars,' one for office use and the other for warehousing, both laid out east-west for best energy performance. The project also has geothermal heating, raised-floor displacement ventilation and additional green details. Outside, rainwater cisterns, rooftop trees and other items express the structure's low-resource approach.



SPECIAL
RECOGNITION

architect
Farr Associates
client
Christy Webber
Landscapes

contractor
George Sollitt Construction Company
consultant
CCJM; Terra Engineering; Drucker Zajdc
Structural Engineers

Gary Comer Youth Center | Chicago

Amid a large number of green-roof entries, this one stood out as "exceptional," jurors said. The roof garden is not only there to reduce climate-control costs, but as an outdoor classroom within the center's youth horticulture and environmental awareness programs. In soil 24 inches deep, children can grow vegetables, flowers, herbs and other plants; vegetables grown here are harvested for use in cooking classes downstairs. The space is "beautiful and usable," jurors said.



Steve Hall, Friedrich Blessing

SPECIAL
RECOGNITION

architect
John Ronan
Architects

client
Comer Science
and Education
Foundation

contractor
W.E. O'Neil
Construction

consultants
Arup (Structural); Peter Lindsay Schaudt
Landscape Architecture

Sustainable

SPECIAL RECOGNITION



architect
Murphy/Jahn
associate architect
Smith and Smith
Architects

client
Mercy Housing
Lakefront
contractor
Linn-Mathes

consultants
Graef Anhalt Schloemer and Associates (Structural); Environmental Systems Design (Energy and Concept); The Renschler Co. (LEED Commissioning)

Margot and Harold Schiff Residences | Chicago

The systemic use of green features in this project pleased jurors with its ambitious effort to raise the bar for such buildings. For special recognition, they singled out the apartments' reliance on a grey water capture tank, which holds and reuses water from laundry, bathroom sinks and showers for second use on the landscape and in other harmless ways.

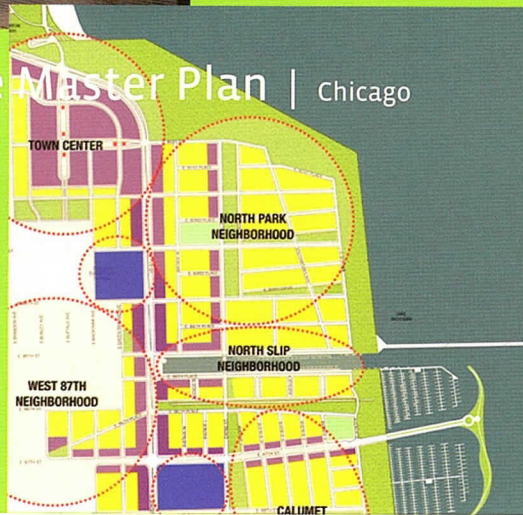


Doug Snower Photography



Lakeside Master Plan | Chicago

Plans for re-mapping a 575-acre former steel mill into compact, walkable neighborhoods knitted back into the surrounding areas would be complex enough, but this plan for the old South Works has sustainability as a fundamental attribute. Harvesting energy by using wind and lake water, using parkland to clean stormwater runoff and other strategies are all part of what jurors called this master plan's "exceptional high standards."



Skidmore, Owings & Merrill

SPECIAL RECOGNITION



architects
Skidmore,
Owings & Merrill;
Sasaki Associates,
Inc.

client
McCaffrey Interests;
Westrum
Development;
Lubert-Adler Funds;
USS Real Estate

consultants
Conestoga-Rovers (Environmental); STS Consultants (Foundations and Geotechnical); Bell, Boyd & Lloyd (Environmental Law); Antunovich Associates (Retail Planning); KLOA (Traffic); Spaceco (Civil Engineering); Christopher B. Burke Engineering; Ardmore Associates; Kenny Construction (Contractor and Costing); O'Neil Construction (Contractor and Costing); Shaw Environmental & Infrastructure

Jurors

Sustainable Building Awards:

Keith Criminger
AIA
McBride Kelley
Bauer
Chicago,

Helen Kessler
FAIA
HJKessler
Associates
Chicago

Erik Olsen
PE
City of Chicago
Dept. of Construction
and Permits
Chicago



Private Residence in St. Louis, Missouri
Featuring Dimensional Chalet Grey

The Best Stuff On Earth.

Whether you're improving your home indoors or out, Halquist Stone has the best stuff made on Earth.

Halquist Stone can customize any of our natural stone products to meet the needs for even the most discriminate customer or complex job - commercial or residential.

With quarries all over the State of Wisconsin, Upper Michigan and Arizona, Halquist Stone believes you won't find a better selection of colors, textures, sizes and patterns in your area!

ROCKING AMERICA SINCE 1929

HALQUIST STONE

TO REQUEST A CATALOG, CALL (800) 255-8811
OR VISIT HALQUISTSTONE.COM



**Does your CPA firm
provide expert advice
and strategic solutions
tailored to your firm's
specifications?**

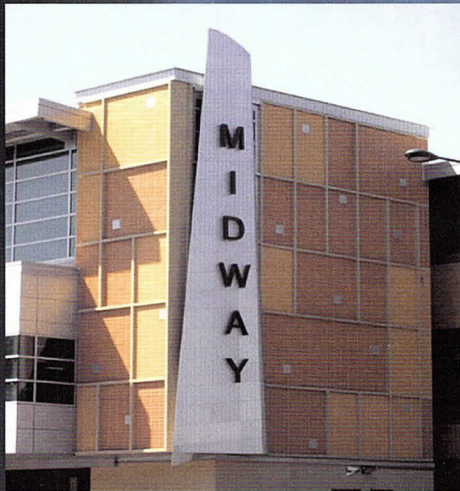
If not, contact Mark Mann at Mann.Weitz & Associates.
We've been providing tax, audit, business advisory services/
part-time chief financial officer (CFO) and consulting services
to architectural firms for more than 25 years.

MW&A

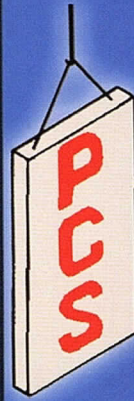
Mann.Weitz & Associates L.L.C.
Certified Public Accountants
and Consultants

108 Wilmot Road, Suite 110
Deerfield, Illinois 60015
847.267.3400 Phone
847.267.3401 Fax
mmann@mannweitz.com

When you're serious about your image.



www.oly signs.com
630.424.6100

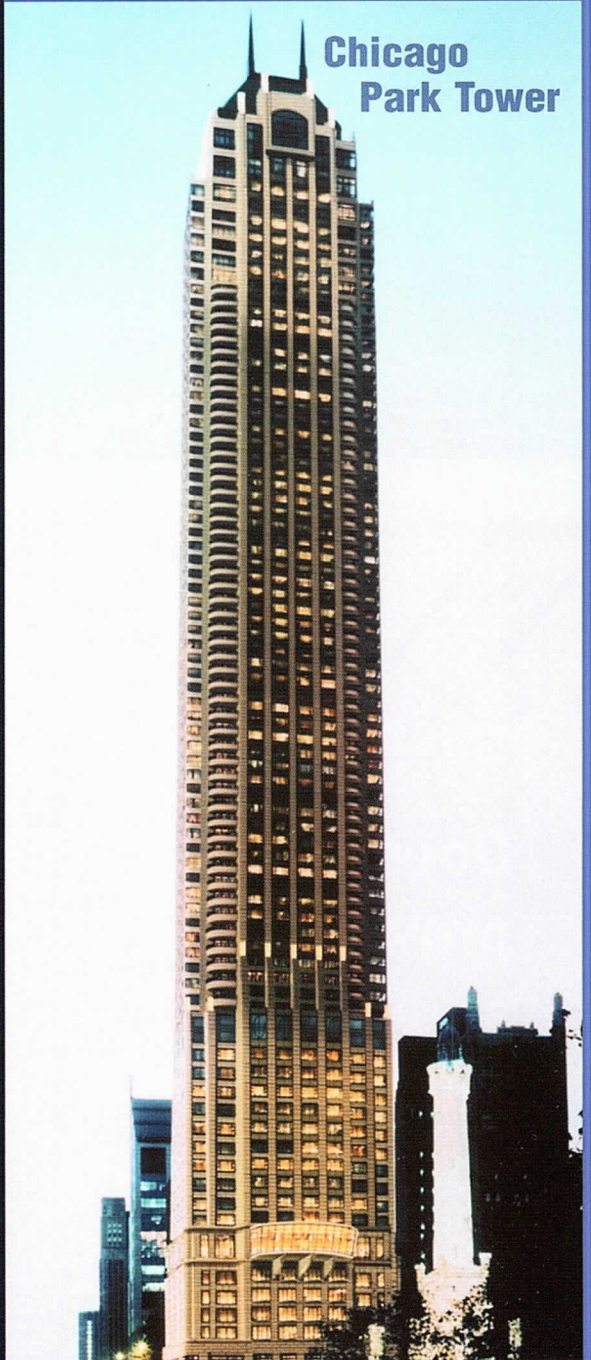


Precast Concrete Specialties Inc.

230 McKinley Ave. • Omro, WI 54963
(920) 685-2727 • WI Fax (920) 685-5402
www.precastinc.com

888-685-2728

Chicago Park Tower





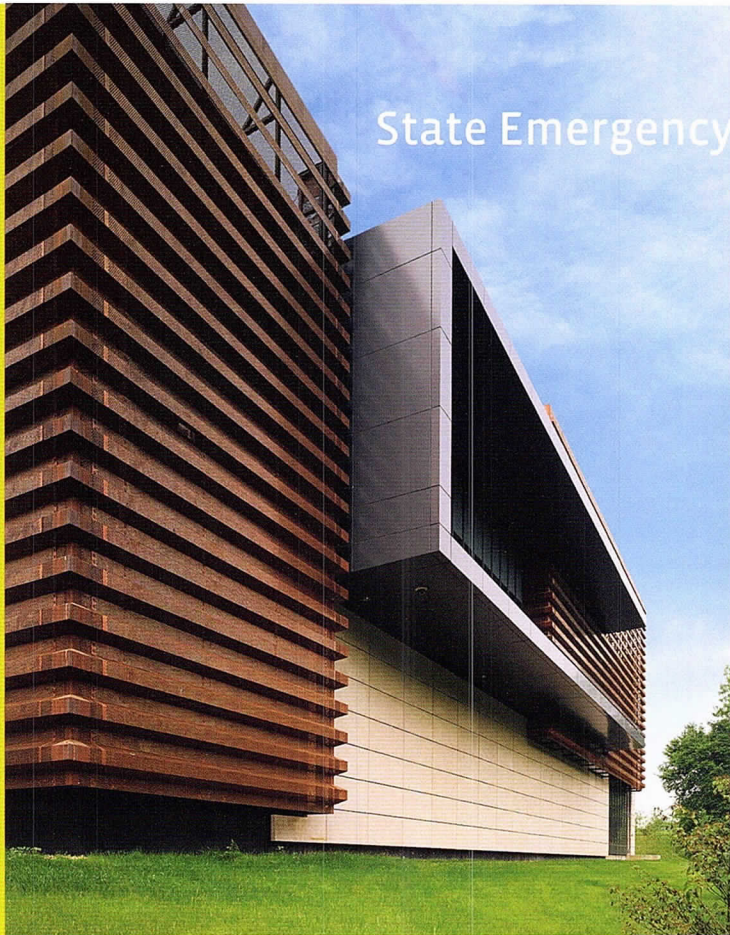
architect
DeStefano and
Partners

client
Illinois Capital
Development Board

contractor
River City
Construction, LLC

consultants
Environmental Systems Design (MEP/FP); Rubinos and Mesia, Inc. (Structural Engineering); Knight E/A, Inc. (Civil Engineering); System Development Integration (Technology Services); Daniel Weinbach & Partners (Landscape Architecture); ESD Construction (Cost Estimating)

State Emergency Operations Center | Springfield, IL



Karami + Associates

“There’s some innovation there,” jurors said about this imposing structure’s copper rain screen. “It integrates with the massing of the major components.” Like the agency this building houses, the rain screen is there to protect and provide aid; it protects windows that would otherwise be left vulnerable, and it aids in unifying the overall design. Perforations in the screen allow natural light into the building, relieving the intensity of the work that goes on there.



Gary Comer Youth Center | Chicago

Another approach to a rain screen, this one’s aesthetic is more playful in response to its use on a children’s building—but it, too, plays a protective role. Because of fears of violence in the neighborhood, large windows were not ideal for security reasons. The slot windows, inset into the building cladding, deter intruders, but they also serve as counterpoint to the cladding. They present as dark voids in the daytime but at night animate the façade with light from the interior. Jurors called the use of an attractive rain screen as a security device “exquisite.”



Steve Hall, Hedrich Blessing



architect
John Ronan
Architects

client
Comer Science
and Education
Foundation

contractor
W.E. O’Neil
Construction Co.

consultants
Arup (Structural);
CCJM Engineers
(MEP)

Divine Detail

CITATION OF MERIT



architect
G. Goldberg + Associates

client
Geoffrey Goldberg and Lynne Remington

contractor
Cerwe Construction
consultants
Steam Joglekar (Consulting Engineer); Cross-tree Studios (Metal Fabrication);

House Dayton | Chicago

This ribbon-of-steel staircase floats upward through the home with no apparent effort, folds upon itself at landings, and punctuates the open plan of the residence. Each step seems to disappear on one side into the frosted glass panel, combining with the cascade of light through the open risers to create a sense of weightlessness. "It's a beautifully crafted thing," said jurors. "Great craftsmanship."



Steve Hall; Hedrich Blessing

Hannah's Bretzel | Chicago

For a purveyor of wholesome organic foods, UrbanLab went with wall panels made of the same natural ingredients: whole grain, wheat and seed. In a branding-conscious twist, the panels were then emblazoned with digitized images of pretzels, creating a memorable visual identity for the store's signage spaces. Jurors savored the idea: "Wheatboard panels are low-tech in operation [an employee manually changes the signage hanging on them], but high-tech in how they were manufactured."



Michelle Litvin

CITATION OF MERIT



architect
UrbanLab
client
Hannah's Bretzel

contractor
Lawrence Construction Services

consultants
T.J. McLeish (Software Development)

Steel arbors holding photovoltaic panels simultaneously capture the sun and block it. Deploying green technology to simultaneously perform a simple function (providing shade) endeared these panels to the jury. "Clever integration," a juror said of the devices, part of a green roof system atop a mixed-use development.



Bill Trimmerman Photography

Biltmore Towers | Phoenix, AZ

SPECIAL RECOGNITION



architect
David C. Hovey, FAIA

client
Optima Camelback Limited Partnership

contractor
Optima Construction

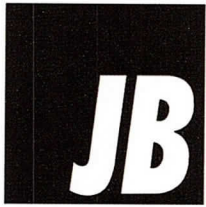
Jurors

Divine Detail Awards:

Catherine Baker
AIA
Landon Bone Baker Architects
Chicago

F. Christopher Lee
FAIA
Johnson & Lee Ltd.
Chicago

W. Stephen Saunders
Eckenhoff Saunders Architects
Chicago



JONES & BROWN COMPANY, INC.

*Leading the Industry in Structural Steel
and Exterior Wall Systems for Over 50 Years*

**One of the largest in the Midwest area,
Jones & Brown provides Turnkey
Building Solutions:**

DESIGN, DETAILING, FABRICATION & CONSTRUCTION

- Structural Steel
- Exterior Wall Systems
- Metal Products - Hollow Metal

We recently relocated to a New State-of-the-Art
Facility to serve you better

www.JonesandBrownCompany.com



145 N. Swift Road • Addison, IL 60101 • 630-543-0300 • fax: 630-543-0341

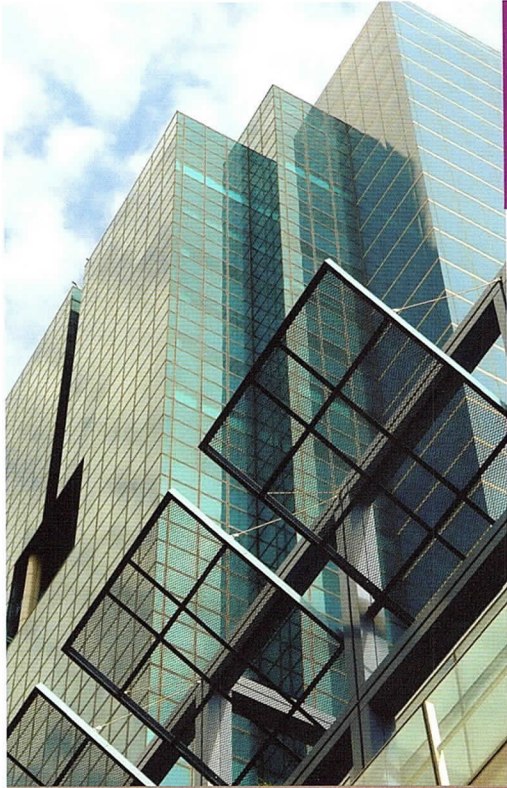
DE STEFANO + PARTNERS

ARCHITECTURE
PLANNING
INTERIOR DESIGN



Chicago | Los Angeles
www.dplusp.com

State Emergency Operations Center, Springfield



Autodesk Technology. Avatech Expertise.

- Design Automation Software.
- BIM Implementations.
- Training and Technical Support.

Better Results.

- Exceed client expectations and increase customer confidence.
- Maximize profitability and reduce risk.
- Reach new levels of design innovation.



AVATECH
SOLUTIONS®

Altogether Smarter Design.

Autodesk
Authorized Value Added Reseller

National Locations • avatech.com • 312-621-0800



*Rosemont Convention Center
Rosemont, IL*



**Bernhard
Woodwork Ltd.**

Architectural Woodwork

*Exquisite Detail
Exceptional Craftsmanship
Extensive Experience*

Online At
www.bernhardwoodwork.com

3670 Woodhead Drive, Northbrook, IL 60062 847.291.1040



architect
Valerio Dewalt
Train Associates

client
Garmin
International

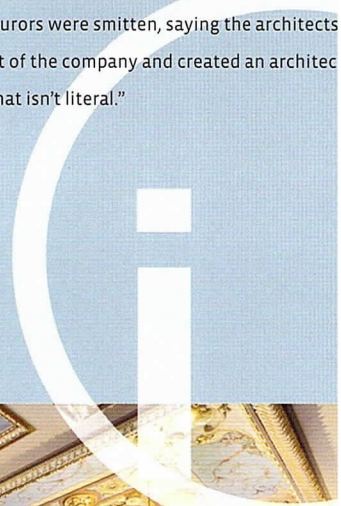
contractor
Turner
Construction Co.

consultants
Arup (Structural Engineering);
Lighting Design Alliance (Lighting)

Garmin International Flagship Store | Chicago



Garmin makes GPS devices that help people figure out where they are in a big, ambiguous world. The store in which they're sold is ambiguous by design: does it resemble a rocky canyon, a streamlined car fender, or the thick hull of a ship? Clarity is found in the glass and metal spaces where Garmin's devices are on display—thus making the product's function the theme of the store's look and layout. Jurors were smitten, saying the architects “took the concept of the company and created an architectural metaphor that isn't literal.”



Illinois State Capitol Renovation of House and Senate Chambers | Springfield, IL

Periodic renovations since the 1887 completion of the Illinois State Capitol building had eroded the place's original stateliness. During a two-year restoration, the architects worked to take the two chambers back to their origins. That entailed designing desks that suited the period but accommodated today's technology; restoring or replacing millwork and marble throughout; and reconstructing a lost laylight in the ceiling of the House of Representatives chamber. Jurors pronounced the finished product “beautiful, and well-done.”



Hausman, Eric Hausman Photography



architect
Vinci | Hamp
Architects, Inc.

associate architect
Evan Lloyd
Associates

client
State of Illinois Capitol
Development Board
contractor
CORE Construction

consultants
HDR/Cochran & Wilken (MEP and Structural Engineering);
Wiss Janney Elstner Associates (Structural Engineering); Randy
Burkett Lighting Design (Lighting Design); Shiner &
Associates (Acoustical Engineering); Lipp A/V Design (AV)



architect
Mark A. Cuellar,
 AIA; Sylvia Helen
 Billisics, Assoc. AIA

client
Touch Salon, Inc.
 contractor
**Pyramid
 Construction, Inc.**

consultant
Spagnolo Enterprises

Touch Salon | Chicago

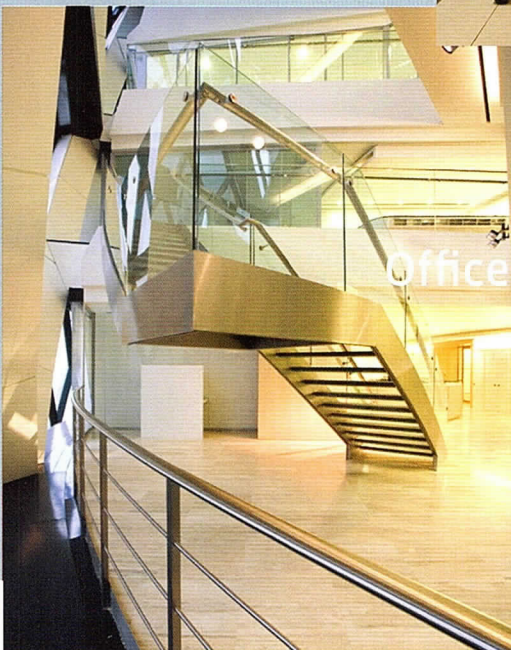
A minimalist interior that speaks of calm and decompression gives this nail salon a physical manifestation of the attitude that pervades the space. Jurors appreciated the details, materials and strong concept for the salon, and they particularly liked the ribbon of wood that morphs from manicure bar into reception desk, into a light soffit, and ultimately into outdoor signage. Materials such as resin paneling, upholstery and tile are all selected to enhance the stress-less atmosphere of the salon.



Anthony May Photography

Office for a Law Firm | London, England

An international law firm with offices in Sir Norman Foster's round tower at 30 St. Mary Axe, also known as the Gherkin, wanted its space to project an image of strength and standing. The quiet, contemporary dignity of the design pleased the jury. Within the building's uncommon floor plates, with curving walls surrounding the 50 attorneys' offices, SOM created a system of movable walls that allows for re-drawing the layout and permits offices to be made of single, double or triple cells.



Jimmy Cohrsen, Jimmy Cohrsen Photography

CITATION
 OF MERIT



architect
**Skidmore, Owings
 & Merrill**

client
 withheld

contractor
**Ibex Interiors
 Limited**

consultants
**SOM Structural Engineering; Troup
 Bywaters + Anders (Mechanical and
 Electrical Engineering)**

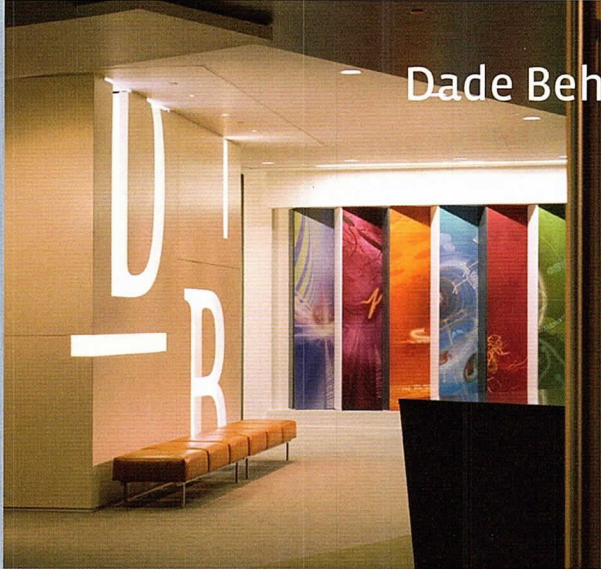
CITATION
OF MERIT



architect
VOA Associates Inc.

client
Dade Behring, Inc.
contractor
S.C. & A.
Construction

consultants
Delaware Engineering & Design Corp.
(MEP); Rockford Cabinet & Millwork



Dade Behring | Newark, DE

Science gets the star treatment at this new Customer Solutions Center for Dade Behring, a maker of medical diagnostic devices. The firm's name is abstracted into bold graphic elements that could be a chemical formula; a central wall that contains hundreds of glowing acrylic boxes suggests the many small steps that make up a single large scientific advance, and the floorplan, with angled shafts penetrating several layers before reaching a central display area, hints at the layers of discovery a scientist must go through on the way to a breakthrough.



Nick Merrick, Hedrich Blessing

Taking a cue from the boat-shaped floorplates of 71 S. Wacker, the offices of investment firm TradeLink have the dark look characteristic of sea-going vessels. The goal was to steer clear of a trendy, short-lived look, and present the firm standing steady on its sea legs. The design, said one juror, is "ominous and brooding." Another called it "moody, atmospheric, [the] opposite of so many corporate interiors." The container-like spaces are easy to reconfigure, providing flexibility for TradeLink's future.

CITATION
OF MERIT



architect
Gensler
client
Tradelink

contractor
Clune Construction
consultants
Halvorson & Partners; Environmental
Systems Design; Radiant Design

Tradelink | Chicago



Christopher Barrett, Hedrich Blessing



Pritzker Family Children's Zoo | Chicago

Jurors enjoyed what they called a "sophisticated" approach to re-creating a natural setting indoors. Children can play inside the trunk of a shingled tree, watch demonstrations by zookeepers from their seats on stylized tree stumps, and interact with turtles, birds and other animals. It's a kid-centered view of the animal world, yet it's not a cartoon-derived aesthetic. Instead the space pays homage to the overlapping views and wandering curves often found in the real thing: nature.



CITATION
OF MERIT



interior architect
architectureisfun,
Inc.
design architect
EHDD/Architecture

climber design
Lucky & Company
client
Lincoln Park Zoo

contractor
Pepper Construction

consultants
Red Box Studio (Specialty Fabrication); Alejandro Romero;
Klein & Hoffman Structural Engineers

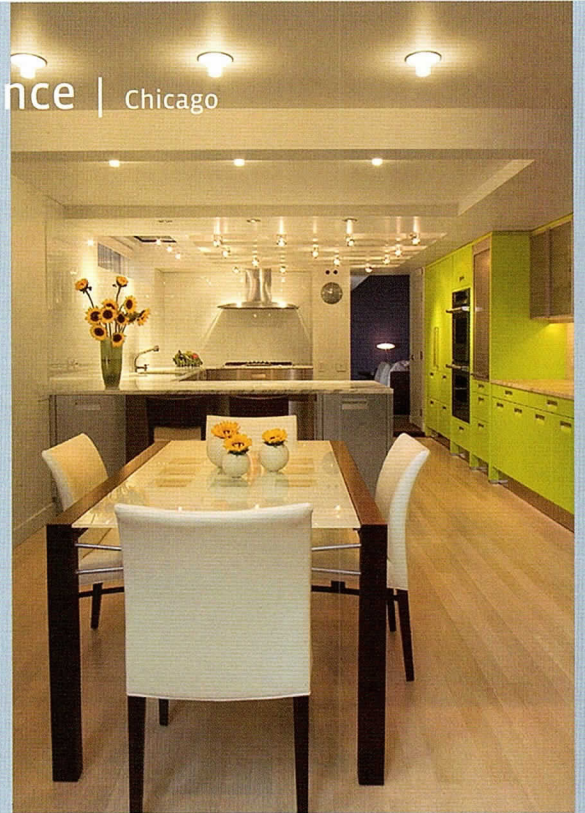
CITATION
OF MERIT 

architect
Florian Architects
client
Mary L. Chait

contractor
Sylvester Construction
consultants
Jorge Romero Design (Interior Design);
Jim Senffner/Senffner & Associates
(Structural Engineering)

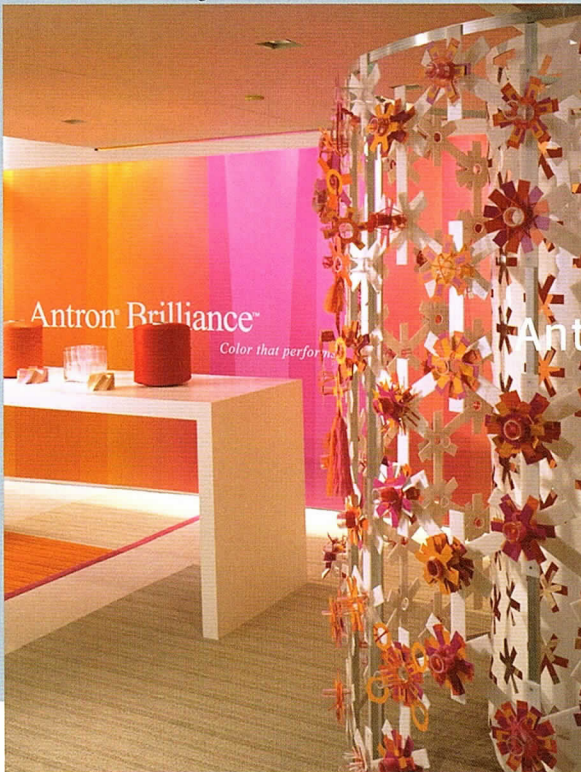
Chait Residence | Chicago

A landmark Gold Coast row house, slim and short on sun, gained an expansive, bright feeling in the course of a renovation. Glass and openness characterize this project. A glass floor in part of the living room connects it visually to the kitchen below and lets natural light reach that interior room. Elsewhere in the living room, a window 20 feet high is divided into panes of assorted finishes and framed in black metal, becoming as much a sculptural work as an oversized window.



Barbara Karant, Karant + Associates Inc.

Steve Hall, Hedrich Blessing



Antron Resource Center | Chicago

To showcase the visual effervescence of its newest carpet fiber, Brilliance, Antron wanted its Mart showroom to pop. The architects created a bright, light-hearted space that demonstrates the brand in an artful and engaging way. Jurors enjoyed the “fun” attitude present in the space, which has its serious side as well: the showroom, typically redone each year for NeoCon, now has a modular framework that can transform for new displays but retain the technical and system infrastructure. Designed to last at least 20 years, the framework provides a necessarily mutable space with sustainability.



CITATION
OF MERIT 

architect
Perkins+Will | Eva
Maddox Branded
Environments™ client
Antron

contractor
N'Dio

CITATION
OF MERIT



architect
G. Goldberg +
Associates

client
Geoffrey Goldberg
and Lynne
Remington

contractor
Cerwe Construction

consultants
Stearn Joglekar (Consulting Engineer);
Julie Thoma Wright

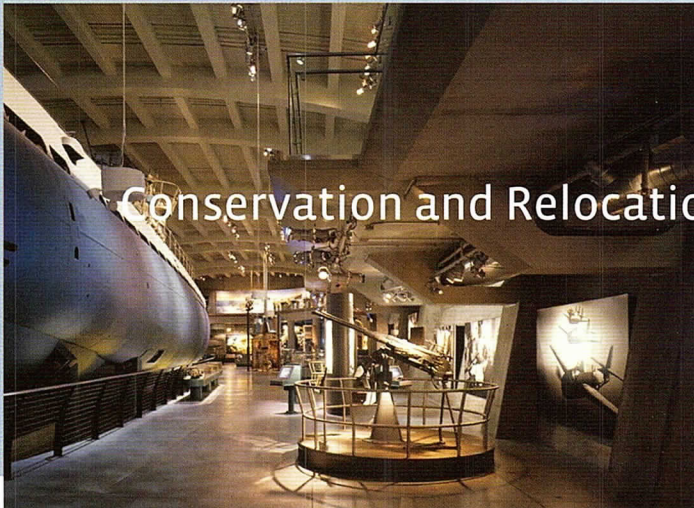
House Dayton | Chicago

“Very elegant,” jurors said of this contemporary interior built within the shell of an existing residence. They complimented the “tasteful” open plan and the way each corner provides a peek into the next vignette. Elm flooring and other rich woods contrast with cooler metal elements, and overall the impression is of a warmly modern, finely detailed house.



Steve Hall, Hedrich Blessing

Jon Miller, Hedrich Blessing



Conservation and Relocation of the U-505 Submarine | Chicago

The museum’s beloved World War II artifact, a 700-ton German submarine, was moved indoors and below ground, and thanks to clever design, visitors now have the impression of visiting the vessel in a period-appropriate dry dock. Jurors said the “concept was great.” Arched steel girders and exposed concrete walls suggest an industrial home for the sub—but the walls, farther apart at the top than at bottom, also subtly suggest the broader horizons that would surround a sub at the water’s surface.



CITATION
OF MERIT



architect
Goetsch Partners

client
Museum of Science
and Industry

contractor
W.E. O’Neil
Construction Co.
program manager
Jones Lang LaSalle

consultants
Halvorson and Partners (Structural Engineering); Primera Engineers
(MEP/FP, Civil Engineering); Available Light (Lighting Design)

Jurors

Interior
Architecture Awards:

Randy Brown
FAIA
Randy Brown
Architects
Omaha, NE

Alex Gorlin
FAIA
Alexander Gorlin
Architects
New York, NY

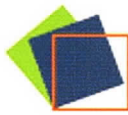
Kelly Thompson-
Frater
AIA
Thompson-Frater
Architects
Madison, WI

What Makes HRH A&E “different?”



HRH A&E has been the leading broker specializing in Architects and Engineers insurance for more than 28 years. No other broker has more experience, expertise and resources dedicated to providing insurance and risk management solutions than HRH A&E.

- Risk Management Department staffed with personnel dedicated exclusively to training, education contract review, etc.
- Claims Department staffed with personnel dedicated exclusively to processing your claims as well as being your claims advocate.
- Risk Management and Claims Department staffed by one former DPIC Regional Leader/Underwriting Director and two former DPIC Claims Supervisor's—one of whom is an attorney.
- Registered Continuing Education Provider
- Serve over 2,500 clients—top 10 broker in the world
- Exceptional carrier relationship and market clout—offering the best coverage *and* pricing options.



HRH A&E

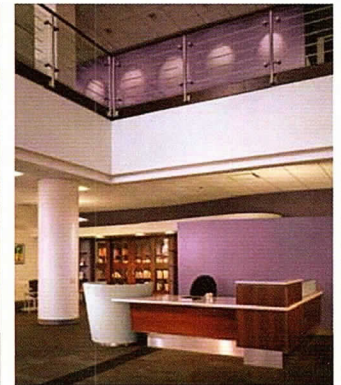
www.hrhae.com

(877) 474-2821



DIFFERENT BY DESIGN®

Proud Builder of Access Living



◆ GREEN BUILDER

◆ CONSTRUCTION MANAGEMENT

◆ DESIGN-BUILD

◆ GENERAL CONTRACTING


MICHUDA
CONSTRUCTION

Michuda Construction, Inc., 11204 S. Western Ave., Chicago, IL 60643

Tel 773.445.5505 questions@michuda.com

BendTec

BendTec is a leader in the bending and fabrication of tubular members for structural applications.

BendTec is AISC certified in Standard for Steel Building Structures, Simple Steel Bridges and Major Steel Bridges. Fracture Critical Endorsement, and Sophisticated Paint Coating Endorsement.

Services: Engineering, Hot and Cold Bending, Welding, Machining, Blasting and Painting, and Non-Destructive Examination.

Products: Roof Trusses, Parabolic Arches, Vierendell Trusses, Long Radius Bends, Light/Power Poles, Signs, Bridge Arches and Window Mullions.

In Chicago: Damen Avenue Bridge, Winter Garden–University of Chicago, North Avenue Bridge, O'Hare Airport, Howard Street Station

www.bendtec.com | sales@bendtec.com | 218.722.0205

ARCHITEMPS, INC.®

ARCHITEMPS, INC. – Chicago's premier Architectural & Interior Design staffing specialists.
Celebrating our 22nd year serving greater metropolitan Chicago.

Quality staffing, service and solutions:

- Design/Production Drafters
- Facility Planners
- CAD Architects/Interior Designers
- Project Managers

Our billing includes all employer liability:

- Payroll Administration
- Employee Benefits
- Government Compliance
- State & Federal Tax Remittance
- Workers' Compensation Coverage

ARCHITEMPS, INC.®

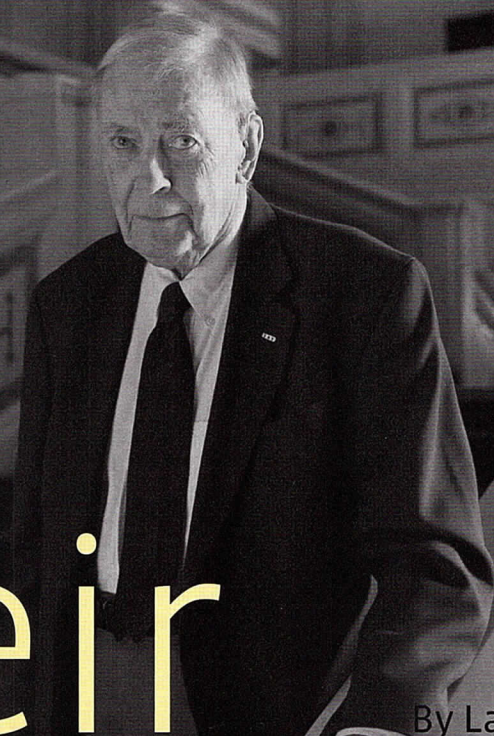
1050 North State Street
Chicago, IL 60610-7829

Tel: 312.649.0912
Fax: 312.649.1667
info@architemps.com
www.architemps.com

Architectural, interior design and facility planning personnel on a per-project basis.
Customized programs to suit your staffing needs. Call today for information about our services or employment opportunities.

Lifetime
Achievement
Honoree
John A. Holabird, Jr.

In 1977 and 1993, Holabird's firm oversaw renovations of the Cultural Center.
Photo by Chris Deford.



Rare Heir

By Laurie Petersen

This third-generation holder of an eminent name has deployed his wit, wisdom and solid understanding of the firm's legacy to great effect. He has also generously helped his profession and his community.

The Holabird name commands attention, for it is one of the most venerable in Chicago architecture. And John Holabird Jr., this year's AIA Chicago lifetime achievement honoree, has spent decades stewarding the firm his name is attached to, mentoring young architects throughout the community, and serving the profession with dedication, integrity, and abundantly creative geniality.

But if Holabird was born with a silver T-square in his hand, it was with mixed feelings and after quite a few detours that he finally joined the family firm, which had changed considerably since its glory days. Bringing back its reputation was not a simple restoration job—it called for major structural changes.

Founded in 1883, the firm of Holabird & Roche produced a number of commercial and institutional buildings that came to be revered as classics of the late 19th century Chicago School. The son of founder

William Holabird, John A. Holabird, Sr. partnered in the 1920s with another second-generation Chicago architect, John Wellborn Root, to create iconic structures that include the Board of Trade and Palmolive buildings. But the one-two punch of the Great Depression and World War II was followed by the blow of John Holabird Sr.'s sudden death. It occurred in 1945, on the last day of the war in which his son was serving in Europe.

The junior Holabird had enlisted in the army upon his graduation from Harvard in 1942. He served as an engineer with the 82nd Airborne Division, laying mine fields and building bridges. During his three years of service he discovered his talent for teaching, for teamwork and for writing medal applications for colleagues. Upon receiving his architecture degree from the Harvard Graduate School of Design he returned to Chicago in 1948 and joined Holabird & Root & Burgee.

“
Holabird’s
integrity
and states-
manlike
demeanor
with clients
are matched
by his sheer
joy of work-
ing on a
team.”



Caricature by Tom Bachtell

A mere five months later he left the firm to teach drama at Francis Parker School, renewing the interest in stage design that he had developed as a Harvard undergraduate. After three years at Parker, a year at Bennington College, and several months of set design for NBC in Chicago, Holabird rejoined the family firm. “I had a stronger sense of myself by then,” he explains, adding that the partner who had made his first stint with the firm miserable retired soon afterwards.

Holabird does not mince words about the state of affairs at the time: “The firm had lost its design reputation.” The bulk of the business was technically demanding but unexciting work such as laboratories and telephone equipment buildings. Holabird happily took on the few educational and cultural commissions. His first important one was for a new Francis Parker School, followed by the music pavilion at Ravinia. The arrival of Gerald Horn, FAIA, helped boost the design quality of the technical buildings and led to an increase in high-profile museum and university work.

One aspect of the firm’s work that remained constant throughout the decades is respect for context. Whether large or small, their buildings have always been good neighbors. Holabird credits his father for imbuing the firm with this attitude, saying that, “he would walk down the street and point out a good Georgian or Gothic Revival building versus a not-so-good one.” This ethos also resulted in the firm’s developing a strong historic preservation and renovation practice.

Along with reviving the firm’s design reputation, Holabird was determined to change the office culture. He stressed teamwork and eliminated the division between the architectural design and production departments. James Baird, AIA, recalls his integrity, his statesmanlike demeanor with clients, and how he demonstrated by example “the joy of working on a team.”

Holabird became known as a mentor for many young architects, including Baird. But his efforts were by no means limited to those in his own firm. Holabird used the medal-application skills honed in his army days to help numerous architects apply for AIA Fellowship status.

Along with helping them apply, he inducted them into the fraternity with an annual dinner he organized at the Tavern Club, his home away from home. He designed colorful felt tunics emblazoned with a large “F” for the newly elected Fellows to don before giving a speech justifying their new status. As John Schlossman, FAIA, noted at yet another event honoring his friend and

colleague, “Whatever the occasion, there’s nothing John likes more than a good, rollicking party, and nobody does it better.”

The most legendary event he organized was the Host Chapter party for the AIA convention in Chicago in 1969. After listening to the Chicago Symphony in the newly restored Auditorium Theatre, about a thousand architects, some brandishing giant T-squares or banners, followed a contingent of bagpipers down Congress Street to Dearborn Street Station for what became known as The Great Train Shed Party.

Another event at which he combined his verbal wit, his love of performing arts and his deep knowledge of the architecture world was in writing and conducting the AIA Two Bit Opera. A cast of colleagues performed the tongue-in-cheek operetta for the chapter’s 125th anniversary in 1994. Clearly Holabird’s retirement in 1987 had not brought an end to his career as an enthusiastic volunteer nor his belief in the power of professional camaraderie.

The wit and congeniality for which Holabird was so well known should not diminish the seriousness of his contributions to the profession and the community. He has served as a trustee for many organizations, including Francis Parker School, Ravinia Festival, and the Graham Foundation for Advanced Studies in Fine Arts. He has been on the board of directors of the Park West Community Association (among other civic groups), the Illinois Institute of Technology, and the Ragdale Foundation. And his many contributions to AIA Chicago include serving as both vice-president and president of the chapter. Peter Schlossman, AIA, past president of AIA Chicago, cites Holabird’s “real convictions and achievements in the profession and the association.”

But let’s leave the last words—or rather lyrics—to Holabird himself, who accepted a Distinguished Service Award from AIA Chicago in 1991 by singing several verses to the tune of “When I was a Lad” from Gilbert and Sullivan’s ‘H.M.S. Pinafore.’ There was a verse describing his early adulthood (“Apres La Guerre, when the guns were still/I returned to Harvard on the GI Bill/For extracurricular activity/I sired four girls and painted scenery/I came to Chicago—got a drafting stool/And decided then I’d rather teach at Parker School”) after which Holabird concluded, “Try all of your life for Variety/And you may be Distinguished Service A-wardee.” CA

Laurie Petersen is the associate editor of the AIA Guide to Chicago

PROFESSIONAL • COST EFFECTIVE • TRUSTED FOR OVER 30 YEARS

COMPUTER ANALYTICS

Making IT Perform for You

www.cacorp.com

847.297.5290

Dale Jessen, x212

dale.jessen@cacorp.com

Steve Benedetto, x218

steve.benedetto@cacorp.com

IT SUPPORT SERVICES

NETWORK/SERVER MIGRATIONS

DELTEK VISION® MIGRATIONS

CUSTOM REPORTING

NETWORK DESIGN & TROUBLESHOOTING

REMOTE OFFICE & WORKFORCE

EMAIL & GROUP COLLABORATION

HELPING BUILD TOMORROW'S CHICAGO TODAY.



PROFESSIONAL
LAND & CONSTRUCTION
SURVEYORS

**Gremlay &
Biedermann**

LAND SURVEYORS SINCE 1927

773-685-5102



James Schaeffer & Schimming, Inc.

LAND SURVEYORS SINCE 1930

UNION AFFILIATED TECHNICAL ENGINEERS LOCAL 130

847-885-3322



**CHICAGO GUARANTEE
SURVEY COMPANY**

LAND SURVEYORS SINCE 1872

312-986-9445

Info@PLCS-Survey.com

Complete Door Solutions

INDUSTRIAL / COMMERCIAL



AVIATION



CUSTOM



Door Engineering and Manufacturing has been offering aviation, industrial, fire and specialty door solutions for over 40 years. Their complete door solutions can meet even the most challenging and unique requirements and are built to endure the heaviest traffic, while providing a weather-tight seal and maintaining quick yet stable motion.

Door Engineering stands behind its door systems with the newly introduced standard three-year warranty and optional five-year extended warranty. *Let Door Engineering and Manufacturing put years of door system experience to work for you.*

FIRE RATED



Standard 3 year warranty and optional 5 year warranty only from Door Engineering.



800.959.1352 | doorengineering.com



Door Engineering
and Manufacturing

"Securing the Future"

Strogoff Consulting's Confidential Clearinghouse for Mergers & Acquisitions

Serving Design Professionals Nationwide

**WHEN EXPLORING AN
ACQUISITION, SALE OR MERGER, YOU NEED:**

- An expert with inside knowledge of the A/E industry
- An extensive network of strong, strategic contacts
- Confidential introductions to qualified prospects
- A trusted, creative and targeted advisor

Strogoff Consulting provides confidential introductions between prospective buyers and sellers, develops valuations and guides firms through the merger/acquisition process. Firms are introduced to each other only when there is a strong strategic and cultural fit. Contact Michael Strogoff, AIA, at **866 ARCH ENG** (866.272.4364) or e-mail Clearinghouse@StrogoffConsulting.com.

All discussions held in strict confidence.

(For a profile of firms actively interested in exploring an acquisition or merger, visit www.StrogoffConsulting.com.)



Building Blocks Inc.

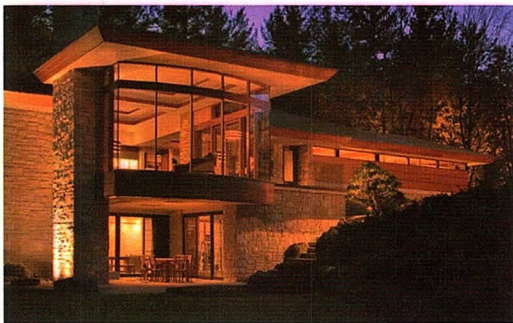
**"The Chicago Source for
Grabill Windows & Doors"**

**Visit Our
Open House
To Introduce**



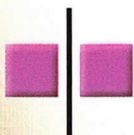
**Friday, November 16th
11 a.m. to 6 p.m.**

Refreshments will be served



Superior Detailing - Quality Materials

**Residential • Commercial
Historical Reproduction**



Building Blocks Inc.
1621 West Carroll Avenue
Chicago, IL 60612
(312) 243-9960
www.bblocks.net

BRIGHTER FUTURES



Chicago Board of Trade

**LIGHTING DESIGNERS
Schuler Shook**



Chicago 312 944 8230

Minneapolis 612 339 5958

Dallas 214 747 8300

schulershook.com

Teams today need to interact and collaborate to get the job done. With the SMART Board interactive whiteboard, your team can brainstorm, write notes, open multimedia files, visit web sites, refine ideas and save decisions - with the files and information they need at their fingertips.

But big business benefits don't have to come with a steep learning curve. If you can use a computer, you can use a SMART Board interactive whiteboard.

Find out more about the world's leading interactive whiteboard, and leverage the intelligence of your team.



Share your ideas. **Intelligently.**



FOCUSED ON YOUR SUCCESS

621 Busse Road, Bensenville, IL
Tel. 630-477-2300, info@avisys.com
www.avimidwest.com

SMART
Technologies
www.smarttech.com

Free Lunch, Free Knowledge and Continuing Education Credits

Lunch & Learns, presented at your office

INSTALL is a Continuing Education Provider for the AIA and ALA. We will provide lunch at your office and in a one-hour class expand your knowledge of the floor covering industry. This will earn you credits



toward your continuing education requirements. You have the choice of five different Lunch & Learn classes, or take them all. Lunch is on us and the learning is up to you.

INSTALL
INTERNATIONAL STANDARDS & TRAINING ALLIANCE
FLOORCOVERING PROFESSIONALS

Providers of the most current, comprehensive flooring installation training.

For further information contact us at 630-371-0739 or e-mail us at cesprovider@aol.com. Visit us on the web at www.chicagofloorcovering.com.



**PERFORMANCE
& LUXURY**
IN PERFECT SYMMETRY

EUROVIEW ANNOUNCES THE DEBUT OF
KINETIK, THE INDUSTRY'S FIRST TRULY
FRAMELESS SLIDING SHOWER DOOR.

EUROVIEW

FRAMELESS GLASS ENCLOSURES

Chicago's leading manufacturer, fabricator,
and installer of luxury shower enclosures



www.euroviewinc.com | www.fleurco.com

To locate a KINETIK displaying dealer near you call: 1-800-EUROVIEW (387-6843)

C.E. Anderson & Associates, P.C.

Structural Engineers

175 N. Franklin Street Suite 300 Chicago, IL 60606

Phone: 312.750.1701

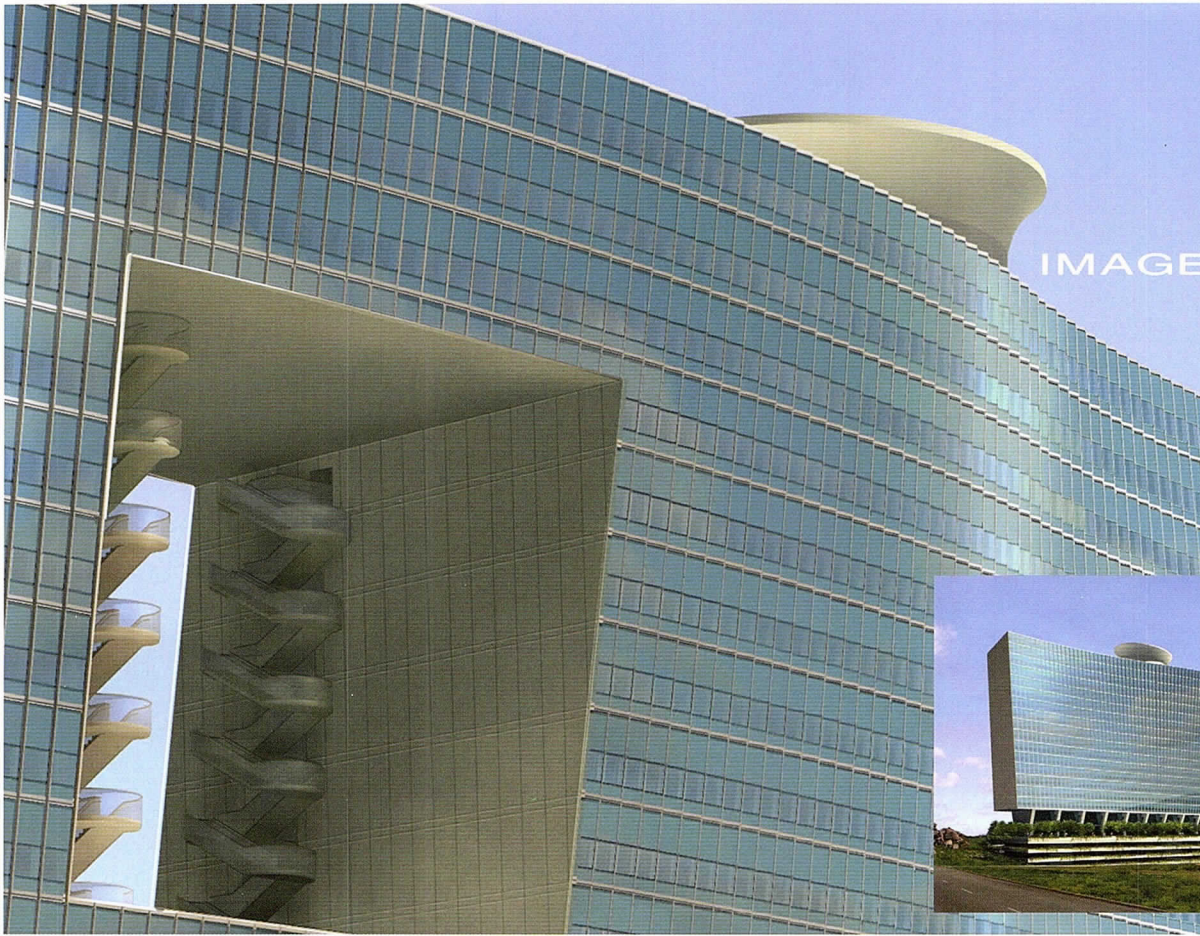
Fax: 312.750.1704

"Proud to be the Structural Engineer for 1620 South Michigan"

C.E. Anderson & Associates offers a complete range of structural engineering services to architects, developers, and building owners.

Through teamwork, innovation, and creativity, we provide quality service to achieve practical, effective structural solutions.

Photograph Courtesy of: Padgett and Company Inc.



Project:
Hyderabad Office Towers
Hyderabad, India

Developer:
Tishman Speyer

Architect:
Pei Cobb Freed & Partners

IMAGEFICTION

LaSalle Wacker Building
221 North LaSalle Street
Suite 1510
Chicago, IL 60601

312.726.0818

architectural rendering
computer imaging
animation



www.imagefiction.com



F.H. PASCHEN, SNNIELSEN

GENERAL CONTRACTORS

Providing Quality Construction Throughout the Chicagoland Area



8725 W. Higgins Rd. Suite 200
Chicago, IL 60631
www.fhпасchen.com



Kitchens

Lee Lumber's Spaces&Views Designers work with Architects, Interior Designers, High-Rise Developers, Builders, Remodelers, Home Owners and those looking to build a new home. That's why our combined sales of Wood-Mode® Cabinetry make us their single largest account.

Wood-Mode®
FINE CUSTOM CABINETRY

LEE LUMBER

Building Centers:

NORTH - Chicago, IL
3250 N. Kedzie Ave. • 773-509-6700

SOUTH - Chicago, IL
633 W. Pershing • 773-927-8282

INDIANA - Merrillville, IN
1577 E. 93rd. Ave. • 219-736-2055

LEE LUMBER'S Spaces and Views

Windows, Cabinetry, Doors and More
Part of Lee Lumber - family owned since 1952

Showroom Locations:

NEW LOCATION: SmartRooms Chicago, IL
A Spaces and Views Showroom (cabinetry only)
The Merchandise Mart, Suite 119 2310 N. Lincoln
Chicago, IL • 312-644-4446 773-866-2310

Highland Park, IL Oakbrook Terrace, IL
583 Elm Place 17W428 22nd Street
847-681-0300 630-782-9999

www.leelumber.com Referral of Certified Installers available

Windows

Lee Lumber's Spaces&Views Window Department Staff is expert in creating just the right product for your job and budget. Marvin Windows® are made to order and we have ordered more of them than anyone in the Chicago area for over 20 consecutive years.



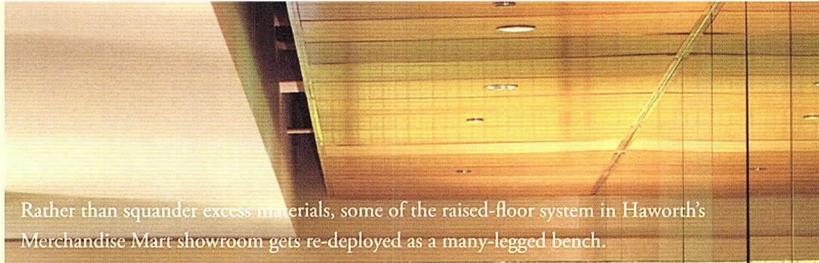
MARVIN 

Windows and Doors

Waste and pollution prod designers to select materials wisely

By Cindy Coleman

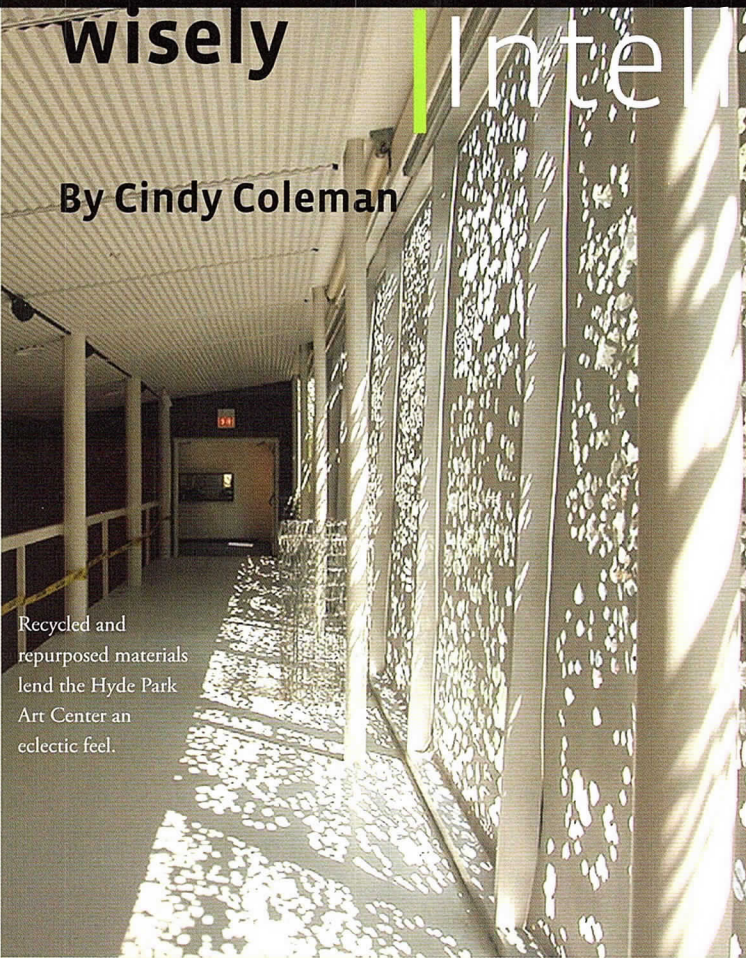
Intelligent Design



Rather than squander excess materials, some of the raised-floor system in Haworth's Merchandise Mart showroom gets re-deployed as a many-legged bench.



Haworth Showroom photo by Jon Miller, Hedrich Blessing



Recycled and repurposed materials lend the Hyde Park Art Center an eclectic feel.

Hyde Park Art Center by Michelle Litvin

Madonna said it: we are living in a material world — and it's a world that looks very different from the recent past.

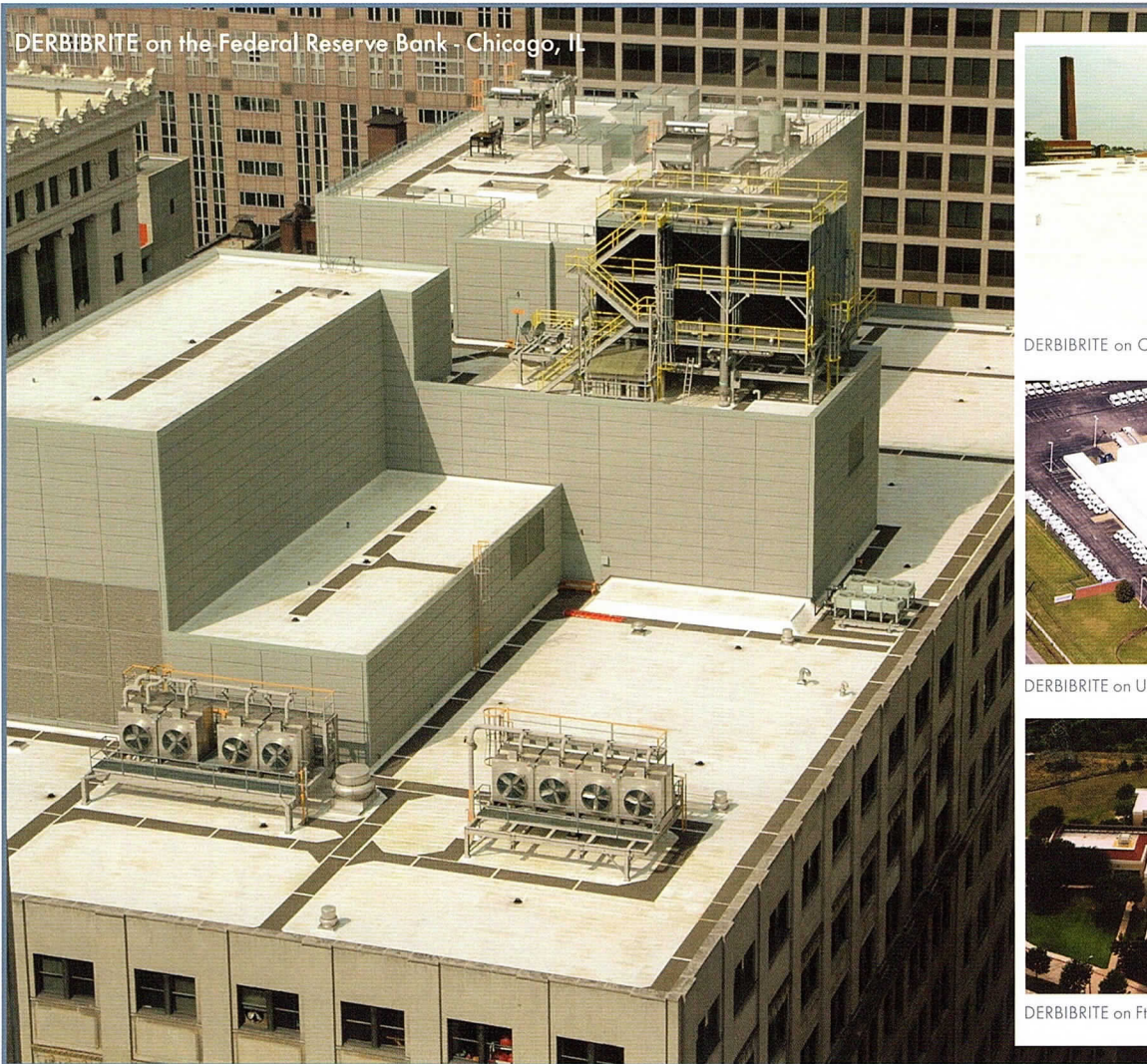
Gone are the massive displays of excess, the use of materiality as testament to wealth and power, or the use of materials that pollute in their production, their use, or disposal. Today's design leadership is moving toward an aesthetic that considers a new ethic of design, one that utilizes materials in support of the design strategy in ways that are responsible and intelligent.

Here are several recent projects whose designers sought a material solution to the problem of waste:

One way to get there is to do with less. Thomas Polluci, AIA, an HOK vice president, directs his team to reduce and, when appropriate, reuse. "Today we strive to create spaces that have access to daylight with transparent and open interior views," Polluci says. For the Chicago offices of Ogilvy & Mather, Polluci counters the openness with intense blocks of colors in key locations, to build distinctions between various work groups and define circulation patterns.

Eva L. Maddox, principal with Perkins+Will | Eva Maddox Branded Environments, looks to support the design strategy by identifying materials that

DERBIBRITE on the Federal Reserve Bank - Chicago, IL



DERBIBRITE on Crystal Lake Central HS - Crystal Lake, IL



DERBIBRITE on United States Post Office - Owensboro, KY



DERBIBRITE on Ft. Worth Life Care Hospital - Ft. Worth, TX

From the worldwide manufacturer of DERBIGUM, with proven in-place performance in Chicago since 1979, the next generation in APP Modified Bitumen Membranes...

DERBIBRITE APP Modified Bitumen Membrane with a durable white acrylic reflective surface exceeding initial & aged reflectivity requirements!

*Conforms to California's strict Title-24 standards.
Resists chemicals, acids, animal fats and fungus growth.
Cold Applied, Flame Free, No Field Coatings Required!*

DERBIBRITE Roofing Solutions reduces a building's Energy Consumption!



CONTACT MIKE TOLZIEN IN THE CHICAGO AREA AT (800) 722-5104 OR (708) 380-5045.

T

A Revolution in Roofing



Ogilvy & Mather photos by Michelle Litvin

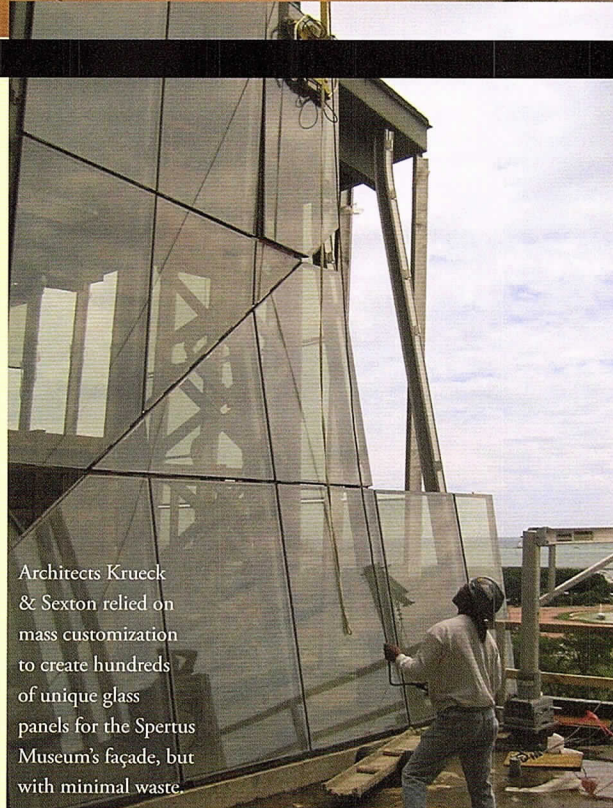
Blocks of intense color work as counterpoints to broad, open interior views in the Ogilvy & Mather offices designed by Thomas Polluci. (photos left and right).

An attitudinal shift about materiality means designers are looking at ways to reduce, integrate and innovate their choice of materials

serve multiple purposes. She looks for “integrated-use materials that respond to two or more inherent needs.” For Haworth’s Merchandise Mart showroom and its corporate headquarters in Holland, Michigan, Maddox utilizes changeable or “activated” glass planes to define spatial zones. The translucent characteristics of the glass can be altered—via either switching or sensing—to provide view, privacy, or electronic media projection.

➔ At the Hyde Park Art Center, Doug Garofalo, FAIA, Garofalo Architects, inserts glazed connections between departments and functions, creating a new hybrid program. Departments are able to function separately, but are visually joined, which is important to the center’s mission. Garofalo’s palette of materials includes recycled, repurposed, industrial, and even organic resources that are put to use in unexpected ways. “Re-thinking material resources allows us to build an environmental vocabulary with greater nuance,” he says, “and refine the architectural statement to emphasize contrast or continuity, or to give a space gravity or air.”

➔ Technological advances in material engineering and visualization tools have opened opportunities for design innovation with increased environmental responsibility. For the new Spertus Institute of Jewish Studies, Mark Sexton, FAIA, Krueck & Sexton Architects, utilized a mass-customization process to design a faceted curtain wall where 250 of the 720 parallelogram-shaped lites of glass are unique. “The ability to analyze and fabricate one-of-a-kind components through a mass-customization process without waste profoundly influenced our design strategy and how we approached the materialization,” Sexton says of the project.



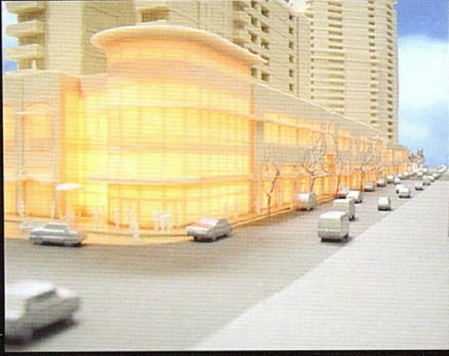
Architects Krueck & Sexton relied on mass customization to create hundreds of unique glass panels for the Spertus Museum’s façade, but with minimal waste.

Courtesy of Spertus Museum

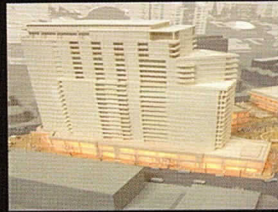
These and other projects are evidence of a cultural shift in attitudes about materiality and the emergence of a new design ethic. Today’s material world is about reduction, integration, and greater innovation. It’s about using materials responsibly to optimize the design strategy. But, mostly, it’s about using materials more intelligently. CA

Cindy Coleman is a partner in the design firm Frankel + Coleman and an assistant professor of interior architecture at the School of the Art Institute of Chicago

3D Printed Models Direct From Your 2D/ 3D CAD Data!



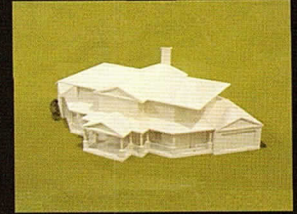
Study Models



Finished



Site Model



Residential

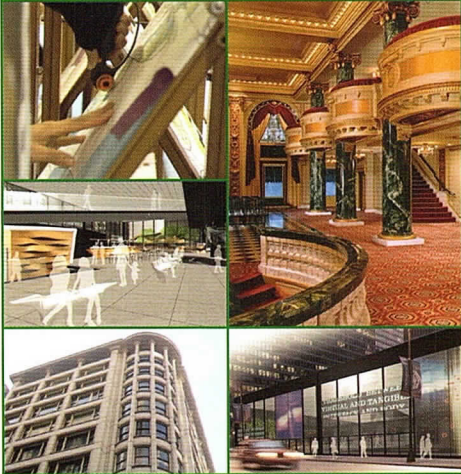
30%-50% Reduction in turnaround at a substantial cost savings.

Prototech Architectural Models
411 Rockwell Ct.
Burr Ridge, IL 60527

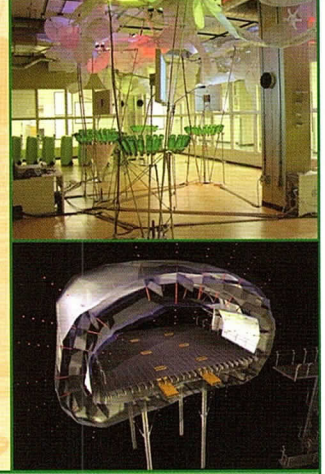
PAM

p: 630.920.0370
f: 630.920.0377
PAM@prototechengineering.com

PROVIDING WORLD-CLASS ART AND DESIGN EDUCATION SINCE 1866



The SCHOOL OF THE ART INSTITUTE OF CHICAGO offers six undergraduate programs, sixteen graduate programs including a dual master's degree, and three certificate programs that address the needs of individuals seeking education in the arts. SAIC offers a unique multidisciplinary approach. Students draw inspiration from all the resources of the school including a great museum and an incomparable city.



SAIC School of the Art Institute of Chicago

www.saic.edu • admiss@saic.edu
800.232-7242 • 312.629-6100

For more information:
ADMISSIONS
36 S. Wabash Avenue
Suite 1201
Chicago, IL 60603



Introducing **neocombo**
from Santa & Cole and Landscape Forms


SANTA & COLE®

landscapeforms®

Quinlan + Quinlan LLC
800.255.0341 312.540.9370
312.540.9371 fax
340 E. Randolph, Suite 300
Chicago, IL 60601

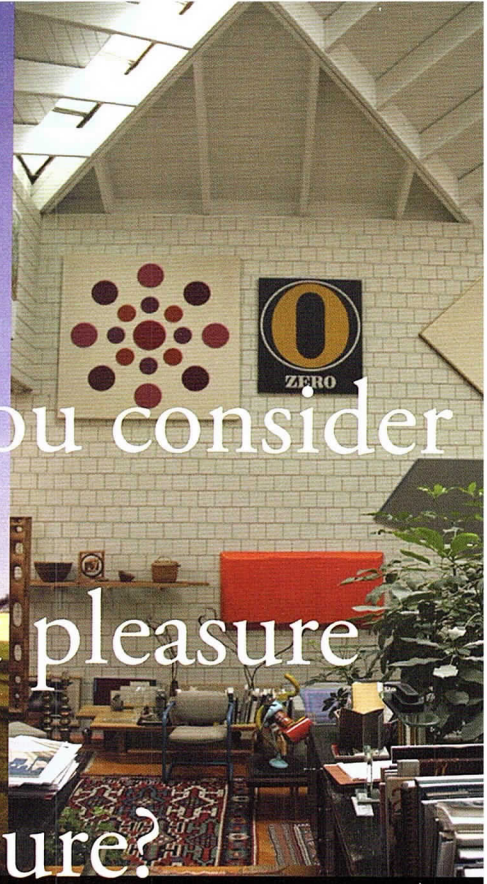


What do you consider the greatest pleasure of architecture?

Among Netsch's many works, Miami University's Art Museum (left) is the one he singles out as a little-known

personal favorite. His Old Town home (right) is a beguiling demonstration of his Field Theory.

The moment of creation. When



Continued from Page 76

the years with the design of some very famous buildings, like Inland Steel and the chapel at the Air Force Academy in Colorado Springs. Are there buildings you designed that deserved more attention or recognition than they actually received?

W: The Miami University Art Museum. It's a beautiful building. Three different shapes in limestone and glass that come together in different ways. It's like a sculpture for art. It's not well known, but the building is beautiful and important to me.

Z: Are there any architects working in Chicago now whose work you particularly admire or pay attention to?

W: I consider Helmut Jahn the best architect in Chicago now. That doesn't make us have lunch together every day...or ever. He liked my work, but we never competed. I really like his work. In his work, he thinks it all out. The buildings don't all look alike. You may not even like a building he does, but that's a separate problem. Ralph Johnson at Perkins + Will is also very good.

Z: You've had many successful projects. Do you consider any of your projects to be failures?

W: I did some dorms at the Air Force Academy long after we did the campus itself. They really were awful. They were for visiting officers who were out there to have a good time. Well, I didn't design them a good-time joint—the dorms I designed were rather perfunctory.

It was a case of the wrong architect and the wrong client. That project was a flop. I wasn't proud of it at all. But I wasn't going to design a nightclub or a warehouse. That's what it became. They had a particular ethic of their own. It's not mine. And I didn't understand that. I misunderstood the client, in other words, and designed a lousy building for them.

Z: Your work has been praised and it has been criticized, some would say in equal proportions. How does that affect you?

W: A lot of people don't like my work. Some people liked and some people didn't like my buildings for the University of Illinois in Chicago. But what I did there still gets recognized

you work and work and the idea comes to you. It's the biggest, precious moment.



for looking at campus planning in a 21st century mode, instead of, say, the campus at University of Illinois in Champaign. It's a completely different model. But those dorms at the corner of the campus were built there, I don't know, to make me mad. That campus has been an up and down situation for me.

Z: What do you consider the greatest pleasure of architecture?

W: The moment of creation. When you work and work and the idea comes to you. It's the biggest, precious moment. I'm getting that feeling with the 2060 work I'm doing.

Z: So you still really enjoy being an architect?

W: Of course. And I'm not using my license, but I don't like it taken away from me. By the way, what are you going to call me in this article with all this license nonsense? An ex-architect?

Z: An architect. C

In an extended version of this interview, Walter talks about his career at SOM and other topics not included here. Read the longer interview at www.aiachicago.org.



CONGRATULATIONS

on the launch of
Chicago Architect

...another bright idea from AIA Chicago.

Pictured here: AIA Chicago's new offices at 35 East Wacker
Designed by the Interface Team / Architect of Record: HOK
Photography: Doug Snower, Doug Snower Photography



THE

AIA Contract Documents are the way everyone in the

INDUSTRY

can safeguard their interests and ensure all projects meet the same

STANDARD.

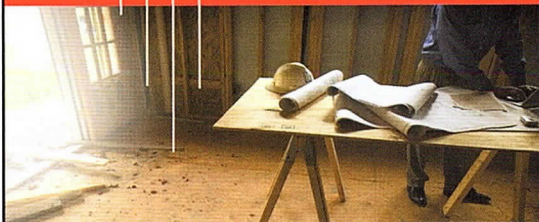
AIA Contract Documents

Available in both paper and software formats.



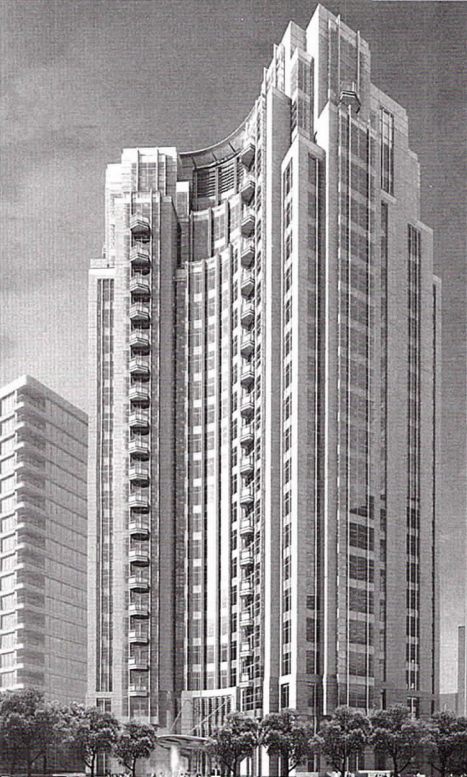
AIAChicago

35 E. Wacker Dr., Ste. 250 | Chicago, IL 60601
(312) 670-7770 | www.aiachicago.org





HARLEY ELLIS DEVEREAUX



harleyellisdevereaux.com

Healthcare
Science & Research
Corporate & Commercial
Education
Industrial & Automotive

Planning
Architecture
Engineering
Interior Architecture
Landscape Architecture
Construction Services

Los Angeles
Chicago
Detroit
Riverside
San Diego

Harley Ellis Devereaux is interested in talking to people with strong technical knowledge in architecture and project management, the desire to excel and an interest in joining a growth-oriented, quality-based organization. Our recruiting efforts reflect this philosophy and our professional success is a direct result.

So let's get acquainted. If you believe you're a top notch performer, we encourage you to contact us. Please e-mail or fax your resume and cover letter to:
Karen Szostak, Human Resources at 312.951.1719 or careers@hedev.com



AIA Chicago

thanks all of our sponsors who made
DESIGNIGHT 2007 a success.

Special thanks to our Platinum Sponsors for their very generous support this year.

Petersen Aluminum Corporation

Skidmore, Owings & Merrill LLP

McGraw-Hill Construction

Turner Construction Company

Murphy/Jahn

USG

Holabird & Root

Kayhan International
reception sponsor

Digital Printing Center

Professional Training Yields

EXPERT PLASTERERS



Conventional and Veneer Plaster



Stucco and Exterior Insulated Finish
Systems

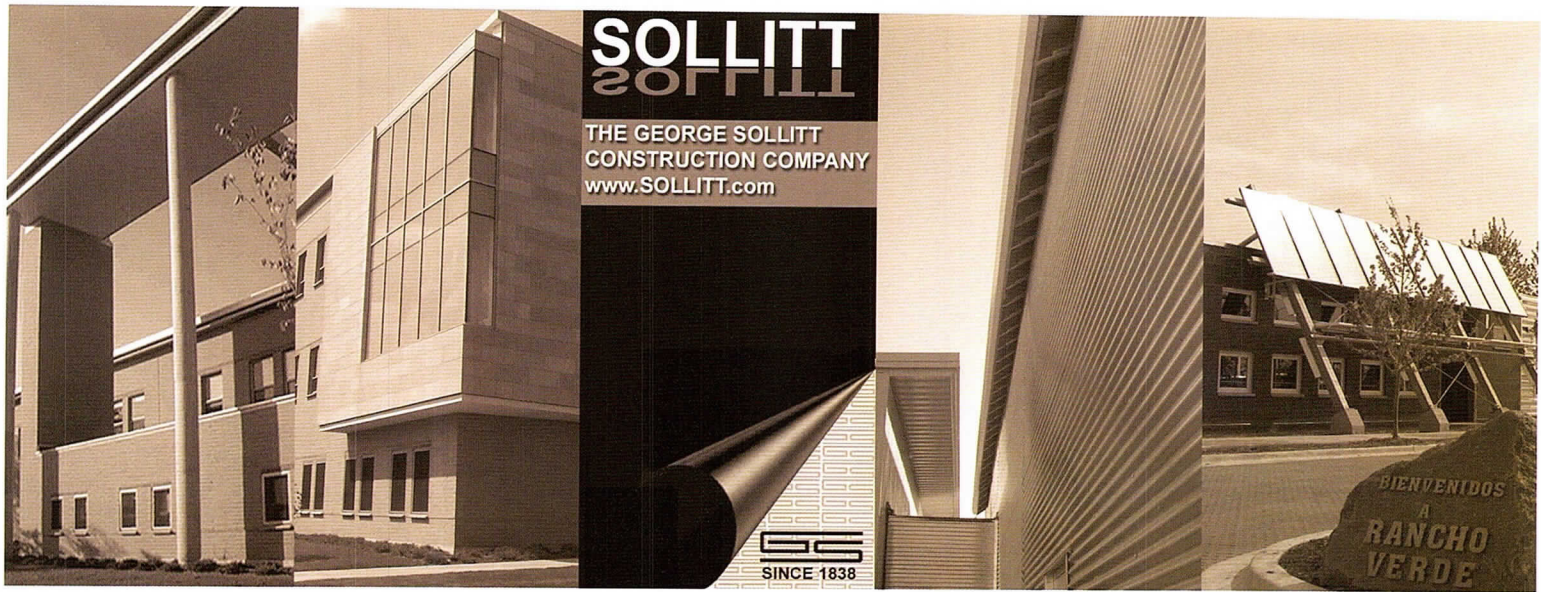


Ornamental Plaster

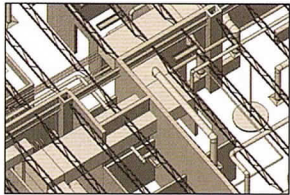
Call us for information about today's
plastering systems and the best
people to apply them.



Chicago Plastering Institute
5611 West 120th Street
Alsip, IL 60803
(708) 371-3100



Wondering what BIM can do for you?



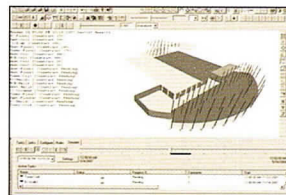
MEP Coordination



Structural Coordination



3D Visualization



4D Simulation

30 E Adams Street, Suite 1040
Chicago, Illinois 60603
phone: 312-641-9339
fax: 312-641-9337
www.kfa-inc.com

Consulting

- Strategy
- Briefings
- Transition
- Collaboration

Services

- Deployment
- Configuration
- Customization
- Training
- Support

Research

- BIM Pilots
- Case Studies
- Digital Archiving
- General Buildings Information Handover Guide (NISTIR 7417)

KFA
KRISTINE FALLON
ASSOCIATES, INC.

NATIONAL SURVEY SERVICE INC.

Professional Land Surveyors

Since 1917

We Survey the Earth - Be Sure of Your Ground.

30 South Michigan Avenue
Chicago, Illinois 60603-3212
Phone (312) 630-9480
Fax (312) 630-9484
www.nss1.net



PROTECTION

M.D. Raimondi—J.A. Lima

Award of Excellence: Architecture in Perspective 22

ASAI: American Society of Architectural Illustrators



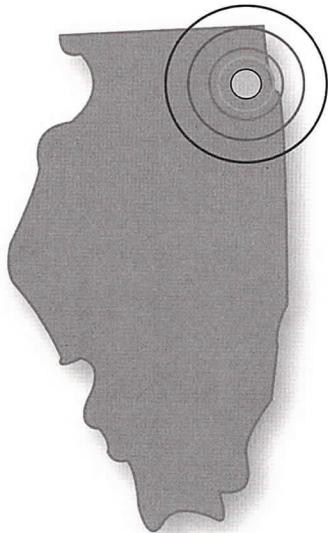
c o n c e p t u a l
d e s i g n s t u d i o

Award Winning 3D
Architectural Visualization

Aaron Coon, ALA, ASAI
111 S. Highland Avenue
Arlington Heights, IL. 60005
Phone (847) 749-4676



www.cds-architect.com

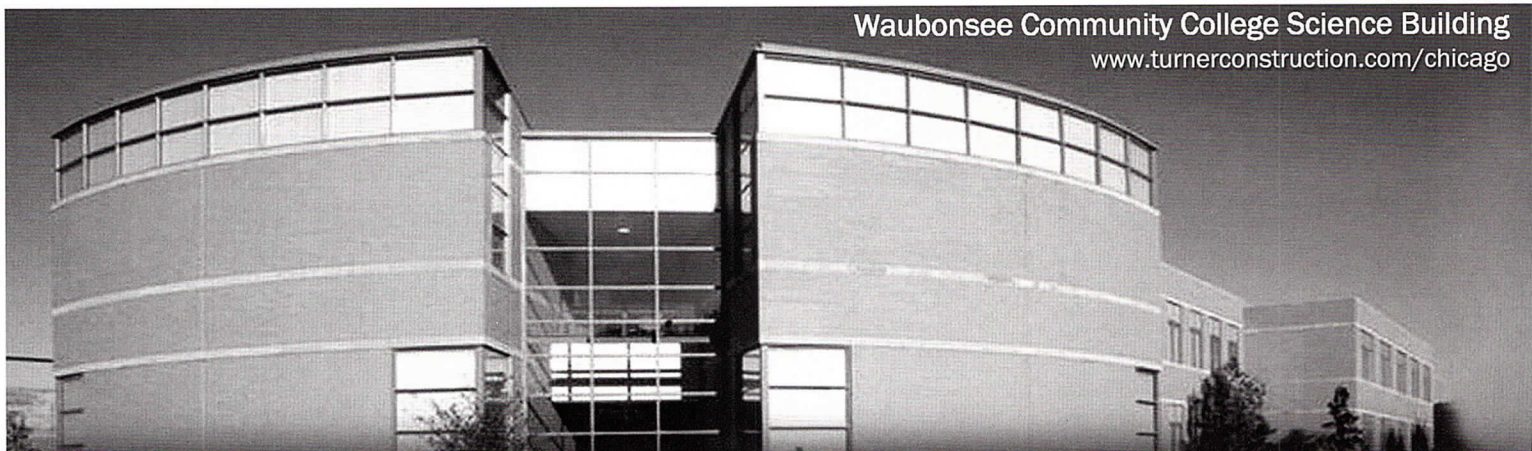


AWI Chicago Manufacturer List:

Ace Styline
Barsanti Woodwork Corp.
Bernhard Woodwork, Ltd.
Cain Millwork, Ltd.
Custom Designed Cabinetry
Gleason Woodwork Inc.
Imperial Woodworking Company

Inter Ocean Cabinet Company
Midwest Woodwork & Veneering Inc.
Parenti & Raffaelli Ltd.
Pepper Millwork and Interiors
Pierce Laminated Products Inc.
T.h. Snyder Company, Inc.

**Visit our website at www.awichicago.org
for more information on manufacturer
and supplier member info!**

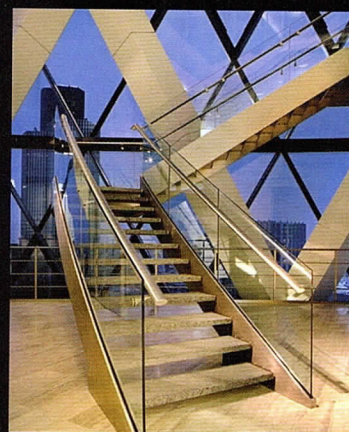
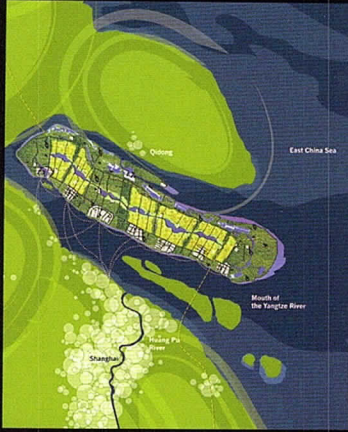



Waubensee Community College Science Building

www.turnerconstruction.com/chicago

Turner
Building the Future

Turner is proud to support Designight 2007.
Congratulations John Holabird on
his lifetime of achievement.



SOM

SKIDMORE, OWINGS & MERRILL LLP

WWW.SOM.COM

Botti Studio of Architectural Arts, Inc.

1-800-524-7211 • www.bottistudio.com • FAX:1-847-869-5996

Established in 1864, Botti Studio's scope of work includes total/partial restorations and conservation of historic mansions, public buildings, museums, corporate and private institutions, churches, synagogues, new commissions in stained and faceted glass, marble, mosaic, statuary.

Stained & Faceted Glass • Marble • Mosaic • Statuary • Interiors
Painting & Decoration • Historic Discovery

Chicago - New York - San Diego - Sarasota
Nassau, Bahamas - Agropoli, Italy

>>>> REPRINTS

CHICAGO ARCHITECT

Order reprints of an article or feature that was originally published in **CHICAGO ARCHITECT**

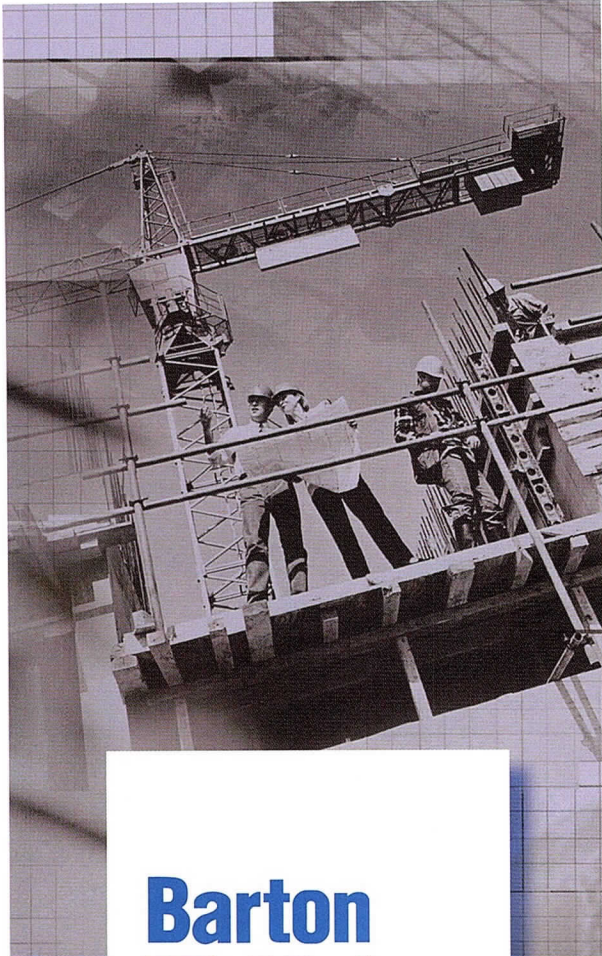
Contact **Al Slattery** at McGraw-Hill Construction for more details.
Call **303.584.6719** or email al_slattery@mcgraw-hill.com

Connecting people_projects_products

**McGraw Hill
CONSTRUCTION**



AIA Chicago



**Providing
Preconstruction
and Construction
Services
Since 1924**

www.bartonmalow.com

312.281.0810

AIA CHICAGO'S 2007 DESIGN EXCELLENCE INDEX

DISTINGUISHED BUILDING

HONOR AWARD

Garofalo Architects	
→ Hyde Park Art Center	26
Hammond Beeby Rupert Ainge	
→ Port of Entry	25
John Ronan Architects	
→ Gary Comer Youth Center	25
Murphy/Jahn	
→ Mannheimer 2 Corporate Headquarters	26

CITATIONS OF MERIT

Brininstool + Lynch	
→ 1620 South Michigan	29
EHDD/Architecture	
→ Pritzker Family Children's Zoo	29
Goettsch Partners	
→ Charles Square Center	27
John Ronan Architects	
→ Akiba-Schechter Jewish Day School	29
Murphy/Jahn	
→ Margot and Harold Schiff Residences	30
Murphy/Jahn	
→ Merck Serono Headquarters and Research Center	27
Pappageorge/Haymes, Ltd.	
→ University Commons	27
Searl and Associates Architects PC	
→ Willow Residence	28
Studio Dwell	
→ 1748 N. Winchester	28
Xavier Vendrell, AIA, and Claudi Aguilo	
→ Abello House	28

SPECIAL RECOGNITION

Legat Architects	
→ ABC-7 State Street Studio, WLS-TV	30

SUSTAINABLE DESIGN

HONOR AWARD

Farr Associates	
→ Alys Beach Courtyard House A-5	35
Holabird & Root	
→ Grinnell College C.E.R.A. Education Center	36
LCM Architects	
→ Access Living	35
Valerio Dewalt Train Associates	
→ Kresge Foundation Headquarters	36

CITATIONS OF MERIT

Harley Ellis Devereaux	
→ Wentworth Commons Apartments	38
Interior Space International	
→ Exelon Corporate Headquarters	38
OWP/P	
→ Tarkington School of Excellence	37
Perkins+Will	
→ Arizona State University Interdisciplinary Science and Technology Building	38
Skidmore, Owings & Merrill	
→ Chongming Island Master Plan	37
Xavier Vendrell, AIA, and Claudi Aguilo	
→ Abello House	37

SPECIAL RECOGNITION

Farr Associates	
→ Christy Webber Landscapes Headquarters	3
John Ronan Architects	
→ Gary Comer Youth Center	3
Murphy/Jahn	
→ Margot and Harold Schiff Residences	4
Skidmore, Owings & Merrill	
→ 601 Congress Street	3
Skidmore, Owings & Merrill	
→ Lakeside Master Plan	4

DIVINE DETAIL

HONOR AWARD

DeStefano + Partners	
→ State of Emergency Operations Center	4
John Ronan Architects	
→ Gary Comer Youth Center	4

CITATIONS OF MERIT

G. Goldberg + Associates	
→ House Dayton	4
UrbanLab	
→ Hannah's Bretzel	4

SPECIAL RECOGNITION

David C. Hovey, FAIA	
→ Biltmore Towers	4

INTERIOR ARCHITECTURE

HONOR AWARD

Mark A. Cuellar, AIA, and Sylvia Helen Billisics, Assoc. AIA	
→ Touch Salon	4
Valerio Dewalt Train Associates	
→ Garmin International Flagship Store	4
Vinci Hamp Architects, Inc.	
→ Illinois State Capitol Renovation of House and Senate Chambers	4

CITATIONS OF MERIT

architectureisfun, Inc.	
→ Pritzker Family Children's Zoo	4
Florian Architects	
→ Chait Residence	4
Gensler	
→ Tradelink	4
G. Goldberg + Associates	
→ House Dayton	4
Goettsch Partners	
→ Conservation and Relocation of the U-505 Submarine...	4
Perkins+Will Eva Maddox Branded Environments™	
→ Antron Resource Center	4
Skidmore, Owings & Merrill	
→ Office for a Law Firm	4
VOA Associates, Inc.	
→ Dade Behring	4

INDEX OF ADVERTISERS

- Advantage Kitchen & Bath 2
Alloc Inc. 14
Architemps Inc. 53
Avatech Solutions 46
AVI Midwest 59
AWI Chicago 72
Barton Malow Co. 74
Bendtec Inc. 53
Bernhard Woodwork LTD 46
Botti Studio of Architects 73
Brick Distributors of Illinois IFC
Brizo 3
Building Blocks Inc. 58
Burnham Nationwide 8
C.E. Anderson & Assoc. 60
Cadworks 31
Chicago Architectural Metals IBC
Chicago Building Congress 32
Chicago Plastering Inst. 70
Chicago Regional Council of Carpenters 59
Chicagoland Roofing Council 33
Computer Analytics Corp. 56
Conceptual Design Studio 72
County Materials Corp. 20
Destefano + Partners 45
Door Engineering & Mfg. 57
Euroview 60
F.H. Paschen 61
Faithful & Gould 21
George Sollitt Construction 71
Goettsch Partners 11
Gremley & Biedermann 56
HOK Architects 68
Halquist Stone Co. 41
Halvorsen & Partners 34
Harley Ellis Devereaux 69
Hayward Baker 5
Hill Mechanical 1
HRH A&E 52
ImageFiction 61
International Masonry Inst. 19
Jones & Brown Co. 45
Kayhan International 20
Kristine Fallon Assoc. 71
Krukowski Stone Co. Inc. 13
Landscapeforms 66
Lee Lumber 62
Magnusson Klemencic Assoc. 21
Mann Weitz & Assoc. 41
Michuda Construction Inc. 52
National Survey Service Inc. 71
Olympic Signs 42
Performance Roof Systems 64
Permasteelisa Cladding 18
Petersen Aluminum Corp. 22
Precast Concrete Specialties 42
Professional Concepts Ins. 9
Prototech Architectural 66
School of the Art Institute 66
Schuler Shook 58
Skimore, Owings & Merrill LLP 73
Strogoff Consulting 57
Turner Construction 72
Tuttle Railing Systems 6
USG Design Studio 4
Vertex Graphics BC
Walsh Construction 75

Walsh Construction

A DIVISION OF The Walsh Group

GENERAL CONTRACTING
CONSTRUCTION MANAGEMENT
DESIGN BUILD



929 West Adams Street
Chicago, IL 60607
312.563.5400
www.walshgroup.com

WALSH

The innovator and iconoclast

walter netsch

Walter Netsch (right) and Zurich Esposito

talks with Zurich Esposito about age and architects

I had not seen Walter Netsch, FAIA, since AIA Chicago's 2006 Annual Meeting last December at the University Club, where he was given a Lifetime Achievement Award from our chapter at the age of 86. His eloquent acceptance speech left me, and others, wanting to hear more from this man whose contributions to Chicago's architecture and design community are numerous.

Walter greeted me warmly, looking healthy and well, and led me on a mesmerizing tour of the fascinating home in Old Town he designed in 1974 for his wife, Dawn Clark Netsch, himself, and their impressive art collection (then growing, now exploding). Walter led the way in his wheelchair (his legs were amputated several years ago, following complications from diabetes), swiftly navigating the interconnected angular spaces that make up an

Escher-like ensemble of ultimately pleasing living spaces organized on various levels, following the tenets of his "field theory." Finally, Walter directed me to sit on one of several Eames chairs—"Charlie said I had to have these for the house," he explained—in front of a giant original Roy Lichtenstein painting depicting another interior space that covers an entire wall of Netsch's study, where we settled in for some Q and A.

Z Walter, what are you working on these days?

W: Well, I'm not trying to design an office building or a condo; I'm working on the year 2060. I've been working on issues that relate to climate change, first of all because it's so sad and tragic and horrible. I'm working on solutions for dealing with the consequences and conditions we are going to face by the year 2060.

Z So clearly you continue to work and to do research. You've also been fighting very hard to keep your Illinois architecture license without keeping up with continuing education requirements, but it sounds like you are actually doing a lot of research and learning.

W: There is somebody in that license office that doesn't like me, or doesn't like Skidmore, or something. I don't need learning units for having lunch with product manufacturers to see their newest whatever-it-is. I find that a little unnecessary at my age and I am not with a firm where that would be beneficial to me.

Z Licensed architects in Illinois can retire their license and take the designation "architect, retired." With that status, you would not need to attend lunch-and-learns. But I don't think that's the part that really bothers you. There are other ways of earning continuing ed requirements.

W: I earned my license as an architect. Now they want me to send the license back? I am fighting for anybody who's had a decent career, especially.

Z Can you expect the licensing board to determine who has and who hasn't had a "decent career?"

W: I don't like having my license taken away from me. I don't expect the licensing board to do that.

Z Your fight has gotten a lot of attention, but so has your association over

Continued on Page 67

CHICAGO ARCHITECTURAL METALS

The Benchmark of Craftsmanship



• DESIGN • ENGINEERING • FABRICATION • ERECTING

- ARCHITECTURE METALS
- ORNAMENTAL IRON
- CURTAIN WALL
- MISCELLANEOUS METALS
- STRUCTURE STEEL
- RESTORATION

4619 N. Ravenswood Ave. Suite 201 Chicago, IL 60640 P. 773-275-0700 F. 773-275-0900
www.chicagoarchitecturalmetals.com



REALIZE THE FUTURE TODAY
WWW.VERTEXGRAPHICS.COM

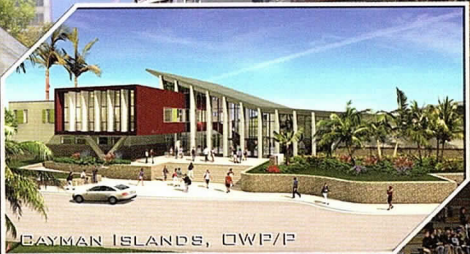
101% EVENTS CENTER HOTEL - DLR GROUP, CHICAGO



SOBEL CENTER - PERKINS + WILL



312.432.9870
VERTEX GRAPHICS
1147 W OHIO #102 CHICAGO IL 60622



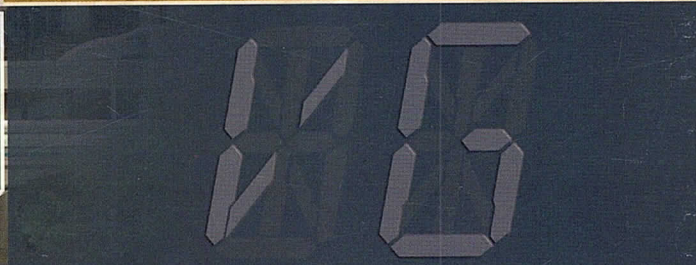
CAYMAN ISLANDS, OWP/P



MINISTRY OF EDUCATION NEW HIGH SCHOOLS, CAYMAN ISLANDS, OWP/P



CAYMAN ISLANDS, OWP/P



ARCHITECTURAL - VISUALIZATION - RENDERING - ANIMATION - VR PANORAMIC