



**Focus**

NOVEMBER 2006  
SPECIAL EDITION

# Design Excellence Awards 2006

**Distinguished Building, Interior Architecture,  
Divine Detail and Urban Design Awards**

---

AIA Chicago





WORN JERABEK ARCHITECTS, PC, ILLINOIS



TWH ARCHITECTS, INC., TENNESSEE Photo by Stephen Greenfield



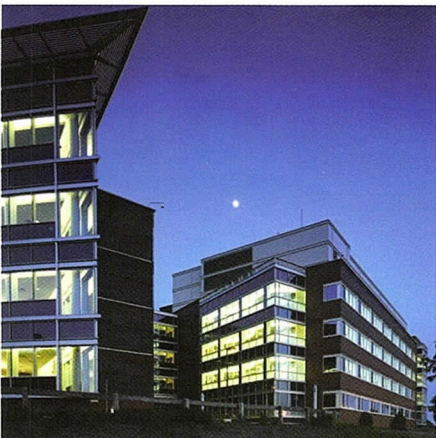
OLSON LEWIS DIOLI & DOKTOR ARCHITECTS, MASSACHUSETTS



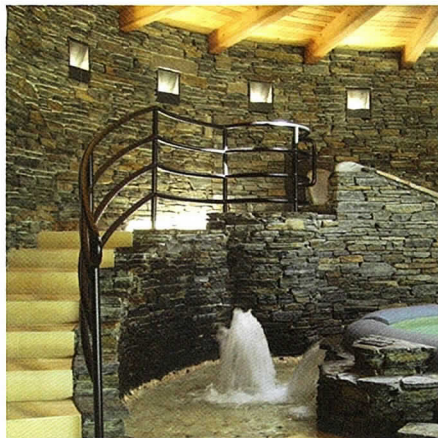
ROJO ARCHITECTURE, FLORIDA



NATHAN KIPNIS ARCHITECTS, INC., ILLINOIS



KING & KING, NEW YORK



LINESYNC ARCHITECTURE, VERMONT



GLEICHER DESIGN GROUP, NEW YORK

## They all use it. Shouldn't you?

When so many talented designers choose the same architectural design software to drive business forward, it's more than a trend. It's a sign you may be missing out on an exceptional resource. VectorWorks Architect offers architectural design firms powerful BIM features, unparalleled performance and uncommon value. Your competitors are taking advantage of top speed, as well as superior production and presentation capabilities —plus, seamless integration of 2D, 3D and building data. Shouldn't you?

Call 1-877-202-9309 today to receive your free copy of our demo CD.

BIM software for the smart-sized firm  
**VectorWORKS**  
[www.vectorworks.net/chicago](http://www.vectorworks.net/chicago)



**Focus Advisory Board**

Thomas Braham, AIA  
 Peter Exley, FAIA  
 Peter Schlossman, AIA  
 Linda Searl, FAIA  
 Alice Sinkevitch, Hon. AIA

Brett Taylor, AIA  
 P.K. VanderBeke, AIA  
 Cynthia Weese, FAIA  
 Thomas Zurowski, AIA

FOCUS (ISSN 1071-3700) Vol. 27 No. 10, is published monthly with a combined issue July/August, by AIA Chicago, 222 Merchandise Mart Plaza, Suite 1049, Chicago, Illinois 60654-1001. \$20 of each member's dues are allotted as a subscription. Periodicals postage paid at Chicago, Illinois. POSTMASTER: Send address changes to Focus, AIA Chicago, 222 Merchandise Mart Plaza, Suite 1049, Chicago, Illinois 60654-1001.

For advertising rates and schedules, call 312/670-7770.

© 2006 The American Institute of Architects Chicago.

All rights reserved. Reproduction in whole or part without permission is strictly prohibited.



**2006 Board of Directors**

**President**  
 Peter Schlossman, AIA

**First Vice President/President-Elect**  
 Laura Fisher, FAIA

**Vice Presidents**  
 Richard Master, AIA  
 Fred Brandstrader, AIA

**Secretary**  
 Brett Taylor, AIA

**Treasurer**  
 Christopher Chwedyk, AIA

**Past President**  
 Thomas Kerwin, AIA

**Directors**  
 David Brininstool, AIA  
 Mark Hirons, AIA  
 Grant Uhler, AIA  
 P.K. VanderBeke, AIA  
 RaMonna Westbrook Davis, AIA

**Associate Director**  
 Jeffrey Missad, Associate AIA

**Professional Affiliate Director**  
 Jeffrey Loyall

**AIA Regional Directors**  
 Jonathan L. Fischel, AIA  
 Walter Hainsfurther, AIA

**AIA Illinois Delegates**  
 Mary Brush, AIA  
 Gaines B. Hall, FAIA  
 Leonard E. Koroski, AIA  
 Eben Smith, AIA  
 Robert Woodworth, AIA  
 Dina Griffin-Poynton, AIA  
 (alternate)  
 Sharlene Young, AIA  
 (alternate)

**2006 Committee Chairs**

**Working With an Architect**  
 DonnaLee Floeter, AIA  
 Constantine Vasilios, AIA

**2006 Knowledge Communities**

**Design**  
 Craig Brandt, AIA

**Design/Build**  
 Christopher Martersteck, AIA

**Environment**  
 Robert C. Vagnieres, Jr., AIA

**Architecture for Health**  
 Matthew Miller, AIA

**Historic Resources**  
 Charles Sejud, AIA

**Housing**  
 Steven Montgomery, AIA

**Interior Architecture**  
 Carol LaMar, AIA

**Regional & Urban Design**  
 Richard Wilson, Assoc. AIA

**Practice Management**  
 Heather Poell, Assoc. AIA

**Technical Issues**  
 Lynette Stuhlmacher, Assoc. AIA

**Young Architects Forum**  
 Marc Teer, AIA

**Chapter Staff**

**Executive Vice President**  
 Zurich Esposito

**Communications Director**  
 Alice Sinkevitch, Hon. AIA

**Membership Director/  
 Assistant to the Director**  
 Phil Rahill

**Program Director**  
 Joan Pomaranc

**Financial Manager**  
 Crystal Gagler

**Public Information Receptionist**  
 Linda Freeman

**Communications Specialist**  
 Lara Brown

4

**President's Letter**

6

**Distinguished Building Awards**



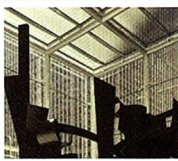
22

**Interior Architecture Awards**



36

**Divine Detail Awards**



42

**Urban Design Awards**



45

**Sponsors List**

46

**Jury List**

46

**Index of Awards**

**Want to See More?**

Visit [www.aiachicago.org](http://www.aiachicago.org) to view a virtual exhibit of all awards submissions.

Cover: 111 S. Wacker by Goettlich Partners  
 Photo: James Steinkamp, Steinkamp Photography





The pursuit of beauty is one of architecture's highest callings, and one reason why many of us have dedicated

ourselves to the profession. Defining and creating beauty, however, can be an elusive task. The architectural process has many varied and potential pitfalls, but after all that a project must undergo to come to fruition, obtaining recognition by a jury of your peers can be equally challenging. The world places many demands on its architects, and the rewards we earn are not always substantial. In this environment it is important that we take time to recognize the excellence for which we, as members of AIA, collectively strive.

The fifty-one year old archive of the Design Excellence Awards program is a living history of our chapter's view of the world, our take on current industry trends, and a reflection of our social priorities and our corresponding design responses over time. This year AIA Chicago adds forty-one new winners to its storied history of Design Excellence Awards, and I can safely say that the winning does not come easy. The process of executing any good project requires an enlightened owner, a rigorous architectural and engineering team and a deftly managed construction crew, but even the benefit of such a team does not guarantee a successful or award-winning

outcome. The process of executing a project worthy of excellence is far less tangible. This special edition is our yearly testament to the extreme dedication and art of those few projects and the teams behind them that reach the level we deem excellent.

The teams that define architectural beauty for us each year are our design award juries. They are selected to be diverse geographically and ethnically, as well as by gender and design backgrounds. This year's juries were no exception. They worked hard, endured lengthy deliberation, and in the end selected a fine set of projects that represent the best thought and design recently accomplished in Chicago. I thank each of them for their dedication to the art of design and for their imprint on the legacy of this award program.

Our award program this year recognizes our best local architects, but is also meant to be a tribute to the fine architecture in Chicago being done by architects living outside of our city. For the first time, beginning this year, the Design Excellence program is open to them. It is the goal of AIA Chicago to recognize all the great work in the city and to have that greatness become the new threshold for excellence in design. Another new feature of this year's awards is the addition of the Urban Design Award. This award will rotate with the

Sustainable Design Award and Unbuilt Design Award, on a yearly basis, or as demand and circumstances dictate. One last change to our program was to extend the eligibility timeframe for projects. Our hope is that these changes will invigorate and expand the potential for this program in future years.

Chicago architects are producing some of the nation's finest work, and I hope this issue is an adequate tribute to their accomplishments. This year's Design Excellence Award winners constitute the finest work in our city, accomplished through the hard work of many owners, contractors, and architects with the able assistance of their engineers, consultants and photographers. I hope you will join me in congratulating all of this year's Design Excellence Award winners.

Thank you.

A handwritten signature in black ink, appearing to read "Peter Schlossman".

Peter Schlossman, AIA  
President



# ALWAYS ALUMINUM

Marriott Surfwatch Resort Condominiums  
Hilton Head Island, SC  
Architect: NCG Architects Inc.  
General Contractor: Hardin Construction Company  
Roofing Contractor: Southern Roof & Wood Care Corp.  
Profile: Snap-Clad  
Color: Custom Color - Charlotte Slate

## PAC-CLAD

Petersen Aluminum

## Aluminum Roofing Panels

Always use PAC-CLAD® Aluminum for projects located in coastal regions, aggressive environments, or areas subject to acid rain. Aluminum has significant advantages including superior corrosion resistance, lighter weight panels and ease of installation. PAC-CLAD® Aluminum is available from Petersen in 34 standard colors and a wide variety of UL-580 Class 90-rated roofing profiles.

Southern Roof & Wood Care Corp. installed 30,000 sq. ft. of .032 aluminum Snap-Clad Panels in a custom color, Charlotte Slate, on the Marriott Surfwatch Resort in Hilton Head.

Jim Carson, Principal, NCG Architects Inc, said that Petersen Aluminum Panels were chosen because they provided the best price and assurance that their Kynar 500® finish in aluminum would hold up to the coastal environment.

PAC-CLAD® Panels are corrective-leveled during fabrication to provide superior panel flatness. Our PAC-CLAD® Kynar 500® finish is covered by a non-prorated 20 year warranty.

For more information regarding our complete line of metal roofing products, please call us at 1-800-PAC-CLAD or visit our website @ [www.pac-clad.com](http://www.pac-clad.com).

## Petersen Aluminum

1005 Tonne Road • Elk Grove Village, IL 60007  
1-800-PAC-CLAD or 1-847-228-7150  
Fax: 1-800-722-7150 or 1-847-956-7968

### Other Plant Locations:

Annapolis Junction, MD: 1-800-344-1400  
Tyler, TX: 1-800-441-8661; Kennesaw, GA: 1-800-272-4482  
<http://www.pac-clad.com>



# Distinguished Building Awards

By Alice Sinkevitch, Hon. AIA, and Lara Brown

**T**he Distinguished Building Award was established 51 years ago to recognize significant achievements in the planning, design and execution of recent building projects. Projects are eligible if they were completed between January 1, 2001, and May 1, 2006.



**111 S. Wacker**  
Chicago, IL

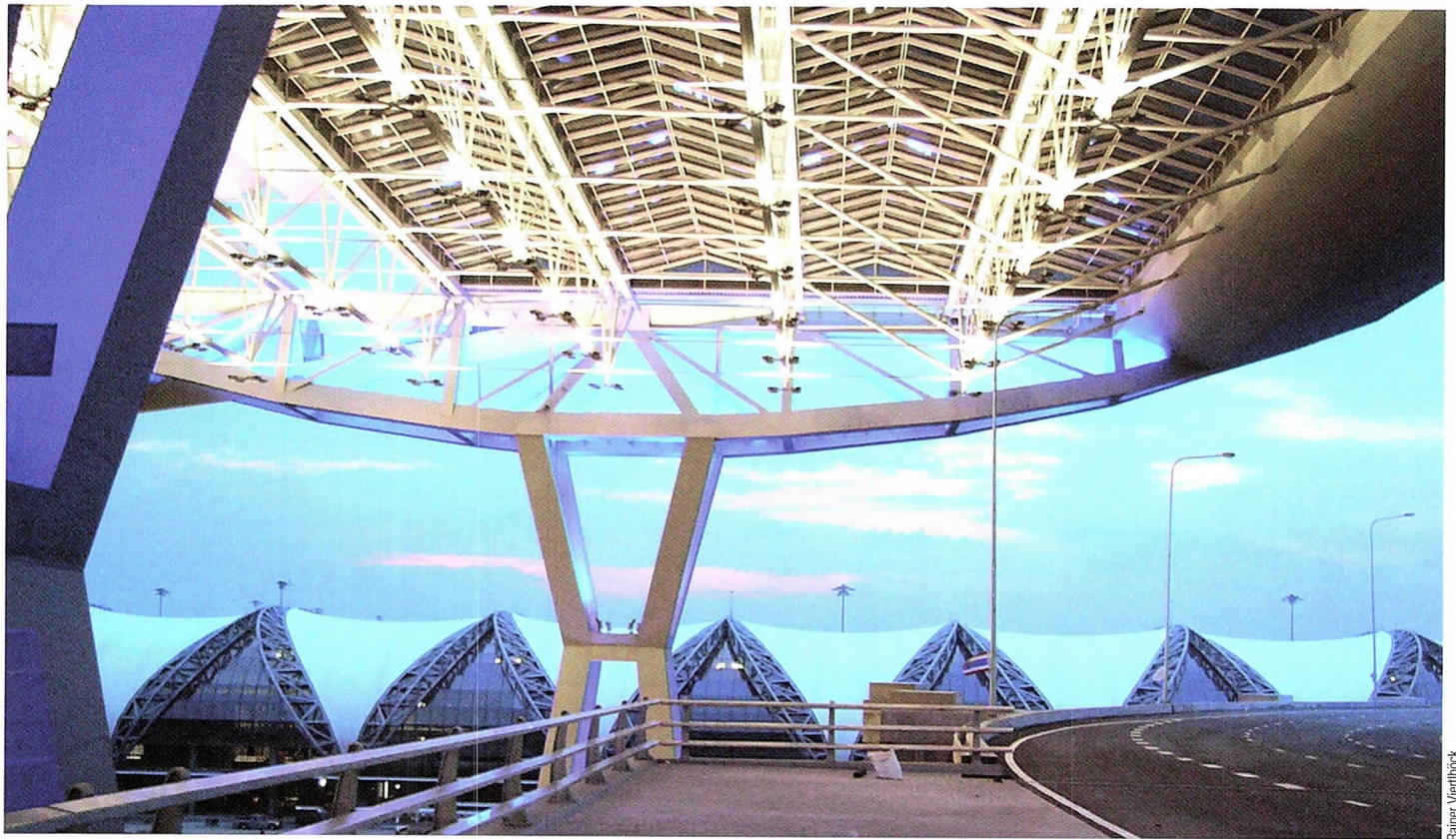
**Honor Award**

Architect – Goettsch Partners  
Client – The John Buck Company  
Contractor – Bovis Lend Lease  
Consultants – Magnusson Klemencic Associates  
(Structural); Hill Mechanical (HVAC Design-Build);  
Gibson Electric (Electrical Design-Build); Consentini  
Lighting (Lighting Design)

The pedestrian experience exposes the multi-faceted aspects of the 53-story, 1.5 million-square-foot office tower design: the functional requirements of the parking ramp; the transparency of the lobby enclosure that reveals the marble walls; the 80-foot column spacing that allows the building to seemingly hover above the lobby; and the steel-and-glass curtain wall above. The design of the lobby evolved out of the need to incorporate a parking ramp to bring cars from the street to the third floor. Jurors were impressed by the innovative enclosure. "They have taken the inside and brought it outside. The transparency of the base is second to none," commented a juror. Based on its sustainable design initiatives, 111 S. Wacker was certified LEED-CS Gold in 2005.







Rainer Weirböck



Rainer Weirböck

**Passenger Terminal Complex, Suvarnabhumi Airport  
Bangkok, Thailand**

**Honor Award**

Architect – Murphy/Jahn  
 Assoc. Architect/Engineer – ACT Consultants Co., Ltd.  
 Client – New Bangkok International Airport Co., Ltd.  
 Contractor – ITO Joint Venture (Italian-Thai  
 Development; Takenaka Corp.; Obayashi Corp.)  
 Consultants – TAMS Consultants/Earth Tech (Special  
 Systems); John A. Martin & Associates, Inc.  
 (Design Engineers); Martin/Martin, Inc. (Steel  
 Superstructure); Werner Sobek Ingenieure GmbH  
 (Steel Work/Façade); Flack + Kurtz Consulting  
 Engineers (Mechanical/Electrical/Plumbing);  
 Transsolar Energietechnik GmbH (Climate and  
 Environmental); Yann Kersalé, AIK Expeditions  
 Lumiere (Lighting Designer); BNP Associates, Inc.  
 (Baggage Consultant)

“Does it say ‘Gateway to Thailand’? – Yes,” commented one juror. “Leafy roof forms protect you from the sun and it provides a beautiful way to get from one end of the space to the other.” Another juror said, “This project innovates. The designers have taken something and made it unexpected. It inserts a garden into the program that is interpreted as lyric and poetic.” A large roof trellis structure placed over the complex of functionally separate buildings unifies the site and provides the predominant architectural image as approached from the landside. Designed to accommodate future growth of the terminal pavilion, the trellis shades the structures below from direct sunlight, thereby reducing mechanical loads. Outdoor spaces between the buildings are also shaded by the roof trellis and provide landscaped courtyards, useful for pedestrians and a visual amenity for the passengers in the terminal above.



**Kresge Foundation Headquarters**  
Troy, MI

**Honor Award**

Architect – Valerio Dewalt Train  
Associate Architect – Farr Associates  
Client – The Kresge Foundation  
Contractor – JM Olson Corporation  
Consultant – Robert Darvas Associates

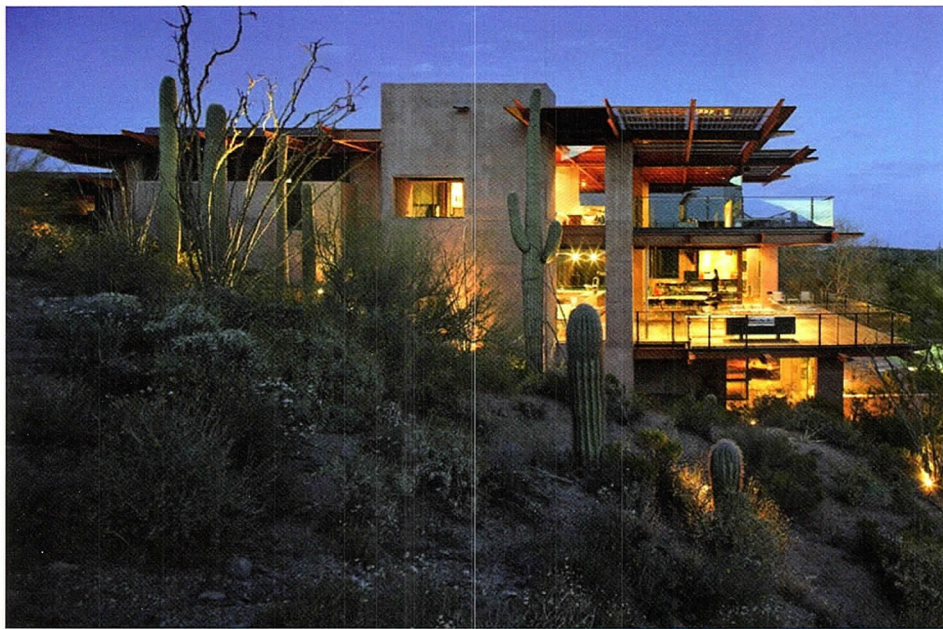
The beautifully scaled and detailed addition is designed to integrate into a seamless whole. The addition to these 19th century farm buildings connects the natural and the manmade and is a model of sustainable design for the nonprofit organizations that apply for Kresge challenge grants. The jury said "traditional modernism intersects and coalesces with a farm house and its natural landscape. It is on such an intimate scale – so controlled, so beautiful, like interlocking panels."







Bill Timmerman, Bill Timmerman Photography, Inc.



Bill Timmerman, Bill Timmerman Photography, Inc.

**Sterling Ridge**  
Scottsdale, AZ

**Honor Award**

Architect – David C. Hovey, FAIA  
Client – David and Eileen Hovey  
General Contractor – Optima, DCH, Inc.  
Consultants – Landa & Associates (Structural Engineers); Kinetics Systems, Inc. (MEP)

This residence reflects the rugged terrain of the High Sonoran desert in Scottsdale, Arizona. Concrete walls blend with the earth; steel beams reflect the power and color of nearby rock outcroppings. Interior spaces seamlessly transition to exterior decks that function as canopies. Photovoltaic cells are suspended in the cantilevers to screen the interior from the desert sun while creating electricity to power the home. The jury said "It is kind of raw, which is appropriate to its desert setting. The photovoltaics are deployed elegantly – the first time I've ever seen that."



**Virginia Beach Convention Center**  
Virginia Beach, VA

**Citation of Merit**

Architect – Skidmore, Owings & Merrill LLP  
Associate Architect – Clark-Nexsen (Civil, Mechanical, Electrical, Plumbing)  
Client – City of Virginia Beach  
Contractor – Turner Construction Company  
Consultants – Shen Milsom & Wilke, Inc. (Acoustical, Telecommunications); The Office of James Burnett (Landscape Design); Calori & Vanden-Eynden, Ltd. (Graphic Design); Kroll Security Services Group (Security Systems); Cini-Little International (Food Services); PHA Lighting Design (Special Lighting); HH Angus & Associates (Vertical Transportation)

The design expresses the past, present and future of the region, evoking imagery reflective of the region's nautical environment: lighthouses, salt marshes, naval vessels and the 21st century jets that fly overhead. The building integrates indoor and outdoor spaces, juxtaposing natural elements with technological innovations in structure, systems and light sources. One juror said, "The project is rigorous, thoughtful, exuberant, exciting; very inviting and democratic – it encourages you to go into it."



James Stairlamm, Stairlamm Photography



© Barbara Karant, Karant + Associates, Inc.

**838 W. Webster**  
Chicago, IL

**Citation of Merit**

Architect – DeStefano and Partners, Ltd.  
Client – withheld  
Contractor – Goldberg General Contracting  
Consultants – Building Engineer Systems (MEP); Charter Sills (Lighting Consultant); Rubinos & Mesia Engineers, Inc. (Structural Engineers)

This townhouse, recognized by jurors as a "creative, sensitive urban infill project," reconciles the practical demands for a city house on a busy urban street with the kind of fluid, open planning characteristic of the case study houses of the 60's and 70's. While making a bold public statement to the street, the house is actually inwardly focused around a courtyard with all major spaces on the ground floor opening directly onto the central outdoor space. The house's materiality marries both brick and painted metal and this mix of indigenously urban materials was noticed by the jurors. One juror noted, "There is an interesting creative juxtaposition and reinterpretation of familiar materials and abstract forms. It has an interesting play of coloration." Another juror said, "The building relates well to its environment through material and scale."



**Highlight Munich Business Towers**  
Munich, Germany

**Citation of Merit**

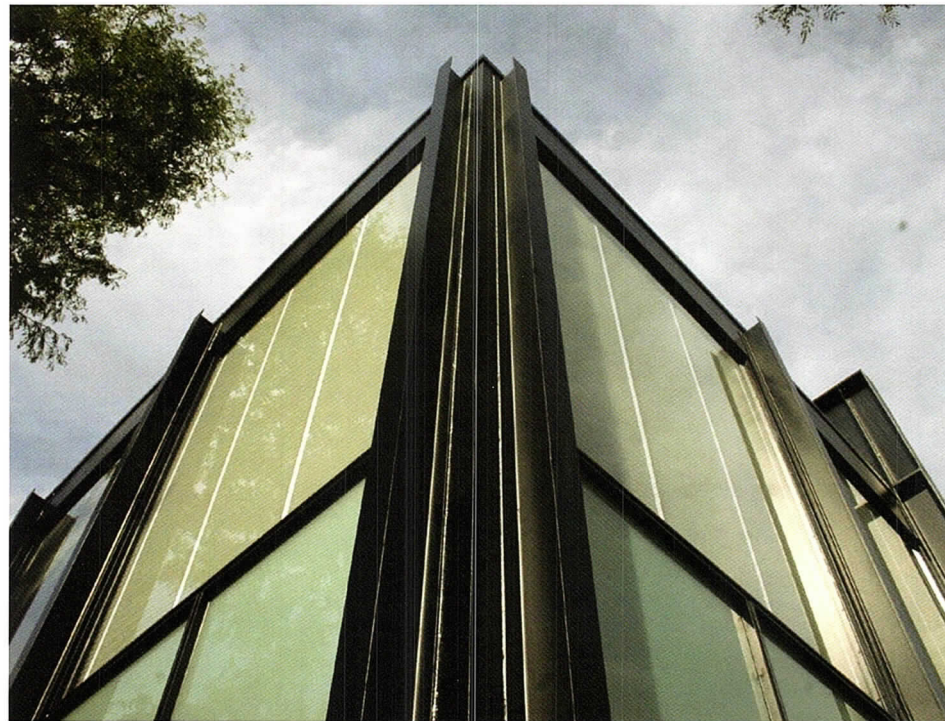
Architect – Murphy/Jahn  
Client – Bürozentrum Parkstadt München-Schwabing KG  
Contractor – Strabag KG  
Consultants – Werner Sobek Ingenieure GmbH (Structural/Façades); Transsolar Energietechnik GmbH (Climate and Environmental Concept); ENCO Energie-Consulting (Mechanical/Electrical/Plumbing); Peter Walker & Partners, Prof. Rainer Schmidt (Landscape Architect); L-Plan Lichtplanung (Lighting); Yann Kersalé, AIK Expedition Lumiere (Lighting Art)

The project consists of two towers that are shifted against each other and two base buildings. The two towers are connected by bridges, intended as “clip-on elements” that can be added or taken away wherever needed. The single-layer façade re-examines the nature of the high-rise enclosure, particularly addressing shading, daylighting, natural ventilation, increased vision and visual control of the tower façades. The typical façade module consists of a narrow, operable window behind vertical panels of stainless steel and a glass portion of high-performance, triple-glazed and insulating glass. A selective interior shade reduces vision and daylight. One juror described the towers as “an incredible project. This project looks at things that American office buildings aren’t looking at. There is a clear conceptual idea that’s carried through in the details.”



Rainer Ventrück

Rainer Ventrück



Ron Gordon, Ron Gordon Photo © Hedrich Blessing

**IIT S.R. Crown Hall Exterior Restoration**  
Chicago, IL

**Citation of Merit**

Architect – Kreuck + Sexton Architects  
Preservation Architect – McClier (now known as Austin/AECOM)  
Client – Illinois Institute of Technology College of Architecture  
Contractor – Clune Construction  
Consultants – Atelier Ten (Environmental); Transolar (Environmental); Horvath Reich CDC (Curtain Wall Consultant); Cotter Consulting (Project Management)

Completed by Mies van der Rohe in 1956, S.R. Crown Hall is home to the Illinois Institute of Technology College of Architecture. After fifty years of continuous use, Crown Hall had undergone deterioration. Additionally, several historically inaccurate and functionally inappropriate renovations to the building envelope had compromised its integrity. The restoration of the exterior consisted of removing and replacing steel corroded beyond repair, sandblasting the steel frame, application of a three-coat epoxy paint, and installing new glass that meets the current code and restores the building's original balance between translucency and transparency. The jury recognized that, “It goes beyond technical skill to renovate that building. This building is extremely rigorous in the concept and the details. In restoration, it must emulate what Mies would have done.”



**Adlai E. Stevenson High School Addition**  
Lincolnshire, IL

*Citation of Merit*

Architect – OWP/P

Client – Adlai E. Stevenson High School District 125

Contractor – Gilbane Construction

Consultants – OWP/P (Structural Engineering)

The new entrance is a symbol of academic pride and brings an iconic element to this ever-evolving building. Five different floor levels meet in an atrium that is flooded by daylight through clerestory windows, providing meeting space for clubs and college and career events. Past the atrium, the music addition supports the school's mission to provide quality programs and promote small learning communities. The addition also enables the return to the full complement of highly-regarded community arts programs. The jury said "This building has a brightness usually not seen in public schools. It's optimistic, a place that encourages the coming together of different people for different reasons. It has a wonderful relationship three-dimensionally."



James Steinkamp, Steinkamp Balllogg Photography



Scott McDonald, Hedrich Blessing

**Courtyard Translucens House**  
Dallas, TX

*Citation of Merit*

Architect of Record – Nagle Hartray Danker Kagan  
McKay Penney Architects

Architect – Robert J. Neylan Architects, Ltd.

Client – Dan and Gail Cook

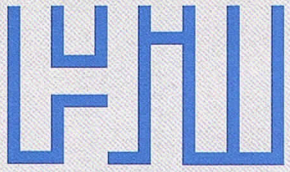
General Contractor – Thos. S. Byrne General Contractors

Consultants – Graef, Anhalt, Schloemer, & Associates (Structural Engineer); WMA Consulting Engineers (Mechanical Engineer)

The house is set back from the street and wraps around a courtyard with a lap pool. Major art will be displayed in the 24 x 60 foot, two-story living room that overlooks the courtyard. The structure is framed in white painted steel with white aluminum panels and clear and translucent glass infill. The jury said "This inwardly focused house is both lovely and calm. It is all about the courtyard. The strong conceptual expression is rigorously followed through."



# 70 YEARS STRONG



**HILL MECHANICAL GROUP**

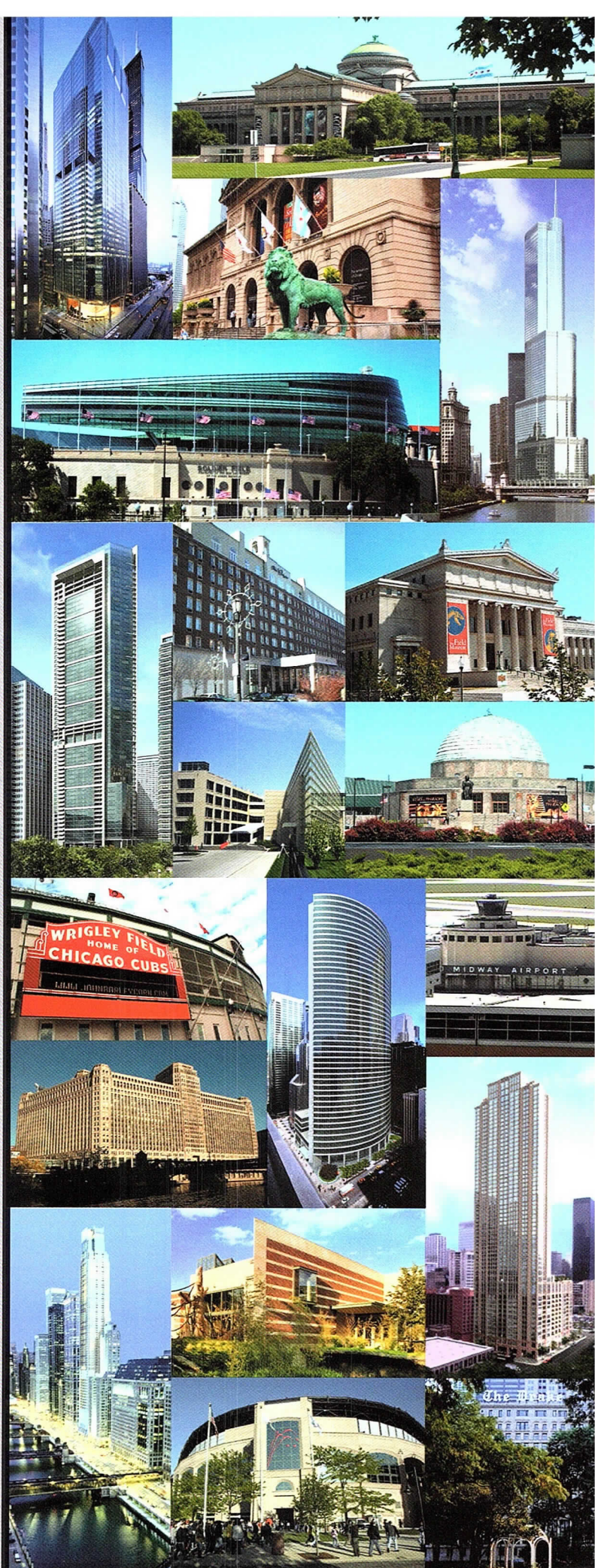
**1936 - 2006**

Since 1936, we've served Chicago with superior construction and maintenance. From her skyline to her suburbs, we've provided the mechanical construction teams for more than ten thousand building projects, including: high-rise structures, sports complexes, hospitals, airports, educational institutions, museums, industrial/manufacturing facilities, offices, restaurants and retail operations.

Today, we're proud to be Illinois' largest HVAC contractor. Our size and broad experience make us experts at delivering quality in everything we do — from HVAC/Plumbing and design-build to system services and facility operations. That's why clients continue to rely on our 30+ graduate engineers and over 900 skilled professionals.

Thank you, Chicago, for 70 strong years.

[www.hillmech.com](http://www.hillmech.com)





**Wilson Residence**  
Pound Ridge, NY

**Citation of Merit**

Architect – Dirk Denison Architects  
Client – Charles and Kerry Wilson  
General Contractor – DPD Builders  
Consultants – Evens & Associates (Structural Engineer); Bibbo Associates, (Civil Engineer)

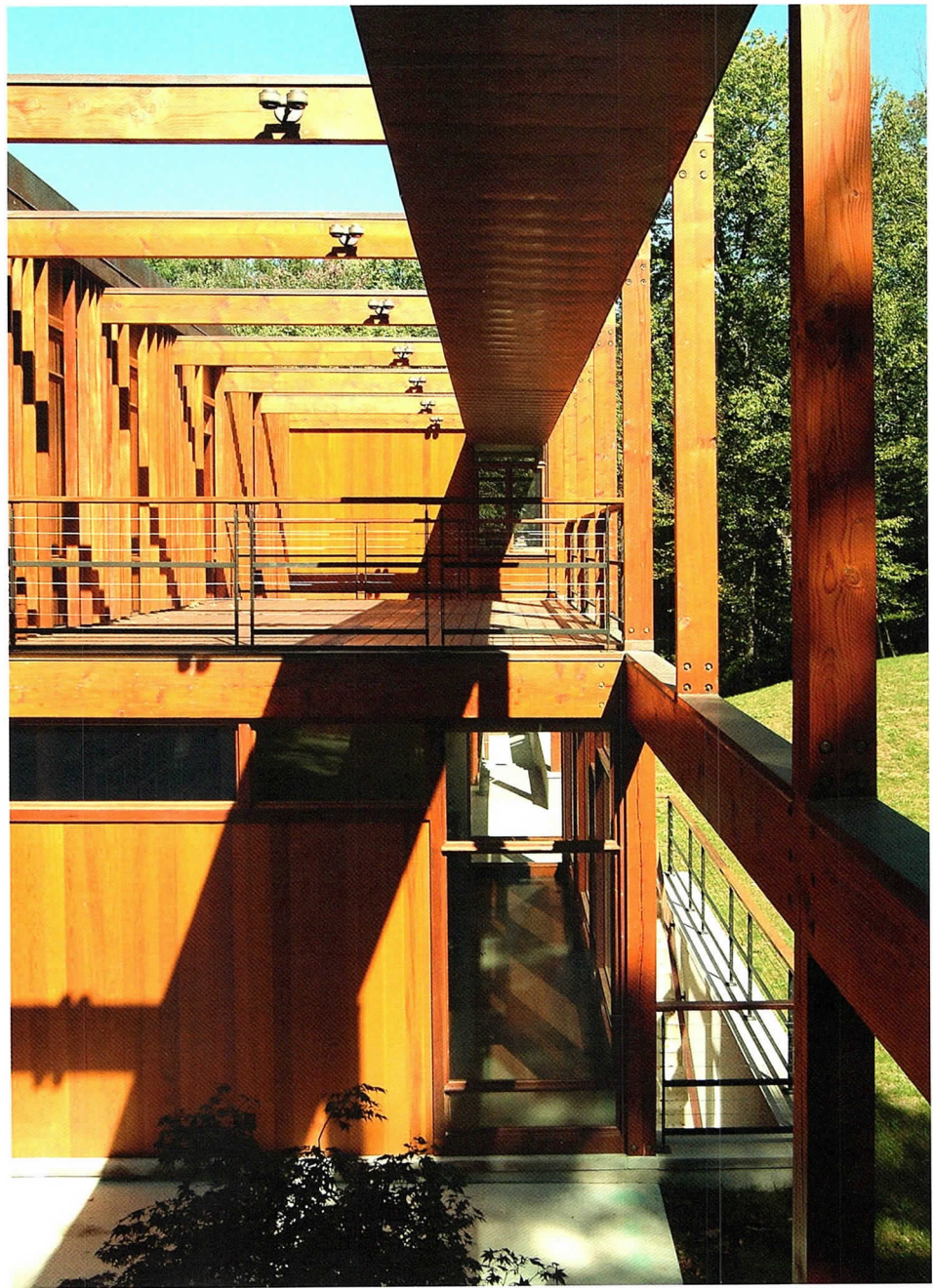
The house is idealized as two horizontal lines spanning between natural outcroppings, and the sliding alignment of the wood bar over the stone expresses a degree of motion. The cross-axial orientation allows for views to the east of a forest, and to the west of a lake. On the east side, the timber structure is pulled out of the main volume, tying it spatially and materially to the forest. The jury commented, "Playfulness in shadow is created by structural armature."

**Dempster Street Station Restoration & Adaptive Reuse Project**  
Skokie, IL

**Special Recognition**

Architect – Antunovich Associates Architects  
Client – The Taxman Corporation; Terraco, Inc.; Village of Skokie  
Contractor – Master Hand Contractors, Inc.  
Consultants – Ciorba Group, Inc. (Civil Engineer); Getty, White & Mason (Structural Engineer)

Designed by architect Arthur U. Gerber (1878-1960) and built in 1925 by railroad tycoon Samuel Insull, the Dempster Street Station served the Elevated and North Shore Rail Lines until the demise of the North Shore Line in 1963. The demolition of the station was imminent, with a new bus terminal project planned for the site. In an effort to save the station, the architect teamed with local developers to move the structure 120 feet, restore it to its original appearance and adapt it to retail use. The station was moved in one piece by saw-cutting the concrete foundations, building a temporary steel frame, jacking up the structure and rolling it across railroad tracks to its new foundations. Following original construction documents and period photographs, the building exterior was faithfully restored. Interior brick partitions were salvaged to rebuild losses in the outside wall, missing windows and storefronts were reconstructed using salvage lumber, layers of paint were stripped from the brick, the Ludovici clay tile roof was rebuilt with new tiles from the original manufacturer, new globe lights were made to match the original, and original paint colors were restored.

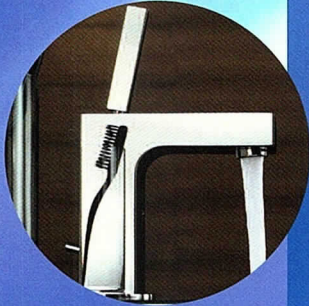




Advantage

# Realize Your Plans.

-----



**AXOR**<sup>®</sup>  
hansgrohe

BATHROOMS  
KITCHENS  
DOOR HARDWARE

Advantage  kitchen & bath  
Find it Here. Gallery

7 8 5 0  
NORTH  
MILWAUKEE  
AVENUE  
NILES  
ILLINOIS

847-965-4444  
advantagebath.com









**3177 Hudson**  
Belmont Hudson LLC

**Crate and Barrel, Oakbrook Homestore**  
Oak Brook, IL

**Special Recognition**

Architect – Crate and Barrel – Architecture Dept.,  
Jacques Verlinden  
Associate Architect – Heather Machicao, Teng & Assoc.  
Client – Crate and Barrel  
Contractor – Crane Construction  
Consultants – M E Engineers (M/E/P & FP Engineers);  
David Fisher & Associates (Structural Engineers);  
Douglas Hoerr Landscape Architecture

**Crate and Barrel, Beverly Hills Homestore**  
Beverly Hills, CA

**Special Recognition**

Architect – Crate and Barrel – Architecture Dept.,  
Jacques Verlinden  
Assoc. Architect – Claudia Ross, NBBJ Retail Concepts  
(Interior); Field Paoli Architects (Exterior)  
Client – Crate and Barrel  
Contractor – The Beck Group (Interior); W.E. O’Neil  
(Exterior)  
Consultants – M E Engineers (M/E/P & FP Engineers);  
Cary Kopczynski & Company (Interior – Structural  
Engineers); KPFF (Exterior – Structural Engineers);  
Douglas Hoerr Landscape Architecture

Jurors lauded the architect’s ability to adapt the brand concept to site specific locations. Jurors agreed that each building was “well-adjusted and site specific. Even textures are rethought depending on the location. They are siblings: each one has a familiarity but is unique.” The Crate and Barrel homestores recognized for maximizing the Crate and Barrel brand identity employ common features: glass curtain walls showcase merchandise; defined entrances facilitate the flow of customers; and the conscientious shifting of scale and density creates pedestrian-friendly experiences.

1438 W. Kinzie #100  
Chicago, IL 60622  
tel: 312-850-0366  
www.imaginarc.com



**MW&A**

**Does your CPA firm  
provide expert  
advice and strategic  
solutions tailored  
to your firm’s  
specifications?**

If not, contact Mark Mann at Mann.Weitz & Associates.  
We’ve been providing tax, audit and consulting services  
to architectural firms for more than 25 years.

**Mann.Weitz & Associates L.L.C.**  
Certified Public Accountants  
and Consultants

108 Wilmot Road, Suite 110  
Deerfield, Illinois 60015  
847.267.3400 Phone  
847.267.3401 Fax  
mmann@mannweitz.com





**Lake View Presbyterian Church Exterior Restoration**  
Chicago, IL

**Special Recognition**

Architect – Holabird & Root  
Client – Lake View Presbyterian Church  
General Contractor – LS Contracting Group

This award is for the exterior restoration of the shingle cladding. This church reminds us that the shingle style was originally considered to be modern. Bold geometric shapes covered with shingles form the body of the church. The building had long been clad by white asbestos siding. The firm reproduced the paint and stain colors to match the 1888 façades of the building. Wood shingles were hand cut for the spiral bell tower and the swallowtail pattern found on the original east entry.

© Russell Phillips Photography

**601 Congress Street**  
Boston, MA

**Special Recognition**

Architect – Skidmore Owings and Merrill  
Client – Manulife Financial  
Associate Architect – Stull & Lee Architects  
General Contractor – Clark/Suffolk Construction  
Consultants – Cambridge Systematics (Traffic);  
Haley & Aldrich (Geotechnical); ISS Integrated  
Security Solutions (Security); McNamara/Salvia Inc.  
(Structural Engineering); R. G. Vanderweil Engineers,  
LLP (Mechanical Engineering); Rowan William Davies  
& Irwin (Wind Tunnel Testing); Sasaki Associates  
(Interior Design, Landscape); Shiner & Associates  
(Acoustics); Fisher Marantz Stone (Lighting)

This 480,000-square-foot office building is a LEED-certified company headquarters. At the base of the building, the clear glass wall is set back to expose columns clad in linen-textured stainless steel. The clear glass double wall has a naturally ventilated interstitial cavity and is highly energy efficient. From the roof garden to the use of low-emitting materials and adhesives, the building is environmentally sensitive.



Peter Vanderwalker, Peter Vanderwalker Photography



# TIME



Linear Grace —  
by Lucci Orlandini Design

"Contrasting symmetry and stylized detail bring uncommon elegance to the kitchen environment."



Contact Studio Snaidero Chicago for our special trade program



FORM FOLLOWS LIFE

## snaidero usa

KITCHENS+DESIGN. Made in Italy.

Studio Snaidero Chicago 222 Merchandise Mart #140 Chicago, IL 60654

312.644.6662 [www.snaiderochicago.com](http://www.snaiderochicago.com)

Dandamudi's Custom Cabinetry 2121 N. Clybourn Ave. Chicago, IL 60614

773.525.8200 [www.dandamudis.com](http://www.dandamudis.com)

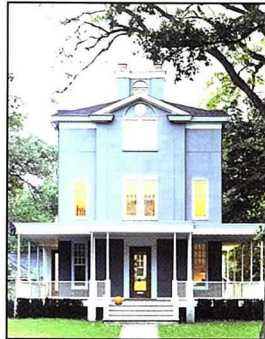
For more locations and catalogs call 1.877.SNAIDERO or visit [www.snaidero-usa.com](http://www.snaidero-usa.com)



# Professional Training Yields EXPERT PLASTERERS



Conventional and Veneer Plaster



Stucco and Exterior Insulated Finish  
Systems



Ornamental Plaster

Call us for information about today's  
plastering systems and the best  
people to apply them.



Chicago Plastering Institute  
5611 West 120th Street  
Alsip, IL 60803  
(708) 371-3100

## ARCHITEMPS, INC.®

**ARCHITEMPS, INC. – Chicago's premier Architectural & Interior Design staffing specialists.  
Celebrating our 20th Anniversary serving greater metropolitan Chicago.**

**Quality staffing, service and solutions:**

- Design/Production Drafters
- Facility Planners
- CAD Architects/Interior Designers
- Project Managers

**Our billing includes all employer liability:**

- Payroll Administration
- Employee Benefits
- Government Compliance
- State & Federal Tax Remittance
- Workers' Compensation Coverage

**ARCHITEMPS, INC.®**  
1050 North State Street  
Chicago, IL 60610-7829

Tel: 312.649.0912  
Fax: 312.649.1667  
info@architemps.com  
www.architemps.com

**Architectural, interior design and facility planning personnel on a per-project basis.  
Customized programs to suit your staffing needs. Call today for information on our  
services or employment opportunities.**



# Your choice of materials speaks volumes



Quality building materials express an attention to detail and a sense of value.

Go first class with **Heritage Collection™ Designer Concrete Brick** and **Premier Prestige Series® Masonry Units**, both available from County Materials.

**Heritage concrete brick** offers the classical styling of brick at a fraction of the cost. Mix and match from a variety of facing styles and color options for interior or exterior applications.

**Premier Prestige** embodies elegance with fine aggregates and rich earth tones under a glossy sealant. This durable, fade-resistant finish is ideal as outdoor accenting, or for indoor areas with moisture concerns or that require special attention to sanitation codes, such as locker rooms, pool areas, and cafeterias.



Proud to be American based & American made

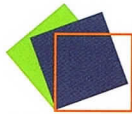
**Chicago North:** 1430 North Elston Ave. • (773) 489-2423

**Chicago South:** 2217 South Loomis St. • (312) 421-8432

**Champaign:** 702 North Edwin St. • (217) 352-4181

[www.countymaterials.com](http://www.countymaterials.com)

PREMIER  
PRESTIGE  
SERIES



# HRH A&E

Visit us at [www.hrhae.com](http://www.hrhae.com)  
and see what makes us .....

DIFFERENT BY DESIGN®

For additional information on our products and services, please call (847) 517-3453



# Interior Architecture Awards

By Lara Brown

The Interior Architecture Award was established over 22 years ago to promote interior architecture as a unique profession by recognizing outstanding projects. For award purposes, interior architecture is defined as the space within a building envelope, including design of lighting, finishes and furnishings. The jury reviewed a wide range of projects completed between January 1, 2001, and May 1, 2006.

**Offices of David Woodhouse Architects**  
Chicago, IL

## Honor Award

Architect – David Woodhouse Architects LLC  
Client – David Woodhouse Architects LLC  
General Contractor – David Woodhouse Architects LLC

On the sixth floor of an old factory building, the architects tried to create a workplace for themselves that would be a daily call to concentrate on the architectural fundamentals: structure, materiality, order, light and community. The shared tables and workspace encourage collaborative interaction and flatten hierarchy. Two sets of homasote panels rotate to provide pin-up walls and the flexibility of various degrees of spatial separation for spaces at each end. One juror described the space as “so simple and restrained.” Another juror appreciated the “innovative alignment of workspace. By pulling the tables back and forth, everyone gets a U-shaped space.”



Chris Barrett, Hedrich Blessing



Chris Barrett, Hedrich Blessing





Jimmy Courssien, Courtesy SOM

**Global Hyatt**  
Chicago, IL

**Honor Award**

Architect – Skidmore, Owings & Merrill LLP  
 Client – Pritzker Realty; Hyatt Hotels Corporation/Hyatt Development  
 Contractor – Power Construction Company  
 Consultants – Skidmore, Owings & Merrill LLP and Halvorson – Base Building (Structural Engineer); CS Technology (Technology Consultant); Environmental Systems Designs, Inc. (MEP Engineer); Integrated Lighting Design (Lighting Designer); Cerami & Associates (Acoustician); Nakashima (Custom Furniture); Corporate Concepts, Environetx (Furniture Dealers); Herman Miller, Nucraft (Furniture Sources)

Located in a newly constructed office tower in downtown Chicago, the new, 250,000-square-foot global headquarters for Hyatt incorporates a seven-story atrium space that serves as the project's centerpiece, not only connecting floors, but introducing public client zones on every level. These areas, tied together by a cascading glass stair, serve as satellites to the main reception volume located on the 12th floor. The public zones are expressed as wood boxes cantilevering into the atrium. The main reception area located in the middle of the stack receives visitors into a two-story, walnut-paneled space. The entire public space is designed with a careful study of shapes, materials and vistas. Nakashima and Bertioa influenced the choice in amorphous furniture pieces, which offset the straight-edged architecture. This ambiguous dynamic produces a monumentality that does not compromise the human scale. One juror said "The staircase improves the quality of space and the experience." Another juror commented "The design is restrained. Most architects wouldn't be able to leave it at that."



Jimmy Courssien, Courtesy SOM





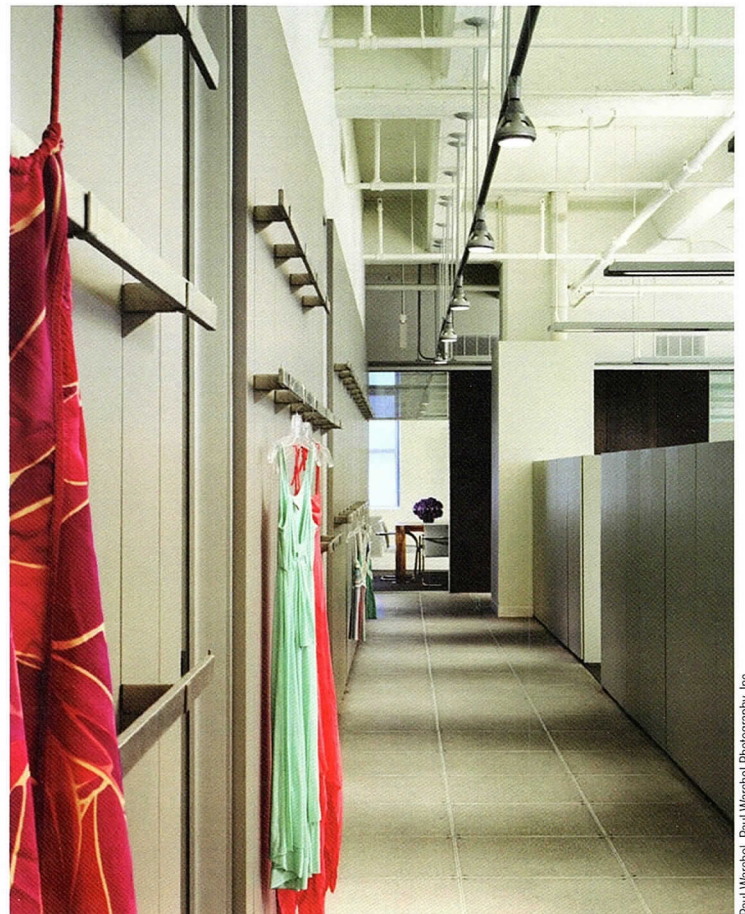
Paul Warchol, Paul Warchol Photography, Inc.

**Armani Exchange**  
New York, NY

**Honor Award**

Architect – Gary Lee Partners  
Client – Armani Exchange  
Contractor – Interiors by Orazio  
Consultants – Concessi Engineering, P.C.

The biggest obstacle for this project was finding a way to keep the client's products organized along with anticipating needed storage for new items, while attaining the look of simplicity. The solution was adding storage units to each workstation as well as wardrobes that merge with the design at the end of each workstation. The truck pit, a unique element, was incorporated as a multi-purpose room for fashion shows, training, yoga, etc. The employee kitchen overlooks the truck pit creating a space separate from the office world. The conference rooms have portable walls between each room, providing flexibility for the client's unique needs. The walls can be pulled down providing privacy for meetings or opened to create a multi-purpose space, perfect for internal fashion shows. Jurors found the space both "spatially innovative and reserved."



Paul Warchol, Paul Warchol Photography, Inc.





Justin Macronchie, Macronchie Photography

**Kresge Foundation Headquarters**  
Troy, MI

**Honor Award**

Architect – Valerio Dewalt Train Associates, Inc.  
Associate Architect – Farr Associates  
Client – The Kresge Foundation  
Contractor – JM Olsen Corporation  
Consultants – Robert Darvis Associates

The Kresge Foundation headquarters consists of three elements: restoration of a landmark, 19th-century farmhouse complex; integration of a modern office building addition; and development of a sustainable strategy for the entire complex. The challenge was to create a visually integrated whole from these three disparate objectives. Conceptually, the restored farmhouse buildings sit high above the landscape, floating on a sea of grasses. In contrast, the new building, with two-thirds of its area below grade, is embedded in the restored prairie, a part of the landscape. The interior incorporates a number of sustainable strategies which are integrated into the whole, including a light harvesting system, energy-saving system controls, and raised-floor air distribution. The building has been submitted for a Platinum LEED Certification. "It is very clean and understated with simple detailing," one juror remarked. Another juror said, "The palette works very well with the surroundings. It is cohesive and consistent with the exterior building. Every move has been well-considered."



Justin Macronchie, Macronchie Photography



**17th Floor Office**  
Chicago, IL

*Citation of Merit*

Architect – Goettsch Partners  
Client – Goettsch Partners  
Contractor – Executive Construction, Inc.  
Consultants – Cosentini Associates (MEP Engineers)

"It would be amazing to work in that space," exclaimed one juror. The reception area of this Chicago architectural firm's office sets the tone for the entire space, introducing the firm's modern aesthetic with a full-glass enclosure and ultra-clear doors that slide on a stainless steel support. The offices are located on the top floor of Daniel Burnham's historic Railway Exchange Building. The office plan emphasizes clear organization, unity and openness, providing a work environment that is both inspirational and productive. The design of the space responds to the building's main design features: 7-foot-diameter windows on the east and south sides and the central atrium skylight. The open-planned studio is fitted with low, linear workstations that allow for clear views to the windows and skylight while also providing privacy. The corner space was intentionally designed as an in-house library and conference room instead of a private office, allowing all employees to use the space and enjoy the views.



James Steinkamp, Steinkamp Photography



# Design Freedom

Versatile precast concrete gives you design freedom, and Spancrete can help you use it. With over 60 years of experience, through dedicated service and inventive solutions, we'll help you see how original you can be with precast concrete. Call us today—see how precast concrete can bring your projects to life.

*Partner with the leader in precast concrete solutions.*

**SPANCRETE**

Quality • Service • Durability



Waukesha: 414.290.9000 • Green Bay: 920.494.0274 • Arlington Heights: 847.879.2100  
[www.spancrete.com](http://www.spancrete.com)

**IBM Innovation Center**  
Chicago, IL

### *Citation of Merit*

Architect – Gensler

Client – IBM

Contractor – Pepper Construction

Consultants – BLM Engineers (Electrical);

Environmental Systems Design (Mechanical Engineer)

To foster employee collaboration, designers drew upon natural and technological networks as inspiration for the design of IBM's new 126,000-square-foot Hyatt Center offices. The key was in creating a place that people would want to inhabit – a place that speaks to change, innovation, and a collaborative spirit. Standing in stark contrast to rigidly orthogonal cubicles that are aligned with the building geometry, the curvilinear Town Centers and Executive Briefing Center dominate the design. Changing color and graphics highlight two key cultural points: IBM is based on connections and is a global company. Jurors appreciated the "consistency of detail and sparseness of treatment." One juror liked how the architect "provided a variety of experiences within that space."

**CADaract**

**noun.** A condition resulting in blurred vision caused by hours of staring at software manuals searching for the cause of error237///file will not print, common among people under tight deadlines working late at night.

CADworks. Redefining CAD Networks.







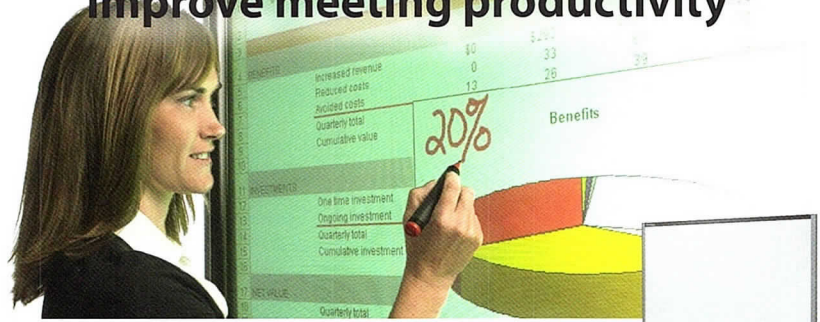
Christopher Barrett © Heinrich Blessing



Douglas Reid Fogelson, Douglas Reid Fogelson Photography



## Deliver dynamic presentations and improve meeting productivity



Business professionals trust AVI Midwest and SMARTBoard™ interactive whiteboard solutions to make their presentations more productive, efficient and interactive.

Experience the power:

- **TOUCH** screen controls
- **WRITE** in electronic ink
- **SAVE**, print or email notes
- **HIGHLIGHT** key information easily



To experience SMART products in action call today for a demonstration.



**FOCUSED ON YOUR SUCCESS**  
A/V Systems Designs, Integration & Service  
[www.avimidwest.com](http://www.avimidwest.com)

621 Busse Road, Bensenville, IL Tel. 630-477-2300

### Mayer Brown Rowe & Maw Office Relocation Chicago, IL

#### Citation of Merit

Architect – Powell/Kleinschmidt Inc  
Client – Mayer Brown Rowe & Maw  
Contractor – Clune Construction  
Consultants – Development Resources Inc. (Project Manager); Environmental Systems Design (MEP/FP Engineer); Halvorson and Partners (Structural Engineers); Shen Milsom & Wilke (Engineers AV Consultant); Charter Sills (Lighting); Environmental Systems Design/Kraft Kennedy Lesser (IT Consultants); Kroll (Security Systems)

After an audit of their former headquarters and an analysis of trends in law firm design, the project team identified the facility requirements critical to the future success of Mayer Brown Rowe & Maw. The new space is composed of ten repeating floors and two amenity floors totaling 400,000 square feet. The architect provided significant impact on how the building performs for a global law firm, including identifying an efficient building module, perimeter column spacing, and elimination of corner offices. Key office features include flexible work zones, collaboration space, and a conference center complex designed for present and future needs. Jurors liked the “character of the law library” and the “sense of style in the conference room.” Another juror commended the architects on their “elegant interpretation of the floor plan.”

### Randolph Street Commuter Station Chicago, IL

#### Citation of Merit

Architect – Skidmore, Owings & Merrill LLP  
(Interior Design)  
Associate Architect – Teng + Associates, Inc.  
(Architect of Record for Project)  
Client – Metra  
Contractor – John Burns Construction Company  
Consultants – Shah Engineering, Inc. (Structural Engineers); Schuler Shook (Lighting)

For years, Metra's Randolph Street Commuter Station was best known for its dark and unheated concourses and near-dilapidated condition. The station held the potential to be more than the end-of-the-line for two commuter railroads. The architect sought to create a renovation that filled the station with light, color and quality finishes that would turn the terminus into a gateway to the Loop. The renovation overcame the underground station's inherent darkness with vastly improved artificial lighting. In addition, the concourse's low and uneven ceilings – the results of structural elements of the active roadway above – were made into undulating, well-lit, wave-like forms, giving a sense of space and motion. One juror said, “It is a very cool space. It's about circulation – being fluid – it allows people to move quickly and efficiently.”

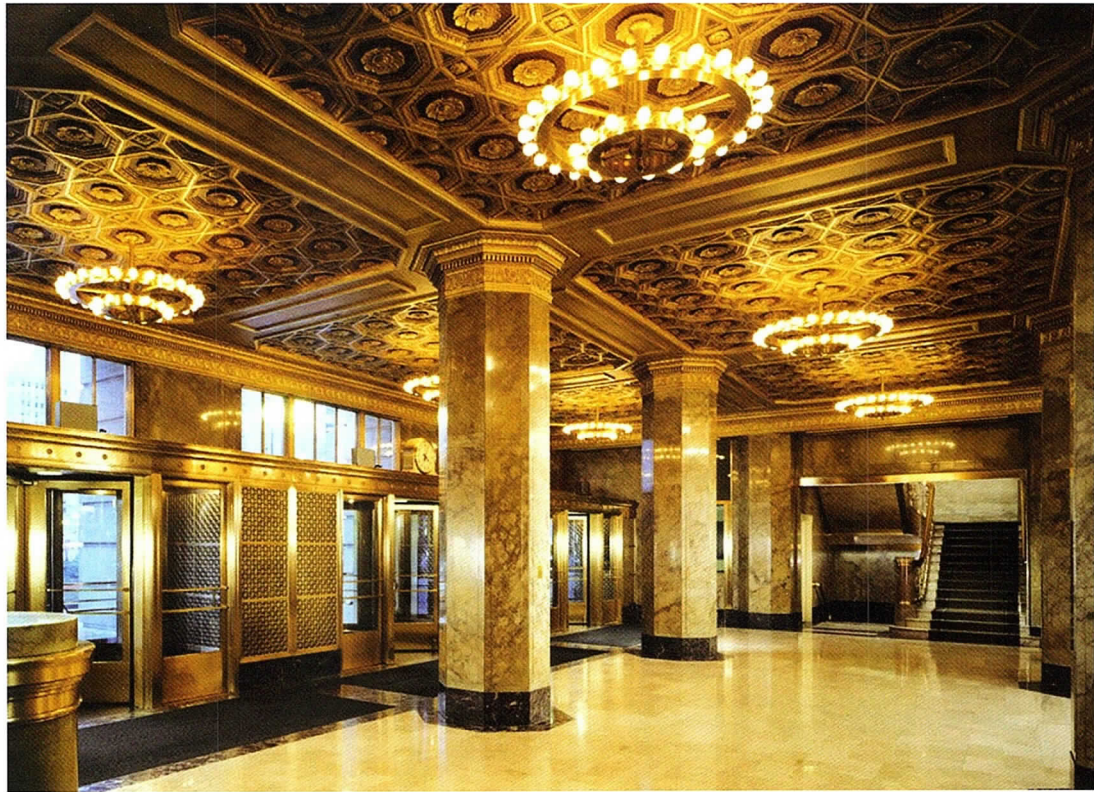
## CADbird seat

phrase. A situation of advantage or superiority, usually leading to a sense of euphoria:  
“Once CADworks installed their new network, AI's firm was sitting in the CADbird seat.”  
People in this position are prone to spontaneous celebratory outbursts.

CADworks. Redefining CAD Networks.







**E-Suite**  
Chicago, IL

*Citation of Merit*

Architect – Skidmore, Owings & Merrill LLP  
Client – Museum of Science and Industry  
Contractor – HB Barnard Company  
Consultants – B&A/CCJM Engineers, Ltd.; Schuler & Shook, Inc.

The E-Suite at Chicago's Museum of Science and Industry is an electronic classroom that enables remote learning and dialogue with distant sites. To facilitate this unique experience, the firm designed a reception room, electronic classroom and various educational and technical support spaces. The classroom space was designed as a neutral gray box to eliminate visual distractions. Flexibility to accommodate a variety of classroom configurations was essential. Teleconference cameras and two plasma display monitors travel on aluminum "festoons" mounted on overhead tracks. The first curriculum to use E-Suites is "Live from the Heart," a program that gives students a virtual visit to an actual hospital operating theater during open-heart surgery. Students have live, two-way visual and audio communications with the surgical team. One juror described the E-Suite as a "really simple space with great potential for transformation."

© Hedrich Blessing



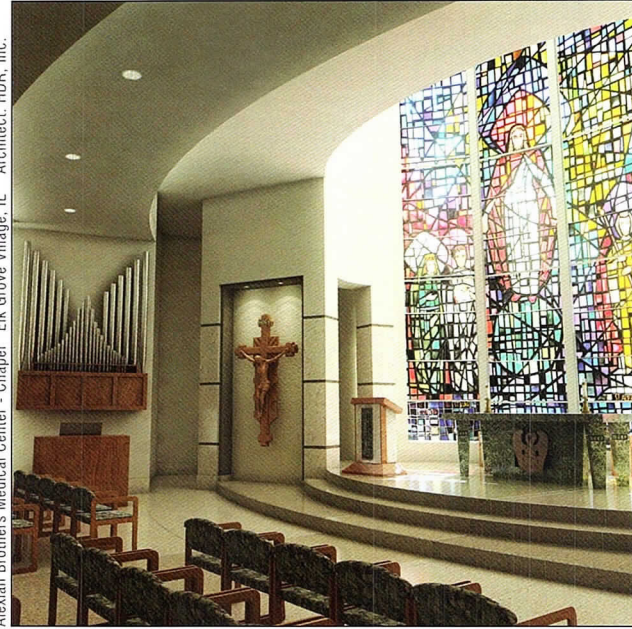
35 E. Wacker  
Chicago, IL

*Citation of Merit*

Architect – Goettsch Partners  
Client – Dorchester Oaks Corporation  
Contractor – Leopardo Companies  
Consultants – McGuire Engineers (MEP/Civil);  
Abatangelo-Hason (Structural); Schuler & Shook  
(Lighting); Lerch Bates & Associates (Elevator);  
Custom Architectural Metals (Metal Worker)

Originally completed in 1927 and known as the Jewelers Building, 35 East Wacker Drive sits prominently along the Chicago River. The building had undergone routine maintenance but experienced little in long-term enhancements. The owner wanted to restore the building's classic design elements and provide an updated infrastructure. The renovation included the lobby, main entrance and storefronts. The main entry was taken down to structural steel and rebuilt, and the storefronts were returned to their original historic proportions. The storefronts, lobby ceilings, lighting, and the interior and exterior of the elevator cabs were restored to what is believed to be their original design. The security desk was relocated from its central location in order to re-establish the lobby's original volume. By referring to the building's original marketing brochure and a small section of intact cornices, the architects restored the gilded cornice and column capitals and recreated the ornamental, painted, coffered ceiling. "Well done," commented a juror.

see reality



Alexian Brothers Medical Center - Chapel - Elk Grove Village, IL - Architect: HDR, Inc.



- Photorealistic & Conceptual Imagery
- Photomontages
- Architectural Photo Retouching
- Animation & Virtual Tours (QTVR)

618 Marengo Avenue  
Forest Park, IL 60130  
708-822-2366

[www.dpict3d.com](http://www.dpict3d.com)



## CADworks

noun. 1) The last word in IT solutions for CAD networks.  
2) A better way to design, maintain and monitor your CAD network. 3) Network insurance, now you can focus on your business instead of your infrastructure.

For a free consultation please call us at:  
312.596.5325 or visit us at [cadworks.net](http://cadworks.net).

Network Design and Implementation | 24/7 Monitoring | Security Management  
Software Standardization | Backup & Maintenance | Web



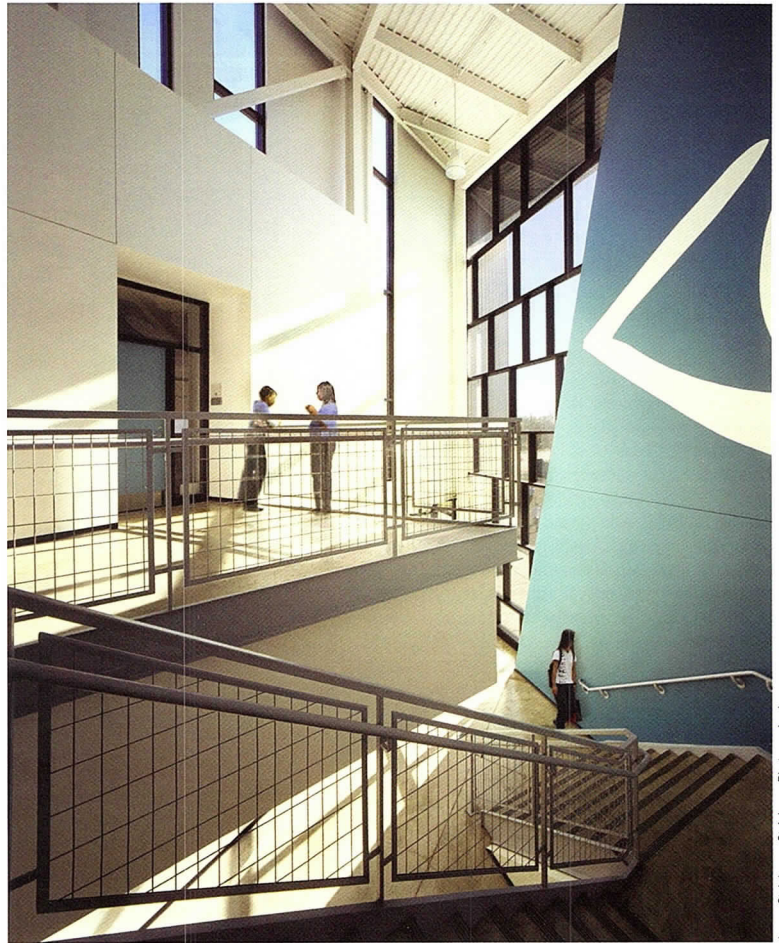


**Perspective Charter School**  
Chicago, IL

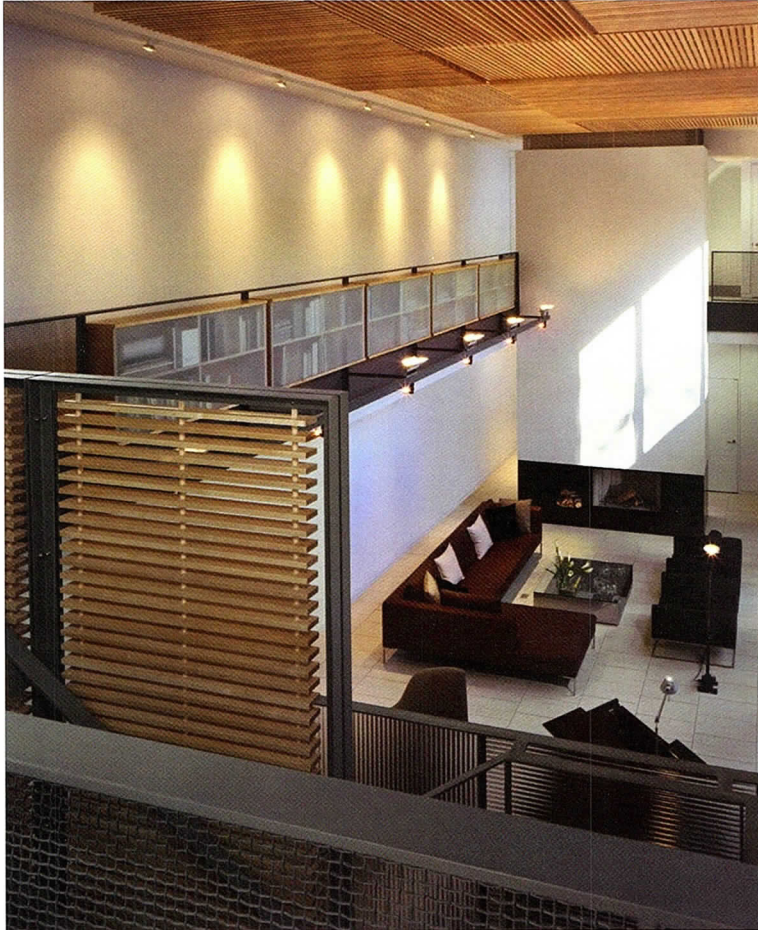
*Citation of Merit*

Architect – Perkins+Will  
Client – Perspectives Charter School  
Contractor – Levine Construction, Inc.  
Consultants – TGRWA Engineers; WMA Engineers;  
Site Design Group

Perspectives Charter School is a 300-student, grade 6-12, public school in Chicago's South Loop. The school is organized around the central "living room," a flexible two-story volume used as the cafeteria, the main assembly hall and the central social space. The living room lets light in from the clerestories above; around it, single-loaded corridors feed the classrooms and link the other main spaces, the library and the entry. The strategy for the interior was to use paint to add visual interest and variety and to reinforce the school's mission while maintaining a tight budget. The school logo, The Eye, highlights the entry. The bilingual graphics in the living room, taken from the school's mission statement, and the multicultural symbols in the library enliven the spaces and celebrate diversity within the school. Jurors liked the "interesting graphics collaboration."



James Steinkamp, Steinkamp Photography, Inc.



© Barbara Karant, Karant + Associates, Inc.

**838 W Webster**  
Chicago, IL

*Citation of Merit*

Architect – DeStefano and Partners, Ltd.  
Client – withheld  
Contractor – Goldberg General Contracting  
Consultants – Building Engineer Systems (MEP);  
Charter Sills (Lighting)

While making a bold public statement to the street, this "extraordinarily elegant" house is actually inwardly focused around a courtyard with all major spaces on the ground floor opening directly onto the central outdoor space. Inside, the defining space of the house is its double-height living room, which is defined by two towers – the stair on the south and fireplace on the north. Through careful planning and layering of materials, the house provides visual and acoustic privacy while providing fluid, unconfined space and access to the outdoors. The day lighting of the house is such that artificial lighting is seldom necessary during the day. One juror described the house as "simple and tight with nice detailing."



Haworth L.A.  
Los Angeles, CA

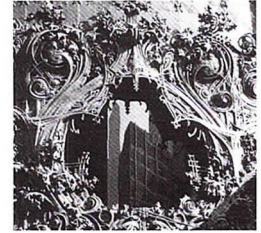
**Citation of Merit**

Architect – Perkins+Will | Eva Maddox Branded Environments™  
Associate Architect – Perkins+Will Los Angeles  
Client – Haworth, Inc.  
Contractor – Taslimi Construction Company (General); Xibitz (Exhibit)  
Consultants – Randy Burkett Lighting Design (Lighting); Syska Hennessy Group, Inc. (MEP/FP); Battle McCarthy, Ltd. (Sustainability)

The Haworth Los Angeles Showroom functions as a sales office, conference facility and product demonstration space featuring a variety of workplace concepts, product applications and integrated communications elements. The facility demonstrates Haworth's evolution from offering workstations, to a solutions-driven resource for the next generation of work spaces. It also functions as a leading example of sustainability, demonstrating methods of integrating improved quality of life, restorative space, resource preservation, waste elimination and cost reduction. The space supports Haworth's holistic approach to product development, incorporating the belief that user satisfaction and productivity are directly related to users' control of their environment. The project received LEED Gold Level certification. "This space," explained one juror, "expresses the mission of the client." Another juror appreciated the "good floor plan graphics and using white as a display."

# UNCOVER THE PAST

## WITH A M.S. IN HISTORIC PRESERVATION



The School of the Art Institute of Chicago offers a two-year Master of Science degree in Historic Preservation. The interdisciplinary curriculum offers a broad approach, combining planning, design, history, and conservation in a program that takes full advantage of Chicago's landmarks and status as America's First City of Architecture. Our faculty are practicing professionals—architects, planners, and historians who have helped save and restore such landmarks as the Frank Lloyd Wright Home and Studio; the Rookery Building; Richardson's Glessner House; and the Reliance Building.

### Bring the past into your present.



For more information, contact us:

Admissions  
36 South Wabash Avenue  
12th Floor, Suite 1201  
Chicago, IL 60603  
312.629.6100 • 1.800.232.7242  
admiss@saic.edu  
www.saic.edu



Marvin Rand, Marvin Rand Associates

## LIGHTING THAT MOVES YOU



Metra Randolph Station - Chicago

LIGHTING DESIGNERS  
Schuler Shook



Chicago 312 944 8230

Minneapolis 612 339 5958

Dallas 214 747 8300

schulershook.com



**Urban Guest House**  
Chicago, IL

*Citation of Merit*

Architect – Tjaden+Architects+AIA  
Client – Wayne F. Tjaden, AIA  
Contractor – South Chicago Workforce  
Consultants – Architectural Consulting Engineers

Needing storage space and guest accommodations for his recently purchased live/work space, the owner purchased space on the floor directly below him. Diagonal walls separate both the main level and the inserted mezzanine into two zones – principal living space and support space. Full-height areas at the foyer and at the window allow the mezzanine to float in the tall space and the diagonal walls create forced perspectives which alter the perception of this 470-square-foot guest apartment. A platform at the window conceals ductwork, acts as a step in the stairway and provides additional seating space as well as extra guest sleeping on a single-size air mattress. A headboard and desk on the mezzanine do double duty as railings. Jurors liked the “details and creative use of small space.”



Alan Shortall, Alan Shortall Photography



Christopher Barrett © Heidrich Blessing

**Carus House**  
Peru, IL

*Citation of Merit*

Architect – Brininstool + Lynch, Ltd.  
Client – Paul and Tammi Carus  
Contractor – American Bilco  
Consultants – Sheffee Lulkin & Associates  
(Structural Engineers)

This “well-planned” house incorporates a characteristic program for a family of five. However, visual and tactile elements interconnect and resolve each room’s function in a way that gives the project an uncommon sensibility. Materials used on the exterior are expressed within the interior to emphasize the interrelationship between indoor and outdoor space, and reinforce a holistic approach to the exterior envelope and the layout of interior space. The main living area, with floor-to-ceiling glazing, faces south to benefit from passive solar energy, and helps supplement a radiant heating system imbedded in the ground concrete floors. Its windows all offer articulated views across the landscaped yard to open vistas, and further integrate the interior to the exterior.

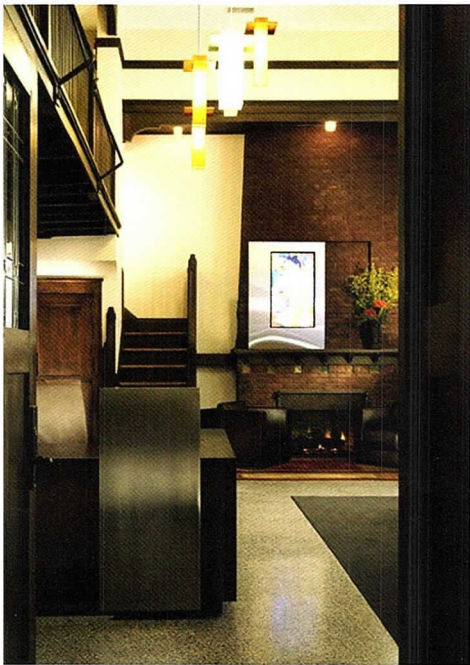


**Metropolitan Capital Bank**  
Chicago, IL

**Special Recognition**

Architect – OWP/P  
Client – Metropolitan Capital Bank  
Contractor – Bulley & Andrews as sub-contractor to  
OWP/P Design/Build

Metropolitan Capital Bank is an adaptive reuse of the 92-year old Tree Studio, on the National Register of Historic Places and a City of Chicago Landmark. The project design scope incorporates custom-designed elements including hanging pendant fixtures, area rugs, and furniture. Respecting the past history of the space, which was previously used as a residential studio, this new "financial studio" is designed in a clean, modern approach to contrast respectfully with the historic surroundings. Vertical and horizontal linearity echo the space's Arts & Crafts provenance. The rich, warm tones of contrasting medium and dark walnut finishes and four fireplaces create an inviting, comfortable atmosphere for the bank's clients and staff, all delivered through designer-led Design/Build under scrutiny. The jurors agreed the space was "artfully updated." One juror praised how "the light pendants modulate between two different eras."



Christopher Barrett © Hedrich Blessing

# engineering CREATIVITY

Structural

Civil

Environmental

Transportation

Mechanical

Electrical

Plumbing



**GRAEF  
ANHALT  
SCHLOEMER**  
*and Associates Inc.*

engineers & scientists

[www.gasai.com](http://www.gasai.com)

332 South Michigan Avenue, Suite 1400  
Chicago, Illinois 60604  
312/582-2000  
also: Chicago - O'Hare,  
Milwaukee, Madison, and Green Bay



30 East Adams Street  
Suite 1040  
Chicago, IL 60603  
312-641-9339 voice  
312-641-9337 fax  
[www.kfa-inc.com](http://www.kfa-inc.com)

### Your Challenges:

- Faster Delivery
- Better Coordination
- Clearer Communication

### Enabling Technologies:

- Building Information Modeling
- Collaboration

### KFA Services:

- Technology Deployment
- Training
- Transition
- Troubleshooting





# Divine Detail Awards

By Lara Brown

**T**he Divine Detail Award essentially honors architectural ingenuity. A jury seeks the results of a firm's fundamental architectural theory or design concept in their use of a particular material, detail or building technology. Execution must express the idea as a whole. Similar to other awards, only projects completed between January 1, 2001, and May 1, 2006 are eligible.



Scott McDonald © Hedrich Blessing

**200 W. Madison Winter Garden**  
Chicago, IL,

## Honor Award

Architect – Powell/Kleinschmidt Inc  
Client – Tishman Speyer Properties  
Contractor – Turner Construction  
Consultants – Environmental Systems Design  
(MEP/FP Engineer); Thornton Thomasetti (Structural Engineer); Israel Berger & Assoc. (Curtain Wall Engineer); George Sexton & Assoc. (Lighting); Daniel Weinbach & Partners (Landscape Architect)

The new, expanded entry lobby enclosure was designed to be spacious and transparent, providing an inviting public plaza in an urban setting. The glass wall owes its transparency to the unusually large laminated glass panels of low-iron glass that are point-supported on four routilles per glass unit. The outrigger support arms for the glass, the tubular steel skeletal superstructure, glass roof, and carefully integrated lighting and sprinkler systems provide minimal profiles and maximum transparency. In addition to Louis Nevelson's sculpture, "Dawn Shadows," the winter garden features two bamboo forests. Jurors were impressed by the "modest, minimal framing," and credited the project with "revitalizing the plaza with an elegant, convincing program that incorporates lighting, sculpture, and the urban landscape."



Scott McDonald © Hedrich Blessing





Gilly Daugarg



Gilly Daugarg

**Issey Miyake me Boutique**  
Paris, France

**Honor Award**

Architect – AEDS | Ammar Eloueini  
Client – Issey Miyake Europe  
Contractor – ARTIS  
Consultants – A Concepteurs Lumière & Design  
(Engineer), Philippe Almon (Lighting)

Jurors declared this space “exquisite” and “so well done” and praised the effective use of white. Existing in an all-white color palette, the featured element of this minimalist boutique is a lacquered, reflective floor and ceiling with recessed light fixtures. This unique lighting method prevents direct spot light, creating an even, ambient light environment.





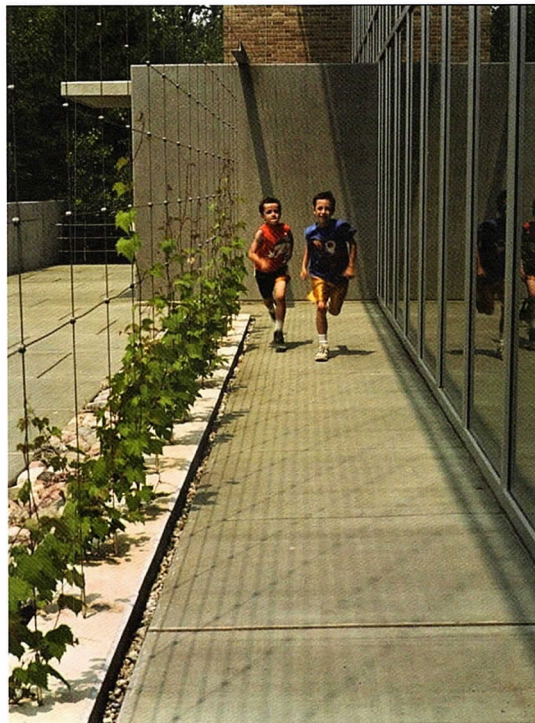
Doug Snower Photography

**The Pritzker Family Children's Zoo – Lincoln Park  
Chicago, IL**

**Honor Award**

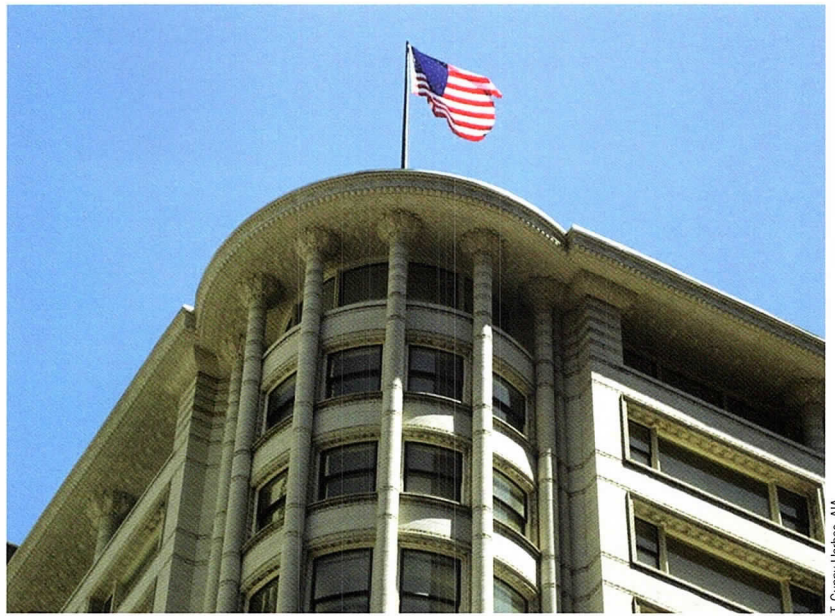
Architect – EHDD Architecture  
 Client – Lincoln Park Zoo  
 Contractor – Pepper Construction  
 Consultants – Klein and Hoffman, SE; Primera  
 (ME/Plumbing/Fire Protection/Civil Engineering);  
 Charter Sills & Associates (Lighting);  
 Shen Milsom & Wilke (Acoustics); architectureisfun  
 (Exhibit Designer – Interpretives); MESA Landscape  
 Architects, Inc. (Exhibit Designer – Habitats);  
 TJP (Life Support)

A vine wall assembly shrouds a small glass and masonry pavilion at the Lincoln Park Zoo. A west-facing, windowed curtain wall offers passive ventilation and panoramic views of the site. Riverbank Grape (*Vitis riparia*), native to the upper Midwest, grows 25-feet high on a steel lattice set six feet in front of the glass to help blend the building into its natural surroundings. The roof's water runoff trickles down the vines into a drainage basin – a narrow, cobblestone-covered planting bed – to provide sustenance. The vine offers seasonal, textural change by shading the harsh summer sun and admitting winter daylight when exfoliated. It also mitigates reflective glass in a bird flyway. Jurors described the program as “very modest, efficient and innovative.” “The whole thing works,” commented one juror.



Doug Snower Photography





T. Gummy Harboe, AIA

**Sullivan Center Cornice Reconstruction**  
Chicago, IL

**Honor Award**

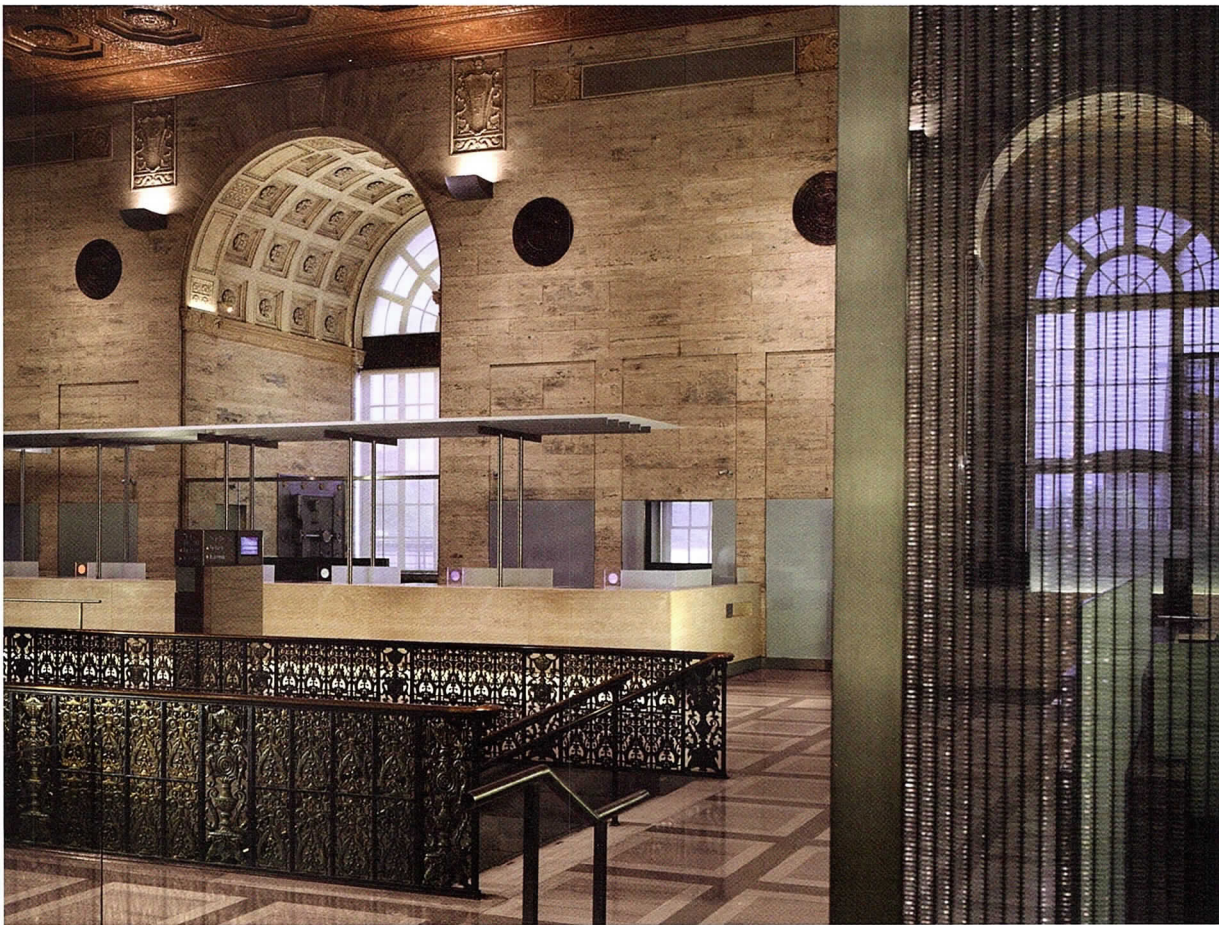
Architect – McClier (now known as Austin/AECOM)  
 Client – Joseph Freed and Associates  
 Contractor – Mark 1 Restoration Company  
 Consultants – GFRC Inc. (Cornice Fabricator);  
 Tim Samuelson (Historian); Conservation of  
 Sculpture and Objects Studio and Eisentrager  
 Studio (Sculptors)

Jurors applauded the "heroic effort and great investigative work," by the design team that worked to reconstruct the cornice and colonnade of Louis Sullivan's Carson Pirie Scott & Company Building (1899-1903) that was removed in 1948. After exhaustive historic research, only minimal documentation of the original cornice was discovered. Particularly daunting was trying to determine the design of the original Sullivan ornament as no historic fabric had survived. In order to develop the ornament for the restoration, the architects added to their design team a historian who is an expert on Louis Sullivan's work and a group of sculptors. The ornament design was developed using historic photos, other existing ornament found on the building as well as fragments from other Sullivan buildings. The stunning result returns one of Sullivan's most significant works back to its original state.



T. Gummy Harboe, AIA





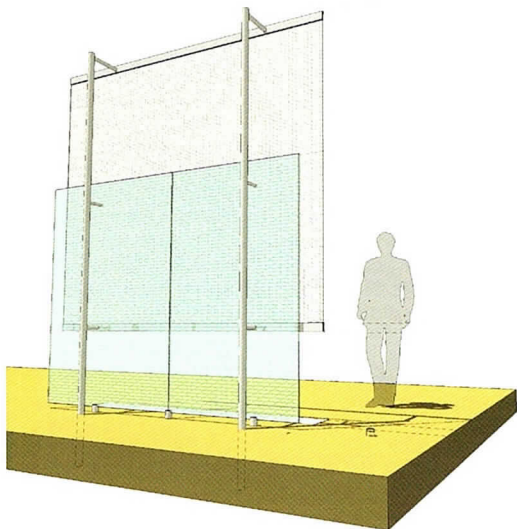
© Barbara Karant, Karant + Associates

**Mod-u-lator Scrim, Hyde Park Bank  
Chicago, IL**

**Citation of Merit**

Architect – Florian Architects, Ltd.  
 Client – Hyde Park Bank & Trust Company  
 Contractor – Power Construction Company, LLC  
 Consultants – Schuler & Shook (Lighting); Engineering Studio (MEP/FP); Thornton Thomasetti (SE); The Grillo Group (Graphic Designer); Thoma/Wright (Color/Material/Furniture Consultant); Shen Millsom & Wilke (Acoustical Engineer)

One juror noted that “The modern insertions are transparent enough that they don’t cut up the volume but they still give privacy.” The Mod-u-lator Scrim is a complex assembly of metal and glass that modulates daylight, privacy, and views within an historic banking hall. The project goal was to create a fresh, customer-friendly atmosphere that complements rather than obscures the historic grandeur of the existing banking hall. The design solution is a bold, elegant juxtaposition of contemporary forms and materials to the monumental scale and ornate surfaces of the restored 1928 banking hall. Stainless steel mesh stretched on a frame is cantilevered from 2” diameter stainless poles. These poles simultaneously brace panes of patterned glass held off the floor on 2” diameter stainless tops. Poles are secured to concrete by stainless steel sleeves.



*What is the value of our firm?*

*How do we increase the value of our firm?*

*What financial information does our firm need to operate?*

*Why do these need to be separate questions?  
They're not...*

**And Managers Know Why**

Supporting the business-side of engineering and architecture firms nationwide. Our mission is to improve your operations and your profitability.

*Financial & Practice Management • M&A  
• Turnaround • Strategic & Market Planning*

**Michael A. Webber**, President  
 Aff. ACEC, AIA  
 1-630-963-5423  
 mawebber@amkw.com  
 www.amkw.com



# Take your vision to new heights with a better design process.

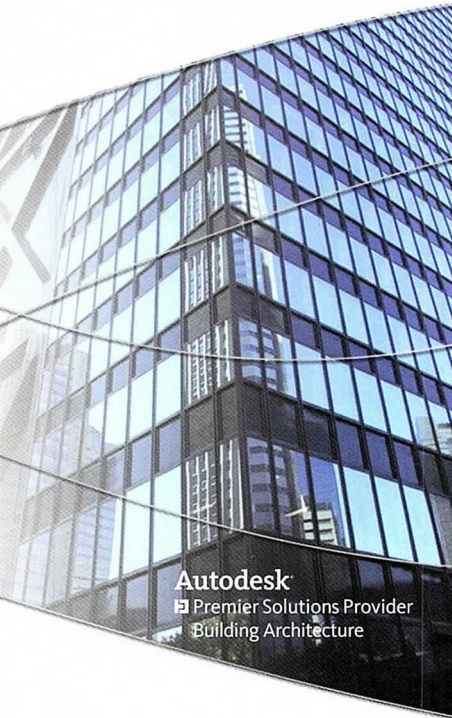
Optimize your resources

Enhance collaboration

Ensure data security

Speed your review and approval process

Communication and collaboration are critical to the success of every design project. The experts at MasterGraphics can help you take your process to the next level with a seamless flow of data that lets you design, manage and distribute information through each stage of a project—and with every partner on your team. A practical approach that lets you achieve productivity and accuracy, while staying on schedule and on budget.



Discover the difference a better design process can make. Call the experts at MasterGraphics today for a consultation at **(800) 873.7328** or visit us online at **www.masterg.com**.



MADISON • APPLETON • MILWAUKEE • CHICAGO • MINNEAPOLIS

**(800) 873.7238 • www.masterg.com**

## THE INDUSTRY STANDARD.

**AIA Contract Documents**

**feature over 100 agreements**

**and forms, providing the most**

**complete and practical way to**

**see that projects run smoothly**

**from start to finish.**

**AIA Contract Documents**

*available in both paper  
and software formats*

AIA Chicago  
222 Merchandise Mart, #1049  
Chicago, IL 60654

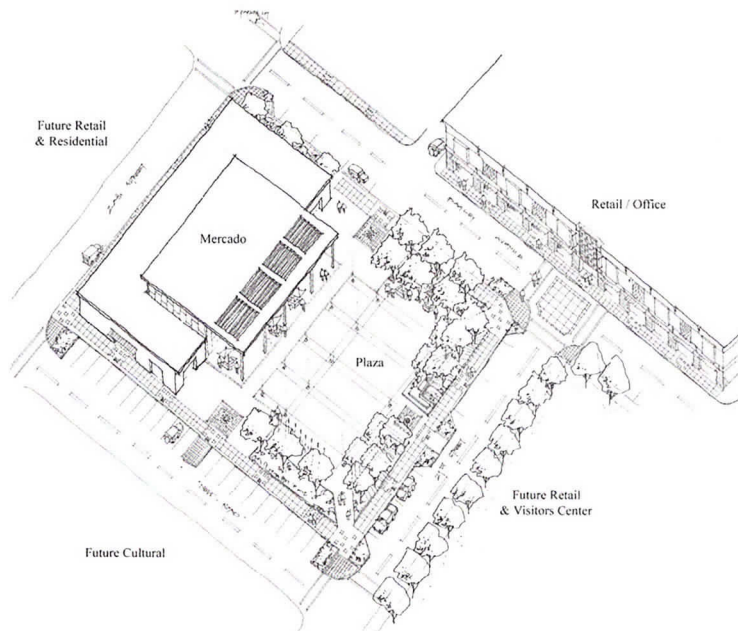
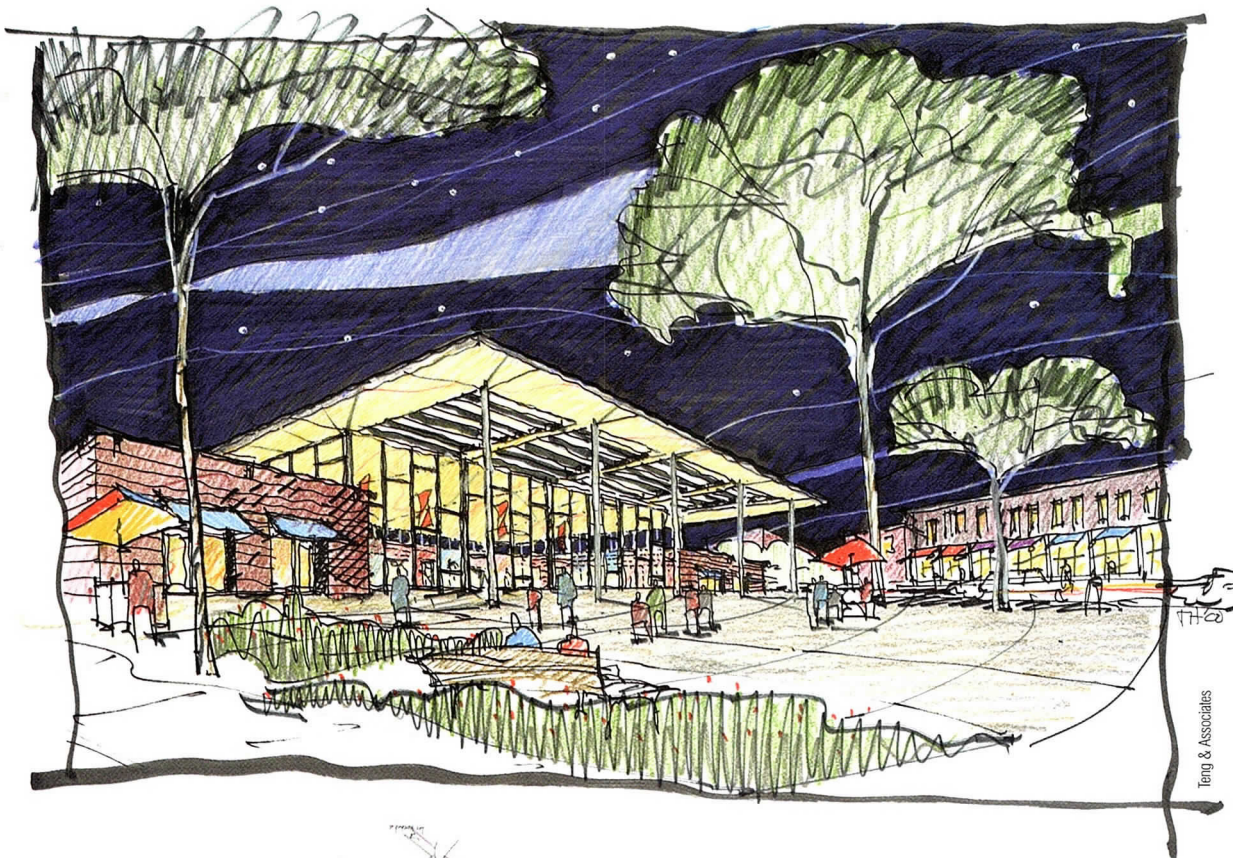
[www.aiachicago.org](http://www.aiachicago.org) • 312/670-7770



# Urban Design Awards

By Lara Brown

inaugurated in 2006, the Urban Design Award recognizes distinguished achievements that involve the role of the architect in urban design; city, suburban, or campus planning; and community development. Jurors reviewed projects consisting of individual projects, planned developments, places, design elements, and programs that contribute to the quality of urban development. Since many urban design projects are never completed in the traditional sense, incomplete projects or ongoing programs may be recognized if a significant portion has been completed, implemented, or adopted by a local jurisdiction. Projects are eligible if they were implemented between January 1, 2001, and May 1, 2006.



## Mexicantown Master Plan, Mercado and Plaza Detroit, MI

### Honor Award

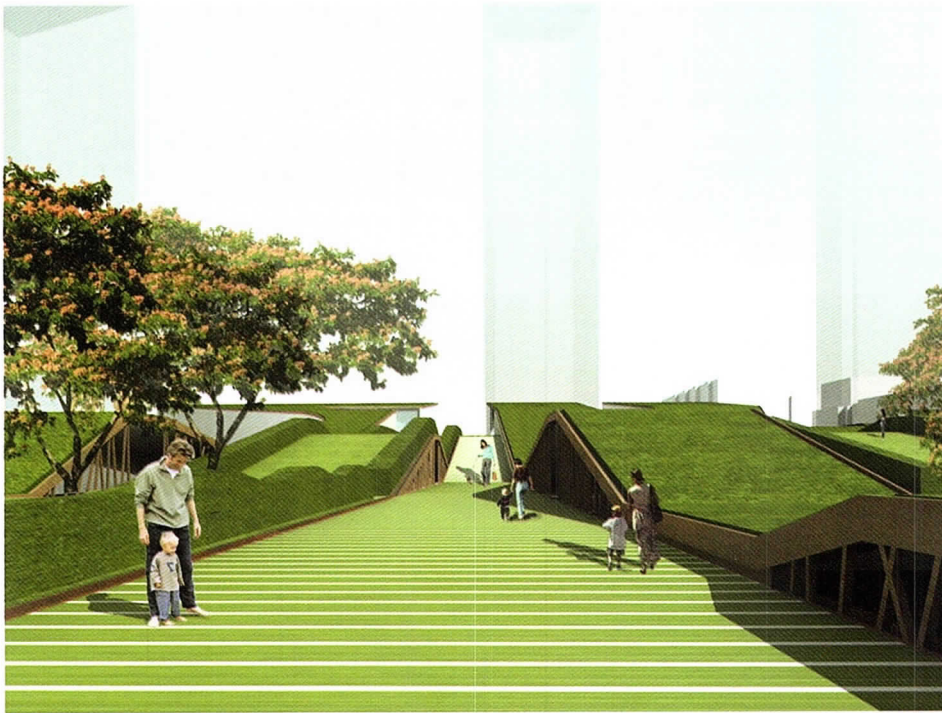
Architect – Teng & Associates

Client – Hamilton Anderson Associates

Contractor – Anzaldua/Garrison – A Joint Venture

The Mexicantown neighborhood along Bagley Avenue was severed into east and west when an interstate was built in 1968. While the west thrives, the east struggles to survive. The master plan provides the east with a framework that will create a new physical and symbolic center for all of Mexicantown. The plan fosters economic development in the community as a means of eliminating blight, creating skilled positions for residents, and providing opportunities for small business entrepreneurs. The plan is being implemented in three phases. One juror remarked, "It clearly had community involvement." Another juror added, "The plan is holistic and reflective of best practices."





## Heping Master Plan

Tianjin, People's Republic of China

### Citation of Merit

Architect – Perkins+Will

Associated Architect – Tianjin Real Estate Appraise  
Survey & Design Institute

Client – Asiaresources, Real Estate  
Development Company

Consultant – Tianjin Real Estate Appraise Survey &  
Design Institute

The master plan for a new residential district in Tianjin, China proposes an alternative strategy to the isolated base-tower strategy common to most high-rise residential developments. A multi-level base structure provides new public green spaces, pedestrian routes and adds street-level retail and community uses within an existing dense urban condition. The base element retail along with the community center under the green roofs provides street activation and helps stitch the building into the surrounding retail activity. Jurors found the plan, "very elegant. It creates a terrain in an urban environment."

## A place for one: A space for many

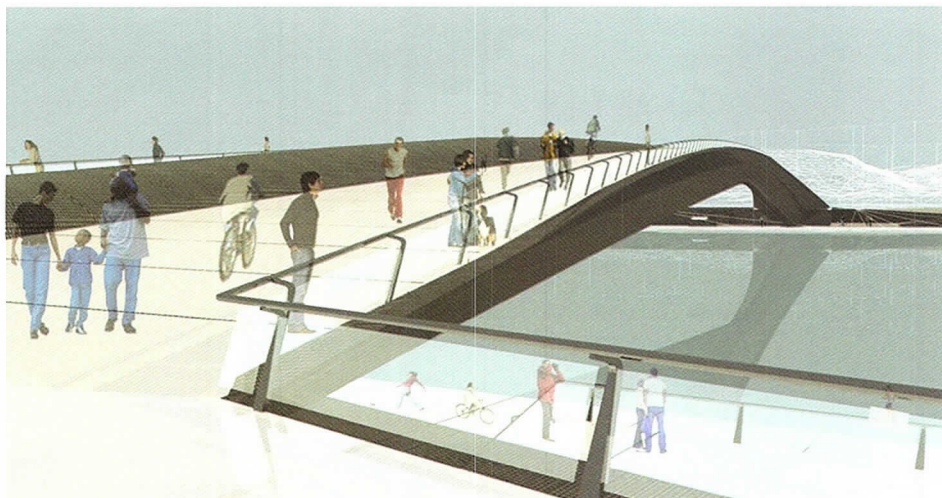
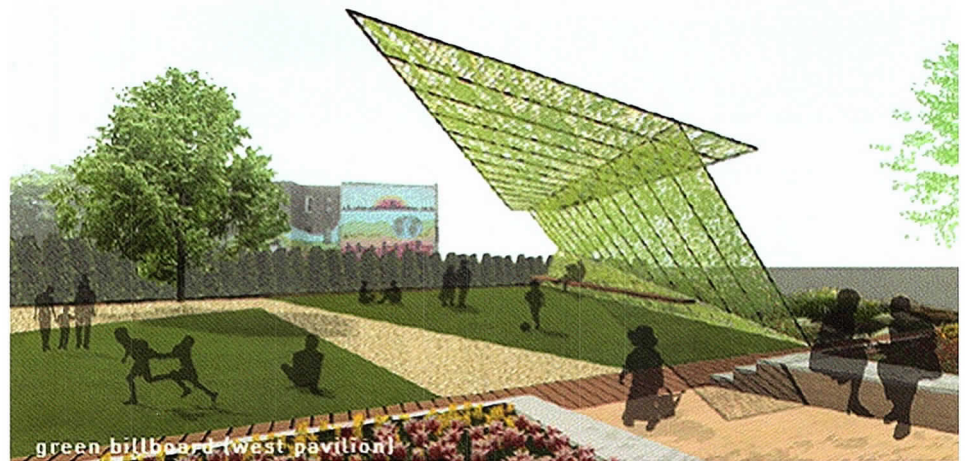
Chicago, IL

### Citation of Merit

Architect – 4240 Architecture

Client – Urban-Open: A competition for Chicago's  
Legacy of Sustainable Communities

Each year the Bethany Brethren congregation can meet to design and create the look and feel of the play space, gardens, and pavilions. The architect's goal was to strike a balance between limiting the amount of work required to change the place while maximizing the perceptual effect of those changes. The neighborhood living room is symbolically held by a pair of hands in the form of two folded plane pavilions. The fingerlike structure of these pavilions will be permanently positioned and the spaces between these vertical structural elements, the surfaces, will be determined by the community each year. The jurors liked that the project represented a grassroots effort. One juror remarked, "[it's a] positive view of the future for the neighborhood." Another juror complimented the "innovative idea of a park that can change."



## Glow

Pittsburgh, PA

### Special Recognition

Architect – 4240 Architecture

Consultant – Thornton Thomasetti Group, Comptek  
Structural Composites

Client – River Life Task Force

This project in the developing riverfront district posits a (re)connection across the genesis of the Ohio River in Pittsburgh, in the form of a new stand-alone Carbon Fiber Reinforced Polymer (FRP) Pedestrian Bridge. The design employs an innovative composite material, with an extremely lightweight structure and surface, manufactured as layers of FRP. Within these layers a luminescent pigment is included which emits a subtle glow each evening. This glow combines with the dramatically slender clear span. One juror commented, "The span is amazing – it almost doesn't seem possible."



We specialize in the recruitment of  
**Architects, Engineers, Designers & Drafters**

Think of Aerotek as your personal career counselor. More than just recruiters, we are industry specialists that can identify your needs and promote your abilities. We partner with reputable companies to help them find the best people to join their organization. With a dedicated team that is committed to the architectural and engineering community, it is our objective to network and build relationships with the most talented in the industry. We don't take your career lightly, and neither should you. Call now and let us help you find the perfect fit.

**Opportunities Nationwide. Local Chicago office: 847.303.2314 [www.aerotek.com](http://www.aerotek.com)**

“ I was impressed with my  
Aerotek recruiter. He knows the  
industry and found the job that  
fits me perfectly. ”



Aerotek is an equal opportunity employer. An Allegis Group Company © 2006

MEMBER



American Staffing Association



PCIA offers numerous resources to serve your Insurance and Risk Management needs and help you improve your competitive edge:

- › Seminars
- › Marketing Lunch and Learn Series
- › HR That Work™
- › Personal Protection Review™
- › Human Resources Hotline
- › Application Assistance
- › Contract Reviews

PCIA provides a Complete Portfolio of Coverages to Protect Your Assets:

- › Professional Liability
- › Business Insurance
- › Employment Practices Liability
- › Group Health, Disability and Life
- › Personal Insurance
- › Bonds
- › Exclusive Workers Comp Dividend Program

Your Strategic Business Partner



For All Your  
Insurance Needs

**Call us for special programs!**

Professional Concepts Insurance Agency (PCIA) provides comprehensive insurance products and customized risk management services for design professionals.



PLAN



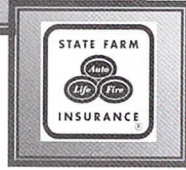


# Mark Mackey Insurance Agency, Inc.

## Business Owner Resources

# 773-604-4334

[www.MarkMackey.com](http://www.MarkMackey.com)



-  Architects Professional Liability
-  Workers Compensation
-  Business General Liability
-  Retirement Plans for Business
-  Business Life Insurance
-  Group Life Insurance
-  Employee Incentives
-  Business Valuation Service
-  Individual Health Coverage
-  Health Savings Account
-  Supplemental Health Coverage
-  Business Exit Planning

*Spend less time worrying about insurance,  
and more time on creating the next Leaning Tower*

## SPONSORS LIST

### Thanks to Our Sponsors

The Design Excellence Awards were presented in Navy Pier's Grand Ballroom. Many organizations made Designight 2006 possible, and AIA Chicago would like to thank them for their support.

### Co-Sponsors

Petersen Aluminum Corp.  
USG  
Charter Sills and Associates  
Turner Construction Company  
Brick Distributors of Illinois  
Digital Printing Center

### Benefactors

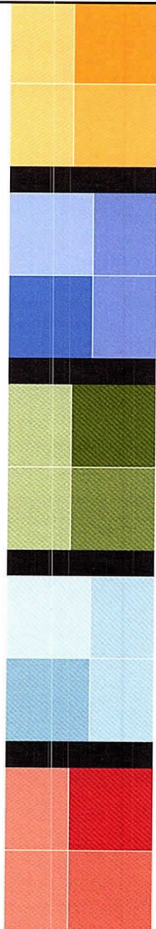
Antonovich Associates  
*Architectural Products* magazine  
Dirk Denison Architects  
Goettsch Partners  
Haworth Inc. and Perkins+Will  
Leopardo Companies Inc.  
McGraw-Hill Construction  
Murphy/Jahn Inc.  
Optima Inc.  
Richard H. Driehaus  
Skidmore, Owings & Merrill LLP

### Patrons

annex|5  
Bovis Lend Lease  
Brininstool + Lynch Ltd.  
Crate and Barrel  
David Woodhouse Architects, LLC  
DeStefano and Partners Ltd.  
Douglas Hoerr Landscape Architecture Inc.  
Environmental Systems Design Inc.  
Executive Construction Inc.  
4240 Architecture Inc.  
Gary Lee Partners  
Gensler  
Goldberg General Contracting  
HOK  
Holabird & Root  
Knoll Chicago  
Krueck & Sexton Architects  
Legat Architects Inc.  
Levine Builders Inc.  
Loebl Schlossman & Hackl  
Magnusson Klemencic Associates  
Nagle Hartray Danker Kagan McKay Penney Architects Ltd.  
Owner Services Group Inc.  
OWP/P  
Pepper Construction Company  
Perkins+Will  
Powell/Kleinschmidt  
Professional Concepts Insurance Agency and XL Insurance  
Solomon Cordwell Buenz  
Teng & Associates Inc.  
Thornton-Tomasetti Group  
Valerio Dewalt Train Associates Inc.  
VOA Associates Inc.  
W. E. O'Neil Construction Co.

# NeoCon<sup>®</sup> SHOWS

North America's **largest** collection of expositions and conferences for interior design and facilities management ...



**NeoCon<sup>®</sup> World's Trade Fair**  
June 11-13, 2007  
The Merchandise Mart  
Chicago, Ill.

**NeoCon<sup>®</sup> Xpress**  
August 22-23, 2007  
Los Angeles Convention Center  
Los Angeles, Calif.

**IIDEX<sup>®</sup>/NeoCon<sup>®</sup> Canada**  
September 28-29, 2007  
Direct Energy Centre, Exhibition Place  
Toronto, Ont.

**NeoCon<sup>®</sup> East**  
October 17-18, 2007  
Baltimore Convention Center  
Baltimore, Md.

[www.merchandisemart.com](http://www.merchandisemart.com) 800.677.6278



**Distinguished Building Awards**

**Honor Awards**

David C. Hovey, FAIA  
(Sterling Ridge) .....9  
Goettsch Partners  
(111 S. Wacker) .....6  
Murphy/Jahn  
(Passenger Terminal Complex,  
Suvarnabhumi Airport) .....7  
Valerio Dewalt Train  
(Kresge Foundation Headquarters) .....8

**Citations of Merit**

DeStefano and Partners, Ltd.  
(838 W. Webster) .....10  
Dirk Denison Architects  
(Wilson Residence) .....14  
Kreuck + Sexton Architects  
(IIT S.R. Crown Hall Exterior Restoration) .....11  
Murphy/Jahn  
(Highlight Munich Business Towers) .....11  
Nagle Hartray Danker Kagan McKay Penney Architects  
(Courtyard Translucens House) .....12  
OWP/P  
(Adlai E. Stevenson High School Addition) .....12  
Skidmore, Owings & Merrill LLP  
(Virginia Beach Convention Center) .....10

**Special Recognition**

Antonovich Associates Architects  
(Dempster Street Station Restoration & Adaptive  
Reuse Project) .....14  
Crate and Barrel – Architecture Dept.,  
Jacques Verlinden  
(Crate and Barrel, Beverly Hills Homestore) .....16  
Crate and Barrel – Architecture Dept.,  
Jacques Verlinden  
(Crate and Barrel, Oakbrook Homestore) .....16  
Holabird & Root  
(Lake View Presbyterian Church Exterior  
Restoration) .....18  
Skidmore Owings and Merrill  
(601 Congress Street) .....18

**Interior Architecture Awards**

**Honor Awards**

David Woodhouse Architects LLC  
(Offices of David Woodhouse Architects) .....22  
Gary Lee Partners  
(Armani Exchange) .....24  
Skidmore, Owings & Merrill LLP  
(Global Hyatt) .....23  
Valerio Dewalt Train Associates, Inc.  
(Kresge Foundation Headquarters) .....25

**Citations of Merit**

Brininstool + Lynch, Ltd.  
(Carus House) .....34  
DeStefano and Partners, Ltd.  
(838 W Webster) .....32  
Gensler  
(IBM Innovation Center) .....26  
Goettsch Partners  
(17th Floor Office) .....26  
Goettsch Partners  
(35 E. Wacker) .....30  
Perkins+Will  
(Perspective Charter School) .....32  
Perkins+Will | Eva Maddox Branded Environments™  
(Haworth L.A.) .....33  
Powell/Kleinschmidt Inc  
(Mayer Brown Rowe & Maw Office Relocation) ... 28  
Skidmore, Owings & Merrill LLP  
(E-Suite) .....30  
Skidmore, Owings & Merrill LLP  
(Randolph Street Commuter Station) .....28

Tjaden+Architects+AIA  
(Urban Guest House) .....34

**Special Recognition**

OWP/P  
(Metropolitan Capital Bank) .....35

**Divine Detail Awards**

**Honor Awards**

AEDS | Ammar Eloueini  
(Issey Miyake me Boutique) .....37  
EHDD Architecture  
(The Pritzker Family Children's Zoo—Lincoln Park) ..38  
McCluer  
(Sullivan Center Cornice Reconstruction) .....39  
Powell/Kleinschmidt Inc  
(200 W. Madison Winter Garden) .....36

**Citations of Merit**

Florian Architects, Ltd.  
(Mod-u-lator Scrim, Hyde Park Bank) .....40

**Urban Design Awards**

**Honor Award**

Teng & Associates  
(Mexicantown Master Plan, Mercado and Plaza) ... 42

**Citations of Merit**

Perkins+Will  
(Heping Master Plan) .....43  
4240 Architecture  
(A place for one: A space for many) .....43

**Special Recognition**

4240 Architecture  
(Glow) .....43

**Distinguished Building Awards**

David Black, AIA  
Flad & Associates, Madison, WI  
Grace La  
La Dallman Architects Inc., Milwaukee, WI  
John Senhauser, FAIA  
John C. Senhauser Architects, Cincinnati, OH

**Interior Architecture Awards**

Robert Peters, FAIA  
Albuquerque, NM  
Gianne Conard, AIA  
Washington, DC  
James Bowen, AIA  
Bowen Architecture  
Sarasota, FL

**Divine Detail Awards**

Andrew Metter, FAIA  
annex|5, Chicago, IL  
Rebel Roberts, III, AIA  
VOA Associates Inc., Chicago, IL  
Grace Kuklinski Rappe, AIA  
Douglas Hoerr Landscape Architecture, Chicago, IL

**Urban Design Awards**

Philip Enquist, FAIA  
Skidmore, Owings & Merrill LLP, Chicago, IL  
Diane Legge Kemp, FAIA  
DLK Civic Design, Chicago, IL  
Richard Wilson, Assoc. AIA  
URS Corporation, Chicago, IL

**Confidential Clearinghouse for  
Mergers & Acquisitions™**  
Serving Design Professionals Nationwide

**When Exploring an Acquisition, Sale or Merger, You Need:**

- An expert with inside knowledge of the A/E industry
- An extensive network of strong, strategic contacts
- Confidential introductions to qualified prospects
- Creative & targeted marketing advice

Strogoff Consulting provides confidential introductions between prospective buyers and sellers and manages the entire merger and acquisition process. Contact Michael Strogoff, AIA, at **866 ARCH ENG** (866.272.4364), e-mail [Clearinghouse@StrogoffConsulting.com](mailto:Clearinghouse@StrogoffConsulting.com) or visit [www.StrogoffConsulting.com](http://www.StrogoffConsulting.com).  
All discussions held in the strictest confidence.




**Construction  
Attorneys**

Arbitration  
Mediation  
Licensing issues  
Contracts  
Negotiation  
Copyrights  
Continuing Education

**Sabo & Zahn**  
ATTORNEYS AT LAW  
401 N. Michigan Ave  
Suite 2050  
Chicago, IL 60611  
(312) 655-8620  
(312) 655-8622 fax  
[WWW.SABOZAHN.COM](http://WWW.SABOZAHN.COM)

**Announcing a DVD Learning Experience  
Copyrights and Construction**  
Learn about copyrights and how to protect your intellectual property in a DVD video.  
Earn 2 hours of HSW/CEU credits that qualify for AIA and state continuing education requirements.





# IMAGEFICTION



**Project:**  
Roosevelt Collection

**Client:**  
Centrum Properties  
Chicago, IL

**Architects:**  
Hirsch Associates  
RTKL Associates

LaSalle Wacker Building  
221 North LaSalle Suite 1510  
Chicago, IL 60601

312.726.0818

architectural rendering  
computer imaging  
animation  
interactive Media

[www.imagefiction.com](http://www.imagefiction.com)



We are pleased to announce that Eric Brightfield was recently elected President of ASAI, The American Society of Architectural Illustrators, and is hosting this year's ASAI/2006 Conference in Chicago.



# REALIZE THE FUTURE TODAY

WWW.VERTEXGRAPHICS.COM



312.432.9870  
**VERTEX GRAPHICS**  
1147 W OHIO #102 CHICAGO IL 60622



ARCHITECTURAL VISUALIZATION · RENDERING · ANIMATION · VR PANORAMIC