



Focus

OCTOBER 2005
SPECIAL EDITION

Design Excellence Awards 2005

**Distinguished Building, Interior Architecture
and Divine Detail**

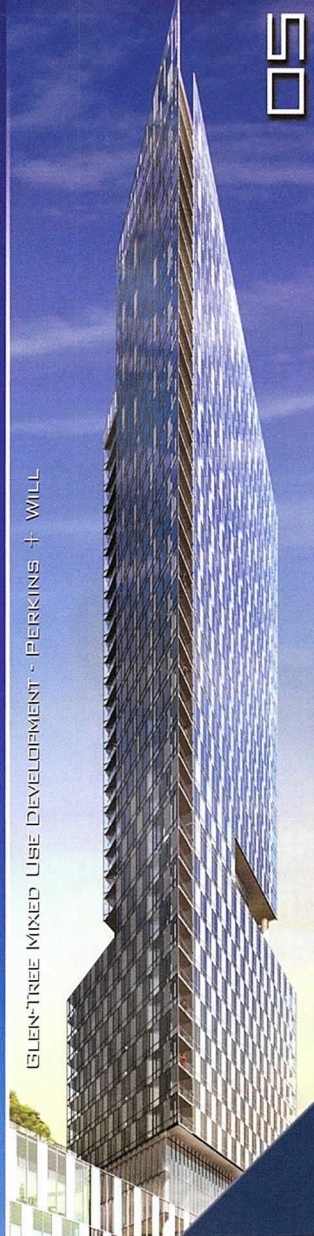
AIA Chicago

REALIZE THE FUTURE TODAY

WWW.VERTEXGRAPHICS.COM



SIGNATURE PLACE TOWER - PERKINS + WILL



GLEN-TREE MIXED USE DEVELOPMENT - PERKINS + WILL

50



SIGNATURE PLACE TOWER - PERKINS + WILL

312.432.9870
VERTEX GRAPHICS
1147 W OHIO #102 CHICAGO IL 60622



600 N FAIRBANKS - MURPHY/JAHN



ARCHITECTURAL VISUALIZATION · RENDERING · ANIMATION · VR PANORAMIC

Communications Director
Mary Beth Klatt

Focus Advisory Board
Thomas Kerwin, AIA
Gigi McCabe-Miele, AIA
Alice Sinkevitch, Hon. AIA
P.K. VanderBeke, AIA
Thomas Zurowski, AIA

FOCUS (ISSN 1071-3700) Vol. 25, No. 9, is published monthly with a combined issue July/August, by AIA Chicago, 222 Merchandise Mart Plaza, Suite 1049, Chicago, Illinois 60654-1001. \$20 of each member's dues are allotted as a subscription. Periodicals postage paid at Chicago, Illinois. POSTMASTER: Send address changes to Focus, AIA Chicago, 222 Merchandise Mart Plaza, Suite 1049, Chicago, Illinois 60654-1001.

For advertising rates and schedules, call 312/670-7770.

© 2005 The American Institute of Architects Chicago.

All rights reserved. Reproduction in whole or part without permission is strictly prohibited.



2005 Board of Directors

President
Thomas Kerwin, AIA

First Vice President/President-Elect
Peter Schlossman, AIA

Vice Presidents
Richard Master, AIA
Gigi McCabe-Miele, AIA

Secretary
Brett Taylor, AIA

Treasurer
Laura Fisher, FAIA

Past President
Charles Smith, AIA

Directors
David Brininstool, AIA
Gaines B. Hall, FAIA
Thomas F. Hoepf, AIA
Daniel Friedman, Ph.D., FAIA
Christopher Chwedyk, AIA

Associate Director
Helen Tsatsos, Associate AIA

Professional Affiliate Director
Jeffrey Loyall

AIA Regional Directors
Robert I. Selby, AIA
Jonathan L. Fischel, AIA

AIA Illinois Delegates
Fred Brandstrader, AIA
Hill Burgess, AIA
Leonard E. Koroski, AIA
Eben Smith, AIA
Robert Woodworth, AIA
Sharlene Young, AIA (alternate)
Mary Brush, AIA (alternate)

2005 Committee Chairs

Working With an Architect
Rob Sierzega, AIA

Architects in the Schools
Curtis Jones, Assoc. AIA

2005 Knowledge Communities

Corporate Architects
TBD

Design
Craig Brandt, AIA

Design/Build
Christopher Martersteck, AIA

Environment
Robert C. Vagnieres, Jr., AIA

Architecture for Health
Robert Schaefer, Jr., AIA

Historic Resources
Charles Sejud, AIA

Housing
Steven Montgomery, AIA

Interior Architecture
Carol LaMar, AIA

Regional & Urban Design
Fred Brandstrader, AIA

Practice Management
Gregory Battoglia, AIA

Technical Issues
Lynette Stuhlmacher, Assoc. AIA

Young Architects
Jeff Missad, Assoc. AIA

Chapter Staff

Executive Director
Alice Sinkevitch, Hon. AIA

**Membership Director/
Assistant to the Director**
Phil Rahill

Program Director
Joan Pomaranc

Communications Director
Mary Beth Klatt

Financial Manager
Crystal Gagler

Public Information Receptionist
Linda Freeman

Documents Clerk
Mary Mnichowicz

4

President's Letter

6

Distinguished Building Awards



18

Interior Architecture Awards



28

Divine Detail Awards



37

Jury List

38

Sponsors List

38

Awards Index

Want to See More?

Visit www.aiachicago.org to view a virtual exhibit of all awards submissions.

Cover: Julien J. Studley Inc. by
VOA Associates Incorporated
Photo: Nick Merrick © Hedrich Blessing



I believe I can state that this issue of *Focus* is one that we particularly all look forward to reading.

It is, of course, the issue that displays our chapter's award-winning designs by some of the leading architects in the U.S. and the world. Yes, critics, I did say the world.

Chicago and other cities have experienced a renewed interest in architecture as art, and some would say that architecture is our number one art form. The appreciation for good and great design has always been a characteristic of keen Chicagoans. This awareness has only been heightened by some great additions to our built landscape by some prominent architects from around the globe. Gehry's Pritzker Pavilion and Koolhaas's IIT Student Center are two great examples. If his previous work is an indication, Piano's Art Institute addition is a work that we can all look forward to experiencing. Having these masters work in our city is a good thing. They positively influence our potential clients and the public on the importance of world-class design.

Does built design matter more? Not necessarily, but as architects we all know the challenges of getting projects built. Winning the commission, meeting client's requirements, making changes, adhering to budgets, making more changes, getting through the construction phase, change orders, punch lists, etc.! I could go on and on, and we all know it first hand. However, it does emphasize that having this built work, which can take years to come to fruition, be judged by a jury of our peers as significant is a great accomplishment.

Brevity in this month's letter is essential as your interest in what follows will cause you to skip reading it otherwise. Congratulations to the winners and celebrate the fact that design does matter.

Thomas Kerwin
President

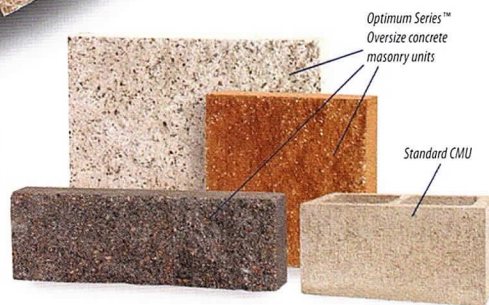
Dramatic color, texture, and character on a grand scale.

Create a visually stunning facade with **Optimum Series™ Oversize masonry units** from County Materials. Present character and varying scale with a variety of sizes ranging from 4- by 24-inch block up to impressive 16- by 24- inch units. Optimum Series units make a statement of stability and

permanence, while evoking the vintage charm of age-old masonry buildings. Available in 4 facing styles, Optimum Series Oversize masonry units are a cost-effective alternative to cut stone, and are ideal for commercial, industrial and institutional applications.



THE OPTIMUM SERIES™



Chicago South
2217 South Loomis St.
(312) 421-8432

Chicago North
1430 North Elston Ave.
(773) 489-2423

Champaign, IL
702 North Edwin St.
(217) 352-4181

www.countymaterials.com

Distinguished Building Awards

By Mary Beth Klatt

When the Distinguished Building Award was established half a century ago to honor major achievements in planning, Richard J. Daley was mayor and McDonald's opened its first restaurant in Des Plaines, IL. Now 50 years later, Daley's son, Richard M., is mayor and McDonald's franchises serve hamburgers worldwide. The Distinguished Building Award continues to honor the design and execution of recent building projects. Projects are eligible if they were designed by a registered architect in the Chicago metropolitan area and completed between Jan 1, 2002 and May 1, 2005.

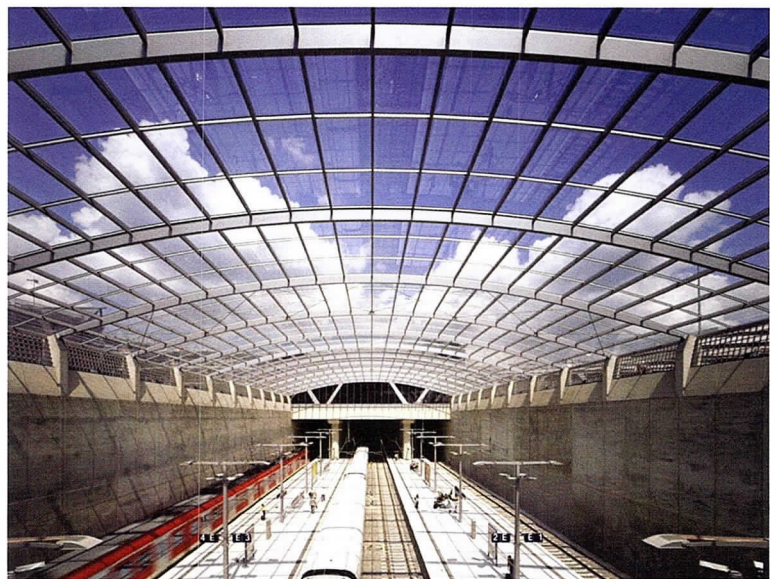


Airport Cologne/Bonn Bahnhof
Cologne/Bonn, Germany

Honor Award

Architect – Murphy/Jahn
Client – DB Station & Service AG
Contractor – Seele GmbH & Co. KG
Consultants – Werner Sobek Ingenieure GmbH
(Structural); Zimmermann + Schrage KG
(Mechanical); IFFT (Institut für Fassadentechnik)
(Façade); Brandi IGH (Lighting)

Located in the heart of the airport, the new train station connects Terminals 1 and 2 with the local German and European high-speed train network. The platform of the 414 m long station lies 12.60 m below grade and runs underneath Terminal 2 and the surrounding runways, perpendicular to the axis of Terminal 1. Placing the station in the heart of the airport required a phased construction sequence and the relocation of the airport's primary access roads. "What a delightful arrival at any time of day or night," said one juror. "It's filled with light during the day, and a glow at night. The architect has spun a beautiful gossamer web of glass and metal over this tunnel."



Carus Residence

Peru, IL

Honor Award

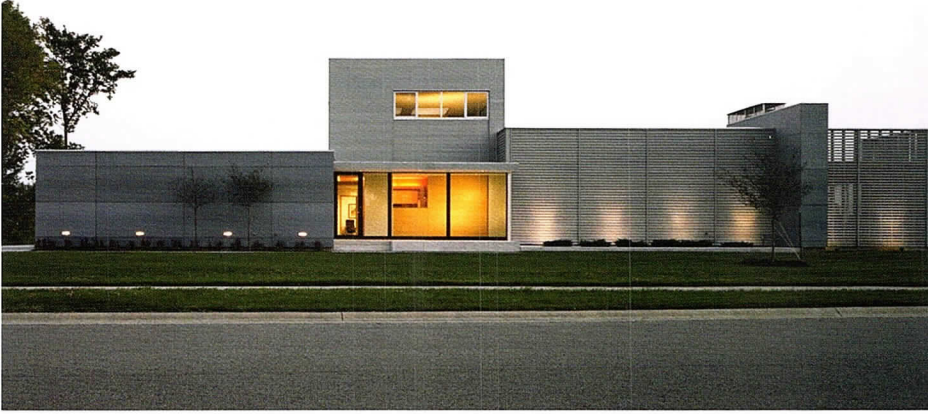
Architect – Brininstool + Lynch Ltd.

Client – Paul and Tammi Carus

Contractor – American Bilco

Consultants – Sheffee Lulkin & Associates

Situated on a large flat site, this house evokes the horizontal influence of agricultural buildings historically built in the Midwest. It incorporates a characteristic program for a family of five. Yet visual and tactile elements interconnect and resolve each room's function to give the project an uncommon sensibility. Cement board panels and varied sizes and applications of redwood siding are wrapped over a steel frame to create the exterior. "It's well organized in terms of public and private areas," said one juror. "They did a beautiful job bringing the outdoors in. The emphasis is on nature."



Christopher Barrett © Hedrich Blessing



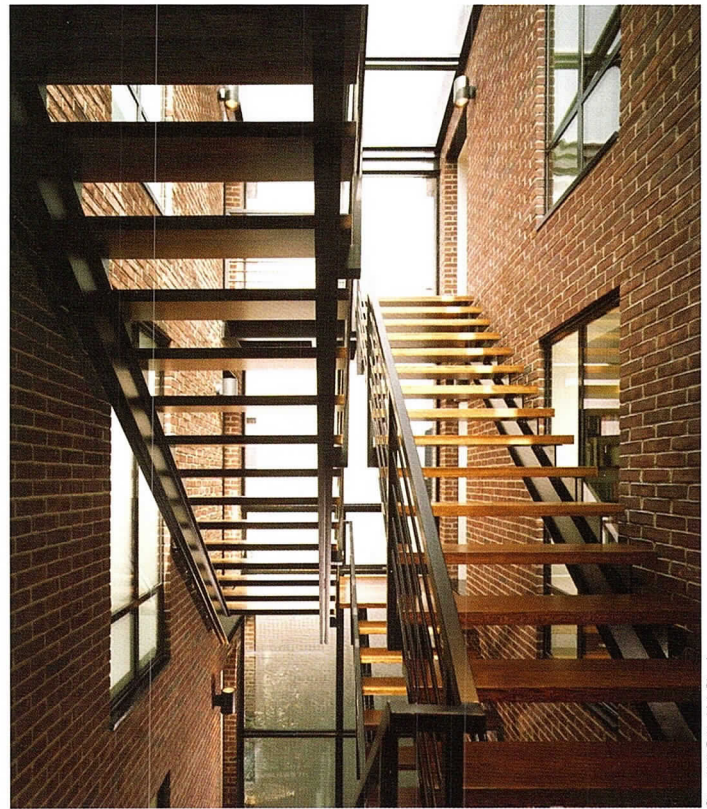
Christopher Barrett © Hedrich Blessing

DePaul Residence
Chicago, IL

Honor Award

Architect – Wheeler Kearns Architects
Client – Kim Clark and James Powell
General Contractor – Fraser Construction
Consultants: Enspect Engineering; The Engineering Studio; Leslie Jones Associates; Douglas Hoerr Landscape Architects

This three-story single family residence in Chicago's DePaul neighborhood was conceived as two independent brick volumes connected by a central glass-enclosed stairwell. Along with the convenience of the central scissor stairs, the subdivided volumes belie the 5,500 square feet overall size of the house. In contrast to the repeated punch openings of the understated façade, the volumes' two-story window exuberantly opens to the patio. "I like the way the architect broke down the massing of the house," one juror commented. "It's in scale with the neighborhood. The detailing of the outside is restrained and handsome, and the interiors, warm and full of life, suggest a livable house."



Steve Hall © Heifrich Blasecinn



Steve Hall © Heifrich Blasecinn



James Steinkamp, Steinkamp/Ballogg Photography Inc.



James Steinkamp, Steinkamp/Ballogg Photography Inc.

Perspectives Charter School
Chicago, IL

Honor Award

Architect – Perkins+Will
Client – Perspectives Charter School
Contractor – Levine Construction, Inc.
Consultants – TGRWA Engineers; WMA Engineers;
Site Design Group; A Perfect Sign

Located on the City's near South Side, Perspectives Charter School houses 300 students in grades 6-12. The public school occupies the pointed end of a triangular

site created by Archer Boulevard with an entry plaza and play area to the west in a former parking lot. A raised roof, which forms a central clerestory, engages the western façade to frame a glazed entry wall and wraps down to form an entry canopy. The triangle tip contains space for a future library and is finished with an outdoor classroom and trellis. The corrugated metal is an economical material which echoes the area's industrial past. Classrooms are oriented around a multi-purpose room, which is treated as a two-story living room. "It's a fresh take on schools," commented one juror. "Most schools don't take this kind of risk. It's very contemporary and at the same time open and light."



Ben Johnson, AIA, Johnson Lasky Architects

Wacker Drive Reconstruction Project, East-West Chicago, IL

Honor Award

Architect – Johnson Lasky Architects (consultant restoration architect, contracts A, B,C)
 Client – City of Chicago Department of Transportation
 Contractor – Walsh Construction Company
 Consultants – DLK, Inc. (Architect, Contracts A, C); Muller & Muller (Architect, Contract B); EarthTech (Design Engineer, Overall Coordinating and Contract A); McDonough and Associates (Design Engineer, Contract C); Teng and Associates (Design Engineer, Contract B)

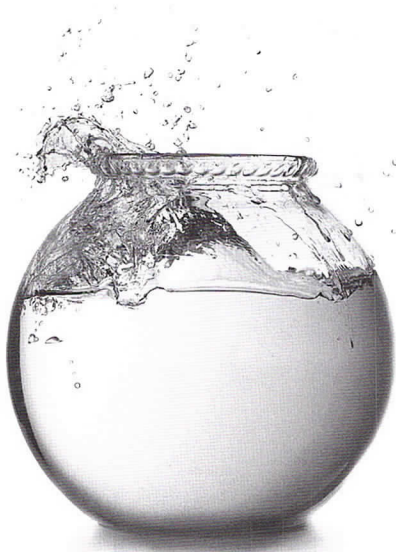
Originally constructed between 1924 and 1926, Wacker Drive was designed by Edward Bennett as an outgrowth of the famous 1909 Plan of Chicago by Daniel Burnham and Edward Bennett.

The City of Chicago assembled a team of architects and engineers to plan and design this unprecedented effort to replace the roadway structure and restore its historic elements. From the beginning, historic preservation was a priority. Preservation design architects worked closely with the project team, state and city officials. Design challenges included coordinating overall design, restoring limestone and granite cladding, bronze luminaires, plaques and sculptures. Furthermore, new design elements including cast-in-place and precast concrete structural elements, streetscape plantings, railings, benches and reproduction lighting were designed to enhance the road and bring it up to contemporary standards. Detailing and reinstalling the stone cladding on the redesigned road was particularly challenging. "It's important to recognize public architecture for investing in a project that will serve the city another 80 years at a time when public works aren't done with that kind of care and detail," said a juror.



Ben Johnson, AIA, Johnson Lasky Architects

Changing Your World



Contacts



Time
Expense



Projects



Billing



Calendar



Reports

Office and Project Management Software for Architects

ArchiOffice is a networkable, multi-user solution which operates on both PCs and Macs.

Designed & Built by **Chicago Architects**

© ArchiOffice is a registered trademark of Orange Loft, LLC.

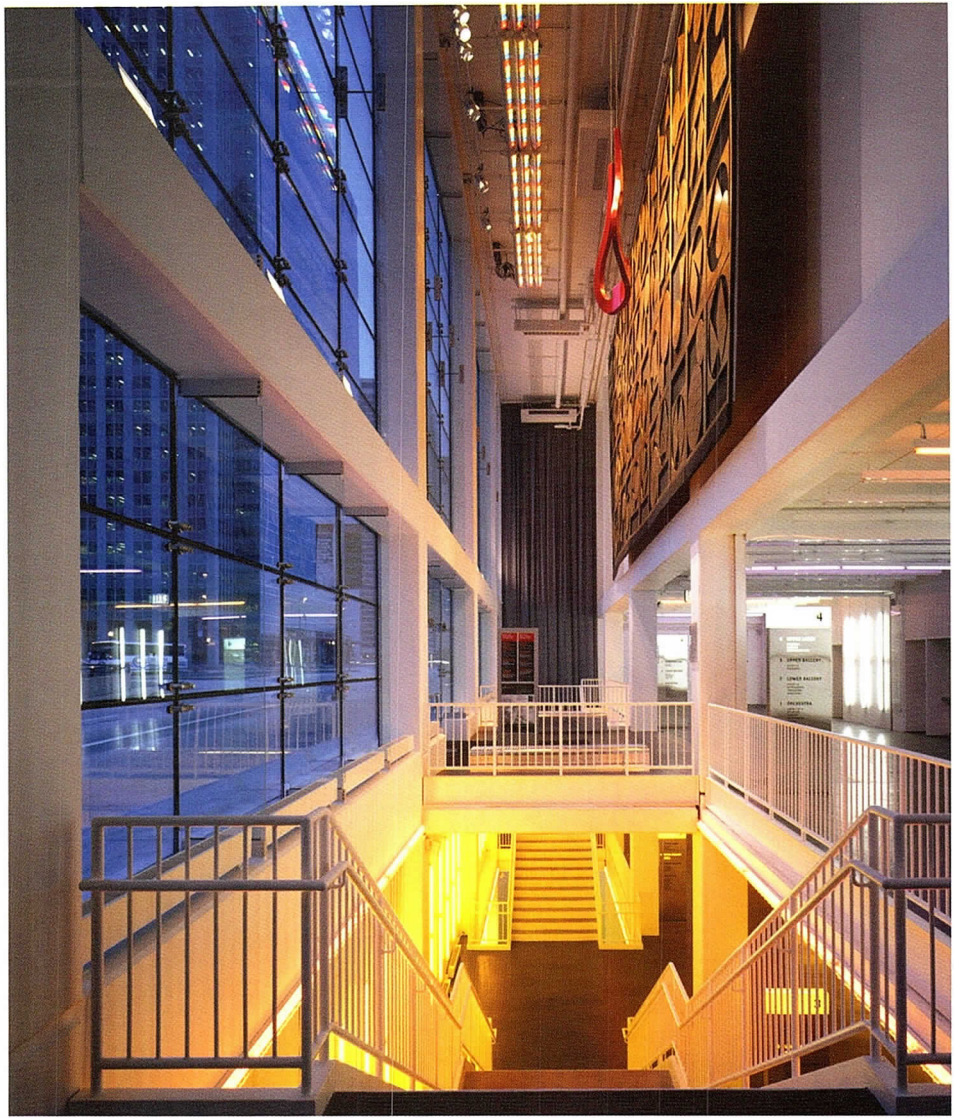
ArchiOffice[®]
archioffice.com 800.371.0130

Joan W. and Irving B. Harris Theater for Music and Dance
Chicago, IL

Citation of Merit

Architect – Hammond Beeby Rupert Ainge Inc.
Client – Music and Dance Theater Chicago
Contractor – The Clark Construction Group
Consultants – Thornton-Tomasetti Engineers (Structural); Environmental Systems Design, Inc.; (MEP/FP Engineer of Record); Jaffe Holden Acoustics (Acoustical Consultant); Schuler Shook (Theater Consultant); Rolf Jensen & Associates, Inc. (Life Safety Consultant); The Consulting Engineers Group, Inc. (Precast Structural Engineer); Construction Cost Systems, Inc. (Cost Estimator); Kathryn Quinn Architects (Associate Architect)
Program Manager – The Rise Group

Located in Chicago's Millennium Park, this new theater required that most of the building be located below the surface. Yet the architect was able to express the exterior directly related to the site in the park. Inside, they created a flexible stage large enough for classical dance, small enough for a soloist with impeccable acoustics and site lines. Jurors felt like all the goals and more were accomplished on a tight budget. The structure is all about illusion, nothing appears to be what it is; even the lights have a magical quality. "There's life in the theater whether the lights are on or off," a juror commented.



Jim Miller © Harbort Blessinn



Bruce Van Inwegen, Van Inwegen Photography

Green Lake Cottage
Green Lake, WI

Citation of Merit

Architect – Nagle Hartray Danker Kagan McKay Penney
Client – anonymous
Contractor – Design Specialty Builders
Consultants – Graef, Anhalt, Schloemer & Associates, Inc. (Structural); Design Specialty Builders (MEP)

The idea was to construct a modest, modern second home/retirement cottage consistent with the motto "Small is Beautiful." The cottage and garage/boathouse out-building follows the contours of an oak-covered hillside overlooking Green Lake. The garage/boat house aligns with the house, preserving trees in between. The two-story steel and wood-framed structure houses the upper-level entry (living/ dining and master bedroom) and lower-level walk out (children's bedroom and family area). Both house and garage are clad in horizontal clear cedar siding with black framed windows and trim. "Here's a quiet, understated wood cottage that's clearly modern," says a juror. "The best part of the house combines indoor/outdoor terraces. It's a nice balance of public and private for informal living."

Independence Grove Visitor Center
Libertyville, IL

Citation of Merit

Architect – David Woodhouse Architects LLC
Client – Lake County Forest Preserves
Contractor – Meridian Consulting Group
Consultants – Nayyar & Nayyar (Structural)

The visitor center anchors the primary recreation core at Independence Grove, 1,100 acres of savanna. The building's form, materials (cedar, fieldstone, weathered zinc) and detail bring to mind the great recreation centers at the national parks with a lightness and scale, and horizontal scope suited to its Midwestern surroundings. Timbered roofs pitch upwards to form a framed gateway to the lakeside. Inside, wood ceilings rise and fall over the interconnected public spaces. Jurors liked the bold, honest use of materials such as wood to create an appealing, outdoor space that blends the landscape with the architecture.



© Barbara Karant, Karant + Associates, Inc.



Claudio Santini

The Chicken Factory
Chicago, IL

Citation of Merit

Architect – Booth Hansen
Client – Paul and Susan Zucker
Contractor – Paul Zucker
Consultants – Robert L. Miller Associates

The client acquired a derelict industrial building that was constructed between 1920 and 1930; he converted the space into a primary residence/business center. Originally a single story poultry processing plant, the 3,200-square-foot building was expanded to 8,200 square feet and raised two floors. The strength of the original structure was utilized to install a 40-foot lap pool on the second floor. A strong sense of order was given to the pre-existing space by establishing a central, column-lined corridor. Original concrete ceilings were preserved, concrete floor slabs, window and door dimensions were scaled to compliment the original factory space. There's a nice contrast between what was added and what remains," a juror commented.

915 North Wolcott
Chicago, IL

Citation of Merit

Architect – Studio Dwell Architects
Client – Robert Ranquist Jr.
Contractor – RCRDC Group LLC
Consultants – Fisher + Partners

This residence is located on an unusually shaped urban lot with neighboring buildings to the north and an alley to the south. The goal was to create an urban retreat that provided privacy, yet was filled with natural light. Toward that end, the main floor plan was designed as an “open” plate which could use light from all four exterior walls. In addition, the “open” plan was applied vertically connecting the first floor to the second. Only 25 percent of the residence provides views to the exterior. The rest is either frosted or placed tight to the ceiling or floor. The jurors admired how the architect created an open, spacious environment on a tight city lot.



House on the Edge of a Forest
Northbrook, IL

Citation of Merit

Architect – John Ronan Architect
Client – Margot & Dan Kaplan
Contractor – Fraser Construction

This house for a family of four explores the relationship between site, material, and program in a domestic environment. The building’s discreet street façade gives way to floor-to-ceiling glass at the house’s rear to offer views from each room into the adjacent forest. Masonry walls form the house’s structure and divide it into living zones: service, relaxation, sleeping; the walls continue outside to create an entry court and terrace. The scale and detail of the home is in scale with its neighbors, jurors felt. They also felt the building was well-thought out – the large gallery can combine the owners’ love of art with their way of life.



**Valparaiso University, Christopher Center for
Library and Information Resources**
Valparaiso, IN

Citation of Merit

Architect – EHDD

Client – Valparaiso University

Contractor – Pepper Construction of Indiana

Consultants – Klein Hoffman (Structural); KJWW (MEP)

The keystone of a 1997 master plan, the Christopher Center for Library and Information Resources is located on a prominent location west of the revered university icon, Resurrection Chapel. The building addresses the scale and character of the low-rise campus buildings, designed so that interior spaces provide a renewed panorama of its immediate surroundings. Plans mandated a monumental structure that would have a strong dialogue with the chapel without upstaging it. Jurors felt the center was well done, with a nurturing learning space for students, supportive of the notion that not all learning has to occur indoors.



Peter Aaron, Esto Photographics, Inc.



Jeff Millies © Hedrich Blessing

Shure Technology Annex

Niles, IL

Citation of Merit

Architect – Krueck & Sexton

Client – Jim Furst, Shure Incorporated

Contractor – Harbour Contractors, Inc.

Consultants – Tytk, Gustafson, Reckers, Wilson,
Andrews, LLC (Structural); CCJM Engineers, Ltd.
(MEP/FP)

Shure Inc., a manufacturer of performance microphones and other electronic equipment, needed an addition to their signature building designed by Murphy/Jahn. The client wanted a state-of-the-art facility for testing and developing their products that would compliment the existing structure, attract and retain engineering staff and communicate the advanced technical quality of their products. The Technology Center is designed with the same quality of light as the corporate office with a 75,000-square-foot high-bay steel frame loft building, clad in glass panels with natural light controlled by fixed louvers. Jurors liked the seamless quality of the annex. "The continuation of the building was beautifully handled," says a juror. "The detail is great."



Mark Balloug © Sternkamp/Baloug Photography Inc.

Harold Washington Unity Co-Operative
Chicago, IL

Special Recognition

Architect – Landon Bone Baker Architects
Client – Erie Cooperative Limited Partnership
Contractor – Humboldt Construction Co.
Consultants – GFGR Structural; RTM & Associates;
HTH Mechanical

The 18-building, 87-apartment development on 12 sites scattered around Humboldt Park were designed to fit into the existing scale and texture of the neighborhood. The structures also bring a fresh and contemporary feel to an area neglected for years. Clean simple lines, studied proportions, strong but not overpowering color and careful detail combine for buildings that project strength, permanence and a modern aesthetic. The jurors felt that this project was an excellent example of restoring the urban fabric of a neighborhood; it gives back to the area rather than repeating what's been done.

First to Finish... Built to Last.



University Village - Midrise Lofts - Total Precast Structural Frame - Chicago, IL

SPANCRETE



www.spancrete.com

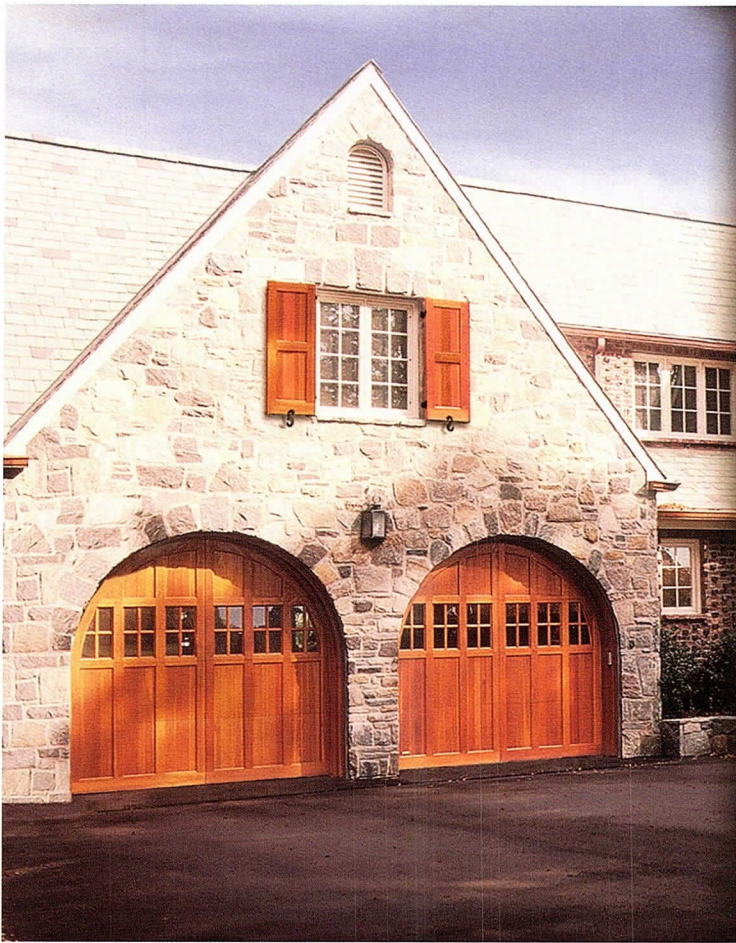
From start to finish, Spancrete® precast is the ideal building material for multi-family housing, and no one knows more about precast concrete than Spancrete, the industry's pioneers. Call us. Our experts will work with you every step of the way toward success.

Quality • Service • Durability **SPANCRETE**

Partner with the leaders in precast concrete solutions.

Spancrete Industries, Inc. Waukesha, WI • 414-290-9000

Spancrete of Illinois, Inc. Arlington Heights, IL • 847-879-2100 • Spancrete, Inc. Green Bay, WI • 920-494-0274



NO ONE COMES
CLOSE, EXCEPT
ADMIRERS.

When you use the finest woods, glass and metals, it's difficult for others to compare. Perhaps that's why no one does. Whether creating or re-visioning™ a client's home, work with the skilled artisans of Designer Doors™ to harmonize its exterior with picture-perfect, handcrafted architectural accents.



DESIGNER DOORS™
ARCHITECTURAL HARMONY

GARAGE DOORS ENTRY DOORS SHUTTERS GATES

ADD HARMONY TO YOUR DESIGNS.
DESIGNERDOORS.COM 800-241-0525

A NEW LIGHT
AT THE END OF THE TUNNEL



Chicago Transit Authority
Jackson Red Line Subway Station

LIGHTING DESIGNERS
SchulerShook



Chicago 312 944 8230
Minneapolis 612 339 5958
Dallas 214 747 8300

schulershook.com

NeoCon® SHOWS

North America's largest collection of
expositions and conferences for interior design
and facilities management ...

L.A. DESIGNWEEK™
March 27-30, 2006

NeoCon® West
March 27-28, 2006
L.A. Mart®
Los Angeles, Calif.

NeoCon® World's Trade Fair
June 12-14, 2006
The Merchandise Mart • Chicago, Ill.

IIDEX®/NeoCon® Canada
September 28-29, 2006
The National Trade Centre
Toronto, Ont.

NeoCon® East
Fall 2006
Baltimore Convention Center
Baltimore, Md.

www.merchadisemart.com 800.677.6278

Interior Architecture Awards

By Mary Beth Klatt

More than 20 years ago the Interior Architecture Award was established to promote interior architecture as a unique profession by honoring phenomenal projects. Interior architecture, for award purposes, is defined as the space within a building envelope, including lighting, finishes and furnishing designs. The jury studied a range of projects completed between Jan. 1, 2002 and May 1, 2005.



Nathan Kirkman, Nathan Kirkman Photography

Coach House Chicago, IL

Honor Award

Architect – John Ronan Architect
Client – Molly & James Perry
Contractor – Eiesland Builders

A 100-year-old coachhouse was converted into a supplemental living space for a family of five. It is the sum of two parallel systems: a vintage shell and its new, more ephemeral interior construction – inserted like furniture into the shell – that might change many times over the life of the shell it inhabits. The existing structure, which once housed horses and their coachmen, is stripped down to bare masonry to reveal its history. Jurors adored the minimal, methodical construction. "It's a flexible space, it can be occupied in different ways," a juror commented. "It's like a Chinese puzzle in a way. There's a nice restraint and simplicity."



Nathan Kirkman, Nathan Kirkman Photography



Julien J. Studley Inc.
Chicago, IL

Honor Award

Architect – VOA Associates Incorporated
Client – Julien J. Studley, Inc.
Contractor – Interior Construction Group, Inc.
Consultants – Alpha Engineering, Ltd. (Mechanical);
Engineering Plus (Low Voltage Engineer)

The client wanted to project an international image and a timeless look in a 15,000-square-foot corporate real estate brokerage office. In addition, the client also wanted to create a sense of life and excitement and incorporate existing artwork within the design. The solution? Interlocking cubes and architectural “boxes” to create spaces within spaces; the furniture reflecting architectural forms and voids. Lighting was also incorporated into unexpected areas while light origins are hidden so that the architecture appears to glow. “A large space nicely punctuated with light and color to define the choreography of space,” commented a juror.

Nick Merrick © Heidrich Blessing



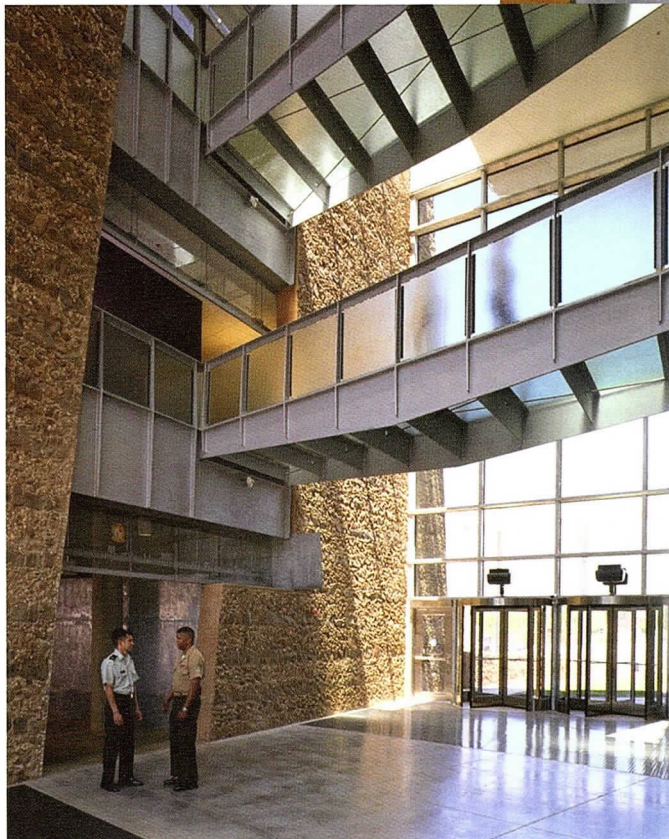
Nick Merrick © Heidrich Blessing

U.S. Federal Building
Oklahoma City, OK

Honor Award

Architect – Ross Barney + Jankowski Inc.
Client – General Services Administration
Contractor – Flintco Construction Co.
Consultants – Sasaki Associates Inc.(Landscape Arch.);
Weidinger Associates, Inc. (Blast Design &
Structural Engineer); Schiff & Associates, Inc.
(Security Consultant); Heery International
(Construction Manager); The Benham Group
(Consulting Engineer/Architect); Brad Goldberg
(Artist); Doug Hollis (Artist)

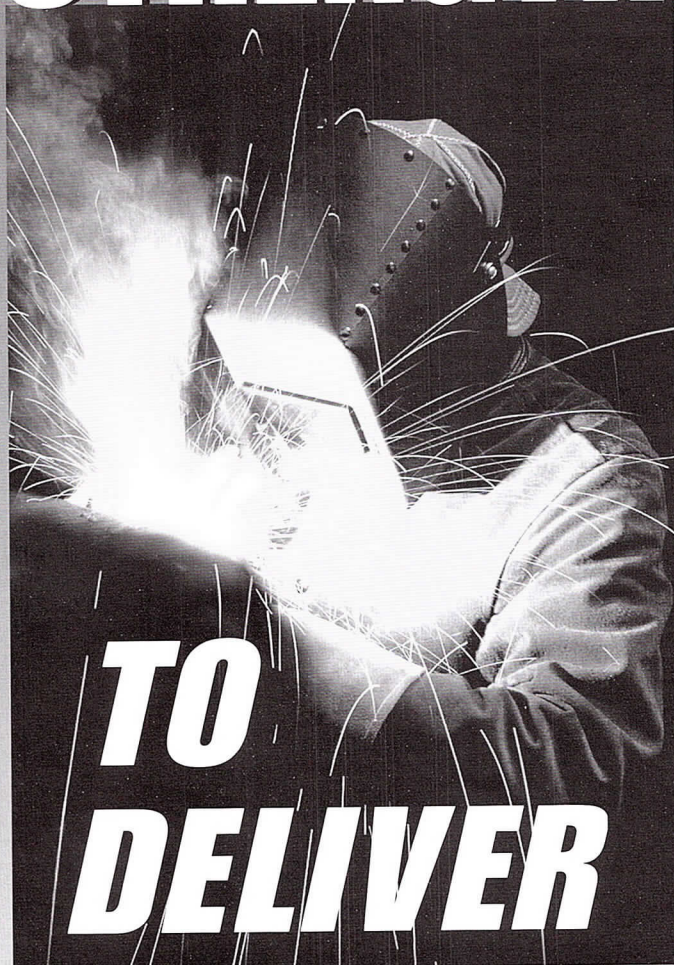
This new facility is about the future, seeking to reunite the federal community and standing as a symbol of freedom. It sits in a transition zone between the central business district and the north downtown neighborhood. Since security was paramount, building mass, glazing inside the courtyard, and bollards were constructed to maintain the sense of safety. The design also maximized sustainability and workplace productivity initiatives. It incorporates daylighting, indirect lighting, individually controlled task lighting as well as underfoot air supply energy for efficient distribution and individual comfort control. Jurors were impressed with how architecture and structure were combined to create a safe vibe. "The feeling of security is particularly important in this building, in this space," said one.



Steve Hall © Heitrich Blessing

Steve Hall © Heitrich Blessing

STRENGTH



TO DELIVER

We're proud to be Illinois' largest HVAC contractor, serving Chicagoland with superior construction and maintenance since 1936. Our size and experience make us experts at delivering quality in everything we do — from HVAC/Plumbing and design-build to system services and facility operations. Rely on our integrated team of 30+ graduate engineers and over 750 skilled professionals for the strength and expertise to deliver whatever you need...on even the most complex projects.



HILL MECHANICAL GROUP

HILL MECHANICAL CORP

HILL MECHANICAL SERVICES

HILL ENVIRONMENTAL OPERATIONS

www.hillmech.com



Greg Murphy, Gregory Murphy Studios, Inc.

Ganz Hall – Auditorium Building
Chicago, IL

Citation of Merit

Architect – Booth Hansen
Client – Roosevelt University
Contractor – Pepper Construction
Consultants – Ketchmark & Associates, Engineers;
Conrad Schmidt Studios (metal fabricator);
Kirkegaard & Associates (acoustic consultants)

Originally designed by Louis Sullivan and constructed in 1890, the once grand hall had fallen into disrepair by 2003. Located in the Auditorium Building, the hall originally had plaster and carved wood ornament, 17 stained-glass lunette windows and gold-leaf stenciled arches punctuated with 10 intricate cast-iron electric-chandeliers, which were later replaced with plain white globes. Based on archival photos, new chandeliers were molded and cast, replicated down to the Edison carbon filament light bulbs. New seating, carpeting, a reconstructed stage, partial woodwork repair, and new mechanical system enhance listening to music in the hall. Jurors were wowed by the technical aspects of restoring this historically important masterpiece. They were particularly impressed with the craftsmanship of the lighting.

Haworth Chicago
Chicago, IL

Citation of Merit

Architect – Perkins+Will | *Eva Maddox Branded Environments™*
Client – Haworth, Inc.
Contractor – W.E. O’Neil Construction Company (general contractor); Xibitz (exhibit contractor)
Consultants – WMA Consulting Engineers (MEP FP); Randy Burkett Lighting Design (Lighting); Battle McCarthy, Ltd. (Sustainability); GBM Engineering (Commissioning); Waste Management (Recycling/Waste)

Located in the Merchandise Mart, Haworth Chicago is a showroom, sales office and conference facility with various workplace concepts, product applications and integrated communications elements. The new facility demonstrates the company’s evolution from offering workstations, to a solutions-driven resource for work spaces. It’s also an example of sustainability – demonstrating ways to integrate improved quality of life, restorative space, resource preservation and cost reduction and waste elimination. “There is a generosity and serenity to the space,” said one juror. “It’s the opposite of every showroom that shows off its product. It pushes the technical aspects of interior architecture.”



Craig Dugan © Heirich Blessing



Jon Miller © Hedrich Blessing

Lake Shore Drive Residence
Chicago, IL

Citation of Merit

Architect – Andric – Goettsch Associates
Client – anonymous
General Contractor – Thorne Associates
Consultants – Cosentini Lighting Design

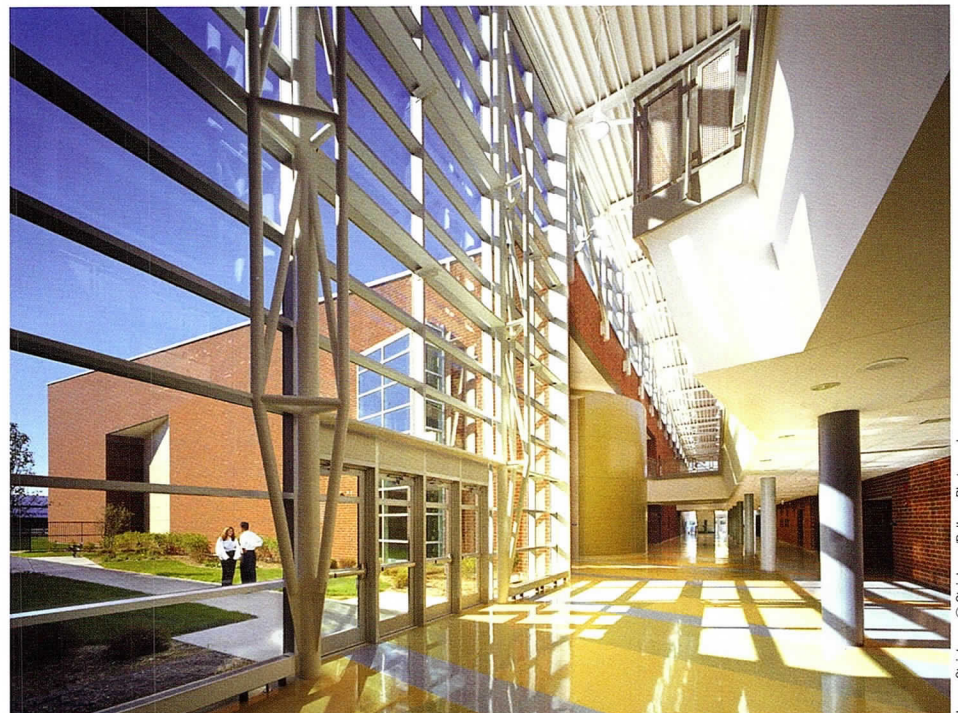
Once a showroom in Chicago's landmark furniture mart, the 3,000-square-foot apartment for a professional couple had all the ingredients of design drama: stunning views of Lake Michigan, a tree-lined Lake Shore Drive, high ceilings and spatial flexibility. However, because a limited portion of the square footage lay along the window wall, the design challenge lay in the strategic introduction of light. The three-step process consisted of minor architectural interventions, a cohesive introduction of artificial lighting and a restricted use of colors and materials. "It's like being in the clouds," marveled one juror. "It's a great atmosphere. The beautiful white wall with the fireplace is pretty interesting."

North Grand High School
Chicago, IL

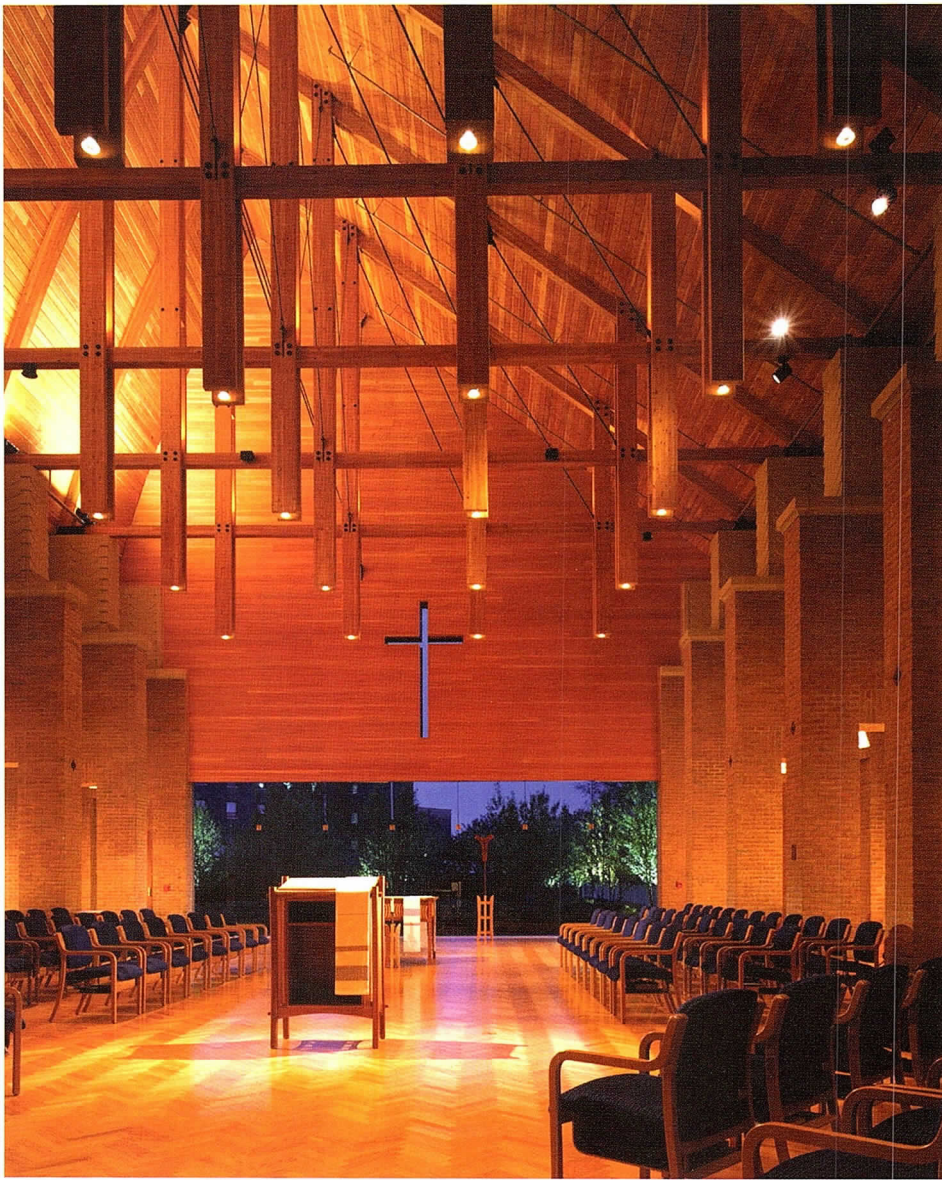
Citation of Merit

Architect – OWP/P
Architect of Record – VOA
Client – Chicago Public Schools
Contractor – Walsh Construction

At first glance, this high school appears to be traditionally organized. But it's not. Its honesty echoes contemporary expectations of governmental transparency. Brick and terrazzo relate to a historic concern for maintenance that has been the ethos' of the city's municipal architecture. Yet it also makes a statement about a new century. It expresses the hope of a society becoming more open in municipal and educational terms. "It seems like a light, airy place to be," noted one juror. "It has a maturity and a kind of sophistication to it, the architect is respectful of the children."



James Steinkamp © Steinkamp/Ballogg Photography



Scott McDonald © Hedrich Blessing

St. Mary of the Springs Chapel
Columbus, OH

Citation of Merit

Architect – Nagle Hartray Danker Kagan McKay Penney
Client – Dominican Sisters of St. Mary of the Springs
Contractor – Smoot Construction
Consultants – Graef, Anhalt, Schloemer, & Associates, Inc. (Structural); Korda/Nemeth Engineering (MEP)

A new home for the Dominican Sisters, this chapel is the focus of community life. Its design reflects the client's organic spirituality. The rectangular plan provides flexibility for worship, funeral and other religious services. The design recalls historic cathedral designs in which buttresses support curving masonry walls and define interior aisles. The buttresses also give expression to the chapel on the exterior. The chapel's shape resembles a bud; the natural theme is reinforced by the selection of materials: brick, cast stone, Douglas fir wood trusses and ceilings, and oak floors. The jurors felt instantly captivated by this project. They loved the integrated lighting and structure, the asymmetrical roof on an asymmetrical plan.



Bill Timmerman, Bill Timmerman Photography



Ammar Eloueini, AEDS

Issey Miyake Pleats Please Store
Berlin, Germany

Special Recognition

Architect – Ammar Eloueini AEDS (Ammar Eloueini Digit-All Studio)
Client – Issey Miyake, Issey Miyake Europe
General Contractor – Chicago Scenic Studios
Consultants – Thornton Tomasetti Group

This is the first in a series of new concept stores for Japanese designer Issey Miyake, designed specifically for the Pleats Please line. The design is supposed to give the space a unique environment that reflects Miyake's personality and approach to fashion while focusing on the clothes. All components relied heavily on computer numerically controlled machines. Parts were manufactured in Chicago, then shipped and assembled in Berlin. The primary design consists of a wall made of two overlapping pieces, creating a fitting room and storage area. "It's like a beautiful piece of fabric," said one juror, who admired the store's technical aspects. "There's a skillful use of CAD and fabrication. I would have loved to watch them put it together."



Ammar Eloueini, AEDS


Sterling Ridge
Scottsdale, AZ

Citation of Merit

Architect – David Hovey FAIA
Client – David & Eileen Hovey
Contractor – Optima DCH, Inc.

The residence takes its cue from the rugged desert. The fundamental idea is one of raw simplicity in the character, composition and assembly of materials consistent with the surrounding environment. Concrete walls blend with the earth, steel beams reflect the power and color of boulder outcroppings and red and green accents provide the punctuation naturally found in the vibrant vegetation of the desert. Spaces were left open to be viewed within and without. A minimal amount of furniture was used to accentuate the spaces' strength. "The interior is about being outside," said a juror. "The furnishings of the interior are the desert. This is the work of an accomplished architect."

We engineer creativity.
Let your imagination take flight.



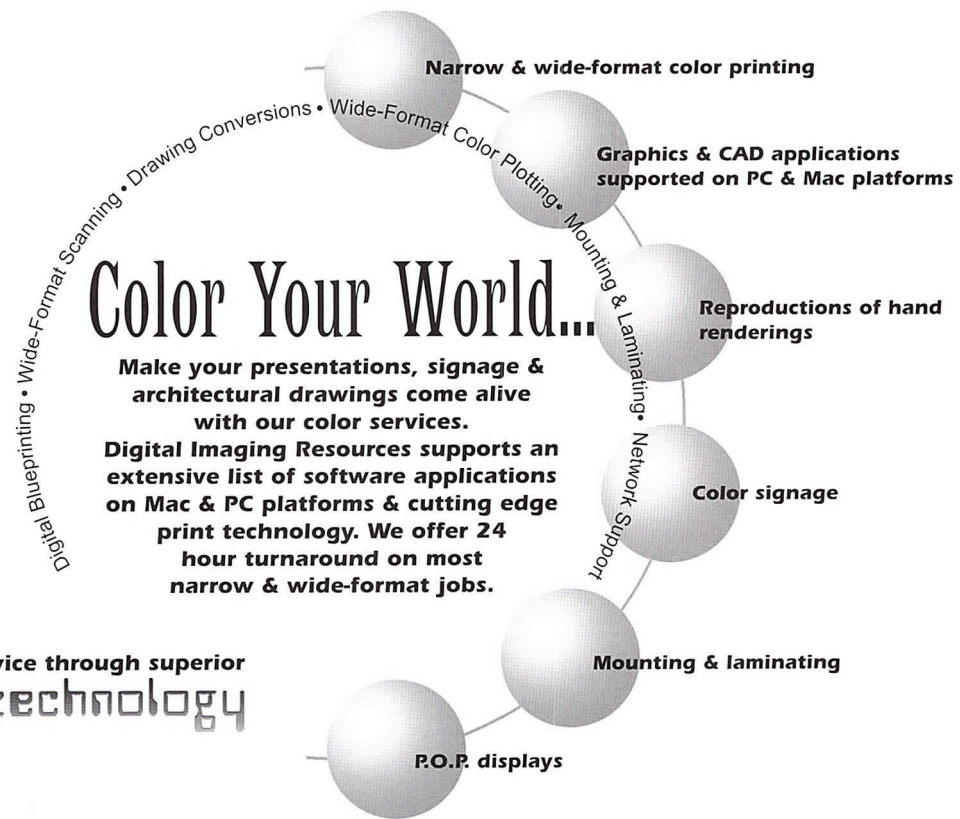
**GRAEF
ANHALT
SCHLOEMER**
and Associates Inc.
engineers & scientists

**Structural, Civil, Environmental,
Transportation, Mechanical, Electrical, Plumbing**

332 South Michigan Avenue, Suite 1400, Chicago, Illinois 60604
312/582-2000 www.gasai.com
also: Chicago - O'Hare, Milwaukee, Madison, and Green Bay



Do you dream in **Color?**



Better service through superior **technology**



Digital Imaging Resources, Inc.

650 West Lake Street #120 • Chicago, IL 60661 • www.dirinc.com

Phone 312.243.1250 • Fax 312.243.1590

THE

AIA Contract Documents are the way everyone in the

INDUSTRY

can safeguard their interests and ensure all projects meet the same

STANDARD.

AIA Contract Documents

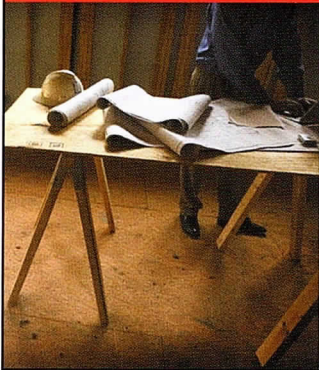
Put the most widely used contract documents to work for your firm today.

Available in both paper and software formats.

AIA Chicago

www.aiachicago.org

222 Merchandise Mart Plaza, Suite 1049
Chicago, IL 60654-1103



Construction Attorneys

Arbitration
Mediation
Licensing issues
Contracts
Negotiation
Copyrights
Continuing Education

Sabo & Zahn

ATTORNEYS AT LAW

401 N. Michigan Ave
Suite 2050
Chicago, IL 60611
(312) 655-8620
(312) 655-8622 fax

WWW.SABOZAHN.COM

Announcing a DVD Learning Experience Copyrights and Construction

Learn about copyrights and how to protect your intellectual property in a DVD video. Earn 2 hours of HSW/CEU credits that qualify for AIA and state continuing education requirements.



introducing

austin™

designed by Robert Chipman

landscapeforms®

Quinlan + Quinlan LLC

417 S. Dearborn St., Suite 220, Chicago, IL 60605
800.255.0341 312.566.0116 312.566.0130 fax

Architects haven't had
this much fun since 1931



*Ghosts of Rock
Stars Past
Masquerade Ball*

*October 29th, 2005
\$250.00 Cash Prize*



Get the info at www.imagefiction.com/ghosts
Fitzgeralds Nightclub 6615 W. Roosevelt Rd.

IMAGEFICTION

Divine Detail Awards

By Mary Beth Klatt

The Divine Detail Award essentially honors architectural ingenuity. A jury seeks the results of a firm's fundamental architectural theory or design concept in their use of a particular material, detail or building technology. Execution must express the idea as a whole. Similar to other awards, only projects completed between January 2002 and May 2005, were eligible.

© Barbara Karant, Karant & Associates



Gladstone Factory Façade Renovation Schaumburg, IL

Honor Award

Architect – Andrew Metter, FAIA for annex|5
Client – Gladstone Group
General Contractor – Ross Midwest, Inc.
Consultants – A. Epstein and Sons International Inc.
(consulting engineer)

The client wanted to breathe new life into the tired, 1970s-era industrial park building and economically redesign the façade of the existing factory. The solution? Design a “kit” that can be clipped onto the current façade and reorient the entry toward the parking lot. The new façade, which takes its cues from the old curtain wall façades of adjacent 1930s industrial structures, has been layered with glass and aluminum louvers. This approach explored the nature of the “kit” solution as a prototype for altering America’s often bleak industrial park landscape. “It has a Mondrian-like composition,” one juror admired. “It keeps your eyes busy so you don’t look at the big, ugly building behind it.”



© Barbara Karant, Karant & Associates



Christopher Barrett © Hedrich Blessing

Racine Art Museum
Racine, WI

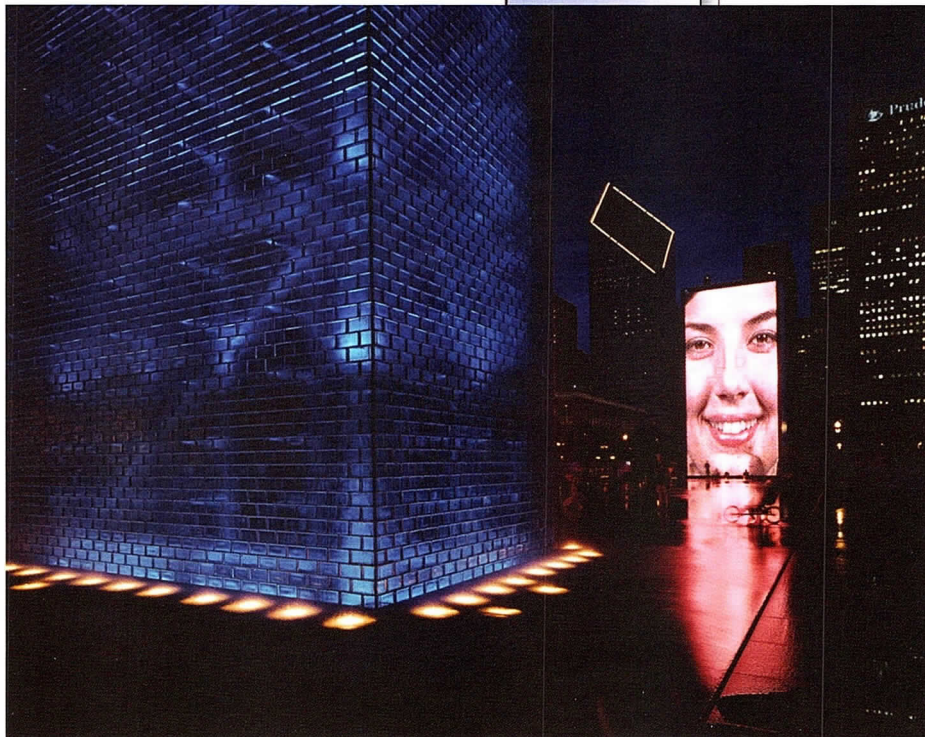
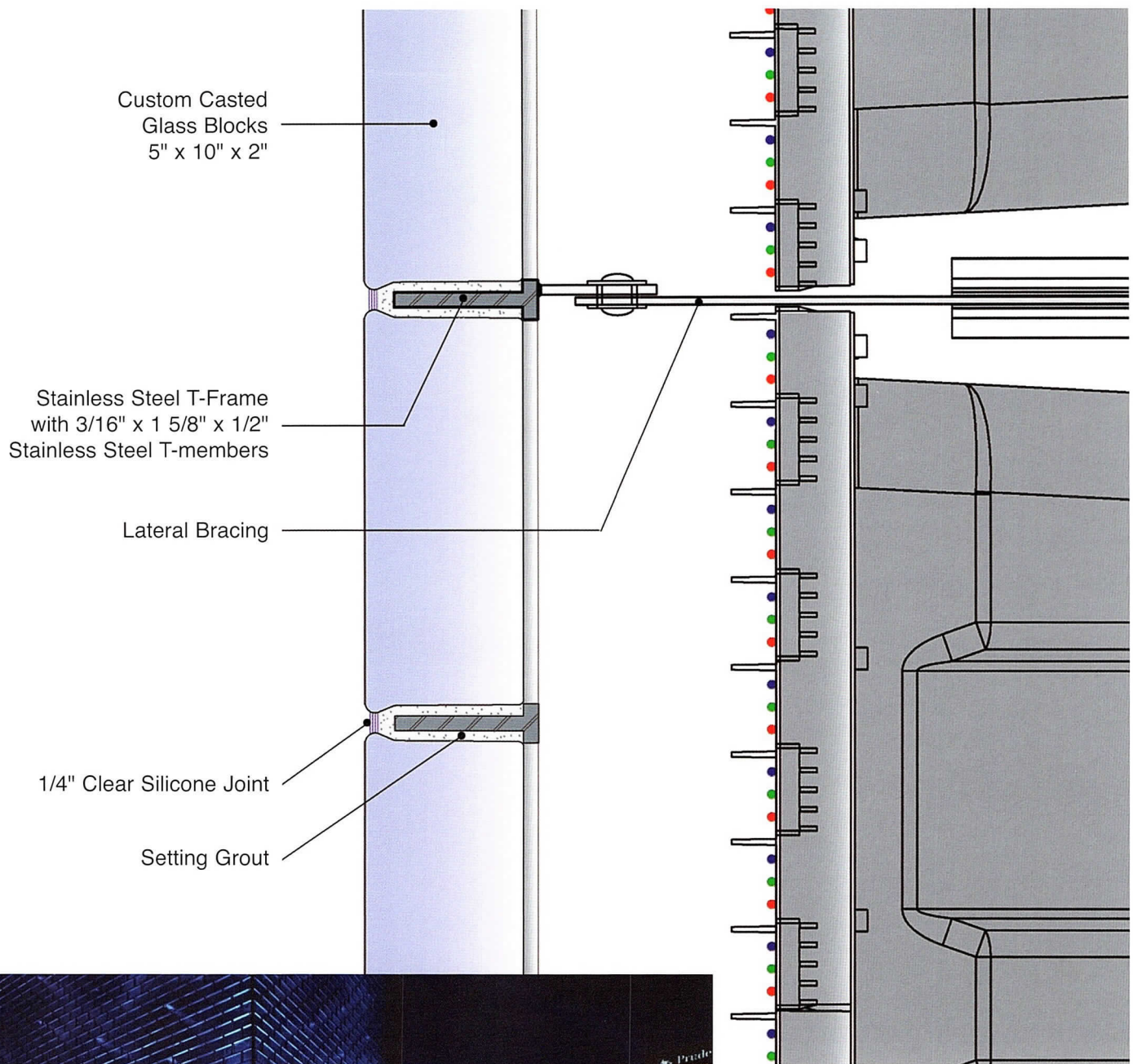
Honor Award

Architect – Brininstool + Lynch Ltd.
Client – Racine Art Museum Association
General Contractor – Bukacek Construction, Inc.

While the museum appears new, it is actually a repurposing of existing buildings that had been connected over a century. The challenge was to transform the ensemble into a single facility to properly display craft art on a tight budget (\$135 per square foot). The cladding system became the critical architectural element, the skin that would cover the hodgepodge of limestone, masonry and concrete. The cladding would also signal the transition occurring inside. The new skin is a double wall acrylic panel in four-foot widths, with alternating lengths up to 34 feet. A custom aluminum and hardware system holds the panels 18" from the wall. During the day, the museum resembles a box wrapped with enchanting iridescent panels. At night, the panels are backlit, making the facility a radiant destination for museum-goers. Jurors were wowed by the clever, economical way to merge the buildings into one.



Christopher Barrett © Hedrich Blessing



Crown Fountain
Chicago, IL

Honor Award

Architect – Krueck & Sexton
Client – JPF Foundation
Contractor – W.E. O'Neil
Consultants – Environmental Systems Design (MEP)

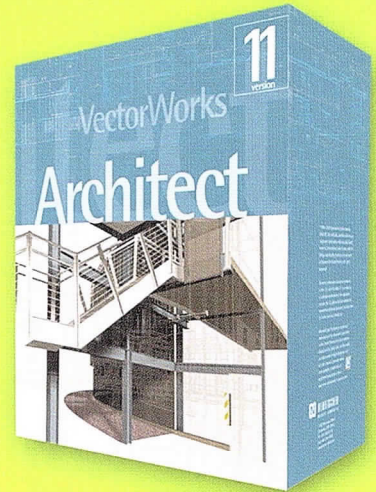
An unprecedented combination of LED technology, water and glass were used to create one of the most popular and photographed destinations in Chicago. The structure's envelope consists of glass bricks supported by a simple steel frame. This accomplishes four related goals in one spectacular detail. It provides gravity and lateral-bearing structure, optical minimization, a waterproof skin and facilitates assembly. The frame consists of thin, stainless T-steel bars welded into eggcrate panels. Handcast glass bricks were siliconed into the frame. "It's completely innovative," enthused a juror. "It's not just a piece of architecture; it goes beyond that."

Steve Hall © Heidrich Blessing

Some choices are
just **smarter** than others.



{ smart }



{ even smarter }

Vectorworks®

CAD for the **smart**-sized firm

Sometimes less is more. VectorWorks ARCHITECT gives you all the tools and technology you need—in one smart application for a fraction of the cost.

VectorWorks ARCHITECT is easier to learn and use than most other CAD programs, so you'll reduce design time and gain productivity almost immediately. A unique hybrid 2D drafting/3D modeling design environment automatically creates 3D models from your 2D plans. Sophisticated database and spreadsheet capabilities and automatic framing make it

easier to track costs and materials. And, built-in presentation capabilities make it easy to sell the job in a pinch.

Wait, there's more. Technical support is free. And upgrades are painless. Did we mention you get a 90-day money-back guarantee? Best of all, at \$1,295.00, VectorWorks ARCHITECT won't blow your budget—unlike other costly CAD programs.

Start working smarter today. Call 1-877-202-9309 or visit www.vectorworks.net/chicago today.

ARCHITEMPS, INC.®

**ARCHITEMPS, INC. – the Architectural & Interior Design staffing specialists,
serving greater metropolitan Chicago since 1986.**

Quality staffing, service and solutions:

- Design/Production Drafters
- Facility Planners
- CAD Architects/Interior Designers
- Project Managers

Our billing includes all employer liability:

- Payroll Administration
- Employee Benefits
- Government Compliance
- State & Federal Tax Remittance
- Workers' Compensation Coverage

ARCHITEMPS, INC.®
1050 North State Street
Chicago, IL 60610-7829

Tel: 312.649.0912
Fax: 312.649.1667
architemps@sbcglobal.net
www.architemps.com

**Architectural, interior design and facility planning personnel on a per-project basis.
Direct hire conversion and direct placement available. Call today for information
on our staffing services or employment opportunities.**

First Impressions Count



Image
Grille SDS

Presentation Graphics
Digital 3D Architectural Rendering
Layout
Modeling
Animation

847-214-8283

920 South Waukegan Road, Lake Forest, Illinois 60045

www.imagegrille.com

U.S. Federal Building
Oklahoma City, OK

Citation of Merit

Architect – Ross Barney + Jankowski
Client – General Services Administration
Contractor – Flintco Construction Co.
Consultants – Sasaki Associates, Inc. (Landscape Arch.); Weidlinger Associates, Inc. (Blast Design & Structural Engineer); Schiff & Associates, Inc. (Security Consultant); Heery International (Construction Manager); The Benham Group (Consulting Engineer/Architect); Brad Goldberg (Artist); Doug Hollis (Artist)

Security and blast mitigation guidelines were rewritten in the aftermath of the bombing that eradicated this building's predecessor, the Alfred P. Murrah building. Stone couldn't be installed traditionally in the new structure. Given the importance of stone to the building's design, the architect devised a new stone setting to eliminate voids during assembly. Veneer stone was cast solidly in high-strength grout against the building's structural concrete walls; it was also cast in two-foot lifts with larger stones bridging the horizontal form lines to mimic the earth's strata and obscure the lines. Embedded reinforcement strengthens the bond between the building and the structure. "It's an interesting way to solve a problem," said one juror. (Double winner; also received Interior Architecture Honor Award.)



Steve Hall © Hedrich Blessing



John J. Korom, John J. Korom Photography

North Avenue Dam Pedestrian Bridge
Milwaukee, WI

Citation of Merit

Architect – Holabird & Root LLC
Client – City of Milwaukee
Contractor – Zenith Tech, Inc.
Consultants – Holabird & Root LLC (Structural)

An overgrown, former industrial area along the Milwaukee River served as the inspiration for this new pedestrian footbridge, built over the remains of a breached dam. Shapes and materials were discovered on site, and reinvented to devise a bridge for an urban nature trail. The guardrail and bent top rail copy the concrete spillway's curve. Rusting structural steel, abandoned in the mudflats native grasses, influenced a decision to use weathering steel (COR-TEN) for the guards, which will eventually oxidize to a cinnamon color. The jurors appreciated how the bridge took its cues from the site itself; the materials took form from remnants on the site.



Ammar Eloueini, AEDS



Ammar Eloueini, AEDS

Issey Miyake Pleats Please Store
Berlin, Germany

Citation of Merit

Architect – Ammar Eloueini, AEDS (Ammar Eloueini Digit-All Studio)
Client – Issey Miyake, Issey Miyake Europe
General Contractor – Chicago Scenic Studios
Consultants – Thornton Tomasetti Group

Jurors felt the store interpreted the client's products beautifully while using interesting technology. They were impressed how inside elements were manufactured locally, shipped and fitted together overseas. Two materials, aluminum and polycarbonate, were used in the space. The aluminum supports polycarbonate panels, racking system and table structure. Polycarbonate panels were assembled using zip ties. The lightweight nature of polycarbonate made it easy to transport and to assemble. (Double winner; also received Interior Architecture Special Recognition Award.)

Ganz Hall – Auditorium Building
Chicago, IL

Special Recognition

Architect – Booth Hansen
Client – Roosevelt University
Contractor – Pepper Construction
Consultants – Ketchmark & Associates, Engineers;
Conrad Schmidt Studios (metal fabricator);
Kirkegaard & Associates (acoustic consultants)

Using archival photographs, the electric lights (electroliers) were translated into drawings. Then foam-core mock-ups were created to determine the light fixtures' impact on the recital hall. Details were cast and recast until a precise reinterpretation was achieved. Final pieces were assembled and wired onto frames. Eventually the fixtures were covered with gold leaf and hand-painted. Each of the 450-lb, six-foot tall lights have authentic lightbulbs. Jurors were swayed by the prodigious amount of research and quest for accuracy. (Double winner; also received Interior Architecture Citation of Merit Award.)





Bill Timmerman, Bill Timmerman Photography Inc.

Sterling Ridge, Photovoltaic Panels
Scottsdale, AZ

Special Recognition

Architect – David Hovey, FAIA
Client – David & Eileen Hovey
Contractor – Optima DCH, Inc.

Spaces are protected from the sun by large, cantilevered roof planes composed of structural steel framing topped by photovoltaic panels. Each contains 72 thin opaque film cells laminated between two clear sheets of glass which rest on steel beams. The cells shade spaces in and around the residence while converting solar energy to power 60 percent of the home's electric load. The home received the highest attainable rating from the Scottsdale Residential Green Building program because of the photovoltaic panels. The jurors liked how the architect exploited the beauty of the photovoltaic panels to enhance the house's beauty. They also admired how the architect exploited the beauty of a product and technology. (Double winner, also received Interior Architecture Citation of Merit.)



GRANICOR

Granite Quarriers and Fabricators since 1922

Dimensional Stone Applications for

Interior ■ Exterior ■ Landscaping

Represented locally by:



BUILDING PRODUCTS, LTD.

630-668-1551 www.granicor.com

AVA

The leader in providing insurance and risk management solutions to architects and engineers for over 25 years.

Insurance Agency

DIFFERENT BY DESIGN®

For more information call AVA Insurance at (847) 517-3450



Does your CPA firm provide expert advice and strategic solutions tailored to your firm's specifications?

If not, contact Mark Mann at Mann.Weitz & Associates.

We've been providing tax, audit and consulting services to architectural firms for more than 25 years.

MW&A

Mann.Weitz & Associates L.L.C.
Certified Public Accountants
and Consultants

108 Wilmot Road, Suite 110
Deerfield, Illinois 60015
847.267.3400 Phone
847.267.3401 Fax
mmann@mannweitz.com



MARK YOUR CALENDAR!
for the
AIA Illinois Annual Conference
"CELEBRATE ARCHITECTURE"
November 4-5, 2005
Rockford, Illinois

Featuring Keynote Speakers
Tom Stat, Dir. of Business Development
IDEO

Alan Ovson
Ovson Communications

Bob Ivy, FAIA, Editor in Chief
Architectural Record
(invited)

Over 12 CES LUs offered
Tours
Fellowship

Call AIA Illinois at 217.522.2309
for more information

Realize Your Plans.

Bathrooms
Kitchens
Door Hardware

Advantage kitchen & bath
Gallery
Find it Here.

Mon & Thurs: 8am-8pm
Tues, Wed & Fri: 8am-5pm
Sat: 9am-4pm

847-965-4444
advantagebath.com

7850
NORTH
MILWAUKEE
AVENUE
NILES
ILLINOIS

FIND IT HERE.

J U R Y L I S T

Distinguished Building Awards

Steve L. Dumez, AIA
Eskew + Dumez + Ripple
New Orleans

Frank Harmon, FAIA
Frank Harmon Architect
Raleigh, NC

Joan M. Soranno, AIA
HGA
Minneapolis

Interior Architecture Awards

Randy Brown AIA
Randy Brown Architects
Omaha, NE

Roberta W. Jorgensen, FAIA
Jorgensen Architects
Newport Beach, CA

Mark McInturff, FAIA
McInturff Architects
Bethesda, MD

Divine Detail Awards

Steven Burns, AIA
Burns + Beyerl
Chicago

Dirk Danker, AIA
Nagle Hartray Danker Kagan McKay Penney
Chicago

Holly Gerberding, AIA
Department of General Services, Architecture,
Engineering, and Construction Management
Chicago

B **Botti Studio of Architectural Arts, Inc.**
919 Grove Street, Evanston, IL 60201 Established 1864
847/869-5933 • Fax: 847/869-5996 • 800/524-7211
www.bottistudio.com • botti@bottistudio.com

Designers/Fabricators • Stained and Faceted Glass • Beveled Glass • Sandblasted • Stained Glass Restoration and Conservation • Protective Glazing • Wood and Metal Frame Restoration • Sculpture • Bronze • Metal • Marble • Mosaic • Interior Renovation • Woodwork • Murals • Painting and Decorating • Custom Sanctuary Furnishings • Stained Glass Consultants to Architects and Churches

Studio Locations
San Diego • Chicago • Sarasota • Agropoli, Italy
760/753-0705 • 847/869-5933 • 941/951-0978

PRAIRIE AVENUE BOOKSHOP

"...the best architectural bookshop in the world..." - LONDON FINANCIAL TIMES

THE CHICAGO ARCHITECTURAL CLUB: PRELUDE TO THE MODERN. By W.R. Hasbrouck; epilogue by Stanley Tigerman. A book about Chicago architects, 1885-1940. How draftsmen and architects influenced education and design for over 50 years with conversations, competitions and catalogs. Hardback; 639 pp.; illus.

With 10% off, \$67.50

WE BUY OUT-OF-PRINT LIBRARIES.

418 S. Wabash, Chicago
Monday-Friday 10-6, Saturday 10-4
312.922.8311 • 800.474.2724

pabook.com

KFA
KRISTINE FALLON
ASSOCIATES, INC.

Achieving business results through computer-based solutions

New!
Revit® Training
in our Computer Lab

Networks Hardware
Web-based Project Management
Software CAD Internet

30 East Adams Street
Suite 1040
Chicago, IL 60603
312-641-9339 voice
312-641-9337 fax
www.kfa-inc.com

Thanks to Our Sponsors

The Design Excellence Awards were presented Fri., Oct. 21 in Navy Pier's Grand Ballroom. Many organizations made Designight 2005 possible, and AIA Chicago would like to thank them for their support.

Co-Sponsors

USG
 Petersen Aluminum Corp.
 Charter Sills & Associates
Architectural Products Magazine
 Turner Construction Co.

Benefactors

DIRTT Environmental Solutions
 Murphy/Jahn Inc.
 Optima Inc.
 Skidmore, Owings & Merrill LLP

Patrons

Annex|5
 Booth Hansen
 Brininstool + Lynch Ltd.
 Clune Construction Co.
 Cosentini & Associates
 David Woodhouse Architects LLC
 DeStefano and Partners Ltd.
 Digit-All Studio
 Environmental Systems Design
 Executive Construction Inc.
 Gensler
 Hammond Beeby Rupert Ainge Inc.
 Haworth
 Hedrich Blessing
 Holabird & Root LLC
 Interior Construction Group
 John Ronan Architect
 Johnson Lasky Architects
 Kirkegaard Associates/Schuler Shook
 Krueck & Sexton Architects
 Landon Bone Baker Architects
 Legat Architects
 Leopardo Companies Inc.
 Lohan Caprile Goettsch
 McGraw Hill/Dodge Construction
 Nagle Hartray Danker Kagan McKay Penney Architects Ltd.
 OWP/P
 Pepper Construction Co.
 Perkins+Will
 Power Construction Co.
 Ross Barney + Jankowski Inc.
 Solomon Cordwell Buenz & Associates
 Studio Dwell Inc.
 Teng & Associates
 Thornton-Tomasetti Group
 VOA Associates Incorporated
 W.E. O'Neil Construction Co.
 Wheeler Kearns Architects
 Wildman Harrold Allen & Dixon

Distinguished Building Awards

Honor Awards

Brininstool + Lynch Ltd.
 (Carus Residence)7
 Johnson Lasky Architects
 (Wacker Drive Reconstruction Project, East-West) ...10
 Murphy/Jahn
 (Airport Cologne/Bonn Bahnhof)6
 Perkins+Will
 (Perspectives Charter School)9
 Wheeler Kearns Architects
 (DePaul Residence)8

Citations of Merit

Booth Hansen
 (The Chicken Factory)13
 EHDD
 (Valparaiso University, Christopher Center for Library and Information Resources)15
 Hammond Beeby Rupert Ainge Inc.
 (Joan W. and Irving B. Harris Theater for Music and Dance)12
 Krueck & Sexton
 (Shure Technology Annex)15
 Nagle Hartray Danker Kagan McKay Penney
 (Green Lake Cottage)12
 Studio Dwell Architects
 (915 North Wolcott)14
 John Ronan Architect
 (House on the Edge of a Forest)14
 David Woodhouse Architects LLC
 (Independence Grove Visitor Center)13

Special Recognition

Landon Bone Baker Architects
 (Harold Washington Unity Co-Operative)16

Interior Architecture Awards

Honor Awards

John Ronan Architect
 (Coach House)18
 Ross Barney + Jankowski Inc.
 (U.S. Federal Building)20
 VOA Associates Inc.
 (Julien J. Studley Inc.)19

Citations of Merit

Andric – Goettsch Associates
 (Lake Shore Drive Residence)23
 Booth Hansen
 (Ganz Hall – Auditorium Building)22
 David Hovey, FAIA
 (Sterling Ridge)24
 Perkins+Will | *Eva Maddox Branded Environments™*
 (Haworth Chicago)22
 Nagle Hartray Danker Kagan McKay Penney
 (St. Mary of the Springs Chapel)24
 OWP/P
 (North Grand High School)23

Special Recognition

Ammar Eloueini AEDS (Ammar Eloueini Digit-All Studio)
 (Issey Miyake Pleats Please Store)25

Divine Detail Awards

Honor Awards

Brininstool + Lynch Ltd.
 (Racine Art Museum)29
 Krueck & Sexton
 (Crown Fountain)30
 Andrew Metter, FAIA for annex|5
 (Gladstone Factory Façade Renovation)28

Citations of Merit

Ammar Eloueini AEDS (Ammar Eloueini Digit-All Studio)
 (Issey Miyake Pleats Please Store)34
 Holabird & Root LLC
 (North Avenue Dam Pedestrian Bridge)33
 Ross Barney + Jankowski Inc.
 (U.S. Federal Building)33
Special Recognition
 Booth Hansen
 (Ganz Hall – Auditorium Building)34
 David Hovey FAIA
 (Sterling Ridge, Photovoltaic Panels)35



onvium, kitchen from The Arclinea Collection Designed and coordinated by Antonio Citterio



Arclinea. Living space.

Alive and personal. That's why your kitchen is unique. Arclinea cannot imagine a kitchen without you. Without your mincing, chopping, frying, boiling, whipping. Without your passion for la bonne cuisine. Without the people you care for gathered at table. Every project takes its cue from this concept. Through spatial arrangements that identify with you and your rituals. Through inventive solutions and startling details. Through the choice of materials such as wood and steel, that tell your story as they age. As always, Arclinea continues designing functional and trend-setting kitchens that respect nature and mankind. Because without human beings, kitchens are only rooms.

Arclinea Chicago, New Flagship Location 314 West Superior St. Chicago, IL 60610 Tel 312 3353855 Fax 312 3353856, **Evanston** 1516 Elmwood Ave. Evanston, IL 60201 Tel 847 8697203 Fax 847 4754369 info@arclineachicago.com www.arclinea.it

Arclinea Arredamenti Viale Pasubio 50 36030 Caldogno (VI) t + 39 0444 394111 www.arclinea.it



We are pleased to announce that ImageFiction has again received an Award of Excellence by ASAI, the American Society of Architectural Illustrators,

Architecture in Perspective is juried annually and is the pre-eminent show of architectural illustration in the world.

IMAGEFICTION

Project:

1180 Peachtree
Atlanta, Georgia

Client:

Hines
Chicago, Illinois

Architect:

Pickard Chilton
New Haven, Connecticut

LaSalle Wacker Building
221 North LaSalle Street
Suite 1510
Chicago, IL 60601

312.726.0818

architectural rendering

computer imaging

animation

interactive media



2004 AIP 19
Award of Excellence



2003 AIP 18
Award of Excellence

www.imagefiction.com

