



**Focus**

OCTOBER 2004  
SPECIAL EDITION

# Design Excellence Awards 2004

Distinguished Building, Interior Architecture  
and Sustainable Design

---

ATA Chicago

# IMAGEFICTION

**Project:**

340 East Randolph  
Chicago, Illinois

**Client:**

LR Development  
Chicago, Illinois

**Architect:**

**SCB**

Solomon Cordwell  
Buenz & Associates  
Chicago, Illinois

LaSalle Wacker Building  
221 North LaSalle Street  
Suite 1510  
Chicago, IL 60601

**312.726.0818**

architectural rendering

computer imaging

animation

interactive media

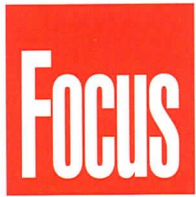
Please visit our website to  
view our latest full service  
3D animation project:  
Friendship Village Community

[www.imagefiction.com](http://www.imagefiction.com)



**Editor**  
Laurie Petersen

**Focus Advisory Board**  
Joseph Caprile, AIA  
Gigi McCabe-Miele, AIA  
Alice Sinkevitch, Hon. AIA  
Charles Smith, AIA  
P.K. VanderBeke, AIA  
Thomas Zurowski, AIA



FOCUS (ISSN 1071-3700) Vol. 24, No. 9, is published monthly with a combined issue July/August, by AIA Chicago, 222 Merchandise Mart Plaza, Suite 1049, Chicago, Illinois 60654-1001. \$20 of each member's dues are allotted as a subscription. Periodicals postage paid at Chicago, Illinois. POSTMASTER: Send address changes to Focus, AIA Chicago, 222 Merchandise Mart Plaza, Suite 1049, Chicago, Illinois 60654-1001.

For advertising rates and schedules, call 312/670-7770.

© 2004 The American Institute of Architects Chicago.

All rights reserved. Reproduction in whole or part without permission is strictly prohibited.



**2004 Board of Directors**

**President**  
Charles Smith, AIA

**President-Elect**  
Thomas Kerwin, AIA

**Vice Presidents**  
Rik Master, AIA  
Gigi McCabe-Miele, AIA

**Secretary**  
Edward Torrez, AIA

**Treasurer**  
Peter Schlossman, AIA

**Directors**  
Laura Fisher, FAIA  
Daniel Friedman, Ph.D., FAIA  
Gaines Hall, FAIA  
Tom Hoepf, AIA

**AIA Regional Directors**  
T. Gunny Harboe, AIA  
Robert Selby, AIA

**Associate Director**  
Helen Tsatsos, Assoc. AIA

**Professional Affiliate Director**  
Lawrence Okrent

**Past President**  
Joseph Caprile, AIA

**2004 AIA Illinois Delegates**  
Hill Burgess, AIA  
Christopher Chwedyk, AIA  
Leonard Koroski, AIA  
Alan Madison, AIA  
Robert Woodworth, AIA  
Mary Brush, AIA (alternate)  
Sharlene Young, AIA (alternate)

**2004 Committee Chairs**

**Working With an Architect**  
Rob Sierzega, AIA

**Architects in the Schools**  
Curtis Jones, Assoc. AIA

**2004 Professional Interest Areas**

**Corporate Architects**  
Karen Eltz, AIA

**Design**  
Stephen Ward, AIA

**Design/Build**  
Alan Treuthart, AIA

**Environment**  
Susan King, AIA

**Architecture for Health**  
Victoria Navarro, Assoc. AIA

**Historic Resources**  
William McMillan, AIA

**Housing**  
David Wytmar, AIA

**Interior Architecture**  
Mark Hiron, AIA

**Office Practice**  
Andrew Tiffin, AIA

**Planning & Urban Affairs**  
Fred Brandstrader, AIA

**Technical Issues**  
Lynette Stuhlmacher, Assoc. AIA

**Young Architects**  
Brett Taylor, AIA

**Chapter Staff**

**Executive Director**  
Alice Sinkevitch, Hon. AIA

**Membership Director/  
Assistant to the Director**  
Phil Rahill

**Program Director**  
Joan Pomaranc

**Communications Director**  
Susan Larson

**Editor**  
Laurie Petersen

**Financial Manager**  
Crystal Gagler

**Public Information Receptionist**  
Linda Freeman

**Documents Clerk**  
Mary Mnichowicz

4

President's Letter

6

Distinguished Building Awards



20

Interior Architecture Awards



30

Sustainable Design Awards



35

Jury List

37

Sponsors List

38

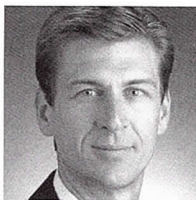
Awards Index

**Want to See More?**

Visit [www.aiachicago.org](http://www.aiachicago.org) to view a virtual exhibit of all awards submissions.

Cover: Factor 10 House by EHDD Architecture  
Photo: Doug Snower, Doug Snower Photography

## Honoring Excellence



The results of the 2004 Design Excellence Awards program, as reviewed by three juries, indicate that jewels

are being designed and built locally, regionally and internationally by our member firms. Many of the winners' names are familiar from previous years and even decades; that is called sustained excellence.

We should all emulate the continued high levels of architectural achievement that the best of our peers reach on a consistent basis. Also interesting is the design track record that emerging firms are establishing. A few of these practices are being awarded for a second or third time. This is quite an achievement early in a firm's life.

Such design excellence should be lauded. The clients should be given kudos. The contractors of the great work should be given a thumbs-up. Looking at the collection of projects, this year's winners are varied in scale and indicate diverse talent by the lead designers and teams. The multiple award winners demonstrate an ability to excel irrespective of building typology.

There were 227 entries to this year's Design Excellence Awards in three categories: Distinguished Building, Interior Architecture and the newcomer, Sustainable Design. We are at a point in our industry where sustainable design is almost inherent in the way we conceive a part or consider a building system, yet it is too early to suggest that every project has pushed the boundaries in consideration of the environment. Ultimately, a separate category for sustainable design will not be necessary. All projects will have advanced environmental considerations that will be evaluated as much as proportion, pattern, space, light, function and all of the characteristics that are successfully present in a building of note and prominence.

Congratulations to this year's award winners. Congratulations also to those firms who submitted their work for consideration. There is no doubt that the significant depth of architectural talent in Chicago is a tangible asset to our city.

Charles Smith, AIA  
President

**Imagine**  
**ARCHITECTURE**

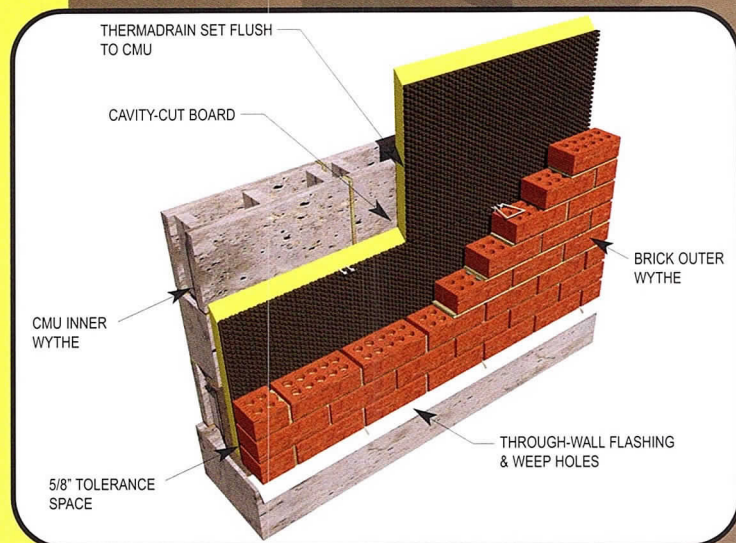
**AIA Illinois**  
**ANNUAL MEETING**  
**2004**

**november 4-6**

**SPRINGFIELD**

# ThermaDrain®

## INSULATED DRAINAGE BOARD WITH DOW POLYISOCYANURATE



**Typical Drainage Wall with ThermaDrain®**

THERMADRAIN can be used in any drainage wall configuration, including CMU back-up or metal stud wall applications.

Our exclusive cavity cut makes installation between the wall ties easy!

Available in 1 3/8", 1 7/8", 2 3/8" and 2 7/8" sizes.



**New Berwyn Middle School**

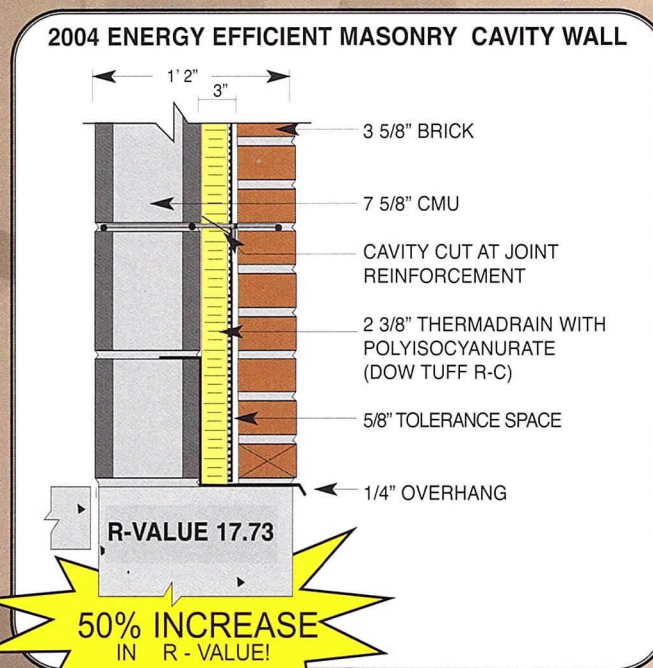
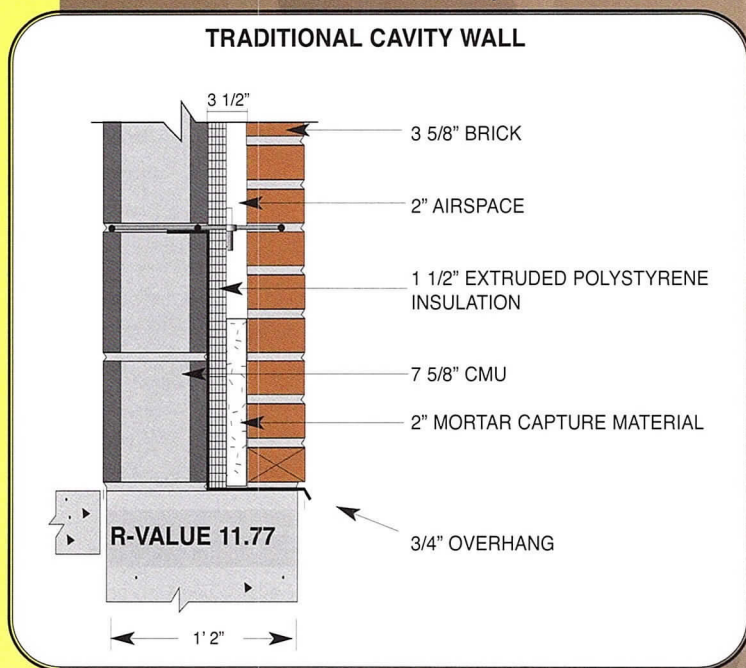
Architect: Green Associates, Inc. - Deerfield, IL  
Mason Contractor: Piazza Masonry - Lockport, IL

**Typical ThermaDrain Installation**

## INSULATES AND ELIMINATES MORTAR DROPPINGS IN CAVITY WALLS

ThermaDrain Insulated Drainage Board combines a high quality foam core board with an integral, factory installed, drainage mat. ThermaDrain eliminates workmanship problems and provides a continuous drainage path to the flashing. Our continuous, non-compressible drainage mat distinguishes us from imitators. Plus, you get a **50% INCREASE in R-Value** over a standard cavity wall!

Call **800-837-4065** for samples and technical information or visit **ThermaDrain.com** today!



**50% INCREASE  
IN R-VALUE!**

### THERMADRAIN INSULATED DRAINAGE BOARD

# Distinguished Building Awards

by Molly O'Halloran

**T**he Distinguished Building Award was established 49 years ago to recognize significant achievements in the planning, design and execution of recent building projects. Projects are eligible if they were completed between January 1, 2001 and May 1, 2004 and were designed by a registered architect in the Chicago metropolitan area.



© James Steinkamp, Steinkamp/Raillogg Photography

**Contemporaine at 516 North Wells**  
Chicago, IL

## **Honor Award**

Architect – Perkins & Will  
Client – CMK Development  
Contractor – McShane Construction Corp.  
Consultants – McGuire Engineers (MEP); C.E. Anderson & Associates (structural); Terra Engineering Ltd. (civil); AMS Mechanical Systems (mechanical); Burnham Nationwide (building expeditor); New Aspen Electric (electrical); C.J. Erikson Plumbing Co. (plumbing); U.S. Fire Protection Illinois Inc. (fire protection)

Elegantly resolving issues of context and scale in the mixed-used River North neighborhood, four stories of retail and garage space stand as pedestal to an 11-story residential volume of concrete and glass. The building is at once remarkably light and refined. Balconies extend outward and multi-story reveals are carved into the main form, recalling to jurors the elaborate yet economical structure of a skeleton. "The whole program is expressed in the building's different facades," said a juror. The building can be clearly read as a series of combined parts of varying scales, addressing the neighborhood's mix of converted warehouses, low-rise retail, and newer residential towers.



© James Steinkamp, Steinkamp/Raillogg Photography



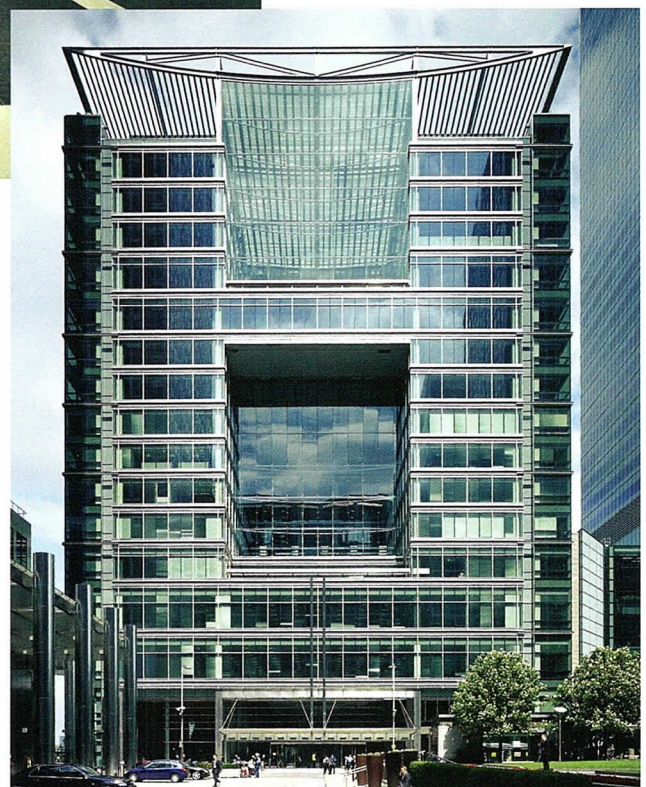
H.G. Esch Photography

**Canary Wharf – DS1**  
London, UK

**Honor Award**

Architect – Skidmore, Owings & Merrill LLP  
Client – Canary Wharf Contractors Ltd.  
Contractor – Canary Wharf Contractors Ltd.  
Consultants – Arup Fire; Faber Maunsell (MEP);  
Cantor Seinuk Group (structural); Hilson Moran  
(building services engineer)

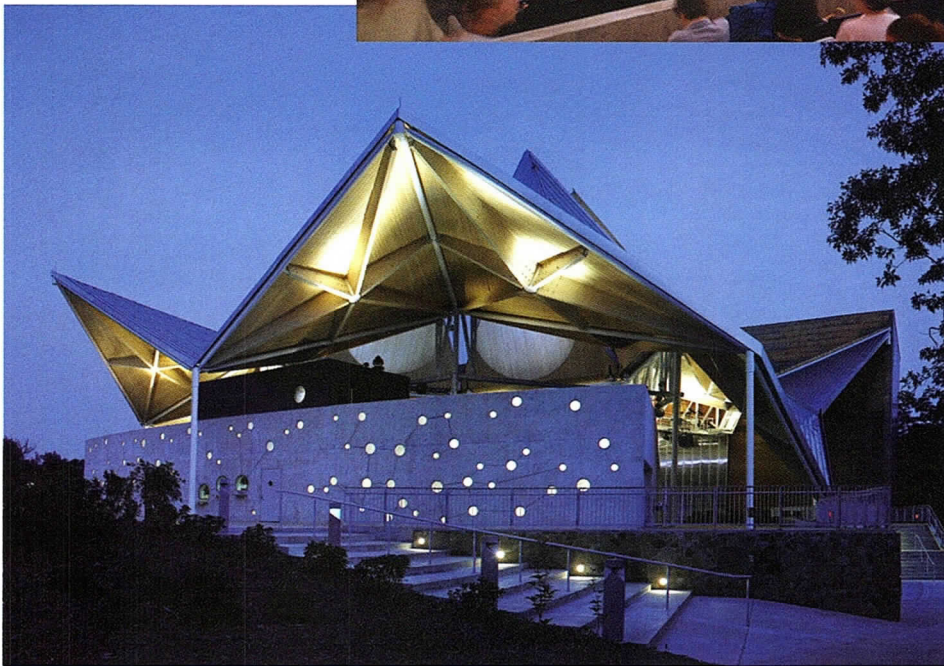
Simple in form and sophisticated in detailing, this 15-story glass and steel office building anchors the north side of a new public square. Two stacked atria are carved into the rectangular form. The front elevation emphasizes the lower, 7-story atrium with a glass wall inset. The top atrium is skylit and capped by a stainless steel truss structure that screens the roof from the view of taller adjacent towers. Glass “columns” on each cantilevered corner frame the facades, which are subtly detailed with stainless steel straps and rails. “It’s essentially a flat building,” commented one juror, “but the more you look at it, the more you see.”



H.G. Esch Photography



Photo: M. K. Anderson; Photo: M. K. Anderson; Photo: M. K. Anderson



Greg Murphy, Greg Murphy Studios Inc.

**Bengt Sjostrom/Starlight Theater**  
Rockford, IL

**Honor Award**

Architect – Studio Gang/O'Donnell  
(now Studio Gang Architects)  
Client – Rock Valley College  
Contractor – Sjostrom and Sons; Area Erectors  
Consultants – Dewhurst McFarlane and Partners (structure)  
Peter Heppel Associates (consulting); Uni-Systems  
(motion technology); Consulting Construction Services  
(now Building Engineering Systems LLC) (mechanical)  
Battle McCarthy Consulting Engineers (wind)

The ingenuity that characterizes live performance is on display in this theater that dissolves the boundary between stage and sky. A copper-clad steel frame proscenium and a cast-concrete ticket building face each other across an open-air seating bowl for an audience of 1100. The key to the project's success, however, is a kinetic roof that opens the theater to the sky. Six wooden panels within slender steel frames were prefabricated on the ground and hoisted into place. Choreographed to open helically over 12 minutes, the roof forms a star-like pattern and recalls traditional hoist technology used in theaters for centuries.





Steve Hall © Hedrich Blessing

**Lookingglass Theatre at Water Tower Water Works**  
Chicago, IL

**Honor Award**

Architect – Morris Architects/Planners  
 Client – Lookingglass Theatre Co.  
 Contractor – Pepper Construction Co.  
 Consultants – R.L. Millies & Associates (MEP/FP);  
 Thornton Tomasetti Engineers (structural);  
 Schuler Shook (theater); The Talaske Group  
 (acoustics and audio)

Rather than copying the style of the historic Water Works building — a Michigan Avenue icon that withstood the 1871 fire — Morris Architects/Planners inserted a deceptively simple black-box theater within. Jurors remarked on the way the architects accommodated the technical acoustical and vibration considerations with front-of-the-house amenities by reincorporating qualities of the historic building systems. The renovation lays bare the inner workings of the pump house in a gallery leading to the box office. Moveable seating risers, a demountable perimeter balcony, trapped stage floor, and an array of lighting catwalks provide a highly flexible space for innovative theater.



Steve Hall © Hedrich Blessing



© Doug Snower, Doug Snower Photography

**Factor 10 House**  
Chicago, IL

**Honor Award**

Architect – EHDD Architecture  
 Client – City of Chicago Departments of Housing and Environment  
 Developer – Neighborhood Housing Services of Chicago  
 Contractor – Telion Contracting Corp.  
 Consultants – Klein & Hoffman (structural); Mechanical Services Associates Corp. (MEP); Renacer Westside Community Network Inc. (HERS); ArchiTech Consulting (architectural specifications)

This small, affordable case study house struck jurors as the epitome of "green" building. "It's beautiful, simple, charming, and modest. And on top of that, you find out that it's green," praised one juror. A front porch and red exterior complement neighboring houses without superfluous details. An open plan on the first floor maximizes light and compensates for a small overall footprint. Upstairs, windows are thoughtfully aligned for long views across the small rooms. An elegant stairway situated halfway along the plan functions also as solar chimney. In winter, a wall of plastic water bottles creates a solar mass, and a fan pushes the warm air down through the house. In summer, hot air is vented out "the chimney" and a sedum-planted roof helps prevent heat gain. (Double winner; also received Sustainable Design Award)



© Doug Snower, Doug Snower Photography



Roland Halbe, Roland Halbe Fotografie

**Galeria Kaufhof**  
Chemnitz, Germany

**Honor Award**

Architect – Murphy/Jahn Inc.  
Client – METRO plus Grundstücksver-  
mietungsgesellschaft mbH & Co. Objekt Chemnitz KG  
Contractor – MRE Metro Real Estate Management  
GmbH (general manager); Seele GmbH & Co. KG  
(façade contractor)  
Consultants – Werner Sobek Ingenieure GmbH  
(structural), Transsolar Energietechnik GmbH and  
Brandi Consult GmbH (MEP)

Clarity of the retail purpose of this 5-story store won the unanimous praise of jurors. Laminated glass walls and a glazed roof create a fully transparent building that shows off merchandise and human activity by day. At night the transparent walls shine like monolithic billboards. Glazed, lighted canopies shelter the entrance to an adjacent train station, and a large cantilevered roof — also of glass — protrudes to form an “urban loggia” on the historic Neumarkt square. “The building is a sign,” said one juror. “It achieves a clearly read commercial demeanor without extraneous signage.”



Roland Halbe, Roland Halbe Fotografie



© Barbara Karant, Karant + Associates



© Barbara Karant, Karant + Associates

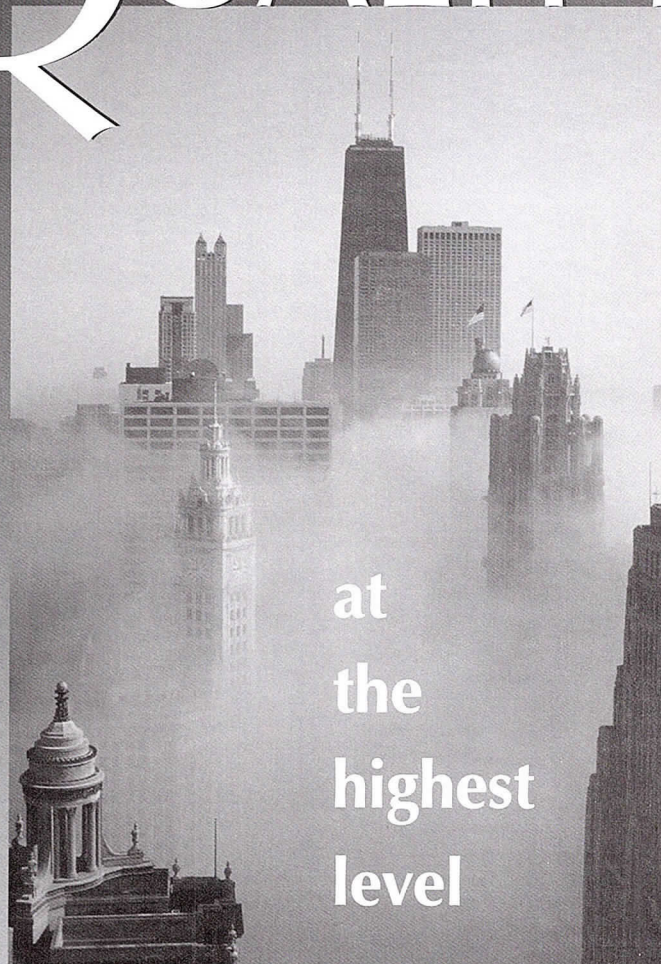
**Doblin Residence**  
Chicago, IL

**Honor Award**

Architect – Valerio Dewalt Train Associates  
Client – Bruce Doblin, MD  
Contractor – Rock and Wall Construction  
Consultants – Robert Darvas Associates (structural);  
Charter Sills & Associates (lighting)

Out of the existing masonry shell of a burned-out early 20th century warehouse, architects carved a public and a private garden, with glass-walled open living space nestled between. Facing a railroad embankment along a street lined with warehouses, apartment buildings, and single family homes, a simple façade highlights the industrial-residential context. One of two identical 23-foot-wide bi-fold galvanized steel doors opens to a garage, while the other opens to reveal a lush garden. Jurors admired the sensibility of this façade, which can appear industrial or park-like. The starkness of the living space and the quietness of the gardens fit the program of this “house for a solitary person.”

# QUALITY



at  
the  
highest  
level

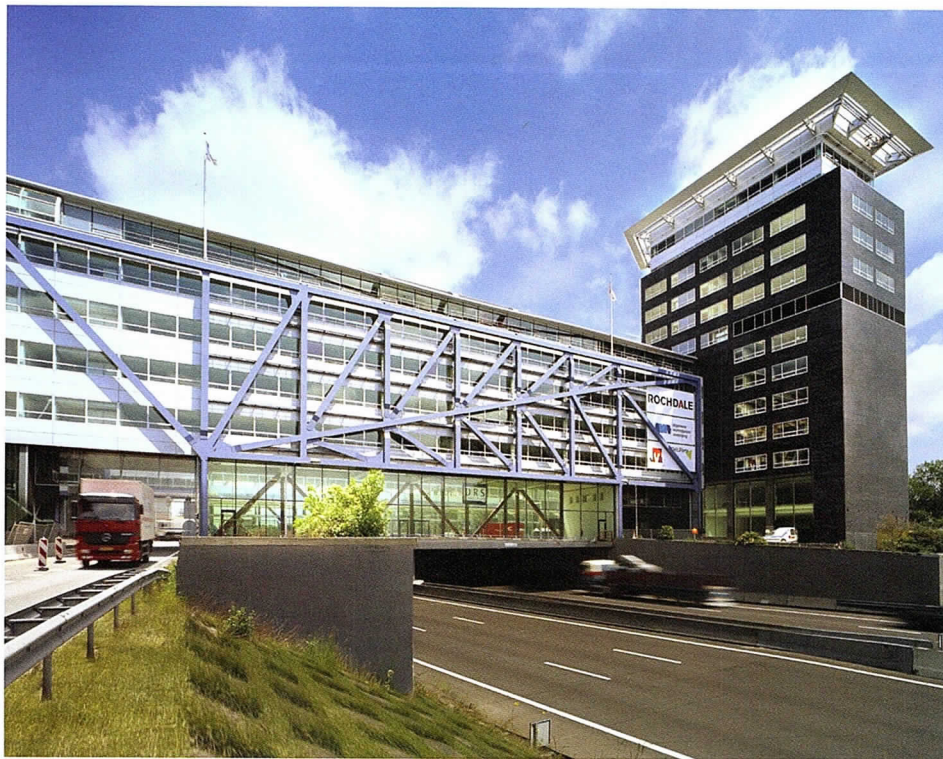
...that's what we strive for on every project, and that's the principal reason we've become Illinois' largest HVAC contractor. We're proud to have served Chicagoland for 67 years, and also proud that design-build and assist design-build represent more than one-third of our annual volume. By designing cost-effective, efficient mechanical systems, our team of 30+ graduate engineers and their proven design-build methods help set Chicago's standard for quality... at the highest level.



**HILL MECHANICAL GROUP**

[www.hillmech.com](http://www.hillmech.com)

See for yourself — click on "PROJECTS" at [www.hillmech.com](http://www.hillmech.com), and while you're there take a video tour of our shops.



**Bos en Lommer Bridge Buildings**  
Amsterdam, The Netherlands

*Citation of Merit*

Architect – PPKS Architects Ltd.  
Associate Architect – Beekink + Molenaar Den Haag BV  
Client – AM Development BV  
Contractor – Hillen & Roosen BV  
Consultants – ABT/Civiele Techniek; WM 5 Projects  
Engineers BV; City of Amsterdam (landscape)

Two linear office buildings connect the north and south parts of Amsterdam over the maw of an auto beltway. Built as phase one of an urban master plan that includes a large urban plaza and office, retail, and residential space, the Bridge Buildings are detailed with a variety of materials expressing the complexity of the plan. Brick, glass, and metal articulate an avenue façade scaled for pedestrians. The beltway elevations feature bold steel trusses in front of a neutral glass and steel backdrop. From the avenue, the buildings stand as an asymmetrical gate; from the beltway, a bridge connecting the city over the scar of the freeway.

Robb Hart, Robb Hart Fotografie

**Cohodes Residence**  
Marin County, CA

*Citation of Merit*

Architect – Dirk Denison Architects  
Client – Marc and Leslie Cohodes  
Contractor – Red Horse Constructors  
Consultants – Endres Ware; Consulting Construction Services; Land Development Solutions

A perimeter wall bounds this unusual house, whose single-level plan is intended to internalize landscape. Housing functions are separated and treated as “figure” interspersed with the “ground” of courtyards in an irregular pattern of solids and openings. Extraordinarily clean detailing draws the eye through nearly invisible glass walls to courtyards, forging a strong relationship between indoor and outdoor building volumes. The ceiling plane is fractured and folded along a diagonal pattern designed to explore the interplay of light and space.



Joshua McHugh



David Seidel, Delmud Space

**Soldier Field and North Burnham Park  
Redevelopment**  
Chicago, IL

**Citation of Merit**

Architect – A joint venture of Lohan Caprile Goettsch Architects and Wood + Zapata

Client – Chicago Park District

Construction Manager – Turner Construction Co./Barton Malow/Kenny Joint Venture c/o Turner Construction Co.

Consultants – Peter Lindsay Schaudt Landscape Architecture; Thornton Tomasetti Engineers (structural); Ellerbe Becket (MEP); Environmental Systems Design (mechanical/electrical); V3 Consultants (civil); Catt Lyon Design (graphics and wayfinding); Schuler Shook (lighting); Metro Transportation Group (traffic consultant)

Bold juxtaposition of an asymmetrical steel-and-glass stadium bowl with Soldier Field's 1924 neoclassical façade struck jurors as a strong solution to a complex program. Four levels of stacked skybox suites on one side of the stadium, and cantilevered seating bowls on the other, feature long spans that create a new backdrop for the historic facades. The stadium addresses the varied needs of football fans and park users with improved stadium amenities and 17 acres of landscaped parkland where paved parking once prevailed. Summing up their decision, a juror noted, "The power of this design is the clash between the two vocabularies."

**Chinese American Service League, Kam L. Liu Building**  
Chicago, IL

**Citation of Merit**

Architect – Studio Gang/O'Donnell (now Studio Gang Architects)

Client – Chinese American Service League;

Developer – R. M. Chin and Associates

Contractor – Paul H. Schwendener

Consultants – Thornton Tomasetti Engineers (structural); Consulting Construction Services (now Building Engineering Systems LLC) (mechanical); Site Design Group (landscape); Terra Engineering (civil)

Innovative use of materials and simplicity in design strike a balance in this modern community center serving recent Chinese immigrants. The building is tightly organized to house adult and child daycare, chef training, classrooms, counseling, and offices. Materials, color, and pattern signal connections to Chinese culture in an understated manner. A steel lattice sunshade protects the double-height community room and its balcony from solar heat gain while evoking traditional Chinese architecture. Diamond-shaped titanium tiles sheath the upper two floors, creating a wall of changing luminous appearance that pleased jurors. The building features controllable daylighting and ventilation, optimizing comfort and minimizing energy use.



Greg Murphey, Greg Murphey Studios Inc.

Are you leveraging your resources?

Digital Imaging Resources can help you make all of your projects come alive with our state of the art equipment, and our eye for quality! Fast turn arounds are not a problem. Our digital Indigo press will personalize messages and images on each page to create quite a response from your client. Our color graphics department will help you design and print your indoor and outdoor displays on most any kind of media, for any application, including vehicle wraps, window displays, backlit signs and billboards. Lenticular graphics are a unique visual experience, not easily forgotten. Whether used in direct mail or as a trade show graphic, lenticular art can have a positive impact on any campaign. We can scan images that are 50" wide to a digital file, or produce an exact color reproduction. Your architectural drawings can be duplicated for you in color or black & white. You can send us your hard copy, or a digital file. Our finishing services include binding or stapling your brochures or books. If you need your prints mounted and laminated, we have many different substrates and laminates to choose from. Our laminates are UV resistant to help your prints stay as bright and colorful as when they were first printed. Give Digital Imaging Resources a call now, and see what a difference we make!

On-site Facilities Management Printing

On-line Project Collaboration Tools

Variable Data Digital Printing

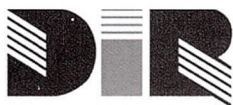
Digital Blueprinting/Copying

Mounting and Laminating

Wide-format Color Graphics

Wide-format Color Scanning

Vehicle Wraps and Backlit Signs



Digital  
Imaging  
Resources, Inc.

650 W. Lake Street • Suite #120 • Chicago, Illinois 60661

224 S. Michigan Avenue • Suite #570 • Chicago, Illinois 60604

312.243.1250

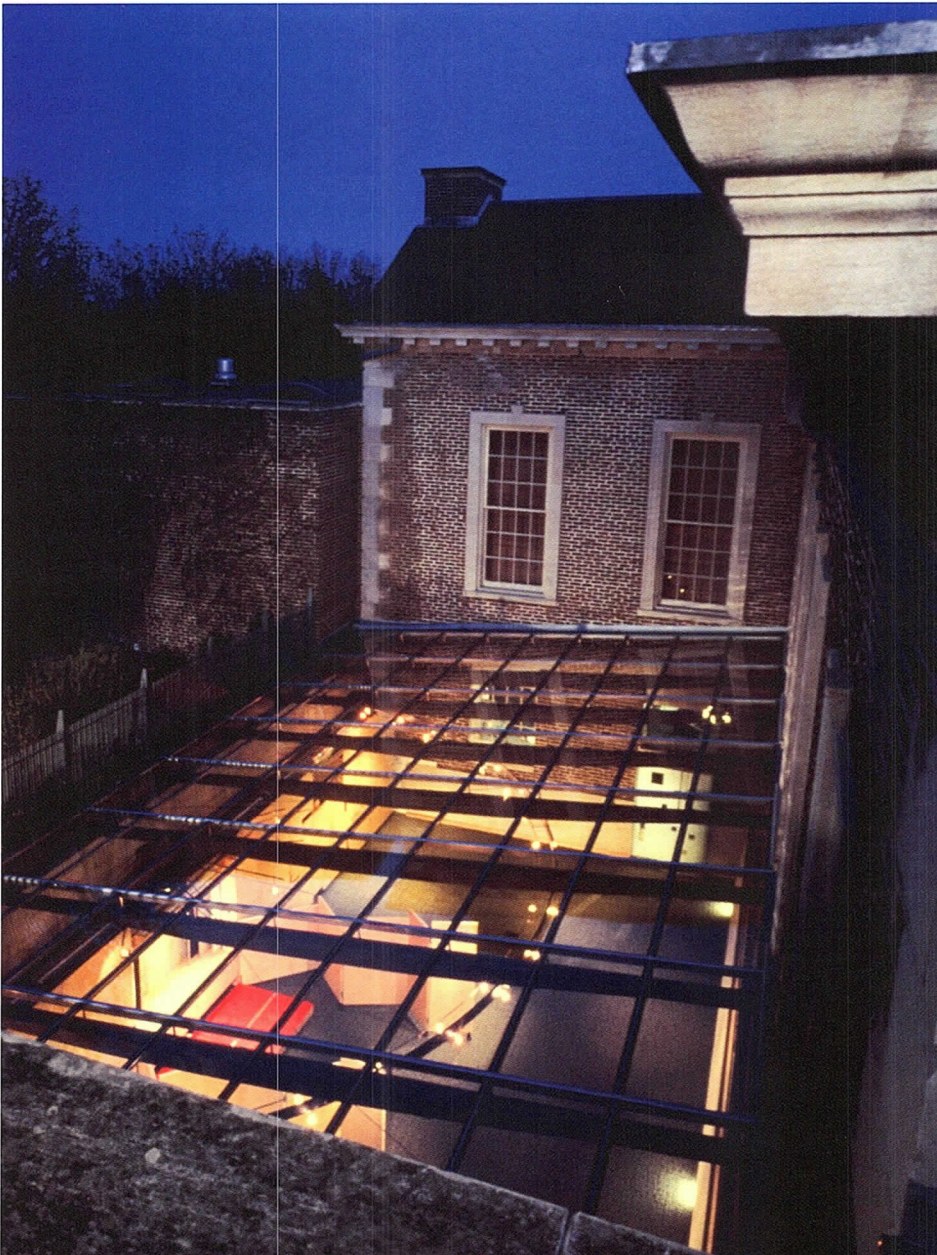
[www.dirinc.com](http://www.dirinc.com)

*The Difference is Service!*





© Barbara Karant, Karant + Associates



© Barbara Karant, Karant + Associates Inc.

**Lipson Alport Glass Associates**  
Northbrook, IL

*Citation of Merit*

Architect – Valerio Dewalt Train Associates  
Client – Lipson Alport Glass Associates  
Contractor – Sterling General Corp.  
Consultants – V3 Consultants Inc. (civil); Robert Darvas Associates (structural); Charter Sills & Associates (lighting)

A play on the nature of solid and void is central to this transformation of a simple brick building into a larger home for a packaging design firm. The existing U-shaped plan was closed by a 2-story rectangle. A brick volume housing a research center and conference rooms appears to balance atop a long glass box. The volumes are shifted, with the brick cantilevered 40 feet out to create a sheltered entryway. The entire glass container is tipped — as if by the weight of the brick — angling the floor of the lobby and creating a terraced design studio. “It’s got a lot of humor to it,” said a juror.

**Louise Wells Kasian Children’s Activity Center,  
Lake Forest Library**  
Lake Forest, IL

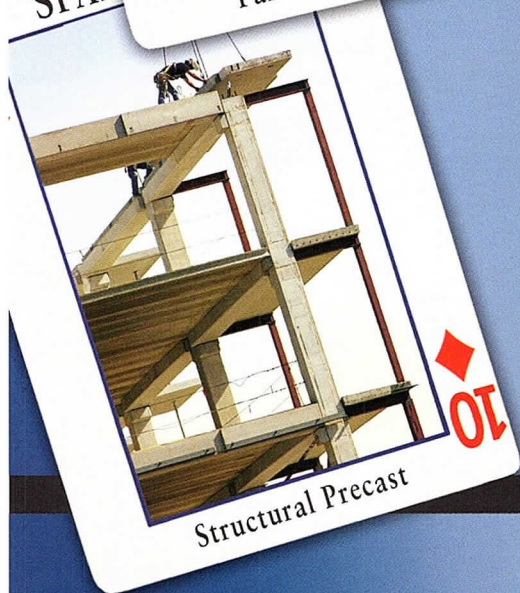
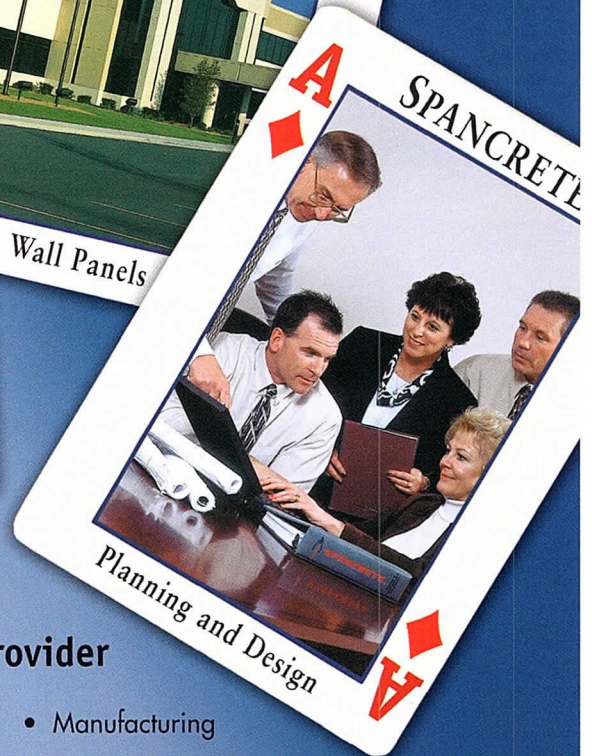
*Citation of Merit*

Architect – David Woodhouse Architects LLC  
Client – Lake Forest Library  
Contractor – R. Rudnick & Co.  
Consultants – Thornton Tomasetti Engineers

Sunken into existing courtyard space in a 1930s Georgian library, a children’s room defines itself with transparent walls and roof. Jurors applauded this “clever use of space” that allows “peek-a-boo” views of the building and conjures a secret garden feel. Light-diffusing shades and translucent films variously veil glass interior walls and the 1430-square-foot skylight. Beneath a curving steel light right under the glass roof, panels of a minimally detailed maple cabinet wall flip out to form a stage, unfold to create smaller spaces, and reveal backdrops for storytelling.

# SPANCRETE

## A Sure Bet



### Your Winning Provider

- Parking
- Office
- Hospitals
- Municipal
- Industrial
- Retail
- Hotel/Motels
- Housing
- Manufacturing
- Food Service
- Sports Complexes
- Justice Facilities
- Schools
- Bridges
- Soundwalls
- Power Plants

### The Spancrete Group, Inc.

Spancrete Industries, Inc.  
Waukesha, WI  
414-290-9000

Spancrete of Illinois, Inc.  
Arlington Heights, IL  
847-879-2100

Spancrete, Inc.  
Green Bay, WI  
920-494-0274



[www.spancrete.com](http://www.spancrete.com)



**State Street Village at Illinois Institute of Technology**  
Chicago, IL

*Citation of Merit*

Architect – Murphy/Jahn Inc.  
Client – IIT Housing Corp.  
Contractor – W.E. O'Neil  
Consultants – Werner Sobek Ingenieure GmbH  
(structural); Transsolar Energietechnik GmbH  
(mechanical concept)

This student housing project addressed budget and programmatic constraints with a pared-down design. Glass screens project from the east façade of the buildings, shielding students from the noise of elevated trains while allowing for pedestrian traffic across campus. On the west, landscaped courtyards of three U-shaped buildings face the main quadrangle. Curved stainless steel panels thrust upward, merging with the roof. The whole composition enjoys “a certain visual toughness,” according to one juror, who especially admired the way the metal skin is neatly interrupted by courtyards along its linear run.

Doug Snower, Doug Snower Photography

**University of California at Los Angeles  
Neuroscience Center**  
Los Angeles, CA

*Citation of Merit*

Architect – Perkins & Will  
Client – Regents of UCLA  
Contractor – Clark Construction  
Consultants – GPR Planners Collaborative  
(lab planning); Englekirk & Sabol Consulting  
Engineers (structural); Bard, Rao + Athanas  
Consulting Engineers (MEP/FP); Katherine Spitz  
Associates (landscape architect); RBA Partners  
(civil); JCM Group (construction manager)

In UCLA's language of brick, the 130,000-square-foot Neuroscience Center speaks of connections between old and new. Banded masonry walls recall the campus's Romanesque architecture. Cleanly cut windows, reveals, and columns cast shadows that show off the solid nature of masonry volumes. On the east, a generous curving curtain wall embraces a courtyard and encloses shared communal spaces including informal seating areas and lounges. The curve also defines a new circulation path between the traditional campus and newer buildings to the south. “It's very well detailed and sets up a nice rhythm,” praised a juror.



© James Steinhamp, Steinhamp/Ballogg Photography

# Interior Architecture Awards

by Laurie Petersen

The Interior Architecture Award was established over 20 years ago to promote interior architecture as a unique profession by recognizing outstanding projects. For award purposes, interior architecture is defined as the space within a building envelope, including design of lighting, finishes and furnishings. The jury considered a wide range of design projects completed between January 1, 2001 and May 1, 2004.



Christopher Barrett © Hedrich Blessing

**Allsteel Resource Center**  
Dallas, TX

## **Honor Award**

Architect – Gensler

Client – Allsteel Inc.

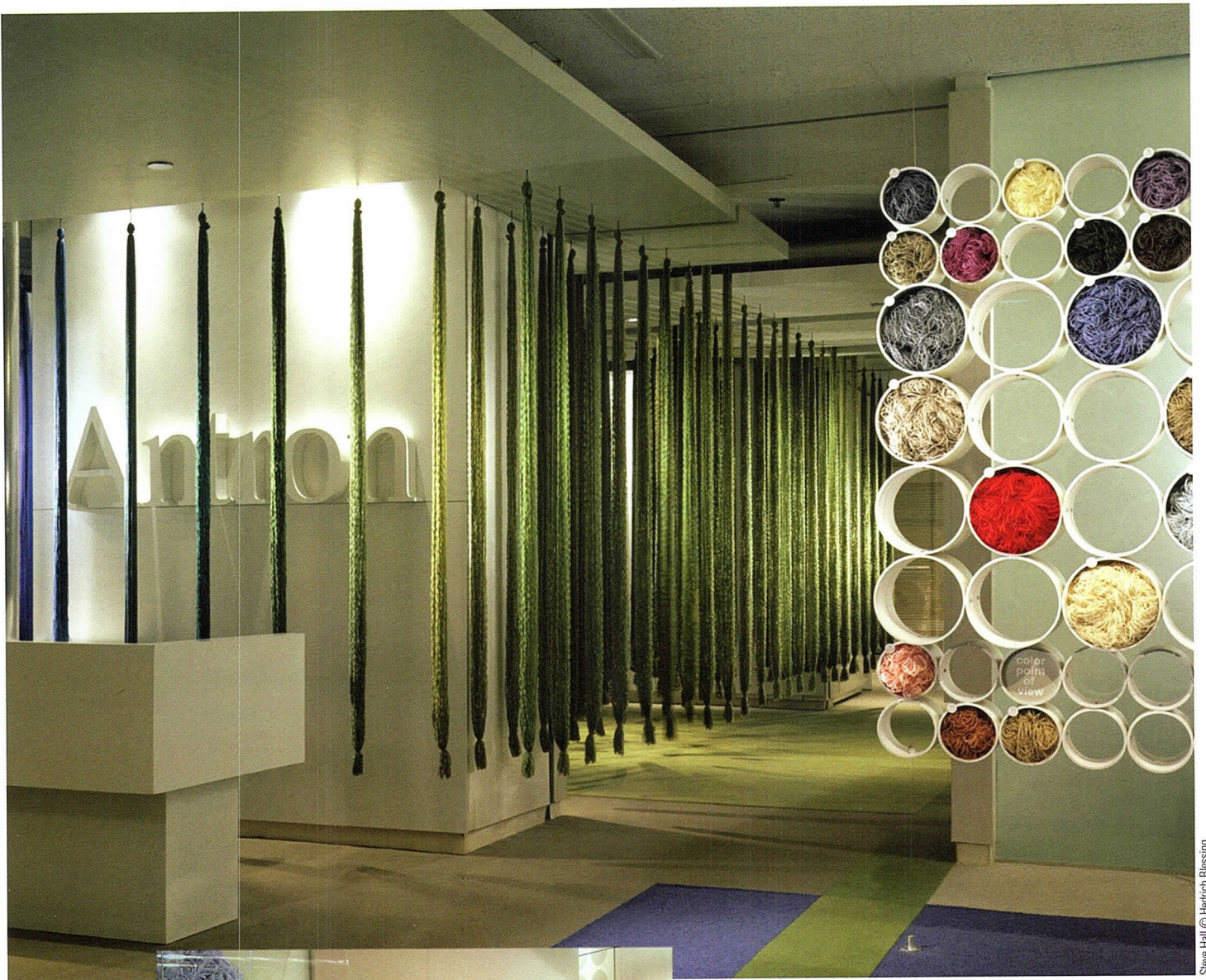
Contractor – Constructors

Consultants – Schmidt Stacy (MEP-base building);  
Architecture and Light (lighting); Mohr Partners,  
Corporate Real Estate Advisors (project manager)

This contract furniture manufacturer wanted to raise its local profile in the growing area around Dallas. The vast scale of the showroom space lent itself to the rugged vernacular of the ranch. "The regional references are not literal, but provide a wonderful sense of place," observed a juror about the rustic, weathered wood, the rough-hewn stone, and the large tumbleweed-like light fixtures. In contrast to this textural richness are crisp planes of drywall that change from vertical to horizontal, forming ceiling planes below the exposed mechanicals. The plan addresses the constraints of a nine-sided footprint with a "dog run," an architectural element that serves as a breezeway for many Texas homes.



Christopher Barrett © Hedrich Blessing



Steve Hall © Hedrich Blessing



Steve Hall © Hedrich Blessing

**Antron® Resource Center**  
Chicago, IL

**Honor Award**

Architect – Perkins & Will | *Eva Maddox Branded Environments®*

Client – Antron®, Invista

Contractor – N'Dio (exhibit)

This Merchandise Mart showroom and conference center is transformed each year for the annual NeoCon® trade show. The focus in 2003 was on the availability of 360 unique colors in a variety of fiber types and styles. Fiber samples of each color were featured in hands-on display components, enticing visitors to interact with the product. The facility used a modular three-dimensional framework to maximize the ability to reconfigure rooms, displays, messages and perimeter walls while maintaining the electrical infrastructure. A circular pathway efficiently led the crowds of showroom visitors throughout the space. The jury was wowed by the ingenious uses of simple strands of fiber to make a big impact.



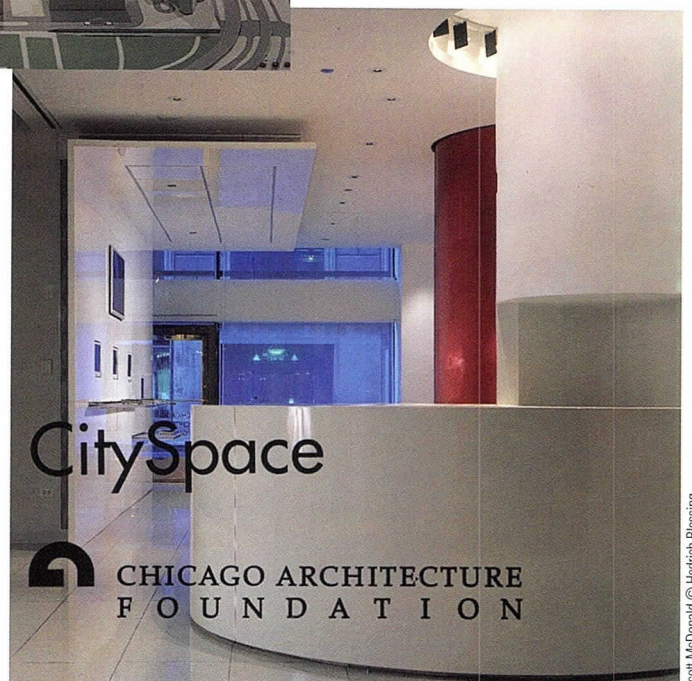
Scott McDonald © Hedrich Blessing

**Chicago Architecture Foundation**  
Chicago, IL

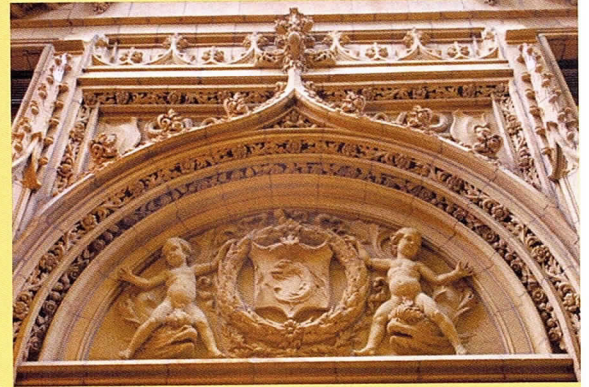
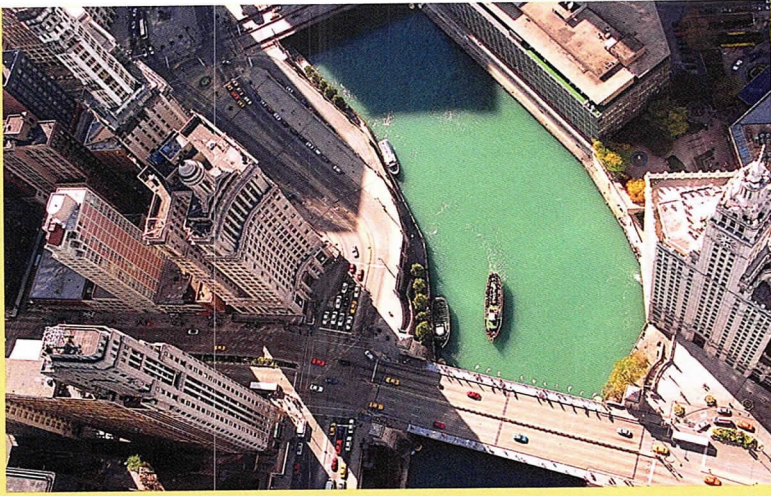
**Honor Award**

Architect – Skidmore, Owings & Merrill LLP  
 Client – Chicago Architecture Foundation  
 Contractor – Executive Construction Inc.  
 Consultants – Environmental Systems Design Inc.  
 (engineering)

The ArchiCenter wanted to expand its offerings with an interpretive center that features a timeline of Chicago's built environment, a scale model of the Loop, interactive exhibits, an area to feature new projects, and an information desk. In a lemonade-from-lemons solution, an unavoidable column in the center of the gallery was transformed with a cladding of bright red aluminum into a positive feature. Its curves are echoed by those of the information desk and the sinuous timeline display. The jury appreciated the simplicity of the bold gesture of the column and felt that the curves personalize the viewing spaces. They also liked the fact that the design does not imitate any of Chicago's famous architecture but serves as a neutral backdrop for display.



Scott McDonald © Hedrich Blessing

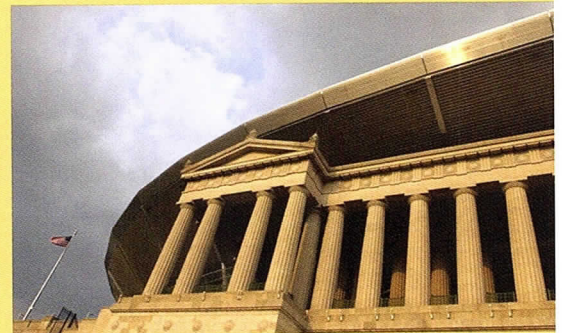
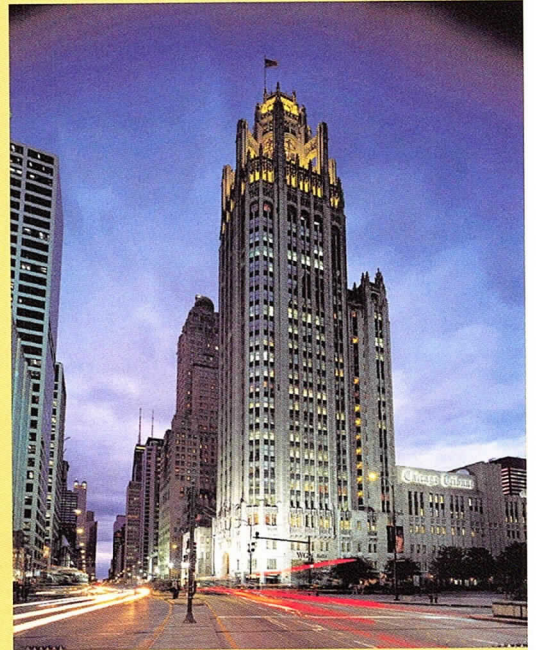


Chicago Tribune

# Memorable photos

FROM THE CHICAGO TRIBUNE ARCHIVES

Add the remarkable photography of the Chicago Tribune to your design. Browse our galleries online at [chicagotribune.publishedphotos.net](http://chicagotribune.publishedphotos.net) for hundreds of images capturing Chicago's history, its skyline, its sports and more. Place your order online too. Or call 800-530-0082 for more information.



[chicagotribune.publishedphotos.net](http://chicagotribune.publishedphotos.net)

# Any Way It Shapes Up... CTI Delivers

## When you need . . . . .

"Using precast thin brick faced panels was the ideal solution to meet the community's aesthetic desires as well as the demanding schedule requirements. In other words, when speed and look are both #1 priority, CTI really delivers!"

~Dennis Nemenz  
Vice President, Sales  
Concrete Technology, Inc.

ECONOMY  
**SPEED**  
EXPERTISE  
APPEAL

*Think...precast concrete*

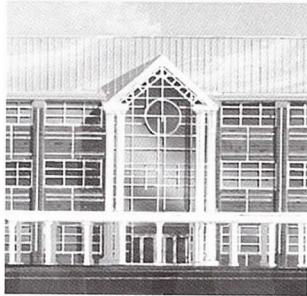


**Fact:** Using architectural precast concrete cladding can reduce enclosure time by as much as 70%.

## Choose...CTI

GARFIELD HEIGHTS  
HIGH SCHOOL  
(Rendering)  
Garfield Heights, OH

DESIGN ARCHITECT:  
FPS Architects &  
Engineers, Ltd.  
Cleveland, OH

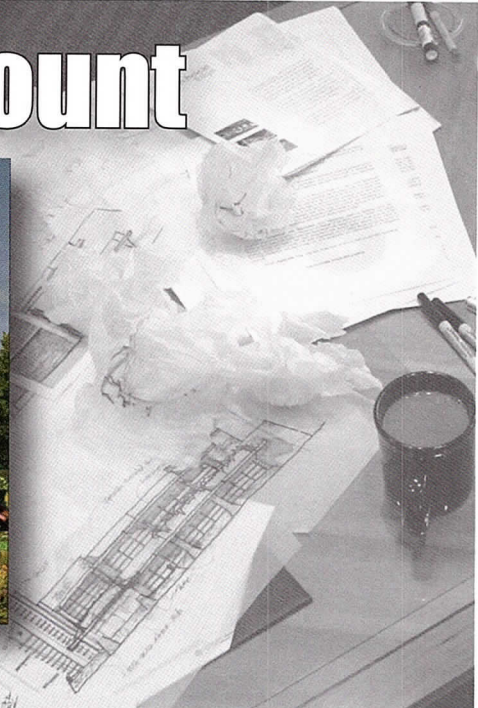


**Fact:** CTI has two high-capacity plants, fully supported by local Customer Service Teams, ready to go to work for you. From initial design to delivery...we get it done in the least possible time.

**See for yourself why architects are talking about CTI.** Let CTI serve up lunch while discussing how they can speed along your next project. To have a box lunch catered for your architectural staff, call Leo Ford at (773) 784-0400.

CONCRETE TECHNOLOGY INC. • Paxton, IL and Springboro, OH • Call 800.788.2370  
[www.ctiprecast.com](http://www.ctiprecast.com)

# First Impressions Count



Presentation Graphics

Digital 3D Architectural Rendering

Layout

Modeling

Animation

847-214-8283

920 South Waukegan Road, Lake Forest, Illinois 60045 / [www.imagegrille.com](http://www.imagegrille.com)



**Gardner-James Residence**  
New York, NY

**Honor Award**

Architect – Valerio Dewalt Train Associates  
Client – Tracy Gardner and Dani James  
Contractor – Scordio Construction  
Consultants – Hill Mechanical and Robert Darvas Associates (consulting engineers)

Masterful use of a mundane material was the ingenious response to the project's extreme time constraints. As the client lost patience with the developer's drawn-out process of converting the industrial loft, they finally asked their architect, "What can we do in a month?" The answer was to conceive of the design as an elaborate costume of many parts, such as kitchen, home office, and media storage, all made of sheet metal. The full set of components was pre-fabricated and test-assembled in Chicago, delivered to New York on two trucks, and installed in one month. The jury applauded how the project's constraints became part of the solution.



Steve Hall © Hedrich Blessing



Steve Hall © Hedrich Blessing



Craig Dugan © Hedrich Blessing

**Crunch Fitness**  
Chicago, IL

*Citation of Merit*

Architect – Cannon Design  
Client – Bally Total Fitness  
Contractor – Interior Construction Group Inc.

This fitness center occupies floors three through five of a new mixed-use development in Chicago's Lincoln Park neighborhood. The location of the entrance on the third level called for dynamic architectural elements to draw in prospective members. Behind a backlit juice bar is a grand angular stair and a fiber-optic edge-lit glass wall that provides silhouettes of club patrons through a double layer of frosted glass. "This is part gym, part nightclub," commented a juror as he praised the consistency of detailing throughout the many different types of spaces.

**Hudson Highland Regional Office**  
Chicago, IL

*Citation of Merit*

Architect – Eastlake Studio  
Client – Hudson Highland  
Contractor – Interior Alterations  
Consultants – Kent Consulting Engineers

The jury admired the design of this global recruiting firm office for "taking the business aspect of the corporation and infusing the interiors with it." Contrasting materials of clear maple and dark gray aniline-dyed ash are used in a clean, restrained way and are enlivened by an unusual geometry. The building footprint is sliced on the west by the adjacent Chicago River at a subtle three-degree angle that deflects the architectural elements in both plan and elevation. The main conference room is separated from the reception area by a back-painted glass wall that provides an appropriate degree of privacy while serving as a functional marker board.



Steve Hall © Hedrich Blessing

# ARCHITEMPS, INC.®

**ARCHITEMPS, INC. – the Architectural & Interior Design staffing specialists, serving greater metropolitan Chicago since 1986.**

**Quality staffing, service and solutions:**

- Design/Production Drafters
- Facility Planners
- CAD Architects/Interior Designers
- Project Managers

**Our billing includes all employer liability:**

- Payroll Administration
- Employee Benefits
- Government Compliance
- State & Federal Tax Remittance
- Workers' Compensation Coverage

**ARCHITEMPS, INC.®**

**1050 North State Street  
Chicago, IL 60610-7829**

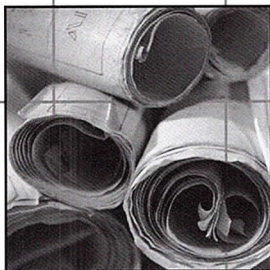
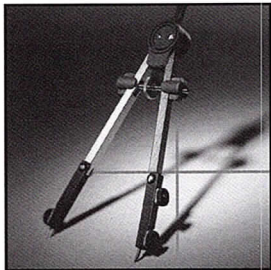
**Tel: 312.649.0912**

**Fax: 312.649.1667**

**architemps@sbcglobal.net**

**www.architemps.com**

**Architectural, interior design and facility planning personnel on a per-project basis. Direct hire conversion and direct placement available. Call today for information on our staffing services or employment opportunities.**



- Specialists in protecting the designs of architects, engineers and land surveyors for 25 years
- A recognized leader in providing risk management solutions for architects, engineers and land surveyors
- A full-service agency with coverages that range from health and life to employers' professional liability
- The world's 10th largest insurance broker



hilb rogal & hobbs™

AVA Insurance Agency

AVA Insurance Agency  
For more information contact your local office at 847-517-3453

or visit [www.hrh.com](http://www.hrh.com)

PROBLEM SOLVED.™



**Rural Studio Exhibit**  
Barcelona, Spain

**Citation of Merit**

Architect – Xavier Vendrell Studio with Andrew Freear and Jennifer Bonner

Client – Col·legi d'Arquitectes de Catalunya, Demarcació de Barcelona, Àrea de Cultura, Formació i Publicacions

Contractor – The exhibition was built by the designers with a crew of students from Rural Studio, Auburn University, the University of Illinois at Chicago, and ETSAB, BAU and IED.

The goal of the exhibit is two-fold: to display the work of the Rural Studio through photos, models and videos, and to convey its essence by demonstrating the construction potential of local, environmentally friendly materials. One of the video viewing spaces is built of carpet tiles and the other one, where an existing stair forms seating risers, is of hay bales, whose odor relates to the images shown. Colored wooden pallets were stacked to create walls, accented by blocks of compressed aluminum cans and stacked packages of recycled cloth. "They have made ordinary materials extraordinary and brought them to where visitors can touch and even smell them," said a juror. (Double winner; also received Sustainable Design Special Recognition)

Monica Rosello

**I & S Residence**  
Chicago, IL

**Citation of Merit**

Architect – mac D+A Inc.

Client – David Herro

Contractor – The Meyne Co., a Division of Bulley and Andrews

Consultants – Jane Stark Interiors (interior design); Shiner & Associates (acoustic engineer)

"Very elegant and impeccably detailed," was the jury verdict on this two-bedroom Gold Coast condominium. Well-proportioned spaces and a good plan are other attributes. Monolithic limestone accents pay homage to the building's Parisian-inspired exterior, and the spare palette is completed with glass, tile, and walnut. The den forms a walnut-encased retreat within the public spaces of the apartment, raised one step and set askew to create a visual focal point; sliding doors of frosted glass provide privacy. The windowless master bath borrows natural light from the bedroom through a floor-to-ceiling, wall-to-wall frosted glass partition.



© Mark Ballogg, Steinkamp/Ballogg Photography

# The Architectural Kitchen



Valcucine Chicago Merchandise Mart, Suite 106 [www.valcucinechicago.com](http://www.valcucinechicago.com) (312) 755-0356



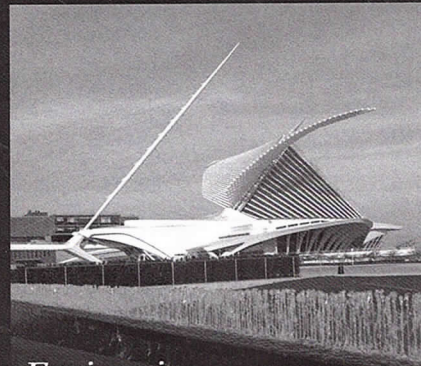
Tak Katsuyama

**Marble Curtain**  
Washington, DC

**Special Recognition**

Architect – Studio Gang Architects  
Client – National Building Museum  
Sponsor – International Masonry Institute  
Contractor – International Masonry Institute  
(stone mason); Banner Masonry Construction  
(contractor assistance); Carlson Construction  
(formwork assistance); Laser Applications  
(waterjet stone cutting)  
Consultants – Thornton Tomasetti Engineers and Peter Heppel Associates (structural); Illinois Institute of Technology/Professor Sheldon Mostovy (testing lab)

The National Building Museum selected the architect and a stone mason to collaborate on exploring new possibilities of stone as a building material. The museum's low floor load capacity made it impossible to support stone from below, so the idea arose to use tension rather than compression and create a suspended curtain of thin stone pieces. Interlocking connections work best for hanging, so intricate puzzle shapes were cut with a water jet and backed with fiber resin to provide redundancy. The mason worked from the top down to create an 18-foot-tall, one-ton curtain of marble that hangs from the ceiling without any supporting frame.



*Engineering services provided to our clients include...*

- Structural*
- Civil*
- Environmental*
- Transportation*
- Mechanical*
- Electrical*
- Plumbing*



**GRAEF ANHALT SCHLOEMER**  
and Associates Inc.  
engineers & scientists

332 South Michigan Avenue  
Suite 1400  
Chicago, Illinois 60604  
312/582-2000  
[www.gasai.com](http://www.gasai.com)

also:  
Chicago - O'Hare  
Milwaukee, Madison,  
and Green Bay

# Sustainable Design Awards

by Laurie Petersen

**T**he Sustainable Design Award makes its debut this year as AIA Chicago strives to support innovative projects that minimize environmental impact while making a positive contribution to the local and larger community and improving comfort and daily life for building occupants. The award celebrates designs that integrate architecture with technology and natural systems, foster site appropriateness, and protect and enhance the environment. The jury considered construction and renovation projects completed between January 1, 2001 and May 1, 2004.



Doug Snower, Doug Snower Photography

## Factor 10 House Chicago, IL

### **Honor Award**

Architect – EHDD Architecture  
Client – City of Chicago Departments of Housing and Environment;  
Developer – Neighborhood Housing Services of Chicago  
Contractor – Telion Contracting Corp.  
Consultants – Klein & Hoffman (structural),  
Mechanical Services Associates Corp. (MEP),  
Renacer Westside Community Network (HERS),  
ArchiTech Consulting (architectural specifications)

The jury found this house to be a superb embodiment of sustainable design principles, from its siting in a traditional urban neighborhood to its innovative energy efficiency to its thoughtful use of recycled and low-impact materials. Its aesthetic appeal and its affordable cost are also exemplary. The house strives to reduce life-cycle environmental impacts by a factor of 10 compared to the average American new-construction home. The strategies are size and impact reduction, improved efficiency and reuse. The project won a 2004 National AIA/Committee on the Environment award, and detailed information on it is available at [www.aiatopten.org](http://www.aiatopten.org). (Double winner; also received Distinguished Building Honor Award)



**Herman Miller Building C1**  
Zeeland, MI

**Citation of Merit**

Architect – Krueck & Sexton Architects  
Client – Herman Miller Inc.  
Contractor – Triangle Associates Inc.  
Consultants – GMB Architects-Engineers (MEP/FP and structural); Schuler Shook (lighting)

“This project hits a lot of the sustainability high points all across the board, and would certainly be a nice place to work,” summed up the jury. The design revitalizes an aging but classic modern building through careful addition and subtraction. Interior finishes were stripped away to reveal the beauty of the original steel structure and to create a flexible open office environment. Energy use was reduced by 29 percent, with two-thirds of the building’s total power generated on-site at a biomass plant. The project achieved LEED™ Gold certification and won a 2004 National AIA/Committee on the Environment award; detailed information is available at [www.ariatopten.org](http://www.ariatopten.org).

Manuz Mizera

**Oklahoma City Federal Building**  
Oklahoma City, OK

**Citation of Merit**

Architect – Ross Barney + Jankowski Inc.  
Associate Architect – The Benham Companies  
Client – U.S. General Services Administration  
Contractor – Flintco Construction Co.  
Consultants – Sasaki Associates Inc. (landscape architect); Sustainable Buildings Industry Council

“If more large office buildings were built like this, our country would save a lot of energy,” observed a juror. Innovations in form-making and façade sun-shading provide seamless integration of architectural elements with energy-efficient principles. Exterior light shelves bounce sunlight onto indoor ceiling surfaces while shading the outdoor glass below. Other sustainable features that also improve productivity include indirect general lighting with individual task lighting and underfloor air distribution. Materials selected for recycled content include concrete that contains flyash, mineral fiber insulation, and steel studs, doors and frames. The siting maintains the city grid to encourage pedestrian activity.



Steve Hall © Hedrich Blessing



Dale Van Donselaar, Dale Photographics

**Central College, Vermeer Science Center  
Renovation and Addition**  
Pella, IA

***Special Recognition for Energy-Efficient  
Laboratory Design***

Architect – Holabird & Root LLC  
Client – Central College  
Contractor – Weitz Co.  
Consultants – Research Facilities Design (lab planner)

Using 60 percent less energy than a traditional laboratory building won plaudits for this facility. The energy-efficient mechanical system recaptures air from the public spaces to supply the labs and then exhausts it from the building through a heat recovery system. Interior spaces are filled with natural light, and a fountain located at the main entrance is powered by donated photovoltaic panels so that the arc of the water rises with the intensity of the sun. The project earned a LEED™ Silver rating.

**Rural Studio Exhibit**  
Barcelona, Spain

***Special Recognition for Material Use***

Architect – Xavier Vendrell Studio with Andrew Freear and Jennifer Bonner  
Client – Col·legi d'Arquitectes de Catalunya, Demarcació de Barcelona, Àrea de Cultura, Formació i Publicacions  
Contractor – The exhibition was built by the designers with a crew of students from Rural Studio, Auburn University, the University of Illinois at Chicago, and ETSAB, BAU and IED.

"This is an excellent manifestation of what the Rural Studio is all about: it creates beauty from the mundane." The honest, creative and efficient use of materials such as hay bales, compressed aluminum cans and recycled cloth makes for a zero-waste exhibit design, which is all the more admirable given its temporary nature. The use of shipping pallets in a port city such as Barcelona emphasizes the value of locally available materials. (Double winner; also received Interior Architecture Citation of Merit)



Mimma Borellin





Christopher Barnett © Hedrich Blessing

**Racine Art Museum**  
Racine, WI

**Special Recognition for Downtown Revitalization**

Architect – Brininstool + Lynch Ltd.  
Client – Racine Art Museum  
Contractor – Bukacek Construction Inc.  
Consultants – Arnold & O'Sheridan Inc.;  
Liska + Associates

This museum offers a one-two punch: reuse of an existing building and investment in a pedestrian-friendly downtown. The jury felt that LEED™ criteria do not sufficiently value the anti-sprawl implications of building in such a location; though perhaps harder to quantify, the results of downtown revitalization have significant environmental impact. Interior finishes include recycled rubber flooring and wood from rapidly renewable sources, while the exterior features recyclable materials such as acrylic and aluminum. Daylight provides much of the interior illumination.

**Bathrooms**  
with the Ultimate Finish.

**Kitchens**  
with the Finishing Touch.

**Advantage** kitchen & bath  
Find it Here. **Gallery**

Mon & Thurs: 8am-8pm  
Tues, Wed & Fri: 8am-5pm  
Sat: 9am-4pm

**hansgrohe**

7 8 5 0  
N O R T H  
M I L W A U K E E  
A V E N U E  
N I L E S  
I L L I N O I S

847-965-4444  
advantagebath.com

FIND IT HERE.



***Mann, Weitz & Associates L.L.C.***  
***CPAs & Business Advisors***

*Experts in the Industry – Servicing Architectural Firms for Over 25 Years*

**A Sample of the Services We Offer**

- Tax Preparation
- Tax Planning
- Business Consulting
- Profit Enhancement
- Audits, Reviews and Compilations
- Outsourcing Accounting Services

*In addition, we provide:*

- Access to partners and senior professionals
- Timely responses
- Business consulting to improve your bottom line

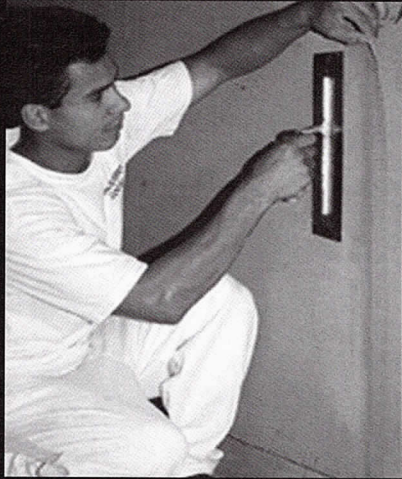
**Contact Mark Mann at Mann, Weitz & Associates L.L.C.**

108 Wilmot Road, Suite 110, Deerfield, Illinois 60015

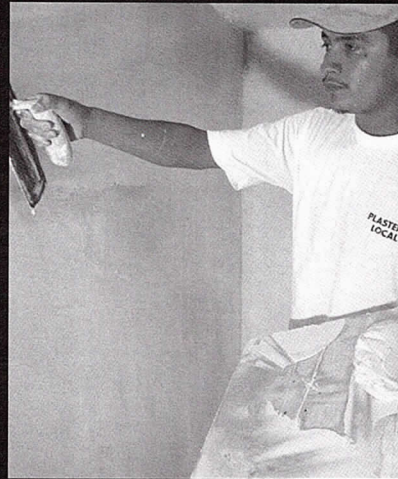
Phone: (847) 267-3400 Fax: (847) 267-3401

Email: info@mannweitz.com or visit us at www.mannweitz.com

# Professional Training Yields Expert Plasterers



Exterior Insulating and Finishing  
Systems (EIFS) and Stucco



Conventional and Veneer Plaster



Ornamental Plaster

Call us for information about today's  
plastering systems and the best  
people to apply them.



Chicago Plastering Institute  
5611 W. 120<sup>th</sup> St.  
Alsip, IL 60803  
(708) 371-3100

Perform  
inside the  
code...  
and  
outside  
the box.

When you have  
questions about  
building code, call  
**The Code Group.**  
We provide answers,  
guidance and insight  
based on years of  
experience in building  
code interpretation  
and precedent.

**CG**  
**THE CODE GROUP**  
A BURNHAM-NATIONWIDE COMPANY  
ARCHITECTS • CODE CONSULTANTS

#### Consulting services include:

- Preliminary Zoning and Building Code Analysis
- ADA, Fair Housing, Section 504
- Fire/Life Safety Evaluations
- Occupancy Placards
- Evacuation Route Diagrams
- Environmental Performance Standards
- Municipal Plan Review
- Local Architect Representation
- Expert Witness Service

#### Architectural / CAD Services

- Commercial
- Residential
- Remodeling

For more information contact  
Christopher Chwedyk, AIA  
111 W. Washington St.  
Suite 450 • Chicago IL 60602  
**312-673-1503**

# NeoCon® SHOWS

North America's largest collection of expositions and conferences for interior design and facilities management ...

NeoCon® World's Trade Fair  
June 13-15, 2005  
The Merchandise Mart • Chicago, Ill.

NeoCon® West  
March 9-10, 2005  
L.A. Mart®  
Los Angeles, Calif.

IIDEX®/NeoCon® Canada  
September 22-September 23, 2005  
The National Trade Centre  
Toronto, Ont.

NeoCon® East  
Fall 2005  
Baltimore Convention Center  
Baltimore, Md.

[www.merchandisemart.com](http://www.merchandisemart.com) 800.677.6278

## JURY LIST

### Distinguished Building Awards

Lawrence Scarpa, AIA  
Pugh + Scarpa  
Santa Monica, CA

Cheryl McAfee-Mitchell, FAIA  
Charles F. McAfee Architects, Planners and  
Program Managers  
Atlanta, GA

Stanley Boles, FAIA  
BOORA Architects  
Portland, OR

### Interior Architecture Awards

Kendall Wilson, AIA, IIDA, LEED AP  
Envision Design  
Washington, DC

Arthur Smith, FAIA  
HarleyEllis  
Southfield, MI

Miguel Rivera, AIA  
Miró Rivera Architects Inc.  
Austin, TX

### Sustainable Design Awards

Douglas Farr, AIA  
Farr Associates  
Chicago, IL

Michelle Halle Stern, AIA, PE  
Delta Institute  
Chicago, IL

Leonard Sciarra, AIA  
Serena Sturm Architects Ltd.  
Northbrook, IL



**GRANICOR**

Granite Quarriers and Fabricators since 1922

Dimensional Stone Applications for

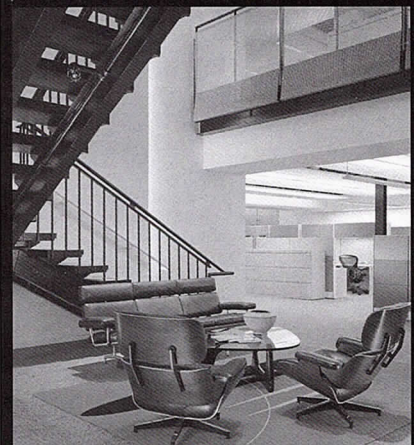
**Interior ■ Exterior ■ Landscaping**

Represented locally by:



630-668-1551 [www.granicor.com](http://www.granicor.com)

## LEED CAN BE BEAUTIFUL



Herman Miller C1 Building - Zeeland, MI  
LEED Gold / AIA Top Ten Green Projects 2004

THEATRE PLANNERS  
LIGHTING DESIGNERS  
**Schuler Shook**



Chicago - 312-944-8230

Minneapolis - 612-339-5958

Dallas - Fort Worth - 817-461-5442

[schulershook.com](http://schulershook.com)

Wanted to be an astronaut.

Afraid of heights.

Wouldn't settle for a window that blocked a single star.



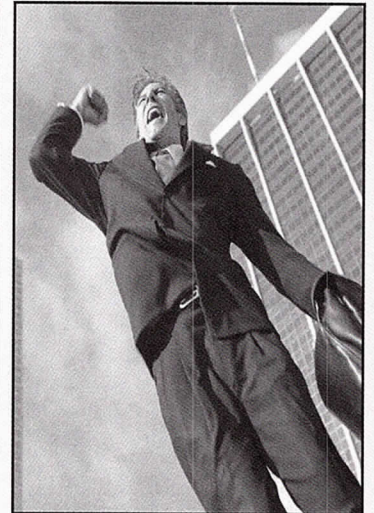
At Marvin, what you want is always within reach. Each of our wood and clad wood windows and doors are made to order. You choose the style and design options that make it your own. To see the difference Marvin makes, visit our Spaces and Views showroom.

**MARVIN**   
Windows and Doors  
Made for you.®  
www.marvin.com

LEE LUMBER'S  
**Spaces and Views**  
17W428 22<sup>nd</sup> Street  
Oakbrook Terrace, IL  
**Ron Hayes – AIA Professional Affiliate**  
630-782-9999 Ext. 230  
rhayes@leelumber.com

©2004 Marvin Windows and Doors. All rights reserved. ®Registered trademark of Marvin Windows and Doors.

**We're releasing  
new software.  
To release you from  
old frustrations.**



We've totally redesigned our AIA Contract Documents software to offer world-class simplicity. We've incorporated familiar toolbars, pull-down menus, and icons, so everything is as streamlined and intuitive. We've also included Microsoft® Word and PDF file-saving so you can create, share and manage documents with ease. Enhanced storage and retrieval lets you call up project data so it can be automatically incorporated into new documents. Plus, any variances from AIA standard contract language can be displayed in a special report. It's all here. And it's all easy.

**To learn more or to  
download the software,  
go to [www.aia.org](http://www.aia.org)  
or call 1-800-365-2724.**

**AIA Contract Documents**

Microsoft® and Microsoft® Word 2000 are either registered trademarks or trademarks of Microsoft Corporation in the United States and/or other countries. ©2003, The American Institute of Architects

**KFA**  
KRISTINE FALLON  
ASSOCIATES, INC.

*New!*  
**Revit® Training**  
in our Computer Lab

Achieving business results through  
computer-based solutions

Networks Hardware  
Web-based Project Management  
Software CAD Internet

30 East Adams Street  
Suite 1040  
Chicago, IL 60603  
312-641-9339 voice  
312-641-9337 fax  
www.kfa-inc.com

**Thanks to Our Sponsors**

The Design Excellence Awards were presented on Friday, October 1 in the Grand Ballroom of Navy Pier. Many organizations made Designight 2004 possible, and AIA Chicago would like to thank them for their support.

**Co-Sponsors**

Petersen Aluminum Corp.  
USG  
Charter Sills & Associates  
*Architectural Products Magazine*

**Benefactors**

DeStefano + Partners  
McGraw-Hill/F. W. Dodge Construction Group  
Murphy/Jahn Inc.  
Skidmore, Owings & Merrill LLP

**Patrons**

Bovis Lend Lease Inc.  
Cannon Design  
Consulate General of the Kingdom of the Netherlands  
David Woodhouse Architects  
Dirk Denison Architects  
Eastlake Studio  
Executive Construction Inc.  
Gensler  
Gilbane Building Company  
Halvorson Kaye  
Hedrich Blessing  
Holabird & Root LLC  
Interior Alterations  
Kirkegaard Associates/Schuler Shook  
Lohan Caprile Goettsch Architects/Wood + Zapata  
OWP/P Architects  
Perkins & Will  
Power Construction Company  
PPKS Architects Ltd.  
Ross Barney + Jankowski Inc.  
SmithGroup  
Studio Gang Architects/Thornton Tomasetti Engineers  
TBMK Joint Venture  
Valerio Dewalt Train Associates Inc.  
VOA Associates Inc.  
W. B. Olsen Inc.

SETTING THE STANDARD IN  
HOME AUTOMATION, HOME THEATER,  
COMMUNICATIONS, LIGHTING, AND  
ENVIRONMENTAL CONTROL  
TECHNOLOGY.



Entertain. Simplify. Support.

Before you put pencil to paper, contact Eric Schmidt – president, and give your clients exactly what they want. Perfection.



ARCHITECT CONSULTATION, DESIGN, INSTALLATION, PROGRAMMING AND SERVICE  
530 EXECUTIVE DRIVE, WILLOWBROOK, IL 60527 • 630.242.4600  
WWW.SOUNDANDVISION.NET

**Sabo & Zahn**  
Attorneys at Law

**Werner Sabo, FAIA**

**James Zahn, FAIA**

Licensing problems, copyrights, business formations,  
mediation, litigation, arbitration, contracts, real estate  
construction attorneys

8620 Sears Tower  
Chicago, IL 60606

(312) 655-8620  
fax: (312) 655-8622

[www.sabozahn.com](http://www.sabozahn.com)



**Botti Studio of Architectural Arts, Inc.**

919 Grove Street, Evanston, IL 60201 Established 1864  
847/869-5933 • Fax: 847/869-5996 • 800/524-7211  
[www.bottistudio.com](http://www.bottistudio.com) • [botti@bottistudio.com](mailto:botti@bottistudio.com)

Designers/Fabricators • Stained and Faceted Glass • Beveled Glass • Sandblasted •  
Stained Glass Restoration and Conservation • Protective Glazing • Wood and Metal  
• Frame Restoration • Sculpture • Bronze • Metal • Marble • Mosaic • Interior  
Renovation • Woodwork • Murals • Painting and Decorating • Custom Sanctuary  
Furnishings • Stained Glass Consultants to Architects and Churches

**Studio Locations**

San Diego • Chicago • Sarasota • Agropoli, Italy • Nassau, Bahamas  
760/753-0705 • 847/869-5933 • 941/951-0978

**Distinguished Building Awards**

**Honor Awards**

EHDD Architecture  
(Factor 10 House) .....10

Morris Architects/Planners  
(Lookingglass Theatre at Water Tower Water Works) .....9

Murphy/Jahn Inc.  
(Galeria Kaufhof) .....11

Perkins & Will  
(Contemporaine at 516 North Wells) .....6

Skidmore, Owings & Merrill LLP  
(Canary Wharf – DS1) .....7

Studio Gang/O'Donnell (now Studio Gang Architects)  
(Bengt Sjostrom/Starlight Theater) .....8

Valerio Dewalt Train Associates  
(Doblin Residence) .....12

**Citations of Merit**

David Woodhouse Architects LLC  
(Louise Wells Kasian Children's Activity Center,  
Lake Forest Library) .....17

Dirk Denison Architects  
(Cohodes Residence) .....14

Lohan Caprile Goettsch Architects and Wood + Zapata  
(Soldier Field and North Burnham Park  
Redevelopment) .....15

Murphy/Jahn Inc.  
(State Street Village at Illinois Institute of Technology) ...19

Perkins & Will  
(University of California at Los Angeles  
Neuroscience Center) .....19

PPKS Architects Ltd.  
(Bos en Lommer Bridge Buildings) .....14

Studio Gang/O'Donnell (now Studio Gang Architects)  
(Chinese American Service League,  
Kam L. Liu Building) .....15

Valerio Dewalt Train Associates  
(Lipson Alport Glass Associates) .....17

**Interior Architecture Awards**

**Honor Awards**

Gensler  
(Allsteel Resource Center) .....20

Perkins & Will | Eva Maddox Branded Environments™  
(Antron® Resource Center) .....21

Skidmore, Owings & Merrill LLP  
(Chicago Architecture Foundation) .....22

Valerio Dewalt Train Associates  
(Gardner-James Residence) .....25

**Citations of Merit**

Cannon Design  
(Crunch Fitness) .....26

Eastlake Studio  
(Hudson Highland Regional Office) .....26

mac D+A Inc.  
(I & S Residence) .....28

Xavier Vendrell Studio  
(Rural Studio Exhibit) .....28

**Special Recognition**

Studio Gang Architects  
(Marble Curtain) .....29

**Sustainable Design Awards**

**Honor Award**

EHDD Architecture  
(Factor 10 House) .....30

**Citations of Merit**

Krueck & Sexton Architects  
(Herman Miller Building C1) .....31

Ross Barney + Jankowski Inc.  
(Oklahoma City Federal Building) .....31

**Special Recognition**

Brininstool + Lynch Ltd.  
(Racine Art Museum) .....33

Holabird & Root LLC  
(Central College, Vermeer Science Center Renovation  
and Addition) .....32

Xavier Vendrell Studio  
(Rural Studio Exhibit) .....32



**Conference Speakers**

- **Paul Bertram Jr.**, FCSI, CDT, LEED-AP
- **Kirsten Ritchie**, Director, Environmental Claims Certification, Scientific Certification Systems
- In addition, a representative from the City of Chicago will outline some of Mayor Richard Daley's plans to make Chicago a world leader in green/sustainable design.

**The Merchandise Mart Conference Center**

CHICAGO / OCTOBER 25, 2004 8:00am-12:00pm

determining "green" in specifications

Earn 3 AIA CES Learning Units

Answering the question "What is green?" is a key quandary facing members of the building team. Determining product ratings, certifications, environmental criteria, and attributes is critical to determining life cycle analysis.

The **Architectural Products Educational Conference** is a premier educational opportunity and networking event designed for professionals with a keen interest in reviewing and selecting green products for commercial, institutional and multi-family design projects.

For more information or to register for this event, please contact Mary Jo Pape at [mj@arch-products.com](mailto:mj@arch-products.com) or call (847) 209-1185.



I N T R O D U C I N G



# Cool Colors

*Saving energy.*

*Preserving color choice.*

**P**etersen Aluminum Corporation is pleased to introduce PAC-CLAD Cool Colors: a new and updated color palette designed to improve the energy saving performance of our metal roofing products without requiring compromise in color selection.

In creating this new product line, we worked with our coating supplier, The Valspar Corporation, to significantly broaden the range of PAC-CLAD Colors that would meet ENERGY STAR®, LEED™ and/or cool roof certification requirements for solar reflectance and emissivity ratings.

In many cases our standard colors met these requirements without modification. Through pigment modification of medium and darker colors, we are now able to offer a PAC-CLAD Cool Color palette that initially includes 27 colors on steel and aluminum.

To receive a copy of our new color chart, please contact us at 1-800-323-1960; or visit our website: [www.pac-clad.com](http://www.pac-clad.com).

## **Petersen Aluminum**

1005 Tonne Road • Elk Grove Village, IL 60007  
1-800-PAC-CLAD or 1-847-228-7150  
Fax: 1-800-722-7150 or 1-847-956-7968

Other Plant Locations:  
Annapolis Junction, MD: 1-800-344-1400  
Tyler, TX: 1-800-441-8661  
Kennesaw, GA: 1-800-272-4482

<http://www.pac-clad.com>

REALIZE THE FUTURE TODAY  
WWW.VERTEXGRAPHICS.COM



DUAL MEMORY BY STRAWN / SIERRADA



312.432.9870  
**VERTEX GRAPHICS**  
1147 W OHIO #102 CHICAGO IL 60622

ARCHITECTURAL VISUALIZATION · RENDERING · ANIMATION · VR PANDRAMIC



106 NORTH STATE - PERKINS & WILL

