



FOCUS

JULY/AUGUST 2004

Beyond the Bandshell

MILLENNIUM PARK

AIA Chicago

Are you leveraging your resources?

Digital Imaging Resources can help you make all of your projects come alive with our state of the art equipment, and our eye for quality! Fast turn arounds are not a problem. Our digital Indigo press will personalize messages and images on each page to create quite a response from your client. Our color graphics department will help you design and print your indoor and outdoor displays on most any kind of media, for any application, including vehicle wraps, window displays, backlit signs and billboards. Lenticular graphics are a unique visual experience, not easily forgotten. Whether used in direct mail or as a trade show graphic, lenticular art can have a positive impact on any campaign. We can scan images that are 50" wide to a digital file, or produce an exact color reproduction. Your architectural drawings can be duplicated for you in color or black & white. You can send us your hard copy, or a digital file. Our finishing services include binding or stapling your brochures or books. If you need your prints mounted and laminated, we have many different substrates and laminates to choose from. Our laminates are UV resistant to help your prints stay as bright and colorful as when they were first printed. Give Digital Imaging Resources a call now, and see what a difference we make!

On-site Facilities Management Printing

On-line Project Collaboration Tools

Variable Data Digital Printing

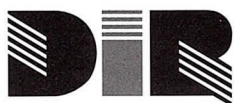
Digital Blueprinting/Copying

Mounting and Laminating

Wide-format Color Graphics

Wide-format Color Scanning

Vehicle Wraps and Backlit Signs



Digital
Imaging
Resources. Inc.

650 W. Lake Street • Suite #120 • Chicago, Illinois 60661

224 S. Michigan Avenue • Suite #570 • Chicago, Illinois 60604

312.243.1250

www.dirinc.com

The Difference is Service!



Executive Editor
Susan Larson
Editor
Laurie Petersen

Focus Advisory Board
Joseph Caprile, AIA
Gigi McCabe-Miele, AIA
Alice Sinkevitch, Hon. AIA
Charles Smith, AIA
P.K. VanderBeke, AIA
Thomas Zurowski, AIA

FOCUS (ISSN 1071-3700) Vol. 24, No. 7, is published monthly with a combined issue July/August, by AIA Chicago, 222 Merchandise Mart Plaza, Suite 1049, Chicago, Illinois 60654-1001. \$20 of each member's dues are allotted as a subscription. Periodicals postage paid at Chicago, Illinois. POSTMASTER: Send address changes to Focus, AIA Chicago, 222 Merchandise Mart Plaza, Suite 1049, Chicago, Illinois 60654-1001.

For advertising rates and schedules, call 312/670-7770.

© 2004 The American Institute of Architects Chicago.

All rights reserved. Reproduction in whole or part without permission is strictly prohibited.



2004 Board of Directors

President
Charles Smith, AIA
President-Elect
Thomas Kerwin, AIA
Vice Presidents
Rik Master, AIA
Gigi McCabe-Miele, AIA
Secretary
Edward Torrez, AIA
Treasurer
Peter Schlossman, AIA
Directors
Laura Fisher, FAIA
Daniel Friedman, Ph.D., FAIA
Gaines Hall, FAIA
Tom Hoepf, AIA
AIA Regional Directors
T. Gunny Harboe, AIA
Robert Selby, AIA
Associate Director
Helen Tsatsos, Assoc. AIA
Professional Affiliate Director
Lawrence Okrent
Past President
Joseph Caprile, AIA
2004 AIA Illinois Delegates
Hill Burgess, AIA
Christopher Chwedyk, AIA
Leonard Koroski, AIA
Alan Madison, AIA
Robert Woodworth, AIA
Mary Brush, AIA (alternate)
Sharlene Young, AIA (alternate)

2004 Committee Chairs

Working With an Architect
Rob Sierzega, AIA
Architects in the Schools
Curtis Jones, Assoc. AIA

2004 Professional Interest Areas

Corporate Architects
Karen Eltz, AIA
Design
Stephen Ward, AIA
Design/Build
Alan Treuhart, AIA
Environment
Susan King, AIA
Architecture for Health
Victoria Navarro, Assoc. AIA
Historic Resources
William McMillan, AIA
Housing
David Wytmar, AIA
Interior Architecture
Mark Hirons, AIA
Office Practice
Andrew Tiffin, AIA
Planning & Urban Affairs
Fred Brandstrader, AIA
Technical Issues
Lynette Stuhlmacher, Assoc. AIA
Young Architects
Brett Taylor, AIA

Chapter Staff

Executive Director
Alice Sinkevitch, Hon. AIA
**Membership Coordinator/
Assistant to the Director**
Phillip Rahill
Program Director
Joan Pomaranc
Communications Director
Susan Larson
Editor
Laurie Petersen
Financial Manager
Crystal Gagler
Public Information Receptionist
Linda Freeman
Documents Clerk
Mary Mnichowicz
Convention Coordinator
Kelley Streeter

4

Focus on Programs

8

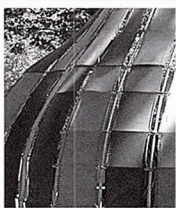
President's Letter

A Convergence of Intellect, Leadership and Passion

10

News Briefs

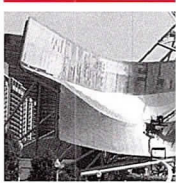
Outdoor Exhibits Showcase Design Talent
■ *Chicago GreenWorks Awards* ■
Chapter Member Survey Results



14

Cover Story

Beyond the Bandshell



23

Feature

Chicago Wilderness

26

Notebook

Three Firms Win Steel Awards ■
FGM Honored for School Design



30

Calendar

■ Young Architects Networking Happy Hour

*Thursdays, July 8 and August 5
5:30 to 7:30 p.m.
Rivers, 30 S. Wacker Dr.
(at Madison Street)
Sponsor: Young Architects Forum*

Come to network and meet other young architectural professionals. We meet at the north end of the patio to discuss issues such as studying for the ARE, community service projects, charrettes and design competitions, tours of firms and buildings, interesting lectures worth attending, or other social events. Questions: brett.taylor@dmjm.com

■ ARE Study Hall and Starbuck's®

*Tuesdays, July 13, 27 and
August 10, 24; 4:00 to 9:00 p.m.
53 W. Jackson Blvd., # 315
Sponsor: Young Architects Forum
and IMI*



Join IMI for six sessions of ARE Study Hall. IMI has purchased the Kaplan/ALS study materials and is offering its Loop office as a study hall. Starbuck's coffee will be supplied; feel free to bring a sack dinner or snacks. Questions: cbolek@imiweb.org or 312/935-1242. Anyone preparing for the ARE is welcome.

■ Annual Work Session

*Wed., July 14, 12:00 noon; AIA Chicago
Sponsor: Planning and Urban Affairs PIA*

At this meeting, we will collectively develop ideas and themes for presentations on urban planning and related topics about our built environment. The group will review and comment on past presentations as to their relevance, interest level and success. A particular focus will be on presentations that involve other PIAs and related agencies or groups. Bring lunch; beverages provided.

■ Current Trends in Fire-Stopping

*Thurs., July 15, 12:00 noon
Chicago Bar Assn.
321 S. Plymouth Court
Sponsor: Technical Issues PIA*

An overview of what a design professional should know about fire-stopping systems, methods and materials. Focus will be on where, when, how, and by whom fire-stopping systems or materials should be installed, recent trends, and current industry practices. Bill McHugh, executive director of Firestop Contractors International Assn., and other industry experts will speak. Bring lunch (no cafeteria service). 1 LU/HSW



■ Tour: City Hall's Green Roof

*Tues., July 20 and Thurs., July 22
9:15 a.m. sharp
121 N. LaSalle St.
(LaSalle Street entrance)
Sponsor: Environment PIA*

Back by popular demand! The first municipal green roof in the U.S. is on Chicago's City Hall. Learn how the city has documented the benefits of the vegetated roof: what plants grow well, what wildlife has moved in, and how well the roof mediates the urban heat island effect compared to the conventional roof over the county side of the building.

Note: sturdy shoes are required for the steep stair climb to the roof. Limited to 16 participants per tour; nonmembers accommodated if space is available. 1 LU/HSW



■ Home Concrete Home

*Wed., July 21, 5:30 p.m.
Evanston Public Library
1703 Orrington Ave.
Sponsor: Housing PIA*

Precast concrete houses can be beautiful, safe, durable, and economical. Dan Kolb, vice president of product development at



Prestress Engineering Corp., and Marty McIntyre, executive director of the Precast/Prestressed Producers of Illinois & Wisconsin, will introduce precast concrete, concentrating on interesting developments in the Chicago area. Single-family residences, townhomes and apartment projects will be discussed. Issues from cost saving ideas to fire resistance, insulation, faster construction and form liner design options will be covered briefly. 1.5 LU/HSW

■ Tour: OWP/P Architects

*Wed., July 21, 5:45 p.m.
111 W. Washington St., #2100
Sponsor: Young Architects Forum*

Charles Smith, AIA, principal of OWP/P and president of AIA Chicago, will lead a tour of the firm. Get a first-hand look at the projects and office culture of this highly successful firm founded in 1958. OWP/P is a leader in the education, corporate, retail/mixed-use, civic facilities, and healthcare markets. Preview the firm at www.owpp.com. Limited to 30 participants. 1 LU



■ Tour: Protecting Marshall Field & Company

*Mon., August 9, 12:00 noon sharp;
meet under clock at State and
Randolph streets
Sponsor: Historic Resources PIA*

Stephen Kelley, AIA, Wiss Janney Elstner, and Robert Score, AIA, McClier, will lead a tour of the cathodic protection installation at Field's as a follow-up to their January presentation. The group will be escorted to the 11th floor for a presentation and viewing of the terra cotta installation process. Hard hats and work boots must be worn. Limited to 25 participants. 1 LU/HSW



■ SPAN: Small Practice Architects Network



Wed., August 11, 5:45 p.m.
AIA Chicago
Sponsor: Young Architects Forum

Listen to a panel discussion hosted by Derrick Bennett and David Bradley, AIA of SPAN, Small Practice Architects Network. Find out what led these architects to take the leap of faith and start their own firms. Discuss the trials, tribulations and successes involved with maintaining your own firm. 1 LU

■ Hands-On Masonry Workshop



Wed., August 18
11:30 a.m. to 2:30 p.m.
Bus leaves from south entrance of Merchandise Mart
Sponsors: Young Architects Forum and Technical Issues PIA, IMI

Learn the fundamentals and challenges of bricklaying by building brick and concrete block mock-ups under the supervision of journeymen bricklayers at Local 21 IMI Training Center, 1950 W. 43rd St. See firsthand how the components of a cavity wall fit together, pick up a trowel and get the feel of the materials, or just watch and learn. This tour will also address technical issues related to masonry design and workmanship. IMI will provide trowels, lunches, and transportation to and from the Merchandise Mart. If driving, arrive at training center by noon. Wear jeans and work boots. Limited to 35 participants. 2 LU/HSW

■ Great Chicago Loop Flood: Mold Management



Thurs., August 19, 12:00 noon
Chicago Bar Association
312 S. Plymouth Court
Sponsor: Technical Issues PIA

What were the mold aftereffects of the Chicago flood of 1992? James Loring, PG, manager of environmental services with Engineering Consulting Services Ltd., will discuss this and other related matters. Definition of mold and health concerns associated with mold; types and causes of mold in buildings; preventing mold growth; and elimination of existing mold will also be discussed. Current regulations and litigation scenarios will be reviewed. Bring lunch (no cafeteria service). 1 LU/HSW

■ Tour: Cultural Center Now and Ahead



Wed., August 25, 5:30 p.m.
77 E. Randolph St.
Sponsor: Historic Resources PIA

What's new (and old) at the Cultural Center? Renovation, restoration and modernization are planned or underway, including improving accessibility; restoring decorative plaster and painting, as well as the two stained-glass domes; and modernizing the theater and a black box studio performance space. Julie Burros, AICP, director of cultural planning for the Department of Cultural Affairs, and Tim Samuelson, city historian, are the guides. Meet at 5:20 p.m. in the Visitor Center on the first floor inside Randolph Street entrance. Limited to 30 participants. 1 LU/HSW

Sign Me Up!

- 7/14 Annual Work Session
- 7/15 Current Trends in Fire-Stopping
- 7/20 Tour: City Hall's Green Roof
- 7/21 Home Concrete Home (Evanston)
- 7/21 Tour: OWP/P Architects
- 7/22 Tour: City Hall's Green Roof
- 8/9 Tour: Protecting Marshall Field's
- 8/11 SPAN: Small Practice Architects Network
- 8/18 Hands-On Masonry Workshop
 Bus Own Transportation
- 8/19 Great Chicago Loop Flood: Mold Management
- 8/25 Tour: Cultural Center Now and Ahead

Register online at www.aiachicago.org

Name _____

Office _____

Address _____

City _____

Phone _____

E-mail _____

All programs listed above are free or as noted for AIA Chicago members. Non-members will be charged \$10 per program or as noted.

Method of Payment

- Check
- American Express Visa MasterCard

Credit Card No. _____

Expiration Date _____

Name on Card _____

Signature _____

Fax to:
AIA Chicago
312/670-2422



Mann, Weitz & Associates L.L.C.
CPAs & Business Advisors

Experts in the Industry – Servicing Architectural Firms for Over 25 Years

A Sample of the Services We Offer

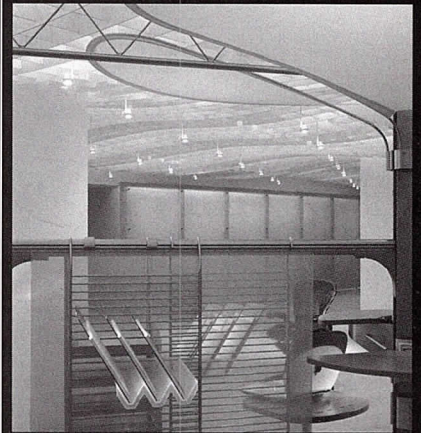
- Tax Preparation
- Tax Planning
- Business Consulting
- Profit Enhancement
- Audits, Reviews and Compilations
- Outsourcing Accounting Services

In addition, we provide:

- *Access to partners and senior professionals*
- *Timely responses*
- *Business consulting to improve your bottom line*

Contact Mark Mann at Mann, Weitz & Associates L.L.C.
108 Wilmot Road, Suite 110, Deerfield, Illinois 60015
Phone: (847) 267-3400 Fax: (847) 267-3401
Email: info@mannweitz.com or visit us at www.mannweitz.com

TO US, THERE'S NO SUCH THING AS FOUR WALLS AND A FLOOR.



Herman Miller National Showroom

**THEATRE PLANNERS
LIGHTING DESIGNERS
Schuler Shook**



Chicago - 312-944-8230

Minneapolis - 612-339-5958

Dallas - Fort Worth - 817-461-5442

schulershook.com

All Styles Merrillat Kitchens



At Cost
Absolute!

With purchase of 1 1/4 inch granite counters at \$150 per linear foot installed. Any faucet and undermount sink also at our cost. We fabricate and install – no subs.

Special!
No Glue

Columbia Classic Clic-Laminate Flooring with silent walk pad at a delivered price of \$3.15 per sq. ft. Lifetime Warranty – Water Resistant.

KOHLER PLUMBING FIXTURES & FAUCETS AT COST

What can we do for you? Call
Don – Merrillat Kitchens (773) 564-4313

Architect/Project Manager

Architect/Project Manager:

Real Estate Development Management firm seeks Architect/Project Manager with minimum 5 years experience to perform Owner's Representative Services for private and public projects. Competitive salary and benefit package.

Email: jfboyle@aol.com or fax resume and salary requirements to 312-274-0965.

No phone calls!

Exceptional
Outstanding
Excellent

You are invited to enter the 2004 Professional Excellence Awards competition of AIA Chicago.

The awards program includes the following categories:

- Dubin Family Young Architect Award
Firm Award
Distinguished Service Award

Detailed guidelines for each award will be sent upon receipt of the form below.

The awards will be presented at the Chapter's annual meeting in December, and the winners will the subject of an article in Focus.

For more information contact Joan Pomaranc, Program Director, at pomarancj@aiachicago.org or 312/670-7770.

Dubin Family Young Architect Award — The purpose of this award, which was established in 1983, is to recognize excellence in ability and exceptional contributions by Chicago area architects between the ages of twenty-five and thirty-nine. In 2003, the Young Architect Award was renamed the Dubin Family Young Architect Award. Thanks to the generosity of M. David Dubin, FAIA, this award has been endowed with a cash prize in recognition of Mr. Dubin's half-century of membership in the AIA. The award may be given for exceptional work in a specific area of architectural practice or for general excellence in a wide range of architectural activities. It is intended to recognize accomplishments in areas including design, management and technology. The jury will consider contributions to team activities and will rely heavily on recommendations in its evaluative process.

Deadlines — Intent to enter: August 5, 2004. Completed submission: September 23, 2004. Fees — There is no entry fee in this category. The entry form should be accompanied by one letter of nomination written by a member of AIA Chicago. Nominations — Nominations will include a brief biography of the nominee, description of accomplishments, and recommendations from at least two individuals familiar with the nominee's work. Individuals may nominate themselves. Nominees must live or work in the Chicago metropolitan area and be between 25 and 39 years of age on May 1, 2004. Membership in AIA Chicago is required.

Firm Award — The Firm Award was established in 1991 to recognize outstanding achievements by a firm, excellence in the body of work produced by a firm over a period of time, and the ongoing contributions of the firm to the advancement of the architectural profession. Firms must be a member of AIA Chicago. Successor firms may be considered, as long as the collective body of work presented is that of a majority of the remaining principals. The entire history of the firm will be examined, but particular attention will be given to the work and achievements of the past three years. Deadlines — Intent to enter: August 12, 2004. Completed submission: September 21, 2004. Fee — \$100. Nominations — Nominations will include a history of the firm; areas of practice; significant projects; biographical information on principals; graphics of representative work; list of awards, honors, or other recognition received by the firm; and list of books, articles, or publications written about the firm's work or professional contributions. Published materials written by the firm may be included.

Distinguished Service Award — Since 1955, the Board of Directors of AIA Chicago has recognized individuals and organizations who have given outstanding service to the Chicago architectural community as a whole, including service to the profession, public service, and education. This award is not necessarily presented every year. Individuals, associations, AIA Chicago members, and members of the Chicago community at large are eligible for this award. Past honorees have included architects, craftsmen, educators, authors, journalists, and organizations of various types. Nominations may be made by any AIA Chicago member. Deadlines — Intent to enter: August 19, 2004. Completed submission: September 14, 2004. Fee — There is no entry fee in this category. Nominations — Nominations will include biographical or historical information; descriptions and illustrations of significant projects; list of awards, honors, or other recognition received by the individual or organization; published materials written about the individual or organization. Published materials written by the individual or organization may be included.

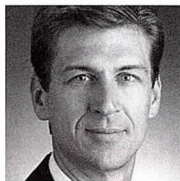
I am entering the following number of entries:

- Dubin Family Young Architect (nomination letter enclosed)
Firm (\$100 entry fee enclosed)
Distinguished Service

Return this form to AIA Chicago at 222 Merchandise Mart Plaza, #1049, Chicago, IL 60654-1103 or fax to 312/670-2422.

Name
Firm
Address
Telephone number Fax number E-mail
Method of Payment
[] Check enclosed (payable to AIA Chicago)
[] Credit Card: [] American Express [] Visa [] MasterCard
Credit card number Expiration date
Name on card Signature

A Convergence of Intellect, Leadership and Passion



As I write this quick, post-convention note, the industry buzz is still humming, albeit with a little moisture added. Chicago

provided an architectural calling card for the convention and we set a record for attendance. The immediate feedback from our own chapter members and others around the country was extremely positive sprinkled with valuable advice for future host chapter cities.

AIA Chicago was able to host this wonderful convergence of intellect, leadership and architectural passion because of our valuable sponsors and indispensable volunteers. Our design/development/construction industry is closely knit, and I'm constantly amazed at our ubiquitous support of each other. The companies and individuals listed on this page rose to the top, providing the financial and planning resources that enabled AIA Chicago to act as a host like no other city. The major events such as the tours, host chapter party, Dining By Design, and 5K fun run, among others, were made possible by their generous contributions. Our keystone sponsors (listed in alphabetical order) deserve special recognition.

This mid-summer edition of *Focus* marks the halfway point in a year that is becoming a truly memorable architectural experience. Not only is the convention a milestone, but so is the recent significance of built work in Chicago, the growing recognition of our talented local architects and re-emerging emphasis that the Chicago public places on architecture's impact to their lives. Enjoy the summer and rest assured that our industry partners are vested in the state of Chicago's architectural success.

Charles Smith, AIA
President

Keystone Partners

Cold Spring Granite
Mr. Richard H. Driehaus
Leopardo Construction Inc.
Lightology
McGraw-Hill Construction
Mesirow Financial
Petersen Aluminum Corp.
Pepper Construction Company
Skidmore, Owings & Merrill
Thornton-Tomasetti Group
Turner Construction Co.
AIA Chicago Large Firm Roundtable
DeStefano and Partners
Holabird & Root
Legat Architects
Lohan Caprile Goettsch Architects
McCluer
Murphy/Jahn
OWP/P
Skidmore, Owings & Merrill
VOA Associates

Sponsors

a/e ProNet
Alter + Care
Aria Group Architects
Bulley & Andrews
Camino Modular Systems
Camosy
Chicago Automobile Trade Association
Christopher B. Burke Engineering
Clayco Construction
Clune Construction
Cushing & Color Chicago
Custom Contracting
Daniel P. Coffey & Associates
Desks Inc.
Digital Imaging Resources
Environmental Systems Design
Euclid Insurance Services
Gaines International
HACIA
Halverson Kaye Structural Engineers
Henneman Raufeisen and Associates
Herman Miller
Hinshaw & Culbertson, Attorneys at Law
Hobbs Group/AVA Insurance Agency
HOK
Illinois Brick
Image Fiction

International Masonry Institute
Kirkegaard & Associates
Knoll
K.R. Miller Contractors
LaSalle Bank
Magnusson Klemencic Associates
Masonry Advisory Council
Monterey Carpets/Tandus Group
Okrent Associates
Palmer & Cay
Parenti & Raffaelli
Piper Rudnick
The Rise Group
RWDI
Schuler & Shook
Solomon Cordwell Buenz & Associates
Urban Works
USG
V3 Consultants
Walsh Construction
W.E. O'Neil Construction Co.

Tour Guides

A special thanks goes to docents of the Chicago Architecture Foundation for leading many of the 50 tours held during the convention. The following guides were recruited by AIA Chicago and volunteered their valuable time to plan and lead some of the more specialized tours.

Rolf Achilles
Janet Attarian, AIA
Julia Bachrach
Joe Caprile, AIA
Ken DeMuth, AIA
Dave Galloway, AIA
Holly Gerberding, AIA
Gil Gorski
Sharon Hall
Kevin Hall, AIA
Kevin Harrington
Bill Hinchliff
Mark Hirons, AIA
Tom Hoepf, AIA
Troy Hoggard, AIA
David Hovey, FAIA
Walker Johnson, FAIA
Marc L' Italien, AIA
Peter Landon, FAIA
Chris Lee, AIA
Dennis McClendon
John Notz
Larry Okrent

GREEN

BIG & GREEN CHICAGO

**Toward sustainable architecture
in the 21st century**

Exhibition on view
June 1–September 12

224 SOUTH MICHIGAN AVENUE
312.922.3432
WWW.ARCHITECTURE.ORG

Sponsors



City of Chicago
Richard M. Daley, Mayor



GRAND VICTORIA
FOUNDATION

City of Chicago Department of Environment
Illinois Department of Commerce and Economic Opportunity
Illinois Clean Energy Community Foundation
Graham Foundation for Advanced Studies in the Fine Arts

- Tim Samuelson
- Laura Saviano
- Peter Schlossman, AIA
- Michael Shymanski, AIA
- Rael Slutsky, AIA
- Travis Soberg
- Will Tippens
- Ed Torrez, AIA
- Trish VanderBeke, AIA

On-Site Volunteers

- Darrel Babuk, AIA
- Amanda Beelman
- Olga Borovski
- Lara Brown
- Tasneem Chowdhury
- Susanna Craib-Cox
- Chris Curran
- Sam Dammers, AIA
- Peter Exley, FAIA
- Huili Feng
- Agnes Garbacz
- Jennifer Gomez
- Jennifer Gremski
- Michael Heider, AIA
- Myung-Joo Kim, AIA
- Carol LaMar, AIA
- Erik Martin, Assoc. AIA
- Scott MacDonald
- Sara Miller
- Ann Minniar, AIA
- Victoria Navarro, Assoc. AIA
- Barry Praeuner, Assoc. AIA
- Ramu Ramachandran, AIA
- Melissa Roberts, AAI
- Deborah Saad, Assoc. AIA
- Jeff Saad
- Lori Schroeder
- Matthew Seganik
- Helena Slosar
- Camille Sylvain
- Eric Sundman
- Terry Tatum
- Brett Taylor, AIA
- Beverly Urschel
- Wesley Urschel
- Tim Vacha, AIA
- Suzanne Von Leuschner, Assoc. AIA
- Chuck Wittleder
- Brian Zielinski

NeoCon® SHOWS

North America's largest collection of
expositions and conferences for interior design
and facilities management ...

NeoCon® World's Trade Fair
June 13-15, 2005
The Merchandise Mart • Chicago, Ill.

IIDEX®/NeoCon® Canada
September 30-October 1, 2004
The National Trade Centre
Toronto, Ont.

NeoCon® East
October 6-7, 2004
Baltimore Convention Center
Baltimore, Md.

NeoCon® West
March 9-10, 2005
L.A. Mart®
Los Angeles, Calif.

www.merchandisemart.com 800.677.6278

Outdoor Exhibits Showcase Design Talent

This summer three different venues in the city and suburbs are displaying whimsical outdoor art that includes work by architects. On view at the Morton Arboretum in Lisle through September 26 are a dozen "InTREEging Treehouses." A May 7 cover story in the *Chicago Tribune* illustrated the entries of Frye Gillan Molinaro, Gensler, and David Woodhouse Architects. Other winners of the competition that was held this spring are Scape Design Associates with Landahl Design Group, and a team from Teng Associates that includes Tom Hoepf, AIA. To see all 12 winning designs, go to www.mortonarb.org.

The grounds of the Ravinia Festival in Highland Park will be adorned with 11 life-size carousel horses, embellished in the spirit of "Cows on Parade." Teams from Powell/Kleinschmidt and Krueck & Sexton each contributed a design. Ravinia's centennial season will close on September 12 with a carousel-themed performance and a live auction of the horse sculptures. The Web site is www.ravinia.org.

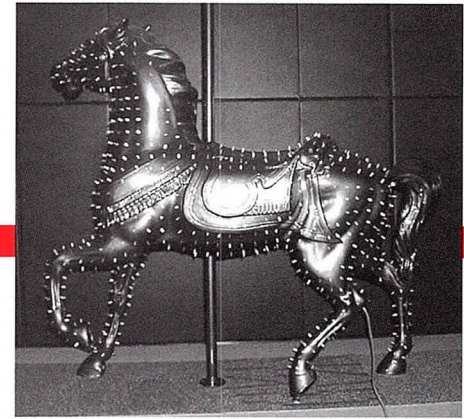
This spring the Chicago Department of Cultural Affairs invited artists, architects and designers to create

birdhouses or bat houses for display in the Clarke House Museum and throughout the grounds of the adjacent Chicago Women's Park and Gardens, 1827 S. Indiana Ave. Participating Chapter members include Kevin Pierce, AIA, Gerardo Fitz-Gibbon, AIA, Doug Garofalo, FAIA, and Gregory Thomas, AIA. The museum is open Wednesdays through Sundays from noon to 3:00 p.m. and the park is open daily from 8:30 a.m. to 10:00 p.m. "For the Birds" opened on June 15 and continues through October 15. The Web site of the Chicago Office of Tourism is www.877chicago.com.

Chicago GreenWorks Awards

Winners of Mayor Daley's GreenWorks Awards were announced at the US Green Building Council Chicago Chapter's inaugural Emerald Gala on May 8 at the Field Museum. This is the first year for the awards, which recognize sustainable design excellence in one residential and one non-residential project.

The residential honor went to Sanctuary Place, affordable supportive housing for homeless women with special needs, designed by Farr Associates for Interfaith Housing Development Corporation. Given the very tight budget, the design features innovative yet proven green



"Moonlight Sonata" by Powell/Kleinschmidt

technologies that include solar energy for water heating, a super-efficient elevator, fresh air heat exchange, and high insulation values.

The non-residential winner was the Center for Neighborhood Technology, a renovation by Boyer Associates that was featured in the March issue of *Focus*. The Center was the first privately-owned building in Chicago to be certified at the LEED Platinum level, and was done on the stringent budget of \$75 per square foot.

Members Choose Best of the Best

Chicago's streetscape has evolved dramatically since 1993, when the city last hosted the AIA national conference. To mark the occasion, the Chapter surveyed our members to find out their opinions on the "best of the best" in Chicago architecture. In all, 338 architects shared their views on what stands out in the city today. The top three responses in each category are listed below.

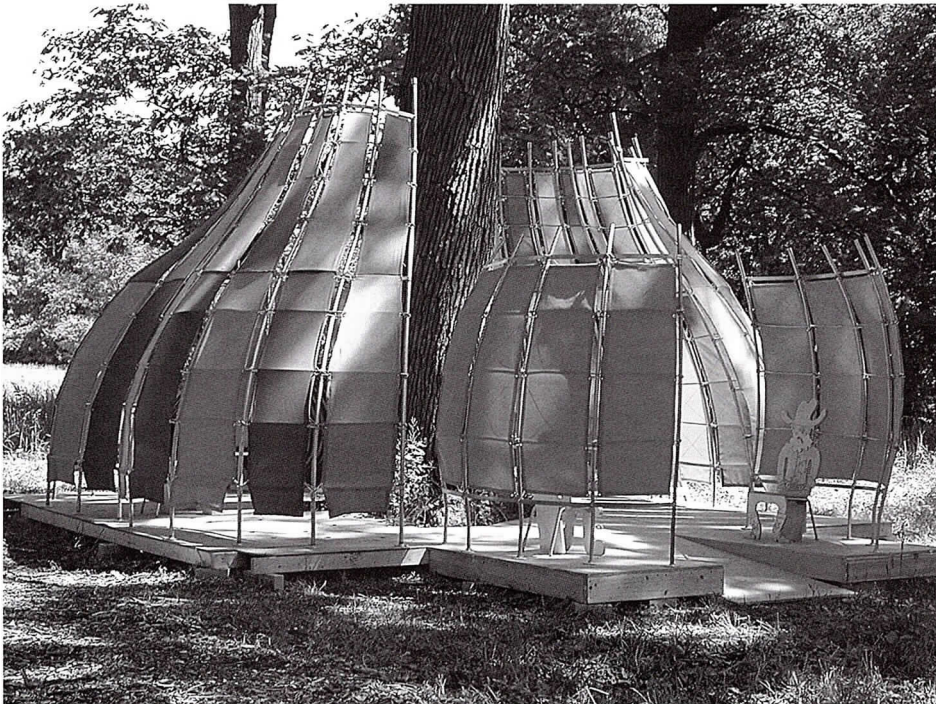
At press time for this issue of *Focus*, local media coverage of the survey was exceptional. The *Chicago Sun-Times* and the online edition of *Crain's Chicago Business* ran the results, as did the Springfield *State Register-Journal*. WBEZ radio featured a news brief on the survey in local news breaks during "All Things Considered" on Friday, June 11, and WTTW included a segment on "Chicago Tonight" on Tuesday, June 15.

What is the best new building in Chicago in the last 10 years?

- Sofitel Chicago (28%)
- Skybridge (18%)
- State Street Village (Dorm) at IIT (16%)

What is the best preservation or re-use of an existing building in Chicago in the last 10 years?

- Hotel Burnham/Reliance Building (48%)
- Bloomington's Home Store/Medinah Temple (17%)
- Soldier Field (16%)



"Kaleidoscopic Dreamhouse" by Frye Gillan Molinaro



What is the most overlooked (but centrally located) architectural treasure?

- Alfred Caldwell Lily Pool in Lincoln Park (36%)
- Upper floors of the Fine Arts Building (19%)
- Lobby of 360 N. Michigan Ave. (9%)

What is the hottest new project in the works?

- Millennium Park (52%)
- Trump International Hotel & Tower (13%)
- Tree Studios Renovation (7%)

What is the best indoor public space?

- The Rookery (42%)
- Chicago Cultural Center (18%)
- Garfield Park Conservatory (16%)

What is the best outdoor public space?

- Buckingham Fountain (31%)
- Museum Campus (18%)
- Daley Plaza (16%)

Where can you see the best view of the Chicago skyline?

- Adler Planetarium/Solidarity Drive (38%)
- Boat on Lake Michigan (32%)
- (Ties for third place included: portions of North and South Lake Shore Drive, the intersection of Halsted Street and Chicago Avenue, and Navy Pier.)

What is your favorite embellishment on a Chicago building?

- Carson Pirie Scott entrance (47%)
- Lions at the Art Institute (18%)
- Ceres Sculpture atop the Board of Trade (14%)

What is the most significant building outside the central city?

- Robie House in Hyde Park (32%)
- Farnsworth House in Plano (28%)
- Crown Hall on the campus of IIT (17%)

HOW DO YOU GET TO THE LEADING EDGE OF
HOME AUTOMATION, HOME THEATER,
COMMUNICATIONS, LIGHTING, AND
ENVIRONMENTAL CONTROL
TECHNOLOGY?

Follow us!
Before you put pencil to paper, contact Eric Schmidt – president,
and give your clients exactly what they want. Perfection.

SOUND & VISION

ARCHITECT CONSULTATION, DESIGN, INSTALLATION, PROGRAMMING AND SERVICE
530 EXECUTIVE DRIVE, WILLOWBROOK, IL 60527 • 630.242.4600
WWW.SOUNDANDVISION.NET

Bathrooms
with the Ultimate Finish.

Kitchens
with the Finishing Touch.

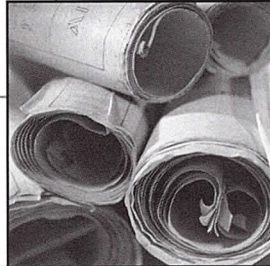
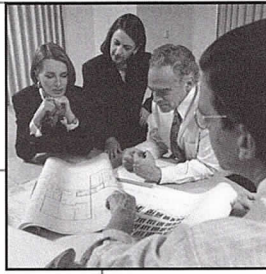
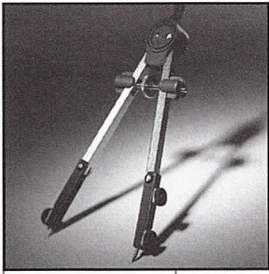
Advantage kitchen & bath
Gallery
Find it Here.

Mon & Thurs: 8am-8pm
Tues, Wed & Fri: 8am-5pm
Sat: 9am-4pm

847-965-4444
advantagebath.com

7 8 5 0
N O R T H
M I L W A U K E E
A V E N U E
N I L E S
I L L I N O I S

FIND IT HERE.



- Specialists in protecting the designs of architects, engineers and land surveyors for 25 years
- A recognized leader in providing risk management solutions for architects, engineers and land surveyors
- A full-service agency with coverages that range from health and life to employers' professional liability
- The world's 10th largest insurance broker



hilb rogal & hobbs™

AVA Insurance Agency

AVA Insurance Agency

For more information contact your local office at 847-517-3453

or visit www.hrh.com

PROBLEM SOLVED.™

ARCHITEMPS, INC.®

ARCHITEMPS, INC. – the Architectural & Interior Design staffing specialists, serving greater metropolitan Chicago since 1986.

Quality staffing, service and solutions:

- Design/Production Drafters
- Facility Planners
- CAD Architects/Interior Designers
- Project Managers

Our billing includes all employer liability:

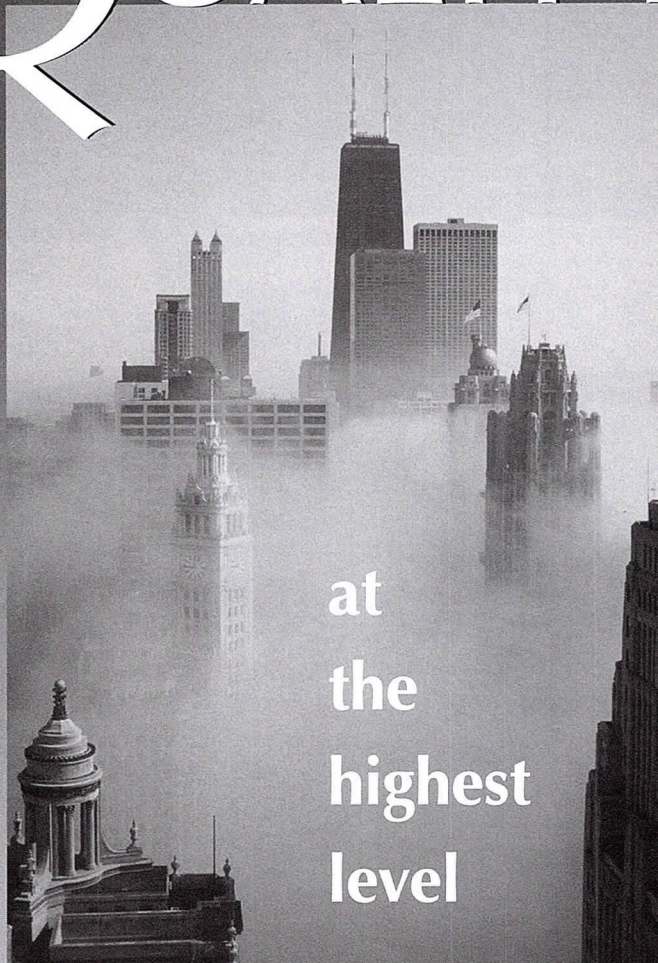
- Payroll Administration
- Employee Benefits
- Government Compliance
- State & Federal Tax Remittance
- Workers' Compensation Coverage

ARCHITEMPS, INC.®
 1050 North State Street
 Chicago, IL 60610-7829

Tel: 312.649.0912
 Fax: 312.649.1667
architemps@sbcglobal.net
www.architemps.com

Architectural, interior design and facility planning personnel on a per-project basis. Direct hire conversion and direct placement available. Call today for information on our staffing services or employment opportunities.

QUALITY



at
the
highest
level

...that's what we strive for on every project, and that's the principal reason we've become Illinois' largest HVAC contractor. We're proud to have served Chicagoland for 67 years, and also proud that design-build and assist design-build represent more than one-third of our annual volume. By designing cost-effective, efficient mechanical systems, our team of 30+ graduate engineers and their proven design-build methods help set Chicago's standard for quality ... at the highest level.



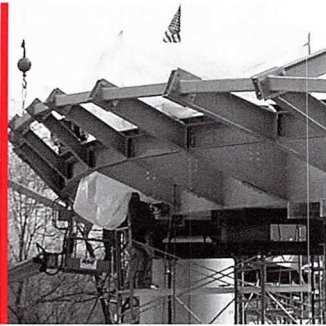
HILL MECHANICAL GROUP

www.hillmech.com

See for yourself — click on "PROJECTS" at www.hillmech.com, and while you're there take a video tour of our shops.

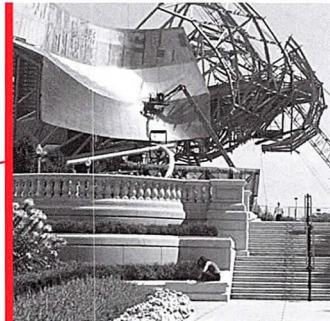
Beyond the Bandshell





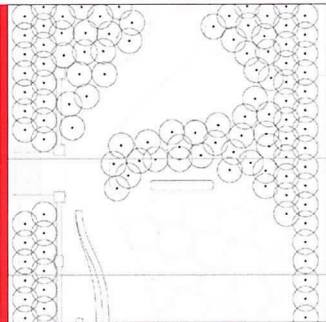
BP Pedestrian Bridge

Gehry Partners
Structural Engineer: Skidmore, Owings & Merrill



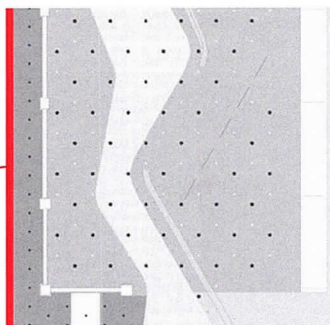
Jay Pritzker Pavilion, Trellis and Great Lawn

Gehry Partners
Structural Engineer:
Skidmore, Owings & Merrill



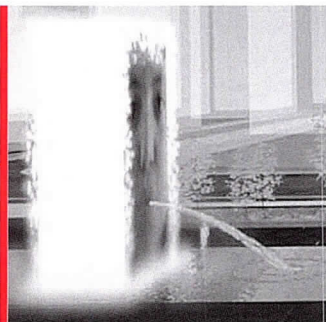
North Terrace

Garofalo Architects with
Xavier Vendrell Studio



South Terrace

Garofalo Architects with
Xavier Vendrell Studio



Crown Fountain

Jaume Plensa, artist
Krueck & Sexton

Opening Events

The long-awaited public opening of the park will be celebrated with a series of events beginning the weekend of July 16 through 18. The days will be filled with music, dancing, tours and activities, and each evening there will be a concert in the Pritzker Pavilion by the Grant Park Orchestra and Chorus. For a complete list of events, go to www.cityofchicago.org/ExploringChicago.

On Friday, July 23, the Architecture and Design Society of The Art Institute of Chicago and Millennium Park, Inc. are hosting a three-part symposium, *Millennium Park: Landscape, Art & Architecture*. Participants include Frank Gehry, FAIA, Thomas Beeby, FAIA, Blair Kamin, Jaume Plensa, Anish Kapoor, Mark Sexton, AIA, Ed Uhlir, FAIA and the designers of the Lurie Garden. The cost is \$25 for each panel discussion or \$60 for all three (\$20/\$50 for Society members) and tickets can be ordered by calling 312/443-7300 or emailing archsoc@artic.edu.

A Grand Opening Gala produced by Jam Productions will take place on July 24. Go the City's Web site for details.

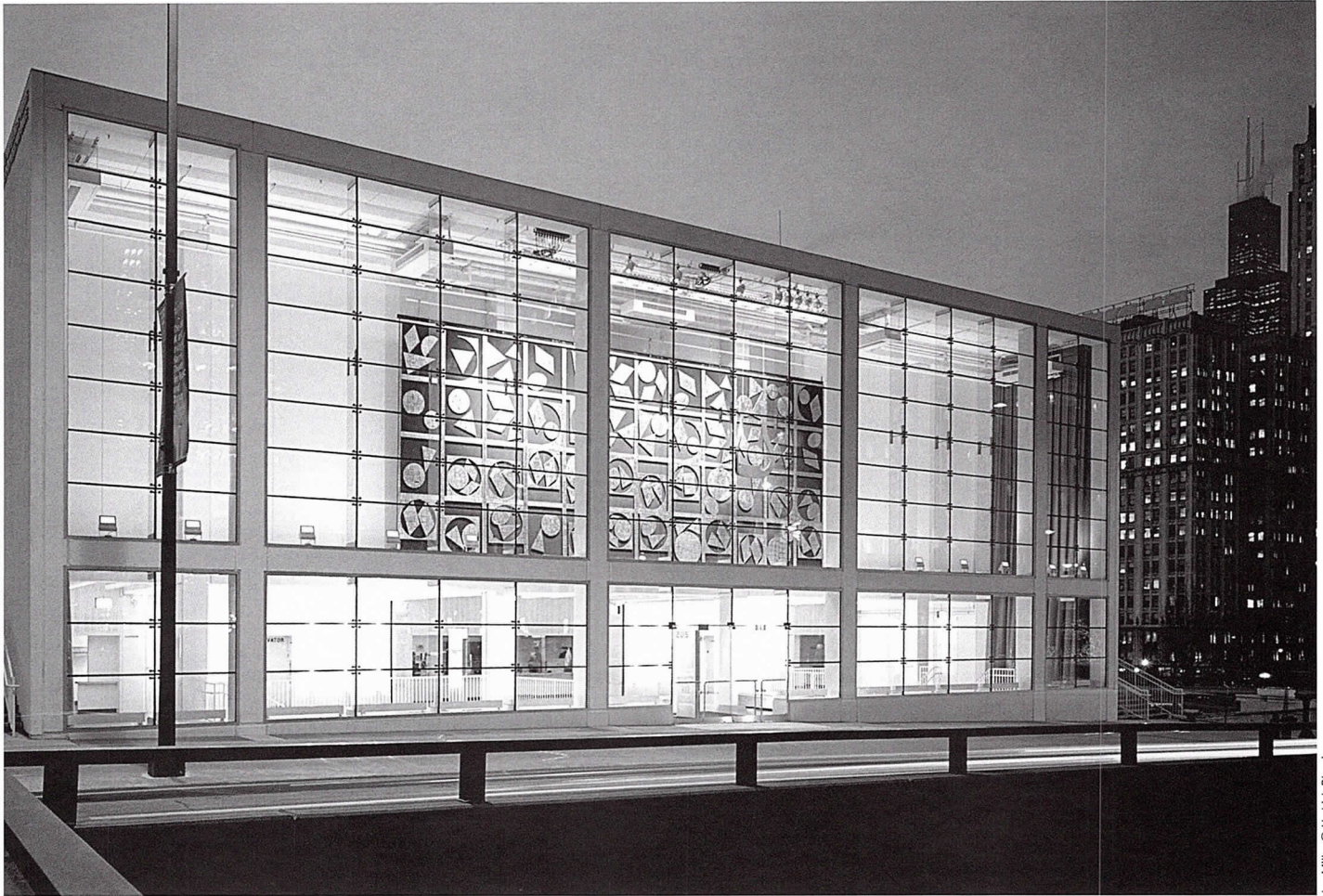
Beyond the Bandshell
Continued from page 17

**Joan W. and Irving B. Harris Theater for
Music and Dance**

Hammond Beeby Rupert Ainge

The bulk of the 1500-seat theater is hidden below the park space, with the entry pavilion serving as a signboard for the attractions within. The lobby and theater are in the center of the building, with a five-story support wing on the east side containing dressing rooms, rehearsal rooms, and offices; and a two-story wing on the west side for the loading dock and mechanical areas. There are pedestrian entrances

on Upper and Lower Randolph streets and an entrance from the parking garage, all served by a multi-level lobby. Backstage space is shared with the Pritzker Pavilion, whose summer performances take place when the dance theater is dark.

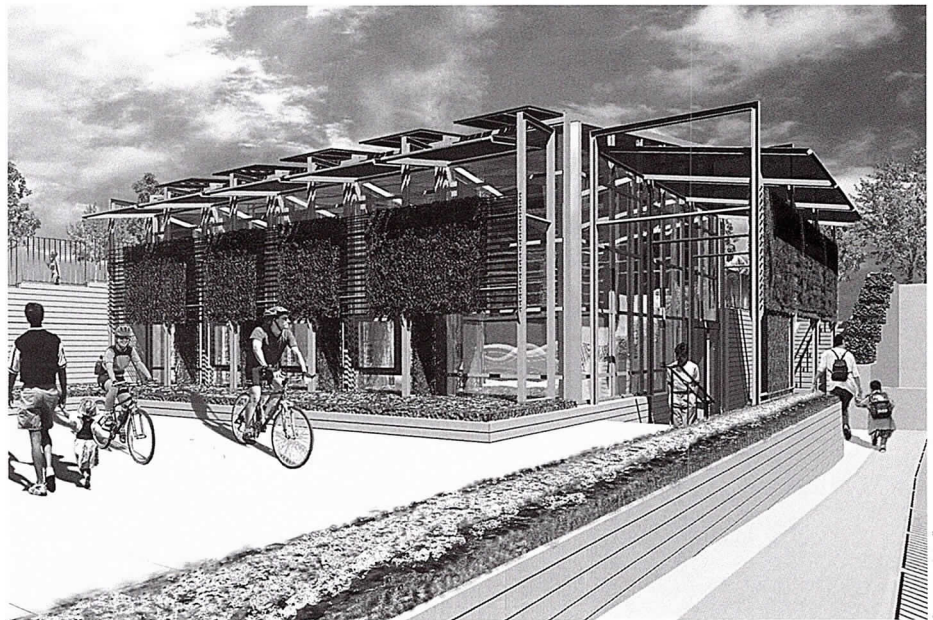


Jon Miller © Hedrich Blessing

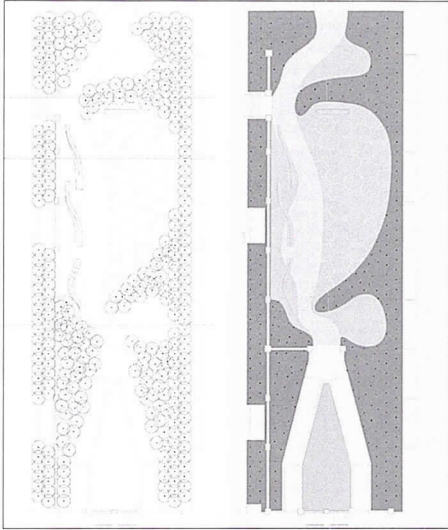
Bicycle Station

Muller & Muller Architects

A glassy atrium pavilion gives a street presence to this multi-level facility, most of which is below grade. It provides bicycle commuters with secure bike parking, showers, lockers, and a café and also serves as the Chicago Police Bicycle Patrol Headquarters. The energy-efficient skin of the atrium permits natural ventilation and features rooftop photovoltaic collectors, fabric awnings and shading louvers that will support climbing vines.



Courtesy of the firm

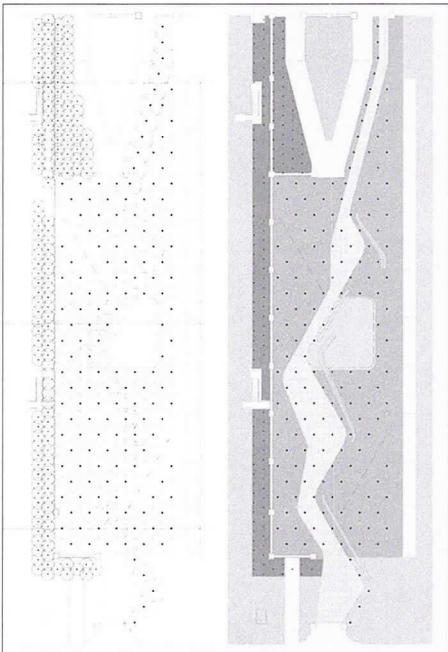


Skidmore, Owings & Merrill

Jay Pritzker Pavilion, Trellis and Great Lawn
 Gehry Partners
 Structural Engineer: Skidmore, Owings & Merrill
 Interior furniture and furnishings: Environ HarleyEllis

The bandshell and bridge are the scene-stealers at the park, with their dramatic design and huge dimensions. The Pavilion includes a 95,000-square-foot lawn area and an outdoor auditorium with 4,000 fixed seats. The stage itself can be enclosed to provide a party facility in inclement weather. Environ HarleyEllis has designed several amenities for the park, including a demountable access barrier system to encircle the Great Lawn during special events. The pedestrian bridge that snakes across Columbus Drive is 925 feet long.

BP Pedestrian Bridge
 Gehry Partners
 Structural Engineer: Skidmore, Owings & Merrill
 Electrical Engineer: OWP/P

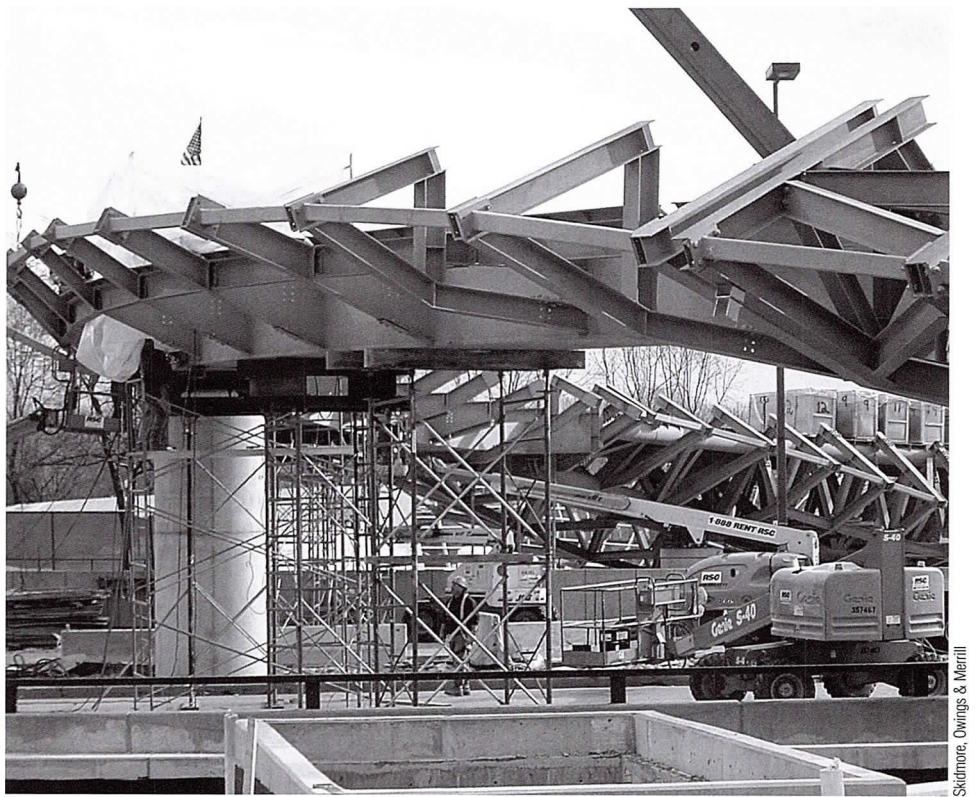


Courtesy of the firm

North and South Terraces
 Garofalo Architects with Xavier Vendrell Studio

The terraces are the most recent programmatic addition to the park and are scheduled for completion in 2005. The design intent is to create outdoor rooms for quiet relaxation, one mostly in shade and the other open to the sky. Each is defined on the west by a wall of ginkgo trees, and each will feature a custom-designed system of curvilinear benches, the profiles of which will subtly change from sitting to reclining to sitting. In-ground lighting will accentuate the differing geometries of each terrace.

The North Terrace will offer an undulating grassy carpet for lounging, surrounded by a dense grouping of cypress to define the curving space. The South Terrace will have a canopy formed by a grove of hawthorn trees, complemented by cherry trees that bloom and change color at a different time.



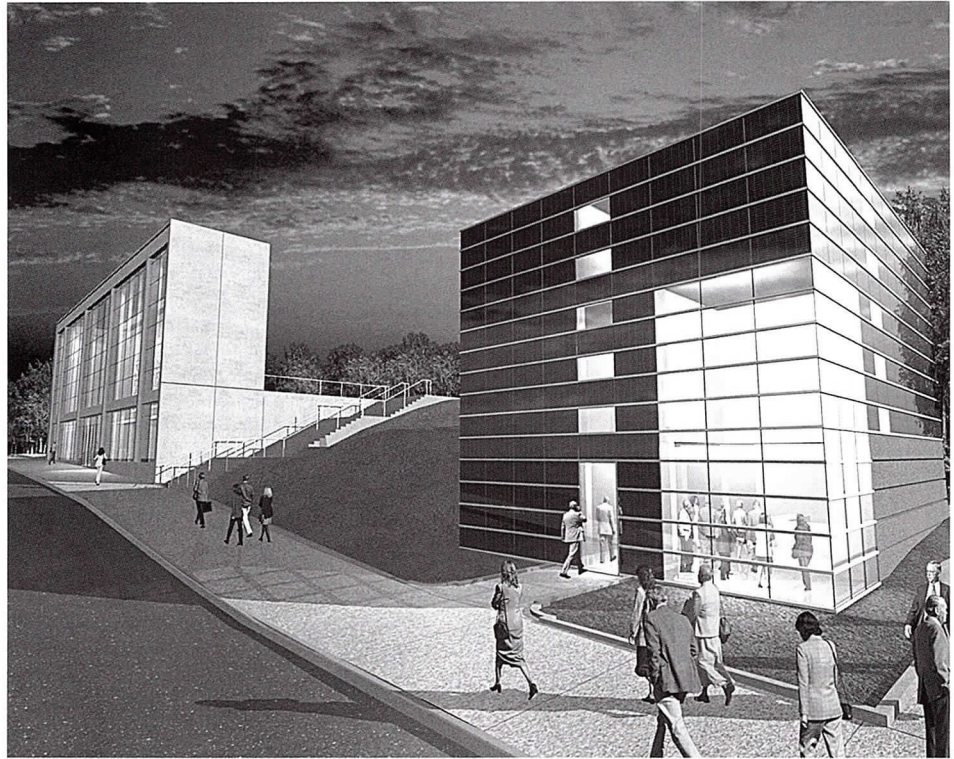
Skidmore, Owings & Merrill

Beyond the Bandshell
Continued from page 19

Exelon North Pavilions

Hammond Beeby Rupert Ainge

Flanking the Music and Dance Theater, a pair of black glass cubes will showcase renewable energy as well as provide access to the underground garage. The exterior cladding, photovoltaic panels glazed into a curtain wall system, will be one of the largest "building integrated" photovoltaic projects in the country. The pavilions will provide office space, transportation access, and display/information zones for the Chicago Park District and the Exelon Corp.



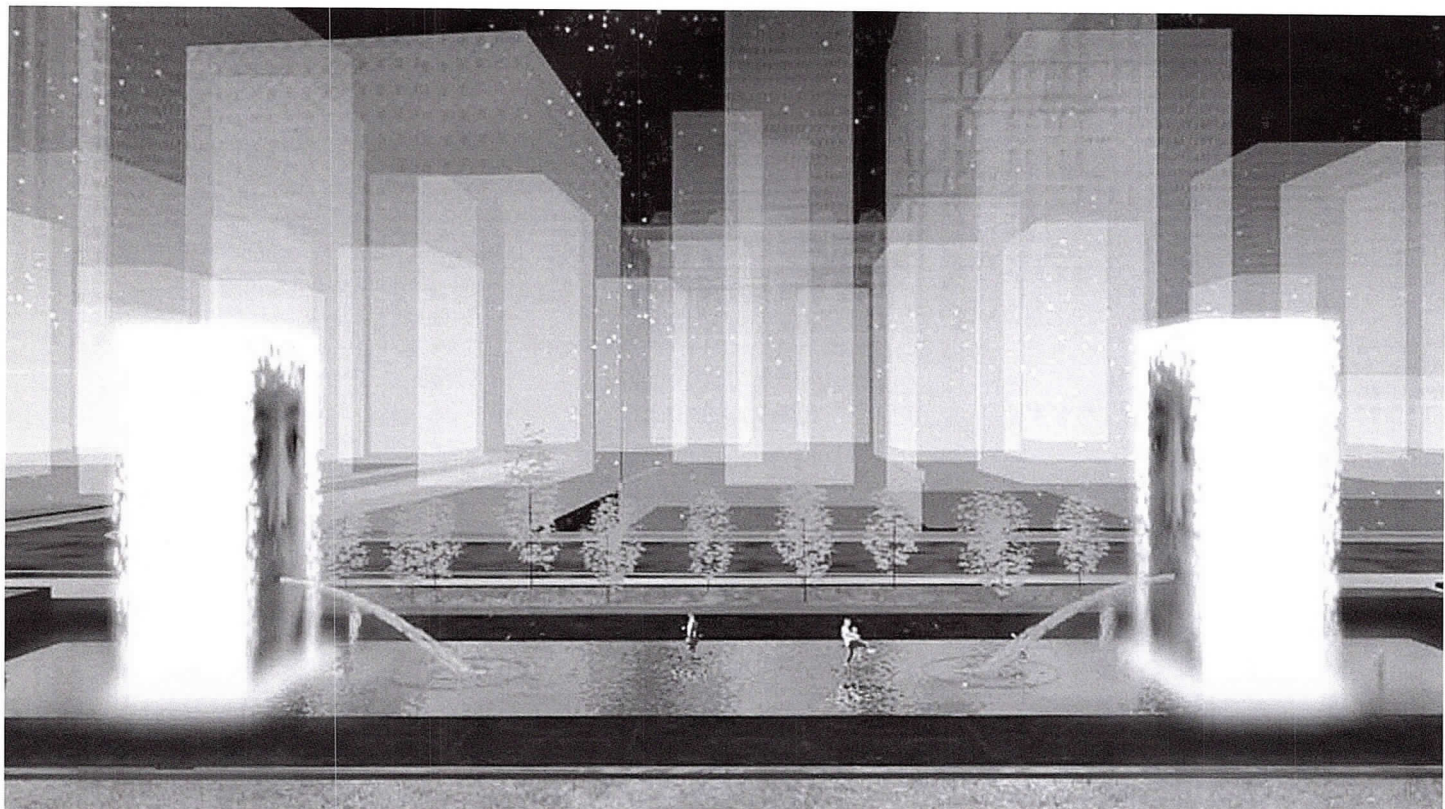
Wrigley Square and Peristyle

OWP/P

Engineering of base structure: Skidmore,
Owings & Merrill

Officially named Millennium Park Monument, the peristyle is a slightly smaller replica of the original, which was designed by Edward Bennett and stood here between 1917 and 1953. The first of the park's major features to be completed, its base is inscribed with names of major donors.





Courtesy of the firm



Brian Fritz Photography

McCormick Tribune Ice Rink/Plaza
 Skate Rental Facility and Restaurant/Storage
 Infrastructure
 Skidmore, Owings & Merrill (schematic design)
 OWP/P

The 16,000-square-foot ice rink becomes an open-air dining plaza in the warmer months. Skidmore, Owings & Merrill designed the façade and Aria Group Architects was responsible for the interior of the restaurant.

Crown Fountain
 Jaume Plensa, artist
 Krueck & Sexton

Krueck & Sexton is leading a design and engineering team that will realize the Spanish artist's concept in innovative materials. A pair of 50-foot-high towers contains LED video screens and water pumping equipment wrapped in translucent glass brick. As faces of Chicagoans appear on the screens, water will seem to spout out of their mouths and then sheets of it will cascade down over the images onto the plaza, creating a thin film of water through which people can walk.

Additional Public Spaces

SBC Plaza and Sculpture
 OWP/P coordinated the structural support requirements for the 110-ton sculpture by artist Anish Kapoor, which sits atop the restaurant and garage.

Bank One Promenade
 Skidmore, Owings & Merrill
 The three-block-long promenade provides a space for events such as book fairs, garden shows, ethnic festivals, exhibitions and family events.

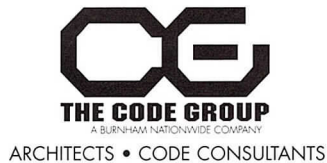
Exelon South Pavilions
 Renzo Piano with McDonough Associates
 The pavilions of steel, glass and limestone will offer access to the underground garage. They are designed to complement the planned Art Institute addition across Monroe Street, scheduled to open in 2008. Photovoltaic panels will be located on the roof.

Lurie Garden
 Gustafson Guthrie Nichol
 Kathryn Gustafson, a partner with the Seattle-based landscape architecture firm, collaborated with Los Angeles-based theater set designer Robert Israel and Dutch garden designer Piet Oudolf. A 15-foot-high "shoulder" hedge encloses the space on the north and west, and a wooden walkway follows a water feature that slices a diagonal path between a perennial garden and a grove of cherry trees.

Perform
inside the
code...

and
outside
the box.

When you have questions about building code, call **The Code Group**. We provide answers, guidance and insight based on years of experience in building code interpretation and precedent.



Consulting services include:

- Preliminary Zoning and Building Code Analysis
- ADA, Fair Housing, Section 504
- Fire/Life Safety Evaluations
- Occupancy Placards
- Evacuation Route Diagrams
- Environmental Performance Standards
- Municipal Plan Review
- Local Architect Representation
- Expert Witness Service

Architectural / CAD Services

- Commercial
- Residential
- Remodeling

For more information contact

Christopher Chwedyk, AIA
111 W. Washington St.
Suite 450 • Chicago IL 60602
312-673-1503

First Impressions Count



Image
Grille SDS

Presentation Graphics
Digital 3D Architectural Rendering
Layout
Modeling
Animation

847-214-8283

920 South Waukegan Road, Lake Forest, Illinois 60045

www.imagegrille.com

Chicago Wilderness: A Green Framework for 21st Century Planning

By Peter Kindel, AIA, ASLA

For more information, visit
www.chicagowilderness.org

Observant architects with an eye towards ecology may have come across a striking publication in area bookstores entitled *Chicago Wilderness*. This richly illustrated quarterly is the public face of a remarkable organization of the same name, a regional network dedicated to the preservation and expansion of Chicago's open spaces, nature preserves and parks.

Chicago Wilderness, an unprecedented consortium of more than 170 public and private agencies, strives to preserve the character of our landscape and its biological diversity through the development of science-based educational programs, community volunteerism, ecological restoration, and sustainable land-use policies. More important, however, is the role Chicago Wilderness plays in creating a regional land-use planning dialogue between myriad constituent groups and municipalities.

When one thinks of Chicago and its burgeoning suburbs, the idea of wilderness does not quickly come to mind. Most of our open spaces seem to be highly-structured urban parks, or forest preserves hemmed-in by suburban highways and development. The notion of true wilderness seems like something that disappeared from this region many years ago. Yet Chicago Wilderness has identified more than 300,000 acres of protected natural lands in the southern Lake Michigan biosphere, stretching from northwestern Indiana to the Wisconsin border. That translates to approximately 460 square miles of unique grasslands, forests and lakefront reserves encompassing the best remaining assemblages of our original Midwestern landscape. By contrast, the entire City of Chicago encompasses 230 square miles.

Chicago Wilderness' aim is to educate our region's citizens, businesses, planners and policy makers about the diversity and richness of our natural environment, and heighten awareness of the region's rapid

urbanization and its effect on our local ecosystems. Chicago architects, landscape architects, urban designers and planners can also play a critical role in educating policy makers and citizens alike on the value of environmental preservation, and how development can be rethought to provide greater environmental benefit.

The role of architect and landscape architect as environmental advocate in Chicago has a rich history. Beginning with Louis Sullivan and Frederick Law Olmsted, continuing with Daniel Burnham and Frank Lloyd Wright, and finally through the work of Jens Jensen, the designer as environmental visionary has a long tradition in Chicago. Under their guidance, corporate leaders like Montgomery Ward and others were able to advocate for the creation of open space systems such as Chicago's lakefront, the Skokie Lagoons, and other major parks systems.

Indeed, architect Dwight Perkins fought to establish the country's first county-wide preservation agency – the Forest Preserve District of Cook County – in 1915. His efforts in launching the fledgling preservation agency resulted in a forest preserve system that now encompasses 68,000 acres, approximately 11 percent of the land in Cook County. Perkins later went on to become the first president of the Chicago Plan Commission.

Today, with Chicago and other urban areas undergoing a shift away from industrial economies, new opportunities for the transformation of brownfield sites into ecological areas are presenting themselves. Likewise, with a focus in suburban areas on more efficient land-use and development, there is a renewed emphasis on the preservation of what wild areas remain. Connecting the urban and suburban planning spheres are the remnant open spaces along river corridors, railroads and highways. As envisioned by groups like Chicago Wilderness, the next generation of projects for architects, planners, and landscape architects will be to transform these fragmented ecosystems into a continuous and meaningful whole.

Chicago Wilderness
Continued from page 23

Recent planning initiatives show that this process has already started. The AIA Honor Award-winning Central Area Plan, by Skidmore, Owings & Merrill, features a dramatically expanded riverfront park system, abandoned rail corridors transformed into greenways, and an enhanced lakefront park system. Philip Enquist, FAIA, the SOM partner in charge of the effort, says brownfield restoration, such as the effort to convert Meigs Field to a new park, "is the future of ecological planning in urban areas."

At the same time, a parallel effort entitled *Chicago Metropolis 2020* has crafted a vision for the entire Chicago region, addressing growth, transportation, education and other issues at a similar scale to the environmental issues addressed by Chicago Wilderness.

This plan strongly advocates the expansion of and connections between the Chicago region's parks, forest preserves and greenways. A key component of *Metropolis'* recommendations is the protection and connection of over 4300 miles of stream- and land-based greenways. These corridors create vital habitat for the region's flora and fauna, while protecting our freshwater reserves. Chicago architects and planners can use *Metropolis'* broad recommendations as guidance for future planning.

The next century bodes well for architects that structure their expertise around sustainability, ecological enhancement and conservation planning. If the 19th century was marked by the settlement of the wilderness, and the 20th century about the subjugation of it, perhaps the challenge for designers in the 21st century will be to knit together our fractured natural areas into a meaningful and vital whole. Regional collaborations like Chicago Wilderness are providing the network of conceptual and technical support to help us achieve that vision. ■

Peter Kindel, AIA, ASLA is an associate partner at Skidmore, Owings & Merrill.

Engineering services provided to our clients include...

- Structural*
- Civil*
- Environmental*
- Transportation*
- Mechanical*
- Electrical*
- Plumbing*

GRAEF ANHALT SCHLOEMER
and Associates Inc.
engineers & scientists

332 South Michigan Avenue
Suite 1400
Chicago, Illinois 60604
312/582-2000
www.gasai.com

also:
Chicago - O'Hare
Milwaukee, Madison,
and Green Bay

Sabo & Zahn
Attorneys at Law

Werner Sabo, FAIA

James Zahn, FAIA

Licensing problems, copyrights, business formations, mediation, litigation, arbitration, contracts, real estate construction attorneys

8620 Sears Tower
Chicago, IL 60606

(312) 655-8620
fax: (312) 655-8622

www.sabozahn.com

Any Way It Shapes Up...CTI Delivers

When you need

"Using precast thin brick faced panels was the ideal solution to meet the community's aesthetic desires as well as the demanding schedule requirements. In other words, when speed and look are both #1 priority, CTI really delivers!"

~Dennis Nemenz
Vice President, Sales
Concrete Technology, Inc.

ECONOMY
SPEED
EXPERTISE
APPEAL

Think...precast concrete

CONCRETE TECHNOLOGY INC.

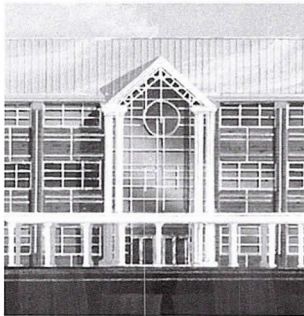
Fact: Using architectural precast concrete cladding can reduce enclosure time by as much as 70%.

Fact: CTI has two high-capacity plants, fully supported by local Customer Service Teams, ready to go to work for you. From initial design to delivery...we get it done in the least possible time.

Choose...CTI

GARFIELD HEIGHTS
HIGH SCHOOL
(Rendering)
Garfield Heights, OH

DESIGN ARCHITECT:
FPS Architects &
Engineers, Ltd.
Cleveland, OH



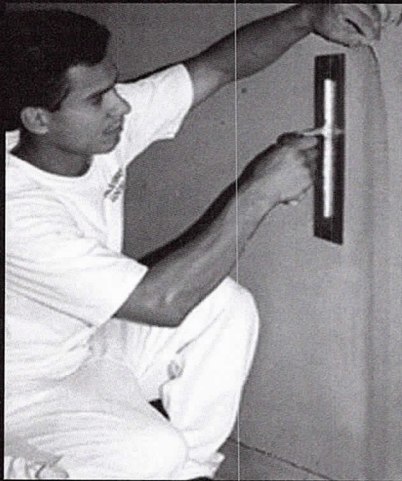
See for yourself why architects are talking about CTI.

Let CTI serve up lunch while discussing how they can speed along your next project. To have a box lunch catered for your architectural staff, call Leo Ford at (773) 784-0400.

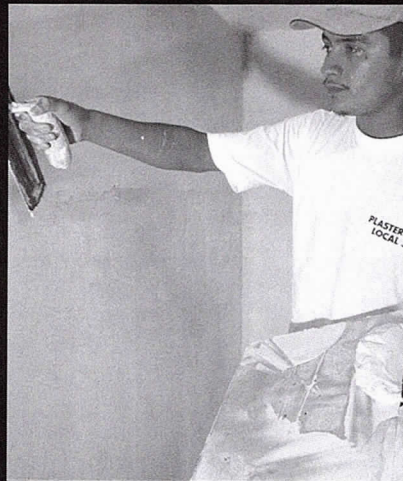
CONCRETE TECHNOLOGY INC. • Paxton, IL and Springboro, OH • Call 800.788.2370
www.ctiprecast.com

pci

Professional Training Yields Expert Plasterers



Exterior Insulating and Finishing
Systems (EIFS) and Stucco



Conventional and Veneer Plaster

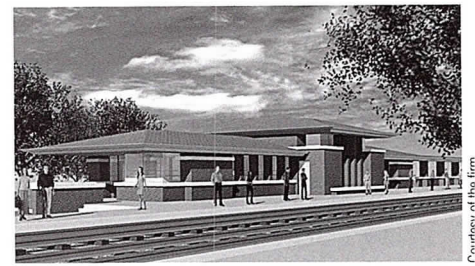


Ornamental Plaster

Call us for information about today's
plastering systems and the best
people to apply them.



Chicago Plastering Institute
5611 W. 120th St.
Alsip, IL 60803
(708) 371-3100



Photograph of the firm

PEOPLE/FIRMS

Paul Armstrong, AIA recently acquired majority ownership in the 90-year-old firm of Edward A. Anderson Company, a residential contracting business on the North Shore.

When Lohan Anderson was launched in March of this year, **Dirk Lohan, FAIA** and **Floyd Anderson, AIA** were joined by associate principals **Basil Souder, AIA**, and **Michael Barnes, AIA** and marketing director **Anthony Kempa, Assoc. AIA**. Joining them is **Angela Wobetzky, AIA**, as an associate, and **Laura Garcia, AIA**.

Douglas Burcham, AIA and **Peter Kindel, AIA** have been promoted to associate partners at Skidmore, Owings & Merrill.

Doug Garofalo, FAIA is the author of a book about his recent work for the plaza of Chicago's Museum of Contemporary Art, *Between the Museum and the City*.

DeStefano and Partners has named **Douglas Hanson, AIA** as principal of the firm's Los Angeles office.

Philip Johnsson, AIA has joined Loeb Schlossman & Hackl as a project architect. In other firm news, recent LSH projects include two law offices at 303 W. Madison St.



Bruce Van Inwegen

Loebl Schlossman & Hackl designed the new offices of **Berger Newmark & Fenchel**

Jeff Reinke, AIA has been promoted to vice president and **Clay Vogel, Assoc. AIA** has been named an associate at HOK.

Holabird & Root has promoted **Dennis Vovos, AIA** and **Ernest Wagner, AIA** to associate principals and has named as associates **Jan-Marie Behounek, AIA**, **Mickey Collins, AIA**, and **Cynthia Mueller, AIA**.

ARCH Consultants has moved to 250 Parkway Drive, Suite 166 in Lincolnshire. The telephone number is 847/541-3220 and fax is 847/541-3221.

BLDD Architects has been named the University of Illinois at Chicago's Professional Services Consultant of the Year for Projects over \$2 Million.

Eastlake Studios' offices for the Storck company won the grand prize in DuPont's Antron® Design Competition. **OWP/P's** cafeteria at Northwest Community Hospital won a Merit Award in the hospitality category.

Graham, Anderson, Probst & White has moved to 601 W. Randolph St. Telephone and e-mail remain unchanged.

Hedrich Blessing has named Scott Brennan as director of the firm.

Three Chicago projects won Merit Awards in the Innovative Design Excellence in Architecture with Steel (IDEAS) program. Soldier Field, by Wood + Zapata and **Lohan Caprile Goettsch Architects** won in the \$100 million and greater category; Erie on the Park by **Lucien Lagrange Architects** was honored in the \$25 million and greater category; and the Tower House by **Frederick Phillips and Associates** took honors in the less than \$10 million category.

A 2004 Green Roofs for Healthy Cities Award of Excellence went to Jeffery L. Bruce & Co. in association with **Peter Lindsay Schaudt Landscape Architecture** for the new rooftop park that covers the Soldier Field parking structure.

PROJECTS

Oak Prairie Middle School in Lockport, designed by **FGM Architects Engineers**, won this year's John N. Shaw Award from the Council for Educational Facilities Planners International, Midwest/Great Lakes Region. The jury was comprised of architects, school administrators and students.

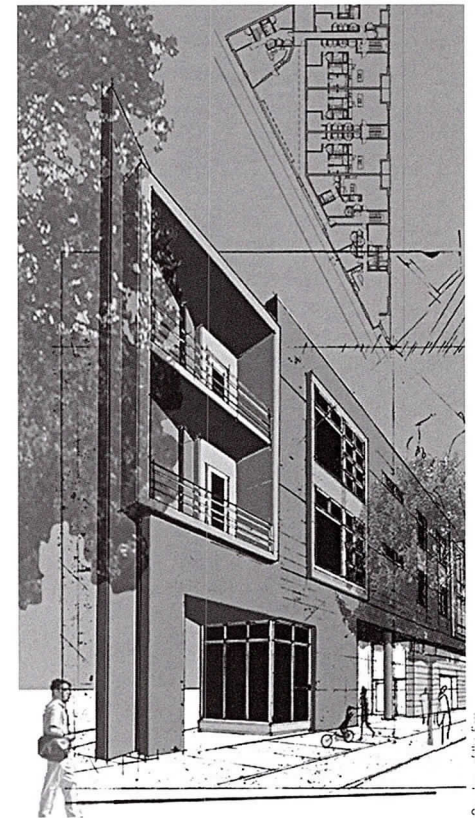


Craig Dugan © Hedrich Blessing

FGM's award-winning Oak Prairie Middle School in Lockport

A new Metra station in Bartlett has just gone out to bid; it is the eighth new station that **Legat Architects** has designed for Metra in the last 17 years. In other firm news, their Lake Zurich Elementary/Middle School was featured in the May 26 edition of *ArchitectureWeek* as an exemplar of green design.

A new mixed-use project designed by **Wilkinson Blender Architecture** has begun construction on Lincoln and Wolcott avenues. Wolcott Terrace includes ground-level parking and retail space below 13 condominiums.



Wolcott Terrace by **Wilkinson Blender Architecture**

OKW Architects is on a team that has been chosen for the redevelopment of downtown Park Ridge. The \$100 million proposal calls for 182 residential units and 87,000 square feet of commercial space.

CLIPPINGS

The Residential Real Estate Supplement to the May 3 issue of *Crain's Chicago Business* featured a bungalow renovation by **Alan Madison, AIA** and a Q&A column on home renovation with **Elissa Morgante, AIA**.

The *AIA Guide to Chicago* received kudos from Lynn Becker in the May 21 issue of *The Reader*.

Larry Booth, FAIA was pictured in the May 7 *Chicago Sun-Times* explaining the planned renovation of the Shubert Theatre, which will be renamed the LaSalle Bank Theatre next year. Also, a new house designed by the firm was featured in *USA Home & Architectural Trends* magazine.

The remodeling and addition to a Burr Ridge house by **Bryan Associates Architects** was featured on HGTV's May 16 "Before & After" program.

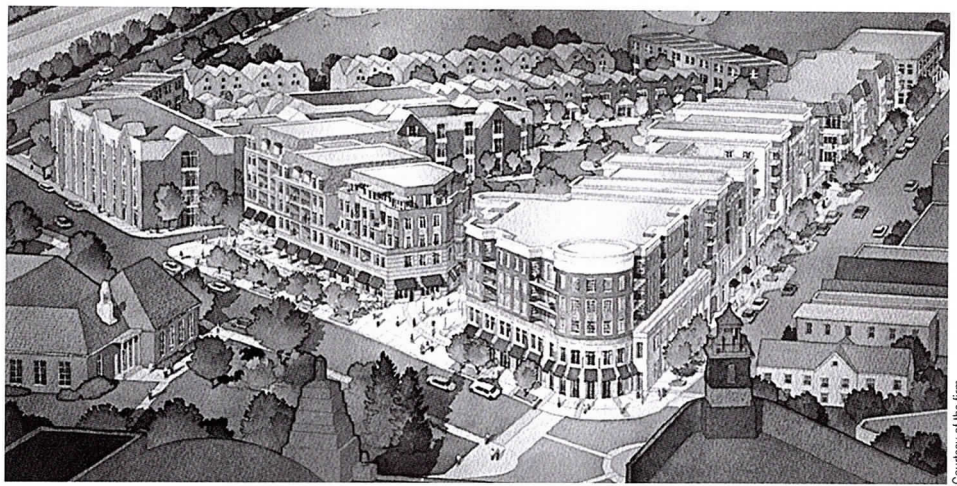
A profile of **Carol Ross Barney, FAIA**, titled "The People's Architect," was the cover story of the *Chicago Tribune Magazine* on May 30. The article featured a variety of projects and cited her "trademark sensitivity to human and environmental concerns." In the same issue, the regular "Spaces" feature illustrated the VOA-designed LaSalle Bank in the lobby of the ABN AMRO Plaza.

John Macsai, FAIA writes a monthly column on local architectural issues for the *Evanston RoundTable*.

CALL FOR ENTRIES

Entries for **Architecture Magazine's Home of the Year Awards** are due July 16. Projects must have been completed after July 2002. The five categories now include one for multifamily buildings of 10 or fewer units. The five-member jury includes Jeanne Gang, AIA. Fees are \$150 for the first entry and \$100 for each additional submission. For more information, go to www.architecturemag.com.

Author Linda Leigh Paul is seeking homes on lakes which have been in the same families for three to four generations for her book, tentatively titled **Summer in the Lake**, to be published in autumn 2005 by Rizzoli/Universe Publishing. Send small jpeg image files (no larger than 1000K) to media@ipns.com or mail color Xerox prints to P.O. Box 796, Lake Oswego, OR, 97034. The deadline is August 1. Paul is also a



Courtesy of the firm

contributing editor for the new magazine *Cottage Living* and welcomes submissions.

Vetter Windows & Doors is seeking entries for its fourth annual **Vetter Inspired Project (VIP) Awards**. There are six residential and commercial categories, and \$1000 cash prizes for each winning entry as well as an additional \$1000 award for Best of Show. Eligible projects must have been started after January 1, 2003 and completed through landscaping prior to June 30 of this year. There is no entry fee and the deadline is August 1. Download the entry form at www.vetterwindows.com or call 715/693-8407 with any questions.

The Bauhaus Dessau Foundation will be conferring its third annual **International Bauhaus Award** for urban projects that address new spatial relations of "Transit Spaces," which are defined as transnational agglomerations without a city, "diasporic public spaces," and areas where informal economies intersect. Entrants must be under 40 years of age on October 23, when the awards will be presented. First, second and third prizes will be accompanied by cash awards of €6000, €4000 and €2000. The deadline is August 20. For further information, go to www.bauhaus-dessau.de.

The 2004 **Emerging Professionals Guest House/Studio Design Competition** is a special project intended to encourage and recognize the design skills of emerging architectural professionals. The winning projects will receive recognition and cash awards. Finalists will become part of a case study demonstrating cooperative projects between industry, schools, and professional practice. This competition is a partnership between EPICConnection.com, the AIA National Housing Committee, and the sponsor, the Whirlpool Corp. Eligible individuals are either students in their fourth or later year of school, or intern architects or young architects licensed 10 years or less. The program is the conversion of a two-car garage into a live/work multi-use space. The registration deadline is October 1 and submissions are due October 18. For information, go to EPICConnection.com. EPIC (Education/Practice/Industry Connection) is a partnership of the academy, the design professions, and industry, working in cooperation to provide quality professional education.

PROFESSIONAL DEVELOPMENT

The Tile Seminar is a four-hour session of classes on the newest technologies in the tile industry as well as the technical and artistic aspects of glass and porcelain tiles. Sponsored by three leaders in the tile industry and the Tile Council of North America, the seminar is free and includes a complimentary full breakfast buffet. It will take place at the University Club, 76 E. Monroe St., on July 13 from 8:30 a.m. to 12:30 p.m. Four LU/HSW will be awarded. To register online, go to www.tileseminar.com. The phone number for questions is 800/472-4588.

The American Society of Professional Estimators will hold its **2004 Estimating Academy** at the Allerton Crown Plaza, 710 N. Michigan Ave., on July 14 through 16. All courses are taught by certified professional estimators and offer learning units. Please visit www.aspenational.org. Each attendee will receive a complimentary copy of the publication *Recommended Bidding Procedures for Competitively Bid Construction Projects*.

Safe Spaces: Designing for Security and Civic Values is a national conference that will take place at the Hyatt Regency Chicago, 151 E. Wacker Drive, from July 25 to 27. The cost is \$450 and pre-registration is available until July 19. The conference is sponsored by the American Society of Landscape Architects with other organizations including the AIA. Register online at www.asla.org or call Cara Welch at 202/216-2334.

The VIIIth International DOCOMOMO Conference will take place at Columbia University in New York City from September 26 to 29, with post-conference technology seminars at Baruch College from September 30 to October 2. DOCOMOMO is the international organization dedicated to the Documentation and Conservation of buildings, sites and neighborhoods of the Modern Movement. For information and to register, go to www.docomomo2004.org or www.docomomo-us.org.

USG Corp. has expanded the Environmental Responsibility section of its Web site, www.usg.com, with new information.

VARIOUS MATTERS

Friends of Downtown is sponsoring a presentation on the **Northwestern Memorial Hospital Master Plan** on July 1, and Heather Plaza-Manning of the Society of Architectural Historians will discuss **Egyptian Revival Architecture** on July 15. Both events take place at 12:15 p.m. at the Chicago Cultural Center, 77 E. Randolph St., Claudia Cassidy Theater, 2nd floor. Information is available at www.chicagoculturalcenter.org or 312/744-6630.

The Frank Lloyd Wright Building Conservancy is sponsoring a bus tour of houses in Lake Forest and Glencoe on July 24. A special tour will also visit Crab Tree Farm to explore a collection of American and British Arts and Crafts furniture and decorative arts. Go to www.savewright.org or call 312/663-5500 for details.

The Chicago Architecture Foundation is offering a tour of the **Peggy Notebaert Nature Museum** on July 29 from 5:30 to 6:30 p.m. as part of its *Chicago Green* exhibition events. The cost is \$15 for CAF and Field Museum members; \$20 non-members. For reservations, call 312/922-3432, ext. 905. Information is available at www.architecture.org, which features an online version of the exhibition. Another related event is a panel discussion on September 9 from 6:00 to 7:00 p.m. Dirk Denison, AIA, Jeanne Gang, AIA, John Ronan, AIA, Joe Valerio, FAIA, and Ross Wimer, AIA will discuss **Green Futures: A Forecast for Architecture in Chicago**. It will be held at the Museum of Contemporary Art, 220 E. Chicago Avenue, and up to four free tickets may be reserved by calling 312/397-3841, going online at www.mcachicago.org, or going to the museum's box office. A \$3 fee applies to phone and online orders. *Chicago Green* closes at the Chicago Architecture Foundation on September 12.

NEW MEMBERS

AIA

Sheri Andrews, Pappageorge/Haymes; **John Arnold III**, Cubellis Associates; **Timothy Bennett**, Yas/Fischel Partnership; **William Brown, Jr.**, Amcraft Construction; **Laurance Browning III**; **Richard Carr**, Carr Warner Architects; **Amy Coffman Phillips**, VOA Associates; **Mary Collins**, Holabird & Root; **Jennifer Costanzo**, STR Partners; **David Crosby**, David Crosby Architects; **Dennis DeCapri**, DeCapri Construction Services; **Marta DeCapri**, DeCapri Construction Services; **Richard Deleo**, Mesa

Development; **Craig Eigenberg**; **Gerald Eisel**, NWS Architects; **Laura Garcia**, Lohan Anderson; **George Gauthier**, Wight & Co.; **Peter Gergel**, W.R. Weis Co.; **Kristina Glusac**; **Howard Goldman**, Howard I. Goldman Architect; **Herbert Gould**, Architectural Additions; **Jacquelyn Graham**, Graham & Assoc.; **John Green**, Groundwork; **Thomas Greene**, Greene & Proppe Design; **Eileen Guevara**, Fred Frank Architects; **Clayton Haldeman**, Kluber Skahan + Associates; **Rebecca Harrell**, Rozovics & Associates Architects; **Michael Hartel**, E.M.O. Architects; **Chris Heimsoth**, Chris Heimsoth, Architect; **Roman Holowka**, R.T.H. Associates; **Mark Jarosik**, Jarosik Architects; **Rahul Karanth**, Makaan Design; **Reynauldt Keys**, Macondo Corp.; **Carl Knutson**, Perkins & Will; **Donald Kranbuehl**, Harding Associates; **Marc Lunardini**, Jaffe Architectural Group; **Kenneth Maynard**, General Growth Properties; **Terence Moeller**, Wight & Co.; **Brent Norsman**, Norsman Architects; **Alessandro Paradiso**, Paradiso & Racelis; **Laura Paradiso-Racelis**, Paradiso & Racelis; **Chris Pemberton**, Skidmore, Owings & Merrill; **Charlie Poppell**, Charlie Poppell, Architect; **Janet Puvogel**, Charles Vincent George Design Group; **Gregory Richard**, Remington Architecture; **Scott Rogers**, Rogers Residential; **Paul Rogner**, Par Craft; **Thomas Ruscitti**, Deloitte & Touche; **Scott Seyer**, Lohan Capri Goettsch Architects; **Lance Shalzi**, Lance A. Shalzi Design Group; **Michael Siegel**, VOA Associates; **Harry Swihart**, Harry Swihart Architype; **William Warner**; **Angela Wobetzky**, Lohan Anderson

Emeritus

Ratindra Das; **Edward De Sas**

Associate AIA

Oscar Alba, Primera Engineers; **Konstantinos Alexakos**, Epic Architecture; **Kyriako Alexakos**, H. Wolff & Associates; **Zachary Aronson**, GreenAssociates; **Erin Bahrke**, Nicholas Clark Architects; **Nootan Bharani**, Kuklinski & Rappe Architects; **Justin Cafferty**, OWP/P Architects; **Angela Carbol**, GreenAssociates; **Josh Czerniak**, Pollock, Hozricher Nicholas; **Benjamin Dahlstrom**, VOA Associates; **Lorie Dillon**, Lorenz Virtual Studio; **Matthew Dumich**, DeStefano + Partners; **Mark Eklund**, Fitzgerald Associates Architects; **Vasiliki Friga**, Environ HarleyEllis; **Arun Gandhi**, M+W Zander; **Gregory Gibson**, Wilkinson Blender

Architecture; **Yanet Herrera**, Urban Works; **Brian Houk**, GreenAssociates; **Susan Johnson**, Muller & Muller; **Andrew Jose**, GreenAssociates; **Loren Keldsen**, Studio Euthenics; **Nicholas Kent**, Skidmore, Owings & Merrill; **Elizabeth Kolzow**, OWP/P Architects; **Ronald Kwaske**; **Patty Looker**, VOA Associates; **Joseph MacNeil**, Yas/Fischel Partnership; **German Manrique**, Urban Works; **Frances Maravelea**, Site Design Group; **Julia Meade**, URS; **Lisa Neidhardt**, Kathryn Quinn Architects; **Kimberly Nigro**, Wilkinson Blender Architecture; **Rebecca Nordmann**, OWP/P Architects; **Patricia Nossen-Johnson**, Muller & Muller; **Shaunagh O'Connor**, Kathryn Quinn Architects; **Rosa-Yemina Ortiz**, Urban Works; **Jin Park**, A. Epstein & Sons International; **Kimberly Penfold**, DeStefano + Partners; **Jason Peters**, Kathryn Quinn Architects; **Viorica Pisau**, Skidmore, Owings & Merrill; **Lisa Povich**, Ziolkowski, Porter, Damato & Associates; **Angela Quinn**, Kathryn Quinn Architects; **John Rockwell**, Wight & Co.; **Hyejung Ryoo**, Skidmore, Owings & Merrill; **Deborah Saad**, Skidmore, Owings & Merrill; **Michelle Sakayan**, Nagle, Hartray Danker Kagan McKay Penney; **Oren Schumaker**, Nicholas Clark Architects; **Bryan Seifert**, CAN Surety Corp.; **Aashit Shah**, Soodan & Associates; **Alissa Smith**, OWP/P Architects; **William Taylor**, GreenAssociates; **Michael Thompson**, Yas/Fischel Partnership; **Tara Toren-Rudisill**, Gustitus Group; **Cristina Tudor**, RTKL Associates; **Alison Varney**, VOA Associates; **Clay Vogel**, Hellmuth, Obata & Kassabaum; **Yu Wen**, VOA Associates; **Val Wilson**, Kathryn Quinn Architects

Student

Lester Scaife

Professional Affiliate

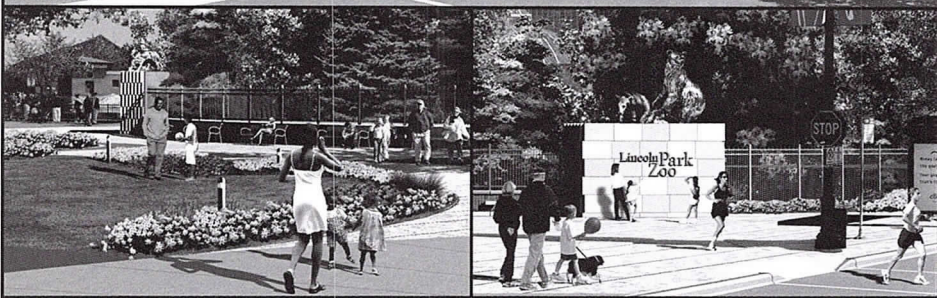
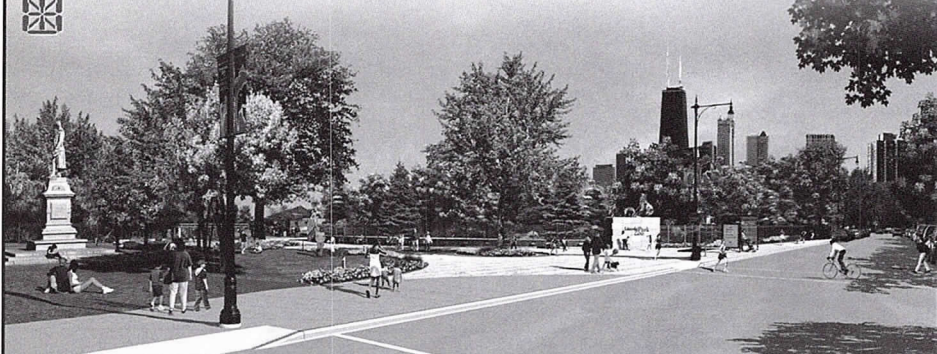
Chris Coldoff, OWP/P Architects; **Jane Cox**, OWP/P Architects; **Howard Garber**; **Ronald Hayes**, Lee Lumber; **Carol Moy**, Thornton-Tomasetti; **Janice Sandri**, FSR; **Michael Thomas**, EYP Mission Critical Facilities; **Denise Young**, McFarlane Douglass & Companies

Submit announcements to Laurie Petersen, Focus editor, at peterseni@aiachicago.org or AIA Chicago, 1049 Merchandise Mart, Chicago, IL 60654; 312/670-2422 (fax). Images are encouraged; call 312/670-7770 for details.

ARCHITECTURAL VISUALIZATION • RENDERING • ANIMATION • VR PANORAMA

REALIZE THE FUTURE TODAY

Lincoln Park Zoo West Gate Entry
David Woodhouse Architects LLC



312.432.9870 WWW.VERTEXGRAPHICS.COM

VERTEX GRAPHICS
1147 W OHIO #102 CHICAGO IL 60622



Botti Studio of Architectural Arts, Inc.

919 Grove Street, Evanston, IL 60201 Established 1864
847/869-5933 • Fax: 847/869-5996 • 800/524-7211
www.bottistudio.com • botti@bottistudio.com

Designers/Fabricators • Stained and Faceted Glass • Beveled Glass • Sandblasted •
Stained Glass Restoration and Conservation • Protective Glazing • Wood and Metal
• Frame Restoration • Sculpture • Bronze • Metal • Marble • Mosaic • Interior
Renovation • Woodwork • Murals • Painting and Decorating • Custom Sanctuary
Furnishings • Stained Glass Consultants to Architects and Churches

Studio Locations

San Diego • Chicago • Sarasota • Agropoli, Italy • Nassau, Bahamas
760/753-0705 • 847/869-5933 • 941/951-0978



What to do?

Networks Hardware
Web-based Project Management
Software CAD Internet

Get it done.

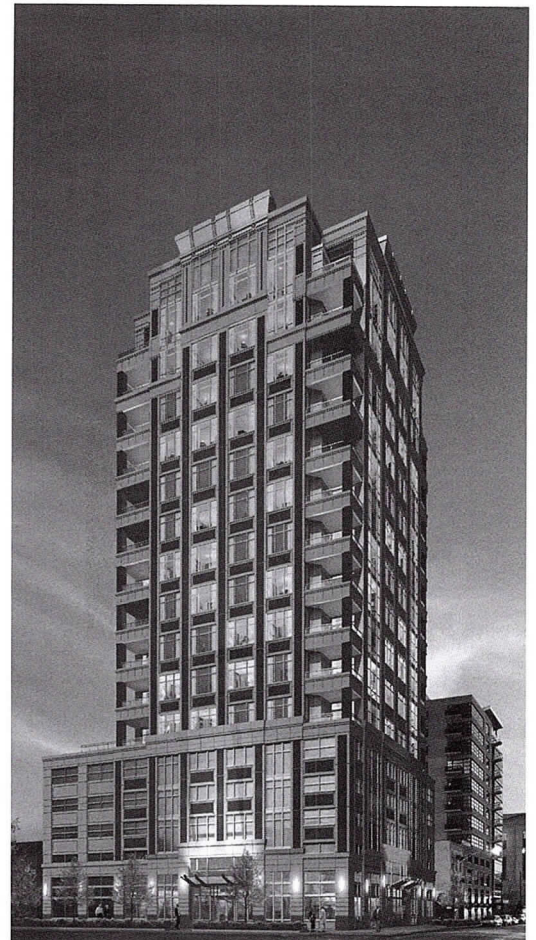
How to do it?

Keep it going!

Achieving business results
through computer-based solutions.

www.kfa-inc.com

30 East Adams Street, Suite 600
Chicago, IL 60603
312-641-9339 voice
312-641-9337 fax
support@kfa-inc.com



Project:
100 West Huron Street
Chicago, Illinois

Client:
JFJ Development, Inc.

Architect:
Hartshorne + Plunkard, Ltd.
Chicago, Illinois



IMAGEFICTION

LaSalle Wacker Building
221 North LaSalle Street
Suite 1510
Chicago, IL 60601

312.726.0818

architectural rendering

computer imaging

animation

interactive media

www.imagefiction.com

- 8 Young Architects Networking Happy Hour.** Sponsor: Young Architects Forum. 5:30 to 7:30 p.m.; Rivers, 30 S. Wacker Dr. (at Madison Street). Questions: brett.taylor@dmjm.com
- 13 The Tile Seminar.** Sponsor: Tile Council of North America. 8:30 a.m. to 12:30 p.m.; University Club, 76 E. Monore St. Breakfast included. Free. Register at www.tileseminar.com or 800/472-4588. 4 LU/HSW
- ARE Study Hall and Starbuck's.** Sponsor: Young Architects Forum and IMI. 4:00 to 9:00 p.m.; 53 W. Jackson Blvd., #315. Questions: Cecile Bolek at cbolek@imiweb.org or 312/935-1242. Anyone preparing for the ARE is welcome.
- 14 2004 Estimating Academy.** Three-day conference. Sponsor: American Society of Professional Estimators. Allerton Hotel, 701 N. Michigan Ave. Information: www.aspenational.org
- Annual Work Session.** Sponsor: Planning and Urban Affairs PIA. 12:00 noon; AIA Chicago. Bring lunch; beverages provided.
- 15 Current Trends in Fire-Stopping.** Sponsor: Technical Issues PIA. 12:00 noon; Chicago Bar Assn., 321 S. Plymouth Court. Bring lunch (no cafeteria service). 1 LU/HSW
- Egyptian Revival Architecture.** Sponsor: Landmarks Preservation Council of Illinois. 12:15 p.m.; Chicago Cultural Center, 77 E. Randolph St. Information: www.landmarks.org.
- 20 Tour: City Hall's Green Roof.** Sponsor: Environment PIA. 9:15 a.m. sharp; 121 N. LaSalle St. (LaSalle Street entrance). Limited to 16. 1 LU/HSW
- 21 Home Concrete Home.** Sponsor: Housing PIA. 5:30 p.m.; Evanston Public Library, 1703 Orrington Ave. 1.5 LU/HSW
- Tour: OWP/P Architects.** Sponsor: Young Architects Forum. 5:45 p.m.; 111 W. Washington St., #2100. Limited to 30 participants. 1 LU
- 22 Tour: City Hall's Green Roof.** Sponsor: Environment PIA. 9:15 a.m. sharp; 121 N. LaSalle St. (LaSalle Street entrance). Limited to 16. 1 LU/HSW
- 24 Bus Tour of Wright Houses in Lake Forest and Glencoe.** Sponsor: Frank Lloyd Wright Building Conservancy. Information: www.savewright.com or 312/663-5500.
- 25 Safe Spaces: Designing for Security and Civic Values.** Three-day conference. Sponsor: American Society of Landscape Architects. Hyatt Regency Chicago, 151 E. Wacker Dr. Register at www.alsa.org.
- 27 ARE Study Hall and Starbuck's.** Sponsor: Young Architects Forum and IMI. 4:00 to 9:00 p.m.; 53 W. Jackson Blvd., #315. Questions: Cecile Bolek at cbolek@imiweb.org or 312/935-1242. Anyone preparing for the ARE is welcome.
- 29 Tour of Peggy Notebaert Nature Museum.** Sponsor: Chicago Architecture Foundation. 5:30 p.m. \$20/\$15 CAF and Field Museum members. Reservations: 312/922-3432, ext. 905.
- 5 Young Architects Networking Happy Hour.** Sponsor: Young Architects Forum. 5:30 to 7:30 p.m.; Rivers, 30 S. Wacker Dr. (at Madison Street). Questions: brett.taylor@dmjm.com
- 9 Tour: Protecting Marshall Field & Company.** Sponsor: Historic Resources PIA. 12:00 noon sharp; meet under clock at State and Randolph streets. Hard hats and work boots must be worn. Limited to 25 participants. 1 LU/HSW
- 10 ARE Study Hall and Starbuck's.** Sponsor: Young Architects Forum and IMI. 4:00 to 9:00 p.m.; 53 W. Jackson Blvd., #315. Questions: Cecile Bolek at cbolek@imiweb.org or 312/935-1242. Anyone preparing for the ARE is welcome.
- 11 SPAN: Small Practice Architects Network.** Sponsor: Young Architects Forum. 5:45 p.m.; AIA Chicago. 1 LU
- 18 Hands-On Masonry Workshop.** Sponsors: Young Architects Forum and Technical Issues PIA, IMI. 11:30 a.m. to 2:30 p.m.; Bus leaves from south entrance of Merchandise Mart. If driving, arrive at training center, 1950 W. 43rd St., by noon. Wear jeans and work boots. Limited to 35 participants. 2 LU/HSW
- 19 Great Chicago Loop Flood: Mold Management.** Sponsor: Technical Issues PIA. 12:00 noon; Chicago Bar Association, 312 S. Plymouth Court. Bring lunch (no cafeteria service). 1 LU/HSW
- 24 ARE Study Hall and Starbuck's.** Sponsor: Young Architects Forum and IMI. 4:00 to 9:00 p.m.; 53 W. Jackson Blvd., #315. Questions: Cecile Bolek at cbolek@imiweb.org or 312/935-1242. Anyone preparing for the ARE is welcome.
- 25 Tour: Cultural Center Now and Ahead.** Sponsor: Historic Resources PIA. 5:20 p.m.; 77 E. Randolph St. Limited to 30 participants. 1 LU/HSW

AIA Chicago



A Chapter of The American Institute of Architects
 222 Merchandise Mart Plaza
 Suite 1049
 Chicago, Illinois 60654
 312/670-7770
 312/670-2422 (fax)
info@aiachicago.org
www.aiachicago.org

Periodical