

Focus

OCTOBER 2003
SPECIAL EDITION

Design Excellence Awards 2003

**Distinguished Building,
Interior Architecture
and Divine Detail**



AIA Chicago



IMAGEFICTION

Project:

Proposed Lobby
Renovation / Addition
200 West Madison

Client:

Tishman Speyer Properties

Architect:

Powell Kleinschmidt
Chicago, Illinois

LaSalle Wacker Building
221 North LaSalle Street
Suite 1510
Chicago, IL 60601

312.726.0818

architectural rendering

computer imaging

animation

interactive media

large format printing

www.imagefiction.com

Executive Editor
Susan Larson

Editor
Laurie Petersen

Focus Advisory Board
Joseph Caprile, AIA
Jonathan Fischel, AIA
Gigi McCabe-Miele, AIA
Alice Sinkevitch, Hon. AIA
P.K. VanderBeke, AIA
Thomas Zurowski, AIA

FOCUS (ISSN 1071-3700) Vol. 23, No. 9, is published monthly with a combined issue July/August, by AIA Chicago, 222 Merchandise Mart Plaza, Suite 1049, Chicago, Illinois 60654-1001. \$20 of each member's dues are allotted as a subscription. Periodicals postage paid at Chicago, Illinois. POSTMASTER: Send address changes to Focus, AIA Chicago, 222 Merchandise Mart Plaza, Suite 1049, Chicago, Illinois 60654-1001.

For advertising rates and schedules, call 312/670-7770.

© 2003 The American Institute of Architects Chicago.

All rights reserved. Reproduction in whole or part without permission is strictly prohibited.

AIA Chicago on the Internet: www.aiachicago.org

AIA Chicago e-mail: info@aiachicago.org

AIA Chicago



A Chapter of The American
Institute of Architects

2003 Board of Directors

President
Joseph Caprile, AIA

President-Elect
Charles Smith, AIA

Vice Presidents
Gigi McCabe-Miele, AIA
Thomas Kerwin, AIA

Secretary
Edward Torrez, AIA

Treasurer
Peter Schlossman, AIA

Directors
Rik Master, AIA
Tom Hoepf, AIA
Laura Fisher, AIA
Gaines Hall, FAIA
Mimi Tsai, AIA

AIA Regional Directors
T. Gunny Harboe, AIA
Robert Selby, AIA

AIA Illinois Director
Robert Woodworth, AIA

Associate Director
Helen Tsatsos, Assoc. AIA

Professional Affiliate Director
Lawrence Okrent

Past President
Jonathan Fischel, AIA

2003 AIA Illinois Delegates
Hill Burgess, AIA
Christopher Chwedyk, AIA
Leonard Koroski, AIA
Alan Madison, AIA
Robert Woodworth, AIA
Angie Lee, AIA (alternate)
Maureen Reagan, AIA (alternate)

2003 Professional Interest Areas

Corporate Architects
Karen Eltz, AIA

Design
Peter Leoschke, AIA

Design/Build
Alan Treuhart, AIA

Environment
Susan King, AIA

Architecture for Health
Enrique Unanue, AIA

Historic Resources
William McMillan, AIA

Housing
David Wytmar, AIA

Interior Architecture
Mark Hirons, AIA

Office Practice
Andrew Tiffin, AIA

Planning & Urban Affairs
Christine Carlyle, AIA

Technical Issues
Gregory Tornatore, AIA

Young Architects
Holly Coulter, Assoc. AIA

Chapter Staff

Executive Director
Alice Sinkevitch, Hon. AIA

**Membership Coordinator/
Assistant to the Director**
Phillip Rahill

Program Director
Joan Pomaranc

Communications Director
Susan Larson

Editor
Laurie Petersen

Financial Manager
Crystal Gagler

Public Information Receptionist
Linda Freeman

Convention Coordinator
Marc Wagner

4

President's Letter

6

Distinguished Building Awards



22

Interior Architecture Awards



30

Divine Detail Awards



37

Jury List

38

Awards Index

Want to See More?

Visit www.aiachicago.org
to view a virtual exhibit of
all awards submissions.

The Value of Awards



“Build, don’t talk.” This dictum, associated with Mies van der Rohe, conveys one of his views on architecture

and, I believe, reflects Chicago’s philosophy as well. As a city and a region, we focus more on our achievements than on our theories.

In keeping with that outlook, the 2003 Design Excellence Awards program focuses on completed projects, acknowledging the body of superior work submitted for consideration and recognizing selected projects in the categories of distinguished building, interior architecture and divine detail.

Over the years, some have suggested that the awards program, along with the Designight event, is just an opportunity for architects to pat themselves on the back. I couldn’t disagree more. Yes, the awards give architects and their projects well-deserved peer acknowledgement for design excellence. But the awards equally honor our clients, who have retained the architects and worked hand-in-hand with them to achieve this excellence. The client’s commitment to a better environment is often as strong as that of the architect. Additionally, the awards acknowledge the quality of craftsmanship we enjoy in Chicago, something we do not always appreciate until we have completed projects elsewhere.

Next year we will add to our awards program to include a new category of sustainable or energy-conscious design. While the details of this new category are still under discussion, our Board, our staff and I agree on the importance of

recognizing designs that consider their environmental impact. We also are considering adding to one of the existing categories a planning award to highlight the long-range visions created by Chicago architects.

Meanwhile, congratulations to this year’s submitters, winners and all those in the industry who achieve excellence. This issue of *Focus* is dedicated to you. The 2003 submissions and award

winners are featured online at www.aiachicago.org. I’m confident that when you visit the site, you will appreciate more fully the depth and breadth of architectural talent in our community.



Joseph Caprile, AIA
President

Thanks to Our Designight 2003 Sponsors

The Design Excellence Awards were presented on Friday, September 19 in the Grand Ballroom of Navy Pier. Many organizations made Designight 2003 possible, and AIA Chicago would like to thank them for their support.

Co-Sponsors

- Allsteel Inc.
- Bovis Lend Lease
- Charter Sills & Associates
- Kimball Office
- Marsh USA Inc.
- Petersen Aluminum Corp.
- USG

Benefactors

- Lohan Caprile Goettsch Architects
- McGraw-Hill/F. W. Dodge Construction Group
- Murphy/Jahn Inc.
- Skidmore, Owings & Merrill LLP

Patrons

- Ann Temple Architect
- annex | 5 Architects
(an Epstein Design Group)
- ASI Modulex
- Brininstool + Lynch Ltd.
- Construction Cost Systems Inc.
- Crate & Barrel
- Daniel P. Coffey & Associates Ltd.
- Eastlake Studio
- EHDD Architecture
- Executive Construction Inc.
- Gensler
- Gilbane Building Co.
- Graycor Construction Co. Inc.
- Halvorson & Kaye Structural Engineers PC
- Hedrich Blessing Ltd.
- Hirsch Associates LLC/Centrum Properties Inc./Joseph Freed Homes
- Holabird & Root

- Legat Architects
- Leopardo Companies Inc.
- M+W Zander/George Sollitt Construction Co.
- Nagle Hartray Danker Kagan McKay Architects Planners Ltd.
- Optima Inc.
- OWP/P Architects
- Perkins & Will
- Ragnar Benson Inc.
- Ross Barney + Jankowski Inc.
- Schuler & Shook/Kirkegaard Associates
- Steelcase Inc./Office Concepts
- Thornton-Tomasetti Engineers
- Turner Construction Co.
- VOA Associates Inc.
- von Weise Associates
- Wheeler Kearns Architects Inc.
- Wildman Harrold Allen & Dixon



What to do?

Networks Hardware
Web-based Project Management
Software CAD Internet

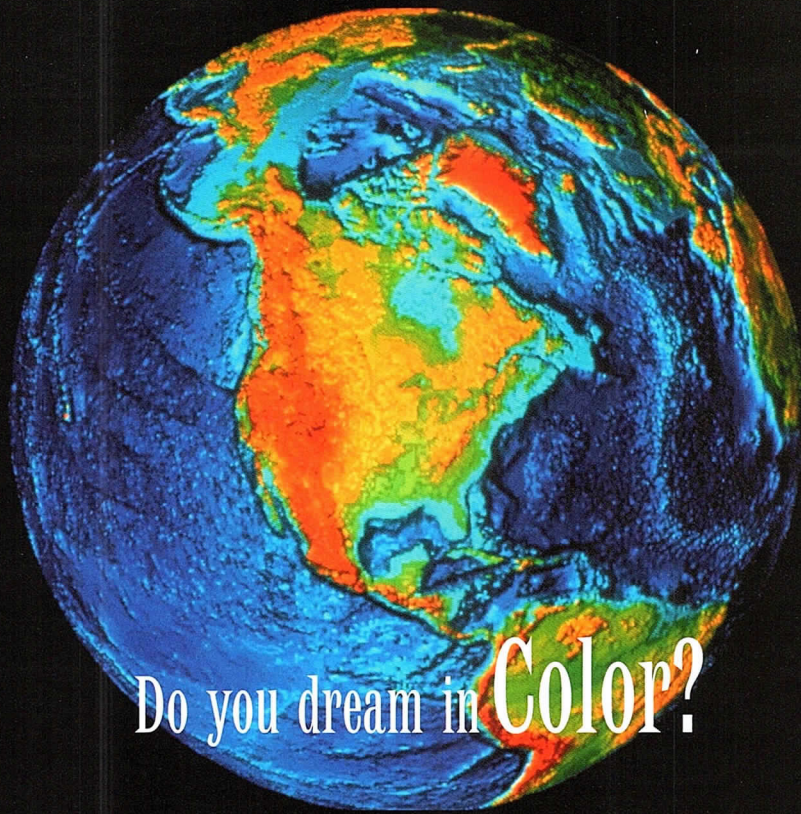
Get it done.

Keep it going!

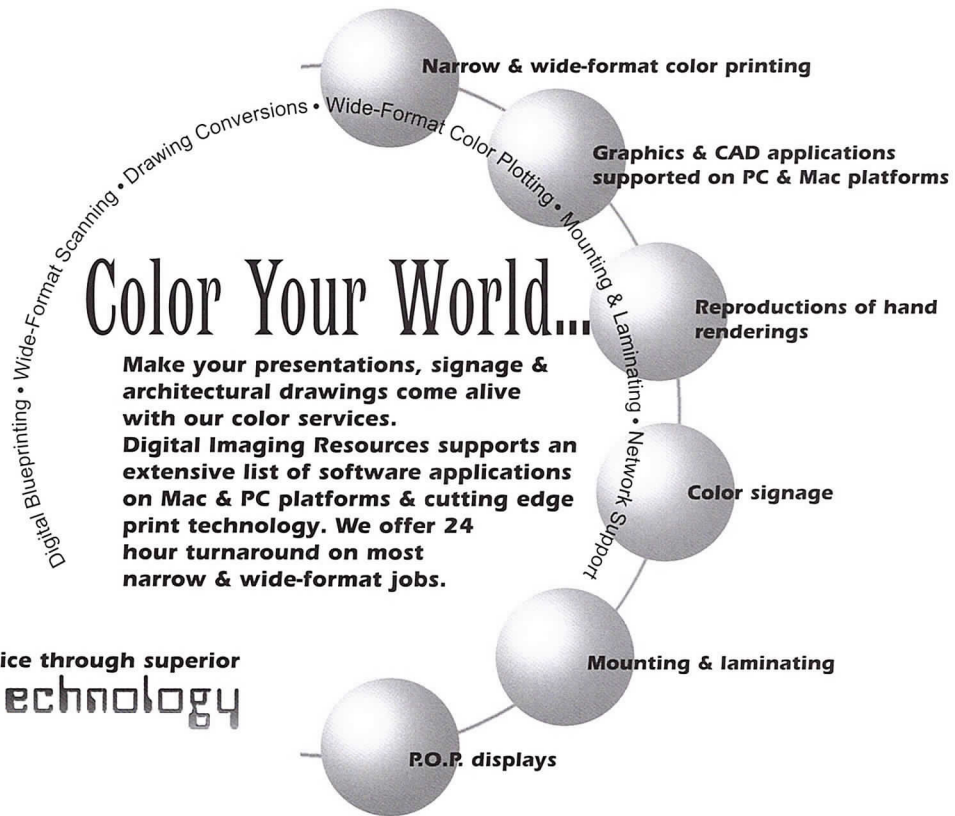
Achieving business results through computer-based solutions.

www.kfa-inc.com

30 East Adams Street, Suite 600
Chicago, IL 60603
312-641-9339 voice
312-641-9337 fax
support@kfa-inc.com



Do you dream in **Color?**



Better service through superior
technology



Digital
Imaging
Resources, Inc.

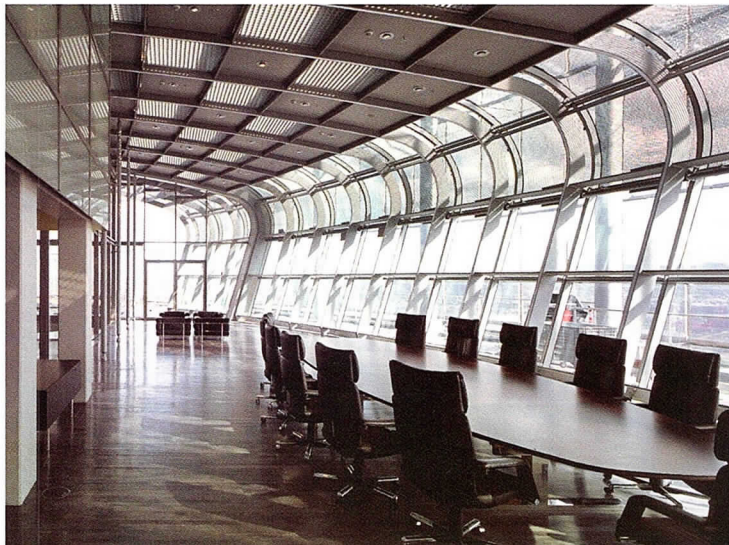
650 West Lake Street #120 • Chicago, IL 60661 • www.dirinc.com

Phone 312.243.1250 • Fax 312.243.1590

Distinguished Building Awards

by Molly O'Halloran

The Distinguished Building Award was established 48 years ago to recognize significant achievements in the planning, design and execution of recent building projects. Projects are eligible if they were completed between January 1, 2000 and May 1, 2003 and were designed by a registered architect in the Chicago metropolitan area.



Dirk Allenkirch

Deutsche Post
Bonn, Germany

Honor Award

Architect – Murphy/Jahn Inc.
Client – Deutsche Post Bauen GmbH
General Contractor – Hochtief AG; PMG; Lindner AG;
Stangl/ABB
Consultants – Werner Sobek Ingenieure GmbH
(structure/enclosure); Transsolar Energietechnik
GmbH (energy/comfort); Brandi Consult GmbH
(mechanical); Peter Walker & Partners (landscape)

Conjuring the image of a dramatically redefined monolith, this lean, 41-story, glass-sheathed tower impressed jurors with its confidence. In plan it is an oval that has been split apart and shifted on its long axis. The space between the half-ovals is a full-height atrium, with skybridges providing crossover points at nine-story intervals. The glass outer shell extends beyond the concrete structure to exaggerate the shifted plan. The twin-shell façade permits natural ventilation during much of the year, and an integral heating and cooling pipe system in the concrete structure is highly efficient. A computerized building management system optimizes energy use.





Crate & Barrel Headquarters
Northbrook, IL

Honor Award

Architect – Perkins & Will

Client – Crate & Barrel

General Contractor – AMEC Construction Management Inc.

Consultants – V3 Consultants (consulting engineer);
WEMA Consulting Engineers Ltd. (MEP);
Douglas Hoerr Landscape Architecture

"This building has a special character that reflects the client's philosophy," said the jury. They admired the way the architect took on the mundane program of a suburban office building and "really did something with it." Two masonry volumes—one containing offices, the other merchandising operations—are joined by a glazed lobby and spanned by a curved, cantilevered roof. The office wing features U-shaped courtyards that maximize daylight and views of the surrounding woods. The whole building conveys the classic modern design aesthetic for which this retail chain is known.

James Steinkamp © Steinkamp/Ballogg Photography



James Steinkamp © Steinkamp/Ballogg Photography

Factory Façade Renovation
Schaumburg, IL

Honor Award

Architect – Andrew Metter, FAIA for annex | 5 Architects
(an Epstein Design Group)

Client – Gladstone Group Inc.

General Contractor – Ross Midwest Construction

Consultants – A. Epstein and Sons International Inc.
(consulting engineer)

A simple intervention completely redefines this suburban factory building. A steel frame and infill panels are clipped onto the existing façade, forming a changing mosaic of sun-shading louvers and sand-blasted privacy glass. "The composition is so beautiful, it borders on art," said a juror. The new façade both celebrates and inverts the archetype of the long, flat industrial building by creating shadow and depth on the south-facing wall. A glass entrance, marked by floating concrete walks and a rock garden, is relocated on the shorter east wall to reinforce the linear nature of the building.





James Steinkamp © Steinkamp/Ballogg Photography



James Steinkamp © Steinkamp/Ballogg Photography

Highland Park High School Science Addition
Highland Park, IL

Honor Award

Architect – Legat Architects
 Client – Township High School District 113
 General Contractor – Boller Construction Co.;
 Lombard Architectural Precast Products Co. (precast)
 Consultants – Larson Engineering of Illinois
 (structural); KJWW Engineering Consultants
 (MEP and FP); Manhard Consulting Ltd. (civil);
 David McCallum and Associates (landscape)

A township high school wanted their addition to be modern, respectful of the natural surroundings, human in scale and appropriate to the overall image of their community. In a plan where rooms appear to step back uniformly along a curved street, brick and precast concrete classroom volumes actually enclose landscaped inner courtyards. The masses are composed on a neighborhood scale and exude a quiet dignity. Glass-clad where they meet a central corridor, the courtyards emphasize localized spaces and views that connect old with new.

Renishaw
Hoffman Estates, IL

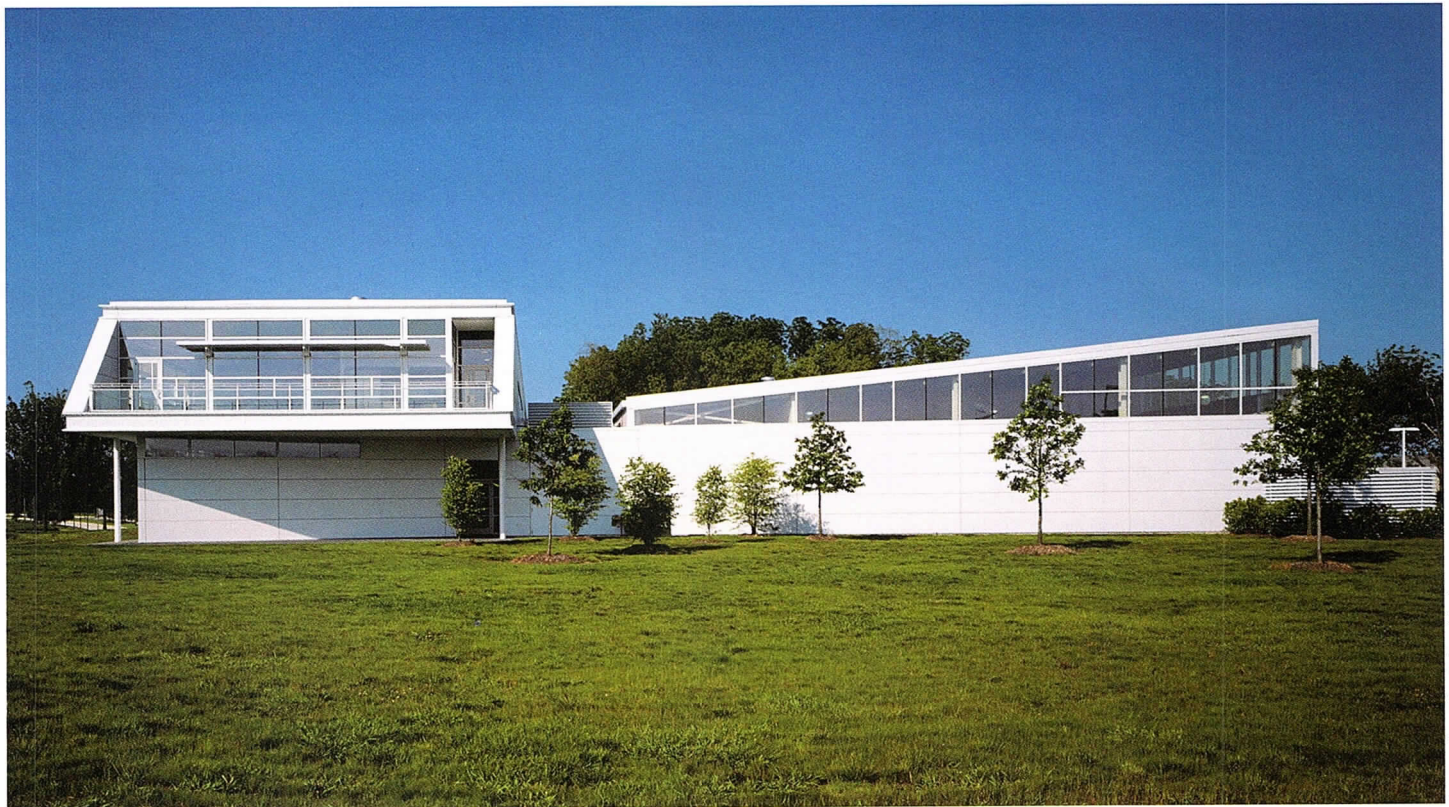
Honor Award

Architect – Andrew Metter, FAIA for annex | 5 Architects
(an Epstein Design Group)
Client – Renishaw Inc.
General Contractor – G. A. Johnson & Sons
Consultants – A. Epstein and Sons International Inc.
(consulting engineer)

Jurors were impressed with the sensitive way this manufacturing headquarters nestles into its prairie landscape. An L-shaped plan joins office and warehouse functions, preserves a stand of existing trees on the south side of the building, and forms an outdoor dining area for employees. The 50-foot-wide office wing terminates on the east end with an extension that serves as a protective canopy for the formal entrance. A focus on natural light and ventilation, sun shading, and preservation of existing vegetation all contribute to an exurban workplace that feels at home in its surroundings.



© Barbara Karant Karant + Associates, Inc.



© Barbara Karant Karant + Associates, Inc.



Nick Merrick © Hedrich Blessing

Skybridge at One North Halsted
Chicago, IL

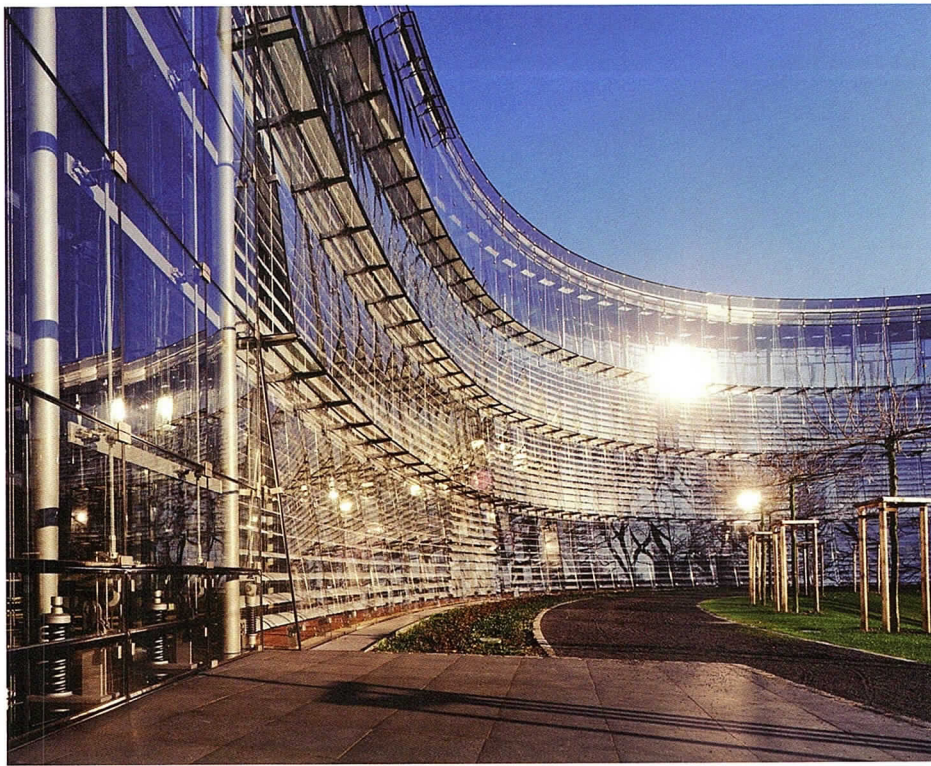
Honor Award

Architect – Perkins & Will
 Client – Dearborn Development
 General Contractor – Walsh Construction Co.
 Consultants – Smartano & Co. (structural);
 MEP & Fire Consultants; Wolf Clements &
 Associates (landscape)

The audacity and sure-handedness with which architects inserted a 25-story void into the design of this residential high rise drew unanimous praise from jurors. But this building is about neighborliness, not ego. At ground level, a four-story retail and parking base relates to an urban street. Above, a 237-unit tower rises in a modernist composition of lightly colored concrete and glass. Cut into the tower are balconies and the vertical slot that is spanned by a series of glazed bridges, bringing relief and shadow to the building's highly visible façades. These cuts maximize corner views of lake and skyline and also signal the change in urban context from downtown towers to a lower-scale fabric to the west.



James Steinkamp © Steinkamp/Ballogg Photography



Andreas Keller Fotografie

Bayer W11
Leverkusen, Germany

Citation of Merit

Architect – Murphy/Jahn Inc.
Client – Bayer AG
General Contractor – Wiemer + Trachte AG;
Iemants Staalconstructies België; Seele GmbH & Co. KG; Stangl AG; Strahle Raum-Systeme GmbH
Consultants – Werner Sobek Ingenieure GmbH (structural); IGH Ingenieurgesellschaft Hopfner mbH (structure/enclosure); Transsolar Energietechnik GmbH (energy/comfort); Brandt Consult GmbH (mechanical); Peter Walker & Partners (landscape)

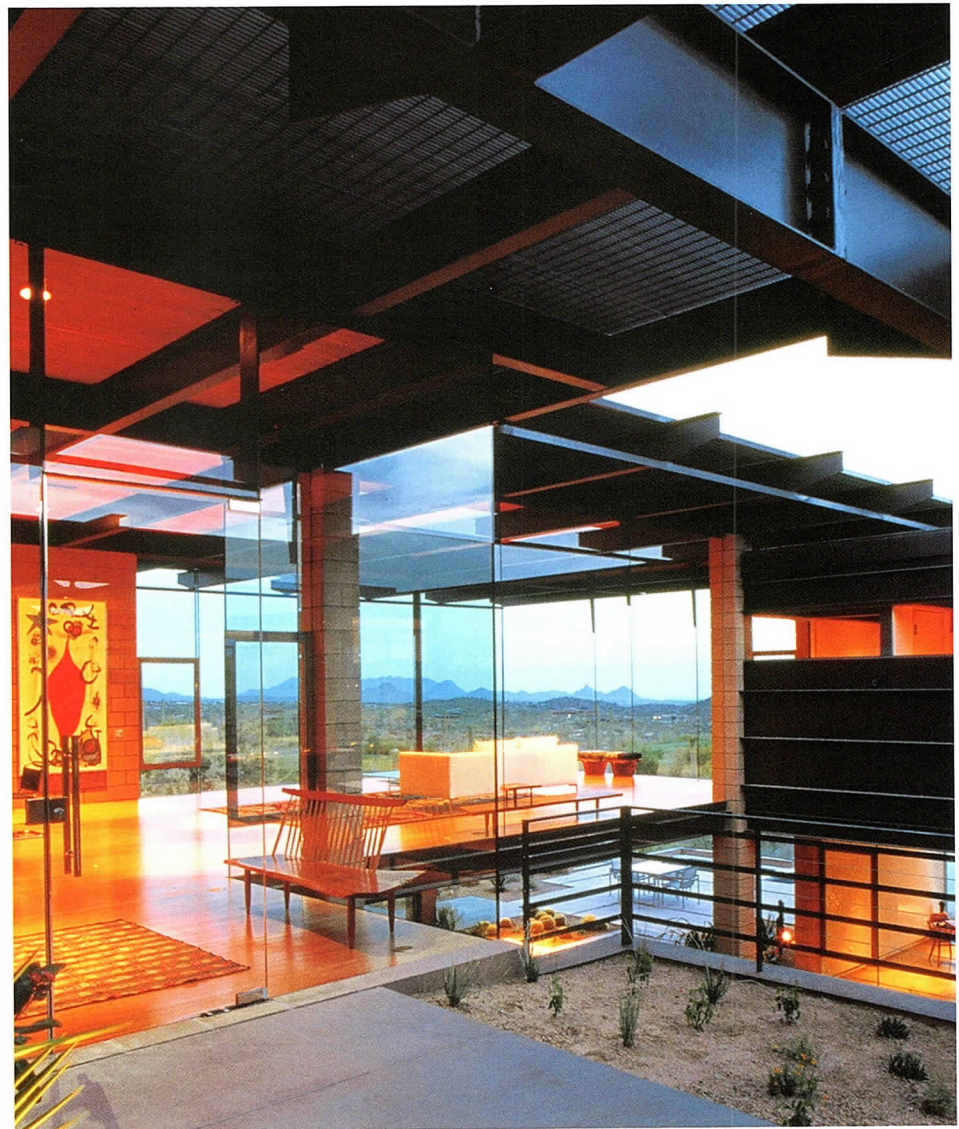
Technologically accomplished and handsomely detailed, this new headquarters building is home to office space that emphasizes natural light, ventilation, and user control. This emphasis is consistently expressed in plan, elevation, and detail, resulting in a nearly transparent building with “a shimmering quality all the way through.” A beautifully articulated glass curtain wall embraces the elliptical courtyard to the south, while a pergola to the north maintains the street edge and scale. A generously proportioned entrance hall speaks of light and air as it connects the public forecourt with the private park as well as providing access to internal functions. Architectural and engineering systems are highly integrated to address energy consumption and comfort; the building exceeds stringent German energy code requirements by 30 percent.

Cloud Chaser
Scottsdale, AZ

Citation of Merit

Architect – David C. Hovey, FAIA
Client – Optima Development AZ LLC
General Contractor – Optima DCH Inc.
Consultants – Thornton-Tomasetti Engineers

Dramatic and serene, this desert house is thoughtfully composed with an honest use of modern materials. A walled forecourt providing entry to the glass-enclosed living space sets the stage for the integration of interior and exterior. Masses of concrete block positioned on the east and west for passive cooling contrast with nearly transparent walls to the south and long, downslope views of the surrounding desert. Textured steel sunscreens supported from the steel roof grid shade the glass and cast shadows across façade and floors. Shaded courtyards and earthen tones drawn from the desert provide a feeling of coolness and retreat.



© Bill Timmerman Photography



DuPage Children's Museum
Naperville, IL

Citation of Merit

Architect – architectureisfun Inc.
 Architect of Record – Nagle Hartray Danker Kagan
 McKay Architects Planners Ltd.
 Client – DuPage Children's Museum
 General Contractor – Graycor Construction Co. Inc.
 Consultants – Graef, Anhalt, Schloemer & Associates
 (structural); WMA Consulting Engineers Inc.;
 Hitchcock Design Group (landscape); Mackie
 Consultants Inc. (civil)

This colorful children's museum conveys a strong message that value and vitality can be created from the humblest of places. Jurors remarked on how skillfully the architects used paint and materials to transform a discarded retail lumber warehouse into an inviting, vibrant space within the limits of a very modest budget. Bright red doors, always open, invite visitors to explore various spaces in the museum. Bold colors break up the long, low, flat warehouse exterior and emphasize the entrance. Oversized signage rendered in playful shapes sits on the ground outside the museum, greeting visitors at child's-eye level and introducing texture and shadow to the previously dull façade.

Churchill Row
Chicago, IL

Citation of Merit

Architect – Hirsch Associates LLC
 Client – Centrum Properties Inc./Joseph Freed Homes
 General Contractor – Centrum Properties Inc.
 Consultants – Stearn Joglekar Ltd. (structural);
 Cosentini Associates (MEP); Terra Engineering (civil);
 Appold Design (landscape)

Infill townhouse buildings are ubiquitous. Rare, however, is the project that boldly and successfully communicates with a historic industrial past and a modern residential neighborhood. Projecting bays of horizontal ribbed pre-finished metal panels alternate with bays of two-story glazing, providing a strong vertical rhythm that holds the street edge. Jurors were won over by the use of industrial materials that achieve a residential quality and neighborhood scale.

© Doug Szwed Photography



© Anthony May



HILL MECHANICAL GROUP

**We build more than
mechanical
systems...**

We build trust.

Trust. A simple principle —
the cornerstone of every
professional relationship we enter
and the fundamental reason we've
become Illinois' largest HVAC contractor.

*Thank you, Chicago, for trusting us
again and again to do what we do best.*

- PRECONSTRUCTION PLANNING to minimize change orders
- SCHEDULING INPUT to guarantee on-time completions
- RESOURCE APPLICATION with personnel/materials for any situation
- PROFESSIONAL EXECUTION from a fully integrated HVAC team
- PROBLEM SOLVING with technical competence and mutual trust

Warren Hill, PE, President • 773-929-6600 • www.hillmech.com



Steve Hall © Hedrich Blessing

Jubilee Family Resource Center
Chicago, IL

Citation of Merit

Architect – Ross Barney + Jankowski Inc.
Client – Carole Robertson Center for Learning
General Contractor – Paul H. Schwendener Inc.
Consultants – Primera Engineers (mechanical);
Rubinos & Mesia Engineers

Developed by a faith-based community organization, this one-story child care center makes the most of an urban commercial strip site while responding to the scale of both its residential neighbors and the children it serves. Play areas for infants are nestled around a protected central courtyard. Single-room volumes that are stepped back along the side streets accommodate older children, while a reception area, offices, and a library front the busy street. The gross motor play area is housed in a canted glass pavilion that pushes into the courtyard, providing views into the center and out toward the community. Architects used patterned floor tiles to economically form decorative “floor mats,” modeled after the Raffia cloths of Zaire, at the entrances to the center, classrooms, and gross motor room.

Farm-in-the-Zoo Presented by John Deere
Chicago, IL

Citation of Merit

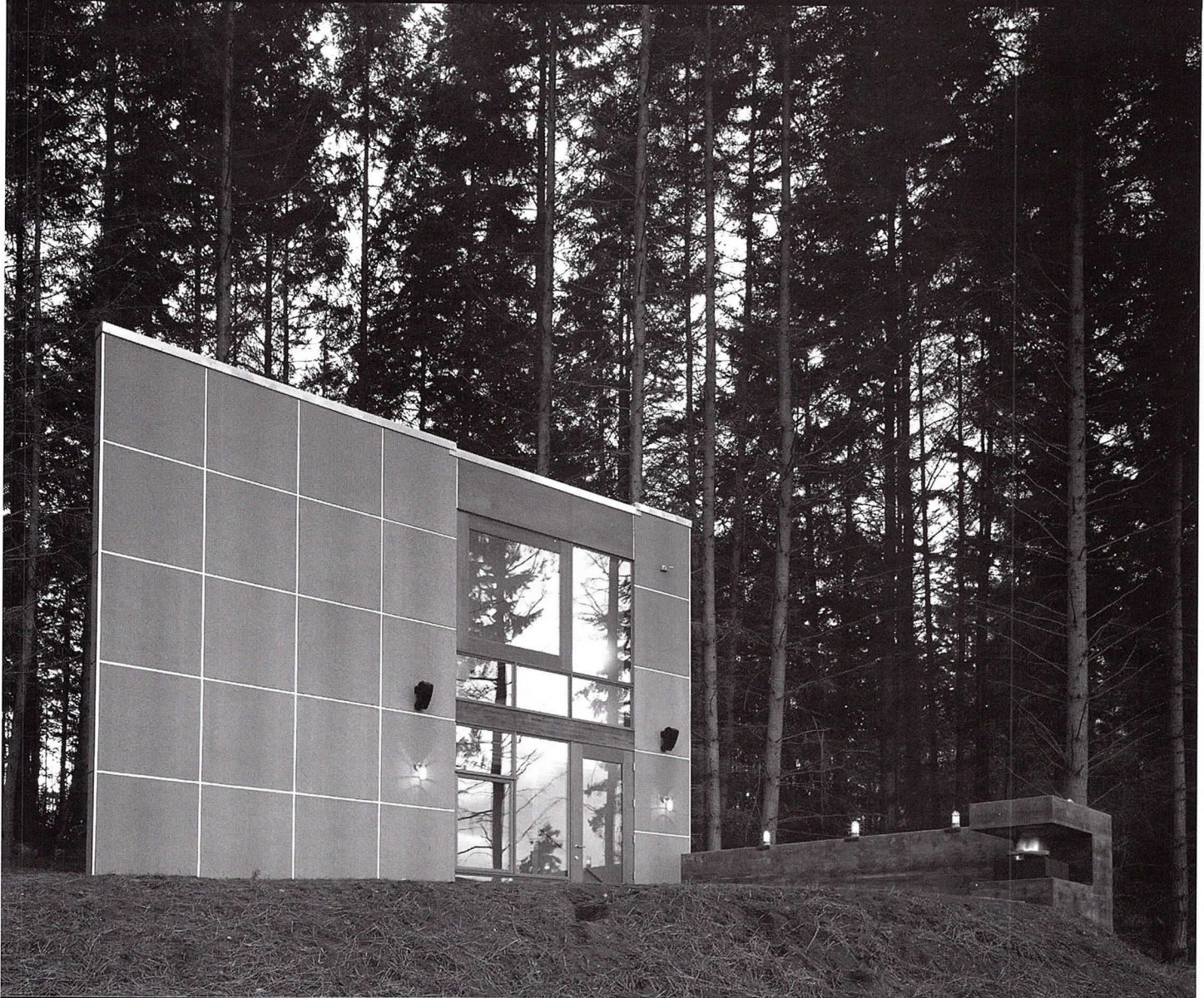
Architect – InterActive Design Inc.
Client – Lincoln Park Zoo
General Contractor – Benson/Rausch, a Joint Venture
Consultants – Patrick Engineering; Silver Oaks
Communications (interpretives designer); Jacobs/Ryan
(landscape)

Thoughtful composition and attention to materials bring a Midwestern farm vocabulary—with a Modernist twist—to the Lincoln Park Farm-in-the-Zoo. Renovation to the complex, which was built in several phases beginning in 1964, included a site plan integrating new and existing buildings, improved indoor and outdoor animal areas, a new farmhouse with demonstration kitchen, and the re-roofing and re-siding of existing barns. Jurors appreciated individual buildings as well as the overall composition, which brings an accessible, urban-scaled “farm” experience to city dwellers.



© Judith Bromley Photographs

[Take a closer look.]



It's all in the details.

Your vision united in harmony with our handcrafted details. Incomparable wood windows and doors built to your specifications. Call or e-mail for information.

Specified by leading architects since 1982.



1-800-287-6650
qsales@quantumwindows.com



Rambler Lofts
Chicago, IL

Citation of Merit

Architect – Ann Temple Architect
Client – Nash Development
General Contractor – Nash Construction
Consultants – Matrix Engineering Corp.

A clever courtyard scheme made for "one of the better multi-family housing solutions" jurors had recently seen. Roofing along the south side of a former warehouse was removed to form a courtyard within a deep, narrow site. Industrial materials employed in balconies and porches—steel bar joists, metal siding and steel grating—are especially appropriate in this adaptive re-use, creating cross-views and focal points in the 15-foot-wide courtyard. The reduced square footage is compensated for with generous double-height living spaces in the front of each of the differently detailed units.

King of Prussia Store
King of Prussia, PA

Citation of Merit

Architect – Crate & Barrel
Associate Architect – Good Fulton & Farrell
Client – Crate & Barrel
General Contractor – Jeffery M. Brown Associates
Consultants – M & E Engineers

This housewares store "really does break the box, especially in the context of a suburban shopping complex," agreed jurors. The building has three components, each of which identifies and anchors a department. White surfaces accentuate gourmet merchandise; zinc anchors glassware and tabletop products, and "basics" are gathered in a space with a purposefully unfinished look. A two-story central spine links the three entrances and is punctuated by bridges linking both halves of the second floor. Two-story glass towers at each end of the spine serve as beacons, identifying the store to customers from any direction. Bold use of form and strong spatial organization make for an unusually elegant solution to an everyday program.

© Leslie Schwartz Photography



© Dan Redmond, Redmond Architectural Photography

ARCHITEMPS, INC.®

ARCHITEMPS, INC. – the Architectural & Interior Design staffing specialists, serving greater metropolitan Chicago since 1986.

Quality staffing, service and solutions:

- Design/Production Drafters
- Facility Planners
- CAD Architects/Interior Designers
- Project Managers

Our billing includes all employer liability:

- Payroll Administration
- Employee Benefits
- Government Compliance
- State & Federal Tax Remittance
- Workers' Compensation Coverage

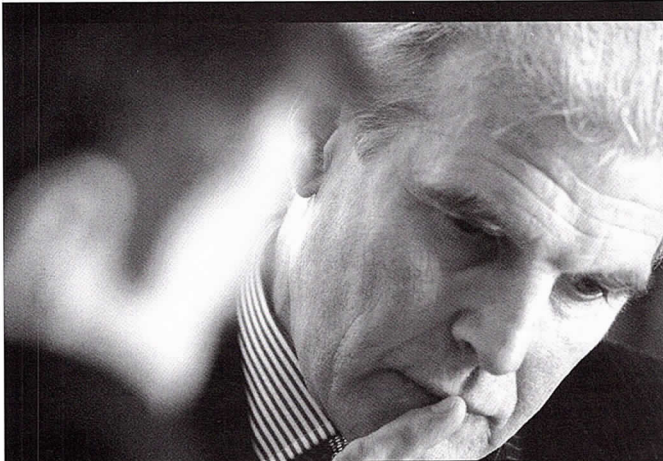
ARCHITEMPS, INC.®
1050 North State Street
Chicago, IL 60610-7829

Tel: 312.649.0912
Fax: 312.649.1667
ARCHITEMPS@aol.com
www.architemps.com

Architectural, interior design and facility planning personnel on a per-project basis. Direct hire conversion and direct placement available. Call today for information on our staffing services or employment opportunities.

“ I chose my insurance agent for the same reason my clients choose me: experience.

” Experience is the DPIC difference.



Combine DPIC's 30 years of dedication to the architect, engineer and environmental market with the expertise of our local brokers, and you get the benefit of the industry's most qualified professional liability experts.

From ongoing education in how to manage risk to new ideas in practice management and smarter dispute resolution that protects your interest, we'll help you realize a better return on your firm's insurance investment.

Contact us today for more information.

Hobbs Group/
AVA Insurance Agency
847-517-8900
www.AVAins.com


A DIFFERENCE THAT DELIVERSSM



© William Kildow, Kildow Photography

Michigan Retreat
Galien, MI

Citation of Merit

Architect – Wheeler Kearns Architects Inc.
Client – Confidential
General Contractor – Great Lakes Builders
Consultants – Thornton-Tomasetti Engineers;
Marsha Weese (interior design)

Jurors found maturity in the way this project “started with an updated farmhouse and then came off that idea.” From the reclaimed meadows outside, the buildings recall rural typologies: taut boxes with simple rooflines. Double-height openings—one an enlarged dogtrot connecting main with guest houses, the other a two-story screened porch—are shaded by wooden louvers, providing cool retreats. A pleasant sense of the ordinary is balanced with careful detail—the flush shiplap siding is mitered at corners to emphasize mass over surface, and yellow pine and simple trim turn the focus to a deeply colored masonry hearth, the heart of the home.

**McCormick Theological Seminary,
New Building and Underground Parking**
Chicago, IL

Citation of Merit

Architect – M+W Zander
Client – McCormick Theological Seminary
General Contractor – The George Sollitt
Construction Company
Consultants – Tanager Design Group (interior design);
C.E. Anderson & Associates (consulting engineer);
Primera Engineers (consulting engineer)

For a seminary committed to welcoming and serving the urban community, the architects skillfully inserted a modern building that finishes off a quadrangle, encloses an urban garden sanctuary, and confidently addresses its neighbors—both 1960s institutional structures and older brick residential buildings. The tight urban site suggested a linear scheme. A glass volume faces existing modern buildings and fronts a landscaped courtyard. A masonry volume borrows from the palette and details of neighboring homes and is subtly bent, bringing attention to the entrance and a two-story lobby connecting interior gallery, study and informal meeting areas.



© Jamie Padgett, Padgett and Company



Christopher Barrett © Hedrich Blessing

Racine Art Museum
Racine, WI

Citation of Merit

Architect – Brininstool + Lynch Ltd.
Client – Racine Art Museum Association
General Contractor – Bukacek Construction Inc.
Consultants – Arnold and O'Sheridan Inc.
(consulting engineer)

Elegant detailing and spatial organization transform a motley group of office buildings into a museum. Additions from the 1960s were removed and an L-shaped glass enclosure was constructed around a new courtyard, defining the entryway and allowing views to the museum's interior. Above, acrylic cladding was mounted 18 inches from existing surface limestone, fashioning a modern work of the top two stories. Natural light subtly illuminates the surfaces during the day; lighting at the top of the acrylic gives a lantern glow during the evening. Jurors found the overall proportioning understated and classic.

(Double winner; also received Interior Architecture Honor Award.)

Alfred Caldwell Lily Pool Restoration of Pavilions & Entry Gate
Chicago, IL

Special Recognition

Architect – Eifler & Associates Inc.
Client – Lincoln Park Conservancy, The Chicago Park District
General Contractor – Clauss Brothers Inc.; Horcher Bros.
Consultants – Wolff Clements & Associates Ltd. (landscape)

This subtle restoration returned a hidden jewel to a new generation of park-goers. Designed by Alfred Caldwell in 1936 as an idealization of the Midwestern landscape, the reflecting pond was complemented by projecting native limestone and indigenous plant species. Two connected pavilions provided shelter and gave the setting a sense of scale. Over the years their roofing materials and framing were replaced and repaired. Architects returned the pavilions to their original configuration, upgrading materials and restoring Caldwell's vision for entry gates, landscaping, pool, and pathways.



© William Kittow, Kittow Photography



James Steinkamp © Steinkamp/Ballogg Photography

Bloomingdale's Home + Furniture Store at Medinah Temple
Chicago, IL

Special Recognition

Architect – Daniel P. Coffey & Associates Ltd.
Client – Federated Department Stores
General Contractor – W.E. O'Neil Construction Co.
Consultants – JEK Engineers Inc. (consulting engineer); Tylk Gustafson Reckers (consulting engineer)

Jurors commended the beautiful exterior restoration of this 1912 Islamic Revival structure, built as an auditorium for a Shriners organization but threatened with demolition. Two copper-clad onion domes were reconstructed based on photographs. Dramatic lighting of masonry forms, entrances, and domes and the glow of the enlarged ground floor windows, restored stained glass, and signage bring new life to a previously dark block of prime real estate.

What is your master *plan* for developing new business?

BizBuzz Marketing Communications specializes in helping architecture firms like yours create a strategy to get the most out of their marketing dollars.

- Maximize results by leveraging your marketing efforts.
- Position your company through consistent communications.
- Achieve the best results by targeting your marketing messages.
- Increase customer loyalty through ongoing communications.
- Promote your business without spending a lot of money.

BizBuzz Marketing Communications
Building Business for Architects.

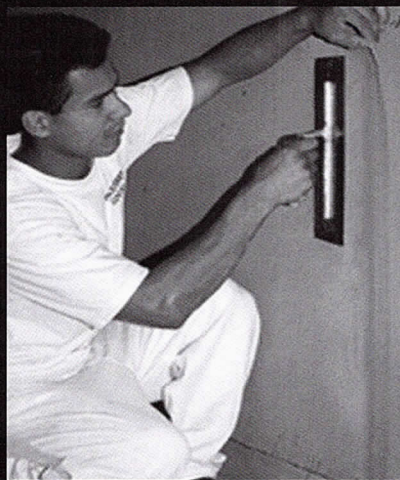
For artful ideas
www.bizbuzzmarketing.com

Our capabilities include:

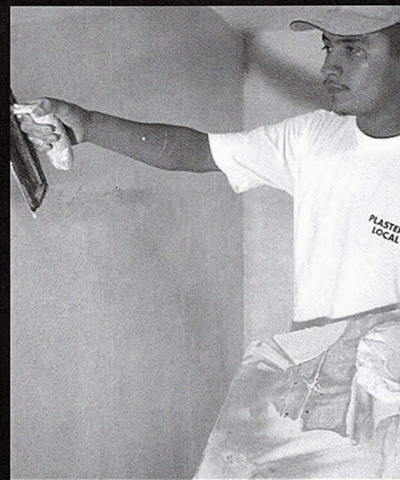
- Strategic Planning—Corporate positioning & program development
- Targeted Business Development—Prospect list development & direct mail campaigns
- Customer Relationship Management—Database management, customer loyalty & newsletters
- Graphic Design and Copywriting—Sales collateral, media kits, Web sites, case studies, multi-media & proposals

call us today!
708.848.4914

Professional Training Yields Expert Plasterers



Exterior Insulating and Finishing
Systems (EIFS) and Stucco



Conventional and Veneer Plaster



Ornamental Plaster

Call us for information about today's
plastering systems and the best
people to apply them.



Chicago Plastering Institute
6547 N. Avondale Ave.
Chicago, IL 60631
(773) 774-4500

Interior Architecture Awards

by Laurie Petersen

The Interior Architecture Award was established over 20 years ago to promote interior architecture as a unique profession by recognizing outstanding projects. For award purposes, interior architecture is defined as the space within a building envelope, including design of lighting, finishes and furnishings. The jury considered a wide range of design projects completed between January 1, 2000 and May 1, 2003.



Steve Hall © Hedrich Blessing

DuPont™ Antron® Corporate Resource Center
Chicago, IL

Honor Award

Architect – Perkins & Will | *Eva Maddox Branded Environments*

Client – DuPont™ Antron®

General Contractor – N'Dio (exhibit fabricator)

This carpet showroom in the Merchandise Mart has "a lot of richness for a very small project," in the jury's opinion. It succeeds in its mission of educating designers about the attributes of Antron® fiber, using it in many forms and demonstrating how colors can be customized. The environment features a variety of scales and textures, and incorporates three-dimensional shapes that are wrapped with different styles of the fiber. Translucent panels that recall museum displays are appropriate to the didactic atmosphere. "A strong concept, with great detail and execution," was the jury verdict.



Steve Hall © Hedrich Blessing

Racine Art Museum

Racine, WI

Honor Award

Architect – Brininstool + Lynch Ltd.

Client – Racine Art Museum Association

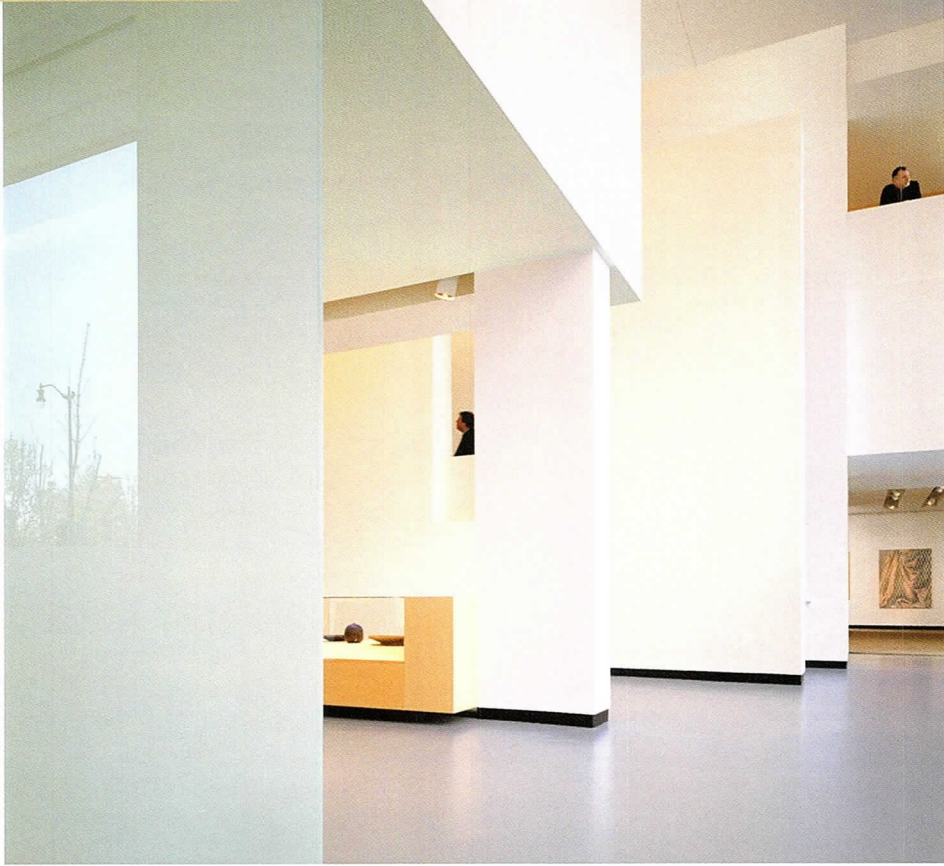
General Contractor – Bukacek Construction Inc.

Consultants – Arnold & O'Sheridan Inc. (engineers)

"The whole project is based on the idea of manipulating and controlling light; all the forms derive from that," according to the admiring jury. They also appreciated the level of consistency and control throughout the interior. "Drywall is the dominant material, but that is appropriate for a neutral environment like a museum." The volumes and planes are detailed in a very minimalist manner, supported by a high level of craftsmanship. The museum was created from a group of existing structures of varying ages and conditions. Planning began with the identification of potential gallery spaces and grouping support and circulation areas around them. Existing structural elements were linked with new wall, floor and ceiling planes. The 46,000-square-foot building contains galleries, a store, an art library, an art storage and preparation area, and offices and support services. The construction cost was a modest \$135 per square foot.

(Double winner; also received Distinguished Building Citation of Merit)

Christopher Barrett © Hedrich Blessing



Christopher Barrett © Hedrich Blessing

Code Compliance Is Not An Option... How You Achieve It Is.

The experienced professionals at The Code Group offer:



For more information contact:

Christopher Chwedyk, AIA
111 W. Washington St., Suite 450
Chicago, IL 60602
312-673-1503

codes@codegrouponline.com

- ADA Site Surveys
- Preliminary Zoning & Building Code Analysis
- Accessibility Consulting
- Code Requirement Analysis
- Local Code Conflict Resolution
- "Hi-Tech" Center Plan Evaluation
- Code Research
- Registered Energy Professional Certification
- Pre-Permit Submittal Plan Review
- MEP & Fire Safety Review



Any Way It Shapes Up... CTI Delivers

When you need

"Using precast thin brick faced panels was the ideal solution to meet the community's aesthetic desires as well as the demanding schedule requirements. In other words, when speed and look are both #1 priority, CTI really delivers!"

~Dennis Nemenz
Vice President, Sales
Concrete Technology, Inc.

ECONOMY
SPEED
EXPERTISE
APPEAL

Think...precast concrete

CONCRETE TECHNOLOGY INC.

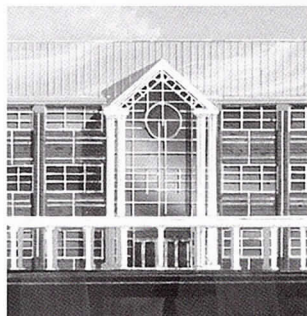
Fact: Using architectural precast concrete cladding can reduce enclosure time by as much as 70%.

Fact: CTI has two high-capacity plants, fully supported by local Customer Service Teams, ready to go to work for you. From initial design to delivery...we get it done in the least possible time.

Choose...CTI

GARFIELD HEIGHTS
HIGH SCHOOL
(Rendering)
Garfield Heights, OH

DESIGN ARCHITECT:
FPS Architects &
Engineers, Ltd.
Cleveland, OH



See for yourself why architects are talking about CTI.

Let CTI serve up lunch while discussing how they can speed along your next project. To have a box lunch catered for your architectural staff, call Leo Ford at (773) 784-0400.

CONCRETE TECHNOLOGY INC. • Paxton, IL and Springboro, OH • Call 800.788.2370
www.ctiprecast.com

Storck USA
Chicago, IL

Honor Award

Architect – Eastlake Studio
Client – Storck USA
General Contractor – Leopardo Construction
Consultants – JB Engineering Services

An engaging sense of wit pervades this headquarters for a German candy company. "The thing is a big jelly bean," commented a juror, while also admiring the innovative plan and the materials palette. The plan avoids the monotony of open workstations by centering a power pole in each column bay and creating a rotated cluster of desks around it. At the entrance is an oval meeting area that can be screened off by a sheer curtain and by pivoting millwork elements that showcase different types of candy. White walls provide an effective backdrop for strong dollops of bright color, and glossy and matte surfaces play off each other nicely.



Steve Hall © Hedrich Blessing



Steve Hall © Hedrich Blessing



Please call John Dashner or Randy Zaleski
 Ph: 630-668-1551 Fax: 630-668-1672



bc
BOTTI
CONSTRUCTION,
INC.

720 ENTERPRISE DRIVE
 OAK BROOK, IL
 60523

• BUILDERS • PLANNERS •
 • DEVELOPERS •

(630) 573-5070

FAX:(630) 573-8586

www.botti-construction.com

Email:
chrisb@botti-construction.com



“Let’s face it. Design is about choice.”

We choose the designs that please us,
 we choose the environment in which
 we live and work. We choose the talent
 that reflects our world, and we choose
 the partners that know us best.

That’s why we choose CFA,
 Chicagoland’s leading choice for
 Staffing and CAD Services since 1984.



Consulting for Architects, Inc.

“Creating Staffing and Software Solutions”

120 South State Street
 Floors 5 & 7
 Chicago, IL 60603
 312.345.1700
www.cons4arch.com



Steve Hall © Hedrich Blessing

Levy Senior Center
Evanston, IL

Citation of Merit

Architect – Ross Barney + Jankowski Inc.
Client – City of Evanston
General Contractor – The Meyne Company Inc.
Consultants – C.E. Anderson & Associates (structural);
Ramm Associates (MEP); Terra Engineering Ltd.
(civil)

The palette of natural materials, use of daylight and blend of interior and exterior all elicited praise for this 25,550-square-foot senior center. The spare, monochromatic aesthetic creates a peaceful, humanistic environment. The building was conceived as a showcase for natural lighting and passive solar control. Glass-enclosed pavilions contain dance and art classrooms, while a translucent fiberglass skin allows diffused light to enter the large multipurpose room. Sweeping roofs and wood wall shutters provide protection from the heat and glare of direct sunlight.

San Diego Zoo Store
San Diego, CA

Citation of Merit

Architect – EHDD Architecture and Schwartz Architects
Client – The Zoological Society of San Diego
General Contractor – Melhorn Construction
Consultants – Rutherford & Chekene (structural);
Guttman & Blaevoet (MP); O'Mahony & Myer
(electrical)

"They understand that a store is a lot of little things, so they use a big-scale gesture to hold it all together," said the jury. The highlight of the space is a grove of bamboo beneath a skylight. The terra cotta tile floor and the wooden slats of the floating ceiling reinforce the natural feeling. Merchandise is displayed on a mixture of custom and modified off-the-shelf fixtures. The theme of conservation and sustainability is given verbal expression in the frieze and mural elements.



© Doug Snower Photography



© Greg Murphy Studios Inc.

Polk Bros. Foundation
Chicago, IL

Special Recognition

Architect – von Weise Associates
Client – Polk Bros. Foundation
General Contractor – Norcon Inc.

"With a small project, one thing can be enough," said the jury of this modest office. Using economical means appropriate to the budgetary constraints of a philanthropic organization, the architects crafted a brand identity for a foundation that helps Chicago children and families. A horizontal band of images along a curving polycarbonate wall creates a visual mission statement about assisting those in need.

Office for Investment Banking Firm
Chicago, IL

Special Recognition

Architect – von Weise Associates
Client – Confidential
General Contractor – Turner SPD

This project was recognized for its novel concept of wrapping the conference room floor and walls with metal. Termed "the idea vault," the room features a deep red wall at the back that contrasts with the industrial-grade finish of the sloping metal surfaces. The newly established investment banking firm wanted an image that would convey stability and permanence while setting them apart as more creative than traditional firms.



© Greg Murphy Studios Inc.



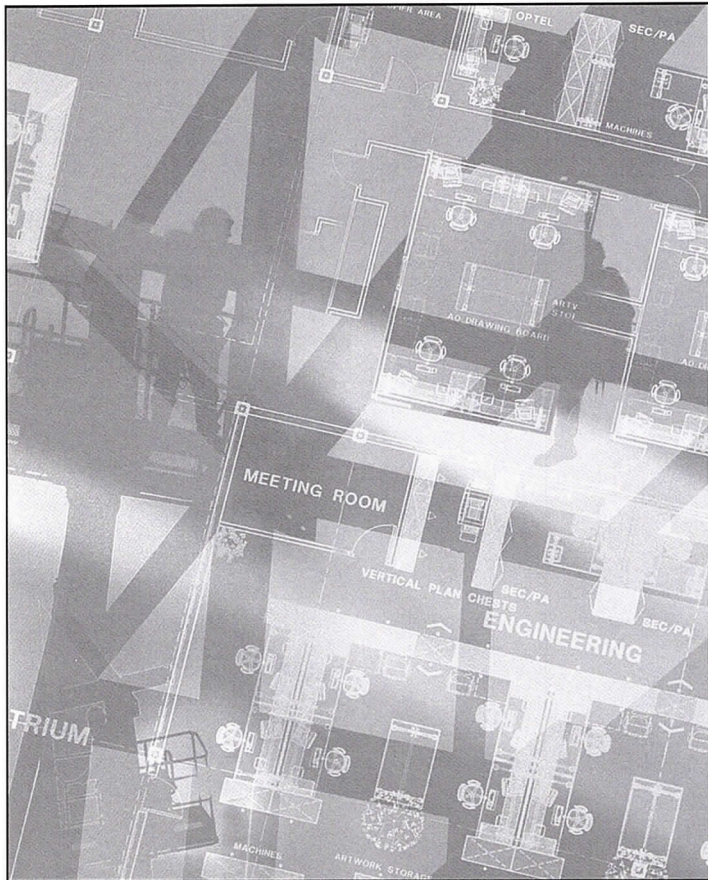
Botti Studio of Architectural Arts, Inc.

919 Grove Street, Evanston, IL 60201 Established 1864
847/869-5933 • Fax: 847/869-5996 • 800/524-7211
www.bottistudio.com • botti@bottistudio.com

Designers/Fabricators • Stained and Faceted Glass • Beveled Glass • Sandblasted •
Stained Glass Restoration and Conservation • Protective Glazing • Wood and Metal
• Frame Restoration • Sculpture • Bronze • Metal • Marble • Mosaic • Interior
Renovation • Woodwork • Murals • Painting and Decorating • Custom Sanctuary
Furnishings • Stained Glass Consultants to Architects and Churches

Studio Locations

San Diego • Chicago • Sarasota • Agropoli, Italy • Nassau, Bahamas
760/753-0705 • 847/869-5933 • 941/951-0978



EUCLID

INSURANCE AGENCIES®

We've been insuring businesses since 1952. We represent hundreds of design firms because our experience allows us to give you the **expert advice** and products you need. We're proud of why so many of your colleagues **continuously choose us** to represent them:

- Reputable insurance companies
- **Competitive** premiums
- Customized employee meetings
- Continuing education programs
- Legislative updates
- Quotes for all policies
Professional Liability, Group Health, Workers Compensation, Disability, Life

For more information, call 630.694.3700 Ext. 1130 • 234 Spring Lake Drive • Itasca IL 60143

Buildings that produce their electricity from the sun are worth their weight in gold.

CHICAGO -- the highest ranking city for new development projects*, calls for the highest ranking design. Custom solar electric systems will make your clients' projects shine.



Safe, clean and secure energy

Enhanced property value

Decreased monthly electric bills

Incentives significantly reduce system costs

* Crain's Chicago Business 2.20.02

CONTACT US TO GET STARTED:
773.638.8700 / www.spirelarchicago.com

Divine Detail Awards

by Laurie Petersen

The Divine Detail Award recognizes architectural excellence in its essence. Each year, a jury looks for the expression of a firm's fundamental architectural theory or design concept in their application of a particular material, detail or building technology. Craft must express the overall concept. As in other awards categories, projects completed between January 1, 2000 and May 1, 2003 were eligible.



Steve Hall © Hedrich Blessing

Emanuel Congregation Sanctuary Renovation Chicago, IL

Honor Award

Architect – Ross Barney + Jankowski Inc.
Associate Architect – Les Jacobs
Client – Emanuel Congregation
General Contractor – Leopardo Companies

Moveable fabric panels provide an ingenious way of creating an intimate worship space within a 12,000-square-foot sanctuary. Twenty-six panels of a polyester cloth that is typically used for sailboat spinnakers are hung from a 16-foot-tall circular track. When panels hang along the length of the track they curtain off the platform from the rest of the interior to create a 200-seat sanctuary. The jury appreciated the light and economical way of transforming the space as well as the historical and cultural references to the ancient "Tent of Meeting" under which the first Jewish worship services were conducted.



Steve Hall © Hedrich Blessing



Folded Steel Stair
Chicago, IL

Honor Award

Architect – Wheeler Kearns Architects Inc.
Client – Confidential
General Contractor – Harold O'Schultz
Consultants – KGH Architects & Engineers (structural);
VA Robinson Ltd. (metal fabricator)

"This is really a magical piece," said one of the jurors. They all admired the fact that a single material—perforated steel—was manipulated to form every element of the stairway: treads, risers, enclosure and handrail. Suspended from the concrete floor slab, the tensile strength of the sheet steel allows the stair to float above the floor below. Using no fasteners, the steel is folded and bent together for joint connections and structure.

© Jun Fujihama



© William Kildow, Kildow Photography



Jon Miller © Hedrich Blessing



UBS Tower Planters
Chicago, IL

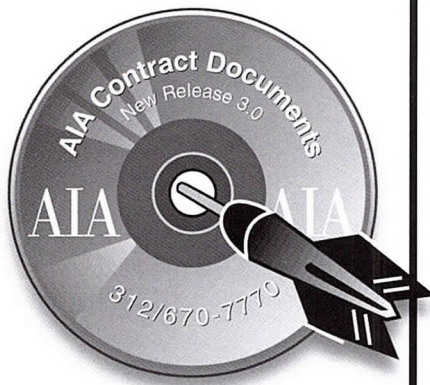
Honor Award

Architect – Lohan Caprile Goettsch Architects
 Client – The John Buck Company
 General Contractor – AMEC (general); Walsh Landscaping Inc.
 Consultants – Peter Walker & Partners (landscape architect/concept design)

"It's wonderful to see a well-done contemporary streetscape in Chicago—one that looks forward rather than backward," said a juror. The project also won kudos for being successful at the scale of the city as well as the scale of the building, creating a greenscape on a street that is an important pedestrian corridor. The planters are effective at dividing the plaza from the street and providing comfortable seating; the result is a welcoming exterior room. Their verticality is a response to the limited space but has the advantage of making them strong sculptural objects.



Jon Miller © Hedrich Blessing



**Nothing Else
Even Comes
Close.**

**AIA Contract Documents:
Electronic Format 3.0**

AIA Contract Documents are the standard in the building industry. Created with the consensus of contractors, attorneys, architects and engineers. Honed razor-sharp by test after legal test. Refined to exceptional clarity through 110 years of precedent and experience. More than 70 contracts and forms for the design and construction phases of all types of projects. Now with custom formatting and flexible pricing.

Call AIA Chicago for your free demo disk today: 312/670-7770. Or order online at www.aiachicago.org.

AIA Chicago



A Chapter of The American Institute of Architects

**Bathrooms
with the Ultimate Finish.
Kitchens
with the Finishing Touch.**

American Standard, Duravit, Porcher, Toto, Kallista, Granite, Corian, Dornbracht, Jado, Hansgrohe, Grohe, Herbeau, KWC, Elkay, Blanco, Bertch, Schrock, Baldwin, Jacuzzi, Pearl, Roborn and Hastings.

Advantage kitchen & bath **Gallery**
Find it Here.

Mon & Thurs: 8am-8pm
Tues, Wed & Fri: 8am-5pm
Sat: 9am-5pm

847-965-4444
advantagebath.com

7 8 5 0
NORTH
MILWAUKEE
AVENUE
NILES
ILLINOIS

FIND IT HERE.

PRECAST SPECIALTIES, INC.

- Watertables
- Sills
- Heads
- Coping
- Bands
- Wainscot Panels
- Column Covers
- Other Custom Shapes

pci
CERTIFIED
PLANT

111 Utility Drive
P.O. Box 452
Monroeville, Indiana
www.precastspec.com

Locally Represented By:

ARC SPEC

Phone 847-362-1590
Fax 847-362-1557



Nick Merrick © Hedrich Blessing

Illinois Department of Natural Resources
Headquarters' Wood Columns
Springfield, IL

Citation of Merit

Architect – VOA Associates Inc.
Client – Illinois Department of Natural Resources
General Contractor – BRH Builders
Consultants – Rubinos & Mesia Engineers Inc.
(structural); Henneman Raufeisen and Associates
Inc. (MEP)

The DNR headquarters reflects its mission of conservation and stewardship of Illinois' natural resources with use of sustainable materials. The curving roof is supported by wood columns on both of the long sides of the building. Rectilinear columns connected with steel fastenings rise from the stone base to support the roof on the main entry façade. The other side features tapered columns that angle out as they rise. The jury found the columns "wonderfully put together" and admired the way they allow the roofline to have a crisp, thin edge.

3 Little Words: WWW.LIGHTOLOGY.COM



Design professionals love our e-commerce site's live inventory and Project Manager layout tool. Register on our website to receive **40% off list price** of the largest and most progressive contemporary collection of lighting in North America. Then plan an entire project by location and e-mail it to your customer for approval.

SHOWROOM HOURS
M-Sat: 10-6
Th: 10-7

Lightology
Formerly Tech Lighting Galleries

215 W. Chicago Ave
Chicago, IL 60610
312.944.1000



Mann, Weitz & Associates L.L.C.
CPAs & Business Advisors

Experts in the Industry – Servicing Architectural Firms for Over 25 Years

A Sample of the Services We Offer

- Tax Preparation
- Tax Planning
- Business Consulting
- Profit Enhancement
- Audits, Reviews and Compilations
- Outsourcing Accounting Services

In addition, we provide:

- *Access to partners and senior professionals*
- *Timely responses*
- *Business consulting to improve your bottom line*

Contact Mark Mann at Mann, Weitz & Associates L.L.C.

108 Wilmot Road, Suite 110, Deerfield, Illinois 60015

Phone: (847) 267-3400 Fax: (847) 267-3401

Email: info@mannweitz.com or visit us at www.mannweitz.com

NeoCon® SHOWS



North America's largest collection of expositions and conferences for interior design and facilities management ...

NeoCon® World's Trade Fair

June 14-16, 2004
The Merchandise Mart • Chicago, Ill.

IIDEX®/NeoCon® Canada

September 30 – October 1, 2004
The National Trade Centre
Toronto, Ont.

NeoCon® East

November 6-7, 2003
Baltimore Convention Center
Baltimore, Md.

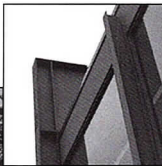
NeoCon® West

February 4-5, 2004
Los Angeles Convention Center
Los Angeles, Calif.

www.merchandisemart.com 800.677.6278



Steve Hall © Hedrich Blessing



UNCOVER THE PAST

Historic Preservation at the School of the Art Institute of Chicago offers a two-year Master of Science in Historic Preservation degree. The interdisciplinary curriculum offers a broad approach, combining planning, design, history, and conservation in a program that takes advantage of Chicago's landmarks and status as American's First City of Architecture. Faculty are practicing professionals—architects, planners, and historians who have helped save and restore such landmarks as the Frank Lloyd Wright Home and Studio; the Rookery Building; Richardson's Glessner House; and the Reliance Building.

Bring the past into your present.



THE SCHOOL OF THE ART INSTITUTE OF CHICAGO

For more information
Office of Admissions
37 South Wabash Ave.
Chicago, IL 60603
312.899-5219
1.800.232-7242
admiss@artic.edu
or www.artic.edu/saic

Tribune Interactive Chicago, IL

Citation of Merit

Architect – Perkins & Will
Client – Tribune Properties Inc.
General Contractor – Pepper Construction
Consultants – McClier Corp. (structural);
Bryne Associates (electrical)

Last year this transformation of a former printing press room in the 32-foot-high basement of the Tribune Tower won an interior architecture honor award from AIA Chicago as well as a national AIA honor award. The Divine Detail jury found the glass tower elements particularly praiseworthy. Located along the three-story-high main hall, the towers are composed of planes of clear and frosted glass in a deliberate contrast with the heavy exposed masonry structure. A canted plane of frosted glass can be used as a projection surface for meetings while also animating the gathering space.



Jon Miller © Hedrich Blessing

UBS Tower Cable Netwall
Chicago, IL

Citation of Merit

Architect – Lohan Caprile Goettsch Architects
Client – The John Buck Company
General Contractor – AMEC (general); Trainor Glass Company/Advanced Structure Inc. (cable netwall)

Jurors applauded the elegance and simplicity of the curtain wall as well as its innovative quality. The wall is a flat, prestressed cable-net system with nodes that support five-foot-square glass panels. Restraining blocks between the face and back plates of the nodes clamp them to the stainless steel cables, which are pre-tensioned with over 18,000 pounds of force. The low-iron, water-white glass features a non-reflective coating that creates a totally transparent building enclosure in all lighting conditions.

On-Site Services for Design Firms



Our clients include over 200 firms in 20 states that are benefiting from the convenience and profitability of OSS within their offices.

- Reprographics Equipment
- Expense Recovery
- Project Tracking
- Flexible Contracts

Partner with the company that pioneered the model and best understands your professional needs.

Service Point



For more on OSS, contact us at (800) 448-6002, x528 or e-mail oss@servicepointusa.com.

Second Course Added Starts: Oct 4th

LEARN AUTODESK® VIZ 4

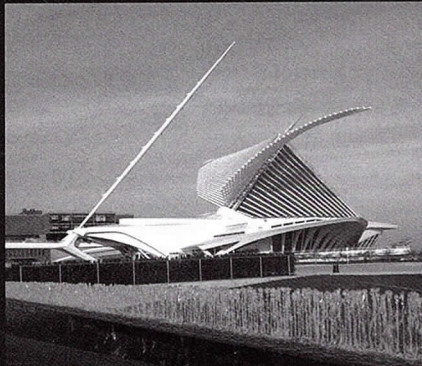
CONTINUING EDUCATION

Design Visualization 3D Design Technology

Vertex Graphics, the award winning architectural visualization firm is now offering training in AutoDesk VIZ 4. The course will teach design professionals how to develop 3D drawings and images to support and express their design ideas. They will also explore principles using 3D data in the construction process. The Course title is Design Visualization/3D Design Technology. For more information contact Alphonso Peluso or John Manaves at 312.432.9870.

Registration Deadline: OCTOBER 1st
Course Starts: OCTOBER 4th
Course Schedule (8 weeks): SATURDAYS 1:00 PM TO 5:00 PM
Earn: 16 AIA CONTINUING EDUCATION LUs
Registration Fee: \$800
SPACE IS LIMITED

312.432.9870 WWW.VERTEXGRAPHICS.COM
VERTEX GRAPHICS
1147 W OHIO #102 CHICAGO IL 60622



*engineering
services provided
to our clients
include...*
**Structural
Civil
Environmental
Transportation
Mechanical
Electrical**



**GRAEF
ANHALT
SCHLOEMER**
and Associates Inc.
engineers & scientists

*228 South Wabash Avenue
Suite 700
Chicago, Illinois 60631
312/939-7007
www.gasai.com*

*also:
Chicago - O'Hare
Milwaukee, Madison,
and Green Bay*

Distinguished Building Awards

Paul Jacob, III, AIA
RTKL Associates Inc.
Los Angeles

Michael Murphy, AIA
Murphy & Dittenhafer Architects
Baltimore

L. Bradford Perkins, FAIA
Perkins Eastman Architects PC
New York City

Interior Architecture Awards

Annie Chu, AIA
Chu + Gooding Architects
Los Angeles

Steven Clem, AIA
TVS & Associates
Atlanta

James Timberlake, FAIA, FAAR
KierantTimberlake Associates LLP
Philadelphia

Divine Detail Awards

Philip Enquist, FAIA
Skidmore, Owings & Merrill LLP
Chicago

Kathleen O'Donnell, AIA
Chicago

Constantine Vasiliou, AIA
Constantine D. Vasiliou & Associates Ltd.
Chicago

Sabo & Zahn
Attorneys at Law

Werner Sabo, FAIA

James Zahn, FAIA

Licensing problems, copyrights, business formations,
mediation, litigation, arbitration, contracts, real estate
construction attorneys

8620 Sears Tower
Chicago, IL 60606

(312) 655-8620
fax: (312) 655-8622

www.sabozahn.com

Distinguished Building Awards

Honor Awards

Andrew Metter, FAIA for annex | 5 Architects (Factory Façade Renovation)8
 Andrew Metter, FAIA for annex | 5 Architects (Renishaw) .10
 Legat Architects (Highland Park High School Science Addition)9
 Murphy/Jahn Inc. (Deutsche Post)6
 Perkins & Will (Crate & Barrel Headquarters)7
 Perkins & Will (Skybridge at One North Halsted)11

Citations of Merit

Ann Temple Architect (Rambler Lofts)17
 architectureisfun Inc. (DuPage Children's Museum)13
 Brininstool + Lynch Ltd. (Racine Art Museum)20
 Crate & Barrel (King of Prussia Store)17
 David C. Hovey, FAIA (Cloud Chaser)12
 Hirsch Associates LLC (Churchill Row)13
 InterActive Design Inc. (Farm-in-the-Zoo Presented by John Deere)15
 M+W Zander (McCormick Theological Seminary, New Building and Underground Parking)19
 Murphy/Jahn Inc. (Bayer W11)12
 Ross Barney + Jankowski Inc. (Jubilee Family Resource Center)15
 Wheeler Kearns Architects Inc. (Michigan Retreat)19

Special Recognition

Daniel P. Coffey & Associates Ltd. (Bloomingdale's Home + Furniture Store at Medinah Temple)20
 Eifler & Associates Inc. (Alfred Caldwell Lily Pool Restoration of Pavilions & Entry Gate)20

Interior Architecture Awards

Honor Awards

Brininstool + Lynch Ltd. (Racine Art Museum)23
 Eastlake Studio (Storck USA)25
 Perkins & Will | *Eva Maddox Branded Environments* (DuPont™ Antron® Corporate Resource Center)22

Citations of Merit

EHDD Architecture and Schwartz Architects (San Diego Zoo Store)27
 Ross Barney + Jankowski Inc. (Levy Senior Center)27

Special Recognition

von Weise Associates (Office for Investment Banking Firm)28
 von Weise Associates (Polk Bros. Foundation)28

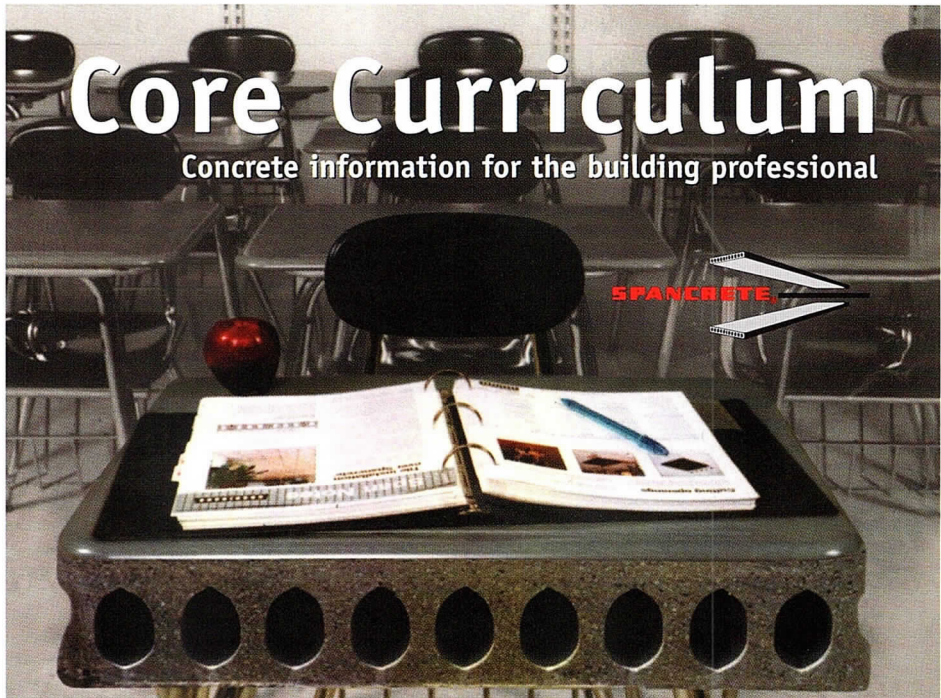
Divine Detail Awards

Honor Awards

Lohan Caprile Goettsch Architects (UBS Tower Planters) .32
 Ross Barney + Jankowski Inc. (Emanuel Congregation Sanctuary Renovation)30
 Wheeler Kearns Architects Inc. (Folded Steel Stair)31

Citations of Merit

Lohan Caprile Goettsch Architects (UBS Tower Cable Netwall)36
 Perkins & Will (Tribune Interactive)35
 VOA Associates Inc. (Illinois Department of Natural Resources Headquarters' Wood Columns)34



Core Curriculum

Concrete information for the building professional

SPANCRETE

Spancrete has assembled a comprehensive reference library to share our core knowledge with customers. Simply fill out the form below and fax it to (414) 290-9125 or order online at www.spancrete.com. You will receive valuable information from Spancrete and build the foundation of your precast library — FREE! (some restrictions may apply)

Name: _____

Title: _____

Company: _____

Address: _____

City: _____

State: _____ Zip: _____

Phone: _____

EMAIL: _____

- | | | |
|---|---|--|
| <input type="checkbox"/> System Profiles | <input type="checkbox"/> Load Tables | <input type="checkbox"/> Precast Wall Panel Brochure |
| <input type="checkbox"/> Project Profiles | <input type="checkbox"/> Precast System Brochure | <input type="checkbox"/> Parking Structures |
| <input type="checkbox"/> Span Notes Techniques & Procedures | <input type="checkbox"/> Better Way to Build Brochure | <input type="checkbox"/> Bridges |
| <input type="checkbox"/> Research Notes | <input type="checkbox"/> Fire Safety Brochure | <input type="checkbox"/> Hotels/Motels |
| <input type="checkbox"/> Wall Panel Finish Guide | <input type="checkbox"/> Architectural Precast Brochure | <input type="checkbox"/> Multi-family Housing |
| <input type="checkbox"/> Wall Panel Video | <input type="checkbox"/> Assisted Living Brochure | <input type="checkbox"/> Single-family Housing |
| <input type="checkbox"/> Wall Panel Brochure | <input type="checkbox"/> Machinery Brochure | <input type="checkbox"/> GFRC |
| <input type="checkbox"/> Design & Engineering Handbook | | <input type="checkbox"/> Industrial/Municipalities Buildings |



SPANCRETE INDUSTRIES, INC.

SPANCRETE

Waukesha, Wisconsin (414) 290-9000
 Chicago, Illinois (773) 775-6402 • Green Bay, Wisconsin (920) 494-0274
www.spancrete.com

I N T R O D U C I N G



Cool Colors

Saving energy.

Preserving color choice.

Petersen Aluminum Corporation is pleased to introduce PAC-CLAD Cool Colors: a new and updated color palette designed to improve the energy saving performance of our metal roofing products without requiring compromise in color selection.

In creating this new product line, we worked with our coating supplier, The Valspar Corporation, to significantly broaden the range of PAC-CLAD Colors that would meet ENERGY STAR®, LEED™ and/or cool roof certification requirements for solar reflectance and emissivity ratings.

In many cases our standard colors met these requirements without modification. Through pigment modification of medium and darker colors, we are now able to offer a PAC-CLAD Cool Color palette that initially includes 27 colors on steel and aluminum.

To receive a copy of our new color chart, please contact us at 1-800-323-1960; or visit our website: www.pac-clad.com.

Petersen Aluminum

1005 Tonne Road • Elk Grove Village, IL 60007
1-800-PAC-CLAD or 1-847-228-7150
Fax: 1-800-722-7150 or 1-847-956-7968

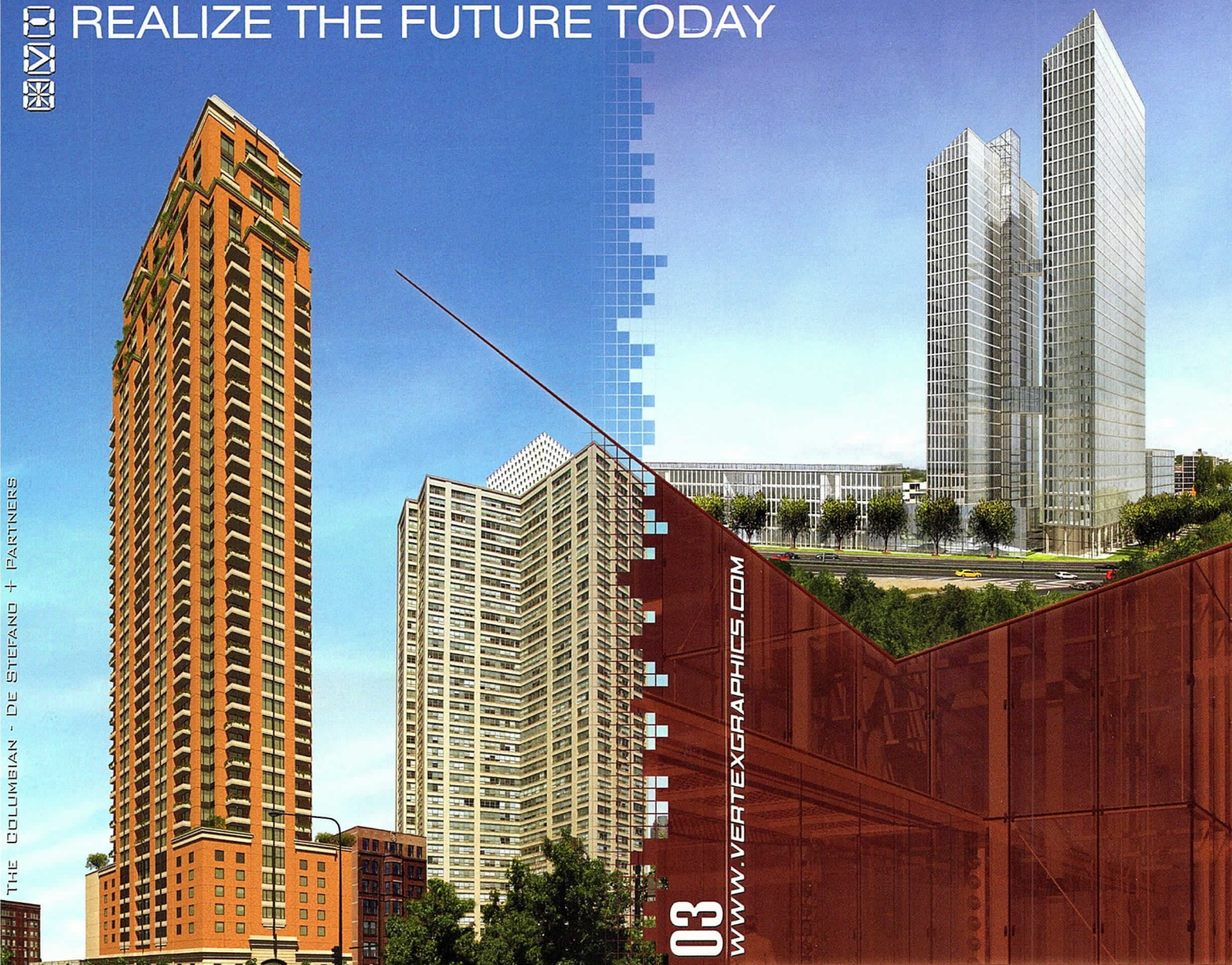
Other Plant Locations:
Annapolis Junction, MD: 1-800-344-1400
Tyler, TX: 1-800-441-8661
Kennesaw, GA: 1-800-272-4482

<http://www.pac-clad.com>

REALIZE THE FUTURE TODAY



THE COLUMBIAN - DE STEFANO + PARTNERS



03

WWW.VERTEXGRAPHICS.COM

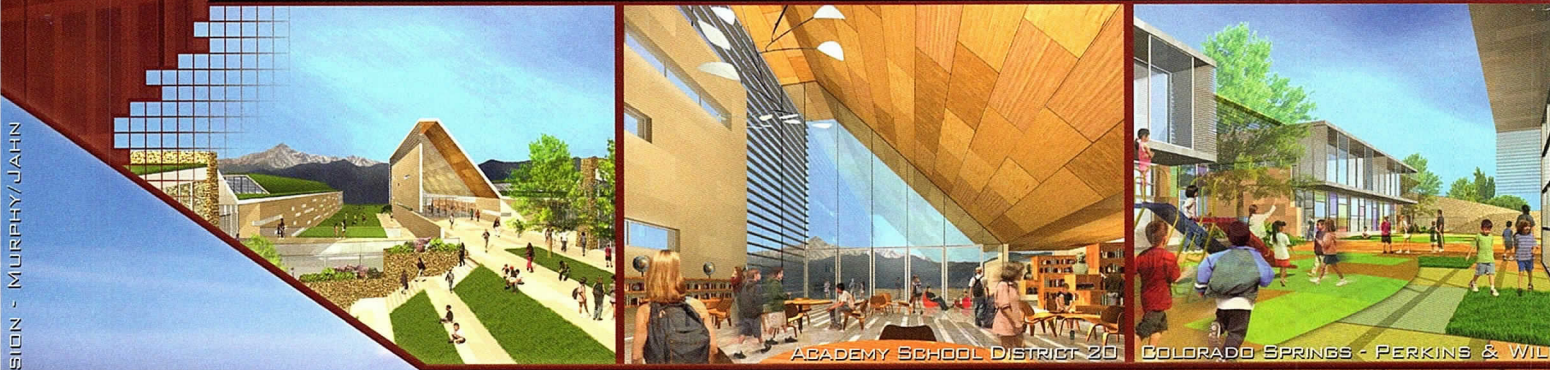
312.432.9870

VERTEX GRAPHICS

1147 W OHIO #102 CHICAGO IL 60622

ARCHITECTURAL VISUALIZATION • RENDERING • ANIMATION • VR PANORAMIC

FKB TERMINAL EXPANSION - MURPHY/JAHN



ACADEMY SCHOOL DISTRICT 20 COLORADO SPRINGS - PERKINS & WIL

