



Focus

SEPTEMBER 2003

Securing Curtain Walls

AIA Chicago

A black and white advertisement featuring a violin on the left and a window frame on the right. The violin is shown in profile, with its body, f-hole, and neck visible. The window frame is a large, arched structure with multiple panes, set against a dark background. The lighting highlights the textures of the wood and the glass.

Like a fine instrument, the most beautiful windows are handcrafted, one at a time.

Why? Because, what is a window, but an instrument for turning light into music.

Fine architectural details, superior millwork and furniture-grade quality truly set Marvin windows and doors apart. Visit www.marvin.com or call 1-800-284-2034 (in Canada, 1-800-263-6161).

©2003 Marvin Windows and Doors. All rights reserved. ®Registered trademark of Marvin Windows and Doors.

MARVIN
Windows and Doors

Made for you.®

www.marvin.com

Executive Editor
Susan Larson
Editor
Laurie Petersen

Focus Advisory Board
Joseph Caprile, AIA
Jonathan Fischel, AIA
Gigi McCabe-Miele, AIA
Alice Sinkevitch, Hon. AIA
P.K. VanderBeke, AIA
Thomas Zurowski, AIA

FOCUS (ISSN 1071-3700) Vol. 23, No. 8, is published monthly with a combined issue July/August, by AIA Chicago, 222 Merchandise Mart Plaza, Suite 1049, Chicago, Illinois 60654-1001. \$20 of each member's dues are allotted as a subscription. Periodicals postage paid at Chicago, Illinois. POSTMASTER: Send address changes to Focus, AIA Chicago, 222 Merchandise Mart Plaza, Suite 1049, Chicago, Illinois 60654-1001.

For advertising rates and schedules, call 312/670-7770.

© 2003 The American Institute of Architects Chicago.

All rights reserved. Reproduction in whole or part without permission is strictly prohibited.



2003 Board of Directors

President
Joseph Caprile, AIA
President-Elect
Charles Smith, AIA
Vice Presidents
Gigi McCabe-Miele, AIA
Thomas Kerwin, AIA

Secretary
Edward Torrez, AIA
Treasurer
Peter Schlossman, AIA

Directors
Rik Master, AIA
Tom Hoepf, AIA
Laura Fisher, AIA
Gaines Hall, FAIA
Mimi Tsai, AIA

AIA Regional Directors
T. Gunny Harboe, AIA
Robert Selby, AIA

AIA Illinois Director
Robert Woodworth, AIA

Associate Director
Helen Tsatsos, Assoc. AIA

Professional Affiliate Director
Lawrence Okrent

Past President
Jonathan Fischel, AIA

2003 AIA Illinois Delegates
Hill Burgess, AIA
Christopher Chwedyk, AIA
Leonard Koroski, AIA
Alan Madison, AIA
Robert Woodworth, AIA
Angie Lee, AIA (alternate)
Maureen Reagan, AIA (alternate)

2003 Professional Interest Areas

Corporate Architects
Karen Eltz, AIA

Design
Peter Leoschke, AIA

Design/Build
Alan Treuthart, AIA

Environment
Susan King, AIA

Architecture for Health
Enrique Unanue, AIA

Historic Resources
William McMillan, AIA

Housing
David Wytmar, AIA

Interior Architecture
Mark Hiron, AIA

Office Practice
Andrew Tiffin, AIA

Planning & Urban Affairs
Christine Carlyle, AIA

Technical Issues
Gregory Tornatore, AIA

Young Architects
Holly Coulter, Assoc. AIA

Chapter Staff

Executive Director
Alice Sinkevitch, Hon. AIA

**Membership Coordinator/
Assistant to the Director**
Phillip Rahill

Program Director
Joan Pomaranc

Communications Director
Susan Larson

Editor
Laurie Petersen

Financial Manager
Crystal Gagler

Public Information Receptionist
Linda Freeman

Documents Clerk
Brian Nelson

Convention Coordinator
Marc Wagner

4

Programs

The Business of Your Business ■
Dearborn Center Tour ■ *Sustainable by Stealth*

6

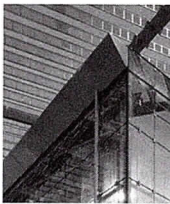
News Briefs

A Fresh Look for Focus ■
Garvin Speaks About WTC Site

10

Cover Story

*Securing Curtain Walls:
New Technology Addresses Aesthetics
as Well as Security*



19

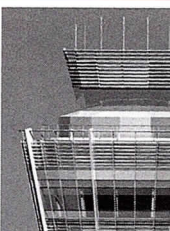
Feature

*Changes in the Tax Code:
Buying vs. Leasing a Company Vehicle*

20

Notebook

*Indianapolis Airport Control Tower by
Teng Associates* ■ *Submissions Sought for Chicago
Green Architecture Exhibit* ■ *Daniel Libeskind to
Speak at Art Institute on October 10*



28

Calendar

■ Tour: Loft Living in the Schoolhouse



Tues., September 9, 4:30 p.m.
4101 S. Michigan Ave.
Sponsor: Interior Architecture PIA

The former Henry Horner School is now a loft condominium building in the rapidly developing Bronzeville neighborhood. Representatives from the architectural office of Michael Hershenson & Associates and Peter Moser, Admar Construction, will identify the project challenges including exterior restoration, interior demolition, and construction of a new atrium and new interior parking garage. 1.5 LU/HSW

■ Chicago's Planned Manufacturing Districts



Wed., September 10, 12:00 noon
AIA Chicago
Sponsor: Planning and Urban Affairs PIA

Eileen Figel, deputy commissioner for the Chicago Department of Planning & Development, and Donna Durcharme from the Delta Institute, an advocate for manufacturing districts, will discuss Goose Island and the impact of planned manufacturing districts on urban development. Bring your lunch; beverages provided. 1 LU/HSW

■ State of the Art: Marquette Building



Thurs., September 11, 12:00 noon
AIA Chicago
Sponsor: Historic Resources PIA

Lisa Chan and Joshua Freedland of Wiss Janney Elstner Associates will explain the complex analysis required to design the most effective, multi-step cleaning system for the exterior of the Marquette Building. 1 LU/HSW

■ The Healing Power of Art and Music



Sat., September 13, 10:00 a.m. to 1:00 p.m.
Art Institute of Chicago,
Price Auditorium
Sponsor: Healthcare PIA
Cost: \$15 nonmembers

Art therapist Janet Beaujon-Couch and music therapist Deforia Lane, Ph.D. will explain how art and music therapy can dramatically improve the quality of a patient's experience and prognosis. 3 LU/HSW

■ Corporate Focus: Customer-Driven Design



Tues., September 16, 5:30 p.m.;
AIA Chicago
Sponsor: Corporate Architects PIA

How do corporations and their architects use consumer input in the design process? Bill Aumiller, AIA of Aumiller Youngquist will share observations and insights from his experience with corporate clients. 1 LU

■ The Business of Your Business



Thurs., September 18; Tues.,
September 23; Thurs., September 25;
9:00 to 11:00 a.m., AIA Chicago

Mark Mann of Mann, Weitz & Associates LLC, auditors for AIA Chicago, again will lead a three-session course on finance for established firms. 2 LU per session.

Topics to be covered include:

Class 1: Internal controls, reducing theft and fraud, and accrual versus cash accounting.

Class 2: Tax and retirement planning, using financial statements to enhance profits, and break-even analysis.

Class 3: General business issues — partner negotiation/compensation, buy/sell agreements, performance measurements, and target markets.

■ Cool Metal Roofing: A LEED Role



Thurs., September 18, 12:00 noon
Chicago Bar Assn.,
321 S. Plymouth Court
Sponsor: Technical Issues PIA

Scott Kriner, technical director for the Metal Construction Assn., will review metal roofing as an energy-efficient alternative. Bring your lunch or buy at the CBA cafeteria. 1 LU/HSW

■ Designight

Fri., September 19, 5:30 p.m.

A festive evening celebrating architecture and the 48th annual Design Excellence Awards will take place in the Grand Ballroom at Navy Pier.

■ Rebuilding the Pentagon



Wed., September 24, 7:00 a.m.
CNA Insurance, 333 S. Wabash Ave.
Sponsor: Design/Build PIA

A year after the tragedy of September 11, the Pentagon repairs were complete. Bob Daniels of the D.C. office of Hensel Phelps Construction explains how design/build delivery brought all the stakeholders together to complete this truly monumental task. Continental breakfast will be served. 1.5 LU/HSW

PIA Spotlight

Office Practice

*Chair: Andrew Tiffin, AIA
Daniel P. Coffey & Associates
atiffin@dpcaltd.com*

*Co-Chair: Barry Koren, AIA
Koren Network
barrykoren@korennetwork.com*

The mission of the Office Practice PIA is to encourage better practices within the business of architecture in the areas of leadership skills, management, marketing, risk management/legal issues, and non-CAD computer technology. Programs are held quarterly, rotating among the learning areas listed above. Each year there is a marketing program presented by a company that is not an architecture firm: the featured speaker this November will be from Southwest Airlines.

Corporate Architects

*Chair: Karen Eltz, AIA
McDonald's Corp.
karen.eltz@mcd.com*

*Co-Chair: David Kasprak, AIA
Aumiller Youngquist
dkaspr@aypc.com*

The mission of this PIA is to sponsor programs and tours for corporate architects and their service providers, focusing on the unique issues, challenges and best practices in today's corporate real estate environment. The programs are geared toward presenting the perspective of building owners and are usually of interest to any architect who has corporate clients. The PIA organizes two programs per quarter, including tours of corporate facilities as well as plants that manufacture architectural products.

Tour: Dearborn Center

*Thurs., September 25, 5:30 p.m.
131 S. Dearborn St.
(meet in main lobby)
Sponsor: Interior Architecture PIA*



Visit the Loop's newest office building. Hear from DeStefano | Keating Partners, architect of record for the project designed by Ricardo Bofill Taller de Arquitectura, about the base building and public spaces. Then visit the law firm of Holland & Knight, designed by ASD/Atlanta, and the Citadel Investment Group, designed by Gensler. Limit 50 (preference given to AIA Chicago members). 1.5 LU/HSW

Sustainable by Stealth

*Tues., September 30, 5:30 p.m.
AIA Chicago
Sponsor: Environment PIA*



A roundtable discussion to share experiences with incorporating low- to no-cost sustainable design elements into projects. Planning of future PIA events will also be discussed. 1 LU/HSW



Sign Me Up!

- 9/9 Tour: Loft Living in the Schoolhouse
- 9/10 Planned Manufacturing Districts
- 9/11 Marquette Building
- 9/13 Healing Power of Art and Music
- 9/16 Customer-Driven Design
- 9/18 The Business of Your Business
- 9/18 Cool Metal Roofing: A LEED Role
- 9/23 The Business of Your Business
- 9/24 Rebuilding the Pentagon
- 9/25 The Business of Your Business
- 9/25 Tour: Dearborn Center
- 9/30 Sustainable by Stealth

NEW! Register online at www.aiachicago.org

Name _____

Office _____

Address _____

City _____

Phone _____

E-mail _____

All programs listed above are free or as noted for AIA Chicago members. Non-members will be charged \$10 per program or as noted.

Method of Payment

- Check
- American Express Visa MasterCard

Credit Card No. _____

Expiration Date _____

Name on Card _____

Signature _____

Fax to:
AIA Chicago
312/670-2422

Alexander Garvin, former Vice President for Planning, Design and Development of the LMDC, spoke about the World Trade Center site planning process.



Linda Malin/Plaintiff

A Fresh Look for *Focus*

The current issue of *Focus* inaugurates an updated design that makes the publication more graphically appealing and easier to read. At the initiative of Chapter President Joe Caprile, AIA, Communications Director Susan Larson worked with a graphic designer to revise the newsletter's template. The most noticeable change is the use of red to highlight editorial content throughout the magazine. The front cover now has a larger image, because the horizontal block of color has been removed from the top and the editorial call-outs have been omitted in favor of an enhanced Table of Contents.

Features of the publication that remain the same are the departments such as News Briefs and Notebook, and the editorial focus on AIA Chicago members and Chapter programs and events. The 60:40 ratio of editorial to advertising, which compares favorably with the 50:50 split at many similar publications, will also remain constant. As always, we encourage members to send in news and images of their work.

Garvin Lecture Provides Inside Look at World Trade Center Rebuilding Process

On June 29 planner Alexander Garvin gave an appreciative audience a sneak preview of the latest designs for the World Trade Center site and set the record straight on some misconceptions about the planning process. He said that the Lower Manhattan Development Corporation did not conduct a design competition but "an innovative design study" intended to generate creative concepts. Studio Daniel Libeskind was then hired to produce a site plan and design guidelines, not to design the buildings or memorial. Libeskind's latest scheme, which had not yet been released to the public, shows a glassy train station that celebrates the importance of a future transportation link between Lower Manhattan and two international airports.

A lively panel discussion moderated by Thomas Beeby, FAIA followed Garvin's lecture. Marilyn Taylor, FAIA, chairman of Skidmore, Owings & Merrill, contributed her insights as one of the founding members of New York New Visions. This consortium of organizations, including AIA New York, worked to bring design to the forefront of public discussion of the rebuilding effort. Linda Searl, FAIA, who serves on the Chicago Plan Commission, and Alicia Mazur Berg, commissioner of the Chicago Department of Planning and Development, picked up on Garvin's theme of the importance of public participation and transportation issues when they discussed the Central Area Plan and Block 37.

Blair Kamin, architecture critic for the *Chicago Tribune*, summed up the lessons learned for Chicago as follows: design should be part of the planning process from the beginning, not treated as an afterthought, and the public should be offered real choices and a chance to discuss them before the critical decisions are made.

ARCHITEMPS, INC.®

ARCHITEMPS, INC. – the Architectural & Interior Design staffing specialists, serving greater metropolitan Chicago since 1986.

Quality staffing, service and solutions:

- Design/Production Drafters
- Facility Planners
- CAD Architects/Interior Designers
- Project Managers

Our billing includes all employer liability:

- Payroll Administration
- Employee Benefits
- Government Compliance
- State & Federal Tax Remittance
- Workers' Compensation Coverage

ARCHITEMPS, INC.®
1050 North State Street
Chicago, IL 60610-7829

Tel: 312.649.0912
Fax: 312.649.1667
ARCHITEMPS@aol.com
www.architemps.com

Architectural, interior design and facility planning personnel on a per-project basis. Direct hire conversion and direct placement available. Call today for information on our staffing services or employment opportunities.



Rafael Pelli, AIA will speak at the AIA Illinois Annual Meeting in November.

A/E/C Study Group Works with City on Contract Language

The Architect/Engineer/Contracts (A/E/C) Study Group, comprised of architects and engineers from the AIA and the Consulting Engineers Council of Illinois (CECI), has provided dedicated leadership in pursuing contractual language revisions in the City of Chicago and City of Chicago sister agencies design services contracts. The A/E/C Study Group has met regularly for two years and effected positive change and discussion in the design contractual areas of Indemnification, Standard of Care, Warrantee issues, Dispute Resolution, Right to Offset, Copyright and Prompt Payment. These overarching issues are important to the business well-being of all large and small AIA Chicago firms. Positive change has occurred and will do so in the future as the group continues its work on behalf of the profession.

The specific issue revisions that have been agreed to in concept or implemented by officials include Indemnification, Standard of Care, Warrantee and

Copyright. Language refinements in each of these contractual categories have been reviewed to improve insurability and liability related to the A/E service provider.

The leaders and participants in this effort include Dave Kennedy (CECI), Andy Mendelson, AIA, Dan Blankenship (Hobbs Group / AVA Insurance), Matt Luzi, AIA, Michael Kaufman, AIA, Bob Clough, AIA, Kenneth Nelson of Clark & Dietz Inc., Feroz Nathani of McDonough Associates, Dick Lehner, AIA and Steve Stein of Stein, Ray Harris. In addition, AIA Chicago and CECI have jointly engaged the support services of Steve Schlickman, Schlickman & Associates.

AIA Illinois Annual Meeting to Feature Sustainable Design

"Building a Sustainable Future" is the title of the 2003 AIA Illinois Annual Meeting that will take place on November 7 and 8 at the University of Illinois College of

Architecture campus in Champaign. The keynote speaker will be Rafael Pelli, AIA, who heads the New York City office of Cesar Pelli & Associates. Continuing education tracks in practice management, design, and technology will include sessions such as "Meeting the MCE Challenge," "Making IDP Manageable," and "Site Design for a Green Tomorrow."

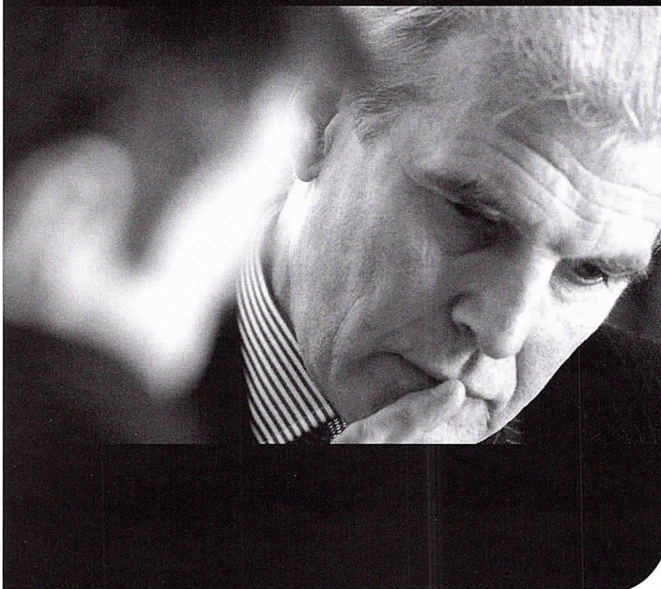
Career Day Program for High School Students

Chicago Career Day 2003 for architecture, construction management, interior design and landscape architecture will be held on Saturday, October 11 at the Chicago Cultural Center, 78 E. Washington. AIA Chicago is one of the organizations comprising the Consortium for Design and Construction Careers that presents this annual career preview and college fair for high school students. The Web site www.chicagocareerday.org offers details and online registration. Brochures are available from the AIA Chicago office.

“ I chose my insurance agent for the same reason my clients choose me: experience. ”



Experience is the DPIC difference.



Combine DPIC's 30 years of dedication to the architect, engineer and environmental market with the expertise of our local brokers, and you get the benefit of the industry's most qualified professional liability experts.

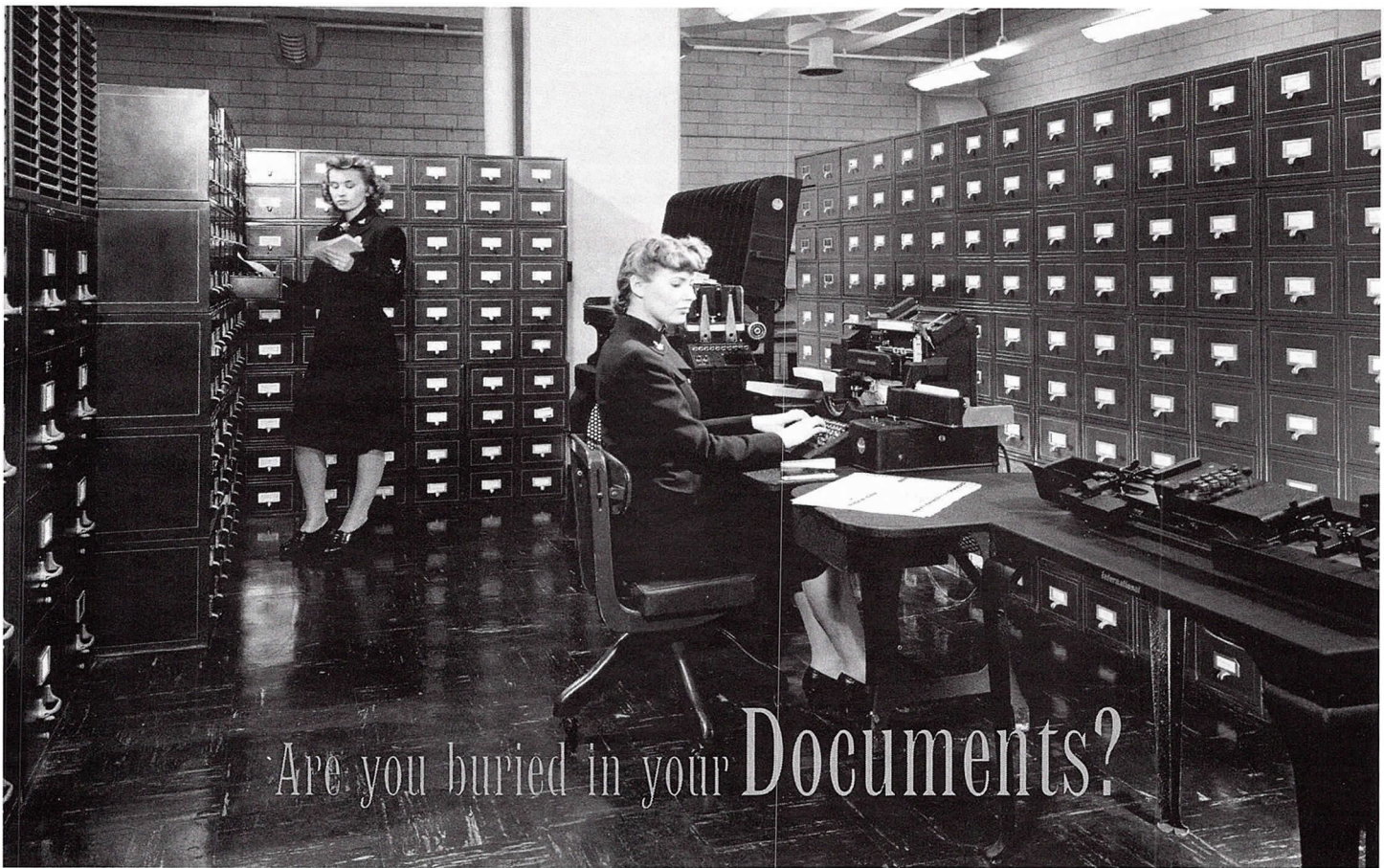
From ongoing education in how to manage risk to new ideas in practice management and smarter dispute resolution that protects your interest, we'll help you realize a better return on your firm's insurance investment.

Contact us today for more information.

**Hobbs Group/
AVA Insurance Agency
847-517-8900
www.AVAins.com**



A DIFFERENCE THAT DELIVERSSM



Are you buried in your Documents?



Better service through superior
technology



Digital
Imaging
Resources, Inc.

650 West Lake Street #120 • Chicago, IL 60661 • www.dirinc.com

Phone 312.243.1250 • Fax 312.243.1590

What is your master *plan* for developing new business?

BizBuzz Marketing Communications specializes in helping architecture firms like yours create a strategy to get the most out of their marketing dollars.

- Maximize results by leveraging your marketing efforts.
- Position your company through consistent communications.
- Achieve the best results by targeting your marketing messages.
- Increase customer loyalty through ongoing communications.
- Promote your business without spending a lot of money.

BizBuzz Marketing Communications
Building Business for Architects.

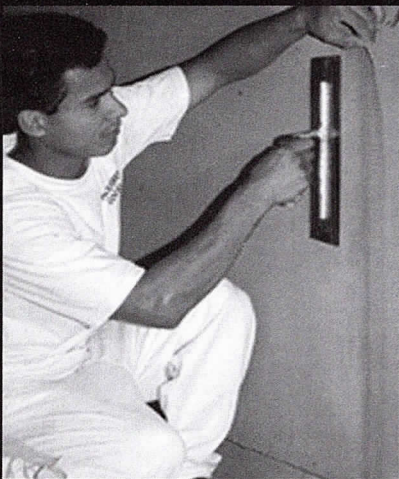
For artful ideas
www.bizbuzzmarketing.com

Our capabilities include:

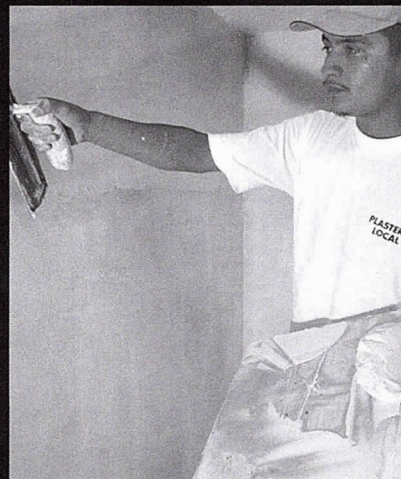
- Strategic Planning—Corporate positioning & program development
- Targeted Business Development—Prospect list development & direct mail campaigns
- Customer Relationship Management—Database management, customer loyalty & newsletters
- Graphic Design and Copywriting—Sales collateral, media kits, Web sites, case studies, multi-media & proposals

call us today!
708.848.4914

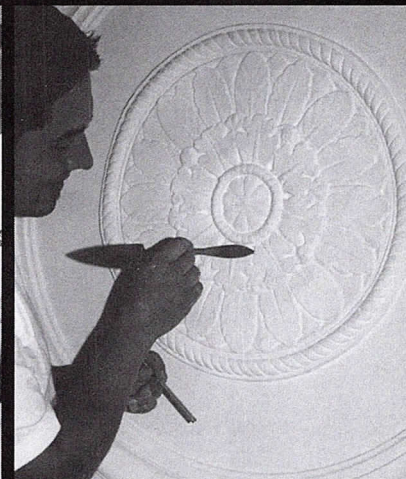
Professional Training Yields Expert Plasterers



Exterior Insulating and Finishing
Systems (EIFS) and Stucco



Conventional and Veneer Plaster



Ornamental Plaster

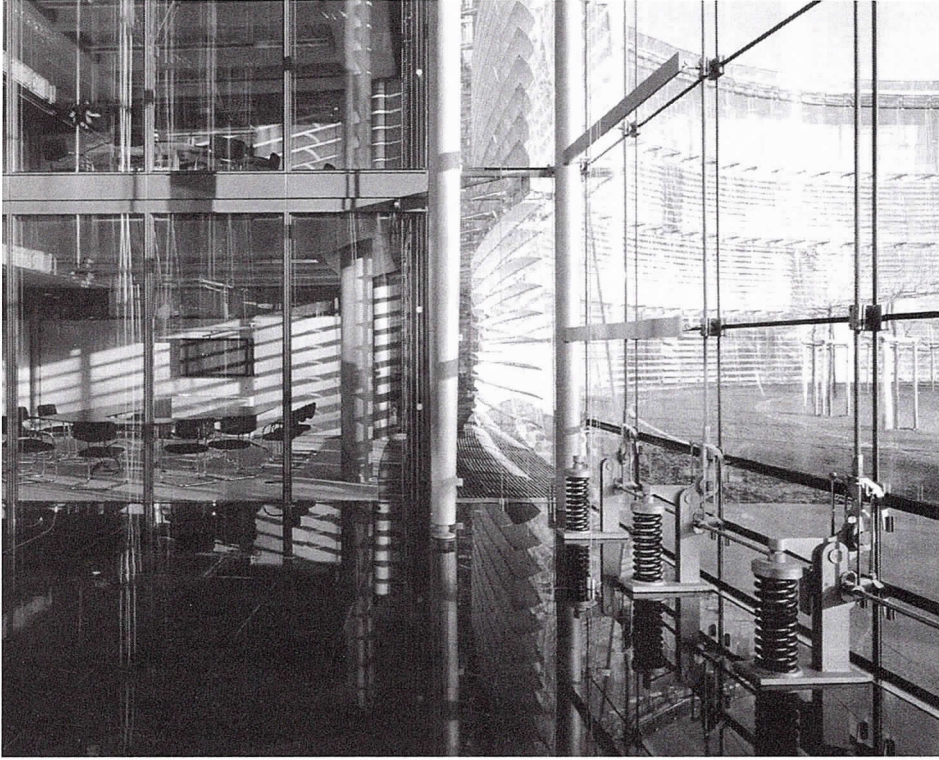
Call us for information about today's
plastering systems and the best
people to apply them.



Chicago Plastering Institute
6547 N. Avondale Ave.
Chicago, IL 60631
(773) 774-4500



Securing Curtain Walls



Andreas Keller

At the Bayer headquarters by Murphy/Jahn, a cable-supported curtain wall with penetration-resistant glass serves as a flexible barrier capable of withstanding blast forces.

By Michael Bordenaro

In this time of heightened security, architects are leading the way in showing that high-level building security does not have to result in low-value aesthetics. A major area of security concern is curtain wall systems that reduce the risk of injury to people from explosions that turn broken glass into lethal shrapnel. Flexible cable net systems, improved glass technology, and other design options are transforming curtain walls into blast-resistant screens.

Bayer's twin-shell curtain wall is energy efficient and creates an extra layer of protection for office occupants.

Curtain walls that include interior shading devices that double as shrapnel screens and cable-net systems with blast-resistant glazing are finding their way into building projects. Increasingly, designers and manufacturers are developing patented approaches to create designs that dampen blast forces similar to the way which contemporary seismic designs help buildings absorb forces instead of trying to resist them.

The resulting architecture shows that secure wall systems do not have to make a building look like a fortress.

John Durbrow, a partner with Murphy/Jahn, says that when the Bayer Group announced the design competition for new facilities at its headquarters in Leverkusen, Germany, there were parameters for extensive use of masonry wall construction to meet security requirements. Murphy/Jahn presented design options and technical data that convinced Bayer that a well-planned curtain wall could meet security concerns yet provide a more pleasing work place, more efficient environmental controls, and a highly attractive building.

In the office areas, a double curtain wall with user-operated interior vents provides a high level of environmental controls. It also reduces clear vision into occupied offices and creates an extra layer of protection that reduces the possibility of injury from shattered glass in the event of an external blast.

In lobby areas, a multi-story, cable-supported curtain wall system with penetration-resistant glass, enhanced

Securing Curtain Walls

Continued from page 11

with Bayer interlayer glass products, serves as a flexible barrier that is capable of withstanding blast forces, according to Durbrow.

Other projects in the design and construction phase are taking advantage of newer concepts related to cable net curtain walls.

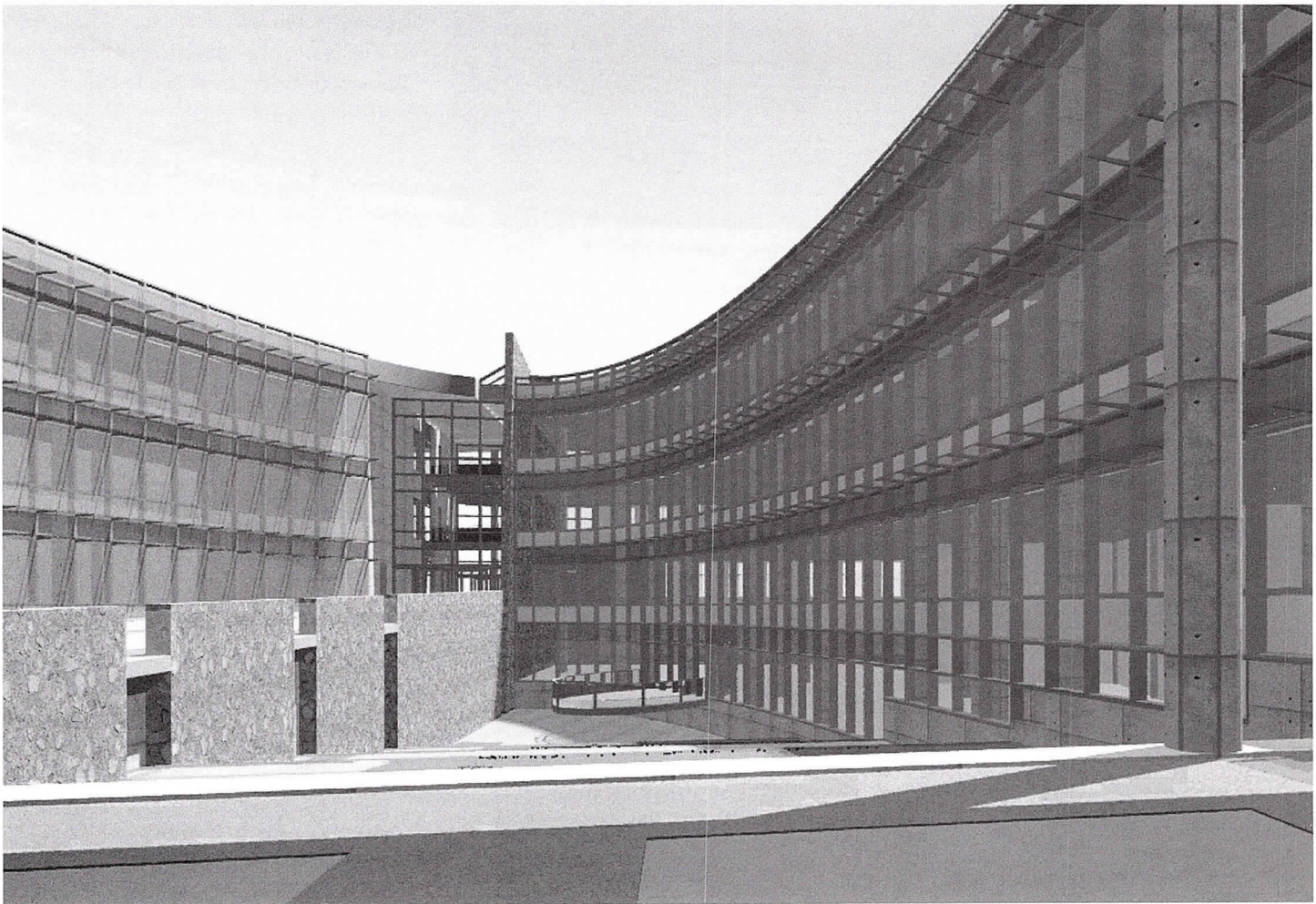
Carl Galioto, AIA, a partner at Skidmore, Owings & Merrill's New York City office, says the firm's design for the Seven World Trade Center lobby curtain wall started out using a cable net system for the aesthetic reason of minimizing the separation between interior and exterior spaces.

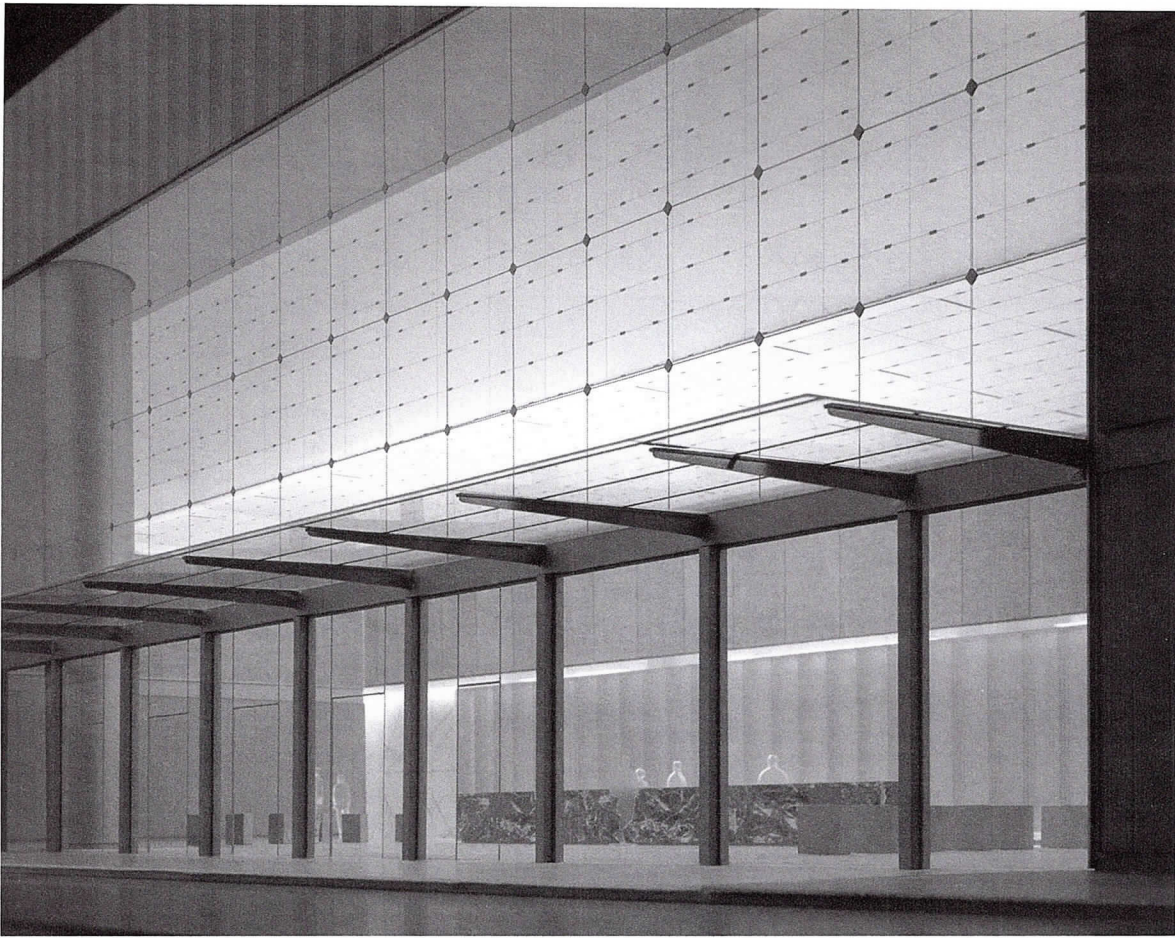
However, Galioto says, "the inherent flexibility of cable net systems provides an excellent opportunity to resist blast loading." The 110-foot-wide by 45-foot-tall lobby curtain wall is being created with glass panels that use a new DuPont interlayer that fuses to both metal and glass surfaces when heated in the manufacturing process. Named SentryGlas® Plus, the glazing system allows metal brackets to be fused into the corner of the laminated panels. The brackets are connected to the cable net system, which flexes when placed under a blast load, but does not totally fail. Also, the interlayer is of sufficient strength to

prevent glass shards from flying away from the system in the event of a blast.

"The objective is to retain glass and prevent pieces of glass from flying into the lobby, because in an attack, glass and debris do most of the damage," Galioto says.

Schlaich Bergermann und Partner, Stuttgart, Germany and James Carpenter Design Associates, New York City were consultants on the lobby curtain wall. According to Carpenter, because the interlayer allows a metal bracket with holes in it to be fused into the glass panels, they are not drilled. He indicates that this allows these





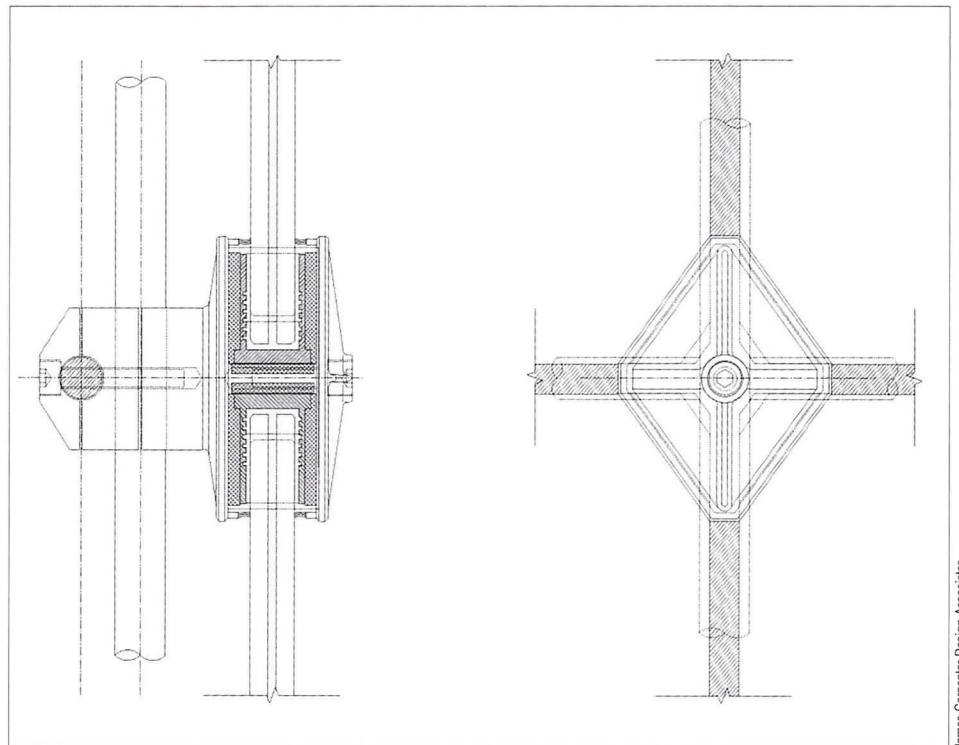
Jack Pottle/ESO

The New York office of Skidmore, Owings & Merrill collaborated with James Carpenter Design Associates on the highly transparent lobby façade of Seven World Trade Center, now under construction.

pressure plates to transfer loads directly to the cable system.

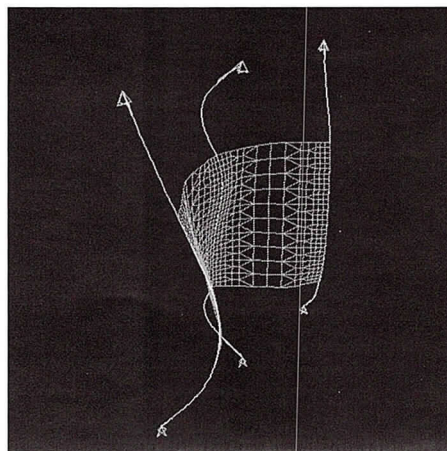
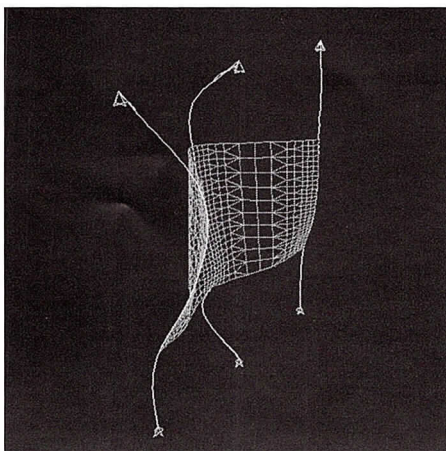
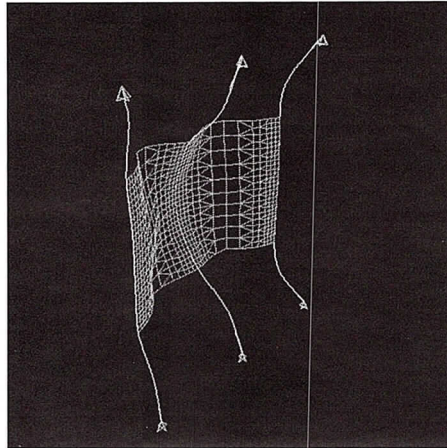
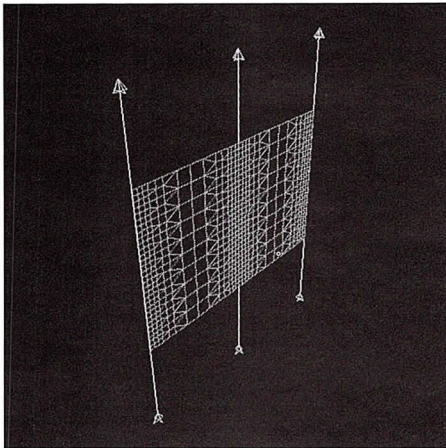
Galioto adds, “finite element analysis revealed the capacity of wall meets the GSA standards for blast resistance and has something to spare. We could increase the resistance capacity without having to increase the size of the cable.”

One way to increase the blast resistance of cable net systems is to use metal or stone panels instead of glass, according to engineer Terry Palmer of MKA, a Seattle-based engineering firm that has a Chicago office. “The cable net systems can support other panels such as steel plate and Kevlar panels to provide very high blast resistance,” Palmer says. MKA (formerly Skilling Ward Magnuson Barkshire), has used a cable net system supporting metal panels to provide a



James Carpenter Design Associates

The courtyard curtain wall for the U.S. Federal Campus in Oklahoma City by Ross Barney + Jankowski had to meet a stringent level of blast resistance.



Seele video images, captured courtesy of Vertex Graphics

Curtain wall manufacturer Seele helped MKA better understand a cable stay system the firm was designing by creating a computer simulation of a blast impact. These images represent the cable system in its original state, deformed due to impact, and the distended but intact final state.

blast barrier for military fuel tanks, according to Palmer.

MKA has applied for a patent for damper connections to be used in blast-resistant cable net systems. Palmer says the system works like seismic dampers, which absorb energy instead of trying to resist it. "In certain applications, blast-resistant cable net systems can be less expensive than stiffening mullions, which have to be substantially larger to prevent blast injuries," Palmer says.

According to Palmer, curtain wall manufacturer Seele has provided cost analysis that indicates blast-resistant cable net systems are not substantially

higher than typical cable net curtain walls.

MKA is working with many airports to devise systems that would protect people inside a terminal in the event of an explosion. Palmer says they are looking at various options: replacing existing curtain walls, creating a cable net screen just inside the curtain walls, and adding protective film to existing glazing systems. "You have to be careful that adding a film doesn't strengthen the glazing unit to the point where an entire panel is blown out of its structural support and becomes a large projectile instead of a number of small fragments," Palmer warns.

Patrick Loughran, AIA, PE points out that the laminated glass used in blast-resistant design provides an improved acoustical performance as compared with non-laminated curtain wall enclosure systems. This is a great benefit to enclosure systems at or near an airport. Loughran is a senior associate at Lohan Caprile Goettsch who has written a book about glass curtain walls (see sidebar).

Loughran says that most cable net façades require the high strength properties of fully tempered glass because of the extreme forces on the glass at the corner panel nodal intersections. At the corners, two of the glass panel sides are fixed, however two of the sides are allowed to flex with the net wall. This generates extreme forces in the glass panel which typically require the use of tempered glass.

"However, stronger is not always better," he continues. The key is the system's ability to absorb the explosion. In blast-resistant glass enclosures other

than cable net systems, designers are using laminated *annealed* glass. Loughran says that the Lloyd D. George Federal Building and United States Courthouse in Las Vegas (2000, HCA/Cannon Dworsky), was the first building in the United States to provide a curtain wall enclosure tested to resist bomb blasts. Annealed glass was used in this design in lieu of heat-strengthened or fully tempered glass. The outer pane of glass provides a sacrificial light with an inner laminated panel designed to be held in its frame after an explosion.

When Ross Barney + Jankowski began designing the replacement federal building for Oklahoma City, specific curtain wall requirements were still evolving. Project Architect Kevin O'Connor, AIA notes that the design team included an array of experts including structural engineers Wiedlinger Engineers, who had significant experience in this area.

The U-shaped building design exposes interior space to direct sunlight but allows perimeter concrete walls to provide increased levels of blast resistance. "What is curtain wall versus concrete-with-punched-windows has to do with the stand-off distance from the bollards around the perimeter of the site," O'Connor says. However, the courtyard curtain wall still had to meet a stringent level of blast resistance.

O'Connor says that Weidlinger project engineers were able to take the security parameter language and mechanical formulas and translate them into what it meant about the size of a mullion or the thickness of glass.

Ross Barney + Jankowski determined that using aluminum mullions to meet GSA blast standards

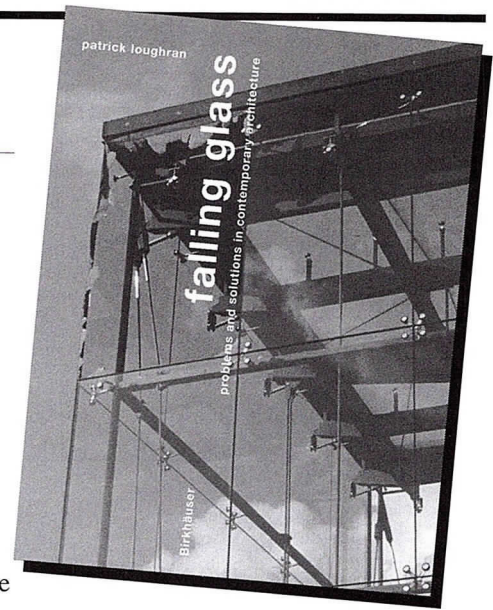
Book by Local Architect Examines Glass Problems and Solutions

As architects have quite literally pushed the envelope of glass enclosures, there have been spectacular results and prominent failures. Many have occurred in Europe, where adventurous designs have inspired both awe and disappointment.

Architect and engineer Patrick Loughran, AIA of Lohan Caprile Goetsch traveled to Europe on a Plym Fellowship in 1999 to investigate innovative curtain walls. He was surprised and then curious about the many instances of failure. How could they have been prevented? What are the lessons learned? What knowledge is critical for the designers of cutting-edge glass buildings?

Loughran's recently published book, *Falling Glass: Problems and Solutions in Contemporary Architecture* (2003, Birkhauser), offers detailed answers to these questions. Extensively illustrated with photographs, charts and drawings, the book devotes a chapter to each of several causes of failure in glass façades and roofs, such as nickel sulfide, thermal stress, and corrosion. Most importantly, each chapter concludes with a section on how these problems can be avoided, followed by a summary of the lessons learned.

would have required some member profiles to be 22 inches thick. "Using a composite of steel and aluminum brought it down to 14 inches," O'Connor says. "But we ended up with a 10-inch deep steel tube, which works out well. We kicked around several complex shapes for the steel tube based on anticipated blast loads at different parts



Although most of the examples are drawn from recent European architecture, a few well-known Chicago buildings are cited. They include the CNA Building and the Sears Tower as well as 333 Wacker Drive, whose spandrel panels were completely replaced in 1992 following a loss of adhesion of the reflective coating to the glass.

The book includes a few success stories among the cautionary tales. One of these is Murphy/Jahn's Hotel Kempinski in Munich, whose atrium is praised for its daring design that takes advantage of the structural properties of tempered glass. Loughran is clearly excited by the design possibilities of curtain walls and his book is an effort to promote successful innovations in this area.

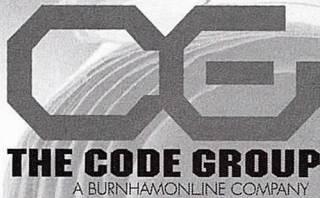
of the building, but ended up with a simple solution."

Whichever approach architects use, there is an increasing number of aesthetically viable solutions to combat the threat of bomb blasts to curtain wall buildings. ■

Michael Bordenaro is a Chicago-based writer and a regular contributor to Focus.

Code Compliance Is Not An Option... How You Achieve It Is.

The experienced professionals at The Code Group offer:



For more information contact:

Christopher Chwedyk, AIA
111 W. Washington St., Suite 450
Chicago, IL 60602
312-673-1503

codes@codegrouponline.com

- ADA Site Surveys
- Preliminary Zoning & Building Code Analysis
- Accessibility Consulting
- Code Requirement Analysis
- Local Code Conflict Resolution
- "Hi-Tech" Center Plan Evaluation
- Code Research
- Registered Energy Professional Certification
- Pre-Permit Submittal Plan Review
- MEP & Fire Safety Review



Any Way It Shapes Up... CTI Delivers

When you need

"Using precast thin brick faced panels was the ideal solution to meet the community's aesthetic desires as well as the demanding schedule requirements. In other words, when speed and look are both #1 priority, CTI really delivers!"

~Dennis Nemenz
Vice President, Sales
Concrete Technology, Inc.

ECONOMY
SPEED
EXPERTISE
APPEAL

Think...precast concrete

CONCRETE TECHNOLOGY INC.

Fact: Using architectural precast concrete cladding can reduce enclosure time by as much as 70%.

Fact: CTI has two high-capacity plants, fully supported by local Customer Service Teams, ready to go to work for you. From initial design to delivery...we get it done in the least possible time.

Choose...CTI

GARFIELD HEIGHTS
HIGH SCHOOL
(Rendering)
Garfield Heights, OH

DESIGN ARCHITECT:
FPS Architects &
Engineers, Ltd.
Cleveland, OH



pci

CONCRETE TECHNOLOGY INC. • Paxton, IL and Springboro, OH • Call 800.788.2370
www.ctiprecast.com



“Let’s face it. Design is about choice.”

We choose the designs that please us,
we choose the environment in which
we live and work. We choose the talent
that reflects our world, and we choose
the partners that know us best.

That’s why we choose CFA,
Chicagoland’s leading choice for
Staffing and CAD Services since 1984.



Consulting for Architects, Inc.

“Creating Staffing and Software Solutions”

120 South State Street
Floors 5 & 7
Chicago, IL 60603
312.345.1700
www.cons4arch.com



EUCLID INSURANCE AGENCIES®

We’ve been insuring businesses since 1952. We represent hundreds of design firms because our experience allows us to give you the **expert advice** and products you need. We’re proud of why so many of your colleagues **continuously choose us** to represent them:

- Reputable insurance companies
- **Competitive** premiums
- Customized employee meetings
- Continuing education programs
- Legislative updates
- Quotes for all policies
**Professional Liability, Group Health,
Workers Compensation, Disability, Life**

For more information, call 630.694.3700 Ext. 1130 • 234 Spring Lake Drive • Itasca IL 60143



HILL MECHANICAL GROUP

**We build more than
mechanical
systems...**

We build trust.

Trust. A simple principle —
the cornerstone of every
professional relationship we enter
and the fundamental reason we've
become Illinois' largest HVAC contractor.

*Thank you, Chicago, for trusting us
again and again to do what we do best.*

- PRECONSTRUCTION PLANNING to minimize change orders
- SCHEDULING INPUT to guarantee on-time completions
- RESOURCE APPLICATION with personnel/materials for any situation
- PROFESSIONAL EXECUTION from a fully integrated HVAC team
- PROBLEM SOLVING with technical competence and mutual trust

Changes in the Tax Code: Buying vs. Leasing a Company Vehicle

The new tax act gives business owners an even greater incentive to buy vehicles for business purposes.

By Mark Mann

Are you thinking about replacing your company car? With low interest rates and attractive leasing packages being advertised on a daily basis there are many options. You already know that there is more to it than simply finding a good deal. What you may not know is that the rules have changed.

The Jobs and Growth Tax Relief Reconciliation Act of 2003 passed by Congress and signed in May by President Bush has significantly changed the tax impact of the buy-or-lease decision. Before September 11, 2001, it was generally more advantageous for tax purposes to lease a vehicle rather than purchase one because of the larger income tax deduction allowed for lease payments in contrast to the depreciation deductions granted to vehicle owners. The new tax act now gives business owners an even greater incentive to buy vehicles for business purposes if they are purchased between May 5, 2003, and January 1, 2005.

This can be illustrated by a side-by-side comparison of purchasing, or leasing over a four-year period, a \$30,000 car in Illinois. Our example assumes that the vehicle is used in a trade or business and is fully deductible with personal usage included on the applicable owner/employee's W-2 form or other tax forms. All taxes, title charges and other fees have been included in the price in both scenarios.

If the car is purchased, the depreciation deduction in the first year is \$10,710. This amount is composed of bonus depreciation of \$7,650 under the new law (which is the maximum amount allowed, no matter how high the cost of the vehicle), and the regular annual first year depreciation of \$3,060 as allowed under the old law. Deductions over the first four years total \$20,335.

In comparison, lease payments over the same period (assuming an interest rate of 3.94 percent and a 48-month lease) would total \$21,961.

Comparing these two alternatives, you see the deduction for depreciation versus the deduction for the lease payments is very close over the four-year period, due to the accelerated depreciation deduction in the first year when you buy the vehicle. The 2003 law has made the depreciation deduction when buying a vehicle more advantageous in the first year for income tax purposes.

There are a couple of other questions you need to ask before making the decision to buy or lease. Will you be buying a vehicle weighing over 6,000 pounds in the next couple of years? Does your business have less than \$400,000 of fixed asset purchases during its taxable year?

If the answer is yes to both of these questions, the depreciation limits for luxury passenger automobiles don't apply, and the new laws will allow you to expense the purchase of certain automobiles up to \$100,000 (subject to taxable income limitations). In other words, you can take an immediate deduction for the full cost of your vehicle up to \$100,000, assuming your taxable income is at least that much, and as long as you answered yes to the two questions above. This new rule is in effect for purchases of vehicles in 2003, 2004 and 2005. Please consult your tax advisor for the types of vehicles that qualify for this deduction.

The 2003 tax law provides new tax incentives for purchasing vehicles and it is important to be aware of how the new rules impact your business. Your tax advisor can make sure you ask the right questions and help you to make the right decision for your business. ■

Mark Mann is a partner at the accounting firm of Mann, Weitz & Associates, LLC, auditors for AIA Chicago.

City View Tower by Nadel Architects



PEOPLE/FIRMS

John Burcher, AIA, a design principal at DeStefano | Keating Partners, has been appointed chair of the auxiliary board of the School of the Art Institute of Chicago. He is also a member of the School's president's council.

Mark Nelson, AIA has joined Cubellis Associates as studio leader for architecture/interiors.

Thomas Powers, AIA has been promoted from principal to managing principal of IA Interior Architects' Chicago office.

Michelle Halle Stern, AIA has joined the Delta Institute, a nonprofit organization that engages in the policy and practice of improving environmental quality and promoting community and economic development. She is responsible for sustainable development programs, including the recently-launched Clean Air Counts development campaign.

Gregory Tornatore, AIA has joined the Proteus Group as a project manager. The firm's new address is 223 West Erie, Suite 6W in Chicago.

Jim Vanek, AIA has joined the BauerLatoza Studio as a partner and senior principal.

Aumiller Youngquist has opened a branch office in Orlando to serve its growing client base in the South. Raymond Schaefer, AIA, a principal with the firm, has moved to Florida to manage the new office.

Burns + Beyerl Architects and **Becker Architects** have joined forces to create a comprehensive management software solution designed by and for architects. Their joint venture company, Orange Loft, LLC, has released ArchiOffice®, designed to manage all the workflow needs of an architecture office, including contact and project management, time and expense tracking, billing, calendaring, reporting, and document management. More information is available at www.archioffice.com.

In celebration of 130 years of practice, **Graham, Anderson, Probst & White** has enhanced its Web site to include an extensive collection of images from the firm's archives. Visit www.gapw.com to see drawings, renderings and photographs of Chicago icons such as The Rookery, The Monadnock Building and the Civic Opera Building.

Robert Flubacker Architects has a new address: 1835 Rohlwing Road, Suite B, Rolling Meadows, 60008.

PROJECTS

Nadel Architects has two projects that are scheduled for completion this month. The Victory Center Supportive Living development in Melrose Park is a four-story building that will house 122 residents. The project was featured in the Real Estate Investment Association conference in May. City View Tower, owned by Kaiser Development Group and built

by Pepper Construction, is a brick-clad residential building in Chicago's Randolph Street corridor. It features bay windows that provide breathtaking views of downtown.

Construction has begun on a new control tower and TRACON base building at the Indianapolis International Airport, designed by **Teng & Associates**. The base building is 43,000 square feet, and the control tower is 340 feet tall. The design of the top of the control tower recalls a diamond ring, with the jewel-like glass cab held in place by stainless steel fins.

Green Roofing Solutions

a&d
BUILDING PRODUCTS, LTD.

Please call John Dashner or Randy Zaleski
Ph: 630-668-1551 Fax: 630-668-1672



The new Indianapolis airport control tower by Teng & Associates

Courtesy of the firm



Frye Gillan Molinaro's award-winning library at Dominican University

George Lambros

Sabo & Zahn

Attorneys at Law

Werner Sabo, FAIA

James Zahn, FAIA

Licensing problems, copyrights, business formations,
mediation, litigation, arbitration, contracts, real estate
construction attorneys

8620 Sears Tower
Chicago, IL 60606

(312) 655-8620
fax: (312) 655-8622

www.sabozahn.com

Frye Gillan Molinaro Architects has won awards for its \$3.2 million restoration of the historic 1905 Carnegie Library in Colorado Springs from the Colorado Historical Society and from the Historic Preservation Alliance of Colorado Springs. The firm also received the Outstanding Architecture and Design in Education Award from School and College Planning and Management for the renovation and expansion of the Rebecca Crown Library at Dominican University in River Forest. The project focused on the creation of a "gateway to the campus." The completed interiors, centered around a dramatic three-story sky-lighted spiral staircase, include state-of-the-art classrooms with digital projectors and integrated LAN wiring, connecting faculty and students to the library database, as well as internet and WAN capabilities.

The joint venture of **ziolkowski porter damato + associates** and Illinois Development Services Corp. has been selected by the Proviso Township District 209 school Board as their development consultant for the renovation and adaptive re-use of a 200,000-square-foot office building into a magnet school, freshman academy and administrative center.



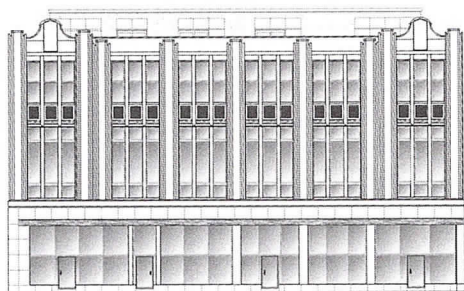
Botti Studio of Architectural Arts, Inc.

919 Grove Street, Evanston, IL 60201 Established 1864
847/869-5933 • Fax: 847/869-5996 • 800/524-7211
www.bottistudio.com • botti@bottistudio.com

Designers/Fabricators • Stained and Faceted Glass • Beveled Glass • Sandblasted •
Stained Glass Restoration and Conservation • Protective Glazing • Wood and Metal
• Frame Restoration • Sculpture • Bronze • Metal • Marble • Mosaic • Interior
Renovation • Woodwork • Murals • Painting and Decorating • Custom Sanctuary
Furnishings • Stained Glass Consultants to Architects and Churches

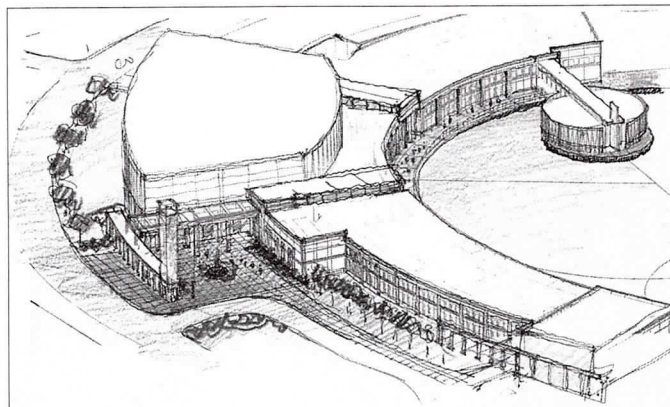
Studio Locations

San Diego • Chicago • Sarasota • Agropoli, Italy • Nassau, Bahamas
760/753-0705 • 847/869-5933 • 941/951-0978



Gunnison Street Lofts by Atul Karkhanis Architects

Courtesy of the firm



Life Changers Church in Hoffman Estates by Legat Architects

Atul Karkhanis Architects has designed the conversion of a vacant furniture store on North Broadway in Uptown into a retail and condominium building to be known as Gunnison Street Lofts. A fourth floor addition will be set back about 10 feet from the Art Deco brick and terra cotta façade. In other firm news, Karkhanis has been named a commissioner on the Park Ridge Zoning Board of Appeals.

Construction is underway on a large worship campus in Hoffman Estates designed by **Legat Architects**

and scheduled for completion next spring. The Life Changers Church complex includes a gymnasium, food court, conference center, Christian Academy, and a 2,800-seat sanctuary. Water is the central design element: building components wrap around one side of a three-acre lake and a bridge connects the main building with a circular, 400-seat World Prayer Center that is surrounded by water.

Bailey Edward Design has received a 2003 Rock Island Preservation Society Award for the \$1.2 million

restoration of the Black Hawk Lodge in the Rock Island Historic State Park. The firm also received six design awards from the *National Home Book* awards program, and had a kitchen remodeling featured in the July/August issue of *This Old House*. In other firm news, principal Ellen Bailey Dickson, AIA was the Commencement speaker at the University of Illinois Urbana-Champaign's Department of Architecture 2003 graduation ceremony. The firm's Champaign office has added to its staff two recent graduates who both received awards from the University.

Buildings that produce their electricity from the sun are worth their weight in gold.

CHICAGO -- the highest ranking city for new development projects*, calls for the highest ranking design. Custom solar electric systems will make your clients' projects shine.



Safe, clean and secure energy

Enhanced property value

Decreased monthly electric bills

Incentives significantly reduce system costs

* Crain's Chicago Business 2.20.02

CONTACT US TO GET STARTED:

773.638.8700 / www.spire solar archicago.com

CLIPPINGS

Three Chicago architecture firms—**Hirsch Associates, Eckenhoff Saunders, and STR Partners**—were featured in the June 2003 “Profiles in Design” issue of *Metal Architecture*. Firms from around the country were selected for the use of metal in their designs.

An article about the new Lookingglass Theater in the June 16 *New York Times* quoted architect **John Morris, AIA**, whose firm designed the new space in the historic Water Tower pumping station.

Todd Main, AIA was quoted in the June 16 issue of *Crain's Chicago Business* about the City's plan to lower thresholds for “planned developments.”

Blair Kamin published glowing reviews of projects by three Chicago architecture firms in June. He dubbed the Skybridge condominium

tower by **Perkins & Will** “the height of holiness” for its open façade. The Starlight Theatre in Rockford by **Studio Gang/O'Donnell** (now Studio Gang) and the Racine Art Museum by **Brininstool + Lynch** were cited as good reasons to leave the city in search of innovative architecture. Kamin also wrote about the selection of **Ron Krueck, AIA** to design the new Spertus Institute building on Michigan Avenue.

PROFESSIONAL DEVELOPMENT

Applications for the 2003 **AIA Leadership Institute** must be mailed by September 10. Twenty-five candidates will be selected to attend an intensive three-day program on October 8 to 11 in Washington DC. The enrollment fee is \$2,000. Information and applications are available by going to www.aia.org and clicking on AIArchitect.

Turning Green into Gold is a hands-on seminar about high-performance building design, construction and operation. The morning session shows sustainable strategies that can be applied to new construction or renovation projects, and how to cut energy costs while adding value to the building. The afternoon session provides updates on the latest in LEED rating systems and green product selection strategies. The program takes place on September 23 at the UBS Tower second floor conference center at 1 North Wacker Drive. It will be repeated the following day at the Milwaukee Athletic Club in Milwaukee. The cost is \$85 for the full day (\$110 at the door); \$60 (\$70 at the door) for the morning session; and \$40 (\$50 at the door) for the afternoon session. A 50 percent discount is available for AIA members who pre-register, and up to six learning units will be awarded. Go to www.squarefootage.net to register online or download the flyer.

PSMJ Resources Inc. is offering a new two-day program, **Everything You Must Know to Win Government Contracts** in Chicago on September 18 and 19. Other local programs include **Project Managers Bootcamp** on October 2 and 3 and **Successful Financial Management for A/E Professionals** on October 9 and 10. Each program provides 12 learning units. For details and to register, go to www.psmj.com.

The National Association of Minority Architects is sponsoring the **NOMA 2003 International Congress & Exposition** at the Hyatt McCormick Place on October 23 to 25. Information and registration are available at www.noma.net.



Design, Engineering and Management Excellence

*Manufacturing and Erecting
Turnkey Prefabricated
Panelized Exterior Surfaces*

- **Creative Solutions ...**
more than 300 buildings
- **Design ...**
diversity, versatility
- **Engineering ...**
up to 70% less weight
- **Manufacturing ...**
unsurpassed quality
- **Erection ...**
70% faster
- **Project Management ...**
20 years experience
- **Single Source ...**
Responsibility
- **GFRC**
- **Thin Brick**
- **Granite/Limestone**
- **Corian®/EC**
- **Tile**
- **EIFS**
- **Metal/Metal Composites**



EASTERN EXTERIOR WALL SYSTEMS INC.

Creating attractive and economical prefabricated building exteriors for new construction and renovation.

Locally
Represented By:


ARC SPEC

Phone 847-362-1590
Fax 847-362-1557

Bathrooms
with the Ultimate Finish.

Kitchens
with the Finishing Touch.

American Standard, Duravit, Porcher, Toto, Kallista, Granite, Corian, Dornbracht, Jado, Hansgrohe, Grohe, Herbeau, KWC, Elkay, Blanco, Bertch Bath, Baldwin, Jacuzzi, Pearl, Robern and Hastings.

Advantage Kitchen & bath
Find it Here. Gallery

Mon & Thurs: 8am-8pm
Tues, Wed & Fri: 8am-5pm
Sat: 9am-4pm

TOTO
Perfection by Design

7 8 5 0
NORTH
MILWAUKEE
AVENUE
N I L E S
ILLINOIS

847-965-4444
advantagebath.com

FIND IT HERE.

CALL FOR ENTRY

The Chicago Architecture Foundation, in conjunction with the AIA Chicago Environment PIA, the Chicago departments of Planning and the Environment, and the local chapter of the US Green Building Council invite project submissions for a Summer 2004 **Exhibition on Chicago Green Architecture**. The exhibition will be mounted in CAF's ArchiCenter and will coincide with the AIA national convention. Projects can be built or unbuilt but must be designed by Chicago firms, and preference will be given to local projects. Fully integrated sustainable design is sought, but lesser "shades of green" will be considered. Please submit a project statement of up to 250 words along with a minimum of three 8.5 by 11 inch color or black and white images (photographs, renderings or drawings) that best convey the design intent. Include a contact person, phone number, email address and firm name. Submissions are due by October 15 to the Chicago Architecture Foundation Green Architecture Exhibition, 224 N. Michigan Ave., 60604. For information, email Curator Ned Cramer at ncramer@architecture.org.

VARIOUS MATTERS

The third annual **National Edge City Conference** will take place in Schaumburg on September 14 through 16. Information and online registration are available at www.edgecityconference.org.

Preservation Snapshots will cover **Art for the People: Chicago Public School Murals 1904-1943** on September 18 and **Chicago's Historic Firehouses** on October 16. Lectures take place in the second floor Claudia Cassidy Theater of the Chicago Cultural Center, 77 E. Randolph St. Admission is free; the phone number for questions is 312/922-1742.

ArchiTech Gallery of Architectural Art presents **Magnifique!**, an exhibition of drawings, photographs, watercolors and antique prints of French architecture and décor. The show runs from October 3 through November 27 at 730 N. Franklin St., Suite 200. Hours are noon to 6:00 p.m., Thursdays through Saturdays. The Web site is www.architechgallery.com.

Daniel Libeskind will speak at the Art Institute in the Rubloff Auditorium on October 10 at 6:00 p.m. Information is available at www.archdesignsociety.org.

3 Little Words: www.LIGHTOLOGY.COM

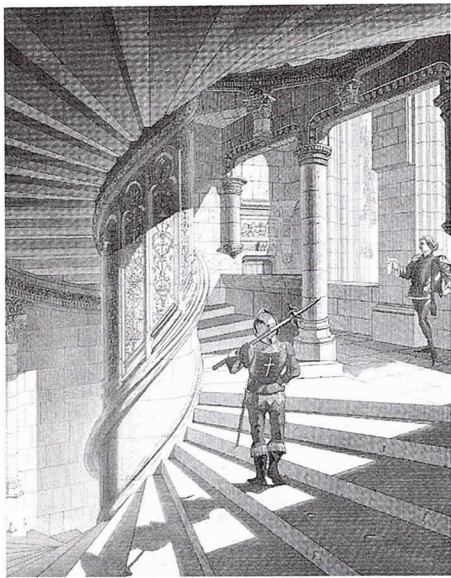
FLOOR		TABLE		SUSPENSION	
WALL		RAIL		CEILING	

Design professionals love our e-commerce site's live inventory and Project Manager layout tool. Register on our website to receive **40% off list price** of the largest and most progressive contemporary collection of lighting in North America. Then plan an entire project by location and e-mail it to your customer for approval.

SHOWROOM HOURS
M-Sat: 10-6
Th: 10-7

Lightology
Formerly Tech Lighting Galleries

215 W. Chicago Ave
Chicago, IL 60610
312.944.1000



Courtesy ArchiTech Gallery

French architecture is the subject of a show at ArchiTech Gallery in October and November.

NEW MEMBERS

AIA

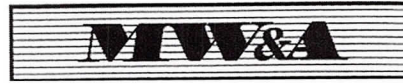
Monica Artmann-Ruggles, Ruggles Architecture; **Antoinette Chiovatero**, Hancock & Hancock; **Jason Kaye**, Boyle and Associates; **Scott Larson**, W.B. Olson; **Jung Mo**, Ross Barney + Jankowski; **Paul Muessig**, Arthur Capital Group; **Adam Mull**, Stephen Rankin Architects; **Philip Padawer**, Philip Padawer Architect; **Patrick Plunkett**, OWP/P Architects; **Anthony Roesch**, Boldt Consulting Services; **Charles Roig**, Roig Associates; **Robert Ruggles**, Ruggles Architecture; **James Summers**, James Summers Architect; **Bruce Weber**, Consoer, Townsend, Envirodyne Engineers

Associate AIA

Michael Ben-Meir, Wolbrink Architects; **Raymond Bruno**, Atkins HF & G; **Michael Hanrahan**, ITT Technical Institute; **Charles Harkins III**, TAMS; **Jennifer Heiney**, Patrick Engineering; **Zane Karpova**; **Mikah Kellogg**, Timothy Morgan Associates; **Deborah Lerner**; **Sophie Martinez**, Earth Tech; **Yeon-Cheon Na**, VOA Associates; **Robert Price, Jr.**, Gensler; **Syed Qadri**; **Rafael Ramirez**; **Thomas Roszak**, Roszak/ADC; **Samuel Wible**, VOA Associates; **Tiffany Wicks**, International Code Council

Professional Affiliate

Brian Bizup, Klein Construction Services; **Kate Brannelly**; **Michelle Disselkoen**, J+J/Invision; **Michael Farley**, Lord, Bissell & Brook; **Tim Kaye**, Halvorson & Kaye Structural Engineers; **Brad Weintraub**, ISR; **Austin Wyman**, Northwestern Mutual Financial Network; **Benjamin Yabut, Jr.**, Dykstra Consulting Group LLC



Mann, Weitz & Associates L.L.C. CPAs & Business Advisors

Experts in the Industry – Servicing Architectural Firms for Over 25 Years

A Sample of the Services We Offer

- Tax Preparation
- Tax Planning
- Business Consulting
- Profit Enhancement
- Audits, Reviews and Compilations
- Outsourcing Accounting Services

In addition, we provide:

- *Access to partners and senior professionals*
- *Timely responses*
- *Business consulting to improve your bottom line*

Contact Mark Mann at Mann, Weitz & Associates L.L.C.

108 Wilmot Road, Suite 110, Deerfield, Illinois 60015

Phone: (847) 267-3400 Fax: (847) 267-3401

Email: info@mannweitz.com or visit us at www.mannweitz.com

NeoCon® SHOWS

North America's largest collection of expositions and conferences for interior design and facilities management ...

NeoCon® World's Trade Fair

June 14-16, 2004

The Merchandise Mart • Chicago, Ill.

IIDEX®/NeoCon® Canada

September 18-19, 2003

The National Trade Centre
Toronto, Ont.

NeoCon® East

November 6-7, 2003

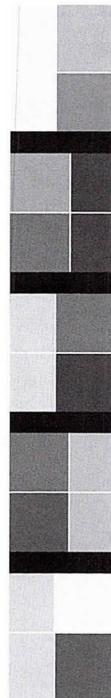
Baltimore Convention Center
Baltimore, Md.

NeoCon® West

February 4-5, 2004

Los Angeles Convention Center
Los Angeles, Calif.

www.merchandisemart.com 800.677.6278



bc

BOTTI

CONSTRUCTION, INC.

720 ENTERPRISE DRIVE
OAK BROOK, IL
60523

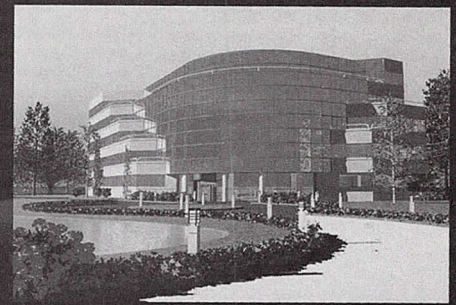
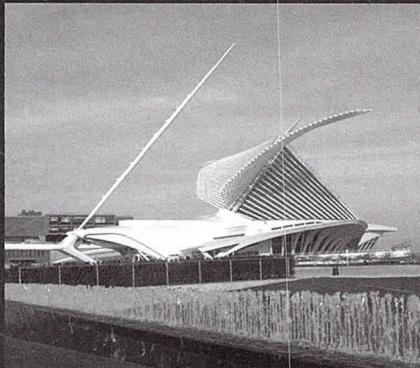
• BUILDERS • PLANNERS •
• DEVELOPERS •

(630) 573-5070

FAX:(630) 573-8586

www.botti-construction.com

Email:
chrisb@botti-construction.com



*engineering
services provided
to our clients
include...*

*Structural
Civil
Environmental
Transportation
Mechanical
Electrical*



**GRAEF
ANHALT
SCHLOEMER**
and Associates Inc.
engineers & scientists

228 South Wabash Avenue
Suite 700
Chicago, Illinois 60631
312/939-7007
www.gasai.com

also:
Chicago - O'Hare
Milwaukee, Madison,
and Green Bay

Project Architect:

WheelerKearnsArchitects

Wheeler Kearns is in search for an exceptional project architect with 5-10 years of experience, beginning Sept/Oct 2003. Candidates must exhibit clarity in design process and tenacity in making things real.

Submit vitae, references and samples of work to **jobs@wkarch.com**.
Absolutely no phone calls.

KFA
KRISTINE FALLON
ASSOCIATES, INC.

Achieving business results
through computer-based solutions.

www.kfa-inc.com

What to do?

Networks Hardware
Web-based Project Management
Software CAD Internet

Get it done.

How to do it?

Keep it going!

30 East Adams Street, Suite 600
Chicago, IL 60603
312-641-9339 voice
312-641-9337 fax
support@kfa-inc.com

On-Site Services for Design Firms

Our clients include over 200 firms in 20 states that are benefiting from the convenience and profitability of OSS within their offices.

- Reprographics Equipment
- Expense Recovery
- Project Tracking
- Flexible Contracts

Partner with the company that pioneered the model and best understands your professional needs.

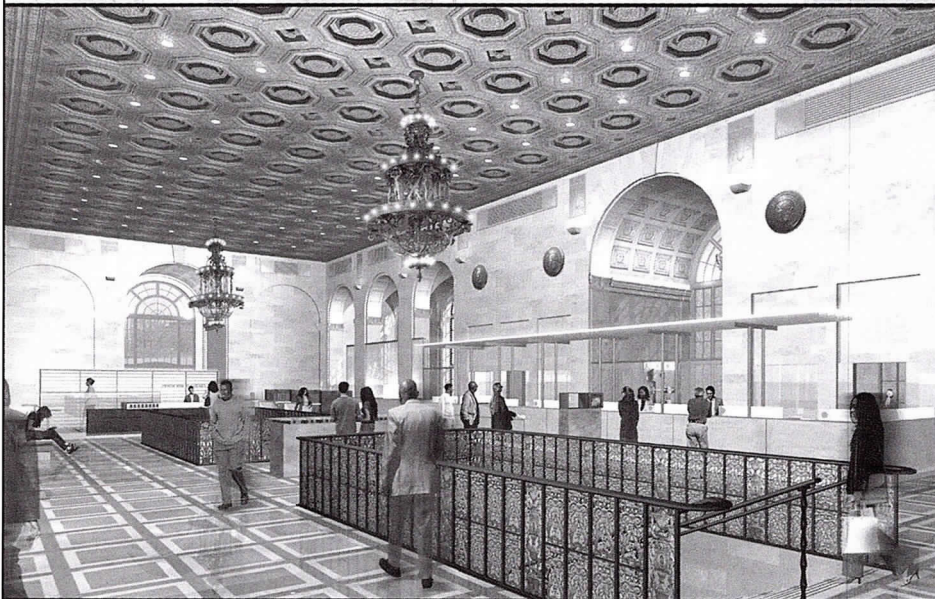
Service Point

For more on OSS, contact us at (800) 448-6002, x528
or e-mail oss@servicepointusa.com.

ARCHITECTURAL VISUALIZATION • RENDERING • ANIMATION • VR PANORAMA

REALIZE THE FUTURE TODAY

Hyde Park Bank
Florian Architects



312.432.9870 WWW.VERTEXGRAPHICS.COM
VERTEX GRAPHICS
1147 W OHIO #102 CHICAGO IL 60622



Project:

Maryland Walk
Clayton, Missouri

Client:

Conrad Properties

Architect:

Louis R. Saur & Associates



IMAGEFICTION

LaSalle Wacker Building
221 North LaSalle Street
Suite 1510
Chicago, IL 60601

312.726.0818

architectural rendering

computer imaging

animation

interactive media

www.imagefiction.com

AIA Chicago Members to Benefit from Reduced Rate for 2004 Convention

AIA Chicago members who register early for next year's convention, to be held in Chicago June 10 to 12, qualify for a substantially reduced rate of \$40. A group of volunteers is hard at work organizing a variety of activities that will showcase the best of Chicago architecture.



- 9 Tour: Loft Living in the Schoolhouse.** Sponsor: Interior Architecture PIA. 4:30 p.m.; 4101 S. Michigan Ave. 1.5 LU/HSW
- 10 Chicago's Planned Manufacturing Districts.** Sponsor: Planning and Urban Affairs PIA. 12:00 noon; AIA Chicago. Bring your lunch; beverages provided. 1 LU/HSW
- 11 State of the Art: Marquette Building.** Sponsor: Historic Resources PIA. 12:00 noon; AIA Chicago. Bring your lunch; beverages provided. 1 LU/HSW
- Green Homes for Chicago Parade of Homes-Englewood Sites.** Sponsor: Chicago departments of Housing and the Environment. 3:00 to 6:00 p.m.; 600 block of W. Englewood. Also Saturday, Sept. 13 from 10:00 a.m. to 1:00 p.m. Information: www.cityofchicago.org/environment.
- 13 The Healing Power of Art and Music.** Sponsor: Healthcare PIA. 10:00 a.m. to 1:00 p.m.; Art Institute of Chicago, Price Auditorium. \$15 for nonmembers. 3 LU/HSW
- 16 Corporate Focus: Customer-Driven Design.** Sponsor: Corporate Architects PIA. 5:30 p.m.; AIA Chicago. 1 LU
- 18 The Business of Your Business.** Sponsor: Mann, Weitz & Associates. 9:00 to 11:00 a.m.; AIA Chicago. 2 LU
- Cool Metal Roofing: A LEED Role.** Sponsor: Technical Issues PIA. 12:00 noon; Chicago Bar Association, 321 S. Plymouth Court. Bring lunch or buy at CBA cafeteria. 1 LU/HSW
- Green Homes for Chicago Parade of Homes-Hermosa Sites.** Sponsor: Chicago departments of Housing and the Environment. 3:00 to 6:00 p.m.; 1900 block of N. Keeler. Also Saturday, Sept. 20 from 10:00 a.m. to 1:00 p.m. Information: www.cityofchicago.org/environment.

- 19 Designight 2003.** AIA Chicago. 5:30 p.m.; Grand Ballroom, Navy Pier.
- 23 Turning Green into Gold.** Sponsor: The Corporate Realty, Design & Management Institute. 8:30 a.m. to 4:00 p.m.; 1 N. Wacker Dr. \$85 advance/\$110 at the door for full day; \$60/70 for a.m. or \$40/50 for p.m. sessions. Information: www.squarefootage.net. Up to 6 LU
- The Business of Your Business.** Sponsor: Mann, Weitz & Associates. 9:00 to 11:00 a.m.; AIA Chicago. 2 LU
- 24 Rebuilding the Pentagon.** Sponsor: Design/Build PIA. 7:00 a.m.; CNA Insurance, 333 S. Wabash Ave. Continental breakfast will be served. 1.5 LU/HSW
- 25 The Business of Your Business.** Sponsor: Mann, Weitz & Associates. 9:00 to 11:00 a.m.; AIA Chicago. 2 LU
- Tour: Dearborn Center.** Sponsor: Interior Architecture PIA. 5:30 p.m.; 131 S. Dearborn St., main lobby. 1.5 LU/HSW
- 30 Sustainable by Stealth.** Sponsor: Environment PIA. 5:30 p.m., AIA Chicago. 1 LU/HSW

AIA Chicago



A Chapter of The American Institute of Architects
222 Merchandise Mart Plaza
Suite 1049
Chicago, Illinois 60654
312/670-7770
312/670-2422 (fax)
info@aiachicago.org
www.aiachicago.org