

Focus

Health Care Architecture

AIA Chicago

In This Issue: When Bad Things Happen to Good Projects - 3 ■ Making No Small Plans: Learning from New York City- 4 ■ AIA Chicago Meets With DCAP Executive - 6 ■ NEA Announces Competition for New High School - 22 ■ Solar Workshop for Chicago Professionals - 23 ■

3

Focus on Programs

6

News Briefs

12

Cover Story
Health Care Architecture

17

Feature
*Designing for
Complementary and
Alternative Medicine*

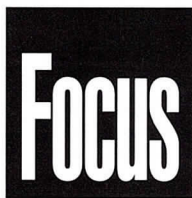
20

Notebook

28

Calendar

Cover Project: Evanston Hospital by
Eckenhoff Saunders Architects
Photo: Steve Hall © Hedrich Blessing



June 2003

Executive Editor

Susan Larson

Editor

Laurie Petersen

Focus Advisory Board

Joseph Caprile, AIA
Jonathan Fischel, AIA
Gigi McCabe-Miele, AIA
Alice Sinkevitch, Hon. AIA
P.K. VanderBeke, AIA
Thomas Zurowski, AIA

FOCUS (ISSN 1071-3700) Vol. 23, No. 6, is published monthly with a combined issue July/August, by AIA Chicago, 222 Merchandise Mart Plaza, Suite 1049, Chicago, Illinois 60654-1001. \$20 of each member's dues are allotted as a subscription. Periodicals postage paid at Chicago, Illinois. POSTMASTER: Send address changes to Focus, AIA Chicago, 222 Merchandise Mart Plaza, Suite 1049, Chicago, Illinois 60654-1001.

For advertising rates and schedules, call 312/670-7770.

© 2003 The American Institute of Architects Chicago. All rights reserved. Reproduction in whole or part without permission is strictly prohibited.

AIA Chicago on the Internet: www.aiachicago.org
AIA Chicago e-mail: info@aiachicago.org

AIA Chicago



A Chapter of The American
Institute of Architects

2003 Board of Directors

President

Joseph Caprile, AIA

President-Elect

Charles Smith, AIA

Vice Presidents

Gigi McCabe-Miele, AIA
Thomas Kerwin, AIA

Secretary

Edward Torrez, AIA

Treasurer

Peter Schlossman, AIA

Directors

Rik Master, AIA
Tom Hoepf, AIA
Laura Fisher, AIA
Gaines Hall, FAIA
Mimi Tsai, AIA

AIA Regional Directors

T. Gunny Harboe, AIA
Robert Selby, AIA

AIA Illinois Director

Robert Woodworth, AIA

Associate Director

Helen Tsatsos, Assoc. AIA

Professional Affiliate Director

Lawrence Okrent

Past President

Jonathan Fischel, AIA

2003 AIA Illinois Delegates

Hill Burgess, AIA
Christopher Chwedyk, AIA
Leonard Koroski, AIA
Alan Madison, AIA
Robert Woodworth, AIA
Angie Lee, AIA (alternate)
Maureen Reagan, AIA (alternate)

2003 Professional Interest Areas

Corporate Architects

Karen Eltz, AIA

Design

Peter Leoschke, AIA

Design/Build

Alan Treuthart, AIA

Environment

Susan King, AIA

Architecture for Health

Enrique Unanue, AIA

Historic Resources

William McMillan, AIA

Housing

David Wytmar, AIA

Information Technology

Gaute Grindheim, Assoc. AIA

Interior Architecture

Mark Hirons, AIA

Office Practice

Andrew Tiffin, AIA

Planning & Urban Affairs

Christine Carlyle, AIA

Technical Issues

Gregory Tornatore, AIA

Young Architects

Holly Coulter, Assoc. AIA

Chapter Staff

Executive Director

Alice Sinkevitch, Hon. AIA

**Membership Coordinator/
Assistant to the Director**

Phillip Rahill

Program Director

Joan Pomaranc

Communications Director

Susan Larson

Editor

Laurie Petersen

Financial Manager

Crystal Gagler

Public Information Receptionist

Linda Freeman

Convention Coordinator

Marc Wagner

■ Young Architects Getting Together

*Thurs., June 5, 5:30 p.m.
Monk's Pub, 203 W. Lake St.
Sponsor: Young Architects PIA*

Learn about upcoming events and get involved with community service projects. Questions: hollyjcoulter@yahoo.com.

■ Expanding the Northeast Illinois Rail System



*Wed., June 11, 12:00 noon
AIA Chicago
Sponsor: Planning & Urban Affairs PIA*

Jeffrey Ladd, chairman of Metra, will discuss Metra's plans for the future, the impact of mass transit on the region, and design opportunities. Bring your lunch. 1 LU/HSW

■ When Bad Things Happen to Good Projects



*Monday, June 16
9:30 to 11:00 a.m.
Holiday Inn Chicago Mart Plaza
Sponsor: AIA Chicago
Cost: \$45 members; \$65 nonmembers*

Bad projects seldom start out that way and are frequently the result of factors outside the control of the design professional. Recognition of those factors and proper documentation can help avoid these situations. Attorneys Eric Singer (Wildman, Harrold, Allen & Dixon) and Karen Erger (Holmes, Murphy & Associates) will present this Association Forum at NeoCon. Examples from claims and litigated cases will be presented, with special emphasis given to the factors that lead to disaster. Bring your own stories for discussion or e-mail them in advance to singer@wildman-harrold.com. Note: NeoCon registration is not required to attend this program. 1.5 LU

■ Good Projects Gone Bad



*Mon., June 16, 12:30 p.m.
Wildman, Harrold, Allen & Dixon
225 W. Wacker Dr., 30th floor
Sponsor: Office Practice PIA*

Bad projects seldom start out that way and are frequently the result of factors outside the architect's control. Recognizing them can help avoid these situations. Bring a lunch and your own stories. 1 LU

■ Tour: Music and Dance Theater



*Mon., June 16, 5:30 to 6:30 p.m.
Randolph Drive between Michigan Avenue and Columbus Drive
Sponsor: Design PIA*

Gary Ainge, AIA and Mary O'Toole, AIA will lead a tour of the theater under construction in Millennium Park. Learn how this largely underground structure was designed and built. Limit 25 AIA Chicago members. Participants must wear hard-soled shoes and bring a hardhat. 1 LU/HSW

■ Wood Window Installation



*Thurs., June 19, 12:00 noon
Chicago Bar Association
321 S. Plymouth Court
Sponsor: Technical Issues PIA*

Learn how architects can limit water infiltration through proper design of the window installation system. John Tarte of Pella Windows and Doors will present. Bring your lunch or purchase a lunch ticket for \$11 in the CBA shop. 1 LU/HSW

Continued on page 4



Sign Me Up!

- 6/11 Expanding the Northeast Illinois Rail System
- 6/16 When Bad Things Happen to Good Projects (\$45/m; \$65nm)
- 6/16 Good Projects Gone Bad
- 6/16 Tour: Music and Dance Theater
- 6/19 Wood Window Installation
- 6/20 Design of Labyrinths (\$15/nm)
- 6/24 Tour: City Hall's Green Roof
- 6/26 Tour: City Hall's Green Roof
- 6/26 Canadian National Architectural Policy

Name _____

Office _____

Address _____

City _____

Phone _____

E-mail _____

All programs listed above are free or as noted for AIA Chicago members. Non-members will be charged \$10 per program or as noted.

Method of Payment

- Check
- American Express Visa MasterCard

Credit Card No. _____

Expiration Date _____

Name on Card _____

Signature _____

Fax to:
AIA Chicago
312/670-2422

■ Design of Labyrinths

Fri., June 20, 7:00 to 10:00 p.m.
 Chicago Architecture Foundation
 224 S. Michigan Ave.
 Sponsor: Health PIA
 Cost: \$15 nonmembers

Experience first-hand the soothing effects and health benefits of walking a labyrinth with Robert Ferre, director of Labyrinth Enterprises. Visit www.aiachicago.org for complete details on this eight-part series. 3 LU/HSW



■ Tour: City Hall's Green Roof

Tues., June 24 and
Thurs., June 26, 9:15 to 10:30 a.m.
 City Hall, 121 N. LaSalle St.
 Sponsor: Environment PIA

You've heard all about it: now see it first hand. Each tour limited to 25 AIA Chicago members (nonmembers accommodated if space permits). Meet at 9:15 a.m. sharp. 1 LU/HSW



■ Canadian National Architectural Policy

Thurs., June 26, 5:30 p.m.
 Chicago Architecture Foundation
 224 S. Michigan
 Sponsors: Design PIA, CAF, The Canadian Club of Chicago

Ronald Keenberg, FRAIC, Hon. AIA, president of the Royal Architectural Institute of Canada, will present Canada's plan for a National Architectural Policy, a sweeping program to create a better built environment by raising the national awareness of and standards for architectural design. 1 LU



■ Making No Small Plans: Learning from New York City

Saturday, June 28
1:00 to 3:30 p.m.
 The Art Institute of Chicago
 Rubloff Auditorium

Sponsors: AIA Chicago, Architecture & Design Society of The Art Institute of Chicago, and Lambda Alpha International
 Cost: \$10 nonmembers



What can Chicago learn from the complex and very public planning effort to rebuild the area devastated by the destruction of the World Trade Center?

Alexander Garvin, former vice president for planning, design and development of the Lower Manhattan Development Corp. (LMDC), will share his experience and insights. Garvin has combined a career in urban planning and design with teaching, architecture, and public service. Garvin has a private consulting practice, which includes his role as managing director for planning for NYC2012, the committee to bring the Summer Olympics to New York in 2012. He is also on the New York City Planning Commission and adjunct professor of urban planning and management at Yale University.

After his lecture, a panel consisting of Thomas Beeby, FAIA of Hammond Beeby Rupert Ainge Inc.; Linda Searl, FAIA of Searl and Associates; Marilyn Taylor, FAIA of Skidmore, Owings & Merrill LLP; Blair Kamin of the *Chicago Tribune*; and Lee Bey, deputy chief of staff to Mayor Richard Daley, will respond to his comments. 2 LU/HSW

Thanks to additional sponsors USG and Petersen Aluminum Corp. for making this event possible.



PIA Spotlight

Design

Chair:
 Peter Leoschke, AIA
 Lucien Lagrange Architects
peter@llarch.com

Co-Chair:
 Stephen Ward, AIA
 Urban Design Group
sward@urbandesigngroup.com

Highlights of this year's Design PIA activities include two tours that sold out almost immediately, Soldier Field and the Music and Dance Theater. The PIA co-sponsored the biennial Emerging Visions portfolio competition and collaborated with two local organizations in a design competition for a parking garage linked to a public transportation terminal in the Loop.

Technical Issues

Chair:
 Gregory Tornatore, AIA

Co-Chairs:
 Lynette Stuhlmacher, Assoc. AIA
 McCluer
lynette_stuhlmacher@yahoo.com

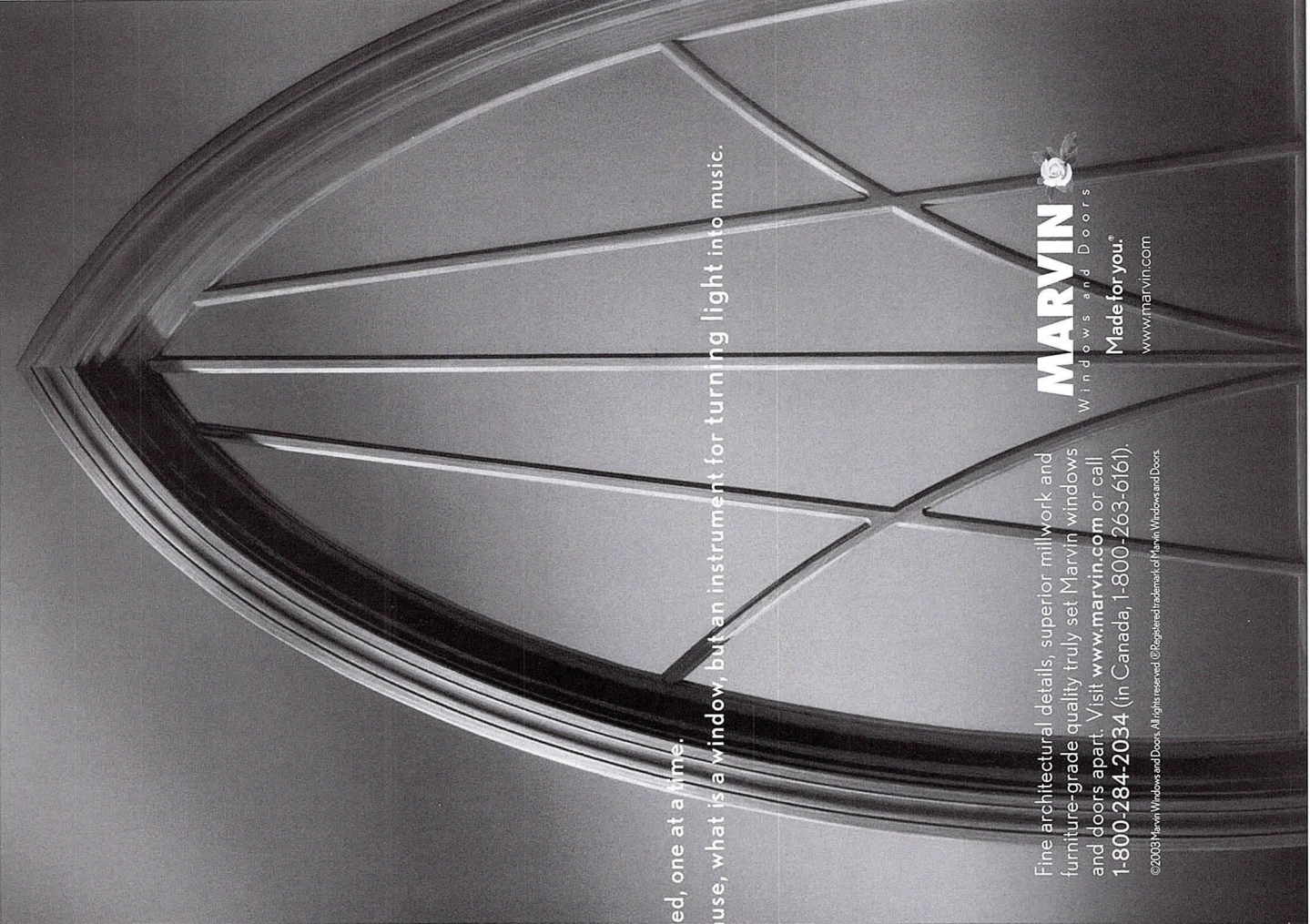
Ron Reed, AIA
 RTKL Associates; rreed@rtkl.com

Educating architects about materials and processes is the Technical Issues PIA's focus. Topics covered include lighting design, architectural copper, and precast concrete. They have also joined with the Historic Resources PIA to offer programs on stained glass and masonry restoration.



Like a fine instrument, the most beautiful windows are handcrafted, one at a time.

Why? Because, what is a window, but an instrument for turning light into music.



Fine architectural details, superior millwork and furniture-grade quality truly set Marvin windows and doors apart. Visit www.marvin.com or call 1-800-284-2034 (in Canada, 1-800-263-6161).

MARVIN
Windows and Doors
Made for you.[®]
www.marvin.com

©2003 Marvin Windows and Doors. All rights reserved. ®Registered trademark of Marvin Windows and Doors.

AIA Chicago Representatives Meet with DCAP Director

On April 9 a group of AIA Chicago members met with John Roberson, executive director of the city's Department of Construction and Permits (DCAP), to discuss the changes in the new department, to raise concerns voiced by AIA members, and to offer help and assistance from the Chapter. Joseph Caprile, AIA, Gigi McCabe-Miele, AIA, Art Salzman, AIA, Mimi Tsai, AIA, and Edward Wilkas, AIA attended the meeting and McCabe-Miele presented a summary to the AIA Chicago board of directors on April 15. One key point is that the City expects to have the new building code adopted by the end of this year, with the probability of a one-year transition period, during which time both codes will be in use.

AIA Illinois Urges Members to Make Voices Heard About SWA

AIA Illinois continues to express opposition to re-enactment of the Structural Work Act (SWA), which would expose architects and engineers to unwarranted liability (see the March issue of *Focus*). The Web site, www.aiaill.org, now features an SWA Resource Center, which includes a tool for finding the addresses, phone numbers and e-mail addresses of state senators and representatives; a guide to effectively communicating with legislators; links to position papers and resources; and ongoing updates on SWA-related activities in the General Assembly.

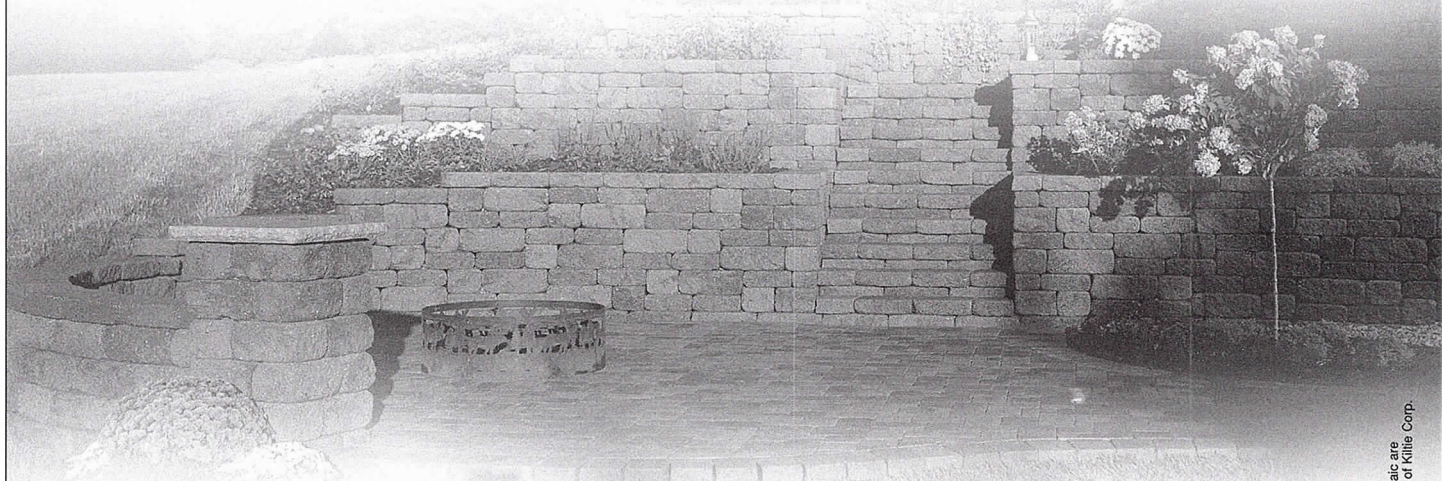
AIA Illinois also encourages members to consider contributing to its Political Action

Committee fund, which makes these lobbying efforts possible.

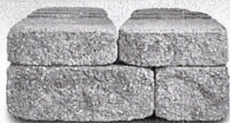
Chicago Center for Green Technology Receives National AIA Award

In recognition of Earth Day 2003, The American Institute of Architects and its Committee on the Environment (COTE) have selected 10 examples of "green" architectural design. The projects were honored on May 1 at the National Building Museum and on May 9 at the AIA Convention in San Diego. The panel of jurors, which included Carol Ross Barney, FAIA, chose the Chicago Center for Green Technology as one of the winners. Designed by Farr Associates Architecture and Urban Design, the LEED-

Walls Really Can Talk. This One Speaks Old World Italian.



You'd think so by looking at it. That's because Weathered™ Mosaic® Retaining Walls look like natural, hand-hewn stone. Something you'd see by an old English cottage. Or firmly rooted in the European countryside. *Magnifico!* For more information, call the 800 number or visit our web site.



Weathered™ Mosaic®

VERSA-LOK®
Retaining Wall Systems
Solid Solutions.™

1-800-770-4525
www.versa-lok.com

MANUFACTURED
LOCALLY BY
BEND
INDUSTRIES
www.bendindustries.com
1-800-886-4149

© 2003 VERSA-LOK and Mosaic are registered trademarks of Killee Corp.



AIA Chicago members repair a Dixmoor house on National Rebuilding Day.

Holly Coulter, Assoc. AIA

Platinum-rated building on the city's West Side was termed "an environmental showcase of both high- and low-tech systems and components." The AIA's COTE represents over 5300 members who are committed to making sustainable design integral to their practices. The sixth annual AIA/COTE Top Ten Green Projects initiative was developed in partnership with the U.S. Department of Energy and *Environmental Building News* magazine.

Chapter Members Participate in Rebuilding Together

On April 26 a team of AIA Chicago members and other volunteers helped repair a house in the south suburb of Dixmoor under the auspices of Rebuilding Together of Metro Chicago. The effort was organized by Holly Coulter, Assoc. AIA, chair of the Young Architects PIA. The team replaced kitchen cabi-

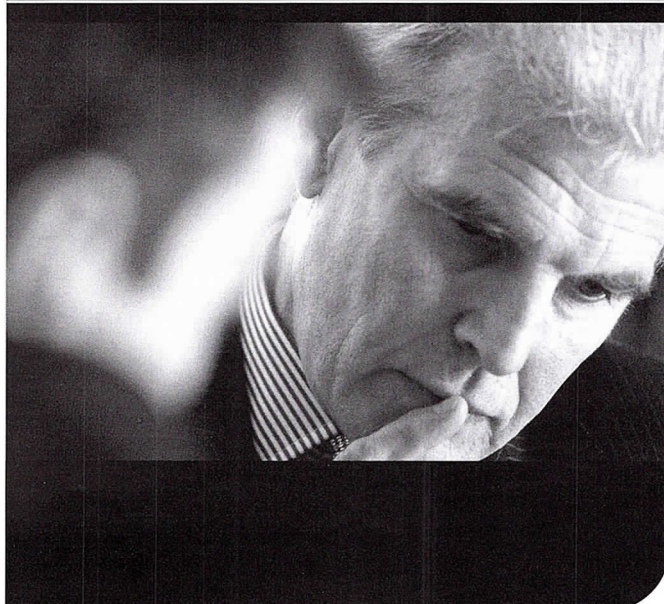
nets, fixed plumbing, recaulked exterior windows, demolished unsafe outbuildings, replaced rotten wood, and replastered and repainted. The Chicago project, in conjunction with National Rebuilding Day, repaired a total of 74 houses and community centers in the city and Cook County. Rebuilding Together is a national organization, formerly known as Christmas in April, that works to preserve and revitalize housing for elderly, disabled or low-income home-owners.

Call for Preservation Awards Submissions

The Landmarks Preservation Council of Illinois (LPCI) is requesting nominations for its 2003 Richard H. Driehaus Foundation Preservation Awards. Projects must have been completed in

“ I chose my insurance agent for the same reason my clients choose me: experience.

” Experience is the DPIC difference.



Combine DPIC's 30 years of dedication to the architect, engineer and environmental market with the expertise of our local brokers, and you get the benefit of the industry's most qualified professional liability experts.

From ongoing education in how to manage risk to new ideas in practice management and smarter dispute resolution that protects your interest, we'll help you realize a better return on your firm's insurance investment.

Contact us today for more information.

Hobbs Group/
AVA Insurance Agency
847-517-8900
www.AVAins.com

DPIC Companies
A DIFFERENCE THAT DELIVERSSM



Roula Alakiotou, FAIA advised several young architects and interns during a recent portfolio review event.

© Defined Space

the state of Illinois within the last five years. There is no fee to apply, and the deadline for completed submissions is June 30. Winners will be honored at a ceremony in Chicago on September 20. For more information, visit the Web site www.landmarks.org.

Young Architects' Portfolio Review a Huge Success

In April, the Young Architects PIA sponsored its first annual Prompt Portfolio Presentation (P3). More than 25 young architects and interns presented their design portfolios to seasoned professionals, who then provided valuable feedback in a series of one-on-one discussions.

"I discovered my portfolio shouldn't be thought of as an interview tool but rather a story of my

personal design experiences," said Sarah Eddy, Assoc. AIA, of Phillips Swager Associates.

The following architects served as mentors/reviewers for P3, which was held at Defined Space, an architectural photography studio:

Carol Ross Barney, FAIA
Ross Barney + Jankowski

Gordon Gill, AIA
Skidmore, Owings & Merrill

Don McKay, AIA; *Nagle Hartray Danker Kagan McKay Architects*

Peter Leoschke, AIA
Lucien Lagrange and Associates

Tom Hoepf, AIA; *Teng & Associates*

Scott Hindsley, AIA; *Archideas*
Peter Exley, AIA
architectureisfun/Peter J. Exley

Roula Alakiotou, FAIA
Roula Associates Architects

Michael Pancost, AIA
Roula Associates Architects

Doug Gillespie; *Mayers Jeffers Gillespie*
Martin Felsen; *Urbanlab*

Marc Cerone
Marvin Herman and Associates

The Young Architects PIA has plans to sponsor the portfolio review each year.

bc
BOTTI
CONSTRUCTION,
INC.

720 ENTERPRISE DRIVE
OAK BROOK, IL
60523

• BUILDERS • PLANNERS •
• DEVELOPERS •

(630) 573-5070
FAX:(630) 573-8586
www.botti-construction.com
Email:
chrisb@botti-construction.com

Quality
Manufacturing
and Service in
Architectural
Terra Cotta.

Locally
Represented By:

Phone 847-362-1590
Fax 847-362-1557



HILL MECHANICAL GROUP

**We build more than
mechanical
systems...**

We build trust.

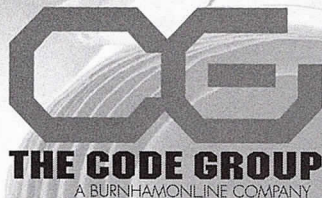
Trust. A simple principle —
the cornerstone of every
professional relationship we enter
and the fundamental reason we've
become Illinois' largest HVAC contractor.

*Thank you, Chicago, for trusting us
again and again to do what we do best.*

- PRECONSTRUCTION PLANNING to minimize change orders
- SCHEDULING INPUT to guarantee on-time completions
- RESOURCE APPLICATION with personnel/materials for any situation
- PROFESSIONAL EXECUTION from a fully integrated HVAC team
- PROBLEM SOLVING with technical competence and mutual trust

Code Compliance Is Not An Option... How You Achieve It Is.

The experienced professionals at The Code Group offer:



For more information contact:

Christopher Chwedyk, AIA

111 W. Washington St., Suite 450

Chicago, IL 60602

312-673-1503

codes@codegrouponline.com

- ADA Site Surveys
- Preliminary Zoning & Building Code Analysis
- Accessibility Consulting
- Code Requirement Analysis
- Local Code Conflict Resolution
- "Hi-Tech" Center Plan Evaluation
- Code Research
- Registered Energy Professional Certification
- Pre-Permit Submittal Plan Review
- MEP & Fire Safety Review



ARCHITEMPS, INC.®

**ARCHITEMPS, INC. – the Architectural & Interior Design staffing specialists,
serving greater metropolitan Chicago since 1986.**

Quality staffing, service and solutions:

- Design/Production Drafters
- Facility Planners
- CAD Architects/Interior Designers
- Project Managers

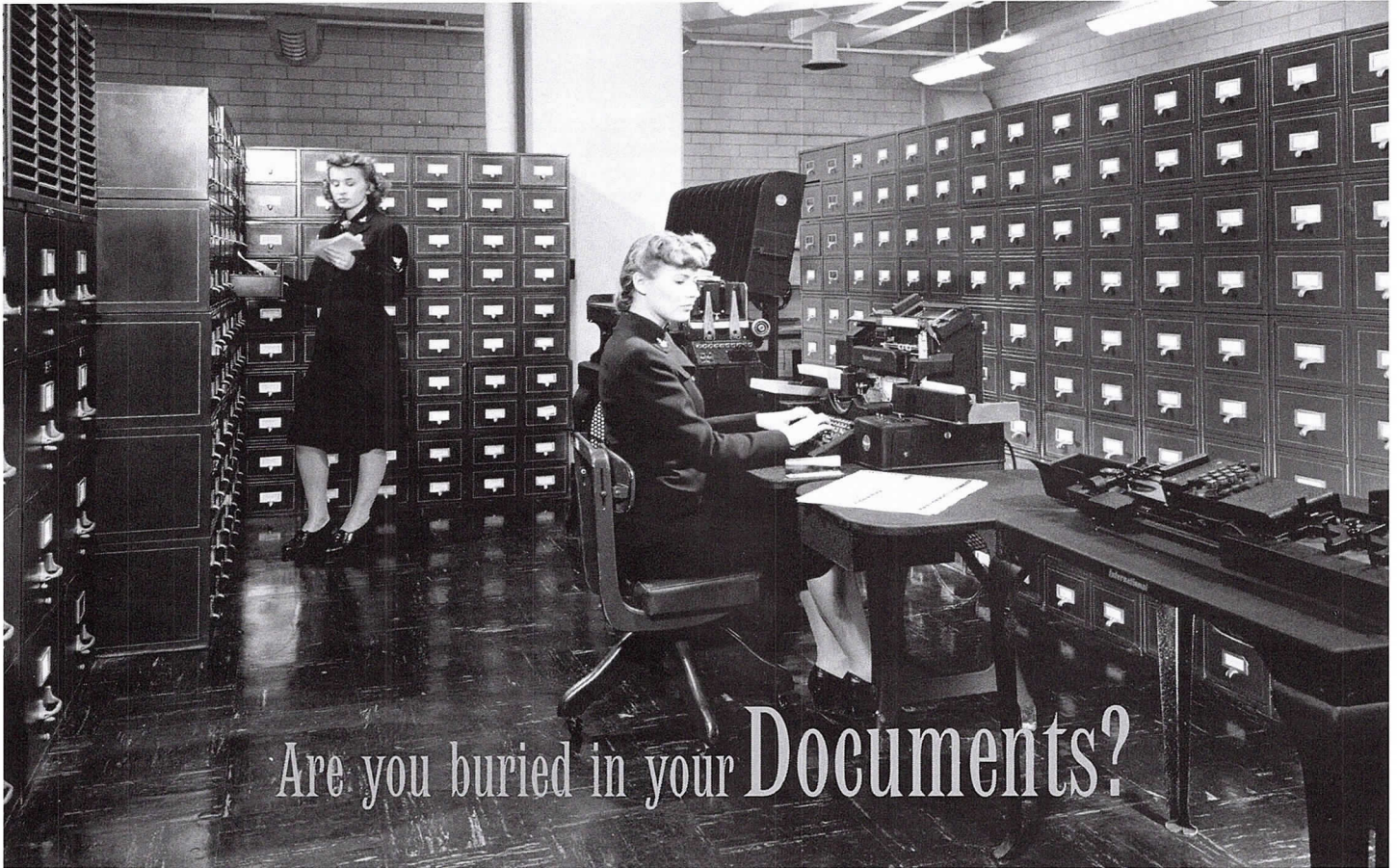
Our billing includes all employer liability:

- Payroll Administration
- Employee Benefits
- Government Compliance
- State & Federal Tax Remittance
- Workers' Compensation Coverage

ARCHITEMPS, INC.®
1050 North State Street
Chicago, IL 60610-7829

Tel: 312.649.0912
Fax: 312.649.1667
ARCHITEMPS@aol.com
www.architemps.com

**Architectural, interior design and facility planning personnel on a per-project basis.
Direct hire conversion and direct placement available. Call today for information
on our staffing services or employment opportunities.**



Are you buried in your Documents?



Better service through superior
technology



Digital
 Imaging
 Resources, Inc.

650 West Lake Street #120 • Chicago, IL 60661 • www.dirinc.com

Phone 312.243.1250 • Fax 312.243.1590

Health Care Architecture

Designing With Identity in Mind

By Molly O'Halloran

Highland Park Hospital is part of the Evanston Northwestern Healthcare system, which charged Eckenhoff Saunders Architects with creating a consistent look for their member hospitals.

During a medical crisis, a hospital's architectural design is probably the last thing on the mind of a patient or family member — even one who is an architect. In the first three days of his son's stay in an intensive care unit, Alan Wilson, AIA, of RTKL Associates, "wouldn't have cared if he

was in a railroad car, as long as he was getting the care he needed. It was when he was out of the woods that I started to pay attention to design issues."

For many people, introduction to a hospital system occurs during an emergency. But a growing number of health care consumers investigate several systems before deciding where to receive care. In the highly competitive health care market, architecture can play a key role in creating system-wide identities that attract customers and provide amenities that enhance medical care.



Steve Hall © Hedrich Blessing

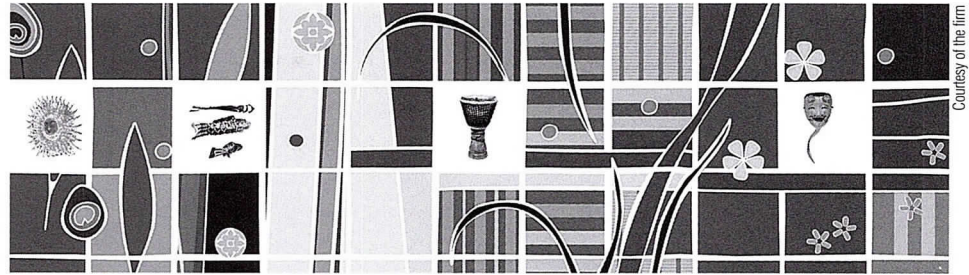
Developing Identity

Strong identity begins with clear values on the part of the client. Many hospitals can claim to provide great care on a clinical level. It is a unique style of care that patients are looking for, and the architectural expression of that style, applied in step with the client's values, can distinguish a hospital from its competitors and assure customers of continuity throughout a hospital system's many points of contact. Architects are getting involved early and bringing all parties together — from patients to doctors and nurses to building engineers — to define realistic and measurable goals for hospitals. The identities that emerge from design charrettes can permeate hospital culture and go well beyond the construction phase, finding expression in outpatient clinics, signage, Web sites, and in staff policies.

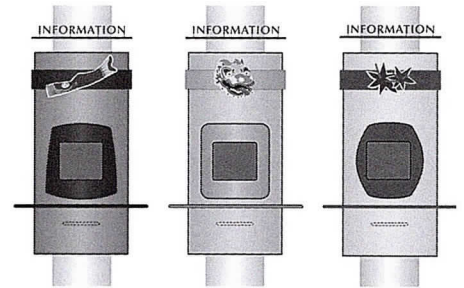
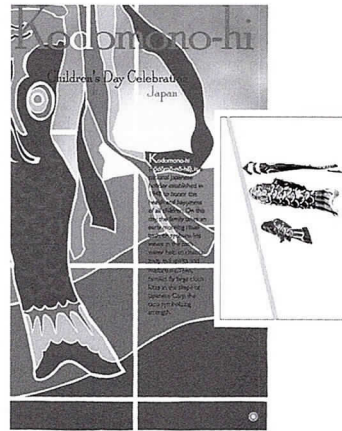
"Planning and creating identity is a totally viable component of design," asserts Eva Maddox, Assoc. AIA, director of Perkins & Will | Eva Maddox Branded Environments. Maddox and her group were brought in several years ago to help crystallize the identity of Children's

Hospital Medical Center in Cincinnati. The hospital community defined its core values around an ethic of learning. When faced with challenges like an almost half-mile-long walkway connecting buildings, designers returned to the core values for direction. Large, interactive, interpretive panels that feature multicultural celebrations were placed along the pathway. The panels expand the education theme, uplift passers-by, and are critical in creating welcome points for various buildings.

Walter Eckenhoff, AIA, of Eckenhoff Saunders Architects, faced rather a different challenge in strengthening the identity of Evanston Northwestern Healthcare. Charged with handling new construction and renovation phases for three distinct hospitals in the northern Chicago suburbs, Eckenhoff designed each with a specific sense of place but with an eye to the overall feeling of the system. The overarching aesthetic employs curved walls and columns, planted interior spaces, fountains, and as much daylight as possible, subtly affirming patient expectations system-wide. To integrate multiple campuses, Eckenhoff Saunders began by specifying interior finishes, with the administration, for the whole system. The resulting standardization created a system-wide identity so that the public knows what to expect in the way of quality care when they enter a facility.



Courtesy of the firm



Interactive, interpretive panels enliven a long walkway at Children's Hospital Medical Center in Cincinnati, designed by Perkins & Will | Eva Maddox Branded Environments.

Designing for Patient, Family and Staff

Focusing on the patient as consumer is hardly new. Current projects, however, also concentrate on the needs of patients' families and hospital staff. Nursing shortages have encouraged this approach to design. The quality of physical hospital space is crucial to reducing staff errors

and making patients and families feel comfortable enough to focus on the matter of healing.

Renovation and new construction at Phoenix's Banner Good Samaritan Medical Center feature materials and colors drawn from the local landscape. Deborah Sheehan, Assoc. AIA, principal at OWP/P, specified regional sandstone and limestone for interior and exterior finishes, and used color as an organizing principle for the hospital. Patterns in ceilings and terrazzo floors were conceived as directional cues for patients navigating the hospital, and reception desks, soffits, and carpets in coordinated palettes create local identities for disciplines within the facility.

In designing a new inpatient wing at La Rabida Children's Hospital, VOA

Continued on page 14

Nautical imagery sets a playful tone for the new inpatient wing that VOA Associates designed for La Rabida Children's Hospital on Chicago's lakefront.

Associates Inc. worked with the client to establish the playful concept of hospital as cruise ship. A nautical identity was a natural fit for the location on Lake Michigan at 65th Street. With porthole windows, nautical signage, and language including "cabins," "passengers," and "sundeck," children with chronic illnesses are now welcomed into an environment that clearly values play, art, and family. This new language is indicative of the culture shift that has permeated the

institution. Rooms are flexible enough to facilitate care at many levels of acuity, but include permanent features to create a familiar feel. Built-in desks with backlit magnetic "bulletin boards" and special framed spaces outside each room for patients' artwork encourage kids to settle in and make the "ship" their own while they're on board.

The challenge of recruiting and retaining nurses has led to increased awareness of the staff's needs for private restorative spaces and functional layouts that support daily activities in caring for patients. Taking care of the staff also enhances the quality of care. Patient surveys at La Rabida show that satisfaction with the nursing staff — the same employees, but in the newly designed unit — increased from 69 percent to 84 percent. Brenda Bush-Moline, AIA, a vice president at VOA, sees including staff amenities as part of the institution's intentions with the hope that the total project transcends expectations.

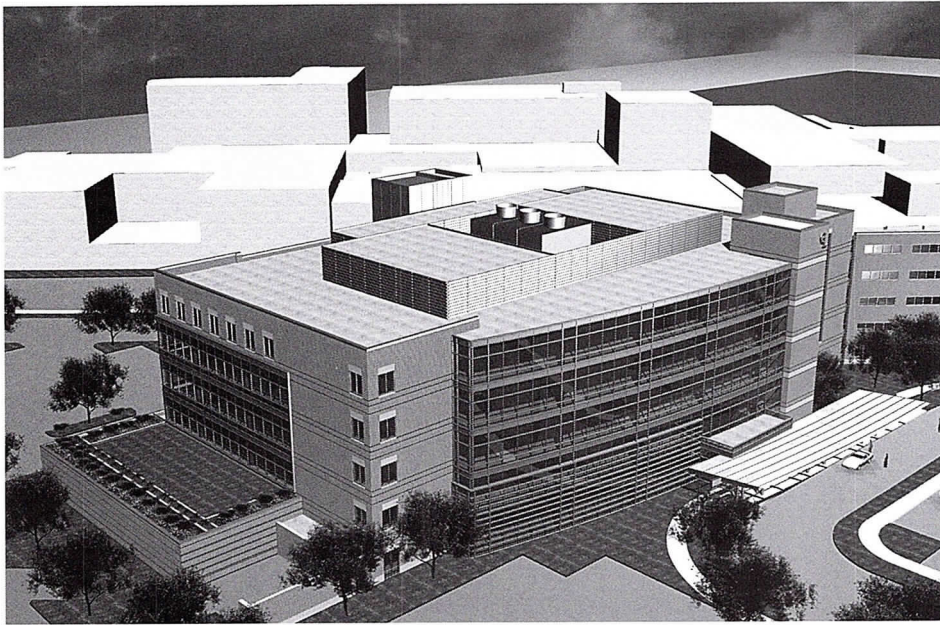
"The health of patients is a hospital's first priority," says Bush-Moline. "If the family is relaxed, if the patient receives care effectively, if the doctors and nurses can negotiate space easily and take breaks in a pleasant place, all of this serves the health of the patient."

Designing for Long-term Profitability

The profit margin in health care today is very slight, and boards of directors are keeping a sharp eye on the bottom line. At Gundersen Lutheran Hospital, a new 200,000-square-foot outpatient facility in LaCrosse, Wisconsin, a high level of



Scott McDonald © Heitrich Blessing



At Gundersen Lutheran Hospital in LaCrosse, an outpatient facility designed by RTKL Associates, examination rooms are designed to accommodate family members as well as patient and doctor.

Courtesy of the firm

patient-doctor interaction is critical to making the provider-owned practice successful — financially and institutionally. To that end, the Chicago office of RTKL Associates designed examination rooms to accommodate two to three family members in addition to patient and doctor. Every exam room has technology that allows patients to enter their own information in digital charts while talking to the doctor. Educating and empowering the patient provides health benefits while strengthening his or her commitment to the hospital. Floor-to-ceiling curved glass walls take advantage of views, and large waiting rooms promise an uncrowded atmosphere, even as the Neurology Clinic alone expects to serve 50,000 patients per year. Design choices such as the use of indirect lighting, natural materials, even the choice of colors for technical equipment in exam rooms convey compassion without piling up project costs. Alan Wilson, AIA, RTKL's vice president and Chicago office director, says that the Gundersen board of directors was pleasantly surprised that this high-finish building is also highly cost effective.

The inclusion of flexible space for consultation, relaxation, or waiting is well established in hospital design. A newer phenomenon is the provision of spaces that not only accommodate but also are conducive to complementary therapies (see Feature, page 17). A building's

systems must also be adaptable so that the hospital can flourish as capacity increases.

"The idea is flexibility," says Sheila Cahnman, AIA, associate vice president at HLM Design. "Hospitals don't have discretionary income. You have to be able to design space and systems to accommodate change." There's a cost involved, of course, but providing extra empty conduit or greater inter-floor space can save a growing hospital trouble and money during the next expansion phase.

As health care consumers increasingly educate themselves regarding choices, hospitals are making greater efforts to differentiate themselves from

their competitors. Working with architects to create a strong identity and a welcoming environment for patients as well as staff is an important part of this mission.

Molly O'Halloran is a Chicago-based writer

OWP/P's design for Phoenix's Banner Good Samaritan Medical Center blurs the boundaries between interior and exterior to create relaxing environments.



Courtesy of the firm

Any Way It Shapes Up...CTI Delivers

When you need

"Using precast thin brick faced panels was the ideal solution to meet the community's aesthetic desires as well as the demanding schedule requirements. In other words, when speed and look are both #1 priority, CTI really delivers!"

~Dennis Nemenz
Vice President, Sales
Concrete Technology, Inc.

ECONOMY
SPEED
EXPERTISE
APPEAL

Think...precast concrete

CONCRETE TECHNOLOGY INC.

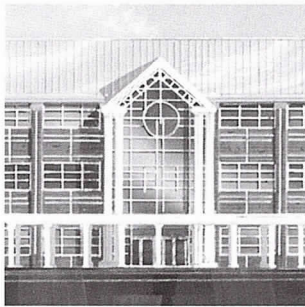
Fact: Using architectural precast concrete cladding can reduce enclosure time by as much as 70%.

Fact: CTI has two high-capacity plants, fully supported by local Customer Service Teams, ready to go to work for you. From initial design to delivery...we get it done in the least possible time.

Choose...CTI

GARFIELD HEIGHTS
HIGH SCHOOL
(Rendering)
Garfield Heights, OH

DESIGN ARCHITECT:
FPS Architects &
Engineers, Ltd.
Cleveland, OH



pci

See for yourself why architects are talking about CTI.

Let CTI serve up lunch while discussing how they can speed along your next project. To have a box lunch catered for your architectural staff, call Leo Ford at (773) 784-0400.

CONCRETE TECHNOLOGY INC. • Paxton, IL and Springboro, OH • Call 800.788.2370
www.ctiprecast.com

EUCLID
INSURANCE AGENCIES®

We've been insuring businesses since 1952. We represent hundreds of design firms because our experience allows us to give you the **expert advice** and products you need. We're proud of why so many of your colleagues **continuously choose us** to represent them:

- Reputable insurance companies
- **Competitive** premiums
- Customized employee meetings
- Continuing education programs
- Legislative updates
- Quotes for all policies
*Professional Liability, Group Health,
Workers Compensation, Disability, Life*

For more information, call 630.833.1000 ext. 365 or ext. 363 • 977 Oaklawn Ave • Elmhurst, IL 60126

Designing for Complementary and Alternative Medicine

Architects need to be able to anticipate market needs and reflect a holistic approach that integrates the best modern medicine with complementary therapies.

By Molly O'Halloran

A competitive health care market filled with educated consumers offers rich opportunities for hospitals trying to distinguish themselves with treatment options and environment. Accentuating spaces designed for complementary and alternative medical treatments is an approach with distinctive yet broad appeal.

Complementary and alternative medicine (CAM) is rapidly becoming more economically important in the United States. Greater public access to health information has led to the inclusion of non-medication therapies such as acupuncture, massage, meditation, and art and music therapies in the modern health care lexicon. Longer life expectancies bring with them an increase in chronic diseases such as heart disease, cancer, and mental disorders. Many patients are interested in CAM treatments that seem to offer a gentler way of managing disease than allopathic medicine.

Advocates of CAM practices hardly comprise a fringe population. Forty-two percent of Americans have used CAM at least once, according to the World Health Organization, and their spending on it totals \$2.7 billion per year. The National Institutes of Health 2003 budget includes \$1134 million for their National Center for Complementary and Alternative Medicine, an 84 percent increase in funding from 2002. With more and more individuals willing to pay out of pocket for CAM treatments, modern medical providers are taking notice.

An understanding of how the design of health care environments can enhance healing is evolving. Enrique Unanue, AIA, chair of the Architecture for Health PIA, believes the trend toward designing with alternative therapies in mind was first apparent in psychiatric hospitals where

non-medication therapies gained acceptance and required dedicated spaces. Maternity wards became another vanguard of holistic design, and women's centers still often serve as seedbeds for introducing CAM into a hospital system.

Banner Good Samaritan Medical Center in Phoenix is well known for its birthing center. In the new women's center, designed by Deborah Sheehan, Assoc. AIA, earthen tones prevail and "soft spaces" include an education resource center, dedicated wall space for community-supported exhibitions, and a lobby that overlooks a healing garden. This approach of softening the boundaries between indoors and out, hospital and community, was used throughout the renovation of the hospital. Landscaping provides spaces where patients and visitors on foot or in wheelchairs can enjoy gardens and plazas. An infusion garden within cloister walls allows for privacy and monitoring while patients undergo long-term chemotherapy.

For hospitals, including labyrinths and healing gardens in programs for new construction relays an important message: that the hospital cares for the whole person, not just the clinical patient. Walking a labyrinth — a single path leading to a center and out again — can help disengage the mind from troubles and lead to emotional healing. Not just "extra" amenities, these are dedicated spaces with flexible uses — they can provide places for mothers in labor to walk, caregivers to relieve stress, families to contemplate decisions, and patients to regain mobility.

Labyrinths, libraries, classes, and art programs also serve to attract discretionary traffic to hospitals. "You don't just go in, have an exam or a procedure, and walk out," notes Eva Maddox, Assoc. AIA. Programs such as lectures or yoga classes build a sense of

Continued on page 18

community and can bolster the rolls of volunteers and donors, too. Given conducive spaces, a trained volunteer staff might run storytelling, pet therapy, and music therapy programs. These programs in turn can lead to lower anxiety levels for patients and families, and shorter hospital stays. Therapeutic and educational programs can be inexpensive to operate, and contribute to employee and patient satisfaction. For architects, paying attention to such programmatic needs can mean developing specialized spaces, but also involves making flexible spaces conducive to therapies. Corridors might bend around softly lighted gathering spaces with comfortable seats for musicians and patients to play instruments.

The Architecture for Health PIA is currently sponsoring a lecture series entitled "The Emerging Horizon: Where Design Meets Complementary and Alternative Medicine" that is designed to explore the increasing role of CAM in health care environments. (See Sidebar for details.)

"These concerns are becoming part of the normal set of variables," says Unanue, and architects need to be able to anticipate market needs and reflect a holistic approach that integrates the best modern medicine with complementary therapies. Drina Nikola, Assoc. AIA, an associate at OWP/P, sees the lecture series as a way to enrich the conversation between architects and their clients, outside of a project-specific setting, so that they can continue the exploration when it comes time to design.

Molly O'Halloran is a Chicago-based writer

The Emerging Horizon: Where Design Meets Complementary and Alternative Medicine

Through a series of interactive learning sessions that include tours and events by leading health care professionals, planners and designers, the Health Care PIA of AIA Chicago explores how integrative medicine and an environment supportive of a holistic approach can achieve effective outcomes.

Go to www.aiachicago.org for details or call AIA Chicago at 312/670-7770 for a brochure.

The lecture series continues through December:

- | | |
|-------|--|
| 6/20 | Labyrinths: An Inward Journey Manifested |
| 8/14 | Wellness Centers: Crossing the Threshold to Integrative Care |
| 9/13 | The Healing Power of Art and Music |
| 10/18 | Ayurveda and Vastu: Creating Balance |
| 11/12 | Zen in the Art of Architecture |
| 12/10 | In Conclusion: Implementing Integration |



Please call John Dashner or Randy Zaleski
Ph: 630-668-1551 Fax: 630-668-1672





"Let's face it. Design is about choice."

We choose the designs that please us,
we choose the environment in which
we live and work. We choose the talent
that reflects our world, and we choose
the partners that know us best.

That's why we choose CFA,
Chicagoland's leading choice for
Staffing and CAD Services since 1984.

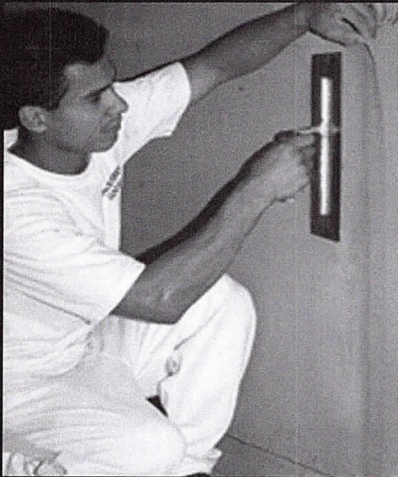


Consulting for Architects, Inc.

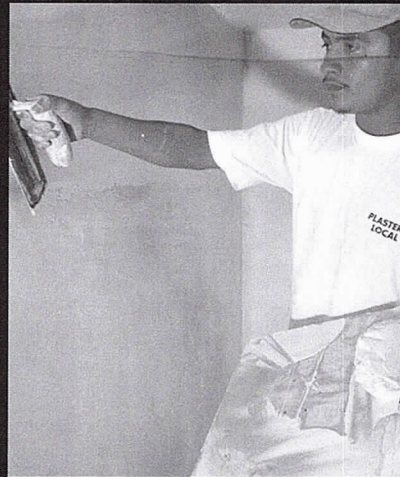
"Creating Staffing and Software Solutions"

120 South State Street
Floors 5 & 7
Chicago, IL 60603
312.345.1700
www.cons4arch.com

Professional Training Yields Expert Plasterers



Exterior Insulating and Finishing
Systems (EIFS) and Stucco



Conventional and Veneer Plaster



Ornamental Plaster

Call us for information about
today's plastering systems and the
best people to apply them.



Chicago Plastering Institute
6547 N. Avondale Ave.
Chicago, IL 60631
(773) 774-4500

Clockwise from top left: Ray Clark, AIA; Bill Steed, AIA; Jim McDonough, AIA; Jim Mladucky, AIA; and Scott Nelson, AIA



PEOPLE/FIRMS

Raymond Clark, AIA has been named managing principal of the Chicago office of DeStefano I Keating Partners. He is vice chair of the Chicago Committee on High Rise Buildings and is a former board member of AIA Chicago.

Andrew Metter, FAIA served on two design juries in April. He was a juror for the AIA Springfield, Missouri design awards, along with **Carol Ross Barney, FAIA** and **David Woodhouse, FAIA**. He also served on the jury for the spring awards for student work at the Illinois Institute of Technology.

OWP/P has promoted **Scott Nelson, AIA** and hired **James Mladucky, AIA** as principals. In addition the firm has promoted the following AIA Chicago members: **Fernando Araujo, AIA** and **Albert Manshum, AIA** to senior associates and **Patrick Bryck, AIA**; **Mary Cavanaugh, AIA**; **Stephen Christien, AIA**; and **Kevin Hall, AIA** to associates.

Legat Architects has promoted **James McDonough, AIA** and **William Steed, AIA** to principals. McDonough is the firm's director of educational facilities and Steed is director of health care facilities.

Craig Smith, AIA has joined Loebel Schlossman & Hackl as a project director, and **David Urschel, AIA** has joined the firm's health care group as a project architect. Urschel is past treasurer of AIA Chicago and chairs the coordinating committee for the Chapter's 2004 national convention host activities.

William Waterston, AIA has relocated from the Chicago to the Boston office of Wiss, Janney, Elstner Associates.

Lohan Caprile Goettsch Architects was named Architect of the Year for the Commercial Real Estate Awards presented by the Greater Chicago Food Depository.

Euclid Insurance Agencies has moved to 234 Spring Lake Drive in Itasca. The new phone number is 630/238-1900.

hydraulic manufacturer, in Lincolnshire. Design of the 12,600-square-foot space took advantage of the large amount of glass in the existing building.

Among the projects underway at **JMH Architects** are a new façade for Fairhaven Plaza in Mundelein and a speculative house in Highland Park. The firm is also part of the team for a new surgical center in Rockford.

Graham, Anderson, Probst & White provided full architectural and interior services for the recently completed tower at 2 East Erie. The 40-story building includes offices, apartments, indoor parking and retail.

Stephen Rankin Associates has designed a new 29,000-square-foot office building for the Illinois Federation of Teachers in Westmont. The building will contain offices, classrooms and meeting rooms to be used for seminars and conferences.

Urban Works Ltd. has designed a 27-unit, four-story residential building for the corner of Paulina Street and Warren Boulevard in Chicago. The masonry building is accented with metal elements that include two-story bays and entry canopies. A prominent corner entrance leads to a landscaped courtyard.

Manuel Hernandez, Assoc. AIA, partner at the one-year-old firm of IK + Associates, designed the Estate on State residential building. Now under construction at 16th and State streets, the seven-story condominium

Bathrooms
with the Ultimate Finish.

Kitchens
with the Finishing Touch.

American Standard, Duravit, Porcher, Toto, Kallista, Granite, Corian, Dornbracht, Jado, Hansgrohe, Grohe, Herbeau, KWC, Elkay, Blanco, Bertch, Schrock, Baldwin, Jacuzzi, Pearl, Roben and Hastings.

Advantage Kitchen & Bath Gallery
Find it Here.

Mon & Thurs: 8am-8pm
Tues, Wed & Fri: 8am-5pm
Sat: 9am-5pm

GROHE
FAUCET TECHNOLOGY

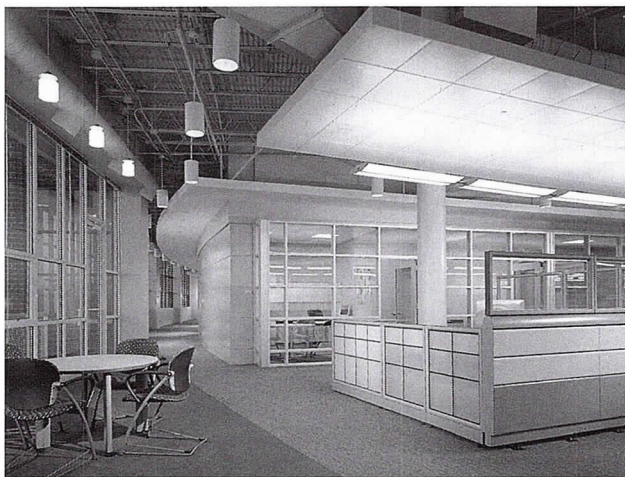
7850 NORTH MILWAUKEE AVENUE NILES ILLINOIS

847-965-4444
advantagebath.com

FIND IT HERE.

PROJECTS

OWP/P has announced the completion of offices for the U.S. headquarters of Sauer-Danfoss Inc., a mobile



Steve Hall © Hedrich Blessing



Courtesy of the firm

Left: The offices of Sauer-Danfoss's U.S. headquarters in Lincolnshire were designed by OWP/P. Top: Stephen Rankin Associates has designed a building for the Illinois Federation of Teachers.

includes ground floor commercial and parking spaces. Hernandez was interviewed for the April 7 issue of the *Illinois Real Estate Journal*.

The Wild Reef Sharks at Shedd exhibit opened with a splash at the Shedd Aquarium on April 15. **EHDD** worked with the aquarium staff to design the project.

The Chicago office of **RTKL Associates** is currently developing the site master plan for an outpatient medical campus for the Carolinas HealthCare System in

Charlotte, N.C. They are also designing the shell, core and public spaces for two medical office buildings and a parking garage that will comprise the first phase of the development. In other firm news, they are planning and designing the first two phases of Rookwood Exchange, just north of Cincinnati. This high-density, mixed-use development will combine office, retail and residential uses on a 12-acre site.

Ziolkowski Porter Damato + Associates (zpd+a) has been selected by the city of Oak Forest to serve as

development consultant and planner for the Gateway Corridors Redevelopment Project. The firm will establish an integrated multi-stage master planning process for the city's two major arterial commercial corridors: 159th Street, extending from Crawford Avenue on the east to Oak Park Avenue on the west, and Cicero Avenue, extending from 149th Street on the north to Interstate 57 on the south. zpd+a will oversee the project team that currently includes URS Corp., which is providing civil engineering and infrastructure and landscape architecture consulting.

CLIPPINGS

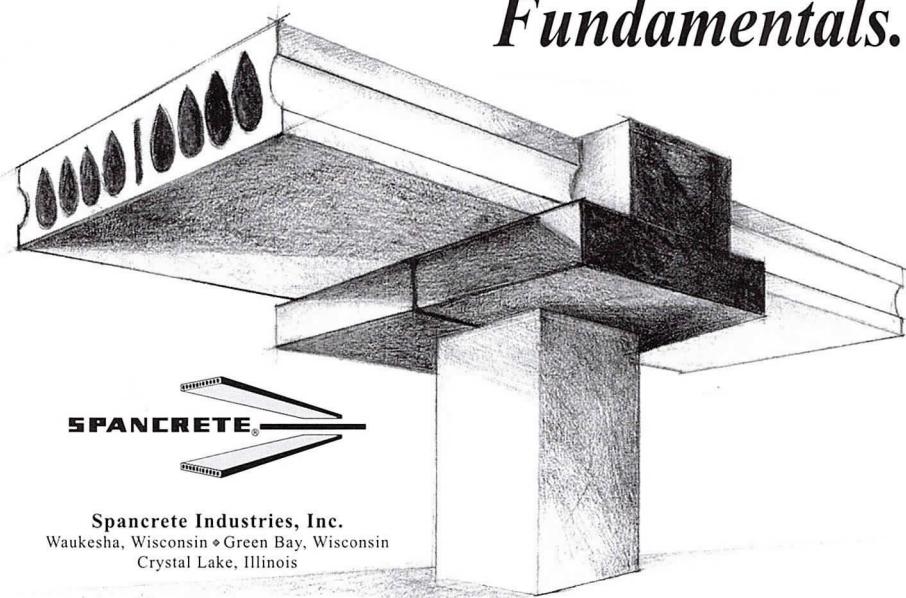
A Chicago residence designed by **Joseph Valerio, FAIA** of Valerio Dewalt Train was featured in the April "Record Houses 2003" issue of *Architectural Record* as well as the April 27 issue of the *Chicago Tribune Magazine*. The new façade of a rebuilt former manufacturing building is made entirely of galvanized corrugated steel, comprised of two bi-fold garage doors separated by a three-foot-wide door of the same material.

The April issue of *Building Design & Construction*, which focuses on major international buildings, includes three projects by Chicago architecture firms. **Murphy/Jahn's** Bayer AG Headquarters in Leverkusen, Germany is on the cover and its innovative construction, including a twin-shelled glass façade, is described in detail (see *Focus*, June/July 2000). Also featured are the Charles Square Center office and retail complex in Prague by **Lohan Caprile Goettsch** and the 22-story Torre Paris office tower in Santiago, Chile by **Loebl Schlossman & Hackl**. In addition, an article on computer applications highlights **Antunovich Associates'** use of Revit software to design the University Center of Chicago residence hall in the Loop.

Two local firms were recently featured on the cable network HGTV's "New Spaces" program. A sunroom remodeling by **Ken Zajac, AIA** of Design 2 Build was broadcast on March 29 and **Mekus Studios'** addition

Beam Column Plank

Fundamentals.



SPANCRETE

Spancrete Industries, Inc.
Waukesha, Wisconsin • Green Bay, Wisconsin
Crystal Lake, Illinois

Telephone: 414-290-9000 Facsimile: 414-290-9125
www.spancrete.com e-mail: info@spancrete.com

A residential building designed by Urban Works will be constructed on Chicago's West Side. (See page 20.)



Courtesy of the firm

to a 1911 Evanston house by E.A. Mayo was shown on April 19.

The April 6 Spring Home Design issue of the *Chicago Tribune Magazine* featured a North Shore house designed by **Stuart Cohen & Julie Hacker Architects**. In other firm news, www.cohen-hacker.com is the only Chicago finalist in the *Architecture Business & Economics* magazine Web Site of the Year contest.

A kitchen that **Harold Dietrich, AIA** designed for his own house is featured in the latest issue of *Kitchen Trends* magazine.

The March/April issue of *Fabric Architecture* has an article about the DuPage Children's Museum in Naperville by **architectureisfun/Peter J. Exley**.

The March/April issue of *Real Estate Chicago* featured a roundtable discussion on the state of local architecture. The panelists were **Carol Ross Barney, FAIA; Sanjiv**

Chadha, AIA; Karl Heitman, AIA; Jim Plunkard, AIA; and Thomas Ventulett, FAIA.

The Manilow Residence by **Garofalo Associates** is spotlighted on the coveted "Houses We Love" page in the May issue of *Dwell*. The project was featured on the cover of *Focus* (February 2002) in an article about computer-aided design.

A piece by **Jim Plunkard, AIA** was featured in the "My Biggest Mistake" column of the *Chicago Tribune* Business Section on May 12. Plunkard explained how he and partner Ray Hartshorne, AIA rented office space for several years after opening their firm in 1987. Looking back, he confesses, it would have been wiser to buy office space sooner than 1997. The firm is located in the West Loop and employs 25.

3 Little Words: [WWW.LIGHTOLOGY.COM](http://www.LIGHTOLOGY.COM)



Design professionals love our e-commerce site's live inventory and Project Manager layout tool. Register on our website to receive **40% off list price** of the largest and most progressive contemporary collection of lighting in North America. Then plan an entire project by location and e-mail it to your customer for approval.

SHOWROOM HOURS
M-Sat: 10-6
Th: 10-7

Lightology
Formerly Tech Lighting Galleries

215 W. Chicago Ave
Chicago, IL 60610
312.944.1000

CALL FOR ENTRIES

The Van Alen Institute is calling for entries from recent architecture graduates for the **Dinkeloo Fellowship at the American Academy in Rome**. This year's Dinkeloo Fellow will have the opportunity to participate in the Van Alen Institute's program for new design directions for public space. Through research and intense exploration, a focused travel experience, and a residency period at the Academy, he or she will be asked to investigate, report and document a project of his or her choice. The fellowship is open to U.S. citizens who are recent or prospective graduates (May 1999 - September 2003) of U.S. architecture, environmental design, landscape architecture, and urban design programs. The submission deadline (portfolio and project proposal) is June 16 at 6:00 p.m. Visit www.vanalen.org for complete information.

The city and board of education of Perth Amboy, New Jersey and the National Endowment for the Arts have announced a **national design competition for a new high school**. The size of the school will be approximately 489,000 square feet, and its 15-acre site



Courtesy of the firm

RTKL Associates has master planned and designed the first two phases of Rookwood Exchange near Cincinnati. (See page 21.)

is positioned as a gateway to the city. The two-stage competition asks architects to submit concepts by July 23; a jury that includes Henry Cobb, FAIA, Carlos Jimenez and Toshiko Mori, AIA will select four competitors who will receive an honorarium of \$20,000 to produce more detailed projects by November 3. The cost of registration is \$100 and the deadline is June 16. The registration form and additional information are available at www.paps.net/competition. The competition advisor is Ralph Lerner, FAIA.

PROFESSIONAL DEVELOPMENT

The Chicago Department of Environment and the Chicago Center for Green Technology are sponsoring the **Spire Solar Chicago Solar Workshop for Professionals** on June 11 from 3:00 to 5:00 p.m. at the Center for Green Technology, 445 N. Sacramento Blvd. The free program includes a tour of on-site solar electric installations as well as Spire's module manufacturing facility. To register, call 773/638-8700 or email aleontis@spirecorp.com.

Charter Sills is repeating its popular program **Lighting Jeopardy**, a seminar about lighting technology in a fun "eat and compete" team format. It will take place on June 19 from 12:00 noon to 2:00 p.m. at AIA Chicago. Lunch is included in the program, which is free for AIA Chicago members, but seating is limited, so please reserve a spot by e-mailing warren@chartersills.com. The phone number is 312/759-5909 and the Web site is www.chartersills.com. The seminar provides 1.5 LU.

IIT CARE (Chicago Area Renewable Energy) is sponsoring a **Chicago/Midwest Renewable Energy Workshop** at IIT on June 19 and 20. Visit their Web site, www.iitcare.org, for information.

Vertex Graphics is offering training in **Autodesk VIZ 4. Classes** begin on July 12 and participants must register by July 1. The course will teach design professionals how to develop 3D-drawings and images to support and express their design ideas. They will also

DRAFTING RENDERING PRINT DESIGN WEB DESIGN DIGITAL VIDEO NETWORKS

SIMPLYCAD



More than our name says!

(312) 596 5325 SIMPLYCAD.COM



Mann, Weitz & Associates L.L.C. CPAs & Business Advisors

Experts in the Industry – Servicing Architectural Firms for Over 25 Years

A Sample of the Services We Offer

- Tax Preparation
- Tax Planning
- Business Consulting
- Profit Enhancement
- Audit Reviews and Compilation
- Outsourcing Accounting Services

In addition, we provide:

- *Access to partners and senior professionals*
- *Timely responses*
- *Business consulting to improve your bottom line*

Contact Mark Mann at Mann, Weitz & Associates L.L.C.

108 Wilmot Road, Suite 110, Deerfield, Illinois 60015

Phone: (847) 267-3400 Fax: (847) 267-3401

Email: info@mannweitz.com or visit us at www.mannweitz.com

From left to right: An addition by Mekus Studios to a 1911 house was featured on HGTV. (See page 21.)

Randy Deutsch, AIA models the "lighting specs" worn by contestants in Lighting Jeopardy. (See page 23.)

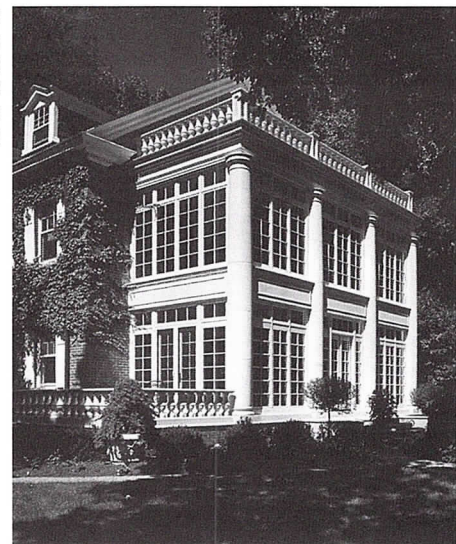


Photo: Dennis © Randy Deutsch

explore principles of using 3D-data in the construction process. The course, Design Visualization / 3D Design Technology, will meet on Saturdays from 1:00 to 5:00 p.m. for eight weeks. It provides 16 LU and registration is \$800. Space is limited. For more information contact Alphonso Peluso or John Manaves 312/432-9870.

VARIOUS MATTERS

Ron Keenberg, FRAIC, Hon. AIA, president of the Royal Architectural Institute of Canada, will deliver a lecture titled **Platform for Great Architecture: Canadian National Architectural Policy** at the Chicago Architecture Foundation (CAF), 224 S. Michigan Ave., on June 26 at 5:30 p.m. Canada has recently instituted a sweeping national policy to educate the general public about and raise the national standard for architectural design. The lecture is sponsored by the Design PIA of AIA Chicago, CAF, and The Canadian Club of Chicago.

The annual conclave of the **Theatre Historical Society of America** will be held in Chicago on July 8 through 13. It will include visits and backstage tours of a variety of historic theaters. For information, visit www.historictheatres.org, or call 630/375-0431.

The Women's Architectural League of Chicago has announced its **2003 Scholarship Winners**. The IIT winners are Sara Ann Stevenson and Allyson Ann Wilkovich; the University of Illinois Urbana-Champaign winners are Andrea Bosshardt and Nicole Brzozowski; and University of Illinois Chicago winners are Gregory Crichlow and Steven Shearer.

The **2003 Project Management Survey** of 38 design, construction and owner/client organizations, conducted by the Association for Project Managers (APM), is now available for \$95. It can be ordered from

APM, 1227 W. Wrightwood Ave., Chicago, 60614, by mail, phone (312/664-2300) or email at apm1@rcnchicago.com.

The Structural Engineers Association of Illinois (SEAOI) will hold its annual banquet and present the **Excellence in Structural Engineering Awards** on June 7 at the Brookfield Zoo. Reservations are required; call Donna Childs at 312/372-4198.

The Frederick Law Olmsted Society is sponsoring **guided walking tours of the Village of Riverside** on the following Sundays: June 29, July 27, August 31, September 28, and October 26. There are two separate tours-north and south-that alternate monthly. Tours begin at 2:00 p.m. at the Burlington train station in downtown Riverside and last approximately two hours. The cost is \$7.00 for adults, \$5.00 for senior citizens, and free for children under 12. The village was designed by Olmsted and Calvert Vaux in 1869 and is a National Historic Landmark. For more information, or to request a group tour, call 708/442-7675.

Elevation Drawings of the 20th Century is on display at the ArchiTech Gallery, 730 N. Franklin St., Suite 200, through June 14. Featured architects include Ludwig Mies van der Rohe, Charles Rennie Mackintosh, Abel Faigy, Bruce Goff, and Alfonso Iannelli. The gallery is open Thursday, Friday, and Saturday from 12:00 noon to 6:00 p.m. For information, visit www.architech-gallery.com or call 312/475-1290.

NEW MEMBERS

AIA

Paul Babski, Legat Architects; **Frederic Biederman**, Lisec & Biederman; **Patrick Brosnan**, Legat Architects; **Edwin Chung**; **Darin Couturiaux**, Design Organization; **RaMona Davis**, Brook Architecture;



Achieving business results through computer-based solutions.

What to do? How to do it?

Networks Hardware

Web-based Project Management Software CAD Internet

Get it done. Keep it going!

30 East Adams Street, Suite 600
Chicago, IL 60603
312-641-9339 voice
312-641-9337 fax
support@kfa-inc.com

www.kfa-inc.com



Botti Studio of Architectural Arts, Inc.
919 Grove Street, Evanston, IL 60201 Established 1864
847/869-5933 • Fax: 847/869-5996 • 800/524-7211
www.bottistudio.com • botti@bottistudio.com

Designers/Fabricators • Stained and Faceted Glass • Beveled Glass • Sandblasted • Stained Glass Restoration and Conservation • Protective Glazing • Wood and Metal Frame Restoration • Sculpture • Bronze • Metal • Marble • Mosaic • Interior Renovation • Woodwork • Murals • Painting and Decorating • Custom Sanctuary Furnishings • Stained Glass Consultants to Architects and Churches

Studio Locations
San Diego • Chicago • Sarasota • Agropoli, Italy
760/753-0705 • 847/869-5933 • 941/951-0978



Sabo & Zahn

Attorneys at Law

Werner Sabo, FAIA

James Zahn, FAIA

Licensing problems, copyrights, business formations,
mediation, litigation, arbitration, contracts, real estate
construction attorneys

8620 Sears Tower
Chicago, IL 60606

(312) 655-8620
fax: (312) 655-8622

www.sabozahn.com

Arthur Del Muro, Legat Architects; **Dominick Demonica**, Legat Architects; **Laurance Glasser**, Jacobs Facilities; **Evan Greven**, Lohan Caprile Goettsch; **Don Hansen**, STR Partners; **Fritz Hengge**, McDonough Associates; **William McMillan**, Antunovich Associates Architects; **Jerald Milligan**, Legat Architects; **Christine Oleson Gomez**, Legat Architects; **Robert Plebanski**, Eckenhoff Saunders Architects; **Scott Polit**, Legat Architects; **Vincent Rigg**, DeStefano | Keating Partners; **Robert Theel**, U.S. General Services Administration; **Kevin Walls**; **Raymond Watkins**, R.E. Watkins & Associates; **Leslye Winslow**, Walgreens Co.; **Edward Wong**, Smith Group

Associate AIA

Peter Eliopoulos, Legat Architects; **Kristan Grygiel**; **Mike Kanak**, Sound Decisions; **Zane Karpova**; **Claudia Mendelson**, Loebel Schlossman & Hackl; **Kathleen Mullaney**, Cambridge Homes; **Joe Richmond**, Archiplan International; **Thomas Rowland**, Torchia Associates; **Christina Schrader**, Walgreens Co.; **Wells Squier**, Skidmore, Owings & Merrill; **Gabriel Tchilinguirian**; **Charzine Townsend**; **Annabelle Wong**

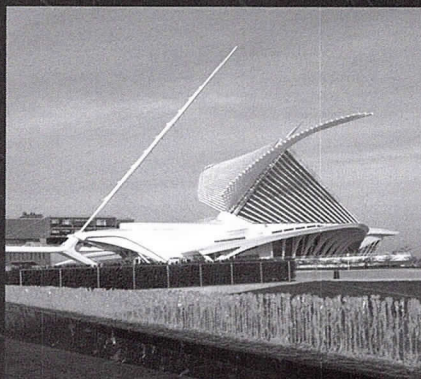
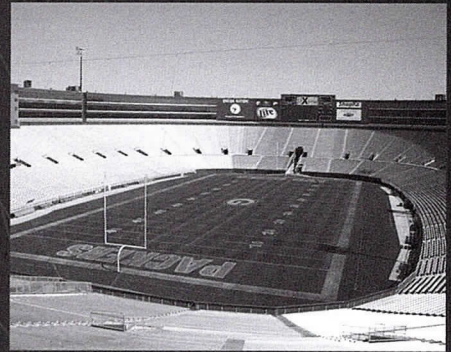
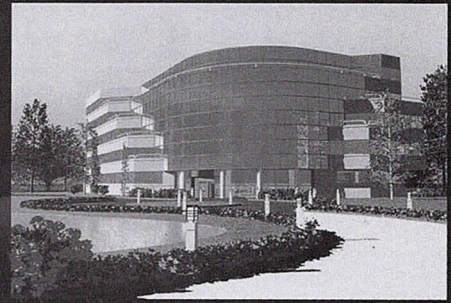
Student

Wesley Urschel

Professional Affiliate

Tracey Dear, Dear Productions; **Ron Schramm**, Ron Schramm Photography; **Jay Thompson**, Advanced Pavement Technology

Submit announcements to Laurie Petersen, Focus editor, at petersenl@aiachicago.org or AIA Chicago, 1049 Merchandise Mart, Chicago, IL 60654; 312/670-2422 (fax).



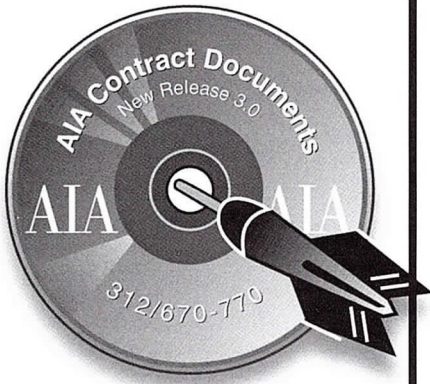
*engineering
services provided
to our clients
include...*

*Structural
Civil
Environmental
Transportation
Mechanical
Electrical*

**GRAEF
ANHALT
SCHLOEMER**
and Associates Inc.
engineers & scientists

228 South Wabash Avenue
Suite 700
Chicago, Illinois 60631
312/939-7007
www.gasai.com

also:
Chicago - O'Hare
Milwaukee, Madison,
and Green Bay



**Nothing Else
Even Comes
Close.**

**AIA Contract
Documents:
Electronic Format 3.0**

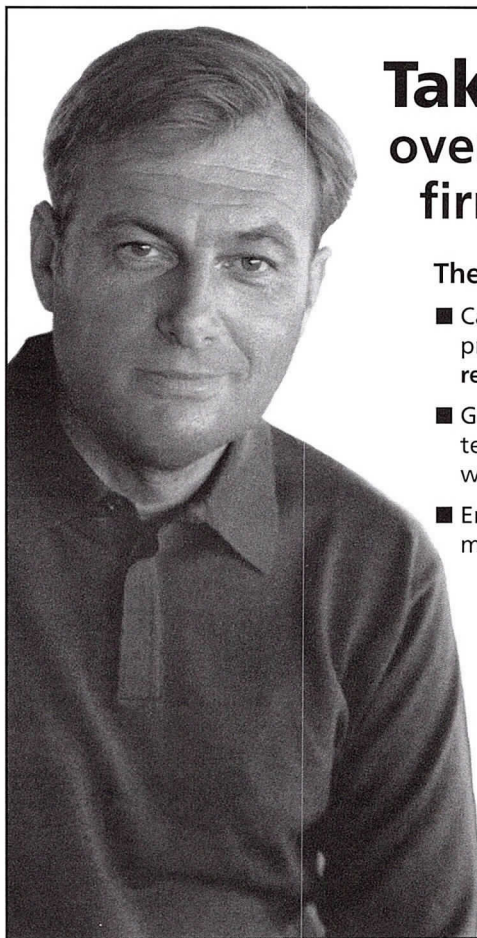
AIA Contract Documents are the standard in the building industry. Created with the consensus of contractors, attorneys, architects and engineers. Honed razor-sharp by test after legal test. Refined to exceptional clarity through 110 years of precedent and experience. More than 70 contracts and forms for the design and construction phases of all types of projects. Now with custom formatting and flexible pricing.

Call AIA Chicago for your free demo disk today: 312/670-7770. Or order online at www.aiachicago.org.

AIA Chicago



A Chapter of The American
Institute of Architects



**Take Advantage
over 200 architectural
firms already have.**

The On-Site Services (OSS) Program

- Capture all reimbursable expenses by project with our **cost recovery and reporting systems.**
- Gain improved, in-house reprographics technology (copiers, printers, plotters) with **no purchase or lease.**
- Enjoy dedicated customer service in managing your program.

For more on the unique benefits of OSS, contact us at (800) 448-6002, x528, e-mail oss@servicepointusa.com or visit us at servicepointusa.com/onsiteservices.



Service Point
Formerly Charrette ProGraphics

NeoCon[®]
World's Trade Fair 2003
June 16-18, 2003

The Merchandise Mart • Chicago, Ill. USA

THE WORLD'S
TRADE FAIR
FOR INTERIOR
DESIGN &
FACILITIES
MANAGEMENT

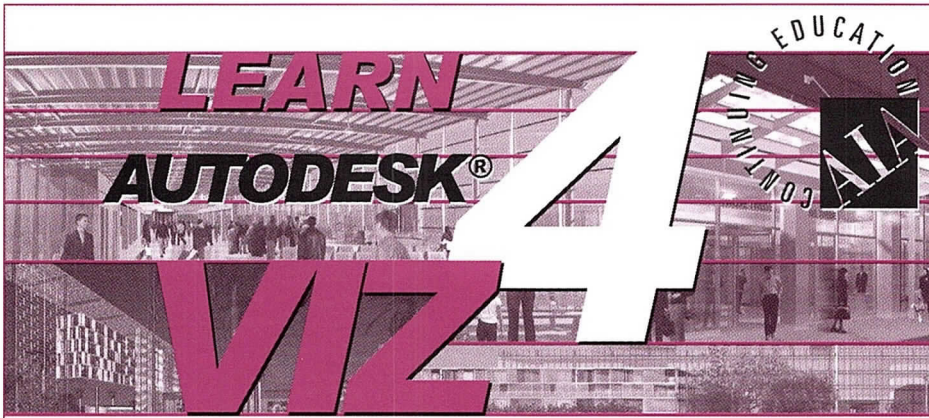
www.merchandisemart.com

Featuring:

Buildings Show[®] • Office Expo by OFDA • TechnoCon[™]
NEWHospitality • Fine Design Residential Home Furnishings Show[™]

Combine career-advancing information, access to the latest resources and inspiration, and your performance can't help but reach new levels. For 35 years, NeoCon[®] has been the epicenter of design innovation, with this year's event boasting thousands of new products/services, over a hundred educational programs, 1,200 exhibitors, and countless networking events and award programs. Take your work to a whole new level — get to NeoCon 2003.

For more information, call 800.677.6278 or visit www.merchandisemart.com.



Design Visualization 3D Design Technology

Vertex Graphics, the award winning architectural visualization firm is now offering training in AutoDesk VIZ 4. The course will teach design professionals how to develop 3D drawings and images to support and express their design ideas. They will also explore principles using 3D data in the construction process. The Course title is Design Visualization/3D Design Technology. For more information contact Alphonso Peluso or John Manaves at 312.432.9870.

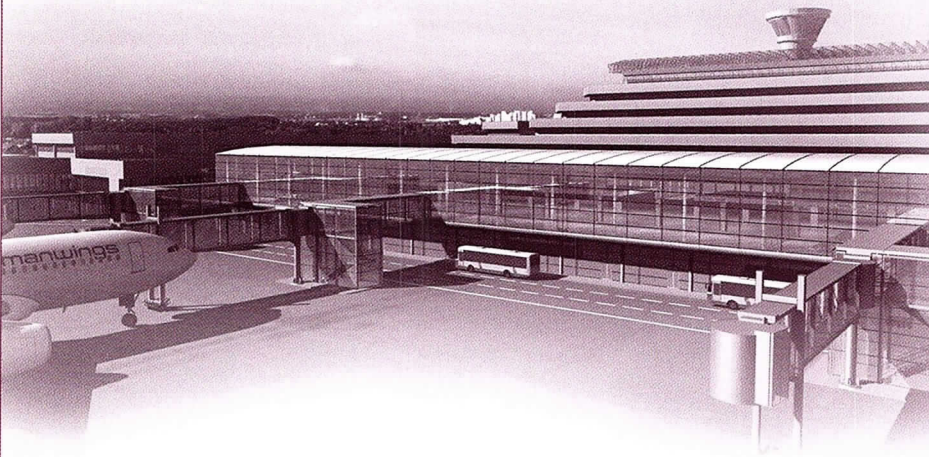
Course Schedule (8 weeks): SATURDAYS 1:00 PM TO 5:00 PM
Registration Deadline: JULY 1st
Course Starts: JULY 12th
Earn: 16 LUs
Registration Fee: \$800

312.432.9870
WWW.VERTEXGRAPHICS.COM
VERTEX GRAPHICS
 1147 W OHIO #102 CHICAGO IL 60622

ARCHITECTURAL VISUALIZATION • RENDERING • ANIMATION • VR PANORAMA

REALIZE THE FUTURE TODAY

 FKB TERMINAL 1
 Cologne/ Bonn Germany
 Murphy/Jahn Architects



312.432.9870
WWW.VERTEXGRAPHICS.COM
VERTEX GRAPHICS
 1147 W OHIO #102 CHICAGO IL 60622



Project:
 Park Alexandria
Client:
 Fiffeld Realty Corporation
 Magellan Development Corporation
 Chicago, Illinois
Architect:
 Lowenberg + Associates
 Chicago, Illinois



IMAGEFICTION

LaSalle Wacker Building
 221 North LaSalle Street
 Suite 1510
 Chicago, IL 60601

312.726.0818

architectural rendering

computer imaging

animation

interactive media

www.imagefiction.com

-
- 5 Young Architects Getting Together.** Sponsor: Young Architects PIA. 5:30 p.m.; Monk's Pub, 203 W. Lake St. Questions: hollyjcoulter@yahoo.com.
-
- 11 Expanding the Northeast Illinois Rail System.** Sponsor: Planning & Urban Affairs PIA. 12:00 noon; AIA Chicago. Bring your lunch. 1 LU/HSW
-
- 16 NeoCon Forum: When Bad Things Happen to Good Projects.** Sponsor: AIA Chicago. 9:30 to 11:00 a.m.; Holiday Inn Chicago Mart Plaza. Cost: \$45 AIA members; \$65 nonmembers. Note: NeoCon registration is not required to attend this program. 1.5 LU
- Good Projects Gone Bad.** Sponsor: Office Practice PIA. 12:30 p.m.; Wildman Harrold Allen Dixon, 225 W. Wacker Dr., 30th floor. Bring a lunch and your own stories. 1 LU
- Tour: Music and Dance Theater.** Sponsor: Design PIA. 5:30 to 6:30 p.m.; Randolph Drive between Michigan and Columbus. Limit 25 AIA Chicago members. Participants must wear hard-soled shoes and bring a hardhat. 1 LU/HSW
-
- 19 Wood Window Installation.** Sponsor: Technical Issues PIA. 12:00 noon; Chicago Bar Assn., 321 S. Plymouth Court. Bring your lunch or purchase a lunch ticket for \$11 in the CBA shop. 1 LU/HSW
- Lighting Jeopardy.** Sponsor: Charter Sills. 12:00 noon; AIA Chicago. Lunch is included; seating is limited. Free to AIA Chicago members. Reservations: warren@chartersills.com or 312/759-5909. 1.5 LU
-
- 20 Design of Labyrinths.** Sponsor: Health PIA. 7:00 to 10:00 p.m.; Chicago Architecture Foundation, 224 S. Michigan Ave. Cost: \$15 nonmembers. Visit www.aiachicago.org for complete details on this eight-part series. 3 LU/HSW
-
- 24 Tour: City Hall's Green Roof.** Sponsor: Environment PIA. 9:15 to 10:30 a.m.; City Hall, 121 N. LaSalle St. Tour limited to 25 AIA Chicago members (nonmembers accommodated if space permits). Meet at 9:15 a.m. sharp. Second tour offered on June 26. 1 LU/HSW
-
- 26 Tour: City Hall's Green Roof.** Sponsor: Environment PIA. 9:15 to 10:30 a.m.; City Hall, 121 N. LaSalle St. Tour limited to 25 AIA Chicago members (nonmembers accommodated if space permits). Meet at 9:15 a.m. sharp. 1 LU/HSW
- Canadian National Architectural Policy.** Sponsors: Design PIA, CAF, The Canadian Club of Chicago. 5:30 p.m.; Chicago Architecture Foundation, 224 S. Michigan Ave. 1 LU
-
- 28 Making No Small Plans: Learning from New York City.** Sponsors: AIA Chicago, Architecture & Design Society of The Art Institute of Chicago, and Lambda Alpha International. 1:00 to 3:30 p.m.; Rubloff Auditorium at The Art Institute of Chicago. Cost: Free to members; \$10 nonmembers 2 LU/HSW

AIA Chicago



A Chapter of The American Institute of Architects
 222 Merchandise Mart Plaza
 Suite 1049
 Chicago, Illinois 60654
 312/670-7770
 312/670-2422 (fax)
info@aiachicago.org
www.aiachicago.org