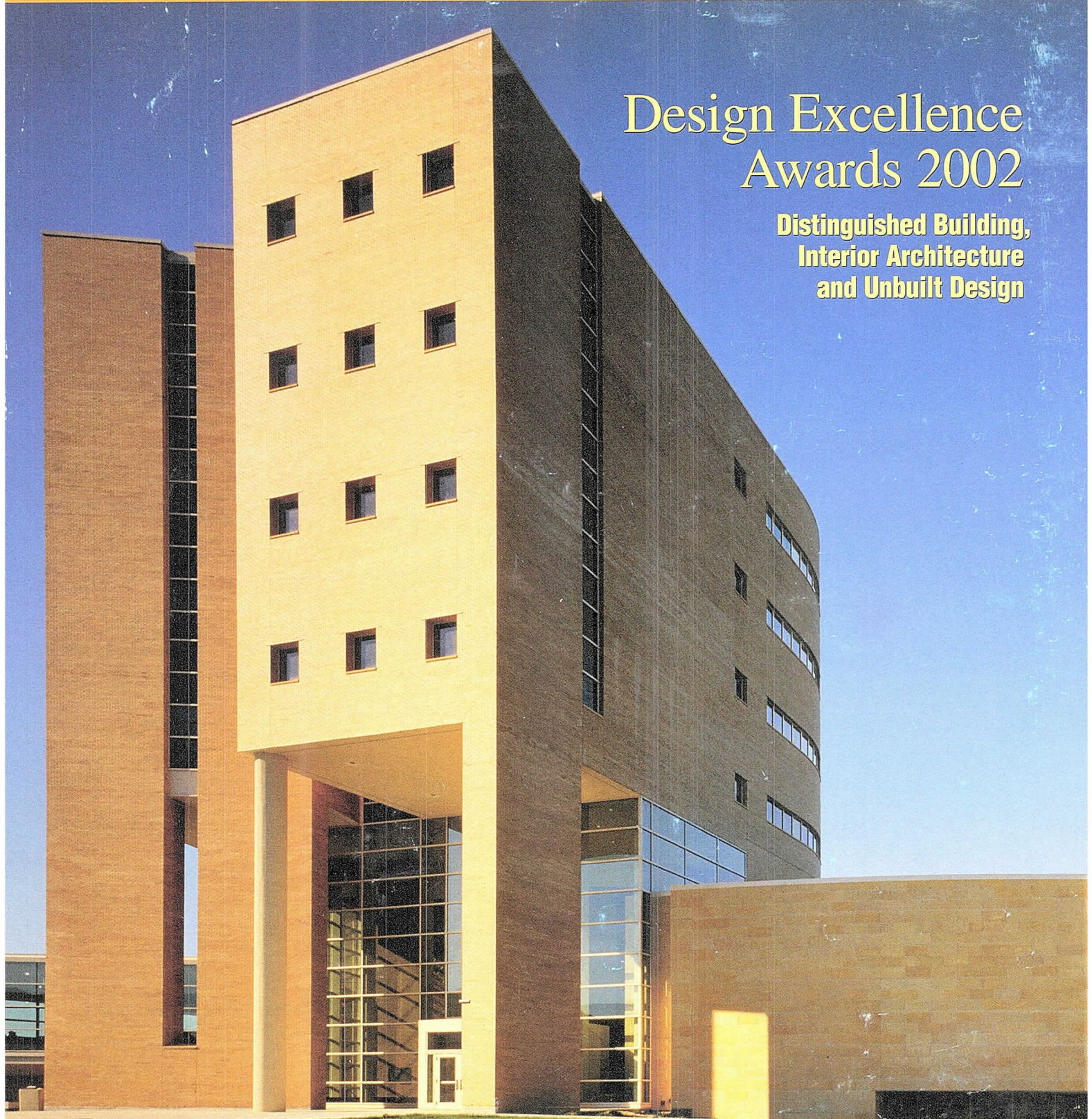


Focus

SPECIAL EDITION

Design Excellence Awards 2002

**Distinguished Building,
Interior Architecture
and Unbuilt Design**



IMAGEFICTION

Project:

Proposed West Loop
Transportation Center
& Future East-West Busway

Client:

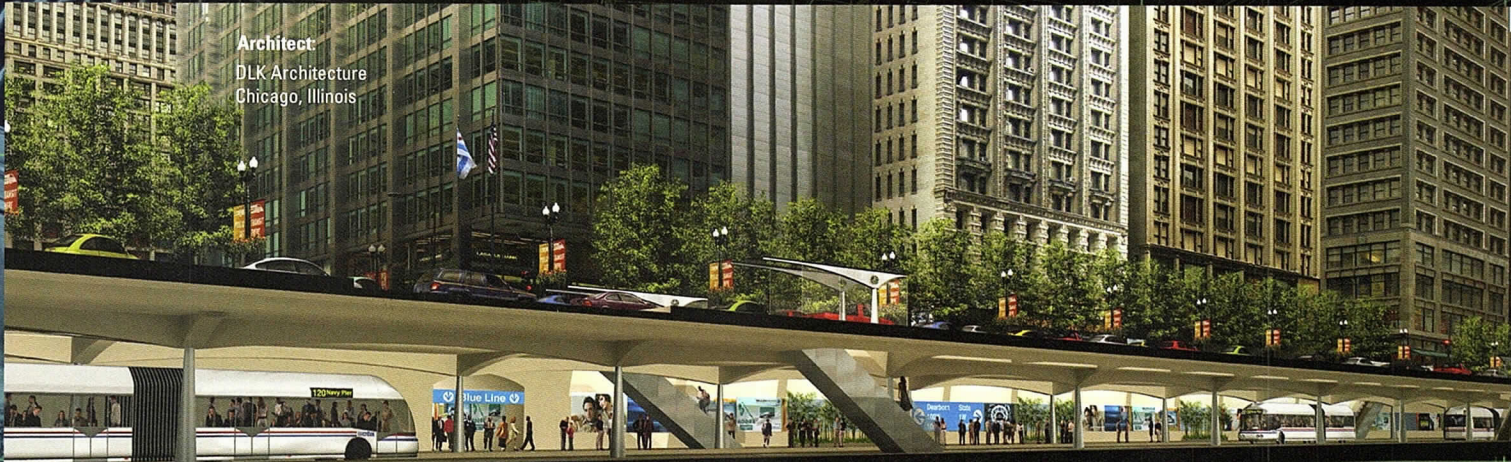
TranSystems Corporation
for the City of Chicago
Department of Transportation

Architect:

DLK Architecture
Chicago, Illinois



Entrance Level



Future East-West Busway -below grade option



Proposed West Loop Transportation Center



CTA Rail Level

LaSalle Wacker Building
221 North LaSalle Street
Suite 1510
Chicago, IL 60601

312.726.0818

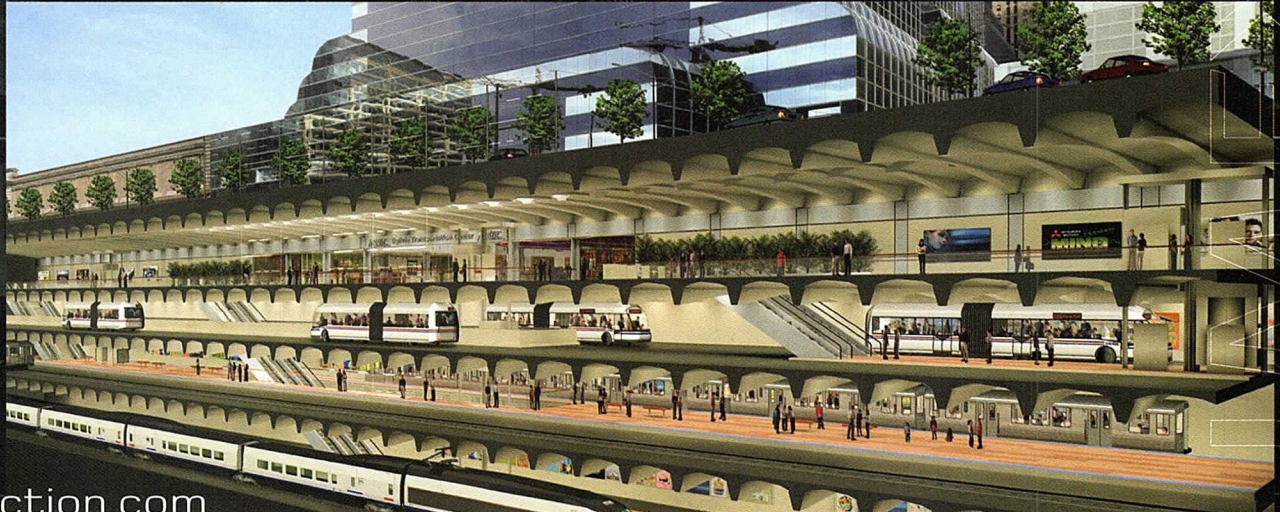
architectural rendering

computer imaging

animation

interactive media

large format printing



4

President's Letter

6

Distinguished Building Awards

20

Interior Architecture Awards

32

Unbuilt Design Awards

37

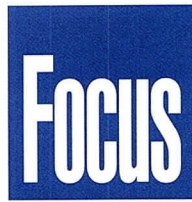
Jury List

38

Awards Index

Want to See More?

The winners will be on display at the Chicago Architecture Foundation, 224 S. Michigan Ave., from October 14 to January 5, 2003. Or, if you prefer a more virtual experience, visit www.aiachicago.org where every submission is on exhibit.



Special Edition, October 2002

Editor

Susan Larson

Contributing Editor

Laurie McGovern Petersen

Focus Advisory Board

Jonathan Fischel, AIA
Laurie McGovern Petersen
James Prendergast, AIA
Alice Sinkevitch, Hon. AIA
P.K. VanderBeke, AIA
Thomas Zurowski, AIA

FOCUS (ISSN 1071-3700) Vol. 22, No. 9, is published monthly with a combined issue June/July, by AIA Chicago, 222 Merchandise Mart Plaza, Suite 1049, Chicago, Illinois 60654-1001. \$20 of each member's dues are allotted as a subscription. Periodicals postage paid at Chicago, Illinois. POSTMASTER: Send address changes to Focus, AIA Chicago, 222 Merchandise Mart Plaza, Suite 1049, Chicago, Illinois 60654-1001.

For advertising rates and schedules, call 312/670-7770.

© 2002 The American Institute of Architects Chicago. All rights reserved. Reproduction in whole or part without permission is strictly prohibited.

AIA Chicago on the Internet: www.aiachicago.org

AIA Chicago e-mail: info@aiachicago.org

AIA Chicago



A Chapter of The American Institute of Architects

2002 Board of Directors

President

Jonathan L. Fischel, AIA

President-Elect

Joseph Caprile, AIA

Vice President

James E. Prendergast, AIA

Secretary

Charles Smith, AIA

Treasurer

Peter Schlossman, AIA

Directors

Eleanor Esser Gorski, AIA
Thomas Hoepf, AIA
Lamar Johnson, AIA
Edward Torrez, AIA
Mimi Tsai, AIA

AIA Regional Directors

Holly Gerberding, AIA
T. Gunny Harboe, AIA

AIA Illinois Director

Alan Madison, AIA

Associate Director

Helen Tsatsos, Assoc. AIA

Professional Affiliate Director

Larry Okrent

Past President

Thomas Zurowski, AIA

2002 AIA Illinois Delegates

William Bradford, AIA
Thomas Braham, AIA
Hill Burgess, AIA
Christopher Chwedyk, AIA
Angie Lee, AIA (Alternate)
Maureen Reagan, AIA (Alternate)

2002 Professional Interest Areas

Corporate Architects

Laura Fisher, AIA

Design

Daniel Towler Weese, AIA

Design/Build

Alan Treuthart, AIA

Environment

Edward Heinen, AIA

Health

James Mladucky, AIA

Historic Resources

Robert Score, AIA

Housing

Robert Pfauth, AIA

Information Technology

Gaute Grindheim, Assoc. AIA

Interior Architecture

Mark Hiron, AIA

Office Practice

Barry Koren, AIA

Planning & Urban Affairs

Douglas Schroeder, FAIA

Technical Issues

Gregory Tornatore, AIA

Young Architects

Mary Brush, AIA

Chapter Staff

Executive Director

Alice Sinkevitch

Membership Coordinator/Assistant to the Director

Jamie Juliano

Program Director

Joan Pomaranc

Communications Director

Susan Larson

Financial Manager

Crystal Gagler

Public Information Receptionist

Linda Freeman

Documents Clerk

Phillip Rahill

Destination Chicago



For many of us, Chicago has been a destination for architecture. We have made our careers in a city centered on high-quality

design. Working in Chicago, directly out of college, was a graduate program in and of itself, where one was exposed to building styles, systems and processes that expanded our horizons and our minds.

That culture continues today. The quality of design, coupled with technical expertise, makes Chicago a laboratory for the profession's best practices. With the 2002 Design Excellence Awards, we celebrate the work of our peers who maintain and advance these traditions.

The design awards are granted in three categories: distinguished building, interior architecture and unbuilt design. There were 265 entries this year, representing local, national and international projects designed by Chicago firms. The juries selected seven Honor Awards, 20 Citations of Merit, and six Special Recognition Awards.

Winners will be recognized in several ways. In addition to being published in this issue of Focus, they were honored at Designight on October 11. They also will be displayed at the Chicago Architecture Foundation, 224. S. Michigan Ave., through January 5, 2003 and at www.aiachicago.org, together with all submissions.

I extend my congratulations to each firm that entered this year's competition, and especially to the winners.

Jonathan L. Fischel

Jonathan L. Fischel, AIA
President

Thanks to Our Designight 2002 Sponsors

The Design Excellence Awards were presented on Friday, October 11 in the Grand Ballroom of Navy Pier. Many organizations made Designight 2002 possible, and AIA Chicago would like to thank them for their support.

Co-Sponsors

USG Corp.
Petersen Aluminum Corp.
Charter Sills & Associates
Kimball
Knoll Inc.

Benefactors

Gensler
Murphy/Jahn Inc.
Skidmore Owings & Merrill LLP

Patrons

Annex/5
Brininstool + Lynch Ltd.
Daniel P. Coffey & Associates Ltd.
David Woodhouse Architects
DeStefano and Partners
Environ Inc.
Hedrich Blessing Photographers
Hellmuth, Obata + Kassabaum Inc.
Holabird & Root
Landon Bone Baker Architects
Legat Architects Inc.
Lohan Caprile Goettsch Architects
McClier

Optima Inc.
OWP/P Architects Inc.
Parenti & Rafaelli Ltd.
Perkins & Will
Ross Barney + Jankowski Inc.
RTKL Associates Inc.
Steelcase Inc.
The Environments Group/Interior Construction Group
The Environments Group/Turner Interiors
URS Corp.
Valerio Dewalt Train Associates
Vinci/Hamp Architects Inc.
VOA Associates Inc.
Weese Langley Weese Architects Ltd.
Wildman Harrold Allen & Dixon

Bertch

Bathrooms with the Ultimate Finish.

Kitchens with the Finishing Touch.

American Standard, Duravit, Porcher, Toto, Kallista, Granite, Corian, Dornbracht, Jado, Hansgrohe, Grohe, Herbeau, KWC, Elkay, Blanco, Bertch, Schrock, Baldwin, Jacuzzi, Pearl, Robern and Hastings.

Advantage kitchen & bath
Find it Here. **Gallery**

**Mon & Thurs: 8am-8pm
Tues, Wed & Fri: 8am-5pm
Sat: 9am-5pm**

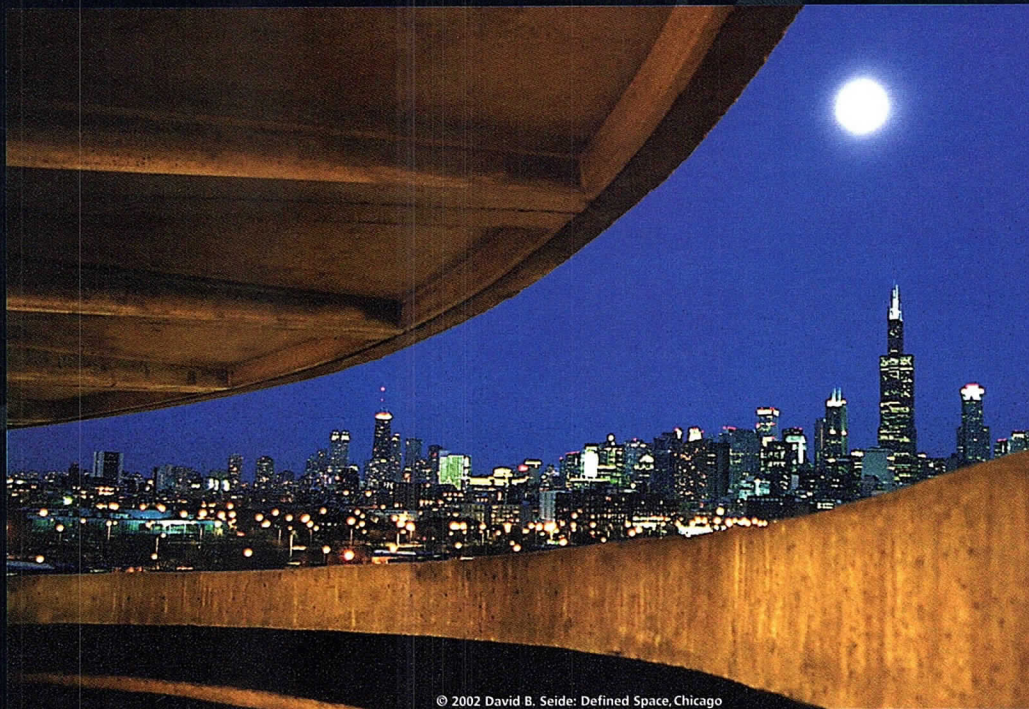
847-965-4444
advantagebath.com

7 8 5 0
NORTH
MILWAUKEE
AVENUE
NILES
ILLINOIS

FIND IT HERE.

Now, more than ever...

Design-build drives real value engineering.



© 2002 David B. Seide: Defined Space, Chicago

We've proven it time and time again ... the sooner we get involved in a project, the better. That's because "real" value engineering begins the moment a project starts — by designing cost-effective yet efficient mechanical systems into every stage ... from preliminary drawings to final prints. We're proud to be Illinois' largest HVAC contractor, and prouder yet that design-build and assist design-build encompass more than one-third of our annual volume. Now, more than ever, competent design-build experience drives real value engineering. That's why our team of 30+ graduate engineers and their proven design-build methods always take value engineering benefits to a new level.

To discuss your HVAC needs, contact Warren Hill, P.E, President:
773.929.6600.



HILL MECHANICAL GROUP

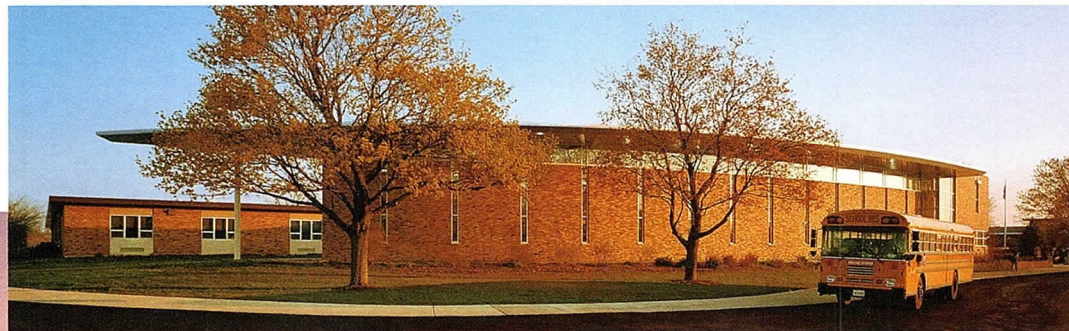
*See for yourself — click on "PROJECTS" at www.hillmech.com —
and while you're there take a virtual tour of our shops.*

Congratulations, AIA 2002 Design Award Winners!

Distinguished Building Awards

by Molly O'Halloran

The Distinguished Building Award was established 47 years ago to recognize significant achievements in the planning, design and execution of recent building projects. Projects are eligible if they were completed between January 1, 1999 and May 1, 2002 and were designed by a registered architect in the Chicago metropolitan area.



Cary Grove High School Media Center Addition Cary, IL

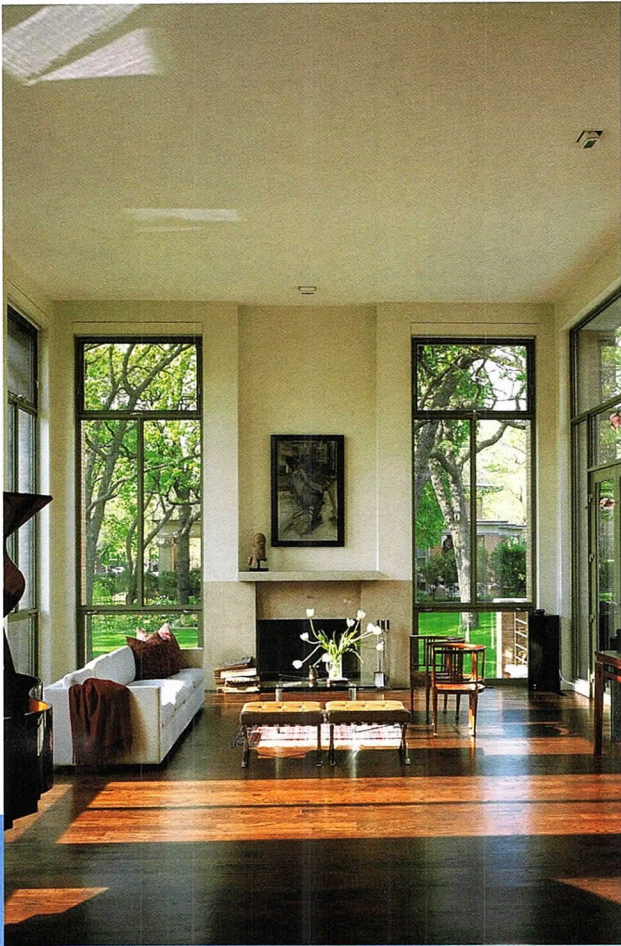
Honor Award

Architect – Perkins & Will
Client – Community High School District 155
General Contractor – Boller Construction Co.
Consultants – C.E. Anderson & Associates;
Mechanical Services Associates Corp.

This 30,000-square-foot addition to a 1950s building recasts the image that Cary Grove High School presents to its community. Perkins & Will "made a virtue out of an elemental metal frame structure," noted jurors, ingeniously extending the original building's materials of brick, anodized aluminum fascias, and clear glass into a highly refined skin. The skillful placement of windows and the gently curved wall of the new reading room greet the school's main drive and transform the school from banal to brilliant.

*made a virtue out of
an elemental metal
frame structure*

James Sternkamp © Sternkamp/Ballogg Photography



© Judith Bromley Photographs

South Kenwood Residence
Chicago, IL

Honor Award

Architect – Vinci | Hamp Architects Inc.
Client – Allison and Susan Davis
General Contractor – Norcon Inc.
Consultants – Nayyar & Nayyar International (structural);
Klaucens & Associates (MEP); Gary A. Wiss Inc. (civil)

"This house plays with scale in a very interesting way," noted a juror, pointing to a concrete main staircase that occupies almost as much space in plan as the living room. The generosity is well balanced by clear organization and overall restraint. Cubes of Roman brick walls trimmed in limestone come together in classical volumes moderated by planar elements. A terrace is suspended off the circulation spine and overlooks a garden to the rear of the deep site. Entry stairs at the house's corner gesture openly to the street and neighbors. Jurors agreed that this modern home "quite remarkably takes its place in the [historic Kenwood] neighborhood" without resorting to historic devices.

*quite remarkably takes its
place in the neighborhood*



Christopher Barrett © Hertrich Blessing

*It's a lot of building,
yet the architect
was in control of it.*



© Roos Aldershoff



Philips Headquarters at Bretnet Centre
Amsterdam, Netherlands

Honor Award

Architect – Skidmore, Owings & Merrill LLP
Client – Philips
Owner – Sedijko B.V.
Consulting Engineer – Skidmore, Owings & Merrill LLP

The architects organized this small building in a new high-rise district into three slender towers to emphasize its height. The slab-like towers step down between taller buildings nearby and lower residential buildings on the river. Deft use of linear continuity through façade elements creates an exhilarating rhythm that thrilled jurors. A skin of matte and polished panels and glass stretches over changing forms with weight placed at the corners, making for a solidity not found in most curtain wall buildings.

© Roos Aldershoff

Rennebohm Hall, School of Pharmacy at the University of Wisconsin
Madison, WI

Honor Award

Architect – Perkins & Will
Architect-of-Record – Potter Lawson Inc.
Client – State of Wisconsin, Division of Facilities Development
General Contractor – Kraemer Brothers LLC
Consultants – GPR Planners (lab planning); Arnold & O'Sheridan Inc. (structural); Ring & DuChateau (mechanical)

"Sensational, very elegant, and proportioned," praised a juror, who joined the others in admiring this 205,000-square-foot building designed on an educational rather than clinical model. "The building's dynamic geometry seems appropriate on this site plan." Three distinct masses create an identity for the School of Pharmacy while defining a new quadrangle and addressing a pond. Curtain walls enclose public spaces including the lobby and a library volume while a grid of punched openings in solid masonry walls reflects the modular nature of the laboratories they enclose.



James Steinkamp © Steinkamp/Ballogg Photography



James Steinkamp © Steinkamp/Ballogg Photography

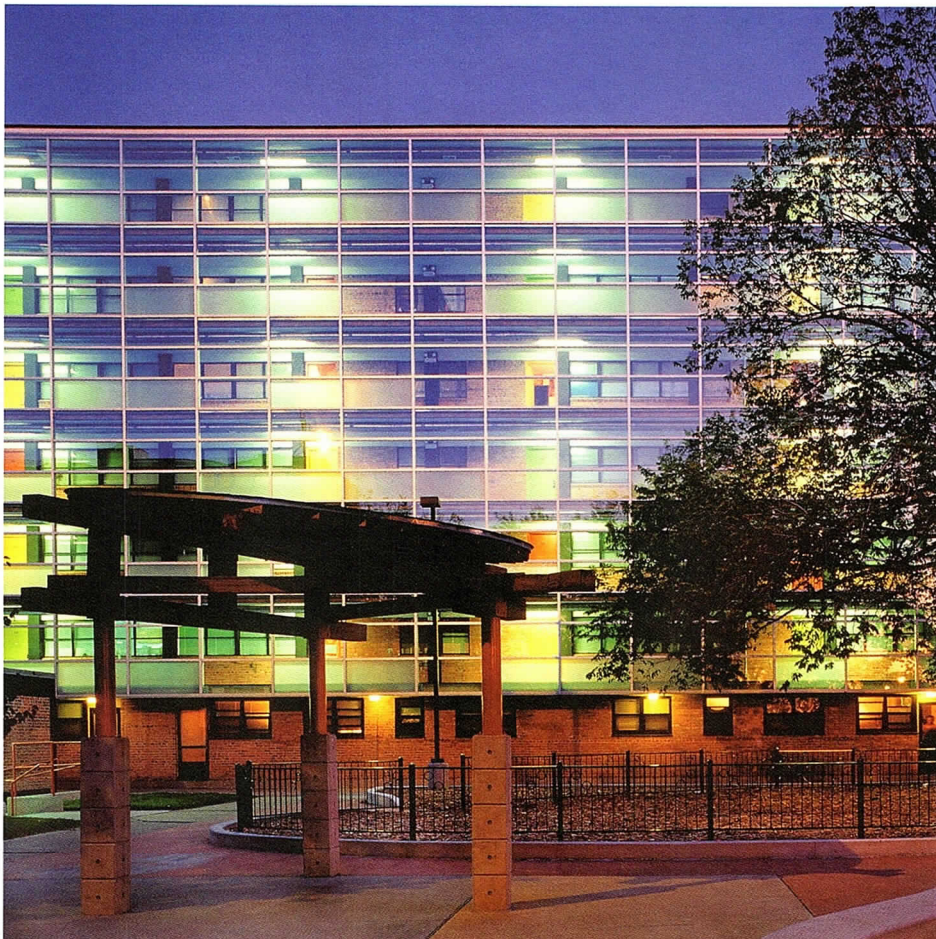
*The skin
celebrates
the uses!*

29 North Wacker
Chicago, IL

Citation of Merit

Architect – Skidmore, Owings & Merrill LLP
Client – Hines Interests
General Contractor – Taisei
Engineers – Skidmore, Owings & Merrill LLP

Addressing a prevailing problem for architects across the country, this renovation economically transforms a nondescript, mid-rise 1960s office building into a vibrant and elegant player in today's downtown. Without changing the aperture of the windows, architects reconfigured the building's exterior proportions with a floating stainless-steel grille that picks up patterns from neighboring buildings and creates a strong identity for itself. In fact, jurors speculated that a shrewd client might have purchased the unassuming mid-rise at a bargain price and come away with a trophy building.



Archer Courts Renovation
Chicago, IL

Citation of Merit

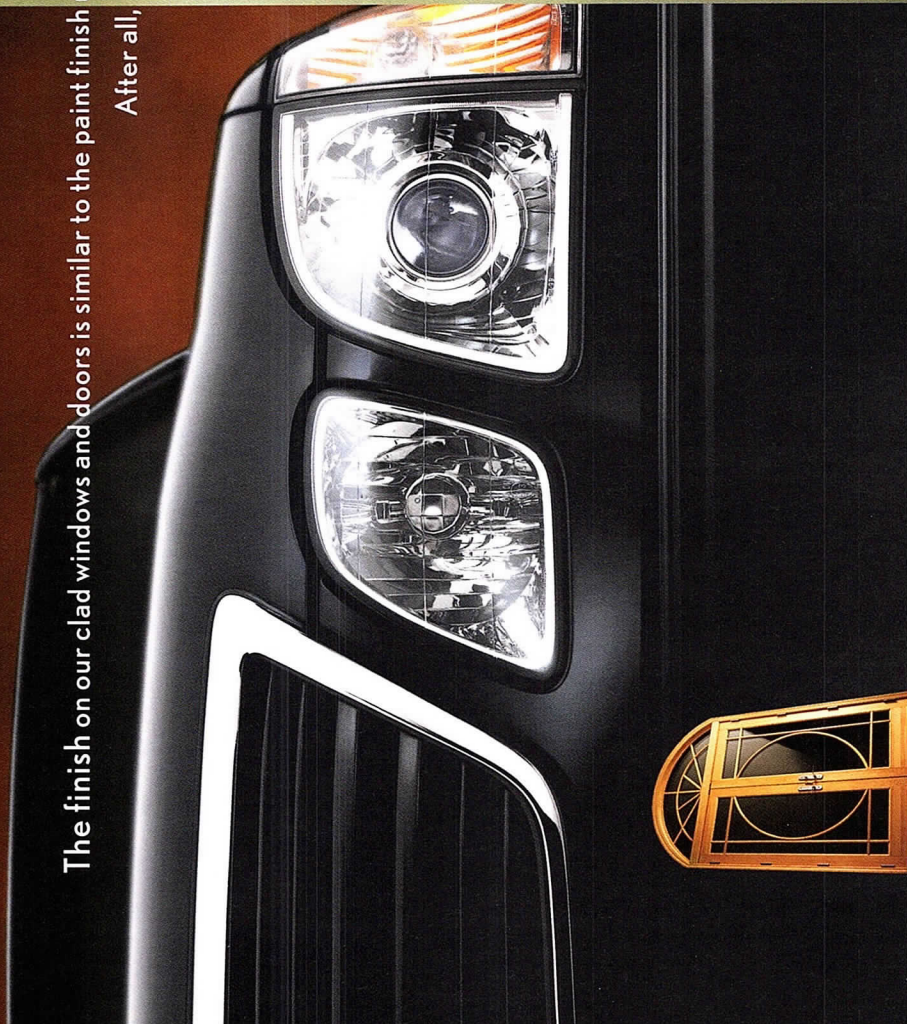
Architect – Landon Bone Architects
Client – Chicago Community Development Corp.
General Contractor – Burling Builders
Consultants – GFGR Inc.(engineering);
McKay Landscape Architects

A bland and neglected 1950s building was purchased from the Chicago Housing Authority and transformed—with all tenants in place—to an animated expression of the life within. The new look came at half the cost of replacement. Where a chain-link fence had enclosed stacked galleries, a glass wall now shows off colorful walls and doors and brings the public space inside. This subtle change makes arrival to the units more engaging than the original design and is an intelligent choice for Chicago, where sheltered access and warmth are key.

Mark Ballogg © Sternkamp/Ballogg Photography

The finish on our clad windows and doors is similar to the paint finish used on luxury automobiles.

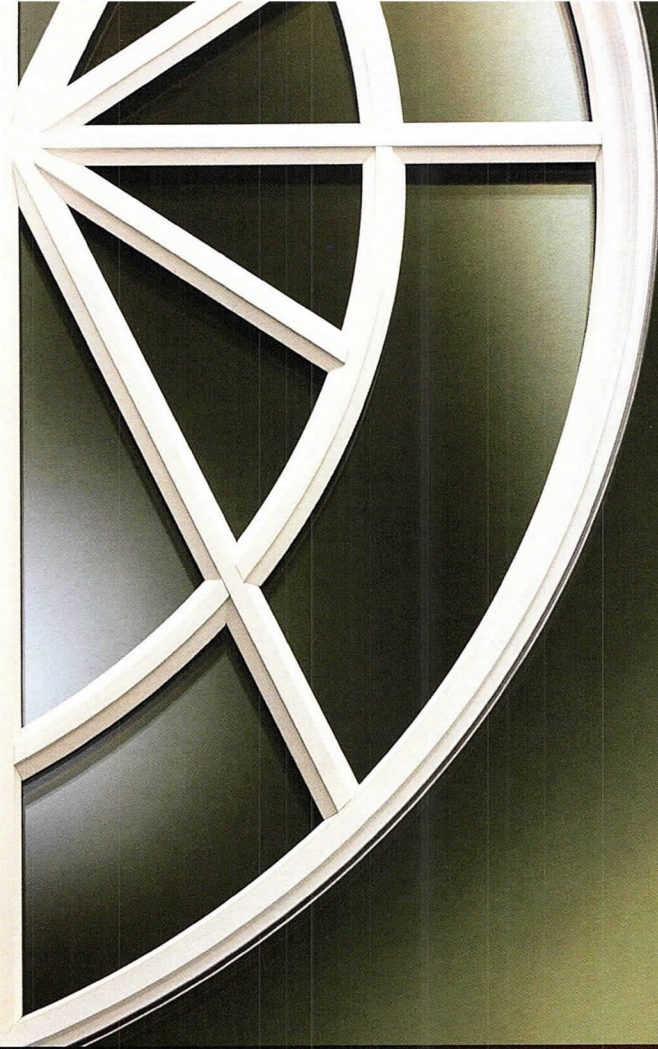
After all, shouldn't what overlooks the driveway be as beautiful as what's in it?



Marvin cladding is so low maintenance, so durable that it's rated highest in the industry (AAMA 2605-98). Visit www.marvin.com or call **1-800-318-7232** (in Canada, 1-800-263-6161).

©2002 Marvin Windows and Doors. All rights reserved. ®Registered trademark of Marvin Windows and Doors.

MARVIN
Windows and Doors
Made for you.®





Protection Since 1952

Euclid Insurance Agencies has been providing insurance services to businesses since 1952. Our dedication to the complex field of insurance for design professionals enables us to give you the professional advice and tailored products you need. We have a unique understanding of the architectural and engineering clients we serve and the special coverages they require.

- Professional Liability, Workers Compensation, Disability, Office Package, Health Insurance, Estate Planning, and more
- Legal advice, seminars and continuing education programs
- Website access to risk management information
- AIA Chicago 401 (k) and Profit Sharing Association Plan

EUCLID
INSURANCE AGENCIES®

977 Oaklawn Avenue • Elmhurst, IL 60126
Tel: (630) 833-1000 • Fax: (630) 833-1747



Beach House at Rainbow Park and Beach
Chicago, IL

Citation of Merit

Architect – David Woodhouse Architects
Client – Chicago Park District
General Contractor – R. Rudnick & Co.
Consultants – Nayyar & Nayyar International (structural); Primera Engineers (mechanical)

“Whoever designed this was loving every piece of it, even though they had very little money to spend.” A sense of play and commitment to a beach aesthetic teased an extraordinary amount of fun out of a small institutional project. Rest rooms, a lifeguard station, and a concession stand are accommodated in sand-colored concrete block and silver-painted steel reminiscent of driftwood on a beach. Horizontal beams and translucent, corrugated fiberglass disks create shadows and transitional spaces between service areas, the beach, and the neighborhood.

Damore House
Fort Myers, FL

Citation of Merit

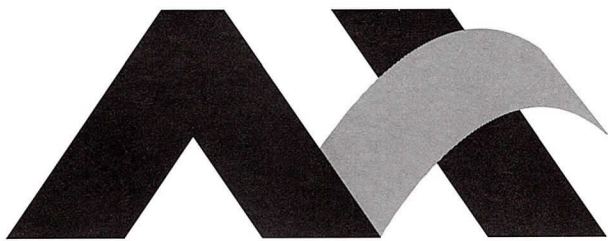
Architect – Annex/5 (An A. Epstein and Sons International Design Group)
Client – Michael and Sharon Damore
General Contractor – David Dickerson

“I love the restraint of this house,” commented one juror. Extreme transparency is the effect, though the architect employed heavy walls to create shade and display art in this south Florida home. A 1,000-square-foot courtyard extends visual lines without increasing air-conditioned space and an exposed, polished concrete floor slab maintains a cool feeling throughout. Sand-finished plaster bearing walls are married with exposed structural steel beams, allowing the east and south perimeter walls to be almost all glass. The placement of rooms alleviates the need for curtains, while omission of base or trim on walls and doors allows the eye to rest on walls or wander to outdoor gardens.

© Barbara Karant, Karant + Associates



James Sienkemp © Sienkemp/Ballogg Photography



PHONE: 312.372.8600

Habitat Africa! The Forest
Brookfield, IL

Citation of Merit

Architect – EHDD Architecture
Client – The Chicago Zoological Society
Consultants – McClier (program manager); Klein & Hoffman Inc. (structural); Environmental Systems Design Inc. (MEP, fire protection); Edwin Hancock Engineering (civil); Mesa (exterior exhibits, landscape); Progressive Communications (lighting); Oppenheim Lewis, Inc.

Zoo buildings present the great challenge of creating architecture for exhibits of “outdoor” space. The key to this successful solution is a back wall broken into unequal elements set at slightly varied angles and clad in common asphalt shingles. Inside, the wall engages a 9,300-square-foot African rain forest exhibit. Outside, the building demurs to landscape, becoming a series of abstract planes sometimes barely seen through surrounding forest.



© Doug Snower Photography



© Barbara Karant, Karant + Associates

Kline Creek Farm Visitors Center
Winfield, IL

Citation of Merit

Architect – Teng & Associates Inc.
Client – Forest Preserve District of DuPage County
General Contractor – Kwaske Construction

In a beautifully rendered architect’s drawing, the barn-like Visitors Center huddles on a low horizon of grasses under a huge slate-blue sky. For jurors, this “signaled everything about the intention of this building—a very thoughtful interpretation, with contemporary materials, of an agricultural building.” Situated at the head of a trail that leads to the farm, the center cleverly organizes exhibit space, a welcome desk, and bathroom and storage facilities into “served” and “service” areas. Cedar wood interior walls grace the simple steel structure, which is clad in galvanized corrugated sheet metal. These vernacular materials are applied in a modern use and composition, alluding to the fast-disappearing status of the farm in northern Illinois’ landscape.

It's WHAT'S on the outside



Dorner Manufacturing Corp.

Finish: Plain Grey Form Finish with Applied Stains and Fluted Form Linear Finish



Ridgeview Office Building



Finish: Exposed Aggregate - Pea Gravel and Merimac Stone Finish



Fox Valley Lutheran High School
Finish: Exposed Aggregate - Northern Red Stone Finish



that counts

Who says appearances don't matter? With Spancrete® insulated wall panels and other precast products, speed of construction combines with structural integrity to create a building that is attractive and smart.



For more detailed information please contact Spancrete and ask for an insulated wall panel finish guide, video and brochure.

"Striving to be the most responsive partner and innovative provider of precast solutions"

SPANCRETE INDUSTRIES, INC.

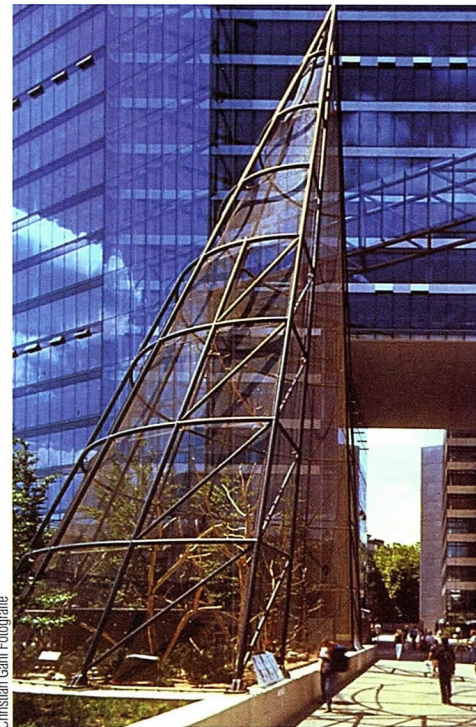
www.spancrete.com

Waukesha, Wisconsin 414-290-9000

Chicago, Illinois 773-775-6402 • Green Bay, Wisconsin 920-494-0274



SPANCRETE



Christian Gahr Fotografie

Neues Kranzler Eck
Berlin, Germany

Citation of Merit

Architect – Murphy/Jahn Inc.

Client – Deutsche Immobilien Fonds AG

General Contractor – Konsortium Kudamm 21 (general); Götz GmbH (façade)

Consultants – IFB Dr. Braschel GmbH (structural); Werner Sobek Ingenieure GmbH (special structures); Brandi Consult GmbH (mechanical); Peter Walker and Partners (landscape); a-g Licht, AIK Expeditions Lumiere (lighting consultant), L-Plan Lichtplanung (lighting coordination)

Situated on a prominent Berlin street, this retail center achieves urban scale without sacrificing pedestrian appeal. A broad passageway cut boldly through the building provides a succession of varied spaces within the block as well as urban linkages between surrounding streets and plazas. Double-glazed glass and steel on an exposed concrete frame form planes—walls, roofs, and projecting elements—that alternately reinforce and blur the building's boundaries. The same theme is explored in changing displays of colored light throughout the building. The plan's complex geometries are played up by pavement patterns that celebrate pedestrians' angled journeys through the building.

Michigan Place
Chicago, IL

Citation of Merit

Architect – David C. Hovey, FAIA
Client – Michigan Place LLC
General Contractor – Optima Inc.
Consultants – ELN Structural Engineers (town homes);
CHR Engineering Inc. (condominiums)

A strong site plan confidently mixes a few 100-year-old structures within a new development of town homes and condominiums. Undulating green terraces serve to downplay indoor parking and create an undisciplined landscape that negotiates spaces between the buildings' differing aesthetic systems. "[This project] is an excellent neighbor without having to mimic the architecture of IIT," the Miesian campus across the street. Glass and aluminum towers balance smaller concrete and masonry masses in "a compelling marriage of mid-rise apartment with a town house community."



Jon Miller © Heinrich Blessing



Engelhardt/Sellin Photography

Munich Airport Center
Munich, Germany

Citation of Merit

Architect – Murphy/Jahn Inc.
Client – Flughafen München GmbH, MFG Delta KG and ALBA GmbH
General Contractor – Hochtief / Bauer Arge (rough structure); Dobler (façade); Wolf/HEFI (roof); ROM (mechanical); Siemens, Honeywell (electrical); Stingl GmbH (plumbing); Sulzer Infra; Thyssen, Schindler (elevators); Worthing, Stegmüller (steel); Kohlhoefer + Koltz (paving)
Consultants – HL-Technik (mechanical); Ove Arup & Partners, Grebner GmbH, and Werner Sobek Ingenieure GmbH (structural); Peter Walker & Partners and Professor Rainer Schmidt (landscape)

A huge arched truss with a glass canopy roof announces the architects' ambitious intention for this "Airport City." Serving as connection between hotel, retail stores, and service functions, the covered plaza or "Forum" aims to create urban, rather than mall-like, experiences that introduce the traveler to the city to which she's just arrived. This innovative center establishes "a new prototype that probably has international significance."



© Bruce Van Inwegen Photography

Wabash YMCA Renovation
Chicago, IL

Special Recognition for Historic Preservation

Architect – Weese Langley Weese Architects Ltd.
Client – The Renaissance Collaborative
General Contractor – Powers & Sons Construction Company Inc.
Consultants – Consolidated Consulting Engineers

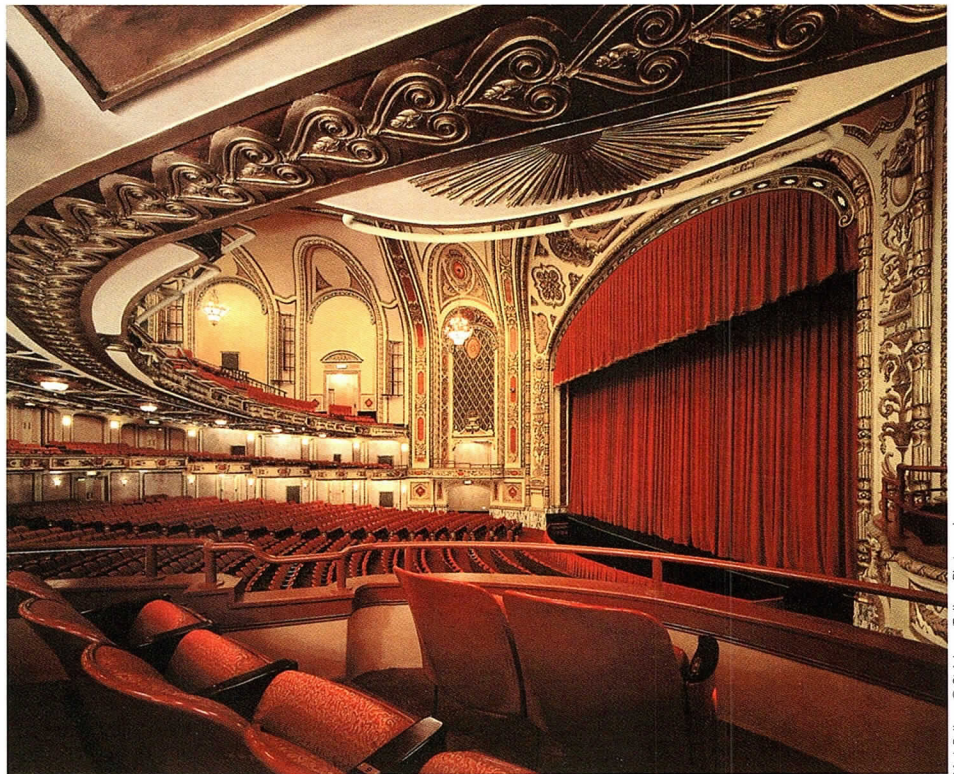
After decades of abandonment, this 1913 building—now on the National Register of Historic Places—was faithfully restored to serve its original function as a YMCA. Original materials were discovered and reproduced, resulting in a handsome marble-tiled and oak-trimmed entrance, dignified and airy single-room occupancy units, and a restored ballroom. A mural painted in 1936 by a prominent African-American artist was carefully restored and reminds visitors of the Wabash Y's history as an orientation center for blacks migrating from southern states to Chicago. Jurors particularly appreciated the restoration of the building to its original purpose. "The building retains robust qualities that YMCAs need to have," with a handsome—and never contrived—result.

Cadillac Palace Theater Renovation
Chicago, IL

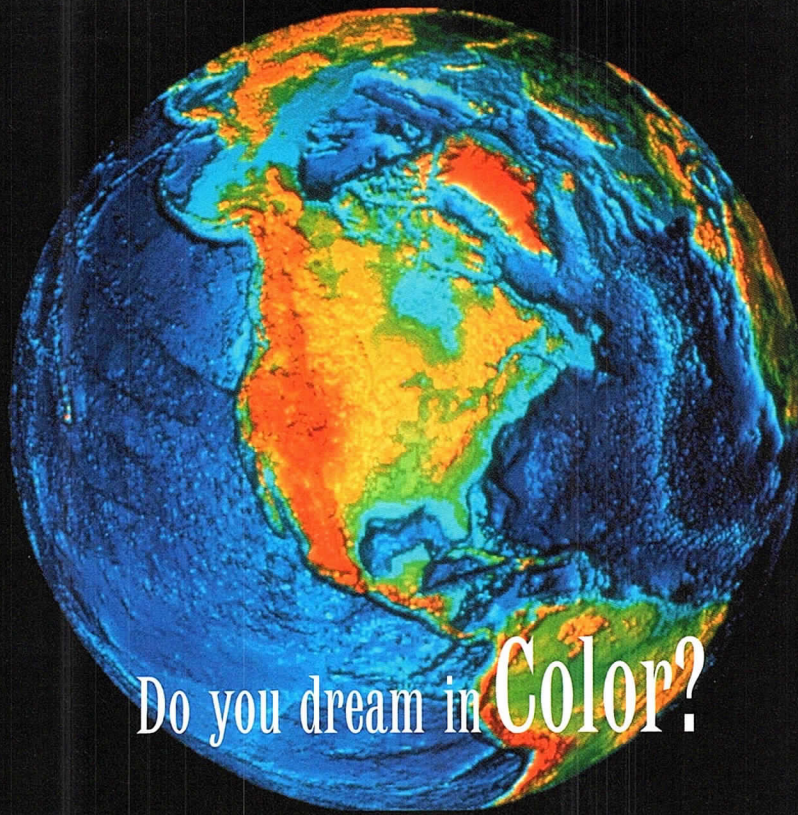
Special Recognition for Historic Preservation

Architect – Daniel P. Coffey & Associates Ltd.
Client – Palmet Venture LLC
General Contractor – W.E. O'Neil Construction Co.
Consultants – Don Belford Associates (structural);
Dickerson Engineering Inc. (electrical, mechanical);
Teng & Associates (mechanical)

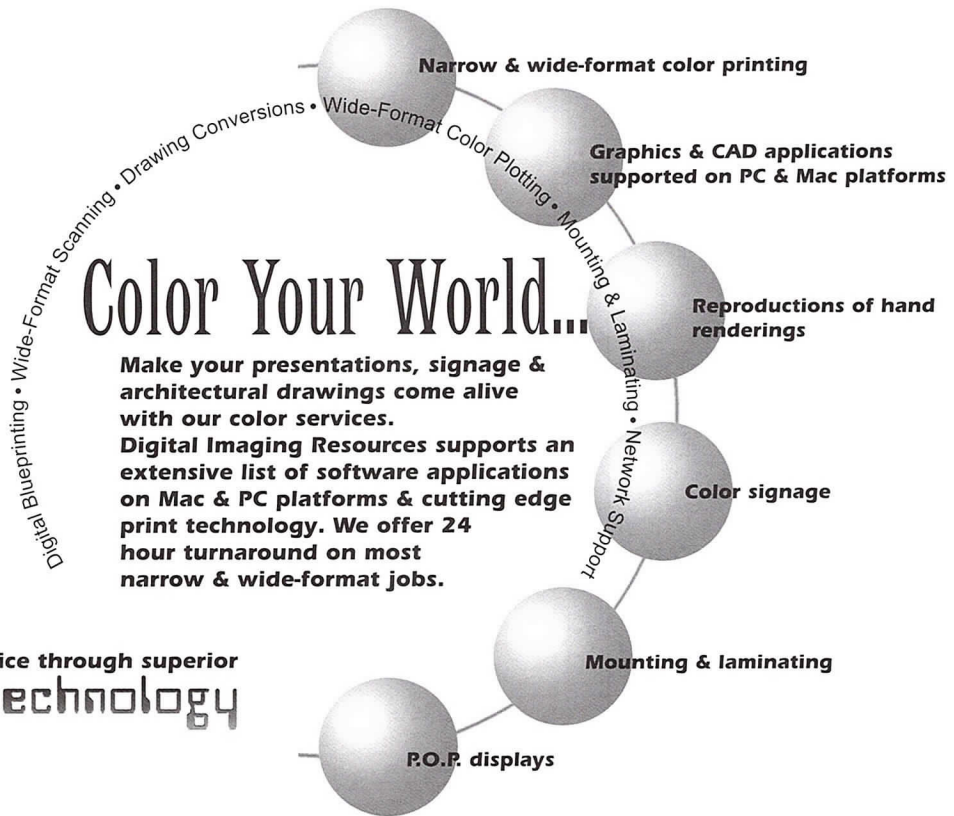
The architects' role in this meticulous commercial renovation was to attend to process and detail. Jurors were impressed with the results. The scope included expanding the existing stage and support areas, creating a new vertical core, and restoring the auditorium to its original physical state, in addition to renovating the interior and exterior of hotel, office, and retail spaces. "From a civic point of view, it's fantastic that it's preserved," said one juror who further commented that the architects' work was pure and ambitious, likening the project to the passionate restoration of a well-loved automobile.



Mark Ballogg © Stankamp/Ballogg Photography



Do you dream in **Color?**



Better service through superior **technology**



Digital Imaging Resources, Inc.

650 West Lake Street #120 • Chicago, IL 60661 • www.dirinc.com

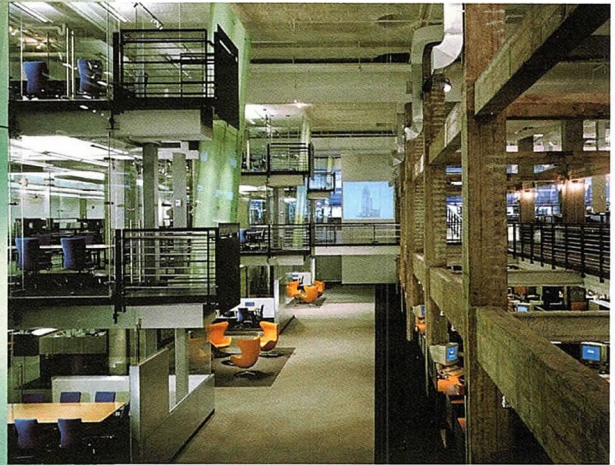
Phone 312.243.1250 • Fax 312.243.1590

Interior Architecture Awards

by Molly O'Halloran

The Interior Architecture Award was established over 20 years ago to promote interior architecture as a unique profession by recognizing outstanding projects. For award purposes, interior architecture is defined as the space within a building envelope, including design of lighting, finishes and furnishings. The jury considered a wide range of design projects completed between January 1, 1999 and May 1, 2002.

*“they recycled it
into something
that really sings”*



Tribune Interactive
Chicago, IL

Honor Award

Architect – Perkins & Will
Associate Architect – McClier
Client – The Tribune Co.
General Contractor – Pepper Construction
Consultants – McClier (structural, mechanical,
plumbing, fire protection); Byrne & Associates
(electrical)

The muscular, industrial character of a former printing press room under Chicago's Tribune Tower was skillfully worked down to an interior scale in this new headquarters for the internet-based media division of The Tribune Co. The architects created a 3-story-high main hall volume by stripping the space to its structural framework and carving away at unneeded floor plates. To bring in natural light, an existing loading dock was refitted with glass. Glass-walled conference rooms stacked into canted, semi-transparent towers form shapes within the central volume and allow diagonal views. Steel bridges connect balconies housing 270 open workstations, with communication and power connections integrated into the handrail detail so that employees can “plug in” virtually anywhere in the space.



Christopher Barrett © Hedrich Blessing

“gorgeous”



Christopher Barrett © Hedrich Blessing

Weiss Residence
Chicago, IL

Honor Award

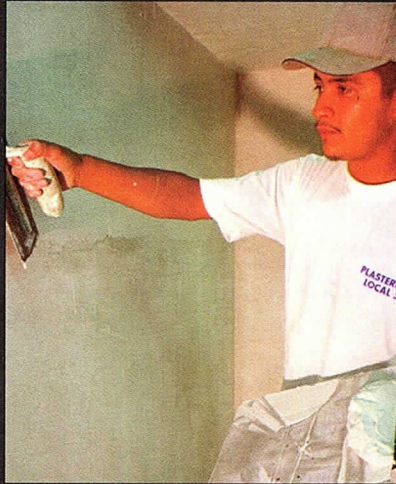
Architect – Brininstool + Lynch Ltd.
Client – Adrienne Weiss
General Contractor – Michael LaPorta,
Bell Construction

The owner of this condominium envisioned an open and serene environment with expansive views of Lake Michigan and nearby Chicago landmarks. The architect delivered by removing and reconfiguring existing walls to create an open plan that elegantly accepts a rich material palette of plaster, stained maple, stainless steel, and limestone. Translucent glass walls defining the master bathroom create a luminous interior volume visible from the entrance hallway and bring natural light into an otherwise dark corner. Detailing is applied cleanly and consistently throughout the home, with an effect jurors deemed “gorgeous.”

Professional Training Yields Expert Plasterers



Exterior Insulating and Finishing
Systems (EIFS) and Stucco



Conventional and Veneer Plaster



Ornamental Plaster

Call us for information about today's
plastering systems and the best
people to apply them.



Chicago Plastering Institute
6547 N. Avondale Ave.
Chicago, IL 60631
(773) 774-4500

Code Compliance Is Not An Option ... How You Achieve It Is.

The experienced professionals at The Code Group offer:

- ADA Site Surveys
- Preliminary Zoning & Building Code Analysis
- Accessibility Consulting
- Code Requirement Analysis
- Local Code Conflict Resolution
- "Hi-Tech" Center Plan Evaluation
- Code Research
- Registered Energy Professional Certification
- Pre-Permit Submittal Plan Review
- MEP & Fire Safety Review



For more information contact:

Christopher Chwedyk, AIA

111 W. Washington St., Suite 450

Chicago, IL 60602

312-673-1503

codes@codegrouponline.com



Allsteel Headquarters
Muscatine, IA

Citation of Merit

Architect – Gensler
Client – Allsteel Inc.
General Contractor – Knutson Construction Services
Consultants – KJWW Engineering Consultants

What happens when you purchase an abandoned, long, low, 65,000-square-foot Iowa factory and make it into a corporate headquarters? In the case of century-old furniture manufacturer Allsteel, a juxtaposition of robust industrial elements and warm furniture and lighting strengthens a brand and breaks down company hierarchies. A circular form with clerestory windows pops from the roof and brings natural light to a main meeting room deep in the building's interior. Jurors complemented the plan's tension between architecture and furniture, which works to encourage interaction between employee groups and customers and to showcase the client's products in real-world applications.



Christopher Barrett © Hedrich Blessing



Steve Hall © Hedrich Blessing

Transora
Chicago, IL

Citation of Merit

Architect – The Environments Group
Client – Transora
General Contractor – Turner Construction Co. SPD
Consultants – Environmental Systems Design

Cool colors and flowing lines bridge the gap between an energetic dot-com aesthetic and a more corporate sensibility in a most imaginative way, concurred jurors. A trick in the elevator hallway subtly sets the tone—panels are applied to a blind wall creating reveals that suggest total symmetry with the elevator doors opposite. Cantled walls and generous curved forms define public and meeting areas, breaking up the grid and pushing into perimeter circulation areas.



Steve Hall © Hedrich Blessing

Jubilee Family Resource Center
Chicago, IL

Citation of Merit

Architect – Ross Barney + Jankowski Inc.
Client – Carole Robertson Center for Learning
(owner/child care provider); Lawndale Christian
Development Corp. (developer); Illinois Facilities
Fund (project manager)
General Contractor – Paul H. Schwendener Inc.
Consultants – Primera Engineers (mechanical);
Rubinos & Mesia Engineers

Jurors faced ambiguity when trying to separate the interior from the architecture of this inward-looking building. In the end, they commended the project's ability to define an interior largely by exploiting views back toward the building itself. A central courtyard, shaped from slightly curved glazed classroom walls, provides a protected play area for infants. Glazed pavilions push into the courtyard on two sides and open up the interior to views of the building. Patterned floor tiles modeled after the Raffia cloths of Zaire mark the entrances to the center and its classrooms.

Louise Wells Kasian Children's Activity Room at Lake Forest Library
Lake Forest, IL

Citation of Merit

Architect – David Woodhouse Architects
Client – Lake Forest Library
General Contractor – R. Rudnick & Co.
Consultants – Thornton-Tomasetti Engineers
(structural); Innovative Engineering Group
(mechanical)

A sunken courtyard illuminated by skylights recalls secret garden imagery and asserts that children's spaces needn't look like a toy box. Jurors deemed "magical" a maple cabinet wall—almost featureless when closed—that unfolds in pleated panels to engage space and create imaginary rooms. A stage, a puppet playhouse, and tables for story-based art programs are revealed in a way that "gives kids credit for having intelligence."



© Barbara Karant, Karant + Associates

ARCHITEMPS, INC.®

ARCHITEMPS, INC. – the Architectural & Interior Design staffing specialists, serving greater metropolitan Chicago since 1986.

Quality staffing, service and solutions:

- Design/Production Drafters
- Facility Planners
- CAD Architects/Interior Designers
- Project Managers

Our billing includes all employer liability:

- Payroll Administration
- Employee Benefits
- Government Compliance
- State & Federal Tax Remittance
- Workers' Compensation Coverage

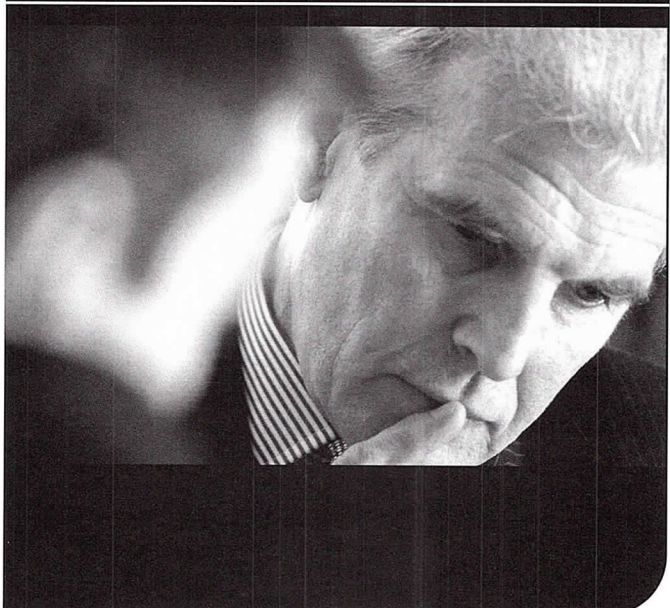
ARCHITEMPS, INC.®
1050 North State Street
Chicago, IL 60610-7829

Tel: 312.649.0912
Fax: 312.649.1667
ARCHITEMPS@aol.com
www.architemps.com

Architectural, interior design and facility planning personnel on a per-project basis. Direct hire conversion and direct placement available. Call today for information on our staffing services or employment opportunities.

“ I chose my insurance agent for the same reason my clients choose me: experience.

” Experience is the DPIC difference.



Combine DPIC's 30 years of dedication to the architect, engineer and environmental market with the expertise of our local brokers, and you get the benefit of the industry's most qualified professional liability experts.

From ongoing education in how to manage risk to new ideas in practice management and smarter dispute resolution that protects your interest, we'll help you realize a better return on your firm's insurance investment.

Contact us today for more information.

Hobbs Group/
AVA Insurance Agency
847-517-8900
www.AVAins.com


A DIFFERENCE THAT DELIVERS™

Any Way It Shapes Up...CTI Delivers

When you need

"CTI's plant seminars are fantastic and very informative! The tour of CTI's yard was helpful in seeing what is possible with architectural precast."

Jacob Plummer, RATIO Architects
Indianapolis, IN

ECONOMY
EXPERTISE
SPEED
APPEAL

Think...precast concrete

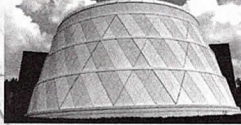


Fact: The national Precast/Prestressed Concrete Institute (PCI) requires frequent, independent audits of all of its members to ensure they maintain the highest standard from quality to service, production and design.

Fact: CTI was the only precaster to bid on the challenging architectural precast enclosures for the Columbus Center of Science and Industry (COSI) and the Indianapolis Children's Museum projects. That kind of expertise is backed by exceptional service delivered by our staff of project managers, budget estimators, engineers/draftsmen and sales reps.

Choose...CTI

Children's Museum of Indianapolis



ARCHITECT:
Browning Day Mullins Dierdorf
Indianapolis, Indiana

DESIGN ARCHITECT:
Arata Isozaki & Associates
Tokyo, Japan

LEAD ARCHITECT:
NBBJ Architects Inc.
Columbus, Ohio

The Center of Science and Industry (COSI) Columbus, OH



See for yourself why top architects are talking about CTI.

Join CTI's specialists at a plant seminar in either Springboro, Ohio or Paxton, Illinois to learn more about how to create exciting, custom-designed architectural precast solutions. Attendees will earn seven AIA learning units. Call Dennis Nemenz at (800) 788-2370 ext. 123 to enroll today.

CONCRETE TECHNOLOGY INC. • Paxton, IL and Springboro, OH • Call 800.788.2370

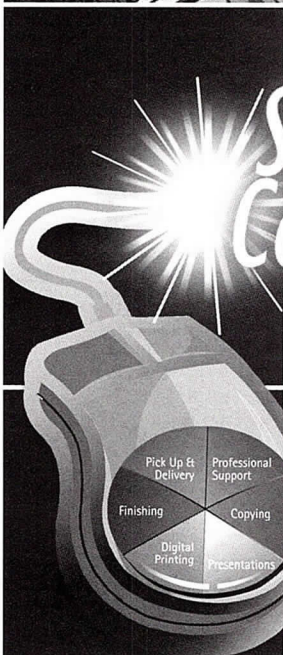


member
International Reprographic
Association

affiliate member
AIA Northeast Illinois

listed with
Modern Reprographics
Cool Repro Sites

Your print connection to
DuPage County



express
Suburban
Connection

Pick Up & Delivery
Professional Support
Finishing
Copying
Digital Printing
Presentations

DU PAGE COPY
& BLUEPRINT

Digital Printing

Large/small format

Finishing services

Presentations

Delivery included

Free delivery to your DuPage Customers for jobs submitted over the internet

630.469.9360

www.dupage-copy.com

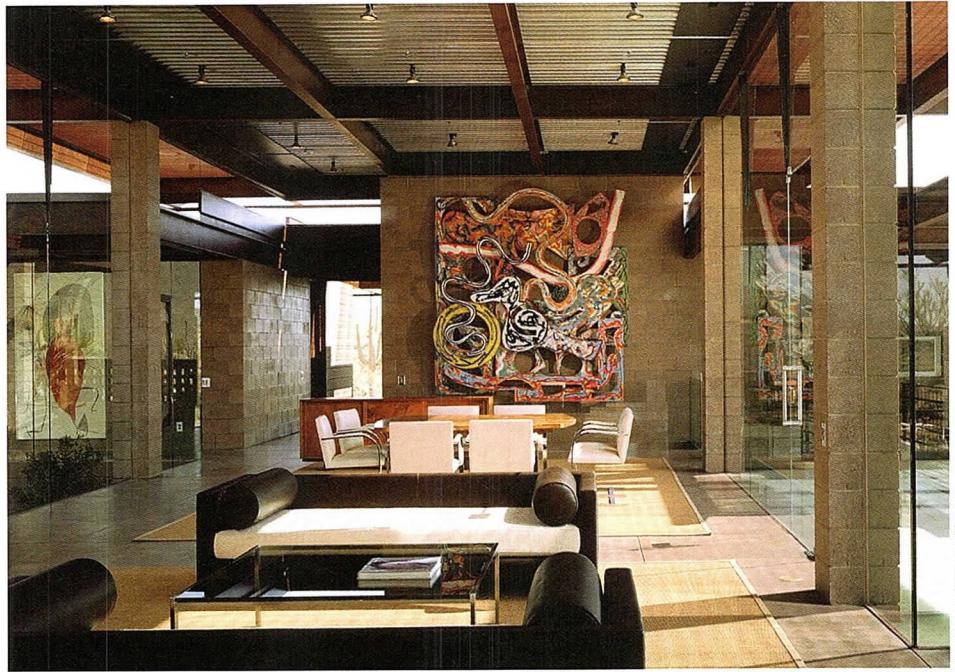
plots@dupage-copy.com

Shadow Caster 78
Scottsdale, AZ

Citation of Merit

Architect – David C. Hovey, FAIA
Client – David and Eileen Hovey
General Contractor – Optima Inc.
Consultants – Thornton-Thomasetti Engineers

For a Sonoran desert home that is all core and no shell, the idea was to allow interior spaces to flow seamlessly outside. Steel beams and generous cantilevers top ground-face concrete block walls, casting shadows that pass undisturbed through glass veils of frameless walls and windows. Interior colors and finishes, in a similar way, stress unity with the surrounding landscape. Furnishings—sisal rugs, leather upholstery, and solid walnut casework—are soothing, and building materials intentionally left raw project coolness while providing a neutral setting for artwork.



Nick Merrick © Hedrich Blessing



Sleve Hall © Hedrich Blessing

Spencer Stuart
Chicago, IL

Citation of Merit

Architect – The Environments Group
Client – Spencer Stuart
General Contractor – Interior Construction Group

Straightforward programmatic requirements only added to jurors' appreciation of this sure-handed design of an office for an executive recruiting firm. Careful treatment of ceiling and floor planes forms distinctive open spaces that create energy in a densely populated plan. Confronted with low ceilings but wanting to avoid an industrial look, designers exposed ceilings to gain height in public areas—entry, reception, and team spaces—and then suspended tensile fabric to conceal ductwork and soften acoustics. Reflected ceiling plans and a diverse color scheme demonstrate the skill and subtlety that create elegance without the use of expensive materials. "The project goes into a nondescript slab of space and creates magic," said a juror. "This is what we all try to do every day."



A Consulting Firm – 15th Floor
Chicago, IL

Citation of Merit

Architect – VOA Associates Inc.
Client – Confidential
General Contractor – Turner Construction Co.
Consultants – McGuire Engineers

A Mondrian-inspired concept of interlocking cubes and planes is elegantly carried out in plan and detail in this space for a technical innovation group. Primary colors are applied boldly to carpet and drywall, with thoughtful reveals and insets holding the look together at the junctures. A main pathway leads through the design at an angle, maximizing the impact of an existing atrium without creating unused space. To reduce overall costs, designers elected to reuse 50 percent of existing carpeting and 85 percent of HVAC, lighting, sprinkler, and ceiling systems.

Nick Merrick © Heinrich Blessing

Zenith Electronics Corp.
Lincolnshire, IL

Citation of Merit

Architect – Valerio Dewalt Train Associates
Client – Zenith Electronics Corp.
General Contractor – Turner Construction Co. SPD
Consultants – WMA Consulting Engineers Ltd.;
Charter Sills & Associates

A 50,000-square-foot headquarters facility helps shift Zenith's operations from manufacturing to the development of consumer electronics. Similar in plan and material selection to many other office interiors, Zenith won jurors' notice through careful detail that leaves a statement of elegance. High ceilings in open office areas are enhanced by use of a continuous light shelf mounted at the head of windows to reflect light deep into interior spaces. Electronics and wet lab spaces are housed in the building's core. Mushroom air diffusers stand out as sculptural ceiling elements in a meeting room, and the cafeteria features a display of early Zenith products in an overall atmosphere that jurors thought well suited to both corporate and worker needs.



© Barbara Karant, Karant + Associates



WOOD DOORS & WINDOWS

Made to order
German Engineering & Components

MFG DIRECT

ArchiSpec LLC

935 W. State Street, Hartford, WI 53027

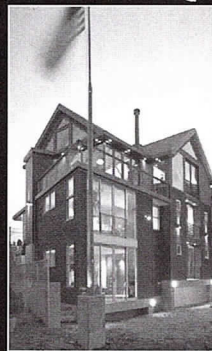
262.670.6524

[take a closer look]

As individual as your design.



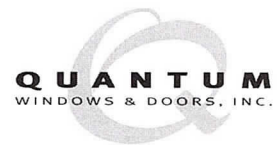
Arellano/Christofides Architects



Constructive Energy, Inc., Builder

It's all in the details.

Quantum's Slide/Fold Doors complement the architect's vision. In this installation the doors meet beautifully at the corner to create an unobstructed opening. Every Quantum window and door is built to specification with unsurpassed craftsmanship. Strict quality standards emphasize the richness of every detail. A wide array of creative options awaits your selection including true divided lites, choice of wood species, finishes and more. Take a closer look. We've been perfecting the details for 20 years.



1-800-287-6650

email: qsales@quantumwindows.com
www.quantumwindows.com



Emanuel Congregation Sanctuary Renovation
Chicago, IL

Special Recognition for Use of Materials to Evoke Spirituality

Architect – Ross Barney + Jankowski Inc.
Associate Architect – Les M. Jacobs
Client – Emanuel Congregation
General Contractor – Leopardo Companies
Consultants – Dennis Kinsel (custom interiors contractor); Vector Custom Fabricating (metal fabricator)

The program for this renovation of a 45-year-old sanctuary called for a flexible area capable of accommodating large crowds or small gatherings. Architects removed fixed seating and converted the higher, sloping rear of the existing auditorium-style space into a raised platform that becomes the heart of the temple. Around the platform, 26 sliding translucent sailcloth scrims create a transformable tent. Panels can be drawn closed to form a sanctuary-within-sanctuary, or opened to flank the platform in its use as a stage for social events or for ritual during special services. Overhead, white Lycra® sheets forming geometric shapes float just below a black ceiling, diffusing light, enhancing acoustics, and contributing to the ethereal ambience.

Steve Hall © Hedrich Blessing

The Zipatoni Co.
Chicago, IL

Special Recognition for Re-imagining the Knowledge Workplace

Architect – Environ Inc.
Client – The Zipatoni Co.
General Contractor – Hensley Construction Inc.
Consultants – Cosentini & Associates (engineering); Kelly Erbschloe (industrial designer)

The client's notion of an unorthodox working environment for its creative force found brilliant expression in this 25,000-square-foot interior build-out. Utilizing raw materials including milled steel, concrete, unfinished drywall, and exposed metal raised flooring to establish a hard, industrial character, the design invites office inhabitants to "color" and "soften" their own environment. This brave concept results in an imaginatively fun—but absolutely adult—workplace. Novel use of garage doors to enclose conference space opens up the floor plan to a central lounge and client area featuring a full bar, kitchen, and café seating, while available natural light is reserved for open offices.





Craig Dugan © Hedrich Blessing

Booth Library Renovation and Addition at Eastern Illinois University
Charleston, IL

Special Recognition for Sensitive Renovation

Architect – Holabird & Root LLP
Client – Eastern Illinois University and Capital Development Board
General Contractor – Williams Brothers Construction Co.
Consultants – Terra Engineering Ltd. (civil); KJWW Engineering Consultants (MEP)

This renovation and addition to a Collegiate Gothic university library remains sensitive to the original building without creating a campus anachronism. Clear organization was required to integrate the original 1948 building, a 1968 addition that had provided space but confused the circulation, and new construction. An open atrium shows off the original south façade and brings natural light into the heart of the library. Reestablishment of the original north entrance and the addition of a south entrance flanked symmetrically by offices create a strong axis around which library stacks and study areas are organized.



18th century character. Modern day construction.

Our new Mosaic® Segmental Retaining Wall has both. Age-old, handcrafted beauty on one hand. Solid, pinned VERSA-LOK technology on the other. It's as simple as that. Mosaic's rustic character stems from its random



pattern and 100%-solid construction—allowing you more design options than you can imagine. Curves. Corners. Tiers.

Even tall walls. What's more, Mosaic walls are now available in a Weathered™ option for those clients who prefer a more timeworn touch.

Manufactured locally by



www.bendindustries.com

1-800-886-4149

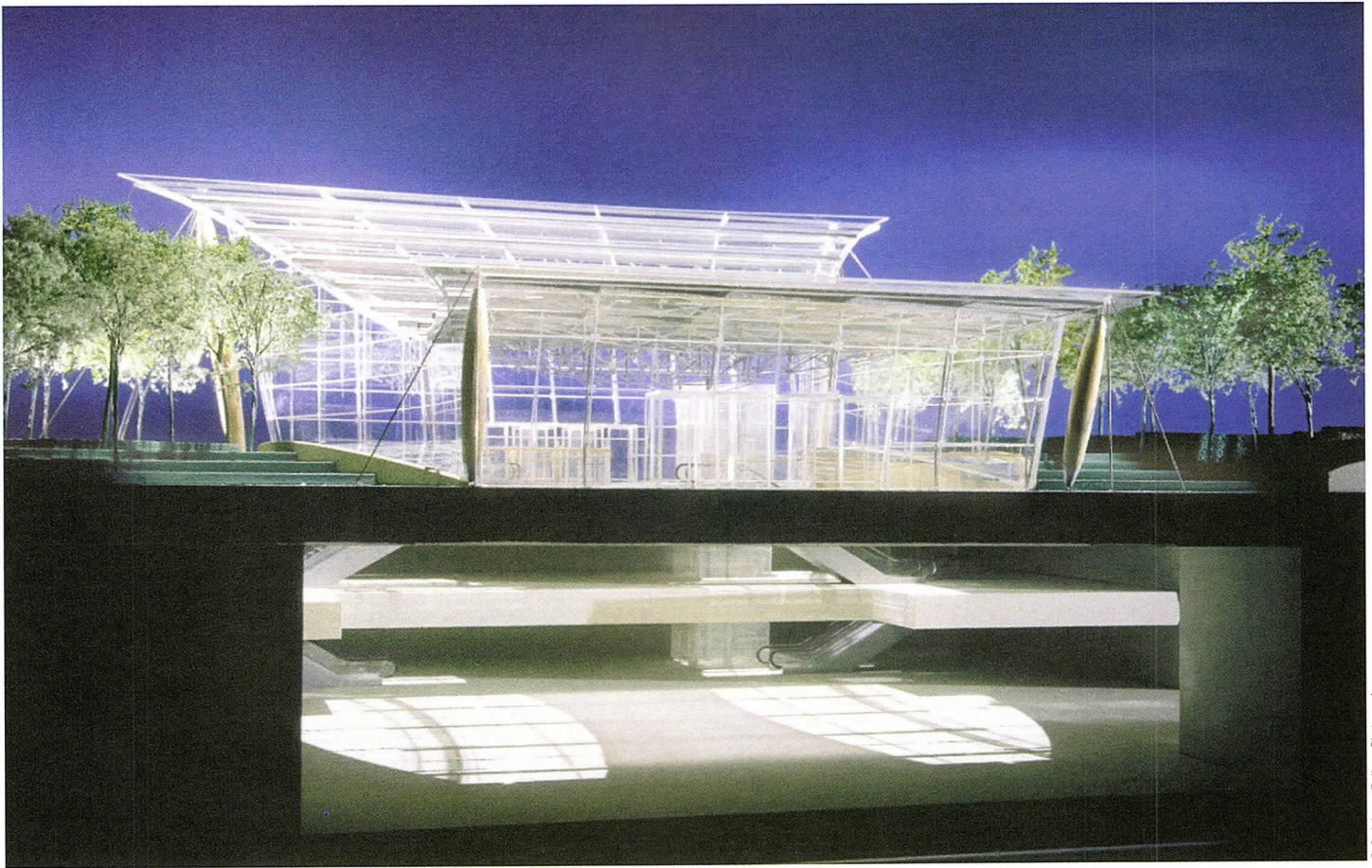


www.versa-lok.com

Unbuilt Design Awards

by Susan Larson

The Unbuilt Design Award was established in 1991 as the result of the 1990 exhibition, "Roads Not Taken." None of the projects will be built, yet the award is intended to recognize projects for the significance of their concept and the quality of design. Submitted projects must have been commissioned by a client; however, they may include competition entries or urban design schemes. A jury of three prominent local architects considered design work completed between January 1, 1999 and May 1, 2002

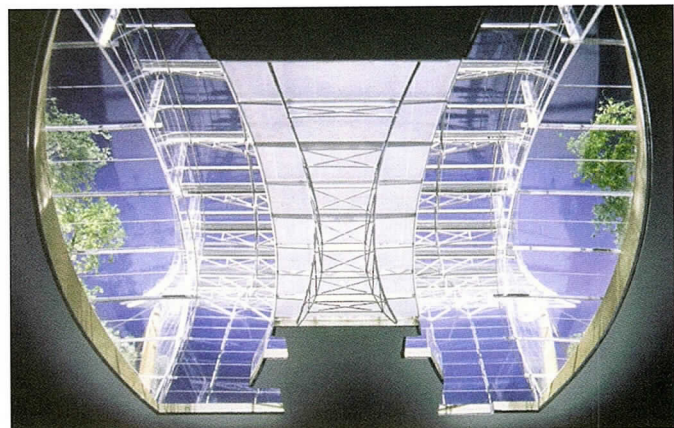


Jubilee Park Pavilion
London, England

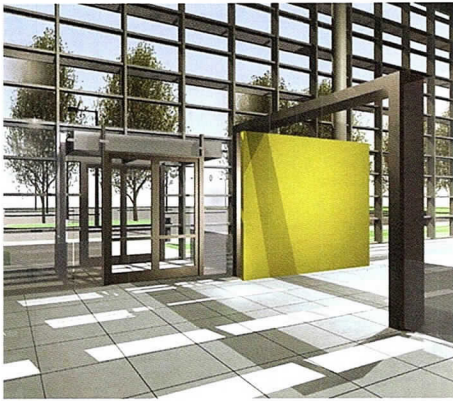
Honor Award

Architect – Skidmore, Owings & Merrill LLP
Client – Canary Wharf Ltd.
Consultants – Skidmore, Owings & Merrill LLP

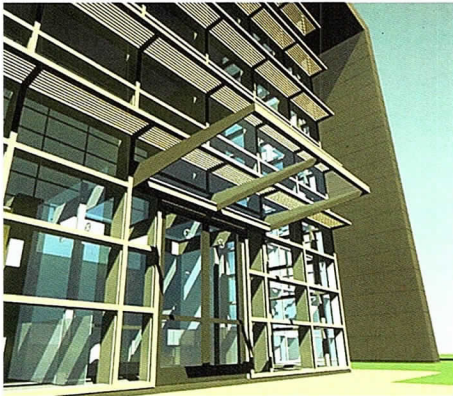
This project is an exploration of the relationship between glass and nature. The pavilion, sited at the southern edge of a multi-acre park, was designed as a pedestrian gateway. A suspended glass and cable steel enclosed room embraces the park and a large, below-grade retail facility. The transparent envelope and structure allow for daylight while laterally dissolving the line between the interior and exterior. Spatially, the pavilion creates multi-level views to the park, contrasting panoramic surface vistas with deep vertical space.



New laser scanning engineering/surveying services from Falk PLI



Courtesy of the firm



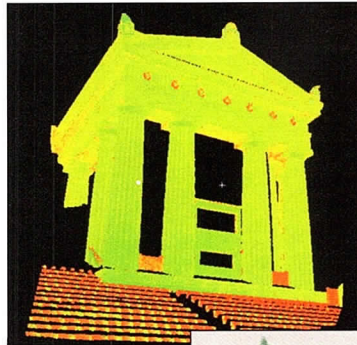
Courtesy of the firm

Bank of Jacomo
Blue Springs, MO

Citation of Merit

Architect – DeStefano + Partners
Client – Central Bancompany
Consultants – Daniel Weinbach and Partners;
Halvorson & Kaye Structural Engineers PC

This client approached the design of its new headquarters as an opportunity to illustrate its state-of-the-art standards and project its expectations for future growth. Responding to this directive, the architects designed a 3-story, 30,000-square-foot building with the services core at the north end of the plan and single-loaded corridor connecting to a stair at the south end. This yields a 50-foot bay of office space with unusually flexible office planning opportunities. The first two floors were reserved for initial occupancy, and the third floor would be leased to a tenant but planned for the future expansion requirements of the client.



Falk PLI will become the preferred provider of engineering surveying services.

Falk PLI matches tomorrow's technology to our customers' engineering/surveying needs today. Our new laser scanner is ideal for a variety of design, construction and historical preservation projects. It is the first scanner of its type in the greater Chicago area.

It is lightweight, portable and easy to set up.

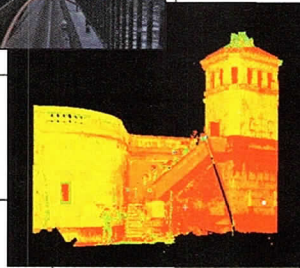
Accurate and fast (scanning hundreds of thousands of location points in minutes!).

We can scan during construction and upgrades, and we can create detailed diagrams and accurate computerized models of existing facades and facilities.

Falk PLI customers get superior surveying, reverse engineering capabilities, better retrofit designs, as-built surveys and better

project management.

Find out more.



FALK PLI

Engineering & Surveying

5979 McCasland Avenue
Portage, Indiana 46368
Phone: 219-762-7024 ■ Fax: 219-764-4261
Email: falk@crown.net
Internet: www.falk-pli.com

1550-82-4422

© 2002, Falk PLI Engineering & Surveying
Printed in U.S.A.

What to do? How to do it?

Kristine Fallon Associates, Inc.

<http://www.kfa-inc.com>

Hardware
Software
Networks
Internet

30 East Adams Street, Suite 600
Chicago, IL 60603-5609
312-641-9339 (voice)
312-641-9337 (fax)
kfainc@kfa-inc.com

Get it done. Keep it going.

Qatar Broadcasting Services Complex
Doha, Qatar

Citation of Merit

Architect – Perkins & Will
Client – Ministry of Municipal Affairs and Agriculture,
Office of the Assistant Undersecretary for
Engineering Affairs

The design of this broadcasting complex is a modern interpretation of traditional Islamic architecture and urbanism. The bazaar that is the heart of most Islamic cities is interpreted by organizing the program elements along a linear spine or “electronic bazaar” of video monitors. Musharabiyya — exterior screens common in Qatar — are referenced by a metal umbrella roof that controls solar gain, provides shade, and channels breezes to passively cool the facility. The project also includes a traditional walled garden and intimate courtyards that bring natural light into the facility.

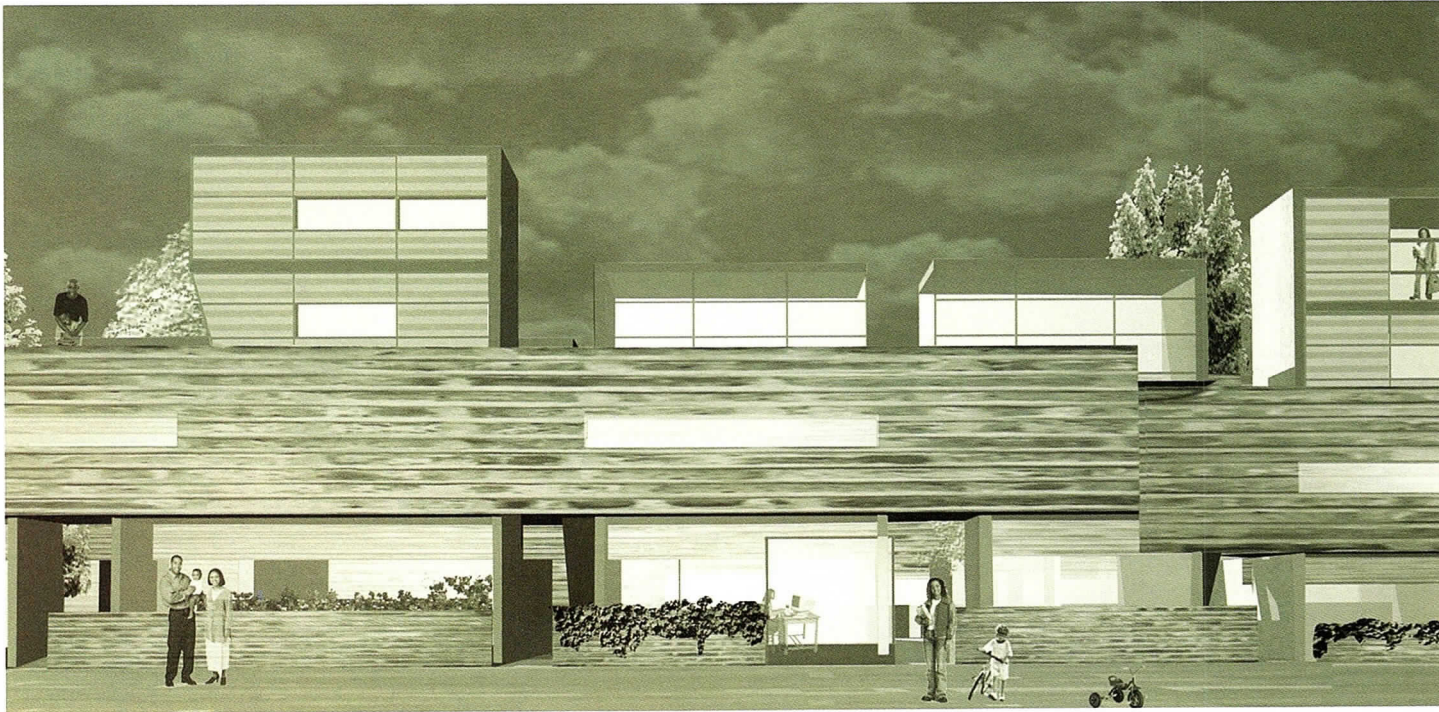


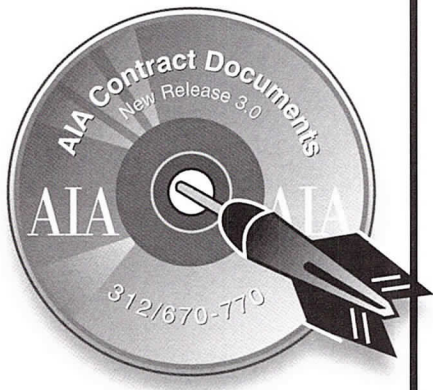
Entry in Chicago's Design Competition for Mixed-Income Housing
Chicago, IL

Special Recognition

Architect – Garofalo Architects
Client – ABLA Homes, The Chicago Housing Authority

Most mixed-income housing is in a predicament because the highly individual nature of homeownership is at odds with the standardized, repetitive design of most public housing. This entry for a Chicago Housing Authority design competition for low-rise affordable housing proposes a “weave” of elements. Landscape and materiality are combined to form a backdrop for community relations. The rich palette of discrete, yet related, construction systems unify the scheme—without making outward distinctions between residents—but still expresses the diversity of individual lives. Within the site, a complex pattern of unit types ties together residents of varying family structures and incomes.





Nothing Else Even Comes Close.

AIA Contract Documents: Electronic Format 3.0

AIA Contract Documents are the standard in the building industry. Created with the consensus of contractors, attorneys, architects and engineers. Honed razor-sharp by test after legal test. Refined to exceptional clarity through 110 years of precedent and experience. More than 70 contracts and forms for the design and construction phases of all types of projects. Now with custom formatting and flexible pricing.

Call AIA Chicago for your free demo disk today: 312/670-7770. Or order online at www.aiachicago.org.

AIA Chicago



A Chapter of The American
Institute of Architects



Old World Elegance for Today's World

Step back in time and experience the Ultralex Granites Old World Paver Designer Series. Colors and texture create the rich, elegant look of flamed granite, but the beauty is an added feature to the durability and practicality of this paver group. Ultralex is available in three shapes to form unique configurations for residential and commercial applications. Our palette of five permanent colors offer unlimited design opportunities from old world to new age. For more information on this timeless product, call 1.800.886.4149 or visit our website, we think you'll be taken back!



BEND

INDUSTRIES
www.bendindustries.com

Sabo & Zahn Attorneys at Law

Werner Sabo, FAIA

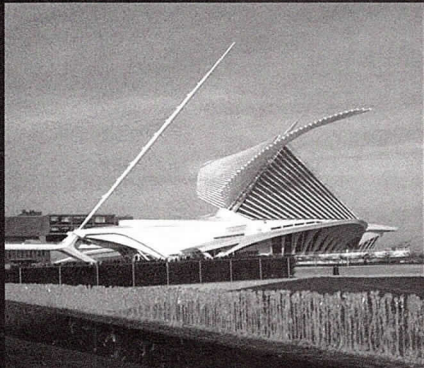
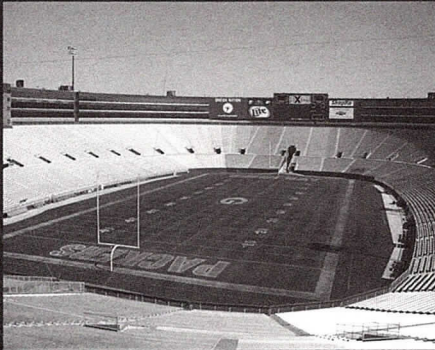
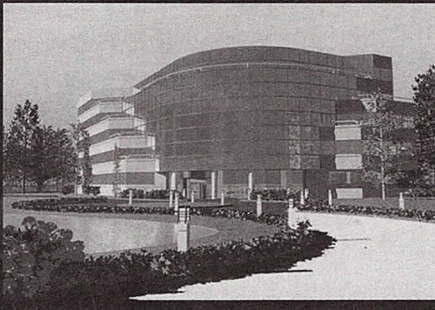
James Zahn, FAIA

Licensing problems, copyrights, business formations,
mediation, litigation, arbitration, contracts, real estate
construction attorneys

8620 Sears Tower
Chicago, IL 60606

(312) 655-8620
fax: (312) 655-8622

www.sabozahn.com



*engineering
services provided
to our clients
include...*

*Structural
Civil
Environmental
Transportation
Mechanical
Electrical*



**GRAEF
ANHALT
SCHLOEMER**
and Associates Inc.
engineers & scientists

228 South Wabash Avenue
Suite 700
Chicago, Illinois 60631
312/939-7007
www.gasai.com

also:
Chicago - O'Hare
Milwaukee, Madison,
and Green Bay



Job Seekers

Search the Job Board
Post Your Resume

Employers

Advertise Openings
Find Qualified Employees

www.aiachicago.org



Original

Design

Deserves

Original

Documents.

Order today.

www.aiachicago.org

312/670-7770



Botti Studio of Architectural Arts, Inc.

919 Grove Street, Evanston, IL 60201 Established 1864
847/869-5933 • Fax: 847/869-5996 • 800/524-7211
www.bottistudio.com • botti@bottistudio.com

Designers/Fabricators • Stained and Faceted Glass • Beveled Glass • Sandblasted •
Stained Glass Restoration and Conservation • Protective Glazing • Wood and Metal
Frame Restoration • Sculpture • Bronze • Metal • Marble • Mosaic • Interior
Renovation • Woodwork • Murals • Painting and Decorating • Custom Sanctuary
Furnishings • Stained Glass Consultants to Architects and Churches

Studio Locations

San Diego • Chicago • Sarasota • Agropoli, Italy
760/753-0705 • 847/869-5933 • 941/951-0978

Roofing Solutions for the New Chicago Energy Code

Verisco TPO White Single Ply Membranes
Bakor Modified Bitumen with Acrylic Coatings
Carlisle Coating and Waterproofing for Green Roofing

Please call John Dashner or Randy Zaleski
Ph: 630-668-1551 Fax: 630-668-1672



Distinguished Building Award

Edward Weinstein, FAIA
Weinstein Copeland Architects
Seattle

Suman Sorg, FAIA
Sorg & Associates
Washington, D.C.

Craig Hodgetts, AIA
Hodgetts + Fung Design Associates
Culver City, CA

Interior Architecture Award

Richard Pollack, FAIA, FIIDA
Richard Pollack & Associates
San Francisco

Stephen Swicegood, AIA
Idea/Span
Atlanta

Barbara Hillier, AIA
The Hillier Group
Princeton, NJ

Unbuilt Design Award

David Woodhouse, FAIA
David Woodhouse Architects
Chicago

Thomas Zurowski, AIA
Eastlake Studio
Chicago

Ronald Krueck, FAIA
Krueck & Sexton Architects
Chicago

Give your vision a voice.

With Continuing Education Programs from MCSi

At MCSi, our seasoned consultants and technicians collaborate with architectural firms and general contractors as part of a complete design/build solution. Together we integrate technology and specialized design to create intuitive presentation environments that uniquely position our customers.

MCSi AIA & IIDA Continuing Education Course

Technology Integration in Architectural Design One Learning Unit - 1 hr. length

This course explores the co-dependent relationship between integrated technology and architectural design by examining the impact of early design considerations (seating plans, table wire management, lectern configuration, screen placement, etc.) on the building plan. Discussion will include a topical review of recent advances in media technology, as well as advances to come. If your projects involve the design and implementation of thoughtfully integrated communication technologies, this is the course for you.



For more information on how to bring a free MCSi AIA & IIDA Continuing Education Program to your office where we'll even provide lunch, call Tom Melms at **630.477.2307** or visit us at **www.mcsinet.com** for details.



Now your vision has a voice.

Distinguished Building Awards

Honor Awards

Perkins & Will (Cary Grove High School Media Center Addition)6
 Perkins & Will (Rennebohm Hall, School of Pharmacy at the University of Wisconsin)9
 Skidmore, Owings & Merrill LLP (Phillips Headquarters at Breitner Centre)8
 Vinci | Hamp Architects Inc. (South Kenwood Residence)7

Citations of Merit

Annex/5 (Damore House)13
 David C. Hovey, FAIA (Michigan Place)17
 David Woodhouse Architects (Beach House at Rainbow Park and Beach)13
 EHDD Architecture (Habitat Africa! The Forest)15
 Landon Bone Architects (Archer Courts Renovation)10
 Murphy/Jahn Inc. (Munich Airport Center)17
 Murphy/Jahn Inc. (Neues Kranzler Eck)16
 Skidmore, Owings & Merrill LLP (29 North Wacker)10
 Teng & Associates Inc. (Kline Creek Farm Visitors Center)15

Special Recognition

Daniel P. Coffey & Associates Ltd. (Cadillac Palace Theater Renovation)18
 Weese Langley Weese Architects Ltd. (Wabash YMCA Renovation)18

Interior Architecture Awards

Honor Awards

Brininstool + Lynch Ltd. (Weiss Residence)21
 Perkins & Will (Tribune Interactive)20

Citations of Merit

David Woodhouse Architects (Louise Wells Kasian Children's Activity Room at Lake Forest Library)24
 David C. Hovey, FAIA (Shadow Caster 78)27
 The Environments Group (Spencer Stuart)27
 The Environments Group (Transora)23
 Gensler (Allsteel Headquarters)23
 Ross Barney + Jankowski Inc. (Jubilee Family Resource Center)24
 Valerio Dewalt Train Associates (Zenith Electronics Corp.)28
 VOA Associates Inc. (A Consulting Firm - 15th Floor)28

Special Recognition

Environ Inc. (The Zipatoni Co.)30
 Holabird & Root LLP (Booth Library Renovation and Addition at Eastern Illinois University)31
 Ross Barney + Jankowski Inc. (Emanuel Congregation Sanctuary Renovation)30

Unbuilt Design Award

Honor Award

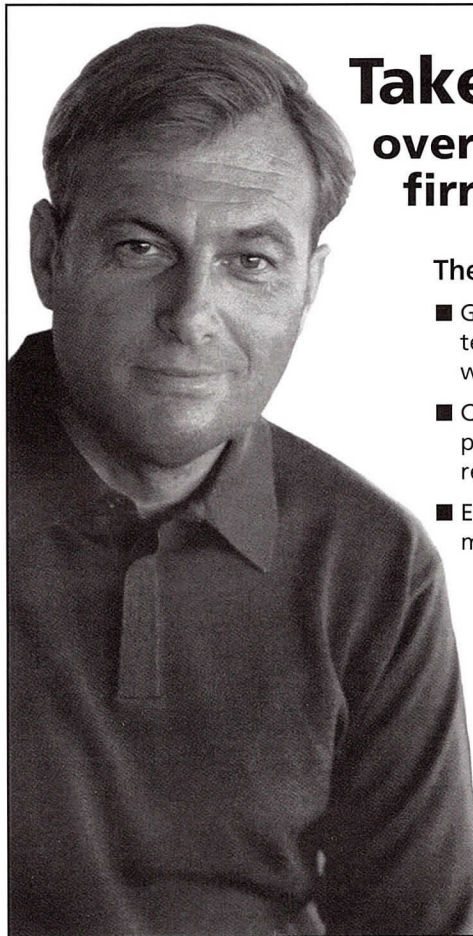
Skidmore, Owings & Merrill LLP (Jubilee Park Pavilion)32

Citations of Merit

DeStefano + Partners (Bank of Jacomo)33
 Perkins & Will (Qatar Broadcasting Services Complex)34

Special Recognition

Garofalo Architects (Entry in Chicago's Design Competition for Mixed-Income Housing)34



Take Advantage - over 200 architectural firms already have.

The On-Site Services (OSS) Program

- Gain improved, in-house reprographics technology (copiers, printers, plotters) with no purchase or lease.
- Capture all reimbursable expenses by project with our cost recovery and reporting systems.
- Enjoy dedicated customer service in managing your program.

For more on the unique benefits of OSS, contact us at (800) 448-6002, x528, e-mail oss@charrette.com or visit us at charretteprographics.com/onsiteservices.

charrette ProGraphics

Service Point USA

Evolving with AEC professionals for over 35 years.

• LIGHTING • ARCHITECTURAL PRODUCTS • TECHNOLOGY • WORKPLACE • HEALTH CARE • RETAIL

• WORKPLACE • HEALTH CARE • RETAIL • HOSPITALITY • RESIDENTIAL • FLOORCOVERING • RETAIL

• HOSPITALITY • RESIDENTIAL • FLOORCOVERING • LIGHTING • ARCHITECTURAL PRODUCTS • RETAIL

NEOCON SHOWS

North America's largest collection of expositions and conferences for interior design and facilities management ...

NeoCon® World's Trade Fair
June 16-18, 2003
 The Merchandise Mart • Chicago, Ill.

NeoCon® West
March 5-6, 2003
 Los Angeles Convention Center
 Los Angeles, Calif.

IDEX®/NeoCon® Canada
September 18-19, 2003
 The National Trade Centre at Exhibition Place
 Toronto, Ont.

NeoCon® East
November 6-7, 2003
 Baltimore Convention Center
 Baltimore, Md.

www.merchandisemart.com • 800/677-6278

• HEALTH CARE • HOSPITALITY • RESIDENTIAL • FLOORCOVERING • TECHNOLOGY • WORKPLACE •

SOMETHING OLD, SOMETHING NEW...



TITE-LOC Metal Roofing Panels

New from Petersen Aluminum are two structural standing seam roofing profiles. Old is the brick Service Net building, originally constructed in 1893 as a manufacturing plant for passenger rail cars. The structure was renovated in 2000 to serve as offices for Service Net, an underwriter of extended warranties. The standing seam roof was chosen to highlight the brick tower and mirror the corrugated metal walls used as office dividers throughout the interior. The architecture firm of Johnson Romanowitz designed the exterior and 45,000 s.f. of interior space. The roofing contractor, Brasch-Berry Co., Inc., installed the interstate blue Tite-Loc Plus panels.

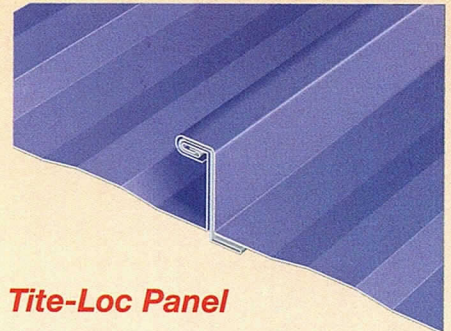
These new roofing profiles, Tite-Loc and Tite-Loc Plus, have been designed for structural and architectural metal roofing applications and are available in a variety of materials including 22 and 24 gauge steel and aluminum. Both profiles feature factory-applied hot melt sealant to insure weather tight performance. Panels are corrective-leveled during fabrication to provide superior panel flatness. Both profiles feature our PAC-CLAD® Kynar 500 finish, **now available in 33 standard colors on steel and 27 standard colors on aluminum.**

For more information regarding our complete line of metal roofing products, please call us at **1-800-PAC-CLAD** or visit our website @ www.pac-clad.com.



1005 Tonne Road • Elk Grove Village, IL 60007
1-800-PAC-CLAD or 1-847-228-7150
Fax: 1-800-722-7150 or 1-847-956-7968
<http://www.pac-clad.com>

Other Plant Locations:
Annapolis Junction, MD: 1-800-344-1400
Tyler, TX: 1-800-441-8661
Kennesaw, GA: 1-800-272-4482



Tite-Loc Panel

12", 16" or 18" O.C.	.032 aluminum
2" high	.040 aluminum
	24 gauge steel
	22 gauge steel

Product Features

- Architectural/Structural Panel
- Factory applied sealant
- UL-90 rated
- ASTM E1592/CEGS 07416 tested
- UL-790 Class A fire rated
- UL-263 fire resistance rated
- Striations available
- Factory-swedged end laps
- UL 2218 Class 4 impact resistance
- ASTM E283/1680 tested
- ASTM E331/1646 tested

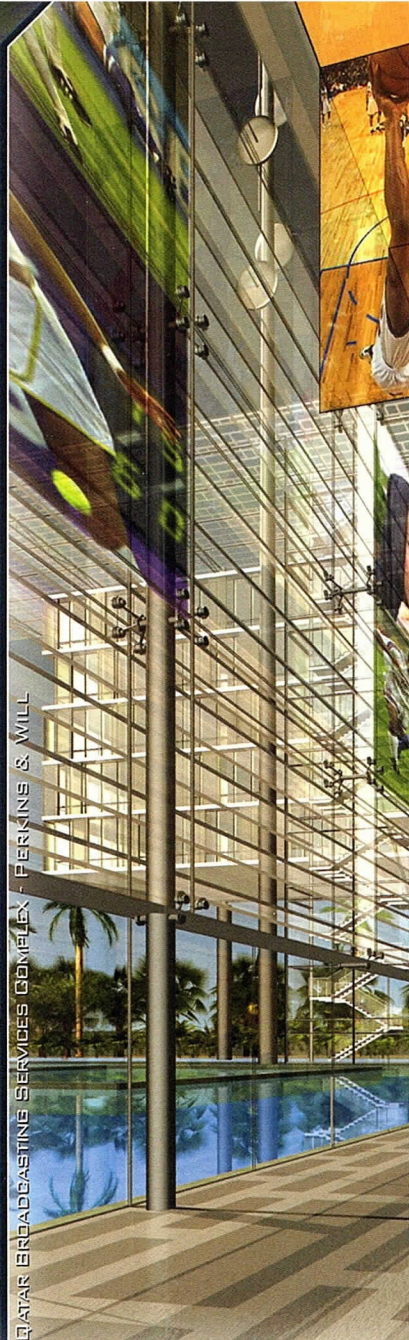


WWW.VERTEXGRAPHICS.COM

EXPERIENCE

VIRTUAL

INNOVATION



QATAR BROADCASTING SERVICES COMPLEX - PERKINS & WILL

QATAR BROADCASTING SERVICES COMPLEX - PERKINS & WILL

ARCHITECTURAL VISUALIZATION · RENDERING · ANIMATION · VR PANORAMIC

TWELVE TWELVE - DE STEFANO + PARTNERS



312.432.9870

VERTEX GRAPHICS

1147 W OHIO #102 CHICAGO IL 60622



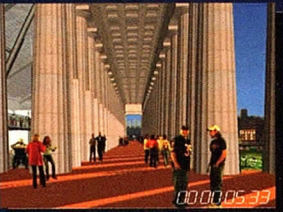
00:00:03:04



00:00:03:26



00:00:04:20



00:00:05:33



00:00:06:00

SOLDIER FIELD VIRTUAL TOUR - CHICAGO BEARS, LLC - LOHAN CAPRILE GOETTSCHE ARCHITECTS - WOOD + ZAPATA ARCHITECTS

