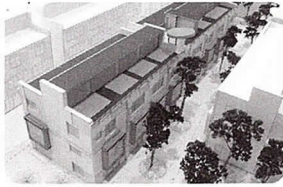
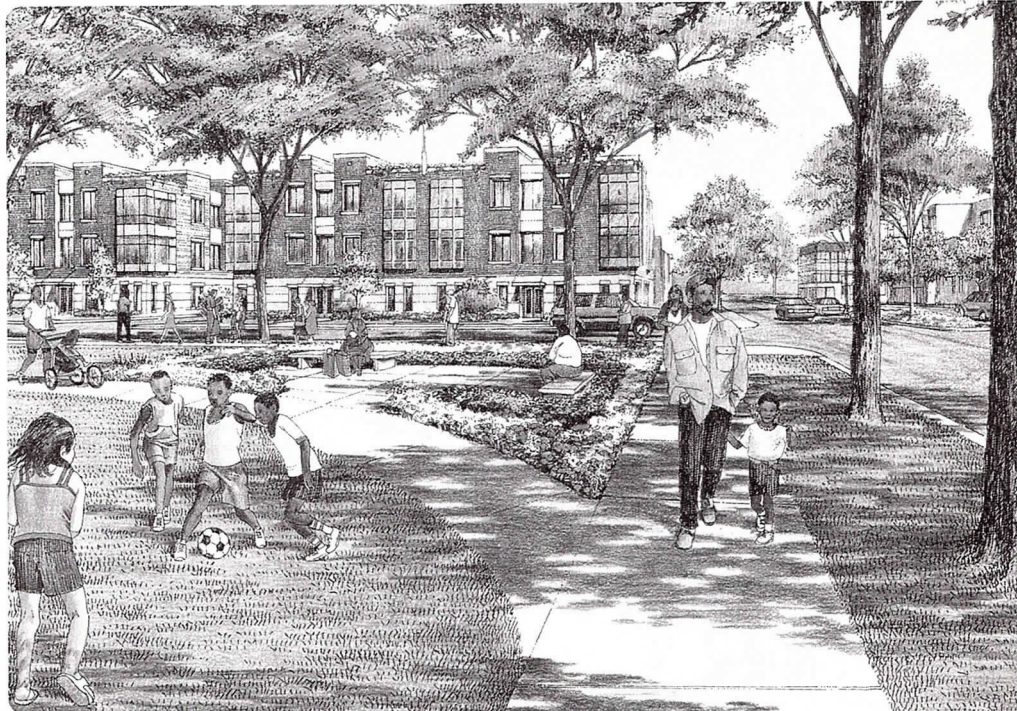


Focus



From Projects to Neighborhoods

The Transformation of Public Housing in Chicago



AIA Chicago



3
Focus on Programs

8
News Briefs

10
Cover Story
*From Projects to
Neighborhoods*

20
Notebook

28
Calendar

Cover Photos (from top to bottom):
Archer Courts, Landon Bone Architects;
Lake Park Crescent townhouses, JH Design Group;
Stateway Gardens, Skidmore, Owings & Merrill.

June/July 2002

Editor

Susan Larson

Contributing Editor

Laurie McGovern Petersen

Focus Advisory Board

Jonathan L. Fischel, AIA
Laurie McGovern Petersen
James Prendergast, AIA
Alice Sinkevitch, Hon. AIA
P.K. VanderBeke, AIA
Thomas Zurowski, AIA

FOCUS (ISSN 1071-3700) Vol. 22, No. 6, is published monthly with a combined issue June/July, by AIA Chicago, 222 Merchandise Mart Plaza, Suite 1049, Chicago, Illinois 60654-1001. \$20 of each member's dues are allotted as a subscription. Periodicals postage paid at Chicago, Illinois. POSTMASTER: Send address changes to Focus, AIA Chicago, 222 Merchandise Mart Plaza, Suite 1049, Chicago, Illinois 60654-1001.

For advertising rates and schedules, call 312/670-7770.

© 2002 The American Institute of Architects Chicago. All rights reserved. Reproduction in whole or part without permission is strictly prohibited.

AIA Chicago on the Internet: www.aiachicago.org
AIA Chicago e-mail: info@aiachicago.org

AIA Chicago



A Chapter of The American
Institute of Architects

2002 Board of Directors

President

Jonathan L. Fischel, AIA

President-Elect

Joseph Caprile, AIA

Vice Presidents

Thomas Fridstein, FAIA
James Prendergast, AIA

Secretary

Charles Smith, AIA

Treasurer

Peter Schlossman, AIA

Directors

Eleanor Esser Gorski, AIA
Thomas Hoepf, AIA
Lamar Johnson, AIA
Edward Torrez, AIA
Mimi Tsai, AIA

AIA Regional Directors

Holly Gerberding, AIA
T. Gunny Harboe, AIA

AIA Illinois Director

Alan Madison, AIA

Associate Director

Helen Tsatsos, Assoc. AIA

Professional Affiliate Director

Karen Dilibert

Past President

Thomas Zurowski, AIA

2002 AIA Illinois Delegates

William Bradford, AIA
Thomas Braham, AIA
Hill Burgess, AIA
Christopher Chwedyk, AIA
Angie Lee, AIA (Alternate)
Maureen Reagan, AIA (Alternate)

2002 Professional Interest Areas

Corporate Architects

Laura Fisher, AIA

Design

Daniel Towler-Weese, AIA

Design/Build

Alan Treuthart, AIA

Environment

Edward Heinen, AIA

Health

James Mladucky, AIA

Historic Resources

Robert Score, AIA

Housing

Robert Pfauth, AIA

Information Technology

Gaute Grindheim, Assoc. AIA

Interior Architecture

Mark Hiron, AIA

Office Practice

Barry Koren, AIA

Planning & Urban Affairs

Douglas Schroeder, FAIA

Technical Issues

Gregory Tornatore, AIA

Young Architects

Mary Brush, AIA

Chapter Staff

Executive Director

Alice Sinkevitch, Hon. AIA

**Membership Coordinator/
Assistant to the Director**

Jamie Juliano

Program Director

Joan Pomaranc

Communications Director

Susan Larson

Financial Manager

Crystal Gagler

Public Information Receptionist

Linda Freeman

Documents Clerk

Phillip Rahill

■ Inside Mold: The Coming Liability Trap



Association Forum at NeoCon
 Mon., June 10, 9:30 to 11:30 a.m.
 Holiday Inn Chicago Mart Plaza
 350 N. Orleans St.
 Sponsor: AIA Chicago

Much of the risk caused by the increased legal sensitivity to mold can be mitigated through good management practices:

- preventing water infiltration
- putting contractual responsibility at the levels where mismanagement (such as incorporating wet materials or creating damaging site drainage situations) leads to long-term problems
- communicating with clients how improper construction management and installation procedures can lead to mold problems
- making sure clients understand the design process and the designer's role during construction

Speakers will be Frank Musica, Esq., Assoc. AIA, risk management attorney for Victor O. Schinnerer & Company, and Gary Crawford, certified industrial hygienist, Boelter & Yates, Inc. Co-sponsored by AIA Trust and Schinnerer & Company Cost: \$50 AIA members; \$75 nonmembers. Register through AIA Chicago or through NeoCon at www.mmart.com/neocon or 800/677-6278. (It is not necessary to register for NeoCon in order to attend this program.) 2 LU/HSW

■ Planning the Gary/Chicago Airport



Wed., June 12, 12:00 noon
 AIA Chicago
 Sponsor: Planning & Urban Affairs PIA

Paul Karas, manager of the Gary/Chicago Airport, speaks about plans for the north-west Indiana airport's role in the Chicago regional transportation system. Learn more about the airport at www.garychicagoairport.com. 1 LU

■ Northwestern vs. Chicago: Real Estate Challenge!



Wed., June 12, 5:30 p.m.
 AIA Chicago
 Sponsor: Corporate Architects PIA

Teams from the business schools at Northwestern University and the University of Chicago will present solutions to the 2002 Real Estate Challenge: a plan for the adaptive re-use of the Supreme Life Building, 3501 S. King Drive, in the Bronzeville community. A representative of the Corporate Architects PIA will serve on the jury for this competition. 1 LU

■ Tour: LaRabida Children's Hospital and Research Center



Wed., June 12, 5:30 to 7:00 p.m.
 6501 S. Promontory Dr./E. 65th at Lake Michigan (meet in library)
 Sponsor: Architecture for Health PIA

Fabio Grego, AIA, project manager at VOA Associates, and Brenda Wolf, director of external affairs for LaRabida Children's Hospital, lead a tour of the new inpatient unit, a study in keeping a health-care facility operational while under construction on all sides. Limit 30 participants. Bring a hardhat. 1.5 LU/HSW

■ Marquette Building Cornice Recreation



Thurs., June 13, 12:00 noon
 AIA Chicago
 Sponsor: Historic Resources PIA

Like many 19th century downtown buildings, the Marquette Building, 140 S. Dearborn St., had its cornice removed in the 1950s. Now it's coming back. Robert Score, AIA of McClier and Mark Kuberski of Central Building Preservation, present the design, fabrication and installation of the recreated cornice, made of glass fiber and reinforced concrete panels. 1 LU

continued on page 4

Sign Me Up!

- 6/10 Inside Mold (\$50m/\$75nm)
- 6/12 Planning the Gary/Chicago Airport
- 6/12 Real Estate Challenge
- 6/12 Tour: LaRabida Children's Hospital
- 6/13 Marquette Building Cornice Recreation
- 6/13 Housing Diversity
- 6/19 Don't Get Caught in the Web!
- 7/10 Airport-Highway-Rail Grid
- 7/10 Dealing with the C's
- 7/11 Preservation After Nisqually Quake
- 7/15 Door and Hardware Security Summit
- 7/16 Pushing the Envelope
- 7/19 Hands-on Masonry
 - Will ride bus.
- 7/20 Milwaukee Museum of Art and More (\$50 members/\$60 non-members)

Name _____
 Office _____
 Address _____
 City _____
 Phone _____
 E-mail _____

All programs listed above are free or as noted for AIA Chicago members. Non-members will be charged \$10 per program or as noted.

Method of Payment

- Check
 American Express Visa MasterCard

Credit Card No. _____
 Expiration Date _____
 Name on Card _____
 Signature _____

Fax to:
AIA Chicago
 312/670-2422

■ **Housing Diversity: Act Three**



Thurs., June 13, 6:00 p.m.
Pappageorge/Haymes
814 N. Franklin St., #400
Sponsor: Housing PIA

Long recognized as a leader in Chicago-area housing design, Pappageorge/Haymes will be featured in the third installment of our popular series. Meet some of the leaders of this venerable practice, tour their office, and see how their residential designs respond to varying segments of the continually shifting American housing market. Light refreshments will be provided. 1.5 LU/HSW

■ **Don't Get Caught in the Web!**



Wed., June 19, 5:30 p.m.
AIA Chicago
Sponsor: Office Practice and Information Technology PIAs

Kristine Fallon, FAIA has been a pioneer in applying information technology to architecture, engineering and facility management since the 1970s. She provides an introduction to untangling Web implementation in the AEC field. 1 LU

■ **Tour: Urban Canoe Adventure with Friends of the Chicago River**



Sat., June 29, 11:00 a.m. to 2:00 p.m.
Chicago River at Clark Park
3400 N. Rockwell St.
Sponsor: Environment PIA

Sorry, this popular event is full.

■ **Developing the Regional Airport-Highway-Rail Grid**



Wed., July 10, 12:00 noon
AIA Chicago
Sponsor: Planning and Urban Affairs PIA

Chicago-based freelance journalist and regional policy consultant Robert Heuer will discuss the opportunities for architects to work in the transportation sector. 1 LU/HSW

■ **Dealing with the Cs: CEO, CFO, COO**



Wed., July 10, 5:30 p.m.
Knoll, #1111, Merchandise Mart
Sponsor: Corporate Architects PIA

How do you reach high-level decision-makers? Mike Clardy of Knoll will present a seminar on identifying specific techniques that can open the doors of executives to your firm. Learn what's important to executives and what is not, what to talk about once you're inside the door, and how to enhance your ability to market architectural services to corporations. 1 LU

■ **Preservation Issues After the Nisqually Earthquake**



Thurs., July 11, 12:00 noon
AIA Chicago
Sponsor: Historic Resources PIA

Doug Gilbert, AIA, McClier, will present his work with the Federal Emergency Management Agency (FEMA), following the Nisqually earthquake of 2001, including reviewing proposals to restore structures at Washington State Capital Campus and Seattle's Pioneer Square. 1 LU/HSW

■ **Tour: North Lakefront by Bike**



Sat., July 13; 8:15 to 8:45 a.m. (registration); 9:00 a.m. to 1:00 p.m. (ride)
Meet at the totem pole at Addison Street in Lincoln Park
Sponsor: Environment PIA

Join the Lake Michigan Federation's 10-mile bicycle tour along the lakefront and learn about current shoreline development plans as well as areas designated for natural restoration. \$8 LMF members; \$10 non-members. RSVP to Debbie Musiker at 312/939-0838, ext. 6 or dmusiker@lakemichigan.org. Let PIA Chair Ed Heinen know you'll be there, eheinen@dlkinc.com. 2 LU/HSW

■ **Door and Hardware Institute Security Summit**



Mon., July 15
Navy Pier Convention Center
9:00 a.m. (trade show opens)
11:30 a.m. (lunch)
1:00 to 3:00 p.m. (program)
Sponsor: Technical Issues PIA

Attend a session at the DHI annual convention. Topics to be covered: basic, cost-effective methods for increasing facility security; how to see the big picture in evaluating security measures; facts about school and workplace violence; preventative measures and crisis preparedness policies; pros and cons of certain high-profile barriers. DHI is a CES Registered Provider.

■ **Pushing the Envelope: Innovation in Design Practice, Step 3 - Systems and Technology**



Tues., July 16, 5:30 p.m.
AIA Chicago
Sponsor: Design PIA

"Systems and Technology" is the third step in our look at local firms bringing new thinking to the five steps of the building process. Structural engineers John Dasoqi, SE, John Kissinger, SE, and Loei Badreddine, SE from Graef Anhalt Schloemer will discuss their collaboration with architects on the Milwaukee Art Museum addition designed by Santiago Calatrava. Christopher Rockey, SE, AIA, Skidmore Owings and Merrill, will present several projects designed by Frank Gehry, FAIA, including Bilbao Guggenheim and Millennium Park Bridge in Chicago. In each, the structural system played a crucial role in making an unconventional building possible. Dan Wheeler, FAIA, Wheeler Kearns Architects, and Joe Burns, PE, SE, AIA, Thornton-Tomasetti Engineers/LZA Technology, will respond and lead a discussion. 1.5 LU/HSW

■ **Masonry Hands-On Experience**



Fri., July 19

Masonry Training Center
1950 W. 43rd St.

Bus leaves south entrance of
Merchandise Mart at 11:30 sharp and
returns at 2:30 p.m.

Sponsor: Young Architects PIA

Learn the fundamentals of bricklaying by building mock-ups under the supervision of journeymen bricklayers at the training center. See how the components of a cavity wall fit together, pick up a trowel and get the feel of the materials, or just watch and learn.

Sponsored by the International Masonry Institute which will provide trowels, lunches, and transportation to and from the Merchandise Mart. If driving, arrive at training center by 12:00 noon. Wear jeans and work boots. Limit 40 participants.
2 LU/HSW

■ **Milwaukee Museum of Art and More**



Sat., July 20

Meet bus at 8:00 a.m. at the Merchandise Mart (south entrance) or 8:30 a.m. at Edens Plaza, Lake Street at Edens Expwy. (parking lot north of Carson Pirie Scott)

Sponsors: Interior Architecture and Design PIAs

Cost: \$50 members/\$60 non-members

A tour of Santiago Calatrava's new addition to the Museum of Art highlights this bus tour to Milwaukee. See the brise soleil, the parking gallery, and the cable-stayed bridge as well as the galleries with representatives of structural engineers Graef Anhalt Schloemer and associate architects Kahler Slater. Lunch will be at the Boulevard Inn, located near the Museum in an elegant Holabird & Root apartment tower from 1929. Early afternoon will be devoted to a short tour of the most notable buildings in downtown, including the newly restored 1898 Beaux Arts-style public library and the Grand Avenue Arcade (1916) by Holabird & Roche. 2 LU/HSW

What to do? How to do it?

Kristine Fallon Associates, Inc.

<http://www.kfa-inc.com>

Hardware
Software
Networks
Internet

30 East Adams Street, Suite 600

Chicago, IL 60603-5609

312-641-9339 (voice)

312-641-9337 (fax)

kfainc@kfa-inc.com

Get it done. Keep it going.



*Old World Elegance
for Today's World*

Step back in time and experience the Ultratex Granites Old World Paver Designer Series. Colors and texture create the rich, elegant look of flamed granite, but the beauty is an added feature to the durability and practicality of this paver group. Ultratex is available in three shapes to form unique configurations for residential and commercial applications. Our palette of five permanent colors offer unlimited design opportunities from old world to new age. For more information on this timeless product, call 1.800.886.4149 or visit our website, we think you'll be taken back!



BEND

INDUSTRIES
www.bendindustries.com



11



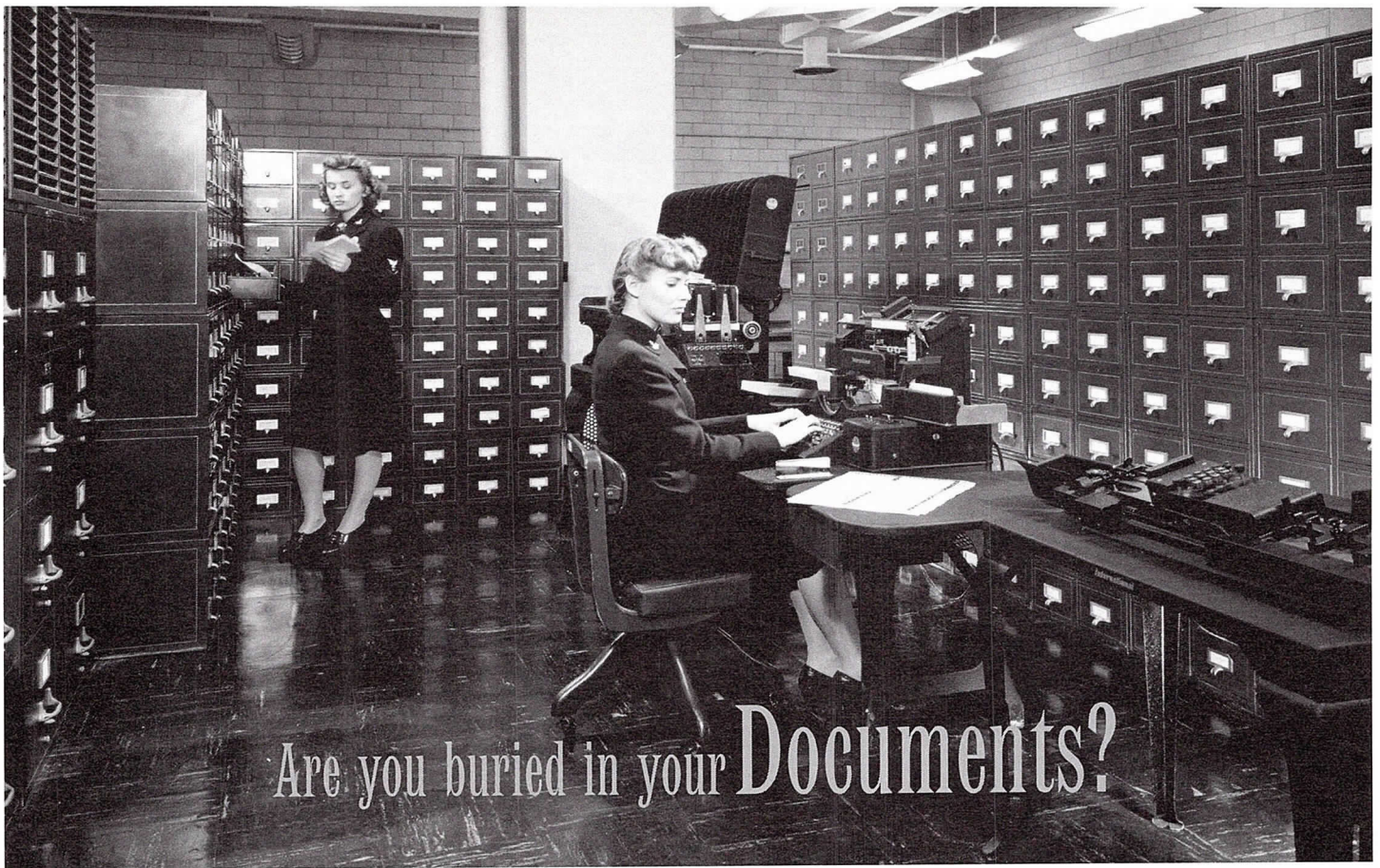
HILL MECHANICAL GROUP

CHICAGO'S PROVEN DESIGN-BUILD SPECIALISTS

We're proud to be Illinois' largest HVAC contractor, and prouder yet that design-build now encompasses more than one-third of our annual volume. Trust our professional team of 30 graduate engineers to save critical project time while delivering cost effective system configuration and construction ...

it's where we've put our energy for over 65 years!

To discuss your needs contact Warren Hill, P.E, President: 773.929-6600



Are you buried in your Documents?



Better service through superior technology



Digital Imaging Resources, Inc.

650 West Lake Street #120 • Chicago, IL 60661 • www.dirinc.com

Phone 312.243.1250 • Fax 312.243.1590

Municipalities Enlist Exclusive Internet-Based Procurement Notification Process

More and more local municipalities are coordinating their procurement process through www.municipalnet.com. Firms must register with the service in order to be notified of upcoming bids. Basic registration is free and can be completed online. According to information received by AIA Chicago, as of the end of May, unregistered suppliers will not receive bid notices. If you do not have Internet access, bid notices will be faxed to you. Call MunicipalNet toll-free at 866/686-4266 for a registration form.

Eligible Members Invited to Apply for AIA Fellow Status

The Chapter has scheduled an informational meeting on the process of joining the AIA College of Fellows. Architects who have been members of the Institute for at least 10 years can apply. Carol Ross Barney, FAIA and Robin Lee, national AIA director of honors and awards, will discuss the application process on Thursday, June 20 at 5:00 p.m. at the AIA Chicago office. Samples of winning submissions will be available for reference. To view a list of Chicago Fellows, visit www.aiachicago.org under "About AIA Chicago."

Jurors Named for Annual Design Awards

AIA Chicago has finalized the jurors for the 2002 Design Excellence Awards. The Distinguished Building Awards will be judged by Edward Weinstein, FAIA of Weinstein Copeland Architects in Seattle; Suman Sorg, FAIA of Sorg & Associates in Washington, D.C.; and Craig Hodgetts of Hodgetts + Fung Design Associates in Culver City, CA. The jury for the Interior Architecture Awards is comprised of Richard Pollack, FAIA, FIIDA of Richard Pollack & Associates in San Francisco; Stephen Swicegood, AIA of Idea/Span in Atlanta; and Barbara Hillier, AIA of The Hillier Group in Princeton, NJ. The jury for the Unbuilt Design Award is made up of local members and will be named at a later date.

ARCHITEMPS, INC.[®]

ARCHITEMPS, INC. – the Architectural & Interior Design staffing specialists, serving greater metropolitan Chicago since 1986.

Quality staffing, service and solutions:

- Design/Production Drafters
- Facility Planners
- CAD Architects/Interior Designers
- Project Managers

Our billing includes all employer liability:

- Payroll Administration
- Employee Benefits
- Government Compliance
- State & Federal Tax Remittance
- Workers' Compensation Coverage

ARCHITEMPS, INC.[®]
1050 North State Street
Chicago, IL 60610-7829

Tel: 312.649.0912
Fax: 312.649.1667
ARCHITEMPS@aol.com
www.architemps.com

Architectural, interior design and facility planning personnel on a per-project basis. Direct hire conversion and direct placement available. Call today for information on our staffing services or employment opportunities.

Video Course Fulfills Florida Licensure Requirement

A new video presentation of the Florida Building Code core curriculum is available from AIA Florida, allowing architects who are licensed in the state to meet the requirements of Florida Statute 553.841 and earn four learning units of AIA continuing education credit. As reported in the May issue of *Focus*, all registered design professionals with Florida licenses must complete a four-hour course about the Florida Building Code by June 1, 2003. The video package includes the video seminar, handouts, a CD-Rom, and a workbook and quiz. The cost is \$125 for AIA members and \$175 for non-members. Call AIA Florida at 850/222-7590 for information and an order form.

Book Series Covers Business Essentials

The AIA and John Wiley & Sons have published a new series of business guides for architects. The *Architect's Essentials of Professional Practice* includes three titles covering ownership transition, cost management, and contract negotiation. Forthcoming books in the series will cover presentation skills and starting a design firm. For details and to order, visit the "Contract Documents and Books" section of www.aiachicago.org.

ARE Review Classes

AIA Chicago is offering two review programs for the ARE — an eight-session review of the General Structures and Lateral Forces divisions of the six-part Multiple-Choice Divisions in June and in July, a weekend review of the three Graphic Divisions: Site Planning, Building Planning and Building Technology. Visit www.aiachicago.org for complete details and to register.

“ I chose my insurance agent for the same reason my clients choose me: experience.

” Experience is the DPIC difference.

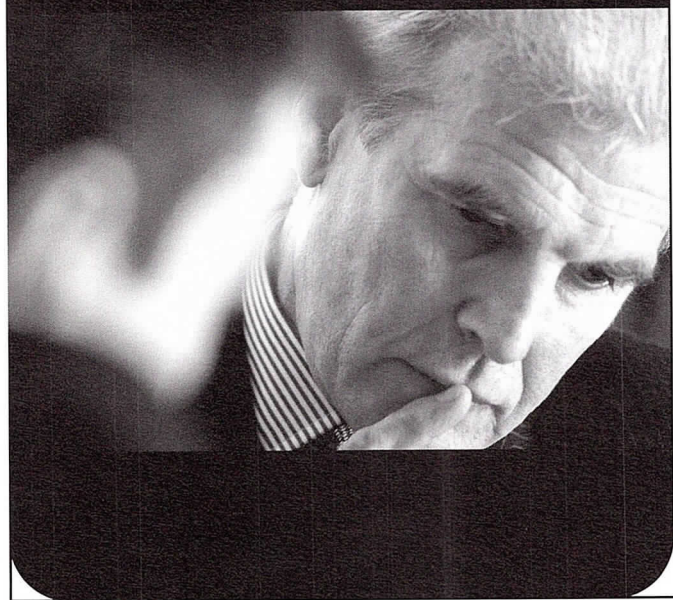
Combine DPIC's 30 years of dedication to the architect, engineer and environmental market with the expertise of our local brokers, and you get the benefit of the industry's most qualified professional liability experts.

From ongoing education in how to manage risk to new ideas in practice management and smarter dispute resolution that protects your interest, we'll help you realize a better return on your firm's insurance investment.

Contact us today for more information.

Hobbs Group/
AVA Insurance Agency
847-517-8900
www.AVAins.com


A DIFFERENCE THAT DELIVERS™



From Projects to Neighborhoods

The Transformation of Public Housing in Chicago

By Laurie McGovern Petersen

A new chapter in the history of public housing is being written all around the country, but nowhere as dramatically as in Chicago. A half-century of housing poor families in massive high-rises that sprawl across vast empty spaces is coming to an end.

Traditional notions of streetscape and neighborhood design are being used to create new, mixed-income communities in place of the old housing projects.

How will this ambitious goal be realized? The Chicago Housing Authority (CHA) is in the third year of a 10-year "Plan for Transformation" that will cost \$1.6 billion. After being taken over by the federal government, the agency reverted to City control in 1999 and came up with a plan of sweeping changes in almost all aspects of its operations. The goal is to demolish all CHA high-rises meant for families and replace them with units that are interspersed with market-rate and affordable housing. (Senior high-rises are slated for repair and rehabilitation). A different development team is chosen for each project to avoid a one-size-fits-all approach.

According to Lee Bey, Mayor Daley's deputy chief of staff for planning and design, architects have a crucial role in all this. "It's the most important design

story in the City since the World's Fair of 1893," he asserts, "because good design is critical to the success of these new communities." Some projects have the advantage of highly desirable locations; in other areas, high-quality design will be needed to attract market-rate buyers. The ambiance of traditional Chicago neighborhoods, with their front stoops, well-detailed facades, and humanely-scaled blocks, will be carried into these new communities, while the architecture itself can be modernist or historic.

What follows is a portfolio of some of the many projects currently on the boards, with information accurate as of press time and therefore subject to change.

Laurie McGovern Petersen is contributing editor of Focus.

More to Come

Many other redevelopment projects are in various stages of planning. They include:

- ABLA
- Clarence Darrow
- Drexel Boulevard
- Madden/Wells
- Rockwell Gardens
- Robert Taylor

Members are invited to submit images and information on projects they are working on for a follow-up feature in an upcoming issue of *Focus*.



Courtesy Campbell Tiu Campbell

Lake Park Crescent

Location: Lake Park Avenue to the train tracks; 40th Street to 42nd Place

Size: 490 units on 17 acres (of the 32-acre Lakefront Properties TIF district)

Building Types:

Phase I (40th Street to 41st Place): 22 rowhouses and two eight-story mid-rises

Phase II: 49 duplex townhouses and 23 six-flats

Phase III: 14-story high-rise

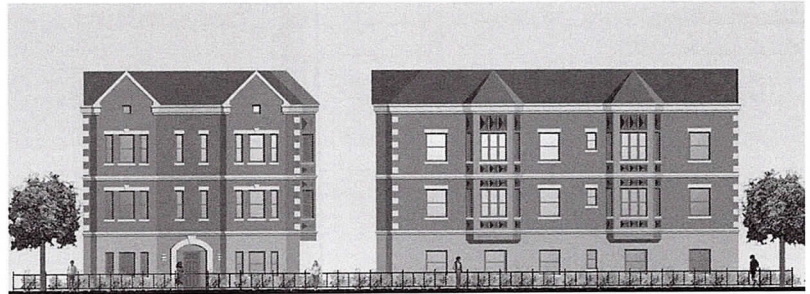
Market Mix: 248 for-sale units (197 market rate, 51 affordable); 242 rental units (51 market rate, 71 affordable, 120 CHA replacement units)

Amenities: 2.85-acre park, to be owned and maintained by Chicago Park District. Lake access at 43rd Street

Developer: Draper & Kramer

Owner: The CHA is retaining ownership of the land and leasing it to Draper & Kramer for 99 years.

Planners: Chicago Consultants Studio (master planner)

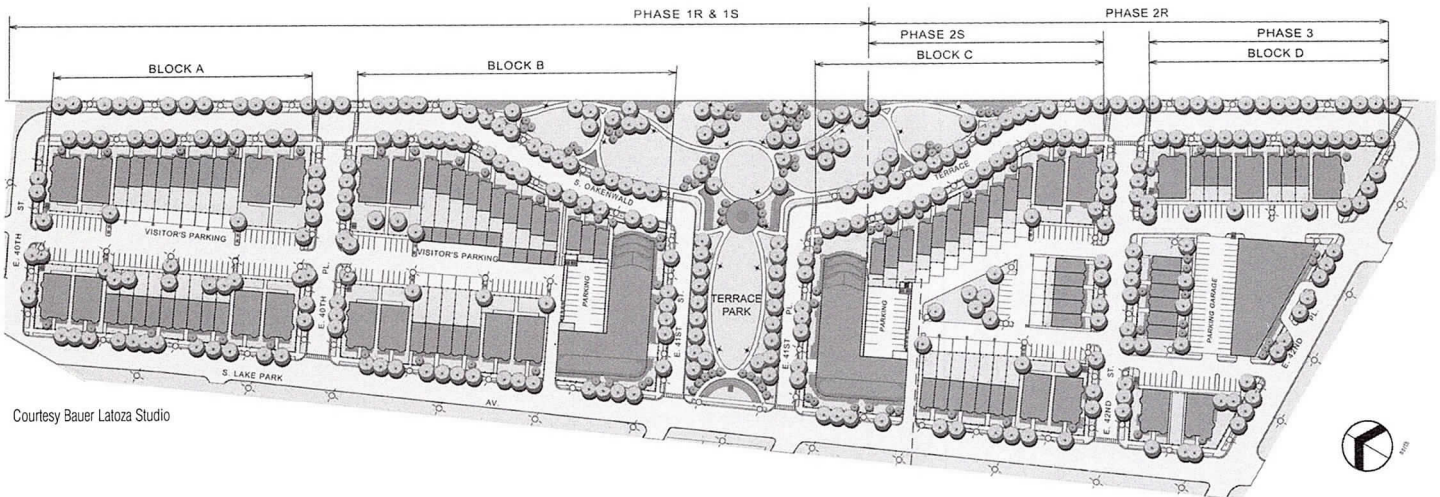


Courtesy Nia Architects

Architects: Campbell Tiu Campbell (master architect)
 Campbell Tiu Campbell for two mid-rises
 JH Design for duplex townhouses and rowhouses
 Ray/Dawson P.C. and Nia Architects for six-flats
 Booth Hansen Associates for 14-story building
 Bauer Latoza Studio is landscape architect for buildings and park

Status/Timetable: Construction to begin this fall, with first occupancies in March 2003 and final project completion expected spring 2007.

The design is responsive to the input of the North Kenwood/Oakland Conservation Council, which requested masonry (preferably brick) construction and stoops to reflect the buildings across the street to the west. New infrastructure includes reconstruction of Oakenwald Avenue and building new streets at 40th Place and 42nd Street.



Courtesy Bauer Latoza Studio



North Town (Cabrini-Green Redevelopment Area)

- 1** **Walter Payton College Preparatory High School**
1034 N. Wells St.
Managing Architect: DeStefano and Partners
Architect of Record: Mann, Gin, Dubin & Frazier
Status: Completed 2000

Jenner Academy

1119 N. Cleveland Ave.

Managing Architect: DeStefano and Partners

Architect of Record: Heard Associates

Status: Completed 2000

- 2** **Chicago Public Library Near North Branch**
310 W. Division St.
Design/Builder: George Sollitt Construction
Design Architect: Interactive Design (prototype designed by Joan Jackson, AIA)
Architect of Record: Premier
Status: Completed 1997

- 3** **18th District Police Station**
1160 N. Larrabee St.
Architect: Environ (based on a prototype created by OWP/P)
Status: Completed 2001

Old Town Square Shopping Center

424 W. Division St.

Developer: MCL Companies

Architect: Roy H. Kruse + Associates

Status: Completed 1998

- 4** **North Town Village**
Halsted Street and Evergreen Avenue
261 units on seven acres
Building Types: Townhouses, eight-flats, six-flats, and a seven-story building
Market Mix: 50% market-rate homes, 30% CHA replacement units, 20% affordable; 116 total rental units

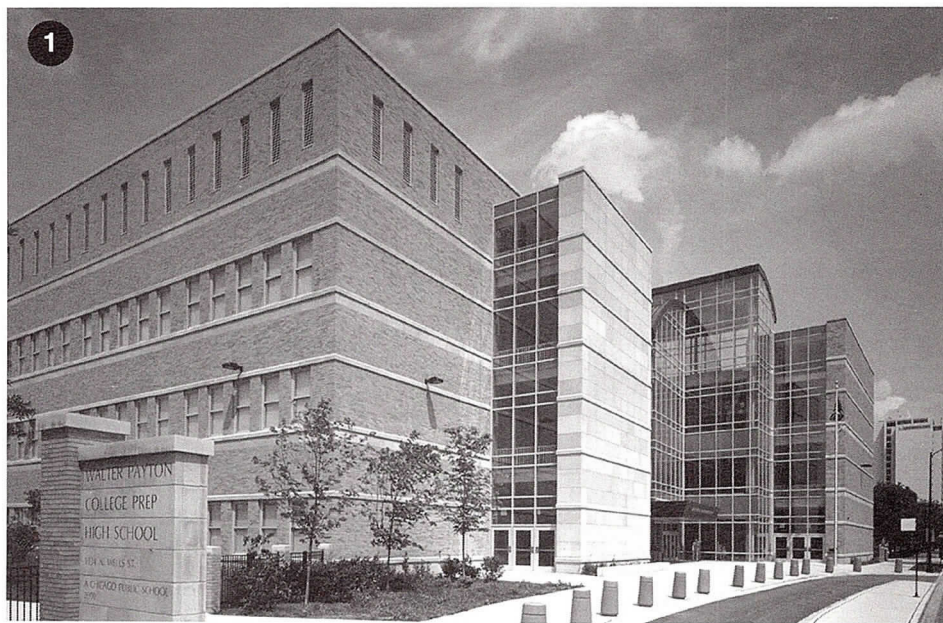


Photo Barbara Karant, Karant + Associates; courtesy DeStefano and Partners

Developers: Holsten Real Estate Development Corp. and Kenard Corp.
Planners and Architects: Bauhs Dring Main
Status: First occupancies in 2001; final completion scheduled for 2002

Renaissance North

551 W. North Ave.

59 apartments in a four-story building

Market Mix: All rental; 50% market rate, 30% CHA, 20% affordable

Developer: Renaissance Realty Group (will also own and manage)

Architect: Roy H. Kruse + Associates

Status: Completion scheduled for 2002

North Mohawk Homes

1400 block of Mohawk Street

15 condominiums in five, four-story buildings

Market Mix: Seven sold at market-rate, three sold as affordable housing, five purchased by CHA

Developer: Mohawk Partners (includes Smith & Smith and Monterrey Contractors)

Architect: Smith & Smith

Status: Completed 2001

5 Mohawk North

Mohawk and Larrabee Streets

Building Types: Eight single-family homes, four townhouses, 26 three-flats

Market Mix: All units for sale; 80% market rate, 20% owned by MCL and leased to CHA*

Developer: MCL Companies

Architect: Roy H. Kruse + Associates

Status: Completed 1998

6 Old Town Village East

328-54 W. Division St.

Building Types: Eight single-family homes, 23 townhouses, 139 condominiums in a seven-story building and four-story rowhouses

Market Mix: All units for sale; 80% market rate, 20% owned by MCL and leased to CHA*

Developer: MCL Companies

Architect: Pappageorge/Haymes

Status: Under construction



Photo Paul Schilsmann; courtesy Jackson Architects



Photo Nebajsa Stanic; courtesy Environ

Old Town Village West

635 W. Division St.

Building Types: Eight single-family homes, 126 condominiums in 42 three-flats

Market Mix: All units for sale; 80% market rate, 20% owned by MCL and leased to CHA*

Developer: MCL Companies

Architect: Roy H. Kruse + Associates

Status: In for permit spring 2002

Old Town Square

247 W. Scott St.

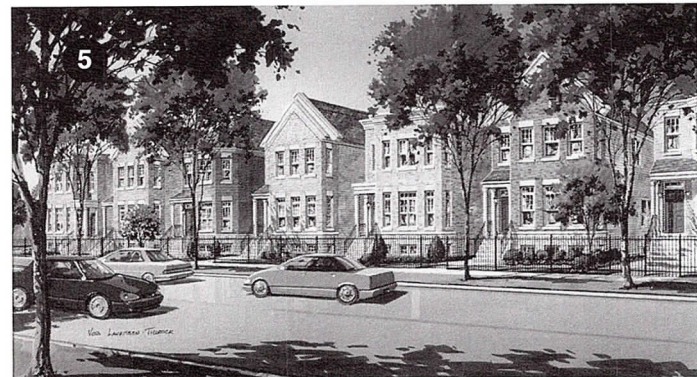
Building Types: 30 single-family homes, 56 townhouses, 44 units in four-story walk-up, 30 units in five-story mid-rise

Market Mix: Market-rate for sale, except for 12 units leased to CHA

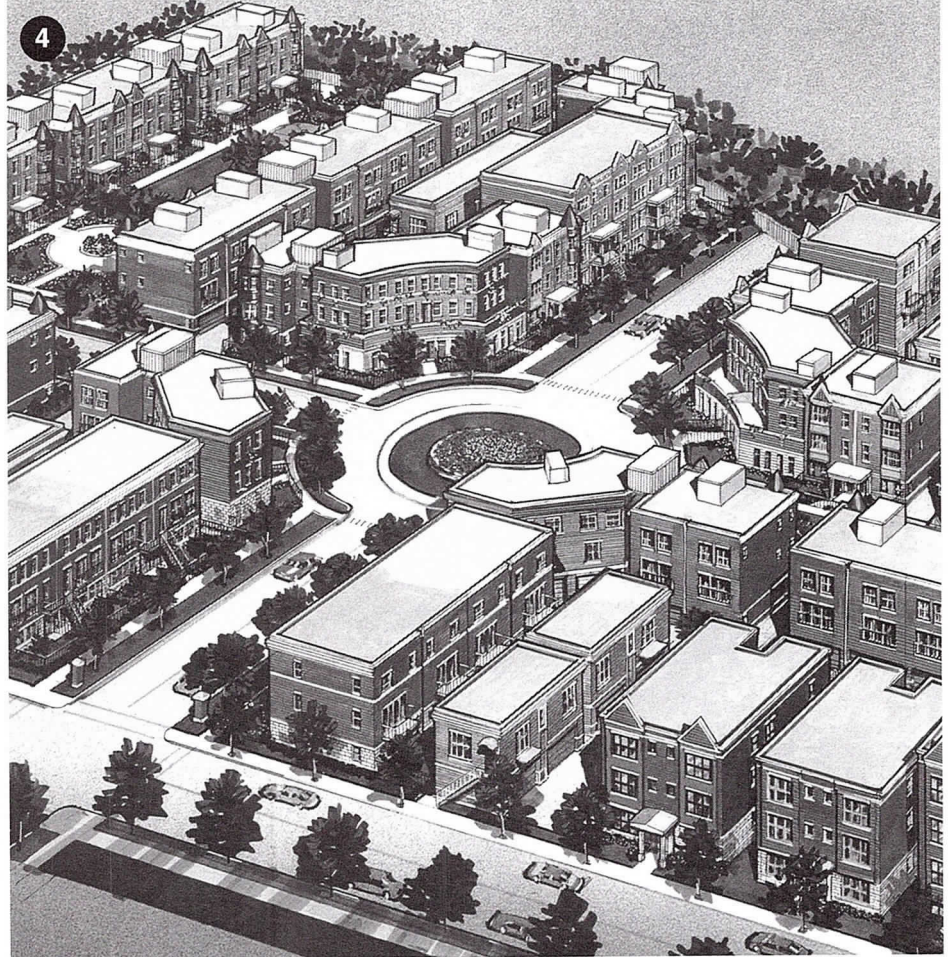
Developer: MCL Companies

Architect: Roy H. Kruse + Associates for single-family homes; Pappageorge/Haymes for all others

Status: Completed 2000



Courtesy MCL Companies



Courtesy Bauhs Dring Main Architects



Courtesy Pappageorge/Haymes

* Twenty percent of the total units developed by MCL Companies will be CHA replacement units; percentage may vary from project to project.

Henry Horner Homes

Location: Lake Street to Washington Boulevard for all phases. Phase I: Damen Avenue to Leavitt Street. Phase IIa: Leavitt to Oakley Streets (west portion) and Hermitage to Wood Streets (east portion); Phase IIb: Wood to Damen Streets

Size: Phase I: 466 units; Phase II: just under 800 units and will include a 2-acre park

Building Types: Phase I: townhouses and flats with duplexes; Phase IIa: 120 units in nine-story mid-rise and 219 units in three- and four-story apartment buildings; Phase IIb will include a seven- to nine-story mid-rise

Market Mix: Phase I: All CHA; Phase II: 50% market-rate (both for-sale and rental); 15% affordable rental; 35% CHA replacement units

Developer: Phase I: The Habitat Company; Phase II: Brinshore Michaels

Owner: CHA owns land and rental buildings

Planners: Phase I: Solomon Cordwell & Buenz and Johnson & Lee; Phase II: Skidmore, Owings & Merrill

Architects: Phase I Block 1 (Leavitt Street to Hoyne Avenue): Solomon Cordwell & Buenz; Phase I Block 2 (Hoyne to Damen Avenues): Johnson & Lee, master architect; Brook Architecture and Hammond Beeby Rupert Ainge, associate architects. Phase II: DeStefano and Partners, executive architect; Urban Works, Smith & Smith, and Brook Architecture, associate architects.

Status/Timetable: Phase I Block 1 completed 1998; Phase I Block 2 completed 1999. Phase IIa: Construction planned to start at the end of summer 2002.

As master architect of Phase I, Block 2, Johnson & Lee felt it important to bring in other firms to provide a variety of architectural signatures. This is the policy being implemented for Phase II, and it is now often found in the CHA's redevelopment guidelines.



Photo Craig Dugan © Hedrich Blessing; courtesy Johnson & Lee



Photo Craig Dugan © Hedrich Blessing; courtesy Johnson & Lee



Courtesy DeStefano and Partners

Archer Courts

Location: Archer Avenue to 23rd Street and Stewart Avenue to Princeton Avenue

Size: 147 apartments and 43 townhouses on 4.5 acres

Building Types: 43 townhouses and two, seven-story mid-rises

Market Mix: Townhouses will be sold at market rate under the City of Chicago's Homestart Program, with the exception of four CHA-owned units that will be rented to public housing tenants. The apartments are Section 8 rentals.

Amenities: A new wellness and community center for the rental buildings.

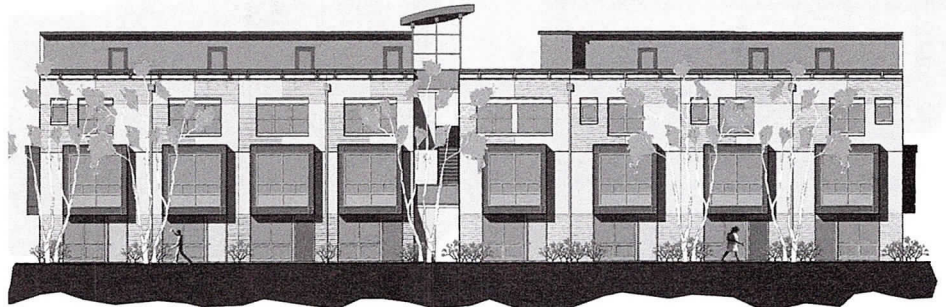
Developer: Chicago Community Development Corporation

Owner: The apartment buildings are on CHA-owned land, but the buildings are owned and operated by the developer. Land for the townhouses was transferred to the City of Chicago from the CHA in return for four of the units. The City will transfer land ownership to the townhouse buyers as the units are sold.

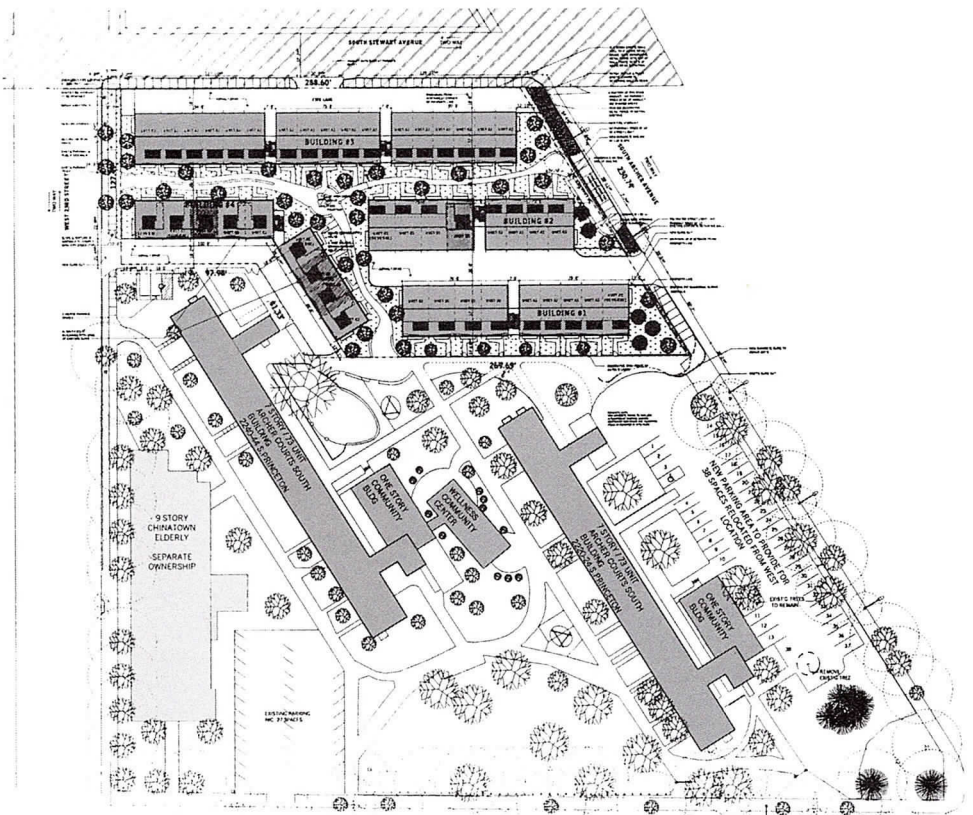
Planners and Architects: Landon Bone Architects

Status/Timetable: Phase I, the redevelopment of Archer Courts Apartments, began in June 1999 and was completed in September 2000. Phase II, Archer Townhouses, begins construction May 2002.

A curtain wall now encloses the former outdoor corridors of the mid-rises, improving the buildings' aesthetics and comfort level. The townhouses are of pre-cast concrete with steel bays. The courtyard of the townhouses is on the central axis between the two mid-rises. The courtyard is a shared green space with a European feeling; private gardens are provided on townhouse rooftops. The high density of the site reflects the desire for density expressed by residents in a series of community meetings. According to Peter Landon, FAIA, "density can be good. This market-rate development has greater density than currently allowed by HUD for affordable housing, and it might help change their minds."



Courtesy Landon Bone Architects



Courtesy Landon Bone Architects

NORTH

Stateway Gardens

Location: State Street from 35th Street to Pershing Road

Size: 885 units on a 38-acre site; 430 units on vacant city-owned parcels east of State Street

Building Types: Townhouses (both single- and multi-family), stacked flats, three-flats, three-story courtyard buildings, and seven-story mid-rises with ground floor retail and office space. A new K-6 elementary school is also planned.

Market Mix: Equally divided into CHA, affordable, and market-rate units, with all buildings having some of each. Half of the units will be owned, 439 at market rate and 240 at affordable rates.

Developer: Stateway Associates (A partnership of the Davis Group, Walsh Construction, Mesa Development and Kimball Hill Homes)

Owner: To be determined

Planners: Skidmore, Owings & Merrill and Johnson & Lee

Architects: Skidmore, Owings & Merrill and Johnson & Lee for low-rise buildings

Status/Timetable: Completion by 2008

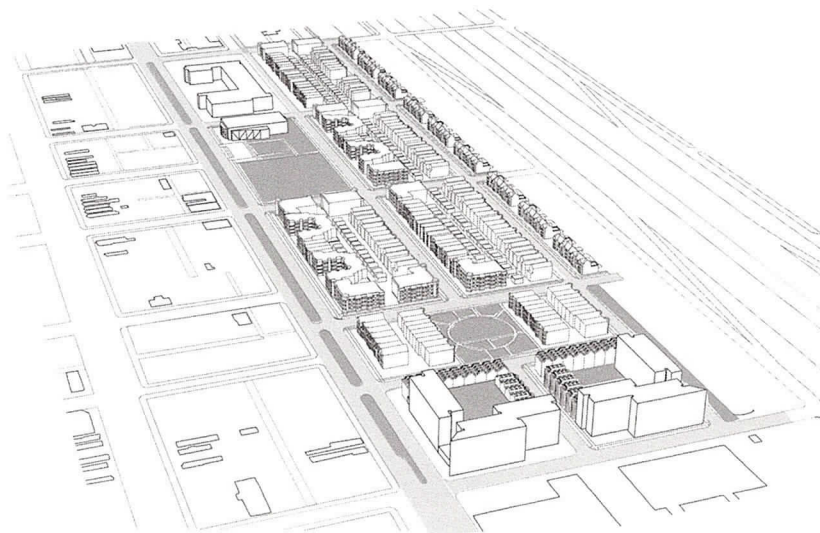
The plan won a 2002 Charter Award from the Congress for New Urbanism. The architects led a four-and-a-half-month public planning process that included input from CHA residents. Key planning principles include reintroducing the street grid and the urban block; finding infill opportunities throughout the neighborhood to blur the project boundaries; adding non-residential uses; creating a variety of unit types and price levels; and eliminating poorly defined open fields in favor of green spaces framed by buildings.



Courtesy Johnson & Lee



Courtesy Skidmore, Owings & Merrill



Courtesy Skidmore, Owings & Merrill



Botti Studio of Architectural Arts, Inc.

919 Grove Street, Evanston, IL 60201

Established 1864

847/869-5933 • Fax: 847/869-5996 • 800/524-7211

www.bottistudio.com • botti@bottistudio.com

Designers/Fabricators • Stained and Faceted Glass • Beveled Glass • Sandblasted • Stained Glass Restoration and Conservation • Protective Glazing • Wood and Metal Frame Restoration • Sculpture • Bronze • Metal • Marble • Mosaic • Interior Renovation • Woodwork • Murals • Painting and Decorating • Custom Sanctuary Furnishings • Stained Glass Consultants to Architects and Churches

Studio Locations

San Diego • Chicago • Sarasota • Agropoli, Italy

760/753-0705 • 847/869-5933 • 941/951-0978

Hilliard Homes Redevelopment

Location: Cermak Road to Cullerton Street/Archer Avenue and State Street to Clark Street

Size: 654 units on 12.5 acres

Building Types: Four high-rises: two 16-story and two 22-story

Market mix: Rental, with 305 public housing units and 349 affordable rental units; the 16-story buildings are senior-only

Amenities: A community center and a mix of quiet gardens as well as activity spaces in a limited-access, park-like setting.

Developer: Holsten Real Estate Development Corp.

Owner: The CHA will retain ownership of the land; Holsten has a 99-year lease and will own and manage the buildings.

Planners and Architects: Lisec & Biederman

Associate Architects: Parkman & Weston Associates

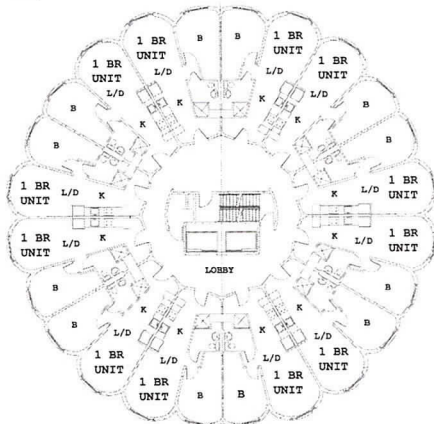
Landscape Architect: Joe Karr & Associates

Status/Timetable: Construction of two buildings to begin this summer, completed in 20 months; balance of project to be complete in four years

Designed by Bertrand Goldberg and completed in 1966, the entire complex is on the National Register of Historic Places. The building shells are of slip-formed concrete. The exteriors are being restored and the interiors gutted and rebuilt. The landscape design is intended to reinforce the original plan designed by Alfred Caldwell.

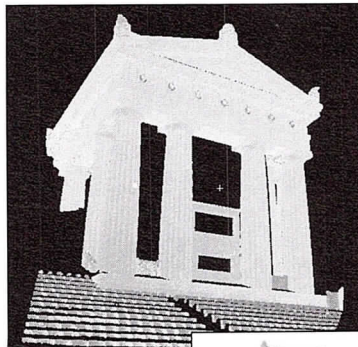


Courtesy Lisec & Biederman



Courtesy Lisec & Biederman

New laser scanning engineering/surveying services from Falk PLI



Falk PLI matches tomorrow's technology to our customers' engineering/surveying needs today. Our new laser scanner is ideal for a variety of design, construction and historical preservation projects. It is the first scanner of its type in the greater Chicago area.

It is lightweight, portable and easy to set up.

Accurate and fast (scanning hundreds of thousands of location points in minutes!).

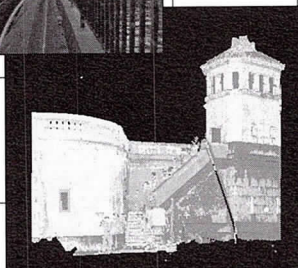
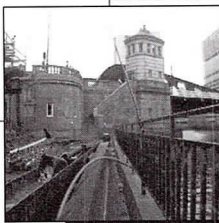
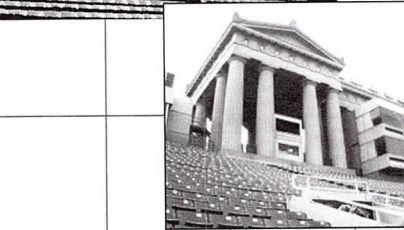
We can scan during construction and upgrades, and we can create detailed diagrams and accurate computerized models of existing facades and facilities.

Falk PLI will become the preferred provider of engineering surveying services.

Falk PLI customers get superior surveying, reverse engineering capabilities, better retrofit designs, as-built surveys and better

project management.

Find out more.



FALK PLI

Engineering & Surveying

5979 McCasland Avenue
Portage, Indiana 46368
Phone: 219-762-7024 ■ Fax: 219-764-4261
Email: falk@crow.net
Internet: www.falk-pli.com

1550-12-4040

© 2002, Falk PLI Engineering & Surveying
Printed in U.S.A.

Give your vision a voice.

Conference Rooms • Meeting Centers • Auditoriums • Videoconferencing Centers
Display Areas/Lobbies • Training Facilities • Classrooms



Beckman Coulter Schaumburg, IL



Milwaukee Art Museum Milwaukee, WI

With a Systems Integration Specialist as your guide, your structure will be able to speak for itself. At MCSi, our presentation technology visionaries collaborate with architectural firms and general contractors as part of a complete design/build solution. These relationships combine integrated technology and specialized design to create state-of-the-art presentation environments that uniquely position our customers. Also, MCSi is an AIA-authorized continuing education provider. Please contact us about our CES – Learning Unit courses. Call Eric Kolkey at **800.876.8298 x2332** or visit **www.mcsinet.com** for more information.

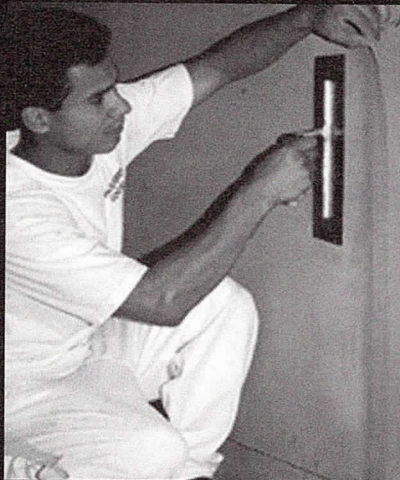


Now your vision has a voice.

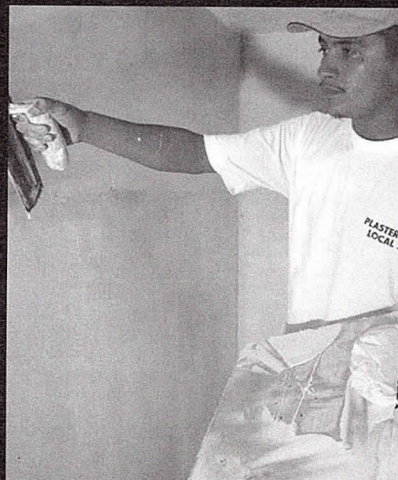
©2002 MCSi, Inc. All rights reserved. MCSi and the MCSi logo are registered trademarks of MCSi. All other trademarks contained in this document are the property of their respective owners.

5/02 D-REG-5000-028

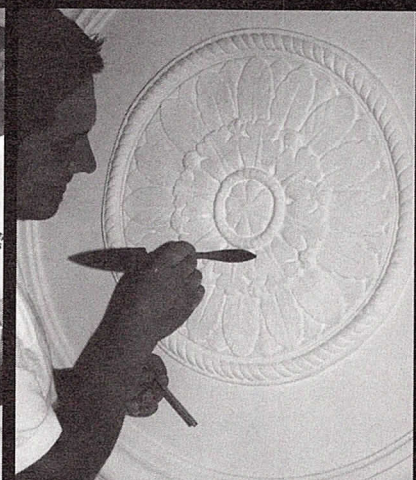
Professional Training Yields Expert Plasterers



Exterior Insulating and Finishing Systems (EIFS) and Stucco



Conventional and Veneer Plaster



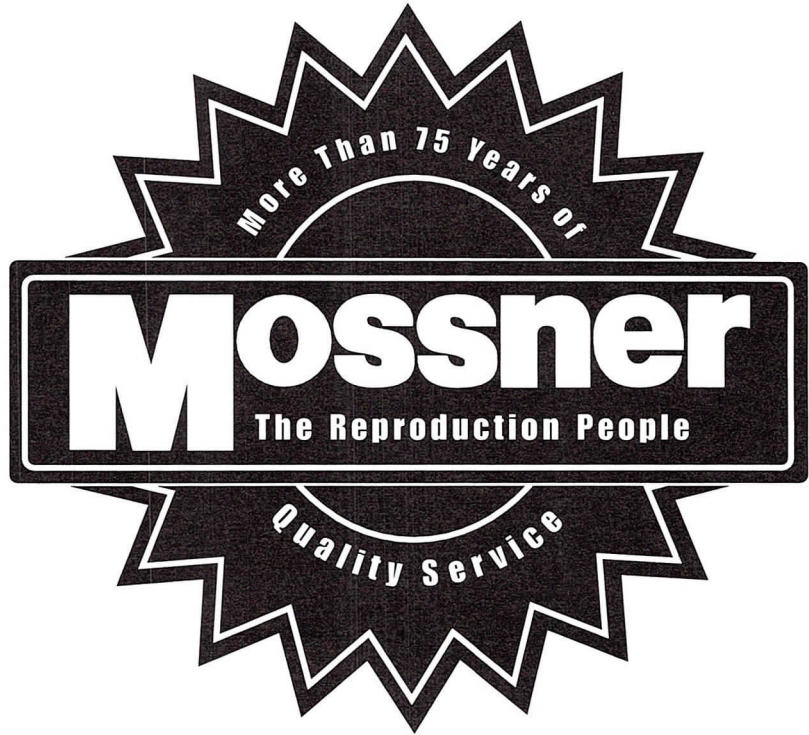
Ornamental Plaster

Call us for information about today's plastering systems and the best people to apply them.



Chicago Plastering Institute
6547 N. Avondale Ave.
Chicago, IL 60631
(773) 774-4500

Mossner
Mossner
Mossner
Mossner
Mossner
Mossner
Mossner
Mossner
Mossner
Mossner
Mossner
Mossner
Mossner
Mossner



- Now offering PlanWell™
- High Speed Digital Blue Printing
- Electronic CAD File Transfer Options
- Digital & Diazo Reproductions (Bond or Vellum)
- Large & Small Color Reproductions
- Drawing Management & Distribution
- Specifications & Document Printing
- Pick-up & Delivery Service

Mossner
THE REPRODUCTION PEOPLE • LARGEST IN THE MIDWEST
200 N. Michigan Avenue • Chicago, IL 60601
PHONE: (312) 372-8600 • FAX: (312) 372-2809 • www.mossner.com

Left to right:
Thomas Battles, AIA;
Jeffrey Conroy, FAIA;
and Randy Guillot, AIA



PEOPLE/FIRMS

Holabird & Root recently promoted **James Baird, AIA** to partner and **Burcin Moehring, AIA** to associate.

The American Concrete Institute has awarded the 2002 Henry C. Turner Medal to **Thomas Battles, AIA**. Battles will retire in October after serving for 15 years as president of the Precast/Prestressed Concrete Institute.

Cannon Design has moved its offices to 30 W. Monroe St., Suite 900 in Chicago.

Hendricksen, The Care of Trees has simplified its company name to **The Care of Trees**. The company is headquartered in Wheeling, with divisions in Washington, D.C., New York, and Philadelphia.

Jeffrey Conroy, FAIA has joined Loeb Schlossman & Hackl as a principal. Conroy will be responsible for the planning and design of higher education and athletic facility projects.

OWP/P has hired **Randy Guillot, AIA** as a principal and the design director of the corporate market and **Theodore Amberg, AIA** as a vice president.

Chicago-based **HLM Design** recently announced that it has joined with HLM Design Limited of the United Kingdom to broaden the firm's international reach. In an amazing coincidence, the two firms, that until now were not related, share the same name.

Oak Brook-based Advanced Technologies Group has hired **Gary Keclik, AIA** as vice president of business development.

David Kuhlman, AIA has been promoted to associate principal at Nagle Hartray Danker Kagan McKay.

Frank Michalski, AIA has opened his own firm, Northlight Architects, which specializes in residential and institutional projects.

Lohan Caprile Goettsch Architects has promoted **Steven Nilles, AIA** and **Lawrence Weldon, AIA** to principal; **Stephen Cavanaugh, AIA** and **Patrick Loughran, AIA** to senior associate; and **Joseph Cliggott, AIA**, **Ming-Chih Lai, AIA**, and **Charles Wittleder, AIA** to associate.

Michael Sauer, AIA has been named a senior associate with ARCON Associates. In his new role, Sauer will serve as director of production.

Any Way It Shapes Up...CTI Delivers

When you need

"CTI was proud to deliver the Dearborn project in record time by industry standards."

~Leo Ford
CTI Customer Service Team Leader

ECONOMY
SPEED
EXPERTISE
APPEAL

Think...precast concrete



Fact: Using architectural precast concrete cladding can reduce enclosure time by as much as 70%.

Fact: CTI has two high-capacity plants, fully supported by local Customer Service Teams, ready to go to work for you. From initial design to delivery...we get it done in the least possible time.

See for yourself why architects are talking about CTI. Let CTI serve up lunch while discussing how they can speed along your next project. To have a box lunch catered for your architectural staff, call Leo Ford at (773) 784-0400.

Choose...CTI

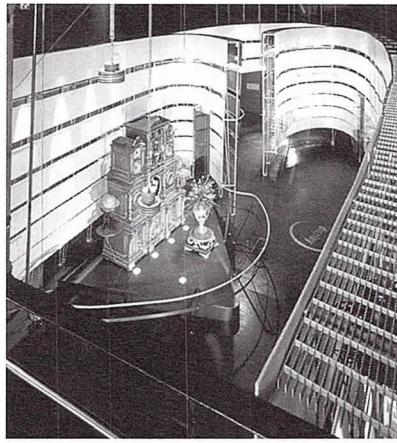
DEARBORN PLAZA
Located at the corner of
Dearborn and Kinzie
Chicago, IL

DESIGN ARCHITECT:
DeStefano + Partners Ltd.
Chicago, IL

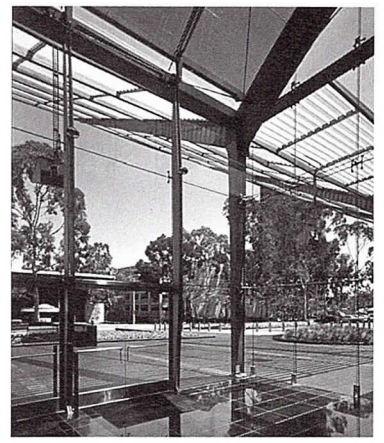


CONCRETE TECHNOLOGY INC. • Paxton, IL and Springboro, OH • Call 800.788.2370

From left to right:
The National Museum
of Time Exhibit and the
Imperial Bank Tower in
Costa Mesa, CA.



Doug Fogelson



John Lindren

Professional affiliate member **David Seide** has opened his own architectural photography studio, Defined Space, offering architectural model photography, construction documentation and site scouting, digital imaging and interior, exterior and aerial photography.

AIA Chicago member **Martin Sterr, AIA** has been promoted to associate principal at Phillips Swager Associates.

Krueck + Sexton Architects named **Tim Tracey, Assoc. AIA** and **Thomas Jacobs, AIA** as associate principals of the firm. Tracey has been with the firm since 1996; Jacobs is returning after several years with Herzog & de Meuron in Switzerland.

William Waterston, AIA has joined Wiss, Janney, Elstner as senior architect for the Chicago office.

AWARDS

Charter/Sills & Associates has won four 2002 International Illumination Design awards from the Chicago chapter of the Illuminating Engineering Society of North America. The projects are: the "Time" exhibit at the Museum of Science and Industry by **Garofalo Architects**; **Valerio Dewalt Train Associates'** corporate headquarters for Turner Construction and the firm's own offices; and the renovation of 175 W. Jackson Blvd. by **Lucien Lagrange and Associates**.

Eleanor Gorski, AIA has been awarded the Rome Prize, a fellowship that enables artists and scholars to live and work at the American Academy in Rome. Gorski is a supervising architect in the Landmarks Division of Chicago's Department of Planning and Development and a member of AIA Chicago's board of directors. The Rome Prize is awarded through an annual, open competition juried by leading artists and scholars in different disciplines. Over 35 individuals were convened into eight different juries to review applications. The annual deadline is November 1. For more information, visit www.aarome.org.

EUCLID

Employers are looking for Key Employees Employees are looking for Key Benefits...

The AIA Chicago 401(k) and Profit Sharing plan can help. This program offers large plan options at a competitive cost -- all with less employer administration time.

The AIA plan uses goal-based software to educate and inform employees about their retirement. Employees can direct their own investments among the top mutual fund managers such as Fidelity, Janus, AIM, Dreyfus, etc...

For more information, please contact:
Jim Lorenz at 630 833-1000
jlorenz@euclidinsurance.com

AIA Chicago 401(k) and Profit Sharing Association Plan

Euclid Insurance Agencies
977 Oaklawn Avenue, Elmhurst, IL 60126

From left to right:
The Center for Advanced
Clinical Studies at the
Methodist Hospitals in
Merrillville, IN and The
Ratner Athletic Center at
the University of Chicago.



The School of Architecture at Washington University in St. Louis has honored **Avram Lothan, AIA** with a Distinguished Alumni Award. A principal of DeStefano and Partners, Lothan has overseen the design of numerous educational and institutional projects, including the renovation and expansion of Alliance Française de Chicago and the Elmhurst Art Museum. Prior to joining DeStefano and Partners, Lothan was a senior designer at Skidmore, Owings and Merrill.

Murphy/Jahn has won the American Institute of Steel Construction's 2002 Innovative Design and Excellence in Architecture with Steel award for the renovation of the Imperial Bank Tower in Costa Mesa, CA. The project was entered in the "Up to \$10 Million" category.

On May 3, the **Women's Architectural League** of Chicago announced the recipients of the group's annual scholarship awards. The winners are Amanda Johanson and Megan Recaut of the Illinois Institute of Technology; Lisa Fricker and Dana Kirsch of the University of Illinois, Urbana-Champaign; and Jennifer Hauser-Lin and Ellen Jenkins of the University of Illinois, Chicago. The Franklin R. Smith Design Award was given to Indraneel Dutta.

PROJECTS

The Midwest Center for Green Technology, designed by **Farr Associates** for the City of Chicago's Department of the Environment, officially opened on May 4. The 35,000-square-foot demonstration project was built to

LEED Platinum standards. It houses Spire Solar, a solar panel manufacturer, and GreenCorps Chicago, a landscape training center. Significant features include high performance HVAC using ground source heat technology, solar panel electrical generation, a green roof, and a bio-swale filtered parking lot.

The renovation of the Schultz Residence by **Harold Forrest Dietrich Architects** has been chosen as a featured project on Home and Garden Television's "Before & After" series. The filming of the renovation began this spring and will continue for one year. This is the second project by the firm to be profiled by the show.

The Chicago office of **HLM Design** has completed the design of the new Center for Advanced Clinical Studies at the Methodist Hospitals in Merrillville, IN. The design of the 96,000-square-foot, three-story addition includes a spiral "vase-like" stair and specialty lighting meant to comfort patients and their families. Construction is expected to be completed within 18 months.

Thorek Hospital and Medical Center will be constructing a new four-story, mixed-use building at the northwest corner of Broadway Avenue and Irving Park Road in Chicago. The building will feature multiple retail tenants on the first floor and professional medical offices on the upper floors. **Stephen Rankin Associates** and Kiferbaum Construction are the design/build team for the 51,000-square-foot project.

CALL FOR ENTRIES

The U.S. Department of Housing and Urban Development is sponsoring the sixth annual **Best in American Living Award**. The award recognizes design excellence produced through cooperative public/private efforts that expand homeownership opportunities for underserved American families. For registration information, call 630/288-8184.

PROFESSIONAL DEVELOPMENT

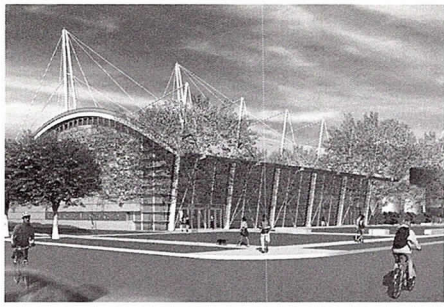
On June 18, the Great Lakes ADA & Accessibility Center is sponsoring **Design Issues in Children's Environments**, a Web-based, "distance learning" seminar highlighting accessibility issues in facilities designed for young children such as schools and day care centers. The web-based seminar begins at 1:00 p.m. (CST) and lasts for one hour. For more information, call 312/413-1407 or visit www.gldbtc.org.

Roofing Solutions for the New Chicago Energy Code

Verisco TPO White Single Ply Membranes
Bakor Modified Bitumen with Acrylic Coatings
Carlisle Coating and Waterproofing for Green Roofing

Please call John Dashner or Randy Zaleski
Ph: 630-668-1551 Fax: 630-668-1672





Courtesy the University of Chicago

Hobbs Group/AVA Insurance Agency and Carnow Conibear & Associates are sponsoring **Mold: Health Effects, Investigation, Remediation and Prevention**, a risk management seminar for design professionals, on Wednesday, June 19 from 9:00 to 11:00 a.m. at AIA Chicago. Reservations are recommended; contact Tom Harkins at 847/571-3453 or tom@avains.com.

The Environmental Protection Agency, in conjunction with AIA Chicago's Environment PIA, is sponsoring a lecture series through 2003. The series uses the U.S. Green Building Council's LEED Rating System as a starting point from which to discuss a wide variety of issues related to sustainable development. **Brownfield Redevelopment** will be held on June 28 and **Healthy Indoor Environments** on July 26. Both workshops take place at the Metcalfe Federal Building, 77 W. Jackson Blvd., from 11:30 a.m. to 1:30 p.m. Advance registration is requested. Call the University of Illinois at Chicago's Great Lakes Center at 312/996-6904. Box lunches are available.

The Society of Marketing Professional Services (SMPS) and the Professional Services Management Association are co-hosting a national conference July 28 through 31 at the Sheraton Chicago Hotel & Towers. The conference includes five educational tracks, focusing on business development, marketing and technology. Programs are eligible for AIA continuing education learning units. For complete details, visit www.smeps.org or call 800/292-7677.

Building for Sustainability, a publication written for the Chicago Community Loan Fund and underwritten by ComEd, is now available at www.cclfchicago.org/pdf/green-guide.pdf. The guide promotes the design and construction of energy efficient affordable housing in Chicago.

VARIOUS MATTERS

Cesar Pelli, FAIA will discuss his new building on the campus of the University of Chicago on June 6 at 6:00 p.m. at the Chicago Architecture Foundation (CAF), 224 S. Michigan Ave. The talk is in conjunction with the exhibit "New Architecture at the University of Chicago" that runs through June 16. Tickets for the lecture are \$35 or \$20 for CAF members and students, faculty and alumni of the University. Prepaid reservations are required. Call 312/922-3432 ext. 909.

Sabo & Zahn

Attorneys at Law

Werner Sabo, FAIA

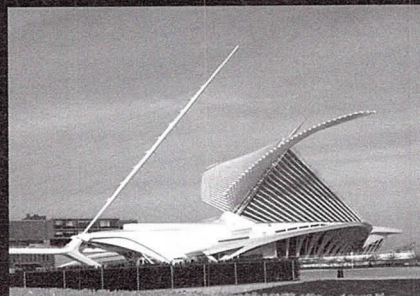
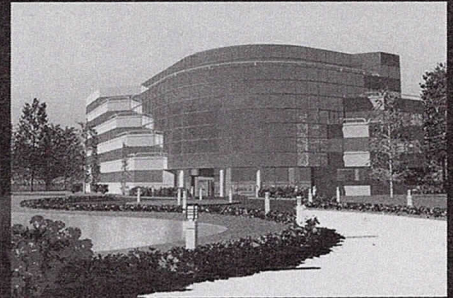
James Zahn, FAIA

Licensing problems, copyrights, business formations, mediation, litigation, arbitration, contracts, real estate construction attorneys

8620 Sears Tower
Chicago, IL 60606

(312) 655-8620
fax: (312) 655-8622

www.sabozahn.com



engineering services provided to our clients include...
Structural
Civil
Environmental
Transportation
Mechanical
Electrical



GRAEF ANHALT SCHLOEMER
and Associates Inc.
engineers & scientists

228 South Wabash Avenue
Suite 700
Chicago, Illinois 60631
312/939-7007
www.gasai.com

also:
Chicago - O'Hare
Milwaukee, Madison,
and Green Bay

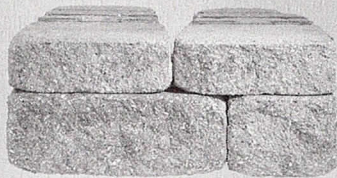
From "Unexpected Chicagoland," a detail on the corner of Cicero and Cornelia Avenues.



Photo: Tom Mennon

18th century character. Modern day construction.

Our new Mosaic® Segmental Retaining Wall has both. Age-old, handcrafted beauty on one hand. Solid, pinned VERSA-LOK technology on the other. It's as simple as that. Mosaic's rustic character stems from its random



pattern and 100%-solid construction—allowing you more design options than you can imagine.

Curves. Corners. Tiers.

Even tall walls. What's more, Mosaic walls are now available in a Weathered™ option for those clients who prefer a more timeworn touch.

Manufactured locally by

BEND
INDUSTRIES

www.bendindustries.com

1-800-886-4149

VERSA-LOK®
Retaining Wall Systems
Solid Solutions.™

www.versa-lok.com

An exhibit featuring projects from the 20th annual **Newhouse Architecture Competition** will be on display from June 7 to 14 at Roosevelt University, 430 S. Michigan Ave. The competition and internship program was started 20 years ago by the late Sen. Richard Newhouse. The program awards Chicago public high school students paid summer internships with local architecture and construction firms. To date, nearly 12,000 students have participated. For more information on the exhibit or the Newhouse Architecture Competition, call the Chicago Architecture Foundation at 312/944-3432 ext. 254.

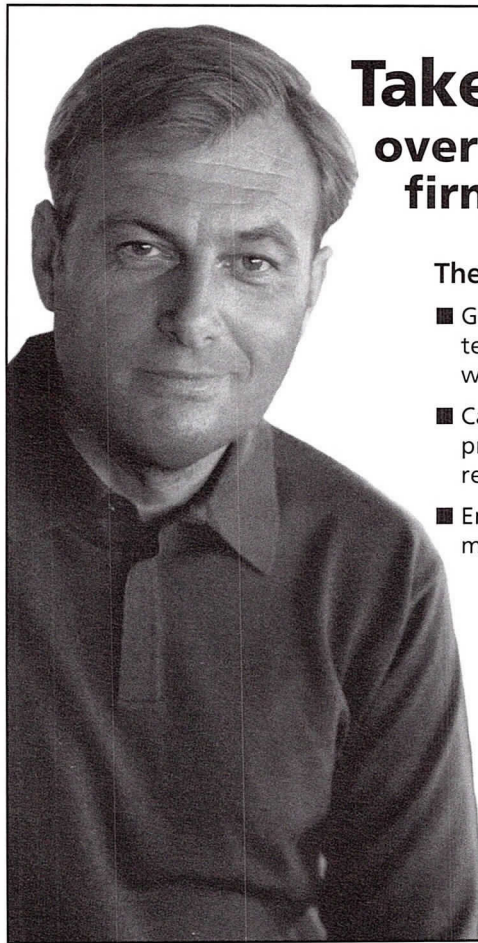
The Landmarks Preservation Council of Illinois is presenting **Infill Housing in Chicago's Landmark Districts** at 12:15 p.m. on June 20 at the Chicago Cultural Center, 77 E. Randolph St., 2nd Floor. Eleanor Gorski, AIA of the Landmarks Division of the Chicago Department of Planning and Development, will present award-winning designs from within the city's landmark districts.

Unexpected Chicagoland, a photo exhibit of lesser-known neighborhood buildings, will be on display from June 27 to September 2 in the Atrium Gallery of the Chicago Architecture Foundation, 224 S. Michigan Ave. The exhibition is based on a book by Tim Samuelson, cultural historian at the Department of Cultural Affairs, and Camilo Vergara, a photographer and sociologist. Call 312/944-3432 for more information.

NEW MEMBERS

AIA

Nancy Becker, Becker Architects; **Joseph Cliggot**, Lohan Caprile Goettsch Architects; **Carol Crandall**, Crandall Ritzu Architects; **Bryce de Reynier**, Perkins + Will; **Brian Hyde**, The Poulton Group; **Ming Chih Lai**, Lohan Caprile Goettsch Architects; **Zygmunt Latka**, H&L Architects; **Hosang Lee**, BCC; **Rosemarie Pardo Eisenberg**, JDL Development; **Erik Sander**, Gensler; **Gracia Maria Shiffrin**, Chicago Department of Planning and Development; **Karl Tabor**, Karl Tabor, Architect; **Timothy Walker**, Mero Structures; **Thomas Weathered**, Oppidan USA; **Craig Williams**, Terabyte; **Tak-Chi Wong**, HDR Architecture



Take Advantage - over 200 architectural firms already have.

The On-Site Services (OSS) Program

- Gain improved, in-house reprographics technology (copiers, printers, plotters) with no purchase or lease.
- Capture all reimbursable expenses by project with our cost recovery and reporting systems.
- Enjoy dedicated customer service in managing your program.

For more on the unique benefits of OSS, contact us at (800) 448-6002, x528, e-mail oss@charrette.com or visit us at charretteprographics.com/onsiteservices.



Emeritus

Wojciech Madeyski, Voy Madeyski Architects; **Lawrence O'Donnell**, OWP/P Architects; **Leonard Peterson**, OWP/P Architects

Associates

Lutz Barndt, VOA Associates; **Nathan Bavolek**, Alberts Associates; **Michael Cipriani**, VOA Associates; **Curtis Clay**, VOA Associates; **Amy Coffman Phillips**, VOA Associates; **Victoris Navarro**, VOA Associates; **James Wild**, Gensler

Professional Affiliates

Thomas Arey, P.E., J. Paul Group; **Barry Baughman**, Parksite Surfaces; **Andrew Nelson**, A.G. Nelson Inc.

Students

Alex Giangrande, Illinois Institute of Technology; **Dennis Iodice**, Harrington Institute of Interior Design; **Sara Miller**, University of Illinois at Chicago

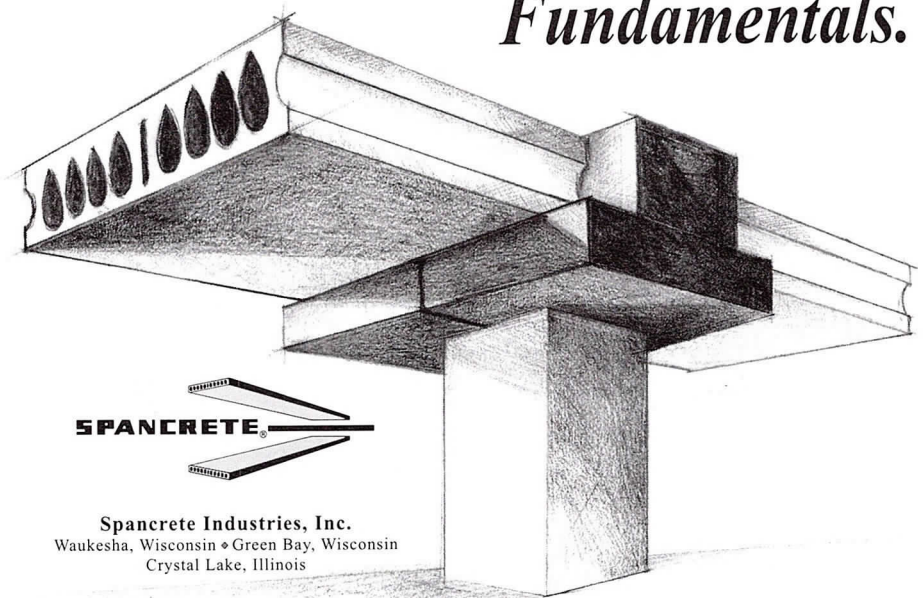
Submit Notebook announcements to Susan Larson, at larsons@aiachicago.org or AIA Chicago, 222 Merchandise Mart Plaza, Suite 1049, Chicago, IL 60654. The deadline is the first working day of the month preceding publication. Renderings, elevations and photographs are requested; call Susan Larson at 312/670-7770 for details.

Online With AIArchitect

The AIA's member newsletter, *AIArchitect*, is published in an electronic format only. If you do not receive the online newsletter automatically and would like to, send your name, member number, and e-mail address (old and new if there is a need to make a change) to infocentral@aia.org. The newsletter also can be viewed at www.aia.org by members who have logged in.

Beam Column Plank

Fundamentals.



Spancrete Industries, Inc.
Waukesha, Wisconsin • Green Bay, Wisconsin
Crystal Lake, Illinois

Telephone: 414-290-9000 Facsimile: 414-290-9125
www.spancrete.com e-mail: info@spancrete.com

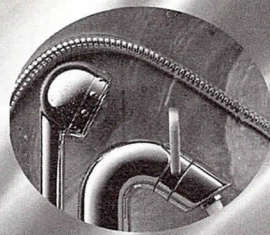


Original
Design
Deserves
Original
Documents.

Order today.

www.aiachicago.org

312/670-7770



Bathrooms
with the Ultimate Finish.
Kitchens
with the Finishing Touch.

American Standard, Duravit, Porcher,
Toto, Kallista, Granite, Corian,
Dornbracht, Jado, Hansgrohe, Grohe,
Herbeau, KWC, Elkay, Blanco, Bertch,
Schrock, Baldwin, Jacuzzi, Pearl,
Robern and Hastings.

Advantage kitchen & bath
Find it Here. **Gallery**

Mon & Thurs: 8am-8pm
Tues, Wed & Fri: 8am-5pm
Sat: 9am-5pm



847-965-4444
advantagebath.com

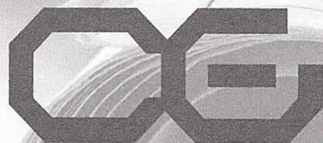
7 8 5 0
N O R T H
M I L W A U K E E
A V E N U E
N I L E S
I L L I N O I S

FIND IT HERE.

Code Compliance Is Not An Option... How You Achieve It Is.

The experienced professionals at The Code Group offer:

- ADA Site Surveys
- Preliminary Zoning & Building Code Analysis
- Accessibility Consulting
- Code Requirement Analysis
- Local Code Conflict Resolution
- "Hi-Tech" Center Plan Evaluation
- Code Research
- Registered Energy Professional Certification
- Pre-Permit Submittal Plan Review
- MEP & Fire Safety Review



THE CODE GROUP
A BURNHAM ONLINE COMPANY

For more information contact:

Christopher Chwedyk, AIA

111 W. Washington St., Suite 450
Chicago, IL 60602

312-673-1503

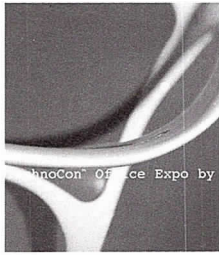
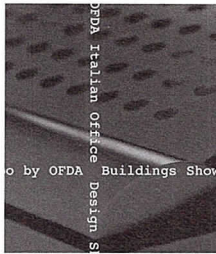
codes@codegrouponline.com



NeoCon® World's Trade Fair dominates the commercial furnishings industry with new product introductions, innovative ideas and state-of-the-art concepts. Be a part of the event you and your colleagues will talk about all year long.

June 10-12, 2002

The Merchandise Mart
Chicago, Illinois USA



For more information,
call 800.473.0194 or visit
www.merchandisemart.com
(click on NeoCon).

NeoCon® Buildings Show®
Office Expo by OFDA
Featuring TechnoCon™
NEW Hospitality
World's Trade Fair 2002 Fine Design Residential Home Furnishings Show™
Italian Office Design Show



ARCHITECTURAL VISUALIZATION - RENDERING - ANIMATION - VR PANORAMIC

WWW.VERTEXGRAPHICS.COM

312.432.9870
VERTEX GRAPHICS
1147 W OHIO #102 CHICAGO IL 60622

PROJECT: TWELVE TWELVE ON SOUTH MICHIGAN
ARCHITECT: DESTEFANO + PARTNERS
LOCATION: CHICAGO, ILLINOIS

▲ Award:
Award of Excellence
ASAI AIP17
Project:
Goodman Theater
Architect:
K P M B

Award:
CADDIES First Place Interiors
Project:
Zoëtemeer Tower
Architect:
P P K S



IMAGEFICTION

LaSalle Wacker Building
221 North LaSalle Street
Suite 1510
Chicago, IL 60601

www.imagefiction.com

312.726.0818
architectural rendering
computer imaging
animation
interactive media
large format printing

- 6 Cesar Pelli, FAIA.** Chicago Architecture Foundation. 6:00 p.m.; 224 S. Michigan Ave. Tickets: \$35 or \$20 for CAF members and students, faculty and alumni of the University of Chicago. Prepaid reservations required: 312/922-3432 ext. 909.
- 10 Inside Mold: The Coming Liability Trap.** Association Forum at NeoCon. 9:30 to 11:30 a.m., Holiday Inn Chicago Mart Plaza. Co-sponsored by AIA Trust and Schinnerer & Company Inc. Cost: \$50/AIA members; \$75/nonmembers. Register through AIA Chicago or through NeoCon at www.mmart.com/neocon or 800/677-6278. (It is not necessary to register for NeoCon in order to attend this program.) 2 LU/HSW
- 12 Northwestern vs. Chicago: Real Estate Challenge!** Corporate Architects PIA. 5:30 p.m.; AIA Chicago. 1 LU
- Planning the Gary/Chicago Airport.** Planning & Urban Affairs PIA. 12:00 noon; AIA Chicago. 1 LU
- Tour: LaRabida Children's Hospital and Research Center.** Architecture for Health PIA. 5:30 to 7:00 p.m.; 6501 S. Promontory Dr./E. 65th at Lake Michigan (meet in library). Limited 30 participants. Bring a hardhat. 1.5 LU/HSW
- 13 Housing Diversity: Act Three.** Housing PIA. 6:00 p.m.; Pappageorge/Haymes, 814 N. Franklin St., #400. 1.5 LU/HSW
- Marquette Building Cornice Recreation.** Historic Resources PIA. 12:00 noon; AIA Chicago. 1 LU
- 19 Mold: Health Effects, Investigation, Remediation and Prevention.** Hobbs Group/AVA Insurance Agency and Carnow Conibear & Associates. 9:00 to 11:00 a.m.; AIA Chicago. Reservations recommended: Tom Harkins, 847/571-3453 or tom@avains.com.
- Don't Get Caught in the Web!** Office Practice and Information Technology PIAs. 5:30 p.m.; AIA Chicago. 1 LU
- 20 Infill Housing in Chicago's Landmark Districts.** Landmarks Preservation Council of Illinois. 12:15 p.m.; Chicago Cultural Center, 77 E. Randolph St., 2nd Floor.
- 10 Developing the Regional Airport-Highway-Rail Grid.** Planning and Urban Affairs PIA. 12:00 noon; AIA Chicago. 1 LU/HSW
- Dealing with the Cs: CEO, CFO, COO.** Corporate Architects PIA. 5:30 p.m.; Knoll, #1111, Merchandise Mart. 1 LU
- 11 Preservation Issues After the Nisqually Earthquake.** Historic Resources PIA. 12:00 noon; AIA Chicago. 1 LU/HSW
- 13 Tour: North Lakefront by Bike.** Environment PIA. 8:15 to 8:45 a.m. (registration); 9:00 a.m. to 1:00 p.m. (ride); Meet at the totem pole at Addison Street in Lincoln Park. \$8 LMF members; \$10 non-members. RSVP: 312/939-0838, ext. 6 or dmsiker@lakemichigan.org. Let PIA Chair Ed Heinen know you'll be there, eheinen@dlkinc.com. 2 LU/HSW
- 15 Door and Hardware Institute Security Summit.** Technical Issues PIA. 9:00 a.m. (trade show opens); 11:30 a.m. (lunch); 1:00 to 3:00 p.m. (program); Navy Pier Convention Center.
- 16 Pushing the Envelope: Innovation in Design Practice, Step 3 - Systems and Technology.** Design PIA. 5:30 p.m.; AIA Chicago. 1.5 LU/HSW
- 19 Masonry Hands-On Experience.** Young Architects PIA. Masonry Training Center, 1950 W. 43rd St. (Bus leaves south entrance of Merchandise Mart at 11:30 sharp and returns at 2:30 p.m.) If driving, arrive at training center by 12:00 noon. Wear jeans and work boots. Limit 40 participants. 2 LU/HSW
- 20 Milwaukee Museum of Art and More.** Meet bus at 8:00 a.m. at the Merchandise Mart (south entrance) or 8:30 a.m. at Edens Plaza, Lake Street at Edens Expwy. (parking lot north of Carson Pirie Scott). Interior Architecture and Design PIAs. Cost: \$50 members/\$60 non-members. 2 LU/HSW
- 26 Healthy Indoor Environments.** The Environmental Protection Agency. 11:30 a.m. to 1:30 p.m.; Metcalfe Federal Building, 77 W. Jackson Blvd. Advance registration: 312/996-6904. Box lunches are available.

AIA Chicago



A Chapter of The American Institute of Architects
 222 Merchandise Mart Plaza
 Suite 1049
 Chicago, Illinois 60654
 312/670-7770
 312/670-2422 (fax)
info@aiachicago.org
www.aiachicago.org