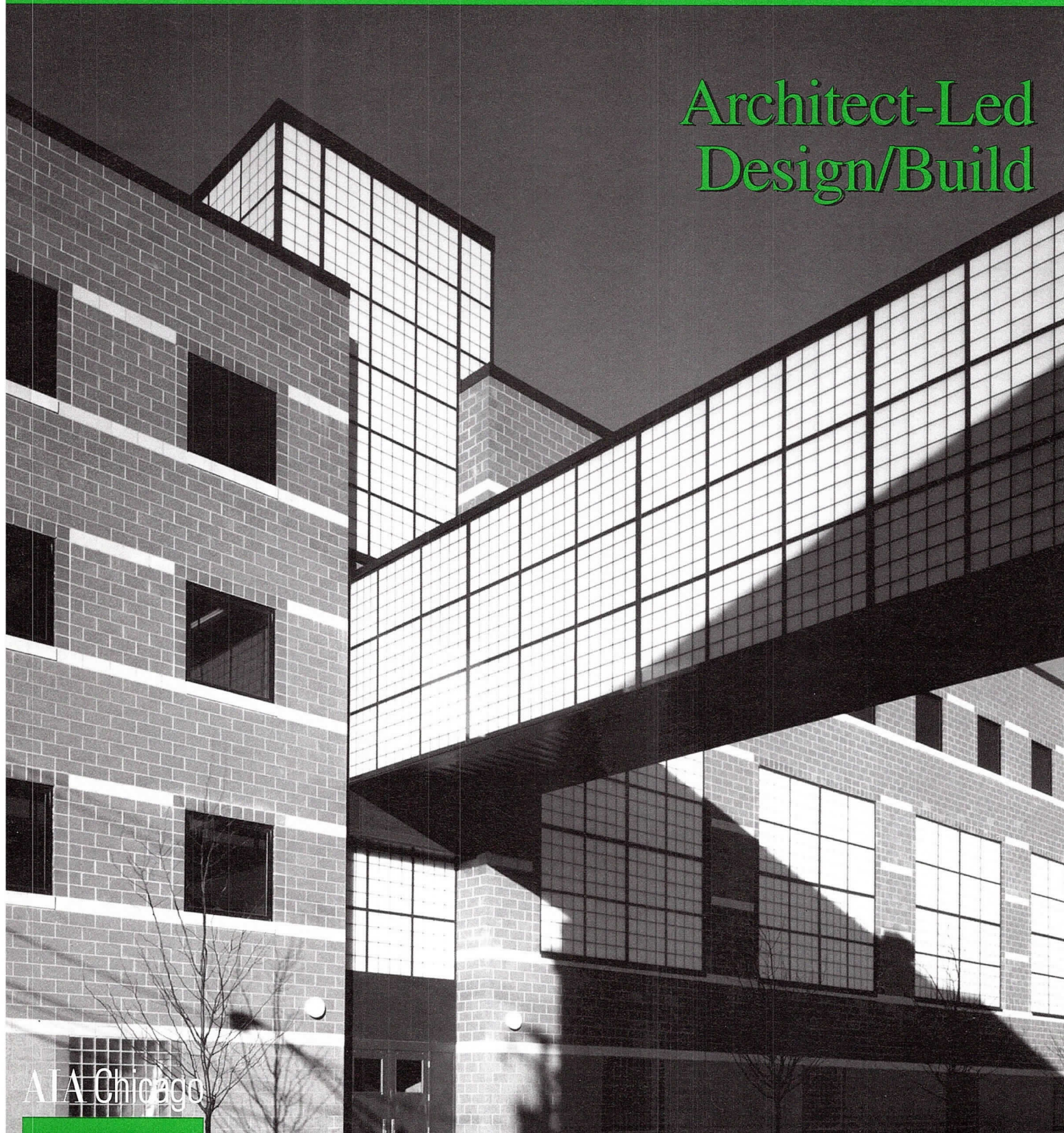


Focus

Architect-Led Design/Build



AIA Chicago

In This Issue: Professional Development Conference - 4 ■ City Housing Competition - 6 ■ Newhouse Program Seeks Intern Sponsors - 7
■ Driehaus Community Design Awards - 9 ■ Design/Build Conference in Chicago - 14 ■ Architect-Led Design/Build: An Insurance Perspective - 16

Focus

3
Focus on Programs

6
News Briefs

9
Driehaus Awards

12
Cover Story
*Architect-Led
Design/Build*

16
Feature
*Architect-Led
Design/Build:
An Insurance
Perspective*

18
Notebook

24
Calendar

Cover Photo: The Off-the-Street Club by McClier
Credit: Craig Dugan © Hedrich Blessing

April 2002

Editor

Susan Larson

Contributing Editor

Laurie McGovern Petersen

Focus Advisory Board

Jonathan L. Fischel, AIA
Laurie McGovern Petersen
James Prendergast, AIA
Alice Sinkevitch, Hon. AIA
P.K. VanderBeke, AIA
Thomas Zurowski, AIA

FOCUS (ISSN 1071-3700) Vol. 22, No. 4, is published monthly with a combined issue June/July, by AIA Chicago, 222 Merchandise Mart Plaza, Suite 1049, Chicago, Illinois 60654-1001. \$20 of each member's dues are allotted as a subscription. Periodicals postage paid at Chicago, Illinois. POSTMASTER: Send address changes to Focus, AIA Chicago, 222 Merchandise Mart Plaza, Suite 1049, Chicago, Illinois 60654-1001.

For advertising rates and schedules, call 312/670-7770.

© 2002 The American Institute of Architects Chicago. All rights reserved. Reproduction in whole or part without permission is strictly prohibited.

AIA Chicago on the Internet: www.aiachicago.org
AIA Chicago e-mail: info@aiachicago.org

AIA Chicago



A Chapter of The American Institute of Architects

2002 Board of Directors

President

Jonathan L. Fischel, AIA

President-Elect

Joseph Caprile, AIA

Vice Presidents

Thomas Fridstein, FAIA
James Prendergast, AIA

Secretary

Charles Smith, AIA

Treasurer

Peter Schlossman, AIA

Directors

Eleanor Esser Gorski, AIA
Thomas Hoepf, AIA
Lamar Johnson, AIA
Edward Torrez, AIA
Mimi Tsai, AIA

AIA Regional Directors

Holly Gerberding, AIA
T. Gunny Harboe, AIA

AIA Illinois Director

Alan Madison, AIA

Associate Director

Helen Tsatsos, Assoc. AIA

Professional Affiliate Director

Karen Dilibert

Past President

Thomas Zurowski, AIA

2002 AIA Illinois Delegates

William Bradford, AIA
Thomas Braham, AIA
Hill Burgess, AIA
Christopher Chwedyk, AIA
Angie Lee, AIA (Alternate)
Maureen Reagan, AIA (Alternate)

2002 Professional Interest Areas

Corporate Architects

Laura Fisher, AIA

Design

Daniel Towler-Weese, AIA

Design/Build

Scott Hindsley, AIA

Environment

Edward Heinen, AIA

Health

James Mladucky, AIA

Historic Resources

Robert Score, AIA

Housing

Robert Pfauth, AIA

Information Technology

Gaute Grindheim, Assoc. AIA

Interior Architecture

Mark Hiron, AIA

Office Practice

Barry Koren, AIA

Planning & Urban Affairs

Douglas Schroeder, FAIA

Technical Issues

Gregory Tornatore, AIA

Young Architects

Mary Brush, AIA

Chapter Staff

Executive Director

Alice Sinkevitch, Hon. AIA

**Membership Coordinator/
Assistant to the Director**

Jamie Juliano

Program Director

Joan Pomaranc

Communications Director

Susan Larson

Financial Manager

Crystal Gagler

Public Information Receptionist

Linda Freeman

Documents Clerk

Phillip Rahill

Transportation: New Techniques for Planning and Visualization



Wed., April 10, 12:00 noon; AIA Chicago
 Sponsor: Planning & Urban Affairs PIA

Michael Shiffer, Ph.D., vice president of planning operations for the Chicago Transit Authority, discusses his department's work.
 1 LU/HSW

Tour: Eport



Wed., April 10, 5:30 to 7:00 p.m.
 500 W. Chicago Ave.
 (Meet inside Larrabee Street lobby.)
 Sponsor: Corporate Architects and Historic Resources PIAs

Grant Uhler, AIA, Gensler, and Brad Despot, Eport/600 LLC, present the adaptation of the Montgomery Ward warehouse into the 1.4 million-square-foot Eport facility. They discuss the numerous development, planning, landmarks and phasing parameters, and the new infrastructure that supports mixed uses. A tour immediately follows. Limit 30 participants; preference to AIA Chicago members. 1.5 LU/HSW

Hilliard Homes Redevelopment



Thurs., April 11, 12:00 noon
 AIA Chicago
 Sponsor: Historic Resources PIA

Laura Brace, development officer with Holsten Development Corp., discusses plans to redevelop Bertrand Goldberg's Near South Side senior and family public housing project into a mix of low-income and market-rate housing units. The housing project is eligible for listing on the National Register of Historic Places, despite being less than 50 years old.
 1 LU/HSW

Design Excellence Awards: Is It Your Intent to Enter?

It's not too late! The deadline for filing an Intent to Enter this year's Design Excellence Awards is April 4. The call for entries was included in the February issue of *Focus*. If you need another copy, contact AIA Chicago.

Pushing the Envelope: Innovation in Design Practice, Step 1 - Conception and Planning



Thurs., April 11, 5:30 p.m.
 Farr Associates
 53 W. Jackson Blvd., #1661
 Sponsor: Design PIA

This year, the Design PIA looks at the building process from start to finish, focusing on local firms with new and sometimes revolutionary approaches. The programs are structured around five steps: Conception and Planning, Form-Making, Systems and Technology, Detailing, and Construction. For the first, Douglas Farr, AIA demonstrates the techniques his firm has developed to make the urban planning process accessible to the community organizations with which they work. Michael Newman, Chicago Associates Planners and Architects, and David Woodhouse, FAIA, David Woodhouse Architects, respond.
 1.5 LU/HSW

Tour: Advocate Christ Medical Center Imaging Center



Sat., April 13, 10:00 a.m. to 12:00 noon
 4440 W. 95th St., Oak Lawn
 Sponsor: Architecture for Health PIA

Focusing on technology, Michael Doiel, AIA, leads a tour of this new 50,000-square-foot facility designed by HDR Inc. It includes one of the largest diagnostic imaging centers in Illinois, featuring all-

Sign Me Up!

- 4/10 Transportation: New Techniques for Planning and Visualization
- 4/10 Tour: Eport
- 4/11 Hilliard Homes Redevelopment
- 4/11 Pushing the Envelope: Innovation in Design Practice, Step 1 - Conception and Planning
- 4/13 Tour: Advocate Christ Medical Center Imaging Center
- 4/16 Tour: Mies in America
- 4/18 Through-Wall Fire Penetration
- 4/24 New Members Breakfast
- 4/30 Housing Diversity: Act Two

Name _____

Office _____

Address _____

City _____

Phone _____

E-mail _____

All programs listed above are free or as noted for AIA Chicago members. Non-members will be charged \$10 per program or as noted.

Method of Payment

- Check
- American Express Visa MasterCard

Credit Card No. _____

Expiration Date _____

Name on Card _____

Signature _____

Fax to:
AIA Chicago
 312/670-2422

continued on page 4

digital filmless radiology modalities. Limit 30 participants. 2 LU/HSW

■ **Tour: Mies in America**

Tues., April 16, 6:00 to 8:00 p.m.
Museum of Contemporary Art
220 E. Chicago Ave.

Sponsor: Young Architects and Design PIAs

Take a one-hour guided tour of Mies in America with an MCA docent and then peruse the exhibit further on your own. The exhibition, designed by John Vinci, FAIA, Vinci/Hamp Architects, connects Mies' investigation of space and his philosophy of architecture with the visual art of his time. Mies in America features drawings, scale models, photographs, and a series of specially commissioned videos by Chicago-based artist Inigo Manglano-Ovalle. \$10/AIA Chicago member; \$12/non-member. Limit 50 participants. 1 LU



■ **Through-Wall Fire Penetration**

Thurs., April 18, 12:00 noon
Chicago Bar Assn.
321 S. Plymouth Court
Sponsor: Technical Issues PIA

Nestor Sanchez, architectural systems manager at USG, explains through penetra-



tions of rated partitions, fire containment, and UL 2079, including systems design and detailing. He also discusses ASTM E119 and how gypsum-based products perform under fire exposure. Lunch is available (purchase ticket in CBA shop) or bring your own. 1 LU/HSW

■ **Professional Development Conference**

Fri., April 19 and Sat., April 20
Holiday Inn Chicago Mart Plaza
350 N. Orleans St.
Sponsor: AIA Chicago

Attend the sixth annual Professional Development Conference, and you'll learn something new to use the following Monday. Technical/Life Safety seminars cover security matters, glass technology, and building forensics. The Design Track includes discussions of historic preservation incentives and guidelines, supportive interiors for communities of practice, and European models for architect/structural engineer collaborations. In the Management Track, learn how to use the AIA B141 document to your best advantage and how to improve your presentation skills. At lunch, Dirk Lohan, FAIA, principal of Lohan Caprile Goettsch, offers his thoughts on "40 Years as an Architect in Chicago: Reflections and Hindsight."



On Saturday, Paul Doherty, AIA, founder of Memphis-based The Digit Group and one of the industry's most sought-after consultants on the subject of integrating technology and business, speaks on "Architecture as eBusiness: Profiting in the Net Economy." And Lisbeth Quebe, FSMPS, marketing director in the Chicago office of RTKL, shares her knowledge of "Marketing Plans and Budgets."

For complete details and to register, visit www.aiachicago.org or call 312/670-7770 for a brochure.

■ **New Members Breakfast**

Wed., April 24, 7:45 a.m.
AIA Chicago
Sponsor: AIA Chicago

The Board of Directors and staff preview upcoming activities and answer questions. RSVP by April 22; 312/670-7770 or info@aiachicago.org.

■ **Housing Diversity: Act Two**

Tues., April 30, 6:00 p.m.
Archeworks, 625 N. Kingsbury St.
Sponsor: Housing PIA

This series continues to explore how residential design is evolving in response to changing American household demographics and lifestyles. Meet the graduating class of this iconoclastic school and view the results of their most recent design studio in transitional housing. 1.5 LU/HSW



Botti Studio of Architectural Arts, Inc.
919 Grove Street, Evanston, IL 60201 Established 1864
847/869-5933 • Fax: 847/869-5996 • 800/524-7211
www.bottistudio.com • botti@bottistudio.com

Designers/Fabricators • Stained and Faceted Glass • Beveled Glass • Sandblasted • Stained Glass Restoration and Conservation • Protective Glazing • Wood and Metal Frame Restoration • Sculpture • Bronze • Metal • Marble • Mosaic • Interior Renovation • Woodwork • Murals • Painting and Decorating • Custom Sanctuary Furnishings • Stained Glass Consultants to Architects and Churches

Studio Locations

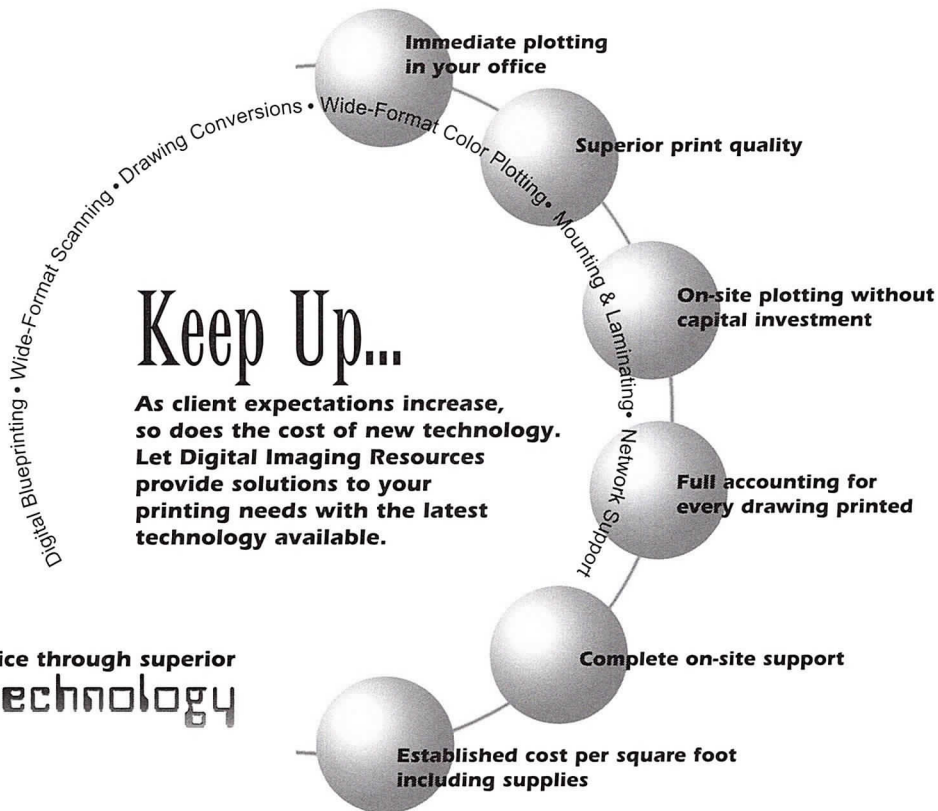
San Diego • Chicago • Sarasota • Agropoli, Italy
760/753-0705 • 847/869-5933 • 941/951-0978

**AIA National Convention
Charlotte, NC
May 9-11**

For details about the AIA 2002 Convention and Expo, call AIA Information Central at 800/242-3837 or visit www.aiaconvention.com.



Are you keeping up with **Technology?**



Better service through superior **technology**



Digital Imaging Resources, Inc.

650 West Lake Street #120 • Chicago, IL 60661 • www.dirinc.com

Phone 312.243.1250 • Fax 312.243.1590

Hoepf Joins Chapter Board

Thomas Hoepf, AIA was named to the AIA Chicago Board of Directors in February, replacing Ellen Bailey Dickson, AIA. Hoepf has been a principal design architect with Teng & Associates since 1994. He was previously a senior project designer with Holabird & Root. Hoepf received the AIA Chicago Young Architect Award in 1998, and chaired the chapter's Design PIA in 2001.

AIA/CES Transcripts Now Mailed by Request Only

The annual March mailing of AIA continuing education transcripts has been discontinued. A CES transcript from the University of Oklahoma is still available to members, but only on request. One copy a year is free; additional

copies remain \$10 each. Contact the University of Oklahoma, AIA/CES, Room B-1, 1700 Asp Avenue, Norman, OK 73072; phone, 800/605-8229; fax, 405/325-6965.

Call for Delegates to AIA National Convention

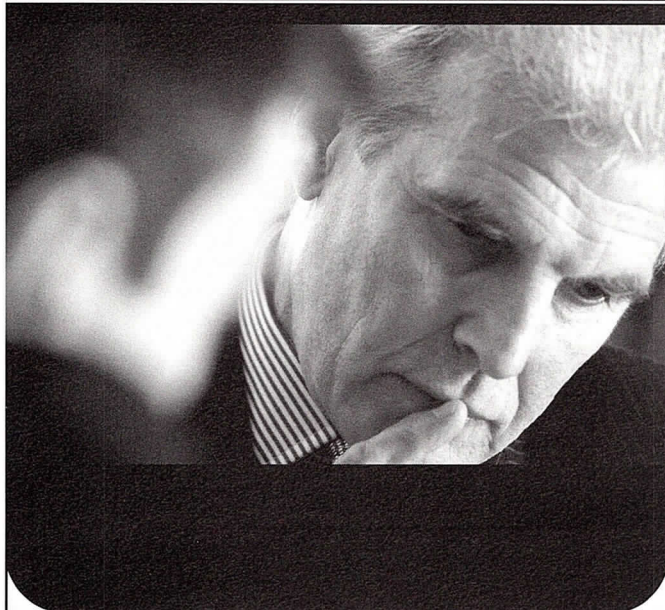
AIA Chicago members who will be attending the AIA convention in Charlotte, May 9 through 11, may serve as chapter delegates. Responsibilities include attending a short, pre-convention meeting at AIA Chicago on Tuesday, April 30 at 5:30 p.m. and the convention business meeting on May 11 from 9:45 to 11:15 a.m. Delegates are also required to vote in the national elections on May 9 or May 10. Contact Alice Sinkevitch by April 15 at 312/670-7770 or sinkevitcha@aiachicago.org.

City Housing Competition

The City of Chicago Mayor's Office for People with Disabilities (MOPD) and the Department of Housing (DOH) invite licensed architects to compete in a Universal and Affordable Housing Design Competition. The housing shall incorporate universal design principles for single-family and two-flat homes to be constructed within the budget requirements for New Homes for Chicago or Home Start developments. Specifics will be issued at a Universal House Charrette to be conducted on or about May 14. Competitors must attend the event in order to be eligible for the competition. Three finalists, from among all the open-call entries submitted on or about the June 18th deadline, will be awarded a small stipend to further develop their designs. A distinguished panel of judges consisting of Stanley Tigerman, FAIA, Ralph Lerner, FAIA, MOPD Commissioner David

“ I chose my insurance agent for the same reason my clients choose me: experience.

” Experience is the DPIC difference.



Combine DPIC's 30 years of dedication to the architect, engineer and environmental market with the expertise of our local brokers, and you get the benefit of the industry's most qualified professional liability experts.

From ongoing education in how to manage risk to new ideas in practice management and smarter dispute resolution that protects your interest, we'll help you realize a better return on your firm's insurance investment.

Contact us today for more information.

**Hobbs Group/
AVA Insurance Agency**
847-517-8900
www.AVAins.com

DPIC Companies
A DIFFERENCE THAT DELIVERS™

Hanson and others will select one winner to construct at least 20 dwelling units on the West Side of Chicago. For more information go to www.cityofchicago.org/Disabilities or [/Housing](http://www.cityofchicago.org/Housing).

Tacoma Seeks Architect

The City of Tacoma is seeking an architectural team to complete a site analysis and design documents for a museum to house the automobile collection of Harold E. LeMay. Estimated costs for the 200,000-square-foot facility are \$80 to \$100 million. The Call for Qualifications is available on the City's Web site, www.cityoftacoma.org/45bids; the deadline is April 23.

Newhouse Program Seeks Firms to Sponsor Interns

The Newhouse Program, which is in its 20th year of bringing architectural education to the Chicago Public Schools, is once again seeking firms who would be willing to sponsor a summer intern. Last year, 29 winners (from a pool of almost 500 entrants) were awarded six-week summer internships at Chicago architecture, engineering and construction firms. Student interns perform a variety of jobs including drafting, model-making, and clerical tasks. For more information, contact Todd Crouch, Newhouse Program Coordinator at the Chicago Architecture Foundation, 312/922-3432, ext. 237, or Bill Bradford, AIA, Newhouse Internship Chair, at VOA Associates, 312/554-1400.

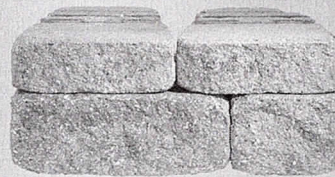
The Business of Your Business: New Firms

Do you know how to prepare and implement a business plan? What kind of day-to-day records should you keep? How do you track your financial progress? Starting in May, Leonard Weitz and Mark Mann of Mann, Weitz & Associates LLC, auditors for AIA Chicago, are presenting a four-session course on entrepreneurial finance for new firms that will cover these topics. The classes will be offered on Thursday mornings, May 16, 23, 30, and June 6, at the AIA Chicago office. A similar 4-session series for established firms will be offered this fall. RSVP to AIA Chicago. Earn 8 Learning Units.



18th century character. Modern day construction.

Our new Mosaic[®] Segmental Retaining Wall has both. Age-old, handcrafted beauty on one hand. Solid, pinned VERSA-LOK technology on the other. It's as simple as that. Mosaic's rustic character stems from its random



pattern and 100%-solid construction—allowing you more design options than you can imagine.

Curves. Corners. Tiers.

Even tall walls. What's more, Mosaic walls are now available in a Weathered[™] option for those clients who prefer a more timeworn touch.

Manufactured locally by

BEND
INDUSTRIES

www.bendindustries.com

1-800-886-4149

VERSA-LOK[®]
Retaining Wall Systems
Solid Solutions.™

www.versa-lok.com

Give your vision a voice.

Conference Rooms • Meeting Centers • Auditoriums • Videoconferencing Centers
Display Areas/Lobbies • Training Facilities • Classrooms



Beckman Coulter - Schaumburg, IL



Milwaukee Art Museum - Milwaukee, WI

With a Systems Integration Specialist as your guide, your structure will be able to speak for itself. At MCSi, our presentation technology visionaries collaborate with architectural firms and general contractors as part of a complete design/build solution. These relationships combine integrated technology and specialized design to create state-of-the-art presentation environments that uniquely position our customers. Also, MCSi is an AIA-authorized continuing education provider. Please contact us about our CES - Learning Unit courses. Call Eric Kolkey at **800.876.8298 x2332** or visit **www.mcsinet.com** for more information.



Now your vision has a voice.

EUCLID

Employers are looking for Key Employees Employees are looking for Key Benefits...

The AIA Chicago 401(k) and Profit Sharing plan can help. This program offers large plan options at a competitive cost -- all with less employer administration time.

The AIA plan uses goal-based software to educate and inform employees about their retirement. Employees can direct their own investments among the top mutual fund managers such as Fidelity, Janus, AIM, Dreyfus, etc...

For more information, please contact:
Jim Lorenz at 630 833-1000
jlorenz@euclidinsurance.com

AIA Chicago 401(k) and Profit Sharing Association Plan

Euclid Insurance Agencies
977 Oaklawn Avenue, Elmhurst, IL 60126

Driehaus Foundation Awards for Architectural Excellence in Community Design



Steve Hall © Hedrich Blessing

First Place

Mather Café
Wheeler Kearns Architects
Mather Lifeways

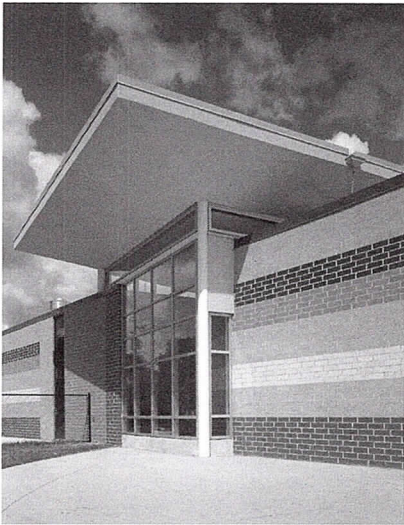
This project creatively transforms a Galewood Park storefront into a non-traditional senior center. Mather Café Plus is a multi-faceted senior-service center placed in the context of a working café. The 6,000-square-foot facility houses the café (known to regulars as “Starbucks for Seniors”) as well as a series of rooms and lounges where a variety of classes and social services are offered. These rooms are easily adaptable for different uses, and the café itself can be used as a dance floor. A geometric arrangement of vibrant ceiling panels, walls, light fixtures and an open-to-view country-style kitchen form a lively environment. The tabletops are glass-covered “memory boxes” in which area seniors have placed personal memorabilia. Mather Lifeways, an Evanston-based foundation dedicated to enriching the lives of Chicago-area seniors, has already duplicated the success of this facility with a second Mather Café in Norwood Park.

The Richard H. Driehaus Foundation Awards for Architectural Excellence in Community Design were established to recognize the importance of great architecture and craftsmanship to city life. The recipients are architects and project sponsors who, through restoration or new construction, have created buildings and spaces that enhance Chicago’s neighborhoods. This year’s jury was chaired by Thomas Beeby, FAIA of Hammond Beeby Rupert Ainge. The honors were presented in February under the auspices of the Chicago Neighborhood Development Awards.

Second Place

Archer Court Apartments
Landon Bone Architects
Chicago Community Development Corporation

The Chicago Community Development Corporation acquired this 50-year-old two-building complex from the Chicago Housing Authority in 1999 and charged Landon Bone with its rehabilitation. A new curtain wall covers the formerly exposed outdoor balconies that served as corridors, greatly improving the building’s character. Taking cues from the project’s Chinatown location and the Chinese ancestry of many of its residents, Landon Bone employed the principles of Feng Shui in reconfiguring many of the building and site elements, from windows to doors and gateways. A new wellness and community center provides a much-needed gathering place.



Steve Hall © Hedrich Blessing

Third Place

Jubilee Family Resource Center
Ross Barney +Jankowski
Carole Robertson Center for Learning

This is the second Driehaus award in two years for this client-architect partnership, whose Little Village facility addition was honored in 2001. The 21,000-square-foot Jubilee Center is child-focused and family-friendly, providing the community with a gathering space as well as a location for year-round child care and adult education, job training, and counseling. Children are able to learn and socialize in safe and stimulating indoor and outdoor spaces. The north and south facades feature a woven masonry pattern that evokes Kente cloth, a symbol of African pride and dignity.



Mark Balloug, Steinkamp Balloug



11



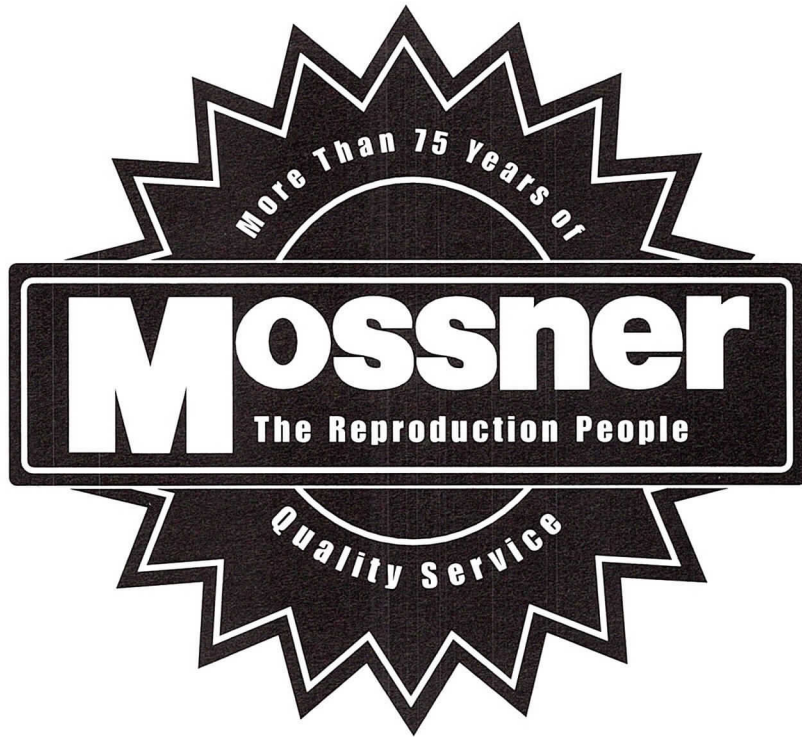
HILL MECHANICAL GROUP

CHICAGO'S PROVEN DESIGN-BUILD SPECIALISTS

We're proud to be Illinois' largest HVAC contractor, and prouder yet that design-build now encompasses more than one-third of our annual volume. Trust our professional team of 30 graduate engineers to save critical project time while delivering cost effective system configuration and construction ...
it's where we've put our energy for over 65 years!

To discuss your needs contact Warren Hill, P.E, President: 773.929-6600

Mossner
Mossner
Mossner
Mossner
Mossner
Mossner
Mossner
Mossner
Mossner
Mossner
Mossner
Mossner
Mossner
Mossner
Mossner



- Now offering PlanWell™
- High Speed Digital Blue Printing
- Electronic CAD File Transfer Options
- Digital & Diazo Reproductions (Bond or Vellum)
- Large & Small Color Reproductions
- Drawing Management & Distribution
- Specifications & Document Printing
- Pick-up & Delivery Service

Mossner

THE REPRODUCTION PEOPLE • LARGEST IN THE MIDWEST
Mossner Building • 137 North Wabash • Chicago, IL 60602
PHONE: (312) 372-8600 • FAX: (312) 372-2809 • www.mossner.com

Architect-Led Design/Build

By Rosemarie Buchanan

Forty percent of all new construction in the United States is produced using the design/build delivery method instead of the typical design-bid-build process. Locally, the Harold Washington Library and the addition to McCormick Place were delivered

Lincoln Avenue condominiums in Chicago by Atul Karkhanis Architects



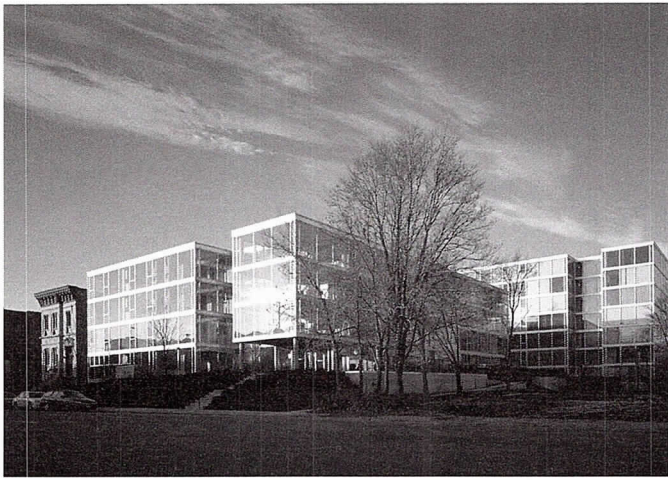
design/build. Yet less than 10 percent of that 40 percent is led by architects. Why? Some architects are wary of the increased insurance exposure (see Feature story), while others are reluctant to compete against contractors with whom they would otherwise be partners.

Although many architects are gunshy when it comes to design/build, even when they could lead the effort, proponents cite the advantages of greater control, higher margins and the ability to ensure that their design is constructed as they intended.

Architects may earn higher fees for design/build, but at a price. The design/build entity assumes total responsibility for the on-time, on-budget delivery of a project. The contract with the owner generally (though not always) specifies a guaranteed maximum price (GMP) which is usually determined after schematic design. If the GMP is not met, the design/build team makes up the difference, although a contingency may be agreed upon as a cushion for owner-initiated scope changes.

Christopher Barrett, Photographer

The Chicago offices of OWP/P
by OWP/P Design/Build



Optima's Michigan Place condominiums at 31st and Michigan Avenue in Chicago

Scott McDonald © Herich Blessing



Euclid Square townhomes in Oak Park by Metropolis Architects and Builders

Courtesy of the Firm

Architect-led vs. Contractor-led

“There are some owners who will never trust a contractor to lead design/build, and it’s directly related to concern for the quality of the building,” says Hill Burgess, AIA, leader of the commercial/institutional group at McClier and former chair of the Design/Build PIA.

Contractors may continue to lead design/build projects that are not design-intensive, such as warehouses and sewage treatment plants, Burgess adds. However, he feels that there is a definite market for architect-led design/build, from non-profits to schools. These owners want to outsource the entire design and construction process yet remain assured of design integrity. “They need to have a more traditional relationship with their architect and do not need to put the lowest cost as their first priority.” Ream agrees, pointing out that “most contractors are cost-driven, while architects are generally driven by client need and project quality.” OWP/P Design/Build takes the lead role on all of its projects.

New Business Models

Architect-led design/build has shaped the services architects offer and the way they organize their firms. These changes include greater vertical integration and the creation of separate business entities for those firms offering multiple delivery options.

“An analogy to design/build is what happened to many firms in the ‘60s when they became horizontally integrated, offering engineering and interior design,” Burgess points out. Now design/build presents architects the opportunity to vertically integrate. Some offer financing services and will even act as building manager and lease it to the owner.

A few architects have chosen to become developers themselves. Glencoe-based Optima, Inc. was a pioneer in assuming control of every phase of the process, from site selection through building management. Why haven’t more firms followed their lead? According to vice president Tod Desmarais, AIA, “it might be psychological. Architects may feel that it wouldn’t be right to act as developers because they’ve spent so much time fighting developers to make buildings better.”

Optima is currently completing the 13-story Optima Towers, a condominium development in downtown Evanston that includes 8,000 square feet of retail space. Its 105 units range in price from \$170,000 to \$600,000. The wide price range is appealing for Optima, which strives to create a context for some economic diversity—a goal that’s counterintuitive for most developers, Desmarais adds.

Two local architects who have assumed the role of residential developer while maintaining traditional architecture practices are Atul Karkhanis, AIA of Karkhanis Architects and John Schiess, AIA of Metropolis Architects & Builders.

“Design/build is great for the client, but it’s good for the architect, too,” says Karkhanis. He has been delivering design/build projects for 15 years. He prefers to build on spec for more control and greater profit margins, but continues to perform as a design/builder for clients with a specific site and project in mind. Recent work includes a private residence in Park Ridge and two multi-family developments in Chicago.

“You can modify things as you go along, you can be more resourceful and you can drive the project,” he says. “Many times the architect is looked at as just the one who draws the blueprints, and the contractor at the job site doesn’t bother calling you [for guidance]. That doesn’t happen here.” It also enables him to better manage the risk inherent in the process. “If you’re running a little over, you have the control to opt out of the marble tile.”

Schiess of Metropolis Architects & Builders in Oak Park also prefers to act as developer for the single-family houses, townhomes and condominiums that he builds. Schiess became impatient with the traditional services model because “99.9 percent of the time, the owner came back and said it was either over budget, or the builder can’t build it.” The firm’s recent projects include Euclid Square, a 14-unit townhome development, and The Astor, a four-unit luxury condominium.

Metropolis offers a gamut of services, including financial pro formas and other pre-design services such as feasibility studies. The firm is officially

Design/Build Conference

The Design-Build Institute of America (DBIA) and the American Institute of Certified Public Accountants are sponsoring an A/E design/build financial management conference, "Risks and Reward\$," in Chicago on June 12-14.

Wednesday afternoon features two special sessions and a reception. The next two days have three tracks of sessions: Controls and Management; Financial and Tax; and Risk and Legal. The program is endorsed by the AIA. Visit www.dbia.org.

comprised of two separate entities, one to deliver design/build services and the other solely for design work. Legal and tax liabilities are different for each entity. Larger firms such as OWP/P often adopt this structure as well.

Re-thinking the Contractor Relationship

Whoever leads the team, the design/build process requires designers to look at contractors in a different light. According to Ream, the change in perspective requires burying age-old grievances between architects and contractors, because contractors contribute

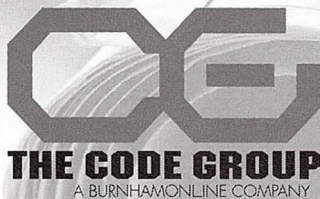
to the process from square one. Alan Treuthart, AIA, also of OWP/P and co-chair of the Design/Build PIA, puts it this way: "You have to really believe that everyone involved adds something of value; they all have an expertise. A crane operator may come up with a quarter of a million dollars in savings." Masons or millworkers may be brought in as consultants early on, even if those functions will be bid out later, he adds.

Scott Hindsley, AIA, a principal at Archideas and current chair of the Design/Build PIA, stresses the importance of partnering with the right contractor. It must be a pro-active firm that actively participates in the design process, rather than one with a more traditional "you-design-it-and-I'll-build-it" approach.

Code Compliance Is Not An Option... How You Achieve It Is.

The experienced professionals at The Code Group offer:

- ADA Site Surveys
- Preliminary Zoning & Building Code Analysis
- Accessibility Consulting
- Code Requirement Analysis
- Local Code Conflict Resolution
- "Hi-Tech" Center Plan Evaluation
- Code Research
- Registered Energy Professional Certification
- Pre-Permit Submittal Plan Review
- MEP & Fire Safety Review



For more information contact:

Christopher Chwedyk, AIA
111 W. Washington St., Suite 450
Chicago, IL 60602
312-673-1503

codes@codegrouponline.com



Archideas was the architect and McShane Construction the design/builder for IPC International in Bannockburn

Ream lists four criteria that OWP/P Design/Build uses to select its contractors: a positive working relationship with the firm in the past; appropriateness for the project size; experience in the building type; and geographic proximity to the project location. They have teamed with seven different contractors on the 14 projects that the firm has undertaken since its founding in 1998.

Taking the Lead—or Not

One potential stumbling block to architects' taking the lead on design/build teams is the risk of alienating key contractors. Optima designs only its own projects. But Archideas is more typical in that they participate in many different contractor-led design/build teams. That means that if they were to take the lead on such a team, they would compete head-on with their erstwhile contractor partners. About 25 percent of Archideas' projects are delivered design/build; Hindsley likes the process because "the integration and teamwork of design-build aligns with my sensibility as an architect."

There may be a perception that large firms such as McClier—which started as a design/build firm 13 years ago and delivers half of its projects in that form—have a greater precedent for design/build. Not so. Smaller architecture firms such as Optima have led design/build for just as long if not longer. The change in today's climate means that more firms, both large and small, are participating in design/build, and many are now taking the lead role in the process.

Rosemarie Buchanan is a free-lance writer and former marketing and business development manager at Anshen + Allen Architects in San Francisco and Jacobs Facilities Inc. in St. Louis. She received a master's degree in environmental science from Yale University.



Wayne Cable

Architect-Led Design/Build: A Legal Perspective

By Kevin Sido

From a legal point of view, architect-led design/build is very straightforward. This form of project delivery for private sector clients complies with existing licensing laws and avoids many of the legal issues prevalent under existing regulations for design/build schemes led by non-architects (any entities that are not registered professional design firms offering architecture).

In leading the design/build team, architects can create opportunities for the greater rewards that come with the absorption of additional risk. AIA contract forms B901 and A191 lead the way. Architect-led design/build is often a natural extension for architects whose practice has already broadened into construction management. Arranging the correct insurance is a critical foundation, particularly because insurance often seems

complex and the insurance industry is still evolving in its approach to design/build.

Careful practitioners may still want to consider establishing a separate entity to actually be the design/builder. That entity signs a contract with the owner and itself contracts with the professional design firm to provide architectural services.

State regulations covering design/build are currently under revision as this issue of *Focus* goes to press. Proposed changes, scheduled to take effect on April 1, include more specific definitions related to design/build as well as emphasizing the need for architecture to be offered only through a registered professional design firm. Visit the Illinois Department of Professional Regulation Web site at www.dpr.state.il.us and see Section 1150.85(a) for specifics.

Kevin Sido is a partner at Hinshaw & Culbertson.

Architect-Led Design/Build: An Insurance Perspective

By Dan Buelow

While we have seen an increase in design/build projects over the last five years, the vast majority of these are still contractor-led versus designer-led. Design professionals who participate in a contractor-led design/build project typically don't need to secure any additional insurance, since they are simply contracting with the contractor instead of the owner. It will, of course, be just as important that you negotiate and execute an insurable contract that clearly defines the scope of your services and your role as a design professional.

As a design professional, your liability is based on the principles of negligence and the standard of care. The liability of a contractor, on the other hand, is based on the principles of warranty: a standard of performance versus a standard of care. The standard of care can be defined as providing services in a manner consistent with that degree of care and skill ordinarily exercised by members of the same profession practicing under similar circumstances. Being "perfect" isn't required—or even contemplated—in this standard for design consultants. As long as you don't contractually agree to extend your liability over and above the standard of care (and your actions are consistent with this!), your professional

liability insurance policy will cover you for your negligence.

With traditional design-bid-build projects, each party contracts separately with the owner. There are clear divisions of responsibility between the contractor and the design professional, and it is fairly easy to distinguish liability between them. Design/build is a bit more complicated, and the lines of responsibility can become more blurred. There is also a widely held belief that the liability of the design/build entity is greater than the sum of its parts. This is due to client expectations: more is being required than professional design and workmanlike construction. The design/build entity promises to deliver a finished project that will meet the owner's

ARCHITEMPS, INC.®

ARCHITEMPS, INC. – the Architectural & Interior Design staffing specialists, serving greater metropolitan Chicago since 1986.

Quality staffing, service and solutions:

- Design/Production Drafters
- Facility Planners
- CAD Architects/Interior Designers
- Project Managers

Our billing includes all employer liability:

- Payroll Administration
- Employee Benefits
- Government Compliance
- State & Federal Tax Remittance
- Workers' Compensation Coverage

ARCHITEMPS, INC.®
1050 North State Street
Chicago, IL 60610-7829

Tel: 312.649.0912
Fax: 312.649.1667
ARCHITEMPS@aol.com
www.architemps.com

Architectural, interior design and facility planning personnel on a per-project basis. Direct hire conversion and direct placement available. Call today for information on our staffing services or employment opportunities.

stated performance expectations (goal of the process versus a product).

For firms that engage in designer-led design/build, it is very important to assure that all of the exposures are adequately addressed. At-risk exposures, including jobsite-safety and means and methods, are not covered by an A/E's professional liability or general liability policies. You must assume and control these exposures and/or transfer them via your contracts or through insurance.

A designer-led design/build entity can be set up in various ways, some of which are intended to transfer all of your contractor-related exposures. However, be aware that regardless of how this entity may be formed, the fact remains that there

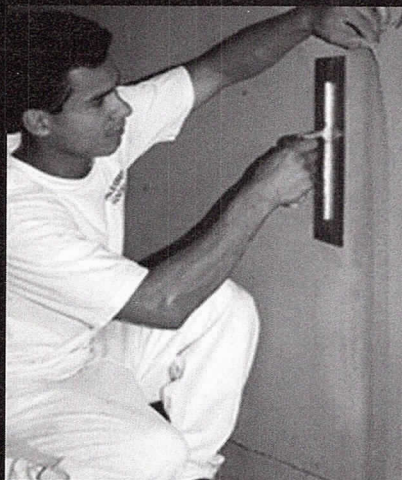
is only one contract and a single source of accountability. Simply put, virtually any and all complaints or problems will pass through the design firm. You should seek legal advice on how to best set up your design/build entity in addition to drafting your contract.

From a claims standpoint, we have seen design/build projects work very well and we have seen them fail miserably. Many of the failures occurred when the design/build team was formed on-the-fly in an effort to satisfy a prospective client's whim of having a faster, cheaper delivery method. This is, in fact, where the inherent exposures of design/build often lie: unrealistic client expectations that are not met. A prevailing goal of "cheaper"

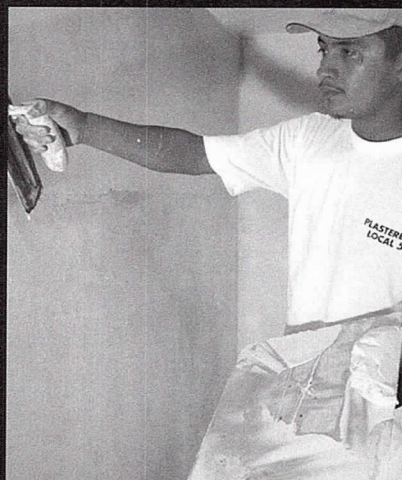
often results in problems relating to funding and/or quality and a demand for "faster" often results in claims related to delays and economic loss. Successful design/build projects are usually those where a great deal of thought and effort was invested in putting together an effective designer/contractor team that is a true, long-term partnership for this project—and the next.

Dan Buelow is Managing Director of Hobbs Group/AVA, an insurance agency that specializes in risk management and insurance for design professionals. He can be reached at dan@avains.com

Professional Training Yields Expert Plasterers



Exterior Insulating and Finishing Systems (EIFS) and Stucco



Conventional and Veneer Plaster

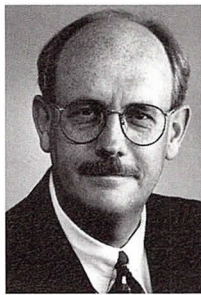


Ornamental Plaster

Call us for information about today's plastering systems and the best people to apply them.



Chicago Plastering Institute
6547 N. Avondale Ave.
Chicago, IL 60631
(773) 774-4500



From left to right:
 Alan C. Wilson, AIA;
 Keith W. Campbell, AIA;
 Richard Hayes, AIA;
 Kenneth E. Giere, AIA

PEOPLE/FIRMS

RTKL has named **Alan C. Wilson, AIA** director of the firm's Chicago health care practice. A vice president in the firm, he will also be taking on the role of office director. **Keith W. Campbell, AIA**, also a vice president, joins Wilson as co-director of the Chicago office and will assume responsibility for retail and residential projects. Wilson and Campbell succeed the office's two founders, **James C. Allen, AIA** and **Jerry L. Quebe, FAIA**, who are retiring.

George "Jib" Chapman, AIA and **Mark A. Nichols, AIA** have been named principals at Loebel Schlossman & Hackl. **Abigail Brundage, AIA**, was named an associate principal.

Richard Hayes, AIA has joined David Woodhouse Architects as director of architecture. He will be responsible for firm operations as well as senior project management. Hayes was most recently a project manager at A. Epstein and Sons International.

Merritt Seymour, vice president, architectural design and innovation, has retired from USG Corporation. Seymour was involved in the development of several new products at USG that received patent awards for unique design features. He also served as the Professional Affiliate Director on AIA Chicago's board from 1996 through 1998.

Kenneth E. Giere, AIA has been named a principal of Mekus Studios. Giere joined the firm in 1986, two years after its founding, and has managed many of the projects in the firm's religious practice.

Anne T. Sullivan, AIA, senior associate with Johnson Lasky Architects, has been appointed to the Illinois Historic Sites Advisory Council for 2002-04. This 15-member council meets four times each year to consider nominations to the National Register of Historic Places and to advise the State Historic Preservation Office.

Skidmore, Owings & Merrill announced the expansion of its Health+Science practice with the appointment of **Thomas Fromm, AIA** as Director in the Chicago office.

Ross Barney + Jankowski has moved from the Inland Steel Building to larger new quarters at 10 W. Hubbard St. in Chicago. The new phone number is 312/832-0600.

Otis Koglin Wilson Architects has relocated to 600 W. Jackson St. in Chicago's West Loop from the firm's

Any Way It Shapes Up...CTI Delivers

When you need

ECONOMY
EXPERTISE
 SPEED
 APPEAL

"CTI's plant seminars are fantastic and very informative! The tour of CTI's yard was helpful in seeing what is possible with architectural precast."

Jacob Plummer, **RATIO Architects**
 Indianapolis, IN

Think...precast concrete

CONCRETE TECHNOLOGY INC.

Fact: The national Precast/Prestressed Concrete Institute (PCI) requires frequent, independent audits of all of its members to ensure they maintain the highest standard from quality to service, production and design.

Fact: CTI was the only precaster to bid on the challenging architectural precast enclosures for the Columbus Center of Science and Industry (COSI) and the Indianapolis Children's Museum projects. That kind of expertise is backed by exceptional service delivered by our staff of project managers, budget estimators, engineers/draftsmen and sales reps.

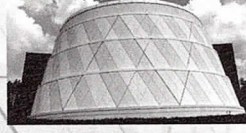
See for yourself why top architects are talking about CTI.

Join CTI's specialists at a plant seminar in either Springboro, Ohio or Paxton, Illinois to learn more about how to create exciting, custom-designed architectural precast solutions. Attendees will earn seven AIA learning units. Call Dennis Nemenz at (800) 788-2370 ext. 123 to enroll today.

CONCRETE TECHNOLOGY INC. • Paxton, IL and Springboro, OH • Call 800.788.2370

Choose...CTI

Children's Museum
 of Indianapolis



ARCHITECT:
 Browning Day Mullins Dierdorf
 Indianapolis, Indiana

DESIGN ARCHITECT:
 Arata Isozaki & Associates
 Tokyo, Japan

LEAD ARCHITECT:
 NBBJ Architects Inc.
 Columbus, Ohio

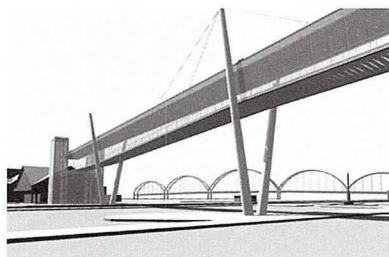
The Center of Science
 and Industry (COSI)
 Columbus, OH





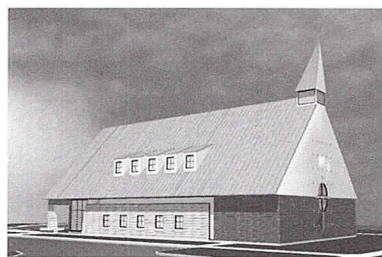
Christopher Barrett, Photographer

Stevenson High School's addition was designed by OWP/P



Courtesy of the Firm

Holabird & Root's winning conceptual design for a pedestrian skybridge in Davenport, Iowa



Courtesy of the Firm

The design for the Chicago Marthoma Church in Lombard by Crossroads Design

two previous locations in Lincolnshire and Chicago's Inland Steel Building. The new telephone number is 312/798-7700.

HDR, Inc. has moved to 8550 W. Bryn Mawr Ave., Suite 900, in Chicago.

J. W. Sih and Associates is now located at 2320 W. Superior St. in Chicago. The telephone number is 773/862-8600.

OWP&P has changed its mark to **OWP/P**.

PROJECTS

OWP/P recently completed a 60,000-square-foot resource center and commons addition to Adlai E. Stevenson High School in Lincolnshire, Illinois. It implements the final phase of OWP/P's 1995 master plan for the school.

The city of Davenport, Iowa conducted an invited competition for a new pedestrian skybridge in February and chose **Holabird & Root's** conceptual design as the winner. The \$6.8 million structure will span 650 feet through the downtown area as part of Davenport's River Renaissance redevelopment project. The city had requested a signature element for the Renaissance project that would provide views of the city and surrounding scenery. Holabird & Root's design minimizes the structure and maximizes the use of glass. The glass side walls are angled to reduce glare and heat load. Translucent glass panels set into the floor slab emit a soft glow under the bridge at night. Sixty-foot-high steel columns support the bridge with tension cables.

Crossroads Design has been selected by the Chicago Marthoma Church to design a new church in Lombard. The 16,000-square-foot facility will include administrative offices, a multipurpose space, and a sanctuary to accommodate 450 members. The metal cathedral roof floats over the masonry base on a layer of sheet glazing, highlighting the entry. The isolated use of glass block and windows accents the building's clean geometry and pure form.

CLIPPINGS

The pool building in Davis Square Park by **David Woodhouse Architects** was selected by

Architectural Record to appear on its Web site, www.architecturalrecord.com, as part of its Building Types Study on community buildings.

Holland Cotter's article on the front page of the February 1 New York Times Living Arts section, "Amid the Ashes, Creativity," was illustrated with **Krueck & Sexton's** design for a new tower for the World Trade Center site. The firm's work was included in an exhibition at the Max Protetch Gallery in New York.

Teng & Associates' Kline Creek Farm Visitors Center was featured in the February 27 online publication architectureweek.com.

AWARDS

Urban Works, Ltd. received the 2002 Professional Service Firm of the Year award from the Hispanic American Construction Industry Association (HACIA) at the organization's 23rd annual banquet in February. Patricia Saldana Natke, AIA, a founding principal of Urban Works, is a HACIA board member and has taken a leadership role on many of their committees. She is currently the Professional Committee Chair.

Peter Exley, AIA has received a 2002 Service Recognition Award from the Illinois Alliance for Arts Education in honor of his contributions to arts education for Illinois school children.

PROFESSIONAL DEVELOPMENT

The 2002 national conference of the **American Planning Association** will be held in Chicago on April 13 to 17 at the downtown Hyatt Regency. The national Web site is www.planning.org.

The Museum of Contemporary Art (MCA) continues to sponsor special events related to the exhibition **Mies in America**, which is on view through May 26. On Tuesday, April 16 at 6:00 p.m. (note new date), architects Elizabeth Diller and Ricardo Scofidio will discuss their recent work. On Saturday, May 18, Doug Garofalo, AIA leads a private tour of the Markow Residence in Prospect Heights. Space is limited for both events; the box office number is 312/397-4010. Lecture tickets are free, and tour tickets are \$60 for MCA members, \$70 for non-members. Visit the MCA's Web site at www.mcachicago.org for complete details.

The submission deadline for the Chicago Athenaeum's fifth annual **American Architecture Awards** is April 15. Eligible projects were built in the United States or abroad by a U.S. architectural firm as of January 1, 2000. Unbuilt projects are also eligible. Winning submissions and other selected projects will be exhibited at the Chicago Athenaeum's new downtown museum at 307 N. Michigan Ave. and subsequently at other venues in the U.S. and abroad. Entry forms are available by calling the museum at 847/895-3950 or going online at www.chiathenaeum.org.

The AIA Chicago Association Forum at NeoCon, **Inside Mold: The Coming Liability Trap**, will explore how mold concerns have changed the design professions. The session taps the experience of the nation's leading insurer of design professionals on the front-line of the mold litigation explosion, to help designers understand their risk and manage their exposures. The program, which provides 2 LU/HSW, runs from 9:30 to 11:30 a.m. on Monday, June 10 at the Holiday Inn Chicago Mart Plaza. The cost is \$50 for AIA members and \$75 for non-members. Register through AIA Chicago or through NeoCon at www.mmart.com/neocon or 800/677-6278. (It is not necessary to register for NeoCon in order to attend this program.) The program is co-sponsored by AIA Trust and Victor O. Schinnerer & Company, Inc.

On Thursday, April 11, Lorman Education Services will conduct a one-day seminar on **Claim Prevention for Illinois Design Professionals** at the John Marshall Law School, 315 S. Plymouth Court. Presenters include Melissa Roberts from Euclid Insurance Agencies and attorneys from Crisham & Kubes, Ltd. The fee is \$279 and registration is available online at www.lorman.com or by calling 715/833-3959.

The Pleasant Home Foundation is sponsoring the symposium **Framing a View: The Art of Stained Glass** on May 3-4. Participants will explore the craft of stained glass through tours of private residences, lectures by nationally-known experts, and demonstrations by artisans. Call 708/383-2654 to request a brochure.

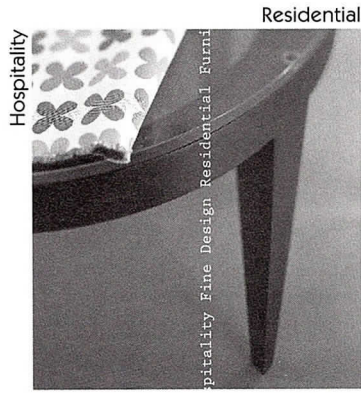
Mike Jackson, FAIA, chief architect for the Illinois Historic Preservation Agency, will showcase the architectural legacy of the state's county courthouses and

Office Expo by OFDA ■ TechnoCon™ ■ NEWHospitality ■ Fine Design Residential Furnishings Show™ ■ Italian Office Design Show ■ Buildings Show®

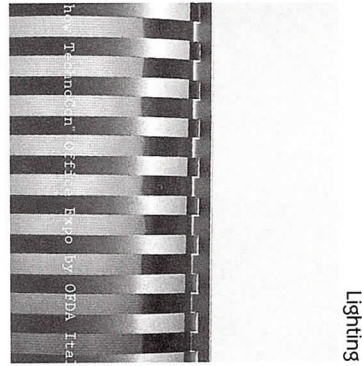
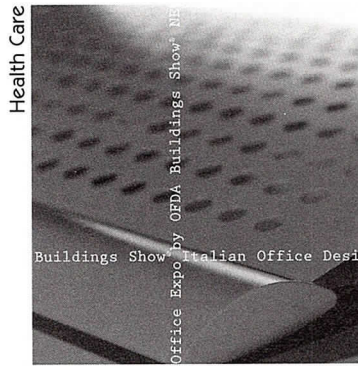
Office Expo by OFDA ■ TechnoCon™ ■ NEWHospitality ■ Fine Design Residential Furnishings Show™ ■ Italian Office Design Show ■ Buildings Show®

June 10-12, 2002

The Merchandise Mart
Chicago, Illinois USA



Residential



Architectural Products

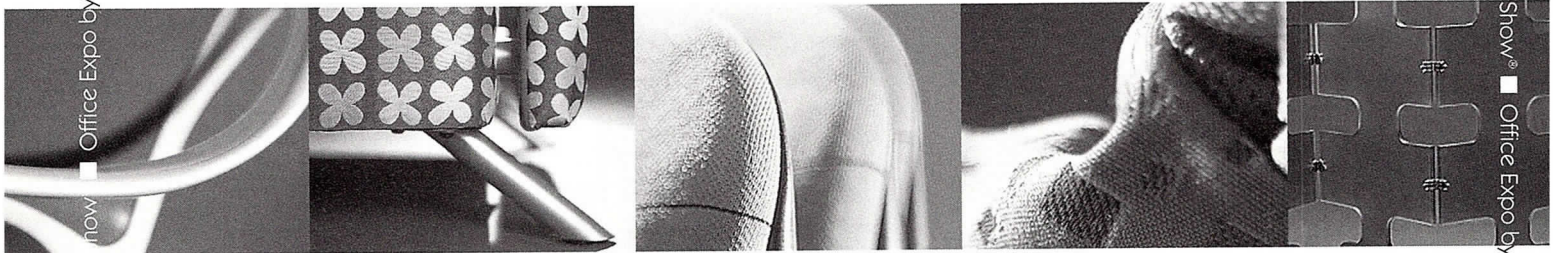


The World's Trade Fair for Interior Design and Facilities Management

NeoCon®
World's Trade Fair 2002

Featuring Buildings Show®
Office Expo by OFDA
TechnoCon™
NEWHospitality
Fine Design Residential Furnishings Show™
Italian Office Design Show

NeoCon® World's Trade Fair dominates the commercial furnishings industry with new product introductions, innovative ideas and state-of-the-art concepts. Be a part of the event you and your colleagues will talk about all year long.



For more information, call 800.473.0194 or
visit www.merchandisemart.com (click on NeoCon).

Sabo & Zahn

Attorneys at Law

Werner Sabo, FAIA

James Zahn, FAIA

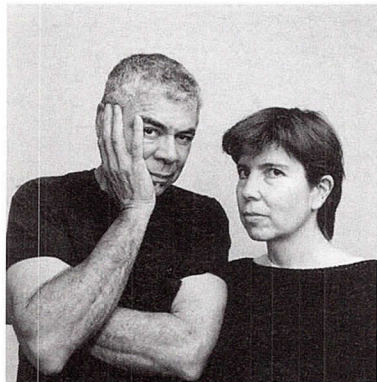
Licensing problems, copyrights, business formations,
mediation, litigation, arbitration, contracts, real estate
construction attorneys

8620 Sears Tower
Chicago, IL 60606

(312) 655-8620
fax: (312) 655-8622

www.sabozahn.com

Elizabeth Diller and Ricardo Scofidio will speak at the Museum of Contemporary Art on April 16.

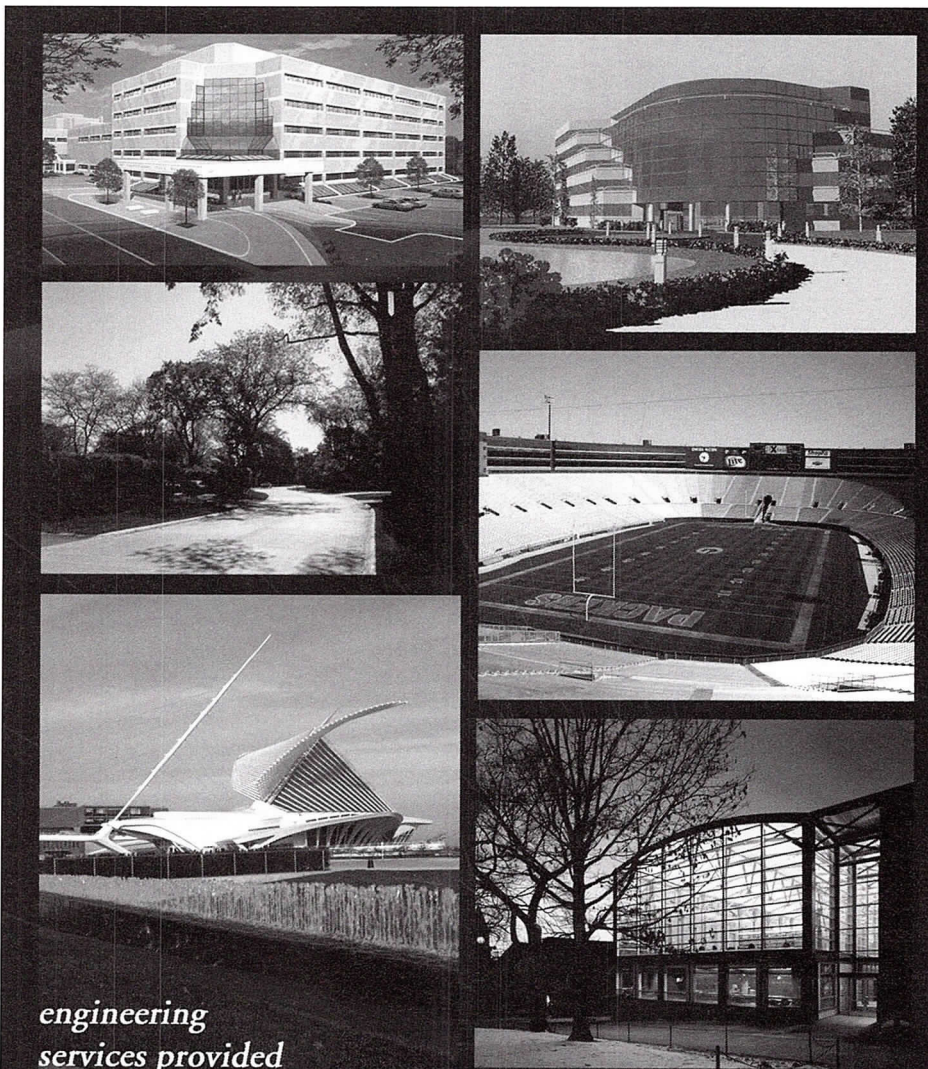


Mark La Rosa

direct attention to a new model program of courthouse preservation as part of the monthly **Preservation Snapshots** series sponsored by the Landmarks Preservation Council of Illinois. The public is invited to attend this free program (bring a brown-bag lunch) at 12:15 p.m. on Thursday, April 18 at the Claudia Cassidy Theater on the second floor of the Chicago Cultural Center, 77 E. Randolph St.

A new exhibition at the Graham Foundation, **Fischer von Erlach: Architecture as Theater**, features Mark Ashton's photographs of buildings designed by the Viennese imperial architect between 1688 and 1722. The April 3 opening of the exhibition will be accompanied by a lecture by art historian Esther Gordon Dotson, who is currently preparing a book on the subject. On April 17, architect Ammar Eloueini will give a lecture on **Digital Technology**, presenting Digit-all Studio's current projects and discussing how digital media is being used today to conceive, represent and fabricate architecture. Eloueini established Digit-all Studio in 1997 as an architectural laboratory, based in Paris and Chicago, that focuses on international competitions, especially those of a theoretical nature. Doors open at 5:00 p.m. and the lectures begin at 6:00 p.m.; seating is limited to the first 150 people. Both of the lectures and the exhibition, which continues through May 16, are free and open to the public. The Graham Foundation is located at 4 W. Burton Place; hours are Monday through Thursday, 10:00 a.m. to 4:00 p.m. Further details are available at www.grahamfoundation.org.

The catalog for the **Campbell Center for Historic Preservation Studies** in Mount Carroll, Illinois is available online at www.campbellcenter.org or by calling 815/244-1173.



*engineering
services provided
to our clients
include...*
**Structural
Civil
Environmental
Transportation
Mechanical
Electrical**



**GRAEF
ANHALT
SCHLOEMER**
and Associates Inc.
engineers & scientists

228 South Wabash Avenue
Suite 700
Chicago, Illinois 60631
312/939-7007
www.gasai.com

also:
Chicago - O'Hare
Milwaukee, Madison,
and Green Bay

VARIOUS MATTERS

Twin Towers Remembered, an exhibition of photographs by taken by Camilo Jose Vergara over a 30-year period, will be on view in the Chicago Architecture Center Lecture Hall Gallery, 224 S. Michigan Ave., from April 11 to June 4. A small catalog, co-published by the National Building Museum and Princeton Architectural Press, accompanies the exhibit.

Space + Form: An Exhibition of Work from the First Year Undergraduate Architecture Studios at UIC is on view at the Elmhurst Art Museum through May 5. The museum, located at 150 Cottage Hill Ave. in Elmhurst, occupies, in part, a house designed by Mies van der Rohe. For information, call 630/834-0202.

Golf Around Chicago 2002 is open for play at Navy Pier until April 21. The 18-hole miniature golf course features holes designed and constructed by local architects and builders. All proceeds benefit the Epilepsy Foundation of Greater Chicago.

NEW MEMBERS

AIA

Thomas E. Brock, Tom Brock, Architect; **Yong Sang Choi**, Loebi Schlossman & Hackl; **Rand K. Ekman**, OWP/P Architects; **Neal J. Gerdes**, AKL Architectural Services; **Robert M. Gross**, Chipman Adams; **Leona M. Ketterl**, OWP/P Architects; **Robert A. Sanchez**, Hines; **Scott Alan Sarver**, DeStefano + Partners; **Michael Wong**, Alvord, Burdick & Howson

Associates

Kathleen Brady Fanning, DeStefano + Partners; **Laura A. Gagliano**, OWP/P Architects; **Julia A. Hamson**, Hartshorne + Plunkard Architects; **Mark Kasprzyk**, McClier; **William L. Kwon**, RTKL Associates; **Matthew C. Larson**, RTKL Associates; **Meggan Marie Lux**, Urban Works; **Chester Mietus**, IA Chicago; **Matthew D. Miller**, RTKL Associates; **Mehernosh P. Mistry**, Legat Architects; **R. McShane Murnane**, Nagle Hartray Danker Kagan McKay Architects Planners; **David Nienhueser**, Metis Advisory Group; **Michael Smith**, RTKL Associates; **Ho-Yuet Tang**, Legat Architects; **John C. Weis**, Cashman Stahler Group

Professional Affiliates

Douglas Holmes, Hafele America; **Christine Miller**, Charrette ProGraphics; **Peter Lindsay Schaudt**, Peter Lindsay Schaudt Landscape

What to do? How to do it?

Kristine Fallon Associates, Inc.

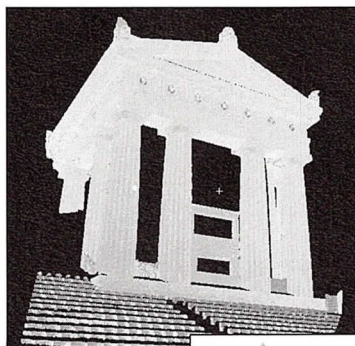
http://www.kfa-inc.com

Hardware
Software
Networks
Internet

30 East Adams Street, Suite 600
Chicago, IL 60603-5609
312-641-9339 (voice)
312-641-9337 (fax)
kfa-inc@kfa-inc.com

Get it done. Keep it going.

New laser scanning engineering/surveying services from Falk PLI



Falk PLI matches tomorrow's technology to our customers' engineering/surveying needs today. Our new laser scanner is ideal for a variety of design, construction and historical preservation projects. It is the first scanner of its type in the greater Chicago area.

It is lightweight, portable and easy to set up.

Accurate and fast (scanning hundreds of thousands of location points in minutes!).

We can scan during construction and upgrades, and we can create detailed diagrams and accurate computerized models of existing facades and facilities.

Falk PLI will become the preferred provider of engineering surveying services.

Falk PLI customers get superior surveying, reverse engineering capabilities, better retrofit designs, as-built surveys and better

project management.

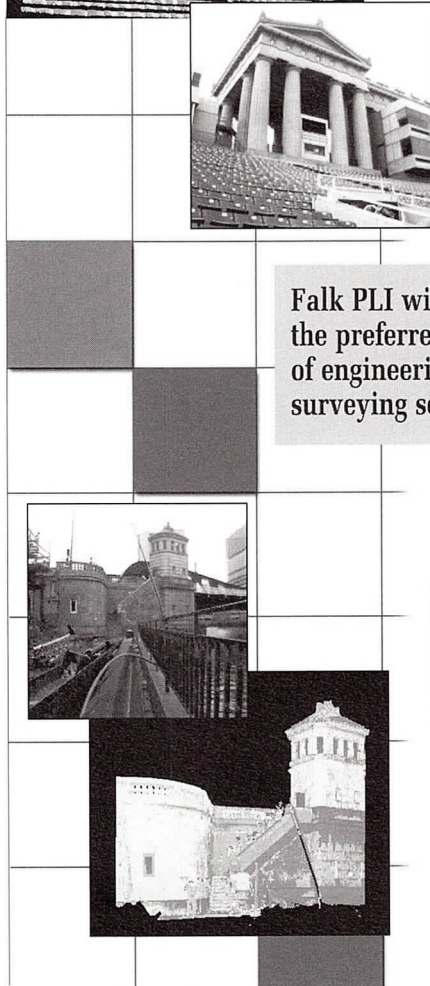
Find out more.

FALK PLI
Engineering & Surveying

5979 McCasland Avenue
Portage, Indiana 46368
Phone: 219-762-7024 ■ Fax: 219-764-4261
Email: falk@crowne.net
Internet: www.falk-pli.com

1550-12-4040

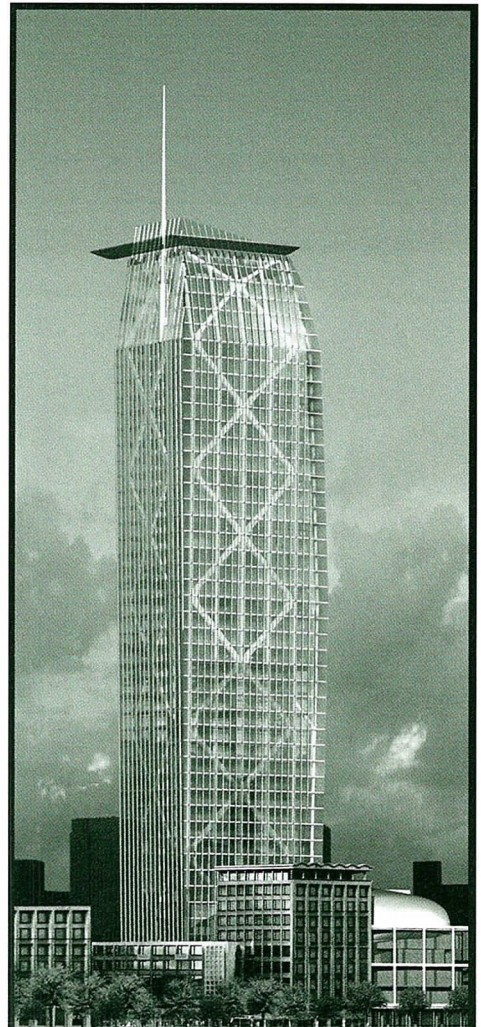
© 2002, Falk PLI Engineering & Surveying
Printed in U.S.A.



Roofing Solutions for the New Chicago Energy Code

Verisco TPO White Single Ply Membranes
Bakor Modified Bitumen with Acrylic Coatings
Carlisle Coating and Waterproofing for Green Roofing

Please call John Dashner or Randy Zaleski
Ph: 630-668-1551 Fax: 630-668-1672



ARCHITECTURAL VISUALIZATION - RENDERING - ANIMATION - VR PANORAMIC

WWW.VERTEXGRAPHICS.COM



312.432.9870

VERTEX GRAPHICS

1147 W OHIO #102 CHICAGO IL 60622

PROJECT: 54 EAST SCOTT STREET
ARCHITECT: HUTTER ARCHITECTS, LTD.
CLIENT: BARCLAY INVESTMENT HOLDINGS LLC
LOCATION: CHICAGO, ILLINOIS



Project:

Coolsingel Tower
The Netherlands

Client:

Bouffonds, The Netherlands

Architect:

PPKS Architects
René Steevensz, AIA



IMAGEFICTION

LaSalle Wacker Building
221 North LaSalle Street
Suite 1510
Chicago, IL 60601

312.726.0818

architectural rendering

computer imaging

animation

interactive media

large format printing

www.imagefiction.com

- 3 Fischer von Erlach: Architecture as Theater.** Exhibition opening and lecture at the Graham Foundation. 6:00 p.m.; 4 W. Burton Place. Information: 312/787-4071; www.grahamfoundation.org
- 4 Deadline for Intent to Enter Design Excellence Awards.** AIA Chicago.
Will Bruder. Lecture by Phoenix-based architect. 7:30 p.m.; Judson College Fine Arts Performance Hall, 1151 N. State St., Elgin. Information: 847/695-2500, ext. 3350.
- 10 Transportation: New Techniques for Planning and Visualization.** Planning & Urban Affairs PIA. 12:00 noon; AIA Chicago. Bring your lunch; beverages are provided. 1 LU/HSW
Tour: Eport. Corporate Architects and Historic Resources PIAs. 5:30 to 7:00 p.m. 600 W. Chicago Ave. (Larrabee St. lobby). 1.5 LU/HSW
- 11 Claim Prevention for Illinois Design Professionals.** Lorman Education Services. Day-long seminar at John Marshall Law School, 315 S. Plymouth Ct. Info: www.lorman.com or 715/833-3959.
Hilliard Homes Redevelopment. Historic Resources PIA. 12:00 noon; AIA Chicago. Bring your lunch; beverages are provided. 1 LU/HSW
Pushing the Envelope: Innovation in Design Practice, Step 1 – Conception and Planning. Design PIA. 5:30 p.m.; Farr Associates, 53 W. Jackson Blvd., #1661. 1.5 LU/HSW
- 13 Tour: Advocate Christ Medical Center Imaging Center.** Architecture for Health PIA. 10:00 a.m. to 12:00 noon; 4440 W. 95th St., Oak Lawn. Limit 30 participants. 2 LU/HSW
American Planning Association National Convention. APA. 5-day convention at Hyatt Regency Chicago. Information: www.planning.org.
- 16 Diller + Scofidio.** Lecture by New York-based architects at the Museum of Contemporary Art. 6:00 p.m.; 220 E. Chicago Ave. Reserve free tickets by calling 312/397-4010.
Tour: Mies in America. Young Architects and Design PIAs. 6:00 to 8:00 p.m.; Museum of Contemporary Art, 220 E. Chicago Ave. Limit 50 participants. 1 LU
- 17 Digital Technology.** Lecture by Ammar Eloueini of Digit-all Studio at the Graham Foundation. 6:00 p.m.; 4 W. Burton Place. Information: 312/787-4071; www.grahamfoundation.org
- 18 Building Permit Seminar.** Chicago Buildings Department. Discussion of best practices for permit process, highlights of the rewrite of the Building Code, details of a new permitting program. 9:00 to 11:00 a.m.; City Hall Council Chambers, 121 N. LaSalle St.
Through-Wall Fire Penetration. Technical Issues PIA. 12:00 noon; Chicago Bar Association, 321 S. Plymouth Court. 1 LU/HSW
Illinois County Courthouses. Landmarks Preservation Council of Illinois. 12:15 p.m., Chicago Cultural Center, 77 E. Randolph St., Claudia Cassidy Theater. Admission is free; bring a brown-bag lunch.
- 19 2002 Professional Development Conference.** AIA Chicago. 7:30 a.m. to 5:00 p.m.; Holiday Inn Chicago Mart Plaza, 350 N. Orleans St. Two-day conference; earn up to 11 LUs. Register online: www.aiachicago.org
- 24 New Members Breakfast.** AIA Chicago. 7:45 a.m.; AIA Chicago. RSVP by April 22; 312/670-7770 or info@aiachicago.org.
- 25 Observations from Ground Zero.** Lecture by John Zils, FAIA of Skidmore, Owings & Merrill. Chicago Architecture Foundation. 6:00 p.m.; CAF Lecture Hall, 224 S. Michigan Ave. \$10 CAF members/\$15 non-members. No reservations. Info at www.architecture.org
- 30 Pre-convention Meeting for Delegates to AIA National Convention.** AIA Chicago. 5:30 p.m.; AIA Chicago.
Housing Diversity: Act Two. Housing PIA. 6:00 p.m.; Archeworks, 625 N. Kingsbury St. 1.5 LU/HSW

AIA Chicago



A Chapter of The American Institute of Architects
222 Merchandise Mart Plaza
Suite 1049
Chicago, Illinois 60654
312/670-7770
312/670-2422 (fax)
info@aiachicago.org
www.aiachicago.org

Periodical