

Focus

SPECIAL EDITION

Design Excellence Awards 2001

**Distinguished Building, Interior
Architecture and Divine Detail**

imagefiction

Architectural Rendering

Computer Imaging

Animation

Large Format Color

LaSalle Wacker Building
221 North LaSalle Street
Suite 1510
Chicago, IL 60601

312.726.0818

www.imagefiction.com



Project:

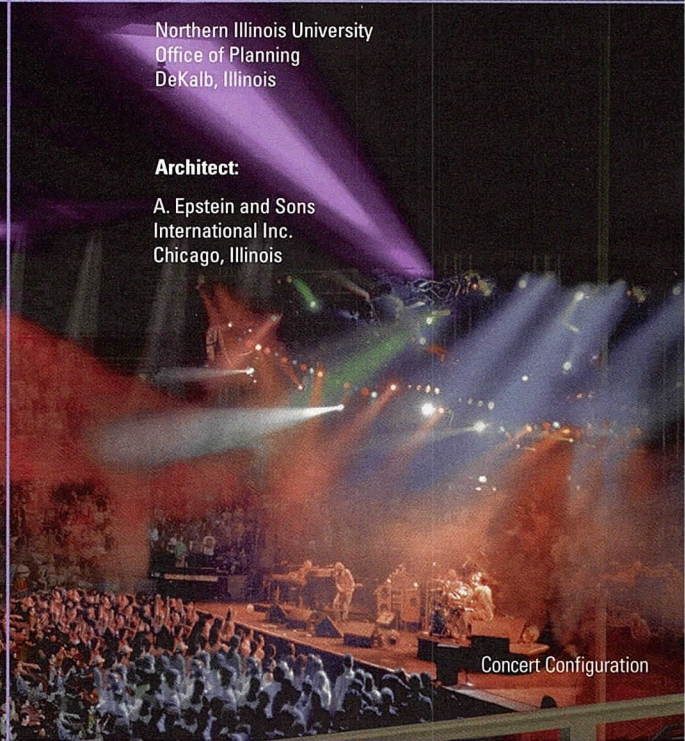
NIU Convocation Center
Huskie Basketball Arena
DeKalb, Illinois

Client:

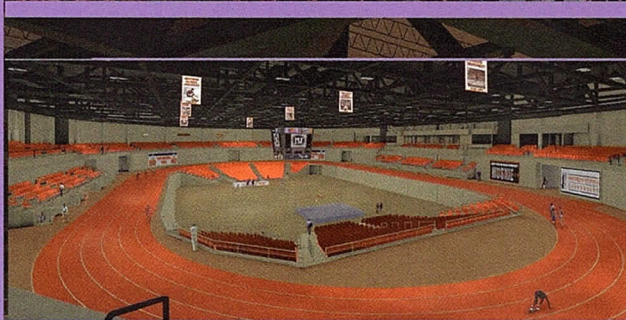
Northern Illinois University
Office of Planning
DeKalb, Illinois

Architect:

A. Epstein and Sons
International Inc.
Chicago, Illinois



Concert Configuration



Track and Field Configuration

Basketball Configuration



4

President's Letter

6

Distinguished Building Awards

18

Interior Architecture Awards

32

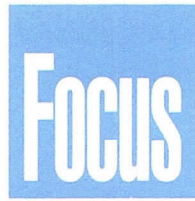
Divine Detail Awards

38

Index and Jury List

Want to See More?

The Chicago Architecture Foundation, 224 S. Michigan Ave., will display the winners in their gallery from October 1 through December 3. Or, if you prefer a more virtual experience, visit www.aiachicago.org where every submission is on exhibit.



Special Edition, October 2001

Editor

Susan Larson

Contributing Editor

Laurie McGovern Petersen

Focus Advisory Board

Jonathan Fischel, AIA
Laurie McGovern Petersen
James Prendergast, AIA
Alice Sinkevitch, Hon. AIA
P.K. VanderBeke, AIA
Thomas Zurowski, AIA

FOCUS (ISSN 1071-3700) Vol. 21, No. 9, is published monthly with a combined issue June/July, by AIA Chicago, 222 Merchandise Mart Plaza, Suite 1049, Chicago, Illinois 60654-1001. \$20 of each member's dues is allotted as a subscription. Periodicals postage paid at Chicago, Illinois. POSTMASTER: Send address changes to Focus, AIA Chicago, 222 Merchandise Mart Plaza, Suite 1049, Chicago, Illinois 60654-1001.

For advertising rates and schedules, call 312/670-7770.

© 2001 The American Institute of Architects Chicago.

All rights reserved. Reproduction in whole or part without permission is strictly prohibited.

AIA Chicago on the Internet: www.aiachicago.org

AIA Chicago e-mail: info@aiachicago.org

AIA Chicago



A Chapter of The American Institute of Architects

2001 Board of Directors

President

Thomas Zurowski, AIA

President-Elect

Jonathan Fischel, AIA

Vice Presidents

Joseph Caprile, AIA
James Prendergast, AIA

Secretary

Charles Smith, AIA

Treasurer

Dave Urschel, AIA

Directors

Ellen Bailey Dickson, AIA
Eleanor Esser Gorski, AIA
Peter Schlossman, AIA
Lamar Johnson, AIA
Philip Craig Johnson, AIA

AIA Regional Director

Holly Gerberding, AIA
Lawrence Livengood, AIA

AIA Illinois Director

W. Stephen Saunders, AIA

Associate Director

Susan Campbell, Assoc. AIA

Professional Affiliate Director

Eric Singer

Past President

Gunny Harboe, AIA

2001 AIA Illinois Delegates

William Bradford, AIA
Thomas Braham, AIA
Hill Burgess, AIA
Christopher Chwedyk, AIA
Deborah Doyle, AIA
Angie Lee, AIA (Alternate)
Alan Madison, AIA
Maureen Reagan, AIA (Alternate)
W. Stephen Saunders, AIA
Robert Woodworth, AIA

2001 Professional Interest Areas

Corporate Architects

Laura Fisher, AIA

Design

Thomas Hoepf, AIA

Design/Build

Hill Burgess, AIA

Environment

Leonard Sciarra, AIA

Health

Terry Houk, AIA

Historic Resources

Thomas Gentry, Assoc. AIA

Housing

Michael Messerle, AIA

Information Technology

Gaute Grindheim, Assoc. AIA

Interiors

Sharlene Young, AIA

Office Practice

Barry Koren, AIA

Planning and Urban Affairs

Douglas Schroeder, FAIA

Technical Issues

Christopher Chwedyk, AIA

Young Architects

David Genc, Assoc. AIA

Chapter Staff

Executive Director

Alice Sinkevitch, Hon. AIA

Membership Coordinator/Assistant to the Director

Jamie Juliano

Program Director

Joan Pomaranc

Communications Director

Susan Larson

Financial Manager

Crystal Gagler

Public Information Receptionist

Linda Freeman

AIA Chicago's (International) Awards Competition



When you see this year's winners, you could get the feeling, as I did, that AIA Chicago's annual Design Excellence Awards is an international competition. In this special awards issue you will see work from Asia to Europe. You also will see some great local projects

There are writers who claim the quality of architecture in Chicago is not what it used to be. However, it seems clear from this competition that clients all over the world are hiring Chicago firms for their distinctive designs. (Not unlike us, I'm sure those local architects are complaining about competition from the outside.)

An interesting aspect of this year's winners as a group is the presence of an intriguing balance of internationally recognized firms, solid regionally focused firms, and young emerging firms. Of the more than 250 total entries in the Distinguished Building, Interior Architecture and Divine Detail categories, the jury presented 12 Honor Awards, 13 Citations of Merit, and five Special Recognition Awards.

Winners will be recognized in several ways. In addition to being published in this issue of *Focus*, they were honored at our annual Designight event, which was held on September 28 in the Grand Ballroom at Navy Pier. The Chicago Architecture Foundation, 224 S. Michigan Ave., will display the winners in their gallery October 1 through November 30. And, if you prefer a more virtual experience, visit www.aiachicago.org where every submission is on exhibit.

I would like to thank all of our members who entered and congratulate those who won. I would also like to thank our sponsors for making the event possible and encourage all members to continue to build upon an architectural heritage that is still world class.

Thomas Zurowski, AIA
President

Thanks to Our Sponsors

The Design Excellence Awards were presented on Friday, September 28 in the Grand Ballroom of Navy Pier. Many organizations made the event possible and AIA Chicago would like to thank them for their support.

Co-Sponsors

Charter Sills & Associates
Permasteelisa Cladding Technologies Ltd.
Petersen Aluminum Corp.
USG Corp.

Benefactors

Gensler
Murphy/Jahn Inc.

Patrons

Brininstool + Lynch Ltd.
Cosentini Associates Inc.
Corporate Concepts
DeStefano and Partners
Executive Construction Inc.
Gary Lee Partners
Goldberg General Contracting
Griskelis Young Harrell Architects
Harding Associates
HOK Inc.
Holabird & Root LLP
Illinois Institute of Technology, College of Architecture
Interior Space International
Knight Advanced Technology
Landon Bone Architects Ltd.

Leopardo Construction
Loebl, Schlossman & Hackl
Lohan Associates
McCluer
OWP&P Architects
Pappageorge/Haymes Ltd.
Pepper Construction Co.
Perkins & Will
Ross Architecture Inc.
Skidmore Owings & Merrill LLP
Teng & Associates Inc.
Thornton-Tomasetti Engineers
Turner Construction Co.
Turner Construction Co./SPD
Valerio Dewalt Train Associates
VOA Associates Inc.



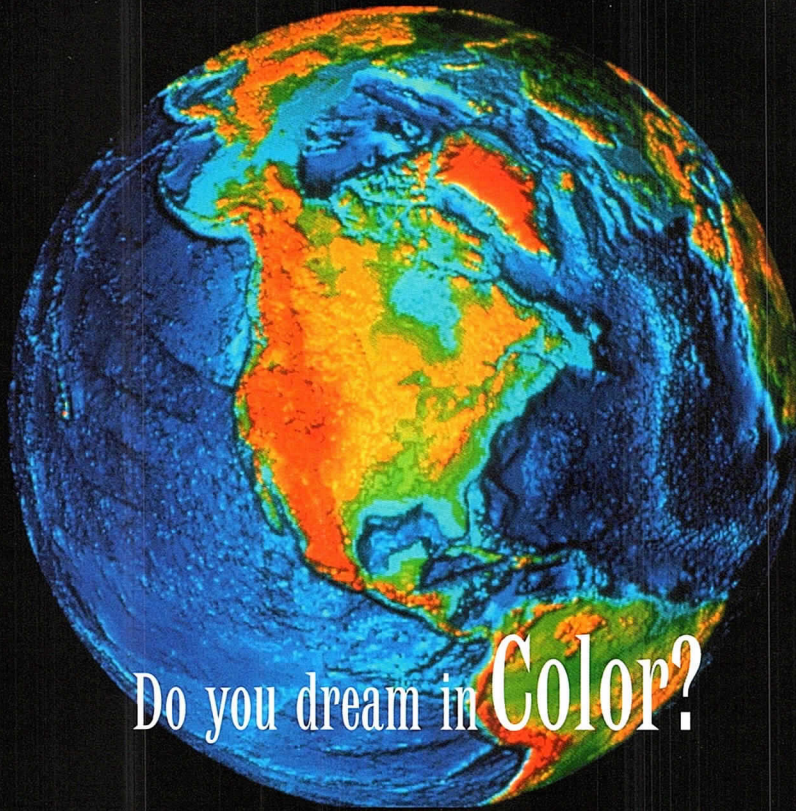
The Construction Law Group
SCHIFF HARDIN & WAITE
Providing Constructive Legal Counsel Since 1864

We were pleased to have assisted
Ernest A. Grunsfeld III, FAIA
and
Thomas L. Shafer, AIA

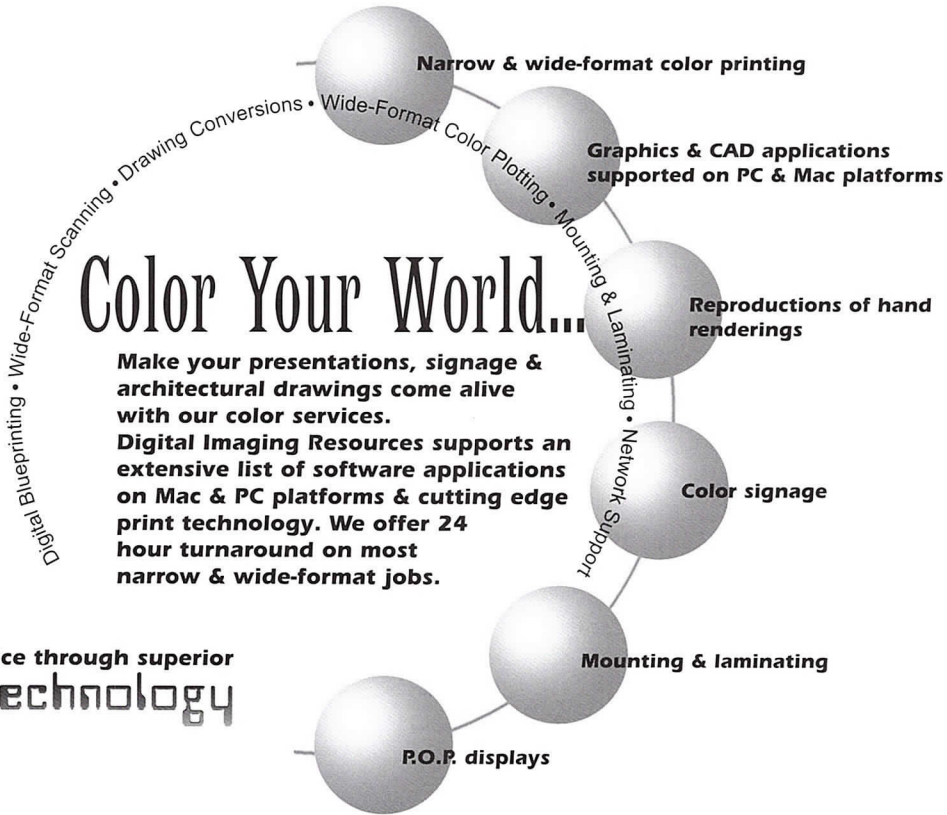
in the merger of their practices
under the name

Grunsfeld Shafer Architects LLC

Paul M. Lurie
312.258.5660
plurie@schiffhardin.com
www.schiffhardin.com



Do you dream in **Color?**



Better service through superior
technology



Digital
Imaging
Resources, Inc.

650 West Lake Street #120 • Chicago, IL 60661 • www.dirinc.com

Phone 312.243.1250 • Fax 312.243.1590

Distinguished Building Awards

The Distinguished Building Award was established 46 years ago to recognize significant achievements in the planning, design and execution of recent building projects. Projects are eligible if they were completed between January 1, 1998 and May 1, 2001 and were designed by a registered architect in the Chicago metropolitan area.

*daring and
superb*



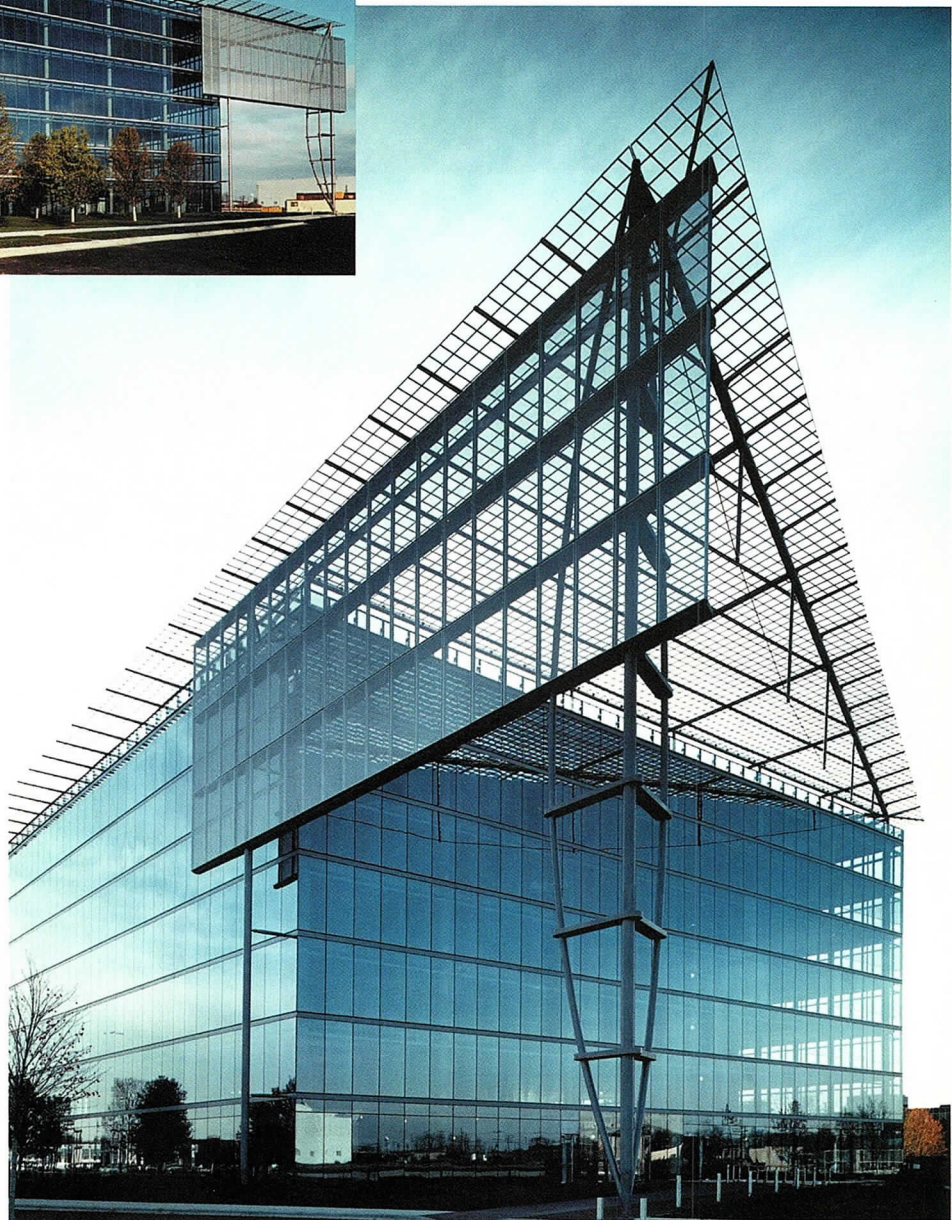
© Doug Sawyer Photography

HALO Headquarters Niles, IL

Honor Award

Architect – Murphy/Jahn Inc.
Client – CenterPoint Properties
General Contractor – Harbour Contractors Inc.
Consultants – Peller and Associates (structural);
Werner Sobek Ingenieure GmbH (special structures);
Cosentini Associates (MEP); Cowhey Gudmunson
Leder Ltd. (civil)

The jurors agreed that this building is at the leading edge of design and technology, in the best Chicago tradition. The simple seven-story box is overlaid with triangular screens that form loggias to the street and parking and can serve as projection screens for the company's logo. The exterior wall is a single-shell, insulating glass façade between the slab edges. The concrete ceiling is exposed, with mechanical systems placed beneath the raised floors. The interior is organized around a full-height atrium with three glass elevators. At the top two levels the atrium connects to a two-story skylit showroom for the company's products.





Foster Residence
Highland Park, IL

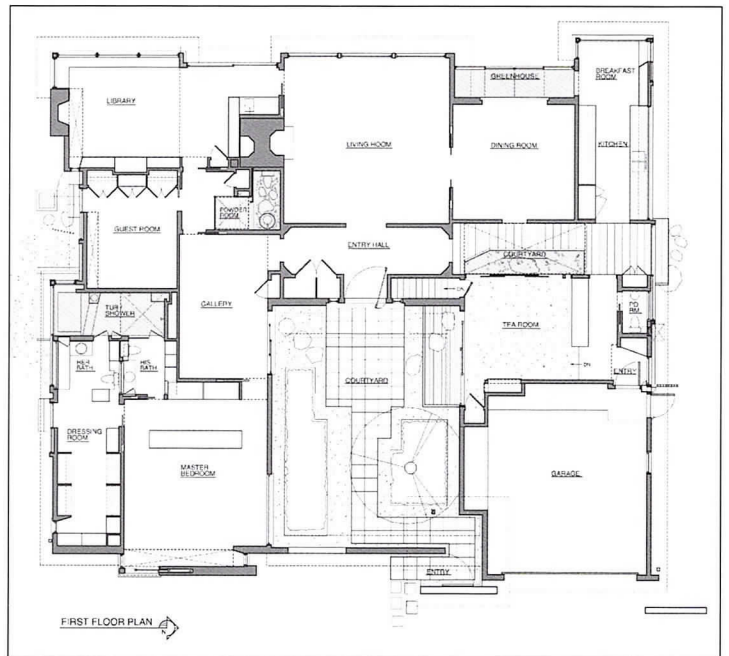
Honor Award

Architect – Ross Architecture Inc.
Client – Lynn and Jim Foster
General Contractor – H. Hepp & Co.
Consultants – Calor Design Group (mechanical);
Dan Weinbach Partners Ltd. (landscape)

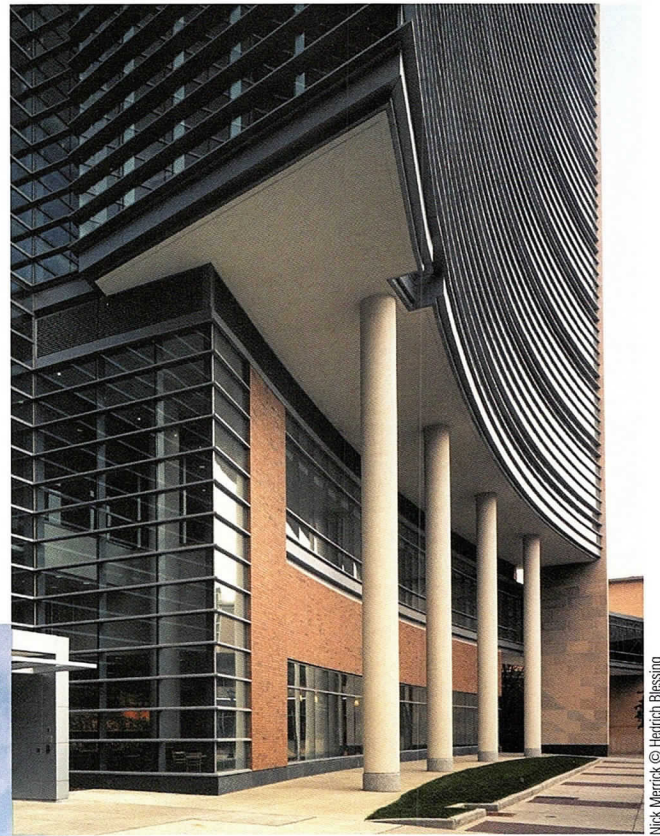
A 1960s ranch house was extensively remodeled to create a series of Zen-like indoor-outdoor spaces. The result exudes such tranquility that one juror claimed to experience lower blood pressure just looking at it. Given the relatively dense suburban context, the architect carefully arranged the rooms, passages and windows to provide views of nature while screening the surrounding houses. Every turn reveals courtyards of light and vistas to the landscape. There are no dead-ends; all corners open up to the outdoors. Understated materials, muted colors and subtle natural light enhance the owners' collection of fine art.

Jon Miller © Hedrich Blessing

*a superb sequence of
spaces and views*



*there's an abstract
quality, a sense of
grace and movement,
that is carried
throughout the project*



Nick Merrick © Hedrich Blessing



Nick Merrick © Hedrich Blessing

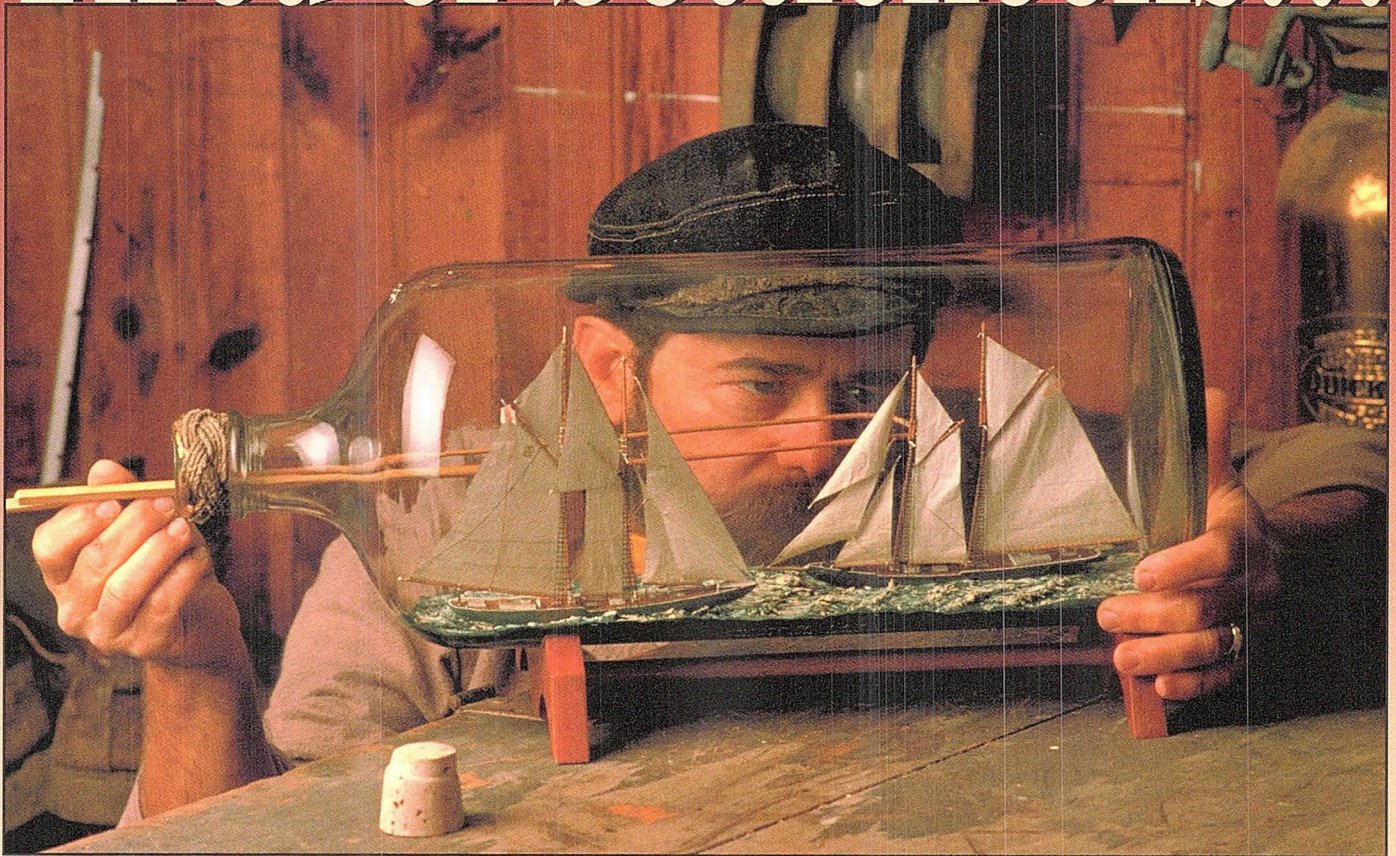
McDonnell Pediatric Research Building
St. Louis, MO

Honor Award

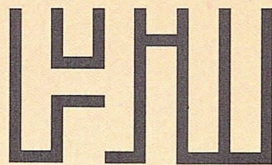
Architect – Perkins & Will
Associate Architect – MacKey Mitchell Associates
Client – Washington University School of Medicine
General Contractor – Jacobs/Sverdrup Facilities Inc.
Consultant – Bard, Rao + Athanas Consulting Engineers

Initially seduced by the very handsome exterior wall, the jurors were happy to find that this project's beauty was more than skin-deep. Located in a high-density area of the Washington University Medical School campus, the building is designed to connect to existing and future buildings with bridges, pedestrian arcades and a transparent double-height lobby. The exterior is composed of wrapped layers of brick, glass and limestone, with a gently curved transparent curtain wall defining the edge of a street that is destined to become a pedestrian plaza.

Tired of bottlenecks...



*Bring us aboard early
for "real-time" value engineering.*



HILL MECHANICAL GROUP

"Value engineering"... it should start the moment a project is launched by designing the most effective, efficient mechanical strategies possible into every stage of building plans — from preliminary drawings to final prints. That's how you eliminate the cost squeeze and project bottlenecks that come when mechanical proposals just don't align with structural budgets.

Bring us aboard early. We're Illinois' largest trade contractor, and we're proud that design-build encompasses over one-third of our annual volume. To save real time and money, let our team of 35+ graduate engineers demonstrate the impact of "real-time" value engineering. We'll design HVAC strategies from the start that complement — not complicate — your job.

To discuss your needs, contact Warren Hill, P.E., President 773-929-6600

www.hillmech.com

the exterior puts new energy into the old buildings and the interior provides the quietness of space that an art gallery needs



Mary and Leigh Block Museum of Art
Evanston, IL

Honor Award

Architect – Lohan Associates
Client – Northwestern University
General Contractor – Pepper Construction Co.
Consultant – Environmental Systems Design Inc.

This addition to the 1979 museum is "very economical with its gestures and means." Jurors praised the interior for its nice sense of space and good relationship with the outside. They particularly admired the floating display partitions that free up wall space for windows but allow viewers to focus on the art. The handsome exterior composition terminates with a glass portico that extends out of the masonry block and creates a sheltered outdoor space.





Sony Center Berlin
Berlin, Germany

Honor Award

Architect – Murphy/Jahn Inc.
 Client – Sony with TishmanSpeyer Properties and Kajima
 Contractors – Hochtief AG, Berlin (general); Josef Gartner & Co. and Fa. Gotz (façade)
 Consultants – BGS Ingenieursozietat and Ove Arup & Partners (structural); Werner Sobek Ingenieure GmbH (special structures); Jaros Baum & Bolles and Ingenieurgesellschaft Hopfner mbH (mechanical); Peter Walker & Partners (landscape)

Mega-projects are usually compelling from a distance but often stumble when they meet the street. The jury was impressed that the Sony Center not only creates a nice dialogue with neighboring buildings but also animates the pedestrian scene at its base. They found the vast interior Forum a bit intimidating but “very high energy.” The roof over the Forum is an elliptical umbrella providing shading and protection from the elements. One-third of the roof is glazed and two-thirds are a cable-reinforced fiberglass membrane. All components of the building enclosure are state-of-the-art construction technology.

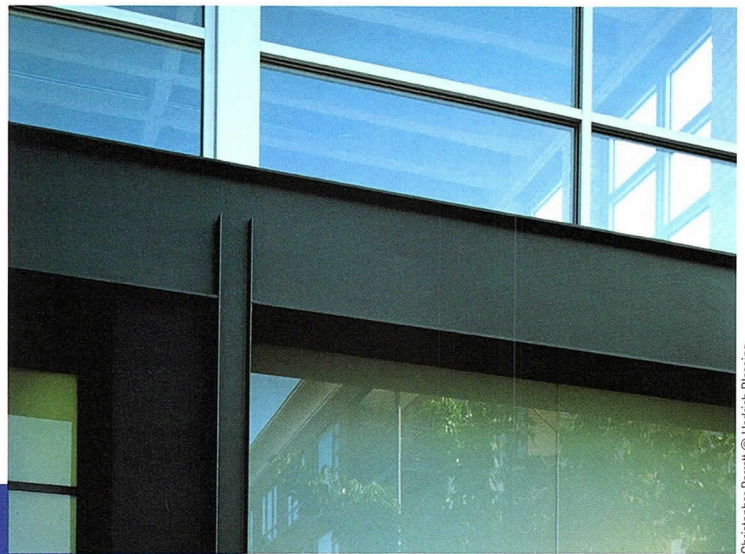
Engelhardt/Sellin Photography

a terrific overall composition



Engelhardt/Sellin Photography

*classic adaptive reuse,
with richness and
character derived
from the contrast of
new and old*



Christopher Barrett © Heidrich Blessing



Christopher Barrett © Heidrich Blessing

Squark
Chicago, IL

Honor Award

Architect – Brininstool + Lynch Ltd.
Client – Estia Eichten and Deborah Forman
General Contractor – Goldberg General Contracting
Consultant – Lyle Haag

A small group of theoretical physicists created a company to provide partial differential equations calculated by supercomputer over the Internet. They chose a modest brick building on the Near West Side to house their offices and laboratory spaces. The architects created a new street façade of steel, aluminum and large expanses of glass: "clearly an existing building with a powerful change," in the eyes of the jury. The east wall received additional windows to increase light and views. The main entrance is now on the side wall, towards the back of the building, so that visitors see the company's work spaces before progressing to the more finished offices, thus reflecting the group's philosophy of the work being of paramount importance. (Double winner. See Interior Architecture Awards.)

Protection Since 1952

Euclid Insurance Agencies has been providing insurance services to businesses since 1952. Our dedication to the complex field of insurance for design professionals enables us to give you the professional advice and tailored products you need. We have a unique understanding of the architectural and engineering clients we serve and the special coverages they require.

- Professional Liability, Workers Compensation, Disability, Office Package, Health Insurance, Estate Planning, and more
- Legal advice, seminars and continuing education programs
- Website access to risk management information
- AIA Chicago 401(k) and Profit Sharing Association Plan

EUCLID
INSURANCE AGENCIES®

977 Oaklawn Avenue • Elmhurst, IL 60126
Tel: (630) 833-1000 • Fax: (630) 833-1747

Armitage-Leavitt Condominiums
Chicago, IL

Citation of Merit

Architect – Pappageorge/Haymes Ltd.
Client – Armitage-Leavitt LLC
General Contractor – Spec Development Inc.
Consultant – Samartano & Co.

“Taut, crisp and clean,” was the jury’s verdict on this project. They admired the proportions and details and particularly liked the way the balconies were created by voids at the corner elevations. The mixed-use building features 11 condominium units over retail and indoor parking. The tall, narrow windows and modern interpretation of a cornice relate to the Victorian context of the Bucktown neighborhood.



© George Pappageorge, FAIA

Copernicus Center
Chicago, IL

Citation of Merit

Architect – Harding Associates
Client – Department of General Services,
City of Chicago
Consultant – Environmental Systems Design Inc.

“This is a good little civic building,” commented a juror. “It has certainly made a new presence on the streetscape,” said another. The two-room addition of just 3,900 square feet creates interiors that feel like outdoor spaces, with generous natural light pouring in from clerestories above simple masonry walls. At night, indirect lighting reflected off the ceiling creates a community beacon. The facility has been such a success with the low-income seniors for whom it was designed that they line up outside each morning before it opens.



Scott McDonald © Hedrich Blessing



Christopher Barrett © Heinrich Blessing

Yamamoto Residence
McCordsville, IN

Citation of Merit

Architect – Brininstool + Lynch Ltd.
Client – Tom and Nancy Yamamoto
General Contractor – Lerchen Inc.
Consultant – Stearn-Joglekar Ltd.

The dilemma of siting living spaces away from the street without creating a fortress-like feeling is resolved here with a façade that is a beautiful, abstract composition. The jury admired this gesture, as well as the subtlety and richness created with simple materials of wood and brick. The entry sequence is defined by a series of horizontal elements that include the garage, site wall and entrance canopy. Inside, the house becomes more vertical on the sloping site. The main rooms all have views over a garden to the woods and lake beyond. (Double winner. See Interior Architecture Awards.)



© William Kirlow

Tower House
Chicago, IL

Citation of Merit

Architect – Frederick Phillips & Associates
Client – Frederick Phillips, FAIA
Construction Manager – Ladner Construction
Consultants – Thornton Tomasetti Engineers (structural); Peter Lindsay Schaudt (landscape architect)

“Good urban design and also good architecture,” are words of high praise for any building, especially one that had a very difficult site and budget. A triangular lot that was considered unbuildable now contains a four-story house of 1,150 square feet. A 40-foot-tall concrete stair tower connects the levels of the exposed steel structure. The first and fourth levels of the structure are open, creating a carport and roof terrace, while the middle two are fully enclosed. An exterior circular stair provides the second means of egress required by city code.



© George Pappageorge, FAIA

The Fisher Building
Chicago, IL

Special Recognition Award

Architect – Pappageorge/Haymes Ltd.
 First Floor Restoration – Eifler & Associates
 Terra Cotta Restoration – McClier
 Client – Kenard Corp.; Concord Development Corp.; Village Green
 General Contractor – Babco
 Consultants – Samartano & Co. (structural);
 Sunnyside Design Group (mechanical);
 Desman Associates (façade engineer)

One of Chicago's terra cotta treasures got a new lease on life as an apartment building in this adaptive reuse. The painstaking exterior restoration included the replacement of over 6,000 pieces of terra cotta, repair or replacement of 1,200 wood-framed windows, and recreation of the two original entrances. In the historic office corridors, glass-paneled doors and transoms were retrofitted with gypsum board behind the glass to meet city code.



© George Pappageorge, FAIA

Roseland Ridge Apartments
Chicago, IL

Special Recognition Award

Architect – Landon Bone Architects Ltd.
 Client – Neighborhood Housing Services
 General Contractor – Thrush Contractors Corp.
 Consultants – Calor Design Group (MEP);
 GFGR Inc. (structural)

Affordable new rental housing has come to seem like an impossible ideal, but this project makes it a reality. Four buildings were laid out on the long, narrow site to form an open-sided garden courtyard at the back. The jury admired the strong sense of place created on the courtyard side and the contribution of the lively facades to the streetscape. Because of the project's prominent location, high standard of design and positive impact, it has already spurred two additional private developments.



© Wayne Cable



OUR STAFFING SERVICES MEASURE UP...AND THEN SOME!

CFA has faithfully served Chicago area architects and AIA members since 1994. We are proud of our hard-earned reputation of dedication and excellence. Thank you.

Today, CFA is the leading staffing referral service for architects working on a per-project basis. Our staffing services include project-to-perm, and permanent placements as well.

Our mission is to partner with you, for all of your outsourced staffing, CAD software, training and support needs. Visit or call us today and see how we measure up.



Consulting For Architects, Inc. Chicago

120 South State Street, Chicago, IL 60603, 312-345-1700, www.cons4arch.com and www.CADstoreOnLine.com

Interior Architecture Awards

The Interior Architecture Award was established two decades ago to promote interior architecture as a unique profession by recognizing outstanding projects. For award purposes, interior architecture is defined as the space within a building envelope, including design of lighting, finishes and furnishings. The jury considers a wide range of design projects completed between January 1, 1998 and May 1, 2001.

it creates a new brand for the client, combining solidity and tradition with new, innovative thinking



Christopher Barrett © Hedrich Blessing

Chicago Office for IBM e-Business Innovation
Chicago, IL

Honor Award

Architect – HOK Inc.
Client – IBM
General Contractor – Pepper Construction Co.
Consultants – BLM Engineering; McGuire Engineering

Occupying a full floor of One IBM Plaza, this new division of the company needed to distinguish itself as a creative think tank. The open, collaborative, non-hierarchical work environment features overlapping, interconnected forms and surfaces that suggest a three-dimensional representation of the Internet. The jury found the project to be beautifully executed, with a nice rhythm and clarity to the plan. The restrained use of a palette of reflective materials was, in contrast to flashier projects, "just enough."



Christopher Barrett © Hedrich Blessing



Jin Mao Tower
Shanghai, China

Honor Award

Architect – Skidmore, Owings & Merrill LLP

Client – China Jin Mao Group Co.

General Contractor – Shanghai Jin Mao Contractor (SJMC)

Consultants – East China Architectural Design & Research Institute; Shanghai Institute of Architectural Design and Research

The sheer size and variety of spaces in this project put it in a class by itself. The 88-story, 3 million-square-foot complex includes over a million square feet of office space and a 600-room hotel. The six-story podium houses hotel function areas, a conference and exhibition center, a cinema and retail Galleria. A dramatic atrium runs from the 54th floor sky-lobby to level 88, where there is a spectacular observatory. "As big as it is, everything is executed down to the smallest detail," commented a juror, while another agreed that "there is a lot of unique detailing, but it all holds together; it all seems to have been done by the same hand." (Double winner. See Divine Detail Awards.)

Nick Merrick © Heitrich Blessing

*this shows how
to handle the
big-league stuff*



Nick Merrick © Heitrich Blessing

Rocket Science
Chicago, IL

Honor Award

Architect – Interior Space International

Client – Rocket Science

General Contractor – Leopardo Companies Inc.

A dynamic, up-and-coming sales promotions agency sought a signature space that would capture their energy and creative process. The oddly shaped 3,500 square foot floor plate needed to accommodate open and private offices, an activity bar, gallery, and a presentation room while preserving vistas toward Michigan Avenue and the Chicago River. Circulation and workspace therefore revolve around the "Rocket Red" presentation room, which adds visual punch to the inexpensively remodeled space. Paint and drywall were the only materials used to enliven the concrete shell. The jury admired the palette of neutrals highlighted with a few bold colors and said the architects "did a great job with an awkward space and low budget."



Steve Hall © Heitrich Blessing



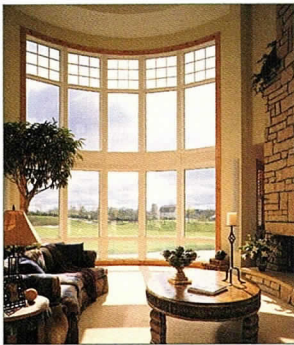
Steve Hall © Heitrich Blessing

*a lot of
originality,
but also a lot
of restraint*

Environmental Design

By Barbara A. Nadel, FAIA

MARVIN WINDOWS AND DOORS
PROVIDES HOMEOWNERS WITH
DESIGN OPTIONS, RELIABLE SERVICE
AND CUSTOMIZED CAPABILITIES.



Marvin's local architectural representatives, along with technical support from Marvin's Architectural Division, are available to provide for technical support, project coordination and product training to architects from concept to completion for all project needs.

Whether your design goals are to protect an upscale art collection, withstand coastal hurricane winds or simply to save on energy costs, Marvin Windows and Doors has a customized solution for your next residential project.

With over 11,000 standard sizes and unlimited custom capabilities, Marvin's *Made for you*® manufacturing process produces windows and doors to meet a wide range of client requirements. These include creating unique shapes and sizes, custom casings, special glazing options, or divided lites. For Authentic or Simulated Divided Lites, Marvin can provide standard or custom options to meet every architectural style and budget. The following two case studies each used Marvin's custom capabilities to meet unique client criteria.



Preserving Art Amid an Island Setting

Interior living spaces with natural light and panoramic waterfront views are ideal for entertaining and relaxing. When an art dealer wanted an 800 square foot, two story addition with 360 degree lake views for his weekend retreat on Candlewood Isle, Connecticut, he turned to New York City architect Jeffrey Berman, AIA, principal of Jeffrey Berman Architect - and to Marvin Windows and Doors for the big picture solution. The house, located in the middle of man-made Candlewood Lake, was originally built with Marvin products, and both the client and Berman chose Marvin for the addition.

The design goals were to create a large space for entertaining, protect an art collection and capture the magnificent views overlooking the garden and the lake. Marvin was the only manufacturer to provide the flexibility needed for different sizes and shapes, including larger assemblies. The wide expanses of glass maximized views, while retaining a smaller, residential scale for a grand window wall, and avoiding a curtain wall look. Window trim is painted on the outside, and provides the only opportunity to add color to the building's exterior palette of natural materials.

"The client wanted Marvin Windows and Doors, because they offer the best thermal performance and airtight seals to protect artwork from dust and dirt. Humidity and temperature control were also considerations in the

windy lakefront environment. We used insulated double glazed, operable windows with integrated screens. On a cool summer night, the clients will open a window, enjoy the breeze, and feel like they're outside," said Berman.

Light-filled Small Scaled Addition Saves Energy Costs

Starting the day in a cozy light-filled breakfast nook overlooking the woods is just what architect Michael Crosbie, an Associate with Steven Winter Associates, Inc, in Norwalk, Connecticut, had in mind when he designed an addition on the north facing side of his 1938 vintage home. He wanted the new windows to match the existing "six over one" windows on the rest of the house. Crosbie achieved these aesthetic goals and more, with Marvin Windows and Doors.

Crosbie chose Marvin because of the high quality they provide, the custom capabilities and selection available to meet project needs. Specifically, the simulated muntin - the strip separating panes of glass in a window sash - attached to the window gave the appearance of a true muntin, while providing the advantage of double paned glass and energy efficiency.

"I wanted the small scaled addition to appear like it had always been part of the house, and Marvin worked out all the details just perfectly. They ganged three windows together in one assembly for easier installation, but the windows look like three separate units. The contractor installed the windows in less than a day. The product versatility is endless; Marvin will do anything you want," said Crosbie.

Inside, the simple, tastefully detailed addition overlooks a naturally landscaped area, and includes built-in bench seating below the windows. "We rarely turn the lights on, because there is so much natural light entering the space, even with a northern exposure. As a result, we've saved on electricity and energy use. Marvin was the most economical choice available on the market that gave me exactly what I wanted: aesthetics, maximum natural light, energy efficiency, double glazed units and ease of installation," Crosbie added.



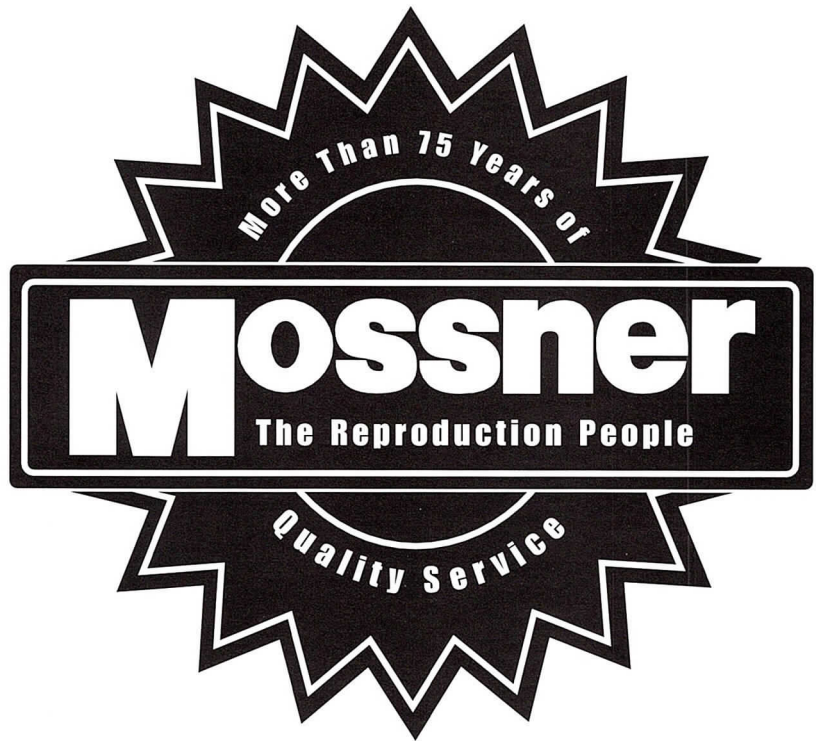
MARVIN 
Windows and Doors
Made for you.®

For more product information and to receive a catalog, call 1-800-318-7232.

Check the web site at www.marvin.com

Barbara A. Nadel, FAIA is principal of Barbara Nadel Architect, in New York City, specializing in programming, planning and design of institutional facilities. She is 2001 National Vice President of the American Institute of Architects and frequently writes about design and technology.

Mossner
Mossner
Mossner
Mossner
Mossner
Mossner
Mossner
Mossner
Mossner
Mossner
Mossner
Mossner
Mossner
Mossner
Mossner

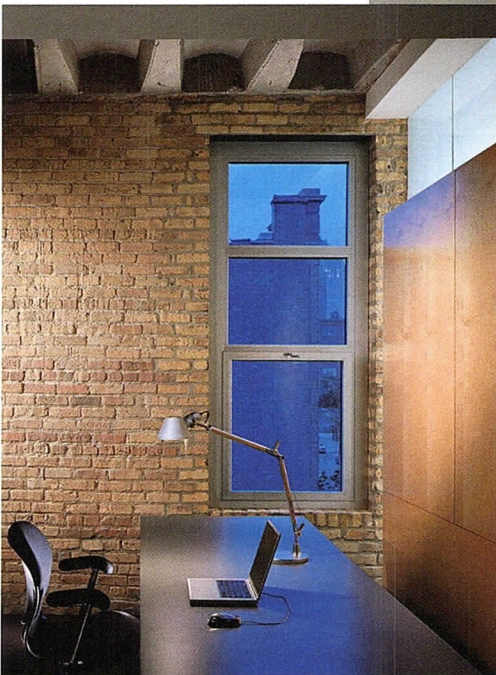
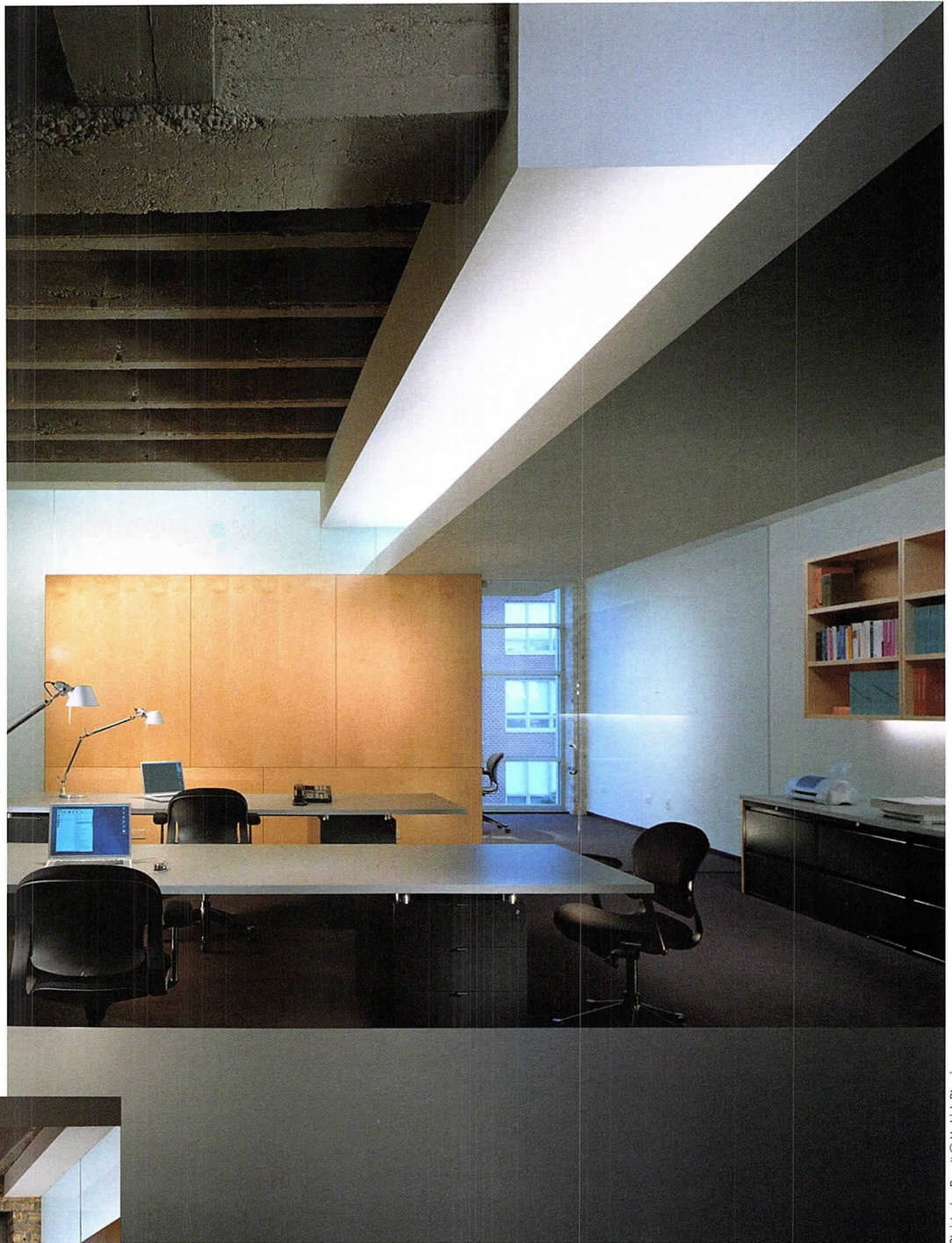


- Now offering PlanWell™
- High Speed Digital Blue Printing
- Electronic CAD File Transfer Options
- Digital & Diazo Reproductions (Bond or Vellum)
- Large & Small Color Reproductions
- Drawing Management & Distribution
- Specifications & Document Printing
- Pick-up & Delivery Service

Mossner

THE REPRODUCTION PEOPLE • LARGEST IN THE MIDWEST
Mossner Building • 137 North Wabash • Chicago, IL 60602
PHONE: (312) 372-8600 • FAX: (312) 372-2809 • www.mossner.com

a very
contemporary
solution, and a
'solid citizen'



Christopher Barrett © Hedrich Blessing

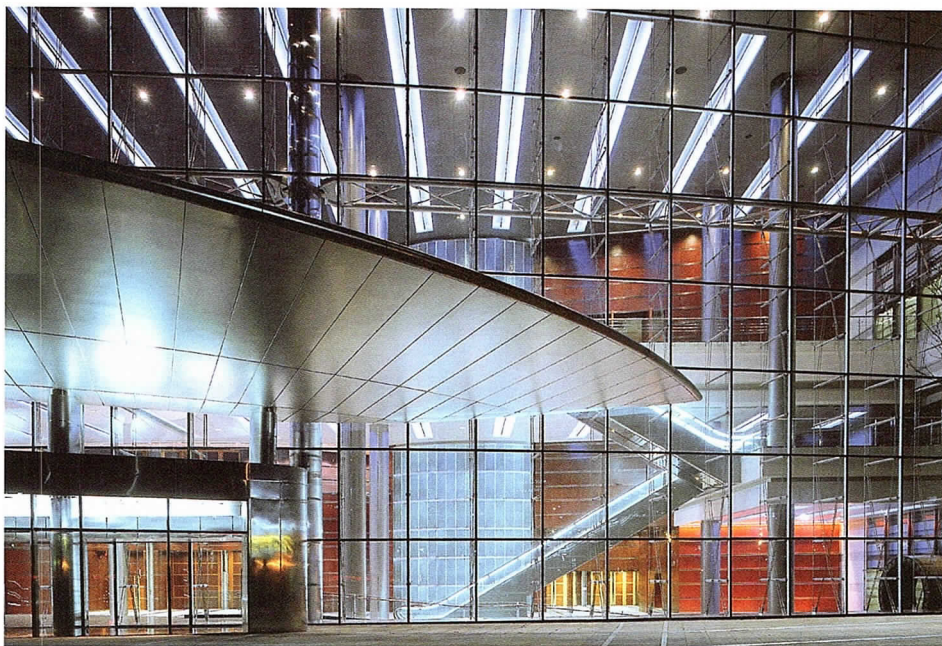
Squark
Chicago, IL

Honor Award

Architect – Brininstool + Lynch Ltd.
Client – Estia Eichten and Deborah Forman
General Contractor – Goldberg General Contracting
Consultant – Lyle Haag

This project presented the unusual program of designing offices and laboratory spaces for a private company created by theoretical physicists. Employees and visitors alike access the building through a side entrance near the rear and must pass through laboratories and work spaces before arriving at the more finished offices and conference rooms, thus reflecting the company philosophy of the work being of paramount importance. The jury admired the simple plan and the effective layering of old and new elements, with wood, glass and drywall playing off the exposed concrete and brick. (Double winner. See Distinguished Building Awards.)

Christopher Barrett © Hedrich Blessing



Mark Ballogg © Sternkamp/Ballogg Photography

Korean World Trade Center
Seoul, Korea

Citation of Merit

Architect – Skidmore, Owings & Merrill LLP
Client – Korea International Trade Association
General Contractor – Bovis Asia Pacific
Consultants – ASEM & KWTC Design Consortium;
Baum Architects & Engineers; Chang-Jo Architects
Inc.; Heerim Architects & Engineers; Keon Won
Architects & Engineers; Han-IL Mechanical
Engineering Consultants Ltd.

The addition of this convention facility doubled the size of the Korean World Trade Center to 6.5 million square feet. The public spaces are all located at the glazed perimeter of the building to bring more life to the street and allow the outside world to permeate the huge interior. Glass walls are suspended from above to maximize this two-way transparency. "It's like a crystal palace, with remarkable finishes," was the jury's opinion.

G Concourse Renovation at O'Hare Airport
Chicago, IL

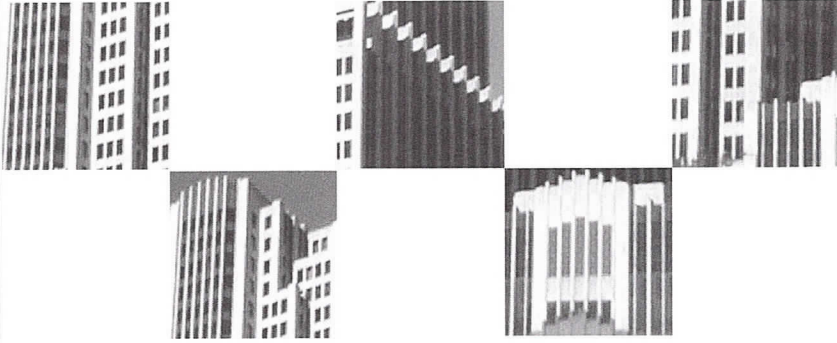
Citation of Merit

Architect – Teng & Associates
Client – American Airlines
General Contractor – McHugh Construction Co.
Consultant – Environmental Systems Design Inc.

A total rehab of this 700-foot-long concourse resulted in a "pleasant, light-filled space with a nice rhythm to it." Seven rooftop mechanical penthouses along the central spine were consolidated into three, freeing up ceiling space for six vaulted clerestories. The ceilings beneath the new penthouses were purposely compressed to contrast with the soaring vaulted spaces, creating a rhythm of openness and enclosure. The jury liked both the overall spatial concept and the aerodynamic detailing.



Steve Hall © Hedrich Blessing



providing

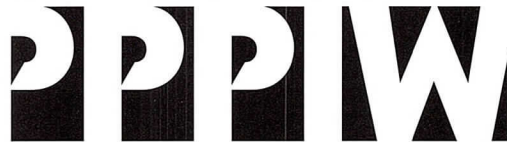
precast concrete
resources to the
architecture,
engineering, design,
real estate and
construction
professional
or student

we offer:

- Box lunch presentations with learning credits in architectural precast, structural precast, parking structures, bridges, housing, special casting and other topics
- Updates on Precast/Prestressed Concrete Institute (PCI) publications, seminars and events
- Tours of PPPI&W member company production plants, including learning credits
- Assistance with precast/prestressed products or design concepts
- Information on the precast industry
- Meeting speakers and presentations

Contact Marty McIntyre, Executive Director,
for all your precast needs

PRECAST PRESTRESSED PRODUCERS



OF ILLINOIS & WISCONSIN

PO Box 1477, Oak Park, Illinois 60305-0477

e-mail: marty@pppiw.org

Phone: (708) 386-3715 • Fax: (708) 386-5922

Member Companies

Calumet Flexicore Corporation
Hammond, Indiana

Concrete Technology Inc.
Paxton, Illinois

County Prestress Corporation
Eau Claire, Wisconsin

Dukane Precast Inc.
Naperville, Illinois

Egyptian Concrete Company
Salem, Illinois

Illinois Concrete Company, Inc.
Champaign, Illinois

Lombard Architectural Precast
Products Company
Alsip, Illinois

Mid-States Concrete Products Company
Beloit, Wisconsin

PBM Concrete, Inc.
Rochelle, Illinois

J.W. Peters & Sons Inc.
Burlington, Wisconsin

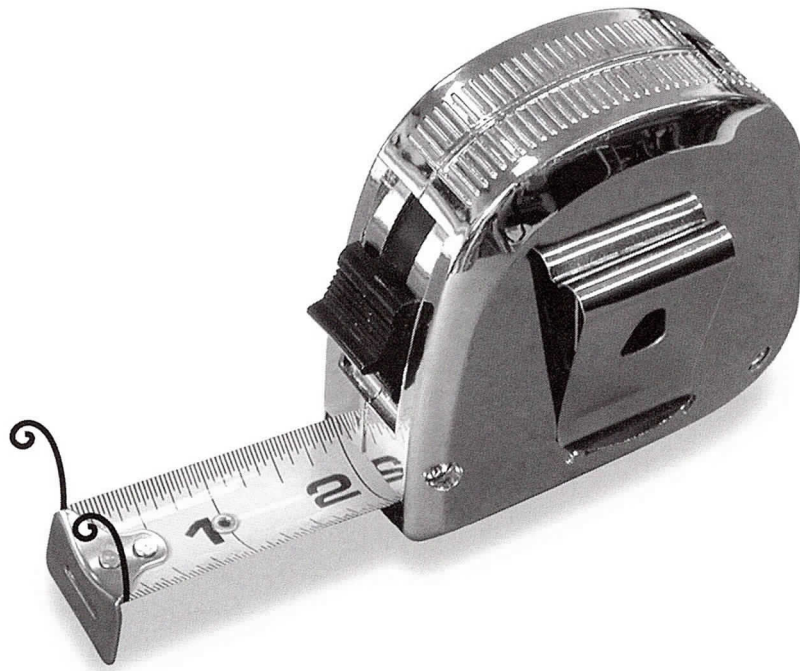
Prestress Engineering Corporation
Prairie Grove, Illinois

St. Louis Prestress Inc.
Edwardsville, Illinois

Spancrete of Illinois Inc.
Crystal Lake, Illinois

Spancrete, Inc.
Green Bay, Wisconsin

Spancrete Industries, Inc.
Waukesha, Wisconsin



Our laser can beat your snail.

Just landed a great renovation project but ... no existing drawings and an impossible deadline? Stop searching your office for the 100' tape and someone to hold the dumb end.

You're working at a snail's pace.

Instead, call Quantapoint. We can

- provide existing condition documentation
- compress your schedule
- free up resources
- improve the quality and accuracy of the base drawings
- hold the line on cost

And we can provide final CAD documents in either AutoCAD or MicroStation.

Contact Kelly King at 412.337.2581 or kking@quantapoint.com.
Work the laser, not the snail.

Quantapoint™

Existing condition documentation

Northside College Preparatory High School
Chicago, IL

Citation of Merit

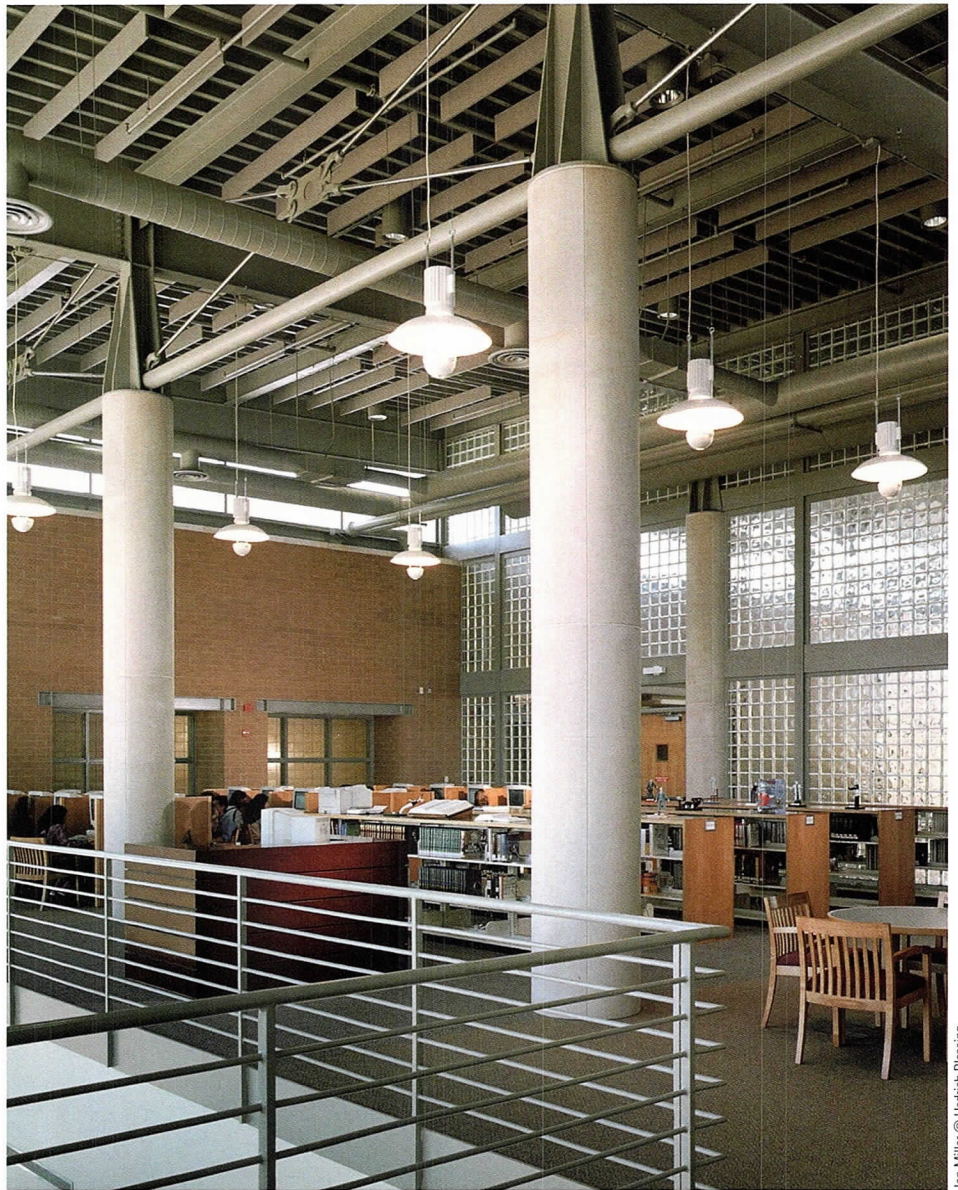
Architect – OWP&P Architects

Client – Chicago Public Schools

General Contractor – Walsh Construction Group of Illinois

Consultants – Bovis Management Group (construction manager); The Architects Enterprise Ltd. (associate architect); Rubinos & Mesia Engineers (structural, civil); OWP&P Engineers (mechanical, electrical); Galloway Ltd. (plumbing, fire protection)

The interior of this public high school carries through the award-winning quality of the whole building, which won a Citation of Merit in the Distinguished Building category last year. At entryways, light-filled gathering spaces provide flexibility and encourage community use. The relationship to the exterior is emphasized throughout, with natural light, views and similar materials. The jury found it restrained, handsome and very sophisticated for a high school.



Jon Miller © Hedrich Blessing



Christopher Barrett © Hedrich Blessing

Yamamoto Residence
McCordsville, IN

Citation of Merit

Architect – Brininstool + Lynch Ltd.

Client – Tom and Nancy Yamamoto

General Contractor – Lerchen Inc.

Consultant – Stearn-Joglekar Ltd.

Suburban Indianapolis is the location of this modestly sized three-bedroom house. The owners requested a serene environment for the display of art and a comfortable place for entertaining. The open plan of the first floor features a kitchen defined by volumes of wood, and large niches for Japanese screens in the living and dining areas. All furniture was either custom designed or chosen by the architect. The jury admired the handsome materials as well as the simplicity and clarity of the plan. (Double winner. See Distinguished Building Awards.)



Steve Hall © Hedrich Blessing

Offices of Turner Construction Company
Chicago, IL

Citation of Merit

Architect – Valerio Dewalt Train Associates
Client – Turner Construction
General Contractor – Turner SPD
Consultant – Charter Sills

"It has a construction edge to it," was one of the compliments paid to this project. The jury liked the interesting use of simple, inexpensive materials to create drama in the space. The dominant feature is a rippling plane of galvanized metal decking that passes overhead from one end of the office to the other. It is interrupted only at the reception area, where there are two vertical planes of translucent blue polycarbonate sheeting. The other economical materials include linoleum sheet flooring and off-the-shelf light fixtures.

Offices of Russell Reynolds Associates
Chicago, IL

Citation of Merit

Design Architect – Gary Lee Partners
Architect-of-Record – Construction Specification Specialists Ltd.
Client – Russell Reynolds Associates
General Contractor – Interior Construction Group
Consultant – Weber Consultants

"Sometimes we don't celebrate beauty enough," commented a juror after praising this project as "elegant and beautiful but with a lot of restraint and simplicity." These offices for an executive recruiting firm feature contemporary approaches and finishes communicated through a traditional architectural vocabulary. Natural light filters into the interior through window-wall apertures outside the principal offices at the corridor ends and through acid-etched glass walls and door inserts.



Christopher Barrett © Hedrich Blessing

What to do? How to do it?

Kristine Fallon Associates, Inc.

<http://www.kfa-inc.com>

30 East Adams Street, Suite 600
Chicago, IL 60603-5609
312-641-9339 (voice)
312-641-9337 (fax)
kfainc@kfa-inc.com

Hardware
Software
Networks
Internet

Get it done. Keep it going.



RG 3D

3D ARCHITECTURAL
RENDERINGS
&
ANIMATIONS

CALL NOW
FOR
CURRENT SPECIALS
&
A FREE QUOTE

RENDERGRAPHICS 3D

▪ THE ARCHITECTURAL 3D PEOPLE ▪

www.rendergraphics.com

(800) 793-4838



Christopher Barrett © Hedrich Blessing

General Dentistry
Chicago, IL

Special Recognition

Architect – Landon Bone Architects Ltd.
Client – Dr. David H. Baukol, DDS, PC
General Contractor – Andrews Construction
Consultant – Calor Design Group

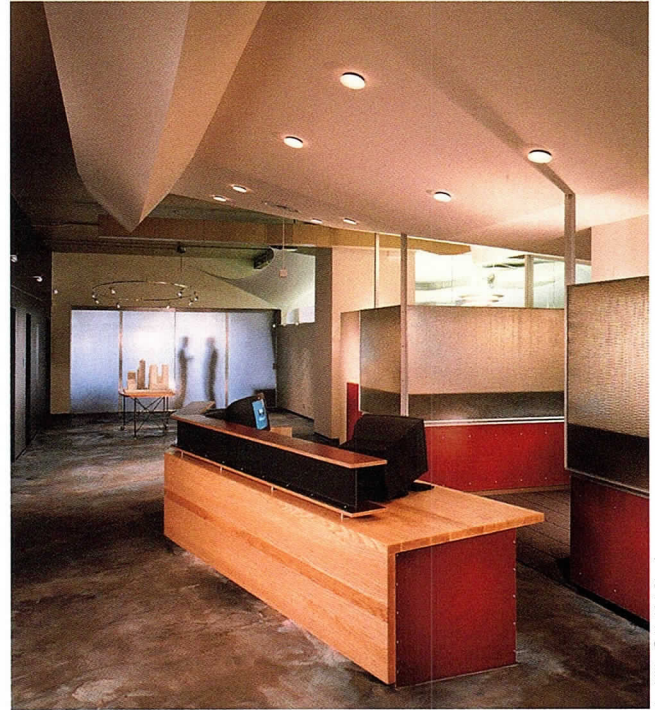
“This is what medical projects should look like,” commented a juror. They all agreed that the architect made good use of materials, and they pointed out how great it was for a dentist’s office to have an interesting ceiling for the patients to gaze at while in the reclining chair. Every square inch of the 1,100-square-foot space is efficient, with new equipment and custom cabinetry used architecturally to delineate separate areas.

Offices of Thornton Tomasetti Engineers
Chicago, IL

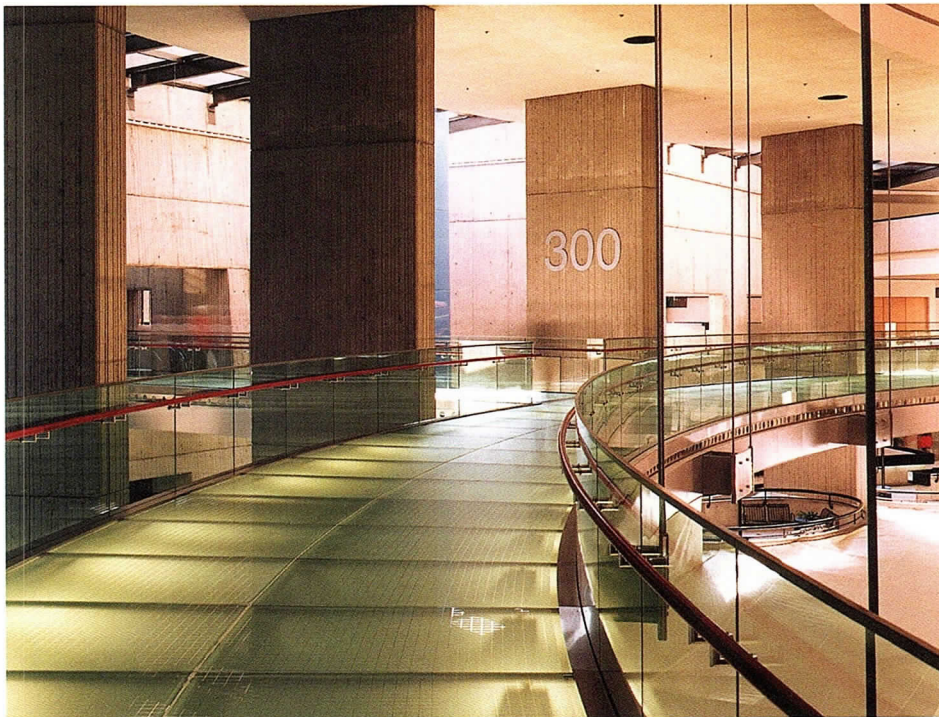
Citation of Merit

Architect – Garofalo Architects
Client – Thornton Tomasetti Engineers
General Contractor – Interior Alterations
Consultants – Anton Metalworks Inc. (steel fabrication);
Nuveau Designs Inc. (millwork)

This is a wonderful example of office space that conveys the client’s identity while providing an appropriate work environment. The internationally recognized structural engineering firm wanted to make a forward-looking statement with their full-floor location in the Chicago Information Technology Exchange building. The open plan features communal work and conference areas in locations normally occupied by corner offices. Ceiling canopies that fold and curve serve to visually tie together the different ceiling, wall and workstation treatments.



Jon Miller © Hedrich Blessing



Justin Macrone © Hedrich Blessing

General Motors Global Headquarters Circulation Ring
Detroit, MI

Special Recognition

Architect – Skidmore, Owings & Merrill LLP
Client – General Motors
General Contractor – Turner Bailey Brinker
Consultants – Mero (circulation ring contractor);
Fisher Marantz Stone (specialty lighting)

Detroit’s Renaissance Center is a concrete behemoth that dates from 1977. Circulation through the multi-use complex was always problematic and became more critical when an automotive giant decided to create a global headquarters here. This project is a “simple, bold move that provides a solution to a very complex problem,” according to a juror. In addition to providing a simplified circulation pattern, the ring improves the aesthetics with light, modern materials of steel and glass that contrast with the massiveness of the concrete.

C
O
R
P
O
R
A
T
E



structure

SPANCRETE.

A solid framework to build upon:

"I've been in this business for 24 years as an architect, engineer and general contractor. I know that when Spancrete's on a job, we don't have to be. It all comes down to quality, speed and price."

Ken Miller, President
The Kendal Group, Ltd.
Waukesha, WI

From the ground up, Spancrete precast beams, columns and plank provide the strength and stability you need. Longer spans offer great design versatility while easily meeting heavy load requirements and exceeding fire codes. Precast concrete goes up fast, especially when dealing with a single source provider. Spancrete products are plant fabricated under the highest quality control standards.

*Spancrete beams, columns and plank...
the framework for your next project.*

"Striving to be the most responsive partner and innovative provider of precast solutions"

SPANCRETE INDUSTRIES, INC.

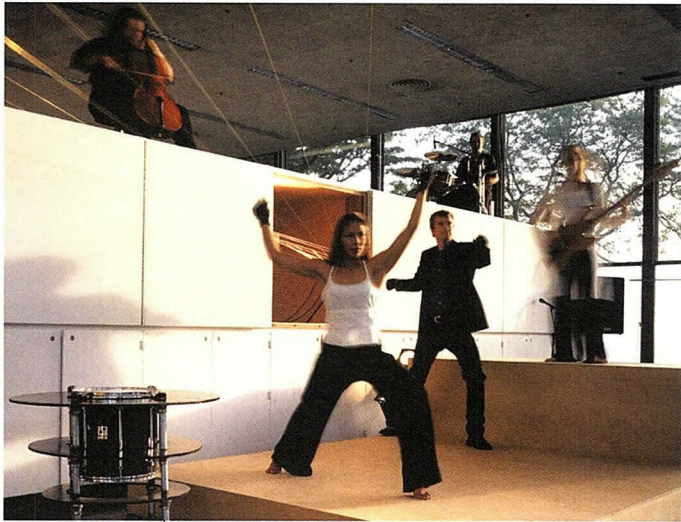
www.spancrete.com • Waukesha, Wisconsin 53187-0828 • 414-290-9000
Chicago, Illinois 773-775-6402 • Green Bay, Wisconsin 920-494-0274



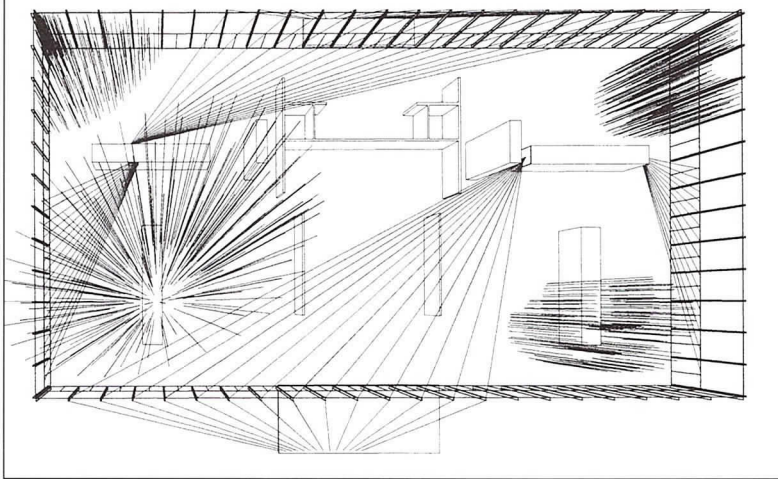
SPANCRETE

Divine Detail Awards

The Divine Detail Award recognizes architectural excellence in its essence. Each year, a jury looks for the expression of a firm's fundamental architectural theory or design concept in their application of a particular material, detail or building technology. Craft must express the overall concept. As in other awards categories, projects completed between January 1, 1998 and May 1, 2001 were eligible.



Greg Murphy



Studio Gang/O'Donnell

IIT Open House 2001: The Crown Instrument and Suspended Exhibit

Chicago, IL

Honor Award

Architect – Studio Gang/O'Donnell
 Client – Illinois Institute of Technology
 General Contractor – Students of the Illinois Institute of Technology
 Consultant – MASS Ensemble
 (musical/acoustic requirements)

This project takes Ludwig Mies van der Rohe's vision of Crown Hall as "universal space" to a new creative plateau by turning the entire interior into a giant musical instrument. Two sets of brass wires were strung from one wall to another, passing through existing lockers that were transformed into resonant chambers. The wires fanned out to the steel mullions and plate glass of the walls, with the length of each wire creating a different musical note. The group Mass Ensemble composed and performed the site-specific "Mies Piece," in which musicians rubbed their hands along the wires to set in motion vibrations that resonated against the materials of glass, steel and wood. As another aspect of the project, the same .85-gauge brass wire was hung from the ceiling and individually weighted with carpenters' plumb bobs to suspend student artwork for the school's annual exhibition.

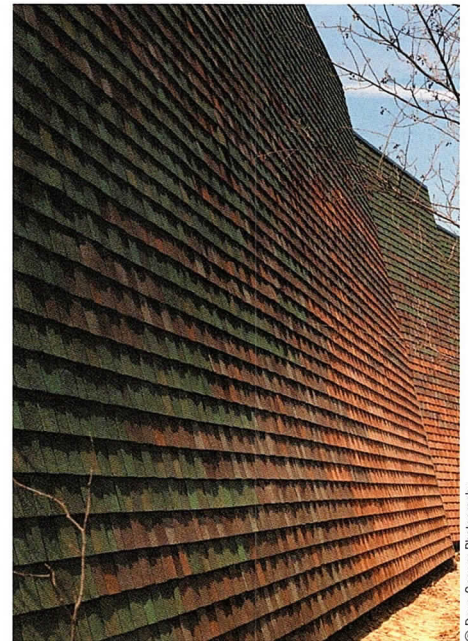
Shingle Wall at Habitat Africa! The Forest

Brookfield, IL

Honor Award

Architect – EHDD Architecture
 Client – Chicago Zoological Society, Brookfield Zoo
 General Contractor – McCluer
 Consultants – Klein & Hoffman Inc. (structural);
 Environmental Systems Design Inc. (MEP - FP);
 Edwin Hancock Engineering (civil); Mesa Landscape
 Architects (exterior exhibits and landscape)

Like a fairy-tale character that spins straw into gold, the architects of this project transformed off-the-shelf asphalt roof shingles into an inspired wall-cladding material. The design goal for the Ituri Rain Forest habitat was a self-effacing building that would blend into its wooded surroundings. The solution entailed covering the exterior walls with an abstract pattern made up of five different colorways of shingles. Also, one long wall is broken up into three shorter ones, each of which tilts at a slightly different angle. The variations in color, texture and angles create a camouflage effect that helps the building disappear into the forest, just as the featured animals camouflage themselves from their prey.



© Doug Snower Photography

ARCHITEMPS, INC.®

ARCHITEMPS, INC. – the Architectural & Interior Design staffing specialists, serving greater metropolitan Chicago since 1986.

Quality staffing, service and solutions:

- Design/Production Drafters
- Facility Planners
- CAD Architects/Interior Designers
- Project Managers

Our billing includes all employer liability:

- Payroll Administration
- Employee Benefits
- Government Compliance
- State & Federal Tax Remittance
- Workers' Compensation Coverage

ARCHITEMPS, INC.®
1050 North State Street
Chicago, IL 60610-7829

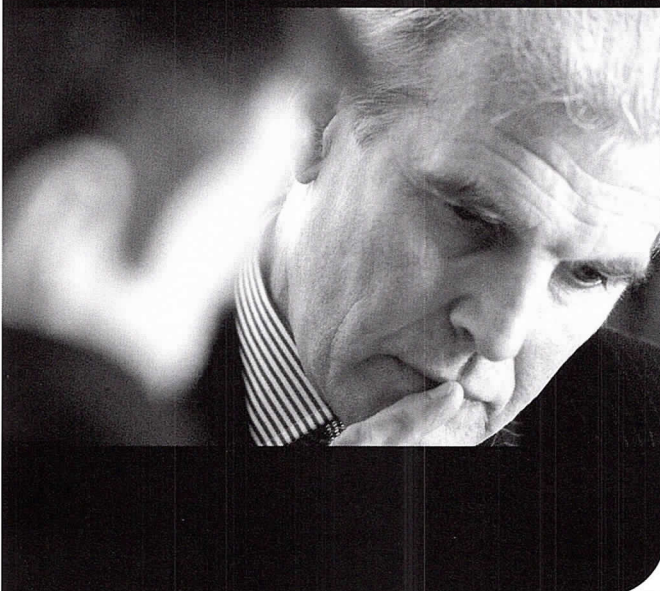
Tel: 312.649.0912
Fax: 312.649.1667
ARCHITEMPS@aol.com
www.architemps.com

Architectural, interior design and facility planning personnel on a per-project basis. Direct hire conversion and direct placement available. Call today for information on our staffing services or employment opportunities.

“ I chose my insurance agent for the same reason my clients choose me: experience.

”

Experience is the DPIC difference.



Combine DPIC's 30 years of dedication to the architect, engineer and environmental market with the expertise of our local brokers, and you get the benefit of the industry's most qualified professional liability experts.

From ongoing education in how to manage risk to new ideas in practice management and smarter dispute resolution that protects your interest, we'll help you realize a better return on your firm's insurance investment.

Contact us today for more information.

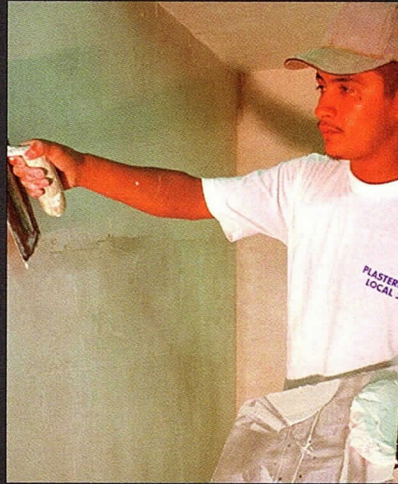
Hobbs Group/
AVA Insurance Agency
Tom Harkins
630-571-4500

 DPIC Companies
A DIFFERENCE THAT DELIVERSSM

Professional Training Yields Expert Plasterers



Exterior Insulating and Finishing
Systems (EIFS) and Stucco



Conventional and Veneer Plaster



Ornamental Plaster

Call us for information about today's
plastering systems and the best
people to apply them.



Chicago Plastering Institute
6547 N. Avondale Ave.
Chicago, IL 60631
(773) 774-4500



OUR CAD SERVICES MEASURE UP...AND THEN SOME!

CFA has faithfully served Chicago area architects and AIA members since 1994. We are proud of our hard-earned reputation for dedication and excellence. Thank you.

Today, CFA is a Premier Autodesk Support Center, CAD software reseller and web-based solutions specialist. We thrive on our client's success.

Numerous professionals in the workplace today have learned their special skills from CFA's Autodesk Certified Trainers.

Our mission is to partner with you, for all of your outsourced staffing, CAD software, training and support needs. Visit or call us today and see how we measure up.

Consulting For Architects, Inc. Chicago
120 South State Street, Chicago, IL 60603, 312-345-1700, www.cons4arch.com and www.CADstoreOnLine.com





© Barbara Karant, Karant + Associates

Interior Walls at Kline Creek Farm Visitors Center
Winfield, IL

Citation of Merit

Architect – Teng & Associates
Client – Forest Preserve District of DuPage County
General Contractor – Teng Construction LLC

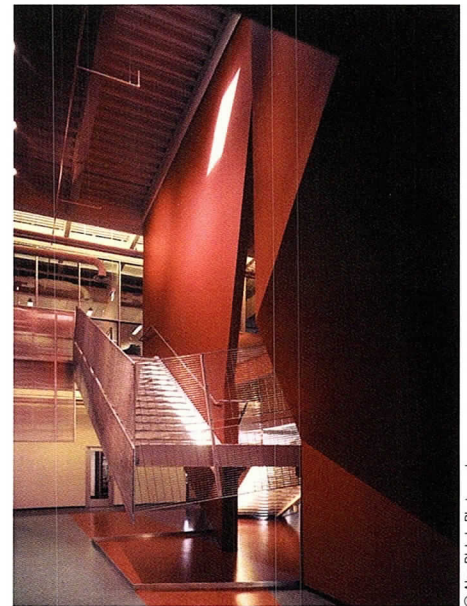
Materials from the farm vernacular are used in innovative ways throughout this new addition to an 1890s farmstead. The building serves as a welcome and orientation center, and houses exhibits of artifacts from farming history. Interior walls in the lobby, gallery and exhibition room consist of a system of galvanized T-frames with 1 foot by 4 feet cedar slat cribbing upon which mounting clips can be attached for complete flexibility in display layout. These open slat walls conjure images of farm construction while modeling light and creating a degree of permeability through the small building.

3Com Office Building Stair
Salt Lake City, Utah

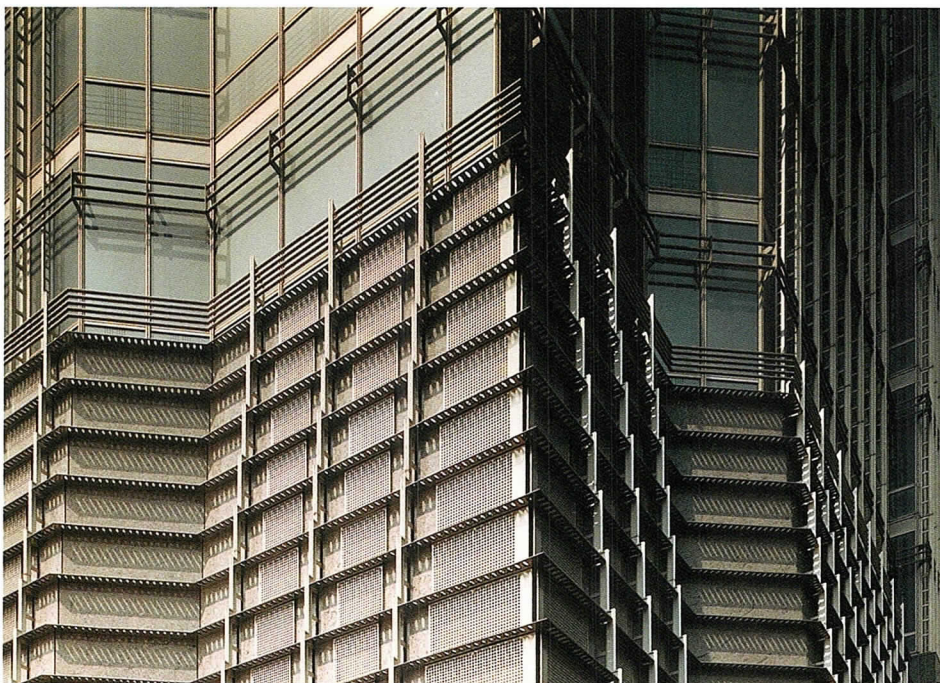
Citation of Merit

Architect – Valerio Dewalt Train Associates
Client – 3Com Corp.
General Contractor – Layton Construction
Consultant – Hope Engineering (structural)

“The Matrix” has become something of a cult film in the architecture community; more than one award submission was directly inspired by its imagery. In this project, a stairway and its supporting wall bend and fold, recalling the movie’s freeze-frame sequence of actor Keanu Reeves contorting his body to dodge bullets. The bright red wall is represented as reacting to the motion of the stairs climbing along its side and going through it, with the tear in the wall occurring at the landing. The upper run of stairs rises at a steeper incline than the lower (the treads are 11 inches deep versus 22 inches). The wall folds back in two places to respond to the rising handrail. The stair reinforces the idea that architecture is dynamic, creating constant shifts of perspective as a person moves through space.



© Alan Blakely Photography



Nick Merrick © Heifrich Blessing

Jin Mao Tower
Shanghai, China

Special Recognition

Architect – Skidmore, Owings & Merrill LLP
Client – China Jin Mao Group Co.
General Contractor – Shanghai Jin Mao Contractor (SJMC)
Consultants – East China Architectural Design & Research Institute; Shanghai Institute of Architectural Design and Research

While the massing of this 88-story tower recalls traditional Chinese pagoda forms, its skin is a state-of-the-art curtain wall comprised of high-performance glass and an expressed exterior stainless steel mullion system. A juror described it as “an extraordinary use of today’s technology and building materials to create a fabric, texture and detailing that relate to the historic and cultural values of the context.” (Double winner. See Interior Architecture Awards.)

Any Way It Shapes Up...CTI Delivers

When you need

"CTI's plant seminars are fantastic and very informative! The tour of CTI's yard was helpful in seeing what is possible with architectural precast."

Jacob Plummer, RATIO Architects
Indianapolis, IN

ECONOMY
EXPERTISE
SPEED
APPEAL

Think...precast concrete



Fact: The national Precast/Prestressed Concrete Institute (PCI) requires frequent, independent audits of all of its members to ensure they maintain the highest standard from quality to service, production and design.

Fact: CTI was the only precaster to bid on the challenging architectural precast enclosures for the Columbus Center of Science and Industry (COSI) and the Indianapolis Children's Museum projects. That kind of expertise is backed by exceptional service delivered by our staff of project managers, budget estimators, engineers/draftsmen and sales reps.

Choose...CTI

Children's Museum of Indianapolis



ARCHITECT:
Browning Day Mullins Dierdorf
Indianapolis, Indiana

The Center of Science and Industry (COSI) Columbus, OH



DESIGN ARCHITECT:
Arata Isozaki & Associates
Tokyo, Japan

LEAD ARCHITECT:
NBBJ Architects Inc.
Columbus, Ohio

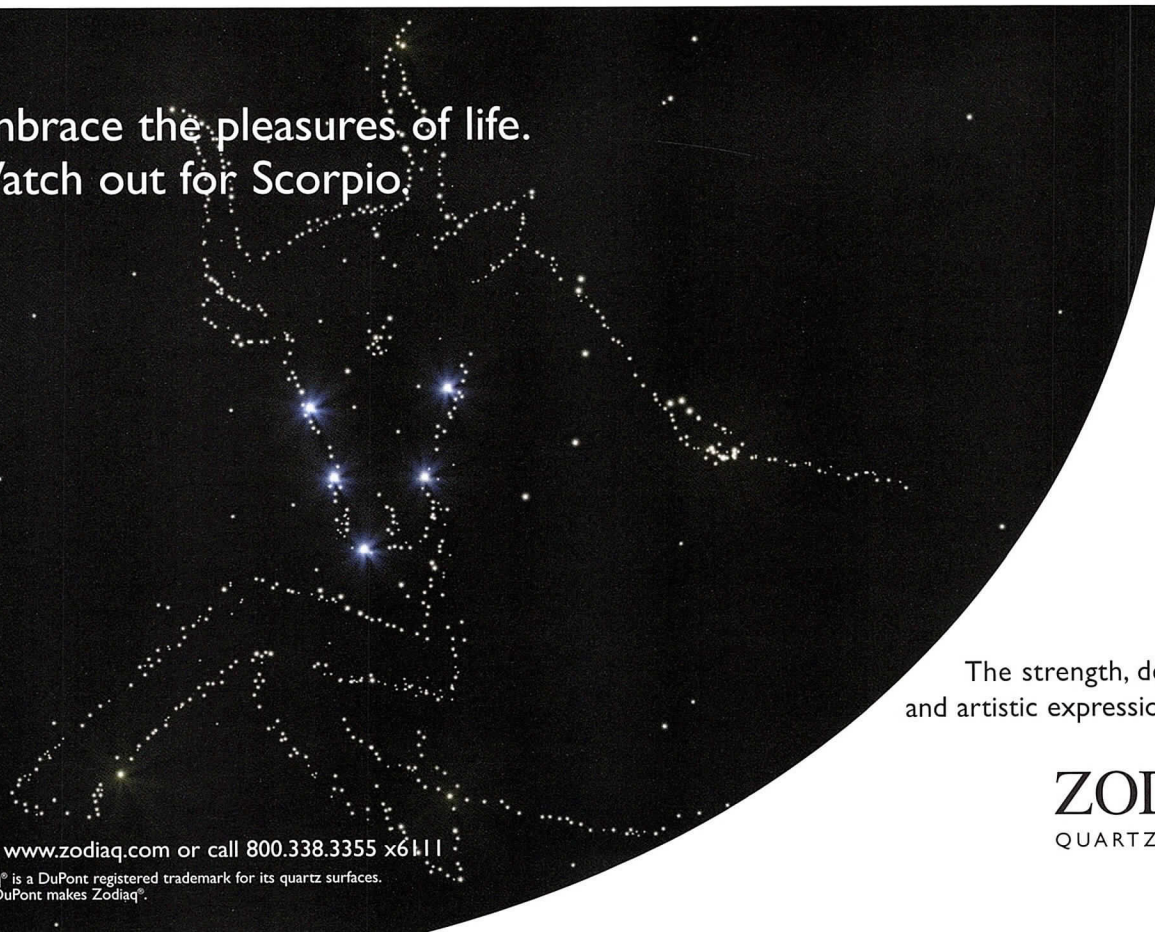


See for yourself why top architects are talking about CTI.

Join CTI's specialists at a plant seminar in either Springboro, Ohio or Paxton, Illinois to learn more about how to create exciting, custom-designed architectural precast solutions. Attendees will earn seven AIA learning units. Call Dennis Nemenz at (800) 788-2370 ext. 123 to enroll today.

CONCRETE TECHNOLOGY INC. • Paxton, IL and Springboro, OH • Call 800.788.2370

Embrace the pleasures of life.
Watch out for Scorpio



The strength, dependability
and artistic expression of Taurus.

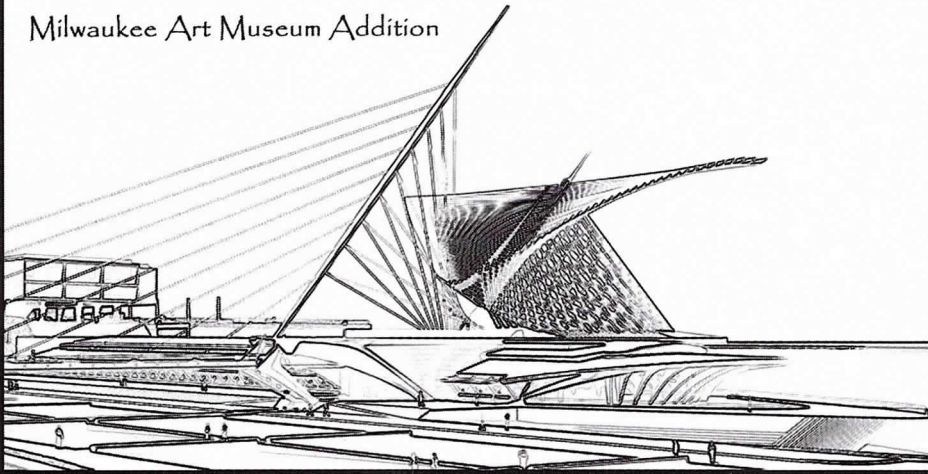
ZODIAQ[®]
QUARTZ SURFACES



visit www.zodiaq.com or call 800.338.3355 x6111

Zodiaq[®] is a DuPont registered trademark for its quartz surfaces.
Only DuPont makes Zodiaq[®].

Milwaukee Art Museum Addition



www.gasai.com



**GRAEF
ANHALT
SCHLOEMER**
and Associates Inc.

engineers & scientists

8501 West Higgins Road
Suite 280
Chicago, Illinois 60631
773.399.0112

also:
Milwaukee
Madison
Green Bay



Botti Studio of Architectural Arts, Inc.

919 Grove Street, Evanston, IL 60201 Established 1864
847/869-5933 • Fax: 847/869-5996 • 800/524-7211
www.bottistudio.com • botti@bottistudio.com

Designers/Fabricators • Stained and Faceted Glass • Beveled Glass • Sandblasted •
Stained Glass Restoration and Conservation • Protective Glazing • Wood and Metal
Frame Restoration • Sculpture • Bronze • Metal • Marble • Mosaic • Interior
Renovation • Woodwork • Murals • Painting and Decorating • Custom Sanctuary
Furnishings • Stained Glass Consultants to Architects and Churches

Studio Locations

San Diego • Chicago • Sarasota • Agropoli, Italy
760/753-0705 • 847/869-5933 • 941/951-0978



**Nothing Else
Even Comes
Close.**

**AIA Contract
Documents:
Electronic Format 3.0**

AIA Contract Documents are the standard in the building industry. Created with the consensus of contractors, attorneys, architects and engineers. Honed razor-sharp by test after legal test. Refined to exceptional clarity through 110 years of precedent and experience. More than 70 contracts and forms for the design and construction phases of all types of projects. Now with custom formatting and flexible pricing.

**Call AIA Chicago for your free
demo disk today: 312/670-7770.
Or order online at
www.aiachicago.org.**

AIA Chicago



A Chapter of The American
Institute of Architects

Alphabetical by firm.

Distinguished Building Awards

Honor Awards

Brininstool + Lynch Ltd. (Squark)12
 Lohan Associates (Mary and Leigh Block Museum of Art)10
 Murphy/Jahn Inc. (HALO Headquarters)6
 Murphy/Jahn Inc. (Sony Center Berlin)11
 Perkins & Will (McDonnell Pediatric Research Building)8
 Ross Architecture Inc. (Foster Residence)7

Citations of Merit

Brininstool + Lynch Ltd. (Yamamoto Residence)15
 Frederick Phillips & Associates (Tower House)15
 Harding Associates (Copernicus Center)14
 Pappageorge/Haymes Ltd. (Armitage-Leavitt Condominiums)14

Special Recognition

Landon Bone Architects Ltd. (Roseland Ridge Apartments)16
 Pappageorge/Haymes Ltd. (The Fisher Building)16

Interior Architecture Awards

Honor

Brininstool + Lynch Ltd. (Squark)23
 HOK Inc. (Chicago Center for IBM e-Business Innovation)18
 Interior Space International (Rocket Science)20
 Skidmore, Owings & Merrill LLP (Jin Mao Tower)19

Citations of Merit

Brininstool + Lynch Ltd. (Yamamoto Residence)27
 Garofalo Architects (Offices of Thornton Tomasetti Engineers)30
 Gary Lee Partners (Offices of Russell Reynolds Associates)28
 OWP&P Architects (Northside College Preparatory High School)27
 Skidmore, Owings & Merrill LLP (Korean World Trade Center)24
 Teng & Associates (G Concourse Renovation at O'Hare Airport)24
 Valerio Dewalt Train Associates (Offices of Turner Construction Co.)28

Special Recognition Awards

Landon Bone Architects Ltd. (General Dentistry)30
 Skidmore, Owings & Merrill LLP (General Motors Global Headquarters Circulation Ring)30

Divine Detail Awards

Honor Awards

EHDD Architecture (Shingle Wall at Habitat Africa! The Forest) ...32
 Studio Gang/O'Donnell (IIT Open House 2001: Crown Instrument and Suspension Exhibits)32

Citations of Merit

Teng & Associates (Interior Walls at Kline Creek Farm Visitors Center)35
 Valerio Dewalt Train Associates (3Com Office Building Stair)35

Special Recognition

Skidmore, Owings & Merrill LLP (Jin Mao Tower Curtain Wall) ...35

Jury List

Distinguished Building

George Nikolajevich, FAIA, Cannon Design, St. Louis, Missouri
 Rafael Pelli, AIA, Cesar Pelli & Associates, New York, New York
 Jane Weinzapfel, FAIA, Leers Weinzapfel Associates, Boston, Massachusetts

Interior Architecture

Nila Leiserowitz, Assoc. AIA, FASID, Gensler, Santa Monica, California
 Lewis Goetz, AIA, Group Goetz Architects PC, Washington, D.C.
 Victor Saroki, FAIA, Victor Saroki & Associates Architects PC, Birmingham, Michigan

Divine Detail

Tod Desmarais, AIA, Optima Inc., Glencoe, Illinois
 Peter Exley, AIA, Peter J. Exley Architect, Chicago, Illinois
 Stephen Yas, AIA, Yas/Fischel Partnership, Evanston, Illinois

ARCHITECT SEARCH, Inc.

You Create Buildings. We Create Careers.

Architect Search has placed 250 architects of all levels in **BETTER POSITIONS**, with a 96% success rate since 1998. It's free to you.

"The people at Architect Search are very professional and are dedicated to help you find the right job to fit your qualifications."
 -Erin K. Stone

Architect Search, Inc.

You Create Buildings. We Create Careers.

312/ 467-0677

FAX 217/ 586-2524 TOLL FREE 877-335-2410
 E-MAIL chicago@archsearch.com www.archsearch.com

Structural Engineering

Perry & Associates, LLC
 221 N. LaSalle St., Suite 425
 Chicago, Illinois 60601
 (312) 364-9112 (312) 364-9163 (fax)
www.PerryLLC.com info@PerryLLC.com

Design • Analysis • Repair • Waterproofing

- **Steel** ➤ New construction.
- **Concrete** ➤ Structural modifications and additions.
- **Wood** ➤ Evaluation and repair of structural distress.
- **Masonry** ➤ Condition assessments / feasibility studies.
- **Precast Concrete** ➤ Construction documents and specifications.
- **Drawings and Specifications** ➤ Evaluation of waterproofing and building envelopes.
- Architectural serviceability review.

Sabo & Zahn

Attorneys at Law

Werner Sabo, FAIA

James Zahn, FAIA

Licensing problems, copyrights, business formations, mediation, litigation, arbitration, contracts, real estate construction attorneys

8620 Sears Tower
 Chicago, IL 60606

(312) 655-8620
 fax: (312) 655-8622

www.sabozahn.com

SNAP-CLAD™

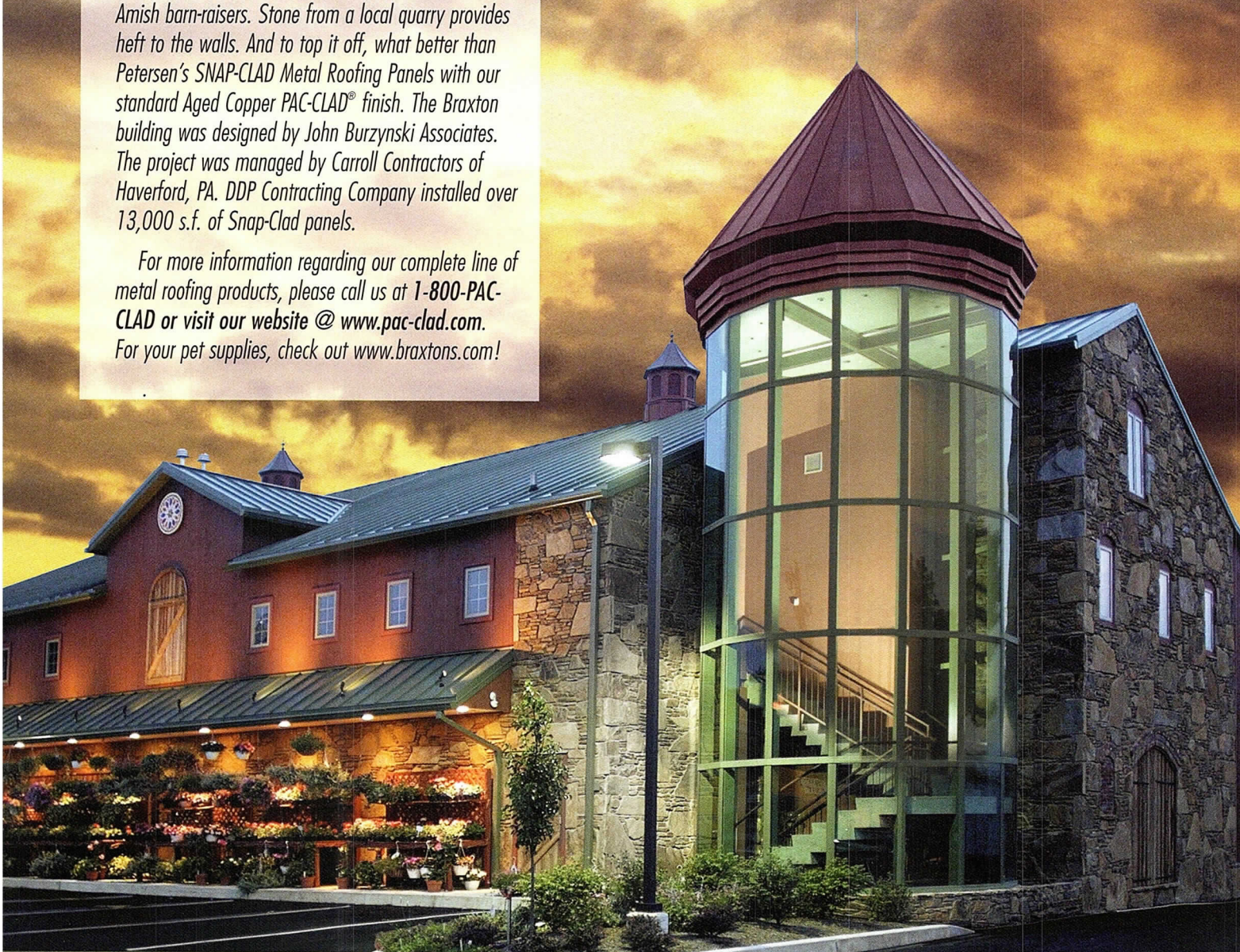
Metal Roofing Panels

Braxton's Animal Works is a third-generation family business that has pampered Philadelphia's pets and their owners since 1938. When their growing business required additional space, the Braxtons set out to create a building that was as distinctive as their products and service.

The building's pole and beam frame was erected by Amish barn-raisers. Stone from a local quarry provides heft to the walls. And to top it off, what better than Petersen's SNAP-CLAD Metal Roofing Panels with our standard Aged Copper PAC-CLAD® finish. The Braxton building was designed by John Burzynski Associates. The project was managed by Carroll Contractors of Haverford, PA. DDP Contracting Company installed over 13,000 s.f. of Snap-Clad panels.

For more information regarding our complete line of metal roofing products, please call us at 1-800-PAC-CLAD or visit our website @ www.pac-clad.com. For your pet supplies, check out www.braxtons.com!

PAC-CLAD®
Petersen Aluminum



Petersen Aluminum Corporation

1005 Tonne Road • Elk Grove Village, IL 60007
1-800-PAC-CLAD or 1-847-228-7150
Fax: 1-800-722-7150 or 1-847-956-7968
<http://www.pac-clad.com>

Other Plant Locations:
Annapolis Junction, MD: 1-800-344-1400
Tyler, TX: 1-800-441-8661
Kennesaw, GA: 1-800-272-4482



WWW.VERTEXGRAPHICS.COM

EXPANDING

TRANSFORMING

GROWING

DS3 CANARY WHARF - WEINTRAUB DE STEFANO + PARTNERS

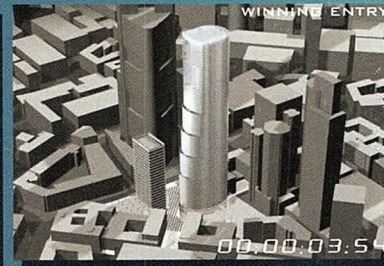
ARCHITECTURAL VISUALIZATION - RENDERING - ANIMATION - VR PANORAMIC



WINNING ENTRY



WINNING ENTRY



WINNING ENTRY

00:00:03:5

SKOPJE AIRPORT - TAMS CONSULTING GARNIEG MUSEUMS - VINCI|HAMP MAX FRANKFURT - MURPHY/JAH



MARINA TOWER PLACE - DE STEFANO + PARTNERS



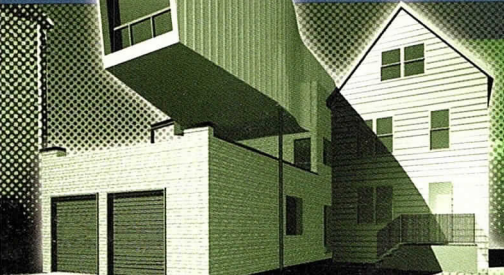
CENTRAL MIDDLE SCHOOL - PERKINS & WILL

312.432.9870

VERTEX GRAPHICS

1147 W OHIO #102 CHICAGO IL 60622

MOVING TO OUR NEW LOCATION 10.01.01



BOSZCZYCKI RESIDENCE - GAROFALO ARCHITECTS

