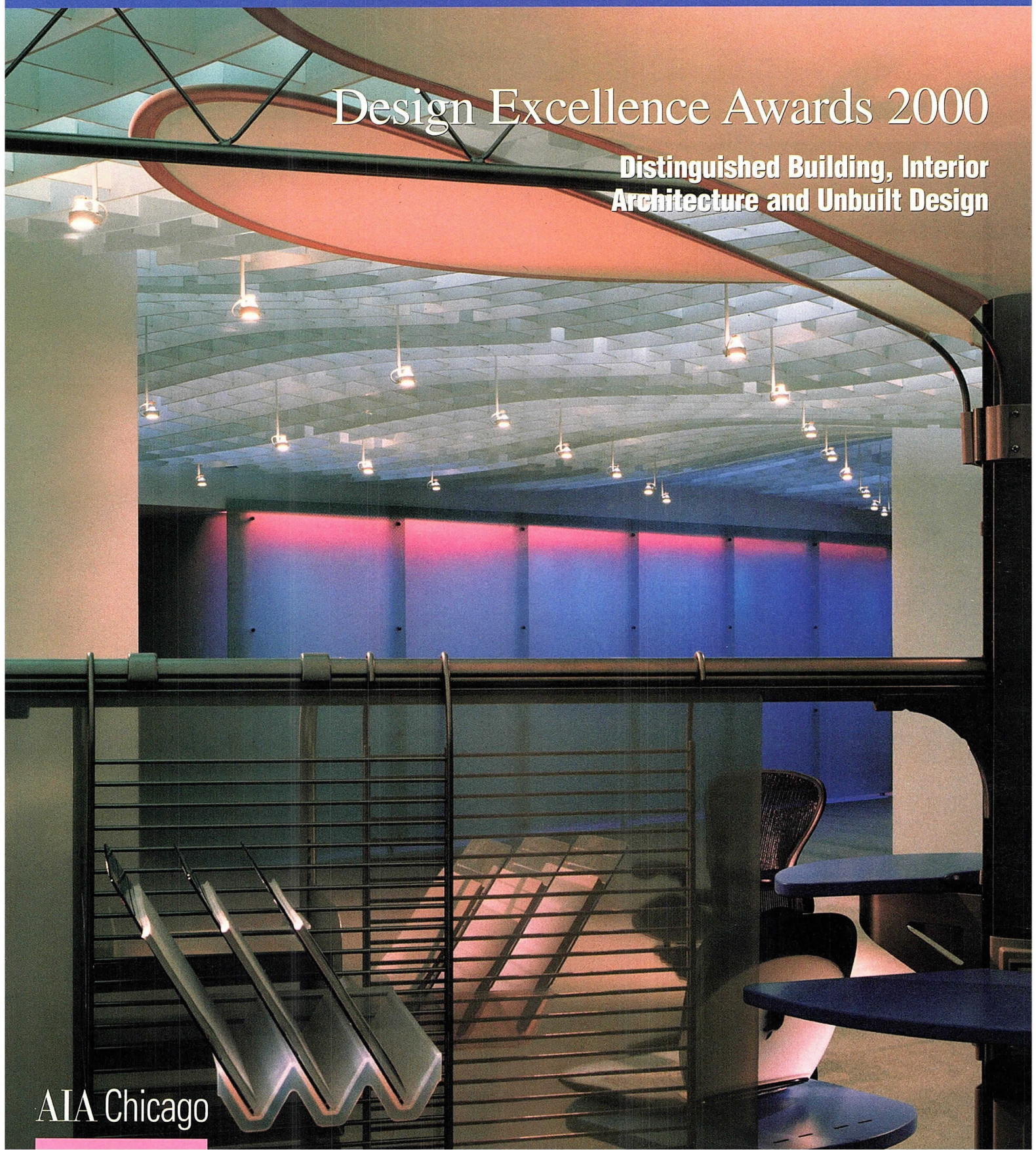


Focus

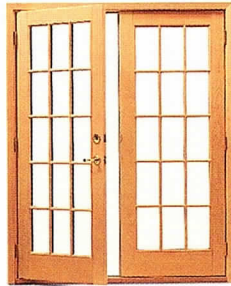
SPECIAL EDITION

Design Excellence Awards 2000

**Distinguished Building, Interior
Architecture and Unbuilt Design**



*"I'd like all wood,
inside and out."*



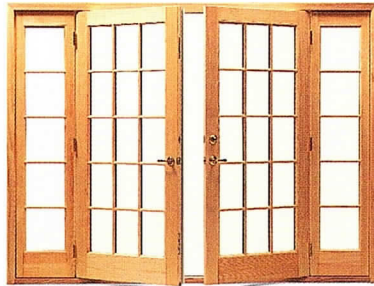
"OK."

*"Oh, and I want it to
be really secure."*



"OK."

*"Maybe some
sidelights."*



"OK."

*"You know,
a different
design for the
panes might
be better."*



"OK."

The Marvin Inswing French Door.
For that strange and unusual situation when a client changes their mind.

Now as clients request more, you can give them more. And sometimes, the fact you can say "OK" means you get more chances to sell to more customers. Want a higher performance rating?

MARVIN
Windows and Doors

Made for you.

Extruded aluminum clad exterior, and all furniture-finish wood interior? Multi-point locking system? Virtually any light pattern? The list of options goes on and on. In case your client does, too.

For a free product brochure, call 1-800-318-7232. (Canada, call 1-800-263-6161.) www.marvin.com

4

President's Letter

6

Distinguished Building Awards

16

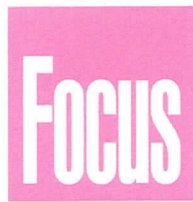
Interior Architecture Awards

28

Unbuilt Design Awards

30

Index



Special Edition, November 2000

Editor

Susan Larson

Contributing Editor

Laurie McGovern Petersen

Focus Advisory Board

William Bradford, AIA
 Howard Decker, FAIA
 Deborah Doyle, AIA
 James Jankowski, AIA
 Edward Keegan, AIA
 Laurie Petersen
 Pat Rosenzweig
 Alice Sinkevitch, Hon. AIA
 Thomas Zurowski, AIA

FOCUS (ISSN 1071-3700) Vol. 20. No. 10, is published monthly with a combined issue June/July, by AIA Chicago, 222 Merchandise Mart Plaza, Suite 1049, Chicago, Illinois 60654-1001. \$20 of each member's dues are allotted as a subscription. Periodicals postage paid at Chicago, Illinois. POSTMASTER: Send address changes to Focus, AIA Chicago, 222 Merchandise Mart Plaza, Suite 1049, Chicago, Illinois 60654-1001.

For advertising rates and schedules, call 312/670-7770.

© 2000 The American Institute of Architects Chicago.

All rights reserved. Reproduction in whole or part without permission is strictly prohibited.

AIA Chicago on the Internet: www.aiachicago.org

AIA Chicago e-mail: info@aiachicago.org

AIA Chicago



A Chapter of The American Institute of Architects

2000 Board of Directors

President

T. Gunny Harboe, AIA

President-Elect

Thomas Zurowski, AIA

Vice Presidents

Joseph Caprile, AIA
 Randall Deutsch, AIA

Secretary

Jonathan Fischel, AIA

Treasurer

Dave Urschel, AIA

Directors

Raymond Clark, AIA
 Ellen Bailey Dickson, AIA
 Kevin Hall, AIA
 Philip Craig Johnson, AIA
 James E. Prendergast, AIA

AIA Regional Director

Holly Gerberding, AIA
 Lawrence Livergood, AIA

AIA Illinois Director

W. Stephen Saunders, AIA

Associate Director

Susan Campbell, Assoc. AIA

Professional Affiliate Director

Eric Singer

Past President

James Jankowski, AIA

2000 AIA Illinois Delegates

William Bradford, AIA
 Thomas Braham, AIA
 Hill Burgess, AIA
 Deborah Doyle, AIA
 Arthur Salzman, AIA
 W. Stephen Saunders, AIA
 Peter Schlossman, AIA
 (Alternate)
 Lee Weintraub, AIA (Alternate)
 William Worn, AIA
 Robert E. Woodworth Jr., AIA

2000 Professional Interest Areas

Corporate Architects

Laura Fisher, AIA

Design

David Brininstool, AIA

Design/Build

Bruce Ream, AIA

Environment

Michelle Halle Stern, AIA

Health

Robert Carlton, AIA

Historic Resources

Thomas Gentry, Assoc. AIA

Housing

Margaret Cervantes, AIA

Information Technology

Kristine Fallon, FAIA

Interiors

Vito Lotta, AIA

Office Practice

Lisa Willis-Brown

Planning and Urban Affairs

Kyle Benkert, AIA

Technical Issues

Christopher Chwedyk, AIA

Young Architects

Helen Tsatsos, Assoc. AIA

Chapter Staff

Executive Director

Alice Sinkevitch, Hon. AIA

Membership Coordinator/Assistant to the Director

Jamie Juliano

Program Director

Joan Pomaranc

Communications Director

Susan Larson

Financial Manager

Crystal Gagler

Public Information Receptionist

Nichole Brown

Documents Clerk

Barbara Homziuk

Design Excellence Practiced Here



We are all extremely fortunate to live and work in a city as architecturally exciting as Chicago. AIA Chicago's annual awards program underscores that energy and gives the architecture community the chance to publicly recognize design excellence as practiced here.

The 11 Honor Award winners honored this year span a broad range of challenges and include examples of sublime environmental integration, noteworthy restoration work, and innovative planning for the workplace of the future. In addition to the Honor Awards, AIA Chicago has bestowed 19 Citations of Merit and seven Special Recognition Awards.

Local firms competed in three categories: distinguished building, interior architecture, and unbuilt design. Jurors (listed below) selected winners from a combined field of more than 210 entries. For a look at all the submissions, visit the electronic exhibit at www.aiachicago.org.

This year's winners emphasize the fact that Chicago, long known for its architectural treasures, remains a center of exceptional talent.

T. Gunny Harboe, AIA
President

Jury List

Distinguished Building Awards

Michael L. Quinn, FAIA
Quinn Evans/Architects
Washington, D.C.

Edward A. Feiner, FAIA
GSA Public Buildings Service
Washington, DC

Geoffrey Wooding, AIA
Goody, Clancy & Associates
Boston, MA

Interior Architecture Awards

Darrell Fitzgerald, FAIA
Gensler
Atlanta, GA

Stanford Hughes, AIA
Brayton & Hughes Design Studio
San Francisco, CA

Julie Snow, FAIA
Julie Snow Architects
Minneapolis, MN

Unbuilt Design Awards

Jeanne Gang, AIA
Studio Gang/O'Donnell Ltd.
Chicago, IL

Peter Landon, FAIA
Landon Bone Architects
Chicago, IL

Frederick Phillips, FAIA
Frederick Phillips & Associates
Chicago, IL

Thanks to Our Sponsors

The Design Excellence Awards were presented on Friday, October 27 in the Grand Ballroom of Navy Pier. Many organizations made the event possible and AIA Chicago would like to thank them for their support.

Co-Sponsors

Cold Spring Granite
Permasteelisa Cladding Technologies
USG Corp.

Benefactors

Antunovich Associates Inc.

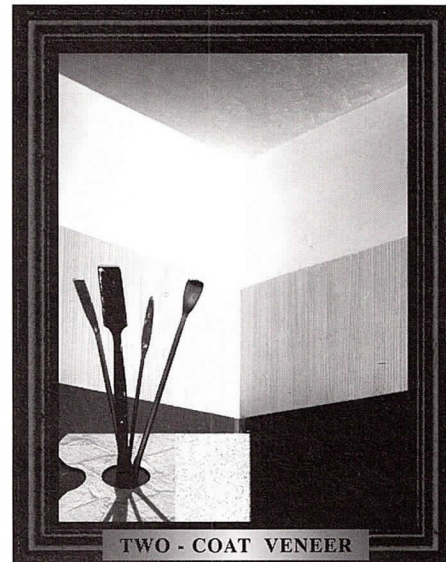
Patrons

Bailey Edward Design
Booth Hansen Associates
Bovis Lend Lease Inc.
Charter Sills and Associates
Clune Construction Co.
Consulting for Architects
Crate & Barrel

Desks Inc.
DeStefano and Partners
Eastlake Studio
Eckenhoff Saunders Architects Inc.
EHDD Architecture
Eifler & Associates Inc.
Environmental Systems Design Inc.
Eva Maddox Associates
Gary Lee Partners
Graycor Construction Company Inc.
Harry Weese Associates
Haworth Inc.
Hedrich Blessing
Herman Miller Inc.
Holabird & Root LLP
International Contractors Inc.
Krueck & Sexton Architects
Legat Architects Inc.
Leopardo Construction Co.
LR Development Co. LLC
Loebl Schlossman & Hackl
Lohan Associates
McCluer

McGuire Engineers
Milliken Carpets
Murphy/Jahn Inc.
Nagle Hartray Danker Kagan
McKay Architects Planners Ltd.
Office Concepts
OWP&P Architects
Pappageorge Haymes Ltd.
Perkins & Will
Rubio/Durham Architects/ISI
Skidmore, Owings & Merrill LLP
Solomon Cordwell Buenz & Associates Inc.
Teng & Associates Inc.
Tigerman McCurry Architects
Tishman Speyer Properties
Turner Construction Co.
Valerio Dewalt Train Associates Inc.
VOA Associates Inc.
Von Weise Associates
Walsh Construction Co.
Wheeler Kearns Architects Inc.
Vernon Williams Architects P.C.

The Art of Plastering



Spectacular walls.
Smooth...Textured...

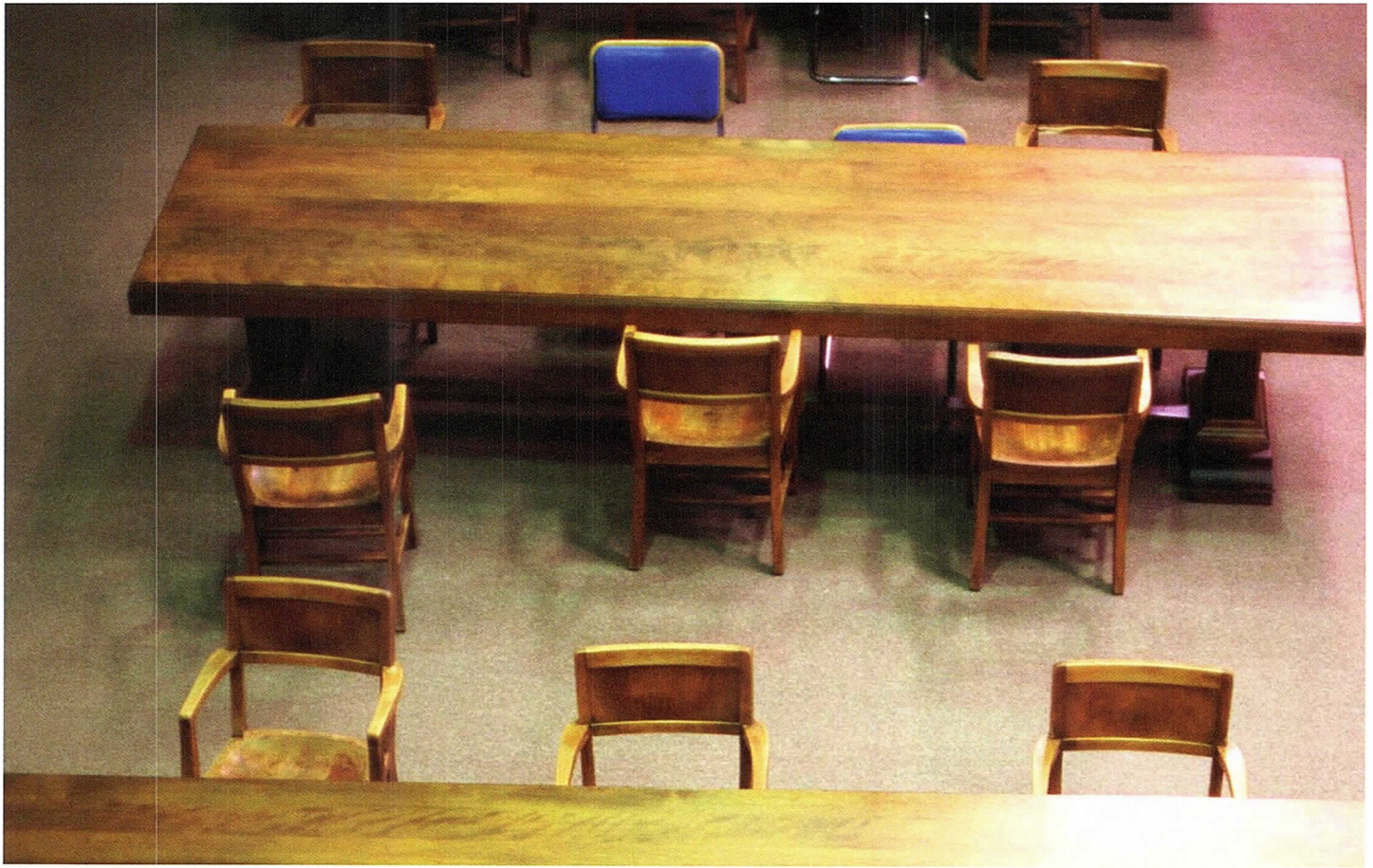
Done the way you want them.
Hard and durable surfaces that
make paint and paper look
better, make redecorating
easier, make homes quieter.

**Plaster interiors are
more cost-effective than
you think.**

Call us for more information.



Chicago Plastering Institute
6547 N. Avondale Ave.
Chicago, Illinois 60631
773.774.4500
Fax. 773.774.5828



They All Got Jobs.

Have you looked around lately? It appears as though everyone has a job. For architects and other design professionals, unemployment is at an all time low. Every firm is hiring, so how can you get your name and resume in front of the right hiring manager?

The answer is CFA. Our feelers are always out, especially in this market. Over the past 16 years we've built a job database unequaled anywhere in the USA. Since 1984, CFA has successfully introduced candidates and firms more than 20,000 times.

Come to a CFA office for a complete and comprehensive portfolio review and CAD skills evaluation. We will refer you to one of our award-winning clients to perform per-project consulting services or, if you prefer,

CFA will help find you a permanent position at the firm of your choice.

"CFA makes suitable matches through careful listening and thorough skill evaluations. As a result of their professionalism I was placed successfully both as a consultant and then as a permanent employee", Brooks Slocum, AIA, HOK employee.

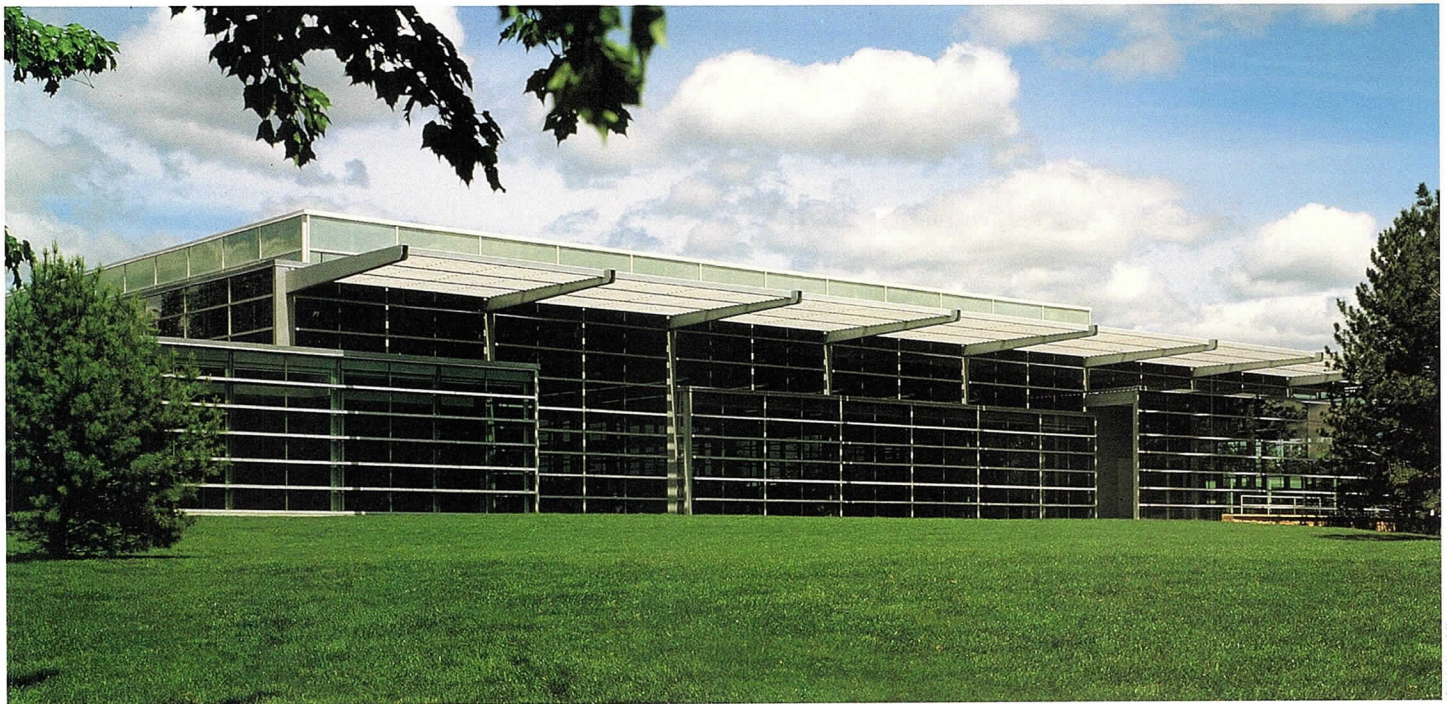
CFA's job placement counselors have years of experience in the staffing industry and specialize in the field of architecture and design. Let CFA help you chart a path that will satisfy your professional career goals. Act now -- Schedule your interview with CFA and get started on your new job today.



For more information contact Consulting For Architects, Inc. at 312 345-1700 or on-line at www.cons4arch.com

Distinguished Building Awards

The Distinguished Building Award was established 45 years ago to recognize significant achievements in the planning, design and execution of recent building projects. Projects are eligible if they were completed between January 1, 1997 and May 1, 2000 and were designed by a registered architect in the Chicago metropolitan area.



© Maris Mizera

Phillips Plastics Phillips, WI

Honor Award

Architect – Krueck & Sexton Architects
Associate Architect – AEC
Client – Phillips Plastics
General Contractor – Boldt Builds
Engineer – Larson Engineering of Wisconsin

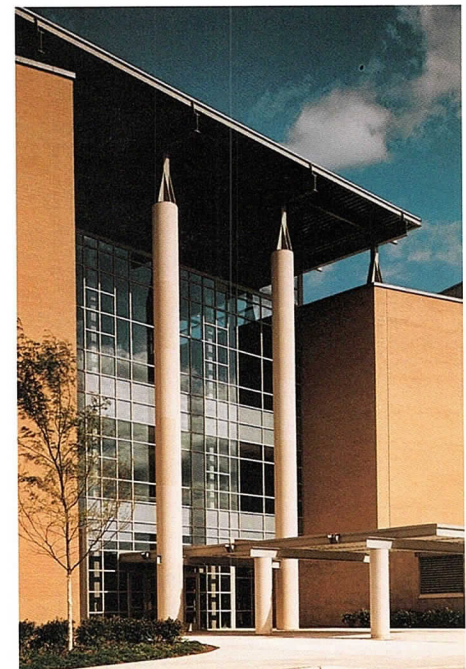
This is “the factory of the future” in the opinion of the jury. An acoustically isolated glass wall is the only element that separates the manufacturing area from the office, conference and common areas. The exterior of the factory has 35-foot-high glass walls that provide abundant natural light as well as views of the beautiful site, located between two rivers in the north woods of Wisconsin. A solar coating on the glass cuts direct light by 80 percent to reduce the glare for press operators. The elements of transparency and natural light emphasize the connection between management and production and express the company’s innovative character.

Northside College Preparatory High School Chicago, IL

Citation of Merit

Architect – OWP&P Architects
Client – Chicago Public Schools
General Contractor – Walsh Construction Co.
Consultants – Bovis Management Group (construction manager); The Architects Enterprise Ltd. (associate architect); Rubinos & Mesia Engineers (structural, civil); OWP&P Engineers (mechanical, electrical); Galloway Ltd. (plumbing, fire protection)

The city’s first public high school in 20 years was designed to compete with private schools to attract gifted students. Jurors were impressed with the results, making comments such as, “It takes high school architecture to a completely new level; I was amazed when I realized this was a public institution; the interiors are exceptional.” The constraints of the long, narrow site — bounded by residential streets, utilities, and the river — were turned into advantages with a linear plan of interconnecting forms. Interstitial spaces between the large volumes became light-filled gathering spots that encourage students to enjoy the unique setting. An auditorium and adjacent glazed lobby are sited to facilitate community use.



© Matt McDonald / © Heinrich Rieckson



George Pappageorge, FAIA

Block X
Chicago, IL

Honor Award

Architect – Pappageorge/Haymes Ltd.
Client – Thrush Development
General Contractor – TCI
Consultants – Peter R. Krallitsch & Associates
(structural); Cartland Co. (mechanical); McClier
(civil); Joe Karr & Associates (landscape)

The design challenge for this condominium complex on Chicago's Near West Side was to create a vocabulary that is residential and contemporary yet fits in with the context of old industrial buildings and lofts. The jury applauded the design, calling the project "a good urban statement, nicely broken down in scale." The buildings come right out to the sidewalk and relate to their surroundings with red brick, masonry, and large areas of glazing. Pushing the buildings to the perimeter of the site freed up a third of an acre for a park-like interior courtyard. The façades are enlivened with terraces, balconies, fenestration changes, and a materials palette that includes brick, metal panels, and painted steel. Parking is hidden under the buildings and garden, and the garage ventilation shafts are incorporated into the design as towers from which the entrance canopy is suspended.



© Doug Stover Photography

Exploris
Raleigh, NC

Citation of Merit

Architects – EHDD Architecture in association with
Clearscapes P.A.
Client – Wake County and the Children's
Museum-Raleigh
General Contractor – MLB Industries
Consultants – Lysaught & Associates (structural);
DS Atlantic Corp. (mechanical, electrical, plumbing,
fire protection); Paoletti (acoustical)

"An exciting environment with a nice playfulness to it," was the jury's opinion of this humanities-oriented children's museum. Located on one of Raleigh's historic squares, the 70,000-square-foot brick structure incorporates an existing 23,000-square-foot masonry warehouse. The architects and a sculptor worked to blur the distinction between art, architecture and exhibits to support the museum's themes of choice, change, interconnectedness and perception. The World Wall, constructed of stainless steel panels supporting 1.2 million glass marbles, transforms the building with a translucent image of the earth from outer space. A vaulted light scoop with a corrugated, perforated metal ceiling provides a natural balance of daylight to the main lobby.



Christopher Barrett © Hedrich Blessing

Crate & Barrel, North and Clybourn Home Store
Chicago, IL

Citation of Merit

Architect – Crate & Barrel
Associate Architect – Solomon Cordwell Buenz & Associates
General Contractor – BABCO Inc.
Engineer – McCluer

The overall mass of the wedge-shaped store, located on a prominent triangular lot, is broken down into three smaller components. Each one partially expresses what the retailer has come to stand for. The sharp corner and middle of the building, executed in white metal and glass, refer to the retailer's flagship store and celebrate seasonality, freshness and light. A three-story stucco volume topped with a curved roof expresses simplicity and value. A serpentine kasotal stone wall punched with large windows proclaims quality and luxury in a domestic context.



Photo: Jeff @ Hedrich Blessing

Tetra Pak Inc., U.S. Headquarters
Vernon Hills, IL

Honor Award

Architect – Solomon Cordwell Buenz & Associates
Client – Van Vlissingen & Co.
General Contractor – Power Construction
Consultants – Robert Miller & Associates (structural);
V.A. Smith Co. (HVAC); Charles W. Greengard
Associates (civil); I.L.T. Vignocchi (landscape)

Sustainability is the guiding design concept of this corporate headquarters that preserved its wooded setting for the benefit of both the environment and the employees. "It is beautifully integrated into the natural surroundings, especially for such a modern, geometric building," commented jurors; "even the overhangs take on the character of a tree canopy." The architects have created a loft-like aesthetic that has practical as well as environmental benefits. High ceilings and expansive glazing create a strong visual connection with the outdoors; king-post trusses with 50-foot spans create column-free, flexible office space; exposed structural and mechanical systems eliminate the need for many interior finish materials. "Green" construction techniques included placing the construction crane within the facility footprint and building outward, and later replanting much of the displaced vegetation, including 22 trees. Many of the building components included high percentages of recycled materials: 88 percent of the steel structure; 30 percent of the aluminum in the curtainwall; and 69 percent of the ceiling tile.



Craig Dugan © Hedrich Blessing

Restoration of the Reliance Building/Hotel Burnham
Chicago, IL

Citation of Merit

Restoration Architect – McCluer
Architect – Antunovich Associates
Owner – Canal Street Partners LLC
General Contractor – Plant/UBM Joint Venture
Consultants – Nayyar & Nayyar International
(structural); Environmental Systems Design
(mechanical, electrical, plumbing); Intra-Spec
(hotel interior design)

The final phase of the Reliance Building's preservation has created a street-level presence worthy of this vaunted landmark. The original storefront of Scottish granite and cast bronze has been reconstructed, and its large glass windows have proven ideal for the restaurant now occupying the space. Diners enjoy abundant natural light and passersby benefit from a lively addition to the streetscape. The hotel reception desk is located in a new lobby entered from Washington Street, and a serpentine half-wall leads guests past the restaurant to the historic elevator lobby. This space has regained its grandeur with reconstruction of the ornamental metal staircase and elevator grille enclosures and installation of new multi-colored marble on the floor, walls and ceiling. Separated from the main hotel and restaurant activity, the historic lobby is a welcoming space for admirers of its glorious architecture.



Protection Since 1952

Euclid Insurance Agencies has been providing insurance services to businesses since 1952. Our dedication to the complex field of insurance for design professionals enables us to give you the professional advice and tailored products you need. We have a unique understanding of the architectural and engineering clients we serve and the special coverages they require.

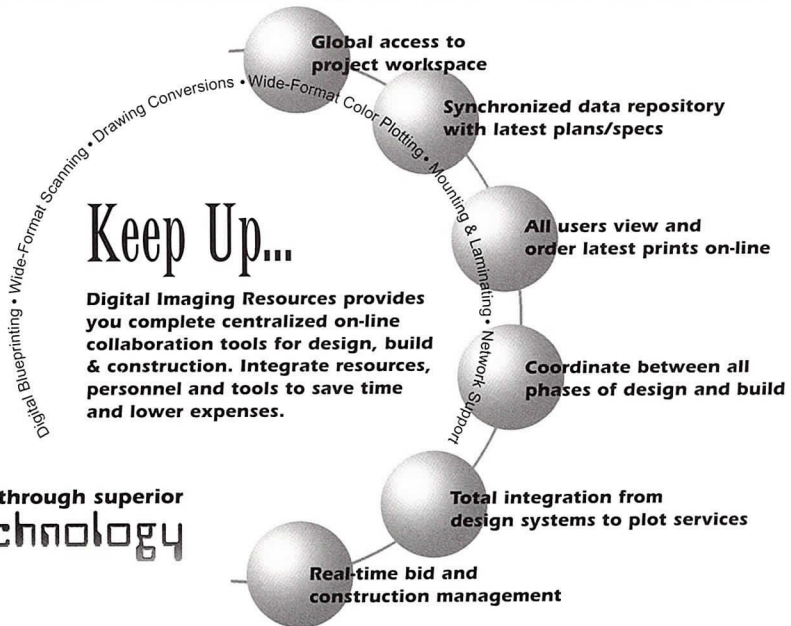
- Professional Liability, Workers Compensation, Disability, Office Package, Health Insurance, Estate Planning, and more
- Legal advice, seminars and continuing education programs
- Website access to risk management information
- AIA Chicago 401(k) and Profit Sharing Association Plan

EUCLID
INSURANCE AGENCIES®

977 Oaklawn Avenue • Elmhurst, IL 60126
Tel: (630) 833-1000 • Fax: (630) 833-1747



Are you leveraging your resources on-line?



Keep Up...

Digital Imaging Resources provides you complete centralized on-line collaboration tools for design, build & construction. Integrate resources, personnel and tools to save time and lower expenses.

Better service through superior
technology



Digital
Imaging
Resources, Inc.

650 West Lake Street #120 • Chicago, IL 60661 • www.dirinc.com

Phone 312.243.1250 • Fax 312.243.1590



© William Kildow

Restoration of the Garfield Park Conservatory/Aroid House, Economic House, Horticulture Hall
Chicago, IL

Special Recognition

Architect – Eifler & Associates Inc.
Client – Chicago Park District
General Contractor – Guse Erickson Co.
Consultants – Nayyar & Nayyar International (structural); Weber Associates (mechanical, electrical, plumbing); Gilmore Franzen Architects; Stearn/Joglekar Ltd. (structural); Environmental Systems Design (mechanical, electrical, plumbing)

This project received kudos for its preservation of historic technology. At the recommendation of the architect, the conservatory's original glazing system was reproduced using old-growth cypress mullions, integral copper condensation gutters, and copper bar caps. The steel trusses were stripped of their lead- and chromium-based paint and re-coated with primer, epoxy and urethane. The final step was replacement and/or repair of ganged cypress awning windows. The country's largest public conservatory when it opened in 1907, Garfield Park is a continuing tribute to the artistry of landscape architect Jens Jensen.



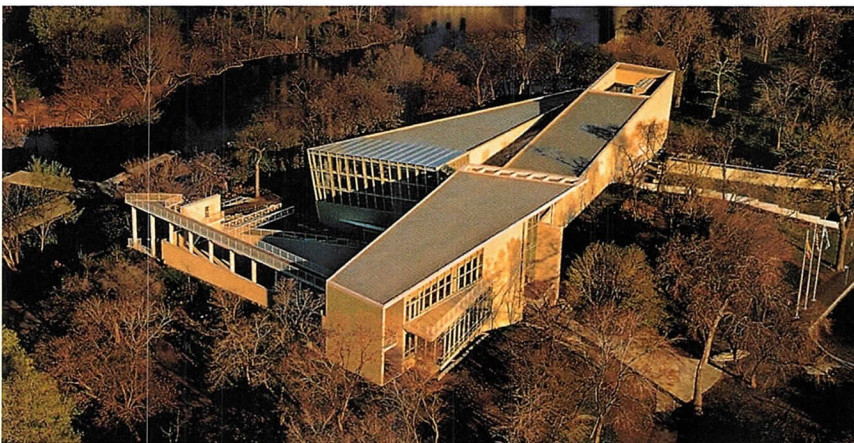
© Christian Korab

The Restoration of the Ward Willits House
Highland Park, IL

Honor Award

Architect – Eifler & Associates Inc.
Client – Milton and Sylvie Robinson

Fifteen years of continuous restoration have brought this 1901 Frank Lloyd Wright classic back to its original condition. The Willits House is the first of Wright's designs to include all the components of his Prairie homes, including art glass, wall finishes, light fixtures, and custom-designed furnishings. Each of these details has been restored, eliciting praise from the jury for the meticulous quality of the project. One juror even assumed it was a museum, and was astonished to realize it was a private home. Exterior work included reroofing and restructuring of deflecting roof spans and cantilevers, reconstruction of the original front porch, and a comprehensive program of art glass repair and reconstruction to rectify the prior removal of over a dozen windows. Interior work included refinishing of original walls and woodwork as well as fabrication of replica furniture, hardware and lighting fixtures. The owners have established a private foundation to ensure the ongoing preservation of the house.



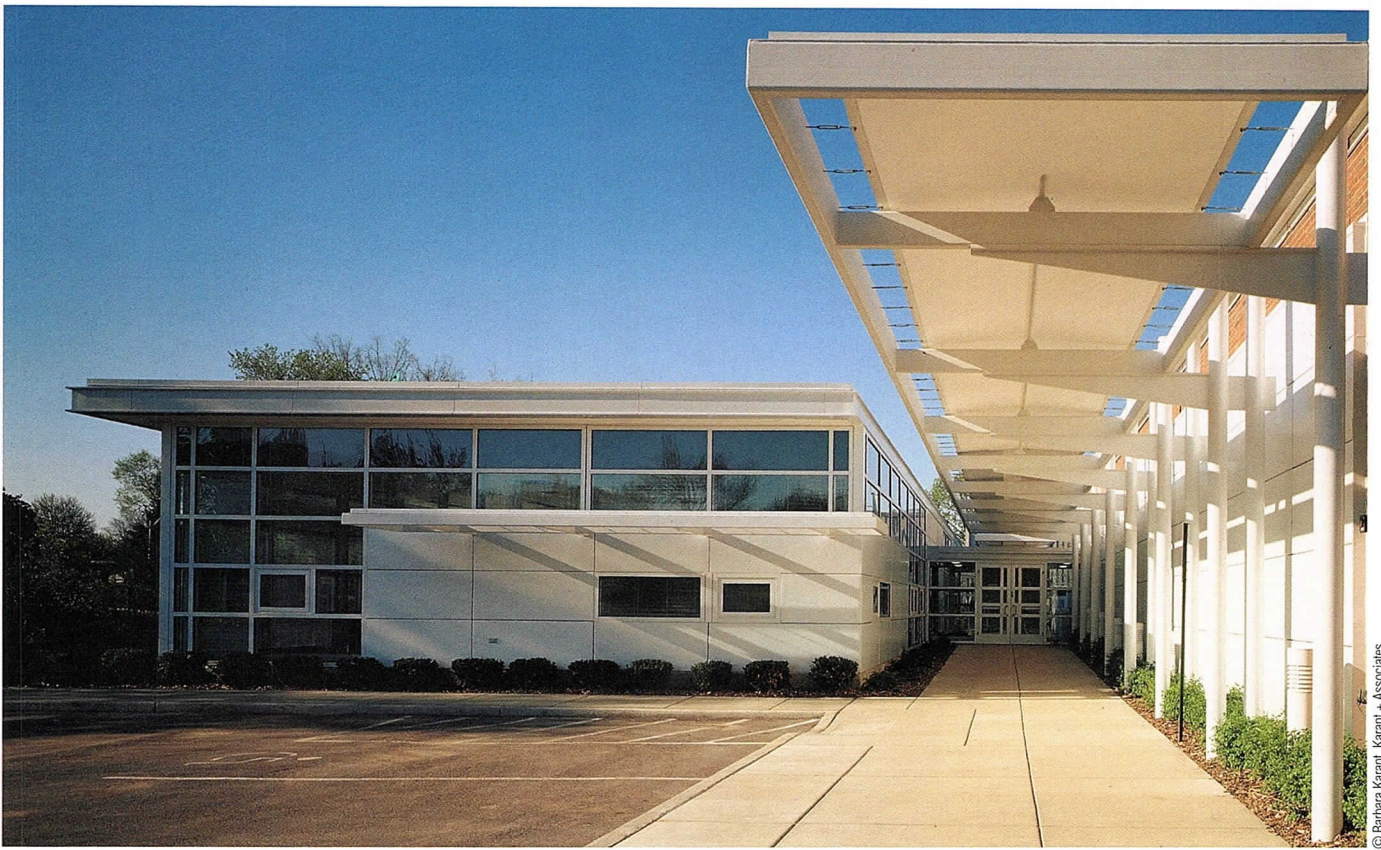
James Stenkamp © Stenkamp/Ballogg Photography

Peggy Notebaert Nature Museum
Chicago, IL

Citation of Merit

Architect – Perkins & Will
Client – Chicago Academy of Sciences
General Contractor – James McHugh Construction Co.
Consultants – C.E. Anderson & Associates (structural); Environmental Systems Design (mechanical, electrical, plumbing); Terra Engineers (civil); Carol JH Yetken Landscape Architects (landscape)

Emphasizing the interdependence of the natural and manmade environments, the angular masses of the museum recall the shifting sand dunes that existed on the site before it was converted to parkland in the late 19th century. To preserve existing trees and land contours, the footprint of the demolished park maintenance sheds determined the building's placement. A transparent entrance lobby leads to a ravine with native plantings and a pond beyond. The glazed butterfly haven flanks this space to the north. Jurors praised the museum's spatial variety and the relationship of building to landscape.



© Barbara Karant, Karant + Associates

Wilmette Public Works Facility
Wilmette, IL

Honor Award

Architect – A. Epstein and Sons International Inc.
Principal Designer – Andrew Metter, FAIA
Client – Village of Wilmette
General Contractor – Ilice Construction Co.
Engineer – A. Epstein and Sons International Inc.

This is a small project with a big purpose: by linking two mundane buildings with a lively design, it changes the work environment for the employees and provides an attractive street façade for the public works complex. A single-loaded corridor plan, with circulation on the yard side and occupied spaces on the street side, allows natural light to penetrate the building. The corridor splays out to provide access to an employee patio/courtyard. A large steel and fabric canopy runs from the courtyard to the parking lot, providing covered access to the entrance and creating a sheltered outdoor dining space on the patio. The jury felt that the project set a good example of creating a linking structure that also stands by itself, and that the sense of scale and welcoming entrance were an asset to the neighborhood.



Nick Merrick © Hedrich Blessing

University of Illinois at Chicago Outpatient Care Center
Chicago, IL

Citation of Merit

Architect – Perkins & Will
Client – University of Illinois at Chicago
General Contractor – Turner Construction
Engineer – Perkins & Will

This facility forms an aesthetic and physical link between several buildings on this dense medical campus, creating a functionally cohesive system as well as a single visual image for the medical center. The main public corridor runs along the east side of the building, crossing Taylor Street above the first floor. This connection minimizes traffic through the clinics and provides orientation, views and light. "This is a truly urban solution," agreed the jury, "with wonderful transparency and reflectivity."



Steve Hall © Hedrich Blessing

Saltzman Farmhouse
Galien, MI

Citation of Merit

Architect – Tigerman McCurry Architects
General Contractor – Dunes Development
Engineer – The Structural Shop

Sensitivity to context was a critical factor in the design of this family compound because the former owners continue to farm the land. The original farmhouse, a one-and-a-half story structure with a low ceiling, became a bedroom wing with sleeping lofts in the attic and guestrooms below. A master suite and the main living wings are attached to two sides of the existing building. Corrugated metal panels clad the complex, placed vertically on the new, horizontally on the old. Each building is covered in checkered asphalt shingles to carry on a local tradition of eccentric roofing. The result is, in the jury's words, "a creative modern interpretation of a very traditional form."

ENCORE!



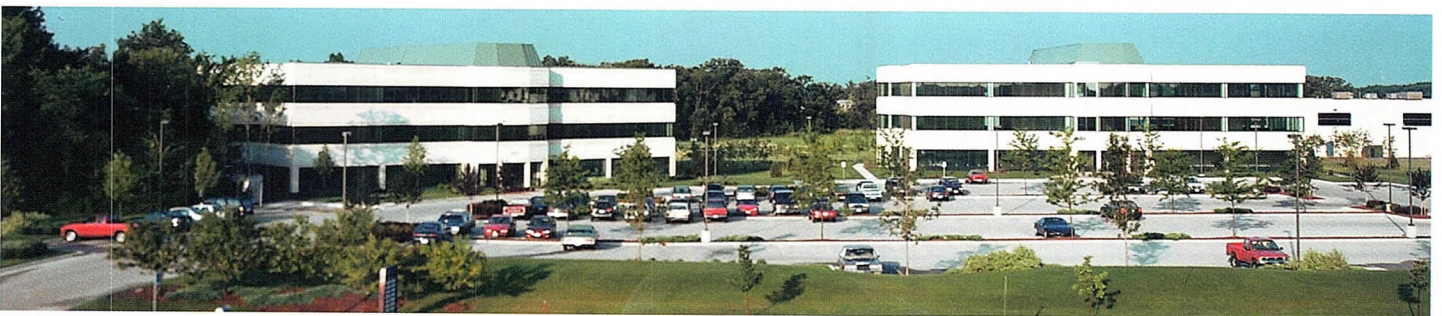
Franklin Corporate Center ~ Franklin, WI



So impressed with the performance of their first building, the owners of the Franklin Corporate Center built its twin just 18 months later. Spancrete® was the single source supplier for this total precast project providing concrete beams, columns, Spancrete® hollowcore plank and exterior architectural panels.

"We've been very happy with the sound construction and rock solid stability of our buildings. The third building, which will complete the Corporate Center, will be built with Spancrete."

- Thomas Lorino, Owner



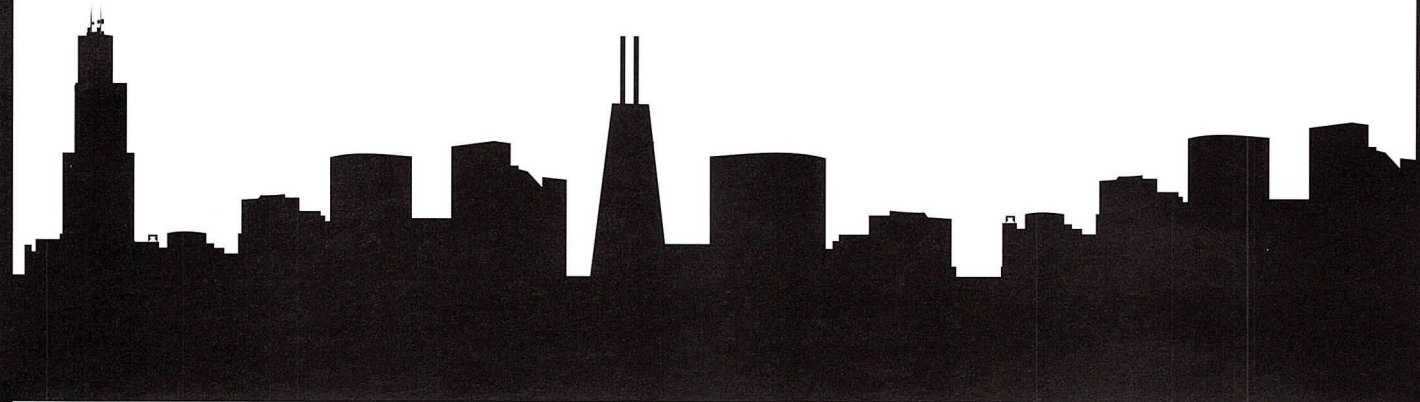
"Striving to be the most responsive partner and innovative provider of precast solutions"

SPANCRETE INDUSTRIES, INC.



P.O. Box 828 Waukesha, Wisconsin 53187-0828 • 414-290-9000
Chicago, Illinois 773-775-6402 • Green Bay, Wisconsin 920-494-0274
www.spancrete.com





Mossner

- Now offering PlanWell™
- High Speed Digital Blue Printing
- Large & Small Color Reproductions
- Complete Electronic CAD File Transfer Options
- Digital & Diazo Reproductions (Bond or Vellum)
- Drawing Management & Distribution
- Specifications & Document Printing
- Pick-up & Delivery Service



Mossner

THE REPRODUCTION PEOPLE • LARGEST IN THE MIDWEST
Mossner Building • 137 North Wabash • Chicago, IL 60602
PHONE: (312) 372-8600 • FAX: (312) 372-2809 • www.mossner.com

Trillium Springs Farmhouse ▶
New Buffalo, MI

Citation of Merit

Architect – Nagle Hartray Danker Kagan
McKay Architects Planners Ltd.
General Contractor – Michigan City Associates
Engineer – Beer, Gorski & Graff Ltd.



© Bruce Van Inwegen



Jim Hedrich © Hedrich Blessing

◀ **Architect's Cottage**
Door County, WI

Citation of Merit

Architect – Nagle Hartray Danker Kagan
McKay Architects Planners Ltd.
General Contractor – Leist Construction Co.
Consultant – Beer, Gorski & Graff Ltd.
(structural)

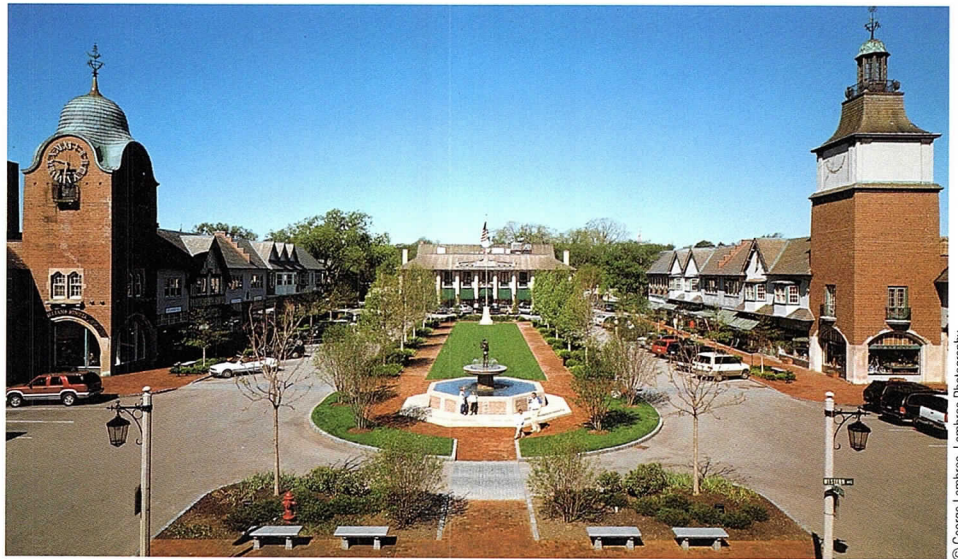
Although they differ in size and program, these houses by the same architect are both eloquent essays in modernism. Resolution of that style's technical problems is an important shared concern: roofs are slightly pitched and equipped with internal or external drains; windows have casing around them rather than lying flush with the façade; and cedar siding "floats" on the insulated walls. Extensive use of wood inside and out lends warmth and a feeling of belonging to the natural environment. The 1,500-square-foot cottage is a simple rectangular pavilion with 12-foot rolling doors that open onto decks or a columned screen porch. The farmhouse is a complex of three buildings — main house, guest quarters, garage/office — connected by porches. Breaking the building mass into these component parts creates a residence that "fits beautifully into the landscape, seeming to grow out of it," said the jury.

Market Square Restoration
Lake Forest, IL

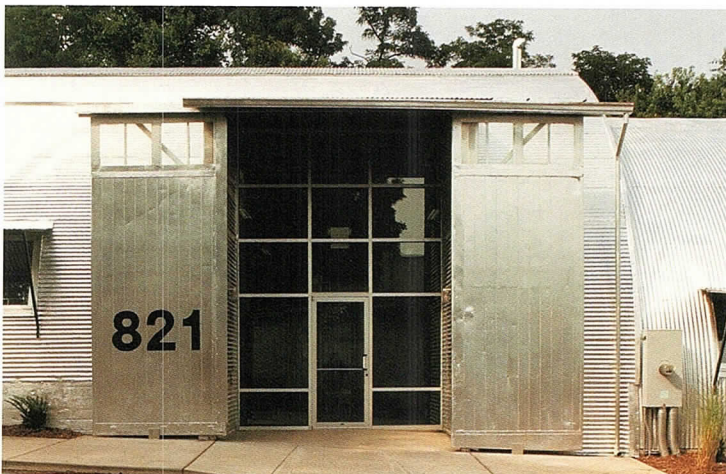
Special Recognition

Architect – Harry Weese Associates
Landscape Architect – Rodney Robinson Landscape Architects
Client – Market Square 2000
General Contractor – SDI Construction Group
Consultants – Conservation of Sculpture and Objects Studio; SDI Consultants (civil); John D. Pantazis & Associates Ltd. (mechanical, electrical); Environmental Systems Design (mechanical, electrical); Building Consultants Ltd. (structural)

Market Square is an extraordinary early example of a planned, car-accessed shopping center. Designed by Howard Van Doren Shaw, it is also the civic hub and indelible symbol of the town of Lake Forest. The buildings had been recently restored, but the square itself had lost historic site and landscaping elements to decay and inappropriate replacements. Guided by the plaza's national and local landmark status, the restoration team meticulously reconstructed the square to its original standards.



© George Lambros, Lambros Photography



Steve Hall © Hedrich Blessing

Bethany Place
Belleville, IL

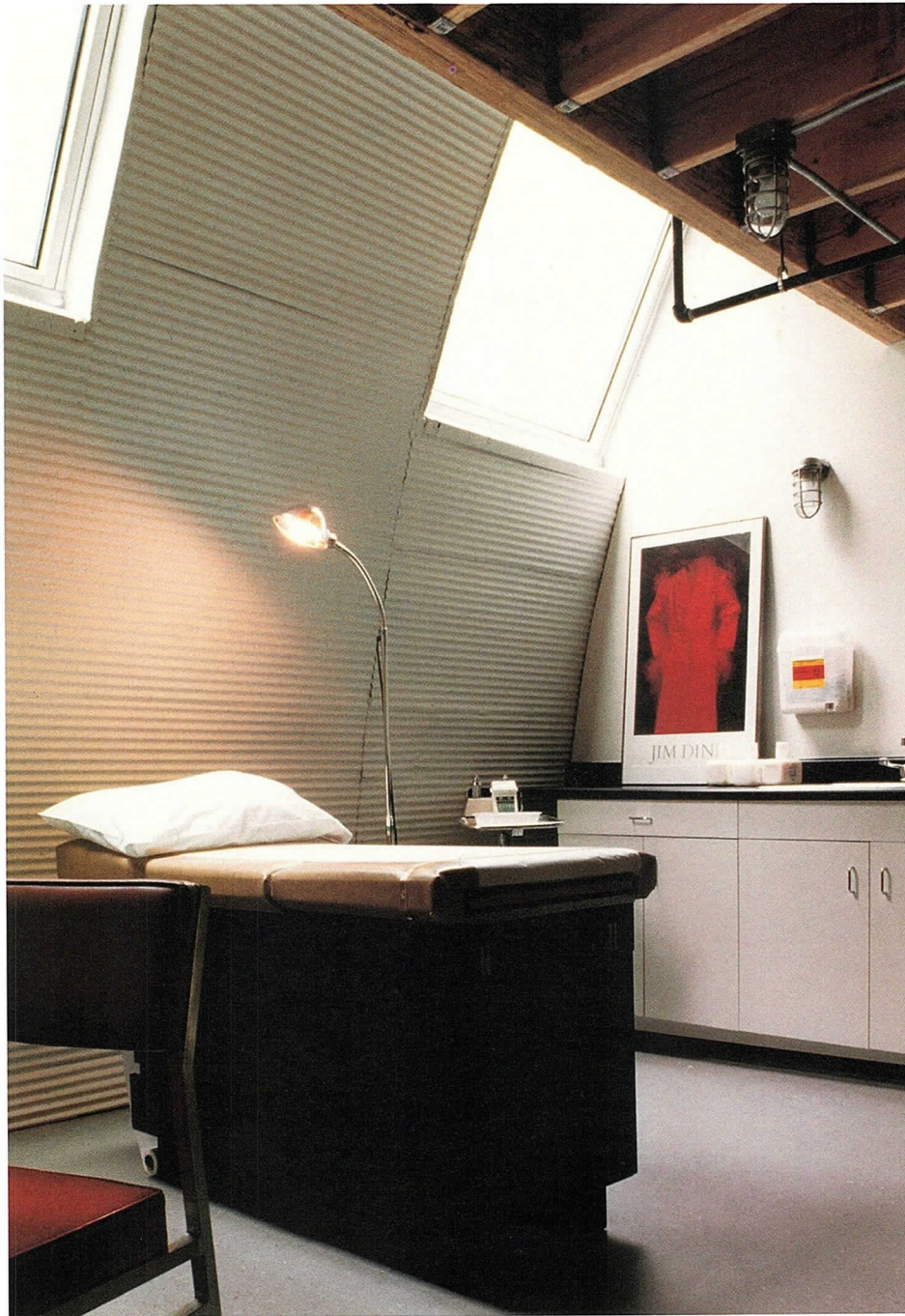
Special Recognition

Architect – Rubio/Durham Architects/ISI
Client – Bethany Place
General Contractor – Plocher Construction
Consultants – McGinnis and Associates (structural); Spaid Associates (landscape)

"High quality design achieved with very limited means," was the jury's opinion of this project that gives new life to a building type that few would be willing to take on. Two Quonset huts and a small masonry structure were transformed into a transitional housing facility and offices for a non-profit provider of social services for AIDS patients. In addition to the design aspects, the energy efficiency of the project was praised.

Interior Architecture Awards

The Interior Architecture Award was established two decades ago to promote interior architecture as a unique profession by recognizing outstanding projects. For award purposes, interior architecture is defined as the space within a building envelope, including design of lighting, finishes and furnishings. The jury considers a wide range of design projects completed between January 1, 1997 and May 1, 2000.



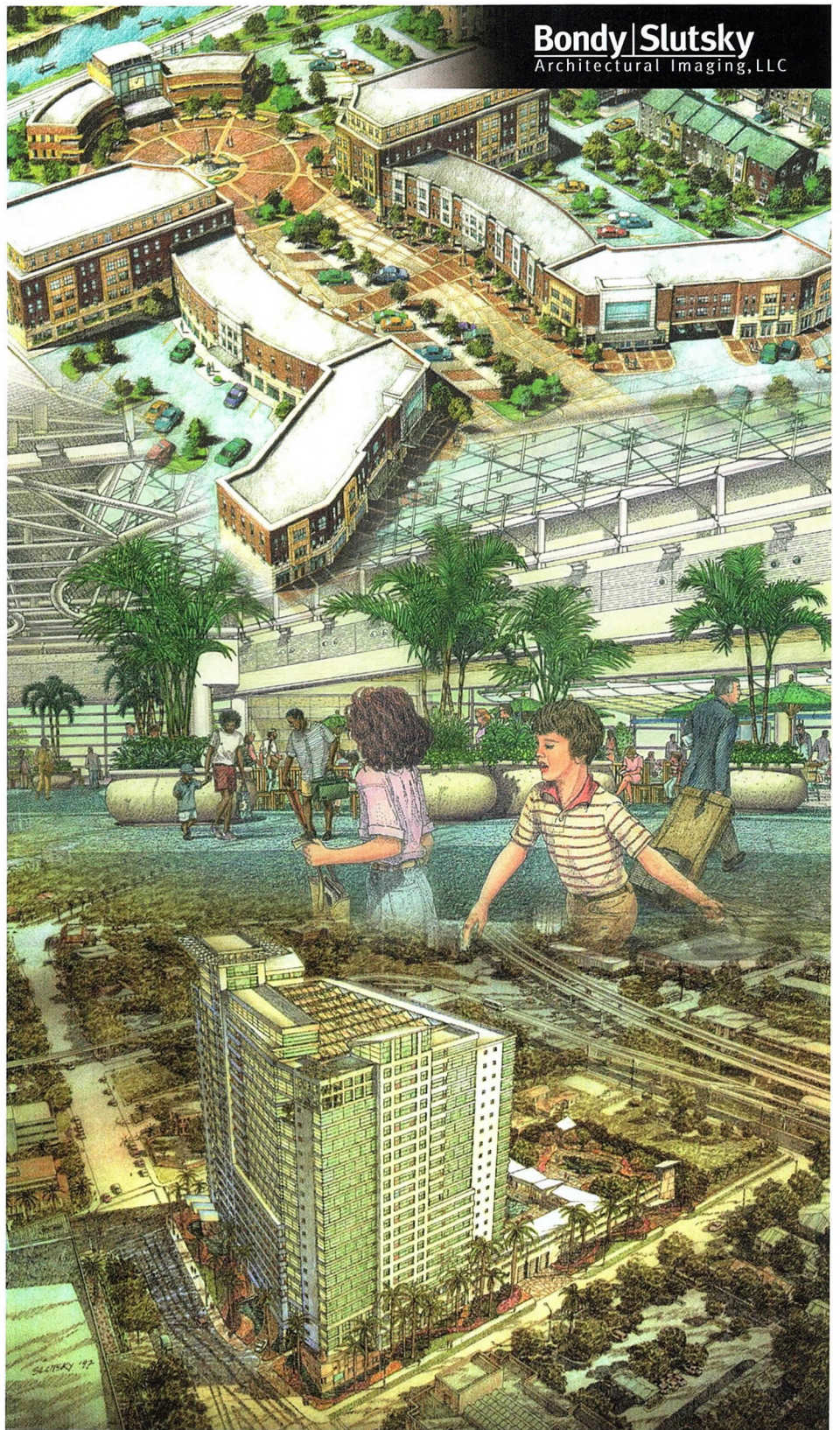
Bethany Place
Belleville, IL

Honor Award

Architect – Rubio/Durham Architects/ISI
Client – Bethany Place
General Contractor – Plocher Construction
Consultants – McGinnis and Associates (structural);
Spaid Associates (landscape)

Quonset huts, with their harsh materials and military connotations, seem unlikely candidates for conversion to a supportive, welcoming environment for the chronically ill. But a transformation that the jury dubbed “phenomenal” fulfilled that mission, and on a penurious budget of less than \$65 per square foot. Bethany Place is a national leader in innovative care for people with HIV, providing one-stop shopping for all their social service needs. The design goal for this facility was, in the words of Director Tom Adams, “to create a place where people will feel safe and healed, respected and relaxed. We want to send a message that if you’re HIV positive, you can still have nice surroundings.” The unique shape of the Quonset hut interiors, the feeling of expansiveness, the variety of lighting levels, and the attention to design details, all contribute to this feeling of well-being. The successful design also has helped improve a dilapidated neighborhood and raise community awareness of Bethany’s programs, by providing desirable meeting spaces for local civic groups.

Steve Hall © Heinrich Blessing



© Doug Snower Photography

Astor Street Residence
Chicago, IL

Honor Award

Architect – Wheeler Kearns Architects Inc.
Interior Designer – Leslie Jones Interiors
General Contractor – Harold O. Schultz Co.
Consultants – Midwestern Engineering,
George Myrtle (mechanical)

When it comes to designing apartments, architects can either disguise or celebrate the dwelling's essential nature, making it feel like a house that just happens to be 20 stories up, or emphasizing its high-rise character. This project is an exemplar of the latter approach, with an ever-present sense of core and an open periphery defined by the rhythm of columns and vista. "They really took advantage of the 360-degree floor plate and gave it a sense of being lifted up and attached to the core," the jury noted approvingly. Originally three apartments, the 6,000-square-foot residence has an open plan on three sides and a glazed interior corridor that borrows light from the bedrooms on the fourth side. Large, trackless pocket doors provide privacy for the master suite. The kitchen space is defined by an overhead panel of perforated stainless steel that absorbs sound and conceals lighting fixtures. Cabinets set in the kitchen window bays are glazed on both sides; opaque panels at the back screen the lower, less desirable view, while the lake is visible above the cabinet tops.

Contact us

Rael D. Slutsky, AIA
Bruce Bondy

1514 Chapel Court
Northbrook IL, 60062

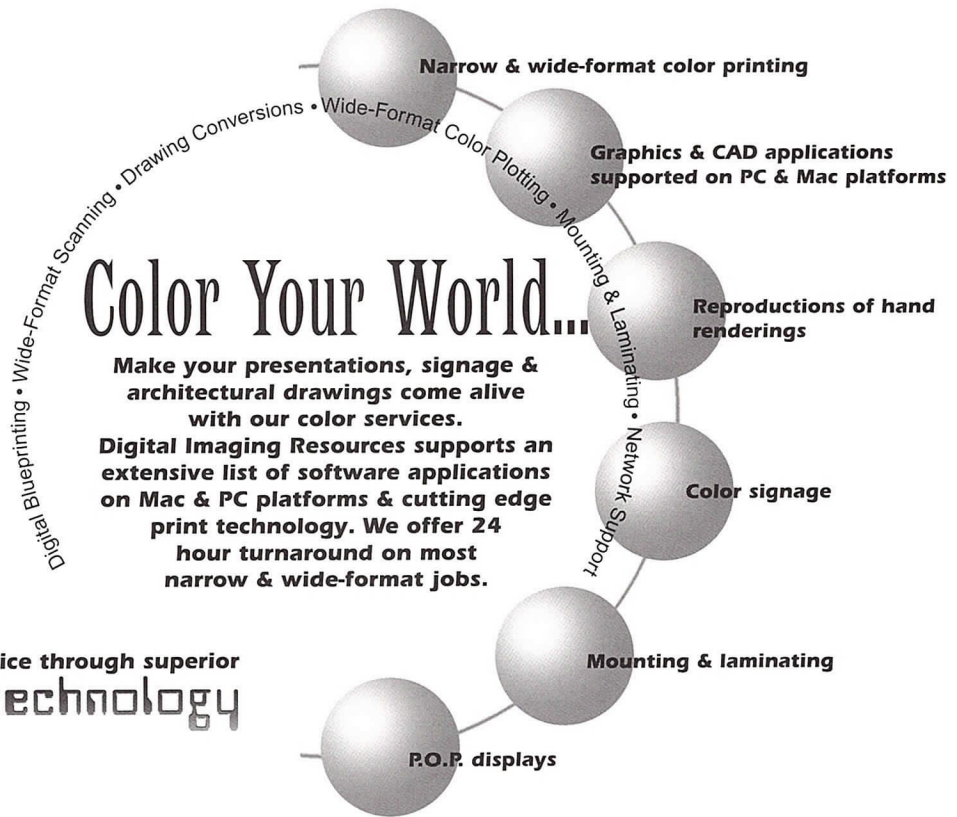
847-562-9493

Digital modeling and rendering
Interactive virtual reality
Computer animation
Pen and ink renderings
Charrette sketches

top: Willow Springs Village Center, Architect: Yas/Fischel Partnership middle: New Orlando International Airport Terminal, Architect: HOK bottom: VESTEC Tower, Miami, Architect: ACI, Inc.



Do you dream in **Color?**



Better service through superior
technology



650 West Lake Street #120 • Chicago, IL 60661 • www.dirinc.com

Phone 312.243.1250 • Fax 312.243.1590



Marco Lorenzetti © Heirich Blessing

Herman Miller National Showroom
Chicago, IL

Honor Award

Architect – Krueck & Sexton Architects
Client – Herman Miller Inc.
General Contractor – Jarlath Igoe/Clune Construction
Engineer – ECI
Consultants – Parenti & Raffaelli Ltd. (millwork);
Trainer Glass (glass)

"This showroom creates its own environment, one that is fresh but is also a good backdrop for the furniture," said the jury. These words of praise define the ideal for any display space. "The design is sublime, particularly in the new way of using glass," they continued. The 23,000-square-foot flagship showroom in Chicago's Merchandise Mart required commonplace building products to reflect the client's corporate values of economy and honest use of materials. The 200-foot perimeter exhibit wall is composed of dynamically faceted glass panels mortised into a recycled clear glass and white epoxy floor, which flows onto low benches that engage the free-floating reception desk and island kitchen. Overlapping pinned glass panels that curve through the space are used as enclosing walls on four conference rooms. These etched glass panels absorb the multi-colored light, which is programmed to change throughout the day, so that they can be either clear or obscure at the flip of a switch.



Christopher Barrett © Heirich Blessing

American Hospital Association
Chicago, IL

Citation of Merit

Architect – Perkins & Will
Client – American Hospital Association
General Contractor – Fredrickson KRJ
Consultants – McGuire Engineers (mechanical);
Teng & Associates (electrical); Office Concepts and
Henrickson & Co. (furniture)

Relocating three for-profit subsidiaries into the main headquarters of a non-profit organization required a balancing act between team and individual needs. The layout combines open-plan work areas with separate offices, which have glass fronts to provide access to natural light and views. Costs were kept down by reusing 60 percent of the original tenant buildout. The jury found the design pleasingly subtle, with nice proportions and delicate details.

ARCHITEMPS, INC.®

ARCHITEMPS, INC.® -- the Architectural & Interior Design staffing specialists, serving greater metropolitan Chicago since 1986.

Quality staffing, service and solutions:

- **Design/Production Drafters**
- **Facility Planners**
- **CAD Architects/Interior Designers**
- **Project Managers**

Our billing includes all employer liability:

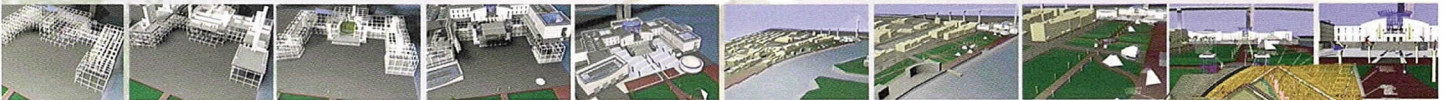
- **Payroll Administration**
- **Employee Benefits**
- **Government Compliance**
- **State & Federal Tax Remittance**
- **Workers' Compensation Coverage**

Architectural, interior design and facility planning personnel on a per-project basis. Customized employee leasing, permanent conversion and direct placement available. Call today for information on our staffing services or employment opportunities.

ARCHITEMPS, INC.®
1050 North State Street
Chicago, Illinois 60610.1043

Tel: 312.649.0912
Fax: 312.649.1667
ARCHITEMPS@aol.com
<http://www.architemps.com>

faster. better. cheaper.



We provide High Quality:

- Architectural Rendering
- Computer Animation
- Virtual Reality Scenes
- ArchiCAD Sales & Training

(312) 751-3903
renderscope.com

RENDERSCOPE®



architectural visualization services



© Russell Phillips Photography

Living Word Christian Center
Forest Park, IL

Honor Award

Architect – Teng & Associates Inc.
Client – Living Word Christian Center
General Contractor – Teng Construction L.L.C.
Engineer – Teng & Associates Inc.

"This project represents a new way of looking at adaptive reuse as well as a new sense of what worship is," commented an admiring jury. The vast spaces of a former torpedo factory-turned-mall were reclaimed for use as a 2500-seat worship hall. The one interesting feature of the original structure — the stepped roofline created by the factory skylights — is recalled by undulating ceiling planes that create rhythm, define seating areas, and break down the scale of the huge sanctuary. The ceiling planes also perform the practical function of screening the mechanical equipment and the sophisticated lighting and sound systems required for broadcast television production. Other technical achievements include the creation of a single-floor level from the varying slopes left over from three separate movie theaters, and the removal of four central columns to create a 168-foot free span that provides unobstructed views for worshippers.



Steve Hall © Hedrich Blessing

Rehabilitation Institute of Chicago
Chicago, IL

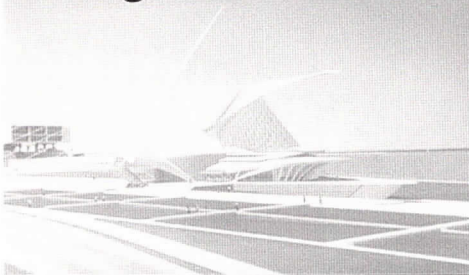
Special Recognition

Design Architect – Eva Maddox Associates Inc.
Architect-of-Record – Loeb Schlossman & Hackl
Client – The Rehabilitation Institute of Chicago
General Contractor – Pepper Construction Co.
Engineer – Gamze Korobkin Calogier Inc.

This prototype renovation of a 20,000-square-foot inpatient floor creates a new environment for the differently abled. Achievements included surpassing ADA guidelines, meeting the budget, and developing a new universal design standard. The design team developed a "therapy walk," reclaiming the wide corridor space for activities, and created a unique multi-purpose/dining room on each floor. A central patterning motif recalling "body in motion" imagery was used throughout the building interiors to instill energy in the environment, inspiring and encouraging patients to reach beyond their limitations.

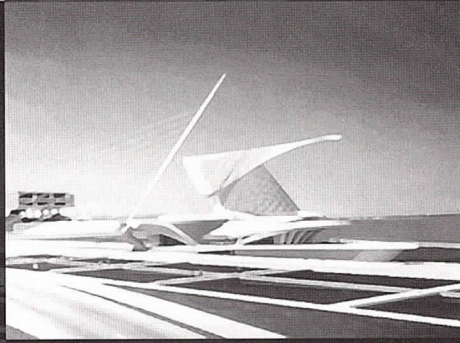
design solutions

design excellence



Structural, site/civil, environmental, and landscape design for the Milwaukee Art Museum addition.

structural engineering
site design & planning
transportation & traffic studies
stormwater management
sustainable design
environmental studies/planning
construction services
parking planning & design



engineers & scientists



GRAEF
ANHALT
SCHLOEMER
and Associates Inc.

8501 West Higgins Road, Suite 280
Chicago, Illinois 60631 773/399-0112

Chicago Milwaukee Madison Green Bay



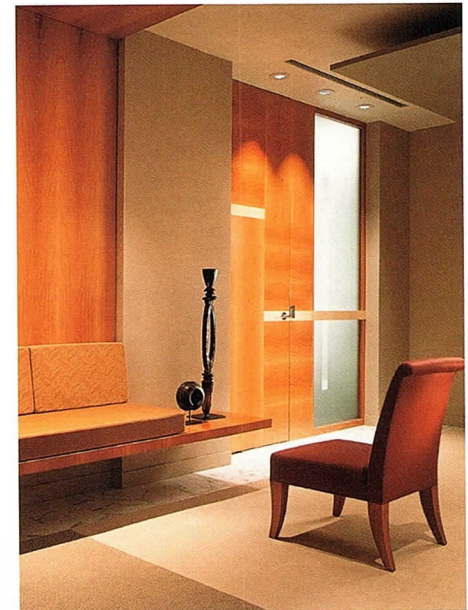
Barbara Karant, Karant + Associates

Alliance Française de Chicago
Chicago, IL

Citation of Merit

Architect – DeStefano and Partners
Client – Alliance Française de Chicago
General Contractor – Executive Construction Inc.
Consultants – Tylk Gustafson Reckers Wilson Andrews
LLC (structural); WMA Consulting Engineers Inc.
(mechanical, electrical, plumbing)

Paying homage to Pierre Chareau's Maison de Verre, contemporary French architecture, and two vintage Chicago buildings seems a lot to ask of a small linking structure, but this project meets those ambitious goals with grace and style. The Alliance purchased an old bank building that abuts the rear garden and alley of their existing 1870s townhouse and requested an overhaul of the entire 17,000-square-foot space as well as a new connection between the buildings. The link is sited in the shared courtyard and is a steel structure with a clear, fritted glass envelope.



Nirx Merrick © Henrich Blaesstin

Investment Management Firm
Chicago, IL

Citation of Merit

Architect – VOA Associates Inc.
General Contractor – Interior Construction Group Inc.
Engineer – Environmental Systems Design

"This is how you make 4,000 square feet feel like 20,000," enthused a juror. In addition to its small size, the project presented a difficult long and narrow configuration. The designers visually expanded the space with intersecting and overlapping planes finished in soft hues of yellow and green. The simplicity of the design approach is embodied in materials and joinery that reflect an Eastern influence.

*Insurance and Loss Prevention
Services for Architects*



A Hobbs Group Company

- ◆ Professional Liability
- ◆ Specific Project Coverage
- ◆ Office Packages
- ◆ Workers Compensation
- ◆ Automobile
- ◆ Exclusive Programs
- ◆ Group & Individual Life & Health

One Tower Lane ♦ Oakbrook Terrace, IL 60181
Tel: 630.571.4500 ♦ Fax: 630.571-4518 or 4525
E-Mail: info@avains.com . www.avains.com



Barbara Karant, Karant + Associates

Ourhouse.com
Evanston, IL

Honor Award

Architect – Valerio Dewalt Train Associates Inc.
Client – Ourhouse.com
General Contractor – Valenti Builders Inc.
Engineer – McGuire Engineers

The re-invention of Ace Hardware as an e-commerce provider of home improvement supplies called for a similarly innovative approach in the design of their national headquarters. The large T-shaped floor plate of open offices is given definition by using different materials, all of which are available on the Web site. The particular material that covers the walls, ceilings and sometimes floors of each defined area signals its program (e.g. translucent polycarbonate encloses offices, aluminum defines conference areas). In an especially creative touch, overhead bifold garage doors allow the conference area to open up to the reception space, thereby creating a room large enough for all-staff “town hall” meetings. The jury admired the successful use of off-the-shelf materials to create a strong new corporate identity.



© Barbara Karant, Karant + Associates

USG Solutions Center
Chicago, IL

Citation of Merit

Architect – Valerio Dewalt Train Associates Inc.
Client – USG Interiors
General Contractor – Turner SPD
Consultants – Tyk Gustafson Reckers Wilson
Andrews LLC (structural); Charter Sills (lighting)

The unusual challenge facing the designers of this showroom was to make something special out of ordinary, low-cost products. The paradox was resolved by using the company's products in great abundance throughout, reveling in their inexpensive nature. Thousands and thousands of acoustic ceiling tiles were stacked on top of each other and then carved out to define the entry sequence. Thousands of drywall accessories create a wall that separates the exhibition and conference areas. The visual intensity of the space is driven by using the same products over and over again.



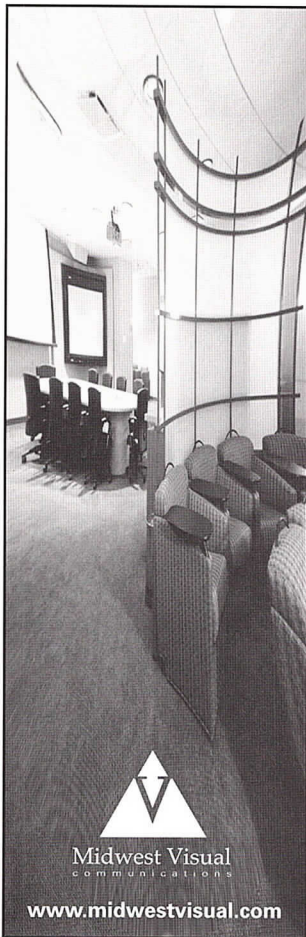
autodesk®

"SUDDENLY DESIGN IS A WHOLLY CONNECTED PROCESS."

How do you capture the sparks that lead to design breakthroughs? The ideas that rocket your company beyond the ordinary? It takes a more stimulating environment and the right design technologies.

Autodesk harnesses the power of the designer, the power of the Internet and the power of innovation to help you gain the competitive advantage of superior design. It's a faster, more fluid way to work that we call **iDesign.**

Contact **Consulting For Architects, Inc.** for a free demonstration and price quote at 312 345-1700 or visit us on-line at www.cons4arch.com.



SmarterRooms.
Smarter Technology.



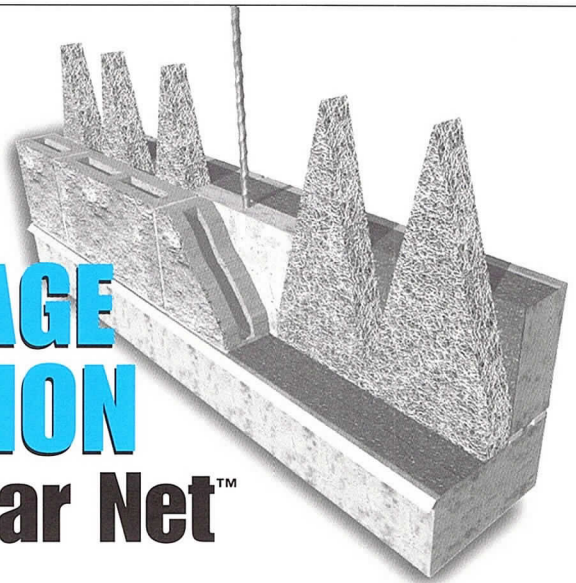
Midwest Visual
communications

www.midwestvisual.com

6500 N. Hamlin
Lincolnwood
Illinois 60712

800.876.8298

Another
**DRAINAGE
SOLUTION**
by Mortar Net™

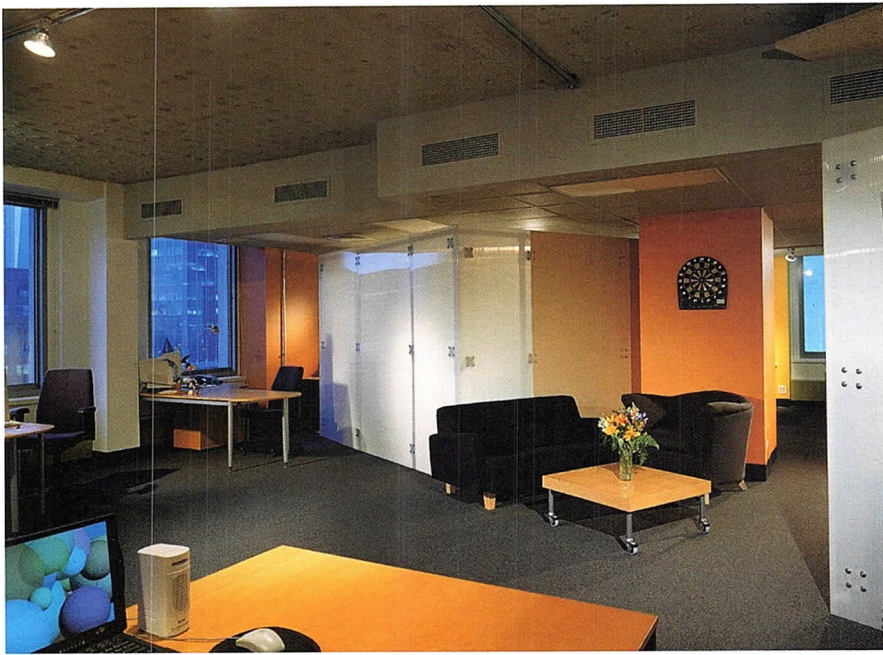


Mortar Net Block's **patented** shaped mortar dropping collection device prevents water damage in single wythe concrete masonry unit (CMU) walls by breaking up mortar thereby allowing proper drainage to the weep holes. For more information, please contact Mortar Net at 800-664-6638 or visit our Web site at www.mortarnet.com.

800-664-6638
www.mortarnet.com



Mortar Net™
The Difference Is In The Cut.



© Anthony May

L'90
Chicago, IL

Citation of Merit

Architect – Bailey Edward Design
Company Representative – Larry Bak
General Contractor – International Contractors Inc.

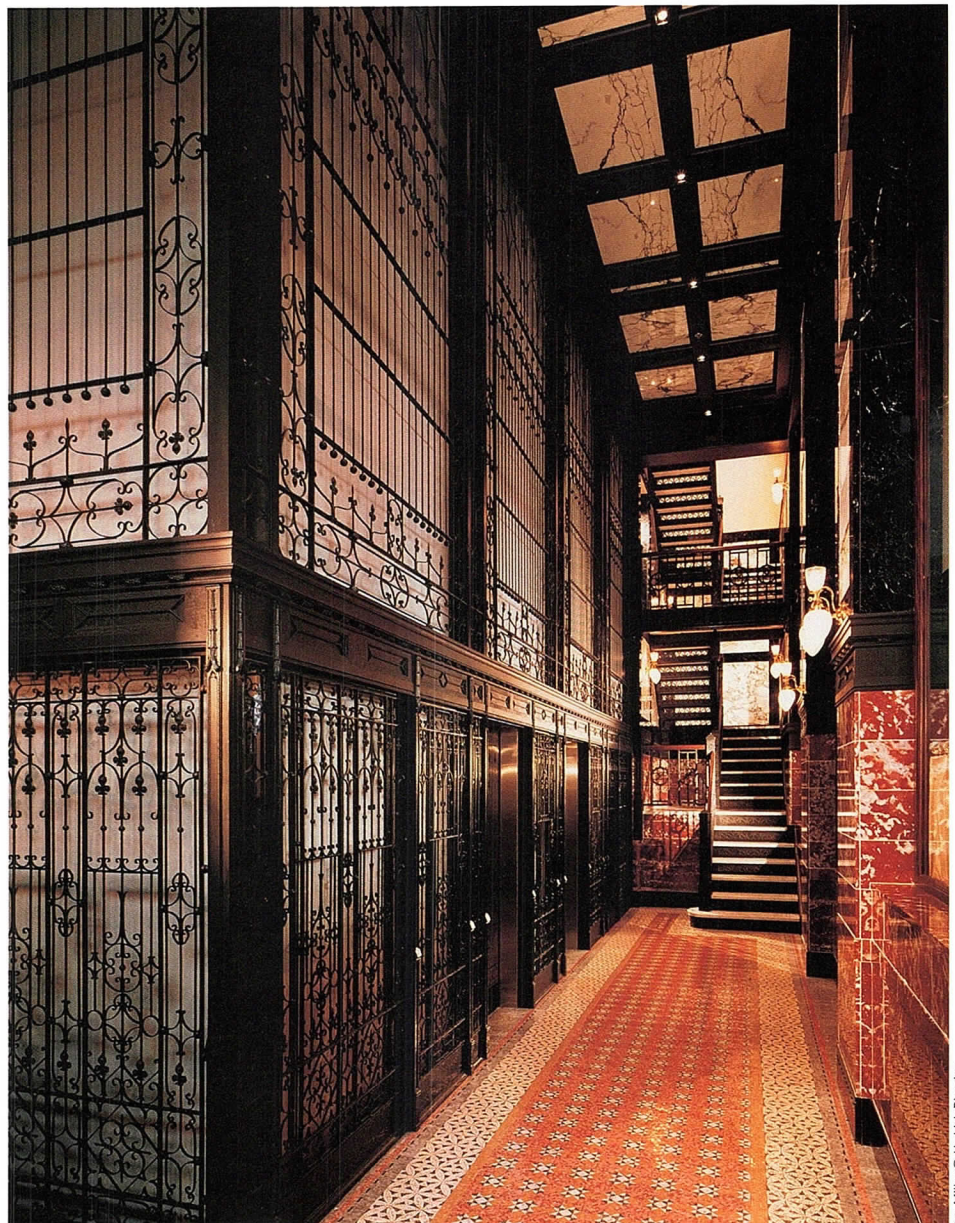
A global Internet advertising company requested a high-tech, cutting-edge prototype office. The design concept opened up the entire space, removing all walls and corner offices to reward everyone with prime downtown views. The company's three divisions are defined by a curving spine of management offices: "pods" made of stock components (scaffolding and sound-absorbing, translucent panels) that are easily broken down and moved to accommodate more employees. The kitchen and lounge occupy a central area to encourage breaks during the long workdays. The jury admired the office's fun colors, interesting plan, and creative use of inexpensive materials.

Restoration of the Reliance Building/Hotel Burnham
Chicago, IL

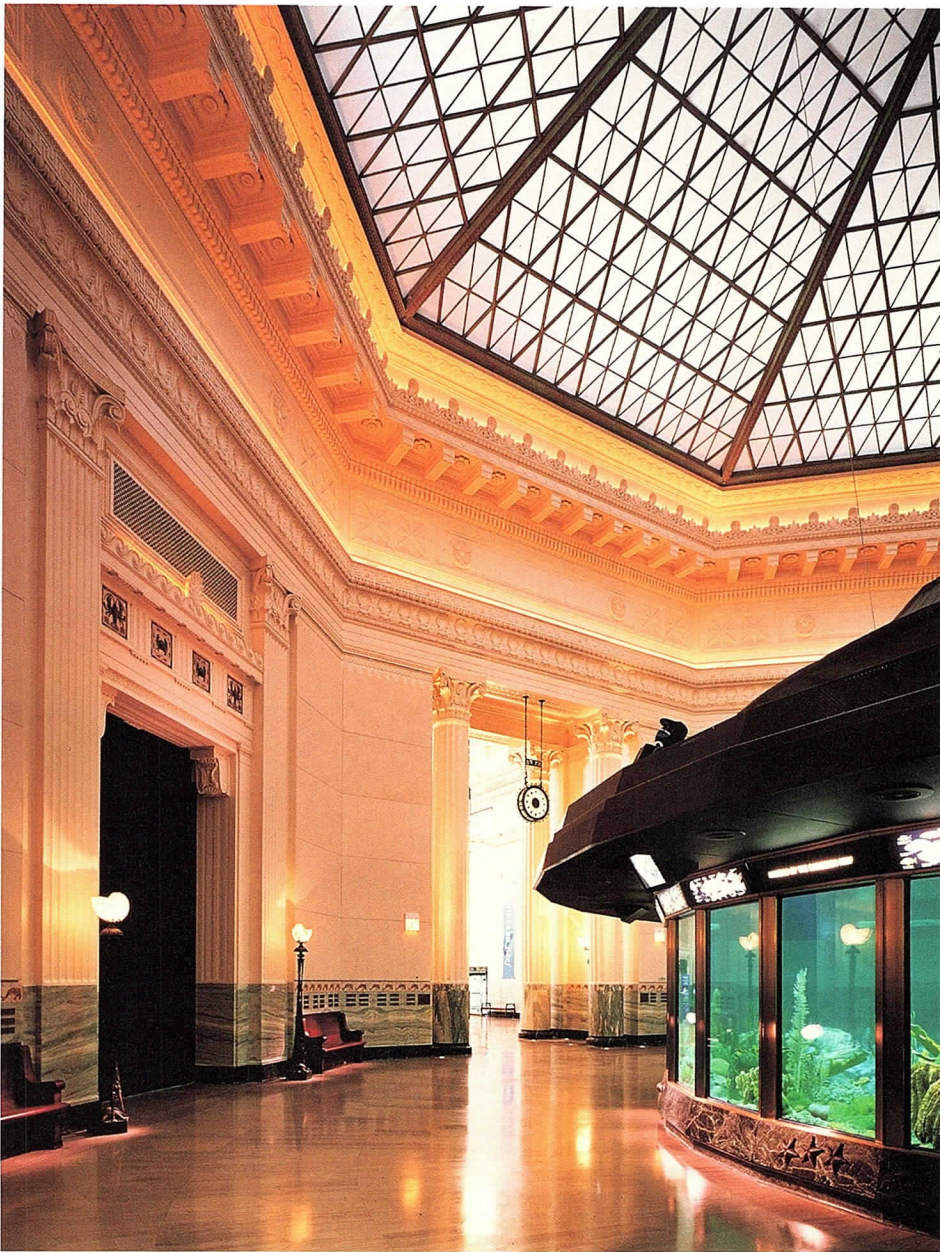
Honor Award

Restoration Architect – McClier
Architect – Antunovich Associates
Owner – Canal Street Partners LLC
General Contractor – Plant/UBM Joint Venture
Consultants – Nayyar & Nayyar International
(structural); Environmental Systems Design
(mechanical, electrical, plumbing);
Intra-Spec (hotel interior design)

With its newly cleaned and restored exterior, the historic Reliance Building was on the verge of being all dressed up with no place to go. Happily, it has found its niche as a boutique hotel. The floor plan of individual small offices, which made it untenable as rental space, became an advantage in the conversion to hotel rooms. The elaborate elevator lobby was restored to its former glory with reconstruction of the ornamental metal staircase and elevator grille enclosures and installation of new multi-colored marble on the floor, walls and ceiling. The jury was impressed with the level of painstaking detail in the restoration of public spaces, and was particularly delighted by the preservation of the original corridors with their opaque glass windows and transoms.



Jon Miller © Hehrich Blessing



Shedd Aquarium
Chicago, IL

Honor Award

Architect – EHDD Architecture in association with Perkins & Will
 Client – John G. Shedd Aquarium
 General Contractor – Turner Construction
 Consultants – Lyons/Zaremba Inc. (exhibit design); Klein & Hoffman Inc. (structural); Environmental Systems Design (mechanical, plumbing); Spectrum Engineering Inc. (electrical); Shiner + Associates Inc. (acoustical)

The central rotunda was once the brightest space in the Shedd Aquarium, illuminated by a translucent laylight 65 feet above the floor. A 1970 renovation made it the darkest space of the aquarium in order to accommodate a coral reef tank, which required a dim, controlled environment. The laylight was destroyed and the walls painted black and dark green. The rotunda has now been restored to its original grandeur as a bright, welcoming space. The walls were painted in the original 1930 colors, and aquatic appointments such as nautilus torcheres have been restored. The new ceiling panels are translucent and have dimmable fluorescent fixtures below a blackout curtain that shields the reef exhibit from daylight. The exterior skylight is now lit to cast an aquamarine glow in the night skyline. The jury was impressed by the integration of historic detail and new technology.

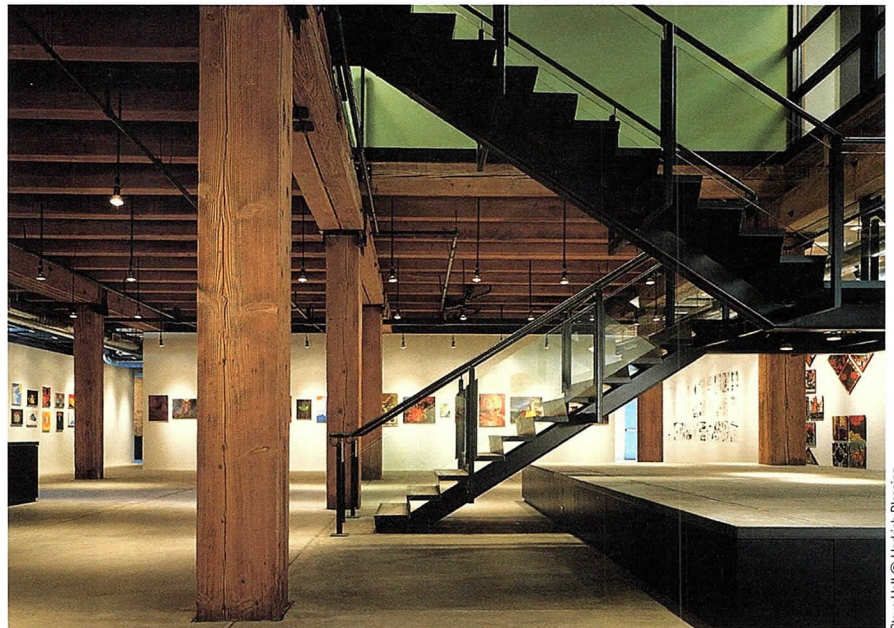
© Peter Aaron/Esto

Marwen
Chicago, IL

Citation of Merit

Architect – Wheeler Kearns Architects Inc.
 Client – Marwen Foundation
 General Contractor – Goldberg General Contracting Inc.
 Consultants – Conceptual Engineering Consultants (mechanical); Thornton-Tomasetti Engineers (structural); Cynthia Winter Architect (interiors)

Marwen is a non-profit foundation that provides free art instruction and counseling to under-served high school students. Renovating two floors of a heavy-timber manufacturing building on a restricted budget of \$30 per square foot, the team created a kind of design alchemy intended to inspire a future generation of artists, designers, and architects. The raw space became a nurturing environment for the teenagers it serves. The jury appreciated the judicious subtraction of elements that restored the building's essential character, and they admired the insertion of a very elegant stair at the heart of the space.



Steve Hall © Heitrich Blessing



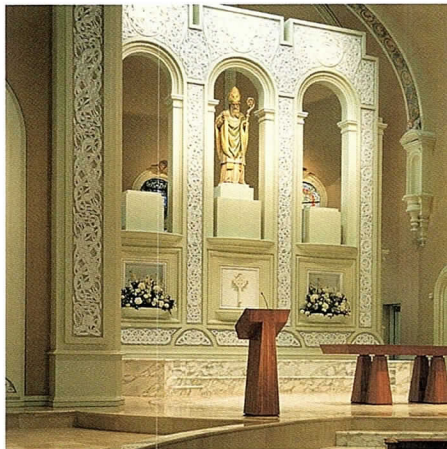
Roger Turk, North Light Photography

Washroom Renovation at the Field Museum of Natural History
Chicago, IL

Special Recognition

Architect – Vernon Williams Architects P.C.
Client – The Field Museum of Natural History
General Contractor – Hill's Property Development and Management Ltd.
Engineer – McGuire Engineers Inc.; Dynacept Engineering Inc.

These renovated washrooms make a virtue of necessity. Each space centers on a hand-painted celestial dome, with custom display cases and background music providing further enhancements. With 10,000 daily visitors, the facilities had to be durable and easy to maintain. The lighting is recessed, with feature lighting in special areas. Dryers are concealed in hoods to eliminate wall projections.



Nick Merrick © Heinrich Blessing

Old St. Patrick's Church
Chicago, IL

Special Recognition

Architect – Booth Hansen Associates
Client – Old St. Patrick's Church
General Contractor – Turner Construction
Consultants – Metro Design (mechanical, electrical, plumbing); Beer, Gorski & Graff (structural); Schuler & Shook (lighting); Kirkegaard & Associates (acoustical)

The jury was impressed with the decade-long collaboration between the church, community, congregation, artists, craftsmen and architect. Taking cues from the Celtic heritage of the church and congregation, the architect used modern technology to recreate and expand the historic splendor. The process of casting permitted fabrication of complex architectural detail such as on the altar screen and surrounding decorative ornament. Computerized craftsmanship was used to create elaborate designs for the chandeliers, pews and stone floor.



The Colors of Corian®

81 Colors.
12 new in 2000.

An expanded palette developed in collaboration with trend and color experts.



Distributed by Parksit Inc.
www.parksite.com/architect
Tel: 800.338.3355



Visit our web site or call to receive your "The Colors of Corian® 2000" samples.

PETER MANEYSKI CONSTRUCTION, INC.

GENERAL CONSTRUCTION CONTRACTOR SPECIALIZING IN HIGH-RISE EXTERIOR MAINTENANCE AND REPAIR.



Peter Maneski Construction Co. is a recommended Sika™ Contractor.

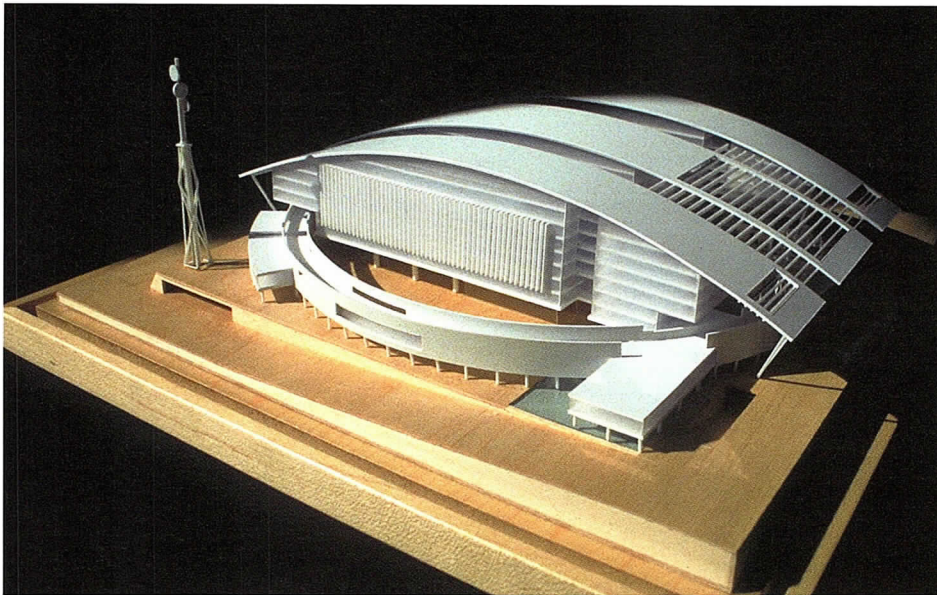
- Facade Inspection Equipment
- Leak Location Service
- Concrete Repair
- Tuckpointing
- Masonry Repair
- Lintel and Shelf Angle Replacement
- Balcony Restoration
- Waterproofing Systems
- Caulking
- Chemical Cleaning



1111 W. Webster St. Chicago, IL. 60614
773.348.6820 / ext. 237

Unbuilt Design Awards

The Unbuilt Design Award was established in 1991 as the result of the 1990 exhibition, “Roads Not Taken.” None of the projects will be built, yet the award is intended to recognize projects for the significance of their concept and the quality of design. Submitted projects must have been commissioned by a client; however, they may include competition entries or urban design schemes. A jury of three prominent local architects considered design work completed between January 1, 1997 and May 1, 2000.



Andrew Metter, FNA

Comverse Network Systems
Rananna, Tel Aviv, Israel

Citation of Merit

Architect – A. Epstein & Sons International Inc./ISI
Client – Comverse Network Systems
Consulting Engineers – A Epstein & Sons International Inc.

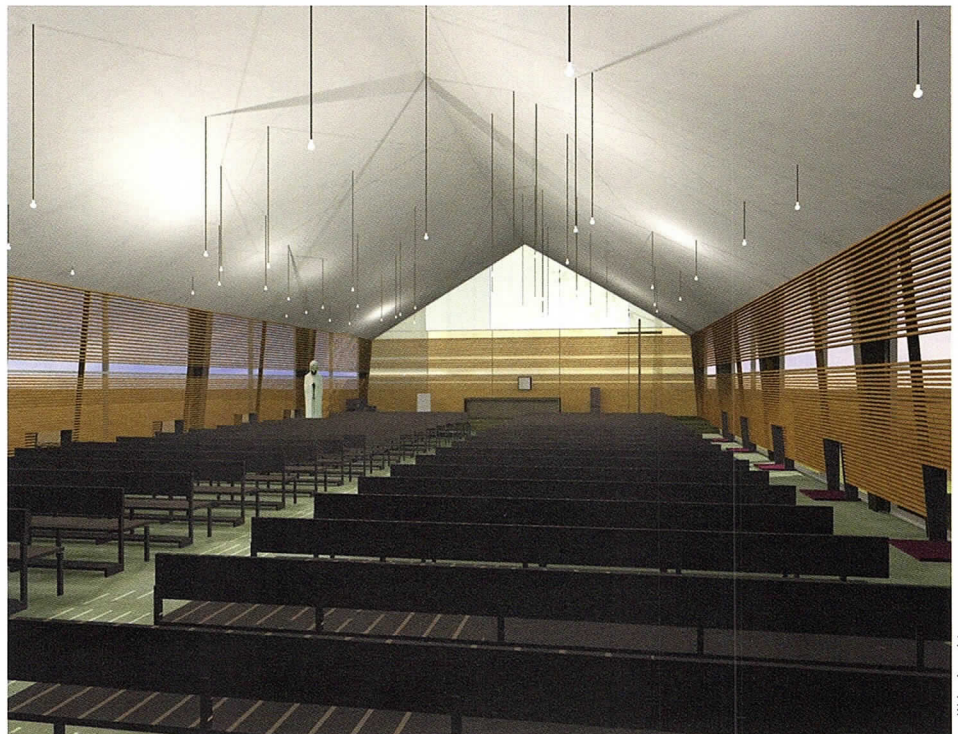
Although huge by any standards — one million square feet of above-grade office space and two million square feet of parking, warehouse and manufacturing below grade — the jury agreed this building would fit appropriately into the density of Tel Aviv. Zoning laws there allow for ground coverage of less than half of the 10-acre site. The design for the corporate campus reflects Israeli culture with two main concepts: the “walled city” and the “tent” or chupah. Both are aimed at creating a sense of community and reconciling the constant struggle between the ancient and the modern.

Our Lady of Guadalupe Design Competition
Rural Milford, IN

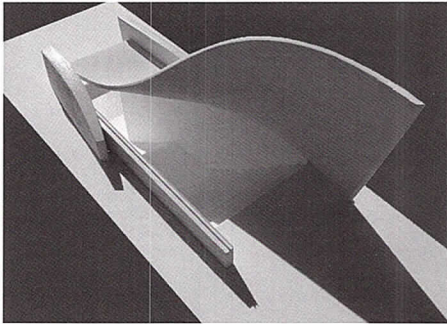
Citation of Merit

Architect – von Weise Associates
Client – Diocese of Fort Wayne – South Bend

This project's essence lives in the physical definition of the rural Indiana landscape, the cultural rituals of a Hispanic congregation, the theoretical precepts of the Catholic faith, and most importantly, the apparition of Our Lady Guadalupe. Mary appeared before the humble Juan Diego not as a Madonna but as an Aztec princess to show her understanding of the culture and its people so that they could better comprehend the message. The project reflects that apparition. The architects started with a common, pre-engineered structural system manufactured locally. And by adding simple metal and glass cladding techniques and some special carpenter-assembled elements in the sanctuary, created a meaningful space with some sophistication.



von Weise Associates



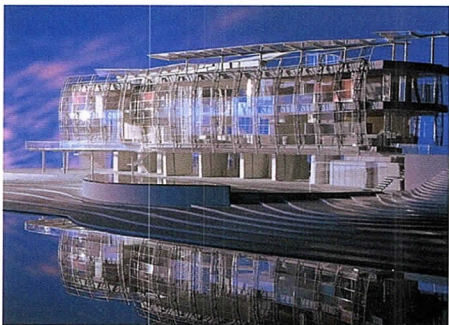
Thomas Haupt, AIA

Subway Entrance Kiosk Prototype
Chicago, IL

Citation of Merit

Architect – Teng & Associates Inc.
Client – City of Chicago, Department of Transportation

Based on the design of an award-winning subway station entrance in 1996, the Chicago Department of Transportation commissioned a prototype for other stations in the Loop. Ironically, the jury celebrated the architect's attempt to challenge the very notion of "prototypes," creating an entrance that could be site specific. The stainless steel sheathed roof twists and curves to become the street-side wall. Granite-clad knee walls break free of the rigid geometry of the sidewalk grid and take on a separate form. Sloped glass spans the widening gap between the "roof" and "walls," drawing light and riders in.



© Mariusz Mizera

The Transparent House
Pensacola, FL

Special Recognition for Glass Technology

Architect – Krueck & Sexton Architects
Consulting Engineer – Tylk Gustafson Reckers Wilson
Andrews LLC (structural)

Situated on a barrier island off Florida's Gulf Coast with views across the sound to the mainland, the owners wanted as transparent a house as possible to take advantage of the spectacular setting. Appropriately, the jury recognized the project for its passionate use of glass. An undulating two-story, north-facing glass wall is connected to curving steel trusses that support the wall and second floor. Six stainless steel connectors at the joints in the glass support the 3-foot by 9-foot insulated glass panels. Because of high humidity in the area, all conditioned air is supplied through an open-floor cell system, minimizing air ducts and eliminating condensation at the glass walls.

Make no small links.

At **aiachicago.org**,
we analyze, summarize, and
organize important online architectural
resources so you don't have to.
With detailed descriptions,
our **links page** helps you quickly
find the information you need,
like licensing and reciprocity facts,
building permit advice, construction
cost data, and much more.

aiachicago.org

- Find the Right Site
- Order Contract Documents Online
- Link to License Renewal
- Review Upcoming Seminars

Photo: The Rookery; Burnham & Root. Courtesy of the Landmarks Division, Chicago Department of Planning and Development.

Botti Studio of Architectural Arts, Inc.
919 Grove Street, Evanston, IL 60201 Established 1864
847/869-5933 • Fax: 847/869-5996 • 800/524-7211
www.bottistudio.com • botti@bottistudio.com

Designers/Fabricators • Stained and Faceted Glass • Beveled Glass • Sandblasted •
Stained Glass Restoration and Conservation • Protective Glazing • Wood and Metal
Frame Restoration • Sculpture • Bronze • Metal • Marble • Mosaic • Interior
Renovation • Woodwork • Murals • Painting and Decorating • Custom Sanctuary
Furnishings • Stained Glass Consultants to Architects and Churches

Studio Locations
San Diego • Chicago • Sarasota • Agropoli, Italy
760/753-0705 • 847/869-5933 • 941/951-0978

What to do? How to do it?

Kristine Fallon Associates, Inc.
http://www.kfa-inc.com

30 East Adams Street, Suite 600
Chicago, IL 60603-5609
312-641-9339 (voice)
312-641-9337 (fax)
kfainc@kfa-inc.com

Hardware
Software
Networks
Internet

Get it done. Keep it going.

Alphabetical by firm.

Distinguished Building Awards

Honor Awards

A. Epstein and Sons International Inc. (Wilmette Public Works Facility)12
 Eiffel & Associates Inc. (The Restoration of the Ward Willits House)11
 Krueck & Sexton Architects (Phillips Plastics)6
 Pappageorge/Haymes Ltd. (Block X)7
 Solomon Cordwell Buenz & Associates (Tetra Pak Inc., U.S. Headquarters)8

Citations of Merit

Crate & Barrel (Crate & Barrel, North and Clybourn Home Store) .8
 EHDD Architecture in association with Clearscapes P.A. (Exploris) .7
 McClier and Antunovich Associates (Restoration of the Reliance Building/Hotel Burnham)8
 Nagle Hartray Danker Kagan McKay Architects Planners Ltd. (Architect's Cottage/Trillium Springs Farmhouse)15
 OWP&P Architects (Northside College Preparatory High School) .6
 Perkins & Will (Peggy Notebaert Nature Museum)11
 (University of Illinois at Chicago Outpatient Care Center)12
 Tigerman McCurry Architects (Saltzman Farmhouse)12

Special Recognition Awards

Eiffel & Associates Inc. (Restoration of the Garfield Park Conservatory)11
 Harry Weese Associates (Market Square Restoration)15
 Rubio/Durham Architects/ISI (Bethany Place)15

Interior Architecture Awards

Honor Awards

EHDD Architecture in association with Perkins & Will (Shedd Aquarium)26
 Krueck & Sexton Architects (Herman Miller National Showroom) .19
 McClier and Antunovich Associates (Restoration of the Reliance Building/Hotel Burnham)25
 Rubio/Durham Architects/ISI (Bethany Place)16
 Teng & Associates Inc. (Living Word Christian Center)21
 Valerio Dewalt Train Associates Inc. (Ourhouse.com)23
 Wheeler Kearns Architects Inc. (Astor Street Residence)17

Citations of Merit

Bailey Edward Design (L'90)25
 DeStefano and Partners (Alliance Française de Chicago)22
 Perkins & Will (American Hospital Association)19
 Valerio Dewalt Train Associates Inc. (USG Solutions Center)23
 VOA Associates Inc. (Investment Management Firm)22
 Wheeler Kearns Architects Inc. (Marwen)26

Special Recognition Awards

Booth Hansen Associates (Old St. Patrick's Church)27
 Eva Maddox Associates Inc. (Rehabilitation Institute of Chicago) .21
 Vernon Williams Architects P.C. (Washroom Renovation at the Field Museum of Natural History)27

Unbuilt Design Awards

Citations of Merit

A. Epstein & Sons International Inc./ISI (Comverse Network Systems)28
 Teng & Associates Inc. (Subway Entrance Kiosk Prototype)29
 von Weise Associates (Our Lady of Guadalupe)28

Special Recognition Award

Krueck & Sexton Architects (The Transparent House)29

ARCHITECT SEARCH

Executive Search Specializing in Architecture

Architect Search has placed over 120 architects of all levels in **BETTER POSITIONS**. Our 96% success rate since 1998 shows that our team ensures it's the **RIGHT POSITION** for you.

What people placed by Architect Search say:

"The people at Architect Search are very professional and are dedicated to help you find the right job to fit your qualifications."
 -Erin K. Stone

"Great!! This is the closest thing to a perfect fit that I have found in 9 years."
 -Dan DeMeyer

"I can't tell you how pleased and excited I am to have finally, after all these years of searching, to have found the right fit, firm, opportunity. . . the opportunity of a lifetime. I owe it all to you."
 - Philip Bologna

Architect Search

Executive Search Specializing in Architecture

312/ 467-0677

FAX 972/ 243-4447

TOLL FREE 877-335-2410

E-MAIL archjob@flash.net

www.architect-placement.com

Sabo & Zahn

Attorneys at Law

Werner Sabo, FAIA

James Zahn, FAIA

Licensing problems, copyrights, business formations, mediation, litigation, arbitration, contracts, real estate construction attorneys

8620 Sears Tower
 Chicago, IL 60606

(312) 655-8620
 fax: (312) 655-8622

www.sabozahn.com

Project:

High School Building

Architect:

Solomon Cordwell Buenz
& Associates, Inc.
Chicago, Illinois
Martin F. Wolf, FAIA
Project Designer
Beth M. Durkin
Interior Designer



Library

imagefiction

Architectural

• Rendering

• Imaging

• Modeling

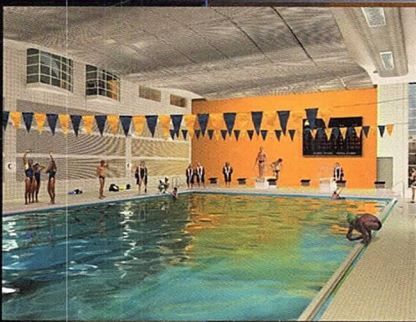
• Animation

• Media Design

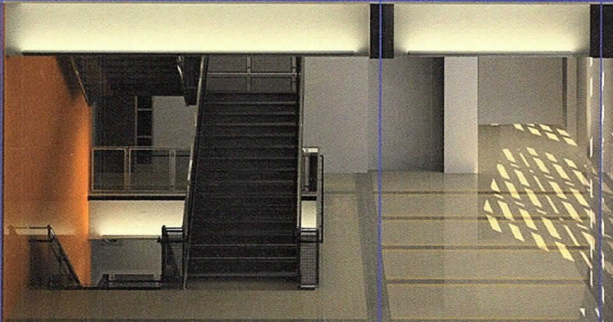
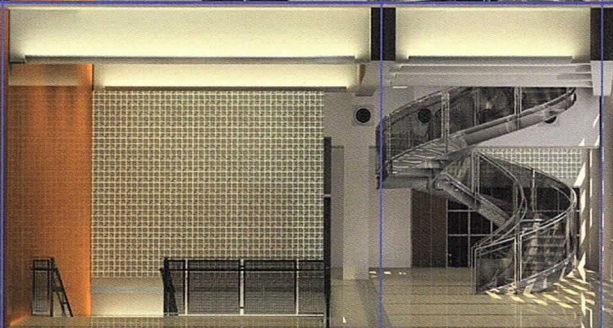
• Large Format
Printing

LaSalle Wacker Building
221 North LaSalle Street
Suite 1510
Chicago, Illinois 60601

312.726.0818



Natorium



www.imagefiction.com



Gymnasium



Exterior Detail

MAJOR LEAGUE MATERIAL

SNAP-CLAD™

Metal Roofing Panels

Petersen Aluminum Corporation's SNAP-CLAD Panels top the new \$4.75 million press box and stadium club, completing an eight year long renovation of the 48-yr-old Rosenblatt Stadium in Omaha, Nebraska. The stadium plays host to the NCAA College World Series and serves as home field for the Omaha Royals. The new press box features a peaked metal roof, which dramatically altered the exterior appearance of the stadium. Boone Brothers Roofing Inc. in coordination with the general contractor, Weitz Company, Inc. installed over 11,000 square feet of SNAP-CLAD Panels manufactured by Petersen Aluminum Corporation. The panels are a custom blue PAC-CLAD finish and were corrective leveled to provide superior panel flatness. Color and panel appearance was critical considering the prominence of the roofing panels in the stadium design.

For more information on SNAP-CLAD Panels, please contact Petersen Aluminum Corp. **Call 1-800-PAC-CLAD or visit our redesigned web site featuring new online ordering @ www.pac-clad.com**

PAC-CLAD
Petersen Aluminum

1005 Tonne Road
Elk Grove Village, IL 60007
1-800-PAC-CLAD
FAX: 1-800-722-7150 or
1-847-956-7968

Other Plant Locations:
Annapolis Junction, MD: 1-800-344-1400
Tyler, TX: 1-800-441-8661
Kennesaw, GA: 1-800-272-4482

NEW Order online!
<http://www.pac-clad.com>

UL 90
RATED

SNAP-CLAD™

10", 12", 16" or 18" O.C. 1-3/4" high
.032 alum., 22 ga. or 24 ga. steel

Features

- Herr-Voss corrective leveled
- UL 90 rated
- Factory-applied sealant
- Continuous interlock
- Labor-saving one-piece design
- 20-year non-prorated finish warranty
- 30 standard colors (24 ga. steel)
- NEW** • 11 standard colors (22 ga. steel)
- 18 standard colors (.032 aluminum)

