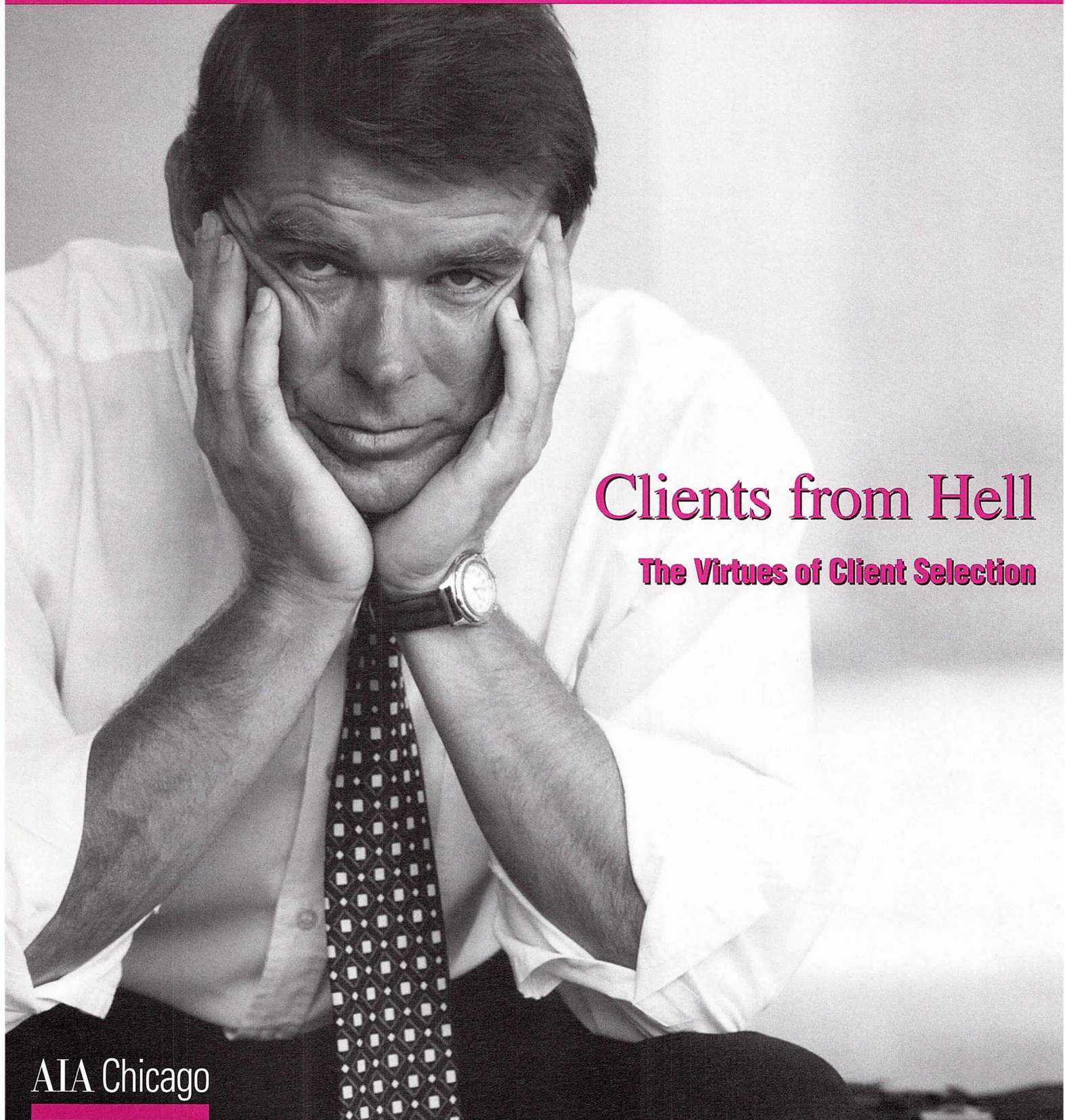


Focus

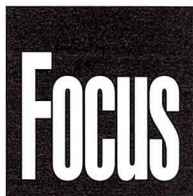


Clients from Hell

The Virtues of Client Selection

AIA Chicago

In This Issue: Where in the World is Chicago? - 5 ■ Updates for National *Profile* Publication Due in October - 7 ■ Board of Directors Responds to Latest Medinah Temple Plan - 9 ■ Guest Essay: Commissioner Mary Richardson-Lowry - 15 ■ Block Museum by Lohan Opens in Evanston - 17 ■



3
Focus on Programs

7
News Briefs

12
Cover Story
Clients from Hell

15
Guest Essay
*Building Commissioner
Mary Richardson-Lowry*

16
Notebook

24
Calendar

Cover: PhotoDisc

October 2000

Editor

Susan Larson

Contributing Editor

Laurie McGovern Petersen

Focus Advisory Board

William Bradford, AIA
Howard Decker, FAIA
Deborah Doyle, AIA
James Jankowski, AIA
Edward Keegan, AIA
Laurie Petersen
Pat Rosenzweig
Alice Sinkevitch, Hon. AIA
Thomas Zurowski, AIA

AIA Chicago



A Chapter of The American
Institute of Architects

FOCUS (ISSN 1071-3700) Vol. 20, No. 9, is published monthly with a combined issue June/July, by AIA Chicago, 222 Merchandise Mart Plaza, Suite 1049, Chicago, Illinois 60654-1001. \$20 of each member's dues are allotted as a subscription. Periodicals postage paid at Chicago, Illinois. POSTMASTER: Send address changes to Focus, AIA Chicago, 222 Merchandise Mart Plaza, Suite 1049, Chicago, Illinois 60654-1001.

For advertising rates and schedules, call 312/670-7770.

© 2000 The American Institute of Architects Chicago. All rights reserved. Reproduction in whole or part without permission is strictly prohibited.

AIA Chicago on the Internet: www.aiachicago.org
AIA Chicago e-mail: info@aiachicago.org

2000 Board of Directors

President

T. Gunny Harboe, AIA

President-Elect

Thomas Zurowski, AIA

Vice Presidents

Joseph Caprile, AIA
Randall Deutsch, AIA

Secretary

Jonathan Fischel, AIA

Treasurer

Dave Urschel, AIA

Directors

Raymond Clark, AIA
Ellen Bailey Dickson, AIA
Kevin Hall, AIA
Philip Craig Johnson, AIA
James E. Prendergast, AIA

AIA Regional Director

Holly Gerberding, AIA
Lawrence Livergood, AIA

AIA Illinois Director

W. Stephen Saunders, AIA

Associate Director

Susan Campbell, Assoc. AIA

Professional Affiliate Director

Eric Singer

Past President

James Jankowski, AIA

2000 AIA Illinois Delegates

William Bradford, AIA
Thomas Braham, AIA
Hill Burgess, AIA
Deborah Doyle, AIA
Arthur Salzman, AIA
W. Stephen Saunders, AIA
Peter Schlossman, AIA (Alternate)
Lee Weintraub, AIA (Alternate)
William Worn, AIA
Robert E. Woodworth Jr., AIA

2000 Professional Interest Areas

Corporate Architects

Laura Fisher, AIA

Design

David Brininstool, AIA

Design/Build

Bruce Ream, AIA

Environment

Michelle Halle Stern, AIA

Health

Robert Carlton, AIA

Historic Resources

Thomas Gentry, Assoc. AIA

Housing

Margaret Cervantes, AIA

Information Technology

Kristine Fallon, FAIA

Interiors

Vito Lotta, AIA

Office Practice

Lisa Willis-Brown

Planning and Urban Affairs

Kyle Benkert, AIA

Technical Issues

Christopher Chweddyk, AIA

Young Architects

Helen Tsatsos, Assoc. AIA

Chapter Staff

Executive Director

Alice Sinkevitch, Hon. AIA

**Membership Coordinator/
Assistant to the Director**

Jamie Juliano

Program Director

Joan Pomaranc

Communications Director

Susan Larson

Financial Manager

Crystal Gagler

Public Information Receptionist

Nichole Brown

Documents Clerk

Barbara Homziuk

■ New Members Breakfast

Wed., October 11, 7:45 a.m.
AIA Chicago

AIA Chicago's board and staff preview upcoming activities and answer questions. RSVP by October 9; 312/670-7770.

■ Millennium Park: Completing Grant Park

Wed., October 11, 12:00 noon
AIA Chicago

Sponsor: Planning and Urban Affairs PIA

Edward Uhler, FAIA, assistant to the Mayor and project director for Millennium Park, presents a slide lecture on the design and construction of the new park. 1 LU/HSW

■ The Web Side of Computer-Aided Facility Management

Wed., October 11, 5:30 p.m.
Gensler, 30 E. Monroe St., #400
Sponsor: Corporate Architects PIA

Tom Houlihan of Gensler explains how CAFM systems can interface with the Internet to create accessible tools for property owners and managers. An online review of how McDonald's Corp. accesses facility information is included. 1.5 LU

■ Tour: UIC Outpatient Care Center

Sat., October 14, 10:00 a.m.
Enter at 1800 W. Taylor St. (at Wood St.)
Sponsor: Healthcare PIA

Steve Fort from Turner Construction leads a tour of UIC Hospitals' new comprehensive ambulatory care facility. The unique building, that houses all outpatient services under one roof, was designed by Perkins and Will. Limited to 20. 2 LU/HSW

■ Electronic Collaboration: What are the Options?

Mon., October 16, 12:00 noon
AIA Chicago

Sponsor: Information Technology PIA

Join the I.T. PIA for the first in a series of conversations about new electronic collaboration methods. Frank Heitzman, AIA, of Heitzman Architects; attorney Elias Gordan; Kathleen Glynn, Assoc. AIA of Consulting for Architects; Ray Karenis of McClier, Amy Kerkman, AIA of Matthei & Colin Associates; and Gaute Grindheim, Assoc. AIA of HOK discuss what works and what doesn't. Bring a lunch; beverages provided. 1 LU

■ Green Building Council Comes to Chicago

Tues., October 17, 5:30 p.m.
AIA Chicago
Sponsor: Environment PIA

Christine Ervin, president and CEO of the US Green Building Council, discusses the USGBC, a consensus organization representing all sectors of the building industry. USGBC developed the LEED Green Building Rating System, the most recognized green building rating system in the US. In addition, the Environment PIA elects leadership for 2001. 1.5 LU/HSW

■ Overhead Rolling Closures Part I

Thurs., October 19, 12:00 noon;
Chicago Bar Association
321 S. Plymouth Court
Sponsor: Technical Issues PIA

Dan Wubbels, Midwest regional sales manager for Cornell Iron Works, discusses

 **Sign Me Up!**

- 10/11 Millennium Park
- 10/11 Computer-Aided Facility Management
- 10/14 Tour: UIC Outpatient Care Center
- 10/16 Electronic Collaboration
- 10/17 Green Building Council
- 10/19 Overhead Rolling Closures Part I
- 10/24 Community Design Review
- 10/25 Architect-Led Design/Build
- 11/8 Breaking the Freight Bottleneck
- 11/8 IDPH Review Process
- 11/14 At Home at School
- 11/15 The Law of Design/Build
- 11/16 Overhead Rolling Closures Part II
- 11/16 State of the Practice Panel
- 11/20 I.T. Staffing, Planning and Budgeting
- 11/29 Design/Build on a Very Big Scale

Name _____

Office _____

Address _____

City _____

Phone _____

Fax _____

Method of Payment

- Check
- American Express Visa MasterCard

Credit Card No. _____

Expiration Date _____

Name on Card _____

Signature _____

Fax to:
AIA Chicago
312/670-2422



how rolling door applications can solve the special needs of large facilities. Learn how different materials and finishes meet specific performance requirements. Lunch is available for \$10.50 (purchase a ticket in the CBA Shop) or bring your own. 1 LU/HSW

Not in My Backyard: An Examination of Community Design Review



Tues., October 24, 6:00 p.m.
AIA Chicago
Sponsor: Design PIA

Do communities and neighborhoods have a legitimate fear of new construction? Are architects the problem or the solution? Join a panel discussion representing the varied,

and often times conflicting, views on the legitimacy, need, purpose, criteria and qualifications of design review. Panelists include David Woodhouse, FAIA, attorney Rick Wendy of Altheimer and Gray, and Robert Hunter, AIA. 1.5 LU

Architect-Led Design/Build: A Contractor's View

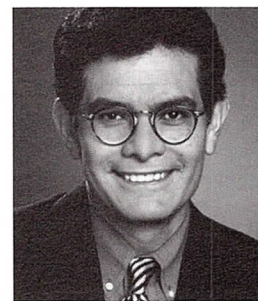


Wed., October 25, 5:30 p.m.; OWP&P Architects, 111 W. Washington St., #2100
Sponsor: Design/Build PIA

Don Robideau and John Blacketor of ECI Construction Co. present their perspective of teaming with architects on design/build projects. They discuss the expectations of this evolving relationship. 1.5 LU

Designight 2000

Fri., October 27, 5:30 p.m.
Grand Ballroom, Navy Pier
Sponsor: AIA Chicago



Join the Chicago architectural community and host Phil Ponce of WTTW's "Chicago Tonight" for an evening celebrating the 45th

annual Design Excellence Awards. The reception begins at 5:30 p.m., followed by dinner, the awards presentation, and a dessert buffet. Tickets are \$75/AIA Chicago members and \$95/non-members. For information, please contact Joan Pomaranc at 312/670-7770.

Planning to Save Chicago: Breaking the Freight Bottleneck



Wed., November 8, 12:00 noon
AIA Chicago

Sponsor: Planning and Urban Affairs PIA

Paul Karas, former commissioner of the Chicago Department of Public Works and now with Grove Management, and Paul Nowicki, vice president of the Burlington Northern Santa Fe Railway, discuss an issue critical to maintaining the region's economic vitality. 1 LU/HSW

IDPH Drawing Submission, Review, and On-Site Review Process



Wed., November 8, 5:30 p.m.
Northwestern Memorial Hospital, 251 E. Huron St., 3rd Floor, Conference Room A
Sponsor: Health Care PIA

Enrique Unanue, AIA, chief of the Illinois Department of Public Health, Division of Health Care Facility & Programs, presents his annual update of health care facility design requirements. 1.5 LU/HSW

At **aiachicago.org**, you won't waste time or energy. Straightforward resources like online documents ordering, annotated links and a calendar of educational programs provide you with the information you need... faster.

aiachicago.org

- Find the Right Site
- Link to License Renewal
- Order Contract Documents Online
- Review Upcoming Seminars

Photo: S.R. Crown Hall; Ludwig Mies van der Rohe

■ Architecture Critics Forum: Where in the World is Chicago?



Saturday, November 11, 1:00 to 4:00 p.m.
The Art Institute of Chicago, Rubloff Auditorium, Columbus Drive Entrance
Sponsors: AIA Chicago and the Architecture and Design Society and the Department of Museum Education, The Art Institute of Chicago

For decades, Chicago has been considered the center of architecture and architectural study. Why then have recent buildings met with bittersweet critique — towering cranes are welcomed sights, but are we settling for second best? Is American architecture now eclipsed by European and Asian innovators? Do clients prefer speed to splendor? Is the Mayor's wrought iron rule beating back cutting-edge design? Have our architects lost their nerve?

Architecture critics Lee Bey, *Chicago Sun-Times*, Robert Campbell, *Boston Globe*, Blair Kamin, *Chicago Tribune*, and Herbert Muschamp, *The New York Times* present their views in a public forum. Following the presentations, Robert Ivy, FAIA, editor of *Architectural Record*, will moderate a discussion among the speakers and local architects Joseph Valerio, FAIA, Carol Ross Barney, FAIA, Jack Hartray, FAIA and Helmut Jahn, FAIA.

The symposium is free and open to the public. It is made possible through the generous support of Petersen Aluminum Corp. and USG Corp. 3 LU/HSW

AIA Issues New Membership Numbers

The AIA is assigning new numbers to all members. Members will be notified of the change this month, with new membership cards mailed in November. The conversion will not affect delivery of services in any way. If you have questions regarding your membership, contact Jamie Juliano, AIA Chicago membership coordinator, at 312/670-7770 or julianoj@aiachicago.org.

■ At Home at School



Tues., November 14, 6:00 p.m.
School of the Art Institute Dormitory, State and Randolph Streets
Sponsors: Young Architects and Housing PIAs



Tour the new state-of-the-art dormitory designed by Booth Hansen Associates, followed by a discussion on current trends in dormitory design with James Curtain, AIA of Solomon Cordwell Buenz and housing

directors from local universities, moderated by David Genc, Assoc. AIA. 1.5 LU/HSW

■ The Law of Design/Build



Wed., November 15, 5:30 p.m.
Schiff Hardin & Waite
Sears Tower, #7200
Sponsor: Corporate Architects PIA

Attorney Mark Friedlander addresses legal issues unique to design/build. How have state law and case law responded to this form of design and construction delivery in the past few years? 1.5 LU

■ Overhead Rolling Closures Part II: Fire-Rated Doors



Thurs., November 16, 11:30 a.m.
Chicago Bar Association
321 S. Plymouth Court
Sponsor: Technical Issues PIA

Pat Kennedy and Roger Hill of Raynor Doors lead an in-depth discussion of fire-rated coiling doors, with details on release devices, drop-testing procedures, fire codes, clearance dimensions, and costs. A 20-page workbook will be provided to participants. Lunch is available for \$10.50 (purchase a ticket in the CBA Shop) or bring your own. Note time change. 2 LU/HSW

■ State of the Practice Panel and Party



Thurs., November 16, 5:30 p.m.; Herman Miller, #321, The Merchandise Mart
Sponsors: Interior Architecture and Design PIAs

How is the design and construction industry responding to the accelerated pace of projects and heightened client expectations? Lamar Johnson, AIA of Gensler will moderate this annual panel discussion (and year-end party). Speakers will be Dwayne MacEwen, AIA, DMAC Architecture P.C.; Eric Singer, Wildman, Harrold, Allen & Dixon; Donald Faloon, Prime Group; Michael Clune, Clune Construction; Randy Bartosh, Development Resources; John Goodman, Studley Inc.; and a representative of host Herman Miller. 1 LU

■ I.T. Staffing, Planning and Budgeting



Mon., November 20, 12:00 noon
AIA Chicago
Sponsor: Information Technology PIA

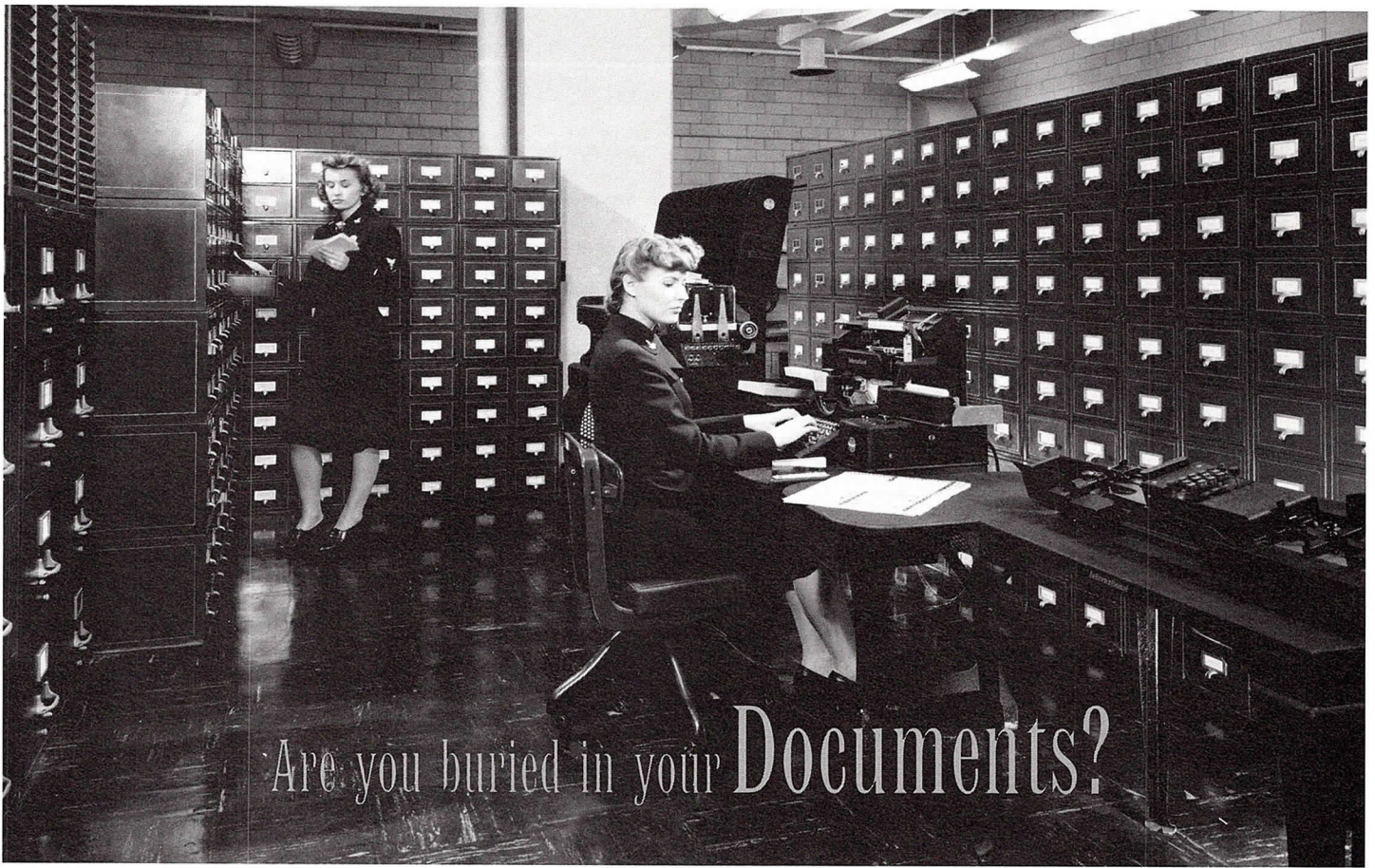
Budgets for 2001 are in the works. Is there something your firm is missing as it sets I.T. staffing initiatives and budgets for the coming year? Bring a lunch; beverages provided. 1 LU

■ Design/Build on a Very Big Scale



Wed., November 29, 5:30 p.m.
McCormick Place (meet on south side of Cermak Road at Prairie Avenue)
Sponsor: Design/Build PIA

Tour the newest McCormick Place expansion, an \$88 million design/build project led by Chicago Design/Build Partners with team members DLK Design & Build, VOA Associates and TVS Architects from Atlanta. Hill Burgess, AIA of DLK Design & Build leads the tour. Bring a hardhat! 1 LU/HSW



Are you buried in your Documents?



Better service through superior
technology



650 West Lake Street #120 • Chicago, IL 60661 • www.dirinc.com

Phone 312.243.1250 • Fax 312.243.1590

McGraw-Hill Reports on Contracts for Future Construction

The F.W. Dodge Division of the McGraw-Hill Companies has reported on July contracts for future construction in the standard metropolitan areas of Chicago, consisting of Cook, DeKalb, DuPage, Grundy, Kane, Kendall, Lake, McHenry and Will counties.

The latest month's construction activity followed this pattern:

Nonresidential

| | |
|----------|---------------|
| 2000 | \$237,514,000 |
| 1999 | \$316,715,000 |
| % Change | -25 |

Residential

| | |
|----------|---------------|
| 2000 | \$337,987,000 |
| 1999 | \$449,980,000 |
| % Change | -25 |

Total building

| | |
|----------|---------------|
| 2000 | \$575,501,000 |
| 1999 | \$766,695,000 |
| % Change | -25 |

Nonresidential buildings include commercial, manufacturing, educational, religious, administrative, recreational, hotel, dormitory and other buildings. Residential buildings include one- and two-family houses and apartments.

Charnley-Persky House Receives Funding for Restoration

The Charnley-Persky House at 1365 N Astor St., has received a grant for critical stabilization and restoration projects from the Illinois FIRST program. A one-time appropriation of \$381,000 will fund extensive restoration work on both the interior and exterior of the landmark house, including rebuilding the crumbling supports under the front vaulted sidewalk, waterproofing the foundation to end frequent flooding, and repairing interior water-damaged plaster. Eiffler & Associates is serving as architect on the project. Charnley-Persky House was designed by Louis Sullivan and Frank Lloyd Wright. Often called "the first modern house in America," it is a National Historic

Landmark now home to the Society of Architectural Historians.

Building Department Revises Permit Application Form

The Department of Buildings has issued a revised permit application form. As of September 18, applications submitted on the old form are not accepted. The revised form is distinguishable from the old by a detachable instruction flap attached to the first page.

The new form specifies which information must be certified by the architect or engineer of record. It also allows for additional information such as zip codes and phone numbers for owners, contractors and trade professionals involved in the project.

NCARB Publishes Two New Monographs

The National Council of Architectural Registration Boards has added two new monographs to its professional development series. *Low Slope Roofing I* is written to help a practitioner become more familiar with roofing terminology and concepts and more skilled in designing built-up roofing systems. It was authored by Justin Henshell, AIA a partner at Henshell & Buccallero. *Professional Conduct*, written by Daniel Taylor of the law firm of Hill & Barlow P.C., provides guidance to architects on standards of conduct that they are legally obliged to follow. It includes a discussion of lessons learned from the worst structural disaster in the U.S., the collapse of the walkways in the Kansas City Hyatt Hotel in 1981.

The successful completion of the quiz that accompanies each monograph qualifies for 10 LUs/10 HSW. To order, call 202/783-6500 or visit www.ncarb.org/publications.

National ProFile Updates for 2001 Edition Due October 31

To ensure accuracy in both the 2001 *ProFile* and the AIA's online Architect Finder database, update firm information online by October 31. Go to www.cmdexpress.com and select "Log

Back to the Drawing Board with "Back to the Schools"

In September, we published a cover story on trends in public school design. The article arose from our coverage of "Schools as Catalysts for Community Development," a symposium sponsored by The Mayors' Institute on City Design last spring. It was our intention to use the work of a few Chapter members to illustrate these trends.

Under the subhead The Chicago Story, we attempted to provide some background on the Chicago Public Schools' (CPS) Capital Improvement Program. In doing so, we failed to justly credit DeStefano and Partners for their leadership of the Educational Design Group Enterprise (EDGE), the team responsible for the new construction component of CPS' \$2.2 billion program. The firm should have been listed as managing architect for the program, the design prototypes, and Sawyer and Sandoval schools specifically. Other key members of EDGE are: Rubinos & Mesia Engineers, Primera Engineers, Mann, Gin, Dubin & Frazier, Maureen Reagan Architects, and Brook Architecture.

Credit also is due to Public Schools Architects and Engineers (PSAE) for the rehabilitation portion of CPS' capital program. PSAE is led by OWP&P, Bauer Latoza Studio, Harry Weese Associates, The Architects Enterprise, and the engineering firms of Environmental Systems Designs and Rubinos & Mesia Engineers.

Focus regrets the omissions.

To learn more about EDGE and PSAE, read "What Have They Done to the Chicago Schools? An Amazing Success Story on the Managing-Architect Concept" by Andrew Mendelsohn, AIA (www.e-architect.com/pia/cae/Chicago_schools.asp), and "Designs for the New Millennium: The Future Connection" by James R. DeStefano, FAIA, RIBA, Mary Ann Van Hook, and Sally Draht (<http://www.asumag.com/magazine/Archives/0100coverstory3.html>)



They All Got Jobs.

Have you looked around lately? It appears as though everyone has a job. For architects and other design professionals, unemployment is at an all time low. Every firm is hiring, so how can you get your name and resume in front of the right hiring manager?

The answer is CFA. Our feelers are always out, especially in this market. Over the past 15 years we've built a job database unequaled anywhere in the USA. Since 1984, CFA has successfully introduced candidates and firms more than 20,000 times.

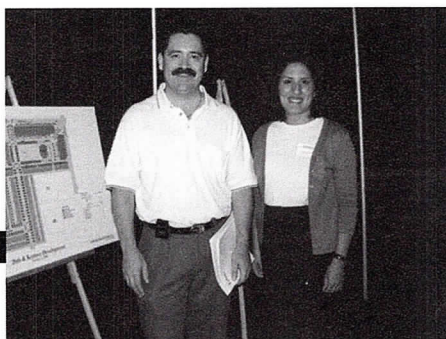
Come to a CFA office for a complete and comprehensive portfolio review and CAD skills evaluation. We will refer you to one of our award-winning

clients to perform per-project consulting services or, if you prefer, CFA will help find you a permanent position at the firm of your choice.

"CFA makes suitable matches through careful listening and thorough skill evaluations. As a result of their professionalism I was placed successfully both as a consultant and then as a permanent employee", Brooks Slocum, AIA, HOK employee.

CFA's job placement counselors have years of experience in the staffing industry and specialize in the field of architecture and design. Let CFA help you chart a path that will satisfy your professional career goals. Act now -- schedule your interview with CFA and get started on your new job today.





Alice Sinkevitch

Jesus Garcia, executive director of Little Village Development Corp., and Patricia Saldana Natke, AIA, Diversity 2000 conference chair.

In." If your firm is new to *ProFile*, select "Register" and complete the form. Call Jamie Juliano or Alice Sinkevitch at AIA Chicago with questions, or e-mail CMD at dorothy.degenaro@cmdg.com.

Board Commends, Cautions Redevelopment of Medinah

On September 1, following a presentation by the Department of Planning, the board of directors of AIA Chicago sent a letter to Mayor Richard Daley supporting, with some reservations, the proposed redevelopment of Medinah Temple and Tree Studios. In the letter, the board lauded the restoration of the structures, but expressed concern over the destruction of much of the acoustically unmatched interior of the Temple.

The Community Development Commission, on September 12, unanimously approved the \$63.5 million plan and sent it to the Planning Commission and the Commission on Chicago Landmarks, which will consider it in October.

Send Dues Payments to AIA Chicago

All AIA and Associate members will receive a consolidated 2001 invoice from the AIA in November. In order to speed processing, AIA Chicago next month will send members a postage paid envelope addressed to the Chapter. Please use this envelope to send your invoice and payment to AIA Chicago.

Chicago Hosts National AIA Diversity 2000 Workshops

On August 5, the AIA, Arquitectos, Chicago Women in Architecture and the Illinois chapter of the National Organization of Minority Architects sponsored two community service workshops. A charrette at the Mexican Fine Arts Center Museum helped Little Village community organizers envision a new 20,000-square-foot community center. A mentoring workshop at Future Commons High School teamed architects with teachers and students to discuss the importance of mentoring minorities.

The day's events included afternoon roundtable discussions on diversity in design and education. AIA Chicago members Ed Torrez, AIA and Patricia Saldana Natke, AIA were instrumental in organizing the programs.



Andersen® windows gets down to business in office design.

- Local, dedicated commercial professionals
- Budget pricing information available
- Specializing in institutional / office / retail / multi-family / churches / schools / banks / hospitals / lodging
- Visit www.andersenwindows.com for complete product information

HARBOUR CONTRACTORS, INC., PLAINFIELD, IL.
ARCHITECTS: MARK ZINNI ARCHITECTS, LIMITED, RIVER FOREST, IL.

Tony Sell
630-293-0510
800-678-8611



Kellan Dillon
630-293-0510
800-678-8611

CALL FOR A COMMERCIAL CATALOG AND A FREE CD-ROM WITH 160+ ANDERSEN COMMERCIAL PROJECTS

*Andersen® is a registered trademark of Andersen Corporation. ©2000. All rights reserved. 0328AR



Protection Since 1952

Euclid Insurance Agencies has been providing insurance services to businesses since 1952. Our dedication to the complex field of insurance for design professionals enables us to give you the professional advice and tailored products you need. We have a unique understanding of the architectural and engineering clients we serve and the special coverages they require.

- Professional Liability, Workers Compensation, Disability, Office Package, Health Insurance, Estate Planning, and more
- Legal advice, seminars and continuing education programs
- Website access to risk management information
- AIA Chicago 401(k) and Profit Sharing Association Plan

EUCLID
INSURANCE AGENCIES®

977 Oaklawn Avenue • Elmhurst, IL 60126
Tel: (630) 833-1000 • Fax: (630) 833-1747

From left to right: MarySue Barrett; Lee Bey; Gordon Chong, FAIA; Hon. John Maitland; and Norbert Young, FAIA



Illinois ArchiPages Questionnaire Due October 30

Questionnaires for the next edition of *ArchiPages: The Illinois Directory of AIA Architectural Firms* are being mailed to all member firms on October 8. To be included, firms must return the survey to AIA Chicago by October 30. For information, call Membership Coordinator Jamie Juliano at 312/670-7770.

AIA Illinois to Hold Annual Meeting and Symposium

On Friday, October 6 and Saturday, October 7, AIA Illinois is holding its annual meeting and symposium at The Lodge at McDonald's in Oak Brook. Two workshops on Friday cover urban growth and e-business issues, and on Saturday, the subject of inclusiveness tops a morning

presentation on the state of the profession in Illinois. Earn up to 6 LUs!

Friday, October 6

1:15 p.m. Sensible Growth in Illinois

A panel discussion including MarySue Barrett of the Metropolitan Planning Council, Illinois State Senator John Maitland, and Gordon Chong, FAIA, president-elect of the AIA. Moderated by Lee Bey, architecture critic for the *Chicago Sun-Times*.

3:30 p.m. Construction.com

A presentation by Norbert Young, FAIA, president of McGraw-Hill's Construction Information Group.

6:00 p.m. Reception

7:00 p.m. Honor Awards Dinner

Saturday, October 7

8:30 a.m. The State of the Profession

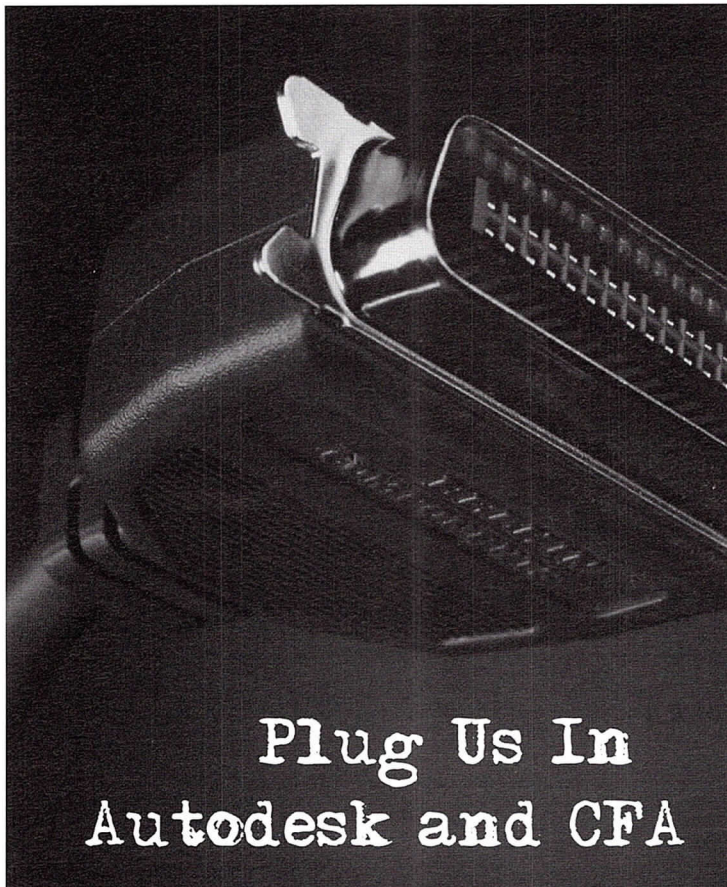
Comments by Kim Robinson, executive director of the Illinois Capital Development Board; Sam McGaw, executive director of the Illinois Building Commission; attorney Jim Nowacki, Kirkland & Ellis; Larry Livergood, AIA, chair of the AIA Illinois Health Facilities Permit Review Task Force; and Janet Hahn Lougee, AIA, president of AIA Illinois.

10:45 a.m. Inclusiveness

A panel discussion moderated by Robert Selby, AIA of the University of Illinois.

12:30 p.m. Lunch Wrap-Up

Registration fees are \$77/person for Friday and Saturday workshops; \$68/person for dinner. To register, contact AIA Illinois at 217/522-5370 (fax) or aiailinois@springnet1.com.



Plug Us In
Autodesk and CFA

THE ARCHITECTS ADVANTAGE

As designers of physical space, we have a profound impact on how others experience the world. New techniques and evolving strategies continually redefine our world. Architects need to conceptualize and communicate their ideas in an accurate and nimble manner-and in less time than ever before.

THE AUTODESK ADVANTAGE

Autodesk is the fourth-largest PC software company in the world. More than four million customers use the company's products for architectural design, civil engineering design and surveying, and through its Discreet division, for design visualization and web content development.

THE CFA ADVANTAGE

CFA is an award-winning Autodesk System Center (ASC) and Autodesk Training Center (ATC). In the last 16 years more than 1000 leading AEC firms have benefited from CFA's turnkey custom CAD staffing and software solutions. Contact a CFA sales manager today and find out why CFA is in the top 3% of all Autodesk dealers nation wide.

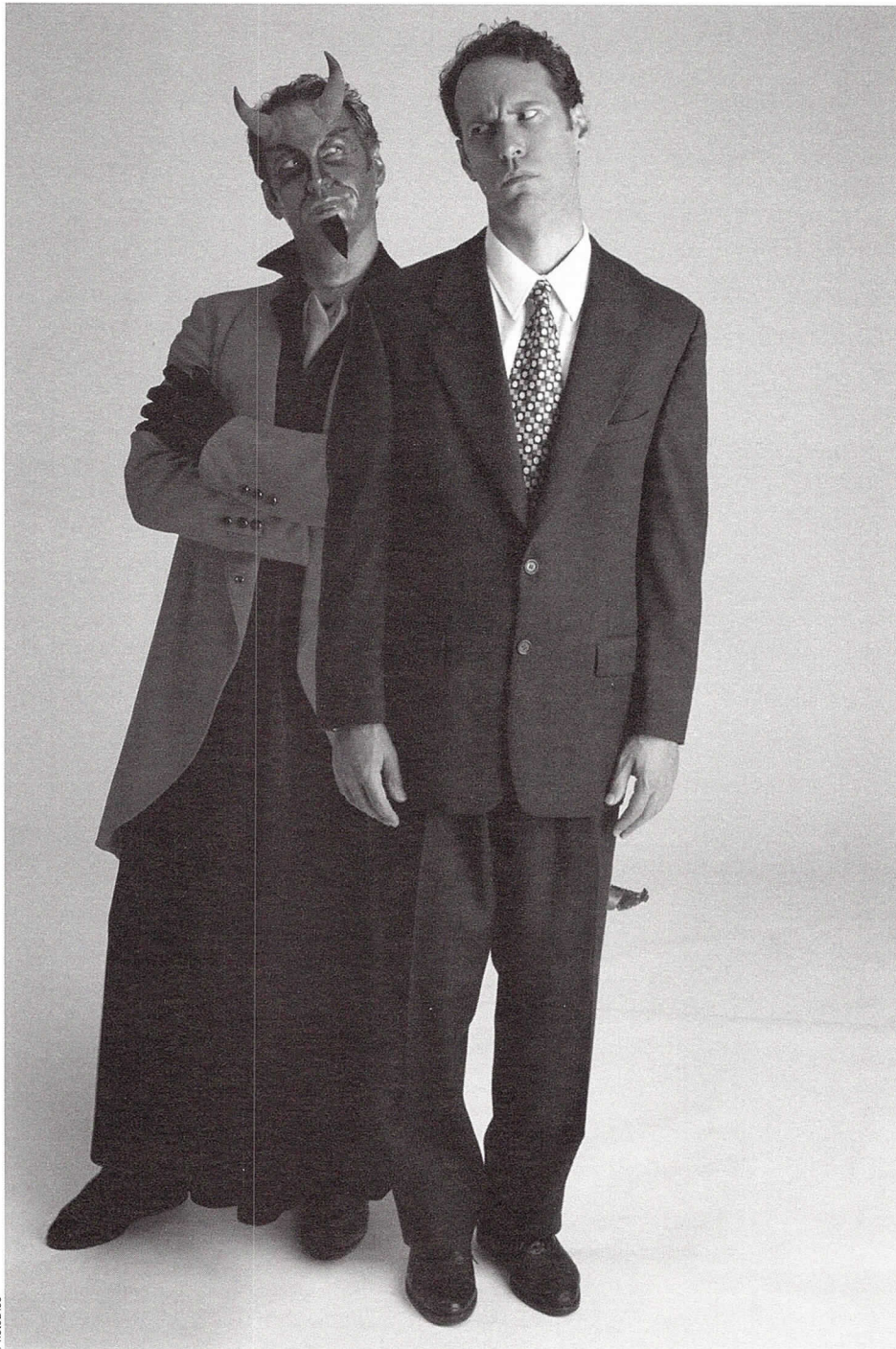


Contact Consulting For Architects Inc. at 312 345-1700 or online at www.cons4arch.com

Clients from Hell

The Virtues of Client Selection

By Eric L. Singer



You know, I had a bad feeling about this guy from the start. This is the frequent lament of design professionals

reporting a new claim. They describe a slow period in their business, or a particularly high profile project blinding them to their new client's tail and pitchfork and the smell of burning sulfur. No contract can protect an A/E from an unscrupulous client, but there are telltale signs of a client from hell in the making. Learning to watch for those signs and having the courage to turn work away can be a powerful loss prevention tool.

Instinct and Gut Feelings

It is unrealistic for your lawyer or insurer to advise you to turn away work whenever you suspect a challenge. There will be projects of sufficient exposure and clients of sufficient stature that you will take the work anyway. You are especially vulnerable during lulls or slow periods in your practice. You should acknowledge that gut feeling, however, so that you may take additional precautions with high maintenance clients. The first meetings and the contract preparation may be enough to distinguish between high-maintenance clients and those of the satanic variety.

High Maintenance Clients

Some design practices depend on high-maintenance clients. Committees, boards and other organizations can create moving targets in the design process or inconsistent decisions (beer budgets with champagne taste). Religious organizations and condominiums are particularly prone to such challenges. For these clients or practices, properly documenting an agreement and scope of services is critical.

It is also advisable to avoid misunderstandings by preparing minutes of meetings and confirming significant decisions by letter. You do not need to offend your client with such letters. The self-congratulatory letter can serve the same purpose. Write the client that you are pleased to enclose the Design Development set and that you are eagerly moving forward with Construction Documents.

Finally, make certain that your fee is appropriate for the level of risk or handholding required. High maintenance clients require more of your time, expose you to more risk and justify an appropriately calculated fee.

Managing Expectations

Unreasonable or unrealistic expectations are a primary source of claims. Use the contract preparation period to educate your clients about what you do for a living. Explain the process and timing of their project's design. If the

client has unrealistic expectations and is unable to rationally discuss the process, you may be better off without the work.

Discuss funding and budgets as well. How is the project being financed? Is the budget realistic? Payment of your fees is a true barometer of your relationship. Is the client willing to make a deposit before you start work? If not, how will you be paid? You should resist the temptation to give the work away, hoping to get the project.

The Telltale Signs

There are some signals so loud and powerful that they reveal the presence of a true client from hell. Satan may indeed be upon you. Here are some of those telltale signs.

The Rebounder

Clients who walk away from other architects will be willing to do the same to you. If you are looking at an incomplete set of plans or sketches, ask where they came from and the circumstances arising before arriving in your office. If the client is evasive or tells you not to worry about it, you should worry about it. Also remember your exposure for copyright infringement if you pick up where the former architect left off.

The Do-It-Yourselfer

Does the client intend to do some of the work itself? A client/general contractor is a problem waiting to happen. The same is true of the client who only

wants a set of plans with which to obtain a permit. "No need for construction-phase services," they tell you.

The Gladly-Pay-You-Tuesday-for-a-Hamburger-Today Client

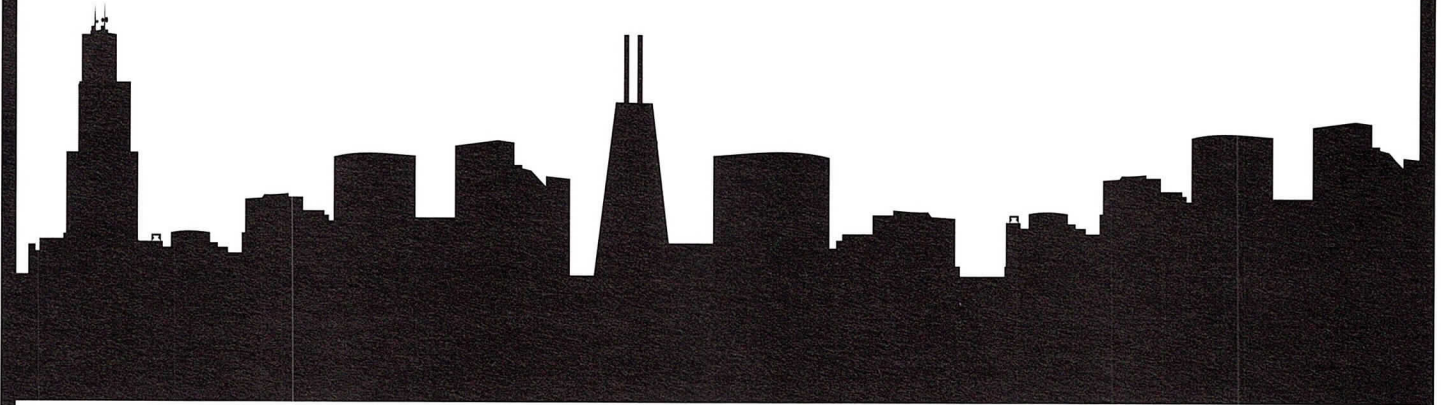
The character Wimpy in the Popeye cartoon was a happy fellow, always asking you to advance him a hamburger. Wimpy would be a lousy client for design professionals. The importance of prompt payment for your work cannot be over-emphasized. Clients who ask you to defer billing, or to wait until funding is in place, do not appropriately value your services. Unless the client wants to make you a partner in the project with all of the attendant profits, you should not be assuming all of the project's risks.

The Handshake Client

Clients who decline to document your scope of services are also likely to generate misunderstandings. If you properly educate your potential client about the design process, the refusal to commit the deal to writing is a bad sign.

Watch for the signs, smell the sulfur and be especially cognizant of high-risk, slow periods in your practice. Your instinct will tell you when to take the work and when to run away from clients from hell.

Eric L. Singer is a member of AIA Chicago's board of directors and an attorney with Wildman, Harrold, Allen & Dixon in Lisle. This article was reprinted with permission from www.aepronet.org.



Mossner

- Now offering PlanWell™
- High Speed Digital Blue Printing
- Large & Small Color Reproductions
- Complete Electronic CAD File Transfer Options
- Digital & Diazo Reproductions (Bond or Vellum)
- Drawing Management & Distribution
- Specifications & Document Printing
- Pick-up & Delivery Service



Mossner

THE REPRODUCTION PEOPLE • LARGEST IN THE MIDWEST
Mossner Building • 137 North Wabash • Chicago, IL 60602
PHONE: (312) 372-8600 • FAX: (312) 372-2809 • www.mossner.com

Special Programs Facilitate Permit Process



By *Mary B. Richardson-Lowry*,
Chicago Building Commissioner

The growing partnership I have forged with the private sector has brought forth suggestions from architects and developers that have led to the introduction of special programs for certain markets. Some professionals are making use of these programs, but I want to make certain that every architect is aware of the tools available to make the permit process more productive and efficient.

Customized Review Program

Under this program, building code issues are uncovered during design development so they can be resolved before the plans are finalized. When the construction documents are submitted for permit review, there should be no surprises.

In this program the Department assigns pre-qualified licensed architects and engineers from our partner firms to perform a series of code reviews, with the same reviewers following the project through all phases to assure consistent interpretations. OWP&P, VOA, Thornton-Tomasetti Engineers, Holabird & Root, Rubinos & Mesia, Performance Technology Consulting, and Rolf Jensen provide plan-review services to our department under contract.

Reviewers have gained both a broadened understanding of the Chicago Building Code and clearer insight into the permit process. The Customized Review Program is funded via flat-rate hourly fees for the services of the outside reviewers and the Department's extra services.

Model Sales Program

This program allows the construction of up to four model dwelling units in a planned larger development to be permitted as a

temporary business use for display purposes only. Another permit to convert the occupancy to residential must be obtained before the unit is sold as a residence.

Preliminary Review

I encourage more architects to take advantage of Preliminary Review, another fee-for-service offering, to resolve building code questions during the design phase so that they can be addressed before construction drawings are completed. This review can shave weeks off the permit review schedule for a complex or large project.

Companion Project Program

This program was developed for prototypical new construction projects that don't qualify for self-certification. A companion project will be routed to the same examiners as the similar, earlier project to ensure consistency of plan review and generally a shorter plan review schedule.

Residential Permits

Permits for certain residential projects in owner-occupied buildings of three units or less can be processed at the Neighborhood Residential Permit Centers, which offer evening, weekday and Saturday hours. These offices, which offer free parking, are located at 2550 W. Addison St. and 2006 E. 95th St.

Our Web site (www.cityofchicago.org/Buildings/) has extensive information on these and other programs, as well as the text of recent building code changes and rules, meeting schedules, plan review checklists, and useful phone numbers. You can request a Certificate of Occupancy inspection on-line, and download many of the Department's forms. We are hoping to open a code question posting board (yes, with questions answered in writing on the site) in the near future.

We're always open to more good ideas!

From left to right: Peter Exley, AIA; Douglas Farr, AIA; and James Zajac, AIA.



Marc Hauser



John Reilly Photography

PEOPLE

Anthony Belluschi, AIA, president of Anthony Belluschi/OWP&P Architects, has been elected chairman of the board of trustees of the Rhode Island School of Design (RISD). A 1966 RISD graduate, Belluschi has served as a trustee since 1986 and had been vice chairman since 1995.

ODI/BLDD Architects has changed its name to **BLDD Architects**. The firm is headquartered in Des Plaines, with offices in Decatur, Champaign, and Bloomington.

Peter Exley, AIA has received the 2000 Distinguished Service to Art Education Award from the Illinois Art Education Association. The award, given to those working outside the art education profession, was given to Exley for his work "in creating an environment that speaks for and about visual communication." Practicing Educative™ design, Exley has designed exhibitions and

interactive playgrounds for the Art Institute of Chicago, the Chicago Children's Museum, the DuPage Children's Museum, and the Louisville Science Center. His portfolio also includes *Kids on the Fly*, a satellite of the Chicago Children's Museum at O'Hare International Airport, and *Playmaze*, an exhibit for early learners also for the Chicago Children's Museum.

Douglas Farr, AIA has been awarded a traveling fellowship by the Institute for Clean Air Policies and the German Marshall Fund to study European land use and transportation in pursuit of his particular interest in "green urbanism."

Gonzalez Hasbrouck has expanded and moved its offices to 180 N. Wabash Ave. in Chicago.

Kerry Leonard, AIA, senior educational planner and associate principal of OWP&P Architects, presented the

firm's award-winning Grainger Center of Imagination and Inquiry to the Texas Association of School Administrator's National School Facilities Workshop in San Antonio in July. The Grainger Center is part of the Illinois Mathematics and Science Academy (IMSA) in Aurora. IMSA received the Shirley Cooper Award from the American Association of School Administrators, the AIA, and the Council of Educational Facilities Planners in 1999.

Al Novickas, AIA has joined Antunovich Associates as a principal.

At VOA Associates, **Michael Toolis, AIA** has been named chairman and CEO and **Percy "Rebel" Roberts III, AIA** has been named president.

On August 27, renowned Chicago architect **Y.C. Wong, FAIA** died at the age of 79. A pupil of Ludwig

ARCHITEMPS, INC.®

ARCHITEMPS, INC.® -- the Architectural & Interior Design staffing specialists, serving greater metropolitan Chicago since 1986.

Quality staffing, service and solutions:

- **Design/Production Drafters**
- **Facility Planners**
- **CAD Architects/Interior Designers**
- **Project Managers**

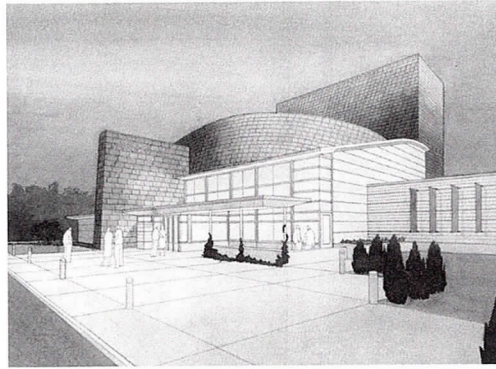
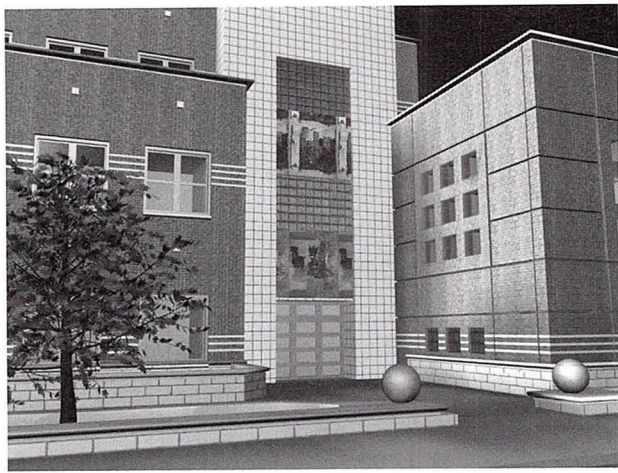
Our billing includes all employer liability:

- **Payroll Administration**
- **Employee Benefits**
- **Government Compliance**
- **State & Federal Tax Remittance**
- **Workers' Compensation Coverage**

Architectural, interior design and facility planning personnel on a per-project basis. Customized employee leasing, permanent conversion and direct placement available. Call today for information on our staffing services or employment opportunities.

ARCHITEMPS, INC.®
1050 North State Street
Chicago, Illinois 60610.1043

Tel: 312.649.0912
Fax: 312.649.1667
ARCHITEMPS@aol.com
http://www.architemps.com



From left to right: Davis Shields Elementary School by Gonzalez Hasbrouck Architects and Newaygo County Performing Arts Center by Holabird & Root.

Mies van der Rohe, Wong is perhaps best known for his 1961 Atrium Houses in Hyde Park. A graduate from the National Central University in Nanjing, China, Wong earned a master's degree in architecture from the Illinois Institute of Technology and worked in Mies' office on Farnsworth House and 900-910 Lake Shore Drive. After brief positions with Skidmore, Owings & Merrill and C.F. Murphy Associates, the architect opened his own firm in 1961. His work includes housing, three Chicago public schools and the Lansing Public Library. He was inducted into the AIA's College of Fellows in 1975, with

a letter of recommendation in which Mies wrote, "Mr. Wong is a man of excellent capacity, fine talent, and high integrity."

James Zajac, AIA has joined the Chicago office of Perkins & Will as principal. Zajac has over 30 years of experience, specializing in the health care industry. Prior to Perkins & Will, he most recently served as a health care market sector leader for CRSS Construction and prior to that was president and chairman of the board of Hansen Lind Meyer.

PROJECTS

Gonzalez Hasbrouck Architects' design of the Davis Shields Elementary School at 4520 S. Kedzie Blvd. in Chicago has been selected for an exhibition at the National School Board Association's (NSBA) annual conference. The 83,000-square-foot, \$11.3 million building is based on a Chicago Public Schools' prototype and community input. It consists of two- and three-story volumes clad in limestone, brick, glass block and ceramic tile mosaic panels. Construction is expected to be completed in July 2001.

Construction has begun on the Newaygo County Performing Arts Center, a \$5.8 million, 28,000-square-foot complex in Fremont, Mich., designed by **Holabird & Root**. The firm recently began the design phase for the renovation and expansion of the High Ridge YMCA in Chicago. The project will be completed in five phases, including the renovation of the existing facility and the construction of an 8,500-square-foot addition.

Legat Architects recently completed the design of a 60-unit assisted living center at Rolling Hills Manor, the Slovak American Charitable Association's skilled nursing facility in Zion, Ill. The new two-story, 48,100-square-foot addition will include studio, one- and two-bedroom residences and amenities such as a wellness center, music room, computer lab and game room. The addition will maintain the residential character of the existing facilities through its design and exterior of brick veneer and vinyl siding. Completion is slated for January 2001. In other news from the firm, construction has started in Township High School District 113 on additions and renovations totaling over \$75 million, including new science wings at Deerfield and Highland Park high schools.

On September 23, the Mary and Leigh Block Museum of Art at Northwestern University re-opened in its new, expanded facility designed by **Lohan Associates**. With the \$8 million expansion, the Museum has grown to 20,000 square feet and includes a second story twice the size of the original building. Its major exhibition gallery on the second level extends above an important

www.teleport.com/~aiatrust

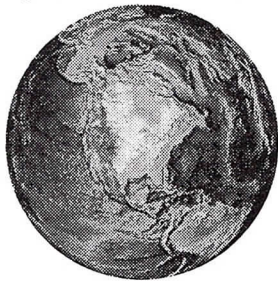
Insurance and Financial Programs for AIA Members

Health
Insurance

Disability

Life
Insurance

Retirement
Program



Small Firm Professional Liability

Business
Insurance

Automobile
Insurance

Legaline
Insurance

Continuing
Education

What Are Architects Saying About Today's AIA Trust?*

96% say the AIA Trust is a valuable membership benefit.

94% of those most familiar with the Trust say the Trust's programs are a reason to belong to AIA.

3/4 of the participants in today's AIA Trust would recommend the program.

AIA Trust

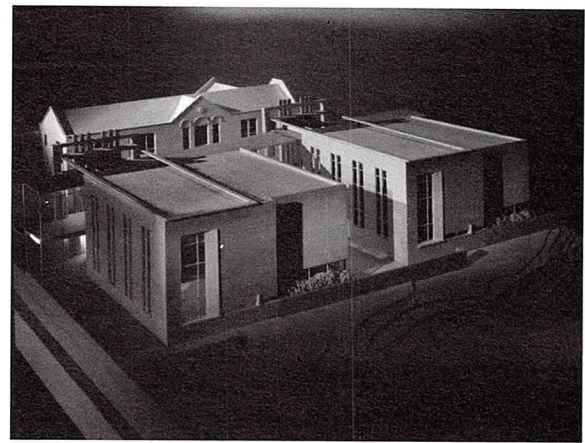
Plan information is available 24 hours a day, toll-free at

1-800-255-8215

Visit e-Architect on www.aiaonline.com
Select Member Services

*AIA Trust Product Evaluation Study
Wiese Research Associates 1998

The new science wing at Highland Park High School by Legat Architects.



pedestrian access route from the west to the arts complex, sheltering the stairs leading up to the Museum and framing the view from the University's Pick-Staiger Hall. A glass and aluminum curtainwall creates a light and accessible exterior. The main, 3,600-square-foot gallery was designed to be more versatile, with temporary walls to allow for flexibility in exhibition layout and installation. The smaller, first-floor gallery is designed for exhibitions that rotate more often than in the major gallery, including regular student exhibitions.

A team of consultants, including the Chicago and Los Angeles offices of **RTKL Associates** and Eppstein Uhen Architects of Milwaukee, has developed a visionary four-year master plan to transform Wisconsin's State Fair Park into a year-round destination. Highlights of the proposed changes include a major redesign of public spaces, remodeling six buildings, the addition of two major buildings and the replacement of the existing Milwaukee Mile Racetrack

grandstand. Phase one, completed to coincide with the August 3 opening of this year's fair, included a major new gateway visible from I-94.

Schroeder Murchie Laya Associates has been selected to design several multi-unit residential projects including St. Luke's Senior Housing, a 32-unit adaptive re-use project of an historic school in Two Rivers, Wis., and the Tobacco Warehouse Lofts, a 120-unit project in Madison, Wis. that includes new and adaptive re-use apartments and an underground parking structure. The firm also has been retained as a prime design consultant for the Chicago Housing Authority.

William Worn Architects' build out renovation of The Rhythm Café recording studios is nearing completion. The 3,500-square-foot, three-story project features two state-of-the-art recording studios. Construction costs are estimated at \$400,000.

PROFESSIONAL DEVELOPMENT

Arthur L. Turner, deputy majority leader of the Illinois House of Representatives, together with an impressive list of state and city agencies, has organized **Preserving the Legacy, Sharing the Vision**, a community development conference on historic preser-

FOOD PROCESS ARCHITECT

McClier is a large, full service Architecture/Engineering Design Build firm headquartered in Chicago, with offices in Atlanta, San Francisco, Los Angeles and New York. We currently seek a highly talented Food Process Architect for our CHICAGO office.

The licensed architect we seek will possess a Bachelor's degree in Architecture and a minimum of eight years experience in design and construction of food processing facilities. Experience must include ability to coordinate works of engineering disciplines, FDA/USDA requirements, thermal envelope design criteria, sanitary design principles, moisture barrier designs, and knowledge of food facility equipment. CAD capability using AutoCAD 14/2000.

Please send resume and salary requirements to: **McClier, Attn: HR, 401 E. Illinois St., Chicago, IL 60611. Fax: 312-373-7774. E-mail: hr@mcclier.com • EOE M/F/D/V.** No phone calls please.

www.mcclier.com

M C C L I E R

AUCUTT'S
BUILDING MATERIALS

Solid as a Brick For over 100 Years!

- Brick, Stone & Masonry Supplies
- Representing over 20 manufacturers of brick and clay products
- Delivery to meet your needs
- 4000 square foot indoor showroom
- Huge 11 acre outdoor brick yard

1975 Aucutt Road
Montgomery, IL 60538
Fax: 630-897-7923

CALL: 630-897-7922



The new main gate of the Wisconsin State Fair by RTKL Associates.

Eric Oxenfort

vation and affordable housing. Workshops are planned for Thursday, October 12 from 8:00 a.m. to 5:30 p.m. at the First Congregational Baptist Church, 60 N. Ashland Ave. A tour of landmark and affordable housing projects is scheduled for Friday, October 13 starting at 8:30 a.m. For a complete schedule of events and registration information, call Valerie Leonard at 773/521-3137.

The Environment and Art Department of the Office for Divine Worship of the Archdiocese of Chicago is sponsoring a three-part speaker series for architects and liturgical design consultants. Each session will include a brief presentation by a professional in church design,

followed by an open discussion. The first session, **Liturgy as the Subject of Architecture**, is being held Thursday, October 19 from 12:00 noon until 3:00 p.m. at the Office for Divine Worship, 1800 N. Hermitage Ave. The featured speaker is liturgical design consultant John Buscemi. The registration fee of \$50 includes lunch. Subsequent sessions are scheduled for March and May; register for all three at once and receive a \$25 discount. For complete details, contact Phil Horrigan at 773/486-5153 or jphilip@odw.org.

On Friday, October 27 and Saturday, October 28, the Ely Chapter of Lambda Alpha International presents

Creating the Livable Downtown at the School of the Art Institute, 112 S. Michigan Ave. For more information, call 312/201-0101.

The Environmental Law and Policy Center (ELPC), Chicago's Department of Environment, and AIA Chicago's Environment PIA are presenting Building Green in Chicago, a lecture series, which continues through May 2001. The next lecture, **Energy**, is scheduled for Thursday, November 9. For information, call Karen Lewis at ELPC, 312/795-3731.

The **Rotch Travelling Scholarship**, one of the oldest and most prestigious architectural competitions in the United States, is receiving applications for the 2001 scholarship. A stipend of \$35,000 is awarded to the first-prize winner of a two-stage design competition for eight months of travel throughout the world. Requests for application forms must be made in writing and received by January 1, 2001 at Rotch Travelling

What to do? How to do it?

Kristine Fallon Associates, Inc.

<http://www.kfa-inc.com>

Hardware
Software
Networks
Internet

30 East Adams Street, Suite 600
Chicago, IL 60603-5609
312-641-9339 (voice)
312-641-9337 (fax)
kfainc@kfa-inc.com

Get it done. Keep it going.



Botti Studio of Architectural Arts, Inc.

919 Grove Street, Evanston, IL 60201 Established 1864
847/869-5933 • Fax: 847/869-5996 • 800/524-7211
www.bottistudio.com • botti@bottistudio.com

Designers/Fabricators • Stained and Faceted Glass • Beveled Glass • Sandblasted • Stained Glass Restoration and Conservation • Protective Glazing • Wood and Metal Frame Restoration • Sculpture • Bronze • Metal • Marble • Mosaic • Interior Renovation • Woodwork • Murals • Painting and Decorating • Custom Sanctuary Furnishings • Stained Glass Consultants to Architects and Churches

Studio Locations

San Diego • Chicago • Sarasota • Agropoli, Italy
760/753-0705 • 847/869-5933 • 941/951-0978

SmarterRooms.
Smarter Technology.

6500 N. Hamlin
Lincolnwood
Illinois 60712

Midwest Visual
communications

www.midwestvisual.com **800.876.8298**



*An Internet Site
Created
Exclusively
for Architects
and Designers*



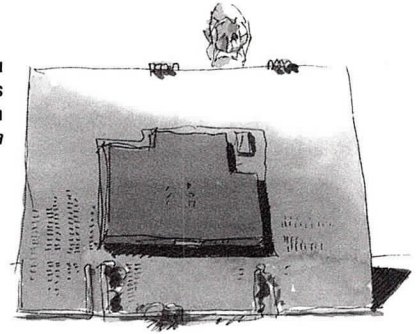
**www.parksite.
com/architect**

Sponsored By

***Parksite Inc.
(800) 338-3355***

N O T E B O O K

"To see architecture fully, you must tip it up, stand it on its edge," writes Malcom Wells in *Recovering America*



Scholarship, Boston Society of Architects, 52 Broad St., Boston, MA 02109. Completed applications are due no later than January 8, 2001 at the same address. For more information, visit www.rotchscholarship.org.

V A R I O U S M A T T E R S

The **Chicago Architecture Foundation (CAF)** is sponsoring three lectures in October of interest to members. On October 16, "Women and the Making of the Modern House" explores the influences of gender on the development of Farnsworth House and The Glass House. Chris Johnson, government architect of New South Wales, and Davina Jackson, former editor of *Architecture Australia*, discuss current projects in their country on October 17. A panel discussion, moderated by Blair Kamin of the Chicago Tribune, delves into the issues surrounding "Prototype Designs for Public Buildings" on October 18. Panelists include Joseph Antunovich, AIA of Antunovich Associates; Carol Ross Barney, FAIA of Ross Barney + Jankowski; Larry Booth, FAIA of Booth Hansen; and Geoff Walters, AIA of OWP&P. Each lecture will be held at 6:00 p.m. at the CAF, 224 S. Michigan Ave. Admission for each, except "Australian Architecture Now" which is free, is \$10 for CAF members; \$15 for non-members. For reservations, call 312/922-3432 ext. 913

The **Graham Foundation for the Advanced Studies in the Fine Arts** is sponsoring Malcolm Wells: *Recovering America* on October 11 and Environmental Thinking: The Art of Architecture in the Age of Ecology with James Wines on October 25. Wells began designing underground buildings in 1964; he has lectured extensively and written over 20 books on the subject. Wines is founder, president and creative

director of SITE, an architecture and environmental arts organization, and head of the architecture department at Penn State University. In 1995, he won the Chrysler Award for Innovation Design. Both lectures take place at 6:00 p.m. at 4 W. Burton Place. Admission is free, but space is limited. For more information, visit www.grahamfoundation.org.

The Frank Lloyd Wright Preservation Trust, previously known as The Frank Lloyd Wright Home and Studio Foundation, is sponsoring **English Country Homes**, a presentation by Alfred Rowe, RIBA, FRSA on Wednesday, October 18 at 7:30 p.m. The lecture will be held in the Duchesne Room in Old Main at Barat College, 70 W. Westleigh Road, Lake Forest. Admission is \$8 for Trust members; \$12 for non-members. To make a reservation, call 708/848-1976.

The Smart Museum at the University of Chicago, 5550 S. Greenwood Ave., is exhibiting **Martin Kippenberger: Hotel Drawings** through November 5. Kippenberger (1953 - 1997) was considered one of the most prolific and complex German artists of his generation. He worked in a wide variety of media, including sculpture, graphic design and installation. During his travels, Kippenberger executed hundreds of drawings on stationery from numerous hotels. The Museum will present roughly 200 of these drawings.

Zweig White Associates is sponsoring **Pathway to Principal**, a two-and-a-half day program for future



A Hobbs Group Company

***Insurance and Loss Prevention
Services for Architects***

- ◆ Professional Liability
- ◆ Specific Project Coverage
- ◆ Office Packages
- ◆ Workers Compensation
- ◆ Automobile
- ◆ Exclusive Programs
- ◆ Group & Individual Life & Health

One Tower Lane ♦ Oakbrook Terrace, IL 60181
Tel: 630.571.4500 ♦ Fax: 630.571-4518 or 4525
E-Mail: info@avains.com . www.avains.com

Sabo & Zahn

Attorneys at Law

Werner Sabo, FAIA

James Zahn, FAIA

Licensing problems, copyrights, business formations,
mediation, litigation, arbitration, contracts, real estate
construction attorneys

8620 Sears Tower
Chicago, IL 60606

(312) 655-8620
fax: (312) 655-8622

www.sabozahn.com

principals. Seminar topics include strategic business planning, finance and accounting, human resources, and project management. For fees and details, visit www.zweigwhite.com/events/p2p. The program is registered with the AIA's continuing education system and AIA members receive a \$50 discount.

Skyscrapers: The New Millennium, an exhibition that examines more than 50 high-rise buildings completed in the past six years or currently under construction, continues through January 15 in the Kisho Kurokawa Gallery at the Art Institute of Chicago.

Travelling to St. Louis? The Center of Contemporary Arts (COCA), 524 Trinity Ave. in University City, is presenting **Architect of Form and Spirit: Eric Mendelsohn in St. Louis** through March 10. After a successful career in Germany, Mendelsohn received his first American commission in 1946, the B'nai Amoona Synagogue in St. Louis. The ideas articulated in the design of the building, which in 1986 became home to COCA, are considered to have radically changed the conception of contemporary religious architecture in America. For more information, visit www.cocastl.org.

NEW MEMBERS

AIA

Thomas Ambry, City of Chicago; **Todd Baisch**, Solomon Cordwell Buenz & Associates; **Rico Cedro**, Krueck & Sexton; **Franco Isaac**, FEI Architects; **Chuck Leonard**, Raymond Professional Group; **W. Laurin McCracken**, McClier; **Eric Mullendore**, Eric Mullendore, Architect; **Mary O'Toole**, Hammond Beeby Rupert Ainge; **Jonathan Orlove**, SOM; **J. Lawton Thies**, Hammond Beeby Rupert Ainge

Associate AIA

Adolfo Amezuca; **Scott Boyle**, DLR Group; **Jill Chambers**, Solomon Cordwell & Buenz; **Troy Contreras**, DLR Group; **Benjamin Johnson**, Johnson-Lasky Architects; **Bumkoo Kim**; **Stephen Long**, Loebl Schlossman Hackl; **John Nicolls**, Hyatt Hotels & Resorts; **Michael Poczatek**, Schroeder Murchie Laya Associates; **Marsha Spencer**, Landon Bone Architects; **Ketema Woldemichael**, AMSYSCO

Professional Affiliate

Nathan Hale, Weaver Boos + Gordon; **Jerry Kane**, Diversified Services Group; **Christian Metz**, Rauch Clay Sales

design solutions

design excellence

Structural, site/civil, environmental, and landscape design for the Milwaukee Art Museum addition.

structural engineering
site design & planning
transportation & traffic studies
stormwater management
sustainable design
environmental studies/planning
construction services
parking planning & design

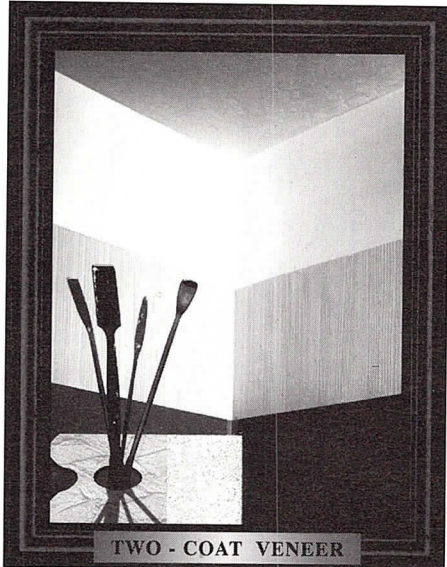
engineers & scientists


GRAEF
ANHALT
SCHLOEMER
and Associates Inc.

8501 West Higgins Road, Suite 280
Chicago, Illinois 60631 773/399-0112

Chicago Milwaukee Madison Green Bay

The Art of Plastering



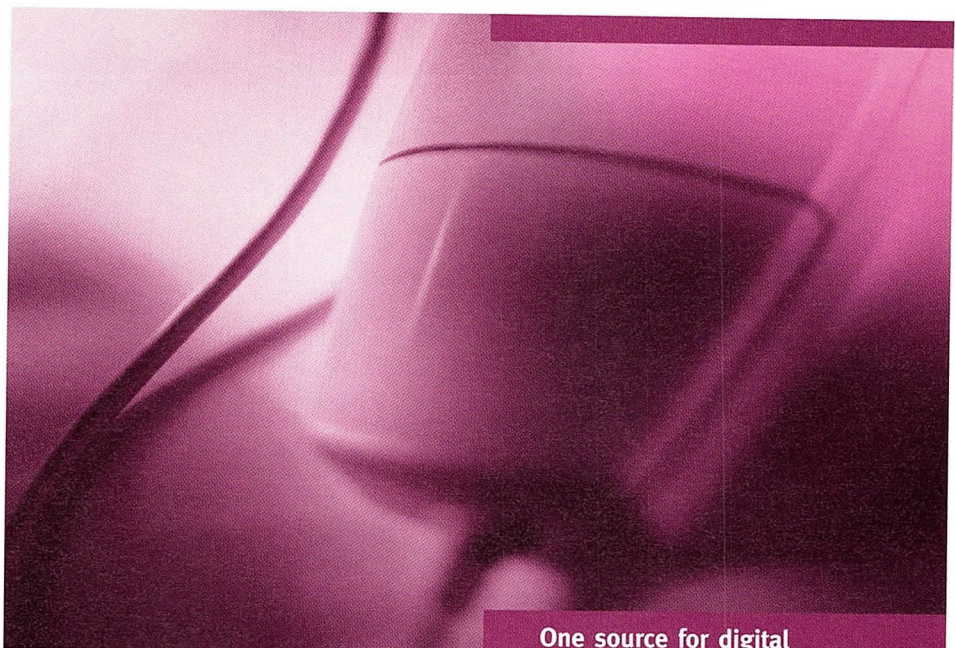
Spectacular walls.
Smooth...Textured...
Done the way you want them.
Hard and durable surfaces that
make paint and paper look
better, make redecorating
easier, make homes quieter.

**Plaster interiors are
more cost-effective than
you think.**

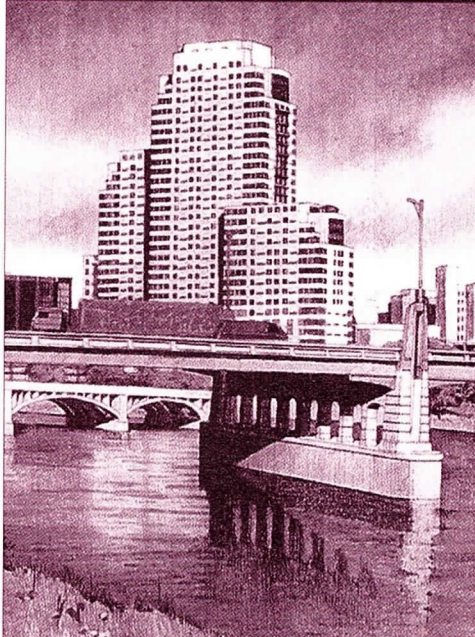
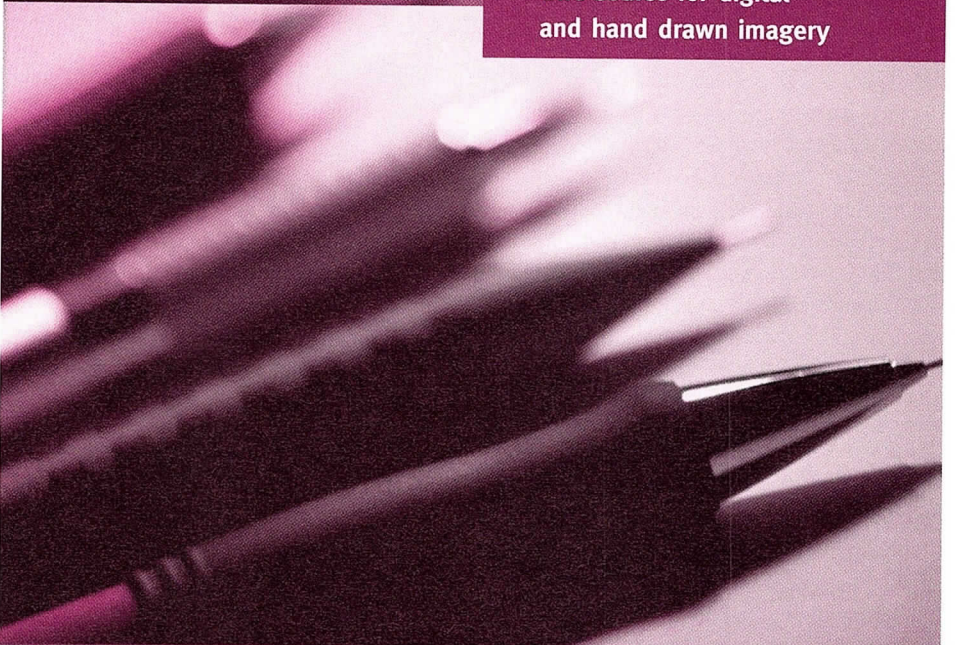
Call us for more information.



Chicago Plastering Institute
6547 N. Avondale Ave.
Chicago, Illinois 60631
773.774.4500
Fax. 773.774.5828



One source for digital
and hand drawn imagery



Bondy/Slutsky
Architctual Imaging, LLC

Contact us

Rael D. Slutsky, AIA
Bruce Bondy
1514 Chapel Court
Northbrook II, 60062
847-562-9493

Digital modeling and rendering
Interactive virtual reality
Computer animation
Pen and ink renderings
Charrette sketches

312.697.1107 WWW.VERTEXGRAPHICS.COM

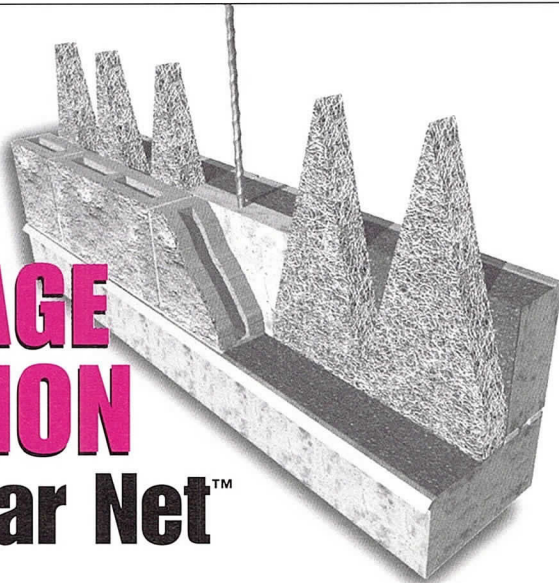
DIGITAL CONSULTANTS
3D MODELING
RENDERING
PRESENTATION GRAPHICS
ANIMATION
GRAPHIC DESIGN
DIGITAL PRINTING

CLIENT: WALKER PARKING CONSULTANTS
PROJECT: UNIVERSITY OF ALABAMA PARKING STRUCTURE



VERTEX GRAPHICS
600 S DEARBORN #2008 CHICAGO IL 60605

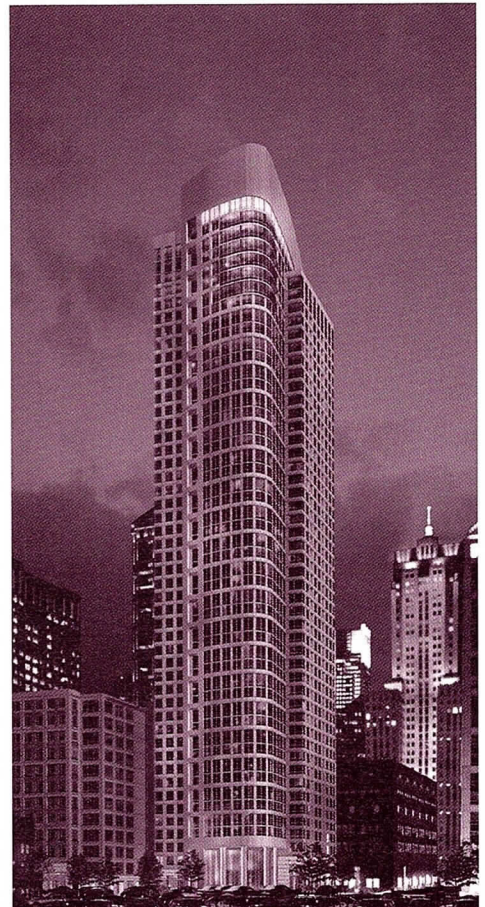
Another DRAINAGE SOLUTION by Mortar Net™



Mortar Net Block's **patented** shaped mortar dropping collection device prevents water damage in single wythe concrete masonry unit (CMU) walls by breaking up mortar thereby allowing proper drainage to the weep holes. For more information, please contact Mortar Net at 800-664-6638 or visit our Web site at www.mortarnet.com.

800-664-6638
www.mortarnet.com

 **Mortar Net™**
The Difference Is In The Cut.



Architectural

Project:

The Sterling
345 North LaSalle St.
Chicago, Illinois

Rendering

Client:

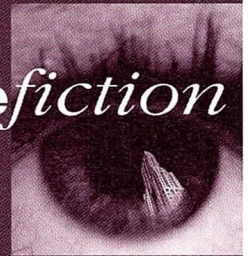
Royal Imperial Group
900 West Jackson
Chicago, Illinois

Imaging

Architect:

Solomon Cordwell Buenz
& Associates, Inc.
625 North Michigan
Chicago, Illinois

imagefiction



Animation

Web / Media Design

LaSalle Wacker Building
221 North LaSalle Street
Suite 1510
Chicago, IL 60601

312.726.0818

Large Format Printing

www.imagefiction.com

- 11 New Members Breakfast.** 7:45 a.m.; AIA Chicago. RSVP by October 9; 312/670-7770.
- Millennium Park: Completing Grant Park.** Planning and Urban Affairs PIA; 12:00 noon; AIA Chicago. 1 LU/HSW
- New Projects of Lucien Lagrange Associates.** Lunchtime lecture. 12:15 p.m. Chicago Architecture Foundation (CAF), 224 S. Michigan Ave.
- The Web Side of Computer-Aided Facility Management.** Corporate Architects PIA. 5:30 p.m.; Gensler, 30 E. Monroe St., #400. 1.5 LU
-
- 14 Tour: Outpatient Care Center,** University of Illinois at Chicago Hospitals. Health Care PIA. 10:00 a.m.; Entrance at 1800 W. Taylor St. (at Wood St.) Limited to 20. 2 LU/HSW
-
- 16 Electronic Collaboration: What are the Options?** Information Technology PIA. 12:00 noon; AIA Chicago. 1 LU
-
- 17 Green Building Council Comes to Chicago.** Environment PIA. 5:30 p.m.; AIA Chicago. 1.5 LU/HSW
-
- 19 Overhead Rolling Closures Part I.** Technical Issues PIA. 12:00 noon; Chicago Bar Association, 321 S. Plymouth Court. Lunch is available for \$10.50 (purchase a ticket in the CBA Shop) or bring your own. 1 LU/HSW
-
- 24 Not in My Backyard: An Examination of Community Design Review.** Design PIA 6:00 p.m.; AIA Chicago. 1.5 LU
-
- 25 The New Design for Block 37.** Lunchtime lecture. 12:15 p.m. Chicago Architecture Foundation (CAF), 224 S. Michigan Ave. Free admission.
- Architect-Led Design/Build: A Contractor's View.** Design/Build PIA. 5:30 p.m.; OWP&P Architects, 111 W. Washington St., #2100. 1.5 LU
-
- 27 Designight 2000.** AIA Chicago. 5:30 p.m.; Grand Ballroom, Navy Pier. Tickets: \$75/AIA Chicago members; \$95/non-members. Information: 312/670-7770.
-
- 8 Planning to Save Chicago: Breaking the Freight Bottleneck.** Planning and Urban Affairs PIA. 12:00 noon; AIA Chicago. 1 LU/HSW
- IDPH Drawing Submission, Review, and On-Site Review Process.** Health Care PIA. 5:30 p.m.; Northwestern Memorial Hospital, 251 E. Huron St., 3rd Floor, Conference Room A. 1.5 LU/HSW
-
- 9 Building Green in Chicago.** The Environmental Law and Policy Center (ELPC), Chicago's Department of Environment, and AIA Chicago's Environment PIA. Information: Karen Lewis at 312/795-3731.
-
- 11 Architecture Critics Forum: Where in the World is Chicago?** 1:00 to 4:00 p.m.; The Art Institute of Chicago, Rubloff Auditorium. Free and open to the public. 3 LU/HSW
-
- 14 At Home at School.** Young Architects and Housing PIAs. 6:00 p.m.; School of the Art Institute Dormitory, State and Randolph Streets. 1.5 LU/HSW
-
- 15 Architecture of High School Sports.** Lunchtime lecture. 12:15 p.m. Chicago Architecture Foundation (CAF), 224 S. Michigan Ave. Free admission.
- The Law of Design/Build.** Corporate Architects PIA. 5:30 p.m.; Schiff Hardin & Waite, Sears Tower, #7200. 1.5 LU
-
- 16 Overhead Rolling Closures Part II: Fire-Rated Doors.** Technical Issues PIA. 11:30 a.m.; Chicago Bar Association, 321 S. Plymouth Court. Lunch is available for \$10.50 (purchase a ticket in the CBA Shop) or bring your own. Note time change. 2 LU/HSW
- State of the Practice Panel and Party.** Interior Architecture and Design PIAs. 5:30 p.m.; Herman Miller, #321, The Merchandise Mart. 1 LU
-
- 20 I.T. Staffing, Planning and Budgeting.** Information Technology PIA. 12:00 noon; AIA Chicago. Bring a lunch; beverages provided. 1 LU
-
- 29 Design/Build on a Very Big Scale.** Design/Build PIA. 5:30 p.m.; McCormick Place. Bring a hardhat! 1 LU/HSW

AIA Chicago



A Chapter of The American Institute of Architects
 222 Merchandise Mart Plaza
 Suite 1049
 Chicago, Illinois 60654
 312/670-7770
 312/670-2422 (fax)
 info@aiachicago.org
 www.aiachicago.org

Periodical