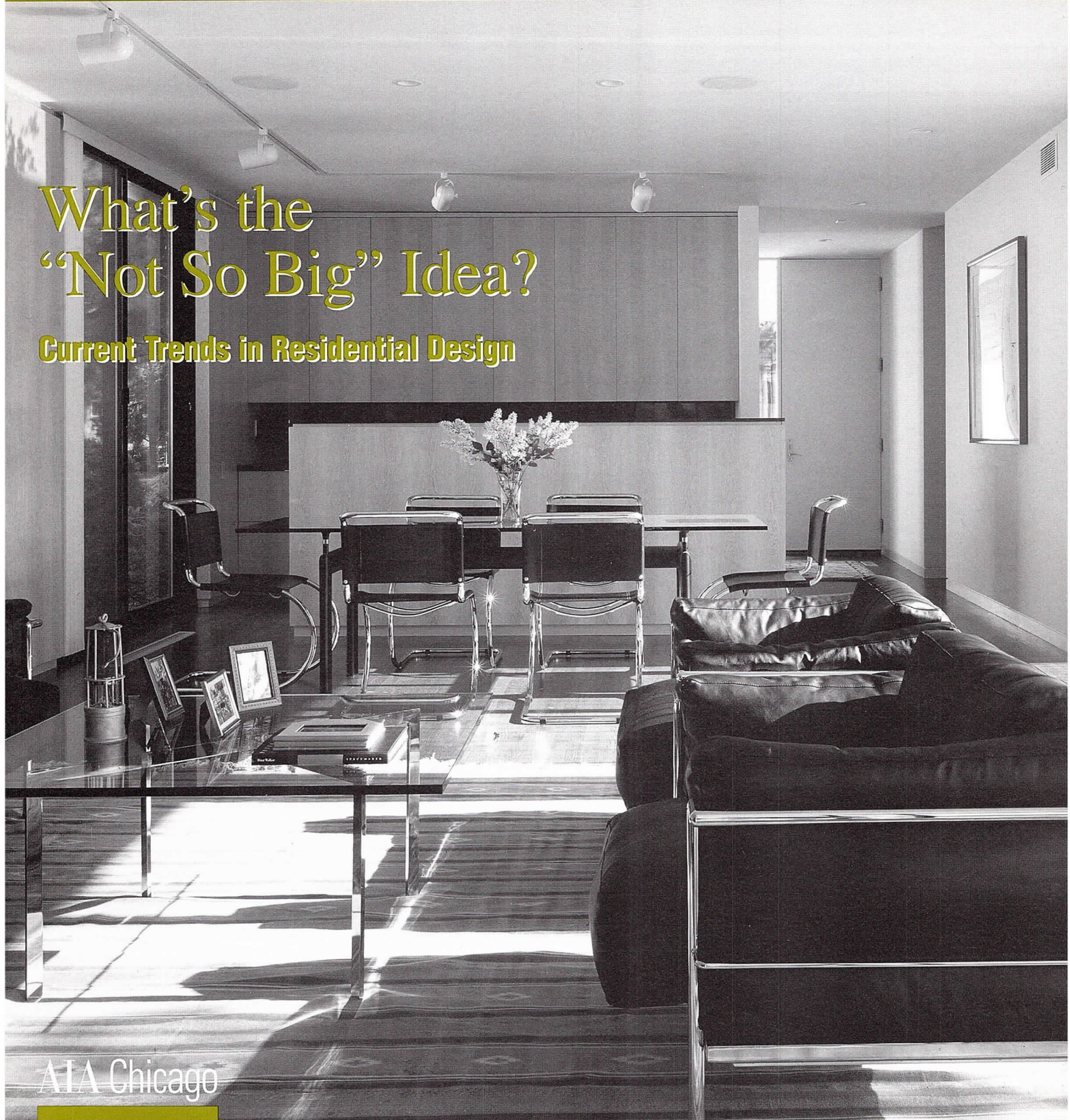


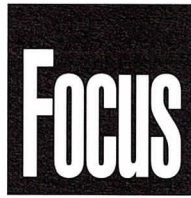
# Focus

## What's the "Not So Big" Idea?

### Current Trends in Residential Design



AIA Chicago



**3**  
Focus on Programs

**4**  
News Briefs

**8**  
Cover Story  
*What's the  
"Not So Big" Idea?*

**15**  
Feature  
*Good Neighbors*

**16**  
Case Study  
*Living Hand -to-Mouse*

**19**  
Notebook

**28**  
Calendar

Cover: The Carpenter's Courtyard House by  
Nagle Hartray Danker Kagan McKay Architects.  
© 1999 Bruce Van Inwegen.

**August 2000**

**Editor**

Susan Larson

**Contributing Editor**

Laurie McGovern Petersen

**Focus Advisory Board**

William Bradford, AIA

Howard Decker, FAIA

Deborah Doyle, AIA

James Jankowski, AIA

Edward Keegan, AIA

Laurie Petersen

Pat Rosenzweig

Alice Sinkevitch, Hon. AIA

Thomas Zurowski, AIA

**AIA Chicago**



A Chapter of The American  
Institute of Architects

FOCUS (ISSN 1071-3700) Vol. 20, No. 7, is published monthly with a combined issue June/July, by AIA Chicago, 222 Merchandise Mart Plaza, Suite 1049, Chicago, Illinois 60654-1001. \$20 of each member's dues are allotted as a subscription. Periodicals postage paid at Chicago, Illinois. POSTMASTER: Send address changes to Focus, AIA Chicago, 222 Merchandise Mart Plaza, Suite 1049, Chicago, Illinois 60654-1001.

For advertising rates and schedules, call 312/670-7770.

© 2000 The American Institute of Architects Chicago. All rights reserved. Reproduction in whole or part without permission is strictly prohibited.

AIA Chicago on the Internet: [www.aiachicago.org](http://www.aiachicago.org)  
AIA Chicago e-mail: [info@aiachicago.org](mailto:info@aiachicago.org)

**2000 Board of Directors**

**President**

T. Gunny Harboe, AIA

**President-Elect**

Thomas Zurowski, AIA

**Vice Presidents**

Joseph Caprile, AIA

Randall Deutsch, AIA

**Secretary**

Jonathan Fischel, AIA

**Treasurer**

Dave Urschel, AIA

**Directors**

Raymond Clark, AIA

Ellen Bailey Dickson, AIA

Kevin Hall, AIA

Philip Craig Johnson, AIA

James E. Prendergast, AIA

**AIA Regional Director**

Holly Gerberding, AIA

Lawrence Livergood, AIA

**AIA Illinois Director**

W. Stephen Saunders, AIA

**Associate Director**

Susan Campbell, Assoc. AIA

**Professional Affiliate Director**

Eric Singer

**Past President**

James Jankowski, AIA

**2000 AIA Illinois Delegates**

William Bradford, AIA

Thomas Braham, AIA

Hill Burgess, AIA

Deborah Doyle, AIA

Arthur Salzman, AIA

W. Stephen Saunders, AIA

Peter Schlossman, AIA (Alternate)

Lee Weintraub, AIA (Alternate)

William Worn, AIA

Robert E. Woodworth Jr., AIA

**2000 Professional Interest Areas**

**Corporate Architects**

Laura Fisher, AIA

**Design**

David Brininstool, AIA

**Design/Build**

Bruce Ream, AIA

**Environment**

Michelle Halle Stern, AIA

**Health**

Robert Carlton, AIA

**Historic Resources**

Thomas Gentry, Assoc. AIA

**Housing**

Margaret Cervantes, AIA

**Information Technology**

Kristine Fallon, FAIA

**Interiors**

Vito Lotta, AIA

**Office Practice**

Lisa Willis-Brown

**Planning and Urban Affairs**

Kyle Benkert, AIA

**Technical Issues**

Christopher Chwedyk, AIA

**Young Architects**

Helen Tsatsos, Assoc. AIA

**Chapter Staff**

**Executive Director**

Alice Sinkevitch, Hon. AIA

**Membership Coordinator/  
Assistant to the Director**

Jamie Juliano

**Program Director**

Joan Pomaranc

**Communications Director**

Susan Larson

**Financial Manager**

Crystal Gagler

**Public Information Receptionist**

Nichole Brown

**Documents Clerk**

Barbara Homziuk

**Transportation Planning**



Wednesday, August 9, 12:00 noon  
AIA Chicago

Sponsor: Planning and Urban Affairs PIA

Join the PIA to work on plans for a possible symposium on transportation planning.

**New Urbanism Meets Adaptive Re-use: A Synergy**



Saturday, August 12, 2:00 p.m.  
The Town of Fort Sheridan, 213 Leonard Wood Drive North, Highland Park

Sponsors: Housing and Historic Resources PIAs

The Town of Fort Sheridan capitalizes on a singular site development opportunity: over 230 prime acres with a stock of historically significant buildings. Attend a panel discussion on planning and design issues involved in reusing the Fort and tour the site. Hardhats and footwear appropriate for a construction are required. Meet in the sales center. Limited to 40. 2 LU/HSW

**ARE Review Class and Mock Exam**

Friday, August 18 - Sunday, August 20  
Holiday Inn Chicago Mart Plaza

350 N. Orleans St.

Sponsor: AIA Chicago

Space is still available for this crash course on the Graphic Divisions of the ARE. For details and registration information, call AIA Chicago at 312/670-7770.

**Tour: Spancrete of Illinois**



Monday, August 21, 8:00 a.m.  
Holiday Inn, 800 S. Route 31,

Crystal Lake

Sponsor: Technical Issues PIA

Join a breakfast meeting during which Roger Becker of Spancrete Illinois discusses the many facets of pre-cast, pre-

stressed concrete construction, followed by a tour of the manufacturing plant at 4012 US Highway 14. 3 LU/HSW

**Electronic Data Standards for Business and Technical Issues**



Monday, August 21, 5:30 - 7:00 p.m.

Loebl Schlossman & Hackl,  
130 E. Randolph Drive, #3400

Sponsor: Information Technology PIA

How well do current/emerging standards for CAD and other systems enable e-commerce for the design and construction industry? 1.5 LU

**Business Planning for Architect-Led Design/Build**



Wednesday, August 23, 5:30 p.m.

Schiff Hardin & Waite, #7200 Sears Tower

Sponsor: Design/Build PIA

Attorney Mark Friedlander explains his business plan for architect-led design/build projects. His plan returns firms of any size to the role of "master builder" by teaming them with a general contractor and avoiding the construction risks often associated with design/build. 1.5 LU

**Tour: Tetra Pak**



Saturday, August 26, 9:30 a.m.

101 Corporate Woods Pkwy.,  
Vernon Hills

Sponsor: Environment PIA

Barry Bebart of Solomon Cordwell Buenz highlights the environmental design elements of the Tetra Pak headquarters and its site. The building strives for energy efficiency by using recycled-content materials, construction waste recycling, exterior sunshades and energy-efficient lighting. Yet, it adheres to standard construction costs for suburban office buildings. Meet in the building lobby. 1.5 LU/HSW



**Sign Me Up!**

- 8/9 Transportation Planning
- 8/12 New Urbanism Meets Adaptive Re-use
- 8/21 Tour: Spancrete of Illinois
- 8/21 Electronic Data Standards for Business and Technical Issues
- 8/23 Business Planning for Architect-Led Design/Build
- 8/26 Tour: Tetra Pak

Name \_\_\_\_\_

Office \_\_\_\_\_

Address \_\_\_\_\_

City \_\_\_\_\_

Phone \_\_\_\_\_

Fax \_\_\_\_\_

All programs listed above are free or as noted for AIA Chicago members. Non-members will be charged \$10 per program or as noted.

**Method of Payment**

- Check
- American Express  Visa  MasterCard

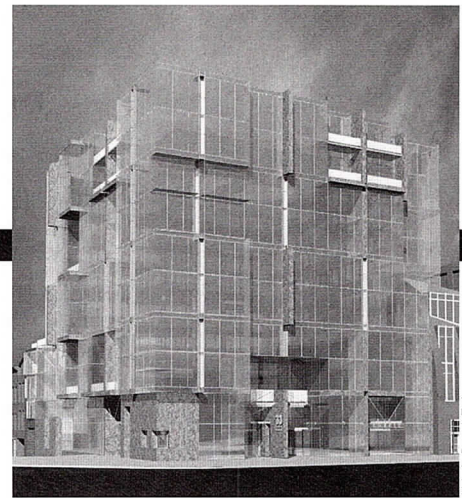
Credit Card No. \_\_\_\_\_

Expiration Date \_\_\_\_\_

Name on Card \_\_\_\_\_

Signature \_\_\_\_\_

Fax to:  
**AIA Chicago**  
312/670-2422



## World Monuments Fund Presents Study on Medinah Temple/Tree Studios

At the AIA Chicago offices on June 8, Bonnie Burnham, president of the World Monuments Fund (WMF), and Hugh Hardy, FAIA of Hardy, Holzman, Pfeiffer Associates presented a preliminary study commissioned by the WMF on the preservation of the Tree Studios and Medinah Temple. Citing the complexity involved in preserving these two buildings, Burnham and Hardy stressed the need for good will on the part of all those interested in saving the structures, to work together and determine a use for the property. Although a general estimate of the cost of renovating these buildings is needed, determining a creative new program for them should come before settling on a likely cost for the undertaking.

According to AIA Chicago President Gunny Harboe, AIA, the WMF is seeking additional funding to complete the recommended economic feasibility study. The building's owners and the City have agreed to wait until September to make a decision on the building.

## Three Local Architects Appointed to GSA's Register of Peer Professionals

Wendell Campbell, FAIA, Ralph Johnson, FAIA and Stanley Tigerman, FAIA have been appointed to 2-year terms on the General Service Administration's (GSA) National Register of Peer Professionals. The Register was developed as part of its Design Excellence Program to strengthen the selection and design review process for design professionals.

## William Worn Architects Receives HUD Award

William Worn Architects has received the Best Practices Award from the U.S. Department of Housing and Urban Development (HUD). The firm is being recognized specifically for helping the housing industry in Idaho better comply with accessibility design requirements.

William Worn Architects participated with HUD in early, informal negotiations to resolve design and construction complaints brought by the Idaho Fair Housing Council. And the firm provided technical assistance to builders, architects and developers on designing and constructing multi-family housing to comply with the requirements of the Fair Housing Act.

William Worn, AIA will accept the award from Housing and Urban Development Secretary Andrew Cuomo in a ceremony in Washington, D.C. on August 10.

## Mergers and Acquisitions Increasing in A/E Industry

Nearly nine out of 10 firms surveyed by Zweig White & Associates indicated they are considering some type of merger or acquisition activity. According to the survey, 86 percent of all participants say their firm is currently discussing a merger, acquisition or sale. This is an increase over the 1999 survey in which only 74 percent of participants said they were interested in a merger or acquisition.

## Innovative, Glassy Façades by Valerio and Belluschi Make News

In the cover story, "Berlin Walls and French Façades" (June/July 2000), we reported on the increasing popularity of double-wall façades in Europe while expressing skepticism that the technology would be adopted here. We were pleasantly surprised to read in the national architecture magazines (*Architecture*, May 2000 and *Architectural Record*, June 2000) that Valerio Dewalt Train has designed a nine-story, speculative office building in Madison, Wis. with a twin-shell façade.

According to Joe Valerio, FAIA, an energy-analysis currently is underway for the building, with the double-wall being weighed against the cost of other energy-saving techniques. (Valerio is working with Efco to create a double-curtain-wall system using less expensive, off-the-shelf components.) Ultimately, developer Brad Binkowski — whose profits from Madison's hot office market may allow him to be more "green" than most developers — wants a glass

building that doesn't use any more energy than a building of more traditional materials. Whether the double-wall curtain wall makes the cut remains to be seen. We'll continue to track its progress in upcoming issues of *Focus*.

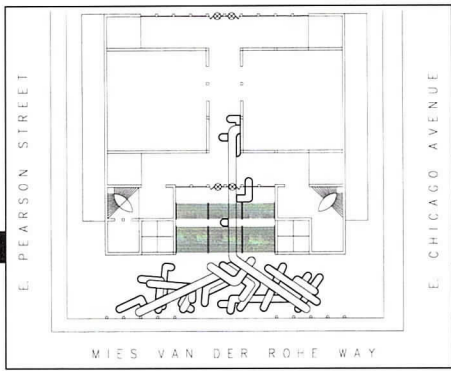
The same article mentioned that Anthony Belluschi/OWP&P Architects was one of two finalists in an international design competition for the renovation and addition to Les Quatre Temps Shopping Centre in Paris. We are happy to report the firm was awarded the commission in June.

## City Honors Holabird Legacy

The City is celebrating a prominent family in Chicago architecture by naming the corner of Michigan Avenue and Washington Street "Honorary Holabird Place." William Holabird founded Holabird & Simonds in 1880; the firm was later known as Holabird & Roche and currently, Holabird & Root. Successors included his son John A. Holabird, cousin William Holabird, and grandson John A. Holabird, Jr., FAIA. This year Holabird & Root celebrates its 120th anniversary and thus is one of Chicago's oldest architectural firms in continuous practice.

## MCA Marries Public Sculpture and Landscape Architecture

The Museum of Contemporary Art (MCA) is displaying through early fall, the work of German artist Tobias Rehberger. *The Sun from Above*, a sculpture and functioning vegetable garden, begins on the Museum's front steps and continues into the lobby and atrium. AIA Chicago members at Marvin Herman & Associates worked with Rehberger to construct the colorful installation. It is the third and largest garden sculpture installation by the artist, following similar projects for the major



Marvin Herman & Associates

Opposite page: Bonnie Burnham, Hugh Hardy, FAIA (left) and Gunny Harboe, AIA; 33 East Main Street by Valerio Dewalt Train. This page: Marvin Herman & Associates' construction drawing for *The Sun from Above*.

European group exhibition *Manifesta 2* in Luxembourg in 1998, and a project at the Berkeley Art Museum last year.

### Owners of Local Landmarks Cited for Preservation Excellence

The Commission on Chicago Landmarks has honored 12 owners of Chicago Landmarks for the critical role they play in preserving historic landmarks and for keeping them in active use. The Commission selected the winners from all projects submitted for approval last year.

- FelCor Lodging Trust  
Allerton Hotel, 701 N. Michigan Ave.

- Congregation of the Church of the Epiphany  
Church of the Epiphany, 201 S. Ashland Ave.
- Chicago Public Schools  
Eighth Regiment Armory, 3533 S. Giles Ave.
- Public Building Commission  
Goldblatt Brothers Department Store  
1613-1635 W. Chicago Ave.
- 1600 Development Inc.  
Single Family Residences in Kenwood  
925 and 929 E. 49th St.
- The Pullman Community  
Clock Tower Petition Initiative
- McCaffery Interests  
Reliance Building, 32 N. State St.
- Landmarks Preservation Council of Illinois  
Waller Apartments, 2840-2858 W. Walnut St.
- Chicago Park District  
Washington Square Park
- P-H Properties  
New Housing, Wicker Park Historic District  
1947 W. Evergreen Ave.
- Lee Ann Perry  
Historic Brick Wicker Park Residence  
2005 W. Evergreen Ave.
- Mark Sutherland  
New Residence, Wicker Park Historic District  
2011 W. Potomac Ave.

### The Fourth Annual Professional Development Conference

September 22 and 23.

Earn up to 10 LUs.

See page 6 for details.

# ARCHITEMPS, INC.®

**ARCHITEMPS, INC.® -- the Architectural & Interior Design staffing specialists, serving greater metropolitan Chicago since 1986.**

**Quality staffing, service and solutions:**

- Design/Production Drafters
- Facility Planners
- CAD Architects/Interior Designers
- Project Managers

**Our billing includes all employer liability:**

- Payroll Administration
- Employee Benefits
- Government Compliance
- State & Federal Tax Remittance
- Workers' Compensation Coverage

**Architectural, interior design and facility planning personnel on a per-project basis. Customized employee leasing, permanent conversion and direct placement available. Call today for information on our staffing services or employment opportunities.**

**ARCHITEMPS, INC.®  
1050 North State Street  
Chicago, Illinois 60610.1043**

**Tel: 312.649.0912  
Fax: 312.649.1667  
ARCHITEMPS@aol.com  
<http://www.architemps.com>**

**AIA Chicago Sponsors  
Fourth Annual Professional  
Development Conference**

*September 22 and 23  
Holiday Inn Chicago Mart Plaza  
350 N. Orleans St.*

Over 300 architects from Illinois and surrounding states are expected to gather for AIA Chicago's fourth annual Professional Development Conference, a series of seminars focusing on the most challenging technical, management and design issues. And this year, there is a special twist to the conference — Saturday is devoted solely to workshops for residential architects. Earn at least 5 LUs per day. Brochures will be mailed in August.

**Selected Friday Programs:**

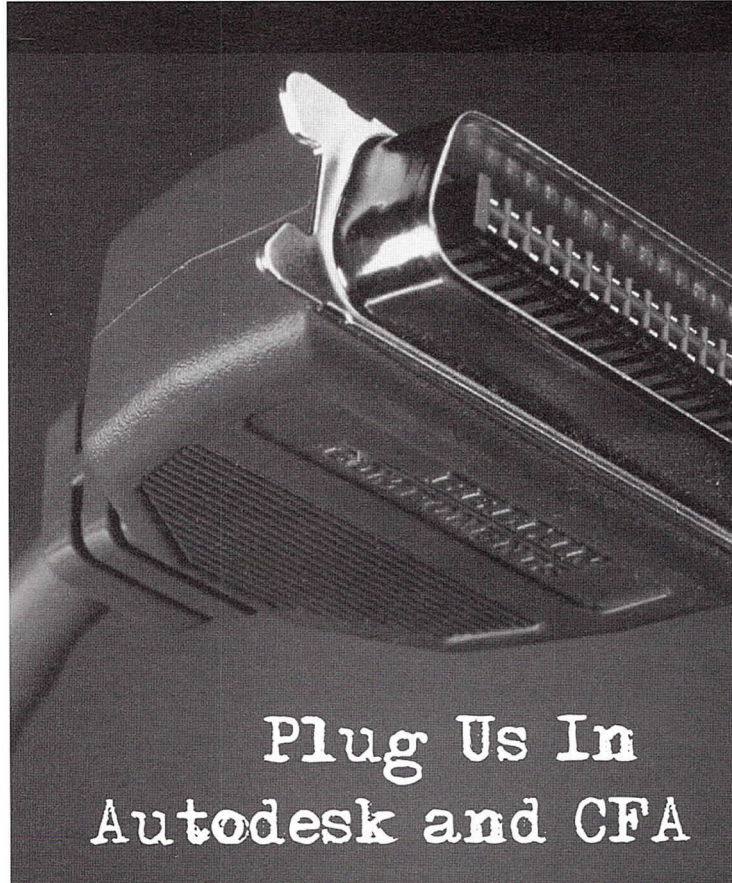
- Causes and Effects of Moisture Problems in Buildings
- What's New in Framing Systems?
- Protecting Your Rights During Electronic Project Management
- Working With Your Client to Pass Community Review
- International Building Code 2000
- Virtual Reality on a Budget: Convincing With Visuals
- The Design Process in Design/Build

**Special Saturday Program:**

Designing and Building the 2000 Home: Clients and Contractors, Details and Documents

- Special Guest: Sarah Susanka, AIA  
*Author of The Not So Big House and the forthcoming Creating the Not So Big House*

During lunch, Susanka will show examples of homes designed or redesigned for the way we live now. (See related article on page 8.) And, in an afternoon workshop first offered at the AIA convention, Susanka reveals how residential firms can identify what the market is looking for and effectively deliver such services.



Plug Us In  
Autodesk and CFA

**THE ARCHITECTS ADVANTAGE**

As designers of physical space, we have a profound impact on how others experience the world. New techniques and evolving strategies continually redefine our world. Architects need to conceptualize and communicate their ideas in an accurate and nimble manner-and in less time than ever before.

**THE AUTODESK ADVANTAGE**

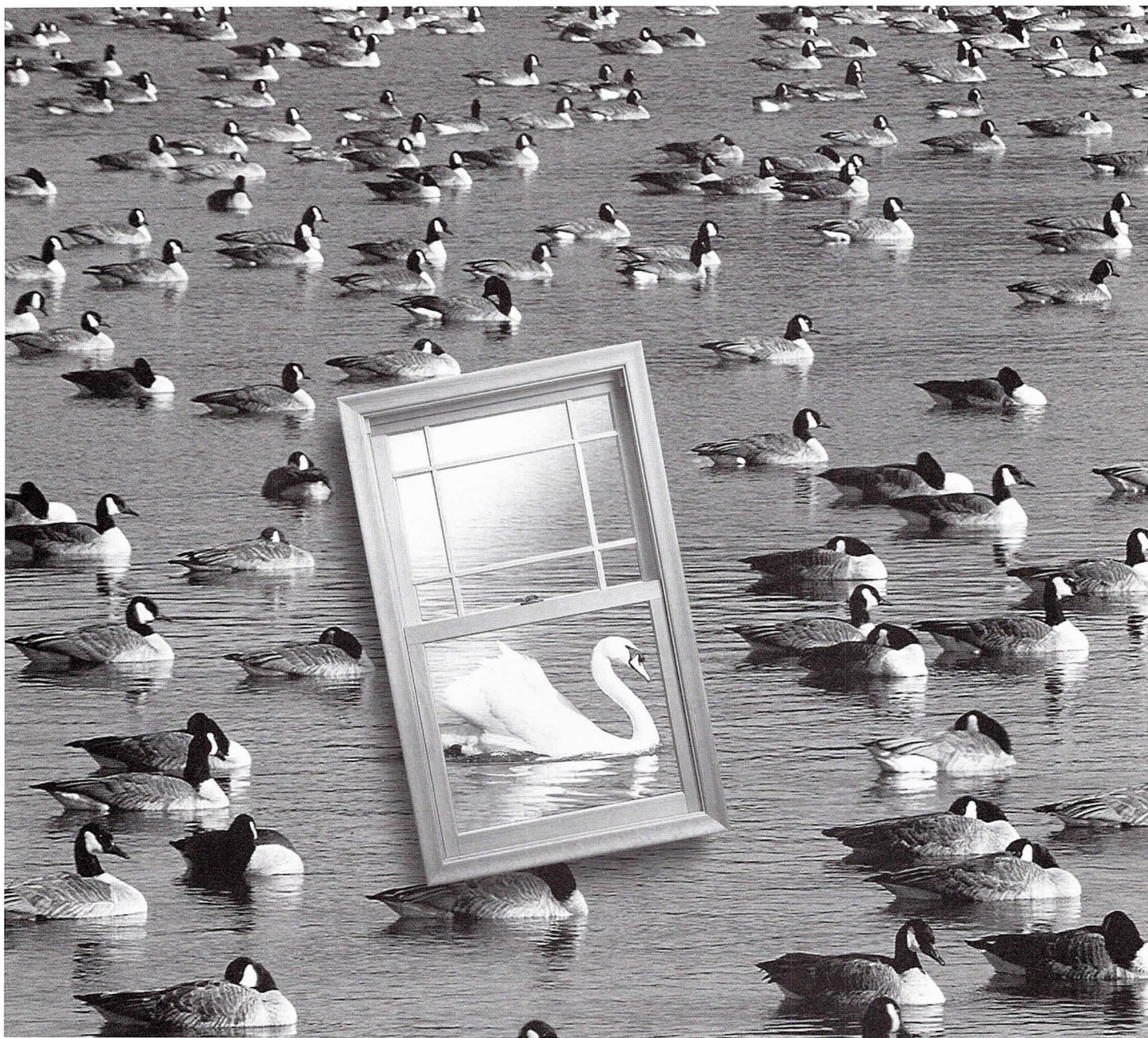
Autodesk is the fourth-largest PC software company in the world. More than four million customers use the company's products for architectural design, civil engineering design and surveying, and through its Discreet division, for design visualization and web content development.

**THE CFA ADVANTAGE**

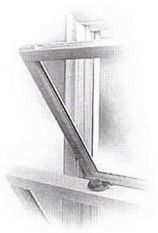
CFA is an award-winning Autodesk System Center (ASC) and Autodesk Training Center (ATC). In the last 16 years more than 1000 leading AEC firms have benefited from CFA's turnkey custom CAD staffing and software solutions. Contact a CFA sales manager today and find out why CFA is in the top 3% of all Autodesk dealers nation wide.



Contact Consulting For Architects Inc. at 312 345-1700 or online at [www.cons4arch.com](http://www.cons4arch.com)



It's not like the rest.



The new Clad Ultimate Double Hung. Clean, traditional lines. An all-wood interior. No unsightly vinyl jamb liners. Over 100 design changes in all. Including our exclusive, integrated sash tracking and locking system which makes the window easier to open, close and clean. The new Clad Ultimate Double Hung from Marvin Windows and Doors, it's truly one of a kind.



For a free catalog, call 1-800-318-7232

**MARVIN**   
Windows and Doors  
Made for you.

Or visit our website at [www.marvin.com](http://www.marvin.com)

The Corporation Center House (this page and next) exemplifies the values of smart design, beauty, and energy designed and installed systems.





# What's the "Not So Big" Idea?

By Laurie McGovern Petersen

How many times have you needed to convince clients bigger is not always better? Have you tried persuading them that their money is better spent on well-detailed, intelligently conceived spaces than on raw square footage? Is it a big effort to get clients to focus on how they will really use their house rather than how it compares in size to the neighbors'?

The age-old issues of quantity versus quality are given an intriguing new spin in a recent book called *The Not So Big House: A Blueprint for the Way We Really Live*, by architect Sarah Susanka, AIA. (See related story on page 6.) Aimed squarely at clients, the book makes a compelling case for smaller, more detailed houses that are well adapted to the everyday lifestyles of their owners. Photos, floor plans and text document how these houses are more satisfying to live in than the "starter castles" being marketed to homebuyers. Many Chicago architects find that the book is a wonderful tool to show clients the benefits of scaling down square footage while raising expectations of quality and comfort.

The ideas set forth in the book are by turns familiar and radical. Susanka

advocates what architects have always believed: that the design of spaces is more important than their square footage. She takes it to the next level and calls for the elimination of all formal rooms in the house (oversized foyers, living and dining rooms) in favor of open-plan spaces articulated with nooks and bay windows that provide intimacy.

The "not so big house" replaces the formal/informal dichotomy with a differentiation between central gathering vs. quiet retreat areas. The spaces of the open plan living/dining area should do double duty: eating areas should be adaptable to formal and informal dining; family rooms should be welcoming places for entertaining as well as daily activities. To provide a respite from the noise and chaos of the shared living spaces, the house should have an "away room" that is just large enough to seat two or four people. Susanka feels that houses are getting bigger in part to put more square feet between the television and those who are not watching it. An "away room" that can be closed off with pocket doors solves this problem with minimal space.

As the size of new houses seems on a perpetual upward spiral, is the not-so-big concept viable? Vacation homes have long provided examples of living on a cozier scale, but designs for full-time dwellings are less common. More typical is an addition and/or renovation that applies many of the not-so-big concepts to the reworked part of the house. This article presents local examples of both approaches.

## New Suburban Houses on a Not-So-Big Scale

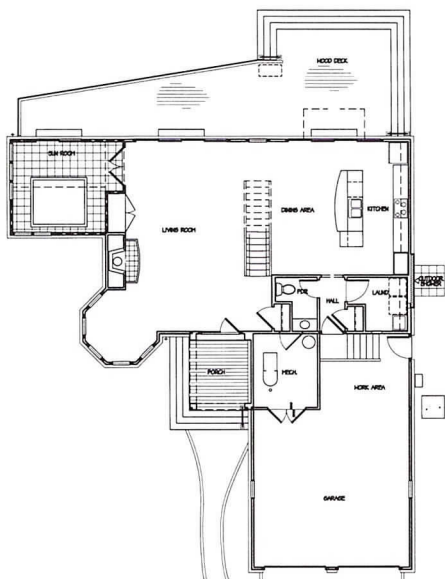
Two houses in the suburbs of Chicago offer different ways of meeting the goal of maximizing value and livability on modest lots. The Carpenter's Courtyard House in Elmhurst, designed by Nagle Hartray Danker Kagan McKay Architects, is a two-bedroom residence of just over 1,000 square feet (with an equal amount of basement space). The Parks Residence in Mundelein provides four bedrooms and two and a half baths in 2,500 square feet of space.

The Carpenter's Courtyard House exemplifies the values of pared-down,



## What's the "Not So Big" Idea?

Continued from page 9



⊕ FIRST FLOOR PLAN ⊙

The Parks Residence (above) makes the most of its 2,500 square feet; an octagonal bay accommodates a piano on the first floor and home office conference table on the second. A 7 foot high closet (right) separates the mudroom from the kitchen/family room in the Hubbard/Walli Residence.

beautifully designed and crafted spaces. The basement level (which has simpler finishes but the same 9-foot ceilings as the first floor) provides the overflow space for messy activities such as hobbies and children's games. The main floor is like an elegant pavilion, with floor-to-ceiling windows that orient it to the rear garden and pool. James Nagle, FAIA refers to the clean-lined style as "Mies in wood," with the exterior sheathed in clear cedar and the interior accented with cabinetry and wall panels of maple.

The house feels larger than it is for several reasons. Built-in cabinets next to the living room fireplace and in the study reduce clutter. The only standard doors in the house are on the second bedroom and bath; the master suite and the master bath

space they will use," comments John Richert, AIA of Crossroads Design.

In planning the Parks Residence, Richert showed his clients Susanka's book and together they were able to agree on reducing the size from over 3,000 square feet to just over 2,500. With a fixed budget, a relatively small lot, and an informal lifestyle, the couple readily agreed to forgo a traditional floor plan in favor of one that focuses on livable space, with an everyday use and purpose for every inch of the house. The first floor is primarily a single large space comprising living, dining and kitchen, with open stair treads contributing to the airy feeling. A corner octagonal bay that was designed to accommodate a piano on the first floor also makes the perfect place for a conference table in the second-floor home office. This house's version of the "away room" is a sunroom filled with a large Jacuzzi tub.



Rockwell Associates

### The Not-So-Big Addition

An addition to an already sizeable house seems an unlikely candidate for this article. Nonetheless, the work done to the 3,500-square-foot Senser Residence in Highland Park by Full Circle Architects exemplifies some major principles of the not-so-big house. The client agreed to transform formal space into everyday space, necessitating double-duty design. The couple's belief in the importance of education was made tangible by converting the former dining room into a study for themselves and their children. The formal dining functions were transferred to a new eating area in the expanded kitchen. With a careful floor plan and a lighting system with dimmers, this informal dining area can seat up to 20 people for dinner parties.

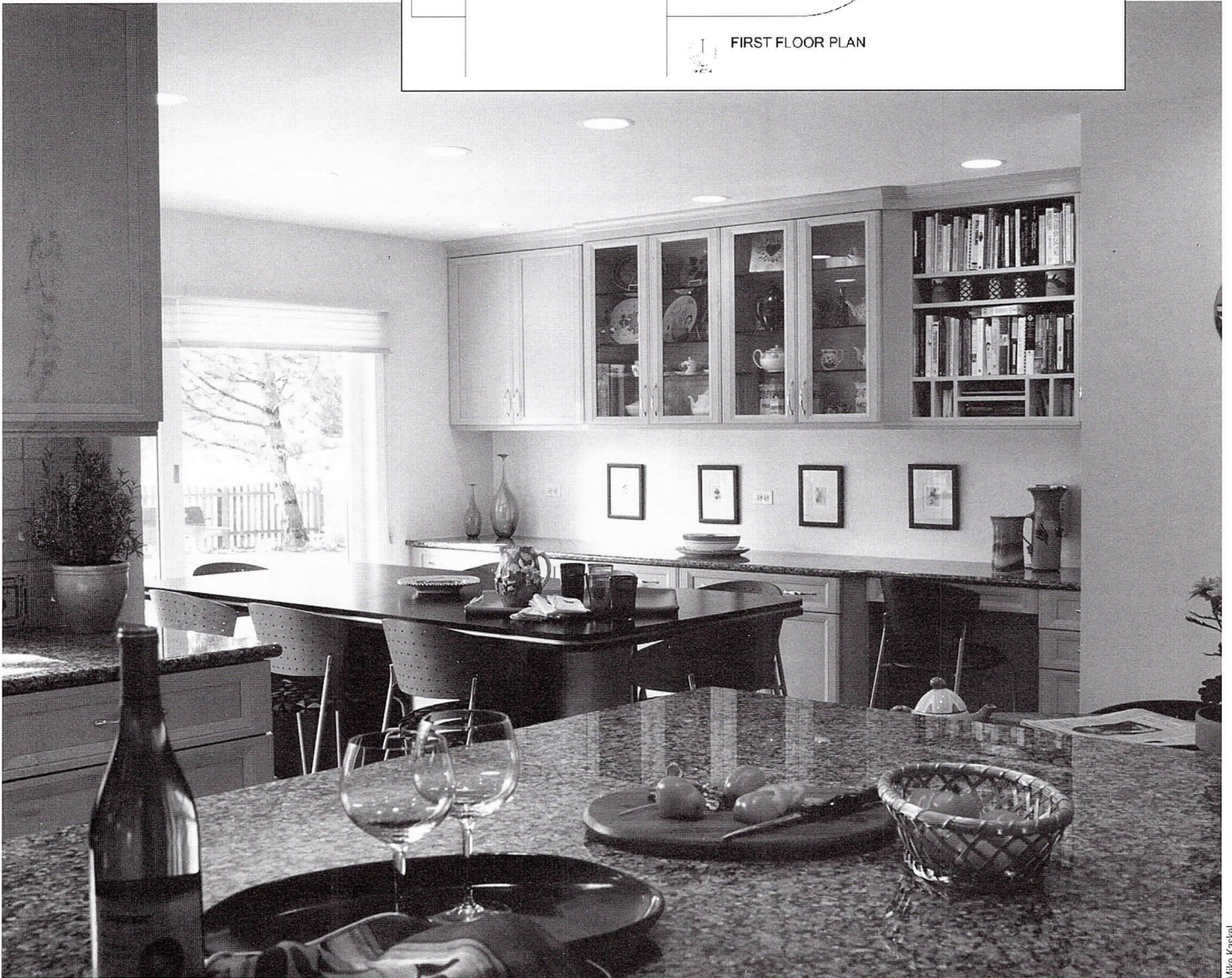
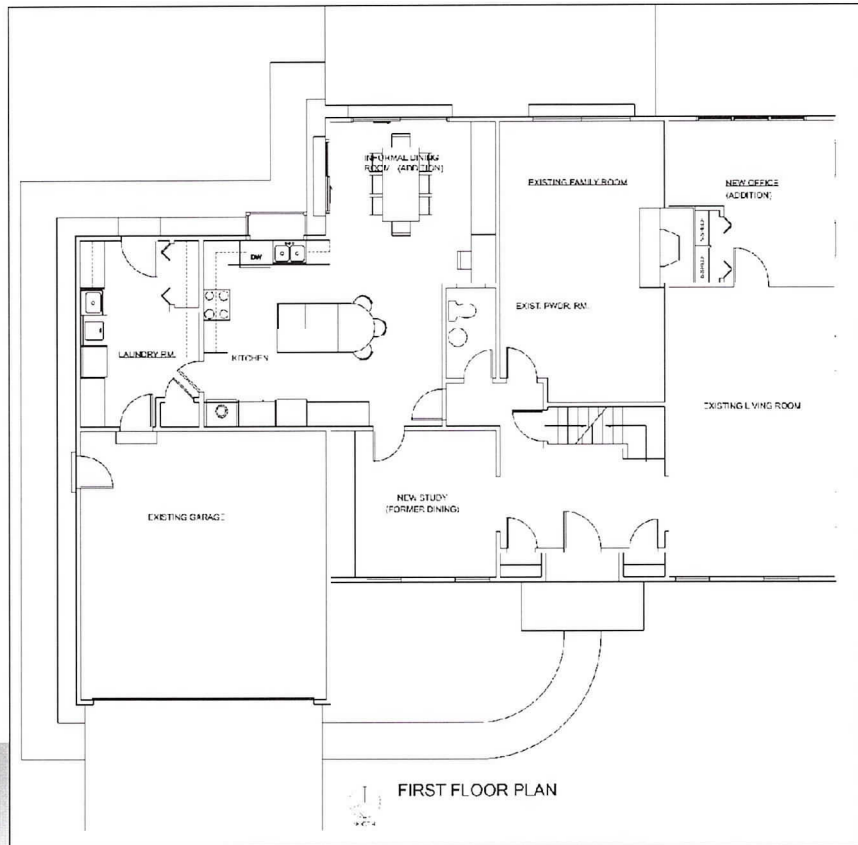
Two additions designed by Rockwell Associates offer inventive space-saving features. In the Hubbard/Walli Residence,

are given privacy by floor-to-ceiling sliding doors of maple. The study is part of the master suite and has its own terrace; as in the rest of the house, sliding glass doors connect it directly to the outdoors to create an expansive feeling.

While Nagle's carpenter/contractor client deliberately commissioned a small house, most people end up scaling down the size of their home for financial reasons.

"People always want more than their budget allows, and we need to convince them to put money into details and the

In the Senser Residence (right and below), Full Circle Architects converted a dining room into a study. Formal and informal dining functions were consolidated in a new expanded kitchen.



Mike Kaskel

## What's the "Not So Big" Idea?

Continued from page 11

a 7 foot high closet at the back door separates the mud room from the kitchen/family room. Creating this spatial divider instead of a full-height wall maintains the views of the backyard and preserves the open feeling of the combined kitchen and living spaces. An even more unusual mudroom at the Robinson Residence does double-duty as a greenhouse, saving space while expressing its owner's personal interests and talents.

Other Rockwell Associates projects not illustrated here include equally ingenious space-saving devices that serve a client's particular needs. For a professor whose house was inundated with books, closet doors in a bedroom/office were fitted with bookshelves and equipped with heavy-duty casters. In the family room of a household whose father needed to do jigsaw puzzles as part of stroke-recovery therapy, architect Ellen Galland, AIA devised a built-in table with a sliding surface that holds the puzzles during the day and disappears when not needed.

### The Pros and Cons of "Not So Big"

The "not so big house" concept has generated an enormous amount of media coverage for both the book and its author; how many other architects have appeared on "Oprah?" This may be in part because it dovetails so well with other current hot topics such as the voluntary simplicity movement, environmental responsibility, even Feng Shui. It is not about affordable housing, or even about doing more with less money; Susanka is quick to point out that the smaller house she advocates will end up costing as much as a larger, less-detailed home. The true subject is the upper-middle-class and its domiciliary discontents — and how good architecture is the solution to their problems. So why aren't more architects and their clients clamoring for it?

"All of the themes resonate with me," comments Scott Fortman, AIA, "but we're seeing a resurgence of formal spaces with clients who do a lot of entertaining and want those rooms as well as the informal family spaces."

Even with less wealthy clients, "it goes against current customs and traditions," according to Chris Turley, AIA. He admires the concept, and is listed on the [notsobighouse.com](http://notsobighouse.com) Web site, but finds it a hard sell to convince clients to in effect pay more for less. Design fees and construction costs are higher per square foot, partly because of the level of detailing and partly because the kitchen, with its large fixed costs for appliances, takes up a proportionately larger share of the house. The architect must spend a

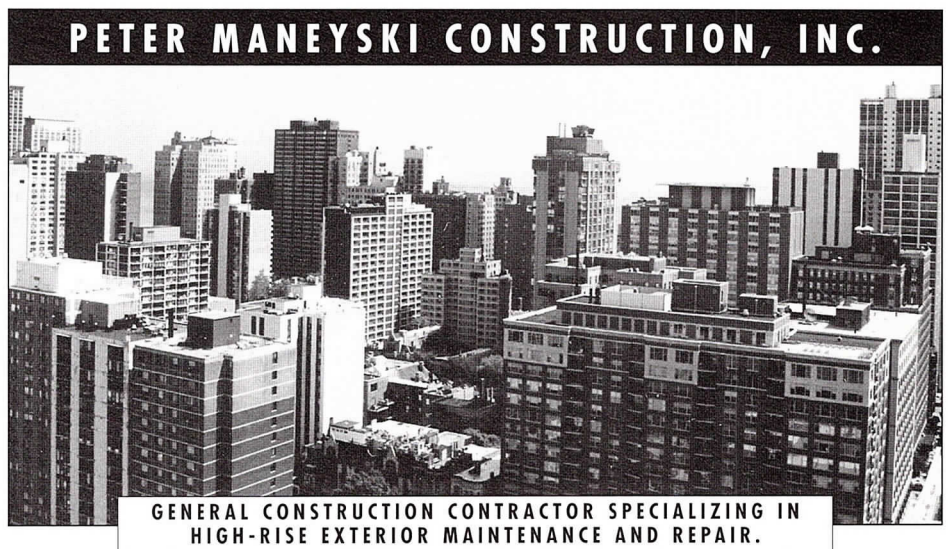
good deal of time educating everyone — not just the client but realtors and lenders — about the value of a house without traditional formal spaces. Nonetheless, Turley often lends it to clients to help them realize that their house need not be colossal to be livable.

At the heart of the not-so-big concept is the power of architecture to shape spaces that bring psychic satisfaction. Now that is an idea worth promoting on a big scale.

Laurie McGovern Petersen is the contributing editor of Focus.

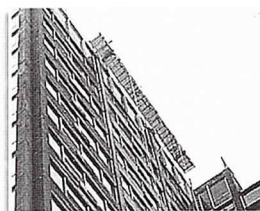
### Susanka to Speak at AIA Chicago

September 23 • Professional Development Conference • Details on page 6



**PETER MANESKI CONSTRUCTION, INC.**

GENERAL CONSTRUCTION CONTRACTOR SPECIALIZING IN HIGH-RISE EXTERIOR MAINTENANCE AND REPAIR.

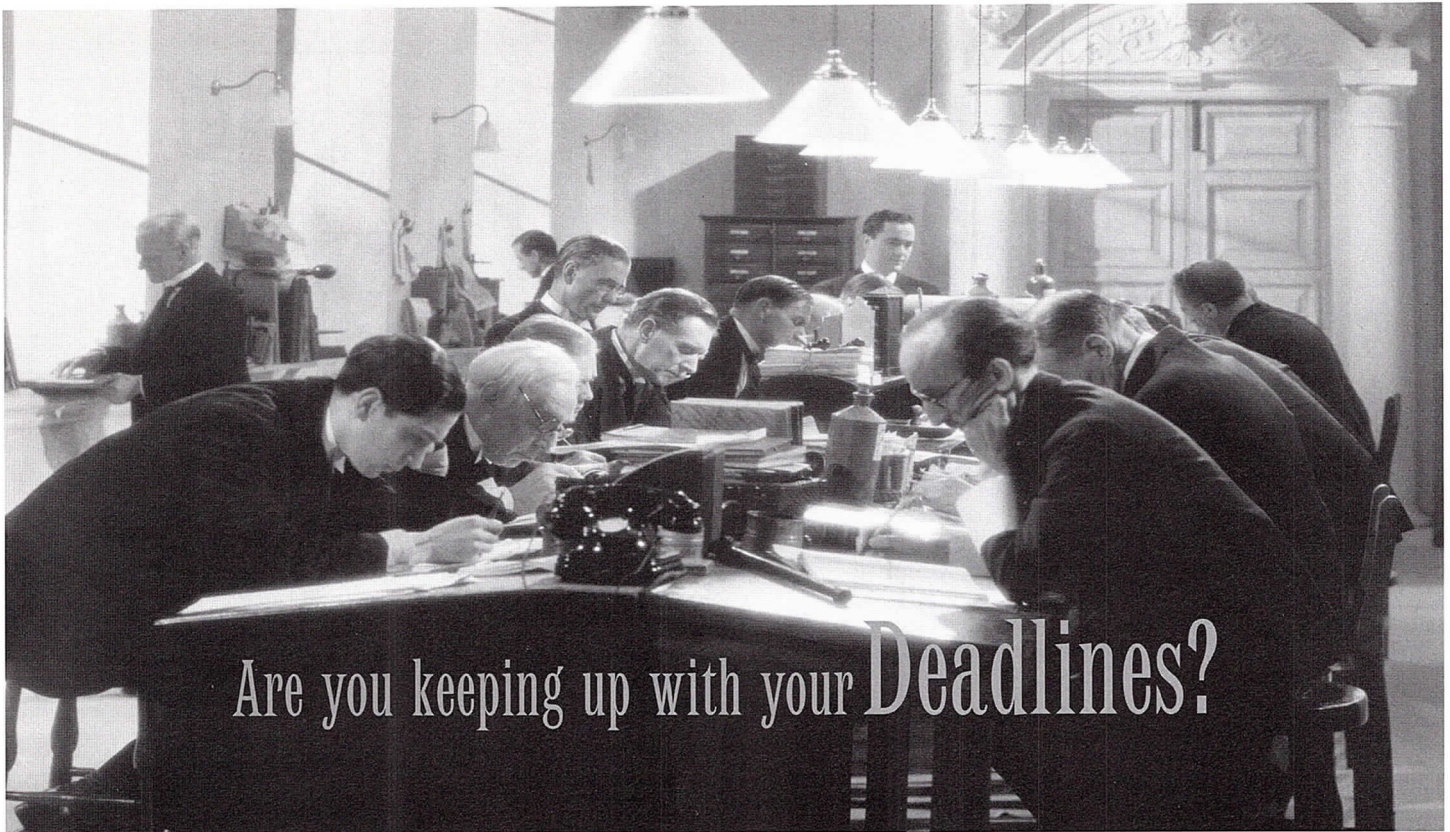


Peter Maneski Construction Co. is a recommended Sika® Contractor.

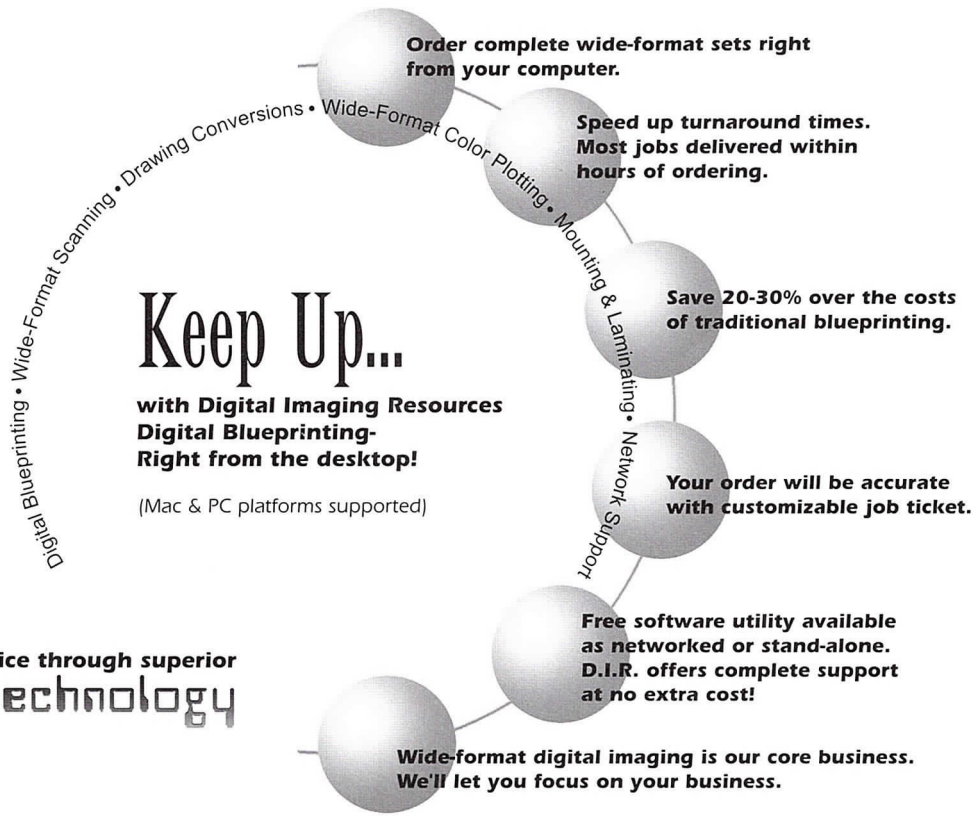
- Facade Inspection Equipment
- Leak Location Service
- Concrete Repair
- Tuckpointing
- Masonry Repair
- Lintel and Shelf Angle Replacement
- Balcony Restoration
- Waterproofing Systems
- Caulking
- Chemical Cleaning



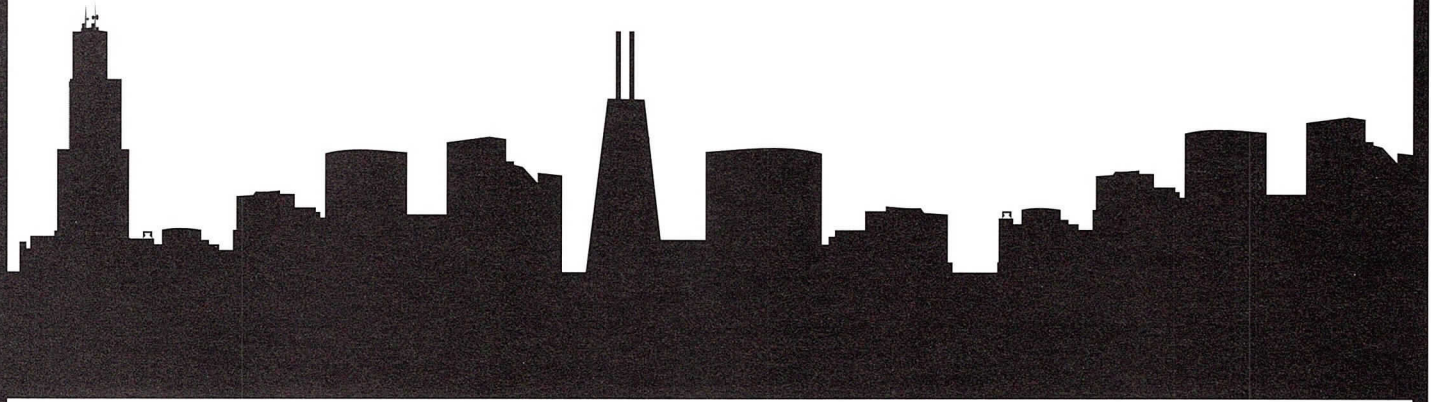
1111 W. Webster St. Chicago, IL. 60614  
773.348.6820 / ext. 237



Are you keeping up with your **Deadlines?**



Better service through superior **technology**



# Mossner

**MORE THAN**  
**75**  
**YEARS OF**  
**QUALITY**  
**SERVICE**

- Now offering PlanWell™
- High Speed Digital Blue Printing
- Large & Small Color Reproductions
- Complete Electronic CAD File Transfer Options
- Digital & Diazo Reproductions (Bond or Vellum)
- Drawing Management & Distribution
- Specifications & Document Printing
- Pick-up & Delivery Service

# Mossner

THE REPRODUCTION PEOPLE • LARGEST IN THE MIDWEST  
Mossner Building • 137 North Wabash • Chicago, IL 60602  
PHONE: (312) 372-8600 • FAX: (312) 372-2809 • [www.mossner.com](http://www.mossner.com)

# Good Neighbors



William Worn Architects

Three new multi-family residential projects are designed with their urban communities in mind.

## Bucktown Commons William Worn Architects

To be located at the corner of Milwaukee Avenue and Concord Place, the 30-unit condominium building by William Worn Architects is designed as a contemporary interpretation of the steel and masonry buildings typical of this gentrifying community. Architectural and cultural history is important to many Bucktown residents (see related story on page 5), so the architects designed window mullions, balconies, spandrel panels, and cornices in flat-black aircraft aluminum to recall the manufacturing heritage of the neighborhood. Cantilevered cornices above the masonry towers create deep shadows that activate the façade.

## Skybridge at One North Perkins and Will

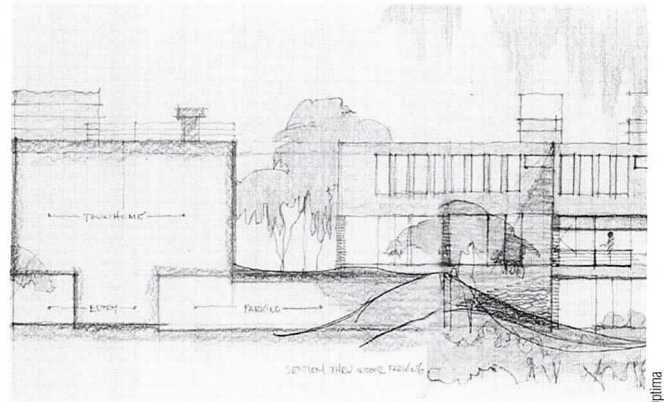
While neighbors in Bucktown worry about how gentrification will impact the community's traditions, inhabitants of Greektown's new high-gloss residential projects hope for more development, specifically in the form of a grocery store. With the design of a new high rise, Perkins and Will not only delivers a supermarket housed in a base that respects its neighbors on Halsted Street, but the firm also presents a lively residential tower that serenades the skyline to the east. The architects have attempted to humanize the 780,000-square-foot structure with a design that recalls a cliff dwelling rather than a monolithic vertical slab.

## Michigan Place by Optima Inc.

This development of townhomes and mid-rise condominiums is the result of a competition held by the Illinois Institute of Technology for a site directly east of their main campus. The centerpiece of Optima's design is a landscaped interior courtyard that's bermed up to conceal the ground-level garage and provide garden



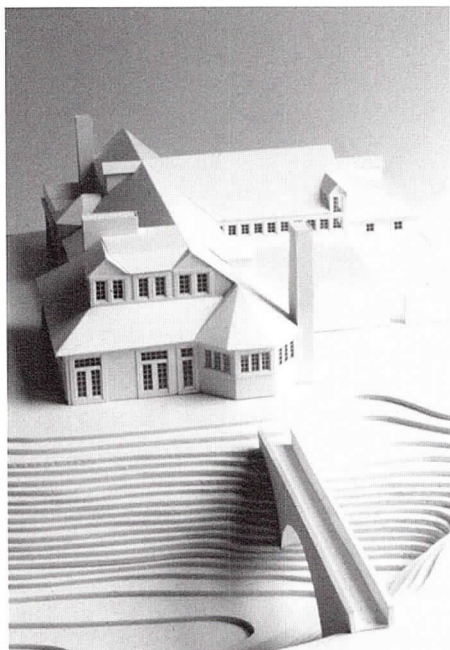
Perkins & Will



Optima

access from the main living level. A shared, off-street entry provides access to the parking spaces, each of which leads directly into the townhome, eliminating the need for individual doors on the streetscape.

# Living Hand-to-Mouse



Cohen &amp; Hacker

This page: A 6,500-square-foot home in Highland Park by Stuart Cohen, FAIA and Julie Hacker, AIA.

By Laurie McGovern Petersen

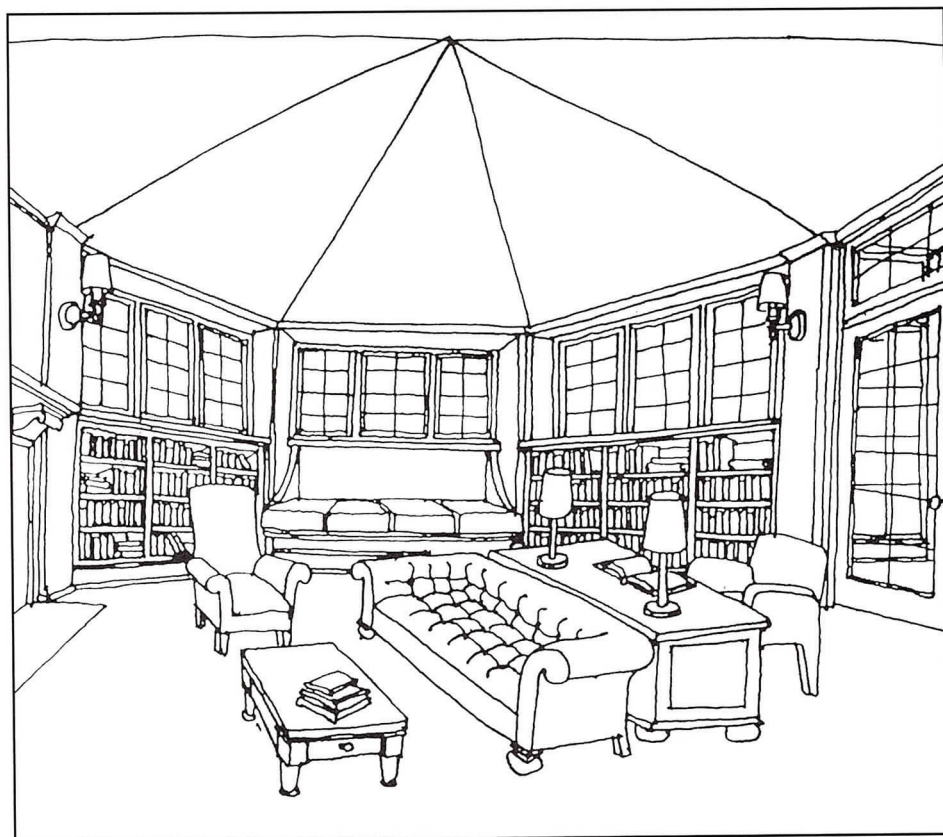
**A**lthough computer-aided design has become ubiquitous in architectural offices, the extent and purposes of its use still vary considerably. Two case studies of the residential design process illustrate different approaches.

## Cohen & Hacker Architects

Schematic design begins with freehand sketches of the floor plan, exterior massing, roof forms and windows. A massing model, constructed on  $1/8'' = 1'$  scale, is used to determine the final form and window placement.

In design development, interiors are drawn freehand and then to scale on the computer. Some of the interiors are then illustrated as models on a  $1/2'' = 1'$  scale.

“We prefer models to computer-generated 3D views because you are better able to see things simultaneously,” says Stuart Cohen, FAIA. Working drawings are prepared using AutoCAD.





## Douglass + Brock Architects Inc.

At the earliest client meetings, the firm presents ideas by sketching floor plans on grid paper. Further on in the schematic design process, the plans are generated on the computer with Vectorworks.

“The hard thing about the computer,” according to Robert Douglass, AIA, “is that it wants to get precise right away.”

Near the end of schematic design and beginning of design development, they generate a computer model in Form Z to check the massing and rooflines.

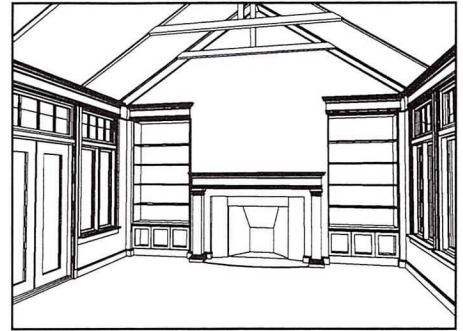
Throughout the rest of the design process, they will go back and forth between the 2-D drawings of Vectorworks and the 3-D models of Form Z.

The realistic exterior view is achieved by importing the Form Z model into Photoshop, dropping it into an actual site

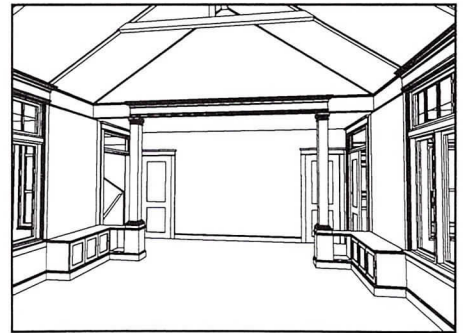
photo, and adding surface textures and foreground landscaping.

“[The computer] is not the answer to every design issue,” comments Douglass, “but it is a tremendous tool for showing clients what they will get, and it helps minimize change orders and surprises during construction. The interior perspectives are a big help for finish carpenters so they can understand how intersections are resolved.”

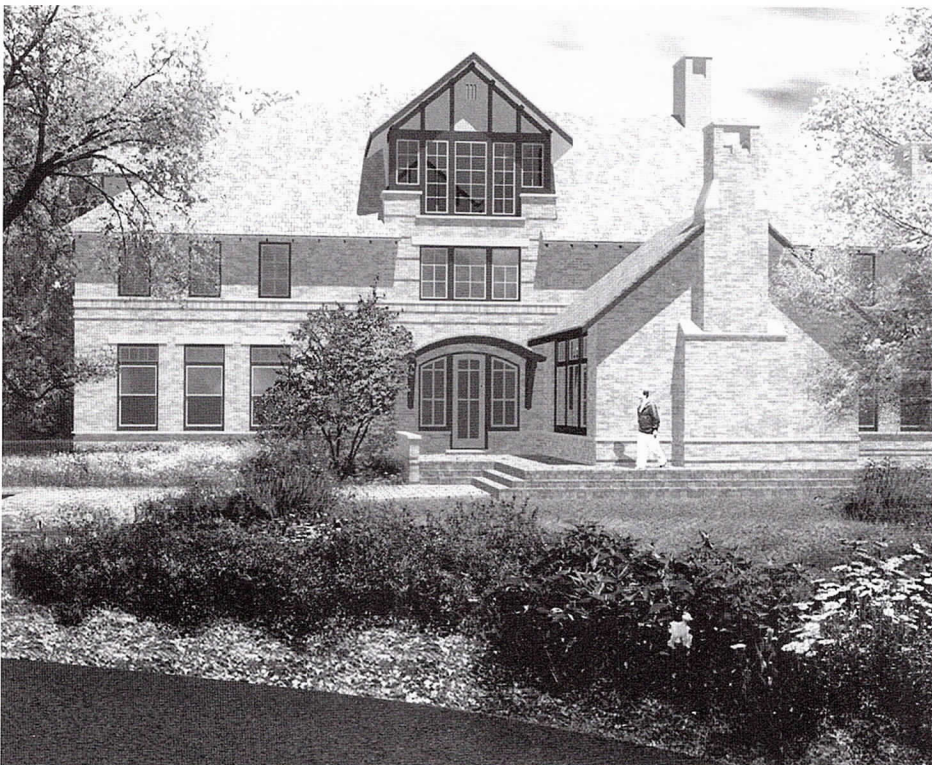
*Laurie McGovern Petersen is contributing editor of Focus.*



1 Living Room  
FROM TOP



2 Living Room  
FROM TOP



This page: Douglass + Brock Architects designed this 5,500-square-foot house in Lake Bluff.

Douglass + Brock Architects



## They All Got Jobs.

Have you looked around lately? It appears as though everyone has a job. For architects and other design professionals, unemployment is at an all time low. Every firm is hiring, so how can you get your name and resume in front of the right hiring manager?

The answer is CFA. Our feelers are always out, especially in this market. Over the past 15 years we've built a job database unequaled anywhere in the USA. Since 1984, CFA has successfully introduced candidates and firms more than 20,000 times.

Come to a CFA office for a complete and comprehensive portfolio review and CAD skills evaluation. We will refer you to one of our award-winning

clients to perform per-project consulting services or, if you prefer, CFA will help find you a permanent position at the firm of your choice.

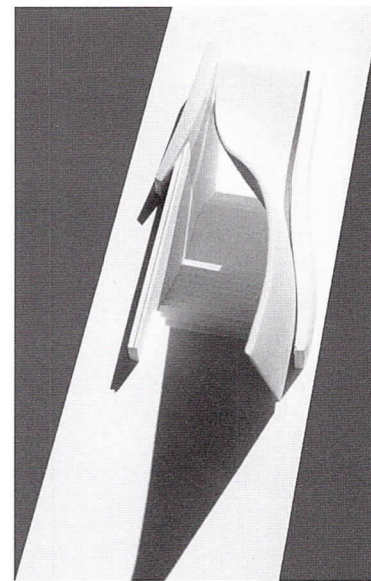
"CFA makes suitable matches through careful listening and thorough skill evaluations. As a result of their professionalism I was placed successfully both as a consultant and then as a permanent employee", Brooks Slocum, AIA, HOK employee.

CFA's job placement counselors have years of experience in the staffing industry and specialize in the field of architecture and design. Let CFA help you chart a path that will satisfy your professional career goals. Act now -- schedule your interview with CFA and get started on your new job today.



For more information contact Consulting for Architects, Inc. at 312-345-1700 or on-line at [www.cons4arch.com](http://www.cons4arch.com)

Left to right: Binh Vinh, AIA of HDR Architecture; Teng & Associates' award-winning subway station entrance prototype (see page 22).



PEOPLE

**The Alter Group** has moved to new headquarters at 5500 W. Howard St. in Skokie.

In Hellmuth, Obata + Kassabaum's Chicago office, **Erik Andersen, AIA** has rejoined the firm as a senior associate and project designer and **Wilson Chow, AIA** has joined as a project architect and planner.

VOA Associates has appointed **David Arms, AIA, Fabio Grego, AIA, Robert Reis, AIA,** and **James Sasek, AIA** as vice presidents.

DLK has promoted **Helen Fantini, AIA** to associate principal, **Sal Salahuddin, AIA** to senior associate, and **Eric Robinson, Assoc. AIA** to associate.

**Michael Blaise Filippini, AIA** has rejoined George A. Kennedy & Associates as vice president.

**Frank Heitzman, AIA** has been named "Outstanding Faculty Member of the Year" by the Illinois Community

College Trustees Association. Heitzman directs the architecture and interior design program at Triton College and is the IDP coordinator for AIA Chicago and AIA Northeast Illinois.

**Thomas Hutchinson, AIA** of Legat Architects will present a case study on the roofing replacement of Mundelein High School at the 11th annual International Waterproofing and Roofing Congress in Florence, Italy in early October. For details about the conference, e-mail [kelly@bfrc.demon.co.uk](mailto:kelly@bfrc.demon.co.uk).

**Victor Krasnopolsky, AIA** and **Michael Karlovitz, AIA** have joined Lucien Lagrange and Associates as senior designers.

In RTKL's Chicago office, **Ronald Reed, AIA** has been promoted to associate vice president.

**Searl and Associates Architects** has relocated to 500 N. Dearborn St., 9th Floor.

Tylk, Gustafson and Associates Inc. has changed its name to **Tylk Gustafson Reckers Wilson Andrews**.

**Valerio Dewalt Train** has moved to the 9th floor of 500 N. Dearborn St.

HDR Architecture has named **Binh Vinh, AIA** senior vice president and director of design for the science and technology sector.

**Customize to meet your project's needs.**

AIA Contract Documents adapt to meet your needs. They start you with the latest in construction industry practices, technology, legal precedents, and indemnity insurance. They're easy to adjust for your project's requirements. Get the contracts that are both flexible and strong.

**Can AIA Contract Documents meet your specs?**  
Yes. Find the Distributor with Documents that are right for any job. For automatic updates on Document changes as they occur, be sure to ask about the Document Supplement Service.

**AIA CONTRACT DOCUMENTS. You can shape them.**

**AIA Chicago  
312/670-7770**

AIA Contract Documents are a product of The American Institute of Architects.

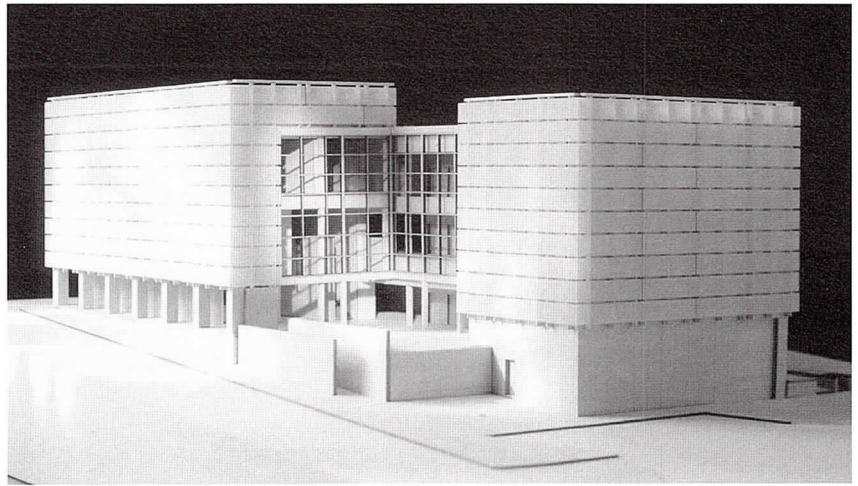
**Bruce Wexelberg, AIA** and **Laura Zimmer, AIA** have joined the Chicago office of HLM Design.

**Zimmerman Weintraub Associates** has moved to 410 S. Michigan, Suite 421.

PROJECTS

The team of **Booth Hansen Associates** and **Studio Gang/O'Donnell** has been selected to design the new \$31 million Rock Valley College Arts Instructional Center in Rockford.

The design of the new Wustum Museum of Art was unveiled recently in downtown Racine, Wis. Designed by **Brininstool + Lynch Ltd.**, the project is an adaptive reuse of an historic office and bank building. Floor-to-ceiling windows at the ground floor allow open views into the building. Inside, a glass curtain wall separates the galleries from a larger outdoor sculpture courtyard, allowing an influx of light and views of Lake Michigan.



Construction costs are projected to be approximately \$5.5 million; construction begins early next year.

**Daniel P. Coffey and Associates** has been retained to prepare plans for the restoration and modernization of the Auditorium Theatre. In April, the Illinois General Assembly announced that the Auditorium Theatre Council would receive up to \$13 million to continue and complete the restoration of the landmark theater under the Build Illinois program.

Construction has begun on a new two-story, 72,000-square-foot design and research facility designed by the

Chicago office of **Hellmuth, Obata + Kassabaum** for Motorola in Champaign. The fast-track construction by Graycor is expected to be complete by December.

**Hirsch Associates** currently is working on three large-scale urban residential projects. Churchill Row consists of 39 lofts in an existing three-story manufacturing building and 22 new townhomes on a full block in the Bucktown neighborhood of Chicago. 1001 West Madison, a new seven-story concrete loft building with 90 units over retail and parking, is being developed by Turnberry Properties, a venture of Sherwin Braun, AIA.

Build your future with ASC. Our increased focus on Engineering & Architectural Design Services has created openings for:

**Architect/Interior Design**

- Bachelor's in Interior Design w/strong architectural background.
- Strong exp. in programming, space planning, furniture & finish specification.
- Minimum 7 yrs. exp. in admin. projects, project management and coordination.
- Ability to handle multiple projects & priorities in a fast-paced environment.
- Must have excellent communication skills & work well as a team member.

**Architect**

- Requires BA/BS in architecture
- Min. 5 yrs. exp. in a fast-paced project environment, demonstrate the ability to handle multiple projects & priorities.
- Excellent communication skills & the ability to periodically lead a project design team.
- Some exp. w/project mgmt tasks, strong detailing, design coordination, & construction document preparation.

ASC also has openings for Mechanical & Electrical Engineers.

Please forward your resume to:

ASC Services Co. • Attn: HR  
300 W. Washington St., Suite 200  
Chicago, IL 60606 • Fax: 312-214-1546  
• E-mail: hrdept@ascservices.com  
• www.ascservices.com

EOE, M/F/H/V

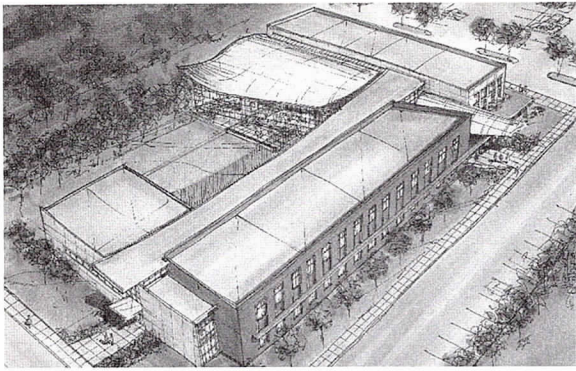
**AUCUTT'S**  
BUILDING MATERIALS

**Solid as a Brick  
For over 100 Years!**

- Brick, Stone & Masonry Supplies
- Representing over 20 manufacturers of brick and clay products
- Delivery to meet your needs
- 4000 square foot indoor showroom
- Huge 11 acre outdoor brick yard

1975 Aucutt Road  
Montgomery, IL 60538  
Fax: 630-897-7923

**CALL: 630-897-7922**



The Wustum Museum of Arts by Brininstool + Lynch Ltd. (opposite page) and the technology center at Robert Morris College by Legat Architects (this page).

100 South Ashland, formerly the Stadium Lofts, is a two-phase project of 139 lofts and 40,000 square feet of retail space with an existing 5-story department store. Phase two will consist of three additional floors of new construction lofts.

Robert Morris College has hired **Legat Architects** to design a new 40,000-square-foot technology center adjacent to the existing campus. The \$10-million building will house classrooms, faculty offices, computer labs and studios. The design also features an internal "town center," with a cyber café, bookstore, auditorium and outdoor courtyard, a fitness center, and gallery space to showcase students' computer-generated artwork and digital images.

**Richard Knorr International** has been commissioned by the Bonetti Family Trust to design a high-rise residential development in Santo Domingo, Dominican Republic. The

three-phase, 582,000-square-foot project includes 130 residential units, 10 penthouse apartments, underground parking for 410 cars, and recreational facilities.

**Perkins and Will** recently completed design on two projects in Cairo, Egypt. The Nile Gateway Centre, a 100,000-square-meter office building, has unrestricted views of the Nile on the eastern edge of its site. To maximize vistas, the complex is composed of two main building masses perpendicular to the river with bridging between. The second project is master planning and design commission that includes 20 prototype buildings on a site within view of the pyramids of Giza. The four building types, assembled from a kit of parts based on the building module, are clad in pre-cast panels and

make use of sunshades to shield the occupants from the desert sun.

Interior construction has been completed on a new high-tech computer lab at the University of Chicago designed by **VMC Architects Inc.** The 5,500-square-foot USITE/Crear Cluster is considered the first of its kind in the country, with movable work stations that reinforce the University's philosophy of small-group interaction and collaborative research.

**Zimmerman Weintraub Associates** has been retained by Crestline Capital to provide program management and conceptual design for Marriott's 23-acre hotel/conferencing complex near O'Hare. The firm will address vehicular access/parking issues and the renovation of ground floor public spaces, including the lobby, retail and meeting facilities.

**Yas/Fischel Partnership** has completed the design of a new 34,000-square-foot village hall and senior

[www.teleport.com/~aiatrust](http://www.teleport.com/~aiatrust)

*Insurance and Financial Programs  
for AIA Members*

*Health Insurance*

*Disability*

*Life Insurance*

*Retirement Program*



*Business Insurance*

*Automobile Insurance*

*Legaline Insurance*

*Continuing Education*

*Small Firm Professional Liability*

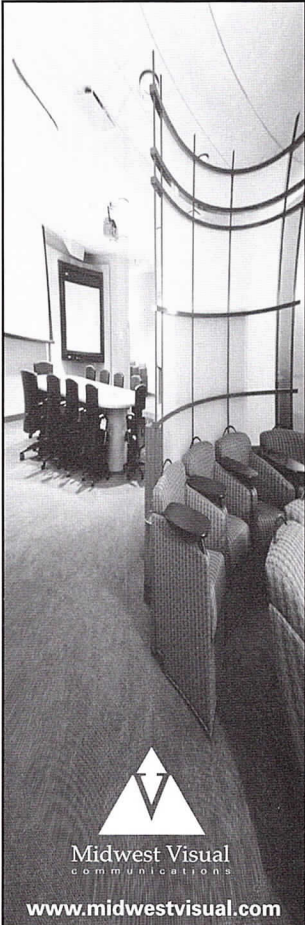
**What Are Architects Saying About Today's AIA Trust?\***

96% say the AIA Trust is a valuable membership benefit.  
94% of those most familiar with the Trust say the Trust's programs are a reason to belong to AIA.  
3/4 of the participants in today's AIA Trust would recommend the program.


**AIA Trust**

Plan information is available 24 hours a day, toll-free at  
**1-800-255-8215**  
Visit e-Architect on [www.aiaonline.com](http://www.aiaonline.com)  
Select Member Services

\*AIA Trust Product Evaluation Study  
Wiese Research Associates 1998



**SmarterRooms.**  
Smarter Technology.

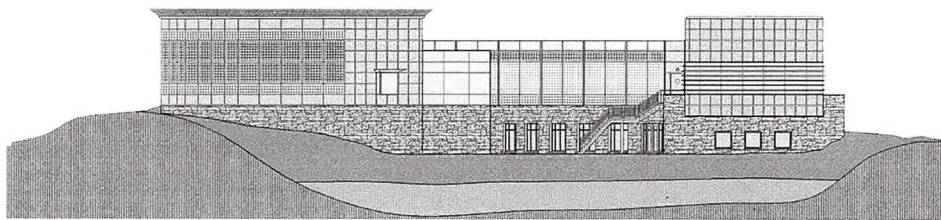


Midwest Visual  
communications

[www.midwestvisual.com](http://www.midwestvisual.com)

6500 N. Hamlin  
Lincolnwood  
Illinois 60712

**800.876.8298**



center for Vernon Hills and also of the \$33 million Lawrence Welk Resort in Escondido, Calif. The latter project includes 156 two-bedroom units in 26 buildings and is currently under construction.

AWARDS

Dale Allen Gyure from the University of Virginia's Department of Architectural History is the recipient of the **2000 Carter Manny Award**. The \$15,000 award will support the completion of Gyure's dissertation, *From Schoolhouse to School Plant: Architectural Transformation and Educational Reform in American Secondary Schools, 1890-1930*.

The Chicago office of **Design Organization Inc.** has won the 2000 Merit Award from the Chicago Building Congress for the Lake County Interstate Visitors Information Center in Hammond, Ind.

The Chicago office of **EHDD Architecture** has won both First Prize and the People's Choice Award in an international competition for ideas for the redevelopment of a three-block area adjacent to the Canadian Parliament in Ottawa, Canada. The EHDD scheme, "The Archeology of Now," proposes the creation of a large public park extending the green space of the Parliament Building's forecourt into Ottawa to connect the commercial structure of the city to the parliamentary domain. The park is terraced across the sloping site with a series of garden spaces connected by ramps. Slate-faced retaining walls provide a continuous chalkboard running the length of the 1,600 square foot long park creating a place for local and visiting artists, political or social pundits to leave their mark on the city. A large perforated sculptural screen, 1,600 feet long by 160 feet high stands along the south edge of the park facing Parliament Hill. Projection towers light the screen at night with images taken that day by digital cameras within the park. The jury described the design as having an "absolutely clear and passionate . . . desire to provide a democratic space of [public] participation."

The Skidmore, Owings & Merrill Foundation has awarded its annual **Architecture Travelling Fellowships** to Vince Pan of the University of Florida, Kai Riedesser from the Southern California Institute of Architecture, and William Prince from Harvard University. The fellowships allow these students to travel to complement their college studies and professional interests. Pan plans to visit China to study the traditions and architecture of high-density cities. Riedesser intends to tour companies and organizations that, in

response to this era of information technology, are re-thinking "process" and making innovations. Prince, whose proposal included what the jury called "a final report that will set a graphic standard," will travel to Rotterdam, Amsterdam, Berlin and Stockholm. The jury consisted of **Leigh Breslau, AIA**, design partner of SOM; Reed Kroloff, editor-in-chief of *Architecture*; and **Larry Kearns, AIA**, principal of Wheeler Kearns Architects. The Foundation also awarded its **Fellowship in Urban Design** to Philip Wilkinson, Jr. of Kent State University and the **Fellowship in Interior Architecture** to Matthew Hufft from the University of Kansas. Wilkinson will visit Southeast Asia; Hufft's travels include Japan, China, the Philippines and Thailand. The urban design jury was comprised of Craig Farnsworth, senior landscape architect of Wolff Clements & Associates; **Geoff Goldberg, AIA**, principal of Goldberg + Associates; **John Syvertsen, FAIA**, president of OWP&P Architects; and **Philip Enquist, AIA**, urban design partner of SOM.

Nada Andric, associate partner at SOM; Bob Kleinschmidt, principal of Powell-Kleinschmidt; and John Zukowsky, curator of architecture at the Art Institute of Chicago, were jurors for the interior architecture fellowship.

The tree-friendly Tetra Pak headquarters designed by **Solomon Cordwell Buenz** recently won an Award of Distinction from the National Arborist Association and an Award of Excellence from the National Arbor Day Foundation. Scott Jamieson of **Hendricksen the Care of Trees** headed the project's arborists. The architects and arborists created a detailed tree inventory of the heavily wooded property to site the building in a way that would save the most trees.

**Teng & Associates** received the 2000 American Architecture Award from the Chicago Athenaeum Museum of Architecture and Design for the design of a subway station entrance prototype for the Chicago Department of Transportation. The City requested the



A Hobbs Group Company

*Insurance and Loss Prevention Services for Architects*

- ◆ Professional Liability
- ◆ Specific Project Coverage
- ◆ Office Packages
- ◆ Workers Compensation
- ◆ Automobile
- ◆ Exclusive Programs
- ◆ Group & Individual Life & Health

One Tower Lane ♦ Oakbrook Terrace, IL 60181  
 Tel: 630.571.4500 ♦ Fax: 630.571-4518 or 4525  
 E-Mail: [info@avains.com](mailto:info@avains.com) . [www.avains.com](http://www.avains.com)

**Sabo & Zahn**  
 Attorneys at Law

**Werner Sabo, FAIA**

**James Zahn, FAIA**

Licensing problems, copyrights, business formations,  
 mediation, litigation, arbitration, contracts, real estate  
 construction attorneys

8620 Sears Tower  
 Chicago, IL 60606

(312) 655-8620  
 fax: (312) 655-8622

[www.sabozahn.com](http://www.sabozahn.com)



Vernon Hills' new village hall and senior center by Yas/Fischel Partnership (opposite page) and EHDD's award-winning design for a public park near the Canadian Parliament (this page).

prototype design after the firm completed the award-winning Lake/Wells Subway Station entrance.

The American Resort Development Association has awarded **Yas/Fischel Partnership** the 2000 Silver Award for Interior Design/Refurbishment for the Fernwood Vacation Village in Bushkill, Penn.

#### PROFESSIONAL DEVELOPMENT

The AIA's International Committee PIA is sponsoring **Design Diplomacy: Public Policy and the Practice of Architecture** September 6 through 9 in Copenhagen, Denmark. The conference will explore the connection between design in architecture and the influence it can have on public policy. AIA members can earn up to 42 LU. For more information and to register, visit [www.e-architect.com/pia/intlmkts/](http://www.e-architect.com/pia/intlmkts/).

On September 7, from 10:00 a.m. to 4:00 p.m., the International Masonry Institute (IMI) is sponsoring **Ceramic Tile Chicago Style**, a free workshop about the design and installation of ceramic tile floors and walls using thin-set and mud-set applications. ANSI also will be discussed. Lunch and educational materials are included for those who pre-register; AIA members earn 4 LUs. The workshop is being held at the Hotel Intercontinental, 505 N. Michigan Ave. To register, call 312/347-2500.

**Many Shades of Green**, an eco-friendly exhibit for designers, is on display through early September at Archeworks, 625 Kingsbury St. The exhibition will travel to Ball State University in the fall.

#### VARIOUS MATTERS

The Museum of Science and Industry is sponsoring **CANstruction**, a design competition that benefits the Greater Chicago Food Depository. Fifteen teams of architects, engineers and contractors are needed to construct "food sculptures" for this high-profile event, scheduled for October 6 through 9. Firms interested in volunteering should call Karen Lasky at 773/684-9844. To find out more about CANstruction, visit [www.canstruction.org](http://www.canstruction.org).

In July, **Charrette** moved its Midwest distribution center to 50,000 square feet of office, showroom and warehouse space at Ashland Marketplace, 3000 S. Ashland Ave. The new facility includes a 12,000-square-foot demo room and houses the company's wide range of digital imaging equipment.

The **Landmarks Preservation Council of Illinois** will hold its annual conference in Lake Forest, September 13 through 16. Philippe de Montebello, director of the Metropolitan Museum in New York, will keynote the opening gala dinner, followed by two days of workshops and panel discussions. For more information, call 312/922-1742.

The Frank Lloyd Wright Building Conservancy is holding its annual conference, **Broadacre City and Beyond: Frank Lloyd Wright and His Vision for Usonia**, September 20 through 24 in Minneapolis. For more information, call 773/784-7334 or visit [www.savewright.org/FLW](http://www.savewright.org/FLW).

The Arts and Crafts Conference has scheduled its annual conference, **Uniting the Useful with the Beautiful: The Architecture of the Arts and Crafts Movement**, for October 19 through 22 in Perry, Iowa. Margaret Richardson, chair of the Lutyens Trust and author of *The Craft Architects*, is the plenary speaker. For details, call Elaine Hirschl Ellis at 877/797-6886.

#### NEW MEMBERS

#### AIA

**Vince Avallone**, HLM Design; **Richard Blender**, Wilkinson Blender Architecture; **Nicol Chervenak**; **Adam Gill**, Gonzalez Hasbrouck; **Edward Heinen**,

### ARCHITECTS NEEDED IMMEDIATELY

Award-winning architectural firm in Elgin, IL seeks architects with varying levels of experience to work with complex, interesting projects. Opportunities available for both recent graduates and experienced professionals to design in our team-based environment. Excellent 401(k) plan and great work environment. Interested candidates should respond immediately to:

Wold Architects and Engineers  
Attn: Cindy Wright  
25 South Grove Avenue, Suite 500  
Elgin, IL 60120  
847-608-2600 • FAX: 847-608-2654  
mail@woldae.com • www.woldae.com



### Botti Studio of Architectural Arts, Inc.

919 Grove Street, Evanston, IL 60201 Established 1864  
847/869-5933 • Fax: 847/869-5996 • 800/524-7211  
[www.bottistudio.com](http://www.bottistudio.com) • [botti@bottistudio.com](mailto:botti@bottistudio.com)

Designers/Fabricators • Stained and Faceted Glass • Beveled Glass • Sandblasted • Stained Glass Restoration and Conservation • Protective Glazing • Wood and Metal Frame Restoration • Sculpture • Bronze • Metal • Marble • Mosaic • Interior Renovation • Woodwork • Murals • Painting and Decorating • Custom Sanctuary Furnishings • Stained Glass Consultants to Architects and Churches

#### Studio Locations

San Diego • Chicago • Sarasota • Agropoli, Italy  
760/753-0705 • 847/869-5933 • 941/951-0978

DLK Architecture; **Earle Lecki**, OWP&P; **Gordon Petrash**, Price Water House Coopers; **Rick Schroeder**, Gonzalez Hasbrouck; **Luis Sunga**, Teng and Associates; **Mimi Tsai**, Mekus Studios; **Christopher Urbanczyk**, Urban & Associates; **Michael Wilkinson**, Wilkinson Blender Architecture; **James Zheng**, Lohan Associates

**Associate AIA**

**Ali Anhari**, Brim Consulting; **Shannon Babski**, Legat Architects; **Maria Beltran**, Adrian Lozano & Associates; **Christopher Bischof**, Stephen Rankin Associates; **Gerald Crumpton**, Thomas Donalek, Douglas Schroeder Associates; **David Felletti**, Wiss, Janney, Elstner; **Joanna Hartman**, Skidmore Owings & Merrill; **Jorge Herrera**, John Joyce, **Booth Hansen Associates**; **Rupa Kunda**, Legat Architects; **Mark Ladd**, **Dong-Hee Ma**, Skidmore Owings & Merrill; **Andrew Maletz**, Oculus Visualization; **Peter Marsh**, Legat Architects; **Patti Miles**, **Rachel Miller**, DeStefano & Partners; **Megan Moore**, Legat Architects; **Malik Nawaz**, Legat Architects; **Jack Panichapan**, Doyle & Associates; **David Poorman**, David Woodhouse Architects; **Charles Sampey**, Merchandise Mart Properties; **Muriel Santacaterina**, Donald James Design Builders; **Keith Schlanger**, Epicenter; **Sallie Schwartzkopf**, Ross Barney & Jankowski; **Naeem Siddiqui**, McClier; **Eben Smith**, Smith & Smith Associates; **Erich Snyder**, Gensler; **J. Cordell Steinmetz**, Booth Hansen & Associates; **Feras Sweis**, Loebel Schlossman & Hackl; **James Tarsio**, Legat Architects; **David Waldow**, Gonzalez Hasbrouck; **Andrew Weiss**, Warman Olsen Warman; **Gary Wheeler**, Perkins & Will; **Richard Wilson**, Camiros

**Professional Affiliates**

**Linda Carroll**, Closet Work; **Kevin Condon**, Great Lakes Plumbing + Heating; **Robert Darin**, The Glass House; **Romeo Gervais**, Gage-Babcock & Associates; **Warren Hill**, Hill Mechanical Corp.; **John O'Leary**, Law Offices of John J. O'Leary; **Darrell Ortiz**, Ortiz Mechanical Contractors; **Ronald Pasowicz, P.E.**

**CLARIFICATION**

In a news item in the June/July issue of *Focus*, **Hellmuth, Obata + Kassabaum** and **Ellerbe Becket** should have been listed as part of the winning team for the Best New Building Award given to the new Northwestern Memorial Hospital.

What to do? How to do it?

**Kristine Fallon Associates, Inc.**

<http://www.kfa-inc.com>

Hardware  
Software  
Networks  
Internet

30 East Adams Street, Suite 600

Chicago, IL 60603-5609

312-641-9339 (voice)

312-641-9337 (fax)

[kfainc@kfa-inc.com](mailto:kfainc@kfa-inc.com)

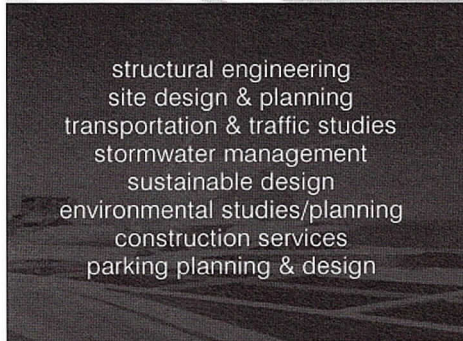
Get it done. Keep it going.

design solutions

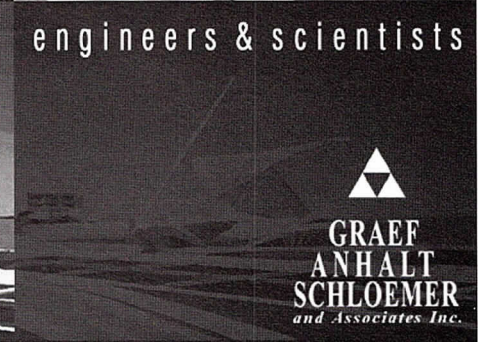
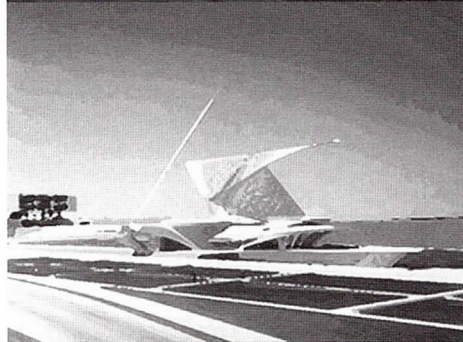
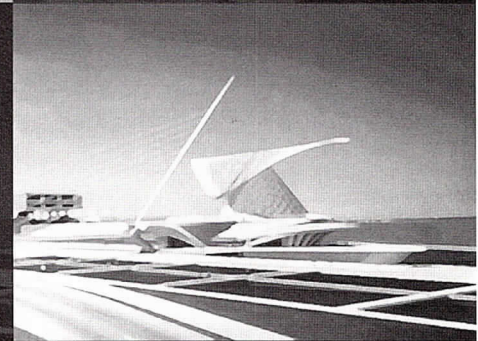
design excellence



Structural, site/civil, environmental, and landscape design for the Milwaukee Art Museum addition.



structural engineering  
site design & planning  
transportation & traffic studies  
stormwater management  
sustainable design  
environmental studies/planning  
construction services  
parking planning & design



engineers & scientists

**GRAEF  
ANHALT  
SCHLOEMER**  
and Associates Inc.

8501 West Higgins Road, Suite 280  
Chicago, Illinois 60631 773/399-0112

Chicago Milwaukee Madison Green Bay





# Protection Since 1952

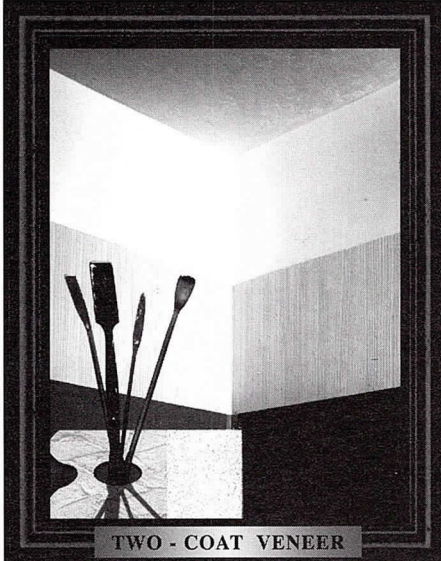
Euclid Insurance Agencies has been providing insurance services to businesses since 1952. Our dedication to the complex field of insurance for design professionals enables us to give you the professional advice and tailored products you need. We have a unique understanding of the architectural and engineering clients we serve and the special coverages they require.

- Professional Liability, Workers Compensation, Disability, Office Package, Health Insurance, Estate Planning, and more
- Legal advice, seminars and continuing education programs
- Website access to risk management information
- AIA Chicago 401(k) and Profit Sharing Association Plan

**EUCLID**  
**INSURANCE AGENCIES®**

977 Oaklawn Avenue • Elmhurst, IL 60126  
Tel: (630) 833-1000 • Fax: (630) 833-1747

# The Art of Plastering



Spectacular walls.  
Smooth...Textured...  
Done the way you want them.  
Hard and durable surfaces that  
make paint and paper look  
better, make redecorating  
easier, make homes quieter.

**Plaster interiors are  
more cost-effective than  
you think.**

*Call us for more information.*



Chicago Plastering Institute  
6547 N. Avondale Ave.  
Chicago, Illinois 60631  
773.774.4500  
Fax. 773.774.5828

## Bondy \* Slutsky Architectural Imaging

Rael D. Slutsky  
Bruce Bondy

847/562-9493

1514 Chapel Court  
Northbrook, IL 60062



Digital Rendering: Tech Tower, Chicago  
Architect: Interactive Design

Hand Rendering Details:  
Prairie Crossing, Grayslake - SOM  
2120 Lincoln Park West - OWP&P

## Announcing

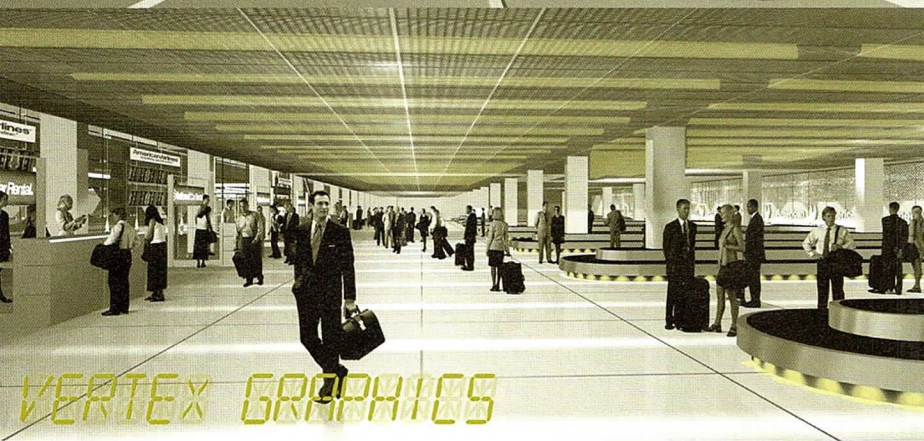
One source for  
digital and  
hand drawn  
imagery

- \* digital modeling and rendering
- \* interactive virtual reality
- \* computer animation
- \* pen & ink renderings
- \* charrette sketches

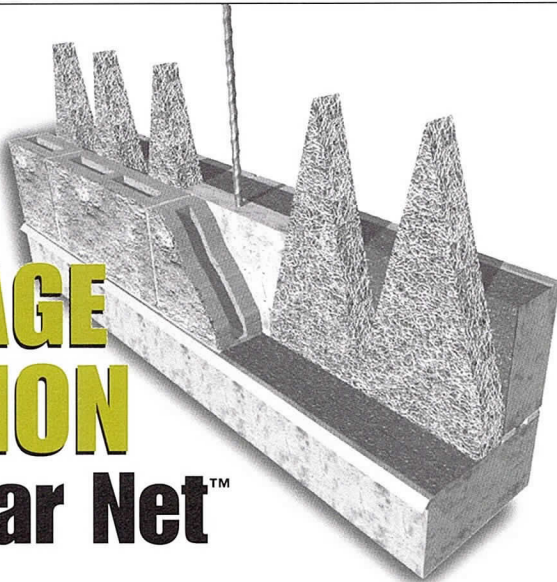
312.697.1107 WWW.VERTEXGRAPHICS.COM

DIGITAL CONSULTANTS  
3D MODELING  
RENDERING  
PRESENTATION GRAPHICS  
ANIMATION  
GRAPHIC DESIGN  
DIGITAL PRINTING

PROJECT : O'HARE FACADE AND CIRCULATION ENHANCEMENTS  
ARCHITECT : MURPHY/JAHN ARCHITECTS



# Another DRAINAGE SOLUTION by Mortar Net™



Mortar Net Block's **patented** shaped mortar dropping collection device prevents water damage in single wythe concrete masonry unit (CMU) walls by breaking up mortar thereby allowing proper drainage to the weep holes. For more information, please contact Mortar Net at 800-664-6638 or visit our Web site at [www.mortarnet.com](http://www.mortarnet.com).

800-664-6638  
[www.mortarnet.com](http://www.mortarnet.com)

 **Mortar Net™**  
The Difference Is In The Cut.

*Architectural*

**Project:**  
De Hollandse Meester  
Zoetermeer, The Netherlands

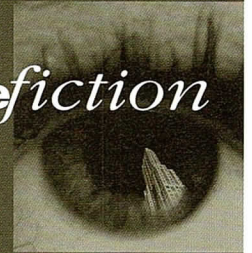
*Rendering*

**Client:**  
Bouwfonds, The Netherlands

*Imaging*

**Architect:**  
PPKS Architects  
René Steevensz, AIA

*imagefiction*



*Animation*

*Web / Media Design*

LaSalle Wacker Building  
221 North LaSalle Street  
Suite 1510  
Chicago, IL 60601

312.726.0818

*Large Format Printing*

[www.imagefiction.com](http://www.imagefiction.com)

- 9** **Transportation Planning.** Planning and Urban Affairs PIA. 12:00 noon; AIA Chicago.
- Robie House Restoration Update.** Summer Loop Lecture Series. Speaker: John G. Thorpe. 12:00 noon; School of the Art Institute, 280 S. Columbus Dr.
- 12** **New Urbanism Meets Adaptive Re-use: A Synergy.** Housing and Historic Resources PIAs. 2:00 p.m.; The Town of Fort Sheridan, 213 Leonard Wood Drive North, Highland Park (meet in the sales center). Limited to 40. 2 LU/HSW
- 17** **Chicago Plan Commission.** Monthly hearing. 1:00 p.m.; City Council Chambers, 121 N. LaSalle St., 2nd Floor. Call 312/744-4499 to confirm date, time and location of hearings.
- 18** **Skyscrapers: The New Millennium.** Exhibit Opening and lecture by Ralph Johnson, FAIA. Sponsored by the Architecture and Design Society of The Art Institute of Chicago. 5:30 p.m., Price Auditorium, 111 S. Michigan Ave. Admission: \$40 for Society members; \$50 for non-members. Reservations and information: 312/443-4751.
- ARE Review Class and Mock Exam.** Friday evening through Sunday afternoon. Holiday Inn Chicago Mart Plaza, 350 N. Orleans. Call AIA Chicago, 312/670-7770, for details.
- 21** **Tour: Spancrete of Illinois.** Technical Issues PIA. 8:00 a.m.; Holiday Inn, 800 South Route 31, Crystal Lake. Followed by a tour of the manufacturing plant at 4012 US Highway 14. 3 LU/HSW
- Electronic Data Standards for Business and Technical Issues.** Information Technology PIA. 5:30 - 7:00 p.m.; Loebel Schlossman & Hackl, 130 E. Randolph Drive, #3400. 1.5 LU

- 23** **Frank Lloyd Wright in Glencoe: 1904-16.** Summer Loop Lecture Series. Speaker: Dr. Susan Solway. 12:00 noon; School of the Art Institute, 280 S. Columbus Dr.
- Business Planning for Architect-Led Design/Build.** Design/Build PIA. 5:30 p.m.; Schiff Hardin & Waite, Sears Tower, #7200. 1.5 LU
- 26** **Tour: Tetra Pak Headquarters.** Environment PIA. 9:30 a.m.; 101 Corporate Woods Pkwy., Vernon Hills (meet in the lobby). 1.5 LU/HSW
- !** **Professional Development Conference 2000.** September 22 and 23. Holiday Inn Chicago Mart Plaza, 350 N. Orleans St. Earn at least 5 LUs per day. See page 3 for details.
- Building Green in Chicago.** Seminar series begins September 28 with a workshop on the LEED rating system. The ongoing series is sponsored by the Environment PIA, the City's Department of Environment, the Environmental Law and Policy Center and Farr Associates. Look for more details in the September issue of *Focus*.

# AIA Chicago



A Chapter of The American Institute of Architects  
 222 Merchandise Mart Plaza  
 Suite 1049  
 Chicago, Illinois 60654  
 312/670-7770  
 312/670-2422 (fax)  
 info@aiachicago.org  
 www.aiachicago.org