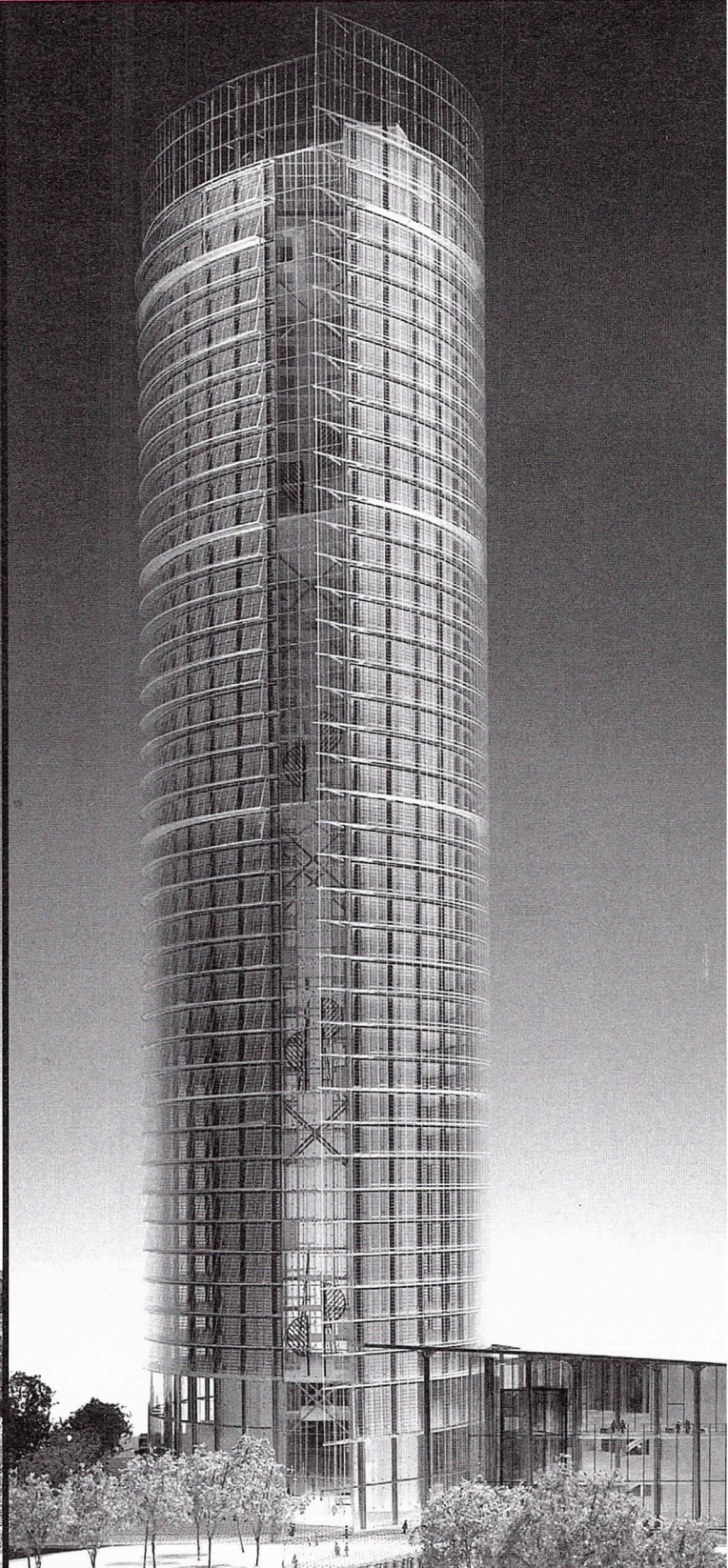
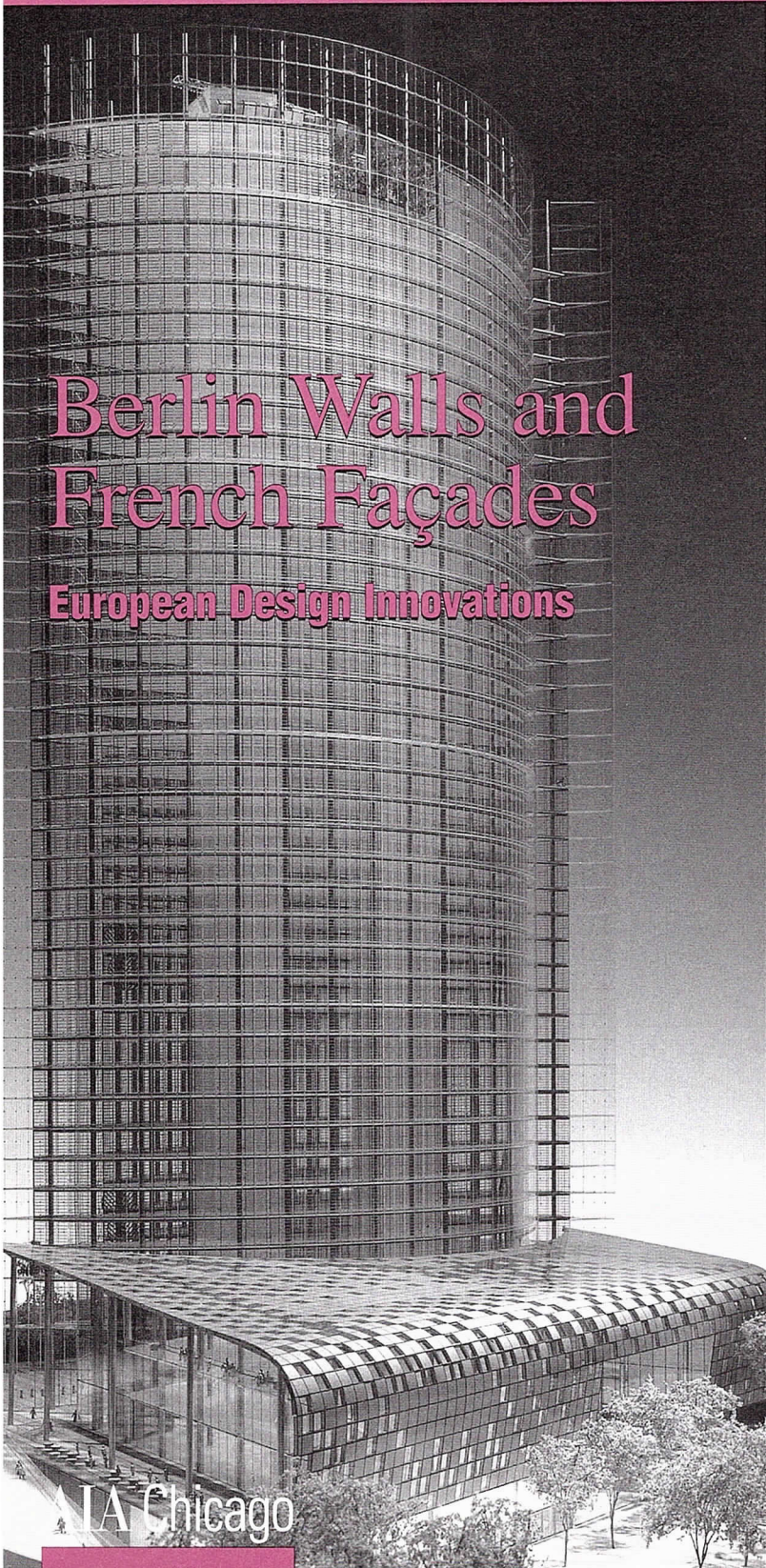


# Focus

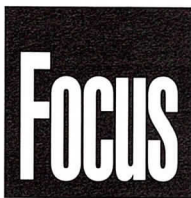
## Berlin Walls and French Façades

European Design Innovations



AIA Chicago

*In This Issue:* When Worlds Collide: Unrealistic Demands, Realistic Advice - 3 ■ Two Seminars for Interns - 3 ■ Show and Tell in Oak Park - 5  
 ■ Sneak Preview: 2000 Professional Development Conference - 8 ■ Message from Berlin - 17 ■ LSH's Torre Paris Headquarters Opens in Chile- 20



**3**  
Focus on Programs

**7**  
News Briefs

**10**  
Cover Story  
*European Design  
Innovations*

**17**  
Feature  
*Message from Berlin*

**18**  
Notebook

**24**  
Calendar

**June/July 2000**

**Editor**

Susan Larson

**Contributing Editor**

Laurie McGovern Petersen

**Focus Advisory Board**

William Bradford, AIA  
Howard Decker, FAIA  
Deborah Doyle, AIA  
James Jankowski, AIA  
Edward Keegan, AIA  
Laurie Petersen  
Pat Rosenzweig  
Alice Sinkevitch, Hon. AIA  
Thomas Zurowski, AIA

FOCUS (ISSN 1071-3700) Vol. 20, No. 6, is published monthly with a combined issue June/July, by AIA Chicago, 222 Merchandise Mart Plaza, Suite 1049, Chicago, Illinois 60654-1001. \$20 of each member's dues are allotted as a subscription. Periodicals postage paid at Chicago, Illinois. POSTMASTER: Send address changes to Focus, AIA Chicago, 222 Merchandise Mart Plaza, Suite 1049, Chicago, Illinois 60654-1001.

For advertising rates and schedules, call 312/670-7770.

© 2000 The American Institute of Architects Chicago. All rights reserved. Reproduction in whole or part without permission is strictly prohibited.

AIA Chicago on the Internet: [www.aiachicago.org](http://www.aiachicago.org)  
AIA Chicago e-mail: [info@aiachicago.org](mailto:info@aiachicago.org)

# AIA Chicago



A Chapter of The American Institute of Architects

**2000 Board of Directors**

**President**

T. Gunny Harboe, AIA

**President-Elect**

Thomas Zurowski, AIA

**Vice Presidents**

Joseph Caprile, AIA  
Randall Deutsch, AIA

**Secretary**

Jonathan Fischel, AIA

**Treasurer**

Dave Urschel, AIA

**Directors**

Raymond Clark, AIA  
Ellen Bailey Dickson, AIA  
Kevin Hall, AIA  
Philip Craig Johnson, AIA  
James E. Prendergast, AIA

**AIA Regional Director**

Holly Gerberding, AIA  
Lawrence Livergood, AIA

**AIA Illinois Director**

W. Stephen Saunders, AIA

**Associate Director**

Susan Campbell, Assoc. AIA

**Professional Affiliate Director**

Eric Singer

**Past President**

James Jankowski, AIA

**2000 AIA Illinois Delegates**

William Bradford, AIA  
Thomas Braham, AIA  
Hill Burgess, AIA  
Deborah Doyle, AIA  
Arthur Salzman, AIA  
W. Stephen Saunders, AIA  
Peter Schlossman, AIA (Alternate)  
Lee Weintraub, AIA (Alternate)  
William Worn, AIA  
Robert E. Woodworth Jr., AIA

**2000 Professional Interest Areas**

**Corporate Architects**

Laura Horstman, AIA

**Design**

David Brininstool, AIA

**Design/Build**

Bruce Ream, AIA

**Environment**

Michelle Halle Stern, AIA

**Health**

Robert Carlton, AIA

**Historic Resources**

Thomas Gentry, Assoc. AIA

**Housing**

Margaret Cervantes, AIA

**Information Technology**

Kristine Fallon, FAIA

**Interiors**

Vito Lotta, AIA

**Office Practice**

Lisa Willis-Brown

**Planning and Urban Affairs**

Kyle Benkert, AIA

**Technical Issues**

Christopher Chwedyk, AIA

**Young Architects**

Helen Tsatsos, Assoc. AIA

**Chapter Staff**

**Executive Director**

Alice Sinkevitch, Hon. AIA

**Membership Coordinator/Assistant to the Director**

Jamie Juliano

**Program Director**

Joan Pomaranc

**Communications Director**

Susan Larson

**Financial Manager**

Crystal Gagler

**Public Information Receptionist**

Nichole Brown

**Documents Clerk**

Barbara Homziuk

Cover: Two views of Deutsche Post AG by Murphy/Jahn. Located in Bonn, Germany, the building is slated for completion in 2001. Model photographed by Holger Knauf.

**■ Cape Hatteras Lighthouse on the Move**



*Thursday, June 8, 5:30 p.m.  
AIA Chicago  
Sponsor: Historic Preservation PIA*

Jerry Stockbridge, PE explains how Wiss Janney Elstner moved the Cape Hatteras Lighthouse 1400 feet inland without causing one new crack. 1.5 LU

**■ When Worlds Collide: Unrealistic Demands, Realistic Advice**



*Monday, June 12, 8:30 a.m.  
Merchandise Mart Conference Center  
350 N. Orleans St.  
Sponsor: AIA Chicago*

Learn to appreciate the risk inherent in client contracts and learn about reasonable, insurable alternatives to often-proposed "contracts from hell." Special emphasis is given to setting appropriate client expectations throughout the pre-contract, contract, design, and construction phases of projects. The fee is \$50 for AIA members/\$80 for nonmembers. Make reservations on form to the right. *You do not need a NeoCon badge to attend this program.* 2 LU

**■ Two Seminars for Interns: Introduction to the IDP and Introduction to the ARE**



*Tuesday, June 13, 6:00 to 8:00 p.m.  
Holiday Inn Chicago Mart Plaza  
350 N. Orleans St., 14th Floor  
Sponsors: AIA Chicago's Young Architects PIA and AIA Illinois*

Attend one of two concurrent seminars that explain the steps to become a licensed architect in Illinois. Representatives from the National Council of Architectural Registration Boards and the Illinois Architecture Licensing Board will be on hand to answer questions. \$5, AIA members; \$7, non-members. 1 LU each

**■ Meet the Planners III**



*Wednesday, June 14, 12:00 noon  
AIA Chicago  
Sponsor: Planning and Urban Affairs PIA*

Architect Ronald Thomas, AICP, director of the Northeastern Illinois Planning Council, discusses the impact of design on the regional plan. 1 LU/HSW

**■ Tour: GE Capital Auto Financial Services**



*Wednesday, June 14, 5:30 p.m.  
540 Northwest Hwy., Barrington  
Sponsor: Corporate Architects PIA*

A brief tour of the facility, designed by Gordon Wigodner Chin Associates and OWP&P Architects, is followed by a discussion of how the players forged a team to solve the project's complex problems. Meet at main entrance. 1.5 LU/HSW

**■ Specifying Fire-Rated Glazing**



*Thursday, June 15, 12:00 noon  
Chicago Bar Association  
321 S. Plymouth Court  
Sponsor: Technical Issues PIA*

Jerry Razwick of Technical Glass Products identifies which types of glazing to use where, when and how. 1 LU/HSW

**■ Evaluating New Software**



*Monday, June 19, 5:30 p.m.  
OWP&P, 111 W. Washington, #2100  
Sponsor: Information Technology PIA*

When a new class of IT products is announced, how does your firm decide whether, when and what to buy? Join an open discussion focusing on two new product categories: object-based CAD and project Web sites. 1.5 LU

**Additional Programs in July**

Check the Quarterly Calendar at [www.aiachicago.org](http://www.aiachicago.org)



**Sign Me Up!**

- 6/8 Cape Hatteras Lighthouse on the Move
- 6/12 When Worlds Collide
- 6/13 Two Seminars for Interns
  - Introduction to the IDP
  - Introduction to the ARE
- 6/14 Meet the Planners II
- 6/14 Tour: GE Capital
- 6/15 Specifying Fire-Rated Glazing
- 6/19 Evaluating New Software
- 6/20 Daylighting Opportunities
- 6/21 Marketing Strategies
- 6/22 Tour: W.W. Grainger
- 6/27 Optima
- 7/11 Show and Tell in Oak Park
- 7/18 Integrated Photovoltaics
- 7/19 Workplaces of the Future
- 7/26 Extranets in the Air

Name \_\_\_\_\_

Office \_\_\_\_\_

Address \_\_\_\_\_

City \_\_\_\_\_

Phone \_\_\_\_\_

Fax \_\_\_\_\_

*All programs listed above are free or as noted for AIA Chicago members. Non-members will be charged \$10 per program or as noted.*

**Method of Payment**

- Check
- American Express  Visa  MasterCard

Credit Card No. \_\_\_\_\_

Expiration Date \_\_\_\_\_

Name on Card \_\_\_\_\_

Signature \_\_\_\_\_

Fax to:  
**AIA Chicago** 312/670-2422

get ready for the architect registration exam! aia chicago offers a weekend course after which you will:

- avoid common and fatal errors
- prepare more effectively
- employ time-saving techniques
- receive \$90 worth of study materials

norman dorf, aia, a developer of the computerized architectural registration exam (ARE), presents a three-day crash course on the graphic divisions of the exam, widely considered the most difficult parts of the test. an ARE grader for 15 years, dorf presents solutions to various problem types, and he discusses approaches that work and those that don't.

**sign up early!**

the first 40 registrants for the mock exams will have their graded exams returned to them for the sunday review session. subsequent registrants will receive their exams via mail the following week.

# ARE review and graphic division

# mock exam

**schedule**

**friday, august 18**

6:00 p.m. to 11:00 p.m.

an interactive lecture on the building planning and building technology divisions. participants should eat before the session.

fee:

members \$60

nonmembers \$75

**saturday, august 19**

8:00 a.m. to 1:15 p.m.

building technology mock exam. participants must bring pencils, tracing paper, tape, a calculator, an architect's and engineer's scale, a portable drawing board, triangle, and a watch.

1:15 p.m. to 2:15 p.m.

a light lunch will be served to all full day participants.

2:15 p.m. to 8:00 p.m.

building planning mock exam. participants must bring pencils, tracing paper, tape, a calculator, an architect's and engineer's scale, a portable drawing board, triangle, and a watch.

fee for each exam:

members \$60

nonmembers \$75

**sunday, august 20**

10:00 a.m. to 1:00 p.m.

mock exam review session.

1:00 to 2:00 p.m.

individual questions will be answered during a light lunch to all full day participants.

fee:

members \$60

nonmembers \$75

2:00 to 5:00 p.m.

site planning division lecture, including problem-solving techniques and grading standards for typical problems.

fee:

members \$60

nonmembers \$75

name \_\_\_\_\_

firm \_\_\_\_\_

address \_\_\_\_\_

daytime phone \_\_\_\_\_

fax \_\_\_\_\_

e-mail \_\_\_\_\_

check enclosed

american express

visa

mastercard

credit card number \_\_\_\_\_

expiration date \_\_\_\_\_

name on card \_\_\_\_\_

signature \_\_\_\_\_

aia chicago member?

yes

no

join now and take the review course at the members' price!

fees (circle elements you will attend)

8/18 building planning/building technology lecture

member

nonmember

\$60

\$75

8/19 building technology mock exam only

\$60

\$75

8/19 building planning mock exam only

\$60

\$75

8/20 mock exams review session

\$60

\$75

8/20 site planning lecture

\$60

\$75

discount for complete package

\$250

\$300

associate membership in AIA for the remainder of 2000

\$85.75

TOTAL \_\_\_\_\_

friday, august 18 - sunday, august 20, 2000  
 holiday inn chicago mart plaza  
 350 n. orleans St., 14th floor  
 sponsored by aia chicago

mail or fax this form to:

aia chicago

222 merchandise mart plaza, #1049

chicago il 60654-1103

fax 312/670-2422

questions? contact 312/670-7770 or

info@aiachicago.org

**Daylighting Opportunities**



Tuesday, June 20, 5:30 p.m.  
AIA Chicago  
Sponsor: Environment PIA

Gregg Ander, AIA, a national authority on daylighting design, uses case studies to review daylighting issues. 1.5 LU/HSW

**Marketing Strategies from Other Industries**



Wednesday, June 21, 5:30 p.m.  
Frankel Brand Environments  
111 E. Wacker Drive, 23rd Floor  
Sponsor: Office Practice PIA

J.D. McKibben, AIA and Gwen Morrison of Frankel Brand Environments reveal how the company markets itself and what architects can learn from the process. 1.5 LU

**Tour: W.W. Grainger Inc.**



Thursday, June 22, 5:30 p.m.  
100 Grainger Pkwy., Lake Forest  
Sponsor: Interiors PIA

W.W. Grainger Inc. brings 2100 employees together under one roof. The building was designed by Perkins & Will, with interiors by The Environments Group. Tour is limited to 50 AIA members only. Meet at main reception area. 1.5 LU/HSW

**Optima Inc.**



Tuesday, June 27, 6:00 p.m.  
630 Vernon Ave., Glencoe  
Sponsor: Design and Housing PIAs

Tod Desmarais, AIA, vice president of Optima Inc., discusses the firm's work. Limited to 20 participants. 1.5 LU/HSW

**Show and Tell in Oak Park**



Tuesday, July 11, 6:00 p.m.  
Pleasant Home, 217 Home Ave., Oak Park  
Sponsor: AIA Chicago

AIA Chicago continues its "show and tell" series with projects by firms in the western suburbs. To share your work at this moderated session, contact Joan Pomaranc at 312/670-7770. 1 LU/HSW

**Integrated Photovoltaics**



Tuesday, July 18, 5:30 p.m.  
OWP&P, 111 W. Washington St., #2100  
Sponsor: Environment PIA

Steven Song, president of Solar Design Associates, presents his experiences integrating solar electricity into buildings. Representatives from BP Solarey, Viracon, and Kawneer discuss how architects can specify solar right now. 1.5 LU/HSW

**Workplaces of the Future**



Wednesday, July 19, 5:30 p.m.  
Steelcase, #1032 The Merchandise Mart  
Sponsor: Corporate Architects PIA

Milica Vidovich, market manager for Steelcase's Worldwide Alliance, presents an update to *Workplaces of the Future*. She'll discuss how people work, what corporate real estate does to support work processes, and how workplaces are planned in the context of continuous change. New solutions are offered, including workplace mapping. 1.5 LU

**Extranets in the Air**



Wednesday, July 26, 6:00 p.m.  
AIA Chicago  
Sponsor: Design/Build and Information Technology PIAs

John Jurewicz, AIA, project manager for Power Construction, presents a case study on the project management system Constructware, used during the remodeling of radio station Q101. A station tour follows the presentation. 1.5 LU

**Sabo & Zahn**  
Attorneys at Law

Werner Sabo, FAIA

James Zahn, FAIA

Licensing problems, copyrights, business formations, mediation, litigation, arbitration, contracts, real estate construction attorneys

8620 Sears Tower  
Chicago, IL 60606

(312) 655-8620  
fax: (312) 655-8622

[www.sabozahn.com](http://www.sabozahn.com)



- Professional Liability
- Specific Project Coverage
- Office Packages
- Workers Compensation
- Automobile
- Exclusive Programs
- Group and Individual Life & Health

**Insurance and Loss Prevention Services for Architects**

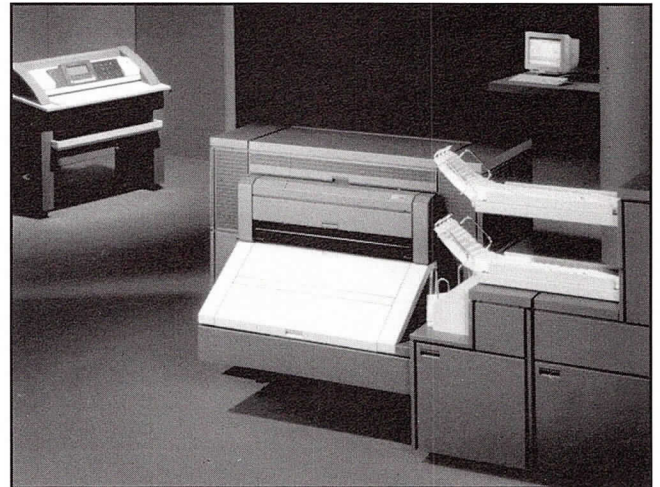
AVA Insurance Agency  
One Tower Lane • Oakbrook Terrace, IL 60181  
Tel: 630.571.4500 • Fax: 630.571.4518 or 4525  
E-Mail: [info@avains.com](mailto:info@avains.com)

**New**

# High-Speed Digital Blueprinting

High speed digital printing from scanned originals or prints and CADD plot files. Copies may be reversed (negative to positive) mirror imaged and stretched along with standard enlargements and reductions from 25% to 400%. We would prefer HP/GL2 files with pen weights set.

For more than 70 years, Mossner has provided the latest and fastest high-production equipment available. And now Chicago's first state-of-the-art Oce 9800 for Digital Blueprinting is here!



- **Pick-up and Delivery**
- **Fast Service**
- **Print Scanned Originals**
- **Print HP-GL, HP-GL/2, HPRTL, TIFF<sub>5.0</sub>, CALS<sub>1</sub> Files**
- **Print Collated Sets Fast**

## BOND PAPER DPB

| Total Sq. Ft. per order | Price per Sq. Ft. |
|-------------------------|-------------------|
| 1 to 49                 | .50               |
| 50 to 74                | .35               |
| 75 to 99                | .25               |
| 100 to 199              | .20               |
| 200 to 499              | .19               |
| 500 to 999              | .18               |
| 1000 to 1999            | .17               |
| over 2000               | .15               |

Minimum Charge \$25.00  
\$2.00 per scan, \$1.00 per CADD File

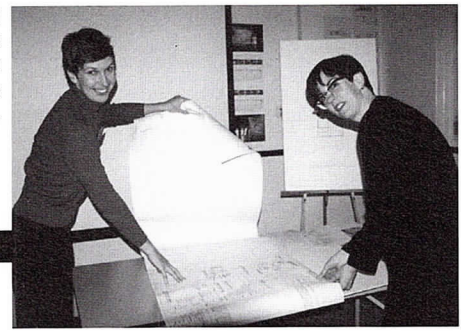
## VELLUM PAPER DPV

| Total Sq. Ft. per order | Price per Sq. Ft. |
|-------------------------|-------------------|
| 1 to 49                 | 2.75              |
| 50 to 74                | 2.50              |
| 75 to 99                | 2.25              |
| 100 to 199              | 2.00              |
| 200 to 499              | 1.75              |
| 500 to 999              | 1.50              |
| 1000 to 1999            | 1.40              |
| over 2000               | 1.35              |

Minimum Charge \$25.00  
\$2.00 per scan, \$1.00 per CADD File

**Mossner (312) 372-8600**  
 THE REPRODUCTION PEOPLE • LARGEST IN THE MIDWEST  
 Mossner Building • 137 North Wabash at Randolph (across from Marshall Field's), Chicago, IL 60602

Trish VanderBeke, AIA (left) and Ellen Bailey Dickson, AIA prepare to present a "Working With an Architect" seminar at the Chicago Architecture Foundation in March.



Alice Simerlich

*Over 200 Potential Clients Attend Popular Residential Seminars*

The annual "Working With an Architect" workshop series proved popular again this year, with 217 participants in seven locations throughout the Chicago area.

The free seminars were created to help homeowners understand the design and construction process. This year's series ran in March and April in Winnetka, Oak Park, Chicago, Crystal Lake, and Park Ridge.

The following AIA Chicago members lead the workshops: Ellen Bailey Dickson, AIA; Scott Fortman, AIA; Jim Fraerman, AIA; Alan Madison, AIA; Steve Moylan, AIA; Tom Prairie, AIA; Scott Rappe, AIA; David Seglin, AIA; Rob Sierzega, AIA; Dan Sih, AIA; Chris Turley, AIA; Trish VanderBeke, AIA; and Victor Wolbrink, AIA.

*Friends of Downtown Announces Annual Awards*

Several member firms of AIA Chicago recently received awards from Friends of Downtown.

- Best New Development or Building: VOA Associates Inc., Northwestern Hospital
- Best Renovation: Booth Hansen & Associates, Old Saint Patrick's Church
- Best Restoration: McClier and Antunovich Associates, Reliance Building
- Best Continued Use: Eckenhoff Saunders Associates, Allerton-Crowne Plaza
- Best Plan: Skidmore, Owings & Merrill LLP, Chicago's Historic Downtown Core
- Best Ephemera: Lohan Associates, London Guarantee Sidewalk Barricade

- Welcome to Downtown Ms. O'Leary: Aria Group, Chicago Firehouse Restaurant
- Mary Ward Wolkonsky Award: Edward Uhler, FAIA

*Will County Sets Record for Build-to-Suit Development*

Build-to-suit activity during 1999 finished at 10,140,996 square feet of space, according to the *Alter Build-to-Suit Report*, a biannual review of build-to-suit development activity in the six-county northeastern Illinois region.

At 4,551,154 square feet, Will County's year-end build-to-suit volume easily bested DuPage County's 1997-level of 3,721,618 square feet to set a record for the highest annual total of any county for the decade.

**SPANCRETE** ABOVE THE REST!

Quality • Service • Durability

With over 50 years of experience, Spancrete's expertise in the precast, prestressed concrete industry soars above the rest!

We have assembled a comprehensive reference library to share this core knowledge with our customers.

Simply call 414.290.9000 to request this valuable information from Spancrete and form the foundation of your own precast library - FREE!

(some restrictions may apply)

[www.spancrete.com](http://www.spancrete.com)

*"Striving to be the most responsive partner and innovative provider of precast solutions."*

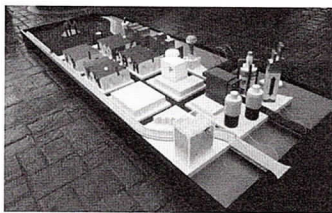
**SPANCRETE INDUSTRIES, INC.**

Waukesha, Wisconsin 414-290-9000

Chicago, Illinois 773-775-6402

Green Bay, Wisconsin 920-494-0274





"Chicagolf" by Solomon Cordwell  
Buenz Associates Inc.

Sharon White

"The migration to the collar counties reflects the trend towards consolidation and larger facilities," said Thomas Boyle, vice president of The Alter Group. "Will County's large inventory of sites with tollway access combined with land prices which are as much as 15 percent lower than in Cook, DuPage and Lake Counties, provided an enormous boost to corporate development."

*Members' Designs Benefit  
Epilepsy Foundation*

AIA Chicago member firms participated in the fifth annual Golf Around Chicago benefit for the Epilepsy Foundation. The firms include: Archideas, Eckenhoff Saunders Architects, Lohan Associates, Morris Architects/Planners, Otis Koglin Wilson, OWP&P, Space, Solomon Cordwell Buenz, and VOA.

**Professional Development  
Conference 2000**

*September 22 and 23  
Holiday Inn Chicago Mart Plaza  
350 N. Orleans St.  
Sponsor: AIA Chicago*

AIA Chicago's Professional Development Conference 2000 focuses on areas members have identified as most challenging — technical and management issues. These topics share the agenda with design workshops, as over 300 architects from Illinois and surrounding states gather for this learning experience.

Participants earn at least 5 CES learning units each day. Conference brochures will be mailed in July. Register by September 1 for a discount!

**Selected Programs**

- Beyond Recruitment: Getting and Keeping Staff through Professional Development and Mentoring
- Causes and Effects of Moisture Problems in Buildings
- Building Relationships with Residential Contractors and Tradespeople
- What's New in Framing Systems?
- Before the Permit: Working With Your Client to Pass Community Review
- Leadership in Energy and Environmental Design
- Structuring the Owner/Architect Agreement for Small Projects
- Virtual Reality on a Budget: Convincing With Visuals

We are pleased to have represented

Anthony Belluschi Architects

in their recent merger with

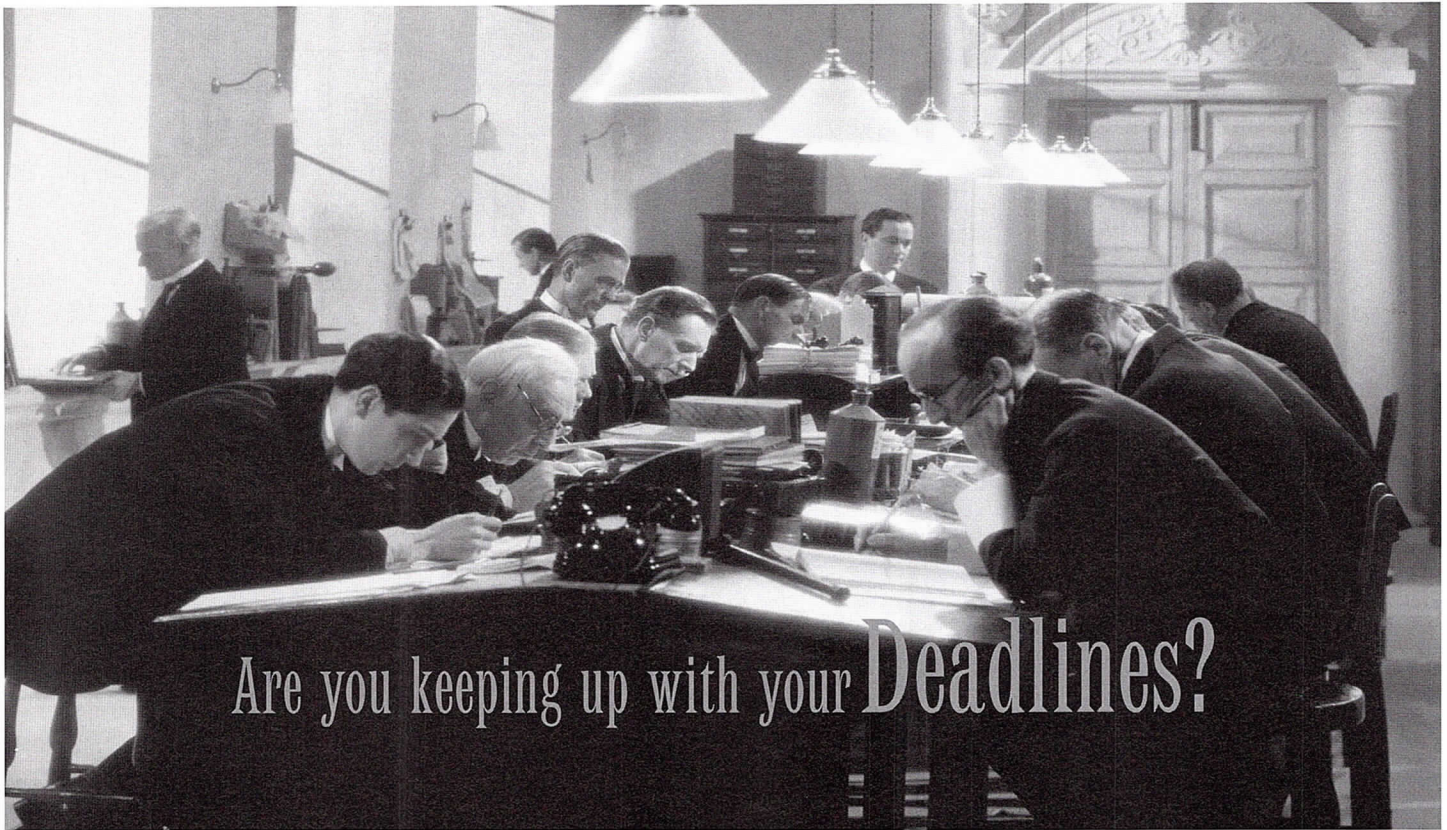
O'Donnell Wicklund Pigozzi & Peterson Architects

creating a subsidiary

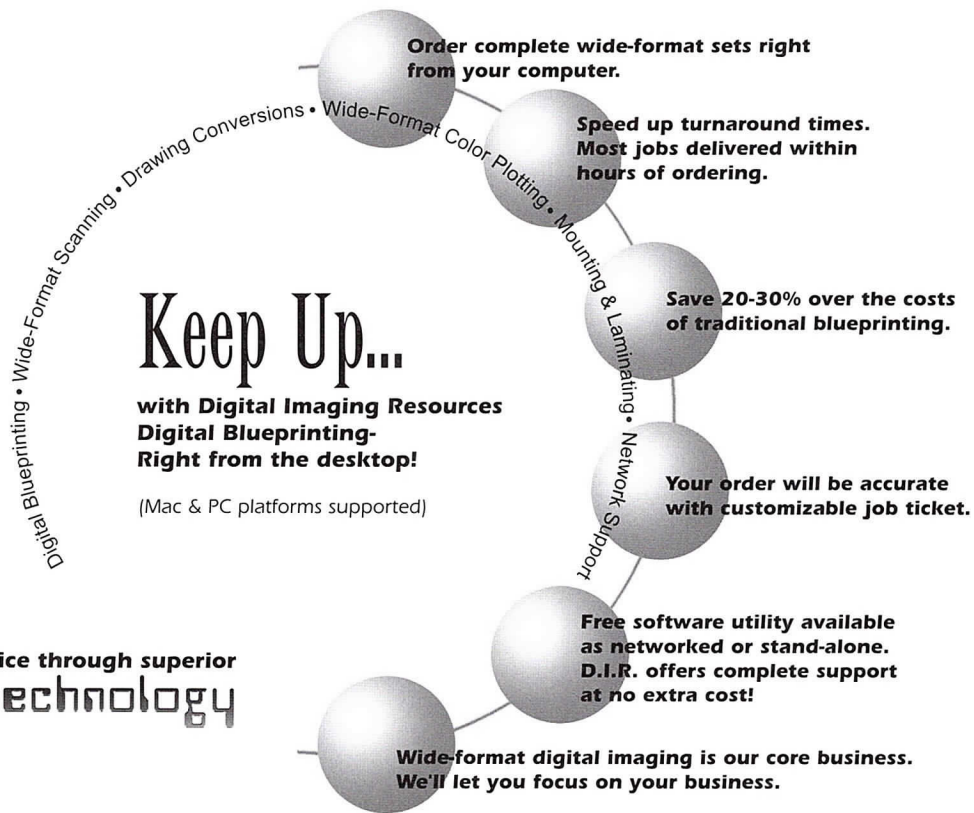
**Belluschi/OWP&P Architects**

The Construction Law Group  
SCHIFF HARDIN & WAITE  
[www.schiffhardin.com](http://www.schiffhardin.com)





Are you keeping up with your **Deadlines?**



**Better service through superior technology**



650 West Lake Street #120 • Chicago, IL 60661 • [www.dirinc.com](http://www.dirinc.com)

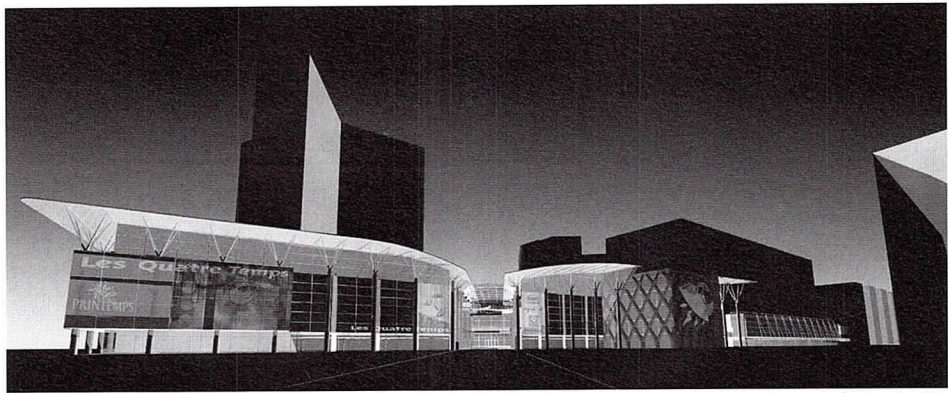
Phone 312.243.1250 • Fax 312.243.1590

# Berlin Walls and French Façades

## European Design Innovations

Berlin's Sony Center  
by Murphy/Jahn.





Courtesy of the firm

*Architects practicing in Europe are leading the world in the design of sustainable buildings and the innovative use of materials. Raised floors, green roofs and integrated A/E design — all much more common on the other side of the Atlantic — were highlighted in the January issue of Focus. This article takes a look at new types of building enclosures, such as double-wall façades and highly transparent glass walls, gaining favor in Germany, France and England.*

by Laurie McGovern Petersen

**W**hat can we learn from sustainable practices in European building, and how much of it can we expect to apply here? What cutting-edge materials and technologies will appear on our buildings in the next decade?

There is a wealth of knowledge available from AIA Chicago's own members. Patrick Loughran, AIA, PE of Lohan Associates, recently spent four months in Europe on a Francis J. Plym Fellowship to research building enclosures. (See sidebar, page 12) His firm currently is designing the first cable-tensioned glass façade in the United States for an office building in the Loop. Murphy/Jahn has designed many high-profile buildings in Germany and now is

applying their expertise to Ha-Lo's suburban headquarters in Niles. And Anthony Belluschi/OWP&P Architects recently was named one of two finalists in a paid international design competition for a 1 million-square-foot commercial complex in Paris.

### The Greening of Glass Walls

One of the most visually dramatic developments — the double-wall façade — is also one of the most thermally efficient. Also called a double-skin or twin-shell façade, it generally consists of an inner wall of operable windows and an outer wall with a grille or filter that admits fresh air either passively or actively. Sunshades often are located between the inner and outer glass walls.

In addition to saving energy, these façades improve employee comfort by providing natural ventilation and increased natural light. Double-wall construction allows occupants to open their windows, even on very high floors, while maintaining physical and acoustical separation from the exterior. These types of walls reduce the cooling load and required air exchange rates, and their low u-value allows for larger areas of glass. They also permit nighttime cooling of a building without compromising security.

Since Germany is the leader in encouraging sustainable buildings, this façade treatment is most common there. According to Loughran, about 20 of these buildings have been constructed recently in

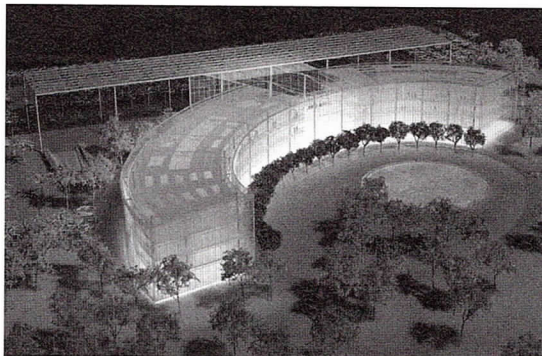
Berlin alone. They include designs by architects Richard Rogers, Norman Foster, Renzo Piano, and Josef Kleihues, Hon. AIA.

Murphy/Jahn has designed many twin-shell buildings, including the Deutsche Post AG tower in Bonn and the Bayer AG headquarters in the company town of Leverkusen. Both feature sunshades between the pair of glass walls. Bayer is "the ultimate double-wall building," according to John Durbrow of Murphy/Jahn. Its outer wall, suspended from cables, is a shingle wall of structural glass flaps that exhaust hot air.

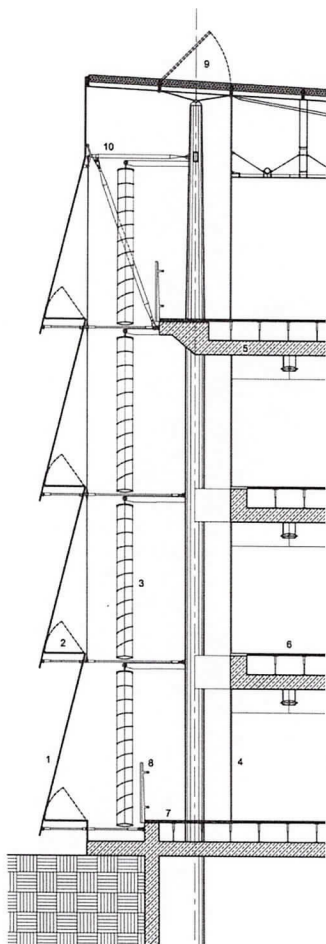
In the spring and fall, natural ventilation supplements the mechanical system (an integral heating and cooling pipe system that is more efficient than forced air and takes advantage of the thermal storage capacity of concrete). In periods of temperature extremes, the HVAC is supplemented by a displacement system fed by a convector, which cools or heats the supply air along the façade. Exhaust air from the offices is used to condition the large public spaces, which in the Deutsche Post tower are multi-story wintergardens. Murphy/Jahn estimates that the total cost of HVAC and twin-shell façade is equal to conventional construction, while operating costs are reduced by 60 percent.

As Loughran puts it, "design of energy-efficient buildings can take money out of the mechanical system and put it into the enclosure elements. You can have very elegant façades because you no longer need huge heating and cooling systems to support them."

Murphy/Jahn's new group headquarters building for Bayer AG in Leverkusen, Germany. In detail below: Bayer's double-wall.



Keith Palmer, AIA



LEGEND

1. Outer Shell
2. Operable Window
3. Solar Controlled Sunshades
4. Inner Shell with Sliding Doors
5. Concrete Slab with Perimeter Beam
6. Raised Floor
7. Balcony with Wood Slats
8. Railing
9. Operable Roof Vent
10. Structural Facade Support

Another energy-efficient façade treatment that offers exciting design opportunities is the use of sunshades and movable louvers. Loughran notes that 15 years ago, the concept of a building enclosure changing in response to the amount of sunlight was in the prototype stage, the most dramatic example being the Arab Institute in Paris. Second-generation buildings are refining the concept and making it more workable.

The German contractor Gartner has developed a sun shading system in which glass louvers move to keep out solar heat on a sunny day and admit diffused daylight during overcast periods. Low-e coatings and frit patterns can increase reflectivity without solar heat gain. A more low-tech (and lower-maintenance) version of sun shading is to vary a building's façade treatments according to their orientation. Loughran observes that it is not uncommon to turn a corner in a European city and find that a building looks completely different on the adjacent façade.

## Making Walls More Transparent

The 20th century quest for a "skin-and-bones" architecture has evolved into a 21st century striving for transparent skin and barely visible bones. The two major developments that allow architects to minimize the structure and maximize the amount of glass are the point-supported light system and the cable net glass façade.

The birthplace of the point-supported light system (also known as a filigree façade) is Paris, specifically the park of La Villette. Here, for the first time, the plane of glass became separate from the plane of the supporting structure, allowing the glass to move in relation to the structure and still maintain a perfectly smooth surface appearance. The system was extremely costly because the fittings were all custom designed, but with the subsequent standardization of parts, such filigree façades have become less expensive and more widely used.

## Plym-inary Findings



Patrick Loughran, AIA, PE of Lohan Associates was the 1999 recipient of the prestigious Francis J. Plym Fellowship, a traveling grant awarded to alumni

of the University of Illinois School of Architecture. His studies provided the foundation for "Berlin Walls and French Façades."

In addition to investigating sustainable architecture and advances in glass enclosures during his travels, Loughran made

note of many innovative uses of traditional materials. In each case, a classic building material is transformed by a technological process to become a key element of a very modern design.

### Thin stone facades

An extremely thin film of marble (as thin as 1 mm) can be laminated to glass to achieve a luminous surface. The glass frit industry can provide a simulated version of this with silk screens by Gold Ray or colored laminates by Cesar Color.

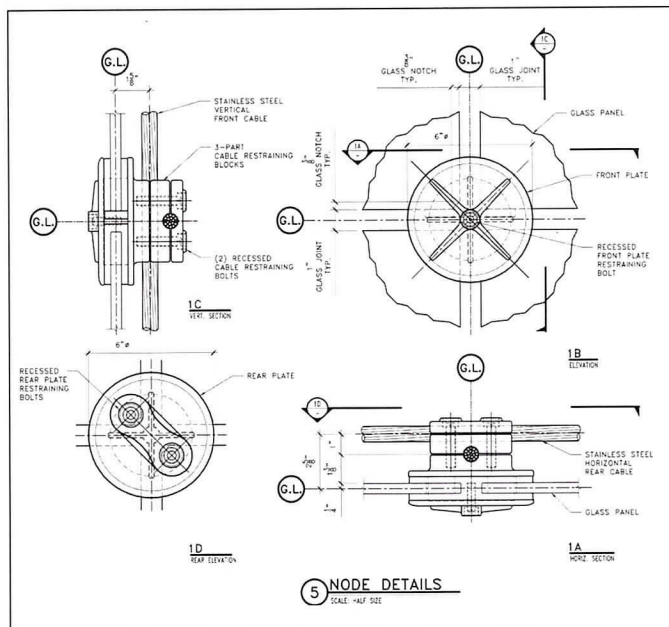
### Patinated bronze façade elements

The natural patina of weathered bronze can be accomplished with a two-step process of an acid wash followed by the

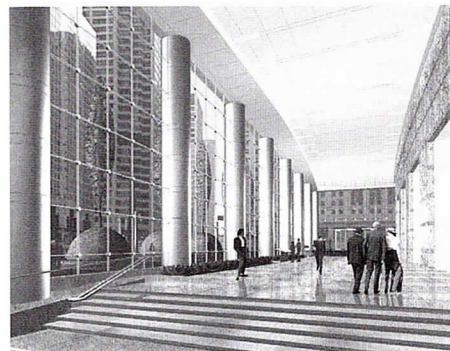
One of the most spectacular current examples of this type of glass structure is the atrium of the Sony Center in Berlin by Murphy/Jahn, where raised walking surfaces offer breathtaking views

of the Reichstag, the Tiergarten and downtown. Smaller scale applications are an increasingly common sight in Chicago, including 430 N. Michigan Ave. and the south and east entrances to Sears Tower.

A well-known example of a cable net glass façade, or net wall, is the atrium of Murphy/Jahn's Kempinski Hotel in Munich. This type of façade is the last word in minimalist structure, with prestressed cables replacing the large trusses needed for a point-supported wall. The glass is supported by clamps at the corners, not penetrated by the fasteners. The entire wall deflects, in contrast to the stiff nature of a filigree façade.



In detail: The cable net wall system Lohan Associates is using in the lobby (below) of One North Wacker Drive.



Schlaich Bergemann und Partner/Advanced Structures Inc.

Courtesy of the firm

This wall system has been used on other buildings in Europe, but its American debut will be in Chicago at One North Wacker Drive. Developed by the John Buck Company and designed by Lohan Associates, the office tower will have a large lobby of cable net glass walls. To enhance the effect of transparency, the glass will be water white (a low-iron-content glass with very little green tint) with a non-reflective coating. Slated for completion by the fall of next year, the lobby's walls will provide a dramatic experience of a totally clear enclosure.

use of a blow-torch and stipple brush. The largest expanse of this material to date is on a speculative office building in London for which the city planners wanted a traditional feeling in keeping with neighboring structures.

### Copper spandrel panels

Copper panels covered with a protective coating do not oxidize but retain the richness and depth of a natural material.

### Stainless steel chains used as façade covering

At the Bibliotheque de France, the glass curtain wall enclosing the stairs of the four towers is draped with a woven metal curtain.

### Terra cotta cladding systems

Unglazed terra cotta, made of carefully selected clay of greater density and strength than that used for glazed applications, can be extruded like aluminum or cast into shapes. It can be installed as individual units or as part of unitized panels. This material is used in various colors and shapes on all the new buildings on Berlin's Potsdamer Platz. Renzo Piano's building for this site features terra cotta sunshades as the primary façade material.

## Stateside Suppliers

**Advanced Structures Inc.**  
www.asidesign.com

**Cesar Color Inc.**  
www.cesarcolor.com

**Chicago Ornamental Iron**  
www.primenet.com/~coic

**MERO Structures Inc.**  
www.mero.com

**Permasteelisa Cladding Technologies Ltd.**  
www.PermasteelisaUSA.com

**Shildan USA Inc.**  
www.shildan.com

**Viracon Glass**  
www.viracon.com

**Pilkington Glass**  
www.pilkington.com

## Other Glassy Innovations

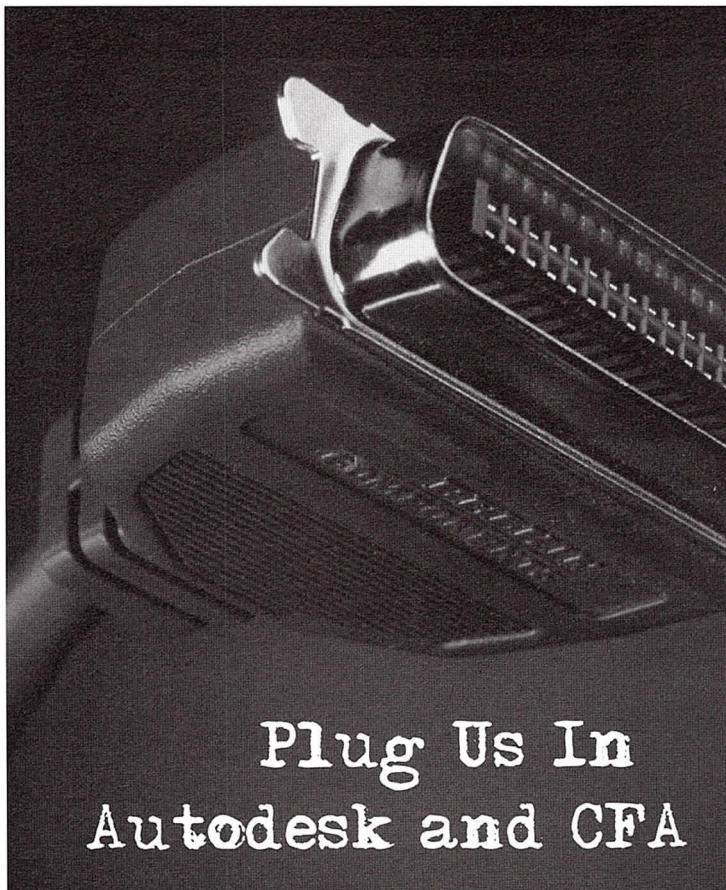
Total transparency is not the only hot new trend in the use of glass; opacity, translucency, and patterning are also exciting new design elements. For the renovation and addition to Les Quatre Temps Shopping Center in Paris, Anthony Belluschi/OWP&P Architects is using a variety of glazing types to give the commercial component a distinct identity from the surrounding office buildings. The glass curtain walls will be opaque (on the upper levels, to conceal back-of-house operations), transparent (to lure shoppers in), and everything in between, with a variety of translucencies and colorful frit patterns. At night the whole building will give off an enticing glow, with the fritted

graphics appearing more subtle than during the day. Belluschi's design was produced for a paid international design competition in which they made a shortlist of two firms (final competition results were unavailable at press time).

An intriguing showroom of the many new types of glass occupies a corner of the Chicago offices of Murphy/Jahn. Durbrow points out that there are many ways to make glass a more thermally efficient building skin. A low-e coating, for instance, admits 73 percent of daylight but only 32 percent of solar heat. The firm was a leader in the use of fritted glass for solar control; the United Airlines Terminal at O'Hare was the first large-scale use of this application. For optimum performance, up to 75 percent of the glass can be opaque, especially if a reflective frit is used on the

exterior while a black frit on the inside enhances one's perception of the view (just as with a Trinitron television screen, a black background makes the images sharper). A particularly high-tech system developed by the German manufacturer Inglas features two parallel panes of glass, each with fritted stripes, that can be moved in relation to each other so the stripes are aligned for 50 percent coverage or totally offset for complete coverage.

Even with these improvements, don't large glassy spaces require a lot of energy? The key to a negative answer is displacement ventilation, which establishes a comfort zone near the floor, where people are, and does not condition the air in the hot upper reaches of the space.



Plug Us In  
Autodesk and CFA

### THE ARCHITECTS ADVANTAGE

As designers of physical space, we have a profound impact on how others experience the world. New techniques and evolving strategies continually redefine our world. Architects need to conceptualize and communicate their ideas in an accurate and nimble manner-and in less time than ever before.

### THE AUTODESK ADVANTAGE

Autodesk is the fourth-largest PC software company in the world. More than four million customers use the company's products for architectural design, civil engineering design and surveying, and through its Discreet division, for design visualization and web content development.

### THE CFA ADVANTAGE

CFA is an award-winning Autodesk System Center (ASC) and Autodesk Training Center (ATC). In the last 16 years more than 1000 leading AEC firms have benefited from CFA's turnkey custom CAD staffing and software solutions. Contact a CFA sales manager today and find out why CFA is in the top 3% of all Autodesk dealers nation wide.



Contact Consulting For Architects Inc. at 312 345-1700 or online at [www.cons4arch.com](http://www.cons4arch.com)

## Local Impact

Which of these many innovations will have an impact on Chicago architecture? The United States will continue to lag behind Europe in the development of "green" buildings due to our lower energy costs, lack of political imperative to reduce energy use, less-regulated building industry, and shorter-term payback on real estate investments. There will be continued improvement in thermal efficiency of glass walls, but the double-wall façade probably will appear only if a deep-pocketed corporate client wants to make a strong environmental statement.

Ironically, many energy-saving features now gaining favor in Europe were first developed in the United States in the

aftermath of the 1970s oil embargo. One of the very first double-wall façades was on an office building in Niagara Falls, N.Y., designed by Cannon Design Group. Also, many of the concepts applied to a "green" corporate headquarters in Cambridge, England, came from *Sun, Wind and Light*, a book written 25 years ago by American G.Z. Brown. As sustainable architecture continues to develop in Europe, it will be our turn to build upon their experience.

The Internet and globalization of the marketplace already are allowing architects to choose from a much broader range of materials. Durbrow points out that the technology and products used in Europe are readily available in this country; several manufacturers are even based here but sell more of their product

overseas. (See sidebar, page 13) These products will be more widely used as American architects educate themselves — and their clients — about these advances. John Howard, AIA of Doughty Hanson & Co. in London points out that large international firms like Skidmore, Owings & Merrill are making an art of mixing and matching glass, coaters, glazers and curtainwall suppliers. As more Chicago firms gain an international perspective, it will be reflected in their work here.

*Laurie McGovern Petersen is contributing editor of Focus.*

## Employers are looking for Key Employees Employees are looking for Key Benefits...

The AIA Chicago 401(k) and Profit Sharing plan can help. This program offers large plan options at a competitive cost -- all with less employer administration time.

The AIA plan uses goal-based software to educate and inform employees about their retirement. Employees can direct their own investments among the top mutual fund managers such as Fidelity, Janus, AIM, Dreyfus, etc...

For more information, please contact :  
**Jim Lorenz at 630 833-1000**  
[jlorenz@euclidinsurance.com](mailto:jlorenz@euclidinsurance.com)

### AIA Chicago 401(k) and Profit Sharing Association Plan

**Euclid Insurance Agencies**  
977 Oaklawn Avenue, Elmhurst, IL 60126

# EUCLID



## They All Got Jobs.

Have you looked around lately? It appears as though everyone has a job. For architects and other design professionals, unemployment is at an all time low. Every firm is hiring, so how can you get your name and resume in front of the right hiring manager?

The answer is CFA. Our feelers are always out, especially in this market. Over the past 15 years we've built a job database unequalled anywhere in the USA. Since 1984, CFA has successfully introduced candidates and firms more than 20,000 times.

Come to a CFA office for a complete and comprehensive portfolio review and CAD skills evaluation. We will refer you to one of our award-winning

clients to perform per-project consulting services or, if you prefer, CFA will help find you a permanent position at the firm of your choice.

"CFA makes suitable matches through careful listening and thorough skill evaluations. As a result of their professionalism I was placed successfully both as a consultant and then as a permanent employee", Brooks Slocum, AIA, HOK employee.

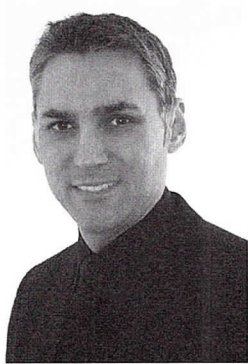
CFA's job placement counselors have years of experience in the staffing industry and specialize in the field of architecture and design. Let CFA help you chart a path that will satisfy your professional career goals. Act now -- schedule your interview with CFA and get started on your new job today.



For more information contact Consulting for Architects, Inc. at 312-345-1700 or on-line at [www.cons4arch.com](http://www.cons4arch.com)



# Message from Berlin



*Expatriate John DeSalvo, AIA shares his experiences working abroad.*

**I** moved to Berlin as a result of a job offer from Josef P. Kleihues, Hon. AIA for whom I had worked on the Museum of Contemporary Art in Chicago. I bought a round-trip ticket and had every intention of working in Europe for a summer and then returning to Chicago.

That was seven years ago and I am still here.

In the early '90s, the Chicago real estate market was in a slump, while Berlin was abuzz with construction activity of a scale that was hard to comprehend. The wall between East and West had come down four years earlier, but the first wave of buildings was just beginning to go up. Even as a latecomer to Berlin's renaissance, I can remember the first architectural competition winner to be completed: an office building by German architect Jurgen Sawade in "Mitte," the virtual middle of former East Berlin. It marked the beginning of the biggest building boom Central Europe had seen since the end of the Second World War.

Since that time, and continuing to the present day, the city has gained international fame, or infamy, as the world's biggest construction site. Construction cranes by the hundreds have

been silhouetted against the Berlin skies for over 10 years. Some of the most influential architects of the late 20th century have made this a spectacular testing ground for new ideas and expression.

As an architect, one could not help but be caught up in the energy and excitement of such an ensemble cast. The potential seemed limitless. In Berlin you could meet people from around the world, all of different backgrounds and interests with hopes and ideals to design and build. Every office had an international flair. The economic downturn that had hit the United States had also affected other parts of the world, and I realized for the first time that in order for architects to flourish, we had to broaden our horizons. Major American architecture firms started satellite offices in Berlin to take advantage of the emerging global architecture market. Many built and left, while others are still here, pushing further and further east.

While not all buildings have completely met expectations, I am proud to have been witness to Berlin's fantastic transformation from a depressed Eastern Bloc city-state to a leading world city at the beginning of the 21st century. Visit [www.cityscope.de](http://www.cityscope.de) for a view of Berlin and see for yourself!

*John DeSalvo, AIA is an architect in the Berlin office of Murphy/Jahn Inc.*



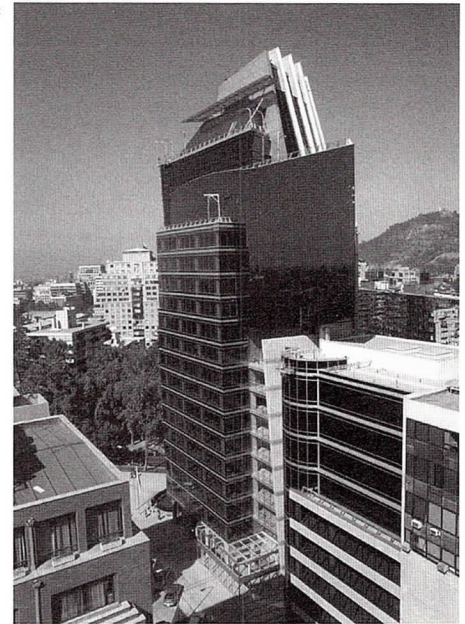
## **Botti Studio of Architectural Arts, Inc.**

919 Grove Street, Evanston, IL 60201      Established 1864  
 847/869-5933 • Fax: 847/869-5996 • 800/524-7211  
[www.bottistudio.com](http://www.bottistudio.com) • [botti@bottistudio.com](mailto:botti@bottistudio.com)

Designers/Fabricators • Stained and Faceted Glass • Beveled Glass • Sandblasted • Stained Glass Restoration and Conservation • Protective Glazing • Wood and Metal Frame Restoration • Sculpture • Bronze • Metal • Marble • Mosaic • Interior Renovation • Woodwork • Murals • Painting and Decorating • Custom Sanctuary Furnishings • Stained Glass Consultants to Architects and Churches

### **Studio Locations**

San Diego • Chicago • Sarasota • Agropoli, Italy  
 760/753-0705 • 847/869-5933 • 941/951-0978



Courtesy of the firm

PEOPLE

In news from Legat Architects, **Tom Behles, AIA** recently led a presentation on construction documents and specifications related to school design to the Illinois Association of School Business Officials. **Bill Steed, AIA** has authored an article on emerging design concepts in assisted living in the year 2000 issue of *Design: An Annual Publication of Nursing Homes Long Term Care Management*. **Paul Pessetti, AIA** and **Jay Johnson, AIA** presented "Design Evolution and Solution" at the National Coalition of Campus Child Care Centers' two-day conference in Chicago. And, **Tom Hutchinson, AIA** recently led a seminar on environmentally responsive roof systems at Facility Forum 2000 in Atlanta.

**Joseph Chronister, AIA** has joined Knight Advanced Technology as principal. He will be in charge of science and research facilities for academic and corporate clients.

In Naperville, Phillips Swager Associates has named **James Cross, AIA** senior associate and **Terry Adams, AIA** and **Marty Leibrock, AIA** associates.

PROJECTS

**David Woodhouse Architects** has been selected to renovate the main east gate entrance to the Lincoln Park Zoo. The project includes landscape architecture and sculptural components to strengthen the Zoo's accessibility and visibility from Lake Shore Drive.

**Hancock + Hancock Inc.** has been awarded the design contract for nine restaurant/concession spaces at Detroit Metro Airport's new midfield passenger terminal. The firm plans to create a broad range of dining environments around a "Motor City" theme. The terminal is expected to open in December 2001.

**Legat Architects** recently completed a \$3-million renovation project of the Electrical Joint Apprenticeship Training Facility in Alsip. The renovation included

replacing all windows, the roof, and the heating and ventilation systems. In addition, a photovoltaic array was added to the top of the two-story building, generating five kilowatts of its own power and making the facility electrically self-sufficient. To support the 6,000-pound array, Legat developed a support structure and new roof system that were integrated in the existing building.

# ARCHITEMPS, INC.®

**ARCHITEMPS, INC.® -- the Architectural & Interior Design staffing specialists, serving greater metropolitan Chicago since 1986.**

**Quality staffing, service and solutions:**

- Design/Production Drafters
- Facility Planners
- CAD Architects/Interior Designers
- Project Managers

**Our billing includes all employer liability:**

- Payroll Administration
- Employee Benefits
- Government Compliance
- State & Federal Tax Remittance
- Workers' Compensation Coverage

**Architectural, interior design and facility planning personnel on a per-project basis. Customized employee leasing, permanent conversion and direct placement available. Call today for information on our staffing services or employment opportunities.**

**ARCHITEMPS, INC.®**  
1050 North State Street  
Chicago, Illinois 60610.1043

**Tel: 312.649.0912**  
**Fax: 312.649.1667**  
**ARCHITEMPS@aol.com**  
**http://www.architemps.com**



West Aurora High School by Perkins & Will

Courtesy of the firm

**Loeb Schlossman & Hackl (LSH)** has completed Torre Paris, a 22-story corporate headquarters tower for the Galmeiz retail family in Santiago, Chile. LSH teamed with local architect Jaime Bendersky Arquitectos to create the winning scheme in an international design competition. The result is a 200,000-square-foot tower that includes offices, commercial spaces and five levels of below-grade parking. According to the firm, the design not only achieves the Galmeiz family's goal of an inspiring landmark, but addresses functional challenges as well by maximizing the usable area of a small triangular site with a restrictive setback envelope, providing

office floors with column-free spaces, and incorporating energy-efficient materials.

The Chicago office of **RTKL Associates** has been awarded the design contract for a 170,000-square-foot, six-story outpatient clinic building on the main campus of Gunderson Lutheran Medical Center, a 286-bed hospital in LaCrosse, Wis.

**RADA Architects**, together with Harza Engineering, has been chosen as one of three prime design consultant teams for a multi-year contract with the Chicago Housing Authority. The contract includes numerous projects with a total construction budget of \$1.2 billion.

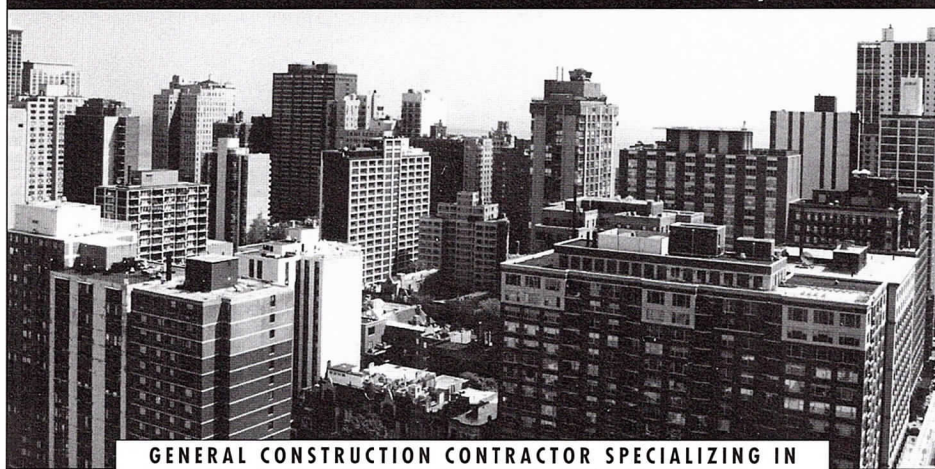
**Solomon Cordwell Buenz Interiors** has been selected to design the 200,000-square-foot offices of Chicago law firm Gardner Carton & Douglas at 191 N. Wacker Drive. The project is scheduled for completion in fall 2002.

**William Worn Architects** currently is working on Madison Manor I and II, a 10-story high-rise in two phases. Combined, the projects at 910 and 920 W. Madison St. span 199,000 square feet, offer 92 residences, a 123-car parking garage, and seven retail spaces. Phase one is expected to be completed by September, with phase two finished a year later. The combined construction cost is nearly \$19 million.

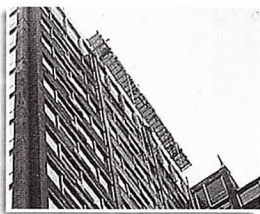
#### AWARDS

Church of the Epiphany, which is being restored by **VincilHamp Architects**, with engineer-of-record Wiss, Janney, Elstner & Associates, has won a 2000 Richard H. Driehaus Foundation Faith in Community Award. The Best Restoration, Design Solution or Revival award is sponsored by Inspired Partnerships, a local nonprofit organization that helps religious congregations care for houses of worship. Church of the Epiphany, 201 S. Ashland Ave., was nearing collapse when the congregation decided it would not give up the

## PETER MANEYSKI CONSTRUCTION, INC.



GENERAL CONSTRUCTION CONTRACTOR SPECIALIZING IN HIGH-RISE EXTERIOR MAINTENANCE AND REPAIR.




Peter Maneski Construction Co. is a recommended Sika™ Contractor.


- Facade Inspection Equipment
- Leak Location Service
- Concrete Repair
- Tuckpointing
- Masonry Repair
- Lintel and Shelf Angle Replacement
- Balcony Restoration
- Waterproofing Systems
- Caulking
- Chemical Cleaning



1111 W. Webster St. Chicago, IL. 60614  
773.348.6820 / ext. 237



Smarter Rooms.  
Smarter Technology.



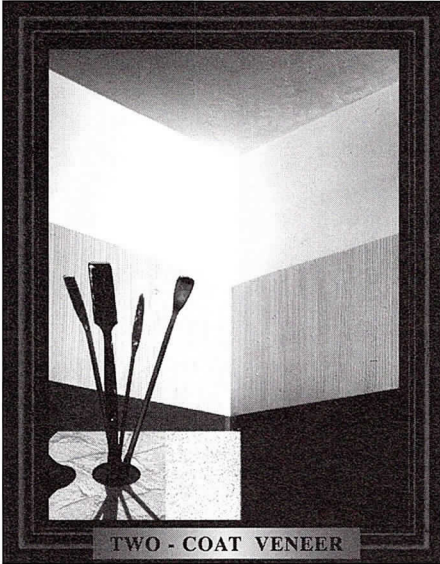
Midwest Visual  
communications

6500 N. Hamlin  
Lincolnwood  
Illinois 60712

[www.midwestvisual.com](http://www.midwestvisual.com)

800.876.8298

# The Art of Plastering



Spectacular walls.  
Smooth...Textured...  
Done the way you want them.  
Hard and durable surfaces that  
make paint and paper look  
better, make redecorating  
easier, make homes quieter.

**Plaster interiors are  
more cost-effective than  
you think.**

*Call us for more information.*



Chicago Plastering Institute  
6547 N. Avondale Ave.  
Chicago, Illinois 60631  
773.774.4500  
Fax. 773.774.5828

## N O T E B O O K

115-year-old Richardsonian Romanesque building. Designed by Francis M. Whitehouse, the church features open wood trusses, elegant woodwork, and intricate mosaics. To date, the restoration has included building stabilization, tuckpointing, window and façade repair, and complete rewiring. Roof repairs and interior restoration are planned for the near future.

The following AIA Chicago member firms received 2000 Excellence in Masonry Awards from the Illinois/Indiana Masonry Council. Gold Medals were awarded to **Perkins & Will** for West Aurora High School and **Ross Barney + Jankowski** for Maywood Public Library. Silver Medals were given to **Valerio Dewalt Train Associates** for Wild Things Store and Café, **Harding Associates** for St. Irene Church, and **Ross Barney + Jankowski** for Oakton Community College. Honorable Mentions were awarded **Schroeder Murchie Laya** for Hale Park Gymnasium, **Grund & Riesterer Architects** for Lake Forest Bank and Trust, and **Harding Associates** for Copernicus Fitness

Center. And, **McCluer** was given a Special Mention for the Reliance Building renovation.

## PROFESSIONAL DEVELOPMENT

On June 6 at 6:00 p.m. in Rubloff Auditorium, The Art Institute of Chicago is sponsoring **Guggenheim, Bilbao and the Changing Role of the Museum in the City**, a forum exploring how the architecture of museums is impacting modern city centers. Donna Robertson, dean of IIT's School of Architecture and Design, moderates a panel discussion between Celeste Adams, director of the Grand Rapids Museum; Steven Bradley, director of the Davenport Museum of Art; David Chipperfield, architect of the new Davenport Museum of Art; Thomas Krens, director of New York City's Guggenheim Museum; and Yvonne Szeto, architect of the new Illinois History Museum.

Interaction by **Design: Bringing People and Plants Together for Health and Well-Being**, the American Horticultural Therapy Association's annual conference,

# AUCUTT'S

## BUILDING MATERIALS

AN AFFILIATE OF THE MASONRY INDUSTRY BOARD OF AMERICA  
 10000 WILSON AVENUE, SUITE 100, MONTGOMERY, IL 60538  
 630-897-7922 FAX 630-897-7923  
 WWW.AUCUTTS.COM

### Solid as a Brick For over 100 Years!

- Brick, Stone & Masonry Supplies
- Representing over 20 manufacturers of brick and clay products
- Delivery to meet your needs
- 4000 square foot indoor showroom
- Huge 11 acre outdoor brick yard

1975 Aucutt Road  
Montgomery, IL 60538  
Fax: 630-897-7923

# CALL: 630-897-7922

is being hosted by the Chicago Botanic Garden July 20 through 22 in Glencoe. The symposium addresses design and the use of outdoor spaces. To register or for more information, call 847/835-8261 ext. 4. Or e-mail [continuingeducation@chicagobotanic.org](mailto:continuingeducation@chicagobotanic.org).

The **AIA's Diversity Conference 2000** will be held in Chicago, August 4 through 6. On Friday, participants choose between two community service activities: a design charrette for a 20,000-square-foot community center in Little Village or a mentorship program at Future Commons, a design-focused public high school. There are over 24 workshops to choose from throughout the weekend, and *Chicago Sun-Times* architecture critic Lee Bey will speak. AIA members earn up to 10 LUs. For complete details, visit [www.e-architect.com](http://www.e-architect.com).

#### VARIOUS MATTERS

Performances of **The Architect** — David Greig's drama about an architect who is faced with the consequences of his own design, a crumbling 20-year-old

public housing project — continue through June 10 at Chicago Dramatists, 1105 W. Chicago Ave. For tickets and information, call 312/458-9182.

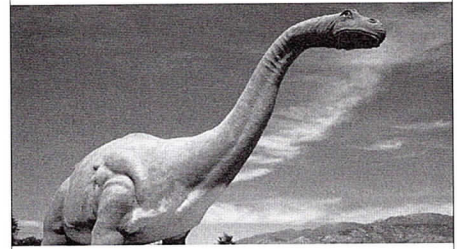
**A Place in History: Design in the Context of Architectural Icons** is on display at the Chicago Architecture Foundation, 224 S. Michigan Ave., through June 10. The exhibit spotlights entries to the recent design competition for an integrated campus for the Graduate School of Business at the University of Chicago. Featured designs and models include those of Kohn, Pederson, Fox, Pei, Cobb, Freed & Partners; Perkins & Will; Porphyrios Associates; Rafael Moneo Architecto; and Rafael Viñoly Architects.

#### NEW MEMBERS

#### AIA

**Thomas Brauer**, Urban Design Group Inc.; **Scott Fradin**, Architecture Management Group; **Stephen Kadlec**, Gary Lee & Partners; **David Lesniak**,

It's big.  
It's clumsy.  
And it's not too bright.



## Sound like your architectural software?

You can continue plodding along with your current CAD software, or you can make the smart move to ArchiCAD. It can be mastered surprisingly fast, and only ArchiCAD has been designed specifically for architects. Really, isn't it time you raised the standards and let go of the past? Embrace the intelligent and integrated approach to building design and documentation.

#### EIGHT REASONS TO START

- Intuitive commands easy to master.
- Suberb construction documentation.
- Fully AutoCAD compatible.
- Remarkable efficiency gains and ROI.
- Cutting edge presentation features.
- Fully parametric objects.
- Time-saving automatic documentation.
- 30-day money back guarantee.

GRAPHISOFT®  
**ArchiCAD®**

Call to inquire about an upcoming demo seminar or for an in office demo.  
**RenderScope Chicago**  
Your Local  
Chicago Metropolitan Area  
ArchiCAD Partner  
**1.800.645.4909**

## STOP LEAKAGE IN MASONRY WALLS

WITH

# ThermaDrain®

\*Patent #5860259

### THE INSULATED DRAINAGE BOARD

#### ThermaDrain® ELIMINATES THE NEED FOR A CLEAN AIRSPACE

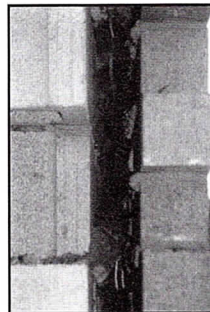
Currently, a 2" airspace is the primary means of providing sufficient drainage for cavity walls. However, poor workmanship, mortar blockages and mortar bridging can and does occur in airspaces 2" or greater. This allows water to bridge the cavity before it ever reaches the flashing and weepholes. **ThermaDrain®** eliminates workmanship problems and provides a continuous drainage path to the required flashing.

#### ThermaDrain® WALL OUT PERFORMS CONVENTIONAL CAVITY WALL



ThermaDrain® stops mortar blockage

Distributed by: Hydro Environmental Products  
c/o Mark Nelson 847-882-8675



Mortar Blockage in 2 1/2" Cavity

Testing performed in accordance with ASTM E514 concluded that a wall with **ThermaDrain®** provided substantially more drainage than a conventional cavity wall by preventing mortar bridging and mortar blockage. In addition, **ThermaDrain®** provides: a maximum "R" value with a thinner profile cavity wall, narrower foundations and smaller shelf angles.

800-837-4065 National  
630-724-1845 Local

**ThermaDrain®**

McShane Construction; **Thomas McWalters**, Gary Lee & Partners

**Emeritus**

**Seymour Frolichstein**, Seymour R. Frolichstein, Architect

**Associates**

**Cristina Bomben-Liberati**, FGM Architects & Engineers; **Bernard Contreras**; **Kathryn Culley**, Loeb Schlossman & Hackl; **Kathleen Glynn**, Consulting for Architects; **Scott Nacheman**, LZA Technology; **Carolyn Zytaruk-Dugger**

**Professional Affiliates**

**James Levi**, Hodges, Loizzi, Eisenhammer, Rodick & Kohn; **Chris Mediate**, Dwyer Compact Kitchens; **Karen Schak**, ICS

Build your future with ASC. Our increased focus on Engineering & Architectural Design Services has created openings for:

**Architect/Interior Design**

- Bachelor's in Interior Design w/strong architectural background.
- Strong exp. in programming, space planning, furniture & finish specification.
- Minimum 7 yrs. exp. in admin. projects, project management and coordination.
- Ability to handle multiple projects & priorities in a fast-paced environment.
- Must have excellent communication skills & work well as a team member.

**Architect**

- Requires BA/BS in architecture
- Min. 5 yrs. exp. in a fast-paced project environment, demonstrate the ability to handle multiple projects & priorities.
- Excellent communication skills & the ability to periodically lead a project design team.
- Some exp. w/project mgmt tasks, strong detailing, design coordination, & construction document preparation.

ASC also has openings for Mechanical & Electrical Engineers.

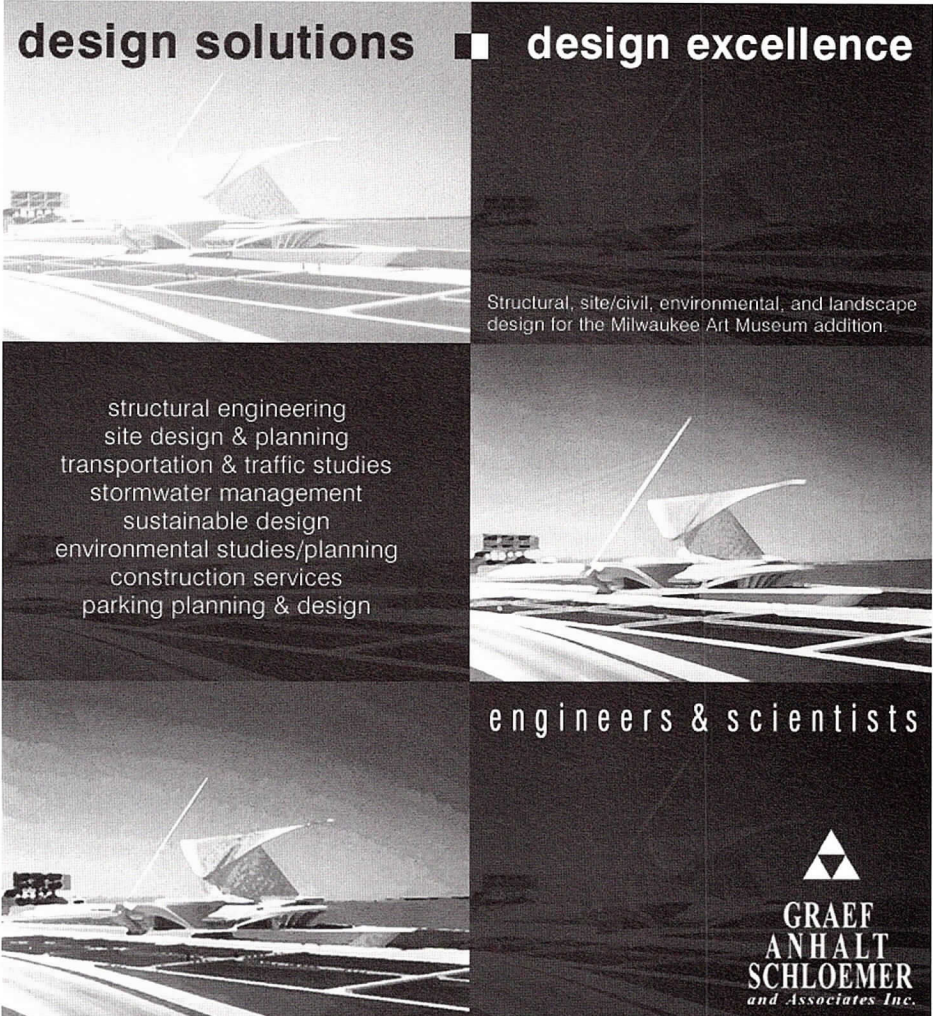
*Please forward your resume to:*

ASC Services Co. • Attn: HR  
 300 W. Washington St., Suite 200  
 Chicago, IL 60606 • Fax: 312-214-1546  
 • E-mail: hrdept@ascservices.com  
 • www.ascservices.com

EOE, M/F/H/V

**What to do? How to do it?**  
**Kristine Fallon Associates, Inc.**  
<http://www.kfa-inc.com>  
 Hardware  
 Software  
 Networks  
 Internet  
 30 East Adams Street, Suite 600  
 Chicago, IL 60603-5609  
 312-641-9339 (voice)  
 312-641-9337 (fax)  
[kfainc@kfa-inc.com](mailto:kfainc@kfa-inc.com)  
**Get it done. Keep it going.**

**design solutions** ■ **design excellence**



Structural, site/civil, environmental, and landscape design for the Milwaukee Art Museum addition.

structural engineering  
 site design & planning  
 transportation & traffic studies  
 stormwater management  
 sustainable design  
 environmental studies/planning  
 construction services  
 parking planning & design

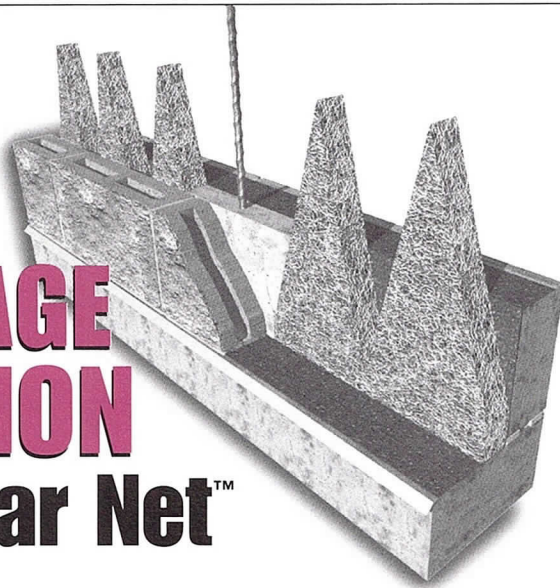
**engineers & scientists**

**GRAEF ANHALT SCHLOEMER**  
*and Associates Inc.*

**8501 West Higgins Road, Suite 280**  
**Chicago, Illinois 60631 773/399-0112**

Chicago Milwaukee Madison Green Bay

# Another DRAINAGE SOLUTION by Mortar Net™



Mortar Net Block's **patented** shaped mortar dropping collection device prevents water damage in single wythe concrete masonry unit (CMU) walls by breaking up mortar thereby allowing proper drainage to the weep holes. For more information, please contact Mortar Net at 800-664-6638 or visit our Web site at [www.mortarnet.com](http://www.mortarnet.com).

800-664-6638  
[www.mortarnet.com](http://www.mortarnet.com)

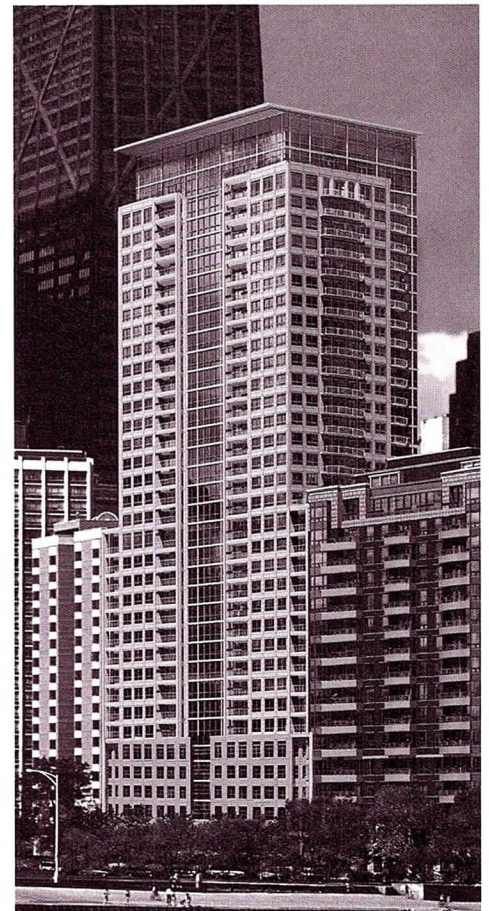


312.697.1107 WWW.VERTEXGRAPHICS.COM

DIGITAL CONSULTANTS  
3D MODELING  
RENDERING  
GRAPHIC DESIGN  
ANIMATION  
PRESENTATION GRAPHICS  
DIGITAL PRINTING

GAROFALO ARCHITECTS  
LOESS PROJECT

VERTEX GRAPHICS  
600 S DEARBORN #2008 CHICAGO IL 60605



*Architectural*

**Project:**  
The Pearson  
The Residences on Lake Shore Park

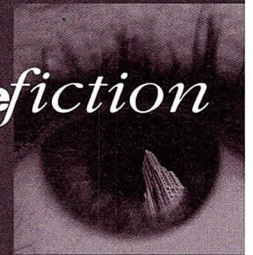
*Rendering*

**Client:**  
LR Development Company

*Imaging*

**Architect:**  
De Stefano+Partners

imagefiction



*Animation*

*Web / Media Design*

LaSalle Wacker Building  
221 North LaSalle Street  
Suite 1510  
Chicago, IL 60601

*Large Format Prints*

312.726.0818

- 1 AIA Chicago Design Excellence Awards.** Deadline for submitting entries in the Interior Architecture category.
- 8 Cape Hatteras Lighthouse on the Move.** Historic Preservation PIA. 5:30 p.m.; AIA Chicago. 1.5 LU
- AIA Chicago Design Excellence Awards.** Deadline for submitting entries in the Distinguished Building category.
- 10 Excellence in Structural Engineering.** SEA01 awards banquet. 6:30 p.m.; Museum of Science and Industry. Cost: \$100 per person. Reservations required: 312/372-4198.
- 12 When Worlds Collide: Unrealistic Demands, Realistic Advice.** AIA Chicago. 8:30 a.m.; Mart Conference Center, 350 N. Orleans St. Fee: \$50 for AIA members/\$80 for nonmembers. Make your reservations with the form on page 3. Note: You do not need a NeoCon badge to attend this program. 2 LU
- 13 Two Seminars for Interns: Introduction to the IDP and Introduction to the ARE.** AIA Chicago's Young Architects PIA and AIA Illinois. 6:00 to 8:00 p.m.; Holiday Inn Chicago Mart Plaza, 350 N. Orleans St., 14th Floor. 1 LU each
- 14 Meet the Planners III.** Planning and Urban Affairs PIA. 12:00 noon; AIA Chicago. 1 LU/HSW
- Tour: GE Capital Auto Financial Service Headquarters.** Corporate Architects PIA. 5:30 p.m.; 540 Northwest Hwy., Barrington. (Meet at the main entrance.) 1.5 LU/HSW
- 15 Specifying Fire-Rated Glazing.** Technical Issues PIA. 12:00 noon; Chicago Bar Association, 321 S. Plymouth Court. 1 LU/HSW
- Chicago Plan Commission.** Monthly meeting. 1:00 p.m.; City Council Chambers, 121 N. LaSalle St., 2nd Floor.
- AIA Chicago Design Excellence Awards.** Deadline for submitting entries in the Unbuilt Design category.
- 19 Evaluating New Software.** Information Technology PIA. 5:30 p.m.; OWP&P, 111 W. Washington, #2100. 1.5 LU
- 20 Daylighting Opportunities.** Environment PIA. 5:30 p.m.; AIA Chicago. 1.5 LU/HSW
- 21 Marketing Strategies from Other Industries.** Office Practice PIA. 5:30 p.m.; Frankel Brand Environments, 111 E. Wacker Drive, 23rd Floor. 1.5 LU
- 22 Tour: W.W. Grainger Inc. Headquarters.** Interiors PIA. 5:30 p.m.; 100 Grainger Pkwy., Lake Forest. (Meet at main reception area.) Tour is limited to 50 AIA members only. 1.5 LU/HSW
- AIA Chicago Design Excellence Awards.** Deadline for submitting entries to the Twenty-Five Year category.
- 27 Optima Inc.** Design and Housing PIAs. 6:00 p.m.; 630 Vernon Ave., Glencoe Limited to 20 participants. 1.5 LU/HSW
- 11 Show and Tell in Oak Park.** AIA Chicago. 6:00 p.m.; Pleasant Home, 217 Home Ave., Oak Park. 1.5 LU
- 18 Integrated Photovoltaics.** Environment PIA. 5:30 p.m.; OWP&P, 111 W. Washington, #2100. 1.5 LU/HSW
- 19 Workplaces of the Future.** Corporate Architects PIA. 5:30 p.m.; Steelcase, #1032 The Merchandise Mart. 1.5 LU
- 20 Structured Wiring Systems.** Technical Issues PIA. 12:00 noon; Chicago Bar Association, 321 S. Plymouth Court. 1 LU/HSW
- 26 Extranets in the Air.** Design/Build and Information Technology PIAs. 6:00 p.m.; AIA Chicago. 1.5 LU

**Additional Programs in July**Check the Quarterly Calendar at [www.aiachicago.org](http://www.aiachicago.org)

# AIA Chicago



A Chapter of The American Institute of Architects  
222 Merchandise Mart Plaza  
Suite 1049  
Chicago, Illinois 60654  
312/670-7770  
312/670-2422 (fax)  
[info@aiachicago.org](mailto:info@aiachicago.org)  
[www.aiachicago.org](http://www.aiachicago.org)

Periodical