

THE NEWSLETTER OF ARCHITECTS
JANUARY 2000

FOCUS

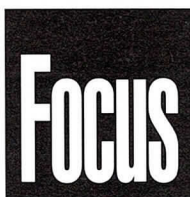


How to Design for the 21st Century

Creative collaborations are the key to the future

AIA Chicago

In This Issue: 1999 Annual Report - 4 ■ Archeworks Announces Accredited Programs - 6 ■ Capital Development Board Holds Required Seminar - 6 ■ NCARB Begins Certification Countdown - 6 ■ Getting Under Gehry's Skin - 13 ■ Underfloor Air Distribution Systems - 15



3
Focus on Programs

4
1999 Annual Report

6
News Briefs

8
Cover Story
*How to Design for
the 21st Century*

13
Case Study
*Getting Under
Gehry's Skin*

15
Feature
*Underfloor Air
Distribution Systems*

17
Notebook

24
Calendar

January 2000

Editor

Susan Larson

Contributing Editor

Laurie McGovern Petersen

Focus Advisory Board

William Bradford, AIA
Howard Decker, FAIA
Deborah Doyle, AIA
James Jankowski, AIA
Edward Keegan, AIA
Laurie Petersen
Pat Rosenzweig
Alice Sinkevitch, Hon. AIA
Thomas Zurowski, AIA

FOCUS (ISSN 1071-3700) Vol. 20, No. 1, is published monthly with a combined issue July/August, by AIA Chicago, 222 Merchandise Mart Plaza, Suite 1049, Chicago, Illinois 60654-1001. \$20 of each member's dues are allotted as a subscription. Periodicals postage paid at Chicago, Illinois. POSTMASTER: Send address changes to Focus, AIA Chicago, 222 Merchandise Mart Plaza, Suite 1049, Chicago, Illinois 60654-1001.

For advertising rates and schedules, call 312/670-7770.

© 2000 The American Institute of Architects Chicago. All rights reserved. Reproduction in whole or part without permission is strictly prohibited.

AIA Chicago on the Internet: www.aiachicago.org
AIA Chicago e-mail: info@aiachicago.org

AIA Chicago



A Chapter of The American
Institute of Architects

**2000 Board
of Directors**

President

T. Gunny Harboe, AIA

President-Elect

Thomas Zurowski, AIA

Vice Presidents

Joseph Caprile, AIA
Randall Deutsch, AIA

Secretary

Jonathan Fischel, AIA

Treasurer

Dave Urschel, AIA

Directors

Raymond Clark, AIA
Ellen Bailey Dickson, AIA
Kevin Hall, AIA
Philip Craig Johnson, AIA
James E. Prendergast, AIA

AIA Regional Director

Holly Gerberding, AIA
Lawrence Livergood, AIA

AIA Illinois Director

W. Stephen Saunders, AIA

Associate Director

Susan Campbell, Assoc. AIA

Professional Affiliate Director

Eric Singer

Past President

James Jankowski, AIA

**2000 AIA Illinois
Delegates**

William Bradford, AIA
Thomas Braham, AIA
Hill Burgess, AIA
Deborah Doyle, AIA
Arthur Salzman, AIA
W. Stephen Saunders, AIA
Peter Schlossman, AIA (Alternate)
Lee Weintraub, AIA (Alternate)
William Worn, AIA
Robert Woodworth, AIA

**2000 Professional
Interest Areas**

Corporate Architects
Robin Ellerthorpe, FAIA

Design
David Brininstool, AIA

Environment
Michelle Halle Stern, AIA

Health
To be announced

Historic Resources
Thomas Gentry, Assoc. AIA

Housing
Margaret Cervantes, AIA

Interiors
Vito Lotta, AIA

Office Practice

Lisa Willis-Brown

Planning and Urban Affairs

Kyle Benkert, AIA

Technical Issues

Christopher Chwedyc, AIA

Young Architects

Helen Tsatsos, Assoc. AIA

Chapter Staff

Executive Director
Alice Sinkevitch, Hon. AIA

**Membership Coordinator/
Assistant to the Director**
Jamie Juliano

Program Director
Joan Pomaranc

Communications Director
Susan Larson

Financial Manager
Crystal Gagler

Public Information Receptionist
Nichole Brown

Cover image: Walgreen Co. campus
expansion by OWP&P Architects.

■ Corporate Real Estate Outsourcing: The Supply Side



Wednesday, January 12, 5:30 p.m.

AIA Chicago

Sponsor: Corporate Architects PIA

A panel of real estate managers — Todd Burns, Jones Lang LaSalle; Don Schoenheider, Trammell Crow; Pat Crumley, Cushman & Wakefield — discuss providing outsourced corporate real estate services such as move management, project management, and capital maintenance. Where is the outsourcing trend heading? Where does the architect fit in an outsourced service relationship? 1.5 LU

■ Introduction to Sustainability



Tuesday, January 18, 5:30 p.m.

AIA Chicago

Sponsor: Environment PIA

This annual review of basic principles of sustainability as they apply to architecture is an excellent way to learn how to begin to make your designs “green.” 1.5 LU/1.5 HSW

■ Douglas Garofalo, AIA and Randall Kober

Tuesday, January 18, 6:00 p.m.

Museum of Contemporary Art

220 E. Chicago Ave., Turner Gallery

An in-gallery talk co-sponsored by the Museum of Contemporary Art and AIA Chicago by two architects included in *Material Evidence*, an exhibition that complements *At the End of the Century: 100 Years of Architecture*. For other related events, see the calendar listings on the back cover of this issue. For information about the talks, call the MCA at 312/280-2660.

■ Valerio Dewalt Train Associates

Wednesday, January 19, 12:15 p.m.

Chicago Architecture Foundation,

224 S. Michigan Ave.

Joseph Valerio, FAIA discusses the work of his firm — AIA Chicago's 1999 Firm of the Year — at a brownbag lecture co-sponsored by AIA Chicago and the Chicago Architecture Foundation. For information, call 312/922-3432.

■ Planning Technical Programs

Thursday, January 20, 12:00 noon

Wiss Janney Elstner

120 N. LaSalle St., 20th floor

Sponsor: Technical Issues PIA

In the 1999 Membership Survey, 75 percent of respondents indicated that technical topics were most critical to their professional development. The Technical Issues PIA is charged with offering such programs to the membership. Help plan presentations on building technology, specifications, and codes and standards. Lunch is provided so reservations are required.

■ 1999 Young Architect Award Winners



Thursday, January 20, 5:30 p.m.

AIA Chicago

Sponsor: Young Architects PIA

Randy Deutsch, AIA, Doug Ross, AIA, and Jim Prendergast, AIA, discuss their careers, their work, and how they prepared their nomination binders for the annual competition. 1.5 LU



Sign Me Up!

- 1/12 Corporate Real Estate Outsourcing: The Supply Side
- 1/18 Introduction to Sustainability
- 1/20 Planning Technical Programs for 2000
- 1/20 1999 Young Architect Award Winners

Name _____

Office _____

Address _____

City _____

Phone _____

Fax _____

All programs listed above are free or as noted for AIA Chicago members. Non-members will be charged \$10 per program or as noted.

Method of Payment

- Check
- American Express Visa MasterCard

Credit Card No. _____

Expiration Date _____

Name on Card _____

Signature _____

Fax to:
AIA Chicago
Fax 312/670-2422

Extra! Extra! Read All About It!



We've all heard the old adage: "No news is good news." Well, for once that doesn't hold true. There's tons of news from AIA

Chicago, and it's all good.

As I step into to serve as president for the Chapter, I'm struck by how solid a foundation has been laid for me by my predecessors. In the mid-1990s, they began a strategic planning process that resulted in an Action Plan that not only promoted growth through the second half of the decade, but also positioned us for success in the next.

The Action Plan is brilliant in its simplicity:

- Take advantage of our collective strength
- Improve the AIA architect's value
- Communicate and demonstrate that value

Here are just a few headlines from last year that point to the strength and effectiveness of AIA Chicago.

T. Gunny Harboe, AIA
President

Internet Overtakes Resource Center as Leading Referral Method

For several years, the AIA Chicago office has featured binders illustrating the work of member firms. But in 1999, visits to the Internet overtook trips to the AIA office as the favored means of reviewing portfolios.

AIA Chicago helps firms gain visibility on the Internet in several ways. Each member firm of AIA Chicago is entitled to a link on our Web site, www.aiachicago.org. To get linked, send your URL to Susan Larson at larsons@aiachicago.org.

The national AIA's television, print, and radio advertising campaign coordinates with a revised Web site just for potential clients: www.aiaaccess.com. The site contains information on how to find and work with an architect, and the Architect Finder searchable database. To begin, information on each firm is culled from the last edition of the national ProFile directory. But that can be updated online by going to www.cmdexpress.com/register.

The ad campaign brought many viewers to the site in 1999. In October alone, there were 34,000 searches in the Architect Finder feature. The press and potential employees also are using this site. For more information on how to update firm information, call Alice Sinkevitch at 312/670-7770.

Task Force Assists Members With Continuing Ed

Treasurer Dave Urschel, AIA directed Continuing Education System (CES) communications efforts in 1999. Letters, phone calls, and CES "Swat Team" visits to offices noticeably increased the level of participation in Chapter programs. For these efforts, AIA Chicago was recognized by the national AIA with the 1999 Award for Component Excellence for membership operation.

A database at www.e-architect.com allows members to search for programs by date, location, or subject matter. Also on the national AIA Web site is a chart showing state-by-state where continuing ed is mandatory for renewal of one's license, and what those requirements are. Members' CES transcripts are also available at this site. Questions? Call Dave Urschel, AIA at 312/786-1204 or AIA Chicago membership coordinator, Jamie Juliano, at 312/670-7770.

The AIA board of directors in December passed new requirements for CES. (See story, pg. 7.)

Burgeoning Membership, Balanced Budget Enables Chapter to Serve Architects and Public

The Chapter continues to be very healthy and ended the year with a balanced budget. The 1999 budget was slightly over \$900,000. A majority of those budgeted dollars were targeted toward programs and services for members and the greater architectural community, including two public exhibitions co-sponsored with the Museum of Contemporary Art and the Chicago Architecture Foundation.

Thanks to strong membership growth — as of December 10, 1999, the Chapter had 2248 members — AIA Chicago's dues income was slightly higher than originally projected, but still provided for less than 45 percent of the overall budget. The balance came from documents sales, entry fees, ticket sales and, most importantly, sponsorship.

Thanks to the generosity of regular contributors, and several new ones, spon-

Record Number of Programs Strengthens Professional Growth

✓ **3,123 total attendance!**

✓ **10,604 LUs earned by AIA Chicago members at programs like these:**

- 51 free continuing education programs, including 11 tours and site visits and six firm visits
- ARE orientation seminar
- "Right from the Start: Opening a Successful Firm" (NeoCon Seminar)
- Special evening at *Ragtime* with a tour of the Oriental Theater
- Professional Development Conference: Two days, 15 programs, 368 in attendance

sorship made up no less than 12 percent of the overall budget. Importantly, these funds were almost entirely targeted toward specific member programs, many of which might otherwise have been too costly for the Chapter to provide.

As AIA Chicago heads into the 2000 budget year, the primary task remains to provide readily perceivable value to members for their dues investment. In addition to the ever-better newsletter and Web site, 51 programs were free to members in 1999, and ticket sales to special programs remained highly affordable.

Membership Survey and Program Evaluations Guide Planning

Professional Interest Area (PIA) chairs, task force members for the Professional Development Conference and Designight '99, and AIA Chicago staff worked throughout the year to provide over 70 high-quality professional development programs.

Their efforts in 2000 will be guided by the 750 responses to the 1999 Member Survey. Members praised tours and site visits, technical programs about building materials and office technology, and presentations by design leaders and critics, and they asked for programs in the suburbs.

Thanks to Our 1999 Sponsors

- | | | |
|--|--------------------------------|--|
| a/e ProNet | Euclid Insurance Agencies Inc. | New Metal Crafts |
| A. Epstein & Sons International Inc./ISI | F.H. Paschen/S.N. Nielsen Inc. | OWP&P Architects Inc. |
| Armstrong World Industries | Gary Lee + Partners | Paul H. Schwendener Inc. |
| AVA Insurance Agency | Gensler | Perkins and Will |
| BABCO Inc. | Hancock & Hancock Inc. | Permasteelisa Cladding Technologies Ltd. |
| Booth/Hansen & Associates Ltd. | Hedrich Blessing | Petersen Aluminum Corp. |
| Bovis Construction | Herman Miller | Power Mortgage, Inc. |
| Brininstool + Lynch | Holabird & Root LLP | Ross Barney + Jankowski Inc. |
| Chicago Automobile Trade Association | Interior Investments | SAFECO/PIMCO |
| Conrad Schmitt Studios | Knoll Inc. | Saydak Construction |
| Consulting for Architects | Legat Architects Inc. | Skidmore, Owings & Merrill LLP |
| Cosentini and Associates | Leopardo Construction | Solomon Cordwell Buenz & Associates Inc. |
| Daniel P. Coffey and Associates | Lightolier | Solutia Inc. |
| David Woodhouse Architects | Loebl Schlossman & Hackl | Thornton - Tomasetti Engineers |
| DeStefano and Partners | Lohan Associates | Tigerman McCurry Architects Ltd. |
| DPIC Companies Inc. | McCluer | Tishman Speyer Properties |
| DuPont Antron | McGuire Engineers | Turner Construction Company |
| DuPont Corian | Morse Diesel International | USG |
| Eckenhoff Saunders Architects Inc. | Muench Woodwork | Valerio Dewalt Train Associates Inc. |
| Environmental Systems Design Inc. | Murphy/Jahn Inc. | VOA Associates Inc. |
| The Environments Group Inc. | Nicholas-Clark Architects | Walsh Construction |
| Esherick Homsey Dodge & Davis | W.E. O'Neil Construction Co. | Wheeler Kearns Architects Inc. |

From left to right: Stanley Tigerman, FAIA and Eva Maddox, FIIDA, Assoc. AIA; 450 attend Art of the Long View opening; and AIA Illinois President Ken Crocco, AIA and President-Elect Janet Hahn Lougee, AIA with representatives from the 1999 AIA Illinois Firm of the Year, Loeb Schlossman & Hackl, Bob Clough, FAIA, Peter Schlossman, AIA, and Don Hackl, FAIA



Bonuses Skyrocketing for Many A/E/P Managers

Bonus amounts are up for most managers in A/E/P and environmental consulting firms, especially for principals and satellite office manager.

According the *Management Compensation Survey* by Zweig White & Associates, project managers, marketing directors, information technology managers, satellite office managers, and principals of A/E/P firms have all experienced a rise in the median bonus amounts over the past two years. However, principals and satellite office managers — in addition to being more likely to receive a bonus than other managers — are seeing the largest increases in median bonus amounts.

The percentage of principals who received a bonus increased from 75 percent reported in the 1998 survey to 83 percent reported in 1999. Over that same period, median bonus amounts for principals increased by \$10,000 to a median of \$30,000. Similarly, the percentage of satellite office managers who received a bonus increased from 79 percent in 1998 to 85 percent in 1999.

CDB to Hold Required Seminar in February

The Capital Development Board's (CDB) Office of Training and Quality Management is conducting training and examination sessions for design firm project managers in Chicago on February 9 from 8:30 a.m. to 5:00 p.m. This training focuses on the responsibilities of the design firm in meeting the statutory, regulatory and procedural requirements of CDB. As of January 1, this training is required of design staff who will manage new CDB projects. Participants who successfully complete an examination at the end of the course are eligible to manage CDB projects. (Participants in the CDB Project Management Workshops for Design Professionals between December 1998 and June 1999 have already met this training requirement.) AIA members earn seven learning units and seven health, safety and welfare hours for attending. To register, contact Kate Mackz at 217/785-5837 or kmackz@cdb.state.il.us.

Archeworks Launches Accredited Workshops for Design Professionals

Archeworks, the alternative design school co-founded by Stanley Tigerman, FAIA and Eva Maddox, FIIDA, is launching a series of design workshops for the Chicago architecture and design community. The workshops are fully accredited as continuing education programs by the AIA, IIDA and ASID.

The workshops will be held on Saturdays in the Archeworks headquarters at 625 N. Kingsbury St. and will focus on socially responsible projects related to health, safety and welfare.

On January 29, the focus will be on designing a safe path lighting system to cope with nighttime wandering common to Alzheimer's disease. The solution will provide help to caregivers and prevent the use of bed restraints.

On April 15, the workshop will center on creating a new standard in low-cost housing for the disabled to enhance comfort and "visibility" for people in wheelchairs and the infirm elderly. The new standard will be a way of expanding the existing Americans With Disabilities laws.

Tigerman and Maddox will conduct all workshops, together with other Archeworks faculty members. For further information, contact Beverly Russell at 312/867-7254. Workshops are \$45 per person and class size is limited.

NCARB Announces Certification Countdown

Beginning July 1, architects will be required to hold a professional degree from a program accredited by the National Architectural Accrediting Board (NAAB) or the Canadian

READ THIS AND WEEP



800-664-6638
www.mortarnet.com

Now made of a softer, more compressible material for easier installation!

Cavity blocked with mortar droppings.

Don't be fooled by cheap imitations—no other design matches the performance of Mortar Net™. Just look for our unique green mesh and patented dovetail shape to ensure reliability every time.

Damming and clogging of cavities can cause costly repairs due to water damage.

The Mortar Net Drainage System allows water to maintain a path of exit to the weeps, preventing damage caused by the blockage of weep holes. Call for more information or to place an order.

(ASTM test method E-514. Laboratory test data available upon request.)



Bill Waldmire

Architectural Certification Board (CACB) to meet NCARB's education requirement. If you do not have a professional degree from an NAAB-accredited school, NCARB currently accepts one of four alternatives, but two will expire June 30. For details on education standards and alternatives for certification, go to the "Certification" and "Newsclips" pages of www.ncarb.org. For a list of accredited schools, download the Historical Listing from the "Forms" page. Reach NCARB by phone at 202/879-0528.

Loebl, Schlossman & Hackl Garners Illinois' Distinguished Firm Award

Loebl, Schlossman & Hackl (LSH) was honored in November with AIA Illinois' Distinguished



Erik Unger

Firm Award. The award recognizes an architectural firm for its public service, community leadership, and sustained contributions to the profession of architecture in Illinois.

AIA Illinois also honored Chicago chapter members Michael Youngman, AIA, Holly Gerberding, and Art Salzman, AIA and AIA Chicago Executive Director Alice Sinkevitch, Hon. AIA with Citation of Merit awards for their continued work on *ArchiPages: The Directory of Architectural Firms*.

assume such leadership, and for creating what *Architectural Record* identified as "one of the 30 best managed firms in the US."

Uhlir, also a past president of AIA Chicago and the director of Chicago's Millennium Park Project, took on this role after retiring from many years of service at the Chicago Park District. As director of the Millennium Park project, Uhlir is coordinating planning by Skidmore, Owings & Merrill LLP, a theater by Hammond Beeby Rupert & Ainge; and the outdoor music facility by Frank O. Gehry Associates.

Over 450 Attend Art of the Long View Opening, Distinguished Service Awards Presentation

The atrium gallery of the former Railway Exchange Building was as busy as Union Station on December 9 for the opening of *Chicago Architecture: The Art of the Long View* and the presentation of the 1999 Distinguished Service Awards. Over 450 members and guests of AIA Chicago and Chicago Architecture Foundation viewed the 81 Chicago-area projects submitted by local and out-of-town firms and heard a keynote address by Cynthia Weese, FAIA, dean of Washington University's School of Architecture.

At a special presentation during the opening, Leonard Peterson, FAIA and Edward Uhlir, FAIA were honored with Distinguished Service Awards, conferred by the AIA Chicago board of directors on individuals and organizations who have given outstanding service to the Chicago architectural community.

Petersen, founding principal of OWP&P Architects and past president of AIA Chicago and AIA Illinois, was recognized for professional leadership, for encouraging others to

AIA Upgrades CES

The AIA board of directors in December passed new requirements for the Continuing Education System (CES). As of January 1, AIA members are required to complete 18 learning units (LU), with eight health, safety and welfare hours, per year. This is a change from the previous requirement of 36 LUs. The board also dropped the requirement that a quality level be determined for each program or self-reported activity. That is, LUs are now calculated simply as the number of hours in a program or activity, rather than by multiplying the number of hours times a quality level.

Volunteers Needed for Annual Working With an Architect Series

Help inform the public about the benefits of working with an architect for home improvement and new construction projects. Join the corps of architects who lead our annual spring *Working With an Architect* seminars. If you would like to participate, contact Joan Pomaranc, AIA Chicago program director, at 312/670-7770 or pomarancj@aichicago.org.



**Premium
Interior Paints**
No Odor/No VOC

DURON
PAINTS & WALLCOVERINGS

Mike Wall
2200 Ogden Ave. #100
Lisle, IL 60653

630.493.1660 • 800.72DURON
• www.duron.com

90231 C-11

How to Design for the 21st Century

By Laurie McGovern Petersen

In November 1999, AIA Chicago offered a two-day professional development conference with speakers that included architects, engineers, suppliers and developers. This is the first in an occasional series of articles that will expand upon themes presented at the conference.

What will buildings look like in the new century? For the most part, not very different than they do today. Their inner workings, however, are another story. Developments in technology have raised expectations on all levels, so buildings are becoming more sophisticated and more energy-efficient,

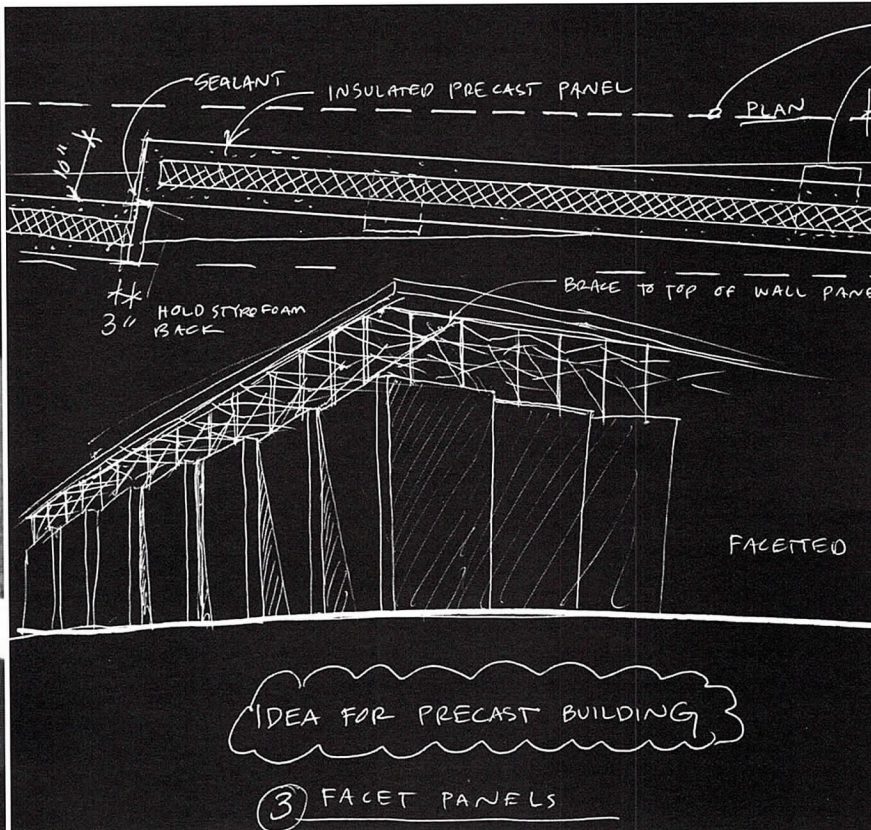
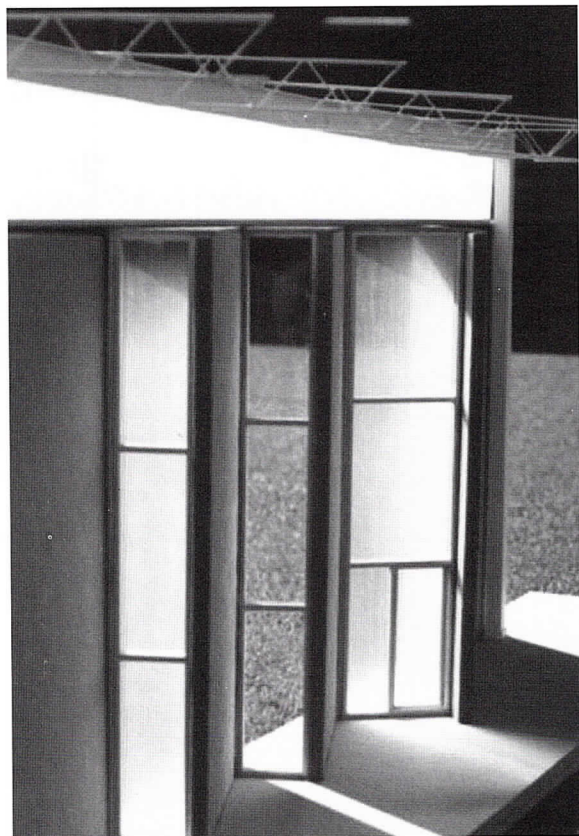
while offering more amenities. Designing the 21st century building, with its complex array of technology and building systems, will require architects and engineers to collaborate much earlier in the design process. Why the traditional design process needs to be restructured and how to do it are the subjects of this article.

WHY INTEGRATE?

Integrated Building Systems Design (IBSD) is the term for holistic design that optimizes how the building works as a unit. The structure, mechanical/electrical systems, and skin are designed from the outset to work together in the most efficient way. This requires a design process that is concurrent rather than serial, according to Ray Clark, AIA of DeStefano and Partners.

“You’ll never have an integrated building without an integrated process,” said Clark. “There is too much happening inside a building, and too many economies and efficiencies that must be achieved, to use the traditional assembly line design method.”

Creative collaboration with engineers affords many benefits. Working with innovative structural engineers offers architects new design freedom. (See *Getting Under Gehry's Skin*, pg. 13) Mechanical engineers can help plan the most comfortable, efficient working environment using new systems such as displacement ventilation. And bringing everyone on board at the start of the design process can result in operational and construction economies that will please the most budget-conscious client.



REALITY CHECK

So why hasn't everyone adopted integrated design? It is a relatively new process, and it challenges the mindset architects, engineers, and clients.

"Mechanical and electrical engineers are geared toward drawing something once, not looking at options," said Randy Deutsch, AIA. "And architects are notorious for designing something and then telling the M/E/P engineers to 'make it fit.'"

Engineer Raj Gupta, PE of Environmental Systems Design agrees these attitudes must change. "An architect will lead the team," he said, "because architects have always been the systems integrators, but engineers must also learn to lead so that they can do so at various times in the process."

Clients must also be persuaded that the increased up-front costs will save money in the long run.

"It's a fee issue," said Richard Hayes, AIA, "because owners can't always afford having everyone on board at the beginning of the project. But in schematic design

Tip: Develop a set of criteria to help clients decide whether a project would benefit from integrated design. Include economics, image, environmental awareness, and flexibility among others.

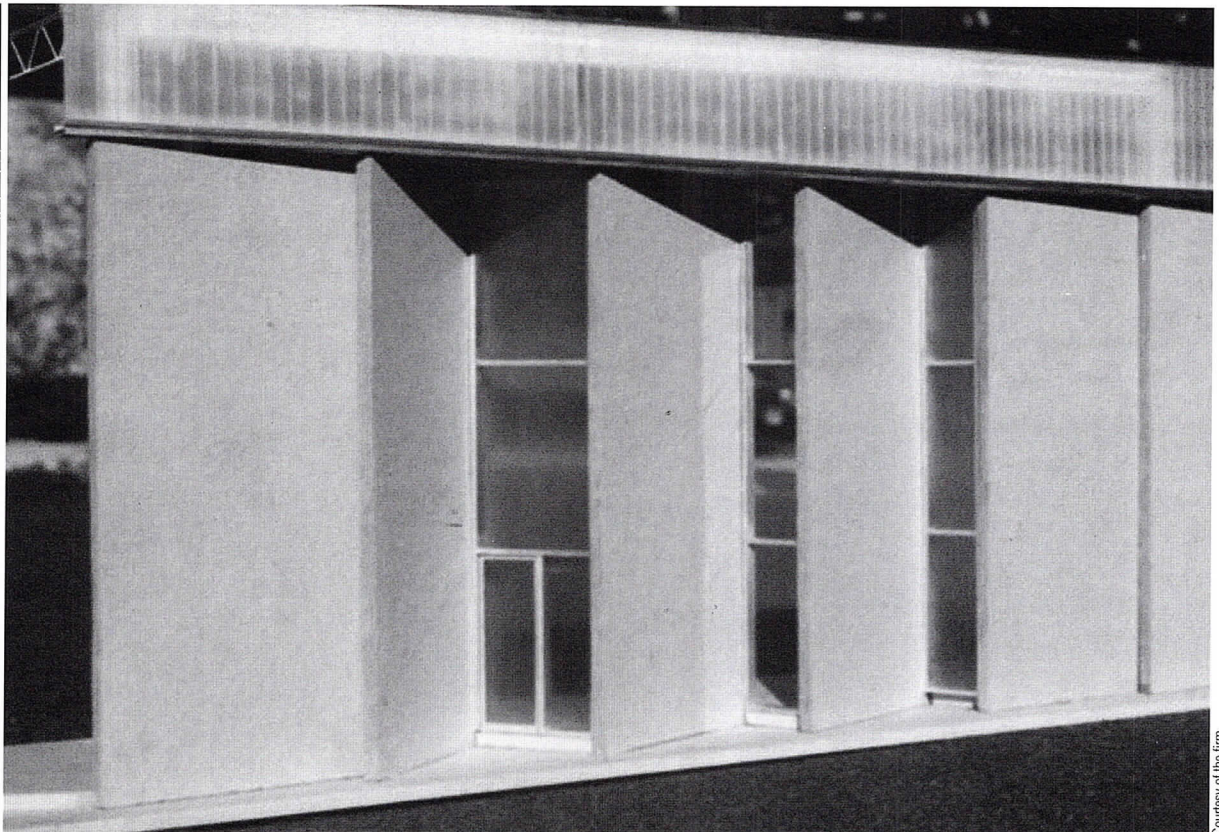
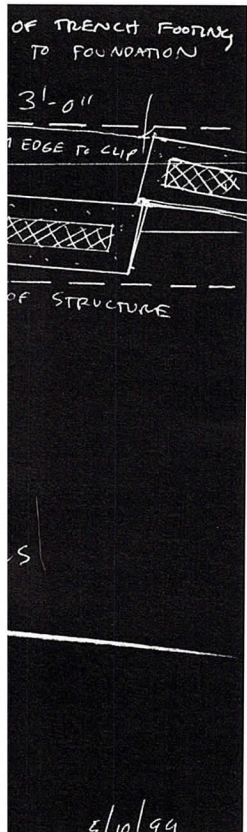
everyone is making decisions, knowingly or not, that will impact the final cost and are hard to change after the documents have been done."

A set of criteria developed by Gupta can help clients decide if a project would benefit from integrated design. These include economics (such as life-cycle costs or revenue opportunities), image, environmental awareness, safety, reliability, flexibility (ability to be reconfigured for tenant movement, future technology, or different fuel sources), simplicity, and employee productivity.

"From a client's viewpoint, these criteria are fixed no matter what new technology comes along," he pointed out. Gupta feels that once clients understand the long-term benefits, they will insist on an integrated process.

Continued on page 10

Studio Gang/O'Donnell's TAG project puts a spin on the familiar: pre-cast concrete panels are twisted on-axis to provide daylight and natural ventilation throughout the warehouse.



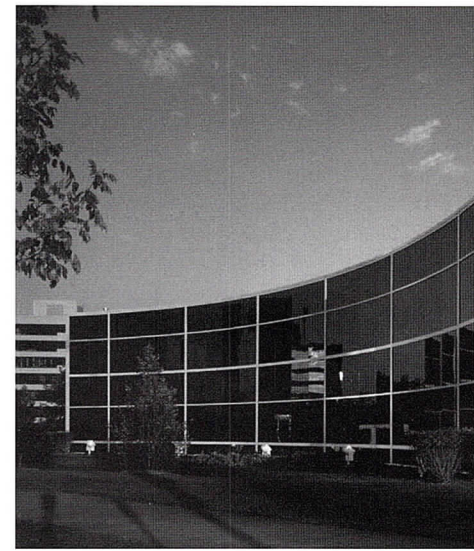
Courtesy of the firm

Although corporate headquarters might seem to be the most logical applications, Clark feels that speculative office buildings are equally relevant.

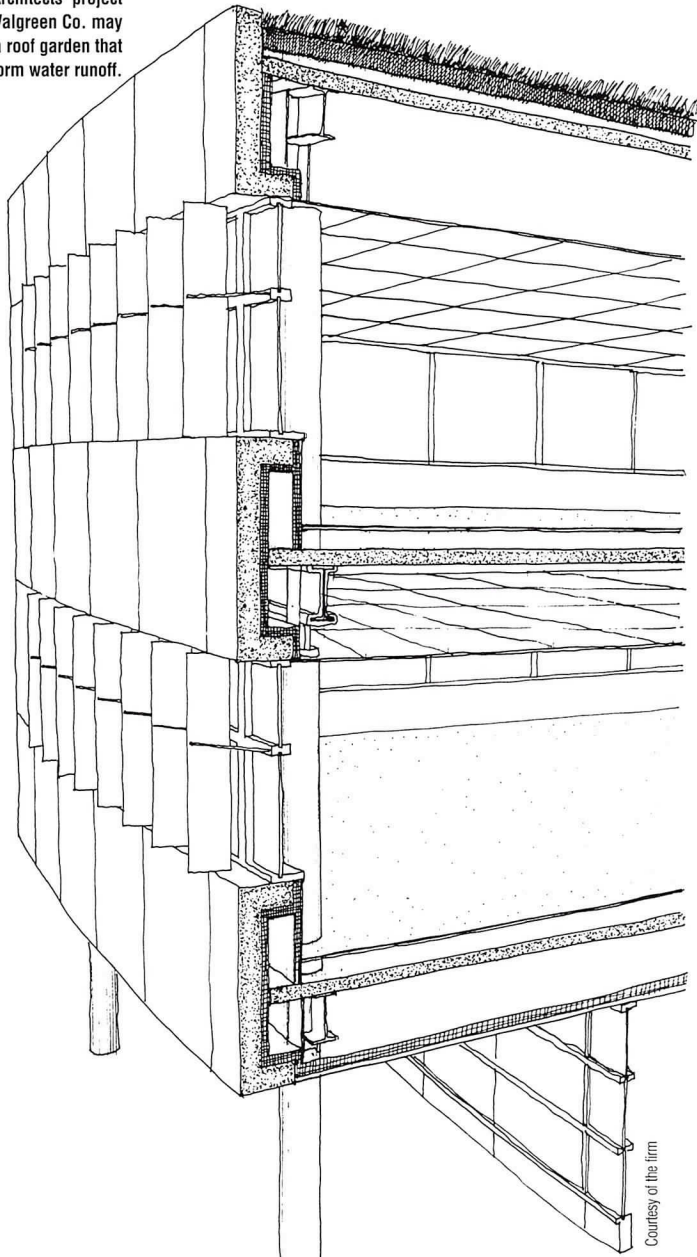
“Most developers who are still in business are technologically savvy and know that they must offer an extremely efficient, flexible product that can be customized from a base of integrated

technology to whatever a tenant might need,” he claimed. His firm is designing two such 21st century buildings for downtown Chicago.

If engineers cannot be brought on board at the beginning, what then? If architects know enough about engineering to ask the right questions during programming, that is the next best thing.



OWP&P Architects' project for the Walgreen Co. may include a roof garden that reduces storm water runoff.



Courtesy of the firm

They should establish the project criteria up front, and convey them to the project engineer as soon as possible. Some cross-training among disciplines is helpful; architects must be aware of structural and mechanical implications of their design decisions, and engineers must consider architectural and structural points of view. Professional development seminars are a good forum for this kind of interdisciplinary education.

Architects who have worked on integrated projects know what kinds of issues need to be raised and presented. DeStefano and Partners has a checklist for clients to go over with them at the beginning of the project, identifying what they want their building to do and what emerging technologies they are interested in.

REAL-WORLD APPLICATIONS

For a client who wants a “green” building, integrated design is essential to ensure the intended synergy of the systems. Three local examples in various

Tip: Create a technology/systems checklist for your client and review it early in the process.

stages of design and construction are the Walgreen Co. campus expansion building in Deerfield, the TAG warehouse on Chicago's Goose Island, and the Systems Research Offices in Schaumburg.



At Systems Research Inc. by RADA Architects, the HVAC units are concealed within the walls of the second floor.

Chris Hinds

The Walgreen Co. project, currently in conceptual design, "is a broad-brush palette of investigation for a client who is

Tip: Introduce your project to the City's zoning, planning and building authorities at the earliest possible time and keep in touch with them, making them part of the process.

particularly interested in environmental and technological advancements," said Bob Bunda, AIA of OWP&P Architects.

"By using sophisticated computer modeling and analysis tools, the effects of different design strategies on a building's energy consumption can be determined," added Bill Kosik, PE, president of OWP&P Engineers.

Design elements under consideration include leading-edge features such as a roof garden that reduces storm water runoff and insulates the building, an underfloor air distribution system (See *Underfloor Air Distribution Systems*, pg. 15) that provides individually zoned climate control, and sensors that allow artificial light to be adjusted in response to the amount of natural light.

Studio Gang/O'Donnell's design of a warehouse and office on Goose Island for the TAG company is a model of green technology and integrated design. Since the firm's four partners all have extensive international experience, "we're used to brainstorming with engineers from the beginning," observed Kathy O'Donnell, AIA. "We worked with our environmental consultant, Battle/McCarthy, on the

mechanical and exterior wall systems as well as site planning, and modeled six different scenarios with various levels of solar control."

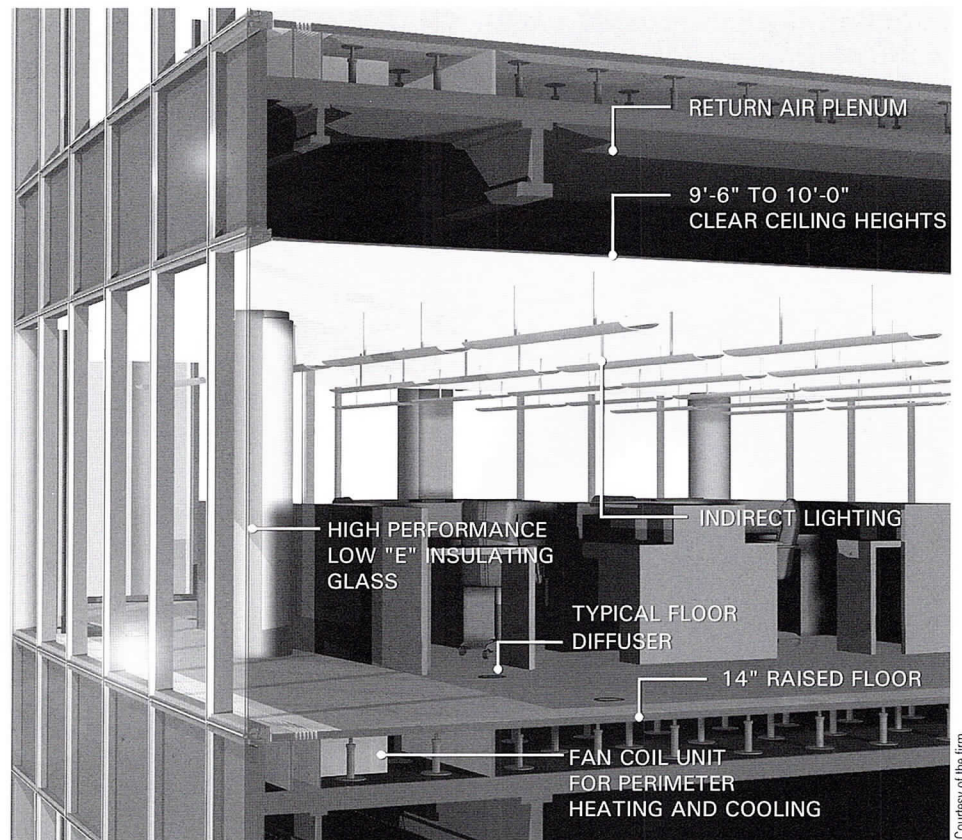
The team also worked closely with the Chicago Department of Environment, and as a result the project received a grant from the city to help fund both the initial hard costs and future educational efforts.

An unusual engineering solution is featured in RADA Architects' suburban office building for Systems Research Inc. To avoid the typical "doghouse on the roof" mechanical penthouse, the HVAC units are concealed within the walls of the second floor, which required less usable floor space than the first level. The high-tech solution heats and cools the building more efficiently and is aesthetically integrated into the architectural design.

Collaboration between architects and engineers is becoming more important at all levels, not just for high-tech or green buildings. Residential architecture, renovations and additions, and small-scale commercial work all require increasing amounts of flexibility and teamwork throughout the process. Advances in technology make it easier to share information and model alternative solutions, bringing the ideal of collaboration closer to reality every day.

What about the 21st century house? Please submit projects and/or thoughts on the subject to Susan Larson at AIA Chicago, 312/670-7770 or larsons@aiachicago.org

An underfloor air distribution system is included in a 21st century building design by DeStefano and Partners



Courtesy of the firm

F
O
C
U
S



They All Got Jobs.

Have you looked around lately? It appears as though everyone has a job. For architects and other design professionals, unemployment is at an all time low. Every firm is hiring, so how can you get your name and resume in front of the right hiring manager?

The answer is CFA. Our feelers are always out, especially in this market. Over the past 15 years we've built a job database unequaled anywhere in the USA. Since 1984, CFA has successfully introduced candidates and firms more than 20,000 times.

Come to a CFA office for a complete and comprehensive portfolio review and CAD skills evaluation. We will refer you to one of our award-winning

clients to perform per-project consulting services or, if you prefer, CFA will help find you a permanent position at the firm of your choice.

"CFA makes suitable matches through careful listening and thorough skill evaluations. As a result of their professionalism I was placed successfully both as a consultant and then as a permanent employee", Brooks Slocum, AIA, HOK employee.

CFA's job placement counselors have years of experience in the staffing industry and specialize in the field of architecture and design. Let CFA help you chart a path that will satisfy your professional career goals. Act now -- schedule your interview with CFA and get started on your new job today.



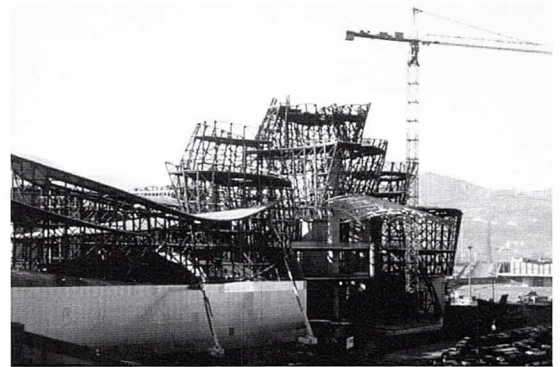
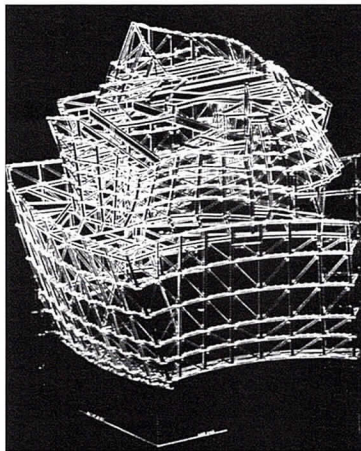
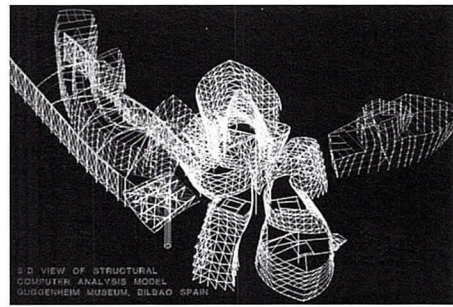
For more information contact Consulting for Architects, Inc. at 312-345-1700 or on-line at www.cons4arch.com

Getting Under Gehry's Skin

Structural engineers at the Chicago office of Skidmore, Owings & Merrill LLP were instrumental in the design and construction of Frank Gehry's Guggenheim Museum in Bilbao, Spain. The project team was lead by Hal Iyengar, Hon.

ASCE; Larry Novak, Bob Sinn, and John Zils, FAIA.

As we think about what it takes to create a 21st century building, the remarkably seamless process illustrated below serves as an example of modern collaborations and the technology that is making them possible.



1

Top left: An architect at Frank O. Gehry Associates digitizes the model using an electronic wand and CATIA software.

2

Top right: The engineers generate a structural model of the building. "We realized that the curves actually worked to our advantage," commented Sinn, "because curves stiffen the structure."

3

Bottom left: SOM transmitted a color-coded computer wire frame to the Spanish steel fabricator URSSA, which used its own software to create this shop drawing. The components were then manufactured by computer-controlled equipment.

4

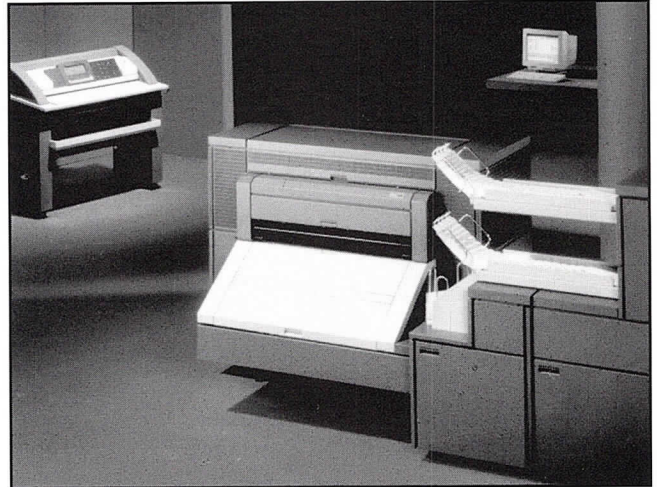
Bottom right: The structure is assembled easily in the field because of extraordinarily low tolerances — one millimeter per 10 meters — made possible by the accuracy of the design and fabrication process. The steel costs are comparable to that of a typical office building.

New

High-Speed Digital Blueprinting

High speed digital printing from scanned originals or prints and CADD plot files. Copies may be reversed (negative to positive) mirror imaged and stretched along with standard enlargements and reductions from 25% to 400%. We would prefer HP/GL2 files with pen weights set.

For more than 70 years, Mossner has provided the latest and fastest high-production equipment available. And now Chicago's first state-of-the-art Oce 9800 for Digital Blueprinting is here!



- **Pick-up and Delivery**
- **Fast Service**
- **Print Scanned Originals**
- **Print HP-GL, HP-GL/2, HPRTL, TIFF_{5.0}, CALS₁ Files**
- **Print Collated Sets Fast**

BOND PAPER DPB

Total Sq. Ft. per order	Price per Sq. Ft.
1 to 49	.50
50 to 74	.35
75 to 99	.25
100 to 199	.20
200 to 499	.19
500 to 999	.18
1000 to 1999	.17
over 2000	.15

Minimum Charge \$25.00
\$2.00 per scan, \$1.00 per CADD File

VELLUM PAPER DPV

Total Sq. Ft. per order	Price per Sq. Ft.
1 to 49	2.75
50 to 74	2.50
75 to 99	2.25
100 to 199	2.00
200 to 499	1.75
500 to 999	1.50
1000 to 1999	1.40
over 2000	1.35

Minimum Charge \$25.00
\$2.00 per scan, \$1.00 per CADD File

Mossner (312) 372-8600

THE REPRODUCTION PEOPLE • LARGEST IN THE MIDWEST

Mossner Building • 137 North Wabash at Randolph (across from Marshall Field's), Chicago, IL 60602

Underfloor Air Distribution Systems

Design Considerations: Use only high induction floor diffusers, locate outlets 16 inches from seated occupants, consider ducting or using booster terminals in areas with rapid load shifts, and design plenums for 0.1 to 0.15 in w.g.

While many architects are unfamiliar with commercial underfloor air distribution — and are limited by local building codes and labor rules — the system is catching on, especially in “green” buildings. More than three million square feet of commercial space in and around Chicago is being designed with underfloor air, according to Richard Craig, a mechanical engineer and owner of Euro-Tech Products Inc., the North American representative of H. Krantz TKT GmbH. Craig prepared this overview for *Focus*. He can be reached at 800/231-7758 or etpinc@bellsouth.net.

The Benefits of Underfloor Air

An underfloor air supply system (UASS) is a highly efficient air distribution system that delivers air from floor level to ceiling, mixing outside ventilation air with existing room ambient air to provide supply air in accordance with national, state and local ventilation code standards. Outside ventilation is treated by mechanical means (HVAC equipment) to adjust temperature and humidity prior to being introduced into the room space.

The system delivers air in the cavity between the floor slab and access floor. The floor cavity functions as a positive pressure supply air plenum into which air is conveyed and then injected through floor outlets into the occupied zone. The special design of the air outlets provides an intense, evenly distributed mixture of fresh supply air with existing room air. The airflow is directed upwards so it supports the buoyancy caused by heat gains, thereby increasing the stability of air flow.

Improved Space Ventilation

Fresh air introduced within occupied zone

- Supplied through high induction diffusers
- Fresh air supply delivered to occupied zone
- Ventilation effectiveness of at least 100%

Single vertical pass through space

- Contaminants and heat removed as air rises through and out of occupied zone
- Displacement ventilation characteristics

Reduced Installation Costs

Smaller supply/exhaust fans

- Reduced space airflow requirements
- Convective heat sources isolated from occupied zone
- Fan airflow calculations utilizes effective sensible heat
- Reduced fan static pressures — lower fan HP

Reduced ductwork costs

- Reduction (or elimination) of duct runouts beyond terminal units
- Smaller supply ducts to lower fan CFM

Reduced Operational Costs

Reduced fan operational costs

- Reduced airflow due to load isolation
- Lower static pressures due to less ductwork

Warmer supply air and return water temperatures

- Higher chiller operational efficiencies
- Extended periods of “free” cooling
- Possible thermal storage opportunities

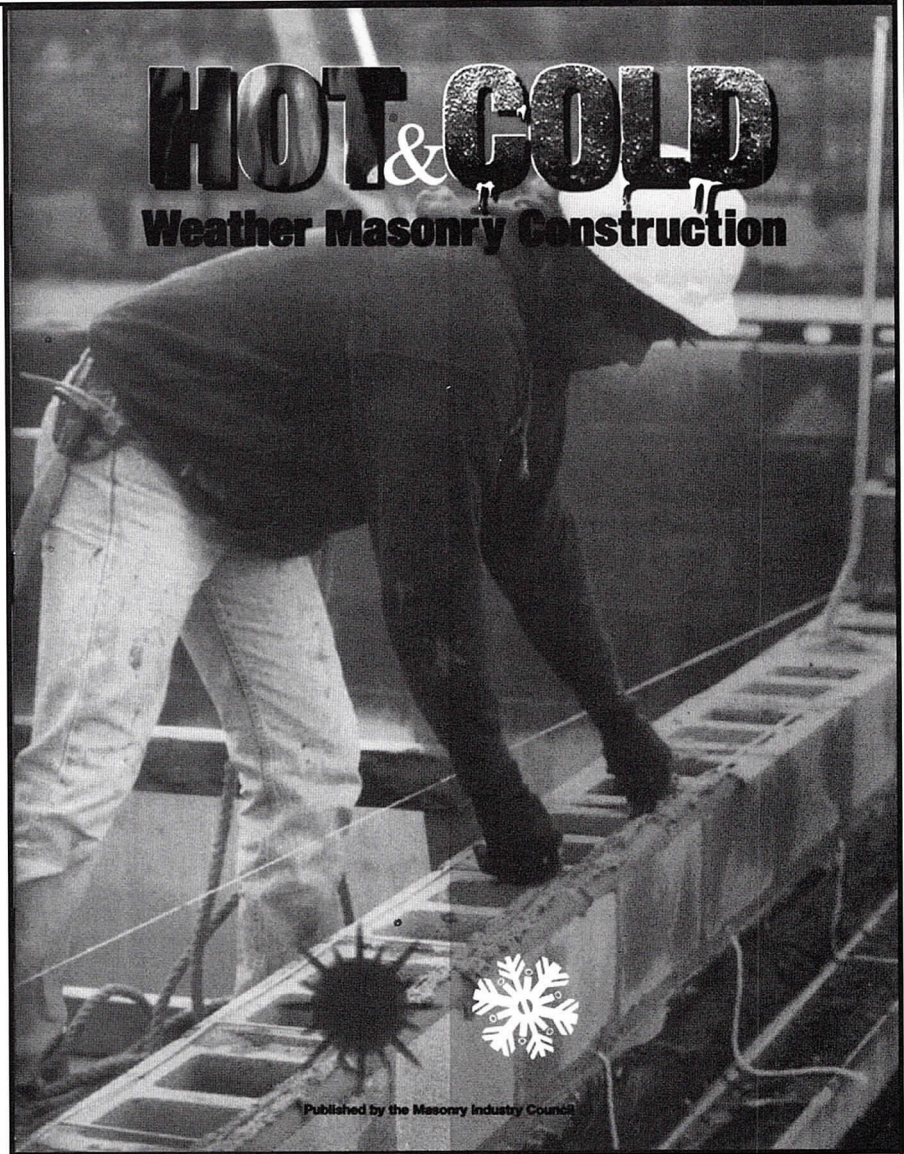
Increased Space Flexibility

Outlets easily added and relocated

Accommodate individual preferences

Floor to floor height is often reduced

**KEEP YOUR
MASONRY
JOBS
GOING IN
WINTER**



Architects, engineers, specification writers, contractors, building officials, and all persons involved in construction realize the effects of seasonality and COLD WEATHER on the construction process.

To provide a basis for strong and durable masonry construction despite freezing weather, a publication has been developed, know as: "Hot & Cold Weather Masonry Construction."

The Masonry Industry Council believes that the methods and procedures recommended in this booklet are important elements in the struggle to overcome the seasonal nature of construction work.

To receive a free copy of this publication, tear off and mail us this form:

Name: _____
Company: _____
Address: _____
City: _____
State: _____
Zip: _____

MASONRY ADVISORY COUNCIL

1480 Renaissance Drive, Suite 401
Park Ridge, IL 60068
(847)297-6704 fax (847)297-8373
<http://www.maconline.org>



PEOPLE

Applied Design Associates Ltd. has moved to 800 E. Northwest Hwy. in Mt. Prospect. The firm's addition to a Prospect Heights home was the featured project in a recent episode of Home and Garden Television's *Before and After* series.

The Environment of Cancer Care: Fast-Tracking a Patient Focused Radiation Therapy Center, an article by **Mark Balasi, AIA**, vice president of Phillips Swager Associates, has been published on-line by the AIA Academy of Architecture for Health.

Booth Hansen Associates has hired Carlos Martinez as senior vice president, director of interiors and named Gordon Grabtree and Harry Soenksen, AIA, vice presidents.

Anne Scarlett has joined **CUH2A** as director of development for the Midwest region.

Dina Griffin-Poynton, AIA and **Susan Campbell, Assoc. AIA** have been elected to the board of directors

of the National Organization of Minority Architects. Griffin-Poynton is serving as Midwest regional vice president and Campbell as parliamentarian.

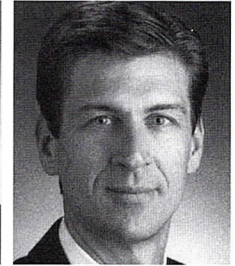
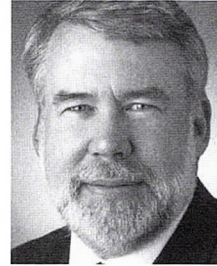
Kirkegaard & Associates has moved to the eighth floor of 801 W. Adams St. in Chicago.

Peter Landon, FAIA has announced that Jeff Bone, AIA has been named partner and the firm's name changed to **Landon Bone Architects**.

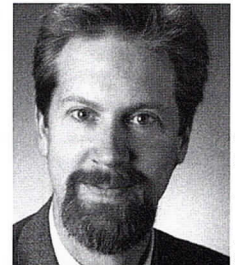
Loewenberg Associates Inc. has moved to new offices at 1 W. Superior St. in Chicago.

McCluer has announced the promotions in Chicago office: Thomas Corning to chief operating officer; Christopher Martersteck to senior vice president of project management; and Jerry Strum to senior vice president of construction.

Phillips Swager Associates has named Randall Gibson, PE, managing principal of the firm's Naperville office, as the corporate-wide director of engineering.



Clockwise from top left:
Robert Bunda, AIA;
Gregory Heiser, AIA;
Charles Smith, AIA;
Geoffrey Walters, AIA;
and Kerry Leonard, AIA



Photos courtesy of the firm

Michelle Gallagher Shryer, Assoc. AIA has been promoted to an associate of Searl and Associates.

ARCHITEMPS, INC.®

ARCHITEMPS, INC.® -- the Architectural & Interior Design staffing specialists, serving greater metropolitan Chicago since 1986.

Quality staffing, service and solutions:

- Design/Production Drafters
- Facility Planners
- CAD Architects/Interior Designers
- Project Managers

Our billing includes all employer liability:

- Payroll Administration
- Employee Benefits
- Government Compliance
- State & Federal Tax Remittance
- Workers' Compensation Coverage

Architectural, interior design and facility planning personnel on a per-project basis. Customized employee leasing, permanent conversion and direct placement available. Call today for information on our staffing services or employment opportunities.

ARCHITEMPS, INC.®
1050 North State Street
Chicago, Illinois 60610.1043

Tel: 312.649.0912
Fax: 312.649.1667
ARCHITEMPS@aol.com
http://www.architemps.com

Notebook

Continued from page 17

Loebl, Schlossman & Hackl has announced that **Joan Suchomel, AIA** has joined the firm as project director of the firm's healthcare group.

Christopher Turley and Associates Ltd. has moved to 261 Madison St. in Evanston.

OWP&P Architects has named Director of Marketing Pat Rosenzweig to principal. The firm has also promoted the following architects to associate principal: Martin Valins, Geoffrey Walters, AIA; Robert Bunda, AIA; Charles Smith, AIA; Kerry Leonard, AIA; John Kowalski; Deborah Sheehan; and Gregory Heiser, AIA.

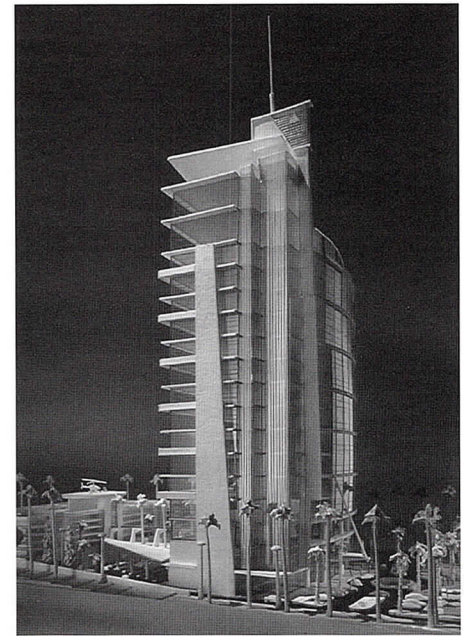
PROJECTS

Anderson Mikos Architects Inc. recently completed the new emergency department at Swedish Covenant Hospital. The renovated space offers seven new exam rooms, a newly remodeled admitting/registration area as well as a corporate health facility. Construction for the 20,000-square-foot project began in April 1999 and



substantially was completed by September 1999. Bulley & Andrews was general contractor.

Anthony Belluschi Architects, in collaboration with Zuhair Fayed Partnership of Jeddah, Saudi Arabia, has won an international competition for the design of the Ghamatha Town Center in Riyadh, Saudi Arabia. The 1.5 million-square-foot project is comprised of stores, restaurants, other commercial uses, outdoor terraces and courtyards. An unusual element of the Town Center is the separate areas that had to be designed for men and women for cultural events, education and entertainment. The project is owned by The General Office for Social Insurance and is scheduled for completion in 2002. Anthony Belluschi Architects has also been invited to participate in a major competition for the reconstruction of a retail complex in the La Defense commercial zone of Paris. And, construction has begun at 550 W. Jackson Blvd. for a 420,000-square-foot, 18-story office building designed by the firm.



Eckenhoff Saunders Architects (ESA) is master-planning a 20-acre site with AMLI commercial Properties Trust's 500-acre Windham Lakes Business Park in Romeoville. The site is designated for future development on Will County's burgeoning I-55 corridor. Additionally, in December 1999, ESA completed a 50,000-square-foot speculative office facility that marked the first phase of The Offices at Windham Lakes.

ARCHITECT

Our growing restaurant concept is seeking a licensed architect with minimum 3-5 years commercial experience for position as in-house facility designer. Must be highly creative, organized and capable of managing multiple projects.

Responsibilities range from schematic/conceptual design to construction document and specific preparation to construction site follow-through. Excellent benefits, salary \$60+ with experience.

Forward resume to:
Carrie Livingston
900 N. Michigan Ave., Suite 1800
Chicago, IL 60611
Fax: 312-475-3865 EOE

What to do? How to do it?

Kristine Fallon Associates, Inc.

<http://www.kfa-inc.com/~kfainc>

Hardware
Software
Networks
Internet

30 East Adams Street, Suite 600
Chicago, IL 60603-5610
312-641-9339 (voice)
312-641-9337 (fax)
kfainc@kfa-inc.com

Get it done. Keep it going.



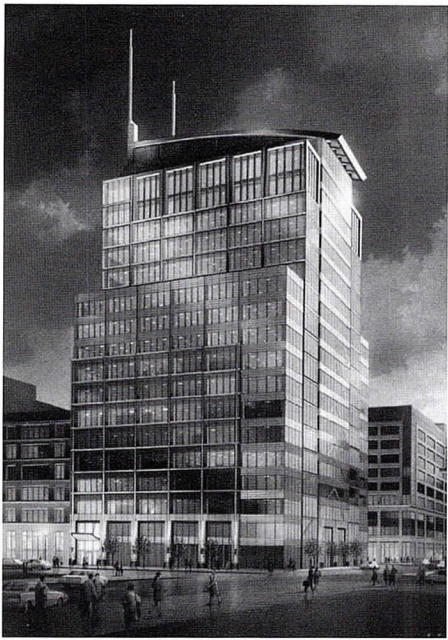
Botti Studio of Architectural Arts, Inc.

919 Grove Street, Evanston, IL 60201
847/869-5933 • Fax: 847/869-5996 • 800/524-7211
www.bottistudio.com • botti@bottistudio.com

Designers/Fabricators • Stained and Faceted Glass • Beveled Glass • Sandblasted • Stained Glass Restoration and Conservation • Protective Glazing • Wood and Metal Frame Restoration • Sculpture • Bronze • Metal • Marble • Mosaic • Interior Renovation • Woodwork • Murals • Painting and Decorating • Custom Sanctuary Furnishings • Stained Glass Consultants to Architects and Churches

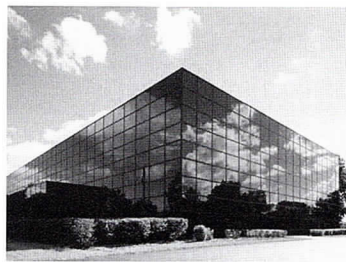
Field Representatives Nationwide

Studios: San Diego • Chicago • Sarasota
760/753-0705 • 847/869-5933 • 941/951-0978



The single-story building features masonry construction and individual entrances for multiple tenants.

Laurence Saint Germain, AIA, development manager for The Alter Group, is heading the interior build-out of his company's new national headquarters — the former headquarters of W.W. Grainger at 5959 W. Howard St. in Skokie. The Bauhaus-style building was designed by



From left to right: Orland Park Primary Care Center by Matthei & Colin Associates; Grupo Financiero Nacional by Richard Knorr International Ltd.; 550 W. Jackson Boulevard by Anthony Belluschi Architects; and The Alter Group's new headquarters, originally designed by Helmut Jahn, FAIA.

Helmut Jahn, FAIA for C.F. Murphy Associates. Occupancy is slated for the first quarter of 2000.

Architects **HLM Design** and general contractors The Meyne Company have completed the third floor build-out at The University of Chicago Hospitals' Duchossois Center for Advanced Medicine. The 67,000-square-foot space is the new home to the departments of ambulatory practices of pediatric subspecialties, obstetrics and gynecology, as well as general internal medicine.

The University of Illinois at Urbana-Champaign has retained **Holabird & Root** to provide programming and schematic design for a 24,000-square-foot addition to the Advanced Computation Building to house the National Supercomputing Facility and Grid Control Room for the Center for Supercomputing Applications. The addition's first floor will house mechanical equipment and the second floor will include a 90' x 140' free-span computer room.

Legat Architects has completed a new \$5.5 million public works facility for the Village of Addison. Legat divided the 55,000-square-foot facility into three zones: office and support, vehicle and equipment storage, and vehicle maintenance. The building also features 10 maintenance bays, two wash bays, and on-site fueling to accommodate both the public works and the police departments.

Matthei & Colin Associates recently completed an addition to the Ambulatory Care Facility of the Orland Park Primary Care Center. The \$8.9 million, 50,000-square-foot addition contains a replacement immediate care center, physician offices and other administrative and support functions. The relocation of entrances to the site and the addition of a peripheral road not only help patients locate multiple facility entrance, but also organize the site for orderly development in the future.

McCluer is designing a wide-body hangar complex and performing custom-equipment engineering and specifi-

Need Technical Support? Let Us Help.



Every design business could use a little technical support. Your CAD software should work for you and not the other way around. Join the many firms that use our HELP DESK services on a daily basis. We are helping our clients utilize the Autodesk, Kinetix, and ARCHIBUS families of products in ways they didn't realize were possible. Whether it's installing or customizing CAD software, getting the training they need, or trouble-shooting, our clients have come to rely on the CFA/HELP DESK. So don't go down with the ship - call the CFA/HELP DESK now and we'll make your problems our own. You can trust our knowledge and commitment.

For information and technical support services contact the Consulting for Architects, Inc. HELP DESK at 800-841-8848 or online at www.cons4arch.com

cations for the \$23 million expansion of Air Canada's heavy-maintenance base in Dorval, Quebec.

The recently merged **Otis Koglin Wilson Architects** has been awarded the contract to renovate 170,000 square feet of Motorola's administrative/manufacturing facility in Libertyville.

Richard Knorr International Ltd. has been commissioned by Grupo Financiero Nacional for the design of a new corporate headquarters facility in Santiago, Dominican Republic. The facility will consolidate three business units of the corporation. The total program includes 400,500-square-feet of gross area of retail banking, commercial office, executive conference facilities and parking. The \$22 million project is scheduled for completion on January 1, 2002.

Skidmore, Owings & Merrill LLP (SOM) is designing the Joe R. and Teresa Lozano Long Center for the Performing Arts, a re-use of the Palmer Auditorium

in downtown Austin, Texas. The schematic design phase begins this month; construction is scheduled to begin in 2001 and be completed in 2004. The Long Center for Performing Arts will be home to Ballet Austin, the Austin Symphony, and the Austin Lyric Opera.

Stephen Rankin Associates has completed a new 94,300-square-foot corporate office and production facility in Arlington Heights for The Design Agency. The building is constructed of steel and load-bearing precast concrete articulated with architectural reveals.

PROFESSIONAL DEVELOPMENT

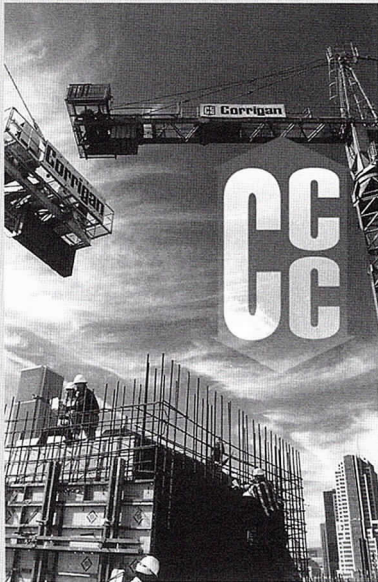
The International Masonry Institute and the Mason Contractors Association of Greater Chicago will host **Introduction to Autoclaved Aerate Concrete** on January 18 at 6:00 p.m. at the Hyatt Regency in Oak Brook. Autoclaved Aerate Concrete (AAC) is a light-weight, precast concrete formed into masonry blocks and panels. AAC is less than half the weight of rein-

forced concrete, but it can have similar compressive strength. It has an R-value of 1.25 per inch, offers four hours of fire resistance with six-inch thick walls, and provides superior STC ratings. The material soon will be widely available in Chicago. At the presentation, Bob Nelson, president of Robert L. Nelson & Associates, will discuss material properties, testing, and building code issues. AIA members earn 1.5 LU for this program. Dinner and education materials are free to those who pre-register. To register, call 312/347-2500.

The **Construction Management Program** at Oakton Community College is offering five courses this term of interest to architects: Construction Scheduling and Coordination, Site Preparation and Layout, and beginning, intermediate, and advanced CAD. For more information, contact Les Jacobs at 847/635-1851 or ljacobs@oakton.edu. Classes begin January 17.

The continuing education division at Columbia College in Chicago is offering a certificate program in **AutoCAD**

E.W. Corrigan Construction Co.



About Corrigan



Services

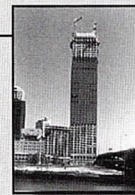
Portfolio



What's New

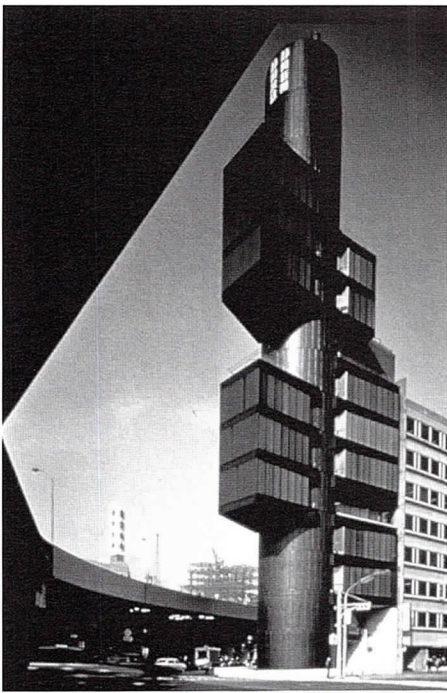
Contact Us

Building Confidence



ewcorrigan.com

1900 Spring Rd, Suite 201 • Oak Brook, IL 60523 • 630.571.4755



The Shizouka Press and Broadcasting Center by Kenzo Tange is included in *At the End of the Century: One Hundred Years of Architecture* at the Museum of Contemporary Art through February 27.

relearn CAD basics but still need training on AutoCAD 2000. For information, call Carl Dittburner at 847/925-6366 and refer to class ATE 105, section 248.

A W A R D S

Thomas Battles, AIA, president of the Precast/Prestressed Concrete Institute (PCI), was honored with an AIA Presidential Citation during PCI's 1999 Annual Convention. Battles was recognized by AIA President Michael Stanton, FAIA for strengthening the collaborative nature of architecture.

The new construction component of the Chicago Public Schools Capital Improvement Program and its managing architect, **DeStefano and Partners**, have been recognized by the Urban Land Institute with an Award for Excellence. DeStefano and Partners leads EDGE, a professional management, design and engineering team responsible for implementing new construction for the \$2.5 billion capital program.

Two projects by Chicago firms have been chosen by the Boston chapter of the American Institute of Architects to be exhibited in the 1999 Unbuilt Design Awards. The Shenzhen Cultural Center by **Richard Drinkwater, AIA** of Loeb Schlossman & Hackl and the Golden Gate Tidal Power and Desalination Station by **Mark L'Italien, AIA** of EHDD were two of 11 projects exhibited during the awards presentation in November. In addition to the projects that were chosen for exhibition, the Boston chapter bestowed awards and honorable mentions to seven other unbuilt projects. For details, visit the Chapter's Web site at www.architects.org.

Garofalo Architects, jointly with Michael McInturf Architects and Greg Lynn FORM, has been awarded a citation award from AIA Ohio for their renovation of the Korean Presbyterian Church of New York City.

The Ely Chapter of Lambda Alpha International, a land economics society, has presented **Robert Piper, FAIA** with the 1999 Member of Year Award.

this spring. For information, call 312/344-8190 or view the Columbia 2 catalog at www.colum.edu.

In suburban Palatine, Harper College is offering **Architectural CAD I**, a self-paced, open-entry class designed for busy architects who don't have time to

Looking for quality printing... *today?*

When you need printing right away, you no longer have to settle for a copy-shop product. InfoComm Electronic Prepress & Print uses the new technologies of digital and wide-format printing to skillfully produce quality results, in any quantity...quickly. At our River North location (open 24 hours), we can:

- Print your collateral materials (no quantity too small) in full color on a true offset printing press within *24 hours* (same day available).
- Provide transparencies and handouts for your presentations *overnight*—with color that blows those guys in the blue aprons away.
- Produce signage on a variety of stocks (glossy, matte, backlit, vinyl, you name it)—*next day*. Plus, we mount or finish your print as needed.

InfoComm has served Chicago's architectural community since 1987. As part of The Wagner Companies, we bring six generations of both conventional & digital printing experience to your projects. From design through printing, we can help.

To get an estimate on your next project, give our customer service representatives a call at 312.751.1220.

Clip this ad and send it in with your project and SAVE 10%. Total discount not to exceed \$100. Offer expires: 03/01/00. Offer number: AIA0100.



Wagner Printing Company
INFOCOMM
JADE

213 W. Institute Place, Ste. 604 ■ Chicago, Illinois 60610 ■ 312.751.1220 ■ Fax: 312.751.1051 ■ Web: <http://www.wpco.com>

VARIOUS MATTERS

The College of Architecture and the Alumni Association of the **Illinois Institute of Technology** invite AIA Chicago members to attend a lecture and dinner on February 10 at the Museum of Contemporary Art in conjunction with the *At the End of the Century: One Hundred Years of Architecture* exhibition. Proceeds from the event will benefit the restoration fund for Mies van der Rohe's S.R. Crown Hall. Tickets range from \$100 to \$300; table sponsorships are also available. For information or to purchase a ticket, call Eric Thompson at 312/567-3231 or Mary Ann Green at 312/567-3279.

The Museum of Contemporary Art, 220 E. Chicago Ave., is sponsoring **Living Spaces: Films on Architecture**, a film series in conjunction with *At the End of the Century: One Hundred Years of Architecture* that explores the social and psychological dimensions of the built environment. In January, the films include: *Safe* (1993); *The Music Room* (1958), *The Draughtsman's Contract* (1982), and *The Tree, the Mayor and the Media Center*, directed by Eric Rohmer. Tickets are \$7. For a complete list of films and showings, call the MCA at 312/280-2660.

From time to time, AIA Chicago receives requests from **foreign architects who will be visiting Chicago**, individually or in groups, and would like to meet their local peers. The Chapter answers these requests informally by providing the visitors with one or two Chicago names; guests and hosts then can make their own arrangements to meet. If you would like to be included on the list of members who enjoy talking with architects from other countries, please send your name and e-mail address, if possible, to Joan Pomaranc at the Chapter office. Foreign language skills are not necessary, but let her know if you have any.

NEW MEMBERS

AIA

Lyle Daly; **Steven O'Rourke**, University of Michigan/Facilities Planning and Design; **Carmen Vidal-Hallett**, City of Chicago Department of Planning and Development; **Susan Barfield**, HLM Design; **Majorie Brownstein**, EHDD; **Matthew Foster**, Thrush Construction Inc.; **Carl Gergits**, Avatar Architects, Ltd.; **Paul Hagle**, The Environments Group; **Lev Izakson**, Troyer Group; **Thomas Kane**, Hirsch Associates, L.L.C.; **John Krukar**, Momentum; **Morris Neal**, YMCA of the USA; **Scott Nelson**, OWP&P; **Daniel O'Malley**, Bloodgood Sharp Buster Architects

& Planners; **Thomas Shafer**, Shafer Architects P.C.; **Gregory Sloniger**, Primera; **Andrew Totten**, James McHugh Construction Co.; **Charles von Weise**, von Weise Associates; **Benjamin Woods**, OWP&P

Emeritus

William Baker, AIA; **Adolph Benages, AIA**; **Edmund Caddy, Jr., AIA**; **Richard Hague, AIA**, Hague-Richards Associates Ltd.; **William Lohmann, AIA**; **Jack Train, FAIA**, Valerio Dewalt Train Associates

Associates

Sergiu Burca, Greeley + Hansen; **Arthur Cantwell**, Ross Barney + Jankowski; **Daniel Fouad**, Rugo Raff Architects; **John Gresko**, Legat Architects; **Amy Holz**, Ross Barney + Jankowski; **Peter Hugh**, Hugh Lighting Design; **Vivek Joshi**; **Andrei Koshelev**, Skidmore Owings & Merrill LLP; **Eric Levin**; **Ying Liu**, Solomon Cordwell Buenz; **Matthew McGeorge**, Quadrant Partners; **Cesar Pino**, The Habitat Co.; **John Price**, Gastinger Walker Malone; **David Roling**, Legat Architects; **Christopher Theisen**, Legat Architects; **Boris Vukovic**, PAL Group; **David Wickstrom**, Ross Barney + Jankowski; **Benjamin Wuller**

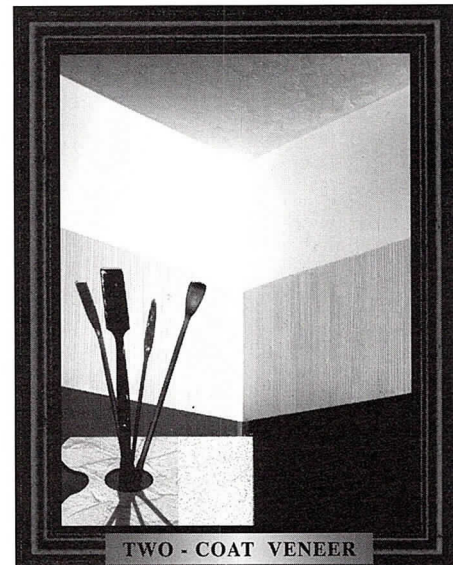
Professional Affiliates

Mattias Graff, The John Buck Co.; **Doris Tune**, Besam Automated Entrance

CLARIFICATION

The December 1999 *Focus* failed to mention the entire design team for the New Cook County Hospital. The team includes: Loebel Schlossman & Hackl Inc., McDonough Associates Inc., Globetrotters Engineering Corp., Henningson, Durham & Richardson Inc.

The Art of Plastering



Spectacular walls.
Smooth...Textured...

Done the way you want them. Hard and durable surfaces that make paint and paper look better, make redecorating easier, make homes quieter.

Plaster interiors are more cost-effective than you think.

Call us for more information.



Chicago Plastering Institute
6547 N. Avondale Ave.
Chicago, Illinois 60631
773.774.4500
Fax. 773.774.5828



Multimedia System Integrations

audio • video
control systems
installations • parts
labor • service

Midwest Visual Communications
6500 N. Hamlin Ave
Chicago, IL 60645
800.876.8298
847.673.4525

www.midwestvisual.com

- presentation rooms
- training centers
- conference rooms
- meeting facilities
- auditoriums
- boardrooms
- classrooms

Sabo & Zahn

Attorneys at Law

Werner Sabo, FAIA

James Zahn, AIA

Copyright protection, business formations
mediation, litigation, arbitration, contracts, real estate
construction attorneys

8620 Sears Tower
Chicago, IL 60606
wsabo@sabozahn.com

www.sabozahn.com

(312) 655-8620
fax: (312) 655-8622
jzahn@sabozahn.com



- Professional Liability
- Specific Project Coverage
- Office Packages
- Workers Compensation
- Automobile
- Exclusive Programs
- Group and Individual Life & Health

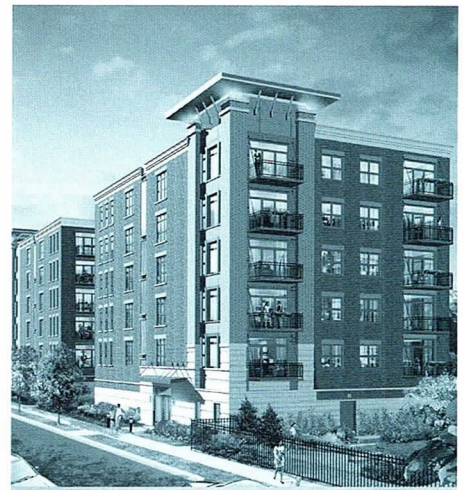
Insurance and Loss Prevention Services for Architects

AVA Insurance Agency

One Tower Lane • Oakbrook Terrace, IL 60181

Tel: 630.571.4500 • Fax: 630.571.4518 or 4525

E-Mail: info@avains.com



Architectural

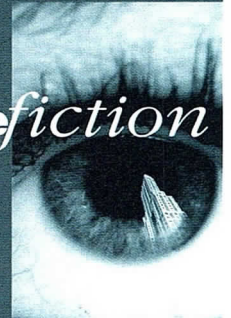
Projects:

2300 West St. Paul Condominium
Turnberry Properties, L.L.C.
Sherwin Braun, AIA

Rendering

The Dakota
3631 North Halsted
The Drake Group
Grief Properties

Imaging



imagefiction

Animation

LaSalle Wacker Building
221 North LaSalle Street
Suite 1510
Chicago, IL 60601

Graphic Design

312.726.0818

Color Printing

www.imagefiction.com

VERTEX GRAPHICS

DIGITAL CONSULTANTS

- 3D MODELING AND DESIGN
- RENDERING
- PRESENTATION GRAPHICS
- ANIMATION
- GRAPHIC DESIGN
- ENVIRONMENTAL GRAPHICS
- DIGITAL PRINTING

600 S. DEARBORN
#2008
CHICAGO, IL 60605
312.697.1107

VERTEXGRAPHICS@HOTMAIL.COM

11 **SEAOI.** Dinner meeting with lobbyist Alice Phillips. 5:30 p.m.; Como Inn, 546 N. Milwaukee. \$25/SEAOI members; \$30/non-members. Reservations by January 7: 312/372-5708.

12 **Woodworking Finishing Seminar.** Architectural Woodwork Institute. 5:00 p.m.; Berghoff's, 17 W. Adams. Information: Tracey Leigh, 630/790-2219.

Corporate Real Estate Outsourcing: The Supply Side. Corporate Architects PIA. 5:30 p.m.; AIA Chicago. 1.5 LU

18 **Introduction to Sustainability.** Environment PIA. 5:30 p.m.; AIA Chicago. 1.5 LU/1.5 HSW

Douglas Garofalo, AIA and Randall Kober. In-gallery talk. 6:00 p.m.; Museum of Contemporary Art, 220 E. Chicago Ave., Turner Gallery. Information: 312/280-2660.

Introduction to Autoclaved Aerate Concrete. The International Masonry Institute and the Mason Contractors Association of Greater Chicago. 6:00 p.m.; Hyatt Regency Oak Brook. Register: 312/347-2500. 1.5 LU

19 **Valerio Dewalt Train Associates.** The work of AIA Chicago's 1999 Firm of the Year. 12:15 p.m.; Chicago Architecture Foundation, 224 S. Michigan Ave. Information: 312/922-3432.

20 **Submissions Due.** Emerging Visions. 5:00 p.m.; AIA Chicago.

Planning Technical Programs for 2000. Technical Issues PIA. 12:00 noon; Wiss Janney Elstner, 120 N. LaSalle St., 20th floor.

1999 Young Architect Award Winners. Young Architects PIA. 5:30 p.m.; AIA Chicago. 1.5 LU

24 **Chicago Neighborhoods: Design and Diversity.** 7:30 p.m.; WTTW/Channel 11. For more information, call 800/821-2164.

27 **Frank Gehry, FAIA.** 6:00 p.m.; Archeworks, 625 N. Kingsbury St. Information: 312/280-2660.

! **Chicago Architecture: The Art of the Long View.** On exhibit through February 29 at the Chicago Architecture Foundation, 224 S. Michigan Ave., Atrium Gallery. Information: 312/922-3432 ext. 123.

Material Evidence: Chicago Architecture at 2000. On exhibit through March 5 in conjunction with *At the End of the Century: One Hundred Years of Architecture* at the Museum of Contemporary Art, 220 E. Chicago Ave., Turner Gallery. Information: 312/280-2660.

AIA Chicago



A Chapter of The American Institute of Architects
222 Merchandise Mart Plaza
Suite 1049
Chicago, Illinois 60654
312/670-7770
312/670-2422 (fax)
info@aiachicago.org
www.aiachicago.org

Periodical