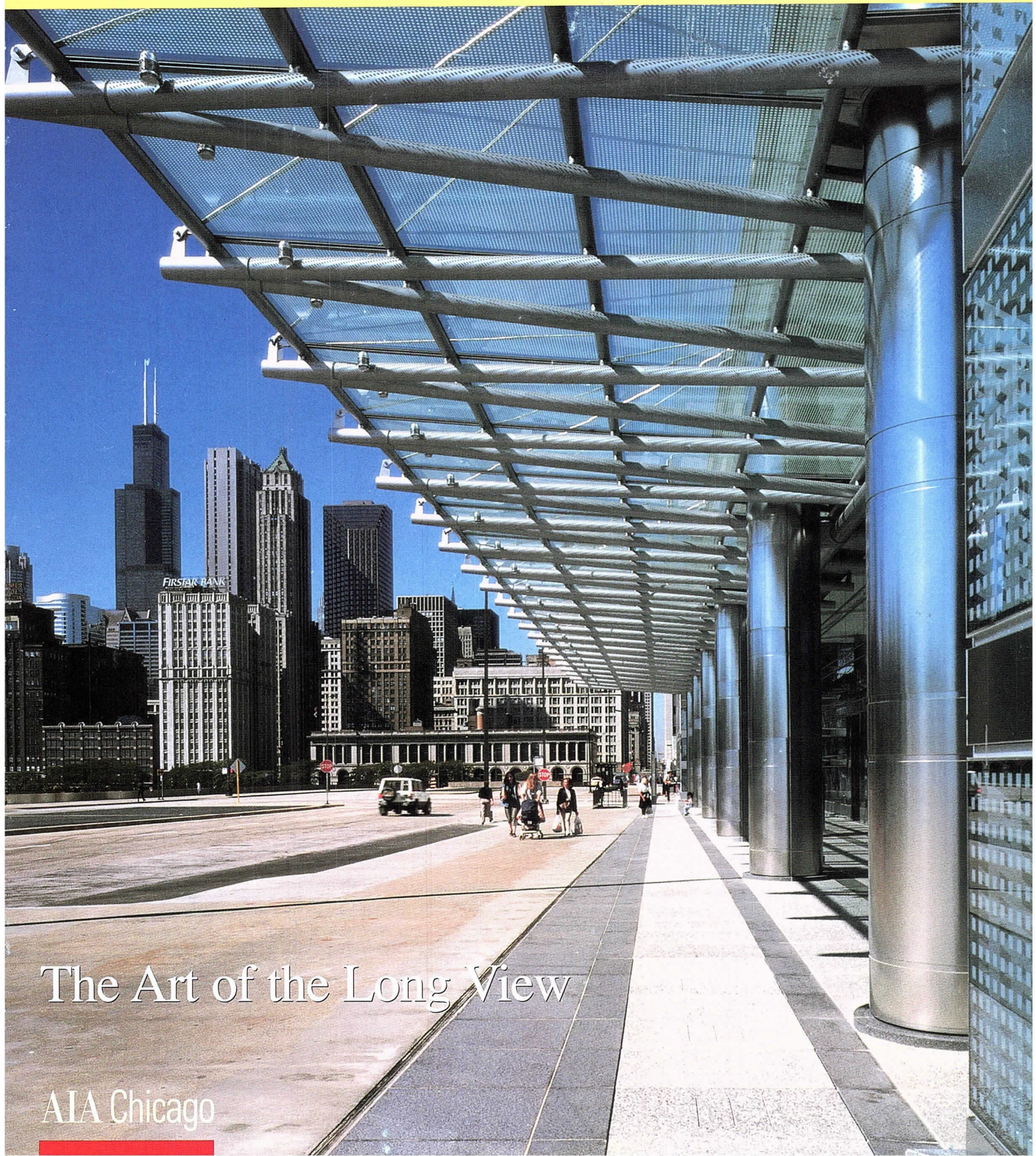


# Focus

SPECIAL EDITION



## The Art of the Long View

AIA Chicago

# Abuse Resistant Drywall ?

# Debunked

**“You can’t replace an 8” concrete block with 1/2” of “abuse resistant” drywall unless you write ad copy for USG !”**

-Charles Ostrander  
Executive Director - Masonry Advisory Council

Any School Board, which allows a construction manager to sell them on the idea of a guaranteed maximum project cost, should be required to visit previously constructed “guaranteed maximum” school projects. Then everyone could see the extent of damage and associated increases in necessary repair costs. They would see taxpayers’ investments disappearing in the name of “value engineering”. Schools should be an investment in durability and quality. Skin deep abuse resistance does not belong in schools. School walls should be abuse resistant to the core!

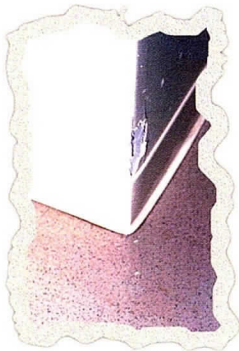
THEY SHOW YOU PRETTY ADS . . .

WE’LL SHOW YOU A REAL PROJECT. . .



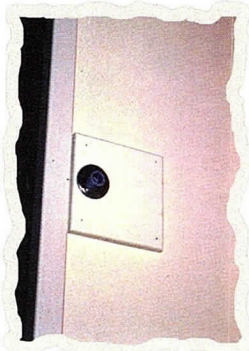
## Chicagoland High School

Interior Walls: “High Impact Drywall”  
Date Built: 1997



Was this corner abuse resistant?

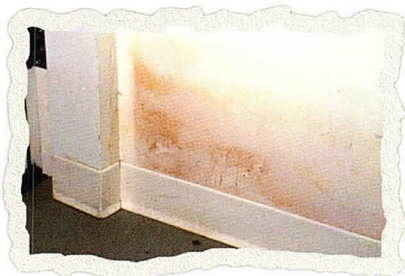
THIS SCHOOL IS ONLY 2 YEARS OLD!



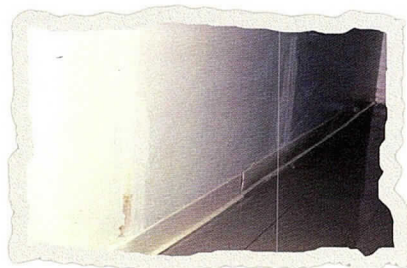
Why does this doorstop need a wood backing?



Why is there an extra wood protector (1x4) at the base of this gyp. wall & why have all the walls been repaired at desktop height?



Architectural Mildew?



Study aid for advanced drywall repair 301?



1480 Renaissance Drive, Suite 401  
Park Ridge, IL 60068  
(847)297-6704 fax (847)297-8373  
<http://www.maconline.org>

5

Forward

6

Exhibit Catalog  
*The Art of the Long View*

38

Index

38

Calendar of Events



**Special Edition, December 1999**

**Editor**

Susan Larson

**Contributing Editor**

Laurie McGovern Petersen

**Focus Advisory Board**

William Bradford, AIA  
Howard Decker, FAIA  
Deborah Doyle, AIA  
James Jankowski, AIA  
Edward Keegan, AIA  
Pat Rosenzweig  
Alice Sinkevitch, Hon. AIA  
Thomas Zurowski, AIA

FOCUS (ISSN 1071-3700) Vol. 19, No. 11, is published monthly with a combined issue July/August, by AIA Chicago, 222 Merchandise Mart Plaza, Suite 1049, Chicago, Illinois 60654-1001. \$20 of each member's dues are allotted as a subscription. Periodicals postage paid at Chicago, Illinois. POSTMASTER: Send address changes to Focus, AIA Chicago, 222 Merchandise Mart Plaza, Suite 1049, Chicago, Illinois 60654-1001.

For advertising rates and schedules, call 312/670-7770.

© 1999 The American Institute of Architects Chicago.

All rights reserved. Reproduction in whole or part without permission is strictly prohibited.

AIA Chicago on the Internet: [www.aiachicago.org](http://www.aiachicago.org)

AIA Chicago e-mail: [info@aiachicago.org](mailto:info@aiachicago.org)

# AIA Chicago



A Chapter of The American Institute of Architects

**The Art of the Long View**

*This exhibit showcases contributions to Chicago's landscape by local or out-of-town firms. The submission criteria were stringent: Firms were allowed to submit only a single, Chicago-area project built within the last five years or planned for within the next five.*

**Exhibit Committee:**

Randall Deutsch, AIA (Chair)  
Douglas Garofalo, AIA  
Neil Frankel, AIA, FIIDA  
Carol Ross Barney, FAIA  
John Syvertsen, FAIA  
Joseph Valerio, FAIA

**Exhibit Sponsors:**

Petersen Aluminum Corp.  
Euclid Insurance Agencies Inc.

**1999 Board of Directors**

**President**

James Jankowski, AIA

**President-Elect**

T. Gunny Harboe, AIA

**Vice Presidents**

Thomas Fridstein, FAIA  
Thomas Zurowski, AIA

**Secretary**

Jonathan Fischel, AIA

**Treasurer**

Dave Urschel, AIA

**Directors**

Joseph Caprile, AIA  
Raymond Clark, AIA  
Randall Deutsch, AIA  
Kevin Hall, AIA  
Philip Craig Johnson, AIA

**AIA Regional Directors**

Lawrence Livergood, AIA  
Linda Searl, FAIA

**AIA Illinois Director**

Holly Gerberding, AIA

**Associate Director**

Susan Campbell, Assoc. AIA

**Professional Affiliate Director**

Eric Singer

**Past President**

Deborah Doyle, AIA

**1999 AIA Illinois Delegates**

William Bradford, AIA  
Thomas Braham, AIA  
Richard Fencel, AIA  
Holly Gerberding, AIA  
Janet Hahn Lougee, AIA  
William Worn, AIA  
Arthur Salzman, AIA  
W. Stephen Saunders, AIA

**1999 Professional Interest Areas**

**Corporate Architects**  
Robin Ellerthorpe, FAIA

**Design**  
Avram Lothan, AIA

**Environment**  
Douglas Farr, AIA

**Health**  
Thomas Fromm, AIA

**Historic Resources**  
Eleanor Esser Gorski, AIA

**Housing**  
Margaret Cervantes, AIA

**Interiors**  
Angelina Lee, AIA

**Office Practice**  
Lisa Willis-Brown

**Planning and Urban Affairs**

Kyle Benkert, AIA

**Technical Issues**

Christopher Chwedyk, AIA

**Young Architects**

Judd Storey, Assoc. AIA

**Chapter Staff**

**Executive Director**

Alice Sinkevitch, Hon. AIA

**Membership Coordinator/Assistant to the Director**

Jamie Juliano

**Program Director**

Joan Pomaranc

**Communications Director**

Susan Larson

**Financial Manager**

Crystal Gagler

**Public Information Receptionist**

Nichole Brown

**Documents Clerk**

Valarie Thompson



## They All Got Jobs.

Have you looked around lately? It appears as though everyone has a job. For architects and other design professionals, unemployment is at an all time low. Every firm is hiring, so how can you get your name and resume in front of the right hiring manager?

The answer is CFA. Our feelers are always out, especially in this market. Over the past 15 years we've built a job database unequaled anywhere in the USA. Since 1984, CFA has successfully introduced candidates and firms more than 20,000 times.

Come to a CFA office for a complete and comprehensive portfolio review and CAD skills evaluation. We will refer you to one of our award-winning

clients to perform per-project consulting services or, if you prefer, CFA will help find you a permanent position at the firm of your choice.

"CFA makes suitable matches through careful listening and thorough skill evaluations. As a result of their professionalism I was placed successfully both as a consultant and then as a permanent employee", Brooks Slocum, AIA, HOK employee.

CFA's job placement counselors have years of experience in the staffing industry and specialize in the field of architecture and design. Let CFA help you chart a path that will satisfy your professional career goals. Act now -- schedule your interview with CFA and get started on your new job today.



For more information contact Consulting for Architects, Inc. at 312-345-1700 or on-line at [www.cons4arch.com](http://www.cons4arch.com)

# The Art of the Long View

## *Chicago Architecture Circa 2000*

**An exhibit of current work, like a photograph taken at a family reunion, captures a moment in time that exists only fleetingly. Because children will grow up and everyone's lives will change, looking at such a picture causes one to take stock of the present and ponder the future. This exhibit, on display at the Chicago Architecture Foundation through February 2000, invites us to step back from our day-to-day experience of architecture and consider the long view of what new buildings say about us and our culture.**

**W**hat realities of turn-of-the-century life are evidenced by this crop of new buildings? The awareness that resources are finite and the past is worth preserving; the need for flexibility to keep up with the rapid pace of change; the use of new materials and technology to adapt and enhance traditional forms as well as create new ones; the expectation that architecture can enhance our lives and help create meaningful places to come together.

The wiser use of resources is a hallmark of many new projects. The three "R"s of the environmentalist's mantra — reduce, reuse,

recycle — are well represented here by buildings that conserve energy and materials, by renovations and additions that permit continued use of buildings, and by adaptive reuse projects that breathe new life into obsolete structures.

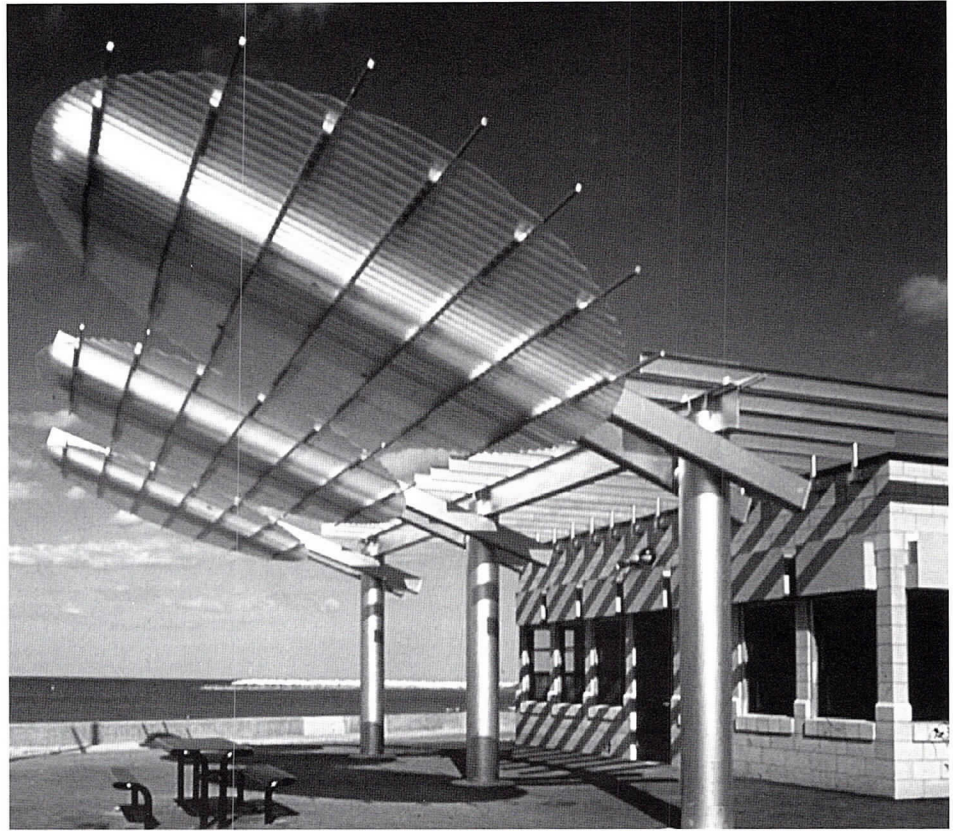
The accelerating pace of change in our era is being reflected in buildings that feature flexible interior configurations. The open-plan office is now the universal standard, often accompanied by an atrium or circulation spine that provides a gathering space for the informal exchange of ideas. On the home front, the open interior has become popular as people's lifestyles have become more casual. Renovations and additions are often the means to this end, and advances in building products make it practical.

This issue of *Focus* serves as a catalog to *The Art of the Long View*. The themes put forth here are meant to provide a framework for discussion and debate. They overlap a great deal, and most projects would fit easily in more than one category. For instance, developments in technology permit advances in "green" architecture, interactive design and complex programs. Many renovation and adaptive re-use projects serve as beacons for their neighborhoods. Most importantly, virtually all of the projects provide examples of clients' great expectations, for despite the lack of rhetoric about architecture as an agent of social change, it is still seen as a significant contributor to the quality of everyday life.

# Urban Beacons and Suburban Buoys

**A**s a sense of community becomes increasingly elusive, residents of many towns, suburbs and city neighborhoods seek to create tangible symbols of what was once taken for granted. For a struggling urban community, a new building is often a source of inspiration and hope. The Chicago projects in this exhibit help meet residents' critical needs, whether social, medical, educational, recreational, or economic. The Lake/Pulaski Transit-Oriented Development seeks to revitalize an entire neighborhood through development of infrastructure, commerce, and a sense of place. The North Lawndale Family Resource Center and the Komed Medical Center are community focal points housing greatly needed services. The Bronzeville Military Academy brings to life an important piece of African-American history with its restoration of the 8th Regiment Armory. The Rainbow Beach Park Buildings and the Hale Park Gymnasium reinterpret historic building types for new recreational facilities.

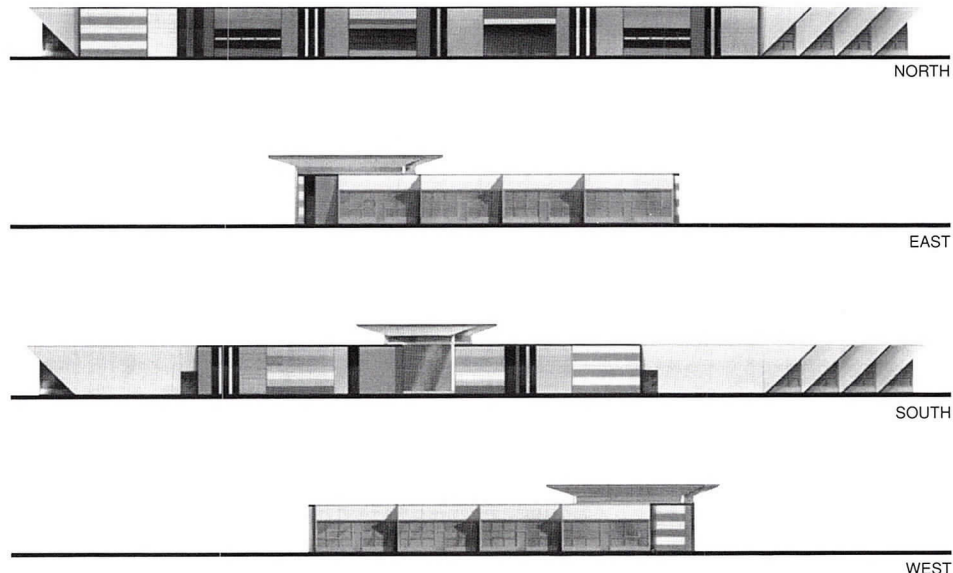
Generally, projects in suburban areas seek to sustain rather than revitalize. The Village Green of Lincolnshire and the Schaumburg Public Library create common spaces meant to be shared by members of their communities. The Country Club Hills Municipal Center provides an indoor "Town Square" connecting its two government buildings. Optima Center Wilmette is an infill project designed to help maintain the vitality of a traditional suburban downtown by providing condominiums above ground-floor retail.



Barbara Karant

**Rainbow Park Beach Buildings**  
7501 S. Shore Drive, Chicago  
*David Woodhouse Architects*

**North Lawndale Family Resource Center**  
3701 W. Ogden Ave., Chicago  
*Ross Barney + Jankowski Inc.*

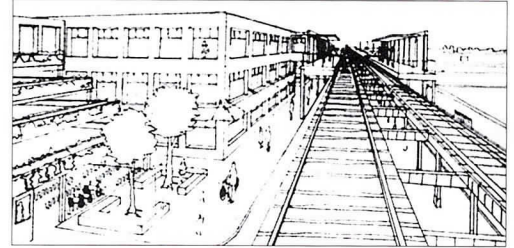




**Hale Park Gymnasium**  
 6258 W. 62nd St., Chicago  
*Schroeder Murchie Laya Associates Ltd.*

William Kildow

**Lake and Pulaski Transit-Oriented Development**  
 Lake and Pulaski Streets, Chicago  
*Farr Associates*



**Bronzeville Military Academy**  
 3519 S. Giles Ave., Chicago  
*Campbell Tiu Campbell Inc.*



THE EIGHTH REGIMENT ARMORY  
**BRONZEVILLE MILITARY ACADEMY**  
 3515-33 SOUTH GILES AVENUE  
 CHICAGO ILLINOIS

Voss Lauritsen Tillrock Inc.

**Komed Medical Center**  
 4230 S. Greenwood Ave., Chicago  
*Johnson & Lee Ltd.*



**Country Club Hills Municipal Complex**  
 3700 175th Place, Country Club Hills  
*Yas/Fischel Partnership*



Jess Smith



Christophe Barral © Hedrich Blessing

**Village Green of Lincolnshire**  
 Milwaukee Avenue and Route 45, Lincolnshire  
*Otis Koglin Wilson Associates Inc.*



Scott McDonald © Hedrich Blessing



Tom Millar © Hedrich Blessing

**Optima Center Wilmette**  
 705 11th St., Wilmette  
*Optima Inc.*

**Schaumburg Township District Library**  
 130 S. Roselle Road, Schaumburg  
*Phillips Swager Associates*



# Great Expectations

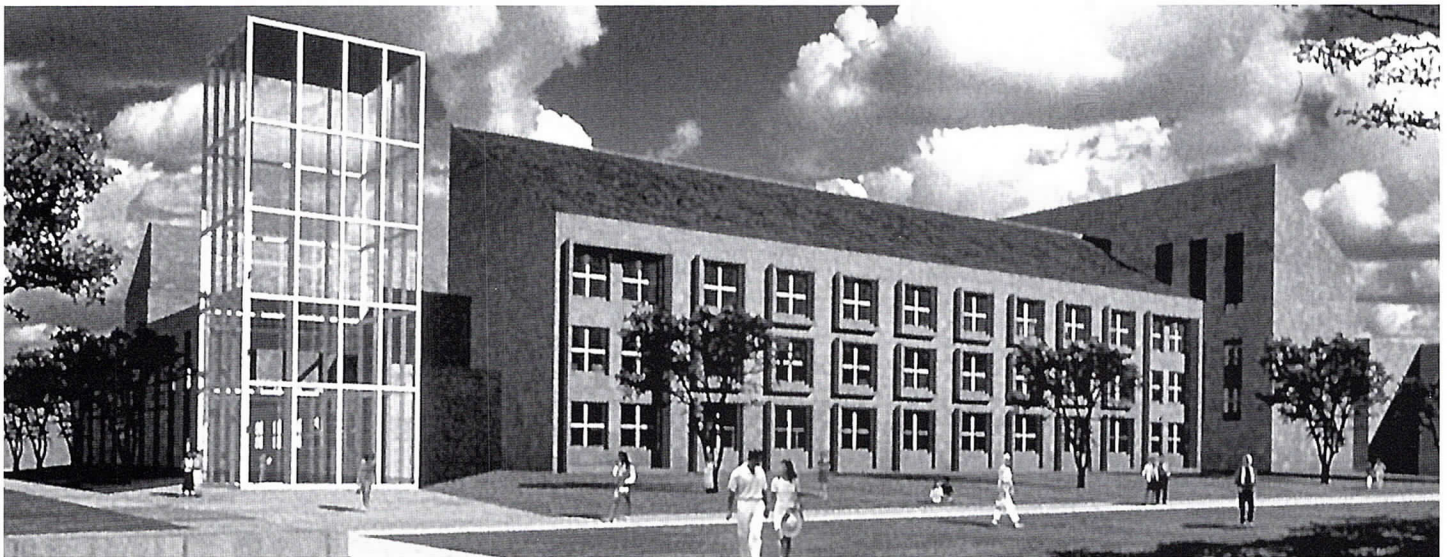
Expectations of the built environment continue to be raised, as each successful innovation or amenity quickly sets a new standard. This is especially apparent in the fields of health, recreation and education. Hospitals are building new facilities and revamping their old ones to accommodate changes in patient care and higher expectations regarding its delivery. Local institutions such as libraries and park districts are broadening their mandates to include new visions of what they should provide. The Warren Newport Public Library is expanding its mission from book repository to information and community center with a café, shop and array of electronic resources. The Hoffman Estates Recreation Center more closely resembles an upscale health club than a traditional park fieldhouse. Orland Park high school students requested that a food court and health club replace the cafeteria and gymnasium. Projects underway at the University of Chicago include new dormitories and an athletic center designed to make the campus more inviting to students. Chicago State University is changing its status from a commuter school to a live-learn campus with a striking dormitory and student union that reflect African-American cultural themes.



Scott McDonald © Hedrich Blessing

**Duchossois Center for Advanced Medicine**  
5841 S. Maryland Ave., Chicago  
*HLM Design*

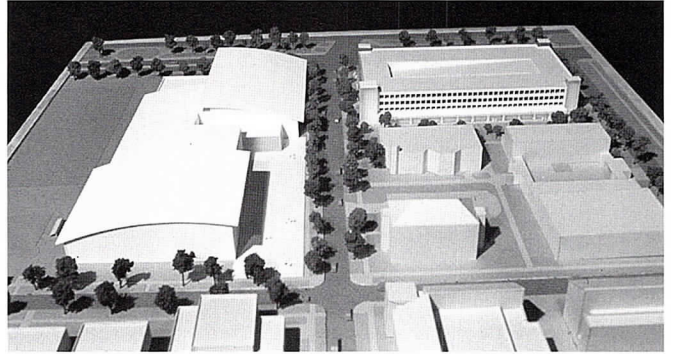
**University of Chicago Residence Halls**  
*Legorreta Arquitectos*





Steve Hall © Hedrich Blessing

**Chicago State University Student Union and Student Residences**  
 9501 S. King Drive, Chicago  
*Harry Weese Associates*

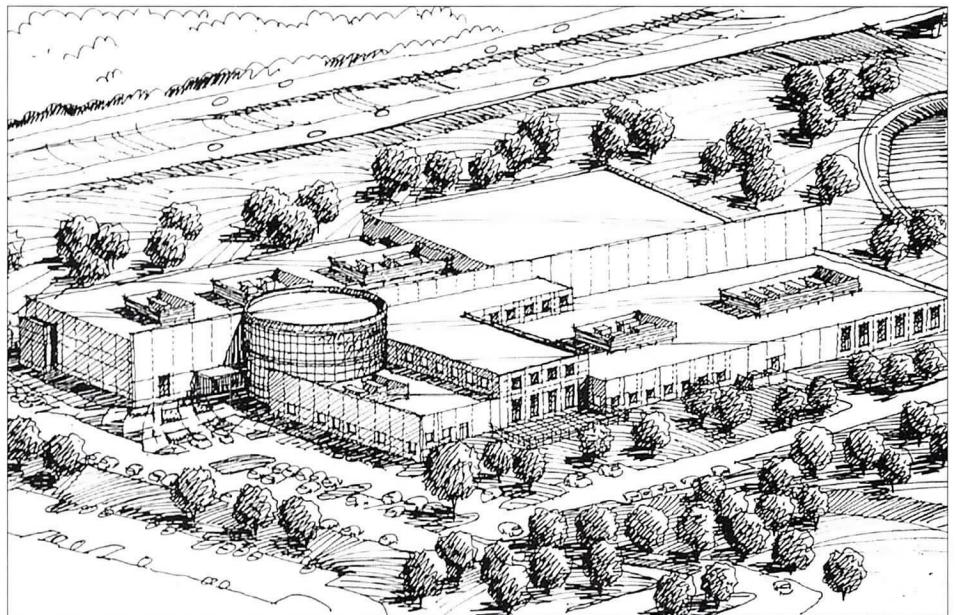


**Gerald Ratner Athletics Center at the University of Chicago**  
 55th St. and Ellis Ave., Chicago  
*Cesar Pelli & Associates*

**Warren Newport Public Library District**  
 224 N. O'Plaine Road, Gurnee  
*Frye Gillan Molinaro Architects Ltd.*

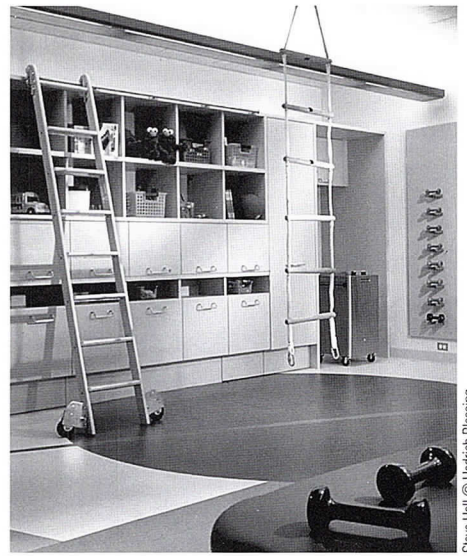
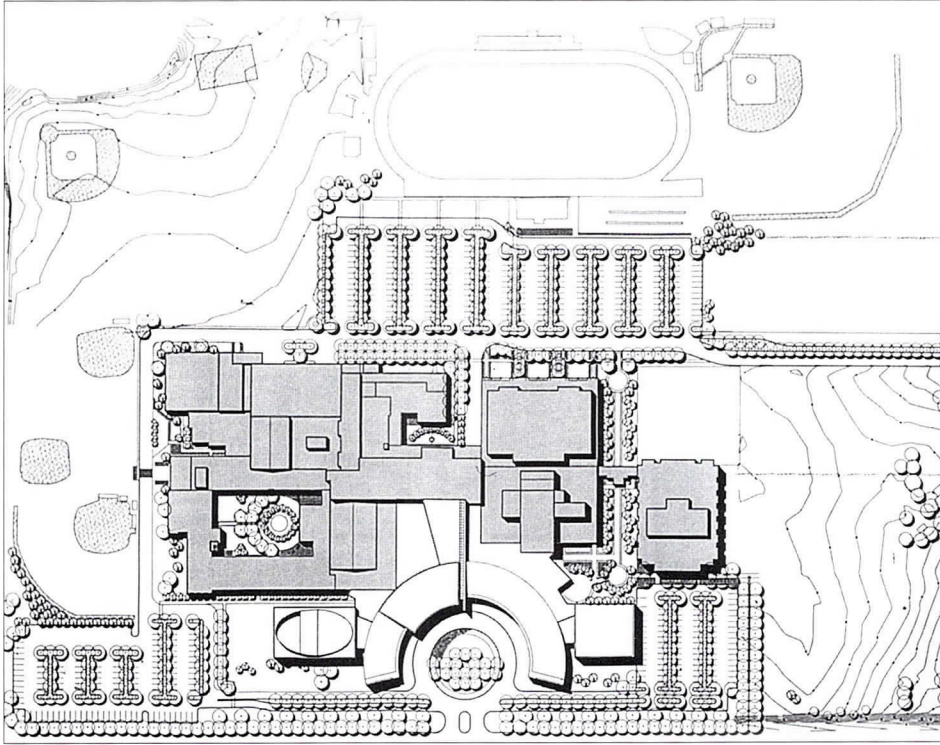


George Lambros



**Hoffman Estates Park District Recreational Center**  
 5050 Sedge Blvd., Hoffman Estates  
*Wright Architects Ltd.*

**Consolidated High School District 230**  
Orland Park  
*VOA Associates Inc.*



Steve Hall © Hedrich Blessing

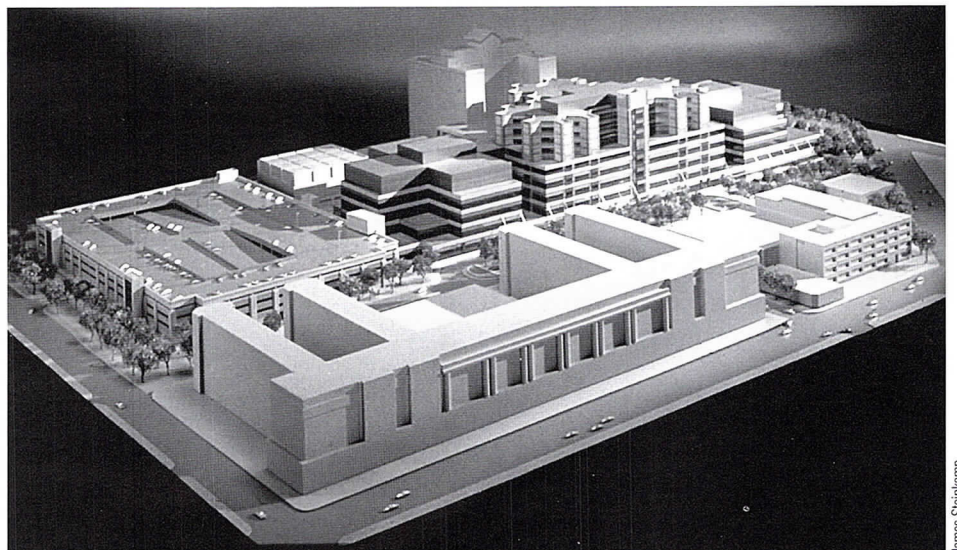
**Rehabilitation Institute of Chicago**  
345 E. Superior St., Chicago  
*Eva Maddox Associates Inc.*



Scott McDonald © Hedrich Blessing

**Northwestern Memorial Hospital**  
251 E. Huron St., Chicago  
*Hellmuth, Obata + Kassabaum Inc.*

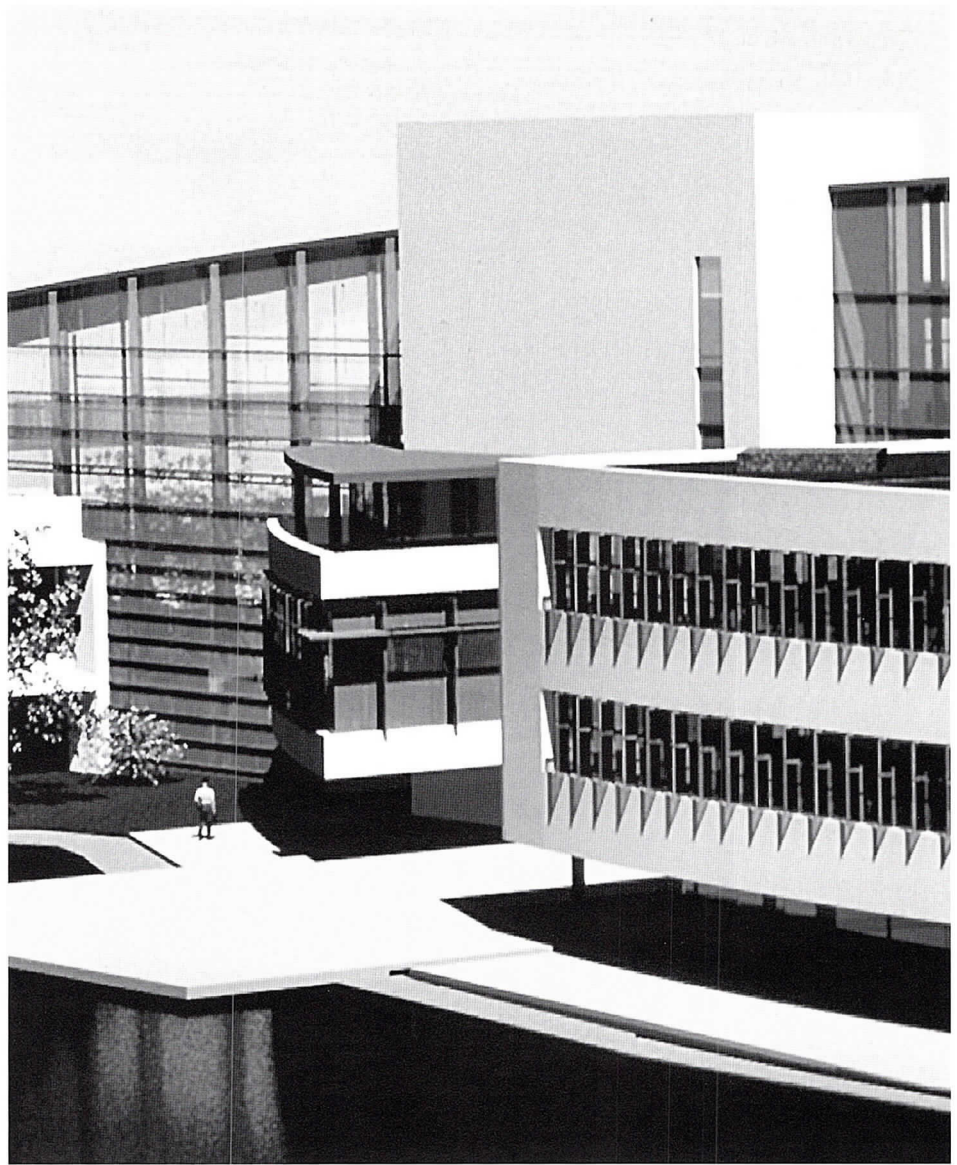
**New Cook County Hospital**  
1901 W. Harrison St., Chicago  
*Loebl Schlossman & Hackl*



James Steinkamp

# How Green is My Rooftop

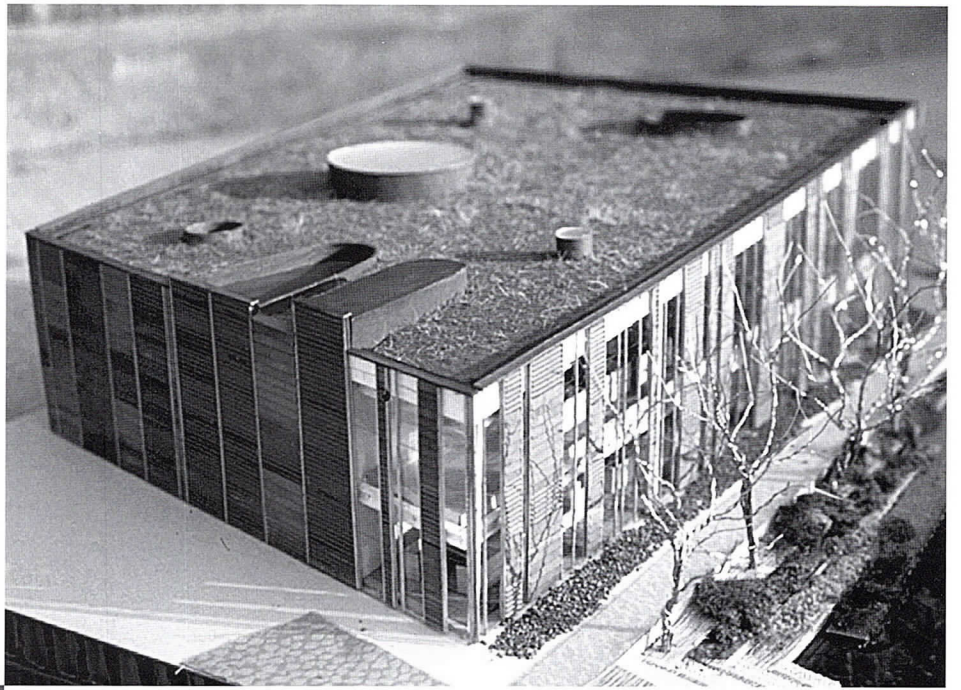
**R**esource conservation is an increasingly pressing concern as the millennium draws to a close, resulting in a growing body of "green" architecture. The most striking developments are taking place on rooftops, where vegetation is replacing heat-retaining tar and asphalt on a new office building for Walgreen's and a Goose Island warehouse for TAG. A city residence has a rooftop vegetable garden and a solar collector. All of the buildings featured here seek to reduce energy consumption by harnessing the sun in various ways: replacing or supplementing artificial light with daylight and controlling solar heat gain with sunscreens and building orientation. The Tetra Pak corporate headquarters has a minimalist design that eliminates the need for many traditional finishes; it also makes use of non-toxic products, as does the headquarters for the Tuthill Corp.



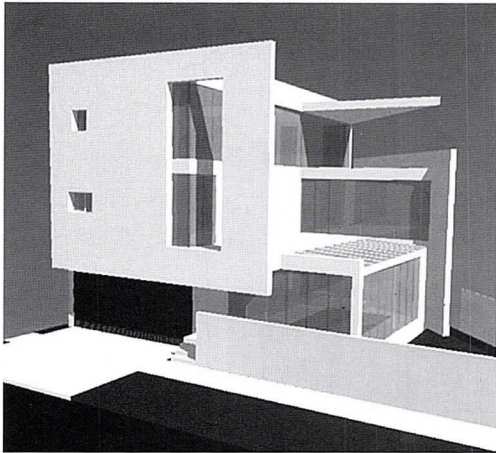
**Tuthill Corporate Headquarters**  
I-55 South and Route 83, Burr Ridge  
*Prisco Serena Sturm Architects*

**Walgreen Co. Campus Expansion**  
200 Wilmot Road, Deerfield  
*OWP&P Architects*





**Private Residence**  
Chicago  
*Landahl Design Studio P.C.*



**TAG**  
1070 N. Northbranch Ave., Chicago  
*Studio Gang/O'Donnell Ltd.*

**Tetra Pak Corporate Headquarters**  
101 Corporate Woods Pkwy., Vernon Hills  
*Solomon Cordwell Buenz & Associates Inc.*



# Recycled Buildings

**R**e-using old buildings for new purposes is a tried-and-true form of “green” architecture, saving historic resources as well as material ones. Two projects on Goose Island — Habitat 01 and Riverworks — transform abandoned industrial shells into state-of-the-art office complexes that feature the formerly malodorous Chicago River as an amenity. Three laboratory buildings on the BP Amoco campus become office buildings with the addition of a glassy atrium entry. The decommissioned army base at Fort Sheridan is master planned as an affluent suburban community where troops once drilled. Two suburban museums occupy equally unlikely quarters: the DuPage Children’s Museum in a former “big box” superstore, the Elmhurst Art Museum in a complex designed around a single family home by Mies van der Rohe.

Some facilities simply need to be updated for the same use, but in a way that goes beyond simple renovation. Such is the case with the UIC athletic facility, which creates a variety of sports facilities within the old hockey rink, and the Lincoln Park Zoo Education Center. A unique case is a proposal for Big Idea Productions’ corporate headquarters, which incorporates an old movie theater into a scheme of offices and video production facilities.



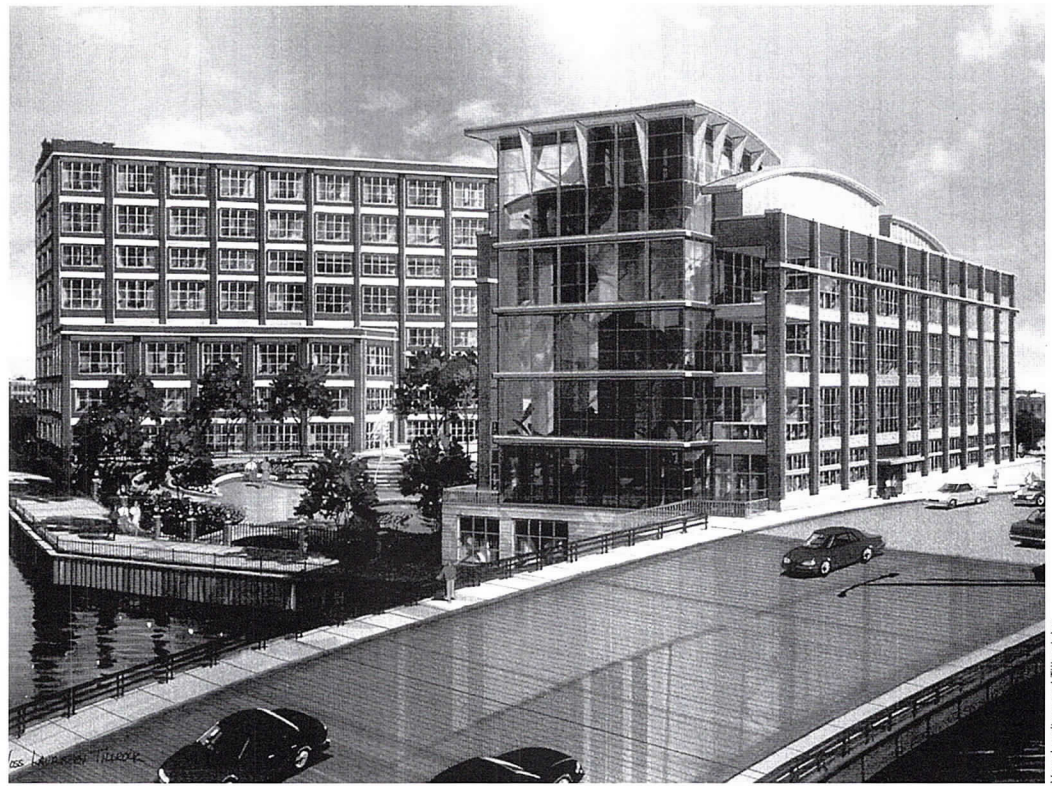
Jaime S. Bellata

**Big Idea Productions Studios and Corporate Headquarters**  
101-109 S. Main St., Lombard  
*RTKL Associates Inc.*

**Building 600 Lobby Addition – BP Amoco Research Center**  
150 W. Warrenville Road, Naperville  
*Teng & Associates Inc.*

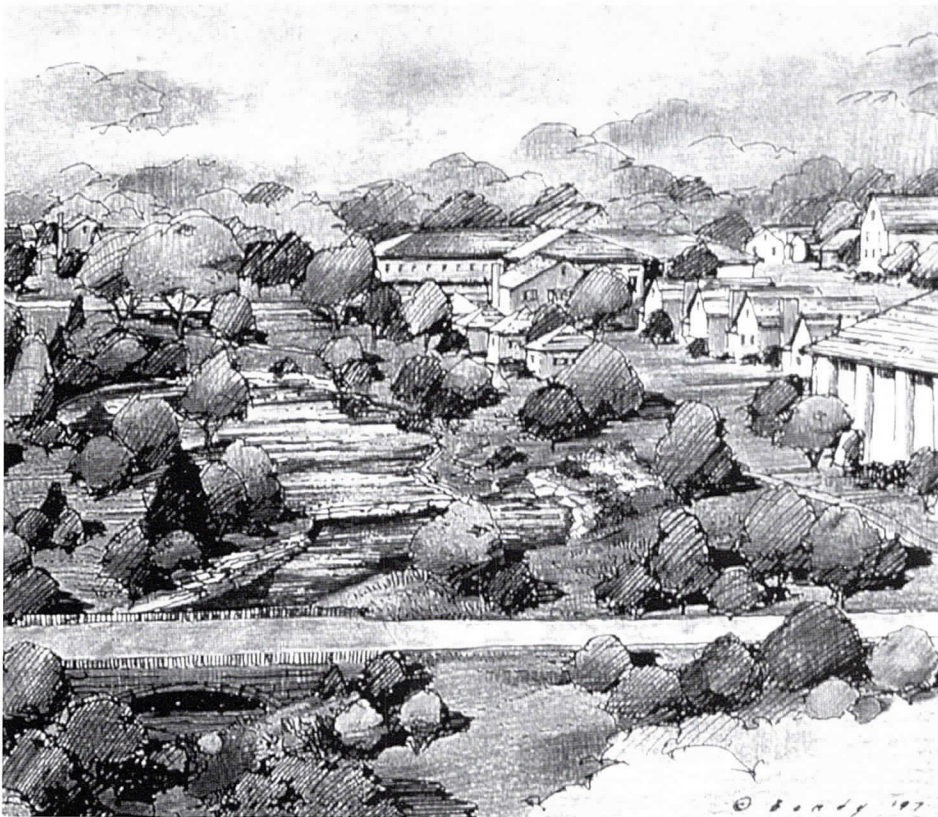


**Riverworks**  
 900 N. Northbranch Ave., Chicago  
*Hartshorne + Plunkard Ltd. Architects*

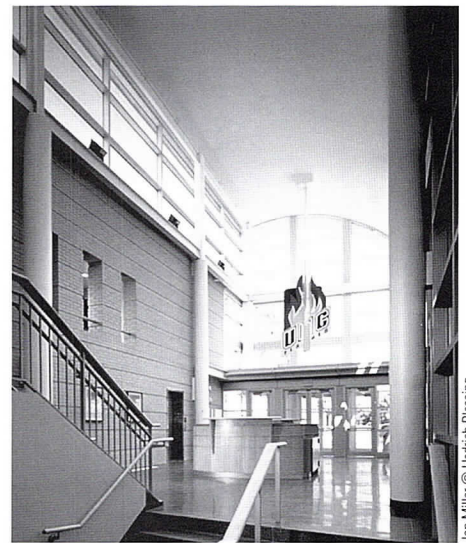


*Yoss Larrinsen and Tiltrock Inc.*

**Town of Fort Sheridan Master Plan**  
 Highland Park  
*DLK Architecture Inc.*



*Bruce Bondy*



*Jon Miller © Hedrich Blessing*

**The Flames Athletic Center at the University of Illinois at Chicago**  
 839 W. Roosevelt Road, Chicago  
*Mekus Studios Ltd.*

[www.teleport.com/~aiatrust](http://www.teleport.com/~aiatrust)

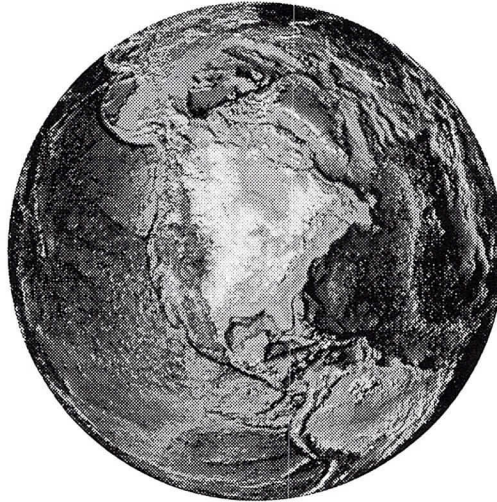
*Insurance and Financial Programs  
for AIA Members*

*Health  
Insurance*

*Disability*

*Life  
Insurance*

*Retirement  
Program*



*Business  
Insurance*

*Automobile  
Insurance*

*LegalLine  
Insurance*

*Continuing  
Education*

*Small Firm Professional Liability*

## What Are Architects Saying About Today's AIA Trust?\*

96% say the AIA Trust is a valuable membership benefit.

94% of those most familiar with the Trust say the Trust's programs are a reason to belong to AIA.

3/4 of the participants in today's AIA Trust would recommend the program.

# AIA Trust

Plan information is available 24 hours a day, toll-free at

**1-800-255-8215**

Visit e-Architect on [www.aiaonline.com](http://www.aiaonline.com)

Select Member Services

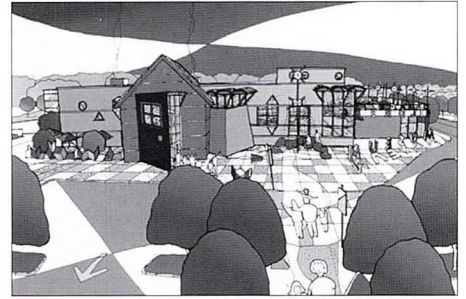
\*AIA Trust Product Evaluation Study Wiese Research Associates 1998





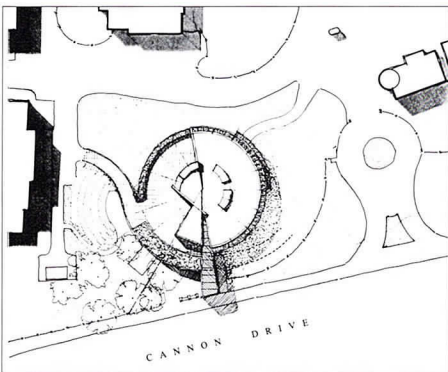
Louis D'Ambrasia

**Habitat 01 - Goose Island**  
1132 W. Blackhawk St., Chicago  
*Gensler*



**DuPage Children's Museum**  
301 N. Washington St., Naperville  
*Peter J. Exley Architect*

**Elmhurst Art Museum**  
150 Cottage Hill Road, Elmhurst  
*DeStefano and Partners*



**Lincoln Park Zoo Education Center**  
Cannon Drive, Chicago  
*Doyle & Associates*



Barbara Karant

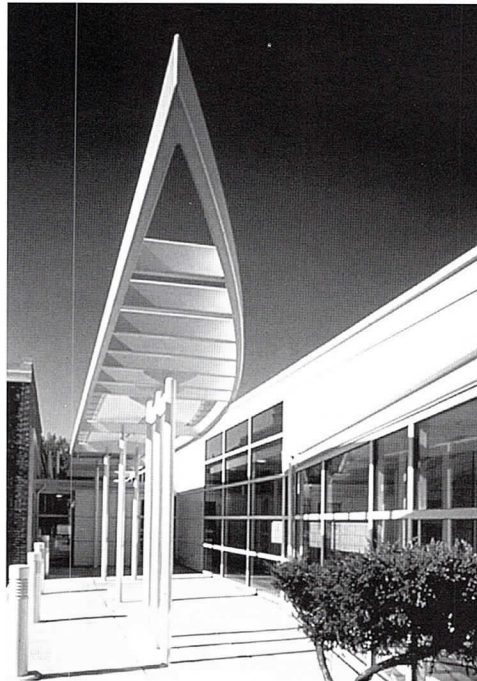
# Another Shade of Green

**T**he mid-century mindset that newer equals better has given way to a more balanced viewpoint that creative renovations and additions to existing buildings can offer equally valid solutions. Incentives to renovate include reduced costs, increased efficiency, and restoration of significant design and craftsmanship.

The five residences presented here cover a broad range, from the rehabilitation of 1940s-era public housing in Chinatown to the restoration of a Gold Coast mansion. A Chicago bungalow is updated by adding a library and new garage that blend with the old house, while a suburban house receives a complete interior remodeling to accommodate the dynamics of a non-traditional family. The most unusual project is a pair of historic buildings in Old Town that are joined with a glass link to form a single residence. The street facades are restored to their original appearance while the interiors are gutted to provide modern amenities.

School districts face the same set of problems and constraints as many homeowners: growing numbers of children demand more space, but moving to larger quarters is not always feasible. Two city schools make maximum use of their sites with well-planned additions, and a suburban district restores a school that had been mothballed since the end of the last baby boom.

Perhaps most challenging are structures built 20 to 50 years ago that are not historic but require aesthetic and functional upgrades. Although many schools fall into this category, the examples here are from the hospitality industry and local government, proving how ubiquitous this challenge will be in the next century.



**Wilmette Public Works Facility**  
711 Laramie Ave., Wilmette  
A. Epstein & Sons  
International Inc.

Barbara Karant



**Francis W. Parker School Addition**  
330 W. Webster Ave., Chicago  
Nagle Hartray Danker Kagan McKay Ltd.

Bruce Van Inwegen/David Clifton

**Private Residence**  
Chicago  
*Richard Gibbons & Associates*



**Skokie School Renovation**  
520 Glendale Road, Winnetka  
*GreenAssociates Architects Ltd.*



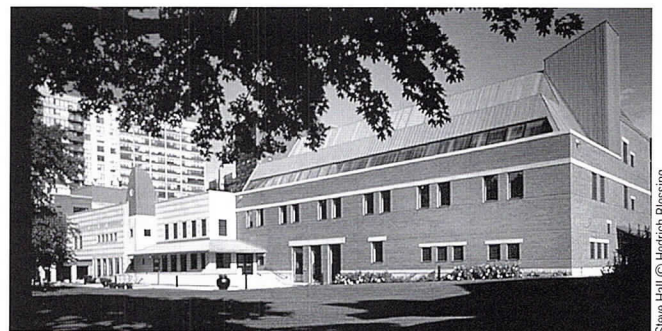
HNK Architectural Photography



Anthony May

**Private Residence**  
River Forest  
*Bailey Edward Design*

**Chicago City Day School Addition**  
541 W. Hawthorne St., Chicago  
*Weese Langley Weese Architects Ltd.*



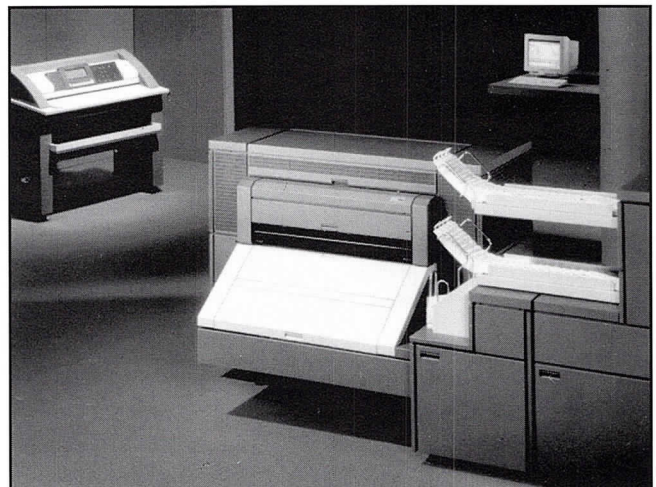
Steve Hall © Herrich Blessing

**New**

# High-Speed Digital Blueprinting

High speed digital printing from scanned originals or prints and CADD plot files. Copies may be reversed (negative to positive) mirror imaged and stretched along with standard enlargements and reductions from 25% to 400%. We would prefer HP/GL2 files with pen weights set.

For more than 70 years, Mossner has provided the latest and fastest high-production equipment available. And now Chicago's first state-of-the-art Oce 9800 for Digital Blueprinting is here!



- Pick-up and Delivery
- Fast Service
- Print Scanned Originals
- Print HP-GL, HP-GL/2, HPRTL, TIFF<sub>5.0</sub>, CALS<sub>1</sub> Files
- Print Collated Sets Fast

BOND PAPER DPB		
Total Sq. Ft. per order		Price per Sq. Ft.
1	to 49	.50
50	to 74	.35
75	to 99	.25
100	to 199	.20
200	to 499	.19
500	to 999	.18
1000	to 1999	.17
over	2000	.15

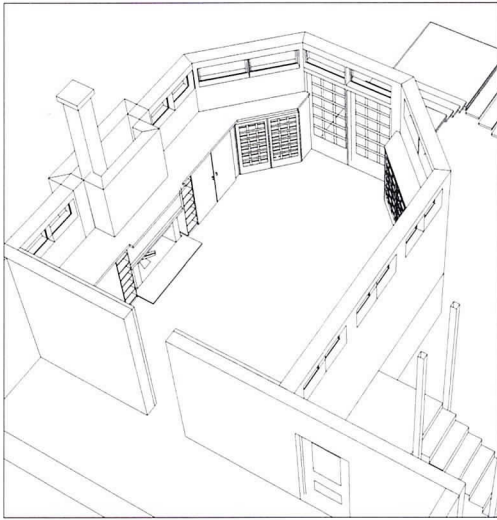
Minimum Charge \$25.00  
\$2.00 per scan, \$1.00 per CADD File

VELLUM PAPER DPV		
Total Sq. Ft. per order		Price per Sq. Ft.
1	to 49	2.75
50	to 74	2.50
75	to 99	2.25
100	to 199	2.00
200	to 499	1.75
500	to 999	1.50
1000	to 1999	1.40
over	2000	1.35

Minimum Charge \$25.00  
\$2.00 per scan, \$1.00 per CADD File

**Mossner (312) 372-8600**  
 THE REPRODUCTION PEOPLE • LARGEST IN THE MIDWEST  
 Mossner Building • 137 North Wabash at Randolph (across from Marshall Field's), Chicago, IL 60602

**Eugenie Street Homes**  
Chicago  
*Eifler & Associates Inc.*

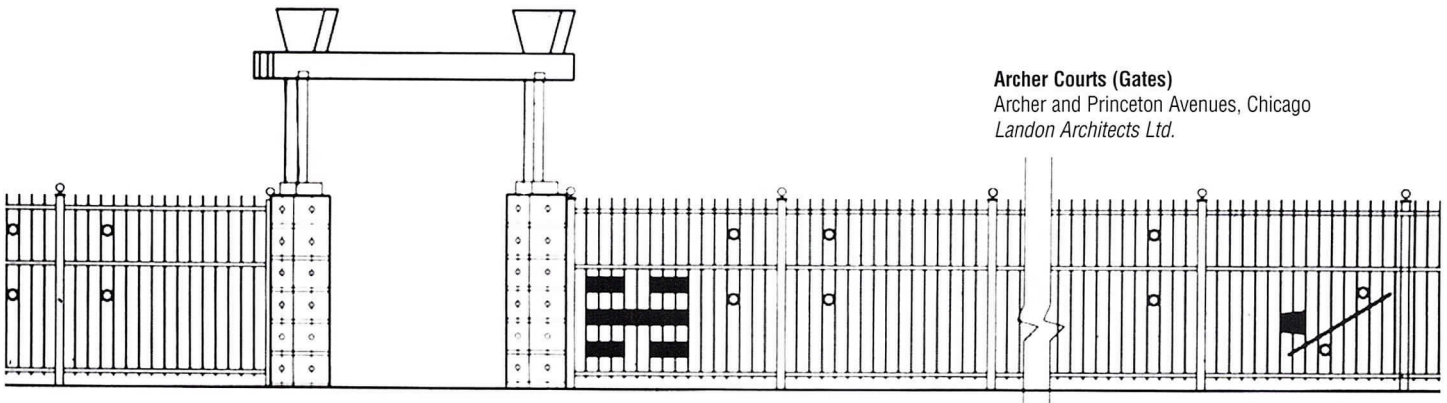


**Private Residence Library Addition**  
Chicago  
*Matthew Blaise Filipini, AIA*

**Holiday Inn – Midway Airport Exterior Renovation**  
7353 S. Cicero Ave., Chicago  
*Robert C. Vagnieres Jr. & Associates*



Jamie Padgett

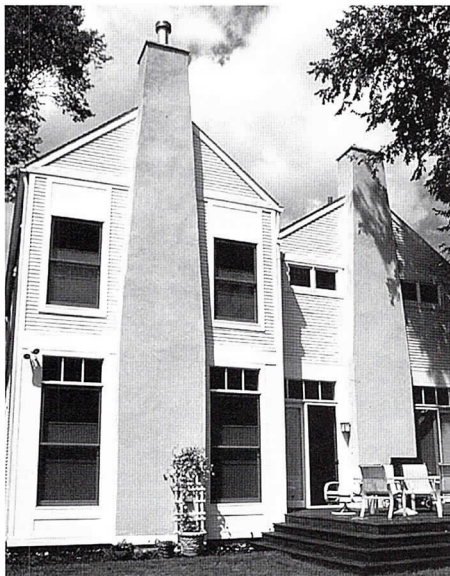


**Archer Courts (Gates)**  
Archer and Princeton Avenues, Chicago  
*Landon Architects Ltd.*

# Open House

While the following residential projects evoke different periods of architectural history, almost all the interiors take their inspiration from planning concepts pioneered by Frank Lloyd Wright early in the century. Even the most traditional-looking homes feature open spaces defined by half-walls, cabinetry, columns or, even more subtly, by changes in elements such as trim, moldings or flooring. There is also a much greater emphasis on natural light, made possible in part by advances in window and skylight technology.

Clients often have very specific needs, such as single-floor living or an art collection that demands complementary display space. Multi-family housing presents the opposite extreme of an unknown group of residents whose domestic desires are being anticipated by a developer.



Bruce Van Inwegen



Jon Miller © Hedrich Blessing

**Private Residence**  
North Suburban Chicago  
*Goldberg Downey Architects Inc.*

**Private Residence**  
Wilmette  
*Searl and Associates*

**Single Family Residence**  
Chicago Suburb  
*Stuart Cohen & Julie Hacker Architects*



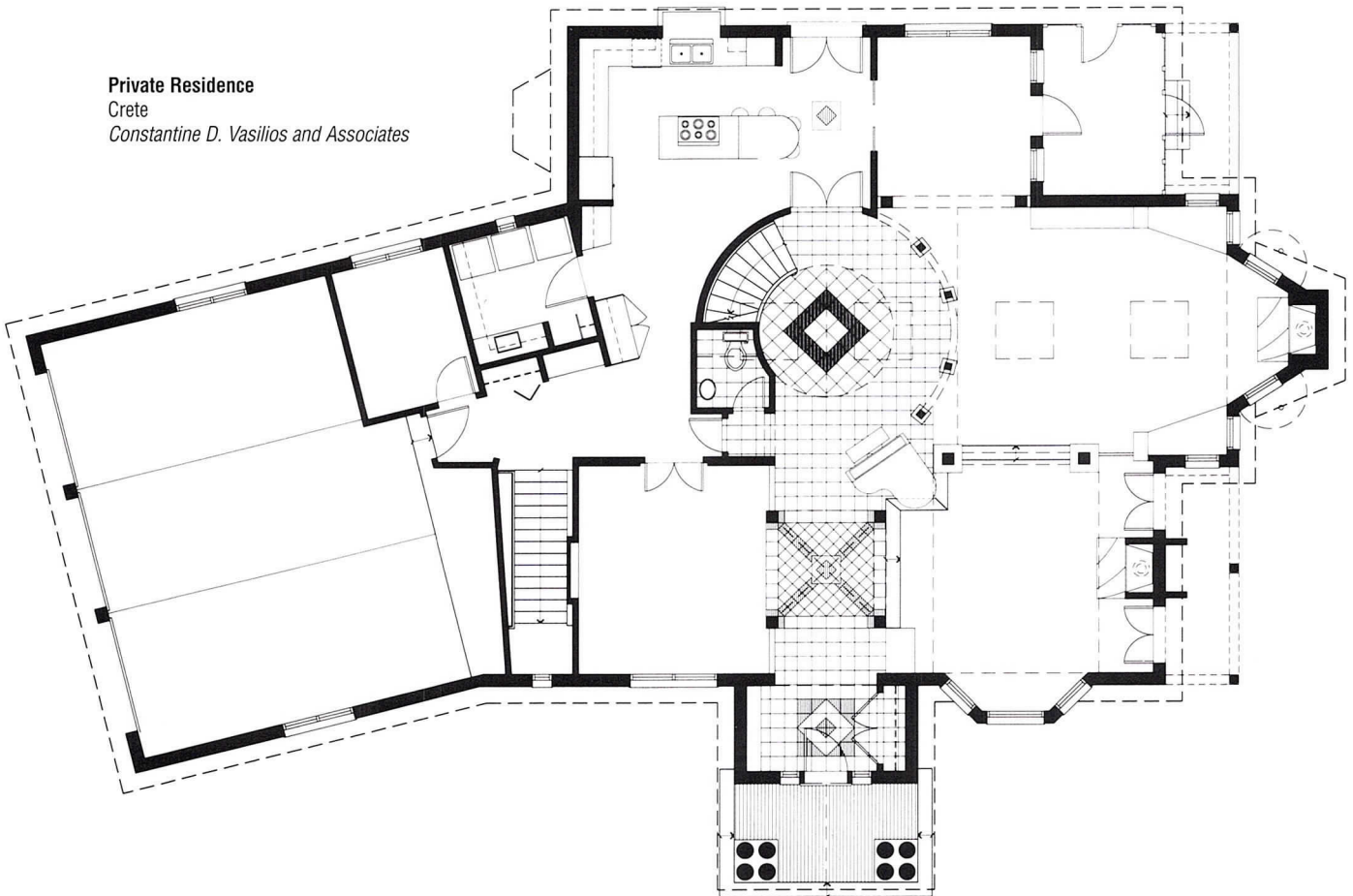
Jon Miller © Hedrich Blessing

**Private Residence**  
Highland Park  
*Fraerman Associates Architecture Inc.*



Bruce Van Inwagen

**Private Residence**  
Crete  
*Constantine D. Vasilios and Associates*



# ARCHITEMPS, INC.®

**ARCHITEMPS, INC.® -- the Architectural & Interior Design staffing specialists, serving greater metropolitan Chicago since 1986.**

**Quality staffing, service and solutions:**

- **Design/Production Drafters**
- **Facility Planners**
- **CAD Architects/Interior Designers**
- **Project Managers**

**Our billing includes all employer liability:**

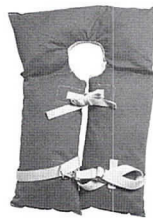
- **Payroll Administration**
- **Employee Benefits**
- **Government Compliance**
- **State & Federal Tax Remittance**
- **Workers' Compensation Coverage**

**Architectural, interior design and facility planning personnel on a per-project basis. Customized employee leasing, permanent conversion and direct placement available. Call today for information on our staffing services or employment opportunities.**

**ARCHITEMPS, INC.®  
1050 North State Street  
Chicago, Illinois 60610.1043**

**Tel: 312.649.0912  
Fax: 312.649.1667  
ARCHITEMPS@aol.com  
<http://www.architemps.com>**

Need Technical Support? Let Us Help.



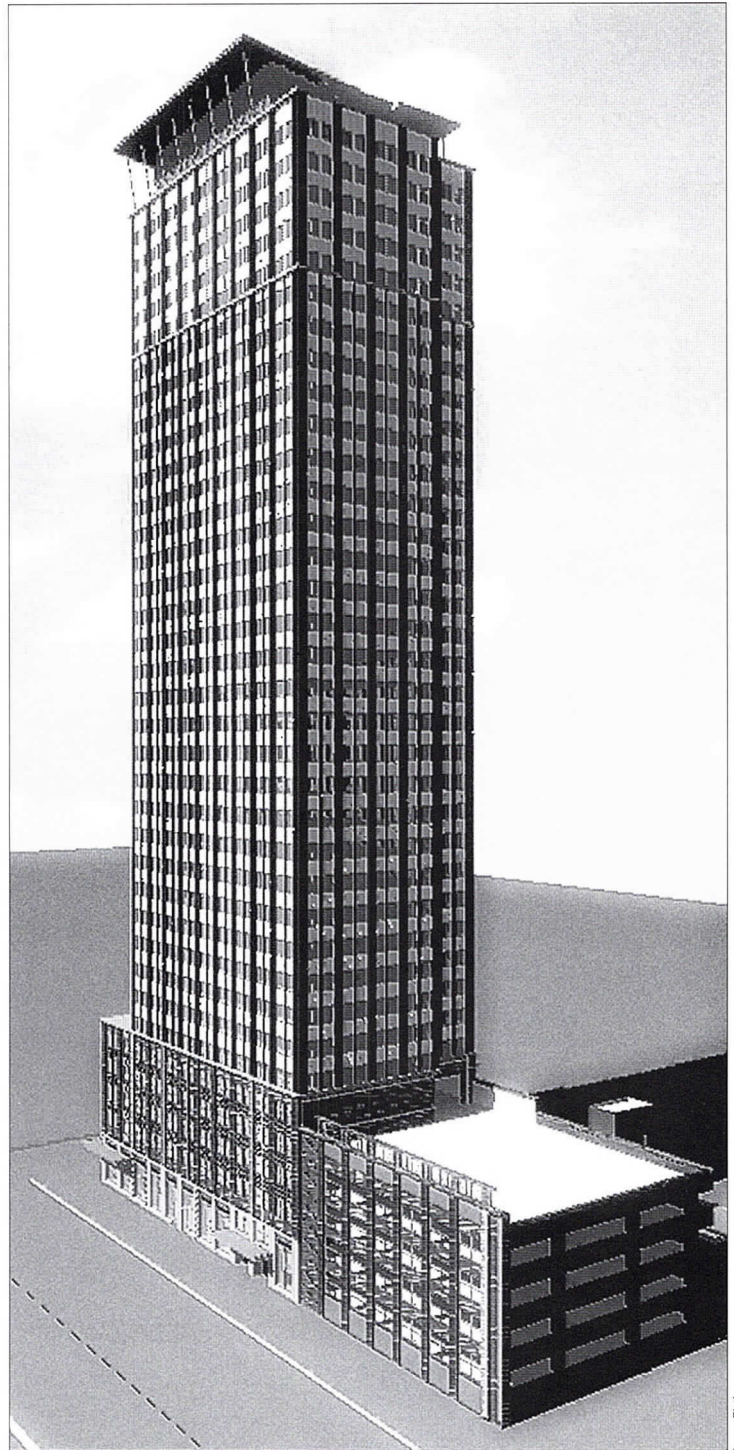
Every design business could use a little technical support. Your CAD software should work for you and not the other way around. Join the many firms that use our HELP DESK services on a daily basis. We are helping our clients utilize the Autodesk, Kinetix, and ARCHIBUS families of products in ways they didn't realize were possible. Whether it's installing or customizing CAD software, getting the training they need, or trouble-shooting, our clients have come to rely on the CFA/HELP DESK. So don't go down with the ship - call the CFA/HELP DESK now and we'll make your problems our own. You can trust our knowledge and commitment.





**Prairie House**  
Midwestern Illinois  
*Rudolph & Associates Inc.*

**121 West Chestnut Tower**  
121 W. Chestnut St., Chicago  
*PPKS Architects*



ImageFiction



**Willow Court**  
Willow Street and Damen Avenue, Chicago  
*Pappageorge/Haymes Ltd.*

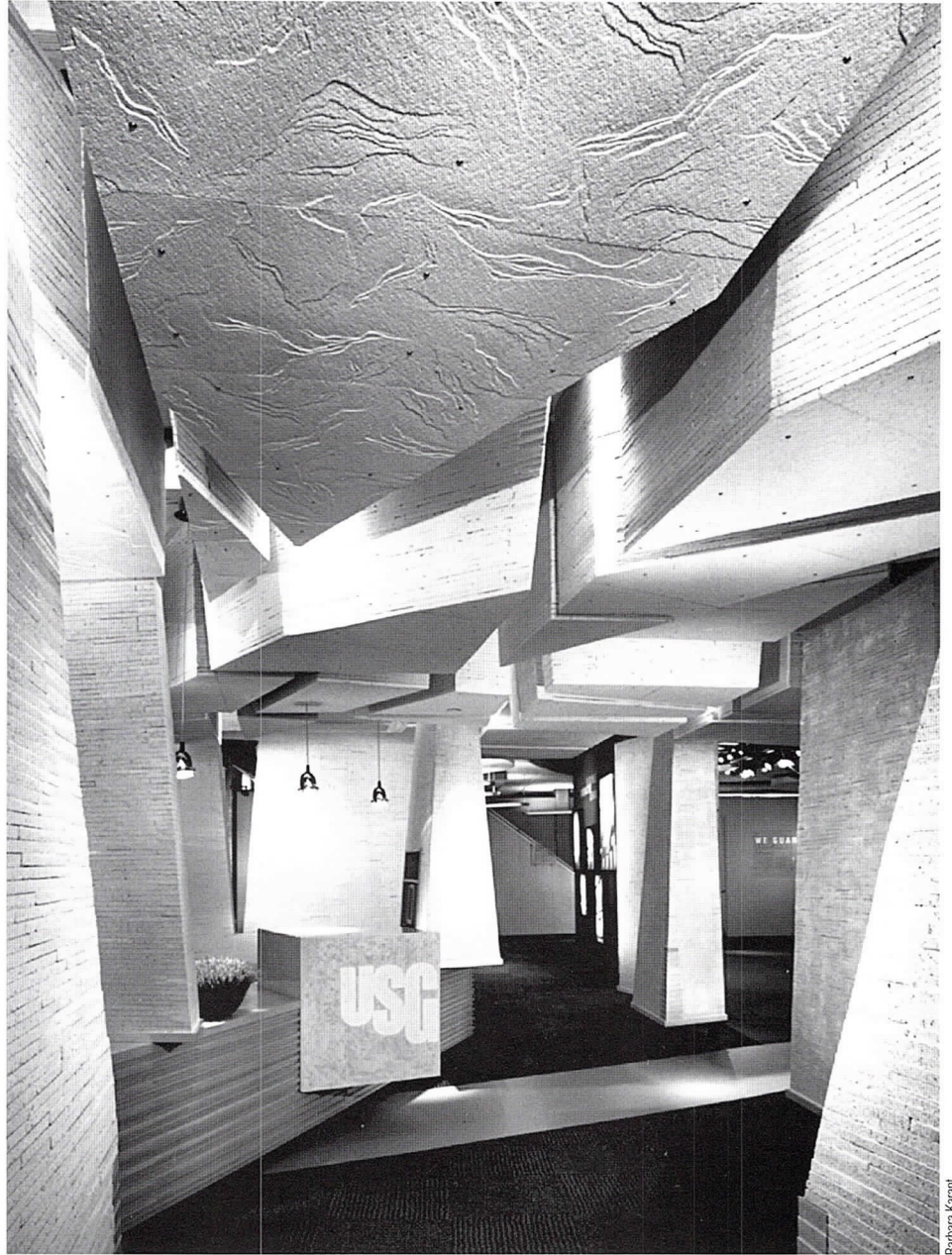
# Techno-File

**T**he architectural changes being brought about by technology are not revolutionary but evolutionary, inexorably affecting design, use of materials, and building programs.

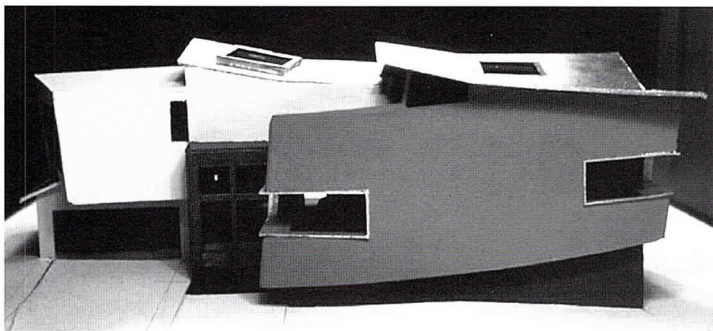
Buildings are growing taller, and familiar materials are taking on new appearances. Advances in software are facilitating the design of 2000-foot-tall buildings which serve the needs of a new form of television technology. Tower 2000 and 7 South Dearborn are each divided into sections housing different functions, the top 500 feet of which are HDTV broadcast antennas.

Even as the city seeks to recapture the title of home of the world's tallest building, other "firsts" are in the works. The 300 East Randolph building will receive a vertical addition on an unmatched scale, with 22 new floors slated for the top of a 32-story building. An unprecedented acoustical device features prominently in the design of IIT's McCormick-Tribune Campus Center: a 600-foot-long stainless steel tube will enclose a section of the elevated train tracks that pass through the campus.

Other creative uses of everyday materials are in evidence at the Ha-Lo headquarters, where glass facades create fabric-like screens, and in the USG Solutions Center, where each interior wall is composed of a raw material or a material in process. Two residential projects take inspiration from their materials with very different results. The forms of one residence are fluid and complex, while the concrete block and steel structure of the other create a precise geometry.



Barbara Karant

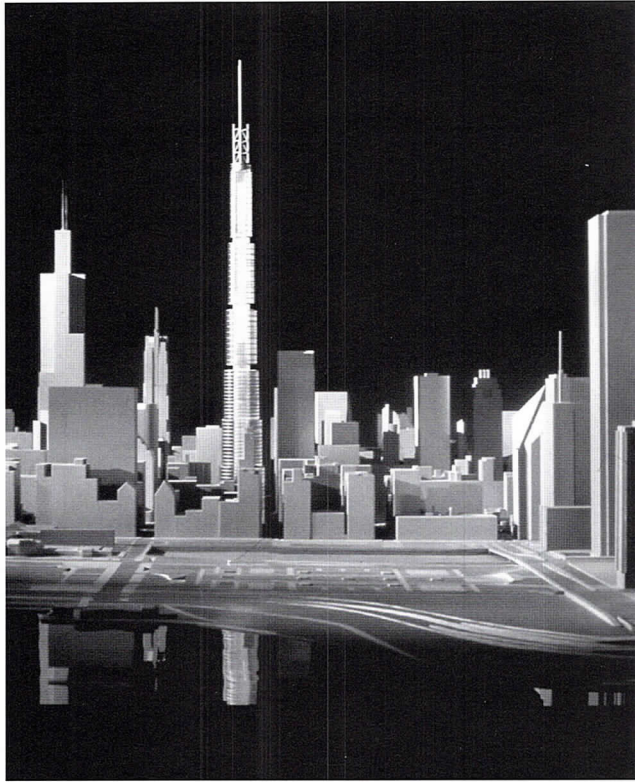


Bill Kildow

**USG Solutions Center**  
222 W. Hubbard St., Chicago  
Valerio Dewalt Train Associates Inc.

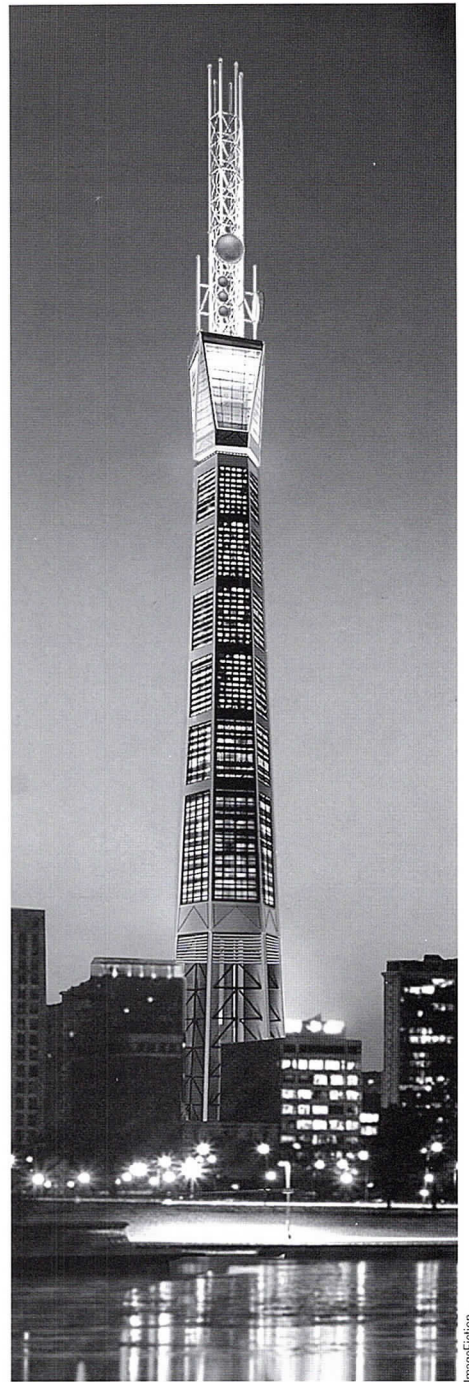
**Private Residence**  
Prospect Heights  
Garofalo Architects

**7 South Dearborn Street**  
7 S. Dearborn St.  
*Skidmore, Owings & Merrill LLP*



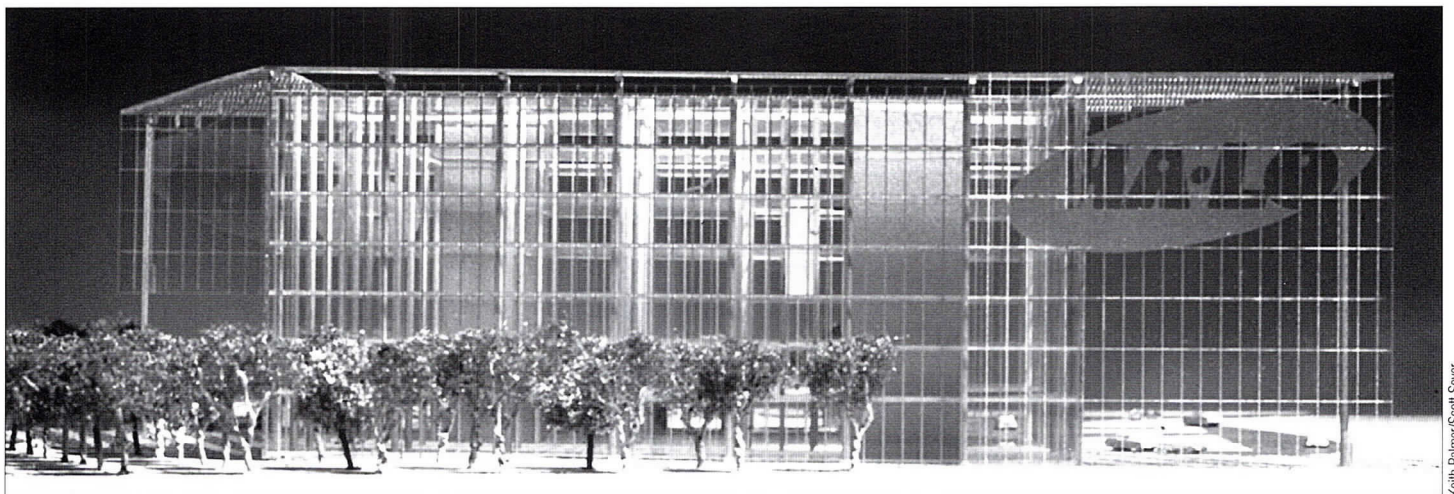
James Steinkamp

**Tower 2000**  
Chicago  
*Eckenhoff Saunders Architects*



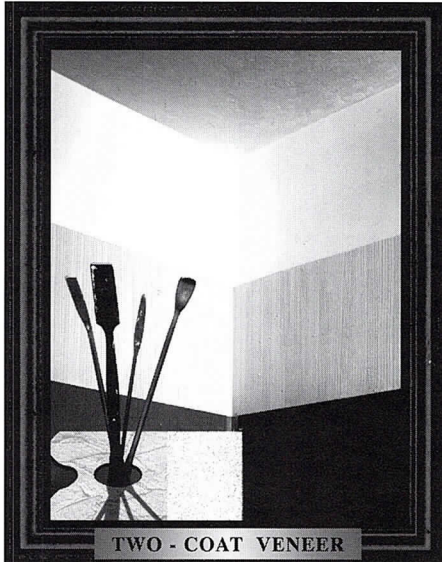
Imagefiction

**HA-LO Headquarters**  
5800 Jarvis St., Niles  
*Murphy/Jahn Inc.*



Keith Palmer/Scott Seyler

# The Art of Plastering



TWO - COAT VENEER

Spectacular walls.  
Smooth...Textured...

Done the way you want them.  
Hard and durable surfaces that  
make paint and paper look  
better, make redecorating  
easier, make homes quieter.

**Plaster interiors are  
more cost-effective than  
you think.**

*Call us for more information.*



Chicago Plastering Institute  
6547 N. Avondale Ave.  
Chicago, Illinois 60631  
773.774.4500  
Fax. 773.774.5828

Architectural  
Representative  
Division 7



## Who's under our roof?

A & D Coating Sales represents Koppers Ltd. and Ludowici Inc.,  
two of the finest manufacturers of roofing systems available. Give us a call  
to see what these extraordinary companies can do for your project.  
A & D Coating Sales—nothing but the best for over 20 years.

**Call John Dashner at: 630.668.1551  
215 N. Washington Unit F, Wheaton, IL 60187**

# READ THIS AND WEEP

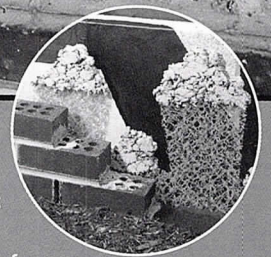
 **Mortar Net™**  
The Difference is in the Cut.

**800-664-6638**  
**www.mortarnet.com**

Now made of a softer, more  
compressible material for  
easier installation!

Cavity blocked with mortar droppings.

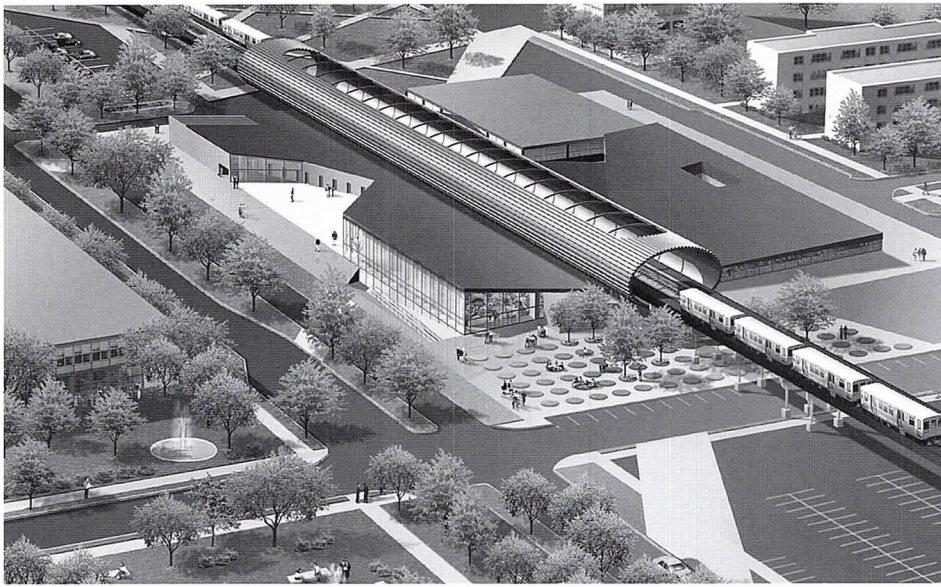
Don't be fooled by  
cheap imitations—no  
other design matches  
the performance of  
Mortar Net™. Just look for our  
unique green mesh and patented dovetail  
shape to ensure reliability every time.



**D**amming and clogging of cavities can cause  
costly repairs due to water damage.

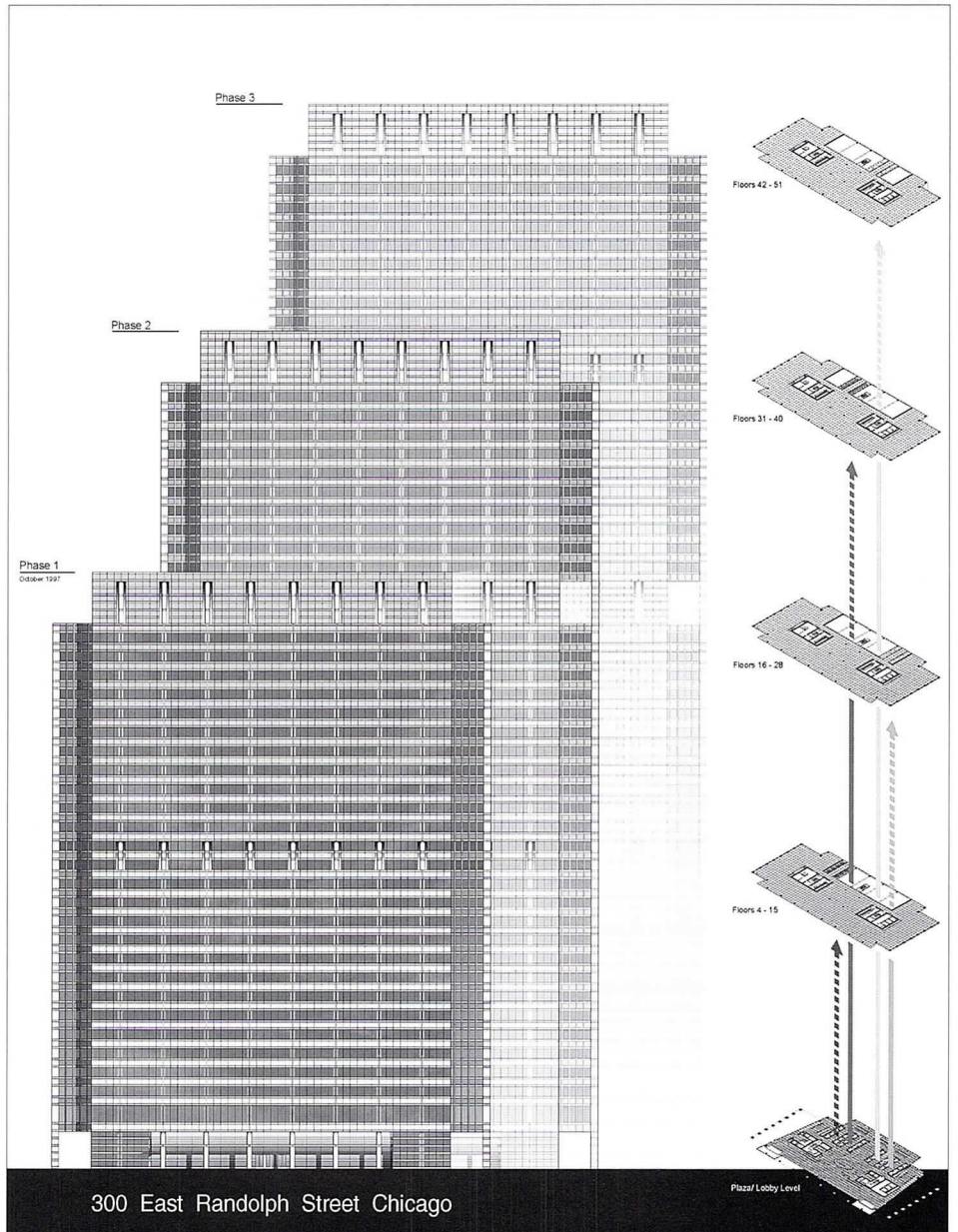
The Mortar Net Drainage System allows water to  
maintain a path of exit to the weeps, preventing  
damage caused by the blockage of weep holes. Call  
for more information or to place an order.

(ASTM test method E-514. Laboratory test data available upon request.)

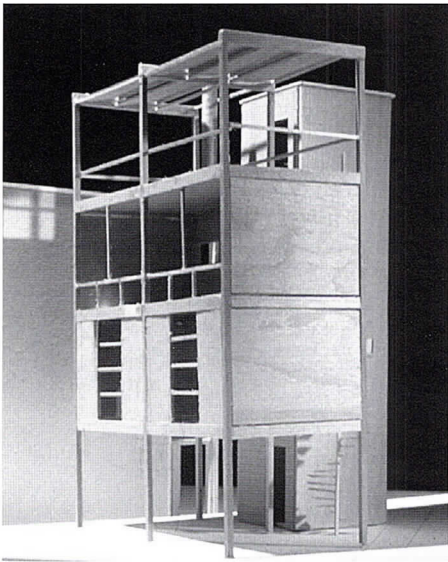


**Illinois Institute of Technology**  
**McCormick-Tribune Campus Center**  
 State and 33rd Streets, Chicago  
*Holabird & Root LLP (for Rem Koolhaas,*  
*The Office for Metropolitan Architecture)*

**300 East Randolph Street**  
 300 E. Randolph St., Chicago  
*Lohan Associates*



300 East Randolph Street Chicago



Orlando Cabanban/Casimir Kujawa

**Private Residence**  
 Chicago  
*Frederick Phillips & Associates*

# Flex Time

The increasingly hectic pace of change at this juncture of history has led to demands for extremely flexible spaces at home, at the office, and especially in places that combine the two. "Breaking down the box" of traditional interiors has made this flexibility easier than ever to accomplish. Two live/work spaces — a studio apartment and a 3500-square-foot loft — have completely open plans that integrate workstations for their designer-owners.

The headquarters of W.W. Grainger, Binks Sames and the American College of Surgeons all feature open office environments with workstations that can be reconfigured easily. They also include public areas that promote informal socializing and large spaces such as auditoriums that can be used for continuing education and training.

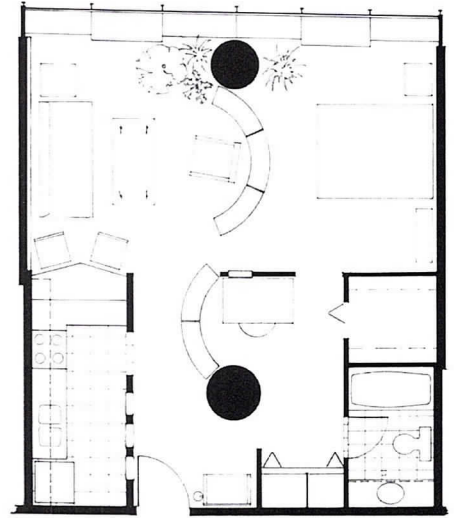
In residential architecture, the demand for flexibility extends not only to open floor plans but also to the other end of the privacy spectrum: provision for independent living quarters within a single-family home. The private residence featured here includes a ground-floor unit suitable for elderly relatives, while a similar space in the Lakeview House could also serve as a rental unit. The Convertible House is perhaps the ultimate expression of this trend, as it is planned to work equally well as a single-family house or a combination duplex and studio apartment.

**Loft Residence**  
Chicago  
*Frankel + Coleman*



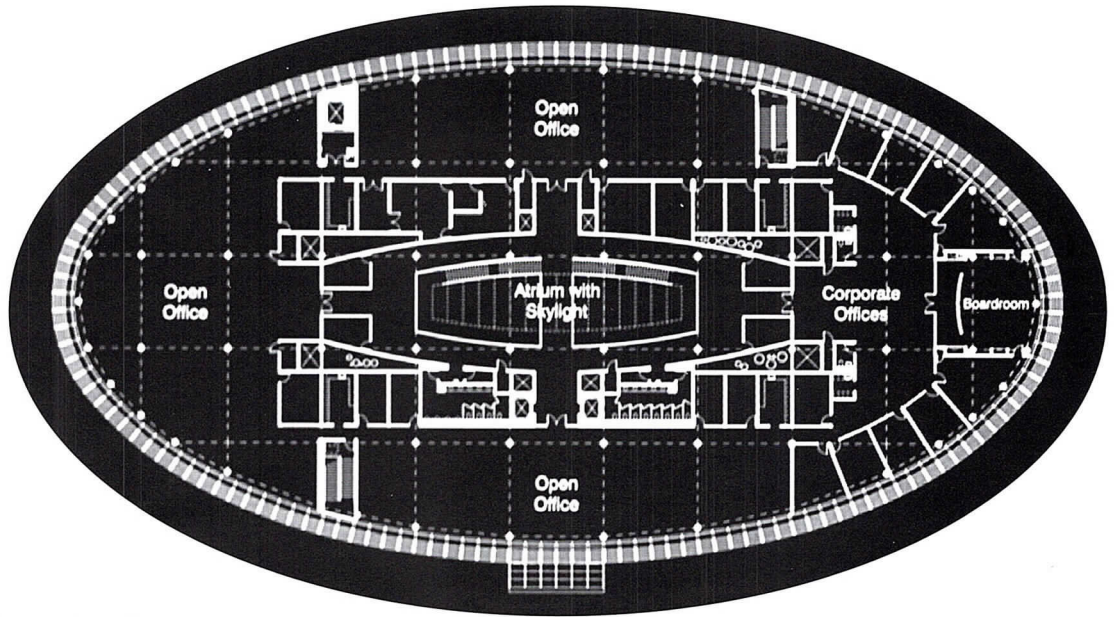


**W.W. Grainger**  
 Lake Forest  
*The Environments Group*



**Lake Point Tower Condominium**  
 Chicago  
*P.K. VanderBeke Architect*

Steve Hall © Hedrich Blessing



**Binks Sames World Headquarters**  
 600 Woodland Pkwy., Vernon Hills  
*Graham, Anderson, Probst & White*



**Lakeview House**  
 Chicago  
*Kuklinski + Rappe*

Doug Showler

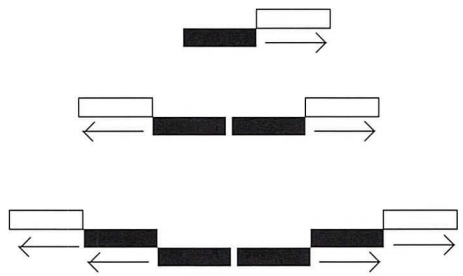


european frame & sash mfg.

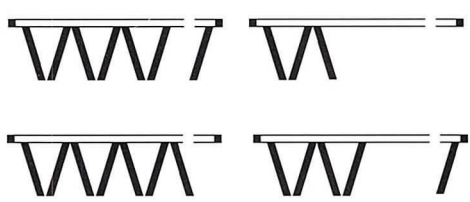
**Windows:** tilt/turn, hopper, arched, fixed, glass, pivotal, fused corner

**Doors:** custom swing in or out, French, lift slide, fold away, pivot doors.

**Lift slide doors:** sliding doors that lift/ raise when moving to release the weather tight double seals & ease gliding.



**Foldaway Doors:** multiple panels that slide and fold to open the space.



**ArchiSpec LLC**  
 3950 N. Holton Street  
 Milwaukee, WI 53212 U.S.A.  
 Ph 414 962-7990  
 Fx 414 962-7993  
 E-Mail [archispec@aero.net](mailto:archispec@aero.net)

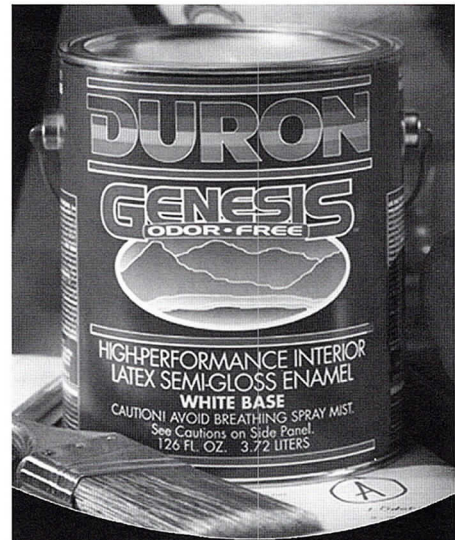
Check components on website  
[www.g-u.com](http://www.g-u.com)



- Professional Liability
- Specific Project Coverage
- Office Packages
- Workers Compensation
- Automobile
- Exclusive Programs
- Group and Individual Life & Health

**Insurance and Loss Prevention Services for Architects**

AVA Insurance Agency  
 One Tower Lane • Oakbrook Terrace, IL 60181  
 Tel: 630.571.4500 • Fax: 630.571.4518 or 4525  
 E-Mail: [info@avains.com](mailto:info@avains.com)



**Premium Interior Paints**  
 No Odor/No VOC



**Mike Wall**  
 2200 Ogden Ave. #100  
 Lisle, IL 60653

630.493.1660 • 800.72DURON  
[www.duron.com](http://www.duron.com)



**Botti Studio of Architectural Arts, Inc.**  
 919 Grove St., Evanston, IL 60201  
 847/869-5933 • Fax 847/869-5996  
 800/524-7211 • [www.bottistudio.com](http://www.bottistudio.com)  
[botti@bottistudio.com](mailto:botti@bottistudio.com)

Designers/Fabricators • Stained and Faceted Glass  
 Beveled Glass • Sandblasted • Stained Glass Restoration  
 and Conservation • Protective Glazing • Wood and Metal  
 Frame Restoration • Sculpture • Bronze • Metal • Marble  
 Mosaic • Interior Renovation • Woodwork • Murals  
 Painting and Decorating • Custom Sanctuary Furnishings  
 Stained Glass Consultants to Architects and Churches

**Field Representatives Nationwide**  
 Studios: San Diego • Chicago • Sarasota  
 760/753-0705 • 847/869-5933 • 941/951-0978



**Multimedia System Integrations**

audio • video  
 control systems  
 installations • parts  
 labor • service

• presentation rooms  
 • training centers  
 • conference rooms  
 • meeting facilities  
 • auditoriums  
 • boardrooms  
 • classrooms

Midwest Visual Communications  
 6500 N. Hamlin Ave  
 Chicago, IL 60645  
**800.876.8298**  
**847.673.4525**  
[www.midwestvisual.com](http://www.midwestvisual.com)

# Sabo & Zahn

Attorneys at Law

**Werner Sabo, FAIA**                      **James Zahn, AIA**

Copyright protection, business formations  
 mediation, litigation, arbitration, contracts, real estate  
 construction attorneys

8620 Sears Tower  
 Chicago, IL 60606  
[wsabo@sabozahn.com](mailto:wsabo@sabozahn.com)

**www.sabozahn.com**

**(312) 655-8620**  
 fax: (312) 655-8622  
[jzahn@sabozahn.com](mailto:jzahn@sabozahn.com)





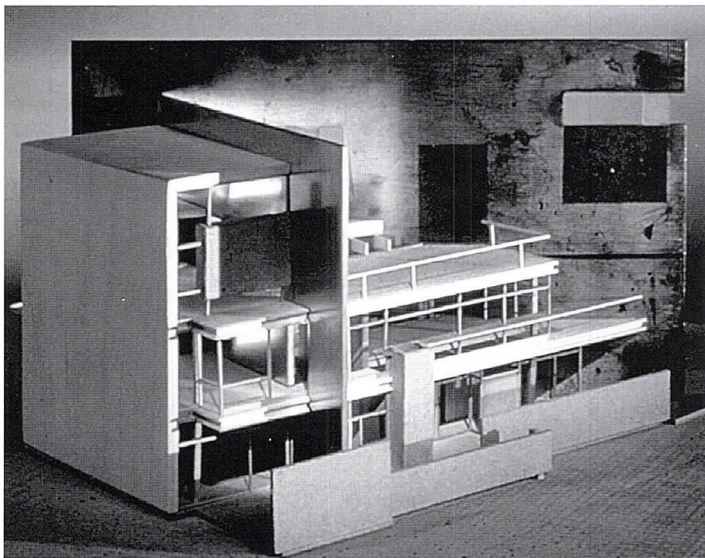
Leslie Schwartz

**American College of Surgeons**  
633 N. St. Clair St., Chicago  
*Gary Lee & Partners*

**Private Residence**  
Evanston  
*Holbert and Associates Architects*



Marco Lorenzetti © Heinrich Blessing



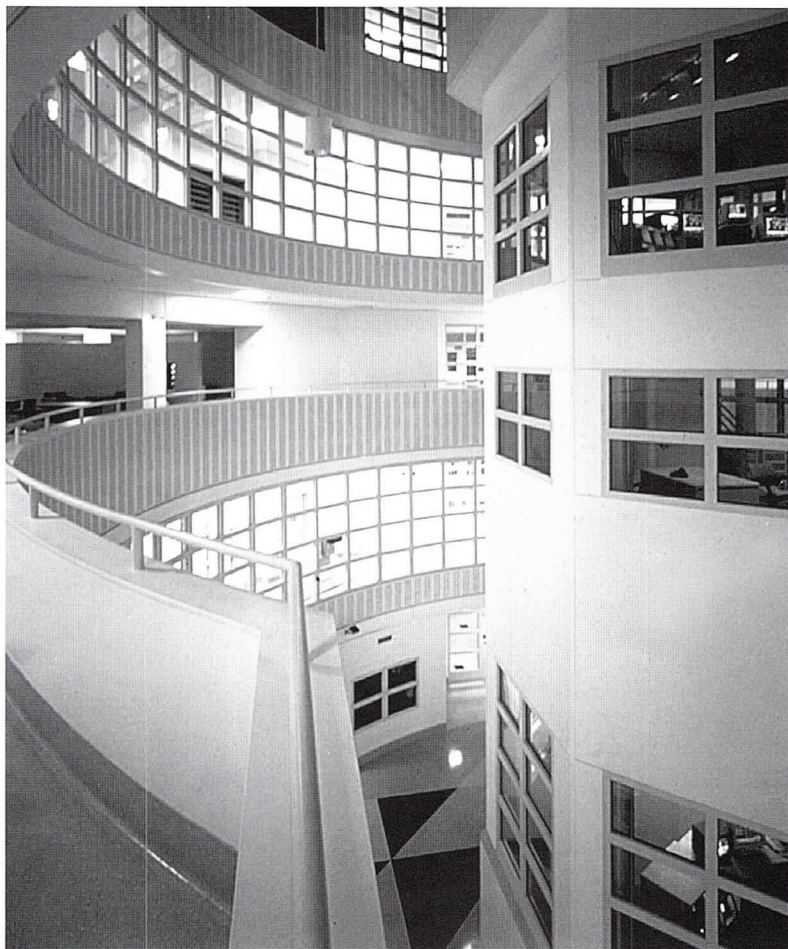
James Steinkeamp

**Convertible House**  
Chicago  
*Florian Architects*

# Make No Simple Plans

Chicago architecture has a century-old tradition of buildings with complex programs; the multi-use Auditorium Building stands as a notable example. New challenges are driven by issues as diverse as preservation, technology, transportation, criminal justice, and the changing role of the architect. The Northbridge project and the proposed Music and Dance Theater both have unusual preservation components (retaining the McGraw-Hill façade and park land respectively) and therefore need to craft inviting entrances to large public structures that are hidden from view. The Northbridge entrance at 520 N. Michigan Ave. is a gateway to a hotel and retail complex located at Grand and Rush Streets. The Randolph Street lobby of the Music and Dance Theater leads to a performance space located below the new Millennium Park.

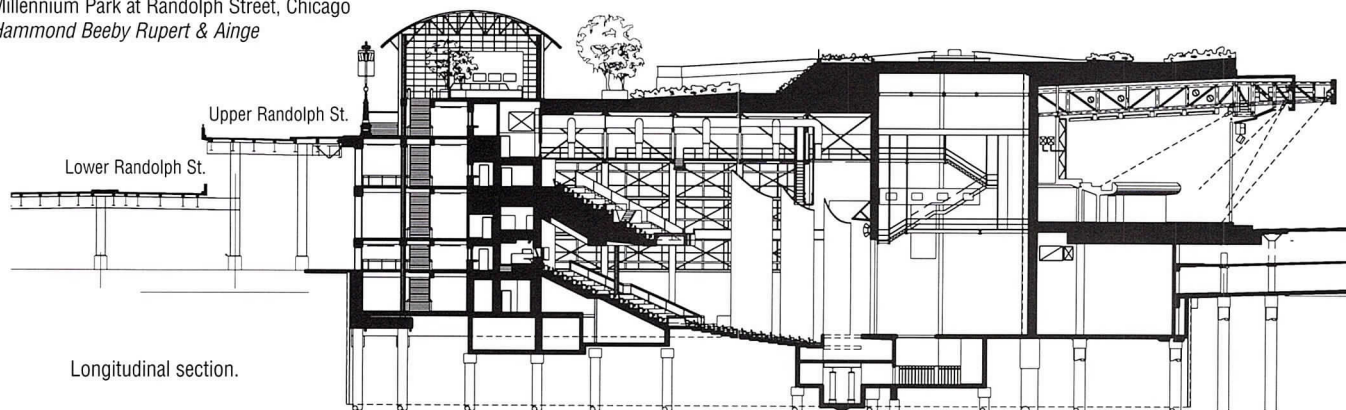
Even more complex are specialized building types with stringent requirements: an airport terminal, a maximum security facility, and the world's largest light source laboratory. Two design-build projects demonstrate the increasingly complex role of the architect when a firm assumes responsibility for a broader scope of work.



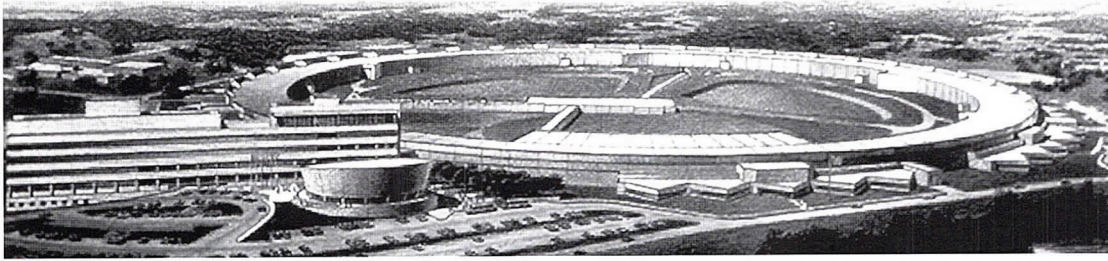
Don Dubroff

**Cook County Maximum Security  
Facility-Division XI**  
3100 S. California Blvd., Chicago  
*Roula Associates Architects Chtd.*

**Music and Dance Theater Chicago**  
Millennium Park at Randolph Street, Chicago  
*Hammond Beeby Rupert & Ainge*



Longitudinal section.

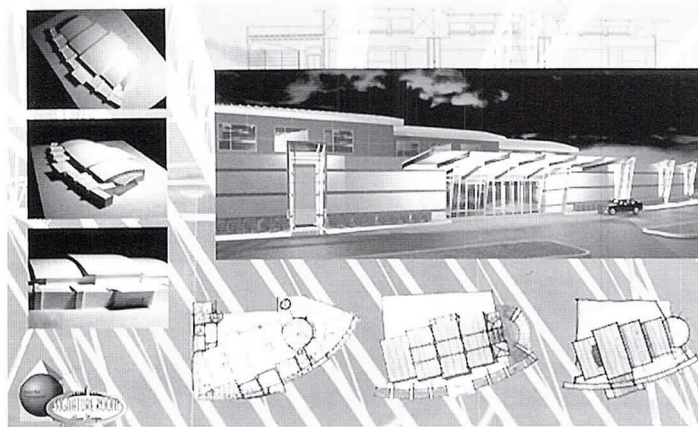
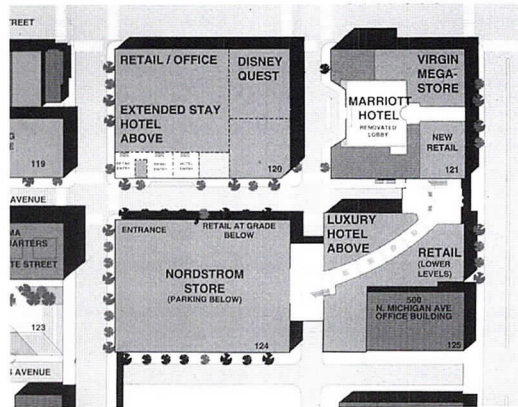


Advanced Photon Source and  
Central Office Laboratory –  
Argonne National Laboratory  
*Knight Advanced Technology*

**Chicago Sun-Times  
Production Facility**  
2800 S. Ashland Ave., Chicago  
*McClier*

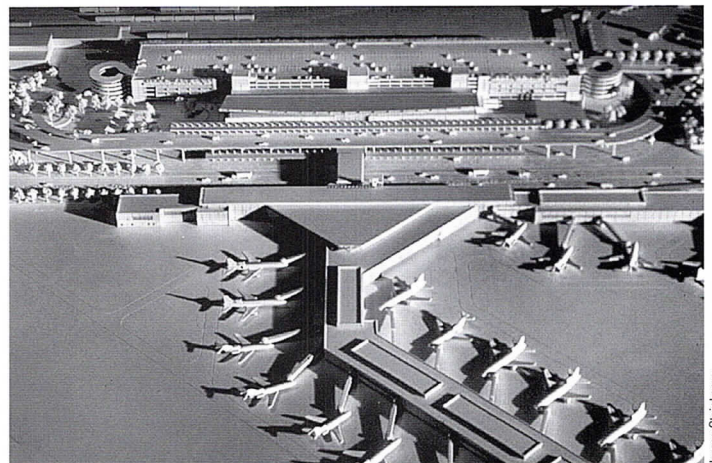


**520 North Michigan Avenue**  
520 N. Michigan Ave., Chicago  
*Anthony Belluschi Architects Ltd.*



**The Signature Room at Seven Bridges**  
Double Eagle Drive, Woodridge  
*Aumiller Youngquist P.C.*

**Midway Airport**  
5700 S. Cicero Ave., Chicago  
*HNTB Architecture*

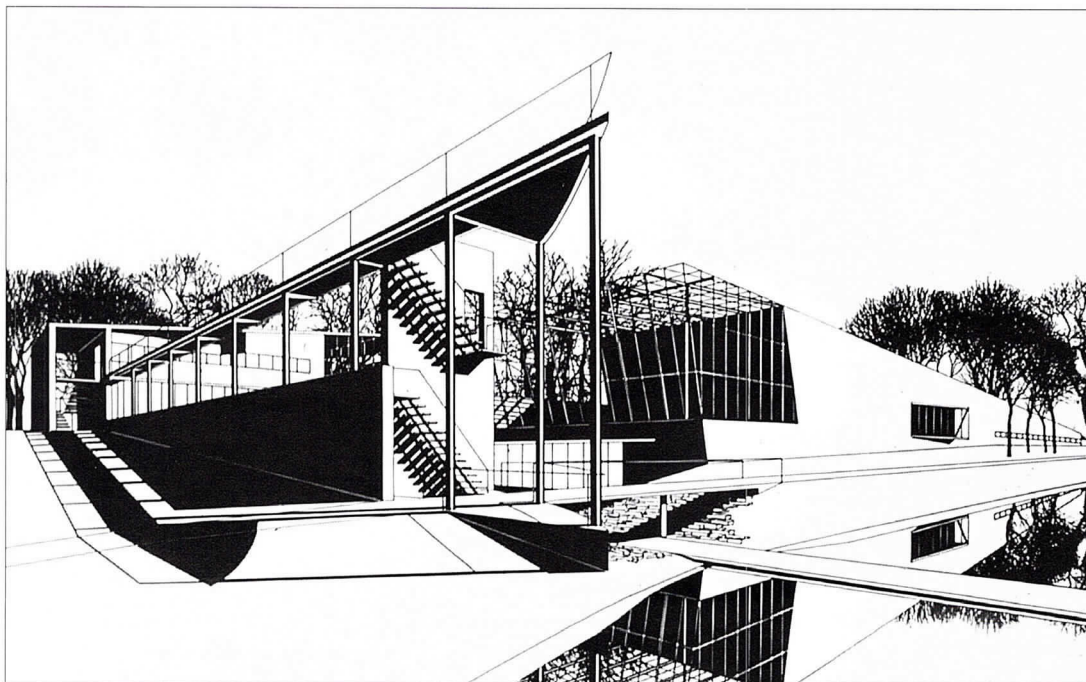
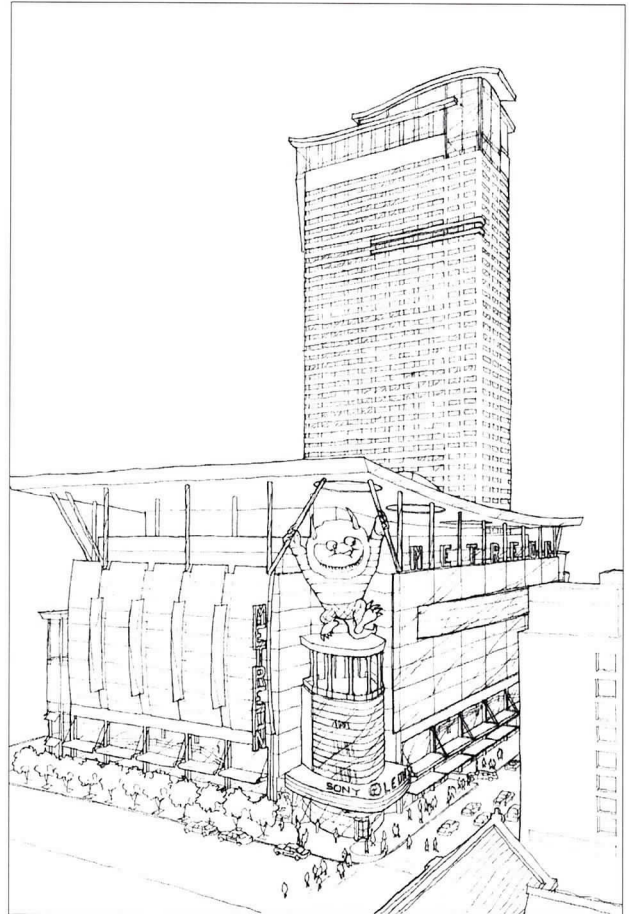


James Steinkamp

# Where the Interaction Is

**T**he concept of promoting various forms of interaction — with nature, with people, or with technology — is at the heart of these projects. Children's museums were pioneers in this domain, and the trend continues with Idea Adventures. Heightened awareness of man's interdependence with the natural environment is the mission of the Peggy Notebaert Nature Museum and the Shedd Aquarium. The Chicago Community Humane Center stresses interaction between people and pets. On the job front, Republic Windows and Doors brings together manufacturing and management in their new headquarters with a grand lobby large enough for the entire company to gather in. The Sony Metreon features four floors of interactive entertainment so exciting that the building form seems to explode out of this section. On a more day-to-day level, Oxford Bank is designed to make an array of banking technology as user-friendly as possible.

**Sony Metreon**  
Ohio and State Streets, Chicago  
*Lucien Lagrange and Associates Ltd.*



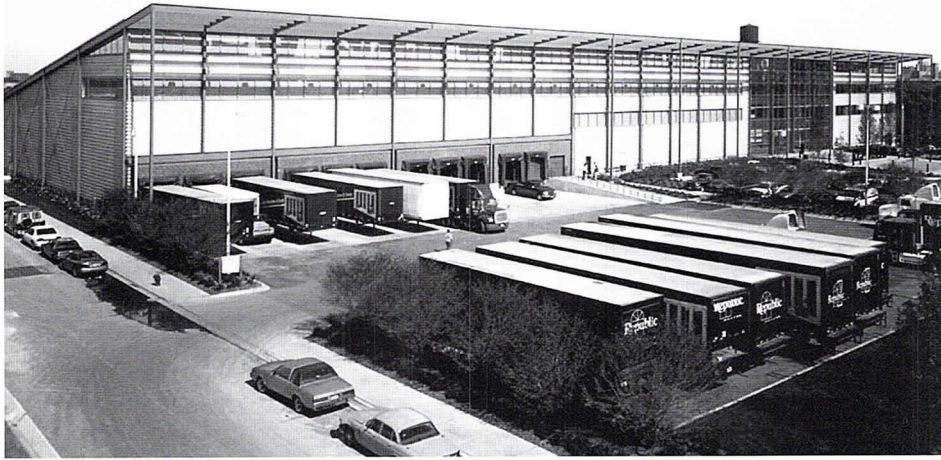
**Peggy Notebaert Nature Museum**  
2430 N. Cannon Drive, Chicago  
*Perkins & Will*

**Shedd Aquarium Facility**  
**Master Plan and Expansion**  
 1200 S. Lake Shore Drive, Chicago  
*EHDD*

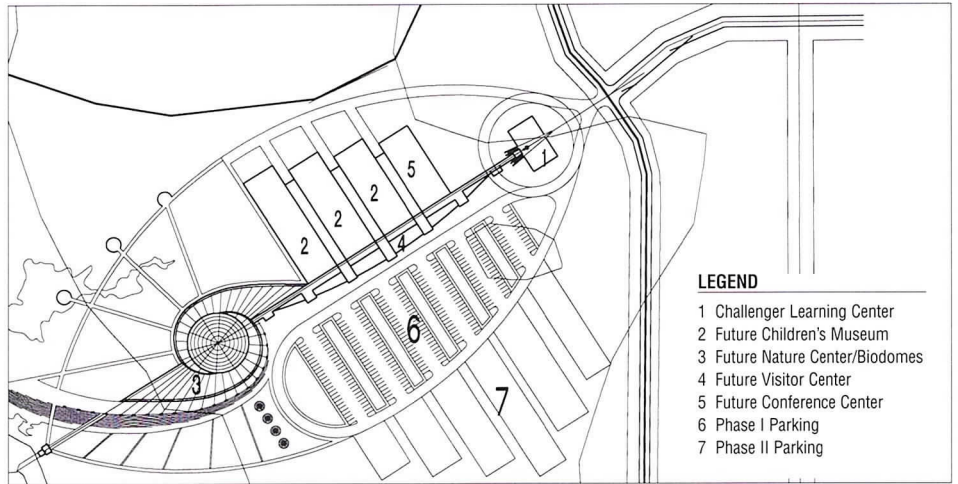


Esto Photographics

**Republic Windows and Doors**  
 933 W. Evergreen Ave., Chicago  
*Booth Hansen Associates*



Greg Murphy



Tim Hobbs

**Idea Adventures Children's Museum**  
 McHenry County  
*Legat Architects Inc.*

**Oxford Bank**  
 Route 59 and 83rd Street, Naperville  
*Cordogan Clark & Associates*

**Chicago Community Humane Center**  
 7444 N. Clark St., Chicago  
*Morgante Wilson Architects Ltd.*

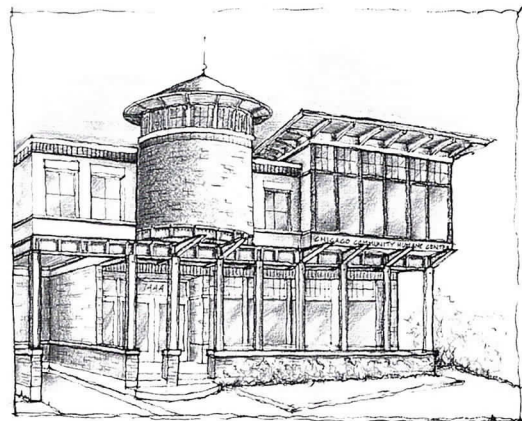


Exhibit Openings, Lectures and Programs

December 1999

**9 Chicago Architecture: The Art of the Long View.** Exhibit opening. 5:30 p.m.; Chicago Architecture Foundation, Atrium Gallery, 224 S. Michigan Ave. Running through February 2000, this exhibit showcases recent and significant contributions to the local landscape by local and out-of-town firms. Exhibit sponsored by Petersen Aluminum Corp.; opening reception sponsored by Euclid Insurance Agencies Inc. Information: 312/922-3432 ext. 123.

**11 Material Evidence: Chicago Architecture at 2000** investigates the use of materials as a defining element in contemporary architecture focusing on current work in Chicago. Organized by the Museum of Contemporary Art (MCA) and AIA Chicago and curated by Cynthia Davidson, *Material Evidence* includes Doug Garofalo, AIA, and Helmut Jahn, FAIA. It runs in conjunction with *At the End of the Century: One Hundred Years of Architecture* through March 5, 2000 in MCA's Turner Gallery, 220 E. Chicago Ave. Sponsored by The Richard H. Driehaus Foundation, USG, Tishman Speyer Properties, and Morse Diesel International. Information: 312/280-2660.

**17 At the End of the Century: One Hundred Years of Architecture.** An exclusive preview party for AIA Chicago members of this comprehensive survey of architectural developments and movements over the past 100 years. 5:30 to 9:00 p.m.; Museum of Contemporary Art, 220 E. Chicago Ave. Exhibit continues through March 5, 2000. Information: 312/670-7770.

January 2000

**18 Douglas Garofalo, AIA and Randall Kober.** 6:00 p.m.; Museum of Contemporary Art, 220 E. Chicago Ave. Free with general MCA admission. Information: 312/280-2660.

**19 Valerio Dewalt Train Associates.** Works by AIA Chicago's Firm of the Year. 12:15 p.m.; Chicago Architecture Foundation, 224 S. Michigan Ave. Free. Information: 312/922-3432.

**27 Frank Gehry, FAIA.** 6:00 p.m.; Archeworks, 625 N. Kingsbury St. Information: 312/280-2660.

February 2000

**1 Cynthia Davidson.** 6:00 p.m. Museum of Contemporary Art, 220 E. Chicago Ave. Free with general MCA admission. Information: 312/280-2660.

**3 Residential Architecture.** Works by Florian Architects, Frankel + Coleman, Garofalo Architects, and Stuart Cohen & Julie Hacker Architects. 5:30 p.m.; Chicago Architecture Foundation, 224 S. Michigan Ave. Free. Information: 312/922-3432.

**9 Young Architects.** Winners of AIA Chicago's 1999 Young Architect Award discuss their work. 12:15 p.m.; Chicago Architecture Foundation, 224 S. Michigan Ave. Free. Information: 312/922-3432.

**12 The City at the End of the Century.** Moderator: Rem Koolhaas. 12:00 noon to 4:00 p.m. Museum of Contemporary Art, 220 E. Chicago Ave. Information: 312/280-2660.

A. Epstein & Sons International Inc. ....	18	Landahl Design Studio P.C. ....	13
Anthony Belluschi Architects Ltd. ....	35	Landon Architects Ltd. ....	21
Aumiller Youngquist P.C. ....	35	Legat Architects Inc. ....	37
Bailey Edward Design ....	19	Legorreta Arquitectos ....	9
Booth Hansen Associates ....	37	Loebl Schlossman & Hackl ....	11
Campbell Tiu Campbell Inc. ....	7	Lohan Associates ....	29
Cesar Pelli & Associates ....	10	Lucien Lagrange and Associates Ltd. ....	36
Constantine D. Vasilios and Associates ....	23	Matthew Blaise Filipini, AIA ....	21
Cordogan Clark & Associates ....	37	McCluer ....	35
David Woodhouse Architects ....	6	Mekus Studios Ltd. ....	15
DeStefano and Partners ....	17	Morgante Wilson Architects Ltd. ....	37
DLK Architecture Inc. ....	15	Murphy/Jahn Inc. ....	27
Doyle & Associates ....	17	Nagle Hartray Danker Kagan McKay Ltd. ....	18
Eckenhoff Saunders Architects ....	27	Optima Inc. ....	8
Eifler & Associates Inc. ....	21	Otis Koglin Wilson Associates Inc. ....	8
The Environments Group ....	31	OWP&P Architects ....	12
EHDD ....	37	P.K. VanderBeke Architect ....	31
Eva Maddox Associates Inc. ....	11	Pappageorge/Haymes Ltd. ....	25
Farr Associates ....	7	Perkins & Will ....	36
Florian Architects ....	33	Peter J. Exley Architect ....	17
Fraerman Associates Architecture Inc. ....	23	Phillips Swager Associates ....	8
Frankel + Coleman ....	30	PPKS Architects ....	25
Frederick Phillips & Associates ....	29	Prisco Serena Sturm Architects ....	12
Frye Gillan Molinaro Architects Ltd. ....	10	Richard Gibbons & Associates ....	19
Garofalo Architects ....	26	Robert C. Vagnieres Jr. & Associates ....	21
Gary Lee & Partners ....	33	Ross Barney + Jankowski Inc. ....	6
Gensler ....	17	Roula Associates Architects Chtd. ....	34
Goldberg Downey Architects Inc. ....	22	RTKL Associates Inc. ....	14
Graham, Anderson, Probst & White ....	31	Rudolph & Associates Inc. ....	25
GreenAssociates Architects Ltd. ....	19	Schroeder Murchie Laya Associates Ltd. ....	7
Hammond Beeby Rupert & Ainge ....	34	Searl and Associates ....	22
Harry Weese Associates ....	10	Skidmore, Owings & Merrill LLP ....	27
Hartshorne + Plunkard Ltd. Architects ....	15	Solomon Cordwell Buenz & Associates Inc. ....	13
Hellmuth, Obata + Kassabaum Inc. ....	11	Stuart Cohen & Julie Hacker Architects ....	23
HLM Design ....	9	Studio Gang/O'Donnell Ltd. ....	13
HNTB Architecture ....	35	Teng & Associates Inc. ....	14
Holabird & Root LLP (for Rem Koolhaas, Office for Metropolitan Architecture) ....	29	Valerio Dewalt Train Associates Inc. ....	26
Holbert and Associates Architects ....	33	VOA Associates Inc. ....	11
Johnson & Lee Ltd. ....	7	Weese Langley Weese Architects Ltd. ....	19
Knight Advanced Technology ....	35	Wright Architects Ltd. ....	10
Kuklinski + Rappe ....	31	Yas/Fischel Partnership ....	8

What to do? How to do it?

**Kristine Fallon Associates, Inc.**  
<http://www.kfa-inc.com/~kfainc>

30 East Adams Street, Suite 600  
 Chicago, IL 60603-5610  
 312-641-9339 (voice)  
 312-641-9337 (fax)  
[kfainc@kfa-inc.com](mailto:kfainc@kfa-inc.com)

Hardware  
 Software  
 Networks  
 Internet

Get it done. Keep it going.

# Looking for quality printing... *today?*

When you need printing right away, you no longer have to settle for a copy-shop product. InfoComm Electronic Prepress & Print uses the new technologies of digital and wide-format printing to skillfully produce quality results, in any quantity...quickly. At our River North location (open 24 hours), we can:

- Print your collateral materials (no quantity too small) in full color on a true offset printing press within *24 hours* (same day available).
- Provide transparencies and handouts for your presentations *overnight*—with color that blows those guys in the blue aprons away.
- Produce signage on a variety of stocks (glossy, matte, backlit, vinyl, you name it)—*next day*. Plus, we mount or finish your print as needed.

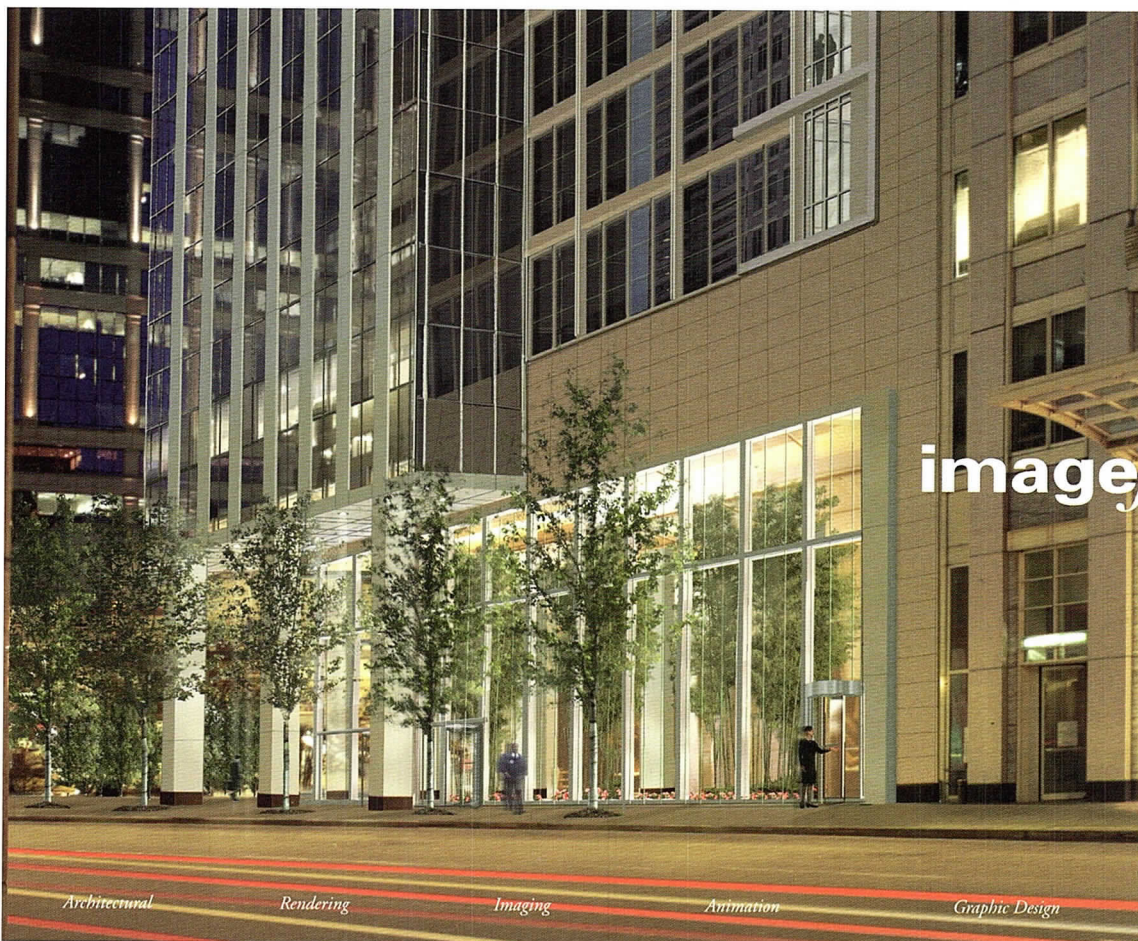
InfoComm has served Chicago's architectural community since 1987. As part of The Wagner Companies, we bring six generations of both conventional & digital printing experience to your projects. From design through printing, we can help.

To get an estimate on your next project, give our customer service representatives a call at 312.751.1220.

Clip this ad and send it in with your project and SAVE 10%. Total discount not to exceed \$100. Offer expires: 2/01/00 Offer number: AIA1299



213 W. Institute Place, Ste. 604 ▪ Chicago, Illinois 60610 ▪ 312.751.1220 ▪ Fax: 312.751.1051 ▪ Web: <http://www.wpco.com>



**imagefiction**

**Project:**  
181 N. Clark Street

**Client:**  
LCOR Incorporated  
Chicago

**Architect:**  
Kohn Pedersen Fox  
NYC

LaSalle Wacker Building  
221 North LaSalle Street  
Suite 1510  
Chicago, IL 60601

**312.726.0818**

[www.imagefiction.com](http://www.imagefiction.com)

Architectural

Rendering

Imaging

Animation

Graphic Design

Pinehurst Resort & Country Club  
Centennial Course No. 8  
Owner: Club Corporation of America  
Architect: James R. McVicker Jr. AIA

Roofing Contractor: McRae Roofing Inc  
Color: Hemlock Green  
Profile: Snap-Clad.



WELL-MANICURED GREENS\*

\* Not to mention the blues, reds and 30 other standard colors on steel. (18 on aluminum)

## **SNAP-CLAD™** **Metal Roofing Panels**

**P**inehurst Resort & Country Club recently completed its new clubhouse for its Centennial Course No. 8. The clubhouse, designed by architect James R. McVicker, evokes the rich tradition of Pinehurst and its position at the top of a hill makes it visible from all corners of the course. The project features over 9,000 sq. ft. of Snap-Clad panels with a Hemlock Green PAC-CLAD finish. McRae Roofing Company of Asheboro, North Carolina installed the panels.

Petersen Snap-Clad Panels are corrective leveled as they are roll-formed, allowing us to provide panels of unmatched flatness. PAC-CLAD is a full Kynar 500® finish covered by a non-prorated 20 year warranty. For complete information, please contact Petersen Aluminum Corporation at 1-800-PAC-CLAD or visit us on the web @ [www.pac-clad.com](http://www.pac-clad.com).



1005 Tonne Road, Elk Grove Village, IL 60007  
1-800-PAC-CLAD • FAX: 1-800-722-7150 or 1-847-956-7968

Other Plant Locations:  
Annapolis Junction, MD: 1-800-344-1400 • Tyler, TX: 1-800-441-8661 • **NEW** Kennesaw, GA: 1-800-272-4482  
visit our website @ <http://www.pac-clad.com>