

Focus

SPECIAL EDITION

Flights of Spirit

**From civic centers and chapels to
offices and homes, the 1999
Design Excellence Awards soar.**

Pinehurst Resort & Country Club
Centennial Course No. 8
Owner: Club Corporation of America
Architect: James R. McVicker Jr. AIA

Roofing Contractor: McRae Roofing Inc
Color: Hemlock Green
Profile: Snap-Clad.



WELL-MANICURED GREENS*

* Not to mention the blues, reds and 30 other standard colors on steel. (18 on aluminum)

SNAP-CLAD™ **Metal Roofing Panels**

Pinehurst Resort & Country Club recently completed its new clubhouse for its Centennial Course No. 8. The clubhouse, designed by architect James R. McVicker, evokes the rich tradition of Pinehurst and its position at the top of a hill makes it visible from all corners of the course. The project features over 9,000 sq. ft. of Snap-Clad panels with a Hemlock Green PAC-CLAD finish. McRae Roofing Company of Asheboro, North Carolina installed the panels.

Petersen Snap-Clad Panels are corrective leveled as they are roll-formed, allowing us to provide panels of unmatched flatness. PAC-CLAD is a full Kynar 500® finish covered by a non-prorated 20 year warranty. For complete information, please contact Petersen Aluminum Corporation at 1-800-PAC-CLAD or visit us on the web @ www.pac-clad.com.



1005 Tonne Road, Elk Grove Village, IL 60007
1-800-PAC-CLAD • FAX: 1-800-722-7150 or 1-847-956-7968

Other Plant Locations:
Annapolis Junction, MD: 1-800-344-1400 • Tyler, TX: 1-800-441-8661 • **NEW** Kennesaw, GA: 1-800-272-4482
visit our website @ <http://www.pac-clad.com>

4

President's Letter

6

Distinguished Building Awards

16

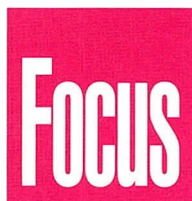
Interior Architecture Awards

24

Divine Detail Awards

26

Index



Special Edition, October 1999

Editor

Susan Larson

Contributing Editor

Laurie McGovern Petersen

Focus Advisory Board

William Bradford, AIA
 Howard Decker, FAIA
 Deborah Doyle, AIA
 James Jankowski, AIA
 Edward Keegan, AIA
 Pat Rosenzweig
 Alice Sinkevitch, Hon. AIA
 Thomas Zurowski, AIA

FOCUS (ISSN 1071-3700) Vol. 19, No. 9, is published monthly with a combined issue July/August, by AIA Chicago, 222 Merchandise Mart Plaza, Suite 1049, Chicago, Illinois 60654-1001. \$20 of each member's dues are allotted as a subscription. Periodicals postage paid at Chicago, Illinois. POSTMASTER: Send address changes to Focus, AIA Chicago, 222 Merchandise Mart Plaza, Suite 1049, Chicago, Illinois 60654-1001.

For advertising rates and schedules, call 312/670-7770.

© 1999 The American Institute of Architects Chicago.

All rights reserved. Reproduction in whole or part without permission is strictly prohibited.

AIA Chicago on the Internet: www.aiachicago.org

AIA Chicago e-mail: info@aiachicago.org

AIA Chicago



A Chapter of The American Institute of Architects

1999 Board of Directors

President

James Jankowski, AIA

President-Elect

T. Gunny Harboe, AIA

Vice Presidents

Thomas Fridstein, FAIA

Thomas Zurowski, AIA

Secretary

Jonathan Fischel, AIA

Treasurer

Dave Urschel, AIA

Directors

Joseph Caprile, AIA

Raymond Clark, AIA

Randall Deutsch, AIA

Kevin Hall, AIA

Philip Craig Johnson, AIA

AIA Regional Directors

Lawrence Livergood, AIA

Linda Searl, FAIA

AIA Illinois Director

Holly Gerberding, AIA

Associate Director

Susan Campbell, Assoc. AIA

Professional Affiliate Director

Eric Singer

Past President

Deborah Doyle, AIA

1999 AIA Illinois Delegates

William Bradford, AIA

Thomas Braham, AIA

Richard Fencel, AIA

Holly Gerberding, AIA

Janet Hahn Lougee, AIA

William Worn, AIA

Arthur Salzman, AIA

W. Stephen Saunders, AIA

1999 Professional Interest Areas

Corporate Architects

Robin Ellerthorpe, FAIA

Design

Avram Lothan, AIA

Environment

Douglas Farr, AIA

Health

Thomas Fromm, AIA

Historic Resources

Eleanor Esser Gorski, AIA

Housing

Margaret Cervantes, AIA

Interiors

Angelina Lee, AIA

Office Practice

Lisa Willis-Brown

Planning and Urban Affairs

Kyle Benkert, AIA

Technical Issues

Christopher Chwedyk, AIA

Young Architects

Judd Storey, Assoc. AIA

Chapter Staff

Executive Director

Alice Sinkevitch, Hon. AIA

Membership Coordinator/Assistant to the Director

Jamie Juliano

Program Director

Joan Pomaranc

Communications Director

Susan Larson

Financial Manager

Crystal Gagler

Public Information Receptionist

Nichole Brown

Documents Clerk

Valarie Thompson

Cover: Skidmore, Owings & Merrill LLP has received an Honor Award for the Hong Kong Convention and Exhibition Centre Extension. Photo by James Steinkamp, Steinkamp/Ballogg Photography.

My Kind of Town



There's been much talk lately about prominent local design commissions going to international "star" architects like Piano,

Gehry and Legorreta. Some of us are excited by the prospect. What would Chicago be like today if, in the past, we hadn't invited a few strangers in? Others are troubled. Why are we being passed over like the boy-next-door for the rebel-without-a-cause? Many are frustrated. Why don't our local clients give us the same artistic freedom on smaller jobs they seek from out-of-towners on higher profile projects?

In a city that got one of its most oft-used nicknames, The Windy City, because of the hot air our civic leaders have been known to blow, I'd say the debate was par for the course.

Fact is — whether you welcome the "the outsiders" for the creativity they're likely to bring or, consider them flies in the ointment — the Chicago architecture community is as vibrant as ever. As practitioners, we continue to garner high-profile international, national and local projects because of the skill and artistry we bring to our profession.

Take for instance the projects honored in the 1999 Design Excellence Awards. The judges proclaimed The Hong Kong Convention Centre "pure, magnificent, architectural fun." Chapel of

the Word, a deceptively simple project, received accolades for the way it used small wooden shapes to create a larger religious expression. And, of a dormitory at Tulane University one juror exclaimed, "I'd love to live there!"

Over 230 projects by local architects were entered in this year's design awards program. Thirty-four were singled out for excellence. Projects are entered in three divisions: distinguished building, interior architecture, and divine detail. Within those categories, awards are given in three ways. An Honor Award recognizes projects that are superior in their entirety. A Citation of Merit recognizes certain aspects of a project. And, a Special Recognition Award honors a project for one particular reason.

The judges painstakingly review each entry and the debate between them is often spirited. The result is a selection of the best work of Chicago architects, and arguably some of the best work in the world.

James Jankowski, AIA
President

P.S. To view all the entries to this year's Design Awards, visit our Web site at www.aiachicago.org

Thanks to Our Sponsors

The Design Excellence Awards were presented on Friday, September 17 in the Grand Ballroom of Navy Pier. Many organizations made the event possible, and AIA Chicago would like to thank them for their support.

Co-Sponsors

USG
DuPont Antron
Permasteelisa Cladding Technologies Ltd.

Benefactors

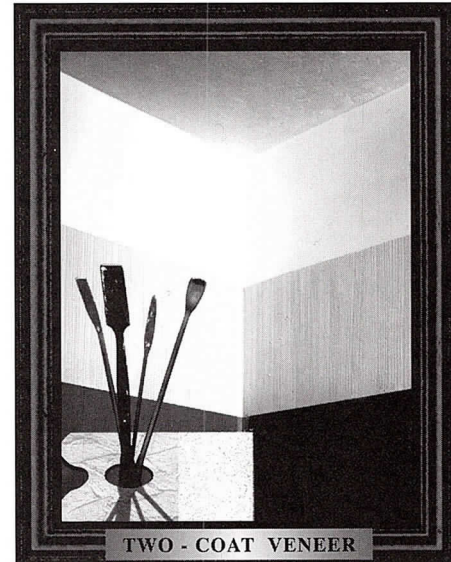
Lohan Associates
Skidmore, Owings & Merrill LLP

Patrons

AVA Insurance Agency
Booth Hansen Associates
Brininstool + Lynch
Consulting for Architects
Daniel P. Coffey and Associates
DeStefano and Partners
Eckenhoff Saunders Architects Inc.
The Environments Group Inc.
Esherick Homsey Dodge & Davis

Hancock & Hancock Inc.
Loebl Schlossman & Hack/Hague Richards
McClier
Nicholas Architects
OWP&P Architects
Perkins & Will
Ross Barney + Jankowski Inc.
Tigerman McCurry Architects Ltd.
Tishman Speyer Properties
Turner Construction Co.
VOA Associates Inc.
Wheeler Kearns Architects Inc.
David Woodhouse Architects

The Art of Plastering



Spectacular walls.
Smooth...Textured...

Done the way you want them.
Hard and durable surfaces that make paint and paper look better, make redecorating easier, make homes quieter.

Plaster interiors are more cost-effective than you think.

Call us for more information.



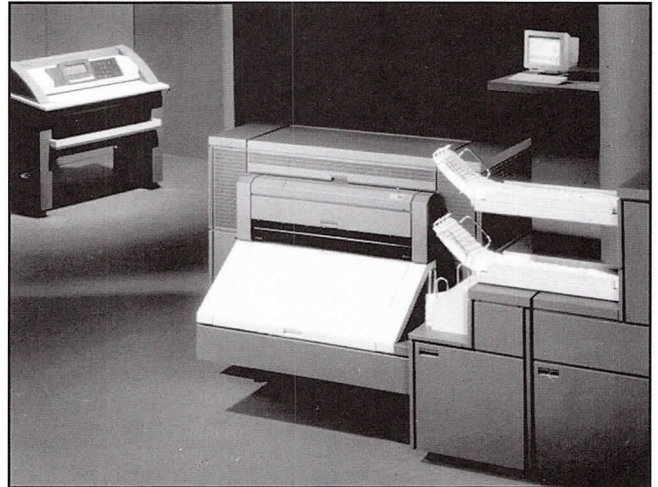
Chicago Plastering Institute
6547 N. Avondale Ave.
Chicago, Illinois 60631
773.774.4500
Fax. 773.774.5828

New

High-Speed Digital Blueprinting

High speed digital printing from scanned originals or prints and CADD plot files. Copies may be reversed (negative to positive) mirror imaged and stretched along with standard enlargements and reductions from 25% to 400%. We would prefer HP/GL2 files with pen weights set.

For more than 70 years, Mossner has provided the latest and fastest high-production equipment available. And now Chicago's first state-of-the-art Oce 9800 for Digital Blueprinting is here!



- Pick-up and Delivery
- Fast Service
- Print Scanned Originals
- Print HP-GL, HP-GL/2, HPRTL, TIFF_{5.0}, CALS₁ Files
- Print Collated Sets Fast

BOND PAPER DPB

| Total Sq. Ft. per order | Price per Sq. Ft. |
|-------------------------|-------------------|
| 1 to 49 | .50 |
| 50 to 74 | .35 |
| 75 to 99 | .25 |
| 100 to 199 | .20 |
| 200 to 499 | .19 |
| 500 to 999 | .18 |
| 1000 to 1999 | .17 |
| over 2000 | .15 |

Minimum Charge \$25.00
\$2.00 per scan, \$1.00 per CADD File

VELLUM PAPER DPV

| Total Sq. Ft. per order | Price per Sq. Ft. |
|-------------------------|-------------------|
| 1 to 49 | 2.75 |
| 50 to 74 | 2.50 |
| 75 to 99 | 2.25 |
| 100 to 199 | 2.00 |
| 200 to 499 | 1.75 |
| 500 to 999 | 1.50 |
| 1000 to 1999 | 1.40 |
| over 2000 | 1.35 |

Minimum Charge \$25.00
\$2.00 per scan, \$1.00 per CADD File

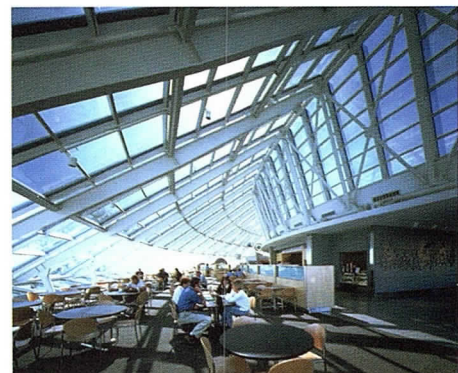
Mossner (312) 372-8600

THE REPRODUCTION PEOPLE • LARGEST IN THE MIDWEST

Mossner Building • 137 North Wabash at Randolph (across from Marshall Field's), Chicago, IL 60602

Distinguished Building Awards

The Distinguished Building Award was established 44 years ago to recognize significant achievements in the planning, design and execution of recent building projects. Projects are eligible if they were completed between January 1, 1996 and May 1, 1999 and were designed by a registered architect in the Chicago metropolitan area. The jury is listed on page 26.



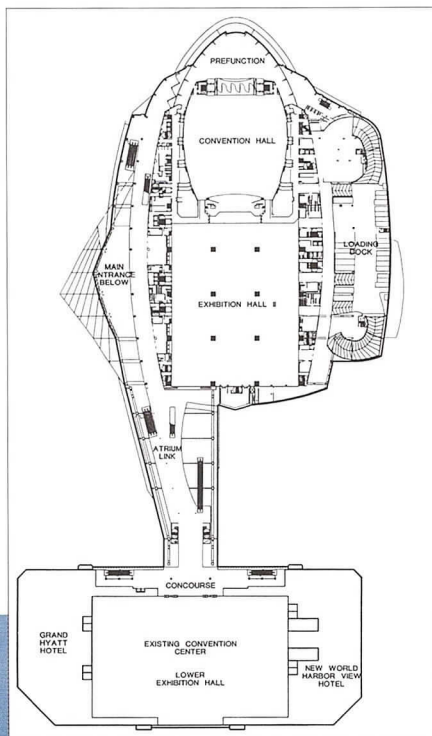
James Steinke - Steinke/Baltona Photography

Hong Kong Convention and Exhibition Centre Extension Wanchai, Hong Kong

Honor Award

Architect – Skidmore, Owings & Merrill LLP
Client – Hong Kong Trade Development Council
General Contractor – Hip Hing/Drageas Joint Venture

Every architect dreams of designing a building that becomes an icon for an entire city, and this project is a superb realization of that goal. The jury lauded this accomplishment, calling the addition “stunning” and “really powerful.” Newspaper advertisements promoting the city to businesspeople cite the building as the new symbol of Hong Kong’s dynamism. The roof of the convention center addition evokes flight with a series of intersecting curved wings that are shaped by the requirements of the structure and by the clear span over the convention and upper exhibition halls. Metal and glass banding in the curtain walls reinforce the curved geometry and horizontal expression. The plan is organized to take advantage of the waterfront site’s unparalleled views. Public and circulation areas are located along the periphery of the building to maximize views of the harbor, while restaurants, shops and lobbies on the ground floor create continuous activity along the waterfront.

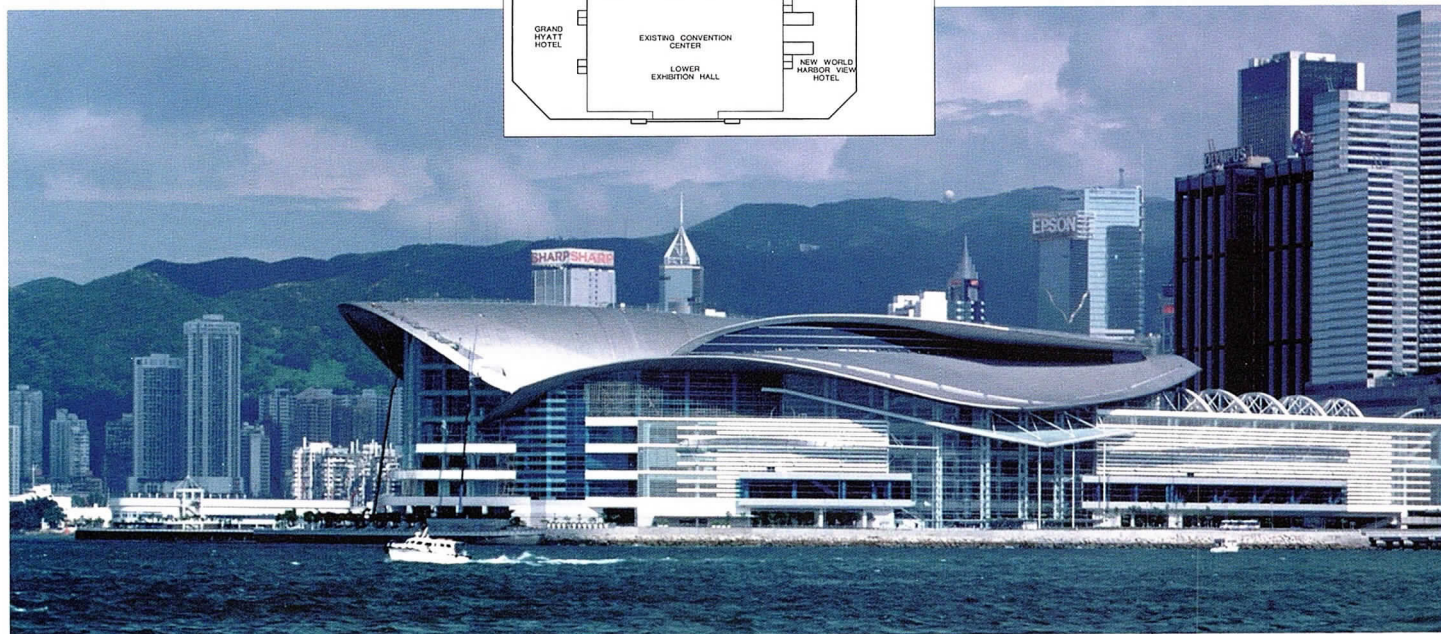


Adler Planetarium and Astronomy Museum Sky Pavilion Chicago, Illinois

Citation of Merit

Architect – Lohan Associates
Client – The Adler Planetarium
General Contractor – Pepper Construction Co.
Engineer – Environmental Systems Design Inc.

“The Planetarium was always the Darth Vader of Chicago’s museums: dark, mysterious and forbidding,” said a juror. “This addition makes it much more approachable and exciting.” The 64,000-square-foot circular glass form wraps around the back half of the dome-shaped 1930 building, setting off its Deco beauty and reintroducing the original esplanade entrance. The jury considered this an excellent example of architecture that is sympathetic to an older style but has its own distinctive character. The Sky Pavilion celebrates the magic of the sky by providing exhibit space, a digital planetarium, classrooms, and a public wintergarden café with spectacular views of Chicago’s lakefront and skyline.



James Steinke - Steinke/Baltona Photography



Barbara Karant, Karant + Associates

**Chapel of the Word, Divine Word Missionaries
Visitor Center**

Techy, Illinois

Citation of Merit

Architect – David Woodhouse Architects
Client – Divine Word Missionaries
General Contractor – Saydak Construction Inc.
Engineer – S+1 Architectural Consultants

The transformative qualities of this small chapel make it a uniquely powerful religious space. In the words of Father Thomas Krosnicki, SVD, spoken at the dedication sermon, “simple, plain-hearted materials of God’s creation and man’s invention form a three-dimensional parable. Its craftsmanship incarnates our Creator — and His Son, a carpenter.” The jury was impressed with the chapel’s straightforward use of plywood and two-by-fours. “The wood retains its lumberyard characteristics but is given new meaning through the way it’s stacked and organized,” the jurors said. They also commented that people could visit the chapel repeatedly and experience the space differently each time. (See related story, page 16.)

Diversey Driving Range

Chicago, Illinois

Honor Award

Architect – DeStefano and Partners
Client – Chicago Park District
General Contractor – F.H. Paschen/S.N. Nielsen Inc.
Engineers – Environmental Systems Design Inc.
(mechanical); Nayyar & Nayyar International Inc.
(structural)

In honoring this unusual structure, the jury recognized that design excellence is just as significant for a small commission as it is for a major building. The driving range’s location in a heavily used park made its positive impact on the landscape that much more important. “It really shows concern for the people in the park who don’t use it,” commented one juror. “It’s just so playful and fun,” added another. All the jurors considered it a very successful park folly in the English landscape tradition of small, whimsical buildings, yet it was executed in a structure and materials appropriate to Chicago. The nearly 400-foot-long multi-deck structure has a series of metal trellises that support climbing vines and flowering creepers to create a soft green screen. “The Park District is thrilled with the project’s success — the number of users has increased dramatically — and with its cutting-edge design,” according to Joe Horner, head of design and construction for the Chicago Park District.



Barbara Karant, Karant + Associates



James Steinkamp, Steinkamp/Ballogg Photography

Oriental Theater/Ford Center for the Performing Arts
Chicago, Illinois

Honor Award

Architect – Daniel P. Coffey & Associates Ltd.
Client – Oriental Theater/Ford Center for the Performing Arts
General Contractor – W.E. O’Neil Construction Co.
Engineers – Environmental Systems Design Inc. (mechanical/electrical/plumbing); Yolles Partnership Inc. (structural)

The superlatives came tumbling forth when the jury viewed this theatrical restoration. “Drop-dead incredible; an absolute stunner; spectacular,” were among their compliments. They admired the creativity and technical prowess required to bring this obsolete theater back to life. The greatest challenge was to expand the stage to double its original depth. This was achieved by demolishing the interior of the neighboring Oliver Building — while preserving its landmark façade — and inserting a pair of 20-ton trusses to transfer the load of a stage-obstructing column. Support facilities include two rehearsal halls and facilities for 100 actors and musicians. Interior work included the restoration of elaborate plasterwork and other ornamental features as well as the creation of new audience amenities in the exuberant spirit of the original décor.

Chicago Sinai Temple
Chicago, Illinois

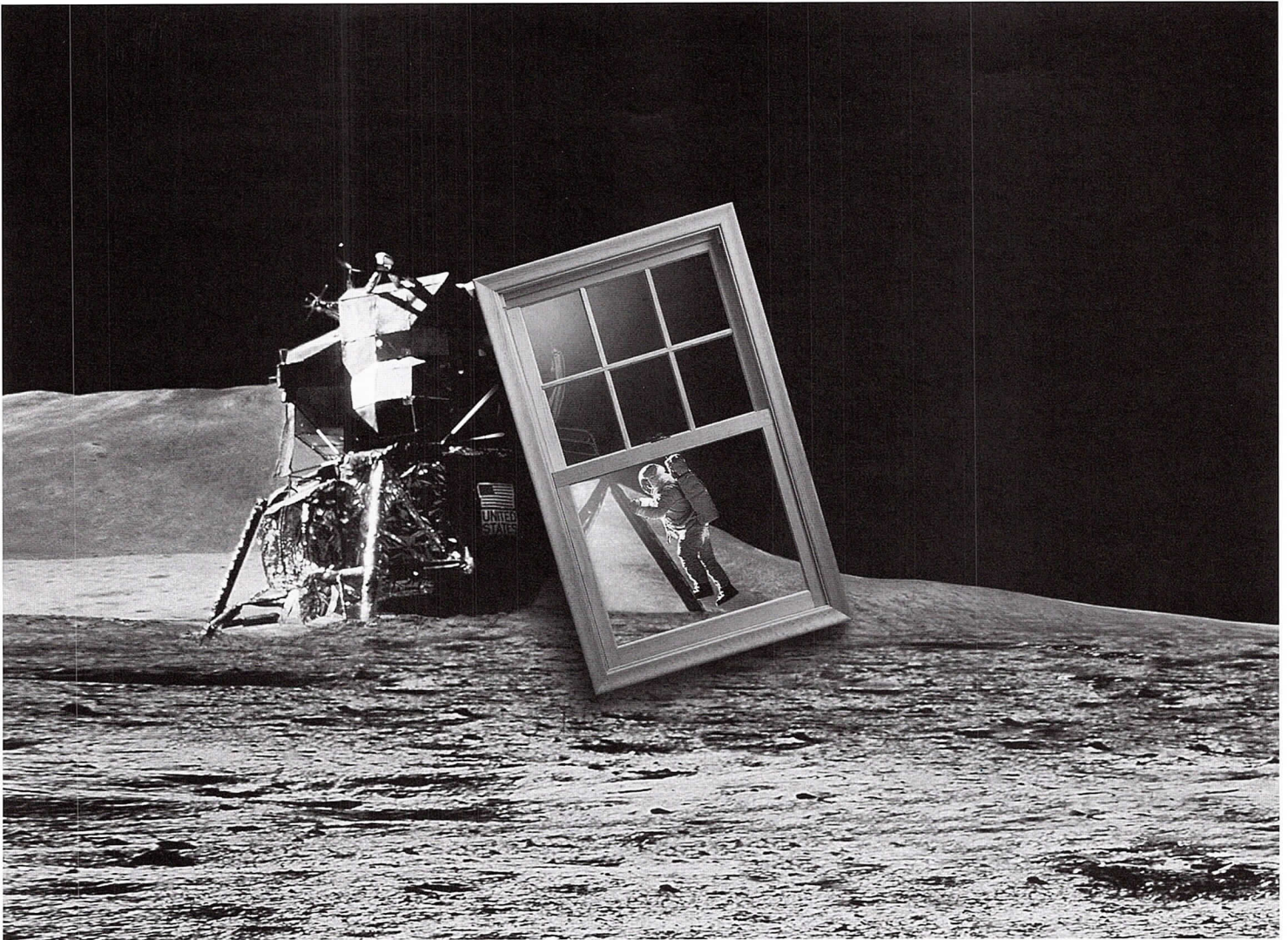
Citation of Merit

Architect – Lohan Associates
Client – Chicago Sinai Temple
General Contractor – The Walsh Group
Engineer – Cosentini Associates

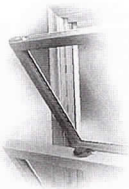
This new synagogue is located in a dense urban area, so the sanctuary was raised above street level to offer increased tranquility as one ascends the monumental exterior stairway. At the top of the stairs, a wall of large windows illuminates a spacious lobby that provides access to the enclosed sanctuary. “A beautiful, restrained building,” agreed the jury, adding kudos to the architect for getting everything just right on a building type that offers so many challenges and pitfalls.



Inn Miller, Henrich/Rieschlin



It's a major step.



The new Clad Ultimate Double Hung. Clean, traditional lines. An all-wood interior. No unsightly vinyl jamb liners. Over 100 design changes in all. Including our exclusive, integrated sash tracking and locking system for easier opening, closing and cleaning. Call for a brochure on the new Marvin Clad Ultimate Double Hung. It's clearly superior to anything on the market today.



For a free product brochure, call 1-800-318-7232.

MARVIN 
Windows and Doors

Made for you.

In Canada, 1-800-263-6161. www.marvin.com

ABOVE THE REST!



With over 50 years of experience, Spancrete's expertise in the precast, prestressed concrete industry soars above the rest!

We have assembled a comprehensive reference library to share this core knowledge with our customers.

Simply fill out the form below and fax it to 414-290-9125 and receive valuable information from Spancrete to form the foundation of your precast library - FREE! (some restrictions may apply)

NAME: _____ TITLE: _____
 COMPANY: _____ TEL: _____
 ADDRESS: _____ email/web _____
 CITY: _____ STATE: _____ ZIP: _____

PLEASE SEND THE FOLLOWING REFERENCE MATERIALS:

- | | | |
|------------------------------------------------|--------------------------------------------------------|-------------------------------------------------------|
| <input type="checkbox"/> SYSTEM PROFILES | <input type="checkbox"/> WALL PANEL FINISH GUIDE | <input type="checkbox"/> PRECAST SYSTEM BROCHURE |
| <input type="checkbox"/> PROJECT PROFILES | <input type="checkbox"/> WALL PANEL VIDEO | <input type="checkbox"/> BETTER WAY TO BUILD BROCHURE |
| <input type="checkbox"/> CORPORATE NEWSLETTERS | <input type="checkbox"/> WALL PANEL BROCHURE | <input type="checkbox"/> FIRE SAFETY BROCHURE |
| <input type="checkbox"/> SPAN NOTES | <input type="checkbox"/> DESIGN & ENGINEERING HANDBOOK | <input type="checkbox"/> ASSISTED LIVING BROCHURE |
| <input type="checkbox"/> RESEARCH NOTES | <input type="checkbox"/> LOAD TABLES | <input type="checkbox"/> MACHINERY BROCHURE |

"Striving to be the most responsive partner and innovative provider of precast solutions"

SPANCRETE INDUSTRIES, INC.



P.O. BOX 828 Waukesha, Wisconsin 53187-0828 • 414-290-9000
 Chicago, Illinois 773-775-6402 • Green Bay, Wisconsin 920-494-0274

www.spancrete.com



Private Residence
Sawyer, Michigan

Honor Award

Architect – Tigerman McCurry Architects
General Contractor – Mead Construction
Engineers – The Structural Shop (structural);
Wall Engineering (mechanical)

The dual personality of this house reflects its double mission of providing a calm haven for grandparents and a welcoming gathering place for extended family. The jury admired the shift from the simple, direct façade to the elegant, sophisticated interior. "The exterior has recognizable forms that say 'home' even to kids, but it's transformed into something unique and special by the corrugated metal and red window frames," observed a juror. Located in a region of small farms and family vineyards, the house has a modified barn shape that allows light to flood the interior through clerestory windows set above shed roofs. The change in materials from metal sides to concrete ends is a reference to residential antecedents of the owner's East Coast birthplace, while the corrugated steel walls, standing seam roof, and barn red accents reinforce the Midwestern farm metaphor. The interior features a fully accessible ground floor with a master suite and a great room that is adapted to the client's acoustical needs with double drywall and a ceiling of fabric panels. The second floor accommodates guests with sleeping lofts, bedrooms and an outdoor sleeping porch.



Steve Hall, Hedrich Blessing



Eric Oxendorf, Eric Oxendorf Studio

University of Wisconsin – Law School Addition and Renovation
Madison, Wisconsin

Citation of Merit

Architect – Holabird & Root LLP and
Bowen Williamson Zimmerman Inc.
Client – University of Wisconsin at Madison
General Contractor – J.H. Findorff & Sons Inc.
Engineers – Graef, Anhalt Schloemer and Associates
(structural); Arnold & O'Sheridan Inc. (electrical);
Ring & DuChateau (mechanical)

This project entailed the complete reorganization of a seven-building complex around a 70,000-square-foot, multi-level addition. A series of balconies, bridges and open stairs between the new structure and existing buildings provides the primary circulation system. Accessible entrances at both ends of the circulation spine offer on-grade access to Bascom Hill, the main quadrangle on campus. A new reading room with hilltop views features a 50-foot-wide steel roof with cantilever outriggers that support clerestory windows. The new facility clearly identifies the building entrance; takes advantage of views; organizes interior spaces around a central spine; and strengthens the image of the Law School on campus. The jury was impressed with the magnitude of the transformation that took place.



Steve Hall, Hedrich Blessing

Maywood Public Library
Maywood, Illinois

Citation of Merit

Architect – Ross Barney + Jankowski Inc.
Client – Maywood Public Library
General Contractor – Capitol Construction
Engineers – Dynacept Engineers (mechanical/electrical/
plumbing); Stearn Joglekar (structural);
Terra Engineering Ltd. (civil)

The Maywood Library Board commissioned a major expansion of their small 1908 Carnegie Library to create a catalyst for reviving the community. The design of the addition reflects the Board's progressive outlook, while maintaining and restoring the integrity of the original, historic building. A cylindrical stair lobby carefully separates the 30,000-square-foot addition from the much smaller (7,000 square feet) original building. The addition's masonry wall is detailed to evoke the original. The jury praised the addition for being compatible with the existing library yet new and fresh. "It is restrained but strong," they commented, "with interesting moves that make it a special building."



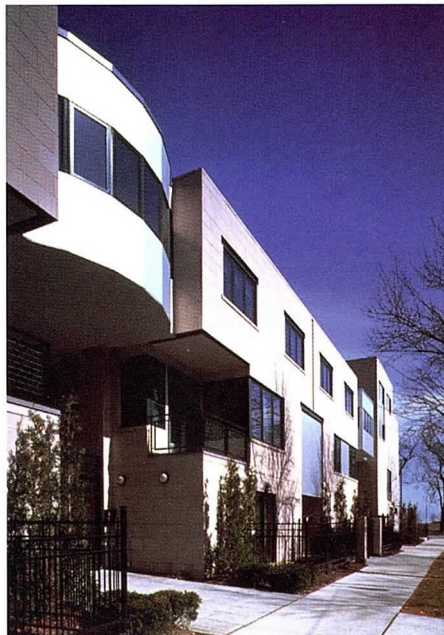
Greg Murphy, Greg Murphy Studio Inc.

Republic Windows and Doors Inc.
Chicago, Illinois

Honor Award

Architect – Booth Hansen Associates
Client – Republic Windows and Doors Inc.
General Contractor – Wooton Construction
Engineers – TT-CBM (structural); Metro Design Associates (electrical); Advance Mechanical (mechanical)
Interior Design – Hendler Design

This factory on Chicago's Goose Island is such a superbly executed version of a banal building type that it takes a place of honor with its more glamorous peers. "Everything is done exquisitely, right down to the organization of the factory floor and the way the loading docks fit in," was the consensus of the jury. A spectacular staircase is the highlight of the lobby, which is a "finished" space large enough for the entire company to gather. The three-story portion of the building houses the corporate offices, an exercise room, training center, cafeteria, and the product display area that features a view of the manufacturing floor. The factory is designed on a 40-foot by 40-foot column grid to maximize open space while being structurally efficient. Glass-windowed roof monitors provide ample natural light to the factory area. "The building is everything we'd hoped it would be and much, much more," commented Rich Gillman, Republic's executive vice president. "It lifts your spirits just walking in the door." (See related story, page 25.)



Linda Oyama Bryan

5350 South Shore Drive Townhouses
Chicago, Illinois

Citation of Merit

Architect – Nicholas Architects Ltd.
Client – 5350 South Shore LLC
General Contractor – BABCO
Engineers – Nayyar & Nayyar International Inc. (structural); Sunnyside Design Group (mechanical/electrical/plumbing); Terra Engineering Ltd. (civil)

"The façades, the detailing, and the stonework are impeccable," was the jury reaction to this lakefront complex of 44 townhouses. Units that face the street each feature a typical Chicago front entry and stair. The other residences are accessed through a gated community garden. This garden court draws inspiration from Chicago courtyard buildings and offers a smaller scaled composition of façade elements. Two-car garages are incorporated into an auto court with greenhouses.



They All Got Jobs.

Have you looked around lately? It appears as though everyone has a job. For architects and other design professionals, unemployment is at an all time low. Every firm is hiring, so how can you get your name and resume in front of the right hiring manager?

The answer is CFA. Our feelers are always out, especially in this market. Over the past 16 years we've built a job database unequaled anywhere in the USA. Since 1984, CFA has successfully introduced candidates and firms more than 20,000 times.

Come to a CFA office for a complete and comprehensive portfolio review and CAD skills evaluation. We will refer you to one of our award-winning

clients to perform per-project consulting services or, if you prefer, CFA will help find you a permanent position at the firm of your choice.

"CFA makes suitable matches through careful listening and thorough skill evaluations. As a result of their professionalism I was placed successfully both as a consultant and then as a permanent employee", Brooks Slocum, AIA, HOK employee.

CFA's job placement counselors have years of experience in the staffing industry and specialize in the field of architecture and design. Let CFA help you chart a path that will satisfy your professional career goals. Act now-schedule your interview with CFA and get started in your new job.



For more information contact Consulting For Architects, Inc. at 312 345-1700 or on-line at www.cons4arch.com

www.teleport.com/~aiatrust

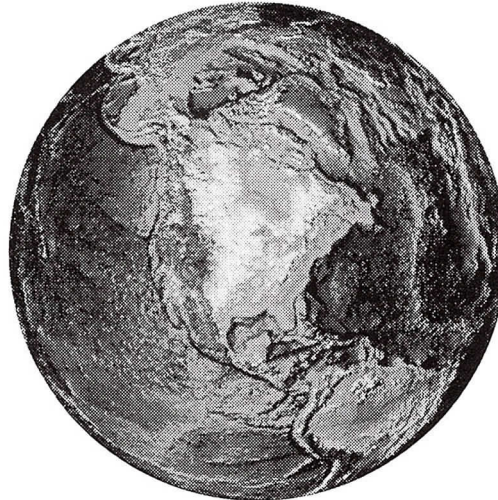
*Insurance and Financial Programs
for AIA Members*

*Health
Insurance*

Disability

*Life
Insurance*

*Retirement
Program*



*Business
Insurance*

*Automobile
Insurance*

*Legaline
Insurance*

*Continuing
Education*

Small Firm Professional Liability

What Are Architects Saying About Today's AIA Trust?*

96% say the AIA Trust is a valuable membership benefit.

94% of those most familiar with the Trust say the Trust's programs are a reason to belong to AIA.

3/4 of the participants in today's AIA Trust would recommend the program.

AIA Trust

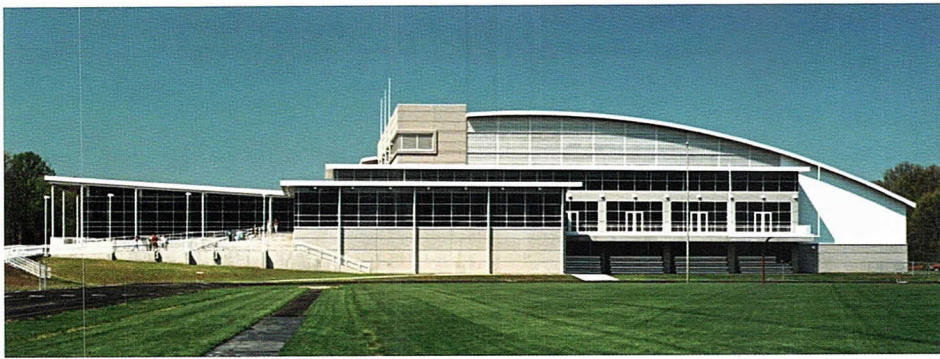
Plan information is available 24 hours a day, toll-free at

1-800-255-8215

Visit e-Architect on www.aiaonline.com

Select Member Services

*AIA Trust Product Evaluation Study Wiese Research Associates 1998



James Steinhamp, Steinhamp/Ballogg Photography

▶ **Rose-Hulman Institute of Technology – Sports and Recreation Center**
Terre Haute, Indiana

Citation of Merit

Architect – VOA Associates Inc.
Client – Rose-Hulman Institute of Technology
General Contractor – Huber, Hunt & Nichols Inc.
Engineers – Fink, Roberts & Petrie Inc. (structural);
Circle Design Group (mechanical/electrical/plumbing)

Anchoring the recreational core of the campus, the 160,000-square-foot Sports and Recreation Center is organized to minimize circulation and to maximize visibility; all of the major activity areas can be viewed from the entry-level lobby. Facilities include a 70,000-square-foot field house with a 200-meter track circling basketball and tennis courts; a 1500-seat arena for volleyball and basketball; and an eight-lane, 25-meter pool. A curved long-span truss roof covers the field house and arena and establishes the building's dominant architectural character. In the natatorium, a special tube truss system was designed to resist the corrosive pool environment. The playful roof shapes and attractive interiors elicited praise from jurors, who appreciated the difficulties of designing such a large facility.

▶ **Unicom Thermal Technologies – Franklin/Van Buren District Cooling Plant**
Chicago, Illinois

Citation of Merit

Architect – Eckenhoff Saunders Architects
Client – Unicom Thermal Technologies
Construction Manager – R.M. Chin & Associates

This is the second of six chilled water plants planned for the Loop; its State Street predecessor also received a Distinguished Building Award. The plants are essentially giant icemakers that provide an environmentally friendly way to cool office buildings. The 40,000-square-foot plant is at the south end of its site to visually screen its Wacker Drive frontage from the adjacent Congress Expressway. The façade of the world's largest ice tank is articulated to relate to the expressway piers and to express the bundled glycol coils inside the tank. The rooftop galvanized screen takes its visual esthetic from the adjacent freeway signage structures as it masks evaporative condensers. In the jury's opinion, "To make a technical building like this come out as architecture is a great accomplishment."



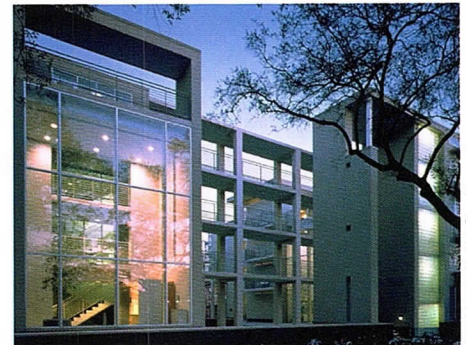
Nick Merrick, Hedrich Blessing

▶ **The Old Town School of Folk Music**
Chicago, Illinois

Citation of Merit

Architect – Wheeler Kearns Architects
Theater Architect – Morris Architects/Planners
Client – The Old Town School of Folk Music
General Contractor – Pepper Construction Co.
Engineer – TT-CBM Engineers

The shell of the 1929 Hild Public Library was inventively transformed into the nation's largest facility dedicated to Folk Music. The social center of the 43,000-square-foot building is a semi-circular performance hall, located where there were once four floors of library stacks. A thrust stage, encircled by a combination of cabaret and bench seating on two levels, provides an intimate setting where no audience member is more than 45 feet from performers. Two large sliding doors make the backstage wall disappear so that during the day the hall welcomes visitors and doubles as the school's café. Two restored WPA murals help celebrate the work and music of the common man. The jury was pleased to see features of the original building incorporated into beautiful new interiors.



Nick Merrick, Hedrich Blessing

▶ **Tulane University – Mayer Residences**
New Orleans, Louisiana

Citation of Merit

Architect – Perkins & Will
Client – Tulane University
General Contractor – Linbeck Construction Corp.

"I'd love to live here as a student," remarked one juror, adding that the transparency and activity level make the complex feel very safe. The 256-bed residence hall defines two critical campus edges with a pair of L-shaped four-story buildings that create a courtyard. The street facades are of brick and convey a townhouse quality that contrasts with the open, bright feeling of the courtyard. The jury admired this change in character as well as the elegant proportions, sense of structure, and articulation of parts. The contemporary design evokes the layered spatial quality typical of traditional New Orleans architecture.



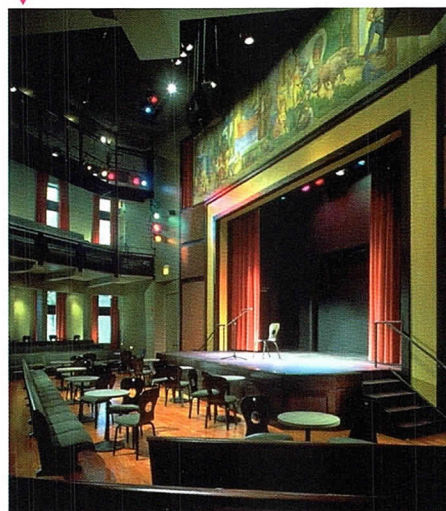
Thomas Hickey, AIA

▶ **Robert Brooks Homes**
Chicago, Illinois

Special Recognition Award

Architect – Thomas Hickey & Associates
Associate Architect – William Brazley & Associates
Client – Chicago Housing Authority
General Contractor – Walsh Construction Co.
Engineer – Khatib and Associates

This project transformed dilapidated and dangerous public housing into a community. The 834 units, built in 1942 as two-story, barracks-style buildings, are part of the Chicago Housing Authority's 3300-unit ABLA complex on the Near West Side. Working with residents at weekly site meetings, the architects developed a new design that called for demolishing half of the buildings. The new space became landscaped courts with rear gardens, parking, and safe play areas for children. The remaining buildings were gutted and 132 of them received pitched roofs with gables of varying design along with new windows, doors and porches. The jury found the project "very handsomely done, with nice proportions and straightforward detailing."



Steve Hall, Hedrich Blessing

Interior Architecture Awards

The Interior Architecture Award was established two decades ago to promote interior architecture as a unique profession by recognizing outstanding projects. For award purposes, interior architecture is defined as the space within a building envelope, including the design of lighting, finishes and furnishings. The jurors, who have established practices in cities other than Chicago, consider a wide range of design projects completed between January 1, 1996 and May 1, 1999. See page 26 for the list of jurors.



Jamie Paraggett, Paraggett and Co.

Liska and Associates
Chicago, Illinois

Citation of Merit

Architect – Brininstool & Lynch Ltd.
Client – Liska and Associates
General Contractor – Progress Construction Co.

The desire to bring as much daylight as possible into this office created a dynamic, special space. A series of translucent glass walls divide the reception area, conference rooms and private offices from the studio area. "This design uses daylight as effectively as any project we've seen," observed a juror, also noting that the full range of lighting effects here includes reflections, back lighting, and silhouetting.

**Chapel of the Word, Divine Word Missionaries
Visitor Center**
Techy, Illinois

Honor Award

Architect – David Woodhouse Architects
Client – Divine Word Missionaries
General Contractor – Saydak Construction Inc.
Engineer – S+1 Architectural Consultants

"This project has it all — symbol, concept, execution," was the jury consensus. "It is a full piece of architecture at all levels." They praised its quality as a meditative space and agreed that it would be well worth a detour to experience personally. The chapel celebrates the inherent beauty of wood that has been cut and shaped, thereby recalling Jesus' trade as a carpenter. Also noteworthy are the patterns of both natural and artificial light. In the words of Father Thomas Krosnicki, SVD, the chapel interior is "ordered tranquility under heaven's vault... a place of prayer where the Word is allowed to speak, to be heard, and be received." (See related story, page 7.)



Barbara Karant, Karant + Associates

Arie Crown Theater Renovation

Chicago, Illinois

Honor Award

Architect – VOA Associates Inc.
Client – Metropolitan Pier and Exposition Authority
General Contractor – Walsh Construction Co.
Engineers – Environmental Systems Design Inc.
(mechanical/electrical/plumbing); Nayar & Nayar
International Inc. (structural)

Ever since it was built in 1971, this theater has had a reputation as one of the city's worst performing arts venues, particularly because of poor sound and a lackluster interior. Therefore, correcting the acoustics and improving the aesthetics were top priorities. The renovation succeeds in creating a theater that is, in the words of the jury, "memorable, with lots of sparkle and a sense of excitement and energy." This improvement was particularly noticeable to one juror, who recalled going there years ago and retaining no visual memory of the theater. Now there is an ambiance of arrival and of having left the everyday world behind. The design takes its inspiration from the nearby lakefront, with its clouds, sails, masts and halyards. The color scheme combines saturated sunset colors with cloud white. Acoustical improvements include wall "sails" (freestanding partitions of fabric-wrapped panels suspended from steel tube "masts") and an adjustable sound system suspended on ropes and pulleys. The interior envelope was reshaped to reduce volume by 30 percent. Dramatic dividing curtains allow multiple configurations to accommodate various audience sizes.



Doug Snower, Doug Snower Photography



Barbara Karant, Karant + Associates

3Com Regional Campus, Phase I

Rolling Meadows, Illinois

Citation of Merit

Architect – Valerio Dewalt Train Associates Inc.
Client – 3Com Corp.
General Contractor – Turner Construction Co.
Engineer – WMA Consulting Engineers Ltd.
(mechanical/electrical/plumbing); Robert Darvas
Associates (structural)

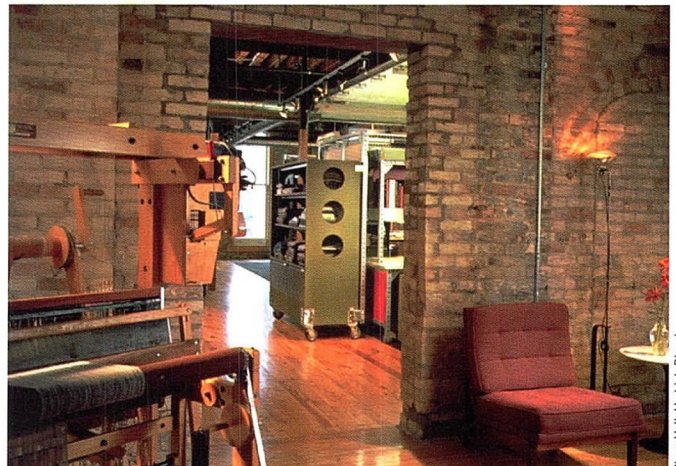
After purchasing U.S. Robotics and experiencing the outflow of staff that typically follows such an acquisition, 3Com Corp. decided that architecture could play a key role in reversing the employee exodus. They therefore made a commitment to a major Midwest campus. Phase I is a 500,000-square-foot building with an interior organization based on the concept of downtown and suburban neighborhoods. Three-story precast panels define a downtown "street" lined with public facilities including a conference "tower," fitness center, and café. Secondary "streets" divide workstations into neighborhoods, with common areas at major intersections. The jury was impressed with how the vast workplace was given human scale and memorable public spaces.

Guilford of Maine
Grand Rapids, Michigan

Citation of Merit

Architect – The Environments Group
Associate Designer – Workshop
Client – Guilford of Maine
General Contractor – DeVries Construction

Designing for designers can be one of an architect's greatest challenges. This textile design studio is an "imaginative, refreshing workplace," in the words of the jurors, who admired the contrast of rough and refined as well as the custom-designed furniture. The 150-year-old commercial textile mill wanted a new image that would strengthen customer relations and convey the mill's long legacy and new direction. The light-filled studio is organized into quadrants, with two for textile designers, one for meetings and presentations, and one for foodservice and hospitality.



Steve Hall, Hedrich Blessing

Farnsworth House Restoration
Plano, Illinois

Honor Award

Architect – Lohan Associates
Client – Lord Peter Palumbo
Property Manager – Tom Blanchard

In 1996, the famous Farnsworth House by Mies van der Rohe was inundated with floodwaters from the Fox River, the highest ever recorded for the river. The floor of the house was under water by six feet, which meant that everything — woodwork, furnishings, mechanical and electrical systems — was destroyed. The owner hired Mies' grandson, Dirk Lohan, FAIA to restore the house to its original high standards of quality. The jury admired the "extraordinary rescue effort that has resurrected this enormously significant building for the next century." The house is open to the public for pre-arranged tours.



Genere Lambrino | Lambrino Photography Inc.



Courtesy of the firm

Private Residence
Chicago, Illinois

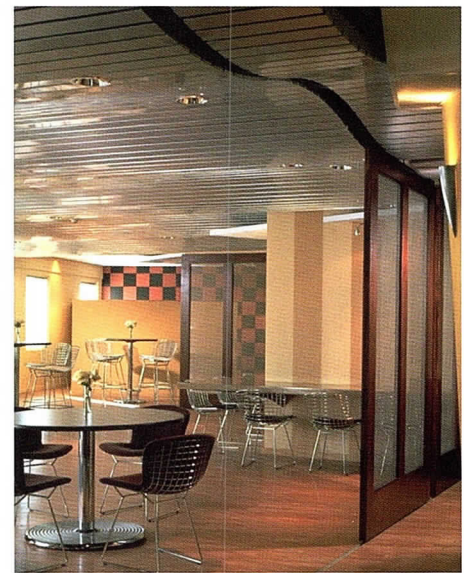
Citation of Merit

Architect – Skidmore, Owings & Merrill LLP
General Contractor – Interior Alterations

This dramatic, minimalist interior showed the jury that the architect "understood the strength of the place: the windows, the panoramic views, the building's cross-bracing." The 2800-square-foot apartment is a combination of two units at the southeast corner of the 92nd floor of the John Hancock Center. Much of the furniture was custom-made, including the living room banquettes that maximize open space. Custom finishes include travertine marble flooring and a moveable panel system that provides flexibility.



Nick Merrick, Hedrich Blessing



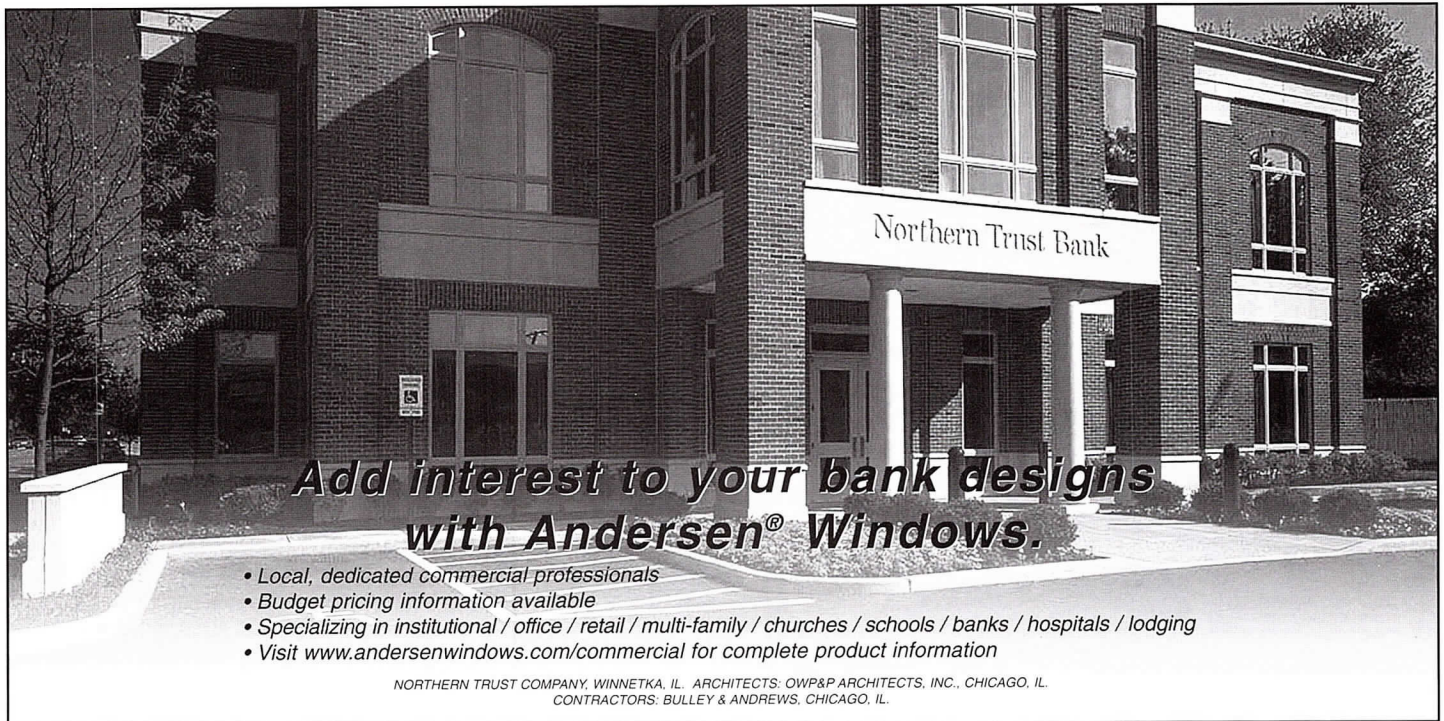
Steve Hall | Hedrich Blessing

USG Corporate Conference and Training Center
Schiller Park, Illinois

Citation of Merit

Architect – OWP&P Architects Client – USG Corp.
Client – USG Corp.
General Contractor – CMC Construction Group

This training center for national sales staff is a dramatic showcase of the creative possibilities of the client's products. Inventive use of drywall, plaster and ceiling products transformed a difficult space into a workplace that the jury described as "thoughtful, interesting, and sophisticated." The architect's design concept was "controlled chaos." Training rooms rotate and collide in plan so that various ceiling products — metal pan, acoustical tile, and slat systems — overlap. In the café an undulating ceiling system, one of the older product lines, floats under the edge of a new product that creates an umbrella-like effect in the center. Columns are wrapped in canted conical shapes to demonstrate plaster's potential, and drywall surfaces are painted with bold, richly colored patterns.



**Add interest to your bank designs
with Andersen® Windows.**

- Local, dedicated commercial professionals
- Budget pricing information available
- Specializing in institutional / office / retail / multi-family / churches / schools / banks / hospitals / lodging
- Visit www.andersenwindows.com/commercial for complete product information

NORTHERN TRUST COMPANY, WINNETKA, IL. ARCHITECTS: OWP&P ARCHITECTS, INC., CHICAGO, IL.
CONTRACTORS: BULLEY & ANDREWS, CHICAGO, IL.



Tony Sell or
Bruce Townsager
630-293-0510



Kellan Dillon
847-570-4069

CALL FOR A COMMERCIAL CATALOG AND A FREE CD-ROM WITH 150+ ANDERSEN COMMERCIAL PROJECTS

Andersen is a registered trademark of Andersen Corporation ©1999 All rights reserved

ARCHITEMPS, INC.®

ARCHITEMPS, INC.® -- the Architectural & Interior Design staffing specialists, serving greater metropolitan Chicago since 1986.

Quality staffing, service and solutions:

- Design/Production Drafters
- Facility Planners
- CAD Architects/Interior Designers
- Project Managers

Our billing includes all employer liability:

- Payroll Administration
- Employee Benefits
- Government Compliance
- State & Federal Tax Remittance
- Workers' Compensation Coverage

Architectural, interior design and facility planning personnel on a per-project basis. Customized employee leasing, permanent conversion and direct placement available. Call today for information on our staffing services or employment opportunities.

**ARCHITEMPS, INC.®
1050 North State Street
Chicago, Illinois 60610.1043**

**Tel: 312.649.0912
Fax: 312.649.1667
ARCHITEMPS@aol.com
<http://www.architemps.com>**

Need Technical CAD Support? Let Us Help.



Every design business can use a little technical support. Your computer network and CAD software should work for you and not the other way around. We employ over 15 certified AutoCAD trainers, AEC/FM & Civil CAD and Design Visualization software application engineers, CAD managers, and Microsoft & Novell Network Engineers. They are available on a 4-hour notice for phone and on-site support at reasonable rates. Join the many firms that use our HelpDesk on a daily basis - you may qualify for 45 days free phone support. So don't go down with the ship. Call our live HelpDesk now and we'll make your technical problems our own - you can trust our knowledge and commitment.



For more information call the CFA/HelpDesk at 1-800-841-8848 or contact us online at www.cons4arch.com

Looking for quality printing...today?

When you need printing right away, you no longer have to settle for a copy-shop product. InfoComm Electronic Prepress & Print uses the new technologies of digital and wide-format printing to skillfully produce quality results, in any quantity...quickly. At our River North location (open 24 hours), we can:

- Print your collateral materials (no quantity too small) in full color on a true offset printing press within *24 hours* (same day available).
- Provide transparencies and handouts for your presentations *overnight*—with color that blows those guys in the blue aprons away.
- Produce signage on a variety of stocks (glossy, matte, backlit, vinyl, you name it)—*next day*. Plus, we mount or finish your print as needed.

InfoComm has served Chicago's architectural community since 1987. As part of The Wagner Companies, we bring six generations of both conventional & digital printing experience to your projects. From design through printing, we can help.

To get an estimate on your next project, give our customer service representatives a call at 312.751.1220.

Clip this ad and send it in with your project and SAVE 10%. Total discount not to exceed \$100. Offer expires: 12/01/99. Offer number: AIA1099





Go Overboard!
Chicago, Illinois

Honor Award

Architect – Esherick Homsey Dodge & Davis
Associate Architect – Schwartz Architects
Client – John G. Shedd Aquarium
General Contractor – McClier Corp.
Engineers – Klein & Hoffman (structural);
Environmental Systems Design Inc.
(mechanical/electrical/plumbing)

"The name says it all," commented a juror of this exuberant retail space; another dubbed it "Captain Nemo meets George Lucas." They found it a dynamic, interesting space with multiple levels of fun detailing. The centerpiece of the Shedd Aquarium's expanded and renovated store is a cable-suspended, fiberglass octopus 28 feet wide and 14 feet high. Its tentacles wrap around eight structural columns whose presence originally suggested the octopus motif. The store's five thematic departments radiate from the great looming octopus. Special features include super-scale fiberglass aquatic creatures, theatrical lighting, multimedia video and audio effects, and macro-enlarged, 35-foot-long photomurals. According to Paul Bluestone, the Aquarium's vice president of planning and design, the store has been very well received by the public and its excitement and novelty have set the right tone as the kick-off point for a 5-year master plan.

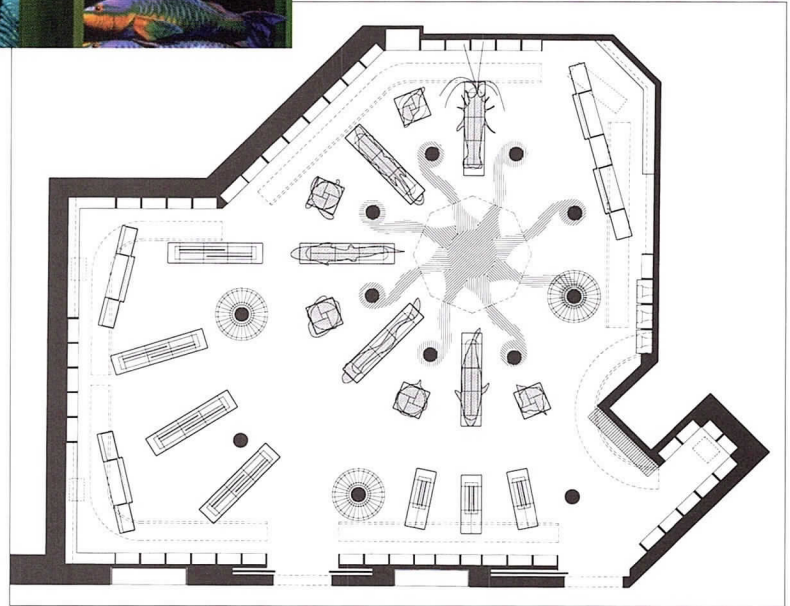
Doug Snower, Doug Snower Photography

Telling Images: Stories in Art
Chicago, Illinois

Citation of Merit

Architect – Tigerman McCurry Architects
Client – The Art Institute of Chicago
General Contractor – The Art Institute of Chicago

This gallery installation, designed around six original artworks from the Art Institute's collection, gives children the opportunity to learn how stories are told through art. It also helps them appreciate the beauty of art, demonstrates that art can have many different meanings, and raises their comfort level with the museum setting. Conceived with the assistance of a focus group of children ages 7 to 12, the exhibit design encourages both interactive and introspective experiences. The jury admired the way the architecture and art work together in this engaging, richly textured project.



Steve Hall, Heidrich Blessing



Nick Merrick, Heidrich Blessing

Steelcase – Pathways Product Launch
Grand Rapids, Michigan

Special Recognition Award

Architect – VOA Associates Inc.
Client – Steelcase Pathways Furniture

This abstract office environment is in a category by itself, since the space is meant to exist only in photographs. The architects collaborated with a photographer and a corporate image consultant to design a showcase for new products that explores the basic elements of architecture, interior planes, lighting and furniture. The jury admired the "creative, interesting use of different elements of architecture."

3Com Office and Manufacturing Center ▶
Mt. Prospect, Illinois

Special Recognition Award

Architect – Valerio Dewalt Train Associates Inc.
Client – 3Com Corp.
General Contractor – Turner Construction Co.

A huge, anonymous building is generally a very inhospitable workplace. The jury praised this project for meeting the difficult challenge of creating an inviting environment within the 600,000-square-foot shell of an old mimeograph factory. Design elements create a staccato rhythm in the long circulation corridor and screens of red mesh provide points of interest in the vast office areas.



Barbara Karant, Karant + Associates

ABN AMRO North America Inc. – Executive Conference and Dining Facility
Chicago, Illinois

Special Recognition Award

Architect – VOA Associates Inc.
Client – ABN AMRO North American Inc.
General Contractor – The Rose Group

“This project is saying ‘This is the way Deco might have been,’” remarked a juror, noting that the design is an appealing mix of pre-war sensibilities rather than a literal reproduction of a single style. They admired the strong client identity created for this 7,000-square-foot executive conference and dining facility. Contemporary functionality is accommodated in period style with patterned conference tables that gang together to form larger surfaces and with elegant chairs modified to stack.



Alise O'Brien, Alise O'Brien Photography

▶ **Washington University – Holmes Lounge at Ridgley Hall**
St. Louis, Missouri

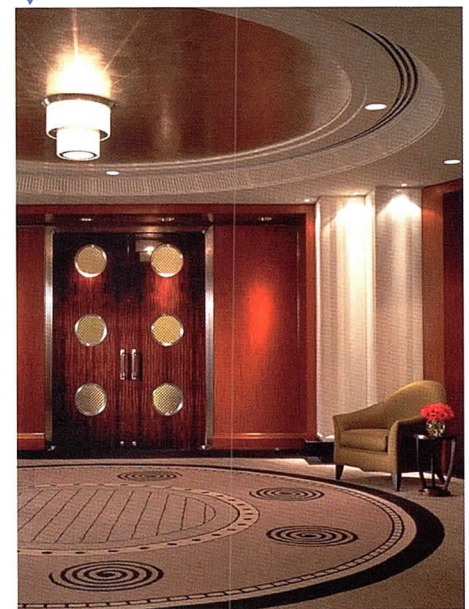
Special Recognition Award

Architect – Vinci | Hamp Architects Inc.
Client – Washington University
General Contractor – Hensley Construction Co.
Engineers – Lapin-Ellis & Associates (structural);
Tennill & Associates Inc. (mechanical)
Consultants – Robert A. Furfhoff (finishes);
Randy Burkett Lighting Design (lighting)

“The highest compliment for a restoration,” according to a juror, “is that the space feels like it might have felt originally.” The architects earned that accolade for Holmes Lounge by carrying the restoration through the full range of details. Built as the University’s library in 1902, Holmes Lounge became a study hall/cafe/tertia 60 years later and gradually lost its historic character. As part of the restoration, oak wainscots conceal new HVAC units installed where library shelves once stood. Having regained its original grandeur, it now serves as the University’s primary public reception space.



Bob Shimer, Hedrich Blessing



Nick Merrick, Hedrich Blessing

▶ **Museum of Science and Industry – Great Hall and Underground Visitors Facilities**
Chicago, Illinois

Special Recognition Award

Architect – A. Epstein and Sons International Inc./Interior Space International Inc.
Client – Museum of Science and Industry
Program Manager – Higgins Development Partners
General Contractor – Paul H. Schwendener Inc.

A subterranean garage would seem to be the least welcoming approach to a museum, unless of course there is a restored Burlington Pioneer Zephyr train in the middle of it. This project received honors for turning a parking garage into an appealing visitor amenity while following the Beaux Arts style of the museum’s original plan. A new Arrival Hall and Link Lobby lead patrons into the heart of the museum.

Take your career to the next level with an award-winning design firm!

Perkins & Will, the AIA's "Firm of the Year" for 1999, is presently seeking talented professionals to join our growing practice. Candidates should have prior experience in one or more practice areas including Health Care, Research, Laboratories, Education Facilities, General Buildings and Interior Design in the following positions:

- Project Directors/Managers
- Senior Technical Coordinators
- Project Architects
- Interior Designers and Architects
- Technical Coordinators

Our firm provides industry-leading benefits including medical, dental, free life insurance and an employer-matched 401(k) program. Opportunities exist in the following cities: Chicago, New York, Minneapolis, Santa Monica, Pasadena, Atlanta, Charlotte and Miami. Interested candidates should submit resume including location preference and salary history to:

Perkins & Will
Attn: HR-ENR
330 North Wabash Ave
Suite 3600
Chicago, IL 60611
Fax: 312.755.0775

P E R K I N S
& **W I L L**
www.perkinswill.com
EOE

Sabo & Zahn

Attorneys at Law

Werner Sabo, FAIA

James Zahn, AIA

Copyright protection, business formations
mediation, litigation, arbitration, contracts, real estate
construction attorneys

8620 Sears Tower
Chicago, IL 60606
wsabo@sabozahn.com

www.sabozahn.com

(312) 655-8620
fax: (312) 655-8622
jzahn@sabozahn.com



**Premium
Interior Paints**
No Odor/No VOC

DURON
PAINTS & WALLCOVERINGS

Mike Wall

2200 Ogden Ave. #100 • Lisle, IL 60653
630.493.1660 • 800.72DURON • www.duron.com
90462 C-11



**Midwest Visual
communications**

**Multimedia
System
Integrations**

audio • video
control systems
installations • parts
labor • service

- presentation rooms
- training centers
- conference rooms
- meeting facilities
- auditoriums
- boardrooms
- classrooms

Midwest Visual Communications
6500 N. Hamlin Ave
Chicago, IL 60645
800.876.8298
847.673.4525

www.midwestvisual.com

What to do? How to do it?

Kristine Fallon Associates, Inc.
<http://www.kfa-inc.com/~kfainc>

30 East Adams Street, Suite 600
Chicago, IL 60603-5610
312-641-9339 (voice)
312-641-9337 (fax)
kfainc@kfa-inc.com

Hardware
Software
Networks
Internet

Get it done. Keep it going.



**Botti Studio
of Architectural Arts, Inc.**
919 Grove St., Evanston, IL 60201
847/869-5933 • Fax 847/869-5996
800/524-7211 • www.bottistudio.com
botti@bottistudio.com

Designers/Fabricators • Stained and Faceted Glass
Beveled Glass • Sandblasted • Stained Glass Restoration
and Conservation • Protective Glazing • Wood and Metal
Frame Restoration • Sculpture • Bronze • Metal • Marble
Mosaic • Interior Renovation • Woodwork • Murals
Painting and Decorating • Custom Sanctuary Furnishings
Stained Glass Consultants to Architects and Churches

Field Representatives Nationwide
Studios: San Diego • Chicago • Sarasota
760/753-0705 • 847/869-5933 • 941/951-0978



Uh-oh.

Two words you never want to hear on any project. Unfortunately the cause often stems from lack of experience. A & D Coating Sales has been solving difficult roofing jobs for over 20 years, we have the knowledge and experience to handle virtually any design problem. Give us a call to see what we can do for your next project. A & D Coating Sales—nothing but the best for over 20 years.

**Call John Dashner at: 630.668.1551
215 N. Washington Unit F, Wheaton, IL 60187**

Divine Detail

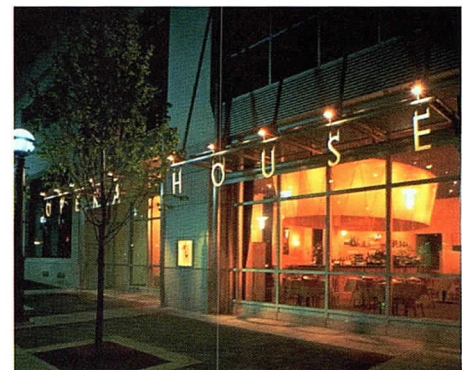
The Divine Detail Award recognizes architectural excellence in its essence. Each year, a jury looks for the expression of a project's fundamental architectural theory or design concept in their application of a particular material, detail or building technology. Craft must express the overall concept. As in other awards categories, projects completed between January 1, 1996 and May 1, 1999. A jury list appears on page 26.

**Opera House Restaurant – Environmental Graphics
Madison, Wisconsin**

Special Recognition Award

Architect – Valerio Dewalt Train Associates Inc.
Client – Chardonnezmoi Inc./Urban Land Interests Ltd.
General Contractor – J.H. Findorff & Sons Ltd.
Lighting Consultant – Charter Sills & Associates

This restaurant in an abandoned loading dock has two separate dining spaces – an interior room and an extra wide outdoor sidewalk. The two areas are linked visually by a translucent screen of glass and aluminum tubes. The rhythm of these tubes was the inspiration for the design of the restaurant's sign, because the number of tubes exactly matched the number of letters in the name. "Opera House" is suspended marquee-like at the very edge of each aluminum tube. These reinterpreted klieg lights both illuminate each letter and project a theatrical glow onto the actors in the urban scene below. The jury recognized this project to draw attention to the fact that the architect designed an extraordinary detail that might otherwise have been relegated to the ordinary. The jury agreed the result is "a small detail that influences an entire building."



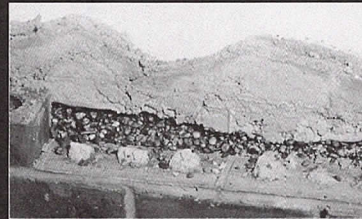
Can you afford Value Engineering?

Don't risk lawsuits and the costs of restoration work just because someone down the line wanted to save a couple bucks. Do it right the first time with the only ASTM-tested cavity drainage material—Mortar Net™.

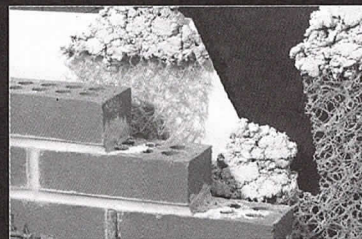
Mortar Net Drainage System prevents the cavity from becoming clogged with mortar droppings. Due to its patented dovetail shape and 90% open mesh, Mortar Net allows water to maintain a path of exit to the weeps, preventing damage caused by mortar damming and the blockage of weep holes.

Mortar dropping collection devices are a necessary part of the cavity wall flashing drainage system. Don't be fooled by cheap imitations—no other design matches the performance of Mortar Net. Just look for our unique green mesh to ensure reliability every time.

For more information, please contact Mortar Net at 800-664-6638 or visit our Web site at www.mortarnetusa.com.



Damming and clogging of cavities can cause costly repairs due to water damage.



The Mortar Net Drainage System allows water to maintain a path of exit to the weeps, preventing damage caused by the blockage of weep holes.

800-664-6638
www.mortarnetusa.com

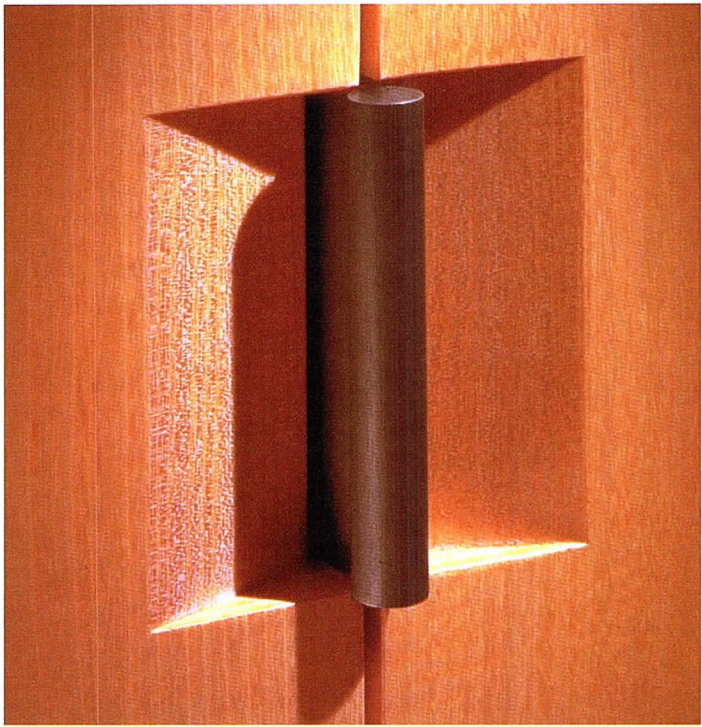
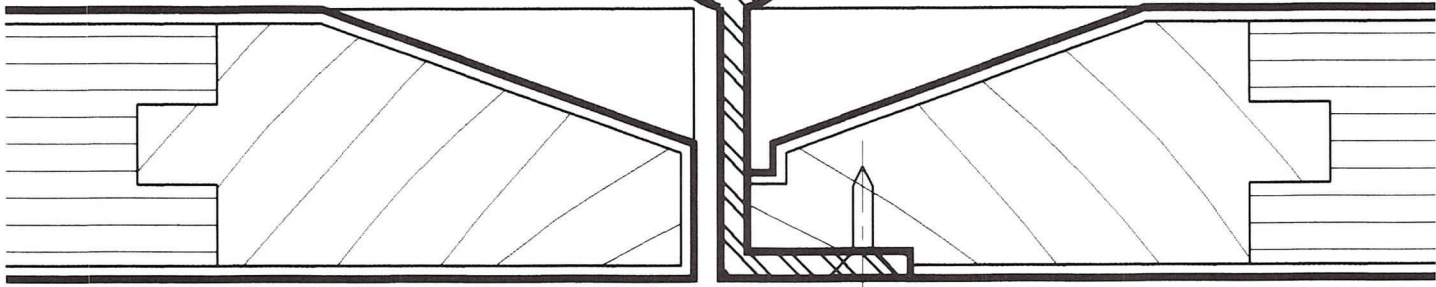


Mortar Net™
The Difference is in the Cut.

NOW MADE OF A SOFTER, MORE COMPRESSIBLE MATERIAL FOR EASIER INSTALLATION!



PLAN DETAIL CABINET PULL



Steve Hall, Hedrich Blessing

Apartment Door Pulls
Chicago, Illinois

Honor Award

Architect-of-Record – Todd Pape, AIA
Firm – Hancock + Hancock
Millwork Contractor – Continental Woodworking Co.

In designing an apartment in a high rise apartment building, the architect created original door pulls for pivot, sliding pocket and cabinet doors. The handles are fabricated of solid, oxidized brass. Two shapes, rods and flat-bar stock, were used for the various fittings. Many of the wood veneered doors were detailed with recessed beveled form to receive the pull. With this hardware, the architect asserts his desire to create a unified palette of materials, including even the smallest detail. The jury praised the architect for rethinking a standard component, describing the door pulls as “timeless design that transcends stylistic boundaries.”

Republic Windows and Doors Inc. – Lobby Stair
Chicago, Illinois

Citation of Merit

Architect – Booth Hansen Associates
Client – Republic Windows and Doors Inc.
General Contractor – Wooton Construction
Engineer – TT-CBM (structural)

A staircase is the heart of an office building lobby. In the eyes of the jurors, the architects of this large industrial building have gone a long way to resuscitate this often neglected building detail. Four steel columns support the stair. From these columns, steel plate outriggers support the landings. Bolted to the folded steel plate treads and risers, cast aluminum floor panels provide a durable walking surface. Not only does the stair serve its function, providing access to the corporate offices, exercise room, training facility and cafeteria, it has a sculpture-like presence. Unlike others they had seen recently, the jurors felt this staircase was “very successful as an object in the space and as it relates to the building’s other details.” (See related story, page 12.)



Greg Murphy, Greg Murphy Studios Inc.

Alphabetical by firm.

Distinguished Building Award

Honor Award

Booth Hansen Associates
 Republic Windows and Doors Inc.12

Daniel P. Coffey & Associates Ltd.
 Oriental Theater/Ford Center for the Performing Arts . . . 8

DeStefano and Partners
 Diversey Driving Range7

Skidmore, Owings & Merrill LLP
 Hong Kong Convention and Exhibition
 Centre Extension6

Tigerman McCurry Architects
 Private Residence11

Citation of Merit

Eckenhoff Saunders Architects
 Unicom Thermal Technologies –
 Franklin/Van Buren District Cooling Plant15

Holabird & Root LLP
 University of Wisconsin – Law School Addition and
 Renovation11

Lohan Associates
 Adler Planetarium and Astronomy Museum
 Sky Pavilion6
 Chicago Sinai Temple8

Nicholas Architects Ltd.
 5350 South Shore Drive Townhouses12

Perkins & Will
 Tulane University – Mayer Residences15

Ross Barney + Jankowski Inc.
 Maywood Public Library11

VOA Associates Inc.
 Rose-Hulman Institute of Technology –
 Sports and Recreation Center15

Wheeler Kearns Architects
 The Old Town School of Folk Music15

David Woodhouse Architects
 Chapel of the Word, Divine Word Missionaries
 Visitor Center7

Special Recognition

Thomas Hickey & Associates
 Robert Brooks Homes15

Interior Architecture Award

Honor Award

Esherick Homsey Dodge & Davis
 Go Overboard!21

Lohan Associates
 Farnsworth House Restoration18

VOA Associates Inc.
 Arie Crown Theater Renovation17

David Woodhouse Architects
 Chapel of the Word, Divine Word Missionaries
 Visitor Center16

Citation of Merit

Brininstool & Lynch Ltd.
 Liska and Associates16

The Environments Group
 Guilford of Maine17

OWP&P Architects
 USG Corporate Conference and Training Center18

Skidmore, Owings & Merrill LLP
 Private Residence18

Tigerman McCurry Architects
 Telling Images: Stories in Art21

Valerio Dewalt Train Associates Inc.
 3Com Regional Campus, Phase I17

Special Recognition

A. Epstein and Sons International Inc./Interior Space
 International Inc.
 Museum of Science and Industry –
 Great Hall and Underground Visitors Facilities22

Valerio Dewalt Train Associates Inc.
 3Com Office and Manufacturing Center22

Vinci | Hamp Architects Inc.
 Washington University – Holmes Lounge at
 Ridgley Hall22

VOA Associates Inc.
 ABN AMRO North America Inc. –
 Executive Conference and Dining Facility22
 Steelcase – Pathways Product Launch21

Divine Detail Award

Honor Award

Hancock + Hancock
 Apartment Door Pulls25

Citation of Merit

Booth Hansen Associates
 Republic Windows and Doors Inc. – Lobby Stair25

Special Recognition

Valerio Dewalt Train Associates Inc.
 Opera House Restaurant – Environmental Graphics . .24

Jury List

Distinguished Building Award

Donald Carlson, FAIA; Seattle, WA
 Andrea Clark Brown, AIA; Naples, FL
 Kenneth Neumann, FAIA; Southfield, MI

Interior Architecture Award

Barbara Geddis, FAIA; Stamford, CT
 Calvin Lewis, FAIA; Des Moines, IA

Divine Detail Award

Deborah Doyle, AIA; Chicago
 Kathryn Quinn, AIA; Chicago
 Kenneth Schroeder, FAIA; Chicago

Everyday is an Adventure!



Travelware for your drawings and presentation materials

- Compact
- Lightweight **JANDTT INC.**
- Water Reppellent **847.823.6391**

ASBESTOS

And
 LEAD SRVC's
 IDPH LICENSED

847.441.6200
 Fax: 847.441.6228
 email: LINDASSOC@aol.com

LIND ASSOCIATES P.C.
 CONSULTANTS


Renovation / Demolition
 Assessment, Inspection, Budget,
 Design and Field Monitoring Services

Mark J. Kupiec
Attorney at Law

Land use, zoning, code compliance,
 business licensing, commercial, and
 residential real estate.

Suite 519
 77 West Washington St.
 Chicago, IL 60602

312/541-1878



1979-1999

- Professional Liability
- Specific Project Coverage
- Office Packages
- Workers Compensation
- Automobile
- Exclusive Programs
- Group and Individual Life & Health

Insurance and Loss Prevention Services for Architects

AVA Insurance Agency
 One Tower Lane • Oakbrook Terrace, IL 60181
 Tel: 630.571.4500 • Fax: 630.571.4518 or 4525
 E-Mail: info@avains.com

In telecommunication installations, We've Been Realizing Chicago's Power for a Century

When the International Brotherhood of Electrical Workers, Local 134, and the Electrical Contractors Association of Chicago began their partnership a century ago, they worked together to install the telephone system that helped unite Chicago into a giant of commerce and industry.

Today IBEW Local 134 and NECA Chicago remain on the cutting edge of telecommunication installations. Our contractors and electricians have the expertise to maintain and install communication networks and to reconfigure existing networks.



Your guarantee of our expertise in telecommunications is the Certification Card, worn only by IBEW electricians, and the Contractor Card, worn only by contractors represented by NECA. The Certification Card represents thousands of hours of apprentice training and ongoing journeyman education in the very latest technologies —



including the telecommunication systems that will help unite the Chicago of the next century.

Realize Your Power: hire the contractors represented by NECA Chicago and the electricians of IBEW Local 134. For a free listing of qualified contractors, call toll-free **1-800-281-LMCC**.



NECA & IBEW

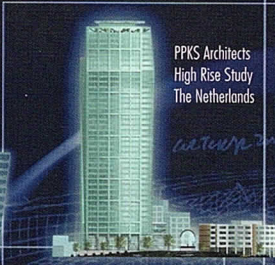
CHICAGO LOCAL 134
National Electrical Contractors Association
International Brotherhood of Electrical Workers



S C H E M A T I C S T U D I E S



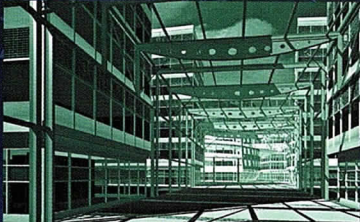
PPKS Architects
Corporate Campus
Amsterdam



PPKS Architects
High Rise Study
The Netherlands



A R C H I T E C T U R A L R E N D E R I N G



PPKS Architects
Diemen Multi-Use Complex
The Netherlands



Skidmore, Owings & Merrill LLP
2525 West End
Nashville, Tennessee

M A R K E T I N G I M A G E S



Pappageorge Haymes Ltd.
Riverwalk Loft/Townhomes
Chicago, Illinois

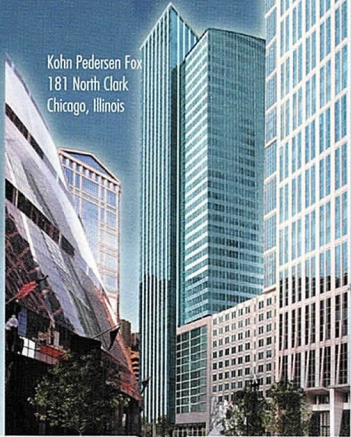
 **imagefiction**

221 NORTH LASALLE STREET
SUITE 1510
CHICAGO, IL 60601
312.726.0818
WWW.IMAGEFICTION.COM



R E S I D E N T I A L

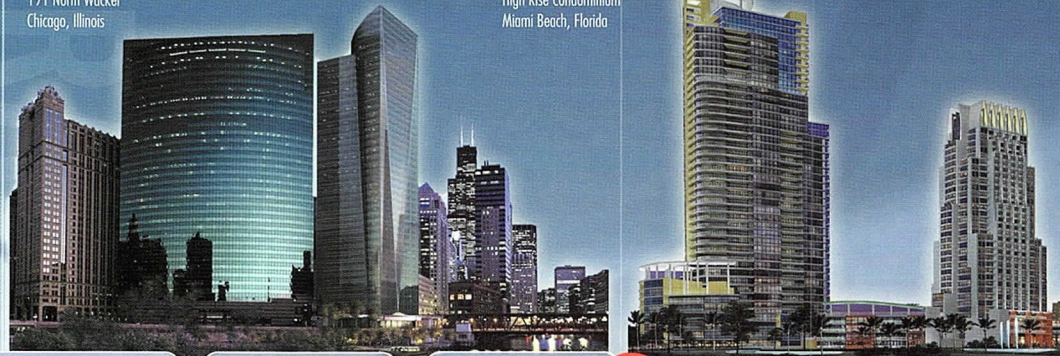
G R A P H I C D E S I G N



Kohn Pedersen Fox
181 North Clark
Chicago, Illinois

Kohn Pedersen Fox
191 North Wacker
Chicago, Illinois

Skidmore, Owings & Merrill LLP
High Rise Condominium
Miami Beach, Florida



PPKS Architects
Coolsingel Tower
Rotterdam, Holland

00:00:12.36



00:01:12.36



00:01:59.09



00:02:50.38



00:02:54.36



V I D E O C O M P U T E R A N I M A T I O N
T R U E M O T I O N T R A C K I N G

S I T E P L A N S

