

# Focus

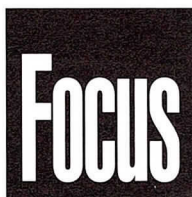
## New and Improved

**What Every Architect Should Know About  
the New AIA Contract Documents**



AIA Chicago





**February 1998**

**Editor**

Susan Nelson

**Focus Advisory Board**

William Bradford, AIA

Audrey Cusack

Deborah Doyle, AIA

Jim Jankowski, AIA

Laurie Petersen

Merritt Seymour, IDSA, CMG

Alice Sinkevitch

Thomas Zurowski, AIA

FOCUS (ISSN 1071-3700) Vol. 18, No. 2, is published monthly except May and October, with a combined issue June/July, by AIA Chicago, 222 Merchandise Mart Plaza, Suite 1049, Chicago, Illinois 60654-1001. \$20 of each member's dues are allotted as a subscription. Periodicals postage paid at Chicago, Illinois. POSTMASTER: Send address changes to Focus, AIA Chicago, 222 Merchandise Mart Plaza, Suite 1049, Chicago, Illinois 60654-1001.

For advertising rates and schedules, call 312/670-7770.

© 1998 The American Institute of Architects Chicago. All rights reserved. Reproduction in whole or part without permission is strictly prohibited.

AIA Chicago on the Internet: [www.aiachicago.org](http://www.aiachicago.org)  
AIA Chicago e-mail: [aiachgo@mcs.com](mailto:aiachgo@mcs.com).

**3**  
Focus on Programs

**4**  
News Briefs

**6**  
*New and Improved  
Contract Documents*

**9**  
*Using the New  
AIA Documents*

**12**  
Notebook

**16**  
Calendar

# AIA Chicago



A Chapter of The American  
Institute of Architects

## 1998 Board of Directors

**President**

Deborah Doyle, AIA

**President-Elect**

James Jankowski, AIA

**Vice Presidents**

Thomas Fridstein, FAIA

Thomas Zurowski, AIA

**Secretary**

T. Gunny Harboe, AIA

**Treasurer**

Dave Urschel, AIA

**Directors**

Hill Burgess, AIA

Raymond Clark, AIA

Randall Deutsch, AIA

Jonathan Fischel, AIA

Kevin Hall, AIA

**AIA Regional Director**

Linda Searl, FAIA

**AIA Illinois Director**

Holly Gerberding, AIA

**Associate Director**

Lee Waldrep, Ph.D.

**Professional Affiliate Director**

Merritt Seymour, IDSA, CMG

**Past President**

W. Stephen Saunders, AIA

## 1998 AIA Illinois Delegates

Thomas Braham, AIA

Kenneth Crocco, AIA

Richard Fencil, AIA

Kevin Hall, AIA

Janet Hahn Lougee, AIA

William Worn, AIA

William Bradford, AIA (alternate)

Arthur Salzman, AIA (alternate)

## 1998 Professional Interest Areas

**Corporate Architects**

Robert Woodworth Jr., AIA

**Design**

Daniel Wheeler, AIA

**Environment**

Douglas Farr, AIA

**Health**

Gregory Heiser, AIA

**Historic Resources**

Edward Torrez, Assoc. AIA

**Interiors**

James Prendergast, AIA

**Office Practice**

Barry Koren, AIA

**Planning and Urban Affairs**

Kevin Pierce, AIA

**Technical Issues**

Bruce Kaskel, AIA

**Young Architects**

Grace Kim, Assoc. AIA

## Chapter Staff

**Executive Director**

Alice Sinkevitch

**Membership Coordinator/  
Assistant to the Director**

Anna Andrews Smith

**Program Director**

Joan Pomaranc

**Focus Editor**

Susan Nelson

**Financial Manager**

Crystal Gagler

**Public Information Receptionist**

Christine Weaver

**Documents Clerk**

Ed Moy

## Tour: Hope Children's Hospital of Christ Medical Center



Wed., February 11, 5:30 p.m.

4440 W. 95th St., Oak Lawn

Sponsor: Architecture for Health PIA

Tour this new 112,000-square-foot facility designed by Matthei & Colin Associates of Chicago. The hospital is designed for family-centered care. All rooms are private to accommodate overnight stays by parents. Meet at the main entrance of Hope Children's Hospital. Registration is limited to 30 participants. 2 LUs (HSW)

## Bauer Latoza Studio



Thurs., February 12, 5:30 p.m.

1006 S. Michigan Ave., #602

Sponsor: Historic Resources PIA

Bill Latoza, AIA and Ed Torrez, Assoc. AIA describe the historic preservation work of their firm, highlighting current projects. 2 LUs (HSW)

## Contract Documents Forum: The New A201 and B141



Fri., February 13, 8:00 a.m. - 5:00 p.m.

The Merchandise Mart

Costs: \$60 for AIA members  
\$95 for non-members

Get an in-depth look at the major AIA documents, with an emphasis on the 1997 versions of the A201, B141 and B151. Attorneys Werner Sabo, FAIA, CSI and James Zahn, AIA, CSI will conduct this program. Participants receive copies of the new documents. (See story on page 6.) Lunch is included in the registration fee. 14 LUs (HSW)

## Changes at the Building Department

Thurs., February 19, 8:00 to 10:00 a.m.

City Hall, 121 N. LaSalle St., 2nd floor

Cost: \$5, includes breakfast

The Chicago Department of Buildings is holding a public seminar, sponsored by AIA Chicago, to discuss a number of issues of interest to design professionals. They include: 1) the EZ Permit Process; 2) the Preliminary Permit Program; 3) the Self-Certification Program; and 4) the Work-flow System. Reserve a space by completing the registration form to the right.

## Metra Commuter Station Rehabilitation Partnership: Glenview Station



Thurs., February 19, 6:00 p.m.; Chicago

Cultural Center, 78 E. Randolph St.

Sponsor: Planning and Urban Affairs PIA

Working with local municipalities, Metra has leveraged simple station upgrades into transit-oriented development that creates a strong civic presence. Learn about one project that earned Metra and the Village of Glenview a 1997 Transportation Certificate from the AIA Regional and Urban Design Committee. 3 LUs

## Life Safety or Security? How to Achieve Both



Thurs., February 26, 12:00 noon

Chicago Bar Assn, 321 S. Plymouth Court

Sponsor: Technical Issues PIA

Jonathan Hale of Gage-Babcock & Associates will present the first in a three-part series on security and architecture. He will discuss how preliminary design decisions can help resolve conflicts between security demands and occupant life safety. The impact these decisions have on life cycle costs will also be examined through several case studies. 2 LUs (HSW)



## Sign Me Up!

☐ 2/11 Tour: Hope Children's Hospital

☐ 2/12 Bauer Latoza Studio

☐ 2/13 Contract Documents Forum

☐ 2/19 Changes at the Building Department

☐ 2/19 Metra Station Rehabilitation

☐ 2/26 Life Safety or Security?

Name

Office

Address

City

Phone

Fax

All programs listed above are free or as noted for AIA Chicago members. Non-members will be charged \$10 per program or as noted.

### Method of Payment

☐ Check  
☐ American Express ☐ Visa ☐ Mastercard

Credit Card No.

Expiration Date

Name on Card

Signature

Fax to:

**AIA Chicago**

Fax 312/670-2422



## Chicago Architects Receive State Awards

Valerio Dewalt Train Associates Inc. has been awarded the 1997 Distinguished Firm Award from AIA Illinois. The jury unanimously selected the firm based on their extraordinary achievements and service to the profession.

AIA Illinois also recognized two other Chicago-area architects with awards. Ken Crocco, AIA received a Citation of Honor for his distinguished representation of architects in the development of the Illinois Building Commission.

Professor David Sharpe of the Illinois Institute of Technology received the 1997 Excellence in Education Award. Sharpe was cited as a role model in teaching and mentoring and for exemplifying the values of practicing architects and the university.

## Law Firm to Hold Symposium for Design Professionals

Stein, Ray & Conway will hold its seventh annual symposium for design professionals from 8:00 a.m. to 12:00 noon on Friday, February 27 at the Chicago Hilton and Towers, 720 S. Michigan Ave. The symposium is held to help architects meet legal challenges. Members of Stein, Ray & Conway will discuss current issues including: code compliance liability for performance specified work and design-build projects and modifying the 1997 B141.

The symposium is registered with the AIA's Continuing Education System. AIA members who participate will be credited automatically with learning units. The program is scheduled from 8:00 a.m. to 12:00 noon (breakfast included). The seminar fee is \$90. All proceeds in excess of program cost will be donated to the Chicago Architecture Foundation. To register, call Tammy Thompson at 312/641-3700.

## Firms Sought to Participate in Work Study Program

The school of architecture at the University of Illinois at Chicago (UIC) has received an Illinois Cooperative Work Study Program Grant to support a cooperative work study program for UIC undergraduate students. The program was initiated in

September, at the start of the current academic year. Nearly 40 students have enrolled in the program, with more than 30 employed in a variety of traditional and non-traditional architecture jobs. Many are employed by AIA Chicago member firms.

UIC continues to seek firms willing to participate in this program by employing one or more students on a part-time basis. Employers are expected to pay half of a \$7 hourly wage. Because students will be employed by the University for purposes of payroll and payment, firms do not have to add students to their own payroll or withhold taxes. The only financial requirement of an employer is reimbursement to UIC of 50 percent of the salary plus 0.03 percent of Workmen's Compensation Tax, a total of \$3.5021 an hour. The firm must also submit bi-weekly time sheets and evaluate the student's performance.

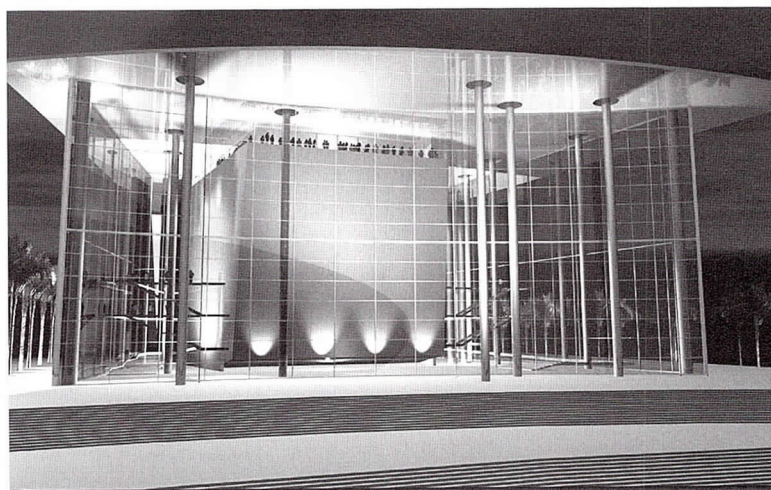
While academic schedules limit students to an average of eight to 16 hours a week, a greater work

load is permitted during vacations and holidays. Firms interested in participating should fax information regarding available positions to Elliott Dudnik, AIA at 847/866-7897 or 312/413-4488. Upon receipt of job information, potential students will be screened for referral to the firm. Employers are expected to interview all candidates and make final hiring decisions. For information, call Elliott Dudnik at 847/866-7760 or 312/996-3335.

## Reinvigorated Design Committee Investigates Invention

The 1998 programs of the Design PIA will focus on design practices that inform and further the current state of architecture through invention, a term historically synonymous with Chicago architecture. The programs will be informal Kindergarten Chats at offices or built works. A variety of practices have been selected to present two to three case studies.

## ENVISION — Design Visualization



### Architectural Modeling, Rendering & Animation

Providing design visualization imagery services to architects and interior designers.

Utilizing state-of-the-art technology, we will transform your design sketches into renderings of stunning realism.

**Lake Walden Center**  
**Manteno, IL 60950**  
**tel. 815.468.0182**  
**fax. 815-468-0185**  
**envision@en-vis.com**





From left to right: Len Peterson, FAIA, past president of AIA Illinois; Jack Train, FAIA, Gene Montgomery, AIA, and Mark Dewalt, AIA of Valerio Dewalt Train Assoc.; and Larry Livergood, AIA, current president of AIA Illinois.

To focus the discussion, presenters will be required to address the following questions: 1) Is the work elevating the state of architecture?; 2) What troubled you about the process and the work produced?; and 3) What is your biggest criticism of current architectural design in Chicago?

One evening will be devoted to Emerging Voices, featuring the inventive work of younger practitioners. Programs are planned to be educational and inspiring critical. The first four are as follows:

- March 19 Joseph Valerio, FAIA  
Valerio Dewalt Train
- April 16 Stuart Cohen, FAIA and Julie Hacker, AIA  
Stuart Cohen & Julie Hacker Architects
- May 21 James DeStefano, FAIA  
DeStefano and Partners
- June 18 Emerging Voices

### *Marathon Meeting Set for Aspiring Developers*

This spring, AIA Chicago is co-sponsoring the 1998 Developer Olympics, a charrette-style workshop for banking, real estate, planning and design professionals. With the help of the city's top developers, teams of participants will competitively create financial solutions for Wilson Yard, a five-acre site owned by the Chicago Transit Authority and three additional acres of commercial property in Chicago's Uptown neighborhood. Other sponsors include LaSalle National Bank, Uptown Community Development Corp. and Women in Planning and Development.

Although conceptual site plans will be provided, teams will be encouraged to rethink their approach to land use and design. Prizes will be awarded for solutions with the highest returns on investment and the greatest response to community needs.

A real estate finance refresher course will be offered prior to the workshop. It will include background information on the surrounding community. For more information about the 1998 Developer Olympics, call Mimi Slogar at 773/878-1184.

### *Career Fair for Architecture Students in Its Third Year*

On Saturday, March 7, AIA Chicago's Education to Practice Task Force is holding the third annual Architecture: Professional Pathways at the Illinois Institute of Technology (IIT). This half-day program allows architecture students and interns to learn more about the various careers available to them within architecture. Following a presentation by a panel of architects, attendees meet with the panelists in small discussion groups. AIA members interested in attending are encouraged to contact Lee Waldrep, assistant dean at IIT at 312/567-8835.

# **ARCHITEMPS, INC.®**

**ARCHITEMPS, INC.® -- the Architectural & Interior Design staffing specialists, serving greater metropolitan Chicago since 1986.**

**Quality staffing, service and solutions:**

- Design/Production Drafters
- Facility Planners
- CAD Architects/Interior Designers
- Project Managers

**Our billing includes all employer liability:**

- Payroll Administration
- Employee Benefits
- Government Compliance
- State & Federal Tax Remittance
- Workers' Compensation Coverage

**Architectural, interior design and facility planning personnel on a per-project basis. Customized employee leasing, permanent conversion and direct placement available. Call today for information on our staffing services or employment opportunities.**

**ARCHITEMPS, INC.®  
1050 North State Street  
Chicago, Illinois 60610.1043**

**Tel: 312.649.0912  
Fax: 312.649.1667  
ARCHITEMPS@aol.com  
<http://www.architemps.com>**



# New and Improved

## Revisions to prominent documents help assuage owners' concerns over budget and accountability.



by James Zahn, AIA

*At least every 10 years, the AIA Documents Committee reviews, revises and reissues every document that it publishes. In late 1997, the AIA reissued 10 documents, including the General Conditions for the Contract for Construction (A201) and the Standard Form of Agreement Between Owner and Architect with Standard Form of Architect's Services (B141). A201 is the document upon which all other AIA documents are based. B141 is the most commonly used AIA form of agreement between an owner and architect. These two documents should be thoroughly read and understood by all practicing architects, as they change the traditional way in which architecture has been practiced.*

Since the last time the A201 and B141 were revised, it has become known that owners have lost confidence in architects and the practice of architecture. The perception that architects are unable to design to specific budgets, and that they shift all potential risks to other parties, has lowered owners' appreciation of architects' services. Unfortunately, the tone of some AIA documents inadvertently helped generate or reinforce this negative perception. The increase in the use of design-build agreements is directly attributable to owners' concerns of budget and accountability.

The AIA is endeavoring to change this negative image by revising all

documents to be more positive, by expanding architects' services and potential compensation and by making architects more responsible for the services they perform. The updated documents are designed to create a better mutual understanding between the owner and architect by establishing project parameters, identifying who will participate in each project and what services they will perform, and verifying what the owner is expected to pay.

The most frequent complaint that owners have is that architects cannot design to specific budgets. The new B141 eliminates that concern by contractually obligating the architect to design the project on "a fixed limit of construction cost" basis. This is a major change that should be noted by all users of the document. Under the terms of the new B141, if the project cost comes in over budget, the architect is contractually liable to redo the documents at the architect's own expense until the project conforms to the owner's budget requirements. This is of great comfort to owners as they can now rely on their project coming in within budget. Now, more than ever before, architects should be mindful of project costs during the time the documents are being prepared. If the architect fails to pay attention to the established budget, the architect will have the unpleasant experience of paying for the correction of the documents to reconcile the budget.

### A201

The A201 utilizes the same format as the 1987 version but has been expanded from 24 pages to 44 pages, allowing for the inclusion of the following new concepts:



1. Substitutions may be considered defective work if not allowed for by an executed change order.

2. The designated design services to be performed by the contractor's design professional have been clarified.

3. The term "observation" has been removed from the site visit paragraphs.

4. The contractor and owner waive claims against each other for consequential damages.

5. Mediation is a precondition to arbitration or the institution of legal or equitable proceedings.

6. Amounts not in dispute for Construction Change Directives shall be paid when requested in an Application for Payment accompanied by an executed Change Order.

7. The definition of "hazardous materials" has been expanded to include all hazardous or toxic materials or substances.

8. An owner may now require contractors to purchase a Project Management Protective Liability Policy covering the owner's, architect's and contractor's vicarious liability for construction operations under the contract, also allowing the contractor to increase the Contract Sum to cover the cost of said insurance.

9. If the owner fails to notify and give the contractor a chance to correct defective work, the owner waives the right to require correction by the contractor and to make a claim for breach of warranty under the contract.

10. The owner can now terminate the contractor for convenience and without cause.

## B141

B141 is a completely new document which has some of the familiarity of the prior version. The following new concepts have been incorporated:

1. The new document requires that the owner and architect jointly complete an initial information and project team section.

2. The Instruments of Service provisions have been greatly expanded to include electronic documents and a detailed discussion of explicit and implied licenses for use of the documents.

3. Changes in architect's services allow for adjustments in compensation.

4. Mediation is a precondition to arbitration or the institution of legal or equitable proceedings.

5. The owner and architect waive all claims for consequential damages against each other.

6. The owner may terminate the architect's services for convenience and without cause.

7. The architect must add an additional paragraph to the compensation section, describing the percent of the total fee that each scope of service represents, if being compensated on a lump sum or percentage of construction cost basis.

8. The Standard Form of Architect's Services: Design and Contract

Administration (part two) must be specifically edited, amended or replaced with the architect's specific services to be performed, otherwise the architect shall be obligated to perform all services described in this section of the document.

9. A new schedule of services provides a reasonable limit to the various services an architect performs before the architect can request additional compensation.

10. The document contains a chart indicating which services are to be performed and who is to perform them, as well as indicating which services are not to be performed by anyone.

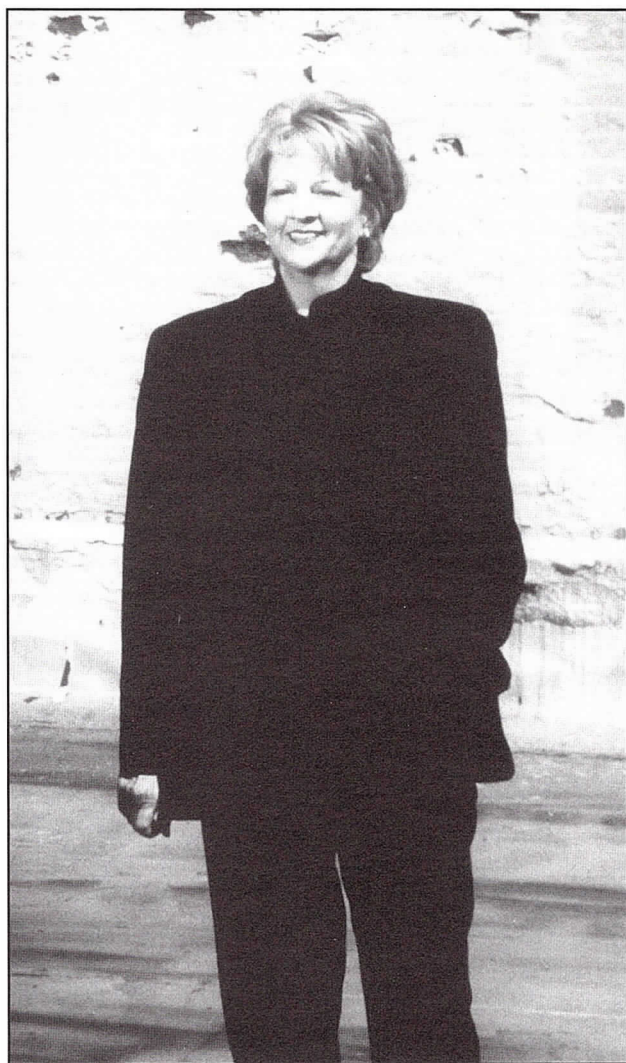
This document will result in a much better owner/architect agreement if properly executed. The architect will have to fully negotiate the terms of the agreement, which in turn, should provide a better mutual understanding of what the owner will receive and at what cost. The document itself has expanded from 10 pages to 24 pages, while the instruction sheets have expanded from four to 15 pages. All architects should spend the time required to become fully familiar with the contents of the new B141.

*James Zahn, AIA is a registered architect and practicing attorney. A member of AIA Chicago, Zahn is the Illinois coordinator on the AIA's Document Committee. This article is reprinted with permission from AIA Illinois News.*

## Where to Buy Contract Documents

All AIA contract documents can be purchased quickly and conveniently through AIA Chicago. For a price list and order form, call 312/670-7770.





"Let's face it.  
The design profession  
is about choice."

*We choose the designs that please us, we choose the environment in which we live and work, and we choose the CAD software products that reflect the way we see our world. And to supply and teach us those products, we choose a company that knows us best.*

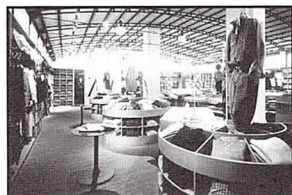
*We choose CFA to purchase our Autodesk products—the nation's leading choice for CAD and job placement services for almost 14 years."*

**Naomi Leff, ASID**

President, Naomi Leff & Associates, Inc.



Polo, Ralph Lauren, NYC



A/X, Boston



Beaver Creek Conference  
Center, Vail



Armani, San Francisco

## CFA/Information Media Group, Inc.



Chicagoland's Newest Autodesk Dealer

The Merchandise Mart  
Suite 1049A, Next to AIA/Chicago  
Chicago, IL 60654

Consulting For Architects, Inc. is an Authorized Autodesk Partner, Dealership, Autodesk Systems Center (ASC) with an Autodesk Medallion in Architecture, Engineering, and Construction (AEC)\*, Award-Winning Autodesk Premier Training Center (ATC), Technical Support Center, and Temporary and Permanent Personnel Service

\*Pending Approval

Call Toll Free  
**1-800-599-8882**



NEMETSCHEK



SOFTDESK

Lightscape

KINETIX



DRAW  
IT  
ONCE



# 2008 CALL FOR ENTRIES

excellence DESIGN  
AWARDS  
PROFESSIONAL





# ELIGIBILITY

## ENTRIES AND

Entries are limited to work by firms within the Chicago metropolitan area, defined as the counties of Cook, DuPage, Kane, Lake, McHenry, and Will in Illinois, and Lake and Porter counties in Indiana. Entries from multi-office firms are limited to work designed in the local office. Projects must be designed by registered architects.

The intent of the Distinguished Building Award and Interior Architecture Award of AIA Chicago is to honor those firms and individuals responsible for the submitted designs. AIA Chicago has always honored other team members as part of the awards process. However, it is critical to the integrity of the awards that the primary actor receive the primary credit. Entering the competition is a representation that the submitting firm is responsible for the submitted design. This must be the case or the entry is not eligible for consideration.

In situations where project responsibilities are shared, the following are examples of entities that are eligible for consideration. The architect of a building or an interior is eligible if by contract the architect has primary or sole responsibility for Schematic Design and Design Development.

In a large project with a number of components, the architect may submit the portion of the project for which the architect had primary or sole responsibility. For example, the architect responsible for the shell and core of the building may submit photographs of the exterior and core elements of the interior. Photographs of other portions of the project should not be included.

In the event a firm does not meet these criteria but believes it should still be eligible for the awards program, an appeal may be made to AIA Chicago, citing any special circumstances. AIA Chicago reserves the right to review eligibility before and after the deliberations of the jury. The entry fee for a disqualified project will be fully refunded.

Projects must have been completed between January 1, 1995 and May 1, 1998 to be eligible for the Distinguished Building, Interior Architecture, and Unbuilt Design awards. Candidates for the Twenty-Five Year Award must have been completed between 1963 and 1973.

Firms are encouraged to re-enter projects previously submitted if they did not win an award. Projects that have received an AIA Chicago award in a previous year are not eligible for the 1998 awards.

Please submit a separate entry form for each category you wish to enter. Your form or forms must be accompanied by the required entry fee. Upon receipt of the form and fee, instructions for submittals will be sent to you, along with a registration number for each entry.

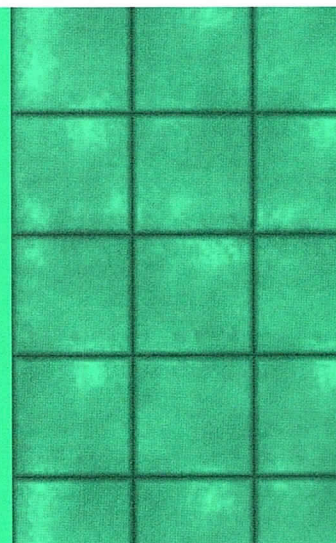
### QUESTIONS?

CALL AIA CHICAGO AT 312.670.7770 OR  
E-MAIL TO [AIACHGO.MCS.COM](mailto:AIACHGO.MCS.COM)

## DESIGN

# excellence

## PROFESSIONAL





**THE CHICAGO CHAPTER OF THE  
AMERICAN INSTITUTE OF  
ARCHITECTS INVITES YOU TO  
PARTICIPATE IN THE 1998  
DESIGN EXCELLENCE AWARDS &  
PROFESSIONAL EXCELLENCE  
AWARDS**

The Design Excellence Awards recognize the best contemporary architecture produced by Chicago area firms, in Chicago and elsewhere. This year's categories for entries are: Distinguished Building, Interior Architecture, Unbuilt Design, and Twenty-Five Year Award.

Through the Professional Excellence Awards, the Chapter recognize individuals and firms who have made and continue to make a significant contribution to the architectural community of Chicago.

The Design Excellence Awards will be presented in September 1998. The Professional Excellence Awards will be presented at the annual meeting in December.

Review submissions to the 1997 awards program at [www.aiachicago.org](http://www.aiachicago.org).

**DESIGN EXCELLENCE AWARDS**

**PROGRAM**

The awards program includes the following categories:

- Distinguished Building Award
- Interior Architecture Award
- Unbuilt Design Award
- Twenty-Five Year Award

**NOTIFICATION**

AIA Chicago will notify winners immediately following the jury deliberations. No public announcement of any award will be made prior to the awards presentation program in September.

**RECOGNITION**

Awards and Citations will be given to the architect, owner and contractor for each project. Winning projects will be documented in the October special edition issue of Focus: Architecture Chicago. These projects will also be highlighted in an electronic exhibit at our Web site: [www.aiachicago.org](http://www.aiachicago.org).

**PROFESSIONAL EXCELLENCE AWARDS**

**PROGRAM**

The awards program includes the following categories:

- Young Architect Award
- Firm Award
- Distinguished Service Award

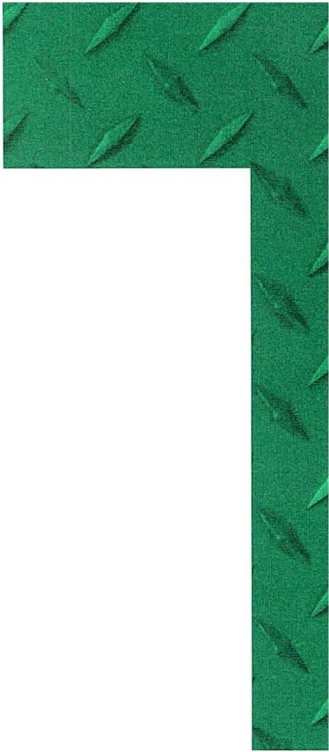
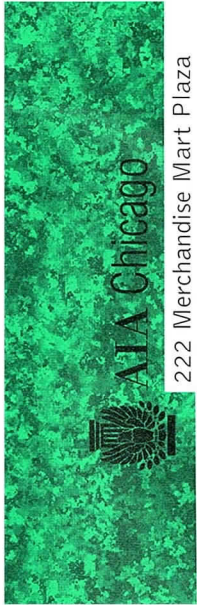
**NOTIFICATION**

AIA Chicago will notify winners immediately following the jury deliberations. No public announcement of any award will be made prior to the Chapter's annual meeting in December.

**RECOGNITION**

Awards will be presented at the Chapter's annual meeting in December. Winners will be documented in the December issue of Focus. They will also be featured at our Web site: [www.aiachicago.org](http://www.aiachicago.org).







# Using the New Contract Documents

The new B141 and A201 are an improvement over the old, but there are important issues every architect ought to know.

by Paul Lurie and Mark Friedlander

## Financial Condition

In the 1987 edition of A201, a contractor could require evidence of the owner's financial arrangements as a condition to starting the work. As revised in 1997, any material change in the financial arrangements can affect the contractor's obligation to continue the work (A201-2.2.1). While the concept is not unfair, the vague language may cause problems for owners as well as an interruption of the project.

## Termination

In accordance with the 1997 revisions, the owner has the right to terminate a project for convenience; in such an event, the contractor is entitled to "reasonable overhead and profit" on uncompleted work (A201-14.4). Owners may object to this and may prefer to pay a liquidated amount.

## Design and Performance Criteria

Under the provisions of the 1987 version of the A201, the owner and architect had the power to require the contractor to hire a licensed design professional to complete the designs for specific portions of the work. However, section 3.12.10 of the 1997 version provides that as a condition of the contractor's assumption of this responsibility, the architect is required to specify all design and performance criteria. This is an important responsibility with loss control implications. Your consultants also should understand this responsibility.

## Consequential Damages

Owners must understand the trade-offs involved in the waiver of consequential damages provision (A201-4.3.10 and B141-1.3.6). Although owners may be getting waivers of the types of claims which have supported claims-conscious contractors, they are giving up virtually all other claims except for the cost of repair or replacement of defective work. Further modifications need to be made to the comparable provision of B141 to make it consistent with the waiver in A201. If claims involving this waiver of consequential damages are not resolved by mediation or arbitration and are allowed to go to court, we can expect years of litigation interpreting the waiver.

## Protective Liability Insurance

As revised, the owner's (and architect's) principal source of protection for worker injury claims is intended to be a form of OCP insurance called Protective Liability Insurance, rather than having the owner and architect named as additional insureds on the contractor's general liability policy. (A201-11.3). However, this coverage is optional, unless required by the contract documents. Owners need to understand the advantages and disadvantages of this change in coverage and the associated cost differences.

## Property Insurance

Property insurance deductibles are the responsibility of the owner according to the 1997 A201. Under the 1987 A201, they were the responsibility of the contractor. It is common on large projects for there to be many small claims by the contractor for damage to the work, each claim being subject to the deductible. Owners may object to this shift since the contractor is usually in control of the situations causing these losses. (A201-11.4.1.3.)

*Continued on next page.*



## Copyrights

According to the revised A201, the copyright protection in drawings and specifications remains the architect's but also includes protection for the consultants. However, both the architect and the consultants must agree to license these documents to the owner. Be certain your consultants have that contractual obligation (B141-1.3.2.2).

## Budget

The concept of a Fixed Limit of Construction Cost has been deleted from the revised B141 because the architect is always required to design the owner's budget. Section 2.1.7.6 obligates the architect to modify the design without additional compensation if the construction price exceeds the budget.

## Disclosure of Confidence

Be aware of two new provisions governing how the architect conducts business. Section 1.2.3.4 of the 1997 B141 forbids the architect or its consultants from disclosing the owner's confidential information except in certain circumstances. Section 1.2.3.5 requires the architect to disclose or refrain from any activity "that would reasonably appear to compromise the architect's professional judgment" regarding the project. This may include declining or disclosing perks from certain vendors or contractors who may become involved in the architect's other projects.

## Mandatory Mediation

Under both A201 and B141, non-binding mediation is now required as a condition to proceeding to resolve claims by either arbitration or litigation. Significantly, the parties cannot proceed in either arbitration or litigation for a period of 60 days. This delay is to give mediation an opportunity to work. Bad faith stalling

during this period could be disadvantageous to the claimant. Design professionals should benefit from mediation because it has a proven record of helping resolve disputes between owners and contractors. However, we expect that architects are going to be more frequently requested to participate in such mediations by the clients. The circumstances under which compensation should be due for such service is an appropriate subject for negotiation.

*Paul Lurie, Esq., Assoc. AIA, has been an advisor to the AIA Documents Committee since 1991. Lurie and Mark Friedlander are partners at the law firm of Schiff Hardin & Waite.*

## Architects Project Architects

DTA is growing with the high-tech entertainment and telecommunication industries. Project types include television stations, production facilities, digital animation studios and satellite uplink control centers. National and international projects require detail-oriented AutoCAD v.14 proficient architects and project architects able to match the intensity of clients in demanding industries.

Fax resumes to (312) 255-0063



*Daniel Taylor & Associates, Ltd.*  
730 North Franklin  
Chicago, Illinois 60610

## The Law Offices of Cooke & Whitcomb

TIMOTHY P. MORGAN, ESQ., AIA OF COUNSEL

Twenty years experience as a practicing architect.

A Business Transactional Practice. Contracts. Strategies. Financing.  
Commercial & Residential Real Estate. Construction. Arbitration. Litigation.

111 E. Wacker Drive  
Suite 3021  
Chicago, Illinois 60601

TLPH (312) 240-9002  
FAX (312) 240-9007  
E-MAIL: Garycooke2@worldnet.att.net

- Professional Liability
- Office Package
- Workers Compensation



- Automobile
- Health
- Serving You Since 1979

### INSURANCE SPECIALISTS FOR ARCHITECTS

One Tower Lane, Oakbrook Terrace, IL 60181 (630) 571-4500  
Fax: (630) 571-4518 Email: INFO@AVAINS.COM

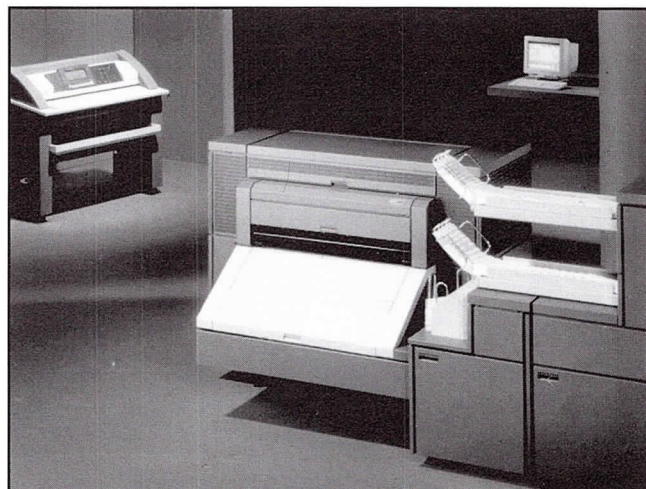




# *High-Speed Digital Blueprinting*

High speed digital printing from scanned originals or prints and CADD plot files. Copies may be reversed (negative to positive) mirror imaged and stretched along with standard enlargements and reductions from 25% to 400%. We would prefer HP/GL2 files with pen weights set.

For more than 70 years, Mossner has provided the latest and fastest high-production equipment available. And now Chicago's first state-of-the-art Oce 9800 for Digital Blueprinting is here!



- **Pick-up and Delivery**
- **Fast Service**
- **Print Scanned Originals**
- **Print HP-GL, HP-GL/2, HPRTL, TIFF<sub>5.0</sub>, CALS<sub>1</sub> Files**
- **Print Collated Sets Fast**

## **BOND PAPER DPB**

Total Sq. Ft. per order			Price per Sq. Ft.
1	to	49	.50
50	to	74	.35
75	to	99	.25
100	to	199	.20
200	to	499	.19
500	to	999	.18
1000	to	1999	.17
over		2000	.15

Minimum Charge \$25.00  
\$2.00 per scan, \$1.00 per CADD File

## **VELLUM PAPER DPV**

Total Sq. Ft. per order			Price per Sq. Ft.
1	to	49	2.75
50	to	74	2.50
75	to	99	2.25
100	to	199	2.00
200	to	499	1.75
500	to	999	1.50
1000	to	1999	1.40
over		2000	1.35

Minimum Charge \$25.00  
\$2.00 per scan, \$1.00 per CADD File

# **Mossner** (312) 372-8600

**THE REPRODUCTION PEOPLE • LARGEST IN THE MIDWEST**

Mossner Building • 137 North Wabash at Randolph (across from Marshall Field's), Chicago, IL 60602



American Sky Broadcasting, a facility designed by Daniel Taylor & Associates Ltd.



Mark Reinhardt

## NEW MEMBERS

### AIA

**Michael Coleman**, R.A. Grella & Associates; **Carl Giegold**, Kirkegaard & Associates;

**Warrick Graham**, Cook County Office of Capital Planning & Policy; **Todd Kuhlman**, Antunovich Associates; **John Lyon**, HLM Design Inc.; **Daniel Robison**, Daniel Robison Architects PC; **Robin Whitehurst**, Bailey Edward Design

### Transferring AIA

**Joel Jaffe** from AIA Atlanta, Public Building Commission of Chicago; **James Papoutsis** from AIA New York, James Papoutsis Architecture

### Associates

**Laura Srebro**, Skidmore Owings & Merrill LLP; **Jeffrey Lange**, The Habitat Co.

### Professional Affiliates

**LaVerne Byrne**, Impo Glaztile; **Brad Gesbocker**, Unilock; **Paul Gorski**, Beer Gorski & Graff Ltd.; **Dave Van Langevelde**, Corporate Vision Interiors; **Kimberley Phad**, Mid-America Tile; **Judith Schroeder**, F.W. Dodge, McGraw-Hill

## PEOPLE

Mekus Johnson Inc. has adopted a new name, **Mekus Studios Ltd.**

**Lucien LaGrange and Associates Ltd.** has relocated to 605 N. Michigan Ave., a classically styled 1922 building the architecture firm recently helped to renovate. The firm's 25 architects will occupy 7,000 square feet on the third floor.

**MFH Associates P.C.** has moved to 111 N. Canal St. in Chicago.

**Matthew Petrie, AIA** has left Booth/Hansen & Assoc. to form **von Weise Petrie Ronan Architects**. He is joined by Charles von Weise, also of Booth/Hansen & Assoc., and John Ronan, formerly with Lohan Assoc. The firm is located at 925 W. Fullerton Ave. in Chicago.

## AWARDS

Park Meadows Retail Resort, designed by **Anthony Belluschi Architects** for TrizecHahn Centers of San Diego, has been awarded the 1997 Urban Land Institute Award of Excellence. The award is the fourth for this project. Located 15 miles south of Denver, the 1.7

million-square-foot retail resort integrates the warm hospitality of a traditional mountain lodge with entertainment and national and local retailers. Lodge-like elements, such as a dining hall, fireplaces and commissioned artwork, contribute to the ambiance of the project.

The Dow Jones Business Directory has rated **USG Corp.'s** Web site ([www.usg.com](http://www.usg.com)) as one of the highest quality business sites on the Internet. In the ranking of more than 1,000 corporate Web sites, only 10 sites earned a higher score than USG's.

## NEW PROJECTS

**Daniel Taylor & Associates Ltd. (DTA)** recently celebrated the opening of American Sky Broadcasting, a 14,000-square-foot satellite uplink facility near Phoenix. Capable of broadcasting 720 channels of digital television programs at one time, the facility was designed and constructed in less than a year for News Corp. and MCI Communications. DTA also is preparing for the grand

opening of KRIV, Fox's prototype digital television station in Houston.

Taliesin Architects of Scottsdale, Arizona and **Eifler & Assoc.** of Chicago have begun a restoration program at the world renowned Taliesin West, designed by Frank Lloyd Wright as his winter home and studio. For the first time, architects are conducting a comprehensive assessment of the historic and existing conditions of the studio and Kiva Theater which were built in the 1930s. They are developing plans that will lead to the conservation of the landmark complex. The work is funded by a grant from the state of Arizona. Eifler & Assoc. specifically is preparing the Building Condition Assessment Report that includes an historical overview, an evaluation of architectural elements, and an investigation of the structural, mechanical, electrical and plumbing systems.

## STOP LEAKAGE IN MASONRY WALLS

WITH

# ThermaDrain®

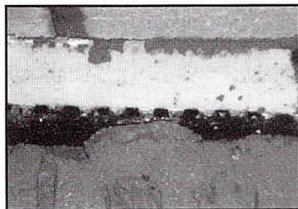
\*Patent Pending

## THE INSULATED DRAINAGE BOARD

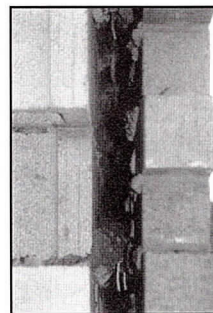
### ThermaDrain® ELIMINATES THE NEED FOR A CLEAN AIRSPACE

Currently, a 2" airspace is the primary means of providing sufficient drainage for cavity walls. However, poor workmanship, mortar blockages and mortar bridging can and does occur in airspaces 2" or greater. This allows water to bridge the cavity before it ever reaches the flashing and weepholes. **ThermaDrain®** eliminates workmanship problems and provides a continuous drainage path to the required flashing.

### ThermaDrain® WALL OUT PERFORMS CONVENTIONAL CAVITY WALL



ThermaDrain® stops mortar blockage



Mortar Blockage in 1 1/2" Cavity

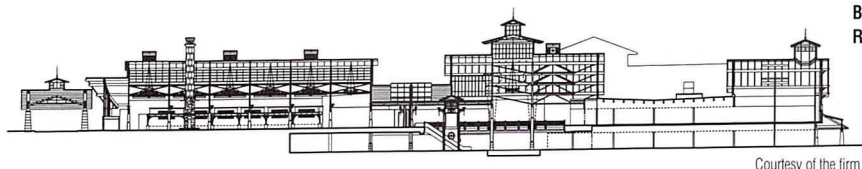
Testing performed in accordance with ASTM E514 concluded that a wall with **ThermaDrain®** provided substantially more drainage than a conventional cavity wall by preventing mortar bridging and mortar blockage. In addition, **ThermaDrain®** provides: a maximum "R" value with a thinner profile cavity wall, narrower foundations and smaller shelf angles.

Distributed by: Hydro Environmental Products  
c/o Mark Nelson 847-882-8675

800-837-4065 National  
630-241-9840 Local

# ThermaDrain®





Transverse section of Anthony  
Belluschi Architects' Park Meadows  
Retail Resort

Courtesy of the firm

**McCluer** is scheduled to begin work on several new airport projects: new international gates and an expanded Federal Inspection Services facility for the San Diego airport; a terminal expansion at San Luis Obispo Airport; and facilities for Southwest, Delta, American and Northwest Airlines at the Ontario International Airport.

**Muterspaugh & Assoc.** has completed an expansion project for Porters Oyster Bar and Night Club in Crystal Lake. The project added an additional 1,800 square feet to the existing dining room. With seating for 60 to 100 guests, the 1930s Art Deco library will serve as a banquet room and new non-smoking dining space.

**Otis Associates Inc.** has designed a \$30 million dollar expansion for the corporate offices of Experian Inc. The expansion will nearly triple the company's Schaumburg office to 296,000 square feet. The design includes a four-story, 189,000-square-foot office complex with a two-story link to the present building.

#### CALLS FOR ENTRY

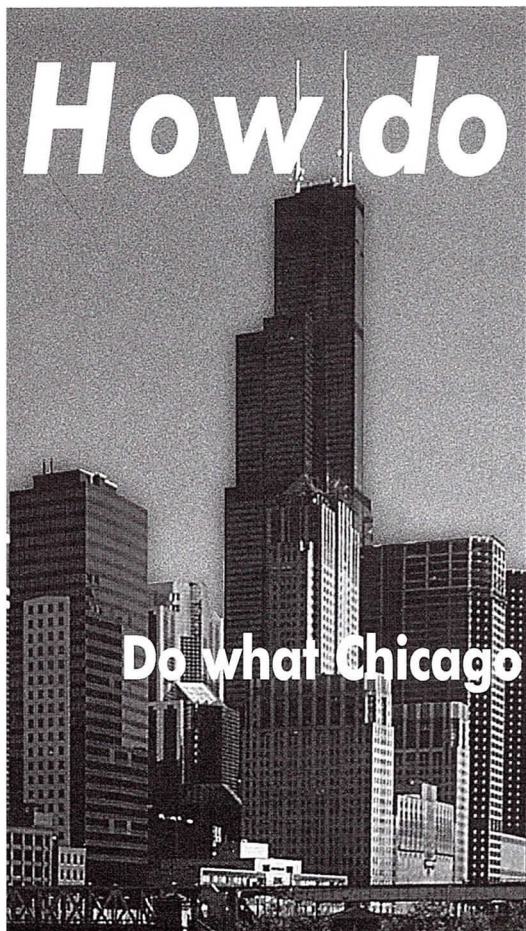
The **Village of Tinley Park** is requesting qualifications from architecture firms to design a **convention center**. The center would be constructed northeast of I-80 and Harlem Avenue and be developed with a 200-room Holiday Inn. The convention center would contain 35,000 square feet, designed to expand to 50,000 to 100,000 square feet if required. Send qualifications with a cover letter describing how (the process) you will charge for this work to: Village of Tinley Park, 16250 S. Oak Park Ave., Tinley Park, IL 60477, Attn: Craig Hullinger.

The Graham Foundation for Advanced Studies in the Fine Arts is accepting applications for the 1998 **Carter Manny Award** until March 15. The monetary award supports research for academic dissertations that focus on areas directly related to architecture and with other arts that contribute to architecture. For information, contact the Foundation at 312/787-4071.

The 1998 **Van Alen Prize in Public Architecture** is calling for entries that investigate, envision and promote the design of a better public realm for New York's East River, the city's decrepit backyard. The site is the East River running from Governors Island in the south to Randall's Island to the north, including the waterfront of areas of Manhattan, Brooklyn and Queens. Entrants may propose design ideas for the entire district or for a partial area, as long as the proposal has an impact on the East River's identity in the city. The finalist(s) will be awarded cash prizes totaling \$15,000; deadline for registration is April 8. Entries are due May 20. For a complete registration packet, fax the Van Alen Institute at 212/366-5836 or write them at [vanalen@vanalen.org](mailto:vanalen@vanalen.org).

#### STUDY TOURS

David Underwood, author of *Oscar Niemeyer and the Architecture of Brazil*, will lead a **10-day study tour of modern and colonial architecture in Brazil**



# How do they do it?

*How does the Chicago design and architecture community produce so many award winning, internationally renowned and respected projects?*

The answer is a lot of talent, a wonderful spirit of community, and a little help from Consulting For Architects, Inc. For over three years, CFA has supported the Chicago design and architecture community with full-time staff and per-project consultants, award winning CAD and multimedia software training and sales.

**Do what Chicago firms have been doing for years!**

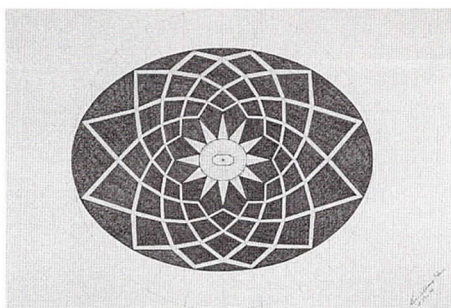
Stop by or call to speak with a member of our courteous and knowledgeable staff. We are located on the tenth floor of The Merchandise Mart in the heart of downtown Chicago, right next door to the AIA! Voice 312-822-0338, Fax 312-822-0342, E-mail [cfachi@cons4arch.com](mailto:cfachi@cons4arch.com), Internet <http://www.cons4arch.com>



beginning March 12 in Rio de Janeiro. The tour is sponsored by Painted Desert Art and Cultural Tours of Scottsdale, Arizona and costs \$2935 per person (double occupancy). For complete information, call Bonnie Lewis at 602/991-1442.

From June 26 to July 10, the Society of Architectural Historians (SAH) is sponsoring a **study tour to Mexico**. The two-week itinerary takes participants to a selection of cities, towns and rural settings where one of the finest chapters in this history of architecture and town planning was written. The tour leader is Latin-American scholar Humberto Rodríguez-Camilloni, director of the Henry H. Wiss Center for Theory and History of Art and Architecture at Virginia Polytechnic Institute. The tour price is \$3295 per person (double occupancy). For more information, contact the SAH office at 312/573-1365 or [info@sah.org](mailto:info@sah.org).

The Association of French-American Classes Ltd. is sponsoring **travel packages for architects to**



*Pavement Detail, Elliptical Rosette. The Campidoglio in Rome. Designed by Michelangelo. Executed in 1940.*

**France and Australia.** Packages include an introduction to a professional counterpart and a wide variety of architectural tours. For a brochure, including an itineraries and costs, call Kristina Schoell at 630/968-2800.

#### VARIOUS MATTERS

The Graham Foundation for Advanced Studies in the Fine Arts is sponsoring **Italian Pavements: Patterns in Space**, a lecture by architect Kim Williams on Wednesday, February 4. The lecture concentrates on three aspects of pavement design: the dynamic relationship between the paving patterns and the architectural spaces in which they are found; the different techniques involved in laying pavement; and the geometry behind some of the paving patterns. An exhibition featuring Williams' renderings of the pavements of some of Italy's most well-known cathedrals, churches and piazzas runs until March 12. For more information, call 312/787-4071.

The Metal Construction Association has released two new publications of interest to residential architects. Order forms for **An American Tradition**, a brochure about metal's evolution into a trend in residential roofing, and **Guide Specifications for Residential Metal Roofs** are available by calling 312/201-0193.

The Frank Lloyd Wright Home and Studio Foundation announced that 10 architecturally significant buildings will comprise the 24th annual **Wright Plus Housewalk** on May 16. Wright Plus ticket holders will view the interiors of eight private residences and two national historic landmarks. Tickets for the housewalk will go on sale March 1 and can be purchased by calling 708/848-9518.



**SITE  
ENGINEERING**

**CALL ED RESNER**  
**630-289-4029**

TOPOGRAPHY
PARKING

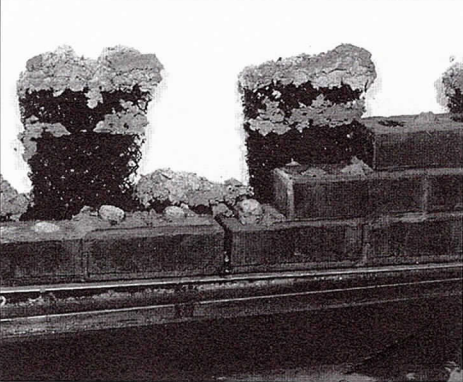
DRAINAGE
SEWER & WATER

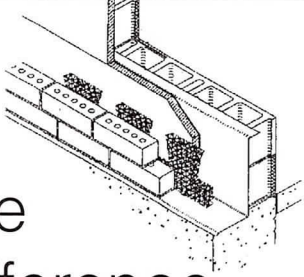


**Botti Studio  
of Architectural Arts, Inc.**  
 919 Grove St., Evanston, IL 60201  
 847/869-5933 • Fax 847/869-5996  
 800/524-7211 • [Botti@ix.netcom.com](mailto:Botti@ix.netcom.com)

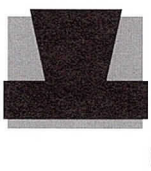
Designers/Fabricators • Stained and Faceted Glass  
 Beveled Glass • Sandblasted • Stained Glass Restoration  
 and Conservation • Protective Glazing • Wood and Metal  
 Frame Restoration • Sculpture • Bronze • Metal • Marble  
 Mosaic • Interior Renovation • Woodwork • Murals  
 Painting and Decorating • Custom Sanctuary Furnishings  
 Stained Glass Consultants to Architects and Churches

**Field Representatives Nationwide**  
 Studios: San Diego • Chicago • Sarasota  
 619/753-0705 • 847/869-5933 • 941/951-0978





The  
Difference  
is in *The Cut.*



**Mortar Net™**  
 USA, LTD

TO ORDER MORTAR NET™ CALL  
 SEALANT ENGINEERING ASSOCIATES AT  
**630 860 7878**

FOR TECHNICAL DATA AND A FREE  
 SAMPLE KIT OR TO ORDER  
 MORTAR NET™ CALL  
**800 664 6638**

Mortar Net's patented dove tail cut keeps weep holes open— collects mortar droppings inside masonry cavity walls.

Fast, Easy Installation— requires no fasteners or adhesives, no special skills or tools

5' long sections in 4 nominal sizes:  
 10" high x 2", x 1", x 0.8" or x 0.4" thick and  
 16" high x 1" thick



**What to do? How to do it?**

**Kristine Fallon Associates, Inc.**

<http://www.kfa-inc.com/~kfainc>

Hardware  
Software  
Networks  
Internet

30 East Adams Street, Suite 600  
Chicago, IL 60603-5610  
312-641-9339 (voice)  
312-641-9337 (fax)  
[kfainc@kfa-inc.com](mailto:kfainc@kfa-inc.com)

**Get it done. Keep it going.**

## **Sabo & Zahn**

Attorneys at Law

**Werner Sabo, FAIA**

**James Zahn, AIA**

Copyrights for architectural works  
litigation, arbitration, contracts, real estate  
construction attorneys

8620 Sears Tower  
Chicago, IL 60606

**(312) 655-8620**  
fax: (312) 655-8622

<http://www.sabozahn.com>

Division 7

## **Architectural Representative**

**630.668.1551**  
*Telephone*



**630.668.1672**  
*Facsimile*

Representing Manufacturers of Quality Construction Materials Since 1977

### Koppers Industries

#### *Coal Tar Built Up Roofing Systems*

- Fume Recovery System—FRS 6000
- Proven Materials
- Quality Manufacturer
- Warranty

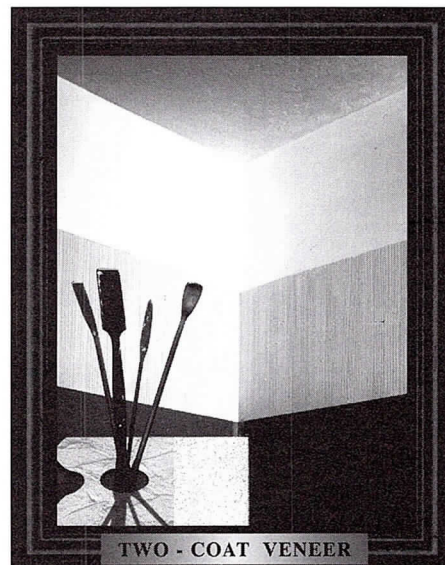
### Ludowici Roof Tile

#### *Clay Roof Tile Systems*

- Historic Preservation
- Proven Materials
- Quality Manufacturer
- Fine Home Construction

*Long-term, Effective Solutions to  
Your Roofing Needs*

# **The Art of Plastering**



Spectacular walls.

Smooth...Textured...

Done the way you want them.  
Hard and durable surfaces that  
make paint and paper look  
better, make redecorating  
easier, make homes quieter.

**Plaster interiors are  
more cost-effective than  
you think.**

*Call us for more informaton.*



Chicago Plastering Institute  
6547 N. Avondale Ave.  
Chicago, Illinois 60631  
773.774.4500  
Fax. 773.774.5828



**4 Chicago Architecture Foundation.** The Clean Sweep: Urban Planning in Chicago During the Atomic Age. 6:30 to 8:30 p.m.; 224 S. Michigan Ave. Cost: \$15/CAF members; \$25 non-members. Information: 312/922-3432 ext. 220.

**10 Corporate Architects.** Monthly meeting. 6:00 p.m.; AIA Chicago.

**11 Chicago Plan Commission.** Monthly Public Hearing. 1:00 p.m.; City Hall, 121 N. LaSalle, 2nd floor. Information: 312/744-6504.

**Architecture for Health PIA.** Tour: Hope Children's Hospital of Christ Medical Center. 5:30 p.m.; 4440 W. 95th St., Oak Lawn. 2 LUs (HSW)

**12 Historic Resources PIA.** Bauer Latoza Studio. 5:30 p.m.; 1006 S. Michigan Ave., #602. 2 LUs (HSW)

**13 AIA Chicago.** Contract Documents Forum: The New A201 and B141. 8:00 a.m. to 5:00 p.m.; The Merchandise Mart. Costs: \$60 for AIA members; \$95 for non-members. 14 LUs (HSW)

**18 Architectural Woodwork Institute.** 7th Annual Architectural Panel Discussion. 5:00 p.m. (registration); 6:00 p.m. (dinner discussion); Como Inn, 546 N. Milwaukee Ave. Reservations: Tracey Leigh, 630/790-2219.

**19 AIA Chicago.** Changes at the Building Department. 8:00 to 10:00 a.m.; City Hall, 121 N. LaSalle St., 2nd floor. Cost: \$5, includes breakfast.

**Planning and Urban Affairs PIA.** Metra Commuter Station Rehabilitation Partnership: Glenview Station. 6:00 p.m.; Chicago Cultural Center, 78 E. Randolph St. 3 LUs

**20 The Art Institute of Chicago.** Japan 2000: Architecture for the Japanese Public. 5:30 p.m. exhibit opening in the Kisho Kurokawa Gallery; 6:30 p.m. lecture by Pritzker Prize winner Fumihiko Maki in the Fullerton Auditorium. Information: 312/443-4751.

**26 Technical Issues PIA.** Life Safety or Security? How to Achieve Both. 12:00 noon; Chicago Bar Association, 321 S. Plymouth Court. 2 LUs (HSW)

## AIA Chicago



A Chapter of The  
American Institute of Architects  
222 Merchandise Mart Plaza  
Suite 1049  
Chicago, Illinois 60654  
312/670-7770  
312/670-2422 (fax)  
aiachgo@mcs.com  
www.aiachicago.org

Periodical