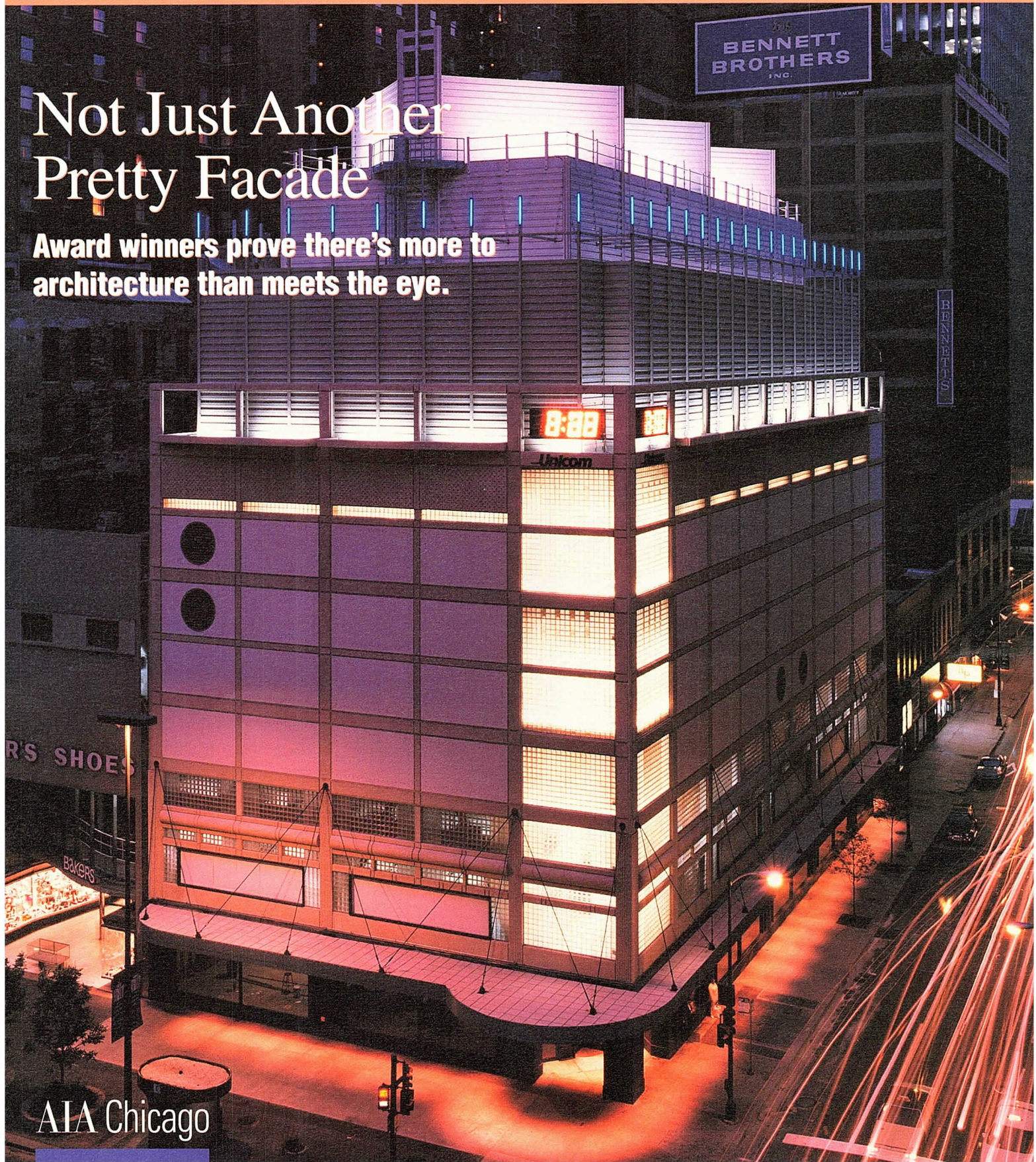


Focus Architecture Chicago

SPECIAL EDITION

Not Just Another Pretty Facade

Award winners prove there's more to architecture than meets the eye.



AIA Chicago

Petersen Aluminum Corporation

1005 Tonne Road • Elk Grove Village, IL 60007
1-800-PAC-CLAD • FAX: 1-800-722-7150 or
1-847-722-7150

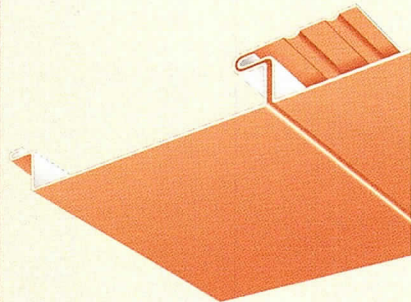
Other Plant Locations:
Annapolis Junction, MD: 1-800-344-1400
Tyler, TX: 1-800-441-8661

PAC-CLAD® Flush Panels for soffit & fascia applications

PAC-CLAD Flush Panels have been designed for wall, fascia and soffit applications where a flush or flat appearance is desired. Our Flush Panels are formed on precision roll-forming equipment that includes in-line Herr Voss corrective levelers. Corrective leveling works to remove typical metal conditions including "oil-canning", coil set and edge wave. The result is a panel that exhibits **superior flatness**. A rounded interlock leg acts to improve the flush appearance while adding torsional strength.

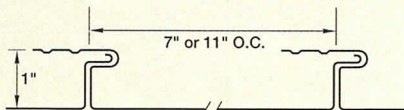
The Capitol City Airport in Lansing, Michigan, designed by Greiner Inc., included more than 50,000 square feet of PAC-CLAD Flush Panels installed as soffit. The Rubenzer residence designed by Bruce Lehrer, Architect, is an example of our panel used in a wall panel application.

For more information regarding the wide variety of PAC-CLAD Flush Panels, please contact Petersen Aluminum Corporation, **1-800-PAC-CLAD**.



Flush Panel

7" or 11" O.C. .032 aluminum
1" high 22 gauge steel
 24 gauge steel



Features

- Herr-Voss corrective leveled
- Rounded interlock leg provides improved flush fit
- 1-1/2" reveal profile available
- Available with up to 3 stiffener beads
- PAC-CLAD finish
- 20-year non-prorated finish warranty
- 25 standard colors (24 ga. steel)
- NEW** • 10 standard colors (22 ga. steel)
- 16 standard colors (.032 aluminum)



*The Capital City Airport
Lansing, MI
Architect: Greiner, Inc.
Roofing Contractor: Metal Building
Specialties
Color: Sandstone
Profile: Flush Panel*

*Rubenzer Residence
Prior Lake, MN
Architect: Bruce Lehrer Architect
Roofing Contractor: D.H. Nygren/
Specialty Systems
Color: Stone White
Profile: Flush Panel*

Focus Architecture Chicago

Special Edition, October 1996

Editor

Susan Nelson

Focus Advisory Board

William Bradford, AIA
 Randall Deutsch, AIA
 Peter Exley, AIA
 Joan Pomaranc
 W. Stephen Saunders, AIA
 Merritt Seymour, IDSA, CMG
 Alice Sinkevitch
 John Syvertsen, AIA

Except where noted, the opinions expressed in Focus Architecture Chicago reflect those of the author only and do not reflect or represent the position of AIA Chicago or the American Institute of Architects. Advertising of products and services appearing in Focus Architecture Chicago does not constitute endorsement by AIA Chicago or the American Institute of Architects.

Focus Architecture Chicago is published twice a year by AIA Chicago, 222 Merchandise Mart Plaza, Suite 1049, Chicago, IL 60654; 312/670-7770, (fax) 312/670-2422, (home page) <http://www.aiachicago.org>. It is a special edition of the Chapter's newsletter, Focus (ISSN 1071-3700).

For advertising rates and schedules, call 312/670-7770 ext. 24.

© 1996 The American Institute of Architects Chicago. All rights reserved. Reproduction in whole or part without permission is strictly prohibited.

4

President's Letter

6

Focal Point

Map offers self-guided tour of new projects.

8

Cover Story

Award winners prove there's more to architecture than meets the eye.

15

Feature

Underage landmarks fight their way to the top.

17

Bookshelf

New monograph uncovers one architect's bounty.

19

Technique

Architect and developer make a restorative pairing.

26

Index

AIA Chicago



A Chapter of The American Institute of Architects

1996 Board of Directors

President

John Syvertsen, AIA

President-Elect

W. Stephen Saunders, AIA

Vice Presidents

Deborah Doyle, AIA
 T. Gunny Harboe, AIA

Secretary

Arthur Salzman, AIA

Treasurer

James Jankowski, AIA

Directors-at-Large

Hill Burgess, AIA
 Doug Garofalo, AIA
 Christopher Lee, AIA
 Michael Nardini, AIA
 Harold Olin, FAIA

Directors

Through December 1996

Raymond Clark, AIA
 Jonathan Fischel, AIA
 Thomas Fridstein, FAIA
 Leonard Koroski, AIA
 William Latoza, AIA
 Mimi Slogar, AIA
 Constantine Vasilios, AIA
 William Worn, AIA
 Thomas Zurowski, AIA

Past President

William Bradford, AIA

Associate Director

Lee Waldrep, Ph.D.

Professional Affiliate Director

Merritt Seymour, IDSA, CMG

AIA Illinois Directors

Kenneth Crocco, AIA
 Dirk Danker, AIA
 Richard Fencil, AIA
 Holly Gerberding, AIA
 Janet Hahn-Lougee, AIA
 Leonard Peterson, FAIA

AIA Illinois Alternates

Thomas Braham, AIA
 Kevin Hall, AIA
 Linda Searl, FAIA

Regional Director

Gaines Hall, FAIA

Chapter Staff

Executive Director

Alice Sinkevitch

Membership Coordinator/Assistant to the Director

Mark Crossley

Program Director

Joan Pomaranc

Focus Editor

Susan Nelson

Financial Manager

Crystal Gagler

Public Information Receptionist

Margie McArdle Smith

Documents/Office Assistant

Armando Tobias

Cover photo: Unicom Thermal Technologies, Inc. designed by Eckenhoff Saunders Architects Inc. and photographed by Anthony May

AIA Chicago Announces Winners of the 1996 Design Excellence Awards



With this issue of *Focus: Architecture Chicago*, we celebrate the accomplishments of local architects.

For these pages feature the winners of the Design Excellence Awards, a program sponsored by the Chicago chapter of the American Institute of Architects for more than 40 years.

The Design Excellence Awards are significant for many reasons, yet one stands out above all others: Chicago is a center of architecture and architectural study. Not only do thousands upon thousands of people visit our city year to see our sites, Chicago architects are some of the busiest in the world. Our architects are creating structures in every corner of the globe—the U.S., Europe, the Far East and Latin America to name a few. By recognizing their work, we hope to establish a standard of excellence and to inform the public about the scope and merit of architectural practice.

Given the vicissitude of work by Chicago architects, readers should not be surprised that the 1996 award winners have but one thing in common: Excellence. The winning entries,

representing only a small number of the total submitted for consideration, are a cross-section of building types, project sizes and construction budgets. They were selected by nationally recognized architects. Design Excellence Awards were given in four categories—Distinguished Building, Interior Architecture, Unbuilt Design, and Twenty-five Years. In addition to architecture firms, the Design Excellence Awards recognize the many individuals associated with a project, including clients, contractors, and consultants.

For a complete catalog of entries to the 1996 Design Excellence Awards, visit our web site at www.aiachicago.org.

John Syvertsen, AIA
President

P.S. The Design Excellence Awards were presented on Friday, October 4 in the Grand Ballroom of Hotel Nikko. Many organizations made the event possible, and AIA Chicago would like to thank them for their support.

Sponsors

SAFECO/PIMCO
USG Corp. and Family of Companies

Benefactors

Brininstool + Lynch Ltd.
Perkins & Will
Ullman & Fill Architects Ltd.

Patrons

Booth/Hansen & Associates Ltd.
Daniel P. Coffey & Associates Ltd.
Decker Legge Kemp Architecture Inc.
Development Resources Inc.
Eckenhoff Saunders Architects Inc.
Euclid Insurance Agency Inc.
Eva Maddox Associates Inc.
Hancock & Hancock Inc.
Harry Weese Associates
Interior Alterations Inc.
International Masonry Institute
Interprise
Kajima Associates Inc.
LaSalle Construction Ltd.
Lieber Architects Inc.
Loebl Schlossman & Hackl/Hague Richards
McClier Corp.
McGuire Engineering PC
Mohawk Commercial Carpet
Pepper Construction Co.
Ross Barney + Jankowski Inc.
Tigerman McCurry Architects Ltd.
Turner Construction Co., Special Projects Division
UBM Inc.
Valerio Dewalt Train Associates Inc.
VOA Associates Inc.
W. E. O'Neil Construction Co.

ARCHITEMPS, INC.®

ARCHITEMPS, INC.® -- the Architectural & Interior Design staffing specialists, serving greater metropolitan Chicago since 1986.

Quality staffing, service and solutions:

- Design/Production Drafters
- Facility Planners
- CAD Architects/Interior Designers
- Project Managers

Architectural, interior design and facility planning personnel on a per-project basis. Customized employee leasing and permanent conversion available.

Call today for more information or a personal consultation.

ARCHITEMPS, INC.®
1050 North State Street
Chicago, Illinois 60610.1043
Tel: 312.649.0912
Fax: 312.649.1667



Botti Studio of Architectural Arts, Inc.

919 Grove St., Evanston, IL 60201
847/869-5933 • Fax 847/869-5996
800/524-7211 • Botti@ix.netcom.com

DESIGNERS/FABRICATORS • STAINED AND FACED GLASS • BEVELED GLASS • SANDBLASTED • STAINED GLASS RESTORATION/CONSERVATION • PROTECTIVE GLAZING • WOOD/METAL FRAME RESTORATION
SCULPTURE • BRONZE • METAL • MARBLE • MOSAIC
INTERIOR RENOVATION • WOODWORK • MURALS
PAINTING & DECORATING • CUSTOM SANCTUARY FURNISHINGS • STAINED GLASS CONSULTANTS TO ARCHITECTS & CHURCHES

Field Representatives Nationwide

Studios: San Diego • Chicago • Sarasota
619/753-0705 • 847/869-5933 • 941/951-0978

**"Last week the job market got more competitive. Twelve professionals learned CAD at The CFA/CADD TRAINING CENTER.™
Now it's your turn to catch up."**

Why Consulting For Architects for CAD training?

Exceptional Learning Environment

- **Small Class Size:** An average of 4 students per class in an intimate learning environment • Taught by state-licensed instructors • Curriculum supports design and construction professionals including architects, engineers, interior designers and the building trades.
- **Multiple Software Packages and Platforms Taught:** AutoCAD, AutoVision, 3D Studio, form Z, Microstation, DataCAD, MiniCAD, ARCH-T, AutoArchitect, and many others • DOS, WINDOWS 95, and MAC.
- **Flexible Schedule and Locations:** Morning, afternoon, evening, and weekend sessions at your office or our convenient state-of-the-art downtown classroom facility - close to work, accessible by car and "L" • Our facility is handicapped accessible.
- **Customized Training:** Our instructors are all current practitioners • Hands-on curriculum based exclusively on professional practice methods • Optional training by the hour.
- **Accelerated Instruction:** No need to wait one year or even one semester to become more marketable • Learn basic CAD in twenty hours • One to five week programs available • A full range of intermediate, advanced and management level courses are offered as well.
- **Three Months Free Lab Time:** Each class includes practice time in our completely updated computer lab • Reinforce what you have learned, or prepare a project for a job interview.

Superb Educational Credentials

- **Autodesk Premier Training Center:** As the producer of AutoCAD, the world leader in computer-aided design software, Autodesk Training Centers maintain the most rigorous and comprehensive educational programs; providing training of the highest quality for the widest range of professionals within the design industry.
- **Licensed by the Illinois State Board of Education:** The CFA/CADD Training Center™ is fully accredited as a private school. Our facilities and instructors must comply with strict standards of excellence, audited and monitored on an annual basis.
- **AIA/CES Provider:** Our program meets American Institute of Architects Continuing Education System Quality Level 3 criteria. Participants earn 60 LU's (learning units) for each 20-hour course.

Convenient Downtown Chicago Location:
We are located next to AIA Chicago

The Merchandise Mart
Suite 1049A
Chicago, IL 60654

tel (312) 822-0338
toll free (800) 599-8882
fax (312) 822-0342

Curriculum developed with
The Boston Society
of Architects



 **Autodesk**
Premier Training Center



VISA, MasterCard, American Express & Discover accepted. Catalog available.

**Call The CFA/CADD TRAINING CENTER™
at 312-822-0338 to reserve your classes now. Ask for Harry Lane.**

See for Yourself

by Susan Nelson

Architecture has been likened to sculpture, music and good neighbors—all things that are better to experience than simply to observe. Although some of the designs profiled in this issue of *Focus: Architecture Chicago* are private offices and residences built in other parts of the country, many are not. In fact, readers can tour most of the local award-winning projects in an afternoon or choose one to witness firsthand on a lunch hour.

So, we invite you, with map in hand, to explore some of Chicago's best new architecture.

Susan Nelson is editor of Focus: Architecture Chicago. Mark Hinchman, AIA contributed to this feature.



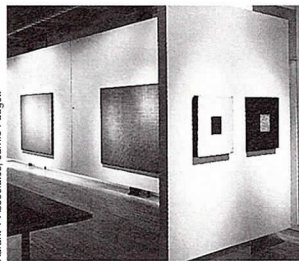
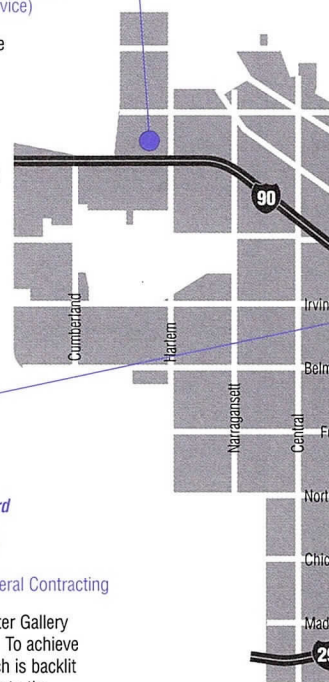
Bronze Van Imwegen

Resurrection Medical Center Cafeteria
7435 W. Talcott Ave.

Interior Architecture — Special Recognition

Architect — Loeb Schlossman & Hack/Hague Richards
Client/Owner — Resurrection Health Care Corp.
General Contractor — Power Contracting and Engineering Corp.
Consultants — Robert G. Burkhardt and Associates (Mechanical), Dickerson Engineering Inc. (Electrical), Janows Design Associates Inc. (Food Service)

As part of an ambitious modernization program, Loeb Schlossman & Hack/Hague Richards renovated this 112,650-square-foot cafeteria, enhancing its operating efficiency and creating a non-institutional restaurant atmosphere. The dining area was expanded into an adjacent under-utilized conference room. Intimate seating groups took the place of large tables, and the 1960s decor was replaced with a Mediterranean palette of blues, greens and light woods. The servery was totally renovated and expanded to almost three times its original size. What had been an overcrowded, nondescript space with an ineffective servery has been transformed into a visually vivid, enticing and meaningful setting that operates efficiently.



Karant + Associates, Jamie Padgett

Perimeter Gallery
210 W. Superior St.

Interior Architecture — Honor Award

Architect — Brininstool + Lynch Ltd.
Client/Owner — Perimeter Gallery
General Contractor — Goldberg General Contracting

For architects at Brininstool + Lynch Ltd., the foremost design goal for the Perimeter Gallery was to produce a space in which art could be viewed in the best possible context. To achieve this goal, the architects designed an angled wall seven inches above the floor which is backlit with incandescent lighting. It creates a greater sense of width and draws visitors into the space. The position of soffits, a reception desk and partition walls link individual spaces. The interplay of light and depth encourages a sense of anticipation.

Unicom Thermal Technologies
State and Adams Streets — see page 9



Karant + Associates, Barbara Karant

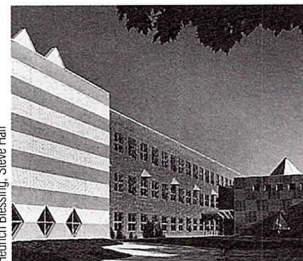
Karl Friedrich Schinkel 1781-1841: The Drama of Architecture
The Art Institute of Chicago, Adams Street at Michigan Avenue

Interior Architecture — Citation of Merit

Architect — Tigerman McCurry Architects Ltd.
Client/Owner — The Art Institute of Chicago
General Contractor — Chicago Scenic Studios Inc.

Although people around the world think of the Art Institute of Chicago when they consider great works of art, many do not think of the museum for innovative architecture. However, installations for special exhibits often are impressive examples of interior architecture. Take the recent exhibition of the work of architect Karl Friedrich Schinkel. Tigerman McCurry Architects Ltd. drew on Schinkel's love of theater as much as his love of architecture to style a dramatic exhibit installation. High drama was achieved through the use of flattened classicism (in this case, literally painted on the gallery walls) which created an appropriately theatrical milieu for Schinkel's original drawings and opera-set renderings. This fall, the design of Chicago-based architect, Helmut Jahn, FAIA, will show another important architectural exhibition at the Art Institute. "Building for Air Travel," which examines architecture and design for commercial aviation, opens October 19.

DePaul Center
State and Jackson Streets — see page 10



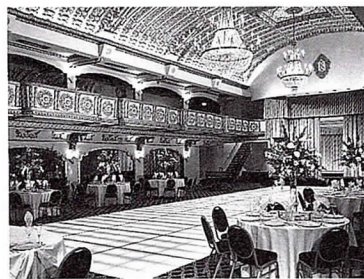
Hedrich Blessing, Steve Hall

Cesar Chavez Multicultural Academic Center
4747 S. Marshfield Ave.

Distinguished Building — Special Recognition

Architect — Ross Barney + Jankowski Inc.
Client/Owner — Chicago Public Schools
General Contractor — UBM Inc.
Consulting Engineer — Beling Consultants

This 58,000-square-foot public school serves Chicago's gritty, gang-infested Back-of-the-Yards neighborhood. The site is extremely small and narrow. To avoid an alley-like environment and maximize the area available for play space, the firm of Ross Barney + Jankowski, Inc. designed a three-story, single-loaded linear building that hugs one perimeter of the site. As a result, all classrooms face the front yard, which also allows for supervision of the grounds from the building. A lighted pyramid apex acts as a beacon to the community. In the three-story structure, the basic scheme for all classrooms is natural wood and white walls so spaces become a personal canvas for students and teachers. The exuberant colors, textures and forms convey excitement about education. This school serves its clients, the students and teachers of Chicago, but also the community of which it is a vital part.



Don Dubroff Photography

Knickerbocker Hotel
 163 E. Walton St.
Interior Architecture — Citation of Merit
 Architect — Teng & Associates Inc.
 Client/Owner — OCWEN Financial Corp.
 General Contractor — Capitol Construction

This vintage 1927 Gold Coast hotel required an extensive renovation of both its exterior and interior. A futuristic spaceship-like canopy, an abomination of taste dating from the 1970s, hid the original two-story ornamental steel windows and deprived the lobby of natural light. Therefore, the firm of Teng & Associates Inc. removed the canopy and faux marble panels, repaired the limestone facade, and installed a new canopy that respects the hotel's historical period. In the Grand Ballroom, the plaster ceiling and unusual illuminated dance floor were restored; however, the original lobby could not be reconstructed since most of the original ornament was obliterated during the 1973 remodeling. Instead, stainless steel, glass, granite and limestone were combined with simple details to clearly separate the old from the new.

Seventeenth Church of Christ, Scientist
 Wacker Drive at Wabash Avenue — see page 15

Doug Snower Photography



Navy Pier Reconstruction
 Grand Avenue at Lake Michigan
Distinguished Building — Special Recognition

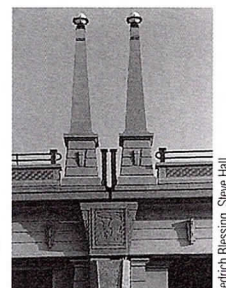
Design Architect /Architect of Record — VOA Associates Inc.
 Design Architect — Benjamin Thompson & Associates Inc.
 Client/Owner — Metropolitan Pier and Exposition Authority
 General Contractor — Schal Bovis Inc.
 Engineering Management — Consoer Townsend Envirodyne Engineers Inc.

Where once stood a decaying, under-utilized wharf disconnected from the lakefront park system, now stands a 1.1 million-square-foot waterfront public amenity. By devising an entirely new infrastructure for the 3,000-foot-long Navy Pier, VOA Associates Inc. created a structure that gives pedestrians a manageable, recognizable sense of scale and place. A Family Pavilion—with an IMAX theater and the Chicago Children's Museum—anchors the west end of the Pier. A park complete with a Ferris wheel and carousel leads to a 230,000-square-foot convention center. The historic Grand Ballroom anchors the east end of the Pier.

Reliance Building Exterior Renovation
 32 N. State St. — see page 19

Roosevelt Road Reconstruction
 Grant Park to the Chicago River
Distinguished Building — Special Recognition

Architect — Decker Legge Kemp Architecture Inc.
 Client/Owner — Chicago Department of Transportation
 General Contractor — F.H. Paschen Inc.
 Consulting Engineer — CTE Engineers Inc./MAI



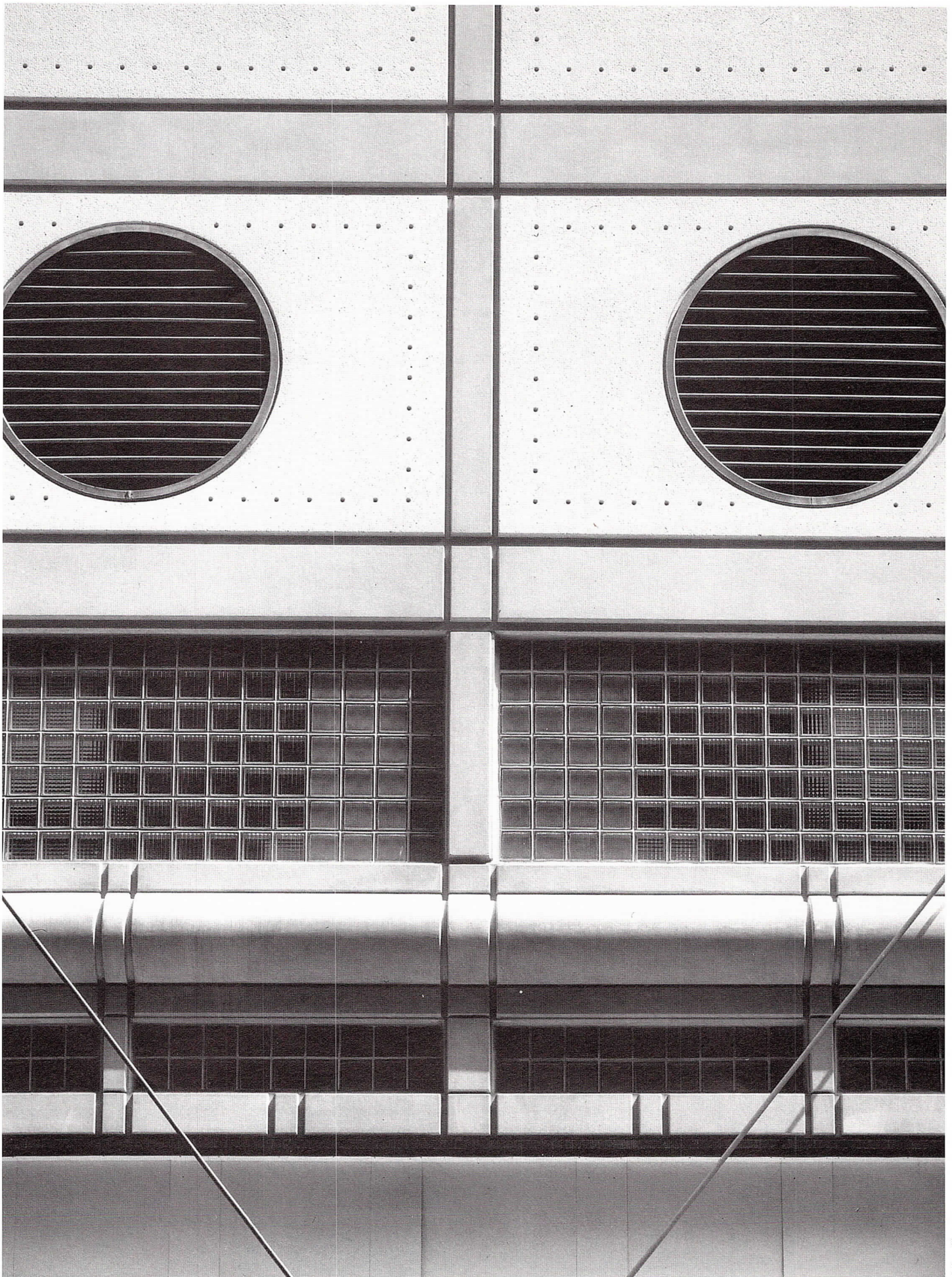
Hedrich Blessing, Sieve Hall

A crumbling elevated roadway from Grant Park to the Chicago River was to be replaced. Simple enough. But what resulted was anything but ordinary. Decker Legge Kemp Architecture Inc.'s reconstruction of Roosevelt Road pays homage to the aesthetics of the 1909 Burnham Plan of Chicago while pushing beyond its civic boundaries to embrace residential and commercial activities. Much of the roadway was lowered so that more of its streetscape was closer to retailers and housing. The art program includes castings of historic stone sculptures that are of local significance. This project addresses Chicago's urban scale with details that are specific to this unique neighborhood.

Student Success Center at Chicago State University
 Martin Luther King Drive and 95th Street — see page 10



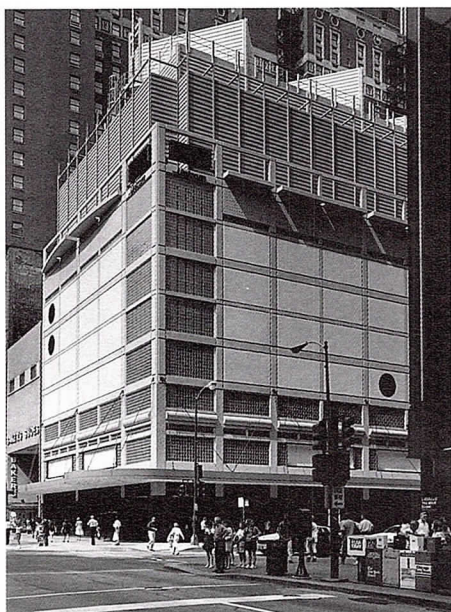
Map by Dennis McClendon, Chicago CartoGraphics



Not Just Another Pretty Facade

Judges Consider Many Factors in Selecting Award-winning Architecture

by Laurie McGovern Petersen



Anthony May

Unicom Thermal Technologies: State/Adams Plant
Chicago, Illinois

Distinguished Building — Honor Award

Architect — Eckenhoff Saunders Architects Inc.
Client/Owner — Unicom Thermal Technologies
Developer — JPS Interests
General Contractor — Pepper Construction Co.
Consulting Engineer — Thornton Tomasetti-Cohen Barreto Marchertas, Environmental Systems Design Inc. (MEP)

What does a five-story ice-making plant have in common with a remodeled church basement? They both are among this year's winners of AIA Chicago's design awards program. If you think that architecture competitions are like beauty pageants, with lip service paid to brains and talent but the final decision based only on looks, the results of the 1996 Design Excellence Awards should convince you otherwise.

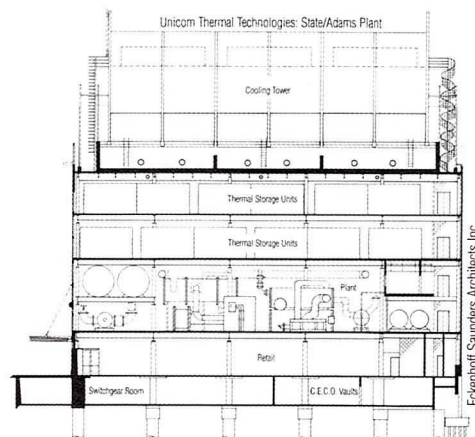
The jury for each award category looked beyond the glamorous images to ask some key questions of the projects, from their impact on the community to the consistency of their design and details. What were the challenges the architect had to overcome? Does the building or interior express its purpose and project the image sought by the client? What is it like to walk past this building or to work every day in this office? The winners are those projects that go above and beyond expectations, that not only meet but exceed the clients' goals, and show evidence of top-flight creative thinking.

Strength of Character

A high-visibility site would seem to be the last thing an architect would wish for when the commission involves an industrial facility, especially one that is essentially a giant ice-maker. **Unicom's** district cooling plant at the corner of State and Adams streets uses non-CFC based refrigerants to supply chilled water from ice melt to downtown buildings via a network of subterranean pipes.

The challenge facing Eckenhoff Saunders Architects Inc. was to house all the equipment—gargantuan ice tanks, chillers, cooling towers—in a structure that would fit into State Street's historic retail context. Avoiding the temptation to simply wallpaper a big blank box, the architects express the structural frame and division of interior spaces with a grid of precast concrete panels. At the corner,

Continued on page 10



Pretty Facade

Continued from page 9



Stenkamp-Ballogg, James Stenkamp

DePaul Center
Chicago, Illinois

Distinguished Building — Citation of Merit

Architect — Daniel P. Coffey & Associates Ltd.
Client/Owner — DePaul University
General Contractor — W.E. O'Neil Construction Co.
Consulting Engineers — Globetrotters Engineering Inc.
with Don Belford (Structural), WMA Consulting Engineers
Ltd. (Mechanical), Teng & Associates Inc. (Electrical)

panels are of glass block and the pedestrian canopy flares outward, recalling the curving corner entry and tower of Louis Sullivan's nearby Carson Pirie Scott store. The ground floor features retail space with large display windows. On the upper level, fiberglass walls mask cooling towers and act as a crown to the facade. At night, the glass block glows and a ring of blue lights at the top signifies the ice-making within.

The jury loved everything about the Unicom project, from its obvious civic merit to the details of the blue lights. One of them noted admiringly that the top is overtly industrial but also steps back gracefully and "does what the top of building is supposed to do." The first of six cooling plants planned for downtown, the building sets a high standard for those that will follow.

Just a block south of the Unicom plant is another success story. In a superb example of adaptive reuse, Daniel P. Coffey & Associates Ltd. converted the long-vacant Goldblatt's department store into the centerpiece of **DePaul University's** Loop campus. The jury applauded its value as a civic presence, and admired the treatment of the north side, where an unattractive two-story building was demolished to create a plaza. The north facade is all new, with an inventive cornice that echoes the original. The south and west facades were carefully restored with over 1,000 new pieces of terra cotta, and the roof was



Hedrich Blessing, Steve Hall

Student Success Center — Chicago State University
Chicago, Illinois

Interior Architecture — Honor Award

Interior Architect — Eva Maddox Associates Inc.
Exterior Architect — Harry Weese Associates
Associate Architect — Johnson & Lee Ltd.
Client/Owner — Chicago State University
General Contractor — Morse Diesel International, UBM Inc.
Consulting Engineers — Galloway Ltd. (MEP), Rubinson & Mesia Engineers (Structural)

redone to include skylights and a terrace. The interior, which was gutted, now features a central atrium with a block-long mahogany storefront. This retail space enlivens the streetscape and restores the building to its rightful place on State Street.

Another urban challenge to the architect is the commuter campus, an institution that needs a spiritual center where members of its scattered population can come together. **Chicago State University** had no such building even though its South Side campus serves 9,000 students. The goals of the new Student Success Center were to improve campus life by creating a central gathering place where students could interact with each other as well as faculty and the larger community. It also needed to make a significant design statement to improve the campus image yet be easy to maintain, energy efficient, and completed on a modest budget. Most ambitiously, it was to help establish a sense of pride in the students.

Eva Maddox Associates' award-winning interior architecture evokes the culture and history of the student body, which is predominantly African-American. Through research and interviews with the students and faculty, the design team identified elements of African visual culture that remain constant through the centuries: texture, color and pattern. The key ceremonial space is the rotunda, where perforations in the brick wall create a beautiful texture and improve the acoustics of the large space.



Old St. Patrick's Church Hall
Chicago, Illinois

Interior Architecture — Citation of Merit

Architect — Booth/Hansen & Associates Ltd.
Client/Owner — Old St. Patrick's Church
General Contractor — Turner Construction Co.,
Special Projects Division
Consulting Engineer — McGuire Engineers

Hedrich Blessing, Jon Miller

The terrazzo floor is inlaid with colorful West African adinkra symbols that are at the heart of the project's design. Each symbol carries a specific meaning such as wisdom, fortitude or valor, and often has an associated proverb or story. The symbols are used at large scale in the dining areas to create dividing screens. The images are also carried into upholstery and tack board fabric, but their inclusion in such durable materials as terrazzo flooring and metal screens ensures their lasting quality in the building.

Creating a memorable interior was also the goal of the lower-level renovation of **Old St. Patrick's Church**. Church basements are typically rather dreary places, and St. Patrick's presented the additional challenge of a sea of supporting columns that seemed to preclude the kind of light, airy space desired by the congregation. Architects Booth/Hansen & Associates Ltd. ingeniously turned a liability into an asset by devising a ceiling system of cast plaster vaults that seem to spring from the columns, recalling the arches of Gothic cathedrals. Light-colored floors and walls enhance the spacious feeling.

Sometimes the societal implications of a change in image are so important that an architectural project merits special recognition. The **Jane Addams Hull House Association** is a not-for-profit agency that helps teenagers make the transition from dependency on state

programs to independent, productive living. The design challenge faced by the Interprise firm was to produce an exciting, professional environment on a shoestring budget. Brightly colored vinyl floor patterns and matching accent walls enliven key areas and transition points. Vibrant colors emphasize angled and curved walls that have been placed for maximum impact.

Inner Beauty

Glamorous lobbies, lavish private offices, windows framing million-dollar views... What's a jury to do? They consider the client, first of all. Does the space seem suitable for their needs? Does it strongly project a unique image for the organization? What about the bulk of the office space, where the majority of employees spend most of their time—are those pleasant spaces in which to work? Are the quality and attention to detail consistently high throughout the project? Last, but definitely not least, what were the challenges posed by the project? An unusually small budget or particularly stringent functional requirements were key factors in final selection. The award-winning offices represent a variety of project types and design approaches, but each one projects a clear and consistent image of the client who commissioned it.

The office of **Rodman & Renshaw Inc.** occupies a full floor of the Sears Tower. Lieber Architects Inc. designed a curving wall in the reception area that

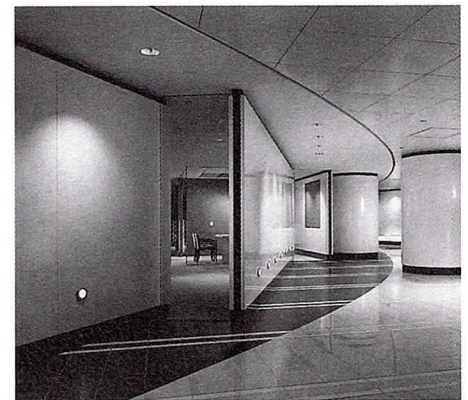


David Clifton

Jane Addams Hull House Association — New Directions Facility
Chicago, Illinois

Interior Architecture — Special Recognition

Architect — Interprise
Client/Owner — Jane Addams Hull House Association
General Contractor — Interior Alterations



Korab/Hedrich Blessing, Marco Lorenzetti

Rodman & Renshaw Inc.
Chicago, Illinois

Interior Architecture — Honor Award

Architect — Lieber Architects Inc.
Client/Owner — Rodman & Renshaw Inc.
General Contractor — Turner Construction Co.,
Special Projects Division

Continued on page 12

Pretty Facade
Continued from page 11

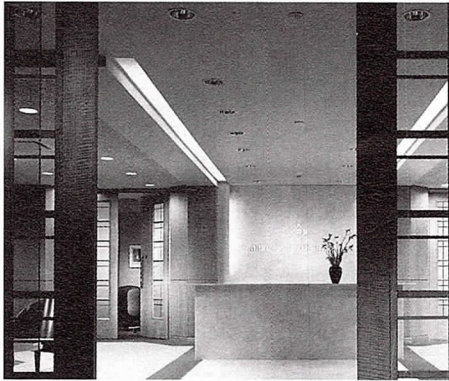
Amerin Guaranty Corp.
Chicago, Illinois

Interior Architecture — Honor Award

Architect — Gary Lee & Partners
Client/Owner — Amerin Guaranty Corp.
General Contractor — LaSalle Construction



Korab/Hedrick Blessing, Marco Lorenzetti



Don DuBroff Photography

Mitsui & Co. (USA)
Chicago, Illinois

Interior Architecture — Honor Award

Architect — Kajima Associates Inc.
Client/Owner — Mitsui & Co. (USA)
General Contractor — Kajima Construction Services Inc.
Consulting Engineer — Kroeschell Engineering

creates an element of surprise within the grid of the building layout and conveys the dynamic quality sought by the client. Nine, five-foot-wide glass panels pivot to allow the conference and reception areas to be used as a single space for large gatherings. The jury greatly admired the inventiveness of this space, and liked the additional harmony created by the floor and ceiling patterns. Although these public areas obviously had a higher budget than the back-office space, the design quality was maintained throughout.

Chicago's Amoco Building houses two elegant and distinctive award winners. The office of **Mitsui & Co.**, designed by Kajima Associates Inc.,

reflects both the company's Japanese heritage and its global market. The serene lobby has automatic sliding doors inspired by traditional shoji screens and relief-carved glass panels depicting the world's six major continents. **Amerin Guaranty's** offices feature a beautiful palette of natural wood and exposed aluminum that is enhanced by the combination of natural and indirect lighting. Custom workstations and private offices are elegant and simple; one juror commented of a small office, "it's pared down, but it has everything." Gary Lee & Partners were responsible for the design.

The ultra-conservative image of most insurance companies is nowhere to be

Unbuilt Design Awards Exemplify the Power of Unrealized Visions

by Laurie McGovern Petersen

Architects are known for the buildings they create, but there is another, hidden aspect to their practice. The Unbuilt Design Awards honor the unsung heroes of an architect's practice, projects that explore new ideas and directions that may surface in

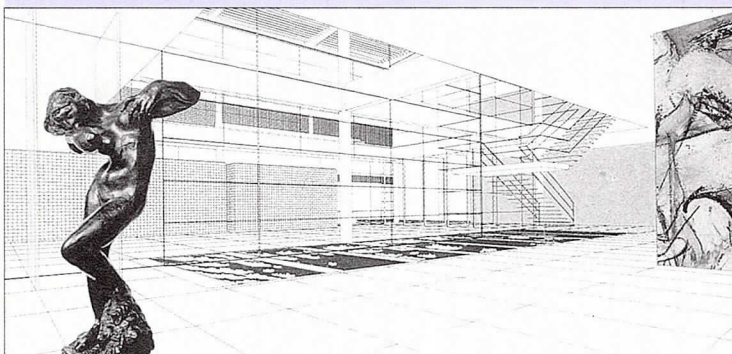
other work. These awards recognize projects that are frozen in time on the drawing board, at stages that vary from conceptual proposals to completed construction documents.

An Unbuilt Design Award is often a bittersweet prize.

The three winning entries are representative of the range of such work: a submission for a design competition; a house which the client decided not to

build; and an advocacy project that is meant to generate discussion and lead to civic action.

In the case of the **Arts Club**, a submission not selected during a competition, Krueck & Sexton Architects' continues to carry forward the modernism of Ludwig Mies van der Rohe. The two floors of the club are integrated into a whole through extensive use of glass and open spaces, creating a vertical dialog that enriches the Miesian tradition of horizontal space. There is also an integration of indoors and outdoors, with a reflecting pool extending from the lobby to the sculpture garden at the heart of the building.



Krueck & Sexton Architects

The Arts Club of Chicago
Chicago, Illinois

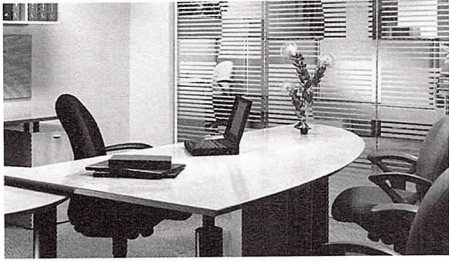
Unbuilt Design — Honor Award

Architect — Krueck & Sexton Architects
Associated Architect — McClier Corp.
Client/Owner — The Arts Club of Chicago

Deming Street Residence
Chicago, Illinois

Unbuilt Design — Certificate of Merit

Architect — Ullman & Fill Architects Ltd.
Client/Owner — name withheld
Contractor — Blackmore Construction
Consulting Engineer — S.P. Asrow Associates



Coregis Corp.
Chicago, Illinois
Interior Architecture — Honor Award
Architect — VOA Associates Inc.
Client/Owner — Coregis Corp.
General Contractor — LaSalle Construction

found in the offices of **Coregis Corp.**, designed by VOA Associates Inc. The jurors were delighted by the whimsical quality of the design, carried out in the rugs, lighting and especially the furniture. The color scheme, scale and attention to detail also received praise.

Most architects face a special challenge in designing for that most demanding of all clients, themselves. The best possible design on the lowest feasible budget is the goal, and this year the firm of **Ross Barney + Jankowski Inc.** received an award for their success in this daunting task. Jurors praised the lighting, the materials (many of which were creative substitutes for costly finishes),

and the way walls and partitions were arranged to create views through the space. The office makes the most of its location in the Inland Steel Building, a classic of Modern architecture that offers narrow, column-free floors offset from the elevator core structure. Since the office space occupies most of the floor but does not extend to the elevator lobby, a diagonal wall was built to extend from the office entrance to the main conference room. This wall provides an identifiable entrance that directs visitors into the office and gives them views through the width of the building. There are few partitions in the main office space, emphasizing the lack of interior columns.

Continued on page 20



Office of Ross Barney + Jankowski Inc.
Chicago, Illinois
Interior Architecture — Honor Award
Architect — Ross Barney + Jankowski Inc.
Client/Owner — Ross Barney + Jankowski Inc.
General Contractor — Ross Barney + Jankowski Inc.

Although their clients decided not to build, Ullman & Fill Architects' house on **Deming Street** allowed the firm to be creative and explore ideas about modern urban architecture. This design, along with their award-winning private residence in Michigan (see page 23), represents the modern vein of their practice, in contrast to the vernacular city houses for which they are best known.

The **Grant Park Festival Grounds** are the solution proposed by Decker Legge Kemp Architecture Inc. for the annual dilemma posed by the Taste of Chicago. This outdoor festival must take place close to downtown but is not appropriate for the formal groves and parterres of

Grant Park. Former railroad land north of Randolph Street that is now used for surface parking could be decked over to create festival grounds with permanent infrastructure. The architects feel it is important to offer up ideas such as this one to stimulate dialog and create a basis for future action.

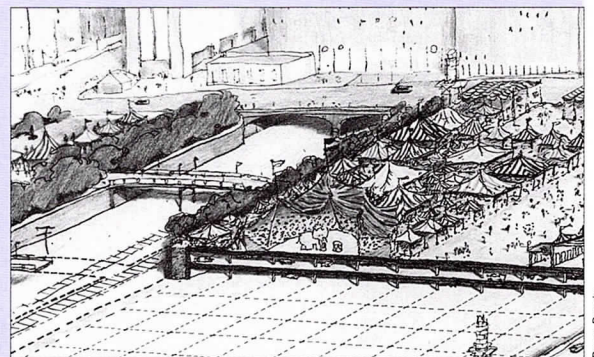
The jury had a specific reason for choosing each project, above and beyond the general aim of promoting good design. In selecting a competition entry that did not win, they provide us with the opportunity to compare a new building with an alternative approach. In honoring an unbuilt house, they give a handsome design the exposure it deserves. And, in

premiating a worthy civic concept, they help keep it alive and encourage it to be realized in some form in the future.

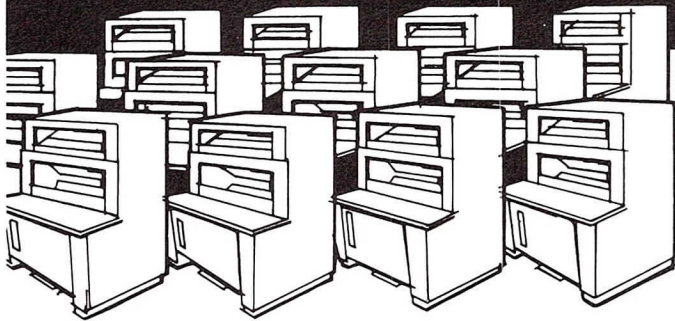
Every architect knows the feeling of disappointment when a project does not get built, and an Unbuilt Design Award is often a bittersweet prize. Sometimes the design is so specific that it can never be recreated in anything like the original form, while other schemes eventually may be realized with a few variations. In any case, these projects will continue as sources of inspiration for their creators as well as being immortalized as examples of what might have been.



Grant Park Festival Grounds
Chicago, Illinois
Unbuilt Design — Special Recognition
Architect — Decker Legge Kemp Architecture Inc.
Client/Owner — name withheld



**When you need 1
or 1,000,000 blue
prints, or any other
quantity...**



**MOSSNER'S 15 State-of-the-Art
Blue Print-White Print Machines
at One Location Produce Them
Fast, Fast, Fast**

**NO JOB TOO LARGE
NO JOB TOO SMALL**

**BLUE LINE, BLACK LINE,
BLUE PRINTS AND
SEPIA REPRODUCIBLES**

Speed, quality and dependability... these characterize Mossner's "blue print" service since 1922.

For more than 60 years, Mossner has provided the latest and fastest state-of-the-art, high-production equipment.

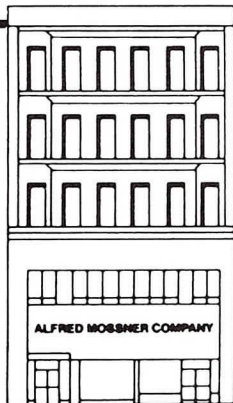
More than 50 messengers plus radio-dispatched pick-up and delivery vehicles assure the fastest possible service, including dependable print distribution to consultants, contractors and clients.

And that goes for *any* quantity you may require.

Mossner 372-8600

THE REPRODUCTION PEOPLE • LARGEST IN THE MIDWEST

Mossner Building • 137 North Wabash at Randolph (across from Marshall Field's), Chicago, IL 60602



Fast one-source service for all of your reproduction requirements

PHOTOMECHANICAL SERVICES

- STAR-REPRO® Drafting Systems — for pin-bar overlay and team drafting
- Precision camera work up to 48 in. by 72 in. enlargements and reduction to 10 times
- Autopositives
- Scissor drafting
- Photo drafting
- PencilTone® reproductions
- Xerox 600 enlargements from 35mm microfilm
- Xerox 2080-24"
- Shacoh 36-36" translucent vellum or Mylar intermediates, and paper prints—reduced or enlarged

**105mm and 35mm MICROFILM SERVICE
DRAFTING SUPPLIES AND
FURNITURE**

WE DO IT ALL UNDER ONE ROOF

OFFSET PRINTING

- Specification sheets and booklets
- MAGI-COPY® fast printing service — ideal for architectural and engineering specifications

**BLUE PRINTS,
WHITE PRINTS,
SEPIA INTERMEDIATES
ON PAPER OR MYLAR**

Too Young to be Landmarks, Modern Structures Struggle for Status

by Barbara Hower

In 1988, architectural historian Susan Benjamin urged Chicagoans to preserve the city's underage landmarks. Recognizing buildings that are less than 50 years old, she said, protects examples of Modern architecture for future generations. These newer buildings illustrate the important design advances, societal changes and technological achievements of the postwar era. Among the many buildings that Benjamin cited as noteworthy was the Seventeenth Church of Christ, Scientist, designed in 1968 by architect Harry Weese, FAIA.

Corroborating her judgment, the jurors on AIA Chicago's Twenty-five Year Award panel selected the church to receive this year's honor. The Seventeenth Church of Christ, Scientist

at 55 E. Wacker Drive is a modern solution to a traditional building type. A tight, irregular-shaped lot and a semicircular seating arrangement required by the client dictated the external expression of the building—a strong, travertine-clad conical form. Weese clearly defined the private and public realms of the building. The auditorium at the heart of the building, which focuses worshippers toward the reader's desk, is introverted. The more extroverted glassy area below the auditorium, however, clearly acknowledges its urban setting and welcomes passersby to enter.

"As it comes around the corner, the building is concerned with its urban context," explained Kevin Harrington, an architectural historian at the Illinois Institute of Technology (IIT) and a member of this year's Twenty-five Year Award jury. "Being low and easy for pedestrians to enter, it's an inviting and easily understood building for people on foot. Furthermore, it gives a strong presence to the corner—even though it's a small building, it holds its own amidst the taller surrounding buildings."

Harrington also pointed out that this particular building is an important one in Harry Weese's career. "If Mies is alone at the top of the Modern Movement, Harry Weese is at the top of the next tier of Modernist architects in Chicago," Harrington said. "Harry was more concerned with the relationship between people and the built environment."

While the Twenty-five Year Award serves to recognize significant projects 25 years after their completion, it does not in any way impart landmark status to the building. The general rule of thumb for landmark designation is the 50-year rule set forth by the National Register of Historic Places. The mandated time span is intended to allow for a significant passage of time so as to better place the building in a historical context. The danger, however, in strictly adhering to the 50-year ruling is that many significant



Orlando Calamban

Seventeenth Church of Christ, Scientist
Chicago, Illinois

Twenty-five Year Award

Architect — Harry Weese Associates
Client/Owner — Seventeenth Church of Christ, Scientist
General Contractor — Sumner Sollitt Construction Co.

Continued on page 16

younger buildings will be demolished or radically altered before they ever reach their 50th birthday.

So how does Chicago measure up in terms of protecting its built environment? Not very well, according to many local preservationists. The recent landmarks controversy, in which 29 buildings were stripped of their landmark protection and the subsequent revamping of the landmarks ordinance, has many in the preservation community concerned. Until this year, a building could sit in limbo, yet still retain protected, for years and—in some cases—decades, as if it were protected. Now, however, if the council doesn't vote on the proposed designation within one year, the proposal dies.

"The City Council has created a pocket veto provision whereby it can simply not act on a recommendation and at the end of the year, the designation is removed with little or no chance of 'calling the building up' again," said Ron Emrich, executive director of the Landmarks Preservation Council of Illinois (LPCI).

To date, however, the council is acting rapidly on the pending decisions for the 29 buildings stripped of their protection. After sitting in limbo since 1980, Ludwig Mies van der Rohe's 860-880 N. Lake Shore Drive was finally granted official landmark status, making it Chicago's youngest landmark.

It is ironic that a city that is quick to boast of its architectural legacy has trouble in preserving its historic buildings. The irony is not missed by the preservation community.

"Chicagoans always feel that they should tout their architectural legacy, yet we tear down at an enormous rate," said Howard Decker, AIA, a partner at Decker Legge Kemp Architecture Inc. and past president of LPCI. "Chicagoans don't do nearly as well as their pride in their built environment suggests."

Political machinations, though, are not the only road blocks in identifying younger buildings for landmark status.

At the "Preserving the Recent Past" conference, which was held in Chicago last year, it was pointed out that Americans tend to equate "historic" with age and not with legacy or heritage.

How, then, should more recent structures be evaluated for historical significance?

Emrich believes that historic designations for younger buildings should be based upon the National Register's other evaluations. Aside from the 50-year rule, the organization considers the building's architect, famous individuals associated with the building, and significant events that took place in the structure. "One would be hard-pressed to deny that the mission control room from which the first moon landing was monitored was historic," Emrich said.

Historian Susan Benjamin agrees.

"We need to be very vigilant about these more recently designed buildings. We have a sufficient body of information with which to understand them—we have an understanding of the Modernism of Mies and of the '40s, '50s, and '60s—so we can make informed judgments on these buildings."

The recent landmark designation of the Mies buildings and recognition by AIA Chicago of the Seventeenth Church of Christ, Scientist are reassuring. We're starting to recognize the importance of these young landmarks, but we clearly have a way to go. ■

Barbara Hower is a former editor of Inland Architect. She has written design-related articles for the Chicago Tribune, Chicago magazine and Realty and Building magazine.

Division 7

Architectural Representative

708.668.1551
Telephone



708.668.1672
Facsimile

COATING SALES LTD.

Representing Manufacturers of Quality Construction Materials Since 1977

Koppers Industries

Coal Tar Built Up Roofing Systems

- Fume Recovery System—FRS 6000
- Proven Materials
- Quality Manufacturer
- Warranty

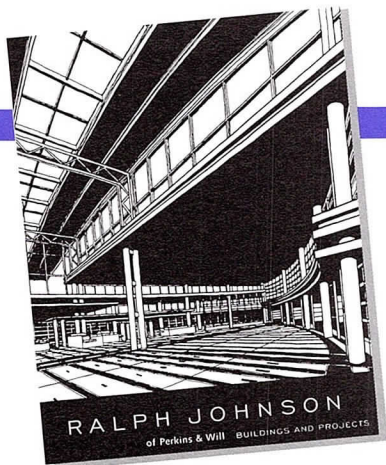
Ludowici Roof Tile

Clay Roof Tile Systems

- Historic Preservation
- Proven Materials
- Quality Manufacturer
- Fine Home Construction

*Long-term, Effective Solutions to
Your Roofing Needs*

The Prince of Thieves



by *Randall Deutsch, AIA*

Ralph Johnson of Perkins & Will: Buildings and Projects

(New York: Rizzoli, 1995, 223 pages, \$39.00 softcover.)

Charles Moore, paraphrasing T.S. Eliot, once boasted: "Most architects borrow from the past, but the best architects steal." *Ralph Johnson of Perkins & Will: Buildings and Projects* is a testament to one of our country's most accomplished thieves.

Ralph Johnson's buildings are refreshingly new, because his sources are transformed and abstracted.

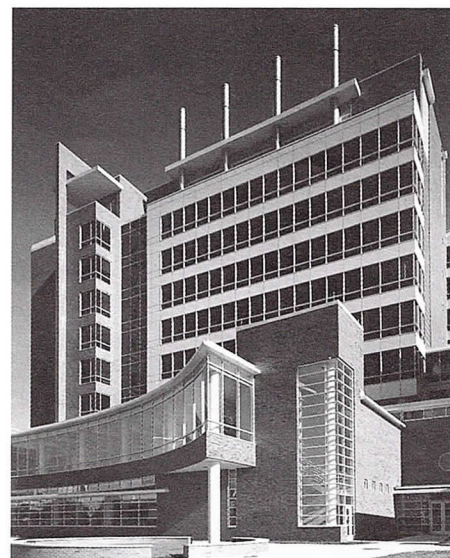
Skeptics allude to the fact that Postmodern architects culled from familiar sources, and that the difference in the case of Ralph Johnson, FAIA is that he borrows from less well-known architects. Their reasoning follows: If your references are obscure enough, you'll evoke the requisite echoes of the past in order to ground the work without anyone being able to recall the references themselves. The ideal is for the work to remain on the tip of everyone's architectural tongue. We've met before, but I can't quite place you.

Ralph Johnson's buildings are at once familiar and refreshingly new, primarily because his sources are transformed and abstracted. Even so, following the publication of this book, one cannot look at the Crow Island School in Winnetka without seeing

Johnson. Nor can one look at the work of Dutch architect Willem Dudok again with innocent eyes. Johnson has transformed the work of Dudok and Eliel Saarinen into his own likeness. From here on out, one can only turn to these Modern masters by way of Johnson.

Johnson's monograph allows the reader for the first time to view 20 years of work from this singular sensibility. If Johnson is less successful in his earlier work, it's because he is more literal in his reference to and reverence of architects past. But like an architect's portfolio, the book attempts to correct the past of unfortunate blemishes and re-evaluate lesser efforts. If arranged chronologically, one would see greater and greater abstraction of referenced sources in his projects over time. But because the book is arranged, not by date, but by building types, this maturity in his work is difficult to witness at first.

Continued on page 18



Ohio State University, Vernal G. Riffe Jr. Building
Columbus, Ohio

Distinguished Building — Honor Award

Design Architect — Perkins & Will
Associated Architect — Burgess & Niple Ltd.
Client/Owner — Ohio State University
General Contractor — Sherman R. Smoot Co.
Consulting Engineer — W. E. Monks & Co.
(Mechanical/Electrical), John E. Foster & Associates (Civil)

Heidrich Blessing

Bookshelf

Continued from page 17

Working primarily with August "Augie" Battaglia, AIA, one of the 20th century's most unsung architects-in-the-shadow, Johnson has won most of the awards for Perkins & Will. But Johnson comes across in Robert Bruegmann's introduction as a reluctant hero, prophet, and formfinder. Bruegmann rightly, and adeptly, points out the disconcerting disparity between Johnson's subdued character and the look-at-me-no-hands personality of his buildings.

So what if he's a lousy interview? (Who remembers if architect Ralph Adams Cram was a scintillating conversationalist?) It's the work, and work there is: schools, laboratories, airports, office buildings, civic projects and housing.

Johnson's success is partly owed to a duality; he is at once a client's architect as well as an architect's architect. His concern for the program above all else assures the former, while his obedience to certain endearingly Modern forms, reappearing in project after project, includes him in the latter.

Johnson, it becomes clear, is a situational formalist, allowing the circumstances of program and site to dictate the ideal form, rather than attempting to cram a program into a preconceived package. You want a real treat? Take a look at his award-winning project for Ohio State University. Lodged between two existing laboratories, the research facility unites all three buildings to define the east edge of the campus.

It's no surprise that heads of architectural firms large and small hoard copies of Johnson's book in their desks, enticing their staffs to learn, borrow and steal from herein. These firms are using the book much the way, one concludes, Johnson used the monograph on Dudok to inform his own work. While so many monographs find their way to the remainders bin, *Ralph Johnson of Perkins & Will* will remain the heist of the century. ■

Randall Deutsch, AIA is a regular reviewer for Focus: Architecture Chicago and a practicing architect with Chicago-based Jordan Mozer & Associates.

Bargains Available Only To AIA Members

- 1 Term Life Insurance**
- 2 Disability Income Protection**
- 3 Business Overhead Expense Protection**

800-367-7438

AIA Trust

Architect and Developer Form Restorative Partnership

by *Laura Gatland*



Leslie Schwartz

Reliance Building Exterior Restoration
Chicago, Illinois

Distinguished Building — Special Recognition

Architect — McClier Corp.
Client/Owner — City of Chicago Department of
Planning and Development
Developer — Baldwin Development Co.
General Contractor — UBM Inc.
Consultants — Wiss, Janney, Elstner Associates Inc.
(Terra Cotta and Windows), Klein and Hoffman Inc.
(Structural Engineer)

A glance at the floor of the renovated Rookery Building reveals one of the keys to a successful pairing of architect and developer: The gleaming marble mosaic tile that was laid as part of the landmark building's overall restoration cost the Baldwin Development Co. an extra \$500,000.

When architects at McClier Corp. first discussed renovating the floor of the 1888 building, they weren't sure whether Baldwin would be willing to shell out the extra funds for the most expensive—but historically accurate—option.

That Baldwin understands the value of historic preservation is one reason the developer and McClier work so well together. Indeed, the pair is considered a model preservation team, considering the accolades they have received for restoring the landmark Rookery and Reliance buildings.

"As an organization, Baldwin is really into this business because of the quality of the end result they can achieve," said Christopher Martersteck, AIA, vice president of McClier and project manager for the Reliance Building. "In historical restoration that becomes even more critical because of the difficulty of trying to recreate something that was done 100 years ago... Sometimes people are just inclined to settle for something else."

Originally built by Chicago architects Daniel Burnham and John Wellborn Root and later renovated by Frank Lloyd Wright, today's Rookery illustrates how a meticulously restored historic building can succeed in the competitive commercial market of the '90s. The total tab of the renovation project was \$82 million for a building that Baldwin paid \$27 million to acquire in 1988. Renowned as an adept fund-raiser, Baldwin convinced NMB

Vastgoed Fonds N.V., a Dutch real estate investment fund, to agree to provide about \$25 million in financing. Another Dutch entity, ING Bank, furnished \$77 million. And Chevron USA provided additional financial support.

Today, Baldwin has managed to lease 94 percent of the Rookery's space to investment fund managers, law firms and banks, debunking the notion that historic buildings cannot be turned into "Class A" office space. Baldwin has snared tenants willing to rent space at a net rate of \$15 to \$20 per square foot. (Typical office space in the Loop rents for about \$9.75 per square foot.)

So successful was the Rookery project that the city of Chicago chose Baldwin and McClier to restore the exterior of the Reliance Building.

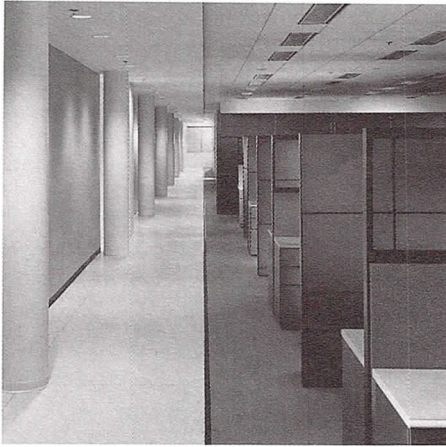
The Baldwin-McClier team was able to achieve such commercial success by restoring historical features that included a spiral staircase and a glass and iron skylight, as well as adding state-of-the-art heating, air conditioning, elevators and electrical systems. The Rookery was completed in 1992 to much praise, including AIA Chicago's Interior Architecture and Distinguished Building Honor Awards.

So successful was the Rookery project that the city of Chicago chose Baldwin and McClier to restore the exterior of the Reliance Building, another national and city landmark at 32 N. State St.

Continued on page 24

Pretty Facade

Continued from page 13



Korab/Hedrich Blessing, Marco Lorenzetti

Watson Wyatt Worldwide
Marlborough, Massachusetts

Interior Architecture — Citation of Merit

Architect — Perkins & Will
Client/Owner — Watson Wyatt Worldwide
General Contractor — C.E. Floyd Co.



Warner Jagger

Combined Outpatient Clinics for Obstetrics and Women's Health
Boston, Massachusetts

Interior Architecture — Honor Award

Interior Architect — Hancock & Hancock Inc.
Client/Owner — The Massachusetts General Hospital Corp.
General Contractor — Walsh Brothers Inc.
Consulting Engineer — Thompson Consultants Inc.

The jury members all agreed that one of the toughest commissions is the interior architecture of a medical facility, because the users determine the spatial needs so closely that there is little room for creativity. Hancock & Hancock's **Combined Outpatient Clinic for Obstetrics and Women's Health** in Boston, Massachusetts, received an award because jurors felt it was the best, most sophisticated clinic they had ever seen. Custom oak trim and color-coded architectural and graphic elements create a welcoming, helpful environment.

Sometimes a single element of a project will capture a jury's attention.

The Marlborough, Massachusetts office of **Watson Wyatt Worldwide**, designed by Perkins & Will, features a series of parallel walls painted in subtle variations of color. This design device also reflects the phased nature of the project, which will be expanded at a future date.

Manufacturing facilities generally lack the glamour of high-rise Loop offices, but two award-winning projects exemplify distinguished design. Jurors found **M & L International** (Pappageorge/Haymes Ltd.) to be a superb example of a space that conveys the nature of the activities taking place. The company designs, manufactures and distributes children's clothing out of a 22,000-square-foot industrial building in Chicago. As one juror put it, "It looks like kids, and it looks like manufacturing." Vivid contemporary colors highlight a

EUCLID

We have Big Plans for your Small Firm

AIA Chicago 401(k) and Profit Sharing Association Plan

IRS compliance is a key factor in the cost of pension plan administration costs. By combining smaller firms together in a larger group, the costs will be lower. That is exactly what the AIA Chicago 401(k) and Profit Sharing Association Plan did. Euclid and Sandner & Emering developed a plan that will allow smaller employers to offer the same options as their larger counterparts. The annual charges are the following:

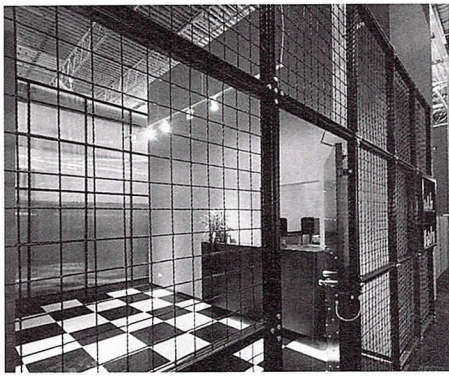
- \$500.00 per firm**
- \$33.50 per participant**

These charges include everything for a turn-key" pension plan... filings, 5500's testing, investing, reporting, bookkeeping...

For more information, please contact:

Jim Lorenz at 708 833-1000

Euclid Insurance Agencies, Inc.
977 Oaklawn Avenue, Elmhurst, IL 60126



William Killow

M & L International
Chicago, Illinois
Interior Architecture — Citation of Merit
Architect — Pappageorge/Haymes Ltd.
Client/Owner — M & L International
General Contractor — Urban Estates Inc.

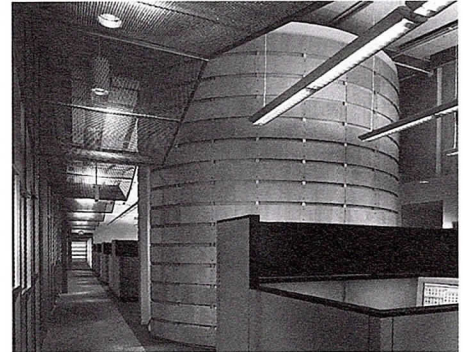
series of freestanding rooms that break up the 22,000-square-foot space.

U.S. Robotics' UWest plant won an Honor Award for Valerio Dewalt Train Associates' transformation of an abandoned 1950s factory into a modern production facility. A long corridor separates offices from the production floor; dubbed by employees "The Chunnel of Industry," it features a ceiling element of metal mesh that echoes the up-and-down movement of the old shed roof. The jury was impressed by this visual blend of high-tech and traditional imagery. They also praised the scale, the lighting, and the attention paid to all the details.

Poise and Personality

The 1996 jury viewed almost two dozen residences in styles that ranged from spare to sumptuous and sites as varied as cramped city lots and vast rural acreage. Although many houses had the jurors fantasizing about a weekend stay, more than good looks were needed to push a project beyond the worth-a-second-look stage to award-winner status. Each of the three houses that were awarded Citations of Merit showed sensitivity to its site, a command of details, and the individuality and unexpected touches that go beyond the norm of custom design and set a higher standard for residential architecture.

Continued on page 22



Karant + Associates, Barbara Karant

UWest: U.S. Robotics
Morton Grove, Illinois
Interior Architecture — Honor Award
Architect — Valerio Dewalt Train Associates Inc.
Client/Owner — U.S. Robotics
General Contractor — Turner Construction Co.
Consulting Engineer — WMA Consulting Engineers (MEP)

NO MATTER HOW HARD THE WINDS OF RISK BLOW, CHICAGO-AREA ARCHITECTS HAVE TEN PILLARS OF SUPPORT.

ANNOUNCING THE NEWLY EXPANDED ANDERSEN COMMERCIAL GROUPSM

It's a team of ten commercial window specialists dedicated to helping you reduce the risks of the world you work in. And it puts the resources of the entire Andersen Corporation at your disposal.

Call Brian Musselman, your Chicago pillar, at (312) 464-1805. His new 1500 square foot Andersen showroom in the Merchandise Mart will keep you out of the wind. Or call any member of the Andersen Commercial Group. 1-800-299-9029.

ANDERSEN COMMERCIAL GROUPSM



4341 Copyright © Andersen Corporation 1994. All rights reserved.

Pretty Facade

Continued from page 21

Dunewood Retreat
Bridgman, Michigan

Distinguished Building — Citation of Merit

Architect — Nagle Hartray Danker Kagan McKay,
Architects/Planners Ltd.

Client/Owner — name withheld

General Contractor — Michigan City Associates Inc.
Consulting Engineer — Beer, Gorski & Graff Ltd.

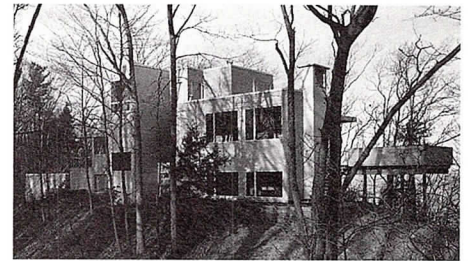
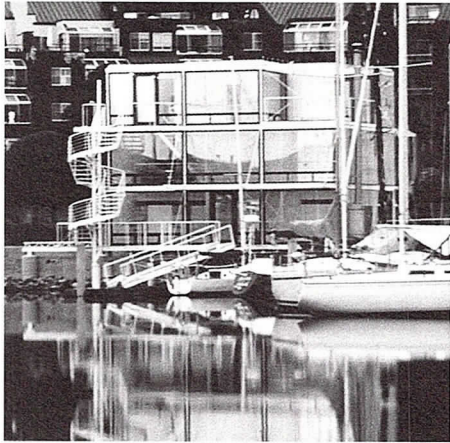


Photo: Van Inwagen



Holabird & Root LLP

Caryl's California House I
Point Richmond, California

Distinguished Building — Citation of Merit

Architect — Gerald Horn with Holabird & Root LLP

Client/Owner — Caryl Horn

Builder — James Horn, Bruce Ward

Consulting Engineer — Holabird & Root LLP (structural)

While all three houses have waterfront locations, **Caryl's California House I** is actually built over the water, providing direct access to a boat slip in a protected harbor of San Francisco Bay. This was accomplished by sinking pilings into the water and topping them with 36-foot-long trusses that support the building's framework. Located in a densely-settled community, the house's three-story height maximizes living space on the small lot. Floor-to-ceiling windows predominate on the waterfront side, while redwood siding lends privacy to the street facade.

The jurors admired the playful, inventive quality of Caryl's House, and the fact that it fits in with its neighbors even though it is totally different. Architect Gerald Horn, FAIA of Holabird

& Root LLP designed it as a vacation/retirement house for himself and his wife, so the interior was configured to accommodate extended family visits while maintaining the owners' privacy. Horn, his son and his son-in-law built the house themselves, a task made feasible by the design of a lightweight steel structure infilled with wood and glass.

Dunewood Retreat, designed by Nagle Hartray Danker Kagan McKay Architects/Planners Inc., stretches for 200 feet along the crest of a dune that overlooks Lake Michigan. The main level at the top of the outdoor stairway contains the living, dining, kitchen, deck and screen porch spaces. The children's quarters are below and the master suite is above. The jury praised the spatial flow and the internal logic of the plan, with its

PROJECT CONTROL INC.

A Professional Service Organization
Established in 1974

PROJECT/CONSTRUCTION MANAGEMENT

Project Delivery Management
Construction Management
Cost Estimating
CPM Scheduling
On-Site Management

PROFESSIONAL CONSULTING

Feasibility Studies
Loan Management
Property Inspections
Litigation Support
Maintenance Reports

PROJECT CONTROL INC.

411 South Wells Street, Suite 902
Chicago, Illinois 60607

Tel: 312/922-5151
Fax: 312/922-6858

A Great Offer from the #1 Encad Dealer in the U.S.!



A Complete Supplier
of CAD Plotters & Media

charrette

Solutions for Design Professionals

NEW ENGLAND • NORTHEAST • MIDWEST

ENCAD[®] CADJET[™] 2

COLOR INKJET PLOTTER

Best Color/CAD Plotter Value on the Market!

- Fast, monochrome plotting
...only 5 min. per plot!
- Great for spot-fill color!
- Roll-feed for unattended
operation.

Complete with Stand **\$3695**

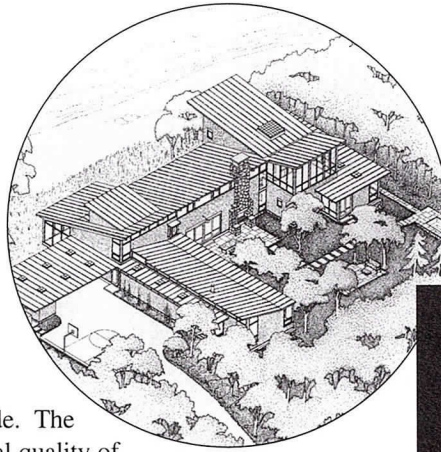
Call Today!

PHONE: 800-367-3729

FAX: 800-626-7889

layering of living levels and porches; they liked the fact that the layout was shaped by the site and the interior uses rather than by a predetermined geometry. They also admired the variety of exposures and window forms. The exterior of the house features wood siding, sunscreens and metal railings that all reinforce the linearity of the dune. One of the most impressive features is the successful preservation of a very challenging building site.

A **Private Residence** by Ullman & Fill Architects Ltd. was also designed to fit into its site on Lake Michigan. Set in a U-shaped valley formed by ancient dunes, the house's plan was partly determined by the desire to preserve old growth trees. Two wings of the house create a peaceful courtyard sheltered from the more open



lake side. The informal quality of the plan, which has interconnecting single- and double-height spaces oriented to views, reminded jurors of both Frank Lloyd Wright and Alvar Aalto. In fact this overall quality of being familiar yet original, modern but reminiscent of earlier vernacular buildings, was what they most admired about the project. ■

Laurie McGovern Petersen is a Chicago-based free-lance writer and editor. She is a regular contributor to Focus: Architecture Chicago and is the editor of ARCHIDEK: Chicago, a set of architectural collector's cards.



Konrad/Hedrich Blessing, Gary Quessada

Private Residence
Covert, Michigan

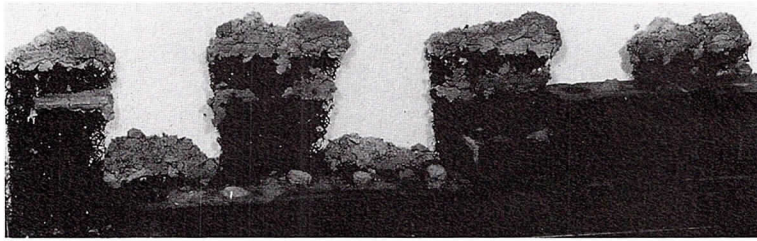
Distinguished Building — Citation of Merit

Architect — Ullman & Fill Architects Ltd.
Client/Owner — name withheld
General Contractor — Harold Herbstreit
Consulting Engineer — Beer Gorski & Graff Ltd.

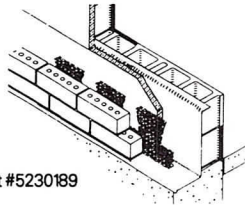
THE MORTAR NET™

Absolutely eliminates weep hole blockage due to mortar droppings

Assures a successful flashing/weep hole system*



The Mortar Net™ holding mortar droppings from a 5' high test wall.



Patent #5230189

- Weep holes stay open—Mortar Net collects mortar droppings *inside* masonry cavity walls
- Fast, easy installation—requires no fasteners or adhesives, no special skills or tools
- 5' long sections in four nominal sizes:
10" high x 1", 0.8" and 0.4" thick
16" high x 1" thick

FOR TECHNICAL DATA AND A FREE SAMPLE KIT

CALL 1-800-664-6638

TO ORDER THE MORTAR NET™ CALL SEALANT ENGINEERING ASSOCIATES AT 708/860-7878.

* When properly installed.

Architectural Services Enhancement, Inc.

901 North Elm Street
Suite 100
Hinsdale, Illinois 60521
(708) 323-8431

AIA Members

John Cinelli

Dennis Kapustka

Richard Lehman

J. Michael Meissner

Mike Velko

"A permanent staff providing contract documents and related services to architects"



crosstree
INC.

ARCHITECTURAL METALWORK

CUSTOM
ARCHITECTURE
INTERIOR
FURNITURE
IN
METAL

FREE Portfolio

Call 312.733.1234

to receive our portfolio and see for yourself what we could do for your custom metal fabrication needs.

500 West Cermak Rd. Box 25 Suite 815 Chicago, Illinois 60616
Tel: 312.733.1234 Fax: 312.733.1207 E-mail: crosstree@wwa.com

Partnership

Continued from page 19

"They were a strong team," said Charles Thurow, deputy commissioner of the landmarks division of the city's Department of Planning and Development. "Their previous experience with the Rookery was one of the reasons they got the Reliance job. They could go from both the architectural and technical parts of the project to the economic part."

The team used wise judgment in making the difficult decisions that arose in both projects, Thurow said.

"Especially in historic preservation, you're dealing with all these unknowns," Thurow said. "You constantly have to make these important economic and development decisions as the project is going along."

The Reliance Building, originally

designed by Charles Atwood of D.H. Burnham and Co., was considered remarkable at the time as the first glazed terra cotta skyscraper in Chicago with an unusually glassy facade. To restore the exterior after decades of neglect, McClier had to replace more than 2,000 pieces of terra cotta.

Today, the restored Reliance Building's exterior has stimulated a whole new thinking process for the city in preserving the terra cotta that dresses many other East Loop buildings from the same era, Thurow noted. And the Reliance's restored exterior has garnered the Landmarks Preservation Council of Illinois' 25th Anniversary Award as well as special recognition in AIA Chicago's Distinguished Building Awards.

The Reliance project proved to be

trickier for McClier than the Rookery, said Gunny Harboe, AIA, chief preservation architect on both projects, because of the many layers of public agencies and consultants hired by the city. Baldwin acted as the city's project manager on the Reliance restoration to ensure that the design was carried out properly and stayed within budget.

Preserving a historic building often digs up unknown costs mid-project, which became a thorny issue since the city's budget was fixed and its time frame was a quick one year, Harboe noted.

Despite the project's difficulties, both McClier and Baldwin are eager to team up again to restore the Reliance's vacant interior. But the project's fate remains to be seen: The city has been trying to sell

Minicad Training

Macintosh/Windows

Logical step by step CAD training for all skill levels
System organization • Office standards • Consulting



NATHAN KIPNIS
• ARCHITECTS • INC. •

• 1525 Greenleaf Street • Evanston, Illinois 60202 •
• NKArch@AOL.com •

847 • 864 • 9650

Graphsoft listed consultant

The Law Offices of Cooke & Whitcomb

TIMOTHY P. MORGAN, ESQ., AIA OF COUNSEL

Twenty years experience as a practicing architect.

A Business Transactional Practice. Contracts. Strategies. Financing.
Commercial & Residential Real Estate. Construction. Arbitration. Litigation.

360 N. Michigan Ave.
Suite 1116
Chicago, Illinois 60601

TLPH (312) 444-9002
FAX (312) 444-9007
E-MAIL: Garycooke2@aol.com

Gloor Realty Company

114 North Oak Park Avenue Oak Park, IL 60301
708.524.1100 800.684.5221

RIVER FOREST. Distinctive Prairie-style home designed in 1912 by William Drummond for Charles Barr. Magnificent oak woodwork, built-ins and leaded art glass windows throughout. Three-sided Roman brick fireplace, 4 bedrooms, 2 baths, family room. Lovely deck and beautifully landscaped private fenced yard. A very special home! \$475,000.

OPTION 1

Temporary placement - CFA's total billing rate averages \$15 to \$45 per hour for entry to senior level staff. This price combines a fair market value for the temp's service (architects compensation) and fair market value for our service (CFA fixed fee) Our service includes recruiting, candidate interviewing, reference checking, and credit (cash flow financing) on weekly payroll. Also, our accounting department administers project time records, invoicing, accounts payable and collection. *This allows for risk-free, flexible, project-based staffing on an as-needed basis only.*

Consulting For Architects, Inc. Placement Services

The Merchandise Mart, Suite 1049A, Chicago IL 60654
(312) 822-0338 Fax 822-0342

"The leader in architectural recruiting and staffing"



the century-old building without success.

The interior has languished for decades with very little maintenance, explained Robert Fraley, Baldwin's executive vice president and chief financial officer. Restoring the interior could cost at least \$15 million and would be difficult to finance because of limited space in the 57,000-square-foot building, Fraley said.

The courtship of Baldwin and McClier began through Robert Meers, a development consultant who had worked with McClier in restoring North Pier, said Thomas Rossiter, AIA, president of McClier's commercial group and principal-in-charge for the Reliance project. Meers introduced McClier to Baldwin Development, who owned the

Rookery and was set to begin restoring the national and city landmark.

Baldwin's Fraley said that McClier has proven a strong partner because of its thorough research and follow-through. He singled out Harboe, director of McClier's preservation group, for his diligence "in researching what the restoration needed to be."

"It goes without saying that they're certainly technically competent," Fraley said. "In both cases they assigned a team of individuals to see [the projects] through from commencement to completion." ■

Laura Gatland is a free-lance journalist. Her work is featured regularly in Crain's Small Business, Crain's Chicago Business and the journal of the American Bar Association.

INSURANCE SPECIALISTS FOR
Architects • Engineers • Land Surveyors

AVA Insurance Agency, Inc.

- Professional Liability
- Commercial

- Special Programs
- Group Health

Serving You
Since
1979

One Tower Lane, Suite 1440, Oakbrook Terrace, IL 60181
(708) 571-4500 Fax (708) 571-4518 E-Mail: INFO@AVAINS.COM

OPTION 2

Technical Placement - CFA will place a computer expert specializing in CAD and experienced with A/E/C installations to solve a variety of your office automation needs. CFA's total billing rate averages \$50 - \$150/hr. These skilled technicians can develop budgets & specifications, install, administer & trouble shoot Networks, PCs, or MACs, install CAD stations & software, train staff, provide DOS/SUN/UNIX/NOVELL/WINDOWS programming solutions, support IS or MIS, develop CAD standards and layering guidelines, provide telephone support, data integration, plotting, drawing conversion and more. *At no additional charge we evaluate your needs and assign a consultant to complete your project.*

Consulting For Architects, Inc. Placement Services

The Merchandise Mart, Suite 1049A, Chicago IL 60654
(312) 822-0338 Fax 822-0342

"The leader in architectural recruiting and staffing"



**DO YOU NEED
INFORMATION OR
ASSISTANCE ON ANY
OF THE
FOLLOWING?**

Ornamental Plaster

Interior Gypsum Plaster

Portland Cement Plaster

Spray Fireproofing

Gunite Rock Work

Veneer Plaster

Stucco Work

Scagliola

E.I.F.S.

Sgraffito

Cast Plaster

Racquetball Courts

Hydronic Heat in Plaster

Electric Heat in Plaster

**Just give us a call.
We will be happy
to serve you.**

**CHICAGO
PLASTERING
INSTITUTE**

**6547 N. AVONDALE AVE.
CHICAGO, IL 60631
Phone (312) 774-4500**

(Firms are listed alphabetically by award category.)

Distinguished Building Awards

Daniel P. Coffey & Associates Ltd.10
 Decker Legge Kemp Architecture Inc.7
 Eckenhoff Saunders Architects Inc.9
 Gerald Horn with Holabird & Root LLP22
 McClier Corp.19
 Nagle Hartray Danker Kagan McKay,
 Architects/Planners Ltd.22
 Perkins & Will17
 Ross Barney + Jankowski Inc.6
 Ullman & Fill Architects Ltd.23
 VOA Associates Inc.7

Interior Architecture Awards

Booth/Hansen & Associates Inc.11
 Brininstool + Lynch Ltd.6
 Eva Maddox Associates Inc.10
 Gary Lee & Partners12
 Hancock & Hancock Inc.20
 Interprise11
 Kajima Associates Inc.12
 Leiber Architects Inc.11
 Loebel Schlossman & Hackl/Hague Richards6
 Pappageorge/Haymes Ltd.21
 Perkins & Will20
 Ross Barney + Jankowski Inc.13
 Teng & Associates Inc.7
 Tigerman McCurry Architects Ltd.6
 Valerio Dewalt Train Associates Inc.21
 VOA Associates Inc.13

Unbuilt Design Awards

Decker Legge Kemp Architecture Inc.13
 Krueck & Sexton Architects12
 Ullman & Fill Architects Ltd.13

Twenty-five Year Award

Harry Weese Associates15

Jury List

(Jurors are listed alphabetically by award category.)

Distinguished Building Awards

Walter Chatham, AIA — New York, New York
 Donlyn Lyndon, FAIA — Berkeley, California
 Mary E. Griffin, AIA — San Francisco, California

Interior Architecture Awards

Margaret Sedlis, AIA — New York, New York
 Jay Nordsten, AIA — West Hollywood, California
 Juan Montier, Assoc. AIA — Decatur, Georgia

Unbuilt Design Awards

Daniel Wheeler, AIA — Chicago, Illinois
 Laurence Booth, FAIA — Chicago, Illinois
 Gerald Horn, FAIA — Chicago, Illinois

Twenty-five Year Award

Wilbert Hasbrouck, FAIA — Chicago, Illinois
 Carol Ross Barney, FAIA — Chicago, Illinois
 Kevin Harrington — Chicago, Illinois

Sabo & Zahn

Attorneys at Law
 Werner Sabo, AIA James Zahn, AIA

Copyrights for architectural works
 litigation, arbitration, contracts, real estate
 construction attorneys

444 N. Michigan, Suite 3560 (312)644-2010
 Chicago, IL 60611 fax: (312)644-2012

Check out our WEB Page at <http://www.webcom.com/~sabozahn>

Land Surveying Services

Zarko Sekerez & Associates

Land Surveying • Civil Engineering • Land Planning

Serving Architects Since 1964

111 West Washington, Suite 940 • Chicago, Illinois 60602
 (312)726-1313 • Fax 236-9506

Mortgage Financing

Residential & Commercial

New Construction
 Rehab & Additions
 Purchase & Refinance

for loan information, call:
Menno Scholten, AIA

Illinois Mortgage Company
 908 Waukegan Road
 Glenview, Illinois 60025
 An Illinois Mortgage Licensee

(847) 724-0000 fax (847) 724-5606

RICHARD GIBBONS & ASSOCIATES

ARCHITECTURE • DESIGN

Seeking: Full time Project Architect
 Skill Req'd: Res. Const. Doc., Ink on Mylar
 Experience: Min. 4 yrs. Post College
 Education: Min. BA or BS in Arch.
 Req'd Start: 10/96
 Salary: To be Negotiated
 Firm Size: Seven Members
 Firm Projects: Mostly Hi End Res. in Chgo.
 Fax Res. to: 312 482 8043 (Max. 3 pp)

OPTION 3

Permanent placement - No matter what experience or salary, CFA charges a fixed fee of \$3,650 if you hire our candidate. CFA does not charge based on a percentage of the candidate's annual salary. *When we do the same amount of work, why should a candidate's salary level result in higher fees to you?*

Consulting For Architects, Inc. Placement Services

The Merchandise Mart, Suite 1049A, Chicago IL 60654
 (312) 822-0338 Fax 822-0342

"The leader in architectural recruiting and staffing"



COMPUTER IMAGING BY ARTISTS, NOT TECHNICIANS

perception?



reality.

Exceptional images are critical in gaining design approvals, building consensus, raising funds or pre-leasing unbuilt space. Let us show you how we can illustrate your project, from concept stage through construction. Our computer generated

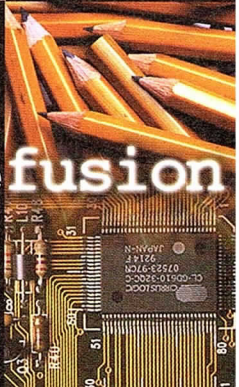
images evolve with the design process, instead of becoming obsolete. We offer competitive pricing with the ability to meet the demanding schedule of the A/E/C profession. Give us your ideas as rough sketch, conventional drawings or CAD dxf.

image fusion

312.726.0818

Fax 726.1118

Contact: Eric Brightfield



WATER-MANAGED EXTERIOR FINISH SYSTEMS: THE FUTURE OF STUCCO EXTERIORS.

The future of EIFS isn't about sealing out water. It's about letting it escape if it ever penetrates a system's exterior. Water-managed type EIF and DEF Systems are designed to do just that – making them more practical to install and more reliable in performance than regular “barrier” type EIFS.

Fact is, barrier EIF Systems were designed to seal water out. And they work. That is, until water seeps behind the system through and around windows, roof flashings and other penetration points. That's when the limitations of “barrier” EIFS become evident: they can also seal water in, causing permanent damage not visible from a home's exterior.

Without sacrificing the stucco-look appeal, or insulation benefits, Water-Managed Exterior Finish Systems perform like an EIF System with one crucial difference. They give water the means to escape if it should ever penetrate the system's exterior.

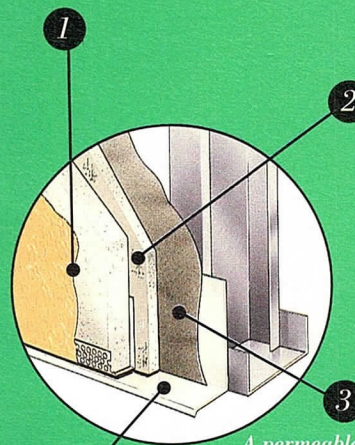
This “water in, water out” premise isn't new to the construction industry. It's the basic concept behind conventional exterior cladding such as aluminum and vinyl siding, and even the predecessor to barrier EIFS, portland cement stucco.

The fact is, windows are not waterproof. And independent tests reveal that even perfectly installed windows can eventually leak. Factor in ineffective sealants and poor detailing and it's only a matter of time before water gets in.

By incorporating water-durable substrates, vapor permeable components, flashing and drainage planes, Water-Managed EIF Systems make sure water gets out. Safely. Surely. And without damaging a home's water-sensitive framing and sheathing.

For complete details and specifications on Water-Managed Exterior Finish Systems, or a technical paper outlining the results of our exterior systems research, call 1-800-USG-4YOU, or visit <http://www.usgcorp.com>. It's the kind of information that can put your mind at ease.

Stucco-look exterior finish, with or without insulation, provides pleasing aesthetics and design versatility in a system that's practical to install and reliable in performance.



DUROCK™ cement panels are the most durable substrate in an exterior finish system. They won't trap water or vapor, delaminate, soften or deteriorate should water penetrate the system's exterior.

A permeable water barrier serves as an additional drainage plane for water that has entered the wall cavity.

Flashing provides the final component in managing water effectively. This water-exit device, central to Water-Managed EIF Systems, prevents damage to a home's water-sensitive framing and exterior sheathing.